

THE WHEELER TIMES

(USPS 681-960)
VOLUME 68, NUMBER 36

THURSDAY, AUGUST 16, 2001

Single Copy **50c**
"Wheeler, town of friendship and pride."

CWE CHAT WITH EDITOR

By Louis C. Stas

It can rain! We have reports of up to 3" in the Briscoe Area.

The official report for Wheeler is 0.3"—more than I thought we had received.

It is back to school—where did the summer go?

We received a 'Letter to the Editor' in response to the one we published August 2. Letters must be signed—we will withhold the name of the writer on request. Please come by and sign the letter, or send us a signed copy.

Most people feel we should publish the writer's name. In some cases, the name might change a reader's opinion about the letter and the worth of the content would be discarded.

Friday was press day for the Wheeler Mustangs. Rob Schaffer was on the scene to make the pictures for the Times. Thanks, Rob.

The 4th of July report was given at the Chamber meeting Tuesday. Lots of money is spent each year and it certainly is a good money maker for

Memorial Services Wed. For Tommy Sherrod, 53

Tommy Michael Sherrod, 53, of Quitman, TX died Sunday August 12 at his home.

Memorial services were held at Quitman Wednesday, August 15.

Mr. Sherrod was born in Marshall, TX on Oct. 31, 1947. He lived in Miami, TX for almost 30 years before moving to Quitman recently. An avid hunter and fisherman, Mr. Sherrod worked for Arkla Energy as a pipeline welder for 25 years before retiring.

He was preceded in death by his wife Sidney Lee Hale Sherrod.

He is survived by two daughters, Traci Batee of Denton, TX and her husband, Stephen, Kristen Sherrod of Elk City, OK and her fiancée Britton Davis; one son, Tommy Michael Simmons, one grandson, Braden Simmons; a granddaughter, Kaylee Harris; his mother, Billie Ford; two sisters, Joyce Boothe and Debbie Sherrod; one brother, F. E. Sherrod, all from Marshall, as well as several nieces and nephews.

Family asks that donations be made to Ducks Unlimited, One Waterfowl Way, Memphis, TN 38120-2351.

Hospital Notes

Extended Care

Estelle Orr
Virginia Frye
Ruth Ledbetter
Verne Lohberger
Ardie Martin

New Admissions

8/7 Jewel Moore
8/10 Maurine Foshee

Dismissal

8/8 Walter Simmons
Andrew Wilson
8/9 Julia Buckingham
8/10 Pearl Larner
8/12 Maurine Foshee
8/13 Jewel Moore



FIFTIETH WEDDING ANNIVERSARY: F. M. and Ethel Grimes celebrated their 50th Wedding Anniversary on August 13, 2001, with their daughter, Elizabeth Shipp, son-in-law, Andy Shipp and granddaughters, Katie and Savanna Shipp. Ethel Reener and F. M. Grimes were married August 13, 1951, in Clovis, New Mexico.

Wheeler County Commissioners Accept Bid for Precinct 2 Loader

The Wheeler County Commissioners met in regular session on Monday, August 13, 2001 at 10:00 a.m. Fourteen items were on the agenda. The minutes were read and approved.

The J. P. reports were approved. Meadows reported \$2,070.02 and Taylor reported \$34,148.50.

Employees time sheets for the hourly payroll was approved. Approved bills for payment.

Bids for a loader for precinct No. 2 were opened. One bid was received from Texas Caterpillar in the amount of \$135,800 w/trade.

David Watson was removed from the Sheriff's payroll, effective August 5.

The commissioners pay expenses for Jon Sullivan to complete EMT Intermediate training and complete paramedic classes.

The commissioners will consider bids for a group health insurance plan at the September 10, 2001, meeting.

No action was taken in the purchase of a pickup for the Extension Service.

John F. Haag, 82, Rites Are Read In Little Rock

John Franklin Haag, 82, died Saturday, August 11, 2001. Services were Wednesday, August 15, 2001, at 11 a.m. in North Little Rock Funeral Home Chapel. Burial was in Glover Cemetery in Lonoke County, Ark. Arrangements were under the direction of North Little Rock Funeral Home.

Mr. Haag was a retired meat market manager at Jacksonville Air Force Base Commissary and belonged to Gardner Memorial United Methodist Church. He was a veteran of the United States Coast Guard.

He was preceded in death by a grandson.

Survivors include his wife, Ruth Finley Haag; two daughters, Lucy York Parsley and Carol Ann Hunter, both of Midland, Texas; three sons, John Haag of Maumelle, Jim Haag of Mayflower and Don Finley of Stockbridge, Ga.; a sister, Lois Flowers of Sweetwater, Okla.; 12 grandchildren and 15 great-grandchildren.

Old Mobeetie Tex. Assoc. Holds Regular Meeting

The Old Mobeetie Texas Association met for their regular meeting Thursday night. President Dale Corcoran called the meeting to order. Joe VanZandt led in the opening prayer. Bobby Hill read the minutes for the June meeting. Motion by Jimmy Hill and second by Dutch Elliott. Louise Hogan gave a financial report.

Melba Corcoran reported that there have been 15621 work sheets with 31999 items.

She also reported that we had 2327 visitors for July. They had 2 visitors from Israel and Malaysia and 19 from out of state.

Louise Hogan reported that we had 1566.25 volunteers' hours for July. She also reported that we had 5,409 hits on the web site for July.

Report on the Music Festival. There was about 1050 armbands and passes for the festival. Bands booked

(Continued Page 6)

Andrea Auldridge was removed from the payroll of the County Tax office effective Aug. 10.

The county will open bids for properties "struck off" to the county at the September 10 meeting at 10:00 a.m.

No action was taken on the WTRC Insurance bills presented by Jimmy Adams.

No action was taken on the appointment of a county treasurer.

Wheeler I.S.D. Board of Trustees Conducts Business For August

August 9, 2001

The Wheeler ISD board of Trustees regular meeting was held with all members present.

School personnel present were: Brooks Symank, Dale Pulpan, Doug Rives and James Hubble.

Guests were: Randy Carman and Kermit Richards of Johnson Controls, Inc.

The meeting was called to order at 7:20 p.m. with President Dan Sams welcoming all guests and calling for any public comment.

1. Motion by Dr. Smith, second by Dr. Hillhouse, to approve the minutes of the last meeting. Motion carried unanimously.

Reports were given. Brooks Symank gave superintendent report. Dale Pulpan and Doug Rives gave



Ben Dollar

Ben Dollar Is Named To ENMU Athletic Honor Roll

Ben Dollar, the 19 year-old son of Buck and Donnetta Dollar, earned his first letter in collegiate football this past fall and made the athletic honor roll. Ben was a "true" freshman. He started on special teams and was second in the depth chart at middle linebacker, behind starting middle

linebacker, Larry Varnado, a Jr. from Clovis, NM. Ben successfully completed 30 hrs. this past year and carried a 3.25 GPA. He is looking forward to his second season with the ENMU Greyhounds. Aaron Dunnam, the son of Scott and Juanell Dunnam, plays fullback for the Greyhounds. Aaron also, made the athletic honor roll and was named on the LSC South Second Team Offense for the 2000 season. The Greyhounds posted a 6-4 overall record for 2000 and clinched the title of LSC Co-Champions for the second year in a row. You can keep up with the Ben, Aaron, and all the Greyhounds on their website at www.enmu.edu/athletics.html.

12. Motion by Dr. Hillhouse, second by Mark Tucker, to accept the cell phone policy as discussed. Motion carried unanimously.

Meeting adjourned at 12:02 a.m.

West Texas Christian Will Begin 27th Year

West Texas Christian School is once again pleased to be able to announce the beginning of its 27th year of educating local children. West Texas Christian School was begun in 1974 in order to provide individualized, Christ-centered, character building education. The school is located at 106 E. Texas. Classes are scheduled to start on August 20th for approximately 15 fulltime and home school students.

If you are interested in knowing more about West Texas Christian School, please contact us at 826-3457 or call Mrs. Joe (D'Anna) Jernigan at 256-5318.

Wheeler I.S.D. Will Pursue Tax Collection

Wheeler ISD is actively pursuing the collection of delinquent taxes. A complete roll of unpaid taxes is on file at the Wheeler ISD Business/Tax Office. This roll is public record.

Beginning July 1, a 15% attorney fee was added to each delinquent account. This information was noted on the third notice of unpaid 2000 taxes.

Wheeler Chamber of Commerce Reports on 4th Of July Success

The Wheeler Chamber of Commerce held their August meeting at Mel's Diner Tuesday, August 14, 2001.

The success of the 4th of July celebration was reported. The chamber holds this event each year to promote Wheeler and it is not intended as a money making event. The concessions and activities offer local organi-

zations to make money for their organization.

The Chamber takes 10% of the ticket sales to be used for expenses of the chamber. Checks are then written to each booth operator for the remainder of the ticket sales.

A \$968.40 check was written to Wheeler Methodist Men.

A \$599.40 check was written to the Women Auxiliary.

Allison Ag received a check for \$766.16.

Frankie Jackson received \$72.45.

Meals on Wheels had \$645.75 in sales.

The Wheeler Cheerleaders' check was in the amount of \$723.85.

The Wheeler Fun Run is a very popular event. It was decided at the August meeting to increase the entry fee to \$7.50 and obtain additional sponsors for the t-shirts.

The amount raised for the fireworks fell a little short this year. The chamber appreciates all the donations made for the fireworks.

The St. Mary's Catholic Church of Wheeler served breakfast on the 4th of July. The amount collected through donations was \$1010.00.

The next event sponsored by the Wheeler Chamber of Commerce will be the Christmas Open House. The group decided to move the event back to the Sunday and Monday after Thanksgiving, November 25 and 26.

In addition to the businesses holding open house, local organizations and individuals are offered spaces to sell handmade items. It is time to start working.

Other business was finding a speaker for the February installation

(Continued Page 5)

Clara Marie Holmes, 94 Services Here August 10

Clara Marie Finsterwald Holmes, 94, died Wednesday, August 8, 2001, at Wheeler, Texas.

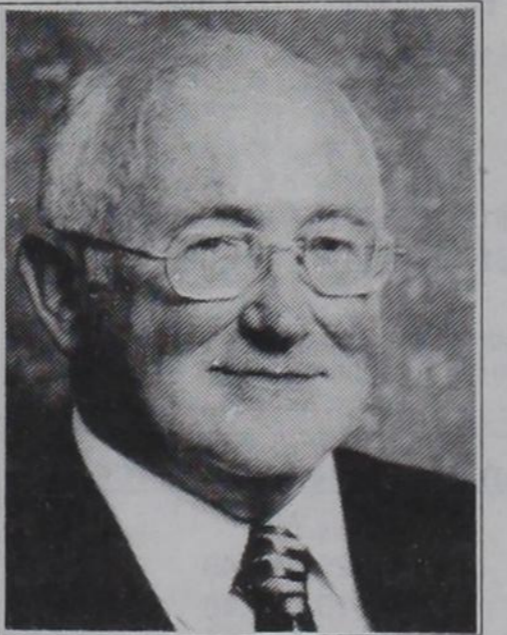
Graveside services were Friday, August 10, 2001, at 10:30 a.m. in the Wheeler cemetery with Bill Morrison, minister of the Church of Christ, Wheeler, Texas, officiating.

Burial was in the Wheeler cemetery under the direction of Wright Funeral Home.

Mrs. Holmes was born April 30, 1907, to Abraham and Sophia Schnell Finsterwald on the family ranch in Wheeler County, Mr. and Mrs. Finsterwald were a pioneer ranching family in Wheeler County. Mrs. Holmes had lived in Albuquerque, N.M., since 1945 and then moved back to Wheeler in 1995. She had worked in banking in Wheeler and Albuquerque. Mrs. Holmes had owned and operated a variety store in Wheeler and she loved gardening.

She is survived by a sister-in-law, Mary Finsterwald, of Wheeler, and several nieces and nephews.

The family requests memorials be to the Wheeler Public Library.



Dr. Ted Esselstyn



Joan Esselstyn

Missionaries To Speak At Nazarene Church

Ted and Joan Esselstyn have served 33 years as career missionaries for the Church of the Nazarene in Africa.

Ted was born in Swaziland to missionary parents. He experienced a call to serve in the training of national leaders while a teen on the mission field, and prepared for this at Eastern Nazarene College, Nazarene Theological Seminary and Yale University.

Joan was born in Pittsburgh, PA., and they met as students at ENC. She qualified as a teacher and helped "put hubby through" Seminary and Graduate School.

The Esselstyns were appointed to South Africa in 1968 where they served first as teachers. Responsibilities changed through the years to Principal at the Lula Schmelzenbach Memorial Nazarene Bible College (1970); then as Rector of Nazarene Theologise Kollege (1975); President of Africa Nazarene Theological College (1979); Chancellor of Africa

Nazarene University (1995).

In 1983 Ted was asked to start a new role as Coordinator of all of the education institutions and programs of the Church of the Nazarene in Africa. This has developed into a major responsibility, and the role has now

(Continued Page 6)

Wheeler-opoly Games

Wheeler-opoly games are still available.

The games were sold and promoted by the Wheeler Band Boosters to raise money for new band uniforms. The sales have gone very well, but more games need to be sold.

If you want a wonderful keepsake that shows Wheeler history, this is the item to have! The game is also available as a game.

The games are \$25 each. Contact: Gail Sams - 826-3226 Brenda Mitchell - 826-3060 Rhonda McWhorter 826-3456

Mobeetie City Council Conducts Aug. Business

Mobeetie City Council held their regular monthly meeting August 13, 2001 with Mayor Gordon Estes in charge of the meeting. He called the meeting to order at 7:02 P.M. He turned the meeting over to Todd Alvey. Todd gave a report on the lawsuit. He also discussed Jess Mixon's place on the council. He also reported on the letter from Mayor Gordon Estes to Walter Head with RECD. Todd then left the meeting.

Jean McAlpine read the minutes for June. Dale Corcoran made a motion to accept the minutes as read. Second by Patricia Kephart. Carried 4-0. Frannie Hilburn arrived during the financial reports. Motion by Jerry Martinez to accept the reports. Second by Dale Corcoran. Carried 5-0. Jean presented the bills to be paid. Motion by Patricia Kephart to pay the bills. Second by Frannie Hilburn. Carried 4-0 with 1 abstaining.

Next was Jess Mixon's place on the council. Dale Corcoran made a motion to keep Jess on the Council. Second by Frannie Hilburn. Carried 3-0 with 2 abstaining.

New Business a telephone for the city hall with an answering machine. Gordon asks Dale to pick up one tomorrow. Next was a burn ban but due to the rains this was dropped.

Gordon Estes discussed the proposed budget for next year and the tax rate for next year. The budget hearing and the tax rate hearing will

(Continued Page 6)

Ona Rebecka Black, 95 Is Buried here Tuesday

Ona Rebecka Black, 95, died Saturday, August 11, 2001, at Wheeler, Texas.

Funeral services were at 2:00 p.m. Tuesday, August 14, 2001, at the First Baptist Church in Wheeler with Rev. Bill Shirel of Muskogee, Ok., United Pentecostal Church, and Rev. M. C. McDaniel of Allison United Pentecostal Church, officiating.

Burial was in the Wheeler Cemetery under the direction of Wright Funeral Home of Wheeler.

Mrs. Black was born July 31, 1906, to John and Hattie Choat Reed at Meridian Lake, Oklahoma. She married Robert (Bob) Black on October 14, 1928. They lived on the ranch Northeast of Wheeler until 1962, when they moved to Allison. She was a member of the Allison United Pentecostal Church for some 70 years. She was preceded in death by her parents, her husband in 1969, three brothers and three sisters.

Survivors include a son, J. R. Black of Ft. Stockton, Texas; a daughter, Dora Lea Dupont and husband, Henry of Okay, Oklahoma; a daughter-in-law, Leota Black of Wheeler; one brother-in-law, Reed Stone of Muskogee, Oklahoma; 6 grandchildren, Jeffery Black and wife, Tracey, of Winona, Texas, Tina Thomas and husband, Tim, of Amarillo, Texas, Henry B. Dupont and wife, Cheryl, of Allison, Jerry Allen Dupont and wife, Kim, of Ft. Gibson, Oklahoma, Sherrie Dupont of Booneville, Ark., and Terry Dupont and wife, Cathy, of Ft. Smith, Arkansas; 14 great-grandchildren, Sabrina and Cody Dupont, Danny and Leann Dupont, Melissa Dupont, Lindsey Russel, Alisha and Amanda Robertson, Chelsey Dupont, Robert, Nathan and JaCee Black, Savannah and Sawyer Thomas; and one great-granddaughter, Madison Dupont.

E.M.T. Classes Will Be Offered Beginning Soon

The Wheeler and Shamrock Ambulance Services are hosting an ECA/ EMT-B course. The course will start the last of September or the first of October. If there is anyone that would like to take the course, they can contact one of the people listed below.

The Wheeler EMS is also needing some first responders and some daytime personnel. The first responders are needed in the Mobeetie and Kelton areas. The system has first responders in the Briscoe and Allison areas, but have none in the Mobeetie and Kelton areas.

The first responders do so much to help before the Ambulance can get to the scene. They are very much appreciated for their good work, that they do for their communities.

It does not matter where you live, you are welcome to come and be in the class. We could use all the help we can get.

Thank you for your help and support.

Individuals to contact are: Jon Sullivan, director of Wheeler EMS (work) 826-2010, (home) 826-3322 or (cell) 898-2088; Jean Ann Triplett, director of Shamrock EMS; (work) 256-2136 or (home) 256-3502 or (cell) 662-5493; Brenda Sparlin, (work) 826-5581 or (home) 826-3006; Wanda Lane, (work) 826-5581 or (home) 375-2229.

MOBEETIE NEWS

By: Melba Corcoran

Rance Rector of Amarillo visited Wednesday with his grandmother Lorene Rector.

George and Marie Kilcrease, Bill and Dutch Elliott and Dale and Melba Corcoran went to supper Friday night at Soto's and then back to the Kilcrease's motor home for ice cream.

Nolan Corcoran of Mid West City spent some time with his grandparents Pete and Sue Seitz. Barry and Terri Corcoran, Cody and Justin came over the weekend to get him. Nolan and Cody stayed to visit a few more days with Pete and Sue.

Aaron and Arica Lancaster took their grandchildren Trenton and Maerica Bleeker of Wisconsin to Oklahoma City, OK to fly home. Aaron and Arica Lancaster went to the bull riding.

Barry and Terri Corcoran and Nolan visited Saturday night with Dale and Melba Corcoran. Barry and Terri Corcoran and Justin visited Sunday night with Dale and Melba Corcoran.

Bill and Dutch Elliott went home for the weekend Saturday morning. They returned to the museum on Monday. Dale and Bill are working on the cemetery.

Debbie McLaughlin was involved in a wreck this week in Wheeler. She has her arm in a brace and a sore ankle. She will be going to a specialist to have the arm checked on the 24.

Remember her in your prayers. Clint and Maurita Stribling have been vacationing in Colorado. Don and Willene Burke spent some time in California and Utah. They attended a family reunion there. Bro. Bob Meller is home after visiting his son in Colorado. School will be starting August 16th. Remember to drive slower around the schoolhouse. Jack and Bernice went to Pampa Saturday to R. H. and Debbie Dyson. Other there were R. L. and Rozena Zybach. Those from Mobeetie attending the Revival Tuesday night at Gageby Church were David and Melba Seitz, Jane Seitz, and Doyle and Bulah

Grimes. Leta Mae Gatlin was in the hospital in Pampa. She got home Monday. Remember her in your prayers. The Mt. View Quilting met Thursday with Sidney Lynch as hostess. Those attending were Jane Seitz, Estelle Hodges, Audrey Seitz, Elva Wood and Betty Haines. Lorene Rector is in therapy for her hand three times a week. She thinks it is helping. Remember her in your prayers. Bill and Pearl Darby of Wheeler visited in Mobeetie Thursday. Aline Corse is doing better. They had to go to the doctor again on Tuesday. Remember her in your prayers.

Our Sympathy goes out to the family of Ona Black. The rain has been great. Mobeetie got between 1 1/2 inches and 2 inches this weekend

Sweetwater News

By Lois Flowers

Still hot and dry. But for what it is worth, we have clouds and thunder. Forecast is scattered showers. We are still praying for rain. Joe Dales came by from San Antonio last week and took me with them to St. Joseph, Mo., to visit their son, Mike and family. We were gone a week.

We got on the plane at Oklahoma City and flew to Kansas City, Mo. My first time in the air. Sure nice. Missouri was a beautiful green. They have been having good rains. The kids took us to the park, museums, and volleyball games. Even a movie. Scott and Teresa Locke are home from a nice vacation. The L. G. Reeds looked after things for them.

Big news is school started this week. I'm not sure why so early. In my day we had summer school, then a long "cotton picking vacation" in the fall. There's no cotton now!

Our teachers are the same with one new one, Marsha Richardson, High School English.

Peggy Dunlap and Jake of Sayre visited Iva Thompson last Tuesday. This week, Iva, Ollie Anderson and Norma Zellmer went to Amarillo.

CARD OF THANKS

The family of E. O. Kelly wish to extend their sincere thanks to all of those in the Allison and Briscoe communities for the prepared meal in the Ft. Elliott cafeteria. They also wish to extend gratitude to everyone in the surrounding area, who sent food, flowers, plants and memorials in honor of E. O. Kelly. Thanks for keeping us in your thoughts and prayers.

Alice Kelly
Lewis, Elizabeth and Ginger Meers
Glenn, Diann, Kelly and Savannah Rose
Allen and Janice McCloy,
Jared and Kirby Johnson
Steve, Linda and Bethany Thomas

To The Editor
The Wheeler Times
Wheeler, TX 79096

We are having cool days (80 degrees) and afternoon showers. In low 40's at night. Sure is nice at June Bug Camp ground. Have the river at our backdoor.

George & Ruby McLaurin



THE WHEELER TIMES

PAGE 2—Thursday, August 16, 2001
"Wheeler, town of friendship and pride."

where Norma got a good report from her doctor.

Randa Coffey kept the post office this week while Bonnie Rice visited her sister.

Julie Ann Coker was on the Dean's Honor roll at SWOSU this month.

J. W. and Billy McMullin of Amarillo; Verda York of Sayre, Dallas Webster and friend dropped by to see Zuma Sutton. They met at the Rafter T for lunch Sunday.

Ethel Sanders Davis died at Oklahoma City. Services were Saturday at Buffalo. She was a sister of Villard Sanders.

Graveside services were August 9 at the Erick Cemetery for Howard Reed, 85. He was born at Mayfield.

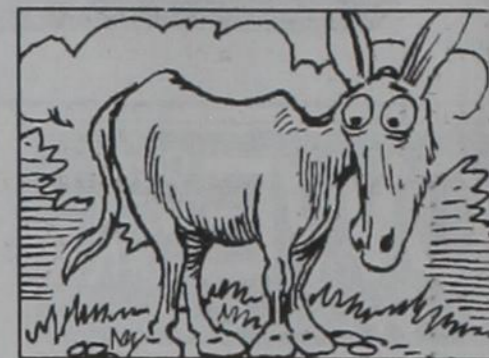
Billy Mac Sutton has been in the hospital at Oklahoma City. Hoped to come home today.

Clifford and Helen Jones of Elk City, came to see me last week. Found

me gone. Sorry I missed them.

Things are getting desperate for farmers. Pray for rain. The weather map in the Missouri paper had a circle around Texas and Oklahoma with drought printed in large letters.

Services were July 29, for Lavelle Davis Dunsworth, 75, at the Rose Chapel. Burial was in the Buffalo Cemetery. She was the daughter of Sam and Lillie Mae Davis.



The placement of a donkey's eyes in its head enables it to see all four feet at once.

Composer Cole Porter could play the violin well at six and the piano well at eight.

Listen to...
KPDR-FM, 90.5
WHEELER, TEXAS

MOORE INSURANCE AGENCY
Todd Moore, Agent
111 W. 2nd St. Shamrock, TX 79079
1-800-687-3730
Fax (806) 256-8919
(806) 256-8911

WHEELER COMMUNITY CHURCH
Rev. Alberta and Pat Helton
806-323-9849 or 826-5607
P.O. Box 544
Wheeler, TX 79096
John 14:6 "Jesus saith unto him, I am the way, the truth and the life: no man cometh unto the Father but by me."
1/3 mi. N. Hwy. 83.
Thursdays 7:00 P.M.
—WELCOME—

WELCOME TO FIRST UNITED METHODIST CHURCH
8TH AT MAIN - P.O. BOX 89 - WHEELER, TX 79096
CHURCH (806) 826-3114 - PARSONAGE (806) 826-3079
Sunday School 9:45 a.m.
Morning Worship 11:00 a.m.
Area-Wide Community Church at Mobeetie Jail Sunday 6:30 p.m.
Ricky Carstensen, Pastor

MAXEY'S STEAKHOUSE

SUNDAY BUFFET

- Salad Bar
- Pot Roast
- Fried Chicken w/ Cream Gravy
- Blackeyed Peas
- Hot Rolls
- Iced Tea/Coffee
- Dessert

Sun.—Noon Buffet (Only): 11:30 a.m. - 1:30 p.m.
Mon.-Tues.-Wed.-Thurs.: 11:00 a.m. - 10:00 p.m.
Fri.-Sat.: 11:00 a.m. to 10:00 p.m.

PHONE: 826-3441
1 Mile South of Wheeler on U.S. 83

THURSDAY NIGHTS

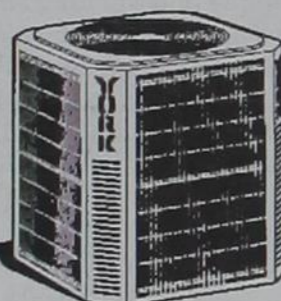
All the fresh Water Catfish and Shrimp you can eat.

Served with Onion Rings, French Fries, Hush Puppies and Cole Slaw

FRIDAY NIGHTS PRIME RIB

JENNINGS PLUMBING, HEATING & AIR CONDITIONING

LARRY JENNINGS, Owner



YORK SALES & SERVICE

Licensed, Insured & Bonded
(806) 826-3153
Licensed Septic Systems, & Site Evaluations



NOTICE OF PUBLIC MEETING TO DISCUSS BUDGET AND PROPOSED TAX RATE

The Allison ISD Board of Trustees will hold a public meeting at 8:00 p.m., August 30, 2001 in Allison ISD Board Room, Allison, Texas. **The purpose of this meeting is to discuss the school district's budget that will determine the tax rate that will be adopted.** Public participation in the discussion is invited.

The tax rate that is ultimately adopted at this meeting or at a separate meeting at a later date may not exceed the proposed rate shown below unless the district publishes a revised notice containing the same information and comparisons set out below and holds another public meeting to discuss the revised notice.

Comparison of Proposed Rates with Last Year's Rates

	Maintenance & Operations	Interest & Sinking Fund*	Local Revenue Total	State Revenue Per Student
Last Year's Rate	\$1.44	\$0*	\$1.44	\$19,552.00
Rate to Maintain Same Level of Maintenance & Operations Revenue & Pay Debt Service	\$0.9434	\$0*	\$0.9434	\$16,779.00
Proposed Rate	\$1.00	\$0*	\$1.00	\$17,785.00

*The Interest & Sinking Fund tax revenue is used to pay for bonded indebtedness or construction, equipment, or both. The bonds, and the tax rate necessary to pay those bonds, were approved by the voters of this district.

Comparison of Proposed Levy with last Year's Levy on Average Residence

	Last Year	This Year
Average Market Value of Residences	\$25,410.00	\$25,913.48
Average Taxable Value of Residences	\$10,410.00	\$10,913.48
Last Year's Rate Versus Proposed Rate per \$100 Value	\$1.44	\$1.00
Taxes Due on Average Residence	\$149.90	\$109.03
Increase (Decrease) in Taxes		\$(40.87)

Under state law, the dollar amount of school taxes imposed on the residence homestead of a person 65 years of age or older or of the surviving spouse of such a person, if the surviving spouse was 55 years of age or older when the person died, may not be increased above the amount paid in the first year after the person turned 65, regardless of changes in tax rate or property value.

Notice of Rollback Rate: The highest tax rate the district can adopt before requiring voter approval at an election is \$1.00. This election will be automatically held if the district adopts a rate in excess of the rollback rate of \$1.00

Fund Balances

The following estimated balances will remain at the end of the current fiscal year and are not encumbered with or by a corresponding debt obligation, less estimated funds necessary for operating the district before receipt of the first state aid payment:

Maintenance and Operations Fund Balance(s)	\$1,700,000.00
Interest & Sinking fund Balance(s)	\$ 0

NOTICE OF PUBLIC MEETING TO DISCUSS BUDGET AND PROPOSED TAX RATE

The Wheeler Independent School District Board of Trustees will hold a public meeting at 6:15 P.M., August 29, 2001 in Wheeler ISD Board Room, Wheeler, Texas. **The purpose of this meeting is to discuss the school district's budget that will determine the tax rate that will be adopted.** Public participation in the discussion is invited.

The tax rate that is ultimately adopted at this meeting or at a separate meeting at a later date may not exceed the proposed rate shown below unless the district publishes a revised notice containing the same information and comparisons set out below and holds another public meeting to discuss the revised notice.

Comparison of Proposed Rates with Last Year's Rates

	Maintenance & Operations	Interest & Sinking Fund*	Local Revenue Total	State Revenue Per Student
Last Year's Rate	\$1.342	\$0*	\$1.342	\$3,839.00
Rate to Maintain Same Level of Maintenance & Operations Revenue & Pay Debt Service	\$1.4633	\$0*	\$1.4633	\$3,991.00
Proposed Rate	\$1.50	\$0*	\$1.50	\$4,056.00

*The Interest & Sinking Fund tax revenue is used to pay for bonded indebtedness or construction, equipment, or both. The bonds, and the tax rate necessary to pay those bonds, were approved by the voters of this district.

Comparison of Proposed Levy with last Year's Levy on Average Residence

	Last Year	This Year
Average Market Value of Residences	\$28,478.00	\$28,880.00
Average Taxable Value of Residences	\$13,478.00	\$13,880.00
Last Year's Rate Versus Proposed Rate per \$100 Value	\$1.342	\$1.50
Taxes Due on Average Residence	\$180.87	\$208.20
Increase (Decrease) in Taxes		\$27.33

Under state law, the dollar amount of school taxes imposed on the residence homestead of a person 65 years of age or older or of the surviving spouse of such a person, if the surviving spouse was 55 years of age or older when the person died, may not be increased above the amount paid in the first year after the person turned 65, regardless of changes in tax rate or property value.

Notice of Rollback Rate: The highest tax rate the district can adopt before requiring voter approval at an election is \$1.5233. This election will be automatically held if the district adopts a rate in excess of the rollback rate of \$1.5233.

Fund Balances

The following estimated balances will remain at the end of the current fiscal year and are not encumbered with or by a corresponding debt obligation, less estimated funds necessary for operating the district before receipt of the first state aid payment:

Maintenance and Operations Fund Balance(s)	\$ 0
Interest & Sinking fund Balance(s)	\$ 0

Aug. 22; Tammy Greene and Tim Kincannon on Aug. 23; Julie Shields, Becky Helton, William Zumstein and Lori Fenwick on Aug. 24; Sharon Grandstaff, Lynn Sims and Shelton May on Aug. 25; Gary Davis on Aug. 2; Nell Bradstreet on Aug. 4; Adrian Risner on Aug. 6; Bill Morrison, Tammy Moore and Remona Compton on Aug. 11; Stacy Burrell on Aug. 20; Janice Sparlin on Aug. 21; Gracie Gaines, Zane Kuehn, Larry Taylor on Aug. 23; Billy Richardson and LeRoy Hunt on Aug. 25.

Listen to...
KPDR-FM, 90.5
WHEELER, TEXAS

Deuteronomy 8:10: When you have eaten and are full, then, you shall bless the Lord thy God for the good land which he has given you. Beware that in your plenty you don't forget the Lord your God and begin to disobey Him.

Happy Birthday to Charlie Phillis and Mary Margaret Dodd on Aug. 19; Keith Horn, Mike Goad, Kathy Meek and Tyler Herd on Aug. 20; Billie Stuckey, Shelly Murray and Timmy Andris on Aug. 21; Marie Baker, Clyde Dukes Jr., Leanna Schaub, Reagan Meadows, Chuck Jones, Travis Stevens and Tom Stribling on

Happy Anniversary to J. P. and Martha Meek on Aug. 19; Bill and Tonya Finsterwald and Bill and Kyla Walker on Aug. 21; Joe and Anna Dell Myers and Ed and Patricia Forrester on Aug. 23; Phil and Carol Richmond and Earnest and Brenda Lancaster on Aug. 24; Larry and Suzanne Hampton on Aug. 7; Wes and Cindy Bradstreet on Aug. 22.

Nice to have a visit from Don and Cindy Zumstein Tuesday. We ate supper at Maxeys and came back to Gageby Church Revival for good preaching and singing. Other visitors at Gageby Church included David and Melba Seitz, Annette Meek and Jane Seitz.

Nice to see Jackie Kirkpatrick and Caleb at Maxeys. Sorry to hear Caleb has to have knee surgery, so won't be able to play football as he would like to. Also at Maxeys were Joyce

Perkins and Tina Deger and Chelsea. Enjoying supper together at Maxeys Saturday night were Richard and Bonnie Meadows and Reagan, Ben and Tonia Meadows and Bailey from Canyon and David and Phyllis Hefley.

Saturday, nice to see C. B. and Maurine Brotherton at Thriftway. When they went to Amarillo Monday, they flew on down to El Paso to visit Maurine's cousins, Bob and Dorothy Holdeman. They had a three hour lay over in Albuquerque and enjoyed visiting with cousins, W. T. and Imogene Hines there. They enjoyed their visit with Bob and Dorothy and came back Thursday. Maurine thought their trip went well first time by themselves. Dorothy and Elmer helped them to get on the plane at Amarillo. Maurine was given a wheelchair to ride in and they got to be first ones on the plane, each stop. Visiting C. B. and Maurine Saturday night and playing 80 were Jo Redding and Joyce Perkins.

Gaye Hale made it home all right from Africa and had a wonderful summer. After seeing Sarah Beth and her parents, David and Heather Gaye and Elizabeth and Sarah started right off to go to Mobile Alabama to see Allen's mother, Evelyn Hale before school started. They also saw Olaf and his mom, Audie Siviage. They were driving through on the 17 hour trip with three good drivers. Hope they have a wonderful vacation and get to see lots of relatives. They made it through Dallas all right.

Nice to have Wilma Bible and Carla Bible join us for lunch at Furrs Friday. Good to visit with them. They live at Fritch, as do Tom and Misty and Nancy Bible. I also visited a little with Nita Evans (no relation) from White Deer and her mom, Della Reeves from Pampa and Nita's son, Ed Evans, from Canyon, who helps with their farming. Nita and Della are always eating at Furrs when we do.

I enjoy old Negro Spirituals, songs that show their feelings, trust in the Lord and sometimes sadness. Brad Sanders sang during the Gageby Revival, "I'm Gonna Rise Again!" "Ain't No Power on Earth Can Hold Me Down." Praise the Lord!

Nice to see Dean and Georgia Tipps, Iona May and Tammy Maddox and Jennifer and Amber at Maxeys Saturday night.

We hope to celebrate Willis's 82nd birthday at Maxeys Saturday night. Dallas and Lindsey and Ken are supposed to come in. Maybe Danny. Willis is a pretty handsome man for 82. We've had lots of good years together. I'm thankful.

So thankful, very thankful, for the wonderful rain Friday night and Saturday. Cornets and Doris Finsterwald had over two inches. We had a good inch, as did Chandlers at Allison. Bob Zybach and others. Also cooled off some. Yeah! J. P. had 1 1/2 inches.

Eula Newman got sick while visiting her son, William Wade and wife, Annette, at Oneonta, Ala. She had to spend some time in the hospital with bleeding ulcers, thought to be caused by arthritis medicine. She is now out of the hospital. She had to have two units of blood and plans to stay two weeks or so more with William and Annette before going back home to Saginaw, Texas, near Ft. Worth, where she lives with daughter, Laura Faye Huddler. Eula will be having her 88th birthday on Aug. 15.

Charley Helton, son of John Clyde and Sheila is working at County Line Equity some, "Holding down the Fort" when Glenn needs to be gone.

Eula Newman's address at Williams is 2040 Reid Road, Oneonta, Ala. 35121.

The pleasant, helpful young man, who carried out my groceries at Lowe's in Canadian Thursday was Shane Simms. He attended Ft. Elliott Elementary, while his mom, Barbara Hodges, taught there. Barbara now teaches kindergarten at Canadian.

THANK YOU

We would like to thank everyone for taking such good care of Larry last month while we were out of town and not able to take care of him ourselves. All of our friends who went to the hospital to check on him, the wonderful nurses at Parkview Hospital, Dr. Galutia's staff and Dr. Galutia. Although we were not able to be here with him, we were kept aware of what was going on by cell phone and we were at BSA waiting when the helicopter delivered him to Amarillo. We also want to thank everyone for their prayers and all of the phone calls while Larry was in the hospital in Amarillo. Words cannot express the love and appreciation we feel for everyone for their many kindnesses. Wheeler is truly a great place to live. Thanks again.

Carol,
Jason and Tracey Porton
Wes, Christi, Bryce and
Jensen Hatley



Several gathered at Briscoe Community Church Sunday night for playing music and singing. Not a big crowd, but they had fun and ate ice cream.

John and Julie Shields and Maddie enjoyed a vacation to the mountains last week.

Happy Birthday, Rosalie Keelin. She will be 79 Friday, 17th. She is a lovely lady and has blessed so many

of us with her talented piano playing through the years. And her sweet spirit.

Pray for Bill Rains. He had a pace-maker put in at Pampa. Pray for Leta Mae Gatlin. She is in Pampa hospital with a blood clot in her leg from a fall.

Pray for our college kids, who will be returning soon to colleges. Andy Finsterwald will be going back to Levelland. God bless you everyone!

Bob and Gena Zybach left Monday to go to Surprise Valley in New Mexico. They fished some and relaxed. It rained on them some there and followed them home Friday. Wasn't it nice of them to bring some back! We had needed it so badly and hope for more rain. Fat Childress reported three inches rain and Donald Stuckey over 2 inches.

Many Allison and Briscoe people helped with the family dinner and supper Wednesday at Briscoe School for the E. O. Kelly family.

Pat (Waters) Brogdon (Mrs. John) had surgery at Amarillo Friday to repair hernias and other things. Hopeful that all O.K. Pray for Pat.

Darville Atherton got a new baler. He ran it three days when it broke down and hasn't been able to get it fixed. Maybe we need to pray for Darv.

Mike Bradstreet from Hinton, Okla., visited Roy and Nell Bradstreet, his parents. Cindy and Wes Bradstreet joined them for supper at Maxeys Tuesday night and a good visit.

We've enjoyed the preaching from Dr. Charles Jones at Gageby Church Revival and the singing of his grandson, Brad Sanders, and gifted piano playing of Brandon Sigmon. Also singing Wednesday night was Randell Myers, very good. Other visitors were Matt Ayala and Rocky Thompson and Brad's parents, Debbie and Heath Holean and Courtney and Kristi and Mrs. Charles Jones. Also Jeanette Jahnel and Deseray and Carl Lee and Mary Lou Carter and Kathy Kiewer.

Glady's Pannell is back to her home after having a stroke and in the hospital at Amarillo. Still has to have lots of help. Eddie Pannell Jr. and Imogene Murray were with her Sunday night. Eddie's wife, Lavina, has helped, too. Remember them all in

SHARP'S
Hometown Brand Center
101 E. Main • Sayre, Ok
580-928-3378
All Major Appliances
See Our Selection of Good Used Appliances!



Dacey Dollar, 2 years old, is the daughter of Penny Dollar. Granddaughter of Buck and Donneta Dollar.

For all your...
Insurance Needs, See
Eastern Panhandle Insurance Agency, Inc.
117 W. Texas St.—Wheeler, Tex.
806/826-3573
•Auto •Home •Life •Health
•Commercial •Bonds

Glenn Keelin
Professional Lawncare Service
Mowing, Aerating, Thatching Fertilizing & Clean-up Needs
RESIDENTIAL • COMMERCIAL
—Satisfaction Guaranteed—
375-2321
Please call for free estimate!

GIFTS — AMBASSADOR CARDS
HYLAND'S PHARMACY
109 W. TEX. ST.—WHEELER, TEXAS
Phone: 806/826-5561
COSMETICS—VITAMINS—FILM DEVELOPING

MARSHALL'S
HEATING & AIR CONDITIONING
Wheeler, TX —Phone: 826-0043
—24 Hour Emergency Service—
LICENSED & INSURED
License No. TACLBO 18635E
Mark Marshall, Owner

STORAGE BUILDING SALE
We Have 50 Units in Stock
Ideal Storage
28 to 48 Foot Long-Nice-Clean-Ready To Use
Banker Says To Sell NOW!
Free Delivery Within 75 Miles of Wellington
Come Look-Take Your Pick-We Deliver
We Need to Sell
See Robert Owens
at Wellington Tractor Parts Inc.
1-800-992-5346
WELLINGTON, TX.

NOTICE OF SERVICE

If you have recently purchased a hearing instrument from one of the many traveling truck clinics and are concerned about your warranty and insurance policies The Elk City/Clinton Hearing Aid Centers invites you to our office for these services and any other assistance you might need.

Serving hearing needs in Western Oklahoma since 1982.

Elk City Hearing Aid Center, 2900 W. 3rd St., Elk City, OK
(580) 243-0939... 1-800-834-5989

Clinton Hearing Aid Center, 900 Gary Blvd., Clinton, OK
(580) 323-2418... 1-800-834-5989 (Thursdays Only)

YOUR CHOICE!

PICK ONE FOR LIFE:

1180 MINUTES FOR \$29⁹⁹

FREE MOBILE-TO-MOBILE CALLING

1180 Minutes	1280 Minutes	1380 Minutes
\$29 ⁹⁹	\$39 ⁹⁹	\$49 ⁹⁹

ASK ABOUT FREE WIRELESS INTERNET SERVICE!

GET A FREE PHONE!

Plans that fit the way you talk.

DOBSON CELLULAR SYSTEMS

1.800.882.4154 www.dobsoncellular.com

BORGER Dobson Cellular 905 N. Cedar (806) 273-5656	GRUVER Gruver Ford Inc. (806) 733-2431	PANHANDLE Lane & Company Inc. (806) 537-3537	SPEARMAN Cellular Communications (806) 659-3762	WHEELER Lyndon Loyd Auctioneers (806) 826-5850
Hy-Tech Communications (806) 274-7452	PAMPA Dobson Cellular 2131 Perryton Pkwy (806) 665-0500	PERRYTON Ace Commercial Radio (806) 435-7131	B&B Sales True Value Hardware (806) 659-3762	Ware Chevrolet (806) 826-3026
WT Services (806) 273-2092	Farmers Equipment (806) 665-8046	Talk To Me Wireless (806) 648-1600	WELLINGTON Langford Communications (806) 447-1004	Wireless Works (806) 898-1800
CANADIAN Baker City Drug (806) 323-9135	Pampa Communications (806) 665-1663	Zink Consulting (806) 435-2200	SHAMROCK Dobson Cellular 116 N. Main (806) 256-3859	

Free phone type and style offered may vary by location. Phone shown in this ad may not be the actual phone offered. Free phone offer available while supplies last with a new one-year agreement and available on plans \$29.99 or higher. Advertised minutes include local plan minutes only. 1,000 off peak minutes and is available on plans \$29.99 or higher. 1,000 off peak minutes and mobile to mobile calling good for life with a new two-year contract or for six months with a new one-year contract. 1,000 off peak minutes and mobile to mobile calling are good in feature areas only. Offers not valid on all plans. New activations are contingent upon credit check and actual contract. Airtime is billed in one minute increments. Other terms and conditions may apply. See store for details. Available at participating locations only. Limited time offer ©2001, Dobson Cellular 130-1-DCSTX J-1

THRIFTWAY SUPERMARKET

Your source for the freshest
PRODUCE • MEAT • DAIRY

WHEELER COUNTY'S EXCLUSIVE SOURCE FOR PLAINS & SHURFINE PRODUCTS.

THRIFTWAY SUPERMARKET
300 EAST OKLAHOMA
WHEELER
826-5944 PHONE 826-3345 FAX

MARKET SQUARE THRIFTWAY
205 EAST THIRD
SHAMROCK
256-2481 PHONE 256-5060 FAX

Oil & Gas NEWS

(New Location, Completion and Plugging Report made possible by Oil & Gas Reporting Service, 3930 Beaver St., Vernon, TX 76384, Doris Harrison, Phone 940 552-6644.)

Week ending August 9, 2001
Intentions to Drill
 HEMPHILL (WILDCAT & TWISTER Douglas) Apache Corp., #4 Urschel, 2150' from North & 1500' from East line, Sec. 51, 1, G&M PD 7350'
Applications to Plug-Back
 HEMPHILL (MATHERS RANCH Upper Morrow) Ocean Energy, Inc., #10 Mathers Ranch, 2360' from North & West line, Sec. 166, 41, H&TC, PD 13550'
Gas Well Completions
 GRAY (WEST PANHANDLE) Gruy Petroleum Mgmt. Co., #3 Fowler 'C', Sec. 30, R, A.D. Heiman Survey, spud 1-23-01, drlg. compl 1-25-01, tested 3-20-01, potential 900 MCF, TD 2419'
 HEMPHILL (BUFFALO WALLOW Granite Wash) Bravo Natural Resources, Inc., #2068 Meek, Sec. 68, M-1, H&GN, spud 5-24-01, drlg. compl 7-7-01, tested 7-18-01, potential 2528 MCF, TD 11875', PBTD 11716'
 HEMPHILL (NORTH HOWE RANCH Upper Morrow) Burlington Resources

O & G Co., L.P., #9 Gene Howe, Sec. 5, 1, G&M, spud 3-4-01, drlg. compl 4-11-01, tested 5-22-01, potential 941 MCF, TD 12206', PBTD 12165'
Plugged Wells
 GRAY (WEST PANHANDLE) Hy-Tech, Inc., #1 Sheppard 'A', Sec. 188, B-2, H&GN, spud 4-5-55, plugged 7-11-01, TD 2987' (gas) — Form 1 in Ada Oil Co.
 HEMPHILL (FELDMAN Douglas) Unit Petroleum Co., #1021 Jones Estate, Sec. 21, 1, G&M, spud unknown, plugged 6-6-01, TD 9690' (gas) —
 WHEELER (EAST PANHANDLE) Kenneth Wischkemper, #1 A.S. Martin, Sec. 52, 17, H&GN, spud unknown, plugged 7-25-01, TD 2055' (gas) —

Wheeler County COURT RECORDS

List of instruments filed in the Wheeler County Clerk's office from August 6, 2001 — August 10, 2001.
AUGUST 6, 2001
 PARTIAL ASSIGN.—Geodyne Nominee Corporation to Samson Lone Star Limited Partnership, 7-31-01, Sec. 1, BBB&C Survey.
 DVL—Thomas Grainger McIlhany to Jerry Dan Hefley, et ux, 8-3-01, SE

1/4 Sec. 6, Blk. A-3, H&GN Ry. Company Survey.
 DVL—William Ray McIlhany to Jerry Dan Hefley, et ux, 7-30-01, SE 1/4 Sec. 6, Blk. A-3, H&GN Ry. Company Survey.
 DVL—Anne Louise Kirkpatrick to Jerry Dan Hefley, et ux, 8-3-01, SE 1/4 Sec. 6, Blk. A-3, H&GN Ry. Company Survey.
 DT—Jerry Dan Hefley, et ux to Wheeler Banking Center, 8-3-01, Pt. SE 1/4 Sec. 6, Blk. A-3, H&GN Ry. Company Survey.
 IDENTITY AFF.—James C. Fling to Grainger Walter McIlhany, et ux, 8-3-01.
 OL—O'Brien Revocable Mineral Trust to Newfield Exploration Mid-Continent Inc., 6-20-01, N 1/2 NW 1/4 Sec. 2, Camp County School Land.
 OL—Andrea G. Stoneman to Newfield Exploration Mid-Continent Inc., 6-20-01, N 1/2 NW 1/4 Sec. 2, Camp County School Land.
 OL—Patricia Ann Stoneman to Newfield Exploration Mid-Continent Inc., 6-20-01, N 1/2 NW 1/4 Sec. 2, Camp County School Land.
 ASSIGN.—Burlington Resources Oil & Gas Company LP to Newfield Exploration Mid-Continent Inc., 7-24-01, Pt. Sec. 49, Blk. M-1, H&GN Ry. Company Survey.
AUGUST 7, 2001
 ADMINISTRATORS ROY./MD—Harry E. Franks to Edwin O. Thompson, et al, 4-6-99, See Instrument.
 ROY./MD—Maurine Thompson Montgomery to Billy Ed Thompson, 3-23-01, See Instrument.
 D—Bednorz Family Trust to Bill Richardson, et ux, 8-6-01, Lot 22, Blk. 6, Mont-Lew Add., Shamrock.
 AMEND. DT—Burlington Northern and Santa Fe Railway Company to U. S. Bank Trust National Association, 3-2-70, See Instrument.
 OCD—Margaret Elaine Oldham to Michael Lynn Oldham, 7-13-01, W 1/2 NW 1/4; W 1/2 E 1/2 NW 1/4; S 1/2 Sec. 27 and the S 1/2 Sec. 28, Blk. 13, H&GN Ry. Company Survey.
AUGUST 8, 2001
 D—Bernice Ivy Collinsworth to Bence Close, 7-12-01, S 1/2 SW 1/4 NW 1/4 Sec. 77, Blk. 23, H&GN Ry. Company Survey.
 QC ASSIGN.—SMR Natural Gas Income Fund 1993 LP, et al to Dolphin Energy LLC, 7-26-01, See Instrument.
 ASSIGN.—Home-Stake Oil & Gas Company to Parks & Luttrell Energy Partners LP, 7-27-01, See Instrument.
 D—Kenneth Shaffer, et ux to John Shaffer, 6- —00, S 25' of Lot 3 and all of Lots 4 and 5, Blk. 83, WSSA, Shamrock.
 RDT/RVL—Bryan Frank Going, et al to Gary W. Atkins, et ux, 7-6-01, S 1/2 Lot 3, Blk. XC, Shamrock.
 B. of SALE—Bradley A. McAllister, et ux to Charles Griffin, 7-18-01.
 D—Khili R. McAllister, et vir to Charles Griffin, 7-18-01, Pt. Outlot 4, Shamrock.
AUGUST 9, 2001
 DT—Al P. Cunningham to Amarillo National Bank, 8-8-01, Sec. 23, Blk. A-5, H&GN Ry. Company Survey.
 EXECUTORS DIST. D—John Hepburn Blaffer to Camilla B. Royall Trust A, et al, 2-27-01, See Instrument.
 RDT—PNB Financial Bank to Michael W. Holder, 8-2-01, N 80' E 1/2 Blk. 54, Stanley Add., Wheeler.
 D—Beverly Caldwell Godwin to Geoffrey M. Caldwell, 8-3-01, Lots 5-9, Blk. 105, New Mobeetie.
 QC ROY./MD—James Q. Newton Jr. to James Q. Newton and Nelle S. Newton Trust, 7-24-01, NW 1/4 Sec. 20, Blk. A-8, H&GN Ry. Company Survey.
 DT—Al P. Cunningham to Amarillo National Bank, 8-8-01, Sec. 23, Blk. A-5, H&GN Ry. Company Survey.
AUGUST 10, 2001
 HOME EQUITY DT—Jo Ann Lewis, et vir to Centex Home Equity Corporation, 8-6-01, Lot 1, Blk. 67, WSSA, Shamrock.
 HOME EQUITY AFF. AGREE.—Jo Ann Lewis, et vir to Centex Home Equity Corporation, 8-6-01, Lot 1, Blk. 67, WSSA, Shamrock.
 EXT. DT—S & S Family Ltd. to National Bank of Commerce, 8-3-01, Pt. N 1/2 SW 1/4 Sec. 44, Blk. 23, H&GN Ry. Company Survey.
 C/C PROBATE—Horace G. Gordon to Ex Parte, 6-14-01.
 ASSIGN.—James D. Man to McGoo, Ltd., 8-3-01, Sec. 7, Camp County School Land, Secs. 25, 34, and 35, Blk. M-1, H&GN Ry. Company Survey, and Sec. 13, Blk. R.E., Roberts and Eddleman Survey.
 D—Minerva Jones to Edwin H. Jones Jr., 6-6-88, Lots 11 and 12, Blk. 34, Wheeler.
 D—Bessie Callaway to Rebecca Blackburn, 8-10-01, Lots 19 and 20, Blk. L, Park Add., Wheeler.

CLARENDON COLLEGE REGISTRATION

Registration for Clarendon College courses being offered at Childress will be held Tuesday, August 21 from 6-8 p.m. at Childress High School. For more information, call James Anglin at 937-8821 or Clarendon College at 874-3571.

Registration for Clarendon College courses being offered at Wellington will be held Wednesday, August 22 from 6-8 p.m. in the math building behind the Wellington Junior High. For more information call Renissa Klink at 447-2353 or 493-4966, or Clarendon College at 874-3571.

Registration for Clarendon College courses being offered at Clarendon College Pampa Center, 1601 W. Kentucky is now underway through September 10. For more information call Joe Kyle Reeve, director, 665-8801.

General registration will be held Monday, Tuesday and Wednesday, August 27-29 from 9 a.m.-5 p.m. at Clarendon College in Clarendon. Late registration will be held through Monday, Sept. 10 and will include a \$10 fee.

Wheeler Church of Christ

Congregational Concerns:
 A linen shower will be held for Devin (Diebel) McDaniel on this coming Sunday afternoon, August 19th, in the home of Buck and Donneta Dollar. This shower will be held from 2:00 p. m. to 4:00 p. m.
 Bill Mayes, the minister of the 2nd Street Church of Christ in Childress, will be the guest speaker at the mid-week service on Wednesday night, August 22nd.
 The annual Teenage Crusade for Christ will be held by the Church of Christ in Borger on Saturday, August 18th. More information about this teenage crusade is posted on the bulletin board in the lobby.
 On Sunday, August 26th, the Change For Children campaign of the High Plains Children's Home in Amarillo will conclude. If you have participated in this campaign, please return your "change can" on that Sunday.
 The latest mission report from India is posted on the bulletin board in the lobby. This mission report was prepared by Ron Clayton, a former minister of this congregation.
 Ardie Martin remains hospitalized in the local hospital. Her condition is slowly improving.
 Mary Gibson is scheduled to have surgery on Tuesday, August 21st, at Baptist/St. Anthony's Hospital in Amarillo.
 Laurie (Lane) Poindexter is having some problems with her pregnancy. She is confined to her home in Sayre.
 There are some other people that we need to keep in our thoughts and prayers. These people are Don Edwards, Jancie Sparlin, and Greta Bass.

From The Minister's Desk:
 Joe Slater, the minister of the Church of Christ in Augusta, Kansas, recently wrote an insightful editorial about the problem of stem cell research. This editorial was entitled, "Do Evil That Good May Come" and it said: —
 "They are going to be destroyed anyway, so why not use them for research that could benefit the rest of us? After all, they are not really human persons. And just think of all the suffering that could be alleviated by the knowledge we gain from these experiments."
 "Does this line of reasoning sound familiar? If you have been following the controversy over stem cell research using "spare" human embryos, then you have heard it from Hollywood celebrities, certain medical researchers, and even some previously stalwart pro-life politicians. At least under certain controlled conditions, they claim, killing the smallest, most vulnerable members of the human race to experiment with their stem cells would not only be ethical, but would be worthy of taxpayer funding."
 "Do you realize, though that the first paragraph of this article expresses the gist of the arguments used by the Nazis to justify their medical experiments and research on inmates in the concentration camps? Jews, Poles, Gypsies, etc., were viewed as subhuman and were going to be killed anyway. Some of the research actually was directed toward alleviating the suffering of the Nazi military."
 "The infamous "Angel of Death", Josef Mengele, tortured and killed numerous sets of twins in the name of medical research. Though he escaped and was never prosecuted, 23 of his colleagues were tried at Nuremberg; sixteen were found guilty, of which seven were executed in 1948. Rightly, the judges rejected the argument that these inmates were going to die anyway, so the living might as well get some benefit from their deaths. How ironic, that the majority of Americans now uses the very logic Hitler's SS used to justify their outrageous barbarism."
 "The Apostle Paul was once accused of teaching the idea, "Let us do evil that good may come" (Romans 3:8). He called this accusation slander, and said that those who so accused him deserved to be condemned. Tempting as it is, we are never justified in doing evil, even if we intend to bring about a good result. The end simply does not justify the means. Killing defenseless human beings in the laboratory to further medical research is no more justified today than it was in the concentration camps in the early 1940's. May God help this country to wake up before it is too late."

Bill Morrison, Minister
 Church of Christ
 Wheeler, Texas

Services:
 Sunday Bible Study 10:00 A.M.
 Sunday Morning Worship ... 11:00 A.M.
 Sunday Night Worship 6:00 P.M.
 Wednesday Bible Study 7:30 P.M.

An Invitation: You are cordially invited to attend any of the weekly services of the Wheeler Church of Christ which meets at 1001 S. Alan Bean Blvd, in Wheeler, Texas

Want Ads

Canadian Laundry and Dry Cleaners, 1-800-766-6532 or mobile 662-6353.
 We have linens for parties, banquets and special occasions, napkins and banquet tops. We specialize in Dry Cleaning and Starched Jeans. rtn

WANTED: Lawns to mow for summer. Excellent service, competitive prices. Call for Free Estimate. 375-2321. rtn

REAL ESTATE APPRAISAL & SALES
 Farm & Ranch Land Specialist
 State Certified Appraiser
 TEXAS SUNBELT SERVICES
 Lavon Williams
 806/826-5232
 or 826-5803

HOUSE FOR SALE: 3 Bedroom/2 Bath, Living Room, Dining Room, Den, Attached Dbl. Car Garage, Single Car Garage with Apartment on Large Lot. 804 S Red River. Please Only Serious Inquiries. Call 826-1616 for more info. 9/6c

NOTICE
 The City of Wheeler will hold a meeting at 7:00 P.M. on Monday, August 20, 2001 at City Hall to consider adopting a proposed tax rate for tax year 2001. The proposed tax rate is .4900 per \$100 of value. The proposed tax rate would increase total taxes in City of Wheeler by 8% above the effective tax rate. 8/16c

\$ RNs-LVNs-CNAs-RRTs-CRRTs \$
NURSE REGISTRY, INC.
 Staffing Oklahoma, Kansas, & Texas
TEMPORARY ASSIGNMENTS
 CALL 580-225-7804 OR 1-800-734-1470
 Or send resume to P.O. Box 1555 Elk City, OK 73648 7/26rtn

YARD SALE: 405 S. Hefley Rd., Wheeler, Saturday, August 18, 8:00 A.M.—? 8/16p

56 Acres for Sale East of Wheeler. (806) 375-2121. 9/23p

Abraham Memorial Home is hiring CNAs for day shift and night shift. Looking for candidates for CNA class. No experience necessary. Come by 803 Birch in Canadian or call 323-6453 and ask for Cindy. 8/16c

WEST TEXAS CHRISTIAN SCHOOL NON DISCRIMINATORY NOTICE FOR IRS CODE (c) (3) exemption LEGAL NOTICE
 "West Texas Christian School admits students of any race, color, national and ethnic origin in administration of its educational policies, scholarship and loan programs, athletic and other school-administered programs".
 D'Anna Jernigan, Principal
 August 13, 2001 8/16c

R. C. 'BOB' CALLAN
 OIL, GAS AND MINERAL LEASES
 OFF. 806/352-7891
 RES. 806/352-3204
 MAILING ADDRESS
 BOX 7473
 AMARILLO, TEXAS 79109

TEXAS STATEWIDE CLASSIFIED ADVERTISING NETWORK



TexSCAN Week of August 12, 2001

ADOPTION
 Note: It is illegal to be paid for anything beyond medical and legal expenses in Texas adoption.
STAY AT HOME Mom, loving Dad and a secure future await your baby. Expenses paid. Please call Bridget and John @ 1-877-777-6584.
THE LITTLE THINGS! We look forward to the everyday life of being parents. Our family can't wait for a new baby in the family. Call Bonnie and Jim, 1-800-967-2762.

BUSINESS OPPORTUNITY
 A+ M&M MARS/NESTLE. Established vending route. Will sell by 8/27/01. Under \$9K minimum investment required. Excellent monthly profit potential. Finance available/good credit. 1-800-637-7444.
HOTTEST PRODUCTS IN AMERICA. Make money now. Distribute from your hometown. No experience necessary. \$130.00 investment. We show you how. Call Bill, 1-210-697-2150.

DRIVERS WANTED
A CAREER OPPORTUNITY. Earn 40K year + benefits. CDL training in 18 days. Lifetime job placement assistance. Financing, housing, transportation available. Long Horn Driver Training, 1-866-367-9933.
SBIG MONEYS - N.T.S. Placement Company needs drivers. Experienced up to \$600. Experienced up to \$1000. Pay up to 42cpm. Paid training, if you qualify. 1-888-781-8556. Tractor Trailer Training.

DRIVERS: ALLIED VAN Lines has openings in electronics and trade shops. Class A CDL with one year OTR experience. Tractor purchase available. Call 1-800-634-2200, Dept. ATXS.
DRIVER - COVENANT TRANSPORT now offering per diem pay for experienced teams, solos and trainers. O/O - Solos/Teams 83 cents plus fuel surcharge. No CDL? No problem. We school, no money down. Licensed by SBPCE. School located in Stuttgart, AR. Call 1-888-MORE-PAY (1-888-667-3729).

DRIVER - FFE TRANSPORTATION is now hiring experienced drivers for its growing fleet. Start up to 29 cpm w/one year experience with pay increases every six months up to 42 cpm. Call 1-800-569-9230.
DRIVERS-FRIDAYS ARE Payouts! One hour approval. Home at your request. Tractors set at 70mph. Benefits, bonuses, OTR, Class "A" required. Continental Trucking, Start now. 1-800-727-4374.

DRIVERS - IN FOR the long haul. CFI now hiring company driver, solos & teams. Company drivers start at 32 cents per mile. For more information, call 1-800-CFI-DRIVE.
DRIVER-OWNER OPERATORS - up to \$1.55 per loaded mile. Tractor, cargo van and 18-24 ft. straight truck owners needed. Call Panther II Transportation today. 1-800-640-7055.

DRIVER TRAINEE NEEDED! Dick Simon Trucking. Trainees can earn \$600-\$800 per week. No CDL needed - tuition reimbursement. Call 1-800-562-9696. Experienced drivers call too.
OWNER OPERATOR AVERAGE \$1.13 in Southwest 5 state area. FFE needs 27 trucks to cover this obligation. Sign-on bonus, base plates, generous fuel surcharge and plenty of freight. 1-800-569-9298.

TIRED OF GOING backwards in life? Let us help you. 350 openings for student drivers. 14-16 day CDL Training Program. 100% financing available. Call 1-877-83TRAIN.
FINANCIAL SERVICES
ARE YOU RECEIVING Payments? We buy Mortgages, Contracts, & Trust Deeds nationwide. Let our experience of 14 years work for you. Call Ken/Jennifer, 1-800-874-2389.
BE DEBT FREE - years sooner. Low payments. Reduce interest. Stop late fees. Stop collectors. Family Credit Counseling. Non-profit Christian Agency. See habla Espanol. Recorded message. 1-800-729-7964. Free quote, www.familycredit.org.

CASH NOW! FOR future payments. We buy insurance settlements, annuities & lottery winnings. We also buy owner financed mortgages. Call R & P Capital 1-800-338-5815, ext. 111.
500FASTCASH.COM - Short term loans up to \$500.00. We want your business. To apply: 1-800-290-8288. Loans by County Bank, Rehoboth Beach, DE (FDIC), Equal Opportunity Lender.
GET OUT OF debt now! Debt consolidation cuts interest, reduces payments, stops collection calls and late fees. Free application. No credit check. NCI, 1-800-270-9894.

STOP COLLECTOR CALLS! We can help. Lower payments. Reduce interest. Stop late fees. Debt consolidation. Free debt counseling. Non-profit. Call Aurion Solutions, 1-800-558-5562, www.aurion.org

NOTICE: While most advertisers are reputable, we cannot guarantee products or services advertised. We urge readers to use caution and when in doubt, contact the Texas Attorney General at 1-800-621-0508 or the Federal Trade Commission at 1-877-FTC-HELP. The FTC web site is www.ftc.gov/bizop

Call this newspaper to advertise statewide and regionally or call 512-477-6755

DRIVERS-O/O'S/FLATBED-Dry Box. The keys to a brighter future are here with Smithway Motor Xpress. Great pay package, miles and home time. 1-800-952-8091.
DRIVERS: OWNER/OPERATORS, Fleetwood Transportation is now leasing. Great lease package, we can help keep you loaded. Also need company drivers. 1-888-276-9923, www.ftwd.net
DRIVERS OTR - MARTEN Transport, Ltd. can pay you, with one year plus experience, 33 cents per mile. Call 1-800-395-3331, www.marten.com
DRIVERS: SOLOS UP to 45 cents per mile, teams up to 48 cents per mile, contractors 81 cents all miles. Lease options available. (No money down). Fuel incentives, increased holiday orientation pay & more. (No CDL, No Exp., Need training)...Call Burlington Motor Carriers, 1-800-583-9504.
DRIVERS...SWIFT TRANSPORTATION is hiring experienced and inexperienced drivers and O/O. CDL training is available. We offer great pay, benefits and consistent miles. 1-800-284-8785 (eoe-m/f).
DRIVER TRAINEE NEEDED! Dick Simon Trucking. Trainees can earn \$600-\$800 per week. No CDL needed - tuition reimbursement. Call 1-800-562-9696. Experienced drivers call too.
OWNER OPERATOR AVERAGE \$1.13 in Southwest 5 state area. FFE needs 27 trucks to cover this obligation. Sign-on bonus, base plates, generous fuel surcharge and plenty of freight. 1-800-569-9298.
TIRED OF GOING backwards in life? Let us help you. 350 openings for student drivers. 14-16 day CDL Training Program. 100% financing available. Call 1-877-83TRAIN.
FINANCIAL SERVICES
ARE YOU RECEIVING Payments? We buy Mortgages, Contracts, & Trust Deeds nationwide. Let our experience of 14 years work for you. Call Ken/Jennifer, 1-800-874-2389.
BE DEBT FREE - years sooner. Low payments. Reduce interest. Stop late fees. Stop collectors. Family Credit Counseling. Non-profit Christian Agency. See habla Espanol. Recorded message. 1-800-729-7964. Free quote, www.familycredit.org.
CASH NOW! FOR future payments. We buy insurance settlements, annuities & lottery winnings. We also buy owner financed mortgages. Call R & P Capital 1-800-338-5815, ext. 111.
500FASTCASH.COM - Short term loans up to \$500.00. We want your business. To apply: 1-800-290-8288. Loans by County Bank, Rehoboth Beach, DE (FDIC), Equal Opportunity Lender.
GET OUT OF debt now! Debt consolidation cuts interest, reduces payments, stops collection calls and late fees. Free application. No credit check. NCI, 1-800-270-9894.
STOP COLLECTOR CALLS! We can help. Lower payments. Reduce interest. Stop late fees. Debt consolidation. Free debt counseling. Non-profit. Call Aurion Solutions, 1-800-558-5562, www.aurion.org

FOR SALE
AMAZINGLY LOW PRICES - Wolff Tanning beds. Buy Factory Direct. Excellent serviced. Flexible financing available. Home/Commercial units. Free color catalog. Call today 1-800-711-0158, www.np.etstanc.com
HOT! SWIMMING POOLS! Easy setup! Complete pool for under \$1400 or \$28/mo., 1-866-763-8821.
NICE FIFTH WHEELS. 96 Mallard 24-5, \$8,995.00; 94 Sportsmaster 21-2, \$7,995.00; 86 Wilderness 28, \$6,595.00. All prices plus T&L. Southern RV World, Toll Free 1-866-581-0020.
SAWMILL \$3795. New Super Lumbermate 2000. Larger capacities, more options. Manufacturer of sawmills, edgers & skidders. Norwood Sawmills, 252 Sonvil Drive, Buffalo, NY 14225. 1-800-578-1363, ext. 300-N.
STEEL BUILDINGS-SAVE\$\$\$\$ on the number one Steel Arch Building. Specials: 16x26, 30x32, 40x50, 52x116. Call now, 1-800-341-7007. www.steelmasterusa.com
HELP WANTED
CONSTRUCTION TOP DOLLAR. Busy NE Developer seeking experienced framing crews and foundation form crews. Serious inquiries only. KC at 1-401-233-3320 or fax experience to 1-401-233-7632.
FRIENDLY TOYS & GIFTS has openings for party plan advisors and managers. Home decor, gifts, toys, Christmas. Earn cash, trips, recognition. Free catalog, information 1-800-488-4875.
MISCELLANEOUS
CHARITY CARS - DONATE your vehicle, tax deductible, free tow. Nationally acclaimed, we provide vehicles to struggling families. 1-800-442-4451, www.charity-cars.org
SPREAD THE GOSPEL of Christ with free "How to be Born Again" Postcards and Tracts. Contact Boxholder, P.O. Box 439, Fairfax Station, VA 22039-0439.
PANAMA CITY BEACH. Sandpiper-Beacon Beach Resort. From \$39 (1-2 persons, arrive Sun./Mon. - free night starting 8/19/01. Restrictions). Pools, river, ride, suites, bar. 1-800-488-8828, www.sandpiperbeacon.com
REAL ESTATE
ACREAGE-FREE LIST. Affordable hunting ranches 100-640 acres or more, lowest prices. E-Z terms. Toll-free 1-866-379-5263.
COLORADO RANCH 40 acres - \$29,900. First time offered. Enjoy country living yet close to city amenities. Rolling fields w/Rocky Mtn. views. Year round roads, survey, telephone/electric, excellent financing. Call Red Creek Ranch toll-free 1-877-676-6367.
HOMESITES - COLORADO, HAWAII, Arizona. Spectacular views - Owner financing. The easiest real estate purchase you will ever make. www.MYERANCH.com, 1-800-715-LAND.

DRIVERS-O/O'S/FLATBED-Dry Box. The keys to a brighter future are here with Smithway Motor Xpress. Great pay package, miles and home time. 1-800-952-8091.
DRIVERS: OWNER/OPERATORS, Fleetwood Transportation is now leasing. Great lease package, we can help keep you loaded. Also need company drivers. 1-888-276-9923, www.ftwd.net
DRIVERS OTR - MARTEN Transport, Ltd. can pay you, with one year plus experience, 33 cents per mile. Call 1-800-395-3331, www.marten.com
DRIVERS: SOLOS UP to 45 cents per mile, teams up to 48 cents per mile, contractors 81 cents all miles. Lease options available. (No money down). Fuel incentives, increased holiday orientation pay & more. (No CDL, No Exp., Need training)...Call Burlington Motor Carriers, 1-800-583-9504.
DRIVERS...SWIFT TRANSPORTATION is hiring experienced and inexperienced drivers and O/O. CDL training is available. We offer great pay, benefits and consistent miles. 1-800-284-8785 (eoe-m/f).
DRIVER TRAINEE NEEDED! Dick Simon Trucking. Trainees can earn \$600-\$800 per week. No CDL needed - tuition reimbursement. Call 1-800-562-9696. Experienced drivers call too.
OWNER OPERATOR AVERAGE \$1.13 in Southwest 5 state area. FFE needs 27 trucks to cover this obligation. Sign-on bonus, base plates, generous fuel surcharge and plenty of freight. 1-800-569-9298.
TIRED OF GOING backwards in life? Let us help you. 350 openings for student drivers. 14-16 day CDL Training Program. 100% financing available. Call 1-877-83TRAIN.
FINANCIAL SERVICES
ARE YOU RECEIVING Payments? We buy Mortgages, Contracts, & Trust Deeds nationwide. Let our experience of 14 years work for you. Call Ken/Jennifer, 1-800-874-2389.
BE DEBT FREE - years sooner. Low payments. Reduce interest. Stop late fees. Stop collectors. Family Credit Counseling. Non-profit Christian Agency. See habla Espanol. Recorded message. 1-800-729-7964. Free quote, www.familycredit.org.
CASH NOW! FOR future payments. We buy insurance settlements, annuities & lottery winnings. We also buy owner financed mortgages. Call R & P Capital 1-800-338-5815, ext. 111.
500FASTCASH.COM - Short term loans up to \$500.00. We want your business. To apply: 1-800-290-8288. Loans by County Bank, Rehoboth Beach, DE (FDIC), Equal Opportunity Lender.
GET OUT OF debt now! Debt consolidation cuts interest, reduces payments, stops collection calls and late fees. Free application. No credit check. NCI, 1-800-270-9894.
STOP COLLECTOR CALLS! We can help. Lower payments. Reduce interest. Stop late fees. Debt consolidation. Free debt counseling. Non-profit. Call Aurion Solutions, 1-800-558-5562, www.aurion.org

FOR SALE
AMAZINGLY LOW PRICES - Wolff Tanning beds. Buy Factory Direct. Excellent serviced. Flexible financing available. Home/Commercial units. Free color catalog. Call today 1-800-711-0158, www.np.etstanc.com
HOT! SWIMMING POOLS! Easy setup! Complete pool for under \$1400 or \$28/mo., 1-866-763-8821.
NICE FIFTH WHEELS. 96 Mallard 24-5, \$8,995.00; 94 Sportsmaster 21-2, \$7,995.00; 86 Wilderness 28, \$6,595.00. All prices plus T&L. Southern RV World, Toll Free 1-866-581-0020.
SAWMILL \$3795. New Super Lumbermate 2000. Larger capacities, more options. Manufacturer of sawmills, edgers & skidders. Norwood Sawmills, 252 Sonvil Drive, Buffalo, NY 14225. 1-800-578-1363, ext. 300-N.
STEEL BUILDINGS-SAVE\$\$\$\$ on the number one Steel Arch Building. Specials: 16x26, 30x32, 40x50, 52x116. Call now, 1-800-341-7007. www.steelmasterusa.com
HELP WANTED
CONSTRUCTION TOP DOLLAR. Busy NE Developer seeking experienced framing crews and foundation form crews. Serious inquiries only. KC at 1-401-233-3320 or fax experience to 1-401-233-7632.
FRIENDLY TOYS & GIFTS has openings for party plan advisors and managers. Home decor, gifts, toys, Christmas. Earn cash, trips, recognition. Free catalog, information 1-800-488-4875.
MISCELLANEOUS
CHARITY CARS - DONATE your vehicle, tax deductible, free tow. Nationally acclaimed, we provide vehicles to struggling families. 1-800-442-4451, www.charity-cars.org
SPREAD THE GOSPEL of Christ with free "How to be Born Again" Postcards and Tracts. Contact Boxholder, P.O. Box 439, Fairfax Station, VA 22039-0439.
PANAMA CITY BEACH. Sandpiper-Beacon Beach Resort. From \$39 (1-2 persons, arrive Sun./Mon. - free night starting 8/19/01. Restrictions). Pools, river, ride, suites, bar. 1-800-488-8828, www.sandpiperbeacon.com
REAL ESTATE
ACREAGE-FREE LIST. Affordable hunting ranches 100-640 acres or more, lowest prices. E-Z terms. Toll-free 1-866-379-5263.
COLORADO RANCH 40 acres - \$29,900. First time offered. Enjoy country living yet close to city amenities. Rolling fields w/Rocky Mtn. views. Year round roads, survey, telephone/electric, excellent financing. Call Red Creek Ranch toll-free 1-877-676-6367.
HOMESITES - COLORADO, HAWAII, Arizona. Spectacular views - Owner financing. The easiest real estate purchase you will ever make. www.MYERANCH.com, 1-800-715-LAND.

DRIVERS-O/O'S/FLATBED-Dry Box. The keys to a brighter future are here with Smithway Motor Xpress. Great pay package, miles and home time. 1-800-952-8091.
DRIVERS: OWNER/OPERATORS, Fleetwood Transportation is now leasing. Great lease package, we can help keep you loaded. Also need company drivers. 1-888-276-9923, www.ftwd.net
DRIVERS OTR - MARTEN Transport, Ltd. can pay you, with one year plus experience, 33 cents per mile. Call 1-800-395-3331, www.marten.com
DRIVERS: SOLOS UP to 45 cents per mile, teams up to 48 cents per mile, contractors 81 cents all miles. Lease options available. (No money down). Fuel incentives, increased holiday orientation pay & more. (No CDL, No Exp., Need training)...Call Burlington Motor Carriers, 1-800-583-9504.
DRIVERS...SWIFT TRANSPORTATION is hiring experienced and inexperienced drivers and O/O. CDL training is available. We offer great pay, benefits and consistent miles. 1-800-284-8785 (eoe-m/f).
DRIVER TRAINEE NEEDED! Dick Simon Trucking. Trainees can earn \$600-\$800 per week. No CDL needed - tuition reimbursement. Call 1-800-562-9696

Canyon all attended a Harrison-Bradley Family Reunion at Cloud Croft, N.M. the first weekend of August. Hershel Sanford from Higgins spent last Wednesday night with his sister, Pearl.

Clifton and Louise Boydston's Sunday dinner guests were Pearl Harrison, Gary and Julie Boydston, H. B. and Cheryl Dupont, Sabrina and Cody and Henry and Dora Lea Dupont and Pastor McDaniel and Rev. T. H. Chapman.

Rita Grayson and Debbie Jones attended the bridal shower for Dawn Lohberger and Cory Case last Sunday afternoon at the Church of Christ

fellowship hall in Wheeler.

Our sympathy goes out to the family of Ona Black. She died last Saturday morning at the Wheeler Care Center.

Lanora Morse's visitors last week were Areil Lohberger, Pearl Harrison, Anna Dukes and Ingrid Meraz of Amarillo and each one brought Lanora some food goodies. She appreciated them coming.

Jon and Connie Steffey's visitor through the weekend was a good friend, Kathy Nelson from Canyon City, Colo. I imagine they had a good time visiting. They have been good friends for years.

Vance Boydston went to Oklahoma City last Wednesday and brought Caroline home from the hospital. She spent from Friday to Wednesday there. It's good to have her back home.

Take time to pray—it is the greatest power on earth!

Gageby (from Page 3)

your prayers. Psalm 127:1: Unless the Lord builds the house, those who build it labor in vain.

So nice to have Dan and Caroline Cornett join us for supper at Maxeys Saturday night and a good visit. They plan a trip to the mountains of Colorado, taking two horses and a dog. The horse trailer will have a bed for them to sleep at night and a portable shower. A battery-operated electric fence will enclose the horses at night. They will enjoy riding horses and sight-seeing in the mountains, a time to relax and see new things. Caroline frequently goes on trail rides. She loves horses and riding and outdoor stuff.

Dale Stevens' family celebrated Dale's 47th birthday with supper at Maxeys Saturday night. Some there were Janet and Dale Stevens, Travis Stevens, Juajuan and Kenneth Stokes, Lynette Miller and Casey and Chance (who was 12 Saturday) Juanette O'Gorman, Amy, Terri and Lacy Gibson, Brooke Stevens, Nikki Robinson, Jeff Martin, Danny Glasgow and Kenzie Chick.

Camilla Hefley from Cooper and Tressa Jenkins and Kyle and Kayla from near Huntsville came last Monday to visit Pauline Hefley and Jim and Beth Alvey and David and Phyllis Hefley. They all ate at Maxeys Monday night. Tuesday they got together at Alveys for a cookout and visit. The company left Wednesday. They had fun.

Sincere sympathy to family and friends of Mrs. Ona Black, 95, in her death. Funeral was to be Tuesday, August 14, at Wheeler Baptist Church.

Mayme McElroy has started teaching at Perryton. First day was Monday. Don McElroy has a job on the King Ranch, north of Locust Grove, where they used to live, when Don pastored the church there. Mayme was to spend Monday night with us. Be good to see them again. Pray for Don and Mayme. Good to have Mayme come. They will be moving in soon to the King Ranch. Lance and LaJuana Caroland plan to help them move from Muleshoe.

Noveta Atherton and Chynna and Kelley Aderholt got back August 5 from a two weeks trip to Bakersfield, Calif., to visit DeAnn and Torrence Coons and Teesha and Torree and Misty and Jimmy Densen. They went to Magic Mountain, saw lots of historical sites, went out to eat and had family time and especially enjoyed the grandkids. Chynna is getting ready for seventh grade at Ft. Elliott.

TURN ON THE VICTROLA

By: Lorena G. Males
I was so surprised one day while I was playing the piano. My late husband, L. L. "Red" Males, had had no background in music, but while I played he sat beside me and said, "I love that piece you're playing. Its Humoresque. Who composed it?" "Well—Dvorak did—but how did you know?"

From our old Victrola when I was a boy. My older brother Fred worked hard, saved his money and bought the treasured instrument. No one was allowed to touch it but Fred but I could listen.

"What other pieces did you learn?" "I'll Take You Home Again, Kathleen."

"Oh, that's one of my favorites too." The Victrola had a powerful influence on the pioneer family. There were very few pianos and fewer piano teachers. Many people gained their musical education from the traveling "singing" teacher. He taught the community to sing do, re, me. There were no radios, no movies, no television.

If a family was lucky enough to own a Victrola the neighbors would all gather in the parlor and listen to a musical recital. Since ready made entertainment was scarce the early day settlers were starved for music. The Victrola was the most cherished piece of furniture in the house.

Willa Cather writes about the tremendous influence of the phonograph in early day Nebraska.

When the pioneers would buy a Victrola—usually order it from Sears, Roebuck or Montgomery Ward—they'd receive a package of records, chosen by the seller. Their would often be so called "high class" music so the people would learn some of the classics without realizing it.

We kept up with the music hits of the day. Mama was my Victrola. She sang as she made slaw, set the table, peeled potatoes mopped the floor.

After The Ball, Bill Bailey, Won't You Please Come Home, In The Good Old Summer Time, In The Shade of the Old Apple Tree, Down By The Old Mill Stream, When You And I Were Young, Maggie and Red Wing were all sung.

(Words to Red Wing)
Now the moon shines tonight on pretty Red Wing

The breeze is sighing; the night bird's calling.

While afar 'neath the stars, her brave is sleeping

While Red Wing's weeping her heart away.

I remember once long ago when I went to visit Howard and Augusta Metcalfe, Durham. They had a Victrola that worked. Wonder if it still does?

Chamber (from Page 1)

banquet. If you have an idea for a speaker, please call the Chamber office at 826-3408.

In 1909, the U. S. became the twelfth country in the world to embrace the British Boy Scout movement and establish a scouting program.

David and Rita Pearson went to Stamford Friday and spent the night. Saturday David and Rita and David's mom, Mary Pearson, and his brother, Glen and wife, Kathy, and Kajsja all went to Kingsland to the 50th anniversary celebration of Mary's brother and wife, John and Charlotte Wheeler. They all spent the night at Kingsland Saturday and came home Sunday, a long day, but good to see everyone.

THE ALL NEW
PALACE THEATRE
210 Main — Canadian, TX
Beginning August 17
Showtime: 7:30 Sun.-Thurs
Showtime: 7:00 & 9:00 Fri. & Sat.
Sunday Matinee: 2:00
"Rush Hour 2"
Rated: PG-13
For Show Time Information
Phone: 323-5133
The only THX Approved Theatre in the Texas Panhandle

Grace Fellowship Church
601 S. Red River
Wheeler, Texas
Bible Faith Lessons
Each Sunday
10:30 A.M.
Praise Service & Teaching
by Jim Loper
Each Sunday
Evening—7:00 P.M.

WHEELER PLUMBING
511 S. Cheyenne
New Construction
Remodel
Repair
Sewer Service
Septic Systems
Site Evaluations
Phone: 826-5907
MAX McQUEEN
P.O. Box 754 Wheeler, TX

Canadian Supply & Redi-Mix
for all your Concrete Needs!
Jerry Smith, Owner
806-323-5379

Listen to...
KPDR-FM, 90.5
WHEELER, TEXAS

AUCTION
SAT. AUGUST 18, 2001- 9:43 A.M.
TOM & ALICE BELL HELTON LIVING ESTATE
Located: WHEELER, TX--907 Kiowa Street. From Intersection of Hwy. 83 & 152 Take Hwy. 83 (Alan Bean Blvd.) South Six Blocks to 10th Street Then West on 10th Street Four Blocks to Kiowa (Corner of 10th & Kiowa).
PICKUP • 79 Chevy 1/2 Ton • APPLIANCES • Kenmore (21 Ft. Ref./Frz., Dryers) • Goldspot 16 Ft. Ref./Frz. • Marquette C/T Frz. • Whirlpool Washer • TVs & VCR • Zenith 27" KTV 19" • PIANO • Gulbransen Console • ELECTRIC ORGAN • Baldwin 46H • GRANDFATHER • J. Lee Fincher • FURNITURE • Lou. KT Pecan Dining Room Suite • Ant. (Tiger Oak Dining Table & Bedr. Suite, Walnut Buffet, Mahg. Wash Stand, Pine Rocker, Rev. Bow Dresser, Loveseat) • Recliners • Oak Coffee & End Tables • Night Stands • Lamps • SEWING MACH. • Ant. Singer Treadle • SAFE • COL. GLASS • Fostoria • Lead Crystal • Ruby Red • Japan • Pressed Cut • Pink Dep. • COL. • Cream Separator • Old Quilts • Crocks • Cast Iron • Costume Jelly • Marbles • KITCHEN & HOUSEHOLD • LAWNMOWERS • Toro 21" S/P, WEED TRIMMERS • DR 21" Weed • TOOLS • LAWN FURN. (7119). Wheeler--806-826-5850 Lyndon Loyd Auctioneers

HEALTH BENEFITS
for the ENTIRE FAMILY
only \$70 per month!
• FLAT RATE • GUARANTEED ACCEPTANCE
• SELF-EMPLOYED OR NOT—NO INCREASE!
• DEEP MEDICAL DISCOUNTS ON DOCTOR, DENTAL, CHIROPRACTIC, EMERGENCY ROOM, HOSPITAL CONFINEMENT, VISION, RX & MORE!
Call 1-888-369-1739

You May Be An Oil & Gas Royalty Millionaire.
\$ Per Mo. Cash Value
2K = \$100,000
5K = \$250,000
10K = \$500,000
20K = \$1 Million
We purchase quality Overriding Royalty Interest (ORRI) and Royalty Interest (RI) properties from individuals and estates.
Call 214-742-0800
Or visit RoyaltyInvestor.com and submit e-summary
Quick action on quality property.

2001 Property Tax Rates in CITY OF MOBEETIE

This notice concerns 2001 property tax rates for CITY OF MOBEETIE. It presents information about three tax rates. Last year's tax rate is the actual rate the taxing unit used to determine property taxes for last year. This year's effective tax rate would impose the same total taxes as last year if you compare properties taxed in both years. This year's rollback tax rate is the highest tax rate the taxing unit can set before taxpayers can start tax rollback procedures. In each case these rates are found by dividing the total amount of taxes by the tax base (the total value of taxable property) with adjustments as required by state law. The rates are given per \$100 of property value.

Last year's tax rate:	
Last year's operating taxes	\$12,260
Last year's debt taxes	\$0
Last year's total taxes	\$12,260
Last year's tax base	\$1,702,778
Last year's total tax rate	0.72000/\$100
This year's effective tax rate:	
Last year's adjusted taxes (after subtracting taxes on lost property)	\$12,260
/ This year's adjusted tax base (after subtracting value of new property)	\$1,749,716
= This year's effective tax rate	0.70068/\$100
x 1.03=maximum rate unless unit publishes notices and holds hearing	0.72170/\$100
This year's rollback tax rate:	
Last year's adjusted operating taxes (after subtracting taxes on lost property and adjusting for any transferred function, tax increment financing, and/or enhanced indigent health care expenditures)	\$12,260
/ This year's adjusted tax base	\$1,749,716
= This year's effective operating rate	0.70068/\$100
x 1.08=this year's maximum operating rate	0.75673/\$100
+ This year's debt rate	0.00000/\$100
= This year's rollback rate	0.75673/\$100

Statement of Increase/Decrease
If CITY OF MOBEETIE adopts a 2001 tax rate equal to the effective tax rate of 0.70068 per \$100 of value, taxes would increase compared to 2000 taxes by \$410

Schedule A Unencumbered Fund Balances

The following estimated balances will be left in the unit's property tax accounts at the end of the fiscal year. These balances are not encumbered by a corresponding debt obligation.

Type of Property Tax Fund	Balance
Schedule B 2001 Debt Service	
The unit plans to pay the following amounts for long-term debts that are secured by property taxes. These amounts will be paid from property tax revenues (or additional sales tax revenues, if applicable).	
Total required for 2001 debt service	\$0
- Amount (if any) paid from funds listed in Schedule A	\$0
- Amount (if any) paid from other resources	\$0
- Excess collections last year	\$0
= Total to be paid from taxes in 2001	\$0
+ Amount added in anticipation that the unit will collect only 100.00% of its taxes in 2001	\$0
= Total debt levy	\$0

This notice contains a summary of actual effective and rollback tax rates' calculations. You can inspect a copy of the full calculations at 100 MAIN.

Name of the person preparing this notice: LEWIS SCOTT PORTER
Title: TAX ASSESSOR/COLLECTOR
Date prepared: July 31, 2001

It Is Well
Andy Copeland

NEW RELEASE: Wheeler's Andy Copeland has released his first CD. The disk is entitled "It is Well" and is a collection of "old favorites" played on the saxophone. The ten hymns on the tape are "It is Well; Fairest Lord Jesus; How Great Thou Art; In the Garden; The Old Rugged Cross; We Shall Behold Him; Amazing Grace; Holy, Holy, Holy; A Mighty Fortress Is Our God, and Sweet Hour of Prayer. Andy is a graduate of Wheeler High School and is presently serving in the military. Copies of the CD may be obtained by contacting his parents, Tex and Theresa Copeland at 826-3626.

Did you take Fen-Phen?
If you took Pondimin, Phentermine (Fastin, Adipex) or Redux and you have heart problems, valve leakage, murmurs, regurgitation, or PPH, then call us to discuss your legal rights for damages against the manufacturers and your eligibility for echocardiographic testing.
DAVID P. WILLIS - WILLIS LAW FIRM
3333 One Houston Center Houston, Texas 77010
BOARD CERTIFIED PERSONAL INJURY TRIAL LAWYER
Texas Board of Legal Specialization
1 (800) 468-4878 or 1 (800) 883-9858
Mr. Willis is likely to associate with other attorneys in the handling of this matter

Rezulin/Diabetes Drug Users
REZULIN has been linked to liver dysfunction and other health problems in numerous individuals. It was taken off the market 3-21-00 by its manufacturer, Parke-Davis, a division of Warner-Lambert. You or someone you love may be affected. If you wish to know your legal rights with regard to medical problems associated with the use of REZULIN, please contact our offices for a free legal consultation.
JOHN G. EMERSON, JR. - THE EMERSON FIRM
Attorneys at Law
2000 S. Gessner, Suite 600, Houston, Texas (832) 723-8850
Email: jge@emersonfirm.com
*Licensed by the Supreme Court of Texas, Not Certified by the Texas Board of Legal Specialization
We often work in conjunction with another law firm on client cases.

Top 'O Texas Cattle Women Hold Meeting

The Top 'O Texas Cattle Women met in Canadian at the Cattle Exchange Restaurant August 13, 2001. President Kay Stiles opened the meeting with a prayer. As Sandra Christine for the minutes they will be read at the next meeting. Dianne Buckingham gave the treasurer's report.

As our Style Show is slated for September 8, 2001, most of the meeting was devoted to preparations for it. It will be held at the Pampa County Club and tickets are \$15.00. There will be a Brunch and door prizes, plus major prizes of airplane tickets worth hundreds of dollars. A number of stores from Pampa (Dunlaps, Images, V J's, and Jiffy Cleaners), Amarillo (Betty's, Cavendish's, and Maternally yours), Shamrock (Vernell's), and Canadian River Originals from Canadian. There may be other stores also. Tickets will be available from Cattle Women by next week. Call your local Cattle Woman and get your name in the pot!

Our Beef Ambassadors both competed well at the State Finals, and we hope that they will compete again. They are available as speakers for

clubs, etc. which need speakers. Please contact Amy Brainard at (806) 323-6397 if you need a program, or if you are age 16 to 19 and would like to compete for Beef Ambassador next year.

Top 'O Texas Cattle Women will have a booth at the Chautauqua Celebration in Pampa on Labor Day. There will be an interesting game for children called "Batting for Beef" and we will have free brochures and recipes.

Members who enjoyed the wonderful steak dinner at the Cattle Exchange were Kay Stiles and her little guest, Makenzie Stiles, Tara Rodden, Mary Mitchell, Anita Brown, Glenda Adcock, Julie Cooke, Julie Watkins, Sena Brainard, Lith Brainard, Amy and Eddy Brainard, Berklee Clements, Sally, Rachel and Reza Wicker, Dianne Buckingham, Carolyn Buckingham, Margaret Tobert, and Sandra Christine.

We hope to see you at our Style Show and at Chautauqua!

Old Mobeetie (from Page 1)

for 2002 are Magic City Cowboys, Star Canyon, Mary McDonald and a Touch of Grass. Texas Country and Buddy and Tina Wright. The Duffin Family is booked for 2003 already. They were booked for a show in IL during the 2002 festival. The group will be listening to some tapes that were given them before booking the rest of the bands. Melba had e-mail

MEALS on WHEELS

MONDAY, August 13, 2001 — FRIDAY, August 17, 2001

MONDAY: Pinto Beans, W/Ham, Fried Potatoes, Stewed Tomatoes, Cornbread/Butter, Fruit Cocktail
TUESDAY: Barbecue Beef On Bun, Baked Beans, Coleslaw, Apple Crisp
WEDNESDAY: Enchiladas/Sauce, Spanish Rice, Tossed Salad/Dress- ing, Cornbread/Margarine, Pineapple Upside Down Cake

THURSDAY: Fried Veal Patty, Baked Potato, Gravy, Mixed Vegetables, Plum Cobbler

FRIDAY: Fried Catfish, Spinach, Au Gratin Potatoes, Bread/Margarine, Gingerbread/Topping

from a group from Holland wanting to perform in the next festival. She is to peruse this. She had also had a call from High Standards. Report on the restroom project was given. Vents will be put in before winter. The evaluation sheet informant was given to everyone present.

Motion by Bill Elliott and second by Joe VanZandt to pay \$500.00 to Bill Hagerman for his expense on the restroom project. Carried.
Workday was set for August 25th. Jim Hill motion to adjourn.

Those present were Bernice Helley, Louise Hogan, Joe VanZandt, Bill Finsterwald, George Kilcrease, Bill and Dutch Elliott, Nathan and Melba Lancaster, Lee and Melba Brown, Bill and Fleda Hagerman, Jimmy and Bobby Hill, and Dale and Melba Corcoran

Miami, Florida, gets its name from an Indian word *mayami* meaning "big water".

Listen to
KPDR-FM, 90.5
WHEELER, TEXAS

SWU

SEC	CRSE	COURSE TITLE	TIME	DAYS	INSTRUCTOR
			8:00-8:50	M W F	
47	2104	Human Anatomy	+		Brooks
60	2104L	Human Anatomy Lab	8:00-9:50	R	Brooks
48	2205	Human Anatomy & Physiology	+		R Coker
124	2205L	Human Anat/Phys Lab	2:00-3:50 M & 1:00-2:50 R		R Coker
103	1113V	English Composition I			Haught
50	1023	Computer/Information Access			D Coker
51	2723	Computer Business Applications			Wootton
53	1033	World History			Worley
54	2413	Introduction to Literature			Williams
55	1513	College Algebra			Swartwood
56	1003	General Psychology			Froneberger
52	3123R	Legal Env of Business			Crall
158	3423R	The Teaching of Reading I			Perkins

SEC	CRSE	COURSE TITLE	TIME	DAYS	INSTRUCTOR
			9:00-9:50	M W F	
62	0125	Basic Algebra		M T W R F	Swartwood
63	2412	Immunology/Serology		M T W	Brooks
64	2213	Principles of Financial Accounting			Wootton
65	2443	Medical Terminology			R Coker
66	1223	Art Survey			Williams
67	1004	Biological Concepts	+		Davis
59	1004L	Biological Concepts Lab	8:00-9:50	R	Davis
97	1004L	Biological Concepts Lab	10:00-11:50	R	Davis
68	1023	Computer/Information Access			Clark
70	1113	English Composition I			McKinney
71	1213	English Composition II			Haught
72	1033	World History			Instructor
73	1063	United States History			Worley
74	1143	Math Concepts			D Coker
75	1103	American Government & Politics			Froneberger
76	1082	Radiographic Exposure I		M W	Stufflebean
78	1071	Patient Care		F	Stufflebean
69	1113R	Intro to Criminal Justice			Storm

SEC	CRSE	COURSE TITLE	TIME	DAYS	INSTRUCTOR
			9:00-9:50	T R	
77	1053	Radiographic Positioning (With Lab)	9:00-11:50		Parker
			9:35-10:50	T R	
80	3143R	Principles of Marketing			Ferrell
160	1433R	Structural Concepts in Arithmetic			DeVaughan

SEC	CRSE	COURSE TITLE	TIME	DAYS	INSTRUCTOR
			10:00-10:50	M W F	
81	2503	Parasitology		M T W	R Coker
82	1063	Fundamentals of Speech			Williams
83	1433	Visual Basic Programming			Clark
84	2153	Introduction to Networking			C White
85	1113	Contemporary Economics			Wootton
87	0123	Fundamentals of English			Haught
170	2713	Creative Writing-Poetry			McKinney
89	1103	World Cultural Geography			Instructor
90	1103	Intermediate Algebra			Swartwood
91	1513V	College Algebra			D Coker
92	1103	American Government & Politics			Worley
93	1003	General Psychology			Froneberger
94	1062	Intro to Radiologic Technology		M W	Stufflebean
98	1021	Radiation Safety/Protection		F	Stufflebean
86	2263R	Intro to Macroeconomics			Nowka

SEC	CRSE	COURSE TITLE	TIME	DAYS	INSTRUCTOR
			10:00-10:50	T R	
95	1001	Freshman Orientation (1st 4 Weeks)			Instructor
10	0121A	Keyboarding (2nd 4 Weeks)			Wootton
96	1001	Freshman Orientation (1st 8 Weeks)		T	Davis
			11:00-11:50	M W F	
100	1034	Hematology & Phlebotomy I	+		R Coker
58	1034L	Hematology & Phleb Lab	8:00-9:50	T	R Coker
101	1023	Computer/Information Access			Clark
102	2013	Computer Science I			C White
49	1063	Fundamentals of Speech			Haught
104	1213	English Composition II			McKinney
105	1033	World History			Worley
106	1063	United States History			Instructor
107	1133	Wellness Concepts & Exercise App + Lab Arranged			Instructor
108	1013	Introduction to Music I			Williams
109	1453	Introduction to Philosophy			Froneberger
110	0123	Improvement of Reading			Instructor
111	1614	Science & the Environment	11:00-12:10		Davis
112	1253R	American Correction System	11:00-12:15		Storm

SEC	CRSE	COURSE TITLE	TIME	DAYS	INSTRUCTOR
			11:00-12:15	T R	
157	3432R	The Teaching of Reading II			Russell
			12:00-12:50	M W F	
138	2355	Microbiology	+	M T W	Brooks
118	2355L	Microbiology Lab	1:00-2:50	T W	Brooks
139	2443	Medical Terminology			Stufflebean
140	1063	Fundamentals of Speech			McKinney
141	1023	Computer/Information Access			Wootton
146	1133	Wellness Concepts & Exercis App + Lab Arranged			Instructor
147	0125	Basic Algebra	12:00-1:30		D Coker
148	0125	Basic Algebra	12:00-1:30		Swartwood
149	1103	American Government & Politics			Worley
142	2011	Microsoft Word I	12:00-1:15		Clark
		(1st 4 Weeks / Aug 22 - Sep 17)			
143	2011	Microsoft Word II	12:00-1:15		Clark
		(2nd 4 Weeks / Sep 19 - Oct 12)			
144	2011	Microsoft Access I	12:00-1:15		Clark
		(3rd 4 Weeks / Oct 15 - Nov 9)			
145	2011	Microsoft Access II	12:00-1:15		Clark
		(4th 4 Weeks / Nov 12 - Dec 10)			

SEC	CRSE	COURSE TITLE	TIME	DAYS	INSTRUCTOR
			1:00-1:50	M W F	
114	1113	English Composition I			Haught
115	2253	Business Communications			Wootton
116	1514	Concepts of Physical Science	1:00-2:10		Davis
117	1001	Freshman Orientn (1st 8 Weeks)		M	Instructor
122	1001	Freshman Orientn (1st 4 Weeks)	1:40-2:30	M W	Instructor
123	1001	Freshman Orientn (1st 4 Weeks)	1:40-2:30	M W	D Coker
165	2433R	Psychological Statistics			Hunsicker

SEC	CRSE	COURSE TITLE	TIME	DAYS	INSTRUCTOR
			10:00-10:50	T R	
95	1001	Freshman Orientation (1st 4 Weeks)			Instructor
10	0121A	Keyboarding (2nd 4 Weeks)			Wootton
96	1001	Freshman Orientation (1st 8 Weeks)		T	Davis
			11:00-11:50	M W F	
100	1034	Hematology & Phlebotomy I	+		R Coker
58	1034L	Hematology & Phleb Lab	8:00-9:50	T	R Coker
101	1023	Computer/Information Access			Clark
102	2013	Computer Science I			C White
49	1063	Fundamentals of Speech			Haught
104	1213	English Composition II			McKinney
105	1033	World History			Worley
106	1063	United States History			Instructor
107	1133	Wellness Concepts & Exercise App + Lab Arranged			Instructor
108	1013	Introduction to Music I			Williams
109	1453	Introduction to Philosophy			Froneberger
110	0123	Improvement of Reading			Instructor
111	1614	Science & the Environment	11:00-12:10		Davis
112	1253R	American Correction System	11:00-12:15		Storm
			11:00-12:15	T R	
157	3432R	The Teaching of Reading II			Russell
			12:00-12:50	M W F	
138	2355	Microbiology	+	M T W	Brooks
118	2355L	Microbiology Lab	1:00-2:50	T W	Brooks
139	2443	Medical Terminology			Stufflebean
140	1063	Fundamentals of Speech			McKinney
141	1023	Computer/Information Access			Wootton
146	1133	Wellness Concepts & Exercis App + Lab Arranged			Instructor
147	0125	Basic Algebra	12:00-1:30		D Coker
148	0125	Basic Algebra	12:00-1:30		Swartwood
149	1103	American Government & Politics			Worley
142	2011	Microsoft Word I	12:00-1:15		Clark
		(1st 4 Weeks / Aug 22 - Sep 17)			
143	2011	Microsoft Word II	12:00-1:15		Clark
		(2nd 4 Weeks / Sep 19 - Oct 12)			
144	2011	Microsoft Access I	12:00-1:15		Clark
		(3rd 4 Weeks / Oct 15 - Nov 9)			
145	2011	Microsoft Access II	12:00-1:15		Clark
		(4th 4 Weeks / Nov 12 - Dec 10)			
			1:00-1:50	M W F	
114	1113	English Composition I			Haught
115	2253	Business Communications			Wootton
116	1514	Concepts of Physical Science	1:00-2:10		Davis
117	1001	Freshman Orientn (1st 8 Weeks)		M	Instructor
122	1001	Freshman Orientn (1st 4 Weeks)	1:40-2:30	M W	Instructor
123	1001	Freshman Orientn (1st 4 Weeks)	1:40-2:30	M W	D Coker
165	2433R	Psychological Statistics			Hunsicker

SEC	CRSE	COURSE TITLE	TIME	DAYS	INSTRUCTOR
			10:00-10:50	T R	
95	1001	Freshman Orientation (1st 4 Weeks)			Instructor
10	0121A	Keyboarding (2nd 4 Weeks)			Wootton
96	1001	Freshman Orientation (1st 8 Weeks)		T	Davis
			11:00-11:50	M W F	
100	1034	Hematology & Phlebotomy I	+		R Coker
58	1034L	Hematology & Phleb Lab	8:00-9:50	T	R Coker
101	1023	Computer/Information Access			Clark
102	2013	Computer Science I			C White
49	1063	Fundamentals of Speech			Haught
104	1213	English Composition II			McKinney
105	1033	World History			Worley
106	1063	United States History			Instructor
107	1133	Wellness Concepts & Exercise App + Lab Arranged			Instructor
108	1013	Introduction to Music I			Williams
109	1453	Introduction to Philosophy			Froneberger
110	0123	Improvement of Reading			Instructor
111	1614	Science & the Environment	11:00-12:10		Davis
112	1253R	American Correction System	11:00-12:15		Storm
			11:00-12:15	T R	
157	3432R	The Teaching of Reading II			Russell
			12:00-12:50	M W F	
138	2355	Microbiology	+	M T W	Brooks
118					