

# THE WHEELER TIMES

(USPS-681-960)  
VOLUME 725, NUMBER 48

THURSDAY, NOVEMBER 13, 2008

SINGLE COPY **50c**

“Wheeler: town of friendship and pride.”

## CWE CHAT WITH EDITOR

By Louis C. Stas

**Congratulations, Wheeler Mustangs** on your win over Shamrock and earning a place in the playoffs.

— cwe —  
**Congratulations, Richard Watler** for having been named to the *Amarillo Globe-News* “Athlete of the Week” Honor Roll.

— cwe —  
**Congratulations, Taylor and Haley Sparks!** The two girls will once again be representing Wheeler at the Cross County State Meet.

— cwe —  
The Ft. Elliott Lady Cougars finished their season without a loss, but lost their first game of the playoffs. We are proud of you, **Lady Cougars!**

— cwe —  
Wheeler is also represented in the football playoffs with Vega having won their district. Two former Wheeler Mustangs, **Phillip Wiggins** and **Jason Porton** are the head coach and assistant coach respectively. This is Vega's first district win in 19 years.

— cwe —  
Have you been by the Wheeler Agricultural and Family Center. They are making progress as you can see by the pictures in this week's edition of the *Times*.

— cwe —  
Progress was also being made on the Ambulance Barn, but they have slowed down for some reason.

— cwe —  
I was told of the North Wheeler County Ambulance crew's desire to have two flag poles located at the new barn. If you would like to make a donation toward the flag poles project, contact Brenda Sparlin.

— cwe —  
I intend to plant a tree at the new location of the ambulance service in memory of Mary K. and Mac Christner. If you would like to help me with this project, give me a call.

(Continued Page 8)

## STORM REPORT

As Reported by Stormie Meriwether Kindergarten Student

One day my Mom went to help the people vote. It was very dark. Dad got me ready for school. "It's just you and me against the world, Dad." I missed my Mom all day. It was dark again and she came home. The next day we have a new president. It's Obama, not McCain. I like the little girls. He is a nice man to give them a puppy. School is great! Books are fun. All the kids have to read a book at home. I write the letters over and over. Some letters are easy and some letters are a little hard.

We go to Oklahoma to see Aunt Melba and Uncle Gene. I didn't know my band was there! My band gave me a little pin. It is a flag cross. I'm so excited. I saw Seth and Jennifer and I don't know all those people. One little boy is Ian. He is so cute. He can play with me. Seth is growing up, but he can't play with the big kids yet.

After church we got in the big red pickup. I told my mom, "Look there is a car following us with nobody in it!" It followed us to the gas station, McDonald's and all the way to Texas, Wheeler. I was just teasing. Dad put the car on a trailer and it followed us home.

I have another loose tooth! I pulled it all by myself. It didn't even hurt. The Tooth Fairy left me a gold dollar and a lot of quarters. I'm so excited! I can pull all my teeth and I will have a lotta-lotta money! That's it.

## Hospital Notes

### Assisted Living:

- Jack Hefley
- Jane Seitz
- Tom Frye
- Iona May
- Julia Buckingham

### Admissions

- 10/27 Marie Williams
- 11/1 Ernestine Holmes
- 11-3 Melvin Stinnett
- 11/5 Isabelita Arjona
- 11/6 Tanner Brownfield
- Jimmie Carr
- 11/7 Billy Coberly

### Dismissals

- 11/3 Crystal Marshall
- 11/4 Melvin Stinnett
- Barbara Beard
- 11/6 Anne O'Gorman
- Marie Williams
- Tanner Brownfield
- 11/7 Isabelita Arjona
- Billy Brown
- 11/9 Billy Coberly



**ADVANCE TO STATE:** On Saturday November 8, Haley and Taylor Sparks competed at the Regional UIL Cross Country Meet in Lubbock. They finished in 8th and 9th places. For the second year in a row, the girls have advanced to state. They will proudly represent Wheeler once again in Round Rock on Saturday November 15.

— Diana J. Corral

## Parkview Board Meeting Oct. 13; Bids For Helipad To Be Taken

OCTOBER 13, 2008

Chairman Thomas Helton called the meeting to order at 6:00 p.m. in the Board Room of Parkview Hospital. Present were: Thomas R. Helton, Chairman; Sue Chandler, Vice Chairman; James Batton, Secretary; Dale Garner and Ray Hudson. Also present: Ann Fagan Cook, RN, BSN, CEO; Dr. John P. Lavelle and Deborah Whitley, CPA, Parrish, Moody & Fikes, p.c.

Chairman Helton moved to agenda item 5 to allow Deborah Whitley to present our audit report for the last fiscal year. Ms. Whitley gave an in-depth report of the status of the District. Even though we have made some changes in duties in the Business Office recommendations were given for more changes. Ms. Whitley also gave a report regarding the fiscal effects of being a Critical Access Hospital. This has been a very positive effect and has allowed us to stay in business. The board members reviewed audit documents. There was some discussion regarding the report. Ms. Whitley left the meeting at 7:15 p.m.

Chairman Helton returned to agenda item 2 the consent agenda. Dale Garner made a motion to approve and James Batton seconded the motion.

## Wheeler School Times

by: Diana J. Corral

The week of November the 3-8 was not as busy as previous weeks. On Wednesday the Jr. High had their Spirit Week Coronation, Ismael Buenrostro and Alyssa Kinnaman were crowned king and queen. Their court consisted of Zack McCasaland, Zay McCasaland, Ismael Buenrostro, the girls: Elizabeth Horton, Danielle Garcia, and Vanessa Altamirano. The junior high students had a great participation for Spirit Week. The Colts ended their season with a victory over Shamrock.

Thursday and Friday were enrichment days. This means that students with good attendance, good grades, and good behavior were exempt from school. This was a great reward to the many students who have been responsible throughout the year.

Thursday night was the Pre-Shamrock game bonfire. There was a caravan at 8:30 followed by the bonfire at 9:00. There was a great community turn out, and a great time was had by all.

Friday the Mustangs faced the Shamrock Irish for the last district game. The football players and band led the way for the 16 mile caravan as the many fans followed. The Mustangs stomped all over the Irish leaving the scoreboard 53-0. The Mustangs are now in the state playoffs. They will face Nazareth at Bushland on Thursday November 13 at 7:00 p.m. Admission will be \$3 for adults and \$2 for students.

On Saturday November 8, Haley and Taylor Sparks competed at the Regional UIL Cross Country Meet in Lubbock. They finished in 8th and 9th places. For the second year in a row, the girls have advanced to state. They will proudly represent Wheeler once again in Round Rock on Saturday November 15. These girls have been working hard all year, and we know they will do a great job. Good luck and bring home the gold!

There was some discussion regarding the financial statements. Motion carried unanimously.

Ms. Fagan Cook reported that a CD was purchased from Farm Bureau Bank for \$300,000 for a 15-month period at an interest rate of 4.25%. Investment report was given and Sue Chandler made the motion to approve. Ray Hudson seconded the motion and it carried unanimously.

Ms. Fagan Cook presented the bad debt write-offs for the month. There were no charity write-offs. Dale Garner made a motion to approve that was seconded by Ray Hudson. Motion carried unanimously.

QAPI minutes and Scorecards for September 2008 were presented. Documents were reviewed and James Batton made a motion to accept. Dale Garner seconded the motion and the motion carried unanimously. Ms. Fagan Cook presented the CAH Evaluation and Annual Report. James Batton made the motion to accept the report. Dale Garner seconded the motion. There was some discussion and the motion passed unanimously.

Ms. Fagan Cook reported that the repairs to the Home Health building had been completed and the staff was in the process of moving back to the space.

Ray Hudson reported on the price of the storage unit. An 8x40 priced container with a side door and a rolling door on the end, painted to our specs, and delivered is \$4500. Dale Garner made a motion to accept the price and this was seconded by James Batton. There was some discussion regarding how to get the old building removed. Ms. Fagan Cook stated that perhaps the County could do this for the District. She said that she would ask Bob Rowley to call the Commissioner and request aid. Motion carried unanimously.

There was discussion regarding our current hospital room rates. Ms. Fagan Cook was instructed to bring back area rates as well as our current rate to the next board meeting.

Ms. Fagan Cook reported that after the cost report was completed we have a payback to Medicare. She stated that we have the money readily available for this and that despite the large payback we still ended the year on May 31, 2008 in the black.

Ms. Fagan Cook requested that the Board consider purchasing 10 doses of Shingles for our employees. We have an aging workforce and this would allow them to have a lighter case of Shingles should they develop it or perhaps not to have shingles at all. Shingles are debilitating and this would help with staffing issues as well. Dale Garner made the motion to purchase the vaccine. Ray Hudson seconded the motion and the motion carried unanimously.

Chairman Helton asked if there was any new business. Ms. Fagan Cook said that she had been working towards having a paid paramedic 24/7 for the Ambulance Service. She asked permission to continue negotiations to make this happen. She also mentioned once again the need for a helipad for landings. There was some discussion and consensus was to put out a request for bids in the area newspapers and report back at the next meeting.

There was no further business and Chairman Helton declared the meeting adjourned at 8:45 p.m.

## Mustangs Earn Spot In Play-offs

# MUSTANGS, 53 - SHAMROCK, 0

Wheeler's 53-0 win over Shamrock placed the Mustangs in third place in Class 1-A district playoffs.

The Mustangs will meet the Nazareth Swifts at Bushland on Thursday, November 13, 2008. The game will be at 7:00 p.m. with Wheeler being the "Home" team.

The Mustangs (8-2, 3-2 in District 4-1A) finished third in their district race. Wheeler's only losses were to district foes, Clarendon and Wellington, which played Friday for the 1-4A title with Wellington winning 38-16.

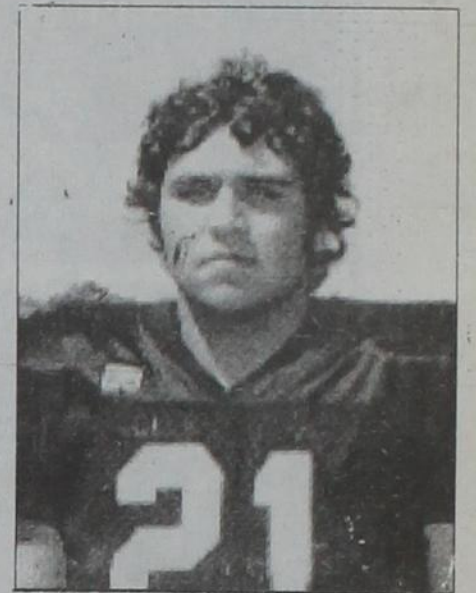
Shamrock finished 2-8, 1-4. Michael Gaines and Jorge Porras each ran for three touchdowns for Wheeler, which had 408 rushing yards. Shamrock was held to three first downs and 75 total yards.

Wheeler 14 12 14 13 — 53  
Shamrock 0 0 0 0 — 0  
W—Michael Gaines 4 run (Kick failed)

W—Richard Watler 13 run (Walter pass from Jorge Porras)  
W—Michael Gaines 4 run (Kick failed)

W—Porras 1 run (Pass failed)  
W—Porras 56 run (Gerardo Diaz kick)  
W—Gaines 33 run (Diaz kick)  
W—Porras 1 run (Kick failed)  
W—Diaz 39 run (Kick failed)

	Wheeler	Sham
First downs	16	3
Rushing Yards	408	5
Passing Yards	16	70
Total Yards	424	75
Comp-Att-Int	1-5-0	13-33-2
Punts-Avg.	1-40	6-13-6
Fumbles-Lost	3-2	5-4
Penalties-Yards	7-80	4-55



**Richard Watler** was named to the *Amarillo Globe-News* "Athlete of the Week" Honor Roll for his part in Wheeler's 53-0 shutout of Shamrock. Watler rushed 22 times for 189 yards and a score. He finished the regular season with 167 carries for 1,269 yards and 11 TDs.

## Commissioners' Court Meets

Wheeler County Commissioners' Court met in regular session on Monday, November 10, 2008, at 10:00 a.m., in the Commissioners' Courtroom of the Wheeler County Courthouse.

Nineteen items were on the agenda for the court.

The minutes for the previous meetings were approved with one correction made.

The monthly reports to the Justices of the Peace, County Tax Assessor and County Clerk were accepted.

The court approved the hourly payroll time sheets for payment.

The bills were approved for payment. No action was taken on the budget.

County Tax Assessor-Collector, Scott Porter, explained his report. Scott reported the office collected \$40,000 in fees for the collection of taxes for other taxing entities in the county—City of Wheeler, Wheeler School, Kelton School. The county spent in excess of the \$40,000 for computers and other expenses to be able to collect these taxes; these expenses were necessary for the collection of county taxes.

No action was taken on the burn ban.

Misty Walker was to present a certificate of continuing education hours, but was not present.

The courthouse closings for 2009 were approved—the same as 2008.

Two bids were submitted for the purchase of two pickups for the Wheeler County Sheriff's Department. The only bids received for

vehicles for 4-wheel drive were from Ware Chevrolet. The extended cab and 4-door cab pickups were bid at \$24,450 and \$24,950, respectively. Both pickups are 2008 models.

The commissioners approved the placing of stop signs on County Road 11 at the intersections of County Roads "K" and "L".

Elk City Oklahoma Pipeline, LP, was given permission to cross County Road "M" for installation of an oil and gas pipeline.

Enbridge Pipelines (Texas Gathering), LP, was given permission to cross County Roads "23", "J", "20" (twice) and "B" for installation of an oil and gas pipeline.

(Continued Page 8)

## County Road Clarification Meeting Is Held Monday

Wheeler County Commissioners' Court met in a special session at 1:30 p.m. November 10, 2008, to clarify the county road network.

A map of the county road network has been posted at the courthouse. The meeting Monday was a hearing for the purpose of hearing citizens protests about the map.

Several individuals attended the meeting to clarify whether or not the road was or should be on the map. Notes were taken on roads in question. Research will be done and corrections and/or additions will be made before the

map is again presented to the public.

Greg Green, ENP Regional 9-1-1 Network Director explained the purpose of the map to those in attendance.

The county needs a map which meets Chapter 258 Transportation Code. When adopted, the county will no longer maintain any road which is not on the map.

There are four ways for a road to become a county road:

Outright purchase by the county, Condemned, Dedicated and Received by the County or Maintained by the County for a Continuous Length of Time.

## Wheeler Shoppers Can Win 'Cash'; Lucky Shoppers To Share \$1500

The annual Christmas Drawing will again be offered by the progressive merchants of Wheeler. The drawings are sponsored by the Wheeler Chamber of Commerce. Wheeler "Cash" will be given away to lucky local shoppers during the two-day-Chamber Christmas Open house on December 6 and 7, 2008. The merchants of Wheeler feel this is one way they can thank you, their cus-

tomers, for the support you have given them during the year and are giving you a chance to share their profits.

There will be only two drawings during our Christmas Open house on November 29-30 at 2:00 p.m. both days on the square. A total of \$1500 in Wheeler 'Cash' will be handed out to lucky Wheeler shoppers. The amounts in the envelopes will be varied.

Local businesses have begun giving the tickets with your purchase. Tickets are available at Carniceria San Miquel, Cross Country Barn, H&H Tire, Hyland's Pharmacy, Marshall Discount Auto, Novedades Sahary, Peso Dollar, Wheeler Market Square and Wheeler Flower Shop.

The 'cash' will still be in the form of Wheeler bucks to be used at

(Continued Page 8)



**UNDER NEW MANAGEMENT:** Wheeler Flower Shop in Wheeler is under new management. Misty Aderholt Snelgroves and Chynna Atherton took over the business on October 2, 2008. The new owners plan to continue with beautiful flower arrangements, plants, a line of gift items and the wire service to reach locations outside the Wheeler area. Wheeler Flower Shop at 121 W. Texas; phone 806/826-5943 or email: wheelerflowers@yahoo.com. Frankie Jackson, Wheeler Chamber of Commerce president (right) shakes hands with Chynna; Misty is pictured at left.

THESE PICTURES SPONSORED BY:

# FIRST STATE BANK

Mobeetie Office:  
First & Wheeler St.  
Mobeetie, Texas  
845-2311

Wheeler Office:  
1408 S. Alan Bean Blvd.  
Wheeler, Texas  
826-5546



## COUNTRY NEWS

By Verna Fillingim



**Veteran's Day At School, 2008**  
Sponsored by Wheeler Student Council



**Jotana Henson's Third Grade Music Class**



Flag Presentation: Jaden Moore, Trevor Marshall and Stefan Tucker



J. D. Miles  
Kindergarten



Sinthia Almanza  
Second Grade



Layten Hibler and Omar Pachardo—Fourth Grade  
—Photos by Rhonda Meriwether

## We Salute Our . . . VETERANS!

"Fear thou not; for I am with you; be not dismayed; for I am your God: I will strengthen you; yea, I will help you; yea, I will uphold you with the right hand of my righteousness" (Isaiah 41:10).

"He heals the broken heart, and binds up their wounds" (Psalm 147:3).

"Happy Birthday" to Shot Childress, Lacey Henson, David Jones, Carolyn Sabbe, William Scales, Luke Mick, Kathy Hathaway, Machille Henson and Seth Stribling, Nov. 9; Kelly Wilson, George Helton, Mandy Meadows, Claudine Finsterwald, Helen Singleton, Brad Harrison, Virginia Moore, Will Smith, Travis Theissen and D. Davidson, Nov. 10; Jake Benefield, Lacy Britten, Travis Little, Roy Baker, Sara Risner, Michael Braddock and Christy Hefner, Nov. 11; Gene Keelin, Amanda Salas, Bobby Blackburn, Carolan Aycock Schafer, Drew Hillhouse, Courtney Blackmon, Brandon Dodd, Landon Ferguson, Brian Swartwood, Katelyn Wallace, Rebecca Monroe and Marlana Helton, Nov. 12; Jason Beers, David Pearson, John Forrester, Steve Lindsey, Amie Purcell, Jake Weatherly, Reson Anderson, Dorcie Gillette, Steve Lindsey, Joshua Muller, Melvin Hunt, Colbey Hanson and Andrew Huff, Nov. 13; Edward Forrester, Leo Shuler, Amanda Floyd, Jim Wright, Donald Phipps, Jesse Haines, Marion Grimes, Bevard Dukes, Michael Watkins, Elizabeth Newman, William Wiggins, Zachary McCaskill and Sammye Rives, Nov. 14; and Donna Velasquez, Haley Jones, Amy Everett, Ashley Estes and Heather Schmitt, Nov. 15.

"Happy Anniversary" to Richard and Bonnie Meadows and Tim and Sallie Adcock, Nov. 9 and Gary and Carolyn May, Nov. 11. God bless you all!

"I will enter His gates, with Thanksgiving in my heart. I will enter His courts with praise. I will say this is the day the Lord has made. I will rejoice for He has made me glad."

Bro. Aaron Laverty had a scare, especially for his family when he lost so much blood that they about lost him on Sunday, Nov. 2. He and Claudetta are home now (as of Tuesday night, Nov. 4), but going to take a while to recuperate. They first took Aaron to Canadian hospital; then had to give him three units of blood and airlifted him to Northwest Hospital. Keep praying for Aaron and Claudetta and family. All the kids except Claude were able to come to Amarillo to see Aaron on Sunday: Gordon and Barbie, Richard, Russell.

Some going on the Wheeler Baptist Church bus to Childress Calvary Baptist Church on Monday, November 3, for Naomi Speck's funeral were Ed Hershman, driver, Laurel Hershman, Wesley Steen, Betty Morrison, Betty Howard, Ned Burrell, Ella Mae Wood and Leona Coates. Also going were Ed and Jeannie Hennig and others. They also saw watermelons on a trailer and several got some big, beautiful ones for \$4 each. Yea! Thank you, Ed and Laurel! Ed Hennig is Naomi's son. Sympathy to all. Good watermelons. My favorite food!

We welcome new members to Wheeler Baptist Church: Joe and Mary Weatherly. They have lived in Wheeler area many years, but membership was from Quail Creek Church in Amarillo. We also welcome Louise Hogan as a new member to Wheeler Baptist. She and husband, Chuck Hogan, were very active in Mobeetie Baptist for many years. Chuck is now deceased. Charles and Kristi Petit are also welcomed as new members. They run Mustang Auto Care. Kristi is the daughter of Dwayne and Bobbie Baker. Kenton Petit is the son of Charles and Kristi and is a member of the church. God bless you all. Proud to have you! Welcome!

Coming to Wheeler Care Center for Tuesday morning church were Earl and Betty Husted, Joyce Wood, Mark and Danielle Barton and Verna. Mark brought a message on restoration and how God can change and restore us. Betty led singing. A good service.

Congratulations to Wheeler sophomore twins, Taylor and Haley Sparks, for winning 8<sup>th</sup> and 9<sup>th</sup> at Regional Cross Country Saturday at Lubbock. The top ten advance to State competition at Round Rock. Shamrock's Melissa was first State competition on Saturday, Nov. 15. Good luck!

Henry Barnes and wife Vera (Moore) are both deceased. Some of the family have been working to get ready for a sale of their things and get the house ready to be sold to someone. A nice place.

"God will take care of you! Through every day, over all the way, God will take care of you."

Everyone was invited to Pastor Larry and Dessa Mitchell's home Sunday afternoon, Nov. 9, for food, fellowship and a good time together. Lots of good food and house was fixed so pretty.

Some gathering at the Martha Meek home Thursday evening for a good gospel sing-along, snacks and visiting were Kay Dickey,

Mary Galbreath and Lurline Isaacs from Shamrock, Leona Coates, Joyce Perkins, Ella Mae Wood, Verna Fillingim, Martha Meek and Betty Howard. An enjoyable evening. Thank you!

Orville Greenhouse has gone to stay some with daughter, Virginia Mixon, at Dumas. Know they will have fun. Save Virginia some long drives to check on her. Remember them in your prayers. Orville grew up in Wheeler area. Virginia's phone # is 806-935-2851.

Sue Seitz is still having trouble walking with a walker after being 7 1/2 months in the hospital. Hope you will soon be better, Sue. Remember Sue and Pete in your prayers; she is glad to be home.

Wes and Cindy Bradstreet celebrated Cindy's 54<sup>th</sup> birthday by visiting their kids over the weekend: Ember and Mike Keith and Miles, Jenna and Zach and Andy and Tracy Bradstreet and Sandy and Brad Cooper from Coppell. Keiths are from Alvarado and Bradstreets from Frisco. They also got to see dinosaurs.

God is still on His throne and prayer changes things." Pray for our country and the world.

### Parkview Artery Keeping Kids Safe on the Internet

When your children appear to know so much more about the Internet than you do, it can be tempting to let them take charge. After all, you've taught them the basics! You've warned them about drugs, talking to people they don't know, and other risky behaviors — and even though they might sometimes act like knuckleheads. So why is it that kids, even good kids, make so many potentially dangerous choices when it comes to the Internet?

It may all stem from the fact that the area of the brain which we use to form judgments—the frontal cortex—is not fully developed until age 25. This means that even the most well-intentioned teen might lack the physical capability to make safer choices at times. Teens on the Internet may be faced with making a lot of choices in a short amount of time as they click from Web page to Web page and instant message their friends. Talking to them in advance about safer online behaviors may help them know what choice to make when faced with pop-ups and requests from people they've met online. Also, remember to take precautions such as:

- Setting Limits for Internet use
- Installing Filtering and Blocking software
- Knowing who your children are communicating with
- Spending time with them when they're on the computer

Make sure that when kids are just being kids, you've set the boundaries necessary to help keep them safer. Medcat  
In God we trust, all others we virus scan.

Nice to have a call from sister-in-law, Elton Fillingim. She is still doing water exercises and doing pretty well, as is husband, Pat. They live at Prescott, AZ.

Hope you all have a great and joyful Thanksgiving. God bless you!  
Nice to talk on the phone to Matt Rogers, son of Oleta and Doyle Rogers, who lived in Briscoe area many years. Oleta lives in a nursing facility at Plainview and is in a wheelchair. Matt works for Texas Tech with correspondence courses and visits his mom frequently. Oleta and Matt doing pretty well.

I am expecting daughter, Mary Newman and Katie, and maybe others, for Thanksgiving.

My "little sister," Mary Ruth VanSant lost her beloved husband, J.W. VanSant, 89, on Tuesday night. They had been married about 44 years and enjoyed life very much. His funeral was to be at Lindale Methodist Church on Saturday. Jim and Beth Alvey were there.

Congratulations, Fort Elliott volleyball team on winning district!

Laurel and Ed Hershman and Bob and Evangeline Wills prepared the good hot dog supper with fresh veggies, baked beans, cantaloupe and other goodies at Wheeler Baptist Church Wednesday night. Others brought desserts. Thank you to all who help.

Enjoying quilting and visiting at Totty School, Thursday, were Jimmae Hines, Sydney Lynch, Betty Haines, Jamie Johnston and Riggan, Audrey Seitz, Betty Rogers and Augusta Brown.

Hello, Maria Lax; I've missed seeing you.

Friday night, Wheeler defeated Shamrock 53 to 0; Valley beat Fort Elliott 53 to 6; Canadian beat Gruver 60 to 23. Best wishes to all!

"God be with you till we meet again."



Hadley Grace Johnson is the 3 month old daughter of Mike & Rexann Johnson of Canyon, TX. Grandparents are Skeet & Dianna Johnson of Wheeler. Great grandmother is Marie Williams of Wheeler

For all your . . .  
Insurance Needs, See  
Eastern Panhandle  
Insur. Agency, Inc.  
117 W. Texas St.—Wheeler  
806/826-3573  
•Auto •Home •Life •Health  
•Commercial •Bonds

## JENNINGS PLUMBING HEATING & AIR CONDITIONING

P.O. BOX 423 — Wheeler, Texas 79096

LARRY & BOBBY JENNINGS, Owners  
Licensed, Insured & Bonded

(806) 826-3153

American Standard  
HEATING & AIR CONDITIONING



"A Flush . . . Is Better Than A Full House!™"

### First United Methodist Church

Eighth at Main St. - P.O. Box 89  
Wheeler, TX 79096  
(806) 826-3114 - Fax 826-3780  
wheelerume@centrmedia.net  
Tom Carter, Pastor  
Sunday School — 9:45 am  
Morning Worship — 11:00 am

Growing Spiritually, Loving God & Others  
Offering Christ

## WALLACE MONUMENT COMPANY

MONUMENTS, CURBING,  
GRAVE COVERS

Represented By: **Jim Wright**

Wright Funeral Home

Wheeler, Texas

Phone: 806/826-5214

# Wheeler School Board Meeting, Track, Kitchen, Bus Barn Topics

Unapproved Minutes Regular Board Meeting November 10, 2008  
The Wheeler ISD Board of Trustees met for a scheduled meeting November 10, 2008. Dr. Mike Smith called the meeting to order at 6:30PM. All board members were present. School personnel present were Debbie Finsterwald, Jack Noles, Brandon

## Wheeler County JAIL REPORT

10-31-08  
Mayo, Lindsay Doris 32 w/f Arizona 10-08-08—Possession of marijuana \$20,000 Brady Meadows  
Lerma, Brenda Lee 21 w/f Shamrock TX 10-08-08 to 10-10-08—Theft <\$20K more than \$1500 \$5000 bond Meadows  
Graves, Eutaw Harold 48 w/m Amarillo TX 10-08-08 to 10-09-08—Potter Co wrnt \$1500 bond Meadows  
Gallardo, Ruben Dario 22 w/m Wheeler TX 10-12-08 tom 10-15-08—Deadly conduct \$2500 bond Meadows—Theft by check \$1000 bond Meadows—Childress Co wrnt \$2000 bond Meadows—JP Commitment—Fines pd in full  
Perez, Luis Alberto 19 w/m Wheeler TX 10-13-08—Burglary of hab \$10,000 Meadows—Assault w/ bodily injury \$2000 Meadows—ICE hold  
Bouteller, Jeremy Clay 30 w/m Oklahoma 10-17-08 to 10-18-08—Dwi 1st \$5000 bond Meadows  
Massey, Marcy Elaine 36 b/f Wellington TX 10-21-08 to 10-2102-08—Felony probation violation \$10,000 bond Meadows  
Atha, Jonathan Michael 21 w/m Oklahoma 10-23-08—Burglary of hab \$10,000 bond Meadows  
Longbine, Brian Keith 33 w/m Shamrock TX 10-25-08—Agg. Kidnapping with deadly weapon bond denied Meadows  
Black, Roger Duane 29 w/m Borger TX 10-27-08 to 10-27-08—Misd Probation violation—pled out in co court and released  
Lopez, Brenda NMN 47 w/f California 10-27-08 to 10-30-08—Poss of marijuana \$10,000 bond Meadows—Money Laundering \$7500 bond Meadows  
Gutierrez, Carlos Rodriguez 42 w/m Spearman TX 10-30-08—Dwi 3rd or more—rec'd 5 yrs TDCJ  
Lopez, Gumaro NMN 26 w/m Wheeler TX 10-31-08—Jones Co Wrnt \$7500 bond Meadows  
Current Inmates: Cameron, Robert; Chadwick, Jered; Lewis, Ryan; Baum, Jennifer; Bailey, David; Owsley, Glenn; Scheller, Kenneth; Garza, Simon; Perez, Luis; Atha, Jonathan; Longbine, Brian; Gutierrez, Carlos and Lopez, Gumaro.

## Red Carpet Theatre Rehearsing For Play

Red Carpet Community Theatre announces the cast for *A Christmas Carol*. Directed by local Kit Haraugthy, production dates are December 1 through the 7, 2008, with a Wednesday night performance. "We look forward to having a great cast to share this Christmas classic with the community," states Haraugthy.  
Ebenezer Scrooge is a cold man, tormenting his office clerk, ridiculing his good-spirited nephew, and condemning the poor and needy to lives of prisons and workhouses. But on a singular Christmas Eve, Scrooge finds himself face-to-face with three ghosts of Christmas, each determined to show Scrooge the error of his ways. After a visit to the Christmas of his past, a trip through Christmas of the present, and a terrifying vision of the Christmas of the future, can Scrooge be redeemed before it is too late...Join us for this classic story of Scrooge, Tiny Tim and the "spirits" of Christmas told with warmth and visual splendor.  
Cast includes: Calvin Stone as "Ebenezer Scrooge", Joshua Dodd as "Charles Dickens", "Ghost of Christmas Past" is being portrayed by Schylar Tripp, "Ghost of Christmas Present" will be played by Christy Dowdy, and the "Ghost of Christmas Yet to Come" is Mikah Larson. The rest of the cast includes: Stephanie Allen, Dylan Anderson, Kallie Brawner, Susan Brooke, William Brooke, Jami Butcher, Cody Carnahan, Mason Congdon, Katie Currell, Lily Dowdy, Anna Ediger, Dakota Foreman, Aaron Jaques, Jake Inman, Carrie Johnson, Gracie McCulloch, Marcy Schmitz, Mahala Spillers, Raine Spillers, Pat Spillers, Stacy Strong, Madison Thompson, Micaela Thompson, Tonja Thompson, Jonathon Walker, Candise Warren, Tom Warren, Kevin Williams, and Trak Thompson as "Tiny Tim."  
Local underwriter that makes this show possible is the First National Bank and Trust of Elk City with grant assistance from the Oklahoma Arts Council and the National Endowment of the Arts. The production will open Monday, December 1 and run through Sunday, December 7, with shows nightly at 7:30, except for Thursday when it is an 8:00 pm curtain, closing with a Sunday 2:30 matinee. For more information, call 580-225-1941 or check out our website [www.rcct.org](http://www.rcct.org).

Smith, and Clay Mahler. The pledge to the flag was led by Dr. Smith and the invocation was offered by Kent Vise. There were no individuals or groups who wished to speak to the board.

Motion by Ravonda Hardcastle; Second by Kent Vise; To accept the minutes of the October 14, 2008 board meeting; Motion carried unanimously.

Motion by Dr Hillhouse; Second by Todd Moore; To approve payment of bills; Motion carried with James Masters abstaining.

Motion by Billy Richardson; Second by James Masters; To call for bids to repair the track; Motion carried unanimously.

Motion by James Masters; Second by Kent Vise; To table consideration on bids to update the kitchen; Motion carried unanimously.

Motion by Kent Vise; Second by Todd Moore; To approve \$200 extra duty pay; Motion carried unanimously.

Motion by Ravonda Hardcastle; Second by James Masters; To accept update 84 of the Board Policy Manual; Motion carried unanimously.

Items for open discussion included bus barn renovation and the security system.

Mr. Noles and Mrs. Finsterwald reported on the Enrichment Days and computer usage. Mr. Mahler reported to the board concerning the physical fitness program and the 2007-08 Academic Excellence Indicator System. The board entered closed session in accordance with the Texas Open Meetings Act at 7:37 and returned to open session 8:41.

Motion by James Masters; Second by Todd Moore; To adjourn at 8:52; Motion carried unanimously.

As appropriate, the Board may enter in Closed Meeting as authorized by the Texas Open Meetings Act, Government Code, Chapter 551. Before any meetings are convened, the presiding officer will publicly identify the section on the Act authorizing the closed meetings. All final votes, actions, or decisions will be taken in open meetings.

# ALLISON NEWS

By Juanita Boydston

He only is my rock and my salvation; he is my defence, I shall not be moved. In God is my salvation and my glory: the rock of my strength, and my refuge, is in God. Trust in him at all times; ye people, pour out your heart before him: God is a refuge for us. Selah. Psalm 61:6-8

Rejoice in the Lord, O ye righteous: for in the Lord is comely for the upright. Praise the Lord with harp: sing unto him with the psaltery and an instrument of ten strings. Sing unto him a new song; play skillfully with a loud noise. For the word of the Lord is right; and all his works are done in truth. He loveth righteousness and judgment: the earth is full of the goodness of the Lord. By the word of the Lord were the heavens made; and all the host of them by the breath of his mouth. He gathereth the waters of the sea together as an heap: he layeth up the depth in storehouses. Let all the earth fear the Lord: let all the inhabitants of the world stand in awe of

him. For he spake, and it was done; he commanded, and it stood fast. The Lord bringeth the counsel for the heathen to nought: he maketh the devices of the people of none effect. The counsel of the Lord standeth for ever, the thoughts of his heart to all generations. Blessed is the nation whose God is the Lord; and the people whom he hath chosen for his own inheritance. The Lord looketh from heaven; he beholdeth all the sons of men. Psalm 33:1-13

Give unto the Lord, O ye mighty, give unto the Lord glory and strength. Give unto the Lord the glory due unto his name; worship the Lord in the beauty of holiness. The voice of the Lord is upon the waters: the God of glory thunders: the Lord is upon many waters. The voice of the Lord is powerful; the voice of the Lord is full of majesty. The voice of the Lord breaketh the cedars; yea the Lord breaketh the cedars of Lebanon. The Lord will give strength unto his people; the Lord will bless his people with peace. Psalm 29:2-5 & 11

The weather here in Allison on this Tuesday morning is sunny and windy and cold. We have been having lots of cold fronts as of late and it makes it colder each time. Allison has received several freezes, but with each one, it makes the trees such a beautiful color, it brings out the gold and browns and reds in them. We love the foliage of the fall, God's handiwork!! Praise be to God!! There is always beauty around us if we will be look and see it.

Sunday, Opal and Juanita Boydston enjoyed visiting and a delicious meal in the home of Curtis and Lillian Boydston. Later in the evening, Opal and Juanita Boydston traveled to Wheeler, Texas where they visited Billy June Brown in the Parkview Hospital.

Monday, Opal and Juanita Boydston left for Oklahoma City, Oklahoma and Curtis and Lillian Boydston also left and followed them to make sure they made it there in the Lincoln Town Car. They all stopped in Elk City, Oklahoma and had a tasty meal at McDonald's and then went to Wal-Mart and shopped while the oil was being changed in the Lincoln and two better tires were being mounted on the front of the car and new windshield wipers were also installed and the tires were all balanced. After all that the car drove lots better, almost like a new one. We arrived in Oklahoma City, Oklahoma around five p.m. Opal got with Curtis and Lillian and went to their home there and Juanita drove to visit with her friend, Tom Stevens. Tom and Juanita had a great time, they visited and enjoyed a delicious meal at Western Sizzlin Steakhouse.

While Opal and Juanita were getting into Oklahoma City to

Sun. Nite Live On KPDR, 90.5  
... Live from Canadian 9:00 p.m. - 10:00 p.m.

WHEELER PLUMBING  
511 S. Cheyenne New Construction Remodel Repair Sewer Service Septic Systems Site Evaluations  
Phone: 826-5907  
MAX McQUEEN  
P.O. Box 754 Wheeler, TX

DOUG BOYD MOTOR CO.  
Buy Here / Pay Here  
No Credit Check • Areas Largest Selection  
Pampa • Corner of Hwy 60 @ Hwy 70  
806-669-6062 • [www.dougboydmotors.com](http://www.dougboydmotors.com)

New Location:  
**Scissor Works Beauty Salon**  
... inside Sherry's Cut & Curl  
1303 South Alan L. Bean Blvd. — Wheeler, Texas  
**Cuts, Color, Perms Foil H-lights & Waxing**  
—Men—Women—Children—  
**Walk-Ins Welcome!**  
Tuesdays & Thursdays: 10-6  
Dawn Case, Cosmetologist  
Call: 806-663-9786 or 580/534-2423 for Appointment

Registered Refrigerant Recovery Walk In Coolers Residential A/C Repair  
Walk In Freezers Commercial A/C Repair Industrial A/C Repair  
**SHANE CO OMEGA AIR CONDITIONING**  
Shane Orr Licensed & Bonded TACLA27017 (806) 231-8685 Work Guaranteed

BigTex  
All Trailers 10% Off!!!  
WELLS CARGO  
Canadian Water Well, Inc.  
806-323-9413 www.canadianwaterwell.com  
1mi South of Canadian, TX on HWY 60/83  
\*Sale Valid Now - October 31, 2008

and following Curtis and Lillian they got into bumper to bumper traffic, cause of construction and around the rush hour as well. Not a good situation to get into for sure especially when you are trying to follow someone. Praise the Lord we finally made it thru it tho and safely and praised the Lord for his goodness and safety.

Opal and Juanita stayed a couple of nights in the home of Curtis and Lillian Boydston in their Oklahoma City home. They are always treat us very royal while we are there with them. Lillian took Mom with her to get her hair fixed and got Mom's fixed as well. They both came out looking really great!!

Tuesday, Tom and Juanita enjoyed visiting again and Tom took Juanita to see the Gardens in downtown Oklahoma City. It was just so beautiful there this time of year with the fall foliage and the waterfalls and all, they had a very enjoyable time and lots of pictures were taken to be sure. Then they walked to Bricktown and enjoyed looking around there and they shared a meal together and enjoyed a juice drink as well. Had a great time!! It was the first time

News, Views, Commentary On KPDR, 90.5  
... in Wheeler  
Weekdays 6:00 a.m. to 7 a.m.

McLean Care Center  
Since 1979  
"Caring For Those You Care About, In An Excellent Facility"  
☆ Family Atmosphere  
☆ Caring For Each Other  
☆ Therapeutic Dietary Service  
☆ Daily RN Coverage  
☆ Transportation to Dr.'s Appts.  
☆ Beauty & Barber Services  
☆ Semi Private & private Rooms  
☆ Church Services Weekly  
☆ Fun Activities Scheduled Daily  
☆ Monthly Newsletters to Families  
Medicare & Medicaid & Private Patients Welcome.  
We cordially invite you to visit our facility and see for yourself the difference and have lunch with us, to see just how good our food is, for a tour and lunch or just a tour, call the administrator, Nita Massey, or Director of Nursing Kim Wheeler, R.N., and we will set up a time for your visit. You're welcome at anytime you want to come. Questions are always welcome, and we will assist you in any way necessary for admission, or for qualifications necessary for nursing home placement or the Medicare/medicate programs.  
"24 Hour Professional Staff"  
"McLean Care Center, it's such a short drive for the care your loved one deserves."  
**NITA MASSEY**  
Administrator  
605 W. 7th — McLean, TX 79075  
Phone: 806-779-2469  
Fax: 806-779-2515

## TxDOT Replacing Bronco Creek Brdg.

The Texas Department of Transportation recently began a project to replace the Bronco Creek Bridge on US 83 north of Shamrock in Wheeler County.

This \$1,250,625.00 project is a total bridge replacement. The contractor Gilvin-Terrell, Inc. of Amarillo, TX is currently working on a detour around the current bridge structure.

Construction of the detour started the end of October, 2008. This detour will be 24 feet wide and consist of two 12 foot lanes. Removal of the old bridge structure will begin approximately November 17, 2008. The removal should take about a week. Weather permitting, this bridge project will take 140 days or 7 months to complete.

Daryl Eigenmann is the chief inspector for TxDOT and Steve Ellis is the project manager for Gilvin-Terrell, Inc.

"During construction motorist should observe all warning signs and watch for equipment and workers in the construction zone."

For more information contact the Wellington Area Office at 806-447-5137 or Barbara Seal, TxDOT Public Information Officer (940) 937-7288.

## Night Classes To Be Offered By SWOSU

Southwestern Oklahoma State University/Sayre's spring night class schedule includes classes at both the SWOSU-Sayre campus and at Elk City High School.

Beginning in January, SWOSU-Sayre will offer general education classes three nights each week—Mondays, Tuesdays and Thursdays. Classes such as American Government and Politics, English Composition II, Biological Concepts and U.S. History will meet at the SWOSU-Sayre campus.

In addition, two classes—Introduction to Literature and College Algebra—are offered at Elk City High School. Literature will meet Monday evenings, and Algebra will meet Thursday evenings. Both classes begin at 6 p.m.

"Night classes are ideal for busy adults who want a college education but must juggle work and home responsibilities," said SWOSU-Sayre instructor Landy Brewer. "But the classes are also available for eligible high school juniors and seniors who want to get a jump on college before graduating."

COUNTRY CHAPEL  
Pastor Alan Morgan  
7796 U.S. Hwy. 83 P.O. Box 376  
Wheeler, TX 79096  
806-826-3511  
COME AS YOU ARE  
Sunday Morning Service ..... 10:30 a.m.  
Country Kids for Christ ..... 10:30 a.m.  
Tuesday Morning Prayer ..... 6:30 a.m.  
Saturday Morning Prayer .... 7:00 a.m.

GIFTS — AMBASSADOR CARDS  
HYLAND'S PHARMACY  
109 W. TEX. ST.—WHEELER, TEXAS  
Phone: 806/826-5561  
VITAMINS — FILM DEVELOPING

Steel Construction  
Barns — Houses Sheds Carports, etc  
Fax: 806/447-0158  
Pat-Home: 806/447-9705  
Cell: 806/205-0770  
Clint: 806/205-0646  
Scooter: 806/447-1122  
Cell: 806/930-9201

# Want Ads

**PARKVIEW HOSPITAL** is now accepting applications for a full time **LVN & Pharmacy Tech.** Competitive salary, excellent benefits, and mileage paid. Please call Sue Stiles, DON at 826-5581, apply in person at 901 Sweetwater St., Wheeler, TX or e-mail resume to SStiles@centramedia.net

For Sale: **Fine China**, Service for 12 w/all serving pieces; Old Colony (white with gold trim) Syracuse, NY. 806/375-2155.

Listen to... **KPDR-FM, 90.5**  
WHEELER, TEXAS

**Outreach Health Services** is hiring **Regular Attendants** and **Special Attendant** to cover the surrounding areas. Must be 18+ TX CNA or 6 mo. prior experience in Home Health. Please call Rejhona @ 1-800-800-0697 or 1-806-373-0986 EOE 11/6-13c

**Oil & Gas NEWS**

(New Location, Completion and Plugging Report made possible by Oil & Gas Reporting Service, 3930 Beaver St., Vernon, TX 76384. Doris Harrison, Phone: 940/552-6644.)

**For Rent:** Very nice **Brick Home** in Wheeler w/Central Heat & Air, 3-bedroom, 1 3/4 bath, partially furnished. Phone 806/334-1238. Please call after 3:30 p.m. 11/6-13c

Parkview Hospital is now accepting applications for a **Full Time Nurse's aid.** Competitive Salary, Excellent Benefits, Mileage Paid. Please call Sue Stiles, DON at 826-5581 or apply in person at 901 Sweetwater, Wheeler, Texas. 7/24rtn

ALL NEW king pillow top mattress & split box set. \$250. complete 3 pc set, still wrapped. 806-356-9215

Brand New queen pillowtop mattress 2 pc set, in plastic Original warranty \$109 806-341-6233

Must sell brand new queen orthopedic mattress set, in plastic with warranty \$99 806-356-9215

Double/Full pillowtop/orthopedic mattress set. FLAME RESISTANT, warranty. \$129 806-341-6233

Body contouring memory foam mattress and foundation, still wrapped with warranty. \$375 806-356-9215

Parkview Hospital Dietary Department is now taking applications for full time and part-time cook and tray aid. Benefits and mileage paid. 826-1355. 9/4rtn

**FOR SALE:** Registered Angus Cattle, Two-year-old bulls, yearling bulls, spring calving heifers and yearling heifers. 7-H Angus Cattle, Wheeler, TX Phone 806-633-0558 or 806-826-3358. Email: sevenhangus@aol.com 1/17rtn

Hemphill County Hospital is taking applications for a medical records clerk position. Computer experience required. Competitive salary, benefits, and excellent working conditions. Send resume and references to: Karen Gullett, Hemphill County Hospital, 1020 S. 4th St. Canadian, Texas 79014 or fax to 323-9375. Hemphill County Hospital is an Equal Opportunity Employer. 5/1rtn

Wheeler Nursing & Rehabilitation has opening full time housekeeper and cook. Competitive pay, will train, flexible hours. Apply in person 1000 S Kiowa see Ronnie Bailey, housekeeping and Larry Diamond, dietary 7/10rtn

Edward Abraham Memorial Home is currently seeking **LVN's** and **CNA's** with benefits and drive pay. Call 806/323-6453. Apply at 803 Birch Street, Canadian, TX. EOE 11/6-13c

**Notice of Public Sale Of Property** to satisfy landlord's lien. Sale is 10:00 a.m. Nov. 22, 2008, at 1101 N. Main, Shamrock, TX. Property will be sold to highest bidder for cash. Seller reserves right to withdraw property from sale. Property includes contents for spaces of following tenants: Rocky Patton—household furniture, computer, clothes, sweeper, misc., boxes. Contact Star & Lok, Box 1136, Wheeler, TX or 826-3373. 11/6-13c

## NOTICE OF SOUTHWESTERN ELECTRIC POWER COMPANY'S PETITION FOR AUTHORITY TO IMPLEMENT INTERIM FUEL SURCHARGE

On October 28, 2008, Southwestern Electric Power Company (SWEPCO) filed a petition with the Public Utility Commission of Texas (Commission) to implement an interim fuel surcharge under Texas Utilities Code § 36.203 and Commission Substantive Rule 25.237. If the Commission approves this petition, all of SWEPCO's Texas retail customers who pay fixed fuel factors will be affected. SWEPCO's petition affects only the fuel portion of the rates that SWEPCO charges for electricity in Texas and does not affect non-fuel base rates. SWEPCO's fuel surcharge will be subject to final review by the Commission in SWEPCO's next fuel reconciliation case.

Because SWEPCO materially under-collected its fuel costs for the period February 1, 2007 through September 30, 2008 and projects that it will continue to be in a state of material under-collection, SWEPCO seeks to implement a fuel surcharge. Specifically, the fuel under-recovery balance that SWEPCO seeks to collect through the surcharge is approximately \$50,861,354, including interest, through the surcharge collection period. To mitigate the impact on customers' monthly bills, SWEPCO has asked to implement this surcharge over a 12-month period, beginning no later than the January 2009 billing month. If the surcharge is approved, a residential customer using 1000 kWh per month will see an increase of \$7.11 in their monthly electric bill.

Persons with questions or who want more information on SWEPCO's petition may contact Southwestern Electric Power Company at 428 Travis Street, Shreveport, Louisiana 71101, telephone toll free at (888) 216-3523 during normal business hours. A complete copy of the filing is available for inspection at the address listed above. Persons who wish to formally participate in this proceeding, or who wish to express their comments concerning this application should contact the Public Utility Commission of Texas, Office of Consumer Protection, P.O. Box 13326, Austin, Texas 78711-3326, or call (512) 936-7120, or toll free at (888) 782-8477. Hearing and speech-impaired individuals with text telephones (TTY) may call (512) 936-7136 or use Relay Texas (toll free) at (800) 735-2989.

## DAY & NIGHT TRANSPORT DRIVERS

Now hiring full-time truck drivers. Previous experience preferred, but will consider training. Valid CDL Drivers License required, and must be able to pass a drug test.

We have new pay rates  
Earn up to \$60,000 - \$70,000 per year

### Benefits include:

- Health Insurance
- Dental Insurance
- Life Insurance
- STD/LTD Insurance
- Safety Bonus
- 401(k) Retirement Plan (With up to 4% company match)
- Paid Vacations
- Uniforms



For more information contact  
**Turner Energy Services**  
**(806) 323-8301**  
Monday - Friday 8:00 a.m. - 5:00 p.m.  
**Drug Free Workplace**

Intentions to Drill  
HEMPHILL (WILDCAT & ALLISON Parks Granite Wash) Forest Oil Corp., Begert, Sec. 7, Z-1, ACH&B, for the following wells:  
#107, 990' from North & 467' from East line of Sec.  
#407, 467' from North & West line of Sec.  
#507, 2310' from North & 780' from West line of Sec.  
HEMPHILL (WILDCAT & ALLISON PARKS Granite Wash) Forest Oil Corp., #1407 Lieb, 990' from South & 1650' from West line, Sec. 7, Z-1, ACH&B, PD 16500.  
HEMPHILL & BEGERT 10200) Laredo Petroleum, Inc., #5 Begert Trust '31', 833' from South & 2441' from East line, Sec. 31, 41, H&TC, I'D 13490.  
HEMPHILL (WILDCAT & BUFFALO WALLOW Granite Wash) Forest Oil Corp., #8038 Smith, 2216' from North & 967' from East line, Sec. 38, M-1, H&GN, PD 15000.  
HEMPHILL (HEMPHILL Granite Wash) Cimarex Energy Co., Hobart Ranch, PD 12800', for the following wells:  
#2667, 1452' from North & 1120' from East line, Sec. 67, A-2, H&GN.  
#1970, 1238' from North & 2500' from East line, Sec. 70, A-2, H&GN.  
#2970, 356' from South & 921' from East line, Sec. 70, A-2, H&GN.  
#4068, 709' from North & 1592' from West line, Sec. 68, A-2, H&GN.  
ROBERTS (WILDCAT & N.W. MENDOTA Upper Morrow) Mewbourne Oil Co., #84 Flowers Trust, 2300' from South & 2230' from East line, Sec. 8, BS&F, PD 11600.  
ROBERTS (RED DEER CREEK Granite Wash) Bravo Natural Gas, L.L.C., #1805 Byrum, 2111' from South & 467' from East line, Sec. 5, B-1, H&GN, PD 10600.  
WHEELER (WILDCAT & DYCO Granite Wash) Linn Operating, Inc., #8 Tipps '13', 853' from South & 1673' from East line, Sec. 13, RE, R&E, PF 14906.  
WHEELER (WILDCAT & FRYE RANCH Consolidated) Questar E&P Co., #5028H Tom Puryear, 400' from South & 1988' from East line, Sec. 28, A-3, H&GN, PD 12400' (BHL: 660' from North & 1988' from East Sec. line) Horizontal  
WHEELER (WILDCAT & STILES RANCH Granite Wash Consolidated) Forest Oil Corp., Britt, PD 16000' for the following wells:  
#407, 2173' from South & 940' from East line, Sec. 7, 2, B&B.  
#707, 1650' from South & 990' from West line, Sec. 7, 2, B&B.  
#505, 1650' from South & 467' from East line, Sec. 5, 1, B&B.  
#905, 970' from North & 467' from West line, Sec. 5, 1, B&B.  
#1005, 2173' from North & 467' from West line, Sec. 5, 1, B&B.  
#1301, 1650' from South & 1040' from West line, Sec. 1, 5, B&B.  
#1501, 467' from North & 1650' from West line, Sec. 1, 5, B&B.  
#1601, 467' from North & 990' from East line, Sec. 1, 5, B&B.  
WHEELER (STILES RANCH Granite Wash) Newfield Explora-

PBTD 16862' —  
WHEELER (STILES RANCH Granite Wash Cons.) Newfield Exploration Mid-Con., Inc., #10 Thomas Britt '6', Sec. 6, 5, B&B, spud 3-7-08, drlg. compl 7-10-08, tested 8-26-08,  
TV D 15328', MD 15479' — Directional well  
WHEELER (STILES RANCH Granite Wash Cons.) Newfield Exploration Mid-Con., Inc., #17 Britt Ranch 'C' 35, Sec. 35, A-3, H&GN, spud 4-7-08, drlg. compl 6-23-08, tested 8-26-08,  
TV D 15760', MD 15698' — Directional

tion Mid-Con., Inc., #8H McCoy '27', 300' from North & 567' from West line, Sec. 4, Lot 27, Camp CSL Survey, PD 12281' (BHL: 4813' from North & 567' from West Sec. line) Rule 37 - Horizontal well  
Oil- Well Completions  
ROBERTS (ALPAR-LIPS St. Louis) Range Production Co., #11 Courson Ranch, Sec. 1, —, BBB&C, spud 4-18-08, drlg. compl 5-5-08, tested 6-24-08, pumped 20 bbl. of 42 grav. oil + 160 bbls. water on 24 hour test, GOR 8850', TD 9610', PBTD 9524' —  
ROBERTS (ALPAR-LIPS St. Louis) Range Production Co. # 601 Courson Ranch, Sec. 1, —, BBB&C, spud 3-26-08, drlg. compl 4-14-08, tested 6-19-08, pumped 13 bbl. of 43 grav. oil + 52 bbls. water on 24 hour test, GOR 1923, TD 9663' —  
Gas Well Completions  
HEMPHILL (BUFFALO WALLOW Granite Wash) Cordillera Texas, L.P., #8011 Walker, Sec. 11, 41, H&TC, spud 6-17-08, drlg. compl 7-9-08, test-3d 9—10-08, potential 1428 MCF, TD 13003', PBTD 12842' —  
HEMPHILL (BUFFALO WALLOW Granite Wash) Cordillera Texas, L.P., #1810 Walker Ranch, Sec. 10, 41, H&TC, spud 7-17-08, drlg. compl 8-5-08, tested 9-13-08, potential 708 MCF, TD 13117', PBTD 13020' —  
HEMPHILL (BUFFALO WALLOW Granite Wash) Granite Operating Co., #7008 Ellen, Sec. 8, A-1, H&GN, spud 3-27-08, drlg. compl 4-22-08, tested 8-15-08, potential 4100 MCF, TD 13308', PBTD 13230' —  
HEMPHILL, (S.W. CANADIAN Granite Wash) Chevron U.S.A., #2210 Isaacs, Sec. 210, —, G&MMB&A, spud 8-3-08, drlg. compl 5-19-08, potential 447 MCF, TD 11711', PBTD 11532' —  
Re-completion  
HEMPHILL (HEMPHILL Granite Wash) Cordillera Texas, L.P., #2 Shell Fee '51', Sec. 51, S1, H&TC, spud 6-15-08, drlg. compl 7-14-08, tested 9-13-08, potential 366 MCF, TD 12716', PBTD 12612' —  
ROBERTS (RED DEER CREEK Granite Wash) Cimarex Energy Co. of Colorado, #27 Byrum '4',  
Sec. 4, B-1, H&GN, spud 7-20-08, drlg. compl 8-9-08, tested 9-23-08, potential 13850 MCF, TV D 10700', MD 10736' —  
Directional well  
WHEELER (FRYE RANCH Consolidated) Questar E&P Co., #1 Simmonds '9', Sec. 9, L, J.M. Lindsey, spud 6-9-08, drlg. compl 7-18-08, tested 9-3-08, potential 7301 MCF, TD 15550', PBTD 15434' —  
WHEELER (MILLS RANCH Granite Wash) Sanguine Gas Exploration, L.L.C., #1039A Davidson,  
Sec. 39, A-7, H&GN, spud 4-24-08, drlg. compl 7-3-08, tested 8-11-08, TD 15550', PBTD 15434' — Re-Entry  
WHEELER (STILES RANCH Granite Wash Cons.) Apache Corp., #2063 Seeds '63', Drc. 63, A-7,  
H&GN, spud 6-21-08, drlg. compl 8-9-08, tested 9-26-08, potential 7599 MCF, TD 16955',

## Wheeler County COURT RECORDS

List of instruments filed in the Wheeler County Clerk's office from November 3, 2008 - November 7, 2008.  
**NOVEMBER 3, 2008**  
ASSIGN./CONVEY./B. OF SALE-Bear Creek Energy LLC to Russell S. Sampson, 9-19-08, All Int. in Wheeler County. DVL-Ray Admire, et ux to Joe G. Jernigan, et ux, 10-31-08, Lot 12, Blk. G, Potts Add., Shamrock. DT-Joe G. Jernigan, et ux to Ray Admire, et ux, 10-31-08, Lot 12, Blk. G, Potts Add., Shamrock. AFF-James C. Fling to Elsie Wagner (Estate), 10-29-08, Lots 9-12, Blk. 6, Shamrock. RDT-Edward Meek Jr., et al to David Woodruff, et ux, 10-22-08, 80.28 acs. NE/4 Sec. 80, Blk. 17, H&GN Ry. Company Survey. OL-Margot Pyle to Kaiser-Francis Mid-Continent Limited Partnership, 9-16-08, E/2 Sec. 39, Blk. A-4, H&GN Ry. Company Survey. OL-Margot Pyle to Kaiser-Francis Mid-Continent Limited Partnership, 9-16-08, E/2 Sec. 22, Blk. A-4, H&GN Ry. Company Survey. EXECUTORS OL-Charles L. Hamilton (Estate) to Kaiser-Francis Mid-Continent Limited Partnership, 9-16-08, E/2 Sec. 22, Blk. A-4, H&GN Ry. Company Survey. EXECUTORS OL-Charles L. Hamilton (Estate) to Kaiser-Francis Mid-Continent Limited Partnership, 9-16-08, E/2 Sec. 39, Blk. A-4, H&GN Ry. Company Survey. ASSIGN.-Ferroil Co. LLC to CAF Enterprises Inc., 10-31-08, Pts. NW/4 Sec. 4, Blk. L, J. M. Lindsey Survey. CONVEY.-Ferroil Co. LLC to CAF Enterprises Inc., 10-31-08, See Instrument.  
**NOVEMBER 4, 2008**  
Election Day—Office Closed  
**NOVEMBER 5, 2008**  
RDT-United States of America-Rural Development to Royce D. Ellerbe, et al, 10-29-08, See Instrument.  
(Continued Page 6)

## THE WHEELER TIMES

PAGE 4 — Thursday, November 13, 2008  
"Wheeler: town of friendship and pride."

**MEMBER 2008**  
TEXAS PRESS ASSOCIATION

**City of Wheeler Turns 100**  
Aug. 6, '05 Celebration Planned  
P.O. Box 1080  
Wheeler, Texas 79096  
Phone: 806/826-3123  
Entered as second-class matter December 18, 1933, at the Post Office at Wheeler, Texas 79096, under the act March 3, 1879.  
Postmaster: Send Address changes to *The Wheeler Times*, P.O. Box 1080, Wheeler, TX 79096-1080 — wtimes@centramedia.net

**Louis C. Stas, Owner & Publisher**  
SUBSCRIPTION RATES:  
Wheeler County...\$20.00 Outside County...\$22.00

## THE BUSINESS DIRECTORY

**CROSS COUNTRY BARN**  
★24 Hr. Gas & Diesel ★Convenience Store  
★Hunt Bros. Pizza  
301 E. Oklahoma St.  
Wheeler, TX  
Phone: 806-826-2276  
Dale & Monica Kidd

It pays to Advertise in **The Wheeler Times**  
Phone & Fax: 826-3123  
wtimes@centramedia.net  
Classified:  
Cash—\$4.00 for first 20 words  
Charge—\$6.00 for first 20 words  
15¢ for each additional word  
Open Rate: \$2.50 Per Col. In.  
Card of Thanks \$5.00

## HUGE 2-DAY PUBLIC AUCTION

Huge Contractors Equipment & Truck Auction  
**DEANCO AUCTION**  
Tuesday, Nov. 18th & Wednesday, Nov. 19th • 2008  
1042 Holland Ave • Philadelphia, Mississippi  
**Day 1:** Selling Dump Trucks, Truck Tractors, Specialty Trucks, Trailers, Farm Tractors, 1-ton Trucks, Pickups, Vehicles, Mowers, Related Attachments, Misc. Items  
**Day 2:** Selling All-types of Construction Equip., Support Equip., Service Trucks, Water Trucks, Boom Trucks, Generators, Logging Equipment, Related Attachments, Misc. Items  
Deanco Auction 877-898-5905 www.deancoauction.com  
1042 Holland Ave (PO Box 1248) • Philadelphia, Mississippi 39350 Auctioneer: Donnie W. Dean, #733, MSSL #835

**Go Painlessly**  
Mary Ann W. Tom W.  
ARTHROSIS  
BACK PAIN  
MUSCLE PAIN  
PENETRATING PAIN RELIEF  
**THERA-GESIC**  
MAXIMUM STRENGTH  
Pain Relieving Cream  
Compare and Save! Buy **THERA-GESIC**

## FREE DIRECTV 4 ROOM SYSTEM!

265+ ALL DIGITAL CHANNELS!  
130 HD CHANNELS!  
FREE HBO, Showtime & Starz for 3 Months!  
Channel Pkgs. Start \$29.99 / mo  
Packages Start only \$29.99  
FREE DVR/HD  
No Start Up Costs!  
We're Local Installers!  
Toll Free 800-214-7110

DT-Charles Bateman, et ux to First State Bank of Mobeetie, 10-28-08, Lots 11 and 12, Blk. 51, WSSA, Shamrock.  
**NOVEMBER 4, 2008**  
Election Day—Office Closed  
**NOVEMBER 5, 2008**  
RDT-United States of America-Rural Development to Royce D. Ellerbe, et al, 10-29-08, See Instrument.  
(Continued Page 6)

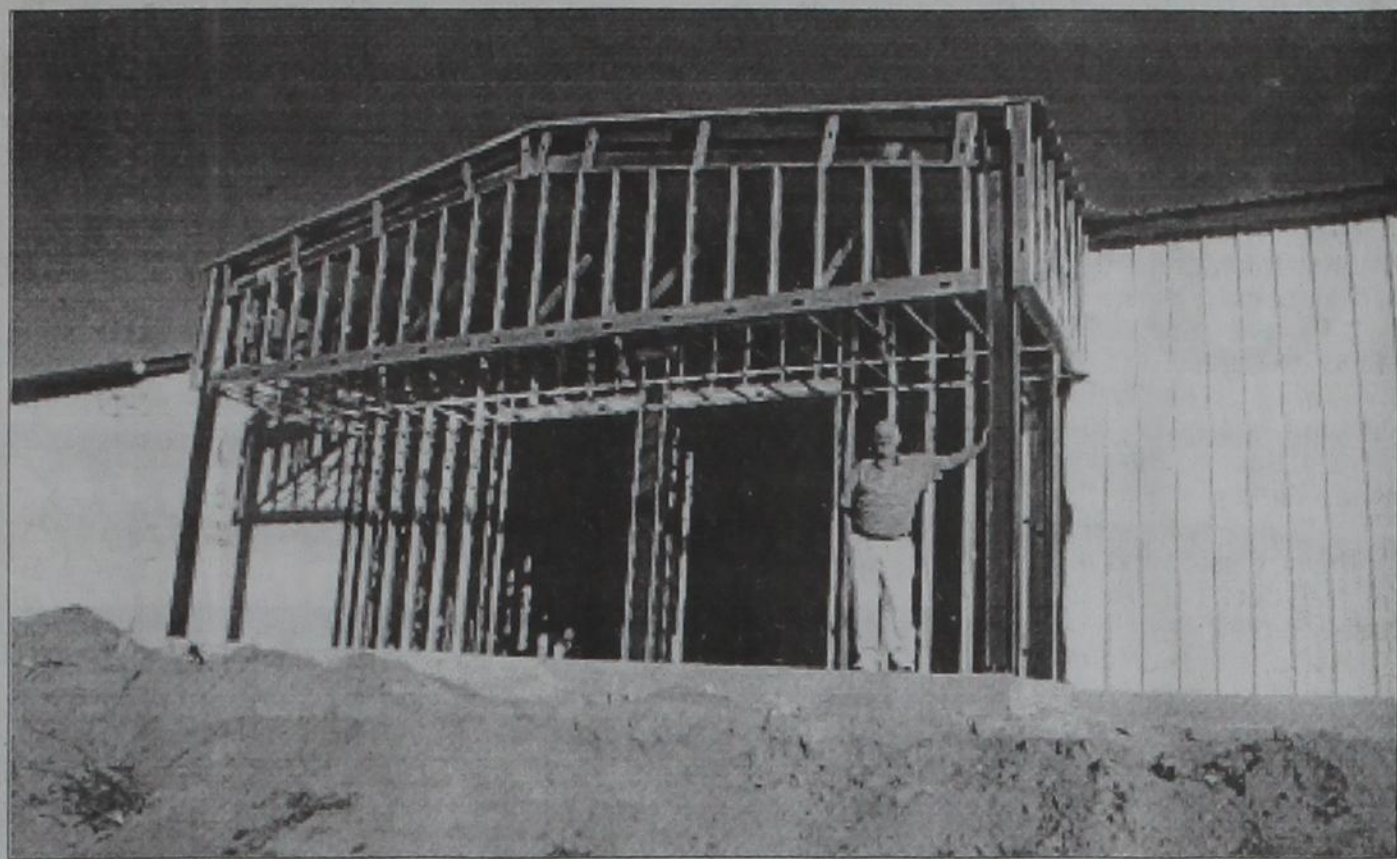
## TEXAS STATEWIDE CLASSIFIED ADVERTISING NETWORK



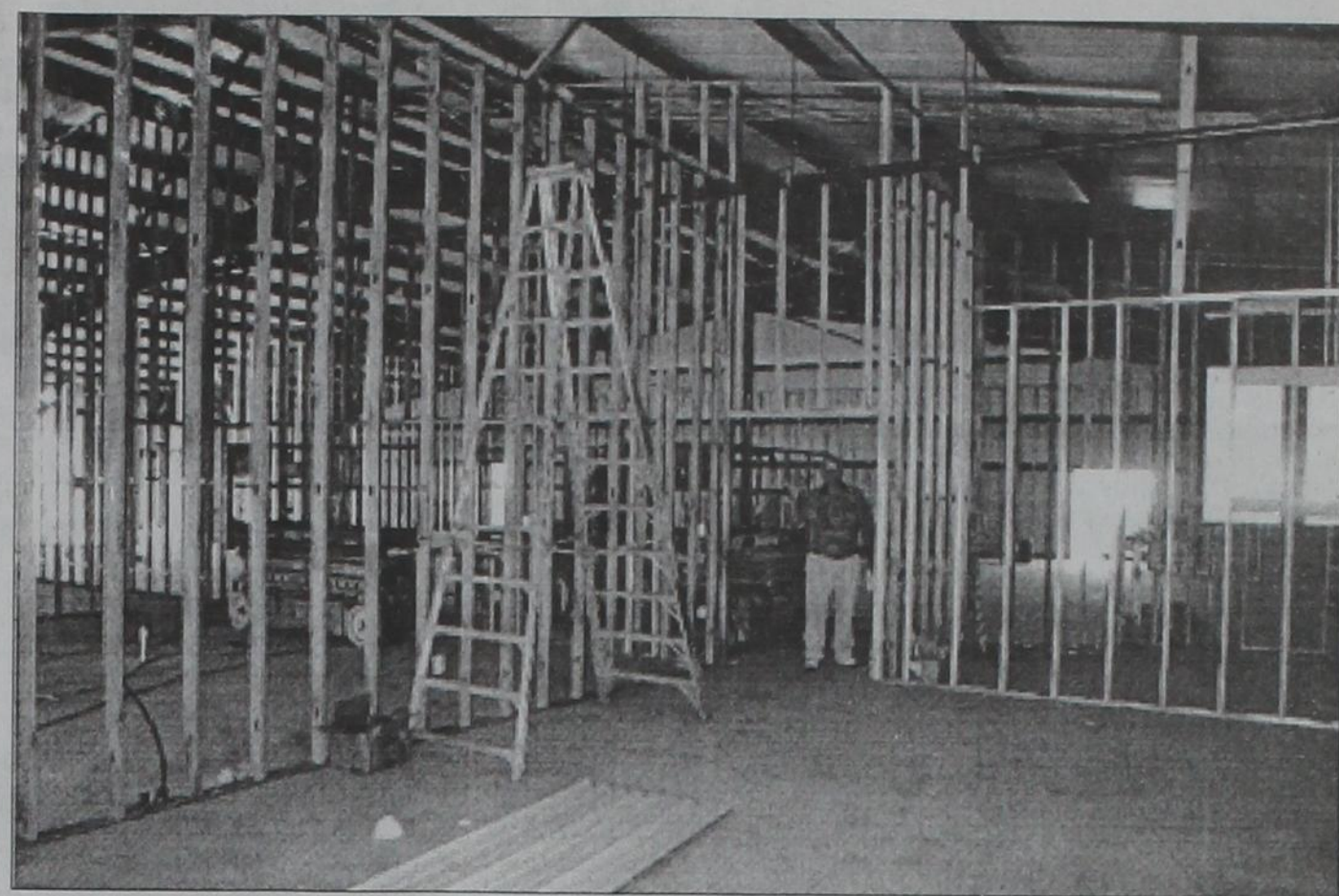
**TexSCAN Week of November 9, 2008 AUCTIONS**  
ARMSBID.COM NATIONAL Firearms Auction, 201 SE 59th, Topeka, KS. Catalogs-\$10. 2,200 lots. Thursday, Friday & Saturday, Nov. 20, 21, 22. KS Firearms Auctioneers, 1-785-862-8800, www.armsbid.com.  
**BUSINESS OPPORTUNITIES**  
ALL CASH CANDY Route. Do you earn \$800 in a day? Your own local candy route. 30 machines and candy. All for \$9,995. 1-888-625-5481. Multi Vend, LLC.  
**DRIVERS**  
CDL-A DRIVERS: EXPANDING Fleet offering Regional/OTR runs. Outstanding pay package. Excellent benefits. Generous overtime. \$300 lease special on Volkswagens. National Carriers, 1-888-707-7279, www.nationalcarriers.com.  
DRIVER: DON'T JUST start your career, start it right! No experience required. Company sponsored CDL training. First day medical. www.joincrst.com. 1-866-917-2778.  
DRIVER: PTL NEEDS Company Drivers-CDL-A Earn up to 46¢ cpm. 1/2 cpm increase furnished. All expense paid training every 60K miles. Average 2,800 unit program. Work/travel entire miles/week. www.ptl-inc.com. 1-877-740-6262.  
DRIVERS: CALL TODAY! Sign-On bonus 35¢-41¢ cpm. Earn over \$1000 weekly. Excellent benefits. Need CDL-A & 3 months recent OTR. 1-877-258-8782. www.meltontruck.com.  
**EDUCATION/SCHOOLS**  
CANYOU DIG IT? Heavy equipment school. 3 week training program. Backhoes, bulldozer, trackhoes. Local job placement assistance. Start digging dirt now. 1-866-362-6497.  
**EQUIPMENT FOR SALE**  
SAWMILLS FROM ONLY \$2,990.00—Convert your logs to valuable lumber with your own Norwood portable band sawmill. Log skidders also available. www.norwoodsawmills.com/300N-FREE information: 1-800-578-1363-Ext:300-N.  
**HOMES FOR SALE**  
FORECLOSURES & HUD'S! 5 BR 3BA only \$10,179 or pay \$200/Month! Won't last! 5% down, 30 years @ 8%! More homes available! For BNI listings 1-800-544-6258 ext. 9847.  
**HELP WANTED**  
ABLE TO TRAVEL: Hiring eight people, no experience necessary, transportation and lodging gated community on Possum Kingdom Lake. Only \$49,900. Great trees & seasonal creek running across property. Owner will finance. Won't Last! Call 1-940-664-5789, ext. 999.  
**REAL ESTATE**  
3.21 ACRES NORTH of Brady, Water, electricity. Seasonal creek, oak, elm, and mesquite trees. \$1225 down, \$241/mo. (5% down, 11%, 20 years.) 1-800-876-9720. www.texasranchland.com.  
452.8 ACRES, MEYERS Canyon, Tract #8, west Texas, good hunting with large canyon, \$395 per acre, owner financing. Ranch Enterprises, 1-866-286-0199.  
**STEEL BUILDINGS**  
MUST SELL ALL steel buildings from 2007 inventory cancellations, one is 30x42. Will sell for balance owed. Freight paid to Texas. Call 1-800-552-8504.  
**Run Your Ad In TexSCAN!**  
Statewide Ad.....\$450  
303 Newspapers, 1,017,914 Circulation  
North Region Only.....\$195  
98 Newspapers, 276,893 Circulation  
South Region Only.....\$195  
103 Newspapers, 488,823 Circulation  
West Region Only.....\$195  
102 Newspapers, 252,398 Circulation  
To Order: Call This Newspaper direct, or call Texas Press Service at 1-800-749-4793 Today!

NOTICE: While most advertisers are reputable, we cannot guarantee products or services advertised. We urge readers to use caution and when in doubt, contact the Texas Attorney General at 1-800-621-0508 or the Federal Trade Commission at 1-877-FTC-HELP. The FTC web site is www.ftc.gov/bizop

Extend your advertising reach with TexSCAN, your Statewide Classified Ad Network.



Charles Kuntz stands at the front entry to the Wheeler Co. Agricultural & Family Center.



Charles Kuntz stands inside the Wheeler Co. Agricultural & Family Center; studs are in place.

## Wildlife Specialist Offers Hints For Avoiding Deer-Vehicle Crashes

In November, when it comes to avoiding deer collisions, it's not the one you see crossing the road that's likely to get you, according to a wildlife expert.

"It's the one that's chasing her," said Dr. Billy Higginbotham, Texas AgriLife Extension Service fisheries and wildlife specialist.

Throughout the year, there's always risk from collisions with deer on Texas highways, Higginbotham said. But deer behavior is more erratic during the peak of the breeding season, which is from Nov. 1 through December, depending upon which part of the state you live in.

"The doe may look both ways when she's crossing the road, but the buck-in-love that's chasing her may not," he said.

Higginbotham said that some may find the concept of love-struck bucks humorous, but the results of deer-vehicle collisions are not. Collisions that result in a human fatality are up 50 percent since 2000, according to a report released Oct. 30 by the Highway Loss Data Institute, an affiliate of the Insurance Institute for Highway Safety.

According to insurance claims, 101 people died in animal-vehicle crashes in 1993 in the U.S. By 2000, fatalities had risen to 150. In 2007, deaths totaled 223.

During the last 14 years, Texas had 227 people die in animal-vehicle crashes, the most of any state. Wisconsin was second with 123 deaths, and Pennsylvania third with 112.

Higginbotham noted the institute records revealed from January 2005 through April 2008, animal-vehicle collisions were three times more likely during November.

"Which just happens to be the peak of the rutting season," he said.

The peak of the rutting season, or mating season, varies from one part of the state to another. It starts Nov. 1 in East Texas; early to mid-November in the Hill Country; around Thanksgiving in West Texas and mid- to late-December in South Texas, Higginbotham said.

"There's another risky time during January and February when food supplies become short and deer are more likely to graze along roadsides," he said.

Most animal-vehicle collisions don't result in human deaths, but can be expensive for the motorist.

The institute also found that crashes are more likely to happen in rural areas where the speed limit is 55 mph or higher, and more often between dusk and dawn. The insurance records also reveal that motorcycle riders account for about half the deaths in such collisions.

Higginbotham warned that because many Texas suburban neighborhoods are close to wooded areas that may harbor deer, drivers in these areas should be cautious too.

In a 2008 study in the city of Edmonton, Canada's sixth largest city, University of Regina researchers found a positive correlation between speed limits and the number of deer-vehicle collisions.

Higginbotham said slowing down may help because it gives the driver more time to react. Also, driving slowly means the vehicle is less likely to go off the road after a collision, he said. The insti-

tute report noted that deaths rarely occurred from contact with the animal. Instead, they were the result of the driver running off the road when taking evasive action, or in the case of motorcyclists, falling off the bike.

But from November through December, it's good to know that although you've dodged one deer, there's often another that will follow — and at high speed, Higginbotham said. -30-

We grant permission for the use of this news as a free service to the news media. Articles may be used either in their entirety or in part, provided that attribution remains. You may print the stories and art or you may put it on your Web sites. High resolution photos, audio and video also are provided with many of our articles for your use at [agnews.tamu.edu](http://agnews.tamu.edu)

## JAG Theatre 101 Workshop Openings

Red Carpet Community Theatre's Jr. Actors Guild (JAG) is kicking off its 15th season with Theatre 101. We are inviting all students ages 5 through 18 to join us for Season Saturdays along with providing an adult workshop, during our Fall Session. Come join us each Saturday to learn basic theatre skills and gain an understanding of basic techniques in the theatre arts.

The program is split up into five weeks with a different guest director each week. The students will learn physicality, stage combat, improv, acting, and theatre dance. Saturday, October 25, students met with Doobie Potter, an Oklahoma City resident, who has done both professional and community theatre in every aspect. They learned the basics of forming a character through body movement.

This Saturday, November 2, Tiphani Currell-Haraugly will be leading the workshop in Stage Combat. Each student will learn the basics of "fighting" on stage for realistic slaps, punches, falls, and trust. Tiphani, a local, grew up on Red Carpet's Stage then earned a degree in Theatre Performance from St. Gregory's University. Tiphani recently directed *Joseph and the Amazing Technicolor Dreamcoat* at Red Carpet Community Theatre and is the Director of JAG Season Saturdays.

Saturday, November 8, Lee Neibert will be leading the workshop on Improvisation. Lee, of Oklahoma City, a grad assistant at The University of Oklahoma, and has a Master in Acting from Oklahoma State University. Lee is currently working on his Masters in Directing from OU. He is a past chair of the Oklahoma Regions, Kennedy Center American College Theatre Festival and is still very active in the drive for educational theatre. Lee also helps his wife, Deanna, with technical design at Edmond Memorial High School.

Clayton Guiltner, who is also a graduate assistant at The University of Oklahoma, will conduct the acting workshop on Saturday, November 15. He plans to complete his MFA in Directing in 2010. Clayton is a hard working, disciplined artist who has exceptional leadership skills. With a Bachelor of Arts in Theatre, and a Masters degree in Leadership, he has a proven track record in producing quality theatre both professionally and on the academic level. Clayton is an associate member of the Society of Stage Director's and Choreographers Union in New York City. Over the past several years, he has worked with adults and students in a wide range of theatrical productions.

## What were your childhood dreams?

I was actually having difficulty thinking about anything but the election when I first sat down to write this column. So in search of some fresh inspiration, last night I started reading a new book or at least a book that is new to me — *The Last Lecture* by Randy Pausch.

The second section of the book is titled, "Really Achieving Your Childhood Dreams." Randy's list of childhood dreams included: "being in zero gravity, playing in the NFL, authoring an article in the World Book Encyclopedia, being Captain Kirk, winning stuffed animals and being a Disney Imagineer."

What impressed me about his list was its specificity. And I asked myself, "What were my childhood dreams?" At this moment, I can't tell you whether or not I've acquired my childhood dreams because I'm still trying to remember what they were.

One of my favorite Disney movies was "Cinderella," so I'm pretty sure one of my dreams was to find my very own Prince Charming. And that goal was definitely reached when I met my husband!

But what other dreams were nestled in my young head?

I remember loving to sing and used to imagine myself making a record. I wasn't shy about performing in front of people. In fact, I remember going door to door in my neighborhood and asking folks if they wanted me to sing and play my baritone ukulele for them. I was in the school choir and participated in high school musicals. But that's the extent of that dream.

I've also always loved to write and fancied myself as a published author. I remember keeping a diary when very young and still journal pretty much daily. And I remember beginning to write a book. But somewhere during our move from Georgia to Texas when I was around 10 years old, my book draft was lost and I've never begun another.

By the time I went to college, I had aspirations of becoming a lawyer and eventually running for political office. But I must admit I pushed this dream aside after I met and married my Prince Charming and started dreaming of having children. Oh I know, I could have done both. But I didn't

Clayton has directed several shows including musicals, comedies, and dramatic works which includes directing *Panda* at the Triad Theatre in New York City. Clayton has several professional training credits, including master workshops in voice and movement and youth theatre from The American Conservatory Theatre in San Francisco and the ACTER organization based in London. He has training in both education and performance, which has made him an effective teacher and director and for the stage. Clayton and his wife, Erin, ran The Theatre Experience, a summer children's theatre program in Orlando Florida for several years. Erin is a licensed kindergarten instructor and specializes in teaching music and theatre for children of all ages.

Finally, Saturday, November 22, each student will learn the basics of Theatre Dance with Dance Majors Katherine King and Jessica Landry, from St. Gregory's University. They have extensive musical theatre training.

Theatre 101 began October 25 and will go through November 22, 2008. Tuition for ages 5 through 18 are \$20 a class or \$65 for the remaining four classes. Ages 5 through 11 will meet from 9:00 am to 11:00 pm. On-site registration and check-in begins at 8:30. Ages 12 through 18 will meet from 12:00 pm to 2:00 pm. Registration and check-in begins at 11:30 pm. The adult workshop will be from 3:00 pm to 5:00 pm, where tuition is \$25. Scholarships and family discounts are available for 5 — 18 years old. Check our website for more information, [www.rcct.org](http://www.rcct.org).

Also set your calendars to be a part of our Spring Session, starting in January, where we will be putting on the musical *Seussical Jr.* for Red Carpet Community Theatre Main Stage Production. This project is done with the grant assistance of the Oklahoma Arts Council, and the National Endowment for the Arts. For more information call, 580-225-1941.

— or haven't yet.

I can't help but think, however, that I had other childhood dreams that somehow were forgotten and never pursued.

Thinking back on Randy's very specific list, I think his pursuit of dreams was made possible because of his very clear and definitive vision of his goals. Yet even when his specific dream was not exactly realized, his pursuit taught him valuable lessons guiding him in new, often unexpected directions he had never envisioned before.

Basically one could say Randy walked his talk.

Perhaps that is a big key in accomplishing our dreams as well as helping us to not lose sight of them. Got a dream? Go for it! Begin walking the journey. We don't get anywhere unless we venture out. And for every dead end road, there is another road to take nearby. It seems another key in garnering aspirations is being flexible in how we outline our plans so we don't limit the possibilities or our capabilities.

Regarding dreams not achieved Randy wrote, "And even though I did not reach the National Football League, I sometimes think I got more from pursuing that dream, and not accomplishing it, than I did from many of the ones I did accomplish." And although he didn't actually "become" Captain Kirk, he did meet his childhood idol years later as an adult. And I suspect Randy mastered many of the same leadership skills as Captain Kirk in his own life and profession.

If you're like me and you're having difficulty remembering what your childhood dreams were, don't be discouraged and feel your dreams have been lost forever. Start a new list of goals right now. Be specific but remain ready to let your dreams evolve and expand. Then start your pursuit!

Life is about living our goals throughout our entire lives — however small or grand. Day by day and moment by moment, keep pursuing and even adding new ones to your list. Dreaming is not limited to our childhood years! And the pursuit of dreams should never end!

-end-  
Annette Bridges is a freelance writer who lives on a north Texas ranch with her husband, John. Her columns are published weekly on United Press International's [ReligionAndSpirituality.com](http://ReligionAndSpirituality.com) and numerous other websites and newspapers. Visit her website and participate in her blog at [www.annettebridges.com](http://www.annettebridges.com) and send her an email at [annettebridges@gmail.com](mailto:annettebridges@gmail.com). © 2008 by Annette Bridges



THE WHEELER TIMES

PAGE 5 — Thursday, November 13, 2008

"Wheeler: town of friendship and pride."

## Cattle Fed Distiller's Grains Maintain Flavor And Tenderness Of Beef

The availability and use of wet distiller's grains in beef finishing diets continues to increase as the ethanol industry expands, and some Texas AgriLife Research scientists are trying to determine if that will affect consumers' meat purchases.

While much of the research focus has been on the energy value of the distiller's grains relative to the corn it replaces, recent questions have been posed on how they may affect beef quality, said Dr. Jim MacDonald, AgriLife Research ruminant nutritionist.

The concern is based on the premise that replacing corn, which is primarily starch, with distiller's grains, which has essentially no starch, will reduce blood glucose and negatively impact the marbling of beef cuts, MacDonald said.

MacDonald and others conducted a study funded by the \$1-per-head beef checkoff, Texas Beef Council, and a cooperative agreement between the U.S. Department of Agriculture-Agriculture Research Service and AgriLife Research.

In the study, 54 steers were fed dry-rolled corn or steam-flaked corn-based finishing rations with or without 35 percent wet distiller's grain, he said. The goal was to determine the effects of the corn processing and the inclusion of distiller's grain on marbling attributes, sensory attributes and shelf-life of beef loins.

The final data indicated that feeding 35 percent wet distiller's grains in both of the finishing diets may decrease the shelf-life of beef, but likely will have little impact on beef taste and quality, MacDonald said.

In the study, a single one-inch thick steak was removed from the 13th rib end of the loin from each animal, MacDonald said. The steaks were vacuum-packaged and aged for 14 days prior to freezing. Sensory analysis was performed at Texas A&M University with trained panelists. The beef was judged for palatability attributes such as juiciness, tenderness and flavor.

"When you add distiller's grains

to steam-flaked corn-based diets, it does not negatively affect palatability attributes," MacDonald said. "In fact, our panel found those steaks with distiller's grains to be slightly more tender."

The results indicate that the corn-processing method affects sensory properties of steaks; but while consistent, the differences were minimal, MacDonald said.

Sensory differences also were detected in steaks from steers fed differing levels of dietary wet distiller's grain plus solubles; however, the differences were slight, MacDonald said. It is unknown if the levels detected by expert, trained sensory panelists would be detected by consumers.

Another finding of this study was that distiller's grain byproducts increased the muscle concentration of linoleic acid, said Dr. Stephen Smith, AgriLife Research professor of animal science at Texas A&M University.

Increasing the concentration of linoleic acid in beef makes it more susceptible to producing a warmed-over flavor if it is stored in the refrigerator after cooking, Smith said.

The addition of distiller's grain byproducts to finishing altered the activity of enzymes important in the deposition of marbling fat also, he said. As a result, beef from cattle fed distiller's grain byproducts was higher in saturated and trans-fatty acids, and lower in the monounsaturated fatty acid, oleic acid, than beef from cattle not fed distiller's grains.

Smith said even though palatability attributes were not affected by distiller's grain byproducts, the composition of the beef changed quite a bit.

Steaks from steers fed distiller's grains may be darker in color and were more susceptible to lipid oxidation after five days of storage, MacDonald said.

But incorporation of wet distiller's grains into steam-flaked corn-based diets does not appear to affect beef quality differently than incorporation into dry-rolled corn-based diets, he said.

These results indicate that

Thru the play-offs to STATE!

# GO MUSTANGS!

THE WHEELER TIMES for all your

## JOB PRINTING OFFICE SUPPLIES OFFICE FURNITURE ANNOUNCEMENTS INVITATIONS & PRINTED NAPKINS

110 EAST TEXAS — WHEELER, TX  
Phone: 806/826-3123

A Subscription to . . .

## THE WHEELER TIMES

. . . makes an excellent gift . . .

KEEP UP WITH WHAT'S HAPPENING IN WHEELER

"It's like a letter from home for those living elsewhere!"

\$20.00 in Wheeler Co. \$22.00 Elsewhere  
806/826-3123—P.O. Box 1080—Wheeler, Texas 79096  
Send Pictures & News to: [wtimes@centramedia.net](mailto:wtimes@centramedia.net)

Old Time Gospel Music  
On KPDR, 90.5  
... in Wheeler  
Sundays 6 a.m. to 8 a.m.

MARSHALL'S  
HEATING & AIR CONDITIONING  
WHEELER, TX—PHONE: 664-5395—CELL: 662-7876

NOW DOING...  
TRANE AIR DUCT CLEANING  
It's Hard To Stop A Trane —24 Hour Emergency Service—

LICENSED & INSURED  
License No. TACLB022710E  
Mark Marshall, Owner

**Court** (from Page 4)

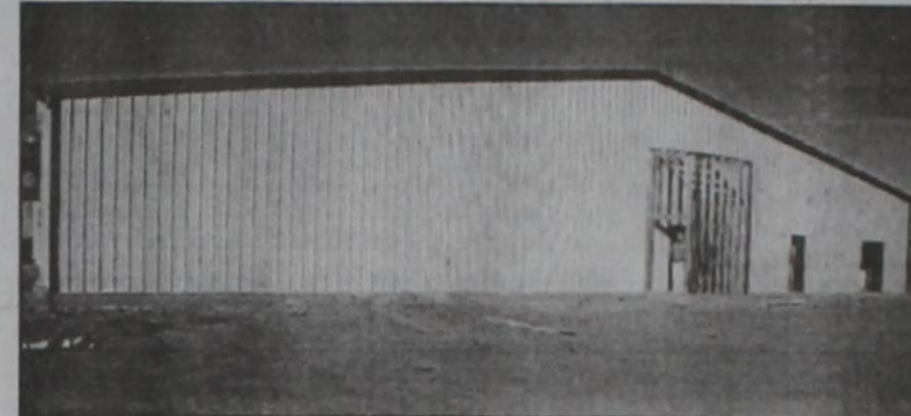
ASSIGN.-PAC Production Company to Forest Oil Panhandle Resources LP, 11-4-08, W/2 NW/4 Sec. 30, Blk. A-3, H&GN Ry. Company Survey.  
 OL-Dwaine Caldwell to Sanguine Gas Exploration LLC, 10-22-08, SE/4 SW/4 Sec. 29, Blk. A-7, H&GN Ry. Company Survey.  
 ROY. D-Santa Rita Land Company to Shawn S. Scholl, et al, 11-5-08, N/2 Sec. 30, Blk. A-8, H&GN Ry. Company Survey; N/2 Sec. 11, Blk. L, J. M. Lindsey Survey; N/2 Sec. 5, J. Poitevent Survey.  
 NON PARTITION ROY. D-Santa Rita Land Company to Shawn S. Scholl, et al, 11-5-08, N/2 Sec. 30, Blk. A-8, H&GN Ry. Company Survey; N/2 Sec. 11, Blk. L, J. M. Lindsey Survey; N/2 Sec. 5, J. Poitevent Survey.  
 MD-Santa Rita Land Company to Shawn S. Scholl, et al, 11-5-08, Sec. 12, Blk. A-8, H&GN Ry. Company Survey.  
 C/C PROBATE-Fred G. Wittenburg Jr. to Ex Parte, 11-5-08.  
 WELL-BORE ASSIGN.-Baker Recovery Inc. to James R. Culp Trust, 10-22-08, Pt. Secs. 47 and 48, Blk. A-3, H&GN Ry. Company Survey.  
 ROW-Stiles Land and Assets Ltd. to Chesapeake Midstream Gas Services LLC, 10-7-08, Pt. SW/4

Sec. 23, Blk. A-3, H&GN Ry. Company Survey.  
 MD-Jerrie Moore Trust to Charles Bruce Hubbard, et al, 9-23-08, Und. Int. in Wheeler County.  
 OWNER/DISCLAIMER AFF.-Diana Marie Chadwick Nall to Robert Chadwick, et al, 10-28-08, Pt. NE/4 Blk. XCI, Roman Add., Shamrock.  
 DVL-Cherry Johnson Hall to Andrew James Hampton, 11-5-08, .258 acs. E/2 Sec. 60, Blk. A-8, H&GN Ry. Company Survey, being out of Sub. Div. #7.  
 DT-Andrew James Hampton to Amarillo National Bank, 11-5-08, .258 acs. E/2 Sec. 60, Blk. A-8, H&GN Ry. Company Survey, being out of Sub. Div. #7.  
**NOVEMBER 6, 2008**  
**NOVEMBER 7, 2008**  
 D-Joann B. Simmon to Deleise Simmons Atwood, 11-6-08, Lot 5, Blk. 32, Wheeler.  
 D-Joann B. Simmon to Weldon V. Simmons, 11-6-08, Lots 7-9, Blk. 38, Wheeler.  
 RDT-Wells Fargo Bank NA to Albert L. Hyman, et ux, 11-3-08, See Instrument.  
 ROW-Dobson Ranch LLC to Linn Energy Holdings LLC, 10-29-08, Pt. SE/4 Sec. 40, Blk. A-3, H&GN Ry. Company Survey.  
 ROW-Dobson Ranch LLC to Linn Energy Holdings LLC, 10-29-08, Pt. SE/4 Sec. 40, Blk. A-3, H&GN Ry. Company Survey.  
 AFF.-Texas Department of Housing and Community Affairs

to Wayne A. Bell, 10-20-08, 1 ac. SW/4 Sec. 10, Blk. A-4, H&GN Ry. Company Survey.  
 DT-Gene D. Wise to First National Bank of Weatherford, Texas, 10-28-08, See Instrument.  
 TAX D-Shamrock Independent School District, et al to Barker Production Co., 11-3-08, Blk. XXXIX and XLII, Romans Add., Shamrock.  
 OL-Linda G. Reed to JMA Energy Company of Texas LLC, 8-29-09, W/2 NW/4 Sec. 8, Blk. L, J. M. Lindsey Survey.  
 OL-Frances A. Shryock to JMA Energy Company of Texas LLC, 8-29-09, W/2 NW/4 Sec. 8, Blk. L, J. M. Lindsey Survey.  
 OL-Barbara J. Lallement to JMA Energy Company of Texas LLC, 8-29-09, W/2 NW/4 Sec. 8, Blk. L, J. M. Lindsey Survey.  
 A of JUDG.-Hi-Plains Bag & Gassing Co. Inc. to Community Gin Inc., 11-4-08.  
 POA-R. Larry Hinkle to Camala Houck, 10-1-08.  
 D-Mills Ranch and Company Ltd. to R. Larry Hinkle, 9-2-08, 46.09 acs. Sec. 100, Blk. 13, H&GN Ry. Company Survey; and Secs. 11 and 13, Blk. OS-2.

D-Josephine Welch, et al to R. Larry Hinkle, 9-19-08, 146.14 acs. Sec. 12 Blk. OS-2.  
 ROW-Bert and Barbara Bass Revocable Living Trust to Elk City Oklahoma Pipeline LP, 10-28-08, Pt. SE/4 Sec. 59, Blk. A-7, H&GN Ry. Company Survey.  
 ROW-Kordzik Living Trust to Elk City Oklahoma Pipeline LP, 10-20-08, Pt. NW/4 Sec. 5, Blk. L, J. M. Lindsey Survey.  
 ROW-Tom Puryear to Elk City Oklahoma Pipeline LP, 10-17-08, Pt. NE/4 Sec. 6, Blk. L, J. M. Lindsey Survey.  
 ROY. D-Doris Fay Finsterwald to Billy Wayne Finsterwald, et al, 11-7-08, N/2 Sec. 10, Blk. L, J. M. Lindsey Survey.  
 D-Odessa Vann Weldon to Melvin Hunt, et ux, 10-29-08, Lots 4-12, Words Add., Briscoe.  
 ASSIGN.-Asset Placement Corporation to Mark Floyd, 11-1-08, Sec. 3, Blk. A-4, H&GN Ry. Company Survey.  
 ASSIGN.-Asset Placement Corporation to Warbird Transportation, 11-1-08, Sec. 3, Blk. A-4, H&GN Ry. Company Survey.  
 RDT-Mortgage Electronic Registration Systems Inc. to Charles F. Caldwell, 10-27-08, See Instrument.  
 OL-Donna Dickson, et al to Sanguine Gas Exploration LLC, 10-21-08, NE/4 Sec. 12, Blk. A-7, H&GN Ry. Company Survey.  
 AFF.-Jeffrey Bass to Gracie

Payne, 10-28-08, Lots 9-12, Blk. 6, Shamrock.  
 AFF.-Gracie Payne to Wesley Adam Yarbrough, et ux, 10-28-08, Lots 9-12, Blk. 6, Shamrock.  
 ROW-E. Keith Coltharp, et ux to Elk City Oklahoma Pipeline LP, 9-23-08, Pt. N/2 Sec. 58, Blk. A-7, H&GN Ry. Company Survey.  
 ROW-Peggy J. Bryant Trust to Elk City Oklahoma Pipeline LP, 10-28-08, Pt. SE/4 Sec. 58, Blk. A-7, H&GN Ry. Company Survey.  
**District Clerk's Filings:**  
 #12230-In Re: To a minor, 10-17-08, Termination.  
 #12231-Albert Angton vs IB Property Holding LLC and Bayview Loan Servicing LLC, 10-21-08, Temporary Injunction.  
 #12232-JMA Energy Co. of Texas, et al vs Pogo Energy 2004, LP, et al, 10-30-08.



**SOUTH SIDE:** Work continues on the Wheeler County Agricultural and Family Center, located at the north edge of Wheeler. This photo shows the south side of the building and the entry to the 36'x39' Meeting Room/Storm Shelter. There is still time to purchase one of the granite blocks and help finance this project. Call Charles Kuntz, treasurer of WAAIC for more details at 806/826-5516.

**Do your Christmas Shopping In Wheeler!**

**Joel & Debbie Finsterwald**

**Go Stangs!**  
**GREENBELT ELECTRIC COOPERATIVE, INC.**  
 708 10th — Wellington, TX — 447-2536  
 Serving the Rural Area of Armstrong, Childress, Wheeler, Collingsworth, Donley, Gray, Hemphill, Randall & Roberts

**James, Belinda, Kyle & Brad Masters**

**CROSS COUNTRY BARN**  
 24-Hr. Gas & Diesel Convenience Store  
 Hunt Bros. Pizza Sandwiches  
 301 E. Oklahoma — Wheeler, TX — 806.826.2276  
 Dale & Monica Kidd, Owners

**KIM'S KITCHEN**—Hwy. 69/152—home: 826-5102  
 Pizzas-Burgers-Lunch Buffet-Drive-thru — **GO KALLEN!**

**MAXEY'S STEAKHOUSE**

**WALLACE CONSTRUCTION**  
 Changing the looks of Wheeler—one building at a time!  
 305 S. Main — Wheeler, TX — 826-3503  
**WALLACE TAX SERVICE**  
 For all you accounting needs— 826-3503

**Gail & Sally Ledbetter**

**Jay & Karen Lewis, Tyler & Rebecca**

**I.H.S. Music**  
 (In His Service)  
 "Helping to Make Music Possible"  
 Teaching • Sales • Repair  
 110 W. Okla. St.—Wheeler, TX—806/826-5001

**Sandra Christner**

**2008-2009 Wheeler Varsity Football Schedule**

Date	Opponent	Site	Time
8-16	Claude Scrimmage	Wheeler	12:00
8-21	Amarillo		
	River Road Scrimmage	There	5:00
8-29	Gruver	W-20—G-8	
9- 5	Spearman	W-20—S-0	
9-13 (Sat)	**Amarillo San Jacinto	W-62 — SJ--6	
9-19	White Deer	W-42 — WD-28	
9-26	Booker	W-39 — B-0	
10- 3	Open		
10-10	*Quanah	W-56 — Q-6	
10-17	*Memphis	W-27 — M-0	
10-24	*Clarendon	W-27 — C-35	
10-31	*Wellington	Wh-0 — We-28	
11- 7	*Shamrock	W-53 — S-0	
	**Homecoming	*District Game	

Anytime you are in ...  
**WHEELER, TEXAS**  
 we invite you to spend the night at ...  
**City Drug Bed & Breakfast Hotel**  
 400 South Main Street  
 806/826-3790

**HONEY INN MOTEL**

**Buster, Debbie, Jennifer & Jarrod Haning**  
 — GO STANGS! —

**Hansford Implement Company**  
 JOHN DEERE  
 "Customer Service is our specialty, just ask around"  
**Darrell Butler** Cell phone: 806-664-6442  
 Sales Representative Business phone: 806-665-1888  
 Email: dbutler@hijcd.com

**Bob & Evangeline Wills**

**EASTERN PANHANDLE Insurance Agency, Inc.**  
 117 W. Texas — Wheeler, TX  
 KAY LUTTRELL, Office Manager

**Heritage Feeders, L.P.**  
 "West Hwy. 152 — Wheeler, TX  
 806/826-5591

**Rodney, Greta & Craig Bass Coach Dorris & Rachel Dorris**

**STILES RANCH**  
 Bob & Sue Stiles  
 Bill & Kay Stiles

**elltel CLAWSON COMMUNICATIONS**  
 wireless CELL PHONES & ACCESSORIES

**SOTO FAMILY RESTAURANT**  
 708 E. Oklahoma St. — 826-3129

**MEL'S DINER, West Hwy. 152**  
 Ph.: 826-3756 — Where Friends Meet to Eat!

**WHEELER MUSTANGS**

No.	Name	Position	Wt	Grade
5	Gerardo Diaz	WR/DB	155	11
7	Jorge Porras	QB/DB	165	10
15	Richard Watler	RB/LB	180	12
17	Brock Sabbe	QB/LB	175	11
21	Michael Gaines	RB/LB	185	11
25	Terry Menefield	QB/LB	170	11
30	Rolando Salas	RB/LB	160	10
35	Aaron Rincon	TE/DE	170	12
40	Aaron Gaines	TE/LB	155	11
52	Vinnie Ruiz	OL/DL	300	12
54	Michael Mendoza	OL/LB	175	12
55	Zack Andis	OL/DE	170	12
61	Darren Gaines	OL/DL	220	11
62	Tanner Brownfield	OL/DL	165	11
65	Trevor Marshall	OL/DL	165	9
69	Frankie Ramirez	OL/DL	240	11
70	Jonathan Engles	OL/DE	155	11
78	Ozzie Arzabala	OL/DL	185	11
86	Adam Robles	TE/DB	155	11

Superintendent—Clay Ma'ler  
 Principal—Jack Noles  
 Athletic Director/Head Football Coach—Brandon Smith  
 Assistant Football Coaches—Kenny Rutherford, Morgan Brady  
 Managers—Garrett Andis, Zay McCasland, Chisum Rutherford,  
 Brodie Richardson, Cody Howard, Braydon Smith, Jayton Smith  
 Band Director—Tim Martin  
 Cheerleader Sponsor—Tammy Moore  
 Cheerleaders—Nicole Moore, Bailey Richardson, Macie Miller,  
 Ashley Gallagher, Tonia Flores, Stacie Hanson, Mascot—Carla Mendoza

**David, Stephanie, Mageie & Shelby Jones**  
 Derek & Jennifer Murray

**Rick & Judy Woollard**

**Marshall Heating & Air Conditioning**  
 Mark, Joanna, Urrick & Hesston

**Leo & Sylvia Shuler**

**Lewis, Jennie, Jeff & Tom Britt**

**MUSTANG AUTO CARE**

1100 S. Alan L. Bean Blvd.  
 Wheeler, TX — 806/826-0948  
 Hours: 8-5 M-F Closed for Lunch 8-12 Sat.  
 • Oil Change • Tune-ups • Shocks • Struts  
 • Alignments • AC Service  
 Charles Pettit

**Ed and Patricia Forrester**

**CLASSIC CAR WASH PURE WATER EXPRESS**  
 Fred & Melody Velasquez

**TURNER ENERGY SERVICES**  
 Fullflow  
 806/826-3522 — Wheeler, Texas

**WHEELER MUSTANGS**

**HYLAND'S Pharmacy**  
 Phone: 826-5561  
 109 West Texas Street Wheeler, Texas

**Dwayne & Bobbie Sue Baker**

**PARADISE SPA** BY APPOINTMENT ONLY!  
 114 E. Texas Ave. — Wheeler

**Bill & VonEva Robertson**

**Dr. Louie Mendiola, M.D., P.A.**  
 Gina, Vincent, Melissa, Hunter, Ashley, & Chloe, Rocky & Rosemary Mendiola

**CHEERLEADERS**  
 MEET THE  
  
 Carla Mendoza  
 ... Mighty

**Betty Hennard**

**Wheeler Lumber Co.**

**Centergas**  
 710 E. Oklahoma — Wheeler, TX  
 806/826-5222  
 Jason, Rebecca, Cooper & Reese

**Danny, Ravonda, Josh & Nick Hardcastle**

**WHEELER PLUMBING CO.**  
 Max, Stacy, Gavin & Creede McQueen

**HEFLEY HARDWARE, Inc**  
 Furniture, Appliances, ACE Hardware,  
 Carpet & Gifts  
 8:00 A.M. - 5:30 P.M. — Mon. thru Sat.  
 Phone: 826-5532 — 420 S. Main — Wheeler, Texas

# Billions Available Are To Local Government Entities

The economic slowdown has left most local governments throughout Texas facing budget shortfalls. And, population increases continue to put a strain on local governments as they try to meet the needs of an increasing constituency. The result, in many cases, means postponement or elimination of special initiatives and cutbacks in delivery of services.

To assist local governments — cities, counties, public schools and institutions of higher education — Strategic Partnerships, Inc. (SPI) has launched a new **Community Resources Division**. This division will have one objective — to help government entities find and capture new funding for special initiatives of all types.

"Last year, the State of Texas awarded more than \$2.5 billion in grant funding and the federal government allocated more than \$100 billion," said Mary Scott Nabers, president and CEO of Austin-based SPI. "The funds are available, but many communities lack the resources to compete effectively for the funding. We plan to remedy that."

Nabers pointed to SPI's team of former elected officials, city

managers, economic development experts, political strategists and experienced researchers in Austin and Washington, D.C., and said, "The need has never been greater and this is an area we understand well. There is an abundance of funding available and we are ready to help cities and counties capture their share from state, federal and private sources." SPI was founded by Nabers in 1994.

John Breier, a 25-year veteran

of economic development, will lead SPI's funding efforts in Austin and he will be joined by a Washington veteran of 25 years, Rich Leidl. Leidl can point to more than \$100 million in federal funding that he has helped clients capture in the past few years.

"Because of the current economy and historic population growth, demand for new initiatives that involve construction, infrastructure, and schools continues to increase. But, local government entities are hard-pressed to find the resources to pay for them," said Nabers. No matter what the needs — infrastructure, criminal justice, education, home-

land security or something else — SPI's **Community Resources Division** stands ready to partner with local groups to identify funding sources and develop a strategy to capture the funding.

For more information on the **Community Resources Division**, contact John Breier at 512-531-3946 or Reagan Weil at 512-531-3917.

## Clarendon College's "Cheating Cheaters"

Clarendon College To Present "Cheating Cheaters" November 14, 15, 16

The Clarendon College Theatre Department announces the opening of "Cheating Cheaters," a comedy written by John Patrick, produced with special arrangement with Samuel French.

Performances are scheduled for Friday, November 14, and Saturday, November 15, with curtain at 8 p.m. A matinee is scheduled for Sunday, November 16, with curtain at 1 p.m. All performances will be in the Harned Sister Fine Arts Center.

The cast includes Jaci Copelin, of Hedley; Erica Depew, of Clarendon; Whitney Goldston, of White Deer; Sam Lovely, of Hedley; and Will Drackley, of Clarendon.

Admission is \$5 for adults and \$3 for students. Admission is free to all Clarendon College regents,



administration, faculty, staff, CC Students and high school theatre groups.

Cheating Cheaters is being performed in an arena (thrust) format, therefore seating is limited to 90 people per performance. Reservations are recommended. Please call 874-4838 and leave your name, phone number, date of performance you wish to attend, and how many seats you will require. Walk-ins will be seated on a first-come-first-served basis. No one will be seated after opening curtain until intermission.

Synopsis: Faced with the responsibility of looking after their orphaned niece, Theresa and Angelica, two middle-aged sisters, have settled on the idea of impersonating begging nuns in order to send Tania to art school in Europe, but as the play begins they have run into double trouble: An agile young cat burglar is about to make off with their ill-gotten gains; and a suspicious policeman has followed Theresa home. However all is not as desperate as it seems, as the personable young thief happens to be a medical student who steals to pay his tuition while the cop, as it turns out, is also not above taking what

he can on the side. So the four join forces for some inspired larceny and things go swimmingly — or do until the supposedly saintly Tania turns up unannounced. Trying to hide the truth from their niece, Theresa and Angelica decide to "go straight," which also, unfortunately, means going broke, and results in a series of hilarious misunderstandings. In the end, however, it develops that Tania is not quite the paragon her aunts believed her to be — but the confession of her own misdeeds steadily forgiven when she also reveals that the rather considerable earnings from her illegal activities are merrily piling up interest in a Swiss bank!

## Canadian Supply & Redi-Mix

for all your Concrete

Needs!

Jerry Smith, Owner

806-323-5379

**The Shear Delight**  
Melody, Tina & Stephanie

**Good Luck Brock!**

**Finsterwald Ranch**  
Larry & Ike

**Bobby, Chris & Kylie Schubert**

**LYNDON AUCTIONEERS**  
P.O. Box 1279  
Wheeler, Texas 79096  
Lyndon & Novelline Loyd  
(LI #7119)

**Larry & Carol Porton**

**Devin, Kenna, Cody & Kori Howard**

**Gary, Karen & Dee Alston**

**FIRST AG CREDIT FCA**

**Gary and Becky Hardcastle** Todd, Mindy, Bailey, Reagan & Presley Brashears  
Marcus, Heather, Justin, Houston & Sierra Hardcastle

**FIRST STATE BANK**  
Mobeetie & Wheeler  
Established 1906 Member: F.D.I.C.

HOME - AUTO - FARM - LIFE  
**Todd Moore Insurance Agency, Inc**  
Representing the Germania Companies  
315 N. Main — P.O. Box 168 — Shamrock, TX 79079  
Todd Moore - Owner/Agent  
806.256.8911 806.334.0330 800.687.3730  
INSURANCE AGENCY INC.

**ALVEY TAX & LAW — TODD ALVEY**  
101 E. Oklahoma — 826-3766

**MARSHALL DISCOUNT AUTO PARTS PLUS**  
Darrell & Maggie Marshall  
Mark, Crystal, Mariah, Trevor & McKell  
Mark, Joanna, Urriak, & Hecston  
Steve, Krista & Dylan, Meeshelle, William, Hope & Austin

**Wright Funeral Home**  
THE WRIGHT FAMILY

**WHEELER VETERINARY CLINIC**  
Drs. LecAnn & Ben Ed Hillhouse

**WARE Chevrolet-Buick Olds & Pontiac, Inc.**  
South Hwy. 83 Wheeler, Texas

**R. & M. Car Wash**  
Robert, Marla, Spencer & Mitchell Ford

**Dori's Salon**  
Dori & Darrell Butler, Don & Wene

**Dr. Mike Smith — Mike & Jennie Smith**  
Ben & Kristen Crowe, Jarod & Lacey Guillen

44 **KELTON AG SUPPLY** 44  
SEED — FERTILIZER  
806/826-0064  
Owner: Karen Harris In Memory of J. D. Cole, #44

**Jennings Plumbing, Heating & Air Conditioning — Larry & Bobby**

**Dan, Gail, Lauren & Landon Sams**

**SOONER ENERGY SERVICES**  
3401 Macdonnell Dr. — Norman, Oklahoma  
Soap Sticks Liquid Foamer  
**Toby Collins, Sales & Service**  
Wheeler Office: 812 S. Osage  
Office: 1-800-579-3220  
Cell: (405) 684-3493 www.SoonerEnergyServices.com

**Dave & Mary Britt, Jake & Josh**  
In Memory of Ben

# vs. NAZARETH

THURSDAY, NOV. 13, 2008  
BUSHLAND STADIUM — 7:00 P.M.

**Charlie Brown**

**PH PARKVIEW HOSPITAL**  
901 S. Sweetwater — Wheeler, Texas  
Assisted Living & Home Health Agency  
**North Wheeler County Ambulance Service**  
On Call 24 Hours A Day • 826-5581

**LeRoy & Rhonda Meriwether & Stormie**

**MR. B.B.Q.** — Steve, Joyce & Caitlynn Walker  
Don't forget your BBQ burger at the game!

**CHEERLEADERS**  
**MEET THE**  
 Macie Miller ... Cheerleader  
 Tania Flores ... Cheerleader

**Kent, Will, Kelby & Maddie Vise**

**H&H TIRE** 403 RED RIVER WHEELER, TEXAS 806.826.5759  
Come see us if you need...  
**TIRE REPAIR** or if you need...  
**NEW TIRES**

**H & H DIRT WORKS**  
P.O. Box 207 — Wheeler, TX 79096

**Speedi Mart CONVENIENCE STORE**  
Happy Hour: 3-5 Daily — Store Hrs. M-F 6-10, Sat. 6-10:30, Sun. 7-10  
Brock & Jenny Kauk & Girls — Janice Scales, Mgr.

**Sweat Shop Toning & Tanning**  
114 W. Oklahoma St., Wheeler — 806-826-0572

**ARROW WATER WELL, INC.**  
JERRY & BARBARA KOEHLER, WINGE, RONNIE & STRETCH

**B BECK OILFIELD SUPPLY INC.**  
711 West Highway 152  
Wheeler, Texas 79096  
806-826-0775  
"Service is Our Business"

## NAZARETH SWIFTS

Player	Ht.	Wt.	Yr.	Pos.
Chat Acker	6-1	215	Jr.	OL-DL
Eric Acker	5-9	150	So.	OL-LB
George Acker	5-8	140	Sr.	WR-DB
Kyle Birkenfeld	6-0	145	Sr.	WR-DB
Ryan Birkenfeld	6-0	140	Jr.	WR-DB
Sage Black	6-0	175	Jr.	WR-DL
Alec Braddock	5-10	190	Sr.	OL-DL
Beau Bradley	5-8	145	Jr.	OL-LB
Korey Carter	5-10	140	Sr.	WR-DB
Brennan Cluck	6-1	170	Jr.	WR-DB
Oscar Cordova	5-4	140	Sr.	OL-DL
Jerimiah Fetsch	6-0	270	So.	OL-DL
Caleb Gerber	6-2	150	Jr.	OL-DL
Reagan Hunter	6-3	200	Jr.	OL-DL
Clint Huseman	6-0	120	Jr.	OL-DB
Cutter Johnson	5-11	155	Jr.	RB-LB
Shay Johnson	5-6	145	So.	OL-DL
Devin Kern	5-11	245	So.	OL-DL
Kevin Lilley	5-11	145	So.	QB-LB
Evan Murray	5-2	105	So.	WR-DB
Braden Nelson	6-0	170	So.	WR-DL
Adam Pena	5-8	150	So.	OL-DL
Nicky Rowland	5-10	160	Sr.	QB-DB
Thomas Schacher	5-9	145	Sr.	WR-DB
Landon Schulte	5-4	120	So.	WR-DB
Sid Sheffy	5-11	150	Jr.	WR-DB
Seth Venable	5-10	185	So.	OL-DL
Marcus Wilhelm	6-1	250	Jr.	OL-DL

**CHEERLEADERS**  
**MEET THE**  
 Nicole Moore ... Cheerleader  
 Bailey Richardson ... Cheerleader

**Wellington State Bank**  
Wellington, Texas Wheeler • Memphis • Childress • Canadian  
**Wheeler Banking Center**  
405 Alan L. Bean Blvd. P.O. Box 1040 • Wheeler, Texas 79096  
Phone: 826-5566 Member: F.D.I.C.

**WHEELER NURSING & REHABILITATION**  
1000 S. Kiowa • Wheeler, Texas • 806/826-3505

**THE WHEELER TIMES**  
Serving Wheeler Since 1933  
Louis & Barbara Stas & Family  
...a part of Wheeler since 1960

**David & Paula Britt**

**'Cash'** (from Page 1)  
 our local businesses listed on the back of each slip of script. Tickets for the drawings will be given out only in **November** at businesses identified as posted in their windows. As has been the practice for the past several years, script is given away to the lucky individuals instead of cash. The script can be spent like money with any of the participating merchants named on the back of the script. The value of each slip of script will be printed on the face of the script. Remember, each time you enter participating stores you are entitled to a ticket; ask for it, sign it and deposit the ticket in the container located in the sponsoring

firms. You will receive one ticket per each one dollar of the purchase value up to a maximum of \$500. When the day of the drawing arrives, all of the tickets will be placed in a large container and the winners drawn. You **MUST** be present to win; however, husbands and wives may claim each other's prizes.

**Comm.** (from Page 1)  
 Enogex Gas Gathering, LLC, was given permission to cross County Roads "J" and "22" for installation of an oil and gas pipeline. The next regular meeting of the Wheeler County Commissions' Court will be Monday, November 24, 2008, at 10:00 a.m.

Each sponsor giving tickets will display a poster in their window indicating they are giving drawing tickets. A complete list of sponsors will be published at a later date.

**Night** (from Page 3)  
 Brewer also reminds that Oklahoma senior high school students who have a certain ACT score do not have to pay tuition. Night classes meet one night a week from January until May. For a complete listing of SWOSU-Sayre spring classes, pick up a schedule on the Sayre campus or go to [http://www.swosu.edu/resources/data/sayre\\_sched2.htm](http://www.swosu.edu/resources/data/sayre_sched2.htm). The spring semester begins January 8.

**Chat** (from Page 1)  
 Several of the local merchants are once again handing out drawing tickets for Wheeler's 'Cash' drawings. You get a ticket for each dollar spent in Wheeler.

— cwe —  
 The weekend was spent in OKC. Seth attended his first Bluegrass event Saturday evening and he seemed to enjoy it.

— cwe —  
 When I went to purchase a ticket for Jennifer, the lady said, "Well, how old is she?" Eleven and under got in free.

— cwe —  
 The Meriwethers, Jennifer, Seth, Barbara and I were guests at the Arnolds for lunch Saturday. Bluegrass bands, Star Canyon

**THE WHEELER TIMES**  
 PAGE 8 — Thursday, November 13, 2008  
 "Wheeler: town of friendship and pride"

and The Hunt Family, were honored guests.

— cwe —  
 Cards were played Monday evening. It was just Rhonda and Barbara against Leroy and I. We each won a game.

— cwe —  
 I forgot to say last week that Seth and Jennifer won first in the Halloween contest at one of the Wal-Mart stores in OKC in Seth's age group.

— cwe —  
**GO MUSTANGS!**

**Booth Space Available for Wheeler Chamber of Commerce Christmas Open House**  
**December 6-7, 2008**  
 Phone: 806/826-3408

**MARKET SQUARE**  
**WHEELER WELLINGTON SHAMROCK CHEYENNE**

Wheeler County's Exclusive source for Plains & Shurfine Products!  
 Your source for the freshest ★ PRODUCE ★ MEATS ★ DAIRY  
 300 E. Oklahoma Ave. — Wheeler, Texas  
 "Support Your Local Merchants" **806-826-5944**

PRICES GOOD  
 WEDNESDAY NOVEMBER 12 THRU  
 TUESDAY NOVEMBER 18, 2008

ASST. NATURALLY FRESH  
**Salad Toppings**  
 EACH **\$2.99**

**Tender Crust Split Top White Bread**  
 24 oz. **99¢**

IT'S OUR STOCK UP FOR  
**THANKSGIVING**  
*Blowout!*

**Pilgrim's Pride Thighs or Drumsticks**  
 family pack **99¢ lb.**  
 Small Pack \$1.19 lb.

**Shurfine/Shur Saving Milk**  
 select varieties gallon **2 for \$5**

**Banquet Dinners**  
 select varieties 6.7-12 oz. **10 for \$10**

**Sirloin Cut Pork Chops**  
 family pack bone-in **99¢ lb.**  
 Small Pack \$1.29 lb.

**T-Bone Steak**  
 preferred trim **\$4.99 lb.**

**Betty Crocker Cake Mixes**  
 select varieties 18-18.25 oz. **10 for \$10**

**Shurfine Saltine Crackers**  
 select varieties 15-16 oz. **\$1.19**

**Wolf Chili No Beans**  
 19 oz. **2 for \$3**

**New Crop Tangerines**  
**99¢ lb.**

**Betty Crocker Whipped Frosting**  
 select varieties 12-16 oz. **2 for \$3**

**Kleenex Cottonelle Bath Tissue**  
 regular or ultra 12 double rolls **\$5.99**

**Rome or Gala Apples**  
**99¢ lb.**

**Colorado Baking Potatoes**  
 2 lbs. **\$1**

**Nice'n Fluffy Fabric Softener**  
 floral 80 oz. **\$2.99**

**Xtra Detergent**  
 select varieties 40-50 loads **2 for \$4**