

Boys, Saturday Is Last Day to Enter FBI Contest



Eastland Telegram

"COVERING EASTLAND COUNTY"



VOL. NO. 30

EASTLAND, TEXAS, THURSDAY, OCTOBER 1, 1959

No. 65



THE NEW PONTIAC—Pontiac's new approach to styling is pronounced by the Bonneville convertible and the Ventura sport coupe, only two in a parade of 16 beautiful models introduced by Pontiac for 1960. Priced just above the Catalina series, the Ventura features special interior appointments, including seats trimmed entirely in Venetian Morrokide. The new Pontiacs go on display at Muirhead Motor Co. today.

Pontiacs Go On Display Today For First Time

"Sixteen stunningly new models in four series are presented by Pontiac in 1960, marking the greatest engineering and styling advances ever achieved by our firm," S. E. Knudsen, GM vice president and general manager of Pontiac Motor Division, said in announcing the Division's new line of cars. The new Pontiac goes on display here today at Muirhead Motor Co.

"Our engineers and stylists have overlooked nothing in their successful efforts to make Pontiac for 1960 the most desirable car that we have ever manufactured," said Knudsen. "We are confident that our new line of cars will maintain Pontiac's award-winning reputation as America's number one road car."

Gentle curves and flowing lines of sculptured beauty readily identify Pontiac's completely new line of cars for 1960. Pontiac's sensational classic styling and wide track design prevails throughout each series; from the luxurious Bonneville and Star Chief to the Catalina and the new Ventura series.

Heading a list of 47 new features is the exciting appearance of the 1960 Pontiac, highlighted by a "V" design front end. A massive, sweeping front bumper just (Continued on Page Four)

New Cadillac to Go On Display Tomorrow

In announcing the 1960 Cadillac, which goes on public display tomorrow, James M. Roche, Cadillac general manager and vice president of General Motors, said, "The newness of the 1960 Cadillac is emphasized by its handsome lines and elegant simplicity of design."

The new Cadillac will be on display at Don Pierson's Olds-Cadillac in Eastland.

"In addition to the styling advances are important developments in mechanical operation, including further progress in achievement of smoothness and quietness of performance and significant developments in the braking system."

For 1960, Cadillac is offering 13 models in three standard series and one custom series, the Eldorado Brougham. All models are basically unchanged in dimensions over last year's models.

The wider and lower appearance of the new front grille is achieved by the addition of a fine horizontal bar between each row of jewel-like ornaments and the elimination of the center bumper bar. At each end of the front bumper is a visored housing with two parking and directional signal lamps.

As a new safety feature, driver convenience and another Cadillac first, the front fender crown (Continued on Page Four)

HOLLYWOOD HAPPENINGS

news from the HOLLYWOOD V-ETTE VASSARETTE FACTORY By GEORGIA GOSNELL

This week has had quite a lot of excitement for us out at the plant. We have a Credit Union set the way for the employees and their families. Each year we vote for a "Queen" to represent our plant in the National "Bra-Caster" new F. Let's come out on top for this three night place.

Paulene Hill, Mildred Loper and Norma Wharton. Paulene Hill resides in Ring Star and attended school in Epton Okla. Paulene has been employed with this company for about eight years and became a member of the credit union about three months after it was organized in our plant. Paulene is the mother of two daughters.

Mildred Loper lives in Eastland and attended school here and Ranger Junior College. Mildred has been with the company about two months and a member of the credit union since her employment. She has two daughters and is a machine operator in the cup section on line one.

Funeral Services Held Today for James W. Watson

Funeral services for Jim Watson, 401 High, were held today at 2 p.m. in the Hamner Funeral Home Chapel with Rev. James Campbell and Rev. Heckendorn officiating at the services. Burial was in the Eastland cemetery. Mr. Watson died Tuesday morning at his home.

Mr. Watson is survived by three sons; James of Monahan, Jim of Sweeney and Marshall of New Orleans, La. and two daughters, Mrs. Mae Spars of Nowata Okla. and Mrs. Nell Davis of South Houston.

Norma Wharton is a charming top-stitcher on line three. Norma has one small boy and attended Ranger school. She has been employed with the company approximately one year and a member of the credit union two or three weeks.

Nellie White and her husband, Mac, had a surprise early Sunday morning. Nellie was up to take a pill and Mac got thirsty. When he looked out the back screen door, there stood Nellie's sister, Mrs. Sally Mills from Houston. A nice day of visiting and catching up on the news was enjoyed by all.

Mrs. Margaret Lind from Abilene visited her daughter over the weekend. Her daughter Mrs. Alene Reed, is a whirler of line three.

Guess what! The mumps caught up with Eula Slatten this week. We wish her a speedy recovery and to see her soon.

Visiting Mrs. Harlow this weekend were her uncle and aunt, Mr. (Continued on Page Five)

Yesterday Was... Day to Buy!

Eastland County citizens, like all good Americans, will start paying a penny a gallon more for gasoline today.

The new one cent increase in federal fuel taxes goes into effect today. Texans will now be paying four-cent per gallon federal tax plus five-cent per gallon state tax. That's about 90 cents in taxes on every 10-gallon purchase, or the equivalent of 42 percent of the average price Texans pay for motor fuel.

RHODES' ROUND-UP

Fire Prevention Is Stressed at School

By GENE RHODES

Hi! This past week has been quite a week on high school hill. Work has started being piled on and everyone is having to get down to business. For the past week, everyone has been walking around scratching the heads and racking their brains trying to think of subject matter for a fire theme.

This next week is the week designated as fire prevention week. Certainly fire prevention should be on our minds all year, but this special week puts marked emphasis on it. The fire themes written will be judged and prizes will be awarded for the best themes in each class.

Last Friday night, the Eastland Mavericks lucked out and sneaked by a fired-up Cross Plains team 14-8. The Mavericks didn't look like the same boys that played De Leon last week. Certainly, the many injuries hurt the Mavericks, but there were other factors that spelled their near defeat. If Cross Plains had had some sticky-fingered pass receivers, the score would not have been the same. This week the Mavericks tackle the rugged Albany Lions at Maverick Stadium. The Mavericks are going to have to play good ball and work hard to take a victory, but I think they will do it.

There was a mighty fine crowd on hand at Cross Plains last Friday night. If you were there, I think that you will agree that it

Simple Contest Rules Explained One More Time

Here are the simple rules Eastland County junior high and senior high school boys must follow to be eligible to win the free trip to Washington, D. C. in the FBI contest sponsored by the Majestic Theatre and the Eastland Telegram:

- 1.) Write a theme of 100 words or less on "Why I Would Like to be An FBI Agent."
 - 2.) Mail or bring the entry to the editor of the Eastland Telegram before midnight Saturday. Accompanying the essay must be the entrant's full name, address, age, telephone number and the school he attends.
- There will be a winner in Eastland County. Will it be you?

EASTLAND NATIONAL BANK "On The Square" MEMBER F. D. I. C.

stands should have been switched. I believe that the visitor stands would have been about right for the Cross Plains crowd while the (Continued on Page Four)

New Imperial Goes On Display Locally Friday

The 1960 Imperial cars will be displayed by dealers beginning Friday, at Blevins Motors in Eastland.

They will be the first of the 1960 Chrysler Corporation passenger cars to be shown to the public.

Jay Blevins said the new models represented the most extensive styling change in the Imperial since it became a completely separate line in the 1957 model year.

"We have modified everything—doors, roof, quarter panels, hood, deck lid, fenders, front, rear and interior—and yet we were careful to retain the Imperial look which has become a classic in the industry," Blevins said. "This protects the owner's investment."

Blevins said special attention had been given to the interiors of the new models, particularly to design features which contribute to passenger comfort. He said marked advancement in the area of comfort and convenience included:

New high-torque driver seat for greater driver back and shoulder comfort.

Foam rubber padding up to six-inch thickness in both front and rear seat backs.

Adjustable spot air conditioning unit beneath steering column opposite driver.

New non-glare instrument panel with EL light for less driver eye (Continued on Page Four)

PAGE ONE MUST

Members of the Lakeside Country Club will hold a family night and covered dish supper Thursday at 6:30 p.m. All members have been urged to attend.

Monday will be an official school holiday in Eastland. It will be teacher visitation day, giving local teachers an opportunity to visit other schools and study new teaching methods.

New Oldsmobile Goes On Display At Don Pierson's

New crisply-tailored styling and a new balance of design are teamed with further advances in economy of operation in the 17 new Oldsmobile models for 1960. It was announced today by Don Pierson. The new Oldsmobile goes on display in Eastland Friday.

Pierson stated that the 1960 Oldsmobile features a redesigned Rocket engine in the Dynasave '85' series for use with lower cost regular grade gasoline.

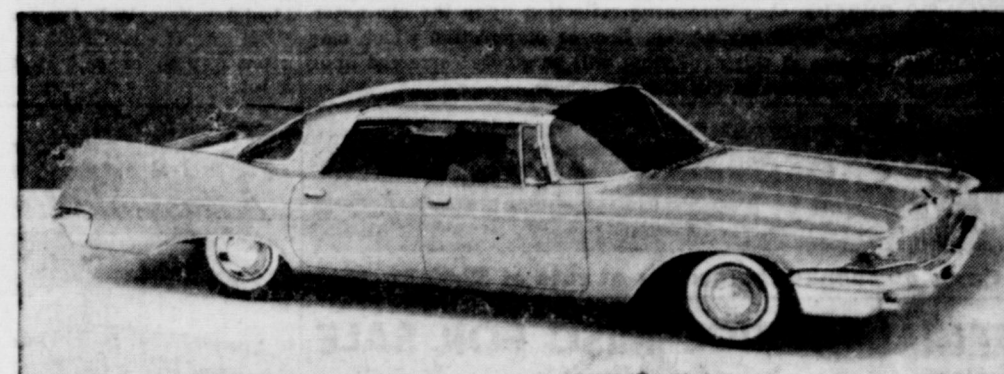
"This engine," said Pierson, "will give our customers an improvement of 15 per cent in miles per dollar—maintaining excellent performance."

In all series there are new rear (Continued on Page Five)

Election of New Hospital Board Set for Oct. 12

A meeting of all persons who hold stock in Eastland Memorial Hospital will be held Monday, Oct. 12 at 7 p.m. in the Texas Electric Service Co. conference room. Directors and officers will be elected for the coming year.

TIRE OF A GAS MOG? OF PARRING A DINOSAUR? Fry and buy the popular, smart new Rambler, truly a feisty-weeney gas burner. Famous for fun, resale, quality and economy.



AT BLEVINS FRIDAY—In re-designing the Imperial for 1960, inside and out, stylists gave special attention to passenger comfort. Seat cushions are padded with up to six inches of foam rubber and there is ample head room and leg room despite the car's low silhouette. The Imperial Custom four-door Southampton, shown above, features flashing new exterior styling.

Stern Test Faces Mavs In Albany Game Friday

Two teams which have each won three games in a row after dropping opening tilts to tough opponents clash at Maverick Stadium Friday night. It will be the Albany Lions against the Eastland Mavericks at 8 p.m.

This will be the fourth straight year the two teams have matched talents and Eastland will be out to even up the series. The Mavs won in 1956, 38-36; Albany won last year, 37-14; and the Lions edged the Mavs, 19-13 in 1955.

New Appearance Features 1960 Chevrolet Line

A distinctive new appearance, added comfort and increased economy of the most popular V8 engine are among outstanding features of the 1960 Chevrolet.

Nineteen models (including the Corvair and the spirited Corvette sports car) will be included in the first public showing by Chevrolet here Friday at Fullen Motors.

All passenger car series have been completely re-styled. There is a fresh new appearance to the exteriors. The interiors are roomier and offer new elegance of upholstery and sidewall treatment.

The most notable design changes occur in frontal and rear areas. An oval-shaped grille spans the hood and encloses widely spaced twin headlights at the outer edges.

The wing overhang at the rear has been revamped to widen the trunk opening and lower the loading sill. An ensemble of circular tail-lamps replaces the former tear-drop configuration.

Side-trim moldings establish distinctive appearance for the Impala, Bel Air and Biscayne series.

The front compartment transmission tunnel has been significantly reduced in width and height to benefit roominess. The frame has been reinforced and new rubber-insulated body mounts give a quieter ride.

In addition to the new economy in the Turbo-Fire V8, the power packages include a six and six other V8 choices. To improve overall economy and engine performance in the normal driving ranges, a low-lift camshaft with reduced valve overlap, and recalibrated carburetor are featured on the new economy Turbo-Fire V8.

New tires are more durable. Tread life has been increased 12 (Continued on Page Two)

with a last minute touchdown. Albany has given up just six points to their last three opponents. They used reserves to beat Throckmorton, 27-0, last week, and downed Roscoe, 26-6, the week before.

Albany has given up just six points to their last three opponents. They used reserves to beat Throckmorton, 27-0, last week, and downed Roscoe, 26-6, the week before.

Albany is always a tough and the Mavs will probably find themselves in the underdog roll, considering the fact that the locals almost let Cross Plains, loser of four straight games, upset them last week.

7-AA PREDICTIONS

Here's how the Telegram sports desk sees this week's District 7-AA games:

Albany will outscore Eastland, 24-14.

Cisco's reserve strength will win out over DeLeon's Bearcats, 24-6.

Ballinger will rip Lakeview (San Angelo), 44-0.

Ranger will beat Dublin, 32-12.

Winters will fall to Hamlin, 16-0.

Coleman will down Haskell, 22-8.

(Last week this department hit five for five.)

week before. Their other victory was a 51-0 beating handed Santa Anna. The Lions only loss was suffered at the hands of strong Olney. Albany was outscored in that one, 38-12.

Eastland, on the other hand, opened with a 38-8 drubbing inflicted by Hamlin's Pied Pipers. The Pipers are still undefeated after three games. The Mavs snapped back to whip Dublin, 36-6; DeLeon, 20-6; and Cross Plains, 14-8.

Eastland will regain two starters this week. Gary Lusk and Don Wilson, two tough linemen, will be back in action after sitting out last week's game because of sickness. The Mavs will also have Buddy Moser, who has missed the last two games, back in uniform for limited service.

Two starters will probably not

see action, however. John Wilson is definitely out for the week with a hip injury suffered in the Cross Plains game and Philip Lewis will see only limited action because of illness.

Coach Carrol Shelton announced one additional change in the lineup. He is moving J. D. Ables, a freshman back, into the starting line-up. In the backfield with Ables will be Mickey Garner, John Stroud and James Lewis.

Albany is always a tough and the Mavs will probably find themselves in the underdog roll, considering the fact that the locals almost let Cross Plains, loser of four straight games, upset them last week.

Albany has given up just six points to their last three opponents. They used reserves to beat Throckmorton, 27-0, last week, and downed Roscoe, 26-6, the week before.

Albany has given up just six points to their last three opponents. They used reserves to beat Throckmorton, 27-0, last week, and downed Roscoe, 26-6, the week before.

Albany has given up just six points to their last three opponents. They used reserves to beat Throckmorton, 27-0, last week, and downed Roscoe, 26-6, the week before.

Albany has given up just six points to their last three opponents. They used reserves to beat Throckmorton, 27-0, last week, and downed Roscoe, 26-6, the week before.

Albany has given up just six points to their last three opponents. They used reserves to beat Throckmorton, 27-0, last week, and downed Roscoe, 26-6, the week before.

Albany has given up just six points to their last three opponents. They used reserves to beat Throckmorton, 27-0, last week, and downed Roscoe, 26-6, the week before.

Albany has given up just six points to their last three opponents. They used reserves to beat Throckmorton, 27-0, last week, and downed Roscoe, 26-6, the week before.

Albany has given up just six points to their last three opponents. They used reserves to beat Throckmorton, 27-0, last week, and downed Roscoe, 26-6, the week before.

Albany has given up just six points to their last three opponents. They used reserves to beat Throckmorton, 27-0, last week, and downed Roscoe, 26-6, the week before.

Albany has given up just six points to their last three opponents. They used reserves to beat Throckmorton, 27-0, last week, and downed Roscoe, 26-6, the week before.

Albany has given up just six points to their last three opponents. They used reserves to beat Throckmorton, 27-0, last week, and downed Roscoe, 26-6, the week before.

Albany has given up just six points to their last three opponents. They used reserves to beat Throckmorton, 27-0, last week, and downed Roscoe, 26-6, the week before.

Albany has given up just six points to their last three opponents. They used reserves to beat Throckmorton, 27-0, last week, and downed Roscoe, 26-6, the week before.

Albany has given up just six points to their last three opponents. They used reserves to beat Throckmorton, 27-0, last week, and downed Roscoe, 26-6, the week before.

Albany has given up just six points to their last three opponents. They used reserves to beat Throckmorton, 27-0, last week, and downed Roscoe, 26-6, the week before.

Albany has given up just six points to their last three opponents. They used reserves to beat Throckmorton, 27-0, last week, and downed Roscoe, 26-6, the week before.

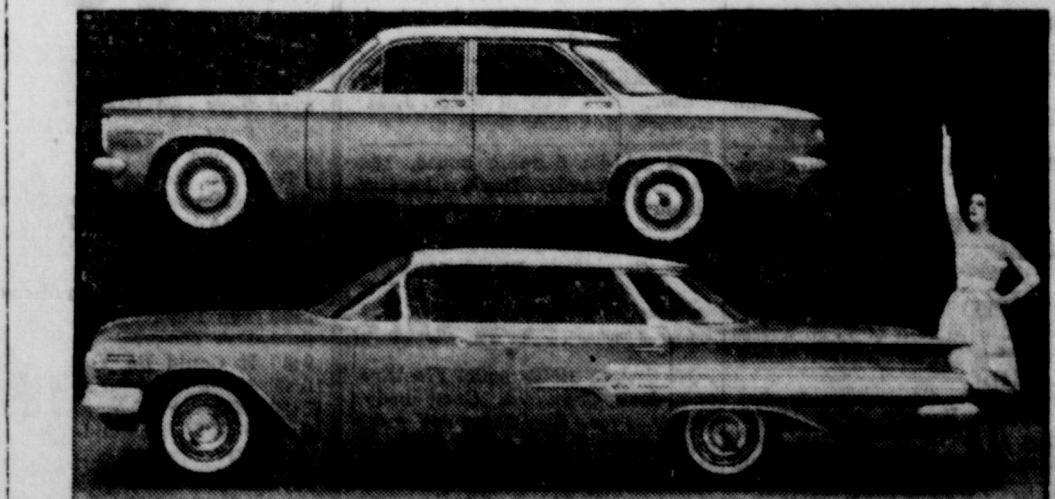
Albany has given up just six points to their last three opponents. They used reserves to beat Throckmorton, 27-0, last week, and downed Roscoe, 26-6, the week before.

Albany has given up just six points to their last three opponents. They used reserves to beat Throckmorton, 27-0, last week, and downed Roscoe, 26-6, the week before.

Albany has given up just six points to their last three opponents. They used reserves to beat Throckmorton, 27-0, last week, and downed Roscoe, 26-6, the week before.

Albany has given up just six points to their last three opponents. They used reserves to beat Throckmorton, 27-0, last week, and downed Roscoe, 26-6, the week before.

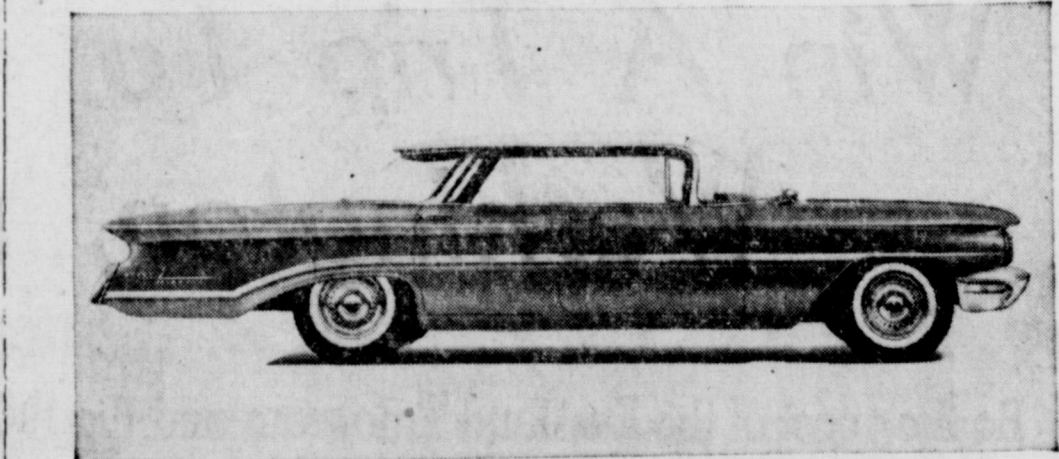
Albany has given up just six points to their last three opponents. They used reserves to beat Throckmorton, 27-0, last week, and downed Roscoe, 26-6, the week before.



TWO CHEVROLETS—A strong family resemblance between the all-new Corvair and Chevrolet's conventional line of passenger cars for 1960 is evident in this unusual profile view. At 180 inches, however, the Corvair is more than two and one-half feet shorter, while its 108-inch wheelbase compares with 119 on the Impala Sport Sedan with which it appears. The two cars both go on display here Friday at Fullen Motor Co.

FREYSCHLAG INSURANCE AGENCY presents the **WEATHER NEWS**

High	70
Low	51
Rainfall Since Tues.	2.70
Total Rainfall in Oct.	2.15
Avg. Rainfall in Oct.	2.74
Forecast	Cloudy and Cool



ON DISPLAY FRIDAY—A trim balanced design of clean flowing lines highlight the modern styling of the Oldsmobile for 1960. This side view of the '98" Holiday Sport Sedan shows off the smooth, uncluttered lines to their best advantage. Note the low and level design of the car. The new Olds can be seen Friday at Don Pierson's Olds-Cadillac in Eastland.



AT DON PIERSON'S—The sweeping elegance of the newly created silhouette of the Series Sixty-Two six-window sedan typifies the handsome lines and simplicity of design of the 1960 Cadillac. The popular six-window sedan features all the advanced engineering and design characteristics of the new models.

Eastland Telegram

Eastland County Record established in 1931, consolidated August 31, 1951. Chronicle established 1887, Telegram established 1923. Entered as second class matter at the Post Office in Eastland, Texas under the act of Congress of March 3, 1879.

TIMES PUBLISHING COMPANY
Published Tri-Weekly—Tuesdays - Thursdays - Sundays
Onous Dick and Joe Dennis, Publishers
Virgil E. Moore, Editor

One week by carrier in city 15
One month by carrier in city 65
One year by mail in County 2.95
One year by mail in state 4.95
One year by mail out of state 6.95

NOTICE TO PUBLIC—Any erroneous reflection upon the character, standing or reputation of any person, firm or corporation which may appear in the columns of this newspaper will be gladly corrected upon being brought to the attention of the publishers.

WANT ADS

Cards of Thanks charged for at rate of \$2.00 Each

SPECIAL NOTICE

NOTICE: Rock foundation and house leveling. Cement porches at reasonable prices. 609 W. Plummer.

NOTICE: Traffic appliances repaired, irons, percolators, mixers, etc. Call Roy Gann, 785.

NOTICE: Green Kindergarten will open Oct. 1, 902 W. Plummer, 9 to 12 Tuesday, Wednesday and Thursday mornings. Possibly on Friday for a younger group. Enrollment Wed., Sept. 30th, 2:30 to 3:30. Tuition by the month in advance. Fern Green, Phone 827-W.

DON'T LET YOUR SOIL DO YOU DIRT: For a limited time we will give a complete soil test for only 50c. Test includes PH, Values, Lime (Acidity), Nitrogen, Phosphorus and potash. Will advise what soil needs for vegetables, fruit trees, field crops, flowers, etc. **TENNYSON NURSERY**, 1003 West 16th, Phone Hillcrest 2-1512, Cisco.

SPECIAL NOTICE: Senior citizens come live with us. Reasonable rates. Few more downstairs rooms available. For well or convalescing guests nursing care available around the clock. Golden Age Convalescing Home formerly Mobley Hotel, Cisco, Texas, Phone HI 2-2370.

WANTED: Mowing, raking and Hay Baling. Call Casey Mezell, Phone 836 W2, Eastland

Eastland Masonic Lodge No. 467
Reg. Stated meetings 2nd Thursday of each month, at 8 p. m.
H. G. Weathersby, W. M.
L. E. Hockaby, Secretary

FOR RENT

FOR RENT: Furnished 2 bedroom apartment in Duplex. 611 Plummer.

FOR RENT: Furnished apartments. Call 576 or 246.

FOR RENT: Newly decorated apartments Hillside. Phone 9520.

ENJOY LIFE DOWNTOWN, close to everything. 100 lovely redecorated rooms with 100 private baths, all with ceiling fans, for only \$39.50 per month, which includes maid service. Delicious Coffee Shop. Also apartments custom made to any size for permanent guests. Contact Mrs. Robinson, manager, the friendly Village Hotel (formerly the Connellee), Eastland, Texas.

FOR RENT: Small clean house, \$25.00. Call 119.

FOR RENT: 4 room apartment. Newly decorated. Phone 90.

FOR RENT: Furnished 1 bedroom apartment with garage and air conditioner. 302 East Main.

FOR RENT: Four room house. 207 South Walnut.

TERMITE CONTROL and all other types **PEST EXTERMINATING MODERN EXTERMINATING CO.**
Box 312 Ranger
PHONE RANGER
Day 919—Night 911

MISC. WANTED

WANTED: Children to keep by hour or day. Fenced yard and excellent care. Phone 446-W.

WANT TO BUY: Good used piano. Call 1117.

WANTED: Small used electric refrigerator and apartment sized kitchen range. Call 520-W.

POSITIONS WANTED
Man and wife both L. V. N. nurses desire position as private nurse. Call 324-W.

WANTED: Barber with Master license to work in Gorman shop. Walter Broom, Box 135, Gorman.

SALESMAN
Leads furnished. No experience necessary. Earn \$1,000 per month. Age 21 to 45. Write Dan Crowley, Care of States General Life Insurance Co., 708 Jackson Street, Dallas, Texas.

MISC FOR SALE

FOR SALE: Electric range with copper trim. Bargain. Phone 667.

FOR SALE: Wish to sell equity in property 713 W. Patterson. Will accept good used car. Phone HI-2-2437, Cisco.

FOR SALE: 5 hp. Sea King. \$25.00. Lee McGuire, Olden.

ELECTROLUX (R) Cleaners factory rebuilt and guaranteed. Authorized Sales & Service. 1392 Sayles, Abilene. Ph. OR 3-1135.

FOR SALE: House plans especially for you. FHA and G. I. approved. Phone 875.

FOR SALE: Double boat house and lot lease, located on Lake Eastland. See Onous Dick, Eastland Telegram.

"We have in this vicinity 3 Re-possessed Pianos — 2 tradit-ions, which include one small blonde Spinnet, and one dark finished Spinnet. Responsible parties may assume attractive balances. Write only—Credit Manager, McBryner & Sons Piano Company, 3128 E. Lancaster Ave., Ft. Worth."

FOR SALE: New 16 hp. Oliver outboard motor. Less than wholesale. Can be financed. Phone 142. 565 S. Bassett.

FOR SALE: Good used Hotpoint electric cook stove with automatic oven, warming drawer, automatic time plug, oven signal light and timer. Call 566 after 5 p.m. Mrs. Johnnie Aaron.

GADGETS, GIZMOS, UNIQUES: New all wool sleeping bags with cover \$5.50; Comforts \$3.95; 5 buckle overshoes \$3.00; New wool quilted Tanker jackets \$6.95; With mouton collar \$8.95; With mouton zipper parka \$15.95; New low quarter russet, plain toe dress shoes size 6-A \$3.95; 100 percent wool Air Force blue trousers \$4.00; Overcoats \$6.00; Eisenhower jackets \$3.00; Wool knit scarfs 50c; 18-qt. O. D. Water buckets \$1.00; Overall, flying jackets, kakah shirts, hunters caps, game bags, hunters knives, rope, tarpaulins, rain coats, camp stools, all sizes metal and wood boxes, at low, low prices. Come in and browse—Army Surplus Store, Eastland, Texas.

REAL ESTATE FOR SALE

HOUSE FOR SALE: Cheap. Will take boat or small car as part payment. D. L. Kinnaird Insurance.

REAL ESTATE FOR SALE: Nice home, three bedrooms. 507 South Walnut, also frigidare, living room furniture, water cooler. Phone 361 or 1142-W.

FOR SALE: House, 608 S. Bassett.

22 ACRES grassland, 3 miles South Wayland. 1/2 Mineral rights \$18,000. Howard O. Swanson. HI-9-2241, Breckenridge.

FOR SALE: Large house to be moved. See Johnny Gerhardt, phone 54619. Rising Star.

FOR SALE: Small house to be moved. 210 East Valley.

FOR SALE: Five room house. Newly decorated. Good location across street from grade school. Call 80 or 406.

FOR SALE: Staff store and filling station. Good well of water. J. M. Mounce, Box 294, Gorman.

FOR SALE: 5 room house, 104 South Hillcrest. Doyle Lasater Phone 715-W.

FOR RENT: Furnished house. 1209 West Commerce. Phone 509.

AUTOS FOR SALE

FOR SALE: 1950 model Fleetline two door Chevrolet. Good body, motor, tires. Big Chevrolet radio and heater. B. C. Narron, Route 1, Eastland, in care of Ollie Doiber.

LOST & FOUND -

LOST: Schoolbooks, in Saint Francis Catholic Church. Call 1066.

Trade With Your Hometown Merchants

Wanted To Trade

WANT to trade lot and half on paved street and 51, four door Plymouth for 54 or 55 car. Phone 631.

FOR SALE OR TRADE for Eastland city, rural or lake property one of most beautiful ranch style homes in Cisco. 3 bedrooms and den, 3 ceramic tile baths, vinyl tile throughout, fireplace, central air, central heat, reflective insulation, life-time roof, large hobby shop, beautiful trees and lawns in ideal location. Will finance 100% F. H. A. Phone Cisco HI 2-2418 after 6 p.m. or call Eastland 0, 8 to 5.

New! Gillette Adjustable Razor



YOU CHOOSE EXPOSURE FOR YOUR SKIN & BEARD!

NOTICE

FRESH DRESSED FRYERS and Fresh Dressed Hens At The Plant PHONE 110 WALKER Dressing Plant

KING'S TV LOG

- Thursday, Oct. 1
- 2:00 Young Doctor Malone
- 2:30 From These Roots
- 3:00 House On High Street
- 3:30 Split Personality
- 4:00 MGM Command Presentation
- 5:30 Three Stooges
- 6:00 News
- 6:10 Weather
- 6:15 NBC News
- 6:30 Sports Desk
- 6:45 Football with Chuck
- 7:00 MacKenzie's Raiders
- 7:30 Johnny Staccato
- 8:00 Bachelor Father
- 8:30 Tennessee Ernie Ford
- 9:00 You Bet Your Life
- 9:30 State Trooper
- 10:00 News
- 10:10 Weather
- 10:15 MGM Command Presentation Sign Off
- Friday, Oct. 2
- 6:30 Continental Classroom
- 7:00 Today
- 8:00 Today
- 9:00 Dough Re Mi
- 9:30 Treasure Hunt
- 10:00 Price Is Right
- 10:30 Concentration
- 11:00 Tic Tac Dough
- 11:30 It Could Be You
- 12:00 News & Weather
- 12:15 Middy Melodies
- 12:30 Devotions
- 12:35 Three Stooges
- 12:45 Air Force Film
- 1:00 Queen for a Day
- 1:30 The Thin Man
- 2:00 Young Dr. Malone
- 2:30 House On High Street
- 3:00 Split Personality
- 4:00 Command Presentation
- 5:30 Three Stooges
- 6:00 News
- 6:10 Weather
- 6:15 NBC News
- 6:30 People are Funny
- 7:00 Kit Carson
- 7:30 M-Squad
- 8:00 Calvacade of Spaz
- 8:45 Jackpot Bowling
- 9:00 Art Carney Show
- 10:00 News
- 10:10 Weather
- 10:15 MGM Command Presentation Sign Off
- Saturday, Oct. 3
- 9:00 Howdy Doody
- 9:30 Ruff and Reddy
- 10:00 Fury
- 10:30 Circus Story
- 11:00 True Story
- 11:30 Command Presentation
- 3:15 NCAA Football, Texas vs. California
- 6:30 Bonanza
- 7:30 The Man & the Challenge
- 8:00 The Deputy
- 8:30 Five Fingers
- 9:30 It Could Be You
- 10:00 News
- 10:10 Weather
- 10:15 MGM Command Presentation Sign Off

Probable Line Up

EASTLAND	WT.	Position	WT.	ALBANY
Martin Day	175	End	145	Rocky Hill
Bill Moylan	170	Tackle	174	Mack Woodfin
Bill Jones	170	Guard	152	Raymond Taylor
Don Hazard	155	Center	195	T. G. Willie
Marvin Agnew	180	Guard	165	Bill Stapp
Gary Lusk	178	Tackle	187	Tommy Stapp
Don Wilson	160	End	145	Denny Dodigen
Mickey Garner	160	QB	175	Charles Woodard
J. D. Ables	135	HB	155	Bill Morrell
John Stroud	168	HB	160	Harold Durham
James Lewis	162	FB	170	Gene Gray

BOY SCOUT ACTIVITIES

Members of Rotary Scout troop held an all-day hike Saturday, Sept. 26. Here is the report issued by Scoutmaster Jimmy Horn:

We met at the scout cabin at 7 a.m. and checked our first aid kits and distributed snake bite kits. All boys learned the proper use of snake kits before leaving on the hike.

I was amazed at the variety of food and equipment carried for the five mile hike. We left City Park at about 7:35 a.m. and hiked three miles to the ranch, then about a mile and a half to the springs, where we stopped to cook our noon meal. All meals prepared by the scouts consisted of meat and at least one cooked vegetable.

Before we reached our camp site the boys were yelling food and had quit singing the hiking and camping songs they were singing in the first part of the hike.

When nearing the springs we walked upon a full grown fox and were within 15 to 20 yards of him before he took flight. We saw several cardinals, mocking birds, wrens and hawks and several other types of birds.

While choosing our camp site for the noon meal the boys collected some pets such as a ribbon snake and a snapping turtle that measured about 14 inches across. The boys finally decided on a site to cook lunch. It was well shaded and a good carpet of green grass and an ample supply of fuel and stones made it ideal. Five cooking fires were started with two or three scouts cooking at each fire. These fires were all started with one match, with the exception of one. The type fires were rock fireplace type, except for one trench fire and one common pyramid fire. All types are good low smoke

cooking fires. Quite a variety of food was prepared. Several steaks were either fried in skillets or on forks and a great deal of foil was used on this outing. For dessert the boys had baked apples coated with cinnamon and pineapple or cinnamon, pineapple and bananas baked in some fashion.

After completing the meal the next step was cleaning up the camp site. We burned the garbage and buried the cans.

As tired as the boys were they wanted to go on to a canyon and cave about a mile and a half away. During the stay at the springs some boys passed fire building, cooking and other skills. About 2 p.m. we started for the caves. Time caught up with us, however, and we had to head back home.

New Appearance -

(Continued from Page One)

per cent by new synthetic rubber and a change in the proportion of synthetic and natural rubber. The higher energy - absorbing tread material also promises less impact on bumps, reduced tire squeal on turns and surer traction.

Brakes have been improved and require less pedal pressure. The parking brake now carries a pop-out release lever.

Color choices in the 1960 conventional passenger car line include 13 solids and 10 two-tone combinations.

Body types offered include: Impala: four-door sedan and sport sedan; sport coupe and convertible. Bel Air: Two- and four-door sedans; sport coupe and sport sedan. Biscayne: Two-door and four-door sedans and a utility sedan. Station wagons: Nomad, Parkwood, Kingswood and two choices of Brookwood.

VISITS NIECE

Mrs. T. M. Collie has returned from Houston where she visited her niece, Mrs. H. L. Boothman, the former Billie Beth Rhoads of Ranger. Mrs. Boothman has been critically ill for sometime.



Bring Your BATTERY TROUBLES To Us!

Group One Fits Most 6 Volt Cars

8.95

Exchange

JIM HORTON

East Main St. Phone 258 Eastland, Texas

MOORE about... EASTLAND by Virgil E. Moore

A while back Blair Lewis was a patient at Eastland Memorial Hospital and Irvin Bishop phoned and asked if he needed anything. Blair said he could use a nice chocolate malt and before long a fellow brought one in, telling Blair that Bishop sent it to him.

Naturally Blair was delighted that Bishop thought enough of him to send him a malt. So he told all the nurses and everyone else who would listen what a nice guy Bishop was.

Well, Blair got out of the hospital this week and was in the White Elephant, where Bishop is manager. Lewis had just drunk a cup of coffee and handed Bishop 50c for him to take the dime he owed him out.

Blair was just fixing to thank Bishop for the malt when Irvin rang up the entire 50c.

"Wait a minute," Blair protested, "I just had a cup of coffee."

"You never did pay me for that malt I sent you," Bishop replied.

The story back of all of this is that Blair has demanded that we let everyone know Bishop didn't give him the malt.

"I told a lot of people Bishop was a good guy," Blair said, "and I sure want to take back what I said."

Noticed the new sign on all county-owned vehicles? The last Legislature passed a bill requiring that the signs be placed on the vehicles. Several Eastland County Commissioners aren't too happy with the requirement, and we can't see any advantage to the taxpayer ourselves. They do plug Eastland County a bit, however, and it's a small point to crusade over so we will shut up.

Want to help select a national flower? Understand that all florists which have FTD service are participating in an election to find out what flower Americans best like. A ballot lists most of the nation's flowers, and all you have to do is cast your vote. Results of the contest will be turned over to Congress. The Flower Shop and Poe Floral both are participating in the event.

Consumer Credit Publication Is Now Available

COLLEGE STATION — Do you know how to use your credit? Consumer credit can be a valuable tool or it can be a trap that will make your life miserable. Knowing how to use credit is an important asset.

Consumer credit is a business transaction that allows an individual or a family to get money, goods or services and pay for them at some future time. Good financial management often includes the use of credit. If used wisely, credit may enable a family to attain some of its major goals more quickly and easily. It may permit the purchase of furnishings and equipment when the family is young and needs are greatest, and allow the family to enjoy the goods as they pay for them.

To help individuals or families better use credit, extension specialists in home management have written a publication entitled, "Using Consumer Credit." This publication discusses the many phases of credit.

A few of the many reasons for using credit are: convenience, emergencies, savings, consolidation of debts and establishing a credit rating. Credit can be used at times to take advantage of special sales when cash is not available and also it is easier to return charged purchases than cash ones.

The specialists add that when using credit you should be cautious. When a person signs a credit contract, he mortgages his future

income. The use of too much credit will lower the level of living. Research shows that people usually buy more when they can use credit. Also, goods bought at a store with charge accounts are usually more expensive because of the costs of investigating each person's credit rating and keeping records of payments; loss through non-payment of accounts; and difficulty of collecting from some customers. This cost of credit is hidden, although included in the price of goods bought.

The publication also discusses types of sales credit available, where to borrow cash, decisions the individual or family should make before using credit, and an explanation of legal credit contracts.

Contact your local county agent for a copy of the publication, or write the Agricultural Information Office, College Station. Ask for MF 343.

CONSTIPATED? Medical reports show how folks over 35 can establish regularity

After 35, irregularity often becomes a problem. What you need is something that aids nature and helps establish regularity. Such an aid to regularity is the daily use of SERUTAN. Here's medical evidence: A group of men and women took SERUTAN daily under medical supervision. In case after case SERUTAN, taken daily, helped establish regularity. So, for real relief from constipation after 35, try SERUTAN, powder or granules.

SERUTAN "Read it Backwards"

NEW BIGGEST MARKING VALUE • Quick • Thrifty • Easy

USE ON ANYTHING

MARKER WITH FEET TIP

1,001 USES EASTLAND TELEGRAM

ATTENTION

Eastland County

JUNIOR AND SENIOR HIGH SCHOOL BOYS

Win A Trip To Washington, D. C.

Be the guest of the Eastland Telegram and the Majestic Theatre.

Here's All You Have To Do ...

To win a trip to Washington all you have to do is write a 100 word essay on "Why I Would Like to be an FBI Agent." The contest was inspired by the Warner Brothers motion picture "The FBI Story." Some boy in Eastland County will win. Will it be you? Essay entries must be mailed or brought to the editor of the Telegram before midnight, Oct. 3. The winner will be announced Tuesday, Oct. 6 and he will leave Dallas with 21 other Texas boys Thursday, Oct. 8. After a two-day visit the entire party will return to Dallas Sunday, Oct. 11.

Enter Your Essay Today

MOST POPULAR "WESTERN" AND PRICES IN TOWN



DEL MONTE ROUND-UP

AT WORTH FOOD MART!

FREE! 1,000⁰⁰
-- IN CASH --

Register FREE Every Day at WORTH FOOD MART
1st Prize-\$500.00 • 2nd Prize-\$250.00
3rd Prize-\$150.00 • 4th Prize \$10 0.00
No Purchase Necessary

DEL MONTE
WHOLE POTATOES No. 303 Can 15c
DEL MONTE
TOMATO SAUCE 3 8-Oz. Cans 29c
DEL MONTE, GREEN
FRENCH STYLE BEANS No. 303 can 25c

Prices Good thru Sat.

FRUIT COCKTAIL

DEL MONTE
SAVE 25c

5 No. 303 Cans **1⁰⁰**

PEACHES Del Monte Yellow Cling, Sliced or 1/2's

4 No. 2 1/2 Cans

1.00

CATSUP Del Monte

YOU SAVE 10c

3 14-Oz. Botls. **49c**

TOMATOES Del Monte Fancy, SAVE 20c

5 No. 303 Cans

1.00

PINEAPPLE Del Monte Chunks

2 No. 211 Cans

2 **35c**

DEL MONTE PEAS

EARLY GARDEN

2 No. 303 Cans **29c**

Golden Corn Del Monte Cream Style

6 No. 303 Cans

1.00

Tomato Juice Del Monte

SAVE 16c

4 46-Oz. Cans **1.00**

Green Beans Del Monte Cut

5 No. 303 Cans

1.00

Pine.-Gr'fruit Del Monte Drink

46-Oz. Can

29c

Chunk Style Tuna

Del Monte SAVE 17c

2 No. 1/2 Cans **49c**

Chili With Beans

Gebhardt's SAVE 40c

4 No. 300 Cans **1⁰⁰**

PORK & BEANS WHITE SWAN

3 No. 300 Cans

29c

BLACK PEPPER MORTON'S

3 1 1/2-oz. Cans

25c

Pink or Regular
LEMONADE
or **LIMEADE**

M. C. P. Frozen SAVE 19c **5** 6-Oz. Cans **49c**

Grape Juice

Welch's Frozen **2** 6-Oz. Cans **39c**

Limit Rights Reserved

IRONING BOARD PAD & COVER SETS

TUFFLEX PAD SILICONE COVER REGULAR \$1.98 VALUE

99c

DEL MONTE GOLDEN
Whole Kernel Corn 2 Cans **39c**

DEL MONTE SLICED
FREESTONE PEACHES No. 303 Can **25c**

DEL MONTE BEANS
EARLY GARDEN LIMAS No. 303 can **27c**

DEL MONTE FRESH
CUCUMBER PICKLES 15-Oz. Jar **23c**

Layer Cakes

Mrs. Baird's **DEVIL'S FOOD** Reg. 49c Value **39c**



WE GIVE
GREEN STAMPS

RAINBOW TROUT
Empress Rainbow 1 1/2-Oz. Pkg. **49c**

ARMOUR'S STAR BACON

Lb. **49c**
Pkg.

Fresh Ground Beef WORTH QUALITY

Lb. **45c**

Sliced Pork Liver FRESH

Lb. **29c**

Smoked Bacon Squares SWIFT'S

Lb. **29c**

Haddock Portions TASTE O' SEA

12-Oz. Pkg. **49c**

RED POTATOES

U. S. No. 1

10 -Lb Cello **39c**

Jonathan Apples ROSY RED

2 Lbs. **25c**

U. S. NO. 1 SPANISH
WHITE ONIONS

2 Lbs. **13c**

RED-RIPE, 3's, 4's
CARTON TOMATOES

Each **19c**

Colgate

TOOTH PASTE Economy 69c Size **53c**

WORTH FOOD MART

Rhodes Roundup

(Continued from Page One)

home stands would have been filled by the Eastland patrons. When you see crowds like this, you know that the people are backing you, and that makes a deciding factor very often. I hope that another fine crowd will be on hand Friday night to see a good ballgame.

The Eastland Maverick Band outdid itself again Friday night for a very fine show. It was good to show off our fine band this year to a school that always has a fine band. I'm sure that you will enjoy the fine program that they will put on Friday night at the football game. By the way, the Maverick band went to Abilene last Wednesday to see the Air Force Band and from everyone that I've talked to, I've come to the conclusion that it was a very successful and enjoyable trip.

Last Thursday night the pep rally on the south side of the square turned out to be one of the best of the year. It was raining cats and dogs, but there was a fine turnout. The Maverick band marched down to the square, played well, the cheerleaders turned in a fine performance and the whole situation turned out far better than expectations. The next morning a pep rally was held in front of high school. After hearing the band play and the fine feeling good, you couldn't help feeling that that afternoon the pep rally turned out to be a dandy. If the school spirit holds out, this will be one of the finest years EHS has seen. The spirit of the student body is one of the most determining factors between a fine year of school or a drab boring task.

There was a Southern Assembly program held at high school last Friday. The man, William Roy, was an "acrobat, ventriloquist, and comedian. The act was very

nice for the younger children. By the way, I noticed that Jon Tate, former Eastland coach, got a fine performance from his Clyde team Saturday night as they defeated Baird. We of high school hope that this is just a beginning of good things for Coach Tate and his team.

I suppose that about wraps it up for this week. See you soon. Oh yes, don't forget the pep rally Thursday night at 7. Everyone will meet in front of Modern Cleaners and the band will march down to the square with everyone following behind.

Cadillac

(Continued from Page One) moldings, in addition to concealing the junction line between fender and hood, have a new chrome ornament with a small amber light on the rear face which serves as a turn signal indicator.

The new side view silhouette is achieved with the lower, more restrained tail fin design which gives the effect of one long, sweeping line from the hood through the entire length of the car. The trim, classic lines which mark the 1960 Cadillac are brilliantly evident in the rear end styling with the most distinctive lightning arrangement ever offered by Cadillac.

Just below the contoured taillight lenses in the trailing edge of the fins are new vertical, oval, chrome bumper housings each containing two circular lamps with concave lens. The lower lamp with a red reflector lens serves as a taillight, stoplight and directional signal light operating in unison with the taillight in the fin itself. The upper lamp is the backup light.

Highlighted by rich metallic tones, fifteen basic acrylic paints are available throughout the line with five additional exclusive finishes for the Biarritz and Seville.

Pontiac

(Continued from Page One)

forward below a classical grille formed by seven narrow, gleaming bars with twin headlamps set at either end. The distinctively different grille, the one-piece bumper and the clean, sharp line of the hood enhances the car's overall simplicity and beauty.

Pontiac's low, clean styling is complemented by a Vista-Panoramic windshield and a generous wrap-around rear window, with a low-cut roof adding to the rakish beauty of every model. Pontiac's fresh approach to styling is even more pronounced in the sculptured deck lid and the rear fenders topped by twin dual tail lamps housed in individual cones extending toward the back window. Below each set of tail lamps are long, graceful backup lamp ports framed in chromium. The artistic deck flares downward to blend with a massive wraparound rear bumper. Below the front fender series nameplate on each model a thin-line trim moulding extends the full length of the car. The upper edge of the rear quarter panel is highlighted by a trim moulding.

Priced just above the Catalina series are two Ventura models, a four-door and a two-door hardtop. The two Ventura models have interiors trimmed entirely in colorful, customized Jewel-tone Morrokide available in many different shades to harmonize with exterior finishes. Fifteen solid paint colors and 60 two-tone combinations are offered with the 1960 Pontiac. Harmonizing with exterior colors are 51 interior color and material combinations of cloth, Morrokide and genuine leather.

Pontiac's instrument panel for 1960 features a new horizontal speedometer, redesigned instruments and control knobs and a non-glare finish on the upper surface.

Highlighted by rich metallic tones, fifteen basic acrylic paints are available throughout the line with five additional exclusive finishes for the Biarritz and Seville.

Mrs. Brown Hosts Members of Xi Alpha Zeta Mon.

Mrs. Truman Brown was the hostess to the members of the Xi Alpha Zeta Chapter of Beta Sigma Phi in her home Monday evening at the sorority's regular meeting.

During the business session, Mrs. Bill Collings presided. A program on photography was presented by Mrs. R. M. Sneed. She explained to the group how an amateur photographer can get outstanding pictures. Slides were shown and Mrs. Sneed made the pictures more interesting by giving each one a title.

White cake and coffee were served to Meses. Bill Leslie, Jack Horn, Bill Collings Fehrman Lund, M. H. Perry, R. M. Sneed, Virgil Moore, and the hostess, Mrs. Brown.

The next meeting will be held in the home of Mrs. Horn, 515 South Bassett.

Zeta Pi Chapter Rummage Sale Set For Oct. 2-3

The Zeta Pi chapter of Beta Sigma Phi will sponsor a Rummage sale to be held Oct. 2-3 in the Leslie Building on the northwest corner of the square from 9 a.m. to 5:30 p.m. Clothes, toys and a white elephant sale will be available. If anyone has any items that they would like to have picked up Thursday afternoon, contact Mrs. James Smith at 374.

Look Who's New



Mr. and Mrs. Richard E. Lane, 2304 39th Street, Lubbock, have announced the arrival of a son, Richard E. Lane, Jr. The baby was born Tuesday at 3 p.m. in Lubbock. He weighed seven pounds and one ounce.

He has one sister, Dana Ernestine, 2. The grandparents are Mr. and Mrs. James Gillo of Pasadena, Calif., and Mr. and Mrs. Roy Lane of Eastland. The great grandparents are Mr. and Mrs. H. J. Lane of Eastland.

Officers Elected At First Meeting Of Desdemona 4H

The first meeting of the 4-H Club work was held last week. The first business was to elect officers for the ensuing year.

They are as follows: Joyce Rainey, president; Rena Carr, vice-president; Charlene Stacy, secretary-treasurer; Brenda Roberts, council delegates; Anne Rainey, song leader and Ruby Lewis, reporter.

The program was on food and clothing. The 4-H teacher is Miss Willene Sockwell.

Joe Muirhead is visiting his parents, Mr. and Mrs. Jack Muirhead for a few days enroute from El Paso to Fort Bending, Ga.

Collie Circle Is Hosted by Mrs. Hill Tuesday

The Collie Circle of the Woman's Society of Christian Service of the First Methodist Church met at 9:30 a.m. in the home of Mrs. Russell Hill. The business session was conducted by the circle leader, Mrs. T. M. Collie. The circle voted to place 10 devotional booklets in the Eastland Memorial Hospital. Cards were sent to ill and bereaved families.

The program was under the leadership of Mrs. W. P. Leslie, program chairman. Mrs. W. A. Martin brought the devotional message. Mrs. Leslie gave a talk on "World Refuge Year."

A new member, Mrs. Bean Robinson was welcomed. The following members enjoyed Mrs. Hill's hospitality, Meses. O. M. White, W. A. Martin, Bean Robinson, Frank Castleberry, Chas. Harris, B. O. Harrell, T. M. Johnson, Taylor Smith, W. F. Davenport, W. P. Leslie, and T. M. Collie.

The next circle meeting will be held in the home of Mrs. T. M. Collie on Oct. 13th. All members are urged to attend each meeting.

ATTEND THE CHURCH OF YOUR CHOICE EACH SUNDAY

INGROWN NAIL HURTING YOU? Immediate Relief! A few drops of OUTGRO bring blessed relief from tormenting pain of ingrown nail. OUTGRO softens the skin underneath the nail, allows the nail to be cut and thus prevents further pain and discomfort. OUTGRO is available at all drug counters.

—Call 601 for Classified Ads—

RANGER DRIVE-IN HIGHWAY 80 EAST ON RANGER HILL. Box Office Opens 6:45 — Show Starts 7:15. Adults 50c—Kiddies Under 11 Free. Only Eastland County Drive-In With All Year Operation. THURSDAY - FRIDAY. WALT DISNEY'S THE LIGHT IN THE FOREST. SATURDAY. GOLD MINE WARS ROCK THE SIERRAS! THE RAIDERS. RICHARD CONTE VIVECA LINDFORS BARBARA BRITTON - HUGH O'BRIEN. FREEVUE EVERY SATURDAY NITE.

Funeral Directors HAMNER FUNERAL HOMES Ben E. Hamner Oxygen Equipped - Air Conditioned Eastland Cisco Phone 17 Phone Hillcrest 21211 AMBULANCE SERVICE ANY WHERE ANY TIME Nominal Cost Burial Insurance For The Entire Family

New Imperial

(Continued from Page One)

strain. Improved Auto Pilot with additional automatic feature. New automatic swivel seat. New 6-way power seat featuring easier multi-directional control.

Blevins said 1960 will mark the second year Imperial has been produced at its new plant in Dearborn, Michigan, where more than 700 different hand craftsmanship operations are employed.

The 1960 Imperial's new silhouette features a wedge-shaped profile, and an elongated hood line reminiscent of classic Imperial automobiles of the Thirties. Tailfins are adorned with Imperial's familiar gunsight tail light. Between the chrome encircled lights is another familiar Imperial hallmark - Flight Sweep decklid. Sculptured paneling sweeps almost full car length, complemented by forward sweeping canopy roof molding, extending from backlight to windshield. This is a new version of the Imperial canopy roof accented by chrome-finished moldings. Standard treatment for the lower side roof areas is body color in the Imperial Custom and Imperial Crown, with satin-finished stainless steel in the Imperial LeBaron. The stainless steel treatment or tone color to complement the basic body and roof shade are optional in the Four-Door Imperial Custom and Imperial Crown.

Rainfall Above Two Inches In Eastland Area

Eastland got a downpour last night, with an official reading of 2.15 and unofficial reports of as high as three inches.

The moisture came on the heels of a cold front which brought .55 of an inch of rain Tuesday night. Total rainfall for the year in Eastland now stands at 18.55 inches.

DIXIE Drive-In EASTLAND RANGER HIGHWAY. Admission Never More Than 50c. Children Under 12 on Wednesday Is Bargain Night - Adults 25c. Box Office Opens 7:15 Show Starts 9:15. Box Office Closes 7:15. THURSDAY, FRIDAY, SATURDAY, OCT. 1, 2, 3. WATUSI GUARDIANS OF KING SOLOMON'S MINES! starring GEORGE MONTGOMERY TAINA ELG - DAVID FARRAR. PLUS: Two Color Cartoons

ATTENTION, SECRETARIES And STENOS: I cordially invite you to a preview showing of a new movie that I know you will especially love... because it's about a secretary... the kind of secretary every man would like to have. The movie is Paramount's "BUT NOT FOR ME". Clark Gable is the reluctant boss, and Carroll "Baby Doll" Baker is the not-so-private secretary. Come as my guest — and bring someone of your choice — and enjoy this hilarious romantic comedy. AT 10 A. M. SATURDAY MORNING. OCTOBER 3rd at the MAJESTIC. At that time I have a surprise for you. I will tell you how you can win: A fall sports outfit... Skirt, Blouse and Shoes... Courtesy "Altman's in Cisco and Eastland... Purse, Gloves, Hose and Scarf Courtesy "The Smart Shop" in Ranger. IT'S REALLY EASY TO WIN! Looking forward to seeing you at this FREE PREVIEW I am Sincerely yours, Aubrey Van Hoy Manager Majestic Eastland

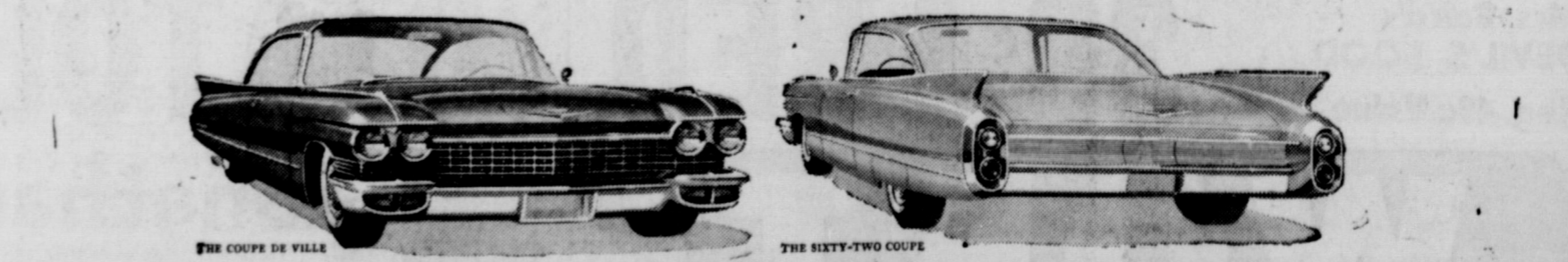
MAJESTIC THURS. - FRI. & SAT. Glenn Ford Debbie Reynolds IT STARTED WITH A KISS STARTS SUNDAY THE MAN WHO UNDERSTOOD WOMEN

Presenting the Magnificent Nineteen-Sixty



Creating a New Era of Elegance!

The motor cars represented here will soon introduce a new era of elegance to the world's highways. They are the Cadillac cars of 1960—and, from every standpoint, they represent the Cadillac tradition in its finest hour. In appearance, they are regal and majestic as never before—a brilliant symphony of line and contour from the sparkling new front grille to the graceful flow of the rear fenders. In interior decor, they are truly magnificent—featuring luxurious new fabrics and leathers—new convenience and excellence of appointments. And in the way they drive and handle, they are perfection on wheels. There is a greatly refined engine and transmission that provide even finer performance... a ride of unbelievable smoothness and quiet... and notable advancements in power steering and braking. These new Cadillac virtues have been interpreted in thirteen distinctive body styles. Every motorist owes himself an hour at the wheel. The 1960 Cadillac is waiting for you now at your authorized Cadillac dealer—and your dealer himself is waiting to introduce you to this magnificent new Standard of the World!



See and Drive the 1960 Standard of the World VISIT YOUR LOCAL AUTHORIZED CADILLAC DEALER DON PIERSON OLDS - CADILLAC 314 West Main Street Eastland, Texas



Good Taste

by
EMILY POST

When Inviting Guests To Dinner
Dear Mrs. Post: When inviting several guests to dinner, is it necessary for the hostess to advise each of her guests that there will be others present? I would very much appreciate your answer to

this question as there has been much discussion about it.
Answer: It is not necessary, but it would be kind to warn anyone who is accustomed to dining with you and your husband alone, that "this time it's a dinner party."

Putting Salt On The Tablecloth
Dear Mrs. Post: If the salt cellar is not convenient to one's plate, may one put salt on the tablecloth and pinch it between the fingers to season the food?
Answer: Yes: to do so is quite correct.

A Delayed Wedding Present
Dear Mrs. Post: I would very much appreciate your advice on the following matter: Six months ago our daughter was married but unfortunately it did not go well and two months ago she and her husband were separated. This week she received a wedding check from one of our friends who had been away. Should she return the gift and explain the situation or does

she keep it and write a thank-you note?
Answer: She should return it with a letter thanking your friend for sending it, and explaining why she is returning it.

Tying Man's Present With Ribbon
Dear Mrs. Post: Our firm recently gave a farewell party to a senior partner and we presented him with a gift at this time. One of the men took charge of buying and wrapping the present. The

package was very beautifully done up with attractive paper and tied with matching ribbon and a bow on top. One of the women remarked that a man's package is never tied with ribbon or bows and that only plain white tissue paper should be used. The man was very much perturbed over this and asked that I write and ask you if the wrapping was in bad taste.
Answer: Tying his package with ribbon was in perfectly good taste. Just think how drab Christmas packages would be if none of the presents for men could be embellished with ribbons or bows.

After Opening The Car Door
Dear Mrs. Post: After opening a car door to seat a lady, should I then walk around the front or back of the car to take my place behind the driver's seat? I have been told that I should walk around the front of the car so as to remain in her sight. I never heard of this before. Can you enlighten me?
Answer: There is no rule about this, but the suggestion that you walk around the front of the car is a good one.

Mrs. Post offers readers leaflets on a variety of subjects concerning etiquette. If you would like to have her leaflet E-35, entitled, "The Well-Dressed Woman," send 10 cents in coin to Dept. E, Box 99, Station G, New York 19, N. Y. Mrs. Post is sorry she cannot answer personal mail.
(Released by The Bell Syndicate, Inc.)

New Olds-

(Continued from Page One)

axle ratios and many other engineering advancements. Two three-seat Fiestas have been added to Oldsmobile's station wagon line.

"From the trim curved grille to the clean-sweep of the rear deck the 1960 Oldsmobile is the finest automobile we have ever built," he said.

"The balanced design of the car is new from every view—front, side and rear. We believe the new Oldsmobile has the styling our customers want, the full family consciousness they need and the luxurious interiors they asked," he said.

Bright chrome plated bars in groups of three give the 1960 Oldsmobile curved grille a wide, stable look even though the car itself is no wider than the 1959 models. Headlights are placed horizontally with the outboard pair set slightly behind the inboard pair. The parking lights are safely recessed in the wrap-around section of the bumper where they can be easily seen from front or side.

The lower and slightly rounded styling of the new front end aids maneuverability of the 1960 Oldsmobile, Pierson said, especially in tight parking situations. Maneuverability is increased 2 1/4 to 3 1/2 inches.

The flowing lines of the 1960 Oldsmobile are emphasized by an attractive chrome accent strip which starts at the headlight on the front fender, sweeps back to the rear quarter where it dips down to the lower edge and rearward to the new bumper.

Taillights are moulded into the rear fenders in a high, easy-to-see position. Below the attractive angled bumper is ribbed heavy gauge steel that completes the solid, built-to-the-road appearance of the new rear end.

Hollywood-

(Continued from Page One)

and Mrs. Preston Beane of Plaine. Mr. Beane is a former county judge there, serving in that office for about 16 years.

We have Eula Byrd back on the pay roll after about five months off. She reports a wonderful time, having visited all over the Lone Star State. Her daughter, Bettye Carlton, a former Sandwich girl on line one, is going to college. We hear Bettye is striving for a teachers degree. One thing for sure, bet she makes a nice teacher.

Tim Fambrough stopped by to visit his parents Dave and Dora, on his way to Ft. Worth, where he is taking special training from the Texas Electric Company.

Our sympathy go to the Sharp family at Dallas this week and to the employees related to them here. Marvin Sharp passed away last week after a lengthy illness. Funeral service were the 23rd in Dallas. Attending from here were his cousins, Mrs. Elva Lewis and Mrs. Renfro and Mrs. J. D. Riggs of Breckenridge.

Several women attended the "O and R" Circle meeting Monday night in Baird for the Oddfellow and Rebekah Lodges. A nice time was reported by several and we had a wonderful time.

Here's wishes and good luck to all three of our candidates* for Queen.

Hope to see you next week.

Lacasa Lines

By Mrs. D. B. Raney

The Woman's Missionary Society had their week of Prayer for State Missions each afternoon last week, except one, which was combined with regular Wednesday night prayer services. Eleven women and two members of Girls' Auxiliary attended the programs.

James Meador Templeton and family have been visiting his mother, Mrs. Myrtle Templeton, the past week.

Mrs. A. O. Templeton is seriously ill in the Ranger General Hospital.

the Original

Lindy

UTILITY BALL POINT PENS

America's Finest Writing Instrument

for only

39¢

F.T.I. Fair Traded

Perfect Balance Prevents Writing Fatigue

Do Not Accept Substitutes. Look For The Name "LINDY" On The Pen!

GIANT INK SUPPLY

8

BRILLIANT INK COLORS

Color of Pen is Color of Ink

RED BLUE BROWN TURQUOISE
BLACK GREEN LAVENDER YELLOW-GOLD

• Permanent • Non-Transferable • Non-Smudging
• Ink meets Gov't. Spec. TT-1-562

• Nationally Advertised • Unconditionally Guaranteed

Manufactured by Lindy PEN CO., INC. Dallas, Texas, U.S.A.

Eastland Telegram Office

South Side of Square Phone 601

HORTON CERAMICS

Anniversary SALE

MONTH OF OCTOBER

Large new supply of discontinued items in pottery and wrought iron. New shipment. All sale-priced! Golden opportunity to buy jardeneries for garden foliage which must be brought indoors for the winter . . . also to replenish and freshen your indoor planters.

Other fabulous odds and ends in firsts, seconds, and discontinued items to dress up the living areas of your home!

There are bargain priced items in a large variety — both in first grade merchandise and "second" quality merchandise (imperfects) you will find gifts for all occasions—weddings, birthdays, showers and Christmas — for all members of the family from baby to grandfather!

HORTON CERAMICS

FACTORY SALESROOM

Open 8 a.m. to 6 p.m. Daily
Highway 80 East

Sunday 1 to 6 p.m.
Eastland, Texas

SWAPPING!

BUYING! SELLING! RENTING!

YOU'LL FIND IT IN THE

WANT ADS

Read and Use Want Ads for Quick Results!

It's The Town's Biggest Market Place . . .

EASTLAND TELEGRAM

1960

THERE'S NOTHING LIKE A NEW CAR... MAKE YOURS A ROCKET ENGINE OLDS!

YOUR LOCAL AUTHORIZED
OLDSMOBILE
QUALITY DEALER

invites you to see the *Mighty Satisfying* cars you've ever known!

The 1960 Oldsmobiles are here—as new as new can be! Every beautiful line and every outstanding new feature is included to bring you the finest the medium-price class has to offer!

Oldsmobile's new and radiant styling is designed to satisfy your sense of good taste. New Quadri-Balanced Ride with Vibra-Tuned Body Mountings is certain to be the most comfortable and satisfying ride you've ever tried. It brings new smoothness, new stability, new safety . . . and new silence! There's a new balance of power — with two Rocket Engines! Three established series to choose from! 17 new models . . . including two new 3-seat Fiestas! Come in and see the *Mighty Satisfying* 1960 Oldsmobiles . . . quality built, quality sold and quality serviced for your *lasting* satisfaction!

1960 OLDSMOBILE DYNAMIC 88 HOLIDAY SCENICOUPE—You get more miles per dollar! Every dollar-saving Dynamic 88 has as standard equipment the new REGULAR ROCKET Engine—for Rocket "Go" on lower cost, regular gas—saves you about a dollar on every fill!

1960 NINETY-EIGHT HOLIDAY SPORTSEDAN—Luxuriously appointed . . . elegantly styled. In the new Ninety-Eight Oldsmobile, you will find supreme satisfaction in every respect—power, prestige, pleasure. New Custom-Lounge Interiors—New PREMIUM ROCKET Engine!

OLDSMOBILE FOR 1960

DON PIERSON OLDS - CADILLAC 314 W. MAIN, EASTLAND, TEXAS

FOR THE DESSERT S'KEEP SHOW A EVERY WEEK ON CBS-TV... HEAR LOWELL THOMAS AND THE NEWS • MONDAY THRU FRIDAY ON CBS RADIO

Look Who's New

Mr. and Mrs. Clyde Evatt of Alpine announce the arrival of

their first born, a son named Stephen Kirk. Kirk was born Tuesday morning at 6 in the Eastland Memorial Hospital. He weighed eight pounds and four ounces. The grandparents are Mr. and Mrs. J. D. Pittman and Mr. and Mrs. J. H. Evatt. The great-grand-

parents are Mr. and Mrs. O. T. Hudson of Rome, Ga., Mr. and Mrs. H. G. Hamrick, Sr. of Macon, Ga., Mr. and Mrs. J. H. Pittman of Eastland and Mr. and Mrs. Clyde Benham of Springtown.

Ester Group Meet Held in Home of Mrs. Beskow Wed.

The Ester Group of the First Christian Church met in the home of Mrs. Christine Beskow, 510 S. Walnut Wednesday.

Mrs. J. R. Gilbreath led the opening prayer and the president, Fannie Carpenter presided over a short business meeting. Mrs. Beskow then played on her new organ. The lesson for the day was from the yearbook, "He Taught Them Saying," by Mrs. Carpenter, who made it very interesting. After the benediction, Mrs. Beskow served ice cream and decorated cup cakes.

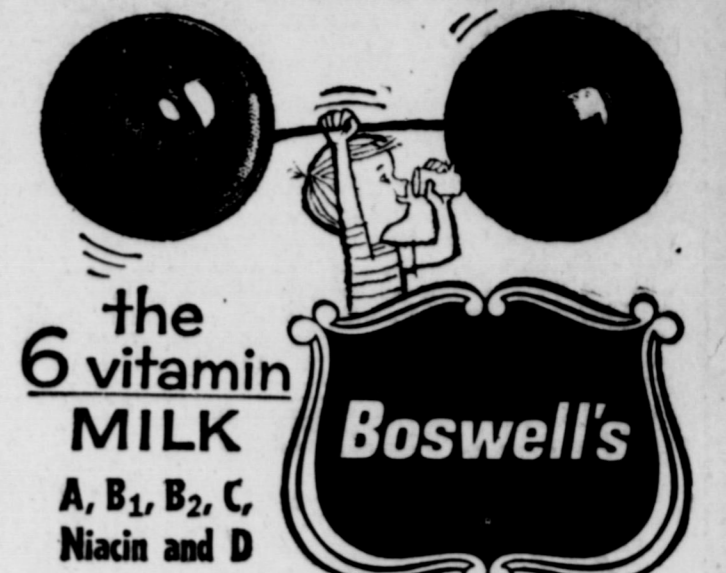
The members that were present were as follows: Mmes. H. B. Meek, J. H. Evans, F. L. Cooper, R. I. Malone, Fannie Carpenter, Mollie Drake, J. R. Gilbreath, Johnson and the hostess, Mrs. Beskow.

Friendship Club Holds Regular Meet Thursday

The Friendship Club met in the home of Mrs. Clyde McBee Thursday at 2 p.m. The evening was spent doing needlework and birthday presents were presented to Mrs. Ruth Butler and Mrs. Ethel Harbin from the club.

Refreshments of open faced sandwiches, potato chips, cakes and cokes were served to the following guests: Mmes. Clyde Walters, B. H. Clifton, Harlin Denny, C. W. Mayo, Bruce Butler, Wylie Harbin and Nora Stiles Wilkerson by the hostess, Mrs. McBee. The next meeting will be Oct. 8 at the home of Mrs. Harlin Denny.

FOR STRONG BODIES



KEEP PLENTY IN YOUR REFRIGERATOR

Insurance is a Life-Time Affair
 . . . and is so considered by those who figure safety as a business and protection as an investment. The fact that a person has carried insurance for many years and never had a claim does not mean that he has lost his money premiums. Rather has he gained them because he invested in safety, got protection and lost none of his property. If we buy insurance for what it really is at least a part of our financial problems will solve themselves.
EARL BENDER & COMPANY
 Eastland, (Insurance since 1924) Texas

IT'S A&P'S 100th ANNIVERSARY MONTH! AND EVERY SHOPPING DAY IN... RINGED WITH SAVINGS!

October 18-31

JANE PARKER REG. 25 EA.
Buttermilk Bread 24-oz. Loaves **2 39¢**

JANE PARKER POTATO
Chips 4-oz. Pkg. **19¢** 8-oz. Pkg. **35¢**

JANE PARKER CARAMEL
Pecan Rolls Pkg. **35¢**

JANE PARKER ICED
Spanish Bar Ea. **29¢**

JANE PARKER
APPLE PIE **39¢**

ANN PAGE—Peach, Pineapple, Apricot
Preserves **49¢**

"SUPER-RIGHT" WHOLE 12-16 LB. AVG. HALF, OR BUTT PORTION
Smoked Ham Lb. **45¢**

"SUPER-RIGHT" USDA GRADE A
Fryers Cut Up Lb. **33¢** Whole Lb. **29¢**

"SUPER-RIGHT" SMOKED HAM
Center Cuts Slices of Portions Lb. **79¢**

"SUPER-RIGHT" SMOKED HAM
Ham Hocks Lb. **23¢**

ALGIDD BRAND
Sliced Bacon Lb. **39¢**

SUPER-RIGHT HEAVY CALF
CHUCK ROAST Lb. **55¢**

SUPER-RIGHT FRESH PORK
SHOULDER STEAK Lb. **45¢**

"SUPER-RIGHT" FRYERS BY THE PIECE
LEGS or THIGHS Lb. **45¢**
Breasts or Pulley Bones Lb. **39¢**
Wings Lb. **25¢** **Backs** Lb. **12¢**

SUPER-RIGHT FRESH
GROUND BEEF Lb. **49¢**

SUPER-RIGHT HEAVY CALF
SHORT RIBS Lb. **35¢**

PINEAPPLE JUICE Dole 46-oz. Can **29¢**

CRUSHED PINEAPPLE Dole 2 No. 1 Flat Cans **29¢**

SLICED PINEAPPLE Dole 3 No. 2 Cans **1.00**

KRAFT DINNERS Spaghetti 2 For **45¢**

PEANUT BUTTER Ann Page Creamy-Smooth 24-oz. Jar **55¢**

Good Housekeeping Cookbook
 A Book a Week
 Each **39¢**

APPETIZER RECIPE BOOK
 Now on Sale at A&P

A&P's Ever-Thriftly Produce Values!

Oregon Bartlett Pears Lb. **15c**

Florida Ruby Red Grapefruit Lb. **10c**

Washington State Red Delicious Lettuce head **19c**

Extra Fancy Apples Lb. **19c**

Special Offer!

Pillsbury Pancake Mix 16-oz. Pkg. **AND Vermont Maid Syrup** 12-oz. Btl. **45¢**

Packed In Handy Cardboard Carrier Both Only **45¢**

LIHLE & IVES COMPLETE ILLUSTRATED BOOK OF SCIENCE SECTION 4 NOW ON SALE Ea. **99¢**

WINTERIZE YOUR CAR NOW!

MARVEL Anti Freeze 47¢ Gal. 1.79

VACUUM-PACKED COFFEE

MARYLAND CLUB 1-lb. Tin **73¢**

VANILLA • CHOC. • STRAW. • NEAPOLITAN

Marvel ICE CREAM 1/2 Gal. Ctn. **55c**

VANITY FAIR "5¢ OFF" LABEL

Facial Tissue 3 Bot. of 400 **49¢**

dexo

SHORTENING

3-lb. can **63c**

White House Non-Fat—12-Qt.

DRY MILK

12-qt. **83c**

A&P Food Stores

Trade With Your HOMETOWN MERCHANTS

UP TO 60 MONTHS TO PAY

\$3,500 IS THE LIMIT

- REMODEL
- REPAIR

Well, if money is all you need, don't delay a minute more. It's easy and quick . . . obtaining one of our low-cost home loans. Like-rent monthly payments are tailored to suit your budget and needs. Call or come in!

Higginbotham-Bartlett Co.
 Jack Elliott, Mgr.
 301 W. Main Phone 112 or 1014

fresh point of view...from Pontiac!

Another fresh one from Pontiac!

- The inspired beauty of perfect proportion!
- The precision control of Wide-Track Wheel Design!
- The softer ride of supple suspension!
- The wide choice of vigorous Tempest V-8 Engines tailored to economy or high performance!

The car craftsmen who developed Wide-Track Wheels, the innovation that brought a new standard of roadability to the American passenger car, present another fresh original for 1960!

With clean, crisp lines they've composed a delightful rightness of form with unity and rhythm.

Into the proved principle of Wide-Track (wheels farther apart for a steadier stance) they've engineered an ingeniously improved suspension system. This combination of a firm foundation and supple suspension gives you flawless control, more skill in the fine art of driving, smooth stability, bump-yielding softness.

The power plant is typically Pontiac. A wide range of restless, ground-gaining power packages to choose from. All are husky V-8's, ranging from the frugal 425E economy engine that prefers regular grade gasoline to the fiery Tempest 425.

Haven't you been an admiring spectator of Pontiacs long enough? Isn't this your year to become a participant in Pontiac pleasure, to move up to Pontiac ownership, where the enjoyment is the fullest, where the point of view is the freshest?

Wide-Track Wheels give you swiftest stability, solid comfort. You maneuver with skillful sureness, accurate control. It's the sweetest, most precise, most rewarding driving you've ever felt.

PONTIAC THE ONLY CAR WITH WIDE-TRACK WHEELS

ON DISPLAY TODAY AT ALL PONTIAC DEALERS

MUIRHEAD MOTOR CO.
 301 W. COMMERCE EASTLAND, TEXAS

CALL 601 FOR CLASSIFIEDS

**GRADE A
MARIGOLD MILK**
Dock Price 69¢ a Gallon

HIGH IN QUALITY
LOW IN PRICE

One of Fort Worth Highest-Testing Milk
Butterfat Content
Guaranteed equal to Carton Milk
Proved by Fort Worth Health Department

EXCLUSIVE
KELLY'S GROCERY
701 West Main

Cottage Prayer Meetings Set For Thursday

Cottage Prayer Meetings will be held for members of the First Baptist Church Thursday evening at 7 in preparation for the revival beginning Sunday Oct. 4-11. The meetings will be held in the following homes:
Mrs. Fern Green with R. B. Hall in charge.
Mr. and Mrs. Warren Chapman with Harl O'Brien in charge.
Mr. and Mrs. Clyde Garrett with Harvey Kimbler in charge.

Jones Electric

Contracting - Repairs

- ★ Wiring Supplies
- ★ Light Fixtures
- ★ Appliances
- ★ Air Conditioning

We Sell and Install
Carpet - Linoleum - Tile
Phone HI 2-1955 - Cisco
611 Ave. D

Ladies Night Is Held by Baptist Brotherhood

The Annual Brotherhood "Ladies Night" was held Tuesday night in Fellowship Hall at the First Baptist Church at 7 p.m. The following new officers for the coming year were installed: president, Johnny Grimes; membership vice-president, James Johnson; activities chairman, D. G. Fambrough; program chairman, Harvey Kimbler; secretary, Lee Graham; Treasurer, Hubert Ekrut; food chairman, George Ford; Sweetheart, Janet Kimbler.

YOU HAVE NEWS TIPS?

MATTRESSES

Save up to 50% renovating, choice of color and firmness. Complete bedding. Made and guaranteed by WESTERN MATTRESS CO., San Angelo. Phone 706, Eastland and leave address.

NEWS FROM DESDEMONA

Rev. and Mrs. Buel Bryan and Linda Beth spent the weekend in Odessa with a son and brother, Mr. and Mrs. Jimmy Bryan and their new baby, Elizabeth Ann. Health in this community is fairly good at this writing.

Miss Evelyn Herral, daughter of Mrs. Mary Harrel and grand-daughter of Mrs. C. H. Geonway, passed away at her home here on Sept. 24 following a lengthy illness. The funeral services were held Friday morning at 10 at the First Baptist Church with Rev. Buel Bryan officiating. The burial was in the Desdemona Cemetery.

Mr. and Mrs. W. H. Koonce of Ft. Worth visited a few days with the John Arnolds and while here attended the funeral of a cousin Aaron Halle of Gorman.

The Willie Wordens had as visitors for the weekend a son, Mr. and Mrs. Charlie Worden and Mark of Kermit and the Lloyd Armstrong family of Highland.

Mr. and Mrs. Delbert Williams of Kermit spent the weekend here with his parents, Mr. and Mrs. H. H. Williams. Delbert had been sent to Dallas as a Magnolia representative from Kermit.

Mrs. Mattie Reid of Hasse spent Monday night of last week with her cousin, Mrs. Myrt Reed.

Mrs. Lela Horn wishes to take this method to thank her many friends for the nice gifts and cards that helped to make her 89th birthday a success.

Harrell Circle Meets Tuesday In Methodist Church

The newly formed Harrell Circle of the Methodist Church, which is the young ladies circle, met Tuesday morning at 9:30 in the Methodist Church.

Mrs. Travis Harrell was the hostess and Mrs. H. J. Bulgerin presented the program on the "Book of Ruth."

Members present were as follows: Mmes. H. J. Bulgerin, M. S. Dry, Don Doyle, Jack Horn, James Campbell and the hostess, Mrs. Travis Harrell.

Read The Classifieds

The Rudolph (Humphy) Duke family visited his parents the Rufus Dukes the past weekend.

Mrs. Dess Abernathy, has been at the bedside of her mother, Mrs. Hunter at Ranger, Word was re-

ceived here at Noon Monday that Mrs. Hunter had passed away. No particulars at this hour.

Special Purchase



BOYS SHIRTS

Long Sleeve Flannel **1.98**

**Fruit of the Loom
13 3/4-OZ. JEANS**

Coarse Weave

Sanforized 6 to 12 **2.29**

14 - 16 **2.49**

BOYS JACKETS

Bed Ford Cord 8 - 16 **9.98**



HARELIK'S

"Home of Better Values"

Westex Packing Co.

Formerly Earnest Food Locker

RETAIL DIVISION

Friday and Saturday

Specials

Loin Steak	ECONOMY	Lb.	59¢
Round Steak	ECONOMY	Lb.	69¢
Ground Meat	Economy	Lb.	39¢
Boneless Roast	SHOULDER	Lb.	59¢
Boneless Roast Chuck		Lb.	55¢
Pork Roast	FRESH PICNIC	Lb.	29¢
Pork Roast	FRESH BOSTON BUTT	Lb.	35¢
Pork Sausage		4 Lbs.	1.00
Slab Bacon	RINDLESS	Lb.	43¢
Loin Steak	CHOICE	Lb.	85¢
Round Steak	CHOICE	Lb.	89¢
Seven Roast	CHOICE	Lb.	49¢
Shoulder Roast	CHOICE	Lb.	59¢
Veal Cutlets		Lb.	79¢
Pork Cutlets		Lb.	59¢
Calf Liver		Lb.	39¢
Pork Liver		Lb.	29¢
Pork Neck Bones		Lb.	15¢

FOR YOUR FREEZER... CUT, WRAPPED AND FROZEN FREE

CHOICE	HALF CALF	Lb.	49¢
FED	HIND QUARTER	Lb.	59¢
HEAVY	ROUND	Lb.	55¢
CALVES	PORK CUTLETS	10 Lbs.	5.75
	HAMBURGER PATTIES	10 Lbs.	4.95
	VEAL CUTLETS	10 Lbs.	7.75

PRESENTING AMERICA'S MOST CAREFULLY BUILT CAR



THE IMPERIAL OF 1960



Tomorrow, at showrooms across America, we introduce the totally new... totally wonderful Imperial.

It is built more carefully, tested more thoroughly, than any other car which has been or will be introduced this year. It requires more individual hand-crafting than other cars. It takes longer to build... because the skills which build it are the kind that can't be hurried. It has brought automotive craftsmanship back to America.

The new instrument panel has bold, readable calibrations... logically placed controls... and a remarkable new Panelless lighting which aids vision and depth perception at night by eliminating glare and reflection.

New swivel seats turn automatically as the door is opened. An exclusive, improved Auto-Pilot tends the

accelerator on long trips (two very practical options)... the engine has more wheel-turning power than any other passenger car engine in the world.

When you drive our Imperial of 1960, we think you will agree it proves one satisfying point... that a fine car can be almost awesomely impressive, and still be a vivid, engaging personality... a good companion as well as an obedient servant.

Compare Imperial's riding quality, space and comfort... ease of entry and exit, front and rear... driving liveliness... and learn that it is, in luxurious fact, the finest car America has yet produced.

The exclusive **IMPERIAL OF 1960**
PROUDEST ACHIEVEMENT OF CHRYSLER CORPORATION

ON VIEW AT IMPERIAL SHOWROOMS FROM OCTOBER 2

BLEVINS MOTOR CO. 514 W. Main St. Eastland

READ THE CLASSIFIEDS

'FLOWER SHOP'
200 N. Green Phone 147
WE DON'T WANT ALL THE BUSINESS... JUST YOURS
Mr. and Mrs. Don D. Parker

SOCIAL CALENDAR

Thursday, Oct. 1
2 p.m.—The Flatwood Home Demonstration Club will hold their regular meeting at the home of Mrs. Mary Hightower.
7 p.m.—The Thursday Afternoon Club will have a Candlelight Supper in the Womens Club with the Program Committee as the hostesses. It will be the first meet-

ing of the year.
7:30 p.m.—The Gleamers Sunday School Class of the Bethel Baptist Church will meet in the home of Mrs. J. C. Allison to install officers. All members are urged to be present.

Monday, Oct. 5
7:30 p.m.—The Oddfellow Lodge No. 126 will have their regular meeting in the IOOF Hall.
7:30 p.m.—The Pythian Sisters will meet for their regular meeting in the Castle Hall, 106 Commerce.
7:30 p.m.—The Posse Anns will meet at the Court House for the monthly meeting.

Tuesday, Oct. 6
2 p.m.—The Eastland Art Club will meet in the home of Mrs. meeting.
7:30 p.m.—The Eastern Star will meet in the Masonic Hall.

Annual Reunion Of White Family Held Sunday

The annual White family reunion was held at the Eastland City Park Sunday.
About 75 people were present. The descendants of the late Mr. and Mrs. White of Hamilton are Mr. and Mrs. W. F. White, Mr. and Mrs. Steve White and Mr. and Mrs. Tommy White all of Jonesboro, Mr. Ike White of Monahans and Walter White of Selma, Calif., the two daughters, Mrs. Susan Bruner of Hico and Mary Oglesby of Eastland.
All of the children except Ike and Walter White were present at the reunion.
The towns of Cross Plains, Abilene, Roscoe, Hamilton, Big Spring, Odessa, Jonesboro, Brady, Ft. Worth, Hico, San Angelo and Casa Grande, Arizona, were represented at the reunion.

NEWS FROM STAFF

Mr. and Mrs. Winston Boles and boys of Athens were visiting over the weekend with her parents, Mr. and Mrs. J. L. Little and his parents, Mr. and Mrs. Claude Boles.
Mr. and Mrs. W. T. Duncan visited with relatives at Sulphur Springs and Linden over the past weekend.

Mr. and Mrs. Jack Cole of Midland were visiting recently with her parents, Mr. and Mrs. O. T. Hazard Jack also made a business trip to Dallas.
Mr. and Mrs. Earl Dick of Phoenix, Ariz. were recent visitors in the community. Earl was raised near Staff attending school at Triumph. His wife was the former Corn Lee Wright; she was also one of the former students of Union.

Mr. and Mrs. Ray Hailey of Lubbock visited last week with his brother, Mr. and Mrs. W. H. Hailey. Together they motored to Burnet to visit relatives there.

A very delicious Pot Luck dinner visit was enjoyed Friday evening at the Onous Dick lot on Lake Leon. The visiting party kept a roster of 10 from 8:00 a.m. to 10:00 p.m. and there of us there ate in a drive-in. Those present were Mr. and Mrs. Earl Dick of Phoenix, Ariz., Mr. and Mrs. Onous Dick, Miss Nannie Ailman, Mrs. Eva Dick, Mr. and Mrs. Dick Higgins all of Olden, Mr. and Mrs. Bill Walters, Sr. and Mrs. S. E. Hazard of Eastland.

Mr. and Mrs. Robert Reeves have recently been having some improvement done on their house.

Mr. and Mrs. Steele Hill of Ft. Worth spent the past weekend at their place, Hill's Haven, at Staff Village.
Mr. and Mrs. Jimmie Reeve and family have been spending the past week with his grandmother, Mrs. Henry Woods. Mr. Woods has been ill and in the hospital in Eastland.
Mr. and Mrs. Mearle Miller are having a new home built on their

place.
Farmers have been very busy the past few weeks harvesting the maize and peanut.
Judge and Mrs. Esco Walters were out at their place on Lake Leon Friday evening.

NEWS FROM OLDEN

Mr. and Mrs. Joe Lawrence moved to Eastland Monday after living in Olden since he retired from the Magnolia Petroleum Company 12 years ago. They bought a home at 609 South Lamar. Mr. and Mrs. J. D. Tusz bought their home and moved here from Lameta.

Mr. and Mrs. Travis Hilliard spent Sunday in Dedenoma visiting Mrs. Edd Parks, who is Mrs. Hilliard's mother.
Mrs. W. P. Edwards spent the weekend in Ft. Worth with her daughter, Mrs. Evelyn Fisher and family.

Mrs. U. E. Talley of Denison was the weekend guest in the home of her son, Mr. and Mrs. Irvin Talley. They were joined by Carl Talley of Denison, who had attended a postal convention in Lubbock.

Mr. and Mrs. J. D. Sprawls of Memphis, Tenn. visited in the home Mr. and Mrs. Bernard O'Brien Saturday. Mr. Sprawls is Mrs. O'Brien's brother.
Mr. and Mrs. Truett Holder of

Hospital News

Patients in Eastland Memorial Hospital are:
Mrs. Otta Crabb, Eastland, medical
David Gurrola, Cisco, accident
Mrs. J. J. Finley and baby girl, Eastland
Essie Mae Christesson, Breckenridge, surgical

Stanton, Mrs. Buddy Reed of Cisco, Mr. and Mrs. J. D. Sprawls of Putnam spent Sunday in the home of Mr. and Mrs. Bernard O'Brien.

Visitors in the Marvin Hutto home Sunday were Mrs. Hutto's sister, Mrs. Tommy Morgan and Mr. Morgan and their daughter, Marilyn and her husband, Bobby and little son Jay from Abilene. A picnic honoring I. E. Talley and B. F. Aiford on their birthdays was held in the back yard of the Talley home Saturday evening. Mrs. Gene Falls and Mrs. Talley were the hostesses. Mr. Talley is the father of Mrs. Talley and Mrs. Falls.

Others present were the following: Mrs. U. E. Talley of Denison, Mr. and Mrs. A. R. McFarland, Mr. and Mrs. John Yielding, Mr. and Mrs. Benny Hagan and Rosa Lee Williamson, Mr. and Mrs. Jackie Heath and children, Mrs. Jessie Lee Holladay and Sharon, Mr. and Mrs. Claud Renfro, Mr. and Mrs. Griffith, Mr. and Mrs. O. H. Dick and Gene Falls.

Pat Armstrong, Eastland, medical
Mrs. Dora Valliant, Rising Star, medical

Guy Robbins, Eastland, surgical
Mrs. Opal Bygton, Ranger, medical
E. A. Taylor, Eastland, medical
Mrs. Clyde Evatt and baby boy, Eastland

Les Strawn, Eastland, surgical
Mrs. Ruth Kendrick, Eastland, surgical
Mae Gibson, Rising Star, medical
W. A. Owen, Eastland, surgical
Kenneth Simpson, Carbon, medical

Eleanor Wright, Eastland, surgical
Mrs. W. N. Fox, Eastland, medical

Mrs. Delece Quarrels, Eastland, surgical
Sidney Arthur, Eastland, medical

Mrs. Pearl Noble, Eastland, medical
Edna Hancock, Rising Star, medical
Newton Sparks, Cisco, medical
Bill McCleskey, Eastland, surgical

Patients dismissed were: Mrs. L. L. Hallmark, Mrs. Nancy Poulston, Mrs. Dee Williamson, Mrs. Jimmy Yates, Mrs. Maggie Ingram, and Mrs. C. J. Germany.

Go To Church This Sunday

"EFFICIENT EXTERMINATION"

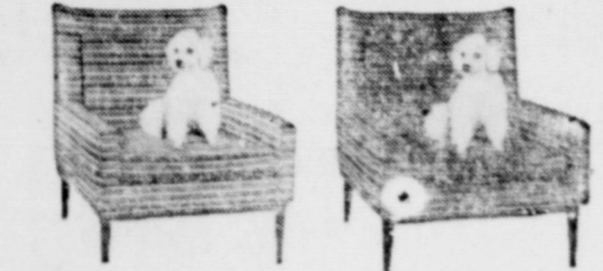
- Roaches • Silver Fish • Ants
- Mice • Fleas • Ticks
- Scorpions and other Pests

Member National Pest Control Ass'n.

Lester Humphrey PEST CONTROL SERVICE



Roscoe Marsh, Mgr.
525 E. Conner
Phone 86
—Surety Bonded Termite Control—



Three months ago these chairs looked exactly alike!

(But one was treated with Durashield soil retarding process that keeps things clean longer, makes housework easy!)

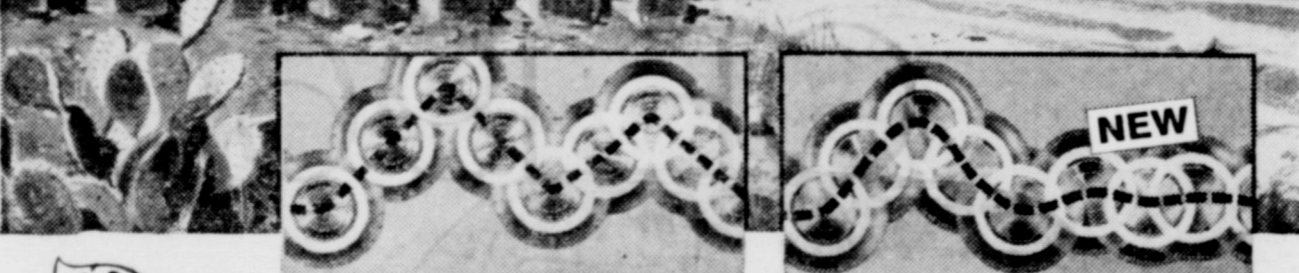
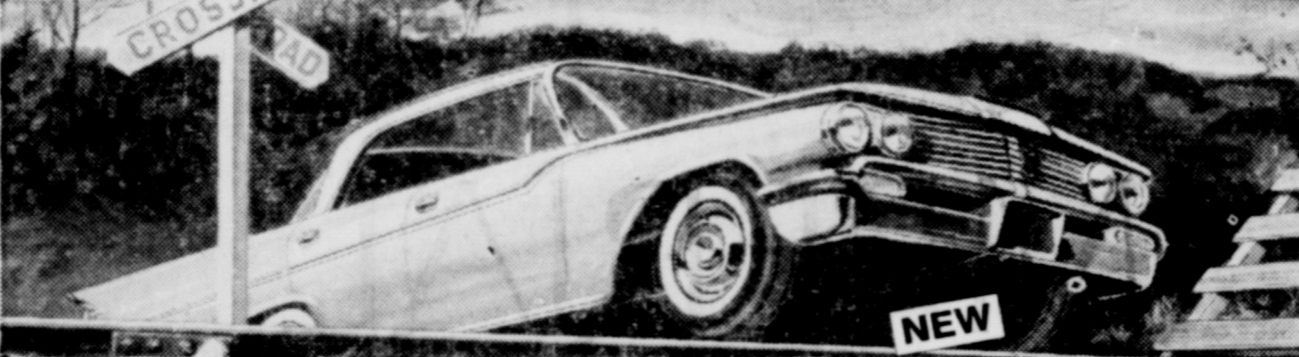
AMAZING NEW DISCOVERY freshly cleaned for months!
You can have Durashield soil retarding service only through your Duraclean dealer, an expert in home furnishings maintenance. He'll clean your things first by the safe, scientific Duraclean absorption process, then protect them with Durashield for a fraction of the cleaning cost. Don't wear yourself out cleaning up after your happy, active children and pets—end your worries now with Durashield. Call us today!

for a FREE estimate, call these Duraclean experts:
Duraclean Home Services
Phone 1156 -- 602 S. Daugherty
Eastland, Texas

HUMBLE Presents... THE NEW TIRE of this generation!

ATLAS BUCRON TIRES

Ride easier than any other tires



Ordinary tires "bounce" . . . multiply bumps and jars. Atlas Bucron Tires smother "bounce," give shock-absorbing ride.
SOAKS UP BUMPS AND JARS! You notice bumps with ordinary tires because the rubber "bounces." The miracle new rubber in Atlas Bucron Tires smothers "bounce." Your car rides like the day you bought it, steers easier, handles better.



POSITIVELY NO SQUEAL! The new Atlas Bucron Tire grips the road so well you can't make it squeal. The secret is in the miracle new rubber of the tread.



SAFER! Stops 30% quicker than ordinary tires. Tested against other tires, the Atlas Bucron Tires stopped 30% quicker—often the difference between a safe stop and an accident. Atlas Bucron Tires will stop quicker on wet pavement than ordinary tires on dry.

HUMBLE OIL & REFINING COMPANY

Trade Now for a set of these amazing new tires. Ask for a demonstration ride—you'll be amazed! Then talk trade with your neighbor under the Humble sign. The price is less than you would think, and terms are available. Equip your car with Atlas Bucron Tires on all four wheels.

GUARANTEED BY HUMBLE

Humble guarantees the Atlas Bucron Tire against all road hazards for 18 months. Adjustment is based on months of service. Guarantee is honored by 38,000 Atlas dealers on service station driveways throughout the United States and Canada. (Note: All Atlas dealers do not carry Atlas Bucron Tires, but all will make adjustment under the guarantee.)



HUMBLE
SIGN OF
Happy Motoring
HUMBLE OIL & REFINING CO.

*ATLAS "BUCRON" REGISTERED TRADEMARK, ATLAS SUPPLY COMPANY.

Real down-on-the-farm savings during our big DEL MONTE®

BUSHEL OF VALUES SALE

Del Monte Whole 303 Can
GREEN BEANS 25¢

Del Monte SPINACH
Tender young leaves—Washed clean!
2 303 Cans 29¢

Prices Good Through Saturday

Del Monte TOMATO JUICE
46-Oz. Can **29¢**

FOLGER'S COFFEE Lb. Can **73¢**
GREEN GIANT 3¢ off Sale
PEAS 303 Can **15¢**
SWEETHEART FLOUR 5-Lb. Bag **33¢**

Del Monte Early Garden PEAS 303 Can **15¢**

Del Monte SPAGHETTI and MEAT BALLS 15-Oz. Can **15¢**
Del Monte 12-Oz. Can **15¢**

Del Monte CORNED BEEF 49¢
Del Monte WHITE SWAN TEA 1/2-Lb. Box **49¢**

Del Monte SUNSHINE Krispy Lb. Box **25¢**
Del Monte CRACKERS 25¢

Del Monte NORTHERN TISSUE 5 Rolls **39¢**
Del Monte TOMATO SAUCE 3 8-Oz. Cans **25¢**
Del Monte FRUIT COCKTAIL 2 303 Cans **49¢**
Del Monte CORN Cream Style Golden 2 303 Cans **35¢**

CRISP PRODUCE

U. S. NO. 1 RUSSET POTATOES 10 Lbs. **49¢**
RED DELICIOUS APPLES 2 Lbs. **25¢**
CALIFORNIA ORANGES Lb. **17¢**

MEAT SPECIALS

ARMOUR'S MATCHLESS SLICED BACON Lb. **39¢**
CANNED PICNICS 3 lb. can **1.79**
BACON ENDS 5 lb. box **89¢**
FRESH GROUND MEAT Lb. **45¢**

WORTH BRAND 300 Can
Yellow or Blue Label
DOG FOOD 10¢

MacMOY'S Super Save
400 S. Seaman Home Owned—Home Operated
We Reserve the Right to Limit Quantities

