



It is a great pity that, because of the force of gravity, it takes more energy to close the mouth than to open it.

FRIDAY NIGHT

Behind Curtain of Junior Play

The following play... Mrs. Don Russell... The Junior... staged Friday... in the high school.

Having the right play seems to have made the rest of it easy. Casting was a slow process, but fun.

It was even a little exciting to watch the play forming in these early readings because the potential actors would improve so much—both in understanding and voice—from one tryout to the next.

The athlete in the play was another obvious choice, John Stroud. The part fit like a baseball glove.

Can you imagine how they fought for the part of the janitor? A sharp-tongued character in the play characterized "our stomach."

Can you imagine the type of preserved, at least 75 percent of the allotment must have been planted one year within the past three years.

Bill Walters was program chairman at the Lions' Tuesday luncheon meeting. He gave a book review on "The Cow Killers."

Only stores pledging to offer at least one red-hot special each month are eligible to participate in the Opportunity Days event.

Businesses participating has purchased special merchandise for the event. At least one business, Western Auto, will be giving away gifts to each customer.

Two other businesses, Kirkland's and Canaris Studio, are offering coupons in today's Telegram which allow drastic reductions on merchandise.

SEE and Drive the 1961 PONTIAC... fresh point of view and wide track too! MUIRHEAD MOTOR CO.

SEE and Drive the 1961 PONTIAC... fresh point of view and wide track too! MUIRHEAD MOTOR CO.

SEE and Drive the 1961 PONTIAC... fresh point of view and wide track too! MUIRHEAD MOTOR CO.

SEE and Drive the 1961 PONTIAC... fresh point of view and wide track too! MUIRHEAD MOTOR CO.

SEE and Drive the 1961 PONTIAC... fresh point of view and wide track too! MUIRHEAD MOTOR CO.

SEE and Drive the 1961 PONTIAC... fresh point of view and wide track too! MUIRHEAD MOTOR CO.

SEE and Drive the 1961 PONTIAC... fresh point of view and wide track too! MUIRHEAD MOTOR CO.

SEE and Drive the 1961 PONTIAC... fresh point of view and wide track too! MUIRHEAD MOTOR CO.

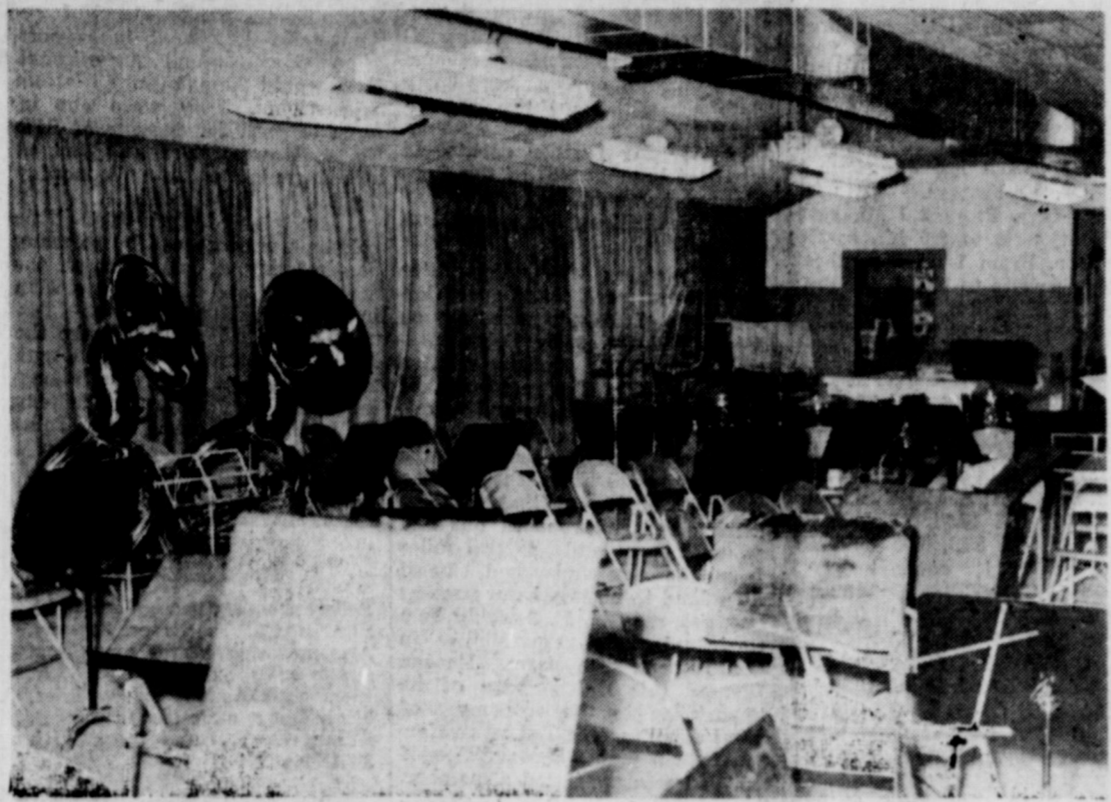
SEE and Drive the 1961 PONTIAC... fresh point of view and wide track too! MUIRHEAD MOTOR CO.

SEE and Drive the 1961 PONTIAC... fresh point of view and wide track too! MUIRHEAD MOTOR CO.

SEE and Drive the 1961 PONTIAC... fresh point of view and wide track too! MUIRHEAD MOTOR CO.

SEE and Drive the 1961 PONTIAC... fresh point of view and wide track too! MUIRHEAD MOTOR CO.

SEE and Drive the 1961 PONTIAC... fresh point of view and wide track too! MUIRHEAD MOTOR CO.



NEW REHEARSAL HALL—This interior view of the new Eastland High School band hall shows just how much work Band Booster Club members have done to completely remodel the building which once was a medical clinic. Note the draped wall at left. The building is air conditioned. (Canaris Studio Photo).

PAGE ONE MUST

Saturday midnight is the last day for candidates to file in the city commission election. Three positions will be filled. Three candidates filed for the office.

Peanut History May be Lost If Planting Skipped

Methods for preserving cotton and peanut history has recently been changed, Emmett Powell, county office manager for the Agricultural Stabilization and Conservation committee, pointed out today.

Lions Re-Set Broom and Mop Sale March 10

Eastland Lions have re-scheduled their broom and mop sale for March 10-11.

J. M. Cooper and Two 4-H Boys In Houston for Show

County Agent J. M. Cooper is at the Houston Stock Show with Charles Stephenson, Cisco 4-H Club boy, and his registered Hereford heifer in the show there this week.

Betty Blevins On Honor Roll at Hardin-Simmons

Betty Blevins was one of 50 students earning places on the Hardin-Simmons University honor roll by making a grade point average of 3.58 or better on at least 12 semester hours of work during the 1960 fall semester.

GRAY MATTER

Legislature Gets Small Dose of Gray Treatment

By JOE GRAY "Joe, when did you get opposed to the highway department?" I've been asked since this business of rerouting Highway 6 came up.

Actually I think some people have gotten me down a little wrong. I'm not opposed to the Highway department. I'm merely opposed to their abuse of the Texas taxpayers' money.

I think, though, that the thing that really opened my eyes to what has been going on in the highway system of Texas came about when they were making a 4-lane highway of Highway 80 from Ranger to Cisco.

But today I don't want to discuss the highway department as I've got important things on my mind. I don't know how most people in Eastland feel about our state government but I'm not happy about it at all.

Joy Drive-In Theatre Opens Season Tonight

The Joy Drive-In Theatre, located on the Cisco and Eastland highway, will re-open tonight for the 1961 season.

Featured movie tonight will be the "Misfits," starring Clark Gable and Marilyn Monroe. The feature will show through Saturday.

The drive in will make three picture changes each week. Show dates will be Sunday, Monday and Tuesday, Thursday, Friday and Saturday and Wednesday. The Wednesday showing will be a double feature each week and will be bargain night.

Surplus Foods Distribution Dates Listed

The next date to distribute the surplus foods, will be as follows: Monday, March 13—Eastland, Olden and Ranger.

Tuesday, March 14—Pioneer, Rising Star, Orka, Carbon, Gorman and Desdemona.

Wednesday, March 15—Cisco, Scranton and Nimrod.

Eastland National Bank "On The Square" MEMBER F. D. I. C.

Eastland National Bank "On The Square" MEMBER F. D. I. C.

Eastland National Bank "On The Square" MEMBER F. D. I. C.

Dedication of Band Hall to Be Highlighted by Concert

A concert will highlight activities Tuesday when a dedication program for the new Eastland High School band hall is held at 8 p.m.

Both the Junior High and Senior High bands will perform. The event will climax a story that began many months ago. The Band

Deadline Is Near for Auto Inspection Time

April 15, 1961 is the deadline for displaying the 1961 Motor Vehicle Inspection Stickers.

It has been observed that a large percentage of vehicles in Eastland County have yet to be inspected, according to Carl B. Boustead, Motor Vehicle Inspection Patrolman of the Texas Department of Public Safety.

Approved inspection stations in the county are: Ranger — Mission Garage, Anderson Chevrolet and Funderburg Ford Sales.

Eastland — Fullen Motor Co., Hood King Motor Co., Rushing Motor Co., Muirhead Motor Co., Blevins Motor Co. and City Garage.

Cisco — Graham Motor Co., Rutherford Chevrolet, Gorr Motor Co., and Booth's Garage.

Rising Star — Butler Motor Co. Gorman — Smith Bros. Chevrolet.

Cisco College Instructor to Teach Class Here

Miss Martha Graves will hold an organizational meeting for adult classes on "Home and Family Living" Tuesday, March 7 at 1:30 p.m. in the Texas Electric conference room.

Miss Graves is a member of the Cisco Junior College faculty. Before joining the CJC staff she was director of home and family life in the home economics department at Texas Tech and previously served as state supervisor of home economics education in Idaho.

Classes will be held in cooperation with the State Board for Vocational Education and there will be no charge.

County Teachers Meeting Monday Night at Ranger

The Eastland County unit of the Texas State Teachers Association will be guests of the Ranger Classroom Teachers Association on Monday, March 6, at 7:30 p.m. in the Ranger High School Auditorium.

Guest speaker will be Jennings H. Flathers of Amarillo. He was the South Central Regional Director of the NEA Department of Classroom Teachers for 1957-60.

A Texan by birth, Flathers attended school in Texas, Arkansas, and Oklahoma, and returned to Texas to finish his secondary education in Canadian.

Flathers entered West Texas State Teachers College in Canyon, but the advent of World War II called a temporary halt to his education.

Flathers entered the 355th Fighter Group, a segment of the Eighth Air Force. After receiving his discharge in 1945, he resumed his studies and completed work on his master's degree at the University of Colorado in 1946.

Flathers entered the 355th Fighter Group, a segment of the Eighth Air Force. After receiving his discharge in 1945, he resumed his studies and completed work on his master's degree at the University of Colorado in 1946.

Kimbrough Is Arrested by Small Posse

Texas Rangers, a United States deputy marshal and Eastland police were involved in an old time arrest in Eastland Tuesday night.

Seven officers arrested Jesse C. Kimbrough of Eastland at his home. He was wanted in Fort Worth for violation of federal parole and was under bond on robbery and murder charges there.

Involved in the arrest of Kimbrough were Texas Rangers Gene Graves and J. P. Lynch, Deputy Marshal Bill Black, Police Chief Ray Laney, Highway Patrol Sgt. J. O. Tanner and City Policemen Howard Bradford and Neil Seaborn.

Kimbrough has operated out of Fort Worth for several years, but always managed to spend considerable time in Eastland at the home of his father.

Donations for Simpson Cemetery Upkeep Are Asked

Donations for the upkeep of Simpson Cemetery are being accepted now.

Donations can be sent to the Simpson Cemetery Association, care of First National Bank, Gorman, or to John Donleson, Route 1, Gorman, B. R. Parker, Route 1, Gorman or Joe McNeely, Route 1, Gorman.

Nancy Lou Owen On Dean's Honor Roll at Texas

Nancy Lou Owen of Eastland was named on the College of Fine Arts fall honor roll at the University of Texas.

Miss Owen qualified for cum laude ampla et magna honors.

Survey of County Farms Producing Grain Is Set

Due to pending legislation in the Congress of the United States concerning feed grains it is mandatory that a survey be made in all major feed grain producing counties in the United States.

This survey will be conducted by ASC offices throughout the nation.

Eastland County has been classified as a major feed grain producing county. Data must be obtained for each farm in the county on which one or more of the four major feed grains was produced in either 1959 or 1960 or both.

Feed grains shall include only field corn and grain sorghum, defined as follows:

1. Corn acreage means the number of acres of land on which field corn was planted.

2. Grain sorghum acreage means the number of acres of land from which this crop was harvested as grain by combining or threshing.

It is important that this data be supplied by each farmer. This data will be used to establish base acreages for each feed grain producing farm in the county as a basis for determining price support eligibility and cash payment rates for producers who desire to participate.

To expedite the securing of this information, it would be helpful if you would have in mind the feed grain crops you grew in 1959 and 1960.

The full cooperation of all producers in the county is vitally needed and will be greatly appreciated.

The sign up for Eastland County will be in the county ASC Office beginning March 6 and running through March 10.

Eastland National Bank "On The Square" MEMBER F. D. I. C.

Eastland National Bank "On The Square" MEMBER F. D. I. C.

Eastland National Bank "On The Square" MEMBER F. D. I. C.

Eastland National Bank "On The Square" MEMBER F. D. I. C.

Eastland National Bank "On The Square" MEMBER F. D. I. C.

Eastland National Bank "On The Square" MEMBER F. D. I. C.

Eastland National Bank "On The Square" MEMBER F. D. I. C.

Eastland National Bank "On The Square" MEMBER F. D. I. C.

Eastland National Bank "On The Square" MEMBER F. D. I. C.

Eastland National Bank "On The Square" MEMBER F. D. I. C.

Eastland National Bank "On The Square" MEMBER F. D. I. C.

Eastland National Bank "On The Square" MEMBER F. D. I. C.

Eastland National Bank "On The Square" MEMBER F. D. I. C.

Eastland National Bank "On The Square" MEMBER F. D. I. C.

Eastland National Bank "On The Square" MEMBER F. D. I. C.

Eastland National Bank "On The Square" MEMBER F. D. I. C.

Eastland National Bank "On The Square" MEMBER F. D. I. C.

Eastland National Bank "On The Square" MEMBER F. D. I. C.

Eastland National Bank "On The Square" MEMBER F. D. I. C.

Eastland National Bank "On The Square" MEMBER F. D. I. C.

Eastland National Bank "On The Square" MEMBER F. D. I. C.

Eastland National Bank "On The Square" MEMBER F. D. I. C.

Eastland National Bank "On The Square" MEMBER F. D. I. C.

Opportunity to Save Money Here

Opportunity to Save Money Here

Opportunity to Save Money Here

Opportunity to Save Money Here

Opportunity to Save Money Here

Freyschlag Ins. Co. presents the WEATHER NEWS

Freyschlag Ins. Co. presents the WEATHER NEWS

Freyschlag Ins. Co. presents the WEATHER NEWS

Freyschlag Ins. Co. presents the WEATHER NEWS

Freyschlag Ins. Co. presents the WEATHER NEWS

Freyschlag Ins. Co. presents the WEATHER NEWS

Freyschlag Ins. Co. presents the WEATHER NEWS

Freyschlag Ins. Co. presents the WEATHER NEWS

Freyschlag Ins. Co. presents the WEATHER NEWS

Freyschlag Ins. Co. presents the WEATHER NEWS

Freyschlag Ins. Co. presents the WEATHER NEWS

Freyschlag Ins. Co. presents the WEATHER NEWS

Freyschlag Ins. Co. presents the WEATHER NEWS

Freyschlag Ins. Co. presents the WEATHER NEWS

Freyschlag Ins. Co. presents the WEATHER NEWS

Freyschlag Ins. Co. presents the WEATHER NEWS

Freyschlag Ins. Co. presents the WEATHER NEWS

Freyschlag Ins. Co. presents the WEATHER NEWS

Freyschlag Ins. Co. presents the WEATHER NEWS

Freyschlag Ins. Co. presents the WEATHER NEWS

Freyschlag Ins. Co. presents the WEATHER NEWS

Freyschlag Ins. Co. presents the WEATHER NEWS

Freyschlag Ins. Co. presents the WEATHER NEWS

Freyschlag Ins. Co. presents the WEATHER NEWS

Freyschlag Ins. Co. presents the WEATHER NEWS

Freyschlag Ins. Co. presents the WEATHER NEWS

Freyschlag Ins. Co. presents the WEATHER NEWS

Freyschlag Ins. Co. presents the WEATHER NEWS

Freyschlag Ins. Co. presents the WEATHER NEWS

Freyschlag Ins. Co. presents the WEATHER NEWS

Freyschlag Ins. Co. presents the WEATHER NEWS

Freyschlag Ins. Co. presents the WEATHER NEWS

Freyschlag Ins. Co. presents the WEATHER NEWS

Freyschlag Ins. Co. presents the WEATHER NEWS

Freyschlag Ins. Co. presents the WEATHER NEWS

Freyschlag Ins. Co. presents the WEATHER NEWS

Freyschlag Ins. Co. presents the WEATHER NEWS

Freyschlag Ins. Co. presents the WEATHER NEWS

Freyschlag Ins. Co. presents the WEATHER NEWS

Freyschlag Ins. Co. presents the WEATHER NEWS

Freyschlag Ins. Co. presents the WEATHER NEWS

Freyschlag Ins. Co. presents the WEATHER NEWS

Freyschlag Ins. Co. presents the WEATHER NEWS

Freyschlag Ins. Co. presents the WEATHER NEWS

Freyschlag Ins. Co. presents the WEATHER NEWS

Freyschlag Ins. Co. presents the WEATHER NEWS

Freyschlag Ins. Co. presents the WEATHER NEWS

Freyschlag Ins. Co. presents the WEATHER NEWS

Freyschlag Ins. Co. presents the WEATHER NEWS

Freyschlag Ins. Co. presents the WEATHER NEWS

Freyschlag Ins. Co. presents the WEATHER NEWS

Freyschlag Ins. Co. presents the WEATHER NEWS

Freyschlag Ins. Co. presents the WEATHER NEWS

Freyschlag Ins. Co. presents the WEATHER NEWS

Freyschlag Ins. Co. presents the WEATHER NEWS

Freyschlag Ins. Co. presents the WEATHER NEWS

Freyschlag Ins. Co. presents the WEATHER NEWS

Freyschlag Ins. Co. presents the WEATHER NEWS

Freyschlag Ins. Co. presents the WEATHER NEWS

Freyschlag Ins. Co. presents the WEATHER NEWS

Freyschlag Ins. Co. presents the WEATHER NEWS

Freyschlag Ins. Co. presents the WEATHER NEWS

Freyschlag Ins. Co. presents the WEATHER NEWS

Freyschlag Ins. Co. presents the WEATHER NEWS

Freyschlag Ins. Co. presents the WEATHER NEWS

Freyschlag Ins. Co. presents the WEATHER NEWS

Freyschlag Ins. Co. presents the WEATHER NEWS

Freyschlag Ins. Co. presents the WEATHER NEWS

Freyschlag Ins. Co. presents the WEATHER NEWS

Freyschlag Ins. Co. presents the WEATHER NEWS

Freyschlag Ins. Co. presents the WEATHER NEWS

Freyschlag Ins. Co. presents the WEATHER NEWS

Freyschlag Ins. Co. presents the WEATHER NEWS

Freyschlag Ins. Co. presents the WEATHER NEWS

Freyschlag Ins. Co. presents the WEATHER NEWS

Freyschlag Ins. Co. presents the WEATHER NEWS

Freyschlag Ins. Co. presents the WEATHER NEWS

Freyschlag Ins. Co. presents the WEATHER NEWS

Freyschlag Ins. Co. presents the WEATHER NEWS

Freyschlag Ins. Co. presents the WEATHER NEWS

Freyschlag Ins. Co. presents the WEATHER NEWS

Freyschlag Ins. Co. presents the WEATHER NEWS

Freyschlag Ins. Co. presents the WEATHER NEWS

Freyschlag Ins. Co. presents the WEATHER NEWS

Freyschlag Ins. Co. presents the WEATHER NEWS

Freyschlag Ins. Co. presents the WEATHER NEWS

Freyschlag Ins. Co. presents the WEATHER NEWS

Freyschlag Ins. Co. presents the WEATHER NEWS

Freyschlag Ins. Co. presents the WEATHER NEWS

Freyschlag Ins. Co. presents the WEATHER NEWS

Freyschlag Ins. Co. presents the WEATHER NEWS

Freyschlag Ins. Co. presents the WEATHER NEWS

Freyschlag Ins. Co. presents the WEATHER NEWS

Freyschlag Ins. Co. presents the WEATHER NEWS

Freyschlag Ins. Co. presents the WEATHER NEWS

Freyschlag Ins. Co. presents the WEATHER NEWS

Freyschlag Ins. Co. presents the WEATHER NEWS

Freyschlag Ins. Co. presents the WEATHER NEWS

Freyschlag Ins. Co. presents the WEATHER NEWS

Freyschlag Ins. Co. presents the WEATHER NEWS

Freyschlag Ins. Co. presents the WEATHER NEWS

Freyschlag Ins. Co. presents the WEATHER NEWS

Freyschlag Ins. Co. presents the WEATHER NEWS

Freyschlag Ins. Co. presents the WEATHER NEWS

Freyschlag Ins. Co. presents the WEATHER NEWS</

Eastland Telegram

Eastland County Record established in 1931, consolidated August 31, 1951. Chronicle established 1887, Telegram established 1923. Entered as second class matter at the Post Office in Eastland, Texas under the Act of Congress of March 3, 1879.

TIMES PUBLISHING COMPANY
Published Tri-Weekly—Tuesdays - Thursdays - Sundays
Onous Dick and Joe Dennis, Publishers
Virgil E. Moore, Editor

One week by carrier in city 15
One month by carrier in city 65
One year by mail in County 2.95
One year by mail in state 4.95
One year by mail out of state 6.95

NOTICE TO PUBLIC—Any erroneous reflection upon the character standing or reputation of any person, firm or corporation which may appear in the columns of this newspaper will be gladly corrected upon being brought to the attention of the publishers.

CLASSIFIED

Cards of Thanks charged for at rate of \$2.00 Each

Misc. For Sale

FOR SALE: Five registered Duroc pigs. Three boars, three sows, ready now. Ronnie Reese, Olden.

FOR SALE: Long lasting work shoes with cork and rubber sole, oxfords with oil resistant sole, work boots, rough outside boots, from \$6.95 to \$12.95. New and used work pants and shirts, comforts, blankets, coats, jackets, tarpaulins, tool boxes, foot lockers, rain coats, rain suits, garden rakes, hoes and spades, gas cans. Hundreds of other items, all at LOW-LOW prices. Army Surplus Store, Eastland.

FOR SALE: All kinds and sizes creosoted posts and poles. Crowell Lumber Company.

For Rent

FOR RENT: Unfurnished 4 room duplex. Call MA 9-2186.

FOR RENT: Unfurnished six room house, 207 S. Madera. Call MI 7-3338, Ranger.

FOR RENT: Five room house call Everett Plowman, Corner Drug.

FOR RENT: Unfurnished 2 bedroom apartment in Duplex 611 Plummer.

FOR RENT: Lovely apartments, with living, dining, bedrooms and kitchen, furnished or unfurnished at very reasonable rates. Also comfortable single rooms with tiled baths for only \$39.50. No stairs to climb, elevator equipped. Delicious food in our coffee shop and steam heated for really warm and comfortable living. Maid service is always included. Throw away your cares and high expenses and come live with us. The Village Hotel, Mrs. Robinson, manager—call me today, MA 9-1716.

FOR RENT: Three room furnished house. 500 S. Bassett.

FOR RENT: Six room house, double garage. See Mrs. John W. Smith, 306 W. Plumer St.

FOR RENT: Five room and bath house. \$50.00. 905 S. Daugherty. Put rent in bank and move in.

Eastland Masonic Lodge No. 467
Reg. Stated meetings
2nd Thursday of each month, at 7:30 p.m.
H. C. Pounds, W. M.
L. E. Huckaby, Secretary

Lost & Found
LOST: Male red Pekingese dog. Black collar. Call MA 9-2074.
LOST: Female Siamese cat. Named "Missy". Phone MA 9-2307.

MATTRESSES
Save up to 50% renovating. choice of color and firmness. Complete bedding. Made and guaranteed by WESTERN MATTRESS CO., San Angelo. Phone MA 9-2689, Eastland and leave address.

KELLAR'S FIX-IT SHOP
202 SOUTH SEAMAN
WANTED
Lawn Mowers, Repaired. Small Appliances, Yard and Garden Tools.

MARCH SPECIAL
Lark & Brow Dye and Arch 1.00
With Cr. Sr. and Set 1.50
BASHAM BEAUTY BAR

County Surveyors Office
Box 492 — Phone MA 9-2639
Courthouse, Eastland, Texas
• Land Surveying and Mapping
• Civil Engineering
• Sub-Division Design and Layout
• Oil Field Surveying
R. T. MAGNESS, JR.
Reg. Prof. Engineer
County Surveyor
T. P. MOBLEY, Reg. Public Surveyor
HI 5-3644, Breckenridge

Real Estate

FOR SALE: I have several real bargains. Three bedroom homes. Good financing. M. A. Treadwell Sr. Phone MA 9-2017.

FOR SALE: Saws All types. See the new Wright power blade saws. Also used chain saws. Sales and service, Perkins Implement Co.

FOR SALE: Furnished or Unfurnished House 305 South Neblett.

FOR SALE: Five room house to be moved. Located northwest Eastland. Contact B. H. Courtney. Phone MA 9-1340.

FOR SALE: Five room house on pavement. 175 foot lot. \$3,200. Ben Hamner.

FOR RENT OR SALE: House on West Valley. Phone MA 9-1091.

Misc. Wanted

SPECIAL NOTICE: Want to buy dead rabbits. Carbon Ice House.

WANTED: Woman for light housekeeping and care for convalescing couple. MA 9-2473.

See Me For Your Real Estate Needs
Will Build To Suit You
M. A. TREADWELL, SR.
Phone MA 9-2017

Typewriters Adding Machines Cash Registers
BUY — SELL — RENT
EARL F. STEPHENS
417 S. Lamar St - Eastland
New Telephone No. MA 9-2319

Special Notice
NOTICE: Private nursing. Will care for elderly person in my home. Phone Hillcrest 2-3409, Cisco.
NOTICE: Let me break and (or) sow your land. Contact B. H. Courtney, Main 9-1340.

INGROWN NAIL HURTING YOU? Immediate Relief!
A few drops of OUTGRO bring blessed relief from tormenting pain of ingrown nail. OUTGRO softens the skin underneath the nail, allows the nail to be cut and thus prevents further pain and discomfort. OUTGRO is available at all drug counters.

T. L. FAGG REAL ESTATE
Property Management
Home and Farm Loans

Insurance and Real Estate D. L. KINNAIRD
Life - Fire - Auto - Farm
Polio - Bonds
42 years in the Insurance Business in Eastland

LEGAL NOTICE

CONTRACTOR'S NOTICE OF TEXAS HIGHWAY CONSTRUCTION

Sealed proposals for constructing 230.847 miles of Dist. 23 Seal Coat From US 67 in Bangs, southwest to FM 1176. From US 183 in May, east to Comanche C/L. From US 183, 11.0 Mi. north of Brownwood, east. From Coleman C/L 0.7 Mi. to intersection FM 586. From intersection FM 586, north-east to US 377. From near Byrds Store, 16.0 Mi. north of Brownwood, east to US 183. From Rockwood, north to US 67 and 84 in Santa Anna. From 1.0 Mi. south of Rockwood, to Rockwood. From US 84, east & northeast 10.9 Mi. From 0.5 Mi. south of Valera, south to Sta. 330. From 0.5 Mi. south of

Voss, south 4.2 Mi. From US 67 & 84 in Santa Anna, north to FM 568. From Eastland C/L, south-east to State 16. From 5.4 Mi. south of Comanche, south to Mills C/L. From State 16 in Comanche, southwest to Brown C/L. From State 16, north & east 4.5 Mi. From Sidney, east to State 36. From US 67 at Proctor to FM 591. From 1476 to FM 1702. From FM 591 to State 36. From FM 587, south to State 36. From State 36, south to Enery. From FM 587, south to Comanche. From FM 588, north of Beattie, east to FM 2247. From US 80, south to FM 570. From Nimrod, south to State 36. From FM 569 to Callahan C/L. From RM 42, south to Calf Creek. From US 87, north to Salt Gap. From 1.0 Mi. south of Lohn, west to 2.0 Mi. east of Salt Gap. From 1.0 Mi. southeast of Goldthwaite to FM 1047. From US 84 in Mullin, southwest 4.5 Mi. From US 190, southwest 4.1 Mi. From US 190 south 2.9 Mi. on Highway No's FM 586, FM 1689, FM 1467, FM 1176, FM 2273, US 283, FM 568, FM 503, State 6, State 16, FM 591, FM 590, FM 588, FM 589, FM 1476, FM 1477, FM 1702, FM 2247, FM 2461, FM 569, FM 1702, FM 1864, FM 1311, FM 504, FM 572, FM 573, FM 1030, FM 1031, covered by C 1025-2-7, C 1033-3-3, C 1038-2-6, C 1365-4-2, C 1365-5-4, C 2106-1-2, C 99-1-16, C 99-2-10, C 636-2-7, C 869-1-9, C 1365-2-3, C 257-5-14, C 289-1-13, C 1029-1-6, C 1037-1-5, C 1366-1-3, C 1038-1-5, C 1597-4-4, C 2107-1-4, C 2198-1-2, C 714-5-3, C 1026-2-2, C 1778-2-3, C 129-1-11, C 869-2-7, C 870-2-10, C 1028-2-6, C 1029-3-2, C 1240-1-3, C 1241-1-3, in Brown, Coleman, Comanche, Eastland, McCulloch, Mills and San Saba Counties will be received at the Highway Department, Austin, until 9:00 A. M., March 18, 1961, and then publicly opened and read.

NOTICE FRESH DRESSED FRYERS and Fresh Dressed Hens At The Plant PHONE MA 9-1200 WALKER Dressing Plant

A Mystery Comes to the junior play at E.H.S. It will be full of fun and plenty of laughs for you. See you at seven-thirty march 3.

FOR REAL PIT COOKED Barbecue TRY THE Barbecue Pit Hwy. 80 East RANGER Gene Townsend, Owner

DISCOUNT PRICES
GARCIA MITCHELL 300 SPINNING REEL Regular 32.50 DISCOUNT PRICE 21.88
GARCIA ABU-MATIC MOD. 170 REEL Regular 29.95 DISCOUNT PRICE 19.88
GARCIA ABU-MATIC MOD. 140 Regular 22.50 DISCOUNT PRICE 14.88
HEDDON SPINNING ROD 7 FOOT Regular 14.95 DISCOUNT PRICE 8.88
Spinning Line Trilene 40% off
8 Lb. thru 25 Lb. Example: 10 Lb 2.00 List DISCOUNT PRICE 1.20
SHYSTER LIKE LURES 49c EA.
ASSORTED LURES LINES LIGHTS FLY BOXES 50% OFF
FLOATING Minnow Bucket \$1.98
Castling Line 50 Yards 59c
Spinning Line 8 to 25 Lb. 100 Yds. 1.00
Golf Balls WILSON 49c ea.
Marine Hardware 40% off
Toys—40% off Rubber Balls 2 for 25c
Tennis Rackets 3.95 to 17.25
Chest High Waders 2 Pair Only 14.95
BRUCE PIPKIN'S (DISCOUNT) SPORT CENTER

AUSTIN REPORT

By SCOTT BAILEY
REP. OF 76th DISTRICT

Things began to happen quickly as a number of controversial issues began to make their way toward the House Calendar. The so-called "Race-horse Bill" got a favorable report from its subcommittee on Constitutional Amendments. It is reported that some members who oppose race-horse gambling voted for the amendment so that it would come out on the floor for further debate. If it passes both houses of the Legislature, it would then go to voters of Texas for final approval in 1962.

As a member of the Committee on Private and Municipal Corporations, I heard debate on House Bill No. 3 by Representative Dungan of McKinney. This Bill relates to the regulation of annexation by citizens and towns. H. B. 3 represents a compromise between the large cities and the small towns. During the hearing it was brought out that in some cases cities had reached out and annexed farm-land several miles from the city and had caused farm-land to be taxed the same as city property. H. B. 3 would help to insure more responsibility in this respect. The Farm Bureau favored this Bill because of its importance to the economy of rural families. The Bill was referred to a 5 man sub-committee of which I was appointed a member.

We will hear other testimony before taking final action on the measure.

As the 57th Session nears its second month, nearly 600 Bills have been introduced. Among some of the latest are: H. B. 399 by Representative James of Dallas, allowing Legislators who fail to run again or who are defeated in primaries to retain memberships on interim Committees until their term expires; H. B. 389 by Representative Sandahl, bringing the Pure Food and Drug Law up to date; H. B. 404 by Representative Spears, allowing microfilming of County records; H. B. 440

Hospital

Patients in the Eastland Memorial Hospital are the following:

- Dale Baker, medical
- Mrs. Carl Angstadt, medical
- Mrs. Sarah Farmer, medical
- Cisco Clifford Wilson, medical
- Carrie Willard, medical
- Wallace Bagley, medical
- Joan Slaughter, medical
- LeRoy Wright, medical
- Mrs. Willie Fisher, medical
- Edna Hamilton, medical
- Mrs. Barbara Shugart, surgical
- Mrs. Marcia Wende, medical
- Jammie Harris, medical
- Mrs. Iona Sikes, medical
- Mrs. Josie Campbell, medical
- Rufus Hendricks, surgical
- Frank Mitchell, medical
- Mrs. Josephine Taylor, medical
- Mrs. Belle McCullough, surgical
- Leonard Florence, medical
- Mrs. Elsie Fiensy, medical
- Mrs. Lora Norris, medical
- Mrs. Johnnie Woods, surgical
- Cisco Dismissed were:
Eddie Bailock, Dr. E. R. Townsen, Mrs. Fred Williams, George Hull, Danny Ivory, Buddy Aaron and Mrs. Arlene Moxley.

by Representative Buchanan, the Bill which didn't quite make it last time making gas producers sell to the landowner for irrigation purposes.

The ladies really marched on the Capitol last week in support of a Constitutional Amendment that would help them to attain more rights. They were out in force to push for passage of SJR No. 4. It was heard and sent to a Sub-committee last Wednesday night.

I am pleased that this little column has been read by so many people lately. It is sent to all the newspapers and the radio station in the 76th Representative District. Sometimes I don't make the deadline on sending it but I wish to thank all of the News People for their helpfulness in helping me to better inform you folks back home.

—READ THE CLASSIFIEDS—

COLDS

Relieve aches and pains of colds with STANBACK Tablets or Powders. Also use as gargle for sore throat due to colds. STANBACK'S S. A. (Synergistic Action) reduces fever, brings faster, more complete relief. Remember... Snap back with STANBACK!

WE RECOMMEND Garner's Farm Tax Record

Completely Meets All Income Tax Requirements
NOW COMPLETE WITH SOCIAL SECURITY RECORDS
APPROVED BY TAX EXPERTS BANKERS AND FARMERS EVERYWHERE
• SIMPLE • ECONOMICAL • COMPLETE
PRICE \$1.75 PER BOOK Plus Sales Tax
MADE FOR THE FARMER WHO WANTS THE BEST IN PROTECTION AND SERVICE AT LOWEST POSSIBLE COST

FURNITURE for the Entire Home

★ Carpet - Rugs All Prices ★
Be Sure To Check With



Call MA 9-1707 for Classifieds

HAMNER FUNERAL HOME
Ben E. Hamner, Owner
Serving Eastland County since 1920 ambulance and funeral service. Our ambulance oxygen equipped and air conditioned.
Through our nation-wide connections we funeral directors, we can handle a funeral any point in America. We offer this service that we can relieve the family of all incident to any death away from home.
Eastland Dial MA 9-

AUCTION McDONALD FORD SALE
208 Texas - DeLeon, Tex
Monday, March 6th - 10:00
Mr. H. H. McDonald has closed his Ford dealership and missioned Von Reece Associates, Inc. to sell the assets of the to the high bidder. EVERYTHING SELLS REGARDLESS OF SHOP EQUIPMENT
Quincy 1 1/2 HP Air Compressor (2 years old), Weaver Tool J. H. Bender front end machine, John Bean Headlight welder, Sun Combustion efficiency tester, Sun Volt tester, electronic distributor tester, Blackhawk 4 ton Hoop jack, Walker floor jack, Blackhawk 1 ton floor jack, two Black & Decker Black & Decker 1/2" drill, Sioux 3/4" drill, Black & Decker Walker #44 transmission jack, Marquette 6 1/2 charger, acetylene welding equipment, three Alemite greasers, Allen container, 1/2 HP grinder on stand, K. R. Wilson motor, FOMOCO undercoater, Curtis key machine, Champion sander, chime, growler tester, Binks paint gun, Tap & Die sets, Die cleaner, Bubble balancer, cleaning barrel with electric agitator and bearing pullers, special tools, Wilton 5" vise, 2 large wood desks, secretary chair, small metal desk (near new), office set leatherette covered, miscellaneous chairs and stools
OFFICE EQUIPMENT
Remington 10 key electric adding machine, R. C. Allen 10 adding machine, McCaskey Cash register, Remington typewriter, file cabinets, large office safe 5' tall - 2' wide - 2' deep, 200 window air conditioner, Illustravox standard film strip, wood desk, secretary chair, small metal desk (near new), office set leatherette covered, miscellaneous chairs and stools
MISCELLANEOUS
30 metal parts bins, Large shop fan, Coke box with drinker, 61' parts counter, miscellaneous parts and accessories.
TERMS
Cash, Cashier's check, personal and company checks must be paid by letter of bank credit.
Sale Conducted By
VON REECE ASSOCIATES,
Box 9121 HO 5-0500 GL 3-3979

PHONE
FOR COMPLETE AUTO REPAIR ALL MAKES AND MODELS
OFFICIAL INSPECTION STATION
ALLEN AUTO REPAIR
AT RUSHING MOTOR CO.
215 SOUTH SEAMAN

Rambler Gladly Gives the Facts, Including Prices on the '61 Cars
FREE AUTOMOTIVE X-RAYS
Can Save You Hundreds of Dollars
Three 28-Page Books Compare '61 Cars...Packed with Easy-to-Understand Photos, Facts, Figures
Never before have there been so many claims and counter-claims about new automobiles as there are today. How can you separate fact from fiction? Which cars actually offer the best features? Which are really lowest priced? Which give best performance, economy?
You'll find the answers to these and hundreds more questions in the 1961 Automotive X-Ray Books just off the press. These books pull no punches. They name names, show prices, comparison photos side by side. Three complete books—one for each of the popular-priced fields—free at your Rambler dealer's.
ECONOMY NEWS!
Rambler beats all other compact cars competing in Pure Oil Economy Trials for second straight year!
Tops field with 26.86 M.P.G. averaging more than 40 M.P.H. in nation's toughest, fairest economy run (NASCAR sanctioned). Rambler American Custom with overdrive takes first 6 places in Class 6—sweeps 8 of first 10 places—more proof of Rambler Excellence.
Supply Limited—Get Your 1961 Automotive X-Rays Today!
PIPKIN MOTOR COMPANY, 314 West Main

Pack Your Pantry and Fill Your Freezer!



LIBBY'S BEST BUY DAYS!

STOCK-UP TIME ON LIBBY'S CANNED AND FROZEN FOODS

Prices Effective Thursday, Friday and Saturday

Libby's Frozen Foods Sale!

- at Pies Libby's—Chicken, Beef or Turkey 4 8-oz. Pkgs. 89¢
- awberries Libby's Sliced 4 10-oz. Pkgs. 99¢
- ange Juice Libby's 4 6-oz. Cans 99¢

nd Carrots
Peas
ed Broccoli
Beans } Libby's Frozen Mix or Match **5** 10-oz. Pkgs. **1⁰⁰**

by's Fruit Pies All Flavors Large Pkg. **43¢**

els Sprouts
ccoli Spears
ed Peaches
liflower } • Green Beans
• Lima Beans
• Succotash
• Gard'n Vegetables } Mix or Match **4** Pkgs. **1⁰⁰**

y's Frozen Corn Cut or Cream Style 4 10-oz. Pkgs. 89¢

atoes French-Fried, Reg. or Ripple
ach Leaf or Chopped
ato Patties } Libby's Mix or Match **5** Pkgs. **89¢**

ansdown Cake Mixes All Varieties 2 19-oz. Pkgs. 69¢

Libby's Canned Foods Sale!

- Vienna Sausage Libby's 5 4-oz. Cans 1⁰⁰
- Fruit Cocktail Libby's 3 303's Cans 69¢
- Tomato Juice Libby's—Delicious 2 46-oz. Cans 69¢
- Bartlett Pears Libby's In Heavy Syrup 2 303's Cans 49¢
- Golden Corn Cream Style or Whole Kernel
- Green Beans Cut Tender, Flavorful
- Sweet Peas Garden-Sweet and Tender
- Libby's Beef Stew Just Heat & Serve, Fine One-Dish Meal 24-oz. Can 45¢
- Libby's Fruit Nectars Peach, Pear or Apricot 3 12-oz. Cans 39¢

Libby's - Your Choice:

4 303's Cans **79¢**

U. S. No. 1

Potatoes Russet 10 Lb. **69¢**

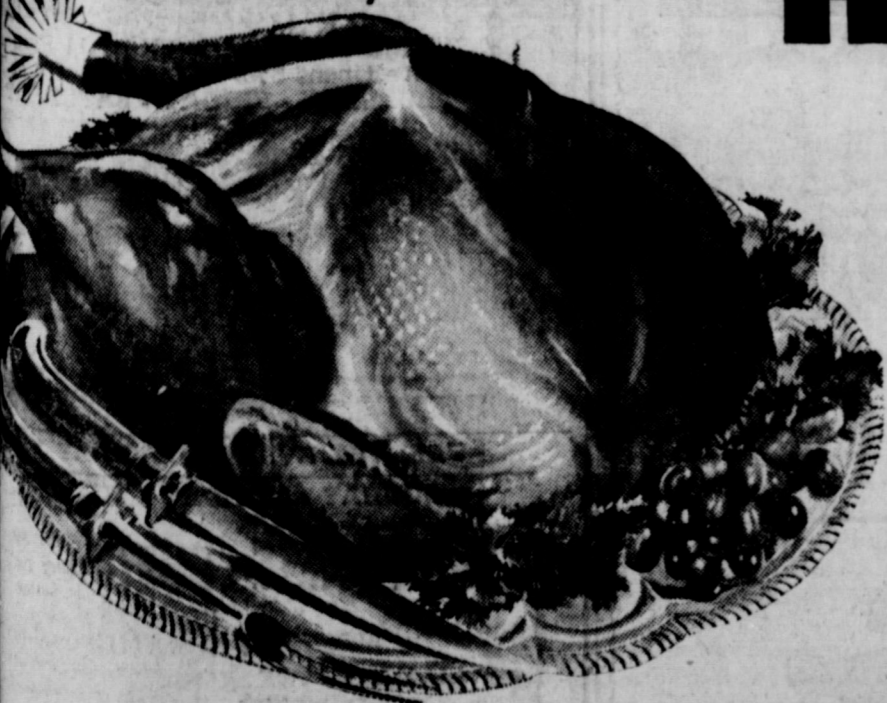
Pascal Celery Crisp, Green, Crunchy 2 Large Stalks 25¢

Firm Heads
Green Cabbage Lib. 4^c Extra-Fancy Red
Delicious Apples Lib. 25^c

Washington Extra-Fancy
Anjou Pears Lib. 19^c California, Young
Crisp Carrots in Cello 2 1-Lb. Pkgs. 29^c

Large Size
Avocados 2 For 25^c New Crop, Mexico
White Onions Lib. 10^c

For a Real Taste Treat
Serve Turkey BARBECUED!



HEN TURKEYS

Fancy U. S. Government Inspected,
U. S. Gov't. Grade "A" - Plump, Tender,
10 to 16 Lbs. Average... Priced So Low!
Lb.

39^c

Beef Chuck Roast Worth Controlled Quality Heavy Beef Lb. 49^c

Hormel Sliced Bacon "Dairy" Brand Lb. Pkg. 59^c

Shoulder Arm Roast Worth Controlled Quality Heavy Beef Lb. 59^c

Fresh Ground Beef Worth Quality Really-Fresh! Lb. 49^c

Catfish Fillets Taste O'Sea Frozen Lb. Pkg. 53^c

Great with Turkey—Ocean Spray

Cranberry Sauce 16-oz. Can 25^c

Libby's "Deep-Brown"
Pork & Beans 2 15-oz. Can 29^c

New! Made with Corn Oil
Mazola Margarine Lb. Pkg. 39^c

ate Reg. 53c Giant Tube **35^c**

a-Seltzer Reg. 54c **35^c**

CLIP AND SAVE!

Redeem This Coupon for EXTRA
50 Free S&H Green Stamps
with the Purchase of 5-Lb. Bag
PILLSBURY FLOUR
Void After Sat., March 4, 1961—Limit One

WORTH FOOD MART

CLIP AND SAVE!

Redeem This Coupon for EXTRA
50 Free S&H Green Stamps
with Purchase of One Bottle
QUART WESSON OIL
Void After Sat., March 4, 1961—Limit One

WORTH FOOD MART

CLIP AND SAVE!

Redeem This Coupon for EXTRA
25 Free S&H Green Stamps
with Purchase of 15c off Label
SOILAX 16-oz. Pkg. (Net) 14^c
Void After Sat., March 4, 1961—Limit One

WORTH FOOD MART

CLIP AND SAVE!

Redeem This Coupon for EXTRA
50 Free S&H Green Stamps
with Purchase of 15-oz. Jar, Whitfield's
FRESH CUCUMBER CHIPS
Void After Sat., March 4, 1961—Limit One

WORTH FOOD MART

CLIP AND SAVE!

Redeem This Coupon for EXTRA
50 Free S&H Green Stamps
with Purchase of Yearling Frozen
BEEF STEAKS or PATTIES
Void After Sat., March 4, 1961—Limit One

WORTH FOOD MART

— Call MA 9-1707 for Classified Ads —

How Much Can You Save—

... on your automobile insurance? As much as 20% or more if you are a careful driver. And this substantial savings goes right along with personal, efficient service you get by being insured with this agency. And if you need experienced counseling, help in case of an accident, or a free inventory of your property, we are as close to you as your telephone. Conveniently located down town and representing only oldline stock companies, we are fully equipped to serve you.

EARL BENDER & COMPANY

Eastland, (Insurance since 1924) Texas

FRESH AND FLAVORFUL

Boswell's COTTAGE CHEESE

Great tasting! Spoon Boswell's Cottage Cheese onto crisp, colorful, fresh vegetables or cling peaches — it makes one of the easiest salads. Tastes as good as it looks too. Use extra creamy Boswell's Cottage Cheese — made fresh and flavorful — gives you needed proteins.

Pythian Sisters To Meet; Members Urged to Attend

All members are urged to attend the regular meeting of the Pythian Sisters Monday at 7:30 p.m. in the Castle Hall, 106 Commerce.

The highlight of this meeting will be a "Reobligation Ceremony."

MOVES TO EASTLAND

Mr. and Mrs. Troy Ray of Falfurrias have moved to Eastland and are making their home on Hal-bryan St.

Mrs. Ray is the former Juanita (Pat) Pentecost of Eastland. Ray is a retired employee of the Magnolia Petroleum Co. They have two children, Bill of A&I College, and Dana of Pampa.

Ray is the son of Bill Ray of Dallas, Superintendent of the Gasoline Department of Magnolia Petroleum Co. there.



Chill Wills in "Little Shepherd of Kingdom Come" at the Majestic in Eastland Thursday, Friday, Saturday received the nomination for academy award contender for best supporting actor of the year. Wills, a native Texan, and a favorite with movie fans everywhere plays the part of Major Buford in "Little Shepherd of Kingdom Come."

Howdy Pardner! Coming to the Junior Play?

YOU'D BETTER OR YOUR GOING TO BE DEAD BANG!

Zeta Pi Chapter Meet Is Hosted By Mrs. Watts

The Zeta Pi Chapter of Beta Sigma Phi met for their regular business meeting and program last Monday evening in the home of Mrs. Alice Watts.

Mrs. Pat Collins, president, called the meeting to order. Old and new business was discussed after which plans were made for the "Spring Rush."

Mrs. Pat Ables introduced Mrs. Edith Winslow who brought the program for the evening. Mrs. Winslow's chosen subject was "Charm."

After the meeting was adjourned a surprise baby shower was given for Mrs. Eileen Watson.

Refreshments of frosted punch, cake and nuts were served to the following members present: Mmes. Wanda Burnham, Barbara Jeffcoat, Doris Harris, Pat Collings, Eileen Watson, Pat Ables and the hostess, Mrs. Watts.

The next meeting will be held March 6 in the home of Mrs. Nell Early.

Singing Planned at Bullock Tonight, Ranger Sunday

There will be an evening of gospel singing at the Bullock Community Center at 7:30 p.m. tonight.

Sunday at 2 p.m. there will be a gospel singing at the First Christian Church in Ranger. This will be the first of a monthly singing held at the First Christian Church. The meeting will be held the first Sunday of each month.

A spokesman for the group of Ranger singers urged everyone to come out and give their support in getting this singing started.

— READ THE CLASSIFIEDS —

Legislation—

(Continued from Page One)

The Texas Legislature file a copy of their Federal income tax returns with the Secretary of State of Texas, both for themselves and their wives, when they announce for the legislature.

The people of Texas have a right to know where their representatives in Austin get their income as a man's treasure is where his heart is also.

I feel sure that it would certainly be a revelation to the taxpayers to find out what the monetary interests of our legislators are. I'm sure the people would be surprised to find so many of them collecting "retainers" from the vested interests of this state, the oil and sulphur interests.

The present automobile insurance law is a farce but the insur-

ance commission is more interested in representing the insurance companies than it is in representing the people.

The legislature is not entirely to blame for the insurance commissions acts, but the legislature did set up the thing and it does control the purse-strings to the commission and it does have the power to do something about the abuse they have made in commission rulings of the feelings of the people.

After all the people we have in Austin doing the work of state government are supposed to represent the people of the state, not to see how much taxes they can collect.

One reason Price Daniel got elected to office as governor was his promise of no income tax nor sales tax. Let's stay with that program.

In the meantime there seems to be a rumor running around the south side of the square that Virgil Moore is going to be Representative Poage's campaign manager if the congressman should consent to announce for the senate race.

That'll be the day. If such a day were to arrive I'd be willing to pay the congressman's \$50 filing fee. This sure would be a good opportunity for Mr. Moore to get into politics. Our editor has been aching to get into politics anyway for some time. This is a chance he shouldn't miss.

Dedication—

(Continued from Page One) Texas Electric Service, Gas Co., Brown Plumber, KERR, Eastland School Board of Band Booster Club, western Bell Telephone Sneed, Crowell, Victor Cornelius, Coca Cola Bottling Food Store, Caldwell Montgomery Ward, son, Opal Cross, Mrs. Noble Squires Brown.

Joy Drive-In

Open 7:00 - Close 11:00 Adults 50c - Children 25c

CLARK GABLE MARILYN MONROE

Gable Monroe

in the John Huston production

the Mist

CO-STARRING Thelma Ritter Eli Wallach

screenplay by Arthur Miller produced by Frank E. Taylor directed by John Huston

DIXIE Drive-In

EASTLAND RANGER HIGHWAY

Boxoffice Opens 6:45 Show Starts 7:00

Admission 50c — Children Under 12 Free

Each Wednesday Is Bargain Night — Adults 40c

THURSDAY - FRIDAY - SATURDAY, MARCH 2-4

It's "Heavensville" on wheels for two eloping kind...

...A RUNAWAY PROPOSAL... A MILLIONAIRE HOBO AND A CARLOAD OF ZANY CHARACTERS...

Chartreuse Caboo

Starring MOLLY BEE BEN COOPER EDGAR BUCHANAN

PLUS: Color Cartoon and Color Parade

SUNDAY - MONDAY - TUESDAY, MARCH 5-7

LANA TURNER ANTHONY QUINN SANDRA DEE JOHN SAXON

Portrait in Blue

CO-STARRING LLOYD NOLAN RAY WALSTON

PLUS: Color Cartoon and Color Parade

RANGER DRIVE-IN

HIGHWAY 80 EAST ON RANGER HILL

Adults 50c—Kiddies Under 11 Free

Boxoffice Opens 6:45 — Show Starts at 7:00

THURSDAY - FRIDAY - SATURDAY

WALK TALK

COLOR BY DE LUXE

WILARD PARKER - JOYCE MEADOWS - KENT TAYLOR

FREEVUE EVERY SATURDAY NIGHT

SUNDAY - MONDAY - TUESDAY

CLARK GABLE · SOPHIA LOREN

NAPLES! WHERE THE FIREWORKS BEGIN!

IT STARTED IN NAPLES

TECHNICOLOR

VITTORIO DE SICA · MARIETTA

PERRY'S

OPPORTUNITY DAYS

FRIDAY AND SATURDAY

BARGAINS

COME EARLY . . . GET YOUR SHARE

CELLO SPONGES

3 assorted sizes to each bag.

Assorted colors

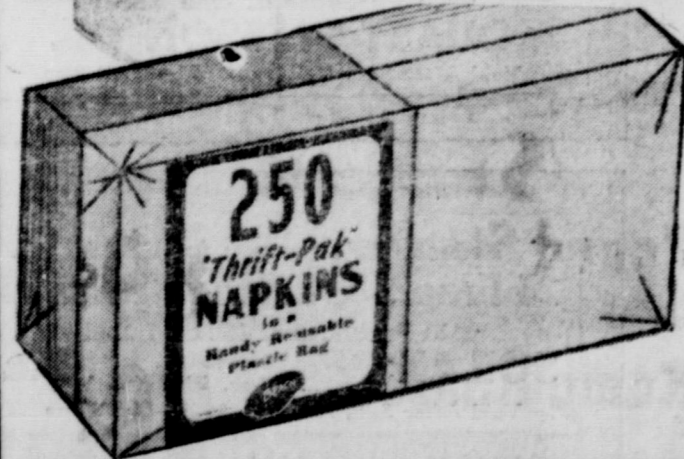
47¢

WOOD GRAIN OVEN PROOF

KITCHEN POTTERY

- 3 PC. BOWL SETS
- 80 OZ. PITCHERS
- COVERED COOKIE JARS
- DUTCH OVENS

YOUR CHOICE **99¢**



250 COUNT PACKAGED **PAPER NAPKINS** **31¢** PACKAGE

Ladies Spring PURSES Assorted Colors

1.00 AND **1.98**

Ladies Crepe Sole SHOES Assorted Colors

1.98

Children's Can-Can SLIPS

Assorted Colors Sizes: 2 to 14

1.98 AND **1.98**

FOR THE FIRST TIME AT THIS

LOW PRICE

DUPONT DULUX FINISH • IN TRADITIONAL OLD WORLD MAPLE

Four lovely, versatile styles so you can fit any spot and fill your decorating need . . . tables designed with loving, old-fashioned cabinet-maker care for detail . . . and scaled to fit into today's homes. We've turned tricks, too, to give you your choice at this feature price!



LAMP TABLE TOP 16" x 16" HEIGHT 24"



STEP TABLE LOWER SHELF 24" x 14" HEIGHT 23"



END TABLE TOP 19 1/2" x 13" HEIGHT 23"

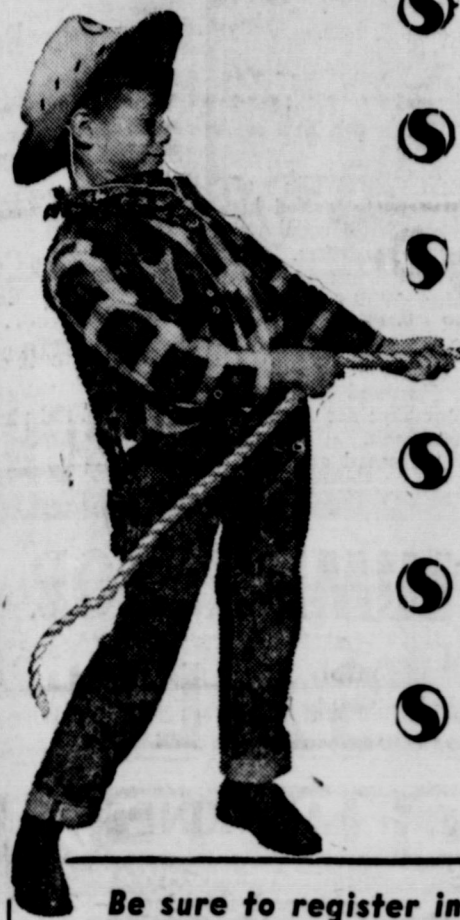


COCKTAIL TABLE TOP 34" x 17 1/2" HEIGHT 15 1/2"

\$9.95 Choice of any TABLE

Coats Furniture

SAFEWAY BRANDS SALE



- Safeway Milk** Cherub Evaporated For coffee, cooking or baby. None finer. **6** 14 1/2-Oz. Cans **79¢**
- Jell Well Gelatin** Assorted Flavors. **3** 3-Oz. Pkgs. **19¢**
- Mellorine** Joyett — Vanilla, Chocolate, Strawberry or Neapolitan. **1/2-Gal. Ctn.** **39¢**

Smart shoppers eagerly await our big annual Brands Sale... it gives them a chance to stock up at great savings! Featured are Safeway's own brands... guaranteed to give consistently fine quality every time. Now you can get these famous products, which offer more value for your money, at low, low prices. Corral really big savings!



- Detergent** White Magic. For pride and praise on washday. **Giant Box** **55¢**
- Grape Jelly** Safeway Empress. Unsurpassed in quality. **3** 10-Oz. Jars **59¢**
- Apple Pie** Safeway Bel-air Frozen. Large 8-inch pie. So easy to serve. **2** 1 1/2-Lb. Pies **69¢**

Pickles Safeway Zippy Whole Dill. **2** 72-Oz. Jars **49¢**
Drink La Lani Pineapple-Grapefruit. **2** 46-Oz. Cans **49¢**

Be sure to register in our **\$38,000.00 Bel-air Frozen Food GIVEAWAY**
 No obligations, nothing to buy. You need not be present to win.
 ★ Weekly winners in every store each week.
 ★ Monthly winners in every store each week.
 ★ Yearly winners in every store. Complete Rules at Safeway.

- Wisconsin Cheese** Longhorn. Lb. **63¢**
- Non-Fat Milk** Lacerne Dry. (15¢ off label) New at Safeway. 12-Oz. Size **76¢**
- Peanut Brittle** Safeway Roxbury Candy. 8-Oz. Pkg. **25¢**

Brand Values!

Brand Buys!

- Cheese Spread** Van Zee. Spread or slices. **2** Lb. Box **69¢**
- Safeway Prunes** Town House Large. **1-Lb. Pkg.** **39¢**
- Safeway Cookies** Busy Baker Oatmeal or Coconut. **2-Lb., 6-Oz. Pkg.** **79¢**

SAFEWAY Gives those Valuable **GOLD BOND STAMPS** your nearest Redemption Center is 443 Walnut Street, Abilene

Safeway Produce

Bananas **10¢**
 Young, firm and golden. Perfect fruit for any eating mood. Carefully selected and ripened.



Apples Washington State Winesap. Extra fancy. Lb. **15¢**

Romaine for salads. Lb. **19¢**

Peat Michigan soil conditioner. **2** 100-Lb. Bags **\$3.98**

Cabbage Firm, round heads. Lb. **4¢**

Yams Texas kiln dried. Delicious with ham. **2** Lbs. **25¢**

Safeway Specials!

Fruit Cocktail Safeway Town House. Five delicious fruits. **3** No. 303 Cans **65¢**

Mandarin Oranges Safeway Town House. **3** 11-Oz. Cans **69¢**

Flour Harvest Blossom. For all your cooking needs. (10-Lb. Bag... 69¢) **5** Lb. Bag **37¢**

Applesauce Highway. Add flavor to meats. **4** No. 303 Cans **59¢**

Green Peas Gardenside Early June. **5** No. 303 Cans **69¢**

Perch Fillets Captain's Choice Frozen. Boneless — Rich in flavor. **1-Lb. Pkg.** **39¢**

Blossom Time Milk In two 1/2-Gal. cartons. Gal. **93¢**

Slenderway Bread 1-Lb. Loaf **19¢**

Nut Snails Mrs. Wright's — Regular 7-Oz. Pkg. **23¢**

Hot Cross Buns Curtis — 8-count. 12-Oz. Pkg. **25¢**

Sandwich Bread Mrs. Wright's — White Sliced. 1 1/2-Lb. Loaf **25¢**

Mrs. Wright's Bread Regular white sliced. 1 1/2-Lb. Loaf **25¢**

Grape Juice Safeway Empress. Unsurpassed for quality. **2** 24-Oz. Bottles **59¢**

Sauerkraut Town House. Add zing to your meal! **2** No. 303 Cans **29¢**

Safeway Salmon Prince Paul Pink. **2** No. 1/2 Cans **69¢**

Highway Catsup Add taste-tempting flavor to meats. **3** 14-Oz. Bottles **49¢**

Airway Coffee Mild and Mellow. (2-Lb. Bag... \$1.09) **1-Lb. Bag** **55¢**

Nob Hill Coffee Rich and Aromatic. (2-Lb. Bag... \$1.21) **1-Lb. Bag** **57¢**

HAMS

Smoked. Selected for superb quality eating.

Shank Portion Lb. **29¢**

Butt Half Lb. **45¢**

Center Slices Lb. **89¢**

Delicious served fried with eggs.



SAFEWAY Choice MEATS

Round Steak U.S.D.A. Choice Grade Heavy Beef. "Naturally Aged." Full Cut. Lb. **89¢**

Rump Roast U.S.D.A. Choice Grade Heavy Beef. "Naturally Aged." Lb. **79¢**

Ducklings Long Island. Perfect for roasting. Lb. **45¢**

Lamb Buys!

Leg-0-Lamb Perfect for roasting. Lb. **69¢**

Lamb Shoulder Try stuffed lamb shoulder. Lb. **45¢**

Lamb Chops Rib or loin. Lb. **85¢**

SAFEWAY
 Conveniently Located to Serve you at 504 E. Main, Eastland
 Prices Effective Thurs., Fri. and Sat., March 2, 3 and 4 in Eastland
 We Reserve the Right to Limit Quantities. No Sales to Dealers.

Volume No. 6
Golden Book Atlas
 Australia, Oceania and the Polar Lands. **99¢** Each
 Complete your reference library.

ATTENDS SCHOOL

Mr. and Mrs. J. C. Poe of Eastland recently attended a Spring Design School held in Fort Worth

in the Texas Hotel.

The Design School was sponsored by the Fort Worth Allied Florists Association.

GO TO CHURCH SUNDAY

Texas Electric Joins In 'Super Line' Project

Texas Electric Service Company and three other major investor-owned electric utility companies operating in Texas today announced plans for the joint construction of a "super power" electrical transmission line between Houston and Fort Worth-Dallas area.

link together 6,500,000 kilowatts of electric power generating capability of the four companies into one of the nation's largest and strongest reservoirs of power.

These projects will provide Texas with a super high-voltage "power highway," stretching some 800 miles from the Permian Basin through the Fort Worth-Dallas area to Houston and from the Fort Worth-Dallas area to the Red River.

Mrs. Guy Quinn Hosts Meeting Of White Circle

Members of the White Circle of the Woman's Society of Christian Service of the Methodist Church met Tuesday at 2 p.m. in the home of Mrs. Guy Quinn.

NEWS FROM STAFF

Mr. and Mrs. Bill McFadden of Duncan, Okla. visited over the weekend with Mrs. McFadden's sister and brother-in-law, Mr. and Mrs. Allen Crosby, and her brother, Mr. and Mrs. Buster Hazard of Eastland.

Jack Cole were shopping land Wednesday. Mr. and Mrs. George recently visited their son, Mr. and Mrs. Fox, Austin.

DO YOU KNOW George Ber Shaw Said About "CURE GOING UP" NOTHING... will enjoy it any 7:30 p.m.



MORE GOOD FOODS—MORE SAVINGS—MORE OFTEN! AT A&P... THERE'S MORE IN IT FOR YOU...



MELLOWMOOD 60 Gauge Deluxe SHEER NYLONS Beige or Taupe Sizes 8 1/2-11 2 Pair in Box 99c

- HEAVY CALF Sirloin Steak Lb. 89c Round Steak Lb. 89c T-Bone Steak Lb. 99c CHUCK ROAST Lb. 49c SLICED BACON Lb. Pkg. 49c Pork Loin Quarters Sliced Lb. 59c CALVES LIVER Skinned, Sliced Lb. 69c CANNED CHICKEN Ea. 89c FISH STICKS 10-oz. Pkg. 29c HADDOCK DINNERS Ea. 39c

Ann Page Fine Foods PRESERVES or JAM 4 12 oz. 95c PORK & BEANS 4 1-lb. Cans 45c GRAPE JELLY 2-lb. Jar 45c WHITE HOUSE EVAPORATED MILK 79c Handy 6 PACK CARTON

APPLE PIE 39c ANGEL FOOD 39c JANE PARKER SOUR RYE BREAD 2 16-oz. Loaves 33c POTATO CHIPS 10-oz. Pkg. 49c SWEET ROLLS Pkg. 29c White Bread 2 For 49c

Best Deal We've Had In Years! Seiberling Portage No. 1 670x15 Black NYLON Tube Type 12.95 750x14 Black NYLON Tubeless 14.95 Plus Tax, Exchange TERMS JIM HORTON Tire Service East Main St. MA 9-1420 Eastland, Texas

Social Calendar Thursday, March 2 3 p.m. — The Thursday Afternoon Club will meet when "Texas Heritage" will be the program prepared and presented by Mrs. Harold Durham and students. 9:30 a.m. — The Rachel Group of the CWF will hold their regular meeting in the home of Mrs. Jim Parks. Monday, March 6 7:30 p.m. — The weekly meeting of the Oddfellows Lodge will be held in the IOOF Hall. 7:30 p.m. — The regular meeting of the Pythian Sisters will be held in the Castle Hall, 106 Commerce. 7:30 p.m. — Mrs. Kinnaird will host members of Las Leales Club in the Woman's Club. Tuesday, March 7 7:30 p.m. — Eastland Chapter No. 280 O. E. S. will meet in the Masonic Hall for their regular stated meeting. All officers are urged to be present and all visitors are welcome. 2 p.m. — The WSCS regular business meeting will be held. Program, "Give Thanks In Lent", will be given by Mrs. Frank Deaton. Wednesday, March 8 2 p.m. — The regular meeting of the Morton Valley Home Demonstration Club will be held in the MV Clubhouse.

We'll give you this ceiling installation kit when you buy an Armstrong ceiling FREE to Weekend Wonders. A Weekend Wonder is someone who installs his own Armstrong ceiling. The kit makes it easy. It contains a ceiling tie knife; 6" steel tape; chalk and chalk line; installation instruction book; Weekend Wonder apron. Crowell Lumber Co. 715 W. Main Phone MA 9-2411

LUMBER FOR SALE ALL KINDS Flooring — hardwood flooring — 2x4; 2x6; 2x12; shiplap; steel beams; all types of plumb brick; building tile. Tearing down old school building on Church of Camp Grounds west of City—starts Monday—salesman on job — bargain prices.

Hamner Life Insurance Comp Ben E. Hamner, President This company has been in operation in section since 1942 selling policies to be used primarily for burial purposes. We write from \$100 to \$600 and our policies are paid in cash, which affords freedom in the selection of the Funeral Director of your choice. Ages from 1 month to 90 years. For further information come by to see Hamner Funeral Home, 301 S. Lamar, Eastland, Texas P. O. Box 431 Dial MAIn 9-2611

- More A&P Money Saving Grocery Values SAUCE MIX McCormick's Spaghetti with Free 8-oz. Can Hunt's Tomato Sauce 1 1/2-oz. Pkg. 23c SPANISH RICE Brown Beauty 3 No. 300 Cans 49c UNCLE BEN RICE Converted 28-oz. Pkg. 45c RED PLUM JAM Garden Club 2-lb. Jar 39c RAINBO PICKLES Deluxe Dills in Freezer Jar 44-oz. Jar 49c IONA TOMATOES 2 16-oz. Cans 25c HYPOWER TAMALES In Sauce 1 Lb. 12-oz. Can 29c CORN A&P Golden Sweet Whole Kernel 2 303 Cans 37c FROZEN PEAS Four Winds Brand Cream or Black-eyo 2 20-oz. Jars 25c Bisquick 40-oz. Pkg. 45c Syrup Ann Page Blended 24-oz. Btl. 49c

SUNNYFIELD FLOUR 25-Lb. Sack 1.73 10-Lb. Sack 69c FIESTA SALE! HI-FI ENAMEL COOK WARE SAUCE PANS 25c Yellow Covered Casserole-Roaster, Covered 4-qt. Sauce Pot, 3-piece Mix Bowl Set or 8-cup Percolator 99c Kitchen Terry TOWELS All Cotton 3 for \$1

Oranges TEXAS 5 Lb. Sack 39c Ruby Red Grapefruit 5 Lb. Bag 29c Radishes Pkg. 5c Lettuce 2 Large Heads 25c Potatoes 10 Lb. Mesh Bag 49c Avocados 2 LARGE SIZE For 29c Peat MICHIGAN 2 100-lb. Sacks 3.98 Tomatoes VINE-RIPENED MEXICAN Lb. 19c A&P Food Stores

Flameless electric cooking helps keep kitchens decorator bright... women who cook electrically know... Modern, flameless electric cooking helps keep your kitchen bright and fresh as new. When you cook electrically, you know the cooking heat is clean. It's the same clean electric heat that irons your clothes... heat as clean as electric light. It helps keep your utensils mirror-bright and your curtains crisp. Woodwork requires less cleaning and care. Start now to enjoy cooking with clean, flameless electric heat. See your electric range dealer soon. TEXAS ELECTRIC SERVICE COMPANY

Party Party Ricky Saturday

The Junior-Senior classes of Carbon High School and faculty were honored with a "Dream" banquet Friday evening in the Fellowship Hall of the Carbon Baptist Church. The banquet was sponsored by the Carbon W.M.U.

The setting for the banquet featured a Castle scene directly in front of the speakers' table. The Dream motif was carried out in the table decorations with pink and silver sprays, rosebuds, lilies, angel-hair and candles, with mirrors placed at intervals to reflect their beauty. Place cards were prince and princess cut-outs bearing the name of each guest.

Rev. Jim Turner served as master of ceremonies and Billy Sandlin gave the invocation which was followed by the "Queen's Feast" by candlelight. The menu consisted of chicken and dressing, giblet gravy, green beans, whole kernel corn, fruit salad, hot rolls, coconut cake and iced tea.

Mrs. M. M. Stubblefield, W. M. U. president, gave the

Carbon Junior-Senior Classes Honored at 'Dream' Banquet Sat.

welcome, "Realized Dreams" and Rhodney Jackson responded with "Pleasant Dreams."

The welcome and response was followed by the group singing of "Beautiful Dreamer" led by Rev. Turner with Mrs. Turner at the piano. Mrs. Ed Willman and Travis Spence did a comical skit "You Tell Me Your Dreams" and the Junior and Senior girls sang "All I Have to Do Is Dream" and "Down the River of Golden Dreams." Rev. Don Timberlake, pastor of Birchman Avenue Baptist Church, Fort Worth, speaker for the evening, after keeping the group amused for several minutes with his fluent flow of clever witticism, came to the serious part of his speech and left them with some worthwhile thoughts on "Making Dreams Come True."

Benediction was given by M. M. Stubblefield.

Seniors are Richard Arnold, Tommy Collins, Patsy Hale, Doris Harle, Rhodney Jackson, Joe Paul May, Gene Maynard, Kay McDaniel, Billy Sandlin. Juniors are Mary Been, Weldon Cook, Don Guy, Jerry Lasater, Larry Morrow, Gary Norris, Charlie Stephenson and Wanda Tucker.

Waitresses were Sophomore girls: Nancy Benton, Annita Duncan, Claudette Guy, La Verne Lee, Sharon Johnson and Kathy Sandlin.

Childrens Center

DAY NURSERY

- Supervised Play
- Large outdoor play ground
- Hot Lunch
- Mid-morning and mid-afternoon refreshments
- Rest period

Age 3 through 6
Monday thru Saturday
From 8 to 5

Qualified Kindergarten Teacher in charge. Transportation arranged. Serving Eastland, Olden, Ranger, and Desdemona.

MRS. PAT MILLER
MA 9-1446

SINCE 1884

... quality workmanship and efficient service, approved throughout this area.

ALEX RAWLINS & SONS

Phone LY 4-2726 Texas

The low-price compact that looks and drives like twice the price!

Valiant's

the compact that rarely complains

(Just like the Valiant owners you know!)



What makes Valiant, and the people who own it, so easy going?

For one thing, nagging annoyances that beset many other car bodies have been engineered out of Valiant's one-piece welded Unibody. And out where the road bumps are, Valiant's torsion-bar suspension stays smooth as milk 'n' honey.

Remember, too, Valiant's low prices begin 1000 lower than last year. And because Valiant's

built the way it is, it's bound to rate high at resale time.

For looks and liveliness, for long life and low cost, the top compact this year is Valiant. Come see the man who sells them!



Valiant!

A Chrysler-engineered product, at your Plymouth-Valiant dealer's

Gorman Gatherings

By Mrs. R. E. Boucher

Mr. and Mrs. J. N. Ellison and Mrs. Ruth Slaton left Tuesday for San Antonio where they will visit the Ellison's daughter and family, Mr. and Mrs. O. D. Hite, Susan and Sally, the rest of the week.

Mr. and Mrs. G. D. Riley had as their guests Sunday their daughter and husband, Mr. and Mrs. Tony Iammatteo and their grandson and his friend, Neil Crossan and Miss Karen Albright of Fort Worth. Neil remained for a few days while recuperating from major surgery.

Mrs. W. J. Mangum of Henrietta is here for an extended visit with her sister and family, Mr. and Mrs. J. N. Kirk and Mrs. Bernice Jeffs and son.

Mr. and Mrs. Walter Gann of Eastland were visiting old friends. They called at the home of Mr. and Mrs. R. E. Boucher and also visited friends in the Nursing Home.

Mr. and Mrs. Graydon Baze were in Fort Worth Sunday visiting his brother, J. B., who underwent surgery and is a patient in the All Saints Hospital. He was improving nicely at the last report.

J. A. Baze is a patient in the Blackwell Hospital suffering from an attack of bronchitis and asthma. He is the father of Graydon Baze and J. B. Baze.

Mrs. Aubrey Griffin and son, James, and his friend, Miss Judy Evans of Borger, were guests in the home of her father, W. L. Andrus, over the weekend.

Mr. and Mrs. Marvin Nix and Jerry were in Dallas Saturday visiting with Mrs. Hazel Shankle, Mrs. Nix's niece.

Mrs. G. D. Riley took her grandson, Neil home Friday and she spent the night with her daughter and husband, Mr. and Mrs.

Would you like to see a play partially directed by a teacher who has never directed a play before about a teacher who has never directed a play before with students who have never acted before in a play about students who have never acted before?

If you get frustrated reading this sort of thing you should see a relaxing play, the JUNIOR CLASS PLAY, MARCH 3, 7:30 P.M. HIGH SCHOOL AUDITORIUM.

Adults 75c, Students 50c, Children 25c.

Tony Iammatteo. She returned home Saturday.

Mr. and Mrs. A. E. Cummings have bought and moved into the J. E. Broom farm south of town. They come here from Bloomfield, N. M. They were also visitors at the morning services of the First Baptist Church Sunday.

Miss Della Pullig has moved to her new home here. She is a former resident and has returned to Gorman. She and her sister, Mrs. Loma McKnight, have been living in Breckenridge for the past several years. Miss Pullig was at the morning services of the First Baptist Church Sunday.

Mrs. Leon Harvey and children of Graham spent the weekend with her parents, Mr. and Mrs. E. L. Maupin. The Harveys are moving from Graham to Mineola the last of this week.

READ THE CLASSIFIEDS

Xi Alpha Zeta Chapter Meets In George Home

Members of the Xi Alpha Zeta Chapter No. 711 of Beta Sigma Phi met Monday at 7:30 p.m. in the home of Mrs. Annette George. Mrs. Jerry Leslie, president, presided over the short business meeting.

Mmes. Frances Walters, Ann Perry and Jerry Leslie were elected to served as a nominating committee. They will present their slate of officers at the March 13 meeting.

Mrs. Frances Moore presented the program and read a story, "A Midwinter Night's Dream" by an unknown author. The story told of a dream the author had of what Eastland will be like in 1986.

COMPLETE AIR CONDITIONING SALES and SERVICE

SMITH PLUMBING AND TIN

PHONE MA 9-2422

114 N. Seaman

Call MA 9-1707 for Classified Ads

UNITED STATES STEEL PRODUCTS

CORRUGATED ROOFING

29 Gage A1 Lengths from 6' thru 12'

V-DRAIN ROOFING

29 Gage A1 Lengths from 6' thru 12'

\$9.75 per square, any amount

35" GOAT WIRE..... \$11.50

BARB WIRE..... \$7.00

These Prices Good for Limited Time or Until Present Stocks Are Depleted

Higginbotham-Bartlett Co.

301 W. Main Jack Elliott, Mgr. Phone MA 9-1311

WILSON CRISP RITE

Sliced Bacon

pound 49c



WHITE SWAN ^{White or Golden} **HOMINY** 12 303 Cans \$1

PRICES GOOD THROUGH SATURDAY, MARCH 4

VELVEETA

Cheese 2 Lb. Box 99c

FRESH PORK

Sausage Lb. 39c

Pork Liver Lb. 29c

You'll SAVE more... so heap your basket with these **DOLLAR Grand Buys**



WHITE SWAN APPLESAUCE 6 303 Cans \$1

WHITE SWAN GRAPEFRUIT JUICE 4 46-Oz. Can \$1

WHITE SWAN TOMATO JUICE 4 46-Oz. Cans \$1

WHITE SWAN PORK & BEANS 10 300 Cans \$1

WHITE SWAN PRESERVES Peach, Apricot or Pineapple 3 20-Oz. Tumblers \$1

WHITE SWAN POTATOES Whole 4 303 Cans \$1

WHITE SWAN WHOLE GREEN BEANS 4 303 Cans \$1

WHITE SWAN CORN Cream Style Golden 6 303 Cans \$1

WHITE SWAN MUSTARD GREENS 10 303 Cans \$1

WHITE SWAN TURNIP GREENS 10 303 Cans \$1

WHITE SWAN CATSUP 5 14-Oz. Bottles \$1

WHITE SWAN PEACHES Sliced or Halves 4 No. 2 1/2 Cans \$1

WHITE SWAN **SHORTENING** 3 Lb. Can 1/2 DOLLAR

WHITE SWAN **BISCUITS** 7 Reg. Cans 1/2 DOLLAR

NABISCO PREMIUM CRACKERS Pound Box 29c

AUSTEX PLAIN CHILI 300 Can 49c

GERBERS BABY FOOD Strained 4 4 1/2-Oz. Can 35c

LIGHT CRUST FLOUR 5 Pound Box 39c

LIPTON'S INSTANT TEA 1 1/2-Oz. Jar 49c

LIPTON'S TEA 1 1/2 Pound Box 39c

LIPTON'S TEA BAGS 16-Count Box 23c

PET EVAPORATED MILK 3 Tall Cans 39c

RUSSET Potatoes 10 Lb. 59c

CELLO Carrots 2 For 25c

SUNKIST Lemons Lb. 17c



WHITE SWAN COFFEE 2 Pound Can \$1

NEUHOFF LONE STAR THICK SLICED BACON 2 Lb. 95c

ARMOUR'S STAR

Sliced Bacon

pound 59c

GOOCH'S RANCH PAK Weiners 3 Lb. 99c

MacMOY'S Super Save

400 S. Seaman Home Owned—Home Operated

EASTLAND OPPORTUNITY DAYS!

DON'T MISS THESE SENSATIONAL E.O.D. VALUES FRIDAY and SATURDAY

(Prices Good These Days Only)

FREE

Each of our customers who make a purchase Friday and Saturday will receive a metal, custom-made plate to fit license plate Free. These plates make you an Eastland Backer. (While our supply lasts.)

SEAT COVERS

Fit Most Models
While Stock Lasts
(Clear Plastic Just \$12). **\$10** Set

DECOROARE—(Blue, Brown, White) Reg. 65c
Waste Paper Baskets **40c**

Western Auto Assoc. Store
EAST SIDE OF SQUARE

BIGGEST BARGAINS EVER

Here's Your Opportunity to Save Money On Your

SHOE REPAIRS

SAVE



25c Off On Sole Job
50c Off on Heels and Soles

FRIDAY AND SATURDAY ONLY

Quality Shoe Service
WEST SIDE OF SQUARE

OPPORTUNITY DAYS

ONE GROUP

MEN'S SLACKS
\$5

YOUR CHOICE
FALL SPORT SHIRTS
COMPLETE STOCK
1/3 OFF

Friday and Saturday Only

James Smith
MENS SHOP
EASTLAND

BIGGEST BARGAINS EVER

U. S. Coast Guard Approved
Life Jackets Reg. 5.95

Spinning Line Spool

Zebco
Reel and Glass Rod Reg. 10.90

12-Foot Fiberglass
Fishing Boat Reg. 179.00 **139.**

BRUCE PIPKIN
SPORT CENTER

OPPORTUNITY DAYS

SPECIAL OPPORTUNITY DAYS COUPON

This Coupon and 1.95 will get you six billfold size pictures Fri. & Sat.

For Appointments Call MA 9-2044

CANARIS STUDIO
102 S. Seaman Phone MA 9-2044

DRESSES, values to 8.99 2.99
ALL 1.99 SLIPS, HALF SLIPS, GOWNS and
PAJAMAS 1.69
BLOUSE SALE 99c
ALL 99c NYLONS 79c pair
(Includes Seamless, Seams, Knee High,
Run Resistant) 3 Pair 2.25

BRA SALE **79c & \$1**

MODE O' DAY
East Side of Square
Eastland

OPPORTUNITY DAYS

This Coupon
Worth \$1.00

ON ANY
\$5 Purchase

Friday and Saturday Only

KIRKLAND'S
North Side of Square

BIGGEST BARGAINS EVER

BARGAINS ON MATERIALS

Prints 59c Value **3 yds. 1.00**

46" Unbleached
Domestic **3 yds. 1.00**

Solid Color
Broad Cloth **29c yd**

Smith's Store
WEST SIDE OF SQUARE

OPPORTUNITY DAYS

Ladies Print
Dresses

Regular 2.98

FAST COLOR
\$1.00

Friday and Saturday Only

HARELIKS INC.
"YOUR CLOTHING HEADQUARTERS"

BIGGEST BARGAINS EVER

Final Clearance

DRESSES FOR WEAR NOW

One Group **\$5**
One Group **\$10**

BLOUSES, SWEATERS, SKIRTS
REDUCED BELOW COST
For Final Clearance

One Group Blouses 1.00
One Group Sweaters 2.99

ALTMAN'S
North Side of Square

Early American

Rocker

\$14.88



Coats
FURNITURE

WHILE THEY LAST!

Snifters Reg. 1.50
75c

FEW BULOVA WATCHES
And One Group
WITTNOUR WATCHES

1/2 Price

Smitty's Jewelry
104 S. Seaman Phone MA 9-1290

WOVEN DOTTED SWISS

IDEAL FOR EASTER
45-Inch Width **2 yds.**

NEW SHIPMENT
DRIP DRI COTTONS

SHORT LENGTHS—
NAME BRANDS **2 yds. for**

FABRICS

(Regular to \$1.39 Now

Includes Wash Silk, Prints, Dacron and Co
Blends, Solids and Stripes to match. Very desirable
for Easter sewing.
(Prices Good Friday and Saturday Only)

Jeanette's Shop
115 LAMAR