



Think Progressively It Works!

COVERING EASTLAND COUNTY

VOLUME 31

EASTLAND, TEXAS, SUNDAY, JANUARY 1, 1961

No. 104



**MAVETTES OF 1960** One of the highest scoring Eastland girls team ever to wear the red and black is the 1960 squad coached by Mrs. Milton Day. Pictured from left to right are Jeanne Morren, Kay Morton, Becky McAlister, Tina Urban, Judy McMillian, Mrs. Day, Wanda Arther, Joyce Robertson, Beverly Kline and and Judy Seaberry. (Canaris Studio Photo)

## EASTLAND LOOKING TO NEW YEAR WITH HOPE

### Stepped Up Chamber Program Is Pledged

The first year of the "Golden States" ended Saturday and most Eastland citizens were in agreement that the year had been a good one locally despite the fact that it wasn't as golden as had been hoped for nationwide.

Since the first falls on Sunday this year most Eastland businesses will close Monday. The courthouse, city hall, post office, grocery stores and department stores have all announced plans to close. The Telegram will be closed Monday but will print Tuesday as usual.

Several local churches held watch night services Saturday and there were the usual number of New Year Eve parties around town.

The coming of 1961 is greeted with optimism here. There are indications that the town may move

forward this year. The Chamber of Commerce has stepped up activities and an all-out effort to increase the city's popularity as a hopping center in this area and at least two major building projects are to begin early in the year.

In fact, work on the \$250,000 Fiesta Bowling Lanes, located on the east outskirts, got underway this week. And plans are being laid to construct a new air conditioned building less than a block off the square. Details of that project are expected to be announced soon.

Prospects for filling up the buildings on the square also look good. The Chamber of Commerce is working towards that goal and it is generally known that one of the buildings on the south side of the square will be filled up in January. The C-C is also working on getting a tenant for the Nelson building.

There is much indication that oil activity in the area will pick up in 1961. And area farmers are back on their feet again after two successful peanut crops. Southwestern Peanut Association officials say many farmers made their best peanut crop in 1960 that they have made in the past 10 years.

### County Bond Sales Nears Goal for Year

Saving Bonds sales in Eastland County were \$24,364 during November. Purchases for the first eleven months of 1960 totaled 476,721 or 91.7 percent of the yearly goal. Guy Parker Chairman of the Eastland County Savings Bonds Committee said today.

E and H 1960 sales in Texas amounted to \$139,283,903. This represents 84.2 percent of the Texas 1960 goal of \$165.5 million.

According to William H. Neal, National Director of the Treasury Bond Program, "November marked the eleventh consecutive month in which Savings Bonds Program has shown growth. We are especially encouraged by the continued downward growth in redemptions, a major factor contributing to this sustained growth", Neal concluded.

### Surplus Foods Distribution Dates Announced

Next date for distribution of the USDA surplus foods in Eastland will be as follows:

Monday, Jan. 9, Eastland, Olden and Ranger.

Tuesday, Jan. 10, Pioneer, Rising Star, Okra, Carbon, Gorman and Desdemona.

Wednesday, Jan. 11, Cisco, Scranton and Nimrod.

**EASTLAND NATIONAL BANK**  
"On The Square"  
MEMBER F. D. I. C.

### Expansion of Sheep Breeding Research Asked

College Station, Dec.—Expansion of sheep breeding research to speed development of animals with improved ability to produce wool and meat that will satisfy consumer needs was advanced by members of the USDA's Sheep and Wool Research and Marketing Advisory Committee at their annual meeting, held Nov. 24, in Washington, D. C.

Breeds and strains of sheep which are resistant to hot, humid weather, parasitism and special diseases are needed to enable the sheep industry to expand into areas of abundant, year-round pastures, the committee noted.

In the area of marketing research, the most important need is for studies to determine consumer preferences for lamb quality, especially as they apply to maturity, degree of finish and meat color, the committee said.

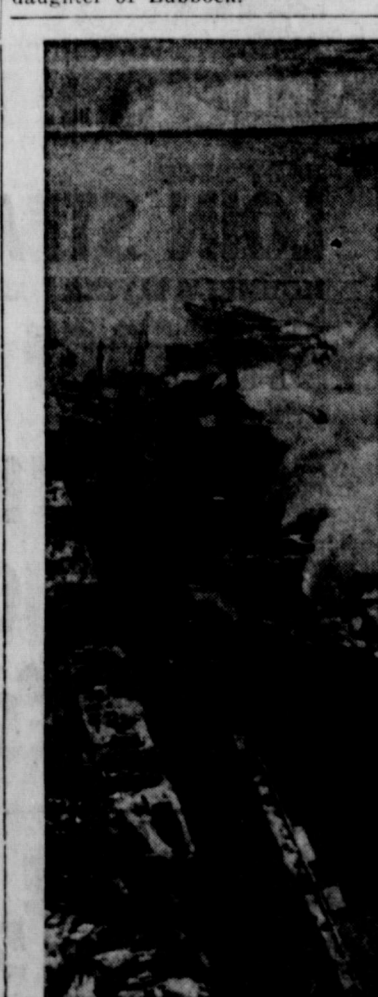
Expanded research on chemical treatment of wool was recommended as the most important need in the field of utilization study. The committee also urged publication of complete annual statistics on wool stocks in the United States.

The committee, of which T. A. Kincaid, Jr. of Ozona, Texas is a member, also recommended studies on ways to increase mohair production, economic studies of price, supply and consumption, and studies to increase the use of wool in blended fabrics.

Detailed recommendations for sheep and wool research will be formally submitted to the USDA within the next few weeks. Copies of this report will be available from the committee's executive secretary, Max Hinds, Office of the Administrator, Agricultural Research Service, USDA, Washington 25, D. C.

### HOLIDAY VISITORS

Holiday visitors in the home of Mr. and Mrs. Roy Lane were A-3C Truman Lane and A-3C Jack Jordan of Carswell Air Force Base and Mr. and Mrs. Dean Sutton and daughter of Lubbock.



**WORLD'S LARGEST** conventionally-powered aircraft carrier, 95 per cent completed, burns at Brooklyn Navy Yard. Dozens of workers were trapped in the USS Constellation.

### Hoffmann Is Re-Elected Director of Oil Assoc.

New officers and directors of the Independent Petroleum Association of America, assuming office Jan. 1, include 14 west central Texas oil men.

J. S. Lauderdale, & Straughan Drilling Co., Abilene will serve the national trade organization as vice president for West Central Texas and P. W. Pitzer, Jr., of Breckenridge, will serve on the IPAA's 25-man national executive committee.

Newly-elected at the IPAA annual meeting in October to serve on the national board of directors during the 1961 calendar year were Ralph Bridwell, Bridwell Oil Company, Abilene; W. W. Walton, Sheets & Walton Drilling Company, Breckenridge; and John I. Moore of San Angelo.

Re-elected board members include Lester Clark, president, Gruniger Corp., Breckenridge; C. W. Hoffmann, of Eastland; and J. Mark McLaughlin, president, Petroleum Producers, Incorporated.

Abilene directors who were re-

lected were: E. L. Anders, Jr., president, LeClair Operating Co., Inc.; J. E. Connally, Connally Oil Company; John Crutchfield; T. R. Havins, Jr., Utex Exploration Co., Inc.; French Robertson and T. D. Tompkins.

### Tax Clinic Is Over Subscribed For Jan. Meeting

Tax practitioners in North Texas have been too enthusiastic in their response to the Internal Revenue Tax Clinic scheduled for January 3, 4, and 5 in Dallas. Available space limited enrollment to 30 practitioners. According to Ellis Campbell, Jr., District Director, more than 190 applications for enrollment were received. Internal Revenue prorated participation to give as much geographical coverage as possible for the entire 143 county districts. The tax men also tried to limit participation to only one member of a firm in order to give more firms a chance to attend.

The tax Clinic will be conducted by veteran tax instructor, J. T. Logan and Internal Revenue Agent Instructor, Herschel Boggs. The sessions will be devoted to working simple basic tax problems. Participants include well known educators, certified public accountants and public accountants, as well as representatives from business and government who prepare returns for employees of their firms or agencies.

Ellis Campbell, Jr., District Director of the Dallas District, says "We rely on voluntary compliance as our basic method of tax collection. Education is a must if we are to have voluntary compliance. We are very happy over the spread participation in this clinic and especially pleased to have the college people attend." Internal Revenue plans another clinic next year with space for any practitioner that desires to attend.

### Swine Carcass Test Program Planned at A&M

The search continues for strains and families of hogs which are prolific and yield carcasses with a high percentage of ham and loin. The statewide swine carcass test offers both purebred and commercial swine producers of Texas an opportunity to get information on their animals and aid in the search, says T. D. Tankley, extension animal husbandman.

Since facilities are available for feeding only 108 head of hogs, the specialist suggests that entries be made at once. Two littermates of either sex will constitute an entry. The pigs are to be delivered to the Texas A&M College Swine Center between January 2-15, 1961 at weights between 50 and 100 pounds. A health certificate from a licensed veterinarian must be presented at time of delivery.

The pigs will self-feed on a highly fortified ration designed to get maximum gain and muscle development, Tankley said. They will be finished on concrete feeding floors. This uniform feeding (Continued on Page Three)



### New Radar Units Are Hard On Speeders

If you're one of the drivers who has a sharp eye and have always been able to spot the little radar box on the side of the highway in time to avoid a speeding ticket here's news for you.

Highway Patrol officers in Eastland County are now using the Model 400 Astrotherm Patrolmaster radar set and it can do things which make the older model radar sets look obsolete.

For instance, the new 400 Model radar can register the speed of your car when you are over 400 feet away. And if it's a truck you are driving the set will indicate your speed when you are over 1,600 feet away.

The new radar set, a reporter who rode with the Highway Patrol learned, doesn't sit outside by the highway. It is set up in the patrol car and therefore can be moved easily to various locations.

Using the new radar sets highway patrolmen can pull over a slight hill, stop at the side of the road and clock your car before you can even see the patrol car.

A staff reporter quickly became a believer after a short hop in the patrol car. In a matter of minutes patrolmen gave out five warning tickets and one speeding ticket.

The driver who got the speeding

ticket was doing better than 80 miles an hour and patrolmen led him into Cisco to the Justice of the Peace. There he pleaded guilty and paid his fine.

The out-of-state driver smiled at the highway patrolmen and said, "These Texas highways are just too smooth and too long!"

### Eastland Teams Post Victories Over Carbon

Eastland teams made a clean sweep Thursday night, winning three games against Carbon in the Mavs home gym.

The Mavs posted a 50-43 victory, the MAVettes won, 40-30, and the Mav B team was victorious by a 46-33 count.

Bill McCleskey led the Mavs with 13 points and Larry M scored 23 for Carbon.

Judy Seaberry led the MAVettes, getting 17 points, but Wanda Arther was close behind with 15. Ruby Hull led Carbon with 16 points.

Pacing the Mav B team was Bobby O'Steen, who scored 10 points.

The games were the final of the year for Eastland but both teams will see action again next week.

Tuesday the Mavs visited Ranger, twice victors over Eastland, and the MAVettes on their journey to Gorman to play Gorman girls.

Then Wednesday the Mavs met the DeLeon Tournament. The tri-city play will begin Jan. 12.

### Hollywood Happenings

news from the HOLLYWOOD V-ETTE VASSARETTE FACTORY By GEORGIA GOSNELL

Christmas is over and we are hard at work again. Most everyone had a nice holiday; however, Mrs. Florence Crabb had an auto accident last Monday ruining her car and "bumping" herself up quite a bit. We wish Florence a speedy recovery.

Mrs. Griffith's mother passed away and Corrie Harlow's father died. Also the mother-in-law of Mrs. Opal Watson was buried during the holidays. We extend to them and their families, our deepest sympathy.

Lou and Lottie Townsend went to Houston to spend the holidays with their new grandson.

Ina Jordan had her children home for the weekend. Danny and family were in Weatherford and my family was in Fort Worth while Dorothy Easter and family were in Dallas. Mike George was with his family in Ft. Worth.

Ruby Guy's line is working

on one of our new styles 4021. They are turning out neat white cotton and latex that is very attractive. It's Tackett's line No. 2 is now making quite a bit. Also line No. 3 has started. Style 8065 in white and black. This is a strapless bra featuring one of the daintiest laces I have ever seen. Line No. 3 is making a new style No. 1333 similar to style No. 1313. This bra has ban-lon inserts in the broadcloth back to give us that freedom of movement we all enjoy in style No. 0022.

Visiting with us are Buster Nelson and Chuck Pauley. Both are from the Paris plant. Welcome, we always enjoy our guests. See you next week!

**EASTLAND NATIONAL BANK**  
"On The Square"  
MEMBER F. D. I. C.

### FROM OUR FILES



**Jan. 1, 1931**  
Plans for the organization in Eastland of a corporation to establish a market in this city for all produce grown on the Eastland County farms, are in a fair way to materialize within the next few days, those promoting the organization announced this morning.

Eastland, like the rest of the country, has been affected by the financial depression through which the country has just gone, but, like the rest of the country, is facing the new year with bright prospects and great hopes for the future.

**Jan. 1, 1941**  
Company I, 142nd Infantry, Texas National Guard of Ranger, left by motor truck at 11:30 Friday morning for one year active training at Camp Bowie near Brownwood. The guard unit has been mobilized for a month.

The office of County School

Superintendent T. C. Williams, announce the receipt of \$2.00 additional state appropriation which makes a total of \$7.00 received to date by the county schools on the \$22.50 annual total.

**Jan. 1, 1951**  
Eastland Postal receipts likely will show about a 10 per cent increase for 1950 over '51, Assistant Postmaster Percy Harris said Thursday.

An area immediately east of Eastland was the center of new oil interest Thursday as oil was found between 3120 and 3175 feet in the A. D. Bradley place and others No. 1 Holcomb.

The free oil was found in the Lake Sand in the test, which is about half a mile east of the city limits of Eastland.

**SEE and Drive the 1961 PONTIAC**... fresh point of view and wide track tool **MUIRHEAD MOTOR CO.**

...of  
...and  
...Rip  
...RE---  
...LAND  
...Moore  
...a hobby al-  
...ple don't call  
...bies. Our hob-  
...been collecting  
...paragraph may  
...but it's about  
...you can explain  
...you. You see  
...starting hob-  
...don't ever  
...enjoy them  
...our hobby is  
...we've got the  
...one coins for  
...so far as to  
...of books on  
...this coin col-  
...think there was  
...in Eastland who  
...by. Since that  
...out that about  
...takes numis-  
...and the other  
...to a coin or  
...that practically  
...Eastland has  
...at least by  
...red area banks  
...for coins and  
...visited nearby  
...money taken  
...insurance  
...ent.  
...just one of  
...we've started  
...ed insects,  
...and postmarks  
...of other things,  
...is more fun  
...ose. We have  
...y people have  
...ed the value of  
...just by carry-  
...if you have a  
...in worth money  
...hole in it or  
...pocket. Put it  
...so that it will  
...ve some coins  
...to know the  
...ld be happy for  
...ur value in our  
...ave little know-  
...are valuable.  
...for instance, has  
...tain years. The  
...you're interested  
...in 1903, 1911,  
...And if you have  
...those years it  
...are than a penny  
...depends on mint  
...condition of the  
...which general-  
...those minted  
...1918 (the most  
...1937. Again the  
...are determin-  
...marks and con-  
...sicles.  
...most people is  
...is valuable just  
...d. Naturally age  
...with the value of  
...everything. Some  
...value, but most  
...that the bank will  
...them, their face  
...day.  
...Jordan  
...ned at  
...Base  
...ergeant Donald  
...wife, Doris,  
...recently arrived  
...is now a mem-  
...Artillery Group  
...Base,  
...assigned to  
...quarters Battery,  
...in 1954.  
...ergeant, S. N.  
...Jordan, 411 S.  
...land, is a 1953  
...High School.  
...CHLAG  
...AGENCY  
...ews  
...47  
...35  
...43  
...3.05  
...1.61  
...23.98  
...25.83  
...RAIN



# Eastland Telegram

Eastland County Record established in 1931, consolidated August 31, 1951. Chronicle established 1887, Telegram established 1923. Entered second class matter at the Post Office in Eastland, Texas under the act of Congress of March 3, 1879.

**TIMES PUBLISHING COMPANY**  
Published Tri-Weekly—Tuesdays - Thursdays - Sundays  
Onous Dick and Joe Dennis, Publishers  
Virgil E. Moore, Editor

Week by carrier in city .15  
One month by carrier in city .61  
One year by mail in County 2.95  
One year by mail out of state 4.91

**NOTICE TO PUBLIC**—Any erroneous reflection upon the character, standing or reputation of any person, firm or corporation which may appear in the columns of this newspaper will be gladly corrected upon being brought to the attention of the publishers.

## CLASSIFIED

Cards of Thanks charged for at rate of \$2.00 Each

### For Rent

FOR RENT: Two bedroom home. Jeff Woods, Olden.

FOR RENT—Five room house on Everett Ploverman, Corner Drug.

FOR RENT: Nice four room house. See anytime. Alice Speer, 411 East Sadosa.

FOR RENT: Lovely apartments, with living, dining, bedrooms and kitchen, furnished or unfurnished at very reasonable rates. Also comfortable single rooms with tiled baths for only \$39.50. No stairs to climb, elevator equipped. Delicious food in our coffee shop and steam heated for really warm and comfortable living. Maid service is always included. Throw away your cares and high expenses and come live with us. The Village Hotel, Mrs. Robinson, manager—call me today, MAIN 9-1716.

FOR RENT: Furnished apartments. 209 N. Lamar. Bills paid. Phone MAIN 9-1980.

### Real Estate

FOR SALE: Two bath, two bedroom house on Oaklawn. Central heating, large lot, double garage. Call after 5 p.m. MAIN 9-2321.

FOR SALE: House 305 South Nettlet.

FOR SALE: Five room house to be moved. Located northwest Eastland. Contact B. H. Courtney. Phone MAIN 9-1340.

FOR SALE: Older two bedroom home, masonry and brick, carpet, large stone room, work shop, very large lot. Excellent location for children. Phone MAIN 9-2351.

FOR SALE OR RENT: Five room house between 200-300 block on Dixie Street. Sunshine Laundry, MA 9-8812.

ATTEND THE CHURCH OF YOUR CHOICE EACH SUNDAY

**T. L. FAGG**  
REAL ESTATE  
Property Management  
Home and Farm Loans

**FURNITURE**  
for the  
Entire Home  
★  
Carpet - Rugs  
All Prices  
★  
Be Sure To Check With

**Coats**  
FURNITURE

**NOTICE**  
FRESH DRESSED  
FRYERS  
and  
Fresh Dressed  
Hens  
At The Plant  
PHONE MA 9-1200  
**WALKER**  
Dressing Plant

### Special Notice

**Eastland Masonic Lodge No. 467**  
Reg. Stated meetings 2nd Thursday of each month, at 7:30 p.m.  
H. C. Pounds, W. M.  
L. E. Huckaby, Secretary

NOTICE: Let me break and (or) sow your land. Contact B. H. Courtney, Main 9-1340.

**LAKE CISCO** Skating Rink open nightly and Saturday and Sunday afternoons for your pleasure. Call for reservations for groups and parties. Phone HI-2-2012, Cisco.

### Misc. For Sale

FOR SALE: Five room house on pavement. 175 foot lot. \$3,200. Gen Hamner.

FOR SALE: 150 gallon butane tank. Alvin Kincaid. Phone MA 9-2726.

FOR SALE: Brand new electric organ with amplifier, stool, and music. Phone 2594, Olden, P. O. Box 627, Olden.

### Help Wanted

HELP WANTED: Girls for fountain work. Daytime hours. Toombs and Richardson Drug.

ATTEND THE CHURCH OF YOUR CHOICE EACH SUNDAY

**Shrinks Hemorrhoids Without Surgery**  
Stops Itch—Relieves Pain

For the first time science has found a new healing substance with the astonishing ability to shrink hemorrhoids and to relieve pain—without surgery. In case after case, while gently relieving pain, actual reduction (shrinkage) took place. Most amazing of all—results were so thorough that sufferers made astonishing statements like "Piles have ceased to be a problem!" The secret is a new healing substance (Bio-Dyne®)—discovery of a world-famous research institute. This substance is now available in suppository or ointment form called Preparation H®. At all drug counters.

**Insurance AND Real Estate**  
**D. L. KINNAIRD**  
Life - Fire - Auto - Farm  
Polio - Bonds  
40 years in the Insurance Business in Eastland

**TIME**  
to choose your new home today! Choose your new home from our picture plans, choose your lot, and your color scheme today! It costs no more to get first choice in our new three bedroom homes. We are ready to build on Conner street! Veterans still nothing down, non-veterans only \$350 down and payments like rent!  
Why throw away rent dollars every month? Pay your rent dollars on your own home and create a savings for your family. See or call us today. We arrange all of the financing and red tape. No obligation, of course.

**Village Homes**  
Suite 210 - Village Hotel  
Don Pierson - MA 9-1033  
Norman Guess - MA 9-1545

## First Methodist Church

Rev. James Campbell, pastor  
The Church School begins at 9:45.  
Morning worship is at 10:50. The Rev. James H. Campbell, pastor, will bring the Communion Meditation titled—"Another Year Of Grace." The choir will present the anthem "Now With the New Year Starting" by George Lynn. The organ music will include "Offertories" by D. Bois, "Cantata" by Strickles and "Our Father Who Art In Heaven Above" by Bach—Mrs. D. L. Kinnaird at the organ, P. W. Hewett, director of music.  
The Youth Fellowship begins at 6:15.  
The evening worship service starts at 7 o'clock. The pastor will again be in the pulpit, his sermon is called "Faith For the New Frontiers". Wendell Siebert will conduct the song service.  
The Woman's Society of Christian Service will meet in the church parlor Tuesday morning for the regular business and program. Mrs. Cecil Collings will discuss—"Recalling our Heritage—Expanding our Horizons". Missionary News will be given by Mrs. James Horton and Mrs. C. W. Boles will bring news of the World Federation of Methodist Women.

## Harmony Baptist Church

Rev. Bill Penland, pastor  
Harmony Baptist, the church with a friendly welcome and old time Gospel preaching from the Bible, welcomes you to its services.  
Harmony Baptist Church will begin Sunday School at 10 a.m. with worship services at 11 o'clock with the pastor bringing the message. Training Union begins at 7 p.m. with evening preaching at eight.  
Wednesday evening midweek service is held at 7 p.m. with Bible study and prayer meeting.  
Thursday evening is visitation night at 7 p.m.

## North Lamar Baptist Church

Rev. Aaron Oden  
If you like real old time gospel preaching from the Bible, then come and be in our services where you will find a welcome. Sunday School begins at 10 a.m. and night service begins at 6:30. Our mid-week prayer services begins at 7:15 p.m. on Wednesday.  
Wednesday evening at 6:30 the annual church-wide Mission Study program will get underway, beginning with a covered-dish supper. Dr. Erwin F. Bohmfalk, pastor of Austin Avenue Methodist Church in Waco will be the speaker for the first of a series during January. Dr. Bohmfalk has recently returned from the World Conference on Temperance held in Central Europe, he is chairman of the Conference Board on Christian Social Concern and is a member of the Jurisdictional Board. The Study will have groups for the adult, junior and primary, the youth will meet with the adults. A nursery will be provided for children too small for the classes. Members are asked to bring an ample dish of food and place settings for their families.

**Reliable**  
Bring Your BATTERY TROUBLES To Us!  
Group One Fits Most 6 Volt Cars  
**8.95**  
Exchange

**JIM HORTON**  
Tire Service  
East Main St. MA 9-1420  
Eastland, Texas

**MATTRESSES**  
Save up to 50% renovating, choice of color and firmness. Complete bedding. Made and guaranteed by WESTERN MATTRESS CO., San Angelo. Phone MA 9-2689, Eastland and leave address.

**SINGER**  
New Sewing Machines \$59.50 up  
Vacuum Cleaners - \$49.50  
Floor Polishers - \$29.95  
Rentals by week or month  
Service All Makes  
Phone MA 9-2084  
**D. L. Morton**  
Representative

**County Surveyors Office**  
Box 492 - Phone MA 9-2639  
Courthouse, Eastland, Texas  
• Land Surveying and Mapping  
• Civil Engineering  
• Sub-Division Design and Layout  
• Oil Field Surveying  
R. T. MAGNESS, JR.  
Reg. Prof. Engineer  
County Surveyor  
T. F. MOBLEY, Reg. Public Surveyor  
HI 9-3644, Breckenridge

## Assembly of God

The Assembly of God, the church where you will find a welcome, invites you to attend each of the following services:  
Sunday School at 10 a.m.; preaching service at 11.  
Wednesday night service, 7:45.

## First Presbyterian Church

Sunday 9:45 a.m.—Church School.  
11 a.m.—Divine Worship. The subject of the sermon for this Sunday After Christmas is, "Your Light Has Come", being a phrase from the Text: Isaiah 60:1.  
Monday 5 p.m.—Portion of Sunday's Divine Worship, including sermon, over KERC radio.

## ABOUT YOUR HEALTH

Short on resolutions for the new year beginning Sunday? Here's a list designed especially for you and your family by the Texas State Department of Health.  
Promise to give your body at least as good care as you give your car. Periodic examinations are the best way yet devised to detect bodily disorders while they can still be treated successfully, so let your doctor look you over thoroughly once a year whether you're ailing or not. Make it twice yearly if you're middle-aged.  
Dental troubles won't kill you, but sometimes they can make you wish you were dead. So check in once yearly with your dentist, too.  
If you are putting on weight, resolve to start passing up the candied yams, boiled potatoes and the cream-filled tidbits which almost invariably spell extra pounds and perhaps an early grave.  
Too much weight contributes to high blood pressure, and may be associated with hardening of the arteries and various forms of heart disease. Too, it means impaired vigor, greater surgical risk and greater danger from otherwise minor illnesses.  
The statistics linking smoking to cancer and heart disease are piling up so fast it is getting tougher and tougher to rationalize the habit. Resolve to impress those statistics on the minds of the teenagers in your family.  
When driving, consider that every other car is being driven by a madman, and when walking trust motorists only as far as you can see them. Motor vehicle deaths stand for above accidental deaths of all other types.  
Resolve to take full advantage of every advancement in medical science aimed at benefitting you and the family, but always on competent medical advice. Start by getting the youngsters and yourself immunized against polio if you haven't already done it.  
Promise to obey local and state laws pertaining to health protection. For example, if your town has a dog leash law, adhere to it. It is a public protection device and you are the public.  
Last but vitally important, give an occasional thought to such awesome problems as water conservation, pollution abatement, juvenile delinquency, and the growing number of elderly people in our society. Lend your support as a responsible citizen to community efforts to solve them.

**New! Gillette Adjustable Razor**  
9 Settings for Superb Shaves!  
NOW \$1.95  
with new Super Blue Blades

## Personals

Mr. and Mrs. Virgil E. Moore, Trippy and Ricky spent the Christmas holidays visiting in the home of his parents, Mr. and Mrs. E. L. Ward of Corsicana and in the home of Mrs. Moore's mother, Mrs. A. A. Wills of Denton. They also visited with Mr. and Mrs. Hubert Wills of Denton.  
Guests on Christmas day in the home of Mr. and Mrs. A. J. Blevins Jr. were their son and daughter-in-law, Mr. and Mrs. Stan Blevins, of Abilene.  
Christmas guests in the home of Mr. and Mrs. J. M. Mitchell were Mr. and Mrs. Howell Sledge of Ft. Worth, Mr. and Mrs. N. G. Morris and Terry of San Angelo, Mr. and Mrs. O. B. Seabourn of Abilene, Mr. and Mrs. J. L. King of Nimrod, Mr. and Mrs. Gene Gist and Gregg of Abilene and Neil Seabourn of Eastland.  
Mr. and Mrs. James Greer of Hot Springs, Ark., were holiday guests in the home of their parents, Mr. and Mrs. Nash and Mr. and Mrs. N. A. Johnson.  
Mrs. A. F. Taylor had as her Christmas guests her brother and sister-in-law, Mr. and Mrs. Jim Weatherby, of Goldthwaite, Mr.

and Mrs. J. P. Kilgore, Glenna, Mr. and Mrs. Jack Wilger, nee Miss Gayle Kilgore, all of Albuquerque, N. M. Mr. and Mrs. M. H. Perry, Linda and Mike of Eastland.  
Mrs. Kilgore, Glenna Kilgore and Mrs. Perry remained for an extended visit with Mrs. Taylor.  
Visiting in the home of Mr. and Mrs. Vernon Humphreys are Mrs. Humphreys mother, Mrs. M. G. Rogers and grandson, David Rogers, of Kilgore.  
Mr. and Mrs. James K. Smith, Cynthia and Kenneth spent Christmas visiting with their parents, Mr. and Mrs. H. H. Smith of Hurst and Mr. and Mrs. L. D. Lewis of Cumby.

Quick Relief HEADACHE  
For faster, more complete relief, take STANBACK'S S.A. — the combined, medically-approved, one easy-to-take dose, and tension, starts to right away.  
Test STANBACK against any preparation you've ever used.  
Guaranteed by Food Research Corp.



**SPECIALS FOR... WEDNESDAY**

WHITE SWAN	Pork & Beans	2 300 TALL	25¢
CONCHO CREAM	CORN	2 303 Cans	25¢
LOOSE LEAF	NOTE PAPER	25¢ PKG.	16¢
WHITE SWAN FRUIT	COCKTAIL	303 Cans	25¢
CALA RIPE	PEACHES	NO. 2 1/2 CAN	25¢
SALAD WAFER	CRACKERS	LB. BOX	27¢
WHITE SWAN	LUNCHEON MEAT	12-OZ. CAN	43¢
KRAFT'S	MIRACLE WHIP	QT. JAR	55¢
WAPCO	SALT	26-OZ. BOX	10¢
ARMOUR'S MATCHLESS	SLICED BACON	LB.	43¢
BABY BEEF	LOIN STEAK	LB.	75¢
HORMEL'S LITTLE SIZZLER'S PURE PORK	SAUSAGE	8 TO PKG.	33¢
KRAFT	SWISS CHEESE	8 OZ. PKG.	30¢
RUSSET	PORK CHOPS	LB.	69¢
	POTATOES	10 LBS	59¢

**PLUS DOUBLE**  
**B&B STAMPS**  
Wednesday at  
**DAVE'S MARKETS**  
SWEETHEAT FLOUR 5 Pound Bag 39¢  
WHITE SWAN MILK 2 Tall Cans 27¢

**MacMOY'S Super Save**  
400 S. Seaman Home Owned—Home Operated



### Christian Science

The effectiveness of reliance on God's power will be illustrated in Christian Science services this Sunday.

David's trust in God alone in his victory over Goliath is featured in one of the Scriptural accounts to be read. The Lesson-Sermon entitled "God" includes this passage from I Samuel (17:45): "Then said David to the Philistine, Thou comest to me with a sword, and with a spear, and with a shield: but I come to thee in the name of the Lord of hosts, the God of the armies of Israel, whom thou hast defied."

This citation will be read from "Science and Health with Key to the Scriptures" by Mary Baker Eddy: "There is no power apart from God. Omnipotence has all-power, and to acknowledge any other power is to dishonor God" (228:25-27).

The Golden Text is from Deuteronomy (6:4): "Hear, O Israel: The Lord our God is one Lord."

ATTEND THE CHURCH OF YOUR CHOICE EACH SUNDAY



**RIOT-TORN ALGERIA**—French troops battled desperately to curb the worst Algerian riots in six years of Moslem rebellion against French rule. Demonstrators, above, move a car across an Algiers street during their battle against police and troops. The Moslem revolt was touched off by the arrival of French President De Gaulle in Algeria to rally support for his plan to loosen Algeria's ties with France.

### Joy Drive-In

Cisco - Eastland Highway  
Show Time 7:00  
LAST NIGHT

**YUL BRYNNER  
MITZI GAYNOR  
NOEL COWARD**  
"SURPRISE PACKAGE"

### Hospital

Patients in the Eastland Memorial Hospital are the following:

- Mrs. Martha Wood, Carbon, medical
- Mrs. Addy Baggett, medical
- W. M. Morris, Ranger, medical
- Mark Allen Kleiner, medical
- Mrs. F. G. Osborne, medical
- Mrs. Maxine Lowrance, medical
- Mrs. Mary C. Reed and baby girl, Ranger
- W. B. Ensor, medical
- Mrs. Florence Crabb, medical
- Rev. Asa Hoskins, medical
- William Leslie, medical
- Mrs. Kate McCollum, medical
- Mrs. Eliza Malone, medical
- L. T. Florence, medical
- Mrs. Velma Stewart, Galveston, medical
- Mrs. Betty Cate, Cisco, medical
- Frank Vaughan, Gordon, medical
- M. D. Sharpe, Ranger, medical
- Mrs. John Smith, medical
- J. C. McGee, Cross Plains, medical
- James O'Shields, Ranger, medical
- Mrs. Odie Kelly, medical
- Mrs. Ethel Daniels, medical
- Mrs. Irene Britton, medical
- Mrs. Wessie Mae Johnson, surgical
- Bert R. Kent, Olden, surgical
- Mrs. Earnestine Pierce, surgical

Patients dismissed were the following: Mrs. Maxine Lowrance, Weldon Roach, J. D. Hitt, Mrs. Jessie Connally, Mrs. Stella Hargus.



Mr. and Mrs. Travis Bond Jr. are the parents of a son Joel Travis, born Dec. 21 in the Eastland Memorial Hospital. Joel Travis has a one sister, Sheila Lea. Maternal grandparents are Mr. and Mrs. Oliver Canet and the paternal grandmother is Mrs. Gladys Bond, all of Eastland.

### SWIN-

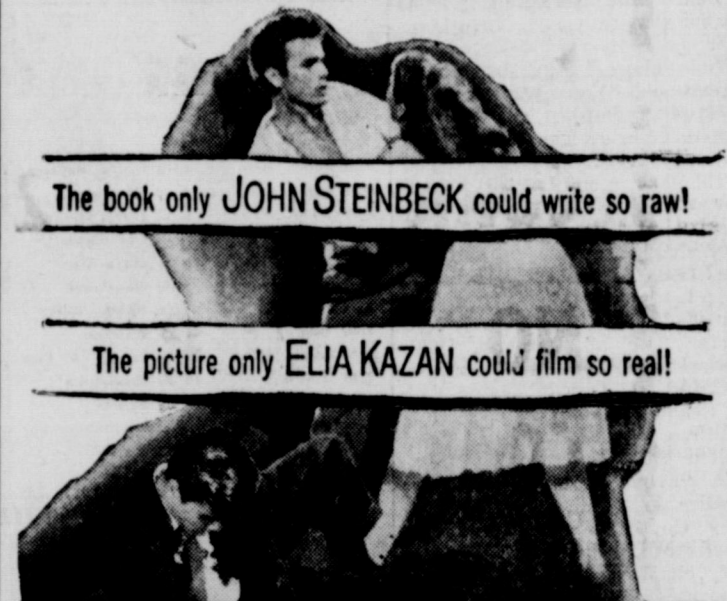
(Continued from Page One) and management plan will help identify the really "meaty" seed-stock because the majority differences in carcass desirability will be the result of breeding. Tanksley pointed out. It will also permit hog value to be figured on a live-weight basis including dressing percentage.

The evaluation information will be released during the tenth annual Texas A&M College Swine Short Course scheduled for next April 3-4. All pigs entered in the test will be purchased by the Animal Husbandry Department but each will be earmarked and entered in the breeder's name. Information on gains and carcass characteristics will be provided on each animal. Tanksley said the testing program will enable hog producers to get carcass information on their animals at the lowest possible cost and that purebred breeders could use the pigs for breed certification records. Commercial producers, he added, should find the information valuable for checking their crossbreeding programs.

Local county agents have detailed information on the program and will be glad to answer questions regarding any part of the test. Entries from 4-H or FFA members will be welcomed, Tanksley said.

### RANGER DRIVE-IN

Boxoffice Opens 6:45 — Show Starts at 7:00  
Adults 50c—Kiddies Under 11 Free  
Only Eastland County Drive-In Open All Year  
SUNDAY - MONDAY - TUESDAY



The book only JOHN STEINBECK could write so raw!

The picture only ELIA KAZAN could film so real!

**'EAST OF EDEN'**  
PRESENTED BY WARNER BROS. IN CINEMASCOPE WARNERCOLOR  
STARRING JULIE HARRIS JAMES DEAN IN HIS VERY FIRST PICTURE - A VERY SPECIAL STORY! RAYMOND MASSEY  
WITH BURL IVES - SCREEN PLAY BY PAUL OSBORN DIRECTED BY ELIA KAZAN  
PLUS: 1960 FOOTBALL HIGHLIGHTS



### There's Still Time To Start The New Year Right

You can keep that New Year's resolution to start saving regularly by opening your insured savings account here by the 10th of January. Earnings start the day you open your insured savings account with a Youcanopen your insured savings account with a convenient amount. Your savings are insured to \$10,000 by Federal Savings and Loan Insurance Corporation, an agency of the U. S. Government.

### First Federal Savings & Loan Association of Ranger

204 Main Ranger, Texas Phone MI 7-1611

### Helps Heal And Clear Itchy Skin Rash!

Zemo—liquid or ointment—a doctor's antiseptic, promptly relieves itching, stops scratching and so helps heal and clear surface skin rashes. Buy Extra Strength Zemo for stubborn cases!

**MAJESTIC**  
IN EASTLAND  
Today - Mon. - Tue. - Wed.  
**ELVIS PRESLEY**  
HAS TO CHOOSE BETWEEN FAMILY AND COLOR!  
**FLAMING STAR**  
STARRING BARBARA EDEN STEVE FORREST  
COLOR by De Luxe  
See A New "Presley" Adults 75c - Children 35c



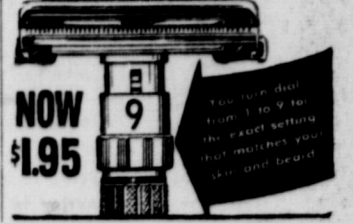
Many folks prefer to finish wood in its natural appearance and color. In most cases, natural wood finishes have been primarily used indoors. These uses include furniture, flooring, paneling, cabinets and doors. However, in recent years the beauty of natural finished wood has been recognized for outdoor use.

Prolonged exposure to light has a tendency to darken all natural finishes or woods that have been bleached. Such darkening may be noted by examining the wall behind a picture that has hung for some time on light colored paneling. This darkening may be minimized through the incorporation of an ultra-violet light absorber in the finish.

Specialized wood finishes are available for almost all requirements. There are plastic coatings which will resist scratching, crayon marks, water stains and alcohol.

Some coatings are capable of withstanding steam and acids, while others render wood insect and decay resistant, germ proof, or fire retardant.

### New! Gillette Adjustable Razo.



GO TO CHURCH SUNDAY

NOW \$1.95

### Hamner Life Insurance Company

Ben E. Hamner, President  
This company has been in operation in this section since 1942 selling policies to be used primarily for burial purposes. We write from \$100 to \$600 and our policies are paid in cash, which allows freedom in the selection of the Funeral Director of your choice.  
Ages from 1 month to 90 years.  
For further information come by to see us at Hamner Funeral Home, 301 S. Lamar, Eastland P. O. Box 431 Dial MAIn 9-2611

<b>BISCUITS</b>	Food Mart	3 Cans	19c
<b>SPINACH</b>	Del Monte	2 303's Cans	25c
<b>BACON</b>	Swift's Premium	Lb. Pkg.	55c
<b>Pork Liver</b>	Fresh-Sliced	Lb.	29c
<b>Longhorn Cheese</b>	Wisconsin	Lb.	59c
<b>Fish Sticks</b>	Taste O'Sea	3 8-oz. Pkgs	1 <sup>00</sup>

**WORTH FOOD MART**  
DOUBLE STAMPS WEDNESDAY  
With Purchase of \$2.50 or More—Prices Good Tues. & Wed.  
CLOSED ALL DAY MONDAY, JANUARY 2

<b>Tomatoes</b>	Firm, Ripe, 3's, 4's	Ctn.	15c
<b>Red Grapefruit</b>	Texas, Juicy	5 -Lb. Cello	35c
<b>Pascal Celery</b>	Crisp, Crunchy	Stalk	10c
<b>Rome Beauty Apples</b>	Crisp, Red	Lb.	19c
<b>Jell-O</b>	All Gelatin Flavors	2 1-Lb. Pkgs	29c
<b>Peas</b>	Libby's	2 303's Can's	35c
<b>Beef Stew</b>	Fritos	24-oz. Can	39c
<b>Chili</b>	With Beans	3 303's Cans	1.00
<b>Pears</b>	In Light Syrup No. 2 1/2	Can	29c
<b>Potatoes</b>	Borden's Instant	Eight Servings	29c
<b>Orange Juice</b>	Tessan	46-oz. Can	29c
<b>Spaghetti</b>	Franco-American	2 15 1/4-oz. Cans	25c
<b>Corny Dogs or Pecan Pies</b>	Speedy	2 2 1/2-oz. Pkgs	49c
<b>Alka-Seltzer</b>	5-Grain	25's Bottl.	39c
<b>Bayer Aspirin</b>	For Children, 1 1/4-Grain	100's Bottl.	49c
<b>Bayer Aspirin</b>		Bottl.	27c

**W. Collum**  
band teacher of Eastland  
1425 Victoria or call locally in 9-2507

**TODAY**  
W. Main MAIn 9-2275 Ph. MAIn 9-1095

**L BENDER & COMPANY**  
(Insurance since 1924) Texas

**HAMNER FUNERAL HOME**  
Ben E. Hamner, Owner  
Dial MA 9-2611

**COMPLETE AIR CONDITIONING SALES and SERVICE**  
WITH PLUMBING AND TIN  
PHONE MA 9-2422  
114 N. Seaman

**SINCE 1884**  
... quality workmanship and efficient service, approved throughout this area.  
**ALEX RAWLINS & SONS**  
Phone LY 4-2726 Texas

**See Us For FURNITURE • APPLIANCES CARPETS**  
Day Low Prices Means Savings For You!  
FREE DELIVERY  
**Furniture Exchange**  
"BRASHIER'S"  
Ranger Phone MI 7-1404





### Social Calendar

**January 2, 1961**  
 7:30 p.m. — The weekly meeting of the Oddfellow Lodge will be held in the OOF Hall.  
 7:30 p.m. — Castle Hall, 106 Commerce, will be the scene of the regular meeting of the Pythian sisters.  
 7:30 p.m. — The monthly meeting of the Posse Anns will be held in the Court House.  
**January 3, 1961**  
 2 p.m. — The Eastland Art Club will hold their regular meeting in the home of Mrs. H. B. MacMoy.  
 7:30 p.m. — Eastland Chapter No. 280, OES, will meet in the Masonic Hall for their regular tated meeting. All officers and members are requested to be present and visitors are welcome.  
 9:30 a.m. — Mrs. Cecil Colings, Mrs. James Horton and Mrs. W. W. Boles will present the WSCS program at their regular meeting.  
**January 4, 1961**  
 7:30 p.m. — The regular meeting of the Wesleyan Service Guild will be held in the Methodist Church.  
 3:30 p.m. — Mrs. Frank Sayre will be the leader for the program of the Eastland Music Study Club.  
**January 5, 1961**  
 2 p.m. — Mrs. Blanche Walker will host members of the Flatwood Home Demonstration Club at their regular meeting.  
 3 p.m. — "American Heritage" will be the program given at the regular meeting of the Thursday Afternoon Club.  
 9:30 a.m. — CWF Circles will hold their regular meetings.

### Jehovah's Witnesses

Meetings to be held at the Kingdom Hall, 204 North Dixie Street for the week of January 1, are as follows:  
 Sunday: 3 p.m. Public address to be given by A. J. Sabo "How Does The United Nations Stand With God?" The discourses will be followed by the weekly study of the "Watchtower." This week's lesson is "Married Believers called to Peace and Salvation." The text for the study is 1 Corinthians 7:1-15.  
 Wednesday: 7 p.m. Bible study in textbook, "Your Will Be Done On Earth." Subject, "The Appointed Time of The End." Text, Daniel 11:41-43.  
 Friday: 7 p.m. Service Meeting; 8 p.m. Theocratic Ministry School as follows: Instruction Talk, chapter 60 of textbook "Qualified To Be Ministers." Subject, "Assistant Ministerial Servants." First Student Talk, chapter 24 of textbook, "This Means Everlasting Life." Subject, "Rearing Children in Divine Favor." Second Student Talk, reading of Proverbs 3:27 to 5:14. Third Student Talk, chapter 17 of textbook, "From Paradise Lost to Paradise Regained." Subject, "Why Gods Son Died and Was Raised to Life." Fourth Student Talk, chapter 16 of textbook, "Jehovah's Witnesses in The Divine Purpose." Subject, "God's Kingdom Exalted Its Counterfeit Exposed."  
 Also at the Service Center 308 West Third in Cisco, Bible Study each Tuesday evening at 7:30 Textbook being studied "Your Will Be Done On Earth."  
 All interested in Bible education are welcome to study with Jehovah's Witnesses. No collection is taken.

### First Baptist Church

a.m.; morning worship, 11 with Dick Spalding directing the music and bringing the special music and William O. Benzley bringing the message. Training Union, 6:30 P. M.; Evening Service, 7:30. Tuesday—W.M.U. Business Meeting 9:30 a.m. with Mrs. Gordon Goldston presiding, and Royal Service program with Mrs. Carl Jones in charge.  
 Deacon's Meeting, 7:30 p.m.  
 Wednesday—Royal Ambassadors, Girl's Auxiliary, Sunbeams, and Sunday School departmental superintendents at 8:45; Teacher's Meeting, 7 Monthly church business meeting, 7:45; Church Choir, 8:50.  
 Saturday—Associational Youth Rally at Breckenridge, First Church beginning at 7 p.m. The latest Billy Graham film, "Africa on the Bridge" will be shown.

### Bethel Baptist Church

Rev. Henry Littleton will conduct his final service Sunday at the Bethel Baptist Church. He will preach on "Heaven."  
 Morning service begin at 9:45 with Sunday School. Evening service begins with Training Union at 6:30 and church service at 7:30. The nursery will be open for each service.  
 Wednesday prayer service will be held at 7:30.  
 Rev. Jimmy Roberts, formerly of Denton, will begin his work with the local church as pastor next Sunday.

ATTEND THE CHURCH OF YOUR CHOICE EACH SUNDAY

### I Give You Texas

By BOYCE HOUSE  
 Can you remember the nickel weeklies, "Nick Carter" and "Old Sleuth"? The cover of the latter featured a dark lantern. Come to think of it, I haven't seen a dark lantern in several weeks.  
 When I was a boy, I wanted a Shetland pony. (I never got it.) Also I wanted a turtle-neck sweater, the kind that Jim Jeffries and James J. Corbett wore when they were running, while in training. But my parents said that kind of sweater would give me a cold. (I got the colds anyway but not the turtle-neck sweater).  
 Do you recall when anyone who took calomel was cautioned not to eat anything sweet or sour, else he might get salivated and all his teeth would come out?  
 Did you ever put a live frog in the school marm's desk?  
 Ladies used to wear hatpins, sometimes using two in a sort of criss-cross to hold their hats on, of course. They wore their hair in a pompadour and when one would nonchalantly thrust a hatpin

through a hat, I was always afraid she would misjudge and stick it through the brain.  
 Folks used to argue about when one could eat watermelon. (If you ate watermelon too early in the season, it was liable to make you sick.) One man in Miss., said he had a way to decide when to eat. "What is your test?" he asked. He replied, "Wait a nickel apiece."

## LUMBER FOR SALE

### ALL KINDS

Flooring — hardwood flooring — 2x4; 2x12; shiplap; steel beams; all types of plating; brick; building tile.

Tearing down old school building on Church Camp Grounds west of City—starts Monday—salesman on job — bargain prices.

### McGraw Motor Company

CARS DODGE—STUDEBAKER Parts and Service  
 661 South Seaman Phone

SATURDAY	SUNDAY	MONDAY
9:00 Shari Lewis	4:00 Capt. Gallant	7:00 Dave Garroway
9:30 King Leonardo	4:30 Sat. Prom	9:00 Guy When
10:00 Fury	5:00 Movie	9:30 Play Tr. Hatch
10:30 Lone Ranger	6:30 Bonanza	10:00 Price Is Right
11:00 True Story	7:30 Tall Man	10:30 Concentration
11:30 Det. Diary	8:00 The Deputy	11:00 Truth or Con.
12:00 Mr. Wizard	8:30 Nations Future	11:30 Could Be You
12:30 Film	9:30 Soldier Fortune	12:00 News, Withr.
1:00 Basketball	10:00 Texas News	12:15 Devotions
3:30 Bowling	10:10 Weather	12:20 3 Stooges
	10:15 Movie	1:00 Jan Murray
		1:30 Loretta Young
		2:00 Dr. Malone
		2:30 From Roots
		3:00 Room for Daff.

CHANNEL 4 (KRLD, Dallas)

SATURDAY	SUNDAY	MONDAY
8:30 Party Time	6:15 Police Rept.	7:30 Cartoons
9:00 Capt. Kangaroo	6:30 Weather	8:00 News
9:30 Magic Lund	6:30 Perry Mason	8:15 Cup. Kangaroo
10:00 Mighty Mouse	7:30 Checkmate	9:00 Loretta Young
11:00 CBS Show	8:30 Have Gun	9:30 Video Village
11:30 Sky King	9:00 Gunsmoke	10:00 I Love Lucy
12:15 Spotlight	9:30 Death Valley	11:00 Love of Life
2:45 Movie	10:15 Weather	11:30 Search for Tr.
4:00 Amat. Hour	10:30 People & Pets	11:45 Guiding Light
4:30 Gourmet	10:30 Movie/Time	12:00 News
5:00 Wrestling	12:00 Vespers	12:15 Beauty Show
6:00 News		12:15 As Wild. Tars
		1:00 Full Circle
		1:30 House Party
		2:00 Millionaire
		2:30 Verdict in Tr.
		3:00 Brighter Day

CHANNEL 11 (KTVT Fort Worth)

SATURDAY	SUNDAY	MONDAY
12:00 Colloquy	6:59 Sign On	11:30 Cartoons
12:30 Big Picture	7:00 Westerns	12:00 News
1:00 Motown Th.	8:30 Crusades	12:15 Information
4:30 Movie	9:00 Herald of Truth	12:30 Bible w. Futler
5:00 Theatre	9:30 Christophers	1:00 Motowne
	10:30 Westerns	3:00 Susie
	11:00 Church	3:30 I Married Joan
	12:00 Information	4:00 Bugs Bunny
	12:30 Orat Roberts	4:30 Popeye
	1:00 Gospel	5:00 3 Stooges

CHANNEL 5 (WBAP, Fort Worth)

SATURDAY	SUNDAY	MONDAY
7:00 Today on Farm	2:00 Opera	5:55 Newsreel
7:30 Farm Page	4:30 Sat. Prom	6:00 Cont. Clm.
8:00 Story Time	5:00 Showcase	7:00 Dave Garroway
8:15 Light Time	6:30 Bonanza	9:00 Dough Re Mi
8:30 Children Show	7:30 Tall Man	9:30 Play Tr. Hatch
9:00 Shari Lewis	8:00 Deputy	10:00 Price Is Right
9:30 King Leonardo	8:30 Nations Future	10:30 Concentration
10:00 Fury	9:30 Dangerous	11:00 Truth
10:30 Lone Ranger	10:00 News	11:30 Could Be You
11:00 True Story	10:10 Weather	12:00 News
11:30 Det. Diary	10:25 News	12:15 Deltelle
12:00 Movie	10:30 Sports	1:30Way of Life
1:00 Basketball	10:35 Theatre	1:30 Loretta Young
		2:00 Dr. Malone
		2:30 From Roots
		3:00 Comedy The.
		3:30 Hollywood
		4:00 Family The.

CHANNEL 8 (WFAA, Dallas)

SATURDAY	SUNDAY	MONDAY
7:30 Ag. on Parade	6:30 Rearing 20's	7:25 Devotional
7:45 Thr. Parthula	7:30 Beaver	7:30 Almanac
8:00 Hop. Cassidy	8:00 L. Wells	7:50 News
8:30 Sat. Special	9:00 Fight	8:00 Felix the Cat
10:30 Robin Hood	9:50 Make Spare	8:15 Showcase
11:00 Falls	10:00 Newsweek	10:00 Julie Benall
11:30 Riley	10:10 News	11:00 Court
1:15 Football	10:15 Weather	11:30 Love That Bob
4:15 Bowling	10:22 Sports	12:00 The Team
4:30 Digest	10:30 Theatre	12:30 Queen for Day
5:00 Golf	11:00 Theatre	1:00 About Faces
6:00 Expeditio		1:30 Medic
		2:00 Day in Court
		2:30 Rd. to Reality
		4:00 Bondstand
		3:00 Beat Clock
		3:30 Who Do Ya
		4:00 News

For Good Looking You Can't Beat TV Cable Looking  
**Community Television, Inc.**  
 'Call today and get five channels tomorrow'  
 Village Hotel Phone

# DUNCAN GROCERY

701 WEST MAIN

## Close Out SALE

Sale Stays On Until All Is Gone

SO YOU HAD BETTER HURRY ON IN.

# 30% OFF

## ON ALL MERCHANDISE

EXCLUDING TOBACCO, MILK, BREAD

Some Items Would Cost As Low As:

**TIDE** giant 60¢ **SUGAR** 5 POUNDS 39¢