

Think Progressively It Works!

MaPugh Named Pecan Queen

County placed second in the state show behind Palo Pinto County and since the Pecan Association rules state no county can have the pecan queen for two consecutive years the Eastland girl won the honors.

Complete results of the show have not yet been made official, other than the placing of the counties. Results will be printed when available.

Hank Sims, Eastland County E. Smith attended the state show.

Dona will be crowned queen at the annual convention of the Texas Pecan Growers Association July 11-12 in College Station.

This is the third time the county has had the state queen. In 1959 Rebecca Graham of Eastland won the honor.

Final Rites Monday for W. O. Weekes

Funeral services for W. O. (Dick) Weekes, 52, were held at the Mesquite and Rusk Sts. Church of Christ in Ranger at 10 a.m. Monday. Lloyd Bryant, minister, officiated. Burial was in the Alameda Cemetery, south of Ranger, with Killingsworth Funeral Home in charge.

Final Rites Monday for Peter F. Turner

Final rites were held Monday at 3:30 p.m. in the Hamner Funeral Home Chapel for Peter Franklin Turner, 80, who died at 8 a. m. Sunday in the Eastland Memorial Hospital where he had been a patient for the past five days.

Mickey Sargeant Wins Regional Band Honors

An Eastland eighth grader has won all-regional band honors. He is Mickey Sargeant, a drummer, who brought back the honors from the regional band meet in Abilene Saturday.

Other Eastland band members who attended the contests were Eddie Sargeant, Graecie Tankersley, Billy Moyian, Raymond Lusk and Gene Hanna.

Postal Receipts Increase In '60

Postal receipts showed a 15.8 percent increase during the year compared to \$97,680 in 1959. Mrs. Johnson said the post office had a good year and praised postal employees and the public as well. She said the public had been very helpful by cooperating with the post office in bundling mail properly.

The Eastland post office has shown a large gain in recent years, one of the reasons being the vast amount of mail sent out from here by Cornelius printing companies.

In 1943 local receipts were only \$31,643. In 1947 the local post office became a first class post office when receipts climbed above \$40,000 for the first year. Since that time receipts have continued to climb. Ten years ago they were listed at \$68,240. The all time high came in 1957 when postal sales reached \$105,575. Since that time 1960 is the first year to show an increase over the preceding year.

Courthouse News And Records

INSTRUMENTS FILED
County Clerk's Office

Fred Burfield to George William Michael, Jr., warranty deed.
E. F. Bender to W. W. Franklin, oil and gas lease.
H. A. Bible to J. D. Brawley, warranty deed.
S. J. Boyd to Aubrey Easter, warranty deed.
S. J. Boyd to Federal Land Bank of Houston, transfer and 2nd lien agreement.
Bruce-Terminix Co. of N. Texas to The Public, assumed name.
Mary Page Childress to Virgil T. Seaberry, Jr., release of vendors lien and deed of trust.
Elsie Sue Davis to Norman Owen, warranty deed.
Neil Day to Ben Hamner, deed of trust.
Aubrey Easter to Federal Land Bank of Houston, deed of trust.
Aubrey Easter to S. J. Boyd, deed of trust.
Claude O. Fuller to Higginbotham Bros. & Co., MML.
J. M. Flournoy to W. W. Franklin, oil and gas lease.
First State Bank of Rising Star to R. W. Wade, release of vendor's lien & MML & Deed of trust.
Jack W. Frost to The Public, resignation of trustee.
Federal Land Bank of Houston to O. C. Holcomb, partial release.
Dora Holloman, deceased to The Public, e/c will.
Dora Holloman, deceased to The Public, e/c order probating will.
Dora Holloman, deceased to The Public, e/c final decree.
Dora Holloman, deceased to The Public, e/c final discharge.
Dora Holloman, deceased to The Public, e/c federal estate tax receipt.
H. R. Hamilton to W. W. Franklin, oil and gas lease.
Higginbotham Bros. & Co. to Gulf Oil Corp., change of depository and ratification of oil and gas lease.
Marie Hyatt to W. G. Kirk, transfer of vendor's lien.
Maecie Hyatt to E. H. Pointer, release of vendor's lien.
R. G. Huffman to Jack Klein, assignment of oil and gas lease.
R. G. Huffman to Frank Slyter, assignment of oil and gas lease.
R. G. Huffman to W. A. Estes, assignment of oil and gas lease.
R. G. Huffman to Max K. Estes, assignment of oil and gas lease.
R. G. Huffman to Jack Klein, assignment of oil and gas lease.
R. G. Huffman to Frank Slyter, assignment of oil and gas lease.
R. G. Huffman to W. A. Estes, assignment of oil and gas lease.
R. G. Huffman to Max K. Estes, assignment of oil and gas lease.
L. A. Hampton to Jack B. Bennett, release of vendors lien.
R. T. Harrod to Roy C. Lyon, release of vendor's lien.
W. H. Hoffman to O. C. Holcomb, release of oil and gas lease.
Mary Alice Hazlewood to Fred E. Burfield, release of vendor's lien.
J. G. Harlow to D. E. Webb, warranty deed.
Jim Walter Cory to Mid-State Homes Inc., assignment of lien.
B. H. King to J. D. Rogers to First Federal S & L of Ranger, MML.
Kinney-Coastal Oil Co. to Ohio Oil Co., indenture and conveyance.
W. L. Moore to The Public, field notes.
Edna Meeker to W. W. Meeker, assignment of oil and gas lease interest.
B. H. Peacock to C. E. Dawson, warranty deed.
J. B. Russell to Glenn D. Compton, warranty deed.
Royal Supply Co. Briggs Todd, Trustee, deed of trust.
Olin Rosenbaum to W. W. Franklin, oil and gas lease.
B. W. Robertson to Gene C. Woods, warranty deed.
Sears Roebuck & Co. a Corp. Vs. Coy A. Nichols, abstract of judgment.
Socony Mobil Oil Co. Inc. to Tom Rogers, lease.
Standard Oil Co. of Texas to The Public, assumed name.
Alvin Schoor to R. G. Huffman, oil and gas lease.
Albert Schoor to R. G. Huffman, oil and gas lease.
Walter Schoor to R. G. Huffman, oil and gas lease.
A. N. Simpson, deceased to The Public, proof of heirship.
Beulah Simpson to Lee Meek, release of lien.
Ed Throp to W. W. Franklin, oil and gas lease.
Veterans Land Board of Texas to Socony Mobil Oil Co. Inc., oil and gas lease.
Wichita Falls Prod. Credit Assn. to J. B. Russell, release of trust.
C. O. Woods to W. W. Franklin, (Continued On Page Four)



COWGIRL SWEETHEART—Toni Horton, 16, daughter of Mr. and Mrs. Horace Horton, will be Eastland's cowgirl sweetheart this year at the annual Southwestern Livestock Show in Fort Worth. She will ride in the grand entry of the rodeo Saturday, Jan. 28. (Moderne Studio Photo).

BAND TO GIVE CONCERT

Toni Horton Named Cowgirl Sweetheart for Stock Show

A blue-eyed Eastland High School Sophomore will represent Eastland this year in the Southwestern Exposition and Fat Stock Show in Fort Worth.

The 1961 Eastland cowgirl sweetheart is 16-year-old Toni Horton, daughter of Mr. and Mrs. Horace Horton. She was chosen by the Chamber of Commerce to represent Eastland for the second time.

Miss Horton, a 5' 7" blonde, will wear a red velvet suit with rhinestones with a red hat to match. White gloves and white boots will complete her riding habit.

She will ride in the grand entry of the rodeo Saturday, Jan. 28 on her horse Buster. The Eastland High school is well schooled for the occasion. She has been riding since she was five years old and has been a member of the Eastland County Posse-Anns for several years, riding in many parades and rodeo grand entries.

Toni is president of the Double Seven Club and is also active in the Tri-Hi-Y.

On the same afternoon the Eastland band will give a concert before the afternoon performance of the rodeo and will then be guests at the rodeo. The band performance will begin at 1 p.m. Tickets for the rodeo are available at the Chamber of Commerce office here, but H. J. Tanner, manager, reminded rodeo fans that they should pick up the ticket soon because he will have to return them.

More than 9,000 head of livestock will vie for hours during the 6th holding of the show. Cash awards of approximately \$200,000 will be awarded exhibitors of top livestock, horses, poultry and rabbits, and to winning contestants in the rodeo.

Area Firemen Elect Officers For New Year

Members of the North Central Fireman's Association held their quarterly meeting in Cisco Saturday and elected officers for the year.

Lee Sublett of Eastland was elected president, Norvell Terry of Weatherford, first vice president, Joe Britton of Cisco, second vice president, Charlie Peach of Palo Pinto, Sgt. of arms, Johnny Grimes of Eastland, chaplain and Terry Grimes of Eastland, as mascot.

Gene Abbot, of the Cisco Chamber of Commerce, gave the welcoming address to the Association. In the business meeting, site for the next meeting was set for Palo Pinto on the first Saturday in April. Fire Chief from Alamogordo, Texas, was a guest of the Association.

The regular purmer races were not held due to a fire at the Cisco postmaster's house, which occurred at approximately the same time the race was to start. The trucks were out for about an hour.

Following the business meeting a banquet and dance were held.

Highway Meeting Held Today; Next Meet in Carbon

The first of two meetings concerning the rerouting of Highway 6 between Eastland and Carbon was scheduled for 1 p.m. today in the district courtroom in Eastland.

Representatives of the highway department will record opinions of Eastland citizens concerning the new route of the highway in Eastland, on Walnut Street.

Wednesday at 4 p.m. the second meeting will be held in the Carbon High School at 4 p.m. The rerouting of the highway in Carbon will make a slow curve south of town, skirting near the school building.

December and January Wettest in Fifty Years

January could easily be the wettest first month in the year since records have been kept here beginning back in 1911.

In the first 10 days of the year 3.58 inches of moisture has been recorded, which makes the month the second wettest January on record already. Only in 1946 was more moisture recorded in the month, and only 3.65 fell then. Therefore two-thirds of this January still are left and only .98 of moisture is needed to set an all-time high.

The 3.58 reading was the official United States Weather Bureau recording. Unofficial gauges showed as high as five inches. The rainfall was general over the entire county and lakes and stock ponds in the area realized a considerable increase in storage.

During the last 41 days a total of 6.83 inches has fallen. That is the most rain to fall in December and January here in 50 years.

Mavettes Winners In DeLeon Tourney; Boys Runnersups

Eastland's girls edged out a two point margin in the finals of the DeLeon tournament Saturday night but the boys were downed by three points to keep Hill teams from taking a complete sweep.

The Mavettes, whipped a fine Dublin sextette, 54-52, and the Mavs came close to upending Priddy before falling 59-56. Priddy hasn't been beaten this year in basketball and the Mavs came closer than any other team has.

Mickey Garner made the boy's all-tournament team, Wanda Arther was named the most outstanding girl in the tourney and Judy Seaberry won all-tourney honors.

Wanda was presented a large trophy for her performances. Garner won his honors by scoring 56 points in three games.

Both Eastland games were close ones. The Mavettes led 19-18 at the end of the first quarter, but were behind 31-37 at halftime. The locals pulled into a tie in the third quarter, then roared to the victory.

Arther was high for the Mavettes with 30 points and Seaberry had 16. Joyce Robertson scored six points and Kay Morton two. Beverly Kline, Tina Urton and Judy McMillan were standouts at their guard positions. High for Dublin was Sharon Ward with 27 points.

Eastland had previously been beaten by Dublin twice and the revenge was extra sweet. The Mavettes now boast a 10-6 win-loss record.

Garner led the Mavs in their losing efforts. He scored 24 points for high honors in the game while James Evans had 19 for Priddy. Red McCleskey posted 14, Ray Dendy eight, James Lewis six and Tommy Beck four. Lewis led the Mavs in rebounding. Eastland hit an amazing 24 of 46 field goal tries, but were badly beaten in the jump ball department.

The Mavs trailed 16-18 at the end of the first quarter, 25-34 at halftime and 42-48 at the three quarter mark. Coach Joe Ingram's charges pulled to within two points in the final stanza, however.

Surviving are seven sons, Ed and J. O. of Dallas, W. A. and W. W. of Wichita Falls, R. L. of Tascosa, N. R. of Ranger and M. J. of Sulphur, La.; two daughters, Mrs. J. C. Roberts of Sulphur, La. and Mrs. L. O. Thompson of Abilene and 22 grandchildren.

Final Rites Are Held Monday for Peter F. Turner

Final rites were held Monday at 3:30 p.m. in the Hamner Funeral Home Chapel for Peter Franklin Turner, 80, who died at 8 a. m. Sunday in the Eastland Memorial Hospital where he had been a patient for the past five days.

Consulting Architect to Meet With Church Board

Friday, Jan. 20 Charles J. Betts, consulting architect of the Board of Church Extension of the Disciples of Christ will meet with the First Christian Church which is studying various means of providing for present and future building needs.

The Board of Church Extension is charged with the responsibility of assisting local congregations in sound planning and financing of church buildings.

The Board of Church Extension currently administers a loan fund of over \$16,000,000 and since its founding in 1883 has granted over 5,700 loans totaling more than \$45,000,000.

Betts directs the department of architecture, employing an associate, a designer and color consultant, a draftsman and a construction superintendent.

He formulates and participates in an extensive consultative program, assisting Christian churches throughout the United States, Canada and Puerto Rico. Each year the department of architecture assists hundreds of churches in all phases of their building programs.

Consulting Architect to Meet With Church Board

Friday, Jan. 20 Charles J. Betts, consulting architect of the Board of Church Extension of the Disciples of Christ will meet with the First Christian Church which is studying various means of providing for present and future building needs.

The Board of Church Extension is charged with the responsibility of assisting local congregations in sound planning and financing of church buildings.

The Board of Church Extension currently administers a loan fund of over \$16,000,000 and since its founding in 1883 has granted over 5,700 loans totaling more than \$45,000,000.

Betts directs the department of architecture, employing an associate, a designer and color consultant, a draftsman and a construction superintendent.

He formulates and participates in an extensive consultative program, assisting Christian churches throughout the United States, Canada and Puerto Rico. Each year the department of architecture assists hundreds of churches in all phases of their building programs.

Cisco College Students' Poems Are Accepted

Five students of Cisco Junior College have been notified that their poems have been accepted for "The American College Poetry Anthology" which is being published in Los Angeles. The contest was open to all college students in the U. S. and Canada and the edition will come from the press in early spring.

Four freshmen and one sophomore had their work accepted for publication. Winners and their titles are:

Harris Miller, Cisco, "Airways Over The World."
Rose Starr, Cisco, "Twilight."
Mrs. Ila Mae Woody, Cisco, "My Gift."
Harold Weiser, Cisco, "Lifes River."
Mrs. Wanda Hagan, Olden, "Walking With Christ."

The poems were entered under the direction of Mrs. E. C. Lloyd, journalism and English teacher at Cisco Junior College.

"This is our first attempt at the national anthology," said Mrs. Lloyd, "and we are delighted to have five of our 12 entries accepted."

President Grady C. H... has instructed Miss Mayme Estes, librarian, to order a copy of the anthology for the CJC library.

Consulting Architect to Meet With Church Board

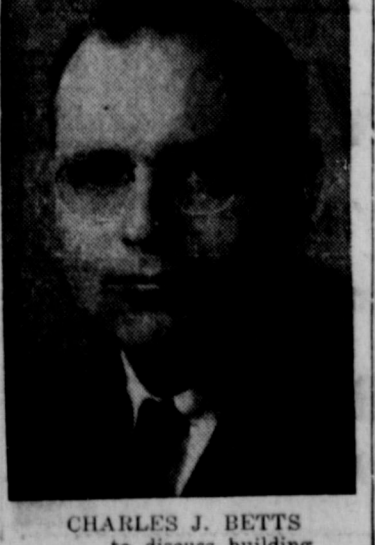
Friday, Jan. 20 Charles J. Betts, consulting architect of the Board of Church Extension of the Disciples of Christ will meet with the First Christian Church which is studying various means of providing for present and future building needs.

The Board of Church Extension is charged with the responsibility of assisting local congregations in sound planning and financing of church buildings.

The Board of Church Extension currently administers a loan fund of over \$16,000,000 and since its founding in 1883 has granted over 5,700 loans totaling more than \$45,000,000.

Betts directs the department of architecture, employing an associate, a designer and color consultant, a draftsman and a construction superintendent.

He formulates and participates in an extensive consultative program, assisting Christian churches throughout the United States, Canada and Puerto Rico. Each year the department of architecture assists hundreds of churches in all phases of their building programs.



CHARLES J. BETTS ... to discuss building

Consulting Architect to Meet With Church Board

Friday, Jan. 20 Charles J. Betts, consulting architect of the Board of Church Extension of the Disciples of Christ will meet with the First Christian Church which is studying various means of providing for present and future building needs.

The Board of Church Extension is charged with the responsibility of assisting local congregations in sound planning and financing of church buildings.

The Board of Church Extension currently administers a loan fund of over \$16,000,000 and since its founding in 1883 has granted over 5,700 loans totaling more than \$45,000,000.

Betts directs the department of architecture, employing an associate, a designer and color consultant, a draftsman and a construction superintendent.

He formulates and participates in an extensive consultative program, assisting Christian churches throughout the United States, Canada and Puerto Rico. Each year the department of architecture assists hundreds of churches in all phases of their building programs.

Your United Fund

\$7154

-\$6500
-\$6000
-\$5500
-\$5000
-\$4500
-\$4000
-\$3500
-\$3000
-\$2500
-\$2000
-\$1500
-\$1000

EASTLAND NATIONAL BANK
"On The Square"
MEMBER F. D. I. C.

Postal Receipts Increase In '60

climbed to \$98,442 during the year compared to \$97,680 in 1959. Mrs. Johnson said the post office had a good year and praised postal employees and the public as well. She said the public had been very helpful by cooperating with the post office in bundling mail properly.

The Eastland post office has shown a large gain in recent years, one of the reasons being the vast amount of mail sent out from here by Cornelius printing companies.

In 1943 local receipts were only \$31,643. In 1947 the local post office became a first class post office when receipts climbed above \$40,000 for the first year. Since that time receipts have continued to climb. Ten years ago they were listed at \$68,240. The all time high came in 1957 when postal sales reached \$105,575. Since that time 1960 is the first year to show an increase over the preceding year.

Eastland Telegram

Eastland County Record established in 1931, consolidated August 8, 1951. Chronicle established 1887, Telegram established 1928. Entered second class matter at the Post Office in Eastland, Texas under the Act of Congress of March 3, 1879.

TIMES PUBLISHING COMPANY
Published Tri-Weekly—Tuesdays - Thursdays - Sundays
Onous Dick and Joe Dennis, Publishers
Virgil E. Moore, Editor

One week by carrier in city15
One month by carrier in city65
One year by mail in County2.95
One year by mail in state4.95
One year by mail out of state6.95

NOTICE TO PUBLIC—Any erroneous reflection upon the character or reputation of any person, firm or corporation which may appear in the columns of this newspaper will be gladly corrected upon being brought to the attention of the publishers.

CLASSIFIED

Cards of Thanks charged for at rate of \$2.00 Each

Misc. For Sale

FOR SALE: Seven year old mare. See J. D. Yancey. Phone 2382, Oldham.

FOR SALE: Snake Place and fixtures. Rent building. Quitting business for other interests. Phone 9-2546 or MAIn 9-1975 or home by 810 W. Elmwood.

FOR SALE: Five room house on pavement. 175 foot lot. \$3,200. See Hammer.

FOR SALE: Closing out some numbers of brassiers. 10 percent to 30 percent discount. Mode Q-Tax, Eastland, Texas.

FOR SALE: 500 laying H. W. Buffing hens. \$1.25. Staff company. W. H. Halley. Phone MA 9-2705.

FOR SALE: Good upright Amann Sewer. Call MAIn 9-1455.

FOR SALE OR TRADE: Have 66 acres dandy farm, 66.0 acres in cultivation, 40.0 acres sowed, 2.7 acres cotton allotment, some old improvements. Creek through place. 20.0 acres good bottom land. Could be put in farm and irrigated. You would like this. Station will sell for \$3500.00 or will trade it for small farm acreage. Run \$30,000. Have 5 room rock house to sell or trade for wood farm. 1416 Brazos St. Coleman, Texas.

Special Notice

NOTICE: Let me break and (or) buy your land. Contact B. H. Courtney, Main 9-1340.

NOTICE: Income tax service for farmers, individuals and small business after 5 p.m. on weekdays, Saturday and Sunday. Contact Army Taylor at 413 Pershing St. Phone MAIn 9-2423.

NOTICE: Cream shampoo and set \$1.60; recondition with shampoo and set \$2.50; Free cream rinse with permanent. \$10.00 wave \$6.50; \$20.00 wave \$10.00. Kora's Hair and Curl. Phone MAIn 9-2256.

Eastland Masonic Lodge No. 467

Reg. Stated meetings 2nd-Thursday of each month, at 7:30 p.m.
H. C. Pounds, W. M.
L. E. Hukaby, Secretary

Real Estate

FOR SALE: Two bath, two bedroom house on Oaklawn. Central heating, large lot, double garage. Call after 5 p.m. MAIn 9-2324.

FOR SALE: house—305 South Neblett.

FOR SALE: Five room house to be moved. Located northwest Eastland. Contact B. H. Courtney, Phone MAIn 9-1340.

FOR SALE OR RENT: Five room house between 200-300 block on Dixie Street. Sunshine Laundry. Phone 9-8812.

FOR SALE: 5 room and bath on paved street, \$4500.00. New carpet, see Day and Pentecost, 208 South Lamar.

FURNITURE for the Entire Home

★ Carpet - Rugs All Prices ★
Be Sure To Check With

Coats FURNITURE

Insurance AND Real Estate

D. L. KINNAIRD
Life - Fire - Auto - Farm
Polio - Bonds
40 years in the Insurance Business in Eastland

NOTICE

FRESH DRESSED FRYERS and Fresh Dressed Hens At The Plant
PHONE MA 9-1200
WALKER Dressing Plant

WEEKLY CROSSWORD PUZZLE

Unpopular Animal

Here's the Answer

HORIZONTAL
1 Depleted animal
6 It is an unpopular Madagascar
11 Resident physicians of a hospital
13 Withdraw
14 Born
15 Facilitated
17 Gibbon
18 Immerse
19 Trite
20 Compass point
21 Diminutive of Edward
22 And (Latin)
23 Incursion
26 Gist
28 Accomplish
29 Relative of either
30 Daybreak (comb. form)
31 Ambar
32 Cicatrix
34 Enthusiastic ardor
37 Symbol for bromine
38 Toward
39 Race course circuit
41 Jogs
46 Inebriate
47 Greek letter
48 Networks
49 Candelabra tree
50 Sea nymph
52 Apparition
54 Hike
55 Golf term

VERTICAL
2 New York lake
3 An act
4 Symbol for selenium
5 Aphrodite's lover
6 Assign
7 — is almost extinct
8 Repulsive
9 Expunger
10 Cylindrical
12 Burmese wood
13 Unit of reluctance
14 Without year (ab.)
24 Preliminary plan
25 Postern
26 System of principles
27 Verbal
32 Taciturn
33 Volcanic orifice
35 World War II bomb
36 Marked with spots
40 Brazilian state
41 Journey
42 Color
43 On time (ab.)
44 It is (contr.)
45 Undermines
46 Hindu garment
51 Type measure
53 Symbol for bismuth

IN FORT WORTH

Mr. and Mrs. Tom Utley are in Fort Worth staying with their daughter, Mrs. Bill Moore. While there Mr. Utley will be under doctors treatment.

Save Money

Good Solid Retreaded Tires
9⁹⁵ EXCHANGE
Size 750 or 800 x 14
670 or 710 x 15
Larger Sizes Slightly Higher

JIM HORTON Tire Service

East Main St. MA 9-1420
Eastland, Texas

Court of Civil Appeals

Motions Submitted
3602 James Yarbrough v. A. M. Teague. Appellee's motion for rehearing. Brown
3610 J. E. Walling, Jr. et al. v. North Central Texas Municipal Water Authority et al. Agreed motion for extension of time to file Appellee's brief. Haskell
Motion Granted
3610 J. E. Walling, Jr. et al. v. North Central Texas Municipal Water Authority et al. Agreed motion for extension of time to file Appellee's brief. Haskell
Motions Overruled
3602 James Yarbrough v. A. M. Teague. Appellee's motion for rehearing. Brown

ATTEND THE CHURCH OF YOUR CHOICE EACH SUNDAY

You don't have to be dependent after age 61!

Investigate **SOUTHLAND LIFE'S SENIOR-CITIZEN CASH-A-DAY HOSPITALIZATION PLAN**

Call me today for complete details on this economical protection plan!

M. H. PERRY
107 W. Main
Office Ph. MA 9-2275
Res. Ph. MA 9-1095

Southland Life Insurance Company
LIFE • ACCIDENT • HEALTH • HOSPITALIZATION • GROUP

Moved

from 311 W. Main to
South East Corner of Square
ROBERTSON RADIO & T. V.
Phone 9-1625

ABOUT YOUR HEALTH

Texas will begin the new year with 63 "packaged" hospitals on hand, ready for almost instant use following enemy action or a major natural disaster. Ninety percent of them are located at least 15 miles from assumed strategic target areas.

Outgrowths of the mobile army hospitals developed and tested during the Korean War, they can be completely installed by 40 or 50 people in four or five hours. In one test exercise an installation was made in an hour and 10 minutes by experienced personnel.

The hospitals, costing \$21,000 apiece, were provided by the federal Office of Civil and Defense Mobilization as part of a nationwide stockpile program. They are administered in Texas by the state Office of Defense and Disaster Relief, with technical cooperation from the Texas State Department of Health.

Local civil defense organizations in designated locations provide storage and otherwise manage the hospitals and their equipment.

Besides the 63 units presently on hand, 11 others have been allocated to Texas for future delivery. The hospitals are designed to be set up in existing buildings. One such unit planned is for Breckenridge, and will serve this area.

Each hospital — already crated for shipment into stricken areas as may be needed, is a complete 200-bed affair with facilities for three operating rooms, a pharmacy, x-ray service, clinical laboratory, sterilizing room, central supply room, and electrical power supply.

Each unit weighs 24,000 pounds and contains 8,000 individual pieces of equipment including a 1500-gallon water tank and pump for emergency water supplies. There are also complete medical supplies, from surgical caps and gowns to inflammable items such as ether and alcohol which are separately packaged and marked to avoid fire hazards.

Local civil defense authorities provide refrigeration for items such as insulin and blood derivatives. Antibiotics and other materials with expiration dates are labeled "deteriorative" to indicate they must be periodically inspected and rotated.

State civil defense and health

NEWS FROM DESDEMONA

Now that we have said goodbye to the old year and hello to the new, we will endeavor to improve our life and be better friends and neighbors.

Most everyone had a nice holiday weekend and everyone was visiting.

Agnes Owens returned home Sunday from Corpus Christi where she had been at the bedside of a brother, Clyde Parker, who passed away and was buried Friday. Our sympathy goes to Mrs. Owens.

ATTEND THE CHURCH OF YOUR CHOICE EACH SUNDAY

PEGGY
BANG
LISSY!
DON'T TRACK ANY DIRTY OLD MUD ON MY CLEAN FLOORS!
I DIDN'T, MOTHER!
THIS IS A GOOD OLD BATH!

HILBERT
I CAN'T DECIDE WHETHER TO INVEST IN THAT STOCK OR NOT?
A CAPITALIST HAS TO GAMBLE NOW AND THEN—ILL FLIP A COIN!
YOU LOST!
THERE ARE TOO MANY MEN INVOLVED IN HIGH FINANCE. I'LL STICK TO LABOR!

WIFE
I NOTICE MR. TILLER IS TAKING ANOTHER NAP!
YES!
DON'T HIS NAPS BOTHER YOU, MRS. TILLER?
NOT A BIT, LORNA!
GRACIOUS! NOW HE'S SLEEP-WALKING!
YES, HE ALWAYS DOES THAT!
HUSBANDS ARE MORE USEFUL ASLEEP THAN AWAKE!



Hitch your wagon to 50 stars!

BUY BETTER-THAN-EVER U.S. SAVINGS BONDS

A new 50-star flag now flies over the capitals of 50 states—symbol of a new America that's bigger and stronger than ever before. And there's a better-than-ever U.S. Savings Bond, too, to help keep our new America strong.

U.S. Savings Bonds are now better in two ways:

1. They mature 14 months faster than before. In E Bonds \$18.75 now becomes \$25 in just 7 years, 9 months.
2. They continue to earn interest after maturity. If you hold your bonds for 17 years, 9 months, you get \$1.93 back for \$1 you put in.

Other advantages of U.S. Savings Bonds:

- You can save automatically the Payroll Savings Plan.
- Invest without risk under a Government guarantee.
- Money can't be lost or stolen.
- Can get your money, with interest, anytime you want it.
- More than money—you're helping your Government pay for peace.

You save more than money with **U.S. Savings Bonds**
Buy them where you work or bank

The U.S. Government does not pay for this advertisement. The Advertising Bureau of the U.S. Treasury Department, Washington, D.C.

Clipboard

by JOANNE WALTERS
special correspondent

seventeen MAGAZINE

FONDA's being pegged for a starring role in "A World of Women" ... FRANKIE AVALON gets a Cadillac and \$150 a week on his 21st birthday ... DICK BEYMER is bad news as far as TUESDAY WELD is concerned ... FABIAN took VICKIE TRICKETT to the Deb Stars Ball and the next night, dated DEAN MARTIN's daughter Claudice ... JULIET PROWSE is through with both SINATRA and ELVIS ... CAROL LYNLEY and BRANDON DE WILDE will be teamed in "Blue Denim Baby" ... DWAYNE HICKMAN wants to give up singing ... BOBBY DARIN and SANDRA DEE are heads on Philly's Chestnut Street ... EDD BYRNES, people, is now "in" with SINATRA's Clan ... Sender



Best postmarked card to correctly identify the five pictured here, wins \$50. Send your guess to Joanne Walters, 400 North Broad Street, Philadelphia 1, Pennsylvania. Warners thinking seriously of taking CONNIE BENS and TROY DONAHUE away from their respective wives, and placing them in movies ... DIANE MC BAIN and JAY JACKSON have taken out apartment together ... Patricia Bell of Marietta, Georgia won for writing the best essay in recent "Why the 18 Year Old is Right to Vote" Contest ... BETTE was mobbed at the Dorchester Hotel in London ... MARLON BRANDO is considering co-starring with TAYLOR in a remake of an old film "Anna Karenina."

VISITORS

At the O. R. Olden spent the weekend in Iraan where they visited with Mrs. Dick's relatives. Joining them Friday night were Mr. and Mrs. Dick's daughter and family, Mr. and Mrs. Kenneth Williamson and Kay, of Andrews.

HAMNER FUNERAL HOME

Ben E. Hamner, Owner

Serving Eastland County since 1924 with care and funeral service. Our ambulances are equipped and air conditioned.

Through our nation-wide connections with other directors, we can handle a funeral from any part of America. We offer this service knowing we can relieve the family of all burdens to any death away from home.

Eastland Dial MA 9-2611

COMPLETE AIR CONDITIONING SALES and SERVICE WITH PLUMBING AND TIN

PHONE MA 9-2422
114 N. Seaman

ALEX RAWLINS & SONS

Phone LY 4-2726 Texas

Designers and Builders of Monuments Since 1884

See Us For FURNITURE • APPLIANCES CARPETS

Day Low Prices Means Savings For You! No carrying charges on furniture for 1 full year

FREE DELIVERY

Brasher Furniture Exchange

"BRASHER'S" Ranger Phone MI 7-1404

NEWS FROM OLDEN

Mr. and Mrs. Walter Colburn and Jerry have returned home after a lengthy visit in Midland with their sons and families, Mr. and Mrs. Jimmy Colburn and Mr. and Mrs. Edd Colburn.

Mrs. Stella Jarrett and her mother, Mrs. H. T. Gibbs of Valley Mills spent New Years weekend in Lubbock with Mrs. Jarrett's son and family, Mr. and Mrs. Jimmy Jarrett and boys. Butch Cooper visited in Holiday some last week.

Mr. and Mrs. Gilbert Copeland, Gary and Nancy visited last week with the Copeland's parents, Mr. and Mrs. Ess Oakley of Hico and Mr. and Mrs. Paul Copeland of Lawton.

Mr. and Mrs. T. O. Marlow of Arlington visited with his parents, Mr. and Mrs. Tom Marlow. Mr. and Mrs. L. L. Sprawls and girls of Fort Worth visited Mr. Sprawls' sister and family, Mr. and Mrs. C. B. O'Brien Saturday. Spending Saturday night with two friends were Mrs. Truett Holder of Stanton and her son and family, Mr. and Mrs. Harrell Lee Holder and son of Denver, City. Mr. and Mrs. Charles Dick and girls of Kermit visited with relatives here Sunday.

Mrs. Raymond Stark and son of Odessa visited recently with her parents, Mr. and Mrs. Lee McGuire and also Mr. and Mrs. Leon Musgrove and Mr. and Mrs. W. C. Stark.

Mr. and Mrs. J. T. Weaver and Mr. and Mrs. Kermit Burchett of Abilene were Christmas day guests with Mr. and Mrs. Jim Everett. Mr. and Mrs. Guy Hendricks of Baird and Miss Dorothy Hendricks of Abilene visited with Mr. and Mrs. Tom Marlow one day last week.

Miss Mollie Green of Mineral Wells and Miss Eunice Hamilton spent the Christmas holidays in New Orleans, La. sightseeing. Mrs. Mable Matlock of Ft. Worth visited with Mr. and Mrs. Jim Everett recently.

Mrs. Travis Reese and Ricky spent Monday with Mrs. Reese's sister and husband, Mr. and Mrs. Pete Dillard of Possum Kingdom. Mr. and Mrs. Dale Wren of Idalou, Mr. and Mrs. Charles Wild of Jayton, Mr. and Mrs. Don Johnston and children of Fort Worth and Stanley Tussey and son of Dallas visited Mr. and Mrs. J. D. Tussey during the holidays.

MATTRESSES

Save up to 50% renovating. Choice of color and firmness. Complete bedding. Made and guaranteed by WESTERN MATTRESS CO., San Angelo. Phone MA 8-2689, Eastland and leave address.

REPORTED IMPROVED

Mr. Walter Duncan is reported as greatly improved. He has recently suffered severe heart attacks.



CHEER LEADERS IN ACTION—Demonstrators in favor of racial school segregation pass comment on the arrival of a white mother and child at boycotted New Orleans school.

Barbara Lou Cook To Become Bride Of Benny Frasier

Mr. and Mrs. Z. W. Cook of Olden announce the engagement and approaching marriage of their daughter, Miss Barbara Lou Cook, to Benny Frasier. The prospective bridegroom is the son of Mr. and Mrs. P. C. Frasier of Route One, Gorman. Wedding vows will be exchanged January 20 at 6 p.m. in the home of the bride-elect's parents. Miss Cook is a 1960 graduate of Olden High School. Mr. Frasier was graduated from Carbon High School in 1960 and is presently employed at Jim Campbell's Texaco Station in Gorman. The couple will make their home on Route one, Gorman.

County Surveyors Office

Box 492 — Phone MAIn 9-2639 Courthouse, Eastland, Texas

- Land Surveying and Mapping
- Civil Engineering
- Sub-Division Design and Layout
- Oil Field Surveying

R. T. MAGNESS, JR. Reg. Prof. Engineer
County Surveyor
T. P. MOBLEY, Reg. Public Surveyor
HI 9-3644, Breckenridge

Gorman Gatherings

By Mrs. R. E. Boucher

Christmas guests in the home of Mr. and Mrs. G. D. Riley were their daughters and families, Mr. and Mrs. Perry Perdue and children, Mr. and Mrs. Tony Iammatto, Gene and Neil Crossan and their girl friends, Miss Karen Albright of Ft. Worth and Mrs. Jeanne Treadway of Mansfield and Tony's father, John Iammatto of New York.

Mr. Bert Bennett returned home Saturday from a two weeks visit with her son and family, Mr. and Mrs. J. B. Bennett and Roy, and other relatives in Fort Worth. New Year's guests in the home of Mr. and Mrs. T. H. Burnett and Mr. and Mrs. J. N. Ellison were Mr. Bennett's and Mrs. Eddison's sister, Mrs. C. H. McCroan of Dallas and her daughter and husband, Mr. and Mrs. Frank Roberts of Central City, Colo. They visited with other relatives and friends. Mrs. Ruth Slaton, Mrs. Bert Bennett and Mr. and Mrs. Roy Rankin.

Mr. and Mrs. A. L. Cribbs of Crystal City were guests in the home of her parents, Mr. and Mrs. R. E. Boucher Sunday evening

and night. Mr. and Mrs. R. C. Boswell, their son and family, Mr. and Mrs. Dwyatt Boswell and Judy of Fort Worth, attended the funeral of Mrs. Sides in DeLeon Wednesday. Mrs. Sides was a sister of Mr. Boswell.

Mr. and Mrs. Clyde Johnson and boys of Kermit visited with her parents, Mr. and Mrs. G. D. Riley Friday and they all spent New Years Eve and New Years Day with Mrs. Johnson's sister and families, Mr. and Mrs. Tony Iammatto and sons and Mr. and Mrs. Perry Perdue and children in Fort Worth.

It Pays to Advertise—

... and most business men do some of it. The impact of advertising on the American psychology is evident in many ways. While honest and truthful advertising is said to make people unhappy with what they have, it also creates a desire for goods and services which they need. We know that people need insurance every hour of the day and to make them conscious of that fact, and to save them world's of trouble, we advertise.

EARL BENDER & COMPANY

Eastland (Insurance since 1924) Texas

McGraw Motor Company

CARS DODGE—STUDEBAKER TRUCKS
Parts and Service

661 South Seaman Phone MA 9-1244

TUESDAY	WEDNESDAY	THURSDAY
7:00 Today 8:00 Today 9:00 Say When 9:30 Play Yr Munch 10:00 Price Is Right 10:30 Concentration 11:00 Truth or Con. 11:30 Could Be You 12:00 News, Wthr. 12:15 Devotions 12:30 3 Stages 1:00 Queen for Day 1:30 Loretta Young 2:00 Dr. Malone 2:30 From Roots	3:00 Comedy Pi-ssa 3:30 Adv. Time 4:00 Com. Pres. 5:30 3 Stages 6:00 News 6:10 Weather 6:30 Wagon Train 7:30 A. Hitchcock 9:00 Peter Loves M. 9:30 Tony Express 10:10 News 10:20 Piskin Picks 10:30 Jack Paar	7:00 Today 8:00 Today 9:00 Say When 9:30 Play Yr Munch 10:00 Parade 10:30 Concentration 11:00 Truth or Con. 11:30 Could Be You 12:00 News, Wthr. 12:15 Devotions 12:20 Air Force 12:30 3 Stages 1:00 Queen for Day 1:30 Loretta Young 2:00 Dr. Malone 2:30 From Roots

TUESDAY	WEDNESDAY	THURSDAY
7:30 Cartoons 8:00 News 8:15 Cap. Kangaroo 9:00 Dec. Bride 9:30 Video Village 10:00 Love Lucy 10:30 Clear Horizon 11:00 Love of Life 11:30 Search for Tm. 1:45 Guiding Light 2:00 News 2:15 Hear's 12:30 As Wild, Turns 1:00 Full Circle 1:30 House Party 2:00 Millionaire 2:30 Verdict Is Yrs.	3:00 Brighter Day 3:15 Secret Storm 3:30 Edge of Night 4:00 Movie 5:15 Party Time 6:00 News 6:10 Weather 6:30 Agamemnon 7:30 Wister 8:00 Sweet Eileen 8:30 Get A Secret 9:00 Steel Hour 10:00 News 10:10 Mike Hammer 10:20 People & Pics 10:30 Movie	7:30 Cartoons 8:00 News 8:15 Cap. Kangaroo 9:00 Dec. Bride 9:30 Video Village 10:00 Love Lucy 10:30 Clear Horizon 11:00 Love of Life 11:30 Search for Tm. 11:45 Guiding Light 12:00 News 12:15 Fashions in Fcs. 12:30 As Wild Turns 1:30 House Party 2:00 Millionaire 2:30 Verdict Is Yrs. 3:00 Brighter Day

TUESDAY	WEDNESDAY	THURSDAY
8:30 Com. Theatre 9:00 Little Rascals 9:30 Jack La Lanne 10:00 Trb'l w. Fhr. 10:30 Rendezvous 12:30 Cartoons 1:00 Matinee 3:30 Mar'd Joan 4:00 Bugs Bunny 4:30 Popeye	8:30 Comedy 9:00 Little Rascals 9:30 Mack La Lanne 10:00 Trb'l w. Fhr. 10:30 Rendezvous 12:30 Cartoons 1:00 Matinee 3:30 Mar'd Joan 4:00 Bugs Bunny 4:30 Popeye	8:30 Comedy 9:00 Little Rascals 9:30 Jack La Lanne 10:00 Trb'l w. Fhr. 10:30 Play of Week 12:30 Cartoons 1:00 Matinee 3:30 Mar'd Joan 4:00 Bugs Bunny 4:30 Popeye

TUESDAY	WEDNESDAY	THURSDAY
5:55 Newsreel 6:00 Cont. Class'm. 7:00 Today 7:25 Weather 8:25 News 9:00 Dough Ra Mi 9:30 Play Yr. Hunch 10:00 Price Is Right 10:30 Concentration 11:00 Tr. or Conseq. 11:30 Could Be You 12:00 Noon News 12:30 Great Life 1:00 Queen for Day 1:30 Loretta Young	2:00 Dr. Malone 2:30 From Roots 3:00 Com. Theatre 3:30 Adv. Time 4:00 Family Theatre 5:30 Downbeat 5:55 News 6:10 Weather 6:30 Wagon Train 7:30 Price Is Right 8:00 Bob Hope 9:00 Peter Loves M. 9:30 Coronado 9 10:00 News 10:10 Mike Hammer 10:20 People & Pics 10:30 Mystery	5:55 Newsreel 6:00 Cont. Class'm. 7:00 Today 7:25 Weather 8:25 News 9:00 Dough Ra Mi 9:30 Play Yr. Hunch 10:00 Price Is Right 10:30 Concentration 11:00 Tr. or Conseq. 11:30 Could Be You 12:00 Noon News 12:30 Great Life 1:00 Queen for Day 1:30 Loretta Young 2:00 Dr. Malone 2:30 From Roots 3:00 Adv. Theatre

TUESDAY	WEDNESDAY	THURSDAY
7:25 Devotional 7:30 Cartoons 8:00 Romper Rm. 8:30 Early Show 10:00 Julie Bonell 11:00 My L.H. Margie 11:30 Life of Riley 11:55 News 12:00 Restless Gun 12:30 Love That Bob 1:00 About Faces 1:30 Way of Life 2:00 Day in Court 2:30 Gale Storm 3:00 Beat Clock 3:30 Who Do Ya 4:00 Amer. Band 5:00 Robin Hood	5:30 Cartoon Strip 6:00 Newsreel 6:10 News 6:15 Weather 6:22 Sports 6:30 HONG KONG 6:30 Nelson Family 6:30 Hawaii Eye 8:00 Naked City 10:00 News 10:10 Weather 10:20 Sports 10:25 Sports 11:00 Theatre	5:30 Cartoon Strip 6:00 Newsreel 6:15 Weather 6:22 Sports 6:30 Guestward Ho 7:00 Donna Reed 7:30 Real McCoy's 8:00 My 3 Sons 8:00 Untouchables 9:30 Take Good Look 10:00 Newsreel 10:10 News 10:15 Weather 10:25 Sports 11:00 Theatre 12:30 News



Can you think of an easier way to save?

When you join the U.S. Savings Bond Payroll Savings Plan, you save automatically . . . without even thinking about it. Is there a savings plan that's easier?

Here's how it works: notify your employer that you want to join the Payroll Savings Plan. Tell him the amount you want to save each payday. He'll set aside your savings from your check and deliver your U.S. Savings Bonds.

Make it easy on yourself—save the Payroll Savings Bond way where you work.

The U.S. Savings Bonds you buy now pay 3 3/4% interest to maturity—and keep on earning for 10 years after maturity. What's more, you invest without risk under U.S. Government guarantee!

You save more than money with

U.S. Savings Bonds

The U.S. Government does not pay for this advertising. The Treasury Department thanks for their patriotic donation, The Advertising Council and

For Good Looking You Can't Beat TV Cable Looking!

Community Television, Inc.

'Call today and get five channels tomorrow'

Village Hotel Phone MAIn 9-1716

ATTEND THE CHURCH OF YOUR CHOICE EACH SUNDAY

PIANO TUNING AND REPAIRING

G. W. Collum
former band teacher of Eastland

Write 1425 Victoria Abilene, or call locally
MAin 9-2507

MATTRESSES

Eastland Mattress and Spring Co.
306 East Main Street

New in Eastland but not new in the business; 12 years experience. We are making a special get acquainted offer: Your cotton mattress converted to innerspring only \$22.95, reg. \$26.95. Cotton mattress made like new, only \$10.95. For information call your slumber number: MA 9-1321.

One Day Service Pick Up and Delivery

Social Calendar

Tuesday, Jan. 10
7:30 a.m.—The regular meeting of the Rebekah Lodge will be held in the IOOF Hall.
2 p.m.—"Human Rights" will be the program given by Mrs. James Campbell at the W.S.C.S. meeting.
12 noon—The Lakeside Ladies Golf Auxiliary will hold their regular meeting with a sack lunch at noon followed by a business meeting.

Wednesday, Jan. 11
2 p.m.—Members of the Morton Valley Home Demonstration Club will hold their regular meeting in the community clubhouse.
9:30 a.m.—"Alaska" will be the program given by Mrs. Grady Pipkin at the regular meeting of the Civic League and Garden Club.

Monday, Jan. 16
7:30 p.m.—The regular meeting of the Oddfellow Lodge will be held in the IOOF Hall.
7:30 p.m.—Castle Hall will be the scene of the Pythian Sisters' meeting.

Tuesday, Jan. 17
2:00 p.m.—Mrs. John Smith, District President, will be guest speaker of the W.S.C.S. meeting in the Methodist church.

Wednesday, Jan. 18
7:30 p.m.—The regular meeting of the Wesleyan Service Guild will be held in the Methodist Church.
3:30 p.m.—Misses D. L. Kinnaird, B. W. Patterson, R. N. Grisham, and Miss Edna Streipe will be hostesses to the meeting of the Music Study Club.

GO TO CHURCH SUNDAY

Hospital

Patients in the Eastland Memorial Hospital are the following:

Mrs. Jackie Wilson, medical
Tom Lovelace, Jr., medical
Mrs. Mary McCoy, medical
Mrs. Vincie Harrison, medical
Mrs. Lillie Sneed, surgical
Mrs. Sarah Woods, Ranger, medical

Mrs. Novie Pafford, medical
Mrs. Nancy Jones, medical
Mrs. Patsy Honea, surgical
Mrs. Gladys Cooper, medical
Mrs. Carrie Blackburn, Cisco, medical

L. E. Sablett, medical
A. R. Sprawell, surgical, Lovington, N. M.
Dean Collins, medical, Baird
Mrs. Minnie Crosby, Cisco, medical

Mrs. Kelly Justice, medical
Mrs. Annie Hunt, Ranger, medical
Eddie Gallagher, medical
Mrs. Betty Lasater, medical, Cisco
Mrs. Dorothy Helen Turner, medical

E. M. McCoy, medical
Miss Sandra Lasater, surgical
Mrs. Mary Renfro, Cross Plains, medical

Mrs. Sarah Owens, medical
W. M. Morris, Ranger, medical
Mark Allen Kleiner, medical
Mrs. Kate McCollum, medical
Frank Vaughan, Gordon, medical

Mrs. John Smith, medical
J. C. McGee, Cross Plains, medical
James O'Shields, Ranger, medical

Mrs. Irene Britton, medical
Mrs. Wessie Mae Johnson, surgical
Bert R. Kent, Olden, surgical
Mrs. Ina Edwards, medical
Patients dismissed were
Mrs. Lois Walton, Mrs. Christine Beskow, Mrs. Valaria Walker, Ellen Snoddy, Mrs. Gerald Jensen, Mrs. Dorothy Lohman, Miss Helen Turner, Mrs. Ruby Jean Smith and baby girl, Rev. Asa Hoskins and L. T. Florence.

Texas Salvation Army Gets New Division Leader

Brigadier B. Gordon Swyers will assume command of the Texas Division of the Salvation Army, with headquarters at 500 North Erway in Dallas, in January of 1961.

Reporting from Washington, D.C. where he has served as commander of the National Capitol Division of the Salvation Army, Brigadier Swyers succeeds Lt. Colonel Ernest Pickering in Texas. Colonel Pickering has been appointed field secretary of the Southern Territory in Atlanta, Ga., effective January 4.

Brigadier Swyers will be in charge of 37 corps in 35 Texas cities, and 226 Service Unit Committees in as many Texas cities.

Mrs. Swyers shares equal rank with her husband and will become Home League secretary for the Texas Division, a position now held by Mrs. Lt. Colonel Ernest Pickering. Mrs. Swyers will be in charge of all Salvation Army women's activities in Texas.

Brigadier Swyers is an able administrator, having served as a finance officer at Southern Territorial Headquarters in Atlanta which includes 15 southern states.

Court News—

(Continued from Page One)

lin, oil and gas lease.
Charles B. Wood to W. W. Franklin, oil and gas lease.
Helen Wardrop to Juanita Umberson, power of attorney.
Merlin Werskye, trustee to First National Bank of Citeo, transfer of lien.
D. E. Webb to J. G. Harlow, deed of trust.

MARRIAGE LICENSES
Jimmy Louis Graham and Mrs. Juan Dean Neves.
SUITS FILED
91st District Court
Ben Hamner V. Bill Wende, et ux, suit for debt.
G. R. Pancake, et al V. Dept. of Public Safety of State of Texas, injunction.
Laverne Johnson V. A. F. Johnson, divorce and custody.
Bobbie Lee Holes V. Billy Joe Beggs, damages.
Marie Bint V. A. E. Bint, divorce.

ORDERS AND JUDGMENTS
91st District Court
G. R. Pancake, et al V. Dept. of Public Safety of State of Texas, order.
Pat J. McGough V. Conner Construction Co., et al, order of dismissal.
Winifred B. Stevenson V. Donald W. Stevenson, order.
Winifred B. Stevenson V. Donald W. Stevenson, judgment.
Elnora Obel V. R. S. Obel, judgment.
V. T. Moser V. State Dept. of Public Safety, Homer S. Garrison Director, order.
M. M. Martin, et al V. Dept. of Public Safety of State of Texas, order of dismissal.
Linda Mae Kelley V. Donald Houston Kelley, judgment.
Winnie Ruth Roberson V. Robert Roberson, order.

RANGER DRIVE-IN
HIGHWAY 80 EAST ON RANGER HILL

Boxoffice Opens 6:45 — Show Starts at 7:00
Adults 50c—Kiddies Under 11 Free
Only Eastland County Drive-In Open All Year

LAST TIMES TUESDAY

It's the high time of your lifetime...!

BING CROSBY FABIAN TUESDAY WELD NICOLE MAUREY

HIGH TIME

EVERY WEDNESDAY IS BARGAIN NITE **50¢** CAR LOAD

The wildest mobster of the wild 20's!
THE RISE AND FALL OF LEGS DIAMOND
RAY DANTON - KAREN STEELE

MAJESTIC
IN EASTLAND

LAST TIMES TODAY

Bob HOPE
Lucille BALL
FACTS OF LIFE

Wed. - Thur. - Fri. & Sat.
DEBORAH KERR
ROBERT MITCHUM
PETER USTINOV

SUNDOWNERS

Adults 75c - Children 35c

37 Years of Continuous Service—

... is a long-time record for any business or profession to achieve. But years without growth are wasted and growth without achievement is impossible. My, how we have grown these 37 years! So with renewed energy and with every modern facility to serve you, we approach the future with confidence. And in the mood of a school boy we can in all sincerity say to our many friends and customers "thank you" and Happy New Year.

EARL BENDER & COMPANY
Eastland. (Insurance since 1924) Texas

it's saving **REGULARLY . . .**

that's important

Saving part of the EXTRA money that comes your way — gifts, bonuses, dividends, and so on—is a fine idea. But it's those FEW dollars taken out of EVERY paycheck and put to WORK in an insured savings account here that really mount up. Try it and see. You won't need a "windfall" to get the things you want, when you've saved for them!

First Federal Savings & Loan Association of Ranger
804 Main Ranger, Texas Phone MI 7-1611

BUDGETS LEAK, TOO!

Tighten yours up: Pay all bills with checks drawn on us, to have more accurate records, and sure receipts!

Eastland National Bank
Member F. D. I. C. "ON THE SQUARE"

VISITS IN DALLAS

Mr. and Mrs. J. L. King of Rt. Four, Cisco, visited friends and relatives in Dallas over the weekend. Mrs. Millie Thompson of Eastland accompanied the Kings.

HAZARDS VISIT

Mr. and Mrs. O. E. Hazard and children, David and Peggy Sue, visited over the weekend with the daughter and son-in-law, Mr. and Mrs. Bobby Compton of Colorado City, their son and daughter-in-law, Mr. and Mrs. Weldon Hazard in Abilene, their daughter and son-in-law, Mr. and Mrs. L. C. Swenson of Abilene and Mr. and Mrs. Lester Westbrook of Baird.

RETURNS FROM NEW MEXICO

Miss Vera Parson returned last Friday from a visit over the holidays with her sister, Mrs. Della McDougle in Clovis, N. M.

TIME

to choose your new home today! Choose your new home from our picture plans, choose your lot, and your color scheme today! It costs no more to get first choice in our new three bedroom homes. We are ready to build on Conner street! Veterans still nothing down, non-veterans only \$350 down and payments like rent!

Why throw away rent dollars every month? Pay your rent dollars on your own home and create a savings for your family. See or call us today. We arrange all of the financing and red tape. No obligation, of course.

Village Homes
Suite 210 — Village Hotel
Don Pierson - MA 9-1033
Norman Guess - MA 9-1545

ATTEND THE CHURCH OF YOUR CHOICE EACH SUNDAY

COLDS

Relieve aches and pains of colds with STANBACK Tablets or Powders. Also use as gargle for sore throat due to colds. STANBACK'S S. A. (Synergistic Action) reduces fever, brings faster, more complete relief. Remember... Snap back with STANBACK!

T. L. FAGG
REAL ESTATE
Property Manager
Home and Farm

Hamner Life Insurance Company
Ben E. Hamner, President

This company has been in operation in section since 1942 selling policies to be used mainly for burial purposes. We write from \$100 to \$500 and our policies are paid in cash, which allows freedom in the selection of the Funeral Director of your choice.

Ages from 1 month to 90 years.

For further information come by to see us
Hamner Funeral Home, 301 S. Lamar, Eastland
P. O. Box 431 Dial MAIN 9-2611

LUMBER FOR SALE

ALL KINDS

Flooring — hardwood flooring — 2x4; 2x6; 2x12; shiplap; steel beams; all types of planed brick; building tile.

Tearing down old school building on Church of Camp Grounds west of City—starts Monday—salesman on job — bargain prices.

Warmth without weight!

Enjoy winter-long blissful sleeping comfort with an **ELECTRIC BEDCOVER**

You'll sleep relaxed, unhampered by heavy layers of covers, under the automatic warmth of an electric bedcover. For only two or three cents a night for electricity, it pre-warms your bed, warms it all over, maintains the warmth you like best all night long, automatically. You just dial the warmth you want and sleep in blissful comfort—regardless of outside weather changes.

Automatic electric bedcovers are available in single and double bed sizes with single or dual controls. Select yours now from your favorite appliance dealer and sleep better . . . electrically!

TEXAS ELECTRIC SERVICE COMPANY