



Rotary To Hold UF Meet Tuesday

Eastland Rotary and Lions clubs will hold a joint meeting Tuesday afternoon and hear an official report from the United Fund office.

CAREWAY ATH

Bank Employees Become Third 100% Group

By contributing one day's pay, employees of the Eastland National Bank became the third organization to subscribe 100 per cent to the United Fund campaign.

Fourth firm to attain the magic height of 100 per cent participation is Safeway in Eastland.

Employees of the large grocery concern have each, either pledged or contributed to the United Fund.

The Hollywood Vassarite Co. employees were the first to reach the 100 per cent mark.

The second group consisted of the 39 employees at the Victor Cornelius Co., which specializes in commercial printing.



HORNS 'APLENTL'—What - Two giant-sized elks and two deer; When - Recent hunting trip; Where - Colorado; Who - right to left, Dr. H. J. Bulgerin, displaying head of his 800 pound elk; W. T. Spudling off the two deer he downed on the spree; and Dale Trout, exhibiting the jumbo horns of the trip from his 600 pound elk.

BRING HOME TROPHIES

Eastland Hunters Score Big With Elk, Deer in Colorado

They went, they saw, they dropped.

Three Eastlanders returned from the wilds of Colorado this week with the spoils of their hunt—two giant elks and three deer.

F. L. Spurlen, machinist, Dr. H. T. Bulgerin, physician, and Dale Trout, druggist, came back following a successful hunting trip near Pagosa Springs, Colo. Trout brought back the biggest set of horns and Dr. Bulgerin claimed the biggest animal.

Trout killed an elk with a set of horns that looked "like two

mesquite trees," he said. Width of the spread was 47 1/2 inches and the animal weighed approximately 700 pounds, he said.

Dr. Bulgerin's kill had only a 36 inch spread of horns but weighed an estimated 800 pounds. He also killed a deer.

Spurlen brought back two deer. The hunting party was in Colorado at the beginning of the season and Trout had his elk on opening day (Oct. 21st) and Dr. Bulgerin got his the next day.

The druggist estimated that he had stalked within 25 yards of his elk before he shot it, but the doctor made his kill from about 200 yards.

It was Trout's first elk (actually, he said, it was the first one he'd ever seen), and Dr. Spurlen's second elk trophy.

AT C-C

Open-House Sunday, 3-5

The new officers of the Eastland Chamber of Commerce will be honored Sunday afternoon from 3 until 5 p.m. by an open-house in the newly-decorated office.

Among the 150 invited to attend this advance showing will be present, past and potential Chamber of Commerce members, officers, and directors, Junior Chamber of Commerce members, city Commissioners, and those who have been connected with the chamber in other ways.

Part of the work done to the office was accomplished through labor and materials donated by members and the Jaycees.

Tables have been placed in various spots in the new office to give visitors information about the chamber's purpose, projects, etc. The new officers to be honored are: Bill Samuels, president; Dick Spaulding, vice-president; and Ronald Burton, vice-president and secretary.

The regular openhouse for the chamber will be held next week. The public is urged to attend at their convenience.

Farm Leader To Be Union Meet Speaker

National farm leader, President James G. Patton of the National Farmers Union, will keynote the Friday night banquet on December 8th at the State Convention of Texas Farmers Union, to be held in Waco at the Raleigh Hotel.

Because of the growth of Central Texas membership in Farmers Union, Patton has varied from the precedent of addressing two state convention successively and will be in Texas for the second successive convention.

The Senior Senator from Texas, Senator Ralph Yarborough, will highlight the Saturday morning session with an address to the convention.

John Hutchinson, Director of Extension Service, Texas A & M College, will speak to the convention on Friday afternoon. Other state and national figures will be in Waco to greet the convention.

See and Drive the 1962 PONTIAC... fresh point of view and wide track too! MUIRHEAD MOTOR CO.

Dry Goods Store To Be Opened in Eastland Soon

J. E. Payne has announced that he will soon open Payne's Dry Goods on the East side of the square in Eastland.

Payne also operates stores in Stanton and Midland.

The store to be re-opened here was formerly Young's Dry Good Store and for many years, was Carl Johnson Dry Goods.

Payne said in his announcement that the store will carry a complete line of wearing apparel and accessories for men,

Eastland-Ranger Highway To Get \$107,000 Re-Vamp

The Texas Highway Commission has approved a 7.5 mile highway betterment project on U. S. Hwy. 80 from Broughter Street in Eastland to Farm Road 2461 west of Ranger according to District Engineer E. M. Pritchard of Brownwood.

This work will be an asphaltic concrete level-up and shoulder seal coat, and is estimated to cost \$107,000.

The work approved is part of the 1962 State Highway Safety and Betterment Program in which funds are allocated throughout the State for improvements to the U. S. and State Highway Systems. This program is intended to provide additional safety features and proper upkeep on these highway systems.

The work in Eastland County is part of the nine-county district's program allotment of \$533,000. Other counties in the district in which work is scheduled under this program are Comanche, Lampasas, McCulloch, and Stephens.

Pritchard said that surveys and plan work would begin immediately and construction should begin on most of these projects by summer of 1962.

Resident Engineer R. P. Haug, Jr. of Eastland will be in charge of work in Eastland county.

'Freedom Fighters' Open Heritage Week at RJC

Freedom Fighters from Fort Worth begin on Monday morning November 6, the series of programs and lectures scheduled by Ranger Junior College for 'Our American Heritage Week,' to be

observed by the college November 6-11.

The Freedom Fighters, part of the Fort Worth Freedom Fighters, will show films, "Communist Encirclement-61" and "Our American Heritage," and then conduct a seminar. The Freedom Fighters have been active over a year at Fort Worth, where at present there are 40 groups.

Major General Harry Crutcher, Jr., and John Conlan, Jr., two outstanding speakers from Dallas will be on program at 8:00 p.m., Monday evening at the National Guard Armory.

Major General Crutcher is the Chief of Staff for Air for the State of Texas, assigned to the State Adjutant General's Department. General of Texas on behalf of all units of the Texas Air National Guard.

General Crutcher has completed twenty-eight years of military service, sixteen years of active duty with the Air Force and over twelve years as a member of the Air National Guard. He is Chairman of the 10th Air Force Reserve Forces Policy Committee and a Regional Vice-President of the Air Force Association.

A graduate of Southern Methodist University, he is vice-president of the Merchants National Bank (Continued on Page Eight)

'How Do You Get Em To And Fro?

Transportation is a hot potato. Especially as it concerns conveying county school students to a proposed consolidated high school and the nine elementary and junior highs that would remain in each district as the result of consolidation.

It has been suggested by Dr. Jim Whittington that the transportation could be handled by the County School Superintendent and his office.

Monday night Supt. Carl Elliott of Seranton said in Eastland, "You can't just give it to him."

Supt. Travis Hilliard of Olden said, "I'm for it."

"I wouldn't touch transportation," Supt. G. B. Rush of Ranger added.

First Christian To Dedicate Library Sunday

A brief library dedication service will be held Sunday morning, Nov. 5, during the worship service at the First Christian Church.

Books will be on display in observance of Christian Literature Week, Oct. 29th-Nov. 5th.

Persons responsible for this service on the Educational Committee are: Mmes. Carl Garrett, Jack Chamberlain, Joe Tow, Ray Norris, Mrs. Curtis Young, Frankie Flowers.

Jack Chamberlain was in charge of getting the shelves in the library ready for the service.

Interesting School Facts

Idle notes taken during the study sessions considering the cost of consolidating the nine county school districts:

Average yearly salary for county school teachers at this time—\$4,751.

Amount paid to county coaches as bonus—\$18,940.

Amount paid to band director as bonus—\$5,100.

Greenville Rites Held Monday For Mr. C. A. Fagg

Funeral services were held Monday at 2 p.m., in Greenville for Mrs. C. A. Fagg, who died at her home there Saturday afternoon following a heart attack.

A pioneer resident of Hunt County and for many years prior to his retirement, Mr. Fagg operated store in Greenville.

He was a rother to T. L. Fagg of Eastland.

Local Family Awarded Damages From Railroad

After approximately 13 hours of deliberation this week a 91st District Court jury awarded \$30,000 to Donald Ray Brown, El Dora Brown and Trent Wayne Brown in a suit against the Texas and Pacific Railway Co.

The suit resulted from a train and auto crash at the Daugherty St. Crossing last April.

A sum of \$1,000 was awarded El Dora Brown for injuries sustained in the accident.

Donald Ray Brown was awarded \$1,500 for injuries.

Trent Wayne Brown was awarded a sum of \$25,000 by the jury.

Twenty five hundred dollars was awarded the Browns to compensate any doctor and hospital bills incurred.

The case was presented to jury members at 1 p.m., Monday and they returned a verdict at 4:50 p.m. Tuesday.

Jury members stated that "the accident was not the result of an unavoidable accident."

Travis Bond was foreman of the jury.

Lone Star Men Honored for Service

An Eastland man has been cited 15 years service with Lone Star Gas Co. and a Cisco man honored for ten years service.

Jack W. Mace, serviceman for the company in Eastland, was given a pin for 15 years service.

Jack B. Whitehead, a Cisco utility man, was given a ten-year pin.

Christmas Lights To Be Strung By Thanksgiving

Eastland residents will be prepared to meet the Yuletide season with a flutter of excitement, Christmas decor and the multi-colored lights which are being strung from the peak of the Court House star to the corners of the square.

Stringing of the lights began on Saturday and will be completed by Thanksgiving at which time they will be turned on and will burn brightly until the New Year.

Planter Box Fund Gets Underway Monday

A drive to raise funds to assist in the construction of planter boxes for downtown Eastland will get underway Monday by members of the beautification committee of the Civil League and Garden Club.

Merchants will be asked to assist in the program by contributing a nominal amount toward the purchase of materials.

The boxes are to be built at the four corners of the Courthouse.

Almost 3" Rain Fell In October

Total rainfall for the month of October in Eastland was 2.86 inches, which is above the average for the month, and above the average for the year.

Heaviest rain during the month was on the 10th when 1.60 fell. On the 2nd, 1.15 was recorded; .101 on the 9th; and .10 on the last day, Tuesday.

Temperature dropped to 37 on the 20th for the minimum reading for the month and 87 was the high, registered on four days.

Total rainfall for the year stood at 28.88 at the end of October, compared with 22.55 average.

FIRE GIRLS

How Part of your United Fund Gift Is Used

The first year for Camp Eastland. There are a total of 46 camps and new ones come every day. There are five grades.

A very interesting program is to make them leaders of Eastland.

Bill Frost and Mrs. Young, Mrs. Gerald Young, Mrs. Ruth McDonald.

Group leaders are Mrs. Knoll, Mrs. Rita Knoll, Mrs. Rita Knoll.

Group leaders are Mrs. Whittington, Mrs. Rose, Mrs. Rose.

Group is backed by the Camp Fire Girls Association. Officers are as follows:

Film To Be Televised on Saturday

peanuts grown and Eastland County will be shown at 1:30 p.m. on KRLD TV.

For the film were the B. Warren of Carbon, Peanut Plant and of the Southwestern Peanuts Association.

Eastland County manager of the peanut company, Melvin Shell, will be in Dallas to prepare the film for

STUDY MEET

Consolidation Points Being Examined By Officials

Committee of 27 Monday took fact-finding on five major areas consolidation of the nine districts in this county.

is made up of the school board and a layman from each school district. All

districts were represented at the Eastland High School meeting with the exception of Desdemona.

The five major study areas are:

Curriculum and teacher personnel necessary for such a consolidated school. Supt. Wendell Siebert heads this group which is made up of other superintendents and two laymen;

Facts and figures concerning construction of a new building. Glen Covington, who was absent Monday night, is in charge of securing this information;

Tax equalization in the county. M. H. Perry, Eastland school board prexy, heads this group;

The legal aspects of consolidation and selection of the school board. Jim Wright, Cisco attorney, is the chairman;

And, retirement of the present debts of the nine schools which

amounts to \$1,500,000. Eastland Accountant T. J. Johnson, Eastland laymen of the committee, is leading this fact-finding detail.

Work got underway during the Monday night meet with the superintendents working in one conference room on curriculum and the other school officials exploring tax equalization in another conference room.

The superintendent's study group including the two laymen decided to reconvene next Monday at 7 p.m. at the Eastland high school. The board presidents and the laymen will not meet.

During the first assembly, Supt. B. G. Rush of Ranger, read an incomplete report by Covington on construction of schools at Snyder and at Breckenridge.

Accountant Johnson was asked to examine the possibility of re-

(Continued on Page Two)



EARL LEBREDO

Earl Lebreo Department Head at Wards

Claude Sooter, manager of the Ranger Montgomery Ward Store, announced today that Earl Lebreo was now associated with the store as manager of the appliance and furniture department.

Lebreo moved to Ranger in 1948 from Strawn and was an employee of Montgomery Ward until 1951. Since that time he has been associated with clothing stores in Ranger and Eastland.

Lebreo said that plans for his department include more varieties and a larger selection of furniture in modern as well as conventional lines. Also, he said that the new 1962 appliances would soon be on display. He invited all his friends to visit him at Wards.

SCHOOL PROGRAM THURSDAY

The Eastland High School assembly program which was announced Wednesday, will be held Thursday at 1 p.m. at the gymnasium.

It will feature a well-known physical culture expert in a series of demonstrations of strength and physical dexterity.

AUTOMOBILE LOANS

At Lowest Rates EASTLAND NATIONAL BANK "On the Square"—Member FDIC

WEATHER NEWS

SUNNY 6:30; Set 4:57 rises 12:43

Eastland Telegram
 Published Semi-Weekly—Thursdays and Sundays
 Eastland County Record established in 1931, consolidated August 31, 1951. Chronicle established 1887, Telegram established 1923. Entered as second class matter at the Post Office in Eastland, Texas under the Act of Congress of March 3, 1879.
 By Eastland County Newspapers, Inc.
 H. V. O'Brien, Editor

One week by carrier in city 15
 One month by carrier in city 65
 One year by mail in County 2.95
 One year by mail in state 4.95
 One year by mail out of state 6.95

NOTICE TO PUBLIC—Any erroneous reflection upon the character standing or reputation of any person, firm or corporation which may appear in the columns of this newspaper will be gladly corrected upon being brought to the attention of the publishers.

CLASSIFIED
CALL MA 9-1707
 Cards of Thanks charged for at rate of \$2.00 Each

For Rent

FOR RENT: Furnished three room house and bath. 302 E. Hill. Phone MAin 9-2391. 20
FOR RENT: Four-room house. Close in. Unfurnished. Apply 210 E. Valley after 6 p.m.
FOR RENT: Re-decorated three room, hall, bath, and 2 walk-in closet furnished garage apartment at 1201 S. Seaman. \$50, paid. MA 9-2413.
FOR RENT: Newly decorated three room apartment. Phone MAin 9-1559.
FOR RENT: Large five room house. Newly decorated, nice neighborhood. Reasonable. Inquire at 308 East Main St. ff
FOR RENT: Modern furnished four room apartment. Phone MA 9-1062.
FOR RENT: Four-room furnished duplex. Call MA 9-2186.
FOR RENT: Three large furnished rooms and bath. Phone MAin 9-1559.
FOR RENT: Lovely furnished or unfurnished apartments, a n y size, bills paid, maid and hotel services included, very reasonable. Also comfortable rooms with tile baths only \$39.95 monthly. Throw away your high bills and troubles and come live with us. Mrs. Robinson, manager, Village Hotel, MA 9-1716.
FOR RENT: Furnished duplex. Phone MAin 9-2326.
FOR RENT: Furnished apartment 315 E. Main.

FOR SALE: 11 cubic foot Frigidaire refrigerator with separate freezing compartment. Extra nice. See to appreciate. 901 West 8th St., Cisco. 20
FOR SALE: Farmall-B tractor with 2-row equipment. Recently overhauled. Call Cisco, HI 2-3159 after 6 p.m. tf
FOR SALE: 1959 Chevrolet pickup, fleetside radio, heater, automatic transmission, overload springs, two mirrors, H. D. Grill-guard, new white side wall tires chrome hub caps. H. D. Rear bumper very clean. MAin 9-1736.
FOR SALE: Will sacrifice three years equity in modern, three bedroom Abilene home for \$700. Down-drought air, central heating, chain-link fence. MA 9-1707. TF
FOR SALE: Portable space gas heater. Phone MAin 9-1707. See Eastland Telegram.
FOR SALE: Burkett pecans. 40c pound. 212 W. Patterson. 20

Help Wanted

WANTED: Man or woman to sell Rawleigh products. Contact 301 E. Main or call MAin 9-2066.
WANTED: Help wanted. Eastland Steam Laundry. Phone MA 9-2613

CANCER Insurance
 Coverage for the individual or the family. (No Age Limit)
CANCER ACCOUNTS FOR ALMOST 1/5th OF ALL DEATHS IN USA
M. H. PERRY
 107 West Main
 Office Phone MA 9-2275
 Res. Phone MA 9-1095

COLDS
 Relieve aches and pains of colds with STANBACK Tablets or Powders. Also use as gargle for sore throat due to colds. STANBACK'S S. A. (Synergistic Action) reduces fever, brings faster, more complete relief. Remember... Snap back with STANBACK!
FREE Estimates On RE-ROOFING
 Or Repair Your Old Roof.
 Residential and Commercial
Eastland Roofing Co.
 Noble Squires
 Phone MA 9-2370

ANNOUNCEMENTS
EASTLAND ROTARY CLUB
 Meets in White Elephant for noon luncheon each Monday. Call Mike George, 9-1435, for information.
EASTLAND JAYCEES
 Meet at 7 p.m. in Texas Electric Conference Room each second and fourth Thursday. For information call Grover Hallmark, 9-1751 or 9-1379.
LADIES GOLF AUXILIARY
 Meets at Lakeside Country Club for noon luncheon the second Tuesday of each month. For information call Mrs. Max Beazley, 9-2478.
ATTEND THE CHURCH OF YOUR CHOICE EACH SUNDAY

EASTLAND REBEKAH LODGE
 NO. 177
 Meets at 7:30 p.m. in the IOOF Hall on the second and fourth Tues. of each month.
 For information call Corrie Harlow, vice grand, MAin 9-1429.
MASONIC LODGE NO. 467
 Meets second Thursday of each month at 7:30 p.m. in the Masonic Hall, Cal Floyd B. Nichols, W. M. Phone MA 9-1227, or L. E. Huey, Sec., 9-1391, for information.
EASTLAND CHAPTER NO. 280 O. E. S.
 Meets the first Tuesday of each month at 8:00 p.m. in the Masonic Hall. Call Mrs. Nelle Earley W. M. 9-2044, for information. Mrs. Helen Shaw, Sec.

Real Estate

FOR SALE: Choice South Dixie living room, dining room kitchen, den, two bedrooms pretty bath, central heat, trees, garage, lots of storage. Easy to finance. M. A. Treadwell. Phone MAin 9-2017.
FOR SALE: Twin bedroom suit, white French Provincial, with night stand and chest of drawers. Only 3 months old. Bargain. Call MAin 9-1163 after 5:00 p.m. or on weekend.
FOR SALE: Two bedroom house. 310 North Daugherty. Phone 2745 Olden for appointment.
FOR SALE: House and lot, 500 block of East Commerce St. Cash or terms. Call collect, Modern Homes Construction Co., PE 2-4469, Fort Worth.
High Team, Single Game
 Koen Salvage 584 609
 Lou Dell's Dress Shop 587
 Altman's Style Shop 582
High Individual Single Game
 Helga Tiner, Koen 213 202
 Louise White, Smallwood 169
 Marg Lamb, Altman's 164
High Team Three Games
 Koen Salvage 1739
 Altman's Style Shop 1,680
 Smallwood Electric 1,550
High Individual Three Games
 Helga Tiner, Koen 566
 Lynell Temple, Altman's 434
 Louise White, Smallwood's 431

For Lease

FOR LEASE: Gulf Service station at E. Main and Bassett St. Contact Harry Gurney, Cisco.

CONCRETE SEPTIC TANKS
 Steel Reinforced
TRI-CITIES TRANSIT MIX CONCRETE
 401 South Halbryan
 Phone MA 9-1795
 Eastland, Texas

WOOTEN'S MOBIL STATION
 Local Moving
 301 East Main
 Prompt Service—We Fix flats, wash, grease and polish.
 We Sell Rawleigh Products
 All Business Appreciated
JUST CALL MAin 9-2066

NOTICE
 MRS. VERA MAYERS now associated with Lula Mae Basham Complete Beauty Service Open Every Week Day 1416 S. Lamar MA 9-2526
Basham Beauty Bar

NOTICE
 FRESH DRESSED FRYERS and Fresh Dressed Hens
 At The Plant WALKER Dressing Plant
 PHONE MA 9-1200

Save Money On Good Clean Rejects

6.70x15	\$10.00
7.10x15	11.50
7.60x15	13.00
8.00x15	14.50
7.50x14	10.00
8.00x14	12.50
8.50x14	13.00
9.00x14	15.00

(All prices plus tax)

HORTON TIRE SERVICE
 East Main St. MA 9-1420
 Eastland, Texas

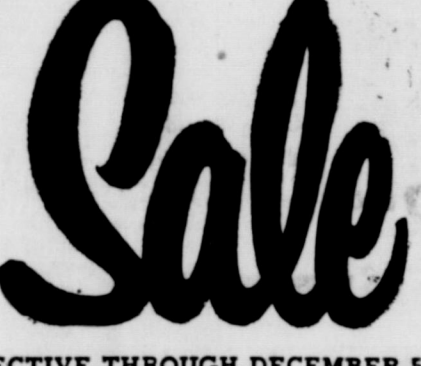
Bowling Results

W L
 Koen Salvage 27 5
 Altman's Style Shop 21 11
 Smallwood Electric Co. 20 12
 Lou Dell's Dress Shop 17 15
 Modern Dry Cleaners 12 20
 Coat's Furniture 12 20
 Scott's Bait House, 10 22
 Alma's Beauty Shop 9 23
High Team, Single Game
 Koen Salvage 584 609
 Lou Dell's Dress Shop 587
 Altman's Style Shop 582
High Individual Single Game
 Helga Tiner, Koen 213 202
 Louise White, Smallwood 169
 Marg Lamb, Altman's 164
High Team Three Games
 Koen Salvage 1739
 Altman's Style Shop 1,680
 Smallwood Electric 1,550
High Individual Three Games
 Helga Tiner, Koen 566
 Lynell Temple, Altman's 434
 Louise White, Smallwood's 431

READ THE CLASSIFIEDS

FURNITURE for the Entire Home
 *
Carpet - Rugs All Prices
 *
Be Sure To Check With

 Eastland

PRE-INVENTORY REDUCTION

SALE
 EFFECTIVE THROUGH DECEMBER 5, 1961
 PLYWOODS OF ALL DESCRIPTIONS
 GOAT WIRE
 HOG WIRE
 BARB WIRE
 NAILS AND STAPLES
 CREOSOTED POLES AND STEEL POST PANITS
 PRICES ON ABOVE WILL BE QUOTED WITH NO OBLIGATION
Higginbotham-Bartlett Company
 Jack Elliott, Mgr.
 301 W. Main — Phone MA 9-1311

HOW OLD IS YOUR MUFFLER?

FREE MUFFLER INSPECTION
 Don't wait! A faulty, old muffler can kill you with its deadly exhaust fumes. Let us inspect your muffler, absolutely free. If you need a new one...
 * FAST AND EXPERT SERVICE!
 Official Inspection Station
ALLEN AUTO REPAIR
 Phone MA 9-2270—Night Phone MA 9-2224
 AT RUSHING MOTOR CO.—215 SOUTH SEAMAN

Five Consolidation

Continued From page one
 tiring the present schools' debts in ten years, as has been announced could be done by the consolidation proponent, Dr. Jim Whittington of Eastland.
 Johnson is to determine how much money would be needed yearly to retire the bonds. It was pointed out that some of the bonds held are of the type that can not be retired ahead of time.
 Attorney Wright will write an opinion on the legal aspects of the consolidation, especially concerning integration and the manner in which the governing school board will be selected.
 Perry's equalization committee will draft a report giving an opinion on the necessity for equalizing the tax collecting methods of the nine districts.
 Tax valuations for the nine districts now stand at \$21,659,000 and percentage of valuations for taxation are different in each school district as are the individual tax rates. (In a consolidation district, it was agreed, this would have to be equalized for fairness.)
The Varying Tax-Rates
 Figure in parenthesis is the amount being collected to retire bonds)
 Carbon 1.27 (.23)
 Cisco 1.00 (.30)
 Eastland 1.00 (.50)
 Gorman 1.10 (.40)
 Olden 1.50 (.00)
 Ranger 1.15 (.35)
 Rising Star 1.25 (.25)
 Desdemona 1.35 (.15)
 Seranton 1.40 (.73)
 Percentage of actual value being collected upon:
 Gorman, 33 1-3; Ranger, 33 1-3; Carbon 35; Cisco, 40; Eastland, 40; Rising Star, 33 1-3; Seranton, 20; Olden, 20; and Desdemona 40.
 The curriculum-study group determined that the consolidated district would have \$415,800 per year to spend—\$336,000 from local taxes based on present evaluations with 100 per cent collections, and \$79,800 from the state.
 However, they estimated, it would cost \$240,500 yearly to pay the extra teachers which would be needed and the administrative personnel.
 Superintendent, \$5,000 above base; assistant superintendent

(who would also serve as business manager) \$10,000; secondary curriculum director, \$7,500; elementary curriculum director, \$7,500; maintenance engineer, \$6,000; head coach, \$3,000 above state minimum; first assistant coach, \$2,000 above base; two physical educational coaches, \$1,500 each above base; eight Junior high coaches at \$500 each above base; a head band director at \$2,500 above base; five junior high and directors at \$1,000 each above base; and a high school principal at \$1,000 above base. This totals \$60,500 for chief administrators.
 The group trimmed an earlier estimate of 45 extra teachers to 40 Monday night by "being ultra conservative."

SW Conference Football Over Area Radios

Four Southwest Conference Football games will be broadcast over radio Saturday by The Humble Company.
 The Arkansas-Texas A & M game will be broadcast from Fayetteville by Ves Box and Jim Wiggins. Radio time will be 1:45 p.m. KWKC, Abilene-1340; WRR, Dallas-1310; KDLK, Ft. Worth-1270; KNIN, Wichita Falls-930.
 The Baylor-TCU game will be broadcast from Waco by Kern Tips and Alec Chessler. Radio time will be 1:45 p.m. (CST) over KRBC, Abilene-1470; WFAA-WBP, Dallas-Ft. Worth-570; Wichita Falls-620.
 The Texas Tech-Rice game will be broadcast from Lubbock by Bob Walker and Jack Dale. Radio time will be 1:45 p.m. (CST) over KNIT, Abilene-1280; Dallas-1080; KSPL.

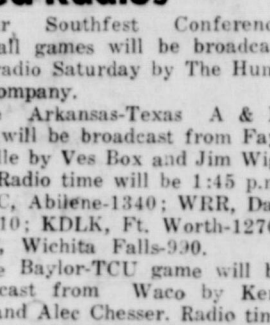
Services Held

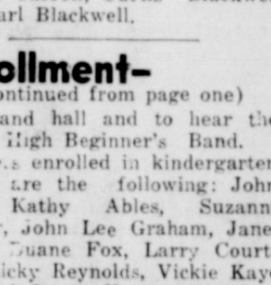
(Continued from page 1)
 19 grandchildren and 15 great-grandchildren.
 Pallbearers were D. W. Rodgers, Herman Nergler, Reed Campbell, Jack Blackwell, Ralph Veal, Robert Carroll, Curtis Blackwell and Earl Blackwell.

Enrollment

(Continued from page one)
 new band hall and to hear the Junior High Beginner's Band.
 Others enrolled in kindergarten classes are the following: John Frost, Kathy Ables, Suzanne Cooper, John Lee Graham, Janet Guess, Juane Fox, Larry Courtney, Ricky Reynolds, Vickie Kaye Lee and James Horton.
 Teachers include Mrs. A. E. Cushman, Mrs. Howard Upchurch and Mrs. Ferne Green Savage.

SAMPLE BALLOT
 SCHOOL INTEGRATION
 Date: Nov. 14
 ELECTION
 Note: Voter's signature affixed on the reverse
INTEGRATION ELECTION!
EASTLAND INDEPENDENT SCHOOL DISTRICT
FOR: Authorizing the local School Board to Integrate the school system.
AGAINST: Authorizing the local School Board to Integrate the school system.
- Call MA 9-1707 for Classified

MAJESTIC
 AN INDEPENDENT THEATRE
 THURSDAY — FRIDAY — SATURDAY

PAUL NEWMAN
 ROBERT ROSSENS
THE HUSTLER
 PIPER LAURIE - SCOTT
 JACKIE GLEASON
 CINEMASCOPE
 SUNDAY — MONDAY — TUESDAY
Susan Hayward
John Gavin
 FANNIE HURST'S
Back Street
 IN EASTMAN COLOR
 CHARLES DRANE-VIRGINIA GREY-REGINALD GARDNER

RANGER DRIVE
 HIGHWAY 80 EAST ON RANGER HILL
 ADULTS 50c
 BOXOFFICE OPENS 6:30
 KIDDIES UNDER 12 SHOW STAR
 THURSDAY — FRIDAY — SATURDAY
THE GREATEST PLAINSMAN OF THEM ALL!

JOEL MCCREA
THE OKLAHOMAN
 BARBARA BROWN
 COLOR BY DE LUXE
 FREEVUE EVERY SATURDAY NITE
 SUNDAY — MONDAY — TUESDAY

ALL NEW! NEVER BEFORE SEEN ON ANY SCREEN
ORSON WELLES
 AS KING SAUL IN
DAVID AND GOLIATH
 EASTMAN COLOR — TOTALSCOPE
 Produced by RKO Radio Pictures
 Distributed by RKO Radio Pictures

GET YOUR Dearborn TODAY!
 WITH COOL SAFETY CABINET AND FORWARD-FLOW CIRCULATION
 MILLIONS AGREE
Dearborn HEATS BEST
 FROM 22.95 INSTALLED

Coats FURNITURE

Palace Theatre
 Cisco, Texas
Limited Engagement
 NOVEMBER 2 THRU NOV. 6
 EVENING SHOWS AT 7:30
 Adults \$1.00 — Students \$.75 — Children \$.50
RETRO-GUZZIN' MAYER
 A Tale of the Christ
 Tender, Awe Inspiring, Thrilling
 All the Emotions of Life in a Picture You Never Forget
 DIRECTED BY **WILLIAM WYLER**
 STARRING **CHARLTON HESTON - JACK HAWKINS**
 HAYA HARAREET - STEPHEN BOYD
 BUGH GRIFFITH - MARTHA SCOTT - CATRY O'DONNELL - SAM JAFFE
 TECHNICOLOR®

READERS WRITE
 ... I have
 the following fact sheet
 the new Sunday Law,
 become effective in
 of 1961. As your elect-
 representative, I feel that I
 to help keep you in-
 matters that effect your

business. Please feel free to con-
 tact me, if I may be of further
 service to you.
 Senate bill 35 makes it illegal
 to offer for sale the following
 items on Saturday or Sunday (if
 you choose to sell on Sunday,
 you cannot sell on Saturday—if
 you decide to sell on Saturday,

you must not sell on Sunday):
 "Clothing; clothing accessories;
 wearing apparel; footwear; head-
 wear; home, business, office or
 outdoor furniture; kitchenware;
 kitchen utensils; china; home ap-
 pliances; stoves; refrigerators; air
 conditioners; electric fans; radios;
 television sets; washing machines;

driers; cameras; hardware; tools;
 excluding non-power driven hand
 tools; jewelry; precious or semi-
 precious stones; silverware; watch-
 es; clocks; luggage; motor vehicles;
 musical instruments; recordings;
 toys; excluding items customarily
 sold as novelties and souvenirs;

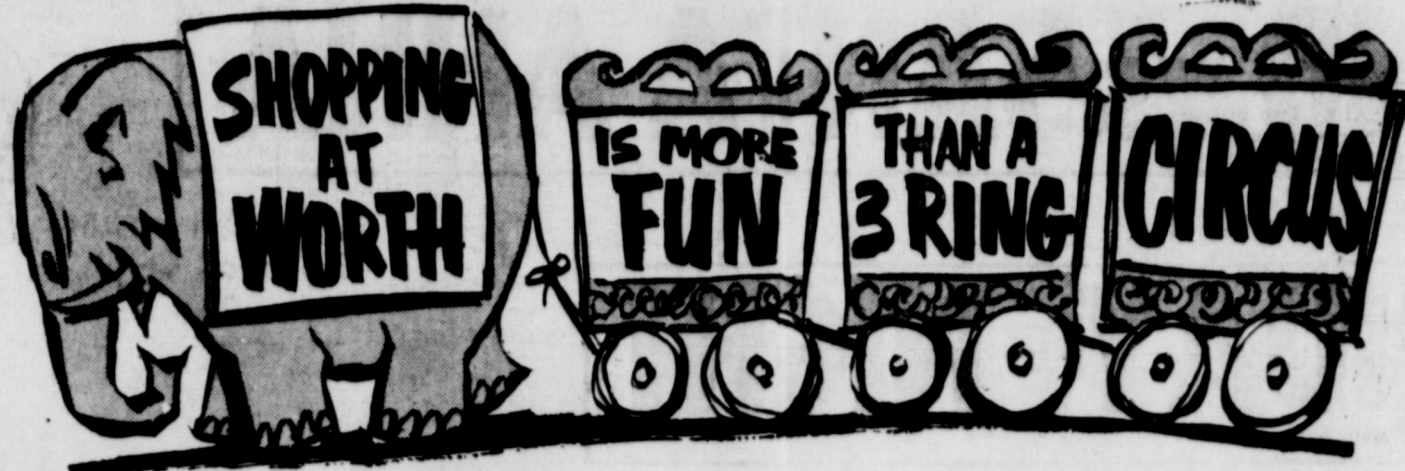
mattresses; bed coverings; lamps;
 drape; blinds; curtains; mir-
 rors; lawn mowers; or cloth piece
 goods."
 There is a maximum fine of
 \$100 on the first offense, and
 \$500 on convictions thereafter.
 Occasional sales are exempt un-
 der this act.

Emergency sales are exempt un-
 der this act.
 I hope this information will
 prove to be of help to you. Should
 you have questions concerning this
 or other Legislative matters, please
 let me know. As you probably

know, I worked as hard as I could
 to keep Texas free of an UNFAIR
 SALES TAX. However, I was on
 the losing side and we now have
 one of the most burdensome Sales
 Tax laws in the United States.
 Some merchants have closed their
 doors because of it. If you have

any advice on needed changes in
 it; I would welcome hearing it.
 Respectfully yours,
 SCOTT BAILEY
 CISCO, TEXAS
 P. S. May I remind you that,
 now is the time to pay your-poll
 tax; Be ready for next Spring.

Free CIRCUS TICKETS



FREE TICKETS TO THE MOSLAH TEMPLE SHRINE CIRCUS

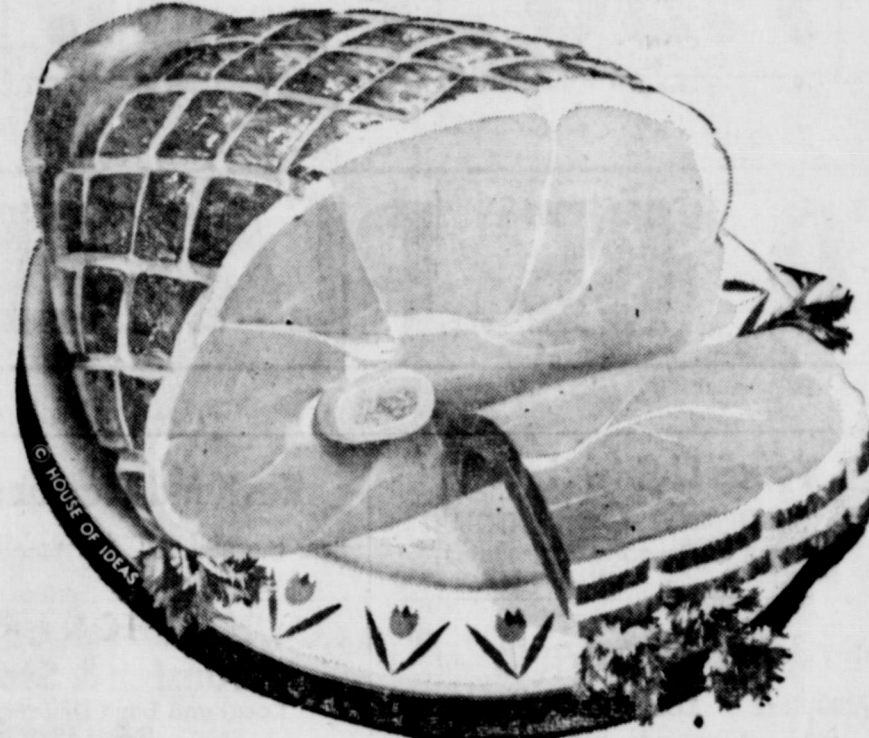
SAVE OUR CASH REGISTER TAPES!
 When they total \$35.00 just bring them in & redeem them for your ticket. Get enough for the entire family. Your choice of 3 gigantic PERFORMANCES! Don't wait - Get your tickets NOW!

Tapes Must be dated Oct. 15, 1961 or later; Must be redeemed by Nov. 18
Sorry! Offer Good Only While 21,00 Tickets Last



HAMS

Swift's Premium, 4 to 18 Lbs. Avg.
SHANK PORTION **35¢**
 Approximately 1-3 of Ham
Half or Whole Center Slices Lb. **49¢**
 Lb. **79¢**



Swift's Sliced
Premium Bacon Lb. Pkg. **59¢**
 Fresh, Tender, Tasty
Sliced Calf Liver Lb. **59¢**
 Famous "Tennessee Farm"
Pure Pork Sausage 2 Lb. Roll **1.19**
 "Worth Controlled Quality"
Chuck Roast Heavy Beef Lb. **45¢**
 "Worth Controlled Quality"
Arm Roast Heavy Beef Shoulder Lb. **59¢**
 Gulf Princess
Peeled, Deveined Shrimp 2-oz. Pkg. **99¢**
 Sea-Pak, Frozen
Stuffed Shrimp 10-oz. Pkg. **79¢**

Tomatoes California Vine-Ripened **2 Lbs. 25¢**
Lettuce Firm, Crisp, Iceberg, Fresh **2 Large Heads 25¢**
Onions Young, Fresh Large Bunch **5¢** **Grapefruit** Texas Sweet Ruby Red Lb. **10¢**
Potatoes U. S. No. 1 Russets **10-Lb. Cello 59¢** **Pascal Celery** Crisp, Green Stalk **15¢**
Dates Desert Sweet 12-oz. Pkg. **35¢** **Crisp Carrots** in Cello **2 1-Lb. Pkgs. 25¢**

Prices and Coupons Effective Thursday, Friday & Saturday

CANNED AND FROZEN FOODS



HARVEST OF VALUES



PACK YOUR PANTRY - FILL YOUR FREEZER

Long Peaches Libby's Sliced or Halves **3 2 1/2's Cans 79¢**
Fruit Cocktail Libby's, Finest Quality **3 303's Cans 69¢**
Green Beans Libby's, Cut **5 303's Cans \$1.00**
Wanna Sausage Libby's, Finest **5 4-oz. Cans \$1.00**
Corn Libby's, White or Golden Cream Style or Whole Kernel Golden **5 303's Cans \$1.00**
Tomato Juice Libby's, Delicious, Rich and Tangy **2 46-oz. Cans 59¢**
Artlett Pears Libby's, Halves In Heavy Syrup **4 303's Cans \$1.00**
Lima Beans Libby's, Green **2 303's Cans 49¢**
Libby's Beets Cut or Sliced **4 303's Cans 59¢**

CLIP AND SAVE!
 50 Bonus "S & H" Green Stamps with this coupon and purchase of 5 303's Cans, Libby's Cut GREEN BEANS 5 cans \$1.00 Void After Sat., Nov. 4, 1961

WORTH FOOD MART CLIP AND SAVE!
 50 Bonus "S & H" Green Stamps with this coupon and purchase of 5 303's Cans, Mix or Match LIBBY'S CORN 5 cans \$1.00 Void After Sat., Nov. 4, 1961

WORTH FOOD MART

COUPON FEATURE
Peas & Carrots
 Libby's Finest **3 303's Cans 59¢**
 Plus 25 Bonus "S&H" Green Stamps with Coupon Below!

Libby's Meat Pies Chicken, Beef or Turkey **5 8-oz. Pkgs. \$1.00**
Libby's Fruit Pies All Varieties Family Size **39¢**
Libby's Orange Juice Save 23¢ **5 6-oz. Cans \$1.00**
Libby's Potatoes In Large, Handy Polyethylene Bag **2 20-oz. Pkgs. 49¢**

Mix or Match—Vegetable Sale!

Chopped Broccoli, 10-oz. Spinach, 10-oz. Leaf, Chopped Fr. Fried Potatoes, 9-oz. Potato Patties, 12-oz. Cream or Crt Corn, 10-oz. English Peas, 10-oz. Peas & Carrots, 10-oz. Turnip Greens, w/Turnips Macaroni & Cheese, 8-oz.

YOUR CHOICE 6 Pkgs. \$1.00

- Broccoli Spears
- Garden Vegetables
- Cut Green Beans
- Butter Beans
- Corn-on-Cob
- Cauliflower
- Whole Okra
- Blackeyed Peas

YOUR CHOICE 5 Reg. Pkgs. \$1.00

- Strawberries
- Peaches
- Baby or Fordhook Limas
- Succotash
- Brussels Sprouts

YOUR CHOICE 4 10-oz. Pkgs. \$1.00

Tooth Paste **Gleen** 59¢ Botl. **Antiseptic Listerine** 45¢ Botl. **Helen Curtiss Egg Shampoo** 43¢ 5.15 size

CLIP AND SAVE!
 25 Bonus "S & H" Green Stamps with this coupon and purchase of 2 303's Cans of Libby's GREEN BEANS 2 cans 49¢ Void After Sat., Nov. 4, 1961

WORTH FOOD MART

CLIP AND SAVE!
 25 Bonus "S & H" Green Stamps with this coupon and purchase of 4 303's Cans, Cut or Sliced LIBBY'S BEETS 4 cans 59¢ Void After Sat., Nov. 4, 1961

WORTH FOOD MART

CLIP AND SAVE!
 25 Bonus "S & H" Green Stamps with this coupon and purchase of 3 303's Cans of Libby's PEAS & CARROTS 3 cans 59¢ Void After Sat., Nov. 4, 1961

WORTH FOOD MART

CLIP AND SAVE!
 25 Bonus "S & H" Green Stamps with this coupon and purchase of 3 303's Cans of Libby's (3) Garden Vegetables 3 for 59¢ Void After Sat., Nov. 4, 1961

WORTH FOOD MART

CLIP AND SAVE!
 25 Bonus "S & H" Green Stamps with this coupon and purchase of 3 303's Cans of Libby's SAUERKRAUT 3 cans 49¢ Void After Sat., Nov. 4, 1961

WORTH FOOD MART

TO OUR TEAM . . . WE'RE BEHIND YOU ALL THE WAY

EASTLAND vs SANTA ANNA

FRIDAY NIGHT

7:30 P. M.

GAME TO BE PLAYED THERE



Central Drug FREE DELIVERY Dale Trout, Owner	Texas Lightweight Aggregate Company Producers of Concrete Aggregates C. W. Martin Phone MA 9-2060	Eastland National Bank "On the Square" Member F. D. I. C.
Muirhead Motor Co. BUICK — PONTIAC — OPAL Sales and Service Phone MA 9-1731	Jordon's Drive In Hwy. 80 East Louise and Harry Jordan	Lovelace Transfer & Storage Local and Long Distance Moving Since 1929
Altman's "Smart Women's Wear" North Side of Square	Reed Oil Company 13 Major Brands Oil — Quart 35c 501 E. Main Phone MA 9-8890	R. M. Sneed General Oil Field Construction Office Phone MA 9-1756 Res. Phone MA 9-2424
		Western Auto Associate Store J. L. Pittman, Owner East Side of Square Phone MA 9-2011

SOUTHERN TELEVISION SYSTEMS CORPORATION

Freyschlag Insurance Agency North Side of Square Phone MA 9-2275	Koen Salvage Your Scrap Iron and Metal Dealer Highway 80 West Phone MA 9-2649	Hood King Motor Co. FORD SALES AND SERVICE On The Square Phone MA 9-1786	Miller's Phillips 66 Service Station 513 W. Main Phone MA 9-1644	Gregory Milk Distributing Co. Bordens Dairy Products Serving Eastland, Stephens, Brown, Comanche and Coleman Counties Phone MA 9-1100
Texas Electric Service Company F. N. Sayre, Mgr. Phone MA 9-2651	Obie and Doc Humble Service Station 802 West Main Phone MA 9-8866	Scott Paint and Body Works 300 W. Commerce Phone MA 9-2372	Smith Plumbing and Tin 114 S. Seaman Phone MA 9-2422	Eastland Auction Company Hwy. 80 East Phone MA 9-1711
Condy Barber Shop Located in Village Hotel	The Men's Shop Correct Styles for Men and Boys James Smith, Owner	Graham's Trim Shop 708 W. Main Phone MA 9-2266	Perkins Implement Co. 116 E. Main Phone MA 9-2666	Modern Dry Cleaners Approved Sanitone Service 210 S. Seaman MA 9-1711
Hill Crest Food Market When You Run Out — Run In 1401 West Main Phone MA 9-1600	City Garage J. J. Finley, Proprietor Engine, Starter and Generator Work 103 White St. Phone MA 9-1709	White Elephant Cafe 724 W. Main Phone MA 9-8881	Eastland Steam Laundry Home Owned—Phone MA 9-2613 B. W. Lasater, Owner	Standlee McCracken Mobil Oil Co. Consignee
Pools Dry Cleaners "City Wide Delivery" 209 S. Lamar Phone MA 9-2055	Foremost Dairy Products Clyde Manning, Mgr. Eastland Phone MA 9-1701	Eastland Supply Co. "Oil Field Supplies" 115 E. Main Box 671 Phone MA 9-1595	Jeanette's Shop Mr. and Mrs. L. D. Harris West Side of Square	Poe Floral "When It's Flowers—Say It With Our" 609 W. Main Phone 9-1711
Otis Coleman HUMBLE PRODUCTS 400 East Main Phone MA 9-1741	Alma's Beauty Parlor 311 W. Main Phone MA 9-1060	Lindley Paint & Body Works "All Work Guaranteed" 110 S. Bassett Phone MA 9-2240	Brown Plumbing Co. Mr. and Mrs. Truman Brown 214 E. Neblett Phone MA 9-1736	Roy's Repair Service Roy and Stella Gann 205 S. Lamar Phone MA 9-1711

MAVERICK 1961 SCHEDULE

Sept. 1—Comanche 21, Mavs 0	Oct. 13—Early* 33 Mavs 6
Sept. 8—Cisco 41 Mavs. 0	Oct. 20—Albany* 56 Mavs 0
Sept. 15—Ranger 14 Mavs. 0	Oct. 27—Cross Plains 7 Mavs 0
Sept. 22—Dublin, 52 Mavs 0	Nov. 3—Santa Anna* There
Sept. 29—Open	Nov. 10—Clyde* Here
Oct. 6—De Leon 45 Mavs 6	*Conference Games—Begin at 7:30 p.m.

Eastland Chamber of Commerce

Eastland Iron & Metal Co.
 Henry, Tillie and Saul Pullman

Barton Oil Co.
 (Reseller)
 Humble Products

MAVERICK ROSTER

No.	Name	Pos.	Wt.		
10	Mike Graham	B	140	69	Dickie Byars G 155
12	Tommy Beck	B	150	70	Jimmie Moylan T 185
20	Gary Graham	B	160	80	Clark Conner E 145
24	J. D. Ables	B	135	82	Johnny Shoemaker E 130
25	Jody Cooper	B	145	86	Lupe Fuentez E 135
42	Buddy Moser	B	160	84	Larry Howle E 155
40	Manuel Herrera	B	130	Coaches: Jimmy Hughes, Howard Payne; Bennett Ragsdale, Texas A & M; Joe Ingram, Baylor.	
50	Mike Jones	C	145	Managers: Mike Perry, Joe Morris, Mike Lewis and Woody Shaw.	
52	Bob Cartwright	C	200		
65	Gayle Chaney	G	160		
67	Bob O'Steen	T	195		



50 SAFEWAY COUPON 50
 Redeem this Coupon for
50 FREE GOLD BOND STAMPS
 with the purchase of \$5.00 or more
 Limit One Per Customer • Coupon Expires November 4,
 50 FREE GOLD BOND STAMPS 50

DEL MONTE FOOD SALE

1000 Island Dressing
 Lucerne Delicatess. **SAVE 10¢** 8-Oz. Ctn. **29¢**

SAFEWAY

Fruit Cocktail **SAVE 6¢** 3 No. 303 Cans **69¢**

Sliced Peaches **SAVE 14¢** 3 No. 2 1/2 Cans **69¢**
 Or Halves. Yellow Cling. Del Monte.

Del Monte Corn **SAVE 10¢** 3 No. 303 Cans **49¢**
 Cream Style Golden.

Del Monte Peas **SAVE 4¢** 3 No. 303 Cans **59¢**
 Early Garden. Delicious.

Tomato Juice Del Monte. So tasty. 3 No. 2 Cans **49¢**

Green Beans Del Monte Whole. No. 303 Can **29¢**

Del Monte Drink Pineapple Grapefruit. 46-Oz. Can **3 For \$1.00**

Del Monte Spinach Rich in vitamins. 3 No. 303 Cans **49¢**

Pineapple Juice Del Monte. Never too tart. 46-Oz. Can **35¢**

Del Monte Tomatoes Whole. For No. 303 casseroles. Can **27¢**

Crushed Pineapple Del Monte. For topping desserts. 2 No. 1 Cans **33¢**

Del Monte Catsup Tasty blend of tomatoes and spices. 2 for 14-Oz. Bottle **43¢**

Tomato Sauce Del Monte. Real tomato flavor. 2 8-Oz. Cans **21¢**

This Coupon Worth 50 FREE GOLD BOND STAMPS
 Plus your regularly earned Gold Bond Stamps with the purchase of
TWO — 22-Oz. Jars Zippy Whole DILL PICKLES
 Coupon Expires November 4, 1961.

Safeway Superb Meats!

FRYERS **25¢** Lb.
 U.S.D.A. Inspected for wholesomeness and Graded "A." Selected for superb eating quality. Whole.



This Coupon Worth 50 FREE GOLD BOND STAMPS
 Plus your regularly earned Gold Bond Stamps with the purchase of
\$1.00 Package of GROUND BEEF
 Limit One Per Customer • Expires November 4, 1961.

This Coupon Worth 50 FREE GOLD BOND STAMPS
 Plus your regularly earned Gold Bond Stamps with the purchase of
THREE — 400-Ct. Boxes of Truly Fine FACIAL TISSUES
 Coupon Expires November 4, 1961.

This Coupon Worth 100 FREE GOLD BOND STAMPS
 Plus your regularly earned Gold Bond Stamps with the purchase of
TWO — 2-Lb. Pkgs. Bell-air Frozen GREEN PEAS or Whole Kernel CORN
 Coupon Expires November 4, 1961.

This Coupon Worth 25 FREE GOLD BOND STAMPS
 Plus your regularly earned Gold Bond Stamps with the purchase of
Any Lucerne DELICATESS SALAD
 Coupon Expires November 4, 1961.

Slab Bacon Half or whole. 8 to 12-pound average. Perfect for breakfast. **39¢** Lb.

Pork Roast Fresh Picnic Cut. Perfect for roasting. Lb. **33¢**
Long Island Ducks Perfect for roasting. Lb. **55¢**
Wingate Sausage Pork. Regular or Hot. 2 Lb. **85¢**
Sliced Bacon Rath Black Hawk. For a real tasty breakfast treat. 1-Lb. Pkg. **59¢**
Neuhoff Sausage Tennessee Farm. (2-Lb. Pkg. ... \$1.25) 1-Lb. Pkg. **65¢**

Canned Picnic Armour's Star. Boneless no waste. Ready-to-eat. 3 -Lb. Can **\$1.99**

Safeway Produce Buys!

Libby Sliced Beets Serve hot buttered beets. No. 303 Jar **19¢**
Peas & Carrots Libby's. For soups. No. 303 Can **24¢**
Instant Coffee Maxwell House. 10-Oz. Jar **\$1.30**
Brer Rabbit Syrup Brown Label. 12-Oz. Bottle **25¢**
Du Pont Sponges Cellulose. 2 For **21¢**
Paper Towels Zee Pink or Yellow. 2 Rolls **39¢**
Sandwich Bags Zee — For packing lunches. Pkg. 30 Ct. **10¢**
Colgate Deodorant Florient Lilac. 5 1/2-Oz. Can **69¢**
Zee Toilet Tissue Assorted colors. 4 Rolls **37¢**
Zee Napkins White. Handy and economical. 2 80-Ct. Pkg. **23¢**

Vel Beauty Bar So gentle to the skin. 2 Reg. Bars **39¢**
Palmolive Soap Green toilet soap. 2 Reg. Bars **21¢**
Palmolive Soap Pink toilet soap. 2 Bath Bars **29¢**
Ad Detergent For automatic washers. 10-Lb. Box **\$1.89**
Vel Detergent For every washday. Large Box **27¢**
Liquid Vel Detergent Pink. For dishes. 12-Oz. Bottle **31¢**
Ajax Cleanser For scrubbing pots and pans. Giant Can **22¢**
Ken-L-Ration Dog Food For your pet. 2 1-Lb. Cans **33¢**
Ken-L-Ration Dog Food A treat for the dog. 26-Oz. Can **27¢**

Potatoes **39¢** 10-Lb. Bag
 U.S. No. 1 Red. Ideal for baking, frying or boiling.



Tomatoes **25¢** Lb.
 Red ripe and firm. Perfect slicers.

Grapes **15¢** Lb.
 California's Finest Red Emperor.

Cranberries **29¢** Lb.
 Ocean Spray. Fresh and flavorful.
Fresh Dates **39¢** Lb.
 Waldorf Unpitted. For pastries.

Bakery Feature of the Week!
Slenderway Bread **19¢**
 Skylark. Regular 25¢ value. Perfect for sandwiches. 1-Lb. Loaf

Twin Rolls Skylark Brown & Serve. Reg. 25¢. "2¢ off" 12-ct. 13-Oz. Pkg. **23¢**
Texas Toastin' Bread Mrs. Wright's. 1 1/2-Lb. Loaf **25¢**
D'Agostino Bread Italiano. 1 1/2-Lb. Loaf **29¢**
Sunshine Fig Bars For snacks. 1-Lb. Pkg. **39¢**

Peach Pie **35¢** **SAVE 10¢**
 Bell-air Frozen Large 8-inch pie. 1 1/2-Lb. Pie

Shortening **50¢** 3-Lb. Ctn.
 Velkay. For baking or frying.

Jergens' Lotion **43¢**
 (Federal tax included.) 6 1/2-Oz. Bottle

Alka-Seltzer **39¢**
 For headache relief. Large Bottle

Safeway Honey **79¢**
 Empress Strained. So tasty. 2 1/2-Lb. Tin

Coffee **59¢** 1-Lb. Can
 MARYLAND CLUB All Grinds. (Edwards Coffee 1-Lb. 59¢)

Fab Detergent **49¢**
 (White Magic ... Giant Box)

Flour **69¢** 10-Lb. Bag
 Harvest Blossom Enriched. All purpose flour.

Armour's Lard **45¢** 3-Lb. Ctn.
 Armour's Star Pure.

Prices and Coupons Effective Thurs., Fri., and Sat. in Eastland

SAFEWAY

Fresh Daily at Safeway!
Fresh Milk Blossom Time Homogenized. 2 1/2-Gal. Ctn. **92¢**
Fresh Butter Shady Lane. Finest quality. 1-Lb. Ctn. **69¢**
Grade 'A' Eggs Breakfast Gems, Grade "A" quality. Medium size. Doz. **45¢**
Mrs. Wright's Biscuits Sweetmilk or Buttermilk. 3 8-Oz. Cans **25¢**
Cottage Cheese Lucerne All Styles. (2-Lb. Ctn. ... 49¢) 1-Lb. Ctn. **25¢**
Bluebonnet Margarine Fresh and tasty. 1-Lb. Ctn. **26¢**
Pancake Mix Kitchen Craft Sweet Cream Buttermilk. 2-Lb. **25¢**

ATTENDS FUNERAL
Mrs. Avie Algood was in Brownwood Monday where she attended the funeral of her nephew, Weldon Berryhill, who died Friday in Oklahoma following a heart attack. Funeral services and interment were held in Brownwood.

Personals

Rev. Ray Heckendorn attended the State Planning Conference of Christian Churches in Abilene, Tuesday, Wednesday and Thursday.

Robert Norris, a student at North Texas State University, Denton visited over the weekend in the home of his parents, Mr. and Mrs. Earl Norris of Route one, Eastland.

Mr. and Mrs. Ray Pool, Jr., Teresa and Sherri were in Fort Worth Saturday and visited Six Flags Over Texas.

Weekend visitors at the home of Mr. and Mrs. Don Parker were

their daughter, Mr. and Mrs. B. J. Parrisa, and daughters, Billy Don and Debra, of Fort Worth. While in Eastland they also visited with his mother, Mrs. Ita Parrish.

Visiting over the weekend in the home of Mr. and Mrs. J. H. E. Att were their son, Mr. and Mrs. Dickie Evatt, of Abilene. Dickie will leave Friday for Fort Hood, Texas where he will be stationed in the army.

Also visiting in the Evatt home was Mrs. Annie Stokes, also of Abilene.

Visitors over the weekend in the home of Mr. and Mrs. C. T. Lucas were Mrs. Lucas's sister and brother-in-law, Mr. and Mrs. Frank McCabe of Robert Lee. They also visited another sister, Mrs. R. R. Gann.

Mr. and Mrs. C. T. Lucas and Miss Helen Lucas of Abilene visited recently in the home of their son and family, Mr. and Mrs. Charles Lucas, Jr. and daughter, Lucille. They helped celebrate Debbie's sixth birthday.

Eastland Talent To Enter College Variety Contest

The freshman class of Cisco Junior College will present a variety talent contest Thursday at 7:30 p.m.

The contest will be held in the Cisco Junior College gymnasium. Admission will be 75c per person. Eastland entries will include Shirley Ford, Patricia Liles and the Thunderbirds.

The public is cordially invited to attend the contest.

VISITS UNCLE

Mrs. H. S. Lewis visited Monday with her uncle, J. L. Johnston, who is seriously ill in the Blackwell Hospital at Gorman.

WEEKEND IN FORT WORTH

Mrs. Cal Johnson spent the weekend in Fort Worth visiting in the home of her daughter, Mr. and Mrs. Beatty. While there they attended Six Flags Over Texas and the Lawrence Welk Show.

HOSPITAL

Patients in the Eastland Memorial Hospital are as follows: Leland Don Everton, accident; Velma Caraway, surgical; Claude Dabbs, surgical; Nettie Rushing, surgical; Mrs. Margie Hollander, medical; R. P. Sneed, medical; Ida M. Dickson, medical; Mrs. Jessie Pippen, medical; J. T. Poe, medical; Tom Presslar, medical; Mrs. Jessie Wood, medical; Mrs. Abernathy Mitchell, medical.

J. C. Whately, medical; La Velle Jobe, medical; Mrs. Lowell Brown, medical; Dr. Lowell Brown, medical; G. H. Falk Sr., medical; John L. Daniel, medical; Mrs. Dorothy Awalt, medical; Mrs. Irma Sutton, medical.

W. L. Gann Feted With Celebration On 75th Birthday

W. L. Gann was honored on his 75th birthday with a card shower Saturday.

Mr. Gann received from 25 to 30 birthday cards in honor of this event.

Mrs. W. L. Gann hosted a party for her husband at which time cakes, pie, coffee and hot tea were served.

Attending the birthday celebration were the following: Mr. and Mrs. W. L. Williams, Mr. and Mrs. Leo Gann, Mrs. R. R. Gann and Roy Gann.

VISITS DAUGHTER

Mr. and Mrs. H. S. Lewis and Judy spent the weekend in the home of their daughter and sister, Mr. and Mrs. Wesley Goheen and Stevie of Eules. While there they attended Six Flags Over Texas.

VISITING

Mr. and Mrs. Weldon Armstrong and their daughter, Mrs. Dwayne Knight and Kim, all of Burkburnett are visiting in the home of Mr. and Mrs. John Armstrong, 508 S. Daugherty.

Rebekah Lodge To Sponsor 42 Party Tuesday

Members of the Rebekah Lodge are sponsoring a 42 party to be held Tuesday at 7:30 p.m. in the 100F Hall, corner of Lamar and Patterson.

Tickets may be purchased for 50c from any Rebekah or at the door on Tuesday night.

Prizes will be awarded to the winners. Refreshments will be served throughout the evening.

Jimmy Sayre Is Party Honoree

Twenty-three of Jimmy Sayre's friends celebrated Jimmy's eighth birthday with a party in the home of his parents, Mr. and Mrs. Frank Sayre, Friday Oct. 20.

The family room and kitchen were transformed into an art gallery at the guests finger painted a still life fruit arrangement.

After an entertaining afternoon of finger painting the guests were served birthday cake and punch. The decorated cake bore the inscription of "Happy Birthday".

Don Everton Is Hospitalized

Don Everton, 20, son of Mrs. and Mrs. Elver Everton of Route one, Eastland is a patient in the Eastland Memorial Hospital suffering from an eye injury sustained Monday following an accident on a job in Gorman.

HOLY TRINITY EPISCOPAL

710 So. Seaman St.
The Rev. Wm. Ralph Woods, Vicar
SUNDAY

9:15 a.m. Church School
10:00 a.m. Morning Prayer
10:15 a.m. Holy Communion and Sermon

MONDAY

7:30 p.m., Vestry meeting at the home of Joseph Neepor, 501 West 18th, Cisco.

Officers To Be Elected Friday At HD Meeting

Mrs. Pete Miller will be hostess to members of the Olden Home Demonstration Club when they meet Friday to organize and to elect officers for the ensuing year. The meeting will be held at 2 P.M.

A group of Olden ladies met on Saturday to discuss forming a Home Demonstration Club with the County Home Demonstration Agent, Beverly Gail Read.

November 3 was the date set for the election of officers. Anyone who is interested in belonging to the Olden Home Demonstration Club is urged to be in attendance at the meeting.

LUNCHEON CLUB TO MEET

The one Cedar luncheon club will meet Friday for the regular monthly luncheon.

Insurance and Real Estate
D. L. KINNAIRD
Life - Fire - Auto - Farm
Policy - Bonds
42 years in the Insurance
Business in Eastland

- Call MA 9-1707 for Classified Ads

HAMNER FUNERAL HOME
Ben E. Hamner, Owner

Serving Eastland County since 1924 ambulance and funeral service. Our ambulances oxygen equipped and air conditioned.

Through our nation-wide connections with funeral directors, we can handle a funeral from point in America. We offer this service knowing we can relieve the family of all burdens incident any death away from home.

Eastland Dial MA 9-2611

Southern Television Systems Co
Village Hotel

CALL US and we will WIRE YOU

Watch Your Favorite TV Program

- Comedy
- Western
- Sports
- Drama

Phone MA 9-1716

EARL BENDER & COMPANY
INSURANCE

Serving Eastland Since 1924

REPRESENTING ONLY OLD LINE CAPITAL STOCK COMPANIES

Pat Miller, Manager

Eastland, Texas

KELLER'S FIX-IT SHOP
Eastland, Texas
MOTOR REWINDING
No Motor too Small or too Large.

SINGER
Sales - Service - Rentals and Repairs
D. L. MORTON
Phone MA 9-2054

LOVELACE
LOCAL & LONG DISTANCE MOVING
EASTLAND TEXAS
Phone MA 9-2440

-Local and Long Distance Moving Since 1929-

BETTER
"Ready for Winter?" - "No?" - CALL

Smith's PLUMBING

MA 9-2422 114 N. Seaman St.

When you get a call that guests (or Dad) will be late...

RELAX

only **GAS** oven-with-a-brain keeps the meal serving-hot without over-cooking!

Exclusive with gas ranges, Oven-with-a-Brain can hold heat at a precise 140°—not enough to cook food, but just right for keeping it moist and warm for hours! This new low-temperature control is great for heating plates, and won't damage the finest china. It's ideal for thawing frozen foods quickly and safely. And it's just one of the many automatic features that make modern gas ranges the best-cooking (as well as the best-looking) you can get. See for yourself — and look for the Gold Star Award that marks the very finest buys!

SEE US IN THE GAS RANGE-O-RAMA AT GAS APPLIANCE DEALERS AND LONE STAR GAS COMPANY

See the Chevrolet Golden Anniversary Show—
CBS-TV—Friday, Nov. 3, 8:30-9:30 p.m. E.S.T.

CHEVROLET

THE NEW CHEVY II
GOING GREAT GUNS!

Chevy II Nova 300 Sport Coupe—and there are 8 more models, just as nice, where this one came from.

This one was on the road to success right from the start. You get a new kind of solid simplicity blended with the economy and dependability you know you can count on from all the Chevrolet family. Beneath the hood... a frugal 4- or satiny 6-cylinder engine (there's a choice in most models) that's downright miserly on gas. Nine new-sized different models... sedans, wagons, hardtop and convertible. Like to see and try one? It's easy... just follow the crowds.

If you're looking for sensibility at its Sunday best—drop in at your Chevrolet dealer's and join the celebration. It's Chevrolet's golden anniversary year, and this new Chevy II is making it a year to remember. Here's Body by Fisher comfort that makes many a full-size car wonder how it's done—room for six solid citizens, bag and baggage, in all sedans and two-seat wagons. And, thanks to new Mono-Plate rear springs, you get a remarkably smooth ride that rivals much higher priced cars.

A New World of Worth

Join in Chevrolet's 50th Anniversary celebration at your dealer's now—By picking up a special order form from your dealer, you can order a "Golden Anniversary Album" LP recording of favorite American songs from Chevrolet for just \$1. (For your convenience, many dealers will have the album for sale in their showrooms.)

Chevy II 300 Three-Seat Station Wagon

Chevy II Nova 400 Convertible

Chevy II 300 4-Door Sedan

See the new Chevy II, '62 Chevrolet and '62 Corvair at your Chevrolet dealer's One-Stop Shopping Center

FULLEN MOTOR COMPANY INC.
305 E. MAIN EASTLAND PHONE MA 9-2876

PERSONALS

Mrs. Dean Collins and family of Carbon.

Mrs. H. V. O'Brien is a new resident of Eastland. She moved here from Abilene. Her present address is 1203 1/2 S. Seaman.

Johnny McMahan, a student at the University of Texas, was in

Eastland over the weekend visiting in the home of his grandmother, Mrs. Rodgers.

Knicky Arther, also a student at the University of Texas, visited in the home of his mother, Mr. and Mrs. A. R. Sonnerford, 203 S. Ammerman, over the weekend.

Mr. and Mrs. Bill Crocker and Cindy spent the weekend visiting with his family in Amarillo. Cindy remained for an extended visit with her grandparents.

Judy Seaberry, Clark Conner, Barbara McCullough and Eddie Dry attended the State YMCA pre-legislation meeting in Abilene Saturday. Mrs. Earl Conner, Jr. accompanied the group.

WE BUY AND SELL USED FURNITURE
Phone MA 9-1740
WAYNE JACKSON

Beautiful Park surrounds quiet spacious home for the aged or chronically ill. Large sitting and recreation room, clean attractive dining hall. 24 hr. nursing care. State and National membership. Call Hill-coast 2-3458, Cisco, Texas.

Weekend visitors in the home of Dr. and Mrs. Bob Alexander were her sister and brother-in-law, Mr. and Mrs. Garth Campbell, Lucia, Barbara, John and Kathy of Amarillo.

Mr. and Mrs. Bob Whiteley, Robby and Rickie of Salem, Ill. visited over the weekend in the home of Mrs. Whiteley's parents, Mr. and Mrs. Cyrus Justice of Route one, Eastland. Mrs. Whiteley, Robby and Rickie remained for an extended visit with her parents. While here they also visited other relatives and friends.

Visiting in the home of Mrs. Ina Jordan over the weekend were Jack Jordan of Kerrville and Mr. and Mrs. Roy Jordan and Raymond of Wumas. They also visited other relatives and friends while in Eastland.

Mrs. M. O. Cleveland and Cathy of Abilene visited over the weekend in the home of her parents, Mr. and Mrs. S. A. Green, and Mr. and Mrs. W. A. Green and family.

Mr. and Mrs. C. C. Cornelius spent last week in Temple with his brother, S. G. Cornelius, who is seriously ill in the Santa Fe Hospital.

Mr. and Mrs. Aubrey Van Hoy of Temple spent the weekend in Eastland visiting in the home of her parents, Mr. and Mrs. Wiley Harbin.

Sp. 4 Roy Hogan, who is with the 49th Division at Fort Polk La., visited in the home of his parents, Mr. and Mrs. Lee Hogan, while enroute to Fort Bliss, Okla. His address is Sp. 4 Roy Hogan, NG 25982244, Btry. C 3D RKT HOW BN, 132 D Artillery, North Fort Polk, La.

Recent guests of Mr. and Mrs. J. C. Allison and Miss Verne Allison were Mr. and Mrs. John L. Allison and Dave of Farmington, N. M. Rev. and Mrs. James C. Allison, Kathy and Jerry of Hobbs, Tex. and Miss Edith Allison of Abilene.

Mrs. C. P. Hastings of 411 S. Connelley St. spent the past weekend in the home of her daughter and family, Mr. and Mrs. Warner Sims, in Lubbock.

Mrs. Jack Lusk spent last week in Spur and Dickens where she visited with her sister, Mrs. Cecil Meadors, and Mr. Lusk's sisters, Mrs. Ann Baldwin and Mrs. L. C. Murphy, who are both in the hospital. Mrs. Meadors returned to Eastland with Mrs. Lusk and while here they visited their sister, Mr. and Mrs. Jack Gipson, who have recently purchased a ranch at May. Mr. Meadors came for his wife and they returned to their home in Dickens Sunday.

Bob Vaught of Dallas has been visiting in the home of his mother, Mrs. Nora Vaught, before moving to New York.

Miss Helen Turner of Eastland spent the weekend in Abilene where she visited in the home of Mr. and Mrs. Aubrey Wadley.

Annual Fall Pledge Banquet Is Hosted by Zeta Pi Chapter

Zeta Pi Chapter of Beta Sigma Phi were hosts to the Xi Alpha Zeta Chapter at the annual fall pledge banquet Saturday night held at the one Cedar Country Club.

New pledges introduced from the Zeta Pi Chapter were Mrs. James Varner, Mrs. Clyde Moore, Mrs. E. M. Rogers, all of Eastland. Mrs. Don Skinner and Mrs. D. O. Smith of Baird.

Mrs. Glyn Gilliam and Mrs. Scalern were introduced as the new pledges from the Xi Alpha Zeta Chapter.

Halloween theme was used for the setting with the traditional Halloween decorations and colors.

Mrs. E. M. Watts, president of the Zeta Pi, served as master of ceremonies. Mrs. E. E. Ables welcomed the guests.

Mrs. Jodie Offield, who did a variation in ballet to Sleeping Beauty, furnished the entertainment for the evening.

The banquet was followed with an evening of dancing.

Members from the Xi Alpha Chapter and their husbands were Mr. and Mrs. James Smith, Mr. and Mrs. Norman Watson, Mr. and Bill Walters, Mr. and Mrs. A. D. Taylor, Mr. and Mrs. Mike George, Mr. and Mrs. Bill Leslie and Mr. and Mrs. J. O. Tanner.

Zeta Pi members and their husbands attending were Mr. and Mrs. Stanley Harris, Mr. and Mrs. Jackie Lee, Mr. and Mrs. E. M. Watts and Mr. and Mrs. E. E. Ables.

—READ THE CLASSIFIEDS—

See Me For Your Real Estate Needs

Will Build To Suit You

M. A. TREADWELL, SR.
Phone MA 9-2017

SINCE 1884
... quality workmanship and efficient service, approved throughout this area.

ALEX RAWLINS & SONS
Weatherford Phone LY 4-2726 Texas
Designers and Builders of Monuments Since 1884

Don't let an accident make you dependent after you reach age 65!

Investigate **SOUTHLAND LIFE'S PREFERRED ACCIDENT PLAN**

Call me today for complete details on this economical Accident Protection Plan.

Southland Life
LIFE • ACCIDENT • HEALTH • HOSPITALIZATION • GROUP

SMALL SAVER ... LARGE SAVER ...

YOU'RE WELCOME HERE!

Whether you do your saving a few dollars at a time, or you have a substantial reserve to invest safely at a good return, you'll like our insured savings accounts. Savings here earn a better-than-average rate and each saver's funds are insured up to \$10,000. You'll like the nice people who are here to serve you.

First Federal Savings & Loan Association of Ranger
204 Main Ranger, Texas Phone MI 7-1611

ARTY CRUNCH ICE CREAM

Boswell's

Add excitement to all your parties with Boswell's Party Crunch Ice Cream. It's vanilla ice cream lavishly studded with pastel marshmallows, gems of red, ripe cherries and crushed pecans. It's Boswell's brightest, best-tasting ice cream of the season. Ask for it soon.

WE GIVE Round-Up STAMPS

SUPER SAVINGS

Russet Potatoes 10 Lbs. 49¢

DAVE MARKETS

BETTY CROCKER LAYER CAKE MIXES Assorted Flavors Reg. Box **29¢**

BETTY CROCKER INSTANT FROSTINGS Assorted Flavors Reg. Box **33¢**

Lettuce Lg. Head 15¢

Oranges 5 Lb. Bag 39¢

Apples Lb. 15¢

DOG FOOD VIGO Blue or Yellow Label Pound Can **10¢**

GLADIOLA FLOUR 43¢

WHITE SWAN GRAPEFRUIT JUICE 46-Oz. Can **19¢**

PRINCESS CREME COOKIES 2-Pound Box **49¢**

ASSORTED FLAVORS JELL-O 3 Reg. Boxes **25¢**

MILK AMPLIFIER BOSCO 12-Oz. Jar **37¢**

AUSTEX BEEF STEW 24-Oz. Can **49¢**

WHITE SWAN All Vegetable SHORTENING 3-Pound Can **59¢**

PECANS 12-Oz. Pkg. **89¢**

IMPERIAL OR DOMINO SUGAR 2 Pound Boxes **25¢**

WESSON OIL 24-Oz. Bottle **47¢**

AUSTEX SPAGHETTI & MEAT BALLS 24-Oz. Can **39¢**

NIBLET'S CORN 12-Oz. Can **19¢**

GREEN GIANT MEXICORN 12-Oz. Can **19¢**

KOTEX Regular Box **33¢**

Ground Beef 3 Lb. **\$1.00**

MacMOY'S Super Save 3 Lbs. **89¢**

Home Owned—Home Operated
400 S. Seaman

Seventy Attend Training Union Program Monday

Seventy members of the First Baptist Church met Monday at 7 p.m. in the Fellowship Hall of the church for the monthly Training Union Program Planning.

Workers of the Adult I department served the covered dish dinner.

Claud Boles, Training Union director, was in charge of the promotional period. Mrs. Haston Brewer and Edgar Altom presented ideas used in their departments.

The group then met by departments for departmental planning.

Department directors are as follows: D. G. Fambrough, Herbert Ekert, J. O. Jolly, Joe Ed Ingram, Mrs. H. W. Sims, Stanley, Lynn, Mrs. Johnson Smith and Mrs. E. F. Altom.

MATTRESSES

Save up to 50% renovating choice of color and firmness. Complete bedding. Made and guaranteed by **WESTERN MATTRESS CO.**, San Angelo. Phone MA 9-2689, Eastland and leave address.

T. L. FAGG REAL ESTATE

Property Management
Home and Farm Loans

NOTICE

CENTRAL DRUG

Will Be Closed
At 6 P.M.

THROUGH THE WINTER MONTHS

NOTICE

Look Who is Coming to Town!

OLD MAN WINTER

That Mean's It's Time To Put in **ANTI FREEZE**

It's time to have your car checked for winter driving. Have a complete winterize job for care-free driving.

We Specialize in Wash and Lubrications

See Us For Any Car Needs In The Way of Tires, Batteries, Etc.

Mobil

Wells Dalton
Phone MA 9-2220
Phone MA 9-2220

Mrs. Perkins To Speak At Meeting Of Thursday Club

Friendship Day will be observed by members of the Thursday Afternoon Study Club this afternoon at 3 p.m. in the Woman's Club.

Mrs. Joseph M. Perkins will be the speaker at which time she will present an illustrated talk on "My Trip Around the World."

Tea hostesses for the afternoon will be the following: Mmes. Cyrus Frost, Milburn Long, Frank Sayre, B. W. Patterson and W. A. Martin.

New Arrivals

Sp. 4 and Mrs. Don Hull of Route one, Eastland announce the arrival of a daughter, Lonnie Rachel, born Saturday, Oct. 21 at 10:40 a.m. in the Blackwell Hospital at Gorman. At birth, Lonnie Rachel weighed nine pounds and 14 ounces.

Maternal grandparents are Mr. and Mrs. Clem Rasberry of Route one, Eastland.

Mrs. Faye Hull of 508 W. Valley, Eastland is the baby's paternal grandmother. George B. Hull of Cisco is the paternal grandfather.

—Read The Classifieds—

Freedom Fighters-

(Continued from page one)

Conlan is a Dallas attorney who has traveled widely behind the Iron Curtain.

Other prominent speakers scheduled for lectures and discussions during "Our American Heritage Week" are Representative Scott Bailey of Cisco and Wayne Gibbons of Breckenridge; Robert L. Hunt, Jr., Director of Century Studies, Texas Agricultural and Mechanical College; Dr. Morris Wallace, Dean of the School of Educational, Texas Technological College; and Dr. John Stevens vice president of Abilene Christian College.

In addition to the teachers, military personnel and private citizens participating in the activities as speakers, various local groups will also take part. The invocation opening each session will be given by some local minister. The Boy Scouts will present the colors, under the direction of Fred Bennett Monday morning and under the direction of Dwaine Dennis Wednesday evening. Children of Mrs. J. C. Carter's first grade room will present a short patriotic program Wednesday morning, and the second and third grade pupils of Mrs. Clara Laners will appear on program Tuesday evening. The Ranger High School Band under the direction of William A. Auvenshine, will play at the Thursday-

night session. The series of lectures and programs has been planned in order that students and citizens may have an opportunity to reevaluate and appreciate our heritage of freedom under a type of government, with stress on the how, when, why, and where of our American heritage. James Phillip Anderson, guidance director of the college, is chairman of the committee making arrangements for the speakers, and the entire faculty of the college is making a concerted effort to make the week of educational activities stimulating and challenging. The people of this area are urged to attend the sessions.

The activities of "Our American Heritage Week" will be climaxed Saturday, Nov. 11, by Ranger Junior College Homecoming, which will carry out a patriotic theme in keeping with the spirit of the week.

FIRST PRESBYTERIAN CHURCH

Rev. Eugene Surface, Pastor

Sunday

10:00 a.m. - Church School

11:00 a.m. - Divine Worship

12 noon - Monthly meeting of the Church Session on the Sunday after the first Wednesday.

Tuesday

9:30 a.m. - United Presbyterian Women meet on the first and the third Wednesdays of each month.

Wednesday

9:00 a.m. - Worship with Sermon over KERC radio.

CHURCH NEWS

FIRST CHRISTIAN CHURCH

THURSDAY

9:00 Rachel Group

SUNDAY

9:45 Church School

11:00 Morning Worship

3:00 District Convention at Lake Brownwood Camp Grounds

MONDAY

3:15 General C. W. F.

UNITED PENTECOSTAL CHURCH

208 N. Dixie

Rev. Freddie Waldrep

SUNDAY

9:45 a.m.: Sunday School

11 a.m.: Morning Worship

7:45 p.m.: Evening Service

WEDNESDAY

7:45 p.m.: Prayer Meeting

SATURDAY

7:45 p.m.: Pentecostal Conquerors.

CHURCH OF THE NAZARENE

Sunday

10—Sunday School

11—Morning Worship

6:15 p.m.—N.V.P.S.

7 p.m.—Evening Services

Wednesday

7 p.m.—Mid-week Prayer Service

Friday

Noon—Prayer and Fasting

3:15 p.m.—Children's Hour

BETHEL BAPTIST CHURCH

Rev. Jimmy Roberts, Pastor

SUNDAY

9:45 a.m.: Sunday School

11 a.m.: Morning worship

6:30 p.m.: Training Union

7:30 p.m.: Evening Worship

WEDNESDAY

6:15 p.m.: Primary teachers and officers meet

7:30 p.m.: Midweek prayer

8:15 p.m.: Choir practice

FIRST BAPTIST CHURCH

Rev. Haston Brewer, Pastor

Plummer & Lamar Sts.

SUNDAY

9:45 a.m.: Sunday School

11 a.m.: Morning Worship

6:15 p.m.: Training Union

7:30 p.m.: Evening Service

TUESDAY

9:30 a.m. & 1 p.m.: WMU Mission Study and Luncheon

WEDNESDAY

6:45 p.m.: Sunbeam Band

Royal Ambassadors

Girl's Auxiliary

S.S. Superintendents

7 p.m.: Teacher's Meeting

7:45 p.m.: Prayer Meeting

8:30 p.m.: Church Choir

Jehovah Witnesses To Assembly

Approximately eight delegates of the Eastland congregation of Jehovah's Witnesses will be leaving Friday to attend the semi-annual Assembly of Jehovah's Witnesses in Mineral Wells, Texas at Convention Hall, November 3-5.

The Friday program will begin at 6:45 P.M.

Delegates from Eastland will be engaged in many activities during this assembly, including house-to-house visitations in Mineral Wells.

M. L. Mackey, District Supervisor from the world headquarters of Jehovah's Witnesses in Brooklyn, New York, will address the assembly on Sunday, November 5th, on "Uniting Men in a Split-up World." Over 700 are expected.

CHURCH OF GOD

Corner Lamar and Valley

Rev. W. E. Hallenbeck Jr., Pastor

SUNDAY

10 a.m.: Sunday School

11 a.m.: Sermon

6:45 p.m.: Youth Fellowship

7:30 p.m.: Sermon

WEDNESDAY

7:30 p.m.: Prayer Service

Olive & Lamar

Ray, Heckendorf, Pastor

SUNDAY

9:45 Church School

11:00 Worship

Sermon: Making God Real

7:00 Evening Worship

Sermon: The Providence of God

WEDNESDAY

5:00 Junior Choir

6:30 Choir

CHRISTIAN SCIENCE

Sunday

9:45 a.m.: Sunday School

11 a.m.: Sunday morning service.

Wednesday

8 p.m.: Mid-week Service

The public is cordially invited.

JEHOVAH'S WITNESSES

Curtis Boase

204 N. Dixie St.

SUNDAY

3 p.m.: Watchtower Bible Study

WEDNESDAY

8 p.m.: Mid-week Bible study

FRIDAY

7:30 p.m.: Service meeting

8:30 p.m.: Theocratic Ministry school

FIRST METHODIST CHURCH

215 S. Mulberry

Wm. S. Fisher, Pastor

SUNDAY

9:45 a.m.: Church School

10:55 p.m.: Worship Service

6:15 p.m.: Youth Fellowship

7 p.m.: Evening Worship

TUESDAY

9:30 a.m.: W.S.C.S.

WEDNESDAY

7:30 p.m.: Choir rehearsal

Wesleyan Guild every 1st & 3rd Wednesdays

Official Board Monday after 1st Tuesday

Five Commissions — every 1st Monday

CALVARY BAPTIST

SUNDAY

10 a.m.—Sunday School

11 a.m.—Morning Worship

7 p.m.—Prayer Service

7:30 p.m.—Evening Worship

WEDNESDAY

7:30 p.m.—Midweek Prayer Service

— READ THE CLASSIFIEDS —

HAVE YOU TRIED IT YET?

Gillette Super Blue Blade

DOUBLE EDGED • DOUBLE ECONOMY

15 for \$1.00

10 for 69¢

FITS ALL GILLETTE RAZORS

Hamner Life Insurance Company

Ben E. Hamner, President

This company has been in operation in this section since 1942 selling policies to be used primarily for burial purposes. We write from \$100 to \$600 and our policies are paid in cash, which allows freedom in the selection of the Funeral Director of your choice.

Ages from 1 month to 90 years. For further information come by to see us at Hamner Funeral Home, 301 S. Lamar, Eastland P. O. Box 431 Dial MAIn 9-2611

See Us For FURNITURE • APPLIANCES

CARPETS

Every Day Low Prices Means Savings For You! No carrying charges on furniture for 1 full year

FREE DELIVERY

Ranger Furniture Exchange

"BRASHIER'S" 123 N. Rusk Ranger Phone M1 7-1404

DECEMOMA NEWS

Vows Read For Linda Carr; Eddie Lindley

The church of Christ was the setting Saturday night of an impressive wedding ceremony which united Miss Linda Carr and Eddie Lindley.

The bride is the daughter of Mr. and Mrs. Cecil Carr and Mr. and Mrs. Raymon Lindley are parents of the bridegroom.

The Bonnie Watsons were home this weekend visiting in the home of his parents, Mr. and Mrs. Roy Watson.

Several of the Jacob children were home during the past weekend.

Granny Northcutt has been on the sick list the past week.

Miss Bessie Rainey, Desdemona high school senior and daughter of Mr. and Mrs. Hubert Rainey, underwent an appendectomy at the Gorman Hospital last week.

At writing she is reportedly doing fine and will be able to return to her home early in the week.

Mrs. Buna Abernathy is in San Angelo visiting in the home of her son, Mr. and Mrs. Melvin Abernathy.

Mrs. Myrtle Collins of Comanche spent Friday night here with her brother, Mr. and Mrs. R. H. Abel.

Mr. and Mrs. John Arnold had Sunday dinner in Gorman with Mr. and Mrs. Garland Dean.

The Grover Mosier family of Carbon were here Sunday afternoon visiting in the home of her uncle, Mr. and Mrs. Jim Huff.

Zennie Moss has been a patient in the Gorman Hospital since Saturday.

Mr. and Mrs. J. D. McMasters spent the past weekend in Kermit with their daughter, Mr. and Mrs. Charles Nick and Dianne.

Douglas Craig, youngest son of Mrs. Ruth Craig, is home for a few days leave from the armed services. Craig is stationed at Fort Ord, Calif.



CINEMASCOPE DRAMA—Thursday, Nov. 2nd, opening night for "The Hustler" at the Majestic. Two of the stars of this production, shown here Piper Laurie and Paul Newman.

Rev. David DeGuire filled the pulpit Sunday and Sunday night in the absence of the pastor, Rev. Moody Smith, who was in Lubbock for the weekend. Mrs. Smith has been visiting relatives the past week and returned with her husband on Monday.

SAVE

PRE-WINTER DRUG NEEDS

STOCK UP ON THE ITEMS YOU KNOW YOU WILL NEED LATER

We Have A Complete Assortment Of The Products That Can Make Your Cold More Bearable!

COUGH REMEDIES

Reg. 32c ea. 2 for 59c Large Size VICKS 89c Reg. \$1.00

SNEEZE SNIFFLE NEEDS

CONAR Reg. 1.25 Cough Syrup 98c COLDENE Reg. 2.00 Large Size 1.75

GIFT SHOPPING HEADQUARTERS

MUSICAL POWDER BOXES

Decorative and Useful

IMPORTED BRASS WARE

A World of Small Appliances

So Many More Beautiful Things To Thrill Any Lucky Gift Receiver

Gifts for Her

- Watches
- Cutlery Sets
- Steak Knives
- Dishes
- Colognes and Perfumes

Gifts for Him

- Shaving Sets
- Electric Razors
- Wallets
- Cameras and Assc.

Central Drug Store

HUNTING SEASON CLOSES DEC. 24

GIFT SHOP NOW!

A PANORAMA OF LOW PRICES!

COOKIES Crispo-Orange Card Party Coconut or Black Walnut 3 8-oz. Pkgs. 49¢

Flour Sunny Field 10 LBS 71¢

Detergent Crystal White Liquid 48-oz. Size 69¢

Peaches Cantadina Whole Spiced 2 29-oz. Cans 39¢

Hamburger Swift Canned Patties 3 11-oz. Cans \$1.00

SPECIAL SALE!

EIGHT O'CLOCK COFFEE

1-LB. BAG 49¢ 3-LB. BAG \$1.45

Ketchup Ann Page 20-oz. Bl. 25¢

Syrup Ann Page Pancake and Waffle 24-oz. Bl. 35¢

Spices Ann Page Black Pepper, Paprika or Cinnamon 4-oz. Pkg. 35¢

Syrup Br'er Rabbit Brown Label 5-lb. Size 55¢

Giant Del-Monte Sale

CORN 2 16-oz. Cans 35¢

BEANS 2 15½-oz. Cans 45¢

Tomatoes 2 16-oz. Cans 45¢

Spinach 2 15-oz. Cans 27¢

A&P Mix or Match Sale

ANN PAGE 16-OZ. CAN **KIDNEY BEANS**

ANN PAGE 16-OZ. CAN **RED BEANS**

ANN PAGE 16-OZ. CAN **PORK & BEANS**

ANN PAGE ELBOW 4-OZ. PKG **MACARONI**

ANN PAGE 10½-oz. Can 10c **TOMATO SOUP**

Daily—Lb. Cans **Dog Food** 3 for 25c

MIX OR MATCH FOR **29¢**

ALUMINUM FOIL **WONDERFOIL** 25¢ Box 29c

MORNING JONES **WASHCLOTHS** Pkg. of 5 79c

arden Fresh Produce

COLORADO

Red Potatoes 25 lb. bag. 89c

Bartlett Pears 6 for 19c

Cucumbers 3 for 19c

Bananas 2 lbs. 25c

Ruby Grapefruit, large 2 for 25c

Carrots 2 lb. bag. 19c

For Extra Values, and Good Eating, Buy "SUPER-RIGHT" QUALITY MEATS

SMOKED HAMS

"Super-Right" Dependable Quality

Center Slices Shank Portion Butt Portion Butt Half Whole or Shank Half

79¢ | 35¢ | 43¢ | 49¢ | 43¢

ARMOUR STAR PICNICS 3-lb. size

HOME FREEZER SALE "SUPER-RIGHT" HEAVY CALF SIDES

FORE QUARTERS Lb.

HINDQUARTERS Lb.

CUT AND WRAPPED FREE

AP Food Stores

JANE PARKER APPLE PIE SPECIAL! 39¢

JANE PARKER SPANISH BAR SPECIAL! 29¢

JANE PARKER FRESH BAKED FRUIT CAKE 5 LB. CAKE \$3.99

7½-LB. CAKE \$1.49 3-LB. CAKE \$2.89

CRACKED WHEAT BREAD Jane Parker 2 16-oz. Loaves 33c

Quality Frozen Sea Food

Oyster Stew 10-oz. Can 29¢