

E VOTE  
TO EACH  
L TAX  
HOLDER

# Eastland



# Telegram

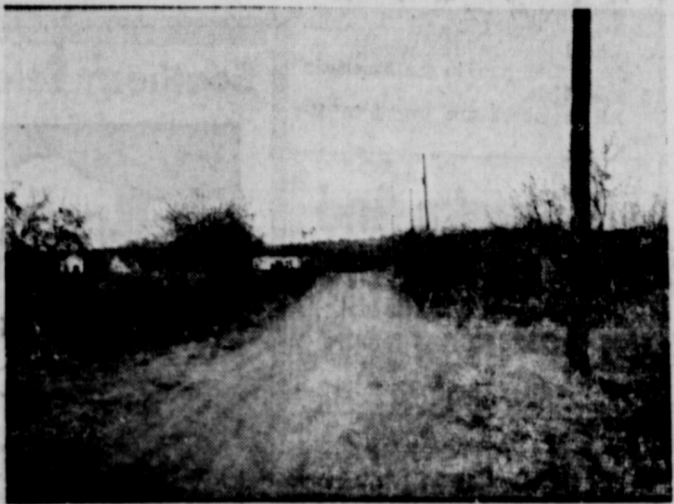
DO YOU HAVE  
YOURS?

THIS IS THE LAST MONTH!  
PRICE 10c

COVERING EASTLAND COUNTY  
EASTLAND, TEXAS, THURSDAY, JANUARY 25, 1962

## Jodie Robinson Killed In Car - Train Crash

### Tuesday At Daugherty St. Crossing



**'ALMOST HOME'**—Jodie Robinson was almost home after a day's work Tuesday when his auto was struck by a T&P freight. This picture was made from the center of the tracks, at approximately the point where the crash occurred, looking northward down unpaved Daugherty. The white trailer house immediately beside the road was Robinson's destination—his home.

**CRASH REMAIN**—This shows the condition of the 1956 Chevrolet in which Robinson was killed in the crash with a Westbound T&P freight Tuesday. This picture was made shortly after the crash, just before an Eastland wrecker pulled the wreckage from the tracks. The wrecked vehicle came to rest approximately 180 feet from the Daugherty St. crossing, site of the impact.

**WORK CLOTHES**—These are work clothes, including a protective hat, found beside the T&P railway tracks after the freight train-auto crash in Eastland Tuesday evening. Along the other side of this picture are seat belts which apparently pulled completely loose from their mountings in the auto. The two pieces of belting were disconnected, indicating that they might not have been fastened prior to the crash. Robinson was believed to have been returning home from work at the Texas Lightweight Aggregate plant. (Staff Photo)

Jodie Robinson, 54-year-old Eastland native, was dead on arrival at Eastland Memorial Hospital Tuesday evening after the auto he was driving was struck by a T&P Railway freight train at the N. Daugherty St. crossing. Robinson, an employe of Texas Lightweight Aggregate Co. here, was returning to his trailer home just north of the crossing, when the collision occurred at approximately 5:30 p.m. He was the only passenger in the northbound auto at the time of the crash. The freight train was headed west. From markings at the site it was believed that the train struck the 1956 Chevrolet on the right side and carried it about 180 feet down the track. Funeral will be held Thursday afternoon at 2:30 p.m. at the Hamner Funeral Home Chapel. Gary Adams, minister of the Church of Christ here, will officiate with burial here. He is survived by his wife and two sisters, Mrs. Tom Noble, and Mrs. Otto Morren, all of Eastland. About a year ago, a train was in collision with an auto carrying members of the Brown family, also Eastland residents, at the same crossing. There were injuries but no fatalities in that collision. Among the first at the scene of the crash Tuesday were County Sheriff Lee Horn and First Deputy John Willingham. City policemen were assisted by Highway Patrolmen in investigating the accident. Five days earlier, last Thursday, a Ranger mother, Mrs. G. A. Towns, 54, and her 15-year-old son, Robert (Bob) were killed instantly after the auto in which they were riding was struck by a T&P freight train in Ranger. The wreck last week happened at the Main St. crossing in Ranger, about nine or ten miles east of the Tuesday crash. The only marking at the Daugherty St. railroad crossing is the traditional crossed-arms bearing the words "Railroad Crossing." There isn't a protective gate, nor flashing lights or sounding devices at the crossing.

## Rural Civil Defense Will Be Discussed Here

The program is complete for a rural Civil Defense meeting in the courthouse in Eastland on Tuesday, Jan. 30th, according to information released today by the Eastland County Agricultural and Home Demonstration agents who have planned the affair. The meeting will be held at 2 p.m. in the County Courtroom on the third floor.

## Rotarians Hear Of Abstracting

Intracencies of the abstracting business were outlined Monday by Pat Miller in a program for the Eastland Rotary Club. Miller, an employe of the Earl Bender Abstracting Co., an old Eastland County business, told of several humorous incidents encountered in the business.

## Wilson Guest New President Sweetwater National Bank

The National Bank of Sweetwater announced today that Wilson Guest, who has been associated with the Commercial State Bank in Ranger for almost 22 years and presently one of its officers and directors, has been named president of the bank there and a member of its board of directors. Guest will join the Sweetwater bank in his new position on March 1st. He has resigned his post as vice president at the Ranger Bank to become effective on that date. He will continue to be a member of the board of directors for Commercial State.

He joined the Eastland County bank in July, 1940, and has been with it constantly since, except for almost four years of military service in the Air Force. He and his wife have been very active in civic affairs in Ranger since coming here. He is a native of Strawn and graduated from Strawn High School. He attended Ranger Jr. College, Hardin-Simmons and the University of Texas and is in his third year at the Graduate School of Banking at SMU. A deacon of the First Baptist Church, Guest is past president of the Junior Chamber of Commerce, and of the Ranger Chamber of Commerce. He has also served as past president of the Ranger Lions Club and of the Eastland County Water Supply District. His family will move to Sweetwater in June. He is a Master Mason and is currently a director of the Eastland County Water Supply District and the Ranger Chamber of Commerce, and serves as county treasurer for the Southwest Animal Health Research Foundation. Mrs. Guest is a member of the Ranger Garden Club and the 19-47 Club and is active in Women's Missionary Union of the First Baptist Church.

See and Drive the 1962 PONTIAC... fresh point of view and wide track too! MUIRHEAD MOTOR CO.

See and Drive the 1962 PONTIAC... fresh point of view and wide track too! MUIRHEAD MOTOR CO.

See and Drive the 1962 PONTIAC... fresh point of view and wide track too! MUIRHEAD MOTOR CO.

See and Drive the 1962 PONTIAC... fresh point of view and wide track too! MUIRHEAD MOTOR CO.

See and Drive the 1962 PONTIAC... fresh point of view and wide track too! MUIRHEAD MOTOR CO.



REV. JOE NORTON to conduct services

## Revival Begins Tonight At Local Nazarene Church

Rev. Joe Norton of Hamlin, Evangelist, will conduct services at the revival to be held today through Feb. 4 in the local Church of the Nazarene. Rev. Clarence Manners is pastor of the church. Music will be directed by Tommy Manners. Services will begin at 7 p.m. daily.

Prior to entering the evangelistic field in 1948, Rev. Norton, who is a graduate of Bethany Nazarene College, Bethany, Okla., was for 16 years a pastor in Oklahoma and Texas. The pastor joins the church in extending to you and your friends a hearty welcome to attend these services.

## 2% OF THIS & THAT

### The Sales Tax 'Better Work' Its No. One Collector Believes

Tax-payers in Eastland County have probably wondered many times whether the complicated, recently-enacted state sales tax will work or not.

These tax-payers might like to know that the State Comptroller, Robert Calvert, has said, "It had better work—or we'll get something else that will."

Spending this week before the Texas Press Assoc. convention in San Antonio, Calvert explained why the tax is necessary, vaguely how it works; and that it is expected to bring \$160 million a year in revenue for the state. Local people would undoubtedly welcome the opportunity to meet with Mr. Calvert and ask some specific questions concerning their own tax-paying problems.

Some very interesting questions have come to the fore-front since the tax was made law last September. Since certain things are exempt, it makes figuring out the taxable items, a bit of a problem. An important thing to remember, Calvert says, is that the new law is a "sales, excise and use tax." And it applies to "tangible

personal property", he pointed out, which should make it fairly easy to understand if a person will take time and weight the problems against these definitions.

The comptroller is the administrator of the tax and his office has been, and is still in the process of writing the rules under which the tax will be collected.

Retailers and others who collect the taxes from their sales are required to report and pay the taxes during the 30-day period following the close of the tax-paying quarter—that is, Nov. 15th, or by Feb. 15th for this quarter. Calvert said the legislature "had to pass the tax", to meet the present state deficit and to meet the constantly increasing demands of the public. He carefully outlined the state's expenditure of revenue in showing the need for more money: Education gets 53 per cent; highways, 30.3 per cent; public welfare, 15.75 per cent; eliminatory institutions and prisons, 5.17 per cent; and other services which includes legislative, courts and departments, 8.35 per cent. He theorized that the state's economy has moved from an agricultural based economy to one based on oil, and now the shift is to the consumer.

## Dr. Southern Is Speaker At P-TA Meeting Recently

The Eastland Elementary P-TA met Tuesday, Jan. 16, at 3:15 p.m. in the high school cafeteria for their regular business meeting and program. Hostesses for the afternoon were the room mothers from the classes of Mrs. D. E. Frazer and Miss Opal Hearn. Mrs. Marcus O'Dell, president, presided over the business session. The outstanding program was presented by Dr. Paul Southern, head of the Bible Department of Abilene Christian College. The topic of his talk was "Affective Learning for Moral and Spiritual Values." He based his program on eight different items every child needs to mature properly. They included Love, Security, Acceptance, Faith, Control, Guidance, Protection and Independence.

## Portrait Points Discussed for Lions

Lloyd Armstrong, co-owner of A&C Studio here, explained the process of portrait photography for the Eastland Lions Club at their Tuesday luncheon. During the meet, Parks Poe reported that signs have been ordered for placement on highways near the city's limits announcing the day and meeting place of the club.

## LOW OF 15

### Eastland Reels Under Icy Wintery Blast

Old Man Winter took a mean right swing at Eastland this week, and there seems to be a good chance he may come back with an equally-wicked left.

The cold blizzard swept into the county last Sunday night, played havoc all day Monday, and then just almost as mysteriously loosened its grip Tuesday morning.

The high temperature Sunday was 59 degrees according to official U. S. Weather Observer James Smith.

The low for the day was 17, indicating that the cold snap moved in before midnight. Monday's coldest reading was 15, and the mercury only went up one degree to 16 for the day's high.

It was a day of slipping and sliding. An inch of sleet was measured, which put a thin layer of ice on the City's streets, trees and those inhabitants who were out long.

Service stations and garages were busy putting on tire chains and the market in the new pressurized "de-icers" was reported good. No incidents of broken bones were reported although there were several incidents of falling on slick pavements and walks. School children had holidays both Monday and Tuesday but were back in class Wednesday. There were undoubtedly many unreported bent fenders as a result of slick streets, but no serious accidents were reported. A possible serious accident was averted by careful driving just before noon Monday when Eastland fire trucks were speeding eastward on Commerce en route to a reported fire on Halbryan. The firetruck driver slowed at the intersection of S. Seaman and thereby missed auto going north on that street. The emergency trucks proceeded eastward on Commerce. Several meetings scheduled for Monday had to be re-set. Mysteriously, Tuesday morning found the streets here dry and virtually clear. Speculation was that high winds accompanying a high pressure condition helped clear the slickness from the streets. Word is that another cold front may be moving in this direction.

## AT BANQUET TONIGHT

### Who Will Be Eastland's 'Outstanding Young Man'?

Will it be Phil, Ben or Grover? No one will know until tonight when the Outstanding Young Man of Eastland for 1961 is formally announced.

You can be present for the special event, as the Eastland Jaycees have invited everyone to attend their grand, first-annual awards banquet at the White Elephant Restaurant.

Chamber Manager Lee Ellis, who has helped coordinate the program, will make the first announcement of the chosen young man, when he opens a sealed envelope and reads:

"The outstanding young man in Eastland for 1961, according to impartial judging, is . . ."

If you don't have your ticket, you can get one from a Jaycee member at \$1.50 each, for the 7:30 p.m. event.

Also honored will be the employe of the month for November and December. Jim Everett of the Men's Store will be recognized as most courteous, efficient employe for November and Miss Carolyn Collins of the Eastland Telegram will receive the honor for December.

## Meeting Re-Set

The regular meeting of the Eastland County Livestock Raisers Association scheduled for Monday of this week has been postponed until Friday due to weather conditions.

The meeting will begin at 7 p.m. in the Texas Electric Conference Room. All members are urged to attend this meeting.

EASTLAND NATIONAL BANK "On The Square" MEMBER F.D.I.C.

RADIO - TV SALES - SERVICE OTIS COLEMAN Phone MAin 9-2545 208 N. Seaman

## NOW SHOWING At The MAJESTIC

### "Sail A Crooked Ship"

FREE PASSES To Those Who Find Their Names Set Bold Face Type Among The CLASSIFIEDS!

Pick up your pass at the Telegram

## dBITS

By H.V.O.

It was a balmy 60 degree day when the gate opened Monday, and myself came in from Antonio late Sunday weekend at the Texaco convention. The mid-winter treat, and posed to some quality experience as well as prior entertainment. The down Friday afternoon meeting opened the panel discussion. A Navy cruise last included friends of Stephenville and of Stamford.

of 15 Texas newspapers on the Carrier in which Red Cleveland is an officer.

ation-proper got underway morning with an American Newspaper Assoc. Research Institute who urged modernizing process. He word about the short-

Bartholomew, No. United Press International about gathering of the world.

interesting points—stories picked as tops only one was of the Kennedy's inauguration—three of the top stories about eyewitness reports the actual events (the feast, the Russian of the 50 meritorious take-over of Lios.)

er was ex-army General A Walker, the ultra- "patriotism", by his

explained his "4th di- warfare, which he in—a war for minds. "ism," he said, "is no called that as a cov- and that's what Com-

red-hot, controversial and ruby-ripe with quotes. The metropoli- have a field day every to town, and that this public improved since his in Dallas recently.

by someone has coach- perhaps told him that ing to captive audience military men regula-

showed it open to a ed anxiety period, and get everything they a statement on all plans. The sam- ple of his military he barely got a the end of a command the lights off" to a movie filmers.

that for us was a con- Kilgore piano great, at a luncheon given when he was given standing Texan of the by the TPA.

an interesting, sincere talk, sat down and with his talent. three selections. One of Schumann's ve poems and the 12th Dance.

was one of those ents when musician ment are married in

speech by "Capt." Webacker, World War age, now head of lines, closed the mid- slave. He said a lot, him a long time to say ed that the U. S. get U. N. and paid glowing the late Sen. Joseph

our best memory of "ig" was having read nence in surviving 24 ft in the Pacific after of his plane during four days, A N D corrected during a ere the closing talk.

WEDNESDAY 55, LOW, 30. THURSDAY, IN THE 40s.

FREYSLAG Insurance Agency presents the WEATHER NEWS

SELL AND PROFIT... BUY AND SAVE... GET A BETTER JOB... HIRE GOOD HELP!

# Read and Use the Want Ads!

## Eastland Telegram

Eastland County Record established in 1931, consolidated August 31, 1961. Chronicle established 1887, Telegram established 1923. Entered as second class matter at the Post Office in Eastland, Texas under the Act of Congress of March 3, 1879.

Published Semi-Weekly—Thursdays and Sundays  
By Eastland County Newspapers, Inc.  
H. V. O'Brien, Editor

One week by carrier in city	.15
One month by carrier in city	.65
One year by mail in County	2.95
One year by mail in state	4.95
One year by mail out of state	6.95

NOTICE TO PUBLIC—Any erroneous reflection upon the character standing or reputation of any person, firm or corporation which may appear in the columns of this newspaper will be gladly corrected upon being brought to the attention of the publishers.

USE WANT ADS-FOR WINTER NEEDS.

### CALL MA 9-1707

Use Our WANT ADS to... BUY, SELL, RENT, TRADE

#### FOR RENT

FOR RENT: Furnished apartment, 2 rooms and bath. Bills paid. 212 W. Paterson. 17

FOR RENT: Re-decorated 2 bedroom house. 511 W. Patterson. See Monroe Walker, 306 N. Dixie. 16

FOR RENT: 6 room house in good condition. Well located. Phone MA 9-2523. 17

FOR RENT: Five room house. Partly furnished. Phone MA 9-1087. 17

Mrs. George Webb

FOR RENT: Furnished apartment. One and one-half bedrooms. Extra clean and nice. MA 9-2413 tf.

FOR RENT—2 bedroom duplex. Call MA 9-2186. tf

FOR RENT: House. 412 E. Sado. Phone MA 9-1977. tf

FOR RENT: Newly decorated three room apartment. Phone MA 9-1559.

Everett Plowman

FOR RENT: Modern furnished four room apartment. Phone MA 9-1062.

FOR RENT: Three large furnished rooms and bath. Phone MA 9-1559.

FOR RENT—Lovely furnished or unfurnished apartments, a n y size, bills paid, maid and hotel services included, very reasonable. Also comfortable rooms with tile baths only \$39.95 monthly. Throw away your high bills and troubles and come live with us. Mrs. Robinson, manager, Village Hotel, MA 9-1716.

FOR RENT: Furnished apartment 309 E. Main.

FOR SALE: Good used automatic washing machine. \$40. Phone MA 9-1571. 17

#### SPECIAL NOTICE

FIESTA BOWL pin-quo of the day: It is well to remember that the fire department never fights fire with ice. 16

SPECIAL NOTICE: Storage facilities for cars, boats, trailers, motors, industrial equipment, stoves, refrigerators, etc. now available in Eastland. Wooten's Local Moving and Storage. MA 9-2066. tf

NOTICE: Eubanks Fresh Fruit and Vegetable Market in Cisco has opened with several truck loads fresh fruit and vegetables from all over the country. We invite you to visit us for your fruit and vegetable needs. Across the street north of Thorton Feed Mill.

NOTICE: Experienced in income tax. Phone MI 7-3426, Ranger, Norville Templeton. 18

## ANNOUNCEMENTS

**EASTLAND ROTARY CLUB**  
Meets in White Elephant for noon luncheon each Monday. Call Mike George, 9-1495, for information.

**EASTLAND JAYCEES**  
Meet at 7 p.m. in Chamber of Commerce office, each Thursday night. Dinner meet first Thursday in Mo. For information call Grover Hallmark, 9-1751 or 9-1379.

**LADIES GOLF AUXILIARY**  
Meets at Lakeside Country Club for noon luncheon the second Tuesday of each month. For information call Mrs. Max Beazley, 9-2478.

**ATTEND THE CHURCH OF YOUR CHOICE EACH SUNDAY**

**EASTLAND REBEKAH LODGE NO. 177**  
Meets at 7:30 p.m. in the IOOF Hall on the second and fourth Tues. of each month. For information call Corrie Harlow, vice grand, MA 9-1429.

**MASONIC LODGE NO. 467**  
Meets second Thursday of each month at 7:30 p.m. in the Masonic Hall, Cal Floyd B. Nichols, W. M. Phone MA 9-1227, or L. E. Huckabay, Sec., 9-1391, for information.

**EASTLAND CHAPTER NO. 280 O. E. S.**  
Meets the first Tuesday of each month at 7:30 p.m. in the Masonic Hall. Call Mrs. Nelle Earley W. M. 9-2044, for information. Mrs. Helen Shaw, Sec.

FOR SALE: 2 chests of drawers, one dresser, one desk and chair, one Mix-Master, one vacuum cleaner and other household items. 414 S. Lamar St.

#### REAL ESTATE

FOR SALE: New two bedroom, interior almost complete. 500 block East Commerce, Eastland. \$1798 cash as is or \$39.98 a month with no down payment. Call collect Modern Homes Construction Company, Pershing 2-4085, Fort Worth. tf

FOR SALE OR TRADE: Three bedroom modern home, newly carpeted, attached garage, Cyclone fence, two extra lots. Near beautiful Lake Whitney. Reasonably priced or would trade for home in Cisco. O. W. Hampton, Box 293, Whitney, Texas.

FOR SALE: Two bedroom house trailer. Apply Old Rip Cafe. 24

FOR SALE: Choice South Dixie living room, dining room kitchen, den, two bedrooms pretty bath, central heat, trees, garage, lots of storage. Easy to finance. M. A. Treadwell. Phone MA 9-2017.

FOR SALE: Two bedroom house. 310 North Daugherty. Phone 2745 Olden for appointment.

FOR SALE: Buy equity in Norman Guess home, 605 S. Dixie, and move in today. Equity for sale only \$1,200 (cash, trade or terms or best offer) with reasonable payments. No credit check. Three bedrooms and 1 1/2 baths—Fenced yard—Built-in range and oven—Central heat. Lovely neighborhood. Call Don Pierson, MA 9-1033 or Don Kinnaird Jr., MA 9-2544. tf

FOR SALE: Will sacrifice three years equity in modern, three bedroom Abilene home for \$700. Down-drought air, central heating, chain-link fence. MA 9-1707. TF

FOR SALE: Three bedroom, two tile baths, one year old, 306 S. Oaklawn. Business property 214 South Seaman. Phone MA 9-1742.

#### MIS. WANTED

WANTED: Reasonable party in this area to assume attractive position as a piano tuner, piano, a Baby Grand piano and a spinet piano, only six months old. Write Credit Manager, Wills-Hammond Piano Co., P. O. Box 3093, Fort Worth 5, Texas. 18

WANTED: Older lady would like to keep small child during day while mother works. Phone MA 9-2413. tf

CLASSIFIED ADS are the small, inexpensive ads with the big pull. An ad need not be big to be seen, you saw this one.

WANTED: Good used Sofa call 9-2471 after 5 p.m.

Mrs. E. J. Turner

#### HELP WANTED

NEARLY 2000 prospects: Could you personally interview, telephone, or solicit by mail that many people at a cost of just a few cents. Our Want Ads will do it for you! Use them often, by calling MA 9-1707 tf

WANTED: Middle-aged lady to live in. Cook three meals daily. Phone MA 9-2497 or MA 9-2624. 17

LADIES have you ever thought about selling Avon? It costs nothing to find out the details. Write to Mrs. Ellis, 1641 Bridge Ave., Abilene. 17

#### FOR LEASE

NOTICE: Painting, interior and exterior, taping and bedding, see estimates. Phone 9-2683. tf

#### Personals

If you are lonely, broken hearted, troubled in spirit or burdened with a sin-sick soul, you can find comfort, consolation and peace at First Methodist Church. TF

### Political Announcement

The Eastland Telegram has been authorized to announce candidates for public office in the Democratic first primary election May 5, 1962 as follows:

#### FOR DISTRICT CLERK

Roy L. Lane (Re-election)  
Ann Justice

#### FOR COUNTY JUDGE

B. M. Bennett  
O. H. (Onous) Dick  
John S. Hart (Re-election)

#### FOR COUNTY SCHOOL SUPERINTENDENT

H. R. (Pop) Garrett  
FOR JUSTICE OF THE PEACE

#### PCT. 1

C. E. (Pop) Owens,  
(Re-election)

### NOTICE

FRESH DRESSED

HENS . . 35c lb.

and Custom Dressing

At The Plant WALKER

Dressing Plant

PHONE MA 9-1200

### FURNITURE

for the Entire Home

★

Carpet - Rugs

All Prices

★

Be Sure To Check With

Coats

FURNITURE

Eastland

Phone Today

M. H. PERRY

offers this coverage:

LIFE

HOSPITALIZATION

(tailored plans)

ACCIDENT AND SICKNESS INCOME

RETIREMENT EDUCATIONAL PROGRAMS

GROUP MORTGAGE CANCELLATION

CANCER RANCH LOANS

(with no age limits) 107 W. Main

Office Ph.: MA 9-2275

Res. Ph.: MA 9-1095

### Casey's Restaurant

Under New Management

—•— Bill England

Owner—Manager

—•— OPEN SUNDAYS

11 a.m. - 2 p.m.

—•— South Side Square

### POSTPONMENT

A meeting of the Chamber of Commerce membership committee scheduled for Monday was canceled due to bad weather and probably will be held Thursday or Friday, chairman Bill Crocker has announced.

### Look Who's New

Rev. and Mrs. Benny Hagan of Goree announce the arrival of their first son, John Mark, born January 24 in the Eastland Memorial Hospital. At birth he weighed six pounds and 14 1/2 ounces.

Grandparents are Mr. and Mrs. B. A. May of Route one, Eastland and Mr. and Mrs. J. B. Hagan of Route two, Cisco.

Maternal great-grandparents are Mrs. W. H. May of Eastland and Mrs. Lula Long of Mexia.

Paternal great-grandparents are Mr. and Mrs. W. S. MaGaha of Carbon.

Rev. Hagan is former pastor of the Olden Baptist Church.

### Court of Civil Appeals

The following proceedings were held in the Court of Civil Appeals, Eleventh Supreme Judicial District of Texas:

**Affirmed**  
Pete-Rae Development Company v. State of Texas. (Opinion by Grissom, C. J.)

**Reversed and Rendered**  
The City of Houston et al v. W. S. Adams et al. (Opinion by Walter, A. J.)

**Motions Submitted**  
Mrs. Baird's Bakeries, Inc. v. Bobby Lewis Roberts et al. Agreed motion for extension of time for filing briefs.

The Fidelity & Casualty Company of New York v. C. T. Davis. Appellee's motion for extension of time to file brief.

Martha Frances Bullock et vir v. Dewitt C. Greer et al. Appellant's motion to strike portions of Appellee's brief and affidavit of Hancock.

H. C. Minton v. George W. Stewart. Joint motion for extension of time to file Appellant's brief.

**Motions Granted**  
Mrs. Baird's Bakeries, Inc. v. Bobby Lewis Roberts et al. Agreed motion for extension of time for filing briefs.

The Fidelity & Casualty Company of New York v. C. T. Davis. Appellee's motion for extension of time to file brief.

Martha Frances Bullock et vir v. Dewitt C. Greer et al. Appellant's motion to strike portions of Appellee's brief and affidavit of Hancock.

H. C. Minton v. George W. Stewart. Joint motion for extension of time to file Appellant's brief.

**Cases Submitted**  
James Coates et al v. Morgan Coates.

Lumbermen's Mutual Casualty Co. et al v. Jefferson C. Meade. Doyce Ray Waddell et al v. Empire Drilling Company.

Fidelity & Casualty Co. of New York v. C. T. Davis.

Martha Frances Bullock et vir v. Dewitt C. Greer et al.

**Fort Worth Men Pleads Guilty**

Charges of driving while intoxicated were filed against Loyd Darnell Hutto of Fort Worth January 17 in County Court.

Darnell pleaded guilty to the charges and was fined \$50.

### Eastland Woman's Brother Buried

Funeral for Bernie Currie, 77, brother of an Eastland woman, was held Wednesday afternoon in Eunice, N. M.

Mr. Currie, a longtime rancher in the Eunice area, died Monday.

He is survived by his wife and son Glen of Eunice, and his sister, Mrs. Ina Bean, manager of the Hillside Apartments here.

#### MEETING TONIGHT

Members of the V. O. Hatcher Barracks, World War I Veterans, will hold their regular meeting tonight at 7:30 p.m. in the American Legion Hall.

All members are urged to attend.

### Fill Cracks And Holes Better

Handles like putty. Hardens like wood. **PLASTIC WOOD**

The Genuine—Accept No Substitute

W & W AUTO REPAIR

200 S. Green St.

★ Major or Minor Auto Repair

★ Guaranteed Work

★ Also Storage Facilities.

Eastland MA 9-2066

### T. L. FAGG

REAL ESTATE

Property Management

Home and Farm Loans

### FREE Estimates On RE-ROOFING

Or Repair Your Old Roof.

Residential and Commercial

Eastland Roofing Co.

Noble Squires

Phone MA 9-2370



### ROBERTSON TV SALES & Service

R C A VICTOR DEALER

S.E. Corner of Square

Ph. Main 9-1625

### Funeral Services Held Monday For Mrs. J. M. Daniel

Funeral services were held Monday at 3 p.m. in the church of God for Mrs. J. M. (Cart) Daniel, a resident of Morton Valley for 50 years.

Rev. W. E. Hallenbeck officiated the services with interment in the Eastland Cemetery under the direction of Hamner Funeral Home, Eastland.

Mrs. Daniel was born Nov. 15, 1890 in Carbon and died Sunday

### Southern Television Systems

Village Hotel

CALL US

and we will

WIRE YOU

Watch Your TV Program

• Comedy •

• Sports •

Ph. MA 9-1511

See Us For

FURNITURE • APPLIANCES

CARPETS

Every Day Low Prices Means Savings

No carrying charges on furniture for 120 days

FREE DELIVERY

Ranger Furniture Exchange

"BRASHIER'S"

123 N. Rusk Ranger Phone MA 9-1511

"THE FLEETWOOD"

A DOLLAR AND A DIME TO YOUR LOT IS ALL YOU NEED

PAYMENTS AS LOW AS

\$30.98 — per month

We Make Your Payments When YOU ARE SICK OR HURTY

SEE US BEFORE YOU BUY

WE NEED A REPRESENTATIVE FOR THIS AREA ARE YOU INTERESTED? CONTACT THE MANAGER AT (Address) below

CLIP AND MAIL THIS COUPON FOR ILLUSTRATION

MODERN HOMES CONSTRUCTION

Box 12381—Fort Worth, Texas

( I Own My Own Lot ) ( I Am Buying )

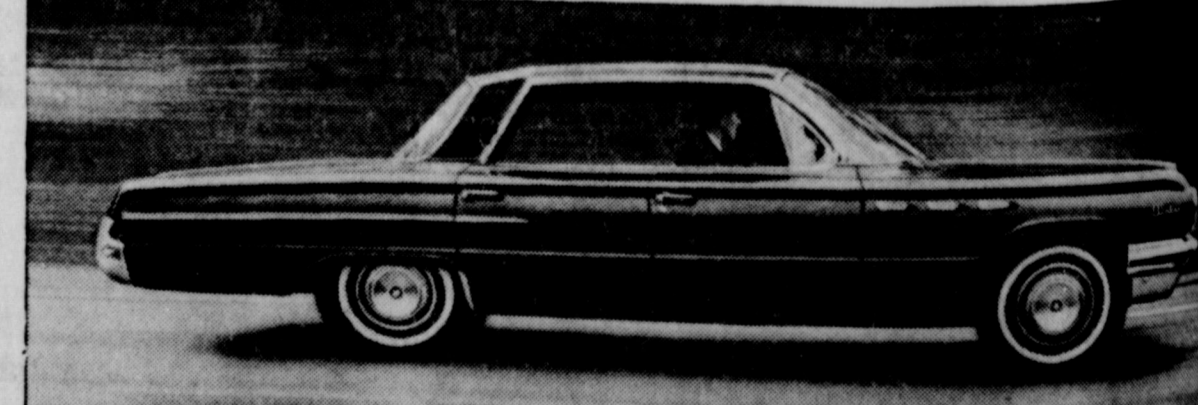
Name: \_\_\_\_\_ Phone: \_\_\_\_\_

Address: \_\_\_\_\_

City: \_\_\_\_\_ State: \_\_\_\_\_

If Rural Route, Give Directions

## Get the sizzling "git" of Advanced Thrust in this value-priced Buick Le Sabre



Exhilarating new go! See for yourself how Buick's exclusive Advanced Thrust puts live action at your command. It unleashes a surging 3/4-G thrust from the mighty new 401 cu. in. Wildcat engine. It unlocks the secret of new road-hugging balance with the engine moved forward like the tip of an arrow. Handling is surer, control is easier, riding smoother. Buick LeSabre is your greatest performance value. It's the lowest priced car to bring you the engineering greatness of Advanced Thrust. See your Buick dealer and see why—

### BUICK Le SABRE'S THE BUY!

301 West Commerce  
Big selection! Big values! See your Buick Dealer for Double Check Used Cars!

KOKOMO NEWS

John W. Henderson went to Brownwood on Saturday to visit with his nephew, W. T. Henderson of Rising Star, who is ill in a Brownwood Hospital.

The Claude Fullers visited with the Glenn Jordans on Thursday night.

Mr. and Mrs. A. F. Riddle and Sonia of Fort Worth spent the weekend with the John W. Hendersons.

Mrs. George Epler of San Angelo and Mrs. Wilburne Wood of Carbo visited with Mrs. Albert Hendricks during the weekend.

Mr. and Mrs. Wayne Eaves

visited in Dallas with Lyndall Morrow and Mr. and Mrs. J. L. Morrow on Sunday afternoon. They reported that Lyndall seemed a little better.

Mr. and Mrs. Jim Levallen of Muleshoe spent the weekend with their daughter, Mr. and Mrs. Glenn Jordan, Glenda and Teddy.

Mrs. W. S. Creager and Alma Lee of Levelland are visiting with Larry Morrow while his parents are in Dallas. They visited with the Morrrows in Dallas on Sunday. Mrs. Creager is Mrs. Morrow's mother.

Mrs. R. Q. Graham visited in Gorman on Sunday with her mother, Mrs. Ennis Lassater.

Bobby and Johnny Eaves spent

Sunday with Danny Snider.

Mr. and Mrs. Odie Rodgers, Mrs. J. C. Timmons and Mrs. Claude Fuller attended the singing in Ranger on Sunday afternoon.

Mike Smith and his aunt, Mrs. Thad Swink, of Claburne visited with Rev. and Mrs. Euel Bryan and Linda on Sunday. Mike has accepted employment in Claburne and has moved there.

Visitors at the Kokomo Baptist Church on Sunday morning were Mrs. A. F. Riddle and Sonia of Fort Worth, Mr. and Mrs. Jim Levallen of Muleshoe, and Mrs. Allen Crosby of Staff, Kay Browning of Gorman was a visitor on Sunday night.

Tax Return Must Be Filed On Or Before April 16

All citizens or residents of the United States, including minors who had gross income of \$600 or more in 1961, must file a federal income tax return on or before

Mr. and Mrs. E. J. Graham of Rush Springs, Okla. and his mother, Mrs. Lela Graham of California, are visiting this week with Mr. Graham's uncles, R. Q. Graham and families.

Mrs. Glenn Jordan, Glenda and Teddy visited in Ranger with Mrs. Jackie Heath and children on Tuesday.

April 16, 1962, it was announced here today. Persons 65 or over on the last tax year day are not required to file such returns unless a gross income of \$1,200 or more was made during the year.

HAVE YOU TRIED IT YET?

Gillette Super Blue Blade Double Edged - Double Economy. 15 for \$1.00, 10 for 69¢. FITS ALL GILLETTE RAZORS.

MAJESTIC THURS. - FRI. - SAT. Columbia Pictures presents Wagner-Hart Jones Avalon Kovacs Sail a Crooked Ship



MISS DIXIE DURHAM (Photo by A&C Studio)

Dixie Durham To Charles Wolford

Durham of 1208... announces the approaching marriage of her daughter, Dixie, to Charles Wolford, son of Wolford of 309 Mar... plan to be married... is a 1959 graduate of Eastland High School and is presently employed with the Eastland National Bank. The prospective bridegroom is a 1959 graduate of Ranger High School and attended Ranger Junior College.

READ THE CLASSIFIEDS

BOWLING is FUN!

FREE! LEARN TO BOWL FROM EXPERT INSTRUCTORS... exciting sport; sign up for free lessons now. courteous, friendly and qualified instructor will teach beginners, or help others to improve their present game.

FIESTA BOWL EASTLAND

SAVED FOR IT! has a new kitchen beautiful husband saved for her. He put aside month in an earning our association a n d he had cash enough the contractor. You can

ASK ABOUT OUR HOME LOANS Federal Savings & Loan Association of Ranger Ranger, Texas Phone MI 7-1611

Chuck Wagon Jamboree

Chili 3 300's \$1.00 Gahardt's, No Beans YOU SAVE 4¢ Morrison's Peace-maker For Everything You Bake 5 -Lb. Bag 39¢ 114 W. Olive in Eastland 8:00 A.M. 6:00 P.M. Mon. Thru Sat.

Food Mart Biscuits Sweetmilk or Buttermilk 3 Pkg. 19¢ Strawberry Preserves Bama, Decorated 18-Oz. Tumbler 49¢ Prem Lunch Meat Swift's 12-Oz. Can 45¢ Cut Green Beans Del Monte 3 300's Cans 69¢ Grapefruit Juice TexSun Natural 2 46-Oz. Cans 49¢ Long-Grain Rice Comet Brand 2 -Lb. Pkg. 39¢

WORTH FOOD MART The SURE SIGN OF QUALITY!

HEAVY BEEF CHUCK ROAST 45¢ W.C.Q. HEAVY BEEF

POTATOES U.S. No. 1 REDS 10 -Lb. Cellulose Bag 39¢ LASSO THESE Dole Specials

Medium Size, Extra-Juicy Sunkist Lemons Full Dozen 29¢ Juice Oranges 2 Lb. 25¢ Royal Beauty Apples U.S. No. 1 19¢ Pascal Celery 19¢ Sweet Potatoes 2 Lb. 25¢ Carton Tomatoes 19¢

Dole Pineapple Chunks No. 211 Can 19¢ 2 Crushed No. 1 Flat Cans 29¢ Royal Puddings All Flavors Regular 5 Pkg. 49¢

Round Steak 79¢ Beef Arm Roast "W.C.Q." Heavy Beef 55¢ Cheese Slices Kraft Deluxe American or Pimiento 8-Oz. Pkg. 33¢ Fisher's "Beef Bacon" Breakfast Sliced Beef 69¢ Armour's Star Sliced Bacon 49¢

Meat Pies 5 8-Oz. Pkgs. \$1.00 Chicken Hot Cake 12-Oz. Pkg. 69¢ Early Java Pops 3 Buffet Cans 39¢ Jolly Time Pop Corn 16-Oz. Can 19¢ Hair Spray 89¢ Rapid-Shave 79¢ Dristan Tablets 89¢ Cough Syrup \$1.25

CLIP AND SAVE! 50 BONUS S&H STAMPS With This Coupon and Purchase of 5-Oz. Pkg. BANQUET MEAT PIES Valid After Sat., Jan. 27, 1962

UP TO 350 BONUS "S & H" GREEN STAMPS When You Redeem These Coupons on Purchases Indicated SHOP WORTH FOOD MART . . . SAVE MORE

CLIP AND SAVE! 50 BONUS S&H STAMPS With This Coupon and Purchase of 2(1) IMPERIAL MARGARINE Valid After Sat., Jan. 27, 1962



'SAIL A CROOKED SHIP'—Starring Ernie Kovacs, it is his final picture. Kovacs was killed recently in an auto wreck in California. 'Sail' is a fine comedy also starring Robert Wagner, Dolores Hart, Carolyn Jones, and Frankie Avalon. This picture plays at the Majestic Thurs., Fri., and Sat. only.

**HARMONY BAPTIST CHURCH**  
Bill Penland, Pastor  
Morton Valley  
Sunday 10:00 AM  
Morning Worship 11:00 AM  
Training Union 7 PM  
Evening Service 8:00 PM  
Monday  
Sunbeams and G. A. S. 4:00 PM  
Wednesday  
W. M. U. 2:00 PM  
Prayer Service 7:00 PM  
Visitation Thursday 7:00 PM

**FIRST CHRISTIAN CHURCH**  
Corner Olive & Lamar  
Ray Heckendorn, Pastor  
Nov. 23-24  
SUNDAY  
9:45 Church School  
11:00 Morning Worship  
7:00 Evening Vespers  
WEDNESDAY  
5:00 Junior Choir  
6:30 Adult Choir

**CALVARY BAPTIST**  
REV. FLOYD OSBORN  
207 N. OAK ST.  
SUNDAY  
10 a.m.—Sunday School  
11 a.m.—Morning Worship  
7 p.m.—Prayer Service  
7:30 p.m.—Evening Worship  
WEDNESDAY  
7:30 p.m.—Midweek Prayer Service

**FLATWOOD METHODIST CHURCH**  
James W. Waller, Pastor  
Sunday 9:45 AM  
Sunday School 11:00 AM

# CHURCH NEWS

**CHURCH OF CHRIST**  
Corner of Plummer and Daugherty  
Cory B. Adams, Minister  
SUNDAY  
9:30 a.m. — Bible Classes For All Age Groups  
10:20 a.m. — Morning worship  
2:00 p.m. — Visitation of Shut-ins  
6:00 p.m. — Young Peoples' Meeting  
7:00 p.m. — Evening Worship  
WEDNESDAY  
9:30 a.m. — Ladies' Bible Class  
7:00 p.m. — Prayer Meeting and Bible Study

**OLDEN BAPTIST CHURCH**  
Sunday 9:45 AM  
Morning Worship 11:00 AM  
Training Union 6:00 PM  
Evening Service 7:00 PM  
Wednesday  
Prayer Service 7:30 PM

**FIRST PRESBYTERIAN CHURCH**  
Rev. Eugene Surface, Pastor  
Sunday  
10:00 a.m. - Church School  
11:00 a.m. - Divine Worship  
12 noon - Monthly meeting of the Church Session on the Sunday after the first Wednesday.  
Tuesday  
9:30 a.m. - United Presbyterian Women meet on the first and the third Tuesdays of each month.  
Wednesday  
9:00 a.m. - Worship with Sermon over KERC radio.

**CHURCH OF THE NAZARENE**  
Rev. Clarence Manners  
631 W. Main  
Sunday  
10—Sunday School  
11—Morning Worship  
6:15 p.m.—N.V.P.S.  
7 p.m.—Evening Services  
Wednesday  
7 p.m.—Mid-week Prayer Service  
Friday  
Noon—Prayer and Fasting  
3:15 p.m.—Children's Hour

**CHRISTIAN SCIENCE**  
Plummer and Lamar  
Sunday  
9:45 a.m.: Sunday School  
11 a.m.: Sunday morning service.  
Wednesday  
7:30 p.m.: Mid-week Service  
The public is cordially invited.

**BETHEL BAPTIST CHURCH**  
Rev. Jimmy Roberts, Pastor  
1304 W. Main  
SUNDAY  
9:45 a.m.: Sunday School  
11 a.m.: Morning worship  
6:30 p.m.: Training Union  
7:30 p.m.: Evening Worship  
WEDNESDAY  
6:15 p.m.: Primary teachers and officers meet  
7:30 p.m.: Midweek prayer  
8:15 p.m.: Choir practice

**FIRST BAPTIST CHURCH**  
Rev. Haston Brewer, Pastor  
108 W. Plummer  
SUNDAY  
9:45 a.m.: Sunday School  
11 a.m.: Morning Worship  
6:15 p.m.: Training Union  
7:30 p.m.: Evening Service  
TUESDAY  
9:30 a.m. & 1 p.m.: WMU Mission Study and Luncheon  
WEDNESDAY  
6:45 p.m.: Sunbeam Band  
Royal Ambassadors  
Girl's Auxiliary  
S.S. Superintendents  
7 p.m.: Teacher's Meeting  
7:45 p.m.: Prayer Meeting  
8:30 p.m.: Church Choir

**JEHOVAH'S WITNESSES**  
CURTIS BOASE  
204 N. Dixie St.  
SUNDAY  
3 p.m.: Watchtower Bible Study  
WEDNESDAY  
8 p.m.: Mid-week Bible study  
FRIDAY  
7:30 p.m.: Service meeting  
8:30 p.m.: Theocratic Ministry school

**CARBON METHODIST CHURCH**  
James W. Waller, Pastor  
Carbon  
Sunday  
Sunday School 10:00 AM  
Morning Worship 11:00 AM  
Methodist Youth Fellowship 6:00 PM  
Evening Service 7:00 PM  
Wednesday  
Mid-week Service 7:00 PM

## Vows Read For Kathie Jones; Robert Crain

Miss Kathie Marie Jones of 1103 W. Missouri, Midland became the bride of G. Robert Crain of 2112 Brunson, Midland in a double ring ceremony performed January 13.



MRS. G. ROBERT CRAIN

Dr. Timothy W. Guthrie officiated the ceremony at 7:30 p.m. in the home of the groom's parents, Mr. and Mrs. Giles Boyd Crain, 2112 Brunson.

The bride is the daughter of Mr. and Mrs. S. B. Jones of 204 N. Ammerman, Eastland. Mrs. Jerry D. Payne of Midland attended as matron of honor. She wore a pure silk beige sheath dress with matching hat and shoes and carried a bronze mum bouquet.

Lt. Jimmy Giles Crain of Big Spring served as best man.

For her wedding, the bride chose a white winter sheath dress with matching jacket. She wore a white net hat and white matching shoes. Her bridal bouquet was of white shredded carnations atop a white Bible.

The reception immediately followed in the home of the groom's parents. Members of the house-party included Mmes. Ken Randall, Bobby Sam Hanson, Tim Fambrough, Bud Coulston and Misses Mildred Wald and Wilma Crain.

The couple are at home at 305 S. Dallas in Midland.

Mrs. Crain is a member of the Beta Sigma Phi, Chapter Phi Alpha Theta and the Midland Ski Club. She is presently employed with the Humble Oil and Refining Co.

The bridegroom is attending Odessa College.

Out of town guests included Mrs. S. B. Jones of Eastland, Mr. and Mrs. Tim Fambrough of Odessa.

See Me For Your Real Estate Needs Will Build To Suit You M. A. TREADWELL, SR. Phone MA 9-2017

**UNITED PENTECOSTAL CHURCH**  
208 N. Dixie  
Rev. Freddie Waldrep  
SUNDAY  
9:45 a.m.: Sunday School  
11 a.m.: Morning Worship  
7:45 p.m.: Evening Service  
WEDNESDAY  
7:45 p.m.: Prayer Meeting  
SATURDAY  
7:45 p.m.: Pentecostal Conquerors.

**FIRST METHODIST CHURCH**  
WM. S. FISHER, PASTOR  
215 S. Mulberry  
SUNDAY  
9:45 a.m.: Church School  
10:35 p.m.: Worship Service  
6:15 p.m.: Youth Fellowship  
7 p.m.: Evening Worship  
TUESDAY  
9:30 a.m.: W.S.C.S.  
WEDNESDAY  
7:30 p.m.: Choir rehearsal  
Wesleyan Guild every 1st & 3rd Wednesdays  
Official Board Monday after 1st Tuesday  
Five Commissions — every 1st Monday

**BOOK YOUR PEANUT SEED - NOW!**  
... to get the BEST Seed!  
... the size you want!  
... when you want it!  
make reservations for  
WILCO  
Certified SPANTEX  
or  
HI-BRED  
Certified STARR  
PEANUT SEED  
A 5¢ deposit per pound will reserve your order at your local authorized seed dealer ... or write to:  
WILSON COUNTY PEANUT CO.  
La Vernia  
Texas  
The Southwest's Exclusive Seed Plant

**HOSPITAL**  
Patients in the Eastland Memorial Hospital are as follows:  
Ethel Julia Pryor, medical, Eastland  
Jeanie Hanna, medical, Eastland  
Mrs. Joyce Ingram and baby boy, Cisco  
William Bailey Enson, medical, Eastland  
Betty Ruth Gooch, medical, Cisco  
Mrs. Clara O. Hallmark, medical, Cisco  
J. B. Anderson, surgical, Gorman  
Mrs. Golda Wilson, medical, Cisco  
Mrs. Clida C. Wharton, medical, Eastland  
Messe W. Wooden, medical, Cisco  
Augusta Mae McCoy, surgical, Eastland  
Mrs. Posephine White, medical, Comanche  
Barbara Marie Butler, surgical, Eastland  
Federica Jimenez Jr., medical, Strawn  
Brooks Herring, medical, Eastland  
Tamra Coreen Reed, medical, Eastland  
Mrs. Margie Bagget, medical, Eastland  
Mrs. Ollie Porter, medical, Cross Plains  
Guy Quinn, medical, Eastland  
Mrs. Molly Poe, medical, Eastland  
Gary Daniel, medical, Eastland  
Lori Williams, medical, Eastland  
Mrs. Mildred Sprinkle, medical, Eastland  
Mrs. Ida Dickson, medical, Eastland  
D. L. Houle, medical, Eastland  
Mrs. Mary Stark, medical, Olden  
Mrs. Betty Hart, medical, Eastland  
Mrs. Mary Loper, medical, Eastland  
John Tucker, medical, Eastland  
Mrs. A. F. Taylor, medical, Eastland  
Roger Noble, surgical, Cisco  
Mrs. Ella Medford, medical, Eastland  
Bert Ray Kent, medical, Eastland  
Wesley D. Keller, medical, Eastland  
Dismissed were Elbert Gourley, John Comegys, Dinnie Brooks, Claudia Bulgerin, Mrs. Caille Smith, Miles P. Pharris, Mrs. Ora Mae Hallmark, Ann Mangum, Debra Williams, Bobby Wayne Reed, Mrs. Addie Evans and Mrs. Lilly Brown.

**REVIVAL**  
JAN. 25 - FEB. 4  
7 P. M. DAILY  
Rev. Joe Norton of Hamlin, Evangelist  
Music Directed by Tommy Manners  
Rev. Clarence Manners, Pastor  
EVERYONE WELCOME  
**CHURCH OF THE NAZARENE**  
W. Main & Connellee St.

**HAMNER FUNERAL HOME**  
Ben E. Hamner, Owner  
Serving Eastland County since 1924 with ambulance and funeral service. Our ambulances are oxygen equipped and air conditioned.  
Through our nation-wide connections with other funeral directors, we can handle a funeral from any point in America. We offer this service knowing that we can relieve the family of all burdens incident to any death away from home.  
Eastland Dial MA 9-2611

**In All Sincerity—**  
... we want to pause for a moment in this busy world to thank you for your friendship and good will and to tell you how much we have enjoyed doing business with you for these many years past and gone. May the New Year, 1962, bring you Peace, Happiness and Prosperity in abundance.  
**EARL BENDER & COMPANY**  
Abstracts since 1923  
Sibyl Davis, Pat Miller, Willie Bender, Annette Miller, Irby White, June Durham, Cathey Owen and Doris Kent.

**SINCE 1884**  
... quality workmanship and efficient service, approved throughout this area.  
**ALEX RAWLINS & SONS**  
W.atherford Phone LY 4-2726 Texas  
Designers and Builders of Monuments Since 1884

**Hamner Life Insurance Company**  
Ben E. Hamner, President  
This company has been in operation in this section since 1942 selling policies to be used primarily for burial purposes. We write from \$100 to \$600 and our policies are paid in cash, which allows freedom in the selection of the Funeral Director of your choice.  
Ages from 1 month to 90 years.  
For further information come by to see us at  
Hamner Funeral Home, 301 S. Lamar, Eastland  
P. O. Box 431 Dial MA 9-2611

**Worship Service Time Changed**  
Rev. Lee Fields of Carbon announced today that his weekly worship service broadcasting time has been changed.  
New time for the service is 8:20 to 9 a.m. each Sunday broadcast over KERC radio.  
**ASSEMBLY OF GOD**  
Rev. Frank Evans, Pastor  
SUNDAY  
9:45 a.m.: Sunday School  
11 a.m.: Morning Worship  
6:45 p.m.: Christ Ambassadors  
7:30 p.m.: Evening Service

**HOME ON LEAVE**  
Burton Norris who is serving with the 49th Armored Division in Fort Polk, La. spent the weekend here visiting with his wife, Betty, and his parents, Mr. and Mrs. Ray A. Norris.

**LOVELACE**  
EASTLAND TEXAS  
Phone MA 9-2440  
—Local and Long Distance Moving Since 1928—

**NOW... LIVELINESS AND LUXURY IN A FULL LINE OF LOW-PRICED CARS CHEVY II**  
Eleven new-size models make One-Stop Shopping easier than ever at your Chevrolet dealer's  
Nothing fair to middling about the spacious and spunky new lineup of low-priced cars from Chevrolet! From the looks of these nifty top-of-the-line Novas (unmistakably new), you'd never guess they're so easy to own. Even some bigger cars wonder how we got so much full-size family room into such a parkable package—and such hustle out of a 6 that sips gas so sparingly. Your dealer will point out more reasons why luxury and a low price have never been more beautifully blended!

**VISITS**  
Mr. and Mrs. Clinton Ray Humphreys of Alpine spent the weekend in Eastland visiting with their parents, Mr. and Mrs. Raymond Beck and Mr. and Mrs. Vernon Humphreys.  
Clinton and Nancy are students at Sul Ross in Alpine.  
— READ THE CLASSIFIEDS —

Mr. and Mrs. Jerry and Becky of Abilene spent the weekend visiting in Eastland with their parents, Mr. and Mrs. Hallmark of Eastland and Mrs. Vern Garret of Gorman.  
While here they also visited the home of Mrs. Betty and family, Mr. Jimmy Little, Ray and daughter of Route two, Eastland.

**IT PAYS TO BUY THE LARGE ECONOMY SIZE**  
Save 36c  
WILLIAMS ELECTRIC SHAVE  
Gt. Size — Reg. 1.86  
ONLY \$1.50

Save 40c  
GILLETTE Suped Blu Blades Gt. Foamy Shave  
ONLY 1.10

Save 20c  
PHILLIPS Giant Size MILK OF MAGNESIA  
Reg. 1.10

Save 29c  
LAVORIS MOUTH WASH AND GARGLE  
Reg. 1.29 — \$1.00

**MID-WINTER HEALTH NEEDS**  
Preparation "H" OINTMENT  
Reg. 1.69 — \$1.49

Dr. Caldwell's Senna Laxative Syrup Pepsin  
Reg. 1.25 — 98c

VITAKE - 12-oz.  
Liquid — Multivitamins By Lederle— Children's Favorite— CHERRY FLAVORED  
Reg. 3.75 — \$3.00

Isodine GARGLE  
Reg. 1.69 -

VICKS VapoRub  
Reg. 1.00 -

COLDEN Vitamin Tonic  
Iron  
Giant Size  
Reg. 1.98 -

**CENTRAL DRUG**

See the new Chevy II, new Chevrolet and new Corvair at your local authorized Chevrolet dealer's  
**FULLEN MOTOR COMPANY INC.**  
305 E. MAIN EASTLAND PHONE MA 9-2676



**MORE PROOF**

**Money Savers!**

- Jell Well Gelatin Assorted flavor desserts, 4 3-Oz. Pkgs. **29¢**
  - Powdered Milk Lucerne Non-Fat Dry, 12-Oz. Size **89¢**
  - Wedding Oats Crystal packed, 16-Oz. Pkg. **21¢**
  - Peanut Butter Nu Made Creamy or Chunky, 12-Oz. Jar **39¢**
  - Pack Train Syrup Waffle and Pancake, 1 1/2-Lb. Decanter **24¢**
- Low Prices!**
- Sandwich Spread Nu Made, 16-Oz. Jar **41¢**
  - Zippy Pickles Whole Sour or Dill, 22-Oz. Jar **29¢**
  - Piedmont Vinegar White, Pint Bottle **11¢**

**Loads of Savings!**

- Biscuits Ballard Sweetmilk or Pillsbury Buttermilk, 3 8-Oz. Cans **29¢**
  - Longhorn Cheese Best Buy Label, Lb. **59¢**
  - Sno White Salt Plain or Iodized, 26-Oz. Box **10¢**
  - Pooch Dog Food Regular or Liver Flavored, 3 1-Lb. Cans **25¢**
  - Facial Tissues Truly Fine Assorted colors, 400-Ct. Box **21¢**
  - Breeze Detergent For the washday, Giant Box **70¢**
  - Liquid Brocade Detergent, For dishes, 22-Oz. Can **37¢**
  - Evergreen Broom A real good buy, Reg. **\$1.09**
- FRESH EGGS**



**Always Fresh at Safeway!**

- Fresh Milk Blossom Time Homogenized, 2 1/2-Gal. Cartons **92¢**
- Chocolate Milk Lucerne, Quart Carton **28¢**
- Coffee Cream Lucerne, 1/2-Pt. Carton **31¢**
- Cottage Cheese Lucerne All Styles, 1-Lb. Carton **31¢**

**MORE PROOF That ALL Prices are Lower at Safeway! Weekend Specials, Everyday Low Prices**

- Potato Chips Morton—For snacks, 7-Oz. Pkg. **39¢**
- Hydrox Cookies Sunshine, For parties, 11 1/2-Oz. Pkg. **39¢**
- Parkay Margarine Kraft, Easy spreading, 1-Lb. Ctn. **28¢**
- Sliced Cheese Kraft American, Pimiento or Swiss, 5/8-Lb. Pkg. **35¢**
- Cake Mixes Betty Crocker Country Kitchen Assorted Kinds, 19-Oz. Box **39¢**
- Cake Frosting Betty Crocker Fluffy White, 6 1/2-Oz. Pkg. **31¢**
- Instant Coffee Maxwell House, 4-Oz. Jar **80¢**
- Lifebuoy Soap Coral color, 2 Bath Bars **33¢**

- Giant Tide** Detergent, White Magic... Giant Box **59¢**
- Coffee** Folgers All Grinds, (Edwards Coffee... 2-Lb. Can \$1.19) 2-Lb. Can **\$1.19**
- Enriched Flour** Harvest Blossom, 5-Lb. Bag **33¢**
- Mellorine** Joyett Vanilla, Chocolate, Strawberry or Neapolitan, 1/2-Gal. Ctn. **39¢**

**This Coupon Worth 100 FREE GOLD BOND STAMPS**  
Plus your regularly earned Gold Bond Stamps with the purchase of **FOUR — No. 2 1/2 Cans Sundown ELBERTA PEACHES**  
Coupon Expires January 27, 1962.

**This Coupon Worth 100 FREE GOLD BOND STAMPS**  
Plus your regularly earned Gold Bond Stamps with the purchase of **FOUR — 6-Oz. Cans Bel-air Frozen ORANGE JUICE**  
Coupon Expires January 27, 1962.

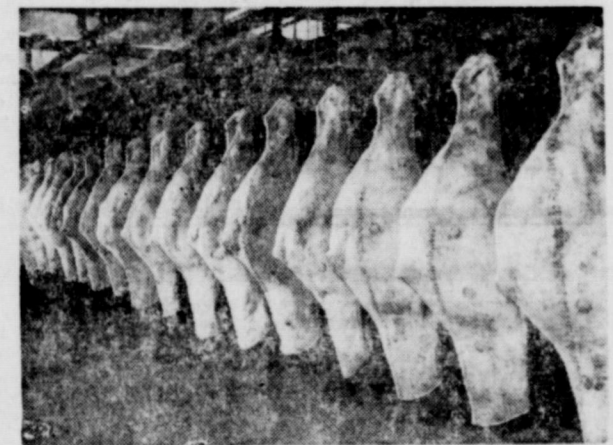
**This Coupon Worth 100 FREE GOLD BOND STAMPS**  
Plus your regularly earned Gold Bond Stamps with the purchase of **TWO — 2-Lb. Bags Bel-air FROZEN MIXED VEGETABLES or CUT WHOLE KERNEL CORN**  
Coupon Expires January 27, 1962.

**This Coupon Worth 50 FREE GOLD BOND STAMPS**  
Plus your regularly earned Gold Bond Stamps with the purchase of **Any Two Lucerne Delicatess Salads, Dips or Dressings**  
Coupon Expires January 27, 1962.

**Safeway Baby Beef Sale!**

**Chuck Roast 45¢ Lb.**

Serve your family generous portions of Baby Beef Chuck Roast tonight. (Arm Roast... Lb. 55¢)



**U. S. D. A. Graded 'A'**

**STEWING Chickens 29¢ Lb.**

2 1/2 to 4-Lb. Avg. U.S.D.A. Graded "A" and inspected for wholesomeness. Whole.

**Short Rib 29¢ Lb.**

Or Brisket. Baby Beef.

**Rib Steak 69¢ Lb.**

Tender and flavorful. Baby Beef.

**Pork Values, Too!**

**Bacon 2-Lb. 89¢ Pkg.**

Safeway Thick Sliced. A breakfast treat.

**Sausage 2-Lb. 79¢ Pkg.**

Wingate Pure Pork. Regular or Hot.

**Bakery Features!**

**Crushed Wheat Bread 19¢ 1-Lb. Loaf.**

Skylark. Real nutty flavor. Regular 23¢ value.

**Club Rolls 21¢ 12-Oz. Pkg.**

Skylark 6-count. Reg. 23¢ value. "2¢ off."

**French Bread 25¢ 1-Lb. Loaf.**

Skylark Foil Wrapped.

**Profile Bread 25¢ 1-Lb. Loaf.**

Perfect for sandwiches.

- Extra Fluffy All Detergent, 3 Lb. Ctn. **75¢**
- Liquid Lux Detergent, 12-Oz. Bottle **35¢**
- Liquid Swan Detergent, 12-Oz. Bottle **35¢**
- Liquid Wisk Detergent, 32-Oz. Can **65¢**
- Charmin Tissue Assorted colors, 4 Roll Pack **37¢**
- Charmin Napkins Paper, White, 2 80-Ct. Pkgs. **27¢**

**Preserves 4 10-Oz. Jars \$1.00**

Empress Apricot, Peach, Grape or Strawberry.

**Shortening 3-Lb. 59¢ Can**

Velkay.

**Biscuits 6 8-Oz. Cans 43¢**

Mrs. Wright's Sweetmilk or Buttermilk.

**Bel-air Frozen Peach Pie 35¢ 1 1/2-Lb. Pie**

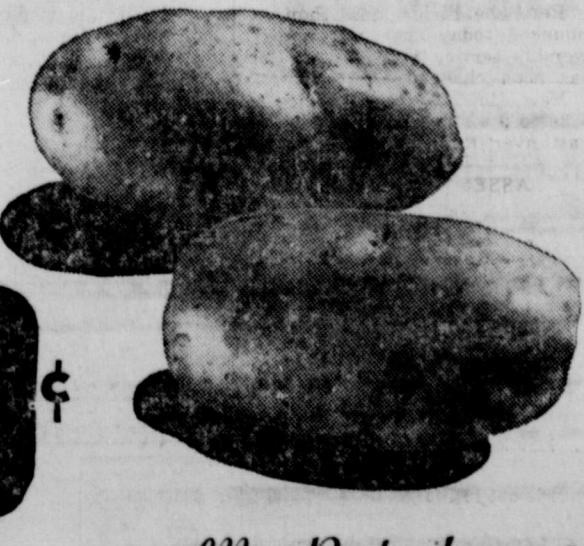
Serve your family a large 8-inch frozen pie.

**Safeway Fresh Produce!**

**Potatoes 10 1-Lb. 49¢ Bag**

U. S. No. 1 Russets.

Ideal for baking, boiling or frying.



**Health & Beauty Aids!**

**Shaving Cream 49¢ 6 1/4-Oz. Can**

Gillette Foamy, Reg. or Menthol. (Regular 69¢ value.)

**Bayer Aspirin 53¢ 100-Ct. Bottle**

Tablets. For headache relief. (Reg. 65¢ value.)

**Apples 15¢ Lb.**

Washington State extra fancy Winesap.

**More Produce!**

**Yams 2-Lbs. 25¢**

Texas' Finest. Kiln dried.

**Romaine 19¢ Lb.**

The aristocrat of the salad lettuce.

**This Coupon Worth 50 FREE GOLD BOND STAMPS**  
Plus your regularly earned Gold Bond Stamps with the purchase of **5-Lb. Bag ORANGES**  
One Per Customer • Coupon Expires January 27, 1962.

**This Coupon Worth 50 FREE GOLD BOND STAMPS**  
Plus your regularly earned Gold Bond Stamps with the purchase of **ANY CUT-UP FRYER**  
One Per Customer • Coupon Expires January 27, 1962.

**Redeem this Coupon for 50 FREE GOLD BOND STAMPS**  
with the purchase of \$5.00 or more  
One Per Customer • Coupon Expires January 27, 1962.

Prices and Coupons Effective Thurs., Fri. and Sat., Jan. 25, 26 and 27 in Eastland  
We Reserve the Right to Limit Quantities. No Sales to Dealers.

**Comparison proves again and again...ALL prices are low at SAFEMAY**

READ THE CLASSIFIEDS

### MATTRESSES

Save up to 50% renovating choice of color and firmness. Complete bedding. Made and guaranteed by WESTERN MATTRESS CO., San Angelo. Phone MA 9-2849, Eastland and leave address.

### Officers Elected At Joint Meeting Of MV 4-H Club

The Morton Valley 4-H Clubs met Wednesday for their regular joint meeting in the Community Clubhouse. The following slate of officers were elected for the ensuing year: Danye Sherman, president; Diane

Yancy, vice president; Alta Jo Flower, secretary and treasurer; Janet West, reporter; and Lela Lee, council delegate. Miss Melbadean Hohertz, Home Demonstration Agent, presented a program on "Good Breakfasts." She announced that a county wide survey is being made in order to determine how many 4-Hers eat a nourishing breakfast. Members of the Morton Valley club held a good average.

Ten members and two adult leaders were present. They include Mrs. R. M. Kincaid and Mrs. J. D. West, Danye Sherman, Kathy Kincaid, Eddie Kincaid, David Hark, Roy Finley, Diane Yancy, Alta Jo Fowler, Lela Lee, and Janet West.

### Art Club Members Elect Officers At Meet Thursday

Members of the Eastland Art Club met Thursday in the home of Mrs. Homer White for their regular meeting and the election of officers.

Mrs. Ita Parrish, outgoing president, presided over the business session.

Officers elected for the new year include Mrs. Gerald Wingate, president; Mrs. Ed Layton, vice president; Mrs. Varge Daniel, secretary and treasurer; Mrs. Homer White, social secretary; and Mrs. Joe Tow, reporter. Members of the purchasing committee are Mrs. Francis Urban and Mrs. Mary Hood.

Members of the club made plans for the new year which includes an art exhibit.

Two new members, Mrs. Clara Cockrill and Mrs. Howard Sherman, were welcomed into the club.

The afternoon was spent by members working on oil and china paintings.

A refreshment plate of sandwiches, lemon pie, tea and coffee was served to the following members present: Mmes. Clara Cockrill, Varge Daniel, Mary Hood, Nora Hudson, Ed Layton, H. B. MacMoy, Ita Parrish, Francis Urban, Gerald Wingate and the hostess, Mrs. White.

### Thursday Club To Continue Sale Saturday

A Spokesman for the Thursday Afternoon Club announced today that their rummage sale will be continued Saturday from 9 a.m. to 3 p.m. in the Leslie Building.

The sale, held Friday and Saturday of last week, was reported a success and many new items will be available for the continuation sale.

The public is cordially invited to attend this sale.

READ THE CLASSIFIEDS

### New Arrivals

Mr. and Mrs. Jon Tate of Fort Polk, La. have announced the arrival of a daughter, Nanci Dee, born in the Woodland Heights Hospital in Lufkin January 19 at 2:30 a.m. At birth, Nanci weighed two pounds and four ounces.

Mrs. J. C. Durham of 1208 W. Main, Eastland is the baby's maternal grandmother. Mr. and Mrs. Sya Tate of Crystal City are the paternal grandparents.

Mr. and Mrs. John Kidd of Route one, Eastland are the parents of a new daughter, Brenda Marie, born January 15 at 6:15 a.m. in the Ranger General Hospital. At birth, Brenda weighed eight pounds and 12 ounces. Brenda has one sister, Sherry Dee, two years old.

Grandparents are Mrs. Clyde Bond, Route one, Eastland and Mr. and Mrs. Bennie Kidd of Sweetwater. Mrs. Annie Palmer of Route one, Eastland is the maternal great-grandmother.

Benny Warren, who is employed in Abilene, spent the weekend in Eastland visiting in the home of his parents, Mr. and Mrs. H. D. Warren.

### LITTLE DAMAGE

Little damage resulted from a fire at the home of J. B. Kendrick, 909 Halbryan. Local firemen answered the call Monday around 12 noon.

### VISITS HERE

Buster Graham, who is with the 40th Division in Fort Polk, La. visited over the weekend with friends and relatives.

### WEEKEND GUESTS

Mr. and Mrs. Jimmy Sandlin and Larry of Abilene were weekend guests in the homes of their parents, Mr. and Mrs. Dean Collins and family and Mr. and Mrs. D. D. Sandlin and family of Carbon.

Read the Classifieds

READ THE CLASSIFIEDS

WE BUY AND SELL USED FURNITURE Phone MA 9-1746 WAYNE JACKSON

# NOTICE !!

To our many friends and customers, let us say thank you for making our sale a success. There may be those of you who do not know that we have had a sale, because tabloids could not be distributed locally because of weather conditions. This sale was to have been over the 20th of January, but because tabloids were not distributed locally, we will continue it until Feb. 1st. We have many good buys left in hardware and house-ware items. Come shop our store and see these exceptional values and while you are in our store, sign an entry blank for a FREE CARIBBEAN CRUISE for the family or one of 64 other prizes—"You may be a winner".

- Sale
- \* Household Brooms - \$1.00 - Reg. 1.45
- Laundry Baskets - 99c - Reg. 1.49
- Ironing Board Pad & Cover - 88c - Reg. 1.10
- 4-Qt. Mirror Matic Cooker - 7.77 - Reg. 8.95

- Sale
- \* 8Ft. Booster Cables - 1.59 - Reg. 3.75
- 20-Gal Garbage Can - 2.98 - Reg. 3.59
- 6-Pc. Screwdriver Set - 66c - Reg. 79c
- .22 Cartridges - From 49c

## Western Auto Associate Store

East Side of Square - Eastland



# Southwest's easiest-to-own fine car

Photo courtesy of the Standard Oil Co.

## '62 Galaxie by Ford

- New Thunderbird Power! Thunderbird pow—and how—from Thunderbird's own new 390-cubic-inch V-8 (optional at extra cost).
- New Thunderbird Flair! Elegant Thunderbird-type roofline... luxurious new interiors... distinctive new colors!
- Beautifully Built to be More Service-Free! Routine maintenance is cut to the minimum... only twice a year on most items!
- New Lower Galaxie Price for '62! With all the above advantages... plus a quiet new ride that whispers "quality"... the '62 Galaxie actually costs less than last year! Hundreds less than other cars with far less to offer. See the new Galaxie... and the Galaxie/500 (shown here)... at your Ford Dealer's today.

BUY NOW—AND BE A FULL YEAR AHEAD!

### HOOD KING MOTOR COMPANY

100 E. Main Eastland Phone MAIn 9-1786



## WE GIVE Round-Up STAMPS

Count the Savings

MAXWELL HOUSE INSTANT COFFEE 6-Oz. Jar 69¢

WESTERN GOLD BUTTER Pound Carton 69¢

WHITE SWAN BISCUITS 3 10-Oz. Cans 25¢

SKINNER'S MACARONI or SPAGHETTI 2 7-Oz. Boxes 27¢

SKINNER'S RAISIN BREAD 11-Oz. Pkg 27¢

ARMOUR'S VIENNA SAUSAGE 15-Oz. Can 73¢

ARMOUR'S CORNED BEEF HASH 15-Oz. Can 49¢

ARMOUR'S TREET Luncheon Meat 12-Oz. Can 49¢

COMET RICE Long Grain 12-Oz. Ctn 19¢

QUANTITY RIGHTS RESERVED

PRICES GOOD THROUGH SATURDAY, JANUARY 27

Amour Star Sliced BACON 1 Lb. 55¢

Boston Butt Pork ROAST 1 Lb. 45¢

Rath Black Hawk Pure Pork Sausage 2 Lb. 75¢

Wilson's Corn King Fully Cooked PICNIC 3 Lb. \$1.99

SUNSHINE HI-HO CRACKERS 12-Oz. Pkg. 29¢

WORTH BLUE or YELLOW LABEL DOG FOOD 300 Can 10¢

KRAFT'S PARKAY MARGARINE Pound Carton 29¢

KRAFT'S American, Pimento, Caraway or Swiss CHEESE 8-Oz. Pkg. 33¢

CRISCO SHORTENING 3-Pound Can 79¢

WHITE SWAN TEA 1/2-Pound Pkg. 29¢

IMPERIAL or DOMINO SUGAR 5 Pound Bag 49¢

Pure Cane

BAMA STRAWBERRY PRESERVES 12-Oz. Jar 25¢

WAPCO CATSUP 2 12-Oz. Bottles 29¢

WHITE SWAN PINTO BEANS 2 300 Cans 25¢

WHITE SWAN HOMINY White or Golden 2 300 Cans 19¢

Neuhoffs Lone Star THICK SLICED BACON 2 Lbs. 89¢

Fresh Pork

Ribs Lb. 49¢

MacMOY'S Super Save 400 S. Seaman Home Owned—Home Operated

Market Sliced Bologna Lb. 45¢

Special Domino Cane Sugar

Imperial Sugar

La CHOY CHOW MEIN NOODLES 300 Pkg 17¢

La CHOY BEAN SPROUTS 300 Can 17¢

La CHOY CHOP SUEY VEGETABLES 300 Can 33¢

FROZEN FOODS

BANQUET FROZEN POT PIES Chicken, Beef or Turkey 8-Oz. Pkg. 19¢

Cello Bag CARROTS 2 For 25¢

