

Eastland Exes Move Into High Gear

Eastland's taking a deep breath with the coming of Spring, in wild anticipation of a summer that will feature the 1975 Eastland High School Ex-Student Homecoming on June 20, 21, and 22.

Gigantic plans are being made; Exes around the world are already packing and making plans to vacation in Eastland for the big event. Subscriptions to the Telegram indicate that Exes are everywhere and they're all keeping up with planning.

Locally planning is frantic, with Exes President Carl Garrett riding herd over an army of volunteers getting ready for the big get-together.

Mrs. Evelyn Daniel and Bill B. Hart are in charge of the religious service which will be held at the Wendell T. Siebert Elementary School Sunday, June 22, when Dr. Cecil Peoples, President of Lone Morris University at Jacksonville will be the principal speaker. Dr. Peoples is the only Ex who is presently serving as a college president.

Mrs. Ima Ruth Taylor will be in charge of registration at the Elementary School Friday, June 20, with registrations to get a special souvenir pin with the school colors. Registration will be \$1.50 per person.

At the registration desk will be a representative for the Wendell T. Siebert Scholarship Fund, which is presently accepting contributors to help worthy students.

A golf tournament at Lone Cedar Country Club will be in charge of Neil Day, Bob Day and John Hart.

Saturday evening a barbecue catered by Vance Godby will be held at Maverick Stadium with Bob King in charge. Tickets will go at \$3.00 per plate and some 2,000 are expected.

Three big dances (count 'em) will be held Saturday night. One will be at the Lone Cedar Country Club. Another at the

Program Features

'The Costas'

"The Costas" will be in a Southern Assembly Program Friday, March 21, at 9:00 a.m. in the new gym. Admission is 15c.

This interesting couple from Spain - Portugal bring much of the old world charm to their fascinating performances. For awhile, the Great Isaac will astonish and amaze everyone with unbelievable tricks of magic and illusion; then Miss Dely will fascinate all with her skilled feats of balancing on the wire.

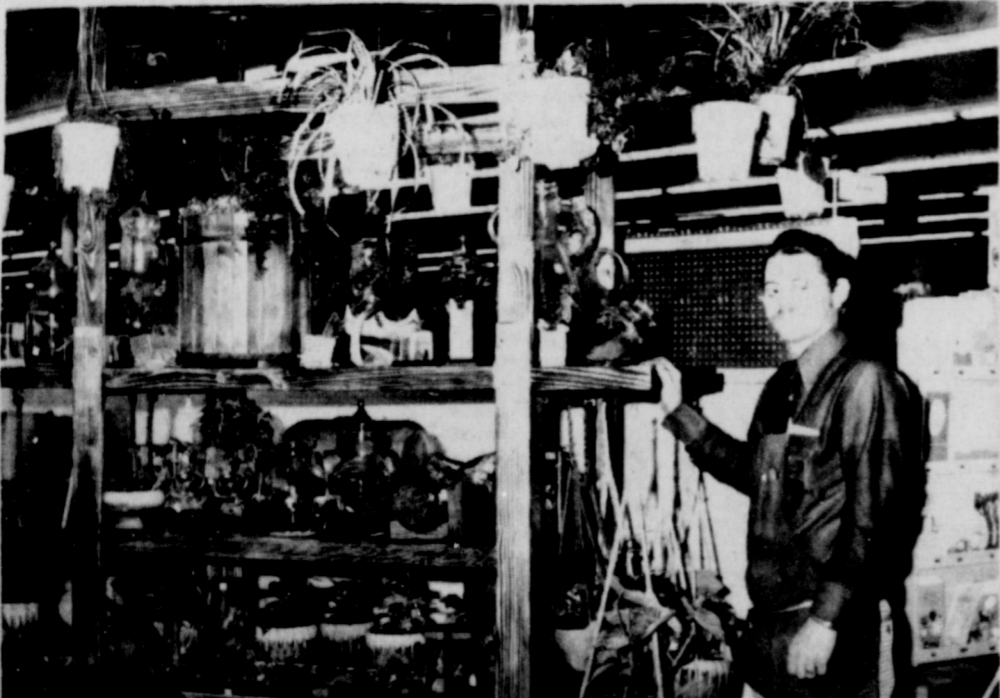
This fun-filled variety show presents a constantly changing tempo-tantalizing the eyes to believe the impossible!

8 Year Old Shot

Jimmy Woodall, eight years old of Gorman, was accidentally shot Tuesday afternoon, March 18, about 4 p.m.

He was wounded in the back and lung. He was first taken to the Gorman Hospital by an aunt and then was transferred to Hendrick Hospital in Abilene. He is reported to be in the Intensive Care unit at the hospital.

Jimmy is the son of Roger Woodall and the late Mary Woodall.



NEW JRB FEATURE- JRB Super Market Produce Manager Johnny Seabourn puts the finishing touches on the new live plant display at the JRB Store in Eastland. Carried are a large assortment of hanging baskets, terrariums, all kinds of potted plants, cacti, and other gift and decorating items. (Haines Photo)

EASTLAND TELEGRAM

Eastland, Texas 76448: Today's Center for Tomorrow's Future!

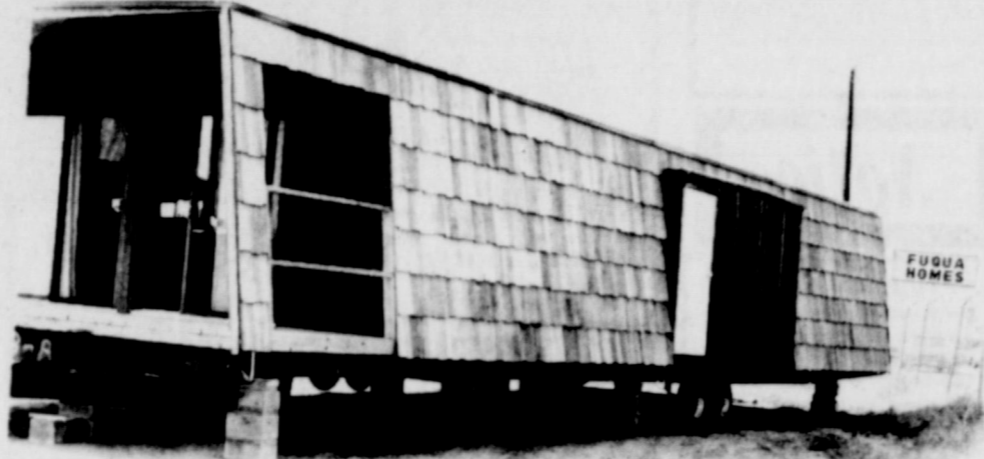
Thursday, March 20, 1975

Volume 46

Number 23

8 pages

10¢ EACH



On display at the Fuqua home plant north of Eastland is one of the new lake front models, which offers double-wide accommodations, large rooms, with beautiful surroundings. (Staff photo by Steve Haines).

City OK's Plant Changes

Eastland City Commissioners adopted a new parking ordinance, a flood insurance ordinance, and approved change orders for developments at the new wastewater treatment plant amounting to some \$10,000.

Three-fourths of the change costs would be paid by the federal government, if approved by the Environmental Protection Agency, and the remaining quarter would be paid by the City from a contingency fund established at the time the bond money was set up.

Mayor W.Q. Verner presided with all commissioners present, and Billy Jacobs of the engineering firm of Yeatts and Decker appeared requesting the modifications in keeping with recent regulations requiring additional testing at such plants.

The Commission approved the ninth payment to the contracting firm of \$22,998.55 for work finished to date. Jacobs reported that the project is some 90% complete, and clean up of the area is included in the plan changes.

Police Chief John Morren appeared before the commission requesting certain traffic changes which were granted.

PARALLEL PARKING Beginning immediately, parallel parking was established for the block on West Commerce St. west to the alley from Mulberry St. and north on Mulberry, east side only, from West Commerce to Main St.

FOUR WAY STOP A four-way stop sign situation will be established at the intersection of West Commerce and S. Daugherty, scenes in the past few years of several accidents, and no parking will be permitted on West Commerce St., north side only, from S. Daugherty St. westward to the alley.

The Commission unanimously approved the new parking ordinance and the flood insurance ordinance.

The group also discussed the Carl Garrett addition and took steps to get the water storage tanks on Park Hill repaired and the tennis courts at the park marked.

The commission also voted unanimously to secure the services of another auditing firm to do the 1974-1975 city audit. The city's fiscal year ends Aug. 31, and the audit will be due Dec. 1.

In other parking matters the Commission decided, in view of the cooperation of the general public in the effort to provide adequate parking for all and good traffic control, to reverse their former position on the parking fines. It was agreed that the parking fine would remain at 25 cents rather than going to \$1.00 as previously voted. However the \$5.00 fine will remain in effect for violations not paid within five days.



Jack Brown answers the only thing that was still in working condition following the twister which totally demolished his new home and heavily damaged the other. (Staff photo by Steve Haines).

Twister Wrecks Homes Near Mangum

BY STEVE HAINES

Area weather bulletins, reports, and tornado watches provided some (if the only) protection for the Jack Brown family who live near the Mangum Community northwest of Carbon. When a tornado touched down on their houses at almost 7:00 p.m. Monday, they were safe.

The tornado came in from the southeast. Jack showed us a large area of trees and fencing that had been torn down and uprooted by the twister.

He went on to say "My wife sought refuge immediately in a small closet in the older house we were living in while our new home (which was being built) directly on the west side of the older home) was being completed."

"As I started for the same door where my wife was, the tornado hit the houses and threw something which hit my head, but did not injure me seriously.

Mr. Brown also stated that the high winds only lasted a matter of seconds, which was

City street patching and repair work was discussed and City Manager Lewis Tiner reported that the program is continuing as weather permits.

A motion passed asking that the U.S. Corps of Engineers be requested to survey the North and South forks of the Leon River with a view to clean these for better water flow and flood control.

Approval was given for the installation of a street light at the corner of Marsh and Commerce St.

Commissioners discussed the serious problem now evident in which service station operators are permitting waste oil and grease to be discharged into the city sewer system. Action is to be taken to correct this problem.

In a special called meeting Tuesday afternoon, the Commission approved the annexation of Indian Hills addition north of town.

long enough to totally demolish the new home, scattering lumber insulation and furnishings over a half mile area to the north of the now, two foundations where the homes had set.

The older home where the Browns were still living was lifted up and completely moved off of its foundation a distance of twenty five to thirty feet, tearing off most of the roof and leaving this house also unable to be lived in.

If an early tornado such as the one endured by the Jack Brown family is any sign of what is in store for the rest of Eastland County this season, we may all need to secure our emergency provisions: Other communities in the county reported very high winds Monday night, with some area reports of as much as two inches of rain fall.

Services For J.M. Cauble Held Wednesday

Services for J.M. Cauble, 89, of Snyder, retired carpenter, were held at 10 a.m. Wednesday in Arrington Funeral Home Chapel.

Officiating was the Rev. Ben Marney, pastor of First United Methodist Church. Burial was in Rose Hill Cemetery in Handley, east of here.

Mr. Cauble died Monday afternoon in Snyder Nursing Home after a lengthy illness.

Born Sept. 16, 1885, in Putnam, Mr. Cauble married Edith Everett May 18, 1940, in Breckenridge. They moved to Snyder in 1956. He was a member of First Christian Church in Wichita Falls.

Survivors include his wife; three sons, Vernon of Wichita Falls, Joe of Eastland, and James of Austin; three daughters, Mrs. Keith Parker and Mrs. C.R. (Van) Grimmett, both of Fort Worth and Mrs. Joe (Louise) Wood of Seymour; 15 grandchildren; and seven great-grandchildren.

Two sons and a daughter preceded him in death.



GOOD NEWS: Friday, the 21st, officially marks the first day of Spring: hope the weather cooperates.

LOCAL SCHOOLS will dismiss Friday at 2:30 p.m. for the Spring Vacation week prior to Easter. Closing date for school will be May 23, with the baccalaureate set for May 25 and commencement, May 26.

DALE SCARTH, Texas Electric Service Co. executive of Fort Worth, (and an Eastland ex - resident of about 1949) was in town early this week visiting District Manager Frank Sayre and others in town.

SOMETHING GOOD'S going to happen in Eastland on June 7!

PLEASE DON'T FORGET: The Salvation Army Roundup for usable clothing, furniture, tools, utensils, etc., will be Saturday, March 22, on the South side of the square. The truck will be here at 2 p.m., but you may bring goods to be given to the worthy cause earlier as part of the street will be blocked off for this purpose. Mike Collins reports. The S.A. puts this material to good use and it's a program we can all help with.

CARBON EXES, scheduled to gather on the July 4 weekend for their five year get together, are hard at work and if you haven't been contacted if you're a CHS exe, write them at P.O. Box 551, Carbon, 76435. Chances are they've been looking for your address. Barbecue tickets are going on sale right away.

A **FAITHFUL** reader reminds us to invite all to take a drive south on Highway 6 to see a beautiful pear orchard in full bloom. Blossom - wise, the experts are guessing that maybe the low temperatures didn't do much damage, perhaps in the low areas maybe, but generally it's felt that so far, the fruit crop is safe. Apparently the next two weeks could tell the difference.

THE PARKS & Wildlife Dept. will be looking at liberalized bag limits all around in public meetings and in Eastland County in a public hearing to be held at the Courthouse at 10 a.m. on March 26. Proposal will be to increase the bag limit to three deer, no more than two bucks, with antlerless deer allowed by permits only. Last year's bag limit here was two deer, either sex.

STATEWIDE UNITED Fund tabulations just released show that Eastland did well. With a goal of \$10,050, \$12,150 was raised for a percentage of 120.9. They figure that at \$3.57 per capita.

TICKETS ARE now on sale for the All-Sports Banquet to be held April 5, at the Wendell T. Siebert Elementary School when Bob Wright of Texas A&M University will be the guest speaker. Va Vance Godby's will be catering and tickets are \$3.75 AND THAT'S A BUY. Better get yours now.

SAD TO report that the Eastland Jaycees have been advised by the Texas Peanut Producers Board that the organization no longer can underwrite the Annual Peanut Queen Pageant, BUT IT'S GOOD TO REPORT that the Eastland Jaycees will not give up the Pageant and are now making plans for the biggest and best ever right now. It's an Eastland Jaycee institution that deserves our support, and by all means it must continue in Eastland.

POLICEMAN'S FISH DERBY, postponed a few weekends ago due to foul weather, will be held Monday, March 24, Chief John Morren reports. Fun starts at 10 a.m. Monday at City Hall. Boys between 8 and 12 will be taken by policemen to a good fishing hole. They need to bring bait and gear. GRUB will be furnished.

Band At Concert

Eight Junior High students from the junior high band were in concert Saturday night with the North All-District Band. Two students, Lacey Gourley and Karen Perkins, were first chair winners. Also obtaining chairs in the honors band were James Doyle, Katrina Amburn, Johnny Ames, and Scotty Frost. Gina Swafford, and Kenneth Watson were members of the reading band. The North All-District Band is made up of the best bandsmen of twelve of the area junior high bands.

Graveside Rites

Services for Mrs. Lula Castleberry, 78, of 2902 S. 2nd, who died Tuesday, will be at 1 p.m. Thursday in Elliott-Hamil Chapel of Memories, 542 Hickory in Abilene.

Burial will be in the Eastland cemetery.

FULLEN MOTOR CO.
Laugh A Day

Historians recently unearthed the very first treaty between white men and the Indians. It says the red man can keep his lands for as long as the river runs, the sun rises and the grass grows - or 90 days, whichever comes first.

FREYSLAG
Insurance
Weather Report
Fair and Mild



Butch Boyd, assistant manager of Thrift Mart, awards Mrs. Earnest Sneed with a check for \$450.00 in last week's money drawing. (Staff photo by Steve Haines).

Thursday,
March 20, 1975

Jody's Pizza

Happy Hour

Wednesday
6:00 - 8:00 P.M.

All You Can Eat \$1.89

Majestic Theatre

Eastland 629-1220

Thurs. 7:30 Only Fri.-Sat. 7:30 & 9:18 P.M.

MGM presents
DEAN MARTIN in
"MR. RICCO"

THE ONE THING PEOPLE HATE MORE THAN A COP KILLER IS THE LAWYER WHO GETS HIM OFF!

Screenplay by ROBERT HOBAN
Story by ED HARVEY & FRANCIS KIERNAN
Directed by PAUL BOGART - Produced by DOUGLAS NETTER PG

MGM METROCOLOR - Filmed in PANAVISION®
United Artists

Fri. Late Show 11 P.M. \$1.00 Adm.
Sun.-Mon. Reg. Adm.

The Magnificent One!

He makes the fastest guns in the West die laughing!

TERENCE HILL
"MAN OF THE EAST"



Returning By Popular Demand Starting Mar. 26

WINNER 7 ACADEMY AWARDS
BEST PICTURE - BEST DIRECTOR

all it takes is a little Confidence
PAUL NEWMAN / ROBERT REDFORD
ROBERT SHAW
A GEORGE ROY HILL FILM
"THE STING"

DAVID S. WARD - GEORGE ROY HILL - TONY BILL MICHAEL
JULIA PHILLIPS - TECHNICOLOR - A UNIVERSAL PICTURE PG-13

MONUMENTS

442-1127

SINCE 1884

RAWLINS MONUMENTS

"Because Someone Lived"



500 East 8th St. Roy L. Taylor, Rep.
Cisco



MRS. FANNIE O'BRIEN
...to celebrate birthday

Reception To Honor Mrs. Fannie O'Brien

Mrs. Fannie O'Brien, long-time Eastland County resident, will be honored by her children and grandchildren with a reception at the Eastland National Bank Conference Room in Eastland on her 80th birthday, Sunday, March 23.

Friends and acquaintances are cordially invited to call between the hours of 2 and 4 p.m. No local invitations are being sent, and no gifts please. The Conference Room is located at the southeast corner of the square, facing the courthouse.

Born Frances Louise Hastings, March 27, 1895, in Bell County, she came with her

family, the late Mr. and Mrs. J.B. Hastings of Eastland County in 1900, first settling in the Kokomo Community and later moving to the Pleasant Hill Community.

She married Houston Vance (Hous) O'Brien on May 21, 1920, with his brother, the late Dr. P.D. (Dick) O'Brien performing the ceremony. The couple lived in Carbon for many years. He died as the result of an accident Oct. 22, 1944.

Mrs. O'Brien lived in Abilene from 1951 until 1961 when she moved to Eastland to make her home at 204 W. Plummer St. She is active at First Baptist Church where she is president of her Fidelis Matrons' Sunday School Class. She is active in several Eastland clubs.

Her brothers and sister are Mr. C.P. Hastings of Eastland, E.B. Hastings of Carbon, Grover C. of Pleasant Hill and Mrs. Dee Hibbs of Brownwood. Her children are Otis of Stanton, Willard of St. Louis, Mo., Mrs. H.L. Thompson of Lewisville, John Edwards of Abilene and H.V. of Eastland. A daughter, Bobby Nell, died Feb. 15, 1935, and a son, John Charles (J.C.) died Aug. 7, 1965.

Mrs. O'Brien has nine grandchildren and nine great-grandchildren.

Easter Seals

Give to Easter Seals

H.L. Ferguson & Tony Lowrance

Backhoe Service
Digging, Ditching,
Sand & Gravel Hauling

CALL IN EASTLAND 629-2795

EASTLAND COUNTY CENTRAL DISPATCH

WHAT IS IT? We are hoping it will be the best thing that has happened to law enforcement in Eastland County in a long time. It will be a dispatch set up for all law enforcement officers in Eastland County - - there will be 24 hour communication through our office for all towns in Eastland County participating.

WHERE WILL IT BE LOCATED? We will be .7 of a mile from I 20 toward Carbon from Eastland on Hwy. 6. We will be on the East side of the road just across the Leon River bridge. You have probably already noticed the changes taking place out there. A building has been erected and a communication tower.

WHO WILL BE WORKING THERE? There will be two dispatchers on duty 24 hours a day - - we will handle all the calls for all the law enforcement agencies. Three dispatchers will be coming from Cisco Police Department - - One from Eastland Police Department - - One from Ranger Police Department. The two others will be coming from Eastland and Rising Star.

WHAT WILL WE DO? We will be taking calls on all complaints - - we will take your call and send it the route it needs to go. We will not take call on dog calls - - weather calls - - ball games scores - - these only tie up our lines and your local police dept. will take care of these for you. We also have teletype communications so each law enforcement officer can check wanted on cars, people, guns, articles, or anything else they wish to check. We will only take phone calls - - no one is allowed to come to our communication unless authorized; as we have no facility to take care of the public.

HOW CAN I GET IN TOUCH WITH THIS CENTRAL DISPATCH? There will be a telephone number printed in all the area papers very soon that will be used by all the people in the county that are participating in our dispatch system. Collect calls will be accepted from Rising Star.

WHO EXACTLY CAN I CONTACT THROUGH THIS CENTRAL DISPATCH? We will be serving as communication for all area law enforcement personnel included will be: Cisco Police Department - - Eastland Police Department - - Ranger Police Department - - Rising Star Police Department - - Eastland County Texas Highway Patrol - - Eastland Sheriff Department - - Game Warden - - ABC (Alcoholic Beverage Commission) - - Eastland County Constables - - License and Weight Highway Patrolmen - - Driver License Division Patrolmen.

This is an effort on behalf of the county and city governments of Eastland County to improve police service in your county; however, we do need cooperation of the public in order to make this system work. There are very few systems set up in the state of Texas to take care of the whole county like ours will be. We will try to the best of our knowledge to make this system one of the best - - and maybe all our counties will follow our example when we make a success of Eastland County Central Dispatch.

Barbara Welch - - Chief Dispatcher

What's Cooking?
BY PEGGY ROBERTS

We certainly hope you are enjoying the recipes each week as we are. They have all been very delicious. The following recipe was sent in by Carolyn Williams of Eastland and I tried this for our Sunday dessert. This cake goes a long way and would be excellent for those extra guests. It is very good any time, but especially in the morning with a hot cup of coffee.

ORANGE POUND CAKE
3 c. Sugar
3 c. Flour
2 Sticks Butter
1 C. Buttermilk
1 tsp. Orange Flavoring
1 tsp. Soda
Separate eggs. Mix sugar, yolks, butter, flavoring. Add flour alternately with buttermilk and soda. Whip egg whites and fold in. Bake 1 hour and 10 minutes at 350 degrees.
(If desired, add a few drops of orange food coloring and/or grated orange rind)

drive

IF IT'S A GOOD ONE IT'LL BE HERE

Phone 647-1149

RANGER DRIVE-IN THEATRE

Box Office Opens 7:30
Show Starts At 8:00

2 1/2 Big Pictures

FRIDAY-SATURDAY-SUNDAY MARCH 21-22-23

DUAL GHOUL CHILL SHOW!
They're all new and all fright!

His brain came from a genius. His body came from a killer. His soul came from hell!

THE ONLY MAN ALIVE FEARED BY THE WALKING DEAD.

AND

Your blood will run cold when the monster rises.

FRANKENSTEIN AND THE MONSTER FROM HELL
Peter Cushing, Shane Briant
Directed by JOHN EDGAR
Produced by ROY SHAPIRO

CAPTAIN KRONOS: VAMPIRE HUNTER
Written and directed by BRIAN CLEMENS
Produced by BRIAN CLEMENS

CITIZENS REALTY

CITIZENS REALTY
YOUR RESIDENTIAL SPECIALIST

Brick 3 bedroom 2 bath home with central heat and air. Nice location, close to schools. Only \$350 down and payments of \$175 mo. Possession upon loan approval.

Looking for a 3bed year old brick home with central heat and air? This 3 year old brick home is in a nice High School and the new City Park. All but **SOLD** and assume loan.

Need a large lot with a pleasant view to build your new home on? Or perhaps you have a home and you're seeking a better location. We have 19375 square feet for only \$31 a month.

Nice 3 bedroom home with freshly painted exterior, paneled den, fenced yard, low monthly payment. **SOLD** age. Only \$250 down with low monthly payment.

3 bedroom, 2 bath brick home under construction in Cisco. Drop by 1408 Simms and see this home go up. Choose your own interior decor. \$1000 down

1974 14 x 70 mobile home. 2 bedroom, 2 bath. Large living room. Central heat. All built - ins and refrigerator. \$750 down and assume payments of \$115 per month plus lot rent.

Avoid expensive closing costs by assuming the loan on this two year old brick home. Situated on corner lot, carrying a low equity **SOLD** POSSESSION.

Corner lot in Eastland, near center of town. Ideal for mobile home or new home. 50 x 150. \$250 down. Close to schools.

135 acres - - 46.7 acres peanut allotment, 4 irrigation wells. Good terms. Located north of Cross Plains.

CITIZENS REALTY
820 West Main
Eastland, Texas
629 - 2404
629-1769

Wayne Durham - Associate
629 - 2743

B.G. Brown - Broker
442 - 1631

Karla Brown - Broker
442 - 1631


WHATS LEFT SALE All Fall & Winter Merchandise Must Go. Many Items. But Few Of A Kind Real March Savings. Hurry In And Save!!

<p>Boy's & Girls Many Styles Ass't. Colors Most All Sizes</p> <p>Reg. \$8.99 To \$13.99</p> <p>SHOES \$3</p>	<p>One Group Women & Girls PANT SUITS</p> <p>Reg. \$32.99 \$36.99</p> <p>NOW \$12</p>	<p>One Group Men's Reduced Not All Sizes Ass't. Styles</p> <p>SHOES \$5</p>
<p>Women's Corduroy PURSES</p> <p>Ass't. Colors</p> <p>\$1</p>	<p>All Cotton Twin Size White Only</p> <p>SHEETS \$2</p>	<p>Women's Long Sleeve BLOUSES</p> <p>Not All Sizes</p> <p>\$5</p>
<p>One Group Double Knits Hurry!</p> <p>FABRICS \$1 yd. & \$2</p>	<p>Men's Permanent Press JEANS</p> <p>Checks Plaids Reg. \$11 To \$13.99</p> <p>\$6</p>	<p>Women's Double Knit TOPS</p> <p>Long Sleeves Reg. \$11 To \$16</p> <p>\$6</p>
<p>One Group Women's SHOES</p> <p>Reg. - Price \$11 To \$14</p> <p>NOW \$3</p>	<p>Bray's BANKAMERICARD</p> <p>DEPARTMENT STORE</p> <p>EASTLAND - RANGER EASTLAND COUNTY'S FAMILY STORE FEATURING NATIONALLY ADVERTISED BRANDS OF MERCHANDISE</p> <p>Store Hours - 9 a.m. - 5 p.m.</p>	
		<p>Women's Double Knits Many Styles Ass't Colors Not All Sizes</p> <p>DRESSES 1/2 PRICE</p>

Brittain DISCOUNT Center

Eastland

\$1.98
Digital Wall Thermometer
EXTREMELY ACCURATE
\$1.67



\$1.99
DRISTAN
DE CONGESTANT TABLETS
24 Tablets
COLDS & HAY FEVER
SINUS CONGESTION
99¢



\$1.77
LYSOL SPRAY
14 oz.
\$1.37



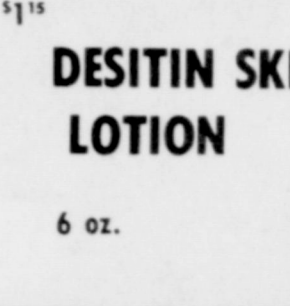
Marblelite
Black
Green
Red
\$5.00 Regular **\$3.97**
\$6.00 Extra Thick **\$4.97**



New \$2.39
Adorn FIRM & FREE
Non-Aerosol Hair Spray
Lasts Longer Than the Leading Aerosol or Non-Aerosol Hair Spray
8 oz.
\$1.39
• Superior Hold
• Unscented




\$1.15
DESITIN SKIN CARE LOTION
6 oz.
67¢



\$1.75
Toni Lemon-Up SHAMPOO
10 oz.
99¢



15¢ 16 Drops
VICKS MEDICATED COUGH DROPS
Menthol Or Cherry Flavor
9¢



\$4.79
Homesteader LAMPS
Assorted Colors
\$3.63




\$1.29
Gillette Trac 11
BLADES
5 Blades
87¢



Your Choice
DISH OR WASH CLOTHS
3/\$1.00

\$1.19
WOOLITE LIQUID
8 oz.
95¢



\$1.49
LADIES PURSE
Special!
Only
\$2.57




\$1.49
EFFERDENT
extra strength
efferdent
EFFERDENT
40 Tablets
89¢



83¢
ANACIN
FAST PAIN RELIEF
HEADACHE COLIC BODYACHE NEURALGIA
30 Tablets
57¢



\$1.99
SURE SUPER DRY DEODORANT
Reg. Or Unscented
9 oz.
\$1.17



\$1.29
Mustard Or Ketchup
PUMP
99¢
12-OZ. PUMP DISPENSERS



49¢
VASELINE
White
Large Jar
29¢



98¢
SOCK SORTERS
78¢



SOCK SORTERS KEEP THEM PAIRED IN WASHER-DRYER. Put an end to strays or mismatched socks! Save time and temper! Simply pair 'em off, slip on unique gripper rings and all mates stay together from hamper to washer to dryer to drawer. Big set of 24 colorful sorters.

OBSERVATIONS FROM... The River Road

BY VIOLA M. PAYNE

A recent nationwide television program focused attention on the increase of illegal aliens—mostly Mexican—who work in the United States. The program indicated that illegal aliens were very bad for this country, and should be kept out. They made the remedy sound so very simple—put the Mexicans back across the border, and build a long chain of electric warning devices to keep them there.

But people who live along the Mexican border, as I once did for fifteen years, know that the problem is infinitely more complex than that. The people of the Rio Grande country of Texas and Mexico are isolated from other areas, and dependent upon each other for economic survival. Their culture is blended, and people from both sides of the river like to move freely across this boundary.

being who has ren the border and thrown himself on your mercy.

There is not one case in a hundred where the American rangers, or the El Paso or Del Rio housewife, crosses the border into Mexico and picks up illegal workers so they can be exploited. These workers cross by their own devising, along trails that are dangerous in the extreme. Mexico has one of the highest birthrates in the world, so a fresh supply of people push against the border like a flood pressing against a flimsy dike.

There are cracks which let them through. The Border Patrol is understaffed. Although the Patrol is generally composed of superior officers, and they range about vigorously, their situation is almost impossible. The laws they are trying to enforce are so unpopular on both sides of the river that they are cast in an unhappy, arbitrary role.

The Mexicans know the habits of these "Federales," and they play a ceaseless cat-and-mouse game with them.

Even the natives far in the interior know, by tradition, all the routes into the United States. After all, this was once their country, and their ancestors moved freely across the river whenever food was more available in the north. It is more available there now.

So an El Paso wido, who lives on an acreage west of town, looks out one morning to see a Mexican woman in an advanced stage of labor under a bush on her front yard. The woman sobs, in Spanish, that she waded the river in the night, so that the baby can be born here and be an American citizen. A baby who is a citizen, she understands, can get free powdered milk and food in the El Paso. She has no food for herself and her six other children, much less this one.

Then another El Paso housewife gets a frantic call from her sister's maid, Maria. The maid says that a young woman cousin of hers somehow got through the gate at the bridge on a borrowed passport. The girl has no money and no place to stay. Could she please come to your house until she can find work?

When the girl finally shows up she is tearful and utterly destitute. She has come from such a primitive area that she stares at the peanut butter you offer her, and finally tastes it. While she relishes this new treat you realize that she has the pure, innocent beauty of a painting of a Madonna. How can you throw this face and figure into the streets of Juarez, with their houses of prostitution?

A tomato crop is wasting in the Upper Valley toward Las Cruces. It costs a lot to put in a tomato crop and bring it to maturity. And once it gets to a certain stage, it must be gathered immediately, or the fruit will be refused by the cannery. Everything the farmer owns in tied up in the crop, and he cannot find any local people who will come out and gather it. They can make more on welfare, they say.

They mysteriously, in the shadows of evening, a number of figures appear, scrambling up from a dry irrigation ditch. They must first have food, but then they want to go to work. Their families in Mexico are hungry, and they want to send them money as soon as possible.

An elderly rancher along the Border in the Big Bend is in desperate need of help. There is no one to hire, from the American side, to do the fence-building and other work on his land. Boys who have grown up in the city—where most boys are growing up now—do not have the background and skills to do ranch work properly. And at the present price of cattle, he can't afford to pay high wages to anyone.

A soft knock brings him to the door one night. The Mexican who is standing in the darkness is the son of a former cowboy on the ranch, and his father has sent him across the river to see if El Patron might need some help.

So that is the story along the border—there are laws written in books, and a line drawn on maps. But people who need each other have a strange way of getting together.

COUNTY NEWS

The following proceedings were had in the Court of Civil Appeals, Eleventh Supreme Judicial District of Texas:

APPEALS DISMISSED
Gladys Dulin et vir v. Tommie Nelle Wright et al. (Opinion on motion for rehearing by Judge Walter. Former Opinion dated Feb. 7, 1975, withdrawn).--Nolan.

Timothy R. Powell v. James J. Hartnett, Successor-Administrator. (Opinion by Judge Brown).--Dallas

REVERSED AND REMANDED
George Allen and Norma F. Allen v. Great Liberty Life Insurance Company. (Opinion by Judge McCloud).--Dallas

MOTIONS SUBMITTED
Gladys Dulin et vir v. Tommie Nelle Wright et al. Appellees' motion for rehearing.--Nolan

Texaco, Inc. et al v. E.H. Pursley Jr.. Agreed motion to file Supplemental Transcript.--Nolan

MOTIONS GRANTED
Gladys Dulin et vir v. Tommie Nelle Wright et al. Appellees' motion for rehearing.--Nolan

Texaco, Inc. et al v. E.H. Pursley Jr.. Agreed motion to file Supplemental Transcript.--Nolan.

CASES SUBMITTED
Joe E. Glover v. James Ronald Moore et al--Baylor

Preston Spray et ux v. Johnnie Stash et al--Jones

Betty Morgan v. Larry Shoemaker Jr.--Taylor

Texcalco, Inc. v. J.F. McMillan dba M&F Well Service--Eastland

NEW!
BERNINA
Bernina 830




New elegance, simplicity and versatility in a sewing machine! The all-new Bernina 830 is the modern way to sew. Compact shape, stronger construction, easier maintenance, a super selection of built-in stretch stitches, the new Bernina 830 puts fun back into sewing! There is NO major stitch the Bernina 830 cannot sew. See your nearby Bernina Dealer for a demonstration.

Rita's Fashion Fabrics
Int. 20 East Of Eastland Next To Ramada Inn
629-8020

FLORSHEIM BELIEVES IN LEATHER

The rich natural feel. The characteristic aroma. The sheer luxury of a natural material, superbly fashioned. Genuine leather—another good reason to always specify Florsheim.



THE MAN'S STORE
Bob Elliott
CISCO

The Home of Your Dreams— for Real!

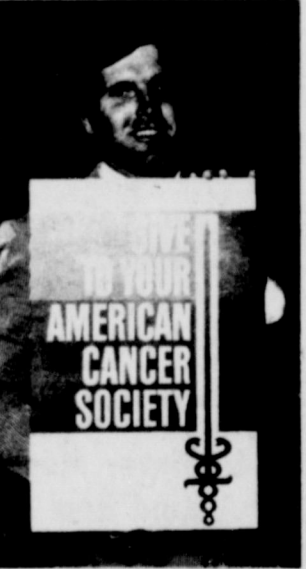


73 1/4% VA & FHA Available!

Nothing Down On VA Loans
Low Down On FHA Loans
Conventional Loans Also Available
Choice Location Still Available

H & W Development Co.
216 S. Seaman Eastland
629-1702

AMERICAN CANCER SOCIETY



Bob Griese, quarterback of the Super-Bowl champion Miami Dolphins, reminds you to give to the American Cancer Society and help in the fight against cancer. The popular player says, "We all want to wipe out cancer in our lifetime. Let's make it happen!"

FOR SALE

- Hitches (Any Make Cars)
- Hitch-Balls
- Tow Bars

RENTALS:

- Tow-Dollies
- Tow-Bars
- Trucks & Trailers
- Hitches

Gilbert Gulf Service
500 W. Main
629-8805
Eastland, Texas
Also Farm Bureau Tires & Batteries

CATTLEMANS RESTAURANT
Eastland, Texas. 629-1761
Featuring Home Cooked Meals
Steaks, With Baked Potatoes Anytime.
Sunday Thru Friday - 6 A.M. - 10 P.M.
Friday - Fish Night - All You Can Eat - \$1.95



" 2 To Serve You And YOUR LOVED ONES"



" The Best Costs No More"

Edith Shook Coordinator

EASTLAND MANOR

629-2686
1403 W COMMERCE

Virginia Pence Adm.

VALLEY VIEW LODGE

629-1779
700 S OSTRUM

Morris Shook, Adm.



2 NEW LUXURIOUS AIR CONDITIONED HOMES
24 HOUR NURSING SERVICE
LVN SUPERVISION

• CHAPEL • LOUNGE • CABLE TV
• TELEPHONES • FULL TIME SOCIAL ACTIVITIES PROGRAM
PRIVATE & SEMI-PRIVATE ROOMS WITH BATH - LUXURIOUS DINING & RECREATION ROOM
• ORGAN • PIANO • GAME TABLES
• BEAUTY & BARBER SHOP
STATE LICENSED • VENDOR APPROVED

FOR SALE—Slightly used deluxe balanced juicer fully automatic. Liquefies, blends, grates, chops, mixes, dry grinds. Would be ideal for rest home or hospital. \$65.00. Call 442-1303.

Round-Up Day, March 22

Saturday, March 22, is Salvation Army Round-Up Day in Eastland County, and help is badly needed.

An Army van will be at the South Side of the Courthouse at 2 p.m. Saturday to receive usable clothing, furniture, tools and appliances, toys, utensils and any other contributions which will be used by the S.A. in the event of disaster.

Citizens are urged to Spring-Clean their garages and closets and bring the items to the square Saturday. An area will be roped off Saturday morning, and it's hoped that the large van truck will be completely loaded by generous Eastland Countians.

Hospital News

Patients in Ranger General Hospital Wednesday morning were:

Clyde Rogers
Rhonda Swanner
Marcelino Capiedra
Eva Eaton

Ruth Greenfield
Eva Northcutt
William Snider
Jesse Bell

Naomi Polk
Vergie Lee
Frances Carr
Dora Lovera

Cleo Greenwood
Myrtle Warren
Michael Mackey
Dora Dempsey

Hazel Newnham
Sarah Rawls
Homer Goforth
Evie Shoemaker

Helen Landtroop
Allison Avinger

Patients in the Eastland Memorial Hospital March 18, 1975, were:

Noah Proffitt
Addie Faulkenberry
Claude Maynard
Maggie Christian

Mildred Dendy
Master Cody Wheeler
Dorothy Capers
Effie Jackson

Nevada Smith
Ruth Reeves
Barbara Wood
Lavene Stubblefield

Dalton Phillips
Jimmie Wylie
Nora Wilkinson
Josephine Boatright

Ruby McDonald
Rhonda Johnson
Patsy Nall
Jerry Pierce

Bert Elliott
Jean Robertson
Edith Stuckey
Lillie Dunlap

Tania Sanders
David Livinston
Luther Carter
Modess Burgess

Idell Warren
Consula Woolfolk
Aline Garrett
Rosa Burton

Willard Vogel
Shirley McCoy
Boyd James
Belle Jones
Edith Wooten
Mendie Webb
Baby Boy McCoy

Patients in the E.L. Graham Memorial Hospital were listed as follows:

Emzie Lawson
Jack Dunlap
R.O. Washington
Selma Tableman

Maude Wood
Bill Calhoun
Bluford Burton
Geneva Gregg

Sterling Whitehead
Georgia Bennett
Beulah Heyser
Jacob Honea

Mildred Cox
Dometria Willett
Bernice Prickett



Do You Remember

BY HERMAN DEMPSEY

The wise oldman who had seen many winters come and go, sat in his rocking chair on the front porch of the general store and listened while the birds sang as they were making everyone aware of the approaching spring when all the country side would wake up and become alive with growth and development.

As friends and neighbors came by the store to pick up supplies, many stopped by to visit with the wise old man. They sought his knowledge and advice in proper planting of

their spring crops. He gave them the positions of the moon when certain seed should be planted for the most productive crop. Fruit trees, grape vines and berries were to be pruned before the spring growth started each year. Trees that were to be cut for use as fence posts should be cut while the growth of the tree was dormant. A post thus prepared would never decay in the ground and last for years without need for replacement. All vegetables which are of flowering plants were planted during first

quarter of the moon. These included cabbage, lettuce, cucumbers, corn, onions, spinach and certain other plants. In the second quarter, such vegetables as beans, egg plant, peas, pepper, tomatoes, and water-melons should be planted. During the third quarter of the moon, radishes, potatoes, turnips and other root vegetables should be planted. In the fourth quarter the sod should be worked, weeds pulled and other noxious growths destroyed for in this quarter the moon is in the barren signs of Gemini, Leo and Virgo. Apples and pears that are picked from the tree during the old moon will be kept

for long periods of time without decay. The bruised spots on the fruit will dry up and not rot. The wise old man also predicted the weather for his community. By raising his hands and bar arms high above his head and if the hair on his arms stood out straight from his arms, it was going to rain for several days. If the hair lay flat against his arms, there would be no rain. If the cows all went to the highest ground in the pasture, there would be floods all over the low places. The wise man was also a "water witch" who could take a forked green peach tree limb and tell the folks where and how deep to dig for well water.

Could It Happen Again?

Henry Block has 17 reasons why you should come to us for income tax help.



HENRY BLOCK

THE INCOME TAX PEOPLE

104 W. Commerce 629-8121

9-6 Mon.-Fri.

9-5 Sat.

Reason 14. We're human, and once in a great while we make a mistake. But if our error means you must pay additional tax, you pay only the tax. We pay any interest or penalty. We stand behind our work.



Jim Graves
Consultant

Free Hearing Test In Your Home Or Office

Free Service On All Makes

If Hearing Is Your Problem Beltone Is Your Answer

New Office Hours

9 - 5 Tuesday Only

In Eastland

629-8159

673-5109

(104 Commerce)

1333 North 2nd

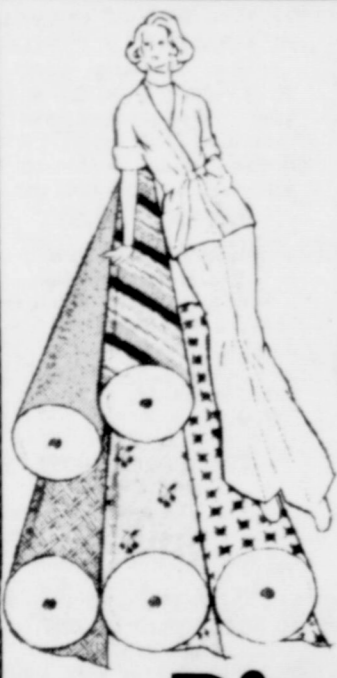
Next To First

Baptist Church

Eastland, Texas

Abilene, Texas

Two Offices



10% OFF ALL FABRICS
Thur
Friday
Saturday

Rita's

Int. 20 E.

Eastland

Thursday, March 20, 1975

When You Think Easter Clothing

Think Of Young Age Shop

RCG Leasing Co.

Patient Aids

South Side Of Square

Call 629-8052

GOODYEAR SERVICE STORES

TRAINLOAD
of
VALUES

RIGHT ON TIME FOR THE 18th STRAIGHT YEAR!
For the 18th straight year the Goodyear Districts of Dallas, Oklahoma City and El Paso have combined their buying power to bring you tremendous values by purchasing our stocks of GENERAL ELECTRIC products.

Carloads of Savings On General Electric Refrigerators, Freezers, Color TV's, Washers, Dryers, Air Conditioners and other items for your home!

GENERAL ELECTRIC IS AMERICA'S NO. 1 MAJOR APPLIANCE VALUE!

20.8 Cu. Ft. No-Frost 2-Door REFRIGERATOR FREEZER

• Giant 6.9 cu. ft. of freezer space, with 2 position cabinet shelf
• Power Saver Switch to help you reduce the cost of operation.
• 3 adjustable cantilever cabinet shelves.
• On wheels to make housecleaning easier.

\$498

ICE MAKER Only \$10 with this purchase

G.E. 100% Solid State Portable Color TV

19"

• Black Matrix Spectra-Brill[®] IV Picture Tube
• AFC-Automatic Fine Tuning Control
• Automatic Color Control
• 70-Position solid state UHF Tuner
• Custom Picture Control

\$398

ON THE SPOT FINANCING

GOODYEAR IS AMERICA'S NO. 1 GENERAL ELECTRIC RETAIL DEALER!

FAMOUS G.E. FILTER-FLO[®] WASHER

• Filter-Flo washing system
• Unbalanced load control
• Famous G.E. Activator for thorough but gentle cleaning.
• Choice of wash times
• Positive water fill — washer will not start until proper water level is reached

\$226

INSTANT CREDIT

MATCHING ELECTRIC DRYER

• 3 temperature selections
• Normal for cottons and permanent press — delicate for fine fabrics
• Full cycle gives gentle no-heat tumbling
• Permanent press cycle
• Manual selection of drying time up to 140 minutes
• Separate start switch
• Porcelain Enamel clothes drum
• Large up-front lint filter

\$178

ON THE SPOT FINANCING

19" 100% Solid State B&W Portable TV

• AGC-Automatic gain control — maintains picture level when changing stations
• Daylight Bright Picture Tube
• Solid State UHF Tuner
• Pre-Set VHF Fine Tuning
• Up-Front Controls
• Weighs only 34 lbs.

\$148

INSTANT CREDIT

3 WAYS TO PAY AT GOODYEAR

CUSTOMER CARE For Major Appliances & TV purchased on the Goodyear Customer Credit Plan. If you don't miss a monthly payment, and pay off your account within 90 days, you can deduct the financing charge.

GOODYEAR SERVICE STORES

315 W. Main

Eastland

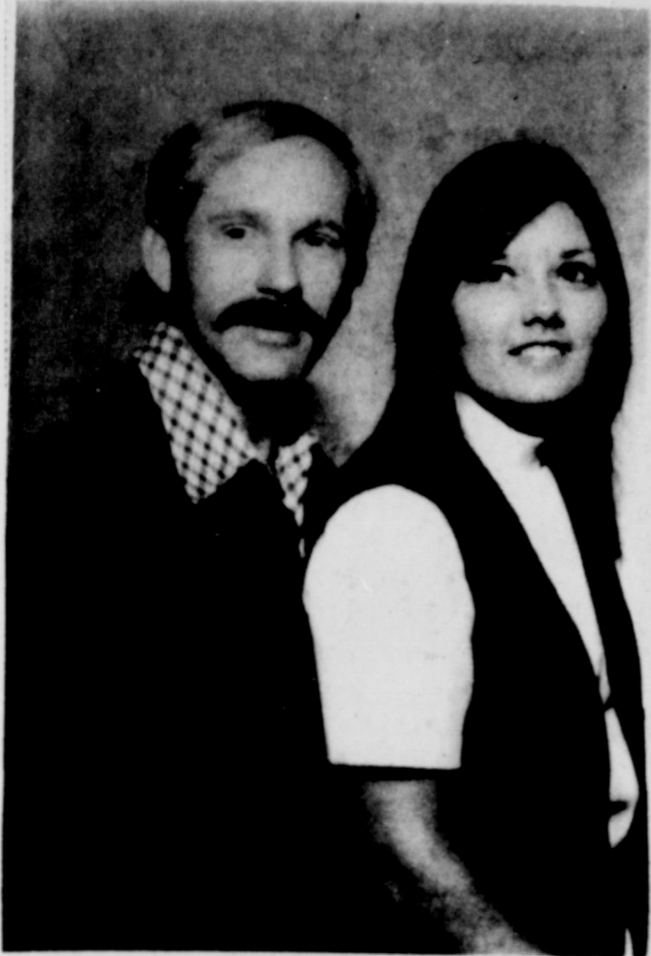
Glenn Dickson, MGR



25 YEARS OF SERVICE TO EASTLAND COUNTY

City Garage
24 Hour WRECKER SERVICE
Phone 629-1709 Night 629-1479
Gil Biggs 629-1210
Eastland, Texas
INTERNATIONAL HARVASTER (Dealer) J.J. Finley, Owner

Any Type Service:
Automobiles
to the
Largest Semi.



Mrs. J.T. Gregory announces the engagement and approaching marriage of her daughter, Kathy Sue, to Mr. Eddie E. Coker, son of Mr. and Mrs. Ed Coker Jr., of Lolita. The bride will graduate in May from Texas A&M University with a degree in sociology.

The prospective bridegroom is a December graduate of Texas A&M and is a corrective therapist at the Veterans Hospital in Waco. The wedding will be May 24 at Bethel Baptist Church.

*In the spirit of Christian joy
Iris Ann Bonny
and
David Wayne Alton
will vow their lives to one another forever
Saturday, the twenty-second of March
nineteen hundred and seventy-five
Mr. and Mrs. Gene Carl Bonny
invite you to join with them in asking
God's blessing upon this holy union
at seven-thirty in the evening
Bethel Baptist Church
Eastland, Texas
Reception
Fellowship Hall*



CHARLESTON HOUSE RESTAURANT

Eastland's Ramada Inn extends a hearty welcome to the many Fuqua dealers which will be attending meetings and listening to new sales ideas this week. (Staff photo by Steve Haines.)

Mr. and Mrs. Alvin D. Novak request the honour of your presence at the marriage of their daughter Deborah Ann to Jess Gourley on Saturday, March twenty-second Nineteen hundred and seventy-five at half after seven o'clock First United Methodist Church Eastland, Texas Reception following in Fellowship Hall

NOTICE

CARBON HOMECOMING NEWSLETTER
March 18, 1975

Tickets are being printed for the big bar-be-cue dinner to be held on the Carbon High School playground Saturday, July 5, 1975. It is very important that you make your reservation now by sending us a check for \$3.00 per ticket to Carbon Homecoming, P.O. Box 551, Carbon, Texas, 76435. This will be a catered affair with bar-be-cued beef and ham with all the trimmings. Please mail your check today.



SAM G. MILLER has been elected a vice president of Martin, Darrell, Ross, Inc., Houston-based advertising agency. A 1960 graduate of the University of Houston, Miller joined the agency in 1969. In addition to his duties as vice president, Miller will continue to serve as account supervisor. He is the son of Mrs. Florence Miller of 308 E. Main St., Eastland.

Easter And Its Meaning Topic For PTO Meeting

Easter and its meaning for those who believe was discussion topic for the Rev. Robert Marsh, pastor of the First Presbyterian Church, speaking for members and guests of the Wendell T. Siebert Parent Teacher Organization Tuesday. President Mrs. Kenny Cogburn presided and introduced Rev. Marsh. In this age, he explained, there are so many things that people fear: the economy, war, accidents, disease, growing old, and in general an uneasy and jittery time.

"Religious faith is the cure for fear", he explained as he told of the promises of the Lord: "Lo, I am with you always..." If we know Him, then we can trust His promises and truly believe that we do not need to fear to live, fear to die, or fear what comes after death, the Rev. Marsh pointed out.

The third grades of Mrs. Marjorie Young and Mrs. J.W. Turner presented a beautiful musical program with a theme of Texas in the Spring time. Mrs. Young's room won the room count.

Program For Senior Citizens

The Cisco Senior Citizens Thursday Program will be as follows: 9-12 a.m.--information and referral at Chamber of Commerce 1-3 p.m.--Games in club room at the Senior Center in the Victor Hotel. Quilting will be in the craft room. 3-3:30 p.m.--Professor Humphries of Cisco Jr. College, History Department, who worked as consultant to Lyndon B. Johnson about 15 years will speak on "My Years With LBJ" 3:30 to 4 p.m.--Senior Chorus in the Corral Room. During the week of Spring vacation for CJC March 24 thru March 28, we will be closed.

Quality **Quantity** **Reasonable Prices** **Quickness** **And** **We Sell And Install Water Heaters** **Morren's Plumbing And Gift Shop** 1013 West Main 629-2092

Carbon News

By Mrs. Bob Hastings

There was a Special Called Meeting of the Carbon School Board Friday, March 14. At the meeting Mr. Carr, the Superintendent of Carbon, resigned from the Carbon Schools to accept the Superintendentcy of the Moran Schools.

The School Board hired Marshall Hickman of Roby to fill the space of Superintendent. They also rehired all the teachers at Carbon.

Mr. Hickman will take over his duties April 1, 1975, as Superintendent.

School will dismiss Friday, March 21, for the Easter holidays. Classes will resume Monday, March 31. The cafeteria staff wishes to extend their best wishes for the holidays to the students, parents and teachers.

Mr. and Mrs. Carl Rye of Dublin visited the Jim Hogans on Thursday of last week.

Paul Taylor of Seminole visited Mr. and Mrs. Roy Skinner part of last week.

Visiting Mrs. Vadis Phelps on Saturday were Mr. and Mrs. Dan Hogan and boys of Fort Worth. Mrs. Elora Lindley and

girls, Mrs. Bobby Tucker and son Mart and Roy Lee Aiden of Carbon. They also attended the Eastland County Stock Show of Eastland.

Mr. and Mrs. Tommy Stacks and Mrs. Faye Walsh of Springtown visited Mr. and Mrs. W.M. Medford. They attended the Brownwood Rattle Snake Roundup Sunday afternoon.

Mr. and Mrs. Tim Stacy, Gregg and Dellana visited Mr. and Mrs. Charlie Jack of Kerens on Sunday.

Miss Kay Kelley of Texas University of Austin spent the weekend with her grandparents Rev. and Mrs. Lee Fields.

Mrs. Della Bryant and Truman Bryant were in Fort Worth on Tuesday to attend the funeral of Mrs. Bryant's granddaughter Mrs. Letha Eubanks who passed away at her home in Houston on Sunday.

Mr. and Mrs. Jim Hogan attended the funeral of their nephew Vernon Barton in Gatesville on Friday.

Among those from Carbon attending the funeral of Mr.

Caution!



A medicine chest that's a jumble of old medicines and other health supplies can be a danger instead of a help. Clean up and clear out now, then stock up with us.

Central Drug
North Side Of Square

BUY & SELL

New & Used Merchandise Furniture Appliance-Anything Of Value

NOW OPEN DAILY

SEWING MACHINE SALES & SERVICE NEW & USED

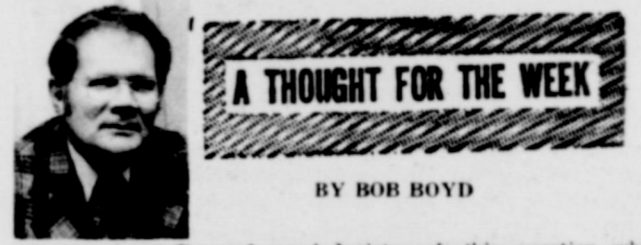
We Repair All Makes & Models

Wright Auction Co.

Eastland

106 S. Seaman

629-2468



A THOUGHT FOR THE WEEK

BY BOB BOYD

A prominent firm of psychologists ask this question when screening and examining employee applications for their clients. "Of all the men you know, have known, met or heard of, what one man would you most like to be like?" Explain why.

Reports indicate this question brings in a lot of different answers and peculiar reasons. Selections include Grandpa, Dad, Uncle John, Cousin Tim, and so on in an apparent effort to tie in a helpful family trait...or affiliation. Other applicants select men such as Chruccill, Lincoln and other historical greats. Some select sports, business or political personalities.

Obviously of course, the psychologists are interested in the reasons why - not so much in the selection itself. The reasons for the selections also vary greatly. Accomplishments, achievements, materialistic success, untarnished reputation, character and other attributes are mentioned as reasons.

It is an interesting question. How would you answer it? Who would you select? Why? Watch for our selection next week. You may - or may not - be surprised!

Bob Boyd
Arrington Funeral Home
301 S. Lamar St.
Eastland, 629 - 2611.

Picture & Needle Point FRAMES \$300 Up	Necklace COIN HOLDERS \$4.95 Each
SHOWER CURTAINS In A Variety Of Colors	
The Original CROCK POT \$24.95	G.E. CAN OPENERS With E-Z Clean \$12.95
T-Charlie C.B. Radio By Teaberry 23 Chanel	ONLY \$169.95
Elgar Fixtures - Shower Stalls - PVC Pipe & Fittings - Sewer & Drainage Pipe	
We Sell And Install Water Heaters	
Morren's Plumbing And Gift Shop 1013 West Main 629-2092	

Lam-Pro "KAYAK"

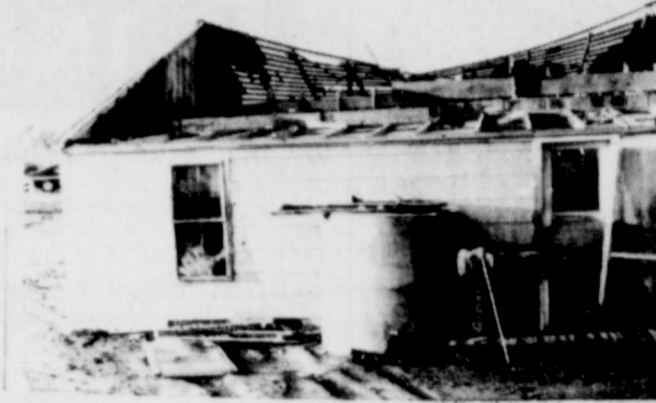
- ★ STURDY — STABLE — SAFE
- ★ KEEL TYPE REINFORCED BOTTOM WITH FLOTATION SEAT
- ★ LENGTH 10 FT — WIDTH 39" — DEPTH 11"
- ★ WEIGHT APPROXIMATELY 35 LBS.

LIST \$140.00 New
One Used \$100.00
One Used \$60.00
See at 413 S. Walnut
Eastland, Texas
Cliff Clary
MA-92540

TORNADO PICTURES



Several news sources reported Monday that there was very little damage as a result of storms Sunday night. Judge for yourself: here is what is left of the Jack Brown's house near the Mangum community after enduring a tornado early Monday evening. (Staff photo by Steve Haines.)



Jack Larain, manager of the Eastland Fuqua plant shows Eastland Chamber of Commerce Manager James Wright some facts and figures pertaining to their new top-of-the-line home models. (Staff photo by Steve Haines)



Mark, a 6th grade 4-Her, shows his Santa Gertrudis which won Reserve Champion of Breeders in the Eastland County Livestock Show. Mark is the son of Mr. and Mrs. Buddy Aaron.



Terence Hill stars as a mild-mannered visitor from England to America's Far (and Wild) West in "Man of the East". The picture, a United Artists release, will open for the late show Friday, March 21, and Sunday and Monday, March 23 and 24 at the Majestic Theatre.

Scores 56 Points

EHS Varsity scored 56 points at the Winters Track Meet this past Saturday.

Placing 5th in the 440 yard relay was Randy Wharton, Clay Wheat, Brian Haun and Rickey Simmons with their time being 48.4.

Brian Haun laced 4th in the 120 yard high hurdles with his time being 17.1.

Claiming 1st in the 100 yard dash was Mike Stutts with a time of 10.4.

In the 440 yard dash John Hart placed 3rd with his time being 53.4.

In the 220 yard dash Mike Stutts placed 2nd with 23.6 being his time; and John Hart placed 4th with 24.7.

Isaac Orosco placed 3rd in the mile run with 4:57.2.

Coming in for 5th place in the mile relay were John Hart, Mike Stutts, Brian Haun, and Lon Mahan with 3:50.4.

Tom morren placed 2nd with 44' 1 1/2" being his distance in the shot put.

In the long jump Mark Thompson placed 4th with 18' 6" being the distance he jumped.

52 Points Scored At Track Meet

The ninth grade track team went to Comanche March 14 and scored 52 points.

In the 100 yard dash Chris Justice came in 3rd with a time of 11.4, and Tom Winingar came in 6th with 11.6 being his time.

Johnny Washington came in 1st in the 220 yard dash with a time of 26.5. Taking 2nd place was Tracy Muirhead with a time of 26.6; and Tom Winingar came in with a time of 27.5 making 6th place.

In the 330 yard dash Tracy Muirhead placed 3rd with the time being 40.5; and Johnny

Washington placed 4th with 42.3 being his time.

Johnny Washinton, Tracy Muirhead, Chris Justice and Nathan Washington placed 3rd in the 1320 relay with their time being 2:50.4.

Placing 5th in the discus was E.C. Ragland with 119'0" being the distance.

Claiming 6th place in high jump was Larry Mathis with a distance of 5'2".

Nathan Washington claimed 6th place in the long jump with a distance of 16'1".

IF YOU MISS YOUR TELEGRAM CALL 629-2214

MASONIC LODGE NO. 467



Meets second Thursday of each month at 7:30 p.m. in the Masonic Hall. Call E.M. Hunt, W.M., at 629-2482 or L.E. Huckabay sec'y at 629-1391 for information.

Savings Bonds

According to Chairman of the Eastland County Savings Bonds Committee, the 1975 Savings Bond goal for the County is \$300,000. January sales of E and H United States Savings Bonds totaled \$17,848 for 6% of the sales goal.

Emergency Water Extraction For Carpets

Due To Busted Water Heater Or Pipes 24 Hr. Service

Pittmans Janitorial Service 629-2746 Eastland, Texas

Mike's Carpet Care

CARPETS & FURNITURE STEAM CLEANED

Free Estimates

Call 629-8129

CATTLE BUYERS

NEEDED NOW

No buying experience necessary. Train to buy cattle, hogs and sheep. The growing livestock industry needs qualified buyers. A good aptitude is required for today's competitive markets.

You should have a farm or agricultural background. Must enjoy working with livestock. Good earnings... secure future... for those who qualify. Write today with your personal background and qualifications. Include: name, age, address & phone number. We will arrange an interview for you, near your home town. No phone calls, please.

NATIONAL LIVESTOCK CO. 5105 North 40th Street Phoenix, Arizona 85018

Thank You, Thrift Mart, For Purchasing My First Show Calf!

Truet Ray Hart

DID YOU KNOW?

Announcing --- Shorty Alcock

Mechanic

Pipkin Motor Co.

Logo Designed

The official logo for Eastland's American Bicentennial celebration, designed by Bob Phillips, has been unveiled.

The symbol uses the basis of the official Bicentennial symbol in taking the form of an American five-pointed star in

white, surrounded by continuous stripes which form a second star. The double star is symbolic of the two centuries

Bob Vaught Candidate For City Commission

Lone Star Gas Company, it Appears would assess its ratepayers \$15,000,000 in excessive rates based on filing with Texas Railroad Commission on February 19, 1975.

I have reviewed the latest filing by Lone Star for the purpose of comparing the fair value concept for rate making purposes used by Lone Star, with the original cost concept used by the Federal Power Commission. This comparison appears below:

	Company Filing Based on Fair Value	Estimated Original Cost
Rate Base (60 percent Debt; 40 percent Equity)	\$236,000,000	\$155,000,000
Net Operating Income Required (company 9 percent on rate base, original cost 8 percent).	\$ 21,000,000	\$ 13,000,000
Federal Income Tax Required	19,000,000	12,000,000
Total Required	40,000,000	25,000,000
Deduct Interest on Debt at 7.5 percent	11,000,000	7,000,000
Taxable Income	29,000,000	18,000,000
Federal Income Tax at 48 percent	14,000,000	9,000,000
Income to Equity Stockholders	15,000,000	9,000,000
Percent Return to Equity	16 percent	15 percent

As you may readily see, Lone Star would assess its ratepayers \$40,000,000 under the fair value concept, while under the original cost concept the assessment against the rate payer would only be \$25,000,000 or \$15,000,000 less.

The above comparison convinces me that a strong State Utility Commission is the answer. If original cost in the above comparison, allowed the 9 percent return requested by the company, and debt considered 50 percent and equity 50 percent, it is estimated the return to equity would be 13 percent. The Federal Power Commission, as I understand, is allowing a return on equity in the range of 12 percent to 13 percent.

TEXAS NEEDS A STRONG STATE UTILITY COMMISSION

(Pol. Adv. Pd. By Bob Vaught)



BAKKER FUNERAL HOME 629-1726

A-1 SALES
BETWEEN PERRYS AND MODE-O-DAY
BUSINESS 629-2102 HOME 629-2464
TERRY - JERRY and DALE MASTON

VINAL STORM WINDOWS

- Mount outside your present windows
- Provides Double Window Insulation
- Saves on fuel consumption

ALUMINUM REPLACEMENT WINDOWS AND STORM DOORS

- Economical · Lasting Beauty
- Practical · Stops Drafts

CUSTOM BUILT-CAR PORTS PATIOS-PORCHES-STORAGE

SIDING-VINAL-INSULATED

All Types Of Remodeling Inside-Outside- Foundations Roofing - We Will Work By The Hour At Reasonable Rates Or We Will Give You A Turn Key Price On Labor & Material

WE WILL USE YOUR MATERIAL OR WILL FURNISH THE MATERIAL

WE OFFER YOU SKILLED WORMANSHIP AT REASONABLE PRICES-CALL US NOW

- FOR -

FREE ESTIMATE
Phone 629-2102