



COVERING EASTLAND COUNTY THE ONLY PLACE YOU CAN READ THE MOST IMPORTANT NEWS IN THE WORLD -- ALL THE NEWS ABOUT YOU, YOUR FAMILY AND YOUR FRIENDS! EASTLAND, TEXAS, THURSDAY, JULY 26, 1962

PRICE 10¢

NO. 124

By H.V.O.

Wilson, manager... group shared... Mrs. Virgil Seag...

Meeting site of the industrial seminar to be held in Eastland on Tuesday, July 31st at 7:30 p.m.

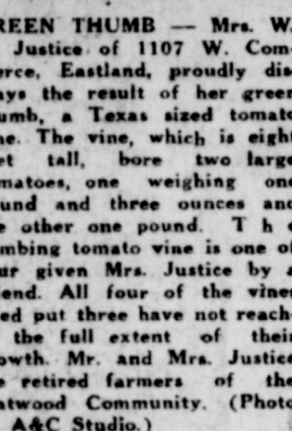
Clark became Executive Director of the Texas Industrial Commission in January, 1962.

Public Interest Noted Due To 4-H Lamb Sale



'100-Yearer' Gets Official Greetings

Mr. Jack Carter, who celebrated his 100th birthday Monday, received nationwide wishes of good health and many happy returns of the day...



GREEN THUMB — Mrs. W. A. Justice of 1107 W. Commerce, Eastland, proudly displays the result of her green thumb, a Texas sized tomato vine.

Mrs. W. A. Justice of 1107 W. Commerce, Eastland, proudly displays the result of her green thumb, a Texas sized tomato vine. The vine, which is eight feet tall, bore two large tomatoes, one weighing one pound and three ounces and the other one pound.

Seminar Site Changed

Meeting site of the industrial seminar to be held in Eastland on Tuesday, July 31st at 7:30 p.m. has been changed from the director's room of the Eastland National Bank to the Texas Electric Conference Room.

Much interest has been shown in the 4-H lambs to be sold Saturday morning at 9 o'clock, according to an announcement made by Roger Blackmon, Assistant County Agent.

Wednesday Rites Held In Spur For Local Resident

Funeral services were held Wednesday at 10 a.m. in the Campbell Funeral Chapel of Spur for Mrs. Georgia Charlotte Higginbotham, 91, who died Tuesday at 1:45 p.m. in the Eastland Memorial Hospital.

Mrs. Higginbotham had been a patient in the local hospital for approximately five months. Born March 28, 1871 in McClellan County, Mrs. Higginbotham had been a resident of Eastland for the past fourteen months.

Ranger All-Stars Win Area II Championship Eastland Cellared

Ranger Little League All-Stars were named Area II Champions following their 6-0 win over Breckenridge All-Stars in area action at Albany Saturday night, July 21.

Ranger won the area decision over Breckenridge Saturday night by virtue of a two hitter game with 13 strike-outs pitched by Jerry Watson.



EASTER CHICK, THREE MONTHS LATER—If you've ever wondered what happens to those cute little rainbow-colored Easter chicks, you can see the results here.

If you've ever wondered what happens to those cute little rainbow-colored Easter chicks, you can see the results here. Hing-Ding, pictured above, even though "grown-up" now, is still the favorite pet rooster of the J. M. Webbs, owners of Webb's Seven-Eleven Grocery at 1906 W. Main.

Wool, Mohair Marketing To Be Field Day Topics

Preparing and marketing wool and mohair, selection of breeding animals and other topics are scheduled for the program of the Eastland County Sheep and Goat Field Day on the Hagaman ranch East of Ranger on August 7th.

Weldon Cloud, wool and mohair buyer and warehouseman, Lampasas, whose firm has a warehouse and a buying station in Ranger, will discuss the preparation of wool and mohair for marketing of the two fibers.

Now Showing At The MAJESTIC IN EASTLAND "Jack, the Giant Killer" Plus "Safe at Home" FREE PASSES To Those Who Find Their Names Set Bold Face Type Among The CLASSIFIEDS!

Program Planning Committee Names Ten-Man RAD Group

A Rural Area Development Committee has been named and a comprehensive survey will be conducted in this county soon. The Eastland County Agricultural Program Building...

Local Firemen Attending Annual Training School

Guy Robinson and J. L. Patton, both members of the Eastland Fire Department, are attending the 33rd annual Texas Firemen's Training School on the Texas A&M College campus.

Other courses of the school include Basic Firefighting, Advanced Firefighting, Fire Instructor Training, Fire Officer Training, Fire Department Pump Maintenance, etc.

Local Golfers Asked To Cisco Tournament

Eastland golfers have been invited to play in the annual Cisco Country Club invitation tournament August 3, 4, 5, according to an announcement by Richard Moore, club president.

Funeral Services Held For Former Resident

Funeral services were held Thursday, July 12, at the Forest Lawn Memorial Park, Bellflower, Calif. for Mrs. Lottie G. Williams, who died July 10 in Bellflower.

Rev. C. Massegee Conducts Revival At DeLeon

The Rev. Charles Massegee is conducting a revival at the First Baptist Church of DeLeon this week, July 22-29, according to a report here.

Re. Osborne

Rev. Floyd Osborne, pastor of the Calvary Baptist Church, will become effective on Sunday.

Special Service

"An old fashioned day" will be the theme for Sunday services of the Calvary Baptist Church, according to an announcement made by the pastor, Rev. Floyd Osborne.

Local Firemen Attending Annual Training School

Miss Barbara McCullough will represent Eastland as Duchess in the annual Peach and Melon Festival in DeLeon, according to an announcement made by the Executive Director of the Chamber of Commerce.

MILITARY WINNER

Military Winner, Master Sergeant Billy R. Bailey, right, of Butler, Okla., explains the military improvement suggestion which won him \$200 to Lieutenant Colonel Robert H. Huston, Pacific Mobil Depot Activity commander, Tachikawa AFB, Japan.



Miss Barbara McCullough will represent Eastland as Duchess in the annual Peach and Melon Festival in DeLeon, according to an announcement made by the Executive Director of the Chamber of Commerce.



Military Winner, Master Sergeant Billy R. Bailey, right, of Butler, Okla., explains the military improvement suggestion which won him \$200 to Lieutenant Colonel Robert H. Huston, Pacific Mobil Depot Activity commander, Tachikawa AFB, Japan.

WORTH FOOD MART

The SURE SIGN OF QUALITY!



Prices Effective: Thursday - Friday and Saturday



MONEY !! DON'T - START YOUR

QUALITY SERVICE AND



BLUE BONNET
MARGARINE LB. PKG. **27c**

YELLOW LABEL
LIPTON'S TEA 1/2 LB. PKG. **85c**

ALMA CUT AND SHELLD
GREEN BEANS No. 303 CAN **15c**

CAKE MIXES GREEN BEANS

DUNCAN HINES-
LAYER VARIETY

2 19-oz. PKGS. **6**

DEL MONTE,
CUT

3 No. 303 CANS **6**



COFFEE

MAXWELL HOUSE
ALL GRINDS

5 LB. CAN

3c OFF LABEL-DUTCH CLEANSER NET 2 21-oz. Cans 39c	NABISCO - PREMIUM CRACKERS LB. BOX 31c
DETERGENT TREND 2 Large Pkgs. 39c	BANQUET - WHOLE CHICKEN 52-oz. CAN 89c
SIX BAR BAG WRISLEY'S SOAP EACH 39c	BROOK'S CATSUP 12-oz. BOTTLE 21c
DETERGENT CHEER GIANT BOX 75c	LAWRY'S - SEASONED PEPPER 1-5.8 oz. PKG. 49c
DETERGENT OXYDOL GIANT BOX 77c	PLAIN or CHOC. COVERED PEANUTS M&M CANDIES 5 3/4-oz BAG 29c
LARGE BOX IVORY SNOW EACH 33c	MISSION - ASST'D FLAVORS Canned Drinks 6 12-oz. Cans 55c
KIRK'S HARDWATER COCO SOAP REG. SIZE BAR 10c	AUNT JEMIMA - EASY Corn Bread Mix 10-oz. PKG. 37c
DETERGENT DREFT LARGE BOX 33c	WYJESKE - WRYROBY - POLISH DILLS 32-oz. JAR 35c
STARTER SET PREMIUM DUZ EACH 55c	BORDEN'S - CONDENSED Eagle Brand Milk 15-oz. CAN 33c

— Mix or Match —
Smucker Grape Jam-12oz.
• ORANGE MARMALADE—12-oz.
• PLUM PRES. — 12-oz. **3** Jars **69c**
• Blackberry Jelly 10-oz. **3** Jars **69c**

KORN KIST CORN OIL
MARGARINE LB. PKG. **29c**

HUNT'S
TOMATO JUICE 10 No. 300 Cans **\$1**

DOLE—CRUSHED
PINEAPPLE No. 1 Fla. 2 CANS **29c**

LIQUID DETERGENT
FOOD MART 2 22-oz. Pkg. **69c**

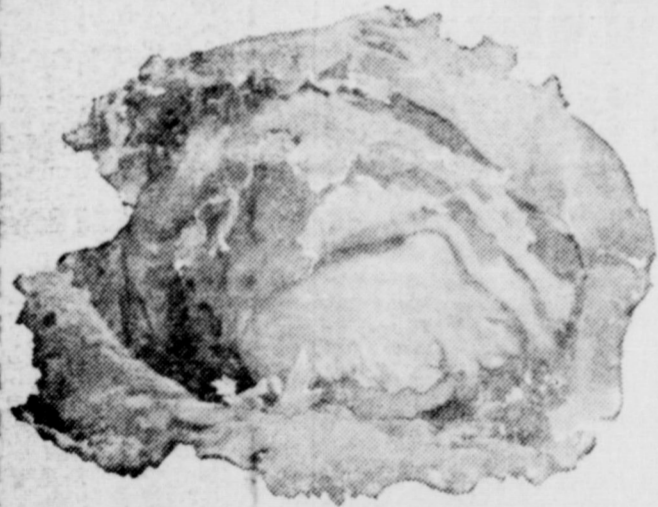
36 TABLETS
BUFFERIN EACH **39c**

IPANA WITH HEXA FLOURIDE
TOOTH PASTE Economy Size - Tube **45c**

Luncheon
OSCAR - MAY
12-OZ. CAN **8**

Vigo Dog
HORSE MEAT
7 1-LB. CANS **5**

Lima Beans
SEASIDE
No. 300 Cans **4**



HEAD LETTUCE

 CRISP-FIRM HEADS EACH **15c**

CUCUMBERS

 GARDEN FRESH LB. **10c**

CANTALOUPES

 LARGE-CALIFORNIA LB. **10c**

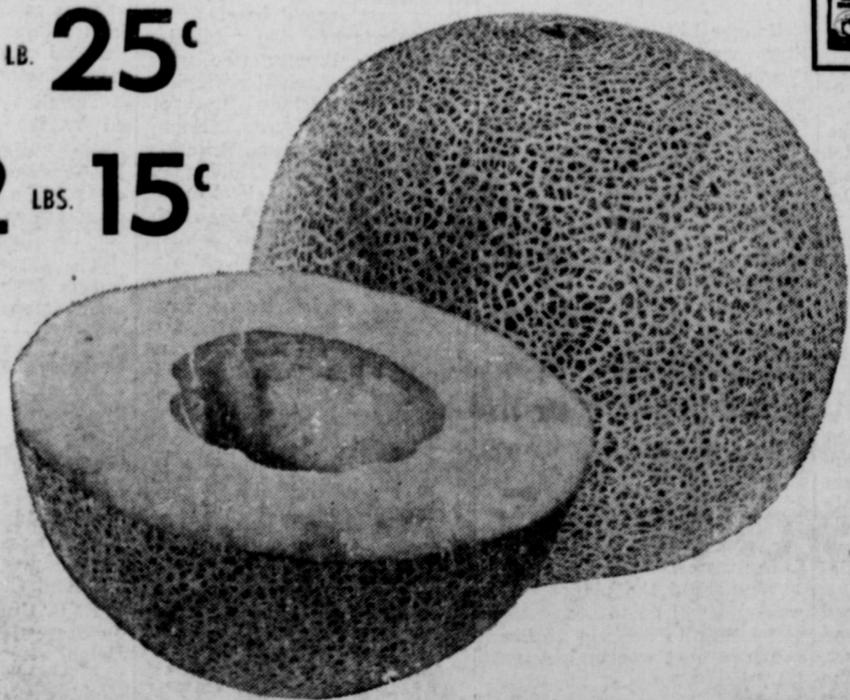
SANTA ROSA PLUMS LB. **25c**

YELLOW ONIONS 2 LBS. **15c**

CABBAGE FRESH GREEN HEADS LB. **5c**

AVOCADOS MEDIUM SIZE 2 FOR **29c**

CARROTS 2 1-LB. CELLO BAGS **25c**



Kellogg's GET DETAILS OF 25¢ REFUND IN OUR STORE

FREE FRUIT OFFER

FAVORITE FRUIT 'N CEREAL TIME "GO-TOGETHER"

Kellogg's
CORN FLAKES 10-oz.
RICE KRISPIES 9 1/2-oz.
VARIETY Ass'd Pkgs.

ZEST TOILET SOAP 2 Reg. Bkts.
ZEST TOILET SOAP 2 Bath Bkts.
LAVA BAR SOAP Medium Bkts.
LAVA BAR SOAP Large Bkts.

CLIP AND SAVE!

50 BONUS S&H GREEN STAMPS
With This Coupon and Purchase of
Two No. 303 Cans of Our Darling
White or Golden Cr. Sty. Corn
VOID AFTER SAT. JULY 28, 1962

WORTH FOOD MART

CLIP AND SAVE!

50 BONUS S&H GREEN STAMPS
With This Coupon and Purchase of
3/4 Lb. Pkg. Yellow Label
LIPTON'S TEA
VOID AFTER SAT. JULY 28, 1962

WORTH FOOD MART

CLIP AND SAVE!

25 BONUS S&H GREEN STAMPS
With This Coupon and Purchase of
1-Lb. Pkg. Blue Bonnet
MARGARINE
VOID AFTER SAT. JULY 28, 1962

WORTH FOOD MART

CLIP AND SAVE!

75 BONUS S&H GREEN STAMPS
With This Coupon and Purchase of
A 10-oz. Pkg. Chase and Sanborn
INSTANT COFFEE
VOID AFTER SAT. JULY 28, 1962

WORTH FOOD MART

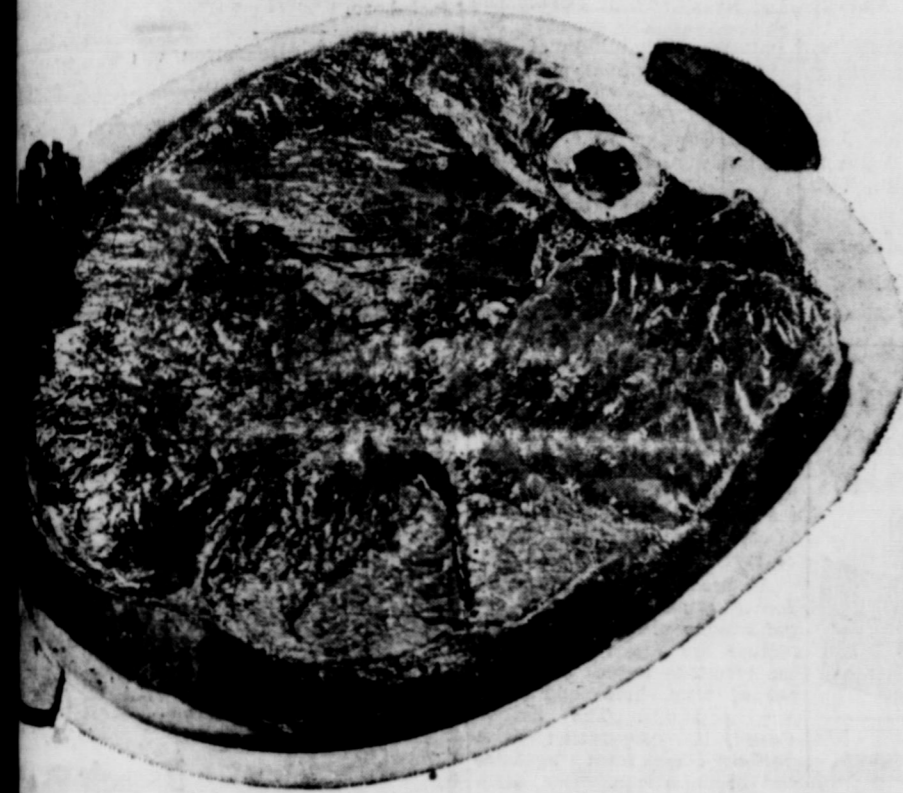
CLIP AND SAVE!

25 BONUS S&H GREEN STAMPS
With This Coupon and Purchase of
An 8-oz. Jar Wishbone
Deluxe French Dressing
VOID AFTER SAT. JULY 28, 1962

WORTH FOOD MART

MONEY !! MONEY !! - FORGET

FREE PREMIUM CARD TODAY!



Prices Effective: Thursday - Friday and Saturday

ROUND STEAK	W. C. Q. HEAVY BEEF	LB. 79^c
CHUCK ROAST	W. C. Q. HEAVY BEEF	LB. 49^c
ARM ROAST	W. C. Q. HEAVY BEEF SHOULDER	LB. 59^c
GROUND BEEF	WORTH QUALITY FRESH GROUND	LB. 39^c

FROZEN FOODS

STRAWBERRIES	3 10-oz. PKG.	69^c	SLICED BACON	RATH BLACKHAWK LB.	59^c
PIZZA RINGS	7-oz. FAMILY SIZE PKG.	39^c	GAME HENS	CORNISH 18-oz. AVG.	LB. 69^c
PARA LEE CAKES	EACH	69^c	CHOPETTES	RATH BEEF OR VEAL	8-oz. PKG. 49^c

OUR DARLING WHITE OR CREAM STYLE
GOLDEN CORN
2 No. 303 CANS **39^c**

DON'T FORGET! START YOUR FREE PREMIUM CARD TODAY!

Invalid if punched by any punch other than shown here VOID IF SEAL IS BROKEN

NO PURCHASES NECESSARY TO OBTAIN FREE PUNCHES
FREE PUNCH OR PUNCHES EACH WEEK

When free punches are punched out and if you are skillful and can answer the question under the seal, you may receive up to \$1,000 Cash.
NO BLANKS FREE OF COST
THIS CARD MAY BE WORTH \$1,000 CASH!

To be valid seal must be opened by authorized store personnel.

FREE PUNCHES

1	2	3	4	5	6	7	8	9	10	11	12	13
\$1	\$1	\$1	\$1	\$1	\$1	\$1	\$1	\$1	\$1	\$1	\$1	\$1
★	★	★	★	★	★	★	★	★	★	★	★	★

WORTH FOOD MART
PROFIT SHARING PREMIUM CARD

HONORED AT ALL WORTH FOOD MARTS VOID AFTER OCTOBER 19, 1962

Record of Purchases

25	25	25	25	25	25	25	25	25	25	25	25	25	25	25	25	25	25	25
50	50	50	50	50	50	50	50	50	50	50	50	50	50	50	50	50	50	50

Pat. Pend. Ser. No. 65476 Premium Cards, Inc., 6710 Snider Plaza, Dallas, Texas

Pick up your FREE PREMIUM CARD today!
You will win up to **\$1,000⁰⁰** IN CASH!

- It's Fun!
 - It's Exciting
 - It's Profitable
- No Purchase Required To Obtain A Card

CAUTION!

PLEASE DO NOT TAMPER WITH THE SEAL. TO BE VALID, SEAL MUST BE OPENED BY AN AUTHORIZED STORE EMPLOYEE.

WORTH FOOD MART
Employees And Their Families Are Not Eligible To Participate

NOTE: No purchase or other consideration is required to receive your Premium Card or to participate for the premium indicated under the seal! The validation of free punch section is in no way dependent upon the completion of the purchase section.

WHEN FREE PUNCH SECTION OF CARD IS FULLY PUNCHED, CARD IS WORTH A MINIMUM OF 1.00-AND MAY BE WORTH

\$2⁰⁰ - \$5⁰⁰ - \$10⁰⁰ OR \$1,000 CASH

\$50 - \$100 - \$250

SELL AND PROFIT... BUY AND SAVE... GET A BETTER JOB... HIRE GOOD HELP!

Read and Use the Want Ads!

CALL MA 9-1707

FOR RENT

FOR RENT: Small furnished apartment. Close in. Apply 210 E. Valley. tf

FOR RENT: House. Vacant July 15th. Apply 507 S. Madera. tf

FOR RENT: One and two bedroom furnished apartments. 611 Plummer. tf

FOR RENT: Lovely furnished or unfurnished apartments, any size, bills paid, maid and hotel services included, very reasonable. Also comfortable rooms with tile baths only \$39.95 monthly. Throw away your high bills and troubles and come live with us. Mrs. Robinson, manager, Village Hotel, MA 9-1716.

FOR RENT: Five room house with adjoining carport. Near factory and schools. tf

FOR RENT: Large house. See R. F. Taylor at 698 W. Patterson. Phone MA 9-2096. tf

FOR RENT: Five room house with adjoining carport. Near factory and schools. Phone MA 9-1559. tf

BUSINESS SERVICES

A-1 Janitorial service — floor waxing, stripping, window cleaning. Office, commercial, residential. Daily, weekly, monthly. Phone MA 9-2583. tf

SPECIAL NOTICE
NOTICE: Individual horseback riding instruction. Safe controlled conditions. Gentle horse and saddle furnished. \$2.00 an hour. For more particulars, call MA 9-2328. 69

FOR TRADE: Used TV to trade for typewriter or cash register. MA 9-1625. tf

NOTICE — Telegram Classifieds don't cost, they pay. tf

SPECIAL NOTICE: Typewriter and office machine repair. Machines to loan while yours is being repaired. Call the Eastland Telegram, MA 9-1707. tf

Gary Upchurch

NOTICE: Chick's Radio and T. V., 103 E. Main. Service calls, \$2.50; work guaranteed 90 days. Phone MA 9-1374, day or night. tf

RECORD-KEEPING got you down? The Eastland Telegram has a complete line of book-keeping supplies — ledgers, pads and all the necessary accessories for efficient record-keeping. tf

MISC FOR SALE
FOR SALE: Grapes. Tom Sharp, 2767, Olden. tf

PEOPLE read the Telegram classifieds. You're reading this one. tf

FOR SALE: Extra large white cast iron bathtub with fixtures. \$15. MA 9-2413 or MA 9-1707. tf

YES you can sell bicycles or roller skates with Telegram classifieds. tf

FOR SALE: Large minnows. Mrs. Harley Fox, Highway 80 East. Phone MA 9-1364. tf

FOR SALE: 3 young white-face cows with baby calves. Also 5 heavy Springers. Phone MA 9-2693. tf

FOR SALE: 290 laying hens. Phone MA 9-2683. tf

FOR SALE: 15 foot White-house boat loaded with extras with trailer. 35 hp Johnson motor with electric-start. James Wright at Modern Dry Cleaners. 67

FOR SALE: Like new Catalina Range with timer, magic-eye burner, griddle, ovenlight and glassed door. Call MA 9-2413 or MA 9-1707. tf

Steve Lond

GARAGE SALE being held. Lamps, tables, mattress and springs, two year old maple sofa bed, steam iron, electric toaster, electric broom, odd chairs, dinette set, draw drapes. All prices cheap. 205 S. Oaklawn, Eastland.

FOR SALE: 45 millimeter camera with flash and light meter. Call MA 9-1433 or MA 9-1436. Ray Heckendorfer. 68

THE GIFT House, Cisco — A haven for gifts, ideas for the home; complete assortment of Christmas cards. American designs and imports from all over the world. tf

FOR SALE: Famous Cedar Crest work shoes and boots. Army and Navy oxfords from \$6.95 to \$12.95, folding, aluminum and steel coats, comforts, blankets, sleeping bags, tarpaulins, tackle boxes, tool boxes, gas cans, tin cups, camp stools. Many other items, all at LOW-LOW prices. ARMY SURPLUS STORE, EASTLAND. tf

FOR SALE: Beltone hearing aid. Same as new. Cost \$229.50. Cash will sell for half price. See Mrs. W. A. Rodgers, Route 1, 1317 Bryens St. Eastland or call MA 9-2374. 70

FOR SALE: One fine cooking range. Almost new with grid-dle. \$75. MA 9-1506. tf

FOR LEASE
NOTICE: Painting, interior and exterior, taping and bedding, free estimates. Phone 9-2683. tf

ake Leon River, big shade trees new road, good fishing and a nice picnicing. Casey Mezell, phone MA 1703. tf

NOTICE: Any type hay baled promptly and efficiently. Also can condition your hay. I. B. Walker, call 2501, Olden collect. tf

FOR SALE: House with five bedrooms and bath. Two large lots. Priced at \$2300. 510 S. Madera St. Eastland. 69

FOR SALE: Five acres, five room modern house at Olden. Mrs. Ethel Rowch, 410 South Lamar. MA 9-1985. 69

REAL ESTATE
FOR SALE: House in Abilene. Have a 3-bedroom, low equity home with chain-link fence, down-drought air. Call MA 9-2413 or MA 9-1707, or write Box 29. tf

House for sale: Modern large two bedroom newly redecorated house, one block out of city limits on south side of Breckenridge Highway. Inquire of J. A. Stewart next on house West in Ranger. tf

FOR SALE OR TRADE: Clean 1949 model Oldsmobile '38'. Will take light two wheel trailer in trade. See at 209 W. Patterson. tf

FOR SALE: Three bedroom home, with two baths, 3 years old. Plenty closet storage. Central heat. Chainlink fence. Double garage. Corner lot. Nice location. 600 S. Bassetts. MA 9-1632. tf

FOR SALE: House in Morton Valley three bedroom, bath, good water, deep well and pump. One acre. High and cool. On highway. Phone MA 9. A. Treadwell, MA 9-2017. tf

FOR SALE: Three bedroom house and two room house. Concrete storm cellar, 7 lots. One and one-half blocks from high school. 505 S. Ostrom. tf

FOR SALE: Three bedrooms, two baths, living, dining, kitchen, and breakfast room, large closets, central heating and cooling, carpeting. All drapes, curtains and carpeting go with house. Two car garage and store rooms. Large attractive yard. 700 S. Seaman. Shown by appointment only. Call MA 9-1095. tf

EASTLAND ROTARY CLUB

Meets in White Elephant room noon luncheon Call Mike George, 9-1495, for each Monday.

EASTLAND JAYCEES

Wives, forget breakfast fast each 2nd & 4th Thursday. Get your JC off for 7 a.m. meet at White Elephant Restaurant

LADIES GOLF AUXILIARY

Meets at Lakeside Country Club for noon luncheon the second Tuesday of each month. For information call Mrs. Max Deazley, 9-2478.

EASTLAND CHAPTER NO 280 O. E. S.

Meets the first Tuesday of each month at 8 p.m. in the Masonic Hall. Call Mrs. Pebble Holes, Sec., for information. MA 9-2733.

MASONIC LODGE NO. 467

Meets second Thursday of each month at 8:00 pm. In the Masonic Hall. Call C. L. Langlitz for information or L. E. Huckabay, Sec., 9-1391, for information.

WE BUY AND SELL USED FURNITURE

Phone MA 9-1740 WAYNE JACKSON

FOR SALE: Three good buys in three bedroom homes. One G. I. equity. All in good location and good condition. M. A. Treadwell Sr. Phone MA 9-2117. tf

YOU can rent that spare bedroom with a Telegram Classified! tf

Chris Pryor

FOR SALE: Beautiful new brick home, three bedrooms, 1 1/2 baths, all electric kitchen, range, oven, vent a hood, dishwasher, disposal, central heating and refrigerated air conditioning, double garage, most beautiful tree shaded corner lot in town — well located at the corner of 500 E. Conner — F.H.A. quality approved — nominal down payment with payments like rent — Call Don Kinnaird Jr. at MA 9-2544 or Don Pierson at MA 9-1033. tf

FOR SALE: New two bedroom. Interior almost complete. 500 block East Commerce, Eastland. \$1798 cash as is or \$39.98 a month with no down payment. Call collect Modern Homes Construction Company, Pershing 2-4085, Fort Worth. tf

Andrea Rhodes

FOR SALE: Our three bedroom Hillcrest home, 2 tile baths, central air and heat. 306 S. Oaklawn. Business property 214 S. Seaman. Phone MA 9-1742. tf

MIS WANTED
WANTED: Babysitting in my home. By hour or day. Dorothy Capers, 510 S. Bassetts. Ph. MA 9-1604. 68

NEED a baby sitter, a car port a lawn mower, a job, an apartment, an assortment of flower seeds? Use Telegram Classifieds. tf

WANTED: Four books of Gold Bond Stamps for three books of Green Stamps and one of Plaid Stamps. MA 9-2413. tf

Lois Sims

HELP WANTED: Eastland Steam Laundry. Phone MA 9-2613. tf

WANTED — An opportunity to prove that Telegram Classifieds work hard for you. tf

WANTED: Sewing. 108 East Conner. MA 9-1568.

PERSONALS

If you are lonely, broken hearted, troubled in spirit or burdened with a sin-sick soul, you can find comfort, consolation and peace at First Methodist Church. tf

NOW OPEN EASTLAND SERVICE PARTS CO.

COMPLETE STOCK OF ALL Auto & Truck PARTS LOWEST PRICES ANYWHERE
Independently Owned Nationally - Affiliated
CALL US FIRST!
AUTO PARTS MA 9-1733
(Clip This Coupon and Place It Near Your Telephone)

Insurance and Real Estate D. L. KINNAIRD
Life - Fire - Auto - Farm Policy - Bonds
42 years in the Insurance Business in Eastland

Southern Television System Corp.

Village Hotel
CALL US and we will WIRE YOU
Watch Your Favorite TV Program
• Comedy • Western • Sports • Drama
Ph. MA 9-1716

FOUND — A perfect way to get rid of those discards at a profit. Sell them with a Telegram Classified.
USE as many as 20 words to describe your 'for rents', 'for sales', or 'what have you', for only 60 cents per insertion. tf

HOW do you know you can't sell it? Have you tried a Telegram Classified? tf

LOST: Pair prescription rimless sunglasses at West 80 Laundromat or in vicinity. Return to Army Surplus Store for reward. 68

FOR TRADE: Will trade equity in nearly new three bedroom home in Abilene for lake or city property around Eastland. MA 9-2413 or MA 9-1707. tf

Legal Notice

Notice

Lone Star producing Company owns 48 2/7 acres, more or less, located in Section No. 12, B.B.B. & C.R.R. Company Survey, Eastland County, Texas. This land is to be sold to the highest bidder on a cash basis. All minerals owned by said Company will be reserved. Company will give a special warranty deed to the property.

Lone Star Gas Company proposes to sell its Cottage No. 297 located at old Plant No. 111, on the road into Texas Electric Service Company power plant approximately five miles southeast of Eastland, Texas. Sale will be made to highest bidder on a where is as is basis for cash. Purchaser will have sixty days after receipt of a bill of sale to remove same from premises clean up tear out and remove from the premises all foundation materials, rock, rubbish and leave same in good workman like manner.

If interested please submit written bid or bids to Mr. P. L. Stone, 301 South Harwood Street, Dallas 1, Texas or contact Mr. B. L. Jordan, 934 Beeck St., Abilene, Texas.
Bids must be received not later than August 10, 1962 for consideration and Companies reserve right to refuse all bids.

PERMANENTS
\$10 Creme-Oil Waves \$6.50
\$12 Creme-Oil Waves \$7.50
\$12 Lanolin Waves \$8.50
Other waves \$10 and up
Basham Beauty Bar

WANTED
Good clean automobiles. Any make—Any Model Considered.
BLEVINS MOTOR CO.
See Jay Blevins.
Ph. MA 9-2433
513 West Main Eastland

T. L. FAGG
REAL ESTATE
Property Management
Home and Farm Loans

Insurance and Real Estate D. L. KINNAIRD
Life - Fire - Auto - Farm Policy - Bonds
42 years in the Insurance Business in Eastland

WANTED
Good clean automobiles. Any make—Any Model Considered.
BLEVINS MOTOR CO.
See Jay Blevins.
Ph. MA 9-2433
513 West Main Eastland

WANTED
Good clean automobiles. Any make—Any Model Considered.
BLEVINS MOTOR CO.
See Jay Blevins.
Ph. MA 9-2433
513 West Main Eastland

WANTED
Good clean automobiles. Any make—Any Model Considered.
BLEVINS MOTOR CO.
See Jay Blevins.
Ph. MA 9-2433
513 West Main Eastland

WANTED
Good clean automobiles. Any make—Any Model Considered.
BLEVINS MOTOR CO.
See Jay Blevins.
Ph. MA 9-2433
513 West Main Eastland

WANTED
Good clean automobiles. Any make—Any Model Considered.
BLEVINS MOTOR CO.
See Jay Blevins.
Ph. MA 9-2433
513 West Main Eastland

WANTED
Good clean automobiles. Any make—Any Model Considered.
BLEVINS MOTOR CO.
See Jay Blevins.
Ph. MA 9-2433
513 West Main Eastland

WANTED
Good clean automobiles. Any make—Any Model Considered.
BLEVINS MOTOR CO.
See Jay Blevins.
Ph. MA 9-2433
513 West Main Eastland

WANTED
Good clean automobiles. Any make—Any Model Considered.
BLEVINS MOTOR CO.
See Jay Blevins.
Ph. MA 9-2433
513 West Main Eastland

WANTED
Good clean automobiles. Any make—Any Model Considered.
BLEVINS MOTOR CO.
See Jay Blevins.
Ph. MA 9-2433
513 West Main Eastland

WANTED
Good clean automobiles. Any make—Any Model Considered.
BLEVINS MOTOR CO.
See Jay Blevins.
Ph. MA 9-2433
513 West Main Eastland

WANTED
Good clean automobiles. Any make—Any Model Considered.
BLEVINS MOTOR CO.
See Jay Blevins.
Ph. MA 9-2433
513 West Main Eastland

WANTED
Good clean automobiles. Any make—Any Model Considered.
BLEVINS MOTOR CO.
See Jay Blevins.
Ph. MA 9-2433
513 West Main Eastland

WANTED
Good clean automobiles. Any make—Any Model Considered.
BLEVINS MOTOR CO.
See Jay Blevins.
Ph. MA 9-2433
513 West Main Eastland

WANTED
Good clean automobiles. Any make—Any Model Considered.
BLEVINS MOTOR CO.
See Jay Blevins.
Ph. MA 9-2433
513 West Main Eastland

WANTED
Good clean automobiles. Any make—Any Model Considered.
BLEVINS MOTOR CO.
See Jay Blevins.
Ph. MA 9-2433
513 West Main Eastland

WANTED
Good clean automobiles. Any make—Any Model Considered.
BLEVINS MOTOR CO.
See Jay Blevins.
Ph. MA 9-2433
513 West Main Eastland

LEGAL NOTICE

We Offer These Two Fine Properties To The Highest Bidder, On A Sealed Bid Basis.


No. 1
One And One-Half Acre Tract Partially Improved, Located In The Hag Survey, One Mile South of Eastland. This Property Just Off Proposed Highway No. 20 & Facing Highway No. 6. Very Desirable Location.

No. 2
Business Property Located At 214 S. Seaman, Lots No. 1 & 16, Blk. No. 2, Eastland, Texas. Property May Be Inspected Daily Between 9 AM & 12 Noon Or Any Time By Appointment.

Bids Will Be Opened Aug. 1st, 1962, At Our Office At 214 S. Seaman.

We Reserve The Right To Reject Any And All Bids. Jack Chamberlain, Phone Main 9-1742, 214 S. Seaman St., Eastland, Texas.

Read The Classifieds

New! Gillette Adjustable Razo. 9 Settings for Superb Shaves!

NOW \$1.95

Babysitting
Good clean automobiles. Any make—Any Model Considered.
BLEVINS MOTOR CO.
See Jay Blevins.
Ph. MA 9-2433
513 West Main Eastland

Child Care
Good clean automobiles. Any make—Any Model Considered.
BLEVINS MOTOR CO.
See Jay Blevins.
Ph. MA 9-2433
513 West Main Eastland

Child Care
Good clean automobiles. Any make—Any Model Considered.
BLEVINS MOTOR CO.
See Jay Blevins.
Ph. MA 9-2433
513 West Main Eastland

Child Care
Good clean automobiles. Any make—Any Model Considered.
BLEVINS MOTOR CO.
See Jay Blevins.
Ph. MA 9-2433
513 West Main Eastland

Child Care
Good clean automobiles. Any make—Any Model Considered.
BLEVINS MOTOR CO.
See Jay Blevins.
Ph. MA 9-2433
513 West Main Eastland

Child Care
Good clean automobiles. Any make—Any Model Considered.
BLEVINS MOTOR CO.
See Jay Blevins.
Ph. MA 9-2433
513 West Main Eastland

Child Care
Good clean automobiles. Any make—Any Model Considered.
BLEVINS MOTOR CO.
See Jay Blevins.
Ph. MA 9-2433
513 West Main Eastland

Child Care
Good clean automobiles. Any make—Any Model Considered.
BLEVINS MOTOR CO.
See Jay Blevins.
Ph. MA 9-2433
513 West Main Eastland

Child Care
Good clean automobiles. Any make—Any Model Considered.
BLEVINS MOTOR CO.
See Jay Blevins.
Ph. MA 9-2433
513 West Main Eastland

Child Care
Good clean automobiles. Any make—Any Model Considered.
BLEVINS MOTOR CO.
See Jay Blevins.
Ph. MA 9-2433
513 West Main Eastland

Child Care
Good clean automobiles. Any make—Any Model Considered.
BLEVINS MOTOR CO.
See Jay Blevins.
Ph. MA 9-2433
513 West Main Eastland

Child Care
Good clean automobiles. Any make—Any Model Considered.
BLEVINS MOTOR CO.
See Jay Blevins.
Ph. MA 9-2433
513 West Main Eastland

Child Care
Good clean automobiles. Any make—Any Model Considered.
BLEVINS MOTOR CO.
See Jay Blevins.
Ph. MA 9-2433
513 West Main Eastland

Child Care
Good clean automobiles. Any make—Any Model Considered.
BLEVINS MOTOR CO.
See Jay Blevins.
Ph. MA 9-2433
513 West Main Eastland

Child Care
Good clean automobiles. Any make—Any Model Considered.
BLEVINS MOTOR CO.
See Jay Blevins.
Ph. MA 9-2433
513 West Main Eastland

Child Care
Good clean automobiles. Any make—Any Model Considered.
BLEVINS MOTOR CO.
See Jay Blevins.
Ph. MA 9-2433
513 West Main Eastland

Child Care
Good clean automobiles. Any make—Any Model Considered.
BLEVINS MOTOR CO.
See Jay Blevins.
Ph. MA 9-2433
513 West Main Eastland

Child Care
Good clean automobiles. Any make—Any Model Considered.
BLEVINS MOTOR CO.
See Jay Blevins.
Ph. MA 9-2433
513 West Main Eastland

Child Care
Good clean automobiles. Any make—Any Model Considered.
BLEVINS MOTOR CO.
See Jay Blevins.
Ph. MA 9-2433
513 West Main Eastland

Child Care
Good clean automobiles. Any make—Any Model Considered.
BLEVINS MOTOR CO.
See Jay Blevins.
Ph. MA 9-2433
513 West Main Eastland

Child Care
Good clean automobiles. Any make—Any Model Considered.
BLEVINS MOTOR CO.
See Jay Blevins.
Ph. MA 9-2433
513 West Main Eastland

Child Care
Good clean automobiles. Any make—Any Model Considered.
BLEVINS MOTOR CO.
See Jay Blevins.
Ph. MA 9-2433
513 West Main Eastland

Child Care
Good clean automobiles. Any make—Any Model Considered.
BLEVINS MOTOR CO.
See Jay Blevins.
Ph. MA 9-2433
513 West Main Eastland

Staff News

Mr. and Mrs. Harry White of Phoenix, Ariz. are visiting his sister, Mrs. O. T. Hazard, and his brother, Mr. and Mrs. Wayne White. While here they also attended the White family reunion held at the Kirby Park in Abilene on Sunday.

Attending other than the above mentioned were Mr. and Mrs. Cecil White and son, Harold and family, of St. Angelo, Mr. and Mrs. R. H. Myrick of Abilene and three daughters, Mr. and Mrs. James Jennings and Martha of Midland, Mr. and Mrs. Eddie Steele, also of Midland, Mr. and Mrs. Bill Erickson of Hobbs, N.M., Mr. and Mrs. John White of Odessa, Mr. and Mrs. Roy White of Eliasville and their daughter, Mr. and Mrs. Leo Draper and three children of El Paso, Mr. and Mrs. Dewayne Dennis and children of Ranger and Mr. and Mrs. James Butler and children of Dallas.

Mrs. M. A. Abel and Mrs. F. S. Crawley were business visitors in Gorman last Friday.

Mrs. Frazier of Ranger and Mr. and Mrs. W. T. Duncan visited recently with friends.

Mrs. C. L. Henderson was and relatives in Comanche.

Mrs. Zannah Bourland and Betty of Eastland spent Friday night and Saturday at their lakeside home at Staff Village.

Mr. and Mrs. Steele Hill spent the weekend at their lakeside home, Hills Haven, also located at Staff Village.

Judge and Mrs. Esco Walter and Carrol of Eastland spent the weekend at their lakeside home here and had as their guests over the weekend the following: Mr. and Mrs. Marvin Smith of Houston, Mr. and Mrs. Richard Davis, Mr. and Mrs. George Stowe, Mr. and Mrs. Jim Jennings, Mr. and Mrs. Bert Chapman, all of Abilene, Mr. and Mrs. C. F. McReynolds and son, Keith, of Lincoln, Kan. and Mr. and Mrs. Jim Neely and son, Jerry, of Jacksboro.

Mrs. C. L. Henderson was

Mrs. M. A. Abel and Mrs. F. S. Crawley were business visitors in Gorman last Friday.

Mrs. Frazier of Ranger and Mr. and Mrs. W. T. Duncan visited recently with friends.

Mrs. C. L. Henderson was

Mrs. Zannah Bourland and Betty of Eastland spent Friday night and Saturday at their lakeside home at Staff Village.

Mr. and Mrs. Steele Hill spent the weekend at their lakeside home, Hills Haven, also located at Staff Village.

Judge and Mrs. Esco Walter and Carrol of Eastland spent the weekend at their lakeside home here and had as their guests over the weekend the following: Mr. and Mrs. Marvin Smith of Houston, Mr. and Mrs. Richard Davis, Mr. and Mrs. George Stowe, Mr. and Mrs. Jim Jennings, Mr. and Mrs. Bert Chapman, all of Abilene, Mr. and Mrs. C. F. McReynolds and son, Keith, of Lincoln, Kan. and Mr. and Mrs. Jim Neely and son, Jerry, of Jacksboro.

Mrs. C. L. Henderson was

Mrs. M. A. Abel and Mrs. F. S. Crawley were business visitors in Gorman last Friday.

Mrs. Frazier of Ranger and Mr. and Mrs. W. T. Duncan visited recently with friends.

10 SUMMER SALE



Libby Vienna
Sausage
 3 No. 1/2 Cans **59¢**

Bel-air Frozen
Cherry Pie
 1 1/2-Lb. Pie **35¢**

Edwards Coffee 1-Lb. Can **59¢**
 All Grinds. Start your day with a good cup of coffee.

Cottage Cheese 1-Lb. Can **19¢**
 Lucerne Regular, Farm Style, Chive, Dry Curd or Low Calorie.

Cragmont Beverages PLUS DEPOSIT 32-oz. **10¢**
 ASSORTED FLAVORS

Niblets Corn 3 12-Oz. Cans **49¢**
 Whole Kernel Golden. Golden nuggets of goodness.

Green Giant
Sweet Peas 3 No. 303 Cans **59¢**
 Tender and flavorful.
Libby Cut
Green Beans 3 No. 303 Cans **59¢**
 Tender and succulent.

Ball Jar Lids Dome Vacuum Seal, 2 2-Oz. Pkg. **31¢**
Charmin Tissue Assorted color toilet tissues, 4 2 1/2-Block **37¢**
Duz Detergent Premium pack, Large Box **55¢**
Pine Sol Disinfectant, For household use, 4 Oz. Bottle **25¢**

Gerber's
Baby Food 6 4 1/2-Oz. Jars **59¢**
 Vegetables and fruits.

Joyett
Mellorine 3 1/2-Gal. Ctn. For **\$1**
 Vanilla, chocolate, strawberry, banana or neapolitan. Regular 49¢.

- Crackers** Sunshine. For snacks, 10-Oz. Pkg. **29¢**
- Chips** Marton. For picnics, 4-Oz. Pkg. **25¢**
- Milk** Welch's. So delightful, 3 32-Oz. Cans **\$1.00**
- Munch** Welch. Perfect for parties, 2 12-Oz. Cans **69¢**
- Juice** Del Monte. A true breakfast beverage, 2 No. 2 Cans **31¢**
- Light Meat** "One can FREE when you mail 3 labels," 6 1/2-Oz. Cans **35¢**
- Tomatoes** Del Monte. Useful so many ways, No. 303 Can **27¢**
- Shortening** For all your cooking, 3 Lb. Can **63¢**
- Food** Yellow label, 2 1-Lb. Can **21¢**



Safeway Fresh Meats!
Fryers **29¢**
 U.S.D.A. inspected for wholesomeness and graded "A." Ready to cook. Whole. Lb.

- Always Fresh!*
- Potato Salad** Lucerne. Regular 39¢, 14-Oz. Ctn. **29¢**
 - 1000 Island Dressing** Lucerne. Regular 39¢, 8-Oz. Jar **29¢**
 - Orange Drink** Grape or Fruit Punch, Lucerne. Reg. 29¢, 2 1/2-Gal. Ctn. **49¢**
 - Empress Grapeade** So delightful, 32-Oz. Can **29¢**
 - Ballard Biscuits** Sweet milk or Pillsbury Buttermilk, 3 1-Oz. Cans **29¢**
 - Cragmont Beverages** Assorted flavors, 10-Oz. Cans **6 For 49¢**
 - Grade 'A' Eggs** Breakfast Coms. Grade "A" Quality, Mead. 50¢, 2 Doz. **69¢**
 - Electric Can Opener** Utility with knife sharpener, Each **\$12.50**
 - Camay Soap** Assorted colors, 2 1/2-Doz. **29¢**
 - Zest Beauty Bar** Get that Zest glow, 2 Doz. **29¢**
 - Draft Detergent** Germaseptic, 1 1/2-Doz. Box **33¢**

Rump Roast U.S.D.A. Choice Grade Heavy Beef, Lb. **79¢**

Sausage Wingate Regular or Hot, 2 Lb. Pkg. **85¢**

Braunschweiger By the chunk, Lb. **49¢**

Quick Steaks Buttered Beef, Lb. **79¢**

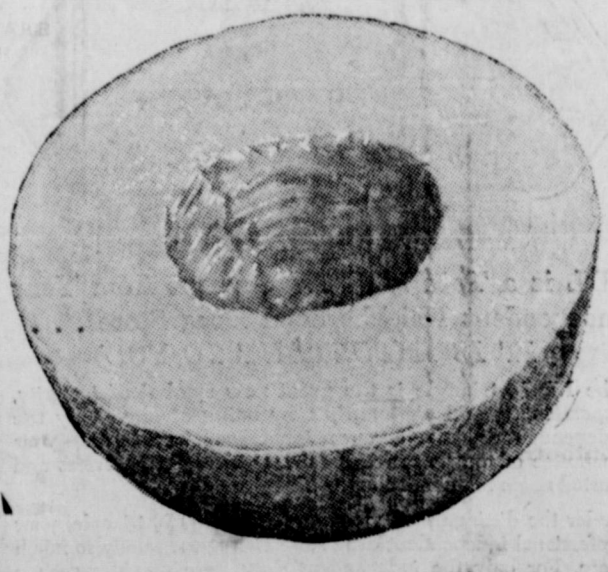
Canned Ham Armour's Star, 6 Lb. Can **\$5.25**

Bacon Capitol Sliced. A true breakfast treat. Serve with Safeway fresh eggs, 1-Lb. Pkg. **49¢**

Round Steak U.S.D.A. Choice Grade Heavy Beef. Full cut, Lb. **85¢**

- Bakery Features!*
- Ch Bread** 1-Lb. Loaf **19¢**
 - Rolls** 13-Oz. Pkg. **23¢**
 - Buns** Mrs. Wright's 8-count, 11-Oz. Pkg. **19¢**
 - Bread** For sandwiches, 1-Lb. Loaf **25¢**

- M & M Candy** Chocolate plain or peanut, 5 1/2-Oz. Pkg. **29¢**
- Almond Candy** M & M. Chocolate covered, 4 1/2-Oz. Pkg. **29¢**
- Chocolate Wafers** M & M Candy, 6-Ct. Pkg. **25¢**
- Charmin Napkins** White paper, 2 80-Ct. Pkgs. **27¢**



Safeway Fresh Produce!
Cantaloupes California. Sweet, juicy, orange-meat cantaloupes. A refreshing summer treat. 2 Large Size **29¢**

Blueberries Fresh and flavorful, Pint Cup **39¢**

Peaches Arkansas's Finest Elbertas. (Bushel ... 1.00) Lb. **10¢**

Tomatoes 13-Oz. Carton **59¢**
 U.S. No. 1 White Rose. Ideal all purpose.

Potatoes U.S. No. 1 White Rose. Ideal all purpose, 10-Lb. Bag **59¢**

Beef Roast This Coupon Worth 50 FREE GOLD BOND STAMPS Plus your regularly earned Gold Bond Stamps with the purchase of Any Heavy Beef or Baby Beef **39¢**
 Coupon Expires July 28, 1962.

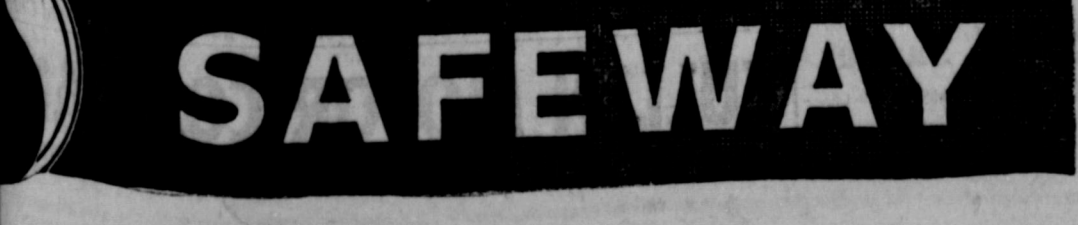
Watermelons U.S. No. 1 Charleston Grey. A delightful summer treat. Red, ripe and unconditionally guaranteed, Each **39¢**

Redeem this coupon for **50 FREE GOLD BOND STAMPS** Plus your regularly earned Gold Bond Stamps with the purchase of \$5.00 or more (Excluding Cigarettes). Coupon Expires July 28, 1962.

This Coupon Worth 25 FREE GOLD BOND STAMPS Plus your regularly earned Gold Bond Stamps with the purchase of 1-Lb. Pkg. Busy Baker SNACK CRACKERS. Coupon Expires July 28, 1962.

This Coupon Worth 50 FREE GOLD BOND STAMPS Plus your regularly earned Gold Bond Stamps with the purchase of TWO - Regular Packages Sno-Fresh Frozen Blackeye Peas or WHOLE BABY OKRA. Coupon Expires July 28, 1962.

Prices and Coupons Effective Thurs., Fri. and Sat., July 26, 27 and 28, in EASTLAND. We Reserve the Right to Limit Quantities. No Sales to Dealers.



EASTLAND TELEGRAM

Eastland County Record established in 1931, consolidated August 31, 1951. Chronicle established 1887, Telegram established 1923. Entered as second class matter at the Post Office in Eastland, Texas under the Act of Congress of March 3, 1879.

Published Semi Weekly—Thursdays and Sundays
By Eastland County Newspapers, Inc.
H. V. O'BRIEN, Editor

One Week by carrier in city15
One month by carrier in city65
One year by mail in county	2.95
One year by mail out of state	6.95

NOTICE TO PUBLIC—Any erroneous reflection upon the character, standing or reputation of any person, firm or corporation which may appear in the columns of this newspaper will be gladly corrected upon being brought to the attention of the publishers.

READ THE CLASSIFIEDS

The Car and it's Companion -

... are inseparable friends and should be. The car is harmless without the driver. With the driver, it may become most useful but never harmless. No operator of a moving vehicle ever realizes his responsibility to the public until he has an accident. Then it dawns on him that he is living in a world with other people, some very peculiar, who have plenty of personal and property rights. So if you drive, drive carefully, but never without adequate insurance protection.

Earl Bender & Company

Eastland (Insurance since 1924) Texas

Court News

Marriage Licenses

Donald Johnson Daniel to Mrs. Anna Jewell Marsh. James Levoice Cate to Mrs. Janet Faye Scott. Freddie Clark Rodgers to Glynda Kay Miller.

Suits Filed

The following suits were filed for record in the 91st District Court last week: Bonnie Helen Agnew vs. Lawson N. Agnew, divorce and child custody.

Jack Robinson vs. The American Insurance Co., for collection of insurance.

R. A. Bearman vs. Faye Johnson, et vir, damages.

Orders and Judgments

The following orders and judgments were rendered from the 91st District Court last week:

Tom Paul Holland vs. Martha Era Holland, judgment.

D. W. Tudor, et ux vs. Oil Transport Co. a Corp., order dismissal.

Bonnie Helen Agnew vs. Lawson N. Agnew, order.

George Peery vs. Mary Elizabeth Peery, judgment.

Cyrus Douglas Justice vs. Jan Marie Justice, order dismissal.

Carl Lummus vs. Magellan Co., order dismissal.

Lois Ruth Bush vs. Alfred Bush, judgment.

Lottie Mae Ainsworth vs. James Monroe Ainsworth, order dismissal.

The following instruments were filed for record in the County Clerk's office last week:

Ewing Baker, Jr. et ux to Benny Skinner to First Federal S&L Assn. of Ranger, MML.

Tom Bryant to R. Elliott Bryant, assignment overriding royalty interest.

Bowman Lumber Co. Inc. to Don Pierson, release MML.

Benjamin A. Christmas, Sr., de-

ceased to The Public, cc probate. William C. Cunningham, deceased to The Public, cc last will and testament.

William C. Cunningham, deceased to The Public, cc order and letters testamentary. I. J. Collins to Robert P. Browder, et al, release vendor's lien. City of Eastland to Mrs. D. L. Houle, cemetery deed.

Mrs. Johnnie G. Cheshire to Beatrice Guthrie, oil and gas lease. Mrs. Johnnie Cheshire to The Public, affidavit of lease expiration.

W. T. Danham, et ux to First National Bank Cisco, deed of trust.

H. C. Edwards to Dewey Cox, Jr., partial assignment of interest in judgment. W. Morris Evans, et al to William Clarence Davis, et ux, warranty deed.

M. H. Jairbetter, et ux to G. T. Leonard, et ux, warranty deed.

First Federal S&L Assn. of Ranger to Allen Dean Schmitt, et ux, release deed of trust.

Franklin Life Insurance Co. to J. H. Laston, Sr., et ux, release deed of trust.

Daisy L. Dunlap Green, et vir to Jack K. Smith, et ux, assignment vendor's lien.

Richard T. Girard, et ux to G. A. Bloomquist, assignment oil and gas lease.

Frank Gryder to Sandra Arline Peterson warranty deed.

Beatrice Guthrie to Moran National Bank, deed of trust.

Hiawatha Oil and Gas Co. to Ton Bryant, et al, assignment overriding royalty.

Humble Oil and Refining Co. to Troy D. Pilgram, et ux, release deed of trust.

Edward F. Harrison to James J. Jobe, et ux, release MML and deed of trust.

Aaron E. Howton, Jr., et ux to Jerry H. Buckley, assignment of contract of sale and purchase.

R. G. Huffman to Beatrice Guthrie assignment oil and

gas lease. R. G. Huffman to Beatrice Guthrie, assignment oil and gas lease.

A. R. Huffman to Beatrice Guthrie, assignment oil and gas lease.

E. E. Ingram to Wilbur Hobbs, deed of trust.

Robert W. Kincaid, et ux to Warren Petroleum Corp., right of way.

Nellie Kate McCarty, et al to Price Hooks, warranty deed.

Julia McGuire, Indv. and Ind. Ex'rx. of estate of W. M. Lawson, deceased to Jim Ray Cox, royalty deed.

R. L. McKinney to J. D. Lauderdale, partial release vendor's lien and deed of trust.

Troy D. Pilgrim, et ux, to Jim L. Webb, et ux, warranty deed.

L. R. Pearson to Warren Petroleum Corp. right of way.

Sandra Arline Peterson to First Federal S&L Assn. of Ranger, deed of trust.

Eunice P. Pence, et al to W. T. Donham, Sr., et ux, warranty deed.

Cora Belle Clary Pippen, deceased, to The Public, proof of heirship.

C. C. Rutherford, et al to B. H. Dennard, warranty deed.

G. R. Sanders, et ux to Shelby Frasier, et ux, warranty deed.

Samuel Warren Sibley, Jr., et al to The Public, affidavit.

J. F. Al Schluter to W. M. Jarrell, assignment oil and gas lease.

Textstar Securities Inc., et al to The Public, designation of pooling unit.

United States of America to State of Texas, subordination of deed of trust lien.

United States of America to Samuel E. Erwin, et ux, partial release deed of trust.

United States of America to Johnny B. Jesse, notice of tax lien.

Vandervoorts, Inc. vs. Kenneth Eoff, abstract of judgment.

Lola Woodriddle to Walter R. Chambers, mineral deed.

Jim L. Webb to First National Bank Cisco, assignment of vendor's lien and deed of trust.

Thomas Walter Whaley, et ux, deceased to The Public, proof of heirship.

H. C. Jordan Tour States

Mr. and Mrs. Herman C. Jordan and daughter, Jerry, and granddaughter, Pamela, have returned home from a vacation during which they visited with their daughter and husband, Mr. and Mrs. Stan McCurdy in Fernandina Beach, Fla.

En route to Florida, the Jordans visited in the home of his cousin and family, Mr. and Mrs. Clexton Wilson at Mable Wood the Jordans traveled Wood, La. near Lake Charles.

After departing from Mable eastward to Baton Rouge and New Orleans. Upon their arrival in Florida, the party visited in the city of Tallahassee. From there they journeyed to Fernandina Beach where they visited Fort Pierce and Mayport. While in Mayport they saw the carrier, Roosevelt. They then ferried across the St. John River.

While enroute home, they visited in Montgomery, Ala. and Jackson, Miss.

Mrs. McCurdy returned with her parents for a short visit.

VISITS HERE

Mr. and Mrs. Joe Garrett and family of Houston visited last week with their parents, Mr. and Mrs. George Rhyne and Clyde Garrett, all of Eastland. They also visited with Mrs. Willie Mae Hendrick and Mrs. Ella Garrett.

VISITS PARENTS

Mr. and Mrs. Glen Garrett and Teresa of Wichita Falls were guests last week in the homes of their parents, Mr. and Mrs. A. K. Garrett of Eastland and Mr. and Mrs. M. Byrd of Carbon.

RECENT GUESTS

Recent guests in the home of Mr. and Mrs. W. S. Willoughby and W. S. Jr. of 306 N. Daugherty were Mrs. Lorene Ferguson and Mr. and Mrs. Louis Willoughby of Dallas and Oscar Willoughby of Greenville. While here they also visited with Mr. and Mrs. David Willoughby.

Reunion Enjoyed By Hart Family

The Hart family held a reunion on Sunday, July 8, at the Legion Hall in Cisco. Those attending were Joe and Alma Matthews of Eastland, N. O. Hart, Sue, Toby Ray, and Larry of Odessa, Mr. and Mrs. Gerald Matthews, Gary and Debbie of Graham, Mr. and Mrs. John L. Hart, Judy, Bob and Pat of Abilene.

Mr. and Mrs. Wayne Brock, Carolyn, Pam, and Cindy of Olden, Mr. and Mrs. John S. Hart of Cisco, Mr. and Mrs. J. B. Havlin, Glinda, Lynetta, and Rovert of Dallas, Odie Matthews of Eastland, Mr. and Mrs. Nute Hart, Rosa Hart, and Mr. and Mrs. Guss Hart, Sylvia and Sandra, all of Cisco.

VISITS

Mr. and Mrs. James K. Smith and family and Mr. and Mrs. Don Kincaid and daughters of Cisco spent Sunday at Possum Kingdom State Park where they visited with Mr. and Mrs. Virgil Moore and sons of Archer City, former residents of Eastland.

SATURDAY GUESTS

Mr. and Mrs. H. H. Smith of Hurst were Saturday guests in the home of their son and family, Mr. and Mrs. James K. Smith, Cynthia and Kenneth. They were enroute home from Seattle, Washington where they attended the World's Fair.

**DRESSY . . .
LIGHT . . .
AND PRACTICAL
CEDAR CREST
WELLINGTON
BOOTS**



Smooth dress leather black and tan
\$9.95
Fawn Suede cork sole
\$8.95

Army Surplus Store
Eastland, Texas

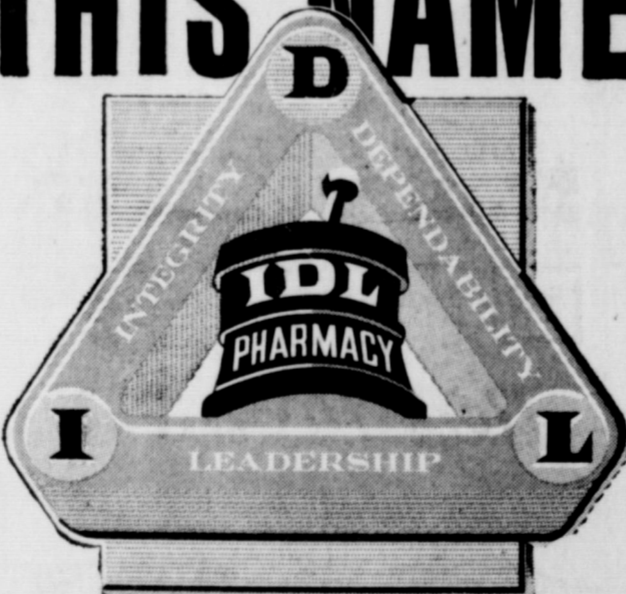
FURNITURE CARPET APPLIANCES

Quality Merchandise at Every Day Low Prices
**FREE DELIVERY — NO CARRYING CHARGES
ON FURNITURE and CARPETS
FOR 1 FULL YEAR**

Ranger Furniture Exchange

"BRASHIER'S"
123 N. RUSK Ranger Phone MI 7-1404

REMEMBER THIS NAME



IDL is a Totally NEW Concept from Your Independent Neighborhood Drug Store . . .
IT IS IMPORTANT TO YOU

The I.D.L. triangle is the great new symbol of integrity, dependability and leadership now being displayed by the independent druggist in your neighborhood. Look for it — your guarantee of the best in professional prescription services and trusted name brand merchandise.

Under the distinguished green and white I.D.L. triangle, your professional independent drug store offers your family so much more. For only the independent drug store provides such a variety of professional services with personal attention to your family's health and well-being. Visit your independent I.D.L. pharmacy soon. You will agree it's the biggest bargain today in your budget for better living.



CENTRAL DRUG CO.
Eastland, Texas

Initiation Rites Are Planned By Double Seven

The Double Seven Club, which is composed of the 1962-63 senior girls of Eastland High School, held a meeting on Wednesday, July 18, to discuss plans for an initiation slumber party to be held in the home of Julie Frost Thursday, Aug. 30 at 5:30 p.m.

All freshmen girls are to be present and will be initiated.

The meeting home of B. refreshments were served by: Judy Frost, Ann Walter, C. Becky McAlister, Nora Jordan a visitor.

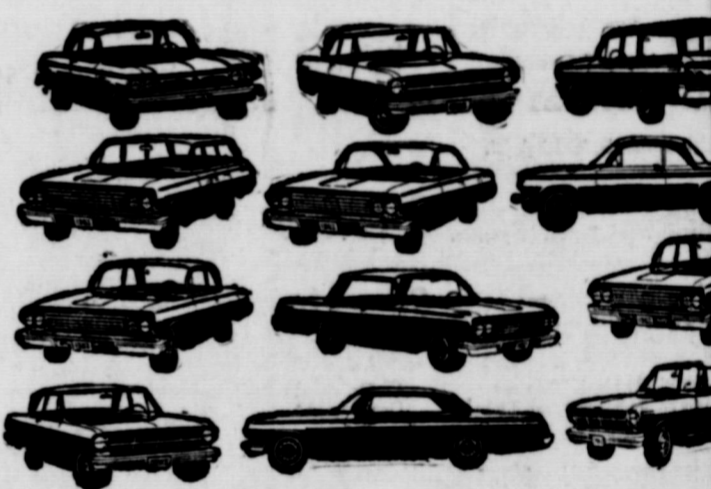
MONROE
SINCE 1884
WEATHERFORD PHONE 11

SAFE DRIVER?



Most people are... and as you are entitled to a better rate comes to your automobile insurance. Get the details. No obligation.

Kinnaird General Insurance
MA 9-2544



your Chevrolet Dealer has lots of new car buys



but they're going fast



so better get yours



before they're all gone!

gone!



See the new Chevrolet, Chevy II and Corvair at your local authorized Chevrolet dealer.

FULLEN MOTOR COMPANY
305 E. MAIN EASTLAND PHONE 11

Van Hays Take Extensive Tour

Mrs. Aubrey Van Hoy of Temple, formerly of Eastland, recently spent 10 days in Lubbock visiting with her daughter and family, Mr. and Mrs. Joe Gibson and son, Eddie. Mr. Van Hoy joined his wife in Lubbock accompanied by her mother, Mrs. Wiley Harbin of Eastland.

They then traveled from Lubbock to Tulsa, Okla. where Mrs. Harbin remained for a visit with her niece and family, Mr. and Mrs. George Mollard, the former Miss Margaret Lou Messey of Eastland.

Mr. and Mrs. Van Hoy then went to Belleville, Ill., where they visited with his son, Conner Van Hoy and family.

While enroute home they visited Meramec Caverns, the Jesse James hideout in Missouri; Bull Shoals Caverns in Arkansas; and Onondaga Cave in Mississippi. They also visited Shepherd of Hills Farm in the Ozark Mountains and drove through the Table Rock Lake Area, and visited the Will Powers Memorial in Claremore, Okla.

They are presently visiting here with her parents, Mr. and Mrs. Wiley Harbin, while on a fishing outing at their Lake Leon cabin.

VISITS DAUGHTER

Mr. and Mrs. Dean Collins and Judy visited over the weekend in Eunice, N.M. with their daughter and family, Mr. and Mrs. Jimmy Sandlin and Larry. Judy remained for a weeks visit with her sister.

VISITORS

Mr. and Mrs. Dean Pulley, Mike and Micky, of Athens spent Sunday night in the home of friends, Mr. and Mrs. C. W. Boles, Bill, Randy, Jerry and Bart.



MISS CAMILLA ROBERTS

Camilla Roberts, Lee King To Repeat Vows in Snyder

Mr. and Mrs. T. A. Roberts of 300-Ave. W., Snyder announce the engagement and approaching marriage of their daughter, Camilla, to Lee King, son of Mr. and Mrs. M. L. King, 808 W. Main, Ranger.

The couple will be married at the First Methodist Church of Snyder on August 4.

Miss Roberts was a 1960 graduate of Snyder High and is a junior at McMurry College. The prospective groom was a 1959 graduate of Ranger High School and is a senior at McMurry.

All friend of the couple are invited to attend.

Mrs. Collings Commended

Mrs. Cecil Collings, chairman for Eastland County, has received commendations from the state Chairman, Dr. G. V. Brindley, Sr., for the outstanding success of the educational and fund-raising campaign in the county this year.

Eastland County is one of the 126 leading counties in the state which have reached or exceeded their minimum share in the 1962 Crusade. With a minimum share of \$2,350, Eastland County already reported a total of \$3,191.25.

Dr. Brindley's letter pointed out that Mrs. Collings and all who helped with the Crusade furnished inspiration to the entire state Crusade.

According to the announcement, Texas has already made a record contribution to the Society's program of research, education and service. Sixty cents of every Crusade dollar will be immediately available for use in these programs within the state of Texas. In addition to this, the national Society supports research in Texas directly to the tune of around forty cents of this dollar in the average year.

During the current year support of this Texas research reached a record level and the Society is actually spending one dollar and ten cents in Texas, for all programs, for every dollar contributed by Texans during the Crusade.

PART II Research League Submits Welfare Recommendations

To "re-orient welfare in Texas," the study makes 12 specific recommendations aimed at emphasizing 1) individual needs, and help commensurate with those needs; 2) the responsibilities of individual welfare applicants and their close relatives for solving their own problems before turning to government; 3) allowing the Department of Public Welfare greater administrative flexibility in the interest of individual needs rather than group pressures; 4) the responsibility of the Legislature and the Governor for careful review of welfare spending needs, goals and plans for each biennium.

Five of these 12 recommendations are of major importance. The findings that led to these recommendations and the recommendations themselves are as follows:

Determining Need In determining the financial needs of public assistance recipients (exclusive of ADC cases), up to 200 acres of land or a town plot worth no more than \$5,000 (exclusive of improvements) is exempt under the Texas Homestead law.

Also, Texas law does not require the relative of a recipient to support him (consistent with their means) while he is alive.

This means that in Texas it would be possible for a man to live on a homestead worth considerable money, have wealthy sons and daughters, raise some of his own food requirements and receive the maximum state grant for many years.

Yet upon his death none of the welfare payments made to him could ever be recovered.

At the other extreme, a man might have housing, clothing, food and other needs exceeding \$100 a month, no relatives, no property, and no other sources of income; and under present laws he would receive the same maximum monthly grant of \$73 that the man mentioned above receives.

The League study disclosed that 48 percent of the Texas OAA caseload own real property and three per cent own real property in excess of \$5,000. In addition, research disclosed that two per cent of the OAA caseload had one or more relatives with a substantial income.

To correct the inequities in the present program the League report offers two basic recommendations which would apply to all public assistance programs. They are as follows:

• The State should enact a lien recovery law which would permit the state to reclaim assistance payments from the

estate of a deceased recipient, provided that estates with a market value of less than \$1,000 be exempted.

• Responsible adults with a net income of \$6,000 a year or more (as defined for federal income tax purposes) should be made liable for the support of close relatives who would otherwise qualify for public assistance grants. Responsible adult relatives would be defined as spouses, parents, step-parents, children, step-children, brothers, sisters, or any other relative who has assumed responsibility for support. The welfare department should be permitted to waive payment in instances of undue hardship or unfair application.

Raising the Limit Contrary to popular concept, the OAA recipient at the maximum grant level is much more apt to be in serious need of additional help than is the recipient whose grant is less than the maximum. When the OAA grant is set at \$25 per month, for example, the recipient's budgeted needs are being fully met by this grant of income. When the grant is set at the maximum, sizable unmet needs may yet remain.

To emphasize attention to individual needs, the League report recommends:

• As additional funds become available, either through declining caseloads or increased resources, these funds should be used to increase the maximum grants, rather than being used to raise the average grant by dividing the money among the entire caseload.

(To be continued)

Ringo Party Big Success

The ice cream and Bingo party sponsored by members of the Eastland Rebekah Lodge on Friday evening at the City Park was a large success, according to an announcement received here.

Fifty-five members and guests attended the affair and a total of 15 gifts were presented to Bingo winners.

RETURNS HOME

Mr. and Mrs. C. W. Boles and sons, Bill, Randy, Jerry and Bart have returned from a two weeks vacation during which they visited Platt National Park in Oklahoma, Hot Springs, Ark., Albert Pike National Park in Langley, Ark. and Mt. Magazine, also in Arkansas. While at Hot Springs, Mr. and Mrs. John Schoenfeld and Trey joined the Boles family.

Hospital News

Patients in the Eastland Memorial Hospital are the following: (From Eastland unless otherwise stated)

- Jack Carter, medical, Ranger
Mrs. Louise McFarland, medical
Miss Eallie Day, medical
Nettie G. Rhodes, medical
W. W. Carney, surgical
Addison Taylor, medical
Mrs. Josie Robinson, medical
Mrs. Pearl Rexroat, medical, Ranger
Mildred Blair, medical, Cisco
Mrs. Arlene Moxley, medical
Ananda E. Morris, medical
James Tarver, medical, Dublin
Helen Reed, medical, Gordon
Margaret A. Obel, medical, Ranger

- Robert H. Latham, medical
Ira O'Malley, medical
Roscoe F. Leard, medical, Cisco
Clarence Bigby, medical
Myra Scarborough, medical, Cisco
Ruth Poe Herring, medical
Julia C. Long, medical
Iva Jean Alexander, medical
Mrs. Corra Sussum, medical, Gorman
Leavis Woolverton, medical
Grady Pipkin, medical

Ranger -

Continued from page One
Howk (1), Farmer (2), Holt, (3) and Wiley.
Consolation
Eastland 011 0-2 4
Albany 382 2-15 9
Smith, Thomas (2) and
Casey, Key, Dodson (4) and Stapp.

DIXIE Drive-In THEATRE
Box Office Opens 7:30 Starts at 8:15 Box Office Closes 9:30
26 THURSDAY 27 FRIDAY 28 SATURDAY
WALT DISNEY'S THE PARENT TRAP IN COLOR
29 SUNDAY 30 MONDAY 31 TUESDAY
Orson Wells Ivo Payer DAVID AND GOLIATH IN COLOR

NOW IS A GOOD TIME... TO HAVE YOUR Portrait
MADE AT A&C STUDIO FOR THAT SOMEONE SPECIAL OR FOR THAT SPECIAL GIFT. All portraits processed in our own studio, and first-class dressing facilities for your convenience
WE TAKE PICTURES IN YOUR HOMES OF PARTIES, REUNIONS, ANNIVERSARIES, AND WEDDINGS
FAST PHOTO FINISHING
A&C STUDIO
102 S. Seaman Phone 9-2616

DRIVE-IN THEATRE
Open 7:30—Starts 8:00
Feature 8:15
THURSDAY — THURSDAY — FRIDAY
BOYS NIGHTS OUT — IN COLOR NOVAK — JAMES GARNER
SATURDAY — SUNDAY — MONDAY
CAPE FEAR PECK — ROBERT MITCHUM

NATURAL COLOR PHOTO
8x10 ENLARGEMENT
2.99 NO LIMIT
SATURDAY ONLY
Selection of Poses All Work Guaranteed
Natural color at its colorful best. In your colorful best. Adults prepare up two times heavier than usual.

PERRY'S EASTLAND
Sittings by Ray Howard
Photos — 2.00 Extra
Prices Good For 2 Days Several If You Desire

Suprise Party Given In Honor Of John Russell

John Russell was honored with a surprise birthday party Saturday evening at the Bell Hurst playhouse.

Refreshments of punch and cake were served from a beautifully decorated serving table. The three-tiered cake was baked by Mrs. Tom Tucker.

Attending the celebration were the following: Carol Walter, Mike Carothers, Carole McCleskey, Mike Graham, Eddie Sargent, Sherry Miller, Whittington, Becky McWhorter, Susan Johnston, Julie Frost, Larry Glyn, Clark Conner, Kay Morton, Tommy Beck, Judy Semberry, Joe Russell, Mr. and Mrs. D. H. Russell, Mrs. Vivian T. Semberry Jr., Mr. and Mrs. E. C. Johnston and the honoree, John Russell.

Special guest for the evening was Mark Owen, cousin of the honoree, from Wellsburg, W. Va.

INGROWN NAIL HURTING YOU? Immediate Relief!
A few drops of OUTGRO bring blessed relief from tormenting pain of ingrown nail. OUTGRO loosens the skin underneath the nail, allows the nail to be cut and thus prevents further pain and discomfort. OUTGRO is available at all drug counters.

MAJESTIC THEATRE
THUR. - FRI. - SAT. Open Thur - Fri - 4:45 Open Saturday 12:45
THE LUCKIEST KID IN THE WORLD MEETS MICKEY MANTLE - ROGER MARIS
SAFE AT HOME!
WILLIAM PATRICIA DCY FRAWLEY - BARRY - COLLIER
Features At: Thur. - Fri. - 6:15 - 9:45 Sat. - 2:45 - 6:00 - 9:19

NOW...THE ADVENTURE OF THE AGES FOR ALL TO SEE! EDWARD SMALL Jack the Giant Killer FANTASCOPE TECHNICOLOR Thur. - Fri. 5:00-8:10 Sat. 1:10-4:25-7:40 SUNDAY — MONDAY

Jessica A L S O Lisa STEPHEN BYRD DOLORES HART 20 COLUMBIA TECHNICOLOR COLBY DE LURE

TV SCOOP! RCA VICTOR BIG SCREEN New Vista TV
The ADAIR Series 233-B-60 M 23" tube (overall diag.) 282 sq. in. picture
BIG-SCREEN TABLE MODEL WITH THE MOST POWERFUL, MOST DEPENDABLE BLACK-AND-WHITE TV CHASSIS IN RCA VICTOR HISTORY! \$199.95
Robertson TV Sales & Service R C A VICTOR DEALER S. E. Corner of Square Ph. Main 9-1625 B. W. Robinson, Owner

RANGER DRIVE-IN THEATRE
ADULTS 50c KIDDIES UNDER 11 FREE Bargain Nite Each Wednesday—50c Carload
THURSDAY — FRIDAY
STREET OF MYSTERY! ALAN LADD - ROE STEIGER
13 WEST STREET
SATURDAY ONLY
THE ONLY MAN IN HISTORY ...TOO TOUGH FOR THE TEXAS RANGERS! GUY MADISON THE HARD MAN
SUNDAY — MONDAY — TUESDAY
JAMES STEWART JOHN WAYNE JOHN FORD The Man Who Shot Liberty Valance

FIRST BAPTIST CHURCH
Rev. Hasston Brewer, Pastor
108 W. Plummer
SUNDAY
9:45 a.m.: Sunday School
11 a.m.: Morning Worship
6:15 p.m.: Training Union
7:30 p.m.: Evening Service
TUESDAY
9:30 a.m. & 1 p.m.: WMU

CALVARY BAPTIST
REV. FLOYD OSBORN
207 N. OAK ST.
SUNDAY
10 a.m.—Sunday School
11 a.m.—Morning Worship
7 p.m.—Prayer Service
7:30 p.m.—Evening Worship
WEDNESDAY
7:25 p.m.—Mid-week Prayer

FIRST PRESBYTERIAN CHURCH
Methodist Youth Fellowship 6:00 PM
Evening Service 7:00 PM
Wednesday
Mid-Week Service 7:00 PM
Mission Study and Luncheon

CHURCH NEWS

FIRST METHODIST CHURCH
Wm. S. Fisher, Pastor
215 S. Mulberry
SUNDAY
9:45 a.m.: Church School
10:55 p.m.: Worship Service
6:15 p.m.: Youth Fellowship
7 p.m.: Evening Worship
TUESDAY
2:30 a.m.: W.S.C.S.
WEDNESDAY
7:50 p.m.: Choir rehearsal
Wesleyan Guild every 1st & 3rd Wednesdays
Official Board Monday after 1st Tuesday
Five Commissions—every 1st Monday

BETHEL BAPTIST CHURCH
Rev. Jimmy Roberts, Pastor
1304 W. Main
SUNDAY
9:45 a.m.: Sunday School
11 a.m.: Morning Worship
6:30 p.m.: Training Union
7:30 p.m.: Evening Worship
WEDNESDAY
6:15 p.m.: Primary teachers and officers meet
7:30 p.m.: Midweek prayer
8:15 p.m.: Choir practice

ASSEMBLY OF GOD
Rev. Frank Evans, Pastor
SUNDAY
9:45 a.m.: Sunday School
11 a.m.: Morning Worship
6:45 p.m.: Christ Ambassadors
7:30 p.m.: Evening Service
OLDEN

UNITED PENTECOSTAL CHURCH
208 N. Dixie
Rev. Freddie Waldrep
SUNDAY
9:45 a.m.: Sunday School
11 a.m.: Morning Worship
7:45 p.m.: Evening Service
WEDNESDAY
7:45 p.m.: Prayer Meeting
SATURDAY
7:45 p.m.: Pentecostal Conquerors

VICAR
SUNDAY
9:15 a.m. Church School
10:00 a.m.: Morning Prayer
10:15 a.m.: Holy Communion and Sermon
MONDAY
7:30 p.m. Vestry meeting at the home of Joseph Nesper, 501 West 18th, Cisco.

ACHING MUSCLES
Quickly relieve nagging pains of tired, sore, aching muscles with STANBACK Powders or Tablets. STANBACK'S combination of medicinally-proven ingredients for relief of pain works fast and gives remarkably comforting relief. Satisfaction guaranteed. Soap back with STANBACK.

HAMNER FUNERAL HOME
Ben E. Hamner, Owner
Serving Eastland County since 1924 with ambulance and funeral service. Our ambulances are oxygen equipped and air conditioned. Through our nation-wide connections with other funeral directors, we can handle a funeral from any point in America. We offer this service knowing that we can relieve the family of all burdens incident to any death away from home.
Eastland Dial MA 9 2611

EUBANK'S PIT BAR-B-Q CAFETERIA
OPENING GRAND
JULY 26 - 29 - 11 A.M. to 9 P.M.
7 DAYS PER WEEK
ALL YOU CAN EAT \$1.00 (Plus Drink)
Includes choice of Pit Bar-B-Q Beef, Chicken or Sausage plus the trimmings
FREE Coffee and Pot Holders to Ladies during our Grand Opening
CATERING SERVICE—Anywhere, Anytime
PRIVATE parties by reservation
1112 Avenue D — CISCO — HI 2-3909

CHRISTIAN SCIENCE
Plummer and Lamar
SUNDAY
9:45 a.m.: Sunday School
11 a.m.: Sunday morning service
Wednesday
7:30 p.m.: Mid-week Service
The public is cordially invited.

HOLY TRINITY EPISCOPAL CHURCH
710 S. Seaman
Rev. William Ralph Woods
SUNDAY
10 a.m.: Morning Prayer
10:15 a.m.: Holy Communion & Sermon
WEDNESDAY
6:30 a.m. & 9 a.m.: Morning Prayer & Holy Communion
5:30 p.m.: Evening Prayer & Litany

CHURCH OF CHRIST
Corner of Plummer and Daugherty
Gary B. Adams, Minister
SUNDAY
9:30 a.m.—Bible Class For All Age Groups.
10:20 a.m.—Morning Worship
2:00 p.m.—Visitation of Shut-ins.
6:00 p.m.—Young Peoples Meeting.
7:00 p.m.—Evening Worship.

OLDEN BAPTIST CHURCH
Rev. Bill Pentland, Pastor
Olden
SUNDAY
9:45 AM
Morning School
11:00 AM
Morning Worship
6:00 PM
Training Union
7:00 PM
Evening Service
WEDNESDAY
Prayer Service 7:30 PM

CARBON BAPTIST CHURCH
Rev. Jimmy Turner, pastor
SUNDAY
10 a.m.: Sunday School
11 a.m.: Morning Worship
6:30 p.m.: BTU
7:30 p.m.: Evening Worship
MONDAY
2 p.m.: WMU
WEDNESDAY
7 p.m.: Prayer Service

METHODIST CHURCH
Willis C. Fisher, Pastor
Olden
SUNDAY
Morning School 9:00 AM
Morning Worship 11:00 AM
710 So. Seaman St.
The Rev. Wm. Ralph Woods.

Hamner Life Insurance Co.
Ben E. Hamner, President
This company has been in operation since 1942 selling policies to maritally for burial purposes. We write to \$600 and our policies are paid in allows freedom in the selection of Director of your choice.
Ages from 1 month to 90 years
For further information come to
Hamner Funeral Home, 301 S. Lane
P. O. Box 431 Dial MA

CHURCH OF THE NAZARENE
Rev. Clarence Manners
613 W. Main
SUNDAY
10—Sunday School
11—Morning Worship
6:45 p.m.—N.V.P.S.
7 p.m.—Evening Services
Wednesday
7 p.m.—Mid-week Prayer Service
FRIDAY
Noon—Prayer and Fasting
3:15 p.m.—Children Hour

WEDNESDAY
9:30 a.m.—Ladies' Bible Class.
7:00 p.m.—Prayer Meeting and Bible Study.
Rev. Eugene Surice, Pastor
SUNDAY
10:00 a.m. - Church School.
11:00 a.m. - Divine Worship
12 noon - Monthly meeting of the Church Session on the Sunday after the first Wednesday.
Tuesday
9:30 a.m. - United Presbyterian Woman meet on the first and the third Tuesdays of each month.

FLATWOOD CHURCH OF CHRIST
Thurman Carte, Pastor
Flatwood
SUNDAY
Sunday School 10:00 AM
Morning Worship 11:00 AM
Evening Service 7:00 AM

FIRST CHRISTIAN CHURCH
Corner Olive & Lamar
Ray Heckendorn, Pastor
SUNDAY
9:45 Church School
11:00 Morning Worship
7:00 Evening Vespers
WEDNESDAY
5:00 Junior Choir
6:30 Adult Choir

CARBON METHODIST CHURCH
James W. Waller, Pastor
Carbon
SUNDAY
Sunday School 10:00 AM
Morning Worship 1:00 AM

PENNEY'S 50th ANNIVERSARY
IN CISCO SHOP 8:30 to 5:30 SATURDAY 8:30 to 6 P.M.

EXTRA Famous Penney Sheets REDUCED!

NATION-WIDE STRONG MUSLIN 100% COTTON
NATION-WIDE WHITE
famous buys at any time of year, now extra big at this special low price! Come in, compare! full 81"x108" or full Sanforized fitted 1.67
pillow cases 42"x36" 2 for 77c

NATION-WIDE PASTELS
same famous quality as white in latest fashion colors: yellow, green, pink, blue, lilac, full 81"x108" or full Sanforized fitted 2.23
pillow cases 42"x36" 2 for 99c

PENCALE WHITE
luxury percales woven of long-staple cotton, combed to silky smoothness! Fabulous buy!
pillow cases 42"x38 1/2" 2 for 99c

PENCALE PASTELS
luxury cotton percales styled in pink, yellow, green, seafoam, aqua, lilac, milk-chocolate.
pillow cases 42"x38 1/2" 2 for 1.17

EXTRA! . . . you get, not seconds, but flawless first quality at savings! EXTRA! you get brands known to 3 generations . . . trusted coast-to-coast . . . quality-controlled, laboratory-tested from fabric to finished sheet.

Count on Penney brands . . . 3 generations already have!
A good name is the hard work of years; in buying, in laboratory testing, in maintaining quality, Penney brand names are our bond to you that we have done everything to justify your confidence.
IT'S A tradition AT PENNEY'S

CHARGE IT...it's easier to Pick, easier to Plan, easier to Pay!

WE GIVE Round-Up STA

LET'S GO SAVE at SUPER SAVE

NEUTZ TOMATO KETCHUP 14-Oz. Bottle 23c
SUPREME CRACKERS Pound Box 31c
KARISCO VANILLA WAFERS 12-Oz. Box 33c
HUNT'S TOMATO SAUCE 8-Oz. Can 10c
PRICES GOOD THROUGH SATURDAY, JULY 28

FAB DETERGENT Giant Box 6
WHITE SWAN Coffee Drip or Reg. Lb. Can 5
ALL FLAVORS MELLORINE Half-Gallon Cartor 3
GERBER'S STRAINED BABY FOOD 6 4 1/2-Oz. Jars 3
FLOUR LIGHT CRUST 8-Pound 4
PICKLES WAPCO Sour or Dill 2
SLICED BEETS WAPCO 2
PIMIENTOS DROMEDARY Whole 4
TEA BAGS WHITE SWAN 16-Coverd 2
MARGARINE SUPER SAVE 2
COLD CUPS BONDWARE PAPER Pkg. of 10 9c
PICNIC PLATES DIAMOND 9-inch 15
BEEF STEW AUSTEX 15-Oz. 15c
SPAGHETTI AND MEAT BALLS AUSTEX 13-Oz. 13c

WHITE SWAN SHORTENING 3-Pound Can 5
WHITE SWAN PINTO BEANS 2-Pound Poly Bag 1
SKYWAY STRAWBERRY PRESERVES 18-Oz. Tumbler 2
MAXWELL HOUSE COFFEE INSTANT \$1.29
10-Oz. Jar
DELSEY TOILET TISSUE White or Assorted 2-Roll Pkg. 25c
WHITE SWAN TEA 1/4-Pound Pkg. 23c
WELCHADE GRAPE DRINK OR FIESTA PUNCH 32-Oz. Can 25c

NEW CROP MULESHOE ONIONS 10 Lbs. 39c

FROZEN FOODS DEPARTMENT
CREAM PIES BANQUET FROZEN 14-Oz. Package 39c
CUT CORN, CUT OKRA, BLACKKEYES SNOW CROP 10-Oz. Frozen 6 Pkg. 99c
SNOW CROP Orange Juice 6-Oz. Can 19c
SNOW CROP FRENCH FRIES 6 7-Oz. Pkg. 99c
SOMERDALE FROZEN STRAWBERRIES 10-Oz. Can 19c

NEUHOFF LONE STAR THICK SLICED BACON 2
BABY BEEF LOIN STEAK 1
California White Rose POTATOES 10 Lbs. 59c
MacMOY'S Super So
Home Owned—Home Operated 100 S. Seaman