



COVERING EASTLAND COUNTY
THE ONLY PLACE YOU CAN READ THE MOST IMPORTANT NEWS IN THE WORLD — ALL THE NEWS ABOUT YOU, YOUR FAMILY AND YOUR FRIENDS!

NO. 143

EASTLAND, TEXAS, THURSDAY, OCTOBER 4, 1962

PRICE 10c

BITs

H.V.O.

notice that...

The B team game...

report that core...

will depend on...

the recovery pro...

is to be a "wet"...

demstrates...

is one of our...

San Antonio, is...

RE Ltd.

County Gets \$32,196 From State

Eastland County Commissioners will have an additional \$32,196 for road construction after action by the State Board of County and District Road Bond Indebtedness this week.

The total state fund, derived from the return to the counties of the one-cent gasoline tax, is \$6,416,958 after \$883,041 is paid for principal and interest.

A formula is used to decide how money is to be divided, based on road mileage which has gone into the state system and other factors.

The fund, originally set up to help counties pay off road bonds for right of way which had been taken over by the State Highway Department, now is largely used for road construction at the choice of the county commissioners.



WINNING FLOAT—For the second year in a row the Eastland County 4-H Club float swept the Peanut Bowl Parade and won first-place trophy. Instrumental in planing and building the float were Mr. and Mrs. Sid Cox and David; Mr. and Mrs. Bill Claburn, Frank and Cynthia; Mrs. Robert Kineaid and Kathy; Tony and Randy Lowrance, all of Eastland; and Mr. and Mrs. Jeff Harbin of Carbon. 4-H'ers riding on the floating, each depicting a different club project, were Robert Harbin of Eastland, peanuts; Dianne Young, of Eastland, sewing; Joyce Casey of Carbon, cooking; David Cox of Eastland, gardening; Frank Claburn of Eastland, grass; and Kathy Boyd of Cisco, lamb raising. (A&C Photo)

More New Autos On Parade Here; Making This Area 'Tradin' Center'

Pontiacs for '63 At Muirhead's In Eastland

Styling and engineering developments found in the new 1963 Pontiacs are more impressive than ever before. The wide track models in the three all-new Pontiac series, reflect the highest standards in body styling, performance, ride and handling, dependability and serviceability.

In announcing his Division's new 1963 models, E. M. Estes, General Motors vice president and general manager of Pontiac Motor Division, said the new roof lines and clean front and rear end styling "create a fresh visual image of quiet elegance." The new styling looks graceful, massive and substantial, yet definitely Pontiac, he said.

The new Pontiacs go on display at Muirhead Motor Co. showrooms today.

Pontiac's high volume production series, the Catalina, is available in seven models; two and four-door sedans, two and four-door hardtops, six and nine passenger Safaris and a convertible. The Star Chief is offered in a four-door hardtop Vista and four-door sedan models. The luxury sedan models.

(Continued on Page 5)

New Valiants At Dealers In Eastland

Valiant's fully new design for 1963 marks the first major styling change in the popular compact field since Chrysler Corporation first introduced the low-price Valiant in the fall of 1959.

Brand new in the 1963 Valiant line are two convertibles, to fill out a complete range of nine models and body styles.

The Valiant for 1963 is on display in Eastland at Blevins Motor Co. and Rushing Motor Co.

"The 1963 Valiant re-emphasizes its reputation as the value

Continued on Page 6, Sec. 2

New Mercurys On Display at King Motor Co.

Mercury's 1963 entrees — Monterey, Meteor and Comet — are on display at Hood King Motor Co.

Dramatic new styling features plus increased power and performance highlight the changes for the 1963 Mercury Monterey.

The completely restyled Monterey, the big car entry in the Mercury line, includes a unique reverse-sloped rear window and roof line that sets the car apart from all other American cars.

The new rear window, which goes up and down, has important functional advantages as well as styling appeal. The window slants inward and virtually eliminates visibility problems caused by rain, snow,

Continued on Page 5, Sec. 2

New Buicks On Display at Muirhead's

Jack Muirhead of Muirhead Motor Co. in Eastland has announced that the new line of 1963 Buicks will be on display in his showrooms beginning Friday.

Already on the floor is a brand-new four-door Buick La Sabre.

Buick's line-up of autos this year include the long, Buick Electra 225 series, a luxurious model, powered by a 401 cubic inch V-8 engine with Buick's Turbine Drive transmission as standard equipment.

Standard equipment includes power steering, power brakes, power windows and two-way power seat.

The Electra is also available in four other models, a 4-door sedan, two 4-door hardtops and a 2-door hardtop.

The new Chevrolets, Imperials and Fords went on display here last week.

'63 Plymouths Look Longer; On Show Here

All-around appealing new styling gives the 1963 Plymouth a wider, longer look to match its famous get-up-and-go performance.

Three inches longer and an inch wider than last year, the 1963 Plymouth has a completely new body design, featuring a stylish rear window, a longer read deck with roomier trunk, and a bright new grille and front-end appearance.

"Plymouth is on the move with an active new look to back up its fine reputation for performance, economy and quality of engineering," C. E. Briggs, vice president of Chrysler Corporation and general manager of the Chrysler-Plymouth Division, declared.

All 1963 Plymouth automobiles sold in the United States and Canada will carry a new

Continued on Page 2, Sec. 2

Mavs Dual Rising Star At 7:30 Friday, There

The all-win, no-loss Eastland Mavericks go to the South part of the county this week and do battle with Rising Star Friday night at 7:30 p.m.

Although picked to win, Coach Millard Gusses' hustling Mavericks are being taught not to count their chickens until the final whistle.

Ken Estes of the Abilene Reporter-News said Tuesday morning that "Eastland should not have too much trouble this week."

Eastland and Baird are the only two undefeated teams in the district.

Rising Star surprised Cross Plains last week, 12-6, and are tied with Blanket in District 21-B, with two wins, one loss and one tied game.

Rising Star has amassed 32 points for the season.

Team	W	L	T	Pct.
Baird	4	0	0	1.000
Eastland	3	0	0	1.000
Clyde	2	1	0	.667
Ranger	1	2	1	.375
Albany	1	3	0	.250
Cross Plains	0	4	0	.000

This Week's Games

Cross Plains at DeLeon
Eastland at Rising Star
Dublin at Ranger
Cisco at Albany
Merkel at Baird
Clyde at Jim Ned

Thanksgiving Service Plans Made

The annual Thanksgiving service will be in the First Methodist Church with Rev. J. O. Downs of the First Church of God as speaker. Plans were read by Rev. Downs, secretary and treasurer, and approved by the group.

Some discussion was given to the Easter Sunrise service and the possibility of an open air service in 1963.

ed to order by the Rev. Eugene Surface, president. Minutes of the September meeting were read by Rev. Downs, secretary and treasurer, and approved by the group.

Following breakfast and fellowship, the meeting was called



1963 CADILLAC ... at Pipkin Motor Co.

Monday Rites Are Held For H. A. Collins

Funeral services were held Monday at 3:30 p. m. in the Hamner Funeral Chapel for Mr. H. A. Collins, 85, who died Sunday at 1:45 a. m. after an illness of several years. Interment was in the Eastland Cemetery under the direction of Hamner Funeral Home.

Mr. Collins, pioneer resident of Eastland County, suffered a stroke about two weeks ago and had been a patient in the Eastland Memorial Hospital since that time. Born June 7 1877 in Canton, Ga., he moved to Eastland County about 65 years ago. He had been married to the former Maude Webb for 62 years.

He served as tax collector for Eastland from 1912 to 1916 and worked in the tax office for many years. He was an active member of the Woodmen of the World Lodge.

He is survived by his wife; one son, Howard A. of Eastland; two daughters, Mrs. Curtis Kimbrell of Eastland and Mrs. R. L. Wilson of San Angelo; four grandchildren and one great-grandchild.

FREYCHLAG
Insurance Agency
presents the
WEATHER NEWS
FAIR
FAIR

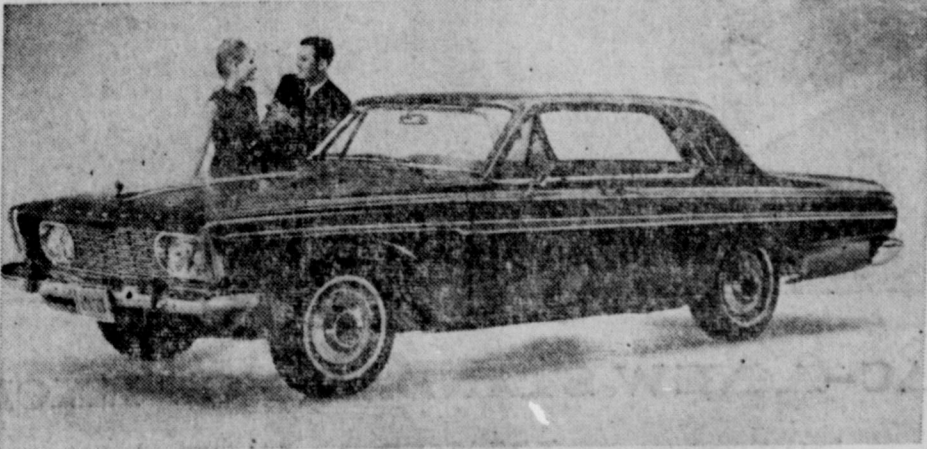
Now Showing At
The MAJESTIC
IN EASTLAND
The Firefly
FREE PASSES

To Those Who Find Their Names Set Bold Face Type Among The

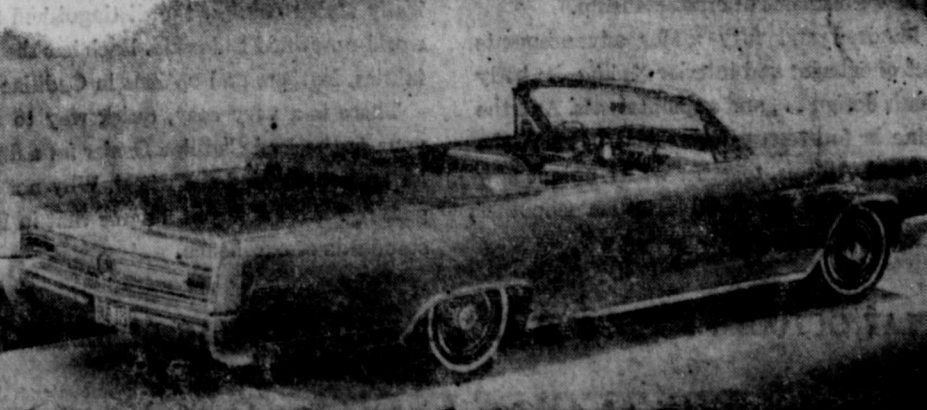
CLASSIFIEDS!



NEWLY DESIGNED VALIANT FOR 1963 ... on parade at Blevin's and Rushing's showrooms



'63 PLYMOUTH HAS LOOK TO MATCH 'GO' ... in Eastland at Rushing's and Blevin's



1963 BUICK ... at Muirhead Motors



PONTIAC FOR 1963 ... at Muirhead Motors today



RAMBLER FOR 1963 ... on sale Friday at Pipkin's



1963 MERCURY METEOR ... Comets and Montereys also at King's

Ramblers for '63 On Display at Pipkin Motors

The 1963 Ramblers announced today by American Motors Corporation re-emphasize the compact leader's size and balance concept while utilizing new body building techniques to take on a fresh new appearance.

The new Rambler Classic Six and Ambassador V-8, which will go on sale Friday at Pipkin Motor Co. in Eastland are lower in silhouette, look much bigger but are actually more than an inch shorter in overall length than previous models.

Coming on the heels of the best sales year in the company's history, Rambler's first

Continued on Page 8, Sec. 2

1963 Cadillacs On Sale at Pipkins Friday

The Cadillac story for 1963 is one of increased size, significant engineering accomplishment with a new engine and drive line plus still greater emphasis on comfort and convenience.

"Designed to leave no question as to its identity, the 1963 models say Cadillac from every angle," says Harold G. Warner, general manager of Cadillac and vice president of General Motors.

The 12 Cadillac models, in three basic series, go on sale Friday, at Pipkin Motor Co. "Cadillac's 1963 look is a blending of clean unbroken side metal with bold and definite components such as the hood, front fenders, grille, head lamps and roofs," Mr. Warner said.

Eleven models are one inch longer with nine of these 223 inches in over-all length. One is 215 inches and the two Series 75 models are 243.3 inches.

(Continued on Page 2)

EASTLAND TELEGRAM

Eastland County Record established in 1931, consolidated August 31, 1951. Chronicle established 1887, Telegram established 1923. Entered as second class matter at the Post Office in Eastland, Texas under the Act of Congress of March 3, 1879.

Published Semi Weekly—Thursdays and Sundays
By Eastland County Newspapers, Inc.
H. V. O'BRIEN, Editor

One Week by carrier in city 15
One month by carrier in city 65
One year by mail in county 2.95
One year by mail out of state 6.95

NOTICE TO PUBLIC—Any erroneous reflection upon the character, standing or reputation of any person, firm or corporation which may appear in the columns of this newspaper will be gladly corrected upon being brought to the attention of the publishers.

DIXIE Drive-In
Box Office Opens 6:45
Show Starts 7:00
Box Office Closes 9:00

Admission 40c
Children under 12 FREE
Each Wednesday - Adults 75c

4 THURSDAY	5 FRIDAY	6 SATURDAY
SAMAR		
George Montgomery ★ Gilbert Roland — IN COLOR —		
7 SUNDAY	8 MONDAY	9 TUESDAY
MOON PILOT		
Tom Tryon ★ Brian Keith ★ Edmond O'Brien — IN COLOR —		

'63 Cadillac -

(Continued From Page One)
Wheel base is unchanged on all models.

The Fleetwood Sixty Special sedan's distinguishing characteristics are its stately roof, stainless rocker moldings along the lower edge of the body, the grille treatment above the rear bumper and the specially styled interior.

Sharing the spotlight with the Sixty Special are the two-door models, the Coupe de Ville and the Series Sixty-Two coupe. Their new appearance is accomplished by a shortened roof line, a 38 per cent smaller back window and a crisp formal design to the metal surrounding the back light. With the shortened roof line the rear deck becomes seven inches longer, contributing greatly to the long and low silhouette.

In the area of comfort and convenience an elegant new instrument panel is featured on all models, while the interior trim groups include more styling combinations than ever offered before by Cadillac. Additionally, the use of wood trim is increased and options such as an adjustable steering wheel, AM-FM radio and combined air conditioning and heater controls appear for the first time on a Cadillac.

Heading this list is a new engine. Lighter, more durable and more efficient, it features the use of the latest in metals

for lightness and structure. Also featured is the grouping of accessories in one area for maximum ease of servicing in the field. The water pump, oil pump, distributor and oil filter are mounted in one neat package on the die cast aluminum front cover. Horsepower remains the same at 325, displacement at 390 cubic inches and compression ratio at 10.5 to 1.

In the area of reliability Cadillac also features a light weight high output generator. This generator provides 42 amps in all models except air conditioned cars and Series 75 which have 52 amps. Glass braided wires are incorporated in the 1963 ignition system. A front frame cross member has been incorporated to support the front suspension with increased ruggedness and life.

Another important comfort feature offered for the first time in the 1963 models is an option is a steering wheel adjustable to six different positions. It is locked in any desired position by means of a spring-loaded lever.

QB Club Sets Friday Meet At 7 a.m.

The Quarterback Club's weekly meeting will be held Friday at 7 a.m. at the White Elephant Restaurant, President Glen Scallorn has announced.

Films of the last games will be shown and coaches will "guesstimate" the upcoming game, Scallorn said.

Cisco Goes One-Up With Win Over Ranger In Peanut Bowl

Cisco went one-up on Ranger in the Peanut Bowl football series last Saturday night with a 27-to-6 triumph when the junior colleges of the two cities played before a capacity crowd at Eastland stadium.

The game was the climax of a daylong program dedicated to the peanut, Eastland County's No. 1 farm crop.

The Wranglers used both power plays and a good passing attack to beat the Rangers in a game that was considerably better than the score might indicate. Both teams moved the ball well, and Cisco was able to keep their drives moving.

The Cisco team scored the first time they got the ball on a sustained drive from their 35-yard line. Short gains by Charles Richardson, Julius Guy and Dave Gleason carried to the Ranger 5 from which QB Billy Porter passed to Guy for a touchdown. Willie Roten kicked goal.

Ranger took the kickoff, and Stanley Kirk ripped off 25 yards on the first play. A pass then was intercepted by Ed Ralph Hodge for CJC, and another touchdown march opened. Hodge took a 12 yard pass, and Richardson grabbed another for 12 more to the Ranger 14. Gleason and Richardson drove to the two, and Guy went over again.

Ranger took the kickoff and, with Kirk, Bill McAllister and QB Doug Wellborn carrying, drove to the Cisco 21 before the Wranglers held for downs and took over.

Richardson got seven yards, and Roten circled for 20. Guy and Gleason drove to the Ranger 44, and Roten hit Hodge with a pass to the Ranger 5. Gleason plowed over for the touchdown.

The Wranglers got two more points late in the second period when Punter Kirk, retrieving his own blocked kick, was tackled in the end zone by end Phillip Petty for a safety.

Ranger received the third period kickoff on their 32 and marched to the goal. Pass by Wellborn to Lenard Jones and with a lateral to McAllister carried to the Cisco one. McAllister then plunged over for the score.

After being held scoreless in the third period, the Wranglers launched another score in the middle of the fourth quarter. They held for downs on their 28 yard line, and Guy went off tackle, broke into the clear and raced 72 yards to the goal.

Porter, the Cisco quarterback, had one of his best nights in the passing department. He connected the first four times he threw and hit twice more in 12 attempts.

Top defensive players for Cisco included Petty, Peter Martinkus, Tom Hardy, Hodge, Dale Norris, Gary Robinson, Lynn Hagan, Bud Hecker, Andy Mason, Dale Norris and Jerry Grider.

Wayne Trasher, McAllister, Martin Day and Bill Clary were among the top defenders for the Rangers.

Wayne Trasher, McAllister, Martin Day and Bill Clary were among the top defenders for the Rangers.

STATISTICS	Ranger	Cisco
First Downs	13	16
Yards rushing	153	250
Yards passing	63	192
Passes good	8 of 17	7 of 14
Interceptions by	6	2 for 33
Punt ave.	3 for 33	4 for 40
Penalties	3 for 15	2
Fumbles lost	1	2

Dr. O'Keefe Delivers Fish To Rest Home

Approximately 25 pounds of cleaned, cut and ready to cook fish was delivered Monday to rest homes in Eastland and Ranger by Dr. Harland O'Keefe, owner and operator of Chock-O-Block Marina at Lake Leon. The fish were left from a fish fry held Saturday night for the two-day fishing rodeo sponsored by the Fort Worth Anglers Club.

The rodeo ended Sunday with more than 400 pounds of fish reported caught by 92 two-man teams.

Participating in the rodeo were anglers from Odessa, Dallas, Ranger, Cisco, Abilen Fort Worth, Arlington, Grand Prairie and Eastland.

Winners on Saturday were caught a three fish string weighing five pounds, 2 ounces, and Algene Bills of Fort Worth, who caught a five pound, five ounce bass for the largest fish.

Sunday winners were Roy Woolsey and Pat Wilmut of Fort Worth with a seven pound, 2 ounce bass and I. C. Maupin of Ranger for the largest string.

All fish left from the Saturday event were cleaned and cut by Dr. O'Keefe.

Rev. Te New Po Bethel

Rev. H. H. Tuscola has been named pastor of the Bethel Baptist Church in Eastland. He is the first pastor of the church since the mid-week service was discontinued.

A native of the Tuscola area, he has been in the ministry since 1955. He is a member of the First Baptist Church of Abilene.

Rev. Tuscola was born in the Tuscola area, he has been in the ministry since 1955. He is a member of the First Baptist Church of Abilene.

Rev. Tuscola was born in the Tuscola area, he has been in the ministry since 1955. He is a member of the First Baptist Church of Abilene.

Rev. Tuscola was born in the Tuscola area, he has been in the ministry since 1955. He is a member of the First Baptist Church of Abilene.

Rev. Tuscola was born in the Tuscola area, he has been in the ministry since 1955. He is a member of the First Baptist Church of Abilene.

Rev. Waldrep Resigns Post; Moves to Waco

Rev. F. J. Waldrep, pastor of the local United Pentecostal Church, moved with his family to Waco on Monday where he will establish a fourth United Pentecostal Church in the southern section of that city.

Rev. Waldrep had served as pastor of the local church for the past seven years. He and his family moved to Eastland from Hamlin.

The Waldreps have five children, all who were attending schools in Eastland. A successor for the position of pastor has not been named at this time.

Devotion Is Highlight Of Friday Outing

A campfire devotion time was the highlight of an overnight hike to Lake Olden Friday. The hike was made by the Nazarene Braves, a division of the local Caravan Program. The evening consisted of the boys singing around the fire, a Bible story and prayer following.

The boys and their sponsors ate hamburgers grilled over an open fire for their evening meal. Breakfast of bacon and eggs cooked over the open fire climaxed the camp.

Boys attending were Billy and Russell Williamson, Dale and W. J. Carmack, Danny and Ronnie McWhorter, Tommy Dale Underwood, Jimmy McCoy, Ronnie Hallum and Danny Manners. Sponsors for the outing were Mr. and Mrs. M. C. McWhorter assisted by Rev. Clarence Manners, pastor of the church.

Rev. Wagner Will Speak At Revival

Rev. Betty E. Wagner, an elder in the Church of the Nazarene, will be guest speaker in the local Church of the Nazarene revival which begins Friday and continues through Sunday, Oct. 12.

Services will be held each evening at 7 o'clock.

Mrs. Wagner has served as an effective pastor, radio speaker and Christian Counselor.

Rev. Clarence Manners, pastor, extends a hearty invitation to the public to attend the revival services.

RANGER DRIVE-IN
HIGHWAY 80 EAST ON RANGER HILL

Adults 50c Kiddies Under 12
Bargain Nite Each Wednesday 50c

THURSDAY - FRIDAY - SATURDAY

NOW... THE ADVENTURE OF THE AGES FOR

the

KERWIN MATHEWS JUDI MEREDET

SUNDAY - MONDAY - TUESDAY

a mighty motion picture experience

...sense it you can't

the

MIRACLES

ANNOUNCEMENT

ANNE BANCROFT/PATTY

THURSDAY

MAJESTIC

6:15 - 8:00

"FALL OPERETTA SEASON"

Jeanette MacDonald

THE FIRE

with ALLAN JONES • WARREN

Billy Gilbert • Douglas Dumbrille • A BOBBI L.

JOY-DRIVE-IN

Open 6:45 - Starts 7:00

THURSDAY - FRIDAY

Lad & Dog

The Adventures Road Runner

A brand new cartoon feature!

SAT. - SUN. - MON.

"2 Weeks In Another Town"

In Color

Kirk Douglas

Cyd Charisse

Adults 75c Discount 50c

SPECIAL DISCOUNT

All who see the first operetta will receive which entitles the holder to see the operettas for 50c each

FRIDAY - SATURDAY

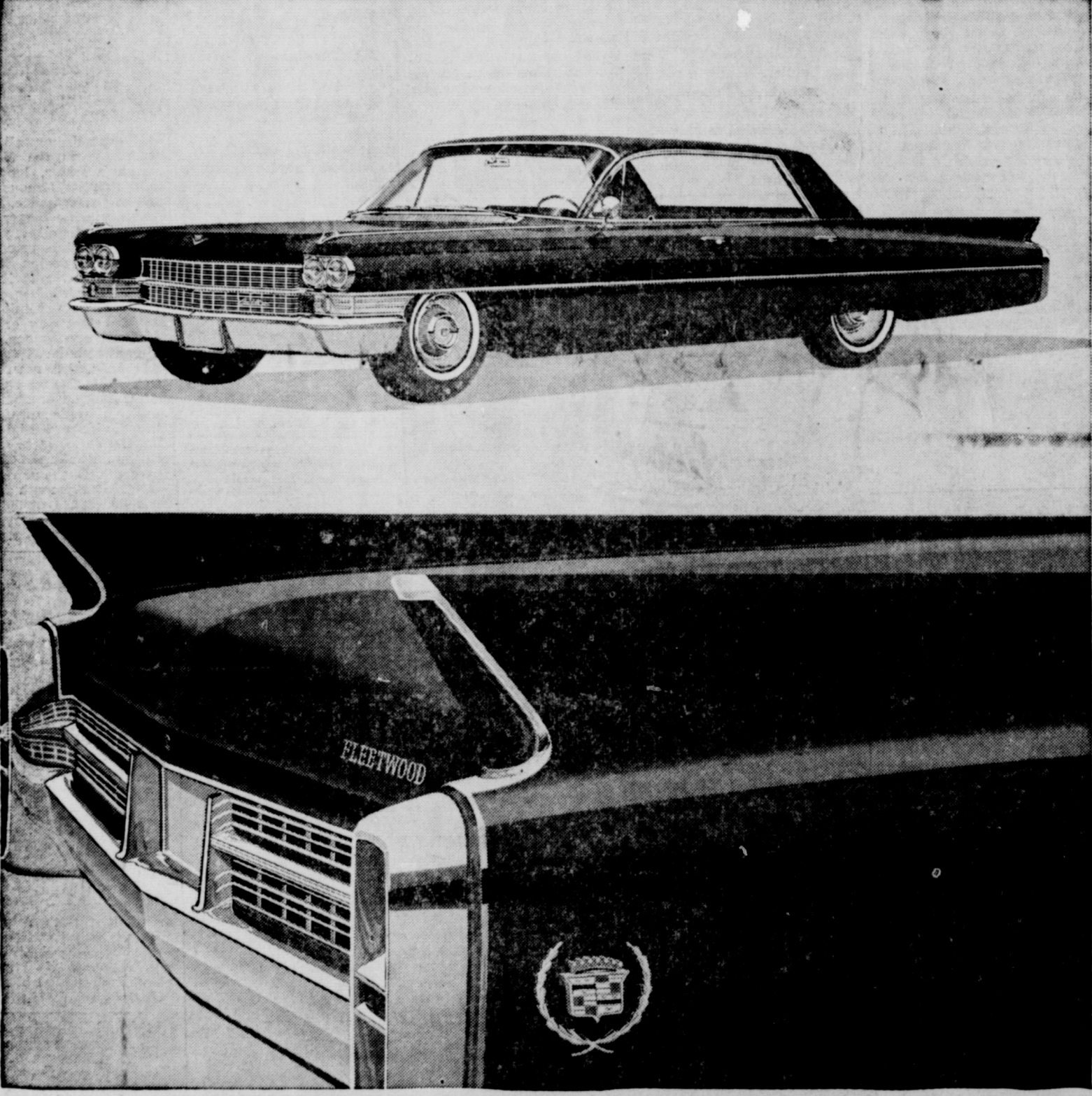
WORLD'S GREAT STORY OF FRIENDSHIP

SPECTACULAR M-G-M

DAMO PYTH

GUY WILLIAMS

IN EASTLAND



CADILLAC—A NEW STANDARD OF EXCELLENCE IN 1963

This is the look of leadership for 1963—bold new elegance of design and brilliant new excellence of craftsmanship. More than one hundred and fifty major advancements embrace every aspect of exterior and interior styling... body construction... chassis design... and appointments. And the most improved engine in fourteen years resides beneath the sweeping expanse of hood. All this, together with a unique new true-center drive line, makes the 1963 Cadillac smoother, quieter and more efficient than ever.

There are twelve new models in 1963, including two dramatically styled coupes, the distinguished Sixty Special and the world-renowned Eldorado. Each has the widest choice of colors, fabrics, leathers and options in Cadillac history. There is a very easy, quick way to confirm all this. Visit your Authorized Cadillac Dealer for a firsthand inspection and for an hour behind the wheel. Why not do it before the week goes by? We know you'll agree that in 1963 Cadillac sets new standards of excellence.

ON DISPLAY OCTOBER 5 AT YOUR AUTHORIZED CADILLAC DEALERSHIP

PIPKIN OLDS-CADILLAC

314 W. MAIN STREET • MAIn 9-2636



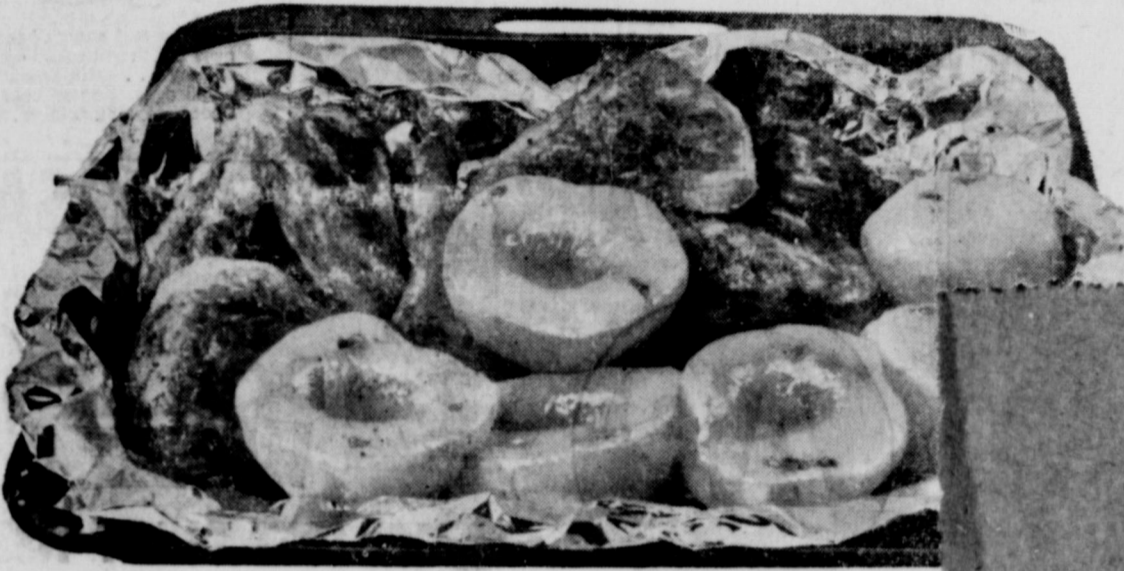


HARVEST of VALUES

PRICES EFFECTIVE THURSDAY - FRIDAY AND SATURDAY October 4-5-6, 1962

FRYERS

SUNCO. U.S.D.A. GRADE "A" 29¢ WHOLE . . . LB.



PEACHES LIBBY'S Y-C HALVES OR SLICED 3 No. 2 1/2 CANS 89¢

MELLORINE TAYLOR'S ALL FLAVORS 2 1/2 GAL. CTNS. 69¢

MARGARINE PANTRY MAIDE 3 1-LB. CTNS. 39¢

COCKTAIL LIBBY'S FRUIT 4 No. 303 CANS 89¢

LIBBY'S - CUT **Green Beans** 4 303 Cans 79¢ **Pears** 3 303 Cans 79¢

LIBBY'S - EARLY **June Peas** 5 303 Cans \$1 **Juice** 2 46-oz. Cans 59¢

LIBBY'S **Viennas** 4 4-oz. Cans 89¢ **Corn** 6 303 Cans \$1

LIBBY'S **Beef Stew** 24 oz. Cans 49¢ **Vegetables** 4 303 Cans 69¢

CUT-UP FRYERS SUNCO-USDA GRADE 'A' LB. 33¢

FRANKFURTERS NEUHOFF'S PREFERRED LB. PKG. 53¢

SAUSAGE HORMEL'S "LITTLE SIZZLERS" 12-oz. PKG. 43¢

LONGHORN CHEESE WISCONSIN LB. 59¢

PERCH TASTE O SEA-FROZEN GOLDEN FRENCH FRIED LB. PKG. 59¢

DEVILED CRAB SEA PACK FROZEN 7-oz. PKG. 49¢

LIBBY'S **Sauerkraut** 3 No. 303 Cans 49¢

LIBBY'S PITTED **Ripe Olives** No. 1 Can 43¢

LIBBY'S - SWEET **Pickles** 8-oz. Jar 29¢

LIBBY'S - FANCY **Cut Beets** No. 303 Can 15¢

LIBBY'S DEEP BROWN **Pork & Beans** 4 15-oz. Cans 59¢

LIBBY'S - CORNED **Beef Hash** 15 1/2 oz. Can 39¢

LIBBY'S BROCCOLI **Spears** 3 10-oz. Pkgs. 69¢

LIBBY'S **Cauliflower** 3 10-oz. Pkgs. 69¢

LIBBY'S BABY **Whole Okra** 3 10-oz. Pkgs. 69¢

LIBBY'S SLICED **Strawberries** 4 10-oz. Pkgs. \$1

LIBBY'S SLICED **Peaches** 4 10-oz. Pkgs. \$1

Health and Beauty Aid
Gillette Slim Adjustable Razor
Gillette Foamy Shave Cream-79c size
Both For \$1.50
Gillette Super-15 Blade Dispenser
Blue Blades Ea. 69¢
Famous Halo-Jumbo - 14 oz. Size
Hair Spray Plus 7c Tax 73¢

CLIP AND SAVE!
50 BONUS S&H GREEN STAMPS
With This Coupon and Purchase of (4) No. 303 Cans of Libby's Cut GREEN BEANS 4 cans 79¢
Void After Sat., October 6, 1962
WORTH FOOD MART

CLIP AND SAVE!
50 BONUS S&H GREEN STAMPS
With This Coupon and Purchase of (5) No. 303 Cans of Libby's Early June Peas 5 cans \$1.00
Void After Sat., October 6, 1962
WORTH FOOD MART

CLIP AND SAVE!
25 BONUS S&H GREEN STAMPS
With This Coupon and Purchase of (4) No. 303 Cans Libby's - W.K. or Cr. Sty. Golden Corn 6 cans \$1.00
Void After Sat., October 6, 1962
WORTH FOOD MART

CLIP AND SAVE!
25 BONUS S&H GREEN STAMPS
With This Coupon and Purchase of (3) No. 303 Cans of Libby's Sauerkraut 3 cans 49¢
Void After Sat., October 6, 1962
WORTH FOOD MART

CLIP AND SAVE!
25 BONUS S&H GREEN STAMPS
With This Coupon and Purchase of (2) 46-oz. Cans of Libby's Tomato Juice 2 cans 59¢
Void After Sat., October 6, 1962
WORTH FOOD MART

Produce Harvest Values

POTATOES COLORADO US No. 1 10 LB. CELLO BAG 49¢
Cello Cartons-Red-Ripe EA. 15¢
PEAS EAST TEXAS LB. 10¢
ONIONS COLORADO No. 1 LB. 5¢
Waxed LB. 7 1/2¢
BAGS 2 1-LB. BAGS 25¢
LARGE 6 FOR 25¢
ICY-RED LB. 23¢



CLIP AND SAVE!
25 BONUS S&H GREEN STAMPS
With This Coupon and Purchase of (4) 4-oz. Cans of Libby's - Vienna Sausage 4 for 89¢
Void After Sat., October 6, 1962
WORTH FOOD MART

CLIP AND SAVE!
50 BONUS S&H GREEN STAMPS
With This Coupon and Purchase of (4) No. 303 Cans of Libby's Cocktail 4 cans
Void After Sat., October 6, 1962
WORTH FOOD MART

CLIP AND SAVE!
50 BONUS S&H GREEN STAMPS
With This Coupon and Purchase of (3) No. 303 Cans of Libby's Pears 3 cans
Void After Sat., October 6, 1962
WORTH FOOD MART

CLIP AND SAVE!
50 BONUS S&H GREEN STAMPS
With This Coupon and Purchase of (2) 46-oz. Cans of Libby's Beef Stew 2 cans 49¢
Void After Sat., October 6, 1962
WORTH FOOD MART

CLIP AND SAVE!
50 BONUS S&H GREEN STAMPS
With This Coupon and Purchase of (3) No. 303 Cans of Libby's Sauerkraut 3 cans 49¢
Void After Sat., October 6, 1962
WORTH FOOD MART

CLIP AND SAVE!
50 BONUS S&H GREEN STAMPS
With This Coupon and Purchase of (2) 46-oz. Cans of Libby's Tomato Juice 2 cans 59¢
Void After Sat., October 6, 1962
WORTH FOOD MART

Court News
Ev. Te
ew Po
ethel
Ev. H.
scola
pastor
urch
de by
v. Jim
resign
ptist
come
d he
mid-
A
Tous
1955
y in
rd. H
Hardi
Alice
Jerni
ene.
ev. T
ary in
years
he is
to Tarr
Mrs.
ing in
do. Th
mer Br
A
r H. b
e Theat
e, he
Taylor
ptem
ver A
2 This
October
ers after
in the
th, Mond
Observed
ed 62
ptil for
ed was
ve the
month
ost of
early, an
A
first of
2nd; 196
he 7th; 1
on the 17
ow temp
th of Pe
he 28th.
V
-1111
Under 11
day 50c
SAT
AGES FOR
the
CH MERO
- TUB
ure ex
ense it
i can't
the
W
and im
PAT
URSDAY
15 - 8
SEASON
E
WARR
FOURTE
COU
ill rece
e the re
RDAY
ENDSHI
ICULAR
-G-M
MO
TH
BY WILLIAMS
EASTMAN
1962

SELL AND BUY... GET A BETTER JOB... HIRE GOOD HELP!

Read and Use the Want Ads!

CALL MA 707

FOR RENT: House with six rooms and bath. Well located. Newly painted. Good condition. Phone MAin 9-2523. 89

FOR RENT: Three room furnished house. Contact 402 E. Sadosa or phone MAin 9-2032. tf

FOR RENT: Two bedroom unfurnished house. 304 E. Hill. Telephone MA 9-1012. 89

FOR RENT: Three bedroom house. Call MA 9-1977. tf

FOR RENT: Farm home with modern conveniences, and will let the right party have either low rent or rent free depending on qualifications. Would expect routine maintenance and overseeing in return. Write address inquiries to Box C, in care of the Eastland Telegram. 94

FOR SALE: Large 6 room house. Big walk-in pantry. Garage. Large storage room. Mrs. Frankie Collins, 500 S. Seaman or phone MAin 9-1394. tf

FOR RENT: Nice clean duplex. Furnished. Bills paid. 607 W. Moss. tf

FOR RENT: Four-room furnished apartment. Newly redecorated. Book cases, walk-in closets. Extra bed. Air-conditioned. Close in. Bills paid. MAin 9-1062. tf

Pamela Keith

FOR RENT: Nicely furnished or unfurnished apartments, any size, bills paid, maid and hotel services included, very reasonable. Also comfortable rooms with tile baths only \$39.95 monthly. Throw away your high bills and troubles and come live with us. Mrs. Robinson, manager, Village Hotel, MA 9-1716.

BUSINESS SERVICES

A-1 Janitorial service — floor waxing, stripping, window cleaning. Office, commercial, residential. Daily, weekly, monthly. Phone MA 9-2583. tf

SPECIAL NOTICE

OCTOBER is our 15th anniversary month. Set our fine array of unusual items. The Gift House, Cisco. tfc

NOTICE: Mexican dinners — Enchiladas — open 'til 8 p.m. except Sundays. Casey's Fine Food. tf

HELP WANTED: Eastland Steam Laundry. Phone MAin 9-1613. tf

ARE NOT expensive. We look that way. The Gift House, Cisco. tf

SEND — A perfect way to rid of those discards at a price. Sell them with a Telegram Classified. tf

PRICE: Any type hay baled neatly and efficient. Also condition your hay. I. R. Miller, call 2501, Olden col. tf

HELP WANTED: Eastland Steam Laundry. Phone MAin 9-2613. tf

REAL ESTATE

FOR SALE OR TRADE: Will sell or trade equity in modern, roomy three bedroom home in Abilene for lake or local property. Has chain-link fence and down-drought air. Call MA 9-2413 or MA 9-1707 or write Box 29. tf

FOR SALE: Equity in two bedroom FHA home. See any even. tf

Patry White

SPECIAL NOTICE: Typewriter and office machine repair. Machines to loan while yours is being repaired. Call the Eastland Telegram. MAin 9-1714. tf

FOR SALE: New two bedroom. Interior almost complete. 500 block East Commerce, Eastland. \$1798 cash as is or \$39.98 a month with no down payment. Call collect Modern Homes Construction Company, Pershing 2-4085, Fort Worth. tf

ROTARY CLUB

Elephant for noon luncheon. Call Mike George, 9-1495, for each Monday.

JAYCEES

Don't forget breakfast each 2nd and Thursday. Get 75¢ off for 7 days at White Mountain Restaurant.

WE BUY AND SELL USED FURNITURE

Phone MA 9-1740
WAYNE JACKSON

FOR SALE: Hunting boots, \$8.95. Insulated underswear — men's, insulated children — \$7.95 up. Ladies, overalls, \$6.95. Sleeping cover and many other items bags outdoorsman. Bruce the Sport Center. tf

Olan Keller

YES you can sell bicycles or roller skates with Telegram Classifieds.

FOR SALE: Mouton size 12. May be seen at Modern Dry Cleaners. tf

FOR SALE: 1958 Belair Chevrolet 4 dr. sedan, R and H, W.S.W. tires, extra clean. My personal car. See Glynn Gilliam at Eastland National Bank or call MA 9-2137. tf

FOR SALE: Used 21 inch Frutons TV set. Good condition. See or call Glyn Gilliam, MA 9-1751 or MA 9-2137. tf

FOR SALE: Deep well pump and 300 feet 1 inch plastic pipe. Also 75 ft. of 1 1/2 inch pipe. All connections ready to assemble. \$70. Mrs. George, 500 S. Halbryan. 89

FOR SALE: Dinnette suite, \$30.00; Sofa-bed, \$50.00. 205 S. Oaklawn. Phone MAin 9-2301. tf

FOR SALE: Two stoves. Like new Catalina Range with timer, magic eye burner, griddle, ovenlight and glassed door. \$80. Another older full-sized range. Good condition. \$30. Call MA 9-2413 or MA 9-1707. tf

YOU can't get that spare bedroom with a Telegram Classified!

MIS WANTED

NEED a baby sitter, a car port a lawn mower, a job, an apartment, an assortment of flowers? Use Telegram Classifieds.

PERSONALS

After 6:30 p.m. 525 E. Conner. tf

WANTED — An opportunity to prove that Telegram Classifieds work hard for you. tf

If you are lonely, broken hearted, troubled in spirit or burdened with a sin-sick soul, you can find comfort, consolation and peace at First Methodist Church. tf

FOR SALE: Our three bedroom Hillcrest home, 2 tile baths, central air and heat. 306 S. Oaklawn. Business property 214 S. Seaman. Phone MA 9-1742. tf

FOR SALE: House in Morton Valley three bedroom, bath, good water, deep well and pump. One acre. High and cool. On highway. Phone MA 9-2413 or MA 9-1707. tf

TRAINERS

400 men needed immediately to work in industry in the Texas Gulf Coast Area. Must be 21-35 years of age and draft exempt. No previous experience is required. Salary range is \$1.50 to \$2.82 per hour, depending on the ability of the applicant.

INDUSTRIAL EMPLOYMENT ASSOCIATES

3111 Baldwin St. Houston 6, Texas, JA 9-3828

MOTEL MANAGEMENT

Motel industry needs 90,000 employees. Earn \$6,000 to \$20,000 per year. If you qualify, you will be trained Home Study and in luxury motel. Don't let age, experience or education hold you back. We can finance your training if you qualify. Write UNIVERSAL MOTEL TRAINING, 6513 East Lancaster, Fort Worth 12, Texas

EASTLAND SERVICE PARTS CO.

Auto & Truck PARTS

IN STOCK & OVER NIGHT DELIVERY

LOWEST PRICES ANYWHERE

Independently Owned Nationally Affiliated

CALL US FIRST!

AUTO PARTS MA 9-1733

(Clip This Coupon and Place It Near Your Telephone)

EASTLAND CHAPTER NO. 280 O. E. S.

Meets the first Tuesday of each month at 8 p.m. in the Masonic Hall. Call Mrs. Pebble Boles, Sec., for information. MA 9-2733.

MASONIC LODGE NO. 467

Meets second Thursday of each month at 8:00 p.m. in the Masonic Hall. Call C. L. Langlitz for information or L. E. Huckabay, Sec., 9-1391, for information.

THURMAN ELECTRIC

Electric Motor Rewinding and Repair. 202 S. Seaman, Eastland.

FHA NEW HOME FOR SALE: Corner of East Conner and Marsh Streets; Central Refrigerated air and heat; all Electric Country Kitchen; Brick construction; 3 bedrooms; 2 baths; double garage; beautiful trees; A real old fashioned bargain for \$14,950 today. Complete with \$14,950 down, payment, land; Nominal down, payment; monthly payments like rent; Call today and see if you can qualify with FHA for this wonderful bargain. Guaranteed reasonable inside of 12 months. Reason inside of 12 months. Call Don Kinnaird Jr. at MA 9-2544 now, or Don Piersol at MA 9-1033. tf

FOR SALE: Three good buys on three-bedroom homes. One G. equity. All in good location and good condition. M. A. Treadwell Sr. Phone MA 9-2017. tf

FOR SALE: Three good buys on three-bedroom homes. One G. equity. All in good location and good condition. M. A. Treadwell Sr. Phone MA 9-2017. tf

FOR SALE: House in Morton Valley three bedroom, bath, good water, deep well and pump. One acre. High and cool. On highway. Phone MA 9-2413 or MA 9-1707. tf

EASTLAND AUTO PARTS

300 S. Seaman MAin 9-2158

FULLY EQUIPPED

AUTOMOTIVE MACHINE SHOP

VALVE GRINDING
BRAKE DRUM TURNING
HEAD SURFACING
VALVE JOBS
BLOCK BORING
SLEEVE INSERTING
VALVE SEATING

ALWAYS IN STOCK COMPLETE LINE AUTOMOTIVE TRUCK TRACTOR PARTS

EASTLAND AUTO PARTS

300 S. Seaman MAin 9-2158

WANTED

Good clean automobiles. Buy make—Any Model Considered.

BLEVINS MOTOR CO.

See Jay Blevins. Ph. MA 9-2433 513 West Main Eastland

LEGAL NOTICE

NOTICE TO BIDDERS

Notice is hereby given that the Commissioners' Court of Eastland County, Texas, will request sealed bids to be made in accordance with law, by any interested bidders for the purpose of one (1) new four door automobile to be used by the Sheriff's department of Eastland County, Texas. Said bids will be opened and considered by the court at its regular place of meeting in the Court House in Eastland, Texas, on October 18, 1962 at 10:00 O'Clock A.M., and will at such time let a contract therefor if any bid be accepted; all such bids to be made as required by law. Right to reject any and all bids is hereby especially reserved by the Commissioners' Court. Any and all such bids should take into consideration a trade-in by the County towards a purchase of such equipment of a 1962 Ford Tudor Sedan, with motor number 9HDS 127877. Hari O'Brien, County Auditor, by order of Commissioners' Court.

STAFF NEWS

Mrs. O. T. Hazard was a business guest in Eastland on Saturday and while there saw the Peanut Bowl Parade.

Mrs. C. I. Henderson was a business visitor in Eastland Tuesday of last week.

Mrs. O. T. Hazard recently visited her brother and sister-in-law, Mr. and Mrs. John White and another sister-in-law, Mrs. Latha Woods of Odessa.

Mrs. M. A. Abel accompanied Mrs. Bates of Ranger to Dallas on business last Friday.

Mrs. W. T. Dunca came home last Tuesday from Stephenville where she had been confined in the hospital for two weeks following surgery.

Mr. and Mrs. John Blackwell

STAFF NEWS

Mrs. Maurice Hazard and her mother, Mrs. Irene Parker of Hereford, were here last Tuesday. Mrs. Parker accompanied her son, Robert Lee, to Fort Worth for a visit with Mr. and Mrs. Love Parker, who were enroute to their home in Portland, Maine after an extended visit in Texas with relatives. Mrs. Parker and family then returned here for a visit with Mrs. Hazard before returning to Hereford.

Mr. and Mrs. Steele Hill of Fort Worth and Mr. and Mrs. E. J. Scarda, also of Fort Worth, have spent the past two weeks at their lakeside homes at Staff Village. They have reported catching some nice bass in Lake Leon.

A total of 300 persons were reported to have been present Saturday night for a fish fry observance of the fishing rodeo sponsored by the Fort

STAFF NEWS

Mr. and Mrs. Eddie Williamson of Wichita Falls visited his mother, Mrs. Earle Williamson, over the weekend.

Worth Anglers' Club. Many of the fishermen brought their families and camped out during the affair. Fish left from land O'Keefe.

STAFF NEWS

Mr. and Mrs. Eddie Williamson of Wichita Falls visited his mother, Mrs. Earle Williamson, over the weekend.

Worth Anglers' Club. Many of the fishermen brought their families and camped out during the affair. Fish left from land O'Keefe.

STAFF NEWS

Mr. and Mrs. Eddie Williamson of Wichita Falls visited his mother, Mrs. Earle Williamson, over the weekend.

Worth Anglers' Club. Many of the fishermen brought their families and camped out during the affair. Fish left from land O'Keefe.

STAFF NEWS

Mr. and Mrs. Eddie Williamson of Wichita Falls visited his mother, Mrs. Earle Williamson, over the weekend.

Worth Anglers' Club. Many of the fishermen brought their families and camped out during the affair. Fish left from land O'Keefe.

STAFF NEWS

Mr. and Mrs. Eddie Williamson of Wichita Falls visited his mother, Mrs. Earle Williamson, over the weekend.

Worth Anglers' Club. Many of the fishermen brought their families and camped out during the affair. Fish left from land O'Keefe.

STAFF NEWS

Mr. and Mrs. Eddie Williamson of Wichita Falls visited his mother, Mrs. Earle Williamson, over the weekend.

Worth Anglers' Club. Many of the fishermen brought their families and camped out during the affair. Fish left from land O'Keefe.

STAFF NEWS

Mr. and Mrs. Eddie Williamson of Wichita Falls visited his mother, Mrs. Earle Williamson, over the weekend.

Worth Anglers' Club. Many of the fishermen brought their families and camped out during the affair. Fish left from land O'Keefe.

STAFF NEWS

Mr. and Mrs. Eddie Williamson of Wichita Falls visited his mother, Mrs. Earle Williamson, over the weekend.

Worth Anglers' Club. Many of the fishermen brought their families and camped out during the affair. Fish left from land O'Keefe.

STAFF NEWS

Mr. and Mrs. Eddie Williamson of Wichita Falls visited his mother, Mrs. Earle Williamson, over the weekend.

Worth Anglers' Club. Many of the fishermen brought their families and camped out during the affair. Fish left from land O'Keefe.

STAFF NEWS

Mr. and Mrs. Eddie Williamson of Wichita Falls visited his mother, Mrs. Earle Williamson, over the weekend.

Worth Anglers' Club. Many of the fishermen brought their families and camped out during the affair. Fish left from land O'Keefe.

STAFF NEWS

Mr. and Mrs. Eddie Williamson of Wichita Falls visited his mother, Mrs. Earle Williamson, over the weekend.

Worth Anglers' Club. Many of the fishermen brought their families and camped out during the affair. Fish left from land O'Keefe.

STAFF NEWS

Mr. and Mrs. Eddie Williamson of Wichita Falls visited his mother, Mrs. Earle Williamson, over the weekend.

Worth Anglers' Club. Many of the fishermen brought their families and camped out during the affair. Fish left from land O'Keefe.

STAFF NEWS

Mr. and Mrs. Eddie Williamson of Wichita Falls visited his mother, Mrs. Earle Williamson, over the weekend.

Worth Anglers' Club. Many of the fishermen brought their families and camped out during the affair. Fish left from land O'Keefe.

STAFF NEWS

Mr. and Mrs. Eddie Williamson of Wichita Falls visited his mother, Mrs. Earle Williamson, over the weekend.

Worth Anglers' Club. Many of the fishermen brought their families and camped out during the affair. Fish left from land O'Keefe.

STAFF NEWS

Mr. and Mrs. Eddie Williamson of Wichita Falls visited his mother, Mrs. Earle Williamson, over the weekend.

Worth Anglers' Club. Many of the fishermen brought their families and camped out during the affair. Fish left from land O'Keefe.

STAFF NEWS

Mr. and Mrs. Eddie Williamson of Wichita Falls visited his mother, Mrs. Earle Williamson, over the weekend.

Worth Anglers' Club. Many of the fishermen brought their families and camped out during the affair. Fish left from land O'Keefe.

STAFF NEWS

Mr. and Mrs. Eddie Williamson of Wichita Falls visited his mother, Mrs. Earle Williamson, over the weekend.

Worth Anglers' Club. Many of the fishermen brought their families and camped out during the affair. Fish left from land O'Keefe.

STAFF NEWS

Mr. and Mrs. Eddie Williamson of Wichita Falls visited his mother, Mrs. Earle Williamson, over the weekend.

Worth Anglers' Club. Many of the fishermen brought their families and camped out during the affair. Fish left from land O'Keefe.

STAFF NEWS

Mr. and Mrs. Eddie Williamson of Wichita Falls visited his mother, Mrs. Earle Williamson, over the weekend.

Worth Anglers' Club. Many of the fishermen brought their families and camped out during the affair. Fish left from land O'Keefe.

STAFF NEWS

Mr. and Mrs. Eddie Williamson of Wichita Falls visited his mother, Mrs. Earle Williamson, over the weekend.

Worth Anglers' Club. Many of the fishermen brought their families and camped out during the affair. Fish left from land O'Keefe.

STAFF NEWS

Mr. and Mrs. Eddie Williamson of Wichita Falls visited his mother, Mrs. Earle Williamson, over the weekend.

Worth Anglers' Club. Many of the fishermen brought their families and camped out during the affair. Fish left from land O'Keefe.

STAFF NEWS

Mr. and Mrs. Eddie Williamson of Wichita Falls visited his mother, Mrs. Earle Williamson, over the weekend.

Worth Anglers' Club. Many of the fishermen brought their families and camped out during the affair. Fish left from land O'Keefe.

PICKS A MAN UP

Boswell's CHOCOLATE MILK

Here's a real energy booster with rich chocolate... extra smooth... a full-flavored... of all ages. Hot or cold it's delicious. Get your Chocolate Milk tomorrow!

FREE PARKING ALL DAY SATURDAY

ONE DOLLAR Sale

AP & P

PRICES GOOD THRU OCT. 6, 1962

325 EXTRA PLAID STAMPS

With the Purchase of the Following Items. NO COUPON NECESSARY

EXTRA PLAID STAMPS WITH LAWTER 24" x 72" RUG RUNNERS \$2.29

EXTRA PLAID STAMPS WITH KRAFT VELVETA 2-lb. Loaf 95c

EXTRA PLAID STAMPS WITH CARNATION INST. MILK 8-oz. Can. 71c

EXTRA PLAID STAMPS WITH ANN PAGE 24-OZ JAR PEANUT BUTTER 59c

EXTRA PLAID STAMPS WITH JANE PARKER 10-OZ TWIN POTATO CHIPS 49c

EXTRA PLAID STAMPS WITH JANE PARKER JELLY TOPPED BUNS 35c

EXTRA PLAID STAMPS WITH ANN PAGE 12-OZ. 87L. CHILI SAUCE 29c

EXTRA PLAID STAMPS WITH BLUEBONNET MARGARINE 1-lb. 27c

ANGEL SOFT TOILET TISSUE 3 4-Roll Packs

BREMNER COOKIES 3 2-lb. Pkgs.

MRS. TUCKER'S SALAD OIL 3 24-oz.

GEBHARDT'S PLAIN CHILI 3 No. 308 Cans

TEXSUN ORANGE JUICE 4 46-oz. Cans

A&P CLING PEACHES 4 Halves or Slices 29-oz. Cans

RUSTIC APPLE RINGS 4 46-oz. Spiced Jars

A&P TOMATO JUICE 4 46-oz. Cans

BANQUET FROZEN PIES 4 22-oz. Pies

GRAPEFRUIT SECTIONS 6 A&P No. 303 Cans

GREEN GIANT PEAS 6 16-oz. Cans

NIBLETS CORN 6 12-oz. Cans

EL CHICO TAMALES 6 No. 300 Cans

CRANBERRY SAUCE 6 Minor Brand No. 300 Cans

ANN PAGE KETCHUP 6 14-oz. 87L. Cans

PORK & BEANS 10 1-lb. Sultana Cans

KIDNEY BEANS 10 1-lb. Ann Page Cans

ANN PAGE RED BEANS 10 1-lb. Cans

BLACK-EYED PEAS 10 15 1/2-oz. Sultana Cans

Sliced SKINLESS BEEF LIVER 49¢ lb.

"SUPER-RIGHT" THICK Sliced Bacon 99¢ 2-lb. Pkg.

CAP'N JOHN FROZEN FRIED FISH STICKS 39¢ 10-oz. Pkg.

ALL GOOD SLICED BACON 99¢ 2-lb. Pkg.

"SUPER-RIGHT" PURE PORK Sausage 99¢ 2-lb. Bag

"Super-Right" whole or half Smoked Hams 49¢ lb.

Butt Portion 49¢ lb.

Center Slices 89¢ lb.

Portions 39¢ lb.

Fish Fillets 59¢ lb.

JANE PARKER ENRICHED WHEAT BREAD 2-lb. Pkg.

JANE PARKER LARGE ANGEL FOOD 2-lb. Pkg.

JANE PARKER GLAZED DONUTS 10-oz. Pkg.

JANE PARKER BROWN 'N SERVED FRENCH ROLLS 10-oz. Pkg.

JANE PARKER 8-INCH PIE 39¢ Each

Fresh Produce

APPLES McIntosh 4 lb. 79¢

PEARS Bartlett 4 lb. 79¢

YAMS East Texas 4 lb. 79¢

SNOW WHITE CAULIFLOWER 1 lb. 79¢

GRAPES Tokay 2 lb. 79¢

LETTUCE Iceberg 2 lb. 79¢

Storewide Specials

NABISCO PREMIUM SALTINES 27¢ 6-oz. Pkg.

HEADACHE REMEDY BUFFERIN 59¢ 6-oz. Pkg.

SUPER RIGHT CORN BEEF OR ROAST BEEF 12-oz. 39¢

WHITE HOUSE HANDY 6-PACK BATTERED EVAP. MILK 75¢ 6 Can Pack



DISPLAY TROPHY — Billy Vice of Shreveport, Roy Armentrout of Azle, and Billy Porter of Fort Worth are shown, left to right, with the trophy won by the Wranglers of Cisco Junior College at the Peanut Bowl in Eastland last Saturday night. They presented the trophy to the college in ceremonies Monday. (Photo courtesy Cotton's Studio).

Richard Wresch Will Present EHS Program

A collection of more than 100 handcuffs, leg irons, thumb screws, a d lock and key devices which the Great Houdini used to spellbind thousands around the globe has been obtained by Richard Wresch and will be displayed on stage of the Eastland High School Auditorium Friday morning at 9 a.m. Admission fee will be 15c.

Dick Wresch became interested in locks at an early age. Picking locks and opening safes came easy for him, and coupled with his desire to follow the Golden Rule and Ten Commandments, he has had an interesting and care free career in the field.

Houdini's younger brother says, "This is the greatest collection of its kind in the world."

1,972 Receive Type II Polio Serum Saturday

A total of 1,972 area residents and Pentac Bowl Day visitors received polio immunization Saturday when the Type II Sabin Oral Polio Clinic was held in the lobby of the Eastland County Courthouse.

As General Chairman of the Clinic and president of the Civic League, Mrs. Frank Sayre expressed her appreciation to everyone who worked or had a part in making the clinic a success.

She stated that the Type III vaccine will be given at a later date, when it is sanctioned by the American Medical Association. She said the clinic in Eastland will probably be held following the date set for the immunization program in Fort Worth.

Mrs. Donelson Presides Over Opening Meet

Mrs. Matt Donelson, president, presided over the opening meeting of the new year for members of the Women's Missionary Union of the Mangum Baptist Church the early part of the week.

Mrs. Rachel Clower brought the prayer calendar for missionaries followed by a devotional from Psalms.

The president, Mrs. Donelson, encouraged all Chri-

RANCH FIELD DAY SET



WILLIAM J. (Dub) WALDRIP

County Agent J. M. Cooper reported that latest research developments at the Texas Experimental Ranch will be presented to the public at a special field day on Thursday, October 4, from 9 a. m. to 3 p. m. William J. (Dub) Waldrip, shown above, is in charge of activities at the ranch which is located 10 miles north of Throckmorton on U. S. Highway 183 and 283.

The morning program will be devoted to guided tours of pastures where important grazing management studies are underway. Visitors also will see the revolutionary "suspension" fence which en-

ables cattlemen to cut fencing costs as much as 30 percent. The first 100 visitors from counties other than Throckmorton and Baylor will receive free tickets to the noon barbecue.

Highlights of the afternoon program will include discussions by Gerald W. Thomas, dean of Agriculture, Texas Tech; Dwight F. Stephens, superintendent, El Reno Experiment Station; Dr. C. L. Leinweber, Department of Range and Forestry, Texas A&M College; and John Matthews, chairman of the Texas Experimental Ranch Committee.

CFW To Hold Rummage Sale

Members of the Christian Women's Fellowship of the First Christian Church will sponsor a rummage sale Friday and Saturday in the church annex.

The sale will be open both days from 9 a.m. to 5 p.m. Mrs. A. D. Webb will serve as chairman for the sale.

For persons in the 65-and-over age group, leading causes of accidental death in 1961 were falls, 10,100; fires, burns and deaths associated with fires, 1,500; and suffocation, 190.

To do their work well and outlined work for the first three months of the new year. She then presented an interesting talk on the Lottie Moon Offerings.

The meeting was closed with prayer led by Mrs. Lina Rice. Attending the meeting were the following: Mmes. Donelson, Rittie Brown, Clower, Ann Tucker, Becky Murhu, Allene Hughes, Coryne Wood, Rice and Billie Wood.

Humble Will Broadcast 5 Football Games

Five Southwest Conference football games will be broadcast over radio Saturday by Humble Oil & Refining Company. In addition, Humble will co-sponsor the live telecast of the LSU-Georgia Tech game.

The SMU-Air Force Academy game will be broadcast at 1:45 p. m. over KWKC, Abilene, KBWD, Brownwood and WRR, Dallas and KFJZ, Fort Worth.

The Rice-Penn State game will be broadcast at 7:45 p. m. over KBWD Brownwood, KBOX, Dallas and KCUL, Fort Worth.

The Texas A&M Texas Tech game will be broadcast at 7:15 p. m. over KRBC, Abilene and WFAA-WBAP, Dallas Fort Worth.

The TCU-Arkansas game will be broadcast at 7:15 p. m. over KWKC, Abilene, and WFAA-WBAP, Dallas, Fort Worth.

The Texas-Tulane game will

Nine Texans Participate in Air Event

Nine Texans participated in the Ricks Trophy event, the annual fighter interceptor competition for Air National Guard pilots recently concluded at Tyndall Air Force Base, Florida.

Air National Guard teams from six states, flying the supersonic F-102 Delta Dagger, competed for top scores in navigation, alert scrambles, weapons firing, ground crew maintenance and aircraft controllers.

The men, all members of the Texas Air National Guard at Houston are Staff Sergeant James A. Craig, a radio technician, son of Mr. and Mrs. William S. Craig Sr. of Route three, Gorman; Master Sergeant Jarvis L. Buchanan, an aircraft mechanic, whose wife is the former Patsy J. McCormack of Corsicana; and Airman First Class Bobby G. Cravens, a radar technician, son of Mr. and Mrs. Lindsey Cravens of Galena Park; Technical Sergeant John D. Davis of Fort Worth; Captain Bobby W. Hodges of Stone-wall; Technical Sergeant Johnny L. McCandless of Alvin; Technical Sergeant George E. Oakes of Pasadena; Technical Sergeant Joe H. Yerkes of Pasadena; and Technical Sergeant Lindsey T. Smith of Galena Park.

Costs of home accidents in the United States in 1961 totaled \$1 billion.

In 1961, accidents killed more Americans in the 1-24 age group than any disease.

For youths aged 15 to 24 years, accidents claim more lives than all other causes combined.

be broadcast at 7:15 p. m. over KRLD, Dallas.

The LSU-Georgia Tech game will be telecast at 1:30 p. m. over DRLD, Dallas and KPAR Sweetwater, Abilene.

T. L. FAGG

REAL ESTATE

Property Management Home and Farm Loans

TidBits -

(Continued from page One) installation of the Atlas Missile complex surrounding Abilene. Another current Zachery project not so far away is the construction of the giant reservoir at San Angelo.

Further afield, they were prime contractor for the installation of missile facilities in the South Pacific.

Eastlanders were ready for a bakery.

Mr. Boyer, who has opened his bakery on N. Seaman St., with an outlet in the foyer of the Petroleum Building, sold 60 dozen doughnuts Monday, 80 Tuesday, and ran out before the days were half over.

What do you think Eastland needs now?

The Jaycee signboard on the west side of town brought us a fine bakery. So now what should we ask for?

We'd like your suggestions, and below you'll find a simple form on which you can list your idea (or ideas) of what Eastland needs.

Fill it in, clip, and mail to the Eastland Telegram, Box 29, and we'll sure see that the Jaycees get the word.

"EASTLAND NEEDS A ..."

SIGNED

ADDRESS

Fill in, clip and mail to Box 29, Eastland, Texas.

WMU Hears Bible Study At Meeting

Mrs. Ann Tucker presented a program, "People on Parade" during a meeting of the Roundtable Circle of the Mangum Women's Missionary Society held Thursday in the home of Mrs. Matt Donelson.

A book review on "The Gentle House" was presented by Mrs. Corine Wood.

The meeting was opened with prayer led by Mrs. Tucker followed by a discussion on the Roundtable Circle.

Refreshments were served by Mrs. Donelson and Mrs. Myrt Biles after which the meeting was closed with prayer led by Mrs. Rittie Brown.

Attending the meeting were Mmes. Brown, Tucker, Billie Wood, Allene Hughes, Corri Wood, Campbell, Donelson and Biles.

Rites Held Tuesday For W. C. Hammond

Final rites for Walter Cleveland Hammond, 77, of 396 S. Connelle, were held Tuesday at 2 p.m. in the Hamner Funeral Chapel with Rev. Hasston Brewer, pastor of the First Baptist Church officiating. Interment was in the Eastland Cemetery under the direction of Hamner Funeral Home.

Mr. Hammond was found dead at his home Monday morning.

He was born April 17, 1885 in Mineral Wells. He was a member of the First Christian Church.

A furniture dealer in Eastland for many years, Mr. Hammond had recently purchased the building housing his store and the one to the west. He was planning to remodel them.

Survivors include one son, Tommy of Hobbs, N. M.; one brother, Albert of Mineral Wells; and one sister, Mrs. D. A. Martin of Mineral Wells.

Read the Classified Ads

Here's what the other '63's wish they looked like.



Today - Wide-Track Pontiac '63

...that Pontiac's come up with another ... this year. Fresh over-and-under headlights, clean ... but you can see that. There's a wider Wide-Track,

...too, and a full line of Trophy V-6's. [That ought to be enough to make those other cars turn green.] And we haven't mentioned such happy touches as self-adjusting

brakes. So what, pray tell, could be keeping you from a new Pontiac of your own? A small suggestion. Don't run down to see one. Gallop! Wide-Track Pontiac

SEE THE CAR THAT'S EVEN NICER THAN THE '62 PONTIAC AT YOUR LOCAL AUTHORIZED PONTIAC DEALER'S TODAY

MUIRHEAD MOTOR CO.

PONTIAC SALES & SERVICE

301 W. Commerce Street Eastland, Texas MA 9-1731

Judge Nominee Bailey Comments On Action

"There'll probably be some new thinking on the Commissioner's Court, come January 1st, when three new members take office," Scott Bailey, the Democratic nominee for County Judge, said in Eastland Monday.

One of the commissioners has already taken office.

Glen Justice of Carbon is finishing the unexpired term of F. M. Bennett who was appointed by the Court to fill the unexpired term of County Judge John Hart who was buried Saturday, Sept. 16th.

Runt Dill, who defeated Carl Lamb, as commissioner from the Cisco Precinct, will take office on Jan. 1. Justice won the nomination in the May primary run-off.

Bailey, the unsuccessful candidate for state representative in the May primary, was nominated by the County Democratic Committee the same day

hadn't known that the nomination for the office didn't actually need to go to the state Democratic Convention for ratification.

(In certain cases—when an elected official dies or resigns and a vacancy exists, the recommendation of the county committee is ratified by the state convention—as was apparently requested in the letter from Connalle.)

It had been announced that the committee would convene Thursday following the Judge's burial, but the committeemen were contacted by telephone Saturday morning and asked to meet at 5 p.m. at the Village Hotel office of Eastland Precinct Chairman Don Pierson.

According to Bailey, the vote of the 12 members was six for him, four for Charles Freyschlag and two for O. H. Dick.

Pierson asked that the vote be made unanimous, as was done.

A paid political advertisement appeared in this and two other county newspapers Sunday asking "write-in" votes for Dick.

Interviewed this week, Dick would not say whether or not he will stage an active write-in campaign.

"If the people want me, I guess I would," he said.

Freyschlag has announced that he will not attempt a write-in.

Asked why the committee held the meeting so soon after the funeral of the County Judge, Bailey said:

"Mr. Crawley (Alvin of Ranger) had received a letter from Ed Connalle, state Democratic executive committee chairman, asking for a list of all the offices for which vacancies existed in off-year posts and recommended nominees."

"Mr. Crawley contacted me at noon Friday and asked if I would consider the nomination for the county judge office. He went with me to talk with three of the committeemen. I talked to six in all."

Asked if he had had any misgivings about soliciting support for the office prior to the Judge's funeral, Bailey answered "No, not really."

He said that he "didn't know", when asked if he, the county chairman or someone

Hospital News

Patients in the Eastland Memorial Hospital are the following. All are from Eastland unless otherwise designated.

Modess Burgess, medical, Gorma

Edna R. Rains, surgical, Cisco

Novie M. McCarver, medical, San Antonio

Iilla A. Powell, medical

Vicenta Soto, medical

Mittie B. Radley, medical, Ranver

Naomi Lewis, medical

T. L. Fagg, medical

Charles Harlow, medical

John Martin Smith, medical, Olden

Margaret Cagle, medical, Cisco

Local Ladies Pumper Team Wins Trophy

The Ladies Pumper Team of the Eastland Fire Department won the third place trophy with their time of 31 seconds Tuesday night when they attended the North Central Texas Fire Association Convention held in Mineral Wells.

Members of the Weatherford team won first place while second place was won by the Aledo team.

eral Intermediate Credit Bank of Houston, supervisory and district agency for all 38 PCA groups in Texas.

Expected to attend from the Stephenville Association are President E. Cal McCurdy of Denton; Vice President James Creuch of Burleson; Directors C. M. McCain of Eastland, T. M. Winters of Evant and Tom Mazurek of Laredo and General Manager W. M. Irwin of Stephenville.

The Stephenville PCA serves Eastland, Comanche, Erath, Hamilton, Hood, Somerville, Johnson, Parker, Tarrant and Wise counties. Officers are in Stephenville, Eastland, Comanche, Fort Worth, Decatur and Cleburne.

PCA Delegates Will Attend Conference

The board of directors and general manager of the Stephenville Production Credit Association will attend an area group conference of PCA managers and directors, to be held in Laredo, October 8-9.

Representatives of seven associations from a 54-county area of Central and Southwest Texas will attend the two-day meeting, sponsored by the Fed-

Plans Made For 4-H Achievement Award Banquet

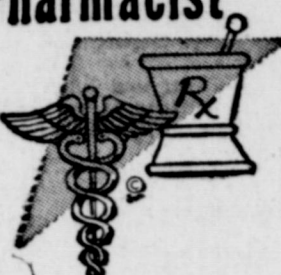
Plans for the 4-H Achievement Awards Banquet were discussed at a meeting of the Eastland County 4-H Council and adult leaders held Thursday at 7:30 p.m. in the County Courtroom. In the absence of the president Nancy Justice, vice president, presided over the first meeting of the new year.

The Awards Banquet will be held in November, the exact date and place will be announced later. The food, decoration and entertainment committees were appointed and will begin their planning meetings soon.

Another item discussed was the possibility of ordering 4-H jackets and window stickers. Roger Blackmon, Assistant County Agent, showed pictures of both and the council members will take this information back to their 4-H Clubs to decide if they want to buy the items.

It was then decided that the Eastland County Clubs would sponsor a program on Registered Quarter Horses to be given in October. An official of the American Quarter Horse Association of Amarillo will be present to show films on the horses. Jimmy Horn will be in charge of making plans and the date and place will be announced later. Everyone interested in horses is cordially invited to attend the program, which will be free to the public.

Choose your Pharmacist, as you would choose a doctor



UP-TO-DATE IN ALL WAYS!

Rely on your pharmacist to fill all prescriptions to exact standards. He's always technically ahead to better serve you and the community.

CENTRAL DRUG
MA 9-2681

Annual Chicken Dinners Will Be Sold Saturday

The annual barbecue chicken dinner will be held Saturday at 11 a.m. in the First Baptist Church annex, Colored, on N. Lamar.

Plates will sell for \$1.00 each.

Roston King of Eastland will barbecue the chickens for the dinner.

The public is cordially invited to attend the annual event.

Card of Thanks

We wish to take this way to express our sincere thanks and appreciation for the kindness extended to us during the illness and death of Mrs. O'Neal.

We especially want to thank Dr. Treadwell and all of the nurses at the Eastland Memorial Hospital.

William O'Neal Jr.
Ozona Durall

WE GIVE Round-Up STAMPS



WAPCO Potatoes & Cut	
GREEN BEANS 303 Can	15c
LAWRY'S Spaghetti SAUCE MIX 1 1/2-Oz. Pkg.	29c
BORDEN'S Instant POTATOES 3 1/2-Oz. Box	29c
DETROIT SURF Giant Box	59c
DETROIT RINGSO BLUE Large Box	25c
Ice Free SECRET Cream DEODORANT 6 1/2 Oz. Plus Tax	59c
WILLIAM'S AQUA VELVA Plus Tax 6 1/2 Oz.	49c

PRICES GOOD THROUGH SATURDAY, OCTOBER 6

CHECK IN NOW FOR YOUR PRE-WINTER CAR CHECK-UP

COMPLETE AUTO REPAIRS

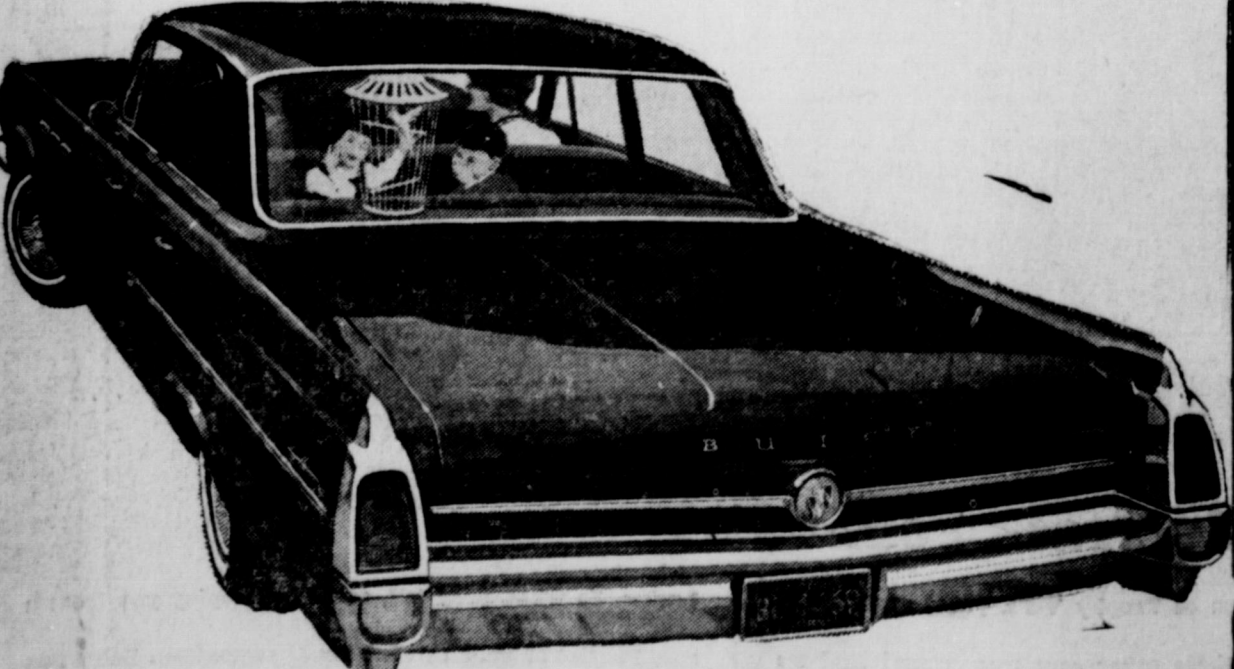
24 HOUR WRECKER SERVICE

Phonex MA 9-2270 Night MA 9-2224

ALLEN AUTO REPAIR
AT RUSHING MOTOR
215 SOUTH SEAMAN

9 AM (TODAY)

SEE THE BOLD BEAUTIFUL CHANGE IN BUICK



Bold, beautiful Buick LeSabre... features Advanced Thrust engineering for greater road stability, Matter floor. Choice of 3 transmissions, including optional Turbine Drive. Finned aluminum front brakes (world's safest.) *Optional at extra cost.

MUIRHEAD MOTOR COMPANY
EASTLAND, TEXAS

QUANTITY RIGHTS RESERVED

Rath's Black Hawk Sliced Bacon	Lb. 59c
RATH BLACK HAWK PURE PORK Sausage 2 Lb. Bag	89c
Rath Hickory Smoked Fully Cooked Ham 5 Lb. Can	\$4.49
BABY BEEF Club Steak	Lb. 89c
FIRM GREEN Cabbage	Lb. 6c
BANQUET Frozen POT PIES 8-Oz. Package	19c
SWANSON'S Frozen TV DINNERS 11-Oz. Package	59c
BOOTH Frozen FISH STICKS 8-Oz. Package	29c
SUZANNE'S Frozen Parkerhouse ROLLS 24-Count Package	25c
IMPERIAL Pure Cane SUGAR 10 Pound Bag	98c
Star-Kist Chunk Style TUNA Regular Can	29c
ZEE Assorted Toilet TISSUE 4 Roll Pkg.	37c
BIP-O-LITE Marshmallow CREME Pint Jar	19c
SUNSHINE HYDROX COOKIES Pound Pkg.	47c
WHITE SWAN TEA BAGS 16-Ct. Box	19c
BLACKBURN Cane Flavored SYRUP Quart Bottle	39c
BREMNER Choc. Bon. Coconut JUMBO PIES 12-Ct. Box	39c
BIO MIKE DOG FOOD 3 300 Cans	19c
PET Evaporated MILK 3 Tall Cans	43c
PET Instant Dry MILK 12-Quart Box	98c
GREEN GIANT PEAS 303 Can	23c
WHITE SWAN TEA 1/2-Pound Carton	25c

FREE Beautiful 4-Color STATE FAIR of TEXAS Hard-Back Picture Book with Each 5-Pound Bag of LIGHT CRUST FLOUR!

LIGHT CRUST FLOUR 49c

5-Pound Bag

KRAFT'S Cheese Loaf VELVEETA 2-Pound Box

PRINCESS CREME Vanilla, Chocolate or Duple COOKIES 2-Pound Pkg.

BREMNER'S Saltine CRACKERS Pound Box

WHITE SWAN or FOLGER'S COFFEE All Grinds Pound Can 65c

BABY BEEF LOIN STEAK 1 LB. 89c

NEUHOFF LONE STAR THICK SLICED BACON 2 LBS. 98c

RUSSET Potatoes MacMOY'S Super Save 10 lbs. 49c

Home Owned—Home Operated 400 S. Seaman

Tourney
Oct. 5-7
Wood

Annual American League sanctioned National Bridge tournament will be held Friday through Sunday at the Brownwood, according to I. Tournament Chair-ACEL director.

As to all known players throughout the Texas playing area extended through the Contract Bridge New York City.

Second place trophy awarded in all the first event before 7:30 p. m. Friday, men's pairs and women's pairs and women's sessions on Saturday, Oct. 6, and 8 p. m. Saturday, Oct. 7.

Organizing organization No. 204 duplicate bridge clubs in Brownwood, G. O. R. M. A. N., Gorman, Brady, Mendenhall.

Group Will
Burk Team

Clasico Junior College education class go to Burk Burnett to play Coach Zach high school team football game.

Burnett team has won from all In-League play this year.

Jim Puryear, Leonard and Carroll Scott with a school bus at 1:30 p. m. Friday.

Scheduled to make the following:

— Jimmy Stewart, Donnie Holden, David Oats, Phil Albert, Morris Freeman and Andy

— LaRon Daniel, Jasper Wilson Tagbolt.

— Vernon Phlips, Bob McCleskey.

— Gary McGee, Allan Jones and



BOARD OF DIRECTORS—The board of directors of the Stephenville Production Credit Association is shown at the reorganizations meeting following the association's annual stockholders' meeting. Left to right are C. M. McCain of Eastland, Vice president James Crouch of Burleson, President R. Cal McCurdy of Decatur, General Manager, W. M. Irvin of Stephenville, and Tom Mazurek of CComanche.

Personals

Mr. and Mrs. Virgil E. Moore, Trippy and Ricky of Archer City spent the weekend in Eastland visiting with friends. The Moores are former residents of Eastland.

Leon Hale of Bryan, a graduate of Eastland High School, spent the weekend with his father, Fred D. Hale. He also visited in the home of his sister and family, Mr. and Mrs. Andy Taylor. Leon writes a daily column for the Houston Post.

Mr. and Mrs. E. E. McAlister Jr. and family of Abilene and Mr. and Mrs. John McAlister and baby girl of Stephenville spent the weekend visiting with their parents, Mr. and Mrs. E. E. McAlister Sr.

Mr. and Mrs. Joe Bowers of Abilene spent Sunday visiting with Fred Hale. The Bowers Harold McFerrin. Centers — Jim Coats and Burch McLemore.

and Mr. Hale are longtime friends.

Mr and Mrs. Eddie White of Odessa visited with her parents, Mr. and Mrs. Jess Taylor, Sunday. The Whites also visited in the home of her brother and family, Mr. and Mrs. Andy Taylor.

Mr. and Mrs. Bobby Little and Arleen of Tyler spent the weekend visiting with their parents, Mr. and Mrs. J. L. Little and Mr. and Mrs. Bob Rendall of Cisco.

Mr. and Mrs. Dean Collins, Carolyn and Judy returned Sunday from Eunice, N. M., where they visited in the home of Mr. and Mrs. Jimmy Sandlin, Larry and Cari Lynn.

First Assembly
Is Presented
By Beta Club

The National Beta Club of Eastland High School presented its first assembly program for the student body on Friday, Sept. 27.

Carol Walter, program chairman, presented Dick Whittington, who led the Pledge of Allegiance to the Flag, and then VerreM Boen, who led in prayer. Kay Morton, Beta Club president, was introduced and presented Beta Club officers for the new year.

PERMANENTS
\$10 Creme-Oil Waves \$6.50
\$12 Creme-Oil Waves \$7.50
\$12 Lanolin Waves \$8.50
Other waves \$10 and up
Basham Beauty Bar

GAS-TOONS



"Fill 'er up, Obie... ONE FULL PINT."
Whether you want a pint or a tankfull, we're always glad to see you!

OBIE & DOC'S HUMBLES SERVICE STATION
802 W Main
MA 9-8866

REMEMBER This Number MA 9-1101



200 N. Green Eastland
COMPLETE SELECTIONS

Bowling
Results

Thursday Night Men's League

Wins	Losses
Kinnaid Insurance	16 0
Fiesta Lanes	14 2
Hollywood Vassarette	14 2
Jordan Drive Inn	10 6
Rockwell Lumber	10 6
Vol. Fire Dept.	8 8
T & P	8 8
Robinson Robels	6 10
Cornelius Printing	6 10

First Natl. Bank, Cisco	2 14
Texas Elec. Ser. Co.	0 16
HIGH TEAM-THREE GAMES	
Rockwell Lumber	2599
Jordan Drive Inn	2522
Fiesta Lanes	2434
HIGH TEAM GAME	
Rockwell Lumber	879
Rockwell Lumber	877
Jordans Drive Inn	866
High Individual-Three Games	
H. Langford	653
T. Smallwood	563
B. Beck	526
HIGH INDIVIDUAL GAME	
H. Langford	228
H. Langford	227
T. Maynard	323

CARBON METHODIST CHURCH
James W. Waller, Pastor
Carbon
Sunday 10:00 AM
Morning Worship 1:00 AM

FIRST BAPTIST CHURCH
Rev. Haston Brewer, Pastor
108 W. Plummer
SUNDAY
9:45 a.m.: Sunday School
11 a.m.: Morning Worship
6:15 p.m.: Training Union
7:30 p.m.: Evening Service
TUESDAY
9:30 a.m. & 1 p.m.: WMU

Insurance and Real Estate
D. L. KINNAID
Life - Fire - Auto - Farm
Polio - Bonds
42 years in the Insurance Business in Eastland

personal extension phones

SAVE MOTHER'S TIME, ENERGY AND DISPOSITION



Personal extension phones bring the calls to her, where she is—kitchen, bedroom or family living area. Save her steps, actually help her do two things at once (call the cleaner while she looks after baby). At night she enjoys the security, privacy and peace of mind of a phone at her bedside: And personal extension phones come in colors to suit every mother's good taste;

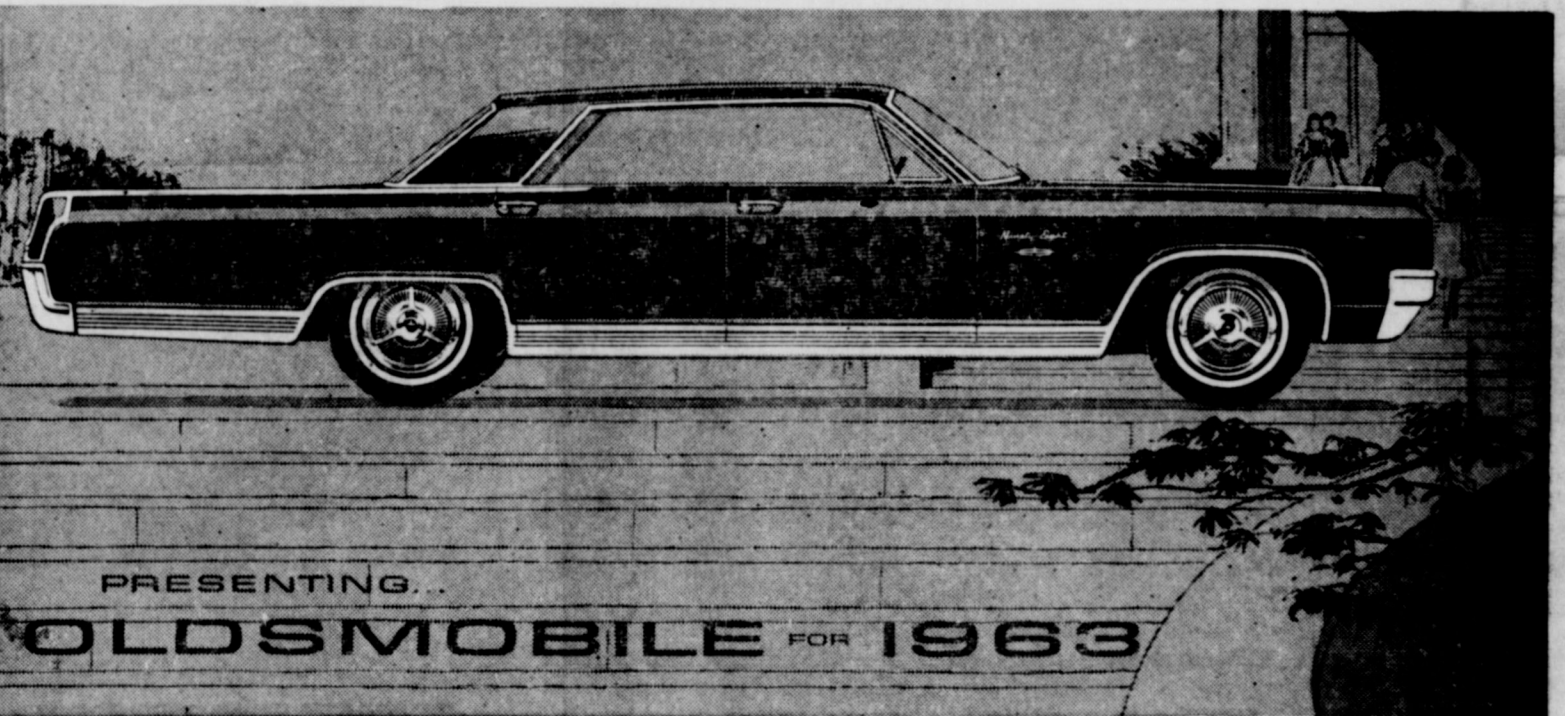
Who needs extension phone service most?

- Families that make or receive five or more calls a day.
- Families with one or more members active in school, church, civic or club work.
- Families with active, popular teenagers or young adults.
- If any of these conditions fit your family, the chances are you need extension phone service.

To order your personal extension phones—Princess, wall or table models—call the telephone business office, or ask any telephone serviceman. Why not order yours today?

SOUTHWESTERN BELL

Call by number... it's twice as fast



PRESENTING... **OLDSMOBILE FOR 1963**

Here's the year's most tasteful combination of elegance and performance—Oldsmobile for 1963! Wide new choice of exciting body styles! Stunning interior detailing! Responsive V-8 engines with up to 345 h.p. There's even a new 7-position Tilt-Away Steering Wheel, optional at extra cost on all full-size models. See and drive the style-leading 1963 Oldsmobile—now on display at your local Oldsmobile Quality Dealer's!



Exciting new blend of beauty and action... in the low-price field!

A longer look... a zesty feel... and every inch an Oldsmobile! That's the F-85 for '63! Powered by a spirited aluminum V-8 with up to 195 horsepower! Handles like a dream—turns full circle in 37 feet! Features a smooth coil-spring ride! And there's a choice of coupes, sedans, station wagons, convertible... plus the revolutionary turbocharged JETFIRE! See the fun-to-drive F-85—on display at your Dealer's!

THESE "SOMETHING EXTRA" ABOUT OWNING AN OLDSMOBILE!

SEE YOUR LOCAL AUTHORIZED OLDSMOBILE QUALITY DEALER

PIPKIN OLDS-CADILLAC
314 W. MAIN STREET • EASTLAND, TEXAS

DON'T MISS THE AWARD-WINNING "GARRY MOORE SHOW" • TUESDAY NIGHTS • CBS-TV!

ALL-SIZE CONSOLE!
USUALLY LOW PRICE!
RCA VICTOR
New Vista TV



The WAYLAND Series 233-C-84-M 27" tube (overall diag.) 282 sq. in. picture

TINGTON'S Invites you to come in and say, "Show me!"

to show you RCA Victor New Vista TV—most dependable in RCA Victor History! more people own RCA Victor than any other! Come in. Ask for proof of performance convinced that RCA Victor is your best buy.

Delivers \$3⁵⁰ A Week

Robertson TV Sales And Service
EASTLAND

Baird May Vote On Liquor Sales

Petition banks asking an election to legalize the sale of all alcoholic beverages for "on premises" consumption in the city of Baird are being circulated, according to a report here.

The petitions were issued following an official request filed Tuesday, Sept. 18 with Callahan County Clerk Mrs. Charles L. Robinson. Proponents have 30 days to return the petition blanks to the Commissioners Court with the required number of voters signatures, one-fourth of the number who balloted in the governor's race in 1960.

Personal Income Up \$15 Billions

Personal income, the most comprehensive gauge of consumer purchasing power available on a state basis, totaled \$414 billion for the country as a whole in 1961, a rise of \$15 billion, or 4 percent over 1960, according to Harry Dallas Field Office of the U. S. Department of Commerce. Nationally, per capita in-



How's your COVERAGE?

(If you're not satisfied, call M. H. Perry, MAin 9-2275. He's the Southland Man)

STATE FAIR'S FASHION FESTIVAL



New fall coat fashions premiere at the 1962 State Fair of Texas' sixth annual Sewing Fashion Festival, October 6 through 21. Festival styles, to be seen in free daily shows at the Women's Building, will include those shown above. Left, a Simplicity Pattern design with button-on scarf, in Abbot Mills' mohair fabric. Under the coat, a Simplicity shirtwaist in Cohama plaid silk broadcloth. Right, a Vogue Paris Original Pattern, with standaway neckline, coats a dress of Abbot Mills print in another Vogue design. Fashions created by Singer Sewing Machine Company and Talon Zippers will also be shown at the Festival.

come last year amounted to \$2,263 or 2 percent above the previous record of \$2,215 attained in 1960, Mr. Meyers stated.

In Texas, the rise in personal income was up 6 percent in 1961 over 1960, against the rise for the nation of 4 percent. Total personal income for Texas in 1961 was \$19.5 billion, up a billion dollars, from \$18.5 billion in 1960. Only seven other states; Kentucky, Mississippi, Arkansas, Arizona, Colorado, Nevada, and Hawaii outranked Texas

in gain in personal income between 1960 and 1961.

Nevada led all states with a 10 percent increase, followed by Arkansas with 9 percent, then Arizona with an 8 percent increase. Colorado, Hawaii, Mississippi, and Kentucky came up with increases of 7 percent, while Texas, Maryland, Iowa, Tennessee, North Carolina, Utah, and California increased 6 percent in 1961 over 1960.

Details on personal income for 1961 are presented in the August issue of the Survey of

'63 Plymouth -

(Continued From Page One)

warranty for five years or 50,000 miles, whichever comes first, on major power train components including engine, transmission, propeller shaft and universal joint and rear axle. Plymouth is the first of the low-priced standardized cars to offer such extended owner protection.

The new 1963 Plymouth can be seen in Eastland at Bleivins Motor Company and at H. Shinn Motor Co.

Standard power plants are the 225-cubic-inch inclined Six and the 318-cubic-inch Fury V-8. Both engines retain the economy features which have won for Plymouth victories in its class in the Mobil Economy Run the past six years in a row.

Plymouth offers 26 different models for 1963 in four series. In the Savoy series there will be a 2- and 4-door sedan and a 6- and 9-passenger station wagon both 6- and 8-cylinder; Belvedere offers 2- and 4-door sedans, a 2-door hardtop and 6- and 9-passenger wagons with V-8 only; Fury with 4-door sedan and 2-door hardtop in both 6- and 8-cylinder models, and the 4-door hardtop, convertible coupe, 6- and 9-passenger wagons with V-8 only. The Sport Fury series will have a 2-door hardtop and convertible coupe with 8-cylinder engines only.

For 1963 Plymouth presents new engine options which offer substantial increases in power and torque in the speed ranges frequently used by most drivers.

A new 361-cubic-inch power pack engine with 2-barrel carburetor replaces the previous 4-barrel carburetor.

The high-performance engine for the 1963 Plymouth is a 383-cubic-inch Golden Commando - V-8 power plant

Current Business, copies of which may be obtained from the U. S. Department of Commerce, Dallas Field Office, 500 South Ervay Street, Dallas 1, Texas.

with 4-barrel carburetor, dual camshaft, dual breaker distributor and other special features.

Both the 361 and the 383 V-8s will be available with a manual four-speed floor-mounted gear box with Hurst Linkage in November.

The powerful Plymouth Super Stock engine will be available in limited quantity for 1963 with 426-cubic-inch displacement. It is designed for the performance enthusiasts who require peak acceleration for competitive events.

An improved starter for six-cylinder engines gives the new Plymouth surer low temperature starting performance.

Electrical system reliability is improved through refinements to the alternator, which replaced the conventional generator in Plymouth cars two years ago.

ST. FRANCIS CATHOLIC CHURCH
Rev. Joseph L. Van Winkle, C.L.C.M.
SUNDAY MASS
1st and 3rd Sunday at 9:30 a.m.
2nd, 4th and 5th Sunday at 11 a.m.
Every Tuesday Mass at 6:30 p.m. Holy Days Mass at 7:15 a.m.

MATTRESSES

Save up to 50% renovating choice of color and firmness. Complete bedding. Made and guaranteed by WESTERN MATTRESS CO., San Angelo. Phone MA 9-2689, Eastland and leave address.

HAMNER FUNERAL HOME

Ben E. Hamner, Owner

Serving Eastland County since 1924 with ambulance and funeral service. Our ambulances are oxygen equipped and air conditioned.

Through our nation-wide connections with other funeral directors, we can handle a funeral from any point in America. We offer this service knowing that we can relieve the family of all burdens incident to any death away from home.

Eastland

Dial MA 9-2611

If Your Home Burned Tonight -

... how would you like to re-buy what you have lost? Sounds silly, but it's a good question. Your furnishings alone are probably worth 2 or 3 times the amount you have them insured for. Gradual accumulations, piece at a time, will fool you, and my how prices have advanced since you first set up housekeeping! How to find out? Let us inventory every item you have, room by room. Then we can tell you how little it will cost to adequately insure you.

EARL BENDER & COMPANY

Eastland, (Insurance since 1924) Texas

Call MA 9-1707 for Classification

GOLDEN AGE NURSING HOME

104 East 4th Street Cisco Phone
24 Hour Nursing Care, Good Meals - State Licensed and Approved For Patients

Jerry Stephens Administrator Mrs. Ora M. Ford Director of



COATS FURNITURE & Cpts. Ltd.



GAS makes every pot automatic

You're in luck with a new GAS range! They're on sale and they're wonderful!

Take Burner-with-a-brain for example. It manages the flame to hold exactly the temperature you set. Lets you turn your back on the most delicate sauces, the most critical simmering. And never a boil-over nor a scorch!

But that's just one lucky charm about new GAS ranges. They also give you the coolest, cleanest cooking you can find. You broil smokelessly (with the broiler door closed). You avoid "hangover heat" on the top burners, because "off" means "off" with GAS!

Beautiful design, more automatic features, unbeatable economy... they're all yours in the new GAS ranges. (Luckiest of all, they're on sale! So buy now.)

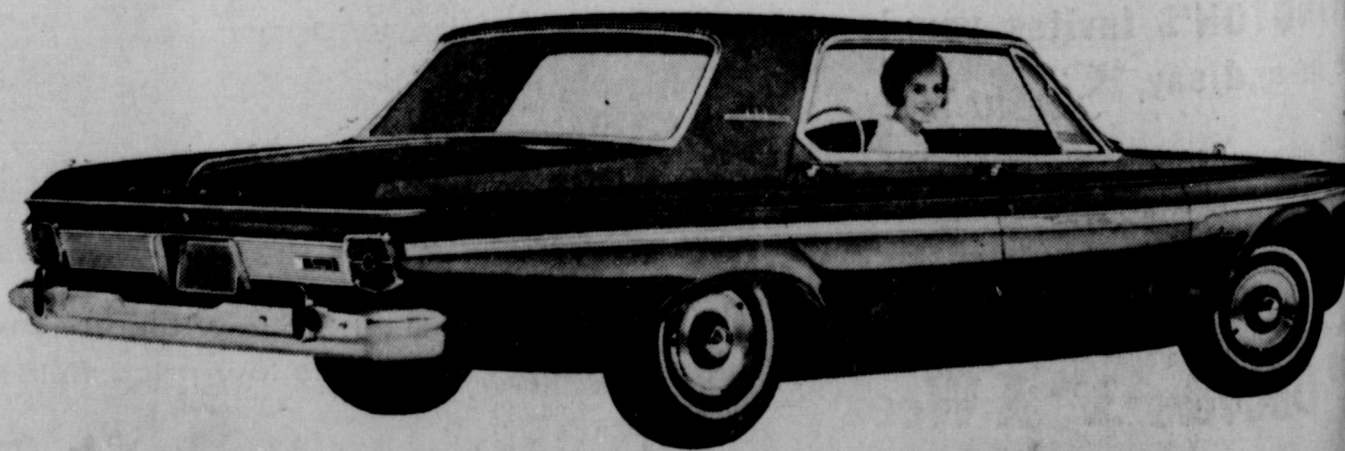
GAS APPLIANCE DEALERS lucky days gas range sale LONE STAR GAS COMPANY



See Plymouth 63 in action on the World Series and "Empire"

PLYMOUTH'S ON THE MOVE ... with the first 5-

warranty in America. This big new beauty is so strong that all internal parts of the engine, transmission and drive train are guaranteed for 5 years or 50,000 miles.* You get great performance—the kind that makes Plymouth champ of the tough Plymouth-Ford-Chevrolet league. Another thing is style. Plymouth 63 reveals brand-new design, with clean, uncomplicated lines. The effect is terrifically good-looking. To sum up: you have to own one to call it one. Quality-built by Chrysler Corporation... at your Plymouth Dealer's



THE CAR WITH AMERICA'S FIRST 5-YEAR WARRANTY... PLYMOUTH

*Your Authorized Plymouth-Valiant Dealer's Warranty against defects in material and workmanship on 1963 cars has been expanded to include parts replacement or repair for 5 years or 50,000 miles, whichever first, on the engine block, head and internal parts; transmission case and internal parts (excluding manual clutch); torque converter, drive shaft, universal joints (excluding dust cover), rear axle and differential rear wheel bearings, provided the vehicle has been serviced at reasonable intervals according to the Plymouth-Valiant Certified Car Care schedules. Factory-approved remanufactured parts may be used for repair.

MANAGER'S SALE!

The Manager Recommends...

Ice Cream

Snow Star. ★ Vanilla ★ Chocolate
★ Strawberry ★ Neapolitan

1/2 Gal. Cin. **59¢**

Strawberries

Bel-air, Frozen, Sliced,
Serve with Ice Cream.

5 10-Oz. Pkgs. **\$1**

Asparagus

Spears. Bel-air, Frozen,
Tender, serve with cheese

8-Oz. Pkg. **29¢**

Velveeta

Kraft Cheese Spread.
Toasts, slices or melts perfectly.

2-Lb. Box **79¢**



- Choice Beauty Soap For normal skin. 2 Bath Bars **49¢**
- Cashmere Bouquet Bath soap, Assorted colors. 2 Bath Bars **29¢**
- Fab Detergent Gets the dirt out fast, gets clothes whiter. Giant Box **75¢**
- Vel Liquid Pink detergent, Plastic. The dishwashing liquid. 12-Oz. Bottle **30¢**
- Niagara Starch Instant laundry starch. No cooking, no boiling. 12-Oz. Pkg. **21¢**
- Ajax Cleanser Forms as it cleans. 2 14-Oz. Cans **33¢**
- Floriant Deodorant Cologne, Aerosol Liliac or Spice. 5 1/2-Oz. Can **69¢**

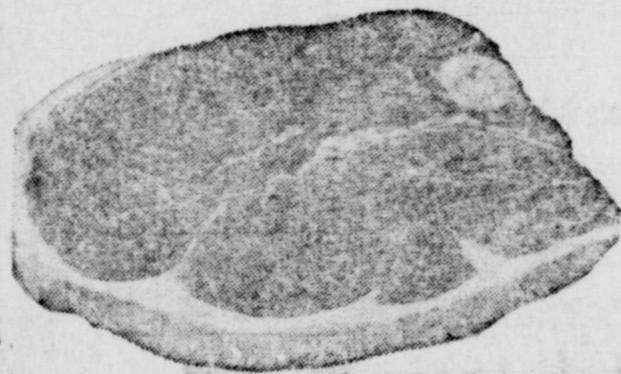
Redeem this coupon for
50 FREE GOLD BOND STAMPS
with purchase of \$5.00 or more (Excluding Cigarettes)
One Per Customer • Coupon Expires October 6, 1962.

Safeway Fresh Meats!

Round Steak

U.S.D.A. Choice
Grade Heavy Beef.
Full Cut, Ideal for pan
frying... economical
and nutritious.

79¢
Lb.



More Meat Buys!

- Pork Spareribs 39¢
Pork, 3 to 5 Lb. average. Serve with sauerkraut. Lb.
- Beef Short Ribs 29¢
Or Brisket, Baby Beef.
- Chicken Backs 19¢
Ideal for chicken with noodles. Lb.
- Luncheon Loaf 4 \$1
Assorted, Sliced, Jumbo Bologna, Pickle-Pimiento or Spiced Luncheon. 8-Oz. Pkg.

Chicken Hens 39¢

U.S.D.A. Inspected for wholesomeness. U.S.D.A. Graded "A" (Ready to cook) 3 1/2 to 6-Lb. Avg. Lb.

Canned Picnic \$2.99

Morrell Pride Big 5 Lb. Size. Boneless no waste. 5 Lb. Car

Rump Roast 75¢

U.S.D.A. Choice Grade Heavy Beef. Serve Roast and potatoes Sunday. Lb.

Always Fresh!

- Creme-De-Fruit Lucerne. 14-Oz. Ctn. **39¢**
- Party Dip Lucerne. Blue Tang, French Onion or garlic. Regular 35¢. 8-Oz. Ctn. **29¢**
- Fresh Milk Blossom Time Homogenized. 2 1/2-Gal. Ctns. **89¢**
- Buttermilk Lucerne. Fresh churned flavor. 1/2-Gal. Ctn. **47¢**
- Shady Lane Butter Delicious table spread. 1-Lb. Ctn. **71¢**
- Pinto Beans Town House Dry, Perfect quality modest cost. 2-Lb. Cello Bag **19¢**
- White Beans Town House Dry, Small White Beans. 1-Lb. Cello Bag **17¢**
- Dried Apricots Town House Medium. Delicious for fried pies. 8-Oz. Cello Bag **49¢**
- Dried Prunes Town House. Breakfast Prunes. 1-Lb. Cello Bag **25¢**
- Dried Peaches Town House. Breakfast peaches. 12-Oz. Cello Bag **39¢**

Safeway Fresh Produce!

Lettuce 15

Most popular salad vegetable, crispy-fresh solid heads.

Large Head

Tomatoes 29¢

Red ripe, flavorful, a salad favorite. 2 Lbs.



- Jonathan Apples Washington State Extra-Fancy. Lb. **19¢**
- Yellow Onions U.S. No. 1. For extra zest. Lb. **5¢**

Baker's Coconut
Angel Flake 4-Oz. Pkg. **63¢**
Angel Flake 7-Oz. Can **35¢**
Angel Flake 3 1/2-Oz. Can **23¢**
Moist 4-Oz. Can **23¢**
Baker's Premium Coconut 4-Oz. Pkg. **21¢**

- Pancake Mix Kitchen Craft. 2 Lb. Pkg. **29¢**
- Bab-O Cleanser In stunning new Golden decorator pkg. 2 1/4-Oz. Cans **33¢**

Prices and Coupons Effective Mon., Tues. and Wed., Oct. 4, 5 and 6, in Eastland
We Reserve the Right to Limit Quantities. No Sales to Dealers.



SAFEWAY



Bakery Features!

Raisin Bread 19¢

Skylink. Not lead. 1 Lb. Leaf. Reg. 27¢.

Swedish Whirls 37¢

Mrs. Wright's (2¢ off). 12 1/2 Oz. Pkg. Serves as mid-morning snack.

Burger Buns 19¢

13 Oz. Pkg. Italiano Bread D'Agostino. Serve with garlic butter. Leaf **29¢**

Ice Cream Wafer Cones 21¢

Ice Cream Cupils or Cones. 12 Ct. Pkg. **21¢**

Butter 29¢

Pullin Sweetmilk or Buttermilk. Betty Crocker Homestyle or sweetmilk. 3 8-Oz. Cans **29¢**

Flour 59¢

Extra Fresh. White, smooth blending. 5 Lb. Bag **59¢**

Milk 29¢

Borden's Starline Instant (12 Quart Size 79¢). 3 Quart Size **29¢**

Instant Coffee 39¢

Airway. It's 100% coffee. 6-Oz. Jar **39¢**

Chunk Tuna \$1.00

Sea Trader. Light meat. 4 6 1/2-Oz. Cans **\$1.00**

Vienna Sausage \$1.00

Libby. All meat. 5 No. 1/2 Cans **\$1.00**

Green Peas \$1.00

Green Giant. Tasty, tempting tender. 5 No. 303 Cans **\$1.00**

Instant Coffee 69¢

Reg., Drip or Fine Grind. 1-Lb. Can **69¢**

Chunk Tuna 35¢

Chunk Light Meat. With good flavor sealed in. 6 1/2-Oz. Can **35¢**

This Coupon Worth 100 FREE GOLD BOND STAMPS
Plus your regularly earned Gold Bond Stamps with the purchase of
WHOLE TURKEY
Coupon Expires October 6, 1962.

This Coupon Worth 50 FREE GOLD BOND STAMPS
Plus your regularly earned Gold Bond Stamps with the purchase of
10-Lb. Bag U.S. No. 1 RED POTATOES
Coupon Expires October 6, 1962.

This Coupon Worth 50 FREE GOLD BOND STAMPS
Plus your regularly earned Gold Bond Stamps with the purchase of
THREE - No. 2 1/2 Cans Sundown ELBERTA PEACHES
Coupon Expires October 6, 1962.

This Coupon Worth 50 FREE GOLD BOND STAMPS
Plus your regularly earned Gold Bond Stamps with the purchase of
TWO - Pkgs. Swanson's Frozen TV DINNERS
Park Lane, Sirloin Beef, Chicken, Turkey or Swiss Steak
Coupon Expires October 6, 1962.

This Coupon Worth 25 FREE GOLD BOND STAMPS
Plus your regularly earned Gold Bond Stamps with the purchase of
ONE - Big 8" Family Size Bel-air Frozen PUMPKIN PIE
Coupon Expires October 6, 1962.

Detergent 53¢

White Magic. Clothes white, dishes bright. Giant Box **53¢**

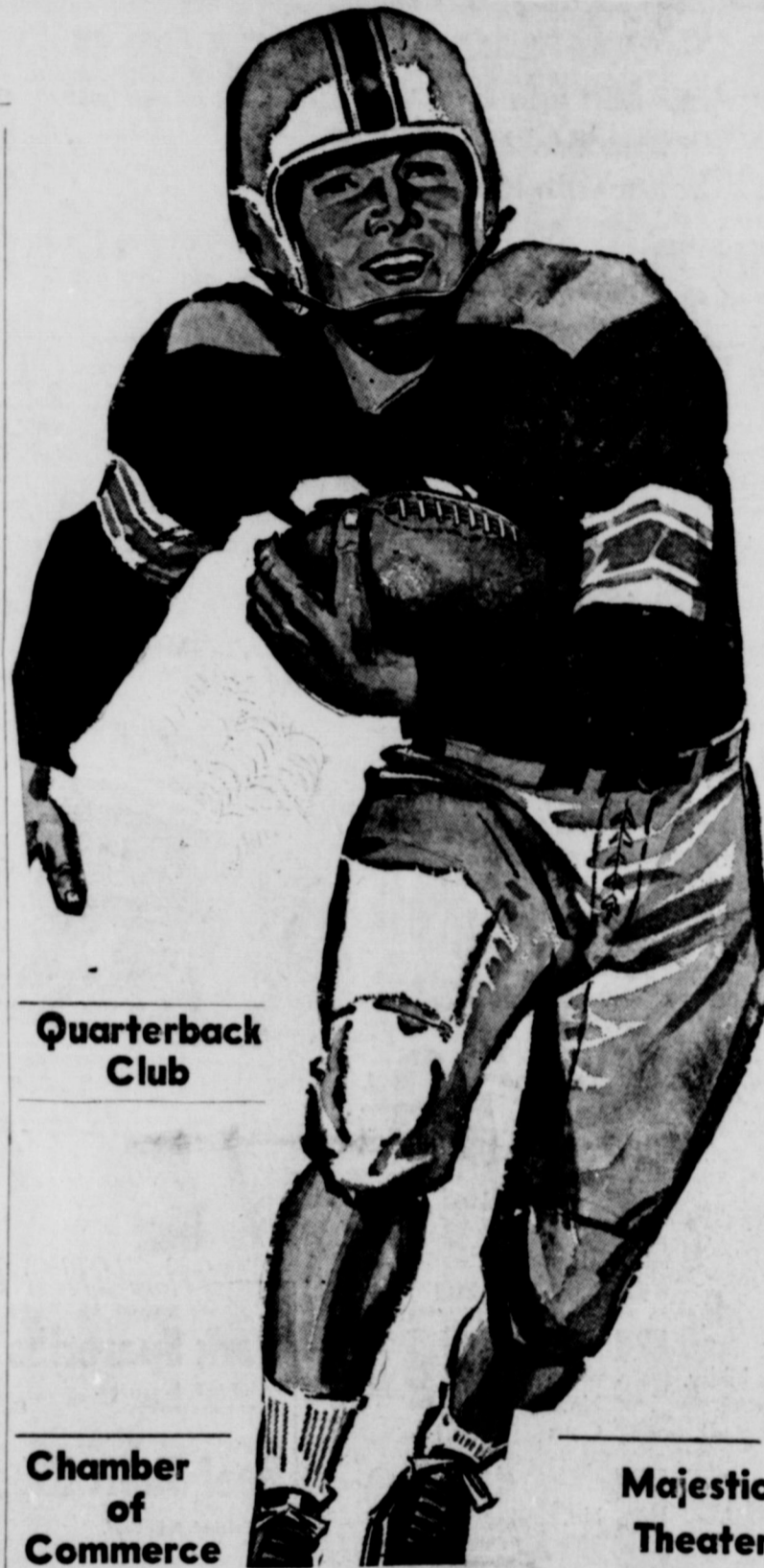
Corn Meal 29¢

Kitchen Craft. Yellow enriched. 5-Lb. Bag **29¢**

TO OUR TEAM . . . WE'RE BEHIND YOU ALL THE WAY

EASTLAND vs RISING STAR

FRIDAY NIGHT, 7:30 P. M., THERE



Central Drug
Free Delivery Dale Troutt, owner

Altman's
"Smart Women's Wear"
North Side of Square

Freyschlag Insurance Agency
North Side of Square
Ph. MA 9-2275

Texas Electric Service Company
F. N. Sayre, Mgr.
Phone MA 9-2651

Village Barber Shop
George Carter

Pools Dry Cleaners
"City Wide Delivery"
209 S. Lamar Ph. MA 9-2655

Otis Coleman Humble Products
400 E. Main St.—Ph. MA 9-8882

Texas Lightweight Aggregate Company
Producers of Concrete Aggregates
C. W. Martin—Ph. MA 9-2060

Jordan's Drive In
Hwy. 80 East
Louise and Harry Jordan

Koen Salvage
Your Scrap Iron and Metal Dealer
Highway 80 West Ph. MA 9-2649

Obie and Doc Humble Ser. Station
802 W. Main—Ph. MA 9-8866

The Men's Shop
Correst Styles for Men and Boys
James Smith, owner

City Garage
J. J. Finley, Proprietor
Engine, Starter and Generator Work
103 White St. — Ph. MA 9-1709

Foremost Dairy Products
Clyde Manning, Mgr.
Eastland — Ph. MA 9-1701

Eastland National Bank
"On the Square"—Member FDIC

Hood King Motor Co.
Ford Sales and Service
On the Square — Ph. MA 9-1786

Graham's Trim Shop
709 W. Main — Ph. MA 9-2266

White Elephant Cafe
724 W. Main — Ph. MA 9-8831

Lindley Paint and Body Works
"All Work Guaranteed"
110 S. Bassett — Ph. MA 9-2240

Eastland Iron & Metal Co.
Henry, Tillie and Saul Pullman

Hill Crest Food Market
When you run out—run in
1401 W. Main — Ph. MA 9-1600

Western Auto Associate Store
J. L. Pittman, owner
East side of square Ph. MA 9-2011

Quarterback Club

Chamber of Commerce

Kinnaird Insurance and Real Estate Agency
207 W. Main MA 9-2544

Eastland Service Parts Co.
112 E. Commerce MA 9-1733

Mr. and Mrs. M. H. Perry

R. M. Sneed
General Oil Field Construction
Office Phone MA 9-1756
Res. Phone MA 9-2424

Toombs & Richardson Drug Store
108 S. Seaman MA 9-1475

Harelik's Department Store
212 W. Main

Smith Plumbing and Tin
114 N. Seaman — Ph. MA 9-2422

Perkins Implement Co.
116 E. Main — Ph. MA 9-2666

Eastland Steam Laundry
Home Owned — B. W. Lasater
Ph. MA 9-2613

Jeanette's Fabric Shop
Mr. and Mrs. L. D. Harris
West side of square

Eastland Auction Co.
Hwy. 80 East — Ph. MA 9-1758

Modern Dry Cleaners
Approved Sanitone Service
210 S. Seaman — Ph. MA 9-1344

Mobil Oil Co.
Standlee McCracken, Consignee

Poe Floral
"When It's Flowers—Say it With Ours"
609 W. Main — Ph. MA 9-1711

Roy's Repair Service
Roy and Stella Gann
205 S. Lamar — Ph. MA 9-2474

Eastland Auto Parts
Mr. and Mrs. Frank Deaton
300 S. Seaman — Ph. MA 9-2158

Rushing Motor Co.
Herman Rushing — Bill Hunter
Chrysler Products, Plymouth, Valiant
215 S. Seaman — Ph. MA 9-2430

Romco - East
MODERN ART

Mr. and Mrs. V. Cornelius

Judge and Mrs. Collie

Mr. and Mrs. Allison

H. R. (Pop) G

Sheriff and Lee Horn

Earl Conner

Eastland Medical Surgical Clinic
404 W. Commerce—Ph. M

Crowell Lumber
715 W. Main — Ph. M

Goodyear Service Store
M. L. Smith, mgr.
306 East Main — Ph. M

Lone Star Gas
A. G. Goldston, M
313 W. Main — Ph. M

SOUTHERN TELEVISION SYSTEMS CORPORATION

MAVERICK 1962 SCHEDULE

Sept. 17 — Mavs. 20 Comanche 14
Sept. 14 — Open date
Sept. 21 — Mavs. 20, Cisco 18
Sept. 28 — Mavs 26, Gorman 0
Oct. 5 — Rising Star There
Oct. 12 — DeLeon There

Oct. 19 — *Baird Here
Oct. 26 — * Albany Here
Nov. 2 — * Cross Plains There
Nov. 9 — * Ranger Here
Nov. 16 — * Clyde There
* District Games at 7:30
Others at 8 p.m.

Eastland Drug Store
201 S. Main — Ph. MA 9-2112

Hanna Hardware & Lumber Co.
201 N. Seaman — MA 9-2104

Miller's Phillips 66 Service Station
513 W. Main Phone MA 9-1644

Eastland Supply Co.
Oil Field Supplies
115 E. Main MA 9-1595

Mr. and Mrs. Don Pierson

Howard Bookkeeping Service
Petroleum Bldg. MA 9-1776

MAVERICK ROSTER

Position	Name
Quarterback	Tommy Beck
Right Halfback	Jody Cooper
Fullback	Jimmy Moylan
Left Halfback	Gary Graham
Right End	Larry Howle
Left End	Stanley Underwood
Center	Jim Wright
Right Tackle	Butch Phillips
Left Tackle	David Taylor
Right Guard	Dickie Byars
Left Guard	Ray Edwards

Stock Low
supply of
FIELD
OF
82. The
by the
including
tax.
TO THE
which was
Peterson
held exper-
than 500
and in-
plates.
supply is
will re-
will be
each.
remaining
should be
and Fish
State
Texas.
ATIN
\$495
Only
SE
R
Ranger
easy!
ber
ber
711
when you
it with
Flowers
TH GUES
ORAL
J. C. Poe
rown's Sanitorium
CISCO HI 2-1400
announces that
ALTER MACK HEARD, D. C.
has joined their staff
Life Insurance Company
E. Hamner, President
pany has been in operation in this
1942 selling policies to be used
purposes. We write from \$100
policies are paid in cash, which
in the selection of the Funeral
your choice.
1 month to 90 years.
information come by to see us at
Home, 301 S. Lamar, Eastland
Dial MAIn 9-2611
Television System Corp.
Village Hotel
CALL US
and we will
WIRE YOU
Watch Your Favorite
TV Program
• Comedy • Western
• Sports • Drama
Ph. MA 9-1716

New Mercury -

(Continued From Page One)
frost or ice. The window, which is power operated, provides excellent ventilation when opened. The new roof also allows more than half an inch of additional rear seat headroom.

In addition to the new roof line, the exterior of the Monterey has been completely restyled. All major sheet metal and ornamentation has been changed. The front features a new bumper and concave grille. The rear of the car has new quarter panels, new bumper, and triple tail lights. Canted blade-type fenders extending the length of the car, add crispness to the styling.

The 390-Marauder V-8 now becomes the standard engine on the Monterey, replacing the 223 six-cylinder and 292 V-8 engines which are no longer available on Monterey. The standard 390 engine with two-barrel carburetor is rated at 250 horsepower and uses regular fuel. With four-barrel option, the engine is rated at 300 horsepower. Both 390-engines may be equipped with dual range Merc-O-Matic transmission, the fully synchronized four-speed floor mounted manual transmission. A newly designed fully synchronized three-speed manual transmission is available on the standard 390-engine.

A highly successful first year for the Mercury Meteor has led Lincoln-Mercury Division to expand the car to a full line for 1963. Five new models — two hardtops and three station wagons — have been added.

"While we offered the Meteor initially in only two body styles, a two-door sedan and a four-door sedan, its sales success proved there is a solid place in the market for a quality car of the Meteor size," said Ben D. Mills, Ford Motor Company vice president and Division general manager.

The 1963 Meteors will feature refined styling with more luxurious interior appointments, reduced maintenance, new or improved options and accessories, and better engine-transmission characteristics.

The new hardtops — in the Meteor Custom and S-33 bucket seat series — are two-door models with a fleet-appearing

ATTENDS MEETING

Rev. and Mrs. Frank Elliott of Breckenridge, Rev. and Mrs. E. F. Waskom of Ranger and Rev. and Mrs. Clarence Banners of Eastland left Monday for Camp Arrowhead, where they attended the Pastors and Wives Conclave. This is a meeting of the ministers of Abilene District of the Church of the Nazarene and is held annually. The group returned to their homes on Wednesday.

(Read the Classifieds)

low silhouette and a long rear deck. Both hardtops provide even more trunk space than the Meteor sedans.

The three new station wagons are four-door models. They are in the Meteor and Meteor Custom series, plus a top-of-the-line Meteor Custom Country Cruiser which features simulated mahogany side paneling.

Two convertibles and numerous cost-reducing maintenance improvements have been added to the '63 Mercury Comet model offerings.

The convertibles, with power operated tops, are available in the custom series and the S-22 series, which is the bucket seat version of the Comet.

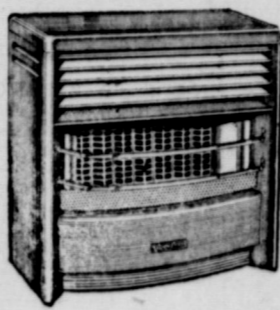
Engineering advances developed originally for the big car field have been incorporated into the new Comet and substantially reduced the time and cost of auto maintenance.

Service-saving maintenance features include an increase in the major lubrication cycle from 1,000 miles to 36,000 miles in 1962; and new self-adjusting brakes that are designed to last longer.

A new high detergent engine oil, factory installed oil filter and adjustments to the transmission, engine and electrical system have eliminated the need for the 1,000 mile checkup. The 1963 Comet will not require its initial servicing until six months or 6,000 miles have elapsed.

A HINT TO THE WISE... WINTERIZE

WITH **Dearborn NOW!**



Yes — get your Dearborns now while you can select from complete stocks of sizes and models —

only **19⁹⁵** Up
FREE INSTALLATION

Come in . . . make your selections early

RANGER FURNITURE EXCHANGE

123 N. RUSK — RANGER

"BRASHIER'S"

DIAL MI 7-1404

OCTOBER SPECIALS

- Living Room Suites**
2 Piece Sleeper Suite
Foam Cushions - Slightly damaged - Reg. 249.50
189.50
- 6 Piece Den Set**
2 - Divans
1 - Chair
3 - Foam Bolsters
Reg. 119.50 **99.50**
- 5 Pc. Ranch Style Suite**
1 - Divan
1 - Platform Rocker
2 - End Tables
1 - Coffee Table
Reg. 179.95 **149.95**

- Carpet Specials**
All Prices Include 40% Rubberized Padding and Smoothedge Installation
- 100% Nylon - Reg. 5.95 **4.95** Sq. Yd.
50% Wool 50% Nylon Reg. 5.95 **4.95** Sq. Yd.
100% Heat Set-Nylon Reg. 5.95 **4.95** Sq. Yd.
100% Heat Set-Nylon Reg. 7.95 **5.95** Sq. Yd.
100% Wool Broadloom Reg. 10.95 **8.95** Sq. Yd.
100% Filament Nylon Reg. 9.95 **7.95** Sq. Yd.
100% 501 Label Filament Nylon Reg. 10.85 **8.95** Sq. Yd.

- 9x12 LINOLEUM RUG**
9x12 Size **4.95**
12 ft. Vinyl lino - Heavy Weight 1st quality. Reg. 1.69 Sq. Yd. **1.29** Sq. Yd.
- 9 Piece Dinette**
36"x72" Table 8 Matching Chairs **89.50**
- 3 Piece Bed Room**
Double Dresser B Case Bed, Chest **89.50**
- FREE DELIVERY - NO INTEREST OR CARRYING CHARGES ON FURNITURE OR CARPET FOR 1 FULL YEAR.**

36,000 mile chassis life (major tubes at 6,000 miles) for all Mercury's

Extra roomy trunks for all Mercury car lines

Comet introduces two jaunty convertibles

New Lightning 260 V-8 available for Meteor

Console-mounted gear shift standard on bucket seat Monterey S-55

New breezeway roof for the elegant Monterey

Self-adjusting brakes for all Mercury's

Meteor introduces two new hardtops

Two-Year Warranty
Or 24,000 miles, whichever comes first
Now all Mercury's have 2-year 24,000-mile warranty powered by Lincoln Continental on 1961 model

New bucket seat models for each Mercury line

A Marauder 390 V-8 now standard for Monterey

Five 4-speed floor shift available for Comet

BURSTING WITH NEWS... '63 MERCURYS



NEWS-MAKING ROOF FROM MONTEREY. The advantages of Monterey's distinctive styling go far beyond its beauty. This is elegance that works. See how the recessed rear window slants inward? It stays clearer in rain or snow. On hot days, it

opens for breezeway ventilation. The overhanging roof shades rear-seat passengers from the sun, gives more headroom, keeps glare off the rear window for better rearview visibility. More good news: a Mercury Marauder 390 V-8 is Monterey's standard engine.



SPARKLING NEW MODELS FROM METEOR. For 1963, Meteor is the hot brand. Meteor is the sparkler with a whole new line of models in the low-price field — sleek new low-to-the-road hardtops, sedans, and three new station wagons. Feel sporty?

Try the racy Meteor S-33 hardtop, with individually adjustable bucket seats and a handy console. For brilliant performance to match Meteor's sparkle, a new Lightning 260 V-8 is available in every model. And you save on upkeep with Mercury service-savers.



THE LID'S OFF COMET. Now a jaunty new convertible joins Comet's all-fun line. This sleek, rakish beauty comes in two models: the Custom and the dashing S-22, with bucket seats and optional stick shift. All Comets now have a complete package of

service-savers like self-adjusting brakes. And Comet still heads its class with the largest trunk, longest wheelbase, and best resale value record. See Comet's whole happy '63 line-up: convertibles, sedans, station wagons. Fun-test your favorite Comet now!

COMET • METEOR • MONTEREY: PRODUCTS OF MOTOR COMPANY • LINCOLN-MERCURY DIVISION

First showing '63 MERCURYS... at these showrooms

HOOD KING MOTOR CO.
100 E. Main Eastland Ph. MA 9-1786

* Lincoln-Mercury Division, Ford Motor Company, warrants to its dealers, and its dealers, in turn warrant to Mercury owners as follows: That for 24 months or for 24,000 miles, whichever comes first, free replacement, including related labor, will be made by dealers of any part with a defect in workmanship or materials. Tires are not covered by the warranty; appropriate adjustments will continue to be made by the tire companies. Owners will remain responsible for normal maintenance services, routine replacement of maintenance items such as filters, spark plugs, ignition points, wiper blades and brake or clutch linings and normal deterioration of soft trim and appearance items.

FIRST CHRISTIAN CHURCH
 Corner Olive & Lamar
SUNDAY
 9:45 Church School
 11:00 Morning Worship
 7:30 Evening Vespers
WEDNESDAY
 5:00 Junior Choir
 6:30 Adult Choir

CALVARY BAPTIST
 207 N. OAK ST.
SUNDAY
 10 a.m.—Sunday School
 11 a.m.—Morning Worship
 7 p.m.—Prayer Service
 7:30 p.m.—Evening Wor-
 ship
 READ THE CLASSIFIEDS



CHURCH NEWS



HOLY TRINITY EPISCOPAL CHURCH
 710 S. Seaman
 Rev. William Ralph Woods
SUNDAY
 9:30 a.m. Church School
 10:30 a.m. Morning Prayer
 10:45 a.m. Holy Communion and Sermon
 Wednesday
 6:15 a.m. Morning Prayer
 6:30 a.m. and 10:30 a.m. Holy Communion
 5:30 p.m. Evening Prayer.

CHURCH OF CHRIST
 Corner of Plummer and Daugherty
SUNDAY
 9:30 a.m.—Bible Class For All Age Groups.
 10:20 a.m.—Morning Worship
 2:00 p.m.—Visitation of Shut-ins.
 6:00 p.m.—Young Peoples' Meeting.
 7:00 p.m.—Evening Worship.
WEDNESDAY
 3:30 a.m.—Ladies' Bible Class.
 7:00 p.m.—Prayer Meeting and Bible Study.

FIRST METHODIST CHURCH
 Wm. S. Fisher, Pastor
 215 S. Mulberry
SUNDAY
 9:45 a.m.: Church School
 10:55 p.m.: Worship Service
 6:15 p.m.: Youth Fellowship
 7 p.m.: Evening Worship
TUESDAY
 2:30 a.m.: W.S.C.S.
WEDNESDAY
 7:30 p.m.: Choir rehearsal
 Wesleyan Guild every 1st & 3rd Wednesdays
 Official Board Monday after 1st Tuesday
 Five Communion—every 1st Monday

FIRST PRESBYTERIAN CHURCH
 Rev. Eugene Surrace, Pastor
Sunday
 10:00 a.m. - Church School
 11:00 a.m. - Divine Worship
 12 noon - Monthly meeting of the Church Session on the Sunday after the first Wednesday.
Tuesday
 9:30 a.m. - United Presbyterian Woman meet on the first and the third Tuesdays of each month.

CHURCH OF GOD
 Corner Lamar and Valley
 Pastor
 K... Joe Downs
SUNDAY
 10 a.m.: Sunday School
 11 a.m.: Sermon
 6:45 p.m. Youth Fellowship
 7:30 p.m.: Sermon
WEDNESDAY
 7:30 p.m.: Prayer Service

OLDEN BAPTIST CHURCH
 Olden
Sunday
 Sunday School 9:45 AM
 Morning Worship 11:00 AM
 Training Union 6:00 PM
 Evening Service 7:00 PM
WEDNESDAY
 Prayer Service 7:30 PM

FLATWOOD CHURCH OF CHRIST
 Thurman Carter, Pastor
 Flatwood
Sunday
 Sunday School 10:00 AM
 Morning Worship 11:00 AM
 Evening Service 7:00 AM

CHURCH OF THE NAZARENE
 Rev. Clarence Manners
 613 W. Main
Sunday
 10—Sunday School
 11—Morning Worship
 6:45 p.m.—N.V.P.S.
 7 p.m.—Evening Services
Wednesday
 7 p.m.—Mid-week Prayer Service
FRIDAY
 Noon—Prayer and Fasting
 3:15 p.m.—Children Hour

ASSEMBLY OF GOD SUNDAY
 9:45 a.m.: Sunday School
 11 a.m.: Morning Worship
 6:45 p.m.: Christ Ambassadors
 7:30 p.m.: Evening Service

CHRISTIAN SCIENCE
 Plummer and Lamar
Sunday
 9:45 a.m.: Sunday School
 11 a.m.: Sunday morning service.
Wednesday
 7:30 p.m.: Mid-week Service
 The public is cordially invited.

Season's End Clearance Sales
 We must make room for our new models this month—To do so we are sacrificing the new motors and boats that are left in stock — CHECK THE PRICES BELOW AND YOU'LL SEE FOR YOURSELF — COME BY AND WE'LL TRADE OR SELL OUTRIGHT ANY OF THE BELOW—DO IT TODAY... BE READY NEXT YEAR!
 (These items are new-never been in the water)
 75 hp JOHNSON ELECTRAMATIC - with controls and generator. Reg. 1085.00 Now 885.00
 75 hp JOHNSON STD ELECTRIC Reg. 943.50 Now 719.00
 40 hp JOHNSON ELECTRAMATIC with controls and generator Reg. 809.50 Now 679.00
 28 hp JOHNSON convertible Reg. 505.50 Now 395.50
 10 hp JOHNSON COMPACT Reg. 351.50 Now 275.00
 5 1/2 hp JOHNSON COMPACT Reg. 255.50 Now 205.00
 16' LONE STAR BISCAYNE (lights - windshield lounge seats) Reg. 1149.00 Now 949.00
 14' LONE STAR SALEM Reg. 695.00 Now 575.00
 14' Whitehouse DART Reg. 425.00 Now 285.00
 14' Lone Star Big Fisherman Reg. 219.00 Now 175.00
 3 trailers in stock Reg. 169.50 Now 105.00
 1 Easy Load Trailer Reg. 249.50 Now 188.50
Bruce Pipkin's Sport Center

"BIG TEX" WELCOMES THE WORLD TO DALLAS

1962 STATE FAIR OF TEXAS
OCT. 6-21

"EXPOSITION OF NATIONS"

1962 TEXAS INTERNATIONAL TRADE FAIR
 WITH A **bright** AND **colorful** ILLUMINATED PARADE OF NATIONS NIGHTLY
 Elaborate parade nightly at 6:45 p.m. (Except Oct. 10 and Oct. 12 parade at 6:15 p.m. and on Sunday, Oct. 7, at 2:30 p.m. AND 6:45 p.m.)
2 FREE TRIPS TO EUROPE
 VIA 10 1/2-HOUR JET, DALLAS-EUROPE PAN AM BRANIFF
 Register World Exhibits Building, Dallas Downtown State Fair Box Office, or any Braniff/Pan American ticket office in Texas.
CARNIVAL AMERICA'S MAGICAL MUSICAL AWARD-WINNING BROADWAY HIT
 Performances begin Friday evening, Oct. 5, 8:30 p.m. through Sunday Matinee, Oct. 21. Nightly at 8:30 and Matinees on Wednesday, Saturday and Sunday at 2:30 p.m. Ticket Prices: \$4.95, \$4.40, \$3.30, \$2.20, \$1.65.
22nd edition of "ICE CAPEDES"
 Ice Arena. Nightly Mondays thru Thursdays at 8 p.m., Fridays and Saturdays at 8:30 p.m., Matinee Saturday, Oct. 6 at 5:00 p.m., Oct. 13 and 20 at 1:00 and 5:00 p.m., Sundays, Oct. 7, 14 and 21, at 1:00 and 5:00 p.m.
PAN-AMERICAN LIVESTOCK EXPOSITION
 Oct. 6-14, Judging dates: Sheep and goats, Oct. 6-11; beef and dairy cattle, Oct. 8-12; swine, Oct. 8-10. JUNIOR LIVESTOCK SHOW Oct. 16-20, Judging Oct. 17-19. Auction sales, Oct. 19-20.
FREE HORSE SHOWS Series I, Oct. 5-9, Series II, Oct. 10-14. Arabian Show, Oct. 19-21. Livestock Coliseum.
1962 AUTOMOBILE SHOW "MAN IN SPACE" SPACE KITCHEN "ARTS OF MAN" IN THE MUSEUM OF FINE ARTS
SPECIAL FREE EVENTS: Red Foley, Oct. 8; Musical Festival, Oct. 9; Circus and Fireworks, Oct. 10; Circus Night, Oct. 11; Symphony Spectacular, Oct. 12; East Texas on Parade, Oct. 16; College Jazz, Oct. 18.
FREE FASHION SHOWS DAILY Women's Building
TEXAS KITCHEN WINDOW Demonstrations Daily
 SEE "TELSTAR" SATELLITE REPLICA FFA CHILDREN'S BARNYARD
BELGIAN HORSE FAIR Sponsored by Dr Pepper
AGRICULTURE SHOW
MOBIL SKY REVUE **CIRCUSLAND**

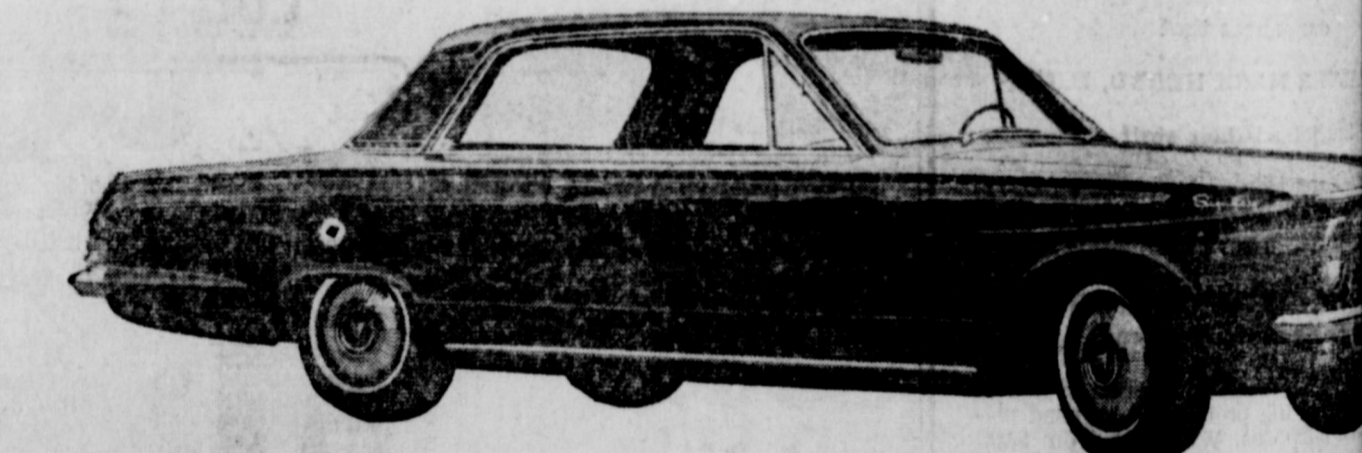
Valiant
 (Continued from page One)
 leader in the low-price compact field," C. E. Briggs, vice president of Chrysler Corporation and general manager of the Chrysler - Plymouth Division, declared. "It is Chrysler's lowest priced compact entry."
 Valiant for 1963 will have a new warranty for five years or 50,000 miles, whichever comes first, on the major power train components including engine, transmission, propeller shaft and universal joint and rear axle. This makes Valiant first in the compact car class to offer such extended owner protection.

As in 1962, the new Valiant offers two engines. It's 170-cu. in. inclined six is the biggest standard engine in its field. The peppy Super 225-cu. in. six is optional.
 Overall length has been increased 2.2 inches, while width at the rear bumper is reduced 1.6 inches.
 The new Valiant look is highlighted by a broad front-end treatment featuring, for the first time since 1957 on Chrysler Corporation cars, single headlights.
 Front bumpers are mounted higher on the car and supported well away from the sheet metal to provide maximum impact protection. Circular parking lights located below the bumper have the new amber lenses.
 Inside, Valiant introduces a new keystone shaped instrument cluster which affords better visibility.
 There are a number of significant quality improvements in 1963 Valiant interiors. Reinforced rubber mats with greater puncture resistance are being introduced. Loop carpeting of 80 per cent rayon and 20 per cent nylon gives better wear resistance and longer life. Molded carpets are polyethylene-backed for improved fit and durability. Body cloth wear resistance has been improved, improved vinyl headliners are used and front armrests on the Signet are four inches longer.
 Added seat comfort and durability are among improvements in the 1963 Valiant. Spring tension bars and wire-reinforced snap-on foam pads extend seat life, provide firmer support and reduce wrinkling.
 Bucket seats have improved back angles and more luxurious padding, and the passenger seat is individually adjustable. Both driver and passenger seats are equipped with the six-way custom positioning feature.
 Refinements to the alternator for 1963 provide greater electrical system reliability. To further improve wet weather starting, splash shields have been added to the Valiant engine compartment to protect ignition system components from wheel splash.
 An improved clutch pedal and pad make it easier for the driver to operate the clutch. Shifting smoothness has been improved by refinements to the gear tooth pointing.
 1963 Valiant model line-up is increased from seven to nine by the addition of convertibles to the V-200 and Signet 200 lines. The 1963 line-up offers 2-door sedans and 4-door sedans in the V-100 and V-200 series, 2-door hardtop in the Signet 200, convertible coupes in the V-200 and Signet 200 series and 4-door station wagons in the V-100 and V-200 series.

A portrait of that grand child or loved one means a lot to each parent and grandparent, so why not let A & C STUDIO make that grandchild portrait now so you will always remember how he or she looked and too, your children would like a living portrait of you Mother and Dad.
 SEE
A&C STUDIO
 today
 201 S. Seaman

FURNITURE CARPET APPLIANCES
 Quality Merchandise at Every Day Low Prices
FREE DELIVERY — NO CARRYING CHARGES ON FURNITURE and CARPETS FOR 1 FULL YEAR
Ranger Furniture Exchange
 "BRASHIER'S" Ranger Phone MI 7-1404
 123 N. RUSK

Here's the best all-around compact anybody has come up with yet... The New Valiant!



For '63, we present the first compact built to do everything well... the first to carry a 5-year warranty. It's The New Valiant...with 33 important value

Some compacts are good at economy. Some feature performance. Some offer luxury. Now, for '63: a compact built to do everything well. The New Valiant excels in economy and performance. It looks great. It costs little. And The New Valiant carries America's first 5-year warranty. All internal parts of the engine, transmission and drive train are guaranteed for 5 years or 50,000 miles.*
 The '63 Valiant's confidence comes from its 33 important value features, including these:
No. 2 One of our swinging new convertibles, all set to debut November 15. **No. 12** Bucket seats on Signet models. **No. 21** Push-buttons for 3-speed TorqueFlite drive. **No. 4** Battery-saving alternator. **No. 6** 6-shooter. An engine that's easy on gallons. See The New Valiant for more features by Chrysler Corporation, now Plymouth-Valiant Dealer.

SEE
 *Your Authorized Plymouth-Valiant Dealer's Warranty against defects in material and workmanship on 1963 cars has been expanded to include parts replacement or repair for 5 years or 50,000 miles. Excludes engine, head and internal parts; transmission case and internal parts (excluding manual clutch); torque converter, drive shaft, universal joints (excluding dust cover); rear axle and wheel bearings, provided the vehicle has been serviced at reasonable intervals according to the Plymouth-Valiant Certified Car Care schedule. Factory-approved remanufactured parts may be used.

READ THE CLASSIFIEDS
MON
 Pay For Your Home On Easy Monthly Payments
 If your home needs more than a beautify it — then see us now for improvement loan that's tailored to your budget!
FIRST FEDERAL LOAN ASSOCIATION
 204 Main Ranger, Texas
 SPECIALIZING IN SAVINGS ACCOUNTS and

Ladies SLACKS

Bobby Lou Capris,
sizes 10 to 20
Full cut imported slacks
that are 100% cotton's,
pre-shrunk and washable

For
Dollar Day **\$1.44**

we've the
neatest
sweetest
Sweaters
in town!



Featherknit—100%
bulky orlon knits
that are really "bulky"
— you can feel
the built in quality
and they will match
the woolen skirts
and slacks that are
so popular this season.
One group of
all colors and styles.

\$5.95 ea.

Black Suede LOAFERS

number ONE school and casual shoe in
town — These fine black suede loafers
in narrow and medium widths — They
handcrafted with white stitching and
pleat — Sizes 4 to 9. —

\$3.99



Girl's Corduroy PANTS

The big special for Dol-
lar Days — girl's sizes
7 to 14 solid or fancy
corduroy pants —

\$1.66
pair

Long Laminated SHORT COAT



Ladies Laminated coats
that are really light in
weight but are warm
and comfortable—Black,
Tan or Red —

\$9.90

Ladies and Misses
TV SOX
Other Soles
SML, Ladies SML pair

\$1

DOLLAR DAYS



Boy's SPORT SHIRTS

Special sale during Dollar Days —
Boy's L. S. Print shirts that are 100%
washable and fast colors in all sizes
2 to 16

Regular \$1.49
SALE **\$1.00**

Children's Sleepers

These are irregulars, but you will be
hard pressed to find the flaw in them.
They are regular \$1.98 Sleepers with
plastic feet and the bottoms just snaps
on the top for easy changing . . .

Sizes 0 to 4
Per Pair **\$1.00**



LEOTARDS

We sold out completely when the
cold weather hit last year, so this
year our assortments are bigger —
sizes now available in 6 to 24 mo.
Sizes 3 to 6X and 7 to 14 — take
your pick — Values to \$1.49 per
pair — save during Dollar Days . . .

pair

\$1.00

RAIN COATS

Special Purchase of imported rain
coats — you will see them sold up
as high as \$1.98 — Now you can
have during Dollar Days — Plastic
coats for men, women, boys and
girls.



\$1.00
each



Now During Dollar Days Two Silicone IRONING BOARD COVERS

Aluminum coated with elastic edge
for perfect fit — 54" size. —

2 Covers
in Bag for **\$1.00**

MEN'S SOX

Men's Mopul crew sox with comfort
fortop — always neat, never binds,

2 Pairs
For **\$1.00**
Also men's cushion foot cotton sox
for school or work 3 pairs for \$1.00.



Boy's BANLON SHIRTS

New Fall Colors in boy's 100% Banlons —
These have long sleeves and all the beautiful
all colors —

Soft and luxurious
Sizes 6 to 16

\$3.95



IT'S \$ DAY
Hurry
!!

Men's GREY SHIRTS

Grey or Blue chambray work shirts — san-
forized, full cut with two pockets —

each

\$1.00



Men's Underwear

For Dollar Days
Men's quality briefs, undershirts
or T-Shirts — take your pick of
any selection. —

3 For **\$1.00**

Mopul Sox

The heavy mopul sox with the
turn down cuff — 100% combed
cotton, 60 needle "the heavy one"
with action cuff as advertized in
Seventeen. —

2 Pairs **77¢**



Household Items

- 80 square laundry bags,
- Double size plastic mattress pro-
tectors,
- Twin size mattress protectors,
- Men's plastic bags for carrying
suits,
- Ladies plastic bags for dresses—

\$1.00

Take
Your
Choice
During
Dollar
Days



Hosiery
SALE

This week's biggest
Dollar Day Special
15-51 self seam 100%
first quality nylon full
fashion hose in your
choice of Honey or Mist
colors — sizes 8 1/2 to 11

3 Pairs **\$1.00**

Men's Handkerchiefs

Real big handkerchiefs packed in
glassin bags with 8 fancies in bag
or 10 whites in bag —

per
bag
each

\$1.00



Feather PILLOWS

16-24 size chicken feather
pillows with floral tick.

\$1.00 each

Ladies Bras

Well made and good fitting bras
that look like they should be \$1.98
— we have them in every color and
black —

During
Dollar Days **\$1.00**



Boy's Coats

Boy's full length surcoats
with quilted linings or
with pile linings. Plenty
of styles and fabrics to
choose from in sizes up
to 16 —

\$9.95



Boy's BELTS

New fall 1962 boy's trophy belts with big
wide western buckles and 1 1/2 in. wide traps
— a really nice belt and the price complete is

ONLY **\$1.98**

Boy's CONTINENTAL SLACKS

Deep tone fancy
dress slacks of
Brown or Charcoal
in sizes 6 to 16 —

\$2.98
pair



Boy's Long Sleeve SPORT SHIRTS

It's time for long sleeves
for these cool mornings
— 100% knits, acrilans,
ginghams, broadcloths
and prints —

Most styles **\$1.98**

Others to \$3.95



MEN'S CLOTHING SALE!

Men's Suits

New deep tones so good
this fall — char browns
or greys and Navy blues
Rayons and acetates in
year round weights —

\$25.00 ea.



Boy's Sweaters



Here are the 1962 styles of the sweaters most
worn by boys. Take your pick of the bulky,
bulky orlons or slipovers in the deep tone
trims that match this fall's Continental pants
so perfectly with really heavy type bulkies
of 100% orlon by Dupont and guaranteed
washable —

Most
Styles **\$4.95**

PRICES GOOD WEDNESDAY THRU SATURDAY

USE
YOUR
CREDIT

HEIDENHEIMER'S

PARK FREE
IN
CISCO
WED. & SAT.





RAMBLER TALK—Mr. and Mrs. James Pipkin, owner of Pipkin Motor Company, Eastland, discuss sales plans for the 1963 Rambler line with Richard Cross, left chairman of the board of American Motors Corporation, at the 1963 Rambler Dealer Preview in Dallas. Pipkin praised the 1963 models as the best Ramblers in history and said he is sure of surpassing all past sales records. The new models go on sale October 5, he said.

Rambler

(Continued from page One)

...of galvanized steel is seen before the rustproofing process. Together with Rambler's rustproofing process, the increased galvanized steel content provides for longer life and protection against rust.

Other highlights of the '63 Rambler include a new front-end design for a wider, more stable stance, a new grille design, new suspension, new floor shift mechanism with overdrive, new steering column, and many other improvements to further reduce maintenance costs and increase reliability. Additional features include Rambler's double-safety brake system and ceramic-armored muffler and tailpipe.

The '63 Ramblers are lower, flatter and more spacious. Overall height is reduced nearly three inches. A new top-down floor seal results in the lower silhouette without loss of interior roominess.

The advanced type of single-unit construction introduced for the first time in the '63 Rambler is a major innovation in the field of body engineering.

The new outer inside sections are of galvanized steel, as are many other Rambler body parts for 1963. Total use

of galvanized steel is seen before the rustproofing process. Together with Rambler's rustproofing process, the increased galvanized steel content provides for longer life and protection against rust.

Other highlights of the '63 Rambler include a new front-end design for a wider, more stable stance, a new grille design, new suspension, new floor shift mechanism with overdrive, new steering column, and many other improvements to further reduce maintenance costs and increase reliability. Additional features include Rambler's double-safety brake system and ceramic-armored muffler and tailpipe.

The '63 Ramblers are lower, flatter and more spacious. Overall height is reduced nearly three inches. A new top-down floor seal results in the lower silhouette without loss of interior roominess.

The advanced type of single-unit construction introduced for the first time in the '63 Rambler is a major innovation in the field of body engineering.

The new outer inside sections are of galvanized steel, as are many other Rambler body parts for 1963. Total use

These models are available in the Classic series and seen in the Ambassador line. The '63 Rambler colors include 13 solid colors and 42 two-tone combinations in double-coat baked enamel.

Court of CIVIL APPEALS

The following proceedings were had in the Court of Civil Appeals, Fifth Supreme Judicial District of Texas:

Motions Submitted:

Mrs. Shelby Hall v. Safeway Stores, Inc. Appellant's motion for rehearing.

M. F. Connor et al v. Edith Purcell. Appellants' motion for rehearing.

Texas & Pacific Railway Company v. H. A. Porter. Appellant's motion for rehearing.

J. R. Hitchcock et ux v. Sojourner Drilling Corporation et al. Appellants' motion for rehearing.

City of Snyder v. W. Prentiss Bass. Appellee's motion for rehearing.

W. E. Martin et al v. Virginia Johnson. Appellants' motion for extension of time to file brief.

W. E. McCook v. First State Bank of Abilene. Appellee's motion for extension of time to file brief.

Motions Granted:

W. E. Martin et al v. Virginia Johnson. Appellants' motion for extension of time to file brief. (This case is reset for submission on December 14, 1962.)

W. E. McCook v. First State Bank of Abilene. Appellee's motion for extension of time to file brief.

Motions Overruled:

Mrs. Shelby Hall v. Safeway Stores, Inc. Appellant's motion for rehearing.

M. F. Connor et al v. Edith Purcell. Appellants' motion for rehearing.

Texas & Pacific Railway Company v. H. A. Porter. Appellant's motion for rehearing.

J. R. Hitchcock et ux v. Sojourner Drilling Corporation et al. Appellants' motion for rehearing.

City of Snyder v. W. Prentiss Bass. Appellee's motion for rehearing.

Card of Thanks:

We extend our sincere thanks to Rev. J. R. Carpenter, and O. J. Taylor and those who sent flowers and cards in any way during our recent bereavement.

THE FAMILY OF
M. E. LEMON C. LEMON

Girls Assembly Is Organized in Eastland

An Eastland Rainbow Assembly was organized and officers installed Monday night Sept. 24 at the Masonic Hall. The Assembly for girls is sponsored by the Eastern Star and Masonic Lodge.

Mrs. Martha Marie Whitfield of Dallas, Supreme Inspector, Grand Assembly of Texas, instituted the assembly at 7 p.m. Officers were installed at 8 o'clock by Mrs. Rebecca Mayfield of Abilene, Grand Visitor for this section.

Officers who were installed at the Monday evening meeting were the following: Gracie Tankersley, First Worth; Advisor: Nora Jordan, Worth; Association Advisor: Rebecca McAllister, Charity; Roy Lynn Gunn, Hope; Donna Ford, Faith; Corole McCleskey, Recorder; Kay Morton, Treasurer; Wanda Lane, Chaplain; Marilyn Huckabee, Drill Leader;

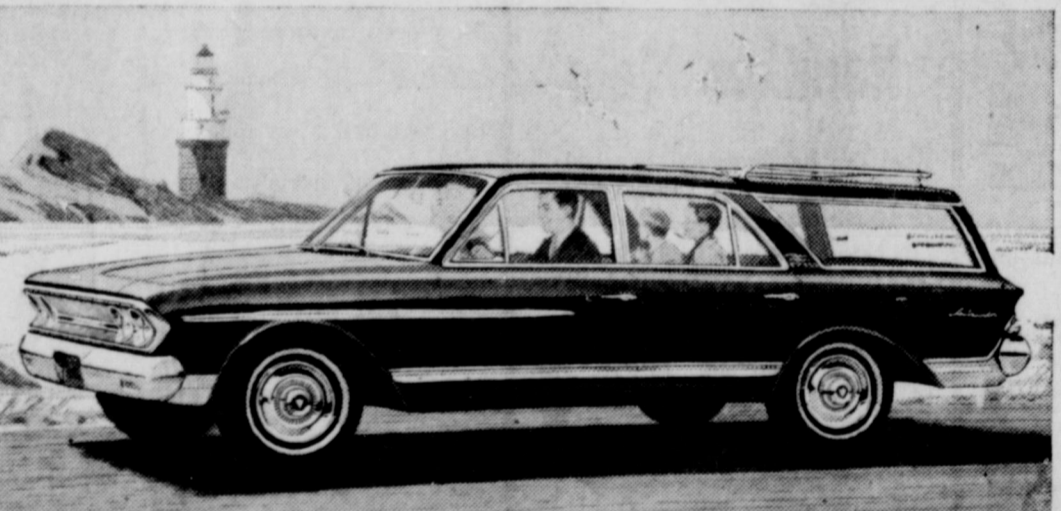
Linda Butler, Love; Donna Fyfe, Religion; Shirley Smith, Nature; Petrina Warren, Fidelity; Nita Bradford, Patriotism; Miriam Poyner, Service; Sharon Day, Outer Observer; Patricia Liles, Musician; Pamela Keith, Choir Director; and Mrs. Bernice Tankersley, Mother Advisor. Choir members include Sharon Sayre, Jane Jessup, Sandra Huling, Teresa Huling, Beverly Sledge and Jeanette Waldon.

ANNOUNCING RAMBLER FOR '63

The New Shape of Quality



1963 Rambler Classic Six Four-Door "770" Sedan. Looks longer but isn't. Curved glass side windows. Advanced Unit Construction.



1963 Rambler Ambassador V-8 "990" Wagon. 250 HP standard, 270 HP optional. Lockable hidden compartment in rear.



Brand new for '63! Rambler American "440-H" Hardtop. 138 HP, Bucket Seats and Console standard.

COME SEE THEM! The most beautiful, the most exciting Ramblers ever built — the '63 Rambler Classic Six and Rambler Ambassador V-8. **New!** All-new Advanced Unit Construction, a years-ahead breakthrough in car building — foundation of the New Shape of Quality. Amazingly greater strength — unequalled door fit and weather sealing. **New!** Lower, swifter lines, yet with easier entrance. Room for six 6-footers. **New!** Quietest Ramblers ever, with vibration-free Tri-Poised Power, curved glass side windows that hush wind noise. **New!** Most service-free Ramblers, with more lubricated-for-life vital parts and 33,000-mile or 3-year chassis lubrication. **New!** Most thoroughly rustproofed cars ever, with 7 times more galvanized steel than before, Deep-Dip rustproofing, Ceramic-Armored exhaust system.

New! Even easier to park. Looks longer, but isn't. Actually turns shorter for greater maneuverability and handling ease.

New! Twin-Stick Floor Shift with Instant Overdrive, Chair-Height Reclining Bucket Seats with Console, optional.

New! Curved Glass Side Windows. **New!** Astonishingly easy entry because doors curve into roof. You step in gracefully.

THE ECONOMY KING HAS BRAND-NEW ZING

See the sports-spirited Rambler Americans for '63. The all-new Rambler American "440-H" Hardtop has Reclining Bucket Seats, Console, new 138 HP Six, standard. Double-Safety Brake System with self-adjusting brakes standard, many other service-free features. See new 1963 Rambler American sedans, wagons, convertibles.

American Motors—Dedicated to Excellence

ALL NEW! ALL BEAUTIFUL! ALL RAMBLER! ON DISPLAY TOMORROW!

PIPKIN MOTOR COMPANY, 314 West Main

1962

STATE and COUNTY TAXES

NOW DUE!

Discount on State Taxes Only!

OCTOBER DISCOUNT

NOVEMBER DISCOUNT

DECEMBER DISCOUNT

• Poll Tax Not Added to Year Statement

EASTLAND COUNTY

J. C. ALLISON

TAX ASSESSOR-COLLECTOR

Card of Thanks

We want to thank our friends for the beautiful floral tributes.

Read Classified

• FR

Estimate

RE-RO

Repair

Resident

Roofing East

Noble S. Phone

MY

AUTOMATIC

CONVERTIBLE

FOR CAR

MY-12

CONTACT EASTLAND COUNTY PART 300 S. S.