



COVERING EASTLAND COUNTY
THE ONLY PLACE YOU CAN READ THE MOST IMPORTANT NEWS IN THE WORLD -- ALL THE NEWS ABOUT YOU, YOUR FAMILY AND YOUR FRIENDS!

EASTLAND, TEXAS, THURSDAY, AUGUST 23, 1962

PRICE 10c

Hammer Enlarging Chapel

The Chapel at Hammer Funeral Home will be taking on a new look soon, according to Ben Hammer, manager.

Construction is underway which will extend the Chapel to seat approximately 50 more persons than at present. Added facilities will include new paneling, new carpeting and new lighting fixtures. Upon completion, entrance to the chapel will be changed from the present position to the new addition.

Mr. Hammer announced that the construction will be completed in about three or four weeks.



SABIN CLINIC—J. A. BRYAN, M.D., S. GREEN, EASTLAND, WAS ONLY ONE OF THE MANY PERSONS WHO WERE ON HAND SATURDAY TO RECEIVE THEIR SUGAR CUBE AND SABIN POLIO VACCINE. PICTURED FROM LEFT TO RIGHT ARE MRS. FRANK SAYRE, GENERAL CHAIRMAN OF THE SABIN CLINIC, MR. MAY, AND MRS. E. R. TOWNSEND, NURSE ON DUTY AT THE SABIN VACCINE POLIO CLINIC. (Photo by A&C Studio)

If You Didn't Get Polio Serum Last Week Come to the Courthouse Saturday, 10 to 6

Polio can be completely wiped out in the United States in a period of three years if every adult and child over six weeks of age is given the three types of Sabin Oral Polio Vaccine.

For those who were unable to take the vaccine Saturday, another oral clinic will be held this Saturday in the Courthouse lobby.

Like before, the Type 1 vaccine will be given from 10 a.m. to 6 p.m.

It is not necessary for those who took the sugar cubes on the first Saturday to return for a second round of the Type 1 vaccine.

Since the polio germ may lie dormant in a persons body and he never take it, he may give it to another person. It is a proven fact that polio is contracted from a carrier of the disease. It is of utmost importance that every person have the immunization vaccine.

A large crowd turned out for the past Saturday Clinic. A total of 2,636 passed through the Clinic and received

their cubes of sugar "doctored" and the serum does not increase the possibility of contracting the disease.

Present for the immunization program were several local doctors, Dr. Peters from Fort Worth and Bill McCoy, Pfizer Laboratories agent from Abilene.

The three types of Sabin Oral Vaccine are for three specific types of polio and all three of the types are mandatory for stamping out the paralytic disease.

According to reports, there are no dangerous side effects

with the serum.

A before, a form must be filled in for every person taking the serum. For any minor receiving it, the form must be signed by the head of the household.

To keep the line moving, all are asked to have their cubes filled in before entering the clinic.

The sugar cubes are free to the public but any donations will be accepted.

'The Future of Eastland' Is Rotary Program Topic

"Where is Eastland going?" was discussed Monday by Rotarians at their regular luncheon meet.

Dr. James Whittington was program chairman and discussed population trends—which point downward—and asked members for their ideas and views on the future of Eastland and Eastland County.

Member Ronald Burton of Texas Electric Service Co. agreed that the statistics indicate less population, and if something isn't done this may become a one-town county.

Attorney Jack Frost, a member of the Texas Industrial Commission, expressed disappointment that there has been so little cooperation or "coordination" between the towns in the county.

Dr. Whittington explained that the word coordination is now being used, in hopes that if the towns can cooperate, they can at least coordinate, as has been suggested recently by visitors here.

Chamber Manager Lee Ellis spoke out for a strong retail center which would create a healthy climate attractive to potential industry.

He said that he felt that the area should be promoted for industry with individual towns going to "bat" after prospects have been sold on the area (county).

Tom Wilson, president of Eastland National Bank, com-

mented on the present economy with local bank deposits near \$4 million, but added that he bears more remarks about "people not making any money now," but everything indicates that in fact, they are making more than they've made in the past.

City Commission Jack Germany, club president, spoke on the financial condition of the city, calling it sound, and crossed for a bright future for the city.

The club's new sweetheart, Julia Frost, daughter of Mr. and Mrs. Bill Frost, was introduced, and Susa Johnston, retiring sweetheart was given a wrist watch.

Guests included the Rev. Jesse E. Castle of Cisco and Pat Owen, formerly of Eastland and Bob Wagley, both of Abilene.

FREYSLAG
Insurance Agency
presents the
WEATHER NEWS

PARTLY CLOUDY
High Thursday, 95 - 100.

'Old Time Value Days' Set In Eastland Saturday

District Queen Contest To Be Held Sept. 1

The District 7 Farm Bureau Queen Contest will be held Saturday, Sept. 1, in the Cisco Junior College Auditorium at 8 o'clock in the evening.

Among the contestants participating will be the following: Stephens County, Janet Taylor, daughter of Mr. and Mrs. Glenn Taylor of Route 1, Breckenridge; Taylor County, Li da Kay Ware of Abilene; Brown County, Virginia Batters of Brownwood; Llano County, Colla Moss, daughter of C. J. Moss of Llano; and Eastland County, Christina Stroebel, daughter of Mr. and Mrs. Carl Stroebel, Route two, Cisco.

Kindergarten To Open October 1 For Eighth Year

The Green Kindergarten will open for the eighth year Monday afternoon, Oct. 1, from 4 to 5 p.m.

Classes begin Tuesday, Oct. 2, from 9 to 12 a.m. for ages four through six. These classes will be held on Tuesdays, Wednesdays and Thursdays.

If enough demand, a pre-kindergarten for tots will be held on Friday mornings.

Teachers for the term which will end the latter part of March will be Mrs. Howard Upchurch, Mrs. A. E. Cushman and Mrs. E. B. Savage.

Kindergarten reservations are now being taken, according to Mrs. Savage.

In the Easter part of the United States, gigantic sales commemorating Washington's Birthday, at which merchandise is sold at ridiculous prices.

The theory being that Washington was a frugal man, very conservative—and therefore, liked a bargain.

Most people today share that characteristic of Washington, People like bargains.

The merchants of Eastland have planned a special day Saturday on which they'll offer various types of merchandise—at just as ridiculous prices as are offered in the East.

In fact, the merchants' announcements indicate that the event will be equal to selling days of old when prices were low, low, low.

They've decided to call their special day "Old Time Value Days" and plan to hold one such day each month.

There was a time, not so many years ago, when just about everybody in the county came to Eastland on Saturday. The merchants want to let it be known, by offering special attractions, that this still is the retail center of the area.

Symbol of the event is a picture of a little man called "Sam" who carries a sandwich signboard, reminding us that we are celebrating "Old Time Value Days."

You'll want to check this entire issue of the Telegram to spot the place where you'll be finding "Saving Sam."

Stores where "Sam" will be offering special prices include: Eastland Discount Stores, Goodyear Service Store, Western Auto, Associate Store, Coats Jewelry, Harold's Department Store, Party Brothers, Variety Store, Central Book, Altman's, Rebertson Television Store, Coats Furniture Store, Eastland Auto Parts, Mode-O-Day Fashion

Shop, Jeanette's Fabric Shop, The Men's Shop and Eastland Service Parts.

Local and area residents will probably welcome such announcements, especially at this time of year, with school opening approaching very soon, and the current need for stocking up on the needed school supplies and clothes for the youngsters.

Coordination of the various phases of the special event is being handled by the Chamber of Commerce and President Frank Denton has announced:

"Eastland has for many years established itself as the retail and service center of the area and the merchants here want to enhance that status, so that people near and far will consider our city their favorite place to visit."

Most of the merchants in town will be having specials advertised for three days a week, highlighted by the special items available on Saturday only.

Shoppers will find that their dollars go further in Eastland.

For Example

Here are some examples of the values that will be offered in Eastland Saturday:

- Dresses \$5
- Trouble Lights 77c
- G. E. Ice Trays 99c
- Wrist Watches \$9.95
- Bleuses 99c
- Champion Sparkplugs 55c
- Watch bands by price
- Material 1c an inch
- Men's Straw Hats \$3.99
- Garden Hose \$4.95
- G. E. Light Bulbs 12c ea.
- 2-Bowl set 99c
- Electric Blankets 13.95
- Boy's shirts 69c
- Shoes 2.29
- Playclothes 2.59
- Water Cans 20% off



ASSUMES DUTIES—Miss Wanda Turner became a deputy on August 14 in the office of the United States Marshall in Oklahoma City. She previously was employed by the U. S. Commission in Oklahoma City. Miss Turner graduated from Midwest City High School, Midwest City, Okla., in May, 1962. She is the daughter of Mr. and Mrs. Clyde Turner of Eastland.

Comanche Rites Are Slated For R. P. Jackson, 72

R. P. (Pierse) Jackson, 72, a resident of Eastland for 35 years died Tuesday morning at 7:30 in the Veteran's Hospital in Bootham.

Born April 24, 1888, in Alexander City, Ala., Mr. Johnson was a veteran of World War I. For the past few years, he had made his home in the Eastland Hotel.

Funeral services will be held this afternoon (Thursday) at 2 p.m. in the Comanche Funeral Chapel. Interment will be in the Comanche Cemetery.

Survivors include three brothers, Curtis A. Jackson and Lovie Jackson, both of Abilene, and J. D. Jackson of Brownwood; and one sister, Mrs. Arcadie Boyd of Downing.



Services Held Wednesday For J. U. Johnson

Funeral services were held Wednesday at 2 p.m. in the Eastland Methodist Church for J. U. Johnson, who died Monday evening at the Eastland Memorial Hospital at the age of 70 years, two months and 18 days. Rev. W. S. Fishback, pastor of the church, officiated with interment in the Eastland Cemetery under the direction of Hammer Funeral Home.

Mr. Johnson had been a patient in the Eastland hospital about 16 days after he sustained a broken hip from a fall at his home, 612 W. Patton.

Mr. Johnson was born in Eastland. Mr. Johnson bought the E. Ober General Merchandise store in Eastland where King Motor Co. is now. In 1920 he purchased Davis Baker and operated the bakery until his retirement at the age of 80 years.

He was a 42 year resident of Eastland.

A retired merchant. Mr. (Continued On Page Three)



PRACTICE BEGINS—Members of the Maverick football team have begun workouts for the coming football season under the direction of the EHS coaching staff. Practice sessions are being held twice daily at Maverick practice field. Denson Moody, a member of the coaching staff, is shown above giving instructions to Jimmy Moylan, Gary Graham and Jody Cooper. (Photo by A&C Studio)

Peanut Crop Outlook Is Mighty Good—Agent

The nature of Coastal Bermuda grass and the prospects for county crops was program for the Eastland Lions Club Tuesday.

County Agent J. M. Cooper called peanut crop prospects "first rate" if we get rains in September and have a dry October.

"We should have a bumper crop if the rains come at the right time," he said.

Most area farmers are hoping for rain now, he said, because the good vines haven't produced much under the ground yet.

Outlining the histories of various grasses and their "popularity periods", Cooper guessed that Coastal Bermuda would also run its course and lose favor in popularity.

He described Weeping Love Grass ("a not-very-palatable variety"); Blue Panic ("hard to start") and the Blue Stems ("won't stand much grazing"). Coastal Bermuda, he said, originated in Georgia and is

not recommended without irrigation. (It requires an annual rainfall of about 30 inches and the average here is 27 inches.)

The Bermuda stands erect and is ideal for forage. I must be irrigated into throughly prepared ground, Cooper pointed out.

The grass is planted in the spring and the cost is about \$10 an acre, he said.

Club visitors included E. L. Hazlevood of Cisco, Bob Schoofield, brother of Member John Schoofield, Coaches Millard Glass, Denson Moody and Harold Price, and Lester Kilpatrick.

Mrs. Owens Funeral Held

Funeral services were held at 2 p.m. Wednesday at the Eastland Church of Christ for Mrs. Sarah Ann Owens, 71, who died at noon Tuesday in a Eastland rest home after a illness of about eight months. Mrs. Owens, the former Sarah Ann Beasley, had been a resident of Eastland for the past 40 years.

She was born in Corvett County on January 16, 1871, and married Charles Booth Owens on January 20, 1889 in Corvett County. Mrs. Owens died on the 40th anniversary of the death of her husband on July 20, 1900 in Corvett County. She was a long (Continued on page 3)

Dr. Richardson To Speak At Farm Bureau Barbecue

Dr. Rupert Richardson, professor at Hardin-Simmons University, Abilene, will be guest speaker at the Eastland County Farm Bureau annual barbecue to be held Friday at 7 p.m. in the Eastland City Park.

Dr. Richardson was reared in Stephens County, north of Ada, Eustacial in Simmons College. The University of Chicago and the University of Texas, he taught in the public schools for four years, was principal of Cisco High School from 1915 to 1918 and taught one summer in Britton's Teachers School. He has been a professor at Hardin-Simmons since 1917 and served as president of the college from 1943-1953. On various leaves of absence he has taught in the University of Texas and a summer in the University of Oklahoma.

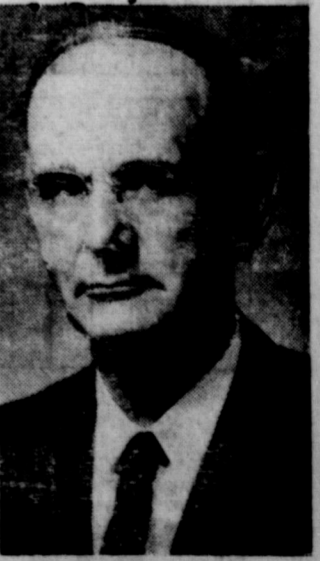
He is the author of an excellent book on Texas, "The Cotton Country" with Carl G. Johnson and "Texas, The Lone Star State."

Dr. Richardson has owned a stock farm for the past 16 years. He is a member of the Taylor County Farm Bureau and is presently serving as president of the Texas State Historical Agency for Histor-

ical Preservation, an agency seeking to preserve historical buildings and places and the memory of great and worthy men and women.

Tickets will be \$1 for adults and 50c for children.

The public is cordially invited to attend the annual barbecue.



DR. RUPERT RICHARDSON

Court Civil Suit Rule Is Announced

These are set for the 15th of October: Aia Gordon vs. M. G. Bryan, et ux, note; Mrs. L. L. Lankford vs. C. L. Archer, damages; and Gene Dawson, et ux vs. Portland Cement Co., damages.

The case of Emory Ford, et ux vs. T & P Railway Co. damages is set for the 22nd of October.

On Nov. 4th, the case of Floyd A. Vaughn vs. R. M. Speed, damages, is set.

Now Showing At
The MAJESTIC
IN EASTLAND
HATARI
FREE PASSES

To Those Who Find Their Names Set Bold Face Type

CLASSIFIEDS!

DRD Polonous shrub Mall. beva-age Frost Publish. ing Pitchers Old Norse work Noxious weed (B) Soon A great number
BIBITS
By H.V.O.
Saturday for shop-
here are going
make that day
day, those of you
your police serum
will want to be
for the Type
Time Values
will be looking for
low buy the
were last
the first
Polio vaci-
Sayre, presi-
League and
and chairman of
here, was in
that it was three
he had time to
he had mis-
office while
publicly check.
John Hart had
from the Scott
Hospital in Temple
at his home near
to be recover-
following sur-
Mrs. Here Fax,
and Mrs. J.
Olson will repre-
FFA Chapter
Texas Fair Sorrow-
in Abilene soon.
graduate in Olden,
9 grade average
and School Queen,
and Class Fav-
ing for the Fair
W. Ducker, 60, a
and newspaper
was buried Thurs-
and Wells. She was
of her death.
the former Ruth
of Cisco and was
John Ducker, a
Star Gas Co.
Burger. He pro-
death. They had
where she had
school and Ranger
to Mineral
the "We're Cele-
Time Value Days"
in Eastland stores
the Grand Jury
on Wednesday.
Supporters for
the courthouse
speakers in grand
what we hear.
Mr. Pete Parker
to do what it gets
and. They're visit-
ing Mr. E. A. Lis-
guy, Colo.
to not being fair
(Continued on Page 2)
with the Grand Jury
on Wednesday.
Supporters for
the courthouse
speakers in grand
what we hear.
Mr. Pete Parker
to do what it gets
and. They're visit-
ing Mr. E. A. Lis-
guy, Colo.
to not being fair
(Continued on Page 2)
with the Grand Jury
on Wednesday.
Supporters for
the courthouse
speakers in grand
what we hear.
Mr. Pete Parker
to do what it gets
and. They're visit-
ing Mr. E. A. Lis-
guy, Colo.
to not being fair
(Continued on Page 2)

EASTLAND TELEGRAM

Eastland County Record established in 1931, consolidated August 31, 1951. Chronicle established 1887, Telegram established 1923. Entered as second class matter at the Post Office in Eastland, Texas under the Act of Congress of March 3, 1879.

Published Semi Weekly—Thursdays and Sundays
By Eastland County Newspapers, Inc.
H. V. O'BRIEN, Editor

One Week by carrier in city15
One month by carrier in city65
One year by mail in county 2.95
One year by mail out of state 6.95

NOTICE TO PUBLIC—Any erroneous reflection upon the character, standing or reputation of any person, firm or corporation which may appear in the columns of this newspaper will be gladly corrected upon being brought to the attention of the publishers.

Call MA 9-1707 for Classified Ads -



RECEIVES DISCHARGE—Sgt. W. R. (Buddy) Aaron, son of Mr. and Mrs. Johnnie Aaron of Eastland, received his discharge from the National Guard Thursday, August 9. He was a gunner on a S. P. 8 Howitzer while stationed at Fort Polk, La. Before being called to active duty, he was employed with Texas Electric Service Co. and will resume his duties with the company after a two weeks vacation. (Photo by A&C Studio)

Delegates Attend District Bureau Day

The Chisholm Restaurant in Brownwood was the scene Monday of a Farm Bureau District VII Day. E. J. Gist, District Director, opened the program and introduced Ed Cumble, Area Fieldman from Bronte, who conducted a training meeting on Policy Development.

He stated that Farm Bureau policies are built by membership, and whether the policies be county problems or state and national issues, they are based on recommendations adopted by a majority vote. He added that this is the policy the Farm Bureau has developed to make possible for farmers everywhere who produce any type of commodity, to meet, study, debate, decide and rally around a sound solution to any problem.

Charles Huff, new Legislative Director, presented sure steps to sound policies. J. D. Jordan, Fieldman of Mason, gave a talk on membership after which Mrs. Hudson Long of Llano, Chairman of District VII Youth Committee, told of the newly organized Youth Committee for the state.

Attending the meeting from Eastland County were the following:

Pat Moseley, Olden; A. W. Wright, Rising Star; Mr. and Mrs. Cyrus Justice, Eastland; John Love and daughter, Lorena, Ranger; Nancy Justice, Carbon; and Kathy Browning of Gorman, Mitchell Campbell, Gorman, Eastland County Policy Development Chairman.

IT'S THE LAW

REASONABLE TIME
Before a contract arises someone must make an offer and another must accept it. Without an offer, no acceptance; with no acceptance, no agreement.

But there is often a time within which you can accept the offer. And if not, the offer ends anyhow within a "reasonable time" which is determined by circumstances and the parties' intentions.

Smith had a set of books which Brown wanted. Brown wrote and offered him \$200 for the set.

Smith didn't answer for six months, and meantime Brown bought a similar set. One day Brown got a letter from Smith saying "I accept your offer of \$200 for the set of books."

Brown told Smith he'd bought the books elsewhere, but Smith still claimed that his belated "acceptance" had nevertheless sealed the contract with Brown.

Was there a contract? No, the offer had lapsed because it had not been accepted in the circumstances within a reasonable time.

There are many ways to end an offer. You may withdraw it, you may say that the offer expires at a given time, or you may die, or the other party may turn it down directly or by making a counter offer.

Here Smith had failed to accept Brown's offer within a reasonable time, which ended it just as though it had been withdrawn.

What is a reasonable time? The offer could expire in a few minutes in the stock market or last for quite a while, depending upon what a court would think is a reasonable time.

But in Smith's case six months was unreasonable. (This newsfeature, prepared by the State Bar of Texas, is written to inform—not to advise. No person should ever apply or interpret any law without the aid of an attorney who is fully advised concerning the facts involved, because a slight variance in facts may change the application of the law.)

TidBits -

(Continued From Page One) about it—they're writing back and telling others how cool and comfortable it is up there.

Mut must have been too hot for the city commissioners this week. They skipped their regular third Monday meeting. (Actually, two members, Milton Fullen and Bob Perkins were out of town.)

There is a quandary as what's to be done with the old city hall. The City Fathers thought they'd found a winner when a Big Spring man agreed to tear down the old building for the materials (no boot), but now another party has offered a little boot.

Some say, if any are willing to pay for the privilege, maybe it would be wise to do some bid advertising and see if there aren't others who might not like to dismantle the old City Hall—at a nice profit to the City.

Mrs. Ima Ruth Taylor, school secretary, tells us that she has only two sets of double reserved Maverick football seats still available, unless there are some people who are not picking up their options for tickets—and none have done so yet.

IT IS OFFICIAL: The Fort Worth Avelers Club will come to Lake Leon the weekend of September 29th for their annual Fishing Rodeo. Negotiations are now under way for the selection of the site for the rodeo headquarters and the giant fish fry. We'll keep you posted.



John Wayne's new movie, "Hatari!" is both a tender love story and an adventure tale filmed under real danger in Tanganyika, Africa. It might also be classified as a comedy thanks to the hilarious antics of Red Buttons and the joyous antics of three baby elephants who think Miss Martinelli is their mother. The baby leopard being petted by lovely Michele Girardon is not tame. Hundreds of animals appearing in the picture only one was tame. Filmed in technicolor, "Hatari!" (which means "danger" in the Swahili language) opens at the Majestic theatre Thursday.

Card of Thanks
We wish to take this means of thanking all our friends for the many words of encouragement, personal visits, sympathy cards, telegrams and phone calls that we received because of the decease of W. G. Walker. We also thank those that sent food and flowers and that thank Mr. Hamner for his assistance during the funeral services.

To all our friends: May the Lord be merciful to the soul of Mrs. W. G. Walker. Mr. and Mrs. W. G. Hamner and Mrs. W. G. Hamner.

Balance your books... with the Original **Lindy** AUDITOR'S Ball Point Pen #F-460

Long 7" perfectly balanced writing instrument designed for auditors, accountants, bookkeepers and others who need a fine ball point pen for extreme legibility.

ONLY THE AUTHENTIC NATIONALLY ADVERTISED LINDY PEN CARRIES THE LINDY UNCONDITIONAL GUARANTEE. DO NOT ACCEPT SUBSTITUTES—LOOK FOR "LINDY" ON THE PEN!

GIANT INK SUPPLY
Also available in 5" pocket ballpoint size #F-459.

Manufactured by **LINDY PEN CO., INC.**, Culver City, Calif., U.S.A.

8 BRILLIANT INK COLORS
Color of Pen in: BLUE - BLACK - GREEN - RED - BROWN - LAVENDER - TURQUOISE - YELLOW GOLD

49¢ F.T.L. Fair Traded

EASTLAND TELEGRAM

EASTLAND TELEGRAM

MOTOR VEHICLE TRAFFIC DEATH CALENDAR

1961 JANUARY							1961 FEBRUARY							1961 MARCH						
SUN	MON	TUE	WED	THU	FRI	SAT	SUN	MON	TUE	WED	THU	FRI	SAT	SUN	MON	TUE	WED	THU	FRI	SAT
10	7	1	2	3	4	7	1	2	3	4	5	6	7	7	8	9	10	11	12	13
11	8	1	2	3	4	10	8	5	2	3	4	5	10	8	5	2	3	4	5	10
12	9	2	3	4	5	11	9	6	3	4	5	6	11	9	6	3	4	5	6	11
13	10	3	4	5	6	12	10	7	4	5	6	7	12	10	7	4	5	6	7	12
14	11	4	5	6	7	13	11	8	5	6	7	8	13	11	8	5	6	7	8	13
15	12	5	6	7	8	14	12	9	6	7	8	9	14	12	9	6	7	8	9	14
16	13	6	7	8	9	15	13	10	7	8	9	10	15	13	10	7	8	9	10	15
17	14	7	8	9	10	16	14	11	8	9	10	11	16	14	11	8	9	10	11	16
18	15	8	9	10	11	17	15	12	9	10	11	12	17	15	12	9	10	11	12	17
19	16	9	10	11	12	18	16	13	10	11	12	13	18	16	13	10	11	12	13	18
20	17	10	11	12	13	19	17	14	11	12	13	14	19	17	14	11	12	13	14	19
21	18	11	12	13	14	20	18	15	12	13	14	15	20	18	15	12	13	14	15	20
22	19	12	13	14	15	21	19	16	13	14	15	16	21	19	16	13	14	15	16	21
23	20	13	14	15	16	22	20	17	14	15	16	17	22	20	17	14	15	16	17	22
24	21	14	15	16	17	23	21	18	15	16	17	18	23	21	18	15	16	17	18	23
25	22	15	16	17	18	24	22	19	16	17	18	19	24	22	19	16	17	18	19	24
26	23	16	17	18	19	25	23	20	17	18	19	20	25	23	20	17	18	19	20	25
27	24	17	18	19	20	26	24	21	18	19	20	21	26	24	21	18	19	20	21	26
28	25	18	19	20	21	27	25	22	19	20	21	22	27	25	22	19	20	21	22	27
29	26	19	20	21	22	28	26	23	20	21	22	23	28	26	23	20	21	22	23	28
30	27	20	21	22	23	29	27	24	21	22	23	24	29	27	24	21	22	23	24	29
31	28	21	22	23	24	30	28	25	22	23	24	25	30	28	25	22	23	24	25	30
	29	22	23	24	25	31	29	26	23	24	25	26	31	29	26	23	24	25	26	31

REMEMBER This Number MA 9-1101

Betty's Flower Shop

200 N. Green Eastland

COMPLETE SELECTIONS

SCHOOL SUPPLIES

BACK-TO-SCHOOL Check List

MASTERPIECE NOTEBOOK PAPER

Reg. 50c Pkg.	3	FOR	79c
Reg. 10c Pkg.	10	FOR	49c

GUIDE - LINE Writing Paper Reg. 25c 12c

Reg. 10c Typing Paper 3 FOR 15c

PRACTICAL 'BOND' Typing Paper 3 FOR 45c

Reg. 25c 3 FOR 45c

SPIRAL COMPOSITION Note Book Reg. 15c 2 FOR 20c

SHEAFFER'S Skrip Ink Reg. 25c 10c

CRAYOLAS

64 COLORS REG. 1.00 75c

48 COLORS REG. 75c 60c

PLASTIC - COVERED MAGNETIC CLIPBOARDS Now 65c

REG. 1.29

ALL ZIPPER NOTEBOOKS 75¢

WE'RE CELEBRATING OLD TIME VALUE DAYS

CENTRAL DRUG

"FREE DELIVERY" S&H GREEN STAMPS

"Long Holiday To Take 30 Lives"—Garrison Says

Colonel Homer Garrison Jr., Director of the Texas Department of Public Safety, today announced the official estimate that 30 persons will be killed in some 3,000 traffic crashes during the upcoming 72-hour Labor Day weekend.

Commenting on Labor Day travel, Garrison said: "Many Texas families will take advantage of this last long summer weekend to take trips prior to the opening of school. As a result, traffic will be heavy and the possibilities of traffic crashes will be increased.

"Because this holiday is so much a family affair, more people will be occupying cars. Thus any traffic accident might result in several casualties. This has been evidenced several times on Texas highways in recent weeks. During one seven-day period in August, three crashes claimed the lives of 20 persons."

Garrison noted that during the past eight weeks traffic deaths have increased from four per cent below to two per cent above the toll for the corresponding period of last year.

"But the most alarming thing is that the number of fatal traffic accidents is now running four per cent above last year's figure," he said. "Experience has shown that in nearly every fatal accident a violation of traffic law has been a major causative factor."

In an effort to focus public

attendance on the hazards of holiday travel and to compile additional data which will be helpful in improving the State's traffic management program, the Department of Public Safety will conduct "Operation Motorcade" from 120 A. M. Saturday, September 1 through 11:59 P. M. Monday, September 3.

During this period, the Department will tabulate all traffic deaths in the State and will issue daily bulletins at 10:30 A. M., 3:00 P. M., and 8:30 P. M.

In an all-out effort to insure driver compliance with traffic regulations and to hold traffic crashes to a minimum, the DPS has made plans to augment its regular Highway Patrol force with some 150 uniformed officers from its other services during this three-day period.

"But the solution to the traffic problem in Texas is in the hands that hold the steering wheels," Garrison said. "Drivers should remind themselves during the Labor Day weekend, and every time they drive, that the operation of a motor vehicle is a full-time job. At no other time are your loved ones more dependent upon you."

Hospital News

Patients in the Eastland Memorial Hospital are the following:

From Eastland unless otherwise stated

Nora C. Payne, medical
Miss Sallie Day, medical
Terry Lynn Wilson, medical
J. C. McGee, medical, Cross Plains

Elisha M. McCoy, medical
Emma J. Crain, medical
Dollie Walto, medical
Leonard Hollander, medical
Stella Rodriguez, medical
Betty Pietraszek, medical
Winnie Pentecost, medical
Annie Palmer, medical
Annie Fox, medical
Mrs. Ethel Pryor, medical
Virginia Dawson and baby girl, Ranger
Nora S. Pilcher and baby boy
Betty Pritchard and baby girl, Cisco
Ruth Stroebel, medical, Rising Star
Larry Allen Glenn, medical
Clarence W. Medford, medical
Clara Young, surgical
Charles Harlow, medical
James Monroe Poe, medical
Laura L. Root, medical
Mae Tickner, medical, Cisco
Grady Pipkin, medical

WELCOME

We wish to join all the people in Eastland in welcoming Betty's Flower Shop to our city. We are looking forward to working and cooperating with this new business. Can't pass an opportunity either to remind our customers that their business is appreciated here, and that they will always find the most complete stock of permanent and fresh, cut and potted flowers imaginable in our shop.

POE FLORAL

609 W. Main St.
Main 9-1711
Member F. T. D.

OF KINGS ON RANGER SCREEN



... in his portrayal as Jesus in the present "King of Kings" unfolding a story of the life of Christ, with a cast of thousands. "King" is playing 4 big nights at your Ranger Drive and the admission is \$1.00 and kids under 12 admitted free when accompanied with a

... among the guests in the Cyrus Justice home Sunday. Doug Justice is the hospital administrator in Hamlin.

SHOT SHELL PRICE

GAUGE	Drams	Oz. Shot	Reg. Price	Sale Price
12 Ga. Super X		1 1/4	3.50	2.99
16 Ga. Super X		1 1/4	3.75	2.79
20 Ga. Super X		1	3.05	2.59
410 3" Super X		%	2.75	2.39
12 Ga. Xpert	3 1/4	1 1/4	2.95	2.59
16 Ga. Xpert	2 3/4	1 1/4	2.75	2.39
20 Ga. Xpert	2 1/2	1	2.65	2.29

ME BAGS — CLEANING SUPPLIES

EVERYTHING FOR YOUR GUN

BRUCE PIPIN'S SPORT CENTER
EASTLAND

Tot Of The Month



"HI, THERE"—Although she doesn't live in Eastland, seven-month-old Cynthia Ann Rich, has some grandparents who undoubtedly wish that she did live here. Cynthia is the daughter of Mr. and Mrs. Ronnie Rich of Irving. Her grandparents are Mr. and Mrs. Oral C. Rich of Rt. 1, Eastland. Her great-grandmother is Mrs. Ruby Thomas, also of Rt. 1. Cynthia says "HI" to what is planned for a monthly Telegram feature. Our photographers and writers will be open for suggestions for selection of the monthly celebrity. (photo by A&C Studio).

Mrs. Owens -

(Continued from page 1)
time member of the Eastland Church of Christ
Cary Adams, minister of the church, officiated at the funeral. Burial was in the Eastland Cemetery under the direction of East Funeral Home of Cisco.
Survivors include four daughters, Mrs. Winnie Griffin of Eastland, Mrs. Ollie Dunnam of Hamlin, Mrs. Zola Shuman of Arlington, Mrs. Lavada Williams of Post, 18 grandchildren, and 33 great grandchildren.

Services -

(Continued from page one)
Johnson had lived in Eastland for 44 years.
Born in Georgia on June 2, 1889, he was married to Miss Della Lay on Nov. 23, 1919 in Eastland.
Palbearers for the services included Bernard Hanna, Frank Crowell, James Reid, Andy Taylor, Charles Beskow, Wendell Siebert and Rudolph Little and Travis Harrell.

New Employee

Bobby Bishop of Graham is a new employee at Safeway store in Eastland. Manager T. M. Temple announced this week. Bishop replaces Clem Measures who has transferred to a Fort Worth store.

POOL CLOSES

The Eastland Swimming Pool located in the City Park closed for the year Monday afternoon, according to an announcement made by city officials.

READ THE CLASSIFIEDS

Shrinks Hemorrhoids Without Surgery

Stops Itch—Relieves Pain
For the first time science has found a new healing substance with the astonishing ability to shrink hemorrhoids and to relieve pain—without surgery. In case after case, while gently relieving pain, actual reduction (shrinkage) took place. Most amazing of all—results were so thorough that sufferers made astonishing statements like "Piles have ceased to be a problem!" The secret is a new healing substance (Bio-Dyne®)—discovery of a world-famous research institute. This substance is now available in suppository or ointment form called Preparation H®. At all drug counters.

WE GIVE Round-Up STAMPS

Let's Go Save at SUPER SAVE

WHITE SWAN LUNCHEON MEAT 12-Oz. Can **39¢**

WHITE SWAN COFFEE All Grinds Pound Can **59¢**

ALL FLAVORS MELLORINE 3 Half-Gallon Cartons **\$1.00**

SUPER SAVE MARGARINE 2 Pound Cartons **33¢** QUANTITY RIGHTS RESERVED

ERISCO SHORTENING 8-Pound Can **79¢**

PRICES GOOD THROUGH SATURDAY, AUGUST 25

GOOCH RODEO BACON L.B. **39¢**

GOOCH BLUE RIBBON FRANKS L.B. **49¢**

NEUHOFF TENNESSEE FARM BRAND SMOKED SAUSAGE L.B. **65¢**

Baby Beef
Loin Steak L.B. **79¢**

Market Sliced
Bologna L.B. **39¢**

California
Lettuce Large Head **15¢**

HI-C Fruit DRINKS 3 46-Oz. Cans **89¢**

You will find our store HEADQUARTERS for SCHOOL SUPPLIES

ALADDIN Loose Leaf NOTEBOOK FILLER 300-Ct. Reg. \$1.19 Pkg. Value! **49¢**

BETTY CROCKER CAKE MIXES 3 Reg. Boxes **\$1.00** (White, Yellow, Devils Food)

SUPER DAVE MARKETS SOAP Bath Bar **21¢**
Toilet Soap **15¢**

DRINK COCA COLA 6-Oz. Bottles **59¢** Plus Depot
COCA COLA 12-Bottle Carton **59¢**

KRAFT'S Salad Dressing MIRACLE WHIP Quart Jar **49¢**

LIBBY'S TOMATO JUICE 46-Oz. Can **25¢**

TIP TOP Frozen LEMONADE Pink or Plain 6-Oz. Can **10¢**

GOLDEN HOP Frozen ORANGE JUICE 8-Oz. Can **15¢**

BOOTH Frozen FISH STICKS 8-Oz. Pkg. **29¢**

BANQUET Frozen CREAM PIES 14-Oz. Pkg. **39¢**

SCOTTIES FACIAL TISSUES White or Assorted 400-Ct. Box **23¢**

GERBER'S Strained BABY FOODS 4 1/2-Oz. Jars **63¢**

CARNATION EVAPORATED MILK 3 1/2-Ct. Can **43¢**

SUNSHINE KRISPY CRACKERS Pound Box **31¢**

AUSTEX CHILI With Beans 300 Can **39¢**

VICO Blue or Yellow Label DOG FOOD 300 Can **10¢**

SCOTCH Towels Large Roll **33¢**
Scotkin Dinner NAPKINS 30-Ct. Box **25¢**
12'S KOTEX Regular Box **33¢**
LUSTRE CREME Shampoo Reg. 69¢ Size **49¢**
COLGATE DENTAL CREME 3 1/2 Size **39¢**

CARNATION Instant DRY MILK 8-Quart Box **69¢**

HERSHEY'S CHOCOLATE SYRUP 18-Oz. Can **19¢**

BAMA RED PLUM JAM 18-Oz. Tumbler **29¢**

CHICKEN OF THE SEA TUNA 3 Reg. Cans **89¢**

LONGHORN CHEESE Lb. **59¢**
SALT BACON Lb. **49¢**

Calif. White Rose Potatoes **MacMOY'S Super Save** Bananas
10 lbs. **59¢** Home Owned—Home Operated 400 S. Seaman **2 lbs. 25¢**



FOR JUST A FEW CENTS A DAY

A CLASSIFIED AD HERE COSTS ONLY PENNIES A DAY, YET IT CAN BRING YOU PRICELESS RESULTS...

New Low Rates Now In Effect

- MINIMUM (20 words or less) 60c
- 1 Insertion 3c per word
- 2 Insertions 5c per word
- 3 Insertions 6c per word

EASTLAND TELEGRAM

YOUR "MARKETPLACE" AT HOME

SELL AND PROFIT ... BUY AND SAVE ... GET A BETTER JOB ... HIRE GOOD HELP!

Read and Use the Want Ads!

CALL MA 9-1707

FOR RENT

FOR RENT: Furnished apartment. Three rooms and bath. Nicely furnished. Two large closets. Apply at 2104 W. Commerce after 5 p.m. or weekdays or all day Sunday. Phone MA 9-1075 or MA 9-1101. tf

FOR RENT: Two bedroom house. 511 W. Patterson. See Monroe Walker, 306 N. Dixie. 76

FOR RENT: Furnished or unfurnished duplex. Apply 206 E. Valley. Phone MA 9-2326. tf

FOR RENT: Furnished four room house. Bills paid. 207 S. Walnut.

FOR RENT: Available Sept. 1st. Clean 5 room house. Good location. Inquire 308 E. Main. tf

FOR RENT IN OLDEN: Four room modern house with city water. See Dean Butler or Mrs. Hightower in Olden. 80

FOR RENT: Six room house with double garage. Shade trees. See Mrs. John W. Smith, 306 W. Plummer. tf

FOR RENT: Small furnished apartment. Close in. Apply 210 E. Valley. tf

FOR RENT: One and two bedroom furnished apartments. 611 Plummer. tf

FOR RENT: Lovely furnished or unfurnished apartments, any size, bills paid, maid and hotel services included, very reasonable. Also comfortable rooms with tile baths only \$39.95 monthly. Throw away your high bills and troubles and come live with us. Mrs. Robinson, manager, Village Hotel, MA 9-1716.

FOR RENT: Large house. See R. F. Taylor at 698 W. Patterson. Phone MA 9-2096. tf

BUSINESS SERVICES

A-1 Janitorial service — floor waxing, stripping, window cleaning. Office, commercial, residential. Daily, weekly, monthly. Phone MA 9-2583. tf

SPECIAL NOTICE

SPECIAL NOTICE: Horses broke and trained for cutting or reining. Have cattle and goats to work. Reasonable rates. Contact E. A. Hillner, Lazy P-Y Ranch, Route three, Box 323 B, Phone 692-1485, Wichita Falls, Texas. 77

NOTICE — Telegram Classifieds don't cost, they pay. tf

NOTICE: Chick's Radio and T. V., 103 E. Main. Service calls. \$2.50; work guaranteed 90 days. Phone MA 9-1374, day or night. tf

RECORD-KEEPING got you down? The Eastland Telegram has a complete line of book-keeping supplies, ledgers, pads and all the necessary accessories for efficient record-keeping. tf

NOTICE: Kindergarten, 903 W. Plummer, Ages 4 to 6 Tuesday, Wednesday and Thursday. Phone MA 9-2460. 76

NOTICE: Carpets clean easier with the Blue Lustre Electric Shampooer only \$1 per day. Coat's Furniture and Carpet Co. 77

FOR SALE: Up-right piano. Cheap. See it Friday. Travis Reese, Olden. 76

Helps Heal And Clear Itchy Skin Rash!

Zemo—liquid or ointment—a doctor's antiseptic, promptly relieves itching, stops scratching and se helps heal and clear surface skin rashes. Buy Extra Strength Zemo for stubborn cases!

EASTLAND ROTARY CLUB

Meets in White Elephant for noon luncheon. Call Mike George, 2-1495, for each Monday.

EASTLAND JAYCEES

Wives, forget break fast each 2nd and 4th Thursday. Get your JC off for 7 a.m. meet at White Elephant Restaurant

INGROWN NAIL HURTING YOU?
Immediate Relief!
A few drops of OUTGROW® bring blessed relief from tormenting pain of ingrown nail. OUTGROW® loosens the skin underneath the nail, allows the nail to be cut and thus grows further pain and discomfort. OUTGROW® is available at all drug counters.

SPECIAL NOTICE: RAILROAD INDUSTRY NEEDS MEN 17½ to 29 to qualify as Telegraph, Teletype, Telephone operators, clerks and agents. Positions available to those who qualify after short training with low tuition. Qualified men earn to \$450 a month plus overtime, vacations, transportation, hospitalization and retirement. For immediate personal interview, write Railroad Communication Training, Box RCT 5 Eastland Telegram. Give name, age, exact address and telephone. 76

NOTICE: Any type hay baled promptly and efficient. Also can condition your hay. I. B. Walker, call 2501, Olden collect. tf

MISC. FOR SALE

PEOPLE read the Telegram Classifieds. You're reading this one. tf

FOR SALE: Extra large white cast iron bathtub with fixtures. \$15. MA 9-2413 or MA 9-1707. tf

YES you can sell bicycles or roller skates with Telegram Classifieds. tf

FOR SALE: Three houses and ten acres land on Eastland City Park Hill. See Royce Phillips or W. F. Creager, Ranger. 80

FOR SALE: Two female chihuahuas. \$25 each. Call MA 9-1388. tf

FOR SALE: Dinnette suite, \$30.00; Sofa-bed, \$50.00. 205 S. Oklawaha. Phone MA 9-2301. tf

FOR SALE: Five pigs. J. C. Foreman, Olden. 77

FOR SALE: Clarinet, LeBlanc, Nobilet. Excellent condition. Call RE 4-5346, Gorman. 78

FOR SALE: 12 volt air cooler. Phone MA 9-1545. 76

FOR SALE: Two tandem trucks, one with winch. 8¼" and 10¼" pipe. Phone MI 7-3426, Ranger. tf

FOR SALE: Kodak Medallion 8 mm. movie camera with 1.9 lens. \$40. Nesco electric roaster. Like new. \$15. Phone MA 9-1632. tf

FOR SALE: Saddle pony and Garden mule. Jack Townsend, Morton Valley. Phone MA 9-1610. tf

FOR SALE: Ten pairs of young cows and calves. Also 20 head of good milk goats. Phone 2374, Olden. tf

FOR SALE: 1952 Harley-Davidson motorcycle. See David Willoughby, 415 Foch, after 4:30 p.m. tf

FOR SALE: 2 young white-face cows with baby calves. Also 5 heavy Springers. Phone MA 9-2683. tf

FOR SALE: 200 laying hens. Phone MA 9-2683. tf

FOR SALE: Like new Catalina Range with timer, magic-eye burner, griddle, ovenlight and glassed door. Call MA 9-2413 or MA 9-1707. tf

FOR SALE: Famous Cedar Crest work shoes and boots, Army and Navy oxfords from \$6.95 to \$12.95, folding, aluminum and steel cots, comforts, blankets, sleeping bags, tarpaulins, tackle boxes, tool boxes, gas cans, tin cups, camp stools. Many other items, all at LOW-LOW prices, ARMY SURPLUS STORE. EASTLAND. tf

THE GIFT House, Cisco — A haven for gifts, ideas for the home; complete assortment of Christmas cards. American designs and imports from all over the world. tf

EASTLAND CHAPTER NO. 280 O. E. S.
Meets the first Tuesday of each month at 8 p.m. in the Masonic Hall. Call Mrs. Pebble Boles, Sec., for information. MA 9-2733.

MASONIC LODGE NO. 467
Meets second Thursday of each month at 8:00 p.m. In the Masonic Hall. Call C. L. Langlitz for information or L. E. Huckabay, Sec., 9-1391, for information.

WE BUY AND SELL USED FURNITURE
Phone MA 9-1740
WAYNE JACKSON

HELP WANTED

HELP WANTED: Dairy Treat. Contact K. Marrs. Don't Call. tf

REAL ESTATE

FOR SALE OR TRADE: Will sell or trade equity in modern, roomy three bedroom home in Abilene for lake or local property. Has chain-link fence and down-drought air. Call MA 9-2413 or MA 9-1707 or write Box 29. tf

FOR SALE OR TRADE: Clean 1949 model Oldsmobile '38'. Will take light two wheel trailer in trade. See at 209 W. Patterson. tf

FOR SALE: Our three bedroom Hicrest home, 2 tile baths, central air and heat. 306 S. Oklawaha. Business property 214 S. Seaman. Phone MA 9-1742. tf

FOR SALE: House in Morton Valley three bedroom, bath, good water, deep well and pump. One acre. High and cool. On highway. Phone M. A. Treadwell, MA 9-2017. tf

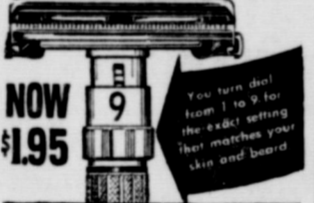
FOR SALE: New two bedroom. Interior almost complete. 500 block East Commerce, Eastland. \$1798 cash as is or \$39.98 a month with no down payment. Call collect Modern Homes Construction Company, Pershing 2-4085, Fort Worth. tf

FOR SALE: Beautiful new brick home, three bedrooms, 1½ baths, all electric kitchen, range, oven, vent a hood, dishwasher, disposal, central heating and central refrigerated air conditioning, double garage, most beautiful tree shaded corner lot in town — well located at the corner of 500 E. Conner — F.H.A. quality approved — nominal down payment with payments like rent — Call Don Kinnaird Jr. at MA 9-2544 or Don Pierson at MA 9-1033. tf

MOTEL MANAGEMENT
Motel Industry needs 90,000 employees. Earn \$6,000 to \$20,000 per year. If you qualify, you will be trained Home Study and in luxury motel. Don't let age, experience or education hold you back. We can finance your training if you qualify. Write UNIVERSAL MOTEL TRAINING, 6513 East Lancaster, Fort Worth 12, Texas

New! Gillette Adjustable Razo.
9 Settings for Superb Shaves.

NOW \$1.95
You turn dial from 1 to 9 for the exact setting that matches your skin and beard!



EASTLAND SERVICE PARTS CO.
Auto & Truck PARTS IN STOCK & OVER NIGHT DELIVERY LOWEST PRICES ANYWHERE
Independently Owned Nationally Affiliated
CALL US FIRST!
AUTO PARTS MA 9-1733
(Clip This Coupon and Place It Near Your Telephone)

THURMAN ELECTRIC
Electric Motor Rewinding and Repair. 202 S. Seaman, Eastland.

PERMANENTS
\$10 Creme-Oil Waves \$6.50
\$12 Creme-Oil Waves \$7.50
\$12 Lanolin Waves \$8.50
Other waves \$10 and up
Basham Beauty Bar

YOU can rent that spare bedroom with a Telegram Classified!

FOR SALE: Three good buys in three-bedroom homes. One G. I. equity. All in good location and good condition. M. A. Treadwell Sr. Phone MA 9-2117. tf

MIS WANTED

NEED a baby sitter, a car port a lawn mower, a job, an apartment, an assortment of flower seeds? Use Telegram Classifieds. tf

WANTED: Job taking care of elderly lady who is not bed fast. Phone HI 9-4369, Breckenridge at 2 p.m. or write Mrs. A. D. Shirley, Gen. Del., Breckenridge.

WANTED — An opportunity to prove that Telegram Classifieds work hard for you. tf

PERSONALS

If you are lonely, broken hearted, troubled in spirit or burdened with a sin-sick soul, you can find comfort, consolation and peace at First Methodist Church. tf

FOUND — A perfect way to get rid of those discards at a profit. Sell them with a Telegram Classified. tf

USE as many as 20 words to describe your 'for rents', 'for sales', or 'what have you', for only 60 cents per insertion. tf
HOW do you know you can't sell it? Have you tried a Telegram Classified? tf

CHICK'S RADIO AND TV
103 E. Main
Service Calls \$2.50
Work guaranteed for 90 days
Phone MA 9-1374
Day or Night

MATTRESSES
Save up to 50% renovating choice of color and firmness. Complete bedding. Made and guaranteed by WESTERN MATTRESS CO., San Angelo. Phone MA 9-2689, Eastland and leave address.

THE HOTEL QUARLES
Originally West Texas Hospital
402 West Main - Ranger
Will Keep Elderly People Room and Board. Reasonable rates.
HOME COOKED MEALS ALL YOU CAN EAT FOR PUBLIC

T. L. FAGG REAL ESTATE
Property Management Home and Farm Loans

WANTED
Good clean automobiles. Any make—Any Model Considered.
BLEVINS MOTOR CO.
See Jay Blevins.
Ph. MA 9-2433
513 West Main Eastland

COMPLETE AUTO REPAIRS

VIC'S AUTO REPAIR
306 W. MAIN ST. EASTLAND
TELEPHONE MA 9-2111
DAY OR NIGHT

As It Looks From Here

WASHINGTON, D. C. — The following story appeared in newspapers from Miami, Florida to San Francisco, California; from New York City to Cincinnati to Duluth and Denver. It is an excerpt from a speech which I made before the House of Representatives on May 31, 1962.

"Representative Omar Burleson, Democrat of Texas, told applauding House colleagues yesterday that it would be a 'ridiculous and absurd' mistake for the United States to bring in thousands of Chinese refugees from Hong Kong. 'How bullbale can we get,' he said, 'to welcome with open arms people about whom we know nothing.'"

"Burleson, a member of the House Foreign Affairs Committee, said he knew he would be criticized for making the comments. He also said there would be some who would charge that he was not in favor of feeding hungry people."

"Well, I'm in favor of feeding them in Hong Kong," he told the House.

"Burleson said this country brought in thousands of Cubans from Hungary and Cuba after crises in those countries."

"Some of them, he said, ended up 'picketing the White House' thus mistaking 'freedom and liberty for license.' 'Many of these people have no concept of ... out customs and traditions.'"

Because of this publicity, hundreds of letters pour in, the vast majority of which express approval. Those which are critical are invariably bitter in nature and, in fact, some are insulting. This is to be expected.

Of course, mail from our own constituents on any subject will be answered first, but eventually all these letters will have a reply, even if it may take most of the summer.

As mentioned in this column of May 31, this whole idea is, in my opinion, about as asi-

nine as anything our Government has ever done.

As mentioned in the speech before the Congress, while we are supposedly trying to ferret out subversion with our right hand, the left hand is waving in these hordes of people about whom we know absolutely nothing, and we have no way of finding out. As if we do not have enough problems already, we invite more by compounding conditions about which those who want to relieve the situations talk — more Federal Aid to Education, more Public Housing, more this and that and the other — but it seems there are these groups who want to take care of the foreigners before we take care of our own people.

There was a day not long ago when it was a crime to smuggle Chinese into the United States. In 1943 a legal quota of 105 annually was established for Chinese, which quota is hundreds of times oversubscribed.

Now there are two bills pending in the House of Representatives and one in the Senate to open up immigration to Chinese escaping out of Communist China into Hong Kong.

If the Great China Wall was around Communist China today and worked as it did in ancient times, there would be little illicit narcotics in this Country now, which is a big business over the world for Communist China, the best market for it being the United States.

Read The Classifieds

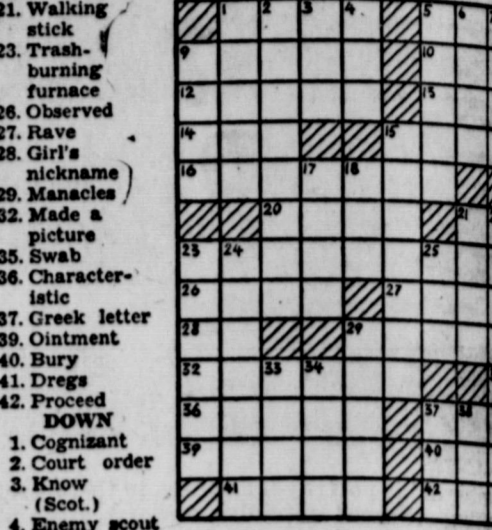
Miss Nancy Lee Owen's POTTERY SELECTIONS from the Smitty's Jewelry collection will be on display at Robertson Radio & TV Store during the coming week. Phone MA 9-1625. SMITTY'S JEWELRY Closed This Week

CROSSWORD

ACROSS
1. Inquires
5. Door fastening
9. Brush away
10. Assign
12. Wary (Scot.)
13. Viscous mud
14. Cunning
15. Russian plain
16. Shortest route
19. Near
20. Not anyone
21. Walking stick
23. Trash-burning furnace
26. Observed
27. Rave
28. Girl's nickname
29. Manacles
32. Made a picture
35. Swab
36. Characteristic
37. Greek letter
39. Ointment
40. Bury
41. Dregs
42. Proceed DOWN
1. Cognizant
2. Court order
3. Know (Scot.)
4. Enemy scout

5. Celerity
6. German river
7. Pillowcase
8. Food fish (W.I.)
9. Crust on a wound
11. Seasaw
15. Scoffed
17. Out of lamb
18. Hostelry
21. Jargon
22. Tries

23. Little islands
24. Indifferent
25. In former (slang) tains
29. Enter-tains
30. Lassoes
31. Mast
33. Gypsies
34. Bee shelter
37. Undressed



FURNITURE CARPET APPLIANCES
Quality Merchandise at Every Day Low FREE DELIVERY — NO CARRYING CHARGE ON FURNITURE AND CARPETS FOR 1 FULL YEAR
Ranger Furniture Exchange
"BRASHIER'S" Ranger Phone MA 123 N. RUSK

Last of the red hot '62 Valiants!



We're cleaning out and you clean up on this red hot compact—now at end-of-model-year sale prices!

Better bring your asbestos gloves—the year-end deals on this sizzling compact are that hot. Out goes every Valiant we have in stock to make room for the arrival of '63 models. If you're burning with a desire to save money, you couldn't possibly pick a better time to do it than right now. So hotfoot it down to your nearest Plymouth-Valiant Dealer today!

IF YOU'RE HOT FOR SAVINGS—HURRY DOWN TO OUR SHOWROOM!

Blevins Motor Company
514 W. Main
Rushing Motor Company
215 South Seaman

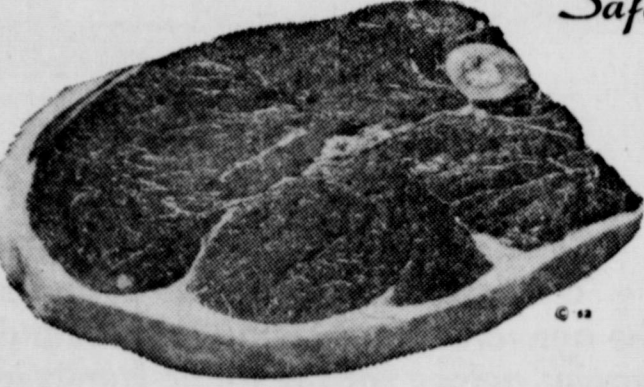
Your money's worth more at SAFEWAY!

- ork & Beans** Van Camp's. Rich in nutrition. **4** No. 300 Cans **49¢**
- aby Food** Gerber's Strained Fruits & Vegetables. **6** 4 1/2-Oz. Jars **59¢**
- trawberry Jam** Shasia. **44-Oz. Jar** **79¢**
- ane Sugar** Imperial, Domino or Supreme. **5** -Lb. Bag **49¢**



SPECIAL OFFER!
King Size TV Trays **99¢**
 Each
Full size, 20 1/4" x 16 1/4" folding trays with 1/2" brass tubular legs. Stain and alcohol resistant. Colorful designs to choose from. Regular \$1.98. No limits - shop early.

- Mixes** Pillsbury Deluxe Assorted flavors. Reg. Box **39¢**
- st Tuna** Chunk light meat. 6 1/2-Oz. Can **35¢**
- ng Food** Yellow Label. **2** 1-lb. Can **21¢**
- Lids** And caps. Dome vacuum seal. 12-Ct. Pkg. **35¢**
- Soap** Assorted colors. **2** Bath Bars **29¢**
- leaf Tea Bags** Orange Palace. 48-Ct. Box **60¢**
- leaf Tea** Instant. (1 1/2-Oz. Jar .. 79¢) 4-Oz. Jar **44¢**
- ake Chip Cookies** Sunshine. 7 1/4-Oz. Bag **29¢**
- stant Coffee** Lets you sleep. 5-Oz. Jar **97¢**
- Cheese** Kraft Philadelphia, Plain, Pimiento, Chire. 2 3-Oz. Pkg. **29¢**
- ite Rolls** Parkerhouse or Cloverleaf. 28-Oz. Pkg. **35¢**



Safeway Superb Meats!
Round Steak **79¢**
 U.S.D.A. Choice Grade Heavy Beef Round Steak. Delicious served pan fried economical and nutritious. Lb.

More Meat Values!

- Jumbo Bologna** 33¢
Jumbo, by the Chunk. Lb.
- Braunschweiger** 49¢
Smoked, by the Chunk. (Artificial Casing.) Lb.
- Chunk Cervelat** 49¢
Texas Style. Lb.
- Armour Ham** 3 -Lb. Can **\$2.69**
Pear Shaped Canned. Boneless - No Waste.

- THICK SLICED Bacon** 2 -Lb. Pkg. **99¢**
Safeway. A true breakfast treat.
- Rump Roast** 75¢
U.S.D.A. Choice Grade Heavy Beef. Lb.
- Chicken Hens** 35¢
U.S.D.A. Inspected for Wholesomeness. U.S.D.A. Graded "A" Ready to Cook. 3 1/2 to 6-lb. Lb.

Always Fresh!

- Cole Slaw** Lucerne. Regular 39¢. 16 Oz. Ctn. **29¢**
- Tartar Sauce** Lucerne. (New at Safeway.) Regular 49¢. 8 Oz. Jar **39¢**

Bakery Features!

- Raisin Bread** 19¢
Skylark not iced. Reg. 27¢ value. 1-Lb. Loaf
- Twin Rolls** 23¢
or Cloverleaf. Skylark Brown & Serve. 12-ct. Reg. 25¢. "2¢ off." 17 Oz. Pkg.
- Hamburger Buns** 19¢
Mrs. Wright's. 8 count. 13-Oz. Pkg.
- Profile Bread** 25¢
For sandwiches. 1-Lb. Loaf
- Tomato Juice** Town House. 2 46-Oz. Cans **49¢**
- Highway Pears** For desserts or salads. 2 No. 2 1/2 Cans **59¢**
- Liquid Bleach** White Magic. 1/2-Gal. Jug **25¢**

This Coupon Worth 50 FREE GOLD BOND STAMPS
 Regularly earned Gold Bond Stamps with the purchase of 10-Lb. Bag Kitchen Craft FLOUR
 Coupon Expires August 25, 1962.

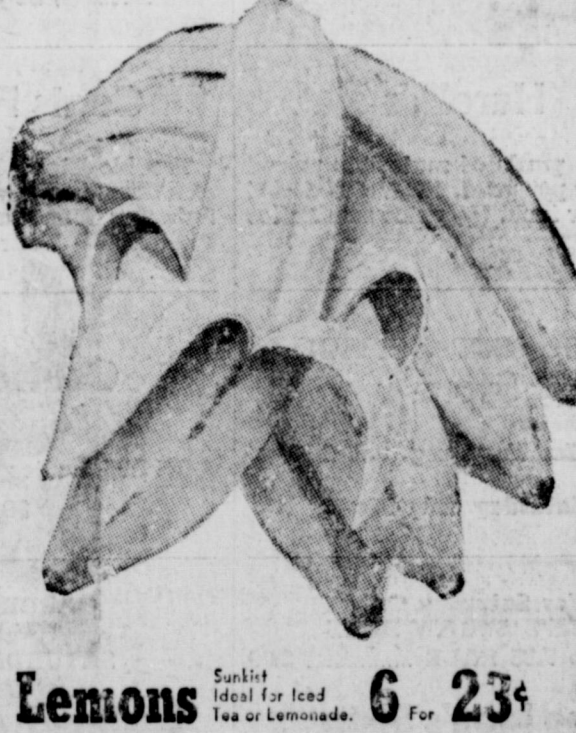
This Coupon Worth 50 FREE GOLD BOND STAMPS
 Regularly earned Gold Bond Stamps with the purchase of 4-Oz. Can Crown Colony Pure BLACK PEPPER
 Coupon Expires August 25, 1962.

This Coupon Worth 50 FREE GOLD BOND STAMPS
 Regularly earned Gold Bond Stamps with the purchase of TWO Regular Packages Sno-Fresh Frozen Blackeye Peas or WHOLE BABY OKRA
 Coupon Expires August 25, 1962.

This Coupon Worth 50 FREE GOLD BOND STAMPS
 Plus your regularly earned Gold Bond Stamps with the purchase of Any Baby Beef or Heavy Beef BEEF ROAST
 Coupon Expires August 25, 1962.

Redeem this coupon for **50 FREE GOLD BOND STAMPS**
 with purchase of \$5.00 or more (Excluding Cigarettes)
 One Per Customer • Coupon Expires August 25, 1962.

This Coupon Worth 50 FREE GOLD BOND STAMPS
 Plus your regularly earned Gold Bond Stamps with the purchase of 10-Lb. Bag U.S. No. 1 RED POTATOES
 Coupon Expires August 25, 1962.



Safeway Guaranteed Fresh Produce!

- Bananas** 10¢
Golden ripe tropical fruit ripened a better unhurried way to preserve their natural flavor. 15.
- Peaches** 15¢
California's finest. Fresh and flavorful. Lb.
- Bartlett Pears** 19¢
California's finest. For Out-of-Hand eating. 1 lb.

School Supplies!

- er Paper** 300-Sheet Pkg. **66¢**
with filler paper for school term. Poly wrapped.
- lit** With vacuum bottle. Regular \$3.19. Each **\$2.19**
- ch Box** Plastic. For packing lunches. Each **25¢**
- astic** No fuss or mess. Each **19¢**
- Bowl** Plastic. Handy, economical. Each **15¢**

More Values!

- rn** 3 No. 303 Cans **4.9¢**
Golden.
- nto Beans** 2 -Lb. Cello Bag **19¢**
and economical.

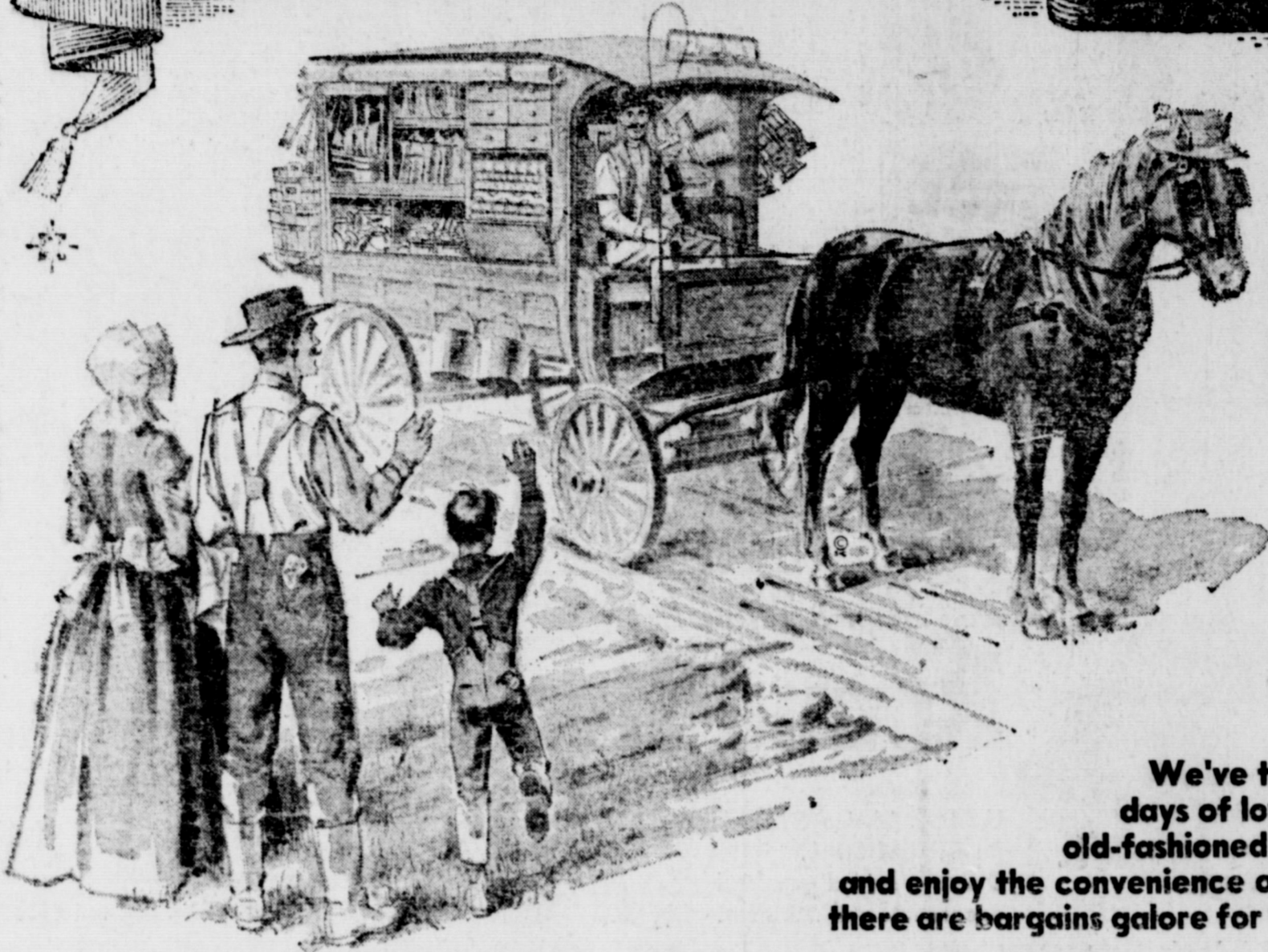
- Peanut Butter** Nu Made Creamy or Chunky. 12 Oz. Jar **49¢**
- Mayonnaise** Nu Made. Quart Jar **49¢**
- Sandwich Spread** Nu Made. 16 Oz. Jar **33¢**
- Peach Pie** Gel-air Frozen. Large 8". Family size. Pie **35¢**

- Duz Detergent** Premium packed. Large Box **55¢**
- Zest Beauty Bar** Get that Zest glow. 2 7-oz. Bars **29¢**
- Dreit Detergent** Germaseptic. Large Box **33¢**
- Kleenex Tissues** White, aqua, pink or yellow. 400 Ct. Box **27¢**
- Delsey Tissue** White or assorted colors. 2 Roll Pack **27¢**
- Zee Tissue** White or assorted colors. 4 Roll Pack **35¢**
- Zee Napkins** White or assorted colors. 2 3-Ct. Pkg. **25¢**
- Kleenex Napkins** White table size. 50 Ct. Pkg. **25¢**
- Zee Towels** Paper. Pink or yellow. Cloth Roll **29¢**
- Sandwich Bags** Zee. For packing lunches. 10 Ct. Pkg. **19¢**
- Kotex Sanitary Napkins** Reg. Super or Junior. 12 Ct. Box **35¢**

Prices and Coupons Effective Thurs., Fri. and Sat., Aug. 23, 24 and 25, in Eastland
 We Reserve the Right to Limit Quantities. No Sales to Dealers.

SAFEWAY

EASTLAND OLD TIME



VALUE

DAYS

We've turned back the clock to the good old days of low prices and high quality, with a good old-fashioned sale! Get in on these old-time values, and enjoy the convenience of shopping around home! Come early there are bargains galore for the whole family in Eastland!

SHOP THESE EASTLAND MERCHANTS FOR BIGGER SAVINGS THAN EVER BEFORE!



Mode-O-Day
Blouses 99c

Eastland Service Parts
112 Commerce Ph. MAin 9-1733
B-K Flashlight Batteries 10c ea.
Champion Sparkplugs 55c ea.

WHILE THEY LAST
All Metal Galvanized Gott and Horton

WATER CANS & COOLERS
20% DISCOUNT

Eastland Supply Co.

Smitty's Jewelry

All Watch Bands 1/2 Price

Harelik's

Over 300 yards of materials priced up to 79c per yard. NOW ON SALE AT 1c per inch. (1/2 price sale ladies shoes.)

Goodyear Service Store

G. E. Ice Tray, reg. val. 2.29
Saturday only 98c

For Saturday Only
MEN'S STRAW HATS
Values to 7.95 SALE 3.99

The Men's Shop
113 S. Lamar

G. E. LIGHT BULBS
1/2 PRICE (12c each)

Robertson Radio and TV Service
100 W. Commerce

ELECTRIC BLANKETS
double bed, single control
\$13.95

Double bed, double control
\$17.95

Western Auto

Altman's

Blouse \$1. Skirts, \$1.99
Dresses, \$5 and 1/2 Price

Coats Furniture

Trouble Light, Laundry Basket
Throw Pillows, Pup Tents
Spinning Wheel and Rocking Chair
Planters — Your Choice 77c each

Central Drug

16.95 Ladies Wrist Watch
\$9.95

GARDEN HOSE
AT 1/2 PRICE
SATURDAY ONLY

Eastland Auto Parts
300 S. Seaman Ph. MAin 9-2158

3-PIECE MIXING
BOWL SET

Reg. 1.29 Saturday only 99c

Perry Brothers
107 S. Lamar

Eastland Discount Stores

No. 1 Boy's shirts, .69 — 1.98
No. 2 Randy Kordroys, \$2.29
No. 3 Playclothes, from 2.59



Support Your Community — Shop Near Home!

HOLY TRINITY EPISCOPAL
710 So. Seaman St.
The Rev. Wm. Ralph Woods,
Vicar
SUNDAY
9:15 a.m. Church School
10:00 a.m.: Morning Prayer
10:15 a.m.: Holy Communion
and Sermon
MONDAY
7:30 p.m.: Vestry meeting at
home of Joseph Neepers,
501 West 18th, Cisco.

Read The Classifieds

FIRST PRESBYTERIAN CHURCH
Rev. Eugene Surface, Pastor
SUNDAY
10:00 a.m. - Church School
11:00 a.m. - Divine Worship
12 noon - Monthly meeting
of the Church Session on the
Sunday after the first Wednes-
day.
Tuesday
9:30 a.m. - United Presby-
terian Woman meet on the
first and the third Tuesdays
of each month.

CHURCH NEWS

CHURCH OF THE NAZARENE
Rev. Clarence Manners
613 W. Main
SUNDAY
10—Sunday School
11—Morning Worship
6:45 p.m.—N.V.P.S.
7 p.m.—Evening Services
Wednesday
7 p.m.—Mid-week Prayer
Service
FRIDAY
Noon—Prayer and Fasting
3:15 p.m.—Children Hour

FIRST METHODIST CHURCH
Wm. S. Fisher, Pastor
215 S. Mulberry
SUNDAY
9:45 a.m.: Church School
10:55 p.m.: Worship Service
6:15 p.m.: Youth Fellowship
7 p.m.: Evening Worship
TUESDAY
9:30 a.m.: W.S.C.S.
WEDNESDAY
7:30 p.m.: Choir rehearsal
Wesleyan Guild every 1st
& 3rd Wednesdays
Official Board Monday
after 1st Tuesday
Five Commissions—every
1st Monday

METHODIST CHURCH
Willias C. Fisher, Pastor
Olden
Sunday
Morning Worship 9:00 AM

CHRISTIAN SCIENCE
Piammer and Lamar
Sunday
9:45 a.m.: Sunday School
11 a.m.: Sunday morning ser-
vice.
Wednesday
7:30 p.m.: Mid-week Service
The public is cordially in-
vited.

FIRST CHRISTIAN CHURCH
Corner Olive & Lamar
Ray Heckendorn, Pastor
SUNDAY
9:45 Church School
11:00 Morning Worship
7:00 Evening Vespers
WEDNESDAY
5:00 Junior Choir
6:30 Adult Choir

BETHEL BAPTIST CHURCH
Rev. Jimmy Roberts, Pastor
1304 W. Main
SUNDAY
9:45 a.m.: Sunday School
11 a.m.: Morning Worship
6:30 p.m.: Training Union
7:30 p.m.: Evening Worship
WEDNESDAY
6:15 p.m.: Primary teachers
and officers meet
7:30 p.m.: Midweek prayer
8:15 p.m.: Choir practice

OLDEN BAPTIST CHURCH
Rev. Bill Pentand, Pastor
Olden
Sunday
Sunday School 9:45 AM
Morning Worship 11:00 AM
Training Union 6:00 PM
Evening Service 7:00 PM
WEDNESDAY
Prayer Service 7:30 PM

FLATWOOD CHURCH OF CHRIST
Thurman Carte, Pastor
Flatwood
Sunday
Sunday School 10:00 AM
Morning Worship 11:00 AM
Evening Service 7:00 AM

CARBON METHODIST CHURCH
James W. Waller, Pastor
Carbon
Sunday
Sunday School 10:00 AM
Morning Worship 1:00 AM

ASSEMBLY OF GOD
Rev. Frank Evans, Pastor
SUNDAY
9:45 a.m.: Sunday School
11 a.m.: Morning Worship
6:45 p.m.: Christ Ambassa-
dors
7:30 p.m.: Evening Service

CALVARY BAPTIST
REV. FLOYD OSBORN
207 N. OAK ST.
SUNDAY
10 a.m.—Sunday School
11 a.m.—Morning Worship
7 p.m.—Prayer Service
7:30 p.m.—Evening Wor-
ship

CHURCH OF GOD
Corner Lamar and Valley
Pastor
R. Joe Downs
SUNDAY
10 a.m.: Sunday School
11 a.m.: Sermon
6:45 p.m.: Youth Fellowship
7:30 p.m.: Sermon
WEDNESDAY
7:30 p.m.: Prayer Service

UNITED PENTECOSTAL CHURCH
208 N. Dixie
Rev. Freddie Waldrep
SUNDAY
9:45 a.m.: Sunday School
11 a.m.: Morning Worship
7:45 p.m.: Evening Service
WEDNESDAY
7:45 p.m.: Prayer Meeting
SATURDAY
7:45 p.m.: Pentecostal Con-
querers.

CHURCH OF CHRIST
Corner of Plummer and
Daugherty
Gary B. Adams, Minister
SUNDAY
9:30 a.m.—Bible Class For
All Age Groups.
10:20 a.m.—Morning Wor-
ship
2:00 p.m.—Visitation of
Shut-ins.
6:00 p.m.—Young Peoples'
Meeting.
7:00 p.m.—Evening Wor-
ship.

WEDNESDAY
9:30 a.m. — Ladies' Bible
Class.
7:00 p.m. — Prayer Meet-
ing and Bible Study.

CARBON BAPTIST CHURCH
Rev. Jimmy Turner, pastor
SUNDAY
10 a.m.: Sunday School
11 a.m.: Morning Worship
6:30 p.m.: BTU
7:30 p.m.: Evening Worship
MONDAY
2 p.m.: WMU
WEDNESDAY
7 p.m.: Prayer Service

ST. FRANCIS CATHOLIC CHURCH
Rev. Joseph L. Van Winkle,
C.L.C.M.
SUNDAY MASS
1st and 3rd Sunday at 9:30
a.m.
2nd, 4th and 5th Sunday at
11 a.m.
Every Tuesday Mass at 6:30
p.m. Holy Days Mass at 7:15 a.
m.

FIRST BAPTIST CHURCH
Rev. Haston Brewer, Pastor
108 W. Plummer
SUNDAY
9:45 a.m.: Sunday School
11 a.m.: Morning Worship
6:15 p.m.: Training Union
7:30 p.m.: Evening Service
TUESDAY
9:30 a.m. & 1 p.m.: WMU

HOLY TRINITY EPISCOPAL CHURCH
710 S. Seaman
Rev. William Ralph Woods
SUNDAY
9 a.m.: Morning Prayer
9:15 a.m.: Holy Communion
& Sermon

Mrs. Butler Is Honored
Mrs. J. C. Butler was hon-
ored on her 37th birthday at a
dinner held Sunday in the home
of her sister, Mrs. James Sher-
rill.
Menu for the occasion con-
sisted of charcoal steaks, beans,
potatoes, corn, pie.
Attending the
Mr. and Mrs. J.
Nona Linda, G.
Raymond Fox.
Following the
group enjoyed
Lake Leon.
Read The

Hamner Life Insurance Co
Ben E. Hamner, President

This company has been in operat-
ion since 1942 selling policies to be
primarily for burial purposes. We write
to \$600 and our policies are paid in cash
allows freedom in the selection of the
Director of your choice.
Ages from 1 month to 90 years.
For further information come by to
Hamner Funeral Home, 301 S. Lamar
P. O. Box 431 Dial MAIN

SEE US FIRST for your HOME LOAN



We offer low cost financing for —

- New Home Building or Buying.
- Home Remodeling, including all permanent type additions.

See Us without Obligations
The Best Place to Save and Borrow

FIRST FEDERAL SAVINGS & LOAN ASSOCIATION

204 Main Ranger, Texas MI 7-1611

SPECIALIZING IN SAVINGS ACCOUNTS and HOME LOANS

Insurance and Real Estate
D. L. KINNAIRD

Life - Fire - Auto - Farm
Polio - Bonds

42 years in the Insurance
Business in Eastland

Free Estimates
On A New ROOF

Or Repair your old Roof
Residential & Commer-
cial

Eastland - Ranger Roofing Co.
Noble Squires
Ph. MA 9-2370 Eastland

modernize your heating!

15% DISCOUNT
(August Only)

now on a new GAS unit

AT LONE STAR GAS

Give your home a new modern comfort (and value) . . . at tremendous savings now! Choose from wide selection of GAS heating units at special prices.

CENTRAL GAS HEATING — whole-house healthful, "fresh-air" warmth. Closet, attic or under-floor installation. Automatic controls. Fuel-saving economy, dependable carefree performance with GAS. (Add CENTRAL GAS COOLING later.)

GAS FLOOR FURNACE — a bargain for "cold" room or new room. Circulates warm air from the floor up economically, thanks to GAS. Automatic. Thermostat regulates warmth you want. Dependable on coldest days.

GAS WALL FURNACE — ideal where floor space is at a premium. Get a lot of comfort from these durable, dependable, big heaters plus GAS economy. Thermostat control. Popular for offices, apartments, homes.

GAS BATH HEATERS — fast, dependable warmth. New wall insert models install above tile easily. Enclosed, safe, modern in appearance — low-cost GAS operation. Never fails from weather.

GAS ROOM HEATERS — lowest cost comfort you can buy. Fast warmth when you need it. Never fails from weather.

SAVE NOW—BEFORE THE WINTER RUSH! TERMS UP TO 36 MONTHS.
Let a Lone Star heating specialist analyze your heating needs with no obligation.

CHURCH OF CHRIST
Corner of Plummer and Daugherty
Gary B. Adams, Minister
SUNDAY
9:30 a.m.—Bible Class For All Age Groups.
10:20 a.m.—Morning Worship
2:00 p.m.—Visitation of Shut-ins.
6:00 p.m.—Young Peoples' Meeting.
7:00 p.m.—Evening Worship.

WEDNESDAY
9:30 a.m. — Ladies' Bible Class.
7:00 p.m. — Prayer Meeting and Bible Study.

CARBON BAPTIST CHURCH
Rev. Jimmy Turner, pastor
SUNDAY
10 a.m.: Sunday School
11 a.m.: Morning Worship
6:30 p.m.: BTU
7:30 p.m.: Evening Worship
MONDAY
2 p.m.: WMU
WEDNESDAY
7 p.m.: Prayer Service

How's your COVERAGE?

(If you're not satisfied, call M. H. Perry, MAin 9-2275 He's the Southland Man)

EASTLAND AUTO PARTS
300 S. Seaman MAin 9-2158

FULLY-EQUIPPED
AUTOMOTIVE MACHINE SHOP
VALVE GRINDING
BRAKE DRUM TURNING
HEAD SURFACING
VALVE JOBS
BLOCK BORING
SLEEVE INSERTING
VALVE SEATING

ALWAYS IN STOCK
COMPLETE LINE
AUTOMOTIVE TRUCK TRACTOR PARTS

EASTLAND AUTO PARTS
300 S. Seaman MAin 9-2158

DRESSY . . . LIGHT . . . AND PRACTICAL CEDAR CREST WELLINGTON BOOTS



Smooth dress leather black and tan \$9.95
Fawn Suede cork sole \$8.95

Army Surplus Store
Eastland, Texas

BACK-TO-SCHOOL SPECIAL classic shirt dress . . .

• Our famous classic dresses — in transitional colors and fabrics. Styled in California by MODE O'DAY these dresses have a timeless smartness always in style. 5.99 to 8.99

SATURDAY OLD-TIME VALUES

DRESSES . . . Values to 5.99
LINGERIE . . . 1.99 to 2.99 Values
BLOUSES
HOSIERY . . . Seamless, (3 pr. 2.00)

MODE O'DAY EASTLAND

Faster Harvest



More than once, a Lilliston Combine has been called "the peanut harvest express." It started with a farmer who watched it race through his 35 acres, picking his crop in less than two days time. Just before the rains came.

The folks at Lilliston know full well how important it is to get the nuts off the ground in a hurry. For fifty years, they've been pursuing the best and quickest way to harvest peanuts, and making the machines to do it.

That brings us to 1962.

The new Lilliston Peanut Combine is the fastest, most effective non-stop performer that ever came off a production line. No matter what the conditions—green nuts, tough vines, wet field or dry—the Lilliston is made to get the job done. From pick-up to hood, it's the biggest producer in peanut harvesting history.

Come by and we'll show you all the reasons why the Lilliston's the first in the field. By much wider margin than ever before.

LILLISTON IMPLEMENT COMPANY

THE WORD FOR LILLISTON IS MORE! (Except for the price—that's less)

Have you seen Lilliston's new 1100 Series Digger-Shaker-Windrower? It will give you a perfect start to a productive harvest—and keep doing it year after year.

JOBE IMPLEMENT
GORMAN, TEXAS

READ THE CLASSIFIEDS

No Laughing Matter -

to those who will lose their 20% credit for driving on account of the repeal of the Safe-Drive Insurance Plan on August 1st. But there's a way out! This agency has available a dividend plan under which safe drivers can continue to receive money on their insurance if their driving records and record make them eligible for this plan. If your car insurance expires this month, drop by the office and let us explain this plan to you. No obligation.

Earl Bender & Company
 (Insurance since 1924) Texas

Box Office Opens 7:30
Starts at 8:15
Box Office Closes 9:30

HELL IS FOR HEROES!
 McQueen ★ Bobby Darin ★ Fess Parker
 Harry Guardino ★ Nick Adams

FEUDIN' FUSSIN' and A-FIGHTIN'
 O'Conner ★ Marjorie Main ★ Percy Kilbride

That's right! They call these pants "White LEVITS!"



LEVI'S SLIM FITS

You can see the LEVI'S look in LEVI'S Slim Fits. The long, lean, tapered legs, low waist and yoke back. You'll like the slim fit of LEVI'S Slim Fits, in rugged twill. They're dressy enough for school and leisure wear—tough enough for sports and work. Try them soon.

What To Do About Hay Fever — Except Sneeze, Of Course

Hay fever, producer of several million watery eyes, runny noses and sneezers each season, is produced by substances called allergens. One of the most frequently involved allergens in hay fever is ragweed pollen.

From mid-August to first frost is the worst season of the year for hay fever sufferers. Persons with tear-filled eyes and runny noses are already evident in this county.

When the hay fever allergen enters the body it speeds up production of antibodies. These chemical policemen rush to battle the allergen and the action releases powerful chemicals. One of these is histamine. The favorite temporary

remedy is an antihistamine, to combat the effect of histamine in the body.

A tolerance to pollens can be built up by injecting a dilute solution of them under the skin, says Today's Health, the magazine of the American Medical Association. The common method is to begin three months ahead of the season and inject increasingly large doses at five day intervals. These shots must be given only by experts. Improperly used they could cause more trouble than the hay fever itself.

Hay fever is a wide open field for the medical quack, and the sufferer will hear of a wide variety of "cures." Most of them are useless. The most common preventives for hay fever are:

—Get specific anti-hay fever shots well ahead of the season.

—Keep away from areas where ragweed pollen loads the air.

—Air conditioning, both at home and in the office, combined with good air filters, will often help.

—Antihistamine drugs lessen congestion and relieve itching.

—Keep your home immaculately clean and free of dust—as is possible in Central West Texas.

Hunt Children To Have Reunion In Eastland

Children of the late twin brothers, S. C. Hunt and James L. Hunt will hold a family reunion in Eastland Park, Saturday, August 25th.

The brothers were sons of the late Rev. and Mrs. E. M. Hunt of Eastland. Rev. Hunt was a pioneer Baptist minister and was a pastor of the Eastland First Baptist Church.

The brothers married sisters; S. C. married Miss Alma Butler and James married Miss Ida Butler, daughters of the late Mr. and Mrs. James Asbury Butler, a pioneer family of Eastland County. Mrs. Ida Hunt, 421 S. Rusk, Ranger, is the only surviving person of the four.

Mrs. S. C. Hunt was employed by the Eastland Postoffice and Mr. James Hunt was a member of the Ranger police force.

Children of the late Mr. and Mrs. S. C. Hunt include Mrs. Florine Webb, Chaney; Mrs. Nadine Halley, Glendale, Calif.; Milton (Sen) Hunt, Eastland; Raymond Hunt, Abilene; Mrs. Ann M. Carpenter, Abilene; Mrs. Opal Terrell, Arkansas; Miss Erma Hunt, Midland.

Children of Mrs. Ida Hunt and the late Mr. James Hunt are Mrs. Leona Bruce, Weatherford; Mrs. Gladys Jackson, Ranger; Mrs. J. M. Carlisle, Dallas; Clayton Hunt, Houston; Omar Hunt, Seminole; Hubert Hunt, Teague; Mrs. Vera Williams, Sebastian.

ON CRUISE

Mrs. Pat Crawford of Eastland left Tuesday for Edna, Tex. where she was joined by a friend, Mrs. J. R. Graham. They then left on a Caribbean Cruise. They will make port stops at Port Antonio and Kingston in Jamaica and Port O'Prince, Haiti and Nassau in the Bahamas.

Mrs. Iva Lea Dalton of Wichita Falls is visiting in Olden with her sister and family, Mr. and Mrs. Tom Sharp and her brother and family, Mr. and Mrs. Buster Elliott.

On Sunday, Mrs. Dalton, Mr. and Mrs. Tom Sharp and Tommie Jure attended the Bell Family Reunion in Aledo.

RETURNS HOME

Mrs. R. B. Hall and son, Roger, of Frederick, Okla. have returned home after spending 10 days with their parents and grandparents, Mr. and Mrs. Paul Taylor, and other relatives.

Card of Thanks

We wish to express our deep appreciation and sincere thanks for the beautiful flowers, tributes, messages of sympathy, and acts of kindness extended to us following the loss of our beloved father.

We especially thank Doctors Bulgerin and Alexander, and the hospital staff of the Eastland Memorial Hospital for their skillful care.

May the Lord bless each of you as you continue to be a blessing to others.

CHILDREN AND GRANDCHILDREN OF JACK CARTER

VISITS IN MIDLAND

Mrs. J. C. Poe of Eastland visited last week in Midland with her daughter and family, Mr. and Mrs. Ralph Green and Vicki.

They were joined on the weekend by Mr. Poe. They then attended the pro football game between the Dallas Texans and the Oakland Raiders.

Mr. and Mrs. Poe returned to their home here on Sunday.

• **Read The Classifieds**

JOY DRIVE-IN Open 7:15—Starts 7:45
 Adults 50c — Children Free
WEDNESDAY — THURSDAY — FRIDAY
 No. 1 At 8:15
'SHOOT OUT AT BIG SAC'
 — Walter Brennan — Luana Patton —
 No. 2 At 9:25
'HOUSE OF WOMEN'
 Barbara Nichols — Shirley Knight
SATURDAY — SUNDAY — MONDAY
'THE ROAD TO HONG KONG'
 Bing Crosby — Bob Hope
COMING SOON — KING OF KINGS

MAJESTIC STARTS THURSDAY
 Adults 75c Student 50c Children 35c
THURSDAY - FRIDAY OPEN AT 5:30
 Features At 6:05 and 9:05 — Open
 Saturday - Sunday At 11:45 Features
 At 12:05 — 3:05 — 6:05 — 9:05

For People of All Ages... A Wonderful New World of ENTERTAINMENT!
HATARI!
 THIS YEAR'S BIG EXCITEMENT MOTION PICTURE!
 JOHN WAYNE

HAMNER FUNERAL HOME
 Ben E. Hamner, Owner
 Serving Eastland County since 1924 with ambulance and funeral service. Our ambulances are oxygen equipped and air conditioned.
 Through our nation-wide connections with other funeral directors, we can handle a funeral from any point in America. We offer this service knowing that we can relieve the family of all burdens incident to any death away from home.
 Eastland Dial MA 9-2611

RANGER DRIVE-IN
 HIGHWAY 80 EASY ON RANGER HILL
 Adults 50c KIDDIES UNDER 11 FREE
 Bargain Nite Each Wednesday—50c Carload
THURSDAY — FRIDAY
 EVA MARIE SAINT WARREN BEATTY KARL MALDEN
ALL FALL DOWN
 ANGELA LANSBURY · BRANDON deWILDE

THE MOST EXCITING ADVENTURES A BOY EVER HAD!
MARK TWAIN'S The Adventures of Huckleberry Finn
 TONY RANDALL
 ARCHIE MOORE · EDDIE HODGES
4 BIG DAYS
 Sunday — Monday — Tuesday — Wednesday
 Admission For This Attraction 1.00

A Story of The Christ... the Inspiration of His Spoken Words.
KING OF KINGS

AUGUST furniture SALE
3 DAYS ONLY THURSDAY FRIDAY and SATURDAY
FAMOUS NAME BRANDS
ALL FINEST QUALITY
SENSATIONAL VALUES
1-ONLY SOFA Foam Cushion Nylon Cover In Beige With Trade **\$149⁰⁰** Reg. 229.00
1-ONLY 2 PIECE SOFA BED Nylon Cover In Beige With Trade **\$129⁰⁰** Reg. 189.00
1-ONLY 3 PIECE SECTIONAL Foam Cushions In Beige With Trade **\$179⁰⁰**
JUST RECEIVED ANOTHER SHIPMENT OF MAPLE BEDROOM
Your Choice SINGLE DRESSER BOOKCASE BED POSTER BED 3 DRAWER CHEST 4 DRAWER CHEST 4 DRAWER DESK CORNER DESK **29⁸⁸**
 DOUBLE DRESSER 39.88 TRIPPLE DRESSER 49.88
ASSORTED NOVELTY ITEMS
 TROUBLE LIGHT PUP TENTS THROW PILLOWS PLANTERS CLOTHES BASKETS **77[¢]**
9 x 12 RUGS FOAM RUBBER BACK ONLY 12 TO GO AT THIS PRICE. IN BEIGE BROWN AND GREEN **19⁸⁸** Reg. 29.50
OLD TIME VALUE DAYS
COATS EASY TERMS PLUS ROUND-UP STAMPS
FURNITURE & CPTS. LTD. EASTLAND, TEXAS
FREE DELIVERY FREE PARKING SATURDAY



—Call MA 7-1101 for Classifieds—

More Profit From Relaxed Chickens

Many complex and complicated methods have been devised to increase the egg and meat production in poultry flocks. But a new and unusual

one is recommended by Joe Wakefield, Poultry Science Department, Texas A&M College.

Reduce the tension in your flock and you will have one that will produce more efficiently, says Wakefield. Chickens are governed by a similar type of psychology as that of the human race and a peck order, or pattern of social habits of the birds, determines the behavior of the entire flock, according to Wakefield.

Some chickens are leaders and some are followers and a bird is in for a fight if it violates its place in the order. The peck order influences the feed consumption and the sexual behavior and eventually the flock's production efficiency, states Wakefield.

Chickens by habit peck their inferiors and avoid their superiors but in a large flock they may get the two mixed. Since this could prove dangerous of a social superior were attacked, chickens should not have to travel into strange areas of the pen to water, feed, nest and roost.

When birds do not have to travel more than 10 or 15 feet there is less danger of encountering social superiors and thus less tension and stress in the flock. The pen may actually be divided into many regional peck orders and birds may never leave their own small region, says Wakefield.

It will also help to reduce tension in the flock if new birds are not introduced into established flocks and birds of different ages are not mixed, he adds.

The establishment of normal social patterns among chickens can reduce tension and the flock will settle down to the efficient production every poultryman wants, Wakefield explains.

MOVES TO ROCKSPRINGS

Mr. and Mrs. Edwin Aaron and family of Abilene moved Wednesday to Rocksprings, Tex., where he will be a member of the teaching and coaching in the public school system there.

The Aarons have three children, Edwin Jr., four; Lisa, three, and Johnny, six months. The son of Mr. and Mrs. Johnny Aaron of Eastland, Edwin is a 1952 graduate of Eastland High School and was graduated in May, 1962 from Abilene Christian College.

VISITS IN FLORIDA

Mr. and Mrs. Henry Collins, Mr. and Mrs. Joe Collins and family of Gorman and Mr. and Mrs. James L. Bigby and family of Fort Worth have returned home after spending a week visiting in Florida with M/Sgt. and Mrs. Bob Collins and family.

En-route to Florida the group visited in Houston with Mr. and Mrs. D. M. Collins and family.

Queen For A Cookout Makes It Nice For Mom

Now that Dad has reached peak form at the outdoor grill, how about offering him the challenge of preparing the whole meal?

He's accustomed to providing the main dish, to be sure. But invariably Mom pitches in with a salad or vegetable. Maybe he's "ready" now to make you queen for a cookout. That means he's responsible for everything—main dish, beverage, salad, vegetable and dessert. It would be a good time to have guests over too, because you'll have more time to get the house in order, and Dad can really perform.

Chances are that because his experience centers mostly around the meat course, he could use these tips in mastering the rest of the meal:

1. In advance of the party, he naturally will check the charcoal supply, grill tools and the grill itself. But he could use a reminder for the table condiments. They should go out before the meal is prepared so there's no last minute rush while the food waits.

2. Use your children as "runners." This will be a great convenience and will involve them enough that they will delight in the effort to please Mom.

3. Now to the menu. Let Dad pick the main dish and chances are he'll prepare the one he knows will please you most. A tossed salad is easy so long as he tackles that first and slips it in the refrigerator while he's at the grill. A "heat up" vegetable should suffice and he can avoid running in the house to cook it if there's enough room on the grill. He has two approaches on dessert—either "all out" or quick-and-easy. Maybe he'd like to bake a cake the night before from a mix. But it could be that a quart of ice cream

would be more refreshing and simpler. In the beverage department, it's hard to beat iced tea for ease and appropriateness.

4. To make clean up time easier use paper plates, cups, utensils and table napkins. Dish washing will be at a minimum and laundering eliminated.

5. Now he's all set. Get yourself ready, too. How about fashioning a queen's crown and putting it on just as he serves you? It'll let him know you appreciate his efforts.

By keeping the arrangements fairly simple yet leaving enough challenge to make it interesting to Dad, he'll be attracted to the queen-for-a-cookout plan. How do you present the idea? Clip out this article and serve it to him tonight with his coffee!

READ THE CLASSIFIEDS

NOTICE

We Will Be Closed

For Vacation

Next Week

Monday, Aug. 27—

Monday, Sept. 4th

SMITTY'S JEWELRY Eastland

PERSONAL ATTENTION

Professional care and personal attention to your prescription needs are two of the important things you always get at your independent I.D.L. drug store. Give your family's health the finest protection. See your neighborhood I.D.L. drugstore!

CENTRAL DRUG 701 W. Main MA 9-2681

Trey Schoolfield Is Honored On First Birthday

Trey Schoolfield celebrated his first birthday with a party held Thursday afternoon in the home of his parents, Mr. and Mrs. John Schoolfield, 301 S. Oaklawn.

Refreshments of ice cream and cake were served to those attending. Party favors of candy and balloons were presented to each guest.

Attending the party with their mothers were the following: Kara Blackmon, Alan Edwards, Bart Boles, Lee Johnson, Timmy, Lou Ann and Nancy Magness and Sherri and Teresa Pool.

VISITS DAUGHTER

Mr. and Mrs. Raymond Beck and Steve recently visited in Abilene with their daughter, Mrs. Clinton Humphreys, who was graduated from

Sul Ross College. She will be a member of the staff in New Braunfels during her senior year. Humphreys will teach

GOLDEN AGE NURSING HOME

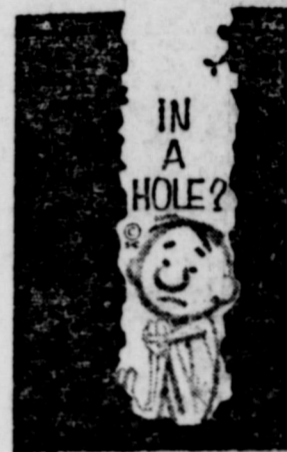
104 East 4th Street Cisco Phone HI 2

24 Hour Nursing Care, Good Meals - Special State Licensed and Approved For Welfare Patients

Jerry Stephens Administrator

Mrs. C. M. Searcy Supervisor of Nurses

Southern Television System Corp.



Village Hall

CALL US

and we will

WIRE YOU

Watch Your Favorite TV Programs • Comedy • Western • Sports • Drama

Ph. MA 9-17

ALTMAN'S STYLE SHOP

109 W. Main Eastland

Get Pinned. It's Jantzen's new cardigan—an exclusive wool blend, the great Italian inspired flat knit, Janessa. In new fall color perfectly matched to an all wool Man Flannel skirt of stitched down pleats. Cardigan 34-40, \$13.98. Skirt 8-18, \$14.98. just wear a smile and a Jantzen



Back to School is fun with clothes from Altman's. All that's new in sweaters, skirts, dresses, car coats, are in Altman's collections of new fashions. You will see many of the styles featured in college issues of Seventeen, Mademoiselle and Glamour. Brand names such as Pettibone, Jantzen, Jr. Set, Ship 'N Shore and Others. Come in, browse around. Let us help you turn your back to school or career fall wardrobe.

MONUMENTS

SECOND SATURDAY

Sabin Oral Polio Vaccine

GIVEN

AUGUST 25TH

AT

County Court House

LAST CHANCE

For Type I

10 AM 6 PM

EASTLAND JAYCEES

NOW'S THE TIME

...for a once-a-year buy on just the one you want!



CHEVROLET BEL AIR 4-DOOR SEDAN



CHEVY II NOVA 4-DOOR STATION WAGON

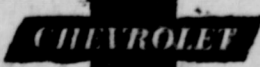


CHEVY II NOVA 4-DOOR SEDAN



CORVAIR MONZA 4-DOOR SEDAN

Getting ready for a vacation trip couldn't be easier: just pick a Chevrolet, pack your family and go. And that first part is easiest of all with what your Chevrolet dealer has to pick from. The Jet-smooth Chevrolet, America's favorite family car, with a ride that only seems expensive; the Chevy II, about as lively and luxurious as you can get for a low, low price; the sporty Corvair, a rear-engine beauty that just refuses to be run-of-the-mill. One of these 4-doors (or a two-door for that matter) is sure to fit your family and budget just fine. So okay—what are you waiting for?



See the Jet-smooth Chevrolet, Chevy II and Corvair at your local authorized Chevrolet dealer's

FULLEN MOTOR COMPANY INC.

305 E. MAIN

EASTLAND

PHONE MA 9-2676

tune-up FOR TROUBLE-FREE DRIVING

COMPLETE AUTO REPAIRS

24 HOUR WRECKER SERVICE

Phones MA 9-2270 Night MA 9-2224

ALLEN AUTO REPAIR

AT RUSHING MOTOR CO. 215 SOUTH SEAMAN

MOBYLETTE Up to 250 Miles Per Gallon



4-MODELS TO CHOOSE FROM from 139⁵⁰

BRUCE PIPKIN SPORT CENTER

304 E. Main

Eastland