



COVERING EASTLAND COUNTY
THE ONLY PLACE YOU CAN READ THE MOST IMPORTANT NEWS IN THE WORLD --- ALL THE NEWS ABOUT YOU, YOUR FAMILY AND YOUR FRIENDS!

EASTLAND, TEXAS, THURSDAY, AUGUST 30, 1962

PRICE 10c

'See the Mavericks Hit; See Them Hit, Hit, Hit'

"Don't our boys look good?" That's about all you could hear in Maverick Stadium Tuesday night as barbers, bakers, preachers and all the other football lovers in town watched Head Coach Millard Glasses' built-from-scratch ball club scrimmage a heavy Hamilton team.

Scorewise, it was a draw, 6-6.

Performance-wise, it was a revelation to the home folks to see their team hitting and hustling and picking up first downs like they not only wanted to win some ballgames, but also knew the secrets of how to win.

The scoring was done by the second units.

After a week and a half of drills, it was apparent that emphasis on pass defense was paying off. Hamilton used the air but time after time, they were dropped in their tracks.

Hamilton got one across in the unofficial game on the first play by the second unit, but some quick detail checking from Assistant Coaches Harold Price and Denson Moody, helped the younger Mavericks stop up the holes.

A few plays later Bubba Hunter snagged a pass intended for a downfield Hamilton player and galloped toward the Eastland goal; what was undoubtedly Bubba's "finest hour."

Unfortunately Bubba is ineligible and won't be playing for the first string where official play gets underway.

Coach Price's line was showing up real good and rising up en masse to throw up the defensive wall.

The local boys moved the ball well on the ground but were having trouble connecting with passes.

Alternating Quarterbacks Jody Cooper and Tommy Beck were operating smoothly with polished hand-offs and runs of their own.

Coach Glass, who had been out of town to attend the funeral of his father, must have been pleased when he walked onto the field midway in the scrimmage just at the opportune time to see his hard-working boys in the midst of a ground-gaining drive.

The enthusiasm of the three new coaches apparently has been spreading.

(Continued on Page 2)

Type III Clinic Set September 22 Only

Saturday, Sept. 22, has been set as Type III Oral Vaccine Clinic Day in Eastland County, according to an announcement made by Mrs. Frank N. Sayre, chairman of the Clinic and president of the Civic League and Garden Club.

As in the past, the clinic will be held in the lobby of the Courthouse from 10 a.m. until 6 p.m. Forms will again be necessary for any person to receive the vaccine.

Mrs. Sayre stressed the point that only the one day will be observed as Type III Vaccine Day.

Since Type III is the second most paralyzing, the Type II vaccine will be given last. Mrs. Sayre stated that the Type II Clinic will be held sometime in October.

A total of 3,386 persons were given the Type I vaccine with 2,636 receiving it the first Saturday and 750 the second Saturday.

Mrs. Sayre expressed her gratitude to all persons who helped in any way to make the Clinics such a large success.

As before, all adults and children over six weeks of age are urged to receive the Type III vaccine.

Backfield is 'Bright Spot' Coaches Say

"We're fortunate in the backfield," Assistant Coach Denson Moody said Tuesday.

Calling the Maverick backfield a "bright spot," he said there are four lettermen back and their experience is going to make a great deal of difference.

Two of the coveted blackshirts are being worn by backfielders—Jimmy Moyla, 195-pound fullback, and Tommy Beck, who'll be alternating

with Jody Cooper at the quarterback slot.

Gary Graham, another fullback, is "coming on great," Moody said, and may earn himself a blackshirt before this week is out.

Speaking before the Lions Club Coaches Moody and Harold Price outlined the program and "guestimated" the future for the ball club.

Both men pruned what they called the "sprink" of the

freshmen who are out and hustling.

In a black shirt now besides Moyla and Beck is Ray Edwards.

"The freshmen are showing desire and they want to hit," Moody said.

At least 50 per cent of the workouts with the backs has been spent on pass defense, the coach said, in the hopes that the opponents will be held to the ground, where they'll have to contend with Price's line.

"We're weak on the ends, we've got two pretty good tackles, and we're in good shape on guards and center," Price said.

"We'll know about just how good that line is Tuesday night when we scrimmage Hamilton," he added.

Glen Scallorn, program chairman, and president of the Maverick Quarterback Club said that all the footballers deserve a lot of credit—for staying in and taking it, especially those little players who really have to hustle to stay up with the team's training schedule.

Pro-Am Golf Set Labor Day At Lone Cedar

Everything is in readiness for the big Pro-Am golfing event at Lone Cedar Country Club on Labor Day, Bruce Pipkin, chairman for the event announced today.

The 18-hole golf event will get underway at 10 a.m. on September 3. Entrance fee has been set at \$3. Mr. Pipkin said that ladies are especially invited to participate in the event.

He also announced that lunch will be served in the club dining room on Monday.

Other committee members for the holiday event are Dr. Theodore Nickisick and Bill Collings.

Mrs. A. E. Fox Gets Degree At Howard-Payne

Mrs. A. E. (Vivian M.) Fox of Eastland was among the 87 students and two Texas leaders who received degrees at the summer commencement at Howard Payne College on Friday, Aug. 24.

Mrs. Fox majored in business and minored in English and secondary education.

Of the 87 class members, 21 received the bachelor of arts degree, 44 the bachelor of science, three the bachelor of music education and 19 the master of education.



FRANK W. EARNEST
... assumes duties
(Photo by A&C Studio)

AT EASTLAND MEMORIAL

Frank Earnest Is Administrator

Frank W. Earnest, 44 of Dallas, has been named administrator of the Eastland Memorial Hospital, according to an announcement made this week.

A native of Dallas, Earnest

had spent the past 15 years in the Western states. He assumed his duties as administrator here Tuesday morning.

He has served as administrator of the Parkview Hospital in Yuma, Ariz. and the Southwest General Hospital in Dallas for the past eight months.

A graduate of the Terrell Preparatory School in Dallas, Earnest attended the College of Mining in El Paso and took extensive courses at the University of Southwestern California.

He began his education in mining engineering and became interested in administrative accounting several years ago.

He served as a test pilot with the Fourth Air Force from 1942 until 1946.

He and his wife, Colette, have three children. They are Hyla, 11 years old; Gary, nine years; and Karen, who is eight.

The Earnest family are making their home in Eastland on Lens Street near the South Ward Elementary School.

Enrollment Is Way Up At Carbon

School enrollment is up this year at Carbon, according to Supt. C. T. Spence.

With a total enrollment of 165, the first and second grades registered increased over last year. There are 14 first-graders and 16 second-graders.

Classes got underway Monday.

The entire school facilities had undergone a renovation during the summer, Spence said, with painting and plastering inside and out and general repairs throughout the system.

The district plans to get two new buses soon, and more students were eating in the lunch room this week than ever before.

Monday 136 ate in the lunchroom, and Tuesday there were 124.

Two new teachers were hired this year.

Mrs. Jessie Ellis, formerly of Abilene, and Mrs. Vivian Fox, who is teaching English, shorthand and bookkeeping.

This is the first year that shorthand has been offered in Carbon school in many years.

Rev. A. D. Kyle Is Speaker At Olden Revival

Rev. A. D. Kyle, Evangelist, is guest speaker during the revival being conducted at the Olden Baptist Church this week.

The revival began Friday and will conclude on Sunday. Morning services are at 10 a.m. with prayer services at 7:30 and evening worship at 8 p.m.

Pete Rodgers is in charge of the song services and Rev. Bill Penland is pastor of the church.

Rev. Penland stated that they are trying for a record in Sunday School and that the public is cordially invited to attend the services.

Home Safety Program Enters Second Year

The year-round home safety program inaugurated in 1961 by Lone Star Gas Company will enter its second year September 1. The Texas Safety Association and The Eastland Telegram will be co-sponsors of the program.

"As in 1961," Lone Star Manager Gordon Goldston said here today, "this public service program has as its objective the saving of lives and the prevention of home accidents by teaching the individual how to detect and eliminate home hazards."

Home accidents occur in Texas at the rate of one every 16 seconds and a victim of a home accident dies every seven hours, the Texas Safety Association reports.

Newspaper advertisements and stories will tell how home accidents occur and will suggest methods of elimination of these hazards to life and limb.

A free four-page pamphlet on home safety may be obtained at the offices of Lone Star and co-sponsors shortly before the first of each month, starting September 1. Based on Texas Safety Association records of home accident deaths and injuries in preceding years, each pamphlet tells the number of home accident deaths and injuries expected to occur during the ensuing month—and tell how these deaths and injuries will occur and gives the

Negro Pupils Enroll Friday

Registration for Negro students in the second, third, fourth and fifth grades will be held Friday at the Douglas School from 9 until 10 a.m.

The junior high school students will register at the Junior High School Building Friday from 8 a.m. until noon.

First graders and high school students have already registered.

Coach's Father Buried Tuesday

Funeral for Millard L. Glass, father of Eastland's Head Coach Millard Glass, was held Tuesday in Vernon.

Mr. Glass, 55-year-old Vernon carpenter, died Monday in a hospital there. He had been ill for several months.

Surviving are his wife; another son, Raymond with the Armed Forces at Fort Belvoir, Va.; two daughters, Mrs. Thelma Evans of Vernon and Mrs. Ruby Pennington of Kansas City, Mo.; his parents, Mr. and Mrs. W. B. Glass of Spur; four granddaughters and one grandson; two brothers, W. B. Glass of Tahoka and Eddie of Rudiso, N. M.; and three sisters.

(Continued on Page 2)



CHRISTINA STROEBEL
... Eastland County

District FB Queen Contest Set in Cisco Saturday Night

Eleven contestants this year will compete for the title of District VII Farm Bureau Queen and the lucky winner will represent the District at the State Convention that will be held November at San Antonio.

The District VII Queen Contest will be held Saturday, September 1st in the Cisco Junior College auditorium at 8 p.m.

Miss Peggy Parker of Coleman County is the current District VII Queen and will crown the 1962-63 Queen.

The queen contestants include Miss Christine Stroebel, daughter of Mr. and Mrs. Carl Stroebel, Route 1, Cisco, who

will represent Eastland County Farm Bureau; Miss Linda Kay Ware, of Abilene, representing Taylor County Farm Bureau; Miss Ilene Rode of Fredericksburg, representing Gillespie County Farm Bureau; Miss Virginia Bitters, of Austin, representing Brown County Farm Bureau; Coila Moss, of Llano, representing Llano County Farm Bureau;

Janice Taylor of Breckinridge, representing Stephens County Farm Bureau; Miss Joanne Lindig, of Johnson City, representing Blanco County Farm Bureau; Ann Joyce, of Coleman, representing Coleman County Farm Bureau;

(Continued on Page 2)

Hollywood-Vassarette TWX Switching to Dial Friday

Eastland business firms and organizations will take part in the first nationwide dial conversion in the history of the telephone industry at 7:30 p.m. Friday August 31 when teletypewriter exchange service will be changed to dial from manual operation.

The change involves one Vassarette Co., in Eastland. The Eastland firm uses the service, known as TWX, to send printed messages to other offices here and in distant cities.

After Friday evening, TWX attendants for Eastland users with the service will dial direct to any of the 60,000 teletypewriters in the nationwide system.

In the manual system now used, TWX connections are made by telephone company operators.

"With the new service, calls between machines will be dialed just as telephone calls are," Johnny Rogerson of Southwestern Bell Telephone Company said. "Connections can be made in about one-third the time now required."

A nationwide TWX information center will be established in St. Louis to serve the dial network. Customers can dial the center direct and get numbers will assist customers with collect, conference and other calls they cannot dial direct. Regional assistance centers at Dallas and St. Louis will serve customers in Southwestern Bell territory.

Rogerson termed the conversion to dial the most significant improvement in TWX service since it was started in 1931.

"Dial TWX will mean faster, more convenient service for our customers," he said.

Local Dealers Going to Auto Showing

Chrysler and Plymouth dealers of Eastland and other cities throughout the Dallas sales region will see the new 1963 Plymouth, Valiant, Chrysler and Imperial cars for the first time here Tuesday, September 4, at Memorial Coliseum.

Among the dealers invited to the premiere showing of the 1963 cars here are A. J. Blevins, Jr., of Blevins Motor Co. and J. H. Rushing of Rushing Motor Co.

T. L. Morgan, Dallas regional sales manager for the Chrysler-Plymouth division of Chrysler Corporation, said the advance showing here will be for dealers and salesmen from Texas and New Mexico.

Following a presentation of the new styling features and engineering advances incorporated in the new automobiles, there will be a private salon exhibit of 18 of the 1963 cars of the four Chrysler - Plymouth lines at Memorial Coliseum.

Public introduction dates are September 25 for the new Chrysler and Imperial and October 3 for the Plymouth and Valiant cars at dealerships throughout the United States.

Funeral Services Held Monday For David B. Parks

Funeral services were held Monday at 10:30 a.m. in the First Baptist Church in Graham for Mr. David B. Parks, 71, who died Saturday in the Graham General Hospital following a lengthy illness. Rev. Foust officiated the services with interment in the Pioneer Cemetery there.

Born Oct. 26, 1891 in Iredell, Tex., Mr. Parks moved to Graham from Desdemona in 1938. He was in the oil business in Graham before his illness.

He was married on June 16, 1912 in Iredell. He and his wife, Alma, had recently celebrated their Golden Wedding Anniversary.

Mr. Parks was a member of the First Baptist Church in Graham.

Survivors include his wife; one daughter, Mrs. Dorotha Endsley Garland; two sons, Don Parks of Big Spring and Jim H. Parks of Eastland; one sister, Mrs. Ida Wyche of Iredell and six grandchildren.

Mrs. Childress Dies; Services Are Pending

Last rites are pending for Mrs. Dan Childress, former longtime resident of Eastland who was making her home in Abilene. Mrs. Childress died Tuesday night in Creed, Colo. while vacationing with Mrs. J. E. Hickman.

Body of the deceased will be returned by train to Abilene where time of the services will be set.



CADET LARRY HOLLIS

Larry Hollis Attending ROTC Training Course

Larry Hollis, son of Roy C. Hollis of Eastland, is presently attending the Air Force ROTC Summer Training Unit at George Air Force Base, California.

Cadet Hollis, who completed his junior year in advanced Air Force ROTC, is attending a four-week summer training period as part of his Reserve Officer Training at college. While at summer training, Cadet Hollis actually observes the Air Force in action and participates in many of the Air Force operations.

Following graduation at the University of Texas, he will be eligible for appointment as a Second Lieutenant in the Air Force.

PREYSLAG Insurance Agency

WEATHER NEWS

WINDY CLOUDY WARM

EASTLAND TELEGRAM

Eastland County Record established in 1931, consolidated August 31, 1951. Chronicle established 1887, Telegram established 1923. Entered as second class matter at the Post Office in Eastland, Texas under the Act of Congress of March 3, 1879.

Published Semi Weekly—Thursdays and Sundays
By Eastland County Newspapers, Inc.
H. V. O'BRIEN, Editor

One Week by carrier in city 15
One month by carrier in city 65
One year by mail in county 2.95
One year by mail out of state 6.95

NOTICE TO PUBLIC—Any erroneous reflection upon the character, standing or reputation of any person, firm or corporation which may appear in the columns of this newspaper will be gladly corrected upon being brought to the attention of the publishers.

It's No Laughing Matter -

... to those who will lose their 20% credit for safe driving on account of the repeal of the Safety Driver Insurance Plan on August 1st. But cheer up! This agency has available a dividend plan under which safe drivers can continue to save money on their insurance if their driving activities and record make them eligible for this plan. If your car insurance expires this month or next drop by the office and let us explain this saving to you. No obligation.

Earl Bender & Company
Eastland (Insurance since 1924) Texas

SHOT SHELL PRICE

Symbol	GAUGE	Drams	Oz. Shot	Reg. Price	Sale Price
SX12	12 Ga. Super X		1 1/4	3.50	2.99
SX16H	16 Ga. Super X		1 1/4	3.75	2.79
SX20	20 Ga. Super X		1	3.05	2.59
SX413	410 3" Super X		3/4	2.75	2.39
XP12H	12 Ga. Xpert	3 1/4	1 1/4	2.95	2.59
XP16H	16 Ga. Xpert	2 3/4	1 1/4	2.75	2.39
XP20H	20 Ga. Xpert	2 1/2	1	2.65	2.29

GAME BAGS — CLEANING SUPPLIES
EVERYTHING FOR YOUR GUN

BRUCE PIPKIN'S SPORT CENTER
EASTLAND



LOW-SLUNG—Ford's all new compact Falcon Futura convertible leads off Detroit's 1963 parade of new car models. Designed with a sports car flair, the car offers luxury-car interior appointments, an electrically operated power top and a complete range of performance options. This newest addition to Ford's industry leading compact line—more than a million Falcons have already been produced—will be introduced in Hood King Motor Co. showrooms Friday, September 28.

Nazarene Church Camp Concludes

The Abilene District of the Nazarene Church concluded its one-week camp meeting Sunday at Camp Arrowhead on the Brazos River. This is reported to be the best camp meeting ever conducted in this District.

Over 1,200 persons attended the closing services Sunday. Among those present were Mr. and Mrs. Hugh Mahaffey, Mr. and Mrs. A. L. Smith, Mrs. Mary Franklin, Mrs. P. H. Couch, Mr. and Mrs. Jack Woods and children, Mr. and Mrs. M. C. McWhorter and children, Miss Helen Turner, Cora Maye Carmack, Karen

Miller, Barbara Hallum, Betty Holum, Carolyn Medford, Rev. and Mrs. Clarence Manners and family, all of Eastland.

Rev. Manners and family served as dining hall keepers during the camp. Rev. Manners also served as lead counselor in the boys' dormitory where approximately 40 teenage boys stayed.

Band Boosters Will Sponsor Bake Sale

Members of the Eastland Band Boosters will sponsor a bake sale to be held Saturday at the Worth Food Mart in Eastland.

The sale will get underway at 8 a.m. The public is cordially invited to aid the Boosters in any way possible.

See The -

(Continued From Page One) rubbed off in big quantities on the team, because they showed the winning spirit Tuesday, and you could hear the leather popping up in the stands. Ken Estes of the Abilene Reporter-News called the Eastland team a "semi-mystery" club Wednesday, but there was no mystery about them Tuesday night. The Mavericks, every one of them, were playing the kind of football Eastlanders like to see.



How's your COVERAGE?

(If you're not satisfied, call M. H. Perry, MAin 9-2275 He's the Southland Man)

Coach's -

(Continued From Page One) Mrs. Fay Arnold, Mrs. Udell Gilcrease and Mrs. Blanche Hamilton, all of Spur. Mr. Glass was born March 18, 1907, in Montague County and moved to Wilbarger County from Chillicothe in 1926. He and the former Miss Jewell McNabb were married in Vernon Jan. 22, 1927. He was a member of the Masonic Lodge, Baptist Church and the local Carpenters Union.

Card of Thanks

Thanks a million to my many friends for the phone calls, letters and cards, visits, floral offerings and prayers while I was in the hospital at Temple. We shall never, never forget you. May the good Lord bless you real good. County Judge John Hart

READ THE CLASSIFIEDS

REMEMBER This Number MA 9-1101



Betty's Flower Shop

200 N. Green Eastland

COMPLETE SELECTIONS

TidBits -

(Continued From Page One) And the REPUBLIC FOR WHICH IT STANDS. We have NOT YET BEGUN TO FIGHT. The shot HEARD ROUND THE WORLD. Socrates. The last one, which you can barely see, continue to puzzle us. You can see "TYPES OF ENT". What do you think?

DRESSY .. LIGHT .. AND PRACTICAL CEDAR CREST WELLINGTON BOOTS



Smooth dress leather black and tan \$9.95
Fawn Suede cork sole \$8.95

Army Surplus Store
Eastland, Texas

READ THE CLASSIFIEDS

MONUMENTS SINCE 1884

SEE US FIRST for your HOME LOAN



We offer low cost financing for -

- New Home Building or Buying
- Home Remodeling, including all permanent type additions.

See Us without Obligations

The Best Place to Save and Borrow

FIRST FEDERAL SAVINGS LOAN ASSOCIATION

204 Main Ranger, Texas

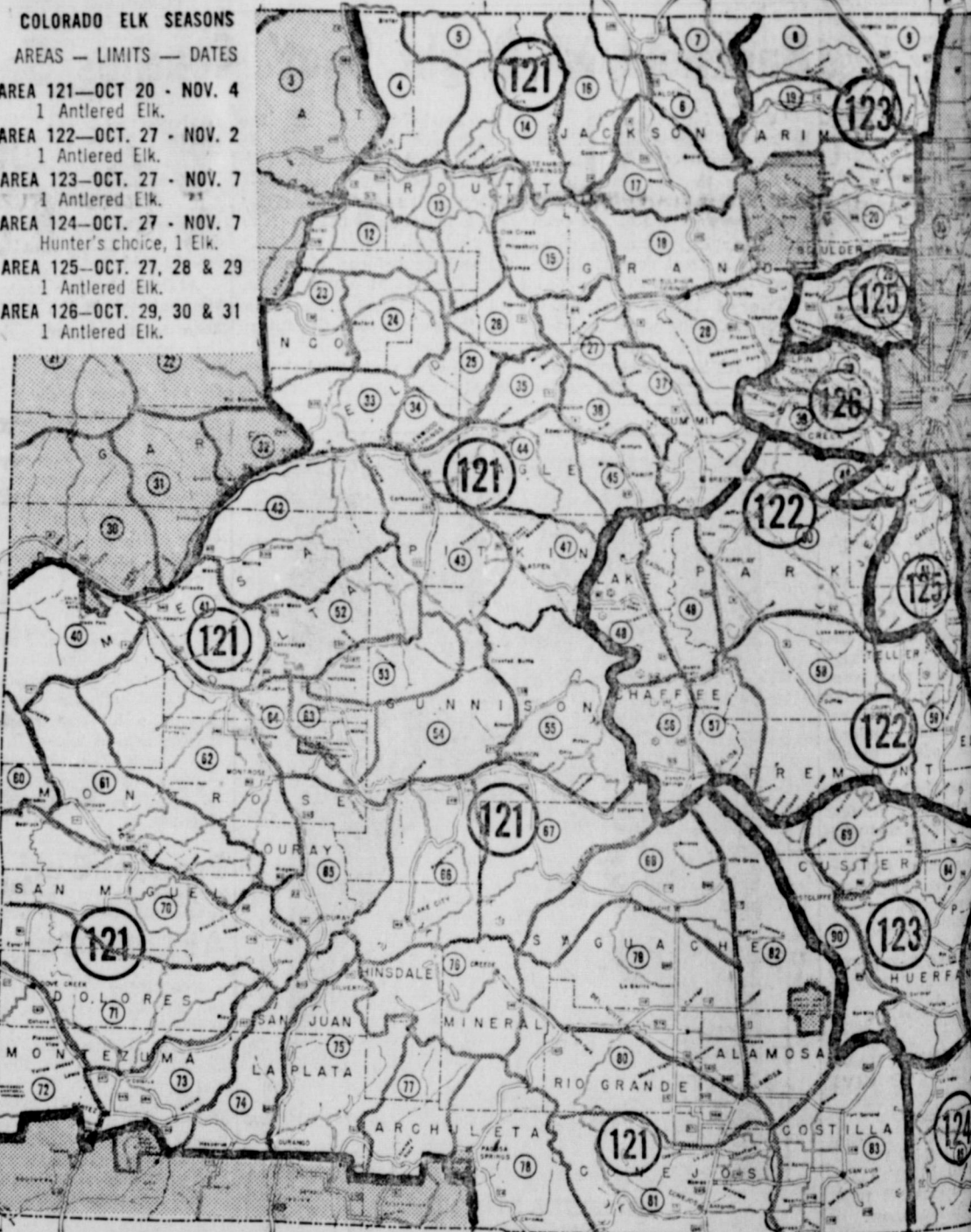
SPECIALIZING IN SAVINGS ACCOUNTS and HOME LOANS

Big Game Hunters Have Good Chance for an Elk This

COLORADO ELK SEASONS

AREAS — LIMITS — DATES

- AREA 121—OCT 20 - NOV. 4
1 Antlered Elk.
- AREA 122—OCT. 27 - NOV. 2
1 Antlered Elk.
- AREA 123—OCT. 27 - NOV. 7
1 Antlered Elk.
- AREA 124—OCT. 27 - NOV. 7
Hunter's choice, 1 Elk.
- AREA 125—OCT. 27, 28 & 29
1 Antlered Elk.
- AREA 126—OCT. 29, 30 & 31
1 Antlered Elk.



Hunters holding elk licenses may hunt antlered elk during the regular big game season in Colorado's great elk hunting areas, Harry Woodward, director of the Colorado Game and Fish department pointed out today. It is required only that they hold an elk license—and that they check carefully to make sure season and area are open for elk hunting, and that the elk they shoot has antlers.

Complete information on all elk and other big game hunting in Colorado, regulations and detailed color maps will be available without cost from the Game and Fish department, 1530 Sherman St., Denver. I from big game licensing agencies, or from Regional Game and Fish managers' offices.

There is one regular area this year, but only one, in which the regular season elk hunt is "hunter's choice"—either an antlered or antlerless elk may be taken on a regular license. That is the Spanish Peaks area where the season is Oct. 27 to Nov. 7.

In addition to the regular elk season, open to all big game hunters holding regular elk licenses, special permits for the taking of more than 9,000 hunter's choice elk, antlered or antlerless (or, in the Tarryall, South Park and Cold Springs areas, elk of specified sex), are distributed through an open lottery to hunters who have filed application for them in specific permit areas. Fifteen per cent of

these permits are reserved for non-resident hunters.

However, no hunter may kill more than one elk in Colorado during the 1962 season, under any circumstances, Woodward warned.

The above map shows the open elk hunting areas (large circled numbers), and the key inserted in the map gives the season dates. More detailed descriptions of the areas, by established Game and Fish department management units (small circled numbers, screened boundary lines), are:

AREA 121—Western Slope, North Park and San Luis Valley. All of Game Units 4, 5, 6, 7, 12, 13, 14, 15, 16, 17, 18, 23, 24, 25, 26, 27, 28, 33, 34, 35, 36, 37, 40, 41, 42, 43, 44, 45, 47, 52, 53,

54, 55, 60, 61, 62, 63, 68, 70, 71, 72, 73, 74, 75, 79, 80, 81, 82 and 83.

AREA 122—South Park Game Units 48, 49, 50 and Game Unit 46 west of Game Unit 8.

AREA 123—The Poudre Game Units 8, 9, 10 and area east of the boundary line of all of Game Unit 90.

AREA 124—The Spanish Peaks Game Unit 85.



Lower Costs

"I've used a Lilliston for three years now, and total repair costs have been \$16.00."

We could multiply that comment a thousand times and it would still hold true.

Let's face it—any time you run a piece of equipment, there are going to be maintenance costs. Anything with moving parts is bound to show wear and tear—some sooner, some later.

But a healthy machine, if we may use that term, is something all of us want. One that will go and go and go again, make you money year after year, without costly, time-consuming down-time.

That's a Lilliston for you. For fifty years now, this company has been famous for the durability of its implements. Every part, every link, every bolt and nut has been tested again and again for lasting power.



IMPLEMENT COMPANY

Come By and Look Over The Lillistons. They're



The Biggest Money-Makers in Peanut Harvesting History.

JOBE IMPLEMENT

GORMAN, TEXAS

L8

BRUCE PIPKINS SPORT CENTER

EASTLAND

Zolie Ellen Richardson to G. M. Richardson, mineral deed. Clayton Rhyne, et ux to State of Texas, deed.
 State Reserve Life Insurance Co. to J. H. Harver, et ux, release deed of trust. Ma ble M. Scott, et vir, deceased, to The Public, proof of heirship. O. E. Scott, et ux to Fred D. Scott, et al, mineral de. d Wendell T. Siebert, et ux to First Federal S&L Assn. to Ronger, deed of trust.
 State of Texas vs. Travis Crutchfield, dba Crutchfield Broom & Mop Co., abstract of judgment. Texas Crude Oil Co. Middle-East to The Public, ce by laws. O. O. Ter-

rell to Wiley Thomas, assignment of interest. United States of America to James H. Turner, release of tax lien. United States of America to Vernon J. Honea, release of tax lien.
 John H. Wylie, et ux to Neal J. Hardy, Federal Housing Commissioner, deed of trust. Earl Woody, et ux to M. E. Long, et ux, warranty deed. Estelle Woods, et vir to Viola Groves, power of attorney. Oscar Wachtel to Jacob Wachtel, et al, assignment oil and gas lease. Minor Wallace, et ux to W. H. Davis, warranty deed.

AREA FARMERS TO VOTE IN NATIONAL WHEAT PROGRAM

Eligible farmers and their wives have been urged to vote in the wheat referendum to be held between 8 a. m. and 6 p. m. Thursday, August 30, at the Eastland County Agricultural Stabilization Conservation Service Office, according to Emmett E. Powell, County office manager of ASCS.
 Those eligible to vote are farmers who will harvest more than 15 acres of 1963

crop of wheat as grain, and their wives. The referendum vote will decide whether marketing quotas will apply for the 1963 crops.
 Mr. Powell stated that the Secretary of Agriculture has proclaimed quotas and set the referendum date in accordance with the present law, which requires such action whenever wheat supplies are more than 20 per cent in excess of "normal." The 1962-63 supply is estimated to be 68.5 per cent more than normal - 2.4 billion bushels.
 The law directs that acreage allotments are to be used each year, but at least two-thirds of the votes in the referendum must favor quotas if they are to be in effect.
 Mr. Powell added that if quotas are approved, (1) All farmers in commercial wheat states with more than 15 acres of wheat who exceed their acreage allotments will be subject to quota penalties on their "excess" ...except those who comply with the "feed wheat" program.
 (2) Growers who comply

with their allotments will be eligible for price support based on a National average of not less than \$1.28 per bushel.
 If quotas are not approved, (1) Marketing quotas and penalties will be in effect for the 1963 wheat crop.
 (2) Acreage allotments will be used to determine eligibility for price support.
 (3) The price support rate will be at 50 per cent of parity based on a National average of about \$1.21 per bushel.
 In 1961, accidents killed more Americans in the 1-24 age group than any disease.

For youths aged 15 to 24 years, accidents claim more lives than all other causes combined.

New! Gillette SLIM Adjustable Razor



NEW LOW PRICE \$1.50 with Super Blue Blades

You turn dial from 1 to 9 for the exact setting that matches your skin and beard

WORTH FOOD MART

The SURE SIGN OF QUALITY!



Prices Effective: Thursday - Friday and Saturday

YOUR BEST FOOD BUYS FOR LABOR DAY FEASTING!



COOKED HAMS

SWIFT'S PREMIUM "FULLY COOKED" 12 TO 14 LB. AVG. HALF or WHOLE **LB. 59c**

HEN TURKEY

SUNCO-USDA GRADE 'A' 8 TO 12 LB. AVG. **LB. 39c**

GROUND BEEF	Worth Quality	LB.	39c
FRANKFURTERS	Swift's Premium	LB. PKG.	53c
SLICED BOLOGNA	Swift's Premium	LB.	49c
KRAFT - AMERICAN OR PIMENTO SLICED CHEESE		8-oz. PKG.	35c
FRYER THIGH'S OR DRUMSTICKS CHICKEN LEGS		2-LB. PKG.	98c
BEEF PATTIES	Yearling Frozen	18-oz. PKG.	89c
REYNOLDS - HEAVY DUTY ALUMINUM FOIL		18"x25' ROLL	59c
ZEE - WHITE OR RAINBO PAPER NAPKINS		2 80 Ct. Pkgs.	19c

ROYAL OAK CHARCOAL BRIQUETS	20 LB. BAG	59c
VAN CAMP'S PORK AND BEANS	4 No. 300 Cans	49c
SWIFT'S VIENNA SAUSAGE	5 4 oz. Cans	\$1.00
SOUR - DILL OR HAMB. DILL SLS. BETTY PICKLES	32-oz. JAR	29c
WORTH MART LARGE EGGS	GRADE "A" DOZ.	49c
WELCH'S - FIESTA PUNCH OR WELCHADE	3 32-oz. Cans	89c
KOBY'S - SHOESTRING POTATOES	3 2 1/2-oz. Cans	29c

WORTH MAID - HAMBURGER OR HOT DOG BUNS	2 8 Ct. Pkgs.	47c
TROWIE OLIVES	6-oz. JAR	39c
McCORMICK'S BLACK PEPPER	4-oz. CAN	35c

CLOSED FOR LABOR DAY

LIBBY'S - FROZEN Lemonade	4 6-oz. Cans	39c	ZEE Waxed Paper	100 Ft. Roll	19c	NOTEBOOK Filler Paper	60 Sheets	19c	NOTEBOOK Filler Paper	2 325 Ct. Pkgs	\$1.00
LIBBY'S - FROZEN Orange Juice	2 6-oz. Cans	39c	BONDWARE - WHITE Paper Plates	40 Ct. Pkg.	49c	MOVIE STAR Pencil Tablets	EA	25c	MARBLE FINISH Clip Board	9"x12"	EA 69c
PATIO - FROZEN - ENCHILADA Dinners	12-oz. Pkg.	39c	BONDWARE - 14 oz. Cold Cups	15 Ct. Pkg.	29c	PARKER T-BALL Jotter Pens	EA	\$1.49	LA PAGES - IN PLASTIC JAR White Paste		EA 29c
COLOMBO - FROZEN Pizza	CHEESE - 7 oz. Pkg. 59c Sausage - 9 oz. Pkg. 69c		BONDWARE - 9 oz. Hot Cups	15 Ct. Pkg.	31c	VINYL - COVERED Notebook Binder	EA	77c	ASSORTED COLORS Skrip Ink		EA 19c

Produce Features

RUSSET POTATOES	Idaho - No. 1 Cello Bag	10 Lb. Bag	59c
CRISP AND CRUNCHY PASCAL CELERY		STALK	15c
MILD AND TASTY YELLOW ONIONS		LB.	5c
LARGE - FIRM HEAD LETTUCE		EACH	15c
RIPE AND FIRM CARTON TOMATOES		EACH	19c
EAST TEXAS SWEET POTATOES		2 LBS.	25c

PANTRY MAID Margarine	2 1 lb. pkgs.	29c
DEL MONTE - SLICED Pineapple	2 No. 1 Cans	35c
HUNT'S Catsup	14 oz. Btl.	19c
SUAVE Shampoo	Large Size	83c
LANOLIN PLUS - Plus 7c Tax Hair Spray	18 oz. Can	73c
PEPSODENT Tooth Paste	Giant Tube	35c
TEK - DELUXE - Medium or Hard Tooth Brushes	EA	47c

12 INCH WOOD RULERS EA. 5c

SCHOOL PACK

SCRIPTO - SPECIAL CARTRIDGE PEN AND INK CARTRIDGE - PENCIL AND LEADS EA. 99c

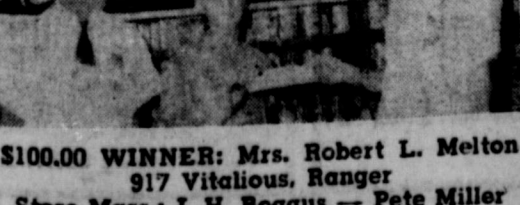
CLIP AND SAVE!

50 BONUS S&H GREEN STAMPS With This Coupon And Purchase of A 48 Count Package of LIPTON'S TEA BAGS Void After Sat., Sept. 1, 1962

WORTH FOOD MART

WIN FROM \$1⁰⁰ to \$1000 in CASH IN WORTH FOOD MARTS

\$17,000.00 CASH GIVE-AWAY WITH FREE PREMIUM CARDS



\$17,000.00 CASH GIVE-AWAY

NOTE: NO PURCHASE OR OTHER CONSIDERATION IS REQUIRED TO RECEIVE YOUR PREMIUM CARD OR PARTICIPATE FOR THE PREMIUM INDICATED UNDER THE SEAL. THE VALIDATION OF THE FREE PUNCH SECTION IS IN NO WAY DEPENDANT UPON THE COMPLETION OF THE PURCHASE SECTION.

\$100.00 WINNER: Mrs. Robert L. Melton 917 Vitalious, Ranger Store Mgrs.: J. H. Boggus - Pete Miller

NOTE: NO PURCHASE OR OTHER CONSIDERATION IS REQUIRED TO RECEIVE YOUR PREMIUM CARD OR PARTICIPATE FOR THE PREMIUM INDICATED UNDER THE SEAL. THE VALIDATION OF THE FREE PUNCH SECTION IS IN NO WAY DEPENDANT UPON THE COMPLETION OF THE PURCHASE SECTION.

CLIP AND SAVE!

100 BONUS S&H GREEN STAMPS With This Coupon And Purchase of A 3-Lb. Can of Rath Blackhawk CANNED HAM Void After Sat., Sept. 1, 1962

WORTH FOOD MART

CLIP AND SAVE!

50 BONUS S&H GREEN STAMPS With This Coupon And Purchase of A Pint Can of FireWay CHARCOAL LIGHTER Void After Sat., Sept. 1, 1962

WORTH FOOD MART

CLIP AND SAVE!

25 BONUS S&H GREEN STAMPS With This Coupon And Purchase of A 12 Ct. Pkg. of Patio Frozen Beef Tamales with Chili Gravy Void After Sat., Sept. 1, 1962

WORTH FOOD MART

CLIP AND SAVE!

50 BONUS S&H GREEN STAMPS With This Coupon And Purchase of Six 1-Lb. Cans of Ken-L-Ration DOG FOOD Void After Sat., Sept. 1, 1962

WORTH FOOD MART

CLIP AND SAVE!

50 BONUS S&H GREEN STAMPS With This Coupon And Purchase of A 5-Lb. Bag of PILLSBURY FLOUR Void After Sat., Sept. 1, 1962

WORTH FOOD MART

CLIP AND SAVE!

25 BONUS S&H GREEN STAMPS With This Coupon And Purchase of Either a 49c Bag of Morton's Chipos or a 59c Bag of Morton's Potato Chips (Twin-Pak) Void After Sat., Sept. 1, 1962

WORTH FOOD MART

SELL AND PROFIT... BUY AND SAVE... GET A BETTER JOB... HIRE GOOD HELP!

Read and Use the Want Ads!

CALL MA 9-1707

FOR RENT

FOR RENT: Newly decorated six room house. 403 E. Sadosa. Phone MA 9-1047 or inquire at 1412 S Lamar. 79

FOR RENT: Two bedroom house and a one bedroom house. 806 W. Plummer. 79

FOR RENT: Furnished apartment. Three rooms and bath. Nicely furnished. Two large closets. Apply at 2104 W. Commerce after 5 p.m. or weekdays or all day Sunday. Phone MA 9-1075 or MA 9-1101. tf

Minton Hanna c

FOR RENT: Furnished or unfurnished duplex. Apply 200 E. Valley. Phone MA 9-2326. tf

FOR RENT IN OLDEN: Four room modern house with city water. See Dean Butler or Mrs. Hightower in Olden. 80

FOR RENT: Six room house with double garage. Shade trees. See Mrs. John W. Smith, 306 W. Plummer. tf

FOR RENT: Small furnished apartment. Close in. Apply 210 E. Valley. tf

FOR RENT: One and two bedroom furnished apartments. 611 Plummer. tf

Lylia Pearl Houston

FOR RENT: Lovely furnished or unfurnished apartments, any size, bills paid, maid and hotel services included, very reasonable. Also comfortable rooms with the bath only \$39.95 monthly. Throw away your high bills and troubles and come live with us. Mrs. Robinson, manager, Village Hotel, MA 9-1716. tf

FOR RENT: Large house. See R. F. Taylor at 498 W. Patterson. Phone MA 9-2096. tf

BUSINESS SERVICES

A-1 Janitorial service - floor waxing, stripping, window cleaning. Office, commercial, residential. Daily, weekly, monthly. Phone MA 9-2583. tf

SPECIAL NOTICE

NOTICE: Child care. Your home or mine. Phone MA 9-1743. 80

LOST: Two \$1000 Lakeland Leon near Quarries Camp. Call MA 9-1758 for reward. 79

NOTICE - Telegram Classifieds don't cost, they pay. tf

NOTICE: Chick's Radio and T. V., 103 E. Main. Service calls \$2.50; work guaranteed 90 days. Phone MA 9-1374, day or night. tf

RECORD-KEEPING got you down? The Eastland Telegram has a complete line of book-keeping supplies - ledgers, pads and all the necessary accessories for efficient record-keeping. tf

SPECIAL NOTICE: Your telephone will bring THE MAGIC HOUR to you. Let a LUZIER consultant show you a plan for a lovelier you. MA 9-2028. 78

NOTICE: T. V. tube service, antenna, rotator and tower service. Evaporative cooler repair. Theron McKirvin, 1301 S. Seaman, phone MA 9-1645. 80

NOTICE: Any type hay baled promptly and efficient. Also can condition your hay. I. B. Walker, call 2501, Olden collect. tf

MISC. FOR SALE

FOR SALE: 510 S. Hillcrest. Living, dining room, kitchen and den. Built-in range, fireplace, central heat and air. Three bedrooms, two tile baths seven closets, double garage. M. A. Treadwell Sr. Sr. MA 9-2017. tf

EASTLAND ROTARY CLUB

Meets in White Elephant for a noon luncheon. Call Mike George, 9-1495, for each Monday.

EASTLAND JAYCEES

Wives, forget breakfast fast each 2nd and 4th Thursday. Get your JC off for 7 a.m. meet at White Elephant Restaurant

EASTLAND CHAPTER NO. 280 O. E. S.

Meets the first Tuesday of each month at 8 p.m. in the Masonic Hall. Call Mrs. Pebble Boles, Sec., for information. MA 9-2783. 4237

MASONIC LODGE NO. 467

Meets second Thursday of each month at 8:00 pm. In the Masonic Hall. Call C. L. Langlitz for information or L. E. Huckabay, Sec., 9-1391, for information.

WE BUY AND SELL USED FURNITURE

Phone MA 9-1740 WAYNE JACKSON

FOR SALE: Registered Duroc pigs. Five weeks old. Are from good stock and are suitable for school projects. Phone MA 9-1805. 80

FOR SALE: Five pairs of Hereford cows and calves. Also Springer heifers. Phone 2374, Olden, tf

PEOPLE read the Telegram classifieds. You're reading this one. tf

FOR SALE: Extra large white cast iron bathtub with fixtures. \$15. MA 9-2413 or MA 9-1707. tf

SINGER FALL SALE: Sewing machines, vacuum cleaners, floor polishers. Save up to \$25.00 this week. Call D. L. Morton, phone MA in 9-2084. tf

FOR SALE: Ladies white gold wrist watch, 30 diamonds, new, never worn, original box and price tags with guarantee. Cost \$325 new. Will sell for \$150 cash. MA 9-1043 after 5 p.m. 81

YES you can sell bicycles or roller skates with Telegram classifieds. tf

FOR SALE: Three houses and ten acres land on Eastland City Park Hill. See Royce Phillips or W. F. Creager, Ranger. 80

FOR SALE: Two female chihuahuas, \$25 each. Call MA 9-1388. tf

FOR SALE: Dinnette suite, \$30.00; Sofa-bed, \$50.00. 205 S. Oaklawn. Phone MA in 9-2301. tf

FOR SALE: Clarinet, LeBlanc, Noblet. Excellent condition. Call RE 4-5346, Gorman. 78

FOR SALE: Used church pews in Baptist Church, Carbon. Good condition. See Rev. Jim Turner at parsonage next to church. 78

FOR SALE: Bird cages, Pillow cases, Pin cushions, Purses, Wedding centerpieces, Flower arrangements. Phone MA 9-1569, 106 N. Connellee. 79

FOR SALE: 3 young white-face cows with baby calves. Also 5 heavy Springers. Phone MA 9-2683. tf

FOR SALE: 200 laying hens. Phone MA 9-2683. tf

FOR SALE: Like new Catalina Range with timer, magic eye burner, griddle, ovenlight and glassed door. Call MA 9-2413 or MA 9-1707. tf

FOR SALE: Famous Cedar Crest work shoes and boots. Army and Navy oxfords from \$6.95 to \$12.95, folding, aluminum and steel cots, comforts, blankets, sleeping bags, tarpaulins, tackle boxes, tool boxes, gas cans, tin cups, camp stools, Many other items, all at LOW-LOW prices. ARMY SURPLUS STORE. EASTLAND. tf

FOR SALE: Three full sized brand new quilts. Piece work. See Bertha Owens at curve in Olden. Phone 2594. 80

THE GIFT HOUSE, Cisco - A haven for gifts, ideas for the home; complete assortment of Christmas cards, American designs and imports from all over the world. tf

HELP WANTED

HELP WANTED MALE OR FEMALE: We will start you in a good industry, train you, provide a permanent job, paid vacation, hospitalization insurance and profit sharing if you are mature, dependable, honest and willing to be trained for a permanent future. We prefer inexperienced people. Apply in person between hours of 8 a.m. and 11 a.m. or 2:30 p.m. and 5 p.m. Mack Erlen's Restaurants, Central Office 2626 No. 2nd. Abilene.

EASTLAND CHAPTER NO. 280 O. E. S.

Meets the first Tuesday of each month at 8 p.m. in the Masonic Hall. Call Mrs. Pebble Boles, Sec., for information. MA 9-2783. 4237

MASONIC LODGE NO. 467

Meets second Thursday of each month at 8:00 pm. In the Masonic Hall. Call C. L. Langlitz for information or L. E. Huckabay, Sec., 9-1391, for information.

WE BUY AND SELL USED FURNITURE

Phone MA 9-1740 WAYNE JACKSON

HELP WANTED: Waitress. Apply at Old Rip Cafe. 79

WANTED: Women to work 8 to 11 p.m. shift. Please apply weekdays Seven-Eleven. 79

REAL ESTATE

FOR SALE OR TRADE: Will sell or trade equity in modern, roomy three bedroom home in Abilene for lake or local property. Has chain-link fence and down-drought air. Call MA 9-2413 or MA 9-1707 or write Box 29. tf

FOR SALE OR TRADE: Equity in large two bedroom house. Payments \$35.60 monthly. 205 S. Virginia. See Monroe Walker, 306 N. Dixie. 78

Bill Keith

FOR SALE OR TRADE: Clean 1949 model Oldsmobile '38'. Will take light two wheel trailer in trade. See at 209 W. Patterson. tf

FOR SALE: Our three bedroom Hicrest home, 2 tile baths, central air and heat. 306 S. Oaklawn. Business property 214 S. Seaman. Phone MA 9-1742. tf

FOR SALE: House in Morton Valley three bedroom, bath, good water, deep well and pump. One acre. High and cool. On highway. Phone M. A. Treadwell, MA 9-2017. tf

Jean Jackson

FOR SALE: New two bedroom. Interior almost complete. 500 block East Commerce. Eastland. \$1798 cash as is or \$39.98 a month with no down payment. Call collect Modern Homes Construction Company, Pershing 2-4085, Fort Worth. tf

FOR SALE: Beautiful new brick home, three bedrooms, 1 1/2 baths, all electric kitchen, range, oven, vent a hood, dishwasher, disposal, central heating and central refrigerated air conditioning, double garage, most beautiful tree shaded corner lot in town - well located at the corner of 500 E. Conner - F.H.A. quality approved - nominal down payment with payments like rent - Call Don Kinnaird Jr. at MA 9-2544 or Don Pierson at MA 9-1033. tf

FOR SALE: Three good buys in three-bedroom homes. One G. I. equity. All in good location and good condition. M. A. Treadwell Sr. Phone MA 9-2017. tf

MOTEL MANAGEMENT

Motel Industry needs 90,000 employees. Earn \$6,000 to \$20,000 per year. If you qualify, you will be trained Home Study and in luxury motel. Don't let age, experience or education hold you back. We can finance your training if you qualify. Write UNIVERSAL MOTEL TRAINING, 6513 East Lancaster, Fort Worth 12, Texas

EASTLAND SERVICE PARTS CO.

Auto & Truck PARTS IN STOCK & OVER NIGHT DELIVERY LOWEST PRICES ANYWHERE Independently Owned Nationally Affiliated CALL US FIRST! AUTO PARTS MA 9-1733 (Clip This Coupon and Place it Near Your Telephone)

THURMAN ELECTRIC

Electric Motor Rewinding and Repair. 202 S. Seaman, Eastland.

PERMANENTS

\$10 Creme-Oil Waves \$6.50 \$12 Creme-Oil Waves \$7.50 \$12 Lanolin Waves \$8.50 Other waves \$10 and up Basham Beauty Bar

YOU can rent that spare bedroom with a Telegram Classified!

Margaret MacMay

MIS WANTED

NEED a baby sitter, a car port a lawn mower, a job, an apartment, an assortment of flower seeds? Use Telegram Classifieds. tf

WANTED - An opportunity to prove that Telegram Classifieds work hard for you. tf

PERSONALS

If you are lonely, broken hearted, troubled in spirit or burdened with a sin-sick soul, you can find comfort, consolation and peace at First Methodist Church. tf

FOUND - A perfect way to get rid of those discards at a profit. Sell them with a Telegram Classified. tf

USE as many as 20 words to describe your 'for rents', 'for sales', or 'what have you', for only 60 cents per insertion. tf

HOW do you know you can't sell it? Have you tried a Telegram Classified? tf

RETURNS HOME

Mrs. F. L. Drago has returned home after spending five weeks with her daughter and family. Dr. and Mrs. C. B. Beall, in San Angelo. Mrs. Beall accompanied Mrs. Drago home and spent two nights with her mother.

CHICK'S RADIO AND TV

103 E. Main Service Calls \$2.50 Work guaranteed for 90 days Phone MA in 9-1374 Day or Night

MATTRESSES

Save up to 50% renovating choice of color and firmness. Complete bedding. Made and guaranteed by WESTERN MATTRESS CO., San Angelo. Phone MA 9-2689, Eastland and leave address.

THE HOTEL QUARLES

Originally West Texas Hospital 402 West Main - Ranger Will Keep Elderly People Room and Board. Reasonable rates. HOME COOKED MEALS ALL YOU CAN EAT FOR PUBLIC

T. L. FAGG

REAL ESTATE Property Management Home and Farm Loans

WANTED

Good clean automobiles. Any make - Any Model Considered. BLEVINS MOTOR CO. See Jay Blevins. Ph. MA 9-2433 513 West Main Eastland

COMPLETE AUTO REPAIRS

VIC'S AUTO REPAIR 306 W. MAIN ST. EASTLAND TELEPHONE MA 9-2111 DAY OR NIGHT

Physical Checks Important for Back-to-School

School bells are ringing this month all over the nation as the children you gsters begin the annual return to the classrooms.

The last days before school opening are the time for making certain that the youngsters are ready physically for another nine months of learning.

The pre-registration physical examination is a must in all well regulated families and is even required in some school districts. Ask your doctor to look over the children before they report for classes, just to make certain that no ailments have cropped up during the summer that demand attention.

Ask your doctor to give your children their necessary immunizations. These might include boosters for polio, smallpox, tetanus, whooping cough and diphtheria. Your doctor will know which shots your children

should have. Some schools require vaccination certificates upon registration.

The physical exam should include tests of sight and hearing. Many a child has been tabbed as a slow learner or not very bright when actually he doesn't see the blackboard or the teacher says. A young child often won't realize what's wrong and will be baffled and frustrated.

A dental checkup, including having teeth cleaned, also is an important part of preparing for school opening. The dentist often can fill small cavities and save a tooth before the decay becomes serious.

While you're getting junior ready for school, don't overlook the fact that mom and dad need checkups too. When you're taking the children in for their physical, make an appointment for the older folks in the family too. Regular physical checkups are even more important for adults.

Hospital News

Patients in the Eastland Memorial Hospital are the following:

All are from Eastland unless otherwise specified. Norman G. Watson, medical Eddie J. Blalock, medical, Cisco Emma J. Crain, medical Dora M. Drake, medical Ardis Porter, medical Annie Palmer, medical Alma L. Vann, medical, Olden Nora C. Payne, medical Olene Williamson, medical Mrs. Ethel Pryor, medical Gladys E. Searcy, surgical, Ranger Ella A. Medford, medical Clarence W. Medford, medical Clara Young, surgical Charles Harlow, medical Ida M. Townsend, medical Moran Mrs. Thelma Kuhn, medical, Olden Weaver T. Aishman, surgical, Ranger Grady Pipkin, medical

See Golf Film

The Eastland Rotary Club saw a film of the 1961 Buick Open Golf Tournament at their regular luncheon Monday. Look Muirhead was program chairman.

Card of Thanks

Thanks a million to my many friends for the phone calls, letters and cards, visits, floral offerings and prayers while I was in the hospital at Temple. We shall never, never forget you. May the good Lord bless you real good. County Judge John Hart

RETURNS HOME

Mrs. Clara Cockrill and Mrs. Sallie Bishop, both of Eastland, have returned to their homes from a vacation trip through Colorado and California on an escorted tour.

They reported a delightful two weeks of sight-seeing in the Rocky Mountains, San Francisco, Los Angeles, Las Vegas and the Grand Canyon.

Suffocation killed 3,100 Americans in 1961.

RANGER DRIVE-IN

ADULTS 50c KIDDIES UNDER 11 FREE Bargain Nite Each Wednesday - 50c Carload THURSDAY - FRIDAY

THE CLOWN AND THE KID BIG TOP DRAMA! THE STORY OF THE EX-CON AND THE CARNIVAL KID! JOHN LUPTON - MIKE MCGREEVEY DON KEEFER SATURDAY

REPRISAL GUY MADISON FELICIA FARR KATHRYN GRANT SUNDAY - MONDAY - TUES

A MUST!... A HEART-TWISTER FOR THOSE WHO LIST TO LOVE! HOLDEN-PALMER PERLBERG-SEATON THE COUNTERFEIT TRAITOR TECHNICAL HUGH GRIFFITH

Letter To The Editor

The attitude of the four city commissioners toward Don Pierson is shocking and disgraceful. Mr. Pierson was elected by the citizens of Eastland. He is their choice. He can't give the citizens of Eastland a larger water minimum as he promised, because he has no cooperation from the other commissioners. The City of Eastland is certainly being poorly managed when the representatives are so biased and callous as to lose \$500.

The commissioners were elected by the citizens of Eastland to work for the best interest of the town, not to carry on a battle of prejudice and jealousy.

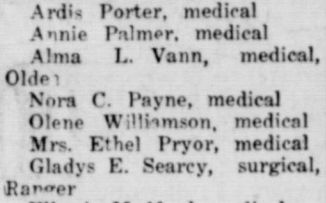
Personally, I don't even know Don Pierson, but Eastland is my town.

(Name withheld by request).

back-to-school FAVOR

fashion outlook... Dresses... sweaters...

Stunning new fashions, created by arriving designers for junior styles at appropiate half sizes at appropiate low prices. Shop 3.99 to 8.99



Other California designed fashions by MODE O'DA Juniors-Misses-Half sizes... priced from 3.99

MODE O'DA

EASTLAND

DIXIE Drive-In

Admission 60c Children under 12 FREE Each Wednesday - Adults 25c

30 Thursday 31 Friday

'LONELY ARE THE BRAVES'

Kirk Douglas * Gena Rowlands * Walt

2 Sunday 3 Monday

'SWINGIN' ALONG'

Tommy Noonan * Pete Marshall * Barbara

IN COLOR

JOY DRIVE-IN

WEDNESDAY - THURSDAY - FRIDAY

'TARZAN GOES TO INDIA'

IN COLOR - JOCK MAHONEY

SATURDAY - SUNDAY - MONDAY

Adults 75c - Children 25c ONE SHOWING NIGHTLY AT 8:00

'KING OF KINGS'

IN COLOR

MAJESTIC

THUR. - FRI. Open Thur. - Sat.

REPRISAL

20th ANNIVERSARY production of JULES VERNE'S

FIVE WEEKS IN A BALLOON

STARTS SUNDAY

TOLD WITH VOLCANIC POWER AND

ROCK HUDSON BURL IVES GENA ROWLANDS

THE SPIRAL ROAD

GEORGE SEXTON GEOFFREY KEEN

Labor Day Week End Specials!

Beef & Beans Highway. 3 No. 300 Cans **29¢**

Vienna Sausage Libby's. 3 No. 1/2 Cans **59¢**

Tempest Tuna Grated Light Meat. 3 6-Oz. Cans **59¢**

Salad Dressing Piedmont. Quart Jar **39¢**

String Potatoes Supper Club. No. 300 Can **10¢**

Berrie Sherbet Party Pride, Assorted Flavors. 1/2-Gal. Ctn. **59¢**

Soft Drink Grape, Orange or Orange-Strawberry. 1/2-Gal. Bottle **35¢**

Potato Salad Lucerne. "Reg. 39¢." 16-Oz. Carton **29¢**

Hamburger Relish Lucerne. "Reg. 49¢." 8-Oz. Jar **39¢**

Fig Bars Busy Baker, Vanilla. 2 Lb. Pkg. **39¢**

Pepsi-Cola (Plus Deposit)
Refreshing Pepsi-Cola Hits the Spot! 6 12-Oz. Bottle Ctn. **29¢**

Beverages Cragmont, Assorted Flavors. (Plus Deposit) Quart Bottle **10¢**

Canned Beverages Cragmont, No Deposit Cans. 6 12-Oz. Cans **49¢**



Enjoy Summer's Last Fling!

Bakery Features!

French Bread 1-Lb. Loaf **19¢**

Roll Wraps "Reg. 25¢." 7-Oz. Pkg. **23¢**

Snails Mrs. Wright's, Pastry. "2¢ Off." 8-Ct. Pkg. **19¢**

Dog Buns Mrs. Wright's. 8-Ct. Pkg. **19¢**

Hamburger Buns Mrs. Wright's. 8-Ct. Pkg. **19¢**

Panobread D'Agostino. 1 1/2-Lb. Loaf **29¢**

Potato Chips Morton's, Barbecue. 3 1/2-Oz. Pkg. **25¢**

Cracker Wafers Nabisco, For snacks! 9 1/2-Oz. Pkg. **39¢**

Chocolate Chip Cookies Sunshine. 7 1/2-Oz. Pkg. **29¢**

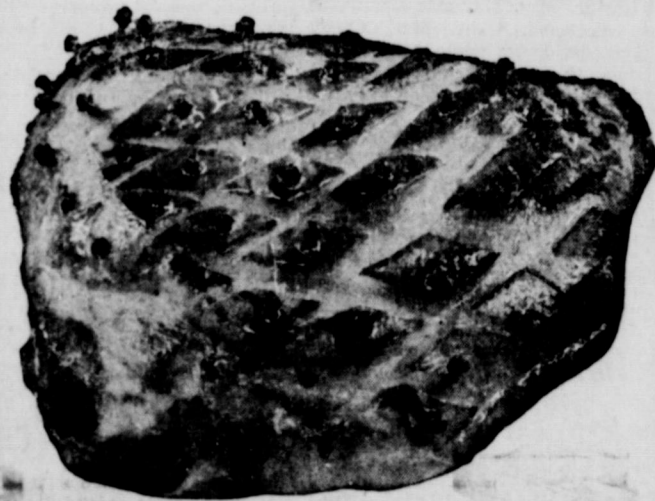
Beef-O-Chicken Tuna Churn Light Meat. 6 1/2-Oz. Can **35¢**

Tooth Cream Colgate, Makes teeth whiter. Giant Size **49¢**

Bar Lids Dome Vacuum Seal. 2 12-Ct. Pkg. **31¢**

1-L-Ration Dog Food. 2 16-Oz. Cans **33¢**

1-L-Ration Dog Food. 2 26-Oz. Can **27¢**



Smoked Picnics 6 to 8-Lb. Average. Delicately Pink and finely textured. Truly a holiday treat. Juicy, tender meat. Whole. **Lb. 29¢**

Jumbo Bologna Full Pound Pkg. **49¢**
Make tasty sandwiches.

Skinless Franks 3 Lbs. **98¢**
Perfect for outdoor cookouts.

Beef Brisket Lb. **35¢**
Ideal for cooking outdoors.

Canned Ham 6 Lb. **\$4.99**
Armour's Star. Boneless. No waste.

Canned Ham 3 Lb. **\$2.79**
Rath's. A handy item for holiday eating.

Pork Spareribs Lb. **39¢**
Delicious barbecued.

Turkey Hens Lb. **39¢**
Manor House. 8 to 12-Lb. Avg. U.S.D.A. Inspected and Graded "A."

T-Bone Steak Lb. **\$1.09**
Or Club Steak. U.S.D.A. Choice Grade Heavy Beef.

Sirloin Steak Lb. **99¢**
U.S.D.A. Choice Grade Heavy Beef.

All Stores Will Be **CLOSED** Labor Day Sept. 3rd Shop Early and Save!

Pillsbury Flour For baking. 5 Lb. Bag **59¢**

Cake Mixes Pillsbury, Deluxe White, Yellow, Pineapple or Chocolate. Reg. Box **39¢**

Frozen Dinners Banquet, Beef, Ham, Chicken or Turkey. 11-Oz. Pkg. **55¢**

Biscuits Ballard Sweetmilk or Pillsbury Buttermilk. 3 8-Oz. Cans **29¢**

Cream Cheese Kraft Philadelphia, Plain, Pimiento or Chive. 2 1-Oz. Pkg. **29¢**

Sliced Cheese Kraft American, Pimiento or Swiss. 1/2-Lb. Pkg. **35¢**

Parkay Margarine Delicious spread. 1-Lb. Pkg. **25¢**

Hawaiian Punch Hot weather treat. 46-Oz. Can **39¢**

Chunk Tuna Breast-O-Chicken, Light Meat, 100% Corn Oil. 1/2-Gal. Can **37¢**

Pickles Sour Pickles. Zippy Whole. 2 22-Oz. Jars **49¢**

Lemonade Bel-air Frozen. Regular or Pink. 6-Oz. Can **10¢**

Deodorant Colgate, Spice or Pine Scent. 8 1/2-Oz. Can **79¢**

Tissue White and assorted colors. 4-Roll Pkg. **37¢**

Towels Northern, Assorted Colors. 2-Roll Pkg. **39¢**

Olives Stuffed. 5-Oz. Jar **39¢**

Mustard Wm. L. Brown Club, Delicious Hot Dogs and Hamburgers. Jar **19¢**

Whitening 3-Lb. Ctn. **49¢**

Cashmere Bouquet Assorted Colors. 2 Bath Bars **29¢**

Fab Detergent For whiter clothes. Giant Box **68¢**

Vel Liquid Pink, for softer hands. 22-Oz. Bottle **51¢**

Ajax Cleanser Bleaches as it cleans. 2 14-Oz. Cans **29¢**

This Coupon Worth 100 FREE GOLD BOND STAMPS
Plus your regularly earned Gold Bond Stamps with the purchase of Any \$5.00 Purchase of SCHOOL SUPPLIES
Coupon Expires September 1, 1962.

Note Book Paper Poly Wrap. 300-Sheet Pkg. **66¢**

Water Colors 8 colors with Brush. Each **49¢**

Plastic Bookcovers "Zany" and Southwest Conference Titles. Each **39¢**



Grapes Thompson seedless. 2 Lbs. **29¢**

Radishes Garden fresh. Add zest to salads. 2 4-Oz. Pkg. **19¢**

Safeway Guaranteed Fresh Produce!

Potatoes U. S. No. 1 Russet. Ideal all purpose. 10-Lb. Bag **59¢**

Peaches Elberta. Colorado, From Mesa County. (Bu. \$4.69). Lb. **10¢**

Lemons Sunkiest. Large size. Ideal for iced tea. 6 For **23¢**

This Coupon Worth 50 FREE GOLD BOND STAMPS
Plus your regularly earned Gold Bond Stamps with the purchase of TWO 1/2-Gal Ctns. Lucerne Orange, Grape or FRUIT PUNCH DRINK
Coupon Expires September 1, 1962.

This Coupon Worth 25 FREE GOLD BOND STAMPS
Plus your regularly earned Gold Bond Stamps with the purchase of 49¢ Bag MORTONS Chip-O's or 59¢ Twin Pak MORTONS POTATO CHIPS
Coupon Expires September 1, 1962.

This Coupon Worth 50 FREE GOLD BOND STAMPS
Plus your regularly earned Gold Bond Stamps with the purchase of 10-Lb. Bag Arrow CHARCOAL BRIQUETS
Coupon Expires September 1, 1962.

This Coupon Worth 25 FREE GOLD BOND STAMPS
Plus your regularly earned Gold Bond Stamps with the purchase of One Head FRESH LETTUCE
Coupon Expires September 1, 1962.

Redeem this coupon for 50 FREE GOLD BOND STAMPS
with purchase of \$5.00 or more (Excluding Cigarettes) One Per Customer. Coupon Expires September 1, 1962.

This Coupon Worth 100 FREE GOLD BOND STAMPS
Plus your regularly earned Gold Bond Stamps with the purchase of One-Half or Whole SMOKED HAM
Coupon Expires September 1, 1962.

Prices and Coupons Effective Thurs., Fri. and Sat., Aug. 30, 31 and Sept. 1 Eastland
We Reserve the Right to Limit Quantities. No Sales to Dealers.

SAFEWAY

Court of CIVIL APPEALS

The following proceedings were had in the Court of Civil Appeals Eleventh Supreme Judicial District of Texas:

Motions Submitted
Lillie V. Miller et al v. Mrs. Dorcas Pierce et al. Agreed Motion to file Supplemental Transcript.
W. E. Martin et al v. Virginia Johnson. Appellants' motion for extension of time to file Statement of Facts, Appellants' motion for extension of time to file Supplemental Transcript.
S. T. Burkett v. Willard Bruenger et ux. Agreed motion to file Deposition.
Motions Granted
Lillie V. Miller et al v. Mrs. Dorcas Pierce et al. Agreed Motion to file Supplemental Transcript.
W. E. Martin et al v. Virginia Johnson. Appellants' motion for extension of time to file Statement of Facts, Appellants' motion for extension of time to file Supplemental Transcript.
S. T. Burkett v. Willard Bruenger et ux. Agreed motion to file Deposition.

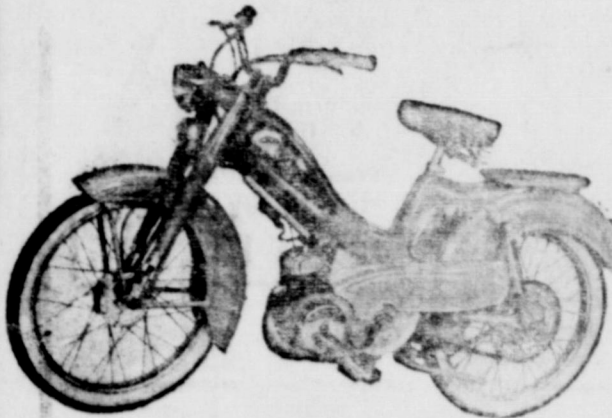
GOLDEN AGE NURSING HOME

104 East 4th Street Cisco Phone HI 2-3458

24 Hour Nursing Care, Good Meals - Special Diets State Licensed and Approved For Welfare Patients

Jerry Stephens Administrator Mrs. C. M. Searcy, R. N. Supervisor of Nurses

MOBYLETTE Up to 250 Miles Per Gallon



4-MODELS TO CHOOSE FROM from 1:39⁵⁰

BRUCE PIPKIN SPORT CENTER

304 E. Main

Eastland

Gorman Gatherings

Lee and Randy Stone of Fort Worth are spending the week with their grandparents, Mr. and Mrs. H. H. Pullig and Mrs. Earl Stone Sr., while their parents are in El Paso on a business trip.

Mr. and Mrs. O. D. Hite, Susan and Sally of San Antonio are visiting with Mrs. Hite's parents, Mr. and Mrs. J. N. Ellison. Mrs. Ellison is a patient in the Blackwell Hospital.

Mr. and Mrs. Marvin Nix and their grandson, Jimmy Clark, spent Tuesday visiting with Mrs. Nix's sister and daughter, Mrs. Dessie McCamas and Mrs. Hazel Shankle. They also attended Six Flag Ozer Texas.

Mr. and Mrs. R. C. Boswell were visiting Sunday with her sister and husband, Mr. and

Mrs. Wylie Yeager, in DeLeon and her brother, Perry St. Clair, in Comanche.

Mr. and Mrs. T. G. Gray spent last weekend with their daughter and husband, Mr. and Mrs. Preston Lightfoot in Sweetwater. Mrs. Lightfoot came for them Friday and brought them home Monday.

Mrs. Lou Emily Metcalf of Fort Worth was a guest at the morning services at the First Baptist Church Sunday and she was a dinner guest in the home of her brother, Mr. and Mrs. Erin Mearns.

Guest in the home of Mr. and Mrs. R. C. Boswell Tuesday were his sister and husband, Mr. and Mrs. Ernest Marland of Stephenville, a niece and husband, Mr. and Mrs. Lester Brown of Midland.

Mr. and Mrs. Marvin Nix left Wednesday evening for Bridgeport. They took their grandson, Jimmy Clark, home after a two weeks visit in Gorman with the Nixes and Mrs. J. W. Clark.

Mr. and Mrs. Henry Wright spent Sunday and Monday with her mother, Mrs. J. W. Townsend, and their granddaughters, Susan and Sheron, returned home with their parents after a two weeks stay with their grandmother.

Recent guests in the home of Mr. and Mrs. Seth Boles were their son, Robert B. Akers, of Fort Worth and Mr. and Mrs. Johnny Burton of Midland.

Mrs. Ben Burdett has returned home after spending a month at the bedside of her daughter, Mrs. Marjorie Crews, in Lakewood, Calif. Mrs. Crews passed away while her mother was there and was buried in the Lakewood Cemetery on July 23.

Guests in the home of Dr. and Mrs. W. M. Brogdon during the past week were her brother and family, Mr. and Mrs. Herbert Gollin and son of Athens.

Mr. and Mrs. Bill Smith of Dallas and Mr. and Mrs. H. J. Townsend of Fort Worth were weekend guests in the home of Mr. and Mrs. Cheek Smith and Mrs. Earl Stone Sr.

Guests in the home of Mr. and Mrs. Othell Clark were her sister and children, Mrs. Brownie Woods of Midland.

Mr. and Mrs. Bucky Walters and children returned home Saturday from New Mexico, where he had been working during the summer.

Mr. and Mrs. O. D. Hite, Susan and Sally returned to their home in San Antonio Saturday after a weeks stay with her parents, Mr. and Mrs. J. N. Ellison.

Gene Ellison of Abilene was at the bedside of his mother over the weekend. Mrs. Ellison and Jennie of Abilene visited with the Ellisons and her mother, Mrs. Fannie Burkett, on their way to Austin. Mrs. Burkett and granddaughter, Dee Palmie, made the trip to Austin with them. Dee had been visiting here with relatives for about a week. They spent the weekend with Dee's mother, Mrs. Dorothy Palmie.

Charles Mauney Serving Aboard USS Huntington

Charles V. Mauney, gunner's mate third class, USN, son of Mr. and Mrs. S. M. Mauney of Route one, Gorman, is serving aboard the destroyer USS Huntington, a unit of the Second Fleet and the North Atlantic Treaty Organization striking force which participated in a special exercise "Riptide III", August 17-20, in the Eastern Atlantic.

The unit joined more than 40 other ships, together with aircraft from four NATO nations for four-day exercise in the Eastern Atlantic.

Vice Admiral John McN. Taylor, Commanding Striking Fleet Atlantic conducted the exercise. Other forces participating consisted of ships and aircraft from France, the United Kingdom and aircraft from Portugal.

Simulated nuclear and conventional strikes by carrier-based aircraft were conducted as well as numerous other exercises.

The purpose of the special exercise was to test and develop the readiness of the participating naval forces operating as a coordinated force.

VISITS HERE

Mrs. Frances Young of Colorado City and Mr. and Mrs. Hudson Young, Barbara and Patricia of San Diego, Calif. were visiting with relatives and friends in Eastland over the weekend.

READ THE CLASSIFIEDS

Gaila Walters Gets Degree From McMurry

Gaila Walters of Eastland was among 56 persons receiving degrees from McMurry College at its annual summer commencement on August 23. The program was held in Radford Memorial Auditorium with the Rev. Frank D. Carlton, pastor of St. Paul Methodist Church in Abilene, as speaker.

The Rev. C. A. Holcomb Jr., Stamford, and the Rev. Joe Emmanuel of Artesia, N. M., were awarded honorary Doctor of Divinity Degrees at the Commencement program.

Seventeen of those receiving diplomas were awarded master of education and 39 received bachelor degrees.

Miss Walters is of Eastland. In was a member of the Club, S. E. A. Education Association

Insurance and Real Estate D. L. KINN Life - Fire - Auto - Polio - 42 years in the Business in E

• Read The Classifieds

tune-up FOR TROUBLE-FREE DRIVING

COMPLETE AUTO REPAIRS

24 HOUR WRECKER SERVICE

Phones MA 9-2270 Night MA 9-2224

ALLEN AUTO REPAIR AT RUSHING MOTOR CO. 215 SOUTH SEAMAN

HURRY!

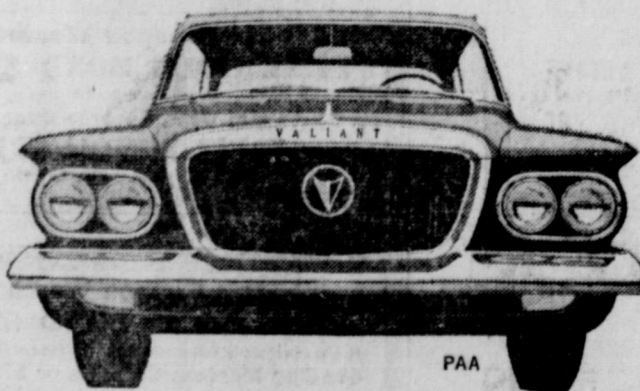
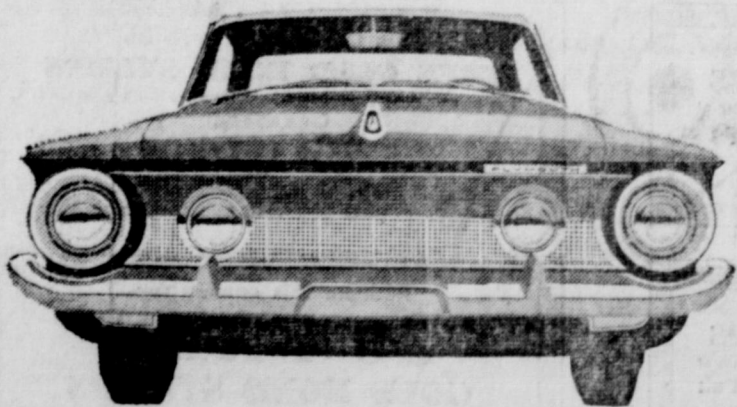
RIGHT NOW: BEST DEALS OF THE YEAR AS WE MAKE ROOM FOR '63 MODELS!

HURRY!

LAST CHANCE TO GET A HUGE SELECTION OF '62 PLYMOUTH AND VALIANTS AT YEAR-END PRICES!

HURRY!

YOU'LL GET A SKY-HIGH TRADE-IN ALLOWANCE ON YOUR PRESENT CAR!



SEE YOUR PLYMOUTH-VALIANT DEALER Rushing Motor Company 215 South Seaman Blevins Motor Company 514 W. Main

HAMNER FUNERAL HOME

Ben E. Hamner, Owner Serving Eastland County since 1922 ambulance and funeral service. Our ambulances are oxygen equipped and air conditioned. Through our nation-wide connection with other funeral directors, we can handle a funeral from any point in America. We offer this knowing that we can relieve the family burdens incident to any death away from Eastland Dial MA 9

Hamner Life Insurance Company

Ben E. Hamner, President This company has been in operation since 1942 selling policies to be used primarily for burial purposes. We write from \$600 and our policies are paid in cash, allows freedom in the selection of the Director of your choice. Ages from 1 month to 90 years. For further information come by to see Hamner Funeral Home, 301 S. Lamar, Eastland P. O. Box 431 Dial MA 9-26

Southern Television System Corp. Village Hall CALL and we WIRE YOU Watch Your Favorite TV Programs • Comedy • Sports Ph. MA 9-17



get your FREE home safety guides now! A child reaches for some bright pills... a chair used as a ladder tilts... an "unloaded" gun is aimed... these are some of the situations that cause 28,000 deaths, 4.2 million injuries in American homes in a typical year. You can protect your loved ones by using your Home Safety Guides to safety-condition your home. They're free at any of the offices of the sponsors listed here. Published monthly, three Safety Guides are available now. Don't delay—get yours today!

LONE STAR GAS COMPANY TEXAS SAFETY ASSOCIATION EASTLAND TELEGRAM

UNITY EPISCOPAL
Seaman St.
Ralph Woods,
Wicar
SUNDAY
Church School
Morning Prayer
Holy Communion
WEDNESDAY
Prayer meeting at
Joseph Nepper,
th. Cisco.

**FURNITURE
CARPET
APPLIANCES**
Merchandise at Every Day Low Prices
DELIVERY — NO CARRYING CHARGES
ON FURNITURE and CARPETS
FOR 1 FULL YEAR
Super Furniture Exchange
"BRASHIER'S"
Ranger Phone MI 7-1404

GIVE Round-Up STAMPS

TIME SANDWICH SPECIAL
18-Oz. Jar **49¢**
BUTTER
Giant Can 23¢
2 Regular Bars 21¢
2 Both Bars 31¢
Regular Bar 21¢

Back to SCHOOL SPECIALS
ALADDIN Loose-Leaf NOTEBOOK FILLER 49¢
5 Lb. Can **4.49**
2 Lb. Bag **89¢**
Lb. **49¢**
Bolcona Lb. **39¢**
2 Lbs. **99¢**
Lbs. **55¢**

STAR-KIST TUNA Green Label Chunk Style **29¢**
Gladiola FLOUR
SUPER DAVE MARKETS

FOLGERS COFFEE Drip Grind **69¢**
Let's go SAVE at SUPER SAVE!

MACMOY'S Super Save
Home Owned—Home Operated 600 S. Seaman
California Tomatoes Lb. 19¢

CHURCH NEWS

ST. FRANCIS CATHOLIC CHURCH
Rev. Joseph L. Van Winkle, C.L.C.M.
SUNDAY MASS
1st and 3rd Sunday at 9:30 a.m.
2nd, 4th and 5th Sunday at 11 a.m.
Every Tuesday Mass at 6:30 p.m. Holy Days Mass at 7:15 a.m.

CHURCH OF CHRIST
Corner of Plummer and Daugherty
SUNDAY
9:30 a.m.—Bible Class For All Age Groups.
10:20 a.m.—Morning Worship
2:00 p.m.—Visitation of Shut-ins.
6:00 p.m.—Young Peoples' Meeting.
7:00 p.m.—Evening Worship.
WEDNESDAY
9:30 a.m.—Ladies' Bible Class.
7:00 p.m.—Prayer Meeting and Bible Study.

FIRST METHODIST CHURCH
Wm. S. Fisher, Pastor
215 S. Mulberry
SUNDAY
9:45 a.m.: Church School
10:55 p.m.: Worship Service.
6:15 p.m.: Youth Fellowship
7 p.m.: Evening Worship
TUESDAY
9:30 a.m.: W.S.C.S.
WEDNESDAY
7:30 p.m.: Choir rehearsal Wesleyan Guild every 1st & 3rd Wednesdays
Official Board Monday after 1st Tuesday
Five Commissions—every 1st Monday

CARBON METHODIST CHURCH
James W. Waller, Pastor
Carbon
SUNDAY
Sunday School 10:00 AM
Morning Worship 1:00 AM
Seventy-two per cent of the deaths from falls in 1961 were of persons 65 years old or older.

CHRISTIAN SCIENCE
Plummer and Lamar
SUNDAY
9:45 a.m.: Sunday School
11 a.m.: Sunday morning service.
Wednesday,
7:30 p.m.: Mid-week Service
The public is cordially invited.

CHURCH OF THE NAZARENE
Rev. Clarence Manners
613 W. Main
SUNDAY
10—Sunday School
11—Morning Worship
6:45 p.m.—N.V.P.S.
7 p.m.—Evening Services
Wednesday
7 p.m.—Mid-week Prayer Service
FRIDAY
Noon—Prayer and Fasting
3:15 p.m.—Children Hour

BETHEL BAPTIST CHURCH
Rev. Henry Littleton, Interim
SUNDAY
9:45 a.m.: Sunday School
11 a.m.: Morning Worship
7 p.m.: Training Union
8 p.m.: Evening Worship
WEDNESDAY
6:15 p.m.: Primary teachers and officers meet
7:30 p.m.: Midweek prayer
8:15 p.m.: Choir practice

FIRST BAPTIST CHURCH
Rev. Haston Brewer, Pastor
108 W. Plummer
SUNDAY
9:45 a.m.: Sunday School
11 a.m.: Morning Worship
6:15 p.m.: Training Union
7:30 p.m.: Evening Service
TUESDAY
9:30 a.m. & 1 p.m.: W.M.U.

CHURCH OF GOD
Corner Lamar and Valley
Pastor
R... Joe Downs
SUNDAY
10 a.m.: Sunday School
11 a.m.: Sermon
6:45 p.m. Youth Fellowship
7:30 p.m.: Sermon
WEDNESDAY
7:30 p.m.: Prayer Service
UNITED PENTECOSTAL CHURCH
208 N. Dixie
Rev. Freddie Waldrep
SUNDAY
9:45 a.m.: Sunday School
11 a.m.: Morning Worship
7:45 p.m.: Evening Service
WEDNESDAY
7:45 p.m.: Prayer Meeting
SATURDAY
7:45 p.m.: Pentecostal Conquerers.

FIRST CHRISTIAN CHURCH
Corner Olive & Lamar
Ray Heckendorn, Pastor
SUNDAY
9:45 Church School
11:00 Morning Worship
7:00 Evening Vespers
WEDNESDAY
5:00 Junior Choir
6:30 Adult Choir

ASSEMBLY OF GOD
Rev. Frank Evans, Pastor
SUNDAY
9:45 a.m.: Sunday School
11 a.m.: Morning Worship
6:45 p.m.: Christ Ambassadors
7:30 p.m.: Evening Service

CALVARY BAPTIST
REV. FLOYD OSBORN
207 N. OAK ST.
SUNDAY
10 a.m.—Sunday School
11 a.m.—Morning Worship
7 p.m.—Prayer Service
7:30 p.m.—Evening Worship

HOLY TRINITY EPISCOPAL CHURCH
710 S. Seaman
Rev. William Ralph Woods
SUNDAY
9 a.m.: Morning Prayer
9:15 a.m.: Holy Communion & Sermon

FIRST PRESBYTERIAN CHURCH
Rev. Eugene Surface, Pastor
SUNDAY
10:00 a.m. - Church School
11:00 a.m. - Divine Worship
12 noon - Monthly meeting of the Church Session on the Sunday after the first Wednesday.
Tuesday
9:30 a.m. - United Presbyterian Woman meet on the first and the third Tuesdays of each month.

OLDEN BAPTIST CHURCH
Rev. Bill Penland, Pastor
Olden
Sunday
9:45 AM
11:00 AM
6:00 PM
7:00 PM
WEDNESDAY
7:30 PM

FLATWOOD CHURCH OF CHRIST
Thurman Carter, Pastor
Flatwood
Sunday
10:00 AM
11:00 AM
7:00 AM

More than half of all fire-arms accidents occur in the home.

EASTLAND AUTO PARTS
300 S. Seaman
Main 9-2158

FULLY EQUIPPED AUTOMOTIVE MACHINE SHOP
VALVE GRINDING
BRAKE DRUM TURNING
HEAD SURFACING
VALVE JOBS
BLOCK BORING
SLEEVE INSERTING
VALVE SEATING

ALWAYS IN STOCK COMPLETE LINE AUTOMOTIVE TRUCK TRACTOR PARTS

EASTLAND AUTO PARTS
300 S. Seaman MAin 9-2158

Wage loss resulting from home accidents in 1961 totaled \$700 million. Medical expenses totaled \$350 million.

Buffalo Rodeo
LABOR DAY — SEPT. 3
8 P.M.
RANGER, TEXAS
Johnny Stewart's Arena
3 Miles West on Farm to Market Road No. 101

IT WILL BE WILD & WOOLY! DON'T MISS IT!

- EVENTS -

• Calf Tie Down
• Double Mugging
• Cowgirl Barrel Races
• Cowgirl Ribbon Roping
• Bronc Riding
• Bull Riding
• Kid's Calf Riding
• Wild Bull Cart Act

ALL EVENTS \$7.00 JACK POT

See Cowboys & Cowgirls Ride the Wild Buffalo!

Admission Adults \$1.00 — Children 50¢ Under 12 Free

Sponsored by
RANGER FIRE DEPARTMENT

LABOR DAY WEEKEND SPECIALS

Largest Selection of School Supplies Ever

Universal Waffle Iron & Grill Reg. 24.95 **18.88**
 Universal Steam & Dry Irons Reg. 12.95 **9.88**
 West Bend Automatic Percolators Reg. 14.95 **11.88**
 Dupont Electric Skillet Reg. 14.95 **11.88**
 Lasko (2 Place) Pop Up Toaster Reg. 14.95 **12.88**
 S&H Green Stamps — Double on Saturday

YOUR IDL STORE

CENTRAL DRUG
MAIN 9-2681

CURED BACON Lb. **65¢**
SMOKED PICNIC 3 Lb. Can **\$1.99**
MacMOY'S Super Save
Home Owned—Home Operated 600 S. Seaman
California Tomatoes Lb. 19¢



JOANNA LINDIG
... Blanco County



LINDA KAY WARE
... Taylor County



ILENE RODE
... Gillespie County



BETTY JOST
... Runnels County



JANICE TAYLOR
... Stephens County



LYNDA SPILL
... McCulloch

District Queens -

(Continued From Page One)
Miss Betty Jost of Rowena, representing Rowena County Farm Bureau; Miss Jan Moreland, of Goldthwaite, representing Mill County Farm Bureau.

Representing McCulloch County will be Miss Lynda Spiller Smith, 16 year old daughter of Mr. and Mrs. Bill Smith of Rochelle. Miss Smith is a junior student at Rochelle High School.

The Women's Committee of Eastland County Farm Bureau is in charge of plans for this annual affair.

The committee is composed of Mrs. Beth Coats, Rt. 1, Cisco; Mrs. Leo Brooks, Eastland; Mrs. Jean Harbin, Eastland; Mrs. Glenn Justice, Carbon; Mrs. B. B. Freeman, Ranger; Mrs. Henry Fry, Cisco; Mrs. B. O. Smoogie, Scranton; Mrs. Dora Schafer, Nimrod; Mrs. Joe Bob Browning, Gorman; Mrs. Don Kincaid, Cisco; and Loresta Love, Ran-

ner, and Paula... A tea will be... contestants... p.m. in the... Spot Restaurant... Entertainme... sited by the... Trio of Baird... vide the music... for the queen... Judges for... test will be... Wichita County



ANN JOYCE
... Coleman County



JAN MORELAND
... Mills County



COLIA MOSS
... LLANO COUNTY



VIRGINIA BITTERS
... Brown County

VISITING PARENTS
Mr. and Mrs. Randall Stone of Phoenix, Ariz. are visiting with their parents, Mr. and Mrs. Dean Butler, who are making their home with her grandfather, Jeff Woods of Olden.

While on the two weeks vacation, they are attending revival services at the Olden Baptist Church.

For children under five years, leading causes of death in 1961 were suffocation, 2,600; fires, burns, and deaths associated with fires, 1,200; and falls, 500.

About 500 persons drowned in home accidents in 1961. Bathtub drownings claimed 170 lives and 75 died in swimming pools. Other drownings occurred in wells, cisterns, creeks and other open bodies of water.

Your dreams come true with **PLAID STAMPS**



PRICES GOOD THRU SAT., SEPT. 1, 1962
BUY YOUR SCHOOL SUPPLIES AT A&P
Closed Labor Day

HOLIDAY FOOD VALUES

FOR THE LONG WEEKEND!

- A&P FROZEN SPINACH Chopped 10-oz. Pkg. 10¢
- WHITFIELD HAMBURGER CHIPS OR REG. DILL PICKLES 2 22-oz. Jars 45¢
- SALAD DRESSING MIRACLE WHIP Qt. 49¢
- JANE PARKER POTATO CHIPS 1-lb. Pkg. 49¢

25 Clip This Coupon for 25 Extra Plaid Stamps
With the Purchase of WUNDERFOIL Aluminum 25 Ft. Roll Foil 29¢
at your A&P Store in Eastland
Coupon Good Through Sept. 1, 1962

- RAINBOW MIDGETS SWT. PICKLES 3 12-oz. Jars \$1
- A&P ASST. FLAVORS MELLORINE 3 1/2 Gal. Ctns. \$1
- CHEF'S PRIDE CHARCOAL BRIQUETS 20-lb. Bag 79¢
- JANE PARKER APPLE PIES Ea. 39¢

"SUPER-RIGHT" HEAVY CALF SALE!

SIDES 125 to 150 Lbs. Avg. **49¢**

- Steaks Round or Tri-Slice 1 lb. 89¢ Sirloin Steaks 1 lb. 79¢
- Chuck Roast 1 lb. 49¢ Arm Roast 1 lb. 59¢
- Brisket Roast or Slow 1 lb. 39¢ Short Ribs 1 lb. 35¢

FRANKS "Super-Right" All Meat 1-lb. Pkg. 49¢

HEN TURKEYS 8 to 14 lb. New Crop 1 lb. 39¢

"SUPER-RIGHT" SMOKED

Hams Whole or Half 1 lb. 55¢

- PORTIONS BUTT 1 lb. 55¢ PORTIONS SHANK 1 lb. 39¢
- PORTIONS CENTER 1 lb. 89¢ PORTIONS SLICES 1 lb. 99¢

Peanut Butter Shedd's 3-lb. Jar 99¢

Paper Plates Superior Pkg. of 100 69¢

APPLE JUICE Apple Keg 46-oz. Can 29¢

"Super-Right" Luncheon Meats

- BOLOGNA 8-oz. Pkg. 29¢ BOLOGNA 16-oz. Pkg. 55¢
- SPICED Luncheon Meat 8-oz. Pkg. 35¢ PICKLE LOAF 8-oz. Pkg. 29¢
- OLIVE LOAF 8-oz. Pkg. 33¢ LIVER LOAF 8-oz. Pkg. 33¢
- CHOPPED HAM 8-oz. Pkg. 53¢ COOKED SALAMI 8-oz. Pkg. 35¢

Fresh Produce

- PRUNE PLUMS 2 LBS. 25¢
- SEEDLESS GRAPES 2 LBS. 29¢
- TOKAY GRAPES 2 LBS. 29¢
- YAMS 1 LB. 10¢

- ANN PAGE SALAD MUSTARD 2-lb. Jar 25¢
- ANN PAGE KETCHUP 2 14-oz. Btl. 39¢
- SUPERIOR 9-oz. COLD CUPS Pkg. of 100 79¢
- MORTON'S ICE CREAM SALT 4-lb. Box 17¢
- KITCHEN CHARM WAX PAPER 2 100-Ft. Rolls 35¢
- A&P BRAND SAUER KRAUT No. 302 Can 10¢



525 EXTRA PLAID STAMPS

With the Purchase of the Following Items No Coupon Necessary

- 100** Rug Runners 24" x 72" Size Ea. \$2.29
- 50** EXTRA PLAID STAMPS WITH LEMON JUICE 1/4 C. Btl. 51¢
- 50** EXTRA PLAID STAMPS WITH JANE PARKER JELLY ROLL Qt. Size 65¢
- 50** EXTRA PLAID STAMPS WITH CHEESE SPREAD 2-lb. Pkg. 83¢
- 25** EXTRA PLAID STAMPS WITH A&P PEANUTS Virginia 16-oz. Pkg. 57¢
- 50** EXTRA PLAID STAMPS WITH AMERICAN CHEESE SPREAD 2-lb. Pkg. 79¢
- 25** EXTRA PLAID STAMPS WITH A&P CASHEWS 6-oz. Pkg. 33¢
- 25** EXTRA PLAID STAMPS WITH MAYONNAISE Qt. Jar 55¢
- 25** EXTRA PLAID STAMPS WITH "SUPER-RIGHT" LUNCHEON MEAT 12 oz. Can 67¢
- 25** EXTRA PLAID STAMPS WITH ALLGOOD BRAND SLICED BACON 1-lb. Pkg. 59¢
- 25** EXTRA PLAID STAMPS WITH ANN PAGE BLACKBERRY PRESERVES 2-lb. Jar 67¢
- 25** EXTRA PLAID STAMPS WITH MORTON'S CHIP-O's Corn Chips Pkg. 49¢
- 25** EXTRA PLAID STAMPS WITH NEUHOFF BRAND FRANKFURTERS 1-lb. Pkg. 59¢
- 25** EXTRA PLAID STAMPS WITH MORTON'S POTATO CHIPS Twin Pack 59¢

PENNEY'S SHOP 8:30 TO SATURDAY 11:00 IN CISCO
ALWAYS FIRST QUALITY!

LAST MINUTE BACK-TO-SCHOOL BUYS!



PERFECT SCHOOL DRESS
ALL SCOTCHGARD FINISHED
GO ON SALE NOW AT ...

Count on Penney's for big school buys on famous Mooresville and Dan River cotton gingham plaid. They wash and little-iron wear, have Scotchgard stain and water repeller finish. Pick a different tucked, trimmed, bowed or bordered dress for a daily change... at small change prices!



No Repair Pentred Soles
They'll outgrow the shoes before they outwear the soles... or a new pair free! Scuff-resistant leathers. Black. 8 1/2 to 3 --- 5.99

Foremost Cotton Denim Jeans!
Western Style Denims for longer wear. Sanforized vat dyed.
Sizes 28-42 **2.98**
Boys Sizes **2.49**

No Repair Pentred Soles
They'll outgrow the shoes before they outwear the soles... or a new pair free! Girls' all black saddle... nylon velvet and leather. Sanitized. 8 1/2 to 3B, D -- 4.99

CHARGE ALL YOUR BACK-TO-SCHOOL...