



COVERING EASTLAND COUNTY  
THE ONLY PLACE YOU CAN READ THE MOST IMPORTANT NEWS IN THE WORLD -- ALL THE NEWS ABOUT YOU, YOUR FAMILY AND YOUR FRIENDS!

EASTLAND, TEXAS, THURSDAY, SEPTEMBER 27, 1962

PRICE 10¢

NO. 141  
dBits  
By H.V.G.  
time of year again/ you didn't already/ as Peanut Bowl time/ will guess if you've seen/ on the west side  
remember that the/ selected by the East-land/ and originally/ reads "Eastland/ Peanut Brewery."  
been a lot of last/ operations and the/ busy people.  
man Jimmy Horn/ slowed down/ to catch his  
you've already/ ticket for the game.  
are getting scarce/ in Central Drug/  
at mid-week/  
high, center seats/  
but there are plenty/  
still available.  
I recommend writ-  
the last minute, or  
though "Old Rip"  
last. Roy, he sure  
last year.  
night will be your/  
Cliff Eubank's/  
if you haven't al-  
think his is about/  
mainly because it/  
dry. Now we like/  
with some bounce,  
some time, you can/  
let it go to ranchy.  
will be at Eastland/  
starting at 4:30 p.m./  
parade), at \$1.25/  
and that'll sure save/  
me and back before/  
at 8.  
entrants and fans/  
want to be in town/  
morning for compet-  
I've been told some-  
the midst of all/  
Phil Hewitt's Paschal/  
band from Fort/  
is here.  
right on that, we're/  
extra treat.  
the idea the Jaycees/  
all kinds of special/  
for  
way, it might be well/  
some safety notes/  
will be hundreds of/  
town Saturday and/  
prevent any accidents to/  
extra careful.  
Chief Guy Robinson/  
firemen will/  
with traffic control/  
with others-- and/  
probably have their/  
at the game, marking/  
of cars. So let's/  
cooperative, and cau-

## TYPE II You Can Get Polio Serum Saturday

**Necessary Form on Page Two**  
All Peanut Bowl visitors as well as Eastland area residents are urged to take the Sabin Oral Polio Vaccine Type II Saturday from 10 a.m. to 6 p.m.  
A special invitation has been extended to the public to the advantage of this program by Mrs. Frank Sayre, president of the Civic League and Garden Club, sponsor of the public immunization drive in Eastland.  
One day only has been designated for the Type II Clinic which will be held in the lobby of the Eastland County Courthouse.  
Forms which appear in this issue are necessary before anyone may receive the sugar cubes.  
Type III Day, which was previously set for last Saturday, was postponed, but will be set at a later date.

## Much Is New On '63 Chryslers At Blevins'

An entirely new and crisp sculptured look of elegance distinguishes the 1963 Chrysler is on display at Blevins' Motor Co. showrooms in Eastland.  
Along this fashionable new look, much more is new in the 1963 Chrysler - new body structure, new brake, new engine options, new economy features, new interiors, and new, improved passenger roominess, safety and comfort.  
"We have been told by architects and design authorities in many fields that the 1963 Chrysler embodies the best of contemporary design and is in many ways a leader in this area," C. E. Briggs, Chrysler Corporation vice president and general manager of the Chrysler-Plymouth Division, said.  
"However, while we have made a distinctive appearance change in Chrysler we have retained the traditional big car appeal and engineering which has seen Chrysler register continuous sales over the past four years," Mr. Briggs said. In 1963 Chrysler maintains its policy of building only luxury car buyers.  
You can see the Imperial in Eastland at Blevins Motor Co. "Imperial continues to be America's biggest car," says C. E. Briggs, vice president Chrysler Corporation and general manager of the Chrysler-Plymouth Division. "We are continuing to make Imperial the most carefully built car in the industry."  
The 1963 Imperials will carry on (Continued on Page 2)

## Football Program

Films of the Eastland-Cisco football game and a visit with the EBS coaching staff was program for the Eastland Rotary Club Monday.  
Introduced were Head Coach Millard Glass, and Assistant Coaches Harold Price and Denson Moody.  
The 1963 Imperials will carry on (Continued on Page 2)



**FISH TALK**—These men were talking fish and fishing tournament this week. Helping finalize plans for this week end's annual Fort Worth Angler's Club Fishing Rodeo at Lake Leon were Doc O'Keefe, Lee Ellis, Roy Plumley and Maurice Fry. Tournament headquarters will be at the public recreation area at the lake, and entry blanks will be available for the fishing competition. (A&C Photo)

## Mavericks And Followers Going to Gorman Friday

The Eastland Mavericks take on the Gorman Panthers Friday night and it will be the first game away from home for the locals this season.  
Eastland didn't play Gorman last year and the yardsticks for comparison purposes are elongated.  
Gorman bowed to Ranger last week, 7-0; Ranger tied Cisco, 12-12, in the season opener for those two; and Eastland beat Cisco 20-18 last week.  
The Mavericks have three games "on the road" including the Gorman tilt.  
The following week they go to Rising Star, followed by a trip to DeLeon.  
Their first district game will be with Baird on Oct. 19th at Maverick Stadium.  
A large following of Eastland fans will probably go to Gorman Friday night in view of the nearness and the first wins racked up by the Mavericks.

## '63 Ford Galaxie Due Friday At King Motor

Described as "the most service-free standard-size American car ever offered," the 1963 Ford Galaxie features completely new styling, a new high economy V8 engine, new 36,000-mile major lubrication interval and a new, \$10-million soft-riding, "compliance-link" suspension.  
The new Ford will be at Hood King Motor Co. in Eastland Friday.  
"The 1963 Galaxie represents an all-out effort by our stylists, engineers and product planners to capture an even greater share of the volume standard-size market," said E. F. Laux, Ford Division general marketing manager.  
Galaxie is currently accounting for 46 per cent of Ford Division sales as a separate car line, Mr. Laux said, with the sleek "500 XL" series taking one out of every eight Galaxie sales.  
"This consumer trend to (Continued on Page 5)

## New Imperials Are On Show At Blevins'

The 1963 Imperial now on display in dealer showrooms carries forward a styling continuity with design modifications which further enhance its appeal to luxury car buyers.  
You can see the Imperial in Eastland at Blevins Motor Co. "Imperial continues to be America's biggest car," says C. E. Briggs, vice president Chrysler Corporation and general manager of the Chrysler-Plymouth Division. "We are continuing to make Imperial the most carefully built car in the industry."  
The 1963 Imperials will carry on (Continued on Page 2)

## Fight Films

Blow-by-blow films of the Sonny Liston-Floyd Patterson heavyweight championship fight will be shown Thursday at the Majestic Theater.

## Fullen Motor Shows Chevys Here Friday

Four distinctive lines of 1963 Chevrolet automobiles will go on display in Chevrolet dealerships across the nation Friday, September 28.  
They'll be in Eastland at Fullen Motor Co.  
Offering 33 models in four separate categories--each aimed at a specific segment of the market--the 1963 cars represent faith in a continued strong national economy by Chevrolet, which is already on its way to setting an all-time industry sales record for 1962.  
There are significant styling changes in the regular Chevrolets, a continuation of their unique automotive personalities by the Chevy II and the Corvair, and two entirely new bodies and a new chassis for the Corvette sports car. All models have significant mechanical improvements.  
Taking the four members of the Chevrolet family one at a time:  
**REGULAR CHEVROLETS**  
(Continued on Page 4)

## Band Booster Rummage Sale Friday - Saturday

Members of the Eastland Band Boosters will sponsor the annual Peanut Bowl rummage sale to be held Friday and Saturday at the northeast corner of the square.  
Proceeds of the sale will go toward various improvements and the purchase of instruments for under privileged children.  
Anyone having any rummage to contribute for the sale are asked to bring it by the building or call Bernard Hanna. A pick-up service will be available.

## Throng Expected Saturday For Annual Peanut Bowl

Saturday night will mark the third year of the annual Peanut Bowl Game and will serve as "Sugar Game" for the Ranger Junior College Rangers and the Cisco Junior College Wranglers.  
The Rangers were winners of the 1960 Bowl game and the Wranglers were victors of the 1961 game.  
The game will be held in Maverick Stadium at 8 p.m. Saturday evening. Tickets for the game are now on sale for \$1.50.  
The game, object of considerable rivalry, is expected to be close, as both teams are evenly matched in weight and speed. The Wranglers will again be depending upon a passing attack, while the Rangers are expected to rely upon a ground attack.  
Members of the Eastland Jaycees sponsor the annual event.  
Other highlights of the Peanut Bowl week include the selection of the Peanut Bowl Queen, which was made Tuesday evening in a contest held at the Majestic Theatre, and the pre-game parade.  
Trophies will be awarded to winners of various divisions. Competing in the parade will be a variety of group sponsored floats, marching bands and possibly area riding clubs.  
Immediately following the parade, from 4:30 to 5:30 p.m. a barbecue will be held in the Eastland City Park. Tickets will be \$1.25. Catering will be done by Eubanks & Son of Cisco.  
Extra added attraction will be Miss Jackie Williams, Miss Texas, who will appear in the parade and will also be present at the Bowl Game as guest of the Eastland Jaycees.

## Proclamation

FROM THE OFFICE OF GOVERNOR PRICE DANIEL  
The annual Eastland County Peanut Bowl Game will be held September 29, 1962.  
And all day celebration will be held on that date, which marks the start of the peanut harvest. It will be climaxed by the game between Cisco and Ranger Colleges.  
This important event recognizes importance of peanut growing to the economy of our State.  
THEREFORE, I, as Governor of Texas, do hereby designate September 29, 1962, as  
PEANUT BOWL DAY  
in Texas.

## Miss Jane Williford Is Peanut Bowl Queen

By ZELMA WILLOUGHBY  
Miss Jane Williford, a student at Cisco Junior College, was named 1962 Peanut Bowl Queen in an impressive contest between 11 Eastland County beauties Tuesday night at the Majestic Theatre.  
Miss Williford, daughter of E. A. Williford of Brockenridge, was crowned by the 1961 Queen, Carol MacMoy. She was presented a "peanut brittle" corsage and a bouquet of red roses by Kernel Gene Baker of Gorman.  
First runner up for the title was Miss Julie Frost of Eastland, daughter of Mr. and Mrs. Billy C. Frost. Miss Cindy Fox of Olden, daughter of Mr. and Mrs. H. E. Fox, was chosen second runner up.  
Judges for the contest were Walter Manley of Arlington, State Director of Jaycees; Miss Sarah McNeal of the Abilene Reporter News; and Avis McMahon of Stephenville, correspondent for the Fort Worth Star Telegram.  
Background music was provided by Ken Mayhall of Abilene.  
The 11 lovelies were judged on appearance in both street and formal clothes.  
Queen Jane Williford wore a multi-colored two-piece sheath dress with beige accessories. Her formal gown was a beautiful white satin floor length gown. The fitted bodice was complimented with iridescents. The bouffant skirt featured draped front and side panels.  
Miss Julie Frost appeared in a red and green two piece ensemble complimented by black accessories. For her evening (Continued on Page Six)

## Services For Mrs. Patterson Held Monday

Funeral services were held Monday at 10 a.m. in the First Baptist Church in Eastland for Mrs. Helen Manton Patterson. Rev. Haston Brewer, pastor of the First Baptist Church, and Rev. Eugene Surface of the First Presbyterian Church officiated the services.  
Interment was in the Evergreen Cemetery in Paris, Tex. under the direction of Hammer Funeral Home.  
Born Sept. 14, 1889 in Paris, Tex., Mrs. Patterson died Saturday, Sept. 22, in a Fort Worth hospital.  
Mrs. Patterson had lived in Eastland for 24 years. She had made her home in the Village Hotel for the past years. She was a soloist for the First Baptist Church Choir for many years and was a member of the First Presbyterian Church.  
She was the widow of the late Mr. B. W. Patterson, longtime judge of the 86th District Court, which has now been abolished in Eastland County.  
Survivors include the daughter, Mrs. Florence Beakey, and one granddaughter (Helen Beakey, both of Fort Worth; one sister, Mrs. John Sparger of Dallas; and one brother, Henry Manton of Dallas.

## Services For Mrs. Patterson Held Monday

Funeral services were held Monday at 10 a.m. in the First Baptist Church in Eastland for Mrs. Helen Manton Patterson. Rev. Haston Brewer, pastor of the First Baptist Church, and Rev. Eugene Surface of the First Presbyterian Church officiated the services.  
Interment was in the Evergreen Cemetery in Paris, Tex. under the direction of Hammer Funeral Home.  
Born Sept. 14, 1889 in Paris, Tex., Mrs. Patterson died Saturday, Sept. 22, in a Fort Worth hospital.  
Mrs. Patterson had lived in Eastland for 24 years. She had made her home in the Village Hotel for the past years. She was a soloist for the First Baptist Church Choir for many years and was a member of the First Presbyterian Church.  
She was the widow of the late Mr. B. W. Patterson, longtime judge of the 86th District Court, which has now been abolished in Eastland County.  
Survivors include the daughter, Mrs. Florence Beakey, and one granddaughter (Helen Beakey, both of Fort Worth; one sister, Mrs. John Sparger of Dallas; and one brother, Henry Manton of Dallas.

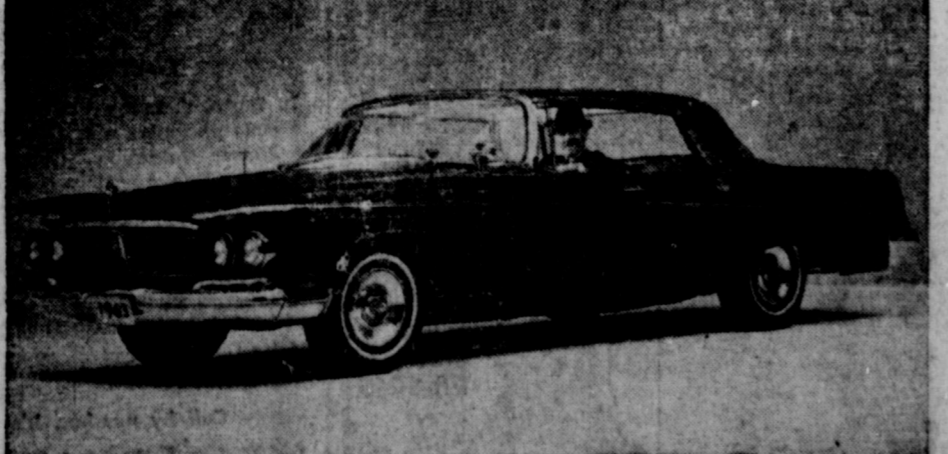
## New Autos in Eastland



CHRYSLER FOR '63 AT BLEVINS MOTOR CO.



'63 CHEVROLET AT FULLEN MOTOR CO.



'63 IMPERIAL AT BLEVINS MOTOR CO



1963 FORD AT KING MOTOR CO.

## JACKPOT ROPING

A jackpot roping will be held Sunday beginning at 1 p.m. at the Eastland County Sheriff Posse Rodeo arena north of Eastland.  
There will be a \$17 open jackpot roping, an \$11 open and barrel races.  
The public is invited and admission will be free.  
The County Sheriff Posse is staging the event.

STAMP  
Purchase  
by's Fr  
CENS 6  
6, 1962



# EASTLAND TELEGRAM

Eastland County Record established in 1931, consolidated August 31, 1951. Chronicle established 1887, Telegram established 1923. Entered as second class matter at the Post Office in Eastland, Texas under the Act of Congress of March 3, 1879.

Published Semi Weekly—Thursdays and Sundays  
By Eastland County Newspapers, Inc.  
H. V. O'BRIEN, Editor

One Week by carrier in city ..... .15  
One month by carrier in city ..... .65  
One year by mail in county ..... 2.95  
One year by mail out of state ..... 6.95

NOTICE TO PUBLIC—Any erroneous reflection upon the character, standing or reputation of any person, firm or corporation which may appear in the columns of this newspaper will be gladly corrected upon being brought to the attention of the publishers.

Call MA 9-1707 for Classified Ads -

## New Imperial -

(Continued From Page One)

ry a new warranty for five years or 50,000 miles, whichever comes first, on all major power train components.

The 1963 model is the seventh in the modern series of Imperial cars which became a separate line in 1957.

**EXTERIOR**  
Imperial retains many of the distinctive styling features of previous Imperials including the free standing head lamps of 1961 and 1962. There is a new grille and a more elegant rear design treatment.

**INTERIOR**  
The appearance, quality and durability of interiors have been greatly improved on the 1963 Imperial.

Great walnut door panel inserts have been added to Le-

Baron to impart a new note of elegance.

The new roof silhouette allows higher rear seats and greater head room. In two-door models the rear passenger compartment has 4.5 inches additional leg room. The floor pan hump in front is lower, providing improved three passenger comfort.

**ENGINE**  
The 413 cubic inch, 340 horsepower Imperial engine is basically unchanged. However, closed crankcase ventilation will be standard on all 1963 Imperials.

**POWER WINDOWS**  
Power operated windows, remote control left side rear view mirrors and integral arm rests with useful storage compartments hidden in front door arm rests have become standard equipment in 1963 Imperials.

**NEW BRAKE SYSTEM**  
Higher braking performance is a significant new characteristic of the Imperial. Servo-contact, self-energizing brakes with 11 x 3 inch linings are introduced for 1963.

New Imperial parking brakes are on the rear wheels. The previous transmission output shaft brake is replaced by a parking system which operates the rear wheel service through a cable and linkage mechanism.

A new, vacuum-actuated parking brake release unit is featured on the Imperial.

**CORROSION PROTECTION**  
Higher grade stainless steels are used on exterior trim parts on the 1963 Imperial to improve life and appearance. More extensive use is made of plastic clips and fasteners for moldings and ornaments to prevent possible rusting under these parts.

Additional underhood corrosion protection measures for 1963 will increase the life of components.

A total of approximately 30 underhood items receive extra protection as a result of this program.

Imperial exhaust system corrosion protection is increased by using aluminized steel for all muffler parts that previously were not protected in this manner.

A parking brake control is introduced for the Imperial's automatic transmission. The sprag mechanism is incorporated in the transmission extension and is used to lock the output shaft to the extension housing.

**SIX MODELS OFFERED**  
The number of Imperial model offerings remains the same. Two-door and four-door hardtops are available in the Custom and Crown series, and an improved Imperial Crown convertible is again available. The LeBaron, too, of the Imperial line, is a hardtop with a distinctive town car appearance and extra luxury features.

**NEW LIGHTING**  
New fluorescent lights were installed in the grand jury room and in the county judge's office in the courthouse this week.



**PROSPECTING?**—Surveying Eastland's square are Drug Store Owner Dale Troutt and Pharmacist Don Stoner. Behind the two is the building into which they'll be moving Central Drug soon. Troutt says that the new store will be the most modern and complete drug store between Fort Worth and Abilene. Faith in the future of Eastland is the peg on which the two are undertaking such an expansion. The building, known locally as the Perry Building, is located on the north side of the square, and is a giant building. Earl Conner Jr., owner of the south-side building where Central Drug is presently located, said that he has no plans for the building at the present time. (A&C Photo).

### Maverick B Wins Over Cross Plains

The Maverick B team journeyed to Cross Plains Saturday night where they defeated the Buffaloes 14-0.

It was the Maverick's ball game all the way with the Buffaloes penetrating to the May's 25 yard line only once.

In the second quarter Jerry Dukes took the ball on a double reverse play over from 10 yards off. This was the climax to a 65 yard drive by the boys from Eastland. The extra point failed and the score at half time was 6-0.

In the fourth stanza, quarterback Mike Siebert passed to end Norman Rhodes for 25 yards and another touchdown. Hayde Wilson took the ball over for two points to end the scoring.

### Mobil Service To Give Away 5,000 Stamps

James McCormick who recently purchased the Mobil Service Station at 301 E. Main, has announced that in the future he will give Plaid Stamps. To get the stamp, project underway, McCormick will give away 5,000 free Plaid Stamps. There is nothing to buy and winners need not be present to win. Five winners will be named and each will receive 1,000 stamps each.

Drawing for the stamps will be held Saturday, Oct. 6. The first 100 customers will receive 50 free stamps with any gasoline purchase, and the coupon from his ad.

Also 50 free stamps will be given for an automobile lubrication and a coupon.

McCormick's Mobil Service is the second Eastland business to give Plaid stamps. The A&P Grocery has been giving the stamps for several months.

### C. Thompson Participating In Japan Exercises

Maine Lance Corporal Charles R. Thompson, son of Mr. and Mrs. Joseph O. Thompson of 213 S. Walnut, Eastland, is participating in a live-firing exercise at Camp Fuji-McNair Japan, located at the base of historic Mount Fuji.

Members of the Third Marine Division participating in the exercise will train until November 4. The exercise will provide them with experience in using mobile weapons under combat conditions.

The Third Marine Division is headquartered on the island of Okinawa.

## Industrial -

(Continued from page 1)

the opportunity to move to our town, they wouldn't want to come to a dead town.

We need to be busy and active."

"Now, I'm against bribing any industry to come here, but I'm all for making it easy for reputable industry to come here."

"It boils down to this really," he says, "we shouldn't do anything for any outside industry that we wouldn't do just as easily for some of our own people."

"I think the plan for administering the fund is very sound." (The fund will be administered by the industrial committee of the chamber of commerce, with the approval of the chamber's board of directors.)

## Colleen Beauty Shop

"A dollar a month son is cheap compared to the benefits might be included."

Colleen Green's shop will remain while she is recovering from surgery. Marcie Keith was enough to take over her weekly patronage.

Colleen Beauty Shop

## THANKS TO THE PEOPLE

Represented by the Eastland County Democratic Executive Committee

I am deeply grateful for the honor of selected as the Democratic Nominee for Judge of Eastland County. I appreciate confidence and shall try to prove worthy of look forward with pride to being your next City Judge; keeping in mind that a public duty is a public trust.

Thanks also for the many cards, letters and messages of congratulation. I pledge to do best to carry the Democratic Banner to victory in the General Election.

Respectfully  
Scott Bailey

## KODAK FILM SPECIAL

Buy your film now so you can take pictures of the weekend of the Peanut Bowl Parade at this price. Fresh Kodak B & W film dated 1962 only 45c a roll, sizes 127, 120, and 620. Discount on color film for box cameras and 8mm cameras.

## A & C STUDIO

102 S. SEAMAN

## SEPTEMBER SONG

September, for many little ones in Eastland, means the end of school.

Which brings to mind a story I heard recently. Seems a mother was patiently trying to teach her five-year-old daughter her home address in preparation for her coming kindergarten debut.

After her daughter repeatedly omitted or forgot recitation of the correct address, the mother asked, "But what do you do when the teacher asks you where you live, Debbie?"

After a moment's hesitation, Debbie replied, "I'll let the driver answer first, then I'll tell my teacher that I live across the street from him."

By golly, I'll bet Debbie does all right in school.

## THOUGHT ON TELSTAR

Recalling the millions of dollars the Bell System spent developing and launching the highly-successful Telstar satellite of our engineers tells me it's a good thing the world is not "Just think," he says, "what a square satellite orb would have cost!"

## COOK'S BEST FRIEND

What's the cook's best friend? Well, salt and pepper would be high on the list, but for my money, a kitchen extension would rate tops.

A kitchen phone lets you feed the baby . . . check the list . . . or stir the stew—and keep right at it when the rings. A kitchen extension costs less than 3 1/2 pennies a mighty low cost when you consider all the step-saving convenience it gives.

We have colors and styles to suit your own good taste. Call the business office or ask your telephone man.

## SOMETHING TO THINK ABOUT

In Japan, there are two ways to get telephone service. People who can't wait three years for their phones use the Nippon Telegraph Corporation, a government-owned company. They must buy a \$450 bond, which cannot be deemed for 10 years, and also pay a \$28 installation charge.

A quicker but more expensive way is to go to a telephone broker. This costs from \$500 to \$1,500, if the customer is in a hurry.

There are an estimated one million people on the waiting list in Japan—210,000 in Tokyo alone. Like I said, it's something to think about.

Call by number. It's twice as fast.

SOUTHWESTERN BELL TELEPHONE COMPANY

Fill Out This Form and Take to Courthouse Saturday for Type II Oral Polio Vaccine

## Sabin Oral Saturday

Polio Prevention Program

FOR TYPE II VACCINE  
FOR TYPE III VACCINE — LATER

List on this form (PLEASE PRINT) the names of ALL persons in your household who will be immunized AT THE SAME TIME.

Date .....

Household Address .....

City .....

PLEASE PRINT

LAST NAME FIRST NAME INITIAL AGE

I hereby state that I am the head of the household of the persons listed above and I hereby request that Sabin oral polio vaccine be administered to said above listed minors:

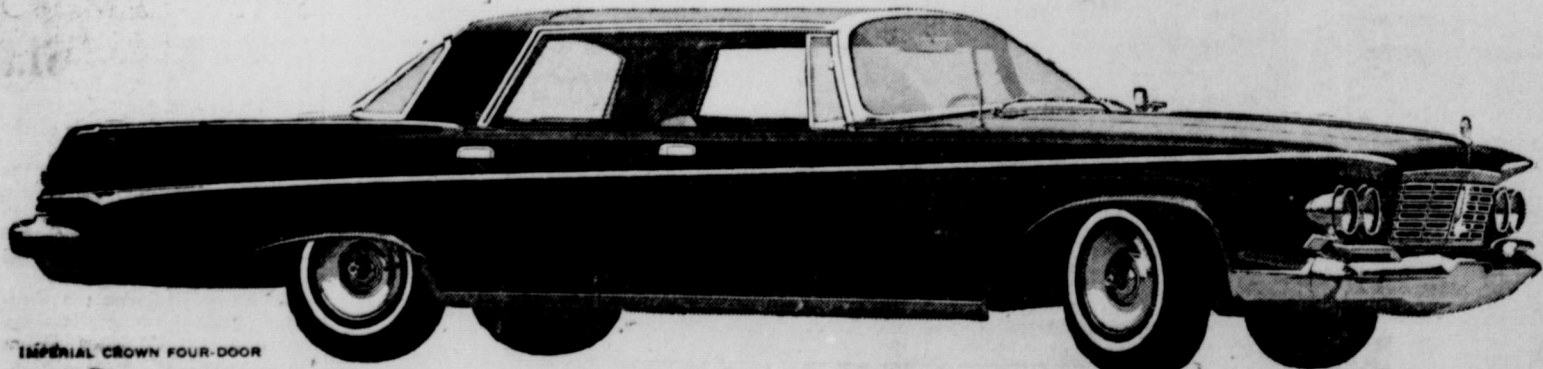
Signature Head of Household



Grand Entrance:

# IMPERIAL 1963

AMERICA'S MOST CAREFULLY BUILT CAR



IMPERIAL CROWN FOUR-DOOR

To everyone who plans to buy an Imperial, Cadillac or Lincoln this year

If you'd like the best perspective on what your next luxury car can offer, begin with a drive in the new Imperial—first luxury car having its power-train warranted\* for five years or 50,000 miles.

Your Imperial dealer is ready to furnish one of his new models for your comparison.

You'll find Imperial is designed for spaciousness and luxury on the grand scale. Imperial's town-car look is deliberately

restrained—and timeless. But its famous roadability is evidence of very timely advances in high-performance power and the largest automatic-adjusting brake system in any American luxury car.

After you've tested and inspected and compared, we'd like your personal judgment of our major premise: that Imperial's differences afford important motoring qualities not found in either Cadillac or Lincoln.

So accept our friendly challenge, please. We're confident that driving an Imperial will influence your ideas about what a luxury car should be and should do.

\*Your authorized Imperial Dealer's Warranty against defects in material and workmanship on 1963 cars has been expanded to include parts replacement or repair for 5 years or 50,000 miles, whichever comes first, on the engine block, head and internal parts; transmission case and internal parts; torque converter; drive shaft; universal joints (excluding dust covers); rear axle and differential; and rear wheel bearings, provided the vehicle has been serviced at reasonable intervals according to the Chrysler Certified Car Care schedules. Factory approved remanufactured parts may be used for replacement.

IMPERIAL — A QUALITY PRODUCT OF CHRYSLER CORPORATION

BLEVINS MOTOR CO. • 514 W. Main



Hospital News

In the Eastland Hospital are as follows: Burgess, medical; Morris, medical; Belle Moseley, medical; O'Neal, medical; L. Warner, medical; Collier, medical; E. Hughes, medical; Mae Johnson, medical; Green, medical; San Norris, accident; W. Sosabee, medical; Barker, medical; Johnson, medical; Harlow, medical; Moylan, medical; Waldrop, medical; Watson, medical; Harlow, medical; Arnold, medical; Car-

Throng -

(Continued from page One) Hardy, RT; Dale Norris, RE; Charles Sims, LB; Ricky Thomas, LB; Billy Vice, HB; Roy Armentrout, HB; a n d Jerry Grider, S. Offensive lineup for the Ranger Junior College Rangers: Jane E. Throne, medical; Macjo Pool, surgical; Dora Higginbotham, medical; Cisco Grady Pinkin, medical; Baby Girl Rodriguez, New-born

will be: J. E. Pollock, LE; Austin Winters, LT; Larry Hodgkinson, RG; Bill Clary, center; Jerry Buerger, RG; John Valadez, RT; Martin Day, PE; Doug Wellborn, QB; Don Hale, LH; Bill McAllister, FB and Stanley Kirk, WH. On defense for the Rangers will be: Jerry Buerger, LE; Martin Day, LT; John Lehman, LG; Wayne Thrasher, RG; Austin Winter, RT; J. E. Pollock, RE; Bill Clary, line backer; Larry Hodgkinson, line backer; Stanley Everett, HB; Virgil Anderson, safety and Bill McAllister, HB.

Humble Will Broadcast 6 Football Games

Six Southwest Conference football games will be broadcast over radio Saturday by Humble Oil & Refining Company. In addition, Humble will co-sponsor the live telecast of the Notre Dame-Oklahoma game. The Baylor-Pittsburg game will be broadcast from Waco over KBOX, Dallas and KCUL, Fort Worth. Game time will be 7:45 p.m.

The Rice-LSU game will be broadcast from Baton Rouge at 7:45 p.m. over KRBC, Abilene and KLIF, Dallas. The SMU-University of Southern California game will be broadcast at 7:45 p.m. from Dallas over WRR, Dallas. The Texas A&M-University of Houston will be broadcast from Houston at 7:45 p.m. over KRLL, Dallas. The TCU-Miami game will be broadcast from Miami at 7 p.m. over KBWD, Brownwood and WFAA and WBAP, Dallas and Fort Worth. The Texas Tech-Texas game will be broadcast from Lubbock at 7:15 p.m. over WFAA and WBAP, Dallas and Fort Worth.

Vernon Rites Held For Local Woman's Brother

Funeral services were held Thursday, Sept. 20, at 10 a.m. in the Henderson Chapel in Vernon for Mr. Floyd E. Coleman, 59, who died the previous Tuesday in an Odessa hospital after suffering a heart attack. Interment was in the East View Memorial Park, Vernon. Mr. Coleman was a brother to Mrs. Don Parker of Eastland. He was born August 30, 1903 in Vernon and attended schools there. He was employed by the Vernon Record from 1922 to 1946. In 1946, he moved to Midland, where he was employed in the advertising department of the Midland Reporter-Telegram. For the past 12

years, he had been employed in the advertising department of the Odessa American. He was married to Miss St. Vinson of Childress in 1944. He was a member of the Baptist Church. Surviving are his wife; two sisters, Mrs. Parker of Eastland and Mrs. John Gilchrist of Oklahoma City; and a brother, Irwin W. Coleman of Sewickley, Pa.

READ THE CLASSIFIEDS



\$100 Winner: Mrs. T. J. Gregory, Eastland and Carey Hightower



\$50 Winner: Mrs. John B. Stokes, 815 Cherry, Ranger store mgrs.: J. H. Boggus-Pete Miller



\$50 Winner Mrs. L. E. Sublett, Eastland Store mgrs.: Carey Hightower - Homer Meeks

WINNERS IN WORTH FOOD MART'S-FABULOUS AND EXCITING \$17,000 CASH GIVE-AWAY!

10<sup>TH</sup> BIG WEEK ONLY THREE WEEKS LEFT TO COMPLETE YOUR PROFIT SHARING PREMIUM CARDS

CHUCK ROAST CANNED HAM'S GROUND BEEF

W. C. Q. HEAVY BEEF-SHOULDER ARM ROAST 59c PLUMROSE 2 LB. CAN \$2.29 WORTH QUALITY GROUND FRESH GROUND BEEF 45c

WORTH FOOD MART THE SURE SIGN OF QUALITY! PRICES EFFECTIVE THURSDAY-FRIDAY-SATURDAY

NOTE: No purchase or other consideration is required to receive your Premium Card or to participate for the premium indicated under the seal. The validation of the FREE Punch Section is in no way dependant upon the completion of the purchase section.

Tenderleaf Tea Orange Pekoe 39c 1/4 Lb. Pkg.

ROYAL GELATIN ALL FLAVORS 6 3 oz. PKGS. 49c ORANGE JUICE TEXSUN 46-oz. CAN 29c CHUCK TUNA BREAST O CHICKEN 3 No. 1/2 CANS \$1.00

BROOKFIELD LINKS SWIFT'S LB. PKG. 59c HADDOCK FROZEN FILLETS 12-oz. PKG. 49c COLOMBO'S FROZEN PIZZA SAUSAGE or PEPPERONI 12 INCH 98c

CLIP AND SAVE! 25 BONUS S&H GREEN STAMPS With This Coupon and Purchase of Three (2's Pkg.) Toilet Tissue SOFT WEVE 3 2's Pkg. 79c Void After Saturday, Sept. 29, 1962

CLIP AND SAVE! 25 BONUS S&H GREEN STAMPS With This Coupon and Purchase of Four 50 Ct. Pkgs. Scottkins Luncheon Napkins 4 pkgs. 59c Void After Saturday, Sept. 29, 1962

Frozen Food Features ORANGE JUICE Libby's Frozen 5 6 oz. Cans \$1.00 SARA LEE Coffee Cake-Brownies or Coffee Cake Each 79c LIBBY'S - FROZEN MEAT PIES Beef - Chicken or Turkey 5 8 oz. Pkgs. \$1.00

CLIP AND SAVE! 25 BONUS S&H GREEN STAMPS With This Coupon and Purchase of Two 120 Cnt. Rolls of SCOTT TOWELS 2 pkgs. 39c Void After Saturday, Sept. 29, 1962

CLIP AND SAVE! 50 BONUS S&H GREEN STAMPS With This Coupon and Purchase of A Family Size Pkg. of TASTE O SEA FISH STICKS Void After Saturday, Sept. 29, 1962

Produce Features COLORADO NO. 1 RED POTATOES Cello Bag 10 Lb. Bag 49c RED GRAPEFRUIT Florida New Crop Lb. 15c

CLIP AND SAVE! 50 BONUS S&H GREEN STAMPS With This Coupon and Purchase of A 1 Lb. Can All Grinds Chase and Sanborn Coffee Void After Saturday, Sept. 29, 1962

CLIP AND SAVE! 50 BONUS S&H GREEN STAMPS With This Coupon and Purchase of Any Size. Any Flavor of COUNTRY CUP BOARD PIES Void After Saturday, Sept. 29, 1962

Delicious Apples Extra Fancy-Reds LB. 25c Sweet Potatoes East Texas LB. 10c

Plumbers and Electricians Attend Western Party

The annual party of the Western Plumbers and Electricians Association was held at the Elmer Hotel in Dallas on Wednesday night for the members of the XI Alpha Zeta Chapter of Beta Sigma Phi. The party was a great success and the guests and their hosts enjoyed an evening of dancing and socializing. The menu consisted of a delicious barbecue ham, potato salad and other delicious dishes. The decorations were beautiful and the atmosphere was very pleasant. The party was a great success and the guests and their hosts enjoyed an evening of dancing and socializing.

Pending Wiley

Funeral services for Wiley Stewart, 19, of 1209 S. 44th, Ranger are pending. Killingsworth Funeral Home, 1209 S. 44th, is in charge. Mr. Stewart, son of Mr. and Mrs. Stewart, was killed Tuesday when his truck collided with an automobile at the intersection of S. 44th and FM 400 south of Dallas. Mr. Stewart was pronounced dead at Mercy Hospital. Driver of the automobile, Col. Donald Boyd, was not injured in the collision. Highway Patrol officers said the truck was traveling south on FM 400 at 45 miles per hour when it struck the automobile at the intersection. Mr. Stewart was wearing a seat belt and although his injuries were around several times the force of impact and the driver side was not thrown out of the truck, his body was thrown through the windshield. Mr. Stewart was transported to the Killingsworth Funeral Home for services Tuesday.

Relieving Muscles

Relieve nagging pains of aching muscles with the new combination of medicinal ingredients for relief that works fast and gives comforting relief. Satisfying relief. Snap back with ease.

Relieves Hemorrhoids Without Surgery

Relieves hemorrhoids without surgery. The first time science has found a substance with the ability to shrink hemorrhoids and relieve pain - without surgery. It works fast and gives comforting relief. Satisfying relief. Snap back with ease.



SELL AND PROFIT... BUY AND SAVE... GET A BETTER JOB... HIRE GOOD HELP!

# Read and Use the Want Ads!

### CALL MA 9-1707

#### FOR RENT

FOR RENT: Furnished apartment. Two rooms and bath. In reasonable rent, 212 Patterson. 87

FOR RENT: Farm home with modern conveniences, and will be the right party have either rent or rent free depending on qualifications. Would expect routine maintenance and see job in return. Write address inquiries to Box C, in care of the Eastland Telegram.

#### Ricky Harrell

FOR SALE: Large 6 room house. Big walk-in pantry. Garage. Large storage room. Mrs. Frankie Collins, 500 S. Seaman. Phone Main 9-1394. tf

FOR RENT: Nice clean duplex furnished. Bills paid. 607 W. Boss. tf

FOR RENT: Four-room furnished apartment. Newly re-decorated. Book cases, walk-in closets. Extra bed. Air-conditioned. Close in. Bills paid. (Main 9-1062. tf

FOR RENT: Lovely furnished or unfurnished apartments, any size, bills paid, maid and hotel services included, very reasonable. Also comfortable rooms with tile baths only \$29.95 monthly. Throw away your high bills and troubles and come live with us. Mrs. Robinson, manager, Village Hotel, MA 9-1716.

FOR RENT: Three room furnished house. Newly painted. 44 E. Sadosa. Call MA 9-282. tf

FOR RENT: House with six rooms and bath. Well located. Newly painted. Good condition. Phone MA 9-2523. 86

#### Ott Hearn

BUSINESS SERVICES  
1 Janitorial service — floor waxing, stripping, window cleaning. Office, commercial, residential. Daily, weekly, monthly. Phone MA 9-2583. tf

#### SPECIAL NOTICE

HELP WANTED: Eastland team Laundry. Phone Main 9-2613. tf

WE'RE NOT expensive. We just look that way. The Gift House, Cisco. tf

FOUND — A perfect way to get rid of those discards at a profit. Sell them with a Telegram Classified. tf

NOTICE: Chick's Radio and V. V., 103 E. Main. Service calls. \$2.50; work guaranteed 90 days. Phone MA 9-1374, day or night. tf

SPECIAL NOTICE: Lovely Wilkint Guaranteed Hosiery. Nationally advertised in leading fashion magazines. Phone Roy Smith, MA 9-1021 or write Box 332, Eastland. 87

NOTICE: Any type hay baled promptly and efficient. Also an condition your hay. B. Walker, call 2501, Olden, colt.

SPECIAL NOTICE: Phone MA 1664 and learn how to earn lots of fine jewelry for yourself and gifts. 87

NOTICE: Will keep elderly people. Very cheap. Hotel Sunles, Ra. ger.

#### MISC FOR SALE

FOR SALE: 510 S. Hillcrest. Living, dining room, kitchen and den. Built-in range, fireplace, central heat and air. Three bedrooms, two tile baths, even closets, double garage. L. A. Treadwell Sr. Sr. MA 9-1717. tf

FOR SALE: 240 Angora nutras. Three miles east of Flatood, Earl Norris. 88

#### EASTLAND ROTARY CLUB

Meets in White Elephant for noon luncheon. Call Mike George, 9-1495, for each Monday.

#### EASTLAND JAYCEES

Wives, forget breakfast each 2nd and 4th Thursday. Get your JC off for 7 a.m. meet at White Elephant Restaurant

INGROWN NAIL HURTING YOU? Immediate Relief!

A few drops of OUTGRO bring blessed relief from tormenting pain of ingrown nail. OUTGRO loosens the skin underneath the nail, allows the nail to be cut and thus prevents further pain and discomfort. OUTGRO is available at all drug counters.

#### REAL ESTATE

FOR SALE: Typewriters, Adding Machines, Cash Registers. New and reconditioned. Sales, Rentals and supplies. Stephens Typewriter Co., 417 S. Lamar St. tf

#### Verrell Boasen

FOR SALE: 1957 Ford Fairlane, two dr. sedan, R and H. Good condition. See or call Gily: Gilliam at Eastland National Bank, MA 9-1751 or MA 9-2137. tf

#### MUSICAL INSTRUMENTS FOR SALE

Reliable party with good credit references to take up payments on a practically new Spinet Piano on which a considerable sum has been paid, also Wurlitzer Electric Spinet Organ. Write Credit Mgr., Irving Piano Co., 617 E. Irvin Blvd., Irving, Texas.

FOR SALE: 60 model Ford Tractor, five disc breaking plow, tandem. Like new. 200 hrs on it. Priced to sell. Phone MA 9-1956. 86

FOR SALE: Five room modern house. 10 acres of land. Garage with storeroom and workshop. Four miles north of Eastland. \$3500. C. D. Beck, MA 9-1990. 88

FOR SALE: Rubber insulated hunting boots, \$8.95; Insulated underwear — mens, ladies, children — \$7.95 up; Rain coveralls, \$6.95; Sleeping bags and many other items for the outdoorsman. Bruce Pipkin Sport Center. tf

FOR SALE: Extra large white cast iron bathtub with fixtures. \$15. MA 9-2413 or MA 9-1707. 87

SINGER FALL SALE: Sewing machines, vacuum cleaners, floor polishers. Save up to \$25. 90 this week. Call D. L. Morton, phone MA 9-2084. tf

YES you can sell bicycles or roller skates with Telegram Classifieds. tf

FOR SALE: Mouton size 12. May be seen at Modern Dry Cleaners. tf

FOR SALE: Tomatoes, 15c pound; Apples, 2 pounds 25c; Watermelons, Bell Pepper, Cucumbers, Honey and Peanuts. Wilson's Fruit Stand, 212 E. Main. 86

FOR SALE: Dinnette suite, \$30.00; Sofa-bed, \$50.00. 205 S. Oaklawn. Phone MA 9-2301. tf

FOR SALE: Two stoves. Like new Catalina Range with timer, magic eye burner, griddle, ovenlight and glassed door. \$80. Another older full-sized range. Good condition. \$30. Call MA 9-2413 or MA 9-1707. tf

PEOPLE read the Telegram Classifieds. You're reading this one. tf

SWAP AND SHOP furniture and laundry equipment. Bring all discards to Mrs. A. M. Fuller, 401 N. Connelley, laundry building in rear. tf

FOR SALE: 1952 Chevrolet 1/2-ton pickup. Phone MA 9-1625. 88

#### HELP WANTED

HOW do you know you can't sell it? Have you tried a Telegram Classified? tf

USE as many as 20 words to describe your 'for rents', 'for sales', or 'what have you', for only 60 cents per insertion. tf

#### Janie Arther

WANTED: Female managers and models for Beau Monde Jewelry. No investment. Party plan. Write to 2010 N. Mockingbird Lane, Abilene for appointments. 88

HELP WANTED: Eastland Steam Laundry. Phone MA 9-2613. tf

#### EASTLAND CHAPTER NO. 280 O. E. S.

Meets the first Tuesday of each month at 8 p.m. in the Masonic Hall. Call Mrs. Pebble Boles, Sec., for information. MA 9-2733.

#### MASONIC LODGE NO. 467

Meets second Thursday of each month at 8:00 pm. in the Masonic Hall. Call C. L. Langtitz for information or L. E. Huckabay, Sec., 9-1391, for information.

#### WE BUY AND SELL USED FURNITURE

Phone MA 9-1740  
WAYNE JACKSON

#### FOR SALE OR TRADE: Will sell or trade equity in modern, roomy three bedroom home in Abilene for lake or local property. Has chain-link fence and down-drought air. Call MA 9-2413 or MA 9-1707 or write Box 29. tf

FOR SALE: Equity in two bedroom FHA home. See any evening after 6:30 p.m. 525 E. Conner. tf

FOR SALE: Three bedroom home, close to all schools, built-in stove, carpeted, lots of closets, carport and garage. Call MA 9-2236 after 5 p.m. tf.

FOR SALE: Our three bedroom Hillcrest home, 2 tile baths, central air and heat. 306 S. Oaklawn. Business property 214 S. Seaman. Phone MA 9-1742. tf

FOR SALE: House in Morton Valley three bedroom, bath, good water, deep well and pump. One acre. High and cool. On highway. Phone M. A. Treadwell, MA 9-2017. tf

FOR SALE: New two bedroom. Interior almost complete. 500 block East Commerce, Eastland. \$1798 cash is or \$39.98 a month with no down payment. Call collect Modern Homes Construction Company, Pershing 2-4085, Fort Worth. tf

FHA NEW HOME FOR SALE: Corner of East Conner and Marsh Streets; Central Refrigerated air and heat; all Electric Country Kitchen; Brick construction; 3 bedrooms; 2 baths; double garage; beautiful trees! A real old fashioned bargain for only \$14,950 today. Complete with land; Nominal down payment; monthly payments like rent; Call today and see if you can qualify with FHA for this wonderful bargain. Guaranteed repurchase if you move for any reason inside of 12 months. Call Don Kinnaird Jr. at MA 9-2544 now, or Don Pierson at MA 9-1033. tf

FOR SALE: Three good buys in three-bedroom homes. One G. I. equity. All in good location and good condition. M. A. Treadwell Sr. Phone MA 9-2017. tf

FOR SALE TO MOVE: 1 four-room house, A-1 condition. 1 four-room house liveable. Ph. MI 7-1149, Ranger.

YOU can rent that spare bedroom with a Telegram Classified! tf

MIS WANTED  
NEED a baby sitter, a car port a lawn mower, a job, an apartment, an assortment of flower seeds? Use Telegram Classifieds. tf

Sharon Johnson

SPECIAL NOTICE: Typewriter and office machine repair. Machines to loan while yours is being repaired. Call the Eastland Telegram, MA 9-2613. tf

WANTED: Janitor work. Call Olden 2531 at noon hour. 86

RECORD-KEEPING got you down? The Eastland Telegram has a complete line of bookkeeping supplies — ledgers, pads and all the necessary accessories for efficient record-keeping. tf

**EASTLAND SERVICE PARTS CO.**  
Auto & Truck PARTS  
IN STOCK & OVER NIGHT DELIVERY  
**LOWEST PRICES ANYWHERE**  
Independently Owned Nationally Affiliated  
CALL US FIRST!  
AUTO PARTS MA 9-1733  
(Clip This Coupon and Place It Near Your Telephone)

**EASTLAND AUTO PARTS**  
300 S. Seaman MA 9-2158

FULLY EQUIPPED  
AUTOMOTIVE MACHINE SHOP

VALVE GRINDING  
BRAKE DRUM TURNING  
HEAD SURFACING  
VALVE JOBS  
BLOCK BORING  
SLEEVE INSERTING  
VALVE SEATING

ALWAYS IN STOCK  
COMPLETE LINE  
AUTOMOTIVE TRUCK TRACTOR PARTS

**EASTLAND AUTO PARTS**  
300 S. Seaman MA 9-2158

Southern Television System Corp.  
**Village Hotel**  
CALL US and we will WIRE YOU

Watch Your Favorite TV Program  
• Comedy • Western  
• Sports • Drama  
Ph. MA 9-1716

THURMAN ELECTRIC  
Electric Motor Rewinding and Repair. 202 S. Seaman, Eastland.

#### PERSONALS

IF you are lonely, broken hearted, troubled in spirit or burdened with a sin-sick soul, you can find comfort, consolation and peace at First Methodist Church. tf

#### Look Who's New

A baby daughter was born to Mr. and Mrs. Melvin Busby of 2110 Yorktown, Abilene Saturday, Sept. 15, at 1:46 a.m. The baby was named Laura Lyn and she weighed six pounds, two and one-half ounces.

Maternal grandparents are Mr. and Mrs. Charles E. Cashion of 1009 W. Patterson, Eastland.

P. L. Busby of Abilene and Mrs. Mattie Franklin of Eastland are the paternal grandparents.

Mrs. Carrie Flowers of Eastland is the baby's maternal great-grandmother.

Mrs. Busby is the former Leo Ellis of Eastland.

#### Helps Heal And Clear Itchy Skin Rash!

Zemo — liquid or ointment — a doctor's antiseptic, promptly relieves itching, stops scratching and helps heal and clear surface skin rashes. Buy Extra Strength Zemo for stubborn cases!

**Insurance and Real Estate**  
**D. L. KINNAIRD**  
Life - Fire - Auto - Farm  
Polio - Bonds  
42 years in the Insurance Business in Eastland

**T. L. FAGG**  
REAL ESTATE  
Property Management  
Home and Farm Loans

**EASTLAND AUTO PARTS**  
300 S. Seaman MA 9-2158

**VIC'S AUTO REPAIR**  
306 W. MAIN ST.  
EASTLAND TELEPHONE MA 9-2111  
DAY or NIGHT

**IN A HOLE?**  
AUTO PARTS MA 9-1733  
(Clip This Coupon and Place It Near Your Telephone)

THURMAN ELECTRIC  
Electric Motor Rewinding and Repair. 202 S. Seaman, Eastland.

#### Bowling News

	WINS-LOSSES	
	WINS	LOSSES
Kinnaird Insurance	8	0
Jordan Drive Inn	8	0
Rockwell Lumber	8	0
Volunteer Fire Dept.	6	2
Fir National Bank, Cis.	2	6
T & P	0	8
Robinson Rebeis	0	8
Cornelius Printing	0	8
Texas Electric	0	8
<b>High Team - Three Games</b>	<b>2599</b>	<b>2522</b>
Rockwell Lumber	2522	2422
Jordans Drive Inn	2422	563
<b>High Individual - Three Games</b>	<b>563</b>	<b>562</b>
Tom Smallwood	563	517
H. Jordan, C. Hudgen	562	
J. Farleigh	517	
<b>High Team Game</b>	<b>877</b>	<b>874</b>
Rockwell Lumber	877	866
Jordans Drive Inn	874	
<b>High Individual Game</b>	<b>215</b>	<b>213</b>
Harry Jordan	215	207
Tom Smallwood	213	
James Johnson	207	

**MATTRESSES**  
Save up to 50% renovating choice of color and firmness. Complete bedding. Made and guaranteed by WESTERN MATTRESS CO., San Angelo. Phone MA 9-2689, Eastland and leave address.

A portrait of that grand child or loved one means a lot to each parent and grandparent. So why not let A & C STUDIO make that grandchild portrait now so you will always remember how he or she looked and too, your children would like a living portrait of you Mother and Dad.  
SEE  
**A&C STUDIO**  
today  
201 S. Seaman

**WANTED**  
Good clean automobiles. Any make—Any Model Considered.  
**BLEVINS MOTOR CO.**  
See Jay Blevins.  
Ph. MA 9-2433  
513 West Main Eastland

**COMPLETE AUTO REPAIRS**

#### Fullen -

(Continued From Page One)  
The traditional big car emphasis upon luxurious transportation is continued in the 1963 regular Chevrolets, offered in 13 models in the Impala, Bel Air and Biscayne series.  
The Impala sport sedan has a fleet, new roofline and an optional vinyl top is available for the Impala sport coupe. Interiors of the cars are entirely new and more luxurious for 1963.  
Mechanically, there are the following new features:  
—A new six-cylinder 140 horsepower engine, higher in horsepower and yet 23 per cent lighter than its 1962 counterpart, teamed with a revised 238 cubic inch V8 engine to offer engines ranging from 140 to 425 horsepower.  
—Brakes are self-adjusting, mufflers will have longer life, and the lightweight Powerglide transmission used with the 327 cubic inch engine outflow in 1962 is extended to all models.  
—Delcotron generators are standard on all models, assuring ample reserve electrical power for added accessories and longer battery life.  
—All radios are transistorized for 1963.  
—heater is new as are the optional all-weather and custom air-conditioners.  
CHEVY II—in its second year on the market, Chevy II continues the basic styling of the previous model with new exterior and interior appointments. There are ten models in three series.  
For 1963, Chevy II offers Super Sport options on its Nova 400 sport coupe and convertible, featuring bucket seats and all-ways interiors. Fifteen solid colors and eleven two-tone combinations are available on Chevy II models.  
Mechanically, the Chevy II has self-adjusting brakes and Delcotron generators.  
CORVAIR—Chevrolet's distinctive small car enters its fourth year on the market with an ever-growing following among those who wait a sports

car feel in a less expensive car. Styling changes are confined to ornamentation; and molding details. Otherwise, America's first rear engine car continues its unique personality.  
There are eight models of Corvair, ranging in variety from the Monza Spyder convertible to two models of the popular Corvair Greenbrier sports wagon. Fifteen solid colors plus two-tone combinations are offered.  
CORVETTE—In its tenth year on the market, America's only production sports car is redesigned and re-engineered for the first time. In addition the convertible (with optional hardtop) model offered in the past, there is a new "fast-back" sport coupe.  
For the first time, Corvette offers optional power steering, power brakes and air-conditioning for the customer who wants a sports car but also wishes to retain the driving conveniences to which he has become accustomed.  
Especially dramatic are the retractable headlights that rotate up from the side of the front end at the touch of a switch by the driver.  
Corvettes for 1963 are 5 inches lower and four inches shorter in wheelbase than models. In addition the interior styling, interiors have been completely redesigned for 1963.

For the first time, Corvette offers optional power steering, power brakes and air-conditioning for the customer who wants a sports car but also wishes to retain the driving conveniences to which he has become accustomed.  
Especially dramatic are the

Mechanically, the Chevy II has self-adjusting brakes and Delcotron generators.  
CORVAIR—Chevrolet's distinctive small car enters its fourth year on the market with an ever-growing following among those who wait a sports

#### Care Urged For Peanuts

A little extra care while harvesting and handling your peanut crop this year can mean marketing a higher quality product.  
W. S. Allen, extension agricultural engineer, Texas A&M College, says that with peanuts in many areas of Texas now being cured artificially the problems involved in handling and conveying can be critical.  
Handling and conveying equipment should be of a type that will cause as little damage as possible to the peanuts and should be operated correctly to insure their high quality, according to Allen. Solid belt conveyors to move fresh peanuts are the best for most operations and will avoid excess shelling and cracking, he says.  
Harvesting should be started when most of the kernels are mature and should be done promptly when the vines have matured the large percentage of sound, mature peanuts. However combining should not be started until the moisture content of the peanut is 30 per cent or less, according to Allen.  
Curing can best be done if the farmer stock peanuts are cleaned before artificial curing is begun and as much sand, dirt and foreign matter as possible is removed. This will permit more uniform distribution of air through the peanuts, the engineer says.  
More practices recommended for the drying of peanuts to avoid off-flavors and deterioration of quality can be obtained from your county agriculture agent, explains Allen.

**MV-12**  
AUTOMOTIVE PRODUCTS  
MV-12 OIL CONDITIONER  
MV-12 CARB-O-KLENE FOR CARBURETORS  
MV-12 ROYAL PURPLE GAS TANK-CRANKCASE AUTOMATIC TRANSMISSION TUNE-UP  
MV-12 BLOCK & RADIATOR SEALER

**MV-12**  
AUTOMOTIVE PRODUCTS  
MV-12 OIL CONDITIONER  
MV-12 CARB-O-KLENE FOR CARBURETORS  
MV-12 ROYAL PURPLE GAS TANK-CRANKCASE AUTOMATIC TRANSMISSION TUNE-UP  
MV-12 BLOCK & RADIATOR SEALER

CONTACT EASTLAND AUTO PARTS  
300 S. Seaman MA 9-2158

**MOTEL MANAGEMENT**  
Motel Industry needs employees. Earn \$18,000 per year. If qualified, you will be in Home Study and in motel. Don't let age, inexperience or education be your back. We can finance training if you qualify. Write UNIVERSAL MOTEL TRAINING, 6513 Eastchester, Fort Worth 12, Texas.

**It's So Easy! to Remember This Number MA 9-1711**  
when you Say it with Flowers  
**POE FLORAL**  
Mr. and Mrs. J. C. Poe

**tune-up FOR TROUBLE-FREE DRIVING**  
**COMPLETE AUTO REPAIRS**  
24 HOUR WRECKER SERVICE  
Ph. MA 9-2270 Night MA 9-2224  
**ALLEN AUTO REPAIR**  
AT RUSHING MOTOR CO.  
215 SOUTH SEAMAN

The most enjoyable TV ever built by...  
**RCA VICTOR**  
The THRIFTON New Vista TV Series 100-A-48-M 19" tube (overall dia.) 17 1/2" sq. in. picture  
**\$159<sup>95</sup>**  
**Robertson TV Sales And Service**  
S. E. CORNER SQUARE

**MOTEL MANAGEMENT**  
Motel Industry needs employees. Earn \$18,000 per year. If qualified, you will be in Home Study and in motel. Don't let age, inexperience or education be your back. We can finance training if you qualify. Write UNIVERSAL MOTEL TRAINING, 6513 Eastchester, Fort Worth 12, Texas.

**MOTEL MANAGEMENT**  
Motel Industry needs employees. Earn \$18,000 per year. If qualified, you will be in Home Study and in motel. Don't let age, inexperience or education be your back. We can finance training if you qualify. Write UNIVERSAL MOTEL TRAINING, 6513 Eastchester, Fort Worth 12, Texas.

**It's So Easy! to Remember This Number MA 9-1711**  
when you Say it with Flowers  
**POE FLORAL**  
Mr. and Mrs. J. C. Poe

**tune-up FOR TROUBLE-FREE DRIVING**  
**COMPLETE AUTO REPAIRS**  
24 HOUR WRECKER SERVICE  
Ph. MA 9-2270 Night MA 9-2224  
**ALLEN AUTO REPAIR**  
AT RUSHING MOTOR CO.  
215 SOUTH SEAMAN

The most enjoyable TV ever built by...  
**RCA VICTOR**  
The THRIFTON New Vista TV Series 100-A-48-M 19" tube (overall dia.) 17 1/2" sq. in. picture  
**\$159<sup>95</sup>**  
**Robertson TV Sales And Service**  
S. E. CORNER SQUARE



# DENTAL FALLS 382 TEXANS

Killed 382 children in a recent year, according to the Texas Dental Society. "The greatest number of fatal falls occur in the bedroom," Goldston said, "but they also occur in the yard, kitchen, living room, bathroom, dining room, hall, basement, garage and on the porches."

Some actual causes of fatal home falls as reported to the Texas Safety Association, are listed below: Getting up from bed, falling out of bed, turning in hospital bed, rising from chair, slipping and falling on hardwood floor, losing balance and falling backward, falling after leaning over to wash hair, stumbling over chair, bending over looking for shoes, falling off porch, losing footing on ladder.

Eighty-five per cent of the victims of fatal home falls were in the 65-and-over age bracket. Eight per cent were in the 45-64 age group. The remaining 7 per cent was spread through the 0-44 age group.

"Particular attention," Goldston said, "must be given to the problem of protecting the older members of our families. Lighting, particularly on stairs, must be adequate. Do not leave loose objects in the middle of the floor. This particularly endangers an older person. His sight may not be able to detect the objects. If he trips, he is less likely than a young person to recover his balance."

"Keep an orderly home. Arrange furniture so that it does not prevent free passage around the room. Do not let beds, vanity benches and other furnishings in the bedroom jut into the middle of the room. Keep doors closed. Close dresser

## 63 Ford

(Continued From Page One)

sparty luxurious cars keynote both the style and the many comfort and convenience features offered in all 1963 Galaxies," Mr. Laux explained. An all-new, three-speed manual shift, synchromesh transmission is standard on all 1963 Galaxy models. The new transmission, first of its type ever offered on U. S. built passenger cars, is synchronized in all forward gears to minimize shifting, gear clash and tooth wear.

The 260 cubic inch Challenger engine is designed to operate on regular fuel, offering good performance and high fuel economy. Custom performance is available in 35 different levels through various combinations of engines, 5 transmissions and 9 rear axle ratios.

A complete line of 14 new Galaxies will be introduced.

**MODELS**  
A new four-door hardtop model in the Galaxy "500 XL" series heads the list of 14 new Galaxies in three series for 1963. The Galaxy series includes two- and four-door sedans; two- and four-door hardtops; and a two-door convertible. The sporty Galaxy "500 XL" series now includes a two-door convertible and two- and four-door hardtop models.

Ford's station wagons will feature four models for 1963 including four-door, six- and nine-passenger Country Sedans and Country Squires, Mr. Laux said.

**POWER**  
The 260-cubic-inch Challenger V8 engine adds still more customer choice of performance economy to the Galaxy power team for 1963. Quiet-running, incredibly smooth and of modern short-stroke design, the Challenger 260 develops 164 horsepower for plenty of punch on regular grade gasoline.

**REDUCED MAINTENANCE**  
Galaxy—which pioneered in the field of reduced maintenance in 1961 with a 30,000

mile major lubrication interval, 4,000-mile oil change and self-adjusting brakes—is more maintenance-free than ever for 1963.

The major lubrication interval has been extended to 36,000 miles a year, the same figure applies to change of radiator coolant, fuel filter, air cleaner element and front wheel bearing lubrication.

"Over a three year period—the time it takes the average car owner to cover 36,000 miles—the owner of a 1963 Galaxy will have saved \$153.12 in routine maintenance costs compared with the owner of a 1960 Galaxy," said Mr. Laux, "enough to buy gas for more than half a year of average driving."

### OPTIONS

A Thunderbird-style, swing-away steering column for added ease of entry and exit heads the list of factory-installed luxury options in the 1963 Galaxy.

The new Galaxy optional AM-FM radio has five push-buttons—three for FM and two for AM stations.

Keyed to turn-key driving, Galaxy's optional new speed selector permits the driver to set the desired cruising speed. The selected speed is maintained up hill and down automatically without foot pressure on the accelerator until the driver taps the brake to stop or disengage the control switch.

New Ford station wagon options for 1963 also include a factory-installed, heavy-duty chrome roof-luggage rack.



### New Arrivals

Mr. and Mrs. H. J. Smith of 2702 Keystone Drive, Odessa have announced the arrival of a daughter, Sarah Lynn, who was born at 8:35 a.m. Tuesday in the Malone and Hoga Clinic Hospital in Big Spring. At birth, the baby weighed seven pounds and 11 ounces.

Sarah Lynn has two brothers, Stephen and Gregory.

Mrs. Robert E. Smith of 13-02 S. Seaman, Eastland is the baby's maternal grandmother. The maternal grandmother is Mrs. W. O. Wilson of Jena, La.



**BETA CLUB OFFICERS:** Pictured above are newly elected officers of the Eastland High School Beta Club, honor society. Shown from left to right on the bottom row are Carol Walter, Kay Morton, Julia Frost and Becky McAlister. Standing from left to right are Joe Russell, Juey Seaberry and Verell Boen. (Photo by A&C Studio)

## Officers Of Beta Club Are Elected

The Beta Club of Eastland High School, a national honor society, met Tuesday at the high school. Miss Verna Johnson and C. P. Marshall are co-sponsors for the club.

Miss Johnson called the meeting to order after which members elected the following officers for the coming year: Kay Morton, president; Carol Walter, vice president; Julie Frost, secretary; Becky McAlister, treasurer; Judy Seaberry, reporter; Verell Bowen, chaplain; and Joe Russell, board member.

The Beta Club plans to have a well organized and constructive club, with good school program throughout the ensuing year.

**INGROWN NAIL HURTING YOU? Immediate Relief!**  
A few drops of OUTGROW® bring blessed relief from tormenting pain of ingrown nail. OUTGROW softens the skin underneath the nail, allows the nail to be cut and dissolves further pain and discomfort. OUTGROW is available at all drug stores.

**RETURNS HOME**  
Mrs. Florine Miller of 308 E. Main recently returned home from an extended visit with family, Mr. and Mrs. Glen Miller and family and Mr. and Mrs. Edward A. Jaks, all of Houston and with Mrs. S. G. Cornelius in Temple.

# WE GIVE Round-Up STAMPS

**MAXWELL HOUSE INSTANT COFFEE** 10-Oz. Jar \$1.19  
**WHITE SWAN Seedless RED PLUM JAM** 18-Oz. Tumbler 19¢  
**IPANA TOOTH PASTE** 69¢ Size 49¢  
**BUFFERIN TABLETS** 63¢ Size 49¢  
**STARLAC Instant Dry Milk** 12-Quart Box 98¢  
**SOFT-WEVE Assorted Toilet Tissue** 2-Roll Package 27¢  
**CUT-RITE Waxed Paper** 125-Ft. Roll 27¢  
**TIDE DETERGENT** Large Box 29¢  
**DUZ DOWNEY Fabric Softener** 17-Oz. Plastic 39¢  
**NIAGARA Spray Starch** 15-Oz. Can 69¢  
**SPIC & SPAN DETERGENT** Large Box 29¢  
**WHITE SWAN Sliced or Halves PEACHES** No. 2 1/2 Can 25¢  
**GERBER'S Strained BABY FOOD** 4 1/2-Oz. Jars 59¢

Save in Every Department!  
PRICES GOOD THROUGH SATURDAY, SEPTEMBER 29

Look at the Savings!

**Swift Premium Sliced BACON** Lb. 59¢  
**Gooch Blue Ribbon Beef T Bone STEAKS** Lb. 95¢  
**Gooch Blue Ribbon Beef Club STEAKS** Lb. 89¢  
**Gooch Blue Ribbon Chuck ROAST** Lb. 59¢

Let's Go **SAVE AT SUPER SAVE**

**WHITE SWAN BISCUITS** 6 Reg. Can 49¢  
**FLEECY WHITE BLEACH** Quart Plastic 15¢  
**SALVO Detergent TABLETS** Giant Box 79¢  
**COMET CLEANSER** Giant Can 22¢  
**Mr. CLEAN CLEANER** 28-Oz. Bottle 59¢  
**IVORY LIQUID DETERGENT** 22-Oz. Plastic 63¢  
**FRITO Jalapeno BEAN DIP** 10-Oz. Can 29¢  
**HERSHEY'S COCOA** Half-Pound Can 25¢  
**BLACKBURN'S WAFFLE SYRUP** Quart Bottle 35¢  
**DOG FOOD** Blue or Yellow Label 300 Can 10¢  
**NINE LIVES CAT FOOD** 2 6-Oz. Cans 29¢  
**Space-Saver TISSUES** BY KLEENEX White or Assorted 23¢  
**FACIAL TISSUES KLEENEX** 400-Ct. Box 23¢  
**FRITOS PLAIN CHILI** No. 2 Can 59¢

## Coming Friday—the '63 Fords... America's liveliest, most care-free cars!



"'63 super torque Ford Galaxie (foreground: Galaxie 500/XL 2-Door Hardtop). The look, the power—and now the feel of the fabulous Thunderbird! A ride so Thunderbird-smooth, you must try it to believe it! Super torque thrust up to 405 hp (optional).  
"63 Ford Fairlane Hardtop (background: Fairlane 500 Sports Coupe). Hot new middleweight... with V-8 punch! A full line of nine Fairlanes! Three new middleweight wagons. Two new hardtops. Four sedans. Big-car room, ride, performance... nimble new size Four. ... saving price. New optional 260 V-8... 221 V-8 (or standard Six).

America's liveliest, most care-free cars  
**FORD**  
FALCON • FAIRLANE • GALAXIE • THUNDERBIRD

**Falcon** (Futura Sports Convertible). Fun is what's new in Falcon—America's all-time economy champ. 15 cars and wagons including the first Falcon Convertible—power-operated top, 170 Special Six (standard). Now all '63 Falcons\* have Ford's exclusive twice-a-year service-saving features.

**HOOD KING MOTOR COMPANY**  
100 E. Main EASTLAND Ph. MA 9-1786

**GOOCH BLUE RIBBON FRANKS** lb. 49¢  
**NEUHOFF LONE STAR THICK SLICED BACON** 2 Lbs. \$1.19  
**Golden Ripe Bananas** 2 lbs. 25¢  
**MacMOY'S Super Save** Home Owned—Home Operated 400 S. Seaman  
**Russet Potatoes** 10 lbs. 49¢



READ THE CLASSIFIEDS

**RAWLINS MONUMENTS**  
SINCE 1884  
WEATHERFORD, PHONE LY 4-2724

**JOY DRIVE-IN** Open 7:15 - Starts 7:30  
Admission 50c  
CISCO - EASTLAND HIGHWAY

THURSDAY AND FRIDAY  
NO. 1 AT 7:15 NO. 2 AT 9:00

**Man Trap**  
A PRISONER RELEASE

**THE WILD WESTERNERS**

SATURDAY - SUNDAY - MONDAY  
NO. 1 AT 7:15 NO. 2 AT 8:45

**TROAD RACERS**

**HOLDEN PALMER**  
PERILS OF THE COURTNEY TRAITOR  
TECHNICOLOR

Much Is -

(Continued From Page One)  
full-size cars.  
Also new is a warranty for five years or 50,000 miles, whichever comes first, to cover the major power train components of all 1963 Chrysler automobiles sold in the United States and Canada.

Chrysler retains its model line-up which proved so successful in 1962. The Newport, a full-sized, lower priced car will be offered as a 4-door sedan, 2 and 4-door hardtop, convertible coupe and 6 and 9-passenger station wagon.

The 300 series, a popular entry in the growing performance sports car market, will be available in three body styles; 2 and 4-door hardtops and a convertible coupe.

**• FREE •**  
Estimates On  
**RE-ROOFING**  
Or Repair Your Old Roof.  
Residential and Commercial  
**Roofing Co. Eastland**  
Noble Squiers  
Phone MA 9-2370

A Chrysler 300J will be introduced later in the year. In all, Chrysler offers 14 models in six body types.

**EXTERIOR STYLING**  
Uncluttered, sharp lines impart a crisp, custom tasteful richness to the 1963 Chrysler. Each of the three Chrysler models has its own individualized grille.

**NEW INTERIOR LOOK**  
Chrysler interiors are significantly new for 1963. There is a totally new instrument panel, new high-quality, appearance-improved seat materials and designs, and roomier interiors on two-door body models.

Seat and door panel designs are new, and fabric colors and patterns are enhanced for 1963. The luxury of soft garnish is the feature of all door panels this year.

**FOUR ENGINES**  
The powerplant for the Newport is the 361 cubic inch V-8 with two-barrel carburetor. The 300 has a 383 cubic inch V-8 with two-barrel carburetor. The New Yorker retains the 413 cubic inch V-8

with single four-barrel carburetor.

**CORROSION PROTECTION**  
A number of improvements have been made in the 1963 Chrysler to further protect against corrosion. Higher grade stainless steels are used for moldings, hub caps and other parts.

The addition of splash shields in under fender areas prevent accumulation of corrosion materials in pocket areas. Bodies are dipped deeper for 1963.

**PARKING SPRAG**  
A parking sprag control is introduced for all models equipped with automatic transmission. It provides a positive and convenient method of holding the car irremovably when parked.

1963 Chrysler Newport and 300 models have longer (60 inches) rear axles which have six leaves in place of five-and-a-half.

**Self-energizing brakes** are used in Chrysler models for 1963. In addition to the inherent advantage of low pedal effort, good pedal reserve, stability and quietness in operation, the new brakes offer improved cooling, higher fade resistance, and more effective sealing.

Miss Jane -

(Continued from page One)  
wear, she chose a floor length formal of beige with orange overtones. The gown was accented by irridescent.

Miss Cindy Fox wore a rust colored Jersey dress designed with a bateau neckline and a softly pleated skirt. Her ensemble was complemented by black accessories. Her beige gown was designed with a floor-length ruffled skirt, complemented with a red waist corsage.

Miss Nelzane Nixon of Cisco, daughter of Mr. and Mrs. D. E. Nixon, chose a green two piece dress with black accessories. Her formal was a white floor-length gown with a bouffant skirt.

Miss Janet Waller of Scranton, daughter of Mr. and Mrs. James Waller of Putnam, wore a black sheath dress complemented by black and beige accessories. She then appeared in a bright pink floor length formal gown designed with a bouffant skirt and scattered with white rosebuds. Long white gloves completed her ensemble.

Miss Betty Wisener of Ranger Junior College, daughter of Mr. and Mrs. C. E. Wisener of Stamford, chose a royal blue two piece dress with blue and gold accessories. For her evening attire she chose a brilliant red formal gown with white accessories.

Miss Carol Burns of Rising Star, daughter of Mr. and Mrs. J. H. Burns of Star Route, Carbon, chose an orchid two piece ensemble with black accessories. She then modeled a pink waltz-length formal ac-

cented by long white gloves.

Miss Glynda Wilson of Ranger, daughter of Mr. and Mrs. Glynn A. Wilson, wore a lovely emerald green belted smooth dress with gold accessories. For her second appearance, she chose a beautiful white formal gown designed with a bouffant skirt with scattered red roses. Rhinestone jewelry completed her attire.

Miss Rena Mae Carr of Deidemonia, daughter of Mr. and Mrs. Cecil Carr, made her first appearance wearing beige sheath dress with brown accessories. She then appeared in a blue formal gown with white accessories.

Miss Kay Browning of Gorman, daughter of W. C. Browning, modeled a turquoise two piece dress with black accessories. For her evening wear, she chose a beautiful white formal gown complemented with red rosebuds and a red velvet ribbon belt.

Miss Sharon Johnson of Carbon, daughter of Mr. and Mrs. Orval Johnson of Route one, Eastland, appeared first in a red two piece ensemble complemented by a long sleeved white blouse. She made her formal appearance in a floor length pink gown with white accessories.

Miss Carol MacMoy, outgoing queen, appeared in a beautiful white floor length formal gown designed with a bouffant skirt. The crop bodice was made of irridescent sequins. Her ensemble was completed by the lovely Peanut Bowl crown.

Intermission entertainment was furnished by an Eastland High School musical group composed of Floyd Robinson, Cy Frost and Richard Jones.

TidBits-

(Continued from page One)  
bridge interest and sinking fund, 10c; jury, 5c; and road and bridge, 5c.

Last year the jury amount was 3c and the road and bridge was 7c.

The jury fund was needing some money.

Sunday Dinner Honors Former Residents

Relatives and friends of this area met at the Eastland City Park Sunday evening, Sept. 22, for a dinner honoring a group of former Eastland residents. Honorees included the following: Mr. and Mrs. John Butler, Mr. and Mrs. Earl Dick, their children, Mrs. Virginia Mayberry of Phoenix, Ariz. and Howard of New York City, and Mr. and Mrs. Jack Wright of Graham.

Mr. Butler will be remembered as the former Miss Heather Dulin and Mrs. Dick, the former Miss Cara Lee Wright.

Attending other than the above mentioned were Mrs. Alma Hunt and her daughter and son-in-law, Mr. and Mrs. C. A. Jackson, all of Ranger, Mr. and Mrs. Sidney Webb of Cheaney, Mr. and Mrs. Onous Dick and his mother, Mrs. Eva Dick, and Dean Butler, all of Olden, Mr. and Mrs. Wayne White, Mrs. O. T. Hazard and

Wedding Ranger Are Ann

Alvin Mayhew announced the approaching wedding to Eugene F. Mr. and Mrs. Mr. Franklins of Ranger, Sept. 25, Street, Ranger, short wedding of Lonnie and hall of Abilene, Farrow of Cisco, in-law of Mrs. hall of Cisco, bridegroom is Reece Franklin

**DIXIE Drive-In** Box Office Open Show Starts Box Office Closed  
Admission 50c Children under 12 FREE Each Wednesday - Adults 25c

27 THURSDAY 28 FRIDAY  
**STATE FAIR**  
Pat Boone \* Bobby Darrin \* Pamela - IN COLOR

30 SUNDAY 1 MONDAY  
**THE ROMAN SPRING MRS. STONE**  
Vivien Leigh \* Warren Beatty - IN COLOR

**MAJESTIC** LAST Open At

**THE HELLIONS**  
AN IRVING ALLEN / JAMES H. HANCOCK PRODUCTION - A COLUMBIA PICTURES

THUR - FRI - SAT  
Open Thur - Fri - 5:00 Open Saturday

**JERRY LEWIS**  
THE DELINQUENT

**See it! - if your nerves can stand it after PSYCHO!**  
ALFRED HITCHCOCK'S **JAMES STEWART REAR WINDOW**  
GRACE KELLY  
OPEN 11:30 SHOW AT 11:50

**RANGER DRIVE-IN**  
BARGAIN NITE EACH WEDNESDAY - 50c  
THURSDAY - FRIDAY - SATURDAY

**SAM THE GATE**  
THEY DARE THE SEVEN UNHOLY TERRORS!  
STARRING **GEORGE MONTGOMERY - GILBERT ROLAND - ZIVA JOAN O'BRIEN - NICO MINARDOS** with FERDIE GROFF  
MONTGOMERY Directed by GEORGE MONTGOMERY

SUNDAY - MONDAY - TUESDAY  
So much of so many of us are in it  
ELIA KAZAN'S PRODUCTION OF **SPLENDOR IN THE GRASS**  
NATALIE WOOD  
WARREN BEATTY

**WIN! 5,000 PLAID STAMPS**

• NOTHING TO BUY  
• REGISTER OFTEN  
• YOU NEED NOT BE PRESENT TO WIN

**JAMES McCORMICK MOBILE SERVICE**  
301 E. MAIN EASTLAND, TEXAS

**Gives More Plaid Stamps**  
See Coupons Below For 100 Extra Stamps

**HOURS OPEN 6 a.m. to 9 p.m.**

**FREE! PLAID STAMPS With Auto Lube**

**FREE! PLAID STAMPS With Any Gas Purchase**

CLIP AND PRESENT TO McCORMICK MOBIL EASTLAND, TEXAS EXPIRES SAT. OCT. 6

CLIP AND PRESENT TO McCORMICK MOBIL EASTLAND, TEXAS LIMIT ONE FOR FIRST 100 CUSTOMERS

**DRAWING SATURDAY OCTOBER 6**  
**5 WINNERS 1000 STAMPS**



Presenting: the Crisp, New, Custom Look of **CHRYSLER '63**

Raise your eyes and take another long look at this beautiful '63 Chrysler.  
How would you describe it? America's most prominent fashion leaders, style-setters, and designers said this about the '63 Chrysler: "A stunning concept in restrained elegance!" "Has the custom look of a town car!" "Beautiful simplicity in line and form!"  
Inside you'll find a style revolution in the making: gorgeous patterns; loop-pile

carpeting that would grace any living room; wide, comfortable deep-cushioned seats.  
Again in '63 you'll find no small-size Chryslers, no jr. editions, to undercut your big-car investment, penalize your pride or reduce your resale value.  
All '63 Chryslers are big, beautiful and V-8 powered. All are pleasant price surprises, too. Take a good look at the custom-looking '63 Chrysler... then take a big, beautiful step ahead in style.

**Now! 5-year/50,000-mile warranty!**  
Another First for Chrysler! The very highest standards of engineering leadership have resulted in an extended warranty\* on the power-train of 1963 Chryslers.\*

\*Your authorized Chrysler Dealer's Warranty against defects in material and workmanship on 1963 cars has been expanded to include parts replacement or repair for 5 years or 50,000 miles, whichever comes first, on the engine block, head and internal parts, transmission case, and internal parts, excluding manual clutch torque converter, drive shaft, universal joints (excluding first covers), rear axle and differential, and rear wheel bearings, provided the vehicle has been serviced at responsible intervals according to the Chrysler Certified Car Care schedule. Factory-approved, remanufactured parts may be used for replacement.

**BLEVINS MOTOR CO. • 514 W. Main**

The **MADRIGAL** 3VF04 Series

- STUDIOMATIC 4-SPEED CHANGER
- FM-AM RADIO
- 4-SPEAKER TOTAL SOUND STEREO SYSTEM

Lowest price ever for an **RCA VICTOR STEREO COMBINATION**

**\$199.95**

INCLUDING TEN FREE STEREO RECORDS  
Many other models to choose from  
**BUDGET TERMS!**  
THE MOST TRUSTED NAME IN SOUND  
**HURRY! YOUR NAME HERE!**  
**Robertson TV Sales & Service**  
S. E. Corner Square



# Smoked Hams



# SMOKED MEAT SALE



More Meat Buys!

**Bacon 59¢**  
Sliced, Poppy. An economical breakfast treat, keep a supply in your freezer. 1-Lb. Pkg.

**Armour's Bacon 59¢**  
Armour's Star Sliced. 1-Lb. Pkg.

**Pork Roast 33¢**  
Fresh, Picnic Cut, so economical. Lb.

**Quick Steaks 69¢**  
Veal, quick lunches. Lb.

**Smokies 69¢**  
Neuhoff. 12-Oz. Pkg.

This Coupon Worth 50 FREE GOLD BOND STAMPS  
Plus your regularly earned Gold Bond Stamps with the purchase of Any Heavy Beef or Baby Beef BEEF ROAST  
Coupon Expires September 29, 1962.

**35¢**  
Butt Portion Lb.

All lean, juicy, tender meat. Smoky hickory flavor. In sizes to fit every family.

**43¢**  
Ham, Delicious Served with Ocean Spray Cranberry Sauce. Lb.

**49¢**  
Half or Whole Lb.

Try Ham Roast!  
**Center Roast 79¢**  
Ham, Center Cut. Turns an ordinary meal into a feast. Lb.

**89¢**  
Center Slices Lb.



Safeway Values!

This Coupon Worth 25 FREE GOLD BOND STAMPS  
Plus your regularly earned Gold Bond Stamps with the purchase of ONE - 16-Oz. Carton Lucerne COTTAGE CHEESE All Styles.  
Coupon Expires September 29, 1962.

Redeem this coupon for 50 FREE GOLD BOND STAMPS  
With purchase of \$5.00 or more (Excluding Cigarettes) One Per Customer. Coupon Expires September 29, 1962.

**Mushrooms 39¢**  
Royal Treat, pieces and stems. 2 2-Oz. Cans

**Soup Mix 37¢**  
Lipton, So easy to prepare. 2-Pk. Pack

**Shortening 69¢**  
Golden, for all your baking. 3 Lb. Can

**Fruit Cocktail 35¢**  
Diet-Delight, low in calories. No. 303 Can

This Coupon Worth 50 FREE GOLD BOND STAMPS  
Plus your regularly earned Gold Bond Stamps with the purchase of THREE - Big Rolls of White, Pink or Yellow PAPER TOWELS  
Coupon Expires September 29, 1962.

This Coupon Worth 100 FREE GOLD BOND STAMPS  
Plus your regularly earned Gold Bond Stamps with the purchase of Any TWO Pair Truly Fine LADIES' HOSE  
Available in most Safeway Stores. Coupon Expires September 29, 1962.

This Coupon Worth 25 FREE GOLD BOND STAMPS  
Plus your regularly earned Gold Bond Stamps with the purchase of ONE - 2-Lb. Cello Pkg. U. S. No. 1 FRESH CARROTS  
Coupon Expires September 29, 1962.

**Maxwell House Instant Coffee 95¢**  
A cup and a half of 6-Oz. Jar 10-Oz. Jar \$1.33  
Flavor in every cup.

**Austex Chili 39¢**  
Plain, serve with tamales. No. 300 Can

**Tamales 49¢**  
Austex. With Chili Gravy. Serve with Chili. 2 No. 300 Cans

**Campbell's Soup 33¢**  
Tomato. 3 No. 1 Cans

**Soda Crackers 19¢**  
Melrose, serve with soup and chili. 1-Lb. Box

**Cole Slaw 29¢**  
Lucerne, Reg. 39¢. 16-Oz. Ctn.

**Tartar Sauce 39¢**  
Lucerne, Reg. 49¢. 8-Oz. Jar

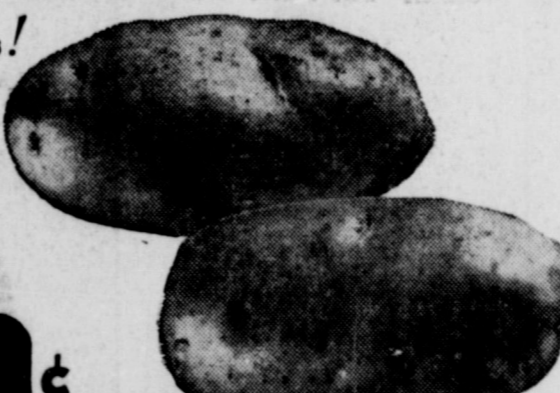
**Blossom Time Milk 89¢**  
Homogenized, Take huge plenty. 2 1/2-Gal. Ctn.

**Shady Lane Butter 69¢**  
Excellent table spread. 1-Lb. Ctn.

**La Lani Drink 27¢**  
Pineapple-Grapefruit. 46-Oz. Can

Safeway Guaranteed Fruits and Vegetables!

**Potatoes 59¢**  
Russet, U. S. No. 1. Serve 'em baked, boiled, mashed, fried. So good so many ways. 10-Lb. Bag



**Tokay Grapes 25¢**  
Flame, U. S. No. 1. Bunches of juicy flavor. 2 Lbs.

**Frozen-Rite Rolls 33¢**  
Cloverleaf, Parker House 24-ct. 28-Oz. Pkg.

**Chase & Sanborn Coffee 65¢**  
Regular or Drip Grind. 1-Lb. Can

**Crisco Shortening 33¢**  
For all your frying. 1-Lb. Can

**Starkist Tuna 35¢**  
Chunk Light Meat. 6 1/2-Oz. Can

**Prune Juice 35¢**  
Town House. You'll feel new pep and energy. 24-Oz. Bottle

**Kleenex Tissues 89¢**  
Facial Tissues, White, Pink, Yellow or Aqua. 4 400-Ct. Boxes

**Gladiola Flour 43¢**  
For all your baking needs. 5-Lb. Bag

**Edwards Coffee 59¢**  
All Grinds, for a perfect cup of coffee. 1-Lb. Can

**Golden Corn 49¢**  
Gardenside, Cream Style. 4 No. 303 Cans

**Sherbet 59¢**  
Lucerne Party Pride, Orange, Lime, Pineapple. 1/2-Gal. Ctn.

**Trend Detergent 49¢**  
For all your washing. Giant Box

**Trend Detergent 49¢**  
Liquid, for washing dishes. 22-Oz. Can

**Purex Bleach 23¢**  
Liquid, Plastic. Quart Bot.

**Northern Tissue 37¢**  
White and assorted colors. 4 Roll kg.

**Sanitary Napkins 35¢**  
Modess, Regular or Super. 12 Ct. Box

**Sanitary Napkins 35¢**  
Modess, Teen Age. 12 Ct. Box

**Plastic Wrap 31¢**  
Cut-Rite, for packing lunches. 100' Roll

**Aluminum Foil 33¢**  
Reynold's Wrap, 25' x 12" roll. Pkg.

**Co-Ets Cotton Squares 29¢**  
Cotton Regular. 40-Ct. Pkg.

**Vigo Dog Food 10¢**  
Yellow Label. 1-Lb. Can

Values at Safeway!

**Spiced Peach 19¢**  
Old Ivory, add spice to your meals. No. 2 1/2 Can

**Facial Tissue 19¢**  
Truly Fine Tissues, White, Pink, Yellow or Aqua. 400-Ct. Box

**Cauliflower 25¢**  
Colorado's finest, fresh and flavorful. Each

**Yellow Onions 5¢**  
U. S. No. 1. Serve with meat. Lb.

**Bell Peppers 15¢**  
U. S. No. 1. Serve stuffed Peppers. Lb.

**Ritz Crackers 35¢**  
Nabisco, serve with salads. 12-Oz. Box

**Hydrox Cookies 49¢**  
Sunshine, delicious with jello. 1-Lb. Cello Bag

**Cake Mix 49¢**  
Duncan Hines, Dutch Topping, Butterscotch, Cinnamon Raisin or Apple 'N Spice. Reg. Pkg.

**Morton's Pies 29¢**  
Frozen, Cherry, Apple, Peach or Coconut Custard. 22-Oz. Pkg.

**Ocean Perch Fillets 39¢**  
Captain's Choice, Frozen. 1-Lb. Pkg.

Bakery Features!

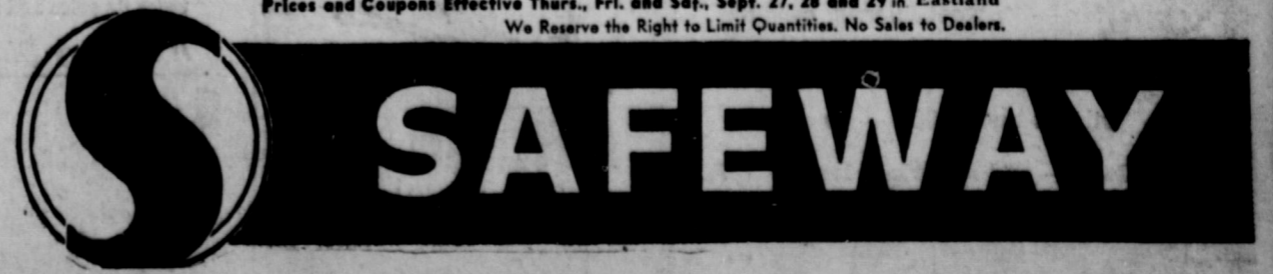
**Italian Bread 19¢**  
Skyline, Regular 27¢. 1 1/2-Lb. Loaf  
Serve it hot—A must with Steaks.

**Jelly Snails 23¢**  
Mrs. Wright's (2¢ Off). Country kitchen goodness. 7-Oz. Pkg.

**Hot Dog Buns 19¢**  
Mrs. Wright's 8-Count. 11-Oz. Pkg.

**Dalleringa Bread 25¢**  
So light—just right for bed-time snacks. 1-Lb. Loaf

Prices and Coupons Effective Thurs., Fri. and Sat., Sept. 27, 28 and 29 in Eastland  
We Reserve the Right to Limit Quantities. No Sales to Dealers.





• Read The Classifieds

IT'S THE LAW

VOLUNTARY CONFESSIONS
Our courts decide where our rights and our security conflict, the rubber hose, police sought

Recently the Supreme Court spelled out what it means by "Voluntary":

1. In one case the Sheriff brought the accused into court. The judge told of his rights and of the charges against him. The prisoner said: "I'm guilty. I killed the woman."

A rancher had lassoed him, but the sheriff had stepped in to protect him from a gathering crowd.

Despite the roping the court found the confession voluntary and upheld it. For only the judge and the prisoner's protector were in court when he confessed. No force or threat.

2. But the U. S. Supreme

Court rejected another conviction when the "Totality" of the conduct of the officers amounted to a denial of "due process of the law."

It concerned a 19-year-old prisoner who had only fifth grade education.

Why did the Supreme Court upset this conviction? Because the trial court admitted a coerced confession in evidence. Officers had arrested the prisoner without a warrant, had held him without much food for two days and had not allowed him to see anybody he knew. Finally, the police chief had told him that a mob outside wanted to "get him," but if he confessed the police could hold them off. He broke down and "confessed."

Such confessions, the court held, were not an "expression of free choice."

(This, newsfeature, prepared by the State Bar of Texas, is written to inform—not to advise. No person should ever apply or interpret any law without the aid of an attorney who is fully advised concerning the facts involved, because a slight variance in facts may change the application of the law.)

Developments To Be Given At Field Day

Courty Age t J. M. Cooper says that latest research developments at the Texas Experimental Ranch will be presented to the public at a special field day on Thursday, Oct. 4, from 9 a.m. to 3 p.m. William J. (Dub) Waldrip will be in charge of activities at the ranch which is located 10 miles north of Throckmorton on U. S. Highways 183 and 283.

Highlights of the day will be guided tours of pastures where important grazing management studies are underway, a barbecue and an afternoon discussion.

Lois Sims Is Hostess To Socialites

The regular meeting of the Socialite Club was held Saturday in the home of Lois Sims.

New officers elected are the following: Tom Sosebee, president; Jennifer Pryor, vice president; Carolyn Thomas, secretary; Sharon Spradling, treasurer; Doris Trout, reporter; Sheryl Butler, chairman; Anna Hoffman, parliamentaria; and Lois Sims, historian.

Refreshments of cakes and cookies were served to the group.

HOLY TRINITY EPISCOPAL CHURCH

710 S. Seaman Rev. William Ralph Woods Sunday

9:30 a.m. Church School 10:30 a.m. Morning Prayer 10:45 a.m. Holy Communion and Sermon

Wednesday 6:30 and 10:30 a.m. Holy Communion 8:00 p.m. Evening Prayer.

CLASSIFIEDS

Mrs. Lon Horn Hosts Meet of Pricilla Group

Members of the Pricilla Group of the Christian Women's Fellowship of the First Christian Church met in the home of Mrs. Lon Horn Monday at 9:30 a.m.

Group chairman, Mrs. Ben Bassett, called the meeting to order after which Mrs. L. D. Keith, C.W.F. president, led the opening prayer. Mrs. Myrtle McNatt brought the devotional.

Refreshments were served to Mrs. L. D. Keith, Mrs. L. E. Huckaby, Mrs. Myrtle McNatt, Mrs. Ben Bassett and Mrs. Jaci Chamberlain by the hostess, Mrs. Horn.

The meeting was adjourned with the C.W.F. benediction.

GAME TOURNEY

A game tournament will be held in the Woman's Club tonight at 7 p.m. Sponsoring the tourney will be members of the club house board.

Tickets for the tourney may be purchased at the door for 50c. All proceeds will go toward improvements for the clubhouse.

The public is cordially invited to attend.

The HOUSE of COLOR
Featuring SPRED SATIN
Nationally Adv. Paint; For Less Money
Hwy. 80 E. Ranger

Caravan Girls Have Outing At Ringling Lake

The Caravan Girls of the Eastland Church of the Nazarene hiked to Ringling Lake Saturday morning for a cook-out and outing.

Upon arriving at the lake, the Pathfinder Group cooked a breakfast of bacon, eggs, toast and coffee over an open fire.

Making the hike were the following members: Claudette, Harriett and Patricia Reed, Barbara, Shirley and Betty Hallum, Linda and Carolyn Medford, Kathy Jo Ensor, Betty Manners, Carla Wood and Treva Wilson.

Sponsors for the group were Mrs. M. C. McWhorter, Mrs. William Reed, Mrs. Jack Wood and Rev. and Mrs. Clarence Manners.

Visitors were Kay and Troy Wood and Cheryl McWhorter.

GOLDEN AGE NURSING HOME

104 East 4th Street Cisco Phone H 24 Hour Nursing Care. Good Meals - Special State Licensed and Approved For Welfare Patients

Jerry Stephens Administrator Mrs. Ora M. Forgy Director of Nursing

SEE US FIRST for your HOME LOAN
We offer low cost financing for -
• New Home Building or Buying.
• Home Remodeling, including all permanent type additions.
See Us without Obligations
The Best Place to Save and Borrow
FIRST FEDERAL SAVINGS LOAN ASSOCIATION
204 Main Ranger, Texas
SPECIALIZING IN SAVINGS ACCOUNTS and HOME LOANS

GAS-TOONS
ACME GLASS CO.
Just the windshield, Doc... I'm in a HURRY.
We'll give your car COMPLETE service that speeds you on your way!
OBIE & DOC'S HUMBLE SERVICE STATION
802 W Main MA 9-8866

HAMNER FUNERAL HOME
Bep E. Hamner, Owner
Serving Eastland County since 1924 with ambulance and funeral service. Our ambulances are oxygen equipped and air conditioned. Through our nation-wide connections with other funeral directors, we can handle a funeral from any point in America. We offer this service knowing that we can relieve the family of all burdens incident to any death away from home.
Eastland Dial MA 9-2611

If Your Home Burned Tonight -
... how would you like to re-buy what you have lost? Sounds silly, but it's a good question. Your furnishings alone are probably worth 2 or 3 times the amount you have them insured for. Gradual accumulations, piece at a time, will fool you, and my how prices have advanced since you first set up housekeeping! How to find out? Let us inventory every item you have, room by room. Then we can tell you how little it will cost to adequately insure you.
EARL BENDER & COMPANY
Eastland, (Insurance since 1924) Texas

FURNITURE CARPET APPLIANCES
Quality Merchandise at Every Day Low Prices
FREE DELIVERY - NO CARRYING CHARGES ON FURNITURE and CARPETS FOR 1 FULL YEAR
Ranger Furniture Exchange
"BRASHIER'S"
123 N. RUSK Ranger Phone MI 7-1404

History Class Hold Indian Exhibit Friday
The 77 members of the junior high sixth grades held an Indian exhibit Friday at the school, as part of their history project.
The class was divided into five Indian tribes. Each tribe developed their tribe in homes, clothes, food, ways of living and government, and each group wrote a paper on their tribe.
During their study of the Indians, the students found that crackerjacks were invented by the Indians. A popcorn party was held during the afternoon.
Each student brought an Indian article for the exhibit. They included Navajo rugs, Indian dolls, necks, jewelry, leatherwork, weapons, baskets, utensils and music makers.
Stephen is history teacher for the group.

Senior Class Officers Are Elected Friday
Officers were elected for the coming year when members of the 1962-63 senior class held their first meeting Friday, Sept. 21, at the High School.
Newly elected officers are the following: Tommy Beck, president; Carol Walter, vice president; Julie Frost, secretary; Kay Morton, treasurer; Judy Seaberry, reporter; and Larry Glein and Mike Graham, fire boys.
Mrs. Earl Conner Jr., class sponsor, called the meeting to order. During the business session, class dues of 50c per year were set.
Seniors will receive their rings sometime around the first of the second six weeks. The exact time will be announced at a later date.



Tomorrow-GO JET-SMOOTH CHEVROLET for '63

If it didn't say Chevrolet on the flanks of the superb automobile you see here, you'd have a hard time proving it's a low-priced car. It offers luxurious styling, extremely comfortable, spacious and silent interiors... plus a lot of invisible ways to keep it looking and running like new when a lot

IT'S EXCITING!

of others have started to sag and sigh: new and dry rocker panels under the doors to guard against rusting... self-adjusting brakes... Delcotron generator for longer battery life... you ever wondered why Chevrolet leads its field a drive in this '63 should answer all your questions



GO CHEVY II for '63-IT'S EXCITING!



GO CORVAIR for '63-IT'S EXCITING!

Hard as it may be to believe, this year's Chevy II is better, better than last year's and better than anything in its class. It combines all the new easy-care features of the big Chevrolet with its own wonderful attributes of parkable size, four- or six-cylinder fuel economy and interiors that'd do justice to cars with twice its price and half its charm.

Change it? Calm yourself, nobody's going to mess with a winner like this one! We did add self-adjusting brakes and a more fully aluminum muffler; interior and outside trim are refined a bit, but the rest is pure Corvaire with all the over-the-road goodness that implies. Oh yes, we changed the taillights so that those people you pass will know you're driving a



It's Chevy Showtime '63! - See four entirely different kinds of cars at your Chevrolet Dealer's Showroom

New! NEW PANTS!
YOU'LL REALLY BE SLACK-HAPPY when you see these new arrivals!
Choose from a wide variety of styles - in wool, blends, corduroy and more - in plaids, checks, stripes and solids - in newest colors - and all priced low!
HARELIKS inc. NATURALLY!

FULLEN MOTOR COMPANY INC.

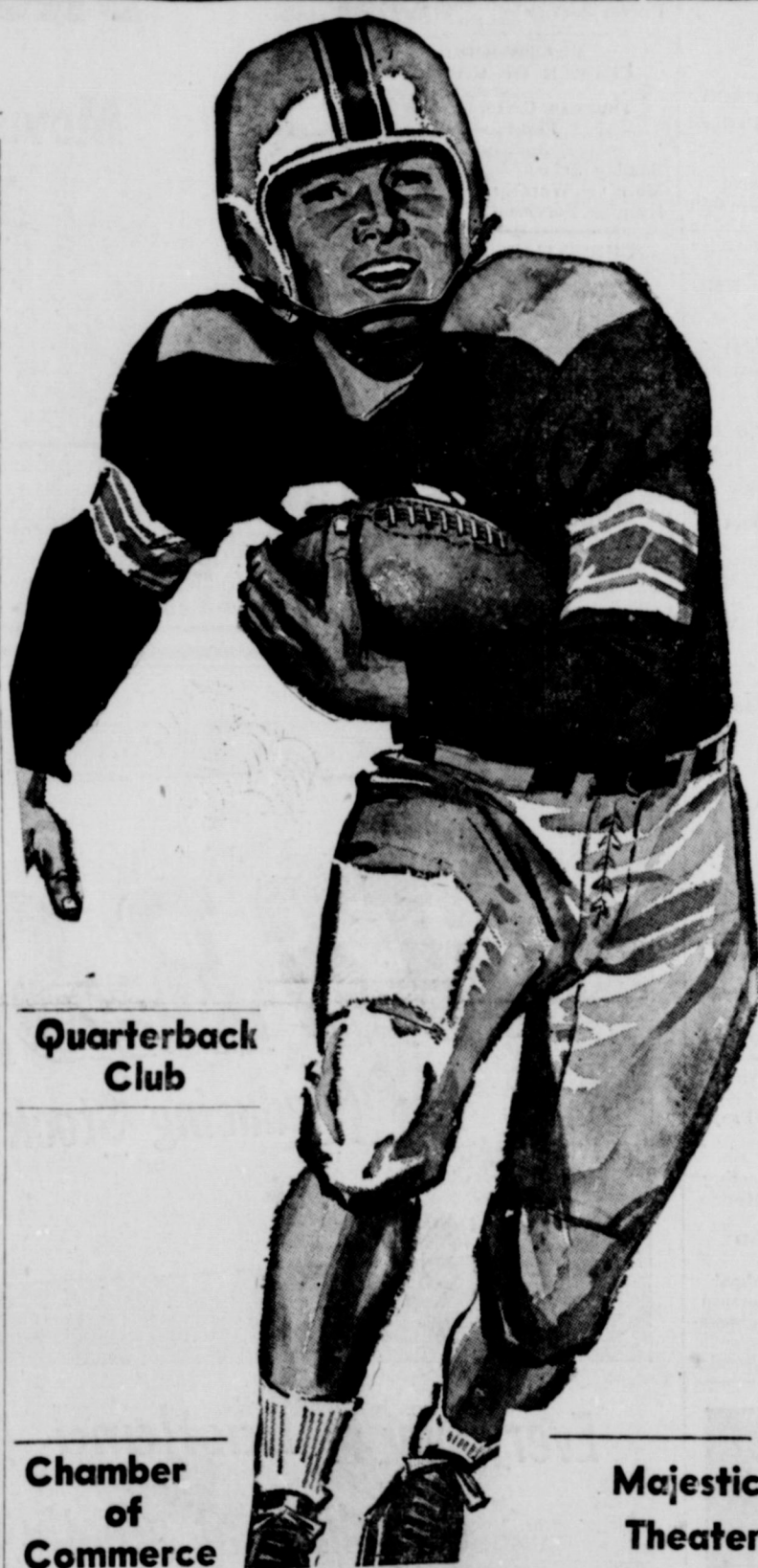
305 E. MAIN EASTLAND PHONE MA 9-2676



TO OUR TEAM . . . WE'RE BEHIND YOU ALL THE WAY

**EASTLAND vs GORMAN**

**FRIDAY NIGHT, 8:00 P. M., THERE**



Quarterback Club

Chamber of Commerce

Majestic Theater

**Central Drug**

Delivery Dale Troutt, owner

**Altman's**

Smart Women's Wear  
North Side of Square

**Schlag Insurance Agency**

North Side of Square  
Ph. MA 9-2275

**Electric Service Company**

F. N. Sayre, Mgr.  
Phone MA 9-2651

**Barber Shop**

George Carter

**Dry Cleaners**

"City Wide Delivery"  
Lamar Ph. MA 9-2055

**Otis Coleman Lumber Products**

Main St.—Ph. MA 9-8882

**Texas Lightweight Concrete Aggregate Company**

Producers of Concrete Aggregates  
Martin—Ph. MA 9-2060

**Jordan's Drive In**

Hwy. 80 East  
Lamar and Harry Jordan

**Koen Salvage**

Scrap Iron and Metal Dealer  
Hwy 80 West Ph. MA 9-2649

**Obie and Doc Automobile Ser. Station**

W. Main—Ph. MA 9-8866

**The Men's Shop**

Correst Styles for Men and Boys  
James Smith, owner

**City Garage**

J. J. Finley, Proprietor  
Engine, Starter and Generator Work  
103 White St. — Ph. MA 9-1709

**Foremost Dairy Products**

Clyde Manning, Mgr.  
Eastland — Ph. MA 9-1701

**Eastland National Bank**

"On the Square"—Member FDIC

**Hood King Motor Co.**

Ford Sales and Service  
On the Square — Ph. MA 9-1786

**Graham's Trim Shop**

709 W. Main — Ph. MA 9-2266

**White Elephant Cafe**

724 W. Main — Ph. MA 9-8831

**Lindley Paint and Body Works**

"All Work Guaranteed"  
110 S. Bassett — Ph. MA 9-2240

**Eastland Iron & Metal Co.**

Henry, Tillie and Saul Pullman

**Hill Crest Food Market**

When you run out—run in  
1401 W. Main — Ph. MA 9-1600

**Western Auto Associate Store**

J. L. Pittman, owner  
East side of square Ph. MA 9-2011

**Smith Plumbing and Tin**

114 N. Seaman — Ph. MA 9-2422

**Perkins Implement Co.**

116 E. Main — Ph. MA 9-2666

**Eastland Steam Laundry**

Home Owned — B. W. Lasater  
Ph. MA 9-2613

**Jeanette's Fabric Shop**

Mr. and Mrs. L. D. Harris  
West side of square

**Eastland Auction Co.**

Hwy. 80 East — Ph. MA 9-1758

**Modern Dry Cleaners**

Approved Sanitone Service  
210 S. Seaman — Ph. MA 9-1344

**Mobil Oil Co.**

Standlee McCracken, Consignee

**Poe Floral**

"When It's Flowers—Say it With Ours"  
609 W. Main — Ph. MA 9-1711

**Roy's Repair Service**

Roy and Stella Gann  
205 S. Lamar — Ph. MA 9-2474

**Eastland Auto Parts**

Mr. and Mrs. Frank Deaton  
300 S. Seaman — Ph. MA 9-2158

**Rushing Motor Co.**

Herman Rushing — Bill Hunter  
Chrysler Products, Plymouth, Valiant  
215 S. Seaman — Ph. MA 9-2430

**Romco - Eastland**

MODERN ARTWARE

**Mr. and Mrs. Victor Cornelius**

Cornelius

**Judge and Mrs. Turner Collier**

Collier

**Mr. and Mrs. J. C. Allison**

Allison

**H. R. (Pop) Garrett**

**Sheriff and Mrs. Lee Horn**

Lee Horn

**Earl Conner Jr.**

**Eastland Medical and Surgical Clinic**

404 W. Commerce—Ph. MA 9-2833

**Crowell Lumber Co.**

715 W. Main — Ph. MA 9-2411

**Goodyear Service Store**

M. L. Smith, mgr.  
306 East Main — Ph. MA 9-2662

**Lone Star Gas Co.**

A. G. Goldston, Mgr.  
313 W. Main — Ph. MA 9-1280

**Kinnaird Insurance and Real Estate Agency**  
207 W. Main MA 9-2544

**R. M. Sneed**  
General Oil Field Construction  
Office Phone MA 9-1756  
Res. Phone MA 9-2424

**Eastland Service Parts Co.**  
112 E. Commerce MA 9-1733

**Toombs & Richardson Drug Store**  
108 S. Seaman MA 9-1475

**Mr. and Mrs. M. H. Perry**

**Harelik's Department Store**  
212 W. Main

**SOUTHERN TELEVISION SYSTEMS CORPORATION**

**MAVERICK 1962 SCHEDULE**

7 — Mavs. 20 Comanche 14	Oct. 19 — * Baird Here
14 — Open date	Oct. 26 — * Albany Here
21 — Mavs. 20, Cisco 18	Nov. 2 — * Cross Plains There
28 — Gorman There	Nov. 9 — * Ranger Here
5 — Rising Star There	Nov. 16 — * Clyde There
12 — DeLeon There	* District Games at 7:30
	Others at 8 p.m.

**Eastland Drug Store**

201 S. Main — Ph. MA 9-2112

**Hanna Hardware & Lumber Co.**

201 N. Seaman — MA 9-2104

**Miller's Phillips 66 Service Station**

513 W. Main Phone MA 9-1644

**Eastland Supply Co.**

Oil Field Supplies  
115 E. Main MA 9-1595

**Mr. and Mrs. Don Pierson**

**Howard Bookkeeping Service**

Petroleum Bldg. MA 9-1776

**MAVERICK ROSTER**

Position	Name	Weight
Quarterback	Tommy Beck	160
Right Halfback	Jody Cooper	160
Fullback	Jimmy Moylan	205
Left Halfback	Gary Graham	165
Right End	Larry Howle	170
Left End	Stanley Underwood	150
Center	Jim Wright	165
Right Tackle	Butch Phillips	160
Left Tackle	David Taylor	165
Right Guard	Dickie Byars	145
Left Guard	Ray Edwards	140



**Read the Classified Ads**



How's your COVERAGE?

(If you're not satisfied, call M. H. Perry, MAIn 9-2275. He's the Southland Man)

**FIRST PRESBYTERIAN CHURCH**

Rev. Eugene Surface, Pastor  
**Sunday**  
 10:00 a.m. - Church School  
 11:00 a.m. - Divine Worship  
 12 noon - Monthly meeting of the Church Session on the Sunday after the first Wednesday.

**Tuesday**  
 9:30 a.m. - United Presbyterian Woman meet on the first and the third Tuesdays of each month.

**CHURCH OF GOD**

Corner Lamar and Valley  
 Pastor  
 Rev. Joe Downs  
**SUNDAY**  
 10 a.m.: Sunday School  
 11 a.m.: Sermon  
 6:45 p.m. Youth Fellowship  
 7:30 p.m.: Sermon  
**WEDNESDAY**  
 7:30 p.m.: Prayer Service

**CHURCH NEWS**

**CARBON BAPTIST CHURCH**

Rev. Jimmy Turner, pastor  
**SUNDAY**  
 10 a.m.: Sunday School  
 11 a.m.: Morning Worship  
 6:30 p.m.: BTU  
 7:30 p.m.: Evening Worship  
**MONDAY**  
 2 p.m.: WMU  
**WEDNESDAY**  
 7 p.m.: Prayer Service

**UNITED PENTECOSTAL CHURCH**

208 N. Dixie  
 Rev. Freddie Waldrep  
**SUNDAY**  
 9:45 a.m.: Sunday School  
 11 a.m.: Morning Worship  
 7:45 p.m.: Evening Service  
**WEDNESDAY**  
 7:45 p.m.: Prayer Meeting  
**SATURDAY**  
 7:45 p.m.: Pentecostal Conquerers.

**FIRST BAPTIST CHURCH**

Rev. Haston Brewer, Pastor  
 108 W. Plummer  
**SUNDAY**  
 9:45 a.m.: Sunday School  
 11 a.m.: Morning Worship  
 6:15 p.m.: Training Union  
 7:30 p.m.: Evening Service  
**TUESDAY**  
 9:30 a.m. & 1 p.m.: WMU

**CARBON METHODIST CHURCH**

James W. Waller, Pastor  
 Carbon  
**Sunday**  
 Sunday School 10:00 AM  
 Morning Worship 1:00 AM

**CHURCH OF CHRIST**

Corner of Plummer and Daugherty  
**SUNDAY**  
 9:30 a.m.—Bible Class For All Age Groups.  
 10:20 a.m.—Morning Worship  
 2:00 p.m.—Visitation of Shut-ins.  
 6:00 p.m.—Young Peoples' Meeting.  
 7:00 p.m.—Evening Worship.  
**WEDNESDAY**  
 9:30 a.m. — Ladies' Bible Class.  
 7:00 p.m. — Prayer Meeting and Bible Study.

**CHURCH OF THE NAZARENE**

Rev. Clarence Manners  
 613 W. Main  
**Sunday**  
 10—Sunday School  
 11—Morning Worship  
 6:45 p.m.—N.V.P.S.  
 7 p.m.—Evening Services  
**Wednesday**  
 7 p.m.—Mid-week Prayer Service  
**FRIDAY**  
 Noon—Prayer and Fasting  
 3:15 p.m.—Children Hour

**ASSEMBLY OF GOD SUNDAY**

9:45 a.m.: Sunday School  
 11 a.m.: Morning Worship  
 6:45 p.m.: Christ Ambassadors  
 7:30 p.m.: Evening Service

**BETHEL BAPTIST CHURCH**

Rev. Henry Littleton, Interim  
**SUNDAY**  
 9:45 a.m.: Sunday School  
 11 a.m.: Morning Worship  
 7 p.m.: Training Union  
 8 p.m.: Evening Worship  
**WEDNESDAY**  
 6:15 p.m.: Primary teachers and officers meet  
 7:30 p.m.: Midweek prayer  
 8:15 p.m.: Choir practice

**OLDEN BAPTIST CHURCH**

Olden  
**Sunday**  
 Sunday School 9:45 AM  
 Morning Worship 11:00 AM  
 Training Union 6:00 PM  
 Evening Service 7:00 PM  
**WEDNESDAY**  
 Prayer Service 7:30 PM

**FLATWOOD CHURCH OF CHRIST**

Thurman Cartel, Pastor  
 Flatwood  
**Sunday**  
 Sunday School 10:00 AM  
 Morning Worship 11:00 AM  
 Evening Service 7:00 AM

**CHRISTIAN SCIENCE**

Plummer and Lamar  
**Sunday**  
 9:45 a.m.: Sunday School  
 11 a.m.: Sunday morning service.  
**Wednesday**  
 7:30 p.m.: Mid-week Service  
 The public is cordially invited.

**PERMANENTS**  
 \$10 Creme-Oil Waves \$6.50  
 \$12 Creme-Oil Waves \$7.50  
 \$12 Lanolin Waves \$8.50  
 Other waves \$10 and up  
**Basham Beauty Bar**

**FIRST METHODIST CHURCH**

Wm. S. Fisher, Pastor  
 215 S. Mulberry  
**SUNDAY**  
 9:45 a.m.: Church School  
 10:55 p.m.: Worship Service  
 6:15 p.m.: Youth Fellowship  
 7 p.m.: Evening Worship  
**TUESDAY**  
 9:30 a.m.: W.S.C.S.  
**WEDNESDAY**  
 7:30 p.m.: Choir rehearsal  
 Wesleyan Guild every 1st & 3rd Wednesdays  
 Official Board Monday

**CALVARY BAPTIST**

207 N. OAK ST.  
**SUNDAY**  
 10 a.m.—Sunday School  
 11 a.m.—Morning Worship  
 7 p.m.—Prayer Service  
 7:30 p.m.—Evening Worship  
**ST. FRANCIS CATHOLIC CHURCH**  
 Rev. Joseph L. Van Winkle, C.L.C.M.  
**SUNDAY MASS**  
 1st and 3rd Sunday at 9:30 a.m.  
 2nd, 4th and 5th Sunday at 11 a.m.  
 Every Tuesday Mass at 6:30 p.m. Holy Days Mass at 7:15 a.m.

**FIRST CHRISTIAN CHURCH**

Corner Olive & Lamar  
**SUNDAY**  
 9:45 Church School  
 11:00 Morning Worship  
 7:00 Evening Vespers  
**WEDNESDAY**

5:00 Junior  
 6:30 Adult  
 Read The  
**CHICK'S**  
 103 E.  
 Service Ca  
 Work guaran  
 Phone MA  
 Day or

**Brown's Sanitorium**  
 800 W. 6th CISCO HI 2-1400  
 announces that  
**DR. WALTER MACK HEARD, D. C.**  
 has joined their staff

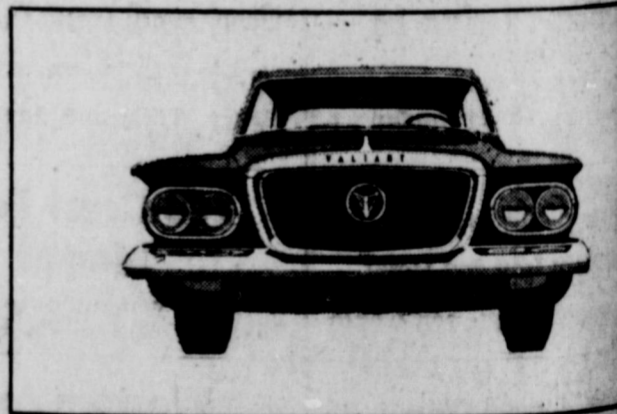
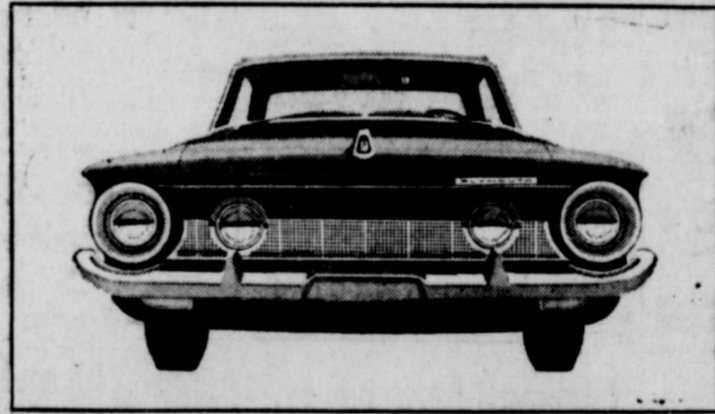
**Clip-on GAS HEATERS**  
 BY **Dearborn**  
 Dearborn's Clip-On series of unvented wall heaters are small in size... large in heating ability. A Clip-On heater is the answer when floor space is limited... hangs on the wall. Quick and easy installation.  
 Clip-On heaters offer many outstanding Dearborn features:  
 • Cool Safety Cabinet  
 • Forward Heat Flow  
 • Hi-Crown, Drilled-Port Burner  
 • Stainless Steel Radi  
 • Enclosed Controls  
 • Blue Flame Manual Pilot  
 • Economical Operation  
 Select the powerful Clip-On heater when floor space is important. Available in 10, 18, and 25 thousand BTU's.  
**FROM \$19.95**  
**COATS FURNITURE & Cpts. Ltd.**

**CHURCH OF CHRIST**  
 Corner of Plummer and Daugherty  
**SUNDAY**  
 9:30 a.m.—Bible Class For All Age Groups.  
 10:20 a.m.—Morning Worship  
 2:00 p.m.—Visitation of Shut-ins.  
 6:00 p.m.—Young Peoples' Meeting.  
 7:00 p.m.—Evening Worship.  
**WEDNESDAY**  
 9:30 a.m. — Ladies' Bible Class.  
 7:00 p.m. — Prayer Meeting and Bible Study.

**"ANNOUNCING"**  
**CENTRAL DRUG'S**  
 Move To A New Location, To Better Serve YOU.  
 the future of Eastland is bright, and we want to grow with it!  
 In line with our established policy of providing the most modern and up-to-date drug service for the people of Eastland and surrounding area, we are going to relocate our store. The move will enable us to expand our present facilities and move another step forward toward our goal of offering the best of everything. The move will be made without any interruption in service.

**IT'S R.S.V.P. TIME!**  
 (Reducing Stock of Valiants & Plymouths)

Everybody in Eastland is invited to buy a new '62 Plymouth or Valiant at greatly reduced prices! R.S.V.P. NOW!



It's that time of the year again—the time when prices on new '62 Plymouths are drastically reduced to move them out fast! The '63 models will be arriving soon and we need the room. Come in right now and you can save on a new '62 Plymouth while color and model selections are best.

If you've been thinking about a compact car, there's a better time than right now to buy a new '62 Valiant. Prices have been slashed to make it easier than ever for you to buy. Trade-in allowances are more than generous, so your old car may well cover the down payment. Come in!

**STOP HOME ACCIDENTS!**

get your **FREE** home safety guides now!  
 Will members of your family be among the 4,200,000 Americans injured at home in a typical year... or the 28,000 dead from home accidents? You can protect them by eliminating dozens of dangerous home hazards. Your free Home Safety Guides will show you how to do it. We urge you to stop in for your Guides at the offices of the sponsors listed here. Published monthly, three Safety Guides are available now. Costs you nothing... and could save you pain, heartache, even a precious life. Act today!  
 LONE STAR GAS COMPANY  
 TEXAS SAFETY ASSOCIATION  
 Eastland Telegram

GET REAL SAVINGS ON VALIANT AND PLYMOUTH AT YOUR NEARBY PLYMOUTH-VALIANT DEALER  
**Rushing Motor Company**  
 215 South Seaman  
**Blevins Motor Company**  
 514 W. Main



## Fields Of Rising Star Area

By B. A. Butler  
All over the Rising Star country, the peanut fields are lush with the appearance of prosperity. Early September rains, falling most opportunely upon a crop planted late for the most part, have given prospects for what many predict will turn out to be the best money crop in ten years. The conditions are borne out by field after field of luxuriant vines and one of the heaviest plantings in recent years.

But despite the outspoken optimism of these observers, there are others who point out that what is under the vines is still a matter of probability and conjecture.

"Most of the crop was planted late and during the dry weather of August there was slow growth," they say. "Before the good rains came in early September there was practically no fruiting. After that rains, the vines began to put on heavily and for the most part the crop is still in the making. If we can have several weeks of warm weather without frost we should make a good crop."

The new peanut was named for W. B. Starr of the Dan Horn community and recently representatives of the Wilson Peanut Company, which handles the new seed, and dealers in the area, including Jones Brothers here, who planted the seed for Starr.

All in all, the outlook for a real peanut money-crop in the Rising Star and southern Eastland County area is the best this season in many years. Farmers, buyers, merchants and just plain citizens are looking forward to the flow of expected cash with anticipations whetted by a decade long period of drought and disappointment.

## GOLD DUST III IS REPORTED ENJOYING LIFE IN ALASKA

Gold Dust III, another "ridiculous" stick horse from Putnam, Texas, has not died from one of his "riders" in-ferred to be a woman. He had feared but is very much "alive" and on the job. His master, Reddy Reynolds, learned this from information received from a former Putnamite who is now living in Alaska.

Hall Green, son of Mrs. Jewel Mobley of Putnam, who works for the U. S. Coast and Geodetic Survey Observatory out of Fairbanks, Alaska, mailed Roddy a clipping from the front page of Thursday (Sept. 20) Evening Daily News-Miner (America's Farthest North Daily Newspaper) published at Fairbanks. The story revealed that Gold Dust III had really been "making tracks."

Gold Dust I, now in retirement, traveled to hundreds of places on five continents back in 1960, by hitching "riders" to help celebrate the 100th anniversary of the famous Pony Express.

Gold Dust II is on a jaunt.

(Continued on page 6.) should be remembered that



**CINDY FOX**  
Olden . . . (A&C Photo)  
First runner up in Tuesday night's Peanut Bowl Queen contest was Miss Julie Frost of Eastland. Named as the second runner-up was Miss Cindy Fox of Olden. (See story on page next point.)



**JULIE FROST**  
Eastland . . . (A&C Photo)  
First runner up in Tuesday night's Peanut Bowl Queen contest was Miss Julie Frost of Eastland. Named as the second runner-up was Miss Cindy Fox of Olden. (See story on page next point.)

The situation in Cuba is occupying the forefront of interest in the country and in the Congress. There are the impetuous, and impatient, the excuser and the appeaser.

One of the things often heard by the "excusers" and of the "wait-and-seers" is that Russia's position in Cuba is no different from that in Turkey, Iran, Pakistan, and other places along the Soviet border where we have military installations. The writer, William S. White, who incidentally is from De Leon, Star this week, made a pertinent point.

Washington  
"As it Looks From Here"  
OMAR BIRKSON  
Congressman  
17th District

WASHINGTON D. C. — The 87th session of the congress will close in the next few days. This is the last column of the year, but will be resumed in the first week of the 1963 Session.

In the meantime, shortly after the Congress adjourns, I will be back home and shall be looking forward to visiting in the various communities in the 14 County area comprising the 17th Congressional District.

It has been my pleasure to write this weekly column, and I hope readers have found it of interest. No claim is made to writing professionally, or even efficiently. It is meant to be a communication between the people and their Representative in Congress. It is meant to provoke thought on current issues of the day and to give some idea at times the attitude of your Congressman, and to solicit interest and reaction of readers.

If it has been worthwhile, comments will be appreciated.

There is a story going around of the Russian agricultural commissar who was checking on a satellite country's farm production. He asked one farm manager, "How is potato production?" To which the manager replied, "The piles of potatoes reach almost to Heaven." The commissar angrily commented, "You know there is no Heaven," to which the farm manager responded, "Yes, I know, and there are no potatoes."

Recently there has been considerable publicity regarding the increase in the number of Federal employees. Regardless of how many there are, it is obvious in a great many places that there are too many. Be that as it may, however, in 1954 there were 2,400,000 civilian employees. Since that time, approximately 15 million people have been added to our population, and the number of people on the Federal payroll is approximately the same. This is not to justify the situation, but it

At last! A fine wash and wear shirt, in Arrow Decotlene, that never, never needs ironing. . . . not even a little bit! Wash it any way you like — it dries to wrinkle-free smoothness within two hours. Styled in 100% Dacron polyester tricot, silk-soft, extra porous. Outlasts three ordinary shirts. . . . won't discolor, stretch or shrink. Choose from our wide selection of handsome collar styles.

Short sleeves, 7.95 Long sleeves, 8.95

**Nick Miller**  
The Man's Store  
CISCO

## Paid \$4,800,000 Dividends

The Southwestern Peanut Growers' Association was organized in 1937 for the purpose of assisting peanut producers in the marketing of their product in a profitable manner. Since its beginning the Association has served as a stabilizing co-operative by working with the government to make price support on peanuts available to all producers in the entire Southwest area.

In addition to insuring that producers receive at least support prices for their peanuts, the Association has been and is active in many other activities instrumental in improving the production and market value of peanuts.

In personal contacts, the latest discoveries relative to farming methods, insect and disease control, improved seed strains, and other pertinent information are made available to producers.

SWPGA sets up storage warehouses in Texas, Oklahoma, New Mexico, Arizona and Arkansas by contracting with warehousemen. Then, with money advanced by Commodity Credit Corporation, SWPGA is able to pay to the farmer government loan prices for his peanuts. This is especially helpful to

## FALL CROP SEEDS

Oats, Wheat, Rye and Others  
In Good Supply

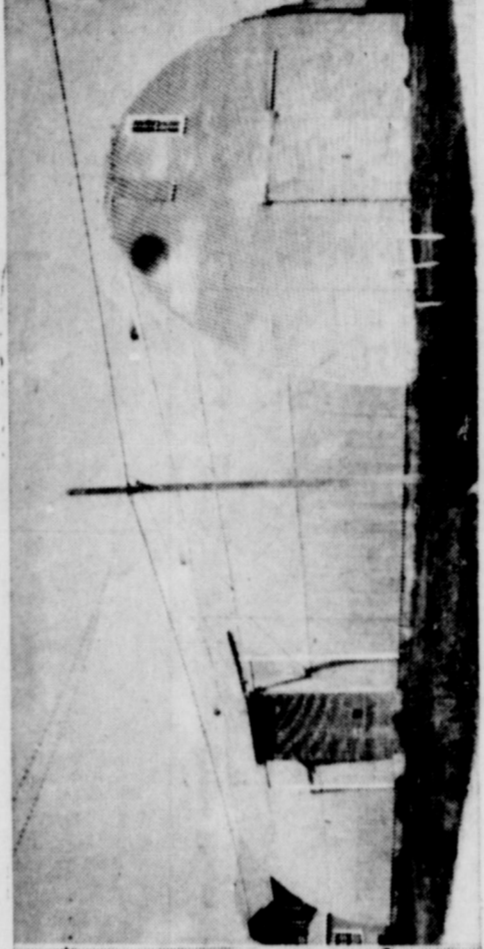
These seed have been re-cleaned, tagged and tested.

See us for fertilizers of all types, livestock and poultry feed and remedies.

## Thornton Feed Mill

'Home of Circle T Feeds'  
Phone HI 2-1122 CISCO 1200 Avenue D

Congratulations Jaycees  
For Promoting the Peanut Industry  
**Durham Peanut Co., Inc.**  
Comanche, Texas



Eligible Peanuts may be delivered to warehouses similar to the one shown here.

For further information call or write Southwestern Peanut Growers Association, Gorman, Texas. Phone RE 4-22-22.

## SOUTHWESTERN PEANUT GROWERS ASSOCIATION With Headquarters at Gorman, Texas, Is Again Offering to growers Throughout the Peanut Producing Areas of the Southwest Price Support Loans on 1962 Crop Eligible Peanuts. Peanut Growers May Look in the October Issue of the Southwestern Peanut Growers Association "News" for Names and Locations of Approved Warehouses and for the Latest Marketing and Price Support Information. Please Call on Us at Any Time We May be of Service to You.



**PLANS NEXT MARCH**  
 Ross Wilson, president, East Wince Graham, Harold Dar-  
 land County Board of  
 ham, R. M. Sneed, and Bill

# SEPTEMBER SAVINGS

**CORDUROY**  
**Capri Sets**  
 FOR CHILDREN  
 High Colors with match-  
 ing trim on the shirts.  
 Sizes 3 to 6X  
 \$1.98  
 \$2.98

**MISSES DEEP PILE**  
**Sweaters**  
 High colors in sizes 7 to  
 11. Regular Price \$1.95  
**SPECIAL PRICE**  
**\$3.98**

**NEW CANNON**  
**Towel Sets**  
 Plaids, stripes or solids  
 in matching sets.  
 Bath 2 for \$1  
 Hand Towels 3 for \$1  
 Wash Cloths 5 for \$1

**LADIES**  
**Car Coats**  
 Made of Bouclé "400".  
 The luxury vinyl fabric  
 with colorful taffeta  
 linings.  
 Usually 10.95 to 12.95  
**SPECIAL PRICE**  
**\$9.90**

**FEATHER KNIT**  
**Pixies**  
 New shipment of fall  
 colors and styles. The  
 street shoe that can do  
 extra service as a  
 house shoe.  
**\$1.98**  
 Pair

**wonderful WOOLENS**  
*In your fall colors*

**Rondanno Woolens**  
 BY SCHLANG  
 A top line of quality woolens for the lady  
 that sews. 100% spangled and shirred.  
 In Matching Solids And Plaids ..... Yd.

**Seamless HOSE**  
 LACE (PLAT KNIT)  
 400 needle - 15 denier, seamless with  
 beautiful lace braided in the welt. These  
 are made on the new style seamless  
 machines and are streak free. Regularly  
 sold from 79c to 88c.

**\$2.98**  
**\$1.00**

**FANCY FABRICS FOR FALL Sewing**

**NEW FALL PRINTS**  
**36-Inch Cottons**

These are guaranteed fast colors with wash and wear finish. The regular price is 59c per yard.  
 Special Price ..... **2 yds. \$1**

**LADIES GYM SHOES**  
 In white or red. Good quality shoe with cushion insole. Why pay more.  
**\$1.98**

**Men's Trim-Fit Sport Shirts**  
 New tapered shirts with snap down tailless collars. 100% wash and wear cottons.  
 EACH **\$3.95**

**Fruit of the Loom**  
 • Men's Briefs  
 • T-Shirts  
 OR YOUR CHOICE OF BROADCLOTH  
**Boxer or Gripper Shorts**  
 Pair ..... **69c**  
 3 Pairs ..... **\$2.05**

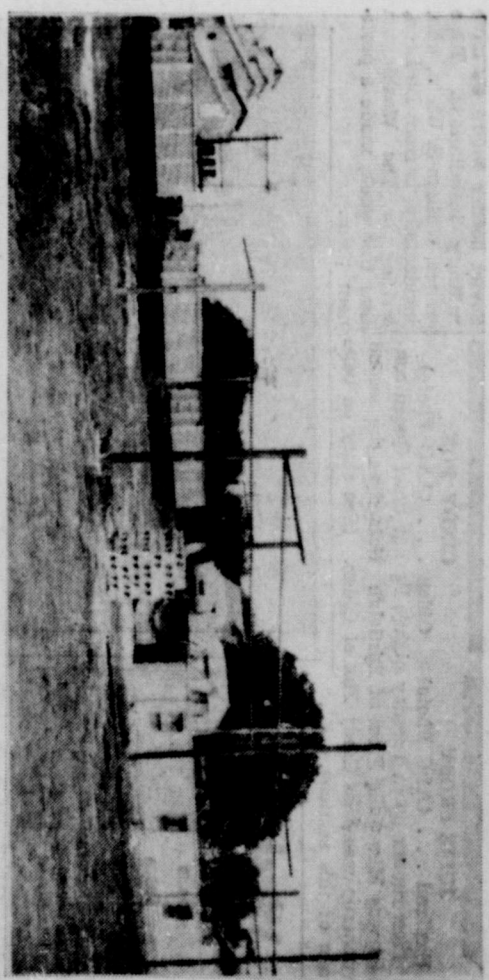
**MEN'S 8-INCH BOOTS**  
 For hunting or for general work. Plain or lace to the toe styles with heavy cork rubber soles.  
 Regular Price \$9.95  
**Special Price \$7.44**

**Latest Styles in GYM SHOES**  
 Black or white basketball shoes with built-in comfort arch and full cushion insole reinforced at toe with ventilating eyelets. Really a PRO shoe. Mens, Boys, youth sizes.  
**\$3.98**  
 Pair

**HEIDENHEIMER'S**  
 IN CISO  
 PARK FREE SATURDAYS

## Dryers And Scales Being Installed By Ranger Co.

An eight-wagon unit Blanton Peanut Dryer is being installed in Carbon by the Ranger Peanut Company of Ran-  
 ger, according to T. C. Wylie, president and General Manager.  
 The Blanton Dryer is noted through out the Southern Peanut area for its balanced drying ability, strict control of  
 both moisture and heat used in the drying process.  
 The dryer is the only one which regulates both quantity of air passing thru the peanuts as well as the humidity of the air to the individual wagon.  
 In the Blanton, the operator has complete control of the individual farmers. The maximum capacity for  
 dried and thereby can assure the user of this equipment individual attention to each wagon.  
 The Ranger Company selected this drying operation because of its excellent reputation and believe that it will more than satisfy the needs of the individual farmers.  
 The maximum capacity for



**DRYERS GOING UP** - Carbon continues to be a center of peanut activity as Ranger Peanut Co. adds peanut drying equipment there to handle crops at the central location. The new installation is immediately south of the old shelling plant, which can be seen at the left edge of this picture. (A&C Photo)

The Famous Blanton -

# PEANUT DRYER

## NOW BEING INSTALLED AT

# CARBON, TEXAS

## FOR BAGGED OR BULK PEANUTS

**INDIVIDUAL Wagons - Automatic Temperature and Humidity Controls - Automatic Sampling - Marketing Facilities - Dump Pits - Personal Attention to Each Load - Public Scales.**

**We Welcome You to Come by and Inspect Our Equipment and Facilities**

**We Can Assure You of the Best and Fastest Service.**

**RANGER PEANUT CO., Inc.**

Carbon Phone 2083  
 F. C. WHITE, President JOHN WYLIE, Vice-President  
 Ranger, Texas MI 7-3286  
 J. E. HOGAN, Supt.

**Share Co. Cotton King**  
 Your News Feature







# Expected To Be Biggest Yet

## CJC Vs. RJG; Sugar Game On Gridiron

The third annual Peanut Bowl Game, an Eastland Jaycee sponsored project, will determine once again the better of the two college teams who compete each year for the title of Bowl champion. During the first Peanut Bowl, the Ranger Junior College Rangers defeated the Cisco Junior College Wranglers 13 to 0.

In the second annual event, the Cisco Wranglers came back to overpower the Rangers with a score of 24 to 0.

Miss Mary Kay Rush of Ranger served as the first Peanut Bowl Queen in 1960. During the pre-game parade trophies for the float division went to Ranger College, first; Cisco Junior Chamber of Commerce, second and Eastland County 4-H Club, third.

Band trophies went to Cisco High School, second and Ranger High School, third.

Chosen Queen of the 1961 Peanut Bowl was Miss Carol Macklof of Eastland.

Trophy winners in the band division were awarded to Fort Worth Polytechnical.

Marching 100' first in AAAA competition: Ranger High School, first in combined class 2A-3A with Cisco High School second; Bangs, first in class B competition with Gorman second; and Eastland High School, first in the Class A division.

Several riding clubs were represented in the second annual parade.

The Breckenridge Buckaroo Riding Club won first in the riding division.

Gorman riders were awarded the second place trophy and the Eastland County Possessors placed third.

Eastland racked up all trophies for the float division with first place going to the Eastland Jaycees, second to the Pastland 4-H Club and third to the Eastland Thursday Afternoon Club.

Highlights of this year's Peanut Bowl week include the Queen contest held Tuesday evening; the pre-game parade to be held Saturday at 2 p. m. and the Bowl game Saturday evening at 8 p. m.

Other special attractions will be the presence of Miss Jackie Fay Williams, Miss Treas, and a barbecue which will be held Saturday at 4:30 p. m. immediately following the parade. The barbecue will be held in the Eastland City Park and tickets will sell for \$1.25. Catering the affair will be Eubanks & Sons of Cisco.

About 500 persons drowned in home accidents in 1961. Bathing drownings claimed 170 lives and 75 died in swimming pools. Other drownings occurred in wells, streams, cesspools and "other open bodies of water."

## HUGE SUM MADE AVAILABLE FOR RURAL HOUSING LOANS

An additional \$152 million has been made available for rural housing loans. Secretary of Agriculture Orville L. Freeman has announced.

The action makes a total of \$182 million available through the Farmers Home Administration for this type of credit during fiscal 1963. The funds come from the \$430 million authorized by the Housing Act of 1961, to be expended within a four-year period. Approximately \$95 million was obligated during fiscal 1962.

"These funds will help 20,000 rural families who do not now have adequate housing to obtain credit to finance a new home or improve the home they already own," Secretary Freeman said.

"The rural housing program is also a driving force in rural areas development. The construction carried on with the funds provides work for local carpenters, masons, plumbers and electricians and steps up the sales of building supply dealers and other merchants in small rural communities. The wages received by the workmen and the profits retained by the business are in turn circulated through local trade centers, invested in local enterprises. The effect of the housing dollar is multiplied many times before its force is diminished.

"In addition, the housing loans are helping to stabilize and strengthen rural communities by creating attractive modern living facilities, the type of home construction that makes communities desirable places in which to live.

Here again the impact of the program multiplies, for the new homes built with Farmers Home Administration loans provide guide lines to the community in the economical construction of homes. In many areas the construction of these homes has stimulated the investment of private capital in similar types of construction.

"The program has also been highly successful so far as payments are concerned," the Secretary said. More than \$417,000,000 has been advanced in rural housing loans since 1949. Principal and interest payments total \$147,000,000. Only \$86,000, or two one-hundredths of one percent have defaulted as of the end of the year.

Rural housing loans may be used to construct, modernize or repair homes and farm service buildings. They are available to farmers and residents of rural communities who cannot obtain credit from other sources.

Under the Rural Housing Program the Farmers Home Administration has already advanced under five years, leading causes of death in 1961 were: suffocation, 2,600; fires, burns, and deaths associated with fires, 1,200; and falls, 500.

**SPECIAL PRICES**

BATH ROOM Fixtures and Plumbing Supplies  
ALUMINUM STORM DOOR — All sizes — Ready to Install  
WEATHER STRIPPING MATERIALS — Get Ready for Winter

**ROCKWELL BROS & CO.**

LUMBERMEN  
107 E. 5th  
CISCO  
HI 2-1015

# LET'S ALL CELEBRATE

## The Third Annual PEANUT BOWL

### SATURDAY, SEPT. 29

Twirling Contest, Sat. a. m. on the Square in Eastland

## PARADE

2 p. m.

## BARBECUE

in Eastland City Park  
from 4:30 to 5:30 p. m.

**\$1.25 per PERSON**

Entertainment by  
**JOHNNY MOORE & BAND**

## Big Pre-Game County Bands Show

### FOOTBALL

## RANGER JUNIOR COLLEGE

VS.

## CISCO JUNIOR COLLEGE

8 p. m. MAVERICK STADIUM

## FORWARD

By I. W. S.

EASTLAND COUNTY has in prospect a 1962 peanut crop of more than 20,000,000 pounds. This would be approximately the same size as the 1961 crop, which was one of the largest ever harvested in the county.

The county has peanut allotment acreage of about 30,000 acres per year. This fluctuates a few hundred acres, depending on the moisture situation during the spring planting months.

THE COUNTY'S peanut crop this year has a base support price of about \$230 per ton. The dollar volume is worth nearly \$3,000,000. Only Commerce County in Texas produces more peanuts each year than Eastland County.

It is not difficult to understand that peanuts is big business in our county.

THE BIG CROP has resulted in considerable activity for the county, including the big Southwestern Peanut Growers Association setup and the Shell Brothers operation at Gorman, the Ranger Peanut Company at Ranger and Carbon, and Farm and Ranch Supply Company's organization in Cisco. In addition, buying stations are located elsewhere in the county.

THIS ALL MAKES us wonder out loud why something couldn't be done to process the peanuts into manufactured food products right here in Eastland County. Perhaps 11 would be in order to organize a county-wide corporation to launch such a proposition.

With more than 6,000 cars per day going through Eastland County, the products from such a processing plant could flow into commerce without a great deal of effort — merely by displaying them for motorists to see.

Raw products worth two or three million dollars would probably double in value as finished products. And a great deal of the extra income from the crop would be paid out in the form of wages and for various services.

THIS NEWSPAPER will be pleased to publish letters or ideas that anyone might want to advance on the subject of How We Can Realize More from the Peanuts of Eastland County. We hope that the entire groups of the county give the matter some study.

Agriculture and livestock represent two of the county's very biggest dollar crops. Full utilization of their potential might well help reverse the trend of population back into our towns and county.

IMPROVED pecans represent another big money crop for Eastland County. This county's orchards have more improved trees than most of others of the state. And the number has been increasing substantially each year.

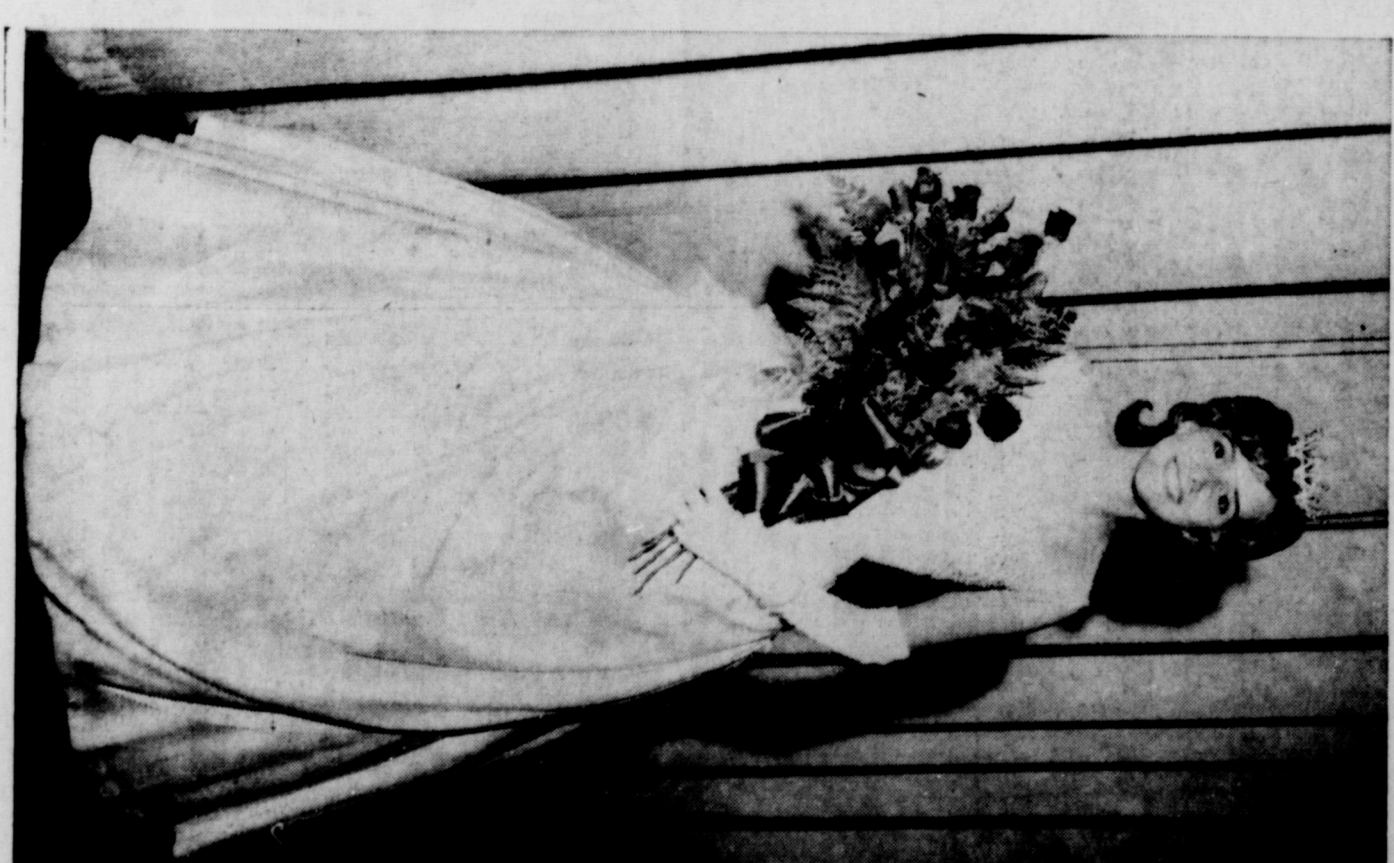
December and January are the best months to plant pecan trees. You might keep this in mind if you have a vacant spot around your home or farm.

# EASTLAND COUNTY

## Your Newspaper Feature Magazine

SEPTEMBER 27, 1962

## CJC Beauty Is Peanut Bowl Queen



JANE WILLIFORD  
(Photo by A&C Studios)

(Pictures of Runnersup on Page 4)

Miss Jane Williford, a student at Cisco Junior College, was named Third Annual Peanut Bowl Queen in a beauty contest held Tuesday evening on stage of the Majestic Theater.

Daughter of E. A. Williford of Breckenridge, Queen Jane was beautifully gowned in a white satin floor length formal. The fitted bodice was complimented by iridescent, draped front and side panels. The new queen was crowned by Miss Carol Macklof, 1961 Peanut Bowl Queen. Miss Williford was presented a "peanut brittle" corsage and a bouquet of red roses from Kernel Gene Baker of Gorman.

First runnersup for the title was Miss Julie Frost of Eastland, daughter of Mr. and Mrs. Billy C. Frost. Miss Cindy Fox of Olden, daughter of Mr. and Mrs. H. E. Fox, was chosen as second runnersup.

Judges for the contest were Walter Manley of Arlington, State Director of Jaycees; Miss Sarah McNeal of the Abilene Reporter News; and Aulis McMahon of Stephenville, correspondent for the Fort Worth Star Telegram.

The 11 losers were judged on appearance in both street and formal clothes.

The 10 remaining entrants were beautifully gowned in a variety of colors and styles.

Intermission entertainment was furnished by an Eastland High School musical group composed of Floyd Robertson, Cy Frost and Richard Jones. Contest music was provided by Ken Mayhall of Abilene. The organ was furnished courtesy of D&W of Abilene.

The new queen is a freshman at CJC. She was the Buckaroo Football Queen at Breckenridge High School in 1962 and the National Guard Sweetheart there in 1961. Miss Williford was a 1959 nominee for the title of Miss Breckenridge and a nominee for homecoming sweetheart in 1961.

In high school Miss Williford graduated with honors, ranking 4th in a class of 89. She was a member of the student council, the FHA and the Tennis Club. She is a member of CJC's Wrangler Belles.

A Magazine Section For  
**Eastland County Newspapers**

A Monthly Feature

EASTLAND TELEGRAM | RANGER TIMES | RISING STAR RECORD | CABRON MESSENGER