

COVERING EASTLAND COUNTY  
THE ONLY PLACE YOU CAN READ THE MOST IMPORTANT NEWS IN THE WORLD — ALL THE NEWS ABOUT YOU, YOUR FAMILY AND YOUR FRIENDS!

EASTLAND, TEXAS, THURSDAY, FEBRUARY 28, 1963

PRICE 10¢

## 6 WEEKS Tests On Tap At EHS

Six weeks tests will start the last of this week with most of them being given on Thursday and Friday.

Students will receive their report cards on Thursday, March 7.

The honor roll will be announced at a later date, according to school officials.

Students will have a holiday on Friday, March 8, due to a teachers meeting that day.

The EHS auditorium has been having a lot of activity lately. Rehearsals have begun for the junior play which will be presented in March and April. Admission for the play will be 50¢ per person.

Senior activities will start soon. Most of the seniors are looking forward to the different parties and banquets that are given prior to graduation.

Tennis and track season has started and the boys and girls are beginning to get into shape.

Jimmy Moylan is reported to be doing fine following an accident in the gym at which time he sustained a broken ankle.

John Bailey is getting his bands ready for the forthcoming parade and contest. The high school band will participate in the Sweetwater Festival on March 2.

## Top Citizens Honored at Rising Star

Rising Star's Chamber of Commerce celebrated its 40th birthday by passing out a handful of honors at a banquet meeting in the First Methodist Church here Tuesday night.

Heading the long list of awards were a Rising Star minister and a farm couple living four miles northwest of town. Honored as the area's outstanding farm family were Mr. and Mrs. Hulon Erwin. Selected as the year's outstanding civic worker was H. McDoald, minister of Rising Star Church of Christ.

Sharing glitter on the occasion was Dr. W. S. Carter, who received a plaque recognizing "50 years of professional service in Rising Star", and a pair of still-active charter members, who also received plaques.

They are Cecil Shults and W. E. Tyler.

Also saluted during the dinner were other charter members of the Rising Star Chamber of Commerce, formed in 1923. They include Fred Roberts, Lanham Brown, A. P. Smith, H. S. Childress, Walker Smith, J. R. Buz, M. G. Joyce, Dr. Carter, Jack Agnew and Jay Koonec. They received honor certificates.

James Rutherford, recently elected to his second consecutive term as C-C president here, was master of ceremonies for the annual event. He introduced other new officers, who include Bill Dennard, vice president, and directors E. M. Crisp, George Steel, Robert Butler. (Continued on Page 5)

## Judges Selected For County Livestock Show

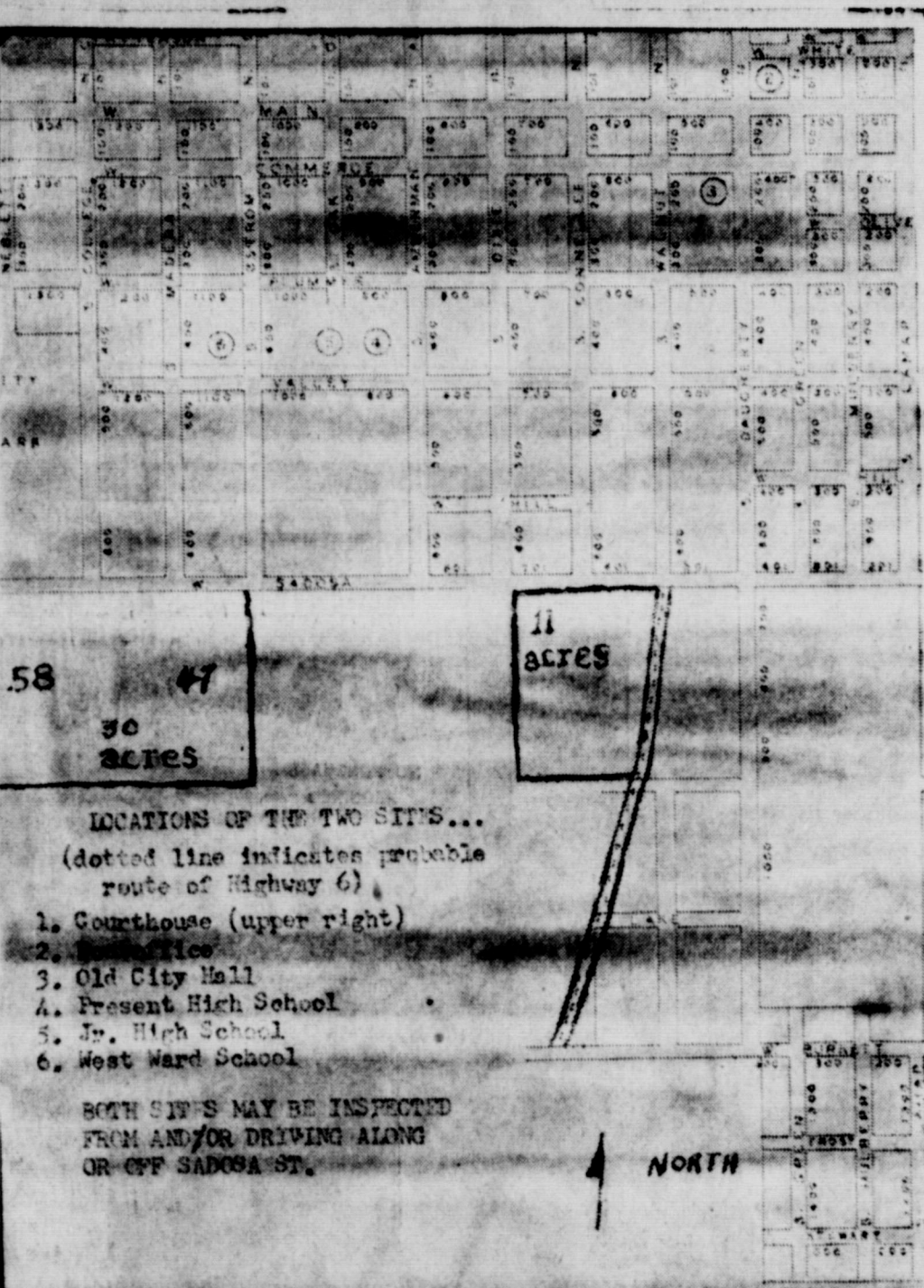
Judges for the Eastland County Livestock Show March 15 and 16, have been selected, according to Ross Wilson, Gorman, President of the County Livestock Raisers' Association, sponsors for the show.

Hester McBride, Llano rancher, has been invited to judge all beef cattle entries, Wilson said.

Garland Coody, Breckenridge rancher, who has judged the A-gora goat entries for the past several years, has again accepted an invitation to judge this year's entries.

Dr. Ray Anderson, Fort Worth, outstanding swine expert, will place all hogs, both in the Fat Pig Division as well as the Breeding Classes. Dr. Anderson, formerly Head of the Animal Husbandry Department of the University of Minnesota, has judged the local

## YOU WILL DECIDE Which Site for School?



## TESTS SHOW Soil Conditions 'Excellent' And Equal at Both Locations

Preliminary tests have revealed that the geological structure of the two proposed school sites are equal and excellent for building.

Testing was done recently with core-drilling on both the 30-acre and the 11-acre tracts.

Both sites are along Sadosa St. and about four blocks apart. Voters will decide Thursday, March 14th, on which site the new 16-classroom, air-conditioned elementary building will be constructed.

Six test holes were drilled on each site, and according to Bill Pope, who logged each hole, the formations are ideal for building.

Tests encountered shale on both sites. Depth was about 11 feet.

Pope, engineering associate with the firm of Boone and Pope of Abilene, said that he wished soil conditions were as good in Abilene. The firm, which is handling the architectural work for the school here, does extensive school work in Abilene and the surrounding area.

After a selection of site is made, deeper tests will probably be run on the chosen site to further determine the foundation needs for the building, he said.

Voters approved the \$525,000 bond issue on Feb. 16th by almost a three-to-one margin, but are to determine the site for the elementary.

The school owns the 30-acre tract and the other land became available just before the election, and the school took options to buy, and decided to let the voters decide where they want the new school to be located.

Other information about the two sites will be published in this newspaper as it becomes available. Cost studies for sewerage, water, paving, fencing, etc., are now underway.

**Rites Recently**  
Funeral for Dr. McKinley Howell, longtime Plainview physician and relative of several Eastland County residents, was held recently in that city.

Dr. Howell died following a heart attack at his home. He and the former Miss Wilma Simer of Amarillo in 1936.

His wife was a former Ranger High School teacher. She is the sister of Clara Simer of Olden and El Paso and of Louis Simer of Olden and Wichita Falls.

Surviving besides the wife is one daughter, Mrs. J. D. Fleming of Atlanta, Ga.

## Funeral Services Held Monday for E. M. Hickerson

Funeral services for Edward Mills Hickerson, 70, of 301 S. Bedford, were held at 10 a.m. Wednesday in the Hamner Funeral Chapel.

Rev. Haston Brewer, pastor of the First Baptist Church, officiated. Interment was in the Eastland Cemetery under the direction of Hamner Funeral Home.

Mr. Hickerson was born Dec. 2, 1892 in Peyson, Ill. and died Saturday in the Eastland Memorial Hospital.

Surviving are the wife, Sarah; two sons, Lee Hickerson of Clyde and Wendell Hickerson of Weatherford; and one daughter, Elvina Buyer of Eastland.

**Services Held Monday For  
Gunshot Victim**  
Funeral services for O. S. Brazzil, 73, a retired barber and farmer of the Okra Community, were held at 2 p.m. Monday at the Church of Christ in Rising Star with Ollie Cartwright of Brownwood officiating.

Interment was in the Rising Star Cemetery under the direction of Higginbotham Funeral Home.

Mrs. Brazzil was found dead of two gunshot wounds at his home in Okra Saturday. A neighbor investigated when he had not been seen.

Eastland County Sheriff Lee Horn and Deputy John Willingham assisted Constable George Carter of Rising Star in the investigation.

Justice of the Peace B. A. Butler of Rising Star returned a verdict of "death by self-inflicted gunshot wounds."

According to reports, Mr. Brazzil had been despondent since the death of his wife two years ago.

The man had been shot twice with a .22 caliber weapon and a .22 caliber rifle was found on the bed beside the body. One empty shell was found in the weapon on one of the floor beside the bed. Neighbors identified the rifle as belonging to the victim.

He was born June 1, 1889 in The Grove, Tex. and was married to Dora Ellen Burns on (Continued on page 6)

## UNDER STATEWIDE CHANGE Redistricting Hinted For 11th Appeals Court

An effort to move the 11th Court of Civil Appeals from Eastland to Abilene is about to be tied up with a larger legislative effort, one involving major changes in the whole state appellate system.

Rep. Bob Johnson of Dallas, chairman of a subcommittee to which the Eastland court bill has been referred, said Tuesday no decision on it will be made until decisions are reached on

the creation of two proposed likelihood of some redistricting new civil appeal courts.

Johnson hinted, too, at the likelihood of some redistricting involving the 11th court. If the two new courts are created, some counties will be shifted around in the system and there's a chance some will be added to the Eastland district.

**No Prediction**  
Johnson declined to predict

when his group will report on the bill by Reps. Raleigh Brown and Allen Glenn of Abilene to move the court from Eastland, where it has been since it was established in 1920.

The bill was heard Tuesday morning by the House Judicial Districts Committee with Rep. Brown and Glenn arguing for the bill and with Rep. Wayne Gibbons of Breckenridge, and Frank Sparks and Virgil Seaberry Jr., both of Eastland, appearing in opposition.

The bill was referred to a subcommittee composed of Johnson, Ben Jarvis of Tyler, and Donald Shipley of Houston.

## House Committee Hears Court Move Arguments

A bill seeking to move the 11th Court of Civil Appeals from Eastland to Abilene was sent to a subcommittee Tuesday for what is expected to be a two-week study.

Neither side would say immediately whether the sub-panel was considered "friendly" to the bill or not.

The study group named by Rep. Robert Fairchild of Center is composed of Rep. Bob Johnson of Dallas, chairman, Rep. Allen Glenn of Abilene, Rep. Ben Jarvis of Tyler, and Rep. Wayne Gibbons of Breckenridge, both of Abilene.

The case for the bill was presented by its two authors, Reps. Wayne Gibbons of Breckenridge, by Frank Sparks, Eastland attorney, and by Virgil Seaberry Jr., Eastland attorney and chairman of the Board of City Commissioners.

Brown testified first, citing three reasons he thought the Appellate Court could be moved to Abilene.

"First, the inadequacy of present facilities at Eastland," he said.

"Second is the inaccessibility of the court in the present location in Eastland.

"Third, it wouldn't cost the state one penny," he added.

Rep. Glenn presented the bulk of the testimony for the bill.

Glenn said that during the last decade, 318 cases have

come from that area of the district from Abilene west, while 168 have originated in the east end of the district.

"Lawyers from the west side of the district are penalized—and the bulk of the litigation comes from the west half of the district," he said.

Glenn said it was logical for the court to be at Eastland when it was established in 1925, but it is logical now that it be in Abilene.

Population shifts to the West were cited by Glenn.

"In 1920 Eastland County had 58,500 people," he said. "And Eastland County had lost two-thirds of its people, while Howard County had 40,000."

Glenn argued that it would be better for lawyers if the court were in Abilene because transportation facilities are better there than in Eastland.

Glenn introduced photos which he said were taken Monday and which he said proved court facilities at Eastland are inadequate.

No other Abilene attorneys appeared before the committee, but Glenn presented a letter from Maurice Brooks, president of the Taylor Bar Assn., endorsing the measure, and a copy of the resolution adopted by the Taylor Commissioners Monday promising adequate quarters for the court.

Rep. Gibbons introduced Bill Wright, Cisco attorney, and Lee Ellis, Eastland Chamber of Commerce manager, both of whom were appearing in opposition.

Arguments against the bill were detailed by Sparks, a member of the House when the court was established in 1925, and by Seaberry.

"Efforts to move the court have been put forth regularly through the years," Sparks said.

"In fact, the original bill was written by the late Rep. E. S. Cummings of Abilene and had the court in Abilene," he said.

Seaberry pointed out that the Eastland taxpayers put up an original investment, over \$100,000, "to provide facilities for the court" and have continued to house and equip it.

"We don't argue that Abilene is bigger—that it is growing and we have lost population—but we just don't want to lose any more," Seaberry said.

Much of the court work comes from outside the district, he said, with the court traveling (Continued On Page Six)

## Routes To Interstates To be 'Blazed'

Daniel Boone did it by hacking notches in trees to direct pioneers to the overland trails. The Texas Highway Department plans to do it by posting "Trail Blazer" signs pointing the way to the Interstate highways.

Mindful that many more miles are being completed on the Interstate Highway System each year, the Texas Highway Commission today announced a new service for the traveling public.

Trail Blazers will be erected at strategic locations to direct traffic to Interstate highways and other controlled access highways.

Whether you're visiting the State Fairgrounds in Dallas, the international airport at Houston, or the shopping districts of El Paso or San Antonio, finding the way through the streets of a strange city to the Interstate highways will no longer be a puzzle when the Trail Blazers are eventually erected.

Trail Blazer "assemblies" will be erected at major places of public gatherings which often attract out-of-town traffic, such as the business districts, municipal airports, universities, auditoriums and fairgrounds.

From top to bottom, this is how a Trail Blazer assembly looks: A black-and-white sign marked with "To." A blue sign bearing the cardinal direction, such as north or south, when needed. A red-and-white-and-blue Interstate shield sign bearing the number of the Interstate route number. A black-and-white sign with an arrow pointing in the direction.

A pole may bear only one assembly, or it may bear as many as (Continued on page 6)

## Virgil Seaberry Wednesday Stated That "Representative Wayne Gibbons and Senator Tom Creighton are our 'Rocks of Gibraltar' in the fight to have the 11th Court of Civil Appeals moved from Eastland to Abilene."

Rep. Johnson said after the hearing, "There are still some things I don't understand — I don't understand just what facilities are planned for the court if it is moved to Abilene and I don't understand why the bill does not spell out who will pay for the move."

**Quarters Promised**  
Glenn, in presenting the bill to the committee, said Taylor County Commissioners have promised to provide quarters and that a floor of the First State Bank building will be used temporarily. Glenn said a new court building is being discussed in Abilene, one we must have."

Both Glenn and Brown said the committee the result of the court would be held for Taylor County.

Johnson said before decisions are reached on his bill other members of the State system should be determined. The committee has before it bills which would create a 12th and 13th civil appeals courts at Tyler and the other at Corpus Christi.

After the hearing, the Abilene members expressed contrasting views as to prospects of their bill. Glenn said he was "encouraged that the subcommittee is friendly." Brown said he feared it is not. Rep. Gibbons, who is leading an all-out fight against moving the court, declined to predict if the bill will show favor or disaster to the bill.

## Governor Proclaims 4-H Week in Texas

Governor John Connally by official memorandum has proclaimed the period from March 2 - 9 as 4-H Club Week in Texas. President Kennedy has designated the same period as National 4-H Week and special activities have been planned in most counties of the nation as a part of the observance.

In his proclamation Governor Connally said, "The development of citizens and leaders for America is a high purpose in (Continued on page 6)

## Commissioners Set Date For Ranger "Wet" Election

Eastland County Commissioners Monday set Saturday, March 23, as date for the local option election in Ranger.

The election, for the sale of all alcoholic beverages in the Ranger city limits of Ranger for off-premises consumption only, will be the fourth similar election held within the past year.

Mrs. Bernie McCrea of Cisco, chairman of the Eastland County Historical Survey Committee, addressed the Court and asked their permission to place locked museum cases in the foyer of the courthouse until a permanent location can be secured.

The matter was taken under advisement by the Court who expressed genuine interest in the matter.

The Eastland National Bank, which was designated as a pre-

vious meeting, was approved by the County Depository.

Bill Herrington, chairman of the hospital board, Hanger General Hospital, met with the Court and inquired about the possibility of enlarging the lobby of the hospital. This matter was also taken under advisement by the Court.

The Court went on to discuss strongly opposing a location change of the 11th Court of Civil Appeals from Eastland to Abilene.

County Agent J. E. Conroy was authorized to remove a tree which is damaging crops of the pecan trees and causing drainage problems.

Commissioner C. B. Hill of Cisco was given the authority to take action concerning lightning fixtures for the County ABGS office.



MI 7-3224 RANGER, TEXAS

## Week-End Specials

### SHOES

Men's, Women's and Children's shoes in assorted styles, colors and sizes. **Some Reduced As Much As 1/2 PRICE**

### WOMEN'S SUITS

Reg. 10.98 Women's Corduroy Suits. Assorted sizes and colors.

**\$7.00**

### CAPRI SETS

Ladies Capri Sets, in spring cotton Wash 'N Wear. Assorted sizes.

**\$2.00 SET**

### REMNANTS

Piece Goods in assorted fabrics and colors.

**1/2 PRICE**

### CURTAINS

100% Cotton Tier curtains in yellow and white colors.

**\$1.50 PAIR**

### Reg. 1.93 SPORT SHIRTS

Boys S/S Sport Shirts in new spring colors. Assorted sizes.

**\$1.47 EA.**

Reg. 2.93 MENS

### SPORT SHIRTS

S/S Cotton Knits. Ideal for golf or casual wear. Assorted colors and sizes. 2 for

**\$5.00**

Reg. 3.49, 3.93 Boys'

### PANTS DRESS AND CASUAL

Wash 'N Wear. Assorted fabrics, colors and sizes.

**\$2.97**

Reg. 3.93

### LADIES SLIPS

Nylon - Tricot Slips in assorted sizes and colors.

**\$2.97**

Reg. 3.93

### LADIES COWNS

Cotton, nylon, dacron shift cowns in assorted colors and sizes.

**\$2.97**

### MATTRESS

510 coil mattress with matching box springs.

**\$32.88 EA.**

### FREE

Tiller demonstration. Take one out and try it. See Glen Williams for details.

### CHEVROLET ENGINE

Remanufactured with new working parts. 1949-'54. Guaranteed 90 days or 4000 miles.

**\$129.88 EXCHANGE**  
Plus Installation.

## Bowling News

### Thursday Night Men's League Wins-Losses

Picta Luna	124 52
Jordan Drive Inn	115 61
K. hand Insurance	102 74
T&P	96 89
Rockwell	95 81
Lumber, Cico	92 84
Holly Vazarette	88 88
First National	78 98
Volunteer Fire Dept.	71 102
Cisco National Guard	71 102
Peterson Nursery	65 108
Cornelius Printing	63 108
Texas Electric	53 123
Service Co.	53 123
High Team Three Games	
Picta Luna	2547
Rockwell Lumber	2457
T&P	2410
High Individual Three Games	
R. Farnley	563
H. Farnwell	561
C. Hudgens - L. Gloss	552
High Team Game	
Rockwell Lumber	894
Jordan Drive Inn	890
T&P	889
High Individual Game	
E. Farnley	245
J. Gloss	244
C. Hudgens	229

### Thursday Night Ladies League Wins-Losses

Keen Salvage	66 32
Altman's	62 25 1/2
Lou Dell's Shop	57 31
Hollywood	
Vazarette	47 41
Jeff's Teating Co.	46 41 1/2
FFTC	44 44
John o. Appliance	44 44
Modern Cleaners	42 45 1/2
Central Drug	36 57
Picta Bowl	31 57
Pex Floral	29 59
Southern TV	25 62 1/2

### High Team Three Games

Keen Salvage	1934
Lou Dell's Shop	1808
Altman's	1715

### High Individual Three Games

Lou Dell Bryan	521
Modell Gann	511
Helga Tiner	499

### High Team Game

Keen Salvage	689
Keen Salvage	656
Lou Dell's Shop	652
High Individual Game	
Lou Dell Bryan	793
Bob Hart	144
Modell Gann	139

### Pugh: Pipkin Wedding Is Announced

Mr. C. W. Carpenter, 310 E. Flummer, announces the marriage of her granddaughter, the former Donna Jane Pugh, to James Hickman Pipkin, son of Mr. and Mrs. James T. Pipkin, 116 S. Dixie.

The couple were married Feb. 18 at 5 p.m. at Hugo, Okla.

Attending them were Taylor Hall of Roeborn and Jim Arp of Roeborn.

Mr. and Mrs. Pipkin will reside in Denton, where the groom will continue his studies at North Texas State University.

Mrs. Pipkin was graduated from Eastland High School and attended Denton Junior College, North Texas State College and East Texas State College.

• Read The Classifieds

## IMPORTED TRANSLUCENT CHINA 99c\*

4-PIECE PLACE SETTING AT YOUR PARTICIPATING



\*All prices effective only with each eight-gallon purchase of Premier Gasoline at participating Premier Stations.



"Golden Rhapsody" is the lovely, translucent china you've dreamed of owning. Introduced in Vogue magazine and advertised for \$5.25 per place setting, this dainty imported china features graceful gold and smoke-grey leaves with twin sprigs of delicate blossoms on porcelain white china—rimmed with a fine golden border—and it's yours for less than the cost of pottery at participating Premier service stations. Start your set today with an eight gallon purchase of Premier Gasoline.

COMPLETE YOUR SET WITH THESE SERVICE PIECES	CREAMER 99c ea.	COVERED SUGAR BOWL 99c ea.
set of 2 SOUP PLATES 99c	set of 4 EXTRA CUPS 99c	set of 3 FRUIT DISH 99c
VEGETABLE DISH \$1.99 ea.	12" MEAT PLATTER \$1.99 ea.	GRAVY BOAT and Dish \$1.99 ea.



"I'll keep the car filled-up with gas for you, dear."

# WORTH FOOD MART INSTANT BUCKS

## GAME

**WORTH FOOD MART Instant Bucks**

Pat. Pending ©Traffic Builders Inc. 1962

**FREE WIN UP TO \$1000**

NO PURCHASE REQUIRED

SEE BACK FOR WINNING COMBINATION

WIFE OFF THE 3 BLACK SQUARES BY RUBBING WITH ANY HOUSEHOLD OIL, MARGARINE OR BUTTER



MRS. FRED BENNETT  
Blundell St., Ranger  
\$25 WINNER



JOHN REED  
Carbon  
\$25 WINNER



MRS. J. M. PAUL  
3620 Biddesen  
\$25.00 WINNER



MRS. C. R. HILL  
3815 Lake Worth Dr.  
\$25.00 WINNER



MRS. AUTHOR REEVES  
1312 No. Carroll  
\$25.00 WINNER



E. R. TAKURSELY  
1207 Montague  
\$25.00 WINNER

## WINNERS

William V. Campbell-5335 Brady Ave.	\$25.00
Ruby Chambers-1017-Brady	\$25.00
Joe Piccola-5710 Morningside	\$25.00
W. S. Barrett-405 So. Brazos	\$25.00
O. A. Samuelson-756 Henson Dr.	\$25.00
Mrs. O. F. Kite-3516 Canyon Ridge	\$25.00
William Walker-2121 Forest Oaks	\$25.00
Phillip R. Reagan-4911-Caston	\$25.00
C. E. Daniels-3409 So. Jennings	\$25.00
Dr. E. Christopherson-7117 Ellis Dr.	\$25.00

AND MANY - MANY OTHER WINNERS - PICK UP YOUR FREE INSTANT BUCKS - TODAY

# WORTH

# FOOD MART

## PURE SIGN OF SAVINGS!



Effective: Thursday-Friday & Saturday

- Sugary Sam No. 2 1/4 Can 23c
- Sour or Dill 32-oz. Jar 29c
- Pillsbury or Ballard 3 Cans 29c
- TECHIPS 6-oz. Pkg. 23c
- FLAVORS REG. 3 Pkgs. 31c
- Plain or Iodized 26-oz. Pkg. 10c
- WELS Jumbo Roll 29c

## BEEF STEW

ARMOUR

24-OZ. CAN

### 49c

## PEACHES

YELLOW BOW ELBERTA  
IRREGULAR

NO. 2 1/2 CAN

### 25c

## POTATOES

RUSSET  
U.S. NO. 1.

### 10 Cello Bag 59c

### Produce Features!

- AVOCADOS 2 Med. Size 25c
- LEMONS Large Size 6 For 25c
- CARROTS 2 Lb. Cello Bag 15c

WINESAP  
**APPLES**  
Extra Fancy Reds  
Lb. 19c

- LETTUCE Large Firm Heads 2 Heads 29c
- CELERY Pascal Fresh & Crisp Stalk 19c
- ANJOU PEARS Extra Fancy Lb. 19c

### More Meat Values!

- BEEF SHOULDER W. C. Q. ARM ROAST Lb. 55c
- CRACKER BARREL KRAFTS SHARP CHEESE 10-oz. Pkg. 49c
- PERCH OR SNAPPER SAN JUAN FILLETS 1 1/2 Lb. Pkg. 49c
- KAPTAIN KRUSTY P&D SHRIMP 8-oz. Pkg. 99c
- TASTE O SEA FISH STICKS 3 8-oz. Pkg. \$1.

### VEL DETERGENT Large Size 32c

**CLIP AND SAVE!**  
100 BONUS S&H GREEN STAMPS  
With This Coupon and Purchase of  
A 3 Lb. Can of Rath's  
Canned Ham  
Void After Sat. Mar. 2, 1963  
**WORTH FOOD MART**

# PLUS EXTRA S&H GREEN STAMPS SAVINGS

Bonus S&H GREEN STAMPS When You use coupons and purchase the items indicated!

PICK - UP YOUR FREE INSTANT BUCKS TICKET - TODAY!

**CLIP AND SAVE!**  
50 BONUS S&H GREEN STAMPS  
With This Coupon and Purchase of  
A Can of Johnson's  
Polish - \$1.39  
Void After Sat. Mar. 2, 1963  
**WORTH FOOD MART**

**CLIP AND SAVE!**  
50 BONUS S&H GREEN STAMPS  
With This Coupon and Purchase of  
A 26 oz. Can. New Lg. Size Johnson's  
Glo-Coat - 69c  
Void After Sat. Mar. 2, 1963  
**WORTH FOOD MART**

**CLIP AND SAVE!**  
100 BONUS S&H GREEN STAMPS  
With This Coupon and Purchase of  
A 2 Lb. Box of Kraft  
Velveeta  
Void After Sat. Mar. 2, 1963  
**WORTH FOOD MART**

**CLIP AND SAVE!**  
50 BONUS S&H GREEN STAMPS  
With This Coupon and Purchase of  
An 18 oz. Jar of Kraft  
Strawberry Preserves  
Void After Sat. Mar. 2, 1963  
**WORTH FOOD MART**

**CLIP AND SAVE!**  
50 BONUS S&H GREEN STAMPS  
With This Coupon and Purchase of  
Two (2) 1 Lb. Pkgs. of Kraft's - Reg.  
Miracle Margarine  
Void After Sat. Mar. 2, 1963  
**WORTH FOOD MART**

**CLIP AND SAVE!**  
50 BONUS S&H GREEN STAMPS  
With This Coupon and Purchase of  
A Box of Food Mart  
Detergent 65c  
Void After Sat. Mar. 2, 1963  
**WORTH FOOD MART**

**CLIP AND SAVE!**  
50 BONUS S&H GREEN STAMPS  
With This Coupon and Purchase of  
Three (3) No. 1 1/4 Cans of Dole  
Sliced Pineapple  
Void After Sat. Mar. 2, 1963  
**WORTH FOOD MART**

**CLIP AND SAVE!**  
250 BONUS S&H GREEN STAMPS  
With This Coupon and Purchase of  
The New Testament of The New  
English Bible - ea. 4.95  
Void After Sat. Mar. 2, 1963  
**WORTH FOOD MART**

**CLIP AND SAVE!**  
50 BONUS S&H GREEN STAMPS  
With This Coupon and Purchase of  
Three (3) No. 303 Cans of Renown  
Green Beans - Wh. or Sl. 3 57c  
Void After Sat. Mar. 2, 1963  
**WORTH FOOD MART**

**CLIP AND SAVE!**  
50 BONUS S&H GREEN STAMPS  
With This Coupon and Purchase of  
Two (2) Pkgs. of Betty Crocker  
Cake Mixes  
Void After Sat. Mar. 2, 1963  
**WORTH FOOD MART**

**CLIP AND SAVE!**  
50 BONUS S&H GREEN STAMPS  
With This Coupon and Purchase of  
A French - Monaco - Italian  
Salad Dressing  
Void After Sat. Mar. 2, 1963  
**WORTH FOOD MART**

**CLIP AND SAVE!**  
50 BONUS S&H GREEN STAMPS  
With This Coupon and Purchase of  
Any Variety of  
Country Cupboard Pies  
Void After Sat. Mar. 2, 1963  
**WORTH FOOD MART**

**CLIP AND SAVE!**  
50 BONUS S&H GREEN STAMPS  
With This Coupon and Purchase of  
Three (3) 8 oz. Pkgs. of Taste O'Sea  
Froz. Fish Sticks 3 Pkgs. \$1.00  
Void After Sat. Mar. 2, 1963  
**WORTH FOOD MART**

**CLIP AND SAVE!**  
50 BONUS S&H GREEN STAMPS  
With This Coupon and Purchase of  
A 7 1/2 oz. Pkg. of  
Chicken Sara Lee - ea. 59c  
Void After Sat. Mar. 2, 1963  
**WORTH FOOD MART**

**CLIP AND SAVE!**  
50 BONUS S&H GREEN STAMPS  
With This Coupon and Purchase of  
A 28 oz. Btl. of Texize-Pine Scent or  
Cleaner with Ammonia  
Void After Sat. Mar. 2, 1963  
**WORTH FOOD MART**

**CLIP AND SAVE!**  
50 BONUS S&H GREEN STAMPS  
With This Coupon and Purchase of  
A 1 Gal. Ctn. of  
Sweet Buttermilk  
Void After Sat. Mar. 2, 1963  
**WORTH FOOD MART**

**CLIP AND SAVE!**  
50 BONUS S&H GREEN STAMPS  
With This Coupon and Purchase of  
Two (2) No. 1/2 Cans of Star-Kist  
Chunk Tuna - ea. 35c  
Void After Sat. Mar. 2, 1963  
**WORTH FOOD MART**

**CLIP AND SAVE!**  
50 BONUS S&H GREEN STAMPS  
With This Coupon and Purchase of  
Four (4) 4 oz. Cans of Swift's  
Vienna Sausage  
Void After Sat. Mar. 2, 1963  
**WORTH FOOD MART**

**CLIP AND SAVE!**  
50 BONUS S&H GREEN STAMPS  
With This Coupon and Purchase of  
Four (4) No. 300 Cans of Trappey's  
Navy Beans With Bacon  
Void After Sat. Mar. 2, 1963  
**WORTH FOOD MART**

**CLIP AND SAVE!**  
50 BONUS S&H GREEN STAMPS  
With This Coupon and Purchase of  
Six (6) 1 Lb. Cans of Pard  
Dog Food  
Void After Sat. Mar. 2, 1963  
**WORTH FOOD MART**

**CLIP AND SAVE!**  
25 BONUS S&H GREEN STAMPS  
With This Coupon and Purchase of  
A 1 Lb. Pkg. of Armour's Star  
Frankfurters  
Void After Sat. Mar. 2, 1963  
**WORTH FOOD MART**

**CLIP AND SAVE!**  
25 BONUS S&H GREEN STAMPS  
With This Coupon and Purchase of  
Three (3) 3 oz. Pkgs. of  
Royal Gelatin  
Void After Sat. Mar. 2, 1963  
**WORTH FOOD MART**

**CLIP AND SAVE!**  
25 BONUS S&H GREEN STAMPS  
With This Coupon and Purchase of  
One Roll of Pest Guard  
Bug Proof Paper  
Void After Sat. Mar. 2, 1963  
**WORTH FOOD MART**

**CLIP AND SAVE!**  
25 BONUS S&H GREEN STAMPS  
With This Coupon and Purchase of  
Any Size - Any Variety of  
French's Potato Products  
Void After Sat. Mar. 2, 1963  
**WORTH FOOD MART**

**CLIP AND SAVE!**  
25 BONUS S&H GREEN STAMPS  
With This Coupon and Purchase of  
Any Size - Any Variety of  
French's Potato Products  
Void After Sat. Mar. 2, 1963  
**WORTH FOOD MART**

SELL AND PROFIT... BUY AND SAVE... GET A BETTER JOB... HIRE GOOD HELP!

# Read and Use the Want Ads!

CALL MA 9-1707

## ANNOUNCEMENTS

**EASTLAND CHAPTER NO. 280 O. E. S.**  
Meets the first Tuesday of each month at 8 p.m. in the Masonic Hall. Call Mrs. Pebble Boles, Sec., for information. MA 9-2733.

**MASONIC LODGE NO. 467**  
Meets second Thursday of each month at 7:30 p.m. in the Masonic Hall. Call C. J. Langlitz for information or V. E. Huckabay, Sec., 9-1391, for information.

**EASTLAND ROTARY CLUB**  
Elephant for noon luncheon. Call Mike George, 9-1495, for each Monday.

## SPECIAL NOTICE

**GIFTS of lasting beauty GREEN LANTERN GIFT SHOP**  
Phone MI 7-3610 - Ranger

**NOTICE:** Bids being accepted for dismantling or moving buildings located on Ranger Junior College campus as follows: 3 one-story, frame houses, approx. 30x30, 1 one-story frame building, 90x25, 1 one-story building 98x60. Bids closed March 15, 1963, usual rights reserved. Address to Ranger Junior College, Box 235, Ranger, Texas.

**SPECIAL NOTICE:** Piano tuning. See L. M. Voorhies, 808 W. Plummer.

**SPECIAL NOTICE:** Let us build you a new brick veneer home—3 bedrooms, 2 1/2 baths, built in kitchen - Total price \$11,000.00 and only \$400.00 down which includes closing costs. D. L. Kinnaird Real Estate - Phone MA 9-2544.

**NOTICE:** See Womack's Nursery between Gorman and De Leon for the latest peaches and fruit tree varieties. Also a wide selection of trees and landscape plants. If

**SPECIAL NOTICE:** Sewing machines—Newchi, Elna and other fine brands. Parts and service on all makes. Gorman Auto Supply. Phone RE 4-5309, Gorman or drop in to see us. If

**SPECIAL NOTICE:** Supplement your home while you earn the World Book Encyclopedia. Complete with Education plan. For details without cost or obligation write Mrs. Lorene Parker, 774 Clinton, Abilene. If

**SPECIAL NOTICE**  
\$15 cold wave for \$10.50  
\$10.50 cold wave for \$8.50  
\$8.50 cold wave for \$7.50  
\$7.50 cold wave for \$6.50  
All cold waves are guaranteed.

**Hairdresser Beauty Shop**  
(near 1302 S. Seaman)  
(Phone MA 9-1430)

**PERSONAL**  
If you are lonely, broken hearted, troubled in spirit or burdened with a sin-sick soul, you can find comfort, consolation and peace at First Methodist Church. If

**MEN**—If you are not attending any other Sunday School Class come to the 9:49 Bible Class at the Methodist Church where you will receive a cordial welcome. If

**TRUCKS FOR SALE**  
FOR SALE: One 1951 Minneapolis Moline Universal tractor on butane. One 11-disc Minneapolis Moline one-way. Six foot International tandem disc harrow. Contact B. H. Courtney, MA 9-1340. If

**AUTOS FOR SALE**  
FOR SALE OR TRADE: 1959 Chevrolet 4 door Impala hard top. Has everything and already financed. MI 7-1914, Ranger. If

**EMPLOYMENT**  
WANTED: The Reliable Life Insurance Company needs a representative for established territory in Eastland, Cisco and Ranger. Permanent, good starting salary, and fringe benefits. Must be married, settled, ages 25 to 40. For personal interview write to The Reliable Life Insurance Company, Box

**WOMAN WHO CAN DRIVE** to call regularly each month on established Studio Girl Cosmetics clients in and around Eastland making necessary deliveries, etc. 3 or 4 hours per day. Route will pay up to \$5.00 per hour. Write STUDIO GIRL COSMETICS, Dept. 79232, Glendale, Calif. 10

**FOR SALE:** Equity in large two bedroom house. Reconditioned. 205 S. Virginia. Total price \$4,700. \$35.00 per month. Monroe Walker, 306 N. Dixie. 18

**FOR SALE: METHODIST CHURCH PARSONAGE AND GARAGE.** Written bids to be accepted from now until March 14, 1963 on the Gorman Methodist Church Parsonage (7 rooms and bath) a double garage combined or parsonage and garage separately. Successful bidder must submit payment promptly on acceptance of bid and must remove from the Church Premises the parsonage and garage not later than April 10, 1963. The Board of Trustees of the First Methodist Church, Gorman, Texas reserves right to reject any or all bids. Mail your bids to Box 127, Gorman, Texas. Bids will be opened at noon March 15, 1963.

**FOR SALE:** Garden mule. Phone MA 9-1610 after 5 p.m. or weekends. If

**FOR SALE:** Carpets clean easier with the Blue Lustre Electric Shampooer only \$1 per day with purchase of Blue Lustre. Coat's Furniture and Carpet Co. 18

**FOR SALE:** A few choice Carpathian Walnut trees left. Good for shade and nuts. Reserve yours today. B. B. Freeman Nursery and Orchard. Route one, Ranger, Chaney community. 17

**FOR SALE:** Set of bathroom fixtures. Nice for lake cabin. Phone MA 9-2126. 18

**EXQUISITE gifts for everyone** anytime. Hallmark cards. The Gift House, Cisco. If

**FOR SALE:** 3 1/2-year old registered Hereford bull. Gentle. \$250. Mrs. Grover Cleveland. HI 2-3972, Cisco. 17

**FOR SALE:** Take up payments on two 23 inch G. E. television sets—\$3.00 per week. One 23 inch T. V. \$2.00 per week. One good used refrigerator \$1.25 per week. Goodyear Tire Service, 306 E. Main, Eastland or phone MA 9-2662. 18

**RENTALS**  
FOR RENT OR LEASE: 80 acre field to rent or lease. Pleasant vicinity. Write Bob Simmons 1800 Linda, Odessa, Texas. 25

**FOR RENT:** Five room house with floor furnace. 306 S. Dixie. Phone MA 9-8812. 20

**FOR RENT:** Nice clean furnished apartment at 2004 Ave. D, Cisco. Apply at 405 N. Daugherty, Eastland. 17

**FOR RENT:** Small 3 bedroom unfurnished cottage well located on top of park hill (north house). Close to school and swimming pool. Only \$39.50 monthly. Contact Don Pierson, phone MA 9-1033 or MA 9-1417. If

**FOR RENT:** Large unfurnished apartments in duplex. 611 W. Plummer. If

**FOR RENT:** 2 bedroom house. Apply 507 S. Madera. If

**FOR RENT:** Lovely furnished or unfurnished apartments, any size, bills paid, maid and hotel services included, very reasonable. Also comfortable rooms with tile baths only \$39.95 monthly. Throw away your high bills and troubles and come live with us. Mrs. Robinson, manager, Village Hotel, MA 9-1716.

**FOR RENT:** 3 room furnished house. See 402 E. Sadosa or phone MA 9-2632. If

**REAL ESTATE**  
FOR SALE: 230 acre Seastrunk stock farm. 2 miles south of Carbon. \$100 per acre. Write S. R. Seastrunk, 2706 Cambridge, Odessa. 17

**FOR SALE:** Three bedroom home, close in, on nice small lot. Good neighborhood. \$5,750.00. After 5 p.m. and weekends. 508 S. Daugherty. If

**FOR SALE:** 389 acres of good mesquite grass land near Moran in Shackelford County. Plenty of water, some cultivation. Contact Austin Flint, Cisco, HI 2-2412. If

**WANTED:** Responsible party to take up payments on Singer Style-a-Matic. Low balanced payments. Only \$5.20 per month. Write Glen Haley, Credit Manager, Singer Sewing Machine Co., 159 Graham, Stephenville, Tex. 19

**FOR SALE:** Equity in large two bedroom house. Reconditioned. 205 S. Virginia. Total price \$4,700. \$35.00 per month. Monroe Walker, 306 N. Dixie. 18

**FOR SALE:** METHODIST CHURCH PARSONAGE AND GARAGE. Written bids to be accepted from now until March 14, 1963 on the Gorman Methodist Church Parsonage (7 rooms and bath) a double garage combined or parsonage and garage separately. Successful bidder must submit payment promptly on acceptance of bid and must remove from the Church Premises the parsonage and garage not later than April 10, 1963. The Board of Trustees of the First Methodist Church, Gorman, Texas reserves right to reject any or all bids. Mail your bids to Box 127, Gorman, Texas. Bids will be opened at noon March 15, 1963.

**FOR SALE:** Garden mule. Phone MA 9-1610 after 5 p.m. or weekends. If

**FOR SALE:** Carpets clean easier with the Blue Lustre Electric Shampooer only \$1 per day with purchase of Blue Lustre. Coat's Furniture and Carpet Co. 18

**FOR SALE:** A few choice Carpathian Walnut trees left. Good for shade and nuts. Reserve yours today. B. B. Freeman Nursery and Orchard. Route one, Ranger, Chaney community. 17

**FOR SALE:** Set of bathroom fixtures. Nice for lake cabin. Phone MA 9-2126. 18

**EXQUISITE gifts for everyone** anytime. Hallmark cards. The Gift House, Cisco. If

**FOR SALE:** 3 1/2-year old registered Hereford bull. Gentle. \$250. Mrs. Grover Cleveland. HI 2-3972, Cisco. 17

**FOR SALE:** Take up payments on two 23 inch G. E. television sets—\$3.00 per week. One 23 inch T. V. \$2.00 per week. One good used refrigerator \$1.25 per week. Goodyear Tire Service, 306 E. Main, Eastland or phone MA 9-2662. 18

**RENTALS**  
FOR RENT OR LEASE: 80 acre field to rent or lease. Pleasant vicinity. Write Bob Simmons 1800 Linda, Odessa, Texas. 25

**FOR RENT:** Five room house with floor furnace. 306 S. Dixie. Phone MA 9-8812. 20

**FOR RENT:** Nice clean furnished apartment at 2004 Ave. D, Cisco. Apply at 405 N. Daugherty, Eastland. 17

**FOR RENT:** Small 3 bedroom unfurnished cottage well located on top of park hill (north house). Close to school and swimming pool. Only \$39.50 monthly. Contact Don Pierson, phone MA 9-1033 or MA 9-1417. If

**FOR RENT:** Large unfurnished apartments in duplex. 611 W. Plummer. If

**FOR RENT:** 2 bedroom house. Apply 507 S. Madera. If

**FOR RENT:** Lovely furnished or unfurnished apartments, any size, bills paid, maid and hotel services included, very reasonable. Also comfortable rooms with tile baths only \$39.95 monthly. Throw away your high bills and troubles and come live with us. Mrs. Robinson, manager, Village Hotel, MA 9-1716.

**FOR RENT:** 3 room furnished house. See 402 E. Sadosa or phone MA 9-2632. If

**REAL ESTATE**  
FOR SALE: 230 acre Seastrunk stock farm. 2 miles south of Carbon. \$100 per acre. Write S. R. Seastrunk, 2706 Cambridge, Odessa. 17

**FOR SALE:** Three bedroom home, close in, on nice small lot. Good neighborhood. \$5,750.00. After 5 p.m. and weekends. 508 S. Daugherty. If

**FOR SALE:** 389 acres of good mesquite grass land near Moran in Shackelford County. Plenty of water, some cultivation. Contact Austin Flint, Cisco, HI 2-2412. If

**WANTED:** Responsible party to take up payments on Singer Style-a-Matic. Low balanced payments. Only \$5.20 per month. Write Glen Haley, Credit Manager, Singer Sewing Machine Co., 159 Graham, Stephenville, Tex. 19

## ABOUT YOUR HEALTH

An annual inspection is routinely made for all motor vehicles. It's too bad the human body doesn't get the same consideration.

Most adults go along year after year, never seeing a doctor until they become sick or have an accident.

If regular inspections are important for a car, consider how absolutely vital they are for the human machine.

You may have some early disease and not even know it. Unless this condition is found and treated, chances are it will become more serious and more difficult to control.

A regular check-up by a doctor is a good opportunity to get sound, medical advice on your needs, based on his professional evaluation of your state-of-health. You may need medical advice about the food you eat, the exercise you should take, and other habits which can help or hinder you in your search for good health.

Even if you are already under treatment, perhaps it has been too long since your last visit to the doctor. Your condition may have changed for the better or worse.

Perhaps your regimen needs to be changed or your medicines—if you are taking any—need to be readjusted in dosage or kind. Not all medicines are to be taken indefinitely.

Also new diagnostic aids and medicines are now available

which the doctor may want to prescribe.

Perhaps you had an illness and overcame it. It is possible the condition could recur.

Perhaps one of the biggest advantages of a complete physical examination at regular intervals is the knowledge that you are in fit physical shape.

If you have an illness, it is comforting to know that everything you are being done to cure it is under control.

There is no set schedule of how often you should have a check-up, but it should be regular. Let your doctor set the schedule for you. At the end of the examination he can suggest the time for the next check-up.

## Its The Law

### DIVISION OF ESTATES EXPLAINED

The death of an intestate person (one who has no will) may give rise to many problems regarding distribution of his separate estate. In the preceding column we investigated the manner of dividing the community estate upon the death of a husband or wife. Now we shall see that, where separate property is involved, a completely different set of rules applies in determining heirship and apportioning the estate among the rightful claimants.

It may be well to recall that the separate estate of a husband or wife includes property owned by either before marriage, and that which is acquired after marriage by gift or inheritance.

Any other property acquired after marriage is presumed by law to be community property until the contrary is clearly proved.

Now, here is a general idea as to how your separate property will be divided if you do not make a will with contrary provisions prior to your death.

If your husband or wife survives and if, in addition, there are surviving children or descendants of previously deceased children, the children and their descendants immediately obtain a full (one) title in two-thirds of the real estate involved.

The surviving spouse receives a life interest in the remaining one-third of the real property, which passes on to the children and their descendants upon the death of the spouse.

The rule for distributing personal property—cash, stocks, bonds, furniture, or any other items not constituting real estate—is different. Here the surviving spouse gets full ownership of one-third, and the children and their descendants inherit the balance.

Now suppose your husband or wife survives, but there are no surviving children or their

## FB President Extends Membership Invitation

Agriculture in this county has a vital stake in the proceedings of the state Legislature and the national Congress, and local farmers and ranchers must be on guard to protect their interest in Austin and Washington, says Jack Cozart, president of the Eastland County Farm Bureau.

"This is one of many reasons why every farmer and rancher in the county should take seriously the invitation to join the Farm Bureau and strengthen agriculture's voice in the state and national capitals," the local farm leader said.

A membership drive will be staged soon by the county Farm Bureau.

"Farm Bureau is the best means farmers have for an effective voice in state and national affairs because it is the only farm organization which has full-time representative both in Austin and Washington," the county pointed out.

Through this representative members are kept informed of the progress of favorable legislation and are alerted to efforts to pass measures harmful to them he explained.

Current state issues which vitally affect agriculture include possible revisions in the sale tax law and other taxation proposals, animal health, farm labor,

descendants. In this case the surviving spouse inherits all of the personal property involved.

With regard to real estate, the survivor obtains full title to one-half, and the other half is divided between your mother and father, if both survive you.

If only one of them survives, he or she receives only half of this portion, and the other half (or one-fourth of the entire real estate) will be divided among your brothers and sisters (and their descendants) who survive.

If there are no surviving children or descendants of previously deceased children, the children and their descendants immediately obtain a full (one) title in two-thirds of the real estate involved.

The surviving spouse receives a life interest in the remaining one-third of the real property, which passes on to the children and their descendants upon the death of the spouse.

The rule for distributing personal property—cash, stocks, bonds, furniture, or any other items not constituting real estate—is different. Here the surviving spouse gets full ownership of one-third, and the children and their descendants inherit the balance.

Now suppose your husband or wife survives, but there are no surviving children or their

and city annexation of farm and ranch properties, according to the Farm Bureau leader.

On the national level, there is a danger of the development of Farm programs which will not be in the best interest of agriculture unless farmers succeed in making their position known, he said.

Every farmer and rancher in the county is urged to join the local organization during the forthcoming membership campaign, the county Farm Bureau leader said. Date for the local drive is March 5-8.

Miss Jill Watkins, student at Baylor University spent the week end in Ranger visiting her parents, Dr. and Mrs. W. P. Watkins.

## VISITS FAMILY

Miss Jill Watkins, student at Baylor University spent the week end in Ranger visiting her parents, Dr. and Mrs. W. P. Watkins.

## WE BUY AND SELL USED FURNITURE

Phone MA 9-1740 WAYNE JACKSON

## See ahead with

**M. H. PERRY**  
107 W. Main Eastland MA 9-2275 MA 9-1095

## RETIREMENT INCOME

Let him show you how little it costs to see ahead—and be sure.

## Southland Life

INSURANCE COMPANY  
Home Office - Southland Center - Dallas

## T. L. FAGG

REAL ESTATE  
Property Management Home and Farm Loans

## WANTED

Good clean automobiles. Any make—Any Model Considered. BLEVINS MOTOR CO. See Jay Blevins. Ph. MA 9-2433 513 West Main Eastland

## TAKE 20

That's how many words you may use, even in the minimum-priced Telegram Classified Ad. Write your ad on dotted lines below and mail to Box 29, Eastland.

## LIST WITH US

and prepare to move We need ranch listings. Nothing under 300 acres, please. Our phone answers collect calls.

## JACK FARRAR

Box 147 Ph. WO 5-4330 Stephenville, Texas

## SPECIAL NOTICE

**LOVELACE TRANSFER AND STORAGE**  
305 E. Commerce St. Ph. MA 9-2440 LOCAL AND LONG DISTANCE MOVING STORAGE, PACKING AND CRATING

Balance your books... with the Original FINE POINT Lindy AUDITOR'S Ball Point Pen #F-460



Long 7" perfectly balanced writing instrument designed for auditors, accountants, bookkeepers and others who need a fine ball point pen for extreme legibility.

8 BRILLIANT INK COLORS  
Color of Pen is Color of Ink  
BLUE - BLACK - GREEN - RED - BROWN - LAVENDER - TURQUOISE - YELLOW-GOLD

ONLY THE AUTHENTIC NATIONALLY ADVERTISED LINDY PEN CARRIES THE LINDY UNCONDITIONAL GUARANTEE. DO NOT ACCEPT SUBSTITUTES—LOOK FOR "LINDY" ON THE PEN!

GIANT INK SUPPLY  
Also available in 5" pocket pen size #F-458.

Manufactured by LINDY PEN CO., INC., Culpeper City, Va., U.S.A.

49¢

Eastland Telegram

## Just Arrived

all-weather coats... Blue skies—gray skies, our classic rain or shine coats are real charmers in any weather. Smart fashion detailing and sturdy water repellent finishes make them super values.

Skimmer shirt new, very important fashion look. A simple style that the figure with class in a wonderful new fabric and enjoy now through 5.99 to 8.99

## MODE O'DAY

EASTLAND

## HILL CREST FOOD MARKET

WHEN YOU RUN OUT—BUY 1401 WEST MAIN - PHONE MA 9-1740

Idaho Russett POTATOES	10
LETTUCE	2
BANANAS	2
County-Kirt CORN	2 1/2
Gebhardt's CHILI	No. 2 1/2
Sweetheart or Towntalk BREAD	2 Large
Miracle Whip SALAD DRESSING	6
Goch's All-Meat WEINERS	2
Goch's Ranch-Style BACON	2
Decker's All Meat BOLOGNA	2
Folger's INSTANT COFFEE	10
White Swan TEA	4
Van Camp TUNA	5
Frozen STRAWBERRIES	4

LAND TELEGRAM

Record established in 1931, consolidated August 1932... second class matter at the Post Office in Eastland...

Semi Weekly—Thursdays and Sundays Eastland County Newspapers, Inc. H. V. O'BRIEN, Editor

by carrier in city .15 by carrier in county .65 by mail out of state 6.95

Public—Any erroneous reflection upon the good or reputation of any person, firm or corporation...

na News spent part of last week visiting with the Horace Lanes and the Tony Ash family.

Mr. and Mrs. Bryant Blackwell visited during the weekend with their son, Derrell, at Mexia.

The Derrell Dosseys had as their guests Friday and Saturday his parents of Mexico.

Mr. and Mrs. John Arnold have returned home from an extended visit in West Texas.

Captain and Mrs. Bobbie Burleton and son, Jerrel, were here during the weekend to visit with the Lonnie William-

sons and the Russ Burlesons. Bill Owens of Odessa spent Saturday night with his mother, Mrs. Agnes Owens and Guy.

Mr. and Mrs. Howard Williams and Mr. and Mrs. Morgan Roberts attended the 80th birthday dinner honoring Lesley Riddell at School Hill recently.

Aunt Ollie Fein, who has been ill in a Dallas hospital, is able to be at home.

Mr. and Mrs. A. M. Hale of Alexander visited Sunday in the home of her brother, Mr. and Mrs. Hugh Abel.

The Chubbie Formans of Arlington spent the weekend here with her parents, Mr. and Mrs. Roy Guthery.

Gene Hudson visited Monday evening with Mrs. Ollie Kay.

Mr. and Mrs. Royce Sartain and Mr. and Mrs. James Campbell of Monaha spent the weekend with their parents, the Cecil Carrs.

WEEKEND GUESTS

Weekend guests in the area of M. and S. A. A. were Rev. and Mrs. W. H. Beat and sons, David and James, of Robert Lee.

Rev. Beaty is pastor of the First Baptist Church in Robert Lee.

RISING STAR NEWS

City Officials To Be Elected on April 2nd

Notice of the general city election called by the City Council has been set for Tuesday, April 2, at which time a mayor and three city commissioners will be elected.

There are four candidates, thus far, who have filed at the City Secretary's office.

Mayor Walter Smith is a candidate for re-election, and Elgie Criss, Durward Fussell and Floyd Joyce have filed for places on the council. Crisp is a candidate for a second term.

Glen Henry and Charlie Carroll are each completing two year terms as council members this spring.

Judge for the city election will be G. E. McDonald.

The Rising Star P-T-A will stage their March of Dimes "Mothers March" the evening of March 4th in cooperation with the Chamber of Commerce, which sponsors the MD luncheon in Pising Star. The P-T-A Mothers March annually raises a large portion of the local contribution.

If residents are to have contributions for the marchers they are requested to leave their porch lights on for the marchers convenience.

Governor -

(Continued from Page 1) 4-H Club work.

The 4-H program stresses the four-fold development of head, heart, hands and health as well as teaching the latest practices in agriculture and home economics.

"Since the 4-H program was inaugurated by the United States government in 1914, the movement has spread across the nation and built bridges of understanding to more than 50 foreign countries. Members of the 4-H Clubs learn by conducting result demonstration and participating in 4-H activities. By putting into action what they learn, club members improve their homes and communities.

"Voluntary adult leaders working with club members provide a key to the success of 4-H. Parents and friends of 4-H give support and encouragement to club members. The Agricultural Extension Service of the A&M College of Texas, through county extension agents, directs the 4-H program.

"The opportunities offered to 4-H members to grow in citizenship, leadership and practical skills are especially valuable to them. The State of Texas and the Nation. The 4-H Clubs are a proving ground for the training of future leaders."

Governor Connally in his message to Texas 4-H members urged them to help others understand the big purposes and ideals of their organization. "The future," he said, "holds bright promise, and as 4-H members you have a vital part in this future."

Remember "yellow jaundice"? The skin and the whites of the eyes take on a yellowish hue. Physicians know that jaundice is not a disease but a symptom of many different conditions in which bile pigment is not being handled properly in the body and is accumulating in excess quantities in the blood.

Bile pigment is a product of red blood cells. Liver cells convert the pigment into bile, which is excreted into the intestinal tract to aid digestion.

Never neglect jaundice. It can be a symptom of a serious condition, such as hepatitis, and hepatitis, by the way, has increased by leaps and bounds in the United States in recent years. It is an infectious disease that causes serious illness and often permanent liver damage.

Jaundice can be detected early in the whites of the eyes. If the eyes suddenly appear yellowish, consult a physician promptly. Early treatment is very important in treating most of the conditions causing jaundice.

Continued

The rummage sale which has been held for the past several Saturdays, will be held again this Saturday on the Southwest corner of the square, Lamar and Commerce.

The public is cordially invited to attend.

Classified Ads Read the

Prayer For Effective Living

Lord, Thou knowest better than I know myself that I am growing old. Keep me from getting talkative, and particularly from the fatal habit of thinking that I must say something on every subject and on every occasion.

Release me from craving to try to straighten out everybody's affairs. Make me thoughtful not moody, helpful but not bossy. With my vast store of wisdom, it seems a pity not to use it all, but Thou knowest, Dear Lord, that I want a few friends at the end.

Keep my mind free from the recital of endless details; give me wings to get to the point and help me not to repeat the same stories over and over. Seal my lips on many aches and pains. They are increasing and my love of rehearsing them grows sweeter as the years go by.

I ask for enough grace to listen to the tales of others' pains. Help me to endure them with patience. Teach me the glorious lesson that occasionally it is possible that I may be mistaken.

Keep me reasonably sweet. I do not want to be a saint; some of them are so hard to live with. But a sour old person is one of the crowning works of the devil. Help me to extract all possible fun out of life, but keep my conscience working so I'll continue to know right and wrong — Albany News.

HEALTH TIPS

'Jaundice' Is A Symptom Not a Disease

Remember "yellow jaundice"? The skin and the whites of the eyes take on a yellowish hue.

Physicians know that jaundice is not a disease but a symptom of many different conditions in which bile pigment is not being handled properly in the body and is accumulating in excess quantities in the blood.

Bile pigment is a product of red blood cells. Liver cells convert the pigment into bile, which is excreted into the intestinal tract to aid digestion.

Never neglect jaundice. It can be a symptom of a serious condition, such as hepatitis, and hepatitis, by the way, has increased by leaps and bounds in the United States in recent years. It is an infectious disease that causes serious illness and often permanent liver damage.

Jaundice can be detected early in the whites of the eyes. If the eyes suddenly appear yellowish, consult a physician promptly. Early treatment is very important in treating most of the conditions causing jaundice.

Continued

The rummage sale which has been held for the past several Saturdays, will be held again this Saturday on the Southwest corner of the square, Lamar and Commerce.

The public is cordially invited to attend.

Classified Ads Read the

1/2 PRICE SALE

2 Days Only - Fri. & Sat. FALL MDSE ONLY

MEN'S SWEATERS Cardigan & Pullover

Long Sleeve SPORT SHIRTS

1 Group MEN'S SHOES

1 Group MEN'S DRESS SHIRTS White & Color

1 Group MEN'S JACKETS & SLACKS

BOY'S WEAR Pants - Sport Shirts Sweaters - Sport Coats Knit Shirts - Jackets

THE MEN'S SHOP EASTLAND

GIVE Round-Up STAMPS

Round Carton 19c Slices 8-Oz. Package 29c Cheese 8-Oz. Package 29c

Waxed Paper 10c CAKE MIX 25c ZEE Waxed PAPER 19c

LIPTON'S Instant Tea 49c Tea Bags 65c SWEET YAMS 25c

WHITE SWAN Golden CORN 25c CRISCO SHORTENING 75c

WHITE SWAN Bartlett Pears 1.00 PICKLES 35c

FOLGER'S COFFEE Choice of Grinds Pound Can 65c

WHITE SWAN Pork and Beans 23c Evaporated Milk 43c

WHITE SWAN Luncheon Meat 43c Paper Towels 21c Lunch Bags 29c

CEDED BACON lb. 49c PREMIUM FRANKS lb. 55c

MacMOY'S Super Save Home Owned - Home Operated 400 S. Seaman

Hospital News

Patients in the Eastland Memorial Hospital are the following: Arthur James, Surg., Gordon Tammie Boyd, Med., Cisco Beatha Jesse, Med., Julia Rose Needham, Med. Ranger

Edyth Reeve, Surg., Cisco Lucille Sutton, Med., Jerusha Tucker, Med., J. L. Little, Med., Nora Hudson, Accident, Nellie W. Naylor Med., Susan Parrish, Med., Dicy Spink Med., Cisco Eva Lou Taylor, Med., Be. W. Williams, Med., Cisco

Clorence W. Medford, Med., J. M. Wilcoxson, Med. Demonna Frank E. Day, Med., Cora E. Webb, Med., Arthur Lancaster, Accident, Pat Armstrong, Med., Elma Gilbert, Med. Breckenridge

Robert Hill, Med., T. L. Fagg, Med., John W. Chapman, Med. Gordon Weldon Earl Baker, Med. Cisco Vera Sohee, Med., Martha Jane Demsey, Med. Ranger Gladys Mathews, Surg., Moran

Julian Nichols, Surg. Cisco Allen D. Dabey, accident, Dorothy Moxley, Med.

TidBits - (Continued from Page 1) and so doing picked up a \$25 prize.

Noticed that someone distributed a "county-wide" directory in our town Tuesday. Handy enough we'd guess, but wonder if you noticed that there were exactly 100 out-of-county advertisers listed in the book - most in direct competition with the local people.

The Olden school board election has been called. Terms of Jim Everett and J. D. Harrell expire. Haven't heard if they plan to rerun or if there are other candidates planning to run.

By the way, Friday is the deadline for filing as candidate for the city commission race in Eastland.

New! Gillette Slim Adjustable Razor

You turn dial from 1 to 9 for the exact setting that matches your skin and beard with Super Blue Blades

For plumbing, carpenter work, painting and floor covering CALL Don Daniels MAIN 9-1315

MEET THURSDAY Board of directors of the Chamber of Commerce will meet at noon Thursday for their regular monthly business meeting. President A. D. Taylor has announced. Meet will be at the White Elephant Restaurant.

MEET THURSDAY Board of directors of the Chamber of Commerce will meet at noon Thursday for their regular monthly business meeting. President A. D. Taylor has announced. Meet will be at the White Elephant Restaurant.

# DAR Members Meet In Eastland Monday

The Charles Crawford Chapter, National Society, Daughters of the American Revolution, with members from Eastland, Cisco and Ranger, held their February meeting at the home of Mrs. Oscar F. Chastain and Charles E. Terrell, 405 Pershing, Eastland, Monday, Feb. 25, with Mrs. W. D. R. Owen, Eastland as assisting hostess. Mrs. Edward F. Horrigan, Regent, Ranger, presided.

During a short business session the group elected Mrs. Frank E. Harrell Cisco, as the Chapter's representative to the National Congress to be held in Washington, Constitution Hall, April 15-19, 1963.

New members, Miss J. E. T. Peters Cisco, and C. B. Wellman, Eastland were welcomed into the Chapter. Announcement that the March Meeting, with the program on American Music, with Mrs. Joseph M. Perkins, Eastland as hostess and program leader scheduled for March 25th, had been changed to March 31st was made.

In line with the National Society's designation for special observances, with February

as American History month, the program Committee, Mesdames Joe Clements, T. C. Williams Alex Spears and D. Horrigan had arranged for the review of a book based on American History.

Mrs. Leslie H. Hagaman, Teacher of Government at a Spanish, Ranger High School reviewed Paul Wellman's "Magnificent Destiny". The story is interwound around the lives of Andrew Jackson and Sam Houston. Beginning with a friendship formed during the war of 1812 and continuing for almost four decades reveals the influence of these two great patriots, as generally, as statesmen, as citizens of the Destiny of our American Nation, and more closely to Texans, founding a Republic, and final annexation to the United States. Mrs. Hagaman brought out forcefully the bravery, the privations, the disappointments, and the pathos of this enduring friendship destined to make a magnificent chapter in our American History.

Following the program, tea

was served by Mrs. Samuel Butler, Eastland. A centerpiece of white and red carnations, accented with blue draping at the base of the arrangement, set the theme of our national flag. A unique half-arrangement of the six floors of nations ruling Texas further carried out the historical motif.

Attending were members from Cisco, Miss N. A. Brown, Joe Clements, Frank E. Harrell, J. P. T. Peters, James Blake, Alex Spears and T. C. Williams. Guests from Eastland were Mates, Butler, Pearson Grimes, I. C. Hack, James Horton, A. H. Johnson, John A. M. Roe, Arthur Murrell, Samuel H. Russell, James C. Whitlington, and Miss Elizabeth Bennett, the hostesses and Mrs. C. B. Wellman.

The National Society of the Daughters of the American Revolution has chosen the following dates in February as dates of historical value:

February 1, 1790 — First Meeting of the Supreme Court of the United States, with Chief Justice Jay presiding.

February 2, 1848 — Mexico signed a treaty with the United States, thus ending the Mexican War. Although the United States was the victor, a reparations payment of \$15,000,000 was made for the lands ceded,

which included Texas, New Mexico, California, and much of the states of Nevada, Utah, Arizona, Colorado and Wyoming.

February 3, 1943 — Four Chaplains, one a Jewish Rabbi, two Protestants and a Catholic Priest, linked arm in arm, their voices raised in prayer, went down with the sinking transport, DORSESTER, 100 miles off the coast of Greenland. They had given their lives to soldiers who had none! Such self-sacrifice and heroism have made our country great.

February 4, 1802 — Mark Hopkins, the great American Educator was born. He was a graduate of Williams College from 1820-1822.

February 5, 1631 — Roger Williams, seeking religious freedom in America, arrived at Salem, Massachusetts. For over three hundred years people from all over the world have sought political and religious refuge in this country. This country would not be so great if it were not for the contributions made by all these people. Know the rich heritage bequeathed by the old and new immigrants.



**OPEN HOUSE**—Mrs. Audrey Yonker (right), owner and operator of The Smart Shop in Ranger, has announced that open house will be held in the new store all day Saturday, March 2. The store was recently moved to 219 Main Street. Also pictured is Mrs. J. A. Johnson, employe at the ladies shop. (Photo by Capps Studio).

**Abilene Show Of Agricultural Film**

The film "The Story of the Farm" will be shown at 7:30 p. m. at the Abilene Hall, 2250 North 10th Street. This film was shown to leading executives in the United States. The movie has on the economic situation.

"The Nature of one of the 15 only agricultural films to be shown at a national film convention in 1962. No admission fee for the film.

The public is invited to attend.

Come to the film with Mrs. R. F. Hoff and Mr. and Mrs. Hoff. They were shown by Driver and Mr. Hoff.

Woods, Perry of Stephenville, a member of the Abilene University in Abilene.

Card of Thanks

We would like to express our deep appreciation to Mrs. Ed T. Cox returned home Monday after a week's stay in Midland.

**Read The Classifieds**

**COME SHOP AND SEE: PLAID STAMPS ARE FOR THE GIFT WISE AND...**

**A&P PRICES are BUDGET-SIZE**

Prices Good Thru March 2, 1963

**ALLGOOD BRAND SLICED BACON** 2-Lb. Pkg. **79¢**

**Super - Right Heavy Calf Chuck Roast** Lb. **59¢**  
**Super - Right Short Ribs** Lb. **35¢**  
**Super - Right Pork Shoulder Roast** Lb. **49¢**

**50 EXTRA PLAID STAMPS WITH TENNESSEE FARM BRAND PURE PORK SAUSAGE** 2-lb. Bag **\$1.29**

**Jane Parker Bakery** **Cap'n John's Frozen**

**FISH STICKS** 2 10-oz. Pkg. **69¢**  
**DINNERS** Haddock 10-oz. Pkg. **49¢**  
**COD** Uncooked Battered Portions 2-lb. Pkg. **99¢**  
**HADDOCK** Battered Portions 2-lb. Pkg. **99¢**

**JANE PARKER FRESH BLACKBERRY PIES** Ea. **39¢**  
**JANE PARKER GOLD OR MARBLE POUND CAKES** Ea. **49¢**

**MILKY WAY SNICKERS 3-MUSKETEERS** IN CELLO BAG 10 Bars **39¢**

**DRIED PEACHES** Tastee Large Fancy 12-oz. Pkg. **39¢**  
**DRIED PRUNES** Sultana medium 2-lb. Pkg. **49¢**  
**FIRESIDE GRAHAMS** Choc. Covered 3 12 1/2-oz. Pkg. **\$1**  
**PINEAPPLE** Typhoon Sliced In heavy syrup 4 No. 2 Cans **95¢**  
**POTATO CHIPS** Jane Parker Twin Pack 1-lb. Pkg. **49¢**  
**TOILET TISSUE** Vanity Fair 8 Rolls in Pack **79¢**  
**KOTEX** Regular, Junior or Super Sanitary Napkins 3 Pkgs. of 12 **\$1**  
**A&P MELLORINE** 1/2 Gallon 3 for **\$1.00**  
**COLGATE TOOTHPASTE** Regular 9c off Plus 5c Coupon Tube **66¢**  
 Fluoride 6c off Plus 5c Coupon Tube **43¢**

**Fresh Produce**

**Lettuce** 2 Large Heads **25¢**  
**Yellow Squash** Lb. **10¢**  
**POTATOES** 10 Lb. Mesh Bag **49¢**  
**WASHINGTON PEARS** 2 Lb. **29¢**  
**CARROTS** 2 Lb. Bag **15¢**

**CLIP THESE COUPONS**

**100 Extra Plaid Stamps**  
 With this Coupon and Purchase of 2-TEK TOOTH BRUSHES 2 for **79¢**  
 AT YOUR A&P SUPERMARKET Coupon Good thru March 2, 1963

**50 Extra Plaid Stamps**  
 With this Coupon and Purchase of REFRIGERATED TOPPING **REDDI WIP** 7-oz. Can **59¢**  
 AT YOUR A&P SUPERMARKET Coupon Good thru March 2, 1963

**25 Extra Plaid Stamps**  
 With this Coupon and Purchase of KRAFT PHILADELPHIA PLAIN CREAM CHEESE 8-oz. Size **35¢**  
 AT YOUR A&P SUPERMARKET Coupon Good thru March 2, 1963

**25 Extra Plaid Stamps**  
 With this Coupon and Purchase of WISHBONE ITALIAN DRESSING 8-oz. Btl. **39¢**  
 AT YOUR A&P SUPERMARKET Coupon Good thru March 2, 1963

**25 Extra Plaid Stamps**  
 With this Coupon and Purchase of ANN PAGE PURE PORK 'N BEANS 2-lb., 9-oz. Can **29¢**  
 AT YOUR A&P SUPERMARKET Coupon Good thru March 2, 1963

**25 Extra Plaid Stamps**  
 With this Coupon and Purchase of ANN PAGE PURE HONEY 1-lb. Jar **39¢**  
 AT YOUR A&P SUPERMARKET Coupon Good thru March 2, 1963

**25 Extra Plaid Stamps**  
 With this Coupon and Purchase of JANE PARKER SANDWICH WHEAT BREAD 16-oz. Loaf **20¢**  
 AT YOUR A&P SUPERMARKET Coupon Good thru March 2, 1963

**100 Extra Plaid Stamps**  
 THIS COUPON GOOD FOR **100 Extra Plaid Stamps**  
 With a Purchase of \$10.00 or more (excluding Cigarettes)  
 At Your A&P in Eastland, Texas D/2/21/63 Coupon Good thru March 2, 1963

**ANN PAGE STRAWBERRY PRESERVES** 4-lb. Jar **\$1.29**  
**WHITE HOUSE EVAP. MILK** 6 13-oz. Cans in Pack **77¢**

## Open House Scheduled At The Smart Shop In Ranger

Formal opening of The Smart Shop at the new location, 219 Main Street in Ranger, will be held Saturday, March 2. Mrs. Audrey Yonker, owner, announced today.

The ladies apparel shop was recently moved into newly remodeled and larger quarters and the formal opening of the shop is being held to acquaint area citizens with the new location and also to give patrons an opportunity to view the many new lines of merchandise now handled by The Smart Shop.

During open house activities, refreshments will be served from 10 a.m. until 12 noon and from 2 p.m. until 4 p.m. Also over 25 door prizes will be awarded during the day, Mrs. Yonker said. No purchase is necessary and you do not have to be present to win a door prize.

## Services -

(Continued from Page 1)

Sept. 8, 1912. She predeceased him in death on Jan. 25, 1961.

He was a member of the Church of Christ and had been a resident of the Olds Community nine miles northeast of Rising Star, for 45 years.

Surviving are a son, Robert D. B. Zell of Abilene; four daughters, Mandline and Olene Zell of Lubbock, Mrs. Wanda Nelson of Houston and Mrs. Oula James of Arizona; one brother, Alvin of Fort Worth; and one sister, Mrs. T. M. Johnson of Abilene.

## House -

(Continued from page 1)

ing to San Antonio, Houston and other cities to sit. Therefore, he argued, the better transportation facilities in Abilene do not necessarily apply.

"In fact, the court has more cases from Harris County than it does from Taylor County," Scaberry said.

Scaberry said that "we share many things with Abilene. Our women shop there, we share a congressional, we have our salaries in Abilene firms, but we think we should keep the court. We do not want Abilene growing at our expense."

## Routes -

(Continued from page One)

many as three.

Traffic and engineering studies are made to determine where to erect the Trail Blazers. The Blazers may be erected on city streets which are designated or marked as part of the State Highway System; or by agreement, on county roads and city streets which are not part of the State Highway System.

But no matter where they are located, the street or combination of streets which are selected as Trail Blazer routes will provide the shortest route in terms of travel time from a specific area to the Interstate highway or other controlled access highways.

As construction of the Interstate system proceeds, the Trail Blazer routes will be updated accordingly.

Easy to identify and simple to read, the Trail Blazers will point the way.

**HAVE YOU TRIED IT YET?**

**Gillette Super Blue Blade**  
 DOUBLE EDGED • DOUBLE ECONOMY  
**15 for \$1.00**  
**10 for 69¢**  
 FITS ALL GILLETTE RAZORS

## FOR REPAIR ON TYPEWRITERS & ADDING MACHINES CALL THE EASTLAND TELEGRAM TEL. MA 9-1707

**MONUMEN** SINCE 1888 WEATHER-RESISTANT PAINTS

THURS., FRI. & SAT. SAVINGS

**CENTRAL DRUG**

MILK OF MAGNE'SIA 1.00  
 100 TCCA-VI-SOL VITAMINS 4.50  
 14-oz. ROSEMARY HAIR SPRAY 1.50  
 15 Pack GILLETTE SUPER BLUE BLADES 1.00  
 3 In Package STYLE HAIR SPRAYS 4.40  
 LADIES WATCHES 16.95  
 POCKET WATCHES 3.95  
 6 Beverage GLASSES & CADDY 3.95  
 McKESSON SHAVE LOTION 1.00

**SPECIAL CORNING WARE**

TRY CORNING WARE FOR 10 DAYS IN YOUR OWN HOME; IF YOU ARE NOT COMPLETELY SATISFIED WITH IT, RETURN IT AND WE'LL REFUND YOUR FULL PURCHASE PRICE!

Observe how this miraculous freeze-cook-serve ware goes directly from coldest freezer to hottest range top without damage, and it washes so easily... All because it's made of PYROCERAM® Space-Age Ceramic. A product of Corning Research.

**MONEY OFFER**

**SALE - 3 pcs. & Serving Cradle \$12.95**

6 TRANSISTOR RADIOS Includes - Battery Leather Carrying Case Ear Phones

**PREScription SPECIALIST**

**CENTRAL DRUG CO.**

S&H GREEN STAMPS—FREE DELIVERY

**EASTLAND AUTO PARTS MACHINE SHOP**

300 S. Seaman Main 9-2158

FULLY-EQUIPPED

**AUTOMOTIVE**  
 VALVE GRINDING  
 BRAKE DRUM TURNING  
 HEAD SURFACING  
 VALVE JOBS  
 BLOCK BORING  
 SLEEVE INSERTING  
 VALVE SEATING

COMPLETE LINE AUTOMOTIVE TRUCK TRACTOR PARTS

ALWAYS IN STOCK

**AUTO PARTS**  
 300 S. Seaman MAIN 9-2158 EASTLAND

# SAFEGWAY BRANDS SALE

**3  
BIG  
DAYS**

**Spinach**

Inside. Ideal source of Vitamin 'A.'

**9** No. 303 Cans **\$1**

**Green Beans**

Inside. Golden Cream Style with sweeter flavor.

**9** No. 303 Cans **\$1**

**Cream Corn**

Inside. Cut. Perfect quality, modest cost.

**9** No. 303 Cans **\$1**

**Tempest Tuna**

Meat, Grated. Serve a Tuna casserole.

**5** 6-Oz. Cans **\$1**

**Cling Peaches**

Washed, Sliced or Halves, Yellow Cling Peaches.

**4** No. 2 1/2 Cans **\$1**

**Pork & Beans**

Delicious and they cost so little.

**10** No. 300 Cans **\$1**

**Gelatin Salads** Lucerne All Styles, 8-Oz. Ctn. **29¢**

**Pimiento Cheese** Glenbrook 8-Oz. Regular 49¢. Ctn. **39¢**

**Cottage Cheese** Lucerne All styles, 16-Oz. Ctn. **27¢**

**Fresh Butter** Shady Lane Delicate flavor, 1-Lb. Ctn. **71¢**

**Lima Beans** Fordhook or Baby Limas, Bel-Air Frozen, 4 Reg. Pkg. **\$1.00**

**Green Beans** Italian Style, Bel-Air Frozen, 4 Reg. Pkg. **\$1.00**

**Mixed Vegetables** Bel-Air Frozen, 4 Reg. Pkg. **\$1.00**

**Ice Cream** Snow Star, Assorted Flavors, 1/2-Gal. Ctn. **59¢**

**Facial Tissues** Truly Fine, Assorted Colors, 400-Ct. Box **21¢**

**Tomato Catsup** Highway, 4 14-Oz. Bottles **59¢**

**Applesauce** Highway, Ready to serve, 7 No. 303 Cans **\$1.00**

**Bakery Features!**

**Rye Bread** Skylark, For cheese and cold cuts, 1-Lb. Loaf **19¢**

**Brown & Serve Rolls** Skylark, Twin or Cloverleaf 12 Count (2c Off) 13-Oz. Pkg. **23¢**

**Bread** Skylark, Western Farms Tab-lock Bag, 15-Lb. Loaf **27¢**

**Italiano Bread** D'Agostino, Delicious hot, 15-Lb. Loaf **29¢**

**Safeway Guaranteed Meats!**

- Gelatin** Assorted Flavors, 4 3-Oz. Pkg. **39¢**
- Sanka Instant Coffee** The 97% Caffeine-free coffee, 5-Oz. Jar **97¢**
- Wafers** The cookie jar, 1-Lb. Cello **39¢**
- Snowdrift Shortening** The Premium Shortening, 3-Lb. Can **61¢**
- Biscuits** Buttermilk or Betty, 3 8-Oz. Cans **29¢**
- Wesson Oil** It's poly-unsaturated, (48-Oz. Bottle 75¢) 24-Oz. Bottle **39¢**

National Brands, too!

Maxwell House

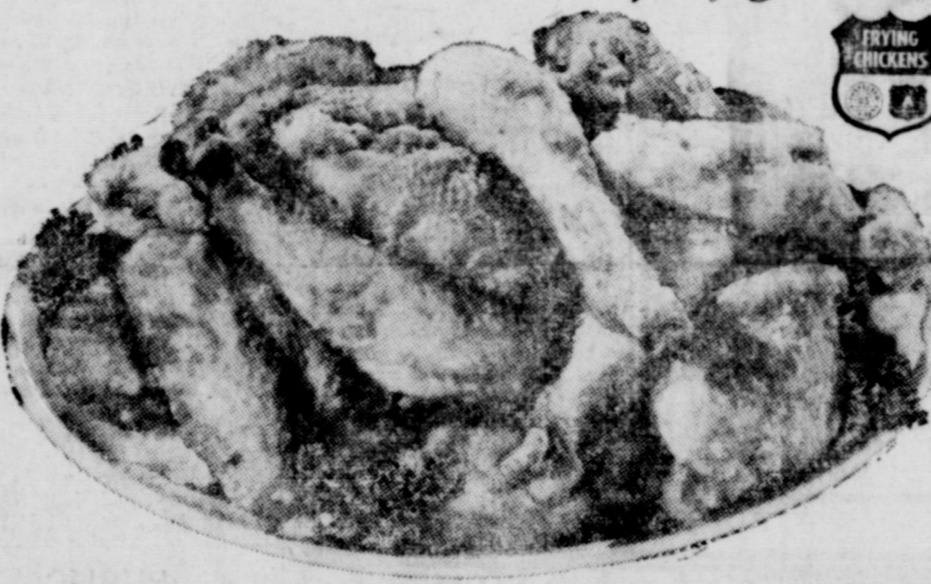
**Coffee 59¢**  
(Or Edwards Coffee 1-Lb. Can 57¢)

**1-Lb. Can**

**53¢** Mild and Mellow, 1-Lb. Pkg.

**55¢** Rich and Aromatic, 1-Lb. Pkg.

**Mellorine 3 1/2-GAL. CTN. \$1**



**FRYERS**

**29¢**  
Fancy Whole. U.S.D.A. Inspected for Wholesomeness. U.S.D.A. Graded "A". Ready to cook.

**Fryer Parts!**

- Fryer Breasts** or Pulley Bones. All White meat, Lb. **69¢**
- Fryer Thighs** or Drumsticks. Heavily meated, Lb. **49¢**
- Fryer Wings** Meaty and economical, Lb. **29¢**
- Fryer Backs** Economical for soups or stews, Lb. **19¢**
- Chicken Livers** Delicious pan fried, 8-Oz. Pkg. **29¢**

**Franks 2 1-Lb. Cello Pkgs. 79¢**  
Sterling Skinless. All Lean, juicy tender meat.

**Sausage 3 1-Lb. Pkgs. 89¢**  
Wingate, Regular or Hot.

**Picnics 3 -Lb. Can \$1.99**  
Canned, Armour's Star. Ready to serve.

**Potatoes 10 -Lb. Bag 39¢**  
No. 1 Red, boiled, or fried. In many ways.



**Rhubarb 29¢**  
Washington State, Extra Fancy Hothouse, Lb.

**Lemons 6 29¢**  
Sunkist, Large Size, Refreshing flavor, For

**Oranges 5 -Lb. Bag 49¢**  
Sweet and flavorful.

**Longhorn Cheese 49¢**  
Best Buy. High in protein for good health. Lb.

**Ironing Board Cover 88¢**  
Safeway Gem. Complete pad and cover set. Set

**This Coupon Worth 50 Free Gold Bond Stamps**  
Plus your regularly earned Gold Bond Stamps with the purchase of 3-Lb. Armour's Star CANNED PICNIC  
Coupon Expires March 2, 1953.

**This Coupon Worth 25 Free Gold Bond Stamps**  
Plus your regularly earned Gold Bond Stamps with the purchase of Fresh Head of LETTUCE  
Coupon Expires March 2, 1953.

**Redeem this coupon for 100 FREE GOLD BOND STAMPS**  
With Purchase of \$10.00 or more (Excluding Cigarettes) One Per Family • Expires March 2, 1953.

**This Coupon Worth 20 Free Gold Bond Stamps**  
Plus your regularly earned Gold Bond Stamps with the purchase of TWO — 2-Lb. Pkgs. BEL-AIR FROZEN GREEN PEAS or WHOLE KERNEL CUT CORN  
Coupon Expires March 2, 1953.

**This Coupon Worth 30 Free Gold Bond Stamps**  
Plus your regularly earned Gold Bond Stamps with the purchase of TWO — 1 1/2-Lb. Pkgs. Bel-Air Frozen Pumpkin or Mince Pie  
Coupon Expires March 2, 1953.

**This Coupon Worth 20 Free Gold Bond Stamps**  
Plus your regularly earned Gold Bond Stamps with the purchase of 1/2-Gal. CARTON LUCERNE BUTTERMILK  
Coupon Expires March 2, 1953.

**Flower Beds Now - 100-Lb. Bag \$1.99**



Prices and Coupons Effective Thurs., Fri. and Sat., Feb. 28, March 1 and 2 in Eastland. We Reserve the Right to Limit Quantities. No Sales to Dealers.

(Read the Classifieds)

**PERMANENTS**  
 \$10 Cream-On Waves \$6.50  
 \$12 Creme-Oil Waves \$7.50  
 \$12 Laminé Waves \$8.50  
 Other waves \$10 and up  
**Basham Beauty Bar**

**FIRST METHODIST CHURCH**  
 Wm. S. Fisher, Pastor  
 215 S. Mulberry

**SUNDAY**  
 9:45 a.m.: Church School  
 10:55 p.m.: Worship Service  
 6:15 p.m.: Youth Fellowship  
 7 p.m.: Evening Worship

**TUESDAY**  
 9:30 a.m.: W.S.C.S.

**FURNITURE  
 CARPET  
 APPLIANCES**

Quality Merchandise at Every Day Low Prices

FREE DELIVERY—NO CARRYING CHARGES ON FURNITURE and CARPETS FOR 1 FULL YEAR

**Ranger Furniture Exchange**

"BRASHIER'S"

123 N. Rusk Ranger Phone MI 7-1404

Behind many "For Sale" signs there is a sad story: A family borrowed more than they could afford to pay for a home, or payments and interest rates were too high, the home had to be sold, often at a loss. This tragedy could often be avoided if the families would seek help from a home loan specialist, such as our Association.

We work with you to arrange for a loan that's as easy to handle as monthly rent.

**FIRST FEDERAL SAVINGS & LOAN ASSOCIATION**

204 Main Ranger, Texas MI 7-1611

**RCA VICTOR**

**NEW VISTA**

For the best deal — see us.

We have a complete stock — from portable T. V. to Stereo and Color T. V.

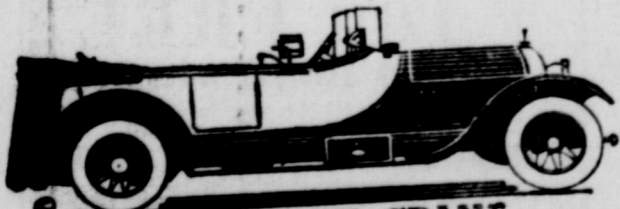
SPECIALS GALORE

**ROBERTSON TV SALES & SERVICE**

100 W. Commerce MA 9-1625

"WE SERVICE WHAT WE SELL AND ALL OTHER MAKES"

**ANY MAKE - ANY MODEL!**



1916 SIMPLEX-CRANE

Yesterday's Service Methods are Out-Dated too!

Service for all makes... minor tune-ups, complete brake service. Lubrication specialists (wheel pack, U-joint pack, etc.) Make our station your auto service center — whether you drive an old or a new automobile.

**ROY'S MOBIL SERVICE STATION**  
 302 W. Main MA 9-2220



MISS FREDDIA LAMB

**Miss Lamb, Paul Free Plan March Wedding**

Mr. and Mrs. Fred Lamb of 205 Blundell announce the engagement and approaching marriage of their daughter, Freddia, to Paul Dee Free, son of Mr. and Mrs. A. A. Free of Colorado City.

The couple will exchange

vows in the home of the bride-elect's grandparents, Mr. and Mrs. W. E. Calvert, Sunday, March 3.

Miss Lamb is a member of the senior class of Ranger High School and plans to continue her studies.

Mr. Free, a Ranger Junior College student for two years, attended McMurry College and is presently employed by Lummas Drilling Company, here.

Miss Kathy Lamb will be her sister's only attendant as maid of honor.

Attending the groom as best man, will be Don Ray Free, his brother. The couple plan to make their home in Ranger.

**GAS-TOONS**



"He thinks it's a SLOW LEAK Obie, I'm waitin' to see!"

We like to see you around... but we won't keep you waiting for service!

**OBIE'S HUMBLE SERVICE STATION**  
 802 W. Main  
 MA 9-8866

**HOLY TRINITY EPISCOPAL CHURCH**

710 S. Seaman  
 Rev. William Ralph Woods  
 Sunday  
 9:30 a.m. Church School  
 10:30 a.m. Morning Prayer  
 10:45 a.m. Holy Communion and Sermon  
 Wednesday  
 6:15 a.m. Morning Prayer  
 6:30 a.m. and 10:30 a.m. Holy Communion  
 5:30 p.m. Evening Prayer.

**RANGER DRIVE-IN**  
 HIGHWAY 80 EAST ON RANGER HILL MI 7-1149

Adults 50c — Children Under 11 FREE  
 Box Office Opens 6:45 p.m. — Show Time 7 p.m.  
**FRIDAY — SATURDAY — SUNDAY**  
 MARCH 1 — 2 — 3

**CARY DORIS GRANT DAY**



GIG YOUNG · AUDREY MEADOWS

**ANNOUNCING... NEW OWNERSHIP...**

FIESTA BOWL is now under new management and is destined to become the entertainment center of this area. Watch this space for announcement of new facilities and extra features. For instance, we're starting by offering

**NEW PRICES...**

Effective immediately —

40¢ a line during the day or 3 lines for \$1 until 6 p.m.

45¢ a line after 6 p.m.

NOT A SPECIAL—These are the new regular prices. You'll like bowling at the FIESTA. "It's always Fiesta time at the Fiesta Bowl".

**FIESTA BOWL**

Hwy. 80 East EASTLAND MA 9-2641

**CHURCH NEWS**

**CHRISTIAN SCIENCE**  
 Sunday  
 9:45 a.m.: Sunday School  
 11 a.m.: Sunday morning service.

**Wednesday**  
 7:30 p.m.: Mid-week Service  
**WEDNESDAY**  
 7:30 p.m.: Choir rehearsal  
 Wesleyan Guild every 1st & 3rd Wednesdays  
 Official Board Monday after 1st Tuesday  
 Five Commissions — every 1st Monday

**CHURCH OF CHRIST**  
 Corner of Plummer and Daugherty  
**SUNDAY**  
 9:30 a.m.—Bible Class For All Age Groups.  
 10:20 a.m.—Morning Worship  
 2:00 p.m.—Visitation of Shut-ins.  
 6:00 p.m.—Young Peoples' Meeting.  
 7:00 p.m.—Evening Worship.

**WEDNESDAY**  
 9:30 a.m. — Ladies' Bible Class.  
 7:00 p.m. — Prayer Meeting and Bible Study.

**CHURCH OF GOD**  
 Corner Lamar and Valley  
 Pastor  
 R. J. Joe Downs  
**SUNDAY**  
 10 a.m.: Sunday School  
 11 a.m.: Sermon  
 6:45 p.m. Youth Fellowship  
 7:30 p.m. — Sermon  
**WEDNESDAY**  
 7:30 p.m.: Prayer Service

**HARMONY BAPTIST CHURCH**  
 Morton Valley, Tex.  
 Rev. Leroy Marvel, Pastor  
**SUNDAY**  
 10 a.m. — Sunday School  
 11 a.m. — Morning Worship  
 7 p.m. — Evening Worship  
**WEDNESDAY**  
 7 p.m. — Prayer Meeting  
 Sunday School for all ages. Nursery provided.

**CHURCH OF THE NAZARENE**  
 Rev. Clarence Manners  
 613 W. Main  
 Sunday  
 10—Sunday School  
 11—Morning Worship  
 6:45 p.m.—N.V.P.S.  
 7 p.m.—Evening Services  
**Wednesday**  
 7 p.m.—Mid-week Prayer Service  
**FRIDAY**  
 Noon—Prayer and Fasting  
 3:15 p.m.—Children Hour

**PUBLIC AUCTION**  
**DRILLING RIGS**  
 Chance Drilling Co.  
 Houston, Texas  
 thurs. 10:00 a.m.  
**MAR. 7**  
 location: B. F. Walker's Sheldon Yard Hwy. 90  
 • UNIT 1220  
 • IDECO PR 1050  
 • IDECOM 10,000  
 • OILWELL 220P pumps  
 • 33 drill collars  
 • 40,000' drill pipe  
 • Misc. components  
 NO MINIMUM — NO RESERVATION  
 Small Business Administration  
 Mortgage Foreclosure  
 for brochure write:  
**NELSON**  
 AUCTION SERVICE  
 4484 Canyon Dr. • Amarillo, Texas  
 AMARILLO - DALLAS

**POE FLORAL**  
 • We're Not Too Big  
 • We're Not Too Small  
 • We're just the right size to give you the most personalized service in Eastland  
 • Creative arrangements of permanent flowers.  
 • Completely stocked at all times  
 When Its Flowers Say It With Ours  
 MA 9-1711 609 W. Main Eastland

**UNITED PENITENTIAL CHURCH**  
 708 N. Dixie  
 Rev. H. F. Wilkins, Pastor  
**SUNDAY**  
 10 a.m.: Sunday School  
 11 a.m.: Morning Worship  
 7:45 p.m.: Evening Service  
**WEDNESDAY**  
 7:30 p.m.: Young Peoples' Service

**FIRST CHRISTIAN CHURCH**  
 Corner Olive & Lamar  
**SUNDAY**  
 9:45 Church School  
 11:00 Morning Worship  
 7:00 Evening Vespers  
**WEDNESDAY**  
 5:00 Junior Choir  
 6:30 Adult Choir

**ST. FRANCIS CATHOLIC CHURCH**  
 Rev. Joseph L. Van Winkle, C.L.C.M.  
**SUNDAY MASS**  
 1st and 3rd Sunday at 9:30 a.m.  
 2nd, 4th and 5th Sunday at 11 a.m.  
 Every Tuesday Mass at 6:30 p.m.  
 Holy Days Mass at 7:15 a.m.

**FIRST PRESBYTERIAN CHURCH**  
 Rev. Eugene Surface, Pastor  
**Sunday**  
 10:00 a.m. - Church School  
 11:00 a.m. - Divine Worship  
 12 noon - Monthly meeting of the Church Session on the Sunday after the first Wednesday.  
**Tuesday**  
 9:30 a.m. - United Presbyterian Woman meet on the first and third Tuesdays of each month.

**ASSEMBLY OF GOD SUNDAY**  
 9:45 a.m.: Sunday School  
 11 a.m.: Morning Worship  
 6:45 p.m.: Christ Ambassadors  
 7:30 p.m.: Evening Service

**CALVARY BAPTIST**  
 Rev. H. L. Williams, Pastor  
 207 N. OAK ST.  
**SUNDAY**  
 10 a.m.—Sunday School  
 11 a.m.—morning Worship  
 7 p.m.—Prayer Service  
 7:30 p.m.—Evening Worship

**CARBON BAPTIST CHURCH**  
 Rev. Jimmy Turner, pastor  
**SUNDAY**  
 10 a.m.: Sunday School  
 11 a.m.: Morning Worship  
 6:30 p.m.: BTU  
 7:30 p.m.: Evening Worship  
**MONDAY**  
 2 p.m.: WMU  
**WEDNESDAY**  
 7 p.m.: Prayer Service

**CARBON METHODIST CHURCH**  
 James W. Waller, Pastor  
 Carbon  
 Sunday  
 Sunday School 10:00 AM  
 Morning Worship 1:00 AM

**Linda Sue Hughes Bride of Virgil Hitch**

Miss Linda Sue Hughes became the bride of Virgil Hitch Monday, Feb. 11, in the home of the groom's parents, Mr. and Mrs. Nelson Hitch, 607 S. W. 2nd, Andrews.

George Dumas, minister of the Church of Christ of Andrews, officiated the single ring ceremony.

The bride is the daughter of Mrs. Willie Maud Hughes, of Andrews, formerly of Eastland.

For her wedding, the bride chose a street-length semi-formal dress of white chiffon fashioned with a fitted bodice and rounded neckline. Her shoulder-length veil of illusion fell from a bandeau of orange blossoms. She wore a shoulder corsage of white carnations.

Miss Frances Thomas attended the bride as maid of honor. She wore a dress of pink crystaline.

This company has been in operation since 1942 selling policies to be primarily for burial purposes. We write for \$600 and our policies are paid in cash allows freedom in the selection of the Director of your choice. Ages from 1 month to 90 years. For further information come by to Hamner Funeral Home, 301 S. Lamar, P. O. Box 431 Dial MA1A 54

**Hamner Life Insurance Co**  
 Ben E. Hamner, President



**Everybody Talking About Dearborn**



Want to heat your home... at less cost... with greater efficiency? Then come in and let us tell you about Dearborn Area Heat!  
**Western Auto Associate**  
 110 So. Seaman

**Just Arrived At HARELIK'S Inc.**

**PATENTS**  
 are pending? *this Spring!*



SHOP FROM OUR BIG SELECTION OF SPRING BAGS JUST UNPACKED 68 NEW SPRING HATS



Read The Classifieds

### Arrivals

Mrs. Rodney Steph-  
view have an ous-  
of their second  
Kleat Stephen,  
Markham Hospital  
day, Feb.  
Mrs. Rodney Steph-  
view have an ous-  
of their second  
Kleat Stephen,  
Markham Hospital  
day, Feb.

### Class Feted

Mrs. W. T. Leslie hosted the Martha Dorcas Sunday School Class of the First Methodist Church Wednesday afternoon with a party in her home here.

### Personals

Guests in the home of Mr. and Mrs. James Pipkin over the weekend were their daughter and family, Mr. and Mrs. Don Owen and Stephen of El Paso and their son and wife, Mr. and Mrs. James W. Pipkin of Denton.

Mr. and Mrs. J. R. Jordan and A. J. Moffitt of Lubbock and Rufus Jordan of El Paso were guests of Mr. and Mrs. J. N. Jordan and Mr. and Mrs. B. W. Robertson over the week-end.

### FREE

Estimates On  
**RE-ROOFING**  
Cr Repair Your Old  
Roof.  
Residential and  
Commercial  
**Roofing Co.**  
Eastland  
Noble Squires  
Phone MA 9-2370

### TRESSES

50% renovating  
color and firmness.  
Mending. Made and  
by WESTERN  
S. CO. San Ange-  
MA 9-1342, East-  
address.

### FINE FABRICS

oolite  
for wool—cash-  
mores  
am at Home.  
y this at

### GROCERY

MA 9-2292

### Change of Location

New Office Hours  
Appointment only  
Eastland:  
Every other week  
Friday-Saturday morning  
MA 9-1376  
**ES. C. WHITTINGTON, M.D.**  
Eye, Ear, Nose, Throat

### HAMNER FUNERAL HOME

Ben E. Hamner, Owner  
ing Eastland County since 1924 with  
ce and funeral service. Our ambulances  
gen equipped and air conditioned.  
ough our nation-wide connections with  
eral directors, we can handle a funeral  
point in America. We offer this service  
that we can relieve the family of all  
incident to any death away from home.  
Dial MA 9-2611

### TUNE-UP

FOR SAFER-SMOOTHER DRIVING  
COMPLETE AUTO REPAIRS  
HOUR WRECKER SERVICE  
**ALLEN AUTO REPAIR**  
AT RUSHING MOTOR CO.  
215 SOUTH SEAMAN

### SATURDAY FEED SPECIALS

Per Ton  
..... Texas King 20% Cube ..... \$66.00  
..... 14% Creep Pellets ..... \$62.00  
..... No. 1 Feed Lot Pellets  
..... 100 Lbs. Ranch and Stock Salt

FREE ROPE WITH PURCHASE OF TON OR MORE  
**P. CLOUD & RIPPY BROS.**  
WOOL & MOHAIR AND FEED  
B. R. RIPPY RANGER

## 'South' Is Theme For Baptist Banquet

"Moonlight and Magolias" was the theme of a young people's sweetheart banquet held recently in the fellowship hall of the First Baptist Church here.

Terry Treadwell and Lois Ann Sims of the senior high Sunday school department were crowned king and queen in the southern setting after about a month's popular voting contest by the three departments participating. Miss Sims was presented a bouquet of red roses.

Run-up-runs in the contest were Gary Upchurch and Sue Brewer of the junior high department and Rudy Fambrough and Karen Taylor of the young people's department.

### Upward Spiral Of Crime Seen By State Agency

AUSTIN — Major crime in Texas continued its upward spiral in 1962, out-stripping the population increase as an average of one offense was committed every two and one-half minutes.

Col. Homer Garrison Jr., director of the Department of Public Safety, reported that crime jumped 6.6 per cent in 1962 over 1961, with the crime of auto theft showing the largest increase of 10.5 per cent.

Garrison said the 1962 figures represent an overall increase in crime in Texas of about 71 per cent since 1955.

"The crime rate per 100,000 population increased from 2,122.0 in 1961 to 2,261.5 in 1962, confirming once again the alarming trend that set in after World War II," he said.

The official 1962 crime report shows that murder was down 8.5 per cent, rape decreased 8.2 per cent, robbery dropped 2.1 per cent, while burglary increased 4.9 per cent, aggravated assault 6.4 per cent, theft 7.4 per cent, and auto theft 10.5 per cent.

In urban areas, there was an increase in major crime of 8.4 per cent, offset by a 3.9 per cent decline in rural areas.

By population groups, the greatest increase was 14.7 per cent in cities between 500,000 and 100,000, while the largest decrease was 15.5 per cent in counties with under five rural population per square mile.

Garrison said there was an 11.8 per cent increase in 1956, a 9.2 per cent increase in 1957, a 9.3 per cent increase in 1958, a 3.9 per cent increase in 1959, a 13.1 per cent increase in 1960, and a 2.2 per cent increase in 1961.

"The 1962 figures, according to our statistical services section, mean that on the average, there was one major crime every 2½ minutes, one murder every 9 hours, one rape every 7½ hours, one robbery every 3 hours, one burglary every 9½ minutes, one aggravated assault every 40½ minutes, and one auto theft every 32 minutes," Garrison said.

"Overall, there were an estimated 216,650 offenses in 1962, which compares with only 126,791 in 1955."

James Reed was in charge of the king and sweetheart coronation and election.

Decorations carried out a southern plantation effect created on a stage, which faced the guests, by means of a painted plantation background mural with pillars, wrought-iron furniture, a "magnolia tree", potted flowers and plants and colonial lights, all on imitation grass in the foreground.

Tables were laid with "life-like" magnolias, handmade colonial "ladies and gents" and candles. Lighting was achieved by table candles and stage lights.

Programs appeared hand-painted in black lacy colonial silhouettes on white glossy paper.

Miss Candy Temple, daughter of Mr. and Mrs. T. M. Temple, returned from a week's visit with her grandparents, Mr. and Mrs. Burt Hod, of Fort Worth Saturday with Mrs. Temple's sister and family, Mr. and Mrs. Bill Henson and their daughter, Sheree, who all spent the week-end with the Temples.

### Mrs. Elliott Presides At Guild Meeting

The Wesleyan Service Guild met Wednesday evening with Mrs. Carl Elliott presiding.

Mrs. Hubert Jones presented the devotional, "The Outline of Prayer", followed with sentence prayers by those present.

Miss Loretta Morris gave a discussion on "Wandering Thoughts", stating that our prayers sometime consist of distractions and wanderings.

A study on "Dimensions of Prayer", using the outline and question and answer method was directed by Mrs. Charles Marshall.

Subject for the evening, "To Pray is to Change", brought out that to be effective, prayer should consist of repentance, making amends to the one sinned against, forgiving the one who has transgressed against us, believing that God does forgive sin completely, accepting this, and going on from there. The meeting was closed with the

circle of hands in prayer. The next meeting will be held March 6 when the subject will be "The Power of Prayer."

Attending the meeting were Mrs. Taylor Smith, Hubert Jones, Joe Stephen, Floyd Robertson, Harold Durham, Charles Marshall, E. J. Turner, Ruth Poe Herring, Carl Elliott, Miss Loretta Morris and a guest, Mrs. Frank Crowell.

**INGROWN NAIL**  
HURTING YOU?  
Immediate Relief!  
A few drops of OUYGRO® bring instant relief from tormenting pain of ingrown nail. OUYGRO® loosens the skin underneath the nail, allows the nail to be cut and then it grows further pain and discomfort. OUYGRO® is available at all drug counters.

NOW THRU SAT.  
Thurs., Fri., Sat. 9:15-7:15  
9:15  
Saturday Open 12:45 Shows  
1:15, 3:15, 7:15, 9:15

**MAJESTIC**

WILLIAM HOLDEN  
TREVOR HOWARD  
CAPUCINE

THE LION

Samuel G. Engel production  
CinemaScope  
COLOR BY DE LUXE

## The Smart Shop of Ranger

# OPEN HOUSE

"Especially for You"

## ALL DAY SATURDAY, MARCH 2

We extend to you a cordial invitation to visit THE SMART SHOP at 219 MAIN STREET, during our OPEN HOUSE celebration.

We have completely remodeled our new building and have added many new lines of merchandise.

### REFRESHMENTS WILL BE SERVED

from 10 a.m. to 12 noon and 2 p.m. to 4 p.m.

## COME IN AND REGISTER FOR FREE DOOR PRIZES

To be given away Saturday, March 2. No Purchase necessary. You need not be present to win. Following is a list of prizes to be given by many of our wholesalers.

- |                                  |                                |
|----------------------------------|--------------------------------|
| Eddie Form Co.                   | 1 - Brassiere                  |
| Grandoe Glove Company            | 1 - Pr. Gloves                 |
| Exquisite Form Company           | 3 - Brassieres                 |
| Collins of Texas                 | 1 - Purse                      |
| Phil Altbaum, Inc.               | 1 - Dress                      |
| Spivey-Baummann Fur Co.          | 1 - White Fox Capelette        |
| The H. W. Gossard Company        | 1 - Garment                    |
| The Formfit Company              | 1 - Girdle                     |
| Marja Brassiere Company          | 1 - Brassiere                  |
| Mitchell Gould Co.               | 1 - Brassiere                  |
| Miss Elaine Lingerie Co.         | Mug and Jar                    |
| Nelly Don, Inc.                  | Pajama and Robe Set            |
| Texas Paper Company              | 1 - Dress                      |
| Henson-Kickernick Inc.           | Picnic Assortment              |
| Parkland of Dallas               | 1 - Slip                       |
| Jo Junior of Dallas              | 1 - Dress                      |
| Huffmann Knitting Mills          | 1 - Dress                      |
| J. M. Rubin & Sons               | 3 - Pr. Hose                   |
| The Samuel Gold Company          | 1 - Pr. Gloves                 |
| White Stag Mfg. Co.              | 1 - Piece of Jewelry           |
| Phillis Ann Novelty Co.          | 1 - Southampton Pant & Blouse  |
| Cadillac Separates of California | 3 - Scarves & Flowers to Match |
| Nicholas Reich Bags              | 1 - Sweater                    |
| Texas Hosiery Company            | 1 - Purse                      |
| Candy Jones of California        | 6 - Pr. Hose                   |
| Sue-Ann of Dallas                | 1 - Dress                      |
| Robert Original, Inc.            | 1 - Blouse                     |
|                                  | 1 - Necklace and Earring Set   |

## THE SMART SHOP

"ESPECIALLY FOR YOU"

219 Main St.

RANGER, TEXAS

Mrs. Audrey Vooker

### First Aid Course For Instructors Planned In Area

An instructor course in first aid will be given from 7 to 10 p. m. Monday through Friday.

Feb. 23 — March 1, at the city hall in Prichard, according to Mrs. Carl Lamb, Eastland County Red Cross administrator.

Hilton H. Gilliam of Brownwood, First Aid and Water Safety representative for Red Cross in this area, will conduct the classes. All eligible persons have been urged to attend the classes due to the great need for more instructors in our county, Mrs. Lamb stated.

Eligibility is based upon all adults who hold valid advanced first aid certificates. At the end of the course, those attending who pass the tests, will be given authorized First Aid Instructor certificates by the American Red Cross, it was announced.

**Insurance and Real Estate**

**D. L. KINNAIRD**

Life - Fire - Auto - Farm  
Policy - Bonds

42 years in the Insurance Business in Eastland

Read the Classified Ads

### GOLDEN AGE NURSING HOME

104 East 4th Street Cisco Phone MA 2-3458  
24 Hour Nursing Care, Good Meals - Special Diets  
State Licensed and Approved For Welfare Patients  
Jerry Stephens Administrator Mrs. Ora M. Forgy, L. V. N. Director of Nurses

### Any Way You Look At It -

... there seems to be no way of escaping the on-rushing tide of casualties and loss of properties connected with moving vehicles. It was the highest in history last year, and with an expected increase in transportation facilities each year we can expect more of the same. All of which leads us up to the suggestion that insurance won't save your life or keep your car out of the garage, but it will help pay the bills. Most people are adequately insured. Are you?

**EARL BENDER & COMPANY**  
Eastland, (Insurance since 1924) Texas

### NOW SEE WHAT'S NEW AT YOUR CHEVROLET DEALER'S

#### Four kinds of sport—all super

Want to make spring come in a hurry? Just pick a new car with whatever you hanker for in performance and sporty trimmings—like bucket seats, 4-speed shift, lots of horses—and start driving it now. Chevy's got a lot of sport in four entirely different kinds of cars.

First, the Jet-smooth Impala Super Sport with your choice of 7 different engines that range up to 425 hp and that include the popular Turbo-Fire 409\* with 340 hp for the ultimate in smooth, responsive driving in modern traffic. Optional equipment, including Comfortilt steering wheel\* that adjusts to your convenience, makes it as super a sport as you'd like.

There's the Chevy II Nova, also available in an SS version. Special instrument cluster. Front buckets. All-vinyl trim. Distinctive SS identification. Fourteen-inch wheels and tires\* with full wheel disks. Three-speed shift or Powerglide\* with floor-mounted shift console.

Or the Corvair Monza Spyder with complete instrumentation, special identification, and an air-cooled Turbocharged Six.

And for a real wallop, see the stunning Corvette Sting Ray, winner of the "Car Life" 1963 Award for Engineering Excellence.

All told, four beautiful convertibles, four handsome coupes. You'll get a four-barrel kick just looking them over—and a whole lot more fun out of driving one!

\*Optional at extra cost.



Top—Corvette Sting Ray Sport Coupe and Corvair Monza Spyder Club Coupe. Below—Left, Chevrolet Impala SS Convertible; right, Chevy II Nova 400 SS Convertible. (All four available in both convertible and coupe models. Super Sport and Spyder equipment optional at extra cost.)

See four entirely different kinds of cars at your Chevrolet dealer's Showroom

**FULLEN MOTOR COMPANY INC.**  
305 E. MAIN EASTLAND PHONE MA 9-2676



MRS. JOHN B. RUSH

### Miss Myers Becomes Bride of Dr. John Rush

Miss Brenda Myers of New York City, became the bride of Dr. John B. Rush, Saturday, February 23 at 10:00 a. m. at St. Stephens Episcopal Chapel in Seattle, Washington.

The bride is a graduate of St. Luke's Hospital School of Nursing and attended Columbia University. She is presently on the nursing staff of King County Hospital in Seattle.

Dr. Rush is the son of Mr. and Mrs. G. B. Rush of Ranger. He is a graduate of Ranger

High School, Baylor University, Waco, and Baylor College of Medicine, Houston.

The couple will be at home in Seattle until July 31, when Dr. Rush will complete his internship at King County Hospital.

### Ladies' Meet

The Ladies Luncheon Club of the Lone Cedar Country Club will meet on March, Friday, at 1 p. m. All members are invited to attend.

(Read the Classifieds)

**REMEMBER This Number MA 9-1101**



Betty's Flower Shop

200 N. Green Eastland

COMPLETE SELECTIONS



**SAVE MONEY**  
Have Your Smooth Tires RETREADED  
**SPECIAL 7.95**

Any Size Passenger Tire  
12 MONTH GUARANTEE  
**Jim Horton Tire Service**  
East Main Eastland

### Undergarten Pupils Honored With Party

Miss W. E. Lee entertained pupils of the Green K. League with a Valentine party during the month of February.

She was assisted by her daughter, Vicki Kay, and son, Eddie, in decorating miniature cakes in the appropriate theme.

Party favors of Valentine candy and napkins were presented each child during the refreshment period.

Mrs. Eddie Roy Grisham, mother of Roy Don Grisham, arranged for colored pictures to be taken during the party.

Lisa Kaye Johnston, four, a part time student, returned to California and Sydney Barton moved with her family to Fort Worth during the month.

Mrs. A. E. Cushman presented the children with bluebonnets to plant.

Children made a large poster to commemorate several events in February, Valentines Day, Lincoln's Birthday and Washington's Birthday. The poster, which is on display at the Eastland Public Library, contains hearts, a log cabin, Lincoln's picture, Washington's

picture, a hatchet, cherries, postage stamps and a picture of the capitol.

Marilyn Pierson served as leader for the band and Dottie Bulgerin was drummer.

Katherine Watson served as able captain for the older group while Curtis Bulgerin was captain for the younger group.

Pandy Collins lead in the "March of Alliance and Non-Resistance" and Mrs. Harrison led in the singing of "American" Nursery rhymes were led by Denna Lemley and Emily Perkins was in charge of such activities.

Parents interested in a roll-up their children in the kindergarten are reminded to do so now and are also urged to send this article for their child's scrapbook.

### Mrs. O. M. White Hosts Meeting Of Pioneer Club

The Pioneer Club of Eastland met Thursday, Feb. 21, in the home of Mrs. O. M. White, 507 S. Walnut, with Mrs. T. E. Castleberry and Mrs. Tonsie Johnson as co-hostesses.

The George Washington's Birthday motif was noted throughout the home. The birthday cake was of white coconut accented with red cherries.

Mrs. Florine Martin, who had been unable to attend previous meetings due to illness, gave a reading, "Rules of the Game."

Other readings given were the following: "How To Be Cheerful" by Mrs. Minnie Williams; "The Prayer of Growing Old" by Mrs. Josie Jones and "The Nigger and the Watermelon" by Mrs. Josie K. Nix.

February birthdays were noted for Mrs. Reva Horn and a guest, Mrs. Grace Funk.

Mrs. Ina May Hill and Mrs. Theo Davis were welcomed as new members of the club.

Members and guests attending the meeting are as follows: Mrs. Ina Sikes and Mrs. Grace Funk and Mrs. Theo Davis, Tonsie Johnson, Alma Castleberry, Josie Jones, Sallie Garrett, Florine Martin, Minnie Williams, Fanny Lockhart, Ina May Hill, Susie Hearn, Mattie Watson, Winnie Bassett, Amanda Morris, Josie K. Nix and the hostesses, Mrs. White.

The next meeting will be held at the home of Mrs. Reva Horn with Mrs. Millie Drake as co-hostesses.

### Mr. and Mrs. Sam Beam III Give Sacred Music Program

The Eastland Baptist Church presented Mr. and Mrs. Sam Beam III a sacred music program Wednesday night, Feb. 27, in the First Baptist Church.

Mrs. Varge Daniel, president, presided and omitting all business matter, introduced Mrs. T. E. Richardson, program leader.

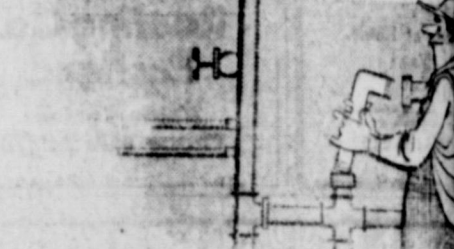
After welcoming members and guests, Mrs. Richardson presented Mr. and Mrs. Beam whose program was "Church Music Through the Ages 1600-1962".

Selections were presented from the following periods: Baroque Period, 1600-1750: "Fugue in C Major", Purcell; "My Jesus Is Lusting Joy", Buxtehude; and "Comfort Ye My People", Handel.

Classical Period, 1750-1820: "And God Created Man" and "In Native Worth and Honor God", Haydn.

Romantic Period, 1820-

### MODERN Your PLUMBING NOW and SAVE



### Get A Plumbing Check-up

Don't wait for plumbing problems to develop. Let us inspect pipes and fixtures now! There's no charge.



HEATING — AIR CONDITIONING  
114 NORTH SEAMAN ST. — EASTLAND

Read The Classifieds

### ANNOUNCING CISCO

### TRANSFER & STORAGE Now Has an Office In Eastland

LOCATED AT 208 W. COMMERCE ST.  
PH. MA 9-2044

### COMPLETE MOVING & STORAGE SERVICE

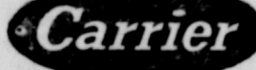
AGENT DEAN VAN LINES  
"WORLD-WIDE MOVING"

BONDED — INSURED

Local And Long-Distant Moving.  
In Eastland County Since 1921

### HOUSEWORK GET YOU DOWN?

Read the Carrier booklet on residential air conditioning in the March issue of Reader's Digest.



SMITH PLUMBING  
114 N. Seaman MA 9-2422

12

Billfold - Size

Black & White  
Portraits

\$4.50

Wednesday, Feb. 27  
thru  
Friday, March 1

YOUR PORTRAIT, WEDDING

COMMERCIAL PHOTOGRAPHER

A&C STUDIO

Eastland  
Eastside of Square  
Ph. MA 9-2616