

THE NEW CAR CAPITAL

NO. 75

EASTLAND, TEXAS, SUNDAY, NOVEMBER 24, 1963

PRICE 10c

## Strawn Services Held For Miss Mellie Naylor

Funeral services for Miss Mellie Melissa Naylor, 69, were held at 3 p. m. Friday, November 15, in the First Baptist Church of Strawn with the pastor, Rev. Tommy Knotts officiating. Burial was in the Mt. Marion Cemetery in Strawn.

Miss Naylor died November 13th in the Eastland Memorial Hospital. She was born February 4, 1894 in Haskell, Texas.

Survivors are four brothers, Holt Naylor of Abilene, Sam of Strawn, Bob of Carlsbad, New Mexico, and Leonard of Baton Rouge, Louisiana; and five sisters, Susie Naylor of Eastland, Mrs. S. N. Stuart, Lucy Naylor, and Mrs. Ruth Wheeler all of Strawn, and Mrs. Alice Chrisman of Waco.

## Hussey Trial Cost \$2,086 In Palo Pinto

The Florence Hussey murder trial held in Palo Pinto County in October cost Eastland County \$2,086.74.

This county received bill from Palo Pinto County this week for the expenses of the week-long trial.

Breakdown of expenses is as follows:

Twenty-seven jurors at \$4, \$108; 18 jurors at \$8, \$144; 51 jurors at \$12, \$612; 12 jurors at \$24, \$288; extra help for the Palo Pinto District Clerk, \$70; meals for jurors, \$418.09; Lodging, \$43.45; and Palo Pinto court reporter, \$403.20.

## Santa Letters Ready For Tots

This is a very special announcement to all parents. Santa Clause has written a selection of beautiful letters that you may send to your child.

To get one of these letters, just go into Eastland National Bank and choose a letter and matching envelope. Address and stamp the envelope and mail in Santa's special mail box in our lobby. Your youngster will be delighted, for the letter will be returned to them with the famous Santa Claus, Indiana postmark.

Just that Santa Claus postmark alone will thrill the children and when they read the letter and see Santa's signature . . . well, it's sure to be a thrill they will never forget.

Remember, all you have to do is visit Eastland National and pick up your letter.

## Dr. John Foster Guest Speaker at 4-H Club Meeting

The Eastland Community 4-H Club held its regular meeting Tuesday night at the American Legion Hall with Sharon Harbin, president, presiding.

Dr. John Foster, veterinarian from Ranger, presented a very interesting program on "Animal Health and the Care of Pets."

Refreshments were served to the 30 members and guests attending.

### TO CLOSE MONDAY

The Southern Television Systems, Inc., reported Saturday that their offices in Cisco, Eastland and Ranger would be closed Monday in memory of the late President Kennedy. Manager Raymond Thackerson said they would be open on Tuesday for business as usual.

For AUTO LOANS see

Eastland National Bank  
"The Old Bank"  
EASTLAND, TEXAS



**SILENT TRIBUTE** — Tragically symbolic of this, one of the darkest days in the history of Texas, both the United States and the Texas flags wave at half mast following the shocking assassination of President Kennedy in Dallas Friday.

## Tragic Death Of President Mourned By Entire Nation

The tragic death Friday of President John F. Kennedy brought expressions of great sorrow from Eastland County as well as Texas, the nation and the world.

The President was struck by a rifle bullet in the head while riding in a Dallas parade from the airport to the Merchandise Market building where he was to speak. He died in a Dallas hospital without ever regaining consciousness. His wife was riding with him.

Governor John Connally of Texas, riding in the same car, had a head wound and a wound in the hand. His condition was reported to be serious.

Reaction from area residents included these comments:

Calvin Brown of Ranger, county Democratic chairman — "It was a black day for Texas. The most regrettable thing that has ever occurred in our state. I feel that Lyndon Johnson is a capable man and will carry on for the remaining term of office vacated by this unfortunate act."

Dr. S. W. Reynolds, superintendent of Cisco District of the Methodist Church — "I am too shocked to speak. My prayers are certainly for the Kennedy family and for our nation."

Don Pierson, mayor of Eastland — "The tragedy will be long remembered in the eyes of the world. American loving citizens throughout this country mourn the death of President Kennedy and the wounding of Governor John Connally. Too often, pure American patriotism is described as being 'out-dated' but it seems a fitting time for all of us to pledge ourselves anew to be more loyal and more vocal in singing the praises of this great America."

John H. Webb, mayor of Cisco — "This is a real blow to the entire civilized world. It was a regrettable incident . . . a sad day for the nation and especially Texas."

Crigger Paschall of Cisco, 17th district commander, Veterans of World War I — "Words cannot express the feeling of deep sorrow that is in my heart."

Winston Heidenheimer of Cisco, Legion Post commander — "The shock of the terrible thing leaves me with a heavy heart. Mr. Kennedy served us well as a citizen, a military man, and as an elected official. Perhaps his family will be able to find a small measure of comfort in this knowledge."

"We are deeply shocked at the assassination of our President," Judge Cecil Collings, of the 11th Court of Civil Appeals in Eastland, said. Chief Justice Clyde Grissom was out of town.

Judge T. M. Collie of the 91st District Court, had this to say:

"All Texas is shocked and grieved at the tragic news of the dastardly attack on our President, and of his untimely death. That such a deed could have been perpetrated by a Texan is unthinkable, and it is to be hoped that the person committing the act is not a Texan."

"Our deepest sympathy and prayers are with Mrs. Kennedy and the other members of the family."

"Our deepest sympathy is extended to the family of the Secret Service agent who lost his life in defense of the President."

(Continued on Page Six)

## 20 Indictments Are Returned By District Court Grand Jury

A 91st District Court Grand Jury recessed Wednesday after eight days of deliberation, handing down 20 indictments, 20 no-bills and passing 18 cases pending further information.

Among the charges were at least four which are believed to name Cisco residents. Capias are now being delivered and names are being withheld pending completed delivery of the warrants.

However, it was believed that Chester E. Couch who has been charged with a assault with intent to murder in connection with the shooting of Cisco Police Chief C. S. Parkinson, has been so indicted.

An indictment for murder with malice presumably names the Ranger woman who fatally shot her husband last month and is so charged.

## Eastland City Offices To Close

The City of Eastland will close its offices on Monday, Nov. 25, in observance of the national day of mourning in the passing of President Kennedy, Mayor Don Pierson announced Saturday.

All federal offices have been ordered to close Monday by directive from Washington.

President James Smith of the Chamber of Commerce urged that businesses close Monday in keeping with the national day of mourning.

## Funeral Services Held Monday For T. L. Johnson

Funeral services for Tobe Lee Johnson, 88, of Gorman, were held at 2 p. m. Monday, in the Desdemona Church of Christ with burial in the Howard Cemetery under the direction of Higginbotham Funeral Home of Gorman.

He was a retired farmer of Desdemona and had been a resident in Gorman nursing homes for five years.

Survivors are his wife, Mrs. Lydia Johnson; one son, Doyle of Desdemona; three daughters, Mrs. R. H. Crawford of Snyder, Mrs. Gladys Pigg of Oregon and Mrs. Robert Bell of Fort Worth, 11 grandchildren and 12 great-grandchildren.

## Eastland Teams Lose Opener

The Eastland boys and girls basketball teams will clash with the Cisco boys and girls teams at 7 p. m. Tuesday at Cisco.

Comanche won a double basketball decision over Eastland in the opening game of the season Thursday night in Eastland. They defeated the boys A team 52-38 and the girls A team 66-37.

Marsha Treadwell was high scorer for the Eastland girls with 20 points which she scored in the first part of the game. Joan Coan slipped through 24 of Comanche's counters and Byrd scored 21 points.

Mike Fletcher popped in 27 points for Comanche in the boys' encounter, while Terry Treadwell was high scorer with 21 points for Eastland.

## Frances Walker Is Treasurer Of Sorority Club

Frances Gerry Walker of Gorman has been elected treasurer for Alpha Lambda Sigma, library service honor society at North Texas State University.

Miss Walker, daughter of Mr. and Mrs. James Walker of Gorman, is a graduate student in library science at NTSU.

### TO HELP NEEDY AT HOME

## H. T. Wilson, Directors Lead Local United Christmas Charities

Under a slogan of "U. C. C. Cares," the United Christmas Charities is limbering itself and flexing for the task of seeing that every needy man, woman and child in Eastland has a joyous Christmas.

Eastland people are known for their benevolence and their readiness to help others less fortunate. The purpose of the United Christmas Charities is to coordinate — to see that all who have a need, have a share, without duplication.

Of course, it's non-profit, and its working is simple. Without a cents' cost for administration, every thing that is given is distributed right here in Eastland.

The UCC isn't new. It's worked quietly for years, bringing tears of happiness to faces, young and old, at Christmas time, by sharing the gifts of many with those who otherwise would have had no cheer.

This year the United

Christmas Charities is broadening its base idea of "It's more blessed to give than receive", by making it possible for everyone in town to participate in the unselfish charity. The "helpers" have been faithful during the years of quiet operation, and now it's going to be an all-Eastland Christmas program.

A board of directors has been named and H. T. Wilson elected to serve as board chairman. Morris Keasler, the man who has guided the early gifting for a long time, was named coordinator and Porter Wood is assistant coordinator.

Directors are Earl Bender, J. M. Cooper, Cecil Collings, Johnson Smith, Porter Woods, F. Collins, Earl Lewis, K. D. Butler, L. A. Bennett, J. F. Gregory, Bernard Hanna, Harold Courtney, Marlin Jackson, H. V. O'Brien, Wilson and Mrs. Marene Johnson.

The board voted Keasler a rousing vote of thanks for his guiding hand in the charity program, during the meeting last Tuesday evening.

Patterned after Fort Worth's Goodfellow program, each contributor will be listed in this newspaper (unless the donor prefers anonymity).

A contributor (either individual, church, civic organization or firm) may request that its gift be acknowledged by name to help a specific family or families or merely give to the general fund to be used to help all the families on the United Christmas Charities list of needy people.

The board approved the following by-laws at their recent meeting:

"This organization will be known as the 'United Christmas Charities.' United because the board of directors will consist of at least two members of the larger churches in Eastland and one member from most of the smaller churches. Christmas because it will function only at Christmas time."

"The purpose of the organization is to distribute Christmas packages or other help to deserving and needy families or individuals."

"The organization shall be governed by a Board of Directors. The members of the Board are elected for life but will be replaced if they move away, become ill or for inactivity."

"The replacement of any board members will be made at the first meeting of each year."

"A coordinator and assistant coordinator shall be elected to be in charge of each Christmas charitable program or operation and may be changed any time the board meets by election."

"A screening committee shall be appointed which will meet at least twice in the month of December to consider suggested recipients and determine what families and individuals should be helped."

"The Board of Directors will meet at least once each year after the first of October and may be called into session another time at the will of the coordinator or of the Board."

"Every dollar contributed to the organization will be spent for charity and the expense of operation will be paid by the Board."

"An official receipt will be given to every donor of \$1.00 or more and a complete permanent record will be kept of all donations and expenditures. This information will be furnished to each board member by February 1."

## Lakeside Club To Sponsor Dance

The Lakeside Country Club will sponsor a dance Saturday, November 23, from 8 p. m. 'til 12.

Music will be furnished by Mack McGuire and the Texas Rolling Stones. There will be no cover charge and the public is invited to attend.



**4-H REC WORKSHOP** — Miss Lucille Moore, recreation specialist, is conducting a recreation workshop for all 4-H'ers and leaders, teaching many types of games including singing and folk games. Approximately 50 attended the first workshop meeting.

### 'CALL THE CHAMBER'

## 'Let the Buyer Beware'

Quite a few Eastland businessmen and citizens are unhappy with a recent "coupon book" selling campaign conducted in Eastland, it was reported at the Chamber of Commerce Board of Directors meeting Thursday at noon.

President James Smith explained that the chamber of commerce is being blamed by many for permitting the campaign to be carried out here. "Actually, the chamber of commerce had nothing to do with it," he said. Businessmen sometime believe, Smith said, that such programs are endorsed by the chamber simply because the salesmen tell them that the program is.

"This isn't the case at all," he said. "The chamber of commerce will gladly investigate salesmen and sales program and then be happy to make recommendations to local businessmen either for participation or not participating. Merchants would be wise to check with the chamber before subscribing to any such campaigns."

The recent program consisted of coupon books being "given for \$4.95" for correct-ly answering a simple, telephoned question. Coupons in the book were supposed to be good for merchandise and/or services, donated by local merchants who had been lead to believe that there would only be four books sold a day, it is reported.

Reports are that as many as 40 to 60 books were sold a day, resulting in a financial loss to the participating merchants. So both the individual who bought the book for \$4.95 and the merchants suffered losses.

Eastlanders are welcome at all times, Smith said, to check with the chamber of commerce before participating in such campaigns.

Henry Pullman, chairman of the chamber's membership committee announced that a concerted drive will begin on December 1. James Reid Charles Freyschlag and Bill Frasier are committeemen.

Bob Perkins, chairman of the chamber's Christmas promotion committee, said that plans are progressing and that announcements of plans will be made soon.

## Mr. Brooks Dies At Cisco Home; Services Friday

Vance Courtney Brooks, 56, died of an apparent heart attack at 3:30 p. m. Wednesday at his home, 509 West 4th Street. A resident of Cisco for the past two and one-half years, he came to Cisco from Laurel, Mississippi.

Born in Moran July 6, 1906, Mr. Brooks had been in ill health for the past six years. He was a retired oil field worker, a veteran of World War II and a Baptist.

Funeral services for Mr. Brooks, who was married to Susie Lorene Menton on July 13, 1963, in Overton, were held at 2 p. m. Friday in the Rust Funeral Chapel. The Rev. Mart Agnew will officiate, assisted by Rev. Jesse Casle, pastor of the First Baptist Church. Burial will be in the Moran Cemetery.

Survivors are Mrs. Brooks; one daughter, Mrs. Charles L. Harris of Eastland; two sisters, Mrs. C. A. Edward, Moran and Mrs. Rayburn Brown, Brownwood; and one brother, W. O. Brooks of Arp.

Pallbearers were named as follows: Mike Menton, Fred Menton, I. B. Menton, Virgil Tyle and H. B. Smith.

## October Savings Bond Sales Total \$46,731

October Savings Bond sales in Eastland County totaled \$46,731. This announcement was made recently by Guy Peyton Parker, chairman of the Eastland County Savings Bonds Committee.

Total sales in this county during the first 10 months of 1963 were \$483,117 which represented 102.8 per cent of the yearly sales goal.

"According to information received from the Treasury Department, 1963 Bond sales are hitting new peacetime highs. During the first 10 months of the year Bond sales nationally have increased 11 percent over the same period in 1962. While sales have shown a fine increase, it is also noted that Bond redemptions have decreased 2.7 percent during the same period," chairman Parker reported.



# Read and Use the Want Ads!

CALL MA 9-1707

**ANNOUNCEMENTS**

**MASONIC LODGE NO. 467**

Meets second Thursday of each month at 7:30 p. m. In the Masonic Hall. Call Joe W. Anderson, MA 9-2331, for information or L. E. Huckaby, Sec., 9-1391, for information.

**EASTLAND ROTARY CLUB**

Meets each Monday noon at White Elephant Restaurant in Eastland. Gordon Goldston, president.

**SPECIAL NOTICE**

**ATTENTION HUNTERS:** Buck day hunting in heart of deer country \$15.00 per gun per day beginning November 23. Plenty of deer and turkey. Well equipped blinds, jeep and hunters cabins available. Woodpile Ranch, Bandera, Texas 512 SW 63370.

**NOTICE:** Position open for married couple to live and work with children. Must be white, unencumbered, 30 to 55 years of age, and have a high school education. Good salaries, comfortable living quarters, and rewarding work. Send your qualifications to Box C, this newspaper.

**AVON COSMETICS**

Need two ladies who are qualified to become Avon representatives in Eastland, to help take care of the Christmas business. For information write Mrs. Sidney Ellis, P. O. Box 2264, Abilene, Phone ORchard 2-6850.

**SPECIAL NOTICE:** Painting, carpenter work. All types home improvements and home repairs. No job too small. Call R. C. Turner "Home Services", MA 9-2226, 17 E. Foch.

**SPECIAL NOTICE —** The D. L. Houle's Shop invites you to visit Babyland while the stock is full. Gift items, Belgian linen hand - screened towels; Vera's scarves, hand - screened. Use lay-away.

**SPECIAL NOTICE —** Any type hay baled. Regular hay 30c. Peanut hay 25c. Have two new Holland balers. 24-hour service. Phone I. B. Walker, 2501, Olden, collect.

**NOTICE —** Call us for residential and commercial wiring. Also pole setting and line construction. Slatton Electric, 800 W. 10th, Cisco. Call HI-2-1965.

**HELP WANTED —** Eastland Steam Laundry. Phone MA-9-2613.

**NOTICE:** For repairs of all kinds of office machines, call the Eastland Telegram.

**NOTICE:** Volume buying enables us to pass saving on to our customers. Large selection of General Electric television and stereo. Come in for demonstration — today. Goodyear Service Store, Eastland.

**NOTICE:** Clean, high tread used tires. Going at \$3.00 and up. Stop by your Goodyear Service Store — today! 308 E. Main, Eastland.

**NOTICE —** Now's the time to select your Masterpiece Christmas Cards at our office. Come see the complete lines, from the budget series to the executive classics. Values and beauty with Masterpiece. Eastland Telegram.

**NOTICE:** Your Electrolux representative, A. J. Lindsey, Rt. 2, Ranger, Texas. Phone MI-7-1485.

**NOTICE OF SALE**  
Trustees of the Eastland Independent School District will accept bids for the purpose of selling one 1953 Model Chevrolet Pick-Up at the Business office in the high school until 12:00 Noon December 3, 1961. Vehicle may be inspected at the high school and bid forms may be secured at the Business Office. The Board reserves the right to reject any and all bids. Wendell T. Siebert, Superintendent, Eastland Ind. School District

**MERCHANDISE**

**FOR SALE:** Big fat young hens for sale. For eating or for laying. 50c each. Call MA 9-1918, Jeff Laughlin.

**FOR SALE:** Every family can own a GE home freezer. Upright models and chest type. Prices start at \$189.95. Use your credit at Goodyear Service Store. 308 E. Main, Eastland.

**FOR SALE:** Clean 1959 V-8 Ford pick-up. Good condition. One owner. 311 W. White. 78

**FOR SALE:** Office desk and TV antenna. Phone MAIn 9-2090.

**FOR SALE —** Insulated hunting boots, \$14.95; Insulated underwear, \$7.95 up; 30-30 shells, \$2.95 box; 30-06 shells, \$3.95; Hooded sweatshirts and all types gear, guns and ammo. Get ready now. We trade guns. Bruce Pipkin Sport Center.

**FOR SALE:** We have 10 new 1963 General Electric refrigerators in stock which must be sold before the 1964 models are introduced. Prices start at \$179.95. Come in and let's talk trade at your Goodyear Service Store, Eastland.

**FOR SALE:** Lost bright carpet colors — restore them with Blue Lustre. Rent electric shampooer \$1. Coat's Furniture and Carpet Co.

**FOR SALE:** Real nice T. V. antenna. All latest improvements. \$25. Call MAIn 9-1570 or MAIn 9-1550.

**FOR SALE:** Five room modern house. Garage. Barn. Three extra lots. \$2700. 1310 South Slay Street, phone MAIn 9-2450.

**FOR LEASE:** Fina Station, Highway 80 East 2 blocks from square. Call M. W. Lawless, Comanche, Texas, Phone 356-2043.

**FOR RENT:** Three bedroom cottage 503 S. High on top of park hill. Close to school. Newly painted inside and out. \$39.50. Call MAIn 9-1033 or MAIn 9-1417.

**FOR RENT:** Dandy two bedroom furnished cabins with kitchenettes. Ideal for weekends during winter. Good rates. Lynn's Lake Lodge, Lake Cisco. Phone HI 2-2064.

**FOR RENT:** 3 room furnished apartment. 608 W. Patterson. Phone MAIn 9-2096.

**FOR RENT —** Lovely furnished apartments — (or unfurnished and use your furniture) with all utilities paid and with maid service, from \$65 monthly complete. Comfortable private rooms with private tile baths, maid service, only \$39.50. Why pay taxes, upkeep, maintenance, gas, lights and water, when you can save money and live really comfortably with us? Plenty of nice people are already living with us and welcome you into our circle of friends. Call us today, MA 9-1716 — The Village Hotel. Tell your friends about us too.

**CARD OF THANKS**

We wish to thank everyone who helped in any way in the loss of our father. For the beautiful flowers, cards, food, the ones who sat up at the funeral home, the doctors and nurses at the rest home, and also for your prayers. May God's blessing be upon all of you. The Doyle Johnson family, R. H. Crawford, Jim Pegg, Ruth Bell

**REAL ESTATE**  
**FOR SALE:** 3-bedroom, den, dining room, 1 1/4 baths, central heating, car-port, city water, irrigation well. 1/2 acre, young bearing fruit trees, berries. Will consider 2-bedroom home in trade. See Jeff Woods, Olden.

**WALKER'S Dressing Plant**  
Custom Dressing  
Phone D. J. Walker  
Eastland MA 9-1192

**MATTRESSES**  
Save up to 50% renovating choice of color and firmness. Complete bedding. Made and guaranteed by WESTERN MATTRESS CO., San Angelo. Phone MA 9-1342 or MA 9-1304, Eastland and leave address.

**FOR SALE:** 1408 South Seaman, 3 bedroom, living room, dining room, bath, nice orchard, 240 foot lot paved and curbed, \$4,000. Call MA 9-2917

**FOR SALE:** or Trade for Real Estate — Our home and business at 901 and 903 Pershing St. See A. H. Powell at 901 Pershing St. in Ranger.

**FOR SALE:** Clean 1959 V-8 Ford pick-up. Good condition. One owner. 311 W. White. 78

**FOR SALE:** 3 bedroom brick home, 2 car garage, built in electric kitchen, 1 1/2 baths, fenced yard. Already in loan. Low equity. MAIn 9-1163.

**FOR SALE: OR TRADE:** Modern six unit motel with three bedroom residence. Located on U.S. Highway 80, Eastland, phone MAIn 9-1328.

**FOR SALE:** 160 acre farm located 8 miles northwest Gorman. J. C. Morris, 1108 London, Vernon, Texas, P. O. Box 227.

**HELP WANTED:** At once. Rawleigh dealer in E. Eastland Co. or Eastern. See Mrs. Mary Hester, Rt. 1, Rising Star or write Rawleigh, TXK 1020-3, Memphis, Tenn.

**HELP WANTED:** Latin Americans — pecan pickers and thrashers. Housing furnished. Apply Southwestern Nut Co., Gordon, Texas. Phone 2751.

**RENTALS**  
**FOR LEASE:** Fina Station, Highway 80 East 2 blocks from square. Call M. W. Lawless, Comanche, Texas, Phone 356-2043.

**FOR RENT:** Three bedroom cottage 503 S. High on top of park hill. Close to school. Newly painted inside and out. \$39.50. Call MAIn 9-1033 or MAIn 9-1417.

**FOR RENT:** Dandy two bedroom furnished cabins with kitchenettes. Ideal for weekends during winter. Good rates. Lynn's Lake Lodge, Lake Cisco. Phone HI 2-2064.

**FOR RENT:** 3 room furnished apartment. 608 W. Patterson. Phone MAIn 9-2096.

**See ahead with**  
**M. H. PERRY**  
107 W. Main MA 9-2275 MA 9-1095  
He sells **FAMILY PROTECTION** Let him show you how little it costs to see ahead — and be sure.  
**Southland Life**  
INSURANCE COMPANY  
Home Office • Southland Center • Dallas

**PERMANENTS**  
\$12 Lanolin Waves \$8.50  
\$10 Creme-Oil Waves \$7.50  
Other waves \$10 and up  
**Basham Beauty Bar**

**EASTLAND AUTO PARTS MACHINE SHOP**  
300 S. Seaman MAIn 9-2158  
FULLY - EQUIPPED  
**AUTOMOTIVE**  
VALVE GRINDING  
BRAKE DRUM TURNING  
HEAD SURFACING  
VALVE JOBS  
BLOCK BORING  
SLEEVE INSERTING  
VALVE SEATING  
COMPLETE LINE AUTOMOTIVE TRUCK TRACTOR PARTS  
ALWAYS IN STOCK  
**AUTO PARTS**  
300 S. Seaman MAIn 9-2158 EASTLAND

**WALKER'S Dressing Plant**  
Custom Dressing  
Phone D. J. Walker  
Eastland MA 9-1192

**MATTRESSES**  
Save up to 50% renovating choice of color and firmness. Complete bedding. Made and guaranteed by WESTERN MATTRESS CO., San Angelo. Phone MA 9-1342 or MA 9-1304, Eastland and leave address.

**RANCHES AND FARMS**

651 acres good grass 5 miles NW Ranger.  
391 2 miles N. Ranger.  
290 14 miles NW Ranger, nice home and improvements.

139 acres 4 miles N. Ranger. House and improvements.  
266 SW Gorman, house, 3 tanks, 75 acres bottom.

40 acres 13 peanut allotment near Carbon \$75.00 per acre.  
160 acres 7 miles N. Eastland, \$8500.00. Will G. I.

120 acres near Cottonwood, house and barn, plenty of water, \$72.50 per acre.  
826 acres near Nimrod. Goat fenced. \$65 acre.

627 acres SW Eastland, good cow country \$95.00 acre.  
657 below lake near Eastland.

144.2 acres, house, good land, N. Eastland. 20 acres; house.  
1685 acres near DeLeon, well fenced, plenty water, coastal bermuda.

1600 acres near Strawn, some production.  
168 acres; well fenced, N. Eastland.

202 acres below Comanche.  
193 acres 7 miles NE Goldthwaite \$125.00 per acre.  
320 acres 7 miles W. Cisco, \$85.00 per acre.

640 acres on Cisco-Moran road, \$80.00 per acre.  
4 acres with house and 12 acres with house, near M. V. 1 acre, 3 bedroom house, MV, \$5500.00.

House 38 acres E. Ranger, \$12,000.00.  
House. 12 acres in Carbon. 40 pecan trees.  
3 bedroom, 4 acres, in Gorman, \$4,000.

Approx. 500 acres, mostly bottom. 4 miles S. Eastland. 120 acres between Carbon and Gorman, peanut allotment, minerals. \$100 per acre.  
Sure Need G. I. listings  
For best results to buy or sale please contact:

**BUCK WHEAT RANCH AND FARM SERVICES**  
Phone MAIn 9-2131  
301 N. Seaman, Eastland  
**USED EQUIPMENT, M. L. TERRELL**

**Buy for Thanksgiving**  
Fresh Dressed Hen  
Walker Dressing Plant  
Phone MAIn 9-1192

**FREE**  
Estimates On **RE-ROOFING**  
Or Repair Your Old Roof.  
Residential and Commercial  
**Roofing Co. Eastland**  
Noble Squiers  
Phone MA 9-2370

**LAUNDRY PICKUP DELIVERY**  
SEND YOUR LAUNDRY TO US  
Take washday out of your services. So easy — so convenient — so inexpensive! home, use our professional

**CISCO Steam Laundry**  
Bill Roney, New Agent  
Phone MA 9-2122, Eastland

**COMPLETE**  
Car Care — Try Us

**OBIE'S HUMBLE SERVICE STATION**  
802 W. Main MA 9-8866

**Miss McCullough And Mr. Carter to Wed in December**

Mr. and Mrs. S. G. McCullough of Eastland are announcing the engagement and approaching marriage of their daughter, Barbara Ann McCullough, to Mickey Zane Carter, son of Mr. and Mrs. O. B. Carter of Lubbock.

The couple will be married at 7:30 p. m., December 27, in the First Methodist Church of Eastland.

The bride-elect is a graduate of Eastland High School and is a student at Texas Tech in Lubbock.

Her fiancé is a graduate of Monterey High School in Lubbock, and is an electrical engineering major at Texas Tech. He is a member of Sigma Chi Fraternity.

**FOR RENT** 3 bedroom house. 811 W. Valley. Call MAIn 9-1534.

**CARD OF THANKS**  
May I take this method to again say thanks to all my friends and neighbors, the nurses and all the hospital staff, to Drs. Bulgerin, Alexander for all they did for me during my last stay in the hospital. May God bless each and every one of you.

Mrs. Viola Guthrie.

**FOR TRADE**  
121 acres, 25 acres in cultivation, dark sandy loam, part net, part barb wire, well windmill, 5 room and bath, barns, double garage, 1/2 minerals, 4 1/2 miles of Hico Texas; gravel road, price \$13,000; would trade for house in Eastland of equal value or less.

**FLOYD OUTLAW Real Estate**  
1551 W. Washington Street Stephenville, Texas  
WO 5-5391 WO 5-5639

**THE STATE OF TEXAS**  
No. 1551  
To Any Sheriff or Any Constable within the State of Texas—Greeting:

Pauline Odom, Guardian, of the Estate of Russell Odom, a person of unsound mind, having filed in the County Court of Eastland County, Texas a Supplemental Final Account of the Condition of the Estate of said Russell Odom, a person of unsound mind, Numbered 1551 on the Probate Docket of said Court, together with an application to be discharged as Guardian and her sureties be discharged from further liability by reason of said guardianship.

**YOU ARE HEREBY COMMANDED,** That by publication of this Write one time, said publication to be not less than ten days before the return day hereof, in a newspaper printed in the County of Eastland, Texas, you give due notice to all persons interested in the said Estate that they are **CITIED TO APPEAR** on the 9th day of December A. D., 1963, before the said County Court, at the Court House in Eastland, Texas; to contest said account and application if they see proper to do so, by filing written answer and objections thereto at or before 10 o'clock A. M. of said day.

**HEREIN FAIL NOT,** but have you before said Court at the time aforesaid, this writ with your return thereon, showing how you have executed the same.

**WITNESS** my hand and official seal, at Eastland, Texas, this 21st day of November, 1963.

**JOHNSON SMITH,** Clerk, County Court, Eastland County, Texas.  
By Mary E. Nicholas, deputy.

**NOTICE:** Check these low prices: GE vacuum cleaner, \$8.88. Universal coffee maker, automatic, 16.95. GE portable radios, all transistors, 12.88; KM irons, 10.95. GE portable mixer, 13.95; (all colors); KM toasters, 9.95; electric blankets, 11.95; electric heaters, 10.95. See these specials and other great buys at Goodyear Service Store, Eastland. tf

**Insurance and Real Estate**  
**D. L. KINNAIRD**  
Life - Fire - Auto - Farm  
Polio - Bonds  
42 years in the Insurance Business in Eastland

**Homemakers**

The Homemakers Class of the First Baptist Church met at noon Tuesday in the home of Mrs. Ita Parrish for a monthly business meeting and covered dish luncheon. Mrs. H. T. Weaver and Mrs. Frances Zerial were co-hostesses.

Following the invocation by Mrs. L. L. Morgan, the group was served buffet style and then seated at various tables decorated with pyroantha berries and chrysanthemums.

After the meal, Mrs. Parks Poe, substituting for Mrs. T. L. Amis who was ill, gave a devotional with a Thanksgiving theme.

Mrs. Pat Crawford, president, presided over a short business session. Mrs. Viola Guthrie gave the closing prayer.

The following members and guests were present: Mmes. C. L. Lucas, A. W. Cartledge, Earl Stephens, T. L. Morgan, Esco Walter, C. O. Shelton, Marvin Hood, T. E. Richardson, Roy Young, Don Parker, Viola Guthrie, J. M. Mitchell, Parks Poe, Victor Cornelius, H. A. O'Brien, Ione Bounds and the hostesses.

**Mrs. Johnson Honored With Shower Event**

Mrs. Kenneth Johnson of Route 1, Eastland, was honored with pink and blue shower from 7 to 9 p.m. Monday in the home of Mrs. Orval Johnson. Co-hostesses were Mmes. Obie Duncan, Troy Cross, Cyrus Justice, Guy Lyerla, and Jeff Harbin.

The refreshment table was laid with lace over pink cloth and centered with a white styrofoam umbrella trimmed in pink and blue ribbon and net. Refreshments of pink fruit punch, assorted cookies, nuts and mints were served.

Approximately forty - five guests called and sent gifts.

**EASTLAND TELEGRAM**  
Eastland County Record established in 1931, August 31, 1951. Chronicle established 1887, established 1923. Entered as second class mail Post Office in Eastland, Texas under the Act of March 3, 1879.  
Published Semi Weekly — Thursdays and  
By Eastland County Newspapers, Inc.  
H. V. O'BRIEN, Editor  
One week by carrier in city  
One month by carrier in city  
One year by mail in county  
One year by mail in state  
One year by mail out of state  
**NOTICE TO PUBLIC —** Any erroneous reference the character, standing or reputation of any person or corporation which may appear in the columns of this newspaper will be gladly corrected upon being brought to the attention of the publishers.

**Clip-On Heat**  
**NEW**  
**Deodor**  
Hangs On Wall — Saves Floor Space  
Small in size, large in heating ability. Features Deodor's exclusive Cool Safety Cabinet and Forward Heat Flow. Economical to operate. Can be installed in minutes. Available in 10, 15, and 25 thousand BTU's  
**Free Delivery Free Installation From 19.95**  
**Coats FURNITURE**

**MOMMY! DADDY! LOOK**  
I got a letter from **SANTA CLAUS**  
Give your child the thrill of receiving a letter from Santa Claus.  
Letter and Envelope beautifully illustrated in full color.  
Come in... select from an assortment keyed to different age groups. We will forward it to the Santa Claus, Indiana post office for the authentic postmark.  
**THAT'S OUR GIFT TO YOU!**  
**Eastland National Bank**  
ON THE SQUARE  
MEMBER F.D.I.C.

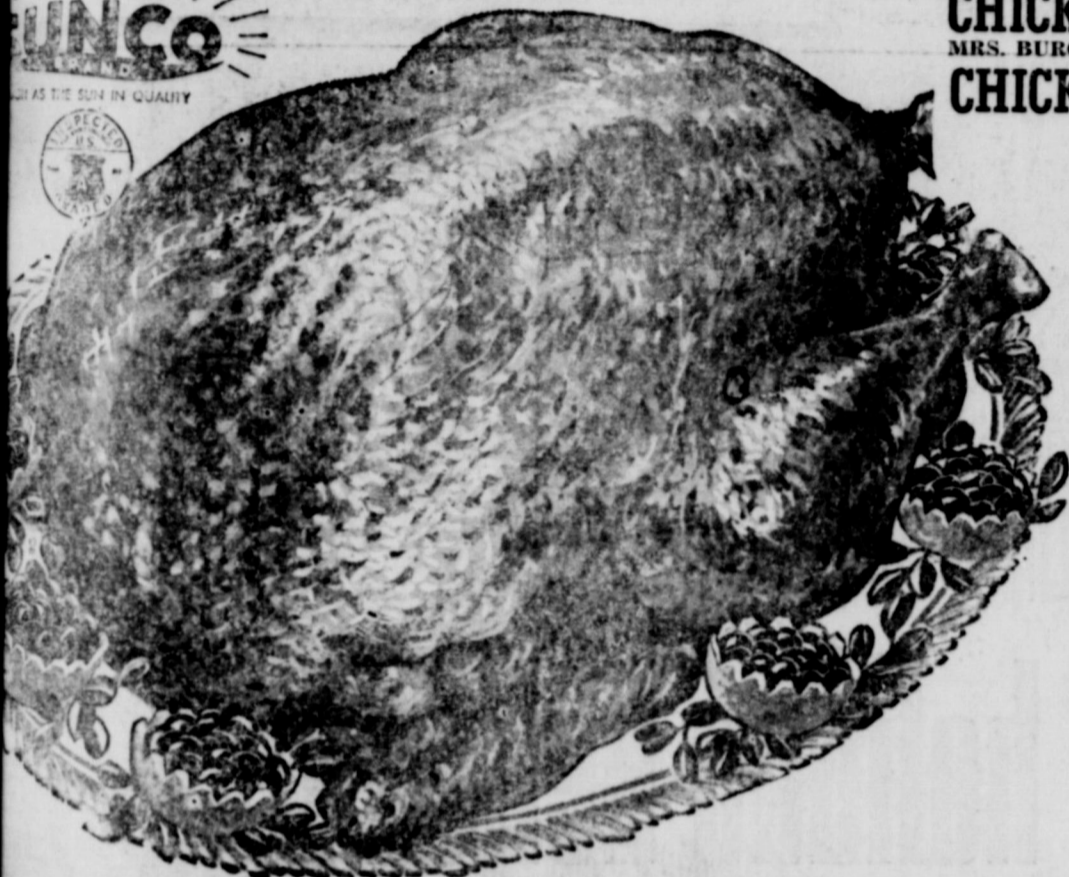


# TURKEYS

Sunco USDA Government Inspected GRADE "A"  
Delicious Served with Ocean Spray Cranberry Sauce

**YOUNG HENS**  
10 to 14 Lb.  
Avg. Weight - Lb. **39¢**

**YOUNG TOMS**  
16 to 22 Lb.  
Avg. Weight - Lb. **33¢**



Ocean Spray Whole or Jelled

MRS. BURGESS FROZEN  
**CHICKEN LIVERS** 8 oz. Pkg. **49¢**  
MRS. BURGESS FROZEN  
**CHICKEN GIZZARDS** 16-oz. pkg. **49¢**  
More Meat Values!

**CHICKEN HENS**  
**DUCKLINGS**  
**CANNED HAMS**  
**OYSTERS**  
**PORK SAUSAGE**  
**SHRIMP**

## WORTH FOOD MART

The SURE SIGN OF SAVINGS!

Prices Effective: Monday Thru Wednesday

SUNCO U.S.D.A. GRADE "A" - 4 to 7 Lb. Avg. **Lb. 39¢**  
LONG ISLAND **Lb. 49¢**  
BATH BLACK HAWK 3 Lb. Can **\$2.79**  
FRESH - Texas Selects 12 oz. **79¢**  
TENNESSEE FARM 2 Lb. Roll **\$1.19**  
CAPTAIN KRUSTY - Frozen Peeled and Deveined 8 oz. Pkg. **69¢**

**KRAFT PHILADELPHIA Cream Cheese** 8 oz. Package **29¢**  
**GOLD COAST Spiced Peaches** 2 No. 2 1/2 Cans **49¢**  
**KLEENEX Table Napkins** 2 50 Ct. Pkgs. **49¢**  
Libby's Mince, Apple or **Pumpkin Pies** 3 Large **\$1.00**

ALL WORTH FOOD MARTS  
WILL BE CLOSED  
Thanksgiving Day - Thurs.

**COFFEE** Maryland Club All Grinds Lb. Can **59¢**

**CRANBERRY SAUCE** 2 16 oz. **39¢**  
**LARGE EGGS** Sunco U. S. D. A. Gov. Inspected Grade A Dozen **49¢**  
**BROCOLI SPEARS** 2 10 oz. Pkgs. **49¢**  
**LIBBY'S FROZEN CAULIFLOWER** 2 10 oz. Pkgs. **49¢**  
**LIBBY'S FROZEN - Sliced FROZEN ROLLS** 2 24 Ct. Pkgs. **49¢**  
**STRAWBERRIES** 2 10 oz. Pkgs. **49¢**  
**LIBBY'S FROZEN SLICED PEACHES** 2 10 oz. Pkgs. **49¢**  
**PIE SHELLS** Pet Ritz Frozen - 10 oz. Pkg. **39¢**

clip this coupon

**FREE!**  
MONTEGO STAINLESS SALAD FORK

WITH COUPON AND PURCHASE OF \$10.00 OR MORE ADDITIONAL COUPON 50¢ AND \$5.00 PURCHASE REQUIRED FOR EACH ADDITIONAL FEATURED PIECE

Void After Sunday, Dec 1

COUPON NO. 6

**Black Pepper** McCormick's **35¢**  
**corn Meal** Best Jemima **19¢**  
**White Tea** Low Label **69¢**

## THANKSGIVING DINNER VALUES

**CREAM** TAYLOR'S HOME MADE 1/2 Gal. Ctn. **59¢**  
**OLE YAMS** TRAPPEY'S NO. 3 SQUAT CAN **29¢**  
**PIPKIN** DEL MONTE OR LIBBY'S No. 303 Can **10¢**  
**SUEUR PEAS** FANCY SWEET PEAS 2 No. 303 Cans **49¢**  
**KE MIXES** PILLSBURY LAYER VARIETY 2 18 oz. Pkgs. **69¢**  
**LATIN** ROYAL ALL FLAVORS 4 3 oz. Pkgs. **33¢**  
**APPLE** DOLE FANCY SLICED 2 No. 2 Cans **69¢**

Double S & H Green Stamps On Wednesday  
With Purchase of \$2.50 or More!

**Alka Seltzer** 25 Tablet Bottle **39¢**  
**AEROSOL ROOM VAPORIZER**  
**Congestaid** Each **89¢**  
**Shortening** Food Mart 3 Lb. Can **49¢**  
**THROWN STUFF. - Queens**  
**Towie Olives** 10 oz. Jar **59¢**  
**Whipping Cream** 1-2 pt. Foremost **29¢**  
**Sour Cream** 1-2 pt. Foremost **29¢**  
**FOREMOST - With Chives**  
**Cottage Cheese** 16 oz. Ctn. **29¢**  
**THROWN STUFF. - Manz.**  
**Towie Olives** 10 oz. Jar **59¢**



**PASCAL CELERY** Fresh and Crisp Stalk **9¢**  
**CRANBERRIES** Ocean Spray 1-Lb. Cello Bag **23¢**  
**POTATOES** EAST TEXAS 2 LBS. **25¢**  
**GREEN ONIONS** 2 Bunches **15¢**  
**RADISHES** CELLO BAG 2 For **15¢**  
**ONIONS** U. S. NO. 1 YELLOW 2 Lbs. **15¢**  
**WASH. STATE ANJOU PEARS** Extra Fancy - Lb. **19¢**

**Onion Soup**  
LIPTON'S MIX FOR DIPS 2 Pkgs. **59¢**

**CLIP AND SAVE!**  
50 BONUS S&H Green Stamps  
With This Coupon and Purchase of  
A 1 Lb. Pkgs. of Fleischmann's  
CORN OIL MARGARINE  
Void After Wed., Nov. 27, 1963

**CLIP AND SAVE!**  
25 BONUS SH GREEN STAMPS  
with this Coupon & Purchase of  
A 20 oz. Pkg. of Old Tyme  
CORN BREAD MIX  
Void After Wed., Nov. 27, 1963

**CLIP AND SAVE!**  
50 BONUS S&H Green Stamps  
With This Coupon and Purchase of  
A 5 Lb. Bag of  
PILLSBURY FLOUR  
Void After Wed., Nov. 27, 1963

**CLIP AND SAVE!**  
50 BONUS S&H Green Stamps  
with this Coupon & Purchase of  
A 8 1/2 oz. Jar of Planter's Cashews  
Dry Roasted or Mixed Nuts  
Void After Wed., Nov. 27, 1963

**CLIP AND SAVE!**  
50 BONUS S&H Green Stamps  
with this Coupon & Purchase of  
Two (2) Bottles (Any Size or Style)  
Wishbone Salad Dressing  
Void After Wed., Nov. 27, 1963





Pictured above are Mr. and Mrs. Bill Berry (Butch) Wilcox, who were united in marriage at 6 p. m. Saturday, Nov. 2, in the First Methodist Church in Cisco, with vows read by Pat Andrews, minister of the Eighth Street Church of Christ. The bride is the former Miss Janice M. Rees of Richardson, daughter of John C. Rees of Denver City and Mrs. Florene Bolin of Richardson. The groom is the son of Mr. and Mrs. G. W. Wilcox, Jr., of Cisco, and nephew of Mr. and Mrs. Harry Wood, 111 East Sodosa, Eastland. (Photo by Cotton's Studio).

## Courthouse Records

- Oil & Gas Leases
- Court Proceedings
- Property Transfers
- Marriage Licenses

### Suits Filed

The Fidelity House, Inc. v. James Dabney, debt.

### Marriage License

Carl Edgar Duffield, Jr. and Miss Mary June Davis.

Charnel Lee Thetford and Miss Shirley Faye Turner.

F. D. Hogg and Mary Jane Fisher.

Abilene Machine Co. v. s. Jeffcoat Testing Co., abstract of judgment.

Winnie Bassett et al to Jackie Dean Wood et ux, warranty deed.

Earl Bender et al to The Public, affidavit.

Ruth Black to Norma J. Egert, warranty deed.

Lucy O. Boase, Trustee to Estelle Breeding, trustee's deed.

Neal Bailey to The Public, affidavit.

Neal Bailey et ux to J. H. Shelton, assignment vendors lien.

O. H. Burkett, Jr. to O. H. Burkett, Sr., revocation.

Kenneth E. Bibb et ux to First Federal Savings and Loan Assn., Ranger, deed of trust.

A. P. Broiles et ux C. C. Hurst, warranty deed.

G. A. Brown and Indv. Atty in Fact to B. J. Greenhaw, assignment interest.

T. E. Callaway to Henry F. Callaway, mineral deed.

Estate of Edith G. Calvert, deceased, to The Public, certified copy probate.

G. G. Crowell et ux to C. R. Tyler, warranty deed.

Mrs. Hollie Davenport Crutcher et vir to R. L. Davenport, quit claim deed.

J. W. Courtney to Bobby Harrell Courtney, royalty

Bobby Harold Courtney et ux to The Public, designation homestead.

Mrs. Rose E. Day to Great from the Blackwell Hospital deed.

Expectations Oil Corp., release oil payment.

Elinor Lancaster Dowling et al to H. M. Underwood, warranty deed.

J. W. Elder to Bennie Edward Stephen et ux, warranty deed.

Nell Montague Edder to Billy H. Dennard, warranty deed.

Eastland National Bank to Bobby Harrold Courtney, release deed of trust.

First Methodist Church, Gorman, Texas, to The Board of Missions, division of Missions, deed of trust.

First Federal Savings and Loan Assn., Ranger, to Tommie Craven, release deed of trust.

First National Bank, Cisco, to Ralph T. Morton et ux, release material mechanics lien and deed of trust.

Federal Land Bank of Houston to Bobby Harrold Courtney, release deed of trust.

Eddie L. Grisham et ux to Dale E. Trout, deed of trust.

General Land Office of Texas to Delbert Tarver, grazing lease.

Glanville Minerals Corp. to Joseph E. Seagrata and Sons, Inc., agreement.

Bernard F. Hanna et ux to Winnie Bassett, quit claim deed.

Investors Syndicate Credit Corp. to H. D. Maupin, release material mechanics lien.

Joyce Johnson et al to Ver-

na Fay Johnson, quit claim deed.

A. H. Johnson to Don S. Schaefer, release vendors Lien.

Jim Walter Corp. to Mid State Homes, Inc., assignment material mechanics lien.

R. M. Morrison to B. B. Simms et ux, partial release deed of trust.

Joseph A. Mann Trustee to Joseph A. Mann, Trustee, correction of partial assignment oil, gas lien.

T. H. Mahan to Naoma Mahan, assignment vendors lien.

W. L. Nicholson et ux to C. C. Rose to First Federal Savings and Loan Assn., Ranger, material mechanics lien and assignment.

Estate of Alice Y. Ools and Joe R. Ools, Joe R. Ools, Indv. & Com. survivor to Winnie Bassett, warranty deed.

Powder River Oil Co. to The Public, assumed name certificate.

Jack A. Rawls et ux to C. C. Rose to First Federal Savings and Loan Assn., Ranger, material mechanics lien and

assignment.

Johnny D. Roberson et ux to O. E. Blackwell et ux, warranty deed.

Floyd O. Rains et ux to Mrs. Ola B. Bond, warranty deed.

G. B. Simms, Jr. et ux to Commercial State Bank, Ranger, deed of trust.

Sinclair Pipe Line Co. to Western Natural Gas Co., release deed of trust.

H. W. Simms et ux to J. D. Parsons, deed of trust.

H. W. Sims et ux to J. D. Parsons to Eastland National Bank, material mechanics lien and assignment.

Maud Etta Slaughter to H. P. Alexander, release vendors lien.

F. V. Tunnell et al to Jess Flippen et ux, release material mechanics lien.

Lowell L. Thomas et ux to Max R. Hahoney, warranty deed.

Hazel B. Tunnell et vir to Mrs. Ethel M. Brown et al, release material mechanics lien.

Texoma Production Co. to Amerada Petroleum Corp., ag-

reement.

S. C. Trigg, deceased, to The Public, proof of heirship.

United States of America to Joe Edgar and Claudia Welch, notice of tax lien.

Veterans Land Bank of Texas to T. D. Whitehorn, deed.

Veterans Land Bank of

Texas to Bobby H. Courtney, ranty deed.

W. O. Wylie, Jr. et ux to John Prickett, deed of trust.

Winnie Bassett, deed of trust. Hermance W. J. D. White et ux to Violet Kenneth E. Bibb M. Watson, et al, warranty ranty deed.

Sammy Mae Trigg, warranty deed.

Violet M. Watson, et al, war-

It's low...it's lovely  
...it's **Dearborn**  
with the famous Cool Safety Cabinet

The Dearborn Crest blends into all decorative schemes. Because of the **Cool Safety Cabinet**, you can use it as an extra table...put books, ash trays, even a potted plant on top! Newly designed Glo-Brite radiants, Forward-Flow Circulation, and improved, original features provide better heating for your home!

...that's why *Only a Dearborn will do!*

**WESTERN AUTO ASSOCIATE STORE**  
Corner Commerce & Lamar

Call for Appointments  
on Wash - Grease

Oil Changes  
ROLLINS & SONS  
GULF SERVICE  
500 W. MAIN  
MAin 9-8840  
We Give S&H Green Stamps

**CISCO TRANSFER**  
And  
**STORAGE**  
315 E. Main  
Phone MAin 9-2044  
Local and long distance moving  
Office and Trucks in Eastland

**HAMNER FUNERAL HOME**  
Ben E. Hamner, Owner

Serving Eastland County since 1924 with ambulance and funeral service. Our ambulance are oxygen equipped and air conditioned. Through our nation-wide connections with other funeral directors, we can handle a funeral from any point in America. We offer this service knowing that we can relieve the family of all burdens incident to any death away from home.

Eastland Dial MA 9-2611

This company has been in operation in this section since 1942 selling policies to be used primarily for burial purposes. We write from \$100 to \$600 and our policies are paid in cash, which allows freedom in the selection of the Funeral Director of your choice.

Ages from 1 month to 90 years.  
For further information come by to see us at  
Hamner Funeral Home, 301 S. Lamar, Eastland  
P. O. Box 431 Dial MAin 9-2611

**Hamner Life Insurance Company**  
Ben E. Hamner, President

**DRIVE SAFELY**

OFFICIAL AUTO SAFETY CENTER

Complete Auto Repairs Safety Inspection Center

24 HOUR WRECKER SERVICE

Phones MA 9-2270  
Night MA 9-2224

**ALLEN AUTO REPAIR**  
A1 RUSHING MOTOR CO.  
215 SOUTH SEAMAN

na Fay Johnson, quit claim deed.

**holiday helper!**

There are so many, many things to do getting ready for Christmas. But one thing helps make them easier — your dependable electric service. Thanks to modern work-saving electric appliances, there's less time spent on routine household chores, leaving more time for Christmas shopping and other holiday preparations. It's during the holiday season, when electricity does so much to save your time and conserve your energy, that electric service once more proves to be the biggest value in your home.

**TEXAS ELECTRIC SERVICE COMPANY**  
FRANK SAYRE, Manager Phone MA 9-2651

**FREE!** DELUXE ROLLAROUND STAND • a \$12.95 value •

WITH THIS  
**RCA VICTOR**  
PORTABLE TV

Now you can roll this superb RCA VICTOR portable from room to room.

- Powerful 16,000-volt chassis
- Big 19" (o.d.) picture 156 sq. inch
- Lively, light weight

More People Own RCA VICTOR TV Than Any Other Kind

**\$144<sup>95</sup>**

Model 9486  
19" (o.d.) 156 sq. in.

**Robertson TV Sales & Service**  
EASTLAND

...another RCA VICTOR "best buy"

More COLOR to See Than Ever Before

The RADNOR Mark 9 Series 14-7-612-M 26 1/2 sq. in. picture

**\$449<sup>95</sup>**

- Famous RCA Victor Color TV Quality, at lowest price
- Big 21" (o.d.) color picture
- Beautiful ebony metal cabinet

...from RCA VICTOR... the most trusted name in television

**Robertson TV Sales & Service**  
EASTLAND

...another RCA VICTOR "best buy"

**\$129<sup>95</sup>**

from RCA VICTOR the most trusted name in television

The PETITE Series 6A-612-M

**portable!**

THE Sweet 16 16" tube (o.d.) 125 sq. in. picture  
Slim, Trim, Light Weight • Powerful 18,000-Volt  
Top, Front Speaker • Telescoping Antenna • Clear

**Robertson TV Sales & Service**  
EASTLAND



The finest of autumn's bountiful harvest is now at SAFEWAY

# For Your Thanksgiving

## TURKEYS

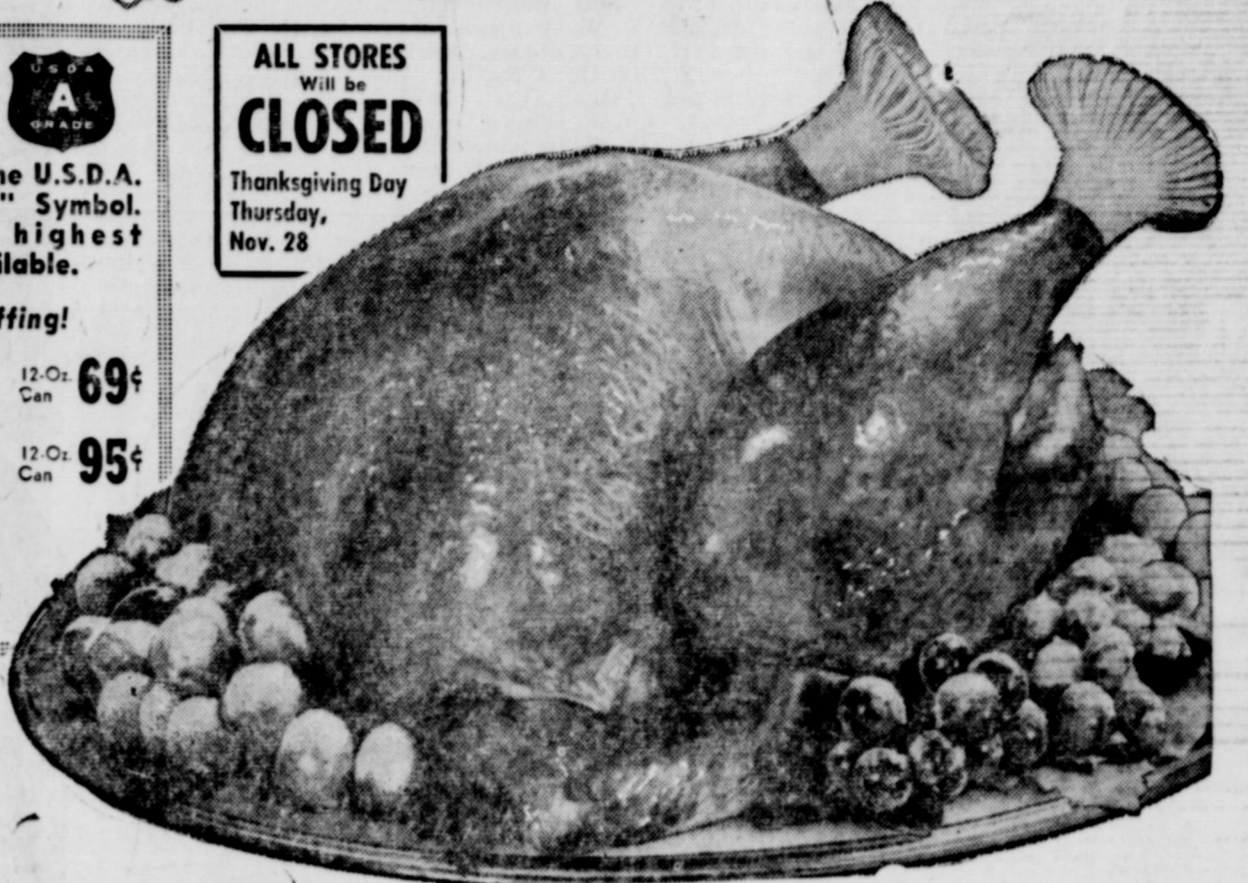
U.S.D.A. Inspected for Wholesomeness and Graded "A"

**35¢** **Young Hens** 39¢  
10 Lbs. and up. Lb.



Look for the U.S.D.A. Grade "A" Symbol. It's the highest grade available.

**ALL STORES**  
Will be **CLOSED**  
Thanksgiving Day  
Thursday,  
Nov. 28



Serve Oyster Stuffing!

**West Coast Oysters** 12-Oz. 69¢  
Fresh. Ideal for dressing. Can

**Gulf Coast Oysters** 12-Oz. 95¢  
Fresh. Perfect for stew. Can

**Aluminum Foil** 2 25-Ft. 49¢  
Kitchen Craft. 12" wide. Rolls

More Meat Values!

**Chicken Hens** 39¢  
Inspected for Wholesomeness. U.S.D.A. Ready to cook. 3 1/2 to 6 Lb. Avg. Lb.

**Drucklings** 49¢  
Duckling. 5 to 5 1/2 Lb. Average. U.S.D.A. Inspected for wholesomeness and Graded "A." Lb.

**Wheat Salad Dressing** 29¢  
Creamy thick. 8-Oz. Bottle

**Onion Dressing** 39¢  
Delicious flavor. 8-Oz. Bottle

**Mustard Dressing** 39¢  
Special flavor. 8-Oz. Bottle

**Blue Cheese Dressing** 43¢  
Mellow flavor. 8-Oz. Bottle

**This Coupon Worth 50 FREE GOLD BOND STAMPS**  
Regularly earned Gold Bond Stamps with the purchase of 3-Lb. Armour's Star CANNED HAM  
Coupon Expires November 27, 1963.

**This Coupon Worth 50 FREE GOLD BOND STAMPS**  
Regularly earned Gold Bond Stamps with the purchase of 20-0-Oz. Packages Bel-air Frozen BRUSSELS SPROUTS  
Coupon Expires November 27, 1963.

**This Coupon Worth 50 FREE GOLD BOND STAMPS**  
Regularly earned Gold Bond Stamps with the purchase of 5-Lb. Bag RUBY RED GRAPEFRUIT  
Coupon Expires November 27, 1963.

**Green Giant Peas** 5 No. \$1.00  
Fancy Peas. 303 Cans

**Whole Kernel Corn** 2 12-Oz. 25¢  
Near goodness. Cans

**Wheat Dressing** 35¢  
Made Fresh! Sold Fresh! Ready and costs you less. Quart Jar

**Strawberry Cocktail** 5 No. \$1.00  
Fruit blended. 303 Cans

**Black Pepper** 29¢  
Pure Black Pepper. 4-Oz. Can

## CASH... Play "THE PRICE IS RIGHT" Game!

Pick up your FREE Game card at Safeway. No purchase required. One FREE store visit to adults only. Purchasers not favored. No need to pass through a line. Secure your free card at either end of checkstand or from any store other than in Meat Department.

**WIN \$100.00 CASH**  
You have collected cards with all four words "The" "Price" "is" "Right" at Safeway for your \$100.00 Cash Prize. Don't forget each card can be a winner.

**WIN MERCHANDISE**  
If you have a merchandise winner, the item will appear below the "TV Winner Number."

**WIN BONUS PRIZE!**  
If you have a "TV Big Winner Number." If you have all cards can be played against any "TV Big Winner Number." If you have that matches exactly the amount won by the show's big TV winner, which will be announced by Bill Cullen at the end of the program, bring the card to Safeway and you may win up to \$500.00 CASH. Save all "The Price is Right" cards and play them for the duration of the game. Winning number will be posted each week at the case you miss the TV show.

More Recent Winners:



Mrs. George Hull receives \$100 check from Mgr. T.M. Temple

**Wheat Dressing** 35¢

**Black Pepper** 29¢

**Wheat Dressing** 35¢

**Black Pepper** 29¢

**Wheat Dressing** 35¢

**Black Pepper** 29¢

**Wheat Dressing** 35¢

**Black Pepper** 29¢

**Wheat Dressing** 35¢

**Black Pepper** 29¢

**Wheat Dressing** 35¢

**Black Pepper** 29¢

**Wheat Dressing** 35¢

**Black Pepper** 29¢

**Wheat Dressing** 35¢

**Black Pepper** 29¢

**Wheat Dressing** 35¢

**Black Pepper** 29¢

**Wheat Dressing** 35¢

**Black Pepper** 29¢

**Wheat Dressing** 35¢

**Black Pepper** 29¢

**Wheat Dressing** 35¢

**Black Pepper** 29¢

**Wheat Dressing** 35¢

**Black Pepper** 29¢

**Wheat Dressing** 35¢

**Black Pepper** 29¢

**Wheat Dressing** 35¢

**Black Pepper** 29¢

**Wheat Dressing** 35¢

**Black Pepper** 29¢

**Wheat Dressing** 35¢

**Black Pepper** 29¢

**Wheat Dressing** 35¢

**Black Pepper** 29¢

**Wheat Dressing** 35¢

**Black Pepper** 29¢

**Wheat Dressing** 35¢

**Black Pepper** 29¢

**Wheat Dressing** 35¢

**Black Pepper** 29¢

**Wheat Dressing** 35¢

**Black Pepper** 29¢

**Wheat Dressing** 35¢

**Black Pepper** 29¢

**Wheat Dressing** 35¢

**Black Pepper** 29¢

**Wheat Dressing** 35¢

**Black Pepper** 29¢

**Wheat Dressing** 35¢

**Black Pepper** 29¢

**Wheat Dressing** 35¢

**Black Pepper** 29¢

**Wheat Dressing** 35¢

**Black Pepper** 29¢

**Wheat Dressing** 35¢

**Black Pepper** 29¢

**Wheat Dressing** 35¢

**Black Pepper** 29¢

**Wheat Dressing** 35¢

**Black Pepper** 29¢

**Wheat Dressing** 35¢

**Black Pepper** 29¢

**Wheat Dressing** 35¢

**Black Pepper** 29¢

**Wheat Dressing** 35¢

**Black Pepper** 29¢

**Wheat Dressing** 35¢

**Black Pepper** 29¢

**Wheat Dressing** 35¢

**Black Pepper** 29¢

**Wheat Dressing** 35¢

**Black Pepper** 29¢

**Wheat Dressing** 35¢

**Black Pepper** 29¢

**Wheat Dressing** 35¢

**Black Pepper** 29¢

**Wheat Dressing** 35¢

**Black Pepper** 29¢

**Wheat Dressing** 35¢

**Black Pepper** 29¢

**Wheat Dressing** 35¢

**Black Pepper** 29¢

**Wheat Dressing** 35¢

**Black Pepper** 29¢

**Wheat Dressing** 35¢

**Black Pepper** 29¢

**Wheat Dressing** 35¢

**Black Pepper** 29¢

**Wheat Dressing** 35¢

**Black Pepper** 29¢

**Wheat Dressing** 35¢

**Black Pepper** 29¢

**Wheat Dressing** 35¢

**Black Pepper** 29¢

**Wheat Dressing** 35¢

**Black Pepper** 29¢

**Wheat Dressing** 35¢

**Black Pepper** 29¢

**Wheat Dressing** 35¢

**Black Pepper** 29¢

**Wheat Dressing** 35¢

**Black Pepper** 29¢

**Wheat Dressing** 35¢

**Black Pepper** 29¢

**Wheat Dressing** 35¢

**Black Pepper** 29¢

**Wheat Dressing** 35¢

**Black Pepper** 29¢

**Wheat Dressing** 35¢

**Black Pepper** 29¢

**Wheat Dressing** 35¢

**Black Pepper** 29¢

**Wheat Dressing** 35¢

**Black Pepper** 29¢

**Wheat Dressing** 35¢

**Black Pepper** 29¢

**Wheat Dressing** 35¢

**Black Pepper** 29¢

**Wheat Dressing** 35¢

**Black Pepper** 29¢

**Wheat Dressing** 35¢

**Black Pepper** 29¢

**Wheat Dressing** 35¢

**Black Pepper** 29¢

**Wheat Dressing** 35¢

**Black Pepper** 29¢

**Wheat Dressing** 35¢

**Black Pepper** 29¢

**Wheat Dressing** 35¢

**Black Pepper** 29¢

**Wheat Dressing** 35¢

**Black Pepper** 29¢

**Wheat Dressing** 35¢

**Black Pepper** 29¢

**Wheat Dressing** 35¢

**Black Pepper** 29¢

**Wheat Dressing** 35¢

**Black Pepper** 29¢

**Wheat Dressing** 35¢

**Black Pepper** 29¢

**Wheat Dressing** 35¢

**Black Pepper** 29¢

**Wheat Dressing** 35¢

**Black Pepper** 29¢

**Wheat Dressing** 35¢

**Black Pepper** 29¢

**Wheat Dressing** 35¢

**Black Pepper** 29¢

**Wheat Dressing** 35¢

**Black Pepper** 29¢

**Wheat Dressing** 35¢

**Black Pepper** 29¢

**Wheat Dressing** 35¢

**Black Pepper** 29¢

**Wheat Dressing** 35¢

**Black Pepper** 29¢

**Wheat Dressing** 35¢

**Black Pepper** 29¢

**Wheat Dressing** 35¢

**Black Pepper** 29¢

**Wheat Dressing** 35¢

**Black Pepper** 29¢

**Wheat Dressing** 35¢

**Black Pepper** 29¢

**Wheat Dressing** 35¢

**Black Pepper** 29¢

**Wheat Dressing** 35¢

**Black Pepper** 29¢

**Wheat Dressing** 35¢

**Black Pepper** 29¢

**Wheat Dressing** 35¢

**Black Pepper** 29¢

**Wheat Dressing** 35¢

**Black Pepper** 29¢

**Wheat Dressing** 35¢

**Black Pepper** 29¢

**Wheat Dressing** 35¢

**Black Pepper** 29¢

**Wheat Dressing** 35¢

**Black Pepper** 29¢

**Wheat Dressing** 35¢

**Black Pepper** 29¢

**Wheat Dressing** 35¢

**Black Pepper** 29¢

**Wheat Dressing** 35¢

**Black Pepper** 29¢

**Wheat Dressing** 35¢

**Black Pepper** 29¢

**Wheat Dressing** 35¢

**Black Pepper** 29¢

**Wheat Dressing** 35¢

**Black Pepper** 29¢

**Wheat Dressing** 35¢

**Black Pepper** 29¢

**Wheat Dressing** 35¢

**Black Pepper** 29¢

**Wheat Dressing** 35¢

**Black Pepper** 29¢

**Wheat Dressing** 35¢



**LEGAL NOTICE**  
**CITATION BY PUBLICATION**  
**THE STATE OF TEXAS**

TO: All persons interested in claiming, or asserting an interest in the property described in Plaintiff's Original Petition in this cause, Defendants, Greeting:

You and each of you are hereby commanded to be and appear before the 91st District Court of Eastland County, Texas, at the courthouse of said county in the City of Eastland by filing a written answer at or before 10 o'clock a. m. of the first Monday next after the expiration of 42 days from the date of issuance hereof; that is to say, on or before 10 o'clock a. m. on Monday, the 23rd day of December, 1963, to Plaintiff's Original Petition filed in said court on the 5th day of November, 1963, in this cause numbered 23,949 on the docket of said court and styled the State of Texas v. Southwestern Peanut Growers Association, Et Al, wherein the State of Texas is Plaintiff and all persons interested in, claiming, or asserting an interest in the property described in Plaintiff's Original Petition in this cause, and Southwestern Peanut Growers Association are Defendants. A brief statement of the nature of this suit is as follows: A suit to escheat the personal property described in said petition to the State of Texas under Articles 3272 and 3272a, Title 53, Revised Civil Statutes of Texas, said property being described as follows: \$8,390.32 in cash representing 1942 crop dividend checks held by Southwestern Peanut Growers Association. For the purpose of more fully describing said property and the respective interests therein of the last known owners, reference is made in said petition to the sworn report of said property made by the Defendant, herein listed above, as holder thereof, to the Treasurer of Texas, which report is annexed to and made a part of said petition. Said property is alleged to have been reported to the State Treasurer by the holder thereof as abandoned personal property subject to escheat, to have been advertised, to have remained unclaimed for 120 days, and more, from date said report was received by said Treasurer, and to have been so certified by said Treasurer to the Attorney General of Texas, all in compliance with Articles 3272 and 3272a, R. C. S. The prayer in said petition is "that citation be issued to all Defendants in accordance with Article 3272a, R. C. S., and that upon trial hereof, the property described herein be declared to be abandoned, escheated to, and the title thereto vested in, the State of Texas; that said Defendant who is the holder of said property be directed by the Court to deliver said property immediately to the Treasurer of the State of Texas; and Plaintiff further prays for such other and further relief, special and general, in law or in equity, to which it may be justly entitled."

The persons last known to have claimed said property (and who are, therefore, made Defendants in said suit), and their respective interests therein, in dollars and cents, are as follows:

**1942 CROP DIVIDENDS**  
Southwestern Peanut Growers Association, Gorman, Texas.  
Peters, E. M., \$8.75; Upton, Everett, \$5.25; Beary, Taylor, \$2.05; Gatlin, Will, \$10.80; Sowell, P. J., \$1.67; Pearce, J. H., \$3.10; Henry, T. C., \$2.90; Jones, Raymond, \$1.90; Barber, Emory, \$1.50; Gibson, T. D., \$4.95; Watson, Lorene, \$5.75; Linville, John, \$4.55; Earl, I. B., \$0.71; Suggs, M. L., \$22.25; Arnett, E. E., \$29.85; Morgan, James, \$0.62; Black, Minnie Ola, \$0.59; Brown, Virgil, \$0.51; Greggs, Will, \$1.31; Nicholson, Tommie, \$1.75; Alford, J. N., \$0.62; Adams, Rostow, \$2.30; Brown, Henderson, \$5.77; Hall, Jess, \$0.87; Moore, George, \$5.52; Spivey, Van, \$6.10; West, Austin, \$4.60; West, Webster, \$1.32; Wise, J. C., \$5.82; Jackson, Henry, Jr., \$0.75; Dunkertell, Tousant, \$1.60; Roberts, Corz, \$ 2.00; Dupree, H. F., \$4.67; Campbell, William Leonard, \$5.45; Ray, L. R., \$3.05; Williams, West, \$1.45; Carpenter, Fred, \$2.40; Cogburn, Wallie, \$20.15; Lynn, E. D., \$16.06; Goodwin, Roy, \$2.82; Massey, J. H., \$58.89; Morgan, M. M., \$2.05; Smith, John, T., \$22.88; Mosley, John, \$13.28; Magness, W. C., \$12.50; Matlock, J. R., \$3.10; Nelson, A. B., \$10.75; Smith, H. L., \$41.55; Smith, W. A., \$12.60; Weaver, E. G., \$24.55; Braisher, Claud, \$15.80; Long, J. D., \$55.45; Bishop, Robert A., \$5.06; Dodson, Snee, \$43.65; Fields, U. M., \$5.43; Handaway, F. E., \$1.17; Isbell, Roy, \$0.95; Lyle, E. M., \$4.55; Phillips, C., \$5.94; Rose, Robert, \$12.03; Snow, Alvin L., \$8.51; Snow, W. B., \$15.63; Wood, W. C., \$7.83; Young, D. F., \$17.02; Young, D. F., \$19.47; Bradford, Rex, \$13.35; McDowell, Claude, \$12.15; Scott, M. L., \$16.17; Massey, Ona, \$9.00; Aston, J. P., \$20.00; Barger, Melton, \$7.10; Brown, Andrew, \$2.79; Goodman, O. C., \$5.48; Howard, Floyd, \$4.14; Johnson, Hayward, \$8.19; Thompson, A. M., \$13.72; Jones, Chester, \$7.90; Maxey, Horace, \$8.27; Witt, Clarence, \$44.34; Answorth, W. C., \$3.70; Hunt, L. C., \$5.50; Pearce, Harry, \$1.35; Pruitt, L. D., \$6.70; Rainbolt, C. W., \$4.20; Reynolds, \$9.45; Green, E. D., \$3.55; Short, P. T., \$3.15; Cannon, B. A., \$29.62; Chambers, M. A., \$47.38; Collum, Willie, \$18.25; Crow, Jack, \$4.70; Johnson, Earl, \$19.55; Roberts, W. W., \$20.05; Sharrin, G. E., \$38.63; Thillis, J. M., \$6.00; Southward, T. D., \$37.30; Hunt, M. A., \$14.06; Kinma, L. L., \$3.63; Wilson, Mose, \$0.95; Childers, Robert, \$8.10; Sheldon, Ray D., \$2.65; Stewart, M. F., \$9.65; Corkey, W. L., \$3.30; Douglas, S. P., \$6.70; Hurt, Albert, \$1.50; Partain, J. C., \$8.04; Smith, A. V., \$1.97; Lynn, Tilman, \$1.02; Telles, Almus, \$0.95; Baker, G. C., \$8.10; Newton, Homer, \$10.85; Southern, H. W., \$59.70; Treat, O. E., \$11.30; Daniels, Dan, \$24.49; Dunias, C. B., \$6.96; Patrick, G. G., \$6.26; Davis, Munson, \$4.85; Newton, Benson, \$25.75; Smith, Arthur, \$10.97; Underwood, A. F., \$1.57; Williams, Fred, \$15.40; Greenleaf, R. C., \$9.20; Canada, John, \$7.20; Davenport, Pearl, \$0.79; Gibson, T. T., \$7.68; Gilbert, E. O., \$10.10; Jett, A. E., \$11.70; Joslin, J. H., \$8.70; Lancaster, Oliver, \$2.02; Woodard, M. E., \$22.34; Barnard, Mrs. E., \$8.80; Butler, Murry, \$13.80; Caulley, M. J., \$26.20; Martin, Everette, \$11.65; Miller, J. O., \$16.20; Robnett, Wm. H., \$6.35; Koster, W. A., \$11.52; Beasley, H. W., \$17.37; Daniels, W. M., \$9.07; Jones, E. K., \$18.15; Ruben, Randle, \$1.74; Harrison, Roy, \$5.10; Brake, Ethel, \$2.01; Green, W. M., \$22.73; Kelly, W. H., \$25.30; Simpson, J. B., \$6.65; Bales, R. J., \$1.07; Crabtree, Elvin, \$13.75; Fisher, J. W., \$31.20; Guess, H. M., \$35.80; Parish, R. D., \$7.25; Riddle, Carl, \$15.68; Rose, W. L., \$15.45; Smith, Grady, \$13.54; Walden, Lindsey, \$0.50; Walker, Lindsey, \$0.65; Watts, W., \$7.90; Brown, D. B., \$2.37; Head, T. F., \$16.10; Hicks, R. E., \$7.52; Holmes, C. C., \$1.73; Inda, J. N., \$1.32; Inda, L. L., \$46.07; Moore, L. V., \$3.02; Tedford, Claude H., \$5.85; Boren, Omer, \$15.78; Creasy, M. L., \$17.85; Holcomb, I. P., \$8.31; Jennings, W. L., \$17.70; Milson, L. B., \$6.64; Morris, John A., \$2.39; Thomas, C. L., \$3.70; Thompson, Allen, \$5.67; William, M. S., \$13.45; Wooten, Louis, \$6.02; Wright, DeWitt, \$2.17; Thompson, Row W., \$24.77; Bramlett, O. E., \$8.26; Clark, Buster, \$14.20; Crawford, Sam, \$2.17; Graham, B. J., \$30.50; Hall, L. L., \$15.79; Hewey, C. A., \$17.49; Hewey, John, \$0.72; Higgins, J. H., \$14.10; Jefferson, Abraham, \$4.82; Jefferson, Robert, \$12.15; Johnson, Burnett, \$3.66; Long, L. E., \$11.20; McBride, W. A., \$70.65; Noble, Rogers, \$0.96; Roark, Tomie, \$4.33; Simpson, D. S., \$7.25; Smyth, Lula, \$9.60; Smith, Walter, \$10.62; Street, Lewis, \$0.75; Venable, J. H., \$17.52; Williams, Coley, \$2.60; Allen, Temple L., \$103.10; Booker, Bill, \$10.40; Rouse, Roy, \$7.40; Toff, Herbert, \$15.20; Toff, H. M., \$1.60; Evans, Joe, \$8.70; Lindley, R. L., \$1.65; Brown, John F., \$11.10; Chambers, R. L., \$56.25; Gagrone, Jim, \$3.15; Sanders, Mamie, \$2.40; Thomas, Joe, \$2.65; Marshall, M. D., \$1.50; Moore, J. J., \$4.45; Rodriguez, C. L., \$44.95; Rodriguez, Palicarpio, \$43.95; Duener, Serafin, \$4.55; Silva, Dolores M., \$5.10; Smoot, M. L., \$18.73; Soning, P. S., \$15.82; Speaker, Allen L., \$17.25; Speaker, Allen L., \$58.15; Barnes, Jesse, \$2.35; Garcia, Santos, \$21.72; Delavan, E. M., \$17.35; Fleming, Fred L., \$15.75; Russell, W. B., \$0.56; Stewart, Edward Jr., \$1.00; Thomas, T., \$2.75; Taylor, Lee, \$1.12; Pizano, Juan G., \$0.80; Duncan, D. R., \$21.07; Polesik, Tom, \$2.30; Taylor, Clarence, \$1.05; Arnold, Chido, \$1.90; Conley, J. D., \$2.50; Gilliland, J. W., \$1.80; Gunn, C. R., \$46.24; Allen, Norman, \$1.00; Barron, W. H., \$1.20; Dickens, T. O., \$5.60; Hodges, Joe Willie, \$3.60; Gauge, Jim, \$1.20; Jackson, Edward \$1.80; Young, George M., \$0.50; Anderson, B. W., \$1.67; Cleaver, Dallas F., \$2.92; Gray, T. R., \$3.05; Robinson, Guy, \$11.20; Sanders, J. R., \$7.50; Sanders, Mamie, \$2.40; Williams, C. C., \$4.30; Rodgers, Dick, \$7.50; Bratton, E. J., \$0.67; Christman, G. J., \$38.39; Chandler, J. T., \$9.16; Edleman, Buron, \$42.90; Ferrell, H. G., \$1.24; Owensby, T. J., \$20.15; Shuler, S. B., \$2.60; Smith, E. G., \$2.64; White, H.

\$8.51; Snow, W. B., \$15.63; Wood, W. C., \$7.83; Young, D. F., \$17.02; Young, D. F., \$19.47; Bradford, Rex, \$13.35; McDowell, Claude, \$12.15; Scott, M. L., \$16.17; Massey, Ona, \$9.00; Aston, J. P., \$20.00; Barger, Melton, \$7.10; Brown, Andrew, \$2.79; Goodman, O. C., \$5.48; Howard, Floyd, \$4.14; Johnson, Hayward, \$8.19; Thompson, A. M., \$13.72; Jones, Chester, \$7.90; Maxey, Horace, \$8.27; Witt, Clarence, \$44.34; Answorth, W. C., \$3.70; Hunt, L. C., \$5.50; Pearce, Harry, \$1.35; Pruitt, L. D., \$6.70; Rainbolt, C. W., \$4.20; Reynolds, \$9.45; Green, E. D., \$3.55; Short, P. T., \$3.15; Cannon, B. A., \$29.62; Chambers, M. A., \$47.38; Collum, Willie, \$18.25; Crow, Jack, \$4.70; Johnson, Earl, \$19.55; Roberts, W. W., \$20.05; Sharrin, G. E., \$38.63; Thillis, J. M., \$6.00; Southward, T. D., \$37.30; Hunt, M. A., \$14.06; Kinma, L. L., \$3.63; Wilson, Mose, \$0.95; Childers, Robert, \$8.10; Sheldon, Ray D., \$2.65; Stewart, M. F., \$9.65; Corkey, W. L., \$3.30; Douglas, S. P., \$6.70; Hurt, Albert, \$1.50; Partain, J. C., \$8.04; Smith, A. V., \$1.97; Lynn, Tilman, \$1.02; Telles, Almus, \$0.95; Baker, G. C., \$8.10; Newton, Homer, \$10.85; Southern, H. W., \$59.70; Treat, O. E., \$11.30; Daniels, Dan, \$24.49; Dunias, C. B., \$6.96; Patrick, G. G., \$6.26; Davis, Munson, \$4.85; Newton, Benson, \$25.75; Smith, Arthur, \$10.97; Underwood, A. F., \$1.57; Williams, Fred, \$15.40; Greenleaf, R. C., \$9.20; Canada, John, \$7.20; Davenport, Pearl, \$0.79; Gibson, T. T., \$7.68; Gilbert, E. O., \$10.10; Jett, A. E., \$11.70; Joslin, J. H., \$8.70; Lancaster, Oliver, \$2.02; Woodard, M. E., \$22.34; Barnard, Mrs. E., \$8.80; Butler, Murry, \$13.80; Caulley, M. J., \$26.20; Martin, Everette, \$11.65; Miller, J. O., \$16.20; Robnett, Wm. H., \$6.35; Koster, W. A., \$11.52; Beasley, H. W., \$17.37; Daniels, W. M., \$9.07; Jones, E. K., \$18.15; Ruben, Randle, \$1.74; Harrison, Roy, \$5.10; Brake, Ethel, \$2.01; Green, W. M., \$22.73; Kelly, W. H., \$25.30; Simpson, J. B., \$6.65; Bales, R. J., \$1.07; Crabtree, Elvin, \$13.75; Fisher, J. W., \$31.20; Guess, H. M., \$35.80; Parish, R. D., \$7.25; Riddle, Carl, \$15.68; Rose, W. L., \$15.45; Smith, Grady, \$13.54; Walden, Lindsey, \$0.50; Walker, Lindsey, \$0.65; Watts, W., \$7.90; Brown, D. B., \$2.37; Head, T. F., \$16.10; Hicks, R. E., \$7.52; Holmes, C. C., \$1.73; Inda, J. N., \$1.32; Inda, L. L., \$46.07; Moore, L. V., \$3.02; Tedford, Claude H., \$5.85; Boren, Omer, \$15.78; Creasy, M. L., \$17.85; Holcomb, I. P., \$8.31; Jennings, W. L., \$17.70; Milson, L. B., \$6.64; Morris, John A., \$2.39; Thomas, C. L., \$3.70; Thompson, Allen, \$5.67; William, M. S., \$13.45; Wooten, Louis, \$6.02; Wright, DeWitt, \$2.17; Thompson, Row W., \$24.77; Bramlett, O. E., \$8.26; Clark, Buster, \$14.20; Crawford, Sam, \$2.17; Graham, B. J., \$30.50; Hall, L. L., \$15.79; Hewey, C. A., \$17.49; Hewey, John, \$0.72; Higgins, J. H., \$14.10; Jefferson, Abraham, \$4.82; Jefferson, Robert, \$12.15; Johnson, Burnett, \$3.66; Long, L. E., \$11.20; McBride, W. A., \$70.65; Noble, Rogers, \$0.96; Roark, Tomie, \$4.33; Simpson, D. S., \$7.25; Smyth, Lula, \$9.60; Smith, Walter, \$10.62; Street, Lewis, \$0.75; Venable, J. H., \$17.52; Williams, Coley, \$2.60; Allen, Temple L., \$103.10; Booker, Bill, \$10.40; Rouse, Roy, \$7.40; Toff, Herbert, \$15.20; Toff, H. M., \$1.60; Evans, Joe, \$8.70; Lindley, R. L., \$1.65; Brown, John F., \$11.10; Chambers, R. L., \$56.25; Gagrone, Jim, \$3.15; Sanders, Mamie, \$2.40; Thomas, Joe, \$2.65; Marshall, M. D., \$1.50; Moore, J. J., \$4.45; Rodriguez, C. L., \$44.95; Rodriguez, Palicarpio, \$43.95; Duener, Serafin, \$4.55; Silva, Dolores M., \$5.10; Smoot, M. L., \$18.73; Soning, P. S., \$15.82; Speaker, Allen L., \$17.25; Speaker, Allen L., \$58.15; Barnes, Jesse, \$2.35; Garcia, Santos, \$21.72; Delavan, E. M., \$17.35; Fleming, Fred L., \$15.75; Russell, W. B., \$0.56; Stewart, Edward Jr., \$1.00; Thomas, T., \$2.75; Taylor, Lee, \$1.12; Pizano, Juan G., \$0.80; Duncan, D. R., \$21.07; Polesik, Tom, \$2.30; Taylor, Clarence, \$1.05; Arnold, Chido, \$1.90; Conley, J. D., \$2.50; Gilliland, J. W., \$1.80; Gunn, C. R., \$46.24; Allen, Norman, \$1.00; Barron, W. H., \$1.20; Dickens, T. O., \$5.60; Hodges, Joe Willie, \$3.60; Gauge, Jim, \$1.20; Jackson, Edward \$1.80; Young, George M., \$0.50; Anderson, B. W., \$1.67; Cleaver, Dallas F., \$2.92; Gray, T. R., \$3.05; Robinson, Guy, \$11.20; Sanders, J. R., \$7.50; Sanders, Mamie, \$2.40; Williams, C. C., \$4.30; Rodgers, Dick, \$7.50; Bratton, E. J., \$0.67; Christman, G. J., \$38.39; Chandler, J. T., \$9.16; Edleman, Buron, \$42.90; Ferrell, H. G., \$1.24; Owensby, T. J., \$20.15; Shuler, S. B., \$2.60; Smith, E. G., \$2.64; White, H.

\$10.60; Luman, \$2.42; Murray, J. R., \$4.45; Gibson, J. A., \$10.92; Kay, V. B., \$2.45; Pollard, Arthur, \$4.30; Robertson, Dallas, \$2.45; Garrison, D. L., \$18.70; Thompson, John, \$16.40; Cross, R. J., \$19.01; Johnson, J. L., \$6.57; Waggoner, Frank, \$26.32; Morris, Sam, \$20.21; Edwards, Lawrence, \$48.20; Green, Lela Mae, \$11.50; Lindley, M. T., \$27.85; Dawson, Albert N., \$8.35; Davis, Walter, \$3.65; Hollis, A. S., \$1.00; Calhoun, Omer, \$3.52; Grider, Noble, Preston, \$2.95; Johnson, E. D., \$2.05; Nobles, H. F., \$2.60; Parsons, E. A., \$1.60; Reeves, H. C., \$6.85; Russell, Ben C., \$4.80; Chamlin, Robert B., \$1.90; Homyby, Oliver, \$1.98; Jones, C. C., \$4.55; Peterson, Weaver, \$6.40; Stanley, W. C., \$2.60; Tidwell, S. S., \$7.75; Tidwell, S. S., \$8.15; Spires, John, \$1.02; Marchmann, Albert, \$2.40; Mathis, Ralph, \$1.31; Wilson, Kinch, \$1.10; Miller, J. F., \$15.55; Green, Z. B., \$18.70; Zoch, E. A., \$12.65; Canter, Erines, \$2.10; Salos, C., \$3.95; White, Poindee, \$5.82; Wiatrek, F. B., \$5.55; Green, J. E., \$11.10; Grunder, H. D., \$42.83; Darby, L. C., \$7.75; McCarty, W. A., \$19.20; Tinney, Bill, \$3.10; Wilkerson, J. F., \$10.55; Owners Unknown, \$4,236.96. If this Citation is not served within ninety days after the date of its issuance, it shall be returned unserved. The officer executing this writ shall promptly serve the same according to requirements of law, and the mandates hereof, and make due return as the law directs. ISSUED AND GIVEN UNDER MY HAND AND SEAL OF SAID COURT, at Eastland, Texas, this 5th day of November A. D., 1963. ATTEST: Roy L. Lane, Clerk, District Court Eastland County, Texas BY: Zinnah Bourland, Deputy

\$10.60; Luman, \$2.42; Murray, J. R., \$4.45; Gibson, J. A., \$10.92; Kay, V. B., \$2.45; Pollard, Arthur, \$4.30; Robertson, Dallas, \$2.45; Garrison, D. L., \$18.70; Thompson, John, \$16.40; Cross, R. J., \$19.01; Johnson, J. L., \$6.57; Waggoner, Frank, \$26.32; Morris, Sam, \$20.21; Edwards, Lawrence, \$48.20; Green, Lela Mae, \$11.50; Lindley, M. T., \$27.85; Dawson, Albert N., \$8.35; Davis, Walter, \$3.65; Hollis, A. S., \$1.00; Calhoun, Omer, \$3.52; Grider, Noble, Preston, \$2.95; Johnson, E. D., \$2.05; Nobles, H. F., \$2.60; Parsons, E. A., \$1.60; Reeves, H. C., \$6.85; Russell, Ben C., \$4.80; Chamlin, Robert B., \$1.90; Homyby, Oliver, \$1.98; Jones, C. C., \$4.55; Peterson, Weaver, \$6.40; Stanley, W. C., \$2.60; Tidwell, S. S., \$7.75; Tidwell, S. S., \$8.15; Spires, John, \$1.02; Marchmann, Albert, \$2.40; Mathis, Ralph, \$1.31; Wilson, Kinch, \$1.10; Miller, J. F., \$15.55; Green, Z. B., \$18.70; Zoch, E. A., \$12.65; Canter, Erines, \$2.10; Salos, C., \$3.95; White, Poindee, \$5.82; Wiatrek, F. B., \$5.55; Green, J. E., \$11.10; Grunder, H. D., \$42.83; Darby, L. C., \$7.75; McCarty, W. A., \$19.20; Tinney, Bill, \$3.10; Wilkerson, J. F., \$10.55; Owners Unknown, \$4,236.96. If this Citation is not served within ninety days after the date of its issuance, it shall be returned unserved. The officer executing this writ shall promptly serve the same according to requirements of law, and the mandates hereof, and make due return as the law directs. ISSUED AND GIVEN UNDER MY HAND AND SEAL OF SAID COURT, at Eastland, Texas, this 5th day of November A. D., 1963. ATTEST: Roy L. Lane, Clerk, District Court Eastland County, Texas BY: Zinnah Bourland, Deputy

indeed... service to... ed by an... civilization... on the battle... living for... hope that... will redede... law and ord... Earth, in the... our fallen le... John F. K... All flags... flying at ha... and the post... fly at half-m... accordance... ment manual... closed Friday... Schools op... ents and... of shock and... the afternoon... dio and tele... the tragedy.

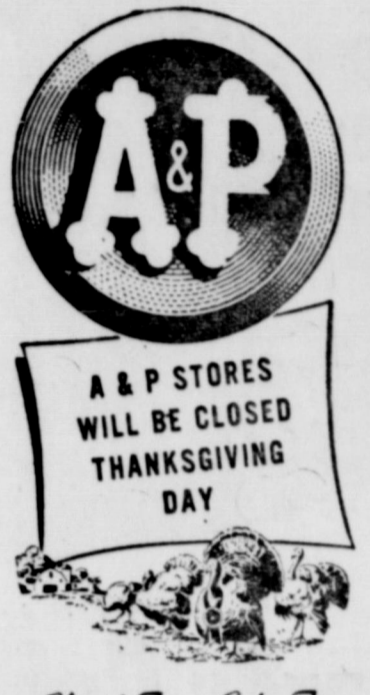
**PRESIDENT . . .**  
(Continued from Page 1.)  
"To Governor Connally, we wish a speedy and complete recovery."  
County Judge Scott Bailey said:  
"We are shocked and saddened to learn of this untimely loss of our Chief Executive. Our heartfelt thoughts and prayers go out to Mrs. Kennedy and his loved ones."  
"This tragic event ranks in its infamy along with the Battle of the Alamo and the Goldiad Masacre. The fact that this terrible crime happened in our State adds further shame and insult to the great injury that the United States and the Free world has suffered."  
President Kennedy was a brave man and had courage that is rare in our time. It is

**PRESIDENT . . .**  
(Continued from Page 1.)  
"To Governor Connally, we wish a speedy and complete recovery."  
County Judge Scott Bailey said:  
"We are shocked and saddened to learn of this untimely loss of our Chief Executive. Our heartfelt thoughts and prayers go out to Mrs. Kennedy and his loved ones."  
"This tragic event ranks in its infamy along with the Battle of the Alamo and the Goldiad Masacre. The fact that this terrible crime happened in our State adds further shame and insult to the great injury that the United States and the Free world has suffered."  
President Kennedy was a brave man and had courage that is rare in our time. It is

**GOOD-TASTING AND EXTRA-THRIFTY TRIMMIN'S FOR YOUR**

**Thanksgiving Feast**

PRICES GOOD THRU NOV. 30, 1963



**A & P TURKEYS**

**YOUNG TURKEYS** For Frying, Baking or Broiling - Under 10 lbs. **43c**

**HENS** 10-LBS. AND UP **39¢** **TOMS** 14-LBS. AND UP **35¢**

**ROASTWELL ROAST**  
4-lb. Size Covered **79c**

**NUTS IN THE SHELL**  
**BRAZIL NUTS** 1 lb. **1.00**  
**MIXED NUTS** English 1 lb. **1.00**  
**BABY WALNUTS** English 1 lb. **1.00**  
**LARGE WALNUTS** English 1 lb. **1.00**

**CHICKEN HENS** 1-lb. **39¢**

**LINK SAUSAGE** 1-lb. **39¢**

**RIB STEAK** 1-lb. **79c**

**STUFFING BREAD** 1 1/2-lb. Loaf **25¢**

**"Super-Right" Smoked Ham**  
WHOLE or Shank Half **47c** CENTER SLICES

**BUTT PORTION** 1-lb. **39¢**

**SHANK PORTION** 1-lb. **39¢**

**DILL PICKLES** 1-pt. 6-oz. Jar **25¢**

**SHELLED WALNUTS** 1-lb. Pkg. **99¢**

**MILK** Handy 6-Pack Carton **77¢**

**STRAWBERRIES** 3-lb. Pkg. **39¢**

**CREAMERY BUTTER** 1-lb. **39¢**

**APPLE PIES** 13-oz. Cans in Pack **77¢**

**Canned Pumpkins** 2 for **23¢**

**LARGE EGGS** Doz. **45¢**

**APPLESAUCE** 2 1-lb. Cans **37¢**

**MAYONNAISE** Qt. Jar **49¢**

**PRESERVES** 2-lb. Jar **45¢**

**PEACHES** 4 1-lb. 12-oz. Cans **89¢**

**PICKLES** Pt. Jar **39¢**

**CORN MEAL** 5-lb. Bag **29¢**

**TWIN ROLLS** 13-oz. Pkg. **25c**

**CAKE** 1-lb. 10-oz. Each **79c**

**Freshly Baked Jane Parker Fruit Cake** 5 LB. RING **\$3.99**

**EXTRA FANCY RED DELICIOUS APPLES**

**CALIFORNIA NAVEL ORANGES**

**BELL PEPPER** NOW WHITE

**CAULIFLOWER**

**Fresh Cranberries** 1-lb. Ctn. **25¢** **Tangerines** 2-lb. for

Detergent Tablets <b>SALVO</b> Giant Box <b>79c</b>	SHORTENING <b>BAKE RITE</b> 3-lb. Tin <b>63c</b>	V. CUUM COFFEE <b>FOLGER'S</b> 1-lb. Tin <b>71c</b> 2-lb. Tin <b>\$1.41</b>	Mellowood <b>NYLONS</b> Size 11 2 pairs <b>\$1.29</b>	WARWICK <b>CHERRIES</b> Chocolate Covered 12-oz. Box <b>49¢</b>	WARWICK <b>Thin Mints</b> Chocolate Covered 1-lb. 6-oz. Size
LIQUID DETERGENT <b>LUX</b> 1 pt., 6-oz. <b>61c</b>	TOILET SOAP <b>LUX</b> 2 Reg. Bars <b>21¢</b>	TOILET SOAP <b>LUX</b> 2 Bath Bars <b>29¢</b>	DEODORANT SOAP <b>Lifebuoy</b> 2 Reg. Bars <b>23¢</b>	DEODORANT SOAP <b>Lifebuoy</b> 2 Bath Bars <b>33¢</b>	TOILET SOAP <b>Pink Soap</b> 1-lb. 6-oz. Size



**RAWLINS**  
**ONUMENTS**  
SINCE 1884  
CATHERFORD PHONE LY 1-1224

**TO DRIVE IN**  
EASY ON RANGER HILL  
KIDDIES UNDER 11 FREE  
SHOW OPENS 6:30 — SHOW STARTS AT 7:00  
MONDAY — MONDAY — TUESDAY  
November 24-25-26

**OOH! LA LA!!!**  
ANYTHING CAN HAPPEN IN A FOTELLI  
MURCH BROS. presents  
**JACK LEMMON**  
**CHARLEY MCLAINE**  
BY BILLY WILDER  
**"VIVA LA BOUGE"**  
TECHNICOLOR • PANAVISION  
RELEASED BY UNITED ARTISTS

WEDNESDAY IS GAIN NITE **50¢** CAR LOAD

**ALLAN POE'S TALES OF HORROR**  
in COLOR  
VINCENT PRICE PETER LOORE  
BASIL RATHBONE  
DEBRA TACKET

**MARKER FOR CAMP SALMON IS PLANNED AT EASTLAND**

A Confederate Memorial Information Marker for Camp Salmon, C.S.A., will be erected this month in Eastland, according to Mr. John Ben Shepperd of Odessa, president of the Texas State Historical marker will stand on the Eastland County Courthouse lawn.

Camp Salmon, which guarded the Frontier during the Civil War, was located 17 miles west and 6 miles north. It was established as part of a chain of posts a day's horseback ride apart stretching from the Red River to the Rio Grande. The Texas Frontier Regiment occupied the fort which was named for Capt. John Salmon, a frontier Indian fighter and post commander. The camp was later renamed Camp McCord. Short of food, supplies, ammunition and horses, troubled with Indians, and sharing few of the glories of the War at the cost of many lives these men served to protect the Texas Frontier.

Confederate Memorial Information Markers are erected by the State Building Commission. The TSHSC researches the subject and writes inscriptions.

Members of the State Building Commission are Governor John Connally, Attorney General Waggoner Carr and Honorable E. E. McAdams, chairman of the Board of Control.

The Camp Salmon, C.S.A. Marker is to be Texas pink granite, stands five feet high, and has the Texas star and wreath incised at the top. Placed in the public squares and along highways, these stones are designed to inform the public and contain comprehensive historical information. One-hundred and ninety-three markers have been approved this year.

This marker is part of a comprehensive program to observe the Civil War Centennial. Markers designate locations of battles, Indian raids, frontier forts, coastal fortifications, sites of manufacturing and supply, sites where

distinguished units were mustered-in, as well as graves, structures and homes of men associated with the period and counties named for prominent Texas Confederates.

County Historical Survey Committees are recording and marking the graves of Civil War Veterans. These Committees are also gathering information on each county's part in the Civil War — soldiers' letters and diaries and minutes of Commissioners Courts. This material will be placed in individual county folders in the State Archives.

The week of April 20-26, 1964, has been set aside as Texas Civil War Appreciation Week — a time for civic clubs and school programs dealing with the war. The 110 historical museums in Texas will be asked to feature Civil War exhibits. Nine Seminars are being held this year throughout the state, to encourage discussion and interest and to plan the program.

Centennial awards of merit are given each year to the authors and publishers of outstanding books on Texas in the Civil War.

The commemorative program is being planned by the Civil War Advisory Committee of the TSHSC.

"The Texas program is not designed to reify the Civil War but to honor the brave men who gave their lives for what they thought was right," Shepperd said. "We cannot bury this part of our history by saying nothing happened in Texas between 1861-1865."



**Desdemona News**

Miss Mary Pacheco is in the Galveston Hospital as a result of an accident that occurred when she fell from a car. She is the only daughter of Shorty Pacheco.

Tobe Johnson, father of Doyle Johnson, passed away Saturday night in a rest home following a long illness. Funeral was held at the Church of Christ at 2 o'clock Monday afternoon and burial was in Howard Cemetery.

Miss Linda Greenhaw, who is in college at Denton, was home for the weekend.

Mr. and Mrs. Dewey Shoemaker of Toledo, Ohio were here to spend the winter with his brother, Art Shoemaker.

Mrs. Katie May is a patient in a rest home in Gorman and her son and his wife, Edd May of Uvalde, visited her last week.

Mr. and Mrs. Mitchell of Lamesa spent a few days last week with their nephew, Rev. and Mrs. Dorsey and attended services on Wednesday night.

**HAVE YOU TRIED IT YET?**  
**Gillette SuperBLUE BLADE**  
DOUBLE EDGED • DOUBLE ECONOMY  
15 for \$1.00  
10 for 69¢  
FITS ALL GILLETTE RAZORS

Newt Abernathy has entered the hospital at Houston

June Eldridge and family of Lubbock were here a few days last week to visit his parents, Mr. and Mrs. C. S. Eldridge.

Mrs. Francis Leazar spent a few days last week with her parents, Mr. and Mrs. John Arnold.

Monday night November 25 the will be the annual Thanksgiving Turkey supper. A nice program is being prepared. Come! Enjoy the evening here.

Palmettos along the Rio Grande caused the Spanish discoverers to name the river "Rio de las Palmas."

Mrs. Pearl McCullough has returned from Shreveport, Louisiana where she visited her daughter, Mrs. Bill Hart. While there she attended the wedding of her grandson, Barton White to Vicki Tillman.

**TO DRIVE IN**  
EASY ON RANGER HILL  
Open 6:45 — Starts 7:00

Last Night  
"Beach Party"  
In color  
Frankie Avalon

Starts Thursday  
"Island of Love"  
In color  
Robert Preston

Lake Brownwood covers 4,500 acres and has a shoreline of 96 miles.

**PLAN NOW BRING YOUR FAMILY & FRIENDS**  
\*\*\*  
**SUNDAY BUFFET DINNER**  
11:30 to 2:00 P. M.  
\*\*\*  
— Menu —  
**CHOICE of MEATS**  
Turkey & Dressing  
Roast Beef - Ham  
and Other Meat Dishes  
Two Vegetables  
Soup or Salad  
Dessert Drink  
**Hot Rolls**  
**1.25**  
Childs Plate — 75¢  
\*\*\*  
**VICTOR HOTEL COFFEE SHOP**  
Cisco, Texas

**Majestic Theatre**

**SUNDAY AND MONDAY**  
12:45 - Shows Open Monday 4:45  
5:30 - 7:20-9:20 Shows 5:15 - 7:15 - 9:20

**THE COLDEST KILLER OF KILLERS WHO EVER LIVED!**  
**JOHNNY COOL**  
Released thru UNITED ARTISTS

**TUESDAY ONLY**  
Open 4:45 Shows 5:15 - 7:20 - 9:30

**YOUR WAY!**  
**THE PRIVATE WAR OF MAJOR BENSON**  
PRINTED BY Technicolor  
STARRING CHARITON HESTON

WEDNESDAY THRU SATURDAY  
Wed. & Fri. Open 4:45 - Shows 5:30 - 7:30 - 9:30  
Thursday & Saturday Open 12:45 Shows 1:30 - 3:30 - 5:30 - 7:30 - 9:30

SPECIAL THANKSGIVING MATINEE THURSDAY

**rare and heartwarming experience...**



These three comfort-loving pets are every bit as remarkable as the adventures they face in their desperate drive toward home across the Canadian wilds

**WALT DISNEY presents**  
**The Incredible Journey**  
Featuring **BODGER** the Bull Terrier - **TAO** the Siamese Cat - **LUATH** the Labrador Retriever  
and also featuring **EMILE GENEST - SANDRA SCOTT - JOHN DRAINIE**  
Based on Sheila Burnford's international best-selling novel that all the world has taken to its heart!  
Adult 75¢ Student 50¢ Child 25¢

**Holiday Bargains**

- 2 ONLY GENERAL ELECTRIC Filter Flow Automatic WASHER. Big 12-lb. capacity ..... 167<sup>50</sup>
- 1 ONLY GE Filter Flow Automatic Washer. 12-lb. load. Single Speed, Single Cycle ..... 179<sup>95</sup>
- 2 ONLY GE Washer with exclusive Mini-basket and Filter Flow, Multi-Cycle, 2-speed ..... 219<sup>95</sup>
- 2 ONLY GE Automatic Dryer, Large Capacity. Dual Heat Settings ..... 139<sup>95</sup>
- 1 ONLY GE Deluxe Quality Clothes Dryer. 12-lb. capacity, delicate fabric cycle. FREE GE HAIR DRYER WITH THIS ONE ..... 169<sup>95</sup>
- 1 ONLY NORGE Wringer-Washer with FREE tubs ..... 119<sup>95</sup>
- 1 ONLY NORGE 30 Gallon WATER HEATER Glass Lined ..... 72<sup>50</sup>
- 1 ONLY TAPPAN 30" GAS RANGE. Visualite Oven Door. FREE SET COOKWARE ..... 154<sup>00</sup>
- 1 ONLY GE Automatic DISHWASHER 12 Place setting size ..... 149<sup>50</sup>
- 1 ONLY GE DELUXE Automatic DISHWASHER, Power Shower. 12 place setting ..... 188<sup>00</sup>
- 1 ONLY GE REFRIGERATOR. 11.2 cu. ft. Dial defrost. All new design. beautiful interior. ..... 199<sup>95</sup>
- 2 ONLY GE Frost-Free Refrigerator, zero degree Freezer combination. 13.2 cu. ft. .... 249<sup>95</sup>
- 1 ONLY GE STEREO console, mahogany finish, multi speaker, 4-speed changer ..... 138<sup>88</sup>
- 1 ONLY GE STEREO Coffee-Table design. Walnut finish. Diamond stylus, 4-speed changer ..... 149<sup>95</sup>
- 2 ONLY GE 19" Portable Television with free base, dual speaker, caster base ..... 179<sup>95</sup>
- 2 ONLY GE 19" Portable Television. Full year warranty on picture tube. Bronze and Tan Color ..... 149<sup>95</sup>

**GOODYEAR**  
Use Our Easy Budget Payment Plan BUY NOW — PAY LATER AS LOW AS \$1.25 WEEKLY  
**GOODYEAR SERVICE STORE**  
308 E. MAIN ST. EASTLAND, TEXAS

**Public Welcome Bring a Friend**  
**AUCTION**

**PARAMOUNT HOTEL RANGER**  
**MONDAY, DEC. 2**  
**7:30 P. M.**

Announcing the sale by auction of the complete and entire Paramount Hotel in Ranger. This well-established firm contains 60 rooms and a nice, modern restaurant, completely furnished. It is presently operating at capacity, and is being sold to settle an estate. The building is 50 by 140 feet and consists of three floors. Both building and furnishings are in good condition. The auction will be held in the Lobby of the Hotel beginning at 7:30 p. m., Monday, December 2.

**A Ranger Land Mark Selling to Settle an Estate**

FOR FURTHER INFORMATION, PLEASE CONTACT  
EARL R. SMITH  
1330 N. 65  
Waco, Texas  
Ph. PR 2-0492  
Licensed Broker, Auctioneer

**INVESTMENT OPPORTUNITY**



**EASTLAND MUSIC CLUB MEETS  
WITH MRS. D. L. KINNAIRD, SR.**

The Eastland Music Study Club met in regular session in the home of first-vice-president, Mrs. Donald L. Kinnaird, Sr., 703 West Moss Street at 3:30 p. m. Wednesday, November 20th.

The subject for the meeting was "Research—Guide To Musical Enjoyment" by George R. Mark.

The meeting was called to order by the president, Mrs. Joseph Perkins, who welcomed the members and guests and expressed the entire Clubs appreciation to Mrs. Kinnaird for her generous hospitality in inviting them to meet in her home.

**Hospital News . . .**

- Jeanette Arther, surgical.
- Ronald Bunch, medical.
- June Bunch, medical.
- Venna M. Justice, medical.
- Fannie Belle Hagar, medical.
- Lavesta Myers, Ranger, medical.
- Minnie Faye Wilson, medical.
- Pearl Williams, Gorman, surgical.
- Billie Lloyd, surgical.
- Lucille Teat, surgical.
- Hannah Lindsey, medical.
- Avie Allgood, medical.
- Tonsie Johnson, medical.
- Florence Brown, Strawn, medical.
- Della Eddy, medical.
- Cuba Morris, Ranger, accident.
- Eva Taylor, medical.
- Ida Fenton, Abilene, medical.
- Zaleman Gregg, surgical.
- Henry Sims, medical.
- Sidney Peel, medical.
- Ruth Branch, medical.
- Maudie Hardy, Rising Star, medical.
- Bobby Dale Mueller, Jr., medical.
- Pearl Chisum, medical.
- G. W. Adams, Rising Star, surgical.
- H. L. McGuire, Olden, medical.
- Carrie Flowers, medical.
- Josie Robinson, medical.
- Jesse Camp, Rising Star, surgical.
- Hattie Ragsdale, surgical.
- Mary Ellen Moore, OB.
- Effie Jackson, Gordon, surgical.
- Ann E. Littleton, medical.
- Tresa Knowlton, Cisco, medical.
- Ruth Horn, OB.
- Lillie Allison, medical.
- T. H. Kirton, medical.
- Roxie Bankhead, Santo, medical.
- Wanda Nerger, OB.
- Opia Jones, medical.
- Robert Taylor, medical.
- Lindell Levens, surgical.
- Olivia Carothers, medical.
- Vera Sosebee, medical.
- Reva Horn, medical.
- Ruth Layton, surgical.
- R. E. Floyd, medical.
- Norma Gail Dennis, OB.
- Ida Arnold, accident.
- Floyd Kirby, medical.
- Cecil Hogan, Ft. Worth, surgical.
- Nora C. Payne, medical.
- Kathy Owens, surgical.
- Donna Roberson, Ranger, medical.
- Louis Simmons, medical.
- James B. Lewis, medical.
- Baby Boy Moore, New baby.
- Baby girl Dennis, new baby.
- Baby girl Nerger, new baby.
- Baby girl Horn, new baby.

She asked members and guests to join her in reading in unison "National Federation Collect" by Ruth Haller Ottoway. She then gave a beautiful quotation from an Arkansas author. She also told briefly of her day at the International Federation of Music Clubs held in Paris this past June.

Mrs. Perkins introduced the leaders for the program, Mrs. Kinnaird, Sr., who presented Mrs. N. N. Rosenquest, who gave such a wonderful discussion of the Life and Works of Mozart. Mrs. D. H. Russell, pianist, and Mrs. Kinnaird, Sr., organist, gave a beautiful and perfect rendition of Concerto in D Minor by Mozart, Allegro, and Romanze.

Mrs. Kinnaird accompanied Mrs. Jack Frost, soprano and Mrs. Grover Hallmark, contralto, who sang Mozart's Sull' aria (Le Nozze di Figaro). It was enjoyed very much by each and everyone. Co-hostesses Mrs. Donald L. Kinnaird, Jr. and Mrs. T. E. Richardson with Mrs. Perkins pouring coffee served assorted cookies, glazed nuts and stuffed dates from a table decorated beautifully with yellow spider mums and yellow candles in silver holders.

Those attending were Mmes. V. C. Barcus, Roger Blackmon, R. L. Carpenter, Clara Cockrill, Marvin Hood, Donald L. Kinnaird, Sr., J. H. Lee, A. L. Murrell, Ita R. Parish, Don Parker, Joseph M. Perkins, T. E. Richardson, N. N. Rosenquest, Floyd F. Robertson, Don H. Russell, H. O. Satterwhite, Joe Stephens, Miss Marjorie Van Hoose and guests, Mrs. Shelton of Eastland, guest of Mrs. Marvin Hood; Mrs. Evelyn Roberts, Dallas, house guest of Mrs. Russell, and Mr. Don H. Russell.

**NOTICE!**

We've added a new Telephone Number to assist you in reporting women's club and social news. Please call **MA 9-2413**

to announce your forthcoming events. The number may also be used for wedding and engagement announcements.

THE EASTLAND TELEGRAM  
**MA 9-1707**

and the new WOMEN'S DEPT. NUMBER:  
**MA 9-2413**

**You Couldn't Pick a Better Time —**

. . . than right now, in the midst of rapidly changing values and creeping inflation, to have your insurance needs and present coverages carefully surveyed and accurately appraised. Are you carrying too much insurance, too little or none at all? Are you sure your policy covers what you think it does? A survey by this agency might be enlightening and help you to get more out of your insurance dollar. There is no obligation. The service is free.

**EARL BENDER & COMPANY**  
Eastland, (Insurance since 1924) Texas

**SERVICE?**



Service for all makes . . . Lubrication specialists (wheel pack, U-joint pack, etc.) Make our station your auto service center — whether you drive an old or a new automobile.

**McCRACKEN'S MOBIL SERVICE STATION**  
BOB HOGAN, Mgr.  
302 W. Main — MA 9-2220

**WE GIVE GOLD BOND STAMPS**

**PENNEY'S SPECTACULAR**  
ALWAYS FIRST QUALITY

**SUIT VALUE**

**FOR A LIMITED TIME**



we're going to shout it . . . to all our PENNEY customers FIRST!

**32.66**

**FAMOUS BRAND SUITS AT  
TREMENDOUS SAVINGS!**

USE OUR LAYAWAY OR CHARGE IT.

**FREE ALTERATION**

CHARGE IT! Penney's in Cisco Open to 5:30

*the festive look*



**HANDSOME JACKET DRESS**

by Henry Lee

A fashion-wise choice for smart wear most everywhere is Henry Lee's new-season costume in nub suiting of 100% wool . . . fully lined, demi-fit jacket with softly tailored lapels, sharply detailed front bodice with novelty button closing . . . fully lined sheath dress. In cranberry, teal, green or black. Sizes 10-20.

**39.95**

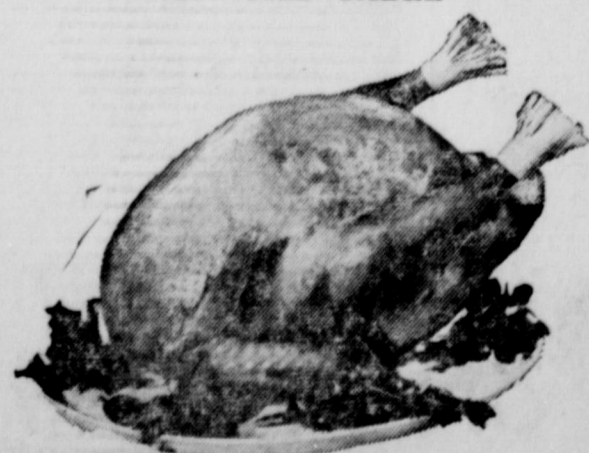
One from a beautiful collection for your dressiest occasions . . . You'll find a world of glamour just right for you at

**Altman's**

EASTLAND

**HOLIDAY FOODS! EVERYDAY LOW PRICES!**

**PICK YOUR SWIFT PREMIUM Butterball Turkeys and Beltsville White Turkeys THE BEST TURKEY ON THE TABLE**



SMOKED HAMS SHANK PORTION	Lb.	29¢
RATH BLACK HAWK HAM FULLY COOKED — Ready to Eat	3 Lb. Can	\$2.79
RATH BLACK HAWK — Honey-Glazed HAM FULLY COOKED — Ready to Eat	4 Lb. Can	\$3.85
BABY BEEF LOIN STEAK	Lb.	89¢
BABY BEEF CLUB STEAK	Lb.	89¢

WHITE SWAN — Halves	WHITE SWAN Tea	¼ Lb. Pkg.	25c
Peaches No. 2½ Cans	27c	WHITE SWAN Biscuits	3 Cans 25c
FOLGERS — Drip or Regular Coffee	Lb. Can 59c	AUNT JEMIMA Meal	10 lb. bag 79c
DEL MONTE Catsup	14 oz. Bottle 19c	DELSEY Toilet Tissue	2 Rolls 23c
VAN CAMP'S Tuna	No. 1 Flat 19c		

CENTER CUT PORK CHOPS	SWIFT PREMIUM CHICKEN HENS	RUSSETT POTATOES	10
WASHINGTON EXTRA FANCY RED DELICIOUS APPLES	PASCAL CELERY		

**AT MAC MOY'S SUPER SAV**

400 S. Seaman EASTLAND MA 9-1