



House of Representatives

JOE C. HANNA
BAKER BUILDING
BRECKENRIDGE, TEXAS
76024

AUSTIN OFFICE
BOX 2910
STATE CAPITOL BUILDING
AUSTIN, TEXAS 78711

To All Residents of the 54th Legislative District:
On Jan. 8, 1974, the State Legislature will sit as a body to write a new constitution. Your government representatives and you, the people of Texas, will be considering possibly the most important document of our lifetimes.

Our State constitution controls our courts, all branches of government, and ultimately, our very lives. The rewriting of that important instrument must be very carefully undertaken, for hopefully, it will control our State's destiny for an indefinite period.

As your State Representative, I want to know the thinking of the people of our 54th district on constitutional revision. If you have any suggestions, I would very much appreciate hearing from you. Please write me, explaining your ideas in full. I promise each of them will be carefully read and considered.

Sincerely,

Joe C. Hanna

Joe C. Hanna
State Representative, 54th District
Baker Building
Breckenridge, Texas 76024

TIDBITS

By HVO

A Faithful reader offers the following for thought:
SEQUENCE
The average age of the world's great civilizations has been 200 years. All nations have passed or progressed through this sequence:
From bondage to spiritual faith.
From spiritual faith to great courage.
From courage to liberty.
From liberty to abundance.
From abundance to selfishness.
From selfishness to complacency.
From complacency to apathy.
From apathy to dependency.
From dependency back to bondage.
In three years our United States will be exactly 200 years old.

WE DON'T ENVY people who write our syndicated columns. Of necessity they must practice "antierastation" (work ahead of time) and with the rapid changes on the national scene, today's facts may be tomorrow's fiction - today's good news may be tomorrow's tragedy. Reminds us of the prayer "Lord, give me patience - but I want it RIGHT NOW!"

The five Cub Scout Dens and the Webelo Den will hold a Pack Meeting Monday evening. Pack Master Joe Housson has announced.
All Cubs, Webelos, workers and parents are urged to attend the meeting to begin at 7:30 p.m. at the Fellowship Hall of the First Methodist Church.

DENTON - Two Eastland County residents have been elected officers of organizations at North Texas State University for the 1973 fall semester.

Danny L. Elrod, son of Mr. and Mrs. Odie L. Elrod, 311 Patterson, Eastland, has been elected athletic director of Phi Kappa Sigma. He is a senior majoring in industrial arts at NTSU.

Teresa Ann Dudley, daughter of Mr. and Mrs. Beverly S. Dudley, Route 2, Ranger, has been elected vice president of Delta Psi Kappa. She is a senior majoring in physical education.

Rough Game For The Dogies

By Scott Spradling & Laura Johnson

A very rough game was played Thursday at Maverick Stadium, when the Eastland Dogies met the Comanche Indians.
Comanche Indians received kickoff and got to the 40 yard line. Both teams tightened up and Comanche got the ball on the 2 yard line. Comanche fumbled the ball and Eastland's Quarterback John Hill drove in for a touchdown, the first score of the game. Eastland's conversion was no good.
Eastland's defense was great but so was Comanche's. Both

teams held each other back. At the half the score was Eastland 6 Comanche 0.
Eastland received the 2nd half kickoff and were held. Peanly was called. Eastland regained the ball and was held by Comanche's good defense.
Punt was blocked and it was Comanche's ball.
Comanche scored on a pass from the 20 yard line. Conversion was no good. The score was now 6 - 6.
Eastland was held and had to punt. Eastland regained the ball but were held back by Comanche's storming defense.
Both Eastland and Comanche defense was great and the game ended 6 - 6.

Eastland Lions Club Annual PANCAKE SUPPER

Friday, Nov. 2
(Night of Eastland-Cisco game)
Eastland Elementary School
Tickets Available Now And At Door
Serving 5 P.M. To ?

EASTLAND TELEGRAM

EASTLAND, TEXAS 76448: Today's CENTER for tomorrow's FUTURE!

Volume No. 104 Number 86

Sunday, October 28, 1973

30 To Train Here For Industrial Prospecting Team

More than 30 Eastland business men will participate in an Industrial Development Team Training Program which will be introduced at a luncheon meeting to be held at the Ramada Inn next Tuesday, Oct. 30th.

Chamber of Commerce President J.T. Carter, Industrial Team captain M.H. Perry and Chamber Manager J.T. Wright have completed contacts with individuals who will be involved in the four industrial training sessions which will be held weekly beginning Monday, Nov. 5th. The course will be under the supervision of Lee Newman, Industrial Development Specialist with Texas Electric Service Company.

In recent years, Eastland has experienced steady growth with several new industries and

numerous businesses having located here.

Eastland's Chamber of Commerce Industrial Team, working in conjunction with the Eastland Industrial Foundation, has played a key role in this growth.

M.H. Perry predicted that with the inclusion of several new members on the industrial team, and with the continued participation of members with many years experience, this growth will be maintained.

The following Eastland citizens will make up the newly reorganized Industrial Development Team:

M.H. Perry, Clint Bray, Gene Johnson, Eugene Frost, Jay Staggs, Pat Miller, Jim Wright, Bruce Pipkin, Otis Coleman, Marcus O'Dell, Wendell Seibert, Emmett Lasater, Bob Perkins.

J.T. Carter, James Wright, Dale Bakker, Kenneth Reese, James Fullen, R.P. Haun, Ray Winingar, Charles Martin, Jim Hogan, Bob Potter, Wilbert Simmel, Charles Freyschlag, Buddy Aaron, Don Kinnaird, Grover Hallmark, Veon Howard, H.V. O'Brien, Wade Freeman.

Roger Terrell, Mike Seibert, Lewis Tiner, John Morren and Bonnie Robertson.

Members of the Eastland Industrial Foundation are Tom Wilson, M.H. Perry, Frank Sayre, Virgil Seaberry, and J.T. Carter.

The year ending Aug. 30, 1973, far exceeded expectations in Texas in terms of activity and results in registering industry "prospects", according to Pat Williams, the director of the Prospect Development Division, to the Industrial

Commission at its regular quarterly meeting.

For that year, Williams said, 286 prospects registered as a result of the TIC's campaign to win them over for Texas. This compares with only 188 in the previous year.

"Thirty-eight of the TIC identifiable prospects have already located in Texas, as compared to only 15 in the previous year," Williams reported. "Of those 38 prospects, almost half of them (16) deciding to come to our state were prospects which we developed from within our files during that 12 month period. "This short time span indicates the fast pace at which we've been moving."

Williams said that another 38 prospects visited Texas during the year and that nine of those already have announced their decision to locate plants in the State.

Mavericks Fall To Indians 33-20

By Steve Haines
The Mavericks' seventh game of the season Friday night in Comanche against the Indians, was one of frustration. As sports fans from Comanche and Eastland witnessed one of the most crucial games in 9AA district race.

The Mighty Mavericks fell to the Comanche Indians, 33 - 20. Maverick spirit, in some people's opinion, seemed to be in somewhat of a slump following the victory over the Coleman Bluecats the previous week. This and other factors played major roll in the game Friday night.

With Eastland losing the toss the Indians went into the game with the first possession. With little over two minutes gone in the first quarter Quarterback Armstrong scampered for a run that brought the ball down to rest on the Mavs 1 yard line where with 9:18 left to play in the first quarter Davis leaped in for the first Comanche touchdown.

With the extra point good the Indians led 7 - 0.

During the Indians' first drive quarterback Terry Ensor sustained a broken wrist which proved to be a big factor in the dreary night for Eastland. With Ensor out, Gary Wheat assumed responsibility for leading the Mavs.

With a little more than five minutes left in the first quarter, the Indians once again regained possession of the ball following a fumble made on a hand off from Wheat to Tony Thomas.

About one minute later Williams ran in for Comanche's second touchdown on the drive that started on the Indians 40 yard line. Extra point was good and Comanche leaped into a 14 - 0 lead.

Eastland, with one second left in the first quarter, and the pride that goes with each Maverick brought the ball to rest on the Comanche 5 yard line on a drive that was started on the 50.



TERRY ENSOR



GARY WHEAT

From the 5 Wheat handed off to Tony Thomas for the Mavs first score of the night.

But with the extra point no good the Mavs were still trailing considerably 14 - 6.

The Indians, with their fine offensive backfield, brought about their third score with a run from the 20 yard line of Eastland by Williams brought into being by a drive from mid - field.

This put more of a decisive edge on the Mavs going into the half with the score Comanche 20 - Eastland 6.

In the latter part of the third quarter Comanche's 4th touchdown was brought about with a 15 yard run by Davis which swept the Comanche crowd right off their feet.

Followed by another breath taking series of events with less than a minute left in the third quarter which featured Holland going for about a 50 yard run which brought the ball for the

Indians to the Eastland 10 yard line which was topped by a ten yard run by Davis for the Indians' final touchdown.

At the end of the third quarter the score was Eastland 6 - Comanche 33.

But with this captivating series of plays the Indians had demonstrated; the Mavericks were not to be out done for another addition to their score. And the Mavs did it in grand fashion with Gary Wheat rolling back and passing in a formation to Tony Thomas for a 55 yard pass - run play which brought the score to 33 - 13.

After this exciting example of Maverick execution the fans for Eastland felt certain that the game would not be adjourned without another Maverick touchdown.

With 3:01 left in the ball game the Indians fumbled the ball on about their ten yard line where the Mavericks recovered.

Seconds later Wheat handed off to Thomas who drove for the Mavericks final score.

With Morren's extra kick good the final score stood at 33 - 20 in favor of the Indians.

Another major factor which was very evident throughout the game was the large amount of fumbles which were lost by both teams, but was probably more to Eastland's favor. Congratulations go to Gary Wheat for his superb leadership which he delivered.

Outstanding players for the Mavericks were Gary Wheat, Tony Thomas, Tom Morren, John Marshall, Charles Harvey, Rex Morgan, Ralph Underwood, Doug Allmond, Isaac Orozco, Jay Staggs, Clay Wheat, David Baze, John Hart, B.W. Robertson, Billy Daniels, and Brent Parker.

Eastland	First Downs	Comanche
16	Pushing	20
24	Passing	24
24	Passing	24
3 of 12	Passes Completed	3 of 9
6	Passes Intercepted By	8
7 for 47	Punts, Average	4 for 17.2
4 for 40	Penalties, Yards	12 for 117
4	Fumbles Lost	5

OTHER SCORES
Cisco 34 - Coleman 14
Hamilton 12 - Clyde 7
DeLeon 50 - Ranger 0
Next week: Cisco at Eastland.

FULLEN MOTOR CO.
Laugh A Day

In the thirties you could see two movies for a dime. Now it costs you \$500 for a television set and what do you see? Those same movies.

FREYSCHLAG Insurance

WEATHER REPORT
Generally fair with mild afternoon. High in upper 70's. Light north winds.

Deadline Nears For Fall Planting Pack

Time runneth out...for tree buys too!

That's the word from the Civic League and Garden Club which is offering a special planting package in cooperation with a professional nursery as part of their present Beautification Project.

Persons wishing to take advantage of the excellent planting package, may do so by contacting Mrs. A.E. Connel, chairman, Mrs. Austin McCloud, president; or any member of the League.

Deadline set for acceptance of orders is Nov. 10.

The package consists of a live oak tree and a choice of other plants.

City Of Trees!

Eastland: the City of Trees! It's certainly becoming that. Especially with the emphasis being placed by the Civic League and Garden Club in their beautification program.

You'll see new plantings at Texas Electric Service Club, at Eastland Memorial Centennial Library, and all over town.

Some thought is being given to tree plantings around the square by individual merchants and businessmen.

The following notes are appropriate:

A LITTLE HELP FOR A SMALL TREE

This is a time when you can plant or transplant trees, and if you do the newly planted tree needs some support for the first year in its new home.

The American Association of Nurserymen suggests that a small tree receive that support from a wooden stake about a foot longer than the height of the tree planted in the ground as close as possible to the trunk.

Tie the tree to the stake with wire, using a small piece of garden hose around the wire to act as a cushion between it and the wood.

For larger trees use three wires staked to the ground and attached to the tree.

FALL FEEDING FOR SHADE TREES

Either after the leaves have

fallen from a shade tree or just when new ones appear in the next growing season are two times when it is best to feed the tree with fertilizer - and the job should be done once a year according to the Association. The nursery professionals provide these instructions to make the results most effective.

Feed the shade tree when the ground is damp. Use a crowbar or some similar tool to make a circle of holes in the ground about 18 inches apart, ideally 8 to 12 inches deep, underneath the tree at about the point of the end of the longest limbs. Put two or three tablespoons of fertilizer in each hole, top them off with soil, and the job is done.

This process assures two benefits. The fertilizer is applied near to the root of the tree where it will do the most good, and it is beneath the level of grass roots to avoid over-abundant growth where it is not desired.

WASHING NATURE'S DUST TRAPS

Nature's gift of green, growing trees and plants and shrubs are the oldest "air purifiers" in the world, and because of that, indoor plants appreciate a bath now and then to wash away the dust and other impurities they collect from the atmosphere around them.

In their publication on Green Survival, the association points out that one major city, Los Angeles, frequently washes its street trees with a detergent solution for the same reason.

Clear water at room temperature is recommended for the plant washing, although a mild detergent solution may be used, and washing can take place every few weeks. The association recommends that plant surfaces not be shined with oily substances which can attract excess dust. In addition to enhancing the air purification capability of the plants, the washing often produces welcome increases in growth.

NATURE'S GIFTS continued inside.

BEAUTIFICATION PROJECT
OFFERED THROUGH EASTLAND CIVIC LEAGUE
by Scherz Nursery & Landsome Co.
San Angelo, Texas

NAME: _____ ADDRESS: _____
CITY: _____ PHONE: _____

PACKAGE: \$16.95 plus tax

1. Live Oak - 5 gallon size

and your choice of 4 plants of any of the below listed one gallon plants:

2. _____ 3. _____
4. _____ 5. _____

Additional plants of any of the one gallon size may be purchased at the cost of \$2.75 (including tax) each.

- Southern Magnolia, evergreen
- Ornamental Japanese Black Pine
- Deciduous Vitex, Lavender Tree
- Burfordi Holly, good evergreen foundation plant
- Euonymus, japonica; hardy evergreen hedge
- Abelia, evergreen flowering shrub
- Crapemyrtle, watermelon pink flowering shrub
- Pomegranate, large deciduous flowering shrub
- Nandina, for fall color semi-evergreen
- Photinia, frazeri; evergreen & upright
- Hockorange, white spring flowers
- Althea, rose of sharon; flowering shrub
- Pyracantha, evergreen, berries in winter

All plants must be picked up at G & D Feed Store, 305 S. Commerce, Eastland, between November 15-17, 1973. The buyer expressly agrees that any plants not picked up by November 17th, 1973 are hereby donated to the City of Eastland to be planted by the city in the Eastland City Park.

BUYER: _____ SALESPERSON: _____

Gordon's pot

by DeMarquis Gordon

Six Eastland County men were among 2,000 Texans who gathered in Austin last Tuesday for an important meeting. The occasion was the Governor's Conference on Rural Development.

Leaders from Cisco who attended were Sutton Crofts, Gene Abbott, Dick Woolley, and Charles Clark. Wade Freeman of Eastland attended with me.

The theme of the conference was "Planning Today for Tomorrow's Balanced Growth." Gov. Dolph Briscoe was the keynote speaker. He spoke on "Planning for a Rural Urban Balance."

Other speakers were Texas Congressman W.R. (Bob) Page, Roy B. Davis, chairman of the Texas Rural Development Commission;

Dallas County Judge W.L. Sterrett; Texas Commissioner of Agriculture John C. ... and Dr. John E. Hutcheson, director of the Texas Agricultural Extension Service.

It seems all the state leaders are putting more emphasis on the development of small towns and rural areas.

Cattle lice cause heaviest damage to livestock in Eastland County during the winter and spring, but populations of these lice begin to build up during the fall months. To delay and minimize the build-up of lice populations, producers should inspect and treat cattle during the fall.

Newly purchased cattle should be treated for lice before being introduced into the herd after control measures have been applied. Cattle lice will spread rapidly for infested animals especially when cattle bunch up due to cold weather conditions or when the cattle are penned for an extended period of time. Cooler weather is conducive to population increase of lice.

Cattle should be inspected periodically throughout the winter and spring and control measures should be applied when the lice populations become excessive. Animals often rub their neck and brisket area on stationary objects and paw the ground as lice feeding increases. Patches of hair may be lost on the neck and tail-head areas giving cattle an

unthrifty appearance. Heaviest lice infestation usually are present on cattle during the late winter and early spring. Heavily infested animals may be weakened by blood losses to the point they are more susceptible to disease with thrift and vigor greatly decreased. Lice also keep cattle from making maximum weight gains and reduce milk production.

For control of cattle, lice, various insecticides can be used as a spray, dust or dip. Information on these insecticides is contained in MP-691 "Suggestions for Controlling External Parasites on Livestock and Poultry". This publication can be obtained from the county extension agents' office in Eastland.

Those engaged in food and fiber production and processing deserve a special "thanks" for a job well done. The month of November has been set aside as "Food and Fiber Appreciation Month". Despite rising prices, food products are still one of the best bargains to be had anywhere. And their quality is second to none. The recent food price situation has brought agriculture to the forefront and has focused more attention on its importance.

FOR SALE: Beautiful, well-built, ideally located two bedroom family home in Eastland with central heating and air conditioning, area rugs and draperies. Attached garage and beautifully landscaped, good sized lot. Call 629-2442 for information and appointment to see. t-f

Steve Polansky Speaks

insurance plan for older persons will be explained and evaluated by Steve Polansky, insurance consultant for the National Retired Teachers Association, at a meeting of the Eastland County RTA unit at 3 p.m., Nov. 5 at the First National Bank, Avenue D. at 8th St., Cisco, Texas.

Members of NRTA who are interested in insurance matters will be welcomed at the meeting. A question-and-answer period will provide opportunities for individual cases to be explored.

Retired educators interested in attending the meeting should contact Herman C. Jordan of Route 1, Eastland, Texas.

Membership in NRTA is open to men and women who have at some time been employed in the U.S. school systems or private educational institutions at any level. With its sister Association, the

American Association of Retired Persons, NRTA represents the nation's largest group of older citizens dedicated to achieving retirement lives of independence, dignity and purpose.

NRTA sponsored development of the nation's first group health insurance plan for the elderly and now offers a wide range of plans, including insurance to complement Medicare and an automobile insurance plan with non-

cancelation features. Other NRTA services include a travel service, a temporary job placement service, a mail-order prescription service, and a continuing education program called "Lifetime Learning".

JAMMIES Evening Specials

- MONDAY: Fried Cat Fish
- TUESDAY: Mexican Food
- WEDNESDAY: Southern Fried Chicken
- THURSDAY: Barbecue
- FRIDAY: Seafood Platter

Supplies Eastland Gallery
Laura Blizzard
310 S. Lamar
629-8004 Eastland
Mon. 1 to 9

Gifts

Crafts Tues. Fri. 9 to 5 Sat. 9 to 1

Classes

RANGER DRIVE-IN THEATRE Last times Sunday OCTOBER 28.

JAMES CAAN
SALLY KELLERMAN
SLITHER

PG METROCOLOR

Friday - Saturday & Sunday NOVEMBER 2-3-4

Same dude with a different plan... in another country with a different man.

The AN NEW SIG SHORE Production

SUPER FLY T.N.T.

Starring RON O'NEAL "SUPER FLY T.N.T." ROSCOE LEE BROWNE
SHERLA FRAZIER ROBERT GUILLAUME JACQUES SERNAS WILLIAM BERGER

Interstate's abc **MAJESTIC** 629-1120 Last Day Sunday

DOWNTOWN EASTLAND

2:15 - 4:00 - 5:45 - 7:30 - 9:15

THE MOST FANTASTIC UNDERSEA ODYSSEY EVER FILMED

THE NEPTUNE FACTOR

GENERAL AUDIENCES All Ages Admitted

REN GAZZARA as the Commander
TWEETY NIMMOX as the Villainess
WALTER FIDGENER as the Scientist
ERNEST BROWNING as the Ace

NEED CEMENT WORK? Call Kincheloe Concrete Co. Free Estimates 629-8092.



The cakes are here. Come by, have a sample and judge for yourself. Thanksgiving is nearly here. Then you will need one for Christmas.

Can ship anywhere in U.S. Post free. We bake for Thanksgiving - Christmas - New Years - Easter. Unconditionally guaranteed. Our company is here to please you and your friends.

Ouida Van Hoy
629-2474
205 S. Lamar
Eastland

Roofing
New & Repair All Buildings & Houses
Estimates Made.
Tri-Citys Roofing
Call Nobel Squires
629-3270

Custom Built Homes
By H. & W. Development Co.
1201 W. Commerce
Eastland, Ph 629-1702

For Professional Care in an Atmosphere of Family Living

Hickman Nursing Home

Offers You

- 24 hour nursing care supervised by a Registered Nurse
- Special diet management by an A.D.A. dietitian
- Full program of recreation and entertainment
- Private rooms

629-2624
411 West Moss Eastland, Texas

WE CARE FOR YOU... WE CARE ABOUT YOU

SENIOR CITIZENS

NOW YOU CAN ENJOY THE SECURITY OF A WORRY FREE 24 HOUR NURSING CARE

* Certified By Texas State Department of Public Welfare

• 24 Hour LVN Supervision • Doctors References • Special Diets
• All Guest on Ground Floor • Controlled Air Cond. & Central Heat
• Planned Activities • Occupational Therapy • Home Like Atmosphere
• MEN - WOMEN - COUPLES • REASONABLE RATES
• CONVENIENT SUBURBAN LOCATION
• ALL CASES CONSIDERED
• DESCRIPTIVE BROCHURES SENT UPON REQUEST

• A beautiful dining room for home-like meals
• "Special Diets"
• Complete program of recreation and occupational therapy
• Private and Semi-Private Rooms
• Beautiful rooms
• Beauty Shop & Barber Shop
• Licensed Personnel
Approved for Medicaid, Old Age Assistance and Welfare Patients

For professional care in a luxury atmosphere, unsurpassed by any other nursing home

EASTLAND MANOR
1405 W. Commerce 629-2686
Gene Frost, Adm.

VALLEY VIEW LODGE
700 S. Ostrom 629-1779
Shirley Frost, Adm.

get your **EXTRA** big values

AT JRB SUPER MARKETS

Eastland - Ranger - Cisco

Limit 1 With \$5.00 Purchase

JRB SUGAR
5 lb. **65¢**

Golden Ripe
BANANAS
lb. **10¢**

FRIED CHICKEN

USDA GRADE A INSPECTED
FRYERS

WHOLE ONLY
(Limit 4 Per Customer)

35¢

LB.

SAMPLE OUR SAVINGS & SERVICE!

Double S & H Green Stamps Saturday & Wednesday

Time Runneth Out For Tree Buys

Penelope Winslow planted a linden tree to celebrate her eleventh birthday. Standing beside the little sapling in the front yard of her father's new home in Plymouth, Massachusetts, she could look some 500 paces away to the rock where the Pilgrims first set foot on this nation's soil.

Her gift has become a part of our heritage, because 200 years since its planting Penelope's linden tree still stands as a monument to America's greatness.

While Miss Winslow was making her environmental contribution in Massachusetts, another more ambitious gardening project was underway in the Virginia colony at the home of George Mason. Jefferson called him "the wisest man of his generation", and others have referred to Mason as "The Pen of the Revolution" because his writing of the first Constitution of Virginia became the basis of our Federal Bill of Rights.

Today's visitors to Gunston Hall, the Mason estate near the nation's capital, find a magnificent 12 foot tall boxwood allee planted in about 1776 by George Mason with seedlings he imported from England. The wondrous boxwood garden remains as his gift to his land as we approach our third century, and a symbol of George Mason's love and respect for nature's beauty.

Harvard University's Dumbarton Oaks, in Washington, D.C., was the site, in 1944, when representatives of four major world powers - Russia, China, Great Britain and the United States - met to plan the first draft of the United Nations Charter. Perhaps the delegates walked through the stately gardens during their deliberations, and when they did they surely stood beneath one of the oldest trees in the

capital city. The majestic white oak has been a quiet sentinel in that place since its planting some 50 years before our nation's independence.

The American Association of Nurserymen is focusing attention on plantings such as these which have been a part of our nation's natural wealth throughout its history to point up the value of new planting now in observance of the approaching American bicentennial year. "The best time to plant a tree," the men and women of the AAN say, "was a long time ago. The second best time is now."

"Decorate our nation for its birthday year," they say, "with trees along our streets, plants and shrubs in our gardens and parks, lawns and ground covers over the naked earth." And they provide a number of compelling arguments for taking these steps as we enter our third century.

Beauty, of course. Destruction of natural beauty is a disastrous by-product of our nation's material growth. According to Dr. Illis of the University of Wisconsin, man, who appears to be genetically programmed to the natural surroundings of green, growing landscapes, is plainly out of place in the concrete and asphalt and glass world he has created for himself.

The easiest way to strike a telling blow for beauty in our land is for people to take a hard look at their homes and neighborhoods, and if they don't like what they see, to do something about it. The homeowner who plants a grassy front lawn and landscapes it with trees and shrubs and flowers is making war on "ugliness."

But the people of the AAN offer other, perhaps even more important reasons for every citizen to contribute nature's growing gifts for the country's

bicentennial year.

In this time of great concern about the deteriorating quality of our atmosphere, the AAN reminds us of this fact: During the course of the 23,000 times we each inhale and exhale in a single day, we take in 35 pounds of oxygen - and we get it all from green plants on land and vegetation in the sea.

In addition to their manufacturing of oxygen, plants are one of nature's most efficient air purifiers. Their hairy leaf surfaces clutch falling particles of dust and dirt to help curtail the steady rain of pollutants in our atmosphere. Dramatizing the efficiency of this process, a recent research study showed the dust count on the sheltered side of a planted section to be 75 percent lower than a similar count on the windward side.

Still another factor in our nation's environmental dilemma as it approaches its third century is the noise pollution in which we live... a cacophony that contributes to all sorts of tension-related diseases: headaches, stomach ulcers, neuroses, mental illness, allergies, even cardiovascular and circulatory disease.

Consider this information provided by the AAN: Heavy street traffic registers an average noise level of 70 decibels. Proper landscaping can reduce that noise about 60 percent. Plant parts break up sound waves, change their direction and reduce their intensity. For the same reason, many modern offices are using live partitions of plant materials between work areas to effect a measurable decrease in sound volume, add beauty, and freshen the air.

With all this in mind, the people of the association conjure up the impact which our nation would experience if every citizen planted one tree or bush or flowering shrub as a bicentennial gift to America. Imagine! they say, 200 million new beautifiers, air purifiers, sound muffers, earth nourishers, water protectors all at one time to restore our diminishing riches in nature's gifts!

The need for this kind of individual action may be urgent. By 1976, the bicentennial year, estimates are that 80 percent of America's people will live in urban areas. But recent studies reveal that one-fourth of the public trees in a typical metropolitan area that are lost every year through natural causes or because of new construction are never replaced.

THE BEST HAMBURGERS ARE AT HOLLAND'S DRIVE IN AT THE Y WEST 1505 W. Main EASTLAND, TEXAS FOR CALL IN ORDERS PHONE 629-2215

Methodist Women Meets

The Suzannah Wesley Class of the First United Methodist Church met in the home of Mrs. Guy Patterson Monday night. The class enjoyed a social hour with Mrs. Cecil Collings as the honoree. Mrs. Collings, a former teacher of the Suzannah Wesleys is moving later this year to Glen Rose, the town where Mrs. Collings and her husband graduated from high school.

A gift of appreciation for her dedicated service to the class and church was presented to Mrs. Collings by the president of the class, Mrs. E.J. Turner. Judge and Mrs. Collings will be remembered for their hospitality to the class in their homes both in town and on Lake Leon.

An autumn theme was carried out at the refreshment table. Centering the table was a colorful arrangement of ornamental gourds. The tablecloth was white maderia

Meeting Of Home Demonstration Club Wednesday, Oct. 24

Morton Valley Home Demonstration Club met Wednesday, Oct. 24.

The meeting was called to order by President Mrs. Bertha Harrison. Theme, creed and prayer was led by Mrs. Gordon. Devotional from 2nd chapter of Timothy, verse 15 and 16 was read by Mrs. Hartzel.

Roll Call was answered by "New Ideas I Have Learned". Treasurers report by Mrs. Tankersley. It was decided that the club send money for the Travis State School in Austin. Call "Operation Santa Claus," is a program for residents without families or friends to remember them at Christmas time.

Janet Thomas brought delightful program on how we spend our time.

The hostess Mrs. Josie Nix served refreshments to Mrs. Harrison, Mrs. Laughlin, Mrs. Hodge, Mrs. Kincaid, Mrs. Hartzel, Mrs. Tankersley, Janet Thomas, Mrs. Gordon, and Mrs. Brockman.

and the appointments were of silver. Hot cranberry punch, nuts and a variety of party cookies were served. Mrs. Turner poured the punch.

The class presented the house hostess a pot of bronze mums. Hostesses assisting were Mmes. Homer Smith, Milton Hunt, E.J. Turner, Charles Marshall, and Rudolph Little. Others attending were Mmes. Cecil Collings, Thura Taylor, Ben Marney, Wendell Seibert, Henry Van Geem, and Misses Opal and Loretta Morris.

Durward Webb Finishes Basic

Durward Webb Jr., son of Mr. and Mrs. Durward Webb of Rt. 1 Carbon, has finished basic training at Fort Polk, La., and is now stationed at Fort Bliss.

He recently graduated at the top of the Air Defense Acquisition Radar Maintenance Course. As top graduate he was promoted to Spec. 4.

Webb was an honor graduate of Carbon High School in 1971 and attended Cisco Junior College in 1972.



Bill Hayes, president of the SOS Center in Eastland, urges senior citizens of the area to join the group which meets at 2:30 p.m. each Friday in the basement of First United Methodist Church to plan for the Christmas party.

Enrollement At Green Tot Kindergarten

The following children are enrolled in the Green Tot Kindergarten: Jody Alexander, Jodi Coan, Tracey Salyer, Stefanie Tankersley, Misty High, Amy Gann, Calvin Golden, Todd Gibson, Tammy Pierce, Blake Boles, Lisa Chick, Jerry Bachtel, Vicki Wright, Julie Richards, Kim Martin, Karen Sue Walton, and Travis Vinson.

This article is for mothers keeping your child's scrapbook. This is the 19th year for this Green Kindergarten.

Our tree is apricot. We each planted seeds outside and discussed how things grow from seed.

We took a hike up on high school hill and sat in one of the big school busses the very first day. This proves the tots are extra nice the first day or no hike.

We enjoy coloring, pasting, cutting, playing band, doing exercises, reading stories. We made Chinese Chains and Jack-O-Lanterns and picture posters brought by Blake Boles.

We have refreshments at 10 followed by a brief rest period. We discuss eating good nourishing meals, brushing teeth and bath and going to bed

early now that we are big kindergarteners. We all need a good breakfast every morning. We stress manners, prayer before we eat. Each takes turns serving in all activities.

We had our Halloween party early as one of our tots will be in California for a couple of weeks. We celebrated all birthdays for tots who do not have a birthday during our six months term. We made Pumpkins and put them in our class room windows.

Kim Martin h has a new baby brother and Todd Gibson has a new baby sister. Dr. and Mrs. Bob Alexander and Mr. and

Mrs. Charlie High are the Kindergarten parents for the year. Each has their third child enrolled in Green Kindergarten.

We feel this is an outstanding group. Most listen and respond nicely. We plan on our third teacher next week. Drama will be her specialty.

As usual we are stressing good citizenship. Do not be a litterbug and do not throw cans, bottles, candy and gum wrappers around.

Ferne Green

HELPING TO SAFEGUARD HEALTH

A Friend You Can Rely On...

Your pharmacist should be your friend. Someone to help. Someone who's always there with careful attention to prescriptions.

And, as your doctor's back-up man, your pharmacist follows his instructions with precision.

Bandages, Strips

Central Drug

103 W. Main Eastland 629-2681

Custom Plowing, Cutting, & Bailing Call Jack Johnson 647-3679

The J&F Poodle Grooming Shop located 14 miles south of Interstate 20 on Cisco and Cross Plains Highway 206. Phone 817-725-4304.

BAKKER FUNERAL HOME

Dear friends,

An honorably discharged U.S. war veteran merits a Veterans Benefit from the U.S. government as follows:

1. An American flag with which to drape the casket - after burial to be given to the next of kin.
2. \$250 toward funeral expenses.
3. A marker for the veteran's grave.
4. In some cases, a pension to the widow and minor children.

Respectfully,

Oaks C. Bakker

ORDER CHRISTMAS CARDS NOW

1/4 Off

See Our Complete Lines At
Eastland Telegram

Pre-Season Heating Sale

15% OFF Heating And Blown-in Insulation Through October, 31

Conserve Fuel-INSULATE

When it Comes to Air Conditioning

When it comes to air conditioning and heating, Don't make the same mistake others do, Don't think cheap is a bargain. Deal with a professional...Central Air Inc., where quality and reputable service are not just words. Your Satisfaction Is Guaranteed.

CALL: 673-9571

For Free Estimate Terms Available

Central Air Heating, Air Conditioning Plumbing and Insulation
201 Mesquite - Abilene, Texas

Let us help you get your new car

Buying a new car can be easier than you'd expect-if you let us handle the financing for you.

For Information Call Richard Rossander Agent
Ph. 629-2563, Eastland, Texas
Financing services by MFA Security Service Co.

ASSETS		Dollars	Cts
Cash and due from banks (including \$ 1,315.46 unposted debits)		1,881	816 25
U.S. Treasury securities		1,194	324 36
Obligations of other U.S. Government agencies and corporations		4,984	318 40
Obligations of States and political subdivisions		2,239	858 65
Other securities (including \$ None corporate stock)		7,500	00
Trading account securities		None	
Federal funds sold and securities purchased under agreements to resell		None	
Loans		5,980	685 82
Bank premises, furniture and fixtures, and other assets representing bank premises		293	962 35
Real estate owned other than bank premises		None	
Investments in unconsolidated subsidiaries and "associated companies"		None	
Customers' liability to this bank on acceptances outstanding		None	
Other assets (including \$ None direct lease financing)		16,886	772 42
TOTAL ASSETS		16,969	218 25
LIABILITIES			
Demand deposits of individuals, partnerships, and corporations		5,632	702 32
Time and savings deposits of individuals, partnerships, and corporations		9,024	497 77
Deposits of United States Government		78	123 04
Deposits of States and political subdivisions		905	882 52
Deposits of foreign governments and official institutions		None	
Deposits of commercial banks		77	908 37
Certified and officers' checks, etc.		59	842 04
TOTAL DEPOSITS		15,778	956 06
(a) Total demand deposits		\$ 6,421,	143.20
(b) Total time and savings deposits		\$ 9,357,	812.86
Federal funds purchased and securities sold under agreements to repurchase		None	
Liabilities for borrowed money		None	
Mortgage indebtedness		None	
Acceptances executed by or for account of this bank and outstanding		237	552 55
Other liabilities		16,016	508 61
TOTAL LIABILITIES		16,969	218 25
MINORITY INTEREST IN CONSOLIDATED SUBSIDIARIES			
RESERVES ON LOANS AND SECURITIES			
Reserve for bad debt losses on loans (set up pursuant to IRS rulings)		83,788	97
Other reserves on loans		None	
Reserves on securities		None	
TOTAL RESERVES ON LOANS AND SECURITIES		83,788	97
CAPITAL ACCOUNTS			
Capital notes and debentures		None	
Equity capital-total		868	920 67
Preferred stock-total par value		None	
Common stock-total par value		100,000	00
Surplus		150,000	00
Undivided profits		618,920	67
Reserve for contingencies and other capital reserves		None	
TOTAL CAPITAL ACCOUNTS		868,920	67
TOTAL LIABILITIES, RESERVES, AND CAPITAL ACCOUNTS		16,969	218 25
MEMORANDA			
Average of total deposits for the 15 calendar days ending with call date		15,825	164 10
Average of total loans for the 15 calendar days ending with call date		5,958	436 08
Interest collected not earned on installment loans included in total capital accounts		None	

I, James W. Reid, Vice-Pres. of the above-named bank do hereby declare that this report of condition is true and correct to the best of my knowledge and belief.

We, the undersigned directors attest the correctness of this report of condition and declare that it has been examined by us and to the best of our knowledge and belief is true and correct.

Directors

E.V. O'BRIEN, Publisher and Editor
Second Class Postage paid at Eastland Texas under Act of Congress on March 1870.
Published semi-weekly - Thursdays and Sundays by Eastland County Newspapers, Inc.

Sunday, October 28, 1973

NOTICE: Any erroneous reflection upon the character, standing, or reputation of any person, firm or corporation which may appear in the columns of this newspaper will be gladly corrected upon being brought to the attention of the editor.

FOR SALE

FOR SALE IN RANGER - Almost new 3 bedroom, 1 1/2 bath, brick home. Pay equity and assume payments of \$112 monthly, including taxes and insurance. Citizens Realty 629-8048 or 629-8082. t-ff

FOR SALE

FOR SALE - USED AND REPOSESSED Kirby vacuum cleaners. Call Mrs. Johnnie Honea at 629-2072

FOR SALE

AUCTION - October 30, 1973 - 10:00 a.m. EAGLE EQUIPMENT CO., INC. - ABILENE, TEXAS Bear Thomas, Owner, is quitting business due to ill health and has commissioned Miller & Miller Auctioneers to liquidate all Construction Equipment, Shop tools, and Equipment, Office machines, and furniture, real estate, etc. Everything positively sell. No minimum prices. No reservations. t-86

Wanted

WANTED: Texas Veteran wants to buy few acres. Call 629-1707. t-ff

NOTICES

EASTLAND ROTARY CLUB
Pat Miller, President
Meets each Monday
MASONIC LODGE NO. 467
Meets second Thursday of each month at 7:30 p.m. in the Masonic Hall. Call L.D. Keith, W.M., at 629-1676. or L.E. Huckabay, sec'y at 629-1391 for information.

NOTICES

CANCER INSURANCE
UP TO \$100,000
M.H. Perry
104 N. Lamar
629-1566

FOR SALE: Beautiful, well-built, ideally located two bedroom family home in Eastland with central heating and air conditioning, area rugs and draperies. Attached garage and beautifully landscaped, good sized lot. Call 629-2442 for information and appointment to see. t-ff

FOR SALE IN RANGER - Almost new 3 bedroom, 1 1/2 bath, brick home. Pay equity and assume payments of \$112 monthly, including taxes and insurance. Citizens Realty 629-8048 or 629-8082. t-ff

FOR SALE - 100' x 500' lake lot. Equipped with cesspool and cabin. Ready for immediate use by trailer house. Beautiful yard with lots live oak trees. Two water pumps and new well house. Deeded land. Call 629-1621. t-86

CERAMIC TILE WORK
Residential, tubs, showers, floors.
Repair jobs welcome
Call 629-1842

FOR SALE - IN CISCO - 3 bedroom, 2 bath brick home, large fence, corner lot. House is fully carpeted and has 2 car garage. Excellent location near shopping and school. Citizens Realty 629-8048 or 629-8082. t-ff

BUSINESS OPPORTUNITY
Profitable small grocery with beer. Main highway; 25 years in same location. Good lease or will sell building. Retiring. Tel. 817-559-5664 or write Park - In Grocery, Breckenridge, Texas 76024. t-x2

FOR SALE - Extra nice 14' x 70' Ramada Mobile Home. 2 bedroom, carpet, central air and heat, unfurnished. Call 629-2766, Vernon Mahan. t-ff

WANTED - Person interested in operating a small business, located in Eastland. Call 629-2804. t-86

FOR SALE - 3000 to 5000 bales peanut hay, \$1.00 per bale in the field. Call Sam Beggs, 629-1514 after 5:30. t-ff

FOR SALE: 1972 set of World Book Encyclopedias, including 1973 Year Book. Reasonably Priced. Mary E. Bingham area manager, 605 S. Marsh. t-86

FOR SALE - 1961 Chevrolet Pickup. Good condition. Cheap. J.L. Ward, 515 S. Green, 629-1317. t-94

WANTED TO BUY - Land near Eastland area. Small or large tract. Call 629-2804. t-86

FOR SALE - Firewood delivered within 20 miles of Eastland. Call 629-1823. t-ff

FOR SALE: Alamo guitar amplifier, piggy back model with 2 channel Utah 15 inch speaker. Covered with simulated snake skin. \$125.00. Contact Bob Bingham 629-2876. t-86

FABRIC SHOP
1208 W. Main 629-1001 Open 9-5 Closed on Fridays starting Aug. 3. The best bargains in town are found here. ff

HELP WANTED - METAL WORKERS AND FABRICATORS
Immediate need for welders, fitters, and trainees at our fabricating plant located in Cisco. We are in International non-defense co. and to qualified candidates we offer long term employment, inside work, company paid group insurance, personal pay increases, 7 paid holidays and 2 weeks paid vacation. New higher wage scale. Apply in person Mon. - Fri. 9 a.m. to 4 p.m. Burgess Industry, 10th at Ave. D., Cisco. Equal Opportunity Employer. t-88

FOR SALE: 1970 Datsun pickup, \$995 also 1967 Chevrolet LWB pickup, \$695. Phone 647-1346 in Ranger after 6 p.m. t-fnc

FOR SALE - CARPETS and life too can be beautiful if you use Blue Lustre. Rent electric shampooer \$1. Coats Furniture. t-86

REAL ESTATE
HOMES
2 Bedroom home, 2 bath, central heat with garage apartment
2 small houses east Sadosa. Good Rent property. - \$5,500
2 Bedroom home carpeted, good shape. West Main Street, \$9,000
2 Bedroom Home S. Bassett Street corner lot \$4,750.00
Small house, big lot. Foxworth Street, \$4,750.00
3 Bedroom, 1 bath. Good location. S. Connelley Street \$7,350.00
2 Bedroom 1 bath, paneled, fireplace. S. Bassett Street. \$11,000.
2 Bedroom 1 bath, city water, fruit trees. Olden. \$7,875.00
4 Bedroom home, carpeted, city water, with 1 acre north of Eastland. \$14,750
1 1/2 acres - 3 Bedroom 2 bath, carpeted and paneled, central heat, city water, 2 wells, pecan and fruit trees. \$21,000
2 acres with 4 room house, city water, well, near Olden on I - 20 with shop building. \$15,000.
3 bedroom 2 bath brick home with built ins, central heat and air. \$17,850.
5 Bedroom 2 bath with fireplace, large corner lot on Oak Street \$18,000
Nice lake home and boat dock. Good water frontage, Lake Leon.
Business building with living quarters. Morton Valley \$5,000

REWARD OFFERED! - Monday, possibly near B&W Clinic or Dr. Treadwell's Clinic a CJC LVN pin with initials "ELH" on back was lost. Blue and gold. About the size of a nickel. If found, call 629-1779 or 734-5735. t-ff

FOR SALE - 3 bedroom home at 511 Pershing, 1 1/2 baths, air conditioned, central heat, built ins, carpeted throughout, drapes, fenced yard. Call 629-1219. t-86

FOR SALE - Registered Angus and Hereford bulls. 14 - 18 months. Call W.P. Watkins, 647-1112 or 647-3454, Ranger. t-ff

FOR SALE - Extra nice 14' x 70' Ramada Mobil Home. 2 bedroom, carpet, central air and heat, unfurnished. Call 629-2766, Vernon Mahan. t-ff

WANTED: Owner of the White Elephant Restaurant is looking for a fairly new 3 to 4 bedroom, 2 bath home in the Cisco - Eastland area to rent or lease. No children; no pets. Willing to put up a deposit or pay in advance if necessary. Call Mr. P.B. Gill in Cisco, 442-3040. t-ff

FOR SALE - 3 bedroom home at 511 Pershing, 1 1/2 baths, air conditioned, central heat, built ins, carpeted throughout, drapes, fenced yard. Call 629-1219. t-86

FOR SALE - together or separately - 630 Case diesel tractor, case swather, John Deere Baler, Kramer loader; '69 Dodge truck with 24 ft. bed. All reasonable. M.C. (Sonny) Carroll, Desdemona, 758-2529. t-92

FOR SALE - New 1973 Pontiac Grandville, 4 door hardtop, fully loaded, power windows and seats, electric door locks and window lifts. Color Bamboo Cream with beige upholstery. Someone will get a bargain here! Call Jack Muirhead, 629-1731 or 629-2772. t-87

HELP WANTED - Job shop and lease welder. We have good equipment. Call collect Alva Lee, Lamesa, Texas. Home phone 806-872-5645.

FOR SALE - 7 acres land in Humbletown. Call 442-1912, Cisco.

FOR SALE - Black and white Early American TV in excellent condition. Call 629-2804. t-86

FARM AND RANCHES
45 Acres house and barn, 30 acres of coastal. Some pecan trees, city water. Near Eastland.
86 Acres 1 mile south of Ranger. 40 acres cultivation, old house, fair barn, good fences, city water \$31,500.
160 acres, 34 acres peanut allotment, net fences. Owner financed.
160 Acres 2 bedroom house, good corrals and barns, on pavement, good fences, small lake.
150 Acres with 130 acres of coastal south of Eastland.
344 Acres with home and good barns, city water, 1 mile of Leon River, near Eastland.
480 Acres house and barn on pavement, 300 acres of coastal irrigated, good fences.
627 acres Eastland County. Some cultivation, some peanut allotment, good fences.
865 Acres near Cross Plains, deer and turkey terms.
916 Acres, 400 acres of coastal near Eastland.

REWARD OFFERED! - Monday, possibly near B&W Clinic or Dr. Treadwell's Clinic a CJC LVN pin with initials "ELH" on back was lost. Blue and gold. About the size of a nickel. If found, call 629-1779 or 734-5735. t-ff

FOR SALE - One 8 x 20 Flatbed gooseneck. 7 acres land in Humbletown. Call 442-1912, Cisco.

FOR SALE - Black and white Early American TV in excellent condition. Call 629-2804. t-86

REWARD OFFERED! - Monday, possibly near B&W Clinic or Dr. Treadwell's Clinic a CJC LVN pin with initials "ELH" on back was lost. Blue and gold. About the size of a nickel. If found, call 629-1779 or 734-5735. t-ff

REWARD OFFERED! - Monday, possibly near B&W Clinic or Dr. Treadwell's Clinic a CJC LVN pin with initials "ELH" on back was lost. Blue and gold. About the size of a nickel. If found, call 629-1779 or 734-5735. t-ff

NEED EXTRA MONEY?
Celebrity Fashion Jewelry needs you! No investment. Call or write Gaila Caraway, Box 420, Clyde, Texas. 915-893-4870. t-95

AIR-POWERED DRILLS
1/2" \$19.50
CISCO ARMY SURPLUS
1201 Ave D 442-3620

NOTICE - Mattresses. Complete bedding made by Western Mattress Co., San Angelo. Best quality, low price, renovate or exchange new. Every other Wednesday. They're guaranteed. For home appointment, call Lois Mezell, 629-2703, leave name. ff

FOR RENT - 4 room furnished house, bills paid, close in. To couple or adult. Call 629-2579. t-ff

LOST - Monday, possibly near B&W Clinic or Dr. Treadwell's Clinic - CJC LVN pin with initials "ELH" on back. Blue and gold. About the size of a nickel. If found, call 629-1779 or 734-5735. t-ff

FOR RENT - 20' x 40' Warehouse with office and rest room in Ranger. Call 629-1179. t-ff

MILLER'S REMODELING
Additional rooms, formica tops, painting, sheetrock, paneling, custom cabinets, acoustical ceilings, etc.
Tel. 647-3005 in Ranger

FOR RENT - Small apt. Call 629-1731 or 629-2772, or 629-2125. t-87

Do our companies give Bumper Discounts: Driver Training Credit; National Safety Council's Defensive Driving Course Credit; Second Car Credit; Dividends and Easy Payment Plans for all eligible policyholders? You bet! Come see us. Freyschlag Insurance Agency on North Side of Square.

FOR RENT - 20' x 40' Warehouse with office and rest room in Ranger. Call 629-1179. t-ff

NOTICES

THIS WEEK'S SPECIAL
(2) 69 White Cabovers, 318 Detroit, 15 spd. & SQHD Tandem, Power Steering, Good Tires, & Paint, Runs & looks good. Was \$9875. Your Choice \$8450.
64 White Freightliner, Twin Screw, Looks & Runs Very Good. \$3875.
67 Cabover White, 180 Cummins, 5 & 2 spd. New Paint & Very Nice. \$2875.
69 N850 Ford, 250 Cummins, 10 spd R.R. Twin Screw, New Paint. We don't believe you can find a better truck than this is \$9500.
12 other Cabovers from \$2100 & up.
6 Other Conv. Cabs
6 Winch Trucks \$1650 & Up
2 Used 40' Floats \$2500 & Up
3 New 40' Fontaine Floats
1 New 33' Tandem Fontaine Loboy
Other Used Van, & Float, Grain, & Pup Trailers
New & Used Single & Tandem Grain Trucks
New 1 1/2, 2 1/2, 3, 4, & 5 Ton International Trucks in Stock
We have over 80 trucks or Trailers in Stock
Johnston Truck, Cross Plains 725-2181.

GREGORY PLUMBING & HEATING
629-2844
Res. 639-2340

PATTON'S NOVELTY SHOP
394 N. Walnut
Polyester remnants as low as \$1.49 yd. All kinds of craft supplies.

HELP WANTED - Light delivery work. Men or women. Must have car. Call 647-3335. t-

JANITORIAL SERVICE
Quality & Dependable Service
629-2746
Michael B. Pittman

IMPORTANT

TAYLOR CENTER
Laundry - Shell gas
Family Recreation
Groceries
1 Gal. Milk 1.29
Large Loaf Bread 32c
Everyday Low Prices

GARDENHIRE OIL COMPANY
Yes! We can sell wholesale to you!
See us for all your oil, grease, filters, spark plugs, brake fluid, anti-freeze, S. T. P. for oil, gasoline, diesel or radiator, tires for cars, truck or tractor. WE HAVE TANKS for farm or commercial gasoline and diesel fuel. See us before you trade. All major brands of Oil and Grease.
WHY PAY MORE??

IS YOUR CAR READY FOR WINTER'S BEAST?
At So-Lo Auto Parts
300 S. Seaman
629-2158
Open Sat. Till 4:00
Doug Lucas Mgr.

SOUTHLAND LIFE INSURANCE
M. H. PERRY
104 N. Lamar
629-1566
629-1095

"We can handle anything but litterbugs."
Goode Pest Control. Phone 629-1179 after 3:00
310 N. Ammerman
roaches, ants, termites, moths, spiders.
ALL GUARANTEED

FOR RENT: Furnished, private 3 room cottages with carpets. Daily, weekly, or monthly. Pleasant Place Motel west edge of Eastland. Call 629-8878. t-ff

ROOFING
Doyle Squires Contr. Olden, Tex. 653-2212 Call after 6 p.m. 12-29 TF.

INSULATION
Smith's PLUMBING

AIR-POWERED DRILLS
1/2" \$19.50
CISCO ARMY SURPLUS
1201 Ave D 442-3620

JAMES BODIFORD
MOBILE HOMES SALES & SERVICE Highway 377 West- 968-2842 Westgate Mobile Home Park Low Prices - High Quality Complete Set-Up Service

FOR RENT - 4 room furnished house, bills paid, close in. To couple or adult. Call 629-2579. t-ff

ABC PLUMBING & HEATING
Contracting & Repair
Small Ditching Service
PHONE 629-1200 After Hrs. 647-1780
BOB WILLIAMS
MASTER PLUMBER

G & H ELECTRIC
Residential - Commercial
Industrial - Oil Field
629-1221 629-1559
Nite 629-2078 t 101

BASHAM BEAUTY BAR
Shampoo & Set 2.50
Permanents \$12.50 & up
Open Mon thru Sat. 9 to 5
Closed Noon Wed & Sat
1416 S. Lamar St. t-ff

FOR RENT - 20' x 40' Warehouse with office and rest room in Ranger. Call 629-1179. t-ff

We Clean & Repair Venetian Blinds
Care For Cemetery Lots
Level Monuments
Align Sunken Foot Stones
Kill Red Ants, Etc.
Chester Allen
442-1513, Cisco

FOR RENT - Small apt. Call 629-1731 or 629-2772, or 629-2125. t-87

BUSINESS PROPERTY
3 1/4 ac. Hiway frontage - 74' x 30' metal shop bldg & office, chain link fence, just outside city limits. Terms, priced right.
2000 sq. ft. all metal bldg., central air & heat - restrooms, 3 lots, excellent location, cash, trade or some terms.
Newly remodeled motel - 8 units - terms or trade. Priced right. Lake Leon Boat - eat & cafe - 12 unit motel - 16 stall boat house, house, 14 trailer spaces. Must sell.

FOR RENT - Small apt. Call 629-1731 or 629-2772, or 629-2125. t-87

LAKE PROPERTY
314 ac. - 3/4 mi. lake frontage, pecan trees, bottom land, lake frontage - deer, quail, turkey. Terms.
47 ac. Lake Leon, lake front property, undeveloped, paved road. Terms.
Lake home - 3 bdrms., living room, kitchen, 1 bath. Leased lot.
Lake home with fireplace. Large Living room. Deeded lot.
Lake cabin, 2 bdrms, kitchen, boathouse and dock, good waterfront - deeded lot.
Lake home, 2 bdrms, 2 bath, carpets, built ins, fruit trees, cellar, city water.

FOR RENT - Small apt. Call 629-1731 or 629-2772, or 629-2125. t-87

HOMES AND LOTS
3 bdrms, 1 bath, washer - dryer hook - up, city water. Terms. Olden.
5 lots Eastland, 23,000, all on same block and in a row.
3,000 sq. ft. home, central air and heat, 2 fireplaces, exceptionally improved, 3 bdrms, 2 1/2 baths.
2 bdrms. trailer home - & lot set up. New appliances & air cond.
Oaklawn - 2 bdrms, 1 bath, washer & dryer hookup, carpets.
Three bdrms, 1 1/2 baths, choice location, large corner lot.
3 bdrms, 1 1/2 baths, large rooms, good corner lot.
3 bdrms home plus 1 bdrms apt. close to school.
2 bdrms - 23 ac, fruit trees, city water, well, need to sell.
2 bdrms, corner lot, central heat, carpets, good loan avail. Small down payment.
2 bdrms frame, trade or terms. Close to all schools.
Small 3 bdrms, new stove & refig. Small price.
1/2 block from high school, 2 bdrms. Can't beat the terms.
New 3 bdrms. mobile home on large lot. All conveniences.
2 bdrms, bath, screened back porch. Cisco.
2 bdrms, bath, fireplace. Good loan on place.

FOR RENT - Small apt. Call 629-1731 or 629-2772, or 629-2125. t-87

ACREAGE
8.4 acres native sandy land, no imp, on pavement. Carbon.
80 acres new land - all sand - 20 ac. peanut, excellent frontage, ideal bldg. site.
40 ac. on pavement, all sand, peanut & grain allot., all in coastal, tank, well, new fences & barn, mobile home.
40 ac. on pavement, 29 ac. coastal, 10 ac. brush, new fence, pens & tanks. Peanut allot.
83.5 ac. native pasture 4 mi. from town. Lots of possibilities.
100 ac. So. of Carbon. Some cult. Sand. 210.00 per ac.
110 ac. at Okra. Native pasture, timber deer, 210.00 ac.
600 ac. someone needs to own, let it pay for itself, coastal, peanuts, lots of water & possibilities. Priced right.
This ain't all we got - come down or call and we can probably find what you want.

Custom Painting
Brush Or Spray, Paper Hanging
Ceiling Accoustical Antiquing
Bonded & Guaranteed Work Local References
17- Years Experience
COLLINS
Paint & Decorating
629-2897 - 600 E. Smith

"Where does he get the money!"
The first rule of getting ahead is to protect what you have. Cover your risks and exposures with adequate insurance from the Kinnaird Agency to reimburse you for any loss you may sustain.

KINNAIRD INSURANCE AGENCY
207 W. Main Since 1919
Don Kinnaird Eastland 629-2544

TERRELL REAL ESTATE
OFFICE PHONE 629-1725
FARM BUREAU BLDG.
HIWAY 80 EAST
EASTLAND, TEXAS
RODGER TERRELL
Home Phone 629-2896
M.L. TERRELL
Home Phone 629-2443
Eastland, Texas

Hospital Notes

Patients in Eastland Memorial Hospital Saturday morning were:

- Everett Plowman
- Mary Meahaffey, Gorman
- Della Reynolds
- Golda L Wilson, Cisco
- Christine Hights
- Katherine Estes, Cisco
- Ethel Alldredge
- Mary Thompson
- Horace Lane
- Marcus Grieger
- Laura Noble
- Gay Kir, Gorman
- Josephine Fraser
- Brenda Holt, Cisco
- Millie Peel
- Nevada Smith, Ranger
- Maggie Christian, R. Star
- Artie Perdue, Cisco
- Grady Rogers
- Golden Lawson, Cisco
- Eunice Anderson, Breck
- Lillian Bledsoe, Carbon
- Eunice Clemmer, Cisco
- Nancy Williams, Cisco
- Thomas Lockhart
- L.C. Hail
- Mary Bayne, Cisco
- L.V. Luker
- Emory Hallmark, Cisco
- Harold Ray
- Donald Nall, Cisco
- Bertha Bryant, Gorman
- Rilla DeFord
- Gail Graham
- Velma Lawrence
- Johnnie Norris
- Gary Richards, Stamford
- Ola Wood
- Amy Rice, Carbon
- George Norris
- Nancy Elliot
- Mary McGowen, Ranger
- Mary Henderson
- Alice Henson, Cisco
- Kathy Dyson, DeLeon
- Nancy Anderson, Breck
- Linda Witt, Cisco
- Nina Hart
- Carolyn Carmack
- Nora Tucker, Carbon
- Dora Garrett, Gorman
- Prudie Hardeman
- Norma Bigson
- Dianna Steinman, Cisco
- Onie Shell
- Etta Whitlock, R. Star
- Rosemary Pierson, R. Star
- Lawrence Ghigo, Dumas
- Laverne Plambeck, Cisco
- Baby Girl Gibson
- Baby Boy Witt, Cisco

Baby Girl Carmack
Baby Girl Dyson, DeLeon

Patients in Ranger General Hospital Saturday morning were:

- Edna Peppers
- Inez Erwin
- Charlie Isabell
- Hershel Regeion
- Millie Monroe
- Letha Chisum
- Lucille Williams
- Agnes Bordeau
- L.A. Hatfield
- Frankie Reatherford
- Viola Knight
- Mae Kitchens
- Ruby Varner
- Cornelia Brown
- Paul Smith
- Harold Caudle
- Loedia Cozart
- Kay Barton
- Ludivina Billanueva

Most Grocery Stores Participate In Stamp Program

Most grocery stores in Eastland County will participate in the food stamp program scheduled to begin November 1.

Individuals may designate an Authorized Representative to purchase their food stamps. In addition, if an individual is unable to come to the food stamp office to make application, he may designate in writing an Authorized Representative to make application for him. This written designation shall contain the reason why the individual could not apply in person; his signature and date; and the name and address of the Authorized Representative.

Each household which has been certified will receive one or two Authorization - to - Purchase cards each month.

These will be mailed from Austin, over the first five days of each month, so they will not necessarily arrive on the first day of the month. These cards, ATPs, may be taken to the post office anytime during the month they are received to purchase the food stamps.

Purchasers must take three things with them to the post office: 1. The Authorization - to - Purchase card, 2. Their food stamp identification card, and 3. Cash specified in the ATP as the post office does not accept checks. No one can use the ATP except the head of the household, his spouse, or authorized representative. All food stamp identification cards must have the necessary signatures.

Once the stamps are purchased they may be used to

purchase all food items. Contrary to rumors, this includes items such as juices, soft drinks, candy and cookies. Items which cannot be bought with stamps are tobacco products, alcoholic beverages, pet food, soap, household cleansers, drug items, and deposits on drink bottles.

Food stamp shoppers are reminded of the following important rules. The food stamp identification card must be taken to the store, and the customer should inform the checkers before they start that the purchase is being made with stamps. Stamps in \$2 and \$5 denominations must be torn out in the presence of the checker, not before. Stamps may not be used to pay overdue bills, but they may be used anytime, not just the month they are bought at the post office.

Sunday, October 28, 1973

Game Day

Game Day at Lone Cedar is Friday, Nov. 2, beginning at 10 a.m. Lunch will be served and play resumed (for those who wish to play in the afternoon). Each player will bring his own partner (or table) and play with her all day.

Reservations in Eastland may be made through Mrs. Virgil Seaberry, Mrs. James Horton, or Joe Stephen. In Gorman through Mrs.

Wilbur Shell and Mrs. Thurman Jay. In Ranger, Mrs. P.M. Kuykendall. In Cisco, Mrs. E.L. Graham or Mrs. Reggie McCreia. And in Stephenville, Mrs. Melvin Shell.

As usual, these affairs bring a full house, including those who wish to bring guests for luncheon.

EASTLAND CO.
Serving All
Of Eastland
County

TV
Repair

1,387.05 Sold At Bazaar

A total of \$1,387.05 was paid to 68 exhibitors for handmade articles sold during the Senior Citizens Bazaar held in Eastland last week, according to Mrs. Janet Thomas, County Extension Agent, in a letter to Mrs. W.E. Herweck of Ranger. Plans are already underway for the 1974 bazaar and suggestions for improvement are always welcome, Mrs. Thomas said.

FAMILY STYLE CATFISH DINNERS

All You Can Eat \$1.75 -- CHILDREN UNDER 6 FREE
10 Pieces Catfish, Hushpuppies & Tartar Sauce \$3.75

TO GO ORDERS ALSO

FONTAIN BLUE

Hwy. 6 Gorman
Ph. 743-5808

You Get **LOW, LOW**
EVERYDAY PRICES!

and You Get... **SPECIALS**
EVERY DAY, too!



Canned Pop

Snowy Peak. Refreshing!
Safeway Big Buy!

12-oz. Can **9¢**



Chunk Tuna

Van Camp's. Light Meat
Safeway Big Buy!

6.5-oz. Can **39¢**



Spaghetti

Franco-American. Prepared
Safeway Big Buy!

15-oz. Can **19¢**



Fruit Cocktail

Hunt's. Delicious!
Safeway Big Buy!

15-oz. Can **28¢**

Tomato Catsup

Highway. Adds Flavor!
Safeway Big Buy!

14-oz. Bottle **25¢**

Pork & Beans

Van Camp's. Flavorful!
Safeway Big Buy!

16-oz. Can **19¢**

Tomato Soup

Town House. Zesty Flavor!

10.75-oz. Can **11¢**

Potato Chips

Party Pride. Twin Pack

9.5-oz. Pkg. **53¢**

Pinto Beans

Town House. Source of Protein!

16-oz. Pkg. **27¢**

Saltines

Melrose Soda Crackers

16-oz. Box **29¢**

Safeway has been providing high quality products at low prices for Generations. This has been a Safeway tradition for years, and will continue. Safeway has Dependable Quality, and Fair Prices. Chances are that's why your mother shopped Safeway, and that's why your daughter will shop Safeway. You can always depend on Safeway.

Your People-To-People Store!

Bleach

White Magic. Gallon Plastic **37¢**

Detergent 49-oz. Box **57¢**
Dog Food Old Pal. Thrifty! 13.5-oz. Can **11¢**
Pinto Beans Town House 16-oz. Pkg. **27¢**

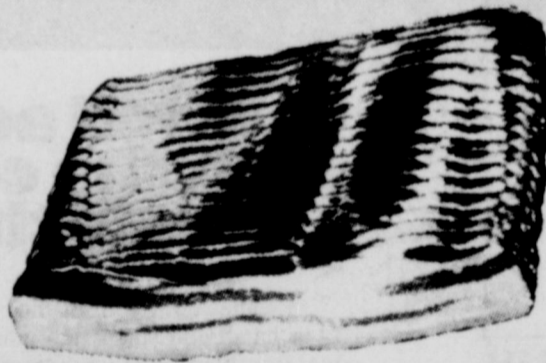
SHOP SAFEWAY
For All Your
HALLOWEEN
TREATS!

Guaranteed to Please!

Sliced Bacon

Slab. Rindless.
Full of Flavor!
Fries Crisp
and Delicious!

-Lb. **98¢**



Safeway Bacon No. 1 Quality, Sliced 1-lb. Pkg. **\$1.19**

Safeway Wieners

(Armour Hot Dogs, 12-oz. Pkg. 85¢) —12-oz. Pkg.

79¢

Ground Beef

Regular. Safeway

—Lb. **89¢**

Chipped Meats

Safeway. Sliced & Varieties

3-oz. Pkg. **45¢**

Lunch Meat

Safeway. Sliced. *Oils, *Macaroni & Cheese *Pickle-Pimiento

6-oz. Pkg. **44¢**

Sliced Bologna

Safeway. All Meat

12-oz. Pkg. **98¢**

All Beef Wieners

Safeway. Ready to Eat!

1-lb. Pkg. **\$1.09**

Link Sausage

Park. Safeway

1-lb. Pkg. **89¢**

Armour Bacon

Armour Star. Mild Cure

1-lb. Pkg. **\$1.29**

Eckrich Sausage

Smoked. Heat & Serve!

1-lb. **\$1.49**

Hamburger Steaks

Fresh. Pre-Formed

—Lb. **99¢**

Lean Ground Beef

Fresh. Flavorful!

—Lb. **\$1.18**

Beef Short Ribs

USDA Choice Grade Heavy Beef

—Lb. **59¢**

Chuck Roast

Full Blade Cut. USDA Choice Heavy Beef

—Lb. **77¢**

Boneless Roast

*Picks Pork or *Bottom Round. USDA Choice Grade Heavy Beef

—Lb. **\$1.45**

Fresh Pork Chops

Economical Family Pack

—Lb. **\$1.08**

Fresh Pork Steak

From Boston Butt

—Lb. **98¢**

USDA Inspected Grade 'A'!

FRESH FRYERS

Finest Quality! Ready to Cook!

(Cut-up Regular —Lb. 51¢) Whole —Lb. **43¢**



Pinwheel Pack 4 Thick *4 Drumsticks. From USDA Insp. Grade 'A' Fryers —Lb. **79¢**

Split Breasts With Ribs. From USDA Inspected Grade 'A' Fryers —Lb. **89¢**

Finest Fruits and Vegetables!

Bananas

Golden Ripe!
Top Quality!
Mellow & Sweet!

—Lb. **10¢**



Rome Apples

Red. Extra Fancy!

—Lb. **19¢**

Red Apples

Red Delicious. Extra Fancy!

—Lb. **29¢**

Cucumbers

Large Sliced Size! —Each

15¢

Tomatoes

Red-Ripe 10-oz. Tube

39¢

Green Onions

Long Shank. Bunch

2 for 29¢

Red Radishes

Safeway. Crisp!

2 8-oz. Bags **29¢**

Cauliflower

California. Large Heads! —Each

59¢

Red Grapes

Emperors. US #1

—Lb. **39¢**

Candy Apple Kits

Snack Treat!

3-oz. Pkg. **35¢**

Pineapple

Natural Sliced

4-oz. Pkg. **49¢**

Pineapple

Red & Green. Sliced

4-oz. Pkg. **49¢**

Orange Juice

Safeway. Pure

7/8-Gal. Carton **89¢**

Crisp Carrots

US #1 Quality —1-Lb. Bag **19¢**

Cabbage

Solid Green Heads —Lb. **15¢**

Green Beans

Kentucky Wonder Variety —Lb. **39¢**

Krispy Crackers Sunshine—1-Lb. Box **47¢**
Pancake Mix Pillsbury Hungry Jack—2-Lb. Box **59¢**
Brownie Mix Pillsbury Family Fudge—22-oz. Pkg. **63¢**
Decorator Icing Pillsbury Cake & Cookie—4-oz. Can **67¢**
Ovaltine Chocolate Flavor—12-oz. Jar **75¢**
Noxzema Skin Cream Medicated—2-1/2-oz. Jar **69¢**

Funk & Wagnalls Volume 12—14 Students Encyclopedia On Sale Now! **\$1.69**

CHINA

On Sale Now!

DESSERT DISHES **59¢**

Compare These Low Prices!

Anti-Freeze \$1.49

Peak. Get Ready for Winter! —Gallon Can

Color Film

GAF 126-12 Instamatic —Each **89¢**

Flashcubes

*Sylvania or *General Electric 3-Cube **99¢**

Batteries

Flashlight. Panasonic C or D 2-Ct. Pkg. **39¢**

Returning vacationers are deciding that the best place to spend their next holiday is inside their budget.

We'll help you stay inside your budget at BRAY'S Eastland and Ranger. See us for all the popular brands of merchandise.

Fast Pain Relief!

Anacin

Analgesic Tablets

30-Ct. Bottle **69¢**

Cough Drops

Victors Cherry 10-Ct. Pkg. **15¢**

Dristan

Nasal Spray 5-oz. Plastic **\$1.19**

Dristan

Tablets, Decongestant 24-Ct. Bottle **\$1.23**

Dristan

Capsules, Relieves Nasal Congestion! 6-Ct. Card **79¢**

Protein 21

Hair Spray 13-oz. Can **\$1.79**

Micrin Plus

Gargle and Rinse 18-oz. Bottle **\$1.19**



SAFEWAY

© Copyright 1960, Safeway Stores, Incorporated.



Mr. And Mrs. H.C. Hardin

Honored On 50th Anniversary

The children of Mr. and Mrs. H.C. Hardin are hosting an open house for their parents in their home at 1101 West Main St., Eastland, in observance of their 50th wedding anniversary from 2:00p to 5:00 p.m. on

Sunday, Nov. 4. All friends of Henry and Willie are invited to call. Mr. Hardin married the former Willie Welch in Cisco on Saturday, Nov. 3, 1923.

President vs. Super Presidents

The following letter appeared in the New York Times this month. It is written by Judge Charles Loreto.

Judge and Mrs. Loreto (the former Rosalie Leslie, daughter of the late Chief Justice and Mrs. W.P. Leslie of Eastland) now divide their time between Eastland and Stony Brook, L.I., N.Y., since the Judge retired in January of this year.

The President vs. the Super Presidents

Even though production of the tapes might be less inconvenient than his personal appearance, the tapes and memos could be incomplete or out of context, and, hence, require that he appear to give his version. If there is merit to the proposition that there can be no Presidential privilege as the them, it follows that he must be answerable to a subpoena calling for his personal appearance. This, no one has seriously contended.

It is in the nature and imperatives of office of the Presidency that the privilege of confidentiality must rest in his unreviewable discretion. He has been placed by nationwide election in an unequalled position of primacy, which carries powers and responsibilities far greater than of any other official. In his election, faith and confidence in his wisdom and integrity were placed. Innuendoes that he claims the privilege in bad faith do not constitute cause for invading the privilege. For misconduct in office, the Constitution provides recourse.

When judges become reviewers of the judgment and wisdom of the President in his exercise of executive privilege of confidentiality and substitute what their judgment and discretion in the matter may be, they thereby purport to constitute themselves Super Presidents, an office to which they were not elected. Would

To the Editor:
Surely the President is not above the law. In his own right as an individual he is not. With this he agrees.
The question is whether the position he has taken with respect to the Watergate tapes and memos is within the law as it applies to the Presidency.
Of necessity he must hold private talks in his official position with the widest variety of people. He is adamant in holding to the principle of executive confidentiality. No one has cited a clear-cut Supreme Court decision holding the contrary. The Marshall - Jefferson case pertaining to Aaron Burr is not a precedent. Marshall acted as trial judge, and no decision of the Supreme Court was made.
That the talks are recorded creates no more legal basis for their production than for requiring the President to testify.

Non Profit Water Systems Ask For Vote

Vital services insuring growth and development in rural Texas is the driving force behind leaders of non-profit water systems attempting to gain passage of Amendment Nine appearing on the Nov. 6 ballot.

"We've spent the past weeks informing our membership of the importance of this vote and now we invite our urban neighbors to join in voting for Amendment Nine next Tuesday," stated Bob Elder, president of the Texas Association of Rural Water Corporations. Elder referred to the fact that 300,000 eligible voters are members of the non-profit rural water systems and he urges each of them to

"A major problem exists for Amendment Nine in the State's urban areas," Elder commented. He pointed out that Houston alone is expected to have a quarter of a million voters go to the polls Nov. 6 and "giving those individuals ample information on Amendment Nine is a great hill to climb."

The non-profit rural water systems are seeking, through Amendment Nine, to place their systems on the same tax base as the urban municipal systems. "We operate much in the same manner as a

municipal system except we are in the sparsely populated rural areas and we are taxed," Elder said. He continued, "The non-profit rural water systems are vital to the State's continued growth and development and we feel an obligation to make certain that agriculture production continues to be highly efficient to allow the cost of food to remain as low as possible."

The non-profit rural water system leaders have continually emphasized the fact that adequate water sources are vital to Texas' future.

Chamber Of Commerce



Chamber of Commerce still on the move and on the grow. With newest member Larry Armstrong manager of Ramada Inn. Let Ramada welcome you home.

Luncheon

The Chamber of Commerce directors met at a noon luncheon Thursday at the Ramada Inn. The huge success of the past weekend was discussed. Several new members were welcomed to the Chamber of Commerce: House of Webster, Sabine Terrace, Eastland Gallery and Judge Austin McCloud.

EASTLAND CO. Serving All Of Eastland County 629-2287	TV
JOHNNY JOHNSON Plumbing & Septic Tank Service - Air Conditioning - Washing Machine Repair Phone 629-8023 1-92	

FOR RENT:
this
MINI-BILLBOARD.
ONLY \$3.50 a month
Call your local paper

Complete painting and
decorating. Tape bed
spread. Acoustic ceiling
wallpaper. Small repairs.
Free estimates. 29-
1390, Cisco, aft 5 p.m.,
Dave Ewell.

Commission Issues Orders

DALLAS -- The Texas Railroad Commission has issued an order that grants, with minor exceptions, the curtailment program Lone Star has followed for about 25 years. The exceptions include slight modifications to higher priority customers and provide for emergency service to electric utility customers under certain conditions.

The order establishes the highest priority of service for "human needs customer", consistent with the company's historical operations. Curtailment of industrial customers by rate classification remains the same, with Rate 1 customers placed in the highest priority of the industrial category.

If it is necessary to curtail industrial Rate 1 customers, the Commission's order categorizes this group into sub-priorities based on the type customer, the end use of the gas and volume requirements. Under this arrangement, priorities range downward from small commercial to large boiler fuel uses of gas.

Lone Star's pipeline system and operations are designed to provide uninterrupted service to high priority customers. The company's ability to add new residential, commercial, and industrial customers is not affected by the Commission's order.

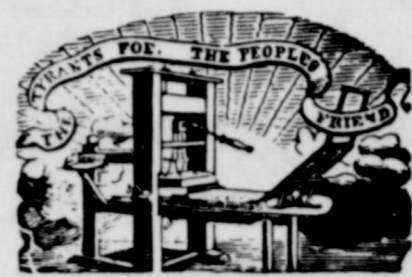
the President similarly have the right to overrule a decision of the Supreme Court and thereby act as a Super-Supreme Court Justice? Where, then, would the doctrine of separation of powers - the very foundation for the stability of our government - be found? Only in its ashes.

Charles A. Loreto
New York
Sept. 27, 1973.

EMMET MORREN PLUMBING
COMPLETE REPAIR SERVICE
1615 W Main
629-2092
24 Hour Service

"Were it left for me to decide whether we should have a government without newspapers, or newspapers without a government, I should not hesitate a moment to prefer the latter."

Thomas Jefferson



Visiting in the home of Mrs. Pauline Skinner during the past week were her brother, E.P. Taylor, and daughter, Mrs. Irve Long, both of Seminole, Texas.

Munsingwear Marks Its 50th

On October 24, Munsingwear, Inc., national apparel and textile firm, marked its fiftieth year on the New York Stock Exchange. The 87 year old firm has the distinction of being one of the first Minneapolis based companies to be listed on that Board.

When the company was first listed on the Exchange in 1923 there were 200,000 shares of Capital Stock outstanding; today there are over 1,424,000 shares. The company has paid consecutive cash dividends for 33 years.

The company has shown an appreciable growth since the year of its listing on the New York Exchange. In 1923, net sales were \$9,749,788. Fifty years later net sales were reported at \$91,492,600.

The company's product line, too, has grown. Known for years as a high quality basic underwear house, the company now has a reputation for fashion innovations in a diversified product line. The Men's and Boys' Division has extended its line beyond basic underwear to include Grand Slam golf shirts, fashion knit shirts, bowling shirts, fashion underwear, sleepwear, robes, slacks, sport coats, sweaters, tennis wear, cross country ski wear, and hosiery.

The women's line, sold under the Vassarette label, includes bras, girdles, lingerie, sleepwear, robes, lounge wear, and swim wear.

Tips for using electricity efficiently:

Get well acquainted with the control on your clothes dryer.

Clothes come out of the dryer harsh and stiff when you over-dry them. And you use electricity that isn't needed. If you don't have automatic controls, experiment with the manual control to find the right setting for each type of fabric, then use it. Man-made fabrics, in particular, require extended cool-down periods.

These other suggestions also can help you make more efficient use of your clothes dryer and electricity.

Group clothes together by weight and texture of the fabrics to avoid running an additional cycle for two or three slower-drying items.

When you want to fluff pillows, sweaters, knits or small throw rugs, tumble them without heat for not more than 15 minutes.

Place your clothes dryer in a heated part of your home, if possible, and have it vented to the outside. A dryer in an unheated area, such as an outside utility room or the garage, can take longer to dry your clothes in winter, because the air temperature in the drum will have to be increased.

And remember to clean the lint filter on the dryer after each load. This will help it operate more efficiently and reduce drying time.

It's our job at Texas Electric to help you get the most value from your electric service. Call us when you have questions about any use of electricity in your home. Or ask for our free booklet, "Tips to help you use electricity more efficiently throughout your home."



TEXAS ELECTRIC SERVICE COMPANY
F. N. SAYRE, Manager, Phone 629-2651

Cosmetics

STOCK UP AT

CUT RATE PRICES

20% OFF

COSMETIC SPECIAL

Helena Rubenstein

Dorothy Gray

Costmetics

Stock Up Now On:
• Treatment Lines

Beauty Aids • Fragrances

PRESCRIPTION PHARMACY

108 S. Seaman Eastland 629-6219

Office Help Wanted

Male or Female
Typing, invoicing,
10 key, receivables,
payables, payroll
Call Earl Bradley
for appointment

Call Earl Bradley
For Appointment
629-1737

Attention

New Business
S & W Industries
801 W. 18th-442-3399

Custom Built Creep
Feeders. Troughs,
Hay Racks, Cattle
Guards

Dignity . . . Consolation . . . Concern

Trust Our Experience

Our reputation is based on competence and caring. Every detail is taken care of.

Arrington Funeral Home
Ph. 629-2611 -- Eastland

Friendly Personalized Service

Southern Television Systems Inc.

Encourages You To Attend The Church Of Your Choice!

EASTLAND CHRISTIAN SCIENCE SOCIETY
Corner of Plummer and Lamar
Sunday morning services 11:00. Services on first Wednesday of month 7:30 p.m. All are welcome.

FIRST UNITED METHODIST CHURCH
Rev. Ben Marney
Sunday School 9:45 a.m.; Morning Worship 11:00 a.m.; E. Young People's Meet 6:00 p.m. Sunday. Evening Worship 7:00 p.m.; Ladies Prayer Group 9:30 a.m. Wednesday; Choir Practice Wednesday 7:30 p.m.

UNITED PENTECOSTAL CHURCH
Rev. E.D. Norman
Sunday School 9:45 a.m.; Morning Worship 11:00 a.m.; 5 Evening Worship 7:30 p.m.

NORTH OSTROM ST. CHURCH OF CHRIST
H.S. Lewis
Worship 9:30 a.m.; Evening Worship 5:00 p.m.; Wednesday Evening Service 7:00 p.m.

FIRST BAPTIST
Rev. Haslow Brewer
Sunday School 9:45 a.m.; Morning Worship 11:00 a.m.; Evening Worship 7:30 p.m.

BETHEL BAPTIST
Rev. Bill Betts
Sunday School 9:45 a.m.; C. Morning Worship 11:00 a.m.; Ev Training Union 6:00 p.m.; Evening Worship 7:00 p.m.

CALVARY BAPTIST
Rev. L.C. Williams
Sunday School 10:00 a.m.; Morning Worship 10:45 a.m.; Training Union 6:00 p.m.; Evening Worship 7:00 p.m.; Wednesday Night Service 7:00 p.m.

FIRST BAPTIST CHURCH NO. SEAMAN ST.
Rev. G.L. Morris
Sunday School 9:30 a.m.; Morning Worship 11:00 a.m.; Baptist Training Union 6:00 p.m.; Evening Worship 7:00 p.m.; Wednesday Night Service 7:00 p.m.

HARMONY BAPTIST CHURCH
RUDY FAMBROUGH - Minister
Sunday School 9:45 a.m.; Morning Worship 11:00 a.m.; Evening Worship 7:30 p.m.; Wednesday Night Service 7:30 p.m.

MANQUA BAPTIST CHURCH
Rev. A.J. Thomas
Sunday School 10:00 a.m.; Morning Worship 11:00 a.m.; Training Union 6:00 p.m.; Evening Worship 7:00 p.m.

ST. FRANCIS CATHOLIC
Priest John Mitchell
Mass Saturdays at 6:30 p.m.

FIRST PRESBYTERIAN CHURCH
Rev. Robert W. Marsh
Sunday School 10:00 a.m.; Morning Worship 11:00 a.m.

FIRST CHRISTIAN DISCIPLES OF CHRIST
Sixteen Church
Mo. Sunday School 9:30 a.m.; Morning Worship 10:55 a.m.; Evening Worship 6:00 p.m.

CHURCH OF GOD
Main & Conclave
Rev. Ronald Beer
Sunday School 10:00 a.m.; Morning Worship 11:00 a.m.; Family Training 6:00 p.m.; Evening Worship 7:00 p.m.; Wednesday Night Service 7:30 p.m.

CHURCH OF CHRIST
Daughterly St.
Jim Pennington
Sunday School 9:30 a.m.; Morning Worship 10:20 a.m.; Evening Worship 6:00 p.m.

HOLY TRINITY EPISCOPAL CHURCH
Priest Raleigh Denison
Sunday School 11 a.m.; Holy Communion 11 a.m.

CARBON FIRST BAPTIST
Rev. Debraul Smith
Sunday School 10:00; Morning Worship 11:00 a.m.; Ev Training Union 5:30 p.m.; Evening Worship 6:30 p.m.; Wednesday Night Service 8:00 p.m.

CHURCH OF CHRIST
Jack Landrum
Sunday School 10:00 a.m.; Morning Worship 10:50 a.m.; Evening Worship 6:00 p.m.; Wednesday Night Worship 7:30 p.m.

FIRST UNITED METHODIST
Rev. C.C. Shultz
Sunday School 10:30 a.m.; Morning Worship 9:30 a.m.

OLDEN BAPTIST CHURCH
Rev. Howard Meester
Sunday School 10:00 a.m.; Morning Worship 11:00 a.m.; Evening Prayer Service 7:00 p.m.; Evening Worship 7:30 p.m. Wednesday Night Service 7:00 p.m.

CHURCH OF CHRIST
Frank Kilbourne
Bible Class 10:00 a.m.; Morning Worship 11:00 a.m.; Evening Worship 7:00 p.m.

FLATWOOD CHURCH OF CHRIST
Willie B. Moore
Sunday School 9:45 a.m. Morning Worship 11:00 a.m. Evening Worship 6:00 p.m. Wednesday evening 6:00 p.m.