

# TIDBITS

By HVO

**PREENING PARENTS** by the droves beamed as their proud offspring performed or were bragged on, at the Parent - Teacher Organization meeting at Elementary School Tuesday evening. Pretty Miss Dianne Young, Kindergarten Teacher, told about her 25 charges and how they are learning reading and writing readiness AND other pre - school skills like sharing, taking turns and being tolerant. To hear Miss Young talk, you've got to know she loves her work and her kids. Musical program was brought by the Fifth and Sixth grades. The 70 voice plus Fifth graders did traditional Christmas music, accompanied by the extra - superb narration of young Blake Mahon, who's surely destined to be a bright voice from hence forth. The Sixth Grade uplifted in their choice of songs and asked for world peace and harmony in the world. Mrs. Emory Walton, president, presided and Lou Ann Collins, vice president, introduced Miss Young. Mrs. Cooper, whose room won the room count, observed afterwards, indicating that the teachers and students had worked long and hard on the program: "I feel like we've got our crop laid by".

J.C. POE, has just received a beautiful new book about the Civil War, which contains a good segment about his great - grandfather, Capt. Poe, whom J.C. biographed properly a few years ago in an excellent book called "The Raving Foe".

**CARBON BASKETBALLERS** are earning All Tournament honors far and wide. On the High School level, Debra Casey was picked for all - tourney honors at Dublin; Sherry Stubblefield was picked at Gorman; and Bo Stanley took honors at Rising Star. Jr. High Schooler Kathy Sparks was picked in the Rising Star tournament.

**YOU'D BETTER** look back over your shoulder before you toss that litter out on the highway or on beaches and park land. If a Highway Patrolman sees you, you're a 100 - to - 1 shot to get a ticket. And if you get one, you're better than 9 to 1 to draw a fine of \$25 to \$200.

More than 800 Texans discovered the odds last year, and arrest records for the first six months of 1973 indicate the total will go above 900 this year.

Those are just for the category of throwing glass, wire, and cans and other litter and for the related one of leaving refuse on the highway.

There are more than 8,600 arrests a year for the broader Department of Public Safety classification of "miscellaneous" violations, of which about 2,000 are for spillage from motor vehicles.

Col. Wilson E. Speir, director of the Public Safety Department, said recently that littering is just as much a misdemeanor as any others on the statute books. He told his men to watch closely for violations and take appropriate enforcement action.

"State law prohibits the dumping or depositing of refuse, garbage, rubbish or junk on public streets, roads or highways", Speir said. "It is also unlawful to dump any sort of waste on rights - of - way, beaches, parking areas or in inland streams or coastal waters."

A breakdown of DPS figures for the first half of 1973 shows the sub - district headquartered at Tyler as the worst offender. Its 17 counties produced 20 charges of depositing litter on highways and 43 of leaving refuse on the highway.

Next worst offenders were in the 15 county area headquartered at Houston. It showed 35 litter violations and 26 charges of leaving refuse.

Abilene's 35 county district produced 20 litter charges and 18 for leaving refuse.

The 22 counties served by the sub - district around Waco turned up with 20 litter charges and 30 refuse tickets.

Corpus Christi area patrolmen arrested 22 for litter and 18 for refuse.

The Dallas sub - district office had 16 litter arrests and 20 refuse cases. Lubbock patrolmen arrested 13 for littering in the 29 county district and 32 for leaving refuse. Beaumont's had eight litter arrests and 17 for leaving refused.

The littering arrests have been running 800 to 900 for the past few years. In 1960 there were only 225 - indicating either less litter or less enforcement.

Even the higher rate for 1973 seems insignificant in view of the many thousands of miles of highway and the constant litter pick - up work carried on by the State Highway Department, Maurice Acers of Beaumont, president of the Beauty Texas Council, said.

But, he added, the police work is not a simple matter of writing tickets. Officers must see the offense or be close behind the offender. The enforcement effort probably prevents repeat offenses by those caught and fined.

And agencies such as the Beauty Texas Council - seeking to cut down litter through pleas for public pride - hope that enforcement will augment education and possibly frighten potential litterbugs.

## BETA OFFICERS...



**FULLEN MOTOR CO.**  
Laugh A Day

Blanche Goodfield is pretty upset. Saturday night somebody broke into her house and stole her bathtub. She says whoever did it can keep the washrag, soap, and tub - but she would like to get back her Aunt Mary.

New Eastland High School Beta Club officers who were installed Wednesday are President Milta Kincaid, Vice

## County Book Now on Sale

Copies of the Eastland County Centennial Book are available at the Eastland chamber of Commerce at \$2.50 each, Chamber Manager James Wright reports. Just off the press, the



**GRAND PRIZE** - Mrs. Melba Aaron, head librarian, stands by her library staff's creation which earned them the best all - around prize.



**MOST BEAUTIFUL** - This gift wrapped door by the Sophomore Class presented them with a first place.



**MOST ORIGINAL** - This winking blinking Santa was created by FHA homemaking classes.

Members of the high school cafeteria staff stand beside their tinsel trimmed and garley wrapped door. This Santa's bake shop with its bags of cookies earned most honorable mention.

## E.H.S. School Doors Of Art

Doors are to be closed, to be opened, to be entered by, usually.

The doors at Eastland High School this week were works of art to be looked at.

The Beta Club, sponsored by Miss Jean Griffin, organized the first Annual Maverick door decorating contest.

For the past week Eastland High School students have gotten into the Christmas spirit decorating doors.

Mrs. Griffin, said her group decided to hold the first Annual Door Decorating Contest to "get students involved in the Christmas Spirit. Tuesday morning a distinguished panel of judges, comprised of James Reid, Mrs. Earl Conner, and Mrs. James Horton chose the winners.

In the words of the judges "it was a very difficult decision to make for so very many of the doors were outstanding".

"They were all beautiful", said Mrs. James Horton.

Various school organizations and classes worked from Tuesday to Friday of last week decorating their doors. Those participating were The Library Staff, the Spanish Club, Cheerleaders, Sophomore Class, FHA, FFA, Thespians, Band, Freshman Class, Office Staff, and Cafeteria Ladies.

The decorated doors were judged in three categories. The most original a giant Santa

with one blinking, winking eye, was by the FHA homemaking classes. Runnerup was Santa's workshop by the Annual Staff.

The most beautiful door was judged to be the sophomore class', depicting a gift wrapped package. Runnerup was the office staff's door.

The best all around door was created by the library staff, headed by Mrs. Melba Aaron, head librarian. They decorated double doors both front and back. Second place went to a Mexican Christmas door done by the Spanish Club.

Honorable mention was given to the door created and baked by the cafeteria staff. Bags of cookies hung from their red tinsel wrapped doors.

Sharon McCloud lead the judges throughout the high school building and acted as a tour guide and spokesman.

There were religious themes to Christmas trees, Santa, Santa's workshop and Mrs. Santa's bake shoppe were well represented. There were gift wrapped packages, angels hair and angels. There was a little bit of everything for the interested onlooker.

## Pete Marsh Buried Sunday In Eastland

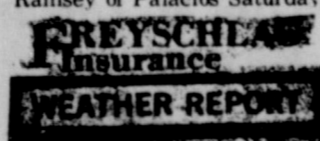
Reuben (Pete) Marsh, 58, of Eastland, was found dead in his home at 1:15 p.m. Saturday after an apparent heart attack. He was a retired farmer. Services were at 3 p.m. Sunday in the Bakker Funeral Chapel.

Conducting the services were Audie Moore, a retired minister of the Church of Christ. He was assisted by Jim Pennington, minister of the Eastland Church of Christ. Burial was in Nimrod Cemetery south of Cisco.

Mr. Marsh was born Dec. 9, 1915, in Eastland County. He married Burline Pierce on Jan. 27, 1944, and had lived in Eastland County all his life.

Survivors include his wife; two sisters, Mrs. Ethel Simmons of Dallas and Mrs. Josie Mitchell of Fort Worth; and several nieces and nephews. Pallbearers were Oscar Schaefer, Edwin Schaefer, Bill Hedrick, G.N. Creech, Herbert Belw and Hub Freeman.

Grover Hallmark attended the funeral of his uncle Coy Ramsey of Palacios Saturday.



Cold

# EASTLAND TELEGRAM

EASTLAND, TEXAS 76448: Today's CENTER for tomorrow's FUTURE!

Volume No. 104 Number 101

Thursday, December 20, 1973

Temperature Drops; Snow Possible

## Yule Weekend Upcoming For Eastlanders

### Public School Closes Friday

Eastland Public Schools will close Friday at 2:30 for the Christmas holiday and open Jan. 3, according to Eastland School Superintendent Wendell Seibert.

In the week before the holiday vacation there are many activities going on. Elementary School principal, R.O. Baze said a number of Christmas events will occur.

Tuesday afternoon the fifth and sixth grades held a Christmas musical program. Miss Dianne Young explained the Kindergarten program.

Friday at 10 a.m. PTO and room mothers will hold a Christmas party for Kindergarten classes and grades one and two. At 1:50 p.m. grades four, five and six will have their Christmas party. The elementary school will dismiss at 2:15.

Eastland junior and senior high school classes will have their regular Christmas program before dismissing for the holidays said High School principal E.O. Hill.



### Locals' Grandson In Region Group

Steven Lee Gaheen, 14, son of Louelle and Weslie Gaheen of South Houston, Texas, made the Regional Orchestra recently.

He is a freshman and plays the Violin in the High School Orchestra. He was in competition with all high school grades when he received this honor.

He is the grandson of Mr. and Mrs. H.S. Lewis of 302 N. Oak, Eastland.

### Mrs. Hernandez Buried Monday In Local Rites

Funeral for Mrs. Delores Hernandez, 81, of Eastland was at 10 a.m. Monday in the St. Frances Catholic Church.

Father John Mitchell officiated. Burial was in Eastland Cemetery.

Born April 1, 1892, Filao Gt., Mexico, she married A.C. Hernandez. He preceded her in death.

Survivors include several nieces and nephews. Mrs. Hernandez died at 2:05 p.m. Saturday in an Eastland hospital after a long illness.

### Miller Funeral Held Wednesday

Henry T. Miller Jr., 53, of Eastland died at 10:25 p.m. Monday in a Wichita Falls hospital. Services were at Arrington Funeral Home Chapel in Eastland at 2 p.m. Wednesday. The Rev. Steven Church, pastor of the First Christian Church in Eastland officiated.

Burial was in Eastland Cemetery. Born Sept. 15, 1920, in Bells, he had been a resident of Eastland since 1961.

Survivors include one sister, Mrs. Ruth Marie Kerby of Sherman.

### Charges Filed Traffic Death

Charges of homicide with a motor vehicle have been filed in Justice of the Peace Wells Dalton's court against Jerry D. Caldwell, 26, of Sweetwater.

Caldwell was the driver of a semi - tractor - trailer truck involved in a two - truck collision 1.6 miles southwest of Eastland on Interstate 20 on Dec. 5.

Fatally injured in the wreck was Morris S. James, 62, of Ranger. He was the driver of the second vehicle, a petroleum transport truck. Both trucks were destroyed in a fire following the accident.

### Extra Police Watch On Tap

Extra police protection during the holiday season was one of the matters approved by the Eastland City Commission in session Monday.

It was like old times with Commission - Watcher Cliff Wilson back in attendance as Mayor Durel Reid presided with all commissioners present.

A 10 percent of one month's salary Christmas bonus was approved for all city employees, and Dr. M.A. Treadwell Jr., was renamed city Health Officer.

The commission approved a \$250 arson reward ordinance which will favorably affect insurance key rate in Eastland.

Commissioners approved payments of bills amounting to \$14,950 to the Abilene engineering firm of Yeatts and Decker, and \$3,208.75 to the First Southwest Company of Abilene.

Both firms are working with the city in the constructing and financing of a new city sewage disposal plant. Bids for construction of the plant are due to be asked for sometime after the first of the year.

Commissioners approved the request of Chief of Police Johnnie Morren for extra police protection for the downtown business area through the Christmas holiday season.

Commissioners voted to accept for annexation property east of the city, located on U.S. 80 and Interstate 20, which includes the business firms of Ramada Inn, House of Webster, Boles Dairy Queen and adjacent property owned by Winston Boles.

### To Present Christmas Play

The Church of God, corner of Main and Connellee Sts. will present its fifth annual Christmas play, Fri., Dec. 21, at 7:30 p.m.

The play "Kosher Christmas" was written by Carol Frazier and is under the direction of Rev. Ronald Bear, pastor of the Church of God.

The cast, made up of the church's young people are:

### Holiday Schedule Due

In observance of the Spirit of the Holiday Season and an Executive Order by President Nixon, Postmaster Marcus O'Dell announced today that Window Service at the Eastland Post Office on Mondays Dec. 24 and 31 will be from 8:30 a.m. until 12:00 noon. All delivery services will be on regular schedule.

On Tuesdays Dec. 25 and Jan. 1 - regular Holiday schedules will be observed with no window or delivery services available.

Postmaster Marcus O'Dell announced today that due to the lower speed limits observed by the U.S. Postal Service vehicles the arrival and departure schedule for all mail in Eastland has been changed.

For the present no schedule changes are being made in the Window Service hours or departure of Rural and City Carriers from the local office. However, Rural and Mounted Carriers will be observing the reduced speed limits and their arrival at you' box will be delayed O'Dell stated.

In order to make the best possible connections with airlines and other transportation facilities all mail must be deposited in the Post Office by 4:40 p.m. Monday through Friday, excepting Holidays. Additional Star Route Collection will be available for mail deposited before 5:45 p.m. in the "Out of Town" curbside collection box West of the post office building.

Due to the rush of the season, the Centennial Memorial Library has extended the time on the Mystery Books Contest.

Dec. 15 was formerly the closing date; but we have decided to give more time to the boys and girls to finish their research over the holidays. We have extended the closing date to Jan. 2, 1974.

Jerry Maston as Bro. Giles the minister, Jack Lyeria as Mr. Davidson, youth leader; Marlene Harris as Mrs. Beck, girls' counselor; Donna Hobbs as Mrs. Ellis, girls' counselor; Petty Jernigan as Hinda, a Jewish refugee; Tammy Hallmark as Shirley, her best friend; Judy Maston as Paula, Sharon Simmons as Norma, Cindy Maston as Terri, Jerry McCoy as Bill, Ronnie Maston as Bob, Bryant Jernigan as Ralph, and Mike Smith as Ray.

There is no admission and the public is cordially invited to attend.

### Fire At Grimes Home

Eastland Firemen made a brief call Wednesday morning at the J.W. Grimes residence, 900 S. Bassett, to put out a small kitchen fire. Thanks to quick action on the part of both the occupants and firemen, the blaze was put out in five minutes.

Earl and A.C. Williams of Eunice, N.M., visited their mother Mrs. Curt Williams.

### Goodfellows At Work For Needy

Many needy families will be gifted with Goodfellow love this year as the total contributions have grown to \$1780.

Goodfellows began distributing baskets of food, warm blankets, clothing, and shoes Wednesday and will continue the distribution through today (Thursday).

Over 50 families were helped with Christmas cheer by the Goodfellows last year.

According to Mrs. Donnie Webb, dietary supervisor at Eastland Memorial Hospital, a total of \$275.38 has been collected by hospital employees for the Walton family. One hundred dollars was given to the Waltons to buy funeral clothing. The remaining \$175 to be used for Christmas gifts, was taken to the Walton family yesterday by Mrs. Martha Brasher, Director of Nurses.

Nothing can take the place of Mrs. Walton, but the kindness and generosity of the people of Eastland can comfort the family this Christmas time.



**A HARD DECISION TO MAKE** - Door decoration judges James Reid, Mrs. Earl Conner and Mrs. James Horton try to make up their mind about a gaily decorated Christmas door



H.V. O'BRIEN, Publisher and Editor  
 Second Class Postage paid at Eastland Texas under Act of Congress on March 1870.  
 Published semi-weekly - Thursdays and Sundays by Eastland County Newspapers, Inc.  
**SUBSCRIPTION RATES:** By carrier in city, 15 c a week or 65 c a month; one year by mail in county, \$5; city P.O. Boxes, \$6; one year elsewhere in state, \$7; out of state, \$8.  
**Thursday, December 20, 1973**

NOTICE: Any erroneous reflection upon the character, standing, or reputation of any person, firm or corporation which may appear in the columns of this newspaper will be gladly corrected upon being brought to the attention of the editor.

**FOR SALE**

MISC. FOR SALE - CARPETS and life too can be beautiful if you use Blue Lustre. Rent electric shampooer \$1. Perry Brothers. t-102

FOR SALE - MILLIONS of rugs have been cleaned with Blue Lustre. It's America's finest. Rent electric shampooer \$1. Coats Furniture. t-102

FOR SALE - 1967 Ford Fairlane, 4 dr. Alc. PS V - 8, auto. Call 629 - 2637. t-102

FOR SALE - 1967 Impala 4 dr. power steering, air conditioner, two tone. Real nice. Call 629 - 2636. t-102

FOR SALE OR TRADE: 1971 Buick Riviera; has every option available. Call Chip Davis, 647 - 3277 or 647 - 1367 in Ranger. t-x1

FOR SALE - 1969 Chev. 2 dr. Impala Custom, vinyl top, power steering, power brakes, air, extra nice car. Call 629 - 2637. t-102

FOR SALE - 1970 Ford, 1/2 PU, short - wide, 6 cyl., std. shift. One owner. Call 629 - 2636. t-102

FOR SALE - 1973 Olds 98, 4 dr. loaded, 27,000 miles, local owner. Call 629 - 2636. t-102

FOR SALE - 1971 Buick Electra Custom, vinyl top, power windows and seat, AM - FM stereo, local owner. Low miles. Call 629 - 2636. t-102

HIGHEST PRICES paid on furs, live animals, deer hides. Look over our selection of Christmas puppies. Stanley Kennel, Rising Star. t-102

FOR SALE - 3 bedroom house with new paneling, also pianos, refrigerators, stoves, and misc. items. Call 647 - 1331, 1009 Spring Road, Ranger. t-x2

FOR SALE - Can you qualify for F.H.A. 235 program? 3 bedroom, 1 1/2 bath brick home in Eastland near all schools. Central heat and air. Built in range and dishwasher, one car garage. Pay equity and assume monthly payment of approximately \$82.50. Call Citizens Realty, 629 - 8082 or 629 - 8048. t-t-f

FOR SALE - Gentle Jersey milk cow. Call 629 - 1923. t-101

FOR SALE - Oats and hay. Call 629 - 1278 after 5. t-102

FOR SALE - 1968 Barracuda 340S, automatic, power steering, 48,700 miles. Clean. Call 629 - 1096. t-t-f

FOR SALE - 2 four bedroom houses and 1 four room house. See Ben Hammer at 309 S. Lamar. t-f

FOR SALE - 3000 to 5000 bales peanut hay. \$1.00 per bale in the field. Call Sam Beggs, 629 - 1514 after 5:30. t-t-f

FOR SALE - 2 bedroom house, 1 acre, water well, city conveniences. \$10,500. Located in Olden. Call 817 - 629 - 2493 or 915 - 949 - 8878. t-105

FOR SALE - 350 IHC tractor, new motor, new clutch, good tread on tires, 2 or 3 point hitch. Call 629 - 1109. t-5

**FOR SALE**

FOR SALE - 6 room house, 2 baths, completely remodeled and decorated, new carpet and drapes. 517 S. Daugherty. Call 629 - 1319. t-t-f

FOR SALE - About 25 sq. asbestos roofing shingles. Good for siding. Also wood for sale. Corner of Commerce and College. t-103

FOR SALE - Remodeled home, 2 bedrooms, kitchen. Carpeted in living room, dining and bath. New plumbing and wiring. Close to schools and town. 807 W. Commerce. Call 629 - 2370 or 629 - 1700. t-t-f

FOR SALE - 2 story home with 2 lots. 413 N. Walnut. Contact Mrs. J.I. Brinkley, 233 - 5852, 1712 W. 8th St. Freepost, Texas. t-105

Triple F. Feeds - proteins, vitamins, minerals, and parasite controls. 8c per head per day. Call collect 817 - 758 - 2679. t-4

WYNELL'S TREASURE ISLAND Tropical Fish and Complete Aquarium Supplies. Next to Mode O'Day

FOR SALE - Peanut hay. \$1.00 bale. Call 817 - 758 - 2645

FOR SALE - 10 speed Columbia bicycle. In excellent condition. \$50.00. Call 629 - 2182 after 5:00 p.m. t-t-f

FOR SALE - Registered Angus and Hereford bulls, 14 - 18 months. Call W.P. Watkins, 647 - 1112 or 647 - 3454, Ranger. t-t-f

FOR SALE - 1965 Ford Custom, standard shift with overdrive and air. Excellent condition. Call 629 - 2476. t-t-f

**BICYCLES-- BICYCLES**

30 Used Bicycles Choice \$15.00

Cisco Army Surplus 1201 Ave. D 442 - 3620

FOR SALE - Peanut hay. \$1.00 bale. Call 817 - 758 - 2645. t-4

FOR SALE - 25 cords of fireplace wood wholesale. Call 817 - 758 - 2645. t-4

FOR SALE - One 6 x 20 gooseneck stock trailer. 7 acres land in Humboldt. Call 442 - 1912. Cisco.

**WANTED**

WANTED - Welders for Construction work at Comyn, Tex. Call W.T. Shell, 817 - 893 - 5855 days or 187 - 734 - 2225 nights. t-t-f

Want to buy or sell something? Want to trade or give something away? Use the classified ads. They pay off! Eastland Telegram, 629 - 1707.

WANTED: Texas Veteran wants to buy few acres. Call 629 - 1707. t-t-f

WANTED - 3 - 11 LVN, 11 - 7 nurses aides, and cooks. Excellent working conditions, salary, and fringe benefits. Apply in person to Eastland Manor or Valley View Lodge. t-t-f

DONATIONS WANTED - Anyone having barbells no longer in use could put them to good use for the Eastland Athletic Club. Contact Coach Dallas 629 - 1021. t-t-f

WANTED: Cook at Hickman Nursing Home. I will train. See Mrs. Nix, Hickman Nursing Home, Eastland. t-t-f

FEMALE HELP WANTED - Immediate opening for 2 experienced waitresses. \$1.65 an hour plus tips. Call Fountain Blv, Gorman, 734 - 5808. t-t-f

WANT TO BUY: Coon hides and other furs. Buyer will be at Eastland Livestock Auction parking lot at 11 a.m. each Saturday through Feb. 9, 1974. t-967

WANTED - Experienced or inexperienced cutter and helper for night shift. Apply at Boss Manufacturing, Cisco, Texas 442 - 1110.

WANTED - Steam presser. Wanted in person at J&H Ind., 300 Pine St. Ranger. t-t-f

WANTED - Baby sitting. Close to school. 629 - 2416. t-t-f

WANTED - Would like to buy some unimproved land in South Eastland County. Send details to P.O. Box 543, Rising Star.

WANTED - Someone to come in 2 or 3 days a week to keep 2 school age children. hours 4 p.m. to 1 a.m. No housekeeping. Call 629 - 1139. t-103

WILL BUY good assortment of hand tools. Need now. Call after 6 p.m. 442 - 1642. t-t-f

WYNELL'S TREASURE ISLAND 8 - Track Quality Stereo Tapes - \$2.95 Quadrasonic Tapes - \$5.95 Next to Perry's

Need a rubber stamp? We can fix you up. Eastland Telegram, 110 W. Commerce

**M. L. TERRELL REAL ESTATE**  
 FARM BUREAU BLDG. - HIGHWAY 80 EAST  
 PHONE 629-1725 NIGHTS 629-2443

**HOUSES**

- 2 Bedroom House Carpeted and Paneled, \$9,000.00
- 2 Bedroom House Corner lot 100 x 100
- 3 Bedroom House Good location \$7,350.00
- 3 Bedroom House 1 Bath, Nice Corner Lot. Good Location
- 5 Bedroom 2 Bath with 2 Fireplaces 138 x 150. Corner Lot close to All Schools.
- 2 Acres and House on Interstate 20. City Water, Trees and Water Well.
- 4 Acres on Pavement with City Water, Natural Gas.
- 2 Small Houses. Been Remodeled. Good Rent Property \$10,500.00
- Nice Lake Home and Dock with Good Lake Frontage.

**FARMS AND RANCHES**

- 37 Acres and House and Old Barn. City Water, Natural Gas, close to Ranger.
- 45 Acres and House. Some Cultivation. Close to Eastland. City Water.
- 111 Acres close to Desdemona, 38 Acres of Peanut Allotment Near Pavement. \$325.00 Per Acre.
- 82 Acres Near Ranger.
- 174 Acres Near Eastland, 55 Acres of Coastal, 70 Acres of Love grass.
- 150 Acres New Fences, Access to City Water, 130 Acres of Coastal
- 247 Acres Near Eastland on County Road, Fair Fences, Some Cleared
- 320 Acres in Stephens on County Road, Fair Fences.
- 864 Acres Near Cross Plains, Deer and Turkey. Terms can be arranged.
- 916 Acres 400' of Coastal, Close to Eastland. Good Fences. Have other tracts large or small

Listings Appreciated.

OFFICE PHONE 629-1725  
 FARM BUREAU BLDG.  
 HWY 80 EAST  
 EASTLAND, TEXAS

RODGER TERRELL Home Phone 629-2896  
 M. L. TERRELL Home Phone 629-2443  
 Eastland, Texas

**REAL ESTATE**

**FOR RENT**

FOR RENT: Furnished mobile homes and mobile home spaces 653-2220 tf.

UNFURNISHED APARTMENTS FOR RENT  
 Royal Oaks Apartments  
 1304 Royal Lane, Cisco  
 442-3232; 442-2709

FOR RENT - 2 rooms and bath with TV cable and bills paid. 212 W. Patterson. Call 629 - 2396. t-t-f

FOR LEASE - Business Space, Inquire at Taylor Center, Eastland t-105

FOR RENT - 2 rooms and bath with TV cable and bills paid. 212 W. Patterson. Call 629 - 2369. t-t-f

**NOTICES**

**EASTLAND ROTARY CLUB**  
 Pat Miller, President  
 Meets each Monday

**MASONIC LODGE NO. 487**  
 Meets second Thursday of each month at 7:30 p.m. in the Masonic Hall. Call L.D. Keith, W.M., at 629 - 1676. or L.E. Huckabay, sec'y at 629 - 1391 for information.

**NOTICE - Mattresses.** Complete bedding made by Western Mattress Co., San Angelo. Best quality, low price, renovate or exchange new. Every other Wednesday. They're guaranteed. For home appointment, call Lois Mezell, 629 - 2703, leave name. t-f

**FABRIC SHOP**  
 1208 W. Main 629-1001 Open 9-5 Closed on Fridays starting Aug. 3. The best bargains in town are found here. t-f

**FOR SALE - USED AND REPOSSESSED** Kirby vacuum cleaners. Call Mrs. Johnnie Honea at 629-2072

**NOTICES**

Freyschlag Insurance has exactly the kind of policy that you need. Check with Charles today and see just how he can help you. Freyschlag Insurance Agency, on the Square in Eastland. 629-2275. 107 W. Main Street

Custom Plowing, Cutting, & Bailing  
 Call Jack Johnson  
 647-3679

**CANCER INSURANCE UP TO \$100,000**  
 M.H. Perry  
 104 N. Lamar  
 629-1566

**PAINTING**  
 Spray or Brush Acoustic Ceilings Free Estimates  
 Call Harold Phippen  
 442 - 1585, Cisco, Texas

Complete painting and decorating. Tape bed paper. Acoustic ceiling wallpaper. Small repairs. Free estimates. Call 629-1390, Cisco, aft. 6 p.m. Dave Ewell.

REDUCE SAFE and fast with GoBese Tablets and E - Vap. "water pills". Central Drug. t-9 thurs only

**THE BEST HAMBURGERS ARE AT HOLLAND'S DRIVE IN AT THE Y WEST**  
 1505 W. Main EASTLAND, TEXAS FOR CALL IN ORDERS PHONE 629-2215

We Clean & Repair Venetian Blinds Care For Cemetery Lots Level Monuments Align Sunken Footstones Kill Red Ants, Etc. Chester Allen 442 - 1513, Cisco

All makes of chain saws repaired. Saw chains sharpened by grinding or machine. We will take care of your sharpening problems. OLDEN SHARP SHOP, 653 - 2224. t-t-f

MILLER'S REMODELING Additional rooms, formica tops, painting, sheetrock, paneling, custom cabinets, acoustical ceilings, etc. Tel. 647 - 3005 in Ranger

Do our companies give Bumper Discounts: Driver Training Credit, National Safety Council's Defensive Driving Course Credit, Second Car Credit, Dividends and Easy Payment Plans for all eligible policyholders? You bet! Come see us. Freyschlag Insurance Agency on North Side of Square.

**HARGRAVE REFRIGERATION**  
 Air conditioning, installation and service Troubleshooting on all types of central heating and cooling. Ready to help you beat the heat.  
 Johnnie Hargraves Answering Service 442-2339

**SOUTHLAND LIFE INSURANCE**  
 M. H. PERRY  
 104 N. Lamar  
 629-1566  
 629-1095

**BUSINESS**

**IS YOUR CAR READY FOR WINTER'S BLAST?**  


**So-Lo Auto Parts**  
 300 S. Seaman  
 629 - 2158  
 Open Sat. Till 4:00  
 Doug Lucas Mgr.

Mercers Appliance Repair Dishwashers, washers, dryers, stoves, disposals, and ovens. G.R. Mercer Olden, Texas. Call 653 - 2473.

**EMMET MORREN PLUMBING**  
 COMPLETE REPAIR SERVICE  
 1015 W. Main  
 629-2092  
 24 Hour Service

**Eastland Co. T.V. Sales & Service**

**MOTOROLA QUASAR**  
 605 W. Sadosa  
 629-2287

**GREGORY PLUMBING & HEATING**  
 629-2844  
 Res. 639-2340

FOR SALE - 2 bedroom house and 4 lots in Ranger at 605 Summit. Call Terrell Real Estate 629 - 1725. Home phones: M.L. Terrell, 629 - 2896; Rodger Terrell, 629 - 2443. t-105

your family feels...  
  
 AT LOWER COST!  
 It's easy with a quality PAYNE system installed expertly to give you economy and comfort. Models for any size home or budget. Let us prove it! Call today!

**Payne**  
 FORCED AIR HEATING  
 Models for any size home or budget. Let us prove it! Call today!

**Hargrave's Tin Shop**  
 1110 Ave. D Cisco  
 Ph. 442-2337

**New PARA-BOOTS \$19.95**  
 Rainsuits Now In.  
**CISCO ARMY SURPLUS**  
 1201 Ave D 442-3620

"We can handle anything but litterbugs."  
**Goode Pest Control**  
 Phone 629 - 1179 after 3:00  
 310 N. Ammerman  
 roaches, ants, termites, moths, spiders.  
**ALL GUARANTEED**  
 ROOFING  
 Doyle Squires Contr. Olden Tex. 653-2212 Call after 6 p.m. 12-29 TF.

**Attention New Business S & W Industries**  
 801 W. 18th-442-3399  
**Custom Built Creep Feeders, Troughs, Hay Racks, Cattle Guards**

TRUMAN MILLER'S REMODELING Acoustical ceilings, tile and linoleum, sheet rock, paneling, roofing, custom cabinets, vanities, additional rooms or a new home, etc. Call 647 - 3005 or 647 - 1637 in Ranger.

FOR SALE: Two adjoining choice building lots, perfectly located in Eastland. Fruit and ornamental trees. Small frame house could be modernized. Total: \$3,750. Safe, but less than perfect title available. If interested, write to HOUSE, P.O. Box 29, Eastland, Texas, 76448. t-f

Senkel's Cabinet Shop 303 N. College Custom Built Cabinets Mobile Home Repair General Carpentry Work Call 629-1269 after 5

**Kincaid's Real Estate Corner**

ACREAGES:  
 Texas Vets' We have 150 acres to split up any way desire **SOLD** frontage, good ranch country an. Better hurry at \$235.00 per acre.  
 80 acres, virgin sand, cleared last year, 20 ac. peanut to be put in improved grass this year, \$315.00 ac.  
 40 acres coastal grain and peanut allotments, live **SOLD** well, excellent improvements, 2 br. mobile Home. Why not live in the country? \$19,000.  
 40 acres with 29 acres coastal, 10 ac. timber, new fences, pens, tank, \$16,750.00.  
 63.5 acres, 4 miles from Cisco, hunt, fish, run cattle, \$275.00 per acre.  
 110 acres, 1/2 mile all the deer and turkeys, all timber **SOLD** indy, \$210 ac.  
 100 acres, 1/2 mile 60 ac. cultivation, balance native **SOLD** good hunting, mostly sand, \$210 ac.  
 149 acres, Stephens Co., 7 minutes from Hubbard Lake, 5 minutes from Breckenridge, 40 ac. grain field, prime land, good hunting.  
 8 1/2 acres, Carbon on Hwy. 183, undeveloped, commercial site.  
 314 acres, deer and dove, quail, turkey, boat through this place, 3/4 mile water front, 1/2 mile road frontage, terms (owner financed).  
 47 acres, Lake Leon frontages, undeveloped, on pavement. Terms (owner financed).

**COMMERCIAL PROPERTY**  
 Want to own your own body shop or garage? 3 1/2 acres under chain link fence, all on major highway, good terms, 75' x 30' all metal shop (3 stalls) and office, priced to sell, Cisco.  
 Be your own boss, put your business in this centrally heated and aired 2000 sq. ft. building, excellent location.  
 Small 8 unit motel, Eastland, excellent condition.  
 Lake Leon Boat - tel. We want to sell now.

**HOMES**  
 5 lots close to Interstate, Investment opportunity 3000 sq. ft., 2 fireplaces, exceptional improvements, 3 br., 2 1/2 baths, will sell soon.  
 Seaman Street, 3 Br., 1 1/4 bath, large rooms, central heat \$13700.  
 3 br. and 1 br. apt., close to schools.  
 Conner St., 2 br., 1 bath central heat, carpets, loan available \$12,500  
 Connellee, small 3 br., new stove and refrigerator, small price, 1/2 block from school, 2 br., cheaper than rent.  
 S. Seaman, 2 br., bath, fireplace, owner financed, good terms, owner.  
 We have several other listings for sale and several buyers available for most types of property. If you want to sell or buy come in and we'll help you.

**Robert M. Kincaid**  
 Broker  
 Eddie Kincaid, Salesman Res. 629 - 1919  
 J.W. Elder, Salesman Res. 647 - 1321  
 100 So. Seaman Eastland, Tex. 629 - 1781  
 Res. 629 - 2721

I am more than a piece of paper.



I am security and protection in the event of a loss or accident.

For All Insurance Needs Contact

**KINNAIRD INSURANCE AGENCY**  
 207 W. Main Since 1919  
 Don Kinnaird Eastland 629-2544



## Friendship Sunday School Class Holds Christmas Dinner

On Dec. 13th the Friendship Sunday School Class of First Baptist Church met at 6:30 p.m. in the fellowship hall for the annual Christmas dinner and social to exchange gifts and have a good time.

After the meal of all goodies such as turkey, dressing, vegetables, salads and desserts along with tea and coffee, were enjoyed by all, especially after our Beloved Pastor gave thanks for all the blessings we have of being together. But most of all about God's gift to us of the Birth of His son, who died on the cross that we might be saved.

Mrs. Lorene Crawford was master of ceremony who invited honored guest Miss Opal Hearne to give her Christmas story entitled "Two Kinds of Christmas" First some say Christ is dead, that the American people have crucified the real meaning of Christmas with all the glitter and pomp of our day. Old Santa will come into town in a fine car or even on an airplane to meet the children and then the little ones will beg mother and daddy for every kind of toy that is made.

The second Christmas is so very much alive for Christ lives in the hearts and souls of men, women, boys and girls who have been saved by Christ's death on the cross. Miss Hearne said no one could ever tell her 35 pupils that Christmas was dead. They know better for the our Savior was born in a manger and lain on the hay, the wise men saw the star and followed it to where the

Babylay. They gave their gifts and left to tell others what they had seen that night. The story of the Baby Jesus is told throughout the world. Miss Hearne gave the reading so wonderfully we all loved every minute of it.

Then Mrs. Crawford asked our teacher Mrs. Fambrough to give our part as a class in the Lottie Moon Missionary program which was nice and she in turn gave it to Bro. Brewer to put in fund.

Afterwards numbers were passed out by the committee and the gifts were given out by Myrtle Richardson, Frances Todd and Ione Bounds. Everyone received a nice gift and after all were unwrapped and shown Mrs. Crawford asked our outreach leader Mary Hood to give the Invocation. All reported a wonderful time.

Those present were Bro. and Mrs. Brewer, Mr. and Mrs. McGinnis, Mr. and Mrs. Dave Fambrough, Mr. and Mrs. Till Harbin, Mrs. Lorene Crawford, Mrs. Carrie Harlow, Mrs. Myrtle Richardson, Mrs. Reed, Mrs. Frances Todd, Mrs. Margaret Goodwin, Mrs. Ione Bounds, Mrs. Inez Cornelius, Mrs. Nina Hastings, Mrs. Mary Hood, and our invited guests Mrs. Inzer, Mrs. Sims, Mrs. Ruth Layton and Mrs. Winnie Young and class reporter.

Julia Havens

## Rural Churches Hit By Thieves

The Mangum Baptist Church will have no piano music this Christmas; their piano was stolen sometime last week.

Sunday Herbert Casey came to the small country church to light the fire for the morning worship and found the piano missing.

The sacrilegious thieves also got away with the church's last five good steel folding chairs.

"We're just not going to have any music now for our Wednesday Christmas program", sighed the pastor's wife, Mrs. A.J. Thomas.

Once before, thieves tried to steal the church's piano, but were thwarted when it became wedged in the back door.

Throughout the past few months there have been a rash of thefts from small county churches in the southern part of the county.

The Mangum Baptist Church has been broken into three times. The first time some large reversible floor fans were taken. The second time, three or four heaters and a number of

## Officials Have Annual Luncheon

Eastland County Courthouse officials and employees held their annual Christmas luncheon Monday on the third floor of the Courthouse.

The ladies of each floor brought meat, vegetable and dessert dishes. The men chipped in on refreshments.

Afterward the group gathered in the lobby around the Christmas tree, swapped presents and sang Christmas carols.

## \$8125 For Library

The Eastland Jaycee's earned \$81.25 for the Eastland Memorial Library fund during their Winter Carnival and Bingo last week.

According to President Tom Holland the turnout was not as good as expected because of the cool weather and the closeness of the holiday season. Hopefully the carnival will be back in April.

The Jaycee's especially want to thank Eastland businesses that donated prizes for the Bingo.

Livestock hauling, light hauling, moving, tractor driving, etc. Call Cisco 817-442-1540. 1-98

FOR SALE Used 24" x 36" Aluminum plates .009" thick. Ideal for sealing. 25c each at the Eastland Telegram.

chairs were taken. "We started out with 49 chairs and they have gotten them all", said Rev. A.J. Thomas, pastor.

According to Rev. Thomas

the New Hope Church over near Romney has had five heaters taken, and the Pleasant Hill Church has lost some pulpit chairs and other equipment.

"It's pitiful and hard to think that there are people around that would do like that, that would steal from a church", said Rev. Thomas.

The thieves even burned a hold in the church's floor this time. The piano was chained to

the floor and bolted. The chain was heated and slipped over the bolt and the piano rolled out the double front doors, loaded into a truck and taken away.

"They even cut the cord and took our old black telephone", added Mrs. Thomas. "Now what use could they have with it?"

They both believe that God works in mysterious ways, but that the devil does also. If so,

the congregation of the Mangum Baptist Church is being sorely tested.

The church was just starting to do good, said Rev. Thomas. "I guess we'll work this out in some way or the other".

Next time he hopes to get a big heavy piano and attach the chair underneath where thieves can't get at it. At present he is

hoping the church can find a good piano that doesn't cost too much.

The reverend wants to see such thievery ended. "Hitting small rural churches is a racket that needs to be stopped", he concluded.

The Eastland County Sheriff's Department is continuing their investigation.

Thursday, December 20, 1973

# Gift Ideas

Something for Everyone!

At HEIDENHEIMER'S

Gift Thoughts  
**FASHION SCARVES**  
Many Shapes  
**\$1.99 To \$2.99**

Squares, oblongs, triangles. Lacy mantillas. Individually packaged.



Welcome Gift  
**FRINGED SHAWLS**  
Of Acrylic  
**From \$8.99**

Hand-made look, open-work pattern. The popular wrap for all fashions.



**Two Piece SCARF ENSEMBLE**  
Bulk Acrylic  
**\$6.00 & \$6.99**

A cozy gift for Winter warming. Scarf, beret and mittens. Colors.



So Cozy!  
**QUILTED ROBES**  
Long  
**\$8.99**

Silky soft nylon satin... just perfect for relaxing at home. 10-20.

**Short Length \$7.99**



Glamorous!  
**LONG GOWNS**  
Lace Trim  
**\$4.99**

Lovely, long nylon tricot gowns. Assorted styles, colors. P-S-M-L.



For Her Fashion Bags  
In Brown, Black, Navy, Red  
**From \$4.99**



Super Sports  
**FLANNEL SHIRTS**  
Polyester/Cotton  
**\$3.99 & \$4.99**

Give him one... give him plenty! Plains 'n plaids. Sizes S, M, L.



Undercover  
**TANKS, T's, BRIEFS**  
Coordinated  
**\$1.39 Each**

Comfort for the inner man... in assorted styles, colors and sizes.



**Velvet BLAZER**  
Classic Style  
**\$22.95**

Give him this two-button model. For now and well into Spring. 38-44.

**100% Polyester SPORT COATS**  
From **\$29.99**



Men & Boys  
Assorted gloves for warmth. Many lined **\$1.99 To \$5.99**



Boy's **\$18.99** Men's **\$22.50**

Norfolk jackets, all sizes. Camel, Brown

**BRADFORD FELTS \$12.50**



Free Gift Wrapping



A personal gift that pleases everyone...  
**Gift Certificate**



Knit Slip Over Or Button Fronts **From \$4.99**

**\$3.00 To \$5.00**



Sweater vests, plain and plaid. **\$4.99 To \$5.99**



**CHRISTMAS Gifts** From **HEIDENHEIMER'S** Family Store in Cisco

**For SINUS Discomfort TAKE sinarest**

SPECIFICALLY FORMULATED FOR SINUS HEADACHE AND CONGESTION

Box 1212 Rochester, New York 14603



**TONY'S CAFETERIA**  
Specializing In **GOOD FOOD**  
In Our Dining Room Or Take-Out  
Closed Saturdays 10 A.M. To 8 P.M.


**BAKKER Funeral Home**

Dear friends,

The following statistics are required to complete a death certificate: full name, birthplace and birth date of the deceased, occupation, Social Security number, place of residence, name of spouse, name and birthplace of father and mother, the date and place of interment.

It is well to have the available facts beforehand.

Respectfully,  
Oale C. Bakker



**MACHINE SHOP**  
MOYORCYCLES  
MINI BIKES  
CHAINSAWS  
GARDEN TRACTORS  
TRAILERS

**BENCO**  
HELMETS 100% APPROVED

**MOTORCYCLE PARTS & ACCESSORIES**

**SPECIAL HOMELIGHT CHAIN SAW AGENT**

**HELMET RADIOS**

**BILLS'S CYCLE SHOP**  
Phone 559-2693  
Highway 180 East Breckenridge, Texas  
Open From 10:00 To 6:00  
Monday Through Saturday

Apply Now Waitresses Needed At **Ramada Inn**  
I-20 East Of Eastland  
Good Benefits Hospitalization  
Contact MGR **Ramada Inn**



### Peanut Industry -- U.S.D.A.

Peanut industry representatives -- growers, shellers, brokers and manufacturers -- were invited to Washington for discussions with the Secretary of Agriculture and other top USDA officials on Dec. 12. Approximately 30 persons from throughout the nation attended the session aimed at achieving an agreement on peanut program modifications. This day long conference resulted from a suggestion of key congressional leaders who met with Agriculture Secretary Butz on Dec. 7. Peanut area congressmen including House Speaker Carl Albert, Senator Herman Talmadge and House Agriculture Committee Chairman W.R. Poage met with Secretary Butz on Dec. 7 in an effort to reach a compromise solution regarding 1974 peanut program changes announced by Butz on Oct. 24. Three of these changes are considered by industry spokesmen to be critical to survival of the peanut program. These changes are transfer of field price support functions from the three grower associations to state and county ASCS offices; establishment of 115 percent of loan value as minimum sales price of CCC stocks and elimination of allotment by transfers of sale and lease.

Industry representatives attending the Dec. 12 conference included James Neal, Pearsall, Texas; Floyd King, Eakly, Oklahoma; Ross Wilson, Gorman, Texas; George Freeman, Dublin, Texas; George Morrow, Jr., Denison, Texas; and Sydney Reagan, Dallas, Texas.

After reviewing the USDA plan for a new peanut program referred to as the target price concept, and an optional production approach submitted by the National Peanut Growers Group last May, the conferees voiced multiple objections to the USDA plan which calls for a \$200 per ton target price, complete freedom in marketing, a poundage production quota and unlimited production by present and new growers with equal opportunity for all growers in the market place. USDA spokesmen em-

phasized that two Department objectives -- (1) competitive loan rate (90 percent of the estimated world market price) presumed to be in the range of \$180 to \$200 per ton and (2) unlimited production, thus eliminating the present value of peanut acreage allotments held by current growers.

Ross Wilson, Southwestern Peanut Growers Association Manager stated that officials of the National Peanut Growers present advised the Secretary that the original NPGG program modification concept was being studied by a small grower committee for possible refinement. Emmett Reynolds, Chairman of the Grower Group Study Committee informed USDA officials that his full committee would be assembled within two weeks to possibly adopt the revised plan for program modification. In the event the plan is approved, he said, opportunities will be provided for shellers and peanut product manufacturers to review the proposal prior to submitting the plan for USDA scrutiny. Wilson stated the local grower leaders will also be given an opportunity to contribute to the program approach prior to any presentation of it to USDA. It is possible, he concluded, to have a program draft ready for discussion with USDA officials by mid-January. The Association Manager reminded them thence to achieve recension of 1974 program policy changes give this effort a real sense of urgency. "After All", he concluded, "The Welfare of approximately 100,000 farm families re dependent to a large degree upon the continuation of a healthy peanut program, but if all efforts at compromise with USDA fail, we will have no alternative other than an all out effort to hold the present program."



### SEEDS FROM THE SOWER

By Michael A. Guido, Metter, Georgia

The behavior of some children suggests that their parents embarked on the sea of matrimony without paddles. But this is not true of our heavenly Father. One of His children admitted in Psalm 118: "The Lord chastened me." The word "chastening" means to correct or to child train. So when the Lord chastens us it is to correct, not to condemn; to instruct, not to injure. One should not despise the chastening or be discouraged when he is corrected. The Bible urges, "Let God train you, for He is doing what any loving father does for his children. For who-

ever heard of a son who was never corrected." We must be careful that we do not allow the chastening to mar us instead of making us. There is no failure of life so terrible as to have the pain without the profit, the sorrow without the softening. One day a father found it necessary to chastise his daughter. After the correction she climbed onto his lap and said, "Daddy, I do love you." "Why?" he asked. "Because," she answered, "you try to make me good." That is why the Lord chastens us - to make us good. I am grateful. Are you?

JACK DAVIS  
Box 872  
Brownwood, Texas

Peanut producers are unanimous in their opinion that the new changes announced by Secretary of Agriculture Earl Butz in the peanut allotment program will have a tremendous impact on the economy of the entire peanut producing area.

Some even suggest that many peanut producers will be forced to utilize their land to grow other crops that would be more profitable. This is on the assumption that, if the new program goes into existence, the price of peanuts would drop below present support prices.

If this should occur, according to CBS News in its broadcast of November third, the production of peanuts would be cut so drastically that the price of high-protein peanut butter would be driven up to the level of the price of beef. At the present time, peanut butter is one of the most economical high-protein foods on the grocery shelves. Congressman W.R. Poage of Waco says the new program would be "disastrous". Representative Omar Burleson of Abilene calls it "a devastating blow to peanut farmers". The president of the Texas Farmers' Union, Jay Naman, says, "It will ruin the peanut industry in the United States".

However, some observers believe that these comments constitute an over reaction to the situation. In the first place, they point out, the peanut producer is not without friends in high places in Washington. Congressman Poage, whose revised district now includes much of the Central Texas peanut-producing area, is Chairman of the House Agriculture Committee. Senator Herman Talmadge of Georgia, the largest peanut producing state in the Union, is chairman of the Senate Agriculture Committee. And, as if this were not enough, the Speaker of the House of Representatives, Carl Albert, represents the largest peanut-producing area in Oklahoma. There is no doubt that these three men will play a prominent role in shaping the new peanut program.

Although it is pointed out, Secretary Butz can change the 1974 peanut program without Congressional approval, it will take a new law to enact his announced intention of completely abolishing the price support program for peanuts. This is when the power of the Speaker and the two congressional committee chairmen will be felt. Some seem to think that Butz will have to modify his new peanut commodity program drastically in the coming year if he is to achieve any success in enacting a new agriculture law.

Just what is the Administration trying to accomplish with its new peanut program?

Many experts say that one only has to look at the world situation to find the answer. An overall balance-of-payments deficit has existed for many years. This has been aggravated by the petroleum shortage that is now confronting us. Petroleum products have been, for years, one of our major exports. Food and fiber are two of the few

export products that can be increased; and this, many experts say, is exactly what the Administration plans to do. The tip-off, they say, came a few weeks ago when Presidential Advisor John Connally emphasized the fact that the United States must increase its exports of food and fiber to compensate for the loss of our overseas markets for petroleum. Texas Commissioner of Agriculture John C. White, concurred in this. "They want us to produce more than we have ever produced in history", White said. "We are anxious to do so - but we must be sure that the markets are really there. If they are, the government should be willing to give us some price protection". Most experts believe that the export market for peanuts is, at present, not so great that it would absorb the increased production that would result if all marketing quotas were abolished.

Although peanuts compare very favorably with soybeans as far as protein content is concerned, price-wise there is a vast gap. Soybeans can be grown and harvested much more cheaply than peanuts. Therefore, they can be sold more cheaply. Consequently, there is a greater overseas demand for soybeans than for peanuts. Exports of peanuts did increase considerably this

year, but only, it was pointed out, as a result of the unusually low yield of soybeans due to a late rainy season last fall in the soybean-producing areas.

Agriculture Department experts say that soybeans and peanuts cannot be grown in the same type of soil. Soybeans require a tight black-land type of soil, while peanuts are grown in deep sand. On the other hand, soybeans and cotton are, for the most part, grown in the same type of soil. In order to increase the production of soybeans, it would be necessary to decrease the production of cotton, and natural fiber is in great demand by overseas markets. This has been especially true since the petroleum shortage curtailed the production of synthetic fibers, most synthetic fibers being manufactured from petroleum.

Department of Agriculture experiment stations are working on two projects relating to the soybean and peanut industry. One project is to develop a variety of soybeans that can be grown in soil that is now adapted for peanuts. The other project is to study new ways to grow and harvest peanuts more economically in order that they may be sold competitively with soybeans.

Agriculture experts are cautiously optimistic that one,

if not all, of these projects will eventually be successful. This would have a tremendous impact on our overseas dollar flow as well as on the economy of the peanut-producing areas.

Speaker Albert, Congressman Poage and Senator Talmadge are no doubt well aware of our export problems. They are also mindful of the problems of the peanut producers. It is not inconceivable, therefore, that these men will use their power to persuade Secretary Butz to modify his peanut program, thereby allowing peanut producers the transitional period necessary if they are to continue operating at a reasonable profit and playing a vital role in feeding the world.

Beginning January 1, 1974,

We Will Custom Grind And Mix Only Two Days Per Week.

Monday And Thursday

This Will Enable Us To Operate More Effectively.

We Wish Everyone A

Merry Christmas

And Happy New Year.

## Thornton Feed Mill

1200 Ave. D Cisco

## CHRISTMAS GIFTS

That are Sure to please



Give Her

### JANTZEN

Complete Matching

Sets Or

Mix And Match

100% Polyester

### DOUBLE KNITS

In Tones Of Blue, Beige,

Pink, Green, Yellow

And Others Popular Priced From

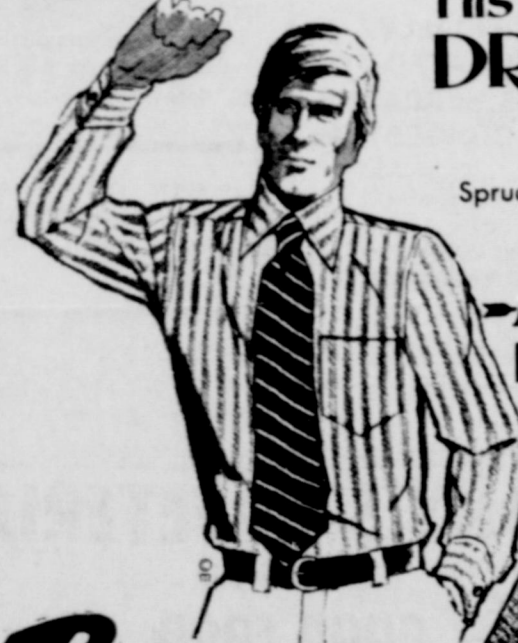
## \$10 To \$38

Each Garment



### His favorite DRESS SHIRTS

Spruce up his suit wardrobe with fresh dress shirts. The styles he likes. Patterns, plains.



Arrow-KNITS \$9 up

## Bray's

DEPARTMENT STORE

EASTLAND COUNTY'S FAMILY STORE  
Store Hours 9 To 5  
EASTLAND - RANGER

### RANGER DRIVE-IN THEATRE

OPEN 8:30 PM - STARTS 7:00

Friday • Saturday • Sunday  
DECEMBER 21-22-23

They call him THE MECHANIC. He has 100 ways to kill... and they all work!

### CHARLES BRONSON "THE MECHANIC"

United Artists

JAN-MICHAEL VINCENT • KEENAN WYNN  
JILL IRELAND

## CARING is more than a word at...

# HICKMAN NURSING HOME

## 629-2624



Final  
Call  
You  
All....

# FIRE SALE

All Xmas  
**TOYS**  
Slashed  
**50% To 75%**  
Or More...  
Smoked Or  
Boxes Scorched

All  
**HAIR SPRAYS**  
· VO-5 · Dry Look · Nestles  
· Aquanet  
Values To \$1.79  
Now **33¢** A Can  
· The Can May Be Scorched  
But Still Spew Spray!

Did You Say  
**SHOES**  
Mens' Womens' Childrens'  
**50% To 75%**  
Off Regular Price!!  
Smokey Smell Only

What's Left  
From Our Stockroom!!  
100% Polyester  
**DOUBLE KNITS**  
50" To 60" Wide  
All First Quality  
All On Bolts  
Perfect Except Smell Smoky  
Compare At \$3.29 Elsewhere  
Our Reg. **\$2.99**  
Now **89¢** Per Yd.  
Unbelievable

We Don't Claim To Be Sane! The  
Way We've Got It Figured - If You  
Don't Cart It Off -- We'll Have To  
Pretty Soon!! Your Neighbor Can  
Tell You We're Not Bashful About  
Selling Any Item At 50% To 75%  
Off! We're No Longer The Most  
Beautiful! Store In The Country -  
But Our Prices Make Normal  
Discount Centers Cry!!!!

Outdoors- It  
May Be Cold - But Prices  
Are Super Hot  
**BARGAIN 50%**  
To  
**TABLES 75% Off**  
One 2 Cent Table - In  
Case You Want To Put  
Your Two-Cents Worth In!

Final Call!  
All Storewide  
**GLASSWARE**  
Now **50%** Off  
Decorative Glassware  
Glass Sets By Libby And  
Anchor Hocking  
Purex Cookware  
Hundreds More

Sewing Notions!  
**SELL-OUT**  
Rug Yarn  
Craft Yarn  
Zippers  
Threads  
Buttons  
Knitting  
Needles  
NOW GET  
**2** For  
The Price Of **1**  
Still A Terrific  
Selection

**DRUGS**  
**SCHOOL SUPPLIES**  
**GIFT SETS**  
Aw-Everything  
**1/2** Price  
Merry Xmas

Store Open  
Daily  
10 A.M. To 6 P.M.  
Open Sunday  
1 To 6 P.M.

**BEN FRANKLIN**  
209-211 Main Ranger, Texas Downtown



**TRIPLE D DISCOUNT EASTLAND**

**TIDE**  
America's Favorite Laundry Detergent



Only **77¢**

**74¢ BAYER ASPIRIN**

**FAST PAIN RELIEF BAYER ASPIRIN**

50 Tablets **36¢**

**Mattel Snoopy Musical GE-TAR**



For Ages 1 1/2 To 4  
Now Only **\$1.83**

**PAPER TOWELS**



Bounty Jumbo Roll

**35¢**

**CHILDREN'S GAMES**



Assorted **2/\$1.00**

**Cast Iron Cornbread SKILLET**



**\$1.89**

**Hospital Notes**

Patients in Ranger General Hospital Wednesday morning were:

Eva Dunlap  
Mary Greer  
Ruby Varner  
Lena Rogers  
Marvin Sparger  
Horace White  
H.R. Goforth  
Julia Steadman  
Burl Shook  
O.D. Phillips  
Laura Todd  
LeVerle Ames  
Ida Harrell  
Florence Urban  
Stanley Mobley  
Ben Robinson  
Jim Brashear  
Allie Owens  
Faye Howell  
Emery Ford  
Mary Campbell  
Wayne White  
Albert Williams  
Tom Cozart  
Beth Collins  
Baby Boy Jones

Patients in Eastland Memorial Hospital Wednesday morning were:

**Farm Bureau Not In Favor State Tax**

"The Farm Bureau is not in favor of a state income tax". That's the statement made by Jack Cozart of Cisco, president of the Eastland County Farm Bureau, regarding tax policies adopted by the Texas Farm Bureau at its recent 40th annual convention in Abilene.

Cozart said that a wire news story incorrectly implied that the TFB had adopted a proposal favoring a state income tax. As a matter of fact, he said, the voting delegates overwhelmingly defeated proposals for such a tax.

Cozart said he was certain that the error in the news story was inadvertent and that the convention received excellent coverage by both major wire services as well as locally. But, a great many members, particularly those who had served as delegates, were confused by the incorrect news story, he said.

In explaining tax policies adopted, Mr. Cozart said the voting delegates approved a plan for taxing agricultural lands according to productive value. He said the organization had long favored such assessment, but that this was the first time for the organization to spell out exactly how it should be done.

Under the TFB plan, a five percent capitalization rate would be applied to price and production factors in determining the actual productive value of agricultural land.

In other tax matters, the delegates not only turned down proposals for the state income tax, they also voted against pari-mutual betting and a state lottery as methods of raising revenue. They did favor a \$10 additional tax on motor vehicle licenses to help pay for education.

December 20, 1973

**Fountains of DeLeon**

For the Job...  
For a Beautiful Complexion...  
For Whatever Your Complexion...  
Non-Surgical Problem May Be...  
"Look Younger as You Grow Older"  
Free Private Consultations  
361 Navarro (Hwy. 66 & 16)  
Call DeLeon  
991-4377 DeLeon, Texas

**Singer Sewing Machine**  
Touch & Sew \$48.00. Also Singer Sewing Machine \$29.10. We also clean and adjust all makes and models. Call 629-2920 Eastland or Cisco 442-3283. t-106

**Help Wanted LVNs**

Good salary and fringe benefits. Call

WESTERN MANOR, INC.  
Tel. 647-3111  
Ranger, Texas

**NEW CAR REGISTRATIONS**

Francis Earl Bullock - Ford - Eastland  
Lucille Wakeley - Ford - Vernon  
W.H. Cooper - Ford - Cisco  
Fambro Gate & Panel - Chev. Trk. - Cisco  
Tony Ash - Chev. - Gorman  
Ronnie Baker - Chev. - Blanket  
Mrs. Vera A. Lane - Chev. - DeLeon  
Henry M. Cornelius - Chev. - Hurst  
J&D Oil Co. - Ford - Eastland  
Larry Don Pierce - Ford - Eastland  
L.V. Jackson - Chev. - Carbon  
Melba Aaron - Chev. - Eastland  
Autry L. Bailey - Ford Pkup - R. Star  
C.L. Rich - Dodge - Cisco  
B.L. Files - Ford - Carbon  
Gary Ray Tucker - Ford - Carbon  
A.M. Butler - Ford - R. Star  
Morris L. Newham - Cad. - Ranger  
C.E. Morris - Ford - Shallowater  
James S. Ryon - Buick - Desdemona  
Lynn Bint - Chev. - Cisco

**91st DISTRICT COURT**

The State of Texas and others vs. Mary Susie Coursey, a widow and others - condemnation  
The State of Texas and others vs. Michael Dennis Clark and others - condemnation  
The State of Texas vs. Dorothy N. Shook - condemnation  
The State of Texas vs. John W. Gerhardt and wife -

**COURTHOUSE NEWS**

condemnation  
J.D. Carter vs. Don L. Dumas, Jr. - sequestration  
Sammy McCullough - Passing a forged instrument in writing  
Leland Miller Jr. - theft by bailee over \$50 and habitual criminal  
Larry Dale Seabourn - murder with malice aforethought  
Dane Lee Clark - receiving and concealing stolen property over the value of \$50.

**MARRIAGE LICENSES**

Jesse Alan Clark and Annette Lee Gilbert  
Kenneth Hank Rainey and Linda Kay Isbell  
James Fredrick Lewis and Glenda Carol Mitchell  
Bruce Dewaine Humphrey and Peggy Gene Gruman  
Thomas Herbert Gunn and Emalee Sumerlin  
Kenneth Ray Johnson and Rhonda Darlene Carlton

**INSTRUMENTS FILED**

**COUNTY CLERK'S OFFICE**

Robbie L. Acrea to Gifford C. Acrea - warranty deed  
Aviation Contractors, Inc. to St. of Tex. - notice St. Tax lien  
Glenda Lou Burger to Vance Bruce Laminack - ratification deed  
James K. Bowne and wife to A.V. Jones and sons - oil, gas, mineral lease  
Cruz R. Baldiviez and wife to Fred W. Rogers - mechanics, materials lien  
Cruz R. Baldiviez and wife to Fred W. Rogers - deed of trust  
Larry K. Bryant and wife to Eastland Nat'l Bk. - deed of trust  
Bob Spencer, Inc. to St. of Tex. - notice St. tax lien  
John T. Beggs and wife to

U.S.A. - deed of trust  
Eugene L. Bagwell and wife to Investors Mort. Corp. - deed of trust  
Virginia Butler to Joe Altus Butler - quick claim deed  
Andy E. Boyle to W.H. Baldwin - warranty deed  
Grover S. Cleveland and others by trustee to W.H. Cooper and wife - release deed of trust  
Geo. O. Carter and wife to Levie R. Van Geem - deed of trust  
Jack R. Clark to Natural Gas Finders Inc. - oil, gas, mineral lease.  
Citizens Nat'l Mort. Corp to Fed. Nat'l Mort. Ass'n - assign deed of trust  
Dean N. Collins and wife to Charles E. Little and wife - warranty deed  
E.A. Connel and wife to Guy Horton and wife - warranty deed  
V.L. Davis, dec'd to the public - proof of heirship  
Herbert Ekrut to J.T. Horn and others - release deed of trust  
Mary E. Eison and others to Mrs. J.C. Timmons and others - partial release deed of trust  
Eastland Nat'l Bank to Tri-Mark Dev. Corp. - release deed of trust  
Eastland Nat'l Bank to Dean N. Collins and wife - release deed of trust  
1st Nat'l Bank, Cisco to R.T. Dolinger and wife - release mechanics, materials lien  
Fed. Land Bk. Houston to R.G. Lyerla and wife - release deed of trust  
1st St. Bank Rising Star to J.T. Beggs and wife - partial release venders lien  
1st Fed S&L Assn to John Huffmyer and wife - release deed of trust  
Louise Gregory to James Grady Gregory and wife - release venders lien deed of trust  
James Grady Gregory to R.E. LDoggett and wife - warranty deed  
Ernest D. Gosnell and wife to Willis R. Armstrong - warranty deed  
G.A.C. Trans - world Acceptance Corp. to Willie Fay Hull - warranty deed  
Buster J. Hastings and wife to Billy J. Moore - oil, gas, mineral lease  
Guy Horton and wife to E.A. Connel and wife - warranty deed  
Guy Horton and wife to Eastland Nat'l Bk - deed of trust  
James E. Jackson and wife to Natural Gas Finders Inc. - oil, gas lease  
Bobby Justice to Amoer Pipeline Co. - right of way  
Kenneth Jameson to Billy B. Logan and others - warranty deed  
Vance Bruce Laminack to Vet. Land Bd - warranty deed  
Billy B. Logan to Kellum B. Logan - quick claim deed  
Billy B. Logan and others to Kenneth Jameson - deed of trust  
Charles E. Little and wife to Dean W. Collins - deed of trust  
Nolan Manley Inc. to St. of Tex. - notice st. tax lien  
Leland Nabors to the Public - aff'd  
Beverly G. Nicholson and husband to Tex. Elec. Serv. Co. - mechanics, materials lien

and ag.  
Mrs. Norma L. O'Dell to West Tex. Utilities Co. - esmt & right of way  
Mrs. Lillian S. Peck to West Tex. Util. Co. - esmt & right of way.  
J.C. Poe to H&H Floral Inc. - release venders lien and deed of trust  
C.C. Pippen and wife to Chaparral Ex. Co. - oil, gas, mineral lease

**To Late To Classify**

FOR SALE OR TRADE: 1971 Buick Riviera; has every option available. Call Chip Davis, 647-3277 or 647-1367 in Ranger. t-x1

FOR SALE: Kimball spinet piano, \$350.00; three piece maple bedroom suite, \$125.00; 12 x 15 ft. biege carpet and pad, \$50.00. See at 1202 Desdemona Blvd. t-50

LOST: Ladies silver Rivera wrist watch. Lost in area of Ben Franklin Store Fire Sale. Call collect, 442-2611, in Cisco. t-47

**Roofing**  
New & Repair All Buildings & Houses Estimates Made.  
**Tri-Cities Roofing**  
Call Noble Squiers  
629-2370

**FAMILY RECREATION CENTER**  
1001 W. Commerce, Eastland

A good clean place for kids from 8 to 88. Foosball - Pool - Pinball - Car Race - Dune Buggy - Pong - Juke Box - Air Hockey - Snack Bar.

Open 11 a.m. to 1 p.m. and 3:30 p.m. to 10 p.m. on school days. 11 a.m. to midnight on Saturday and Holidays. Closed Sunday. Bring this ad for a free game of Foosball.

**GIFT SUGGESTIONS...**

For the man on your list.

	<b>TRAVEL - BAR</b> For after hours leisure away from home...the travel bar with padded top and bottom and with alligator lining. From \$20.00
	<b>BOOT JACK</b> This handsome boot jack is for men, women or children and will remove any size shoe. \$4.50
	<b>SHOE BUFFER</b> Has zipper top and contains shoe polish and applicator \$3.00
	<b>TERRY WRAP</b> Adjustable waist assorted colors \$4.00
	<b>PIPE RACK</b> Genuine Walnut Cork Lined. \$10.00
	<b>Gem Gift Set.</b> DeLuxe Box \$7.50

Gift Wrapping is FREE on any item purchased in our store.

**THE MAN'S STORE**  
Bob Elliott  
CISCO  
"Things in Fashion for Men".

**GREER'S WESTERN STORE**  
IN RANGER

here's a Christmas **BONUS** for you

**\$200<sup>00</sup> Worth Of Gift Certificates To Be Given Away To Our Best Customers Between Thanksgiving And New Years. Come In And See How You Can Win ALSO**

**Our Expansion Celebration Sale Is Still On**

**SENIOR CITIZENS**

**NOW YOU CAN ENJOY THE SECURITY OF A WORRY FREE 24 HOUR NURSING CARE**

\* Certified By Texas State Department of Public Welfare  
Licensed by Texas State Department of Health.

- 24 Hour LVN Supervision • Doctors References • Special Diets
- All Guest on Ground Floor • Controlled Air Cond. & Central Heat
- Planned Activities • Occupational Therapy • Home Like Atmosphere
- MEN - WOMEN - COUPLES • REASONABLE RATES
- CONVENIENT SUBURBAN LOCATION

• DESCRIPTIVE BROCHURES SENT UPON REQUEST

For professional care in a luxury atmosphere, unsurpassed by any other nursing home

**VALLEY VIEW LODGE**  
700 S. Ostrom 629-1779  
Shirley Frost, Adm.

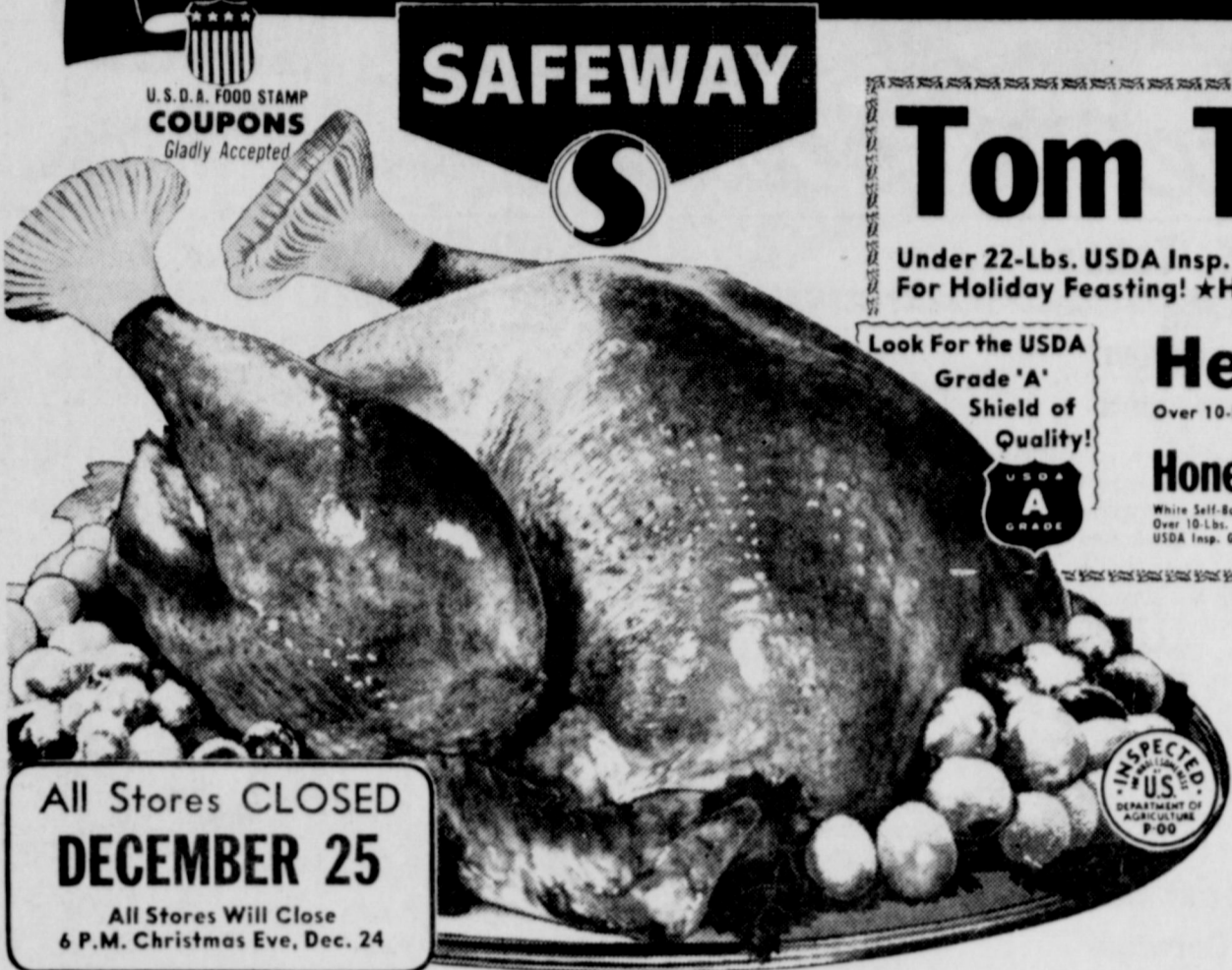
**EASTLAND MANOR**  
Now Offers You  
24 Hour Nursing Care Supervised by a Registered Nurse at Eastland Manor  
Call or Come By Today and Let Our Friendly Staff Show You Around

1405 W. Commerce 629-2686  
Eugene Frost, Adm.

"We CARE"



# FINE FOODS and BEST WISHES



**SAFEWAY**

U. S. D. A. FOOD STAMP  
COUPONS  
Gladly Accepted

## Tom Turkeys 65¢

Under 22-Lbs. USDA Insp. Grade 'A'. Flavorful!  
For Holiday Feasting! ★Half or ★Whole

Look For the USDA  
Grade 'A'  
Shield of  
Quality!

**Hen Turkeys 75¢**  
Over 10-Lbs. USDA Inspected Grade 'A'

**Honeysuckle 77¢**  
White Self-Basting Young Turkey.  
Over 10-Lbs. USDA Insp. Grade 'A'

**Self-Basting 79¢**  
Safeway Young Turkey.  
Over 10-Lbs. USDA Insp. Grade 'A'

### Festive Meats!

**Golden Star 79¢**  
Armour Deep-Basted Young Turkey. Over 10-Lbs. USDA Insp. Grade 'A'

**Butterball 89¢**  
Swift's Deep-Basted Young Turkey. Over 10-Lbs. USDA Insp. Grade 'A'

**Fryer-Roaster 89¢**  
Manor House Small Turkeys. Under 9-Lbs. USDA Insp. Grade 'A'

**Armour Turkeys \$1.05**  
Armour Star Basterie Turkeys. Under 9-Lbs. USDA Insp. Grade 'A'

**Fancy Ducks 88¢**  
Manor House. 5 to 5 1/2-Lbs. USDA Insp. Grade 'A'

**Turkey Breast \$1.29**  
Safeway Self-Basting. 4 to 6-Lbs. Avg.

**Turkey Roast \$6.75**  
Manor House. Light and Dark Meat. 3 1/2-Lb. Ctn.

**Boneless Ham \$2.39**  
Mahawk Chieftain. ★Half or ★Whole

**Fresh Oysters \$1.29**  
Gulf Coast. For Stuffing! 10-oz. Jar

Safeway Meats Are Unconditionally Guaranteed to Please!

**Chicken Hens 69¢**  
Frozen. Under 7-Lbs. USDA Insp. Grade 'A'

**Chuck Roast 79¢**  
Full Blade Cut. USDA Choice Heavy Beef

**Safeway Wieners 77¢**  
Plump and Tender! 12-oz. Pkg.

**Lunch Meat 48¢**  
Safeway Sliced Beef Bologna. ★Olive ★Spiced ★Pickle-Pimientos. 3-oz. Pkg.

**Chipped Meats 45¢**  
Safeway Sliced No. 1 Quality. 1-Lb. Pkg.

**Safeway Bacon \$1.09**  
No. 1 Quality. Sliced

**Armour Bacon \$1.19**  
Armour Star. MireCure

**Whole Hams \$1.05**  
Smoked. 14 to 18-Lb. Water Added

**Smok-Y-Links 98¢**  
Eckrich Sausage. 10-oz. Pkg.

**Rib Roast 99¢**  
Standing. Large End. USDA Choice Heavy Beef

**Smoked Ham 95¢**  
Shank Portion. Water Added. —Lb.

**Canned Ham \$4.98**  
Safeway Fully Cooked! 3-Lb. Can

**Plumrose Ham \$6.25**  
Danish. Canned. 3-Lb. Can

**Pork Roast 95¢**  
Fresh. Boston Butt. Semi-Boneless. —Lb.

**Fresh Pork Chops 98¢**  
Family Pack. —Lb.

**Rib Steaks \$1.08**  
USDA Choice Grade Heavy Beef. Bone in. —Lb.

**Lean Ground Beef \$1.18**  
Freshly Ground! —Lb.

**Smoked Hams \$1.09**  
★Full Shank or ★Half Shank. Water Added. —Lb.

All Stores CLOSED  
**DECEMBER 25**  
All Stores Will Close  
6 P.M. Christmas Eve, Dec. 24

**Polaroid Film \$3.69**  
108 Color Film —Pak  
Safeway Special!

**Party Mixers 15¢**  
Cragmont. Refreshing! 32-oz. Bottle  
Safeway Big Buy!

**Gladiola 68¢**  
Enriched Flour 5-Lb. Bag  
Safeway Special!

**Plain Chili 59¢**  
Town House. No Beans. 16-oz. Can  
Safeway Big Buy!

**Folger's 89¢**  
Coffee. Full of Flavor! 1-Lb. Can  
Safeway Special! (With \$5 or more purchase excluding cigarettes)

Gift idea from Safeway

**GIFT ORDER \$5.00**

SAFEWAY

Safeway Gift Orders come in a range of denominations which are usable by almost everyone. Wonderful for holiday gifts to employees, friends, relatives, partners and members. Safeway gift orders are available for every Safeway store.

Safeway Has Everything for Your Shopping Pleasure!

Fresh Bakery Values!

Everyday Low Prices!

**Rubbing Alcohol 17¢**  
Isopropyl. Clear. —16-oz. Bottle

**Facial Tissues 25¢**  
Truly Fine. Soft. 200-Ct. Box

**Aspirin Tablets 18¢**  
Safeway. 5-Grain. 100-Ct. Bottle

**Overnight Diapers 85¢**  
Truly Fine. Disposable. 12-Ct. Box

**Hair Spray 49¢**  
Truly Fine. Holding Power! 13-oz. Can

**Mouthwash 38¢**  
Safeway. Freshens Breath! 16-oz. Bottle

**Yellow Popcorn 18¢**  
Town House. 16-oz. Pkg.

**Old Pal Dog Food 11¢**  
For Cats. Tost. 15.3-oz. Can

**Panty Hose 99¢**  
Safeway Dress Sheer. Safeway Big Buy! —Pair

**Paper Towels 28¢**  
Tree Saver. Absorbent! Safeway Big Buy! 175-Ct. Roll

**Liquid Bleach 37¢**  
White Magic. Disinfects! Safeway Big Buy! Gallon Plastic

**Tomato Soup 12¢**  
Town House. Zesty! Safeway Big Buy! 10.75-oz. Can

**Saltine Crackers 29¢**  
Melrose Soda Crackers. Safeway Big Buy! 16-oz. Box

**Tomato Catsup 25¢**  
Highway. For Added Flavor! Safeway Big Buy! 14-oz. Bottle

**Chunk Tuna 39¢**  
Van Camp's. Light Meat. Safeway Big Buy! 6.5-oz. Can

**Aluminum Foil 25¢**  
Kitchen Craft. 12 Inches Wide. Safeway Big Buy! 25-Ft. Roll

**Raisin Bread 39¢**  
Skylark. Iced. Special! —16-oz. Loaf

**English Muffins 39¢**  
Mrs. Wright's. 12-oz. Pkg.

**Sesame Twist 44¢**  
Bread. Skylark. 24-oz. Loaf

**Brown & Serve 38¢**  
Twin Rolls. Skylark. 12-oz. Pkg.

Dairy-Deli Favorites!

**Dips for Chips 39¢**  
Lucerne. Safeway Special! —8-oz. Ctn.

**Cinnamon Rolls 35¢**  
Mrs. Wright's. 9.5-oz. Can

**Cottage Cheese 39¢**  
Lucerne. 12-oz. Ctn.

**Creamery Butter 89¢**  
Shady Lane. 16-oz. Ctn.

**Biscuits 11¢**  
Mrs. Wright's. ★Sweet Milk or ★Buttermilk. 10-Ct. Can

**Cheese Spread 59¢**  
Lucerne. Pimiento. 8-oz. Ctn.

**Corn Tortillas 17¢**  
Lucerne. Easy to Prepare! 7-oz. Pkg.

**Bulk Nuts 89¢**  
★Pecans ★Walnuts ★Almonds ★Brazil Nuts ★Filberts. —Lb.

**Florida Avocados 39¢**  
Large Size. —Each

**Red Cabbage 19¢**  
For Colorful Salads! —Lb.

**Green Onions 2 for 29¢**  
Long Shank

**Romaine Lettuce 25¢**  
Large Heads. —Each

**Fresh Carrots 39¢**  
US - 1. Safeway. 2-Lb. Bag

Fresh Fruits and Vegetables!

**Crisp Celery 15¢**  
US - 1. Long Shank. Flavorful! Low in Calories! —Stalk

**Delicious Apples 29¢**  
★Red or ★Golden Washington State. Extra Fancy. —Lb.

**Tomatoes 39¢**  
Red-Ripe! Tasty! —3-Pack Tube

**Tangerines 25¢**  
Easy to Peel Large Size. —Lb.

**D'Anjou Pears 35¢**  
US - 1. Washington. —Lb.

**Red Apples 79¢**  
Red Delicious. Extra Fancy! 3-Lb. Bag

**Mincemeat 89¢**  
Garden's. Ready to Use! 28-oz. Jar

**Russet Potatoes 5 Lb. 69¢**  
US - 1. —Lb.

**Yellow Onions 25¢**  
US - 1. Tasty! —Lb.

Frozen Foods for Holiday Feasting!

**Mince Pie 39¢**  
or ★Pumpkin Pie. Bel-air. Special! —24-oz. Pkg.

**Topping 57¢**  
Lucerne. 6.25-oz. Can

**Strawberries 29¢**  
Sun Fresh. Sliced. 10-oz. Pkg.

**Cool Whip 37¢**  
Bird Eye. Dessert Topping! 4.5-oz. Carton

**Cream Pies 29¢**  
Bel-air. Tasty Desserts! 14-oz. Pkg.

**Cheese Pizza 69¢**  
Bel-air. Taste Treat! 16-oz. Pkg.

**Fish Sticks 29¢**  
Sno-Kist. Pre-Cooked. 8-oz. Pkg.

Compare Low Prices!

Don't Forget to Buy!

**Ice Cream 69¢**  
Snow Star. Great With Pie! —1/2-Gal. Ctn.

**Cake Mixes 35¢**  
Mrs. Wright's. Layer Cake. —18.5-oz. Pkg.

**Fruit Cocktail 28¢**  
Hunt's. Ready to Serve! 15-oz. Can

**Giblet Gravy 20¢**  
Franco-American. 10.3-oz. Can

**Dill Pickle Chips 43¢**  
Zippy. 18-oz. Jar

**Marshmallow Creme 33¢**  
Kraft. 7-oz. Jar

**Cream Cheese 17¢**  
Lucerne Cream. 3 Oz. Pkg.

**Nestle's Morsels 33¢**  
Semi-Sweet. 8-oz. Pkg.

**Powdered Sugar 22¢**  
Candi Cano. 1-Lb. Box

**Egg Nog 75¢**  
Lucerne. Rich & Creamy! —Quart Ctn.

**Cream Cheese 17¢**  
Lucerne. Light Flavor! 3-oz. Pkg.

**Stuffing Mix 36¢**  
Mrs. Wright's. 7.5-oz. Pkg.

**Corn Chips 39¢**  
Party Pride. For Snacks! 11-oz. Pkg.

**Mixed Nuts 79¢**  
Tom Scott. Festival. 13.3-oz. Can

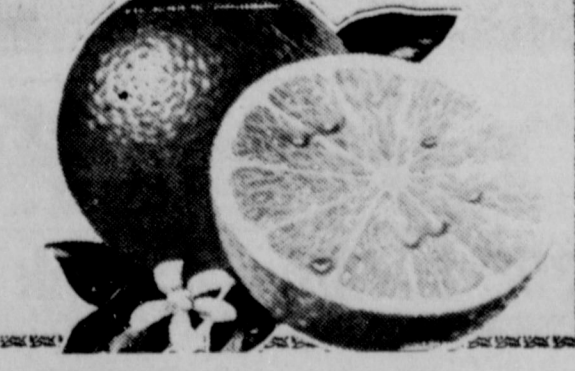
**Ripe Olives 45¢**  
Town House. Large Size. 7.75-oz. Jar

**Salad Dressing 49¢**  
Piedmont. Creamy! 32-oz. Jar

**Dinner Napkins 16¢**  
Oate. Paper. 60-Ct. Pkg.

Sweet and Juicy! Refreshing!

**Navel Oranges 19¢**  
Rich in Vitamin 'C'! Full of Flavor! Easy to Peel! Great for Snacks! —Lb.



Get Set . . .  
Here Comes  
Christmas!

**SAFEWAY**

Prices Effective Thurs., Fri., Sat., Mon., Dec. 20, 21, 22, & 24, in EASTLAND  
No Sales to Dealers.

© Copyright 1960, Safeway Stores, Incorporated.



# Poe Floral Presents

# CHRISTMAS GIFTS

*that are sure to please*

Eastland, Texas

609 W. Main

Thursday, December 20, 1973

## Carlton-Johnson Vows Said Friday in Carbon

Rhonda Darlene Carlton and Kenny Ray Johnson were



married Friday in First Baptist Church, Carbon, with the Rev. Delbert Smith officiating.

Mr. and Mrs. Bob Carlton of Carbon are the bride's parents. Johnson is the son of Mr. and Mrs. Kenneth E. Johnson.

Mike McGinn was organist. Given in marriage by her father, the bride wore a gown of taffeta and organza overlaid with chiffon and trimmed with lace and red ribbon.

Lavada Jackson of Carbon was the bride's only attendant. She wore a gown of red satin trimmed with white lace.

Steve Johnson was his brother's best man.

Flower girl was Diane Johnson, sister of the bridegroom.

The bride was graduated from Carbon High School and is employed by Eastland Manor Nursing Home.

Johnson, a graduate of Eastland High School, is employed by EBBA Iron.

The couple will live at H Hillside Apartments, Apt. No. 7, Eastland.

## 2nd Semester Kindergarten Opens In January

The second group of Kindergarten students will report for school on Thursday, Jan. 10th for the spring semester. Twenty four students have presently been registered for the second session. Parents who have previously registered their children have been advised by mail this week of the starting date. Anyone who failed to register their child last August or during the current school term should contact the Elementary School Principal, Mr. R.O. Baze at the school as soon as possible in order to assist in planning for the new group. Students entering for the Spring session must have been five years of age on or before

Sept. 1 and have their Health Immunization records in proper order.

Twenty five students will be completing the first session of the Kindergarten program on Jan. 9th. The law provides a ninety day instruction period during the school year for students who are five years of age.

New lunchroom price schedules for meals will be in effect for all Eastland Public School students when they return to school after the Christmas holidays on January 3rd. An increase in prices charged for noon lunches was approved by the school board at their December meeting after



## Engagement Announced

Mr. H.R. Casey announces the engagement of his daughter, Debra Ellen to Tim Lisenbee, son of Mrs. Vada Lisenbee.

The bride-elect is a senior at Carbon High School. Lisenbee attended Eastland High School, served two years in the Army and is presently employed at Victor Cornelius.

A wedding date will be announced at a later date.

Mrs. Kate Gipson of Abilene is visiting Mrs. Zelma Lusk. They received a message telling of the death of a brother-in-law Mr. W.A. Wilkins of Saratoga, California, Saturday.

the lunchroom operation showed an increasing deficit because of rising costs in food and labor. Most area schools increased the price of lunches to students at the beginning of the school year while the Eastland schools continued to charge the same as last year. New prices in effect after the holidays will be as follows:

Elementary students 50c  
Junior High and Senior High 55c  
Teachers 70c  
Outside Adults \$1.00  
Extra 1/2 pint of milk 7c. The price of 1/2 pint of milk has been reduced from 10c to 7c after the federal government appropriated money to underwrite a portion of the cost of milk to school children.

Looking for a Christmas gift for the person who has everything? How about a year's subscription to the paper? Inquire at the Eastland Telegram or call 629-1707.

## Debutantes Honored

Each year during the holiday season, parents of debutantes honor their daughters with a tea.

This year friends are invited to the home of Mr. and Mrs. James Murphy, 1142 Sylvan Dr., Abilene. Mr. and Mrs. Murphy are former residents of Eastland. The invitation is from eleven mothers honoring their daughters, the 1973 Cotillion Belles, Sunday afternoon, the twenty third of December.

Of these eleven debutantes, six are known to Eastland residents.

Carolyn Frost was born in Eastland and is the granddaughter of Mrs. Cyrus B. Frost of Eastland. She is a sophomore at Texas Christian University where she is majoring in interior design. Her main interest is raising and showing registered quarter horses. She has traveled to Hawaii and various parts of the United States. Her hobbies include tennis and water sports.

Amy Jennings is the granddaughter of Judge and Mrs. Clyde Grissom. Miss Jennings attends Emory University where she is a sophomore majoring in mathematics.

Julie Brown is the daughter of Judge and Mrs. Raleigh Brown of Eastland. Miss Brown is a sophomore elementary education major at Southern Methodist University.

Melinda McCloud is the daughter of Judge and Mrs. Austin McCloud of Eastland. She is a sophomore at the University of Texas where she is an elementary education major. Her plans include attending the University of Hawaii next summer. Her hobbies are water and snow skiing, horseback riding, swimming and needlepoint.

Cindy Owen is the daughter of Mr. and Mrs. Pat Owen, formerly of Eastland. She is a sophomore at Texas Tech University where she is majoring in elementary education. She plans to teach elementary physical education. Her hobbies are tennis and horseback riding.

Karen Murphy is the daughter of Mr. and Mrs. James Murphy who are former

## Engagement Announced

Mr. and Mrs. C.W. Moseley announce the engagement and approaching marriage of their daughter, Sheila Rose Moseley, to Sgt. Keith Wayne Luttrell, son of Mr. and Mrs. Robert Luttrell of Mineral Wells, Texas. The wedding will be Dec. 22, 1973, at 7:00 p.m. at Bethel Baptist Church. A reception will be held immediately following the ceremony in the Fellowship Hall of the church. All friends and relatives are invited.

## Shower Honorees In Decatur

Miss Carla Boney and Roger Weber were honored at a wedding shower in the home of Mr. and Mrs. George Burchard of Decatur.

Receiving guests were the hosts, the honorees, Mr. and Mrs. Gene Boney, parents of the bride-elect; and Mr. and Mrs. Charlie Weber, parents of the prospective groom.

The bride-elect's colors of blue and white were used in decorations. Punch, cookies, mints, and nuts were served by co-hostesses Mmes. Ben Calhoun, Edgar Clark, Bob Williams, John Florida, and Robert Mote, all of Decatur.

Miss Boney and Mr. Weber will be married Dec. 29 in Bethel Baptist Church in Eastland.

Members 1974 TEXAS PRESS ASSOCIATION

residents of Eastland. She is a sophomore at the University of Colorado where she is majoring in art and plans a career in art and design. She enjoys tennis, skiing, and art.

The children of Mr. and Mrs. John H. Windland will honor their parents Sunday, Dec. 23, with open house in observance of the couple's 50th wedding anniversary in their home at 203 S. Ammerman St.

Guests will call between 2 and 4 p.m. Children are J.W. Windland of Abilene and Mrs. N.F. Cowan of Ore City, Texas. House party will include grandchildren and brothers and sisters of the couple.

Mr. Windland was born in San Saba, Co., Texas. Mrs. Windland was born in Hill Co., Texas. They met at a gathering in Mars Community in Taylor Co. in 1918. They married Dec. 26, 1923, in Eastland County Courthouse.

They have made their home in Eastland for the last 12 years.

The Windlands have eight grandchildren and six great-grandchildren.

## Set New Years

The "Dave Adams Combo" will be playing for Lone Cedar New Years Eve party from 9:00 until 1:00 Monday, Dec. 31, 1973. We will have horns, hats and a free breakfast.

A large group is expected. So it might be wise to contact the club at 817-647-3616 for reservations.

Mack Rep. 2 Dalton Hardin, Mrs. Hardin, Russell, Deborah, Jo Ann and Dalton Jr., of San Diego, Calif., Mrs. Maxine Gressett and Jodie of Denver City spent the weekend with Rev. and Mrs. A.C. Hardin.

Rev. and Mrs. Rudy Fambrough of Morton Valley visited Mr. and Mrs. Dave Fambrough Monday. Another son Tim who lives in Sweetwater has been elected president of Sweetwater Chamber of Commerce.



## Me., Mrs. Windland Invitation

Mr. and Mrs. Glenn Justice of Star Route, Carbon, will host an open house Sunday, Dec. 23, from 2 to 5 p.m. All friends and relatives are invited.

Rev. and Mrs. Haston Brewer would like to extend an invitation to all friends and relatives to the wedding of their daughter, Sarah Jean to Rev. Franklin Michael Krause on Saturday, Dec. 22, 1973, at 7:30 p.m. in the First Baptist Church in Eastland. A reception will be held in the Fellowship Hall following the ceremony.

FOR RENT: Furnished, private 3 room cottages with carpets. Daily, weekly, or monthly Pleasant Place Motel west edge of Eastland. Call 629-8878. t-tf

A total of 186 seniors were graduated from Tarleton State University Sunday, Dec. 16, during Commencement Exercises held in the Wosdom Gymnasium.

Receiving the Bachelor of Science Degree in Elementary Education were Shirley J. Sparkman and Shelley E. Seibert. Shirley is the daughter of Mrs. Hazel A. Underwood of Eastland. Shelley is the daughter of Mr. and Mrs. W.T. Seibert, also of Eastland.

GOLDEN SHARP SHOP  
Circle and hand saws of all kinds sharpened. Any kind of tool that needs sharpening, scissors, etc. All kinds of handles installed. Small electrical appliances repaired. Olden, 653-2224. t-tf

### Jim Sandlin Skelly Station

Welding Of All Kinds

639-2575 Or 639-2215 - Carbon

Farm Bureau Tires & Batteries  
Flatwork

### HOLIDAY NOTICE!

EASTLAND NATIONAL BANK

will be closed

Tuesday, December 25, 1973

In observance of

CHRISTMAS DAY

Please arrange your banking

business accordingly.

EASTLAND NATIONAL BANK  
EASTLAND, TEXAS

FDIC

## HELPING TO SAFEGUARD HEALTH



A Friend  
You Can  
Rely On...

Your pharmacist should be your friend. Someone to help. Someone who's always there with careful attention to prescriptions.

And, as your doctor's back-up man, your pharmacist follows his instructions with precision.

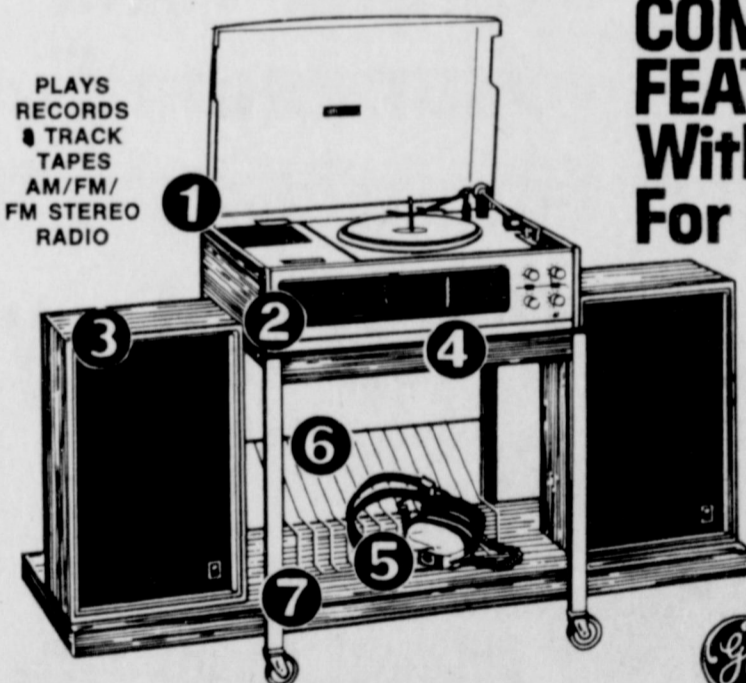
Bandages, Strips

Central Drug

103 W. Main Eastland 629-2681

## Complete GE Stereo Component Set

COMPARE THESE FEATURES...  
With Units Selling For Much More



- 1 Record player with dust cover
- 2 Continuous or manual 8-track tape player
- 3 Two large closed speakers
- 4 FM/AM/FM stereo radio
- 5 Headphone set
- 6 Record storage rack
- 7 Wood and metal roll-about stand

Discover The World of Stereo Today

- Four channel adaptable
- 6 record-capacity 9" turntable player has automatic shut-off/ repeat, precision cueing control, 45 RPM adapter, ceramic cartridge with diamond stylus
- Tape player has channel indicator lights, cartridge opening dust-guard lid
- Matched 17" x 11" x 7" closed speakers with 8" woofer, 3" tweeter
- Stereo Star shows FM reception
- Lightweight headphone with padded ear cuffs
- Fold-up record storage shelves - Walnut finished
- Easy-roll casters give deluxe component stand easy mobility. Model SC 3201.

No Money Down

\$1100 PER MONTH

THE CASH PRICE IS

\$19895

EXCLUDING SALES TAX

You pay only \$11.00 for 20 months, and one final payment of \$13.42. Deferred payment price is \$233.42, excluding sales tax.

The annual % rate is 18%

GOOD YEAR SERVICE STORES

306 E. Main - Frank Murphy, Mgr. - 629-2662



Enjoy a Ho-Ho-Ho Christmas...  
**SHOP EARLY!**

*I'm Glad I Shop  
**Eastland***



**It's All Here!**  
*Something for Everyone  
 On Your List!*



<b>Wanda's Seven-Eleven</b> 1006 W. Main 629 - 8897	<b>Valley View Nursing Home</b> 700 S. Ostrom 629 - 1779
<b>Mangum Service Center</b>	<b>Borden's Milk Distr.</b> 611 W. Commerce 629 - 1100
<b>Altman's Style Shop</b> 109 W. Main 629 - 1150	<b>Tharp Tire Co.</b> 403 E. Main 629 - 2922
<b>Goodyear Service Store</b> 315 E. Main 629 - 2662	<b>Hood King Motor</b> 100 E. Main 629 - 1786
<b>Eastland Manor, Inc.</b> 1405 W. Commerce 629 - 2686	<b>Eastland Co. T.V. Sales &amp; Service</b> <b>MOTOROLA QUASAR</b> 605 W. Sadosa 629-2287
<b>H&amp;R LUMBER CO.</b>	<b>COMMODORE HOTEL</b>

**SAVE  
 FUEL!  
 SHOP AT  
 HOME!**

*This year, wrap up  
 Christmas early*

<b>RITA'S FASHION FABRICS</b>	<b>SAFEWAY</b>	<b>Harelik's, Inc.</b> 212 W. Main 629 - 1443
<b>RAMADA INN</b>	<b>Green Street Florist</b> 200 N. Green 629 - 1101 Hwy. 80 East 629 - 2400	
<b>Baird's TV &amp; Appliances</b> 105 W. Main 629 - 1334	<b>Dairy Queen</b> LIVE A LITTLE	
<b>HILLCREST FOOD MARKET</b>	<b>Quetta's Sportswear</b> I - 20 Next to Ramada Inn 629 - 8030	<b>Robertson's TV Sales &amp; Service</b>
<b>Holland's Drive Inn</b> Hwy. 80 West 629 - 2215	<b>Eastland Telegram</b> 110 W. Commerce 629 - 1707	

SHOP **E a s t l a n d** THE FRIENDLY TOWN FIRST

Cisco, Eastland, Ranger **SOUTHERN TV CABLE SYSTEM** Inviting You To Watch All Of The Games NCAA-AFL-NFL



# Carbon News

**Mrs. Bob Hastings**  
Mr. and Mrs. Jesse Savage of Abilene have announced the birth of a son Don Lewis on Dec. 12. Maternal grandparents are Mr. and Mrs. James Smith of Carbon.

Mr. and Mrs. H.A. Bibles of Cisco visited Mrs. Clyde Hall Sunday afternoon.

Mrs. Anna Pearl Fleming of Harlingen visited friends in Carbon last week.

Mr. and Mrs. M.M. Stubblefield and Sherry, Mr. and Mrs. Truett Norris attended graduation exercises at A&M College Station Saturday. Larry Stubblefield received his BBA degree.

Mr. and Mrs. Larry Stubblefield are visiting their parents here for a few days before making their home in Arlington. Mr. Stubblefield has taken a position with Arthur Anderson and Company of Dallas and will be at work there next week.

Mr. and Mrs. Cecil Oneal of Brownfield visited Rev. and Mrs. R.V. Murray Sunday afternoon.

Visiting Mrs. Clara Brooker Sunday were Mr. and Mrs.

Alvin Brooker of Abilene, Mr. and Mrs. Sammy Brooker and baby, Mr. and Mrs. Irving Brooker of Kipan.

Mr. and Mrs. Pete Hallmark were in Palacios Saturday to attend the funeral of Mrs. Hallmark's uncle Coy Ramsey who died Thursday at his home in Palacios.

Mrs. Curt Williams of Eastland and two sons Earl and A.C. Williams of Eunice, N.M., visited Mr. and Mrs. L.M. Norris on Friday.

Weekend visitors in the home of Mrs. Pearl Snodgrass were her children Mr. and Mrs. Sam Murray of Midland, Mr. and Mrs. Willie Snodgrass and Stacie of Choctaw Oklahoma, Mr. and Mrs. Herbert Fox of Olden.

Troy Bryant of Stephenville visited his mother Mrs. Della Bryant Sunday.

Helping Mrs. Mary Jackson celebrate her birthday Sunday were Mr. and Mrs. Lake Lane of Cisco, Mrs. Bill Midcalf and a friend of Lipan, Mrs. Lottie Fox and Mrs. Pearl Snodgrass, Mr. and Mrs. Clayton Rhyne of Carbon.

Mr. and Mrs. Buster Johnson spent the weekend with Mr. and

# People 'N Things

JWS

YOU CAN'T blame the KRBC television (Channel 9) people for forcing the cable company to stop letting WBAP television (Channel 5) come in loud and clear here. Television stations charge advertising rates based on their audiences.

But KRBC should at least give us the good NBC programs that were on WBAP. For example, there was a special on

Mrs. Vernon Fields of Kokomo.

Mr. and Mrs. D.D. Sandlin visited relatives and friends of Springtown last weekend.

Tommy Cozart has been very ill in the Ranger Hospital but is improving.

Miss Rhonda Carlton and Kenny Ray Johnson were united in marriage Friday evening in the Carbon Baptist Church with Rev. Delbert Smith officiating. The bride's parents are Mr. and Mrs. Bob Carlton. The groom is the son of Mr. and Mrs. Kenneth Johnson.

The bride wore a gown of taffeta and organza overlaid with chiffon and trimmed with lace and red ribbon.

Lavada Jackson was her only attendant. She wore a gown of red satin trimmed with white lace.

Steve Johnson was his brother's best man. Flower girl was Diane Johnson, sister of the groom.

The bride is a graduate of Carbon High School and employed by Eastland Manor Nursing Home.

Kenny is a graduate of Eastland High School and is employed by EBBA Iron.

Merry Christmas and a Happy New Year to all of you from all of us.

Editor  
You were so kind to write me giving me permission to quote from "Old Rip" and also the information concerning the Longhorn Press in Cisco.

I do not want to be so presumptuous as to impose on good nature, but since my husband and I are going to be in Eastland Saturday afternoon and night of Dec. 22, I wondered if you would find it possible to see me for about 20 minutes that afternoon. I realize it is a very busy time so near Christmas, but I would so love to see hi you if I may. We get to Eastland so very seldom and now it will be much more seldom with the gasoline situation.

I hope I shall have another affirmative letter from you.

Sincerely  
Mrs. J. Wesley Beard  
Dallas, Texas

We have a large assortment of books. We also have Texas Almanacs. Eastland Telegram.

NBC Tuesday night on Alaska. But we had to watch a "canned" show on KRBC because WBAP wasn't allowed to come in via cable. And this is a frequent occurrence.

Both Abilene television stations (Channels 9 and 12) don't match the other channels on the cable for quality in their local commercials and programming. The Abilene television people should watch a few of the other stations for ideas on local programming. Presently, they're driving many of us to other channels for entertainment except when we are unable to obtain it otherwise (like Cowboy football).

The cable is a good deal for television owners because of the channels other than 9 and 12. Both Dallas stations, Channels 8 and 4, come in good, as does Fort Worth's Channel 11. And families with children use Channel 13 (Dallas) a lot because of their cartoons, educational programs and documentaries.

So if KRBC wants to increase its audience among cable users, all it has to do is give us the good NBC program and quality local programs.

## Transferred

BY MARION PORTER  
I am being transferred to Terrell, Texas, by the Soil Conservation Service on Dec. 9th. As Area Conservationist, I will direct the SCS activities of nine field offices.

I have enjoyed working with you and others of your organization to help develop the resources of the Leon - Bosque R&D project. This is a most worthwhile project and you have helped to contribute to the success obtained.

Charles Haenisch will be the new project coordinator assisting the Leon - Bosque Project. He will report for duty on Jan. 7, 1974. I know you will continue to provide him the same type of cooperation that you have given me.

Like a good neighbor,  
State Farm  
is there.  
with help for your car, home, life and health insurance.

See me.  
James O. Wortman  
705 W. Main St.  
Eastland  
Ph. 629-1096



STATE FARM  
Insurance Companies  
Home Offices: Bloomington, Illinois

**Merry Christmas**

'Tis the season to be cheery! Laugh... feast... carol. Join in all the fun festivities... be merry. And help make this the most together, happy-to-remember Christmas ever.

The listed families extend Seasons Greetings to all, and have made contributions to the Centennial Memorial Library in lieu of mailing Christmas Cards to local friends. Their names will continue throughout the season.

**In Lieu Of Christmas Cards**

Mr. and Mrs. Harold Ray  
Mr. and Mrs. Pat Crawford  
Marene Johnson-Johnson  
Mr. and Mrs. H. T. Wilson  
James W. Reid  
Mr. and Mrs. Ben Hamner  
Dr. and Mrs. Fehrman H. Lund  
Mr. and Mrs. J. H. Jarrett  
Mr. and Mrs. Dan Childress  
Mr. and Mrs. T. M. Fullen  
Judge and Mrs. Cecil Collings  
Mr. and Mrs. Joseph M. Perkins  
Mr. and Mrs. William L. Bourdeau  
Mrs. Grady Pipkin

**15 Books On Loan Here**  
Fifteen books from the Mitchell County Library were given to the Centennial Memorial Library this week. They are:  
Three Act Special - Marsh Trelawny - Armstrong  
A Shirltail to Hang To - Day Julie - Morris  
Fighter for Freedom - Miller  
Britannia Mews - Sharp  
The Last Time I Saw Paris - Paul  
Stormy Winters - Finney  
Rembrandt - Schmitt  
F.D.R. My Boss - Tully  
The Chain - Wellman  
God's Smuggler - Andrew  
Origin of Evil - Queen  
Intern - Dr. X  
Finches Fortune - Roche  
Mrs. E.C. Johnston gave the bestseller, "All Creatures Great and Small" by James Herriot. It is the unusual animal story by a Veterinarian.

**Thompson Returns**  
JACKSONVILLE, FLA -- Navy Airman Apprentice Michael D. Thompson of Route 1, Eastland, returned to his homebase here with Attack Squadron 45 after a seven-month deployment on board the attack aircraft carrier USS John F. Kennedy. He participated in fleet training exercises in the Mediterranean and North Atlantic, and visited ports in Spain, Greece, France, Italy and Scotland.  
A former student of Eastland High School, he joined the Navy in July 1972.

**Pioneer Club To Have Party**  
The Pioneer Club will hold their Christmas party at a noon luncheon Thursday, Dec. 20, in the home of Mrs. Ben Bassett. All members are urged to attend.

**BROWNWOOD** -- George Sims, son of Mr. and Mrs. Eddie Sims, 201 South Oak, Eastland, has been chosen one of 27 Howard Payne College students to appear in "Who's Who In American Universities and Colleges".  
Mr. Sims, a senior practical theology major at Howard Payne, will officially be presented to faculty and students in a general assembly Feb. 22, 1974.  
Nominees for the honor are chosen by the faculty and staff of the college on the basis of scholasticism, service to the school, leadership, involvement in extra-curricular activities and future potential as a leader.  
Each student will receive a certificate recognizing their achievement and will be listed in the annual "Who's Who" publication listing students from throughout the United States.  
See us for your complete line of office supply needs. Eastland Telegram, 110 W. Commerce

Give the perfect Christmas gift this year. Give a Living Bible. See them at the Eastland Telegram.

**For Your Complete Auto Parts Service**  
See  
**Bill Green Or L.C. Swinson At S & G AUTO PARTS**  
115 Mulberry St.  
Day: 629-2831  
Night: 629-2831  
629-1831  
Open 8-5:30 P.M.  
6 Days A Week  
Can Provide Overnight Parts Service

*Christmas... is the joy of giving...*

**Special! DRESSES**  
Long \$8.99 To \$19.99

**ROBES \$9.00 To \$15.99**  
Quilted And Fancy

**PEGNOER SET \$9.99 To \$16.99**  
Long & Short Style

**GOWNS Long & Short \$3.99 To \$8.99**

**CAFETAN Many Styles \$10.99 To \$15.99**

**DUSTERS Long & Short \$5.99 To \$11.99**

**SPORTWEAR, PANTSUITS, PANTS, BLOUSES And KNIT TOPS**  
Many Styles To Choose From  
\$5.00 To \$19.99

**COATS \$15.00 & \$16.00**

**PANTY HOSE 99c**

**mode o'day**  
G... West Side Square Eastland

**Dignity... Consolation... Concern**

**Trust Our Experience**  
Our reputation is based on competence and caring. Every detail is taken care of.

**Arrington Funeral Home**  
Ph. 629-2611 -- Eastland  
*Friendly Personalized Service*

**ONCE UPON A TIME...**

when Grandfather was in his prime, he had the foresight to seek the 'shelter' of an MFA Life Insurance policy.

For Information Call  
**Richard Rossander**  
Agent  
Ph. 629-2563  
Eastland, Texas

**IS THE SEASON TO BE THRIFTY**

**SUPER SAVE MARKETS HOLIDAY FOOD SAVINGS**

**SMOKED HAM SALE**  
SHANK PORTION lb. 95c  
BUTT PORTION lb. \$1.09  
CENTER SLICES lb. \$1.59

**TURKEYS**  
HENS 75c  
TOMS 65c

**WHOLE HAMS**  
30/25# Avg. lb. \$1.05

**CHICKEN HENS**  
4/6# Avg. Pound 69c

**GOLD MEDAL FLOUR**  
5-Lb. Bag 59c

**CRANBERRY SAUCE** 16-Oz. Con. 29c  
**WHITE SWAN SOFT SPREAD MARGARINE** 1-Lb. Tub 39c

**GOLDEN CORN SPINACH** 5 303 Cans \$1.00

**COKE & 7 UP**  
Canned 9 12 oz. Can \$1.00

**SAUSAGE** 7-Lb. Bag \$7.89

**HI HO CRACKERS** 16-Oz. Pkg. 65c

**CRANBERRIES** 1-Lb. Pkg. 39c

**CASCALY CELERY** 19c  
**BANANAS** 10c

**WASH. RED DELICIOUS APPLES** 25c  
**SUNKIST NAVAL ORANGES** 25c  
**MED. YELLOW ONIONS** 19c

**GRAPEFRUIT JUICE** 45c  
**TOMATO JUICE** 39c

**SAVE 50c**  
**MAXIM** 1.29

**SAVE 60c**  
**MAXWELL HOUSE COFFEE** 1.45

**WHITE SWAN WHOLE BISCUITS** 6 65c  
**SWEET POTATOES** 49c

**POULTRY SEASONING** 29c  
**RUBBED SAGE** 29c  
**MANDARIN ORANGES** 29c  
**SALAD CHERRIES** 39c  
**SALAD OLIVES** 49c  
**STRAWBERRY MARSHMALLOWS** 25c  
**MARSHMALLOW CREME** 49c

**Health & Beauty Aids**  
**HAIR SPRAY** \$1.09  
**TOOTH PASTE** \$1.19  
**MAXI PADS** \$1.09

**SUPER SAVE**  
629-1191 400 S. SEAMAN  
G.A. WHITE Manager

**We Give Gold Bond Stamps Double Stamps**  
Every Wednesday With  
\$2.50 Purchase or more  
Excluding Cigarettes