



TIDBITS

By HVO

SINCE OUR youngsters aren't teenagers yet, we don't get exposed to the "new" music too much, and rarely "up-close", so two outings this week proved interesting.

Monday night at the Texas Electric Service Co. Quarter Century Banquet at Eastland Elementary, special entertainment was provided by the Three's A Crowd band from Tarleton State College... Well, we're a few cuts beyond Lawrence Welk, but wow! You can say this: with two highly amplified guitars, a set of drums and four microphoned voices - it'll sure open your sinuses... It sorta reminded me of GI days at the Boom-Boom Club on Pearl St. right outside Fort Gordon, at Augusta, Ga.

Then Tuesday noon, a similar offering, a little softer and with more identifiable sounds, were the CJC Dippers, who entertained members of the Lions Club at the Ramada Inn Luncheon. CJC Spokesman Eris Ritchie introduced the group, led by Leslie Huff of Roscoe, and told the Lions about the CJC Band and Belles upcoming trip to the Macy's Parade on Thanksgiving Day in New York City.

The four-piece Dippers did a fine job, and Huff sang the auctioneer song, dedicating it to Chamber M Manager James Wright (an auctioneer).

Bruce Pipkin has the program next week. Ray Pryor presided in the absence of President Darwin Miller. Guests included D.R. Martin of Arlington, Bill Watson of Inglebird; and Bill Echols of Breckenridge, introduced Mr. and Mrs. Hank Jergenson of Denmark, who are visiting this area.

OLD RIP, you're everywhere. Today the Eastland Chamber received a box with three live horned toads and this note: "We are unable to keep these horned toads alive. They will not eat; therefore, I am taking the only recourse that I can think of. The toads were secured for a biology lab, and my students and I have tried everything we can to make them eat. Rather than let them die or completely ignore them, we are sending them to you so that you will release them in an appropriate place. Thank you, J. Puckett, biology instructor, Coosa High School, Rome, Ga., and students." The frogs have been fed and released to hibernation in Eastland.

DID YOU GUESS? The mystery customer in George Carter's barber chair shown in Sunday's paper was, will you believe, Merritt Dunn? That's right; a wig, and the removal of glasses and cigar made quite a transformation.

A GOOD number of Eastland Countians were at the 56th Annual Stockholders meeting of the Federal Land Bank of Breckenridge in that city Tuesday evening. Effective Jan. 1, James Isenhower, native of Putnam, and well-known in Eastland County for his Land Bank affiliation, will assume management of the Breckenridge Association. Russell Payne will retire after 44 years with the important organization... Program highlight at the meet was the appearance of Spencer Mayes, 80, of Graham, who dressed in World War I uniform, told of his humorous adventures in that conflict. If anyone needs a really good program, he's the man to get.

Sale

Members of the Thursday Afternoon Club will sponsor a Rummage and Bake Sale in the old Majestic Cafe building on the south side of the square on Friday and Saturday, Nov. 16 and 17 beginning at 9 a.m. each day. Baked goods will be sold Saturday only.

Mrs. Marene Johnson, chairman of food items has some very interesting plans for her department. Mrs. J.F. Francis is Jewelry chairman; Mrs. Joseph Perkins, chairman of household and miscellaneous items. The Majestic Cafe Building will be open each morning to receive donated items Tuesday thru Saturday. Or call Mrs. L.E. Corbell, 629-2441 or Mrs. E.G. Rice, 629-1570 if donated items are to be picked up.

The Thursday Afternoon Club is very grateful to the Community for its past generosity. We need your continued help in going the last few miles with us in order to have a debt free Eastland Centennial Library of which all proceeds of this event will be applied.

Mr. and Mrs. L.F. Trout spent the weekend with their daughter and family Mr. and Mrs. Elvie Moore of Austin.

EASTLAND TELEGRAM

EASTLAND, TEXAS 76448: Today's CENTER for tomorrow's FUTURE!

Volume No. 104 Number 91

Thursday, November 15, 1973

Mavericks Close Out Season With Clyde

Last chance to see the 1973 Eastland Mavericks in action will be Friday night when the Clyde Bulldogs come to town. It'll be the close-out at Maverick Stadium, with a 7:30 p.m. kickoff.

The Mavericks are carrying a 3-5-1 record into the final game - and Clyde has a similar background, so the game should be all rights, be an outstanding evening of District 9 - AA football.

Clyde lost to Cisco last week, 25 - 10, while the Mavericks were winning themselves a big one down at Hamilton, 27 - 20. The two district leaders, Cisco and Comanche meet for the crown in Comanche Friday night.

To date, Eastland has beaten Ranger, 15 - 0; Coleman, 31 - 27; and Hamilton, tied, 7 - 7, with Breckenridge; and lost to Haskell, DeLeon, Olney, Comanche and Cisco.

The Clyde Bulldogs stack up like this:
Dale Doby, 5 - 11, 150, QB
Tommy Fadal, 6 - 1, 170, E
Doug Conder, 6 - 0, 160, E
Ernest Havner, 5 - 8, 150, FB
Harold Heinze, 5 - 11, 155, C
Mike Hutto, 6 - 0, 155, T
Tommy Underwood, 5 - 10, 140, E
Dale Whiteside, 5 - 11, 150, E
Ronald Gipson, 6 - 0, 150, QB
Russell Dendy, 6 - 0, 170, C
Ricky Hussman, 5 - 10, 150, FL
Tommy Finch, 5 - 10, 140, RB
Jackie Cozby, 6 - 0, 240, C
Terry Beal, 5 - 6, 140, FL
Gary Harris, 5 - 11, 155, G
Casey Biggs, 5 - 10, 155, T
Johnny Nelson, 6 - 0, 170, G
Alan Miller, 5 - 8, 150, G
Ricky McMinn, 5 - 6, 135, FL
Norman Davis, 5 - 11, 160, G
Promising Newcomers:
Ricky Hussman and Ernest Havner.

Sweethearts To Be Presented

A Band Sweetheart and Football Sweetheart will be presented this Friday night during the half time of the Eastland - Clyde football game.

Places II

The Eastland High School Marching Band placed a two in the UIL contest held last Saturday in Brady. Ratings were given from 1 to 5 p.m. with a number one being the highest.

Deadline For Labels Of Treat Of Life

Deadline for collection of labels for the UNICEF "Treat of Life" program is Nov. 28. This nationwide program is being sponsored in Eastland by the Zeta Pi Chapter of Beta Sigma Phi.

Labels from the following products will bring cash contributions for vaccines, food, and school supplies to the United Nations Children's Fund: picture of Blue Bonnet Sue from Blue Bonnet Margarine; front panel from Chocks, Chocks - Bugs Bunny, or Flintstones Brand Vitamins; outer pack wrapper of Dentyne or Trident gum, regular or Bonus Pak; Kool - Aid packages; front panel of Royal Desserts; Welch's jam, ej... or preserve labels.

Any individual or organization wishing to contribute any of the above items should contact Mrs. H.D. Aisup at 629 - 2194 or Mrs. Kenny Payne at 629 - 2711.

ask the cities and towns we serve to approve an increase in our rates.

"Even though rate increases will be necessary, we are optimistic that the cost of electricity will increase at a slower rate than the cost of other forms of energy and at a slower rate than the overall cost of living."

Hulseley presented award watches to 11 employees for completing 25 years of service with the company during the year and becoming members of the Quarter Century C Club.

From Eastland were B.R. Little, H.E. Wilson and J.W. Anderson from the transmission division and T.B. Ward of utilization services.

From Graham were L.N. Davis, F.W. Pryor, R.J. Kovar, E.R. Hunt and R.D. Kelley of the power plant, G.E. Rowe of the distribution service center and D.H. Casey of transmission.

NOTICE
The Eastland Motorcycle Club will have their first meeting Tuesday, Nov. 20, at 905 S. Bassett at 7:00 p.m. Anyone wishing to join is urged to attend.

Mr. and Mrs. John Knight of Breckenridge visited Mr. and Mrs. Dave Putnam Sunday.

Busy Local Sign Man

RICHARD HERRERA is a busy man in Eastland these days. Mr. Herrera specializes in sign painting. He does truck lettering, commercial art and road jobs. His shop is located at 1010 W. Main St. in Eastland. He worked previously in Roscoe as a painter for R.S.D. Lettering for nine years. Mr. Herrera has been painting signs here in Eastland for about a year and has his own building and equipment.

Mailing Deadlines Announced

The U.S. Postal Service has announced earlier deadlines for mailing packages for the Holiday season to help in the present energy crisis.

The U.S. Postal service headquarters in Washington urges residents to mail at least two weeks ahead of suggested deadlines.

Surface domestic parcels should be mailed by Nov. 20 to Alaska and Hawaii and by Dec. 3 to the rest of the states. Christmas cards and other first class letter mail in the United States should be mailed by Dec. 8.

Air mail letters and parcels to Alaska and Hawaii should go by Dec. 14 and those to other parts of the United States should be mailed by Dec. 15.

Funeral Services For Mrs. Parrock Held Wednesday

Mrs. Zetty L. Parrock, 77, of Eastland died at 1 p.m. Monday in Eastland Memorial Hospital. Funeral services were held at 2 p.m. Wednesday, November 14, in Bakker Funeral Home Chapel.

R. Hoisington of Kingdom Hall Jehovah's Witness officiated. Burial was in Eastland Cemetery. N Nephews served as pallbearers.

Born August 23, 1896, in Morton Valley, she had lived in Eastland since 1919. She had been Jehovah's Witness since 1940.

Survivors are two sons, Darwin Miller of Eastland and A.G. Parrack of Monahans; a daughter, Mrs. Glenn Evans of San Jose, Calif.; five brothers, Homer Bond of Abilene, Raleigh Bond of Hamlin, Clayton Bond of Eunice, N.M., Euell Bond of Nashville, Ark., and Dellamaine Bond of Monahans; two sisters, Mrs. Lillian Barrett of Cleburne and Mrs. Modrell McDaniel of Midland; five grandchildren and three great grandchildren.

Mr. and Mrs. Doyle Lasater of Abilene visited Mrs. Eunice Lasater Saturday afternoon and they all visited Mr. and Mrs. Bill Lasater and family of Breckenridge Saturday.

FULLEN MOTOR CO.

Lough A Day

As long as there are final exams, there will be prayers in the public schools.

THE BLACK AMERICANS OF EASTLAND
(And their Singing Friends of Cisco & Ranger)
SAMMY Present A MUSICAL SAMMY
Eastland High School Auditorium
Tuesday, November 27 - 7:30 P.M.
\$1.00 - Adults 50c - Children under 12
Proceeds to Eastland Memorial Library

Black Americans To Present Musical

The Black Americans of Eastland County will present a musical at 7:30 p.m. Tuesday, Nov. 27, in the Eastland High School Auditorium.

Presented as a love gift, the program will feature early day folk songs, through the era of the great spirituals, and including semi-classical music of today.

All proceeds will go to the new Eastland Centennial Memorial Library.

Tickets are now on sale at various businesses in Eastland at \$1 for adults and 50c for children under 12.

Eleven TESCO Employees Honored At Annual Banquet

"We have reasons for optimism even though we are facing some of the most serious problems in the history of our company and our industry," Burl B. Hulseley Jr., president of Texas Electric Service Co., told company employees at a meeting in Eastland Monday night honoring members of the TESCO Quarter Century Club.

"The energy crisis directly affects Texas Electric because we need large amounts of the basic fuels that are in short supply to convert into electric energy," he said.

"In Texas, natural gas has been the basic fuel for the generation of electricity for many years. Large quantities have been readily available at low cost. But, this situation has now been reversed.

"There are growing shortages of natural gas and also of oil that we use for standby fuel. Gas and oil have also become much more costly.

"Even so, we must depend on them for many years to meet vital needs for electricity - in homes, to provide jobs, improve the environment, medical care, human comfort, all the things that make living possible and life worthwhile."

Hulseley said that although the company has contracts for ample supplies of natural gas, there are increasing uncertainties in the present situation.

He said the company was doing a number of things to make the most effective use of the gas and oil that is available to them and to obtain additional supplies.

The company is doubling its oil storage capacity this year and will triple that amount in 1974.

"At the same time, we are accelerating our plans to diversify our sources of fuels and to lessen our dependence on natural gas and oil," Hulseley said.

"It is this program of diversification that provides reasons for optimism about our long-term fuel outlook."

TESCO and two other electric power companies are building several power plants in east Texas which will use lignite for fuel and have also scheduled construction of a nuclear-fueled plant in Somervell County near Fort Worth.

Hulseley said that lignite units cost twice as much as gas-fired units and nuclear units more than three times as much. "We are having to finance this record construction program of more than \$700 million in the next five years at interest rates that are almost double what they were just ten years ago, and we are experiencing similar increases in virtually all costs of providing electric service.

"The only way we can finance these higher costs and provide the service our customers depend on is to obtain rate increases when they are needed. We have such a need now. Our plans have not been completed, but sometime early in 1974 we will probably

ask the cities and towns we serve to approve an increase in our rates.

"Even though rate increases will be necessary, we are optimistic that the cost of electricity will increase at a slower rate than the cost of other forms of energy and at a slower rate than the overall cost of living."

Hulseley presented award watches to 11 employees for completing 25 years of service with the company during the year and becoming members of the Quarter Century C Club.

From Eastland were B.R. Little, H.E. Wilson and J.W. Anderson from the transmission division and T.B. Ward of utilization services.

From Graham were L.N. Davis, F.W. Pryor, R.J. Kovar, E.R. Hunt and R.D. Kelley of the power plant, G.E. Rowe of the distribution service center and D.H. Casey of transmission.

Freyschlag Insurance WEATHER REPORT Cloudy & Cool

Planting Underway

The trees are here! Eastland's new greenery is arriving, and many live oak trees were being planted downtown Wednesday, and other plants are ready to be picked up by home owners and businesses.

The trees and shrubs will be at C&D Feed Store on East Commerce St. between the hours of 1 and 6 p.m. Thursday. Mrs. Austin McCloud, president of the sponsoring Civic League and Garden Club has announced.

Hundreds of trees and shrubs have been purchased through the League's special program and package deal, and a few more are available and may be obtained by contacting Project Chairman Mrs. E.A. Connel, Mrs. McCloud or any member of the League.



Landscape Architect Joe Brosig was marking sidewalk spaces Wednesday morning where live oak trees will be planted around the square, and Jimmy Moylan was to begin immediately sawing out hole in the sidewalk to accept the trees. Mr. Brosig's crews were to begin planting and these should be in by Thursday or by the weekend.

Merchants around the square and adjoining streets joined together in a pool to secure the trees, and initially three trees will be planted on each side of the square. The architect posted the location with a view toward being able to add two trees on each side of the square at a later date.

The League is also contributing miniature junipers for the planter boxes to add to the over - all coordinated planting program for a greener, prettier downtown Eastland.

Individual home owners by the dozens took advantage of the special prices on the trees and shrubs for home planting. Scoutmaster Dick Johnson and members of Troop 103 are assisting with plantings.

The program is a continuing program of massive plantings encouraged throughout the years by the Eastland Civic League and Garden Club.

MERRY CHRISTMAS
GOODFELLOWS
P. O. Box 391
Eastland, Texas
A Non-Profit Organization
November 15, 1973

We are all fortunate to live in Eastland. Eastland people always come through and do the job when it is necessary.

It is coming Goodfellow time again. We want to make sure that there is no family in Eastland that is neglected at Christmas. Fifty four families were given generous baskets last year including toys and clothes.

We ask you to help us again this year with a contribution to GOODFELLOWS. Thank you again for your help in the past.

Ed Sargent
Ed Sargent
President
Goodfellow

TELEGRAM CLASSIFIED ADS Telephone 629-1707

H.V. O'BRIEN, Publisher and Editor
 Second Class Postage paid at Eastland Texas under Act of Congress on March 1876.
 Published semi-weekly - Thursdays and Sundays by Eastland County Newspapers, Inc.
 SUBSCRIPTION RATES: By carrier in city, 15c a week or 95c a month; one year by mail incountry, \$9; city P.O. Boxes, \$8; one year elsewhere in state, \$7; out of state, \$9.

Thursday, November 15, 1973

NOTICE: Any erroneous reflection upon the character, standing, or reputation of any person, firm or corporation which may appear in the columns of this newspaper will be gladly corrected upon being brought to the attention of the editor.

FOR SALE

FOR SALE -- FROM wall to wall, no soil at all, on carpets cleaned with Blue Lustre. Rent electric shampooer \$1. Coats Furniture. t-92

FOR SALE - Good set of golf clubs. Ph. 629-1331. t-92

FOR SALE - 1961 Ford Galaxie, low mileage, automatic, air, radio. Call 629-1679 before 5 and 647-2046 after 5. t-92

LARGE GARAGE SALE - 2 air conditioners, 1 electric adding machine, 1 full size bed, 1 electric guitar and amplifier, clothing, tools and misc. 913 Addie, Ranger. All day Saturday and Sunday. t-92

NEIGHBORHOOD GARAGE SALE - 600 S. Bassett, Thurs - Sat dishes, pots and pans, swing set, bicycles, clothing of all sizes. t-91

GARAGE SALE - New and used clothing, cameras, binoculars, bicycles, toys. Friday and Saturday, Nov. 16-17, 708 S. Dixie. t-91

TWO FAMILY GARAGE SALE - Saturday and Sunday, Nov. 17 and 18 from 9 to 5. 1510 W. Commerce. Lots of children's clothing sizes infants thru 14, toys. Lots of misc. items. t-92

MISC. FOR SALE -- SAVE Big! Do your own rug and upholstery cleaning with Blue Lustre. Rent electric shampooer \$1. Perry Brothers. t-92

BIG YARD SALE - Lots of good clothes, misc. items. Fri. and Sat. at 1409 S. Harrell. Go to end of Seaman St., 1 block to left then 1 block to right. t-91

MOVING SALE - Bargain price case swather, John Deere baler with almost 6 rolls wire, 1969 Dodge truck with 24 ft. bed. Call 758-2529 in Desdemona. t-94

PORCH SALE - Sat. and Sun. Nov. 17 & 18, Norwood Add'n. turn north at Hwy Dept. Last house on left. Large dresses and uniforms. Mens and boys clothes, bottles, lots of odds and ends, dishes. t-92

FOR SALE - Completely remodeled 3 bedroom, 1 1/2 bath home. Carpeted throughout, gas air and heating. Located one mile out of Ranger on Breckenridge Hwy. Has 4 acres of land with fruit and pecan trees. For more information call 647-1833. t-11

FOR SALE IN EASTLAND - almost new large 3 bedroom, 2 story home. This house equipped with central heat and air, dishwasher, built-in range. Located on 1 acre lot with good view. Can be purchased by paying equity and assuming 7 percent loan or new loan with 5 percent down. Citizens Realty 629-8048 or 629-8082. t-11

FOR SALE - 2 four bedroom houses and 1 four room house. See Ben Hammer at 309 S. Lamar. t-11

FOR SALE - Extra nice 14' x 70' Ramada Mobil Home. 2 bedroom, carpet, central air and heat, unfurnished. Call 629-2766. Vernon Mahan. t-11

FOR SALE - 3000 to 5000 bales peanut hay. \$1.00 per bale in the field. Call Sam Beggs. 629-1514 after 5:30. t-11

FOR SALE

FOR SALE - USED AND REPOSSESSED Kirby vacuum cleaners. Call Mrs. Johnnie Honea at 629-2072

FOR SALE IN RANGER - Almost new 3 bedroom, 1 1/2 bath, brick home. Pay equity and assume payments of \$112 monthly, including taxes and insurance. Citizens Realty 629-8048 or 629-8082. t-11

BUSINESS OPPORTUNITY - Profitable small grocery with beer. Main highway, 25 years in same location. Good lease or will sell building. Retiring. Tel. 817-559-5664 or write Park-In Grocery, Breckenridge, Texas 76024. t-x2

FOR SALE - One 8 x 20 Flatbed gooseneck. 7 acres land in Humbletown. Call 442-1912. Cisco. t-11

FOR SALE - 3 bedroom home at 511 Pershing, 1 1/2 baths, air conditioned, central heat, built-ins, carpeted throughout, drapes, fenced yard. Call 629-1219. t-11

FOR SALE - 1969 Ford Ranger with camper cover, 360 V-8, automatic, air, clean. \$1,650. Call 629-2484. t-11

FOR SALE - 1970 Glastron, V156 Trihull, 85 hp Johnson, 204 High, 629-2462. t-93

WANTED - Steam presser. Apply in person at J&H Ind., 300 Pine St. Ranger. t-11

8 FAMILY GARAGE SALE all day Saturday and Sunday, Nov. 10 and 11, 307 N. Connellee. Women, men, and children's clothing, household items, all sizes to choose from. t-90

FOR SALE IN CISCO - 3 bedroom, 2 bath brick home, large fence, corner lot. House fully carpeted and has 2 car garage. Excellent location near shopping and school. Citizens Realty 629-8048 or 629-8082. t-11

FOR SALE IN RANGER - Almost new 3 bedroom, 1 1/2 bath, brick home. Pay equity and assume payments of \$112 monthly, including taxes and insurance. Citizens Realty 629-8048 or 629-8082. t-11

FOR SALE: Beautiful, well-built, ideally located two bedroom family home in Eastland with central heating and air conditioning, area rugs and draperies. Attached garage and beautifully landscaped, good sized lot. Call 629-2442 for information and appointment to see. t-11

FOR SALE IN EASTLAND - almost new large 3 bedroom, 2 story home. This house equipped with central heat and air, dishwasher, built-in range. Located on 1 acre lot with good view. Can be purchased by paying equity and assuming 7 percent loan or new loan with 5 percent down. Citizens Realty 629-8048 or 629-8082. t-11

FOR SALE - 2 four bedroom houses and 1 four room house. See Ben Hammer at 309 S. Lamar. t-11

FOR SALE - Extra nice 14' x 70' Ramada Mobil Home. 2 bedroom, carpet, central air and heat, unfurnished. Call 629-2766. Vernon Mahan. t-11

FOR SALE IN EASTLAND - large frame home, 3 bedroom. Completely remodeled inside. Good location. Citizens Realty 629-8048 or 629-8082. t-11

FOR SALE

FOR SALE - Singer Sewing Machine in Walnut cabinet. \$51.10. We also clean, oil, and adjust all makes and models. Call 629-2920 in Eastland or 442-3283 in Cisco. t-96

FOR SALE - 1961 Chevrolet Pickup. Good condition. Cheap. J.L. Ward, 515 S. Green, 629-1317. t-94

FOR SALE - Extra nice 14' x 70' Ramada Mobile Home. 2 bedroom, carpet, central air and heat, unfurnished. Call 629-2766. Vernon Mahan. t-11

FOR SALE - together or separately - 630 Case diesel tractor, case swather, John Deere Baler, Kramer loader; '69 Dodge truck with 24 ft. bed. All reasonable. M.C. (Sonny) Carroll, Desdemona, 758-2529. t-92

JOHNNY JOHNSON
 Plumbing & Septic Tank Service - Air Conditioning - Washing Machine Repair
 Phone 629-8023

Livestock hauling, light hauling, moving, tractor driving, etc. Call Cisco 817-442-1540. t-98

FOR SALE - Registered Angus and Hereford bulls. 14 - 18 months. Call W.P. Watkins, 647-1112 or 647-3454, Ranger. t-11

FOR SALE - Electric central heating unit. Good condition. 2 1/2 ton. Call 629-2428. t-100

Custom Plowing, Cutting, & Bailing
 Call Jack Johnson
 647-3679

THE BEST HAMBURGERS ARE AT HOLLAND'S DRIVE IN AT THE Y WEST 1505 W. Main EASTLAND, TEXAS FOR CALL IN ORDERS PHONE 629-2215

LUZIER COSMETICS 653-2220

Complete painting and decorating. Tape bed e. Acoustic ceiling. Paper. Small e. s. Free estimates. 25-1390, Cisco, aft. j.m., Dave Ewell.

MILLER'S REMODELING
 Additional rooms, formica tops, painting, sheetrock, paneling, custom cabinets, acoustical ceilings, etc.
 Tel. 647-3005 in Ranger

Wanted

WANTED: Texas Veteran wants to buy few acres. Call 629-1707. t-11

Retired man wants part time work. Route 2, Cisco, Box 64A.

WANTED - 3 - 11 LVN, 11 - 7 nurses aides, and cooks. Excellent working conditions, salary, and fringe benefits. Apply in person to Eastland Manor or Valley View Lodge. t-11

HELP WANTED - Light delivery work. Men or women. Must have car. Call 647-3335. t-11

WANTED - Experienced or inexperienced cutter and helper for night shift. Apply at Boss Manufacturing, Cisco, Texas 442-1110.

WANTED: Cook at Hickman Nursing Home. I will train. See Mrs. Nix, Hickman Nursing Home, Eastland. t-11

HELP WANTED - Job shop and lease welder. We have good equipment. Call collect Alva Lee, Lamesa, Texas. Home phone 806-872-5645.

HELP WANTED - Tony's Cafeteria, 701 W. Main. t-92

WANTED - Persons interested in full time night shift work. Contact Boss Manufacturing Company, 442-1110, Cisco. t-96

REWARD OFFERED! - Monday, possibly near B&W Clinic or Dr. Treadwell's Clinic a CJC LVN pin with initials "ELH" on back was lost. Blue and gold. About the size of a nickel. If found, call 629-1779 or 734-5735. t-11

WANTED - Applications are now being accepted for full time night work at Oil States Rubber Company, E. 21st in Humbletown, Cisco. Good pay, good benefits. Contact John Ritchie, manager or call 442-9666. t-92

FEMALE HELP WANTED - Immediate opening for 2 experienced waitresses. \$1.65 an hour plus tips. Call Fountain Blu, Gorman, 734-5808. t-11

HELP WANTED - Someone needed to run small store in Eastland. Call 629-2804. t-11

Complete painting and decorating. Tape bed e. Acoustic ceiling. Paper. Small e. s. Free estimates. 25-1390, Cisco, aft. j.m., Dave Ewell.

MILLER'S REMODELING
 Additional rooms, formica tops, painting, sheetrock, paneling, custom cabinets, acoustical ceilings, etc.
 Tel. 647-3005 in Ranger

NOTICES

EASTLAND ROTARY CLUB
 Pat Miller, President



Meets each Monday

MASONIC LODGE NO. 487



Meets second Thursday of each month at 7:30 p.m. in the Masonic Hall, Call D. Keith, W.M. at 629-1676, or L.E. Huckabay, sec'y at 629-1391 for information.

NEED EXTRA MONEY? Celebrity Fashion Jewelry needs you! No investment. Call or write Gaila Caraway, Box 420, Clyde, Texas. 915-893-4870. t-95

NOTICE - Mattresses. Complete bedding made by Western Mattress Co., San Angelo. Best quality, low price, renovate or exchange new. Every other Wednesday. They're guaranteed. For home appointment, call Lois Meazell, 629-2703, leave name. t-11

FOR SALE - Remodeled home, 2 bedrooms, kitchen. Carpeted in living room, dining and bath. New plumbing and wiring. Close to schools and town. 807 W. Commerce. Call 629-2370 or 629-1700. t-11

TO GIVE AWAY - 4 puppies. 1003 S. Daugherty. t-92

STRAYED FROM DOLBERRY PLACE 7 miles SE of Eastland a red and white faced bull. Weighs about 400 lb. Call C&D Feed, Eastland. t-94

Do our companies give Bumper Discounts: Driver Training Credit; National Safety Council's Defensive Driving Course Credit; Second Car Credit; Dividends and Easy Payment Plans for all eligible policyholders? You bet! Come see us. Freyschlag Insurance Agency on North Side of Square.

GREGORY PLUMBING & HEATING 629-2844 Res. 639-2340

Freyschlag Insurance has exactly the kind of policy that you need. Check with Charles today and see just how he can help you. Freyschlag Insurance Agency, on the Square in Eastland. 629-2275. 107 W. Main Street

CERAMIC TILE WORK
 Residential, tubs, showers, floors.
 Repair jobs welcome
 Call 629-1842

JANITORIAL SERVICE
 Quality & Dependable Service
 629-2746
 Michael B. Pittman

TAYLOR CENTER
 Laundry - Shell gas
 Family Recreation
 Groceries
 1 Gal. Milk 1.29
 Large Loaf Bread 35c
 Everyday Low Prices

Singer Sewing Machine Repair Center
 Servicing all makes. New and Used for sale. Complete line of parts.
 WRIGHT AUCTION COMPANY 106 S. Seaman, 629-2468

SOUTHLAND LIFE INSURANCE M. H. PERRY 104 N. Lamar 629-1566 629-1095

NOTICES

CANCER INSURANCE UP TO \$100,000 M.H. Perry 104 N. Lamar 629-1566

PAINTING
 Spray or Brush
 Acoustic Ceilings
 Free Estimates
 Call Harold Pippin
 442-1585, Cisco, Texas

FABRIC SHOP
 1208 W. Main 629-1001 Oper. 9-5 Closed on Fridays starting Aug. 3. The best bargains in town are found here. t-11

Mercers Appliance Repair
 Dishwashers, washers, dryers, stoves, disposals, and ovens. G.R. Mercer, Olden, Texas. Call 653-2473.

OLDEN SHARP SHOP - Circle and Hand saws of all kinds sharpened. Any kind of tool that needs sharpening. Scissors, etc. All kinds of handles installed. Small electrical appliances repaired. Olden 653-2224. t-97

FOR RENT

FOR RENT: Furnished mobile homes and mobile home spaces 653-2220. t-11

FOR RENT - 2 bedroom unfurnished cottage on top of park hill, 503 High St. Close to schools. Only \$30 a month. Call 629-1417. t-11

FOR RENT - nice, furnished apt. All bills paid. TV cable, telephone in hall. Also one bedroom with refrigerated air, ice box, and TV cable. Call 629-1731 or 629-2125. t-91

APARTMENTS FOR RENT
 Royal Oaks Apartments
 1304 Royal Lane, Cisco
 442-3232; 442-2706

FOR RENT - at Lake Leon 2 bedroom lake cabin; nice lot. Boat docks, excellent location. \$87.50 per month. Kincaid Realty, 629-1781. t-11

IS YOUR CAR READY FOR WINTER'S BLAST?



At So-Lo Auto Parts 300 S. Seaman 629-2158 Open Sat. Till 4:00 Doug Lucas Mgr.

Senkel's Cabinet Shop
 303 N. College
 Custom Built Cabinets
 Mobile Home Repair
 General Carpentry Work
 Call 629-1899 after 5

New PARA-BOOTS \$19.95 Rainsuits Now In.

CISCO ARMY SURPLUS 1201 Ave D 442-3620

"We can handle anything but litterbugs." Goodie Pest Control. Phone 629-1179 after 3:00 310 N. Ammerman roaches, ants, termites, moths, spiders. ALL GUARANTEED

Attention New Business S & W Industries 801 W. 18th-442-3399 Custom Built Creep Feeders, Troughs, Hay Racks, Cattle Guards

TRUMAN MILLER'S REMODELING Acoustical ceilings, tile and linoleum, sheet rocking, paneling, roofing, custom cabinets, vanities, additional rooms or a new home, etc. Call 647-3005 or 647-1837 in Ranger.

HARGRAVE REFRIGERATION

Air conditioning, installation and service. Troubleshooting on all types of central heating and cooling. Ready to help you beat the heat. Johnnie Hargraves Answering Service 442-2339

Kincaid's Real Estate Corner

ACREAGES:
 Texas Vets' We have 150 acres to split up any way desired. Road frontage, good ranch country and hunting. Better hurry at \$235.00 per acre.
 80 acres, virgin sand, cleared last year, 20 ac. peanut to be put in improved grass this year, \$315.00 ac.
 40 acres coastal, grain and peanut allotments, live water tank, well, excellent improvements, 2 br. Mobile Home. Why not live in the country? \$19,000.
 40 acres with 29 acres coastal, 10 ac. timber, new fences, pens, tank, \$16,750.00.
 63.5 acres, 4 miles from Cisco, hunt, fish, run cattle, \$275.00 per acre.
 110 acres, 1/2 minerals, all the deer and turkeys, all timber and sandy, \$210 ac.
 100 acres, 1/2 minerals, 60 ac. cultivation, balance native timber, good hunting, mostly sand, \$210 ac.
 149 acres, Stephens Co., 7 minutes from Hubbard Lake, 5 minutes from Breckenridge, 40 ac. grain field, prime land, good hunting.
 8 1/2 acres, Carbon on Hwy. 183, undeveloped, commercial site.
 314 acres, deer and dove, quail, turkey, boat through this place, 3/4 mile water front, 1/2 mile road frontage, terms (owner financed).
 47 acres, Lake Leon frontages, undeveloped, on pavement. Terms (owner financed).
 COMMERCIAL PROPERTY
 Want to own your own body shop or garage? 3 1/2 acres under chain link fence, all on major highway, good terms, 75' x 30' all metal shop (3 stalls) and office, priced to sell, Cisco.
 Be your own boss, put your business in this centrally heated and aired 2000 sq. ft. building, excellent location.
 Small 8 unit motel, Eastland, excellent condition.
 Lake Leon Boat - tel. We want to sell now.
 HOMES
 5 lots close to Interstate, Investment opportunity 3000 sq. ft., 2 fireplaces, exceptional improvement, 3 br., 2 1/2 baths, will sell soon.
 Seaman Street, 3 Br., 1 1/4 bath, large rooms, central heat \$13700.
 3 br. and 1 br. apt., close to schools.
 Conner St., 2 br., 1 bath central heat, carpets, loan available \$12,500
 Connellee, small 3 br., new stove and refrigerator, small price, 1/2 block from school, 2 br., cheaper than rent.
 S. Seaman, 2 br., bath, fireplace, owner financed, good terms, owner.
 We have several other listings for sale and several buyers available for most types of property. If you want to sell or buy come in and we'll help you.

Robert M. Kincaid
 Broker
 Eddie Kincaid, Salesman Res. 629-1918 Eastland
 J.W. Elder, Salesman Res. 647-1321 Ranger
 100 So. Seaman Eastland, Tex. 629-1781 Res. 629-2721

For All Your Insurance Needs CONTACT KINNAIRD INSURANCE AGENCY

207 W. Main Since 1919
 Don Kinnaird Eastland 629-2544

205 South Oaklawn

Music Study Club of Eastland met in Regular session Wednesday, Nov. 7th, at 3:30 p.m. in the lovely home of Mrs. Mike Collins. Co-hostesses assisting Mrs. Collins were Mrs. A.E. Connell and Mrs. Durel Reid. Guests were served delicious refreshments of tea, punch, dainty hot cheese rolls, cookies and candy from such a beautifully appointed tea table with an heirloom table cloth of Ecu Lace and centerpiece of an arrangement of colorful mums.

President, Mrs. Rossander presided. Quotation for the program "The Cole Porter Story - Acts III and IV - "Music is vitally important in our lives in terms of sheer economics as well as culture". - Broadcast music Inc. Due to absence of Mrs. Wilhelm, Mrs. Collins served as leader for the program also.

Study: The Cole Porter Story by David Ewen, Acts III and IV excellently reviewed by Mrs. Collins. A number of Cole Porter recordings were enjoyed very much.

Members present were: Mmes. C.L. Bigby, Bobby E. Bingham, Mike Collins, E.A. Connell, J.F. Francis, Jack W. Frost, Marene Johnson Johnson, Joseph M. Perkins, Durel Reid, Floyd Robertson, Richard Rossander, Virginia W. Russell, Ralph Stevens, J.H. Lee, Joe Stephen and Miss van Hoose. Marjorie van Hoose Club Reporter

Mrs. Clarence Foster and son Thurman are visiting Mrs. Pauline Skinner. Thurman returned home last weekend and Mrs. Foster and Mrs. Skinner spent last week with Mr. and Mrs. R.D. Cate of Waxahachie.

WANTED - 25" Meihle Single Color pressmen, 36" Meihle single color pressmen. Salary \$4.00 to start. New building, lunchroom, air conditioned, 30,000 square feet manufacturing space, excellent working conditions. Call collect 915-563-2660 or write BP Industries, P.O. Box 3040, Midland, Tex. 79701, Attn. John Stumpff.

Fiesta Bowl New Managers



The New Owners Of Fiesta Bowl

John & Mary Sullivan Wish To Thank Each Of You For Making Our Stay In Eastland An Unforgettable Experience. "We Love You."

Please Come And Give

George & Earline

Your Support And Appreciation

Jo Ann Haskins, Lanny Darrell Lee Wed

Miss Jo Ann Haskins was wed to Lanny Darrell Lee at 2:00 p.m. Saturday, Sept. 29, 1973, in a single ring ceremony at the Daugherty and Plummer Street Church of Christ in Eastland.

The bride is the daughter of Mr. and Mrs. J.G. Haskins of Downey, California. The groom's parents are Mr. and Mrs. J.H. Lee of 1707 West Commerce Street, Eastland.

Carbon News

Mr. and Mrs. Odis Skinner and boys of Kermit spent last weekend with Mr. and Mrs. Roy Skinner.

Mrs. Myrtle Maness has returned home after a stay in Hendrick Memorial Hospital, Abilene, and is improving.

Mr. and Mrs. Doug Crabtree of Carrollton spent the weekend with Mr. and Mrs. Frank Tucker.

Mr. and Mrs. Coda McDaniel visited Mr. and Mrs. Jerry May of Knox City, Sunday.

Mr. C.L. Rogers has returned home from a week's stay in Eastland Memorial Hospital.

Mr. and Mrs. Leroy Higginbottom of Cross Plains visited Mrs. O.A. Mangum Saturday night.

Mrs. Virginia Jessen of Cheyenne, Wyoming, is visiting her mother Mrs. Bessie Morris.

Mr. and Mrs. Trimble Boyett of Arizona, visited friends here last week.

Mrs. Pearl Carson and Mrs. Loyd Mize of Cisco were Sunday visitors of Mrs. Lewis Rice.



I have the cakes fresh from the OVENS IN Corsicana. Come by, get a sample, and take one home for Thanksgiving or Christmas. To taste the cake is to know what a good fruit cake is like.

I am in the building of Gann Electric Repair on S. Lamar.

We ship Post Free anywhere in U.S.

Ouida

Ouida Van Hoy

629 - 2474
205 S. Lamar

Eastland

Haven L. Miller, professor at Abilene Christian College and Church of Christ minister, performed the ceremony before baskets of pink and white gladioli flanking a large white candle in an ornate gold candleholder.

The quartet composed of Mr. and Mrs. James Pennington of Eastland and Mr. and Mrs. Eris Ritchie of Cisco furnished the wedding music. They sang "Wagner's Wedding March", "Be With Me Lord", and "The Recessional" by Mendelssohn.

After the minister pronounced the couple man and wife, each lighted a candle, and from the two small candles ignited the large candle signifying their having been united in marriage.

The bride, given in marriage by an uncle, wore a floor length gown of candlelight sheer over peau de soie with long straight sleeves ending in points at her wrists. Hand cut alencon lace outlined the empire bodice and encircled the matching train. Her fingertip illusion veil was

30 Attend 4-H Meeting

About 30 4-Hers and five adult leaders attended the monthly meeting of the Eastland 4-H Club Tuesday night at the Farm Bureau building, with President Kem Miller presiding over the meeting. The new business for the month of November included the election of officers for 1974, and the results were as follows:

President... Karen Plowman
Vice President... Kem Miller
Secretary... Treasurer Sherry Kidd
Reporter... Brenda Kidd
Council Delegate... Thane Arthur

After the business was completed the meeting was adjourned and refreshments were served. The recreation portion of the meeting was then held with everyone participating and having a very good time.

held by a headpiece of Alencon Lace adorned with seed pearls. She carried a colonial bouquet of pink and white carnations and baby's breath with Alencon lace and satin ribbon streamers.

Maid of Honor was Miss Lela Ann Lee, sister of the groom. She wore a floor length gown of pink sheer over watered taffeta. The empire bodice was outlined in tiny pink rosebuds that also encircled the neckline and cuffs of the long sheer sleeves. In her hair was a cluster of pink silk flowers on each end.

Dale Dupree was best man and Victor Miller ushered. Both are from Houston.

The groom's mother chose a street length turquoise double knit dress with matching coat. She wore a pink carnation corsage.

After the ceremony a reception was held in the Ramada Inn. The bride's table was covered with a pink floor length flounced cloth centered with an epergne holding pink and white carnations. White candles in silver holders were on either side. The triple tiered wedding cake was topped with pink carnations. Punch was served from a silver bowl. The registration table was in matching pink sheer.

For travel the bride chose a navy dress with white collar and the corsage from her wedding bouquet.

After a wedding trip to the Grand Canyon and New Mexico the couple will reside in the San Francisco Bay area of California.

Out of town guests included

FHA Chapter Holds Meeting

The FHA chapter held their monthly meeting last month at 10 o'clock on Thursday morning, Oct. 25, 1973.

The President Becky Miller, called the meeting to order and asked Becky Kincaid to call roll and read the minutes of the last meeting. Co-eds were distributed to the members. Becky Miller then introduced the guest speaker, Phil Westmore who, in turn, introduced the Blue Ribbon Poultry Cookbook.

The cookbooks were selling for \$3.50. Each year the FHA

Mr. and Mrs. James Lemaster and Mrs. H. Penninger of Fort Worth, Mrs. Scotty Lemaster of Dallas, Mrs. Victor Miller of Houston, Mrs. Travis Aven of Yantis, Mrs. Haven Miller of Abilene, and Mrs. Dale Dupree of Houston.

The bride is a graduate of Paramount High School and attended Cerritos College. She is currently employed in the Education Program of the Pacific Service Employees in San Francisco.

The groom is a 1958 graduate of Eastland High School and holds Bachelor and Master of Science Degrees from Abilene Christian College. He is also a certified public accountant, holding memberships in the Texas and California associations. He is employed by the Pacific Gas and Electric Company of San Francisco as Supervisor of the Special Reports and Analysis Section.

A rehearsal dinner was hosted by the groom's parents Friday, September 28, at the Ramada Inn.

organization sells cookbooks as their main fund raising project. Last year's proceeds helped in the redecorating of the new vinyl floor covering in the kitchen, the carpet in the classroom, various kitchen items, the redecorating of tables and chairs, and the matching plaques. This year, the money will be used to redecorate the dining room in the homemaking department. The FHA organization wishes to extend their thanks to all of those who bought cookbooks. The cookbooks will be in about three weeks.

The Senior girls of the FHA organization held a breakfast for the freshman girls in the organization last Wednesday, Nov. 7, 1973. The breakfast was held to introduce the Big Sister Organization.

The little sisters were chosen by the senior girls.

This organization was started to help the different classes get to know each other. The girls will be able to talk to each other during their free time.

Refreshments were served to the faculty of Eastland High School at the morning break

Apply Now Waitresses Needed At Ramada Inn I-20 East Of Eastland Good Benefits Hospitalization Contact Larry Armstrong Ramada Inn

BAKKER

FUNERAL HOME



Dear friends,

Your funeral director's service includes notifying and assisting your attorney and banker to clear jointly-held bank accounts, securities and safe deposit boxes...to secure the Veterans Burial Allowance...to file claims for Social Security death benefits or a widow's pension...to complete insurance forms...to advise on personal problems, at your discretion and in complete confidence.

Respectfully,

Dale O. Bakker

Anniversary Sale

My How Time Flies. Seems like only yesterday that we had our Grand Opening Sale here in Eastland.

Thanks to all of our loyal customers, we are still doing business at the same old stand. To show our appreciation, we are offering a few items at a much reduced price. We hope you will take advantage of these savings. All Sales Final

Ladies NYLON PANTIES Asst. Colors Sizes 5 to 8 Reg. \$1 ⁰⁰ 69^c	Close Out LOVABLE BRAS Final Not All Sizes \$1⁰⁰	Men's BULKY ORLON SOX First Quality Reg. \$1 ⁰⁰ 3 Pr. \$3³⁵
Special Group LADIES SLIPS All Sizes - Colors 1/2 Price	First Quality BIRDSEYE DIAPERS Full Size Reg. \$3 ⁰⁰ \$1⁹⁹	Men's SPORT COATS Odds & Ends Values To \$30 \$10⁰⁰
Fruit Of The Loom PANTY HOSE 3 Colors Reg. 79 ^c 59^c	Special Group BATH TOWELS Full Size Reg. \$1 ⁰⁰ 79^c	Close Outs MEN'S JEANS Values To \$12 \$4⁹⁹
Final LADIES SHOES Odds & Ends Values To \$12 \$4⁰⁰	Odds - Ends MEN'S SHOES Values To \$12 \$5⁰⁰	Last Call KHAKI PANTS Not All Sizes Reg. \$3 ⁰⁰ \$1⁹⁹

Shop

HARELIK'S INC

Eastland

15 Years Of Service & Better Values

Pre-Season Heating Sale

15% OFF Heating And Blown-in Insulation Through October, 31
Conserve Fuel-INSULATE

When it Comes to Air Conditioning

When it comes to air conditioning and heating, Don't make the same mistake others do, Don't think cheap is a bargain. Deal with a professional...Central Air Inc., where quality and reputable service are not just words. Your Satisfaction Is Guaranteed.

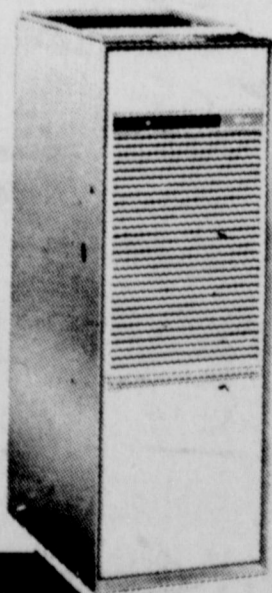


Central Air
Heating, Air Conditioning
Plumbing and Insulation
201 Mesquite - Abilene, Texas

CALL:

673-9571

For Free Estimate
Terms Available



TRIPLE D DISCOUNT EASTLAND

It's New And It's Free! Our New Catalog Order Service Gives You Greater Selection And Lower Prices Than Ever. No Service Charge - No Shipping Charge. Buy On Layaway Plan If You Wish - Come By And See Our Large Catalog.

\$15⁹⁵
Max
The Mini
HAIR DRYER
By Gillette



Layaway \$9⁹⁷
Now For Christmas!

\$1⁴⁴
A AND D OINTMENT



Promotes Healing-Use For Diaper Rash, Minor Burns, Chafing, Skin Dryness, Abrasions,

Family Size **87^c**

\$1⁹⁹ Rubbermaid
SINK MATS



And Dividers - Fits All Twin Sinks - White, Gold, Avocado, Flame **93^c**

59^c
Vanish
BOWL CLEANER

16 oz. Liquid Disinfects

Removes Stains **37^c**

We Have Federal Ammunition At Low, Low Discount Prices



ROOFING
Doyle Squires Contr. Olden, Texas. 653 - 2212. Call after 6 p.m. p-t

EASTLAND CO.
Serving All Of Eastland County
629 - 2287

TV Repair
Fountains of DeLeon
(Licensee)
For the Joy of a beautiful complexion For whatever your complexion
No surgical! Problem May Be! Look Younger as You Grow Older Free Private Consultations 404 Navarro (Hwy. 66 & 16) Call DeLeon 629 - 2287 DeLeon, Texas

HILLSIDE ALPS
Under new management Attractive 1 bedroom & efficiencies \$66.50 per mo. & up. All utilities pd. TV. Cable service. Ask about our weekly rates. Call 629-8097. (monthly)

Visiting Hours
Eastland Memorial Hospital
2:30 to 4 p. m.
7 to 8:30 p. m.

Roofing
New & Repair All Buildings & Houses Estimates Made.
Tri-Cities Roofing
Call Noble Squires 629-2370

JAMMIES Evening Specials

MONDAY: Fried Cat Fish
TUESDAY: Mexican Food
WEDNESDAY: Southern Fried Chicken
THURSDAY: Barbecue
FRIDAY: Seafood Platter

NOVEMBER COAT VALUES

SALE! SALE! SALE!

Many Beautiful Coats At A Special Price. Fabrics Of Corduroy Solids, Plaids, Simulated Furs. All Sizes And Colors For You. Come By Early For Best Selection.

Reg. \$35⁰⁰ To \$45⁰⁰ **\$27⁹⁹**
Reg. \$49⁰⁰ To \$55⁰⁰ **\$41⁹⁹**

SHOP NOW PAY LATER USE YOUR

Bray's
EASTLAND COUNTY'S FAMILY STORE
Store Hours
EASTLAND - RANGER

Hospital Notes

Patients in Ranger General Hospital Wednesday morning were:

Edna Pepper
Naomi Polk
Rosie Goforth
Mae Kitchens
Maude Kitchens
Jewel Newnham
Mary Wheat
Jo Ann Hooper
John Huffman
Ruby Varner
Della Jones
Bessie Alderson
Ed Willingham
Linda Baker
Dale Scott
Lois Holloway

Patients in Eastland Memorial Hospital Wednesday morning were:

Doyle Welch, Gorman
Ethel Stevenson, Baird
Eula Hart, Ranger
Donald Nail, Cisco
A.L. Folkner, R. Star
Isabel Thurman, R. Star
Edna Raney
Jayna Holloway
Floyd Crawley
Marcus Grierger
Theopol Walton
Elosia Renteria, Ranger
Josephine Fraser
Lydia Warren, Gorman
Millie Peel
Arda Tibbs
Lillie Beene, Cisco
Fannie Frost
Sidney Webb, Ranger
Robert Baggett, Cisco
Clida Wharton
Ozona Durall
Charles Black, R. Star
Quintin Wright, Gorman
Virgil Maynard, Cisco
Jerry Jackson
Sarah Baird, Cisco
Ruth Layton

COUNTY NEWS

Don E. Box to Lawson Valley and wife - release deed of trust
B.G. Brown, Inc. to Robert H. Fink and wife - warranty deed
Clyde Brymer and wife to John Huffmyer and wife - warranty deed
Joseph E. Burk and wife to Investors Mortgage Corp - deed of trust
Velma E. Bennett to Earnest E. Wright and wife - warranty deed
B.G. Brown Inc. to Eastland Nat'l Bank - deed of trust
Lynn Bint and wife to 1st Fed. S&L Assn - deed of trust
Thomas Craddock Blau (deceased) to the public - proof of heirship
Dean W. Brim and wife to John A. Sullivan and others - warranty deed
Ethel Birnie to J.W. Crowder and wife - warranty deed
B.G. Brown, Inc. to 1st Nat'l Bank, Cisco - deed of trust
H.E. Coker and wife to Homer Coker and wife - mineral deed
Audie O. Clark and wife to Roger Dale Clark and wife - warranty deed
Ira L. Clemmer to Mary J. Clemmer - asgn. venders lien
James T. Connell, Jr. and wife to Citizens Nat'l Bank, Breckenridge - deed of trust
Costaba, Inc. to Patricia Johnson - abstract of judgment
Commercial Advertising Co. to the public - assumed name
Frank P. Castleberry and wue to Donald R. O'Bannon and wife - warranty deed
J.W. Crowder Jr. and others to Worley Gene Maynard and wife - warranty deed
Bob Daniels and others to State of Texas - notice state tax lien
Robert H. Fink and wife to First Nat'l Bank, Cisco - deed of trust
1st Nat'l Bank, Cisco to Vernon Honea - release deed of trust
1st Fed. S&L Assn to Leonard M. Pounds and wife - release deed of trust
Ruby Frances Glenn and others to Robert James Ratcliff and wife - warranty deed
Walter Van Gardenhire, deceased to the public - proof of heirship
Joseph T. Gardner, deceased to the public - proof of heirship
Howard Hennington and wife to 1st Nat'l Bank, Cisco - deed of trust
J.J. Hawkins and others to W.W. Singleton - oil, gas lease
John Huffmyer and wife to Clyde Brumer and wife - deed of trust
Walter G. Hall and wife to Joseph E. Burk and wife - warranty deed
David E. Hazard and wife to B.G. Brown Inc. - warranty deed
Laura J. Harris and others to Nu - Energy Corp - oil, gas, mineral lease
R.K. Hallmark to Sam Davis - warranty deed
C.W. Hoffman Jr. to the public - aff'd
Investors Mortgage Corp to Federal Nat'l Mortgage Assn - asgn deed of trust

Rufus Marion Jones and wife to A.T. Barron - warranty deed
Kenneth Jameson, Indv. and others to R.K. Lane - lake lease
Carter Jones and wife to John H. Mooney - warranty deed
Bill Johnson to E.H. Miller - release abstract of judgment
Travis D. Kurklin and wife to Howard Hennington - warranty deed
Omega Kimbrough, deceased to the public - proof of heirship will attached
Charlie Kimbrough to Ernest C. Barker and wife - warranty deed
La Vaca Gathering Co. and others to Odessa Nat'l Corp - contract
Lenola Lewis and others to B.G. Brown, Inc. - warranty deed
Thomas A. Munnerlyn to David E. Hazard and wife - release venders lien and deed of trust
Worley Maynard and wife to 1st Nat'l Bank, Cisco - deed of trust
Nichols Oil and Gas Corp to Gordon L. Smedley Jr. - asgn

of overriding royalty
Milburn A. Nutt and wife to Citizens Nat'l Mortgage Corp - deed of trust
Donald R. O'Bannon and wife to Frank P. Castleberry and wife - deed of trust

FOR SALE - Extra nice 14' x 70' Ramada Mobile Home. 2 bedroom, carpet, central air and heat, unfurnished. Call 629 - 2766, Vernon Mahan. t-tf

FOR SALE: Beautiful, well-built, ideally located two bedroom family home in Eastland with central heating and air conditioning, area rugs and draperies. Attached garage and beautifully landscaped, good sized lot. Call 629 - 2442 for information and appointment to see. t-tf

SENIOR CITIZENS

NOW YOU CAN ENJOY THE SECURITY OF A WORRY FREE 24 HOUR NURSING CARE

★ Certified By Texas State Department of Public Welfare
Licensed by Texas State Department of Health.

- 24 Hour LVN Supervision • Doctors References • Special Diets
- All Guest on Ground Floor • Controlled Air Cond. & Central Heat
- Planned Activities • Occupational Therapy • Home Like Atmosphere
- MEN - WOMEN - COUPLES • REASONABLE RATES
- CONVENIENT SUBURBAN LOCATION
- DESCRIPTIVE BROCHURES SENT UPON REQUEST

For professional care in a luxury atmosphere, unsurpassed by any other nursing home

VALLEY VIEW LODGE
700 S. Ostrom 629-1779
Shirley Frost, Adm.

EASTLAND MANOR
Now Offers You
24 Hour Nursing Care Supervised by a Registered Nurse at Eastland Manor
Call or Come By Today and Let Our Friendly Staff Show You Around
1405 W. Commerce 629-2686
Eugene Frost, Adm.

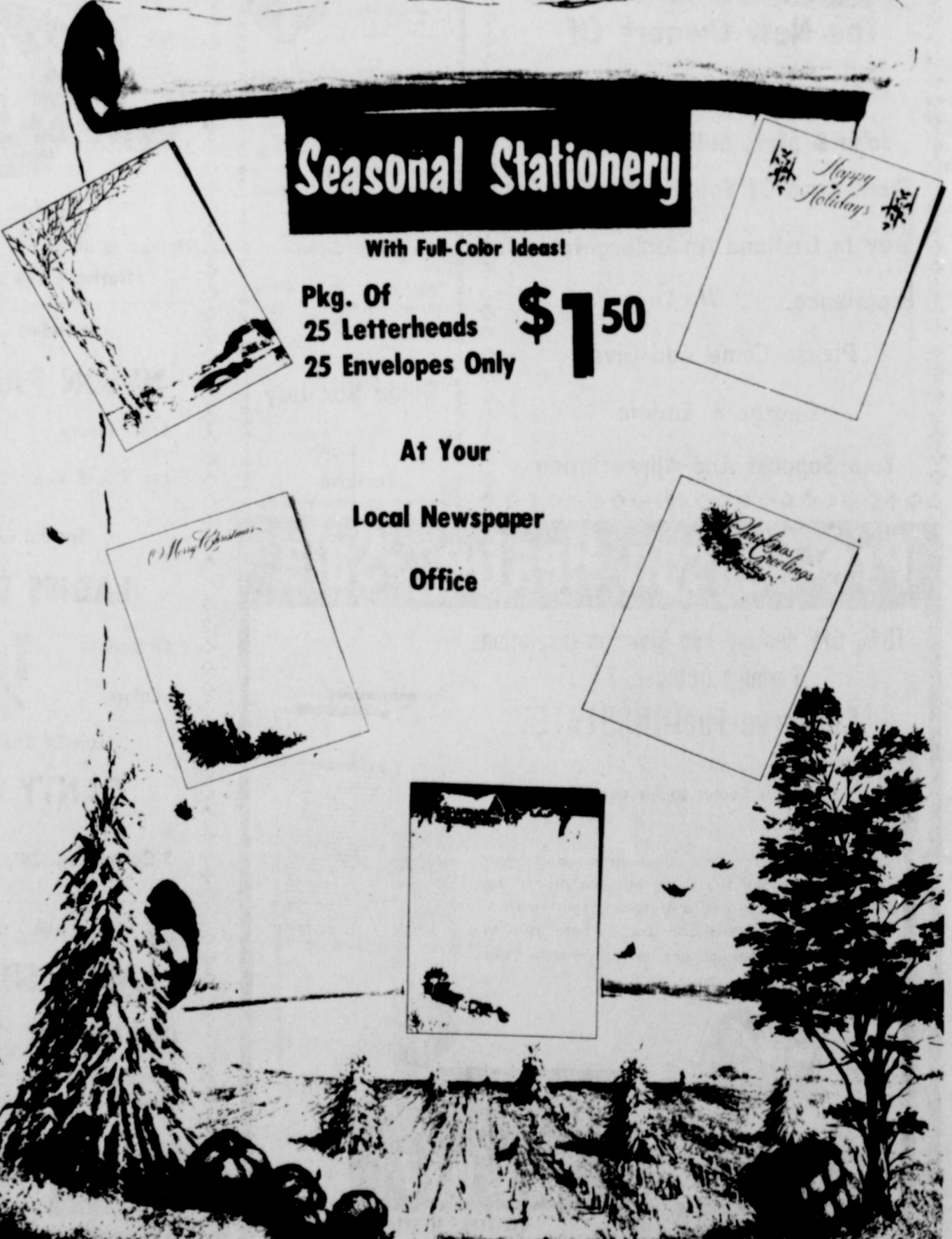
• A beautiful dining room for home-like meals
• "Special Diets"
• Complete program of recreation and occupational therapy
• Private and Semi-Private Rooms
• Beautiful Chapel
• Beauty Shop & Barber Shop
• Licensed Personnel
Approved for Medicaid, Old Age Assistance and Welfare Patients

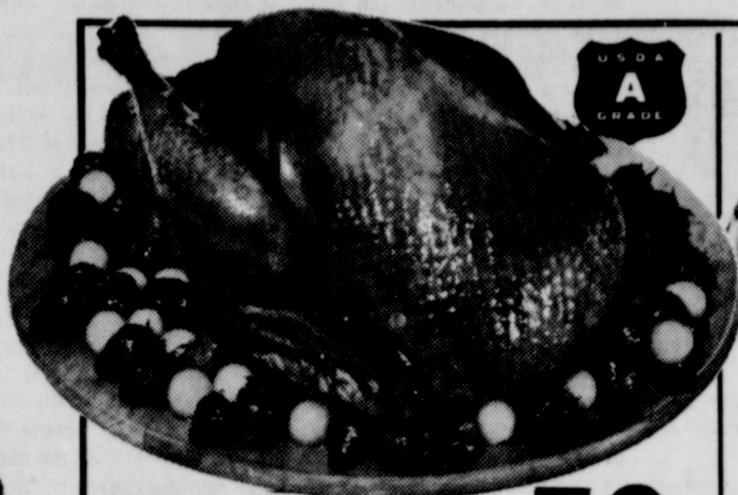
"We CARE"

Seasonal Stationery
With Full-Color Ideas!

Pkg. Of 25 Letterheads 25 Envelopes Only **\$1⁵⁰**

At Your Local Newspaper Office





Tom Turkeys 59¢
—Lb.
Young, 20 to 24-Lbs.
USDA Insp. Grade 'A'

Self-Basting Honeysuckle Butterball 77¢
—Lb.
Safeway Young Turkeys.
Over 10-Lbs. USDA Grade 'A'

White Self-Basting Turkey 79¢
—Lb.
Over 10-Lbs. Young, USDA
Grade 'A', Whole

Armour Turkeys 89¢
—Lb.
Swift Deep-Basted.
Young Turkeys, Over 10-Lbs.
USDA Insp. Grade 'A', Whole

Golden Star Self-Basting Turkey 89¢
—Lb.
Young, Over 10-Lbs.
USDA Grade 'A'

Beef Rib Steaks \$1.25
—Lb.
USDA Choice
Heavy Beef

Standing Rib Roast \$1.19
—Lb.
Large End, 3-Ribs.
USDA Choice
Heavy Beef

Boneless Roast \$1.49
—Lb.
*Pikes Peak or *Bottom
Round, USDA Choice
Grade Heavy Beef

FRESH FRYERS 39¢
—Lb.
USDA Inspected Grade 'A' Whole
Ready to Cook!

Cut-Up Fryers 47¢
—Lb.
Regular, USDA Insp.
Grade 'A'

Lean Ground Beef \$1.15
—Lb.
Freshly
Ground!

Chipped Meats 45¢
—Lb.
Safeway, Sliced
& Varieties

Sliced Bologna 69¢
—Lb.
Oscar Mayer *All
Meat or *Pure Beef

Pork Sausage 98¢
—Lb.
Jimmy Dean's,
*Regular or *Hot

Armour Bacon \$1.25
—Lb.
Armour Star,
MiraCure

Safeway Bacon \$1.19
—Lb.
No. 1 Quality,
Sliced

Smoked Picnic 65¢
—Lb.
6 to 8-Lb. Average
Water Added.

Smoked Ham \$1.05
—Lb.
*Half or *Whole,
Water Added

Smoked Ham 89¢
—Lb.
Shank Portion,
Water Added

Boneless Brisket \$1.38
—Lb.
USDA Choice
Heavy Beef

Fresh Oysters \$1.29
—Lb.
*Gulf Coast or
*Pacific Coast
10-oz. Ctn.

Ham Slices \$1.49
—Lb.
Center Slices,
Smoked, Water Added

Cure 81 Hams \$2.29
—Lb.
Boneless, Hormel
*Half or *Whole

Canned Hams \$4.98
—Lb.
Safeway, Fully Cooked! Can

Fresh Pork Chops 95¢
—Lb.
Economical, Family Pack!

Sliced Bacon 98¢
—Lb.
Slab, Rindless, Tasty!

Safeway Wieners 79¢
—12-oz. Pkg.
Plump and Tender!

LOW EVERYDAY PRICES Plus SPECIALS!

SAVE

Hi-C Drinks 29¢
—46-oz. Can
Fruit Flavors.
Safeway Special!

SAVE

Fruit Cocktail 25¢
—17-oz. Can
Libby's. Delicious!
Safeway Special!

SAVE

Catsup 25¢
—14-oz. Bottle
Highway. Tomato.
Safeway Big Buy!

SAVE

Flour 69¢
—5-Lb. Bag
Light Crust.
Safeway Special!

SAVE

Cake Mix 35¢
—18.5-oz. Box
Duncan Hines.
Safeway Special!

Frozen Food Favorites!

Cream Pies 29¢
—14-oz. Pkg.
Bel-air. Smooth and Creamy!

Orange Juice 19¢
—6-oz. Can
Scotch Treat.
100% Pure Orange
Juice From Florida

Bel-air Waffles 12¢
—6 Count
5-oz. Pkg.

Strawberries 29¢
—10-oz. Pkg.
Sun Fresh.
Sliced

SAVE

Listerine 69¢
—14-oz. Bottle
Antiseptic Mouthwash.
Safeway Special!

Cut Corn 24¢
—10-oz. Pkg.
Bel-air.
Whole Kernel

Shop and Save!

Saltines 29¢
—16-oz. Box
Melrose
Soda Crackers

Tomato Juice 25¢
—18-oz. Can
Town House. Zesty!

Apple Sauce 20¢
—16-oz. Can
Highway. Tangy!

Compare Low Prices!

Pork & Beans 21¢
—16-oz. Can
Van Camp's

Liquid Bleach 37¢
—Gallon Plastic
White Magic

Paper Towels 28¢
—175-Ct. Roll
Tree Saver. Thrifty!

Safeway Money-Saving Low Prices!

Chunk Tuna 39¢
—6.5-oz. Can
Van Camp's. Light Meat.
Safeway Big Buy!

Tomato Soup 12¢
—10.75-oz. Can
Town House.
Big Buy!

Corn Chips 39¢
—11-oz. Pkg.
Party Pride. For Snacks!
Safeway Big Buy!

Pinto Beans 29¢
—16-oz. Pkg.
Town House. Dry.
Safeway Big Buy!

Dog Food 11¢
—15.5-oz. Can
Old Pal.
Safeway Big Buy!

Check These Values!

Aspirin 18¢
—100-Ct. Bottle
Safeway.
5-Grain

Toothpaste 57¢
—7-oz. Tube
Safeway

Rubbing Alcohol 17¢
—16-oz. Clear Bottle
Safeway

Vitamin 'C' 49¢
—100-Ct. Bottle
100 MG Tablets.
Safeway

Motor Oil 28¢
—Quart Can
Safeway. Regular.
*20 Wt. or *30 Wt.

Bakery Low Prices! Dairy-Deli Values!

Rye Bread 34¢
—16-oz. Loaf
Skylark. Regular.
Safeway Special!

Sour Cream 43¢
—8-oz. Ctn.
Lucerne

Sesame Twist 44¢
—24-oz. Loaf
Skylark

Half & Half 23¢
—1/2-Pint Carton
Lucerne

English Muffins 39¢
—12-oz. Pkg.
Mrs. Wright's

Cinnamon Rolls 35¢
—9.5-oz. Can
Mrs. Wright's

Brown & Serve 38¢
—13-oz. Pkg.
Twin Rolls.
Skylark

Yogurt 27¢
—8-oz. Ctn.
Lucerne

ON SALE THIS WEEK!

Students Encyclopedia
Volume 17-18
Funk & Wagnalls \$1.69

CHINA DINNER PLATES
EACH 89¢
with every \$5 purchase
Regularly \$1.50

Fresh Fruits and Vegetables!

Apples 29¢
—Lb.
★Red Delicious
★Golden Delicious
Extra Fancy! Sweet!

Navel Oranges 29¢
—Lb.
California. Juicy!

Crisp Celery 15¢
—Stalk
California. Long Shank

Texas Yams 25¢
—Lb.
New Crop. Texas' Finest!

Russet Potatoes 5.69¢
—5-Lb. Bag
US #1A.
For Baking!

Fresh Carrots 19¢
—1-Lb. Bag
US #1 Quality!

Glace Fruit Mix 69¢
—1-Lb. Ctn.
For Holiday Baking!

Bulk Nuts 89¢
—Lb.
★Pecans ★Walnuts
★Almonds ★Filberts
★Brazil Nuts

Cranberries 39¢
—1-Lb. Bag
Ocean Spray

Mince-meat 47¢
—9-oz. Pkg.
Borden. Condensed

Golden Bananas 10¢
—Lb.
A Tropical Delight!

FESTIVE FAVORITES FOR THANKSGIVING!

Holiday Check List "Don't Forget to Buy!"

- ★ Stuffing Mix
- ★ Fresh Fruits
- ★ Salad Fixings
- ★ Pickles & Relishes
- ★ Holiday Beverages
- ★ Extra Fresh Bread
- ★ Special Desserts
- ★ Party Dips
- ★ Paper Towels

Prices Effective Thurs., Fri., Sat., Nov. 15, 16, 17
No Sales to Dealers.

S SAFEWAY



IMPROVE HOME SCENERY

Plant Greenery



Planting Data

1. Locate a Live Oak where you would like a long lived evergreen shade tree. Any exposure will be satisfactory.
2. Southern Magnolia is an evergreen ornamental tree that may be used as a specimen in the front, sides, or back of a

home, or planting in a series of 3 - 5 for effect.
3. Ornamental Japanese Black Pine is also evergreen and besides being used the same as Magnolia, they are often used in clumps and groupings of 3 - 5 trees.
4. Deciduous Vitex or

Lavender Tree is a large growing old fashioned shrub that after being enjoyed as a shrub for many years, can be trimmed to a very effective ornamental tree that will have a picturesque trunk system and continuous years of annual blue flowers.

maintained to almost any size and shape desired, formal or informal.

6. Euonymus, japonica should do everything a Burfordi Holly will do except it may also be used as a hedge along fences and property lines. For the best results do not plant Euonymus in the shade or on the north side of buildings.

7. Abelia is a good old fashioned evergreen flowering shrub that may be used in front of - or on corners of buildings. Abelia shapes well and its dark green foliage is especially pretty in the autumn months.

8. Crapemyrtle is a favorite summer flowering shrub and later small tree, which is of

ferred in watermelon pin and double white. They should not be planted too close to a building for they grow large and require sunlight for best performance.

9. Pomegranate is a large deciduous flowering shrub, and takes on a bright yellow fall color for a double dividend after blooming all summer.

10. Nandina is a semi-evergreen shrub that holds its foliage all year and gives beautiful vibrant colors for fall and winter. It is referred to by some as "Heavenly Bamboo".

11. Photinia serrulata and frazeri are two good large growing evergreen shrubs, used primarily for privacy on ends and backs of homes or along fence lines and patio walls. Frazeri is more upright growing with a touch of red on the new foliage while serrulata, the older photinia, is more spreading and a heavier appearing plant. Both make excellent windbreaks.

12. Mock orange is a good old fashioned white spring flowering shrub that will appeal to anyone trying to break out in the spring from a long hard winter. It is especially good along a back fence or planting bed seen from the house.

13. Althea is another old fashioned flowering shrub that

is known by all as the "Rose of Sharon".

14. Pyracantha is a well known evergreen shrub that may be used as a foundation shrub or hedge or espaliered specimen plant on a wall or fence. They bloom in spring with small white clusters and are followed in late fall and winter with large clusters of red berries.

PLANTING INSTRUCTIONS

The holes for planting should be about an inch deeper than the can is tall. With the can cut and removed place in the hole so that the tree is straight, even if it means tilting the ball slightly. Now, backfill with good topsoil and possibly a little well rotted compost if you have it available; if not just good soil will suffice. Do not use any fertilizer on these new trees and shrubs until the following year. You should cover the existing ball with about 1/2 to 3/4 inch of soil and leave a low place around the plant to aid in watering. After planting; water the plant well to remove all air from under the ball and help the plant to settle in its new home - your yard. These new plants should be watered at least once a week or every 10 days even during cold weather so that they will not suffer from winter damage. Next summer when it is hot, you may want to water them more often. If it rains, take this into consideration.

NOTE: To force small Live Oaks and make them grow faster you may fertilize them by applying a heaping tablespoon of a well balanced tree and shrub food (10 - 10 - 5 or 11 - 5 - 6) at intervals of time related to the growth periods of the tree. For example this application used at Easter, Mother's Day, the 4th of July and Labor Day would help the home owner remember when to fertilize and hit the growth periods at the same time.



Pictured above are winners of the Motorcycle lime run held Sunday in Eastland. The run was sponsored by Chesnuts Cycle center in Ranger. From left to right they are: Kenneth Chapman third place winner, Brett Arther 1st place winner and Ben Cagle 2nd place. Plans are underway for another lime run to be held in December.

Estate And Family Business

Seminar Scheduled Nov. 15-27

The certainty of death and the severity of taxes levied on property after death are good reasons to stop and think about personal estate planning.

An estate planning and family business seminar is scheduled for the people of Eastland County Nov. 15 and 27. Thursday's session will be held at the Texas Electric Reddy Room in Eastland. The meeting will begin at 1:30 p.m. and will end about 4:30 p.m.

Virgil T. Seaberry, Jr., Eastland attorney, will speak on the importance of wills. Lloyd L. London, First National Bank Trust Dept. in Cisco, will discuss the subject "Trusts as an estate planning tool." William L. White, Estate Tax Attorney with the Internal Revenue Service in Fort Worth, will speak on "Federal estate and gift taxes, and property evaluation".

James S. Denton Jr., Agricultural Economist with the Extension Service, will begin the program by discussing the importance of Estate Planning to every family.

Because of increased fair market value of land many people have wealth they don't recognize. Since taxes at death are based on an estate's fair market value, adequate estate liquidity becomes a real problem where land holdings are involved.

Insurance and Social Security will be the topics of the meeting on November 27. Speakers for the second session will be announced later.

The seminar is being conducted by the County Extension Service. Extension agents DeMarquis Gordon and Janet Thomas invite both husbands and wives of all families in Eastland County.



Interstate's
abc MAJESTIC
DOWNTOWN EASTLAND

THE BROTHERS O'TOOLE

The wackiest, funniest family western of the year!

Starring **JOHN ASTIN**

Starts Next Wednesday
For 2 Days Only

Supplies Eastland Gallery
Laura Blizzard
310 S. Lamar
629-8004
Mon. 1 to 9
Tues. Fri. 9 to 5 Sat. 9 to 1

Gifts

Classes

Thursday,
November 15, 1973

HEIDENHEIMER'S

PRICE-BREAKERS

Special Sale During Turkey Days On
LADIES BOOTS OXFORDS
CASUAL DRESS SHOES

Shoes That We Have Sold Up To \$19⁹⁹

Now On Sale in
Broken Sizes At **\$5⁸⁸**
Per Pair

Clearance Big Boys
Oxfords
And Casuals in Brown And Blacks If You Still Like The Regular Toe (Not The Wide Toe) Then This Is The Biggest Bargain Of The Turkey Day Sale
Sizes **\$5⁸⁸**
3 1/2 To 6

Save On Men's Polyester
Double Knit
DRESS PANTS & SLACKS

2 Big Racks Choose From Farah, Haggar, Campus Or Esskay
NOW **20% off**
Altrations Extra

Sale On Men's Flare Leg All Cotton
JEANS
In High Colors (Green, Brown, Blue & Purple)
Reg. \$8⁰⁰ NOW **\$3²²**
Pair
Sizes 28 To 36
In 30 & 32 Lengths

Sale - Balance Of Men's Close Out
JEANS LEVI AND WRANGLER
These Prepriced Up To \$12⁰⁰
Our Turkey Day Price **\$5⁰⁰**

HEIDENHEIMER'S

Family Store in Cisco

Interstate's
abc MAJESTIC
DOWNTOWN EASTLAND

Fri - Sat - Sun
Features Fri
7:00 - 8:43
Sat - Sun Features
2:10 - 3:50 - 5:35
- 7:19 - 9:00

It took him 20 years to find out who he was and 2 laps to let the world know.

Starring **JEFF BRIDGES**,
THE LAST AMERICAN HERO PG

RANGER DRIVE-IN THEATRE
OPEN 6:30 START 7:00

McQUEEN/MacGRAW

THE GETAWAY

STEVE McQUEEN/ALI MacGRAW IN "THE GETAWAY" A FIRST ARTISTS PRESENTATION
CO-STARRING BEN JOHNSON AL LETTIERI AND SALLY STRUTHERS AS-TRAN
FILMED IN TODD-AO 35 TECHNICOLOUR DIRECTED BY SAM PECKINPAH
A NATIONAL GENERAL PICTURES RELEASE PG

JRB Price Corrections:

Sunday's Ad Should Have Shown:

Philadelphia
CREAM CHEESE 3 oz. Pkg. **19^c**

Armour Star Bologna, Pickle, Olive
LUNCH MEAT 6 oz. Pkg. **49^c**

No Coupons Necessary On Tide **\$2⁴⁹**

15^c COUPON SAVINGS

Lifebuoy BATH SIZE
LIFEBUOY BAR SOAP
TWO BARS
Corals White **2 for 33^c**
GOOD ONLY AT JRB OFFER EXPIRES 11-17-73

For Professional Care
in an Atmosphere
of Family Living

Hickman Nursing Home

Offers You

- 24 hour nursing care supervised by a Registered Nurse
- Special diet management by an A.D.A. dietitian
- Full program of recreation and entertainment
- Private rooms

629-2624
411 West Moss
Eastland, Texas

WE CARE FOR YOU... WE CARE ABOUT YOU



GO MAVERICKS

1973 EASTLAND HIGH SCHOOL FOOTBALL SCHEDULE

Date	Opponent	Place	WE	THEY
Sept. 7	Haskell	There	12	31
Sept. 14	Ranger	HERE	15	0
Sept. 21	De Leon	There	29	34
Sept. 28	Olney	There	19	21
Oct. 12	Breckenridge	HERE	7	7
Oct. 19	Coleman	HERE	31	27
Oct. 26	Comanche	There	20	33
Nov. 2	Cisco	HERE	7	54
Nov. 9	Hamilton	There	27	20
Nov. 16	Clyde	HERE		

HIGH SCHOOL B TEAM

Sept. 13	Clyde at Eastland	7:00
Sept. 20	DeLeon at Eastland	7:45
Sept. 27	Cisco at Eastland	7:30
Oct. 4	Ranger at Ranger	7:30
Oct. 18	Ranger at Eastland	7:30
Oct. 25	Comanche at Comanche	7:00
Nov. 1	Cisco at Cisco	7:30
Nov. 15	Clyde at Clyde	7:00

MAVERICK ROSTER

- 10 Terry Ensor
- 12 Gary Wheat
- 24 John Marshall
- 25 Rex Morgan
- 20 Charles Harvey
- 30 Tony Thomas
- 32 Tom Morren
- 80 Brent Parker
- 84 B.W. Robertson
- 75 David Baze
- 82 Billy Daniels
- 72 John Hart
- 70 Mark Parson
- 51 Bert Elliott
- 60 Jace Staggs
- 61 Isaac Orosco
- 50 Ralph Underwood
- 65 Doug Allmand
- 73 David McElvain
- 69 Clay Wheat

Mavericks

VS

Clyde, Bulldogs

Friday, 7:30 P.M. Here

THIS PAGE IS SPONSORED BY THE FOLLOWING BOOSTERS WHO URGE YOU TO BACK THE

Date	Opponent	7th and 8th	7th	8th
Sept. 13	Clyde at Clyde	5:30	6:45	
Sept. 20	DeLeon at Eastland	5:30	6:30	
Sept. 27	Cisco at Eastland	5:00	6:00	
Oct. 4	Ranger at Ranger	5:00	6:00	
Oct. 18	Ranger at Eastland	5:00	6:00	
Oct. 25	Comanche at Eastland	5:30	6:45	
Nov. 1	Cisco at Cisco	5:00	6:00	
Nov. 15	Clyde at Eastland	5:30	6:45	

1973 CARBON JR. HIGH FOOTBALL SCHEDULE

Date	Opponent	Time
Sept. 11	May at Carbon	6:30
Sept. 18	Sidney at Sidney	6:00
Sept. 25	May at May	6:30
Oct. 2	Gordon at Gordon	7:00
Oct. 9	Strawn at Carbon	7:00
Oct. 16	Open	
Oct. 23	Santo at Santo	7:00
Oct. 30	Moran at Carbon	7:00

1973 CARBON HIGH SCHOOL FOOTBALL

Date	Opponent	Time
Sept. 6	Mullin at Carbon	8:00
Sept. 14	Pottsville at Pottsville	8:00
Sept. 21	Star at Star	8:00
Sept. 28	Open	
Oct. 4	May at Carbon	7:30
Oct. 11	Cherokee at Carbon	7:30
Oct. 19	Santo at Santo	7:30
Oct. 25	Gordon at Carbon	7:30
Nov. 2	Gustine at Gustine	7:00
Nov. 8	Strawn at Strawn	7:00
Nov. 15	Sidney at Carbon	7:00

SCHOOL COLORS
Blue and White

SCHOOL MASCOT
Wolverine

COACH ROBBY STUTEVILLE

1311 W. Main Comanche Co. Electric Co-Op	Goodyear Service Store 315 E. Main 629 - 2662	Graham Trim Shop 708 W. Main 629 - 2266	200 E. Main J.R.B. Super Market 629 - 1667	Gilbert's Gulf Service 500 W. Main 629 - 8805	Foremost Dairies 410 W. Commerce 629 - 1701	Harelik's, Inc. 212 W. Main 629 - 1443
Eastland Medical & Surgical Clinic	Eastland Manor, Inc. 1405 W. Commerce 629 - 2686	Eastland County Farm Bureau Hwy. 80 East 629 - 1704	GO MAVERICKS!! TEXAS ELECTRIC SERVICE COMPANY F. N. SAYRE, Manager, Phone 629-2651 LIVE BETTER ELECTRICALLY	Eastland National Bank FDIC	Green Street Florist 200 N. Green 629 - 1101	Eastland Paint & Body Shop
Victor Cornelius Menus & Printing	City Garage 103 West White 629 - 1709	Bray's 111 S. Lamar 629 - 1789	Borden's Milk Distr. 611 W. Commerce 629 - 1100	Baird's TV & Appliances 105 W. Main 629 - 1334	Dairy Queen LIVE A LITTLE	B & W Clinic 400 W. Plummer 629 - 1744
Arrington Funeral Home 301 S. Lamar 629 - 2611	Wanda's Seven-Eleven 1006 W. Main 629 - 8897	Valley View Nursing Home 700 S. Ostrom 629 - 1779	Tharp Tire Co. 403 E. Main 629 - 2922	R.M. Sneed, Contractor Hwy. 80 East 629 - 1756	Quetta's Sportswear I - 20 Next to Ramada Inn 629 - 8030	Robertson's TV Sales & Service
Altman's Style Shop 109 W. Main 629 - 1150	Mangum Service Center	Kinnaird Insurance 207 W. Main 629 - 2544	Hood King Motor 100 E. Main 629 - 1786	Holland's Drive Inn Hwy. 80 West 629 - 2215	Eastland Telegram 110 W. Commerce 629 - 1707	A Fan

Cisco, Eastland, Ranger

SOUTHERN TV CABLE SYSTEM

Inviting You To Watch All Of The Games
NCAA-AFL-NFL



Robinson-Livingston Wedding Vows Nov. 11

Miss Cheryl Annette Robinson was married to Robert Dell Livingston on November 11 at the Three D. Bridal Shop. The Rev. Haston Brewer, pastor of First Baptist Church, officiated. Parents are Mr. and Mrs. Richard Robinson and Mr. and Mrs. D.H. Livingston.

Livingston, sister of the groom was bridesmaid. Steve Haines was best man with Corbin Livingston groomsmen. Mike Robinson was usher.

The bride is a graduate of Eastland High School and attends Cisco Junior College. The groom graduated from Eastland High School and is employed by EBBA Iron Co.

The couple will reside at 306 1/2 E. Hill in Eastland.

The J&F Poodle Grooming Shop located 14 miles south of Interstate 20 on Cisco and Cross Plains Highway 206. Phone 817-725-4304. 1-1/2

INSULATION



Thanksgiving Greetings From Poe Floral

629-1711 609 W. Main

Beta Sigma Phi Meets

The Zeta Pi chapter of Beta Sigma Phi held the following meetings in October:

On October 1, the sorority met in the home of Mrs. Kenny Payne with Mrs. Richard Wilhelm presiding.

Members discussed finishing the painting on playground equipment at Eastland Elementary School, the UNICEF drive they are sponsoring, and voted to help with readying the new library for its opening.

Mrs. Payne presented the program for Mrs. C.R. Kinser, who was unable to attend the meeting. She reviewed the romantic mystery, Snowfire, by Phyllis Whitney.

Refreshments of sandwiches, salad, chips, relishes, cherry tarts, and cokes were served to Mmes. Wilhelm, H.D. Alsop, Robert Mangum, Mel Sandler, Russell Walker, and Marene Johnson Johnson, sponsor, by the hostess.

The October 29 meeting was held in the Eastland Community Room with Mrs. Robert Mangum as hostess. Mrs. Richard Wilhelm presided.

Members finalized plans for a garage sale Nov. 10, and a social event for November.

Mrs. Kenny Payne was appointed to head a committee to select an Eastland family to receive the annual Thanksgiving turkey given by the sorority.

Mrs. Russell Walker was program chairman. She showed a variety of new fall fashions from Quetta's Boutique.

Refreshments of chef salad, strawberry short cake, and cokes were served to Mmes. Wilhelm, Payne, Walker, H.D. Alsop, and David Mohon by the hostess.

A surprise baby shower was held for Mrs. Mel Sandler in connection with the regular meeting in the Eastland Community Room, Nov. 15. President, Mrs. Richard Wilhelm was hostess.

Business discussed included planning a garage sale and a social for November.

Mrs. David Mohon gave the program on "Environment, Health, Work, and Play". She displayed and discussed pictures of children showing how environment influences their growth, health, and habits.

Refreshments of sandwiches, olive - cheese appetizers, chips, cake, and punch were served to Mmes. Mohon, Sandler, Kenny Payne, and Russell Walker by the hostess.

Mrs. Rankin Bradshaw of McCamey is spending the week with her mother Mrs. A.W. Wright

Miss Lela Lee, student of Texas University Southwestern Medical School of Dallas visited her parents Mr. and Mrs. J.H. Lee. On returning to Dallas she planned to attend a student party on the ranch of Dr. Bryan Williams Dean of Students, near Dallas.

Mrs. Gloria Pettit and Mrs. Bill Thompson of Fort Worth visited Mrs. A.M. Thompson Sunday.

Norman and Gary Hardin of Denver City, Terry Hardin and Jimmy Youngblood of Carbon, Larry Hill of Lubbock and Miss Patricia Heath of Eastland were Sunday dinner guests of Mr. and Mrs. A.C. Hardin.

Tim Fambrough of Sweetwater visited Mr. and Mrs. D.G. Fambrough last week.

WMU Meets

The Mangum WMU met Monday, Nov. 5, in the home of Sandra Reese. She gave a review on the mission book Passport to People. Those attending the meeting were Mattie Donaldson, Stella McBee, Elizabeth Curtis, and Rev. and Mrs. A.J. Thomas.



Do your gift picking the easy way. Right now! Use our LAYAWAY PLAN... it doesn't cost a penny extra. Rich colors, Super values, Wide range of sizes, Beautiful fabrics are all easy care, Small weekly payments, And no crowds when you shop early!

SCHOOL Lunch Menu

THURSDAY, NOV. 15
Homemade chili
Pinto beans
Buttered cabbage
Carrot & celery sticks
Corn bread
Cinnamon rolls

FRIDAY, NOV. 16
Hamburgers
Potato salad
Buttered corn
Oatmeal cookies



AT LOWER COST! It's easy with a quality PAYNE system installed expertly to give you economy and comfort. Models for any size home or budget. Let us prove it! Call today!

Thursday, November 15, 1973
GARDENHIRE OIL COMPANY
Yes! We can sell wholesale to you!
See us for all your oil, grease, filters, spark plugs, brake fluid, anti-freeze, S. T. P. for oil, gasoline, diesel or radiator, tires for cars, truck or tractor. WE HAVE TANKS for farm or commercial gasoline and diesel fuel. See us before you trade. All major brands of Oil and Grease.
WHY PAY MORE??

SUPER QUALITY! SUPER VALUE!
ZENITH Christmas Gift Ideas

The SPRINT • D507 F.L. The Portamatic changer takes 6 each of any size stereo or mono records of same speed and plays "em back monophonically through a 6 1/2" oval front-firing speaker. Features diamond-stylus for LP discs. Tone arm locks in place. Built-in carrying handle and cord storage. Colors: Beige or Green.
WESTERN AUTO
Associate Store
Ph. 629-2011 Eastland

Dignity . . . Consolation . . . Concern

Trust Our Experience
Our reputation is based on competence and caring. Every detail is taken care of.
Arrington Funeral Home
Ph. 629-2611 -- Eastland
Friendly Personalized Service

HELPING TO SAFEGUARD HEALTH

A Friend You Can Rely On...
Your pharmacist should be your friend. Someone to help. Someone who's always there with careful attention to prescriptions.
And, as your doctor's back-up man, your pharmacist follows his instructions with precision.
Bandages, Strips
Central Drug
103 W. Main Eastland 629-2681

Let us help you get your new car

Buying a new car can be easier than you'd expect—if you let us handle the financing for you.
For Information Call
Richard Rossander
Agent
Ph. 629-2563
Eastland, Texas
Financing services by
MFA Security Service Co.

SUPER SAVE MARKETS
TURKEY 'n TRIMMINGS IN THE TRADITION OF THANKSGIVING

TURKEYS: HENS 12 To 16 Lbs 89¢, TOMS 20 To 25 Lbs. Avg. 79¢
WHOLE HAMS \$1.05, SHANK PORTION \$1.89, BUTT PORTION \$1.92, CENTER SLICES \$1.49
FRYERS Fresh Dressed Lb 49¢
PEAS 5 1/2 Oz. \$1.00
GREEN BEANS CUT 4 3/4 Oz. \$1.00
GOLDEN CORN 4 3/4 Oz. \$1.00
COCKTAIL 3 1/2 Oz. \$1.00
We Welcome Food Stamps
COFFEE: MAXWELL HOUSE 2-Lb. Can \$1.49
PUMPKIN 5 16-Oz. Cans \$1.00
COTTAGE CHEESE 12 oz. Carton 49¢
HI HO CRACKERS 10-Oz. Pkg. 43¢
VANILLA WAFERS 11-Oz. Pkg. 43¢
PICKLED BEETS 16-Oz. Can 31¢
FROZEN FOODS: BORDEN'S COOL WHIP 9-Oz. Can 59¢
ORANGE JUICE 5 1/2-Oz. \$1.00
MINCE OF PUMPKIN PIES 25-Oz. Pkg. 49¢
FOLGER'S COFFEE 8-Oz. Can 85¢
Dove COFFEE 2 1/2-Lb. Can 89¢
MAXWELL HOUSE COFFEE 2-Lb. Can 89¢
LIFEBOAT COFFEE 2-Lb. Can 89¢
PINEAPPLES 15¢
DORITOS 15¢
MARGARINE 15¢
CREAM CHEESE 15¢

SUPER SAVE
629-1191 400 S. SEAMAN
G.A. WHITE Manager
We Give Gold Bond Stamps Double Stamps Every Wednesday With \$2.50 Purchase or more Excluding Cigarettes