

# EASTLAND TELEGRAM

EASTLAND, TEXAS 76448: Today's CENTER for tomorrow's FUTURE!

Volume 104 Number 26 Thursday, March 30, 1972

## School Board Election Saturday -Vote

Voters will pick three of six men Saturday to fill three positions on the Board of Trustees of the Eastland Independent School District.

Polls will open at 8 a.m. at the Courthouse with Mrs. Marcus O'Dell serving as election judge. Voting will end at 7 p.m. Only seven absentee ballots had been cast by deadline

time Tuesday at the County Clerk's Office.

Donald Kinnaird Jr. is unopposed for re-election to Place Five.

Eugene Frost, Pat Moseley and F.L. Spurlen are candidates for Place Six, to fill the unexpired term of the late Board Chairman J.T. Gregory. R. Pat Miller and John

Morren are candidates for Place Four. Bill B. Hart is not seeking re-election.

An interesting development in the election is the contest in Place Four. Miller and Morren filed, and shortly thereafter Morren announced that he was withdrawing from the election. School officials report that they were never officially notified of

his withdrawal, and his name was printed on the ballots. His name appeared on the absentee ballots, already voted, and will appear on Saturday's ballot.

Mr. Kinnaird is in the insurance business and is seeking his second term.

Mr. Frost is administrator of Eastland Manor Nursing Home.

Mr. Spurlen is owner-operator of Eastland Machine and Welding.

Mr. Miller is owner-operator of Earl Bender Abstract Co.

Mr. Morren is Eastland Police Chief.

Mr. Moseley was a member of the former Olden School Board for five years and served as Vice President and Secretary-Treasurer. He is currently President of the Olden Water Supply Corporation and member of Eastland County Livestock Raisers Association, Farm Bureau and Eastland Quarterback Club. He is engaged in ranching and bridge construction and has resided near Olden all his life.



**READY FOR PAGEANT** - Mark Kuhn of Eastland portrays Christ here in the Kendrick Easter Pageant which will be seen beginning at 3:30 a.m. Sunday at the Kendrick Amphitheater. In a successful dress rehearsal Tuesday evening, the cast is ready for the annual presentation. A musical will precede the pageant at 1 a.m. and a five-ring circus will be held on the grounds Sunday with performances beginning at 2 and 4:15 p.m. Advance circus tickets are on sale now.

### Eastland Churches To Observe

#### Good Friday Services

Good Friday holds a great significance to almost everyone and is therefore the time for a World Day of Prayer.

Churches of Eastland will have a joint service for this occasion Friday morning beginning at 9:30 in the First United Methodist Church.

Everyone is urged to attend. Ministers, participating in the service are: Rev. Cecil Ellis of the First United Methodist, Rev. Ronald Bear, Church of God, Rev. R. W.

Marsh, Presbyterian Church, Father Scantlin, Catholic and Rev. Eugene Williams, First Christian Church.

Organist will be Durie Reid and Anna Edwards will be soloist.

Ladies of Eastland help with this program are Mmes. O. B. Boyle, Ozona Durelle, Tom Wilson, Carl Garrett, Joe Stephens and L. M. Blalock.

Let's all take this opportunity to get involved with God and our fellowman.



Amy Jo Simms

### Little Miss Eastland 1972

## Tid Bits

By HVO



WHO SAYS space exploration isn't affecting mankind (and Puppet-kind) today? Case in point: FREE KID SHOW at the Majestic Theater Saturday, opening at 9:30 a.m., is billed "Pinocchio in Outer Space". Sponsors are B&B Sales, KERC and Richard Rossander Insurance. Don Baird over at B&B will also give a fantastic prize to the holder of a lucky ticket. It's a necklace radio - which has a space-age sound at that. Free tickets for admission and the gifts are available at the participating sponsors.

CITY'S NEW dog pound is now in operation and Chief Morren reports that pickup of strays developing. He advises that citizens may pen or tie strays and call the police for pickup... Abandoned cars might be another good project to start on too.

ABSENTEE BALLOTING for the May 6 primary begins April 17 at the county clerk's office, and Chief Deputy JoAnn Johnson reports she already has 17 applications from servicemen for ballots.

### STORK NEWS

Rev. and Mrs. Ronald Bear are happy to announce the birth of their daughter Rhonda Jayne born Wednesday, March 29 at 3:20 a.m. in Eastland Memorial Hospital.

Rhonda weighed 6 lbs. and 3 1/2 ozs. She has one brother, Ronnie.

### Coming Events

There will be a bean dinner Wednesday, April 5, from 11:00 to 1:00 p.m. in Fellowship Hall of the First United Methodist Church.

There will be a charge of \$1.50 per person. Everyone is cordially invited to attend.

### City Absentee Ends Friday

Absentee balloting for the Tuesday, April 4 City Election ends at 5 p.m. Friday, City Manager Lewis Tiner has announced. Only three persons had voted absentee through Wednesday.

Eight persons are candidates for two positions to be filled. Candidates are Incumbent Durel Reid, Greg Sedillo, Mrs. Don (Wanda) Baird, Ray Pryor, Bill Hoffmann, J.C. Butler, Jay Staggs and Mike Collins.

### To Perform

EAST TEXAS STATE COLLEGE CHORALE TO PRESENT CONCERT WEDNESDAY, APRIL 5, AT THE FIRST UNITED METHODIST CHURCH AT 8 P.M. (EVERYONE INVITED).



DONALD KINNAIRD JR. ...unopposed



R. PAT MILLER ...for Place 4



JOHN MORREN ...for Place 4



EUGENE FROST ...for Place 6



F.L. SPURLEN ...for Place 6



PAT MOSELEY ...for Place 6

## Eastland Places Second In District One-Act Plays



The EHS One Act Play, **The Playgoers** performed at 4:00 p.m. March 28, 1972, in Ballinger for 8AA District UIL One - Act Play Competition. Eastland presented a fine performance and copped second place along with three berths on the All - Star Cast of ten. Those named to that All - Star Cast were Allan Jolly, John Frost, and Cindy Harbin.

First place went to Clyde for their performance of **Rosencrantz and Guildenstern Are Dead**.

Second place: Eastland's **The Playgoers**.

Third Place: Coleman's **Where the Whirlwind Blows**.

Seated Left to Right: Clint Hill, Allan Jolly, John Frost, Susie Miller.

Seated: Shirley Ford, Kathy Jones, Cindy Harbin, Nancy Seaberry.

Seven one - act plays were presented in the Ballinger High School auditorium Tuesday, March 28, when Ballinger hosted the District 8 - AA UIL One - Act Play Contest.

Four schools presented plays during the afternoon session, beginning at 2:00 p.m. in order

of appearance, they were Comanche, with Mrs. Maxine Martin directing "Two Crooks and a Lady"; Clyde, with Miss Sandra Rosengrants directing "Rosencrantz and Guildenstern Are Dead"; Winters, with Miss Nancy Grundy directing "She Stoops to Conquer"; and Eastland, with Mrs. Nancy Mahan directing "The Playgoers".

Schools giving plays during the night session began at 6:30 p.m., were Ballinger with Mrs. Eleanor Burgess directing

"Cain"; Cisco, with Mrs. Eugena Cotton directing "The Woodshed"; and Coleman with Ricky White directing "When the Whirlwind Blows".

Both sessions were open to the public, with admission price of twenty five and fifty cents.

Doug Cox, principal of Ballinger High School is the District One - Act Play Contest Director. Critic Judge was Bill Cook, Director of the Baylor University Department of Theatre.

### FREYSCHLAG Insurance Presents The Weather

FAIR AND WARM: The beginning of a beautiful holiday

#### To Hold Party

The Rebekah Lodge No. 177 will sponsor a 42 party with games and refreshments April 3rd, Monday at 7:30 p.m. at the Rebekah Hall on 300 N. Lamar St. Tickets are 50 cents each and may be purchased from a Rebekah member and at Basham Beauty Bar.

## Jan Herring Workshop In Eastland April 10-21



JAN HERRING

story inside

### CITY OF EASTLAND

Office of the Mayor

#### PROCLAMATION

WHEREAS Friday, March 31, 1972 will be known the world over as Good Friday; and

WHEREAS the Church Women United of Eastland, Texas, are calling for a world day of prayer on this said Good Friday; and

WHEREAS each of us realize that if we are to ever know peace in our time it will be through the will of God, the Creator of all things; and

NOW THEREFORE, I, James Reid, Mayor of the City of Eastland, in the State of Texas, do hereby call on all the citizens of this Town to join with the Church Women United at the First United Methodist Church, Eastland, Texas, between the hours of 9:30 and 10:30 A.M. in observance of this day.

James Reid, Mayor

## Rep. Joe Hanna Joins In Speaker Price Win

AUSTIN, WEDNESDAY -- State Rep. Joe Hanna, a consultant and early backer of Rayford Price for Speaker of the House, was chosen to accompany the newly elected speaker to the podium after his hard-fought battle Tuesday.

Hanna has backed Price since he came out for reform last year and helped lead the fight to elect Price over Muscher - backed candidate Dewitt Hale. Both Gus Muscher and Tommy Shannon, who were found guilty of bribery in Abilene, voted for Hale. Bill Heatley also was a Hale backer.

"Under Gus Muscher, entirely too much power was placed in the hands of the speaker alone," Hanna said. "And Price has promised committee reforms which will give us a closer look of government spending."

Backers of other speaker candidates banded with

Muscher backers to give Price only an 11 - vote victory over Hale.

However, harmony seemed to prevail after the close vote was over, with all members promising to work together for the best interest of the state.

Voting Tuesday morning was concerned with deciding if the voting in the speaker race was to be taken in secret or open balloting. Hanna voted for open balloting, stating, "There have been too many secrets in the past. I'm for letting the people know how we stand on every vote taken."

Although at least three legislators had bills ready on the trailer law, Gov. Smith told a joint session of the legislature Wednesday morning that issues would be held to financing the primaries and the highway beautification act, adding they could also act on newly-enacted 27th Amendment for Women's Rights if they choose.



**TEXAS ELECTRIC SERVICE COMPANY**

**OUR BUSINESS OFFICE WILL BE CLOSED MARCH 31**

**in observance of GOOD FRIDAY**



Just a few of the hospital staff including Mrs. Donnie Webb, Cletis Williamson, Martha Brashare, Mrs. Smith, Mrs. Helga Tiner, and Sue Cantwell along with several of the students who toured the Hospital Wednesday afternoon.

Texas Hospital Association Careers Program had its pilot program Firing Line in Eastland County in September.

Eighty three High School students responded to the program.

A hospital tour for 31 of the students was held Wednesday. Students were shown all aspects of the hospital field during the tour. Refreshments were served to all students after the tour was completed.

**SEE WHY YOUR SPINE PLAYS SUCH AN IMPORTANT PART IN GOOD HEALTH MAINTENANCE**

**Find Out NOW If Yours is a Case for Chiropractic!**

The Diseases Mentioned Below Are Only a Few Which Are Caused by Vertebrae "Pinching" Nerves. Study this "Health Chart" of Chiropractic, and you will understand why more and more people are turning to Chiropractic care.



1. Slight "pinching" of nerves at this point will cause so-called headaches, eye diseases, dizziness, epilepsy, vertigo, insomnia, wry or stiff neck, facial paralysis, distaste, etc.
2. A slight nerve difficulty in this part of the spine is the cause of so-called throat trouble, neuritis, pain in the shoulders and arms, gastric, nervous prostration, in grippe, nose bleed, disorder of gums, catarrh, etc.
3. The arrow head marked No. 3 locates the part of the spine wherein "pinched" nerves will cause so-called bronchitis, flu, pain between the shoulder blades, rheumatism of the arms and shoulders, hay fever, etc.
4. A blocked nerve at this point causes so-called nervousness, heart disease, asthma, pneumonia, tuberculosis, difficult breathing, other lung troubles etc.
5. Stomach and liver trouble, enlargement of the spleen, pleurisy and a sore of other troubles, so-called are caused by troubles in this part of the spine, sometimes so light as to remain undetected by others except the trained Chiropractor.
6. Here we find the cause of so-called gall stones, dyspepsia of upper bowels, Texas, shingles, hiccough, etc.
7. Right's disease, diabetes, floating kidney, skin disease, boils, eruptions and other diseases, so-called, are caused by nerves being pinched in the spinal openings at this point.
8. Regulations of such troubles as so-called appendicitis, peritonitis, lumbago, etc., follow Chiropractic adjustments at this point.
9. Why have so-called constipation, rectal troubles, sciatica, etc., when Chiropractic adjustments at this part of the spine will remove the cause?
10. A slight slippage of one or both innominate bones, located here, will likewise produce so-called sciatica together with many "diseases" of pelvis and lower extremities.

**SICK?**  
THIS CHART CLEARLY SHOWS WHY YOU MAY BE SUFFERING!

Regardless of what your ailment is called . . . no matter how long you have suffered . . . Chiropractic care may be the exact answer to your specific health problem. Chiropractic succeeds many times after all other methods have failed.

**DON'T WAIT!** Time is a friend of disease. **HEALTH** is a NATURAL condition!

MELVIN H. HENEXSON, D. C.  
103 S. Mulberry Tel. 817-629-1731  
Eastland, Texas 76448

**BUY LIGHT BULBS FROM A LION**

Eastland Lions Club Annual Light Bulb Sale April 11

**School Lunch Menu**

THURSDAY - Hamburgers, stuffed eggs, pork and beans, jello with fruit.

FRIDAY - Good Friday, student school holiday.

**Little Bit Of News**

Visitors in the home of Mr. and Mrs. Dave Putnam Sunday were Mrs. Ida Lou Putnam and Mrs. Nancie Stemmett and daughters of Weatherford, and Melton Ables of Carbon.

Consolidated with Eastland Chronicle, established in 1887, and Eastland County Record, established in 1931

W. Commerce St. Eastland, Texas 76448

H.V. O'BRIEN, Publisher and Editor  
HERMAN ALSUP, Associate Editor

Second Class Postage paid at Eastland Texas under Act of Congress on March 1870.

Published semi-weekly - Thursdays and Sundays by Eastland County Newspapers, Inc.

SUBSCRIPTION RATES: By carrier in city, 15 c a week or 65 c a month; one year by mail in county, \$5; city P.O. Boxes, \$6; one year elsewhere in state, \$7; out of state, \$8.

NOTICE: Any erroneous reflection upon the character, standing, or reputation of any person, firm or corporation which may appear in the columns of this newspaper will be gladly corrected upon being brought to the attention of the editor.

**MAVERICK**

1968 Ford Pickup Auto-Long Wide Box  
1965 Chevy Pickup 6 cyl. Std Local owner.  
1970 Ford Custom Auto-Air & Power  
1970 Ranchero 500 V-8 Auto Air & Power, Extra Clean (car & pickup) combined

MAVERICK 2-DOOR

**Hood King Motor Co.**  
100 E. Main 629-1786

**Baskets OF Easter Savings**

**SUPER SAVE MARKETS**

Hawaiian Punch Fruit Drinks Assorted Flavors 3 46 oz. cans \$1.00

Our Darling Corn Cream Style or Golden 5 303 cans \$1.00

W.P. Detergent giant size box 49¢

Kraft's Philadelphia Cream Cheese 8 oz. 35¢

Borden's Eagle Brand Milk 14 oz. can 39¢

White Swan Buttermilk 1/2 gal. ctn. 49¢

Borden's Mellorine Assort'd Flavors 2 1/2 gal. ctn. 89¢

White Swan CATSUP 20 oz. bottle 3/\$1.00

White Swan Peaches Halves 3 No. 2 1/2 cans \$1.00

**GOODYEAR SERVICE STORES**

"Power Cushion 78" tires **ON SALE**

- Goodyear's deepest tread bias ply "78" tire
- Triple-tempered 4-ply polyester cord body for durability
- Smooth no flat-spot ride
- Tough Tulsyn rubber
- Low profile contour shoulder for good steering control

Save up to \$12 per tire... Pick your size... see what you save!

SIZE	Replaces	Regular Trade-in Price	Regular Trade-in Price \$2.00	Plus Tax \$2.00	SALE PRICE ON BLACKWALLS
<b>MINI CARS AND IMPORTED CAR OWNERS SAVE UP TO 7 PER TIRE</b>					
6-00-13	-	\$25.95	\$29.95	\$1.61	<b>\$19.95</b>
7-00-13	-	\$29.95	\$33.95	\$1.95	<b>\$19.95</b>
B78-14	6.45-14	\$26.95	\$30.95	\$2.00	<b>\$19.95</b>
5-60-15	-	\$26.95	\$30.95	\$1.73	<b>\$19.95</b>
<b>MEDIUM OR REGULAR SIZE CAR OWNERS SAVE UP TO 11 PER TIRE</b>					
E78-14	7.35-14	\$30.95	\$34.95	\$2.24	<b>\$25.95</b>
F78-14	7.75-14	\$32.95	\$36.95	\$2.39	<b>\$25.95</b>
G78-14	8.25-14	\$35.95	\$39.95	\$2.56	<b>\$25.95</b>
F78-15	7.75-15	\$33.95	\$37.95	\$2.43	<b>\$25.95</b>
G78-15	8.25-15	\$36.95	\$40.95	\$2.63	<b>\$25.95</b>
<b>BIG CAR OWNERS SAVE UP TO 12 PER TIRE</b>					
H78-14	8.55-14	\$38.95	\$42.95	\$2.75	<b>\$34.95</b>
H78-15	8.55-15	\$39.95	\$43.95	\$2.81	<b>\$34.95</b>
J78-15	8.85-15	\$42.95	\$46.95	\$3.01	<b>\$34.95</b>
L78-15	9.15-15	\$46.95	\$50.95	\$3.16	<b>\$34.95</b>

Use Our Rain Check Program: Because of expected heavy demand for Goodyear tires, we may run out of some sizes during this offer, but we will be happy to order your size tire at the advertised price and issue you a rain check for future delivery of the merchandise.

THE ONLY MAKER OF POLYGLAS® TIRES

**Fresh MEAT**

PICNICS 6 to 8 lb. avg. **45¢ lb.**

Decker's Tall Korn Sliced Bacon ..... **69¢**

Decker's WEINERS 12 oz. **55¢**

Ground Chuck lb. **79¢**

Chuck Roast .. lb. **89¢**

FULL DRESS DOG FOOD 300 Can **8¢**

**Fresh Produce**

SUNSHINE NAVEL ORANGES Pound **19¢**

U.S. NO. 1 TRUSS POTATOES 10 lb. Bag **79¢**

U.S. NO. 1 PASCAL CELERY Bunch **25¢**

GARDEN FRESH RADISHES or GREEN ONIONS Bunch **10¢**

**GOODYEAR SERVICE STORE**  
315 East Main Street Eastland Phone 629-2662  
Frank Murphy, Manager

**SUPER SAVE**  
Ph. 629-1191 400 S. Seaman G.A. WHITE-Manager

We Give Gold Bond Stamps Double Stamps Every Wednesday With \$2.50 Purchase or more excluding Cigarettes



**SUTTON'S**  
A-1 Office  
Machines  
Call 629-1707  
Eastland

Thursday,  
March 30, 1972  
Page 3

FOR RENT:  
this  
MINI-BILLBOARD  
for  
ONLY \$3.50 a month  
Call your local paper!

# Importance of College on Area Economy Cited Here

Colleges are economic assets and Eastland County is fortunate to have not one, but two. Dr. Jack Elsom, president of Ranger Junior College told members and guests of the Eastland Lions Club Tuesday. Speaking at the luncheon meeting at Sledge's Restaurant, he explained that the relatively light tax cost results in a good return of money to the entire area. With a current annual budget of \$673,484, a major part stays in the community and area, he said. About half is paid out by

the college in salaries. The college gets about half of its funds from the state (so much per student) equalling about \$321,875, and recorded another \$36,959 in federal grants this year. Local taxes equal about eight per cent of the total, amounting to about \$60,500 a year. Three percent of this tax fund goes toward bond retirement and five goes to operations. Tuition and fees bring in about \$93,000 and room and board nets some \$130,000. The college has had \$31,000 in gifts and grants this year which is above average with the special Moody Foundation Grant. Average is usually below \$4,000 a year, Dr. Elsom said. And if you conservatively guess that each of the 400 students spends even \$1 a day in town, you can see that amounts to quite a bit of college money in circulation, he said. In explaining what RJC is doing now, he said that major project is the new library building which will have many modern innovations. He said that the school is developing new curricula techniques, particularly in English and

Biology where modern audio visual aides are being used to give students personalized training. He told of the college's new Peanut Production project which will go into effect this fall, which is an example of the school's efforts to meet the needs of the community and - or area in which it operates. Utilizing a planning board including Ross Wilson and Wayne Eaves, the project will offer specialized training in the important agricultural business of this area. Other such projects are in the planning stages, and Dr. Elsom called on his listeners to join in the partnership because that's the key, he said, the college and the community working together.

directors will meet at 6:30 a.m. Tuesday, April 4 at the Catlemen's Restaurant.

Tommy Warford was program chairman and introduced Dr. Elsom.

Guests introduced included Winston Heidenheimer, Hiram McCanties and Fred Scott, all of Cisco; Bruce Goloman of Ranger; and Richard Rossander and Paul Campbell.

**BULB SALE SET**  
Light Bulb Chairman Monroe Rollins announced sale date as April 11 and team captains as follows: J.B. Arther, Darwin Miller, Dr. Ferhman Lund, Bill Walters, Marcus O'Dell and Obie Duncan.

(ED. NOTE: From the current issue of Munsingwear BREIFPS)



Ada always has an ample supply of news to report from Eastland.

Eastland, Texas, can always be relied upon to supply a good share of the news from the bra and girdle plants. Ada V. Morren is the reporter at that location and has been an active employee there for 21 years. She began working as a cup whirler and worked on various whirling jobs until the operation was moved out of the plant. She now sets straps on six styles of bras. Ada has two children, both married, who have made her a grandmother five times.

**WANTED**  
Bookkeeper for part time employment needed immediately at Higginbotham  
Bartlett Lumber Company.  
Retired person preferred.  
Phone 629-1311  
Night Phone 629-1533 301 W. Main

## WHY WOULD A STATE SENATOR BE OPPOSED TO AN ETHICS BILL?

State Senator Tom Creighton doesn't want an ethics bill. He voted against it when it came up in the Senate, and he seems to take pride in publicly declaring that "you can't legislate morality."

Why would a State Senator who has held the faith and trust of the thousands of people in his district be so strongly opposed to a bill that would require legislators to be honest, and punish them when they're not?

Is it because that such an ethics bill would expose the Senator's own callous disregard for the rules of ethical conduct? Is it because he might have to disclose the sources of the generous retainers which he enjoys? Is it because it might be embarrassing to some large utilities firms like Texas Power & Light Company and the Bell Telephone Company? Is it because he might have to explain the airplane he uses to campaign from airport to airport, and how he pays for all that expensive fuel?

Senator Creighton is right. You can't legislate morality, any more than you can prevent a homicide or an armed robbery, by written statute. But what would happen if we didn't have laws against murder, robbery, etc.? A workable, meaningful ethics bill would set the standards of conduct to be followed by a representative of the people: would eliminate conflicts of interest, which are the major source of corruption in government, and would swiftly and severely punish any legislator who violates these standards. Tom Holmes is for just such a bill.



**TOM HOLMES**  
The Other Tom In The Race for  
**STATE SENATOR**  
22nd District  
Democratic Primary — May 6

Pub. Ad. Pd. by Committee for Tom Holmes. Judge Milton Meyer, Chairman

**BUSINESS**  
President De Gordon presided and announced: A nominating committee comprised of Tip Arther, Jeff Glazner and Ed Ethridge to present a slate of officers for a May election. Announced that a 50th Anniversary Celebration Club photo will be made on April 11. Announced that the board of

**FREE WASH**  
With 14 gallon fill-up  
of our Gulf Gasoline  
**ROBO  
AUTOMATIC  
CAR WASH**  
Stay in your car (2 minutes)  
Tire Cleaner  
Undernear Spray  
Uses warm, soft water.  
Fast and Fun  
Avenue D & 9th Street... Cisco

## Does your hot shower end in the middle of your hot shower?



And, as if that isn't bad enough, you've got three kids and a very irate wife prepared to tar and feather you for using up their hot water.  
Maybe it's time to move up to a larger gas water heater. Gas water heaters are easy to buy. Easy to install. And they recover hot water up to twice as fast as electric water heaters.  
Make the decision. You'll stop getting into hot water with your family, and start getting into hot water with your shower.



# Admiral

ALL-NEW FULL-LENGTH  
CARTOON  
FEATURE IN  
COLOR!  
**PINOCCHIO  
IN OUTER  
SPACE**  
SONGS!  
"The Little Toy Shop"  
"Doin' The Impossible"  
"Goody Good Morning"  
A SWALLOW LTD-BELVISION PRODUCTION - A UNIVERSAL RELEASE

THE DAYTON/Model 8T950 Handsome black finish on hi-impact polystyrene cabinet. The Dayton offers the great features of exclusive Admiral Solarcolor and Instant Play. Also included is "Super Scope" VHF/UHF Tuners for unmatched signal pull-in power even in weak signal areas. Slide lever controls for color and tint. Measures 17 3/4" high, 24 1/2" wide, 19 1/2" deep. Convenient roll-about decorator stand optional.

18" Solar Color  
**\$289<sup>00</sup>**

## KID-SHOW SPECIALS

Good Thursday, Friday & Saturday

**FREE TICKETS**  
at B & B Sales  
For  
**BIG FREE  
KID-SHOW**  
Saturday  
Doors open 9:30 a.m.  
MAJESTIC THEATRE  
EASTLAND, TEXAS  
**Fun - Fun  
FREE  
GIFTS!**

Model 311388  
**SPANISH TV**  
23" Super Brite  
AFC/CM Reg. \$599<sup>95</sup>  
Color TV

All sets carry Admiral's exclusive  
**Master Card Maintenance**

**FREE**  
To Be  
Given  
At

**RADIO  
MEDALLION**  
*The Radios That Care!*  
The newest way to say it with style! Our round radios have themes suitable for most any occasion — or just for fun! Featherly light molded case with metal chain and desk stand. Solid-state AM circuitry, hidden controls. 3 1/2" diameter. Battery included.  
**\$10<sup>95</sup>**  
Retail Value  
See 'em at B & B  
& Get your Free Tickets  
to the Show  
& Be Eligible To Win !!!!!

**Admiral**

**TRUCK-LOAD  
SALE**

Early American TV  
Model 3L1385  
23" Super Brite, Double Speaker  
AFC/CM Color TV  
**SAVE \$120** 2 only  
Reg. \$619<sup>95</sup>  
**\$499<sup>95</sup>** with trade

**SAVE \$89** **\$510<sup>95</sup>** with trade

18" Solar Color  
AFC/CM  
Stand included  
**\$339<sup>95</sup>**

**B&B Sales & Service**  
115 W. Main We Service All Makes & Models 629-1334

MASTER CHARGE & FINANCING AVAILABLE



## Facts about farmers

(ED. NOTE: Reprinted from February issue of ADVERTISING & SALES PROMOTION.)

There are 2.9 million farmers in the U.S., but 2,000 go out of business weekly. In the past 10 years, the average farm has grown from 288 acres to 377 acres, but the number of farms has decreased significantly. Iowa farmers have a net income of about \$8,000 while their midwest neighbors average only \$6,500 annual net.

Two out of three American farmers receive over half their annual income from off-farm sources. Most operators of small farms rely almost entirely on off-farm earnings for their livelihood. Even those who operate very large farms receive a significant proportion of their total incomes from off-farm sources.

Off-farm income of farmers doubled over the decade, rising from \$8.5 billion in 1960 to \$17 billion in 1970, when it exceeded total net farm income for the first time. Income from farming increased only 44% during the same period, from \$11.7 billion to \$15.9 billion.

Farm women, like their urban counterparts, have become more active in the labor force. About 38% of all farm women were either working or seeking outside work in 1970. By contrast, the proportion of farm men in the labor force dropped from 85% to 80% between 1960 and 1970. The

decline in male participation, in part, reflects the rising proportion of farm men reaching retirement age during the period.

Forty percent of America's farmers have annual farm product sales of less than \$2,500 and account for less than 3% of total farm cash receipts. Operators of these farms receive nearly 90% of their income from off-farm sources.

Three firms, Purex, United Brands and Bud Antle, produce so much of the lettuce sold in America that their hold on that market has sparked a rare agricultural antitrust investigation by the FTC. Secretary of Agriculture, Earl Butz, was nearly rejected by the Senate after testifying in favor of corporate farming and revealed that he was a director of such firms as Ralston Purina and Stokely-Van Camp.

Approximately 1.1 million farmers have annual farm product sales over \$10,000. They account for 90% of all cash receipts from farming. But even the very largest, about 20% of that 1.1 million farmers, averaging \$125,000 in annual product sales, receive 20% of their \$31.4 billion annual incomes from off-farm sources—usually from interest or sales of stocks and bonds rather than wages and salaries.

## Hospital Report

Patients in Eastland Memorial Hospital Wednesday were:

Iona Sikes  
Rabb Steddum  
Charlie Mansker  
Bessie Blue, Carbon  
Mary Jackson, Cisco  
Ruby McLearn, DeLeon  
Barbara Brinkley  
Edward James, Ranger  
William Ramsey  
Jim Elmore, Strawn  
Darrel Raney  
David Livingstone  
Dorothy Sumpter,  
Breckenridge  
Lennie Sage, Cisco  
Laura Noble  
Gracie Killion, Breckenridge  
Dewey Tucker  
Wilburn Whitlock, Using  
Star

Dr. R.C. Ferguson.  
Mabel Reynolds, Gorman  
Oleta Caskey, Ranger  
Deborah Walker, Cisco  
Jewell Caldwell  
Rebecca Bennie, Cisco  
Ruth Haney  
Shelia Hollander, Cisco  
Doyle Welch, Gorman  
Coy Nichols, Ranger  
Bessie McCollum  
Jess Siebert  
David Hargrove, Cross  
Plains  
James Lewis  
Charlie Harp  
Gilbert Moody  
Elvina Bourland  
Tania Sanders  
Anita Hendrick  
Margie Valdez, Gordon

Patients in Ranger General Hospital Wednesday morning were:

John Hickman  
Ernie Pollard  
Travis Reese  
Albin Fleming  
Bill Squyres  
Mrs. Onis Littlefield  
Laura Shugart  
Horace White  
Raymond Reson  
John Whisenant  
Mary Dooley  
Sudie Strong  
Opal Patton  
Imogene Harbin  
D.C. Singleton  
Laura Todd  
Susie Vinson  
Bertha Pittman  
Baby Boy Casas

### FHA-VA-235 LOANS DECLARE YOUR INDEPENDENCE FROM RENT YOU CAN NOW OWN YOUR OWN HOME FOR AS LITTLE AS \$79<sup>00</sup> MONTHLY

(Based on Number in Family and Income)

- 3 or 4 Bedrooms
- Dishwasher
- 1 or 2 - Car Garage
- Disposer
- Central Air
- Range
- Carpet
- Concrete Patio

\$300 DOWN

\$15,000 to \$18,000

H & W Development Co.

1201 W. Commerce

Eastland, Texas 76448

Call Collect 629-1305

## Sabine Terrace Apartments

Now Leasing

New  
1 - 2 - 3  
Bedrooms  
are ready for  
immediate  
occupancy

Open  
9 a.m. - 6 p.m.  
Monday - Friday  
Closed 12:30 - 1:30  
during lunch hour

600 W. Sadosa Eastland

Mrs. Dorothy Livingstone  
Manager

629-2518

WANTED:  
Your vote  
EDDIE PIETRASZEK  
for  
Eastland County Tax  
Assessor - Collector.

HARD OF HEARING?  
Hearing Tested Free  
Hearing Aid Sales,  
Repair and Batteries  
BELTONE  
HEARING AIDS  
Dick Stansbury  
442-1049  
404 W. 8th Cisco, Tex

"On  
this graveyard  
we shall build  
our golden  
Bangladesh."

Millions of Bengali  
children have a dream.  
But a dream needs  
medicine, good water and a

roof over it. A dream needs  
food, blankets, and money.

\$1 sent to the United  
Nations Children's Fund brings  
high-protein foods to three  
infants for three months. \$2  
buys a blanket. A dream needs  
money if it's going to be more  
than a dream.

Send your tax-deductible  
contribution to:

UNICEF Bangladesh Relief  
331 East 38th Street  
New York, N.Y. 10016

FOR RENT:  
this  
MINI-BILLBOARD  
for  
ONLY \$3.50 a month  
Call your local paper!

The Man for the Office  
of 91st District Judge  
is  
Truman P. KIRK



"Because Someone Lived"  
RAWLINS  
MONUMENTS

Since 1884 THE NAME to look for in  
distinctive memorials

Roy Taylor 500 East 8th St. Cisco

Please Call Collect  
CALL 442-1127

RANGER DRIVE-IN  
THEATRE

Show Starts at Dusk

FRI. - SAT. - SUN.  
MARCH 31 APRIL 1-2

A famous millionaire songwriter  
who can't find love because some guy  
named Kellerman keeps calling every chick  
he knows telling them Georgie's crazy,  
married, violent and has several  
social diseases!

Dustin Hoffman

wants to know

"Who is  
Harry Kellerman  
and why  
is he saying  
those terrible  
things about  
me?"



"ONE OF THE  
BEST TIMES  
I'VE HAD AT  
THE MOVIES  
THIS YEAR!"  
—Gene Siskel,  
Look Magazine

Barbara Harris Jack Warden David Burns Dom DeLuise  
A NATIONAL GENERAL PICTURES RELEASE

Coming "J.W. COOP"  
BEST ROBO FILM

## Meat SPECIALS

E-Z Paks

GROUND BEEF  
In 1 & 2 pound paks lb. 65¢

SAUSAGE  
In 1 & 2 pound pak lb. 55¢

FREE First 12 customers get  
FREE E-Z Carrying Paks.

Cisco Processing Center

James Stanford  
Manager

109 West 9th Cisco

442-1377

Let's Elect  
BILL B. HART



★ Seeking first elective office in Eastland County.  
(Served on City Commission and School Board).

★ Active practicing attorney.

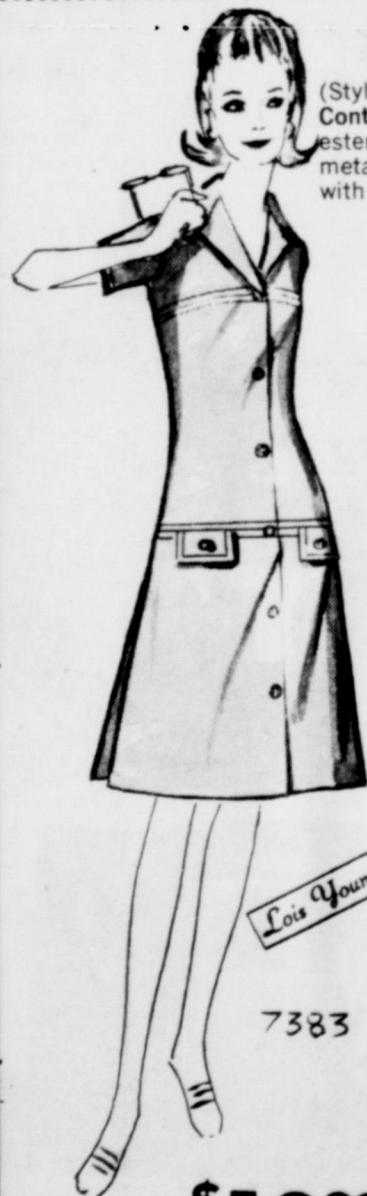
★ Veteran World War II

★ Father three children in high school  
and a son in college.

DISTRICT JUDGE  
91st District Court

(Pol. Ad paid by friends of Bill B. Hart)

## HEIDENHEIMER'S Easter SPECIALS



(Style 7383)  
Contemporary Classic... styling in 65% poly-  
ester and 35% cotton. Distinctive looking with  
metallic button front opening. Mock pockets  
with button trim. Stitching adds elegance.

Lois Young

7383

\$19<sup>99</sup>



Lois Young

8100

\$16<sup>99</sup>

(Style 8100)  
Scene Setter... in gorgeous, 100% polyester  
that's feminine and fashionable. Stitch trim on  
short sleeves, around small pockets and at  
neckline. Button-trim at shoulder adds just the  
right touch for eye-catching beauty.

HEIDENHEIMER'S



# Road Runner

By BARNES PERDUE

OLD MOTHER EARTH IS WOBBLING

There has been much cussing and discussing the expense of our outer space exploration. One man said he didn't know why so many people complained about the expense of the program. "Where else," he asked, "can we spend our tax dollars and see them go so far?" An old Texan who had been a farmer for many years looked at TV pictures of the moon's surface and said, "If that soil won't grow prickly-pears, cockleburrs and johnson grass, it ain't any good for nothin'."

It would be interesting to see a list of accomplishments in technology since outer space exploration began. One small item is the less than dime size battery that runs my watch for almost two years before it is replaced. Remember, too, our astronauts explored the moon. Along with their other exploration work they set up a small reflector on the moon that is proving valuable for scientific facts.

Experts here on earth can zero in on the moon reflector with a laser beam and measure the distance from earth to the moon within one foot. The men who know how to take the laser beam measurement were also surprised to discover old mother earth is wobbling on her axis. All of this is too complicated for me to understand. I don't know if the wobble is because of flat-sided axis shafts or worn axis bearings. If the axis bearings are anchored in the ice caps at the North and South poles, that could be the problem.

Even though everyone knows ice can get as hard as a rock, it seems the bearings for earth to rotate on should be of more stable, longer-lasting material. And what's going to happen if the ice caps at the North and South Poles ever melts? If the ice melts, old mother earth could become a real swinger.

With a little more thought given to the wobble of earth, I wouldn't be surprised if our space exploration doesn't reveal that because of all the hate, strife, violence and lawlessness among earth's people, old mother earth begins to stagger a little bit.

Our moon and space exploration proves another very important fact. Earth people can't live out there briefly or permanently without a staggering amount of expensive equipment to keep them breathing and alive. Maybe we had better learn to live together and to take care of this old planet that is our natural home.

It is true that way out there or way up there is supposed to be a place known as Heaven. Unless many of us mend our ways our chance of going there is going to be as slim as it would be for us to get to the moon - not that I have any desire to get to the moon.

One of our new problems here on earth is what to do with atomic waste material. We are trying to do something about ecology problems. But dwell for a moment as to what we can do about atomic waste.

Last week a TV announcer said he had a plan to solve our atomic waste problem. His proposal is to fill space ships with atomic waste and to blast the ships out to the sun where it would burn up. Now that is where we had better draw the line. The sun must be powered with some kind of atomic energy. What God created and mere earth people created might not mix. I'm for leaving the sun alone. If we should piddle around and snuff out that necessary warmth for life, there will be no need to worry about earth wobbling. Old mother earth would then become iceed in and over. I don't believe any of us would be happy living under an ice cap.

## Wild's Canyon Tours To Begin This Weekend

Everyone has heard of "Wild's Canyon", most folk have had a fleeting glimpse of the locality from a car window, but few have explored the area due to inaccessibility. In interest of Eastland County tourism, it is now possible to enjoy this scenic beauty and that by mule drawn wagon. This is a hayride that will be decidedly "different" and will acquaint riders with the terrain, afford opportunity

to see animals and reptiles in their native habitat and will be an experience to remember.

Tours begin this weekend and will continue according to demand. Reservations may be made by calling 647-3566 in Ranger before 7 a.m. and after 7 p.m. on weekdays; any time during Saturdays and Sundays.

## T O P S Club Installs Officers

New officers were installed at the meeting of the Town and Country T.O.P.S. Club on Monday 27th at the City Hall. Betty Tucker is the new leader, Fran Clark, co-leader, Dalla Hagar, Treasurer; Oleta

Foster, Secretary and Oleta Huffman, reporter. Oleta Huffman was crowned Queen of the week. Our next meeting will be April 3rd. Anyone interested is welcome to come and visit.

**Fantasia's of DeLeon**  
 For the Joy of a Relaxing Vacation  
**SPECIALIZED SUN SERVICE**  
 For Women  
 Your Complete Problem Solving  
 • FACE REJUVENATION (Non-Surgical)  
 • Laser Treatment for Fine Lines  
 • ACNE • AGING SCARS • OILY • PROBLEM SKIN  
 • WHITE-BLACKHEADS • ODT • WENWIDEL  
 Free - Private Consultation  
 404 Havana (Opp. 6 & 14)  
 DeLeon, Texas



# Safeway Dollar Days

**Vienna Sausage**  
 Swift's Safeway Special!  
**5** 4-oz. Cans **\$1**

**Cragmont Cola**  
 and Assorted Flavors. Safeway Special!  
**8** Quart Bottles **\$1**

**Cranberry Sauce**  
 Ocean Spray Safeway Special!  
**4** 16-oz. Cans **\$1**

**Cake Mix**  
 Betty Crocker Layer Cake. Safeway Special!  
**3** Reg. Pkgs. **\$1**

**SAFETYWAY WILL BE CLOSED ALL DAY EASTER SUNDAY**  
 So that our employees may have the opportunity to observe Easter with their families. We hope that your family, too, enjoys a happy holiday.

**SHOP SAFETYWAY & SAVE!**

**SAFETYWAY**

**Corn Oil Margarine**  
 Sunnybank. Safeway Special!  
**3** 1-Lb. Ctns. **\$1**

**Mix or Match!**  
**TOWN HOUSE Vegetables**  
 ★ Cut Green Beans ★ Green Peas Fancy Blended  
 ★ Cream Style Golden Corn  
 ★ Whole Kernel Golden Corn  
 ★ Apple Sauce  
**5** 16-oz. Cans **\$1**

**Empress Preserves**  
 ★ Apricot-Pineapple ★ Peach ★ Red Cherry  
 ★ Peach-Pineapple  
**3** 10-oz. Jars **\$1**

**Zee Tissue**  
 Bathroom. Safeway Special!  
**3** 4-Roll Pkgs. **\$1**

**Dog Food**  
 Red Heart ★ Bacon or ★ Beef Flavor. Safeway Special!  
**8** 15 1/2-oz. Cans **\$1**

**Bounty Towels**  
 Paper. Safeway Special!  
**3** Rolls **\$1**

**Save with These Safeway Values!**

**Brown & Serve Cottage Cheese**  
 Rolls, Skylark  
 ★ Twin or ★ Cloverleaf Safeway Special!  
**13-oz. 29¢**

**Lucerne. Nutritious!**  
 132-oz. Ctn. 57¢  
 Safeway Special!  
**16-oz. 29¢**

### For a Fun-Filled Picnic!

- Pineapple** Sliced, La Loni —20-oz. Can **39¢**
- Marshmallows** Fluf-Puff, White —10-oz. Pkg. **21¢**
- Canned Yams** Tropic's —22-oz. Can **41¢**
- Aluminum Foil** Kitchen Craft, 12" Wide—25-Ft. Roll **25¢**
- Fruit Cocktail** Town House —17-oz. Can **26¢**



- Fresh Coffee** Safeway, Full Ground —1-Lb. Bag **69¢**
- Instant Breakfast** Lucerne —4-Sav. Pkg. **58¢**
- Tomato Soup** Town House —10 1/2-oz. Can **10¢**
- Mustard** French's —4-oz. Jar **14¢**
- Detergent** Parade —47-oz. Box **49¢**
- Liquid Bleach** White Magic —1 1/2-Gal. Plastic **27¢**

### Compare These Safeway Money-Saving Values!

- Mushrooms** B.B. Chopped. Safeway Special! **3** 3-oz. Cans **\$1**
- Potatoes** Butterfield, Shoestring. Safeway Big Buy! **10** 1 1/2-oz. Cans **\$1**
- Gelatins** Jell-well Desserts. Safeway Special! **12** 3-oz. Pkgs. **\$1**
- Shortening** Velkay, All Purpose Safeway Big Buy! **3-Lb. Can 59¢**
- Large 'A' Eggs** Breakfast Gems. Special! —Doz. **38¢**

### Everyday Low Prices!

- Chunk Tuna** Sea Trader, Light Meat **6 1/2-oz. Can 35¢**
- Salad Dressing** Piedmont, Creamy! **Quart Jar 37¢**
- Saltines** Melrose Soda Crackers **1-Lb. Box 23¢**
- Tomato Catsup** Highway, Rich Flavor! **14-oz. Bottle 19¢**

### SAVE! SPECIAL SAVE!

- Save on Your Favorite Size!**
- Cascade Dishwasher Detergent**
  - ★ **20-oz. Box . . . 39¢** You Save **6¢**
  - ★ **35-oz. Box . . . 68¢** You Save **7¢**
  - ★ **50-oz. Box . . . 97¢** You Save **12¢**

**USDA Inspected for Wholesomeness!**

**Hen Turkeys** **43¢** —Lb.  
 Young, 10-Lbs. and up, USDA Inspected Grade 'A'

**Butterball Fryer-Roaster** **59¢** —Lb.  
 Tender, Swift's Deep-Frozen, 10-Lbs. and up USDA Grade 'A'

**Fryer-Roaster** **59¢** —Lb.  
 Young Turkeys, Under 7-Lbs. USDA Grade 'A'

**You'll Like Safeway Variety and Quality!**

<b>Lean Ground Beef</b> Congress Lean Fat Content! —Lb. <b>87¢</b>	<b>Canned Ham</b> Safeway Brand 3-Lb. Can <b>\$2.99</b>
<b>Ground Beef</b> Safeway, Regular 2-Lb. Club <b>\$1.49</b>	<b>Eckrich Sausage</b> Smoked —Lb. <b>\$1.15</b>
<b>Boneless Roast</b> ★ Quick or ★ Shoulder, USDA Choice Grade Heavy Beef —Lb. <b>\$1.09</b>	<b>Sliced Bacon</b> Safeway, No. 1 Quality! 1-Lb. Pkg. <b>75¢</b>
<b>Rib Steaks</b> USDA Choice Grade Heavy Beef —Lb. <b>\$1.09</b>	<b>Pork Chops</b> Fresh, Family Pack —Lb. <b>68¢</b>
<b>Beef Wieners</b> Safeway, All Beef 1-Lb. Pkg. <b>89¢</b>	<b>Ham Roast</b> Center Cut —Lb. <b>99¢</b>
<b>Sliced Bologna</b> Safeway, Jumbo ★ Reg. or ★ Thick Pkg. <b>75¢</b>	<b>Boneless Ham</b> Mahan's Choice, ★ Half or ★ Whole —Lb. <b>\$1.49</b>
<b>Leg of Lamb</b> <b>\$1.15</b> —Lb. USDA Choice Grade Lamb	<b>Canadian Bacon</b> Marcell Stick, By The Piece —Lb. <b>\$1.38</b>
<b>Lamb Chops</b> ★ 8 or ★ 10-Bone, USDA Choice —Lb. <b>\$1.49</b>	<b>Lunch Meat</b> Safeway, ★ Pilsener, ★ Swiss, ★ Cheddar, ★ Swiss ★ Swiss ★ Swiss ★ Swiss —Lb. <b>35¢</b>
<b>Top Sirloin Steak</b> Safeway, USDA Choice Heavy Beef —Lb. <b>\$1.69</b>	<b>Rath Bacon</b> <b>83¢</b> —Lb. Sliced, Black Hawk —1-Lb. Pkg.
<b>New York Steak</b> Safeway, Strip, USDA Choice Heavy Beef —Lb. <b>\$2.59</b>	

**USDA Inspected Grade 'A'**

**Cut-Up Fryers** **38¢** —Lb.  
 Regular, Ready to Cook!

**Leg Quarters** Fresh, Cut From USDA Insp. Grade 'A' Fryer —Lb. **39¢**

**Split Breasts** With Skin, Cut From USDA Insp. Grade 'A' Fryer —Lb. **77¢**

**Smoked Ham** Shank Portion, Tasty —Lb. **49¢**

**Whole Ham** or ★ Full Shank Half, Sealed —Lb. **65¢**

**Cure 81 Hams** Sealed ★ Half or ★ Whole —Lb. **\$1.59**

**Check These Values!**

**Glade** Air Freshener . . . Room Deodorant! **2** 7-oz. Aerosol **\$1**

**Hair Spray** Truly Fine, 2 13-oz. Cans **\$1**

**Toothbrushes** Safeway Brand, Each **3 for \$1**

**Shave Cream** Colgate, Each **2 11-oz. Cans \$1**

**Texaco Motor Oil** ★ 20 Wt. ★ 30 Wt. **3 Quart \$1**

**Safeway for Fine Frozen Foods!**

**Cream Pies** **4** 14-oz. Pkgs. **\$1**  
 Bel-air, Delicious! Safeway Special!

**Strawberries** **33¢** —10-oz. Pkg.  
 Bel-air, Sliced

**Orange Juice** **19¢** —4-oz. Can  
 Tessa, Concentrate

**Dinners** **38¢** —Reg. Pkg.  
 Bonquet (Except Beef)

**PIZZA**  
 ★ Cheese 16-oz. Pkg. **67¢**  
 ★ Sausage 19-oz. Pkg. **77¢**

**Tomatoes** **29¢** —Lb.  
 Red Rip! Large Slicing Size! Juicy Fresh!

**Garden Fresh!**

- Texas Yams** No. 1 Quality! —Lb. **23¢**
- Crisp Celery** Large Neely Stalks —Each **29¢**
- Artichokes** New Crop, Large Size —Each **23¢**
- Asparagus** California, New Crop —Lb. **59¢**

**Red Potatoes** Nutritious! Economical! **20** Lb. Bag **89¢**

**Golden Carrots** Safeway, No. 1 Quality **2-Lb. Cello 29¢**

**Navel Oranges** Sunkist, Sweet & Juicy! **12-Ct. Bag 89¢**

**Sunkist Lemons** Refreshing! Tangy & Tart **12-Ct. Bag 59¢**

**Yellow Onions** US No. 1 Medium Size **3-Lb. Bag 39¢**

**Pitted Dates** or ★ Regular, Safeway **10-oz. Pkg. 45¢**

Prices Effective March 30-April 1, in Eastland. No Sales to Dealers.

**SAFETYWAY**

Enjoy These Lovely Blooms! Top Quality! While They Last!

© Copyright 1980, Safeway Stores, Incorporated.







# Go get 'em The Eastland Telegram 629-1707

Page 7 Thursday, March 30, 1972

## FOR SALE

Sewing Machine Used Singer Zig Zag mends, darns, button holes, sews on buttons all for \$1.25 with free home demonstration. We clean, oil and adjust all makes and models. Call 629-2920. t-36

Freyschlag Insurance has exactly the kind of policy that you need. Check with Charles today and see just how he can help you. Freyschlag Insurance Agency, on the Square in Eastland, 629-2275, 107 W. Main Street

20-20 John Deere tractor, with clear view cab, 1057 hours 4 row planter, J.D., 4 bottom mole board - J.D., 10 foot Treflan rig, peanut rake - J.D., Long peanut digger, 6 foot shredder - J.D., 10 foot tandem - J.D. 16, 2 acres peanut allotment. Phone Sam Beggs 629-1810 after five. t-11

1960 Chevy 1/2 ton pick-up. New engine overhaul 4 speed transmission. 1972 license, radio & heater good. Point Heavy rear bumper \$425 Call E.E. Norris Eastland 629-2421 t-26

2 bedroom home 404 S. Hillcrest on 2 1/2 lots, heavily wooded. Call Wyndie Armstrong at 629-1751 day or 629-2236 after 5 for appointment. t-11

8 x 12 portable building delivered. Hi-way 6 West of Gorman. Call 734-5367. t-27

One full acre joins grade school. \$1,250 cash. Call Daniel Williams 629-2580. t-25

FOR SALE  
1962, two bedroom mobile home. Call 629-2509 or 629-2590. t-33


Find out why State Farm insures more cars than anybody else. Call: 629-1096



**B. T. Van Cleave**  
like a good neighbor,  
State Farm is there.

STATE FARM MUTUAL AUTOMOBILE INSURANCE COMPANY  
Home Office: Bloomington, Illinois  
211 W. Main Eastland

**MY DAD WANTS TO INSURE YOUR CAR**



CALL **D. L. Kinnaird**  
General Insurance  
207 W. Main 629-2544

## FOR SALE

MISC. WANTED  
SCRAP DEALERS, Mixed Cast \$1.90 cwt, Crankshafts \$1.40 cwt, heavy plate and structural \$1.45 cwt. pipe and fittings \$1.45 cwt. 3' and under. Phone collect Taylor Foundry Co., Wichita Falls, Texas. AC 817-767-8541.

Only one 1971 Malibu Organ made by Thomas. Chimes, percussion, Leslie speaker, foot pedals. a beauty. For the one purchaser -- you -- \$235.00 off.

Kendrick Music Seaman and Main.  
Duplex just south of Super Save and a 3 bedroom house. Call 629-1344 or 629-1074 after 5. t-11

Are you sure your home is insured? Let Freyschlag Insurance Agency check over your existing policy for needed changes - or let us fix you a new one. Freyschlag Ins. Agency, 107 W. Main - 629-2275, "On The Square".

**ADVANCE TICKETS ONE LESS**  
Get your tickets early for the April 2 performances of the **WILSON AND BARNES CIRQUE** at the **Kendrick Amphitheater**. Buy advance ticket and save money.

Advance \$1.25 children	At door \$1.00 children
\$2.50 Adult	\$1.00 Adult

Get tickets at the **KENDRICK MUSIC CENTERS** in Eastland and Ranger and at the **KENDRICK POLY DEPT. ARM**

FOR SALE  
Good condition, 15 ft. fiberglass boat, 40 H.P. Sea King Motor, Dilly Trailer, \$875.00. See at 204 W. 19th. St. Cisco. y-34

FOR SALE  
3 bedroom house, 2 bath, carpeted excellent location and condition. Call 629-1676. 704 W. Sadosa, L.D. Keith.

Life - Disability Income Group - Hospital - Surgical Medical - Surgical Cash Policies

**Bankers Life & Casualty Co.**  
POLICIES OF THE White Cross Plan

**Marie Clary**  
Box 166  
Cisco, Tex. 76437  
442-1553

## FOR SALE

Two bedroom suites, cheap, call Mrs. Elvin Hill after 4 p.m. at 629-1568 or come by 603 S. Connellee. t-11

Original owner - 1968 Chevrolet Impala, air, power, steering, clean. Call 629-2555. (4 dr. sedan). t-27

Dishwasher, white, G.E. portable, 5 years old. Call 629-2484. t-26

1961 Chevrolet, standard shift, Fordor, radio, heater, good tires, real clean car, good history. \$295.00. Call 442-1958 after 4 p.m. t-26

YOU saved and slaved for wall to wall carpet. Keep it new with Blue Lustre. Rent electric shampooer \$1. Perry Brothers. t-27

IT'S inexpensive to clean rugs and upholstery with Blue Lustre. Rent electric shampooer \$1. Coats Furniture. t-27

Nice 2 bedroom house 1 block west of school on highway 8 in Gorman - Travis Smith, Gorman - 4 sundays only

Two bedroom apartment. Close in. Bills paid. Cable and telephone. Call 629-2083 or 729-8821. t-27

3 room furnished apt. Bills and cable paid, carport, for individual or couple. 203 N. Dixie t-11

2 bedroom garage apt. at 1409 W. Commerce. Call Dan Martin. 629-1170 t-11

House For Sale  
As is or improved H.B. MacMoy  
706 S. Daugherty 813 Oakmont L North Ft. Worth, Texas 76112

**SOUTHLAND LIFE INSURANCE**  
**M. H. PERRY**  
100 S. Seaman  
629-1566  
629-1095

## FOR RENT

2 bedroom unfurnished house. Call 629-1344 or 629-1074 after 5. t-11

2 bedroom furnished house. Call 629-2613 or 653-2425 after 5 126

Nice clean furnished apartment, large living room and bedroom, small kitchen and bath. Bills paid, permanent renters preferred. Call 629-2362 between 10 and 6. t-11

Furnished rooms and apartments, \$55 a month. Bills paid. Commodore Hotel, Eastland, Texas. Phone 629-1011. t-33

Two bedroom frame house to be moved. Call 758-2645, Desdemona for details. Priced for quick sale. Recently vacated. t-11

Large 2 bedroom house, furnished, no bills paid, no pets. Must have references & deposit. Call Mrs. Basham 629-2526 t-11

2 bedroom mobile home. Call Olden Mobile Sales 653-2358 or 629-1252 t-11

Two bedroom apartment. Close in. Bills paid. Cable and telephone. Call 629-2083 or 729-8821. t-27

3 room furnished apt. Bills and cable paid, carport, for individual or couple. 203 N. Dixie t-11

2 bedroom garage apt. at 1409 W. Commerce. Call Dan Martin. 629-1170 t-11

**West Side Skelly**  
New & Used Tires - Tire Repairing Block Ice Kerosene - Diesel - Gasoline - Expert Car Care Courteous Service 629-8842  
**Pete & Walter Tucker**

**FREE DELIVERY**  
Dial 629-2292  
Before 11 a.m.  
After 1 p.m.  
\$2.50 Minimum  
**Rogers**  
Grocery & Market  
Pays hospital/surgical bills  
For person to person health insurance, call B.T. Van Cleave 211 W. Main 629-1096

**AMERICAN NATIONAL INSURANCE COMPANY**  
HOME OFFICE GALVESTON, TEXAS  
**W. W. Herweck - Agent**  
Office 629-1512  
Home 629-1288

MAYBE YOU DON'T NEED INSURANCE  
If you don't own a home, furniture, jewelry or a car, you can get along without the services of an insurance agent. But for the most of us, life is not that simple. Modern living has become so complex that the protection of property and personal liability is a major problem and we must be insured. The individual you can always depend on for accurate solutions of your insurance problems is your local agent.

**Earl Bender & Company**  
Eastland Insurance since 1924 Texas

## WANTED

WANTED  
Electric Motors to rewind and repair. 403 SE. Main Ph 629-1553

Martin Electric Motor Service

MARTIN ELECTRIC MOTOR SERVICE  
Carpentry work build or repair, painting and paneling. Contract or by the hour rates. 629-1124 after 5. t-11

Older house. Call 629-1992. t-27

Direct from owner moderately priced 2 or 3 bedroom home in Eastland. A.B. Hunt, Gorman. Call 734-5497. t-27

Wanted air conditioners to repower or rebuild. Martin Electric Service Call 629-1553

Helen Crawford Travel Service Representative 442-2265 442-1499

Electric Motors air conditioners washing machines - some 2 speed. Will trade. After 5 please. Hiway 183, 3 miles south of Cisco. T. E. Weathersbee


Veterinarian Veterinary Medicine and Surgery  
Old Sandy Sanders Farm Vergil Patrick 6 Miles N. W. Cisco TEL. 442-3457

ROY LEE SMITH PLUMBING  
Contracting and Repairing Complete Plumbing fixtures and Supplies Bath & Kitchen Improvements  
Trained, Adequate Staff Call a Licensed Plumber Day or Night 629-1722

**SMITH PLUMBING**  
114 N. Seaman Eastland

**GARDENHIRE OIL COMPANY**  
Yes! We can sell wholesale to you!  
See us for all your oil, grease, filters, spark plugs, brake fluid, anti-freeze, S. T. P. for oil, gasoline, diesel or radiator, tires for cars, truck or tractor. WE HAVE TANKS for farm or commercial gasoline and diesel fuel. See us before you trade. All major brands of Oil and Grease.

**WHY PAY MORE??**  
since 1962



**Roy's Complete Whirlpool Appliance Center**  
629-2474 Roy Gann 205 S. Lamar

## NOTICES

Streets are nice places to store junk cars! (Pd. Adv.)

NOTICE - Mattresses. Complete bedding made by Western Mattress Co., San Angelo. Best quality, low price, renovate or exchange new. Every other Wednesday. They're guaranteed. For home appointment, call Lois Mezell, 629-2703, leave name. t-11

NOTICE  
Lites, brakes & running gears installed. All Types of New Trailers For Sale.  
Roy Cozart 1107 W. 15th 442-1912

NOTICE If you need irrigation equipment - check with us. Largest supply in Central Texas Pump Units All Sizes Pipe - Wheel Lines - Traveling Systems KIMMELL IRRIGATION SUPPLY, INC. DE LEON, TEXAS PHONE: 817-893-6266

VACUUM CLEANERS Sales and service New and used Phone 629-1370

"We can handle anything but litterbugs."

Goode Pest Control Phone 629-1179 after 3:00 310 N. Ammerman roaches, ants, termites, moths, spiders ALL WORK GUARANTEED

EMMET MORREN PLUMBING COMPLETE REPAIR SERVICE 1015 W. Main 629-2092 24 Hour Service

**ABCO Plumbing & Heating**  
Contracting and Repairing Complete Plumbing Service Call 629-1200 Day or Nite **BOB WILLIAMS** Master Plumber Serving Texans 25 years

## Political Column

POLITICAL ANNOUNCEMENTS

County Sheriff: Bennie Moseley L.E. Sublett (Re - election) Bill Tackett

County Commissioner: Pct. 1 - Danny Woods

Judge 91st Dist. Court Earl Conner Jr. (Re - election) Truman P. Kirk Bill B. Hart

State Representative District 54: Joe Hanna (Re - election) Jack Hetzel Bill Qualls Constable Precinct 1 Bill Hunter Howard A. Parson, Jr.

Criminal District Attorney (Un - Expired term) Emory Walton

County Tax Assessor - Collector Nancy Trout Eddie Pietraszek

Senate 22nd Dist. Tom Creighton (Re - election) Tom Holmes "B" Carnie Marsh

MERCER'S APPLIANCE SERVICE Dishwasher - Dryers Stoves - Disposals - Ovens G.R. MERCER GOLDEN, TEXAS Telephone - 653-2473

## REAL ESTATE

ALL TYPES OF REAL ESTATE: HOMES

farms ranches

Financing Assistance

Listings requested and long list of good properties on hand

CALL US AND LET US SHOW YOU HOW WE CAN HELP YOU

**M. L. TERRELL REAL ESTATE**  
Farm Bureau Building Hiway 80 East Tel 629-1725 Day Night call 629-2443 Eastland, Texas

Get involved: Attend the United Pentecostal Church 206 N. Dixie, E.D. Norman, pastor. Call 629-2410

FREE Estimates on new roofs only Repair of Your Old Roofs Residential and Commercial "ALL NEW WORK GUARANTEED" TRI-CITIES ROOFING CO. Call Nihil Squiers 629-2370 EASTLAND

## REAL ESTATE

Large 2 bdrm frame house. E. Lens St.

3 bedroom frame, large lot \$6,000.00

3 bedroom brick, Cisco, \$10,000.00

Three small 2 bedroom houses on Sadosa St.

2 bedroom house in Gorman, large lot, near school.

Small 2 bedroom house in Carbon.

Small 2 bedroom house in Cisco, \$3,000.00

3 bedroom frame, Hillcrest St. \$12,000.00

Large 3 bedroom frame, Good repair, Daugherty St.

4 bedroom, very good repair, city water, 2 acres, close in, fruit & pecan trees, also well, \$14,000.00

Large 4 bedroom frame, good repair, large lot, \$15,750.00

Small house, 3 lots, \$3250.00

2 bedroom lots of pecan trees, 4 acres, city water, \$9,000.00.

Large corner lot, \$1,000.00

Farms & Ranches

46 acres near Ranger, city water, good fences, 2 bedroom house.

160 acres near Cisco, Sandy land, will sub - divide for Veterans into 40 or 50 acre tracts.

1750 acres, some cleared, good deer hunting. Well located.

2800 acre well improved Lampasas Co. ranch. Running water.

Lake Property

Small Weekender at Lake Leon \$3750.00

Several cabins at Lake Leon and 2 nice lots on So. side.

We also have large and small motels for sale.

KINCAID REAL ESTATE 100 South Seaman Eastland, Texas 629-1761 Robert M. Kincaid 629-2721 J.W. Elder 647-13211



**Gordon News**

**Artist Author To Conduct Workshop**

Store. On Tuesday, April 11, she will be a guest on Michael Henry Martin's Television Show from 11:30 to 11:50 a.m. over Abilene Television Station KTXS. Mrs. Herring will present the program for the Annual Fine Arts Festival Luncheon on April 19, at Lone Cedar Country Club, which is hosted this year by the Eastland Civic Theatre.

An exhibit of Jan Herring's Paintings will be displayed in the lobby and in the Conference Room of the Eastland National Bank during the two week's workshop, and the public is cordially invited to enjoy this outstanding display. In issuing the invitation, a bank spokesman said "Jan Herring is considered by many to be one of the best qualified art instructors in the United States today, and Eastland County residents consider it a rare privilege to receive a visit from one whose artistic talents are so widely recognized."

**Eastland Paint & Body Shop**

**Insurance Claims**  
**Windshields Installed**  
**Vinyl Tops Installed**  
**Air Conditions Installed**  
**Auto Body Repair Painting**  
 629-1543  
 304 E. Main  
**Gene Millican**  
 Owner



**PARADE OF SHOES WHITE! WHITE!**

**Shoes For The Family**  
**By:**  
 JACQUE  
 CONNIE  
 H Y BROW  
 PERSONALITY  
 NUNN BUSH  
 ROBERTS  
 YOUNGDALE  
 RED GOOSE  
 HUSH PUPPIES

**WHITE is The Popular Shoe For The Easter Parade**

**Popular Prices Women's Shoes \$8 to \$19**

**Men's \$11 to \$29**

**Children's \$6 50 to \$14**

**Bray's DEPARTMENT STORE**  
 Store Hours 9 to 5 p.m.  
 Eastland-Ranger

Mrs. Paul Rexroat Students at Gordon School will participate in an invitational track meet for boys and girls at Strawn Friday, March 31.

Mr. and Mrs. Lambert Pickard and Mrs. Jodie Huddleston all of Weatherford visited recently with Mrs. Eva Rogers and Mrs. Lena Rogers.

Mrs. Ruby Carson and Mrs. Leola Mitchell both of Dallas and G.W. Archer of Irving visited during the weekend with Mrs. Epple Archer and Charles.

Mr. and Mrs. Charlie Elkins and Mr. and Mrs. Lloyd Elkins, Joe, Jan and Jim were in Fort Worth Saturday night to the wedding of Shelly Green and Billy Joe Elkins, son of Mr. and Mrs. Elmer Elkins.

Mrs. John Hardman has returned home after visiting two weeks with Mr. and Mrs. W.B. Hardman of Euless.

Miss Janie Jones of Austin visited during the weekend with Mr. and Mrs. W.C. Stoner. Mr. and Mrs. Herman Stoner, Vicki and Susan of Sherman visited a few days this week with the Stoners.

Mr. and Mrs. Bobby Edwards, Leonard, Mark and Joe and Phil Lockwood all of Santo visited Sunday with Mr. and Mrs. Alvin Butler.

The Gordon girls won first place and the boys second place in the first invitational track meet held on the new track field here Saturday. Thirteen teams competed in the boys events and eight teams were vying in the girls matches.

The Homemakers Sunday School Class of the First Baptist Church had its monthly social at the home of Mrs. Earl Collins Thursday night. Mrs. Cecil Harper brought the

devotional on "Friendship" and Mrs. H.E. Cromer directed games for the group to play. The hostess served angel food cake, ice cream, cokes and coffee to Mmes. Bennie Johnson, Harvel Pitman, Jettye Ballenger, H.E. Cromer, Melvin Knight, Lena Rogers and Cecil Harper.

Mike Stoner, student at Angelo State University, San Angelo is here visiting his parents, Mr. and Mrs. W.C. Stoner during the spring holidays at ASU.

The district track for high school girls will be held in DeLeon Friday, April 7. Gordon girls will participate in the meet.

Mr. and Mrs. W.A. Elkins visited in Abilene Monday and Tuesday of last week with Mr. and Mrs. Pike Rash and daughter, Sandra. Friday they attended funeral services in Aspermont for Billy Morgan.

Mr. and Mrs. Dow Smith were honored with a "going away" party Friday night at the American Legion Hall. Mr. Smith, who has been assistant superintendent at the Lone Star Gas plant at Gordon for the past two years has resigned to be resident manager of Texas Refinery Recreation Ranch, 15 miles west of Fort Worth. Guinn Caskey of Ranger will succeed Mr. Smith and he and his wife will move to the plant in the near future.

**Barnes Appoints 5 Members To Committee**

Lieutenant Governor Ben Barnes announced, today, in Austin, the appointment of five members of the Texas Senate and three lay members to the Interim Committee on Safeguards to Protect the Right of Privacy of Texas Citizens. Those Senate members appointed are A.R. "Babe" Schwartz of Galveston, Oscar Mauzy of Dallas, Tom Creighton of Mineral Wells, W.E. "Pete" Snelson of Midland, and Max Sherman of Amarillo.

The lay members appointed are George Allen, a member of the Dallas City Council; Roy Barrera, an attorney in San Antonio and a former Texas Secretary of State, and Carol Vance, Harris County District Attorney.

These eight members will be joined by the Director of the Department of Public Safety, or his representative, the Attorney General, or his representative, and the Executive Director of the State Board of Private Detectives, Investigators, Patrolmen, Guards and Managers, or his representative.

**Vote For The Other Tom**  
**TOM HOLMES STATE SENATOR**

**FOR SALE**  
 Excellent Washateria, Tile Building, paved street, 19 Maytag Washers, one 30 lb. Maytag Washer, 6 dryers, all equipment in building. TOM B. STARK, 442-1144 Cisco.

**EASTLAND COUNTY NEEDS a Judge (FOR 91ST District) Like TRUMAN P. KIRK**

**FOR SALE**  
 Excellent Washateria, Tile Building, paved street, 19 Maytag Washers, one 30 lb. Maytag Washer, 6 dryers, all equipment in building. TOM B. STARK, 442-1144 Cisco.

**Fountain's of DeLeon**  
 Guaranteed Pure  
**ORANGE JUICE**  
 "The Real Deal" as only imported by  
 Fountain's - Specialty Products  
 Home: T.S.A. - T.S.A. - A.S.E. - T.S.P.  
 Free - Delivery - Cash on Delivery  
 Call DeLeon 695-6777  
 484 Houston 1889 A.S.P. 187 DeLeon, TX

**NOW OPEN BROWN FEED STORE**

307 E. Commerce Street  
 Eastland  
 Carrying all types of Paymaster Feed, Elanco Products, IMC Fertilizers, Animal Health Products, Chemicals, Farm and Garden Seed and Garden and Lawn Fertilizer.

**BROWN FEED STORE**

629-2173  
 Eastland

**At Kendrick Amphitheater**  
 Sunday, April 2, 2:00 p.m. & 4:15 p.m.  
 Tickets now on sale at Kendrick Music Store

**CARSON & BARNES** COMBINED BIG 5 RING WILD ANIMAL  
 AMERICA'S LARGEST EUROPEAN STYLED  
**CIRCUS**  
 UNDER A GIGANTIC BIG TOP Admission Prices Everyone Can Afford SENSATIONAL PROGRAM OF TOP CIRCUS ACTS AND TRAINED ANIMALS

**PRESENTING AN ART WORKSHOP**  
 To Be Conducted By Distinguished Artist - Author  
**Jan Herring**  
 April 10th through April 21st  
 IN THE CONFERENCE ROOM OF EASTLAND NATIONAL BANK  
 Lecture - Demonstration Type Instructions  
 For Beginners and Advanced Students  
 Featuring  
 Oil Painting - Drawing - Composition - Color  
 Portrait and Figure Painting - Landscape and Still Life  
 Mornings 9:00 - 12:00 Afternoons 2:00 - 4:00  
 Mondays through Fridays Tuition \$75.00  
 Evenings 7:30 - 9:30 Tuition \$35.00 (\$5 Single Lesson)  
 CLASSES LIMITED  
 ADVANCE REGISTRATIONS MUST BE MADE WITH  
 Mrs. Austin McCloud, Telephone 629-1598

**The Public is Cordially Invited to Visit The JAN HERRING ART EXHIBIT**  
 In the Lobby and the Conference Room  
 of the Eastland National Bank During the Art Workshop