

EASTLAND TELEGRAM

EASTLAND, TEXAS 76448: Today's CENTER for tomorrow's FUTURE!

Volume 104 Number 11

Sunday, February 6, 1972

Eight Pages

Town Hall Meeting Monday at Club, 8



Directions '72, a Town Hall Meeting for the City of Eastland, will be held Monday, Feb. 7, beginning at 8 p.m. at the Woman's Club, and all plans are complete, it has been announced here.

Mayor James Reid will preside as moderator at the informal talk session, and all residents are urged to attend.

A formal report by Commissioner Durel Reid's Special Committee will be made and several aspects discussed. The committee met Thursday evening at the Club House and did preliminary planning.

Topics of discussion expected to be touched on include possible plans for the library, the woman's club house, a community center, and other matters of long-range nature affecting life in Eastland.

A group of women attended the last City Commission meeting and asked the city's help in planning for the future in regard to the library, club facilities and other matters. Mayor Reid named the committee at that time and a great amount of research has been made and data will be presented at the Town Hall Meeting.

Questions to be resolved are many and include whether existing facilities can and - or should be modernized, or plans made for new facilities. These topics will be discussed in detail.

All commissioners and city department heads are expected to attend the meeting.

Allied topics including beautification of the city park, paving and other matters

PUBLIC INVITED

likely will be touched on, it is reported.

Several years ago, the city had a master plan mapped with extensive developments, but it is felt that this probably would be outdated at this time.

Mr. Reid has appointed Mrs. Herman Hassell to secure data on sites, availability and costs,

and Mrs. Beverly Nicholson, steel building costs.

The committee Thursday agreed on a flexible, basic floor plan, and generally decided that the existing Woman's Club Building might be remodeled sufficiently to house the library alone.

Mavs, Mavettes Smash

The Eastland Mavericks and the Mavettes laid it on their neighbor Cisco Lobos and Cisco Queens Friday night in Eastland cage action.

The Mavericks won 59 - 49 and the Mavettes made it a whopping 80 - 33. Craig Lund was high pointer with 26 for Eastland and Nichols lead the Lobos with 22.

Cindy Allen passed the Mavettes with 31, followed by Crawford's 28; Haun's 8; and Stone's 7.

Other Maverick scorers: Rexroat, 13; McCleskey, 8; Eidson, 6; and Mace, 6.

The Mavericks now stand 7 - 5.

On Kite Flying Safely

It's kite season - the time when youth's fancy turns to paperandstring aerodynamics.

For Texas Electric Service Company it's time to remind parents and youngsters of some safety suggestions for kite flying.

Frank Sayre, TESCO Division Manager, said, "While we understand the joys of kite flying, we also understand the dangers. If your kite gets caught in electric wires just leave it there and call Texas Electric. We'll send someone to get it down for you."

Sayre also pointed out other safety suggestions for kite flyers. They are:

- Always use dry string - never anything metallic. Never use wire.
- Always make your kite of wood and paper.
- Fly your kite only in good weather. A soggy kite doesn't fly well and wet string can be dangerous.
- Find an open area to fly your kite. Always avoid trees, power lines, radio and TV antennas, and busy streets and highways.



"B" CARNIE MARSH
Marsh Seeks Senate Post

At a reception hosted by friends and colleagues Thursday afternoon, "B" Carnie Marsh formally announced his candidacy for State Senator from the 22nd district. The reception was held at the Civic Center Building in Denton, and was open to the public.

Mr. Marsh was accompanied by his wife and campaign manager, Mildred, their two daughters, Corrie and Charlotte, and two sons, Carnie and Chris.

Mr. Marsh is a native Texan, having been born and raised on a farm in Polk County. He served in World War II with the U.S. Navy on LST 1034 in the Pacific Theater. He received his B.S. Degree from the University of Houston in 1950.

Marsh, owner of M&B Specialty Co., resides in Denton with his family. He is a member of the First Baptist Church in Denton. Active in Boy Scout work since he was 12 years old, Marsh attained the rank of Eagle Scout, and has continued his work with the Boy Scouts during his college years and since coming to Denton. He is a member of the Stanfield Masonic Lodge of Denton, a 32nd degree Scottish Rite Mason of the Dallas Scottish Rite, and a member of Moslah Shrine Temple of Fort Worth. He is a member of the Denton Chamber of Commerce and for the past several years has served as Parade Chairman for the North Texas State Fair Association. His wife, Mildred, is a volunteer worker with the Emily Fowler Public Library, and is active in the Women's Garden Club.

When asked about his political experience, Marsh said, "I have never run for public office. However, for the past 19 years I have traveled extensively throughout this district and the State of Texas as a former representative of Clark & Courts Stationery and as owner of M&B Specialty Co. During this time I have come in contact with the Texas farmer, laborer, schools, business and financial institutions, as well as local governments, and I feel that this has given me a first hand knowledge of the problems they face. This is of far greater importance to me than any amount of political experience could ever be in representing and bringing back to the people of Texas a Government that we can once again be proud of."



TRUMAN P. KIRK
Truman Kirk Is Candidate For District Judge

Truman P. Kirk, 47 year old, Cisco Attorney and Businessman, announced today his plans to be a Candidate for District Judge of the 91st District Court of Eastland County.

In making this announcement, Mr. Kirk made the following statement to the Press.

"My experience, my background, my qualifications as an Attorney, my reputation for fair, sober, and impartial dealings and my strong desire to work for the best interest of Justice for ALL our People...gives me the necessary judicial temperament to qualify me to be your Judge. I pledge to be a Judge who will apply the law and the facts with 'Fairness and Justice' in each case, as it comes before the Court, without favoritism."

Mr. Kirk, announced for this same office in 1968, but was "disqualified" by Judge see inside



Brad, Bobby & Coach Shirley Frazier

Photo by H.D. Alsup

Coach Frazier Resigns To Accept Taylor Post

Eastland Head Coach Shirley Frazier has submitted his resignation effective Feb. 14, to accept a top position with the school system at Taylor, it was announced here this weekend.

Tid Bits

By HVO

CONGRATULATIONS TO Taylor, Tex.; we hope you appreciate the Shirley Frazier family. Eastland does and salutes them on their promotion - even though we hate to see them leave Eastland. Shirley and Beth and their three fine children have been assets in our town, and we're better for having had them with us. You will be too. Like anybody else, we like to win ball games, but you'll find there's a lot more to the Fraziers than just that. They're the kind of people, and he's the kind of coach most folks would pick to be associated with young folk.

It's been a treat working with Frazier and his staff here, and we've seen coaches come and coaches go, and we truly say, we're going to miss this one.

RESERVATIONS ARE coming in fast for the Monthly Game Day at Lone Cedar Country Club to be held Feb. 18. If you haven't made yours, better get it done this next week...Shannon Wilson and Dub Hoffmann were a busy Friday night getting decorations ready for the Inauguration Ball Saturday night at the club, and when you see it, you'll think the high ceiling has been lowered.

A GOOD number from our county was at the Ben Barnes Home Country Campaign Kickoff Thursday night in Brownwood, and it was an exciting evening. Gorman was well represented: We saw Ross Wilson, E.G. Henderson and D.B. Warren; and the rest of our towns had represent tatives there...The event had all the earmarks of a major party convention and the some 6,000 gathered at the Coliseum were there wishing their favorite son well in his campaign. A phrase used by one group, fits well: Ben Barnes, the Sandy - Land Governor... The entertainment, including Howard Payne bands, Coleman athletic choir and of course, Top Country Singer Ray Price, was all enjoyable, but the high point had to be when Dr. Guy Newman, president of Howard Payne College, introduced Lt. Gov. Barnes. The distinguished

In making the announcement, Supt. Wendell Siebert said that the system here will no doubt accept the resignation with reluctance. Coach Frazier will be Athletic Director at Taylor, an AAA school, and head football coach.

The Eastland board met informally Friday afternoon and it was explained that Coach Frazier is leaving Eastland, not just for "more money" or prestige, but because the advancement represents a significant step forward in his career.

Supt. Siebert said that the system here probably will substitute Frazier's teaching duties, American History and government, for the remainder of this semester.

Jim Wright Completes Doctor Jurisprudence

Fourteen students of the Texas Tech University School of Law received their doctor of jurisprudence degrees at the conclusion of the fall semester.

Four completed requirements "with honors," including a husband and wife team, Mr. and Mrs. Michael Lee Riddle of (3432 59th St.) Lubbock. The other two were John Edmund Skogland Jr. of (6218 Meadow Lake) Houston and Jim R. Wright of Eastland.

To graduate with honors, a student must have an average grade of 80 or above, according to Dr. Richard B. Amandes, dean of the School of Law.

Wright is the son of Mr. and Mrs. James T. Wright of 1009 So. Bassett, Eastland.

While attending Law School at Texas Tech he was recipient of the Bancroft - Whitney Book award, was recognized at the 1971 University Recognition Series, and was a member of the Delta Theta Phi law fraternity.

educator said he thinks of Ben as a son, and called him the man who can pull this state back together...Groaner Pitts, Brownwood mortician written up so often by George Dolan, was master of ceremonies...Candidate Barnes and his pretty wife Nancy had smiles and handshakes for everybody.

REVIEWING COACH Frazier's district football records for the past six years, it looks like this: only one tie with Granbury;

Won	Lost
G'Bury	1 2
Hamilton	5 1
Cisco	4 2
Clyde	5 1
Comanche	4 2
Winters	2 0
Coleman	1 1
Ballinger	2 0

The coach prefers to join the new system to be able to get acquainted with the programs and youngsters there as soon as possible.

"You can guess that this has been a hard decision for us to make," Coach Frazier told the Telegram. We've lost a lot of sleep trying to convince ourselves that we should move. We love Eastland very much and the people here have been wonderful to us. And the youngsters have been the best in the world."

Since coming to Eastland from Alabama, Coach Frazier has amassed an impressive record.

He came here in 1965 as assistant coach to Millard Glass and the football record

for that year was 7 - 3. He became head coach the next year and the school moved into AA competition. It was a 3 - 7 record that year.

The tide began to turn in 1967 when Eastland made it 8 - 2; 7 - 2 - 1 in 1968; and won the elusive district crown in 1969 with a 10 - 0 season, but lost to Haskell on penetrations in the first post - season play.

Repeating in 1970, Eastland shared district championship honors with Coleman on a 9 - 1 record.

The year just ended, 1971, was THE football year for Eastland under Coach Frazier. He took the team to its highest level ever, Quarter - final Championship, losing to Jacksboro in the Semi - Finals. It was a 13 - 1 season he lost.

Frazier has groomed 11 young men to All - State football player status: Steve Wilson, Bill Hoffmann, Johnny Grimes, Alex Jiminez, Randy Lowrance, Phillip Smith, Tony Lowrance, Craig Lund, Howard King, Rodney Reynolds, Bob Mace and James Eidson.

Taylor is some 30 miles northeast of Austin, and athletically is "winning everything but football."

The school there is now operating in a new \$2 1/2 million plant.

Supt. Siebert pretty well summed up the town's feeling about Coach Frazier: "We sure hate to see him move, but don't blame him a bit in the world."

"Peanut Social"

Perhaps there's always been peanuts!

At least the people of Eastland County have been paying homage to its No. One Cash Crop for a good number of years. The Eastland Jaycees do it annually now with their famous Peanut Bowl Festivities, but it goes back much further.

Proof enough from Mr. and Mrs. Carl Elliott, who this week found among their souvenirs an invitation to a "Peanut Social."

The tiny blue card, decorated with now - fading white and yellow ribbon, reads: "Have you ever been to a Peanut Social?"

Come out Friday evening, eight o'clock, and see Carbon's most popular vegetable product featured in an evening's program of fun. Methodist Parsonage, Feb. 17, 1972."

The Elliotts were Juniors at Carbon High School then, and married in the fall after they graduated there in 1923.

Both taught for many years, and Mr. Elliott retired in the spring of 1966 after a full and successful career as a teacher and administrator.



Little girls in brown and green will be knocking at your door, Thursday, Feb. 10th to sell Girl Scout cookies. Larger boxes of the five varieties will be selling for \$1.00 each.

Proceeds from the sale are used each year to improve the facilities at Camp Wood Lake near Brownwood.

The local troops retain ten cents of the price of each box for local troop activities.

The five varieties being sold are assorted sandwich, mint, peanut butter, pecanettes, and butter flavored shorties.

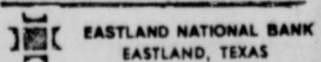
Make the Scouts welcome at your door!

FREYSLAG Insurance Presents THE WEATHER

Clear to partly cloudy. High near 50. Winds southerly 10 to 20 m.p.h.

FULLEN MOTOR

In Egypt the man doesn't know his wife until after he marries her. . . same as here.



EASTLAND NATIONAL BANK EASTLAND, TEXAS

The 1929 Dedication Ceremonies for the present Eastland County Court House was the text of Pat Miller's program at the regular meeting of the Eastland Rotary Club Monday, January 31, at Eastland High School. President Saul Pullman presided.

According to the Official Program from the ceremonies, it was "An occasion of two-fold interest, conducted by the general public, with the hearty co-operation of the American Legion of Eastland County". The affair was also a memorial service, as the Court House is dedicated to the men of Eastland County who served in World War I.

In discussing the ceremonies that were held May 30, 1929, in Eastland, Mr. Miller outlined the events of the day:

9:00 a.m. - Parade formation at corner of Moss and Lamar Streets Order of march - "Band, Gold Star Fathers and Mothers and wives, American Legion, Boy Scouts, Band, Common Schools, Independent Schools, Chambers of Commerce, Band, Women's Clubs, Men's Clubs and Lodges, Industrial Floats, Band, Fire Departments, Miscellaneous Entries, Ranger National Guard Band."

10:00 a.m. - Parade through business streets, terminating at Court House

11:00 a.m. - Inspection of Court House, Band Concert

12:00 - Picnic Lunch in Whiteway Park (Just south of T&P Passenger station).

1:30 p.m. - Open House at Court House, Band Concert

2:30 p.m. - Speaking at southwest corner of square with Cyrus E. Frost presiding Welcome Address - Arch Sprull

Introduction of past and present Commissioner's Courts - County Judge Clyde L. Garrett

Presentation of Court House - Ed S. Pritchard

Memorial Service - American Legion

"What Our Court House Means to Eastland County" - short talks by representative citizens

Reading - Mrs. Lexie Dean Robertson

Address - Rufus S. Scott, Commander Texas American Legion

Fables Cont. Inside

City Policeman Files For Constable Race

Howard A. Parsons, Jr., 26, has announced his candidacy for Constable, Pct. 1, which includes the city of Eastland, as well as the town of Olden.

Parsons, a city patrolman for 15 months, is married to the former Redona Gay Fox, of Desdemona, and the couple have two children.

Parsons graduated from Ranger high school, attended Ranger Jr. College, and is a veteran of 4 years in the air force. He has completed 140 hours of classroom work in the law enforcement school sponsored by the West Central Texas Council of Governments, and is a certified police officer.

Parsons is also Chief of the Olden fire department, a member of the Eastland Quarterback Club, Eastland Jaycees, is a member of the

Olden Water Board, and a coach in the Texas Teen Age Baseball League Association. He and his family attend the Bible Baptist Church.



Howard Parsons

CLASSIFIED ADS

get action

Sunday,
February 6, 1972



EASTLAND TELEGRAM

629-1707

11 W. Commerce St. Eastland, Texas 76448

Consolidated with Eastland Chronicle, established in 1887, and Eastland County Record, established in 1931

H.V. O'BRIEN, Publisher and Editor
HERMAN ALSUP, Associate Editor

Second Class Postage paid at Eastland Texas under Act of Congress on March 1870.
Published semi-weekly - Thursdays and Sundays by Eastland County Newspapers, Inc.

SUBSCRIPTION RATES: By carrier in city, 15 c a week or 65 c a month; one year by mail in county, \$5; city P.O. Boxes, \$6; one year elsewhere in state, \$7; out of state, \$8.

NOTICE: Any erroneous reflection upon the character, standing, or reputation of any person, firm or corporation which may appear in the columns of this newspaper will be gladly corrected upon being brought to the attention of the editor.

since 1962

Roy's Complete Whirlpool Appliance Center

629-2474 Roy Gann 205 S. Lamar

REAL ESTATE

VACUUM CLEANERS
sales and service new and used.
Phone 629-1370. t-18

Large 2 bedroom house, needs some repair. So. Daugherty St. \$8,000.00
2 bdrm house, good roof. S. Seaman. \$5500.00
Small 2 bdrm-3 lots-\$2500.00. Smith St.
1 bdrm house, frame, Ranger, large lot. \$1500.00.
2 1/2 bdrm Needs repair, 8 pecan trees, approx. 1 1/2 ac., Hiway 80. Ranger \$5500.00.
Small 2 bdrm house, garage, large lot. \$3000.00.
Large 2 bedroom frame, 4 lots, in good repair, \$5500.00.
Nice 3 bedroom brick, Cisco. 4 bedroom frame house, 2 baths, Burkett St. \$8,000.00.
3 bedroom frame house, 2 lots, garage, Mulberry St. \$4,750.00.
3 bedroom brick, double garage, fair. Ranger.
4 bedroom, 1 ac. city water & well, 2 baths, some pecan trees. Olden.
Extra nice 3 bedroom brick, 13 acres, 70 pecan trees, Coastal Bermuda, 2 wells, tank, all electric.
4 ac. 2 bedroom, city water, lots pecan trees. Olden.
3 bedroom rock home, 11 acres - 2 acres orchard, large barn. Olden.

FARMS & RANCHES
80 acre, 2 bedroom house, 5 miles out, \$16,000.00
194 acres, some lake frontage, pecan trees, close in.
210 acres, cleared native pasture, pecan trees & creek bottom, net fences-Will subdivide for G.I. \$150.00 per acre.
40 acres, 3 bedroom house. Some improved grasses. South part of County. \$17,000.00.
51 acres-38 cult. balance brush.
17 acre peanut allot. Water well, 6 miles from Ranger, Will G.I. or owner will finance.
120 acres, 200 native pecan trees, 3 tanks, 20 acres Coastal-approx. 20 acres bottom on Sabanna River, good grass.
160 acres near Cisco, will subdivide for G.I.
45 acres-10 cult. on Interstate 20 near Cisco.
14,000 acres improved No. Texas ranch. Will consider trade.
2,800 acre improved Lampasas Co. ranch. Running water.
1,750 acre ranch, some clear, excellent hunting, good location.
Well improved 1000 acre ranch with cheap int. rate. Will consider some clear trade for equity.
Several nice cabins at Lake Leon and also 2 nice lots on South Side.
We have large and small Motels in thr area for sale or trade.
For these and other places contact:

KINCAID
REAL ESTATE
100 South Seaman
Eastland, Texas 629-1781
Robert M. Kincaid
629-2721
J.W. Elder 647-1321

POLITICAL ANNOUNCEMENTS

For County Sheriff:
Bennie Moseley
L. E. (Lefty) Sublett (Re-Election)

County Commissioner,
Pct. 1 Danny Woods

Judge, 91st District Court
Earl Conner Jr. (Re-Election)
Truman P. Kirk

State Representative,
District 54
Joe Hanna

Constable Precinct 1
Bill Hunter
Howard A. Parson, Jr.
Criminal District Attorney (Un-Expired term)
Emory Walton

County Tax Assessor-Collector
Nancy Trout
Eddie Pietraszek

Senate, 22nd District
Tom Creighton (Re-Election)
Carnie Marsh

ROY LEE SMITH PLUMBING
Contracting and Repairing
Complete Plumbing fixtures and Supplies
Bath & Kitchen Improvements
Trained, Adequate Staff
Call a Licensed Plumber
Day or Night
629-1722

SMITH PLUMBING
114 N. Seaman
Eastland

EASTLAND TELEGRAM
used aluminum printing plates
ideal for roofing, sealing.
Sized 24x36 inches. 25c each
at the Telegram Office, Eastland

AMERICAN NATIONAL INSURANCE COMPANY
HOME OFFICE, GALVESTON, TEXAS
M. W. Herweck - Agent
Office 629-1512
Home 629-1288

SOUTHLAND LIFE INSURANCE
M. H. PERRY
100 S. Seaman
629-1566
629-1095

sympathy and advice...
WE ARE HERE TO SERVE YOU
Whatever the hour, feel free to call on us for understanding counsel in time of sorrow.

Arrington Funeral Home
Eastland
629-2611

GARDENHIRE OIL COMPANY
Yes! We can sell wholesale to you!
See us for all your oil, grease, filters, spark plugs, brake fluid, anti-freeze, S. T. P. for oil, gasoline, diesel or radiator, tires for cars, truck or tractor. WE HAVE TANKS for farm or commercial gasoline and diesel fuel. See us before you trade. All major brands of Oil and Grease.
WHY PAY MORE??

Want to buy older house or lot,
629-1992. If no answer,
817, 485-0767. Or write
Box 583, Eastland, Texas 76448

MY DAD WANTS TO INSURE YOUR CAR
CALL
D. L. Kinnaird
General Insurance
207 W. Main 629-2544

For Rent

Small 5 room cottage on top of park Hill. 503 High street. Unfurnished. Only \$35 per month. Phone 629-1417. t-1f

Nice small apt., close in, bills paid, cable and telephone. Call 629-2083 or 629-8821. t-13

Furnished rooms and apartments, \$55 a month, bills paid.
Commodor Hotel
Eastland, Tex
Call 629-1011

2 bedroom unfurnished house. James T. Wright, Call 629-1344 or after five, 629-1074. t-1f

Notice

Fine printing available at the Telegram: calling cards from \$9.95 for 500; your own personal letterhead from \$9.20 for 500; personalized envelopes from \$8.15 per 500; padded statements, from \$8.30 to per. Bigger values in larger lots. You can get it printed at the Telegram. t-1f

Now's the time to clean out the garage and closet and sell your don't needs into cash through the Classifieds. The successful businesses use 'em all the time - why shouldn't you? Up to 20 words, one time for \$1.50, each insertion thereafter for \$1. Keep one running at \$8.50 per month and change the copy to suit your needs. Use the Telegram Classifieds. t-1f.

MERCER'S APPLIANCE SERVICE
Dishwashers - Washers - Dryers - Stoves - Disposals - Ovens
G.R. MERCER P. O. Box 34
Telephone: 653 - 2473 Olden, Texas 76466

SUTTON'S A-1 Office Machines
Call 629-1707
Eastland

Poodle Grooming
Telephone
647-1288 -- 647-1845

"We can handle anything but litterbugs."
Goode Pest Control
Phone 629-1179 after 3:00
310 N. Ammerman
roaches, ants, termites, moths, spiders.
ALL WORK GUARANTEED

HELP WANTED
Registered Nurse for director of nurses. Breckenridge Nursing Home. Call 559-2717 for interview. Breckenridge, Texas
MARY COME HOME

NOTICE
Lites, brakes & running gears installed. All Types of New Trailers For Sale.
Roy Cozart
1107 W. 15th
442-1912

ABCO Plumbing & Heating
Contracting and Repairing
Complete Plumbing Service
Call 629-1200
Day or Nite
BOB WILLIAMS
Master Plumber
Serving Texans
25 years

Wanted

Once a week lady needed for general house cleaning. 629-2413.

"Any person qualified to vote who does not receive a ballot prior to March 13, 1972, may obtain one at his local County Agent's office."

WANTED: To rent 3 bedroom house within 10 mile radius of Eastland. Contact Melvin C. Brown. 629-1023.

Delivery man for rural routes. Must be dependable. Apply West Texas Produce Co., Cisco. t-12

For Sale

FOR SALE: 1961 Econline Pickup, new leatherette seat covers \$275.00

Nearly new complete snow cone ice machine with all supplies. \$100.00
Used deep well pump and tank. Works good \$65.00.
Nice refinished practice piano. \$150.00.
Nice 10 ft. steel stock trailer \$150.00 with lights.
Call Bob at the Dairy Treat 629-1144 after 10 a.m.

Model 854 G E Dishwasher, \$235.00
Model 5FK5 Westinghouse Dishwasher, \$225.00.
Model Gnn 595L RCA Color TV, \$400.00
Model WM 441 18," G E B&W TV, \$150.00
Model WM 507 G E B&W TV, \$100.00
Model HK 4250 Westinghouse Console TV, \$175.00
Ranger 8 Track Car Stereo with speakers, \$75.00.
Call 629-2662 or SEE Goodyear Service Store on East Main.

HANNAH'S husband Hector has hard work so he cleans the rugs with Blue Lustre. Rent electric shampooer \$1. Coats Furniture. t-11

Two Wooden overhead garage doors. Ben Hamner, 1001 S. Seaman. t-1f

Constat Bermuda Sprigs Machine Dug, P.E. Fox, Dendemonia, Tex. Call 758-2623. t-14

3 Bedroom house, bath and a half. Also small lot. Call 629-1020. t-14

MEETINGS

MASONIC LODGE NO. 467
MEETS SECOND THURSDAY OF EACH MONTH AT 7:30 P.M. IN THE MASONIC HALL. Call Pat Miller: W. M. at 629-1077 or L. E. JHuckabay sec'y at 629-1391 for information.

Saul Pullman, president

EASTLAND ROTARY CLUB
Meets each Monday at White Elephant Restaurant in Eastland 12:00 noon.
Rebeckah Lodge 177
Meetings each 2nd & 4th Monday at 7:30 p.m. 300 N. Lamar St.
Sec'y Dorothy Awalt
Phone 629-1682

Meets second Thursday of each month at 7:30 p.m. in the Masonic Hall. Call Pat Miller: W. M. at 629-1077 or L. E. JHuckabay sec'y at 629-1391 for information.

FREE Estimates on new roofs only
Repair of Your Old Roofs
Residential and Commercial
"ALL NEW WORK GUARANTEED"
TRI-CITIES ROOFING CO.
Call **Nobil Squiers**
629-2370
EASTLAND

Helen Crawford
Travel Service Representative
442-2265
442-1499

EMMET MORREN PLUMBING
COMPLETE REPAIR SERVICE
1015 W. Main
629-2092
24 Hour Service

Earl Bender & Company
Eastland Insurance since 1924 Texas

Notice

NOTICE - Mattresses. Complete bedding made by Western Mattress Co., San Angelo. Best quality, low price, renovate or exchange new. Every other Wednesday. They're guaranteed. For home appointment, call Lois Mezell, 629-2703, leave name. t-f

Business opportunity man or woman. Reliable person from this area to service and collect from automatic dispensers. No experience needed. We establish accounts for you. Car, references, and \$995 to \$3,490 cash capital necessary. 4 to 12 hours weekly could net good part-time income. Full time more. For local interview, write, include telephone number, Eagle Industries 3938 Meadowbrook Road, St. Louis Park, Minnesota 55426. t-11

Large selection of suitable gift and personal books for gift giving and your own use. See the complete line at the Telegram. t-1f.

HELP WANTED MALE SALES

Educational Salesmen
LA SALLE EXTENSION UNIVERSITY
A Correspondence Institution

Needs five men immediately to call on prospective students and interview for professional and business courses.

\$200 - \$250 Weekly
You will be paid on our exclusive advance commission schedule and have opportunity to earn substantial monthly bonuses.

LEADS
You will call only on people who have written to us and have been informed that you will call.
If you are interested in securing a lifetime opportunity call:
9 a.m. - 2 p.m.
817 - 244 - 2662
or Write Mr. Elson
P.O. Box 1651
Ft. Worth, Texas
76101

FREE Estimates on new roofs only
Repair of Your Old Roofs
Residential and Commercial
"ALL NEW WORK GUARANTEED"
TRI-CITIES ROOFING CO.
Call **Nobil Squiers**
629-2370
EASTLAND

Helen Crawford
Travel Service Representative
442-2265
442-1499

EMMET MORREN PLUMBING
COMPLETE REPAIR SERVICE
1015 W. Main
629-2092
24 Hour Service

For Sale

1966 Chevy Pickup, 4 speed transmission, long wheel base, 6 cyl. May be seen at 1014 Bessett or call 629-2559. t-1f

Newly remodeled house and beauty shop. Call 629-1222. t-1f

1967 Chevrolet, Bel Air, Black & White, 327 V-8 engine, Standard. \$350.00. Call 629-1941. t-1f

Standel Artist Amp. Brain and two cabinets; one cabinet (2) 15" spkrs. one cabinet (4) 12" spkrs. covers, wheels and all hook up cords. Will sacrifice. 701 6th St. in Ranger. Tel. 647-1424 after 5 p.m. t-11

Fence building, any kind, will chain link, sell by foot or install. Call 442-2197. 405 West 11th. Cisco.

SORRY SAL is now a merry gal. She used Blue Lustre rug and upholstery cleaner. Rent electric shampooer \$1. Perry Brothers. t-11

HANNAH'S husband Hector has hard work so he cleans the rugs with Blue Lustre. Rent electric shampooer \$1. Coats Furniture. t-11

Two Wooden overhead garage doors. Ben Hamner, 1001 S. Seaman. t-1f

Constat Bermuda Sprigs Machine Dug, P.E. Fox, Dendemonia, Tex. Call 758-2623. t-14

3 Bedroom house, bath and a half. Also small lot. Call 629-1020. t-14

FOR SALE

4 1/2 acres with real nice 3 bedroom, 1 1/2 bath home with orchard. Located in Morton Valley Community, city water. House only 6 years old and in excellent shape. Price \$22,000; may assume \$13,900 note. Contact M.L. Terrell, 629-1725 or Buck Wheat, 629-2552.

REAL ESTATE

ALL TYPES OF REAL ESTATE:

HOMES
farms
ranches

Financing Assistance

Listings requested and long list of good properties on hand

CALL US AND LET US SHOW YOU HOW WE CAN HELP YOU

TERRELL REAL ESTATE
Farm Bureau Building
Hiway 80 East
Tel. 629-1725 Day
Night call 629-2443
Eastland, Texas

Hospital Report

Patients in the Eastland Memorial Hospital Friday were:

Vernon Davis
Otis Guy
Vena Whiteley
Mary Kuykendall
James Harrison
John Cozart
Harrison Pitman
William Pence
James Hart
William Eudy
Virgil Trout
Robert Hodge
Millie Waldrep
Mary Johnson
Ruth Haney
Barbara Brinkley

Effie Sharp
Hattie Duncan
Adrian Swindle
Mattie Davis
Joe Tow
Winnie Sue
Mildred Culwell
Sue Hamilton
Mary Burns
Weltha Dunn
Edith Wooten
Edna Thompson
Henry Pence
Harry Eddy
Addie Faulkenberry
Millie Baggett
Ruby McPherson
Baby Boy Rogers
Eva Davis

Claude Greenlee
Treta Vogel
Willard Vogel
Cora Reimund
Ruby Crowley
Estelle Roff
Yvonne Revels
Eva Butler
Rebecca Horton
Homer Duncan
Elmer Bisbee
Myrtle Richardson
George Norris
Elnora Washington
Sharon Rogers
Mertie Jones
Ola Childers
Lucille Atwood
Clarice Seago
Pearlie Highsmith
Zelma Willoughby
Floyd McLearne
Amy Rice
Clarence Rhyme
Willie Speaker
May Harbin
Till Harbin
Patients in Ranger General Hospital Saturday morning were:
Gerald Lee

Walter Henry
Leslie Winnegar
Patsy Patterson
Mrs. Henry Hamilton
Louise Bussell
Opal Patton
Elva Taylor
Jim Casey
Floyd Smith
Erma Polk
Henry Hamilton
Leon Barton
Travis Reese
Minnie Griffith
J.C. Carter
John Hamilton
Johnnie Gallina
Mae Davis
Mrs. Reno Gazzola

Wilson To Head Easter Seal Campaign

Mrs. H.T. Wilson will head the 1972 Easter Seal Appeal in Eastland County, it was announced by Rodney D. Hargrave, Dallas, President of

the Easter Seal Society for Crippled Children and Adults of Texas.

Residents of Eastland County will receive the annual Easter Seal Appeal letters in the mail beginning February 28. The Easter Seal Appeal, conducted yearly to provide disabled persons and their families treatment and services, will continue through Easter Sunday, April 2.

Mr. Wilson is one of 223 men and women throughout Texas who are serving in this capacity. The cost of the statewide Easter Seal program is over one million dollars, financed mainly by the Easter Seal Appeal. Almost 90 percent of all funds raised by the Easter Seal Appeal remain in Texas to support the growing needs of the disabled in the State.

Special emphasis is being given in the 1972 Easter Seal Appeal to the disabled citizen or his family in Eastland County who may need

assistance and not know where to obtain it. Any disabled person can contact Mr. Wilson at the Eastland National Bank, who will refer the request for

services to the Easter Seal Society. A determination of the extent and type of assistance needed and the most efficient means of obtaining that

assistance will be made. Arrangements for needed treatment or service will be made by the Easter Seal Society.

HIGHER COURT

The following proceedings were had in the Court of Civil Appeals, Eleventh Supreme Judicial District of Texas:

Affirmed

R.G. Parker, Independent Executor v. Paul Donald et al. (Opinion by Judge Collings) - - Montague.

REVERSED AND Remanded

Palmer and Ray Dental Supply of Abilene, Inc. v. First National Bank of Abilene. (Opinion by Judge Walter) - - Taylor.

Motions Submitted

Wayne Adams v. North Leon River Irrigation Corp. et al. Appellant's motion for rehearing. - - Comanche.

In Re: Julie Elaine Jones. Appellant's motion for rehearing. - - Taylor.

Jack Beyer v. Douglas W. Collinsworth. Appellant's motion for permission to file Statement of Facts. - - Comanche.

Motion Granted

Jack Beyer v. Douglas W. Collinsworth. Appellant's motion for permission to file Statement of Facts. - - Comanche.

Motions Overruled

Wayne Adams v. North Leon River Irrigation Corp. et al. Appellant's motion for rehearing. - - Comanche.

In Re: Julie Elaine Jones. Appellant's motion for rehearing. - - Taylor.

Want to save up to \$125 when you buy a car?

STATE FARM INSURANCE

Ask me about the State Farm Car Finance Plan. B.T. Van Cleave.

211 W. Main
629 - 1096
Eastland
STATE FARM MUTUAL AUTOMOBILE INSURANCE COMPANY
Home Office
Bloomington, Illinois

DANCE at VERNON'S in Strawn, Texas SATURDAY and SUNDAY Recording Star From MGM PAM NORTON also Jerry, Gerald and MUSIC MAKERS.

You Get **LOW, LOW EVERYDAY PRICES!** and You Get... **SPECIALS EVERY DAY, too!**

Juice 19¢
Orange, Texsun, Frozen. For Vitamin 'C'! 6-oz. Can
Safeway Big Buy!

Waffles 10¢
Bel-air, Frozen. Heat & Serve! 5-oz. Pkg.
Safeway Big Buy!

Biscuits 8¢
Canned, Mrs. Wright's. *Sweet Milk or *Buttermilk 10-Ct. Can
Safeway Big Buy!

Pepper 29¢
Black, Trader Horn, Ground 4-oz. Can
Safeway Special!

Catsup 19¢
Highway, Rich Flavor! 14-oz. Bottle
Safeway Big Buy!

Pintos 31¢
Pinto Beans, Town House 2-Lb. Pkg.
Safeway Big Buy!

SAFEWAY

Money-Saving Low Prices!

Velkay Shortening 59¢
For All Your Baking or Frying! -3-Lb. Can

Fresh Coffee 69¢
Safeway Pre-Ground 1-Lb. Bag

Enriched Flour 39¢
Harvest Blossom 5-Lb. Bag

Salad Dressing 37¢
Piedmont, Creamy! Quart Jar

Margarine 10¢
Piedmont Patty 1/2-Lb. Pkg.

SHOP SAFEWAY AND SAVE!

Safeway Has **LOW EVERYDAY PRICES!** Safeway has big Specials, too, everytime you shop... for total savings that add up fast! And Safeway offers a large selection of all your favorite products... the quality you're looking for... the extra values in Every Department that stretch your grocery dollars.

SHOP and SAVE at **SAFEWAY!**
LOW PRICES EVERY DAY and SPECIALS, TOO!

Compare These Safeway Values!

Parade Detergent 49¢
For All Your Wash! -49-oz. Box

Liquid Bleach 38¢
White Magic Gallon Plastic

Trash Can Liners 69¢
Kitchen Craft, Plastic 10-Ct. Pkg.

Paper Napkins 10¢
Tree Saver, White 60-Ct. Pkg.

Paper Towels 28¢
Tree Saver, White 175-Ct. Roll

Safeway Meats Are Unconditionally Guaranteed to Please!

Sliced Bacon -Lb. 65¢
Slab, Rindless Full of Flavor! Breakfast Favorite!

Safeway Bacon 75¢
Sliced, No. 1 Quality! 1-Lb. Pkg.

Lunch Meat 3 6-oz. Pkgs. \$1
Safeway Sliced, *Pickle-Pimientos *All Beef *Bologna *Olive *Pepperoni *Chorizo *Spiced

Variety & Quality Meats... Always at Safeway!

Lean Ground Beef -Lb. 87¢	Link Sausage Pork, Safeway 1-Lb. Pkg. 65¢
Hamburger Steaks Freshly Ground, Pre-Formed -Lb. 83¢	Fresh Pork Chops Family Pack -Lb. 79¢
Ground Beef Regular Safeway Club Pack, 2-Lb. Chub \$1.49	Pork Spareribs Fresh, 1 1/2 to 3-Lb. Avg. -Lb. 79¢
Round Steak Full Cut, Includes Eye of Round, USDA Choice Grade Heavy Beef, *Pineapple or *Bartlett, *Boneless, USDA Grade Heavy Beef -Lb. \$1.39	Fish Crisps Pre-Cooked, Frozen -Lb. 73¢
Boneless Roast Round, USDA Choice Grade Heavy Beef, *Boneless, USDA Grade Heavy Beef -Lb. \$1.29	Catfish Fillets Ocean Catfish, Raw, Fresh-Frozen -Lb. 85¢
Top Round Steak Choice Grade Heavy Beef -Lb. \$1.49	Flounder Fillets Fresh-Frozen -Lb. 85¢
Cube Steaks Beef, Manor House 10-Ct. Pkg. 99¢	Baking Chickens Fresh, 3 to 3 1/2-Lb. Avg., USDA Grade 'A' -Lb. 37¢
Corn Dogs Easy to Prepare! 10-Ct. Pkg. \$1	Cut-Up Fryers Regular, USDA Insp. Grade 'A' -Lb. 38¢

Compare Quality and Price!

All Meat Wieners 49¢
Safeway, Plump & Tender! (Armour Star Franks) 12-oz. Pkg.

Chopped Ham 59¢
Sliced, Safeway 6-oz. Pkg.

Smorgas Pac \$1.09
Regular, Eckrich 1-Lb. Pkg.

Garden Fresh Fruits and Vegetables!

Oranges -Lb. 19¢
*Navel Oranges *Temple Oranges

Sunkist California Sweet & Juicy! Large Size, Fancy -Lb. 19¢

Apples 3 3-Lb. Bags 69¢
Your Choice! *Red Delicious *Jonathan

Pineapples 39¢
Cayenne Large -Each

Ruby Grapefruit 79¢
Texas, 6-Ct. Ruby Red Cello

Orange Juice 89¢
Safeway, From Florida, 1/2-Gal. Decan.

Seedless Raisins 79¢
Town House 2-Lb. Cello

Large Prunes 89¢
Town House 2-Lb. Cello

Check These Low Prices!

Chocolate Pinwheels Nabisco Cookies-12-oz. Pkg. 59¢	All Vegetables-24-oz. Bottle 62¢
Crisco Oil 62¢	Mixed Vegetables-16-oz. Can 25¢
Larsen's Veg-All 25¢	Morrison's Bn-Kits 2 6-oz. Pkg. 23¢
Biscuit Mix 23¢	Morrison's Corn-Kits 2 6-oz. Pkg. 23¢
Cornbread Mix 31¢	Safeway-18-oz. Pkg. 31¢
Quick Oats 31¢	Mrs. Paul's, Frozen-Fox Pkg. 55¢
Onion Rings 23¢	Frozen Fruit Juice Red-4-oz. Can 23¢
Hawaiian Punch 23¢	Scotkins Luncheon Napkins, Assorted Colors-60-Ct. Pkg. 24¢

Variety and Quality!

Red Potatoes US-1A, Economical! 10-Lb. Bag 79¢
Zucchini Squash Italian, Extra Fancy -Lb. 29¢
Texas Broccoli Winter Harvest -Lb. 29¢
Fresh Turnips Purple Top Variety 2-Lbs. 29¢
Rutabagas No. 1, Medium Size 2-Lbs. 29¢
Red Radishes Top Removed 2 6-oz. Cello 29¢
Green Onions Large Bunches, Each 2 for 29¢

Shop and Save!

Bayer 77¢
Aspirin Tablets-100-Ct. Bottle

Alka-Seltzer 89¢
Full Wrapped 36-Ct. Pkg.

Mouthwash 47¢
Safeway, Antiseptic 16-oz. Bottle

EASTLAND
No Sales to Dealers.

El Chico Dinners
Frozen, Heat & Serve!

*Mexican -14-oz. Pkg.
*Enchilada -12-oz. Pkg.
*Queso (Cheese) -14-oz. Pkg. -Each 57¢
*Saltito -14-oz. Pkg.

Deodorant
Hour After Hour
Feel Fresh All Day
7-oz. Can \$1.33

Razor Blades
Gillette Platinum Plus 5-Ct. Double Edge 83¢

Anacin Tablets
Fast Pain Relief! 30-Ct. Bottle 63¢

SAFEWAY
© Copyright 1980, Safeway Stores, Incorporated.



HD NEWS

By Janet Thomas County Home Demonstration Agent

Home Demonstration Clubs to meet this coming week are:
Lake Cisco H.D. Club Feb. 7 2 p.m.
Morton Valley H.D. Club Feb. 9 For all day meeting at Mrs. Alvin Kincaids home
Desdemona H.D. Club Feb. 8 2 p.m. Community Center

Eastland County Home Demonstration Clubs are making plans to attend the District T.H.D.A. meeting on March 23rd in Gatesville. Home Demonstration members from 19 counties will be represented at this time. Voting delegates from Eastland County are: Mrs. Bernard Campbell, Pleasant Hill H.D. Club; Mrs. Clarence Hastings, Flatwood H.D. Club; and Mrs. J.E. Stansell, Word H.D. Club. Alternates are Mrs. R.H. Gordon, Morton Valley H.D. Club; and Mrs. Arlin Bint, Lake Cisco H.D. Club.

"Your Preschool Child" is a home study course which is being sponsored by the Eastland County Family Living Committee. What is a home study course? Each lesson is mailed to you, you study the lesson at home and mail your short response form back to the Home Demonstration Agent's office in an enclosed envelope. That's all there is to it...learn at your own convenience at home.

How many lessons? There are four (4) lessons: Development of babies, Toddlers & Preschoolers, Importance of Play, and Food for the Young Child.

How do you register? Register by February 21st. First lesson will be mailed to you by February 28th. Registration fee is \$1.00. A recognition tea will be held at the conclusion of the course. Those completing the home study course will be presented certificates of completion.

TO REGISTER, COMPLETE THE BELOW FORM AND MAIL TO:
MRS. JANET THOMAS
COUNTY HOME DEMONSTRATION AGENT
P.O. BOX 189
EASTLAND, TX 76448
RETURN THIS FORM WITH \$1.00 REGISTRATION FEE BEFORE FEBRUARY 21ST.
NAME _____
ADDRESS _____
YES, ENROLL ME IN THE HOME STUDY COURSE, "YOUR PRE-SCHOOL CHILD".

4-H NEWS

By Mrs. Judy Cardwell, Assoc. Co. H.D. Agent
4-H club members in the 7th grade and over are invited to attend the organization meeting of the Junior Leaders Association. This meeting will be held on Saturday, February 12, 7:30 p.m. at the Farm Bureau Eastland.
Boys are to bring drinks. Girls - chips and dips. Junior leaders from the seven 4-H clubs are encouraged to attend.
The program will be given by Suzanne Harbin, District Council vice chairman.

Nimrod 4-H'ers will be meeting on Monday, February 7, Paul Campbell, Assistant Co. Agent will give the program. Rising Star club will meet on Thursday, February 10, at 7:30 p.m. at the elementary school.

Of special interest to leaders of ANY organization is the Longhorn Recreation Laboratory held at Glen Rose.

The lab is a week long experience designed to help adults (20 years and over) learn to lead and develop programs in recreation. Classes and opportunities in the following fields:
Program Development
Human Relations
Leadership Training
Games (including home made games)
Inspirational Ceremonies
Modern and Pioneer Folk Games
Song Leadership
Group Recreation
Crafts
Skits
The cost of the week long stay is \$45. This lab is highly recommended for those working with any group in recreation related areas.

Eastland 4-H club meeting was cancelled due to bad weather. Another meeting is scheduled for Monday, February 14.

Mrs. J. T. Gregory
announces
the appointment of
Mr. Pete McCoy
as manager of
Gregory Borden
Milk Co.
Services offered by the company
will be same as in the past.



Truman Kirk

Cont. from page 1

Temple Driver of Wichita Falls, Texas, after the jury dead-locked 8-4 in favor of Kirk's position in regards to a contest of Residence brought against him by Earl Conner, who then, ran unopposed for this office.

When questioned about this, Kirk said, the Judge on a case is much like a referee of a football game, he has to call it as he sees it. I can't say that I agreed with Judge Driver, then, or now, but I didn't have the time or money, to appeal his decision, at that time. But now we have a New Race, and under these circumstances, I don't feel as though I will be running against an incumbent but again like a football game, its now the second half and I now have the ball and I want to win and serve the People of Eastland County as their

District Judge. I know that I am fully qualified and no one can find any technicality to disqualify me now. I feel that now the "Good People" of Eastland County will have a chance to choose and that they will elect, Truman P. Kirk to be their District Judge on May 6, 1972.

Mr. Kirk, and his family are members of the First Baptist Church of Cisco. Mr. Kirk is a member of Cisco Lions Club and is President of The Oil-Belt University of Texas Exes.

Mr. Kirk is married to the former Evelyn Marie Ross Kirk, who taught in the Eastland Public Schools in 1968-69 and now teaches 4th Grade in the Cisco Intermediate School.

The Kirks have four children; Ken, age 18, a graduate of Cisco High School and presently enrolled at Baylor University; Karen, age 16, a Junior at Cisco High School; Kaylene, age 12, a 7th

grader at Cisco Junior High School; and Kevin 1 1/2. Truman P. Kirk began his business career as a paper boy for The Abilene Reporter - News of Abilene where he became a Paper Route District Manager while still in High School.

After graduation from Hardin - Simmons University with a degree in Government and Business, he served as Newspaper Circulation Manager for the Big Spring Herald and the San Angelo Standard - Times, before he enrolled in Law School at the University of Texas in Austin, where he graduated in the upper one-third of his class; was Editor of the Law School Newspaper; worked in the Library; and also worked as Promotion Manager for the Austin - American Newspaper, while attending school. He received the "Consul Award" which is given for "outstanding contribution of a student" to the

Law School. After graduating from the University in 1956, Truman Kirk, served the City of Odessa for four years as a City Attorney. In 1960, Mr. Kirk, returned to Abilene and served two years as an Attorney for the City of Abilene, then resigned and was elected, and served, as City Commissioner and Councilman until 1965. In the summer of 1965 he set up his Law Offices in Cisco, and taught Government for four years at Cisco Junior College, and he and family live in Cisco at 104 West 6th Street.

Mrs. W. M. Brown
604 Pine St. 647 - 3292
DISTRIBUTOR OF
Luzier
FINE COSMETICS AND PERFUMES

RECEPTION SET - Republican State Representative Candidate Jack Hetzell of Jacksboro will be honored at a reception in Eastland Monday, Feb. 7, beginning at 3:30 p.m. at Bellhurst Theater, located just off Highway 80, east of downtown Eastland. The public is cordially invited to attend, according to Co-Ordinator Roy Smith. Mr. Hetzel is a candidate for nomination in the May Republican Primary to be held in Eastland County, for the office of State Representative, District 54.

December Bonds Sales Total \$11,000

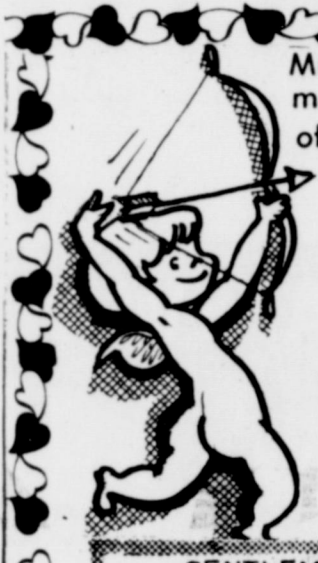
December sales of Series E and H United States Savings Bonds in Eastland County totaled \$11,126, according to County Bond Chairman. Sales during 1971 amounted to \$203,979.00. This represents 68 percent of the sales goal of \$300,000.00.

Nationwide, December sales totaled \$439 million - a 14.4 percent increase above December 1970. During the calendar year 1971, sales of E and H Bonds amounted to \$5.5 billion. This is 114 percent of the National goal of \$4.8 billion.

Newspaper readership is heavy regardless of education level, a research study by Audits & Surveys has established. Of college graduates, 89 percent read a paper on the average weekday; of high school graduates, 87 percent; grade school only, 77 percent.

Texans purchased \$15,207,564 in Savings Bonds during the month. Total Bond sales for 1971 were \$199,830,508 for 110 percent of the state's goal of \$181.9 million. One hundred six counties and twelve districts in the state achieved their 1971

DON'T FORGET. HIRE THE VET!



Mr. Dan Cupid just shot an arrow at our merchandise! We are offering a reward of 1/4 off on all merchandise bearing Cupid's mark.

- Dresses - Toni Todd, Vicky Vaughn & Vicki Petite
- Slacks - Jean Marie, Trissi in misses & Jr.
- Tops - Trissi
- Blouses - Jean Marie
- Slack Suits - McKell's & Others

GENTLEMEN! PERSONALIZED SHOPPING SERVICE & GIFT WRAPPING FOR YOUR CONVENIENCE

And other exciting merchandise & accessories. This reward will last until Feb. 12

Janet's TOPS AND BOTTOMS

Ranger, Texas - Out Main St. Turn Left at So. Homer (Hospital Hill) and Pine St.

RANGER DRIVE-IN THEATRE
BOX OFFICE OPENS 6:45
PICTURE STARTS 7:15
Last times SUN. February 6th
YUL BRYNNER
ADIÓS, SABATA
SUSAN SCOTT
GP. COLOR
FRI. - SAT. - SUN
February 11th, 12th and 13th
THE #1 NOVEL OF THE YEAR - NOW A MOTION PICTURE!
BURT LANCASTER
AIRPORT
"BLOCK-BUSTING... A SURE" - 1971
Dorothy Manners, L.A. Herald

DOLLAR DAY

 SALE Women's DRESSES One Big Group 1/2 Price SHOP NOW PAY LATER USE YOUR 1/3 Children's Shoes	 SHOE SALE Women's Reg. '9 NOW \$4.50 '10 NOW \$5.00 '11 NOW \$5.50 '12 NOW \$6.00 1/3 off	Women's COATS Winter Styles 1/2 Price Women's PANT SUITS Many Styles Many Colors Assorted Fabrics 1/3 off	 Men's SHIRT SALE Dress Shirts Sport Shirts Knit Shirts All Long Sleeve Permanent Press All Sizes 1/3 off	SUIT SALE Entire Stock 1/2 Price Men's TROUSER SALE Permanent Press Assorted Styles Reg. \$7 & \$8 NOW \$4 Bray's DEPARTMENT STORE Eastland County's Family Store STORE HOURS - 9 a.m. to 5 p.m. Eastland & Ranger
--	---	--	---	---

Gordon pot

by DeMarquis Gordon

A large number of Eastland County people were at the first annual Feed Gain Tested Angus Bull Sale in Fort Worth, Monday, January 31st. Forty of the top gaining bulls from the test conducted at Ranger were sold.

Carbin of Pittstown, Oklahoma sold for \$3325. He sold another for \$2200. The Gleannloch Farms of Spring, Texas sold a bull for \$2500. The bull gain test began October 15th, when 82 bulls were brought to Ranger and entered in the test. Jimmy

Ratliff of Ranger conducted the test which was sponsored by the Texas Angus Association and the Leon Valley Angus Association. The bulls were fed for 15 days before the test began on September 1st. The bulls were then weighed full, and the 140 test period began. The bulls were kept in one pen and had access to feed and water at all times. On January 19th, the bulls were weighed again and the gain per day was calculated. Beef cattle men have discovered the importance of studying the average - daily - gain and weight - per - day - of - age

when buying a bull. Several local breeders participated in the bull gain test. They included Mrs. Gladys Carter, Carter Hounsel, and C.C. Rutherford of Rising Star; and Mr. and Mrs. J.V. Heysler of Cisco and Mr. and Mrs. Glen Hubbard of Eastland. The Hubbards entered six bulls in the test. All six bulls were selected among the top 40 to sell at Fort Worth. They were judged within age groups. Four of the Hubbards bulls placed first, second, third, and fourth in a class of 12 Angus bulls. Among the Eastland County

people I saw at the sale were the Ratliffs, the Hubbards, the Heyslers, Mrs. Carter, Cynthia and Carter Hounsel, Dr. and Mrs. Dick Hodges of Ranger, Dr. and Mrs. W.P. Watkins of Ranger, Mr. and Mrs. Major Farnsworth of Cisco, Sutton Crofts of Cisco, and John Schlittler of Rising Star. I'm sure there were other local folks present that I did not remember. Several people have called and asked what is wrong with their evergreen ornaments. They report brown spots on the green leaves. In some cases the

leaves are dying and falling. I could not identify a disease or insect present so I sent a branch of euonymous to the Extension Plant Pathologists at A&M. The problem was diagnosed as apparent cold weather damage. The cold weather damage shows up as "burned" or "scorched" leaves. The first sign is a wilting and rolling of the leaves, then browning in a few days. The frosted plant may take on a "water-soaked" appearance before leaves turn brown. Homeowners with frost or freeze damaged woody plants

should be prepared to give them extra care this spring. Damaged plants should not suffer from lack of moisture. Also a high nitrogen fertilizer should be applied about the time of regrowth begins. This will help stimulate regrowth and lessen danger of sunscald to exposed inner branches. A pound of ammonium sulfate per 100 square feet of root area is a good rule to follow. The upper five to six inches of soil should be moist before applying fertilizer. Don't use a pound coffee can to measure the fertilizer because a pound coffee can full

of ammonium sulfate weighs three to four pounds. Weigh the fertilizer on scales to make it accurate.

Business For Sale
The Montgomery Ward Catalog Stores in Both Eastland and Ranger. For Details Call Wallace Gibson, A Days 915 - 356 - 2593, nights 915 - 356 - 3695 or See At Montgomery Ward Catalog Store, 117 W. Grand, Comanche, Texas.

J R B SUPER MARKETS

PRICES GOOD at EASTLAND, RANGER, CISCO
Monday through Saturday February 12
NO SALES TO DEALERS

Unbeatable prices

Look at the way we've cut prices and you get S&H Green Stamps, too!

Unbeatable stamps

Brownwood, Brady, Cisco, Eastland, Ranger,
Wichita Falls, Cross Plains, Abilene, Coleman.



MID-WINTER CORNER ON SAVINGS

S & H GREEN STAMPS

Every WEDNESDAY AND SATURDAY
With purchase of \$2.50 or more

FOLGERS ALL GRINDS COFFEE 1 lb. can 79¢

GOLD MEDAL FLOUR 5 lb. bag 49¢

JRB MEATS ARE U.S. GOVERNMENT INSPECTED. IF FOR ANY REASON YOU ARE NOT SATISFIED WE WILL CHEERFULLY REFUND YOUR MONEY.

- Chuck Steak Blade Cut lb. 69¢
- Excellent for Soups & Stews
- Short Ribs lb. 49¢
- Swiss Steak Arm
- Boneless Roast Chuck lb. 99¢
- Lean Boneless Cubes
- Boneless Stew Meat lb. 99¢
- Ground Chuck Flavor Fresh lb. 85¢
- "Farm Fresh" Fryers Whole lb. 29¢
- Fryers Cut up Pan Ready lb. 35¢

LIBBYS Vienna Sausage 4 oz. can 5/\$1.00

BUTTERMILK J.R.B. 1/2 ga. 49¢

MIX or MATCH

Trellis 303 can PEAS

American Beauty 300 can Mixed Vegetables 5 for \$1

Ranch Style Blackeyed Peas 300 can

Ranch Style Beans 300 can

Ranch Oven BISCUITS 12/\$1.00

BAKE RITE Shortening 3 lb. can 59¢ with \$3 purchase-limit 1

Trophy 10 oz. ctn. Strawberries 4/\$1.00

JRB Large EGGS doz. 39¢

- FRYER PARTS & PIECES**
Buy O-NLY
The Pieces Your Family Enjoys
- Breast lb. 79¢ Drumsticks lb. 55¢
 - Thighs lb. 59¢ Wings lb. 25¢
 - Armour Mira-Cure Pan Size Sliced Bacon 12 oz. pkg. 69¢
 - Sliced Bologna Lone Star lb. 79¢
 - Swift Each Slice Wrapped Sliced Cheese 12 oz. pkg. 69¢
 - Shop Made Seasoned Just Right Pork Sausage 2 lb. pkg. 89¢
 - Plumrose Sandwich Size Reg. Sliced Ham 69¢ 59¢

Hunt's 300 can Tomato Juice

VAN CAMP 300 can Pork & Beans

VAN CAMP no. 2 can Hominy

ALMA Mixed Greens 300 can 6/\$1.00

Nabisco CRACKERS Premium Saltines 1 lb. 39¢

CREAMER

THIS WEEK'S SERVICE PIECE SPECIAL
Redeem This Coupon
Save \$1.05

Mrs. Bairds CAKES, Orange Rolls pkg. 39¢

COUPON

VALUABLE COUPON WORTH \$1.05

TOWARD THE PURCHASE OF CHINA SERVICE PIECE SPECIAL CREAMER
Reg. Price \$4.30
Less Coupon 1.05
You Pay (with coupon) 3.25

in the pattern of your choice
COUPON GOOD THRU Feb. 12



Kounty KIST CORN 12 oz. can

Rotel Tomatoes No. 2 can

PINEAPPLE Sweet Treat 303 can 4/\$1.00

Appetite-arousing Produce

- Bananas Golden Ripe lb. 10¢
- Cabbage 9¢
- Russett Potatoes 10 lb. bag 69¢
- Yellow Onions Med. Size 2 lbs. 29¢
- Texas Oranges lb. 15¢

Mrs. Perkins Gives Study on Africa

The WSCS of the First United Methodist Church met in the fellowship hall Tuesday at 12 noon for a luncheon and program. Mrs. Ed Ethridge, vice president, presided.

The fourth in a series of studies on Africa was lead by Mrs. Joseph Perkins. Slides of interesting places in both North and South Africa were shown by Mrs. James Horton. They were taken by her late husband while on their trip around Africa in 1969.

Tables were done in palm trees, small animals and fruit

by Mrs. Veon Howard. There was a display of swords, shields and drums, loaned to the society. Screens surrounding the tables were pictured in maps, animals and African scenes.

Food of entirely African dishes was prepared by members. Recipes were furnished by Mrs. Veon Howard, and were surprisingly good. Many peanuts were used in these recipes.

Thirty two members and three husbands enjoyed the festive occasion.



Photo by H.D. Alsop

Bill Wyatt Opens Wyatt Tire Co.

Tires, Tires, and more tires. Robert Munoz, No. one man for the Bill Wyatt Tire Co., along with Bill Wyatt who is now in business for himself, look at the many truck loads of tires which were delivered to the Bill Wyatt Tire Co. at 702 W. Main. (Formerly Morton Texaco Station)

Bill has been in the tire business for several years, having worked for Jim Horton Tire Co. for 10 years, and for the past two years working in partnership with George Webb of Eastland Tire Co.

Bill said that he can handle any tire needs all the way from Truck to sports car tires. We are equipped to Turn tires, Vulcanize Tractor Tires, plus we have an amazing amount of passenger car tires, states Wyatt.

Wyatt Tire Co. still has Texaco gasoline and oil. When asked about wash and grease Bill said, "no room." Bill stated that officially the partnership between himself and George Webb has been

Engagement Announced

Mr. and Mrs. Loy Williams of 1093 South Daugherty, announce the engagement and approaching marriage of their daughter, Kathy Joy Williams, to Mr. Harold Glen Swift, son of Mr. and Mrs. A.A. Swift, of Brisco, Texas.

Miss Williams was an honor graduate of Eastland High School and Cisco Jr. College. She was also on the Dean's List and a 1971 graduate of Texas Tech University in Lubbock.

dissolved. Bill invites everyone to come by and look things over at his new place of business. Bill also has night and road service of all kinds.

Kathy holds a B.A. degree in Sociology from Texas Tech.

Mr. Swift is a 1964 graduate of McLean High School, McLean Texas and attended the University of Texas at Arlington. He is employed by Texas Electric Service Company.

The wedding will be April 29, at 7:30 p.m. in the First Baptist Church of Eastland.

All friends and relatives of the couple are invited.



BRIGHT EYES - - Could be an appropriate name for pretty Jana Michelle Cogburn, 3, daughter of Mr. and Mrs. Kenny Cogburn.

King Motor Co. Special of the Year

1971 Torino - 4 door sedan, air-conditioned, automatic transmission, power steering, 302 V-8 engine, no miles. Come by and See **\$2995**

Used Cars

1970 model 3/4 ton custom pick-up, real work truck

1971 Ranger XLT air-cond auto-trans, power steer, 390 engine

1966 Mercury 4 door sedan, loaded, local car, extra clean

1970 Ford custom, 360, 4 speed transmission

HOOD KING MOTOR CO.

100 E. Main Eastland 629-1786

On the Way to the Top...

He May Need A Helping Hand

Now, he's taking a step at a time. Later, his hopes will be climbing... maybe for a higher education. Be there to back him up with financial assistance. Let us help invest your money in our savings accounts and certificates.

EASTLAND NATIONAL BANK
EASTLAND, TEXAS

Our New Daytime Dept. Many Styles to choose from. **extra value fashion finds!**

One of our many shirt shifts in new checks, stripes, prints, for misses and half sizes!

6.99 - 7.99

mode o'day

EASTLAND

JRB FAMILY CENTER SPECIALS EASTLAND

Plastic Curtains	\$1⁰⁰ pair
Vistlon Prolon Melamine Dinner Service	\$7⁹⁸ 45 Piece
Pyrex Glassware	99^c each
Long Play Record Albums	44^c Each
Rubbermaid Twin Sink Drainer while they last	\$1⁷⁹

Shop J.R.B. Variety

S&H Green Stamps

CENTRAL DRUG

Sweethearts Everywhere—Prefer **CANDY**

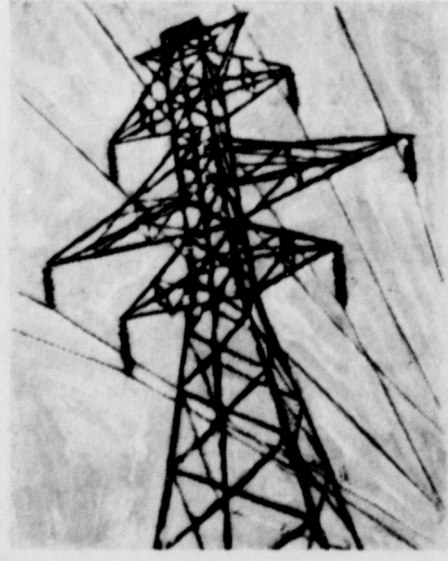
Show Her You Love Her with **CANDY**

Call for Free Delivery
629-2681 103 W. Main St.

At your service: The fastest delivery system in the world.

When you place an order for electric service by flipping a switch or plugging in an appliance, you get instant delivery — because electricity travels at the speed of light, 186,000 miles per second.

In fact, the electricity you use is not even generated until you flip the switch! The light by which you may be reading this is using electric power that is being made and delivered in the same instant that it is used. Since electricity cannot be



stored, we must have the generating capability to provide enough power for all our customers when it is needed, and we must have the delivery system to get it where it's needed.

That's why we have to design and develop our power system well in advance of growing needs.

And that's why we are engaged in the biggest construction program in our history, to provide the facilities that keep instant energy at your service.

TEXAS ELECTRIC SERVICE COMPANY
People power... at your service
F. N. SAYRE, Manager, Phone 629-2651



Steve Haines, sophomore at EHS, seems to be very energetic in the Vo. Ag. Welding Shop. Don Griffin, Vo. Ag. teacher, checks Steve's welding ability.

Photo by H.D. Alsop

piano by Mr. Durel Reid, gave the following numbers, "I'll See You Again", "Tea for Two", "Memory Lane", "Love Come Back to Me", and "Love Nest". This beautiful music gave the appropriate setting for the poem, "I Gave My Heart Away", given in the most gracious and pleasing way by Mrs. Ira Inzer.

The hospitality committee for this occasion was Mrs. Cecil Collings, Mrs. Floyd Robertson, Mrs. Ben Hamner and Mrs. D.L. Childress.

Refreshments were served from a beautifully decorated table carrying out the Valentine motif with centerpiece of red roses, silver candelabras with red candles and white and red napkins. Mrs. Horton poured coffee and Mrs. Bigby ladled the punch.

Club members present were Mesdames, C.L. Bigby, D.L. Childress, Turner Collie, Cecil Collings, Pat Crawford, Fred Davenport, Cyrus B. Frost, Ben Hamner, Herman Hassell, James Horton, Iral Inzer, Marine Johnson, D.L. Kinnaid, Fred Maxey, Arthur Murrell, Guy Patterson, Joseph M. Perkins, Grady Pipkin, E.G. Rice, Floyd Robertson, Charles E. Terrell, and Roy Young.

Guests were Mesdames, C.W. Boles, H.W. Sims, H.T. Weaver, Marvin Hood, Pearson Grimes, I.C. Heck, E.M. Grimes, John Beil, Victor Cornelius, Esco Walter, Jack Frost, T.E. Castleberry, Ruth Layton, Lura Ethereidge, Nancy Frost, Mildred Pickrell, Winnifred Hittson, Nettie Wilson, Virginia Russell, P.M. Kuykendall, Saunders Gregg and Miss Marjorie Van Hoose.

Used two-tube fluorescent desk lamp with swivel arm. \$24.95, at the Telegram office where you'll also find a complete line of office supplies. Paper, files, typewriter ribbons, cash registers, adding machine tape, and much more. Just come look. It's for your desk or office, you'll find it at the Telegram.



LET'S GO, EASTLAND - - Says Good - looking Tim Sedillo, 2½, son of Mr. and Mrs. Greg Sedillo.

Fables continued from page 1

Awarding of prizes.

The eight page program, which was printed complimentary by Langham Printing Company of Eastland, contained this description of the new Court House: "This magnificent structure was erected at a cost of \$312,000, replacing one which was built in 1897 and which was razed to make way for its new and modern successor. Construction work was commenced on January 1, 1928, and completed December 1, 1928, being occupied December 20, 1928. The new building is elegantly furnished throughout, with all modern conveniences for every appropriate need, including a law library consisting of 5000 volumes. At night the building is illuminated by fourteen flood lights with a total of 7000 candle power presenting an imposing spectacle for miles around. Besides the numerous other county departments and officials, the building houses the various courts with their officers..."

Also, the program brought special attention to the war trophies which were brought home by the men of Eastland County who had served in the war. They were on display in the corridor of the ground floor.

The American Legion of the county sponsored the erection of a memorial tablet in the north corridor of the ground floor. This tablet is dedicated to the 762 Eastland County men who served the United States in World War I. The names of the 30 who lost their lives in this service are engraved on this plaque. The Tablet is bronze, approximately 10x6 feet in size and was erected at a cost of \$1,735 to the Commissioner's Court.

The final page of the program contains the poem, "The Lodge of Death by Edgar A. Guest."

Mr. Miller's interesting program brought attention to **Sunday Subject**

Intuition and spiritual sense are not limited to a special few, but are available to all, according to the Bible Lesson - Sermon entitled "Spirit" at Christian Science services Sunday.

Opening the Scriptural readings is this passage from Psalms: "O Lord, how manifold are thy works! in wisdom hast thou made them all: the earth is full of thy riches. Thou sendest forth thy spirit, they are created: and thou renewest the face of the earth."

The unlimited source of spiritual sense is also indicated in this citation to be read from Science and Health with Key to the Scriptures by Mary Baker Eddy: "Spiritual sense, contradicting the material senses, involves intuition, hope, faith, understanding, fruition, reality."

Services in Eastland will begin at 11 a.m. Sunday, February 6, in the First Church of Christ Scientist Building on the corner of Plummer and Lamar.

Thursday Afternoon Club Has Valentine Program

The Thursday Afternoon Club met February 3rd at 3 o'clock in the Woman's Club Building for a Valentine program and tea. As each member and guest arrived, they registered in the red velvet Valentine book.

Mrs. James Horton extended greetings to the guests and led in giving the Club Collect and allegiance to the flag.

Mrs. Guy Patterson, program chairman, announced the numbers on program and gave an original poem, "The Prayer of A Flower". She introduced the Eastland County string Quartette composed of Mrs. Nancy Frost, violin; Mrs. Winnifred Hittson, viola; Mrs. Mildred Pickrell, violin, and Mrs. Nettie Wilson, cello. The Quartette, accompanied on

Now Open Squires Enco Station
Open 24 Hours
 Intersection of I-20 & Lake Leon Road Just East of Eastland
629-8892

Wash & Grease
Minor Repairs & Tune-ups
 of all types
 We Give S&H Green Stamps
Jerry Squires, Dealer

OK...APPROVED by CUPID

A Complete Selection of Valentine's and Valentine Candy

Prescription Pharmacy
 Telephone 629-1475
 East Side of Square

When You Think of FOOD THINK OF SLEDGES!

SLEDGES is the only truly ONE-Stop Spot for Eating--Your Table or Ours!

In our retail market, you'll find the freshest, finest cuts of your choice, all guaranteed to please you!

DELICATESSEN For convenience you can appreciate, shop our ready-to-go dept.

You can set your table extra-good and extra-quick with selections from our wide variety of delicious, fresh items. **Barbecue-Beans-Salads-All the fixin's**

And a Complete **One-Stop Grocery For You**

Then for Eating-Out Treats: Remember our dining rooms: convenient, delicious and economical. Luncheon treats from our wide menu, be it barbecue or lighter.

And for that extra-special meal, **REMEMBER SLEDGE'S STEAKS.** The best to start with and cooked the way YOU want 'em to make your dining out pleasure complete. You'll Find It All at **SLEDGE'S** And You'll Like What You Find

SLEDGES MARKET & DINING ROOM
 210 S. Lamar 629-2913

Tuesday, February 8th

8 99¢

RING SIZE WALLET CREATIVE COLOR PORTRAITS FOR ONLY

PHOTO HOURS 9 A.M. TO CLOSING

NO LIMIT

GET PICTURES MADE OF GRANDPA, GRANDMA, DAD, MOM AND ALL THE LITTLE ONES AT THESE SAME LOW PRICES!

SHUGART COLOR PHOTOS HARELIK'S
 212 West Main

STOP for Brake Service

Wash & Grease

Brake Shoes, Mufflers, Flats and Road Service.

Minor Auto Repairs

S&H GREEN STAMPS

WITH EVERY PURCHASE. LEVENS ENCO
 400 E. Main - Eastland - 629-1688

Convenient CREDIT

Properly maintained, credit buying is a wonderful thing. Consumers are invited and urged to use it, and at the same time, advised never to abuse it. A credit agreement provides many of the finer things of life...it also is a promise to be diligent in meeting obligations and promptness is a virtue that keeps the wheels of commerce and trade turning.

+++

You're welcome to discuss credit needs, and utilize the many services available from these participating members of the

Allmans	Higginbotham Lumber
Benders Insurance	Hollywood Vasserette
Brays	Humble
Central Drug	King Hood Motor Company
City Garage	Kinnard Insurance
Coats Furniture	Perkins Implement
Eastland Auto Parts	Montgomery Ward
Eastland Hospital	Robertsons TV
Eastland National Bank	Scott Paint & Body Works
Eastland Service Parts	Smiths Plumbing
Eastland Floral	Southern Television
Freytschlag Insurance	Southwestern Bell Telephone
Fullen Motor Company	Stevens Printing Co.
G. & R. Gulf	Super Save Market
Goodyear	Texas Electric Service Co.
H & R Lumber	Turner Seaberry & Walford

Eastland Merchants Credit Association.
 Phone 629-2660

Mrs. James Glenn, Sec.-Treas.

OFFICE SUPPLIES

The Eastland Telegram

DEATHS

Mr. Derryberry

Albert Derryberry, 64, of 633 Beech St. died at 7:45 a.m. Wednesday in the Veterans Administration Hospital in Big Spring after a long illness.

Funeral was at 10:30 a.m. Friday in the Elliott's Chapel of Memories with the Rev. William Eastburn, pastor of St. Mark's Episcopal Church, officiating. Burial was in Elmwood Memorial Park.

Born Nov. 20, 1907, at Boyd, he was a longtime Abilene carpenter and a veteran of World War II.

Survivors include a daughter, Mrs. Jane Stephens of Falls Church, Va.; a sister, Mrs. J.B. Crutchfield of 633 Beech; two brothers, Elbert of Eastland and I.D. of Weatherford.

Pallbearers will be Britton Smartt, C.G. Willis, Worth Baugh, Harrison Monroe, Ed Vaughn and D.R. Pratt.

The family requests remembrances be in the form of contributions to the West Texas Rehabilitation Center.

Mr. Nichols

Floyd Barkley Nichols, 68, died at 3:30 p.m. Sunday in Ranger General Hospital following a lengthy illness.

Funeral was at 2 p.m. Tuesday in Killingsworth Funeral Chapel with Hub Lewis, minister of the Church of Christ of Eastland and the Rev. Harl Williams, pastor of Calvary Baptist Church of Eastland, officiating.

Masonic graveside rites were conducted in Eastland Cemetery.

Mr. Nichols was born April 21, 1903 in Moody and married Bessie Pearl Dobbs Dec. 20, 1922 in San Saba. A resident of Eastland County for 45 years, he was a heavy equipment operator for Eastland County for 24 years. He was a member of the Church of Christ, Eastland Masonic Lodge and Oddfellow Lodge.

Survivors include his wife; two daughters, Mrs. Johnny Barton of San Antonio and Mrs. George Pevehouse of Blum.

two sons, Virgil of Clyde and Coy of Clute; 16 grandchildren and nine great grandchildren; one sister, Mrs. Jack Jones of Ganado.

Mrs. Cole

Funeral services were held Saturday, Feb. 5, at 10 a.m. for Mrs. Lela Mae Cole, 78, in the Arrington Funeral Chapel. The Rev. K.C. Edmonds officiated. She died Thursday night at 441 S. Rusk, in Ranger.

Mrs. Cole was born Dec. 14, 1893 in Greenville, Texas. She married William R. Cole Jan. 1, 1910 in Brownwood. She was a member of the Bangs Methodist Church and had lived in Ranger 45 years. She was preceded in death by her husband.

Mrs. Cole is survived by six sons, R.M. Cole of Corpus Christi; Jack W. of Eunice, N.M.; William R. of San Antonio; Houston of Grand Prairie; R.V. of Garland, and Kenneth of Snyder; one daughter, Mrs. Lee Funderburg of Houston; two sisters, Jettie Sears of Bangs, and Allene McReynolds of Lubbock; two brothers, John Allison of Bangs and Walter

Allison of Lubbock; 15 grandchildren and 16 great grandchildren.

Burial was in the Eastland Cemetery and grandsons were pallbearers.

Mrs. Weston

Mrs. H.M. Weston, 92, a longtime Merkel resident died at Western Hills Nursing Home in Comanche Tuesday afternoon following an extended illness.

Funeral was at 2 p.m. Thursday in the Wilkins Funeral Chapel, with Elder Freddie Neal Boen and the Rev. Lynward Harrison officiating.

Burial was in Oakview Cemetery in Mullin, under the direction of Wilkins Funeral Home.

Mrs. Weston was born on March 29, 1879, in Bertram. She married Harmon M. Weston on Nov. 23, 1897, in Kerr County, and moved to Mills County from San Saba in 1911. The couple had moved to Merkel about 40 years ago. Her husband preceded her in death Nov. 26, 1930, and she moved to Comanche a year ago.

She and her husband were united with the Primitive Baptist Church the first Sunday in August, 1904.

Survivors are three daughters, Mrs. George (Cora) Reeves of Comanche, Mrs. Raymond (Merle) Burdett and Mrs. Lynward (Lorraine) Harrison of Ackerly; three sons, John of Wichita Falls, Buck of Carbon, and Joe of Merkel; 16 grandchildren; 38 great-grandchildren and one great-great-grandchild.

Homemakers To Meet Feb. 7th

The young Homemakers of Eastland will meet Feb. 7 at 3:40 in the cafeteria of Eastland High School. The program will be on "Hair Styles" by Mrs. Judy Hallmark.

Baby sitting will be available.

Public To See Films

Mrs. Harvey Basham will be showing films and slides of the Hawaiian Islands, Sunday, Feb. 5, at 3:00 p.m. in the Church of God, corner of Lamar and Valley.

Mrs. Basham made a sixteen day tour of the Islands and would like to share it through these pictures and souvenirs. The public is cordially invited to attend.

Mrs. Hardin

Funeral services from Mrs. Cora Hardin, mother of Mrs. Jim Eidson, were held Friday at 2 p.m. at the Davis - Morris Funeral Home in Brownwood. Burial was in Greenleaf Cemetery.

Mrs. Hardin died in Eastland.



TEXAS TOURISTS IN HAWAII -- Mrs. Lulu Basham of Eastland; left, and Mrs. Loma Underwood of Seminole enjoyed a fast paced holiday season Dec. 27 - Jan. 12 in the Hawaiian Islands. The two were among ten who made the trip to Hawaii under sponsorship of the Southwest Texas State University Home Economics Department. The group was led by Associate Professor of Home Economics Dr. Margaret Fisher, who instructed the ten in "Cultural Foundations of Childhood" in the "Hawaiian Sunshine School."

School Menu

Monday Feb. 7

Meat loaf
Whipped potatoes
Green peas
Tossed salad
Hot rolls
Cake squares

Tuesday Feb. 8

Turkey pie - biscuit topping
Green beans
Buttered carrots
Jellied applesauce salad
Sliced bread
Rice pudding

Wednesday Feb. 9

Sausage pizza
Lima beans
Buttered corn
Cabbage & raisin salad
Fruit cobbler

Thursday Feb. 10

Beef tacos
Pinto beans
Buttered cabbage
Carrot & celery sticks
Corn bread
Banana pudding

Friday Feb. 11

Hamburgers
Pork & beans
Jello with fruit

New Arrival

Mr. and Mrs. D.S. Brinkley of 306 S. Oaklawn, announce the birth of their son, Scott Allen, born Jan. 15 in Eastland Memorial Hospital. Scott weighed six pounds and three ounces.

Maternal grandparents are Mr. and Mrs. Clifford Seabourn and paternal grandparents are Mr. and Mrs. J.I. Brinkley, all of Eastland.

the FTD



"Love Bundle"

Finest, freshest flowers professionally arranged in a re-usable, satin-white ceramic container. Available only from your FTD Florist. Just stop in or give us a call. We can send our "Love-Bundle" almost anywhere in the country.

Poe Floral
609 W. Main 629-1711

Kindergarten Plans Valentine Party

Green Kindergarten got back in full swing after enjoying two weeks holiday vacation. All tots eager to get going and work hard. Troy Van Cleave, who was 6 Nov. 12th and just moved to Eastland is a delightful new student.

Mrs. Anita Whitley had Mrs. Fred Brown deliver a huge tray of gay decorated cup cakes, honoring her granddaughter, Gayla, who is now 6 years old.

New Table Captains are Dana Easter and Gayla Whitley.

Kindergarten diplomas were ordered this month to make sure of delivery for closing date in March.

Table Monitors are Lorrie Smith, Kathy Watson, Brad Freeman and Kyle McKinnis. The tots take great pride in

keeping their rooms neat and tidy. Parents and older children can be of important help if they are careful not to litter and throw out tin cans and bottles when driving. Ecology is a way of thinking. Let's think "Keep America - Eastland Beautiful". Please help tots by setting a good example. Let's don't throw cans, bottles etc. around.

The group planted pecan seeds from Texas Forest Service College Station for Arbor Day.

Valentine Day Monday, Feb. 14th, the children will have a valentine exchange. Each child may bring 20 penny valentines signed from - (not to) Then they will place them in their own kindergarten post office here in the room.

NOTICE

Now open for business
Tropical Aquarium No. 2
Located - Hillside Apt. No. 3 Unit 21
Hours 8:00 a.m. to 10:00 p.m.
For all your Tropical Fish Needs
come and take a look.

EDDIE'S
513 West Main
629-8838

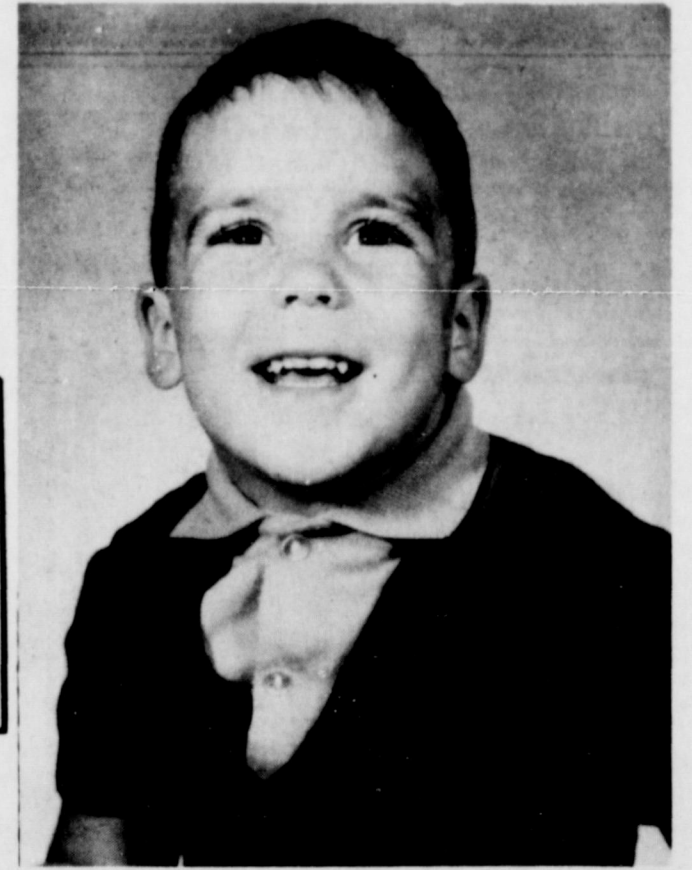
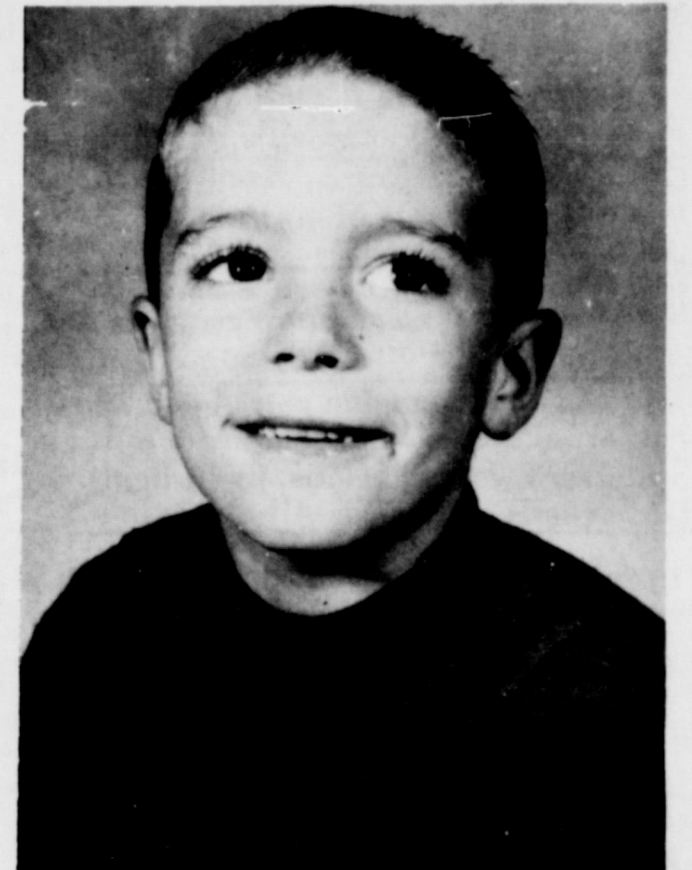


OFFERING THE BEST
IN AUTO SERVICE

Complete Auto tune-up and repair
Mechanic Vic Edwards

Free Pickup and Delivery
Guaranteed Service

At Phillips 66
its performance that counts



A TRIO OF SMILES - - The children of Mr. and Mrs. John Nevill display happiness all over. They are April, 8; Keller, 6; and Glenn, 3.

The Spot Restaurant

Featuring
Mexican Food
every Tuesday night

Fresh Water Cat-
every Friday night

The best eating for the whole
family is The Spot in Cisco.

Phone 442-1949

Open 7 a.m. - 9 p.m. - 7 days a week

Mr. and Mrs. Charles Hill, owners

PONIES WANTED

Mares - 33" or smaller at withers

Stallions - 32" or smaller at withers

2 - 9 years

Contact R. Brown

600 Murray Arlington., Texas 76012

FIRST TIME IN FOUR YEARS

LEAP YEAR SPECIALS

16 x 20
PICTURES
Assorted Scenes

Values to 4⁹⁹
\$3⁰⁰

ORANGE
SLICES

2 LBS.
FOR 49^c

18 x 30
LUXURY
RUGS
Decorator Colors

Values to \$1⁹⁹
\$1¹⁹

JUST ARRIVED

MEN'S SPRING SHIRTS

Short Sleeve

Sizes 14 - 14 1/2 - to 17

Assorted Colors

Values to \$3⁹⁹

NOW 2/\$5⁰⁰

JUST ARRIVED

Ladies
Spring Canvas
SHOES

Assorted Colors

Values to \$2⁹⁹

\$2²⁹

Just Arrived For
Spring Planting
Assorted
FLOWER
BULBS

Just Arrived

BOY'S SPRING SHIRTS

Sizes 6-14 in assorted colors

Short Sleeve

Values to \$2⁹⁹ Each

2/\$5

Just Arrived For Spring Planting

ROSE BUSHES

\$1⁴⁹ - \$1⁵⁹ - \$1⁶⁹

perry's