

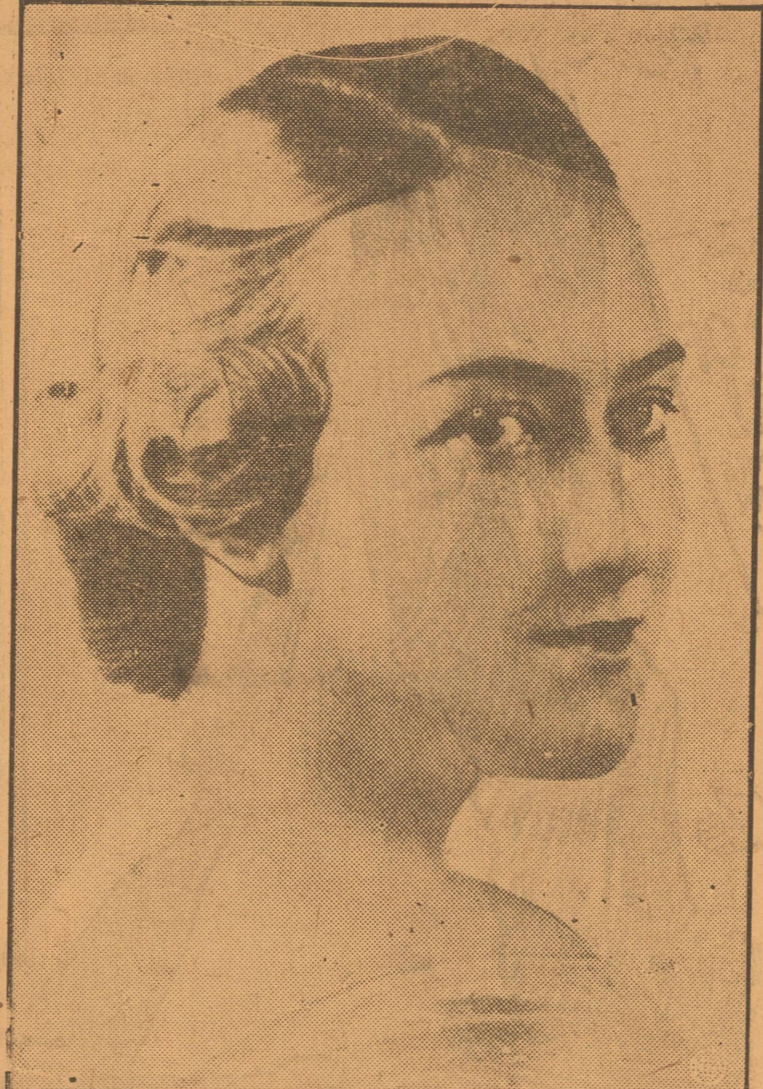
NO SIGN OF STRIKE END FORESEEN

By United Press DETROIT, Feb. 6.—Gov. Frank Murphy maintained contact with President Roosevelt today as conferees in the General Motors strike showed no signs of breaking their deadlock on recognition of the union as sole bargaining agent of the workers.

2,000 ARE EXPECTED AT OIL BELT TEACHERS MEET IN RANGER MARCH 19-20

L. A. Wooldridge, superintendent of the Roscoe Public Schools and Nat Williams, superintendent of the Cross Plains Public Schools, were in Ranger Saturday, conferring with O. G. Lanier on plans for the spring meeting of the Oil Belt Teachers Association, which will be held in Ranger Friday and Saturday, March 19, and 20.

A Family Addition for Il Duce



A place in Italy's First Family was one wedding gift Orsola Buvoli, above, of Milan, was sure of in her wedding to Vittorio Mussolini, son of Benito Mussolini, the nation's dictator.

CONGRESS VIEWING THE JUDICIARY REFORM MOVE WITH MIXED EMOTIONS

WASHINGTON, Feb. 6.—Congressional sources indicated today that views of members of the Supreme Court would be sought as one of the first moves in the impending battle over President Roosevelt's judiciary reform program.

SOLONS ARE DIVIDED ON MANY ACTS

AUSTIN, Feb. 6.—A review of early events of the Texas Legislature's session indicated administration forces were in control of the House, but were weak in the Senate.

Official List of Jurors Is Released

Names of the following petit jurors summoned for the week beginning Monday in 91st court were released Saturday by officials with the announcement, "Any list published other than this one was incorrect and should be disregarded."

Prebyterians to Meet at Abilene All Day On Friday

Announcement was made here today of the 11th annual convention of the Presbyterian Men of the Synod of Texas, to be held in Abilene at the Central Presbyterian Church on Friday, Feb. 12.

PRODUCTION OF WELL IS INCREASED

Production of Roy K. Ashburn and R. S. Luke No. 1 O. E. Scott, A. Tarter & A. Popejoy survey, was increased by shooting from 1/2 to 8 barrels daily, a report filed with the Railroad Commission at Eastland showed Saturday.

STATE CLAIMS TONY JOHNSON 'THREE TIMER'

Conviction of Tony Johnson on a charge of car theft for which he will go on trial Monday in 91st district court would result in infliction of a penalty under the habitual criminal act, District Attorney Earl Conner, Jr., said Saturday.

Three Injured As Truck Strikes Car

Three women were injured, one seriously, and one man was slightly injured in an automobile accident just outside the city limits of Ranger Thursday night.

Breckenridge to Be Host to Workers Of Baptist Church

The following is the program of the workers' conference of the Baptist church, to be held at the First Baptist church of Breckenridge, Tuesday, Feb. 9, as announced here today:

Body of Missing Girl Is Located

By United Press BUFFALO, N. Y., Feb. 6.—The body of Mary Ellen Babcock, 18, missing from her home since Friday night, when she left to attend a wake with a girl companion, was found today in a field on the outskirts of Buffalo.

Mrs. J. M. Hart, 81, Funeral Is Today

Funeral services for Mrs. James McClellan Hart, 81, who died Friday night after several months' illness, will be conducted this afternoon at 2:30 at the family residence, 1316 South Seaman street, in Eastland.

Transfer Thomas Here as Manager At Western Union

E. G. Thomas of McKinney has assumed the management of the Western Union office at Eastland replacing C. F. Tax, who will be assigned work in various cities.

Eastland Flood Fund Over \$400

Reporting a total of \$403.95, Chairman H. J. Tanner of the Eastland Red Cross flood fund drive Saturday listed unacknowledged contributions.

Royal Family to Support Edward

LONDON, Feb. 6.—The British royal family is prepared to finance the future of the Duke of Windsor who abdicated the throne, it was understood tonight.

Louisville Blast Victims Are Found

LOUISVILLE, Ky., Feb. 6.—The bodies of six victims of a gas explosion that wrecked a brick building here Friday, have been recovered, police said today.

Mississippi River Flood Crest Is Moving Slowly

By United Press MEMPHIS, Tenn., Feb. 6.—A rise in the upper Mississippi river caused by heavy rains, is retarding the fall of water at Cairo, where the river meets the Ohio, U. S. engineers said today.

Trial Is Sought In Murder Case

By United Press ORANGE, Texas, Feb. 6.—District Attorney Hollis Kinard said today he would seek an early trial for H. Y. Broussard, 45-year-old "boss" trapper of Port Arthur, charged with murder in the slaying of Etaine Richard, 40, and Albert Theriot, 33.

Old-Aged Dropped From Rolls Should Visit Sub-Office

Pensioners who have been advised of discontinuance of checks are in need will have an opportunity to be interviewed for possible reinstatement Friday at Eastland.

Commerce Group To Select Site For Travel Sign

Committees from the Ranger, Cisco and Eastland Chambers of Commerce are scheduled this week to go to Weatherford for the selection of a site for an advertising sign urging tourists to travel through this section.

Childress Back at Appeal Court Work

Dan Childress, injured eight weeks ago in an automobile accident, has resumed his work as clerk of the Eleventh Court of Civil Appeals at Eastland.

Woman Questioned In Brady Slaying

BRADY, Feb. 6.—McCullough County officers today questioned a young woman in an attempt to establish a motive for the death, Jan. 22, of Mrs. Fred Parker, 42, former Port Worth school teacher.

Three Injured As Truck Strikes Car

Three women were injured, one seriously, and one man was slightly injured in an automobile accident just outside the city limits of Ranger Thursday night.

Special Meeting Of Presbytery to Be In Eastland

A special meeting of the Abilene Presbytery has been called for Monday, Feb. 15, at 2 p. m., at Eastland for the discussion of the future program of the church, Rev. Charles W. Estes, pastor, announced Saturday.

EASTLAND TELEGRAM has Guest Tickets MONDAY for Mrs. M. W. Bagley and Daughter to see SHIRLEY TEMPLE in "STOWAWAY" AT THE CONNELLEE Call at Telegram Office

EASTLAND TELEGRAM

Published every afternoon (except Saturday and Sunday) and every Sunday morning

Member Advertising Bureau—Texas Daily Press League Member of United Press Association

NOTICE TO THE PUBLIC

Any erroneous reflection upon the character, standing or reputation of any person firms or corporations which may appear in the columns of this paper will be gladly corrected upon being brought to the attention of the publisher.

Obituaries, cards of thanks, notices of lodge meetings, etc., are charged for at regular advertising rates, which will be furnished upon mention of the publisher.

Entered as second-class matter at the post office at Eastland, Texas, under act of March, 1879.

SUBSCRIPTION RATE

ONE YEAR BY MAIL (In Texas) \$3.00

That 'Next War' May Already Have Begun

It is hard to pick up a magazine or a newspaper these days without finding in it a forecast about the outbreak of that "next war" in Europe. Reading such forecasts, a nervous man is bound to shiver. He would probably shiver a good deal more if he realized that this war may already be under way.

It is not so much nations which are clashing nowadays as it is rival concepts of government. The idea of dictatorship is colliding with the idea of government by and for the common man—democracy.

But the clash is not head-on. It is a devious affair of plots and counter-plots, of subterranean devices masked by outward expressions of amity.

These two ideas are fighting bitterly in Spain. But is there any war on between the nations which support the rival parties? Far from it. Every effort is being made to prevent it. Nevertheless, the struggle goes on, as deadly and destructive as anything a real war could show, with both sides deeply involved—by proxy.

Austria has had a taste of it. The revolts, attempted coups d'etat, and so on which have plunged that unhappy land in recent years have been part of the struggle. Tomorrow it will be some other nation's turn.

Suppose, for example, that Hitler decides to extend his influence over such a country as Rumania (to pick a nation at random). He would not dream of marching in with his troops, declaring war, and fighting it out in the old style.

Instead, money and organizers would slip into Rumania, a Fascist revolt would be set to fighting the other half—with Germany surreptitiously aiding one side, Russia or someone else aiding the other, and a great international conflict being fought out on the soil of Rumania with the bodies of the Rumanians.

That is what war is nowadays. It has no clear-cut beginning and no clear-cut ending. It is fought under the surface, with trickery and deceit. Never was international politics more dark and confusing.

Dictatorship fights democracy today in Spain, and all Europe is involved. Yet the great dictatorships and the great democracies remain at peace. Is this the sort of thing we are going to have, on a steadily increasing scale, for the next decade or so? If it is, the future is indeed terrifying.

MARVELOUS!



"Take Profit Out of War" Is Planned by Sen. Tom Connally

WASHINGTON.—"Take the Profit Out of War" is the aim of legislation introduced by Senator Tom Connally in Congress. Through taxation, the Connally measure drafts industry and wealth and effectively prevents wartime profiteering. Should the United States become engaged in war, increased tax rates and reduced exemptions for individuals would automatically become effective. Personal exemptions would be lowered to \$500 and \$1,600 for single and married persons, respectively, and the rate of tax would be 10 per cent, with a surtax beginning with 6 per cent on the first thousand dollars in excess of the exemption and reaching a maximum of 80 per cent. Corporation taxation would multiply in like manner.

sought by Senator Connally, who made the following statement:

"The war profits bill provides for the drafting of industrial plants and factories and munitions and supplies. It musters money as well as men. It calls to the colors a vast industrial army as well as the manhood of America. It announces the policy that dollars shall not be more sacred than human life. It enunciates the doctrine that in time of war and crisis, every resource and every instrumentality to secure victory and the triumph of American arms shall be at the command of the Government of the United States."

The measure effectively carries out the policy of the American Legion to draft industry and wealth as well as individuals in the prime of their life. Senator Connally believes that with profits from war removed, one of the major causes of war will be removed.

Working under its chairman, Senator Connally, the Senate finance subcommittee has spent months in conjunction with tax experts from joint committee on internal revenue and taxation and from the Treasury working out the tax plan. The bill was unanimously adopted by the subcommittee and reported favorably by

the finance committee to the Senate late last session. Action was not taken, due to adjournment. The measure carries out the anti-war-profits plank in the Democratic platform adopted in Philadelphia last June, a plank which was placed in the platform upon the insistence of Senator Connally.

Woman Has Lived Under Six Flags

SARNIA, Ont.—Mrs. Elizabeth Ward, who has lived under six British kings, is tired of living. Interviewed on her 101st birthday, she said she was "waiting for the Lord to take me," and refused to give a recipe for longevity.

Ranger Woman to Be Buried Today

Mrs. Mackie Lee Williams, 53, of Ranger, who died in a Ranger hospital Saturday, will be buried from the Church of Christ in Ranger this afternoon at 3.30 with D. W. Nichol, former minister of the church, conducting the services, assisted by Rev. T. E. Bowman, pastor of the First Methodist church of Ranger.

The decedent was born Oct. 5, 1884, and had been a resident of Ranger for 40 years. She was a member of the Church of Christ.

Surviving relatives include her husband, Aaron Williams; one son, William Williams; five daughters, Mrs. J. G. Wheat, Big Spring; Mrs. Roy Booth, Breckenridge; and Misses Velma, Ruby and Mackie Williams of Ranger; two brothers, Lee Ames of Ranger and J. C. Ames of Knox City, and her father, A. A. Ames.

Interment will be in Evergreen cemetery, following the services at the church.

Cooperation In Stopping Theft of Junk Asked

Cooperation of sellers of junk to aid police in halting oil field and other thefts was requested Saturday by H. Pullman, proprietor of the Eastland Iron & Metal Company.

Pullman said that sellers of junk who buy metal should be positive of its owners before accepting the material.

Officers are investigating a series of thefts in which metal was taken from oil leases and sold as junk.

Names of Students Cover Wide Range

FORT WORTH—The Smiths are "not keeping up with the Jones" at T. C. U.

The Jones name leads all others in the student body, and the Smiths, long accustomed to first place, have to be content with second honors.

For a color scheme there is a Black, Brown, Rose and White. But no purple to combine with the White to make the University's colors.

Horned Frogs can go West, Riding in a Bus. They'll go down a Lane, over a Hill, past Brooks and a Woods with a Maple.

There is a Barnes for the Wolf, Eagle, Fox, Coon and Roach. Frog-land is even supplied with Hay for

Jesus THE GOOD SHEPHERD

BY WM. E. GILROY, D. D. Editor of Advance

COMING in the month of February, this lesson on Jesus, the good shepherd, has an appropriateness that was not in the minds of the compilers of the lessons at the time they were planned.

This is the fact that the centenary of the birth of the great evangelist, Dwight L. Moody, is being celebrated throughout the world. Moody was born on Feb. 5, 1837. Associated with him in his evangelistic work was Sankey, the singer; and the song or hymn that was most typical of Moody's evangelism was the beautiful "The Ninety-and-Nine," based on the Parable of the Lost Sheep.

In our lesson the aspect of the shepherd is somewhat different, but it is the same essential fact that is emphasized; namely, the shepherd's care for his sheep, and his willingness to lay down even his life, if necessary, to defend and care for them.

The references that Jesus makes to Himself as the "door" are not easily understood, but the emphasis that Jesus puts upon the character of the shepherd, his care for his own, his patience, his love and his courage are unmistakable.

WE are told that the figure of the shepherd as the "door" is taken from the shepherds of the East, to which there is a very narrow entrance. The shepherd stands in that entrance,

closing the fold, or he stands to one side, leaving an opening for the sheep to come in or go out. So it is that Jesus is the "door."

He symbolizes the protection of the sheep, and the exclusion from the fold of all that is dangerous and harmful. The character of the good shepherd is contrasted with that of the hireling, the man who has no sense of responsibility or of devotion.

The figure of the good shepherd, as he tenderly carries the lamb on his arm, while his staff or crook symbolizes his protecting care for the older sheep, has been enshrined in art. But there is something even deeper than that symbolism. It is the willingness of the shepherd to sacrifice his own life, and that is what Jesus did for humanity.

THE reference to sheep that are not of His particular fold is somewhat obscure, like the earlier portion of the parable; but the one thing that is clear and sure is that all who are living in the spirit of Christ belong to Him.

Paul said, "If any man have not the spirit of Christ, he is none of his." The converse of that statement is that if any man have the spirit of Christ, he does belong to the true fold. Regardless of what his place or connection may be, if he has attained his life to goodness and righteousness and love, his place is in the one fold where the Master is the door, the true shepherd of all sincere souls.

the Barnes. A Hall and Walls are also available for the Whitehouse, Banks, Mills or Camp. The Price of Rice is Low enough, for it's only a Nichol. For the Young there is a Bibb.

The Best and Fine students are enrolled, so it is not surprising to find a King.

There is a Barr but not one available to preside over it. Only a Cook, Page and Butcher.

A satisfactory report was given Saturday on the condition of W. B. Taylor of Eastland, who has influenza with complications at City County hospital in Ranger.

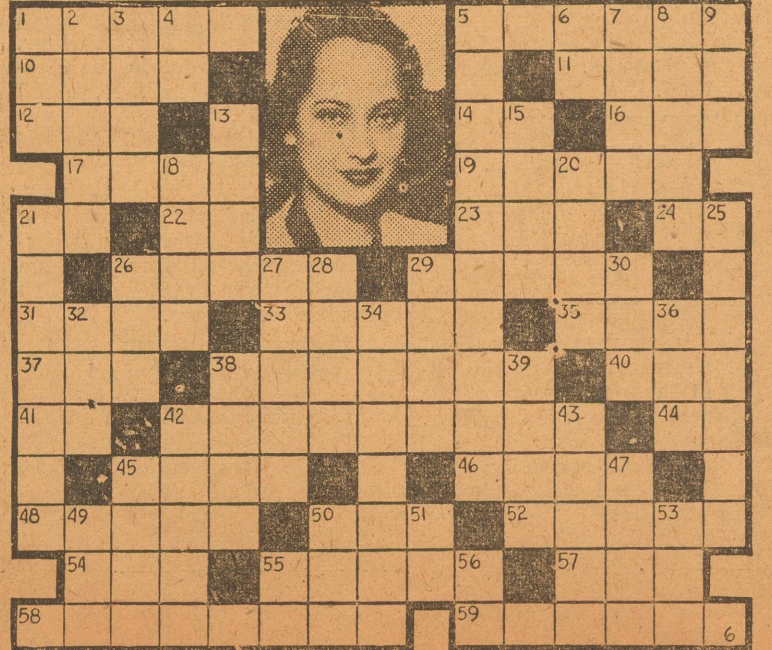
Among the citations which comprise the lesson-sermon is the following from the Bible: "Am I a God at hand, saith the Lord, and not a God far off? ... Do not I fill Heaven and earth," saith the Lord" (Jeremiah 23: 23, 24).

The lesson-sermon includes also the following passage from the Christian Science textbook, "Science and Health with Key to the Scriptures," by Mary Baker Eddy: "The three great verities of Spirit, omnipotence, omnipresence, omniscience, — Spirit possessing all power, filling all space, constituting all Science, — contradict forever the belief that matter can be actual. These eternal verities reveal primeval existence as the radiant reality of God's creation, in which all that He has made is pronounced by His wisdom good" (page 109-110).

CHRISTIAN SCIENCE SERVICES Sunday school, 9:45 a. m. Morning service, 11 a. m. Wednesday, testimonial service, 8 p. m. Public cordially invited. "Spirit" is the subject of the lesson-sermon which will be read in all Churches of Christ, Scientist on Sunday, Feb. 7.

Young Actress

Crossword puzzle grid with clues for words like 'HORIZONTAL', 'VERTICAL', 'Answer to Previous Puzzle', and 'Dirt in smoke'.



Advertisement for Chlorophyll, featuring an illustration of a cow and a fish, and text describing its benefits for coloring matter in plants and its use in cosmetics and foods.

Large advertisement for Eastland Iron & Metal Co. with the headline 'NOTICE TO SELLERS OF JUNK' and text requesting cooperation in stopping junk stealing. Includes the company name and location: Eastland, Texas.

The ABC's of the Unemployment Act

Since the Texas Unemployment Compensation Act and the Old Age Benefits section of the Federal Social Security Act went into effect about the same time, many people have confused the provisions of these two laws.

The Texas Unemployment Compensation Act should be studied by itself, forgetting for the moment the Federal Social Security law, if you really wish to understand it. To try to clear up some of the most frequently asked questions about the Texas Unemployment Compensation Act, we present herewith in simple question and answer form the essential information.

“What employers must pay the tax under the Texas Unemployment Compensation Act?”

All employers who, during 1936, had eight or more people working for them during any part of twenty different weeks must pay the tax under the Texas law. However, certain occupations are completely exempted from the law. These exemptions are agriculture, governmental work, domestic service in a private home, non-profit organizations, such as a community chest, and agents of insurance companies who are paid on a commission basis. In addition, a father working for his son, his wife, or his daughter, or a child working for his parents, is exempt.

“If I am an employer under the Act, how much do I pay the Tex-

as Commission?”

By February 25 you must pay the Texas Unemployment Compensation Commission, Austin, a contribution equal to nine-tenths of one per cent of your total 1936 payroll.

“Does the employer pay this tax or does he take it out of the wages of his workers?”

The employer must pay the full amount of this tax. The Texas law specifically prohibits the employer from deducting this tax from the wages of his workers, and provides fines and jail sentences for employers who do deduct the tax from wages paid.

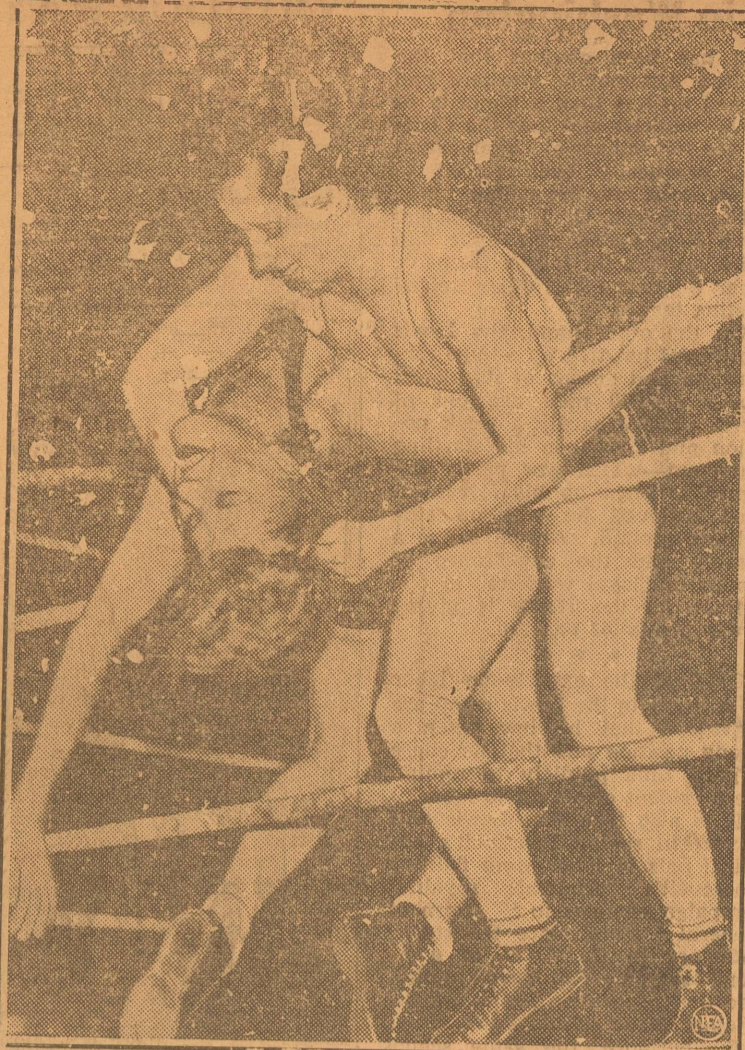
“I don't have eight workers during twenty different weeks in the year, yet I want to come under the law. What must I do?”

If you don't employ eight or more workers during twenty different weeks in the year, or if you are engaged in one of the exempted occupations, such as farming, then you can apply to the Texas Commission for permission to come under the Act. You will have to sign up for a period of at least two years before your application will be accepted. The employer, and not the workers, must sign the application volunteering to come under the law.

If you have any other questions concerning this Act—or its administration, you are invited to write to R. B. Anderson, chairman, Texas Unemployment Compensation Commission, Austin, for complete information.

The youngest punished for his wallpaper murals apparently is destined to be another Diego Rivera.

Sweeping Into Championship



Mildred Burke of Kansas City, Mo., took opportunity by the forelock as it were to wrest the world's feminine wrestling championship from Clara Mortenson of Glendale, Calif., in a match at Chattanooga, Tenn. That's Clara who is being parted from her title hair by hair.

Winter Months Are Busy Ones for the C.C.C. Enrollees

FORT WORTH. — The winter months are busy months for the Civilian Conservation Corps enrollee. It is during these months in Texas that a large portion of all planting of vegetation must be done. Winter is the only time trees can be planted successfully. The CCC camps doing erosion control work must plant much grass and many trees during the winter. In the same connection CCC boys run the lines upon which the cooperating farmers will plant close growing crops for strip crop protection against soil erosion.

The methods of planting vegetation of any sort are of a varied nature according to the type of plant used. The CCC enrollee working with the farmer in establishing all phases of the methods for erosion control is necessarily working in a wide scope of activities. The work in sodding varies with the use to which the grass is to be put. CCC labor is used in all sodding operations necessary in the establishment of new pastures upon sodded and steep land, in the preparation of sodded outlets for the safe removal of excess terrace water, and in the renewing of old pastures or the establishing of meadows.

In any of the Soil Conservation Service areas in Texas in which CCC camps and farmers are cooperating in a co-ordinated erosion control program, the enrollees may be seen daily as they push forward the planting work so necessary in erosion control. A group may be seen today setting chunks of sod over a piece of ground which last year was under the plow but of low production. Yesterday the same group was probably engaged in preparing the land for the grass and cutting the sod from some already well covered spot on the same farm. Tomorrow the boys will perhaps be found setting out seedling trees in a badly gullied place or on a steep slope of the farm.

Another day will be spent in running lines on the contour in the cultivated fields where the

All Set to Fight Except for Foe



If they don't hurry up and go through with one of the bouts that have been talked of for Heavyweight Champion Jimmy Braddock, his sons will be big enough to serve him as seconds when he does get a chance to risk his title. The boys are getting experience for that eventually, too, acting as his seconds in training bouts. Jay Administrators the water and Howard rubs dad down during a work out in New York City.

farmer may then sow oats or such other strip crops as he may plan to use. The bands of vegetation may be all that will occupy the lines. Again the lines may be the basis upon which later the farmer will construct his terraces, to be planted in strips.

Thus the CCC enrollee of the Soil Conservation Service spends his winter months. His labor must be very efficient. The time is short and spring and summer have

to be devoted to further operations adapted better to those seasons. Fall will usher in more sodding. Natural drains through which it is planned to carry off excess terrace water must be well covered with grasses before water is emptied into these outlets. The drains can be used either as a meadow or for pasture. The CCC boys straighten out the bad berds of the draw, slope the sides more

'Luxury Roads' Are Called Dangerous

TRENTON, N. J.—More accidents per vehicle mile occur on the wide, expensive main highways in New Jersey than on the low-cost secondary roads, according to a report of Arnold H. Vey, state traffic engineer. He revealed that 21 per cent of the accidents in that state occurred on the expensive state highway systems, which includes only six per cent of the road miles of the state. That is an accident rate per mile on the main highways four times that for the secondary roads.

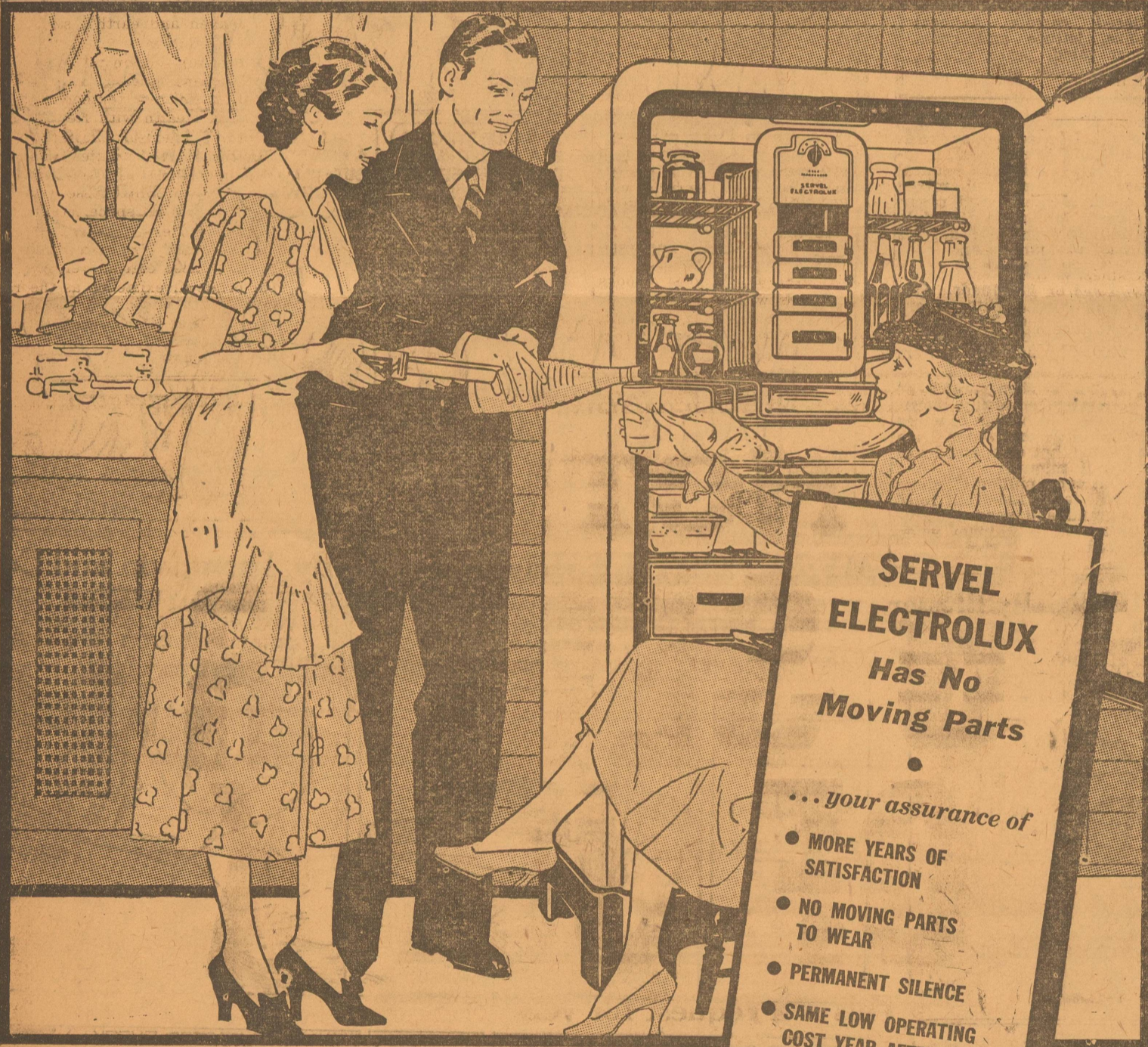
Not only is the accident rate per mile higher on the main roads, but the wider the road the greater the peril, reported Mr. Vey, saying that it is safer to drive an automobile in New Jersey on a two-lane highway than on a three-lane road, and that the four-lane highways had the worst accident records. According to figures submitted by Mr. Vey, on two-lane roads the accident rate was 2.75 accidents per million vehicle miles; on three-lane highways, 3.58, and on four-lane highways, 3.61.

uniformly for the better support of vegetation. After that, sod is placed and seed planted. Not alone is there danger from the future terrace water. These meadow outlets are wide and must protect themselves also from run-off of rain falling directly upon them. Therefore, there is still need for much work as early in the winter as possible that the grass roots will have a good chance to grow rapidly with the first part of spring.

During the month of December, 1936, Soil Conservation Camps in Texas planted 4,140 trees, prepared 33 acres of meadow for terrace outlet purposes, sodded 55,958 square yards of terrace outlet channel, planted one acre in woodland gullies. The camps also sodded 2,776 acres of old and new pasture for the improvement of the pastures and the control of erosion therein. Twenty acres were planted in December for wildlife preservation which plantings will also aid in erosion control.

ITS SILENCE MEANS SAVINGS

throughout its long life!



SERVEL ELECTROLUX Has No Moving Parts

... your assurance of

- MORE YEARS OF SATISFACTION
- NO MOVING PARTS TO WEAR
- PERMANENT SILENCE
- SAME LOW OPERATING COST YEAR AFTER YEAR
- FULLEST FOOD PROTECTION
- SAVINGS THAT PAY FOR IT

And you enjoy also...

- Modern Convenience
- Streamlined Beauty
- Extra Roominess
- Greater Ice Cube Capacity

Women everywhere have started a trend to the GAS refrigerator!

MANY PEOPLE choose Servel Electrolux because its permanent silence says "Comfort" to them in a big way. And they're right—it is a real convenience. But this noiseless operation tells you something of even greater interest—especially to your pocketbook. It says: "Here's a refrigerator that has no moving, wearing parts... a refrigerator that gives you longer service at greater savings." Servel Electrolux has no moving parts for the very good reason that it needs none. A tiny gas flame does all the work in this remarkable refrigerator. See it today at our showrooms.

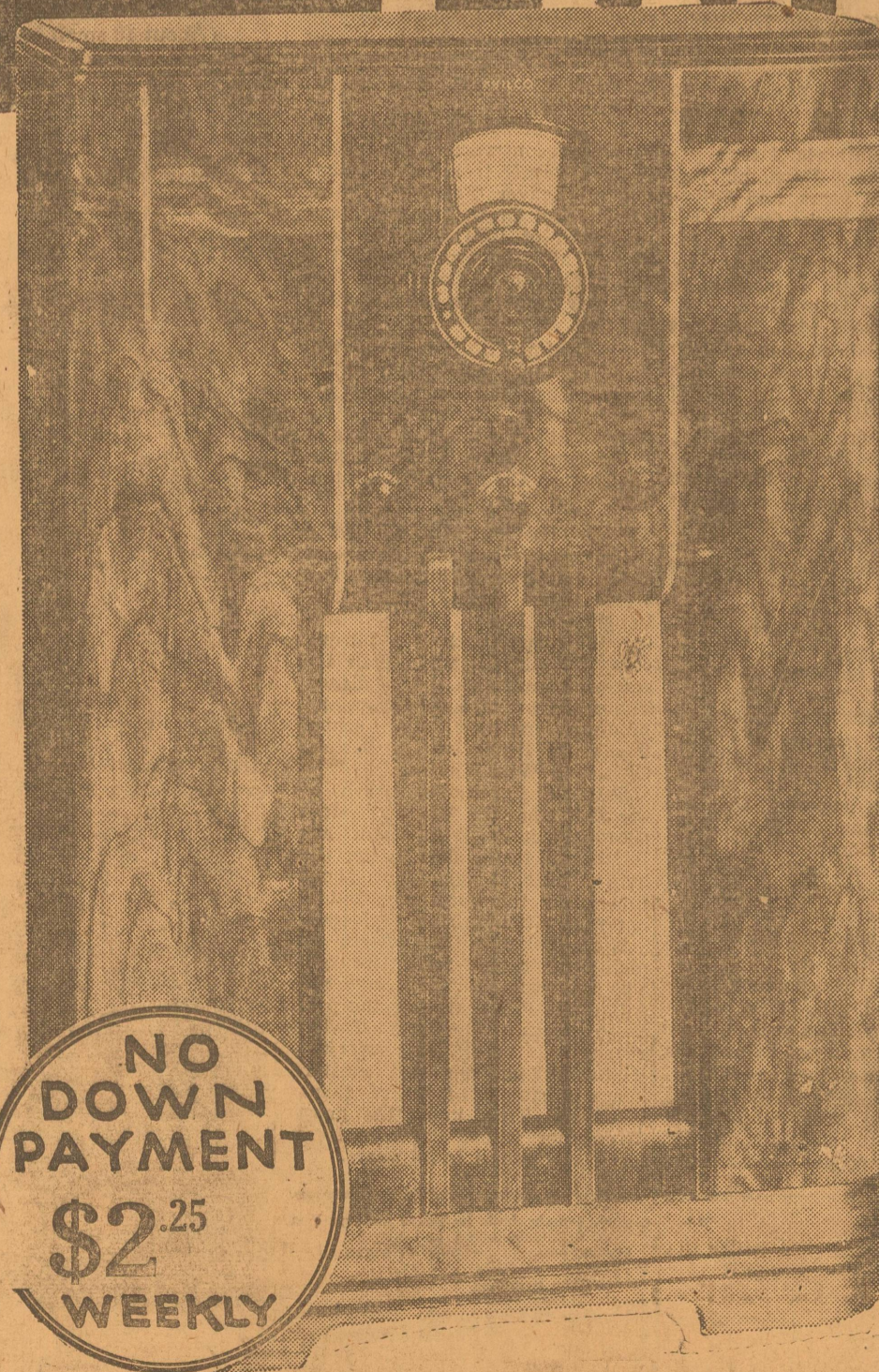
ASK ABOUT OUR EASY PURCHASE PLAN

ALSO ALL NEW 1937 KEROSENE BURNER ELECTROLUX

RANGER FURNITURE EXCHANGE

SHOW ROOMS AT RUPERT'S BAKERY WEST MAIN ST. PHONE 552-J. EASTLAND, TEXAS

\$32. For Your OLD RADIO ON THIS New 1937... PHILCO



\$130 LESS \$32 \$98

Complete With Aerial

- Nine Tubes
- Automatic Tuning
- Magnetic Tuning
- Spread Band Dial
- Philco Foreign Tuning System
- And Many Other Features
- World Wide Reception

Listen to Boake Carter, Philco's Ace News Commentator, at 6:45 p. m., each evening, except Saturday and Sunday, over KRLD, Dallas or KMOX, St. Louis.

NO DOWN PAYMENT \$2.25 WEEKLY

HARPER MUSIC COMPANY

WEST MAIN STREET,

EASTLAND, TEXAS

Last Chance! THEY'RE GOING FAST AT THIS SPECIAL PRICE

CONFIDENTIAL REPORT

CRIME FILE ON BOLITHO BLANE

BEGIN HERE TODAY Boarding CARLTON ROCKS... MRS. JOCELYN Lady Welton's daughter and son-in-law...

from New York and received by the bishop in the post delivered to the yacht on her arrival off Miami yesterday. Letter herewith.

HOTEL ADLON-CLARIDGE New York 5th January, 1937

My Dear Bishop: I have only just learned that you are to make one of the party which Carlton Rocksavage is assembling on his yacht for a little holiday among the islands...

IDENTIFICATION SECTION Department of Police, New York City.



Arrested July 4, 1930, on Mauretania on ship's arrival in New York. Sentenced 18 months for fraud. Served 15 months Sing Sing, then released for good conduct Nov. 10, 1931.

Arrested May 15, 1933, in Feldmar Hotel, N. Y. C. Sentenced two years for fraud. Served 20 months Sing Sing, then released for good conduct Jan. 28, 1935.

NOW GO ON WITH THE STORY CHAPTER X DETECTIVE OFFICER KETTERING'S THIRD REPORT, CONTINUED.

INOSUKE HAYASHI'S postcard to Bolitho Blane follows: S. Y. GOLDEN GULL, Dear Mr. Blane: Needless to say I was very shocked to receive your letter...

With the assistance of Detective Officer Neame I then searched the cabins of all parties concerned. The contents of the wastepaper baskets in each cabin, which had been cleared since the previous morning, were removed and as a matter of routine, their contents being catalogued.

I have an idea that some very strange and unusual things are likely to take place upon Rocksavage's yacht once we put out to sea and, however strange these occurrences may be, I feel sure that you will bear in mind what very good friends we are.

I then examined the ship's officers. Dr. Ackland, Mr. Rocksavage's personal physician, who messes with the officers, and all members of the crew. I am satisfied none of them could have had any connection with the crime and take it you will not require detailed reasons for my conclusions.

MEMO To Detective Officer Kettering: I acknowledge herewith your two reports of yesterday's date, together with documents as stated therein. I am now forwarding herewith all information at present available regarding the parties concerned.

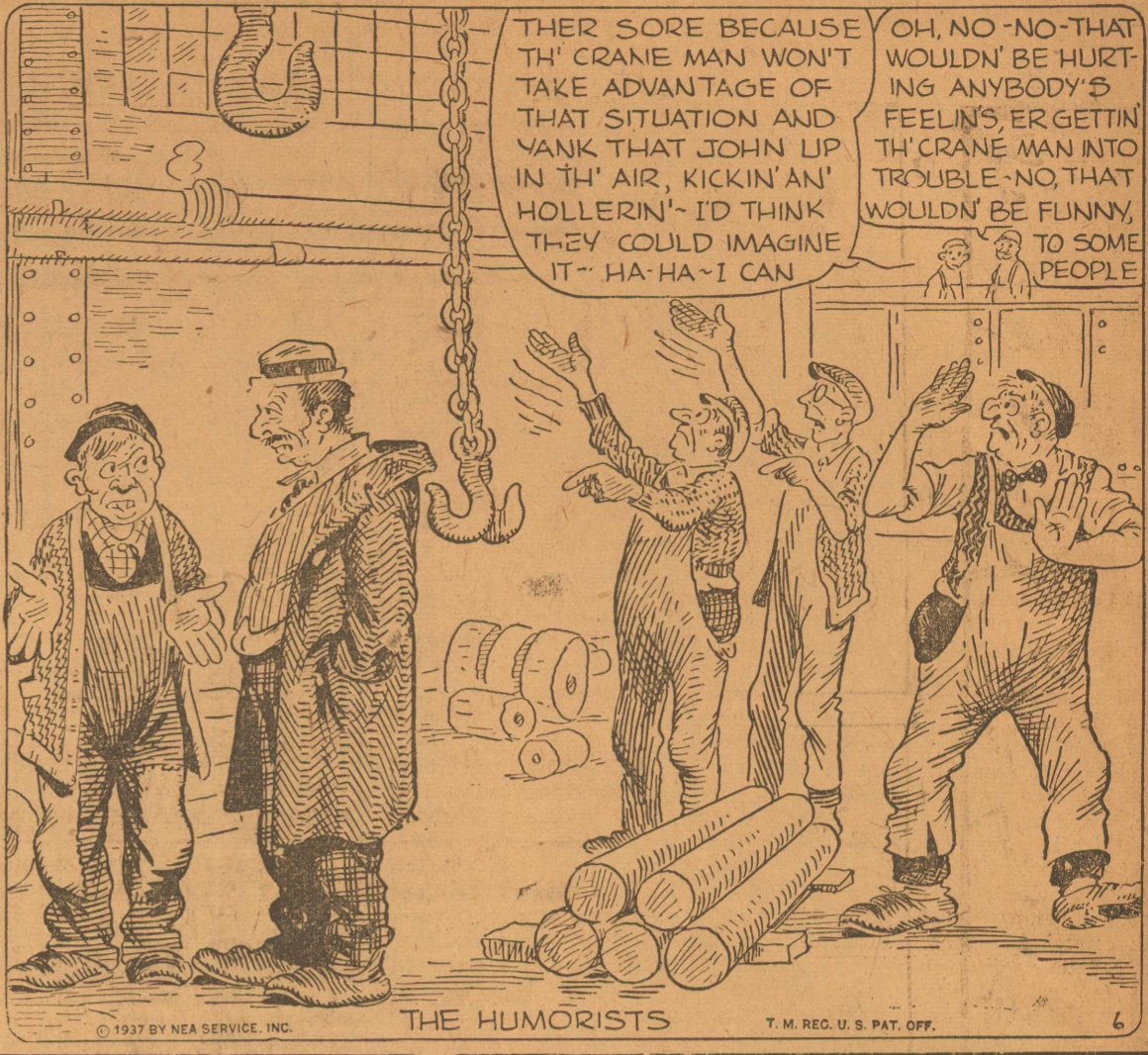
Behind the Scenes in Washington

BY RODNEY DUTCHER NEA Service Staff Correspondent WASHINGTON—Even the friends and admirers of John L. Lewis are mixed up as to the wisdom, implications and possible consequences of his call to President Roosevelt for help in the General Motors strike...

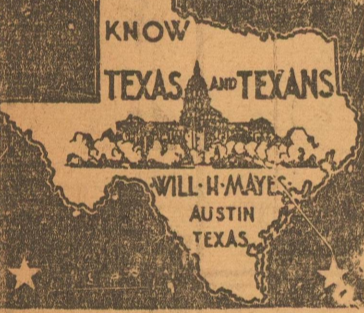
ALTHOUGH this will be denied, Roosevelt had to all intents and purposes been intervening in the strike through long distance telephone conversations with Governor Frank Murphy of Michigan. The extent to which the president made recommendations to Murphy as to his handling of the situation cannot be revealed here...

IT is open to argument, perhaps, whether the Lewis challenge to Roosevelt actually constituted an admission of weakness or a claim of strength.

"OUT OUR WAY" By Williams



LET'S KNOW TEXAS AND TEXANS



In this column answers will be given to inquiries as to Texas history and other matters pertaining to the State and its people. Address inquiries to Will H. Mayes, Austin, Texas.

Q. What inscription is on Houston's monument at Huntsville, summing up his leading achievements and characteristics? C. L. A. "Soldier under Jackson—Boy hero of Horseshoe Bend—Congressman from Tennessee—Chief of the Cherokee—Commander-in-Chief of Texas Army—Hero of San Jacinto—Twice President of the Republic of Texas—United States Senator from Texas—Governor of Texas. A brave soldier, a fearless statesman, a great orator, a pure patriot, a faithful friend, a loyal citizen, a devoted husband and father, a consistent Christian, an honest man."

Q. For what is the historic old oak near the courthouse square at LaGrange especially noted? A. From under its great shades Capt. N. M. Dawson and his company of 53 men marched to the relief of San Antonio after its capture by Mexicans in 1842; it shaded Gen. Kirby Smith's volunteers assembled to join the Southern Confederacy; two companies were formed beneath its foliage for the Spanish-American war; there Fayette county's young manhood gathered to enlist in the World War, and there the people of the county assembled to give thanks when the armistice was signed.

Q. What became of Ensign James A. Sylvester, color-bearer at the Battle of San Jacinto? A. Soon after peace was achieved in Texas, he went to New Orleans and, being an expert printer, obtained a position with the New Orleans Picayune. He died in 1882 and was buried in the Odd Fellows Cemetery at New Orleans. His remains were brought to Texas in November, 1935, and interred in the State Cemetery.

Q. How many airports are there in Texas? A. At the beginning of 1937, there were 134 airports and landing fields in various stages of im-

Sport Glances.By Grayson

WITH Bill Kern and Dr. Eddie Baker moving across the street to Carnegie Tech, the Sutherland system comes home to roost at the University of Pittsburgh.

John Bain Sutherland isn't exactly crazy about Kern, his line coach for eight years, and Baker, who tutored his backs for six, assuming command of a neighbor and a traditional rival, but the silent doctor always is pleased to see his charges step along.

The Sutherland plan long has been recognized as one of the soundest in football. It has been adopted elsewhere and disciples of the canny Scotsman are in demand as teachers.

When Dick Harlow went to Harvard he said that his attack would be patterned as closely as possible after that of Sutherland. Save for a slightly different backfield setup, the Crimson scheme checks closely with that of Pittsburgh. Howdy Odell, pony Panther back of 1933-4-5, drills the Cambridge backs.

Ma. Ralph Sasse employs Sutherland methods at Mississippi State. Lou Little of Columbia and other leading mentors are close students of the Panther strategist.

SISTER MARY'S KITCHEN

By Mrs. Gaynor Maddox NEA Service Staff Writer A SLICE of nut bread added to what you had planned to serve for dinner will give a touch of surprise to the plainest meal. This is a quick-bread recipe and rates a permanent place in your loose-leaf cook book.

Monday's Menu BREAKFAST: Canned cherries, hot rice with brown sugar, whole wheat toast, coffee, milk. LUNCHEON: Split pea soup, nut bread, baked apple, tea, cocoa. DINNER: Panbroiled hamburger steak, mashed potatoes, buttered carrots, oatmeal muffins, lettuce and green pepper salad, pears, cheese, crackers, coffee, milk.

Hotted Bread Less odd than it sounds. One loaf of stale bread. With a sharp knife, cut a row of 2-inch thick slices the length of the loaf, but do not cut through the bottom crust.

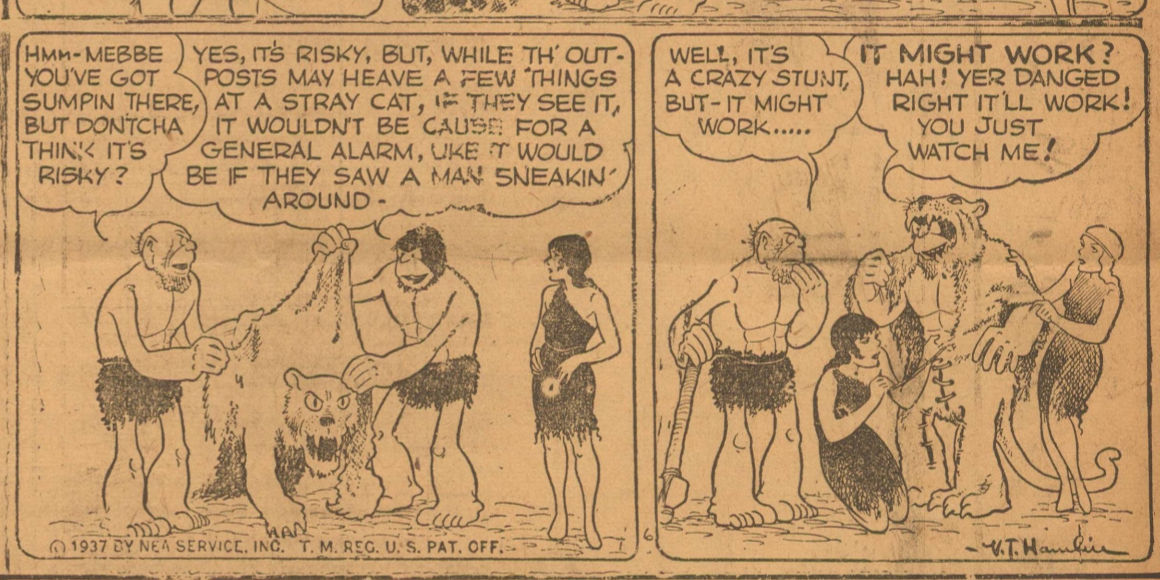
Oatmeal Muffins (About 18 small ones) One and one-half cups scalded milk, 1 cup cooked moist oatmeal, 1 egg, 1 1/4 tablespoons melted butter, 2 scant cups flour, 2 teaspoons baking powder, 1-2 teaspoons salt, 1-2 teaspoons soda. Combine scalded milk and oat-

meal. Add the well-beaten eggs and stir in melted butter. Sift flour, salt and baking powder together. Add to milk and oatmeal mixture and stir until mixed with quick strokes. Add sugar. Fill greased muffin tins 3/4 full. Bake in hot oven (400 degrees F.) for about 15 minutes.

FOR THE FIRST MONTH IT WOULD BE RATHER WISE TO BUY ONLY A FEW PIECES OF FURNITURE... PERHAPS FIFTY DOLLARS WORTH!

I HEARD HIM MUMBLE SOMETHING ABOUT TWO KIDS BEING TOO YOUNG TO ELOPE... AND THEN HE FAINTED!!!

ALLEY OOP By HAMLIN



MYRA NORTH, Special Nurse -- By Thompson and Coll



Frontiersman Fights Citizenship Doubts PIERRE, S. D. — Coleman Naught, Sioux Falls, who voted in the Dakota Territory in 1884 and who cast a ballot in favor of adoption of the South Dakota state constitution, charges he has been denied citizenship.

Historical Painting Placed In Capitol AUSTIN—A painting of the signing of the Texas Declaration of Independence has been placed in the lobby of the state capitol, with possibility that it may be purchased by the legislature for permanent display.

80-YEAR-OLD TWINS NORWALK, Ohio. — The 80th birthday celebration of Mrs. A. B. Bratton and L. L. Kellogg, twins, did not come as a surprise to Norwalk folk. Their family is famous for longevity. Martin Kellogg, grandfather, died in 1892 at the age of 106.

REG. U. S. PAT. OFF.

OUT OUR WAY

The Willets
by J.R. WILLIAMS

BE QUIET AND THAT SALESMAN WILL THINK WE'RE NOT HOME AND FINALLY GET TIRED AND BEAT IT.

HE'S AWFULLY HARD TO GET RID OF.

B-R-R-R
B-R-R-R

GOOD NIGHT! I NEVER SAW SUCH A PERSISTENT PEST.

I THINK HE HEARD US OR SAW ONE OF US.

B-R-R-R
B-R-R

OH! YOU CAN GET RID OF THAT SALESMAN? LISTEN-I DON'T WANT ANY OF YOUR SILLINESS-

LISSUN-LEMME SHOW YOU LEAVE SOMEBODY USE THER HEAD THAT HAS ONE.

B-R-R
B-R

HOW'S THIS? RED INK - GET ME? NOT A WORD SPOKE - JUST OPEN DOOR AN' SAY, GOOD MORNIN' AN' GOOD BYE-

OH, WHY THAT'S A GOOD IDEA!

OH, I SEE - YES, THAT'S GREAT!

WATCH THIS, NOW - IT'S GONNA BE OVER QUICK.

OH, THIS'LL BE FUNNY

COME - WE MUST SEE IT.

HELLO~

OH, THAT WAS CLEVER - HA-HA - DID YOU SEE HIM GO - HA-HA - BOY, YOU'RE GOOD.

YOU'RE BRIGHT, WILLIS

HE HAS COME BACK - I GUESS HE LEFT HIS GRIP, IN HIS RUSH - I'LL JUST LOOK OUT AND GIVE HIM ANOTHER SCARE

I'LL SAY YOU WERE RIGHT!

I KNEW I WAS RIGHT, OR I WOULDN'T HAVE CALLED YOU.

DON'T ANYONE LEAVE THIS HOUSE TILL TH' HEALTH OFFICER INVESTIGATES THIS - HE'LL BE HERE IN A FEW DAYS.

QUARANTINE

WAIT, NOW... WAIT - WE GOT A LAFF COMIN' WHEN TH' HEALTH OFFICER COMES -

J.R. WILLIAMS
© 1937 BY NEA SERVICE, INC.

THE COMIC ZOO

By Scarbo

I GOTTA SEE MY LAWYER, G. BELFOUNTAIN BADGER - MAYBE HE CAN ADVISE ME!

GOLLY, I JUST HAVE TO BOTHER YOU, SIR! I'M IN AN AWFUL FIX - THE DOCTOR SAYS I GOTTA WEAR GLASSES WHEN I WORK

DON'T DISTURB

WELL, WELL! WHAT THE DICHENS! MOST PEOPLE WEAR GLASSES WHEN WORKING!

I KNOW, SIR! BUT I'M A PRIZEFIGHTER!

R-R-R

TAKE OFF THOSE GLASSES - I FEEL LIKE WORKING!

R-R-R

© 1937 BY NEA SERVICE, INC.



LOCAL—EASTLAND—SOCIAL

OFFICE 601 TELEPHONES RESIDENCE 288

CALENDAR SUNDAY Young people's department of Methodist church, 6.15 p. m. Baptist Training union, 7 p. m. Baptist church.

Monday Women's Missionary union of Baptist church, circle sessions: Walton Moore, 1.30 p. m., with Mrs. Marvin Hood; Lottie Moon, 1.30 p. m., with Mrs. C. T. Nelson; Henrietta Hall, 2 p. m., with Mrs. J. B. Overton; Lockett, 2 p. m., with Mrs. E. E. Layton.

Women's Missionary society of Methodist church, world outlook program, 2 p. m., Booster classroom, Mrs. W. P. Leslie, leader.

Women's Missionary society of First Christian church, 3 p. m., Mission study, Mrs. D. J. Fiensy, leader, at church.

Ladies' Bible class, 3 p. m., at Church of Christ.

Young Women's association, at 7.30 p. m., residence Miss Katrina Lovelace, hostess.

Taylor Studio Recital Attended by Many The high school auditorium held a big audience Friday night for the Taylor studio recital, presented in a setting of blooming potted plants, baskets of cut flowers and grouped ferns that massed the ends of the stage, all lighted with tall floor lamps.

The South ward school glee club of 30 members made an appearance in their white uniforms with green touches.

Ushers were Misses Ruby Lee Pritchard, Florine Richardson and Mrs. Burd Turner.

At the close of the concert Mrs. Taylor announced the appearance of the noted Percy Grainger at Simmons University, Abilene, on Feb. 12, in a classical repertoire.

Mrs. James Horton Hostess to Club The Junior Thursday club was complimented with a buffet supper prior to their program Thursday evening at the home of their hostess, Mrs. James Horton, who is the club sponsor.

The big living room with its cheerful open fire, was lighted by vari-colored Valentine tapers in silver holders, that centered the six quartet tables laid in Madeira linen and with places indicated by lovely Valentine cards.

The buffet table, laid in handsome outwork Madeira, was centered in a frosted bowl of sweet peas and nasturtiums. The menu, in the big silver trays, spaced the table, baked turkey with gravy, sweet potato puffs, olives, pickled beets, cranberry jelly, combination salad on lettuce, whole wheat rolls, date pudding with whipped cream topping and coffee, and a cheese with water biscuit.

The after supper program that centered about "Damaged Souls," was opened by the leader, Mrs. Fred Maxey, with the quotation, "We need to hear the excuses men make to themselves for their worthlessness."

The roll call, "Rogues and Rascals," brought some surprising personages.

Music Appreciation Classes Organized A new feature has been developed by Mrs. Johnny Kitchen for her three classes of seventh grade of junior high school in the study of "Music Appreciation."

The work is divided into four parts: Type of music, music memory, learning to identify twenty selections, which they hear from records, and stories of operas.

Hand in hand goes the study of the lives of composers. The records are also used to teach style and composition.

Mrs. Kitchen reported this new study at the meeting of the Music Study club which deeply appreciated this departure in school work.

Club Committees Busy on Benefit Sale In an effort to make funds to pay for the furnishings of the Community clubhouse club-room, the clubhouse board has called to its assistance the five study clubs in Eastland, four of them federated and owners and supporters of the clubhouse.

These committees, appointed by presidents of the various clubs, are working busily securing materials, donations of all kinds, for what is planned to be the biggest bundle or rummage sale yet to be held in Eastland.

The committees are named in the order of their clubs' organizations, and include Thursday Afternoon club group, appointed by the president, Mrs. E. Roy Townsend; Mmes. W. B. Pickens, Elmo V. Cook and W. A. Martin.

Mmes. Iola Mitchell, Richard Jones, W. A. Wiegand, C. W. Hoffmann, appointed by Mrs. W. K. Jackson, president of the Civic League.

Mmes. T. E. Richardson, Tom Flack, P. B. Bittle, soliciting committee; Mmes. P. L. Crossley, Dixie Williamson, F. L. Drago, W. W. Kelly, sales committee, appointed by Mrs. W. E. Stallter, president, Music study club.

Mmes. N. N. Rosenquest, L. C. Brown, Ora B. Jones, from Alpha Pelphian club, appointed by Mrs. J. Leroy Arnold, president.

Junior Thursday club committee, Mmes. R. W. Chalker, Carl Garrett, J. C. Whatley, and Miss Marguerite Quinn, appointed by the president, Miss Mary Carter.

The sale will be held in Eastland National Bank building annex, Friday and Saturday of this week.

All those interested in the success of this undertaking are asked to donate whatever they see fit to the clubs, who will call for the bundles if notified, or the donor may take them to the bank building Thursday evening.

Alpha Delphian Club Hears Rev. Walker The Alpha Delphian club was given a rare treat at their meeting Thursday afternoon, when Rev. P. W. Walker of Eastland Methodist church gave an address on "Government," the subject for study for the day.

The speaker divided his thought in groups; Phases of Government, Forms and Purposes of Government, Communism in Russia, Fascism in Italy, Democracy in America.

The program brought a book review, "Traitors of Yesterday," interestingly given by Mrs. J. C. Whatley, and a paper, "Misjudged Men of Today," written and read by Mrs. Johnny Kitchen.

The business session was opened by Miss Mary Carter, president, with minutes by Mrs. Hollis Bennett, secretary pro tem.

Mrs. Horton announced the rummage sale under auspices of club-house board on Friday and Saturday of this week, in Eastland National Bank building annex.

The president appointed as committee for the sale, Mmes. R. W. Chalker, Carl Garrett, J. C. Whatley and Miss Marguerite Quinn.

Those present: Mmes. Jack Ammer, Hollis Bennett, Roy Birmingham, R. W. Chalker, Carl Garrett, Johnny Kitchen, Fred Maxey, Carl Hiller, Harry B. Sone, J. C. Whatley, James Horton, Gwendoline Bittle-Cox; Misses Dorothy Day, Mary Carter, Adrienne Flurry, Evelyn Hearn, Verna Johnson, Viola La Nunyon, Jessie Lee Ligon, Kathleen Maxwell, Marguerite Quinn, Midge Rose, Ina Mae Reik, Connie Stewart.

Cancelled The luncheon for members of the executive board of the Home Makers class of the Baptist church announced for Thursday noon by the hostess-to-be, Mrs. Don Parker, was cancelled the day prior, due to many conflicting interests in the church work.

Music Appreciation Classes Organized A new feature has been developed by Mrs. Johnny Kitchen for her three classes of seventh grade of junior high school in the study of "Music Appreciation."

The work is divided into four parts: Type of music, music memory, learning to identify twenty selections, which they hear from records, and stories of operas.

Hand in hand goes the study of the lives of composers. The records are also used to teach style and composition.

Mrs. Kitchen reported this new study at the meeting of the Music Study club which deeply appreciated this departure in school work.

Club Committees Busy on Benefit Sale In an effort to make funds to pay for the furnishings of the Community clubhouse club-room, the clubhouse board has called to its assistance the five study clubs in Eastland, four of them federated and owners and supporters of the clubhouse.

These committees, appointed by presidents of the various clubs, are working busily securing materials, donations of all kinds, for what is planned to be the biggest bundle or rummage sale yet to be held in Eastland.

The committees are named in the order of their clubs' organizations, and include Thursday Afternoon club group, appointed by the president, Mrs. E. Roy Townsend; Mmes. W. B. Pickens, Elmo V. Cook and W. A. Martin.

Mmes. Iola Mitchell, Richard Jones, W. A. Wiegand, C. W. Hoffmann, appointed by Mrs. W. K. Jackson, president of the Civic League.

Mmes. T. E. Richardson, Tom Flack, P. B. Bittle, soliciting committee; Mmes. P. L. Crossley, Dixie Williamson, F. L. Drago, W. W. Kelly, sales committee, appointed by Mrs. W. E. Stallter, president, Music study club.

Mmes. N. N. Rosenquest, L. C. Brown, Ora B. Jones, from Alpha Pelphian club, appointed by Mrs. J. Leroy Arnold, president.

Junior Thursday club committee, Mmes. R. W. Chalker, Carl Garrett, J. C. Whatley, and Miss Marguerite Quinn, appointed by the president, Miss Mary Carter.

The sale will be held in Eastland National Bank building annex, Friday and Saturday of this week.

All those interested in the success of this undertaking are asked to donate whatever they see fit to the clubs, who will call for the bundles if notified, or the donor may take them to the bank building Thursday evening.

Alpha Delphian Club Hears Rev. Walker The Alpha Delphian club was given a rare treat at their meeting Thursday afternoon, when Rev. P. W. Walker of Eastland Methodist church gave an address on "Government," the subject for study for the day.

The speaker divided his thought in groups; Phases of Government, Forms and Purposes of Government, Communism in Russia, Fascism in Italy, Democracy in America.

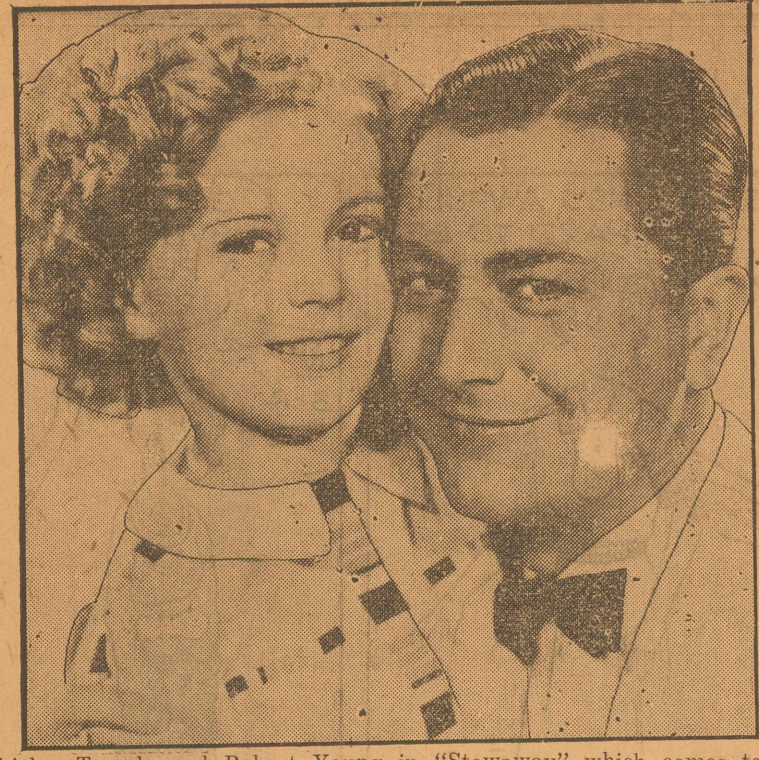
How these different forms began, their purpose, and how they grew.

The address was under the title, "Foreign Governments and their Influence in America."

The program concluded with piano numbers from the Taylor studio, "Tumbleweed," by Johnny Lou Hart; and duet, "Stars and Stripes Forever," by Misses Ruby Lee Pritchard and Florine Richardson.

The business period of the club was opened by their president,

Shirley at Connellee Today



Shirley Temple and Robert Young in "Stowaway" which comes to the Eastland Connellee Today.

Mrs. J. Leroy Arnold. The rummage sale, under auspices of the five study clubs of Eastland, to be held for benefit of clubroom furnishings, was announced for Feb. 12 and 13, Eastland National Bank building annex. Committee previously appointed by the president was requested to appoint their own assisting committee to augment their sales force.

The program was presided over by Mrs. N. N. Rosenquest, who gave a brief background to the study subject, and presented the Rev. Walker, the speaker.

Mrs. Arnold and Mrs. Rosenquest were hostesses for a tea hour, a graceful compliment.

The attendance was small, due to much sickness among the club members.

Guests were Mmes. Elmo Cook, L. D. Black, Earl Woody; Misses Ruby Lee Pritchard, Johnny Lou Hart, Florine Richardson and Rev. P. W. Walker.

Baptist Church Revival Continues This Week Rev. Jared L. Cartledge announces that the revival now in progress in the Baptist church will continue all this week at the stated hours.

For this reason, the all-church night supper conference, to have been held Wednesday night, has been postponed until the first Wednesday night in March.

Sickness Causes Cancellation The cabinet meeting of the Fidelis Matrons class of the Baptist church had its Friday afternoon session cancelled on account of illness in the home of the hostess, Mrs. Jessie Reik.

The session will be held at some future date, to be announced later.

The preparations for the party to have been given by the young people's senior department of the Methodist church school on Friday evening, a proposed dinner with boys to ask their mothers and the girls to ask their fathers were definitely cancelled at the committee meeting held Thursday evening in the church, to arrange plans for the party.

Mrs. Bert McGlamery, superintendent of the department, stated the cancellation was due to so many of the members being on the sick list.

Mr. and Mrs. Rural E. Ellis, announced Saturday, the birth of a nine-pound boy, born Friday at their home at the Consolidated Gasoline corporation on the Carbon highway south of the city.

Rural was passing out the cigars Saturday to his friends, honoring Rural E. Ellis, Jr.

Eastland Personals E. Daniels and L. G. Morahand, members of the Texas Highway Patrol for the district with headquarters at Abilene, were here on a periodic visit Friday.

Mrs. L. Hintor is recovering from an illness of influenza.

R. E. Grantham of Cisco was a courthouse visitor Friday.

Mrs. A. J. Cornelius and infant, Audra Anita, of Brownwood, were the guests Thursday and Friday of Mr. and Mrs. W. A. Martin, who entertained Mr. and Mrs. Hillen Simmons and Raleigh J. Fairbairn, of Arlington, from Tuesday to Friday.

Mrs. Dan Siddall of Gainesville arrived Wednesday for a several days' visit with her daughter, Mrs. Earl Weatherby.

Mrs. M. W. Grieger of Flatwood was a visitor Saturday in the office of the county home demonstration agent.

PRESBYTERIAN CHURCH Charles W. Estes, Pastor Sunday School, Sunday, Feb. 7 at 10 o'clock. Mr. E. C. Johnston, Superintendent.

No preaching services this Sunday because of the absence of the pastor from the city.

STRAWBERRY PLANTS ARE GRANDVIEW, Wash.—Ed. W. Morse is wondering how his strawberry plants have mixed the seasons. Although the temperature is below freezing, strawberry plants in his garden are blooming. Leaves of the plants have become frosted. The only green on them are the tendrils and buds.

Law Protects a Slayer Facing His Doom 28 Years

By United Press TRENTON, N. J. — Twenty-eight years ago a condemned killer boasted as the doors of the state prison closed behind him: "I'll beat it."

Today, still under sentence of death, 77-year-old Archie Herron puffed on his pipe and waited for the next prison movie, tranquil in the knowledge that the sentence can never be carried out.

Herron came to this country from Ireland in 1872 and went to work at his trade, blacksmithing. On July 15, 1908, he killed the Rev. Samuel B. D. Prickett, a retired Presbyterian minister who as recorder of Metuchen, N. J., had jailed Herron for disorderly conduct.

Herron was tried, convicted and sentenced to die some time in the week of Sept. 7, 1908. A writ of error stayed execution of the sentence pending an appeal. The Court of Errors and Appeals upheld the conviction and Herron again was sentenced to die, in the week of Jan. 25, 1909.

Two reprieves followed and a second stay, this time on the order of Justice James J. Bergen of Middlesex county to give time for inquiry into Herron's mental state. The stay was granted until "further orders."

Altimers disagreed as to Herron's sanity, and in 1923, fourteen years after granting the stay of execution, Justice Bergen died without issuing any "further orders."

Until a year ago Herron sulked in his cell, refusing to see relatives who occasionally called at the prison. He exhibited no interest in the world outside and found consolation only in his pipe. He never spoke to the other 60-odd prisoners in his wing.

But a year ago he saw his first movies. They were a sensation to him. Later he saw a radio and heard music coming from it.

Since then Herron, prison officials say, has appeared to be completely at peace with himself and the world, content to pass the time between movies and radio concerts puffing idly on his pipe in his soddie-locked cell.

SHIRLEY SINGS, TALKS CHINESE IN SURPRISE-FULL 'STOWAWAY'

Romantic as the radiant Chinese moon, and as glamorous with its surrounding company of great stars, teeming with danger, excitement, thrills, war-lord bandits, and Shirley Temple as a little wife who talks and sings Chinese, Twentieth Century-Fox's new film, "Stowaway," comes today to the Connellee Theatre.

Yes, Shirley's in China now—and you'd think you'd never seen her before—so different is the setting... so surprising the story!

As Ching-Ching, the adopted daughter of a missionary couple killed in a rebel raid, Shirley is picked up by Robert Young, a care-free young millionaire who is touring the world in a vain attempt to get away from himself. Shirley, instrumental in his meeting Alice Faye, pretty fiancée on stuffy young Allan Lane.

While waiting for Allan to join her at Hong Kong, Alice tours the town with Young and his little protegee, all of them having a glorious lark, which culminates in Shirley's winning a prize in the native language.

Allan then, appears to claim his bride-to-be, but they part in a fierce quarrel. Meanwhile Young is told by Chinese authorities that he cannot adopt Shirley, being unmarried, and must put her in a local orphanage. Determined not to part from her, he proposes to Alice that she become his wife in name only, then proceed to Reno for a divorce. This she does, but Young, realizing he is really in love with her, follows her to Reno and, with Shirley's artful aid, wins her consent to stay married.

Shirley's strong supporting cast includes, in addition to Robert Young and Alice Faye, Eugene Pallette, Helen Westley, Arthur Treacher, J. Edward Bromberg and Astrid Allwyn.

William A. Seiter was chosen to direct by Darryl F. Zanuck, Twentieth Century-Fox production chief, with E. G. De Sylva, Earl Carroll and Harold Wilson as associate producers. William Connellan, Arthur Sheekman and Nat Perrin wrote the screen play, based on a story by Sam Engel. Mack Gordon and Harry Revel wrote five new tune hits, and Irving Caesar composed a happy topical song.

Young Princess Visits Palace



1937 Electrolux Models Received Here by Company

Announcing the first carload of new 1937 models of the Electrolux Gas and Kerosene Refrigerators, W. E. Brashier of the Ranger Furniture Exchange states that this is only a forerunner of several carloads to come in anticipation of the largest business in their history on these popular fast growing economical refrigeration necessities.

All models are now on display in the building occupied by Rupperts' Bakery on West Main street. Mr. Brashier states: "The marvelous improvements that have been made in the new model Electrolux Refrigerators are such that every detail is of a most interesting nature. They are not only economical in operation but the first cost is decidedly low. They are built for long service and have no mechanical 'gadgets' to get out of order or cause for unnecessary delay in perfect performance."

The general public is invited to visit the showrooms and inspect these new arrivals. There are several models for gas and others equipped with kerosene burners for rural homes.

Wishing Well Called Upon For Divorce

SAN ANTONIO—The magic of the wishing well at San Jose mission had more at stake recently than a few wishes based on coins dropped into its waters. It had a future life staked on another object dropped in the well.

A woman tourist, who refused to divulge her name, was told that if she deposited a coin in the water and made a wish the wish would be realized.

Instead she dropped her wedding ring in the well.

"I hope that rids me of a husband," she said.

Chinatown to Fight Modern Music Trend

By United Press SAN FRANCISCO.—Veteran Chinese inhabitants of Chinatown have set out to save the classical music of China from the inroads of modern jazz and swing music.

Backed by some of the wealthier members of the colony, the Chinese Musical Association has been formed, and a group of players is being trained in the use of classical instruments and the music as well.

Lyric EASTLAND TODAY ONLY!



Large advertisement for the film 'Stowaway' featuring Shirley Temple and Robert Young. Includes text: 'STOWAWAY', 'SHIRLEY TEMPLE', 'ROBERT YOUNG with ALICE FAYE', 'Wishing Well Called Upon For Divorce', and 'A Gay romance of the far East!'.

CLASSIFIED

FOR RENT—Three newly furnished rooms. See Mrs. W. S. Barber, 103 East Valley.

FOR RENT—Five room stucco house, has also breakfast room, bath and double garage. Hardwood floors. Ideally located at 416 East Conner street. Call Eastland Investment Company, Eastland National Bank Building, Phone 176.

TO START immediate training to qualify for jobs, servicing, repairing and installing all makes of electric refrigerators and air conditioning units. Experience unnecessary. Write Refrigeration and Air Conditioning Training Corp., Box AA.

DESIRABLE Fort Worth home to trade for Eastland home. See Mr. Clifton at Western Auto Store.

FOR RENT: Large Southeastern modern bedroom; independent entrance; garage space. 1203 S. Seaman. Phone 288.

TREES - TREES - TREES Special January Offer, Fruit Trees, 12 to 18 inch, 10c; 19 to 24 inch, 14c; 25 to 30 inch, 18c; 31 to 40 inch, 24c. Mention varieties. 1 year Grapes flowering shrubs, roses and vines, 20c each. 2 years, 30c. Express collect. Money with order. Kerr Nursery Company, Sherman, Texas. P. O. Box 768. GET NAME CORRECT

Hotel Garage TEXACO PRODUCTS Storage and Tire Service West Main Phone 42

ELECTRICAL APPLIANCES Texas Electric Service Co.

ANNOUNCING Opening of Piano Studio in West Ward School. Pupils desired for organization Monday Morning at 9:00 o'clock. CLARA JUNE KIMBLE

Large advertisement for Jim Horton Tire Service. Features image of a Seiberling tire. Text: 'THE NEW SEIBERLING MUD AND SNOW TIRES ARE BETTER THAN CHAINS IF YOUR WORK TAKES YOU OVER SIDE ROADS! WE HAVE A COMPLETE STOCK OF ALL SIZES ON HAND! Jim Horton Tire Service EAST MAIN ST. EASTLAND, TEXAS'