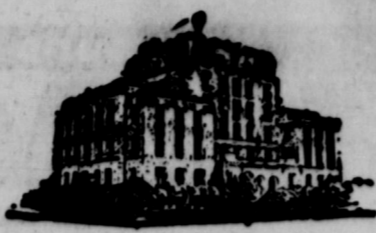


# Eastland Telegram

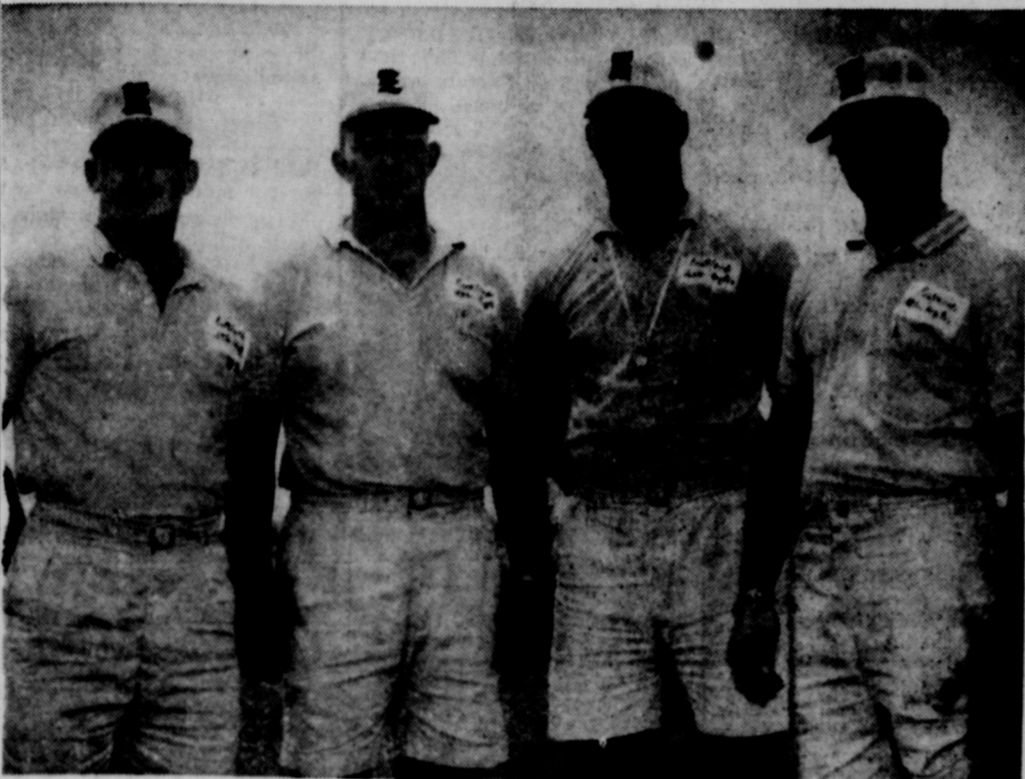


THE NEW CAR CAPITAL

NUMBER 56

EASTLAND, TEXAS, THURSDAY, SEPTEMBER 3, 1964

PRICE 10c



**THE MAVERICK MENTORS** — Coaching staff for the 1964 Eastland High School Mavericks is made up of these play-callers: from left, Backfield Coach Denson Moody, Head Coach Millard Glass, Line Coach Harold Price, and Junior High School Coach Kenneth Norris. The Mavericks first outing of the season will be Friday on local sod against the Comanche Indians with kick-off time set at 8 p. m. (Photo by Cotton's)

## Fullen Motor Co. Expansion Work Is Under Way

The Fullen Motor Company is renovating the old service station to the west of their office for more space for their Chevrolet cars.

The purpose of the tearing down the building, is for more room for parking their cars, reconditioning used cars, and for a new wash rack.

The building which runs north and south is going to be moved back to provide more room for the working of the mechanics and provide more room for the entire business, according to Morris Jones.

### WILSON REUNION

The children of the late Mr. and Mrs. J. L. Wilson are having a family reunion at the Eastland City Park, Saturday night and Sunday, September 13 and 14, respectively. All relatives and friends are cordially invited to attend the reunion and the Sunday luncheon.

## Co. GOP Meet Set For Sept. 10

A County Republican meeting will be held at the County Courthouse, Thursday, Sept. 10, at 7 p. m., it has been announced.

The public has been invited to attend.

Mr. and Mrs. Bill Cooper and children of Morton Valley have returned from a week's vacation to Red River, N.M. and Colorado Springs, Colo. where they especially enjoyed the cool climate.

## Approval Granted for Emergency FHA Loans

Eastland County was approved by Farmers Home Administration Tuesday for emergency loans because of drought, according to a telegram received from Congressman Omar Bursleson.

This program will be in effect until June 30, 1965 and is designed to aid those farmers who are unable to obtain credit from local sources, because of the 1964 crop - killing drought, Mr. Homer Cole of the Eastland Farmers Home Administration office, said.

Approximately 50 per cent of area farmers were unable to plant this year, it is estimated.

The loans, made at 3 per cent interest, could possibly run up to \$30,000 for farm operating expenses.

Mr. Cole said that his office would begin accepting applications as quickly as the necessary forms are obtained,

## 50+ Formally Invited to Special Industrial Meet

Invitations have gone out to over 50 Eastland County residents to attend the special meeting with Texas Industrial Commission officials to be held in Eastland next Tuesday at 2:30 p. m. in the County Commissioner Courtroom.

The meeting was called after Gov. John Connally requested that the Commission consider Eastland County as a pilot site for an industrialization program for the state. Harry Clark, executive director of the Commission, has announced that a Community Development program has been conceived and possibly could be tested in this county.

Gov. Connally sited the county as a pilot site during a visit here in early 1962 when he was campaigning for the top state position.

Accompanying Clark will be Larry Miner, Commission staff member and former Cisco chamber of commerce manager. Judge Bailey spoke at the meeting for the Eastland Lions Club Tuesday noon. At that meeting the judge said that it was his impression from talking and corresponding with the state officials that the success or failure of such an industrial project for the county will hinge on the cooperation of all persons within the county.

Formally invited to the meet are: Eastland — J. M. Cooper, Beverly Nicholson, Victor Cornelius, Bill Hoffman, H. V. O'Brien, Tom Wilson, James Smith, Virgil Seaberry, Frank Sayre, Don Pierson, Mike Collins, Jay Staggs, Roy Lee Smith, Sgt. Roger Sosebee,

and the public will be notified when to begin inquiries.

This brings to two the number of emergency drought programs for the county and another is pending. Permission was granted recently for emergency grazing of soil-banked land, and an emergency feed program is awaiting USDA okay.

THE TEXAN DRIVE-IN REST for fun

Son: "Dad, why is a man only allowed one wife?" Dad: "Son, when you grow up you will learn that the law protects him who can't protect himself."

## Call Issued For Unused Glasses

Those old or unused eyeglasses which many people have lying around the house are urgently needed by the poor the world over, according to Jack Arrington, Manager of Arrington Hamner Funeral Home in Eastland.

Arrington has volunteered to collect discarded eyeglasses for distribution by New Eyes for the Needy, Inc., of Short Hills, New Jersey, which is a non-profit organization that has helped over a half million people without ever asking for a penny. Their sole purpose is to help provide better vision for those who cannot afford to buy glasses themselves.

Eastland County residents, or others, who wish to help this worthwhile cause may bring their discarded glasses to Arrington Hamner Funeral Home in Eastland. The glasses will be wrapped and sent to the home office of New Eyes for the Needy.

According to Mr. Arrington, New Eyes for the Needy, founded by Mrs. Arthur E. Terry in 1932, collect eyeglasses, broken jewelry (both real and costume), and pieces of precious metal. The work of sorting, testing, overseas packaging, and acknowledging the thousands of pairs of glasses is carefully done by volunteers.

"All metal-framed glasses and jewelry are sold to a refinery," Arrington said, "and the redeemed cash is used to purchase new prescription glasses for the indigent in the United States. The unbroken and reusable plastic-framed glasses are tested and sent abroad to medical missions and charitable agencies that are equipped to dispense them properly."

Mr. and Mrs. Clyde Bishop and daughters, Clyda Sue and Beverly Ann, of Abilene visited recently with Mrs. Avie Allgood and Mr. and Mrs. E. D. Allgood.

Mr. and Mrs. Gene Baker, Joe Collins, Merlin Shell, James Myers, Eric Arnold, D. B. Warren, Claude Fuller, and Ross Wilson.

Rising Star — B. A. Butler, John Pruitt, G. A. Dunn and Walter Smith.

Carbon — Merritt Dunn.

Wet August Brings Total Near Normal

After the "driest" three-month period since 1911, Eastland has just had the "wettest" August since 1914.

According to James Smith, official weather observer, Eastland had 5.83 inches rainfall in August. The average August rainfall is 1.77 inches.

In 1914, Eastland had 7.83 inches in this end-of-summer month and only twice in the intervening years has this monthly total passed five inches with 5.28 in 1920 and 5.13 in 1914.

So far this year, Eastland has had 15.78 inches, compared with 15.25 during the same period in 1963. The average for the first eight months is 17.36 inches.

## City Gifted With Gravel

The Eastland Police Department has about two and a half yards of gravel now. They got it Sunday afternoon.

To be specific, they picked it up off Highway 80 just west of Ammerman Street. They don't know whose gravel it was or exactly how it got on the highway.

Apparently the driver of a loaded gravel truck was going to change gears and moved the wrong lever.

All the police know for sure is that they had to direct traffic while the city employees scraped up and loaded the gravel, then hauled it to city property where it is being stored.

## Mavericks Indian-Hunting Friday in Local Stadium

The Eastland High School Mavericks will be stampeding the local stadium Friday night attempting to route the Comanche Indians in the first grid class of the season.

Kick-off time is set at 8 p. m. and a capacity crowd is expected to see the locals launch their new year.

This clash has been the Mavericks' for the past two years, with Eastland downing Comanche, 12-7, last year.

The light and young Mavericks are expected to take to the air for their ground gaining behind the tossing of Quarterback Jerry McCullough.

According to an earlier report by Backfield Coach Denson Moody, passing will be a team asset this year with a shortage of size and speed.

"McCullough has improved tremendously in handling the ball," reports Moody. Johnny Moylan, another backfield running ace, is also coming through for action, the coach said. Gaylon Griffen will carry the fullback duties and Mickey Sargent at wingback.

Head Coach Millard Glass has pegged the average weight of his team somewhere between 150 and 155 pounds, and cited "desire" to play as the team's strongest point.

Coach Harold Price, line coach, reports that although the linemen are relatively small, they are powerful. Veterans on the line will be Gary Rollins, Danny Phillips, Wayne Waldon and Mike Miller. Miller, an end, will be on the strong side and will be a frequent pass target, it is reported.

Coach Glass has evaluated Comanche as a light team too, but improved. The coach also emphasized the importance of support from the fans of the Mavericks.

According to reliable sources, the Comanche mentors had to revise their offensive

backfield during the past two weeks, when the leading scorer for the Indians last season got married and dropped out of school. Also a senior letterman, and largest player in the backfield decided to not play football this season. This left the Indians with only five backfield men who had played any varsity ball — a sophomore, a junior and three seniors.

In a controlled scrimmage against Burnet last week, the Indians came out with two touchdowns to their opponents one.

The Mavericks came out short in a scrimmage against Hamilton Friday when Hamilton scored once.

Probable starters for the Mavs Friday night are as follows:

Jerry McCullough, quarterback; Gaylon Griffen, fullback; Johnny Moylan, halfback; Mickey Sargent, wingback; Garry Rollins, tackle; Butch Phillips, tackle; Wayne Waldon, guard; James Fullen, guard; Bill Boles, center; Mike Miller, end; and Larry Wilson, end.

Tickets will be available at the gate.

## Term Begins; Enrollment Up

School got underway in Eastland Tuesday morning with an increase of 39 over last year's opening enrollment.

This year there are 797 students, with 237 in high school, 150 in junior high (seventh and eighth grades), and 410 in the elementary grades.

Mrs. Harold Durham, Principal of the elementary school, will be teaching during the afternoon. She will be in her office at the school each morning and will be glad to hold interviews with parents between 8:30 a. m. and noon, she said.

## Pep Rally To Launch Grid Season

The first Pep Rally of the Maverick football season will be held at 6:30 p. m. Thursday, on the south side of the square.

The Eastland High School cheer leaders, Kathy Kinoid, Sue Underwood, Sherry Jo Butler, Julie Elrod, and head cheerleader, Sharon Sayre, invite all the public to attend and cheer the Mavericks on to

ing (approximately 17.5 tons), and improved illumination at the U.S. Post Office, Main and Green Streets, Eastland.

Bids for both projects will be publicly opened and read at 3 p. m., September 24, 1964, in the GSA Business Service Center, 1114 Commerce Street, Room 101, Dallas, Texas 75202.

Firms wishing bid forms or other information on either of these projects may write the Business Service Center or call Riverside 9-3355.

## Bids Asked for Re-Modeling And Cooling Post Office Here

General Services Administration, Dallas, is soliciting bids from small business firms for the following air-conditioning and lighting projects at the Eastland post office.

Bids are being solicited for removal of skylight, new roof, new aluminum front entrance doors, repainting exterior stonework, repairing walks and driveway, interior and exterior painting, miscellaneous repairs, new boiler, conversion of heating system to hot water, general aircondition-

Old Rip Event Saturday

The Old Rip Scrip drawing enters its sixth month of life Saturday, when the drawing will be held on the west side of the square at 2 p. m. The hopper is at Eastland Drug.

Since the first drawing, the Chamber of Commerce and the participating merchants have given away approximately \$950 in Old Rip Scrip. Some of the scrip is being kept by the winners, either as souvenirs or possibly for Christmas shopping, since the scrip is good indefinitely.

Most of the scrip won, however, has been redeemed within two weeks of the date it was given.

James Smith, Chamber of Commerce President, says, "We've been well pleased with the response to this drawing. The summer heat and vacations have lowered our attendance somewhat, but we are sure that the attendance will soar with the start of school."

"We will continue to hold the drawings as long as both the merchants and customers participate as actively as they have in the past."

At each drawing, there are four tickets drawn: one for \$50.00, one for \$30.00, and two for \$10.00 each. The Chamber of Commerce wants to give away some eight or nine hundred dollars between now and Christmas. If you are interested, ask the merchants for tickets each time you make a purchase, deposit the tickets in the hopper, bring your stubs and come on down to the drawing.

## VISIT IN OLDEN

Mr. and Mrs. Charles M. Hutto, Jr. and Charles Randy of Shepherd, Texas, visited recently in the home of his parents, Mr. and Mrs. Marvin Hutto of Olden.

Mr. Charles Hutto is head of the agriculture department of the Shepherd school system.

## Freyschlag INSURANCE

weather report

THURSDAY — Sunny. Sun rises 5:32, sets 6:27. Moon rises 2:28 a. m. Fishing poor.

FRIDAY — Hot. Sun rises 5:32, sets 6:25. Moon rises 3:37 a. m. Fishing poor.

SATURDAY — Sun rises 5:33, sets 6:24. Moon sets 6:35 p. m. Fishing poor.



**GETTING THE RAMBLER STORY** — W. Q. Verner, right, sales manager for Pipkin Motor Co., Eastland, Rambler dealership in Eastland, met in Dallas with top executives of American Motors Corp. at the company's annual dealer conference. He is shown here with American Motors Chairman Richard E. Cross. After the meet, Verner said that on the basis of Rambler's 1965 product program and a booming automobile market, he anticipates new sales records for this fall and coming year.

Bits  
8  
L.V.C.

School Tuesday didn't let us long legs those little principal Mrs. and Supt. were graci opening day. gone smooth- by at the new were some being done: check out on which had at first, but leveled out properly to cool. Just about agreed that schoolsters such school facilities. don't believe just about go yourself. Supt. was installing as classes the first day. eciation to stu- and parents, ke the school new conditions.

seemed to city bottleneck parking. School leaving their new school, driveway to the a one-way confusion, event accidents, will drive into the Madera- ation or let the at the safe cor- intersection so to the school ks provided for. It will be re- school buses to, to accept ge passengers. enter the drive ound to the sa- intersection you'll cooperate, all will be

Smith's First and new cafe- led, electrician, work at the and his company awarded the De job, and he's operate from here and a house, he a native of the has been living at during the East- job and the Ran- college job, which

Smith tells us he and 800 regu- to be had over clerk's office. for a tag is the a valid hunting might ought to up early, 'cause t be any more Warden Maurice that it doesn't ere'll by many and this year — ill off the pro- the production,

ts. Curt Williams guests this week. and husband, Mr. C. McCannius of ... First child a food tray ineteria Tuesday ay Clawson, a Mr. and Mrs. ggs have moved from Brecken- he's beginning in-dirt contracting ... County Vete- Officer James attend the state vice officer train- San Antonio next

details of a Low movement Loan at National Bank

details of a Low movement Loan at National Bank

details of a Low movement Loan at National Bank

details of a Low movement Loan at National Bank

details of a Low movement Loan at National Bank

details of a Low movement Loan at National Bank



**SELL AND PROFIT... BUY AND SAVE... GET A BETTER JOB... HIRE GOOD HELP!**

# Read and Use the Want Ads!

**CALL MA 9-1707**

## P-TA Board Plans Work For Season

The executive board of the Eastland PTA met Monday in the elementary school cafeteria. Activities for the coming year were outlined. The meetings will be held the third Tuesday of each month at 3:15 p.m. in the elementary school building. A nursery will be provided. The first meeting will be September 15.

The executive board is composed of Mrs. C. F. Huffman, president; first vice - president, Mrs. Tom Wilson; secretary, Mrs. Tommy Magness; treasurer, Mrs. Troy Cross; second vice - president, Mrs. Henry Parsons; third vice - president, Mrs. Bill Leslie; historian, Mrs. Tot Lovelace; publications, Mrs. F. M. Rollins; parliamentary, Mrs. J. O. Jolly; hospitality, Mrs. B. H. Courtnev; publicity, Mrs. Norman Watson; safety and health, Mrs. Alvin Pierce; chairman of room mothers, Mrs. T. M. Temple; legislation, Mrs. Marcus O'Dell; and yearbook, Mrs. Ray Pool.

## Revival Begins At Calvary Bapt. Church Sunday

Revival services at the Calvary Baptist Church in Eastland will begin Sunday, September 6 and continue 13.

The Rev. Harl Williams, pastor of the church, will preach and J. T. Berry will lead the singing. Church services will be at 7:30 p.m. each evening with prayer meeting beginning at 7 p.m. Round-up day will be September 6, with an old-fashioned "dinner on the ground" at noon. All church members are urged to bring their lunch and enjoy this time of fellowship following the morning worship hour.

## Lake Leon Is Stocked With 33,000 Catfish

Over 33,000 channel catfish were put in Lake Leon this week by the State Game and Fish Commission, according to C. B. Pruet, president of the Eastland County Water Supply District.

This is the first installment of an order sent to the commission in July by the board in an effort to keep Lake Leon well stocked.

The original order included channel catfish, yellow catfish, crappie, bass and wall-eyed pike.

A letter from the commission stated that they had been doing some experimental planting of walleyes, secured from the state of Iowa, in an effort to get them started in Texas. They have been planted in Possum Kinedom Lake and the newly created Canyon Reservoir.

The letter from the commission stated that if these experiments were successful some walleyes would possibly be planted in Lake Leon, Mr. Pruet said.

## Surplus Foods To Be Distributed

Dates for the distribution of USDA Surplus Foods for recipients of Eastland County for September have been announced by J. W. Elder, Sr., representative. They will be distributed at the Eastland County Welfare Center.

Dates are as follows: Monday, September 14 - Eastland, Olden and Ranger; Tuesday, September 15 - Pioneer, Rising Star, Okra, Carbon, Gorman and Desdemona; and Wednesday, September 16 - Cisco, Scranton and Nimrod.

## Drawing Day SPECIALS

VALUES 5.99 & 6.99

**DRESSES** .....

**HOSE** ..... 2 Pairs

FIRST QUALITY, GUARANTEED SEAM & SEAMLESS

VALUES 5.99

**SWEATERS**

**BAGS** \$2.99

**COSTUME JEWELRY**

★ ★ ★

**mode o'da**

East Side of Square EASTLAND

make a SMART MOVE

**WHEN IT'S YOUR MOVE CALL MA 9-2044**

EASTLAND TRANSFER & STORAGE 315 E. Main - Eastland

## EASTLAND MEMORIAL HOSPITAL

- Hannah Lindsey, surgical.  
Mrs. Jim Jackson, Cisco, medical.  
Mrs. Cecil Copeland, medical.  
L. A. Horn, medical.  
John Sawyer, medical.  
T. E. Grisham, Rising Star, medical.  
J. W. Fleming, Cisco, surgical.  
Walter Wyatt, Carbon, surgical.  
Mrs. J. M. Reese, medical.  
Mrs. Russell Rutherford, Gordon, medical.  
Addie Shirley, Cisco, medical.  
Mrs. R. L. Taylor, Eastland, medical.  
Trannie Stevens, Gorman, medical.  
Ruth Claborn, Eastland, medical.  
Ida Belle Box, Eastland, medical.  
Mrs. R. L. Watson, Eastland, medical.  
J. B. Kendrick, medical.  
Mrs. Jim Ingram, Ranger, surgical.  
Mrs. W. D. Harrison, Breckenridge, medical.  
W. H. Drake, medical.  
A. P. Reeves, medical.  
Elbert Jackson, Carbon, medical.  
Miss Ruth Mobley, Putnam, medical.  
Mrs. Ray Laney, medical.  
J. N. Poe, medical.  
W. L. Fisher, surgical.  
Lillie Sneed, Cisco, medical.  
Russell Barton, accident.  
Nora Boggus, Gordon, medical.  
A. B. Herring, medical.  
James Wright, medical.  
Jimmy Warren, Carbon, medical.  
C. R. Neeley, Ranger, medical.  
J. W. Henderson, Gorman, surgical.  
Mrs. C. L. Miller, Moran, OB.  
Thalia Keller, Minevat Wells, surgical.  
Mrs. T. E. Payne, medical.  
Mrs. J. B. Anderson, Gorman, medical.  
Mrs. W. H. Brooks, Moran, medical.  
Billy Patton, surgical.  
W. Ray Fryor, medical.  
Baby Girl Miller, nursery.

## FEMALE HELP WANTED:

Start at once - Earn big money supplying Avon Christmas gifts. We train you to represent Avon. Write Avon District Manager, Box 13446, Fort Worth 18, Texas. 57

WANTED: Couple, lady or student that desires a home in exchange for companion and light housekeeping. (Possible small salary.) Phone MI 7-1308. Or write Mrs. Cuba Morris, 121 Bowie, Ranger, Texas. 58

## WANTED:

Mr. and Mrs. H. S. Lewis of Eastland visited with their daughter and her husband, Mr. and Mrs. J. B. Scott, Jr., of Dallas last weekend. While in Dallas, Mr. and Mrs. Lewis also visited Mrs. Ted Lindley and children, who are former Eastland residents.

Mr. and Mrs. Wayne Bailey have had her father and his family, Mr. and Mrs. Floyd Stuard and children of Altus, Oklahoma visiting here. The Stuards and the Baileys spent Saturday and Sunday visiting friends and relatives in Cisco and Ranger.

Mr. and Mrs. T. M. Temple and children have returned from their vacation which they spent at Bull Shoals Lake, Lakeview, Arkansas and Roaring River Resort in Missouri. His parents, Mr. and Mrs. T. M. Temple, Sr., of Grand Prairie accompanied them. They also went to Six Flags and visited friends in Fort Worth.

Mr. and Mrs. Max Stokes and children of Lubbock spent the weekend with his uncle and aunt, Mr. and Mrs. Floyd White.

## HELP WANTED:

WANTED: Custom breaking, sewing and fertilizing. Call M. C. Key at MA 9-1230 or MA 9-2678, or see O. Carter at Olden.

WANTED: Carpenter contract work. No job too large or too small. Phone MA 9-1297, 64

WANTED: Woman to do baby-sitting and light housekeeping. Five days a week. References necessary. Colored or white. Call MA 9-2531 after 5 or on weekend. 58

HELP WANTED: Are you looking for a good parttime or fulltime income in E. Eastland County or Eastland? Many Raleigh Dealers earn \$2.50 and up per hour. See C. S. Eldridge, Box 67, Desdemona or write Raleigh TX H 1020 26, Memphis, Tenn. 58

## FOR LEASE TO COUPLE ONLY

Clean, 2-bedroom house. Oak floors. Lots of closet space. Located 709 S. Halbryan. \$65. See Ben Hamner at Hamner Funeral Home. No telephone calls, please. tf

## FOR SALE

Small farm. Five miles N.E. of Eastland. Grass and cultivated land. Improved 5 room house. Priced to sell.

**D. L. KINNAIRD**  
REAL ESTATE  
207 W. Main, Ph. MA 9-2544

## MATTRESSES

Save up to 50% renovating choice of color and firmness. Complete bedding. Made and guaranteed by WESTERN MATTRESS CO., San Angelo. Phone MA 9-1342 or MA 9-1304, Eastland and leave address.

## PERMANENTS

\$12 Lanolin Waves - \$8.50  
\$10 Creme-Oil Waves \$7.50  
Other waves \$10 and up

**Basham Beauty Bar**

## POE FLORAL

When Its Flowers Say It With Ours

## Insurance and Real Estate

Experienced designers at your service.

Highest quality stock and material assure your satisfaction.

Since 1946

**EASTLAND**  
210 W. Main EASTLAND MA 9-2529

## Rentals

LIVE AT THE Victor Hotel in Cisco. Permanent guest rooms. \$12.50 weekly. 55

FOR RENT: Two room furnished apartment. Two blocks from square. Air conditioned. Bills paid. Elderly person or couple preferred. Phone MA 9-2692. tf

FOR RENT: Unfurnished 2-bedroom house. 414 East Sadona. Phone MA 9-1877. tf

FOR RENT: Apartment nice clean, furnished, air conditioned. Large living room, bedroom, small kitchen and bath. Bills paid. Phone MA 9-2362. tf

FOR RENT: Furnished or unfurnished two bedroom apartment in duplex. 611 West Plummer. tf

FOR RENT: Dandy two bedroom furnished cabins with kitchenettes. Ideal for week-ends during winter. Good rates. Lynn's Lake Lodge, Lake Cisco. Phone RI 2-2064. tf

## Wanted

WANTED: The opportunity to prove that classifieds get results. People read the Classifieds - and look to them first for apartments, jobs, bargains, etc. Call today and put the Classifieds to work for you. MA 9-1707. tf

## HELP WANTED:

HELP WANTED: Eastland Steam Laundry, 216 North Lamar. Apply in person. tf

## WANTED:

WANTED: Custom breaking, sewing and fertilizing. Call M. C. Key at MA 9-1230 or MA 9-2678, or see O. Carter at Olden.

## HELP WANTED

Someone to do housework. Apply 610 South Lamar. tf

## FREE

Estimates On RE-ROOFING Or Repair Your Old Roof. Residential and Commercial

**Roofing Co. Eastland**  
Nobie Squiers  
Phone MA 9-2370

## ROLLINS & SONS GULF SERVICE

Call for Appointments on Wash - Grease Oil Changes

500 W. MAIN  
MA 9-8840

We Give S&H Green Stamps

## WALKER'S Dressing Plant

Custom Dressing  
Phone D. J. Walker  
Eastland MA 9-1192

## Insurance and Real Estate

Life - Fire - Auto - Farm Polio - Bonds

42 years in the Insurance Business in Eastland

## WANT-ADS

The People's Market Place!

Now's the time to sell or buy band instruments, pianos, bicycles, shot-guns, and so forth.

Want-Ads in this newspaper get results.

## Announcements

MASONIC LODGE NO. 467 Meets second Thursday of each month at 8 p.m. In the Masonic Hall. Call Joe W. Anderson, MA 9-2331, for information or L. E. Huckaby, Sec., 9-1391, for information.

## EASTLAND ROTARY CLUB

Meets each Monday at 8 p.m. at White Elephant Restaurant in Eastland. Cyrus Barcus, president.

## Notice

NOTICE: You'll profit by using accurate farm record books, and other record-keeping material, available at the Eastland Telegram. Complete stock of Garner and Simplified books. tf

## NOTICE:

Classifieds are the people's market place. Buy, sell, swap, rent, hire, announce - all these you can do with thrifty classifieds in this newspaper. Be descriptive, use 20 words and get results. Call MA 9-1707. tf

## NOTICE:

We have a complete stock of shotgun shells: 12-ga. box \$1.97; 16-ga. \$2.09; 20-ga. box \$1.99; 410, box \$2.19. Sears Catalog Office, Cisco. 57

## BE gentle, be kind, to that expensive carpet.

Clean it with Blue Lustre. Rent electric shampooer \$1. Coats Furniture Co. 55

## SPECIALIZING in private dinners, luncheons and banquets, seating up to 200 persons.

Victor Hotel Coffee Shop, Cisco.

## For Sale

FOR SALE: A little dream house to be moved. New Venetian blinds and aluminum screens. Only \$1250. Large bedroom, living room, kitchen and bath. All redecorated. See in Carbon. Inquire at any Carbon filling station, or write Box A, C/O Eastland Telegram, Eastland. tf

## FOR SALE:

Bremington portables. Brand new. Envoy II, \$59.95. Monarchs, \$79.95. (both plus tax). Eastland Telegram. For gifting, for schooling, for self. tf

## SPECIAL

on beautiful green plants free item to visitors

**Florafax Delivery Service**  
**ITA PARRISH**  
Green Street Flower Shop  
200 N. Green - MA 9-1101

## Whittenton T.V. Repair

Guaranteed Service RCA & Sylvania Tubes & parts. AT WESTERN AUTO MA 9-2011

## EASTLAND AUTO PARTS MACHINE SHOP

300 S. Seaman MA 9-2158

FULLY EQUIPPED AUTOMOTIVE VALVE GRINDING BRAKE DRUM TURNING HEAD SURFACING VALVE JOBS BLOCK BORING SLEEVE INSERTING VALVE SEATING

COMPLETE LINE AUTOMOTIVE TRUCK TRACTOR PARTS ALWAYS IN STOCK

**AUTO PARTS**  
300 S. Seaman MA 9-2158 EASTLAND

## FOR SALE:

Two bedroom home, bath, 4 acres. 5 miles north of town. Call MA 9-2739. 59

## FOR SALE:

House trailer. 1959 Model M-System. 2 bedrooms, 42'x10'. Call MA 9-1581 after 4 p.m. tf.

## FOR SALE:

Two 10 cubic foot used refrigerators. Good condition. Terms available. Good-year Service Store, Eastland.

## FOR SALE:

Edgeware Clarinet, case and accessories. Perfect condition, reasonably priced. Call MA 9-2227. 36

## FOR SALE:

1968 Cadillac \$1795. 108 West Valley. Call MA 9-2592. tf

## FOR SALE:

Young's Goat Island at Lake Leon. Summer cabin - electricity, deeded land. \$1,000. Call MA 9-1878 or contact James W. Young. tf

## FOR SALE:

Headquarters for Famous Cedar Crest work shoes and boots. Dress and work oxfords, work shoes, black, brown, tan, rawhide and rough out slip on Wellington boots. Several styles of lace up high top work and hunting boots. Also, steel toe and insulated boots, from \$6.95 to \$12.95. Army Surplus Store, Eastland, Texas. 3 mos. tf

## FOR SALE:

Cheaney Baptist Church building, 150 gallon underground butane tank, 4 heaters, good piano. For information contact Arvol Luker, Wilburn Overstreet, Lonzo Melton or O. D. Quarles. Or call MI 7-3639 or MI 7-1982, Ranger. 60

## FOR SALE:

1958 Chevrolet. Good condition. Standard, overdrive. Call Olden 2765 about 8 p.m. tf.

## FOR SALE:

Remington Portable Typewriters, the best bargain in a typewriter. Easy terms. See at Eastland Telegram, Eastland. tf

## FOR SALE:

House trailer, 10 feet by 50 feet, 1958 Palace, furnished. Phone MA 9-1881. tf

## FOR SALE:

Large selection of clean used tires. Popular sizes priced from \$4 up. Goodyear Service Store, Eastland. tf.

## Real Estate

FOR SALE: Two bedroom, enclosed sleeping porch, paneled kitchen, den, living, dining room carpeted. Double garage, patio. Phone MA 9-2279. 54

FOR SALE - Three nice homes. Bargain prices. One small equity. All well located. M. A. Treadwell, Sr. MA 9-2017. tf

FOR SALE - South Hill, crest choice house, large fenced lot. Three bedrooms, living room, dining room, kitchen, den, lots of good storage. Best location in Eastland. M. A. Treadwell, Sr. MA 9-2017. tf

FOR SALE: Two and three bedroom houses at Breckenridge. Finance available. See or call O. E. Bradford, house-mover, HI 9-4506 or HI 9-3780, Breckenridge. tf

FOR SALE OR TRADE: Three bedroom home, 2 baths, 2 acres land, 12 miles north Brownwood on Cisco Highway. Phone MI 3-4447 Brownwood or write Rt. 2, Box 71, May, Texas. 54



**WORTH FOOD MART**  
SIGN OF QUALITY!

Active Sept. 3 Thru Sept. 6, 1964

Swift's Premium COOKED  
**HAMS**  
SHANK HALF or WHOLE  
Pound **49¢**



**TURKEYS** SLINCO HENS 10 To 14 LB. Avg **39¢**

**BUTT HALF** **55¢** LB.

**BEEF** Worth Quality Lb. **39¢**  
Armour Star 1-Lb. Pkg. **49¢**  
Swift's Premium Sliced Lb. Pkg. **49¢**  
**BEEF** 14 oz. Pkg. **79¢**  
Mrs. Burgess  
**BREAST** 1-Lb. Pkg. **59¢**

**DR. PEPPER**

Welch's Grape or Fiesta Punch  
**WELCHADE** 3 32-oz. cans **89¢**  
Worth Maid, Hamburger  
**BUNS** or Coney 8-ct. Pkg. **23¢**  
Betty, Dill Kasher Dill or Sliced Dills  
**PICKLES** 32-oz. Jar **29¢**  
Royal All Flavors  
**GELATIN** 6 Pkgs. **49¢**  
**TEA' BAGS** Lipton 48-ct. Pkg. **59¢**  
**CHARCOAL** Royal Oak 10-Lb. Bag **59¢**  
Kobey Shoestring  
**POTATOES** 4 2 1/2-oz. Cans **39¢**

6 BTL. CTN. PLUS DEP. **29¢**  
Bondware 9"  
**PAPER PLATES** 100-ct. Pkg. **69¢**  
Bondware 14-oz.  
**COLD CUPS** 2 15-ct. Pkgs. **49¢**  
Zee White Rainbo  
**NAPKINS** 4 80-ct. Pkgs. **49¢**  
Towie Thrown Manzanilla  
**OLIVES** Stuffed No. 610 7-oz. Btl. **39¢**  
**POTATO CHIPS** Morton 14-oz. Bag **59¢**  
**MUSTARD** French's 21-oz. Jar **29¢**  
**KETCHUP** Heinz 3 14-oz. Btls. **59¢**  
Kraft Jet Puffed  
**MARSHMALLOWS** 2 10 oz. Pkgs. **39¢**

**PORK & BEANS**  
Van Camp  
No. 300  
4 Cans **49¢**

**PASTE** Crest Extra Large Size **47¢**  
**PANT** Reg. \$1.00 Size Plus Tax **69¢**

**LEMONADE** LIBBY'S OR ASSORTED DRINK 10 6 OZ. CANS **99¢**  
Underwood's Frozen Bar-B-Q  
**SANDWICHES** 10 oz. Pkg. **59¢**  
Woody's Frozen  
**CORNY DOGS** 5 ct. Pkg. **59¢**

**FREE!**  
**Play**  
**MONEY TREE**  
**WIN UP TO \$100.00**  
**EVERYBODY WINS**  
No Purchase Necessary

**GAME RULES**  
You receive one TREE "MONEY TREE" ticket per store with (include only). No purchase necessary. No need to post the check at the store. Secure your TREE TICKET at the end of the check stand or from any North Food Mart employee (other than meat department) or from manager's office. Store employees and their families are not eligible to participate in the game. Substituted and multiple tickets are void. Winning tickets must be verified by store officials.

**EVERYONE WINS**  
Save Your "MONEY TREE" tickets that do not win a cash award and at the end of the program you will receive a "SPECIAL AWARD" of 50 Last Great Stamps for each 25 "MONEY TREE" TICKETS, redeemable October 17 thru October 24, 1964 ONLY.

**WE WILL be CLOSED**  
**LABOR DAY**  
MONDAY - SEPT. 7, 1964

**POTATOES** **RUSSET U.S. No. 1** **10-Lbs. 59¢**



**LARGE PASCAL CELERY** Calif. Crisp Stalk **23¢**  
**WHITE ONIONS** U.S. No. 1 Mild Flavored 2 Lbs. **23¢**  
**LEMONS** Large Calif. Sunkist 6 For **25¢**  
**TOMATOES** Cello Ctn. Ea. **15¢**  
**Seedless GRAPES** THOMPSON CALIF. FANCY Lb. **15¢**

**FREE!**  
**WOOD & CO., LTD.**  
SAUCER

COUPON AND PURCHASE OF \$10.00 OR MORE  
COUPON: 25¢ AND 25.00 PURCHASE  
Void after Sept. 6

**WE GIVE**

**FILLER PAPER** Notebook 3-225 Sheet Pkgs. **88¢**  
(\$1.77 Value)

**WEBSTER'S DICTIONARY** For Home School Or Office Ea. **99¢**

**MANUSCRIPT FOLDERS** 3 For **19¢**  
**LUNCH KITS** With Vacuum Bottle Ea. **\$1.99**

**SCOTCH Magic Tape** 39c Size Ea. **29¢**  
**WESTAB BINDER** All-in one Ea. **\$1.89**

**CLIP AND SAVE!**  
50 BONUS S&H Green Stamps  
With this Coupon & Purchase of  
One Qt. Jar Kraft's  
MIRACLE WHIP  
Void After Sept. 5, 1964  
**WORTH FOOD MART**

**CLIP AND SAVE!**  
50 BONUS S&H Green Stamps  
With this Coupon & Purchase of  
One 18-oz. Jar Kraft's  
BAR-B-Q SAUCE  
Void After Sept. 5, 1964  
**WORTH FOOD MART**

**CLIP AND SAVE!**  
50 BONUS S&H Green Stamps  
With this Coupon & Purchase of  
2 1-Lb. Ctns. Blue Bonnet Reg.  
MARGARINE  
Void After Sept. 5, 1964  
**WORTH FOOD MART**

**CLIP AND SAVE!**  
50 BONUS S&H Green Stamps  
with this coupon and purchase of  
One Giant Size Box  
FAB DETERGENT  
Void After Sept. 5, 1964  
**WORTH FOOD MART**

**CLIP AND SAVE!**  
50 BONUS S&H Green Stamps  
with this Coupon & Purchase of  
One 5-Lb. Bag  
PILLSBURY FLOUR  
Void After Sept. 5, 1964  
**WORTH FOOD MART**



# 'The Fair Is Lots of Fun and Not Necessarily Expensive'

By Mr. and Mrs. B. W. Robertson

Even though our prime objective was the World's Fair, we discovered New York City more exciting. In a group of five, we joined a bus tour through Greenwich Village, the Bowery, Chinatown and terminated the excursion with a tour of the United Nations. As it is, a famous known, Greenwich Village is a haven for artists and beatniks; due to the early hour of ten o'clock in the morning, the streets were deserted. The buildings depicted a number of wild and work. The Bowery is several blocks long; it was pitiful to see the number of men, inebriated and flocked on the street. Our guide explained that the distressing fact is that the age group is becoming increasingly lower — in the 20-30 year bracket. A number of missions have been established and failed; we saw the last one that had failed and closed its door. The Salvation Army will provide these characters a hot meal if they will bathe and change into clean clothes, but there are few who will accept. Our tour stopped in Chinatown which held no special appeal. Hence, we proceeded to the United Nations. Groups of twenty persons

were escorted by trained personnel. We were accompanied and lectured by a Japanese girl who led the tour from the Security Council Chamber to the General Assembly Room and to the Economic and Social Council Chamber. The Security Council Chamber was designed by Arnstein Arneburg of Norway; a large mural, back of the horseshoe-shaped assembly table, was painted by the Norwegian artist Peter Kraho. The walls are of marble and blue and gold tapestry; the doors are set with inlaid wood. All furnishings, including the tapestry for the walls, curtain and the delegates and secretarial chairs, were supplied by Norway.

The vast scale of the acoustically designed meeting hall, 165 feet long by 115 feet wide, with a 75 foot ceiling, creates an appropriate setting for the General Assembly. In the dome, a circular skylight four feet in diameter admits a single shaft of light.

The delegates area, set beneath the domed ceiling, contains rows of bleached wood desks and blue upholstered chairs facing a raised podium and speakers rostrum. At the podium are the three places for the President of the Secretary-General, and the President's podium con-



MICHELANGELO'S PIETA

Secretary for General Assembly affairs. The wall behind the United Nations emblem. Fluted wooden batters form the gold colored side walls from the dome downwards. At the sides of the hall are seats for advisers and official guests; above them are two tiers of glass enclosed booths for interpreters, and for press, radio, film and television facilities which enable the world as a whole to see the General Assembly at work. Seats for the press and the public rise gradually to the rear of the hall. On the river side of the General Assembly and Secretariat buildings and connecting with both is a long, low lying structure containing three chambers — for the Economic and Social, the Trusteeship, and the Security Councils — each with similar dimensions — 72 feet wide by 135 feet long with 24 foot ceilings — each equipped with interpreters, press radio, television and film booths.

The decor of the Social and Economic Chamber was designed by Sven Marekliss of Sweden. An unusual effect is achieved by the sombre colors and unique ceiling treatment used in the public gallery. Exposed pipes and ducts are boldly decorated with rectangles of black, gray and white and are thus integrated with the design.

By contrast, the delegates area is bright, with a white marble floor and concealed lighting above a suspended ceiling. Sweden furnished the carpet, curtains, pine wood paneling, railings, doors and the white marble.

Although the United Nations was of utmost interest, the Fair contributed to our knowledge concerning the United States and foreign countries. One spokesman stated that it would require 30 eight-hour days to see all the exhibits, therefore, it was of prime importance that we budget our time. We chose first the DuPont Show which presented "The Wonderful World of Chemistry", a musical revue employing a new theatrical technique by which the singers and dancers on the stage join in musical interplay with other singers and dancers on motion picture film. Breathing-taking creations from the World of Fashion were modeled by beautiful girls who could sing and dance while they complemented a New York original. Following the musical revue, we moved into the dazzling Red Room for demonstrations of chemical wizardry. This fast-moving show, augmented by the splendor of its setting and the

music of a modern quintet, provided an entertaining look at the versatility of chemistry.

The next exhibit of great interest was the Vatican Pavilion, which enclosed the noted statue, "Pieta", sculptured by Michelangelo in the years 1498-1500. Michelangelo was commissioned by the Cardinal of San Dionigi to carve the statue for which he was paid 450 ducats (approximately \$1,200 in American currency).

Today, the statue is priceless and was loaned from the Vatican in Vatican City. The statue is insured for five million dollars. The masterpiece is displayed in a dark chamber with spotlights on the statue, and it is viewed from a moving walk. No flash bulbs were allowed; however, with the Polaroid, we captured four excellent snapshots. It was disappointing that we could not study the art for at least five minutes. "Pieta" is Michelangelo's interpretation of the sorrow of the Virgin Mary mourning over the dead body of Christ. Of particular interest were the sheerness of Mary's veil, the intense sorrow reflected in her countenance, and the lifelessness of Christ's hand.

In its own interpretation of man's evolution, the Ford Exhibit carried us on a tour in open convertibles — a man's humble beginnings. In a striking representation designed by Walt Disney, dinosaurs devour each other, followed by the light of erupting volcanoes. Then come the cavemen who discover family life, develop tools, and try to pry a rock down onto a huge elephant. The ride was climaxed with a trip through a city in space in which the passengers feel like real Astronauts.

Of lesser interest to us, but outstanding in each field, we visited the Chrysler-Plymouth Show, the Better House of Living, Eastman Kodak, 7-Up Pavilion and the Federal Building.

To bid a gala farewell to New York, our group met for dinner at the Hawaiian Pavilion. The delicious meal consisting of broiled banana, sweet potato, chicken and beef and spinach on coconut was served in wooden dishes by native Hawaiians. Of special note was a small cup of substance called poi which was placed with each table setting. The native hostess explained that the method of eating poi is to dip one finger and lick; even though it is a dainty portion of native food, it tasted like wall-paper paste to inexperienced connoisseurs. An amusing part of the show was when the hostess chased four men and one girl from the audience to teach them the hula. On fellow from San Antonio was picked from our group; jackets were removed and tied around their waist and rolled up their trouser legs in order to simulate a grass skirt. Everyone cheered and laughed until tears rolled.

The fact that one may spend as much or as little as they wish on any trip certainly holds true with New York City. For those who are contemplating a visit to that area we shall quote a few prices: subway fare 15 cents; bus fare 15 cents; taxi fare, reasonable; boat tour around Manhattan Island, \$2.75. N. N. Tour, (as described) \$5.50; theatre tickets \$8.80; orange juice at the theatre 40 cents; ticket to fair grounds \$2.00 for adults and \$1.00 for children; Savoy Plaza Hotel suite (2 bedrooms) \$35.00; Copa Cabana Night Club, \$6.50 minimum; dinner at Danish Pavilion, \$2.90; meals, reasonable. On the Fair grounds, one could purchase a sandwich for as low as 40 cents and soft drinks at 15 cents.

With much regret that we could not crowd more into five days, we returned to Eastland, our friends and customers to whom we owe the credit for our expense-paid trip. We mutually agree that New York City and the World's Fair is an excellent choice for a vacation.

## Coin Supply Meets Demand Here — Not So in Other Parts of the Country

The Eastland National Bank has been able to supply the coin demands of local merchants, during a coin shortage which has reached serious proportions in many parts of the country.

Banks across the nation have reported that they are receiving only a small percentage of their usual supply of coins from the Federal Reserve banks and that they, in turn, have had to resort to rationing. The Eastland bank has not rationed coins, although occasionally the Federal Reserve Bank in Dallas, through which the bank receives coins from the Denver mint, has not filled its orders.

The shortage has been caused partly by coin-vending machines which have increased the demand. America has some ten million coin collectors, but they are responsible for the shortage only in a small way, since most of them acquire only one or two samples of each issue. Assistant Secretary of the Treasury R. A. Wallace declares that the real culprits are the speculators. "They buy them by the roll and by the bag, put them in vaults and hold them in anticipation of high profits in the future", he said.

The number of coins that should be in circulation in Eastland County, based on an equal distribution of the overall supply in terms of population, amounts to 5,460,000. This would be approximately 300 coins per person, including 193 pennies, 41 nickels, 37 dimes, 20 quarters, and 6 half-dollars.

Much less than that amount is in actual circulation, however. According to Mike Collins, cashier at the Eastland bank, large quantities of coin have been removed from the normal channels by machines which are operated by out-of-town people, who carry the coins to their home office.

"We are not bothered by the large-scale speculators," Mr. Collins said, we do not discourage the collectors, although we would refuse to give rolls of coins if we knew that the customer planned to hoard them." He explained that normally there is a coin shortage from October through Christmas and that this year there is grave concern because the shortage has started earlier. Mr. Collins said, "The mints are working full blast to combat this coin shortage. By the middle of 1965, the situation will be back to normal. With the cooperation of local citizens, this bank will be able to continue to supply every need throughout the remainder of the shortage."

### RECENT VISITORS

Recent guests in the home of the J. C. Allison were Mrs. Bill Beaty and her son, James Beaty of Robert Lee. Also James Allison of Loving, Texas was an overnight visitor at the Allison's. He was guest speaker at a breakfast at the 2nd Baptist Church in Ranzer, and also spoke at the morning and evening worship service at the church Sunday. Rev. Allison will enter The Southwestern Baptist Theological Seminary this fall in Fort Worth.

Mr. and Mrs. Homer Smith have returned from San Antonio where they visited their sons, Ivan Jay, stationed at Lackland Air Force Base, and Dr. and Mrs. Don Smith and family. Dr. Smith is with the Aero Space Division at the Brooks Air Force Base. Mr. and Mrs. Smith also visited with her sister, Mr. and Mrs. Horace Smith, at Lake Buchanan.

## NOTICE:

New Service Available For Eastland and Area: CONSTRUCTION AND DIRT WORK Specializing in SEPTIC TANK JOBS (No Road Expense) Dozers, back hoe, dump trucks, air compressor. No job too big, or too small.

Call today for information and estimates. JOHN HOLT TRUMAN BOGGS 401 S. Halbryan PHONE: MA 9-1795 Day MA 9-2027 Night MA 9-1432 Night

## Xi Alpha Zeta Moves 'Inside' For Hobo Party

Rain didn't dampen the spirits of members of the Xi Alpha Zeta chapter of Beta Sigma Phi as they held a hobo party Thursday evening. Members, guests, and food simply moved into the Texas Electric Service Co. Reddy Room.

Those present were Mr. and Mrs. Wade Freeman, Mr. and Mrs. Allen Rushing, Mrs. Marlene Johnson, Mr. and Mrs. A. D. Taylor, Mr. and Mrs. Don Vergeer, Mr. and Mrs. Norman Watson, Mr. and Mrs. James Smith, Mr. and Mrs. Bill Walters, Mr. and Mrs. Tommy Magness, and Mr. and Mrs. Bill Leslie.

## Olden H. D. Club Has Program On Roses

Mrs. Arthur Murrell of Eastland will speak to the Olden Home Demonstration Club Tuesday, September 8, at 2 p.m. Mrs. Murrell's topic will be "Legend and History of the Rose."

The meeting will be in the Olden Community Center and Mrs. I. V. Walker, club president, urges all members and other interested people to attend.

## Life Development Study For WMU

Mrs. Lenis Rice and Mrs. Mattie Donelson spoke on "Spiritual Life Development" when the Mangun, Baptist WMU met Monday afternoon. The meeting was opened by Mrs. Rachel Clower, who read the prayer calendar. Mrs. Rice led the prayer for the missionaries. The meeting was closed with a season of prayer, led by Mrs. Billie Wood, Mrs. Cora Wood, Mrs. Stella McBee, and Mrs. Rittie Brown.

Members attending were Mrs. Mattie Donelson, Ann Tucker, Lenis, Rice, Stella McBee, Billie Wood, Lee May, Rachel Clower, Myrtle Biles, Correyen, Wod, and Rittie Brown. Mrs. H. S. Curtis of Eastland visited the meeting. The next meeting will be on September 14.

### Attend Houseparty

Four members of the First Baptist WMU attended the state WMU Houseparty at Baylor University from Tuesday through Friday last week. Mrs. Eddie Simms, incoming President, was accompanied by Mrs. H. T. Weaver, Stewardship chairman; Mrs. J. O. Jolly, G. A. Director; and Mrs. Winston Boles, Sunbeam Director.

State WMU officers led in conferences and several missionaries spoke to the group. Mrs. Virginia Seelig, daughter of Mrs. Clyde Garrett of Eastland, was the song leader and soloist for the houseparty.

## Nursing School Applicants Now Being Accepted

The Eastland Memorial Hospital, affiliated with Cisco Junior College Vocational Nursing School, is now accepting applications for the new class to be enrolled in January, 1965.

Requirements for prospective students are: ages between 18 and 55; good physical and mental health with personal qualifications necessary for nursing; two years of high school or its equivalent. Preference will be given to high school graduates.

Interested persons in the Eastland area should contact Mrs. Mary Lee, R.N. or Administrator Leon Musgrove at the Eastland Memorial Hospital. More information and application forms may be secured from them. The applications should be completed and returned to the hospital at least two months before the enrollment date.

Mrs. Tom Sharpe and June of Olden attended the wedding of their granddaughter and niece, Miss Dolphin Kile, to James Robert Smith in Galena Park Saturday night.

They were accompanied by Mrs. C. A. ile and Joan of Cisco, aunt and cousin of the bride.

Mr. and Mrs. Gene Clark of Odessa announce the birth of a son, Tommy Allen, on August 22, 1964. The Clarks have a daughter Karen, four years old.

Grandparents are Mr. and Mrs. Tom Clark and Mr. and Mrs. L. A. Scott, all of Eastland. Paternal great-grandmother is Mrs. Stella Roderick of Eastland. Mr. R. L. Adkins of Las Vegas, Nevada is the maternal great-grandfather.

Mrs. Sarah Mueller of Morton Valley has moved to Ranzer, where she has bought a home at 108 Sue Street.

## It's Almost Unbelievable -

... but statisticians tell us that we are more places in our cars and trucks now than ever before, with an increase of 50 million since 1954. Every extra mile is a hazard chance for another accident. So far 1964 to be the Big Daddy of them all! Since public determines the insurance rates, higher rates are inevitable. Better budget your budget now to include the high cost in modern '64.

## Earl Bender & Co.

Eastland (Insurance Since 1924) 112 W. Commerce



Furniture Buys

SPECTACULAR VALUES FOR MODERN HOMES

## PUT HARMONY IN YOUR HOME

Class organ lessons will soon be Eastland under the leadership of Mrs. V. C. cus at 805 South Seaman Street.

An organ will be placed in your home months with class lessons weekly for a lot you would expect to pay for lessons alone.

This class is being formed now. For further information contact:

MRS. CYRUS BARCUS 805 S. Seaman MA 9-1632

This class is made possible by the ship of — Caldwell Music Co. — 221 Grape St. —

AN INTERSTATE THEATRE

# MAJESTIC

THURSDAY - FRIDAY - SATURDAY  
Th.-Fri. Open 4:45 - Shows 5:00 - 7:15 - 9:35  
Sat. Open 1:45 - Shows 2:15 - 4:40 - 7:00 - 9:25

WILLIAM HOLDEN SUSANNAH YORK  
CAPUCINE  
as Diana

THE 7th DAWN

TECHNICOLOR PRESENTS THE UNITED ARTISTS

## Organ Classes Are Still Open

CALL MRS. CYRUS BARCUS  
805 S. Seaman St., MA 9-1653

for further information.

Don't Miss This chance for you to learn to play the organ in your own home.

EASTLAND TRADES DAY

# SPECIALS

FRIDAY & SATURDAY

MORGAN JONES  
**BED SPREADS**  
6 BEAUTIFUL COLORS  
DOUBLE SIZE 6.98 VALUE ..... **\$4.99**

LIGHT COLOR  
**PIECE GOODS**  
67c VALUE ..... **37¢** yd.

BETTER VALUES ALWAYS  
IN EASTLAND IT'S **HARELIK'S** INC.

**DIXIE Drive-In**  
EASTLAND RANGER HIGHWAY

Box Office Opens 7:45; Show starts 8:15; Box Office closes 9:30. Admission: Adults 60c, Children under 12 Free Each Wed. - Thurs. - Bargain Nights (Adults 25c)

Friday & Saturday, Sept. 4 and 5  
**'Tarzan's Three Challenges'**  
Jock Mahoney and Woody Strode  
IN COLOR  
Sunday, Monday & Tuesday, Sept. 6, 7 and 8  
**'A Ticklish Affair'**  
Shirley Jones — Gig Young — Red Buttons  
Carolyn Jones  
IN COLOR



**McAFEE-LARRY FRANKS SET FOR SATURDAY**

John W. McAffee, Eastland, and Larry D. Franks, Jr., son of Mr. and Mrs. L. D. Franks, Sr., of Fort Worth.

The couple will be married at 12 noon, Saturday, September 19th, at the Eastland Church of Christ.

Miss McAfee, a graduate of Carbon High School, is presently employed at A. Brandt Company in Fort Worth.

Her fiancé is a graduate of Technical High School in Fort Worth. He attended North Texas State University in Denton, and served two years in the United States Army.

Mr. Franks is presently employed at Mrs. Baird's Bakery in Fort Worth.

The couple will make their home in Fort Worth.

All friends of the couple are invited to attend the wedding.

**Critique of New School Given by M. H. Perry**

The completion of the new air-conditioned 16-classroom school, is the realization of a 15-year dream, School Board President M. H. Perry told the Eastland Rotary Club at their weekly meet Monday.

"What we've tried to do," Perry said, "is get the most for the tax-payers' money."

Introduced by Mayor Frank Deaton, program chairman for the day, Perry was also complimented by the mayor for the work that he and the entire school board has done for the unselfish work they've contributed.

Perry attempted during the brief talk to answer questions about the new school facilities which had not been definite before:

- The cafeteria will seat 260, and up to 400. There are 500 seats for the auditorium.
- The stage curtain was due to arrive Monday.
- Half the furniture in the new elementary school will be new — all of it will be modern.
- Besides the 16 classrooms, the building has a teacher's workroom, nurses room, principal's office and a secretarial office.
- Two-way intercom and television cable has been installed (for use in educational television in the future.)
- Playground equipment will be moved from the old school sites to the new and additional added.
- A master landscaping plan will be adopted to which individuals, firms and organizations may contribute for the ever-all beautification of the facilities.
- A total of 2,700 feet of curb and guttering and 1,700 feet of sidewalk has been constructed.
- Gym is nearly complete with seats and goals due to arrive during September. A sidewalk at the gym was to have been poured this week.
- Lighting facilities have been improved at the high school and junior high buildings.
- A master intercom system will link all the buildings in the school.

First bids for an ag shop were too high.

More tennis courts are needed.

Total school enrollment this year is some 800.

The school made \$15,000 in interest on their bond money while construction has been in progress.

A five-foot sidewalk will be built from the new gym to the high school.

The south ward site will be surveyed for sale by lots.

The construction project is within its budget, and

The tax rate will remain the same as last year.

Perry thanked other board members, city officials and others for assistance in the project.

President Cyrus Barcus presided and Secretary Kenneth Thompson introduced these



guests: James Cotton and Bill Boothe, both of Cisco, Bill Ganns of Dublin and John Long of Dallas.

The club voted not to meet next Monday, Labor Day.

Jim Horton spoke briefly about his recent Hawaiian trip and Earl Bender gave a brief Rotary information talk on attendance. Sweetheart Sharon Sayre invited the club to the pep rally to be held Thursday night.

**READ THE CLASSIFIEDS**

**Bridge Winners Are Announced**

The regular session of duplicate bridge was played at Lone Cedar Country Club last Saturday with players from Breckenridge, Cisco, Ranger, Gorman, and Eastland participating.

Winners were First place, Mrs. Clyde Grisom and Mrs. Joe Stephen of Eastland; Second place, Mrs. E. L. Graham and Mrs. Dick Beaman of Cisco, and Third place, Mrs. W. E. Chaney and Mrs. Jaek Carothers of Eastland.

**Sharon Wilson**

**Joining CJC Wrangler Belles**

A tuition scholarship has been awarded to Sharon Kay Wilson of Eastland by Cisco Junior College for her participation in the Wrangler Belles program for the 1964-65 school year.

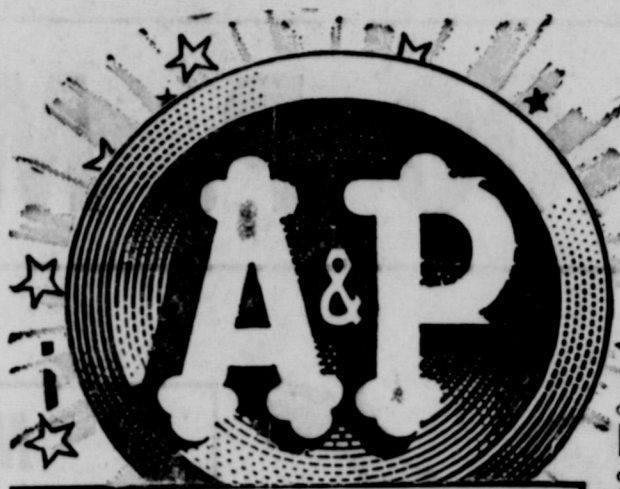
The daughter of Mr. and Mrs. J. D. Wilson, 611 West Patterson, Eastland, Sharon Kay is a 1964 graduate of Eastland High School.

During her high school days, Sharon was a member of the Beta Club, Sub-Deb Club, and the band. She played basketball and was a cheer-leader.

At Cisco Junior College, she will be one of some 30 attractive coeds in the well-known drill team that will stage special half-time shows for CJC football games and other sports events. The Belles will also represent the college in various parades.

**VISIT HERE**

Mr. and Mrs. Rod Stephen and sons of Longview visited Mr. and Mrs. Joe Stephen last week.



**NOTICE: We Will Be Closed All Day Labor Day, Monday, September 7th!**

**\$1.00 SALE!**

- TUNA FISH** Carnation Chunk Light Meat 3 9 1/2-oz. Cans
- TOILET TISSUE** Northern Assorted 3 4-Roll Pkgs.
- TOMATO JUICE** Libby's 3 1-qt. 14-oz. Cans
- HAWAIIAN PUNCH** 3 1-qt. 14-oz. Cans
- COOKIES** Crispo English Style Assortment 3 12-oz. Boxes
- PICKLES** Rainbo Sweet Gherkins 3 12-oz. Jars
- PINK SALMON** Cold Stream 2 1-lb. Cans
- PRESERVES** Festival Queen Strawberry 2 2-lb. Jars
- GREEN BEANS** Del Monte Cut 4 15 1/2-oz. Cans
- ASPARAGUS** A&P All Green 4 14-oz. Cans
- HUNT PEACHES** Yellow Cling Halves or Sliced 4 1-lb. 14-oz. Cans
- ORANGES** Myco Mandarin 4 11-oz. Cans
- COCKTAIL** Del Monte Fruit 4 1-lb. Cans
- GREEN PEAS** Del Monte Early Garden 5 1-lb. Cans
- MARSHMALLOWS** Doumak 5 1-lb. Pkgs.
- LUNCH BAGS** Sno-Man 5 Pkgs. of 50
- PINTO BEANS** Benco Dried 5 2-lb. Pkgs.
- PAPER NAPKINS** Pert Assorted 5 Pkgs. of 200

- JANE PARKER GOLD OR MARBLE POUND CAKES 2 Cut 1-lb. 9-oz. Each 49c
- JANE PARKER BUNS Pineapple Topped 10-oz. Pkg. 29c
- JANE PARKER BROWN 'N SERVE DINNER ROLLS 2 10-oz. Pkgs. 29c
- JANE PARKER PLAIN, CINN. OR SUGAR CAKE DONUTS Pkg. of 12 19c
- JANE PARKER CHEESE BREAD 1-lb. Loaf 25c
- JANE PARKER ITALIAN BREAD 2 1-lb. Loaves 45c

**25 Extra Plaid Stamps**

With This Coupon and Purchase of

ANN PAGE FRENCH DRESSING 1-pt. Jar 33c

AT YOUR A&P SUPERMARKET Coupon Good thru Sept. 5, 1964

**25 Extra Plaid Stamps**

With This Coupon and Purchase of

ANN PAGE ITALIAN DRESSING 8-oz. Jar 25c

AT YOUR A&P SUPERMARKET Coupon Good thru Sept. 5, 1964

TOILET SOAP LUX 2 Reg. Bars 21c	TOILET SOAP LUX 2 Bath Bars 29c	DEODORANT SOAP Lifebouy 2 Reg. Bars 25c	DEODORANT SOAP Lifebouy 2 Bath Bars 35c	LIQUID DETERGENT Pink Swan 1-pt. 6-oz. Size 61c	DETERGENT COLD WATER "all" 1-pt. 6-oz. Size 79c
---------------------------------	---------------------------------	---	---	---	---

U.S.D.A. INSPECTED GRADE "A" WHOLE

**FRYERS 27¢ lb.**

**"SUPER-RIGHT" 10 TO 14 LBS. HALF OR WHOLE ONLY SEMI-BONELESS HAMS 59¢ lb.**

- CAP'N JOHN'S FROZEN Fishsticks 2 10-oz. Pkgs. 69c
- CAP'N JOHN'S FROZEN FISHSTICKS 1-lb. Pkg. 49c
- GULF PRINCESS - PEELLED, DEVEINED SHRIMP 3-lb. Pkg. \$3.99

- "Super-Right" Heavy Calf Arm Roast 1-lb. 55c
- "Super-Right" Heavy Calf Round Steak 1-lb. 79c
- "Super-Right" Heavy Calf Short Ribs 1-lb. 29c
- CHUCK BLADE Pot Roast 1-lb. 39c

- "SUPER-RIGHT" OLD FASHION THICK SLICED BACON 2-lb. Pkg. 99c
- "SUPER-RIGHT" REGULAR SLICED BACON 1-lb. Pkg. 53c
- U.S.D.A. GRADE "A" 10 TO 14 LBS. AVERAGE HEN TURKEYS 1-lb. 39c
- "SUPER-RIGHT" HEAVY CALF SIRLOIN STEAKS 1-lb. 75c
- "SUPER-RIGHT" HEAVY CALF T-BONE STEAKS 1-lb. 39c

**100 100 50**

NO COUPON NEEDED - GET 250 EXTRA PLAID STAMPS WITH EACH 10-LB. BOX OF BEEF STEAKS

**CHOPPED STEAKS**

64 Steaks 10-lb. Box \$7.69

- "SUPER-RIGHT" FREEZER BEEF HEAVY BEEF LOINS 1-lb. 83c
- RIBS 1-lb. 59c

**FREE** GET A 6-BAR PACK OF HOLLYWOOD CANDY FREE OF EXTRA COST WITH THE PURCHASE OF \$2.00 OF MORE IN SCHOOL SUPPLIES AT YOUR NEARBY A&P

**PRODUCE FEATURES**

- POTATOES** U. S. No. 1 Russet 10 Lb. Bag 49c
- Large Size HONEY DEW MELONS 3 for \$1.
- GRAPES Thompson Seedless 2 Lbs. 29c
- PRUNES Italian 2 Lbs. 25c
- LEMONS 6 Each For 29c

- CASE SWAYNE JUICE Grapefruit 1-qt. 14-oz. Can 39c
- KOBEY'S SHOESTRING POTATOES 3 2 1/4-oz. Cans 25c
- ST. REGIS PAPER PLATES Pkg. of 100 49c
- CHEF'S PRIDE CHARCOAL BRIQUETS 20-lb. Bag 79c

- MARVEL ASS'TD FLAVORS ICE CREAM 1/2-Gal. Ctn. 49c
- JANE PARKER CHERRY PIES 1 1/2-lb. Each 39c
- CHARCOAL LIGHTER HIK-RE-LITE Qt. Can 25c
- HOLLYWOOD - PAY DAY, BUTTERNUT, MILK SHAKE TOP STAR OR SMOOTH SAILIN CANDY BARS 6 5c Bars in Pkg. 19c
- NO COUPON NEEDED - GET 25 EXTRA PLAID STAMPS WITH NABISCO SALTINE CRACKERS 1-lb. Box 31c

BUY A BOOK A WEEK

**AMERICAN HERITAGE**

16 VOLUMES PER SET

Vols. 1 thru 15 Vol. 1 49c Vol. 2 99c Only Thru 16, ea.

LIQUID DETERGENT LUX 1-pt. 6-oz. Size 61c

ALL PURPOSE WRAP Handi Wrap 100-ft. Roll 31c

VACUUM COFFEE FOLGERS 1-lb. Can 87¢ 2-lb. Can \$1.73

MARGARINE MIRACLE 1-lb. Ctn. 39c

SANDWICH BAGS Handi Wrap Pkg. of 50 29c

**EIGHT O'CLOCK Coffee Sale!**

MILD & MELLOW

1-LB. BAG 67c | 3-LB. BAG \$1.95

SAVE 6c | SAVE 18c

**ANGER DRIVE-IN**

Highway 80 - East on Ranger Hill

KIDDIES UNDER 11 FREE

SHOW STARTS AT DUSK

THURSDAY, SEPT. 3

oud has a silver lining!

**The COMEDY of TERRORS**

with PETER LORRE-BORIS KARLOFF

ONIZE ONE OF THE FOLLOWING MERCHANDISE AND RECEIVE GUEST TICKET GOOD EACH

THURSDAY NITE

Have a Ticket or Pay Regular Admission

STERN AUTO ASSOCIATE STORE

GLOBE CLOTHIERS

RED QUEEN

ANGER FROZEN FOOD CENTER

ANGER DRY CLEANERS

KEY PIG

FRIDAY - SATURDAY SEPT. 4 - 5

**ELVIS PRESLEY & JIN-MARGRET**

ELVIS PRESLEY & JIN-MARGRET



TO THE MAVERICKS . . . WE'RE BEHIND YOU ALL THE WAY

# EASTLAND vs COMANCHE

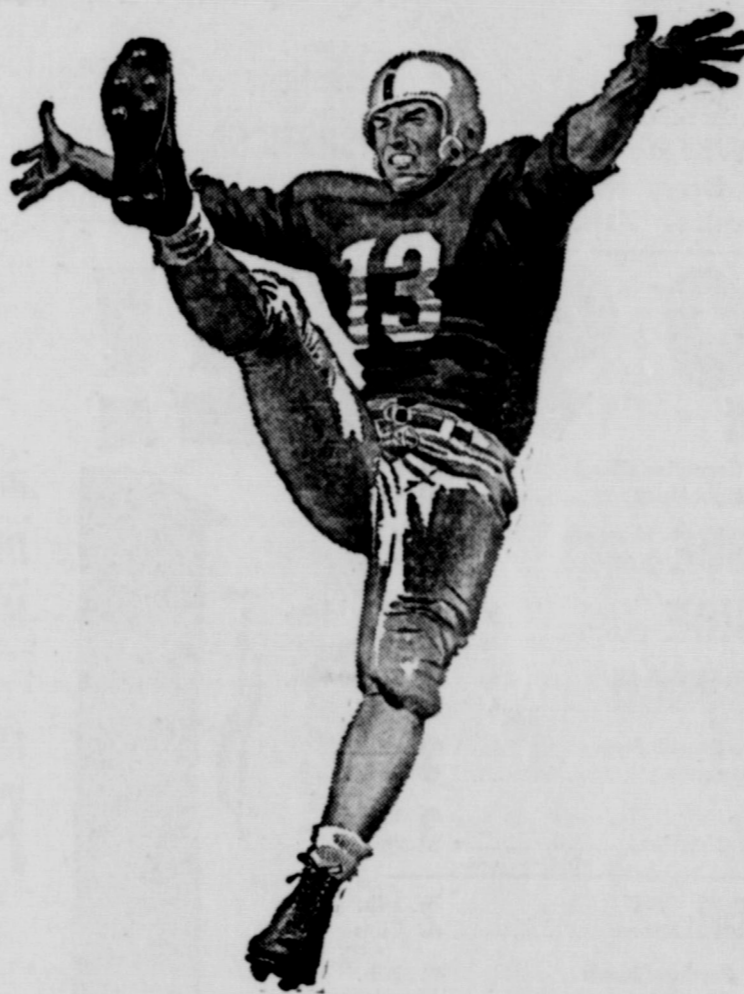
## FRIDAY NIGHT, 8:00 P. M., HERE

### MAVERICK 1964 SCHEDULE

Sept. 4 — Comanche at Eastland  
 Sept. 11 — Rising Star at Rising Star  
 Sept. 18 — Cisco at Eastland  
 Sept. 25 — Dublin at Dublin  
 \*Oct. 2 — Albany at Eastland  
 \*Oct. 9 — Baird at Baird  
 \*Oct. 16 — Clyde at Eastland  
 \*Oct. 23 — Ranger at Ranger  
 Oct. 30 — Open  
 \*Nov. 6 — DeLeon at Eastland  
 \*Nov. 13 — Cross Plains at Cross Plains



The 10-10 C.B. Club will furnish emergency communication facilities to the Stadium — and may be contacted for the transmission of messages to and from Maverick Stadium.  
**TELEPHONE NUMBER IS**  
 MAIN 9-1678



### MAVERICK ROSTER

No.	Name	Pos.	Wt.	Class.
10	Miller, Mike	E	150	Senior
12	McCullough, Jerry	QB	150	Junior
20	Wilson, Gene	QB	120	Sophomore
22	Griffin, Gaylon	FB	150	Senior
24	Martin, Ted	HB	125	Junior
25	Bass, Bill	HB	135	Freshman
40	Moylan, John	HB	155	Junior
42	Gregory, Layne	HB	145	Junior
50	Boles, Bill	C	150	Junior
51	Terrill, Rodger	C	140	Junior
52	Rollins, Garry	T	170	Senior
65	Waldon, Wayne	G	145	Senior
66	Wilson, Haydon	C	142	Junior
67	McCoy, Rodney	G	140	Junior
68	Fullen, James	G	140	Junior
70	Phillips, Dan	T	172	Senior
73	Keith, Fred	T	210	Freshman
75	Moon, Charles	T	195	Junior
77	West, James	G & T	142	Junior
80	Wilson, Larry	E	135	Junior
82	Sargent, Mickey	HB	145	Senior
84	Whitehead, James	E	140	Junior
86	Rhodes, Norman	T	150	Senior

#### COACHES:

Millard Glass, Head Coach; Denson Moody, Backfield Coach  
 Harold Price, Line Coach

#### Eastland Supply Co.

Oil Field Supplies  
 115 E. Main — MA 9-1595

#### Perkins Implement Co.

116 E. Main — Ph. MA 9-2666

#### Eastland Steam Laundry

Home Owned — B. W. Lasater  
 Ph. MA 9-2613

#### Eastland Auction Co.

Hwy. 80 East — MA 9-1760

#### Modern Dry Cleaners

Approved Sanitone Service  
 210 S. Seaman — MA 9-1344

#### Standlee McCracken

Mobil Oil Co.  
 Consignee

#### Roy's Repair Service

Roy and Stella Gann  
 205 S. Lamar — MA 9-2474

#### Hillcrest Food Market

When you run out — run in  
 1401 W. Main — Ph. MA 9-1600

#### Obie's Humble Service Station

802 W. Main — MA 9-8866

#### Western Auto Associate Store

J. L. Pittman, Owner  
 Ph. MA 9-2011  
 Corner of Lamar & Commerce

#### Kinnaird Insurance

and Real Estate Agency  
 207 W. Main — MA 9-2544

#### Eastland Service Parts Co.

112 E. Commerce — MA 9-1733

#### Majestic Theater

#### Toombs & Richardson

Drug Store  
 108 S. Seaman — MA 9-1475  
 FREE DELIVERY

#### Harelik's Department Store

212 W. Main

#### Mr. and Mrs. Victor Cornelius

Eastland Drug Store  
 201 S. Main — MA 9-2112

#### Central Drug

Free Delivery — Dale Troutt, Owner

#### Altman's

"Smart Women's Wear"  
 North Side of Square

#### Freyschlag Insurance Agency

North Side of Square  
 Ph. MA 9-2275

#### Texas Electric Service Co.

F. N. Sayre, Mgr. — MA 9-2651

#### The Men's Shop

Correct Styles for Men and Boys  
 James Smith, Owner

#### City Garage

J. J. Finley, Proprietor  
 Engine, Starter, and Generator Work  
 103 White St. — MA 9-1709

#### Eastland National Bank

"On the Square" — Member FDIC

#### Village Barber Shop

George Carter

#### Village Hotel Coffee Shop

#### Hood King Motor Co.

Ford Sales and Service—On the Square  
 Phone MA 9-1786

#### Graham's Trim Shop

709 W. Main — Ph. MA 9-2266

#### White Elephant Cafe

724 W. Main — MA 9-8831

#### Texas Lightweight Aggregate Co.

Producers of Concrete Aggregates  
 C. W. Martin — Ph. MA 9-2060

#### Jordan's Drive In

Hwy. 80 East  
 Louise and Harry Jordan

#### Eastland Iron & Metal Co.

Henry, Tillie and Saul Pullman

#### Koen Salvage

Your Scrap Iron and Metal Dealer  
 Hwy. 80 West — MA 9-2649

#### B&W Clinic

H. J. Bulgerin, M. D.  
 B. B. Alexander, M. D.  
 310-30 Petroleum Bldg.

#### Rushing Motor Co.

Herman Rushing — Bill Hunt  
 Chrysler, Plymouth, Valiant  
 215 S. Seaman — Ph. MA 9-2644

#### Goodyear Service Store

Neal Edwards, Mgr.  
 306 East Main — Ph. MA 9-2644

#### Dr. and Mrs. M. A. Treadwell

#### Ed Bradshaw

Eastland Texaco Consignee  
 Phone MA 9-1310

#### Eastland Memorial Hospital

#### Chamber of Commerce

#### Angelino Marble Co.

Ph. MA 9-1662

# SOUTHERN TELEVISION SYSTEMS CORPORATION



# Protests Re-Entry Abandoned Well in City

city limits and is at present considering a stronger worded ordinance.

The City announced this past week plans for an official protest with the Railroad Commission against the application for re-entry.

The Tyler oilman explained he was operating under a letter of permission from the Railroad Commission to re-enter at his own peril subject to the regular permit hearing in Austin September 4.

The Tyler man said he wasn't doing any drilling, but was simply using a baler on a cable to clean out the well.

A hearing before the Railroad Commission in Austin is scheduled at 9 a.m., September 4.

# Conservation District Seeks Land, Owner Needs

cost share assistance in working toward complete treatment of the land.

The Great Plains Conservation Program, activated in 1963 in Eastland County, is one of the cost share programs that is of material benefit in doing this important job. Using a complete conservation plan for a farm or ranch as the blueprint, farmers and ranchers are building, what they hope are weather-proof units, by applying conservation practices, cost-shared through a GPCP contract.

There have been 180 applications for assistance submitted in Eastland County. About 90 of these on some 45,000 acres are active contracts. The climatic hazards of an agricultural enterprise have been evident this year. While a conservation plan applied will not insure adequate rain at the right time every year, it does decrease the risk involved in farming or ranching in Eastland County.



MRS. RONNIE G. HOLIDAY  
—Photo courtesy Cotton's Studio.

# Alice Ann Webb, Ronnie Holiday Are Married In August 30 Ceremony

Miss Alice Ann Webb became the bride of Ronnie Glenn Holliday in a double ring ceremony performed at 2 p.m. Sunday, Aug. 30, in the First Baptist Church of Cisco. Vows were read by the Rev. Jesse Cassle, pastor.

The bride is the daughter of Mr. and Mrs. Stanley Webb of Cisco. Parents of the bridegroom are Mr. and Mrs. W. D. Holliday of Woodson.

Miss Doris Lee Glenn of Abilene, soloist, sang "Because," "I Love You Truly," and "The Lord's Prayer," accompanied by Mrs. W. E. Austin at the organ.

The matron of honor, Mrs. Janice Latham of Odessa, the bridesmaid, Miss Sheri Heyser, and the candle lighters, Misses Shirley Page and Valjeanne Loudder, wore identical street length dresses in rainbow colors of silk organza over polished cotton with scoop necklines and tiered skirts. Their head dresses were matching cabbage roses with scalloped circular veils. They each carried a single stemmed mum in matching color.

Best man was Neal Branscomb of Hamlin, and Larry Sullivan of Woodson was groomsmen. Ushers were James Stanley Webb, brother of the bride, and C. B. Rust.

Given in marriage by her father, the bride wore a floor length gown of silk organza with fitted jacket of chantilly lace with long pointed sleeves. Her finger tip veil of silk illusion was secured by a tiara of seed pearls and drop crystals. She carried a bouquet of feathered carnations centered with a white orchid atop a white Bible. She wore a single strand pearl necklace, and she carried old, something new, something borrowed, something blue. Her something old was a gold loveknot pin, which she wore at her wrist, that her grandmother wore at her wedding.

Following the ceremony a reception was held in the Fellowship Hall of the church. Members of the houseparty were Mrs. Gerald Hammer and Mrs. Billy Hammer of

# Word Expected On Drought Feed

Eastland County is one of 40 Texas counties awaiting word on an emergency drought feed program.

An official of the Texas Grain and Feed Association Saturday said that new regulations governing distribution of drought area feed grains by the government at prices lower than the support price formula are expected daily from the Agriculture Department in Washington.

Ray B. Bowden, executive secretary of the association, said, "Congress passed a bill that would allow feed mixers a wider participation in any grain relief program that might be instituted in Texas."

"The state Agricultural Stabilization and Conservation Service committee approved grazing and haying on land that had been in the soil bank program in an effort to relieve drought-stricken counties. However, it has not decided on use of surplus grain held by the Commodity Credit Corporation.

"It is our understanding that as soon as the new regulations are in the hands of the Texas ASCS committee a decision will be made on the application of grain to the drought feed relief," Bowden added.

Feed grain was approved by the government last year, but the program brought criticism from stockmen who found it impossible to get balanced mixed feeds from their suppliers.

Bowden said new regulations should alleviate such a condition in any future drought feed grain program. He said 40 counties or more in Texas are in line for feed grain, but that the rainfall pattern of the last few weeks may have improved the outlook for feed in counties which applied earlier for grain.

# Bowling News

## THURSDAY MORNING HOUSEWIFE'S LEAGUE

	W	L
The Double Ls	58	22
The Vagabonds	54	26
The Sleepers	49½	30½
The Pin Flippers	44	36
The Spares	43	37
The Fall Outs	42	38
The Flops	41	39
The Unpredictables	37	43
The Pin Ups	35	45
F. & M.	32	48
The Flips	29	51
The J. Ps.	15½	64½

**High Team 3 Games**

The Pin Flippers	1217
The Double Ls	1183
The Sleepers	1162

**High Individual 3 Games**

Lynell Temple	516
Jacks Beck	488
Lou Dell Bryan	481

**High Team Game**

The Pin Flippers	452
The Double Ls	406
The Sleepers	399

**High Individual Game**

Lynell Temple	187
Gracie Koen	184
Lou Dell Bryan	179

# Vets Questions And Answers

Q — If a veteran dies while receiving pension under the old pension law, may the widow and minor children be paid under the old law?

A — If the veteran died on or after July 1, 1960, any pension payable to the widow and minor children must be paid under the new pension law.

Q — I was recently hospital-

ized in a VA Hospital for 30 days for treatment of a service-connected disability. After 18 days, I was released for seven days leave, then returned for five more days. Am I entitled to temporary 100 per cent rating for my service-connected disability during the period of hospitalization?

A — No. To meet requirements for temporary 100 per cent rating, you must have received continuous treatment for a period of 21 days. Passes

of more than four days within the first 21 days will be considered as interrupting the continuity of treatment.

Q — As a so-called peacetime veteran am I entitled to any disability compensation from the VA?

A — Yes, such disability compensation is generally 80 per cent of the wartime rates. However, if the disability occurred under extra hazardous conditions wartime rates apply.

Q — Does a veteran who served between September 16, 1940, and December 31, 1956, earn any gratuitous Social Security wage credits?

A — Yes. These gratuitous credits amount to \$160 for each month of duty, but are not listed on the Social Security earnings record until benefits are applied for.

# WANTED

House to rent or take up payments. Prefer Hillcrest Addition.  
Write Post Office Box 1254, Midland, Texas.

# Penney's Back-to-School DOLLAR DAYS



**BOYS' CARE-FREE COTTON SPORT SHIRTS 4 for \$5**  
Popular gingham plaids, printed broadcloths... in short point collars and short sleeves! In many colors. Buy now... you'll save more!



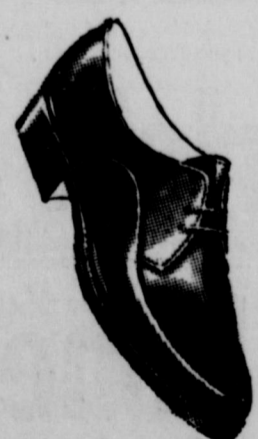
**NATION-WIDE PRINT PILLOW CASES 2 for \$1**  
42"x36"  
Fresh, new looks for your bed in our quality cotton muslin. Choose from a wide variety of all-over prints in many cheery colors.



**Men's Shirt And Slacks In New Trim Styles... \$2**

What a buy! Shirts in every popular model, including shirt jackets and button-downs... in cotton or Dacron polyester-cotton. Slim-tapered, plain-front slacks in heavyweight Avril rayon and cotton — a lustrous, machine-washable blend.

Girl's Cotton <b>Briefs and Anklets</b>	<b>5 For \$1</b>	Boy's Cotton <b>Stripe Socks</b>	<b>4 For \$1</b>
Womens Triple Roll <b>Cotton Anklets</b>	<b>2 For \$1</b>	Womens Gaymode <b>Seamless Hose</b>	<b>3 Pair \$1</b>
Girls <b>Cotton Slips</b>	<b>\$1</b>	Better Cotton <b>Stripe Fabrics</b>	<b>88c</b>
Cotton Sport <b>Denim Fabric</b>	<b>44c</b>	<b>BIG BARGAIN TABLE SUMMER MERCHANDISE</b>	



**Young Men's Leather Dress Shoes For Fall**  
6½-11 D **7.99**

Smooth leather uppers. Guaranteed\* Pentred soles, heels. Injection moulded, Sanitized.  
\*Pentred poly vinyl soles are guaranteed to outwear the uppers... or a new pair free!



**Smart Slip-On For Campus And Casual Wear!**  
5 to 10B **5.99**  
6½ to 9AA

Such smart shoe shaping! Trimly tapered smooth leather uppers have a composition sole. Steel shank. Hand-sewn vamp! Top buy!



**Smart Girls Go For Nylon Velvet Shoes**  
**5.99**

Sizes 8½ to 3, B, C  
So easy to care for... just brush them "new!" Nylon velvet upper with leather leaf trim. Crepe soles. Good-year welt construction. Black.



**Boys' Oxfords, Pentred Soles And Heels**

8½ to 3 B, D, **3.99**  
Smooth leather uppers. Pentred soles and heels won't wear out! Low moccasin styling. Sanitized for stay freshness. In Black or brown. Pentred soles are guaranteed to outwear the uppers. They'll outgrow them before they outwear them... or a new pair free.

**CHARGE IT. PENNEY'S IN CISCO OPEN TO 5:30**

READ THE CLASSIFIEDS

WANT ADS

TO WHOM IT MAY CONCERN  
I am responsible for any debts other than made and never have been. I am the accusation against me. P.F.C. Lonnie U.S.M.C.

**DR. C. E. PAUL**  
Chiropractic Health Service  
OFFICE HOURS  
Mon-Wed-Fri — 9 to 12; 2 to 7  
Tues-Thurs-Sat — 8 to 2  
or by appointment  
Ave. I — CISCO — Phone HI 2-1677

company has been in operation in this since 1942 selling policies to be used prior burial purposes. We write from \$100 and our policies are paid in cash, which freedom in the selection of the Funeral of your choice.  
from 1 month to 90 years.  
further information come by to see us at

**Life Insurance Company**  
301 S. Lamar, Eastland  
Box 431 Dial MA in 9-2611

**UNITED IN COAST-TO-COAST SERVICE**

to take immediate charge when death occurs at a distant duty is performed by competent, professional members association. Reasonable fees, established by agreement between result in a saving to the families we serve.

**Hammer Funeral Home**  
Friendly, Personalized Service  
Eastland Dial M A 9-2611



### Courthouse Records

- Oil & Gas Leases
- Court Proceedings
- Property Transfers

**New Car Registrations**  
 H. T. Huffman, Cisco, Ford Pickup.  
 Joe Don Roland, Eastland, Chevrolet.  
 Francis Barr, Eastland, Chevrolet.  
 Don McCrary, Cisco, Chevrolet.  
 Lee Brown, Cisco, Chevrolet.  
 Bill Baber, Cisco, Chevrolet Pickup.  
 E. I. Fenley, Cisco, Chevrolet.  
 Southern T. V. System Corporation, Cisco, Chevrolet Pickup.  
 Troy Willett, Cisco, Chevrolet.  
 Betty Sue Wagley, Odessa, Chevrolet.  
 Alvis L. Wood Eastland, Ford Pickup.  
 H. C. McBride, Eastland, Chevrolet Pickup.  
 C. A. Ditmore, Cisco, Triumph.  
 G. C. Hogue, Cisco, Ford.  
 Furah Jean Mulliner, Cisco, Ford.  
 A. L. Nantz, Ranger, Chevrolet.  
 Abel Anaya, Ranger, Chevrolet.  
 Charles Alman, Ranger, Chevrolet.  
 Gorman Independent School District, Gorman, Chevrolet School Bus.  
 Bill Dendy, Gorman, Chevrolet.  
 Frank Runkles, Gorman, Chevrolet.  
 Frank Runkles, Gorman, Chevrolet Pickup.  
 Benn Howard, Gorman, Chevrolet.  
 J. O. Fusua, Desdemona, Chevrolet Pickup.  
 O. C. Jeffcoat, Cisco, Chevrolet.  
 R. D. Maxwell, Cisco, Chevrolet.  
 W. H. Kornegaoy, Cisco, Chevrolet.  
 R. E. Darnell, Eastland, Ford.  
 J. O. Thompson, Clifton, GMC Pickup.

**Suits Filed**  
 Dwayne E. Kitchens, vs. Linda Mae Kitchens, Divorce.  
 L. E. Prickett, vs. Texas Employers Insurance Company, Compensation.

**Marriage License**  
 John Paul Bott and Carolyn Sue White

**Instruments Filed**  
 H. V. Ablee et ux to Veterans' Land Board of Texas, Warranty Deed.  
 Roy Blatz et ux to First Federal Savings and Loan Association, Deed of Trust.  
 J. C. Baker et ux to M. J. Kee et ux, Deed of Trust.  
 Ruth B. Cure et ux to Arnold P. Schabauer et al, Certified Copy, Power of Attorney.  
 J. F. Cooper to Pan American Petroleum Corporation, Designation of Depository.  
 Dewey Cox Jr. Trustee, to First Federal Savings and Loan Assn., Warranty Deed.  
 Robert W. Cherry et ux to First Federal Saving and Deed of Trust.  
 Genevieve Elvendorf to Arnold P. Schabauer, et al, Certified Copy, Power of Attorney.  
 Federal Land Bank of Houston to Herman D. Sessum et ux, Release Deed of Trust.  
 First Federal Savings and Loan Association, Ranger, to H. V. Ablee et ux, Release Deed of Trust.  
 Alfred Full et ux to Dewey Cox, Jr. Trustee, Warranty Deed.  
 George Hamilton Folk to Arnold P. Schabauer et al, Certified Copy, Power of Attorney.  
 L. R. Flynn et ux to Olan C. Dennis, et ux, Warranty Deed.  
 Johnnie Honea et al to Modern Homes Construction Company, Mechanic Materialmans Lease, Deed of Trust.  
 M. E. Hallenbeck et al to Jackie Adams, Warranty Deed.  
 L. J. Jeffs et ux deceased to the Public, Proof of Heirship.  
 L. G. Kennedy et ux to Robert Cherry et ux, Warranty Deed.  
 Lone Star Producing Company to Venita Davis Tunnel et al, Release of Oil Gas Lease.  
 D. C. Large et ux to The Public, Homestead Designation.  
 D. C. Large et al to Mrs. Bertha Moore, Deed of Trust.  
 B. M. McCallan et ux to Norman Park, Warranty Deed.  
 Sally Norgans et vir to Clyde N. Foster et ux, Warranty Deed.  
 O. A. Owens et ux, Elsie Roland et vir, Warranty Deed.

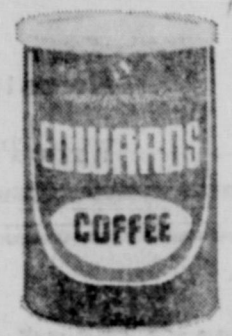
Agnew, Release Deed of Trust.  
 E. O. Riley to R. B. Forehead, Auit Claim deed.  
 H. D. Staton to West Texas Utilities Company, Easement Right Away.  
 John A. Stock et ux to First State Bank of Rising Star, Deed of Trust.  
 G. D. Sledge et ux to B. F. Hatton, Warranty Deed.  
 Orval Jennings Treadway et ux to First Federal Saving and Loan Association, Deed of Trust.  
 Hazel Wyatt to Arnold Scharbauer et al, Certified Copy, Power of Attorney.  
 James T. Wright to Joe Tow, Warranty Deed.  
 Norman Park to B. M. McClellan et ux, deed of trust.  
 L. E. Phillips et al to Vernon D. Phillips et ux, warranty deed.  
 Eris A. Ritchie et ux to E. C. Fuller et ux, warranty deed.  
 C. C. Rose et ux to First Federal Savings and Loan Assn. Ranger, deed of trust.  
 Daryl G. Rice to Leo C. Phagan, warranty deed.  
 L. G. Ross et ux deceased to the Public, proof of heirship.  
 Millie E. Ross deceased to the Public, certified copy probate.  
 Socony Mobil Oil Co., Inc. to M. C. Yeager et al, release oil, gas lease, (2).  
 Doyal R. Summitt et al to

Tempest B. deed.  
 David F. deed.  
 Hazel M. deed.  
 Wayne deed.  
 H. L. deed.  
 Lay, warranty

Edwards  
**COFFEE**  
 All Grinds.  
 1-lb. Can **69¢**

Highway  
**PEACHES**  
 Sliced or Halves.  
 4 No. 2 1/2 Cans **\$1**

Velkay  
**SHORTENING**  
 3-lb. Can

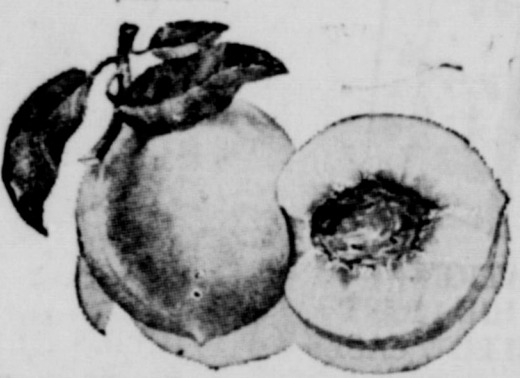


# SAFEWAY

**DAIRY VALUES...**  
 Fresh Milk Lucerne Homogenized, Drink plenty of milk, Gal. Ctn. **97c**  
 Fresh Butter Shady Lane, A. complimentary to meals, 1-lb. Ctn. **71c**  
 Cottage Cheese Lucerne, Assorted Styles, 1-1/2 Lbs. Ctn. **29¢**

**DELICATESSEN SPECIALS...**  
 Potato Salad Lucerne, Delicious, Ready to eat, 2-lb. Ctn. **49¢**  
 Party Dips Lucerne, Assorted Flavors, Serve these to your guests, 8-Oz. Ctn. **29¢**  
 Gelatin Salad Lucerne, Cinnamon/Apple, A salad of distinction, 15-Oz. Ctn. **29¢**

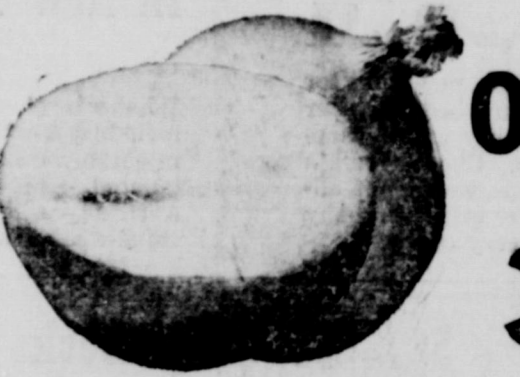
**MORE GOOD BUYS...**  
 Iced Tea Blend Canterbury, Tasty, Get some today, 1/2-lb. Fig. **49¢**  
 Pineapple Juice LaLani, Brimming with Flavor, A real treat, 46-Oz. Can **39¢**  
 Cloverleaf Rolls Pillsbury, Serve piping hot in just minutes, 8-Oz. Cans **29¢**



**U. S. No. 1 PEACHES**  
 California Luscious ripe. Serve with Snow Star Ice Cream.  
 Lb. **19¢**



**SUNKIST LEMONS**  
 Fresh and juicy. Fish and lemon go together.  
 6 For **25¢**



**YELLOW ONIONS**  
 U.S. No. 1. A flavor favorite.  
 3 Lbs. **19¢**



**J. S. No. 1 RUSSET POTATOES**  
 Full of energy. Serve 'em baked, broiled, mashed or fried.  
 10 Lb. Bag **49¢**

**Pascal Celery** U.S. No. 1. Adds flavor to salads. More eating pleasure per bite. Each **23¢**

**Yellow Squash** U.S. No. 1. Tender, yellow meat. Excellent flavor. 2 Lbs. **25¢**

This Coupon Worth 25 Free Gold Bond Stamps Plus your regularly earned Gold Bond Stamps with the purchase of Two Heads Iceberg LETTUCE. Coupon Expires September 5, 1964.

This Coupon Worth 50 Free Gold Bond Stamps Plus your regularly earned Gold Bond Stamps with the purchase of Any Two Whole or CUT-UP FRYERS. Coupon Expires September 5, 1964.

This Coupon Worth 50 Free Gold Bond Stamps Plus your regularly earned Gold Bond Stamps with the purchase of Two 24-Oz. Pkgs. Bel-air, Assorted Frozen FRUIT PIES. Coupon Expires September 5, 1964.

This Coupon Worth 100 Free Gold Bond Stamps Plus your regularly earned Gold Bond Stamps with the purchase of Two Pair (Any Style) Truly Fine LADIES' HOSE (Available in most stores). Coupon Expires September 5, 1964.

This Coupon Worth 100 Free Gold Bond Stamps Plus your regularly earned Gold Bond Stamps with the purchase of One 100-Ct. Bottle Safeway MULTIPLE VITAMINS. Coupon Expires September 5, 1964.

U.S.D.A. CHOICE GRADE HEAVY BEEF SALE!

**Round Steak 79¢** (lb.)  
 U.S. Choice Grade Heavy Beef. Full-cut. Ideal for pan frying. Waste-free trim.

**Sirloin Steak 89¢** (lb.)  
 U.S.D.A. Choice Grade Heavy Beef. "Naturally Aged." Guaranteed to please. Tender and delicious.

**T-Bone Steak 99¢** (lb.)  
 Or Club Steak. U.S. Choice Grade Heavy Beef. Delicious broiled or grilled.

U.S.D.A. Graded "A"  
**Turkey Hens 35¢** (lb.)  
 10 to 14-Lb. Average. U.S.D.A. Government Inspected for Wholesomeness, and Graded A.

**Franks** Safeway or Armour, 1 lb. Fig. **49¢**  
**Danish Ham** Finest Imported, (2-Lb. Can \$2.39) 1-lb. Can **1.35**  
**Canned Ham** Armour or Swift's Premium, 6-lb. Can **4.89**  
**Cervelat** Armour's Texas Style, lb. **49¢**  
**Braunschweiger** Safeway Smoked, By the chunk, lb. **49¢**  
**Bologna** Jumbo Chunk, A Lunchbox favorite, lb. **35¢**

Shop Ahead  
**ALL STORES WILL CLOSE Monday, September 7, LABOR DAY**

**Cookies** Best Baking Coconut Full, Assorted.  
**Aspirin** Safeway. For fast relief of pain, headache.  
**Brooms** Evergreen. For easy cleaning.  
**Dog Food** Pooch. Regular or Liver Flavored.

**SCHOOL SUPPLIES**  
**Filler Paper** 2-Hole, Loose Leaf, 300 Ct. A good school buy.  
**Binder** Blue Cover, 2 Ring, Easy to use. Useful.  
**Lunch Bags** Kitchen Craft. A supply on hand.

**Eating Guaranteed**  
 Every cut of fine Safeway meat is uncooked. Take home any cut you choose your favorite way. Savor its tender, juicy texture. Don't agree it's absolutely delicious in every way, in and tell us. Your money will be refunded.



**FRYER PARTS**  
 Cut from U.S. Grade A Fryers. Serve just the parts they like.  
**Breasts** Whole. All white meat. Delicious.  
**Thighs** On-bone. Lots of meat. So economical.  
**Wings** Meaty and tender. So economical.  
**Backs** For soups, stews and small portions.  
**Livers** Tender. Good for you... Delicious.





September 3, 1964  
 Corp et al, assignment oil, gas lease.  
 Texas Kenworth Co. vs. James H. Turner, et al, abstract judgement.  
 Florence Underwood et al to Public, affidavit.

Veterans Land Board of Texas to Billy C. Johnson, contract sales and purchase.  
 Veterans Land Board of Texas to Hourshel E. Wagley, deed.  
 H. L. Veazey, Jr. to Otto Spratt, oil, gas, mineral lease.  
 Wooten Properties et al to Bilhartz Operating Co., Inc., extension oil, gas lease.

Buchie H. Williams deceased to the Public, proof of heirship.  
 O. R. Williams et ux to W. J. Prange et ux, warranty deed.  
 W. R. Winston et ux both deceased to the Public, proof of heirship.

Wayne Wallace et ux to Federal Land Bank of Houston, deed of trust.  
 Marshall Ernest Wallace deceased to the Public, proof of heirship.  
 Marsha Sue Wallace to the Public, certified copy order appointing guardian and removing disabilities.

Wayne Wallace vs. Hazel Marie Smart et al, certified copy order of dismissal.  
 James E. Wilhelm et ux to B. J. Campbell, warranty deed.  
 Max Wason individual and dba Max Wilson Premier Service to State of Texas, State tax lien.

### Don't Look Now... HAY FEVER POLLENS ARE IN ON INCREASE AS FALL NEARS

The pollens that trigger hay fever are in the air again. From now until first frost there are nine million American sufferers face their annual season of sneezing, stuffed-up, runny nose, itching and swollen eyes. Many people suffer from hay fever needlessly. Enough is known by the allergy specialists to make the average sufferer fairly comfortable and able to carry on a normal existence, says Today's Health, the magazine of the American Medical Association. Consult with your physician or allergist if you have any of the above symptoms. Hay fever is a serious and sometimes incapacitating illness that requires the attention of a physician. Desensitizing injections are the most effective and practical means of managing hay fever. Treatment may be given just prior to the season or all year round. Your physician will decide which will be most effective. Seasonal hay fever is primarily caused by inhalation of pollens, the male fertilizing element of flowering plants, trees or grasses. Allergens, such as dust of all kinds, molds, and animal fur, aggravate symptoms during the hay fever season. Some people move to another part of the country, where the pollen count is at a minimum. Your physician can obtain from the American Academy of Allergy listings and maps which give the pollen count indexes for different parts of the country. Any location with an index of 10 or above is not recommended for those allergic to ragweed. In most of Alaska the count is 0. Lowest in the continental United States is Cape Coral, Fla., with .19. Lexington, Ky., on the other hand, has an index of 156.

**Lucerne**  
**CONDENSED MILK**  
 Evaporated.  
**8 14 1/2 Oz. Cans \$1**

**Gardenside**  
**CORN**  
 Cream Style Golden.  
  
**10 No. 303 Cans \$1**

**Covered Wagon**  
**CORN MEAL**  
 Enriched White.  
  
**5-Lb. Bag 29¢**

**SHOP SAFEWAY AND SAVE!**

# BRANDS SALE

**iced Pineapple** Highway, Appetizing. Wonderful for salads. **4 No. 2 Cans \$1**

**eserves** Empress Strawberry. Fresh Fruit Flavor right on your table. **20-Oz. Jar 49¢**

**ake Mix** Mrs. Wright's. Assorted Flavors. For finer cakes. **4 19-Oz. Pkgs. \$1**

**th Tissue** Truly Fine. Assorted. Luxuriously Soft. **3 4-Roll Pkgs. \$1**

**iquid Bleach** White Magic. For extra cleaning power. Safe. **1/2-Gal. Plastic 29¢**

**ne Sugar** Imperial, or Great Western. Best. Flavors as it sweetens. **5-Lb. Bag 49¢**

**FROZEN FOOD VALUES!**

**ICE CREAM**  
 Snow Star. Assorted Flavors. Unusually good! Makes wonderful milk shakes. Get some — NOW. **1/2-Gal. Ctn. 49¢**



**MORE VALUES!**

**Strawberries** Bel-air Frozen. Sliced. Serve with Snow Star Ice Cream. **3 10-Oz. Pkgs. 85¢**

**Lemonade** Bel-air Frozen. Regular or Pink. Really refreshing. **8 8-Oz. Cans \$1.00**

**Perch Fillets** Captain's Choice Frozen. Fresh-caught flavor. **1-Lb. Fig. 49¢**

**Fish Sticks** Captain's Choice. So quick and convenient. **14-Oz. Fig. 59¢**

**MIX OR MATCH!**

**Meat Pies**  
 Manor House. Easy to prepare.  
 ★ Beef  
 ★ Chicken  
 ★ Turkey  
**6 8-Oz. Pkgs. \$1**

### Desdemona News

Attendance at church services at the different churches here the past Sunday was on the upswing.

Public school will open here Monday, August 31st.

Mr. and Mrs. Charles Williams and children of Austin and Mr. and Mrs. Leo Williams and children of Graceland spent several days this week with their mother, Mr. and Mrs. David Dequire, also while here they visited a sister, Mr. and Mrs. Ben Koonce.

On Thursday of last week Mrs. Howard Wade was in Comanche attending a Reading workshop.

Visiting last week here with the Genoways and the Ott Raglands were Mr. and Mrs. Elmer Wilhelm and children of Austin.

Jerry Buckley has been here the past several days visiting his parents, Mr. and Mrs. R. O. Buckley and doing some work on his farm up in the mountains.

Mr. and Mrs. Chubbie Forman of Irving spent the weekend here with her parents, Mr. and Mrs. Roy Guthery.

Mr. and Mrs. Wayne Whitlock were here on the weekend to visit his mother, Mrs. Geo. Whitlock, Jackie, Roy Lee and Ray.

Visitors at the Church of Christ Sunday were Mrs. S. E. Lemley of Gorman, guest of Mrs. Mother Huddleston.

Mr. and Mrs. Fron of Dallas, guests of Mr. and Mrs. L. E. Clark, and Mr. and Mrs. guests of the Roy Watsons.

A "Pink and Blue" shower was given Monday night at the home of Mrs. Doby Williams honoring Mrs. Garth Priddy, daughter of Mr. and Mrs. Ben Koonce. When school opens they will live in Lubbock where both will be in college.

Mr. and Mrs. Sam Powers had the pleasure of having all their children and grandchildren home the past week for the first time in over 5 years. The group enjoyed the past week in a family reunion. The children are Mr. and Mrs. Truman Powers and daughter Lori of Texas City and son-in-law by the Amco Chemical Co.; Captain and Mrs. Stanley Powers of Sacramento, California stationed at Mothers Field and Mrs. Powers teaches science in high school; Mr. and Mrs. Doug Corlew, Steve, Jane and Mike of Lubbock.

**Chips** Morone. Crispy. Just thing to take on picnic. **14-Oz. Bag 69¢**

**Cheese** Kraft American. Ideal for cheeseburgers. **1/2-Lb. Fig. 37¢**

**o Cheese** Kraft Sliced. For sandwiches. **1/2-Lb. Fig. 37¢**

**heese** Kraft Sliced. The heart-of-the-cheese goodness. **1/2-Lb. Fig. 37¢**

**me** Kraft Miracle Whipped. Tops in flavor and value. **1-Lb. Ctn. 31¢**

**ell House** Regular or Dip. Flavored. **1-Lb. Can 85¢**

**offee** Maryland Club. (10-Oz. Jar, \$1.65) **6-Oz. Jar \$1.09**

**ard** Amours Star. Used for cooking, baking and frying. **8-Lb. Pail \$1.43**

**g Caps** Bell Dome Vac-Seal. Regular. For all your canning needs. **12-Oz. Pkg. 37¢**



## STOCK UP. for HOLIDAY FUN!



**BONDWARE**  
**Paper Plates**  
 Labor Day Outing Need! Useful many ways.  
**100-Ct. Pkg. 49¢**

**Beverages** Cranmont. Assorted Flavors. Really refreshing. (Plus Deposit) **32-Oz. Bottle 10¢**

**Sour Pickles** Zippy Whole or Kother Dill. Liven up a picnic. **48-Oz. Jar 49¢**

**Salad Dressing** Piedmont. Creamy smooth and flavorful. A favorite. **9-Oz. Jar 35¢**

**Aluminum Foil** Kitchen Craft. For freezing, cooking or broiling. **75-Ft. Roll 29¢**

**Charcoal** Ozark Briquets. Why not charcoal steaks tonight? **10-Lb. Bag 39¢**

**ZEE**  
**Paper Napkins**  
 White or Assorted Colors. For all Family Occasions.  
**80-Ct. Pkg. 10¢**

**BAKERY BUYS!**

**ch Bread** Full Whip. Perfect with steak. **1-Lb. Loaf 19¢**

**ails** Mrs. Wright's (2¢ Off). Wonderful Sunday breakfast. **10-Oz. Pkg. 33¢**

**urger Buns** Or Hot Dog Rolls. Mrs. Wright's. **8-Ct. Pkg. 21¢**

**o Bread** Cook Book D'Agostino. Old Fashioned flavor. **24-Oz. Loaf 29¢**

**[PICNIC SUPPLIES!]**

**Potatoes** Kebab's Shoestring. Tasty and nutritious. **2 No. 300 Cans 23¢**

**Catsup** Town House. Tomato. Makes good foods taste better. **2 14-Oz. Bottles 37¢**

**Stuffed Olives** Empress. Thrown. **5-Oz. Jar 39¢**

**Pork & Beans** Highway. Nutritious. Take some on a picnic. **No. 300 Can 10¢**

**[PICNIC NEEDS!]**

**Mustard** French's. Rich and tangy. Flavored. **24-Oz. Jar 35¢**

**Barbecue Sauce** Kraft Hot, Hickory Smoked or Regular. **18-Oz. Bottle 39¢**

**Sweet Gherkins** Zippy Pickles. Snack and treat. **8-Oz. Jar 29¢**

**Sweet Relish** Zippy. Attractive and delicious. **13-Oz. Jar 29¢**

**Lima Beans** Town House. Lame High in food value. **2-Lb. Bag 39¢**

**Green Peas** Gardenside Early June. Varies in your menu. **2 No. 303 Cans 35¢**

**Asparagus** Town House. All green. Fresh at spring. **No. 300 Can 38¢**

**Chum Salmon** Tempco. Delicious in Casseroles. **No. 1 Can 63¢**

**[MORE VALUES!]**

**Black Pepper** Crown Colony Ground. The best in flavor. **4-Oz. Can 39¢**

**Iodized Salt** Or Plain. Snow White. Brings flavor alive. **28-Oz. Boxes 10¢**

**Charcoal Fluid** Safeway Lighter Fluid. The better way to start that charcoal fire. **Qt. Can 29¢**

**Marshallows** Fluff-Puff. Take some on a picnic and roast 'em. **1-Lb. Bag 29¢**

**Sandwich Spread** No Made (2¢ Off Label). Adds new taste to snacks. **16-Oz. Jar 38¢**

**Peanut Butter** Real Roast Creamy or Crunchy. Rich, roasted. **3-Lb. Jar 99¢**

**Crackers** Buy Baker. Good foods deserve good crackers. **1-Lb. Box 29¢**

**Graham Crackers** Buy Baker. Perfect for between-meal snacks. **1-Lb. Box 35¢**

**SAFEWAY**

Prices and Coupons Effective Thurs., Fri. and Sat., September 3, 4 and 5, Eastland

We Reserve the Right to Limit Quantities. No Sales to Dealers.



# State Capital NEWS

By Vern Sanford

AUSTIN — Texas' progress in the field of race relations was commended by visiting federal officials here to discuss aspects of the new Civil Rights law.

Gov. John Connally met briefly with Secretary of Commerce Luther Hodges; former Florida Gov. LeRoy Collins, director of the new Community Relations Service; and former Gov. Buford Ellington of Tennessee.

Session was one of a series to be conducted with governors in all states at the request of President Johnson to discuss the Community Relations Service operation. Agency will provide conciliation service at the state and local level to resolve discrimination disputes.

Governor Connally predicted

Texas will continue to move forward without outside help.

Texas legislative leaders, who have been the target of many lobbyists, have turned lobbyists themselves.

Lt. Gov. Preston Smith, Speaker Byron Tunnell and Sen. George Moffett, chairman of the Legislative Council's redistricting committee, have been lobbying in Washington for passage of federal laws to clarify the congressional and legislative redistricting situation.

Moffett wants Congress to say that a state may have as much as 15 per cent variation from the average population in its Congressional districts. He and Smith also spoke in favor of the proposed amendment to the U. S. Constitution which would allow the states to set up one house of their Legislature on a basis other than population.

Atty. Gen. Waggoner Carr has ruled that: A county commissioners court may decide whether or not it shall appoint county hospital managers with overlapping terms:

A county attorney has the duty of filing suits for foreclosure of the State's lien for delinquent inheritance taxes; District courts in that county have jurisdiction of these suits even in those instances in which property formerly belonging to a decedent is not within the county, so long as it is within the jurisdiction of this state.

New hunting and fishing licenses are scheduled to be sent to some 2,800 dealers by August 14, State Parks and Wildlife Commission announces.

Old licenses expire on August 31. More than 2,300,000 are expected to be paid during the coming year — at the rate of \$2.15 for fishing license and \$3.15 for a hunting license.

## Pvt. Lindley Is Sent To Okinawa

Army Pvt. Charles N. Lindley Jr., whose wife, Betty Louise, lives in Rankin, was assigned as a cook in Headquarters Co., 1st Battalion of the 173rd Airborne Brigade's 503rd Infantry on Okinawa, Aug. 12.

Lindley entered the Army in January and completed basic training at Fort Polk, La. The 21-year-old soldier, whose parents live at 310 N. Daugherty, Eastland, attended Eastland High School.



## BROWSING with BEV.....

By BEVERLEY NICHOLSON  
Eastland County Home Demonstration Agent

Know how to peel tomatoes quickly and easily? Try any of these three methods. They make the job easy.

Stroke the skin with the dull edge of a knife blade until the skin is loosened, or Dip the tomato in boiling water for 1 minute, then cool at once in cold water, or

Run fork into tomato and rotate it over heat of cooking unit until the skin is tight and shiny. Cool at once in cold water.

## Former Resident BSU Director Of Wayland College

R. B. Hall, of Altus, Oklahoma, former music director of the Eastland First Baptist Church, became the new Baptist Student Union secretary and director of religious activities at Wayland Baptist College, August 27, (today), according to President Roy C. McClung.

Hall has been associate pastor of First Baptist Church of Altus for the last 16 months. Prior to joining the Altus church staff, he was music, education and youth director at First Baptist Church, Frederick, Okla.

He was also minister of education and youth director at First Baptist Church, Eastland, and minister of music and youth director at First Baptist Church, Quannah, while attending Southwestern Baptist Theological Seminary, Fort Worth. He is a graduate of Hardin-Simmons University, where he was active in BSU, serving as fellowship vice-president and as music director of the Life Service Band.

Mrs. Hall, the former Helen Taylor, Eastland, is a graduate of Baylor University. They are parents of a boy, 2, and a girl, 1.

Mr. Hall was in charge of the Wayland students who attended the annual Student Assembly, Aug. 20-26.

## National Defense Loans Approved For 25 Students

Some 25 students planning to attend Cisco Junior College during the 1964-65 school year have been approved for National Defense Education Loans up to \$600, according to President G. C. Hogue. The loans are available through the federal government for tuition fees, books and certain other expenses.

Cisco Junior College plans to open the 1964-65 school year on Monday, Sept. 17, with the previous week being devoted to formal enrollment, freshman qualification tests and so forth. Pre-enrollment begins Sept. 1.

Mr. Hogue said that the CJC business office has complete information and the necessary forms for the use of anyone interested in a student loan. These are available at liberal interest rates re-payment plans.

The school has a limited number of scholarships that are offered each year, including those for valedictorians and salutatorians, choir, drill

stored in hot, crowded closets through the summer will give off their color to other garments stored next to them.

Page Four EASTLAND TELEGRAM Thursday, Sept. 10, 1964

team and band, and football and basketball plus a few for other sports.

Mr. Hogue invited anyone interested in the college to call at the business office, which is open throughout the summer from 8 a.m. to 5 p.m.

**FHA LOANS APPROVED**  
Eastland County was approved today by the Farm Home Administration for emergency loans due to drought conditions, according to word from Congressman Omar Burleson. Details will be released in the next few days, the message said.

**READ THE CLASSIFIEDS**

**IMPORTANT NOTICE**  
The annual meeting of the Contributed Eastland Memorial Hospital will be held on September 22, 1964, at 7:30 p. m. at the Texas Service Building in Eastland, Texas. MRS. SAMUEL BUTLER, Board of Directors — Eastland Memorial Hospital

**PUBLIC NOTICE**  
In as much as two property owners are threatening all except myself, who go across their land with the law, I am asking all who have loved ones in the cemetery on my land and all that have bought land from me to come to my house and sign a petition to have the county commissioners court to open a road on section lines that goes across the property in question. Everyone interested in seeing justice done, may also sign.  
W. E. HALLENBECK

## PRE-WINTER TUNE-UP SPECIAL

Complete Auto Repairs Safety Inspection Center

24 HOUR WRECKER SERVICE

Phones MA 9-2270 Night MA 9-2224

**ALLEN AUTO REPAIR**  
A1 RUSHING MOTOR CO.  
215 SOUTH SEAMAN

# NO MONEY DOWN!

## TIRE CLEARANCE SALE

At the LOWEST PRICE EVER OFFERED IN THIS AREA Available In This Area at Your Convenient

**GOOD YEAR Service Stores**

Big Selection Blemish & Second TIRES, up to 50% OFF

<p>Go Deal No. 1</p> <p><b>TUBE-TYPE BLACKWALLS</b></p> <p>4 for \$36<sup>00</sup></p> <p>6.70 x 15 plus tax and old tire in trade for each tire you buy</p> <p>2 for \$18 while they last</p>	<p>Go Deal No. 2</p> <p><b>TUBE-TYPE WHITEWALLS</b></p> <p>4 for \$44<sup>00</sup></p> <p>6.70 x 15 plus tax and old tire in trade for each tire you buy</p> <p>2 for \$22 stay sparkling white!</p>
<p>Go Deal No. 3</p> <p><b>TUBELESS BLACKWALLS</b></p> <p>4 for \$46<sup>00</sup></p> <p>7.50 x 14 or 6.70 x 15 plus tax and old tire for each tire you buy</p> <p>2 for \$24</p>	<p>Go Deal No. 4</p> <p><b>TUBELESS WHITEWALLS</b></p> <p>4 for \$54<sup>00</sup></p> <p>7.50 x 14 or 6.70 x 15 plus tax and old tire for each tire you buy</p> <p>2 for \$28</p>

ALL-WEATHER "42" 3-T NYLONS with TUF SYN!

Hi Miller R-C with TUF SYN 6.70x15 Plus Tax and Recappable Tire

**\$14.76** 6-Ply

3-T NYLON IN THE BODY

**TRUCK TIRE SPECIAL!**

**HI-MILER R-C**

Goodyear's Great Nylon Truck Tire

**EASY TERMS—PAY AS YOU HAUL**

Hi Miller R-C with TUF SYN

**\$44.76** 10-Ply

8.25x20, Plus Tax & Recappable Tire

3-T NYLON IN THE BODY

# GOOD YEAR SERVICE STORE

EASTLAND

## WE GIVE GOLD BOND STAMPS

**ALADDIN NOTE BOOK FILLER**

300 Sheet Pkg. **39¢**

Back To School Savings At Super Save

**300 SHEETS ALADDIN NOTE BOOK PAPER**

300 SHEETS

**PRIME LUNCHEON MEAT**

BONDIWARE PAPER PLATES

WAFCO SANDWICH BAGS

CUT RITE PLASTIC WRAP

CUT RITE WAXED PAPER

WHITE SWAN MUSTARD

**LABOR DAY**

WHITE SWAN PORK & BEANS

**STOP**

Back To School Savings At Super Save

**FLOUR**

Assorted Brands

**MELLORINE**

HUNT'S TOMATO JUICE

5 300 Cans **49¢**

Prices Good Thru Saturday, Sept. 12

**WHITE SWAN CATSUP**

2 14-Oz. Bottles **29¢**

**BARBECUE SAUCE**

18-Oz. Bottle **39¢**

3 Cans **33¢**

**HOME KILLED BABY BEEF LOIN STEAK** . . . lb. **89¢**

**FRESH GROUND BEEF** . . lb. **39¢**

**GOOCH BLUE RIBBON Beef Cutlet** . . . . lb. **69¢**

**GOOCH BLUE RIBBON Beef Chuck Roast** . lb. **49¢**

**GOOCH BLUE RIBBON Beef Club Steak** . . lb. **89¢**

Let's Go Save At Super Save

**MAZOLA CORN OIL**

Pint Bottle **33¢**

**GREEN GIANT PEAS**

2 303 Cans **43¢**

**COCA-COLA**

12-Bottle Carton **65¢**

PLUS DEPOSIT

**ZEE NAPKINS**

2 80-Count Pkgs. **25¢**

**NORTHERN TOILET TISSUE**

4 REG. ROLLS **35¢**

WITHOUT BREEZE DISTURBANCE RINSO SOAP LIFEBOU SOAP LIFEBOU SOAP LUX SOAP LUX SOAP LUX

Let's Go Save At Super Save

**WHITE SWAN OR FOLGER'S COFFEE**

Choice of Grinds

Pound Can **79¢**

**KRAFT'S DELUXE CHEESE SLICES**

American Or Pimento

12-Oz. Pkg. **45¢**

**SWANSDOWN CAKE MIX**

Ass'd Flavors

Reg. Box **29¢**

Let's Go Save At Super Save

**PET INSTANT MILK**

12-Oz. Can **93¢**

**MARICO PREMIUM CRACKERS**

23-1/2 Oz. **31¢**

**ALCOA HOUSEHOLD FOIL**

13-1/2" x 23-1/2" Roll **29¢**

HEALTH & BEAUTY AIDS

**MOUTHWASH LISTERINE**

Reg. 90¢ Size **66¢**

**ASPIRIN**

Reg. 50¢ Size **49¢**

**ST. JOSEPH**

Reg. 50¢ Size **49¢**

**TOOTHPASTE MACLEANS**

**47¢**

**SWANSDOWN CAKE MIX**

Ass'd Flavors

Reg. Box **29¢**

**CEREAL WHEATIES**

12-Oz. Box **33¢**

**FROZEN FOGGS BANQUET POT PIES**

8-Oz. Pkg. **15¢**

**GOLDEN MAP ORANGE JUICE**

6-Oz. Can **25¢**

**SCOHM FISH STICKS**

8-Oz. Pkg. **29¢**

**JOHNSTON FRUIT PIES**

3-1/2-Oz. Pkg. **59¢**

Let's Go Save At Super Save

**SLICED BACON**

Rath Racorn

**SLICED BACON**

Rath Black Hawk

**MacMoys SUPER SAVE**

Home Owned—Home Operated

400 S. Seaman

**RUSSETT POTATOES**

10 lbs. **49¢**