



# Eastland Telegram

Home of  
**LAKE LEON**  
"Texas' Leading Lake"

VOLUME TWENTY-SIX

EASTLAND, TEXAS, THURSDAY, MAY 10, 1956

NUMBER 5

## Moore...

ABOUT

### Eastland

By Virgil E. Moore

Carol Fox, young daughter of Mr. and Mrs. A. E. Fox, who live east of Eastland, can't figure out whether she was lucky or unlucky last week. Carol, it seems, had the misfortune of stepping square into the middle of a rattle snake, but came out with only a bad scare. She was trying to decide if she were unlucky for stepping on the snake in the first place, or lucky because it didn't strike. A little of both, we would say.

Feathers got a little ruffled at the County Democratic Convention Tuesday — for which there was no reason. Supporters of Gov. Shivers quickly gained control of the convention and elected a pro-Shivers chairman. Their hold was not overwhelming, but was secure. Shivers' supporters, however, played just about as fair as you will ever see a majority group play. While they did elect delegates who without doubt favor the Governor, they did not even offer a resolution binding the delegates to stick with Shivers to the end. Actually the Eastland County delegation is uncommitted.

One bad thing about the convention was the fact that only about half of the county's 25 precincts were represented. Only 14 of the precincts even turned in minutes of their precinct conventions, and the remaining 11 represented 13 voting delegates. Actually not even all of those precincts which held conventions were represented. There were enough votes not even cast at the county convention to have swung the decision either way.

To us this means that the 11 precincts are dead. This year's conventions probably had more interest than any in the history of the county, and if the precincts didn't have enough interested citizens to even hold a convention, it seems to us that they should be abandoned and joined in with larger precincts. A resolution almost to that effect was passed by the county convention, calling for the County Commissioners Court to do away with all precincts in which not more than 25 votes were cast at the last general election. The only bad thing we can see about the resolution is that it didn't go far enough. Actually, only one or two precincts will be involved, and there are more that should be abandoned. Maybe we needed 25 precincts in the horse and buggy day, but it's for sure they are a waste of money today.

We don't know anyone who is in worse shape than Gene Townsend. Gene volunteered to manage the Junior Teen-age baseball team and when he called for players to sign up, 27 put their names on the dotted line. That wouldn't be bad except for the fact that Gene is allowed to keep only 15 boys on the team. Looks like the mothers of some of those thirteen and fourteen year old boys are going to be mighty unhappy with Townsend.

We understand someone was really lucky after the recent rain. They tell me that an Eastland man (we couldn't get the name) caught a 32 pound catfish practically on dry land. It seems that the cat made its way out of the Power Plant lake and got halfway to the new lake when the water dropped suddenly and left the cat in a hole all to itself.

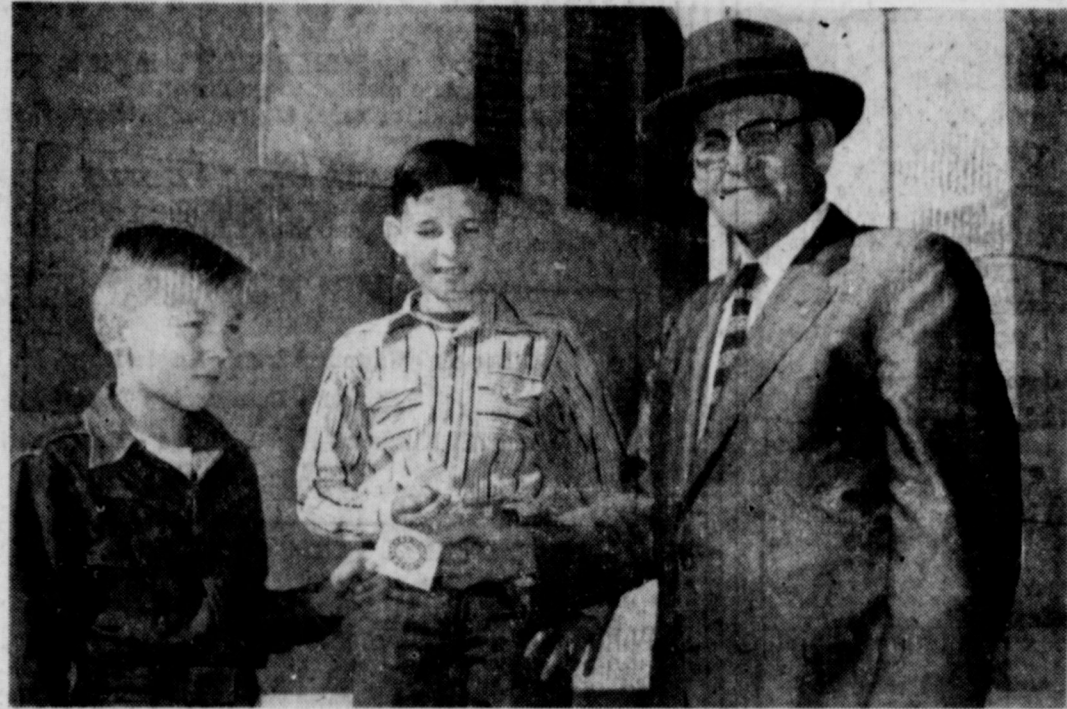
Boy, things were happening plenty fast around the V. T. Moser home Tuesday night and Wednesday morning. The Mosers have three female cats and believe it or not, all three of them became mammas in a 12 hour period. By noon Wednesday seven kittens had been born, and the Mosers were still scratching their heads. "We just hope that's all of them," they said.

It's about time for Aubrey Van Hoy to show another rain picture. The feature showing at the Majestic when we got that five inch rain a while back was "Miracle In The Rain."

Wayne Benson and Mrs. H. E. Williams celebrate their birthdays today and Friday. Mary Lou Siebert and E. E. Woody are due congratulations. Elmo McAlister has Saturday all to himself.

Mr. Jones was visibly undone as (Continued On Page Three)

Your New Car Financed At Low Bank Rates With Your— EASTLAND NATIONAL BANK Member F. D. I. C.



**FIRST CUSTOMER**—Grady Pipkin had the honor of purchasing the first 1956 Eastland Little League sticker this week. The stickers, which are sold to backers of Little League to raise money for the organization, can be purchased from any Little League. Salesmen pictured above are Mickey Kay Sargent and Eddie Don Sargent. (Telegram Staff Photo).

## Burkett Files In Last Minute

Omar Burkett, former State Representative from the 76th Congressional District, is officially in the race for the seat he once held.

Burkett's entry into the race came after it appeared that Paul Brashear, who defeated Burkett two years ago, had the race all to himself. Deadline for filing was Monday, and official records

Tuesday morning did not reveal that Burkett was a candidate. His filing blank was sent by registered mail, however, and arrived late. Since the letter was postmarked Monday, his entry is official in every way, however.

Neither Burkett nor Brashear—who waged a bitter name-calling campaign two years ago—have made a formal statement.

## Women's Hospital Auxiliary Will Hold Open House Saturday Morning

In recognition of National Hospital Week, May 6 to May 12, the Women's Auxiliary of the Eastland Memorial Hospital will hold open house Saturday morning from 10 to 11 o'clock.

"American hospitals deserve a hearty salute from a grateful nation for their many fine services," Mrs. Samuel Butler, Auxiliary president, said. "No other institution has made a contribution to the American way of life.

"American hospitals have played a dramatic part in the tremen-

dous task of lengthening life and improving health. Doctors and scientists have teamed up with our hospitals to make these miracles available to us.

"A hospital is a 24-hour-a-day, seven-day-a-week operation, working around the clock every day of the year. It is a big business and an important business.

"Eastland Memorial Hospital draws near to its Fourth Anniversary. It stands as a symbol of security for our community."

Mrs. Butler and the executive board, composed of Mmes. Dudley Houle, H. T. Weaver, Jack Frost, H. B. MacMoy, Larry McGraw, Chairman James Horton, Milton Fullen and Walter Chaney, will act as hostesses. Supt. Grace R. Reed and a member of her nursing staff will show the hospital to the visitors.

## Woman's Angle On Oil Heard By Lions Club

Gladys Sorensen, vice president of the Abilene Desk and Derrick Club, was guest speaker at the Eastland Lions Club Tuesday.

Miss Sorensen, who was introduced by Ed Haynes, program chairman, spoke on the part the oil industry plays "in our everyday lives."

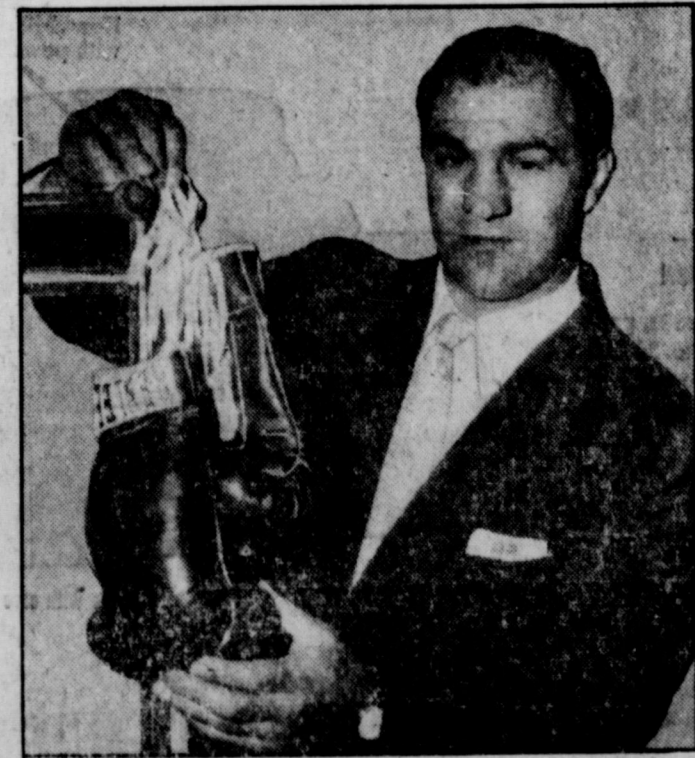
She displayed the many things that contain oil by-products which are taken for granted.

Installment Loans Custom Made For Each Customer EASTLAND NATIONAL BANK Member F. D. I. C.

## Dennis Files By Mail For Post

One more name will be added to the Precinct 5 ballots in the July primary.

E. L. (Jug) Dennis will be a candidate for constable of Precinct 5. Dennis sent in his official entry blank by registered mail and it did not arrive until Tuesday afternoon, but was postmarked in time to make his candidacy legal.



**WHO'LL FILL HIS GLOVES?**—Heavyweight champ Rocky Marciano hangs up the leather in New York City as he announces retirement from the ring "because I want to start living for my family." At 33, he's the fourth man in ring history to retire without suffering a single defeat.

## Red Cross Gives Financial Report For Rural Areas

Mrs. Tom Lovelace, Jr. and Mrs. Leo Brooks, Co-Chairmen for the Rural Division of the recent Red Cross Campaign stated today that they have received the following reports from outlying communities:

Olden	\$25.00
Carbon	16.52
Staff	26.40
Pioneer	5.00
Flatwood	29.35
Lake Cisco	11.00
North Star	13.00
Pleasant Hill	11.85
Cook	14.50
Old Shady Grove	28.50
Nimrod	9.65
Cheaney	7.25
Lone Cedar	11.25
Total	209.27

Several communities have not reported the amount raised. The chairmen urge that each community chairman turn their monies in to Earl E. Wood, Box 111, Eastland, treasurer of the local (Continued on Page Four)

## March Of Dimes Donations Decrease

Final tabulations of the Eastland County March of Dimes campaign that ended Feb. 1, shows that the county fell \$1,900.35 short behind its 1955 contributions, Mrs. J. A. Bates, county chairman, said here today.

Total this year amounted to \$7,517.56 while the campaign netted \$9,417.91 during 1955.

Biggest loss this year was in Eastland who donated only \$1,54.08 following a \$2,339.94 total in 1955.

Ranger was down to \$2,853.10 from \$3,151.15 in 1955 but Cisco and other outlying communities took some pressure off the campaign. Cisco increased their contributions by \$156.17 or from \$2,180.68 to \$2,336.85.

Also showing definite gains were Carbon, Olden, Rising Star, Sabanna and Scanton.

Donations by towns and com-

## PAGE ONE MUST

Little League backers were reminded this week by James Wright, League president, that work on the Little League park would take place each Monday and Thursday starting at five and all day Saturday. He urged volunteers to be present at the park, and said that lights on the field are expected to go up this week.

People living in the Eastland area who have relatives buried in the Carbon cemetery, were asked this week to mail their annual contribution for the upkeep fund to Mrs. C. C. Gilbert, secretary-treasurer, of the Cemetery Association.

The Eastland IOOF Lodge will hold open house Monday and all Oddfellows and their wives and the public has been invited. Forty-two will be played, refreshments served and an out of town speaker will make an address.

## Eastland Group Will Attend Methodist Meet

The Rev. Hayden Edwards, district superintendent of the East Fort Worth District of the Methodist Church, will be the featured speaker for the Cisco District Laymen's Banquet to be at the Crazy Water Hotel in Mineral Wells Friday night May 11. Other speakers to bring brief addresses will be Gerald Groves of Olney, Pete McClesky of Mineral Wells and the Rev. Leslie W. Seymour of Cisco. J. A. Bates of Ranger, district lay leader, will serve as master of ceremonies.

It is expected that between 300 (Continued on Page Four)

munities and stores where collections over the county were made follow.

Towns and Communities: Eastland, 154.08; Carbon, 176.73; Center Point, 15.00; Christ Lutheran Church (near Cook), 17.25; Cook, 6.06; Corinth Baptist Church, 4.00; Desdemona, 41.60; Flatwood, 25.00; Lake Cisco Club, 5.00; Long Branch, 20.00; Lone Cedar, 11.20; Nimrod, 11.29; The North Star Club, 5.00; Okra, 3.74; Olden, 132.73; Pioneer, 6.95; Pleasant Hill, 12.12; Rising Star, 740.06; Sabanna, 15.44; Scanton, 116.26; Staff, 25.24; Word Club, 3.00; Cisco, 2,336.85; Gorman, 599.29; Kokomo, 20.75; New Hope, 7.00; Rahger, 2,853.10.

Community stores: Bluebonnet, 2.00; Bowman's, 1.6; Carters, 1.89; Criswell, 1.98; Reed's, 1.07.

## Major Discovery Drilled In County

A new well — described as a "major discovery" — has been brought in 14 miles southeast of Eastland. It is the No. 1 Crofford Thurnham which was drilled by Jack Grace Drilling Co. of Wichita Falls.

A spokesman said the well would produce "several hundred barrels." A test is to be made in the next few days. The well is now cleaning into pits.

Pay was reached at 3340 feet and bottom was 3386 feet. The well is located in an entirely new field.

Owner and operator is Curtis Plumley of Beaumont. The well is

located 660 feet from the west line and 230 feet from the north line of the Thurnham Track, Abraham Selmer Survey.

The well is located in a 1450 acre tract. Houston concerns are offset lease owners.

In other area oil news the No. 2 Susie P. Wharton, et al., has been staked by J. E. Connally, et al., of Abilene, in the Walton Marble Falls Field. Location is 2264 feet from the south line and 370 feet from the east line of Lot 11, Harvey Kendrick No. 310, seven miles northwest of Gorman on a 179.3 acre lease.

The project is scheduled to go 3500 feet with rotary and elevation is 1441 feet.

Two new tracts have also been staked in neighboring Stephens County. Magnolia 1, et al. Co.'s No. 14 Claude McCauley, located 990

## Unpledged Delegation Will Go To Convention

### Governor's Forces Control Demo Meet

Eastland County will send an unpledged delegation to the State Democratic Convention to be held May 22 in Dallas.

That's the way things stood after a milder than usual Eastland County Democratic Convention in Eastland Tuesday afternoon. Pro-Shivers forces came to the convention armed with 55 votes and the pro-Johnson group had only 32. W. B. Wright, Cisco attorney, was elected temporary chairman on a floor vote of 44 to 32 and Tom Wilson, Eastland banker, won the temporary secretary race 41 to 32. Dr. Price Ashton, Ranger Junior College president, was Wright's opponent and Lester Crossley, Ranger city manager, opposed Wilson.

Wright appointed a committee of delegates and one on resolutions. The delegation committee named Jack W. Frost, David D. Pickrell, W. B. Wright, R. E. Grantham, Ben Hamner, Don Pierson, E. P. Crawford and L. E. Clark — all supporters of Governor Shivers — as delegates to the State Convention and precinct delegates voted for them to cast the county's eight votes as a unit.

The resolutions were adopted by the group concerning the abolishment of some smaller voting precincts in the county; opposition to the graduated income tax; states rights; the Two-Thirds rule for nominating Democratic presidential and vice-presidential candidates; and interposition.

Shivers' supporters, although having enough votes to easily push through a resolution supporting the Governor as leader of the State delegation, did not choose to do so.

Resolutions approved were as follows:

**Resolution 1**

Whereas, as there are 25 precinct voting places in the County of Eastland to represent the people, and whereas, many of these precincts tabulate very few votes, some as little as nine, and; whereas, there are now only half as many candidates to seek election since the new law was passed extending the time of office, and; whereas, the cost of holding the election under the present setup almost makes it prohibitive for the office seeker in view of the high filing fee, and; whereas, those who vote in the smaller boxes (as a general rule) come into the city to get the returns; be it therefore resolved: Where there were in the last general election under 20 votes polled at any voting box that such precinct be abolished and that the voters of said precinct shall go to the nearest voting precinct to cast their ballot; that copy of this resolution be transmitted to the Commissioners Court of Eastland County, Texas, and that it act on same as a mandatory move by this Convention.

**Resolution 2**

Whereas, the graduated income tax is based on an alien philosophy, designed to destroy the power and will of the people to govern themselves; whereas, the graduated

income tax has become a means of oppression, used by the National Government to deny to its citizens the fruits of their labor and industry; whereas, as the result of the unlimited power of the National Government to tax incomes of its citizens, our very substance is being dissipated, wantonly, not only in our own country but over the entire world, eventually to result in our being unable to support or defend our country; now, therefore, it is resolved by this convention that our delegates to the State Convention of the Democratic Party, next to be held at Dallas, are instructed to work for and support, by every legal means possible, an amendment to the Constitution of the United States which will prohibit the collection by the Government of the United States of a tax on incomes. Secondly, failing this, that said delegates are instructed to work for an support an amendment to the Constitution of the United States which will prohibit the Government of the United States from collecting a tax based on income in excess of 25 percent of net income.

**Resolution 3**

Be it resolved that this convention strongly endorses the principle of the right of the separate states to control their internal affairs, and the right of individual citizens to local self-government; and is vigorously opposed to Federal control over the public schools of the States in any guise or form, to Federal control of the production of natural resources of any state, to Federal interference with the right of the several states to control subversives within their borders and protect their citizens against Communism, to Federal infringement of state laws protecting the individual citizen in seeking and holding employment, and to all proposals for the socialization of medical practice.

Be it further resolved that the delegation from this County to the State Convention shall be bound by the unit rule, and the votes to which this County's delegates are entitled shall be cast as a unit, according to the majority of the delegates present at the State Convention.

**Resolution 4**

Whereas, in 1956 there is an urgent necessity for the Democratic Party to regain its historic position of being the only political party which truly represents and reflects the views of all democratic Americans, and; whereas, under the present system of nominating the Democratic Party's national candidates, the selection is controlled by special interests whose moral concepts and political ideologies are alien to the greater majority of American voters, and; whereas, the two-thirds rule was adopted by the first Democratic Convention and was in effect for over one hundred years, giving all areas and sections of the United States a voice in party affairs, and; whereas, when the rule was summarily abrogated, disunity and strife arose wherein the Democratic Party, pitting Democrat against Democrat, and; whereas, restoration of the two-thirds rule will restore harmony and give singleness of purpose and strength to the Democratic Party, therefore, be it resolved by this County convention that the delegates to the State Convention support the Two-Thirds Rule in the State Convention and that the delegates to the National Convention use every means at their command to restore the Two-Thirds Rule in the Democratic Party.

**Resolution 5**

Whereas, the people have the constitutional and inherent right to petition the Government, and; whereas, the people through their legislature may demand that Congress call a convention of the States for the purpose of a constitutional amendment, and; whereas, such State action of interposition on Federal encroachment, based upon a vote of the people would be more effective on Congress (Continued On Page Five)



**MODEST MERMAID**—The swimmer toward more suit this year. Nettie Rosenstein models a black-and-white checked version of the classic tank suit, adapted for beach wear, at Miami Beach, Fla.

## Body Discovered Near Railroad West of Santo

The body of an elderly man, identified by papers in his billfold as George Clarence O'Sullivan of Wasco, Calif., was found dead on the Texas and Pacific Railway right of way about one-half mile west of Santo Wednesday morning.

C. F. Majors, T & P signal maintenance man discovered the body at 8 a.m. Wednesday.

Ticket stubs found on the body indicated that the victim was traveling from El Paso to Fort Worth, and a railway report that a passenger was missing on an east-bound train which went through Santo at 4:32 a.m. indicated that he was aboard the train.

Sheriff Fred Foreman and Justice of Peace E. C. Schoolcraft of Palo Pinto have not completed their investigation. The man appeared not to be a robbery victim as \$97.18 was intact in his billfold.

The body, with multiple fractures, was found 156 steps from where it struck the right of way. Parts of his hearing aid and clothing he wore were found strewn along the track embankment.

## Former Eastland Woman's Husband Dies In Wreck

Funeral services for George Edward Hill, 20, killed Sunday in an auto accident at Graham, were held Wednesday at 3 p.m. in Kibler and Son Chapel in Colorado City with burial in the Colorado City cemetery.

Hill was the husband of the former Miss Treva Lynn Nunley, formerly of Eastland and the son of Mr. and Mrs. Ross R. Hill of Big Spring.

Other survivors include his grandmother, Mrs. M. E. Brashear of Gorman and nine brothers and sisters.

At the time of his death, Hill was an employe of an oil well service company at Monahans.

## Scranton School Bonds Approved

An Eastland County school district was among the list of districts which had bond issues approved this week by Attorney General John Ben Shepperd.

The Scranton Independent School District \$28,000 school-bond issue, series 1955, gained state approval.

**WELLS FARGO INSURANCE**  
No. 500 Fifth Street  
Scranton, Texas

Partly cloudy, warm and windy Thursday, partly cloudy Friday with chance for scattered showers. High both days 90 to 95. Low Thursday night 65 to 70.

**AIR CONDITION ANY CAR—3 HOURS**  
Reg. \$400 with 4-cyl. compressor  
Elect. Clutch \$76 Extra  
**SPECIAL ONLY \$299**  
Don Pierson Olds - Cadillac Eastland

**BE SURE—SEE**  
Don Pierson Olds-Cadillac Eastland  
Quality Cars at Volume Prices

**FOR**  
Fine Furniture, Floor Coverings, G.E. Appliances, It's Coats Furniture & Carpet, Ltd., Eastland. Free Delivery and Convenient Terms. Good Trade-ins, too!



LEGAL NOTICE

CONTRACTORS' NOTICE OF TEXAS HIGHWAY CONSTRUCTION

From: Eolian to Shackelford C. L.: Fr. US 190 E. of San Saba to Colony Road: Fr. SH 16 near De Leon to Erath C. L.: Fr. San Saba to 2.4 Mi. west: Fr. 4.4 mi. north of Gorman to 7.4 mi. north: Fr. FM 1176 to 5.6 Mi. N. E.: Fr. FM 1311 to Menard C. L.: Fr. Cherokee to 10.8 Mi. west: Fr. Mercers Gap to Brown C. L.: Fr. Comanche C. L. to US 84 in Zephyr: Fr. US 377 to Rochelle: Fr. FM 734 in Voca to Mason C. L.: Fr. FM 576 to Wayland: Fr. 576 to 3.0 Mi. S. W.: on Hwy. US 190, SH 6, FM 576, 580, 571, 568, 42, 1648, 590, 1121, 1851 & 1853 covered by C 107-4-3, C 231-14-6, C 257-5-13, C 272-3-12, C 570-1-8, C 636-2-6, C 825-2-3, C 867-8-2, C 1029-1-5, C 1034-2-5, C 1595-2-2, C 1779-1-2, C 1781-1-2, C 1782-1-2, in Stephens, San Saba, Comanche, Eastland, Coleman, McCulloch & Brown Counties will be received at the Highway Department, Austin, until 9:00 AM. May 16, 1956 and publicly opened and read.

This is a "Public Works" Project, as defined in House Bill No. 54 of the 43rd Legislature of the State of Texas and House Bill No. 115 of the 44th Legislature of the State of Texas, and as such is subject to the provisions of said House Bills. No provisions herein are intended to be in conflict with the provisions of said Acts.

In accordance with the provisions of said House Bills, the State Highway Commission has ascertained and set forth in the proposal the wage rates, for each craft or type of workman or mechanic needed to execute the work on above named project, now prevailing in the locality in which the work is to be performed, and the Contractor shall pay not less than these wage rates as shown in the proposal for each craft or type of laborer, workman or mechanic employed on this project.

Legal holiday work shall be paid for at the regular governing rates.

Plans and specifications available at the office of B. R. Russell, Resident Engineer, Brownwood, Texas, and Texas Highway Department, Austin. Usual rights reserved.

LEGAL NOTICE

CONTRACTORS' NOTICE OF TEXAS HIGHWAY CONSTRUCTION

Sealed proposals for constructing 11.345 miles of Gr., Strs., Flex. Base & Two-Crs. Surf. Treat. from Carbon to Comanche C. L. on Highway No. SH 6, covered by F 911 (2) & S 2111 (1), in Eastland County, will be received at the Highway Department, Austin, until 9:00 A.M., May 15, 1956, and then publicly opened and read.

This is a "Public Works" Project, as defined in House Bill No. 54 of the 43rd Legislature of the State of Texas and House Bill No. 115 of the 44th Legislature of the State of Texas, and as such is subject to the provisions of said House Bills. No provisions herein are intended to be in conflict with the provisions of said Acts.

In accordance with the provisions of said House Bills, the State Highway Commission has ascertained and set forth in the proposal the wage rates, for each craft or type of workman or mechanic needed to execute the work on above named project, now prevailing in the locality in which the work is to be performed, and the Contractor shall pay not less than these wage rates as shown in the proposal for each craft or type of laborer, workman or mechanic employed on this project.

Legal holiday work shall be paid for at the regular governing rates.

Plans and specifications available at the office of G. L. Smith, Resident Engineer Eastland, Texas, and Texas Highway Department, Austin. Usual rights reserved.

LEGAL NOTICE

NOTICE OF BIDS

Notice is hereby given that at the regular meeting of the Board of Trustees of Eastland Independent School District held on April 10, 1956, said Board authorized the issuance of a notice calling for sealed bids for the sale and removal of the Morton Valley School Building at Morton Valley, Eastland County, Texas.

Sealed bids for such purpose will be accepted for consideration until 5:00 P.M., May 21, 1956, at the business office of said District. Said District reserves the right to reject any bid tendered.

Eastland Independent School District  
By Billy C. Frost, Secretary

Mr. and Mrs. Monte Webb and son, Monte Don, of Waco, were visitors in the home of Mr. and Mrs. Norman Guess this week.

Mr. and Mrs. Victor Grovowsky visited in Midland over the week

Rats Waste Foods, Carry Many Diseases

AUSTIN — Texans lose 170 million dollars every year on account of rats. They destroy and waste large quantities of food and are responsible for the spread of certain diseases to humans. "There is just one thing to do about rats," declares Dr. Henry A. Holle, Commissioner of Health, "and that is get rid of them."

Rats have been found to spread infectious hepatitis (jaundice), rabies, typhus fever, rat bite fever, dysentery and other diseases. More eggs, chickens and small game are destroyed by rats than by all other animals. Sometimes they start destructive fires by gnawing wires and short circuiting them.

Exterminating rats is an endless process, if your building is not soundly protected against additional invasions. New buildings should be made rat-proof, and old ones can be made so at reasonable expense. Building rats out is a whole lot cheaper than having them around. Solid concrete or heavy metal are about the only materials that keep rats from entering a building, and unless foundations extend about two feet under ground, rats can burrow underneath. You certainly cannot trust to luck — the rat is too clever and aggressive for that.

Red Squill is one of the poisons commonly used to kill rats, but this poison is not only death on rats, it is deadly for humans too. Warfarin is a comparatively new

poison designed for killing rats—but it, too, is equally dangerous to humans. Both these poisons must be handled very carefully, and put out where neither children nor pets can get near them. Any kind of such poison must be stored in very safe places too.

If rats were starved out, by rat-proof construction, and with complete sanitation in our communities — around our homes and places of business, and all wastes and trash were properly disposed

of in sanitary land-fills — we would make an enormous economic saving and eliminate a real threat to health.

Mrs. Artie Liles Is Hostess For Baptist Group

Mrs. Artie Liles was hostess to the Homemakers Sunday School Class of the First Baptist Church

Tuesday in her home, 1303 South Bassett for a covered dish luncheon.

Mrs. Roy Young, teacher of the class, gave the invocation.

Following the meal, served buffet style, Mrs. Liles presided over a business session, during which a project was outlined. Mrs. Harvey Kimbler gave the devotional on "Prayer."

Members attending were: Mess-

James Carl Timmons, T. L. Amis, C. T. Lucas, Mary Hancock, Versie Bell, Frank Lovett, Don Parker, D. J. Daniel, Ed Layton, Kimbler, Young, and Liles, the hostess.

We Are Fond of Fires—

... that warm the home in wintry weather, but not the kind we read about in the papers. We like ice in its place, but in the form of hail its unbearable. Spring breezes are exhilarating until they turn themselves into tornadoes and leave us helpless in their wake. So we can't have everything as we want it, except insurance. Because it costs so little and its value so great why not be adequately insured throughout the year?

EARL BENDER & COMPANY

Eastland (Insurance since 1924) Texas

Funeral Directors

HAMNER FUNERAL HOME

Ben E. Hamner

Eastland Phone 17

Cisco Phone 166

AMBULANCE SERVICE ANY WHERE ANY TIME

Nominal Cost Burial Insurance For The Entire Family

May We Offer A Bit Of Advice?

If you have any SCRAP IRON bring it in. The price is TOPS now, don't wait for the market to go down. The demand for steel is greater today than at any time in our history.

WE ARE ALSO IN THE MARKET FOR Copper Wire - Brass - Radiators - Aluminum - Zink - Lead Babbitt - and Old Batteries.

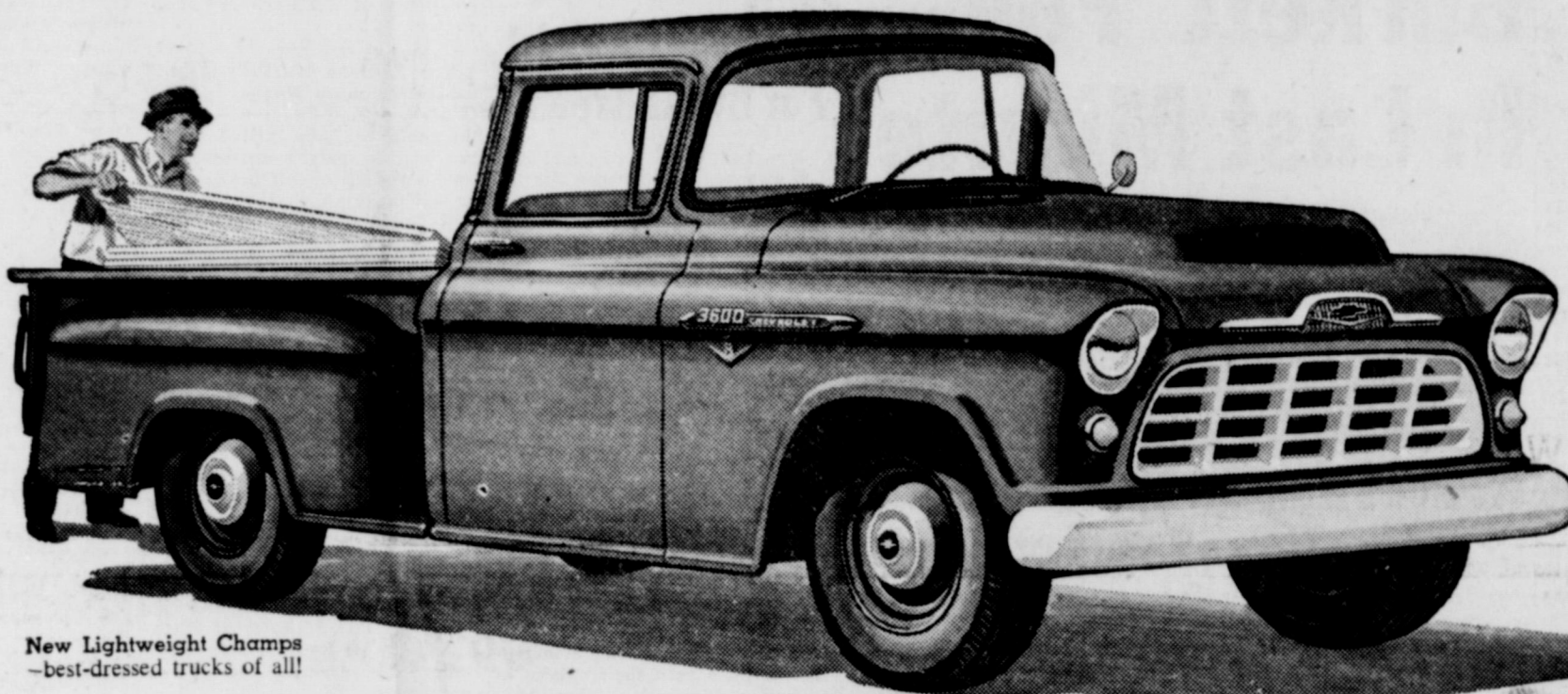
WE BUY AND SELL

I-Beams - Channell Iron - Angle Iron - Plate - Flat Iron Sheets - Reinforcing Rods - Pipe. And All Kinds of Pipe Fittings - Brass Fittings - Copper Tubing - Copper Fittings

—MORE THAN 30 YEARS OF DEPENDABLE SCRAP SERVICE—

EASTLAND IRON & METAL CO.

Ph. 270—Henry Pullman, Owner—On Hwy. 80—East Main St.



New Lightweight Champs —best-dressed trucks of all!

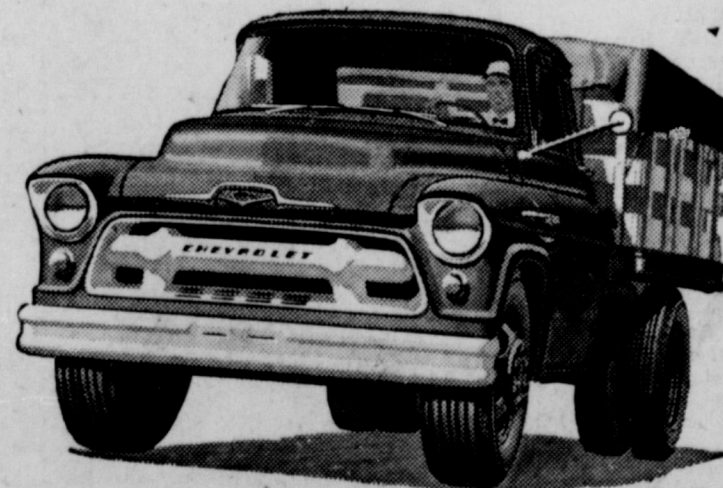
NEW '56 CHEVROLET TASK-FORCE TRUCKS!

A MODERN V8 FOR EVERY MODEL! A MODERN MODEL FOR EVERY JOB!

Whether you deliver flowers or haul eight-yard loads of gravel, there's a new Chevrolet truck to do your job in record time and at rock-bottom cost!

Champs of every weight class!

New Middleweight Champs with powerhouse V8's and 6's!



Drive with care... EVERYWHERE!

New Heavyweight Champs in four completely new series!



High-powered V8's—standard in heavy-duty jobs!

In 9000 and 10000 series Task-Force trucks, you get Chevrolet's big new 322-cu.-in. Loadmaster V8—brand new for '56! The ultra short-stroke Taskmaster V8 is standard in other L.C.F. and heavy-duty models. In lightweights and most middleweights, high-powered V8's are extra-cost options.

New, wider range of models—rated up to 32,000 lbs. G.V.W.!

Come on in and look 'em over! Pickups, panels, stakes, heavyweights rated up to 50,000 lbs. G.C.W. with new Triple-Torque tandems—we've got the right model for your job equipped with the most modern features money can buy. Features that mark Chevrolet trucks by far your best buy!

CHEVROLET - Anything less is an old-fashioned truck!

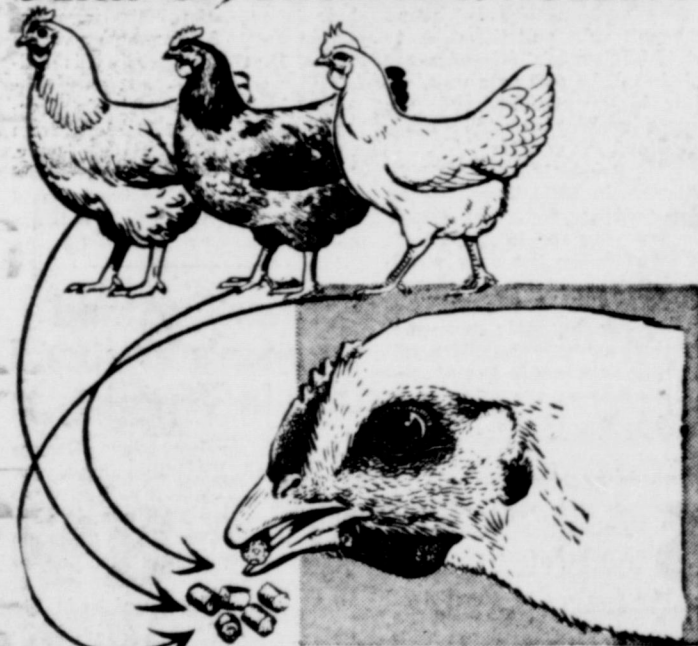
FULLEN MOTOR COMPANY

305 E. Main

EASTLAND, TEXAS

Phone 44

NEW PURINA Bite-Size CHECKER PLAN OF GROWING PULLETS



Compared to usual mash feeding, the new Bite-Size Checker plan can make a big cut in your growing cost. Chicks start eating the new, smaller Checkers when only 4 to 6 weeks old. It takes less feed because pullets spill less out of the hoppers. And the few Checkers that are spilled are quickly picked up—not lost on the ground like mash.



WE BUY EGGS

EASTLAND FEED & SEED

204 N. Seaman

Phone 175



**Moore About -**

(Continued from Page One)  
he staggered into the locker room.  
"What's the matter, old boy?" asked the pro sympathetically.

"I just killed my wife, that's what's the matter," said Mr. Jones.  
"Goodness, how did you do that?"  
"I was over the practice tee and didn't see her coming up behind

me. I took a back swing and hit her on the head and she dropped dead."  
"That's tough," said the pro.  
"What club were you using?"  
"The niblick," said Mr. Jones.  
"That's the club," the pro replied.

Someone (we can't remember just who) was after us the other day to "crusade" for more signs leading to Lake Leon. Looks like to us the old boy might know what he is talking about. We have heard more people say they got lost on the way to the lake than we can count on both hands. We can't expect outsiders to know the way to get there and it would cost very little to get some small signs up all along the route. Might even really go first class and put up a great big sign at the highway turnoff.

That's it for now. See you Sunday.

**CHIROPRACTIC Services Are Included**

People who are employed by companies carrying Workmen's Compensation Insurance are entitled to Chiropractic services, if injured while working.

This means that any workman injured while on the job can have a Chiropractor if he desires.

Back injuries are the most common among workmen. In such cases, Chiropractic is definitely the logical means of correction.

**Dr. Robert G. Verhetsel D. C.**  
Eastland Chiropractic Office  
206 S. Seaman Eastland

**Dr. C. E. Paul, D. C.** **Dr. Hugh C. Brown, D. C.**  
Chiropractic Office Brown's Sanatorium  
708 Avenue I, Cisco 800 West 6, Cisco

**DeSota After New Record**

The De Sota Adventurer, 1956 Pike's Peak Hill Climb pacer, Colorado Springs, Colo., July 4, will attempt a new pace car record there, it was stated today by L. Irving Woolson, president of De Sota Division, Chrysler Corporation.

The present record of 19.39.4 minutes was set last year by a Dodge Lancer.

The 320 h.p. Golden Adventurer, the division's first sports type two-door hardtop model, termed super-powered-for-safety, hit a sizzling 144.19 miles per hour during recent tests at the Chrysler Engineering Proving Grounds, Chelsea, Mich., over a half-mile stretch of the test track.

Chrysler engineers who timed the car believe it is a new, though unofficial, record for an American-built car of its type.

**Showers Possible Here During Friday Afternoon**

Unstable air in this area may release high winds in favor of scattered showers here Friday.

More warm and windy weather is in store today, however.

High temperatures both days will range from 90 to 95, even with the advent of the showers.

Presidio hit its high temperature point of the year Wednesday with the mercury zooming to 107 degrees.

FAIRWINDS YOUR HOME TOWN MERCHANTS

**Flowers**

**CORSAGES**

- ORCHIDS
- GARDENIAS
- ROSES
- IRIS
- CARNATIONS

**POT PLANTS**

- HYDRANGES
- MUMS
- FUCHIAS
- GERANIUMS
- AND MANY OTHERS



For any occasion — give flowers to express your sentiment. There's no lovelier gift and none more welcome! See us for the finest in flowers—always!

**Irma Parker** **Martha Brashier**  
**FLOWER SHOP**  
—GREENHOUSE—  
200 N. Green St.  
Phone 140 All Hours  
Serving: Eastland, Olden and Carbon

**MAY SALE**

We Give B & B Stamps With Each 10c Purchase

BETTY CROCKER

**Cake Mix** Choc. Malt 20-oz. Pkg.

BETTY CROCKER

**Frosting** Choc. Malt 15-oz. Pkg. BOTH FOR

**38c**

**4 Leaf Clover SPECIAL**

California Iceberg

**LETTUCE**

Fresh and Crisp

2 Lg. Heads **25c**

**4 Leaf Clover SPECIAL**

California Sunkist

**LEMONS**

Large and Juicy

2 Lbs. **25c**

**4 Leaf Clover SPECIAL**

HOME GROWN SWEET

**ONIONS**

Extra Special

Lb. **3c**

**4 Leaf Clover SPECIAL**

GLENDALE

**PEACHES**

Sliced or Halves

No. 2 1/2 Can **29c**

**4 Leaf Clover SPECIAL**

LOOSE LEAF

**Note Paper**

25c Size

Pkg. Special **19c**

**FLUFFO** Golden 3 Lb. Can **89c**

**FLOUR** Gladiola 5 Lb. Bag **49c**

**SUGAR** Imperial Pure Cane 10 Lb. Bag **93c**

**Dog Food** Big Mike 3 300 Tall **19c**

**Pork & Beans** Coneho 300 Tall **10c**

**Crackers** Premium Saltine, Lb. **25c**

**Cherries** Clover Farm Red Ripe No. 303 Can **23c**

**TUNA** Van Camp's No. 1 Flat Can **23c**

**Blackeye Peas** White Swan No. 300 Tall **10c**

**SPECIAL! SLICED BACON**

**ENDS** Just As Good As The Middle

5 Lb. Pkg. **59c**

**FRYERS** Home Dressed Lb. **49c**

**BACON** Swift Premium Sliced, Lb. **49c**

**FRANKS** Gooch's All-Meat 3 Lbs. **89c**

**Chuck Roast** Choice Beef, Lb. **39c**

**Round Steak** Choice Beef, Lb. **69c**

**Club Steak** Choice Beef, Lb. **55c**

**Pork Roast** Lean Meaty, Lb. **35c**

**Bar-B-Q Spare Ribs** Lb. **89c**

OPEN EVERY NIGHT TIL 8 P.M.—SATURDAY TIL 9 P.M.

**FOODS CLOVER FARM STORES**

400 South Seaman

Phone 31

**TRADE NOW and SAVE!**

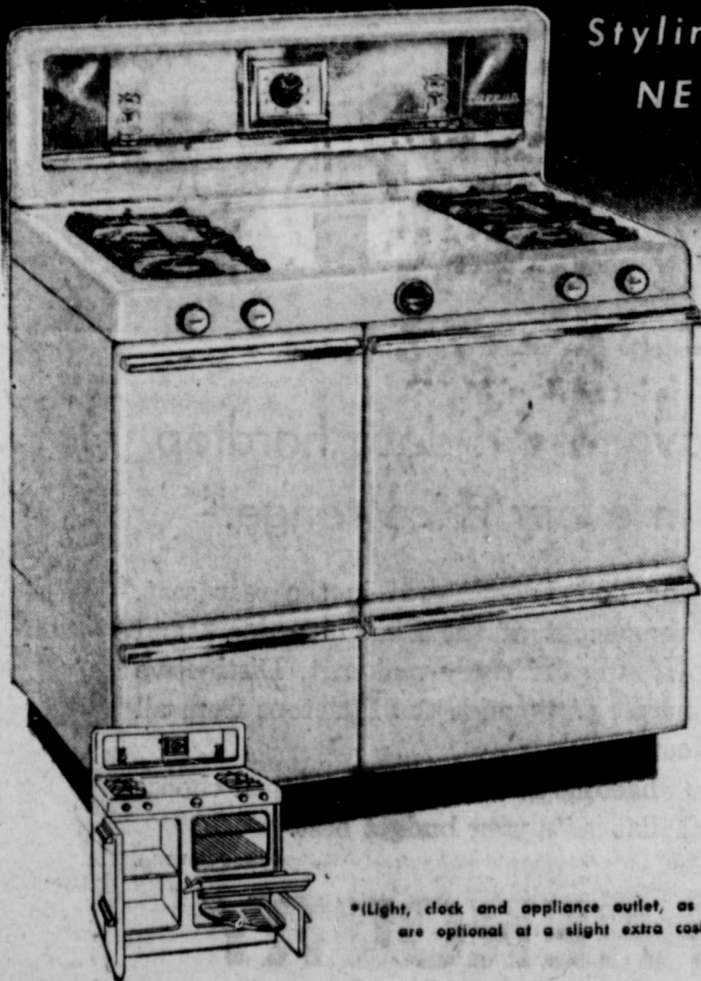
Glamorous New 1956

**TAPPAN**

GAS RANGE

Brilliant NEW

Styling—Amazing NEW Features!



The Tappan "Seventy Series"

It's brand new—just arrived—this glamorous 1956 Tappan! You'll be thrilled with its smartly styled appearance, and proud of the fine meals it makes so easy to prepare! Don't wait any longer, see and buy a great new 1956 Tappan now!

SPECIAL 189.95

Less Trade in 20.00

NOW ONLY

**169.95**

5.00 down, 9.95 month

\*Light, clock and appliance outlet, as shown, are optional at a slight extra cost!

**WESTERN AUTO ASSOCIATE STORE**

EAST SIDE OF SQUARE — HERBERT EKRUT — OWNER





### Beta Sigma Phi Sorority Sets Dance Review

The Beta Sigma Phi Chapter of Ranger will sponsor "Dance Follies of '56" Friday night, May 11 at 8 p.m. at the High School Auditorium, it was announced today. It will be Mrs. Barbara Caffey's, dance instructor from Brownwood, spring dance, review. The numbers will consist of tap dancing, toe dancing and ballet dancing. Admission will be 50 cents for adults and 25 cents for children. Costumes for the students were made by the mothers.

Those participating in the program will be Ronny Pruet, Nancy Newnam, Linda May, Jerri Jolly, Walter Korff, Sandra Hestand, Dorothy Ann Oliver, Kathy Lamb, Cheryl Huffman, Annabelle Ratliff, Jan Griffith, Mary Bratton, Sandy Halbrook, Shirley Rhodes, Linda Jones, Linda Warford, Freddie Lamb, Lucille Nussle, and Patricia Townzen, all of Ranger; Kathy Tuttle, from Strawn; Pamela Williamson from Olden; Toni Horton, Donna Horton, Darlene Lovelace, Butch Phillips and Judy Phillips all from Eastland; Kay Cheshire and Cathy Evans from Cisco; Diane McKenzie from Goldthwaite; and Jeannie Gaines, Sunny Gay and Margie Kay Weidner, all from Brownwood.

### Around the Town At Olden

By Mrs. Dick Yielding

Mrs. Jean Thomas of Detroit, Mich. is here to spend a few weeks with her parents, Mr. and Mrs. Charlie Mitchell, and with her sister Ann in Ranger.

Max McCotter of Colorado Springs, Colo., was in Olden the past week on business.

Pete Holt underwent an appendectomy last Sunday morning in the Eastland Memorial Hospital.

Granvel Nabors left last Friday for Aztec, N.M. where he is employed. Mrs. Nabors and children will stay in Olden until school is out. Then they will join Mr. Nabors.

Mr. and Mrs. Tom Pope of the Cheaney community visited in the home of Mr. and Mrs. T. L. Lockheart last week.

Mr. and Mrs. I. E. Talley and Mrs. Talley's father spent Sunday in Haskell and Denison. Mr. Alford remained there for an extended visit.

Mr. and Mrs. Travis Hilliard spent Saturday in Desdemona with Mrs. Hilliard's parents, Mr. and Mrs. Edd Parks.

Visitors over the weekend in the J. L. Yielding home were Mrs. Nora Butler, Pat Butler and family of Crane, Mrs. Leonard Anderson of Kermit, Mrs. Jewell Smithers of Welch and Mr. and Mrs. Finis Butler of Lawton, Okla. They attended the Alameda Cemetery working Saturday and the home-coming at Dennis Sunday.

Mr. and Mrs. J. C. Simms had as guests in their home Sunday Mr. and Mrs. Turner of Pampa, a brother, Floyd Maynard and wife of Crane and Mr. and Mrs. Whitney Butler of Eastland.

Mr. and Mrs. Dick Yielding and Mrs. Granvel Nabors and children spent the weekend in Wilson,

Okla. with their daughter and son-in-law, Mr. and Mrs. Joe Crawford, and children.

Mrs. Floyd Robertson has as her house guest this week her grandchildren from Bowie.

Mrs. Jim Gilbreath of San Antonio visited in the home of her parents Mr. and Mrs. H. P. Couch and also her husband's parents Mr. and Mrs. J. R. Gilbreath.

### STOP THAT ITCH! IN JUST 15 MINUTES.

If not pleased, your 40c back at any drug store. Try instant-drying ITCH-ME-NOT for itch of eczema, ringworm, insect bites, foot itch or other surface itch. Easy to use day or night. Now at Eastland Drug Store.

### Insurance AND Real Estate D. L. KINNAIRD

Life - Fire - Auto - Farm Polio - Bonds

37 years in the Insurance Business in Eastland



We Make Your Machines Just Like New

- Typewriters
- Adding Machines
- Cash Registers

Completely Rebuilt and Refinished in Colors

Hail Typewriter Co.

204 S. Seaman Phone 94 EASTLAND

# WAIT...

## SEE US BEFORE YOU BUY!!

### Better Prices — Easier Terms

#### WE HANDLE THE WORLD FAMOUS

- **KELVINATOR APPLIANCES**  
THE OLDEST NAME IN REFRIGERATION
- **WHIRLPOOL Automatic Washers**  
ASK ANYBODY THAT OWNS ONE
- **DUMONT TELEVISION**  
FIRST IN THE INDUSTRY
- **SUB-ZERO UPRIGHT FREEZERS**  
THE ONLY ALL-ALUMINUM FREEZER
- **MARQUETTE COMBINATIONS**  
FREEZER & REFRIGERATOR—PROVEN QUALITY

**10% DOWN**  
BUYS ANY APPLIANCE

**EASY TERMS**  
TO MEET YOUR BUDGET

### Let Us Show You How To Slash Food Costs

Let us show you how to slash your food cost with our plan for buying food in quantity. Compare our prices and quality with other food plans before you buy.



Good Housekeeping Magazine Says...

"The idea of buying several months' supply of food when you buy a freezer is a sound one." A FOOD PLAN helps you eat better than you used to, for less money. Come to us for your food plan and save. We pay no salesman commission.

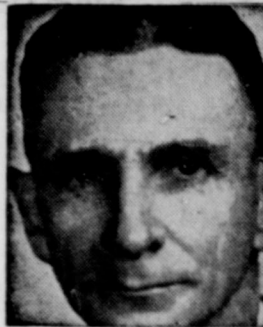
## Ranger Frozen Food Center

216 N. Austin Ranger, Texas

23 Years Legislative Experience

**A. M. Aikin, Jr.**  
OF LAMAR COUNTY  
Candidate for  
LIEUTENANT GOVERNOR  
OF TEXAS

Subject to Democratic Primary  
July 28, 1956  
(Paid Political Ad)



Now's the time to  
**CLEAN**  
WINTER CLOTHES  
before storage



### Store Your Clothes in MOTH - PROOF BAGS

Our SANITEX garment bags keep your clothes safe from moths and free from dust and dirt until you wear them again. All bags have "X-ray windows," you can see what is in them without opening them.

Clothes Stored With Us Are Insured

### POOL'S DRY CLEANERS

207 S. Lamar Phone 47

### Eastland

(Continued from Page One)

and 400 men will attend the banquet program from the four counties of the district according to Bates.

Among those from Eastland who will attend the banquet are Grady Pipkin, Eastland lay leader, Jack Muirhead, Ed Willman, Rudolph Little, Rev. R. R. Smith and Fred Davenport.

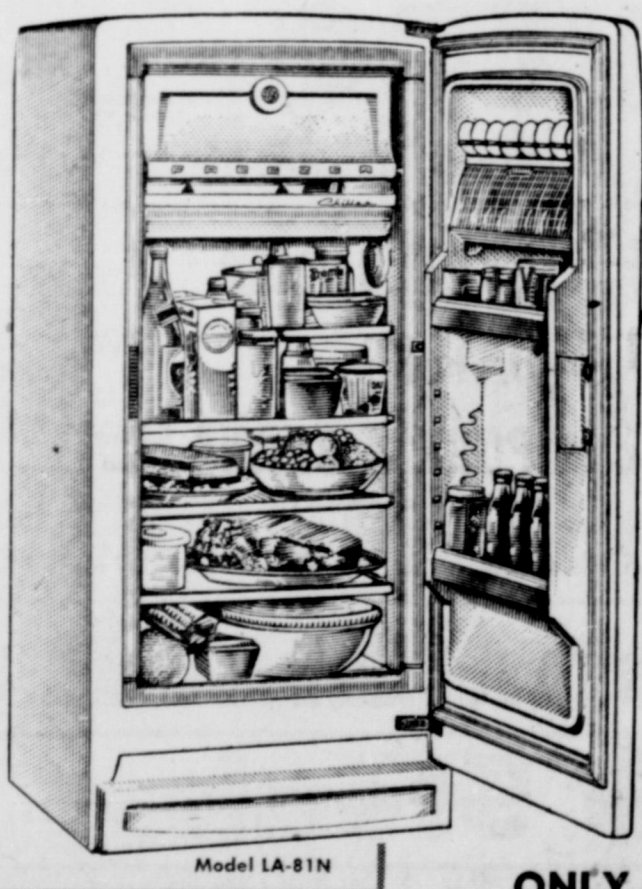
### Red Cross

(Continued From Page One)

Red Cross Chapter. Ranger, Eastland and Cisco contributed to the campaign through their community chests. Gorman has reported a total of \$500 raised. Only \$2 has been received from Rising Star. The campaign there was very late in starting. Mrs. Ernest Shaeffer of Cisco assisted in contacting all Home Demonstration Clubs in the county. When complete reports are received a published report will be made listing each town and community chairman and the amount raised in each area.

ATTEND THE CHURCH OF YOUR CHOICE EACH SUNDAY

## BIG BUDGET-PRICED G.E. with MAGNETIC DOOR



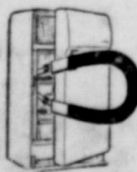
DELUXE G-E FEATURES . . .

- automatic door closing
- full-width freezer
- full-width chiller tray
- adjustable door shelves
- butter compartment
- porcelain vegetable drawer
- removable egg racks

Model LA-81N

**ONLY \$2.85 A WEEK**

After Small Down Payment and Your Old Refrigerator



Magnetic Door closes automatically, silently, surely with G-E permanent Alnico Magnets

**BIG 8.1-CUBIC-FOOT CAPACITY . . . REGULAR, TOP QUALITY G-E REFRIGERATOR**

## Coats Furniture & Carpets, Ltd.

EASY TERMS FREE DELIVERY GOOD TRADE-INS  
305 S. Seaman Authorized G. E. Appliance Dealer EASTLAND Phone 585

BEFORE YOU SAY YOU CAN'T AFFORD A 4-DOOR HARDTOP

# Come see our BIG M 4-door Phaeton hardtops \_now in 4 price ranges



THE BIG M PHAETONS—Shown above (1) The Montclair, (2) The Monterey, (3) The Custom, and (4) The Medalist

Mercury offers you the newest, most advanced 4-door hardtop design with new, higher horsepower in every price range.\*

Now there's a 4-door hardtop to fit every new-car budget—and look at the advantages you get when you pick your 4-door hardtop from the stunning Mercury Phaeton line.

There's greater see-ability all around—especially for rear-seat passengers. Notice that there is no view-cramping curve to the roof, no center pillars,

no annoying "blind-spot" area in the rear seat. The arrangement of the Phaeton's doors and seats provides easier entry and exit. Distinctive styling touches distinguish the Phaetons from all other 4-door hardtops.

See the Phaetons at our showroom, then choose the model that suits your budget best.

\*Available in all models equipped with optional Merc-O-Matic Drive.

Let us show you how easy it is to own— **THE BIG MERCURY**

## Wayne Motors

Don't miss the big television hit, ED SULLIVAN'S "Toast of the Town," Saturday evening, 8:00 to 9:00, KRBC, Channel 9.  
306 E. Main EASTLAND Phone 40



# Eastland Telegram

Eastland County Record established in 1931, consolidated August 31, 1951. Chronical established 1887, Telegram established 1923. Entered as second class matter 4th Feb. Post Office at Eastland, Texas under the act of Congress of March 3, 1879.

VIGIL E. MOORE, Editor

TIMES PUBLISHING COMPANY  
Published Tri-Weekly—Tuesdays - Thursdays - Sundays  
ONOUS DICK and JOE DENNIS, Publishers

FRANCES MOORE, Society Editor  
NORMAN WRIGHT, Advertising Manager

One week by carrier in city 1.75  
One week by carrier in city 2.75  
One year by mail in County 3.00  
One year by mail in state 3.95  
One year by mail out of state 5.95

NOTICE TO PUBLIC—Any erroneous reflection upon the character, standing or reputation of any person, firm or corporation which may appear in the columns of this newspaper will be gladly corrected upon being brought to the attention of the publishers.

## Classified Ads..

Cards of Thanks charged for at rate of \$2.00 Each

### MISC. FOR SALE - FOR RENT -

FOR SALE: Farmall 14 implements, cheap. N. B. Turner, Route 1, Eastland.

FOR SALE: Bred Hampshire gilts, with or without papers. Home Stephens, Route 1, Gorman. Mile west of Ruckers.

FOR SALE: Chrome breakfast set, \$20, coffee table \$12.50, lamp table, \$5, chair, \$10, electrolux sweeper, 2 sets of books - several volumes \$5 each, enameled ice box, \$10, kitchen range, \$10, clothes drying rack, \$2, hassock, onyx table lamp, \$3.50, 2 clay-back heaters, hat box, mattress and springs, few dishes, kitchen utensils, other items. 715 S. Halvan.

FOR SALE: MINNOWS. BIG Golden Shiners and Red Horses. Pink Haley, east side of Olden.

NOTARY SEALS: At Eastland Telegram Office Supply.

FOR SALE: Liberty Record Storage Boxes. Telegram Office Supply.

FOR SALE: All types of bedding plants, including several most wanted varieties of tomatoes. Flower Shop, 200 N. Green St.

FOR SALE: Ed T. Cox's Eastland County Histories. Eastland Telegram.

FOR SALE: A.K.C. registered Boxer pups. T. R. Craig, 522 Pine, Ranger.

BUY CHAIN LINK FENCE: 3 years to pay, no down payment. Keep your own children and pets at home, keep strays out. Call Marvin Hood, 108-J.

FOR SALE: New Remington typewriter, \$85. Fully automatic sewing machine, \$100. Rattan foam rubber living room furniture, 4 different slip covers, bargain. See at 608 W. Plummer.

FOR SALE: Kitchen range, separate broiler unit and also a (Raud) table-top water heater, both in good condition. Mrs. S. Perlstein, 717 Cypress St., phone 539 or 284, Ranger.

FOR SALE: Registered male Pekingese. Well cared for, healthy. Would make wonderful pet. \$35.00. Donna Moser, Route 2, Eastland.

**AUTOS FOR SALE**  
FOR SALE: 1949 walk-in panel Chevrolet. Phone 36.

**MISC. WANTED -**  
FOR WATER WELL Drilling see Roy Parker, North Kent Street, or Box 223, Gorman, Tex.  
WANTED: Ironing, 413 S. High.  
WANTED TO BUY: 75' by 150' lot. Owner must be willing to wait until Veteran's Administration appraiser inspects property. Call 1079-J any time except Saturday and Sunday.

**MOBIL 210**

Stays 34% Stronger  
Lasts 14% Longer  
At the Sign of the FLYING RED HORSE



**Earley Tire Service**  
302 W. Main - Eastland - Phone 208



**KING MOTOR CO.**

COMPLETE BODY-FENDER Repair  
WRECKER SERVICE DAY AND NIGHT Ph. 42  
Expert Body Work and Painting  
Choice of Colors  
Phone 42 NE Corner Square

### Political Announcements

This paper is authorized to make the following announcements, subject to the Democratic primary election, July 24, 1956.

- For Congress, 17th District Dan Kralis
- For Dist. Judge T. M. Collis
- For Sheriff J. B. Williams (For re-election)
- For County Attorney J. M. Nuesse
- For Assessor-Collector J. C. Allison
- Truly Carter
- For Constable Pct. 1 Tom C. High
- Porter Woods
- For Commissioner Pct. 1 Tip Arther
- W. J. (Bill) Herrington
- For State Senator, 22nd District Floyd Bradshaw

Call 601 For Classified Ad Service

**Demand!**

**ACCEPT NO IMITATION**

**REAL ESTATE ?**

Phone 1065

**TRI-CITIES Real Estate Exchange**  
Box 22 Eastland

**M. H. PERRY**  
Representing **Southland Life**

Life - Retirement Income Partnership  
Mortgage Cancellation  
Educational - Annuities  
Accident - Sickness  
Hospitalization - Group

Call 173 or 713-J  
107 W. Main • Eastland

**SPECIAL NOTICES**  
Stated meeting Eastland Lodge No. 467, Second Thursday each month, 8:00 p.m.  
Henry Van Goem, W.M.  
L. E. Huckabay, Sec'y.

**WILL ROOM - BOARD**, a n d nurse elderly people in my home. I am LBN nurse. 416 N. Lamar.

**LOST & FOUND -**  
LOST: Blond Pekingese, Friday. Reward, Phone 392.

**BUSINESS FOR SALE**  
FOR SALE: Cafe, Fixtures and Building - Seating capacity 40. Good location on U.S. 180, Breckenridge, Texas, close in. Plenty of parking space. Bargain, must sell. Write Box 89, Breckenridge, Texas.

**REAL ESTATE -**  
FOR SALE: New home, Tom Stamey, phone 875.  
FOR SALE Cheap: 5 nice lots in Olden. See O. H. Dick at Telegram Office.  
FOR SALE: 5 room house, bath, 3 lots. 410 N. Connellee.  
FOR SALE: 5 Room House, 2 Extra Lots - Shown by Appointment - Phone 444.

**Overseas Veterans Welcome**  
Karl and Boyd Tanner  
Post No. 4136  
VETERANS OF FOREIGN WARS  
Meets 2nd and 4th Thursday 8:00 p.m.

**STOP FEEDING WORMS!**

USE PALATABLE **NEW**

**REDCHAIN 3 D 3**

**CADMIUM HOG WORMER**

Red Chain 3D3 CADMIUM HOG WORMER is an entirely new worming feed. Contains a new drug, cadmium anthranilate, never before used for hogs... the safest effective hog wormer ever developed.

- SAFE • Red Chain 3D3 Cadmium Hog Wormer is remarkably safe for pigs. Does not make them sick, or lose appetite.
- EFFECTIVE • When properly used will remove more than 90 percent of round worms.
- ECONOMICAL • Costs only 7c to 12c per pig. Worm-free pigs gain faster, less feed.
- CONVENIENT • Give as the only feed for 72 hours. Nothing else to do.
- PALATABLE • Is not distasteful to pigs... they stay right "on their feed."

Warm-Free Pigs Make More Pork Profits!  
See Your Red Chain Dealer

**NOW IS THE TIME TO BOOK YOUR CHICKS AND POULTS**

ASK ABOUT OUR **TURKEY FINANCE PLAN**

**KINCAID'S FEED & TURKEY HATCHERY**  
303 N. Seaman Phone 43

## Pete Turner Dies Following Illness

Pete Turner, 37, who has been bedfast with arthritis since 1937, died this morning at 6 p.m. at his residence in the Ranger TP Camp. He was born Oct. 23, 1918 at Era in Cook County. Mr. Turner had been a resident of Ranger since 1923. He graduated from Ranger High School in 1937 and was employed by Piggly Wiggly Food Store until he became ill.

## Retired Civil Employees To Get Charter

J. E. T. Peters of Cisco, formerly with the U.S. Department of Agriculture and long time Eastland County resident, will make the presentation of the charter at the next regular meeting of the Eastland County Chapter No. 555 of the national Association of Retired Civil Employees. The meeting will be held in the Education Building of the First Baptist Church of Eastland at 2 p.m. on Saturday, May 12.

## Unpledged-

(Continued from Page One) gress and would encourage other States to do likewise, and; whereas, the State Democratic Executive Committee needs an indication that such a referendum is desired by members of the Democratic Party of Texas; now therefore be it resolved that the Democratic Convention of Eastland County go on record as favoring an interposition referendum in the July primary and that delegates to this Convention support this action in the State Convention, and that the State Democratic Convention instruct the Texas delegates to the 1956 National Convention to use every honorable means at their command to place this matter in the platform of the National Democratic Party.

Mr. Turner was a member of the First Baptist Church.

Funeral services will be held Friday afternoon at 3 o'clock at the First Baptist Church with Rev. Ralph Perkins, pastor, officiating. Interment will be in Evergreen Cemetery. Arrangements will be made by Killingsworth Funeral Home.

He is survived by his parents, Mr. and Mrs. Flake Turner of Ranger; four sisters, Mrs. Sam Conner of Ballinger, Mrs. Joe Merrill of Fort Worth, Mrs. A. Kirk of Ranger, Mrs. Frank Johnson of Dallas; paternal grandmother, Mrs. W. S. Turner of Gainsville.

Remains will lie in state at the Killingsworth Funeral Home until the time of the service.

## Country Echoes

Mrs. Bill Tucker

Shirley Brown was elected secretary - treasurer of the Alameda Cemetery Association Saturday, May 5, at the annual meeting. He will serve two years. Contributions are made at this annual event for the care and upkeep of the cemetery each year. Many relatives and friends who gather together Sunday came from long distances and enjoyed the basket lunch at noon and an old time singing in the afternoon.

Mr. and Mrs. Chris Tucker and daughter Christine of Arlington spent Saturday night with Mr.

Tucker's sister, Miss Betty-Tucker, and Uncle John Tucker. Sunday afternoon they visited here at Oakland-Indian Mountain with Mrs. Tucker's sister, Mrs. Lee Anglin and her father, Mr. Stephens, who is making his home with the Anglins for awhile. Mrs. Alta Crow and Mrs. Pearl Palmer were visitors in the Anglin home Friday.

Visitors Sunday in the E. L. Curb home were Mrs. Nannie Haygood, sister of Mrs. Curb, from Gorman, and Mrs. L. T. Haygood and daughter and son of Comanche. Mrs. H. A. Coker of Velasco was also a visitor.

We missed getting to go to Brownwood Wednesday with Mrs. Ernest Broom and her daughter, Mrs. Bob Wofford of DeLeon. We were away from home when they came.

This reporter will be in San Antonio Monday afternoon through Wednesday for a board meeting of the Texas Home Demonstration Association. The work sessions will be held in the Gunter Hotel for the purpose of working out the many plans and details for the National Home Demonstration Council meeting in

September in the Alamo City. A boat ride down the river and supper afterwards at the Spanish Casa Rio dining room has been planned.

We went to the Duster Church of Christ Sunday morning for Bi-

ble study and worship. Enjoyed meeting the folks who are close enough to be my neighbors. The Denman Frasers, George Scotts, Bub Heathingtons, Mrs. Bud Lay, Mr. and Mrs. Kea and Mr. and Mrs. Bascom McClellan from DeLeon were among those attending.



## MAKE OUR STORE YOUR FISHING TACKLE HEADQUARTERS

- All Nylon Twine—\$3.50 per lb. \$2.00 per half lb.
- Johnson Century 100 Spinning Reel ..... \$14.00
- Zebco Model 33 Spinning Reel ..... \$14.75
- All Other Brand Name Reels At Similiar Prices
- Coleman Two Mantle Gasoline Lantern ..... \$12.95
- Coleman One Mantle Gasoline Lantern ..... \$11.95
- Coleman Three Burner Gasoline Stove ..... \$21.50
- Coleman Two Burner Stove ..... \$11.40

COME IN AND LOOK AROUND... LET'S GET ACQUAINTED  
**Higginbotham - Bartlett Co.**  
301 W. Main Phone 112 or 1074  
Jack Elliott, Mgr.

ENJOY UTMOST SHAVING EASE AND CONVENIENCE

**Gillette**

Super-Speed RAZOR

WITH BLUE BLADE DISPENSER AND STYRENE CASE

**\$1.00**

## Friday and Saturday

OPEN 'TIL 8 P.M. SATURDAY

<b>Fresh Corn</b>	Golden Bantum	4 Ears For	25c
<b>Bananas</b>	Golden Central American	2 Lbs.	25c
<b>Fresh Tomatoes</b>	U. S. No. 1 Lb.		15c
<b>ONIONS</b>	New Crop Crystal Wax, Lb.		5c

<b>FLOUR</b>	Kimbell's Best 25-Lb. Bag	\$1.59
<b>OLEO</b>	Kimbell's Best 1-Lb. Pkg.	21c
<b>Shortening</b>	Kimbell's 3 Lb. Ctn.	69c
<b>GRAPEFRUIT JUICE</b>	Kimbell's 46-Oz.	25c
<b>SWEET POTATOES</b>	Kimbell's 22-Oz. Can	25c
<b>COLORED TISSUE</b>	Northern 3 Rolls	25c
<b>SUGAR PEAS</b>	Missouri Brand 2 Cans	33c
<b>GREEN BEANS</b>	Diamond Brand 2 Cans	25c
<b>WAFFLE SYRUP</b>	Kimbell's 24-Oz. Bottle	39c
<b>GRATED TUNA</b>	Kimbell's Flat Can	21c
<b>CATSUP</b>	Del Haven Bottle	19c
<b>PORK &amp; BEANS</b>	Kimbell's Brand 2 Cans	19c

<b>Salt Pork</b>	No. 1 Grade Lb.	19c
<b>Wieners</b>	All Meat, Lb.	39c
<b>Seven Roast</b>	Choice Beef, Lb.	35c
<b>Seven Steak</b>	Choice Beef, Lb.	39c
<b>Hamburger Meat</b>	Fresh Ground, Lb.	25c
<b>Stew Meat</b>	Boneless Lean, Lb.	39c

## EARNEST FROZEN FOOD CENTER

280 S. Lamar Phone 11



### Clock Installed At Hospital As Gift from Doctor

For Christmas, Dr. J. H. Caton gave the Eastland Memorial Hospital the price of a clock. The clock has been purchased and is now installed in the reception room at the hospital.

The brass dial clock is encased in a large walnut circle. The hospital grounds are in the process of being improved. The east and south grounds will be terraced and the east side will be planted in grass.

Mrs. Artie Liles fell in her home Tuesday and broke a bone in her right foot and is having to wear a cast on it.

### Senior Class Is Honored With Annual Breakfast

The First Methodist Church honored the senior class of Eastland High School with the annual breakfast Wednesday morning in the church.

Special guests were Miss Verna Johnson, senior sponsor, Mr. and Mrs. Charles Marshall, principal of the school, Mr. and Mrs. Wendell Siebert, superintendent, Rev. and Mrs. Richard Smith, III, pastor of the First Methodist Church and Mr. and Mrs. Roy Turner, president of the W.S.C.S.

The theme "Spring Bouquet" was carried out in the place cards, table decorations, menu and favors which were individual potted flowers.

Daisy pedal fortunes, flower quizzes and games provided gay entertainment for the 38 seniors who attended.

The menu consisted of Honey-suckle Dew, Golden R o d s Scrambled with Iris Curles, Snapdragons with butter and blossom marmalade and nectar.

Mrs. Harbert Davenport has returned to her home in Brownsville after visiting her sister Mrs. Frank Castleberry here.

# Women's Activities

## Miss Jessie Lee Ligon Is Hostess For Las Leales Club Here Tuesday

"Ept Fun With Ert Word Forms" was the program title at the Las Leales meeting Monday night at the Woman's Club. Mrs. J. C. Whatley, president, presided and roll call was answered by "Odds and Ends." Miss Jessie Lee Ligon was hostess for the meeting.

After a short business session, Mrs. Barbara Anderson presented "Some Words Stop at Marietta, Ohio." She said, "Man takes his speech ways with him wherever he goes. While the trend today is away from regional words and expressions linguistic geographers don't anticipate complete uniformity in speech of democratic America—where the way we talk, as well as the way we live, is based on the belief that man can be different, and still be equal."

"Armadillo? Peccadillo? What's the Difference?" was presented by Mrs. Glenna Westfall. She had the group imagine that they were teen agers while she brought to their attention some curious expressions from the book "A Hog on Ice," by Charles Earle Funk.

Members attending included Mesdames Joe Anderson, A n n Grace Bumpass, Wayne Caton, Opal Cross, Eldress Gattis, H. L.

## Mrs. Gilkey Is Honored With Stork Shower

Mrs. Joe Pool was hostess Tuesday evening at a stork shower honoring Mrs. James Gilkey, Jr. at her home at the Leon Plant.

Mrs. J. C. Kaykendall and Mrs. Jerry McCullough were assisted by Mrs. Waverly Masingale and Mrs. Bobby Warren at the refreshment table which was covered with a linen cutwork cloth. An arrangement of pink carnations centered the table from which frosted punch, white cake squares with the baby's name, Lisa Ann, written on top, mints and nuts were served from crystal and silver appointments.

Mrs. James Smith presided over the gift display and Miss Barbara Ann McCullough registered the approximately 40 guests who called between 7 p.m. and 9 p.m.

## Junior-Senior Banquet Is Set Friday Night

The annual Junior and Senior Banquet and Prom will be held in the Eastland High School Gymnasium Friday. The banquet will begin at 7:30 p.m. and the prom will be immediately following.

Hassell, E. E. McAllister, D o n Parker, Guy Patterson, Wendell Siebert, Homer Smith, Thura Taylor, W. Q. Varner, Hubert Westfall, J. C. Whatley, Verice Bell, Myrtle Anderson and Miss Jessie Lee Ligon.

## School Calendar

May  
Thursday, May 10 — Senior Autobiography display in the Eastland High School Library.  
Friday, May 11 — Junior-Senior Banquet and Prom  
Sunday, May 13 — Mother's Day  
Friday, May 18 — Ice Cream Supper for Seniors  
Thursday, May 24 — Slave Breakfast for Seniors and Juniors  
Friday, May 25 — Final Practice for Baccalaureate (wear Caps and Gowns)  
Sunday, May 27 — Baccalaureate  
Tuesday and Wednesday, May 29-30 — Finals  
Friday, June 1 — Final Practice for Commencement (Cap and Gown)  
Graduation Exercises  
Mother's Party after Graduation

## SOCIAL CALENDAR

Thursday, May 10  
2 p.m. to 6 p.m. — Senior Autobiography display will be held in the Eastland High School Library.  
7:30 p.m. — The Alpha Delphian Study Club will hold their regular meeting in the Woman's Club. All members are invited to be present. Installation of officers will be held at this meeting.  
Saturday, May 12  
10 a.m. to 11 a.m. — Eastland Memorial Hospital open house. The public is cordially invited.  
Monday, May 14  
7:30 p.m. — Xi Alpha Zeta chapter of Beta Sigma Phi will meet in the home of Mrs. Marene Johnson, 414 South Hill Crest.

## Mrs. Guess Is Hostess For Sorority Meet

Mrs. Norman Guess was hostess to the Zeta Pi Chapter of Beta Sigma Phi Tuesday night at 7:30 o'clock in her home, 605 South Bassett.

An arrangement of bell of Ireland and pink carnations in a pink and gray vase with matching candleholders holding white tapers centered the mantel. Yellow and red roses also decorated the living room.

Mrs. Virgil Moore and Mrs. James Smith were hostesses to a surprise pink and blue shower for Mrs. Guess before the meeting. As each member entered the house, she presented the honoree with a gift.

Mrs. Bill Arther, president, presided over the short business session after which Mrs. Jerry Carter presented a program titled "Nature's Landscape." Colored slides of the different positions of the sun and various examples of nature were shown.

Refreshments of tuna fish and pimento cheese sandwiches, potato chips, olives, brownies and Cokes were served to the following members: Mesdames Arther, Smith, Moore, Carter, P. S. Ervin, Neil Hurt, R. M. Sneed, Joe Sparks, Larry Kinard, Willis Moore, Rufus Higgins, Les Strawn, Arthur Gallagher, Tom Stamey, Hugh Neeld, R. G. Verhetsel, Ronald Burton, the hostess, and Mrs. Monte Webb, a guest.

## Look Who's New

A girl, Annette, was born to Mr. and Mrs. John Goode Wednesday morning at 6:51 o'clock. Annette weighed 6 pounds and .10 ounces and has a brother, John Earl, and a sister, Julie Kay. Mr. and Mrs. Earl Bender are the maternal grandparents and paternal grandparents are Mr. and Mrs. Lee Goode of Eagle Lake.



**ALEX RAWLINS & SONS**  
MONUMENTS  
WEATHERFORD, TEX.  
Serving This Community Since 1884

## Mrs. Roy Lawson Is Hostess For Art Club Here

Mrs. Roy Lawson was hostess to the Thursday Art club in her home, 206 South Walnut, May 3 at 2 p.m.

The group did sketches and printings on their various subjects. Refreshments of Coke, cake, coffee and mints were served to the following members present: Mesdames Allen Dabney, A. M. Eearn, Bill Lawson, Homer White, Francis Urban, L. C. Corbell, H.

E. McMoy and the hostess Mrs. Lawson.

The next meeting will be held in the home of Mrs. Urban, 1113 Railroad Avenue, Thursday, May 17.

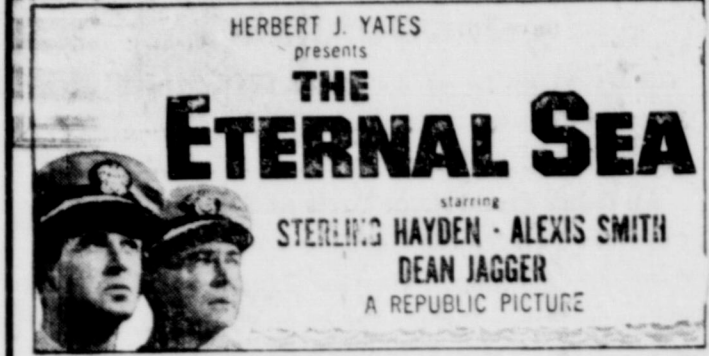
**T. L. FAGG**  
**R. L. JONES**

**REAL ESTATE**  
Property Management  
Home and Farm Loans



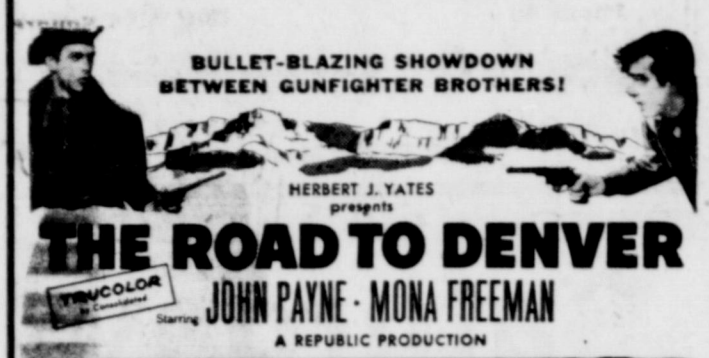
Box Office Opens 7:30  
First Showing 8:00  
Second Showing 10:00

WEDNESDAY - THURSDAY, MAY 9 - 10



PLUS: Color Cartoon

FRIDAY - SATURDAY, MAY 11 - 12



PLUS: Color Cartoon and Sports Reel

## Why "Good-Time Charlie" Suffers Uneasy Bladder

Such a common thing as urine eating or drinking may be a source of mild, but annoying bladder irritations—making you feel restless, tense, and uncomfortable. And if restless nights, with nagging backache, headache or muscular aches and pains due to over-exertion, strain or emotional upset, are adding to your misery—don't wait—try Doan's Pills.

Doan's Pills have three outstanding advantages—act in three ways for your speedy return to comfort. 1—They have an easing soothing effect on bladder irritations. 2—A fast pain-relieving action on nagging backache, headache, muscular aches and pains. 3—A wonderfully mild diuretic action thru the kidneys, tending to increase the output of the 15 miles of kidney tubes. So, get the same happy relief millions have enjoyed for over 60 years. Ask for new, large, economy size and save money. Get Doan's Pills today!

## Mrs. Gilkey Is Honored With Stork Shower

Mrs. Joe Pool was hostess Tuesday evening at a stork shower honoring Mrs. James Gilkey, Jr. at her home at the Leon Plant.

Mrs. J. C. Kaykendall and Mrs. Jerry McCullough were assisted by Mrs. Waverly Masingale and Mrs. Bobby Warren at the refreshment table which was covered with a linen cutwork cloth. An arrangement of pink carnations centered the table from which frosted punch, white cake squares with the baby's name, Lisa Ann, written on top, mints and nuts were served from crystal and silver appointments.

Mrs. James Smith presided over the gift display and Miss Barbara Ann McCullough registered the approximately 40 guests who called between 7 p.m. and 9 p.m.

## Junior-Senior Banquet Is Set Friday Night

The annual Junior and Senior Banquet and Prom will be held in the Eastland High School Gymnasium Friday. The banquet will begin at 7:30 p.m. and the prom will be immediately following.

## SOCIAL CALENDAR

Thursday, May 10  
2 p.m. to 6 p.m. — Senior Autobiography display will be held in the Eastland High School Library.  
7:30 p.m. — The Alpha Delphian Study Club will hold their regular meeting in the Woman's Club. All members are invited to be present. Installation of officers will be held at this meeting.  
Saturday, May 12  
10 a.m. to 11 a.m. — Eastland Memorial Hospital open house. The public is cordially invited.  
Monday, May 14  
7:30 p.m. — Xi Alpha Zeta chapter of Beta Sigma Phi will meet in the home of Mrs. Marene Johnson, 414 South Hill Crest.



MEALS ARE TASTIER... KITCHENS ALWAYS CLEANER AND COOLER BECAUSE...

only gas gives you smokeless closed-door broiling



with that delicious FLAME-KISSED FLAVOR



IT'S NEW! the COOK-SAVER

MERRY MODERN tells why it's wise for you to insist on a really modern automatic gas range.

Only modern flame-fast gas broils food to juicy, tender perfection indoors with that wonderful outdoors flavor! It's smokeless—the flame consumes all the smoke. Cooler, too, for you broil with the door closed! And a modern gas range is so easy to use. No pre-heating, no waiting. Completely automatic, of course. All burners, including oven and broiler, are self-lighting.

See the exciting display of money-saving values at your gas range dealer's today!

DON'T BE FOOLED! For what it costs to cook electrically ONE YEAR, you can cook more than FOUR YEARS with modern flame-fast GAS.\*

\*Almost everywhere in Lone Star Land!

Top burner control maintains pre-set temperature... turns present pots and pans into precise controlled-heat utensils!

FOOD WON'T BURN! Something new in modern top-of-range gas cookery! Just consult recipe, then dial temperature called for. Amazing Thermal-Eye COOK-SAVER top burner lights automatically, quickly reaches and holds exactly pre-set heat until cooking is done. No more guesswork! Gives perfect results every time!

NOW... it's TIME for the TOPS! Top values, top savings on new flame-fast GAS RANGES!

See your gas range dealer or

LONE STAR GAS COMPANY



nylons for Mother's Day  
Sheer 51-gauge nylons, full-fashioned, guaranteed perfect... priced at 79¢ a pair.

MODE O DAY

East Side of Square  
Mrs. J. U. Johnson, Owner

PHONE

894

Air Conditioner SALES and SERVICE

Wayne Jackson AUTO SUPPLY



IDEAS

Tops on the Honor Roll

- Can-Can Slips
- Regular Slips
- Shortie Gowns
- Shortie Pajamas
- Hosiery
- Blouses
- Skirts
- Handbags
- Costume jewelry
- Vanity Cases



Lingerie by

Vanity Fair



All Gifts from Altman's are beautifully Gift-Wrapped FREE

ALTMAN'S

"Nationally Advertised Fashions That You Know"

North Side Square—Eastland

We Give S & H Green Stamps



Charles Pettit underwent a major operation in the Baylor Hospital in Dallas. He is in room 447 and is reported by his sister, Mrs. Frank Castleberry, as doing very nicely.

Mr. and Mrs. A. W. Cartledge visited over the week end in Temple with Mr. and Mrs. Chester Hamilton and with Mrs. H. M. Hart who is a patient in the hospital there.

### COURTHOUSE NEWS AND RECORDS

Real Estate Transfers, Marriages, Suits Filed, Court Judgments, Orders, Etc.

#### INSTRUMENTS FILED

County Clerk's Office  
Ray Agnew to William F. Agnew, warranty deed.  
E. W. Anderson to Hubert S. Reed, assignment of oil and gas lease.  
D. D. Allen to Veterans Land Board, warranty deed.  
H. B. Alexander to Clark P. Chandler, assignment of oil and gas lease.  
Estella Allen to Standard Oil Company of Texas, oil and gas lease.  
A. D. Anderson to Homer S. Head, oil and gas lease.  
Israel Beckhardt to Acacia Oil Corporation, assignment of oil and gas lease.  
Helen Hancock Brown to Stand-

ard Oil Company of Texas, oil and gas lease.  
H. C. Bible to Gilliland & Company, warranty deed.  
Calvin Brown dba Ranger Lumber & Supply to Edwin W. Griffin, release of judgment.  
J. L. Castleberry to L. B. Culppepper, release of vendor's lien.  
L. B. Culppepper to Johnny McCoy, warranty deed.  
Clark P. Chandler to A. A. Williams, assignment of oil and gas lease. (7 other similar instruments).

Gen-Tex Supply Company to Clark P. Chandler, release of MML.  
Chemical Process Company to Clark P. Chandler, release of MML.  
Ralph H. Cummins to Wayne Chandler, release of judgment.  
Commercial State Bank, Ranger to E. W. Griffin, assignment of oil and gas lease.  
Commercial State Bank, Ranger to E. W. Griffin, partial release of deed of trust.  
Commercial State Bank, Ranger to Clark P. Chandler, release of deed of trust.  
Commercial State Bank, Ranger to Clark P. Chandler, assignment of oil and gas lease.  
William Cameron & Company to J. M. Lineberger, release of abstract of judgment.  
Marcell Daniel to Eric L. Tucker, warranty deed.  
Lena Dabner to Standard Oil Company of Texas, oil and gas lease.  
Virginia Dodds to Standard Oil Company of Texas, oil and gas lease.  
C. D. Davis to Worth Thomason, oil and gas lease.  
R. D. Dutton to Wayne Dodson, oil and gas lease.  
Evangelical Methodist Church to Bill Pope, deed of trust.  
Naomi R. Emerson to Don H. Peaker, assignment.  
First Federal S & L Assn. to Marcell Daniel, release of deed of trust.  
Billy C. Frost to Steve E. Potts, warranty deed.  
M. E. Foster to M. E. Shell, warranty deed.  
First National Bank, Houston to B. H. Hilley, release of deed of trust.  
First National Bank, Gorman to M. E. Shell, release of deed of trust.  
Paul Fleming to Hart H. Fleming, assignment of oil and gas lease.  
First Federal S & L Assn. to Richard D. Roff, release of deed of trust.  
E. W. Griffin to Clark P. Chandler, assignment of oil and gas lease.  
Mrs. Ella Mae Garrett to Lillie

E. Garrett, quit claim deed.  
Wilson Guest to Horace T. Miller, Trustee's deed.  
A. A. Huntington to Cowan Hutton, warranty deed.  
Zilla Helen Huntington to Cowan Hutton, warranty deed.  
Harold Dean Huntington to Cowan Hutton, warranty deed.  
B. W. Huntington to Cowan Hutton, warranty deed.  
Willard V. Huntington to Cowan Hutton, warranty deed.  
Zilla Faye Huntington to The Public, removal of disabilities.  
B. H. Hilley to Joe Collins, quit claim deed.  
Ethel M. Huntington to Cowan Hutton, guardian's deed.  
Myrtle Mae Huntington to Cowan Hutton, guardian's deed.  
Harris Hospital v. J. H. Lee, abstract of judgment.  
Myrtle Mae Huntington to Cowan Hutton, warranty deed.  
Higginbotham Bros. & Company to Bernard Watkins, release of deed of trust.  
Glen Hamner to May Kitchens, quit claim deed.  
Joyce J. Joyce to The Public, cc M.L.  
Jarbe Oil Company to Lone Star Producing Company, casinghead gas contract.  
A. S. ackson to Sara Jo Tucker, guardian's deed.  
W. M. Jarrell to I. Erlich, assignment.  
Charles P. Chandler to Chemical Proc. Company, M.L.  
W. M. Jarrell to Irish Drilling Company, assignment.  
W. G. Kirk to Ike Grisham, transfer of vendor's lien.  
W. G. Kirk to Ike Grisham, transfer of deed of trust.  
W. G. Kirk to Ike Grisham, transfer of vendor's lien.  
O. W. Killam to Clark P. Chandler, assignment of oil and gas lease.  
Raymond L. LaScola to Clark P. Chandler, assignment.  
J. C. Lilley to Pearl Emily Harris, warranty deed.  
L. M. Luttrell to The Public, affidavit.  
L. M. Luttrell to H. L. Harris, release.  
Tina Long to J. T. Richardson Jr., warranty deed.  
J. M. Lineberger to Carl C. Simpson, transfer & assignment.  
Floyd Moore, Jr. to Ethel M. Keith, warranty deed.  
Matthew Supply Company to Clark P. Chandler, release. Fred C. Martin to Clark P. Chandler, release of judgment.  
Frank Matusk v. R. B. Gooch, abstract of judgment.  
W. H. Mayhew to Homer S. Head, oil and gas lease.  
H. W. McGee to James V. Miller dba Miller Tank Company, MML.  
Johnny McCoy to Herbert Ekru, deed of trust.  
Johnny McCoy to L. B. Culppepper, deed of trust.  
McAlister Trucking Company to Chandler, Dodson & Killam, release of judgment.  
Henry McCoy to Worth Thomason, oil and gas lease.  
L. W. McCullough to Lula C. Stark, M.D.  
Venner H. Owen to D. D. Allen, release of vendor's lien.  
Leila Castberg Parker to Henry W. Simon, M.D.  
B. J. Rust to The Public, affidavit.  
Donald H. Russell to Billy C. Frost, warranty deed.  
J. T. Richardson to Mrs. W. P. Moore, warranty deed.  
Lloyd Rich to Worth Thomason, assignment of oil and gas lease.  
Schlumberger Well Sur. Co. to Clark P. Chandler, release of MML.  
Schlumberger Well Sur. Company to Clark P. Chandler, release of oil payment assignment.  
Billie D. Snodgrass to Sara Jo Tucker, warranty deed.  
Sam Silverstein to Standard Oil Company of Texas, oil and gas lease.  
Lucy Gray Spencer to W. B. Wright, warranty deed.  
Henry W. Simon to Leila Castberg Parker, M.D.  
L. D. Summers to First Federal S & L Assn., transfer of vendor's lien.  
Lowell F. Suttle to Wayne Dodson, assignment of oil and gas lease. (2 similar instruments).  
Paul Trippet to The Public, affidavit.  
Eric L. Tucker to First Federal

S & L Assn., deed of trust.  
Sara Jo Tucker to R. H. Reed, warranty deed.  
Charles M. Trewitt to Worth Thomason, assignment of oil and gas lease.  
E. A. Tate to Worth Thomason, oil and gas lease.  
Gerald L. Vinson to Garland D. Vinson, assignment of oil and gas lease.  
Veterans Land Board to Lee Ander Lowrance, contract of sale.  
Wichita Falls & Southern RR Co. to Sterling W. Reynolds, quit claim deed.  
Mrs. Samuel F. Whitefield to First Federal S & L Assn., deed of trust.  
Mrs. Jennie Eva Woolridge to Mrs. Minnie Hill, warranty deed.

A. R. Raber, et al v. J. T. Brewer, et al, order.  
A. R. Raber et al v. J. T. Brewer, et al, judgment.  
The First National Bank of Ft. Worth, Trustee & Guardian v. Vera Elizabeth Kleiner, et al, order.

First National Bank of Ft. Worth v. Glenn A. Stallings, judgment.  
Clyde Denver v. Beatrice Denver, order.  
Clyde Denver v. Beatrice Denver, judgment.



## PHILCO

TV with Automatic TOP TOUCH TUNING

FREE

Remote Control

With purchase of any Philco TV with Top Touch Tuning

Hamner Appliance Store

205 S. Lamar

Phone 623

## BOURLAND'S MK'T.

Friday and Saturday Specials

HORMEL'S READY-TO-SERVE HALF or WHOLE

HAMS Lb. 59c

PICNICS Hormel's 6 to 8-lb. Avg., Lb. 35c

BACON Decker's Thick Sliced 2 Lb. Pkg. 89c

Salt Pork No. 1 Sides No Ends, Lb. 25c

Biscuits All Brands 2 Cans 25c

HOME BUTCHERED

Baby Beef Club, Loin, T-Bone Steak, lb. 59c  
Chuck Steak or Roast, lb. 39c  
Ground Meat, Quality, lb. 29c

Be Sure and Check Our Grocery Prices

### Only the Year Ahead car gives you...



1 more that's new than all competitive cars combined...

2 fine-car value for the cost of a fully-equipped "low-priced" car...

Here's dramatic proof that Chrysler has more that's new than all other competitive cars combined!

New in 1956	Chrysler	Cadillac	Chevrolet	Ford	Oldsmobile	Plymouth	Studebaker
Major style changes	YES	NO	NO	NO	NO	NO	NO
Longer Body	YES	YES	NO	YES	NO	NO	NO
New Pushbutton Drive Control*	YES	NO	NO	NO	NO	NO	NO
New Revolutionary Brake System	YES	NO	NO	NO	NO	NO	NO
Hi-Fi Record Player*	YES	NO	NO	NO	NO	NO	NO
Increased Horsepower	YES	YES	YES	YES	YES	YES	YES
Instant Heating System*	YES	NO	NO	NO	NO	NO	NO

\*Optional on small extra cost

And the other 5 cars still do not have full-time power steering and the airplane-type V-8 engine... major advances which Chrysler has had for years!

You can pay as much as \$3000 for a fully-equipped "low-priced" car. For less than that you can own the bigger, more powerful, year-ahead Chrysler Windsor V-8! Standard equipment includes Airfoam Seat Cushions, Heavy Duty Oil Bath Filter, Electric Windshield Wipers, Direction Signals and many other luxury extras. Also the greater size and luxurious comfort of a fine car, with a mighty airplane-type V-8 engine.

### "PowerStyle" CHRYSLER

BIGGEST BUY OF ALL FINE CARS

## BLEVINS MOTOR CO. • 512 West Main

PHONE 308

"May is safety check month... Check your car... check accidents..."

### CITY ICE Ph. 10

BLOCK OR CRUSHED

Open Sundays

"Pop" Whitaker

Foremost Dairy Plant

### KINNAIRD Ins. Agency

Has Moved From Exchange National Bank Building to

207 W. MAIN

Next To CONNELLEE COFFEE SHOP "37 Years In Eastland"

## Once-In-A-Lifetime, Your GRADUATION PHOTO

Be sure to have your photo taken for this big day in your life. You'll never have this opportunity again.



A Photo You'll Treasure Forever

## CANARIS STUDIO

Phone 46

East Side Square



look! we have a host of the gifts they want most



### ARROW Graduation Gifts

featuring smart, Arrow Lightweights

Smart, cool gifts that get a warm reception! Breezy "Sanforized" Arrow Lightweight Shirts in the world's smartest collar styles and Lightweight Sport Shirts with the comfortable Arafold collar... colorful Arrow Sport Knits... light, summery Arrow Ties and Handkerchiefs.

- Arrow Lightweight Shirts ..... 3.95 up
- Arrow Lightweight Sport Shirts ..... 3.95 up
- Arrow Sport Knits ..... 3.95 up
- Arrow Ties
- Arrow Handkerchiefs

Take up the Slack in

### SLAX

from The Men's Shop

At play these Slacks of tropical worsted or Dacron and wool, when coordinated with sports shirts, provide the smart, casual look you want for golf, picnic, or leisure home wear.

12.95

### GIFT IDEAS

- Pioneer Belts ..... 1.50
- Dopp Kits ..... 6.95
- Interwoven Sox ..... 1.00
- Swank Jewelry ..... 1.50



### Judy Seaberry Honored On 11th Birthday

Miss Judy Seaberry was honored with a "Theater Party" on her 11th birthday Tuesday at 4 p.m. by her parents Mr. and Mrs. Virgil T. Seaberry, Jr.

The group met at the Seaberry home, 511 South Mulberry, where they played games and were served refreshments of frosted punch and traditional birthday cake. They were then taken to the theater where they enjoyed a

movie.

Those attending were Judy Frost, Ann Freyschlag, Sue Koch, Rita Trout, Iris Trout, Carol Ann McCleskey, Kay Morton, Toni Horton, Helen Lilley, Claudia Fae Stewart, Wanda Arther, Jana Eldridge, Rebecca McAlister, Jessie Lee Ligon, Nancy Jane Seaberry and the honoree.

Rev. and Mrs. Grady Allison and children, Carol Edwin and Melissa Louise of Hereford, were guests Monday in the home of his parents—Mr. and Mrs. J. C. Allison, 920 West Commerce. Rev. Allison is pastor of the Avenue Baptist Church in Hereford. He has recently conducted a revival in Clyde.

### Prize Money At Mineral Wells Rodeo Is \$3000

MINERAL WELLS (Spl.) — More than \$3,000 in prizes will be offered cowboy contestants in the big 19th Annual Rodeo of the Palo Pinto County Livestock Association, which will be unreeled here on Wednesday, Thursday, Friday and Saturday, May 30-31 and June 1-2.

The stellar four-day event will be opened colorfully with a gala downtown parade in Mineral Wells on Wednesday afternoon May 30, beginning at 5 p.m.

Action-packed performances of the Rodeo, an open show, will be staged nightly at 8:15 at the association's new Rodeo Plant just east of Mineral Wells.

New and unique feature of the show this year, according to Aubrey Wallace, Mineral Wells, President of the PPCLA, will be free admission to FFA and 4-H Club Chapters of Palo Pinto County, Perrin and Millsap. A special section of the grandstand will be roped off and reserved especially for the youngsters, Wallace said.

The FFA and 4-H Club organizations are sponsoring candidates for the Rodeo Queen, another outstanding feature of the 1956 show.

Rodeo events include bareback and saddle bronc riding, bull riding, calf roping, double mugging, girl's barrel races, cutting horse contest and wild mare races. A Kid's pony show also is scheduled for Friday, June 1.

Deadline for entries in all Rodeo events is Tuesday, May 29 at 8 p.m.

### Hospital Report

Patients in the Eastland Memorial Hospital are:

Mrs. Annie L. Burnette, Cisco, medical

Baby Boy Hicks

Mrs. Louise Gregory, surgical

Harley Sanders, medical

Melvin Holt, surgical

P. G. Berry, medical

Mrs. Charles Black, surgical

Mrs. Julia Blackwell, medical

Mrs. John Goode and baby girl born May 9, at 6:51 a.m.

Virgil Wagley, Cisco, medical

Vivian Jones, medical

Clara Wingate, medical

Agnes Daken, surgical

Patients in the Ranger General Hospital from Eastland are:

Mrs. Henry Harle, surgical

Joe Kay, medical

Mrs. R. B. White, surgical

BETTY CROCKER WHITE, DEVIL, YELLOW, MARBLE	
<b>CAKE MIXES</b> 3 Pkgs. \$1.00	
ZEE BRAND	
<b>PAPER TOWELS</b> 2 Rolls 39c	
LIBBY'S SLICED OR CRUSHED	
<b>PINEAPPLE</b> No. 1 Flat Can 18c	
OUR VALUE BRAND	
<b>PORK &amp; BEANS</b> No. 300 Can 10c	
GLADIOLA	
<b>WHITE MEAL</b> 5 Lb. Bag 39c	

NORTHERN	
<b>LUNCH NAPKINS</b> 2 Pkgs. 27c	
DASH BRAND	
<b>DOG FOOD</b> No. 1 Cans 2 For 25c	
MAYFIELD	
<b>CORN</b> No. 303 Cans 2 For 25c	
BORDEN'S, GLADIOLA, PUFFIN	
<b>BISCUITS</b> Ready To Bake 2 Cans 21c	
CARNATION, PET, DARICRAFT	
<b>MILK</b> 2 Tall Cans 25c	

PRICES EFFECTIVE FRIDAY & SATURDAY — OPEN TIL 8 P. M. SATURDAY

We Give S & H Green Stamps With Each 10c Purchase

### HIXON

**COFFEE** Reg. or Drip 1-lb. can ..... **79c**

### LARGE BOX

**TIDE** Detergent Washing Powder ..... **29c**

### CHUCK TIME VIENNA

**SAUSAGE** Reg. 10c Can 10c

### STEELS PINTO

**BEANS** 300 Can 10c

### OUR VALUE CUT GREEN

**BEANS** 2 303 Cans 25c

### YELLOW BABY

**SQUASH** Lb. 10c

### FIRM RIPE

**TOMATOES** C'n. 19c

### GOLDEN SWEET

**CORN** 3 Ears 19c

### PASCAL

**CELERY** Stlk. 15c

### CRISP

**CARROTS** 2 Cello Bags 15c

### CALIFORNIA

**ORANGES** Lb. 13c

FOREMOST

## Mellorine

1/2 Gal. .... **49c**

PURE CANE

## SUGAR

10-Lb. Bag ..... **95c**

KINGSTON

## CHARCOAL

For Out-Door Cooking

10-Lb. Bag ..... **87c**

<b>Chuck Roast</b> Choice Beef, Lb. ....	<b>39c</b>
<b>Club Steak</b> Choice Beef, Lb. ....	<b>49c</b>
<b>Round Steak</b> Choice Beef, Lb. ....	<b>69c</b>
<b>Ground Beef</b> Fresh, Lb. ....	<b>29c</b>
<b>FRANKS</b> Gooch's All Meat, Lb. ....	<b>39c</b>
<b>Picnics</b> Smoked, Lb. ....	<b>35c</b>
<b>Cheese</b> Kraft Velveeta 2 Lb. Box	<b>89c</b>

WHITE BEAUTY **SHORTENING** 3 Lb. Can **73c**

BRUCE	
<b>FLOOR WAX</b> Quart	<b>91c</b>
N.B.C.	
<b>CRACKERS</b> 1-Lb. Bx	<b>25c</b>
N.B.C. New Donut	
<b>COOKIES</b> 1-Lb. Bag	<b>49c</b>
UNDERWOOD — 4 1/2-OZ. CAN	
<b>DEVILED HAM</b>	<b>33c</b>
RED HEART	
<b>DOG FOOD</b> Can	<b>16c</b>

O-CEDAR OIL	
<b>POLISH</b> 12-Oz. Size	<b>49c</b>
LA-CHOY	
<b>NOODLES</b> 303 Can	<b>17c</b>
CAMPBELL'S TOMATO	
<b>SOUP</b> 2 Cans	<b>25c</b>
SALAD BOWL SALAD	
<b>DRESSING</b> Jar	<b>29c</b>
PINE VALLEY SALAD	
<b>OLIVES</b> 10-Oz. Can	<b>39c</b>



We're Authorized Dealers For

### ALL HOTPOINT APPLIANCES

Washing Machines — Dryers — Ranges  
Dish Washers — Disposals  
Home Freezers — Refrigerators  
Air Conditioners — Hot Water Heaters

Call Us For Complete Service  
On ALL Appliances

## SMITH PLUMBING & TIN

114 S. Seaman Phone 304

Introducing the new

## NAVACO

ALL-ALUMINUM  
ALL-WEATHER  
VENTILATED AWRINGS

Special "Install-It-Yourself" Price **\$18.85**  
Fits average size windows, only

Permanent awnings you can install yourself... well-made by the largest exclusive awning manufacturer in the U.S. and they're priced low! Graceful, light, strong, of finest aluminum with tough, baked-on enamel finish. Shield against rain and sun—yet overlapping slat construction allows plenty of air circulation and soft, diffused light!

See your NAVACO dealer today!

**Eastland Venetian Blind Co**

405 S. Seaman Phone 436

## PENNEY'S

ALWAYS FIRST QUALITY!

REMEMBER MOTHER'S DAY

Give Her

DACRON  
NYLON  
SLIPS!