

Lt. Fry Heads Guard Unit Recruiting Drive To Be Held Here

Excellent Is Rating Won By Guard, Cisco

A rating of excellent was awarded Btry A, 648th AFA Bn., National Guard unit in Cisco for the 1956 General Inspection conducted recently.

Col. Homer Widmann, U. S. Army, the Inspector General, was especially pleased with the high morale of the unit, evidenced by the fact that perfect attendance was registered for the inspection on a night when very icy conditions prevailed and nearly impassable roads were encountered. He was impressed with the military appearance demonstrated by the officers and men of the unit, and the excellence of instruction that prevailed throughout the unit. General administration and maintenance were at a very high level. He commented favorably on the fact that over 50 percent of the members are enrolled in Army Extension Courses to further their military education.

Col. Widmann recommended to the Adjutant General that the following be commended for perfect attendance for the 12 months preceding the inspection: WO James O. Hendrick, SFC Charles E. Layton, SFC Billie O. Kendrick, SFC Charles A. Wende, SFC Harold J. Reich, Sgt. Alfred C. Lenz, Cpl. James F. Bassett, SP3 Harry G. Carr, SP3 Monty D. Ingram, SP3 Royce W. Taylor, Pfc. Gene A. Agnew, Pfc. Arzell R. Hale and Pfc. Joe D. Ziehr.

2d Lt. David M. Fry, Btry. A, 648th Armd. FA Bn., National Guard unit in Cisco, was appointed today to direct the Guard's new recruiting campaign in Eastland. The current drive begins February 12, Lincoln's Birthday.

Announcing the appointment, Capt. F. N. Sayre, battery commander, said, "In picking this officer for the job, I have promised him the full support of all National Guard personnel in this city to make our drive the success it must be."

Lt. Fry is a veteran of over 8 years in the Guard and Army Reserve. He served as an enlisted man in Btry. C, 131st Field and Btry. A, 648th AFA, and was commissioned as a reserve officer of the Army in July, 1955. He is a graduate of Abilene Christian College and is cashier at Eastland National Bank.

Lt. Fry said immediately following his appointment that his principal aim in the drive would be to "insure that every prospective National Guard recruit and his parents are visited personally by a member of the Guard and fully acquainted with what our organization has to offer the young man of military age."

He said his principal assistants in organizing and conducting the drive would be: 2d Lt. Charles E. Layton, M-Sgt. George B. Hull, SFC Billie O. Kendrick. "In addition, valuable assistance will be given each Eastland Guardsman."

Lt. Fry is a veteran of over 8 years in the Guard and Army Reserve. He served as an enlisted man in Btry. C, 131st Field and Btry. A, 648th AFA, and was commissioned as a reserve officer of the Army in July, 1955. He is a graduate of Abilene Christian College and is cashier at Eastland National Bank.

Nuessle Seeks Re-Election As County Att'y

J. M. Nuessle today authorized this paper to announce that he is a candidate for re-election as county attorney of Eastland County subject to the Democratic primaries.

"I will make a formal statement concerning my candidacy in this year's election at a later date," said Mr. Nuessle.

"I sincerely appreciate the generous support and wholehearted cooperation that I have received from the people of Eastland County in the past and earnestly hope that they will see fit to return me to my present office for another term."

The Eastland United Fund will hold its annual meeting at 5 p.m. Friday at the Texas Electric Service Community Room.

It is an open session.

Election of officers will be included in business transacted.

United Fund Annual Session At 5 Friday

The Eastland United Fund will hold its annual meeting at 5 p.m. Friday at the Texas Electric Service Community Room.

It is an open session.

Election of officers will be included in business transacted.

Big Six Sets Pipe On Wildcat In Eastland Co.

The Big Six Oil Company, Cisco, has set pipe on their No. 1 Ivy, a deep wildcat oil test two miles north of Cisco, according to reports today. Information concerning the depth and formations encountered was not available.

Completion work is due to begin this week. Location for the test is 330 feet from the east and 1,770 feet from the south lines of Section 579, SP Survey. The permit called for a 4,000 foot test.

Eastland Echoes

By Casey

THOUGHT FOR TODAY: "By gnawing through a dyke, even a rat may drown a nation." (Burke).

Since the entire community is interested — or should be — in the organization which backs charitable causes here, the United Fund, it would be a fine thing if there were a big turn-out for tomorrow afternoon's annual session of this relatively new movement in our town.

It has done a fine job, thanks to leaders like President Tom Wilson and his associates — and thanks to the generous backing of the contributing public. Come out and sit in on the meeting at 5 p.m. Friday at TESCO's Community Room.

Bank To Observe Lincoln Birthday

Eastland citizens are reminded by David Fry, cashier of Eastland National Bank, to do a high banking on Friday and Saturday of this week to last they until next Tuesday morning.

The bank will observe Lincoln's birthday on Monday, Feb. 13. The anniversary falls on Sunday, Feb. 12.

VOLUME TWENTY-SIX

EASTLAND, TEXAS, THURSDAY, FEBRUARY 9, 1956

Agricultural Prospects Are Up As '56 Moisture Thus Far Is 3.68 Inches



LISTEN TO THE PAINTINGS—Shape, line and color can be listened to. So says Mrs. Ann Mittleman, shown with two of her creations. She should know. That's how the 58-year-old New York City artist receives her inspiration. She listens to a symphony or other composition, then plugs her ears to shut out unwanted distractions. Wielding her brush instead of a baton, she then "composes" on canvas; translating sound into color and line.

"Athletic Program" Burnham's Topic As He Addresses Lions

Stan Burnham, head coach of Ranger Junior College, was main speaker at the Eastland Lions Club meeting Tuesday in Fellowship Hall of the First Methodist Church.

Coach Burnham said he wondered what kind of segregation the Eastland Lions practiced since he noticed that a present-day coach and two ex-coaches were eating in the kitchen, to wit, Carol Shelton, Charlie Marshall and Wendell Siebert. Siebert's mother, Mrs. Jess Siebert, is one of the ladies that helps prepare the Lions meals.

Ranger Snares Overtime Win Against Mavs

Paul Hinds ran hog wild in the second half Tuesday night and the Ranger Bulldogs overtook a lead the Eastland Mavericks had held from the beginning to tie up the basketball game 56-56, then went on to win it 60-56 in an overtime period.

It was the Mavs' third loss of the season, but the Eastland five still remained in second place with 5 wins and 3 losses.

Hinds was high point man for his team as well as the game with 29, and could have made more had he not muffed a number of free shots. Slattion was (Continued on Page Five)

R. G. Perkins Gets Implement Meet Pointers

Robert G. Perkins of Perkins Implement Co., Ford tractor and implement dealer in Eastland, has returned from Statler-Hilton Hotel, Dallas, Texas where he attended a one-day management meeting conducted by top officials of the Tractor and Implement Division, Ford Motor Company.

Mr. Perkins said the Ford officials, led by Irving A. Duffy, Ford vice president and general manager of the division, and Merritt D. Hill, assistant general manager, brought dealers up to date on 1956 merchandising and product developments.

The Ford tractor and implement dealers discussed sales and service plans for the expanding line of Ford farm products, and saw several of the new implements that will be on sale in this area in the near future, Mr. Perkins said.

He said Mr. Duffy told the group that Ford increased its tractor production by 29 per cent in 1955, and that more than one out of every five wheel-type tractor (Continued On Page 7)

Installment Loans Custom Made For Each Customer EASTLAND NATIONAL BANK Member F. D. I. C.

"Season" In Ground Deepening, Declares County Ag't Cooper

Moisture received in Eastland County this week, bringing the total since the first of the year to 3.68 inches, will prove of much value to agriculture, according to County Agricultural Agent J. M. Cooper.

"What this country here has needed for years is a good bottom season," he said. "Down deep, there's a clay which, if thoroughly wet, enables us to make good crops without a lot of additional moisture. I spent Wednesday afternoon in the Cheavey community, in the county, and a farmer there who was digging holes for planting bean trees told me that he found that the moisture was penetrating the bottom clay."

Starting with a thunderstorm, torrential rain — along with hail — fell around midnight Tuesday night with the total moisture for the period amounting to 1.62, by measurement of the government gauge at 605 S. Lamar. English-pea-size hail fell for a short time, but its only damage reported was to a few neon lights. Gusty wind reached the velocity of 45 miles per hour.

January's Eastland precipitation reached 1.61. This month, prior to the Tuesday and Tuesday night moisture, there had been .11 on one occasion and .34 on another.

County points reported Tuesday night's rain as follows: Cisco, 60; Panzer, 1.50; Rising Star, 1. Lightning Tuesday night hit an electric line and caused interruption of only 3 to 5 seconds while an operator was closing a circuit breaker.

The Volunteer Fire Department was called to the White Elephant Pastorage at 3 a.m. Wednesday when hail broke the outside neon lighting and a "short" resulted. However, the switch was pulled — and the trouble was over.

Lake Leon was a gainer from the rain, for according to TESCO Power Plant Supt. Jim Kuykendall the power plant lake flood gates were opened Wednesday afternoon and one was left open until 8 a.m. Thursday, water flowing thence into Lake Leon. It was estimated that approximately 350 acre feet (or 129,000,000 gallons) went into Lake Leon from this source, together with what was available from the remainder of its watershed.

1st Christian Class To Give Chili Supper

It's all free men — come and get it!

The Men's Fellowship Bible Class of the First Christian Church will stage its annual chili supper tonight, Thursday, at 7:00 o'clock at the church annex.

Richard C. Cox, class president says, the object of the chili supper is "to promote good fellowship on a full stomach." He said those who had never attended one of the suppers just didn't know what they had missed.

John Collins, Tom Earnest and Jerry Freeze are in charge of the arrangements and promise enough chili for everybody to get their fill. A cordial invitation is extended to all men-folks of the area to attend, with no strings attached.

3 Minnesota Women Injured In Road Crash

Three Minnesota women suffered painful cuts and bruises and their 1952 model Cadillac was demolished earlier this week in a collision with a pickup truck driven by Robert McKinney of Route 1, Cisco, nine miles west of Cisco on Highway 80.

The three women, who were patients at Graham Hospital are: Mrs. Sidney Goldman, 42, St. Paul; Mrs. Ben Grossman, 49, Minneapolis; and Mrs. Louis Neemer, 67, St. Paul. They were en route to Los Angeles, Calif. Hospital attendants said they would remain in the hospital for several days.

The collision occurred as the pickup drove onto Highway 80 from a lateral road, it was reported. Mr. McKinney was released from the hospital after receiving emergency treatment.

Band Director Gill Attending Ass'n Affair

Band Director Howard Gill of Eastland High School is in Dallas attending a convention of the Texas Music Educators Association meeting on Thursday, Friday and Saturday.

The convention is being attended by musical directors from all over the state, who study new teaching techniques and new music that is being introduced. The All-State Band and All-State Orchestra are both at the convention to play the new music for the instructors.

Marine Corps Reservists Plan Is Told

Marine Corps recruiting station, Abilene, announced today an additional enlistment program that permits the Marine Corps to accept young men between the ages of 17 and 26 for a period of two years active duty as Marine Corps Reservists.

Recruiting Sgt. Wilson further stated married men with no children or single men with one dependent are eligible under this program.

"For additional information contact your Marine Corps recruiter at Marine Corps recruiting station Abilene or call 48946 Abilene."

Weather FRIEBSCHLAG INSURANCE AGENCY

Cloudy and cold with occasional light freezing drizzle or snow Thursday and Friday. High Thursday 30 to 35, low Thursday night 25 to 30, high Friday in the 30's.

BE SURE—SEE Don Pierson Olds-Cadillac Eastland Quality Cars at Volume Prices

Your New Car Financed At Low Bank Rates With Your— **EASTLAND NATIONAL BANK** Member F. D. I. C.



EASTLAND MARINE RESERVES IN HONORED COMPANY — Gen. W. W. Stickey, director of all Marine Corps Reserves, recently presented Major C. L. Cobb Jr., commanding officer of the 87th Special Infantry Company, U.S. Marine Corps Reserve, Abilene, with a certificate for 100 per cent drill attendance for the past calendar year at the recent commanding officers and inspector instructors conference held in New Orleans, Louisiana. Major Cobb's unit in Abilene is the parent unit of the Eastland Marine Corps Reserve which meets each Monday evening at the American Legion hall here in Eastland.

Texas Pythian Head Visits Local Lodge

Jack Needham of Brownwood, Texas grand chancellor of the Knights of Pythias, paid an official visit to the Eastland Pythian lodge at its hall Tuesday night.

Herman Rushing acted as chancellor commander in the absence of Chancellor Commander James Wright.

Addresses were delivered by Grand Chancellor Needham and his deputy, Jack Howard, also of Brownwood. They were introduced by E. K. Henderson.

Their messages dealt with what Pythianism stands for and what it has accomplished.

The fraternalists were served a stew supper.

Orchard Field Day Program Is Completed

Programming of the annual Eastland County Orchard Field Day, which has been set for Feb. 23 at the J. E. Spencer orchard at Long Branch, has been announced by the county agent's office.

Those to appear on the program include T. E. Denman, Agricultural Experiment Station, Stephenville; B. G. Hancock and George R. Williams of the A & M College Extension Service; U. A. Randolph, Agricultural Experiment Station, Montague, and J. W. Foster, Jr., Weatherford.

Marketing, varieties of peaches, fertilizers, grape production, pruning, fertilization and control of insects and diseases are topics to be discussed or demonstrated at the meeting.

The all-day meeting will begin at 10 a.m. and will be concluded at 4 p.m. with time out at noon for a picnic lunch. Free coffee and drinks will be furnished at noon but those who attend are asked to bring picnic lunches.

The meeting is free and is open to all in Eastland and adjoining counties interested in the growing of grapes and peaches.

R. B. Kinsey, Aged 80, Laid To Rest, Cisco

R. B. Kinsey, 80, a resident of Cisco for more than 45 years, died Tuesday in Corpus Christi after a brief illness. Funeral services were conducted at 3 p.m. Wednesday at the Cisco First Baptist Church with the Rev. Mart Agnew officiating.

Mr. Kinsey became ill last week at his Cisco home. His son, H. W. Kinsey, came Sunday and left early Monday to take his father (Continued on Page Five)

Little League Big Meet To Be This Eve

Local citizens interested in Little League Baseball are asked to drop whatever they are doing tonight and attend the meeting of the Little League Association at the Texas Electric Service building at 7:30.

President James Wright, and all of the newly elected officers and directors, are holding a city-wide meeting to make plans for building the new Little League park which will be located near the high school.

All parents, and all others interested in the Little League program, are asked to be in attendance at the meeting.

President Wright said that one sure way of getting on a committee would be failure to attend.

Save Surface Run-Offs By Terraces, Says SCS

"Mr. Farmer are you letting your most valuable resource 'Top Soil' leave your farm by unchecked surface runoff?" queried the Soil Conservation Service in the county today.

"Scientists, tell us through study and research that it takes mother nature around 200 years to make one inch of top soil. Without proper protection on our land, we can lose several inches of our rich top soil in just a few heavy rains.

"The depth of our top soil measured in inches gives us an indication of how near we are to starvation. How deep is your life producing 'Top Soil'?"

Terraces are the basic mechanical means of protecting cropland. The Supervisors of the Upper Leon Soil Conservation District and the Eastland County ASC committee recognize the need for and recommended the construction of terraces on cropland. Federal cost share for terrace construction is 70 percent of the cost not to exceed \$3.50 per hundred feet of terraces for the Federal share. Priced at the rate of \$5.00 per hundred feet total cost, the Federal share is \$3.50 and the Farmers share would be \$1.50, at the maximum rate of 70 percent of any total cost below \$5.00 per hundred feet.

"A complete terrace system, properly laid out, constructed, and maintained is a valuable asset to our farm land, it was explained.

Terraces have several functions, one being the safe removal of excessive rainfall runoff. A properly installed terrace system shortens the slope and actually walks the excess water off the land at a slower rate and discharges the water onto a suitable grass outlet. The shorter the slope and the slower the water moves the less chance it has to wash away our top soil.

The shortening of the slope and slow movement of water will help during years of short rainfall, by acting as a barrier and holding small-showers on the land long enough for most of the water to be absorbed by the soil, therefore making better use of rainfall even during dry years.

"Terraces are an important asset in the control of gulley erosion," it was stated.

"Terraces help prevent a mud control gulley erosion by breaking up the constriction of runoff water and safely emptying it onto a stable grass outlet. A stable grass outlet in most cases would be onto native pasture land or if not, into a well established grass waterway.

"Terraces help in still another way by encouraging contour farming. Farming with terraces places each row more on the level and aids in the holding of excess water on the soil for a longer period of time. This, contour cultivation, slows down the movement of water which aids in erosion control and gives the soil a chance to absorb more of the rainfall.

"Now is the time to contact your local Soil Conservation Service office and the Agricultural Stabilization and Conservation office and make your request for assistance for terrace construction."

BE SURE—SEE Don Pierson Olds-Cadillac Eastland Quality Cars at Volume Prices

Your New Car Financed At Low Bank Rates With Your— **EASTLAND NATIONAL BANK** Member F. D. I. C.

HOSPITALIZED AT RANGER Mrs. Jewel Carter, surgery; Mrs. Eastland patients in Ranger Hospital; Ft. Worth, medical General Hospital: Homer Mathis, (niece of Mrs. Albert Fauth, 319 surgery; Homer Long, surgery; N. Ammerman, Eastland).

Hospital News

Patients in Eastland Memorial Hospital follow:
Mrs. Annie Martin, medical.
Mrs. W. E. Lewis, medical.
Mrs. W. H. White, medical.
Mrs. E. C. Satterwhite, medical.
R. W. Bell, surgical.
Dismissals
Sharon Day, medical, dismissed late Tuesday afternoon.
Geniva Ann Mayers, surgical, dismissed late Tuesday afternoon.
Mrs. Mollie Webb, medical, dismissed Wednesday afternoon.

Mrs. Traweek, President, Sixth District, TFMC, To Speak Here

Wednesday will be "Guest Day" at Eastland Music Study Club's "Federation Day" program, observing its thirty-sixth anniversary.

Honorees for the occasion will be Mrs. E. E. Traweek of Abilene, president of Sixth District, TFMC; Mrs. Hazel Post Gillette of Fort Worth, Central Region vice president; Mrs. Ina Wooten Jones of Abilene, Lone Star district president; Mrs. Victor Ginn of Fort Worth, past president of Eastland Music Study Club, and a number of charter members.

Mrs. Traweek, pictured above, will be one of the main speakers. Her subject will be "Federation News," in keeping with the program theme.

Mrs. R. L. Carpenter, president of the local club, will bring greetings; Mrs. D. L. Houle will preside; Mrs. Grady Pipkin, charter member and past president of Eastland Music Study Club, will



MRS. E. E. TRAWEEK sing, and the out-of-town national, state and district honorees will appear, also, on the program.

CWF of Christian Church Holds Its Monthly Program

The Christian Women's Fellowship of First Christian Church met Monday afternoon in the church annex for its monthly program and business session.

Mrs. E. K. Henderson, president, presided; and Mrs. N. L. Smitham gave the opening prayer. Mrs. E. A. Beskow-accompanied the group singing.

The CWF County Council will meet at First Christian Church in Eastland, 2:30 p.m. Monday, Feb. 13, it was announced. Mrs. A. L. Gallagher will sing; Mrs. R. O. y Turner will give the devotional, and Mrs. Frank Sparks will give a dramatic reading at this meeting.

World Day of Prayer will be observed here at the First Presbyterian Church at 7:30 p.m. Friday, Feb. 17 with most churches of the city taking part, it was announced.

Mrs. Henderson appointed a nominating committee to select and submit a list of candidates for office in the CWF for the incoming year.

Minister of the Church Roy M. Turner was the speaker. His subject was "The Changing World" and he brought out many interesting points in the present mode of living compared with that of 20 years ago. He explained that "we are living in the age of miracles" and discussed the possibilities of the people of the church in this age.

Members of Group I were hostesses with Mrs. Lon Horn as chairman.

Homemade coconut cake and coffee were served to those present, as follow: Mmes. Eugene Day, A. L. Gallagher, Margaret East, Winnie Wynne, N. L. Smitham, H. R. Garrett, R. I. Malone, L. E. Huckabay, E. A. Beskow, Cyrus Miller, T. L. Cooper, L. C. McNatt, Howard Gill, Sally Day, B. F. Clifton, Neil Day, J. E. Freese, E. K. Henderson, R. L. Carpenter and the hostess chairman, Mrs. Lon Horn, and Minister and Mrs. Roy Turner.

A Beautiful Memory COLEMAN MEMORIALS

MRS. R. H. ROSS Agent Phone 757-W-3

LOOK! SAVE \$100! FAMOUS HOTPOINT FREEZERS
\$399.95 \$299.95 \$479.95 \$379.95
Value ... 299.95 Value ... 379.95
12 Cu. Ft. Upright 12 Cu. Ft. Chest
See These Wonderful Values at ...

SMITH PLUMBING & TIN
314 S. Seaman Phone 304

BANK HOLIDAY

LINCOLN'S BIRTHDAY

FEBRUARY 12

This bank will observe Lincoln's Birthday on Monday, February 13. Please arrange to do your banking on Friday and Saturday. Use our night depository.

"ON THE SQUARE"

YOUR *Eastland* NATIONAL BANK
Member F. D. I. C.

a Deluxe Range at Economy Price

Hotpoint

AUTOMATIC ELECTRIC PUSHBUTTON RANGE



NOW—WORLD'S FASTEST COOKING at a price that challenges all comparison! See all the deluxe features you can have in this automatic range for the low, low price of only

Reg. \$289.95 — SAVE \$50!

\$239.95

AND YOUR OLD RANGE

EASY TERMS ARRANGED

We're Authorized Dealers For **ALL HOT POINT APPLIANCES**

Washing Machines — Dryers — Ranges
Dish Washers — Disposals
Home Freezers — Refrigerators
Air Conditioners — Hot Water Heaters

SMITH PLUMBING & TIN

114 S. Seaman Phone 304

Come get values galore during A&P's great

Founder's Week Celebration



(Prices in our ad are effective all this weekend.)

Come See ... and Save on A&P's Weekend

Special Meat Values

Hormel's Pre Cooked, Half or Whole HAMS Lb. 55¢	6 to 8 Lb. Average PICNICS Lb. 35¢
Hormel's BACON Lb. 31¢	Square Cut, No Ends SALT PORK Lb. 25¢
Baby Beef Chuck ROAST or STEAK Lb. 39¢	All Brands BISCUITS ... 2 Pkgs. 25¢

Founder's Week Celebration Favors... Thrift With Scores of Savings on A&P's **GROCERY SELECTIONS!**

Iona Brand **TOMATOES**
2 303 cans **23c**

A VERY SPECIAL FEATURE!
SUNNYFIELD PANCAKE 20-OZ. PKG. **FLOUR**
and **VERMONT MAID SYRUP** 12-OZ. BTL. **41¢**

CORN BEEF HASH TWIN-PACK ARMOUR'S 2 16-oz. Cans **55¢**
ORANGE JUICE A&P'S FROZEN 2 5-oz. Cans **29¢**
CHOCOLATES WARWICK HEART SHAPED 14-oz. Box **79¢**

Ann Page Selections
ANN PAGE ELBOW MACARONI or **SPAGHETTI** 2 1-lb. Pkgs. **35¢**
ANN PAGE ELBOW **MACARONI** 2 8-oz. Pkgs. **19¢**
ANN PAGE PURE **GRAPE JELLY** 2-lb. Jar **39¢**

ANN PAGE PURE-FRUIT STRAWBERRY **PRESERVES**
12-oz. Glass **29¢** 1-lb. Jar **35¢** 2-lb. Jar **59¢**

SULTANA PEANUT BUTTER 24-oz. Jar **53¢**
SULTANA SALAD DRESSING 9-oz. Jar **33¢**
SULTANA BUTTER BEANS 2 21-oz. Cans **25¢**

ANN PAGE GROUND—SPECIALI **BLACK PEPPER**
YOUR CHOICE 2 2-oz. Tins **25¢**
4-oz. Tin **23¢** 8-oz. Tin **45¢**

Frozen Foods Specials!
PIES SWANSON'S APPLE & CHERRY 2 FOR **49¢**
BEANS BIRDS EYE CUT GREEN 2 10-oz. Pkgs. **37¢**
CORN BIRDS EYE WHOLE KERNEL 2 10-oz. Pkgs. **33¢**

NUTLEY **Margarine** lb. **17c**
WHITE HOUSE—14 1/2-Oz. **Milk** 5 for **59c**
SUPER-RIGHT—12-Oz. **Luncheon Meat** **29c**
SULTANA—15 3/4-Oz. **Blackeye Peas** **10c**
1-Lb. Can **Iona Pears** **19c**

A & P **GRAPEFRUIT JUICE**
46-OZ. CAN **23¢**

Jane Parker **Orange Chiffon CAKE**
EACH **45¢**

JANE PARKER DELICIOUS! **LEMON PIE** EACH **39¢**
JANE PARKEI **PIE** STRAWBERRY EACH **49¢**

JANE PARKER **VALENTINE CAKE**
Beautifully decorated with coconut icing, 6 1/2-inch Gold Layer Cake, With Valentine decoration.
Only **69¢**

JANE PARKER **CINNAMON LOAF** each **23¢**
JANE PARKER WHOLE **WHEAT BREAD** 2 1-lb. Loaves **25¢**

A&P's Fresh FRUITS and VEGETABLES!
FINEST TEXAS **Yams, lb.** **8c** WASHINGTON DELICIOUS **Apples, lb.** **19c**
WAXED **Rutabagas, lb.** ... **5c** FLORIDA—8-Lb. Bag **Oranges** **59c**

TEXAS **Carrots** 2 1-lb. bags **17c** CALIFORNIA **Lemons, lb.** **15c**
CUBAN VINE RIPENED **Tomatoes, lb.** **25c** TEXAS **Cabbage, lb.** **4c**
CENTRAL AMERICAN **Bananas, lb.** **14c** YELLOW **Onions, lb.** **7c**

Store Hours Week Days 8 a.m. to 6 p.m.
Saturdays 8 a.m. to 8 p.m.



Your present car may win you \$50,000

In Plymouth's \$150,000 Lucky Motor Number Sweepstakes

The car you now own may be worth a lot more than you think! It might win you \$50,000. Or it might take you on a thrilling world trip! Those are just two of the prizes in Plymouth's \$150,000 Lucky Motor Number Sweepstakes.

Here's all you do: bring proof of ownership—for your 1950 or newer car (any make)—to any Plymouth dealer, and register the motor number on the FREE entry blank. So easy! Not a thing to buy! Complete rules at showroom.*

785 PRIZES—\$150,000 IN ALL!

- 1st prize—\$50,000
- 2nd prize—world trip for two by air, plus \$5,000
- 3rd prize—\$5,000
- 4th prize—\$2,500
- 5th prize—\$1,000
- 50 prizes of \$500
- 75 prizes of \$250
- 100 prizes of \$100
- 555 prizes of \$50

Best buy new; better trade-in, too... the car that's going places with the Young in Heart

PLYMOUTH

*After you've registered your motor number you can sell or trade your present car without affecting your chances of winning.

Las Leales Members and Husbands Or Guests Have Valentine Party

The annual Valentine party, honoring husbands of Las Leales Club members, was held Monday night at the Woman's Club.

Mrs. J. C. Whatley, president of the club, welcomed the husbands and other guests.

The five hostesses — Mrs. Hubert Westfall, Mrs. Rudolph Little, Mrs. D. E. Frazer, Mrs. W. Q. Verner and Mrs. Homer Smith — wore aprons styled as red hearts. Mrs. Westfall, chairman of the hostess committee, welcomed the husbands and said "We are going to give five hearts to five distinguished gentlemen — our husbands," and the five hostesses removed their aprons and tied around their respective husbands, who served the tables.

After the refreshments of coffee, olives and cherry pie, topped with whipped cream, were served, games were played.

The large table had been laid with a red linen cloth which was appliqued with white felt hearts and cupid's. Its centerpiece was a huge red and white heart of styrofoam with tiny white hearts at its base and in front of it four red candles burned in a brass mobile base decked with chimes that tinkled. The quartet tables were laid with white cloths and centered with red candles. Valentine place cards were used as tables in the games of bridge, forty-two, canasta and hearts.

Valentine boxes of chocolate candies were awarded to the men and women high scorers in the games, as follows: Bingo — E. E. McAlister and Mrs. James Horton; bridge — Don Parker and Mrs. W. E. Brasher; forty-two — Homer Smith and Mrs. Wayne Caton, and canasta — Mrs. Versie Bell and Mrs. Myrtle Anderson.

As the occasion was also the birthday anniversary of Mrs. W. Q. Verner, she was presented with a white cake topped with red candles, which she cut and served with coffee at the conclusion of the games.

Present were the following members and guests: Mr. and Mrs. Wayne Caton, Mr. and Mrs. O. H. Dick, Mr. and Mrs. D. E. Frazer, Mr. and Mrs. Eldress Gattis, Mr. and Mrs. Rudolph Little, Mr. and Mrs. E. E. McAlister, Mr. and Mrs. Don Parker, Mr. and Mrs. Homer Smith, Mr. and Mrs. W. Q. Verner.

Also Mr. and Mrs. Hubert Westfall, Mr. and Mrs. J. C. Whatley, Mr. and Mrs. James Horton, Mr. and Mrs. Hubert Jones, Mrs. Ella Birmingham, Mrs. W. E. Brasher, Mrs. Anna Grace Pumpass, Mrs. Opal Cross, Mrs. H. L. Hassell, Mrs. Thura Taylor, Mrs. Myrtle Anderson, Mrs. Versie Bell and Mrs. Hildegarde Everett.

SOCIAL CALENDAR

Thursday, Feb. 9
7:30 p.m. — Cisco Association of Baptist Business Women's Circle will meet at Breckenridge.

Friday, Feb. 10
6:30 p.m. — Past Matrons Association will meet at the home of Mrs. Herman Weathersbee for a covered-dish supper honoring husbands of members.
6:30 p.m. — First Christian Church Wshboners Valentine dinner party will be held at the home of Mr. and Mrs. Charles Beskow.

Saturday, Feb. 11
8 p.m. — Annual Valentine Sweetheart banquet for intermediates and young people of First Baptist Church will be held at the church.

Saturday, Feb. 11
9 a.m. to 5 p.m. — Eastland Music Study Club bake sale and rummage sale will be held at the Pullman building, south side of the square; all members are to bring rummage Friday afternoon and cakes or pies early Saturday morning.
10 a.m. — "Story Hour" will be held at the library for children from the first through fifth grades.
7 p.m. — The two Eastland chapters of Beta Sigma Phi will meet for their annual Valentine dinner party at the Connellee Hotel roof garden and each chapter will present its Valentine sweetheart.

Monday, Feb. 13
2:30 p.m. — County Council, Christian Churches, will meet at First Christian Church, Eastland.

Tuesday, Feb. 14
6:30 p.m. — Juniors of Eastland High School will host a program-party in the gym for all high school students, faculty and parents.

Wednesday, Feb. 15
2:30 p.m. — Eastland Music Study Club "Guest Day" program, observing "Federation Day" and the club's 36th anniversary will be held at the Woman's Club honoring national, state and district officers and "members of yesterday."

Wednesday, Feb. 15
9:30 a.m. — Club House Board will meet at the Woman's Club.

HERE FROM VALLEY
Mr. and Mrs. Jim Gilbreath of Harlingen are here for a week's visit with his parents, Mr. and Mrs. J. R. Gilbreath, and her parents, Mr. and Mrs. H. P. Couch. The Harlingen man's mother is recuperating from a recent illness.



The Prices Are **LOW...** Quality Is **FINE** Won't You Be Our **Valentine?**

SAVE B&B COUPONS

OPEN EVERY NIGHT TIL 8 P. M. — OPEN SATURDAYS TIL 9 P. M.

TIDE-CHEER-DREFT Giant Size 69c

4 Leaf Clover SPECIAL

CENTRAL AMERICAN

BANANAS

Golden Ripe

Lb. **12 1/2c**

4 Leaf Clover SPECIAL

IDAHO RUSSET

POTATOES

U. S. No. 1

10 Lb Bag **39c**

4 Leaf Clover SPECIAL

TEXAS JUICY

ORANGES

Lb. **8c**

4 Leaf Clover SPECIAL

FLORIDA GOLD ORANGE

JUICE

Concentrated Frozen

6-Oz. Can **16c**

4 Leaf Clover SPECIAL

DAVID CROCKETT LOOSE LEAF

FILLER

25c Pkg. **19c**

CLOVER FARM VACUUM PACK

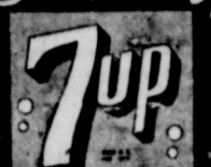
COFFEE	Reg. or Drip, Lb.	79c
SPORK	Luncheon Meat 12-Oz. Can	33c
FLUFFO	3 Lb. Can Golden	69c
Vienna Sausage	Clover Farm No. 1/2 Can	15c
MILK	Clover Farm 2 Tall Cans	25c
Tomato Sauce	Clover Farm 2 8-Oz. Cans	15c
HOMINY	Clover Farm White, No. 2 Can	10c
Crackers	Sunshine Krispy Lb. Box	25c
BEANS	Glendale Cut Green 2 No. 303 Cans	29c
CHERRIES	Clover Farm Red Ripe, 303 Can	23c
ARMOUR'S STAR THICK SLICED		
BACON	2 Lbs.	85c
Pork Roast	Boneless Lb.	39c
Chuck Roast	Choice Beef, Lb.	39c
Sausage	Pure Pork Country Style, Lb.	29c
Club Steak	Lb.	49c
Ground Beef	Fresh Lb.	29c
Short Ribs	Lean, Meaty Beef, Lb.	25c
Cured Hams	Half or Whole, Lb.	49c

OPEN EVERY NIGHT TIL 8 P. M. — SATURDAY TIL 9 P. M.

FOODS CLOVER FARM STORES

407 South Seaman Phone 31

Demand!



ACCEPT NO IMITATION

SAVE \$35



Taylor Made

Metallic Tweed 2-Pc. Living Room Suite
Choice of Colors Reg. 129.50 **for 99.88**

3 Tables
Marlite Plastic 2-STEP STYLE 1 COFFEE TABLE Reg. 29.95 **for 25.00**

ALL FIVE PIECES FOR 124.88

2-PIECE STUDIO 84.50 up

BUY NOW AND SAVE! FREE DELIVERY! NO CARRING CHARGE!

RANGER FURNITURE EXCHANGE
123 N. Rusk RANGER Phone 242

SCRAP: Vital Raw Material For A Better World

The timing is perfect today, on scrap iron and metal. Because fast-moving world events highlight their importance.

Two things could happen. Either a lessening of world tensions, leading to a freer interchange of trade, or the collapse of hopes for peace and resumption of the armament race on an intensified scale.

In the meantime Eastland Iron and Metal Co. is buying all kinds of scrap iron and metal.

WATCH FOR NEW PRICES ON METAL COMING SOON

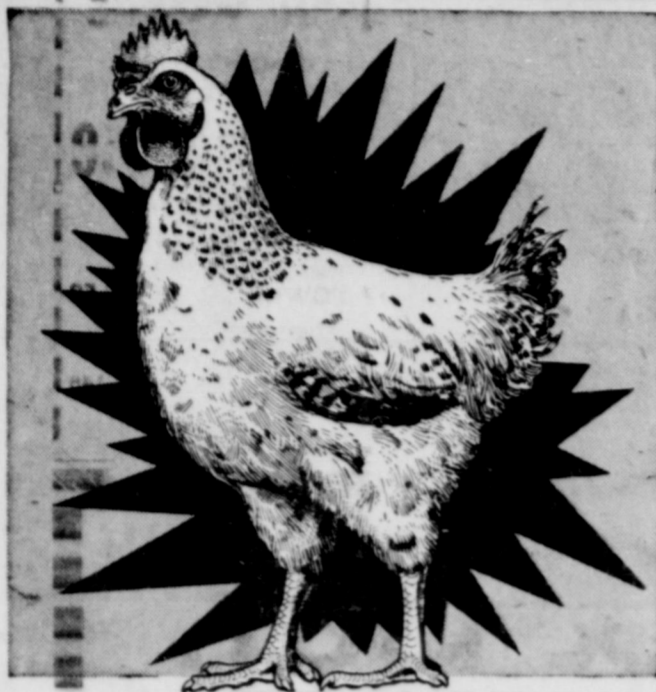
EASTLAND

IRON & METAL CO.

Phone 270 East Main Street Highway 80

OWNED AND OPERATED BY HENRY PULLMAN

CALL 601 FOR CLASSIFIEDS



Let us help you KEEP BROILERS HEALTHY

It is our job to help you head off disease before it starts. We don't know all the answers, but we do know many of the situations that trigger broiler troubles... and what to do to correct them, before something serious happens. We have back of us Purina's disease control staff and a full line of Purina Health Aids. A little precaution may save you many dollars later on.

Call us to come out and check over your birds... any time soon

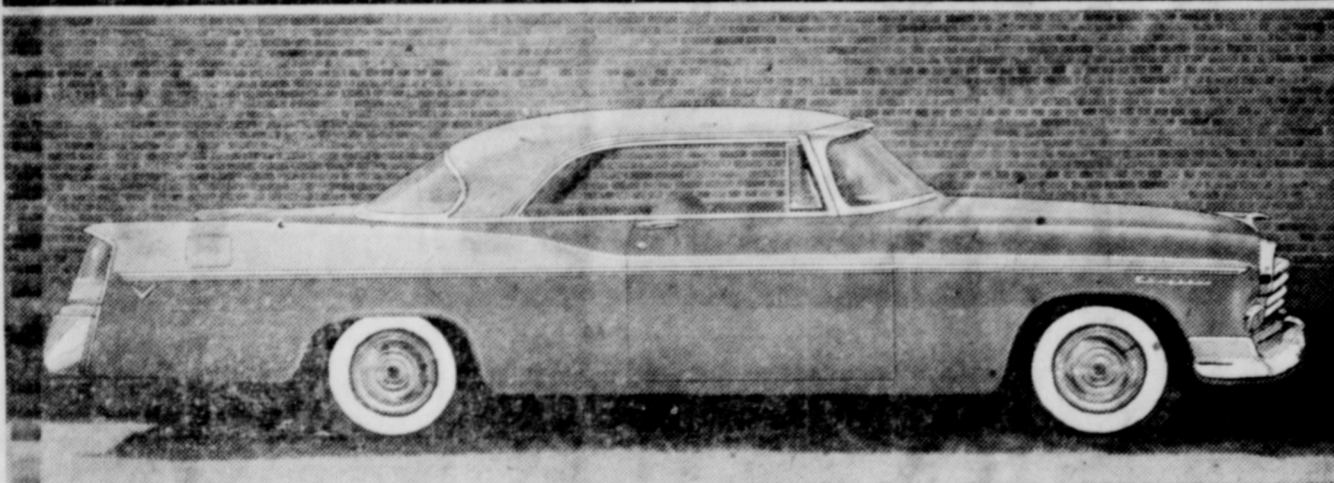


EASTLAND FEED & SEED

204 N. Seaman Phone 175

MOST SUCCESSFUL CHRYSLER IN HISTORY!

THE YEAR AHEAD CAR!



Here's dramatic proof that there's more that's new in Chrysler than in all other competitive cars combined!

New in 1956	Chrysler	Comparably-priced Car "B"	Comparably-priced Car "C"	Comparably-priced Car "D"
Major style changes	YES	NO	NO	NO
Longer Body	YES	NO	NO	YES
New Pushbutton Drive Control*	YES	NO	NO	NO
New Revolutionary Brake System	YES	NO	NO	NO
Hi-Fi Record Player*	YES	NO	NO	NO
Increased Horsepower	YES	YES	YES	YES
Instant Heating System*	YES	NO	NO	NO

And the other 3 cars still do not have full-time power steering and the aforesaid V-8 engine... major advances which Chrysler has had for years!

*Optional at small extra cost

And you can own a bigger, more powerful Chrysler Windsor V-8 for the cost of a medium-price car... even for the cost of a "low-price" car with all the optional equipment.



Our "Quality 1st" Used Cars are the best Used Cars in town - only at the Chrysler "Sign of Quality."

BLEVINS MOTOR CO. • 512 West Main

PHONE 308

ENTER THE \$150,000 LUCKY MOTOR NUMBER SWEEPSTAKES AT YOUR CHRYSLER-PLYMOUTH DEALER'S

Alice Joyce Cushman Is Eastland Hi School Homemaker of Tomorrow

The Betty Crocker Homemaker of Tomorrow in Eastland High School is Alice Joyce Cushman, daughter of Mr. and Mrs. A. E. Cushman, 109 N. Ostrom.

She received the highest score in a written examination which tested the homemaking knowledge and attitudes of senior girls in the graduating class. She will be entered in competition to name this state's candidate for the title of All-American Homemaker of Tomorrow and will also be considered for the runnerup award in the state. She has received a golden award pin designed by Trifari and the school will receive a "Betty Crocker Good and Easy Cook Book."

The national winner in the search conducted among 256,534 young women in 10,222 of the nation's public, private and parochial high schools will be named April 12 at the American Table banquet in Philadelphia.

General Mills is the sponsor of the program designed to assist schools in building in young women a deeper appreciation and understanding of the American home and to emphasize through a sound scholarship award program the personal qualities and sense of values necessary to successful homemaking. More than \$100,000 in scholarships will be awarded.

Each state Betty Crocker Homemaker of Tomorrow will receive



ALICE JOYCE CUSHMAN

a \$1,500 scholarship and an educational trip with her school advisor to Washington, D.C., colonial Williamsburg, Va., and Philadelphia. A \$500 scholarship will be awarded the runnerup girl in each state. The school of the state winner will receive a set of the Encyclopedia Britannica.

The scholarship of the young woman named All-American Homemaker of Tomorrow will be increased to \$5,000. Deloris Arnette of Enterprise, Ala., was the national winner last year and is



MISS SUE BYRD

Miss Byrd To Take Vows Friday Night With Kenneth Garrett

Miss Clista Sue Byrd, daughter of Mr. and Mrs. M. H. Byrd of Box 245, Carbon, will become the bride of Kenneth Glenn Garrett of Eastland in a ceremony at 7 p.m. Friday at the First Baptist Church, Eastland.

Parents of the bridegroom-to-be are Mr. and Mrs. A. K. Garrett of 210 E. Hill, Eastland.

Relatives and friends of the Byrd and Garrett families are invited to the wedding, it was announced.

Miss Byrd was graduated from Carbon High School in the spring of 1955 and is now employed at Victor Cornelius Theatrical Advertising.

Her fiance was graduated from

Eastland High School in 1950, spent three years in the Air Corps which included 13 months in Korea, and received his discharge in Sept. 1954. He is attending Ranger Junior College, where he is a sophomore.

The couple will live in Eastland.

Eastland Women Attend Luncheon At Cisco Club

Eastland women attending the monthly bridge-luncheon Wednesday at Cisco Country Club were Mrs. Ben Hamner and her guest, Mrs. Arthur Murrell; Mrs. James Horton and Mrs. Clyde Grissom, guests of Mrs. Paul Woods of Cisco, and Mrs. T. E. Stamey, guest of her sister, Mrs. Marshall Jones of Cisco.

Decorations throughout the clubhouse were in the Valentine motif, which was carried out also in the luncheon appointments.

VISIT IN DALLAS ATTEND SHOW

Mrs. Harvey E. Basham and son, Lonnie Joe, visited recently in the home of Mr. and Mrs. W. N. Swinney of Dallas, where they attended Cinerama Holiday.

enrolled at Judson college at Marion, Ala.

The 50-minute written examination, designed and judged by Science Research Associates of Chicago, which was given to all participants in this national search, consisted of questions which tested the students' attitude and knowledge in the major areas of homemaking.

Each girl who took the test received a homemaking guide that will assist her in pursuing the career of homemaking.

EX-EASTLANDER ILL FROM HEART ATTACK

H. A. McCantles, well-known Cisco real estate and insurance man, formerly of Eastland, was hospitalized at Graham Hospital, Cisco, this week for treatment of a heart attack suffered Sunday.

CARD OF THANKS

We wish to take this means of expressing our sincere appreciation to our many friends for their acts of kindness and expressions of sympathy in the final illness and death of our beloved father. The Family of Judge R. L. Rust

T. L. FAGG
R. L. JONES
REAL ESTATE
Property Management
Home and Farm Loans

Darrell Basham Attends Swinney Party In Dallas

Darrell Gene Basham, son of Mr. and Mrs. Harvey E. Basham, has returned to Arlington State College, where he is a TESCO student.

He and Miss Darlene Johnson of Fort Worth attended the open house party Sunday at the home of Mr. and Mrs. W. N. Swinney of 2606 Sharon, Dallas. The Swinneys celebrated on this occasion their twenty-fifth wedding anniversary.

Mr. Swinney, it will be recalled, was with O'Rourke Construction Co. when this company built the Majestic Theater here and the Swinneys have many friends in Eastland.



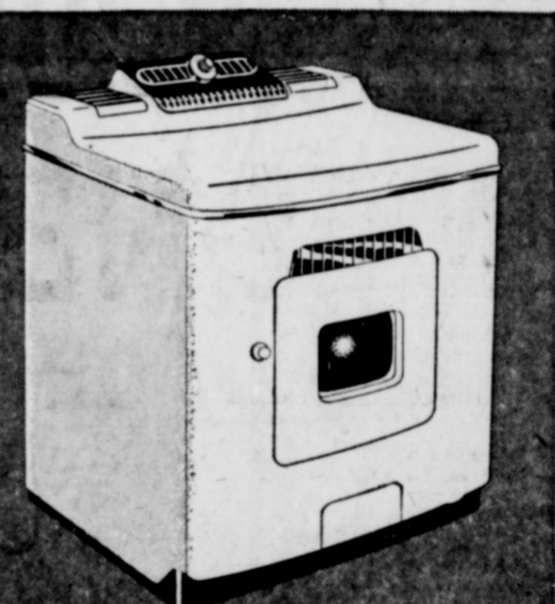
ALEX RAWLINS & SONS
MONUMENTS
WEATHERFORD, TEX.
Serving This Community Since 1884



it's NOT a really modern automatic laundry

... unless you have BOTH!

1 the fast, economical automatic gas dryer



Rain or shine, day or night, you choose your own laundering time, no matter what the weather. Only the GAS dryer is fast enough to keep up with your automatic washer, it takes clothes as rapidly as they're washed, delivers them in minutes fluff-dried (with that sweet, clean, outdoors smell). What's more, much of your usual ironing is eliminated, for wrinkles are actually steamed out. There's no more clothes-line drudgery, no more soiled, sun-faded washing.

DON'T BE FOOLED

Almost everywhere in Lone Star Land...

For what it costs to dry clothes 1 year electrically... you can dry clothes 7 years with flame-fast GAS!

2 the thrifty laundry-rated automatic gas water heater

A laundry-rated automatic GAS water heater is vital to every really modern home laundry. Correctly-sized, it gives tankful after tankful of really hot, hot water 3 times faster than any other heater. There's always plenty left over after washing for other household needs too. And the hotter the water the whiter the wash! You save money on bleaches and soaps - and you save laundering time, too!



BUY AND SAVE NOW!

Special

DISCOUNT PRICES!

ONLY \$1 DOWN
36 MONTHS TO PAY!
At Lone Star Gas Co.

see your gas appliance dealer or
LONE STAR GAS COMPANY

Eastland Rebekah Lodge Meets

Eastland Rebekah Lodge No. 177 met Tuesday night in regular session.

Ruby Crawley, Noble Grand, presided.

The membership contest for the past three months was closed with the Green defeating the Pink. They voted to wait until more members were present before treating the winning team to refreshments.

Juanita Grisham was captain for the green and Ethel Alldredge captain for the pink.

A new contest was started for the next three months with Blanche Nicols and Olive McCrea as captains.

There were eleven members present and a number were reported as being sick.

Yum-Yum Bake Sale Slated For Sat. By Eastland Music Club

Mrs. T. E. Richardson, finance chairman of Eastland Music Study Club, said that final arrangements are being made for the club's rummage and bake sale to be held from 9 a.m. to 5 p.m. Saturday in the Pullman building, south side of the square.

In another spot — so members are asked to bring their "white elephants" as well as rummage and confections.

R. B. Kinsey -

(Continued from Page One)

Assisting her are other members of the committee — Mrs. L. E. Corbell, Mrs. W. E. Brasher and Mrs. Allen D. Dabney.

All members are urged to bring their rummage to the Pullman building Friday afternoon and to bring their pies and/or cakes early Saturday morning.

The committee will be there to receive the rummage, Mrs. Richardson said.

Mrs. R. L. Carpenter, president of Music Study Club, and other officials have stressed that the public is invited to attend the sale and those wanting some delicious home-cooked cakes or pies for Sunday are invited to "come early Saturday morning to get their particular flavors."

Also at the rummage sale, it is quite likely that one person's "white elephant" might just suit

to Corpus Christi hospital. Death came in the hospital there.

Mr. Kinsey was born Nov. 17, 1875, and moved to Cisco in 1910. He was a farmer before entering the grocery business there. He had been retired for a good many years. A member of the First Baptist Church many years, Mr. Kinsey was a member of the board of deacons.

Burial was in the Oakwood Cemetery with the Hamner Funeral Home in charge of arrangements. Pallbearers were deacons of the First Baptist Church.

Surviving Mr. Kinsey are his wife, two sons, W. E. Kinsey of Long Beach, Calif., and H. W. Kinsey of Baytown; one daughter, Mrs. C. B. Smith, Corpus Christi; one sister, Mrs. Della Davidson, Trenton, Tenn., and four grandchildren.

Eastland Echoes-

(Continued from Page One) munity Room) and get a close view of United Fund's worthwhile operation.

A harried business executive went to his physician to get a prescription for sleeping pills only to discover he was allergic to sedatives.

"What about some of this twilight sleep I've been reading about?" he asked.

"Oh, that's only for labor," the doctor replied.

"Good heavens," the executive cried, "haven't you anything for management?" — (Selected).

Let's resolve here and now to sit in on primary conventions when they're held this year. Little as we may realize it — most of us, anyhow — democracy actually begins with them! Don't sell their importance short.

Are you interested in anything goofy as a tongue twister? Here's one:

"Sarah saw a shot silk sash shop full of shot silk sashes as the sunshine shone on the side of the shot silk sash shop."

If a candidate wants to speak his piece to you, take a few minutes to hear him. Never lose sight of the fact that however you may feel about politics, people in politics run the government. Think it over.

Ill On Trip, She Thanks Hospital For Fine Care

Mrs. Lyrleene Daniels of Bay Minette, Ala., whose husband is in the service, in Alabama became ill while journeying through this area, and was taken to Eastland Memorial Hospital.

Her illness occurred on the return journey from a visit with California relatives.

Expressing gratitude for thoughtful courtesies and fine care at the hospital, she wrote to that institution: "I am grateful for your treating me so nice when I was away from home and old friends and needed new friends.

"May God reward you in a most wonderful way for what you did for me."

Tom Lovelace Jr. Takes Mardi Gras Pics In Color

Tom Lovelace Jr. happily mingled fun with business on a trip to New Orleans lately. He took three colored films of scenes at the Mardi Gras.

He had been to Washington, D.C., for Lovelace Transfer Co., and took to New Orleans the furnishings of a member of the Embassy at El Salvador for shipment to the latter land.

This week-end he will make a business trip to San Antonio, from there to Dallas, thence to San Francisco.

Ranger -

(Continued from Page One)

high for Eastland with 16.

In a preliminary game the Ranger "B" team swamped the Eastland "B's" 42-11. Charlie Tibbels was high point for Ranger with 16, and Larry Aldridge was high point man for Eastland with four.

Box score of the "A" game follows:

EASTLAND (56)	fg	ft	tp
Slatton	6	4	16
Cates	5	2	12
Lewis	2	6	10
Herrera	3	4	10
McMahan	3	2	8
Totals	19	18	56

City -

(Continued From Page One)

Sunday the two troops and the Cub Pack will attend worship at the First Baptist Church in uniform.

Tonight Troop 103 will observe Family Night at 7 o'clock at the American Legion Hall, featuring a Court of Honor. All parents of Scouts are invited.

RANGER (60)

RANGER (60)	fg	ft	tp
Hinds	12	5	29
Koenig	5	2	12
A. Robinson	2	1	5
D. Wharton	1	4	6
Watson	2	0	4
J. Wharton	1	0	2
B. Robinson	1	0	2

Totals 24 12 60

Score by quarters was:
 EASTLAND: 16 32 49 56 56
 RANGER: 12 24 40 56 60

The Mavericks travel to Gorman Friday night, where they will take on the powerful Panthers, and they play the final game of the season with Wylie, at Wylie, on Tuesday night, Feb. 14.

RANGER IRON WORKS

ORNAMENTAL and WROUGHT IRON

PORCH POSTS AS LOW AS **\$9.50**

HAND RAILINGS DOOR GRILLES 40-ft. Crank-Up TV TOWER **\$32.50**

Custom Designs by Master Craftsmen
 PHONE 405 BOX 148 RANGER, TEXAS

MAYTAG

AUTOMATIC AND CONVENTIONAL WASHERS - GAS RANGES

"We Service What We Sell"

Hammer Appliance Store

205 S. Lamar Phone 623

MOBIL 210

★ Stays 34% Stronger
 ★ Lasts 14% Longer
 ★ The Sign of the FLYING RED HORSE



Earley Tire Service

302 W. Main - Eastland - Phone 208

Your Insurance and Your Future —

... are all bound up together. The man who keeps adequately insured is not only wise but thrifty since insurance provides protection for the thrifty dollar. If loss occurs in the household of the uninsured his life's savings may be wiped out, but no so with the insured man. To be thrifty and wise, be insured. And the less we have the more it is a part of wisdom to guard against financial destruction.

EARL BENDER & COMPANY

Eastland (Insurance since 1924) Texas

NOW... A NEW DEP'T.

A complete PAINT, BODY and FENDER REPAIR DEP'T., has been added to the service facilities of Don Pierson Olds - Cadillac.

For Quality Workmanship at competitive prices, be sure and bring your damaged car to . . .

JIMMY DOVE
for a Free Estimate.

Don Pierson Olds Cadillac

314 W. Main Phone 802

Ill On Trip, She Thanks Hospital For Fine Care

Mrs. Lyrleene Daniels of Bay Minette, Ala., whose husband is in the service, in Alabama became ill while journeying through this area, and was taken to Eastland Memorial Hospital.

Her illness occurred on the return journey from a visit with California relatives.

Expressing gratitude for thoughtful courtesies and fine care at the hospital, she wrote to that institution: "I am grateful for your treating me so nice when I was away from home and old friends and needed new friends.

"May God reward you in a most wonderful way for what you did for me."

Fri. & Sat.

2 BIG DAYS AT EARNEST FOOD STORE

TEXAS SEEDLESS

GRAPEFRUIT 6 For 39¢

CRISP CALIFORNIA

LETTUCE 2 Lg. Heads 23¢

CARROTS 1-Lb. Cello Bag 10¢

KIMBELL'S BEST—Pillowcase Sack

FLOUR 25-Lb. Bag 1.79

CARNATION

MILK 3 Large Cans 39¢

KIMBELL'S BEST

SHORTENING 3 Lb. Crt. 63¢

TUNA Kimbell's Grated Can 23¢

Grapefruit Juice Kimbell's 46-Oz. Can 25¢

COUNTRY STYLE

SAUSAGE Lb. 19¢

PORK ROAST Lean Lb. 35¢

Sliced Bacon Midwest Lb. 39¢

7-Roast Baby Beef, Lb. 35¢

PORK STEAK Center Cut Ham, Lb. 49¢

EARNEST

Frozen Food Center

206 S. LAMAR PHONE 111

PUBLIC VOTES MERCURY

"BEST VALUE IN ITS FIELD"



19th annual nationwide survey of car owners—by independent research organization*—shows Mercury leads its price class as "best value for the money." Whether you pick a Montclair, Monterey, or Custom, you get more car in four big ways!

1. NEW REFLEX-ACTION PERFORMANCE—Go, stop, pass, climb, turn. THE BIG M responds instantly to your every command, adjusts instantly to every road. We call it "reflex action"—a new kind of performance that makes all your driving easier, safer—and far more comfortable than ever before.

2. NEW BIG M BEAUTY—Here is fresh, clean, graceful beauty for the young-minded. Mercury's lines are long, sleek, road-hugging. New Flo-Tone color styling is radiant and dramatic. You enjoy a distinction in THE BIG M that is unmatched in Mercury's price class.

3. NEW SAFETY-FIRST DESIGN—You get the widest choice of safety features in the field. At no extra cost, there's an impact-absorbing safety steering wheel (an exclusive in Mercury's field) and triple-strength safety door locks. And optional features such as seat belts and padded instrument panel.

4. PROVABLE VALUE—Here's value you can see, and measure! Low first cost. Low operating costs. High resale value. And Mercury trade-in value has remained consistently high. No wonder Mercury was voted "best value in its field." Better see us soon.

*Name on request

For 1956—the big move is to **THE BIG MERCURY**

WAYNE MOTORS

Don't miss the big television hit, ED SULLIVAN'S "Toast of the Town," Saturday evening, 8:00 to 9:00, KRBC, Channel 9.

306 E. Main Phone 40 EASTLAND

Jack and Jill and The Auto' Topic At Civic League Meeting

Henry Price, Abilene insurance executive, was the guest speaker at the Civic League and Garden Club's meeting Wednesday afternoon at the Womans Club. This talk followed one he made at the high school Wednesday morning, before both junior and senior high school students, entitled "A Formula For Living."

In his lecture at the Civic League, where his subject was "Jack and Jill and The Automobile," Mr. Price said, "As kids, they are no different than kids to admit that we, as parents, have made a mess of things in our lifetime. We expect the kids to face up to the terrible problems we have created as if they were more mature than we are. We parents complain that we can't understand our youngsters. I think we overlook the other side of the picture. They really can't understand us; they just can't figure out the complications of the adult world. They don't know how to fit into it."

"Every year thousands of our 1956 Jacks and Jills are not only breaking their crowns, but are smashing and mutilating themselves all over the vast American highway system. It won't do any good to run to Old Dame Dobb for the vinegar - and - brown paper treatment. Most of the time after long hospitalization and laborious surgery, Jack and Jill can be patched up to resume their young careers of growing up to become normal adults. In some cases, the scars are permanent, and dismembered limbs can't be replaced. I don't pretend that Jack and Jill are the only safety problem. The parents of Jack and Jill nowadays present a pretty sorry spectacle," Mr. Price pointed out.

the dismissal time in the afternoon on School days. The motion carried and Mrs. Milburn S. Long, corresponding secretary, was instructed to write the letter.

Helen Poe Lecture Announced For 28th

Mrs. Murrell announced that the club - sponsored monthly luncheon would not be held this month because of the club's having engaged Helen Poe, world traveler and lecturer of international renown, to speak at the high school auditorium at 7:30 p.m. Tuesday, Feb. 28. This is expected to be one of the outstanding programs of the year in Eastland and to draw its audience from the entire section.

The ticket committees were announced, as follows: Eastland, the executive committee; Cisco and Cisco Junior College, Mrs. Jack W. Frost; Ranger, Mrs. James Horton; Ranger Junior College, Mrs. Horace Horton; Rising Star, Mrs. A. Louise Weber; Carbon, Mrs. Claude Stubblefield; Gorman, Mrs. E. E. Todd; Olden, Mrs. Vernon L. Red; Eastland High School, the Tri-Hi-Y Club.

The Hendersons To Host Kinfolk From Other Towns

Mr. and Mrs. E. K. Henderson will entertain Sunday with birthday dinner at their home here honoring Mrs. Henderson's sister, Mrs. E. E. Stephens of Lubbock.

Expected for the event from out of town are the following: the honoree and her husband, E. E. Stevens, Lubbock; Bill Stevens, Wichita Falls; Mr. and Mrs. W. F. Ford, Sweetwater; Mrs. E. Ford and daughter, Olga, Cisco; Mr. and Mrs. W. R. Cabaness, Abilene, and Mr. and Mrs. R. C. Gules and son, Bob, of Breckenridge.

Also present will be their Eastland relatives.

the committee.

The president recognized two guests, Mrs. Stubblefield and Mrs. Greer, both of Carbon.

Refreshment Interlude Follows Program

Mrs. W. H. Hoffmann, chairman of the hostesses, and her committee - Mrs. R. M. Sneed, Mrs. Virgil T. Seaberry Jr., Mrs. Don Parker and Mrs. Wilbur Laney, served refreshments from a table, laid with a red linen cloth and centered with a white styrofoam heart decked with a red camellia framed with red carnations and lighted by red candles.

Fruit cake, topped with whipped cream on Valentine doilies, nuts and mints in silver containers decked the table, which bore at each end a silver coffee service, with Mrs. Murrell and Mrs. Sneed pouring.

Mrs. Richard Smith Hostess At Brunch for WSCS Study Group

Climaxing the Spiritual Life study series, held five consecutive Monday afternoons by the Woman's Society of Christian Service of First Methodist Church, Mrs. Richard R. Smith III was hostess to the group at a brunch Monday at the parsonage.

The five classics studied were reviewed at the brunch with Mrs. Smith, who had been in charge of the study, conducting the review.

The series on the spiritual classics follows: the first, "Selections from St. Augustine"; the second, "Practice of the Presence of God" by Nicholas Herman or "Brother Laurence"; the third, "The Invitation of Christ," edited by Douglas B. Steere and written by Thomas A. Kempis or Gerard Groot; the fourth "A Serious Call to a Devout and Holy Life" by William Law, and the fifth and last of the series, "Selections From A Testament of Devotion" by Thomas R. Kelly, which was given by Mrs. James Horton, Mrs. Frank Castleberry, Mrs. Turner Collie and Mrs. Ina Bean.

Mrs. Turner Collie, president of the WSCS, presided at the silver coffee service, assisted in serving by Mrs. Henry Van Geem, vice president, and Mrs. Smith, the hostess.

The table was laid with a white cloth and decorated in the Valentine motif, with red candles in crystal holders, and centered with a tiered crystal torte whose top deck held pineapple tidbits and lower section was filled with sausages, kolaches and sweet rolls were served from large crystal and silver containers.

Mrs. Collie appointed a nominating committee to select a list of candidates for officers to be installed the latter part of May. The committee is composed of Mrs. S. Milburn S. Long, chairman; Mrs. W. P. Leslie and Mrs. W. F. Dav- enport.

About 23 members were present.

EHS Juniors To Give Party 14th For High School

The Junior class of Eastland High School is giving a party in the gym at 6:30 p.m. Tuesday, Feb. 14, for the entire high school.

The faculty and their families and all parents who wish to attend are invited.

"A wonderful program has been worked up and everyone is expected to have a good time," it was announced.

THE AUBREY VAN HOYS VISIT IN HOUSTON

Aubrey Van Hoy, manager of the Majestic theatre, left Tuesday night for Houston to visit his son-in-law and daughter, Mr. and Mrs. Maurice Bullock and children, before that she had been a guest in the home of her other son-in-law and daughter, Mr. and Mrs. T. Etheridge of El Paso, leaving here for El Paso, Nov. 9. She took a plane Monday at Fort Stockton for Coleman and was met at Coleman by her son, Jack Frost, Monday night, who drove her home from there.

MRS. FROST BACK AT VISIT IN HOMES OF DAUGHTERS

Mrs. Cyrus E. Frost arrived home Monday night from Fort Stockton where she had been visiting in the home of her son-in-law and daughter, Mr. and Mrs. Maurice Bullock and children, before that she had been a guest in the home of her other son-in-law and daughter, Mr. and Mrs. T. Etheridge of El Paso, leaving here for El Paso, Nov. 9. She took a plane Monday at Fort Stockton for Coleman and was met at Coleman by her son, Jack Frost, Monday night, who drove her home from there.

MES. JACKSON AND TINDALL ATTEND BEAUTY MEET, DALLAS

Mrs. Jean Jackson and Mrs. Dee Tindall of Ruby Lee's Beauty Shop attended the beauty convention Sunday and Monday at the Adolphus Hotel, Dallas.

PATRONIZE YOUR HOME TOWN MERCHANTS!

STOP!
It is dangerous to let cough from common cold hang on. Chronic bronchitis may develop if your cough, chest cold, or acute bronchitis is not treated. Get Creomulsion quick and use as directed. It soothes raw throat and chest membranes, loosens and helps expel germey phlegm, mildly relaxes systemic tension and aids nature fight the cause of irritation. For children get milder, faster Creomulsion for Children in the pink and blue package. Adv.

CREOMULSION
relieves Coughs, Chest Colds, Acute Bronchitis

Overseas Veterans Welcome
Karl and Boyd Tanner
Post No. 4136
VETERANS OF FOREIGN WARS
Meets 2nd and 4th Thursday 8:00 p.m.

HAMNER FUNERAL HOME

Funeral Directors

BEN E. HAMNER EASTLAND, TEXAS PHONE 17

THOMAS FUNERAL HOME

PHONE 100 CISCO, TEXAS

Notarial Cost Burial Insurance For The Entire Family

Packing the biggest power punch in Chevrolet truck history!



New Chevrolet Task-Force Trucks for '56!

A short-stroke V8 for every model! Higher powered, higher compression 6's! More power for tight schedules and tough jobs... modern power that saves you money every mile!

You get plenty of "horses" to haul your loads in new Chevrolet Task-Force trucks. Power's been boosted right across the board in modern short-stroke V8's and efficient, valve-in-head 6's!

There's a V8 for every model, either standard

or as an extra-cost option. And Chevrolet's famous truck 6's have higher than ever compression ratios!

Come on in and see all the new advantages you get in these great new Chevrolet trucks!

Anything less is an old-fashioned truck!

Fast Facts About New '56 Task-Force Trucks

- A MODERN, SHORT-STROKE V8 FOR EVERY MODEL!
- MORE POWERFUL VALVE-IN-HEAD SIXES!
- AN AUTOMATIC DRIVE FOR EVERY SERIES!
- GREAT NEW FIVE-SPEED SYNCHRO-MESH TRANSMISSION!
- ULTRA-MODERN FEATURES LIKE HIGH-LEVEL VENTILATION AND CONCEALED SAFETY STEPS!
- TUBELESS TIRES, STANDARD ON ALL MODELS!
- FRESH, FUNCTIONAL WORK STYLING THAT FITS THE JOB!

*V8 standard in L.C.F. models, an extra-cost option in all other models. †Optional at extra cost in a wide range of models.



FULLEN MOTOR COMPANY

ANDERSON'S final clearance

Fall and Winter Merchandise ONE GROUP DRESSES

For Ladies and Children

1/2 PRICE

LADIES HATS

Special Group—Were \$4.95 to \$24.95

\$1 \$2 \$5

GROUP COATS and SUITS

1/3 to 1/2 OFF

Many Beautiful Styles To Clear

ALL WOOL SKIRTS

For Ladies and Children

1/2 PRICE

PETER PAN BRASSIERS

Were \$3.95 and \$5.00

NOW \$2.50

HOSIERY CLEARANCE

Regularly \$1.35 to \$1.95

\$1.00 PAIR

GROUP CHILDREN'S SHOES

\$2.95 and \$3.95 Values

NOW \$1.00 PR.

ONE GROUP HANDBAGS

Going For Less Than Cost

1/2 PRICE

GROUP CHILDREN'S BOOKS

Were \$1.00 to \$2.95

NOW 25¢ - 50¢

ANDERSON'S

North Side Square

Eastland

305 E. Main

EASTLAND, TEXAS

Phone 44

Eastland Telegram

Eastland County Record established in 1931, consolidated August 31, 1951. Chronicle established 1887, Telegram established 1923. Entered as second class matter, U. S. Post Office at Eastland, Texas under the act of Congress of March 3, 1879.

FLOYD W. CASEBOLT, EDITOR AND MANAGER
TIMES PUBLISHING COMPANY
Published Tri-Weekly—Tuesdays—Thursdays—Sundays
FLOYD W. CASEBOLT and JOE DENNIS, Publishers
FAY CASEBOLT, Associate Editor
NORMAN WRIGHT, Advertising Manager

One week by carrier in city . . . 1.00
One month by carrier in city . . . 3.00
One year by mail in city . . . 30.00
One year by mail out of state . . . 35.00

NOTICE TO PUBLIC—Any erroneous reflection upon the character, standing or reputation of any person, firm or corporation which may appear in the columns of this newspaper will be gladly corrected upon being brought to the attention of the publishers.

Classified Ads..

FOR RENT -

FOR RENT: Nice, clean furnished apartment, 3 rooms, bath, and garage. 302 E. Main.

FOR RENT: Nice one room apartment. Will also take two more aged people for room and board. Mrs. Smith, Eastland Hotel.

FOR RENT: 4 room furnished or unfurnished south duplex apartment. Close in, nice location small business. See Mrs. John Smith, Eastland Hotel.

FOR RENT: Furnished 3 room cottage, bills paid. 207 S. Walnut.

FOR RENT: Furnished 4 room house, bills paid. 207 S. Walnut.

NICE HOME — for rent or sale. Call 323-W.

FOR RENT: 4 room duplex furnished or unfurnished. Also wash house. 106 E. Valley, phone 672.

FOR RENT: Nicely furnished 4 room apartment. Phone 90.

FOR RENT: Four room furnished duplex. Phone 394-J.

FOR RENT: Furnished apartment. Phone 9520. Hillside Apartments.

FOR RENT: 2 furnished apartment. 1201 S. Seaman, Phone 358

FOR RENT: One bedroom furnished apartment, 612 W. Plummer.

MISC. WANTED -

WANT TO BUY: 4, 5 or 6-room house to move to town. Phone 31.

IRONING WANTED. Call 619.

SPECIAL NOTICES

Stated meeting Eastland Lodge No. 467, Second Thursday each month, 7:30 p.m.
Henry Van Goem, W.M.
L. E. Huckabay, Sec'y.

SPECIAL NOTICE: Anyone hauling sand and gravel out of Eldridge place pick up key at Joe Barnett's, Carbon, Texas.

PIANO TUNING: M. J. Kennamer is in town. Phone 601.

Call 601 For Classified Ad Service

Insurance AND Real Estate

D. L. KINNAIRD
Life - Fire - Auto - Farm
Police - Bonds
36 years in the insurance Business in Eastland

NOTICE

We have word from several typewriter manufacturers that price increases are due to become effective soon.

Buy Now and Save!

STEPHENS Typewriter Co.

Brown Sanatorium

Office Hours 8 to 5 p.m.
Dr. N. A. Brown, D. C.
In Charge
800 W. 6th St. Cisco

REAL ESTATE ?

Phone 1065

TRI-CITIES Real Estate Exchange
Box 22 Eastland

MISC. FOR SALE -

NOTARY SEALS: At Eastland Telegram Office Supply.

FOR SALE: Liberty Record Storage Boxes. Telegram Office Supply.

FOR SALE: Ed T. Cox's Eastland County Histories. (Give one for Christmas). Eastland Telegram.

FOR SALE: Lone Star Boats 29 Aluminum and Fiberglass Models. Low down payment and low monthly payments. Waverly Mensale. Phone 755-W-2.

FOR SALE: Pecan trees, flowering shrubs, roses, evergreens, and fruit trees. Send for list or come to our nursery 5 miles west of De Leon on Highway 6. Womack Nursery, DeLeon, Tex.

FOR SALE: Pecan trees, flowering shrubs, roses, evergreens, and fruit trees. Send for list or come to our nursery 5 miles west of De Leon on Highway 6. Womack Nursery, DeLeon, Tex.

PIANOS: Want party able to make \$9.00 monthly payment on small upright piano; also have like - new spinet piano at \$18.00 monthly. Can be seen next week in Eastland. Write Credit Manager, Box 604, Brownwood.

FOR SALE: Jersey Milch cow for sale with heifer calf. J. A. Hallmark, Route 1 Eastland. Phone 812-J-4.

BUY A Chain Link Fence, nothing down, 3 years to pay. Keep your own pets and children at home. c/o Eastland Chain Link Fence Co., Marvin Hood, mgr. Phone 108-J.

FOR SALE: A.K.C. registered Boxer pups. T. R. Craig. 622 Pine, Ranger.

FOR SALE: Cheap. Woodwind clarinet and flute, 912 Young Street, Ranger.

FOR SALE: Bred Rampahire gilts, with or without papers. Homer Stephens, Route 1, Gorman. Mile west of Rucker.

FOR SALE: Hot Rod Motor, '48 Mercury. Call 2701, Oldea. After 6, call 2703.

AUTOS FOR SALE

AUTOMOBILES FOR SALE
Five 710x15 tires in good condition \$95. Will throw in for free, top running 1948 Olds 4 door with good radio, good heater, good motor, good hydramatic, good body — in fact — it is good. Don Pierson Olds - Cadillac.

Positions Wanted

EXPERIENCED bookkeeper, secretary desires part-time work. Box Y, Eastland Telegram.

Political Announcements

This paper is authorized to make the following announcements, subject to the Democratic primary election, July 24, 1956.

For Sheriff
J. B. Williams (For Re-election)
For Assessor-Collector
J. C. Allison
For Dist. Judge
T. M. Collie
For Constable Pct. 1
Tom C. High
For Commissioner Pct. 1
Tip Arther
For County Attorney
J. M. Nuessele

PLEASE PHONE If You Miss Your Paper

TO OUR SUBSCRIBERS:
If, for any reason, you fail to receive your Eastland Telegram, by late afternoon, please phone the office (No. 601) by 5:30 p.m. or, afterward, the Casebolt residence (No. 1088) and a copy will be brought to you.

AUTO INSURANCE

Premiums Now Payable On Easy Monthly Payment Plan

Earl Bender and Company

LEGAL NOTICE

THE STATE OF TEXAS

To any Sheriff or any Constable within the State of Texas — GREETING:

You are hereby commanded to cause to be published once each week for four consecutive weeks, the first publication to be at least twenty-eight days before the return day thereof, in a newspaper printed in Eastland County, Texas, the accompanying citation, of which the herein below following is a true copy.

CITATION BY PUBLICATION THE STATE OF TEXAS

TO: W. D. Syers, W. H. Dick, Mary B. Standifer, L. E. Standifer, Bobbie Marchbanks and husband, Duke Marchbanks, Donna-lita Standifer, and the unknown spouses, heirs, devisees, personal representatives, successors and/or assigns of each of the above named persons, Defendants, Greeting: YOU ARE HEREBY COMMANDED to appear before the Honorable 91st District Court of Eastland County at the Court-house thereof, in Eastland, Texas, by filing a written answer at or before 10 o'clock A.M. of the first Monday next after the expiration of forty-two days from the date of the issuance of this citation, same being the 5th day of March A.D. 1956, to Plaintiff's Petition filed in said court on the 16th day of January A.D. 1956, in this cause, numbered 22,292 on the docket of said court and styled Gladys Barron, a feme sole, Bobby Jack Barron, Jack W. Barron, Irene Hightower, a feme sole, Neta Cross, a feme sole, J. E. Spencer, and W. H. Jerrell, Plaintiffs, vs. W. D. Syers, W. H. Dick, Mary B. Standifer, L. E. Standifer, Bobbie Marchbanks and husband Duke Marchbanks, Donna-lita Standifer, and the unknown spouses, heirs, devisees, personal representatives, successors, and/or assigns of each of the above named persons, DEFENDANTS.

A brief statement of the nature of this suit is as follows, to-wit: This suit is for the appointment of a receiver under Article 2320-b, to execute an oil and gas lease on the following described land in Eastland County, Texas, to-wit: 80 acres, more or less, being the South 1/2 of the Southeast 1/4 of Section 3, Block 4, H. & T. C. Railway Company Survey, as is more fully shown by Plaintiff's Petition on file in this suit.

If this citation is not served within ninety days after the date of its issuance, it shall be returned unserved.

The officer executing this writ shall promptly serve the same according to requirements of law, and the mandates hereof, and make the due return as the law directs.

Issued and given under my hand and the seal of said court at Eastland, Texas, this 17th day of January A.D. 1956.

Attest: Roy L. Lane Clerk, (Seal) 91st District Court Eastland County, Texas By Lavern Key, Deputy.

R. G. Perkins -

(Continued from Page One)

tors built in the United States last year was a Ford.

The Eastland dealer said Mr. Duffy reviewed the progress made by Ford in the farm machinery industry during 1955, pointing to the establishment of a "Major, Integrated Research and Engineering Center, employing some 500 engineering personnel to develop new and improved farm machinery, and a new outdoor Farm Machinery Evaluation Center, where new designs are tested throughout the year. Both facilities are located at the Tractor and Implement Division's general offices in Birmingham, Michigan.

"Mr. Duffy also pointed out that the Ford tractor plant in Highland Park, Michigan, now has the industry's most modern assembly line," Mr. Perkins said.

Join the MARCH OF DIMES

Approximately 20" overall, this woolly French poodle has big, shiny eyes, satin collar—ribbons with bow, cocky plaid cap—You'll adore it for counter-top decorative! Assorted colors.

ou! ou!

FREE

with the purchase of

LANE CEDAR CHEST

MOIST PROTECTION GUARANTEE

ABOMA TIGHT LOCK

RED CEDAR INTERIOR

SELF-LIFTING TRAY

\$1.00 DOWN DELIVERS! Small Weekly Payments!

Poodle Price 7.95
Chest Price 49.95
TOTAL 57.45
SALE PRICE 49.95

COATS FURNITURE & CARPETS
305 S. Seaman Phone 585



"HELL ON FRISCO BAY"

in CinemaScope and Warner Color, coming to the Majestic Friday and Saturday, stars Joanne Dry, Alan Ladd and Edward G. Robinson as shown in the artist's sketch above. Ladd plays the part of an ex-cop who was framed and convicted of a crime he did not commit, and he turns into a one-man riot to clear himself, practically wrecking the bay front in the process.

Tri-Hi-Y Meets With Sponsor; Elects Staff for New Season

The Tri-Hi-Y Club met recently at the home of its sponsor, Mrs. Jack Carothers, 601 S. Connelley, with Annette Sherman, president, presiding.

Chief business was election of officers to be installed in March, as follows: Jean Whitten, president; Ellen Whitley, vice president; Sue Day, second vice president; Mildred Day, secretary; Dixie Day, treasurer; Betty Westfall, chaplain; Sylvia Latham, reporter; Sidney Seale, historian; Anne Pittman, assistant secretary-treasurer.

Plans attending a district conference at Wichita Falls were discussed.

The meeting was closed with a prayer led by Jean Whitten, outgoing chaplain.

Present were Annette Sherman, Mildred Day, Ellen Whitley, Marianne Myrick, Sylvia Latham, Barbara Dalton, Dixie Day, Gaila Walters, Betty Westfall, Barbara Hightower, Rosemary Jones, Betty Jones, Anne Pittman, Sidney Seale and the hostess, Mrs. Carothers.

Call 601 For Classified Ad Service

MAJESTIC
Friday and Saturday

ALAN LADD
EDWARD G. ROBINSON
JOANNE DRY
HELL ON FRISCO BAY
CINEMA SCOPE
WarnerColor

THE BROILER INDUSTRY DEMANDED IT... RED CHAIN PRODUCED IT!

the NEW sensational 255

BROILER GRO-FAT

GREATER PROFITS

Months of intensive research have gone into production of the revolutionary NEW Broiler Feed. It's the FEED OF TOMORROW for the broiler producer of today... packed with tremendous NUTRITIONAL PUNCH!

FASTER GROWTH... GREATER FEED CONVERSION... COCCIDIOSIS PROTECTION... SUPERIOR MARKET QUALITY.

See your RED CHAIN Dealer!

REDCHAIN

NOW IS THE TIME TO BOOK YOUR CHICKS AND POULTS ASK ABOUT OUR TURKEY FINANCE PLAN

KINCAID'S FEED & TURKEY HATCHERY
303 N. Seaman Phone 43

Around the Town At Olden

By Mrs. Dick Yielding

Mr. and Mrs. M. S. Holt have returned home from Brownfield where they visited their daughter, Mrs. Melvin Cole, and family.

Jim Everett is a patient in Ranger General Hospital.

Mrs. Walter Colburn has returned home after having spent a week in the home of her son and family in Wichita Falls.

Dick Yielding and daughter, Wanda, drove to Comanche last Tuesday evening on business. Wanda has a new Chevrolet.

The Olden boys won a good game last Tuesday night over the Scranton boys.

Mrs. Buck Weeks and Mrs. Ed Winchell of Odessa accompanied their parents, Mr. and Mrs. O. T. Hunt, to their home last Sunday. Mr. and Mrs. Hunt had spent two weeks in Odessa with their children.

Mr. and Mrs. Sidney Sapulver and children of Abilene spent Sunday here with their parents.

Mr. and Mrs. E. H. Everett drove to Fort Worth Tuesday to meet a friend, Mrs. Lynn Shirk,

TELEVISION PROGRAMS

THURSDAY, FEB. 9	12:15—News, Sports, Weather
3:00—Daily Devotions	12:30—Visit With Virginia
3:15—Modern Romances	12:45—Movie Museum
3:30—Queen For A Day	1:00—TV Theater
4:00—Pinky Lee	1:30—Homemakers Fiesta
4:30—Howdy Doody	2:00—Matinee Theater
5:00—Kalin Kewee	3:00—Daily Devotional
5:30—Little Rascals	3:15—Modern Romances
6:00—News	3:30—Queen for a Day
6:15—Sports	4:00—Pinky Lee
6:25—Weather	4:30—Howdy Doody
6:30—Dinah Shore	5:00—Kalin Kewee
6:45—Playhouse 15	5:30—Little Rascals
7:00—You Bet Your Life	6:00—News
9:00—Video Theater	6:15—Sports
10:00—Masterpiece Theater	6:25—Weather
10:30—News, Sports, Weather	6:30—Coke Time
10:45—Man Behind The Badge	6:45—News Caravan
FRIDAY, FEB. 10	7:30—What's New
7:00—Today	7:30—Life of Riley
9:00—Ding Dong School	8:30—Highway Patrol
9:30—Ernie Kovac Show	8:30—Steve Donovan
10:00—Home	9:00—Cavalade of Sports
11:00—Tenn. Ernie Show	9:45—Red Barber's Corner
11:30—Feather Your Nest	10:00—Masterpiece Theater
12:00—This World of Ours	10:30—News, Sports, Weather
	10:45—Waterfront

PHILCO

No Grappling—No Groping—No Guessing

with trap door panels behind the set with "blind" side tuning

Hamner Appliance Store
205 S. Lamar Phone 623

DIXIE Drive-In

EASTLAND RANGER HIGHWAY

Box Office Opens 6:45
First Showing 7:00
Second Showing 9:00

WEDNESDAY - THURSDAY, FEB. 8 - 9

JIM BOWIE! CROCKETT! HOUSTON!

HERBERT J. YATES presents

LAST COMMAND

TRUCOLOR
STERLING HAYDEN - ANNA MARIA ALBERGHETTI - RICHARD CARLSON - ARTHUR HANNOCK
ERNEST BORGNINE - CAROL NASH - BEN COOPER - JOHN RUSSELL - VIRGINIA GREY
JIM DAVIS - EDUARD FRANZ - OTTO KRUGER
A REPUBLIC PRODUCTION

PLUS: Color Cartoon

FRIDAY & SATURDAY, FEB. 10 - 11

on the screen at last...

PLUS: Color Cartoon



WE GIVE S & H GREEN STAMPS WITH EACH 10c PURCHASE
 PIGGLY WIGGLY'S VALUES OF THE YEAR! OPEN TIL 9:00 P.M. SATURDAY FOR YOUR SHOPPING CONVENIENCE



Hunt's Fancy Bartlett Halves -
3 2 1-2 cans for **\$1**

California Sunkist
ORANGES
2 Lbs. **25c**

Idaho Russet
POTATOES
 Lb. **4c**



Hunt's Sliced or Halves, No. 2 1-2 can
3 for **\$1**

Hunt's Halves In Syrup
APRICOTS
6 No. 300 Cans **\$1.00**

Hunt's Solid Pack
Tomatoes
6 No. 300 Cans **\$1.00**

HUNT'S 46-OZ. CAN FAMOUS
TOMATO JUICE **4** cans for **\$1.00**

WASHINGTON STATE
 RED DELICIOUS
APPLES
2 Lbs. **25c**

Libby's Frozen Chicken or
BEEF PIES
 8 1-2 oz. Size **25c**

Libby's Frozen
Orange Juice
2 6-oz. cans **35c**



Hunt's 14-oz. Bottle
5 for **\$1**

MARKET SPECIAL!
THICK SLICED BACON
 2-Lb. Pkg. **79c**

MARKET SPECIAL!
LEAN PORK ROAST
 Boston Butt Lb. **39c**



Hunt's Tangy 8-oz. can
12 for **\$1**

Market Special!
Seven Roast
 Choice Beef Lb. **35c**

Market Special!
Ground Beef
 Always Fresh Pure Beef, Lb. **29c**

HUNT'S DELICIOUS
WHOLE CORN
8 No. 300 cans **\$1**

HUNT'S FANCY
SPINACH
8 No. 300 cans **\$1**

HUNT'S BLUE LAKE CUT
GREEN BEANS **5** No. 300 cans **\$1.00**

HUNT'S FANCY TENDER
GARDEN PEAS
6 No. 300 cans **\$1**

HUNT'S TASTY
CREAM CORN
8 No. 300 cans **\$1**



Hunt's Mixed Fruits In Syrup
3 2 1-2 cans for **\$1**

These Prices Effective
 Thursday, Friday
 and Saturday,
 February 9, 10 and 11



PIGGLY WIGGLY



These Prices Effective
 Thursday, Friday
 and Saturday,
 February 9, 10 and 11

OPEN TIL 8 P. M. WEDNESDAY AND SATURDAY