

## Wayne Gibbons Is Club Speaker Tuesday

Representative Wayne Gibbons will be the featured speaker at the First Baptist Church, Tuesday, 8:30 a. m. The Women's Society of Christian Service of the First Methodist Church held the first meeting of the year Tuesday, Sept. 1.

## BiTs

... of the oppor-

## ELV.O.

... of the oppor-

... of the oppor-

... of the oppor-

... of the oppor-

... of the oppor-

... of the oppor-

... of the oppor-

... opportunity to hear this speaker by attending, a club spokesman said. The Women's Society of Christian Service of the First Methodist Church held the first meeting of the year Tuesday, Sept. 1. Mrs. Ed Willman, assisted by Mrs. E. S. Perdue, Mrs. H. L. Hassell and Mrs. Cyrus Barcus gave the program, the subject of which was "Summoned to a New Age". The group was challenged to evaluate the effectiveness of the society's efforts, and to keep abreast of progress and change. It was pointed out that by taking advantage of the opportunities and resources of the Woman's Society of Christian Service, women are helped to grow in understanding and spiritual power, and gain knowledge of the needs of the world. Gaining these opportunities, a woman is prepared to share through witness, service and outreach.

Mrs. Crowell, Spiritual Life Secretary and leader of the (Continued on Page 2)



REP. WAYNE GIBBONS ... speaking here



**FIRST MEAL** — First graders at the new Eastland Elementary School are introduced to the cafeteria serving line as the new term began this week. This group, the first to be served in the new facilities, were given a hot, balanced meal which renewed their energy after a busy morning of 'going to school for the first time.' It was all a little new and different to them, and their attitude was a bit reserved as they learned the new routines, but experienced teachers guessed that this would change as the year goes along. (Staff Photo)

## Four-County Latin American Crusade In Eastland, Sept. 13-18

Churches in a four-county area, including Eastland and Callahan counties, will join in a week-long series of gospel services under a tent on the former Douglas School grounds at the corner of Bassett and White Sts. in Eastland beginning Sunday, Sept. 13.

The local campaign is a part of the state-wide crusade known as La Cruzada Bautista Nueva Vida (The Latin American Baptist New Life Crusade), launched Aug. 30, and to continue through Oct. 11. The crusade has been officially proclaimed by Gov. Connally in the state.

Churches in Eastland, Stephens, Shackelford and Callahan counties will participate in the campaign to be conducted at the Eastland site. The Rev. Neal Jones, pastor of the First Baptist Church, Vernon, will preach in English and his messages will be translated into Spanish by Donald T. Moore of Cisco. Rev. Moore is pastor of the Latin American congregation in Cisco, and chairman of the Latin American Crusade for the Cisco Association.

Singer and music director for the local campaign will be Chauncey Handy. Tent for the local crusade is being furnished by a Waco firm and will be erected late this week. Latin Americans are especially invited to the services which begin each evening at 8 p. m. Singing will be in Spanish.

In 1962, when statistics revealed that 38 per cent of the Latin American residents of the state were without church affiliation, the Baptist General Convention of Texas voted to actively direct their spiritual and financial support to this campaign designed to invite and welcome these people into the fellowship of the church. Today there is a state with-in the State of Texas. This is comprised of 2 1/2 million Latin Americans, and is reflected in their vast influence on our way of life. Their culture is evident in the names of towns, cities and streets; in our Spanish architecture; in the directories of professionals, businessmen, politicians and educators; and in the origin of most of our "Texas food" and "Texas music." According to the 1960 census, there has been a 50 per cent increase of Latin Americans in the state during the past (Continued on Page 2)

## Scrappy Mavericks Suffer 18-6 Loss in First Encounter

Jerry McCullough quarterbacked his Mavericks with savvy football against the Comanche Indians Friday night, but the Indians had the odds in their favor and went home leaving Eastland an 18-6 loss for the opening test of the season. Local fans packed their side of Maverick Stadium and agreed that the Mavs, though small and less-than-fast, are a scrappy lot and want to play football. The Indian odds include a power push through the middle and Quarterback Gray Jolink who called his shots right too. Eastland's one score came early in the second quarter, spilling over from a drive that began late in the first. Gaylon Griffin, 150 fullback, was the man who carried the mail over for Eastland, and

accounted for a lot of yardage in the scoring march and throughout the evening. The drive begun late in the first and went like this: a handoff from McCullough to Griffin accounted for 10; McCullough kept to pick up a whopping 20; an attempted pass to John Moylan fell incomplete; a handoff to Griffin gained five; a keep for five more; to Griffin for four; to Mickey Sargent, for four; to Mike Miller to five; a pass to Miller for a big 20; which put the ball on the two-yard line. The quarter ended, and after a switchero of the field, Griffin took the pigskin and lunged over for the first and only Maverick score of the game. Extra point try by Moylan failed — as did all extra-point attempts for both clubs all evening. The Indians got their first score midway in the first, on a 46-yard pass completion to Back Tom Willis who bedeviled

the Mavericks most of the evening. The second Comanche score came with a 10-play drive immediately following Eastland's score early in the second. The Indian QB sneaked and picked up the four yards to pay dirt. The air got a workout late in the first half as the Indians put the ball up three times — to fall incomplete — in the one series. The third stanza was scoreless with the Mavs giving the air the try with four tosses — one of which was intercepted. Mavericks made a break at the beginning of the second when big Mike Miller booted to the waiting Indians — the ball hit a man, bounced back and was recovered by Eastland to set up a series of plays worth about 24 yards. Midway in the last quarter the Comanche QB went over from the 10 for the third and last score of the game. Tackle Garry Rollins foresaw, and (Continued on Page 2)

## Two Women Are Examined After 2-Car Collision

Two Eastland women were examined at Eastland Memorial Hospital shortly after noon Friday following a two-car crash at the intersection of Bassett and Sadosa Sts. minutes earlier.

Mrs. Roger (Vera) Sosebee and Mrs. Norman (Kathy) Owen were examined by physicians and released. The two were drivers of automobiles that collided at the intersection shortly after 12 noon. The Sosebee vehicle, a Ford station wagon, was spun around and it knocked down a street sign at the intersection. An Arrington Funeral Home ambulance took Mrs. Sosebee to the hospital. Police Chief Ray Laney investigated. There are no traffic control signs at the intersection. Both vehicles received extensive damage.

## Highway 206 Work Due To Begin In County Tuesday

Construction work will begin Tuesday on a 13.8 mile section of Highway 206 that will complete the new Coleman-to-Cisco project, according to a report Friday by R. P. Haun, Eastland County resident engineer for the State Highway Department.

Strain Brothers of San Angelo submitted the low bid for the project at a recent Austin highway letting. The bid was \$935,010.86 to cover grading, structures, flexible base and two course surfacing treatment. Mr. Haun said work would begin at Sabanno, near the Eastland - Callahan County line, where an earlier project

ended. Early progress will be slowed somewhat as fence moving work remains to be completed in some places, the engineer said. There will be a construction conference at the county highway center in Eastland Tuesday night to work out safety features in connection with the program. Mr. Haun said. A total of 325 working days will be used on the project under the contract. The Strain company was expected to open offices in Cisco for the work.

Mr. Haun said Highway 206 would join Interstate 20 just west of Cisco at a big interchange. The interchange, however, will be in another project and a temporary connection for 206 will be built. Highway 206 will handle traffic from southwest Texas that joins Interstate 20 for east-west movement. Mr. Haun's office will supervise the project for the state highway agency. Two Interstate 20 projects now are being handled by Mr. Haun and his staff — one west of Cisco and another east of Ranger.

## Angelina Marble Co. Wares On Display 2 Sites Tuesday

Products manufactured by the Angelina Marble Co., a relatively new Eastland concern, will go on display at two locations in the city beginning Tuesday.

The firm manufactures an exclusive line of bathroom fixtures, using crushed Georgia marble, molded into modern forms for dressing tables and bathroom counters. Displays of the company's wares will be shown to the public at the Eastland National Bank and in the lobby of the Courthouse beginning Tuesday, Manager Mrs. Bill (Nancy) Pryor has announced.

Located at 205 S. Green St., in the Grimes Building, the firm has been in operation almost a year, doing research and development of the product. It currently employs seven people and a larger force is anticipated as production is increased. The firm is represented by a full-time salesman and several distribution points. Its products are presently being tested by the Federal Housing Administrator for durability. The company is making the furnishings in 12 colors

and in several styles including one-piece bowl and counter top. Everett H. Everett of Olden is designer of the product and is in charge of production.

## ASC Committeemen Named -- Tuesday Is Voting Deadline

The community committee for the Agricultural Stabilization Conservation Committee, Department of Agriculture, for 1965 have been nominated. There are three members and two alternates to be elected from each community, Gilbert Meredith of office manager, said. The following is a list of the persons nominated:

A Community — F. S. Crawley, Lee Jernigan, Glenn Jordan, R. L. Sharp, Travis Smith, Alton Undersood, and J. L. Yancy.

B Community — Melvin Adams, W. O. Cantwell, B. F. Hanna, J. C. Hathcock, M. S. James, K. F. Kirk and N. E. Richardson.

C Community — Bob Carlton, Aridene Lasater, Paul Norris, W. T. Norris, Victor Park and Cecil Self.

D Community — J. B. Hagan, T. L. Hale, Howard Ingram, Clifford Phippen, Roy Phippen, Carl Stroebel and O. J. Weiser.

E Community — J. T. Alford, J. F. Cooper, L. V. Jackson, R. C. Long, Delbert Tarver, Sterling C. Tucker and Billie Zirkle.

F Community — Cleo Barton, G. T. Dawkins, Joe B. Hunt, Vernon Phillips, Calvin Rody and Herman Schaefer.

Ballots with voting instructions were prepared and mailed to all known eligible voters on Aug. 25th, Meredith said. Eligible voters not receiving a ballot may obtain one at the office. The ballots must be mailed to the ASC office and must be postmarked by Tuesday, Sept. 8. The ballots will be publicly tabulated on Wednesday, Sept. 9. The County Convention will be held on Sept. 16, at 10 a. m. when the 1965 County Committeemen will be elected.

Ballots with voting instructions were prepared and mailed to all known eligible voters on Aug. 25th, Meredith said. Eligible voters not receiving a ballot may obtain one at the office. The ballots must be mailed to the ASC office and must be postmarked by Tuesday, Sept. 8. The ballots will be publicly tabulated on Wednesday, Sept. 9. The County Convention will be held on Sept. 16, at 10 a. m. when the 1965 County Committeemen will be elected.

## Freyschlag INSURANCE weather report

SUNDAY — Windy. Sun rises 5:34, sets 6:22. Moon sets 7:07 p. m. Fishing poor.

MONDAY — Possible showers. Sun rises 5:35, sets 6:21. Moon sets 7:36 p. m. Fishing poor.

TUESDAY — Clear. Sun rises 5:36, sets 6:19. Moon sets 8:04 p. m. Fishing poor.

WEDNESDAY — Fair. Sun rises 5:37, sets 6:18. Moon sets 8:33 p. m. Fishing poor.

## Monday Is A Holiday--Decree Noble Knights

The Noble Order of the Knights of Labor was dissolved in 1917, after 48 years of impact on the American scene. Many ideas originating with the group linger still, the most-widely popular being Labor Day, the first Monday in September.

The knights of Labor were holding their general convention in New York City in 1882, when they decided to stage a large parade in honor of the working people. Two years later, they set the day, named it, and made it an annual affair.

In 1887, Colorado declared Labor Day a legal holiday. New York, Massachusetts, and New Jersey followed suit. The United States Congress voted it a legal holiday in 1897 and today Labor Day is one of the few holidays observed in all states, Washington, D. C., Puerto Rico, the Canal Zone, Hawaii, the Virgin Islands, and Alaska.

Eastland will observe Labor Day this year by giving everyone a holiday. James Smith,

## Gorman Petition Not Filed Yet

The Gorman petitions asking a wet election had not been filed at the county clerk's office Friday afternoon, a check of that office revealed.

Thursday, Sept. 10, is deadline for the return of the petitions, it is reported. The County Commissioners Court won't meet again until Sept. 14. The southhouse will be closed Monday for Labor Day.



**MAVERICK B TEAM** — The Maverick B team roster has a busy Saturday morning schedule on tap for the season, with opening against Clyde on the Eastland field Saturday. Next Saturday morning, the team meets a Cisco B squad in Eastland. From left to right are: front row, Stanley Wilson, George Herrera, Alfonso Geato, Rusty Herridge, Phil Hunt, Wyn Boen and Tommy Herrera; second row, Tommy McCullough, Rickey Manke, Danny Cox, Steve Lund, Wade Thomas and Bob Day; third row, Boyd Porter, Larry Terrell, Jim Pat Miller, Billy Manke, Jim Herridge and Tony Lowrance. (Photo by Cotton's Studio)

## High Schedule

High School grid announced by Edward Glass.

... of the oppor-

... of the oppor-

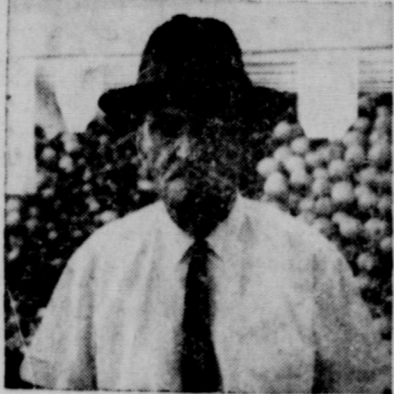
... of the oppor-

... of the oppor-



**WORTH**  
**FOOD**  
**MART**  
SURE SIGN OF QUALITY!  
EFFECTIVE: Sept. 8 thru Sept. 9, 1964

WINNERS IN WORTH FOOD MART'S  
**MONEY TREE GAME!**



\$100.00 WINNER  
MR. W. A. HOTMANN



\$100.00 WINNER  
MRS. J. E. JENNINGS



\$100.00 WINNER  
HELEN EVANS



\$100.00 WINNER  
MRS. BESS JACKSON



Swift's Premium  
**CORNED BEEF** Pound **69¢**

California, Green  
**CABBAGE** Pound **5¢**

**ANKS** RATH 1 LB. BLACKHAWK PKG. **49¢** **APPLES** JONATHAN NEW CROP LB. **15¢**

**SLICED BACON** Swift's Premium 1-Lb. Pkg. **55¢** **BARTLETT PEARS** LARGE CALIF. LB. **19¢**  
**BREADED SHRIMP** Gulf Princes 10-oz. Pkg. **59¢** **CARROTS** GARDEN FRESH **2** 1 LB. CELLO-BAGS **25¢**  
**CATFISH FILLETS** Taste O'Sea 1-Lb. Pkg. **59¢**

**ACH** 1/2 GAL. JUG **29¢** **BLACKEYED PEAS** HOMEFOLK **4** 300 CANS **49¢**

**SLICED PINEAPPLE** DOLE NO 1 1/4 CAN **19¢**

**LIBBY'S BEEF STEW** 24-OZ. CAN **45¢**

**CUT YAMS** Sugary Sam 2 No. 2 1/2 cans **49¢** **IVORY LIQUID** 2 12-oz. Btl. **59¢**  
**SOUP MIXES** Lipton 3 Pkg. of 2's **\$1.** **BABO** Cleanser Reg. 2 14-oz. cans **25¢**  
**PRUNE JUICE** Lady Betty Qt. Btl. **39¢** **SHAMPOO** Reg. or Dry Ea. **\$1.**  
**LEMON TEA MIX** 8 Pkgs. **\$1.** **VITAMINS** 60 Tablet Btl. **\$1.45**

**AURORA TOILET TISSUE**  
Asst. Colors  
**2** 2-Roll Pkgs. **49¢**

**FREE!**  
**WOOD & CO., LTD.**  
DISH  
After Sept. 13

Frozen Food  
**WHOLE OR CUT OKRA** TRAPPEY'S **2** 10 - OZ. PKGS. **39¢**  
**ORANGE JUICE** LIBBY'S **2** 6 OZ. CAN **59¢**

**CLIP AND SAVE!**  
50 BONUS S&H Green Stamps  
With This Coupon and Purchase of  
2 19-oz. Pkgs. Pillsbury  
CAKE MIXES  
Void After Sept. 9, 1964  
**WORTH FOOD MART**

**AND SAVE!**  
50 BONUS S&H Green Stamps  
With this Coupon and Purchase of  
300 Cans Armour's  
Plain or with Beans  
After Sept. 9, 1964  
**WORTH FOOD MART**

**CLIP AND SAVE!**  
50 BONUS S&H Green Stamps  
With this Coupon & Purchase of  
3 46-oz. Cans All Flavors  
H-I-C FRUIT DRINKS  
Void After Sept. 9, 1964  
**WORTH FOOD MART**

**CLIP AND SAVE!**  
50 BONUS S&H Green Stamps  
With this Coupon & Purchase of  
One 6-oz. Jar Chase & Sanborn  
INSTANT COFFEE  
Void After Sept. 9, 1964  
**WORTH FOOD MART**

**CLIP AND SAVE!**  
50 BONUS S&H Green Stamps  
with this coupon and purchase of  
2 1-Lb. Ctns. Fleischmann's  
MARGARINE  
Void After Sept. 9, 1964  
**WORTH FOOD MART**

**CLIP AND SAVE!**  
25 BONUS S&H Green Stamps  
with this Coupon & Purchase of  
One 6-Pak Foremost  
ICE CREAM NOVELTIES  
Void After Sept. 9, 1964  
**WORTH FOOD MART**

# Industrial Meet Is Set To Plan Pilot Program

Will a two-year-old campaign promise result in the industrialization of Eastland County? Will the governor of Texas, through state agencies and officials, be responsible for increased payrolls and economic conditions in this county?

It remains to be seen. But the first step in this direction may be taken Tuesday when Harry Clark, director of the Texas Industrial Commission, and Larry Milner, a staff member, meet with some 75 county, civic and business leaders for what could be a series of planning sessions.

The meeting, to be held at 2:30 p. m. Tuesday in the County Commissioners Courtroom, is the outgrowth of a statement made by Gov. Connally in Eastland County back in May of 1962.

At that time Mr. Connally, in a primary election run-off with Don Yarborough, was

crossing the state aboard a "Victory Special" train. At two of his stops in Eastland County, he stated that, if elected, he would make Eastland County the "pilot site" for his industrialization program. He had advocated an extensive industrialization program from the beginning of his campaign for the state's top office.

The circumstances behind this "campaign promise" indicate the governor's sincerity in wanting to help certain areas, it would seem. As with most campaign trains, delegations of supporters were welcomed aboard at every stop for brief visiting and traveling with the candidate.

Mr. Connally's train was westbound and several Ranger backers met it in Gordon and rode to Ranger, to be with the candidate when he appeared as he did on the observation platform at each stop to speak to the gathered crowd. Eastland residents met the train in Ranger and joined the party for the trip cross-county as did Cisco citizens in Eastland.

In Ranger Connally praised the progress of Ranger Junior College and recalled the oil boom days, and generally, although not specifically, stated that if elected he would do all in his power to re-vitalize the state with industry.

As the train pulled out of Ranger, bound for Eastland, Mr. Connally invited two county newspapermen into his stateroom for soft drinks, dured nuts and conversation. During the informal "interview" he asked point-blank, of his questioners, "What exactly does your county need most?" Naturally, the answer was "More payrolls, more job opportunities for a declining agricultural work force — industry."

And apparently at that instant Mr. Connally decided himself, to make this county the test location for his industrialization plans.

During his brief remarks in Eastland, this was one of the most emphatically stated points "I will, if elected, make Eastland County the pilot site in my industrialization program." He was greeted with cheers from the throng that had met his train at the T&P Depot — the high school band, chamber and city officials, pretty girls and Old Rip. The Eastland-famous horned toad was "given" to Mr. Connally as a token of his support here. (Rip rode on to Cisco with Mr. Connally where it was retrieved by newsmen and returned to its Courthouse resting place.)

His stop in Cisco too was punctuated by his statement that he would, if elected, make Eastland the pilot site for industrialization. And there, too, Cisco supporters cheered as Mr. Connally promised to "help Eastland County."

The giving of Old Rip to

Mr. Connally was obviously a "gimmack" — but perhaps his industrialization of Eastland County is not.

The meeting in the courthouse Tuesday perhaps will tell.

A County Republican meeting will be held at the County Courthouse Thursday, Sept. 10, at 7 p.m., it has been announced.

The public has been invited to attend.

## DIXIE Drive-In EASTLAND RANGER HIGHWAY

Box Office Opens 7:45; Show starts 8:15; Box Office closes 9:30. Admission: Adults 60c, Children under 12 Free Each Wed. - Thurs. — Bargain Nights (Adults 25c) Sunday, Monday & Tuesday, Sept. 6, 7 and 8

### 'A Ticklish Affair'

Shirley Jones — Gig Young — Red Buttons  
Carolyn Jones  
IN COLOR

### 'Love with the Proper Stranger'

Natalie Wood — Steve McQueen

## SPECIAL SHOWING

# RCA VICTOR New Vista COLOR TV

Glare-proof RCA High Fidelity Color Tube brings you a picture so sharp, so true, you have to see it to believe it. Super-powerful "New Vista" Tuner, 24,000-volt (factory adjusted) chassis. Dependable Space Age Sealed Circuitry. Twin Duo-Cone speaker delivers rich "Golden Throat" sound.



The WAKEFIELD Mark 9 Series 14-G-79-M 26 1/2 sq. in. picture

THE MOST TRUSTED NAME IN TELEVISION

Better hurry on over to ROBERTSON'S today while they still have some choice 1964 model TVs left in color, Black and white and Portables. Extra good trades on your old TV.

**Robertson TV Sales & Service**  
Southeast Corner Square  
Eastland

# Somewhere Someone Needs Your Old Glasses



## Needs Your Old Glasses

Did you know that those old, no-longer-worn eyeglasses which you may have lying around the house are urgently needed by poor people all over the world? These people cannot afford the luxury of better vision... but you can help!

As a public service, we are collecting these useless eyeglasses for New Eyes For The Needy, Inc., a non-profit, non-sectarian charitable organization which distributes your donations wherever they are needed.

Won't you help this worth-while cause? If you have any no-longer-worn eyeglasses at your home, you may bring them to our office. We'll then ship them to New Eyes For The Needy... so that someone somewhere may see better!

## Arrington Hamner Funeral Home

301 S. Lamar  
EASTLAND, TEXAS

## MONUMENTS

## MAJESTIC

SUN. Open 12:45 — Shows 1:00 - 3:05 - 5:10 - 7:20 - 9:25  
MON. Open 4:45 — Shows 5:00 - 7:05 - 9:10

Step into the world of Henry Orient

PETER SELLERS  
PAULA PRENTISS & ANGELA LANSBURY

THE WORLD OF HENRY ORIENT

NO Advance In Price!

TUESDAY ONLY  
ALL TICKETS 25c  
Open 4:45 — Shows 5:00 - 7:10 - 9:20

ANN-MARGRET

## BYE BYE BIRDIE

STARTS WEDNESDAY  
Open 5:00 — Shows 5:30 - 7:35 - 9:15

THEIR FIRST FULL-LENGTH MOTION PICTURE IN COLOR!

ERNEST BORGNINE  
JOE FLYNN-TIM CONWAY  
AND THE WHOLE McHALE'S CREW!

## McHALE'S NAVY

# MAJESTIC IN EASTLAND

Your ONLY Opportunity - NEVER CAN BE SEEN AGAIN HERE OR ANYWHERE ELSE!  
SEPT. 1, 23, 24, 1964 ARE THE DAYS ON WHICH ENTERTAINMENT HISTORY WILL BE MADE THRU THE MIRACLE OF ELECTRONOVISION

An ELECTRONOVISION Production - ALEXANDER H. COHEN Presents

# RICHARD BURTON HAMLET

in JOHN GIELGUD'S PRODUCTION OF

with the all-star cast of the hit Broadway play!

Tickets Now on Sale at BOX OFFICE!!

Yes, I want to be part of a historic first.

Please send me \_\_\_\_\_ tickets for SEPT. 23 MATINEE  SEPT. 24 MATINEE  EVENING

Enclosed is a check or money order for \$ \_\_\_\_\_

NAME \_\_\_\_\_  
ADDRESS \_\_\_\_\_  
CITY \_\_\_\_\_ STATE \_\_\_\_\_ ZIP \_\_\_\_\_

DISTRIBUTED BY WARNER BROS.

Q. What makes home study easier?

A. Plenty of good light!



Homework is hard work for young eyes. Plenty of good light needed for reading small type, seeing details in maps and charts and performing other close visual tasks. For easier seeing at study table, a good table lamp with at least a 150 watt bulb equivalent is recommended. The lamp should be tall enough to spread light evenly over the work surface and properly shade the light source from the eyes. A diffusing bowl (or a shade with its own built-in diffuser) is recommended to soften the light and prevent glare. Check your children's study light now. Make sure they have proper light for easy seeing when they do their homework.

**TEXAS ELECTRIC SERVICE COMPANY**  
FRANK SAYRE, Manager Phone MA 9-2651

Beatrice Kile And James Smith Wed In Galena Park

Beatrice Kile and James Smith were married in Galena Park on Saturday, Sept. 5.



MRS. JAMES ROBERT SMITH

necklines, short sleeves, fitted bodices and bell skirts. Head-dresses were high pill box hats of self material and short veils.

Quarterback Club To Meet On Tuesday

The Eastland Quarterback Club will have its first weekly meeting Tuesday night, Sept. 8th at 7:30 p. m. at the White Elephant Restaurant.

Coin Club Elects Officers, Launch Youth Program

A program to encourage the hobby of coin collecting among teen-agers and young people is being developed by the Eastland Coin Club, it has been announced.

Workshop Set October 27

Officers and members of eight Masonic Lodges in this area have been invited to attend a workshop which will be held at 8 p. m., Sept. 24, in the Masonic Hall at Desdemona.

Rising Star News

The Women's Society of the Christian Service of the First Methodist Church of Rising Star met Monday afternoon following the regular monthly luncheon for a business meeting and the continuation of their Spiritual Life program and study course.

The meeting was called to order by Mrs. Jim Ray Bucy and the opening prayer was given by Mrs. Milton Slayden.

Members present were Mesdames Cecil Joyce, Berl Heath, J. R. Bucy, Claud Griffin, May Pearl Hull, Jay Rachel, Elsa Witt, John Stock, Emma Weathermon, Martha Sellers and Milton Slayden.

Mrs. May Pearl Hull is the WSCS reporter.

Mr. and Mrs. Paul White of Rising Star have announced the birth of a baby boy at 11:15 a. m. Tuesday at the Comanche Hospital.

Mr. and Mrs. R. D. Maxwell of Kermit spent part of their vacation in Rising Star with his mother, Mrs. Mollie West, and his brother, Paul Maxwell and family.

Mrs. Goldene Ware and her father-in-law, Will Ware, visited Sunday with her great aunt, Mrs. Martha Musick in Abilene.

Mr. and Mrs. Lee White attended a family reunion Saturday and Sunday, August 29, 30 at Memphis, Texas.

Mr. and Mrs. W. M. Kilpatrick and family, Memphis, Texas; and Mr. and Mrs. Lee White of Rising Star.

Present also were Mr. and Mrs. Wilburn Kilpatrick of Stanton, Texas and Mr. and Mrs. Spencer Wright of Hardesty, Okla., children of the late Mr. and Mrs. Frank Kilpatrick.

The two brothers, William P. and Frank Kilpatrick were early settlers in Hall County.

Homemakers Have Breakfast Meet; Make Plans

Members and guests of the First Baptist Homemakers class attended a breakfast at the White Elephant Sept. 1 as a prelude to the church year beginning Oct. 1.

Mrs. Roy Young, teacher of the class, offered thanks for the meal after which Mrs. Pat Crawford, retiring president, presented a slate of officers for the ensuing church year.

The daughters of Mr. and Mrs. Donald Tow, Donna Joan and Jana, of Temple, were recent guests in the home of their grandparents, Mr. and Mrs. Joe Tow.

Mr. and Mrs. Milton Day were planning a trip to Lubbock this weekend.

Jesse L. Ward and relatives will have a family reunion at Lake Leon this weekend.

Mr. Fred Hoffmann of Los Angeles, Calif.; and Mrs. Emma Rector of Nebraska City, Neb., are visiting their brother and family, Mr. and Mrs. C. W. Hoffmann, Sr.

Whitetops' Get Sport Trophy In Ranger Play

The "Eastland Whitetops" received the Sportsmanship trophy in the Ladies Softball Tournament in Ranger this past weekend.

The team is composed of Helen Reneau who played second base; Diane Garner, shortstop; Jo Ann Greenwood, pitcher; Elaine Berger, third base; Betty Maynard, left field; Joy Maynard, catcher; Cleo Duncan, first base and catcher; Jodie Hogan, right field; Ruth Underwood, center field; and Mona Ruth Christian, center field.

Eastland Area Roping Club Is Organized

A large group of interested Eastland County residents met Tuesday, September 1, at 7:30 p. m. at the home of Mr. and Mrs. Johnny Stewart, on the Breckenridge Highway to organize the Eastland County Roping Club.

The club will include activities of interest to all ages and the entire family may become members. There will be roping, barrel racing, along with games of various kinds for the younger children of the families. Dues will be \$1 per person per year.

Officers elected at the Tuesday meeting were: president, Wayne Stewart of Ranger; vice - president, Sam Beggs of Eastland; secretary - treasurer, Bonnie Stewart, Ranger; board of directors, Bo Bo Beggs, Eastland, Bob England, Doug Blaknev, and Johnny Stewart, all of Ranger; and Arena Director, Jim Stewart of Ranger.

The next meeting of the club will be held at 7:30 p. m. Monday, September 7, at the home of Mr. and Mrs. Johnny Stewart on the Breckenridge Highway. Anyone interested in the club is welcome to attend the meeting.

Shrine Club To Hold Fish Fry At Lake Cisco

The Cross Timber Shrine Club, a unit of Mosleh Temple of Fort Worth, will hold a fish fry and social for members and their guests at Lake Cisco on Saturday, Sept. 12, according to an announcement by President Hood King of Eastland.

The party will be held at the Lake Cisco cabins of W. E. Dean and W. V. Gardinier with Jack Sawyers as the "fish chef." The party will begin with boating and fishing at 4 p. m. Dinner will be served about 7 p. m.

Mr. King said that a number of officials of Mosleh are expected for the fall party. Some 60 persons are due to attend.

The club is composed of Shriners of Eastland and adjoining counties. Meetings are held quarterly. Carl Garner of Eastland is the club secretary.

Vets Questions And Answers

Q - Does a veteran who served between September 16, 1940, and December 31, 1954, earn any gratuity or Social Security wage credits?

A - Yes. These gratuity credits amount to \$160 for each month of duty but are not listed on the Social Security earnings record until benefits are applied for.

Q - Where should I send a change of address notice for my compensation check? It comes from some place in Chicago.

A - You should mail your change of address notice for any VA payments to the VA regional office where your records are maintained. This is the VA office which authorizes your payments. When you move to another regional office area, the VA will transfer your records to this new regional office if you request such transfer.

Guests this weekend in the home of Mr. and Mrs. G. L. Whitley will be Mr. G. L. Whitley, Jr. of Fort Worth, and Mr. and Mrs. G. O. Jackson, Jr. of Gorman.

Malet and Mrs. E. L. Tabor and family of San Antonio visited during the weekend with her mother, Mrs. J. W. Woods.

Ruth SS Class Meets In Home Of Mrs. Thompson

The "Ruth" Sunday School class of the First Baptist Church met Thursday morning in the home of Mrs. K. R. Thompson.

The devotional was given by Mrs. James Johnston on "Faith". Scriptures were taken from First John.

Mrs. M. A. Treadwell Sr. told of the many benefits of the "Bible-a-Month Club". All class members participate in an open discussion on the life of Moses.

Refreshments were served to Mmes. Williams, Chance, Anderson, Moore, Carey, Simms, Johnston, Thompson, Lancaster, and Mrs. M. A. Treadwell Sr.

Mrs. Rosalie Leslie and her son, Charles Robert of Houston have returned home from a recent trip to Canada. They visited in the Canadian Rockies, Lake Louise, Jasper, Vancouver, and Seattle, Washington.

Zeta Phi Plans Year's Program

The Zeta Phi Chapter of Beta Sigma Phi met Sunday afternoon, August 30 at 3 p. m. at the White Elephant Restaurant for the first meeting of the new club year.

Melva Rogers, president, presided over the meeting. The yearbooks for this new year were distributed to members by Ann Glass, chairman of the yearbook committee. The budget was discussed and the meeting was adjourned.

Those present were Ann Glass, Sidney Sims, Kathy Owen, Melva Rogers, Delores Underwood, Glenda Therwanger, Sue Bakker, and Jean Ann Price.

Bring Your Battery Troubles To Us

Advertisement for Jim Horton Tire Service featuring a battery image and contact information: Hwy. 80 & Ave. I - CISCO - Phone HI 2-1677

DR. C. E. PAUL Chiropractic Health Service

Advertisement for Organ Classes Are Still Open: CALL MRS CYRUS BARCUS 805 S. Seaman St., MA 9-1653

Advertisement for Federal Savings & Loan Assn. featuring a piggy bank image and text: WE PAY YOU TO SAVE WITH US

ANGER DRIVE-IN

Highway 80 - East on Ranger Hill KIDDIES UNDER 11 FREE SHOW STARTS AT DUSK

DAY - MONDAY - TUESDAY SEPTEMBER 6 - 7 - 8



WEDNESDAY IS GAIN NITE 50c CAR LOAD



PUBLIC NOTICE

Such as two property owners are threatening all... who go across their land with the law, I...

TO WHOM IT MAY CONCERN

I am responsible for any debts other than made... not married and never have been. I am...

IMPORTANT NOTICE

Annual meeting of the Contributors of The Memorial Hospital will be held on September 13, 1964, at 7:30 p. m. at the Texas Electric Building in Eastland, Texas.

Life Insurance Company 301 S. Lamar, Eastland Box 431 Dial MAin 9-2611

