

TODAY'S NEWS TODAY!

Eastland Telegram

Delivered To Your Home 10c WEEK

UNITED PRESS SERVICE BRINGS LATE NEWS OF THE WORLD TO TELEGRAM READERS

VOL. X

EASTLAND, TEXAS, FRIDAY EVENING, FEBRUARY 2, 1934

PRICE FIVE CENTS

No. 68

Three Bandits Rob Coleman Bank of \$20,000

CASHIER IS RELEASED BY FLEEING TRIO

Officers Believe Robbers Are Surrounded Near Fry Oil Field.

COLEMAN, Tex., Feb. 2.—Assistant Cashier Charlie Woodruff of the First Coleman National bank was released today at the Fry oil field east of here by three men who robbed the bank of cash and currency estimated at more than \$20,000.

Woodruff, who was kidnapped and held as hostage as the bandits fled from Coleman by automobile, was taken to a hospital in Santa Anna. He had been beaten by the desperadoes, but his condition was not thought serious.

The report was current here the bandits had been surrounded by a posse near the Fry field. Many citizens were enroute to the area to help the posse.

Sankey Is Taken To South Dakota By Federal Agents

SIOUX FALLS, S. D., Feb. 2.—Verne Sankey, notorious desperado, arrived here by train in custody of federal officers today and was placed in jail with his wife to await trial on federal charges of transporting kidnapped Charles Boettcher from Denver to South Dakota.

Detective's Son Slain on Street of San Antonio

SAN ANTONIO, Feb. 2.—A. C. Street, 25, son of the late Detective Chief Sam Street, was shot and killed here today in front of a downtown bar.

Police arrested his alleged assailant, whom they declared stood over Street's body and said: "I'm sorry it happened this way, but you were just a little slow on the draw."

Taxes! Taxes! Taxes!! Taxes!!

(An Editorial)

The lower House of the Texas Legislature voted to extend the time for paying automobile licenses to March 31.—News Item.

Taxation without representation was reputedly one of the causes of a scuffle between a couple of nations once.

Whether or not taxation WITH representation is any better is hard to figure out.

Yesterday afternoon a man drinking a cup of coffee at a counter read the above news item and remarked that taxes on a car over a period of years amounted to as much as the car was worth. A little figuring will show the following results:

If you have a moderately priced car, and buy it new, and keep it four years, and drive it about 50,000 miles, all of which the average person with a car does, you will probably average 15 miles to a gallon of gasoline, and will thus burn approximately 3333 gallons in the four years.

The initial investment represents about six hundred dollars. In the four years you will spend for license plates nine dollars a year, or thirty-two dollars in all; for tax on gasoline, a hundred and thirty-three dollars and thirty-three cents at the rate of four cents a gallon. This makes a total of approximately one hundred and seventy dollars you will pay in taxes on your car in four years.

Going the man at the counter one better when it is considered that in only four years the taxes on an investment of only six hundred dollars amount to nearly a third of the initial investment, and when it is additionally considered that the car, after being driven fifty thousand miles will then be worth little more than a hundred dollars and you realize that while the investment has been steadily depreciating the taxes on it have been steadily climbing until at last the taxes have outstripped the investment—you will probably back off and wonder whether taxation without representation was any worse than taxation with representation is.

And car licenses are only the beginning. The sovereign people of this country must also buy a license to get married, sell beer, vote, keep a dog, go hunting, sell cigarettes, run a radio station, manufacture cheese, sell oleomargarine, drive trucks, fish and so forth and so forth.

No taxation without representation! No representation without taxation! The British are coming!—Taylor Press.

Justice Is Not Sure Couple Were In Suicide Pact

AUSTIN, Feb. 2.—Peace Justice T. E. Johnson, who late yesterday wrote verdicts of suicide in the deaths of Mrs. F. A. C. Perrin and Dr. Claude Mattingly, today said his verdicts were subject to change if reasonable evidence was found.

The charming 35-year-old woman and the physician, 39, a former World war hero, lay down together to await a twisting death induced by overdoses of morphine and codeine.

Justice Johnson was not certain whose hands had forced the fatal drug into their bodies. A note found on the dresser in the hotel room where the bodies lay, today was conclusively shown to be a will written by Mrs. Perrin.

Cage Tournament At Eastland High Saturday Night

Saturday night at the Eastland high school gymnasium there will be a Class B cage tournament. Among the teams who will participate are those of Flatwood, Pioneer and Morton Valley.

Charter Is Granted Sweetwater Firm

AUSTIN, Feb. 2.—A state charter was granted to the Hope Grocery company of Sweetwater today, incorporated by W. R. Hope, Mrs. Mary Hope and Gladys Hope, with a capital stock of \$3,600.

A Second Hand License Is Puzzle To County Clerk

HOUSTON, Tex.—County Clerk Albert Townsend has a slightly used marriage license certificate he doesn't know what to do with.

\$950,000,000 RELIEF BILL GOES TO HOUSE

WASHINGTON, Feb. 2.—A \$950,000,000 unemployment relief bill, designed to continue the federal wing of protection over the jobless was reported to the house today.

Despite angry undercurrents of protests against the administration intention to use the bulk of the fund for relief aid other than that provided by the CWA, house leaders hoped to pass the bill by night-fall.

Approximately \$450,000,000 of the appropriation, according to Relief Administrator Harry Hopkins, will be used to extend the CWA until May, when the work projects which will be dropped. He informed the appropriations committee the remaining \$500,000,000 would be used to continue relief aid to states.

58 Additional Names Appear on Taxpayers Roll

Eastland independent school district honor roll of taxpayers for the period ending Jan. 31, 1934:

- Curtis Williams, J. W. Chambers, W. C. Bedford, Frank Castleberry, L. B. Cud, Southland Life Insurance Co., D. E. Daniel, The Texas Pipe Line Co., R. S. Bailey, Hugh L. McWilliams, Frank V. Williams, Farm & Home Savings & Loan Association, T. Y. Butler Estate, J. S. Butler, Fidelity Bldg. & Loan Assn., Western Union Telegraph Co., J. E. Williams, Postal Telegraph-Cable Co., Stewart S. Nemir, Earnest Halkias, George Karantonis, Karantonis & Halkias, Joe D. Blankenship, J. H. Cheatham Jr., American National Life Ins. Co., James Duffy, G. W. Bohning, Walter I. Clark, Cisco Oil Mill, Mrs. Paulette Jordan, C. H. McBea, Mrs. M. E. Moon, Mrs. Sallie Hill, Texas Pacific Coal & Oil Co., W. P. Leslie, Beulah Harrison, J. M. Wilcox, Mrs. J. F. McWilliams, P. L. Parker, Miss Cecelia Haas, E. H. Jones, H. M. Condliey, R. L. Lyman, M. C. Tucker, E. W. Gourley, Joe D. Bradford Grocery, Brubaker Studio, States Oil Corporation, Conner & McKae, C. L. Tyronne, Lon Horn, W. L. Keith, C. A. Martin, Pickering Lumber Sales Co., T. C. Campbell, Jim George.

Eastland Plans Baseball Club For This Season

L. E. Spaulding was named chairman of a committee to work out plans for a baseball club in Eastland this spring and summer at a meeting of business men at the Chamber of Commerce, Thursday night. Mr. Spaulding was empowered by the meeting to name other members of his committee.

Eastland's Fire Record for 1933 A Splendid One

A letter from the state board of insurance commissioners at Austin to City Manager Guy Parker of Eastland, commends the city of Eastland for its splendid fire record for 1933.

Dr. J. L. Neil To Speak Sunday at 11 A.M. in Eastland

Dr. J. L. Neil of Jackson, Miss., one of the outstanding speakers attending the evangelistic and missionary conference this week at Fort Worth, will occupy the pulpit at the First Methodist church, Eastland, Sunday morning at 11 o'clock.

COMPLAINTS FILED

Four complaints charging burglary, theft, receiving and concealing stolen property have been filed in Justice of the Peace Melvin Newman's court at Eastland.

Eastland High Defeats Gorman At Basketball

Eastland high school won the basketball game played with Gorman Thursday night in the Eastland high school gymnasium by a score of 17-13. The victory was by way of decision of the referee, Gorman with only its total squad of six players was unable to play a complete game because two players were withdrawn when they committed the allotted number of fouls.

A large portion of the student body witnessed the game with a fair representation of citizens of the town. The attendance at the game was greater than that of any previous game played on the local court.

Eastland Plans Baseball Club For This Season

L. E. Spaulding was named chairman of a committee to work out plans for a baseball club in Eastland this spring and summer at a meeting of business men at the Chamber of Commerce, Thursday night. Mr. Spaulding was empowered by the meeting to name other members of his committee.

Eastland's Fire Record for 1933 A Splendid One

A letter from the state board of insurance commissioners at Austin to City Manager Guy Parker of Eastland, commends the city of Eastland for its splendid fire record for 1933.

Dr. J. L. Neil To Speak Sunday at 11 A.M. in Eastland

Dr. J. L. Neil of Jackson, Miss., one of the outstanding speakers attending the evangelistic and missionary conference this week at Fort Worth, will occupy the pulpit at the First Methodist church, Eastland, Sunday morning at 11 o'clock.

COMPLAINTS FILED

Four complaints charging burglary, theft, receiving and concealing stolen property have been filed in Justice of the Peace Melvin Newman's court at Eastland.

'Old Black Cat' Shoots Negro at Dance in Ranger

"They say Little Cat wants fight! He will be on the floor to see that everything goes all right! And Old Black Cat won't scar his knuckles. He just wants 50 cents a couple!"

So read the dance placards printed for a negro dance in Ranger, scheduled for Jan. 25, but apparently no mention was made of this week, for Old Black Cat used a long-barreled .38 calibre pistol at close range last night, according to officers, and shot Charlie Anthony, who is said to have wielded a knife.

Patrolmen Guy Pledger and Jack Roach heard shots and screams late Thursday night in the "Flats" and investigated. They said they found Old Black Cat reloading a big revolver and placed him under arrest. Witnesses asserted, the two officers said, that John Ware, otherwise known as Old Black Cat, had fired three shots at Charlie from a distance of only three feet, only one shot taking effect. The bullet struck Charlie in the upper arm and came out in the shoulder.

After placing Black Cat in the city jail they arrested Charlie Anthony as he was leaving a local hospital after having his wounds dressed and he, too, was placed in the city jail.

This morning the two were taken before Justice of the Peace McFatter, who placed them under \$1,000 bond each on charges of assault with intent to murder and bound them over to appear before the 91st grand jury, which is to convene at Eastland Saturday.

Several versions of the fight were given today by those who attended the dance, but the consensus of opinion seemed to be that they "just got to fighting."

11,000,000 Acres of Cotton Will Be Out of Production

WASHINGTON, Feb. 2.—Removal from production this year of about 11,000,000 acres of cotton is assured, officials of the farm administration estimated today.

Preliminary reports on the progress of the restriction campaign, they said, indicated two-thirds of the desired 16,757,000 acres reduction had been pledge to removal.

Extension of the campaign from Feb. 1 to Feb. 17 and liberalization of contract requirements to permit participation by small producers has been announced.

ROBBERY OF STATE CAPITOL IS REPORTED

AUSTIN, Feb. 2.—Fifty thousand dollars of refining stock, held in escrow, was included in loot taken in a state capitol burglary made public here today.

The loss was discovered yesterday and reported to the Austin police. State ranger headquarters in the capitol, said they had not been notified officially, hearing it only from the police.

The stock was in a locked strong box taken from the office of T. F. Walker, chief clerk of the attorney general's department. Walker said the stocks are valuable to the takers, as they must be transferred on the company books to change ownership.

Roosevelt Will Stay Within The Budget for Relief

WASHINGTON, Feb. 2.—President Roosevelt is determined to stay within the limits of the \$1,166,000,000 item in the budget for relief, it was stated today in response to a question as to whether additional funds would be asked for continuation of the CWA.

Life Sentence of Minister Upheld

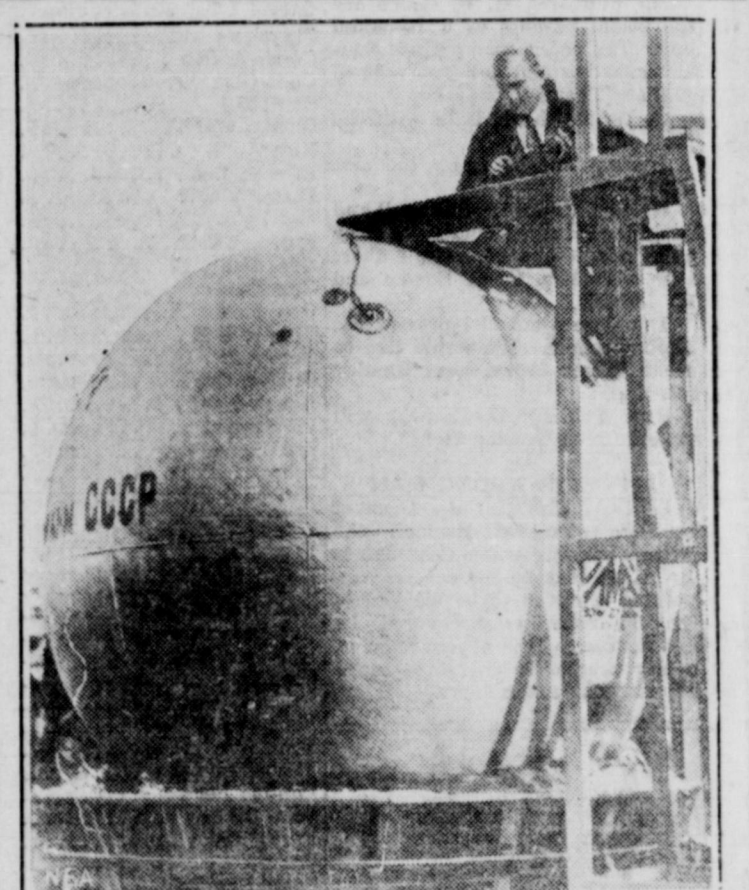
OKLAHOMA CITY, Feb. 2.—The state criminal court of appeals today upheld the life sentence given F. A. Berrie, 54-year-old Muskogee minister, convicted in 1932 of poisoning his wife so he might marry his girl secretary, Ida Lee Bright, 17.

At the trial in 1932 the state contended Berrie poisoned his wife, with whom he had lived 29 years, in order to culminate in marriage an alleged illicit love affair with a girl he employed as secretary.

Sankey Lieutenant Caught By Agents

CHICAGO, Feb. 2.—Gordon Alcorn, chief aid of Verne Sankey in the kidnaping of Charles Boettcher of Denver and Haskell Bohn of St. Paul, was arrested here last night. Chief Federal Investigator Melvin Purvis revealed today.

Three Russian Balloonists and Fatal Gondola



Commanded by Paul Fedosenko (upper left), a scientist with no stratosphere experience, the Russian balloon Stryus (above), set a new world's altitude mark when it rose more than twelve and three-fourths miles in a secret flight over Moscow. Andrew Vasenko (lower left), the engineer who constructed the gondola, also made the ascension. All three were killed when the balloon crashed.

There are two officials in Washington—one is a high official in a large city, the other is a United States Senator. Mayor T. Semmes, of New Orleans from news reports is after the "scalp" of Senator Huey P. Long. Both these men hold dignified offices. Yet there is danger of a personal clash from Mr. Semmes' statements published are true. To imagine any public man whose responsibility is to keep the peace and harmony losing himself to such an extent as to make a public statement that he is seeking personal combat is unbelievable. The people of New Orleans and Louisiana are not to blame for the personal differences of these two men, yet the people as a whole get the kick-back of the thing.

Huey P. Long has been written up in leading magazines to the tune of the most libelous statements, if they are untrue. Now the thing has simmered down to the "gangster" type of revenge. Louisiana would do well to look into the ambitions of its public entertainers and see whether they are constructive or are of a demoralizing nature. However that is their business and if two prominent men want newspaper publicity they certainly have found the best mediums to get it—even though it is of a nature bordering on the "rough."

What can be done with the problem of women who need work? Is it necessary to swing them from one section to the other to give them work if they are capable and want to work? Direct relief is the most definite God-send to those who cannot do anything, but to those girls and women who have means of support, yet are capable, it is an crushing blow to their standard of self-respect if forced to go to any one to go to otherwise for relief. We have stated before and do so again that in the instance of women who apply for work there should be no question as to whether they were born in a community or not, or even lived in a community for a great length of time. The fact that they need work is enough. Womanhood is something that we all are responsible for.

K. S. Wendler, acting county administrator for the relief and CWA work has had a busy week setting things reorganized upon a most efficient and economical basis. Mr. Wendler is a type of man that knows every detail of the government's program. He is expressive of his appreciation for the cooperation he is receiving in his jurisdiction here. His primary activity is to see that matters are extended to the most needy and that all projects in force receive the proper attention and the work conducted as per schedule. Whatever changes are being made are done so strictly from the standpoint of taking up lost motion and keeping the main office in an active capacity. Eastland county is fortunate in having a man of his ability and loyalty to the cause he represents to take temporary charge of the Relief and CWA affairs.

For the benefit of those who have the workings of relief, NRS and CWA confused, there is a decided difference in the different departments. Prior to Nov. 15th, 1933, it was necessary to register for relief and also for NRS. After that date the thing was changed (Continued on page 3)

Notice To Candidates

We invite candidates announcements in the columns of the Eastland Telegram. The price for either the Telegram or the Chronicle will be \$15.00, or carried in both papers for \$20.00. ALL ANNOUNCEMENTS WILL BE CASH IN ADVANCE WHEN THE ANNOUNCEMENT IS MADE. The price includes carrying your name in the announcement column through the primaries and the run-off. When the announcement is made we shall be glad to give any information statement that you desire to make to the voters without extra charge. Thereafter any information that candidates care to make through these newspapers will be charged at our regular political rate as paid advertising.

That reminds me... There are two officials in Washington—one is a high official in a large city, the other is a United States Senator. Mayor T. Semmes, of New Orleans from news reports is after the "scalp" of Senator Huey P. Long. Both these men hold dignified offices. Yet there is danger of a personal clash from Mr. Semmes' statements published are true. To imagine any public man whose responsibility is to keep the peace and harmony losing himself to such an extent as to make a public statement that he is seeking personal combat is unbelievable. The people of New Orleans and Louisiana are not to blame for the personal differences of these two men, yet the people as a whole get the kick-back of the thing.



EASTLAND TELEGRAM

Published every afternoon (except Saturday and Sunday) and every Sunday morning

Member Advertising Bureau - Texas Daily Press League Member of United Press Association

NOTICE TO THE PUBLIC:

Any erroneous reflection upon the character, standing or reputation of any person, firm or corporation which may appear in the columns of this paper will be gladly corrected upon being brought to the attention of the publisher

Obituaries, cards of thanks, notices of lodge meetings, etc., are charged for at regular advertising rates, which will be furnished upon application

Entered as second-class matter at the post office at Eastland, Texas, under Act of March, 1879

SUBSCRIPTION RATES:

Single copies . . . . . \$ .05 One year . . . . . \$ 5.00 One week . . . . . \$ .10 Six months . . . . . \$ 2.50

ALL SUBSCRIPTIONS PAYABLE IN ADVANCE

A BIBLE THOUGHT FOR TODAY

ALMIGHTY GOD: I will cry unto God most high: unto God that performeth all things for me.—Psalm 57. 2.

BANKHEAD BACKS A COTTON CONTROL PLAN

Cotton and its future concerns millions of southern woare not producers. It future concerns millions of southerners who are producers. Sen. John B. Bankhead of Alabama has let it be known that he would press at this session his bill to limit the 1934 cotton crop to 9,000,000 bales by compulsory control. There are two Bankheads. One is a senator from Alabama and another is a member of the house of representatives. The senator will introduce his bill and the brother, who is a representative, will push the measure in the house. This compulsory measure would license ginners and place a prohibitive tax on cotton produced in excess of governmental allotment.

E. F. Creekmooore is the general manager of the American Cotton Co-operative association. He has advised Texas co-ops to give some thought before withdrawing cotton from the government's 10 cent loan pool for sale at a small advance in the market. He submitted interesting figures. He said with surplus as of July 31 reduced to perhaps less than 10,500,000, of which some 3,000,000 bales will be in foreign markets, only about 7,500,000 surplus will be left in the United States. He added that approximately 1,000,000 bales of this will be in domestic mills and another 4,500,000 financed by the government.

Other potent factors are "better world conditions and the president's definite promise to restore commodities to pre-war parity prices. In his Corpus Christi address the general manager of the Cotton Co-ops declared the greatest sustaining force in the cotton market today "is the belief that the acreage reduction campaign for 1934 and 1935 will be successful." He made another important announcement—that the Cotton Co-operative association has acquired a borrowing capacity of \$60,000,000 to finance this season's operations and "is on a sounder basis than in its previous history." Speaking of the plow-up campaign last year, the voice of the Co-op said the plan resulted in decreasing the cotton crop some 4,500,000 bales; that the rentals paid, together with the cost of the options given in connection with the campaign, amounted to approximately \$175,000,000, and lastly, that the government will be partly recompensed for its expenditures through a processing tax on domestic mills amounting to approximately \$20 per bale or for the fiscal year \$125,000,000.

In conclusion Col. Creekmooore declared that "the campaign to reduce this year's crop 40 per cent of the average acreage planted during the past five years will be distributed in rentals throughout the cotton producing states some \$125,000,000." His viewpoint is this cost should be practically offset by receipts from the processing tax during the fiscal year ending July 31, 1935. Well, the Bankhead brothers of Alabama, a senator and a representative, are for government control of cotton production—until prosperity returns to the producers and the purchasing power of the tillers of the soil makes a substantial showing in a trade sense the nation over.

Jim Barrett managing director of an Oklahoma hotel, told me that he heard about an absent minded bootlegger in a neighboring city who walked two miles to a drug store to get something to poison his cat. I wonder why he walked so far?

DID YOU EVER STOP TO THINK

By EDSON R. WAITE, Shawnee, Oklahoma

W. F. PRISK, editor of the Long Beach (Calif.) Press-Telegram, says:

"Did you ever stop to think that advertising makes the balanced newspaper?"

"Advertising balances the newspaper by acquainting readers with the latest developments in the markets as well as the latest happenings in Washington, in London, in Moscow, in the state capital the county seat and the home town.

"The housewife is interested in what the food stores are offering today, in what the department stores have to say about the progress of fashions as displayed in the 'show windows' of the advertising pages. Even the classified columns have their human interest stories.

"Because of this all-around service the newspaper is the dominating advertising medium.

"Because of this all-around service, the newspaper is the dominating advertising medium.

"Because advertising is as current as news—or should be—advertisers find the newspaper the most productive agency as measured by actual results. It is the dependable, day-by-day voice-piece of changes and bargains in the merchandising program.

"To achieve the best results, to be sure, advertising in newspapers must be attractive, newsy, consistent, truthful."

Penalty on Cars Used in January After February 1

Automobile and truck owners and operators who did not secure their registration licenses by midnight, Feb. 1, will have to pay a 20 per cent penalty when they do pay them unless they can furnish an affidavit to the fact that the car or truck being registered was not operated at all in 1934, according to County Tax Collector T. L. Cooper.

The Texas statute is such that should the tax collector accept for registration a car or truck that had been operated during 1934 without collecting the 20 per cent penalty in addition to the license fee, he and his bondsmen would be liable to the state for the amount uncollected, Mr. Cooper said.

Mr. Cooper pointed out, however, that if an affidavit that the vehicle had not been operated at all during 1934, accompanied the application for registration, cars and trucks might now be registered at eleven-twelfths of the regular annual fee. This is because one-twelfth of the year has gone.

Attaches in the Eastland county tax collector's office this morning estimated that there were 8,500 cars and trucks in Eastland county subject to registration and that 5,000 of this number had been registered to date.

More than 1,000 registrations were made Thursday, the first day of February, Tax Collector Cooper estimated.

Registrations were still coming in at a rather steady pace this morning.

Much criticism was heard through the county of the Texas senate for its failure to pass the

bill introduced at the present session of the legislature to extend the time for paying car registration licenses. Most of the critics blamed railroad and bus lobbyists for the senate's action on the bill.

Jury's Report In Ames Case Favors The Plaintiffs

The jury in the case of Mrs. Froma Ames vs. J. B. Ames reported its finding late Thursday to Judge B. W. Patterson of the 88th district court. The case had been on trial since Jan. 22 and in the hands of the jury since Wednesday.

The plaintiff asked for a divorce, custody of two children, a boy, 11, and girl 3, and division of property. Doris Meekie Rice, 13, a daughter of Mrs. Ames by a former marriage, was an intervenor in the suit.

Judge Patterson stated this morning that the case was a very complicated one and that it would be a few days before his judgment would be rendered. He intimated, however, that the jury's answers to the 69 special issues submitted would warrant him in granting the divorce asked for, giving Mrs. Ames custody of the two children and giving Doris Meekie Rice, the intervenor, \$4,250 found by the jury as being the amount of money belonging to her.

A majority of the 59 special issues submitted were apparently answered in favor of the plaintiff in the case.

Mr. and Mrs. Ames were married in December, 1922. They reside in Ranger.

King Murder Case Is Set For Monday

Mrs. May King, charged with murder in connection with the death of Leon Robinson, night-watcherman at Gorman last December, is scheduled for trial in the 31st district court Monday, Feb. 5th.

COLONY

Mrs. Leatha Newsome of Cleburne, after spending a week with homefolks, has returned for an indefinite stay with her son, W. L. Mills, who is still quite ill.

M. and Mrs. H. B. Grace are the proud parents of a 10-pound boy. The young man arrived Sunday morning and has been named William Thomas.

G. W. Smith Jr. is ill with the flu.

Murray Poyner is on the sick list.

Mr. and Mrs. Roscoe Russell and daughter returned Sunday to their home near Cleburne, after a short visit with Mrs. O. C. Bowen and W. L. Mills.

There were only 37 present for Sunday school. We would like to see a larger crowd next Sunday morning.

Rev. Ephriam D. Conway will preach for us Sunday night.

APPOINTMENTS WRONG MAN SACRAMENTO, Cal.—Discreet chuckles resounded through the capitol building when Gov. James Rolph, seeking to replace an appointee reported to be delinquent in the administration, discovered he had announced the appointment of a chiropractor to the state board of osteopathic examiners.

Markets

Closing Selected New York Stocks:

Table of stock prices including Am Can, Am P & L, Am F Pwr, Am Rad & S S, Am Smelt, Am T & T, Anaconda, A T & S F Ry, Auburn Auto, Avn Corp Del, Barnsdall, Beth Steel, Byers A M, Canada Dry, Case J I, Chrysler, Comv & Sou, Cons Oil, Corti Oil, Curtiss Wright, Elec Au L, Elec St Bat, Foster Wheel, Fox, Freshport Tex, Gen Elec, Gen Foods, Gen Mot, Gillette S R, Goodyear, Gt Nor Ore, Houston Oil, Int Cement, Int Harvester, Johns Manville, Kroger G & B, Lig Carb, Marshall Field, M K T Ry, Montg Ward, McKesson & Rob, Nat Dairy, N Y Cent Ry, Ohio Oil, Packard Mot, Penney J C, Penn Ry, Phelps Dodge, Phillips Pet, Pure Oil, Radio, Sears Roebuck, Shell Union Oil, Socony Vac, Southern Pac, Stan Oil N J, Studebaker, Texas Corp, Tex Gulf Sul, Tex Pac C & O, Union Elliott, Union Carb, United Corp, U S Gypsum, U S Ind Ale, U S Steel, Vanadium, Western Union, Westing Elec, Worthington, Curb Stocks, Cities Service, Elec Bond & Sh, Ford M Ltd, Gulf Oil Pa, Humble Oil, Lone Star Gas, Niag Hud Pwr, Stan Oil Ind.

These quotations are furnished through the courtesy of D. E. Pulley, 209 Main street, Ranger.

Table of Chicago Grain prices including Corn, Oats, Wheat, Rye.

Table of Dog and Chickens Figures In Suit including EDINBURG, Tex.—A pedigreed dog and three Rhode Island Red hens of unknown pedigree were central figures in a suit filed in the 93rd Civil District Court here in which damages totaling \$1,106,420 were asked.

B. D. Kimbrough, McAllen attorney and Hidalgo county political leader, filed suit against Geo. B. Ford, his neighbor, for \$1,105 after Ford allegedly shot Kimbrough's pedigreed fox terrier. The plaintiff sought \$5 for veterinary services given the animal, \$100 damages for reduction in the animal's value as a result of wounds, and \$1,000 as exemplary damages.

Ford's attorneys filed a general demurrer to the plaintiff's allegations, asserting Ford had no knowledge of the dog's death. Ford's attorneys also filed a cross-action naming Kimbrough as the cross-plaintiff and sought damages totaling \$126 for the death of three Rhode Island Red hens "of unknown pedigree," as the result of alleged raids on the Ford chicken yard by the pedigreed dog.

The cross-action alleged Kimbrough's terrier was a "chicken thief of the first water" and killed the three hens. Ford sued for the "reasonable market value" of the poultry, which he set at 42 cents each.

FRECKLES and HIS FRIENDS—By Bloss



Married Flirts

HE'S HERE TODAY AND TOMORROW HE'S GONNA BE MARRIED TO THE GIRL WHO'S BEEN HIS GIRLFRIEND SINCE HE WAS A BOY. SHE'S BEEN HIS GIRLFRIEND SINCE HE WAS A BOY. SHE'S BEEN HIS GIRLFRIEND SINCE HE WAS A BOY.

"No—I'm all right. Just a little tired." The apartment was very lonely with Elsa gone and David asleep. There could be years of this sort of thing, Gypsy thought, with a clutch of pain at her heart. Years and years and years of days filled with dull tasks and lonely evenings.

When Tom came in at 9:30, she was playing patience. She had on her old brown vest with the broad lace collar. She was pale but her eyes were feverish and she had painted her small mouth with bright, raspberry colored salve.

"Lo, dear. Sorry I couldn't get away." She read guilt in every line of his face. She lifted a cool cheek for his kiss.

"What's the matter? Anything go wrong?" "No. Everything's fine." He tried to take her in his arms but she evaded him.

"Boy all right!" She tried to make her voice sound natural, to put all her usual enthusiasm in her tone. "He's splendid!" She might tell him how cunning David had been in his bath; how he had laughed aloud waving his fat starfish hands. She might tell him these things . . . and bore him. So she kept silent.

When Tom said, in a sympathetic tone, "Rotten for you today, kitten. I thought of you so much," her throat ached and tears of salty spring to her eyes. She winked them back, bending with pretended concentration over her cards.

"That red queen . . . what did you say, Tommy?" He was puzzled—he was frankly puzzled. Gypsy said to herself, "Let him be." She felt herself all tight and sore within, aching, bruised.

Where did you get that mono-grammed handkerchief? She might fling that at him, watch him squirm, fib, wriggle out of it. Ah, but she wasn't going to ask—not now, at least.

SHE was miserable in the days that followed. The shadow of black jealousy hovered over all her waking hours. On the surface things were as before. Tom had no more late nights at the office and when he was at home Gypsy was quiet, sweet, interested, apathetic. "I think you ought to see the doctor, honey," he told her more than once. "I think you need a tonic."

She shook her head. She was all right, she told him. How explain that what she needed was the elixir of trust, the old, benignant medicine of perfect love and understanding?

But later, as she picked up the threads of the old life again, she began to wonder what had happened her back in the city. Color flowed back into her cheeks and hope into her soul. She began to persuade herself that all of her tortures had been self-inflicted, "It's just that I was so much alone and had so much to do," she assured herself. The rich, jumble, casual family life amused and pleased her. She worked a little in the garden. She lunched and dined with old friends, answering questions about her husband with that serious young-matronly manner which well became her. At the end of seven days she was missing Tom terribly. Over the telephone each morning he assured her that a solitary state was not one to be desired, no matter what emug bachelors told to the contrary.

BUT on Saturday morning four or five hours before his expected arrival, Sue Canavan's young sister, Katherine, tossed a bombshell into Gypsy's house of contentment.

"Saw that handsome husband of yours lurching yesterday," she said gaily. It seemed to Gypsy that the glance Sue threw her was a warning one.

"Oh, did you?" asked Gypsy with animation. "Did you stop and speak to him?" Katherine shrugged this should be. "He was much too busy to notice poor little me," she mocked. "He was all wrapped up in the girl with him—stunning looking creature in black. Looked like Paris."

"He—has all sorts of women clients for the various accounts," Gypsy said coldly and proudly. The old, desperate sickness was returning. Yesterday—why, Tom had telephoned her just at 11 o'clock yesterday to say he was "up to his ears" in work. And she had believed him.

"Of course he has," Sue said quickly—too quickly. She changed the subject with her usual tact and they spoke of other things. But Gypsy felt the knife turning in her heart. This could not go on! It was a situation beyond her control. It wounded her pride and dignity. When Tom came she would have to have it out with him.

After the girls had gone she glanced over the morning newspaper, seeking an escape from her troubled thoughts. A name stood out from all the others in the column of personal notes on the society page.

"Miss Vera Gray of Boston is in the Weylin."

Something clicked in her brain. Was this what she had been fearing all the time? That girl—whose she hated her! Gypsy stood up, her little hands clenched. David sat in his carriage in an angle of the house. Sun poured down on him, a smiling, rosy scrap of babyhood. She stared at him, almost without seeing.

She had been letting things drift. Well, now there must be a show-down! Tom would have to make his choice.

(To Be Continued)

Eastland Personals

Mrs. A. H. Johnson returned home Wednesday evening from a Marshall visit accompanied by Mrs. Bailey Badgett and her little 3-year-old son of that city, and the boy's nurse, Mrs. Badgett will be here two weeks.

Mrs. Scott W. Key spent Thursday and today in Fort Worth. George Wilkins Jr., arrived Thursday from Kilgore, for a few days visit with his parents, Mr. and Mrs. George Wilkins.

Red Calloway, Ranger, was in Eastland Thursday. Jamie Stover, who resides in Alpine with her mother, Mrs. J. A. Stover and sister, Marzelle, who attends Sul Ross Teachers College, is visiting her father, Constable Joe Hicks of Cisco, was in Eastland Friday.

Robert Pentecost, student at Simmons University, Abilene, is visiting in Eastland. Carl Garrett, who attends Simmons University in Abilene, is visiting his parents, Judge and Cydne Garrett.

J. L. Reid was in Putnam Tuesday. Estes Burgamy, a student at Simmons University, Abilene, is visiting relatives in Eastland.

KANSAS CITY, Mo.—C. J. Porta, who started his business with cash assets to \$5, now makes a profit by selling box lunches placed aboard liners here. Porta buys all supplies at retail, cooks with assistance, and delivers the lunches to the planes himself. He keeps the lunches in his kitchenette apartment.

OLD RECORDS ENDANGERED BAY CITY, Tex.—Hisco court records, dating since 1870, were endangered here recently when fire damaged the old gorda county court house.

Founder of Buddhism

HORIZONTAL 1 Defiled title of the pictured religious teacher. 6 His name was — Sid-dhartha. 12 Hodgepodge. 13 Cranny photo. 14 Part of the eye. 17 Wayside hotel. 18 To drink deeply. 20 Bronze. 21 Minor note. 22 Credit. 23 Toward. 25 Northeast. 26 Form of "be." 27 Food container. 29 His religion is 52 Too. large part of 55 Mohammedan —. 30 Piled out. 32 House cat. 33 Small cask. 35 Exists. 37 Therefore. 38 Type standard. 39 Street. 40 Male sheep. 42 To retrieve. 46 Hurray! 47 Bottles. 49 Reverence. 50 Dwelling. 52 Too. 53 Ringlet. 55 Mohammedan —. 56 Mesh of lace. 57 Pastry. 58 Beverage. 60 Thing. 61 Paid publicity. 62 He was a —. 63 Right. 64 Departed boat. 65 More depressed. 66 Forearm bone. 67 Noise. 68 To accomplish. 69 To be in. 70 African antelope. 71 Onager. 72 Sventh note. 73 Constellation. 74 Baking cloth. 75 Ocean. 76 3,1416. 77 August (a).

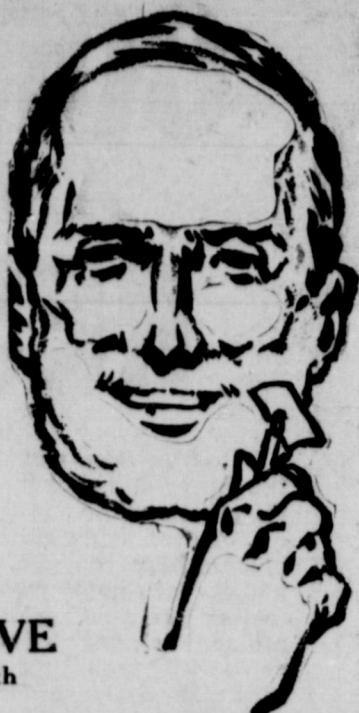




By Blo... THE EX... HE HE... TO SEE... E FAIL!

WAKE UP... ND FIND... E KITCHEN... THE BE... KS IN... NE LUNCHE... YRY A WANT AD—IT ALWAYS PAYS

ASK ABOUT ALL GAS KITCHEN SPECIAL



A SLICK SHAVE possible only with

HOT WATER

The gentleman of the house knows this. But, is he aware of the many other household activities which require hot water for a better, quicker job?



Special Terms Effective Now

- Installed for unusually small down payment. Balance in attractive monthly payments. Trade-in allowance on your present water heater. Special February discount for cash.

Community Natural Gas Co.

That Reminds Me

(Continued from page 1)

somewhat and transfers were made. The present system is to go back to the former plan. Those who appeal for direct relief must register. Also those that apply for NRS, for work. One is not required to register for CWA.

Reports from business men this week are that business is not so good. This is due it is thought to the last minute rush of those who could scrape up the money to pay taxes—poll taxes and get out their automobile licenses.

H. W. Hipp left Thursday morning for Abilene where an all day and much of the night session will be devoted to discussing the angles of better business for the J. C. Penney Company.

Chamber of Commerce rooms

Thursday evening and formed a temporary organization to get behind the move to have a good winning baseball team for Eastland. There are many people here who are interested in baseball and this move will be met with much joy.

Staff and Colony Will Have Services Sunday, February 4

Rev. Ephraim D. Conway, circuit rider of the Ranger district of the Methodist church, is attending the Kingdom Extension conference of the church held in Fort Worth.

At the Staff Methodist Church, South, on Sunday morning Rev. Conway will preach on the subject, "The Stewardship of Life."

At the Colony district schoolhouse, Rev. Conway, Sunday night at 7:15, will preach on the subject, "The Discipline of the Christian Life Characteristic of Jesus."

CARBON

The Women's Missionary society meeting at the Baptist church was well attended Monday and the Bible study conducted by Rev. A. A. Davis was enjoyed by all present.

CROSS ROADS

CROSS ROADS, Feb. 1.—Health in this community is very good at present.

Political Announcements

This paper is authorized to announce the following candidates for office, subject to the Democratic Primary Election in July 1934:

- For Congress, 17th District: ?????????
For Representative in State Legislature, 107th District: ?????????
For District Attorney: ?????????
For District Clerk: ?????????
For County Judge: ?????????
For County Attorney: ?????????
For Sheriff, Eastland County: VIRGE FOSTER
For County Superintendent: ?????????
For County Clerk: ?????????
For County Treasurer: ?????????
For Tax Assessor and Tax Collector, Eastland County: ?????????
For Commissioner, Precinct No. 1: ?????????
For Commissioner, Precinct No. 2: ?????????
For Commissioner, Precinct No. 3: ?????????
For Commissioner, Precinct No. 4: ?????????
For Constable, Precinct No.—: ?????????

ELECTRICAL APPLIANCES

Texas Electric Service Co.

TEXACO CERTIFIED LUBRICATION FIRESTONE TIRES

Eastland Gasoline Co.

OLDEN

Olden high school basketball boys and girls played the Colony teams a double-header basketball game at the Eastland gymnasium Monday night.

Mr. and Mrs. Edgar R. Anderson moved to Thurber Tuesday. Mr. Anderson has accepted a position with the Texas Pacific company at Thurber and begins his new work Feb. 1.

Mr. and Mrs. Johnnie Mitchell have a new baby boy, born a few days ago. Mother and baby are doing well.

People in the Olden vicinity were glad because of the freeing weather the past two nights, thus holding the fruit tree buds back and making the prospects for a good fruit crop more certain.

Olden Boy Scouts with Scoutmaster Fred Warren and Committeeman C. I. Hyatt attended the scout rally held in Cisco Friday night and reported a fine time.

Among those from Olden who attended one of the Roosevelt birthday dances, were Mr. and Mrs. C. I. Hyatt, Gray Smith, Eloise Morton, Jean Adams, Cordell Upton and Baldrige Crawford.

Walter Wyatt received word Wednesday of the death of Will Boyd of near Loveland. Mr. Boyd was or many years a citizen of this community and many friends regret his death.

Rev. A. A. Davis and wife and Mrs. W. W. Speer attended the funeral of Mr. Jobe in Ranger last Friday afternoon, when Rev. Davis assisted in the funeral rites.

Miss Esther McAlester, who is teaching in T. W. C., Fort Worth, visited relatives and friends here last week-end.

Mmes. W. W. and Woodrow Speer visited Mrs. C. M. Cawley in Ranger Wednesday.

Mrs. W. V. Crossley visited her daughter, Mrs. Claud Blacklock, in Ranger, Wednesday.

Henry Hines and Woodrow Speer spent the week-end in Big Spring. Mrs. W. J. Hines returned home with them after a four weeks visit in Hobbs, N. M., and Big Spring.

Mrs. A. A. Davis and Mrs. Dutch Thurman met with Prof. F. M. Wood at the school auditorium Monday in the interest of organizing the Girl Scouts.

Mrs. B. F. Lovett is visiting her sisters, Mmes. Harper, Hearn and Cooper in the Long Branch community.

Miss Esta Lee Morris of Dublin is visiting her parents, Mr. and Mrs. N. C. Morris.

Mrs. Flowers has returned to her home in Grand Saline after an extended visit with Mr. and Mrs. Buck Flowers.

W. A. Tate was in Sipe Springs and Comanche Tuesday.

Mr. and Mrs. M. C. Tucker entertained the brothers and sisters of Mr. Tucker with a 12 o'clock dinner Sunday.

Mrs. Wallace Curtis has returned to her home in San Benito after an extended visit with her sister, Mrs. Hallie Senstrunk.

Frank Bussey and family have moved to Gunsight.

Mr. and Mrs. W. W. Speer, Mr. and Mrs. Laurence Owen and Mrs. Woodrow Speer visited Mr. and Mrs. Hugh Jennings at Baird Sunday.

Miss Ida Hines visited in Gorman Tuesday.

week-end in Ranger with Mr. and Mrs. Jim Stiffner.

Mr. and Mrs. H. D. Browning and daughter visited in the home of J. R. Hale Sunday.

Mr. and Mrs. E. M. Campbell attended church at Cheaney, Sunday.

Wesley Dunlap and family spent Saturday night and Sunday with Mr. and Mrs. Henry Dunlap.

Mr. and Mrs. V. E. Pedigo went fishing Monday.

Stella, Aline and A. G. Kitchen spent Sunday in the home of H. A. Negar.

Herman Browning visited Terrell Hale Sunday.

W. J. Akers visited F. E. Ferrell Sunday.

Grandma Hale and Mrs. Snow Love and son Williams, spent the

day Sunday with Mrs. Jid Blackwell.

J. W. Kitchen was in Ranger Thursday.

Mason Ferrell spent the week-end with his grandparents, Mr. and Mrs. J. T. Walton.

H. A. Nerger was in Ranger Saturday.

Mr. and Mrs. Minter and Henry Etta were in Ranger Tuesday.

O. E. Scott of Breckenridge visited F. E. Ferrell Saturday.

W. J. Akers visited F. E. Ferrell Sunday.

Grandma Hale and Mrs. Snow Love and son Williams, spent the

day Sunday with Mrs. Jid Blackwell.

J. W. Kitchen was in Ranger Thursday.

Mason Ferrell spent the week-end with his grandparents, Mr. and Mrs. J. T. Walton.

H. A. Nerger was in Ranger Saturday.

Mr. and Mrs. Minter and Henry Etta were in Ranger Tuesday.

O. E. Scott of Breckenridge visited F. E. Ferrell Saturday.

W. J. Akers visited F. E. Ferrell Sunday.

Grandma Hale and Mrs. Snow Love and son Williams, spent the

day Sunday with Mrs. Jid Blackwell.

J. W. Kitchen was in Ranger Thursday.

Mason Ferrell spent the week-end with his grandparents, Mr. and Mrs. J. T. Walton.

H. A. Nerger was in Ranger Saturday.

Mr. and Mrs. Minter and Henry Etta were in Ranger Tuesday.

O. E. Scott of Breckenridge visited F. E. Ferrell Saturday.

W. J. Akers visited F. E. Ferrell Sunday.

Grandma Hale and Mrs. Snow Love and son Williams, spent the

day Sunday with Mrs. Jid Blackwell.

J. W. Kitchen was in Ranger Thursday.

Mason Ferrell spent the week-end with his grandparents, Mr. and Mrs. J. T. Walton.

H. A. Nerger was in Ranger Saturday.

Mr. and Mrs. Minter and Henry Etta were in Ranger Tuesday.

Release of Vendor's Lien: Geo. D. Pee to W. H. Mayhew. lot 1-2 block 64 Cisco, \$100.00.

Assignment of Oil and Gas Lease: E. R. Bahan to I. L. Keough, 80 acres section 80 block 4 H&TC Ry. survey, 1-16 interest.

Release of Vendor's Lien: Geo. D. Pee to W. H. Mayhew. lot 1-2 block 64 Cisco, \$100.00.

Release of Vendor's Lien: S. B. Dupriest to L. L. Mead, 2 acres W. C. Grimes survey, \$400.00.

Warranty Deed: Ulric Catron to L. H. Frels, 88 3-4 acres William Frels survey, \$1000.00.

Warranty Deed: S. D. Dupriest to L. L. Mead, 5 acres W. C. Grimes survey, \$500.00.

Transfer of Lien: Mrs. Nannie Walker to Home Owners Loan Corp. 4 notes by J. L. Elmore, \$1000.00.

Deed of Trust: J. L. Elmore to Home Owners Loan Corp., 3 tracts, \$1550.18.

Marriage License: Elmer R. Sewell and Madie S. Todd, Ranger.

TRY A WANT AD

PIGGLY WIGGLY advertisement with various food items and prices: Texas FLOUR, PINEAPPLE, PEACHES, CHERRIES, PORK & BEANS, RAISINS, JELLO, DATES, SOAP, PALMOLIVE, CAMAY, COCOA, Pure East Texas SORGHUM, Pipkin's Special COFFEE, Home-Made GRAPE JELLY, GERBER'S FOOD for Babies, CREAM MEAL 20-pound bag 45c, Sour or Dill PICKLES, Hand-Packed TOMATOES, PINK SALMON, Baking Powder, LETTUCE, BANANAS, APPLES, CABBAGE, ORANGES, QUALITY MEATS, LAMB CHOPS, CHEESE, SLICED BACON, STEAK, PORK ROAST, BABY BEEF ROAST.

ANNOUNCING NOW OPEN SERVICE STATION. 414 SOUTH SEAMAN STREET. Phone 20. F-E-A-T-U-R-I-N-G. WASHING GREASING, CHARGE BATTERIES, TIRE REPAIRS, ROAD SERVICE. MARATHON OILS AND GASOLINE. Also Dealer in GOOD YEAR TIRES AND TUBES. COMPLETE LINE AUTO ACCESSORIES. Next Time... for Service Come to GUY PATTERSON SERVICE STATION. 414 SOUTH SEAMAN STREET. Phone 20.



# DESDEMONA

**Special Correspondent.**  
**DESDEMONA, Feb. 1.**—Mrs. Eugene Ashley of Eastland was the guest of her parents, Mr. and Mrs. W. R. McGowan several days this week. Mr. Ashley came down and spent Sunday with them.  
 Mrs. Mattie Henry, Mrs. J. E. Heeter and Miss Ruth Crenshaw drove down to Daleton Friday.  
 Mr. and Mrs. W. E. Barron and son, Billy Jack, and their mother, Mrs. R. K. Glanton, drove over to their farm, near Stephenville, Sunday afternoon.  
 Mrs. Roy Ashburn and two children, Anita and baby Kenneth, and Mr. J. N. Williams drove up to Ranger, Sunday.  
 Miss Minyon Whitworth, who is attending John Tarleton College at Stephenville, spent the week-end here with her parents, Mr. and Mrs. W. H. Whitworth. She was accompanied by Miss Wanda Smith, who also attends John Tarleton College.  
 Mayor A. C. Robert drove up to Eastland on business Monday.  
 Members of the "21" Study club met Tuesday, January 23, at the home of Mrs. Fred Welder. After a brief business session, the leader, Mrs. John Mendenhall introduced the following program:  
 "Two Women Governors," Mrs. Bratton; "Mrs. Franklin D. Roosevelt," Mrs. A. B. Henslee; "Ruth Bryan Owen," Mrs. A. C. Moore; "Francis Perkins," Mrs. Robert; "Two Women Senators," Mrs. Mendenhall; reading, "The Ship of State," Mrs. Maltby; Better English Drill, Mrs. Barron; Questions, Mrs. Ludwick. At the conclusion of the program the hostesses, Mrs. Welder and Mrs. Maltby served a delicious refreshment plate consisting of cherry pie with whipped cream and coffee to the following members: Mmes. A. C. Moore, A. C. Robert, A. B. Henslee, Roy Ashburn, W. H. Davis, Plummer Ashburn, S. E. Snodgrass, D. B. Parks, Mattie King, J. E. Heeter, Aaron Henslee, John Mendenhall, C. M. Bratton, W. E. Barron, Ralph Ludwick and W. C. Bedford.  
 Weldon Rushing and his mother, Mrs. J. H. Rushing Sr., were guests of Mr. and Mrs. W. J. Herrington at Eastland, Saturday.  
 A number of friends of Mr. and Mrs. Hardie Tidwell gave them a surprise party and shower of gifts at the home of their mother, Mrs. Guy Tidwell, Saturday night.  
 Miss Cornelia Arthur and Jack Riley were married Saturday, Jan. 27. The bride is the daughter of Mr. and Mrs. C. W. Arthur and the groom is the son of Mr. and Mrs. Ed Riley of the Jake Hamon community. The groom has been working at Kilgore for some time. Their many friends are extending congratulations and good wishes.  
 Recently a number of young people formed a new bridge club to meet each Thursday night and play contract bridge. On Thursday night of week before last, Mrs. C. D. Wood was hostess, and those present were: Miss Dorcas Eze, Mr. and Mrs. Plummer Ashburn, Mr. and Mrs. A. H. Johnson, Mr. and Mrs. Joe Merrill, the host and hostess, Mrs. Plummer Ashburn and Mr. A. H. Johnson were winners of high score. Refreshments of date pudding with whipped cream, cheese nut sandwiches and coffee were much enjoyed.  
 On Thursday night Mrs. Joe Merrill was hostess and those present were Messrs and Mmes. C. D. Wood, Claude Lee, Plummer Ashburn, A. B. Henslee, Mrs. Obed Henslee and Mrs. Jesse Sparkman. High score winners were Mrs. Ashburn and Mr. Wood. The host and hostess served delicious elite salad, caramel cake and coffee.  
 The Methodist Missionary Society met at the home of Mrs. Ralph Ludwick with Mrs. C. M. Bratton co-hostess Monday afternoon. The meeting was opened by the president, Mrs. W. R. McGowan. After scripture reading and prayer the playlet, "Forget-Me-Not Magic" was given by Mmes. Z. L. Howell, I. N. Williams, Gifford Acree, W. E. Barron and Ralph Ludwick. The meeting was then turned over to the hostesses for the social hour. As suggestive of Valentine's Day, red and white paper hearts were passed for the contests. The first was filling blanks with names of trees to make phrases and the next was making words out of phrases. The game of buzz was then played and a whistling contest closed the interesting social hour after which the hostesses served delicious frozen fruit salad, cake and coffee. Those present were Miss Mollie Bear, Mmes. Z. L. Howell, W. E. Barron, G. S. Bruce, W. C. Bedford, Roy Ashburn, S. E. Snodgrass, Gifford Acree, Eugene Ashley, W. R. McGowan, I. N. Williams, Mattie Henry, Miss Lois Howell and the hostesses.  
 Perry Daily and Bert Holden of Big Spring were here on business Monday.  
 Mr. and Mrs. Claude Lee and little daughter Frankie Jean, returned Tuesday from Olney where they had visited relatives a few days.  
 Mr. and Mrs. Style McEntire and baby, James Edward, spent the week-end here with her mother, Mrs. J. E. Derrick.  
 Rev. Z. L. Howell drove out to Salem Saturday night and preached to a good crowd.  
 Platinum blonds are not so hot now, says Earl Carroll, famous theatrical producer, who thinks the dollar isn't the only thing in need of devaluation.

# Sunday School Lesson

PUTTING GOD'S KINGDOM FIRST

Text: Matt. 6:1-34

The International Uniform Sunday School Lesson for Feb. 4

By WM. E. GILROY, D. D., Editor of The Congregationalist

The message that Jesus brought to men concerned the Kingdom of God. It was a message for which many in Israel were prepared, for the religious life of Israel was marked by the hope of a coming Messiah and a Messianic kingdom.

Just what was the nature of this Kingdom of God that Jesus came to establish was then, and is now, a matter of much controversy. To some it was then, as it is to many today, a kingdom of truth and righteousness and justice to be established on earth. To others the Kingdom is more remote and spiritual in its nature.

To the latter its realization in the hearts of men is a force tending to change the world for the better, but the consummation of the Kingdom is not thought of as earthly or material except as earth and heaven may meet in "some far-off divine event."

Into these controversies and critical speculations and interpretations it is not necessary that we should enter in order to profit by the teaching of Jesus concerning the Kingdom. The fact is that we are interested in attention on questions about the Kingdom, while we neglect the realities of the Kingdom itself.

It was precisely this attitude that Jesus rebuke when he reminded those who were saying that the Kingdom of Heaven is "Lo, here" and "Lo, there," that it was a Kingdom within their own hearts.

It is more profitable to consider the characteristics and attributes of the Kingdom, the sort of life lived by its King, and the sort of life and character demanded in its subjects, than to enter into speculations concerning how and when some outward manifestation of the Kingdom is to come.

When we approach the Kingdom of God in this way, these characteristics are marked rather plainly. The Kingdom of God, the King, and His subjects are all very definite.

When we approach the Kingdom of God in this way, these characteristics are marked rather plainly. The Kingdom of God, the King, and His subjects are all very definite.

When we approach the Kingdom of God in this way, these characteristics are marked rather plainly. The Kingdom of God, the King, and His subjects are all very definite.

When we approach the Kingdom of God in this way, these characteristics are marked rather plainly. The Kingdom of God, the King, and His subjects are all very definite.

When we approach the Kingdom of God in this way, these characteristics are marked rather plainly. The Kingdom of God, the King, and His subjects are all very definite.

When we approach the Kingdom of God in this way, these characteristics are marked rather plainly. The Kingdom of God, the King, and His subjects are all very definite.

When we approach the Kingdom of God in this way, these characteristics are marked rather plainly. The Kingdom of God, the King, and His subjects are all very definite.

When we approach the Kingdom of God in this way, these characteristics are marked rather plainly. The Kingdom of God, the King, and His subjects are all very definite.

When we approach the Kingdom of God in this way, these characteristics are marked rather plainly. The Kingdom of God, the King, and His subjects are all very definite.

When we approach the Kingdom of God in this way, these characteristics are marked rather plainly. The Kingdom of God, the King, and His subjects are all very definite.

When we approach the Kingdom of God in this way, these characteristics are marked rather plainly. The Kingdom of God, the King, and His subjects are all very definite.

When we approach the Kingdom of God in this way, these characteristics are marked rather plainly. The Kingdom of God, the King, and His subjects are all very definite.

When we approach the Kingdom of God in this way, these characteristics are marked rather plainly. The Kingdom of God, the King, and His subjects are all very definite.

When we approach the Kingdom of God in this way, these characteristics are marked rather plainly. The Kingdom of God, the King, and His subjects are all very definite.

When we approach the Kingdom of God in this way, these characteristics are marked rather plainly. The Kingdom of God, the King, and His subjects are all very definite.

When we approach the Kingdom of God in this way, these characteristics are marked rather plainly. The Kingdom of God, the King, and His subjects are all very definite.

When we approach the Kingdom of God in this way, these characteristics are marked rather plainly. The Kingdom of God, the King, and His subjects are all very definite.

When we approach the Kingdom of God in this way, these characteristics are marked rather plainly. The Kingdom of God, the King, and His subjects are all very definite.

When we approach the Kingdom of God in this way, these characteristics are marked rather plainly. The Kingdom of God, the King, and His subjects are all very definite.

When we approach the Kingdom of God in this way, these characteristics are marked rather plainly. The Kingdom of God, the King, and His subjects are all very definite.

When we approach the Kingdom of God in this way, these characteristics are marked rather plainly. The Kingdom of God, the King, and His subjects are all very definite.

When we approach the Kingdom of God in this way, these characteristics are marked rather plainly. The Kingdom of God, the King, and His subjects are all very definite.

When we approach the Kingdom of God in this way, these characteristics are marked rather plainly. The Kingdom of God, the King, and His subjects are all very definite.

When we approach the Kingdom of God in this way, these characteristics are marked rather plainly. The Kingdom of God, the King, and His subjects are all very definite.

When we approach the Kingdom of God in this way, these characteristics are marked rather plainly. The Kingdom of God, the King, and His subjects are all very definite.

When we approach the Kingdom of God in this way, these characteristics are marked rather plainly. The Kingdom of God, the King, and His subjects are all very definite.

When we approach the Kingdom of God in this way, these characteristics are marked rather plainly. The Kingdom of God, the King, and His subjects are all very definite.

When we approach the Kingdom of God in this way, these characteristics are marked rather plainly. The Kingdom of God, the King, and His subjects are all very definite.

When we approach the Kingdom of God in this way, these characteristics are marked rather plainly. The Kingdom of God, the King, and His subjects are all very definite.

When we approach the Kingdom of God in this way, these characteristics are marked rather plainly. The Kingdom of God, the King, and His subjects are all very definite.

When we approach the Kingdom of God in this way, these characteristics are marked rather plainly. The Kingdom of God, the King, and His subjects are all very definite.

When we approach the Kingdom of God in this way, these characteristics are marked rather plainly. The Kingdom of God, the King, and His subjects are all very definite.

When we approach the Kingdom of God in this way, these characteristics are marked rather plainly. The Kingdom of God, the King, and His subjects are all very definite.

When we approach the Kingdom of God in this way, these characteristics are marked rather plainly. The Kingdom of God, the King, and His subjects are all very definite.

When we approach the Kingdom of God in this way, these characteristics are marked rather plainly. The Kingdom of God, the King, and His subjects are all very definite.

When we approach the Kingdom of God in this way, these characteristics are marked rather plainly. The Kingdom of God, the King, and His subjects are all very definite.

When we approach the Kingdom of God in this way, these characteristics are marked rather plainly. The Kingdom of God, the King, and His subjects are all very definite.

When we approach the Kingdom of God in this way, these characteristics are marked rather plainly. The Kingdom of God, the King, and His subjects are all very definite.

When we approach the Kingdom of God in this way, these characteristics are marked rather plainly. The Kingdom of God, the King, and His subjects are all very definite.

When we approach the Kingdom of God in this way, these characteristics are marked rather plainly. The Kingdom of God, the King, and His subjects are all very definite.

When we approach the Kingdom of God in this way, these characteristics are marked rather plainly. The Kingdom of God, the King, and His subjects are all very definite.

When we approach the Kingdom of God in this way, these characteristics are marked rather plainly. The Kingdom of God, the King, and His subjects are all very definite.

When we approach the Kingdom of God in this way, these characteristics are marked rather plainly. The Kingdom of God, the King, and His subjects are all very definite.

When we approach the Kingdom of God in this way, these characteristics are marked rather plainly. The Kingdom of God, the King, and His subjects are all very definite.

When we approach the Kingdom of God in this way, these characteristics are marked rather plainly. The Kingdom of God, the King, and His subjects are all very definite.

When we approach the Kingdom of God in this way, these characteristics are marked rather plainly. The Kingdom of God, the King, and His subjects are all very definite.

When we approach the Kingdom of God in this way, these characteristics are marked rather plainly. The Kingdom of God, the King, and His subjects are all very definite.

When we approach the Kingdom of God in this way, these characteristics are marked rather plainly. The Kingdom of God, the King, and His subjects are all very definite.

When we approach the Kingdom of God in this way, these characteristics are marked rather plainly. The Kingdom of God, the King, and His subjects are all very definite.

When we approach the Kingdom of God in this way, these characteristics are marked rather plainly. The Kingdom of God, the King, and His subjects are all very definite.

When we approach the Kingdom of God in this way, these characteristics are marked rather plainly. The Kingdom of God, the King, and His subjects are all very definite.

When we approach the Kingdom of God in this way, these characteristics are marked rather plainly. The Kingdom of God, the King, and His subjects are all very definite.

When we approach the Kingdom of God in this way, these characteristics are marked rather plainly. The Kingdom of God, the King, and His subjects are all very definite.

When we approach the Kingdom of God in this way, these characteristics are marked rather plainly. The Kingdom of God, the King, and His subjects are all very definite.

When we approach the Kingdom of God in this way, these characteristics are marked rather plainly. The Kingdom of God, the King, and His subjects are all very definite.

When we approach the Kingdom of God in this way, these characteristics are marked rather plainly. The Kingdom of God, the King, and His subjects are all very definite.

When we approach the Kingdom of God in this way, these characteristics are marked rather plainly. The Kingdom of God, the King, and His subjects are all very definite.

When we approach the Kingdom of God in this way, these characteristics are marked rather plainly. The Kingdom of God, the King, and His subjects are all very definite.

# SCHOOL HILL

**Special Correspondent.**

Mrs. Warren Christian has been suffering with toothache, but is reported to be improving after having it lanced several times.

Mr. and Mrs. Smith of near Howard spent the day with their sister, Mrs. S. Brock, recently.

Several from here attended the play at Lowell Friday night.

Mrs. Mayland Seals of Iran visited her grandparents, Mr. and Mrs. J. O. Hare Sunday. Her mother, ather and sister came with her.

Several from Desdemona attended the singing here Saturday night.

Mr. Perry and family of Lowell attended the singing Saturday night.

Miss Opal Christian spent the day Sunday with Miss Bettie Hallmark.

Mrs. S. Brock spent Tuesday with her sister, Mrs. Mary Smith.

Mr. and Mrs. J. Y. Wells and family spent Sunday afternoon in the home of S. Brock.

F. W. Wells, J. O. Hare and J. L. Morrow were in Stephenville on business Saturday.

Miss Helen Huffman was a dinner guest of Miss Lois Anderson one day this week.

Several from Desdemona attended the singing here Saturday night.

Mr. Perry and family of Lowell attended the singing Saturday night.

Miss Opal Christian spent the day Sunday with Miss Bettie Hallmark.

Mrs. S. Brock spent Tuesday with her sister, Mrs. Mary Smith.

Mr. and Mrs. J. Y. Wells and family spent Sunday afternoon in the home of S. Brock.

F. W. Wells, J. O. Hare and J. L. Morrow were in Stephenville on business Saturday.

Miss Helen Huffman was a dinner guest of Miss Lois Anderson one day this week.

Several from Desdemona attended the singing here Saturday night.

Mr. Perry and family of Lowell attended the singing Saturday night.

Miss Opal Christian spent the day Sunday with Miss Bettie Hallmark.

Mrs. S. Brock spent Tuesday with her sister, Mrs. Mary Smith.

Mr. and Mrs. J. Y. Wells and family spent Sunday afternoon in the home of S. Brock.

F. W. Wells, J. O. Hare and J. L. Morrow were in Stephenville on business Saturday.

Miss Helen Huffman was a dinner guest of Miss Lois Anderson one day this week.

Several from Desdemona attended the singing here Saturday night.

Mr. Perry and family of Lowell attended the singing Saturday night.

Miss Opal Christian spent the day Sunday with Miss Bettie Hallmark.

Mrs. S. Brock spent Tuesday with her sister, Mrs. Mary Smith.

Mr. and Mrs. J. Y. Wells and family spent Sunday afternoon in the home of S. Brock.

F. W. Wells, J. O. Hare and J. L. Morrow were in Stephenville on business Saturday.

Miss Helen Huffman was a dinner guest of Miss Lois Anderson one day this week.

Several from Desdemona attended the singing here Saturday night.

Mr. Perry and family of Lowell attended the singing Saturday night.

Miss Opal Christian spent the day Sunday with Miss Bettie Hallmark.

Mrs. S. Brock spent Tuesday with her sister, Mrs. Mary Smith.

Mr. and Mrs. J. Y. Wells and family spent Sunday afternoon in the home of S. Brock.

F. W. Wells, J. O. Hare and J. L. Morrow were in Stephenville on business Saturday.

Miss Helen Huffman was a dinner guest of Miss Lois Anderson one day this week.

Several from Desdemona attended the singing here Saturday night.

Mr. Perry and family of Lowell attended the singing Saturday night.

Miss Opal Christian spent the day Sunday with Miss Bettie Hallmark.

Mrs. S. Brock spent Tuesday with her sister, Mrs. Mary Smith.

Mr. and Mrs. J. Y. Wells and family spent Sunday afternoon in the home of S. Brock.

F. W. Wells, J. O. Hare and J. L. Morrow were in Stephenville on business Saturday.

Miss Helen Huffman was a dinner guest of Miss Lois Anderson one day this week.

Several from Desdemona attended the singing here Saturday night.

Mr. Perry and family of Lowell attended the singing Saturday night.

Miss Opal Christian spent the day Sunday with Miss Bettie Hallmark.

Mrs. S. Brock spent Tuesday with her sister, Mrs. Mary Smith.

Mr. and Mrs. J. Y. Wells and family spent Sunday afternoon in the home of S. Brock.

F. W. Wells, J. O. Hare and J. L. Morrow were in Stephenville on business Saturday.

Miss Helen Huffman was a dinner guest of Miss Lois Anderson one day this week.

Several from Desdemona attended the singing here Saturday night.

Mr. Perry and family of Lowell attended the singing Saturday night.

Miss Opal Christian spent the day Sunday with Miss Bettie Hallmark.

Mrs. S. Brock spent Tuesday with her sister, Mrs. Mary Smith.

Mr. and Mrs. J. Y. Wells and family spent Sunday afternoon in the home of S. Brock.

F. W. Wells, J. O. Hare and J. L. Morrow were in Stephenville on business Saturday.

Miss Helen Huffman was a dinner guest of Miss Lois Anderson one day this week.

Several from Desdemona attended the singing here Saturday night.

Mr. Perry and family of Lowell attended the singing Saturday night.

Miss Opal Christian spent the day Sunday with Miss Bettie Hallmark.

Mrs. S. Brock spent Tuesday with her sister, Mrs. Mary Smith.

Mr. and Mrs. J. Y. Wells and family spent Sunday afternoon in the home of S. Brock.

F. W. Wells, J. O. Hare and J. L. Morrow were in Stephenville on business Saturday.

Miss Helen Huffman was a dinner guest of Miss Lois Anderson one day this week.

# Yard Improvement During And After Freezes of Winter

By MISS RUTH HAMEY Home Demonstration Agent

How can one protect shrubs from a late freeze? January has been warm and rainy in some sections of the state and shrubs have begun to put on Spring growth, so that a late freeze would find them easy prey.

There is no practical way. Root pruning might help to keep the plant alive if one knew the freeze was coming, but suppose there was no freeze. So much growth would be lost by the root pruning that it might as well be lost by freezing. The best method is to select hardy shrubs in the beginning, stop cultivation early in the fall, withhold fertilized and pruning, and then just take the risk.

When should fertilizing and pruning be done, then?

Preferably just after the last big freeze, if you can determine that time. The plant can then respond to all growth stimuli without harm. This applies to roses, too.

Should shrubs be pruned back immediately after a hard freeze?

After frost injuries it is best to cut the plants back as soon as the extent of the injury can be determined. Otherwise the sap courses in some plants, (as in the case of the sweet potato or the elm) and causes the death of the plant. Heat hastens this soiling; that is the reason that after frost injury plants should be protected from the sunshine if possible. Not all plants are affected in this way, but since it is not known definitely just which plants are affected, it is best to prune. The only disadvantage to pruning is that one may prune off more than the injured part and so lose some growth.

In transplanting shrubs it is a good plan to put fertilizer directly around the roots?

No. The fertilizer would ordinarily dry out the roots and the leaves of the plant would turn yellow and appear burned. A better plan would be to work in ordinary top soil or garden soil around the roots of the plant. The soil should be tamped carefully leaving a slight depression around the plant. Water should be applied to settle dirt and remove air spaces. When the water is soaked in, the depression can be filled. Fertilizer can then be added to the top of the bed, as a mulch, being sure that it is not allowed to touch the stems of the plant.

Fertilizer is of little importance at planting time, compared to the importance of having the whole shrub bed pulverized to a depth of 10 to 18 inches. Plant food can be added easily anytime, but once plants have been set in pot-holes, the chance to work the beds in proper shape easily is forever gone. Poor preparation of soil is the cardinal sin of a gardener.

When should fertilizing and pruning be done, then?

Preferably just after the last big freeze, if you can determine that time. The plant can then respond to all growth stimuli without harm. This applies to roses, too.

Should shrubs be pruned back immediately after a hard freeze?

After frost injuries it is best to cut the plants back as soon as the extent of the injury can be determined. Otherwise the sap courses in some plants, (as in the case of the sweet potato or the elm) and causes the death of the plant. Heat hastens this soiling; that is the reason that after frost injury plants should be protected from the sunshine if possible. Not all plants are affected in this way, but since it is not known definitely just which plants are affected, it is best to prune. The only disadvantage to pruning is that one may prune off more than the injured part and so lose some growth.

In transplanting shrubs it is a good plan to put fertilizer directly around the roots?

No. The fertilizer would ordinarily dry out the roots and the leaves of the plant would turn yellow and appear burned. A better plan would be to work in ordinary top soil or garden soil around the roots of the plant. The soil should be tamped carefully leaving a slight depression around the plant. Water should be applied to settle dirt and remove air spaces. When the water is soaked in, the depression can be filled. Fertilizer can then be added to the top of the bed, as a mulch, being sure that it is not allowed to touch the stems of the plant.

Fertilizer is of little importance at planting time, compared to the importance of having the whole shrub bed pulverized to a depth of 10 to 18 inches. Plant food can be added easily anytime, but once plants have been set in pot-holes, the chance to work the beds in proper shape easily is forever gone. Poor preparation of soil is the cardinal sin of a gardener.

When should fertilizing and pruning be done, then?

Preferably just after the last big freeze, if you can determine that time. The plant can then respond to all growth stimuli without harm. This applies to roses, too.

Should shrubs be pruned back immediately after a hard freeze?

After frost injuries it is best to cut the plants back as soon as the extent of the injury can be determined. Otherwise the sap courses in some plants, (as in the case of the sweet potato or the elm) and causes the death of the plant. Heat hastens this soiling; that is the reason that after frost injury plants should be protected from the sunshine if possible. Not all plants are affected in this way, but since it is not known definitely just which plants are affected, it is best to prune. The only disadvantage to pruning is that one may prune off more than the injured part and so lose some growth.

In transplanting shrubs it is a good plan to put fertilizer directly around the roots?

No. The fertilizer would ordinarily dry out the roots and the leaves of the plant would turn yellow and appear burned. A better plan would be to work in ordinary top soil or garden soil around the roots of the plant. The soil should be tamped carefully leaving a slight depression around the plant. Water should be applied to settle dirt and remove air spaces. When the water is soaked in, the depression can be filled. Fertilizer can then be added to the top of the bed, as a mulch, being sure that it is not allowed to touch the stems of the plant.

Fertilizer is of little importance at planting time, compared to the importance of having the whole shrub bed pulverized to a depth of 10 to 18 inches. Plant food can be added easily anytime, but once plants have been set in pot-holes, the chance to work the beds in proper shape easily is forever gone. Poor preparation of soil is the cardinal sin of a gardener.

When should fertilizing and pruning be done, then?

Preferably just after the last big freeze, if you can determine that time. The plant can then respond to all growth stimuli without harm. This applies to roses, too.

Should shrubs be pruned back immediately after a hard freeze?

After frost injuries it is best to cut the plants back as soon as the extent of the injury can be determined. Otherwise the sap courses in some plants, (as in the case of the sweet potato or the elm) and causes the death of the plant. Heat hastens this soiling; that is the reason that after frost injury plants should be protected from the sunshine if possible. Not all plants are affected in this way, but since it is not known definitely just which plants are affected, it is best to prune. The only disadvantage to pruning is that one may prune off more than the injured part and so lose some growth.

In transplanting shrubs it is a good plan to put fertilizer directly around the roots?

No. The fertilizer would ordinarily dry out the roots and the leaves of the plant would turn yellow and appear burned. A better plan would be to work in ordinary top soil or garden soil around the roots of the plant. The soil should be tamped carefully leaving a slight depression around the plant. Water should be applied to settle dirt and remove air spaces. When the water is soaked in, the depression can be filled. Fertilizer can then be added to the top of the bed, as a mulch, being sure that it is not allowed to touch the stems of the plant.



OUT OUR WAY



COMING DOWN WITH THE GRIP.

Newfangles (Mom 'n' Pop)

By Cowen



Old West is Still Strong Among Youths

By United Press

AGLE PASS, Tex.—The lure of the Old West is still strong in parts of young America. They go to Eagle Pass, by ones and every month, with the fire of adventure in their eyes, a few dollars in their pockets, usually a pistol in their belts, and an insatiable curiosity about this "last frontier."

actions, evidently expect to have to "shoot it out" with some of the hardened characters who used to roam this section, but who are now a little more than a memory. The latest prospective had men to arrive here lost no time in outfitting themselves for the life of true westerners. They were Robert Brown, 13, and Harry Brown, 10, brothers, who had run away from their father's home at Glade-water, Texas, two days before. Immediately after they stepped out of the bus, there youngsters went to a hardware store where they bought a 32-20 rifle, several rounds of ammunition, a large hunting knife, a hatchet, and paid for them in cash. When they were picked up by a deputy sheriff that same afternoon they were looking for a couple of "cheap horses" for which they had \$20 to spend. Where they would have gone if they had found a mount was a matter they were not permitted to decide, as the officer considered the young expedition too dangerous. Consequently, he took the two boys in custody and notified the father that his missing sons had been found.

CANES MADE OF HICKORY

By United Press

OSKALOOSA, Ia.—William Clayworth lived nearly 70 years on his farm near here before he found any good use for the hickory sprouts that continually sprang up in his fields. Now he makes canes of them and gives them to his friends.

HEY OOP

By HAMLIN



ONIONS ADDED TO SHOW PORTLAND, Ore.—Pacific International Livestock Show here next fall will be materially strengthened by addition of an international onion show.

HOPPER POISON KILLS COWS MERRILL, Wis.—Molasses and bran, prepared to poison grasshoppers, tasted good to a herd of cows on the Gottlieb Karau farm. Nearly a dozen of the cows died.

LOW FIRE LOSS By United Press TWO RIVERS, Wis.—City officials believe that the 1933 fire loss here of \$401,500, or four cents per capita, is the lowest in the nation, which has an average fire loss of \$5 per capita.

ROSS WITNESS DIES POTTSVILLE, Pa.—The only witness to the famous kidnaping of Charles Ross from his parents' home in Philadelphia more than 50 years ago, died here recently. William Garetson, 62, was a playmate of the Ross boy and was with him when two men abducted him.

Wards February FURNITURE SALE

Save 15 to 30% ON WARD'S LOW EVERYDAY PRICES!

Living Room SUITES Two-Piece Jacquard SPECIAL \$49.95 See These Beautiful Living Room Suites on Display



February Sale Special! All-Mohair 2 Pieces \$78.88 \$7 down, \$7.50 monthly, plus carrying charge. A big, comfortable suite—covered all over in genuine Angora Mohair! Frankly, we don't know where you'd go to equal this value! BUY DURING THIS SALE!

Mattress \$12.88 Innerspring—deep coils in felted cotton. Button tufted.

99-Coil SPRING February Sale Special! \$7.88 Double deck coils of best wire money can buy. Enameled finish.

3-Pc. Suite Special \$48.88 These suites will race away at this Sale price! Bed, dresser, and chest in walnut finish. Special. \$5 down, \$5.50 monthly, plus carrying charge.

Pull-Up Chair \$6.88 Save at this low price. In Tapestry or velour. Only.

Window Shades No light gets thru. Rollers are dust-proof, shades are smooth. 44c 6 ft. long

Bed Spreads Colonial Rose, blue, orchid, green and gold. 80 x 105 \$1.59

81x99 Sheets Low Price! High Quality! Survive years of use! Long-wear quality. Muslin. \$1.00 ea.

Pillow Cases Wards Longwear Brand Firm muslin with straight, torn edges. Size 42x36. 26c

Studio Couch \$24.88 Opens to double or twin beds. 3 pillows.

Fringed Panel 29c each Off-marchette that hangs in soft folds. 3-in. fringe.

9x12-ft. Axminsters \$22.95 Watch these seamless wool Axminster Rugs speed out at this price. Oriental designs. Beautiful color combinations. 27x50-in. "Non-Skid" Axminster Rugs, \$1.98.

Table Special \$7.88 Beautifully shaped butt walnut veneer top. Only....

Curtain Fabric 12 1/2c 39-in. wide Grenadine with velvety cushion dots wovenright in.

Wardoleum Rugs! Yes, the 9x12-foot size! Price goes up March 1st. Brand new rugs, water-proof and stainproof. \$5.39 Our regular \$6.45 grade

MONTGOMERY WARD 407-409 W. Main St. Ranger, Texas



**COMING**

**Fred G. Brunk's Comedians**  
IN THEIR TENT  
**EASTLAND**

Week Starting  
**MONDAY, FEBRUARY 5th**  
New Show Every Night, Curtain at 8  
Presenting all new plays and vaudeville

Zeke Boyd's Nine-Piece Orchestra  
Featuring—  
Tiny and Freddie in a  
"CENTURY OF NONSENSE"

Brunk's Comedians are old time favorites with Eastland play-goers. You will like their 1934 company better than ever.

**BAND CONCERT AT 7 P. M.**  
IN FRONT OF TENT

---

**OPENING DAY**  
Monday, February 5th  
"BECAUSE SHE LOVED HIM SO"

A New York Comedy Dramatic success, and your favorite

**MONTEY STUCKEY**  
Comedian

Admission—  
Adults 20c; Children 10c  
Tent Comfortably Heated  
Tent Located Across from City Hall

CLIP THIS COUPON

This Coupon and 20c will admit one lady and gentleman or two ladies Monday, Tuesday and Wednesday night.

**THE FASHION INVITES YOU**



Spring STYLES!

To COME OUT

for Spring!

FOR JUNIORS, MISSES AND WOMEN!

Now on Our Racks

SPRING COATS

SPRING DRESSES

SPRING HATS

Swagger SUITS

THE FASHION

Eastland's Exclusive Ladies' Store No. Side of Square

**Local--Eastland--Social**

OFFICE 601 TELEPHONES RESIDENCE 288

**Tonight**  
Dragoo studio recital, 7:30 p. m., auditorium, Methodist church, students in violin and piano, and violin ensembles. Open invitation to public.  
Epworth league, district meeting, 8 p. m., Methodist church, Breckenridge.

**Saturday**  
Martha Dorcas class, country store. All day. Frost building. Chili lunch. Public invited.  
Junior Missionary auxiliary, 9:30 a. m., Baptist church.

**Prominent Pastor at Presbyterian Church Sunday**  
Dr. Davis, president of Daniel Baker college at Brownwood, will deliver the 11 a. m. sermon Sunday, Feb. 4, in the Presbyterian church.

The announcement is made by the officers of the Presbyterian Sunday school who invite the public to attend this special service, and stress the invitation to the young people, for whom Dr. Davis has a special message.

**High School P.-T. A.**  
One of the best meetings that the Parent-Teacher association of the Eastland high school has experienced this school term was that of Wednesday afternoon, with session held in the number 5 classroom.

Mrs. J. LeRoy Arnold called the meeting to order, with the Lord's Prayer spoken in unison. Minutes were submitted by their secretary, Mrs. D. L. Childress.

The nominating committee, Mrs. L. C. Brown, chairman, reported, and Mrs. L. J. Lambert was unanimously elected president of the association, to fill the unexpired term of Mrs. A. J. Campbell, who has moved from the city.

The business discussion was given largely to the form of expanding the Red Cross funds, turned back into the school, which was decided should be used in needy cases.

These funds were the contribu-

tions of the children in the Red Cross roll call membership drive, and which, by instruction of Mr. J. E. Spencer of Cisco, Eastland county chairman for the Red Cross, were proportionately divided between the public schools of Eastland.

The next meeting was announced for Feb. 21.

The program opened with a reading by Julia Brown, and balance of time was devoted to the round-table discussion of points brought out in the paper by Miss Belle Wilson, on "Home Study."

The chief result was, that parents should devote more time in the evening to their children's home study.

All the members of the faculty attended the meeting, and there were 20 patrons present.

**Wilda Dragoo**

The second of the recitals by the Wilda Dragoo studio will be given tonight in the Methodist church auditorium.

The program is rich and colorful selection, and promises a rare treat for the audience.

Concert opens at 7:30 p. m., sharp. The public is cordially invited to attend.

**Intermediate R. A.**

And G. A. Meets

The Intermediate Royal Ambassadors and Girls Auxiliary of the Baptist church held their usual meeting Wednesday afternoon in the church classrooms, opening with the assembly singing of "Tis So Sweet to Trust in Jesus," and "He Keeps Me Smiling," followed with prayer by Miss Geraldine Terrell, president of the organization, who conducted the session.

A party was planned at the home of Curtis Terrell, at 7:30 o'clock, Monday night, Feb. 5.

The Bible study, from St. Mark, was brought by their director, Mrs. L. G. Rogers, closing with prayer. Those present: Elena Drinkard, Fern Lee Frost, Faye Taylor, Wanda Lassater, Joy Coplen, Lucille Grissom, Beulah Drake, Annabelle Arterburn, Rowena Cook, Della Webb, Mary Shepherd, Georgia Bishop, Frances Norton, Angelina Meredith, Marzelle Wright, Geraldine Terrell, Lorene McCoy, and Dora B. Williams, who led the singing; Curtis Terrell, pianist for service; L. J. Lambert Jr., Jim Taylor, and Mrs. L. G. Rogers, director.

Martha Dorcas Country Store

A time of fun and frolic is ex-

**WOMAN'S WEAKNESS**

Mrs. C. M. Windham of 311 Lake Ave., Dallas, Texas, says: "I was nervous, rundown generally, had poor appetite, nervous pains in my back and side, lost weight and interest in life. Dr. Pierce's Favorite Prescription was helping me when I began to enjoy a full night's rest. Soon my nervous system returned to normal, my back and side, and my appetite returned. New size, tablets 50 cts., liquid \$1.00."

Martha Dorcas Country Store

A time of fun and frolic is ex-

**A B C**

GROCERY, MARKET and FEED FREE DELIVERY—ALL HOURS

<b>SUGAR</b> Imperial Cane 10 lbs. 53c	<b>SPUDS</b> 10 pounds 25c
<b>FLOUR</b> ROYAL BRAND 48 pounds \$1.48	<b>Break o' Morn COFFEE</b> 1 pound 19c 2 pounds 35c
<b>YAMS</b> pound 3c	<b>Sugar CORN</b> 3 No. 2 cans 27c
<b>BIG 4 Soap Flakes</b> 5 lbs. 35c	<b>SALT</b> 3 1-pound boxes 10c
<b>A-1 CRACKERS</b> 2-lb. box 25c	<b>BANANAS</b> lb. 7c

**MARKET SPECIALS**

<b>CHEESE</b> Full Cream lb. 18c	<b>STEAK</b> Any Cut Baby Beef lb. 15c	<b>Steaks</b> No. 7 lb. 10c
<b>CHILI</b> Home-Made lb. 14c	<b>ROAST</b> FANCY Beef . . . . 10c Pork . . . . 12 1/2c	<b>PORK</b> FANCY CHOP or HAM lb. 15c
<b>Meat Loaf</b> Ground Meat for 3 lbs. 25c	<b>Sausage</b> Country Style pound 10c	<b>Butter</b> Sweet Cream pound 23c

SEE US FOR FEED!

pected all day Saturday when the Martha Dorcas Bible class of the Methodist church will hold their sale of miscellaneous articles, a in country store, in the Frost building, with attractive saleswomen, the membership of the class, in charge.

Everything imaginable has been contributed to this undertaking, from clothing, shoes, hats, and miscellaneous articles of all kinds, as well as foods, chickens, finware, and the usual things by which a country store earns its name.

Patronize the ladies, enjoy the fun, and help in a worthy cause, that of aiding the class to discharge their obligation, assumed as their part of raising funds on the church indebtedness.

**Book Club Meets**

The Book club held an interesting meeting at the home of Mrs. Loyd McEwen, at the residence of her mother, Mrs. W. H. Taylor, Wednesday afternoon.

The session was opened by their president, Mrs. Scott W. Key. Following roll call, minutes were presented by their secretary, Mrs. Curtis A. Hertig.

Arrangements were made to hold their next session in two weeks as a club luncheon, at the Connellee hotel, at 1 p. m., with the usual program on which Mrs. P. G. Russell will present the book review.

The chair appointed as committee on arrangements, Mrs. John Hume, and Mrs. Curtis A. Hertig. Mrs. Key presented the program subject, "Irish Poetry," opening with a sketch of the author, William Butler Yeats, and his collected poems.

The study was very interesting, and was followed by the history of poetry in Ireland.

Mrs. McEwen gave a sketch of the biography of Yeats, and of George W. Moore.

Mrs. E. Freyschlag of Kansas City, Mo., was a guest of the club and members present were Mmes. Milburn McCarty, W. E. Chaney, John W. Turner, Walter I. Clark, Curtis A. Hertig, Byron Meredith, John Hume, Earl Johnson; president, Mrs. Scott W. Key, and hostess, Mrs. McEwen.

**Just-A-Mere Club**

Mrs. Weldon Graham was a delightful hostess to Just-A-Mere club Wednesday night, entertaining with four tables for bridge.

High score favor, four silver table mats, was awarded Miss Hassie Graham, and the traveling favor, a toilet accessory, went to Mrs. W. H. Cooper.

The guest favor in cut-for-all, a baked ware pie plate, went to Miss Bessie Marlow.

A delicious tea plate was served of fried oysters, potato flakes, congealed salad, wafers, small cakes and coffee to Misses Orlena Davenport, Fern Courtney, Hassie Graham, Nell Caton, Wilma Beard, Ila Mae Coleman, Bessie Marlow; Mmes. Dave Moody, Vaughn, Lynn Hightower, Homer Norton, Walter Green, W. H. Cooper.

Ranger guests were Misses Lucille Hawks and Evelyn Duke.

**Informal Dinner Party**

Mr. and Mrs. P. B. Bittle entertained with an informal dinner Wednesday evening at their residence, when three courses were served and a pink and green color motif carried out.

Pink snapdragons centered the table for which covers were laid for members of high school and ward school faculties, Mr. and Mrs. Hart, Miss Belle Wilson, Miss Lois Nelson, Miss Lavelle Hendrick, and host and hostess.

**Rebekah Lodge**

Mrs. Charles Seed, the new noble grand, conducted a business session of the Rebekah lodge Wednesday night, in I. O. O. F. hall.

New officers present were Mmes. Robert Pearson, Cy Butler, W. C. Marlow, and retiring noble grand, Mrs. Don Parker.

**Bronchial Irritations Need Creosote**

For many years our best doctors have prescribed creosote in some form for coughs, colds and bronchitis, knowing how dangerous it is to let them hang on.

Creomulsion with creosote and six other highly important medicinal elements, quickly and effectively stops coughs and colds that otherwise might lead to serious trouble.

Creomulsion is powerful in the treatment of colds and coughs, yet it is absolutely harmless and is pleasant and easy to take.

Your own druggist guarantees Creomulsion by refunding your money if you are not relieved after taking Creomulsion as directed. Beware the cough or cold that hangs on. Always keep Creomulsion on hand for instant use. (adv.)

**CLASSIFIED ADS**

**WANT TO SWAP**—For truck or car, 5 1/2 acres mostly outside city limits of Eastland on highway. Also well located business lot in Mesquite to trade. J. A. Cole, Box 294, Olney, Texas.

**Quick Automobile Loans and Refinancing**  
Terms To Suit You  
**CENTRAL LOAN CO**  
Ph. 700 208 E. Commerce St.  
D. E. Carter, Mgr. Eastland

If you want safe relief from Constipation

**Science says Today use a LIQUID Laxative**

1. Regulate intestinal action gently—no "purging"
2. Measure dose to suit your individual needs
3. Avoid Bowel Fatigue and the laxative habit

Here's Why:

Harsh laxatives often drain the system, weaken the bowel muscles, and in some cases even affect the liver and kidneys.

A doctor will tell you that the unwise use of harsh laxatives often does more harm than good.

Fortunately, the public is fast returning to the use of laxatives in liquid form.

A properly prepared liquid laxative brings a perfect movement. There is no discomfort at the time and no weakness after. You don't have to take "a double dose" a day or two later.

In buying any laxative, always read the label. Not the claims, but the contents. If it contains doubtful drugs, don't take it.

Dr. Caldwell's Syrup Pepsin is a prescription preparation in which there are no mineral drugs. Its ingredients are on the label. By using it, you avoid danger of bowel strain.

The liquid test:

This test has proved to many men and women that their trouble was not "weak bowels," but strong cathartics:

First, Select a good liquid laxative. 2. Take the dose you find is suited to your system. 3. Gradually reduce the dose until bowels are moving regularly without any need of stimulation.

Dr. Caldwell's Syrup Pepsin has the highest standing among liquid laxatives, and is the one generally used. It contains senna, a natural laxative which is perfectly safe for the youngest child. Your druggist has Dr. Caldwell's Syrup Pepsin.

Try a Want Ad

**BELL-HURST HATCHERY**

—will open Monday, February 5th. Custom hatching. Baby Chicks. Set every Monday. Will exchange hatchery service and baby chicks for grain or hay.

**BELL-HURST RANCH**

Phone 705 Eastland, Texas

Sliced BACON	Lb.	19c
Smoked BACON	Lb.	14c
Baby Beef STEAK	Lb.	15c
Chuck or Seven ROAST	Lb.	10c
Any Cut Pork ROAST	Lb.	12 1/2c
Short Rib VEAL	Lb.	7 1/2c
Full Cream CHEESE	Lb.	19c
Veal LOAF MEAT	3 Lbs.	25c

**We Have Another K. C. Corn Fed Beef For You**

<b>GOLDEN FRUIT BANANAS</b> Dozen 15c	<b>Firm Head LETTUCE</b> 5c	<b>Firm Med. Size CABBAGE</b> Pound 3c
<b>SOUTH TEXAS CARROTS</b> 3 bunches 10c	<b>Medium Size ORANGES</b> Dozen 19c	<b>Onion Plant</b> bu. 10c <b>Cabbage Plant</b> 3 bu. 25c

**Queen of the West FLOUR**

48 lbs. \$1.75  
24 lbs. 93c

**WAPCO Pork & Beans**

6 for 35c

**QUAKER OATS**

Large Package 18c

**Potted Meat**

6 cans 23c

**One DRIP-O-LATER and 1 lb. Folger's COFFE, both 98c**

**BROWN OR POWDERED SUGAR 3 pkgs. 25c**

**SALT 3 pkgs. 10c**

**HILO Baking Powder 10 pounds 98c**

**ALL FLAVORS JELLO 3 pkgs. 19c**

**SPECIAL FOR SATURDAY**

**Cash Grocery and Marke**

J. O. EARNEST JOHN H. HARRIS Telephone 330

**LYR TODAY NEWS TO**

LAST TIMES TO MAURICE CHEVALIER

in 'WAY TO L

Midnite Mat 11 P. M., SATUR

HE'S IN LO WITH HIS

and inspir

robbers made a go the Coleman bank. perfect rhythm in the ents from the time they first entered th the fast news of their One thing however is that it seems they ny in the party. Th

wish that we had and for them to "rol bank we just can't us a visit. Perhaps the near future we up to the fact that we need in Eastland bank. It will save t interests several t dragging off from a week besides the

for banking connecto cannot be said as to t bank . . . and all out ngains in our city for is justified. Man who heard the stateme who do not live h No bank in a town people! It's hard in can go is take a g mthole and keep c

used clothes matine Saturday morning use and those who the movement wei Lots of kiddies i school and keep wari ke, manager of th ated in the move picture and plenty He is usually al when it comes to ivic service and we have him on the j pictures coming up

featuring Edw mon in "Dark Hazar and Monday and Marie Dressler and more in "Her Sree Hal through the eff make, Eastland gets' shows.

that the tax payin are can think abou ing to eat and se There is only o Eastland people to bu Eastland. It's your t n, and a darn goo

ney Mana report Busin Much Impr

George H. Hipp, mana Eastland J. C. Penn not a group meetin ngers of West Texa at Abilene the la the week and report reating and profitab

ditions throughout he said, look rosy, bers of our organiz forward for still ments in business few months at least making improve: was pleased with check up on the group showed his a greater gain fo any other store in t Hipp is also en the prospects for tl store in Eastland future of Eastland as

Notice To Candidates

invite candida ments in the col Eastland Telegr for either the Tel ronic will be \$! ed in both pap 'S WILL BE C/ NCE WHEN TI CEMENT IS MA includes carryi in the announce through the prim un-off: When ment is made w give any inform sent that you d to the voters wi large. Thereaft tion that candid e through the will be charge or political rate at ng.