

AS
—
mce
rip-
in-
28
od's
nen,
God
and
low-
e is

Recent Rains Ruin Record

Eastland Telegram

"COVERING EASTLAND COUNTY"

United
Fund

VOLUME TWENTY-SEVEN

EASTLAND, TEXAS, TUESDAY, NOVEMBER 6, 1956

NUMBER 82

Moore... More Than Two Inches Guaged

ABOUT
Eastland
By Virgil E. Moore

Being a bull-headed Democrat we are not so sure today's election is being carried off just up to snuff the way it should be. Why we even noticed where they have got like counting the votes out at Pioneer.

Probably though, Ike Plumlee will be just as fair as a man can be. Even if the Republican candidate does have the same name.

We were mighty pleased this morning when we looked over at the courthouse and saw so many folks heading that way with pencils in their hands. A lot of folks sorry about the future of our country, and some guys will even tell you that if their boy doesn't win the election the end of the U.S.A. is just around the corner. As long as the citizens of this country get out and vote, and vote the way they themselves feel, we will have nothing to worry about. And by the way, you still have time to get to the polls before seven tonight if you hurry.

It's almost Christmas. We were jolted into realizing that today when we received our first letter to Santa to be forwarded to the North Pole. The letter came from Dixie Marie Young, and she says, "I would like the doll that is numbered 19, and I would like a bicycle."

We sure hope that Santa has that number in stock!

We are still scratching our heads about that B team touchdown Thursday night. If you didn't see it, you missed something. The Dublin punter was standing on about his own 15 and when he booted the ball it flew over the top of his head and rolled into the Dublin endzone. A flock of Eastland and Dublin boys rushed back to the ball and surrounded it. None of them attempted to jump on the ball and finally the officials blew it dead and ruled a touchdown for Eastland. Had Dublin recovered the ball we suppose it would have been a touchback, but then again it may have still been a touchdown since no Eastland boy had ever touched it.

Any way, during the rest of the game Eastland fans yelled "kick us another touchdown" everytime a Dublin boy went back to boot.

Speaking of dirty deals, Norman Guess pulled a lulu on us the other day. The phone rang out at the house and the operator said it was Norman Guess phoning collect. We could just see the old boy out of gas somewhere without any money or something so we accepted the charges. Norman came on laughing himself half to death. Then he explained that he was sitting in his office at Don Pierson Olds-Cadillac here in Eastland. They have a direct line to Abilene down there and since the local phone was busy he just used it. Brother!

I just laughed myself to death Saturday night at the annual Texas Electric Quarter-Century banquet. Clayton Rand, guest speaker, kept everyone holding his side throughout the evening with his witty remarks. He started things off fast, saying that he was pleased to note the progress of Eastland in the last five years.

"When I was here five years ago you folks were bragging about old Rip the horned toad. Imagine trying to sell a dead toad. But today you are the uplift capital of the world."

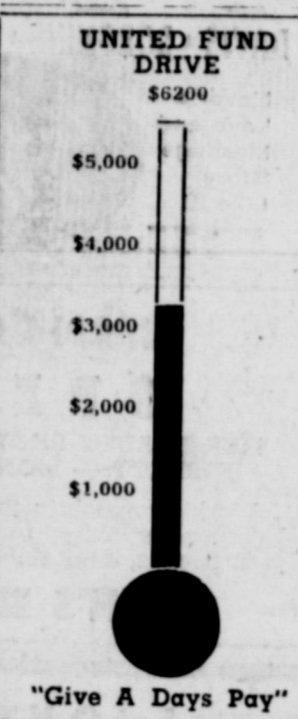
And may we take this opportunity to publicly thank Frank Sayre and the gang at Texas Electric for again inviting the Moores and the Dicks to be TESCO's guests.

Texas Electric demonstrates its feelings for its employees each year at this occasion. Nothing is too good for their employees on this occasion. It is the perfect sign of a good company, and one which Eastland is fortunate to have. Indeed fortunate, in fact, to have the district headquarters here.

That's it for now. See you Thursday.

Installation Loan Custom Made For Each Customer
EASTLAND NATIONAL BANK
Member F. D. I. C.

UNITED FUND DRIVE



SCOUTS HAVE OPPORTUNITY TO ATTEND FOURTH JAMBOREE

A 1,500-acre city will rise next July at historic Valley Forge in Pennsylvania. It will house 50,000 Boy Scouts, Explorers, and their leaders from every part of the nation, in addition to some Scouts from other lands.

It will be the Fourth National Jamboree of the Boy Scouts of America. The organization has held similar great encampments in 1937, 1950 and in 1955.

"Here is high adventure for boys at its best. Jamboree campers will be Scouts from all walks of life, all races and creeds living together governed by their Scout Oath and Law. Here the campers will exchange skills, swap home town products and learn about the customs and traditions of many sections of the nation and the world," Troy Boone, district executive said.

"It will be a self-sustaining venture," Boone said. "All 50,000 campers pay a fee covering the cost of food, use of equipment, and building the camp. It will have

The Scrap Man Will Get You, Rotarians Told

"The scrap man is a mixture of every factor of the iron and steel industry, from the humblest collector to the largest broker," Henry Pullman told Eastland Rotarians Monday in a classification talk.

"He is a man who functions without fanfare, deals very little with the general public and sells nothing to the general public," Pullman said. "He does not clamor for distinction, yet renders a service that is unequalled in the industrial history of the country. His duty is to absorb the enormous amount of discarded metal, sort and reduce it to size or specification, or form conforming to the standards set by the steel industry for shipment."

The Rotary speaker declared that, "Everything of iron and steel, wherever and however used, exists in a three dimensional world. Be it a bobby pin or a battleship, no sooner is iron and steel put into service than obsolescence, corrosion, failure — any one or all three — begin to attack it. Eventually they conquer it, reduce it to scrap."

Joe Davenport Pledges J-Frat

DENTON — Joe Davenport of Eastland has been named a member of Sigma Delta Chi, national journalism fraternity, at North Texas State College.

Davenport is a 1945 graduate of Eastland High School and is a senior journalism major.

QUEEN HONORS MAY GO TO MERLE CRAIG

Merle Craig, daughter of Mr. and Mrs. Guy Craig of Eastland, has been selected as one of three candidates for homecoming queen of Cisco Junior College.

Miss Craig, Norma Schaefer of Cisco and Jelene Richardson of May were chosen by popular vote of the entire student body Friday.

All three candidates will be presented at half-time of the CJC-Paris JC football game, Nov. 17, as the highlight of Homecoming Day activities. The identity of the queen will be kept a secret until the presentation.

Registration for the homecoming will begin at 1 p.m. at the administration building Saturday, Nov. 17. Other activities of the day will include a downtown parade, bonfire and pep rally, barbecue, and a reception following the game.

Area businesses have been invited to enter floats in the parade. Any person desiring to enter a float was asked to contact Wallace Fikes or Ben Green at the college before noon, Nov. 16.

Letters of invitation are being mailed to many ex-students. A cordial invitation was extended to any ex-student who might be missed.

Lone Star Gas Announces New Appointments

J. A. Bates of Ranger has been appointed to the newly created post of departmental superintendent of the gasoline department of Lone Star Gas and Lone Star Producing Co., it is announced. W. A. Robinson succeeds Bates as West Texas district superintendent to supervise operations of gasoline plants at Gordon and Pueblo and those in the Ranger-Breckenridge area.

J. R. Dugan, Jr., has been appointed assistant superintendent of gasoline plants. Ellie Gregory has been promoted to senior foreman of the tank car shops. N. E. Landers has been given additional work as supervisor of structure maintenance crews.

BE SURE—SEE Don Pierson Olds-Cadillac Eastland Quality Cars at Volume Prices

— FOR —
Fine Furniture, Floor Coverings, C. E. Appliances, It's Coats Furniture & Carpet, Ltd., Eastland, Free Delivery and Convenient Terms. Good Trade-Ins. too!

Awfully Close



Merle Craig, daughter of Mr. and Mrs. Guy Craig of Eastland, has been selected as one of three candidates for homecoming queen of Cisco Junior College.

Miss Craig, Norma Schaefer of Cisco and Jelene Richardson of May were chosen by popular vote of the entire student body Friday.

All three candidates will be presented at half-time of the CJC-Paris JC football game, Nov. 17, as the highlight of Homecoming Day activities. The identity of the queen will be kept a secret until the presentation.

Registration for the homecoming will begin at 1 p.m. at the administration building Saturday, Nov. 17. Other activities of the day will include a downtown parade, bonfire and pep rally, barbecue, and a reception following the game.

Area businesses have been invited to enter floats in the parade. Any person desiring to enter a float was asked to contact Wallace Fikes or Ben Green at the college before noon, Nov. 16.

Letters of invitation are being mailed to many ex-students. A cordial invitation was extended to any ex-student who might be missed.

J. A. Bates of Ranger has been appointed to the newly created post of departmental superintendent of the gasoline department of Lone Star Gas and Lone Star Producing Co., it is announced. W. A. Robinson succeeds Bates as West Texas district superintendent to supervise operations of gasoline plants at Gordon and Pueblo and those in the Ranger-Breckenridge area.

J. R. Dugan, Jr., has been appointed assistant superintendent of gasoline plants. Ellie Gregory has been promoted to senior foreman of the tank car shops. N. E. Landers has been given additional work as supervisor of structure maintenance crews.

BE SURE—SEE Don Pierson Olds-Cadillac Eastland Quality Cars at Volume Prices

— FOR —
Fine Furniture, Floor Coverings, C. E. Appliances, It's Coats Furniture & Carpet, Ltd., Eastland, Free Delivery and Convenient Terms. Good Trade-Ins. too!

Awfully Close

SUEZ

Opening of Polls Here Gets Voting Underway

Record Vote Is Possible In Eastland County

Eastland voters — some rather confused after a race to the wire by Texas Democrats and Republicans — were flocking to the polls this morning, and a good vote was practically assured.

Polls opened here at 8 a.m. and will remain open until 7 tonight. A complete tabulation for the county may be available sometime near midnight locally, although the outcome on the national election may not be known until Wednesday or possibly later.

Eastland voters who live west of Daugherty will vote at City Hall and those who live east of Daugherty vote at the courthouse.

District Scout Meeting Plans Are Announced

Ranger will be the scene of the annual meeting of the Boy Scouts of America, Northeast District, which comprises the counties of Erath, Comanche, Eastland, Stephens and Woodson.

The meeting will be held on November 19 at the First Methodist Church of Ranger where a banquet will be given for over 200 Scout leaders and friends of scouting, who will hear Dr. Guy D. Newman of Brownwood, president of Howard Payne College, deliver the principal address. Other activities will be presented by Cub Scouts, Boy Scouts and Explorer Scouts.

Reservations for the dinner are being made through unit committee chairmen or through the attendance committee which includes Sam Cleveland and Paul A. Cynus of Stephenville; Fred Henderson of Dublin; Glenn Mehaffey of Gorman; Arthur Deffebach and John Bates of Ranger; Dr. J. C. Whittington of Eastland; Dr. H. C. Brown of Cisco, and Jack Merrill and Jodie Baker of Breckenridge.

Reports of activities of this year will be made, and election and installation of officers for 1957 will be conducted.

Olden Juniors To Sponsor Red Fox Show Thurs.

OLDEN — The Olden Junior Class will sponsor the Fox Four-Seven Show here Thursday night in the high school gymnasium.

Red Fox, a product of Olden, will bring his TV show back to his home town for the occasion.

Tickets can be secured from any member of the Junior Class or at the Telegram office in Eastland. The show will begin at 7:45 and feature "all the Fox gang."

Marine Officers To Visit Ranger Junior College

Captain Marc A. Moore and Captain Robert W. Lewis, representing the Marine Corps, will visit the Ranger Junior College Campus on Friday, Nov. 9, it has been announced.

Students interested in receiving a commission in the Marine Corps Reserve or obtaining information on their present military training obligations should contact this team while it is in the city, it is said.



EASTLAND INVITED—at Fort Worth's Will Rogers Coliseum the annual Moslah Shrine Circus will open on Nov. 23 for a 10-day stand. There will be matinees on Nov. 24, 25, 29, 30 and Dec. 1 and 2. Among the outstanding acts of the all-professional show — the biggest circus today—will be: The Zachinis and their triple-cannon act; Pat Anthony and his African Lions; Clauson's Bears; Elly Ardel and Great Bersoni and his other circus acts. Reserve seats are on sale at Fort Worth's Hotel Texas. There are acres of free parking space.

'Y' Youth Center Draws 78 For Opening Friday

Seventy-eight members of the Hi-Y and Tri-Hi-Y organizations here turned out for the formal opening of the new YMCA youth center located in the basement of the Petroleum Building.

The opening, held Friday night, featured all games and events previously announced by the Y committee. Unexpectedly, however, chess almost stole the spotlight for the night.

The 78 in attendance represented the 96 members of the two groups, Mr. and Mrs. Russell Hill, Mr. and Mrs. Horace Horton and Mr. and Mrs. Jack Corothers served as supervisors for the occasion, in the absence of Jack Hoffman,

who had to scout the Albany-Throckmorton football game.

Following the opening affair, Mrs. Horton declared, "The enthusiasm and good behavior of the 'Y' members was simply wonderful. Their attitude assures the success of the venture."

Plans for a joint meeting tonight of the two organizations was also announced. The group will hear John Kennedy, area secretary for the YMCA, speak.

The new youth center will be open each Saturday afternoon from 2 to 4 and Saturday nights from 8 until 11.

Wreck Victims Leave Ranger Hospital Monday

Franklin W. Richardson of Strawn and Glenda Mae Smith of Matador, who were injured in a two-car crash at midnight Saturday at the intersection of U. S. Highway 80 and State Highway 16 about eight miles east of Ranger, which resulted in the death of a man and woman from Brownwood, left Ranger General Hospital Monday morning, after being taken there Saturday night following the accident.

Richardson was treated and allowed to return home, while Miss Smith, who suffered a broken chin and possible broken ankle, was transferred to an Abilene hospital.

Dead in the accident were Rosa Nevel Guzman, 44, driver of one of the cars, and James Wright Faris, 26, a passenger in the car. Both suffered broken necks. They were both brought to Ranger General Hospital where they died shortly after the collision. According to Highway Patrolman Les Stoen, the man and woman were residents of Brownwood.

Partly cloudy Tuesday and Wednesday. Slightly cooler Tuesday night.

Annual Poppy Sale Scheduled Saturday

The American Legion Auxiliary, Dublin-Daniel Unit No. 70, will hold its annual Poppy sale, Saturday, Mrs. S. F. Owen, local chairman of the sale, revealed today.

The poppies are made in veterans' hospitals by disabled veterans and the auxiliaries in the towns where the hospitals are located furnish all material for the

making of the poppies. The memorial poppies are made of red crepe paper, by hand, by disabled veterans in hospitals and poppy workrooms in 40 states. The worker receives pay for each poppy.

"This serves a two fold purpose," Mrs. Owen said. "The disabled veteran uses his hands and also receives money for making the poppy. Many veterans are in hospitals and do not receive any compensation or pension at all, and for many the making of the crepe paper poppy is his only income for himself and family."

When the Auxiliary worker sells the poppy, the proceeds can only be used for disabled veterans and their families. Two thirds of the money remains here to assist veterans, and one third is sent into Department headquarters to assist veterans in towns where there is no Legion Post and Auxiliary.

"No price is fixed for the poppy. The new-boy's pennies, and the business man's dollars are equally acceptable," said Mrs. Owen. "The amount dropped into the box of the poppy seller is a donation to relieve the suffering caused by war. The purpose of the Auxiliary's poppy program is to raise the symbol of heroic sacrifice above the heart of every true American, giving at the same time an opportunity to serve the war's living victims."

Your New Car Financed At Low Bank Rates With Year—EASTLAND NATIONAL BANK Member F. D. I. C.

UP IN THE WORLD—Keeping it in trim, Peira Schurman, 23, leaps over a park bench in London, England. The energetic beauty, representing Germany, has been named Miss World of 1956.

Eastland Telegram

Eastland County Record established in 1931, consolidated August 31, 1951. Chronicle established 1887, Telegram established 1923. Entered as second class matter at the Post Office at Eastland, Texas under the act of Congress of March 3, 1879.

VIRGIL E. MOORE, Editor
TIMES PUBLISHING COMPANY
Published Tri-Weekly—Tuesdays - Thursdays - Sundays
FRANCES MOORE, Society Editor

One week by carrier in city .15
One month by carrier in city .45
One year by mail in County 2.95
One year by mail in state 3.95
One year by mail out of state 5.95

NOTICE TO PUBLIC—Any erroneous reflection upon the character, standing or reputation of any person, firm or corporation which may appear in the columns of this newspaper will be gladly corrected upon being brought to the attention of the publishers.

Classified Ads..

Cards of Thanks charged for at rate of \$2.00 Each

FOR RENT - MISC. FOR SALE -

FOR RENT: Small furnished house with garage, bills paid. 211 East Valley.
FOR RENT: 4 room house, garage, 209 South Connellee. Call 842 after 5 p.m.
FOR RENT: Furnished apartments. 611 West Plummer.
FOR RENT: Furnished apartment. Phone 9620. Hillside Apartments.
FOR RENT: Newly decorated apartments. Phone 1085-W.
FOR RENT: 5 room house, 709 Halbryan. Contact Ben Hamner.
WANTED TO RENT: 2 bedroom house for the new Safeway manager, in Eastland. Room 210 Petroleum Building.

MISC. WANTED -
EMPLOYMENT wanted for young man. Mechanical, construction, or driving vehicle. Call 183.

WANTED: Trade or buy tractor (Ford preferred). Call R. H. Murray, Eastland Hotel, or write General Delivery.
WANTED: FINISH HIGH SCHOOL or grade school at home spare time. Books furnished. Diploma awarded. Start where you left school. Write Columbia School Box 1298 Abilene.

FOR WATER WELL: Drilling see Roy Parker, North Kent Street, or Box 225, Gorman, Tex.
WANTED: 40 head large feeder steers. Kirksey Locker, Throckmorton, Texas.

NOTICE

HIGH SCHOOL DIPLOMA
New Home Study High School Course enables you to finish High School in your spare time. Write for FREE BULLETIN.

Name _____
Address _____
City _____ State _____

Central High School
2020 Live Oak Street
Dallas, Texas

SEE ME for your personalized cards and other gifts. Greeting Card and Gift Shop. Mrs. C. M. Pogues, Hwy. 80 East.

HELP WANTED MALE -
WANTED: Ford salesman, good proposition to live wire. Elliott Motor Co. Ranger.

SALESMAN 25 to 50 to act as Singers representative in Eastland County. Salary, commission, and bonus. Two weeks annual vacation. Hospitalization and retirement available. Honest, industrious and permanent employee wanted. Will work from his home. For further information contact John H. Vance, 707 Austin, Waco or call 32496 Waco.

PECANS
Wanted To Buy Your Commercial Shelling Pecans
KING PEANUT CO.
335 S. 11th St. - Abilene, Tex.

CALL 601 FOR CLASSIFIED AD SERVICE



DRESSY DENIM—Once banished to heavy duty on farm and in factory, blue denim is taking a step up the ladder of fashion. Casual coat, above, has straight and narrow cut, with huge patch pockets.

'Scrub Up Party' Termed Success By Christians

The Christian Women's Fellowship "Scrub Up Party" held Monday was termed a huge success by co-chairmen Mrs. L. E. Huckabay and Mrs. Bill Collings. The kitchen annex was completely renovated and even minor repairs made. Mrs. Roy Turner served at the morning session.

Reporting for action in the morning group were Mesdames Lon Horn, J. W. Watson, Curtis Young, Homer Williams, B. H. Clifton, Winnie Wynn, L. C. McNatt, Bill Collings, Miss Sallie Day and the pastor, Roy Turner.

In the afternoon group were Mesdames L. E. Huckabay, Eugene Day, Roy Turner, Lon Horn, J. W. Watson, Curtis Young and Winnie Wynn.

Bethel Baptist Church Holding T.U. Revival

The Bethel Baptist Church is in a busy week of Training Union Revival, it was announced by Truitt Gregory, Training Union director at the church.

Miss Edna Lange, state approved director, is leading the study course which will be held thru Thursday night, every night at 7 p.m.

Working along with Miss Lange and Gregory are Evan Mitchell, Intermediates and Young People and Mrs. Gene Rhodes, beginners.

Hospital News

Patients in the Eastland Memorial Hospital are:

Mrs. Mary Bell Smith, Cisco, accident
James Ward, medical
Miss Beaulah Spear, medical
Mrs. Jewel Gholson, accident
Mrs. Williams O'Neal, surgical
Mrs. Gene Kimler and baby girl

Dismissed were William Gramham, Mrs. Larry Joe McAfee and baby girl and Gregoris Benevides.

Patients in the Ranger General Hospital from Eastland are:

Mrs. Emma Kuhn, medical
Mrs. J. S. Cox, surgical
Eddie Lorenz, Jr., medical

Laura Harris Hostess To Double Seven's

Laura Harris was hostess to the Double Seven Club Monday in her home.

Following a short business session, refreshments of Cokes and cookies were served.

Members present were Dixie Durham, Sandy Taylor, Laura Harris, Cora Mendietta, Jannie Morton, Janie Arthur, Linnett Capers, Nancy Beck, Kathy Williamson, Judy Inzer, Jamie Stamey, Phyllis Phillips, Gaila Walters, Pat Fullen and Rosemary Jones.

Marine-

(Continued from Page 1)
a ten-week training course. Training as a Marine Corps Pilot is also available through both of these programs.

ATTEND THE CHURCH OF YOUR CHOICE EACH SUNDAY

Insurance AND Real Estate
D. L. KINNAIRD
Life - Fire - Auto - Farm
Folio - Bonds
37 years in the Insurance Business in Eastland

OUR WINTERPROOF SERVICE WEATHER WORRIES BEHIND EARLY TIRE SERVICE
302 W. Main Eastland PHONE 208

NEWS FROM STAFF

By Mrs. M. O. Hazard
Mrs. L. G. Powell and Mrs. T. E. Pope accompanied by Mrs. Allie Barber of Arlington, were guests Wednesday of Mr. and Mrs. Jim Brashears in Eastland.

Mr. and Mrs. M. O. Hazard were visiting in Breckenridge Thursday.

Rev. Boyd Tabor from Moran was here Sunday to fill his regular appointment at the Baptist Church. He and Mrs. Tabor and Barney were the guests of Mr. and Mrs. J. W. Mounce.

Mrs. Sam Fonville from Desdemona spent the day Monday with her parents, Mr. and Mrs. M. O. Hazard.

Friends of Mrs. Allie Barber who visited her in the T. E. Pope home last week were Mrs. Fannie Duncan, Mrs. Allie Faircloth, Mrs. Amy Brown, Mrs. Ella White, V. V. Cooper and Charlie Todd all of Ranger; Mr. and Mrs. Walter Mitchell of Strawn, Mrs. Royce Pope and David from Winters; and Mr. and Mrs. M. O. Hazard and Mrs. L. G. Powell of Staff.

Mrs. Barber returned to her home in Arlington Saturday after spending the week with her niece.

Mrs. T. E. Pope and Mr. Pope. Mr. and Mrs. Vern Garrett and Lavell from Kokomo visited with their son-in-law and daughter, Mr. and Mrs. Jimmy Little Friday evening.

Mr. and Mrs. Boyd Hazard of Morton Valley and Helen Hazard from Fort Worth were visitors in the home of Boyd's parents, Mr. and Mrs. M. O. Hazard Saturday.

Mr. and Mrs. R. A. Parker had as guests over the week end their children, Mrs. H. H. Snow of Enochs, Mrs. J. W. Layton, Littlefield; Mr. and Mrs. Edward Crume and two daughters from Littlefield; Mr. and Mrs. James Cash and children from Hereford; and Mr. and Mrs. R. L. Parker from Portland, Maine.

The R. A. Parkers left Tuesday for Fort Worth where they spent the night with Parker's uncle, Mr. and Mrs. Love Parker and left Wednesday for their home in Portland, Maine.

R. C. Reeves made a business trip to Fort Worth over the week end.

O. T. Hazard who recently had surgery at the Ranger General Hospital was able to return to his home Thursday and is recuperating nicely.

The M. O. Hazards were business visitors in Ranger and Eastland Wednesday.

Mr. and Mrs. Bill McFadden from Duncan, Oklahoma visited recently with Mrs. McFadden's sister, Mrs. Allen Crosby and Mr. Crosby and were fishing on Lake Leon.

Mrs. L. G. Powell was shopping in Eastland Wednesday afternoon.

MEAT COOKERY Quiz

Q. What are the names of these cuts of meat?

A. Sirloin Lamb Chops
Left Double-bone Lamb Saddle Chop
Right Double-bone Lamb Saddle Chop

Q. Where do they come from and how are they cooked?

A. They come from the sirloin end of the leg, and contain portions of the hip bone and the spine. They are usually well marbled.

Q. How are they prepared?

A. Sirloin chops may be broiled or pan-broiled. In broiling, they are broiled for 15 minutes on each side. In pan-broiling, they are broiled for 20 minutes on each side.



APPLE A DAY, ETC.—Here's a purpose—he's bringing an apple for the teacher. The "classroom" is at Marineland, in Florida.

MAJESTIC Tuesday & Wednesday
Tuesday Is Family Night
Davis * Borgnine * Reynolds * Fitzgerald
Never a Love and Marriage Story Like It!

JEAN JACKSON'S OPENING
HER BEAUTY SHOP IN HER HOME—305 S. NIBLETT — MONDAY, NOVEMBER 5th
Work by appointments from 2 p.m. till 10 p.m.
Everyone is invited to try my work. If pleased tell your friends, if not tell me. PHONE 7.
JEAN'S BEAUTY SHOP

Let O-K True Your Tires
For a Smooth Ride that Will Save Money
* Truing means more riding pleasure from your car and many more miles of travel from your tires. Out of round tires cause excess wear, car vibration.
* Balancing your wheels gives you lots of additional tire mileage, smoother ride, easier driving.
* Truing and balancing \$2.00 per wheel.
O - K RUBBER WELDERS
IRA DAWSON, Prop.
Tire Repairing and Recapping
140 E. 8th St. CISCO Phone HI 2-9980

Funeral Directors HAMNER FUNERAL HOMES
Ben E. Hamner
Oxygen Equipped - Air Conditioned
Eastland Phone 17
Cisco Phone Hillcrest 21211
AMBULANCE SERVICE ANY WHERE ANY TIME
Nominal Cost Burial Insurance
For The Entire Family

WE BUY SCRAP IRON AND METAL
Get Our Prices Before You Sell
WE PAY HIGHEST MARKET PRICES
WE APPRECIATE YOUR BUSINESS
KOEN SALVAGE
Highway 80 West 1315 W. Main

SPECIAL! 1/4 Carat
Diamond ONLY \$97.00
EASY TERMS Next to Penney's Eastland

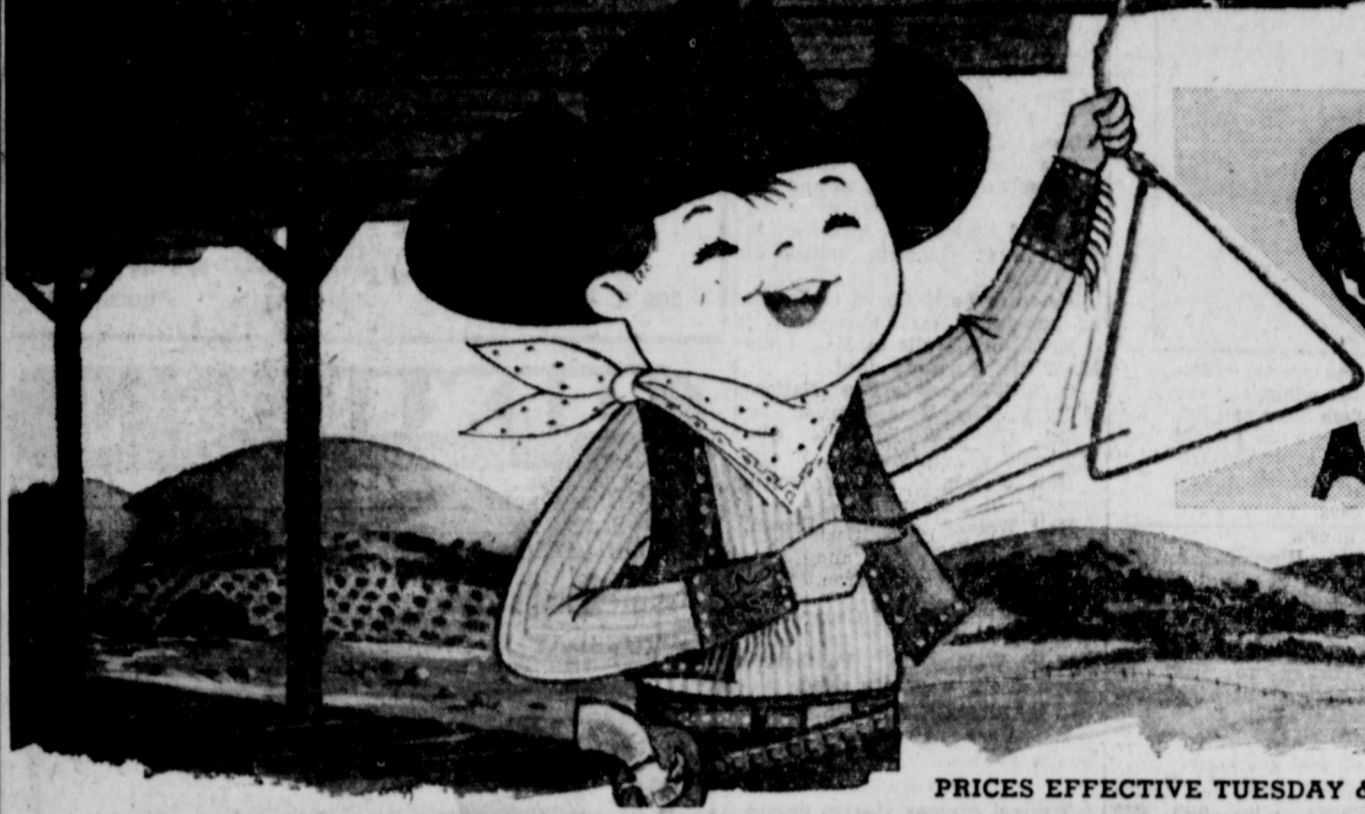
OIL FIELD Equipment
• SURFACE CASING
• OIL STRING CASING
• TUBING
• RODS
• PUMPING UNITS
• TANKS
BOUGHT - SOLD - TRADED
IRISH DRILLING CO., INC.
Hwy. 80 East Eastland, Texas
Office Phone 100 - 101 Yard Phone 199

SAFeway STORES
Will interview applicants for male and female food clerks and meat wrappers, ages 19 to 35. Tuesday, Nov. 6 through Saturday, Nov. 10—8 a.m. to 6 p.m. Week Days. Saturday 8 to 12.
Room 210 Petroleum Bldg.

AUTO BODYS AND LIGHT SHEET SCRAP
FOR BAILING PURPOSES
\$20.00 per ton
IRON AND STEEL SCRAP
\$25.00 - \$35.00 per ton
OIL FIELD CABLE - \$25.00 per ton

NON-FERROUS METALS
Radiators — Batteries — Lead — Babbit
Copper Wire — Brass — Aluminum — Zink
EASTLAND
IRON AND METAL CO.
Phone 270 Owner, H. Pullman East Main St.

HURRY - LAST BIG WEEK!



SALE of SALES

ONLY 5 MORE DAYS TO REGISTER FOR

FABULOUS PRIZES!

Drawing is open to all adults except Worth Food Mart employees, their families and our advertising associates.

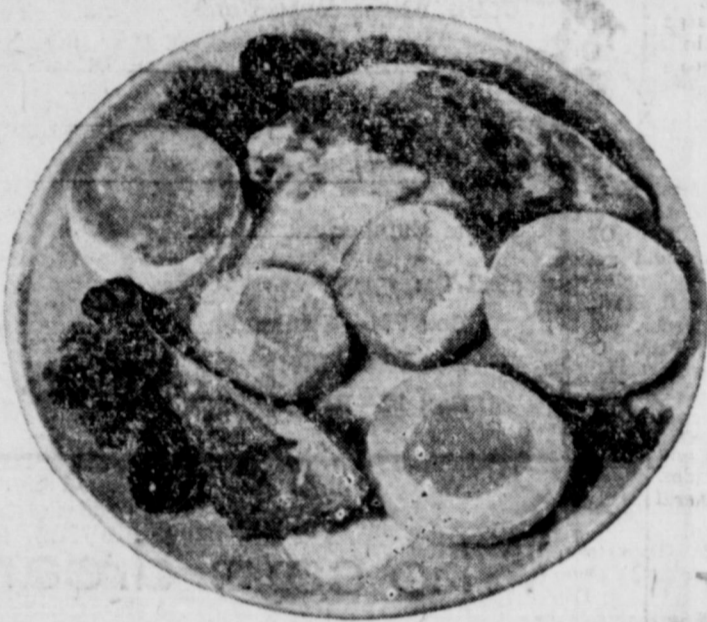
PRICES EFFECTIVE TUESDAY & WEDNESDAY

WESTERN RANCH DINNER

Delicious! Bakes in just one pan!

- | | |
|---------------------------------------|---|
| 1 frying chicken (2 1/2 lbs.) | 1/4 teaspoon pepper |
| 1 No. 21/2 can Cling peach halves | 1 teaspoon paprika |
| 1 1/2 cups Pet Evaporated Milk* | 1/4 teaspoon poultry seasoning (if desired) |
| 1 package Ballard OvenReady* Biscuits | 1/2 cup shortening |
| 1 cup flour | 1 cup water |
| 2 teaspoons salt | |

* Registered trade names At the dairy case
Dip cut-up frying chicken in 1/2 cup Pet Milk, roll (or shake in a bag) in mixture of flour and seasonings. (Set aside remaining flour mixture for gravy.) Melt shortening in 13x9-inch pan. Add chicken, skin side down. Bake uncovered in hot oven (425°) until tender, basting occasionally. (Average cooking time 40 to 50 minutes.) Turn chicken and move to end of pan. Arrange drained peach halves on chicken. Open can of Ballard OvenReady* Biscuits. Separate and put in other end of pan. Bake 15 minutes, until biscuits are brown. Remove peaches, chicken and biscuits to hot plate. For gravy: Blend 3 tablespoons of set-aside flour mixture with pan drippings. Gradually stir in water. Boil and stir 2 minutes. Stir in 1 cup Pet Milk. Heat but do not boil. Add salt, pepper to taste. Serves 4.



GRAND PRIZE 1957 CADILLAC Air-Conditioned Sedan de Ville

- NATURAL ROYAL PASTEL MINK STOLE
By Koslow's of Fort Worth!
- 100 BOOKS OF S & H GREEN STAMPS THIS WEEK
25 Books to Each of Four Lucky Winners!

DOUBLE "S & H" STAMPS

Wednesday With Purchase of \$2.50 or More

MELLORINE	FOREMOST Asstd. Flavors	1/2 Gal. Ctn.	39c
CANE SUGAR		10 -Lb. Bag	89c
TOMATO SOUP	HEINZ	No. 1 Can	10c

Worth Quality Produce!

ORANGES	FLORIDA JUICY, MEDIUM SIZE	2 Lbs.	25c
Florida Grapefruit	New Crop Seedless	2 Lbs.	25c

FLORIDA AVOCADOS	LARGE SIZE MILD FLAVORED	Ea. 25c	25c
YELLOW ONIONS	MINNESOTA WAXED	Lb. 5c	5c
RUTABAGA TURNIPS		Lb. 6c	6c
GREEN CABBAGE	FIRM HEADS U.S. NO. 1 EXTRA—"BAKER"	Lb. 5c	5c
RUSSET POTATOES	EAST TEXAS, SELECT, SMALL	Lb. 7c	7c
SWEET POTATOES		Lb. 10c	10c

Worth Controlled Quality Beef Chuck

roast

Lb Only 43c

Worth Controlled Quality Beef

Round Bone Roast	-Lb.	49c
PREMIUM BACON	SWIFT'S SLICED FRESH SLICED	Lb. Pkg. 49c
PORK LIVER	KRAFT'S AMERICAN	Lb. 19c
SLICED CHEESE		Lb. 59c
PORK SAUSAGE	ARMOUR'S STAR	Lb. Pkg. 33c
SLICED BOLOGNA	SWIFT'S PREMIUM RATH—BEEF, PORK, VEAL	Lb. 39c
CHOP-ETTES		2 8-Oz. Pkgs. 89c

MRS. CHESSER'S PLUMP, FROZEN

FRYERS Whole Fryer 1-Lb., 14-oz. 99c
Cut-Up Pkg.

HUNT'S PEACHES	Yellow Cling Halves or Sliced	No. 2 1/2 Can	25c
PET EVAPORATED MILK		3 Tall Cans	39c
BALLARD BISCUITS	OVEN-READY	Reg. Can	10c

Frozen Mexican Foods Specials!

EL CHICO MEXICAN DINNERS	1-Lb. Pkg	63c	EL CHICO TORTILLAS	12-Ct. Pkg.	15c
EL CHICO ENCHILADAS	1-Lb. Pkg	63c	EL CHICO TAMALES	14-Oz. Pkg.	33c
Patio Plain Chili				No. 303 Can	29c
Pillsbury Flour				5 Lbs. Bag	43c
Gebhardt Tamales				No. 300 Can	15c
Del Monte Pumpkin				2 No. 303 Cans	25c

CLOROX BLEACH	Quart Botl.	19c	STRAWBERRY PRESERVES	12-Oz. Jar	29c
"AD" DETERGENT	King Size	\$1 21	MORTON HOUSE SPAGHETTI & MEATBALLS	16-Oz. Can	25c
FLORIENT DEODORANT	5 1/2-Oz. Can	79c	LUNCHEON MEAT	12-Oz. Can	37c
AB-O CLEANSER	2 1/2-Oz. Cans	35c	ARMOUR'S TREET	1-Lb. Pkg.	32c
			REGULAR OR SLICED OLEOMARGARINE		
			CLOVERBLOOM "99"		

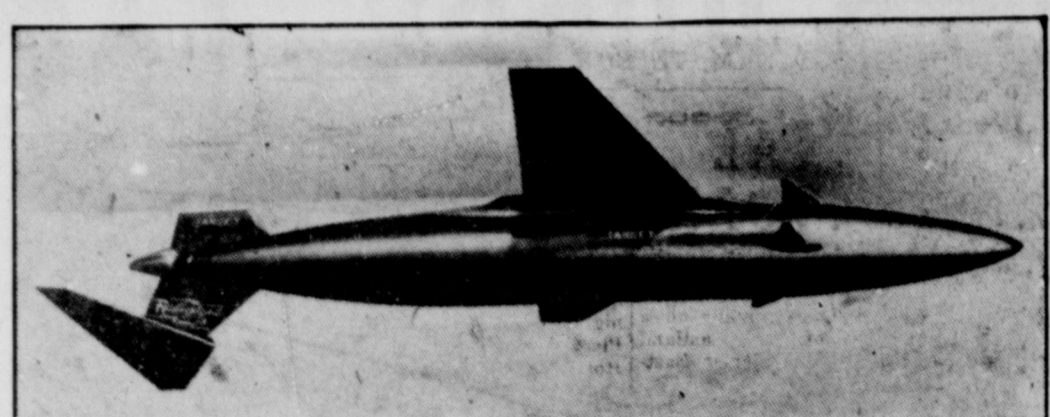
FOLGERS COFFEE	All Grinds	1-Lb. Can	95c	RICE UNCLE BEN	28-Oz. Pkg.	37c
KLEENEX TISSUES	White or Colors	2 400-Ct. Pkgs.	39c	BEEF STEW	24-Oz. Can	41c
CHUNK TUNA	Star-Kist or Chicken-of-Sea	No. 1/2 Can	19c	PEANUTS	Circus Spanish Salted 7 1/4-Oz. Can	99c
CRISCO SHORTENING		3 -Lb. Can	85c	CINCH WAFFLE MIX	16-Oz. Pkg.	27c
PRUNE JUICE	Sunsweet	3 24-Oz. Botls.	\$1	RED HEART	Asstd. Flavors - Dog Food 1-Lb. Cans	29c

WORTH FOOD MART

CARPETS
By LEE'S
COMPLETE CARPET SERVICE
Smoothedge Installation
Berlout Moth Proofing Service
RAYON AVISCO - WOOL - COTTON
Ranger Furniture Exchange
"BRASHIER'S"
RANGER
123 N. Rusk Phone 242

COMPLETE WRECKER SERVICE
BODY-FENDER Repair
DAY AND NIGHT
Ph. 42
Expert Body Work and Painting
Choice of Colors
KING MOTOR CO.
Direct Factory Ford Dealer
NE Corner Square
Phone 42

IN PERSON TRIO CLUB
MINGUS
Thursday Night
Nov. 8
8:15 - 11:45
Jimmy Heap!
And the MELODY MASTER



BUSY DRONE—Designed for weapon evaluation and training, this steel and plastic radio-controlled, rocket-powered drone, above, is the latest in target aircraft. Plastic wings and tail surfaces are in fixed position, and control of the RP-70 is accomplished through the small fin-shaped vanes just forward of the wing. Powered by a solid rocket fuel, the RP-70 has a flight endurance of eight to 10 minutes and a ceiling of 50,000 feet. With a top speed of approximately 980 miles per hour, the nine-foot-long, 300-pound rocket will be used to test U.S. defense missile systems.

COURTHOUSE NEWS AND RECORDS
Real Estate Transfers, Marriages, Suits Filed,
Court Judgments, Orders, Etc.

INSTRUMENTS FILED
County Clerk's Office
Lynn W. Adams to J. M. Baines, warranty deed.
J. S. Anderson to A. A. Belding, oil and gas lease.
J. S. Anderson to United States of America, assignment of income.
Dennis Burns, Jr. to Rutherford & Steel Co., MML.
R. A. Bearman to Magnolia Petroleum Co., assignment of oil and gas lease.
T. A. Byrd to Frank T. Hightower, quit claim deed.
J. P. Bowen to City National Bank, Wichita Falls, deed of trust.
H. C. Bowers to John D. Clark, warranty deed.
H. C. Bowers to John D. Clark, deed of trust.
O. O. Bateman to R. Fred Booth, assignment of oil and gas lease.
Bankers Life Company to Joe S. Anderson, sub. ML.
J. B. Brandon to Sam Broom, release of vendor's lien.
Commercial State Bank, Ranger to First Federal S & L Assn., assignment of ML.
T. T. Colinson to Standard Oil Company of Texas, oil and gas lease.
Mrs. Cordie Carson to The Public, affidavit.
Mrs. Cordie Carson to O. B. Williams, warranty deed.
George E. Cannon to T. W. Whaley, warranty deed.
R. L. Coffee to J. W. Roach, warranty deed.
City of Ranger to Mrs. Mary E. McNeely, warranty deed.
J. N. Dodson to Standard Oil Company of Texas, oil and gas lease.
J. P. Elam, Jr. to Tom B. Stark, rat. & rental division order.
Eastland County to Fred C. Johnson, quit claim deed.
Eastland Free School, Inc. to Fred C. Johnson, quit claim deed.
First National Bank, Gorman to B. J. Greenhaw, release of deed of trust.
F. M. Files to R. O. Rankin, release of vendor's lien.
First National Bank, Cisco to Mrs. Cordie Carson, release of vendor's lien.
First State Bank, Rising Star to H. C. Bowers, release of vendor's lien.
First National Bank, Cisco to George E. Cannon, release of vendor's lien.
First Presbyterian Church to N. E. Squires, deed of trust.
J. F. Genoway to Mrs. Lillie M. Wittie, quit claim deed.
B. L. Gary to First Federal S & L Assn., deed of trust.
Frederick Graefe to The Public, affidavit.
T. A. Graves to Martha E. Graves, warranty deed.
J. A. Green to The Public, affidavit.
J. B. Harris to Federal Land Bank of Houston, deed of trust.
L. L. Hartman to W. W. Franklin, oil and gas lease.
L. B. Horn to W. W. Franklin, oil and gas lease.
Lee A. Harbin to W. W. Franklin, oil and gas lease.
Halliburton Oil Well Cementing Co. to Norton & Tate, release of lien.
W. H. Hoffmann to C. L. Morgan, release of oil and gas lease.
Etta Notgrass Hill to Ola M. Boles, power of attorney.
Joe B. Hunt to United States of America, cor. deed of trust.
H. H. Harrelson to Tom B. Stark, oil and gas lease.
W. H. Hall to Tom B. Stark, oil and gas lease.

Taylor, quit claim deed.
W. J. Lasater to Standard Oil Company of Texas, oil and gas lease.
Roy L. Lane to W. W. Franklin, oil and gas lease.
Mrs. A. C. Underwood to State of Texas, right of way.
C. T. Underwood to State of Texas, right of way.
Jim Underwood to Standard Oil Company of Texas, oil and gas lease.
United States of America to Rowland L. Goodwin, notice of tax lien.
Veterans Land Board to Travis L. Crutchfield, lease agreement.
Mrs. Nora Walls to Mrs. Lillie M. Wittie, warranty deed.
O. B. Williams to First National Bank, Cisco, deed of trust.
Mrs. Lizzie Williams to Olie Williams, warranty deed.
Hall Walker to Calvin Brown, transfer of vendor's lien.
Hall Walker to Calvin Brown, transfer of deed of trust.
C. L. Wolford to Hall Walker, deed of trust.
Norman Webb to George W. Webb, MD.
Hall Walker to Featherlite Corporation, warranty deed.
MARRIAGE LICENSES
Bert Harris Agnew and Glenda Louise Brown.
PROBATE
William Andrew Harris, deceased, application to probate will.
CALL 601 FOR CLASSIFIED AD SERVICE

I am interested in the LONE CEDAR COUNTRY CLUB. Please contact me.
Name _____
Street _____
City _____
Phone Number _____
Mail To:
Box 751—Eastland
Box 1637—Cisco
Box 17—Ranger

CALL 601 FOR CLASSIFIED
MAYTAG
AUTOMATIC AND CONVENTIONAL
WASHERS - GAS RANGE
"We Service What We Sell"
Hamner Appliance Store
205 S. Lamar

DIXIE Drive
EASTLAND RANGER HIGHWAY
Box Office Opens
Show Starts
Box Office Closes
SUNDAY - MONDAY - TUESDAY, NOV. 4
TUESDAY IS BARGAIN NIGHT—ADULTS
Here's a picture that does young to your heart!
GLORIA
MARGARET O'BRIEN
WALTER BRENNAN - CHARLOTTE GRAY
SUPERSCOPE
WEDNESDAY - THURSDAY, NOV. 7
JOE MCCRACKEN - LINDA MCCREA - O'HARA - DARNELL
BUFFALO BILL
PLUS: Color Cartoon

BUYING! SELLING! RENTING! SWAPPING!
YOU'LL FIND IT IN THE WANT ADS
Read and Use Want Ads for Quick Results!
It's The Town's Biggest Market Place...
EASTLAND TELEGRAM
SHERWOOD C. LYNN, M. D.
Announces
Opening of Offices for Practice of Medicine and General Surgery,
Victor Hotel Bldg.
Phone Hillcrest 2-118
400 Ave. D - Cisco

Who says dream cars never come true
Dynamite from Detroit
Coming! America's first production dream car. it will influence the shape of cars for years to come.
The old Detroit rule was to introduce new features gradually, to make little changes each year. Sometimes a new grille, an engine improvement, or new colors and trim.
We broke that rule. In fact, we broke all the rules. This is dynamite!
For you are not the only one who has dreamed of a totally modern car, a car that has everything you find at automobile shows, in illustrations, and in custom-built experimental cars.
Detroit has had that dream, too. And that's why the 1957 Mercury is the car that has honestly excited the most car-jaded, the most sophisticated of Detroit's automotive experts.
When you see the new 1957 Mercury, you'll see America's first full-production dream car—a car that will influence the shape of cars for years to come.
You'll see a dream car you can own and drive a car that has far more than startling years-ahead features.
THE BIG M for '57 boasts dream-car features before found outside a designer's dreambook: board Control that makes ordinary push-button driving old-fashioned; an exclusive Floating Ride a revolutionary new cushioning action you have to believe. There are Mercury "firsts" everywhere. A Power-Booster Engine Fan in the M series that saves horsepower other cars waste many more Mercury exclusives.
You'll see THE BIG M—the new Mercury for '57—soon. You'll see it. You'll drive it. The first car that can be yours. The dynamite is on wheels from Detroit to your dealer's—now!
STRAIGHT-OUT OF TOMORROW
THE BIG M for '57 with DREAM-CAR DESIGN
See it at your MERCURY dealer's on **November 11**
Wayne Motors
Don't miss the big television hit, ED SULLIVAN'S "Town," Saturday evening, 8:00 to 9:00, KRBC, Channel 13.
1006 W. Main EASTLAND

SCHOOL MENU

Tuesday
 Barbecued Wieners with Cheese
 Pinto Beans
 Potato Chips
 Onions & Pickles
 Spinach or Greens
 St Bread & Corn Bread
 Hot Cinnamon Rolls

Wednesday
 Fried Chicken
 Macaroni & Cheese
 Buttered Carrots
 Apple & Celery Salad
 Hot Rolls with Butter
 Chocolate Cake

Thursday
 Turkey & Dressing
 Creamed Potatoes
 English Peas
 Cranberry Sauce
 St Bread
 Orange Date Cake

Friday
 Smothered Steak
 Creamed Potatoes
 Whole Kernel Corn
 Stuffed Celery
 St Bread
 Peanut Butter Cookies

TV LOG

TUESDAY
 3:45—Modern Romances
 4:00—Comedy Time
 4:30—Yesterday's Newsreels
 4:45—Sterling
 5:00—Kalvin Keewee
 5:30—Laurel & Hardy
 6:00—News
 6:10—Sports
 6:25—Weather
 6:30—Jonathan Winters
 6:45—Town & Country Time
 7:00—Big Surprise
 7:30—Paul Honeycutt Show
 8:00—Complete Election Returns
 2:00—Sign Off

WEDNESDAY
 7:00—Today
 9:00—Ding Dong School
 9:30—Bandstand
 10:00—Home
 11:00—Tic Tac Dough
 11:30—It Could Be You
 12:00—Daily Devotions
 12:05—Mid-Day Theatre
 1:30—Tenn. Ernie Show
 2:00—Matinee Theatre

3:00—Queen For A Day
 3:45—Modern Romances
 4:00—Comedy Time
 4:30—Yesterday's Newsreels
 4:45—Sterling
 5:00—Kalvin Keewee
 5:30—Laurel & Hardy
 6:00—News
 6:15—Sports
 6:25—Weather
 6:30—Coke Time
 6:45—NBC News
 7:00—On the Farm
 7:30—Federal Men
 8:00—Kraft TV Theatre
 9:00—This Is Your Life
 9:30—Slim Willet
 10:00—News
 10:10—Feature 9
 10:40—Weather
 10:45—Feature 9
 11:30—Sign Off

SOCIAL CALENDAR

Tuesday, November 6
 7:30 p.m.—There will be a stated meeting of the Eastland chapter No 289 of Order of Eastern Star in the Masonic Hall. Visitors are welcome. Morraine Jones is worthy matron and Pebble Boles, secretary.

8 p.m.—The First Baptist Church (colored) will sponsor a Benefit Recital in the Eastland High School auditorium.

Wednesday, November 7
 3 p.m.—Dr. W. R. Smith of Abilene will be the speaker at the Music Study Club meeting in the Woman's Club.

Thursday, November 8
 3 p.m.—International Relations will be the program topic of the Alpha Delphian Club meeting in the Woman's Club with Mrs. J. W. Wallace, program leader.

Tuesday, November 13
 7:30 p.m.—Mrs. Hugh Neeld will present a program on "Poetry into Music" at the Zeta Pi meeting in the home of Mrs. Norman Gest. Mrs. James Smith will be co-hostess.

7:30 p.m.—The Xi Alpha Zeta chapter of Beta Sigma Phi will meet in the home of Mrs. Neil Hurt, 103 South Hill Crest.

Wednesday, November 14
 3 p.m.—The Civic League and Garden Club will meet in the Woman's Club to hear a book review by Mrs. L. E. Dudley of Abilene.

Thursday, November 15
 3 p.m.—Mrs. Virgil Seaberry, Jr. will be the program leader at the Thursday Afternoon Club meeting in the Woman's Club.



TEXAS DEMOC HEAD—Speaker of the Texas House of Representatives, Jim Lindsey of Texarkana, is the new chairman of the State Democratic Party. Chosen as one of the Five Most Outstanding Young Men in Texas last year, Lindsey, at 30, is the youngest Speaker and youngest Party Chairman in the state's history.

CALL 601 FOR CLASSIFIED AD SERVICE

Beta Sigma Phi's Have Pledge Banquet At Hotel Friday Night

Mrs. Arthur Gallagher read pledge rituals to four new members of Beta Sigma Phi Friday night at the Beta Sigma Phi Pledge Banquet in the Connellee Hotel Roof Garden. Honorees and those receiving rituals were Mmes. A. G. Crosby, Charles Bo-

mar, and Ed Lorenz. Mrs. N. G. Watson also a new member was unable to attend.

Decorations throughout the Garden carried out the theme of Autumn Leaves. Arrangements of gold mums, daisies and greenery centered the U-shaped tables lined with gold sprigs. A cluster of silver sprigs hung in the center of the room. Favors of pearl studded gold hair clips and book matches bearing the symbol and crest of Beta Sigma Phi were presented each person attending.

Mrs. Larry Kinard, president of the Zeta Pi chapter, served as toastmistress. The invocation was given by Mrs. Hugh Neeld.

The honorees and a guest were introduced and welcomed by Mrs. Gallagher, vice president of Zeta Pi. Mrs. Crosby gave the response. A musical number, "As Time Goes By" was sung by Mrs. Dor Doyle, accompanied at the piano by Mrs. Bill Arther.

The members were joined by their husbands following the banquet for dancing.

Wednesday Double BB Stamps AT MacMOY CLOVER FARM STORE PLUS THESE WEDNESDAY SPECIALS

- BLUE **Cheer** Large Box **27¢**
- WOLF'S **Chili** No. 2 Can **46¢**
- WELCH'S **Grape Juice** 24-Oz. Bottle **29c**
- CLOVER FARM PINEAPPLE **Juice** 46-Oz. Can **29¢**
- CLOVER FARM—Drip or Reg. **Coffee** 1-Lb. Can **89¢**
- LOOSE LEAF **Note Paper** 25c Pkg. **15c**
- SCRATCH **Tablet** 25c Size **10¢**
- GLENDALE **Peaches** Sliced or Halves No. 2 1/2 Can **29¢**
- SUPREME SALAD WAFER **Crackers** 1-Lb. Box **25c**
- HOME GROWN **Turnip Greens 2** 1g. Bunches **15c**
- U. S. NO. 1 IDAHO RUSSET **Potatoes** 10 Lb. Bag **39c**
- CENTRAL AMERICAN **Bananas** Lb. **12 1/2¢**
- THRIFT SLICED **BACON 2** Lbs. **69c**
- FRESH GROUND **Beef** Lb. **29¢**
- Club Steak** Good Quality, Lb. **49c**
- Round Steak** Good Quality, Lb. **69c**
- LEAN TENDER **Pork Chops** Lb. **55c**

Sub Deb's Meet In the Home of Kay Culbertson

The Sub Deb Bake Sale was reported a success at a recent meeting of the club in the home of Kay Culbertson.

Frances Cogburn opened the meeting with the devotional followed with a prayer by Brenda Evans. The meeting was closed with a prayer from Charlotte Vaught.

Refreshments of tuna fish sandwiches, ginger bread and cookies were served to Kay Culbertson, Betty Young, Frances Cogburn, Charlotte Vaught, Martha Freese, Brenda Evans, Fay Phelps, Linda Huckabay, Judy Hassell and Jan Robertson.



LACE-EZ FAIR—Striking sheath of imported black lace was designed by Luis Estevez, one of the American designers to receive the coveted City American Fashion Critics' Award for 1956. Neckline, high in front, plunges to the waist in back, pauses for a bow, then flares out in graceful floating panel of lace. A lace mask completes the costume.

ACHING MUSCLES
 Relieve pains of tired, sore, aching muscles with STANBACK, tablets or powder. STANBACK acts fast to bring comforting relief... because the STANBACK formula combines several prescription type ingredients for fast relief of pain.

Overseas Veterans Welcome
 Karl and Boyd Tanner
 Post No. 4136
VETERANS OF FOREIGN WARS
 Meets 2nd and 4th Thursday 8:00 p.m.

M. H. PERRY
 Representing
Southland Life
 Life - Retirement Income Partnership
 Mortgage Cancellation
 Educational - Annuities
 Accident - Sickness
 Hospitalization - Group
 Call 173 or 713-J
 107 W. Main • Eastland

SEE JOHN DILLINGER'S BULLET PROOF GANGSTER CAR

1931 Cadillac - Weighs 9144-Lbs.

A Sensational Exhibit of the Getaway Car in Which the Dillinger Mob Committed 13 MURDERS — 39 HOLDUPS

(Car was abandoned near St. Louis when it ran out of gas)

SPONSORED BY
 Thurs. Nov. 8—Ranger Police Dept.—Downtown
 Fri. Nov. 9—Eastland Fire Dept.—West Side Square
 Saturday, Nov. 10 — Cisco
 Children 11 years and Under—10c
 Adults—25c

WOMEN WHO COOK ELECTRICALLY KNOW

Electric Cooking is THRIFTY!

Fast, efficient electric cooking helps you save in many ways! With accurately-controlled electric heat, meats and other foods cook with a minimum of shrinkage, giving you more servings per pound. Oven cooking... and top-of-the-range cooking, too... can be automatically controlled to eliminate costly cooking failures. And clean electric heat saves on kitchen cleaning and redecorating expense. It costs only about 3c per meal to enjoy the cleanliness, accuracy and carefree convenience of modern electric cooking. Try it... you'll love it!

MINIMUM SHRINKAGE MEANS MORE SERVINGS PER POUND

The accurately measured and controlled heat of an electric oven permits cooking meats the recommended low-temperature way for minimum shrinkage, less drying out and loss of flavorful juices.

For a full measure of cooking pleasure... COOK ELECTRICALLY

See your favorite electric range dealer soon for the model that's exactly right for your family's needs and budget. You'll find electric cooking one of the nicest things about living better... electrically!

TEXAS ELECTRIC SERVICE COMPANY
 F. N. SAYRE, Manager Phone 18

OPEN EVERY NIGHT TIL 8 P.M.—SATURDAY TIL 9 P.M.

CLOVER FARM STORES
 400 South Seaman Phone 31



MRS. CHARLES D. CAMPBELL

Charles D. Campbell Exchanges Wedding Vows With Houston Girl

Miss Rita Hruby became the bride of Charles D. Campbell at 10:00 a.m. Nov. 3 in a ceremony read by the Reverend O'Malley in the Shrine of The True Cross in Dickinson.

Miss Hruby, 3619 Garrott, Houston, is the daughter of Mr. and Mrs. Fred Hruby of Dickinson. Campbell, 1014 Bartlett, Houston, is the son of Mr. and Mrs. Charles A. Campbell, 10408 Heather Lane, Dallas, and formerly of Ranger.

The bride, given in marriage by her father, wore an exquisite gown of chantilly lace and tulle over satin, an original design by Arden. It was created with an Elizabeth collar embroidered in bridal jewels, sculptured lace bodice fastened with small covered buttons and long bridal sleeves ending in petal points at the hands. The voluminous lace skirt featured a deep tulle flounce appliqued into handkerchief points of the skirt and extended into a floor sweep.

Her fingertip veil of silk illusion was held in place by a Queen of Scots headress. She carried a white prayer book topped with white orchids surrounded with blue lace and staphenotis.

Mrs. Herbert Muehr, sister of the bride, was matron of honor and Miss Elizabeth Hruby, cousin of the bride, was bridesmaid. Both wore formal dresses in shades of blue, fashioned with an off the shoulder neckline and cap sleeves. The semi-princess lines of the skirt extended into a bouffant floor length skirt.



IT'S THE LAW in Texas

CHECK YOUR INSURANCE POLICIES

One of the most familiar types of contracts is the insurance policy, as nearly everyone carries some sort of insurance protection. Yet, few people take the trouble to read their policies and have to answer many questions regarding insurance generally.

Here is a problem frequently presented: "I have a hospitalization insurance policy. Will the company pay all of my hospital bills if I become ill?"

It may or may not. Insurance is a contract between the insurance company and the policy holder. In the usual contract the policy holder agrees to pay a certain sum of money for the policy. The insurance company agrees that should the policy holder incur hospital expenses the insurance company will make payment to the policy holder of stated sums, as set out in the policy of insurance.

The insurance policy itself must state the complete contract between the parties. The oral statements of agents not in harmony with the policy are not binding on the company. The company is bound to pay only such sums as are specifically set forth in the policy of insurance.

Practically all policies have a section called exceptions and exclusions. The policy holder should particularly read this section before purchasing a policy of any kind of insurance. It would be possible for a policy of insurance to have so many exceptions and exclusions as to practically nullify any benefits under the policy.

Another question often asked is: "Can I sue the insurance company which issued a liability policy covering the car of someone who runs into and damages my car?"

For all practical purposes you may not sue the insurance company which carries insurance on the other fellow's car to protect him from suits in case of his negligence. You must look to the owner or driver of the other vehicle for your damages.

If the case goes to trial before the jury, even though you may know that the other party carries insurance, if there arises any discussion of the fact that insurance is carried by the other party, then the courts have held that it is the duty of the trial judge to declare a mistrial.

This means that you will have to start all over again and try your case from the beginning before the jury, at a later date. Your case is not dismissed, and you do not lose your rights to be heard on your case because of the word "insurance" coming into the case, but it does mean that the trial then in progress must be dismissed and you must start all over again before a new and different jury.

The theory of the appellate courts is that the mere introduction for weapon evaluation and tested drone, above, is the latest in position, and control of the RP-70 ward of the wing. Powered by a so 10 minutes and a ceiling of 50,000 feet the nine-foot-long, 300-pound rocket

HOUSE NEWS RECORDS

Answers, Marriages, Suits Filed, Judgments, Orders, Etc.

LEAD S. Anderson, sub. ML.

ICE J. B. Brandon to Sam release of vendor's lien.

M. Bain- Commercial State Bank, to First Federal S & L Assignment of ML.

A. Beld- T. T. Collinson to, State income.

St-nr Cerr was 71 years ago.

According to the Weather Bureau, it is even drier now than it was back in 1917, the second driest year. At the end of October of 1917 the rainfall totaled 10.58 inches, while at the end of October this year the rainfall total was only 8.34 inches. Total normal rainfall for the first 10 months of a year for this area is supposed to be 20.16 inches, so we're 11.82 inches, almost a foot, short.

Only about 1.91 inches of rain fell in the Ranger area last month compared to a normal of 2.57 inches, and the largest amount, about .82 of an inch, didn't fall until the morning of Oct. 30.

TRADE WITH YOUR HOME-TOWN MERCHANTS

NOTICE

I am responsible for all the debts and obligations of my wife, Sophia, both present and future and am more than happy to be the provider for a woman who has borne me a wonderful son, and with an over-abundance of love and care for the past 14 years of my married life, the happiest years of my life.

On this (Wednesday, Nov. 7) our 14th anniversary, I wish to publicly express my love and gratitude.

TOM LOVELACE, JR.

Polio is Still Around—

... and may be for a long time. While some progress is being made by the medical profession and other groups to eradicate it, it is still a dreaded disease and feared by millions. To be financially prepared if it strikes is our plain duty and personal obligation. This Agency is stocked with every form of Polio insurance available at small cost. In the insurance field Polio insurance is the best buy on the market today. Don't be without it for a single moment.

T. L. FAGG
R. L. JONES
REAL ESTATE
Property Management
Home and Farm Loans

EARL BENDER & COMPANY
Eastland (Insurance since 1924) Texas



MARY JO DUCK

Mary Jo Duck, Forrest Walker To Wed Dec. 22 In Texas City

Mr. and Mrs. Edward Duck of Texas City, announce the engagement and approaching marriage of their daughter, Mary Jo, to Mr. Forrest Walker, son of Mrs. Jesse Evan Fridge also of Texas City.

Miss Duck is a graduate of George Peabody College for Teachers and a graduate student of the University of Texas. She is a member of Chi Omega Sorority and at present is librarian at Ranger Junior College.

Walker is a graduate of A & L. The wedding will take place December 22 at the First Presbyterian Church in Texas City.

Mixing lump-free plaster is smooth, says Better Homes & Gardens magazine. If any lumps do occur, work them out with a paddle against the side of the container, then stir until the mixture is



For the gift that will charm your friends and family, let us take a portrait of you or your children. Avoid the last minute rush! Phone for your appointment today!

Expert Film Finishing
CANARIS STUDIO
Eastside of Square Phone 46



Sir Galahad never had it so good! Today's up-and-coming knight gets a royal performance with horsepower to spare from his OK Used Car. That's because OK Used Cars are inspected, reconditioned and warranted in writing by Chevy dealers. Volume trading for new Chevrolets means princely selections at popular prices, too!

Only franchised Chevrolet dealers display these famous trademarks.

FULLEN MOTOR CO.
305 E. Main EASTLAND Phone 44

—We Give Hometown Trading Stamps—

KIMBELL'S PEANUT BUTTER	18-Oz. Jar	45¢
SNOW DRIFT SHORT'N	3 Lb. Can	85¢
CLOROX BLEACH	Qt. Bottle	19¢
LIGHT CRUST FLOUR	10 Lb. Bag	98¢
KIMBELL'S OLEO	Lb.	23¢
CHARMIN NAPKINS	2 80-count Pkgs	25¢
SCOTT TISSUES	2 1000 sheet Rolls	25¢

Wednesday Only!

DOUBLE STAMP DAY

Seven Roast Beef, Lb.	Choice	39¢
CLUB STEAK	Choice Beef, Lb.	49¢
Hamburger	Fresh Ground, Lb.	25¢
SAUSAGE	Country Style, Lb.	25¢
Weiners	All Meat	3 Lbs. \$1

—We Give Hometown Trading Stamps—

CALTOP SLICED PEACHES	No. 2 1/2 Can	29¢
KIMBELL'S HOMINY	3 No. 300 Cans	25¢
DEL MONTE SPINACH	2 No. 303 Cans	29¢
KIMBELL'S WHOLE GREEN BEANS	No. 303 Can	21¢
KIMBELL'S GRAPE FRUIT JUICE	46-Oz. Can	29¢
KIMBELL'S—MUSTARD OR TURNIP GREENS	2 No. 303 Cans	25¢
KIMBELL'S WAFFLE SYRUP	24-Oz. Jar	35¢

WISCONSIN RED RHINE
Cheese Lb. **55¢**

EARNEST
Frozen Food Center
210 South Lamar Phone 11

CORN KING
Bacon Sliced, Lb. **45¢**