



Moore...

ABOUT Eastland
By VIRGIL E. MOORE

The League of Women Voters in Texas has announced it will push for a revision of Texas' much-amended Constitution.

"We picked up the following bit of prose from 'Cheer,' the magazine that is 'not copyrighted'—if there is good here we want to share it."

"Little farms are the best tilted. Little books are most read, and little songs are dearest loved. And when Nature would make anything especially rare and beautiful, she makes it little—little pearls, little diamonds, little dew. Life is made up of little things. Day is made up of little beams, and night is glorious with little stars."

Seems that a few folks at Stinnett are upset over the flowers that were delivered to Eastland High School just before the game last week with a card which read, 'Sorry we can't make it to the funeral Saturday, Loyal Stinnett Fans.'

But to rest Stinnett officials' minds, may we take this opportunity to say that Eastland players, fans and even this writer enjoyed the Saturday game as much as you can argue that you are losing. Eastland thought Stinnett played a plenty rough, but a plenty clean brand of ball. If this city has any complaint it would be on the way the Stinnett coach built up the score as much as he possibly could, but after all, Eastland is in the same class as Stinnett and shouldn't ask for any favors.

Here's hoping Stinnett wins the state championship. And here's one loyal (as of Sunday morning) it took us that long to recover) Stinnett fan who thinks that Hondo is in for a sad night.

Like to have \$5000? If you would, here's all you have to do. Invent a cap for a toothpaste tube that cannot be dropped or lost. The Society for the Advancement of the Toothpaste Tube is offering the \$5000 prize. Victor Muscot, (Continued on Page Four)

Turkey Supper Is Set Tonight

Olden High School students tonight will hold their annual turkey supper in the school lunchroom.

The public is invited to attend. Money will go to the schools athletic fund.

FOR — Fine Furniture, Floor Coverings, C. E. Appliances, It's Coats Furniture & Carpet, Ltd., Eastland. Free Delivery and Convenient Terms. Good Trade Ins. tool

Santa's Visit Scheduled Schools Dismiss Friday Fores To Stay Open Late

With just four more shopping days left until Christmas—and you have to count today to have that many—Eastland is in the middle of one of the busiest seasons of the year.

Rotarians Rank Seventh In 36 Club District

Eastland Rotarians ranked seventh in attendance in the 36 club district during November, the attendance committee report has revealed.

Eastland, always a member of the top 10 clubs, slipped to seventh despite a good 97 percent average. The club ranked less than two percent below the second place club, however.

US Air Academy Applications Now Being Taken

It was announced today by Sgt. Jack Smothers, in charge of the Air Force recruiting office here, that newly elected members of Congress may nominate 10 candidates each to compete for appointments to the third class of the U.S. Air Force Academy.

These nominations will be in addition to those made by members of Congress already in office, including those leaving office next month.

Law Prohibits Use of Fireworks

City Manager Jimmy Young reminded Eastland citizens Thursday that it is against the law to sell or fire fireworks in the city limits.

Your New Car Financed At Low Bank Rates With Your—EASTLAND NATIONAL BANK Member F. D. I. C.



4-H CLUB MEMBERS two million strong have joined the nation-wide Safety Program to "Back the Attack" in December. Above, 4-H boys and girls use a battering ram to smash the barricade of 42,000 fatal accidents which annually blocks safe driving on America's highways. Civic Clubs have taken up the movement to help stem the tide in December, the worst month of all, and religious leaders are carrying on the fight from the pulpit. Every individual in the nation has been asked to become a committee of one to see that his own life is preserved and likewise that of a neighbor and friend. The Chamber of Commerce is sponsoring the "Back the Attack" campaign in Eastland

Merchants will stay open until 7 p.m. tonight and later if there is an indication that shoppers are not ready to go home, H. J. Tanner, manager of the Chamber of Commerce, revealed. Local merchants plan to let the customers close the doors here Thursday, Friday, Saturday and Monday nights, he said.

The Chamber of Commerce each year arranges for Santa Claus to visit Eastland three times. Santa always brings lots of candy for all the boys and girls. This year the high school band is scheduled to be on hand to usher him in at 3 p.m.

The \$100 will be given away by merchants who are cooperating in this year's Christmas program. Cooperating merchants have a large blank which are given to customers each time they visit his store. All the names will go into the pot and the \$100 will be awarded shortly after Santa's visit.

Eastland schools will close at 2 p.m. after classes Friday and students will not return until Jan. 2. That will mean a long 11 day holiday for students and teachers alike.

Of course the busiest place in Eastland this week has been the post office. There Mrs. Marene Johnson, postmaster, said employees were keeping up with the load, but not getting ahead.

"We want to thank our patrons for their wonderful assistance," she said. They have greatly aided us by sorting their Christmas cards into local and out of town packages, and by doing their mailing early."

Stacks of mail come in with each new train, but the postmaster said that postal workers had stayed completely up so far.

Eastland County Nears Goal In US Bond Drive

Guy Parker, chairman of the U.S. Savings Bonds Committee for Eastland County, advised today that citizens of the county had purchased a total of \$530,388 Series "E and H" Savings Bonds through November 1956.

The county's goal for the year is \$610,000. Bonds purchased thus far represent 86.9 percent of this goal.

Parker also had some timely advice for the lucky folks who will receive money for Christmas this year. "There is a wonderful way to spend Christmas cash to make it worth much more. Buy United States Savings Bonds and watch them grow."

Installation Loans Custom Made For Each Customer EASTLAND NATIONAL BANK Member F. D. I. C.



They were cleaning up the football equipment at Eastland High School this week, and interest on the hill had switched to basketball.

They were cleaning up the football equipment at Eastland High School this week, and interest on the hill had switched to basketball.



THEY ARE HAPPY—The fact that the youngsters at the Gonzales Warm Springs Foundation face Christmas in wheel chairs and braces does not lessen their enthusiasm for the coming of St. Nick and other Yuletide joys. Among those hanging their stockings at Texas' own comprehensive rehab center this year are Gary Ryan of Kingsville, Linda Bingham of Bridge City, and Kathy Carroll of Abilene.

Cage Action Begins On Hill

The Mavs, with four starters back from last year's third place team, could be a definite threat in the district race this year, providing, of course, that their late football campaign doesn't keep them from whipping into shape fast enough.

Back from last year's started five are Dale Slatton, Lupe Herrera, Johnny McMahon, Larry Hollis and Harvey Lewis among others. Slatton finished second in the district scoring race last year, getting 174 points in district play with 64 field goals and 46 free throws.

Friday is the last day to send Santa letters to the Telegram to be sure they will be published before Christmas. Here are some of the latest arrivals:

Dear Santa, Will you please bring me a football, a toy lion and a night set. I am six years old.
Love, Bryan

Dear Santa, Will you please bring me a baseball glove, and a bicycle. I am in the first grade at West

Olden Students Crown King and Queen At Coronation Exercises

Olden High School students crowned their king and queen Friday at impressive coronation exercises held in the high school gymnasium.

Eastland Splits Cage Games With Olden High Teams

Eastland split a pair of games with Olden Tuesday night in Hornet gym, and the Olden crew took a loss to Ranger in the third game of the night.

Two-Inch Rain Is Help In Eastland

Moisture Falls Here Over Long Period of Time

Eastland County farmers got their Christmas present a few days early this year in the form of more than two inches of rain.

And it was the most welcomed gift that anyone could have given them. In Eastland the official reading was 2.36 inches for the three day period, but unofficial readings were as high as three inches here. The moisture came over an extended period of time and fell perfectly, sinking into the thirsty soil.

The rainfall brought the total for the year in Eastland to 17.14 inches. Average annual rainfall here is 26.05. It brought the total for December up to 2.99 inches, making it the second best rain month of the year here. Only in April did more rain fall. And the 3.30 inches that fell then may yet be equalled in December.

December has not been a good rain month in the present drought. In fact, only .11 of an inch fell during the month last year. The 2.59 inch measurement this year is the most rain in December since 1940 when 3.68 inches was recorded.

Eastland still must get 2.36 inches of rain to equal last year's total of 19.99, however. So far the year ranks just seventh best in the 10 year drought.

Santa letters continue to pile up in the last few days before Christmas.

Friday is the last day to send Santa letters to the Telegram to be sure they will be published before Christmas. Here are some of the latest arrivals:

Olden Students Crown King and Queen At Coronation Exercises

Olden High School students crowned their king and queen Friday at impressive coronation exercises held in the high school gymnasium.

Eastland Splits Cage Games With Olden High Teams

Eastland split a pair of games with Olden Tuesday night in Hornet gym, and the Olden crew took a loss to Ranger in the third game of the night.

Weather FRESCHLAG INSURANCE AGENCY
No. 5102 7th St. Phone 173
President's Choice Weather Report

Partly cloudy and slightly warmer Thursday and Friday. Low Thursday night 35. High Friday near 60.

Mrs. Ed Wende Wins Pecan Show Baking Honors

Mrs. Ed Wende of Cisco was grand prize winner in the Pecan Bake Show held in connection with the Eastland County Pecan Show.

The 32 entries in the show were judged by Mrs. O. O. Odum, Cisco homemaker teacher, and Mrs. Mary Jo Blackwell, Comanche County Home Demonstration agent.

Winners in the cake division were Mrs. Wende, grand prize; Mrs. Walter Tonne, Nimrod, first; Mrs. Alice Gorr, Cisco, second; and Mrs. J. E. Stansell, Cisco, third.

In the pie division winners were Mrs. Leola Hale, Pleasant Hill, first; Mrs. L. W. Tucker, Cisco, second; and Mrs. O. L. Taylor, Cisco, third.

Mrs. Ross Dennington was awarded first place in the candy division. Second place went to Mrs. L. L. Wragg of Cisco, and third place went to Mrs. Lee Lieske, Nimrod.

Friday Last Day To Send Santa Letters

Santa letters continue to pile up in the last few days before Christmas.

Olden Students Crown King and Queen At Coronation Exercises

Olden High School students crowned their king and queen Friday at impressive coronation exercises held in the high school gymnasium.

Eastland Splits Cage Games With Olden High Teams

Eastland split a pair of games with Olden Tuesday night in Hornet gym, and the Olden crew took a loss to Ranger in the third game of the night.

Pecan Growers Organize New Association

Eastland County has a newly organized Pecan Growers Association. The organization of the Association during the annual pecan show at Cisco over the weekend is just another step forward in making pecans a major industry in this county.

County Agent J. M. Cooper, who has long preached the advantages of growing pecans, was instrumental in organizing the new group. Eastland County was the first county ever to hold a pecan show, and now they become one of the very first counties with a pecan association.

Oscar Schaefer of Nimrod will serve as first president of the Association. Ellis Cooper of Ranger is vice president and B. B. Freeman of Ranger is secretary-treasurer.

Directors of the Association are D. J. Jobe of Gorman and W. D. Thurman of Cisco.

The constitution and by laws committee is composed of W. B. Eaves of Carbon, H. L. Capers of Gorman and Cooper.

Pipkin Urges Support for Methodist Home

Eastland Methodists were reminded again today that December is "Methodist Home Month" in Texas.

Local Methodists are helping to raise the \$500,000 goal for the Methodist Home at Waco. Grady Pipkin, a member of the 16-man executive committee of the home and a prominent member of the Eastland church, said the much needed funds will be used for current operating expenses and continuation of the home's widely known child service program.

Highway Construction In County Outlined By Greer

The Texas Highway Department will spend \$120,000 for improvements on highways in Eastland County during 1957, D. C. Greer, State Highway Engineer, has announced. This is in addition to the regular construction and maintenance program.

Virus Disrupts School Work At West Ward Here

Virus was reaching the epidemic stage in Eastland this week. The situation reached a new point Wednesday when 64 students reported out of school because of sickness at the two elementary schools here.

At West Ward the situation was most critical. There 49 students didn't show up for school. At South Ward 15 were absent. J. W. Turner, principal of West Ward, said, "And they are all sick, too. We checked on everyone of them."

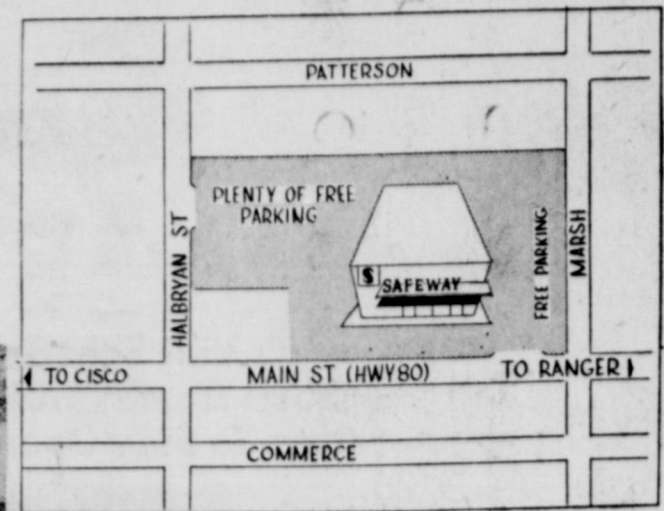
Turner said many students were becoming sick at school. The virus, or whatever you want to call it, makes students and adults alike nauseated.

Doctors say it isn't serious, but those who have had it say it sure can't help you any.

BE SURE—SEE Don Pierson Olds-Cadillac Eastland Quality Cars at Volume Prices

New Safeway

Your New Safeway is Located
504 E. Main
Eastland



Open...
 Just in
 time for
 Christmas



Good News! Safeway's opening a beautiful new store, and you're invited to come and see it. You'll be amazed how fast you can shop here. Every item is easy to reach. There is no waiting at the meat counter. Safeway has more check stands, wide spacious aisles, plenty of free parking, and many other wonderful features to save your time and money. That's the new Safeway store in Eastland.

GRAND

FREE! Registration
 for Valuable Prizes . . .

ONE REGISTRATION ENTITLES YOU TO ALL
 MAJOR PRIZES TO BE GIVEN AWAY

Be Sure and Register for These
 Major Prizes at Safeway!

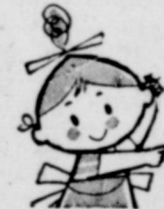
FREE! Hotpoint Electric Range to be given away
 Saturday, December 29 at 4:00 P.M.

FREE! Hotpoint Electric Refrigerator to be given away
 Saturday, January 5.

25 FREE TURKEYS To be given away at drawing
 Friday, December 21.

LIGHT CRUST DOUGHBOYS

Will be at our Store from 1 to 6 P.M. Saturday, December 22 for your entertainment.



OH BOY! ALL THIS
 FOR THE KIDDIES
FREE BALLOONS
FREE KIDDIE RIDES

Grand Opening Good Buys!

- Sliced Pineapple Dole, Libby, or Pineapple No. 2 Can **25¢**
- Cranberry Sauce Ocean Spray Whole or Jellied 2 300 Cans **25¢**
- Mexicorn Delightful Taste Extra Tender 2 12-Oz. Cans **25¢**
- Glenview Dates Pitted 1-Lb. Cello **37¢**
- Lac Mix Milk Instant Powdered 25 6/10-Oz. Box **59¢**

Safeway Good Buys!

- Lucerne Milk Homogenized 1/2-Gal. Ctn. **47¢**
- Whipping Cream Lucerne 1/2-Pt. Ctn. **28¢**
- Half & Half Lucerne Pt. Ctn. **26¢**
- Dinner Rolls Skylark Brown and Serve 12-Count 11-Oz. Pkg. **17¢**
- Cloverleaf Rolls Skylark Brown and Serve 12-Count 12-Oz. Pkg. **23¢**
- Edwards Coffee Rich Coffee Flavor 1-Lb. Can **\$1.01**

Fresh From the Farm Produce

- Pascal Celery Chop some for salads or better yet, set out long stalks in a shining dish. It's Crisp, Clean, Sweet. Lb. **5¢**
- Crisp Lettuce Cracking Fresh Lb. **15¢**
- Cranberries Gleaming Red Berries 1-Lb. Cello **15¢**
- Rome Apples Full of Flavor-Tang Lb. **17¢**
- Sunkist Oranges Navel 110's Lb. **15¢**
- Russet Potatoes Bulk Lb. **8¢**
- Red Grapes Emperor Lb. **19¢**

Holiday Needs!

- Red Cherries Empress Maraschino 8-Oz. Bot. **31¢**
- Pumpkin Moonbeam No. 2 1/2 Can **18¢**
- Mince Meat Little Cook 9-Oz. Box **24¢**
- Brazil Nuts Washed Large and Medium 1-Lb. Pkg. **49¢**
- Large Walnuts Diamond 1-Lb. Pkg. **55¢**
- IXL Almonds Blue Diamond 16-Oz. Pkg. **65¢**
- Emerald Walnuts Long Type Baby 1-Lb. Pkg. **49¢**
- Mixed Nuts Your Favorites 1-Lb. Cello **55¢**
- Cocoanut Durkee 4-Oz. Pkg. **18¢**
- Cane Sugar Domino 5-Lb. Bag **49¢**

★ Happy note for the Holidays

LUCERNE EGG NOG

rich cream and eggs and spice so nice — all mixed and ready to pour

53¢

Graham Crackers

Pirates Gold 1-Lb. Box **35¢**

FREE — 7-oz. box Busy Baker Crackers with purchase of Pirates Gold Graham's.



- Liquid Detergent Scamper 22-Oz. Can **53¢**
- Cookies Cocoanut Chocolate Drop, Jane Arden 16-Oz. Pkg. **39¢**
- Pecan Pieces Perfect for Candies or Baking, Woodies 1-Lb. Pkg. **89¢**
- Salad Oil Mayday Qt. Bot. **49¢**

SAFEWAY

Prices effective Thursday, Friday, Saturday, and Monday, December 20-21-22-23-24.

FREE!

Join Safeway's Save-A-Tape Plan and get Wonderful Gifts Free.

SAVE YOUR SAFEWAY SALES TAPES IN THIS VALUABLE ENVELOPE

After each trip to Safeway, use this valuable envelope to collect your sales slips.

START SAVING SAFEWAY SALES TAPES TODAY

FREE GIFTS with EACH \$35.00 IN TAPES!

COMPLETE DETAILS AT THIS SAFEWAY STORE ABOUT OUR "SAVE-A-TAPE" Premium Ware Plan

THIS ENVELOPE WORTH \$3.00 IN SALES TAPES

Keep record of tapes on other side.

Here's all you do to join Safeway's Save-A-Tape Plan: Save your Safeway GREEN cash register tapes. Save your tapes in this handy envelope until you have \$35.00 worth of tapes, use a separate envelope for each additional \$35.00. When you have the required number of envelopes for the gift you want, bring them to Safeway and the Store Manager will exchange them for your FREE GIFT!

IT'S QUICK, IT'S EASY AND THE PREMIUMS ARE

FREE



HERE'S JUST A FEW OF OVER 50 PREMIUMS

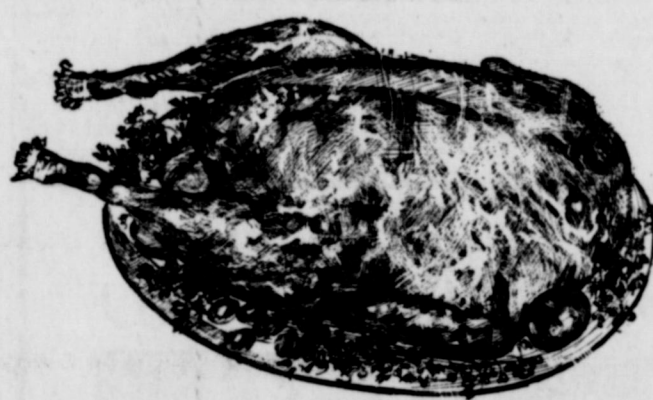
COPPER COOKWARE
TV TABLES

ROLLER SKATES
BATHROOM SCALES

ELECTRIC TOASTERS
ELECTRIC SKILLETS

OPENING CELEBRATION

Honey Comb Chips	9-Oz. Pkg.	39¢
Chocolate Stars	9-Oz. Pkg.	39¢
Old Fashion Mix	16-Oz. Pkg.	39¢
Chocolate Drops	16-Oz. Pkg.	39¢
Peanut Clusters	16-Oz. Pkg.	59¢
Satin Mix	28-Oz. Pkg.	57¢



Celebration Buys

Apple Juice	Westfair	32-Oz. Bot.	30¢
Apple Cider	Westfair	32-Oz. Bot.	30¢
Orangeade	Kraft	46-Oz. Bot.	25¢
Applesauce	Lakemead	303 Can	21¢
Asparagus	Sunnyskies Allgreen	300 Can	44¢
Tomato Soup	Campbell	3 No. 1 Cans	32¢
Soup Mix	Liptons Onion	1 1/2-Oz. Pkg.	17¢
Eagle Milk	Condensed	15-Oz. Can	29¢
Airway Coffee	Full-Flavored	1-Lb. Pkg.	87¢
Nob Hill Coffee	Rich Flavored	1-Lb. Pkg.	95¢

TURKEYS

Fancy Hens | **Fancy Toms**

Broad Breasted Ready to Cook 10 to 16-Lb. Avg. Lb. **43¢**

Broad Breasted Ready to Cook 16 to 24-Lb. Avg. Half or Whole Lb. **39¢**

Canned Picnics Ready to Eat	4 1/2-Lb. Can	\$2.49
Chicken Hens Fancy, Nice for Stewing or Roasting	Lb.	39¢
Fresh Pork Picnics Whole Shank On	Lb.	25¢
Pork Chops Center Cut Sweet, Juicy	Lb.	59¢
Half or Whole Hams 10 to 16-Lb. Avg. Mohawk, Wilson, Neuhoft, or Armour Star	Lb.	49¢
Standard Oysters Maryland Pt. Can	Pt. Can	99¢
Chuck Roast Calif. U.S. Gov't Graded	Lb.	33¢
Ground Beef Economy	Lb.	29¢
Pork Sausage Wingate Reg. or Hot	2-Lb. Roll	55¢
Sliced Bacon Thick Northern Cured	2-Lb. Pkg.	89¢
Cooked Picnics Swift Premium 3 to 5-Lb. Avg.	Lb.	45¢
Canned Ham Wilson	6-Lb. Can	\$5.79
Small Turkeys Beltsville, Ready to Cook, 4 to 8-Lb. Avg.	Lb.	59¢

Ice Cream Party Pride Assorted Flavors 1/2-Gal. Ctn. **59¢**

Fruit Cocktail Hostess Delight No. 2 1/2 Can **25¢**

Safeway Gift Certificates!

Solve your Christmas Shopping problems by giving Safeway's Gift Certificates, the one item that is always sure to please. They're easy to buy, easy to mail. Safeway Gift Certificates come in \$5.00 and \$10.00 amounts, and they are good for any of the fine foods at any Safeway.

Good Holiday Buys

Kitchen Craft Flour For all your baking	10-Lb. Bag	69¢
Light Crust Flour Tender pies	10-Lb. Bag	69¢
White Corn Meal Mammy Lou	5-Lb. Bag	29¢
White Corn Meal Aunt Jemima	5-Lb. Bag	29¢
Roxbury Cherries Chocolate Covered, Milk or Dark Chocolate	1-Lb. Box	45¢
Marshmallows Fluffiest, Perfect with hot chocolate	1-Lb. Cello	29¢

Christmas Specials

Sandwich Spread Lunch Box and You Get	32-Oz. Jar	67¢
Peanut Butter With Purchase of 32-oz. Jar Lunch Box Sandwich Spread	12-Oz. Jar	1¢

A \$1.08 Value for Only 68¢

Bel-air Peas Frozen	10-Oz. Pkg.	19¢
Frozen Pot Pies Manor House, Chicken, Beef, Turkey	4 8-Oz. Pkg.	\$1.00

All Safeway Stores To Close Monday December 24 at 6 p.m.

FREE! 1500 loaves of Skylark multi-grain bread. First 1500 customers receive a loaf free.

FREE! 1/2 Pint of Cottage Cheese to each customer Friday and Saturday, December 21 and 22.

DON'T MISS THESE FREE GIFTS AT THIS NEW SAFEWAY



Eastland Telegram

Eastland County Record established in 1931, consolidated August 31, 1951. Chronicle established 1887, Telegram established 1932. Entered as second class matter at the Post Office at Eastland, Texas under the act of Congress of March 3, 1879.

VIRGIL E. MOORE, Editor
TIMES PUBLISHING COMPANY
Published Tri-Weekly—Tuesdays - Thursdays - Sundays
FRANCIS MOORE, Society Editor

One week by carrier in city .15
One month by carrier in city .45
One year by mail in County 2.95
One year by mail in state 3.95
One year by mail out of state 5.95

NOTICE TO PUBLIC—Any erroneous reflection upon the character, standing or reputation of any person, firm or corporation which may appear in the columns of this newspaper will be gladly corrected upon being brought to the attention of the publishers.

Classified Ads..

Cards of Thanks charged for at rate of \$2.00 Each

MISC. FOR SALE -

FOR SALE: Extra nice strawberry plants, \$2.50 per hundred. Phone 554-J.

FOR SALE: F12 Farmall tractor in fair condition. \$75. See Henry Underwood, Route 2 or Milton Underwood at Coca Cola Plant.

FOR SALE: Used Estate gas range, cheap. Phone 857.

Native trees, shrubs and plants that we could probably furnish you in the size that you would like: live oak, post oak, black jack, red bud, pecan, hack berry, native elm, persimmon, willow, plum, prickly ash, red ball, black hall, algerita berry bush, shiny-hall, cactus and others. We welcome your inquiry. Tennyson Nursery and Landscape Service, 1003 West 16th Street, Cisco.

FOR SALE: 18 by 14 house, Perfect for cabin. Call 189 or 123.

FOR SALE: AUTO 1950 Plymouth suburban, good condition, good tires. \$475. Phone 17.

FOR SALE: 193 1/2 acre oil lease. Call 54 or 1825 W. Main.

FOR SALE: Bred Hampshire gilts, with or without papers. Homer Stephens, Route 1, Gorman, Mile west of Ruckers.

FOR SALE: MINNOWS. BIG Golden Shiners and Red Horses. Pink Haley, east side of Olden.

FOR SALE: 3 bedroom house. 505 S. Bassett. Call 720-W-2 or 707-W-2.

FOR SALE: 10 church pews, \$3.50 each. Can be seen at Olden Baptist Church.

FOR SALE: Size 78 phonograph records, 10 for \$1.00. Wayne Jackson Auto Supplies.

FOR SALE: Turkeys live or oven-ready every day in the year. Kincaid Turkey Farms, Eastland, Breckenridge, and Ranger Highways. Also at Feed Store, Eastland.

FOR SALE

FOR SALE: 26 inch boys bicycle. Reconditioned. Phone 970. 300 West Sadosa.

FOR SALE: Good used gas ranges from \$10 up. Western Auto Stores.

MISC. WANTED -

WANTED: 40 head large feeder snout. Kirkey Locker, Throckmorton, Texas.

EXPERIENCED WAITRESS WANTED

Apply in person
White Elephant
Restaurant
Eastland

REAL ESTATE -

FOR SALE: Five room house. 603 Gilmer. Phone 989.

FOR SALE: Five room residence two extra lots. 611 Gilmer, Phone 444.

REAL ESTATE: 1 now offer 2 nice residences and 2 acres out of city limits for one residence close in. Phone 727-J-1.

LOST & FOUND -

FOUND: Ring of keys in front of A&P Store. Owner may have by calling at Telegram and paying for ad.

Hospital News

Patients in the Eastland Memorial Hospital are:
Joe Poole, medical
Mrs. Jim Meador, Seminole, and baby girl born Dec. 20 at 8:30 a.m.

George Blackwell, Gordon, medical
Kenneth Sullivan, medical
Joe Tullos, Cisco, surgical
Mrs. Harry Donica, Cisco, surgical

Mrs. Mabel Blackman, medical
Dismissed were Mrs. Wanda Blackwell, Mrs. Helen Heyser and baby girl, Mrs. Jim Hallmark and Shirley Gail Thompson.

Patients in the Ranger General Hospital from Eastland are:
Linda Franks, medical
Dismissed was Judy Carroll.

THE BAD DRIVERS

By Mrs. Pat Murphy
We should know the Bad Drivers, they're easy to spot.
The things that they do which good drivers do not:
He crowds you on highways, and passes you on curves
While weaving and darting he eventually swerves.
When he sees a stop sign he never takes heed,
He thinks that his car is especially for speed.

All these bad drivers may keep your heart fail
By driving at 60, three feet from your tail;
You look for his signals, but no use in scanning,
Then wonder what on earth the guy's really planning.

So be on the alert each one of us should,
We can't tell them one thing that does any good.

CALL 601 FOR CLASSIFIED AD SERVICE

FOR RENT -

FOR RENT: 5 room house on West Plummer. Phone 388.

FOR RENT: 4 room unfurnished apartment. Call 394-J, or 379.

FOR RENT: 4 room unfurnished house. Phone 582-W.

FOR RENT: Furnished apartments. 611 West Plummer.

FOR RENT: Newly decorated apartments. Phone 1085-W.

FOR RENT: Large house, \$40. See in the back after 5 p.m. at 107 N. Dixie.

FOR RENT: 3 bedroom house, 1 1/2 bath. Inquire at 1211 West Main. Phone 804-J.

Around the Town At Olden

By Mrs. Dick Yielding

With the holiday season near and Christmas just around the corner the Olden school children are brimming full of joy. Thursday afternoon the FHA girls and their counselor, Mrs. Elizabeth Vaught, entertained the FFA boys with a party in the homemaker cottage. Fruit cake and punch were served to about 45 girls and boys.

Friday afternoon the entire high school presented a program of fun and frolic in the form of an amateur program.

Mr. Fox entertained his 7th and 8th graders with a room par-

Texas Electric Plant Employees Honored Sunday

Members of the production department and transmission department of the Texas Electric Service Company were honored with a Christmas open house Sunday afternoon at the Woman's Club. Mr. and Mrs. Jim Kuykendall and Mr. and Mrs. Ronald Burton were hostesses for the affair and greeted the guests at the door.

Potted poinsettias were in various points in the club house. Recorded Christmas music was played throughout the calling hours.

The tea table was centered with an arrangement of red carnations wound around a silver lease and surrounded by silver balls. Mrs. Mary Barton and Mrs. Hubert Jones poured the spiced tea and coffee and decorated cake squares were served by Mrs. Johnny Collins and Mrs. Frank Hightower. Mrs. Larry Kinard assisted in serving.

Approximately 100 attended.

Olden-

(Continued from Page 1)

Jack Hilliard, acting as representative of the boys basketball team, crowned the queen, and Dolores Cooper, representing the girls basketball team, presented flowers to the queen.

Appearing on the royal program were Linda Mezell, accordion; Donnie Kelley, piano; Delores Cooper, piano; Carol June Hilliard, piano; Linda Cagle, reading; and Gary Copeland, reading. A skit was also given by students.

NEWS FROM DESDEMONA

By Anel McMasters

A wedding shower for Miss Shirley Hogan, bride elect of Larry Nabors, son of Mrs. Doris Nabors was held Monday night.

Mr. and Mrs. Junior Moore of Fort Worth visited their parents, Mr. and Mrs. Hyson Echols and Mr. and Mrs. Floyd Moore over the week end.

Friday afternoon, Cup cakes, pop corn balls, fudge and punch were served.

Last Sunday evening after church services, Mr. and Mrs. Gene Falls, B. F. Alford, Rev. John Morgan and Mr. and Mrs. Dick Yielding enjoyed a TV show in the home of Mr. and Mrs. Archie Campbell. Home made fruit cake and coffee were served by Mrs. Campbell.

Mrs. Myrtle Warren is in Midland with her son, Bobby and Mrs. Warren, who are the parents of a new baby.

Mr. and Mrs. O. B. Crosby of Stephenville visited Mr. and Mrs. Tracie Reece and Mrs. Ann Crosby here on Monday.

Mr. and Mrs. Ronald Hughes and children of Corsicana were in Olden over the week end. The Hughes lived here prior to their moving to Corsicana.

Miss Mary Ann Reece entertained her primary Sunday school class with a party at her home last Wednesday afternoon. About 13 children were there. Cookies, candy canes, and punch were served.

Mr. and Mrs. J. C. Simmes visited friends in Breckenridge Sunday afternoon.

Mr. and Mrs. Oliver Canet, and Mrs. Gene Falls, visited in Heaton, Oklahoma Monday with their daughter.

Edd Mitchell, who has been in the Ranger General Hospital for a long time is still improving.

Mrs. Charlie Mitchell received word Tuesday that her daughter, and family, Mr. and Mrs. Sam Aills and son, had gone to Nachitoches to spend the Christmas holidays with her mother and that her grandson, Gary Wright who is attending the University of Arkansas, will be here to spend Christmas with her and Mitchell.

B. F. Alford left Friday for Cuite in south Texas to spend Christmas with his sister and family.

Lt. James Cooper was in Desdemona Monday. He is home on 22 day leave from Quantico, Virginia where he is stationed with the Marines.

Mr. and Mrs. Robert Abel of Oil Center, New Mexico left Tuesday morning after spending the week end here with their parents, the Abels and Joiners.

Mr. and Mrs. Curtis Allen of Kermit and Roy Allen of Eastland visited Mr. and Mrs. John Allen and Luellen this week end.

Mrs. Roberts is spending awhile in Ranger with her daughter, Mr. and Mrs. Paul Fonville.

Ethel Keith spent Sunday with

Friday-

(Continued from Page 1)

Dear Santa,
Please bring me a Robin Hood set. I am a first grader.
Love,
Jimmy Hughes

Dear Santa,
Will you please bring me a Betty Wetsy doll, a doll bathinette, a bassinet, a billfold and a Bible.
With Love,
Mary Ann Turner

Dear Santa,
Will you please bring me a dancing doll and a jumping rope.
Love,
Lendy Beck

Dear Santa,
Will you please bring me some finger paints and a bride doll.
Love,
Kathy Kincaid

Pipkin-

(Continued from Page 1)
continued success of this ministry of service for the homeless children in Texas and New Mexico. Methodist Home, founded in 1890 by Bishop Joseph S. Key, is owned and operated by the Methodist Church; however, it serves children of all denominations. By its program of help, more than 7500 children have been rehabilitated.

The home now provides food, clothing, shelter and education for more than 400 children who have no outside help.

Moore About-

(Continued from Page 1)
president of the organization, puts it this way:

"Ever since toothpaste was first put in tubes for the public's squeezing pleasure the annoying cap has defied the industry's imagination to come up with a solution to its animated antics and evasive tactics when in the hands of the consumer.

"With no relief in sight from the ravages of this public enemy, we decided to go straight to the public for ideas against the malicious cap. With your help, our first letter drew an overwhelming response, a flood of entries. But alas and alack, virtually every idea or plan we received was impractical to develop.

"Since we are a nation of toothbrushers, I hope you agree with us on the need to find a foolproof 'captive cap,' one that cannot be dropped or lost; that is inseparable from the tube. So may we seek your help in advising prospective inventors throughout the nation to bear in mind the following:

"1. The cap must be fairly simple to make and to use. If we develop some of the ideas sent us the whole populace would have to study engineering to brush their teeth.

"2. It must not be too big or bulky. Some plans call for caps big enough for Shriners to wear, and while it is doubtful that these could get lost, we feel this is not the answer.

"3. Economy must be considered. We cannot produce a cap which costs more than the tube and the toothpaste in it.

"4. The cap must be acceptable to the toothpaste industry. Interested? If you are the address is 527 Madison Avenue, New York 22, N.Y.

—vem—
See you Sunday.

her mother, Mrs. N. S. Partain. The children gathered at her home for a birthday dinner on her 77th birthday.

Kenny Lee, son of Mr. Mrs. J. C. Lee who was staying in El Paso have been here few days.

AN INTERMEDIATE THEATRE

MAJESTIC

The MOLE PEOPLE

JOHN AGAR - CYNTHIA PATRICK

—PLUS—

CURUCU

BEAST OF THE AMAZON

JOHN BROMFIELD - BEVERLY GARLAND

Friday and Saturday

Say MERRY CHRISTMAS with GIFTS from BESKOW'S and SAV

Fabulous selection of watches and diamonds. real savings to you! Hundreds of styles of costume jewelry at reduced prices. Many other gifts that everyone loves to receive.

BESKOW JEWELRY

Next to Penney's Eastland

a Nightcap for the REST of your life-

Boswell's Milk

good all the time

YOU NEVER OUTGROW YOUR NEED FOR VITAMINS AND MINERALS IN MILK

NOW OPEN

OUR WINTERPROOF SERVICE leaves WEATHER WORRIES BEHIND

EARLY TIRE SERVICE

302 W. Main Eastland PHONE 208

NOTICE

We will be closed Monday and Tuesday for the Christmas holidays. May we wish you A Merry, Merry Christmas!

BROWN PLUMBING SHOP

214 South Neblett Phone 785

MORE FEATURES FOR YOUR MONEY

NEW 12 CUBIC-FOOT REFRIGERATOR 339.00

less big allowance for your present refrigerator

GENERAL ELECTRIC FEATURES

- MAGNETIC SAFETY DOOR
- REVOLVING SHELVES
- FULL-WIDTH FREEZING COMPARTMENT
- FULL-WIDTH CHILLER TRAY
- PORCELAIN VEGETABLE DRAWERS
- BUTTER COMPARTMENT—EGG RACKS

Coats Furniture & Carpet, Ltd.

305 S. Seaman Eastland, Texas

Beautiful and Useful GIFTS for the HOME

18" x 27" THROW RUGS

All Wools, Rayons, Cottons

In All Colors Values to 3.50 **49c**

LAMPS Priced from \$6.95

DINETTE SUITES from \$49.50

TV TABLES Wood and Metal \$7.95 up

CHAIRS Platform and Spot \$29.50 up

CEDAR CHEST By Lane 49.95 up

COSCO Step Stools, High Chairs, Utility Tables, Child Rockers, Card Table Sets.

BEDROOM SUITES With Bookcase Headboard from \$89.50

Pictures and Mirrors All Sizes and Prices

SOFA PILLOWS 18 inches square. Made from upholstery fabric. Cotton filled. Reg. \$1.99 Value **\$1**

Coats Furniture and Carpets, Ltd.

Free Delivery EASTLAND Lone 585 G. E. Appliances Good Trade-Ins

Mrs. James Horton Honors Las Leales Club With Yule Party

Members of the Las Leales Club were greeted by a warm wood burning fire in the fire place of the James Horton home Monday night as the group gathered for their annual Christmas party.

A turkey dinner was enjoyed by candlelight at long tables placed in the dining room and living room. Decorations throughout the house carried out the color scheme, amethyst pink and deep blue. The tables were laid with amethyst colored cloths bordered with eight reindeer sprinkled with multicolored sequins.

Following the meal the guests assembled in the sunroom where the Yule tree was the center of attraction. The wood burning fire

and spirit of community children at the Christmas tree. Mr. Shellhorn, an old Englishman gave them this interpretation, "We are maskers and mummers having a merry time, but if we lose our money or our crops or our friends 'The Drum Goes Dead.' It takes a great deal of courage and spirit to beat away as though nothing had happened, does it not?"

Hostesses for the evening were Mmes. Horton, Taylor, Opal Cross, Myrtle Anderson and Miss Jessie Lee Ligon.

Following a gift exchange, James Horton arrived and took pictures of the group.

Those attending were Mmes. Anderson, Bumpass, Wayne Cannon, Cross, O. H. Dick, D. E. Frantz, Eldress Gattis, Hassell, Rudolph Little, E. E. McAlister, Don Parker, Guy Patterson, Wendell Siebert, Homer Smith Taylor, Hubert Westfall, J. C. Whately, James Horton, Leonard Huckabay and Misses Verna Johnson, Jessie Lee Ligon and Gladys Green.

Yule Party Held By Stitch and Chatter Club

Mrs. L. W. Dalton was hostess to a Christmas party Monday night for members of the Stitch and Chatter Club in her home, 101 South Hill Crest.

A short business session was held and those attending exchanged Christmas gifts.

Refreshments of fruit cake, topped with whipped cream, nuts and coffee were served to Mmes. Aubrey McBee, Parks Poe, J. L. Owen, Clarence Penn, Kenneth Garrett, Jack Heleman, Homer Latham, Guy Robison, J. C. Poe, and James Sherrill.

ATTEND THE CHURCH OF YOUR CHOICE EACH SUNDAY

NOTICE OPEN 24 HOURS

A DAY TO BETTER SERVE THE PEOPLE OF THIS LOCALITY

GOBEN'S

WHEEL SERVICE STATION

West Main Phone 127

GIFTS for SPORTS FANS

MAKE US YOUR



Boating Headquarters

It's all here! Everything you need for more fun afloat. Come on in. Browse around. Thump the hulls of our new boats. Inspect the new gadgets. Ply us with questions. We love to talk boating.

- Johnson Sea-Horses 9 new models 3 to 35 hp
- Boats
- A complete line of marine equipment
- Boat trailers
- Outboard motor repairs

• FREE

To be given away December 22: 20-Ga. Shotgun. Just register. You do not have to be present to win.

Bicycles - Tricycles - Wagons - Tractors

- Card Tables • Cosco Chairs • Air Rifles
- Guns • 22's • Scopes • Radios
- Fishing Lures • Boats • Camping Equipment
- Toys • Boat Trailers • Fishing Rods • Fishing Reels

LOTS AND LOTS MORE - COME IN AND SEE

ALL RADIOS SALE! DAISY AIR RIFLES
 10% OFF
 Reg. \$5.50 Rifles \$4.95
 Reg. \$6.50 Rifles \$5.95
 Reg. \$8.50 Rifles \$7.95
 Take Your Choice Reg. \$12.95 Rifles with telescope sight \$11.95

BRUCE PIPKIN'S

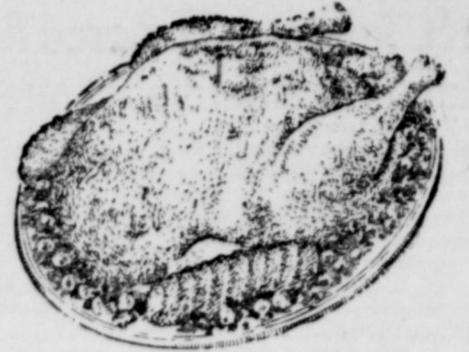
Sport Center

304 E. Main EASTLAND Phone 525



FRESH DRESSED

Turkeys



BOURLAND'S MARKET VALUES FRESH GROUND MEAT

WHOLE HOG

SAUSAGE

The Kind Grandpa Made

Lb. 49c

STEAK

Baby Beef or Veal Home Butchered Milk Fed, Loin, Choice T-Bone, or Club

Lb. 59c

MORRELL'S PALACE

BACON

Sliced

Lb. 43c

Wilson's Certified, Hormell's Dairy, Neuhoff's

HAMS

Half or Whole

Lb. 59c

PICNIC—Shankless

HAMS

6 to 8 Lb. Avg.

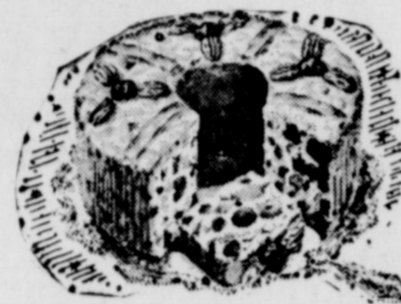
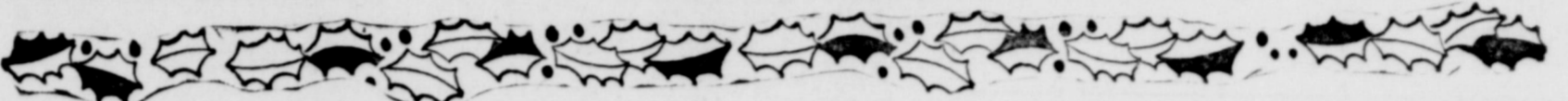
Lb. 39c

CANNED PICNIC

HAMS

4-Lb. Avg.

Can 2.75



JANE PARKER

FRUIT CAKE

1 1/2-lb. Cake \$1.35
 3-lb. Cakes \$2.65
 5-lb. Cake \$3.85

OVER 2/3 FRUITS AND NUTS

Other Jane Parker Buys
 APPLE PIE JANE PARKER Each 43c
 DONUTS JANE PARKER 5 VARIETIES, Doz. 19c
 LOAF CAKE JANE PARKER GOLDEN, Each 25c
 COOKIES JANE PARKER SUGAR, 2 10-oz. Pkg. 49c

A&P NEW INSTANT COFFEE
 2-oz. Jar 49c
 6-oz. Jar \$1.29

Gift Suggestions A&P GIFT CERTIFICATES

Available in 1.00 & 5.00 Denominations Redeemable at any A&P Store in the U.S.

ANN PAGE GIFT BOXES

ASSORTED JELLIES AND PRESERVES \$2.15

King Size CIGARETTES Filter

WINSTON • L&M • KENT* 10 Pks. \$2.37
 KOOLS • VICEROY in Ctn.

Christmas Candy

WARWICK CHOCOLATE COVERED 1-lb. Pkg. 49c
 THIN MINTS WARWICK 1-lb. Pkg. 39c
 OLD-FASHIONED CHOCOLATE DROPS 1-lb. Pkg. 25c
 ROYAL LUSTERS 1-lb. Pkg. 25c
 CANDY AND TOYS IN STOCKING 9-oz. Size 39c
 WORTHMORE CANDY TOYS 1-lb. Pkg. 29c

WARWICK ALL MILK

ASST. CHOCOLATES

1-lb. Box 59c
 2-lb. Box \$1.15
 5-lb. Box \$2.79

Nut-In-The-Shell MIXED NUTS 1-lb. 55c
 PECANS 1-lb. 49c
 WALNUTS BABY 1-lb. 49c
 Fresh Eggs CRESTVIEW 12-oz. 39c
 COUNTRY doz. 45c

Fresh Fruits and Vegetables

EXTRA FANCY WASHINGTON STATE RED DELICIOUS APPLES ... Lb. 19c

FLORIDA ORANGES 8-Lb. Bag 49c

CALIFORNIA SUNKIST NAVAL ORANGES ... Lb. 15c

FLORIDA TEMPLE ORANGES ... Lb. 15c

RUBY RED GRAPEFRUIT 8-Lb. Bag 59c

TANGERINES ... Lb. 15c

MARGARINE ALLSWEET

1-Lb. Ctn. 30c

NORTHERN TOILET

TISSUE

3 Rolls 25c

DEODORANT SOAP

WOODBURY

2 Bath Bars 29c

DEODORANT SOAP

WOODBURY

3 Reg. Bars 29c

MACARONI AND CHEESE

Kraft Dinner

Pkg. 15c

FRENCH

DRESSING

8-Oz. Btl. 23c

WHITE HOUSE

MILK

3 13-Oz. Cans 39c

COMSTOCK

PIE FILLING

CHERRY No. 2 Can 37c

PEACH No. 2 Can 35c

CLEANSER

COMET

2 14-oz. Pkgs. 29c

CHICKEN OF THE SEA TUNAFISH

Chunk Style 6 1/2-oz. Can 35c

GOLD HILL ELBERTA SLICED PEACHES 30-oz. Can 25c

A&P CREAM STYLE GOLDEN CORN 2 16-oz. Cans 27c

SULTANA WHOLE KERNEL GOLDEN CORN 16-oz. Can 10c

NEW CROP PECAN HALVES

RAINBOW DILL OR SOUR CREAM

RAINBOW DILL OR SOUR CREAM

RAINBOW DILL OR SOUR CREAM

RAINBOW DILL OR SOUR CREAM

RAINBOW DILL OR SOUR CREAM

RAINBOW DILL OR SOUR CREAM

RAINBOW DILL OR SOUR CREAM

MINI TAI FROZEN

A&P FROZEN SLICED STRAWBERRY

TEX-WAX OR GULF-WAX PARAFFIN 1-lb. Pkg. 21c

SEE STENCIL DISPLAY GLASS WAX 59c

ANN PAGE SMALL STUFFED OLIVES 4 1/2-oz. Btl. 35c

CRESTMONT-S FLAVORS ICE CREAM 1/2-Gal. Ctn. 75c

NESTLE'S SEMI SWEET CHOCOLATE MORSELS 12-oz. Pkg. 41c

COLEMAN'S CRACKERS 1-lb. Pkg. 35c

SNOW CROP FROZEN ORANGE JUICE 2 8-oz. Cans 35c

SNOW CROP FROZEN GRAPEFRUIT JUICE 2 8-oz. Cans 27c

DOLE FROZEN PINEAPPLE JUICE 2 8-oz. Cans 29c

DOLE FROZEN PINEAPPLE CHUNKS 1 1/2-oz. Can 23c

(Prices effective through Saturday, December 22, 1956)



STAR-KIST CHUNK STYLE

TUNAFISH

Green Label 6 1/2-oz. Can 31c

WHOLE KERNEL CORN

NIBLETS

12-Oz. Can 17c

GERBER'S STRAINED

VEGETABLES

4 1/2-oz. Cans 35c

GERBER'S CHOPPED MEATS 3 1/2-oz. Can 21c

WESSON OIL 1-Gal. 63c

SNOWDRIFT

3-lb. Can 95c

AUSTEX TAMALES

No. 300 Can 21c

AUSTEX FLAIN CHILI

15-oz. Can 35c

Joe H. Adams Is Honored At Magnolia Christmas Dinner

Employees of the Magnolia Petroleum Company, producing department, met at Olden Saturday for a Christmas dinner in honor of the retirement of their friend and fellow employee, Joe H. (Slim) Adams of Desdemona. His years of service ranged from January 29, 1923 to December 31, 1956, a total of 33 years, 11 months and three working days.

Christmas music filled the air in the gaily decorated room as old friends gathered together again. Many new faces were welcomed also.

Carl Crone introduced Donald E. Johnson, safety supervisor of Wichita Falls, who ably served as master of ceremonies for the evening. The invocation was given by John R. Day.

The group had as their guests former employees who had previously retired; Mr. and Mrs. Joe Lawrence of Olden, Mr. and Mrs. James Ward and Mr. and Mrs. W. W. Carney of Eastland and Mrs. De Alva Edwards of Olden.

The menu consisted of turkey and dressing, giblet gravy, green beans, creamed potatoes, cranberry sauce, celery sticks, hot rolls with butter, apple pie a la mode and coffee. This food prepared by Mmes. Charles Langston and Nina Lockhart, was highly complimented and ultimately enjoyed by all.

Retirement gifts presented to the honoree and his wife from the group were a Sunbeam electric skillet, a billfold and a corsage of white carnations that was worn by Mrs. Adams. For these they expressed their sincere appreciation.

E. B. Cantrell of Dallas, son-in-law of the honoree, took pictures of this momentous occasion as an additional gift to the honorees.

A program of music consisted of a rendition of "Rustic Dance" and "Blue Danube" at the piano by Miss Sharon Lawrence and the singing of "Jingle Bells" by a group led by Miss Darla Cooper and played by Miss Betty Baker.

Those registered in the guest book were as follows: Mr. and Mrs. W. C. Crone of Olden; Mr. and Mrs. R. O. Crowder and children of Olden; Mr. and Mrs. J. H. Adams and son of Desdemona; Mr. and Mrs. E. B. Cantrell, Jr. of Dallas; Mr. and Mrs. Don Johnson of Wichita Falls.

Mr. and Mrs. Joe Lawrence, Mrs. De Alva Edwards, Mr. and Mrs. Homer Lawrence and daughter and Mr. and Mrs. R. M. Covington and family of Olden; Mr. and Mrs. E. J. Norvelle, Mr. and Mrs. Dale Jones and family and Mr. and Mrs. Joe C. Langdon all of Breckenridge; Mr. and Mrs. A. E. Baker and Mr. and Mrs. Floyd Todd of Albany; Mr. and Mrs. Jao. R. Day of Coleman; Mr. and Mrs. E. L. Huddleston and son of Anson.

Mr. and Mrs. James Ward, Mr. and Mrs. W. W. Carney, Mr. and Mrs. Lynn Adams and daughters, Mrs. Gene Honey, Frances McCullough, Doris Bennett, Jessie Woolsey, Imogene Mitchell, Ruth Folk, Wanda Thomas, Mavie Campbell, Alene Brim, Wanda Black, Lea Spradling, Naomi Lewis, Luce Pittman, associate members, and the teacher, Mrs. Flo Clark. Visitors attending were Mmes. Billie Sue Chick, Anita Whitley, Juanita Rodgers, Winnette Maynard and Louise Dorsey.

Those attending were Mmes. Gene Honey, Frances McCullough, Doris Bennett, Jessie Woolsey, Imogene Mitchell, Ruth Folk, Wanda Thomas, Mavie Campbell, Alene Brim, Wanda Black, Lea Spradling, Naomi Lewis, Luce Pittman, associate members, and the teacher, Mrs. Flo Clark. Visitors attending were Mmes. Billie Sue Chick, Anita Whitley, Juanita Rodgers, Winnette Maynard and Louise Dorsey.

Naomi Lewis Is Victory Class Party Hostess

The Victory Sunday School class of the Bethel Baptist Church met in the home of Mrs. Naomi Lewis, 104 Harrell Street Friday from 7 to 9 p.m. for their Christmas party.

The festivity was a covered dish supper with each guest bringing a covered dish. The group gathered around the long dining table that was laid with a green and red holiday cloth and centered with a lighted "Santa." Also in keeping with the holiday decorations, snow sprinkled the table cloths and an evergreen decorated lazy susan holding festive holiday home-made cookies was at one end of the table.

After the group sang "Silent Night," Mrs. Allen Brim, president of the class, led in prayer and the supper was served buffet style. Holiday napkins were also used.

The group was seated in the living room with only the lights of the newly decorated tree and a red candle centering the gift table lighting the room.

After a period of visiting and talking, the gift exchange climaxed the evening with each lady drawing a number. Mrs. Gene Poney distributed the numbered gifts to the ladies, matching numbers. Mrs. Flo Clark, teacher of the class, was presented with a black and gold tidbit tray. She announced that she had a Bible marker gift for each one present but since the mail was delayed, she would hand them to each later.

Those attending were Mmes. Gene Honey, Frances McCullough, Doris Bennett, Jessie Woolsey, Imogene Mitchell, Ruth Folk, Wanda Thomas, Mavie Campbell, Alene Brim, Wanda Black, Lea Spradling, Naomi Lewis, Luce Pittman, associate members, and the teacher, Mrs. Flo Clark. Visitors attending were Mmes. Billie Sue Chick, Anita Whitley, Juanita Rodgers, Winnette Maynard and Louise Dorsey.

Double Seven Club Meets With Jannie Morton

Jannie Morton was hostess to members of the Double Seven Club Monday in her home.

The devotional and closing prayers were given by Laura Harris and refreshments were served to the following members: Sandy Taylor, Laura Harris, Dixie Durham, Cora Mendieta, Janie Arthur, Linnett Capers, Phyllis Phillips, Rosemary Jones, Jannie Morton, Jamie Stamey and Maxine Yancey, a visitor.

and Mr. and Mrs. A. G. Crosby and daughter all of Eastland; Mr. and Mrs. Paul Price and children of Cisco; Bill G. Newman and Betty J. Baker of Abilene; and Mr. and Mrs. Grey Cook and daughter of O'Donnell, guests of Mr. and Mrs. Huddleston.

The dinner party ended with Johnson wishing everyone a merry Christmas and a prosperous New Year.

Letter to Editor

Dear Sirs: Several years ago an ordinance was passed by our city commission against the sale and shooting of fireworks.

Please help us see to it that our Christmas season is not ruined by such a tragedy. Please remind our

citizens that we have an ordinance against the sale and shooting of fireworks.

Sincerely,
Mrs. V. T. Seaberry

Dear Editor: While we send our Christmas spirit to the far corners of the earth, while we overlook no creature, not even the alley cat, let us

remember the group that hides its tragedy the best it can, that dreads the coming of the nightmare which is its Christmas. This group consists of the devotees that must honor their God with the Communicative dedication come Christmas.

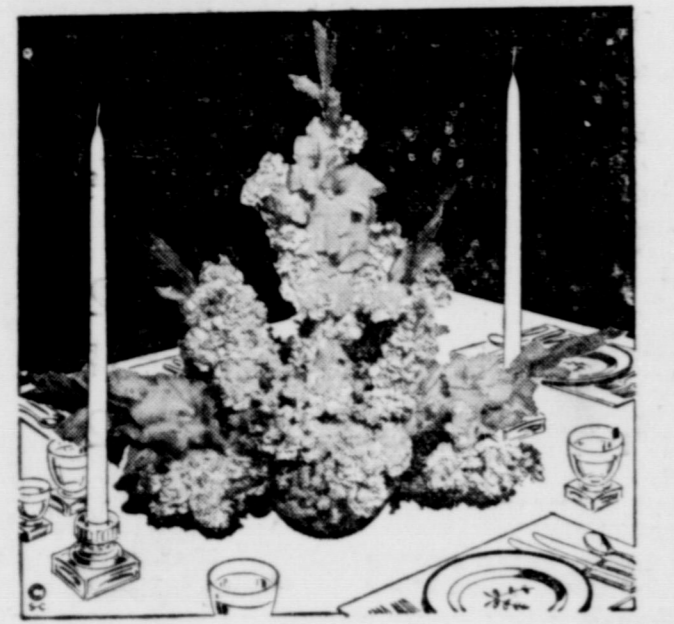
Howard Perkins
Houston

INGROWN NAIL HURTING YOU? Immediate Relief!

A few drops of OUTFORD bring blessed relief from torturing pain of ingrown nail. OUTFORD softens the skin underneath the nail, allows the nail to lie flat and thus prevents further pain and infection. OUTFORD is available at all drug stores.

RCA Whirlpool
automatic washers and dryers

Smith Plumbing and Tin
114 N. Seaman Phone 304



LET **FLOWERS** EXPRESS THE ENCHANTMENT OF CHRISTMAS

THE SEASON FLOWERS.
DISTRIBUTED BY **MARVIN GRUBB**
517 S. Daugherty Phone 870

Motor Overhaul
Only \$298
More Minutes After You Add
TESTED AND CERTIFIED
AMERICAN RESEARCH AND TESTING LABS. CHICAGO
DISTRIBUTED BY **MARVIN GRUBB**
517 S. Daugherty Phone 870

Fleet

with Thunderbird GO

There's new power for the new kind of Ford in the great new Silver Anniversary V-8... with new, wider horsepower ranges to meet your needs.* Or choose the new Mileage Maker Six—the world's most modern.

Low

long and light, it hugs the highway

Fairlane 500 (shown) and Fairlane models are over 17 beautiful feet long. Custom and Custom 300 models, over 16 feet. Every one of the 20 brilliant new Fords is longer, lower, roomier than ever before.

Lovely

... with beauty that's more than "skin-deep"

The new kind of beauty in the '57 Ford is only the lovely "complexion" over the tough and precisely co-ordinated muscles of the stronger "Inner Ford": : : that rides so silent : : : so solid . . . so secure!

*A special 270-hp Thunderbird 312 Super V-8 engine available at extra cost. Also, extra-high-performance Thunderbird 312 Super V-8 engine delivering up to 285 hp.

Come in and Action Test the new kind of **FORD** for '57

King Motor Company
DIRECT FACTORY FORD DEALER EASTLAND Phone 42
100 E. Main See Great TV, Ford Theatre Channel 9 KRBC-TV, Thursday 8:30 p.m.

These Prices Effective . . .

FRIDAY through Monday

Wednesday Double Stamp Day

FRESH DRESSED HENS	Lb.	39c
COUNTRY STYLE SAUSAGE	Lb.	25c
COUNTRY STYLE SAUSAGE	5 Lbs.	\$1

DEL MONTE FRUIT COCKTAIL	303 Can	23c
KIMBELL'S CRANBERRY SAUCE	303 Can	15c
DEL MONTE GOLDEN CREAM CORN	303 Can	15c
KIMBELL'S WHOLE GREEN BEANS	303 Can	21c
DEL MONTE EARLY GARDEN PEAS	303 Can	19c
MISSION WHOLE KERNEL CORN	2 12-Oz. Cans	25c
DIAMOND BRAND SWEET PICKLES	22-Oz. Jar	45c
KIMBELL'S PIE CHERRIES	303 Can	23c

Fresh Dressed Turkeys	Toms	Lb.	39c
Fresh Pork Hams	1/2 or Whole	Lb.	49c

EARNEST
Frozen Food Center
210 South Lamar Phone 11

FRESH GROUND **Hamburger** Lb. 25c

PORK **ROAST** Lb. 39c

WORTH FOOD MART

PRICES EFFECTIVE THURSDAY, FRIDAY, SATURDAY & MONDAY (Open 'til 6:00 p.m. Christmas Eve)
 ALL WORTH FOOD MARTS WILL BE CLOSED ALL DAY CHRISTMAS DAY



"S & H"
 Green
 Stamps
 For Extra
 Savings!

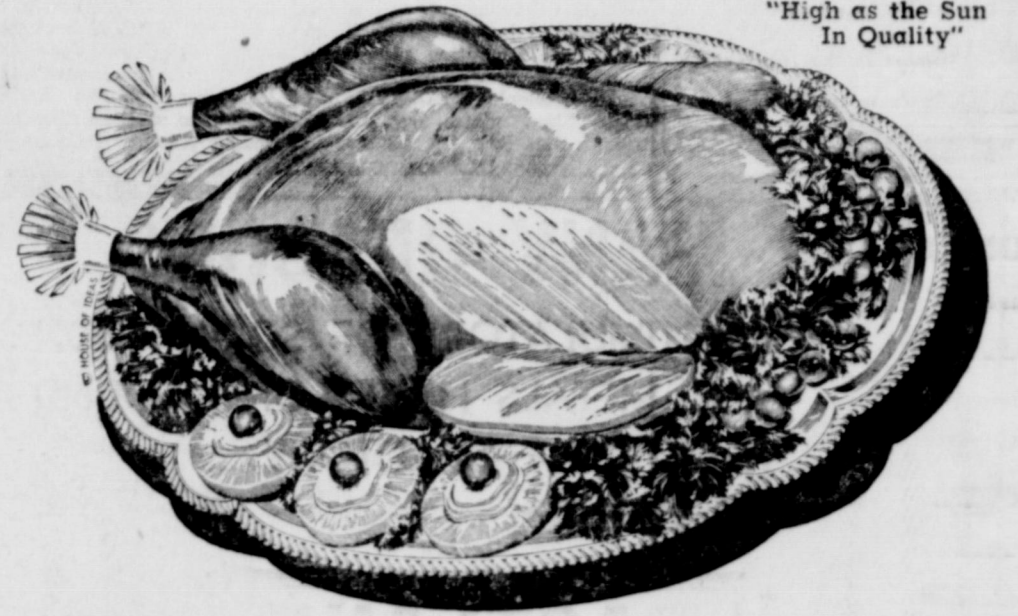
BUYS for CHRISTMAS!

TURKEYS

FANCY TOMS
 Sunco Top Quality,
 Broad-Breast, Young
 14 to 22-lb. Avg. Lb.

39¢

"High as the Sun
 In Quality"



TURKEY HENS SUNCO FANCY Broad-Breasted 8 to 14-Lb. Avg. Lb. **43c**

CHICKEN HENS PLUMP, TENDER, 3 to 5-Lb. Avg. Lb. **39c**

LONG ISLAND TABLE-READY
 DUCKLINGS Lb. **59c**

Holiday Frozen Foods!

SIMPLE SIMON APPLE OR
PUMPKIN PIES 24-Oz. Pkg. **39c**

WHOLE BAKED YAMS Trappey's 22-Oz. Pkg. **43c**

FROZEN-RITE ROLLS Parker, House or Colver Leaf 24-Ct. Pkg. **39c**

CHEESE CAKE Foremost Pineapple, Strawberry or Vanilla 8-Oz. Pkg. **43c**

FROZEN PEAS Libby's 2 10-Oz. Pkgs. **31c**

CUT CORN Libby's Frozen 2 10-Oz. Pkgs. **35c**

CAPONETTES Succulent Flavor Lb. **49c**

SLICED BACON Swift's Oriole 1-Lb. Pkg. **43c**

COOKED HAMS Rath Blackhawk 3 3/4-Lb. Can **\$3**

HAMS ARMOUR'S STAR 12 to 16 Lb. Avg. Half or Whole Lb. **49c**

FRESH OYSTERS Eastern Standards Lb. **99c**

PATTIE SAUSAGE Swift's Brookfield 1-Lb. Pkg. **53c**

PHILADELPHIA Cream CHEESE 2 3-Oz. Pkgs. **25c**

CRACKER BARREL Kraft Mellow 13 1-3 oz. Pkg. **59c** Kraft Sharp 13 1-3 oz. Pkg. **69c**

GRADE "A" LARGE EGGS DIXIE WHITE Doz. **59c**

BALLARD OVEN-READY BISCUITS 8-Oz. Can **10c**



RED DELICIOUS,
 STAYMAN
 WINESAP or
 ROME
 BEAUTY

Lbs.
 Only

19c

COFFEE MARYLAND CLUB, All Grinds 1-Lb. Can **\$1.04**

TEA BAGS LIPTON'S 16-Ct. Pkg. **23c**

VELVEETA Cheese Spread 2-Lb. Ctn. **93c**

APPLE CIDER MOTT'S 1/2-Gal. Jar **59c**

GRAPE JUICE WELCH'S 24-Oz. Bott. **39c**

Fresh and Festive!

TANGERINES Florida "Zipper-Skin" Lb. **15c**

FLORIDA ORANGES Sweet, Juicy Lb. **10c**

SEEDLESS GRAPEFRUIT Marsh, Juicy Lb. **10c**

D'ANJOU PEARS Ripe, Mellow Lb. **19c**

CAULIFLOWER White Snowball Lb. **15c**

YELLOW ONIONS Mild Flavored Lb. **5c**

RUSSET POTATOES U.S. No. 1 Select "Bakers" Lb. **7 1/2c**

SWEET POTATOES East Texas Kilo-Dried Lb. **15c**

Radishes or Green Onions 2 Bunch. **15c**

CELERY Crisp Pascal Lb. **8c**

SUNKIST ORANGES Juicy Navels Lb. **15c**

CRANBERRIES Eatmore, Fresh Lb. **15c**

NUTMEG McCormick 1 1/2-Oz. Can **29c**

CINNAMON McCormick 1 1/2-Oz. Can **14c**

BLACK PEPPER McCormick 4-Oz. Can **31c**

Poultry Seasoning McCormick 7-8-Oz. Can **15c**

Poultry Dressing Paddy's 8-Oz. Pkg. **29c**

Pie Crust Mix Betty Crocker, Pillsbury 9-oz. Pkg. **20c**

Fruit Cake Mix Lyons' 16-Oz. Pkg. **49c**

FLOUR
 GOLD MEDAL 5 -Lb. Bag **45c**

PUMPKIN
 LIBBY or DEL MONTE 2 No. 303 Cans **25c**

PEARS Rosedale Bartlett 3 No. 2 1/2 Cans **\$1**

Pineapple Del Monte Chunks 6 No. 211 Cans **\$1**

Bake-Rite Shortening 3 -Lb. Can **75c**

Tomato Soup Campbell's 2 No. 1 can **23c** Stuffed Olives Towle Thrown 7 1/2-Oz. Jar **49c**
 Ripe Olives Libby's Cadet Size, No. 1 Can **29c** Pickles Tempting Party Chip 16-oz. Jar **39c**

Miracle Whip Salad Dressing Quart Jar **49c**

Golden Corn Del Monte Cream Style 2 No. 303 Cans **25c**

Pitted Dates Bordo 1-Lb. Pkg. **33c** Seedless Raisins Del Monte, 15-oz. Pkg. **21c**
 White Currants Sun Maid 11-oz. Pkg. **21c** Fruit Cake Holiday 3-Lb. Tin **\$1.99**

Sweet Potatoes Trappey's Whole Lg. No. 3 Sgt. Can **25c**

Green Beans Del Monte Whole No. 303 Can **25c**

Marshmallows Angelus White, 10-oz. Pkg. **21c** Ribbon Mix Christmas Candy, 12-oz. Pkg. **29c**
 Christmas Candy Old Fashion Mix 14-Oz. Pkg. **29c** Gloria Mix Christmas Candy, 24-oz. Pkg. **69c**

Spiced Peaches Pratt-Low Whole No. 2 1/2 Can **25c**

Fruit Cocktail Del Monte 5 No. 303 Cans **\$1**

Early June Peas April Showers No. 303 Can **15c**

Prizes for Riding Groups, Floats In Ft. Worth Parade

FORT WORTH — Historical entries and riding clubs from anywhere are welcome to take part in the spectacular parade on Friday.

Jan. 25, opening day of the Southwestern Exposition and Fat Stock Show.

Plaques will be given by the Fort Worth exposition to the first, second and third place winners in the historical division and plaques also will go to the riding clubs that win the three top places. In addition, officials of the Stock Show will present 25 rodeo tickets to each of the six winning entries.

All organizations and business concerns are invited to sponsor historical entries, which may be either floats or vehicles.

Plans for the traditional parade through the downtown business section were discussed at the first meeting of the parade committee Friday afternoon. F. M. Dougherty, Stock Show vice president, is committee chairman. Inquiries will be answered by George R. Shepherd, of the committee, care of the Stock Show, P. O. Box 150, Fort Worth, or telephone EDison 2-7361. Stock Show dates are Jan. 25 through Feb. 3.

Soil and Water Conservation Program Set

A stronger soil and water conservation program for Texas will result from an agreement signed by top officials of the Texas A and M College System and the Texas State Soil Conservation Board.

Acting as spokesman for the agreement, D. W. Williams, vice-chancellor for agriculture for the T and M System, said, "The agreement is to utilize to the fullest personnel to develop further soil and water conservation for Texas without duplication of effort."

The agreement will be extended to a local level for signing by representatives of the soil conservation district supervisors and county agricultural agents.

It is effective immediately. Officials who have been working toward such an agreement expressed further that cooperation

and coordination of activities toward building and conserving soil and development of an adequate water supply will result in a higher level of living and greater security for this country.

All agricultural branches of the Texas A and M College System will be included in the agreement. They are the Texas Agricultural Extension Service, the Texas Agricultural Experiment Station, the School of Agriculture and the Texas Forest Service.

Jobs Open In Public Health Vacancies

AUSTIN — Applications are being received by the Merit System Council for the Texas State Department of Health for competitive examinations to establish eligible lists from which public health vacancies can be filled.

Special recruitment is being made for these classifications which prefer or require a college degree: administrative assistant, lay meat inspector, junior sanitarian, sanitarian, senior sanitarian, junior engineer, veterinarian, dental hygienist, associate director of the dental division, public health physician, and public health nurse. Some positions require extensive specific experience in public health agencies.

Application forms and information are available upon request from the Merit System Council, 814 Littlefield Building, Austin, Texas.

TV LOG

KRBC-TV

THURSDAY

- 3:45—Modern Romances
- 4:00—Comedy Time
- 4:30—Yesterday's Newsreels
- 4:45—Sterling
- 5:00—Kalvin Keewee
- 5:30—Laurel & Hardy
- 6:00—News
- 6:10—Football with Chuck
- 6:25—Weather
- 6:30—Dinah Shore
- 6:45—Open House
- 7:00—You Bet Your Life
- 7:30—Dragnet
- 8:00—People's Choice
- 8:30—Ford Show
- 9:00—Lux Video Theatre
- 10:00—News
- 10:10—Wrestling
- 10:40—Weather
- 10:45—Wrestling
- 11:15—Sign Off

FRIDAY

- 7:00—Today
- 9:00—Ding Dong School
- 9:30—The Price is Right
- 10:00—Home
- 11:00—Tic Tac Dough
- 11:30—It Could Be You
- 12:00—Daily Devotions

- 7:30—His Honor, Homer Bell
- 8:00—Story Theatre
- 8:30—The Unexpected
- 9:00—Cavalcade of Sports
- 9:45—Red Barbers Corner
- 10:00—News
- 10:10—Feature 9
- 10:40—Weather and Sports
- 10:50—Feature 9
- 11:30—Sign Off

CALL 601 FOR CLASSIFIED AD SERVICE

ATTEND THE CHURCH OF YOUR CHOICE EACH SUNDAY

**T. L. FAGG
R. L. JONES**
REAL ESTATE
Property Management
Home and Farm Loans

Insurance AND Real Estate
D. L. KINNAIRD
Life - Fire - Auto - Farm
Polio - Bonds
37 years in the Insurance Business in Eastland

FOR MANY REASONS
ACCUMULATORS OF SCRAP IRON AND METALS HAVE LONG FOUND IT MOST SATISFACTORY TO SELL TO

EASTLAND IRON AND METAL CO.

WHY NOT GET IN TOUCH WITH US
PHONE 270

ONE BLOCK EAST OF THE NEW SAFEWAY STORE
OVER 30 YEARS SQUARE DEALING THE YEAR ROUND

Owned and Operated by
HENRY PULLMAN

COMPLETE BODY-FENDER Repair

WRECKER SERVICE DAY AND NIGHT Ph. 42

Expert Body Work and Painting
Choice of Colors

KING MOTOR CO.
Direct Factory Ford Dealer
NE Corner Square
Phone 42

PHONE 1159
M. & W. Plumbing
405 S. Seaman

FOR GIFTS WONDERFUL WAY BEYOND THEIR PRICE TAG!

Penney's is Your Santa!

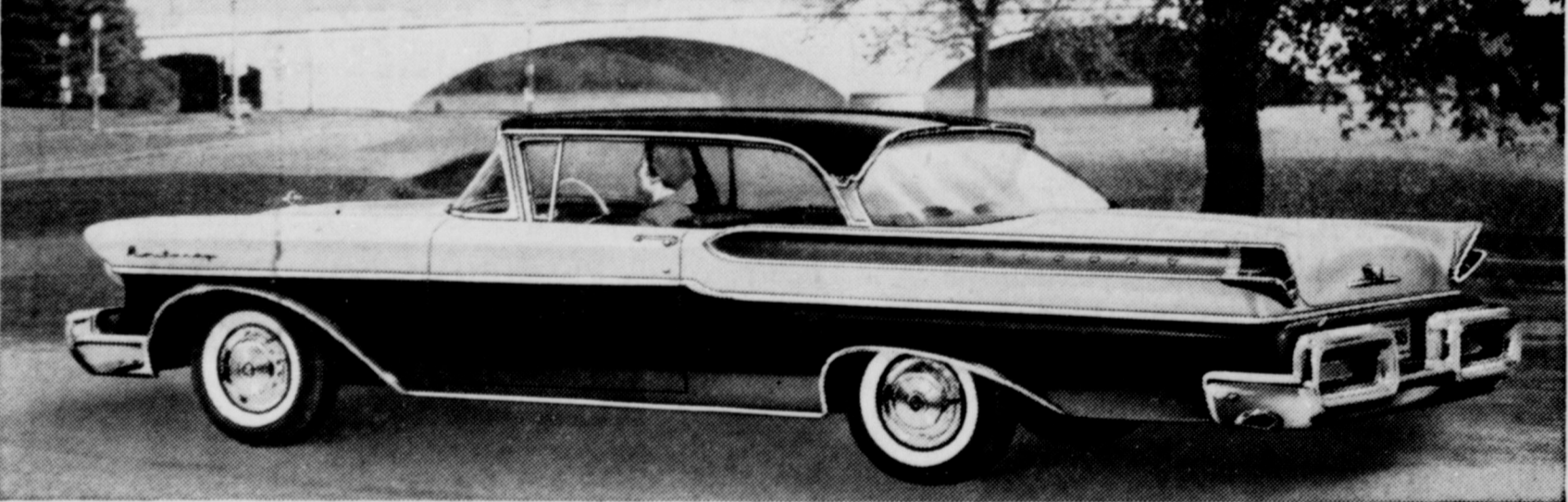
Give her a hoisery treat with new double-loop GAYMODE STRETCHABLES!

- SLEEK REGULAR SEAM STYLES!
- BRAND NEW SEAMLESS!

98c



Don't guess Mercury's price by the new size and luxury (never before has so much bigness and luxury cost so little)



IN MERCURY'S LOWEST PRICE SERIES—Monterey Phaeton Coupe. Also in the big-value Monterey series: Phaeton Sedan, 2-door Sedan, 4-door Sedan.

THE '57 MERCURY brings you the biggest size increase in the industry. It's over 17½ feet long, more than 6½ feet wide. Bigger in every important dimension — with inches more leg room, hip room, shoulder room, headroom.

Mercury brings you Dream-Car Design—shared by no other car on the road. Notice the unique straight-line sweep of the roof, the V-angle Tail-lights, the rear projectiles, the Jet-Flo Bumpers, and the Quadri-Beam headlamps.

Exclusive Floating Ride combines 4 of the greatest bump-smothering features ever put between you and the road. Exclusive Keyboard Control outdates all push-button transmissions. An exclusive power seat that "remembers" finds your favorite seat adjustment at a touch of a dial. In

all, there are 21 dream-car features waiting for you to see and try.

3-WAY POWER CHOICE—A 290-hp Turnpike Cruiser V-8 engine is optional. A 255-hp Safety-Surge V-8 with Power-Booster Fan is standard in Montclair Series. A 255-hp Safety-Surge V-8 is standard in Monterey Series.

All engines feature a unique Thermo-matic Carburetor. Controls temperature of air engine breathes. Greater efficiency and economy result.

Power-Booster Fan in Montclair series *coasts* when not needed for cooling, saves power and fuel other cars waste.

YOU PAY LITTLE MORE DOWN...OR PER MONTH...THAN FOR THE LOWEST PRICED CARS Check price tags at our showroom. You'll find that anyone who can afford a new car can afford BIG M bigness and luxury.

ALL-WEATHER AIR CONDITIONING IS NO LONGER A LUXURY...IT IS A LOW-COST FEATURE WITH MERCURY'S NEW CLIMATE-MASTER SYSTEM.

STRAIGHT OUT OF TOMORROW **MERCURY for '57** with DREAM-CAR DESIGN

Wayne Motors 1006 W. Main EASTLAND Phone 40

8 EACH:	1 EACH:
PLACE SPOONS	SUGAR SHELL
PLACE FORKS	PIERCED SERVING
SALAD FORKS	SPOON
HOLLOW HANDLE	SERVING SPOON
PLACE KNIVES	COLD MEAT FORK
	BUTTER KNIFE
	16 TEASPOONS

"JUBILEE" 53 Piece Service By International Silver!

Big-name quality at big savings for Christmas! Original Rogers AA quality silverplate, Penney's exclusive "Jubilee" pattern.

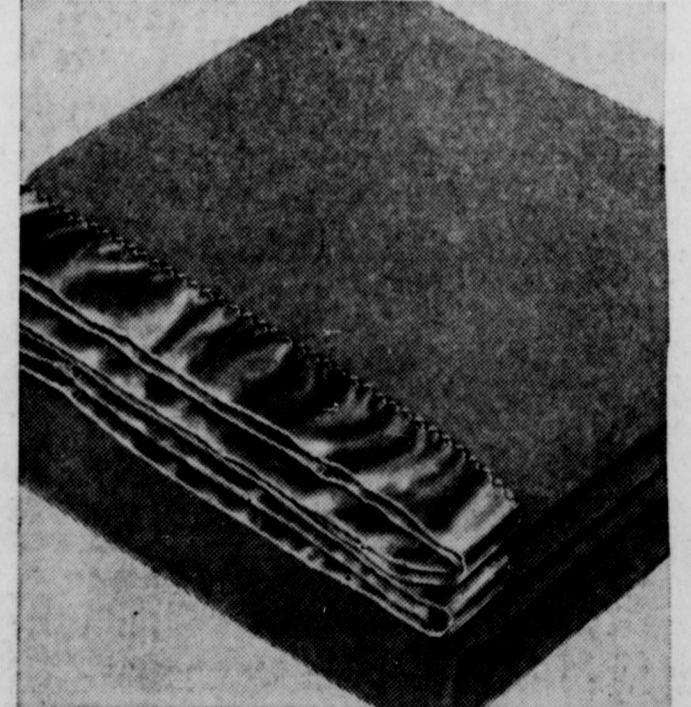
18⁹⁵



Drip Dry Adonnas! Practical Slips

Lavished with luxury trims... the better to win her heart... four gore cut won't twist, or ride up! Suds beautifully... need no ironing... the better to save her do-up time!

3.98



SENSATIONAL BLANKETS ADVERTISED IN LIFE!

Fabulous/ Penney blankets of Avisco rayon with Orlon! Hand wash in lukewarm water, dry fluffly warm like new. Double woven. Life-of-blanket nylon binding.

7.90

72 by 90 inches long



Leather Gift Slippers

Penney's Glove Soft For Men

... are ideal for basement, bedroom or backyard! Hard soles, Sanitized linings for cleaner wear.

3.98

Don't Be Afraid Of Dark—Just Be Careful

Afraid of the dark? You need not be afraid, of course, the National Safety Council says. But the Council adds that it's wise to have a healthy respect for the dark if you are driving a car.

The reason is simple—you must see danger to avoid it.

Last year more than half of the 38,300 fatal traffic accidents oc-

curred at night—and during the Christmas holidays, which the Council says are the most deadly time of the year, 75 per cent of the fatal accidents happened during the dark hours of 5 p.m. and 7 a.m.

Because of the rising toll, a "Back the Attack on Traffic Accidents" campaign, launched this month and continuing through 1957, will emphasize night driving hazards during December. Emphasis also will be on speed, drinking drivers and pedestrians, and pedestrian hazards, all of which increase the Christmas holiday toll, the Council said.

The "Back the Attack" campaign, inaugurated because of the emergency traffic situation, seeks to encourage stepped-up enforcement by public officials, and to stimulate acceptance of enforcement by citizens.

"Drive safely yourself," said Ned H. Dearborn, Council president, "and prevent the one accident you can control—the one that involves you. Then get behind a community attack on this problem. Back your officials to the hilt in whatever needs to be done to stop this carnage."

The Council offers the following suggestions to help reduce night driving accidents:

1. Slow down. Don't regulate your speed by posted limits alone. Remember, speed must be governed by conditions, and darkness is a condition that calls for caution.

2. Have your car checked frequently. In darkness, immediate response of the vehicle is a must. Double-check all lights.

3. Be alert. Keep a constant watch for pedestrians and for vehicles with dim lights or no lights at all.

4. Don't wear tinted glasses at night. The advantage they offer in reducing glare is more than offset by the dangerously reduced vision.

5. Use headlights properly. Use upper beam only on rural highways when no approaching car is within 1,000 feet. Use lower beam when oncoming cars approach, when you are overtaking another car, and when driving in city and residential areas.

6. Dim your lights, even though an oncoming driver fails to dim his. Trying to get even by blinding him is risking your neck. Maintain control of your car by looking at the right shoulder of the highway.

7. Be sure your lights are on before you pull onto a lighted street at night.

8. Never stop on the travelled portion of a roadway at night. If you must stop, pull completely off the roadway, leaving parking and dome lights on. Carry flares for use in emergencies.

Dry Xmas Tree Is Fire Hazard

A moist Christmas tree is a fresh one. A dry Christmas tree is a fire hazard.

There are the simple facts of Yuletide tree selection, according to Davey tree experts. Remember them, and you won't go wrong in buying the family Christmas tree.

You can't gauge a tree's moisture or dryness entirely by appearance. Some species retain their color fairly well even when dry enough to burst into flame at the first spark or short-circuit.

Feeling, not seeing, is believing. Feel twigs and needles to determine if they're dry and brittle. Then bang the tree butt against the floor. If a shower of needles results, look for another, moister tree.

The best way to make sure the tree stays moist at home is to stick it in water. Florist shops feature special Christmas tree bases that can be filled with water; or an ordinary kitchen pail, decorated with aluminum foil, will do as well.

Garden supply shops carry colorless plastic sprays that help to keep the moisture in. These liquid plastics, known as anti-desiccants, are being used outdoors on transplanted materials and to protect evergreen trees and shrubs from winter injury. They'll help Yuletide trees retain their freshness indoors, as well.

Christmas trees should be watered daily like fresh-cut flowers. Holly decorations are another story. These Christmas ornaments

COURTHOUSE NEWS AND RECORDS

Real Estate Transfers, Marriages, Suits Filed, Court Judgments, Orders, Etc.

County Clerk's Office

Atlas Fence Company v. John Shelton, abstract of judgment.
S. B. Aills to First Federal S & L Assn., deed of trust.
W. T. Aishman to First Federal S & L Assn., deed of trust.
Harvey E. Basham to Hanna Hdw. & Lbr. Co., MML & assignment.

James A. Bentley to Charles F. Harding, assignment.
Earl Bender v. Roy Parker, abstract of judgment.
Byrd Adams Buckanan to Erven L. Popham, warranty deed.

G. O. Boyd to Gene M. Gardner, MD.
D. M. Beaty to Gene M. Gardner, MD.
Burton Lingo Co. to First Federal S & L Assn., assignment of ML.

R. E. Browning to Ranger Chamber of Commerce, warranty deed.
Clark P. Chandler to H. B. Alexander, assignment of oil and gas lease (5).
City of Eastland to Mrs. J. C. Brumlow, deed.

G. D. Chastain to Dewey Cox, Jr., quit claim deed.
Commercial State Bank, Ranger to First Federal S&L Assn., assignment of ML.
City of Eastland to Mrs. B. F. Wilcox, cemetery deed.

L. N. Collins to B. W. Robertson, deed of trust.
son, deed of trust.
City of Dallas v. Rodney D. Young, abstract of judgment.
Jack Lee Cogburn to Lynn W. Adams, release of vendor's lien.
Commercial State Bank, Ranger to Eva Mills, extension of vendor's lien.

Lucretia A. Cauthen to E. P. Crawford, warranty deed.
Mary E. Davis to Eldon Callerman, warranty deed.
J. M. Dunn to A. D. Taylor, warranty deed.

F. C. Eaves to J. C. Cook, warranty deed.
Irben H. Fannin to Standard Oil Company of Texas, oil and gas lease.
R. C. Ferguson to W. F. Dillon, release of oil and gas lease.
Mrs. Jonnie Belle Fisher to D. H. Tharp, warranty deed.

First Federal S & L Assn. to W. W. Smith, release of deed of trust.
Jess M. Griffith to Gene M. Gardner, MD.
H. E. Gray to Higginbotham Bros. & Co., MML.
Pearl Emily Harris to J. H. Maxwell, warranty deed.

Russell Hill to M. E. Daniel, warranty deed.
Higginbotham Bros. & Co. to Federal Land Bank, Houston, transfer of MML.
R. Blake Hawk to Dr. R. L. La Scola, release of lien.
Mrs. Billie Ikonen to First National Bank, Cisco, deed of trust.
T. L. Joy to T. J. Johnson, quit

claim deed.
Harold Johnson to The Public, cc probate.
Truman H. Jacobs to M. R. McManigle, warranty deed.
Dorothy Jane Lockhart to Gustus Albert Dunn, Jr., assignment of oil and gas lease.
Lance Miller to Magnolia Petroleum Co., rat. & rental division order.
Cecil W. Meadows to Mae Carr, warranty deed.
J. H. Nunnally to John L. Cook, warranty deed.
O. F. Newson to A. F. Newson, assignment of oil and gas lease.
O. F. Newson to Gustus Albert Dunn, Jr., assignment of oil and gas lease.
O. F. Newson to Iris Jordan, assignment of oil and gas lease.
O. F. Newson to Eddie Gorman, assignment of oil and gas lease.
Stanley J. Pirtle to A. R. Huffman, assignment of oil and gas lease.
O. C. Raynes to Standard Oil Company of Texas, oil and gas lease.
B. W. Robertson to Lawrence

N. Collins, warranty deed.
Ruby Stone Springer to First Federal S&L Assn., deed of trust.
Cecil Shelton to The Texas Company, lease.
J. L. Stafford to Mrs. Billie Ikonen, warranty deed.
Safeway Stores, Inc. to The Public, resolution.
Safeway Stores, Inc. to Seriad Corp., warranty deed.
W. W. Smith to S. B. Aills, warranty deed.
Tri-State Credit Assn. to C. M. VanGeem, quit claim deed.
A. D. Taylor to Gene Schaefer, warranty deed.
L. T. Weathers to M. A. Oliver, release of vendor's lien.
Jack Whitehead to Franklin P. Wilcoxon, warranty deed.
H. O. Wooten Gro. Co. v. Mrs. Dee Anderson Guess, abstract of judgment.
Roy Wallace to F. A. Seidel, assignment of oil and gas lease.
Roy Wallace to Adelyn Wallace, assignment of oil and gas lease.

MARRIAGE LICENSES
Donald Lee Jordan and Doris

PROBATE
William W. Ernst, deceased, application for administration.
Vernon Cannon, deceased, application to probate will.
SUITS FILED
91st District Court
Donald Edward Buckalew v. Katherine Grace Buckalew, divorce.

ORDERS AND JUDGMENTS
91st District Court
Opal Gladys Madera v. James F. Madera, judgment.
Henry S. Melton v. Georgia Melton, judgment.
Melba Weaver v. Basil M. Weaver, judgment.
James C. Cloud v. Scurlock Oil Company, order of dismissal.
Jo Ann Darden v. E. C. Darden, order of dismissal.
D. A. Kitchens v. R. M. Ivy, et al, judgment.
Lorene Register v. George A. Register, judgment.
Jane Graves v. Carl E. Graves, Jr., order.

DANCE
Every Saturday Night.
American Legion Hall
8:30 Till
Also New Year's Eve

When the Fire Alarm Sounds—
... and it's your house would you feel secure in knowing that your insurance program is adequate to cover the entire loss? Or would you be a "wish I had?" There is no second guessing about insurance coverage. You either have it when you need it or you don't. Better let us examine your insurance program now and see if your coverages are complete and in line with present-day values and replacement costs. No obligation.

EARL BENDER & COMPANY
Eastland (Insurance since 1924) Texas

We're Authorized Dealers For
ALL HOTPOINT APPLIANCES
Washing Machines — Dryers — Ranges
Dish Washers — Disposals
Home Freezers — Refrigerators
Air Conditioners — Hot Water Heaters

Call Us For Complete Service
On ALL Appliances

SMITH PLUMBING & TIN
114 S. Seaman Phone 304

SPECIAL PRICE!
WAS \$369.95
NOW ONLY
\$269.95
WITH OLD REFRIGERATOR



YOU SAVE \$100.00
ON ALL NEW 1957
Servel gas
REFRIGERATOR
(FOR LIMITED TIME)

See these exclusive Servel features
at your SERVEL DEALER or
LONE STAR GAS COMPANY

ONLY \$1 DOWN
\$1.60 a week—payable monthly

- 10 YEAR GUARANTEE Servel's freezing system has a guarantee twice as long as for any other refrigerator. Serviced by Lone Star Gas.
- NO MOVING PARTS Nothing to wear out and cause repair expenses—no motor or compressor!
- CONTINUOUS COLD No temperature ups and downs. Uses dependable gas—no interrupted service due to bad weather!
- SILENT OPERATION Runs on a tiny jet flame of gas. Operating costs stay low, efficiency stays high!



His Tenth... and His Greatest Thrill!

Nine times before he has stood in his dealer's showroom and accepted the keys to a new Cadillac car.

And yet, as often as he has re-enacted this glorious event, he knows that there is something very special about today.

For this is more than a new Cadillac. This is the newest and most advanced Cadillac car ever to find its way from drawing board to production line.

And imagine the many wonderful thrills that await him as he takes the keys and starts off on his first journey home.

To begin with, there will be his discovery of Cadillac's brilliant new performance. The car is so responsive and so perfectly balanced that it will be a revelation.

Then, as he takes the sweep of the boulevard, there will be the thrill of those admiring glances from his fellow motorists.

And how satisfying it will be to find that even Cadillac owners themselves have a special affection for the man who rides in the new "car of cars".

And finally, of course, there will be the joy of that wonderful "welcome home" as

he turns into the familiar driveway and comes to a silken stop.

For when a new 1957 Cadillac arrives, it is the prize of any family... and the pride of any neighborhood!

Why not come in soon for a preview of this thrilling experience? We have a 1957 Cadillac waiting for you in our showroom.

Whether it's to be your first or your second—or your fifth or your tenth Cadillac—you're in for a great thrill!

OLDS **Don Pierson** **CADILLAC**
314 West Main EASTLAND Phone 802



THRIFT-PRICED Favorites

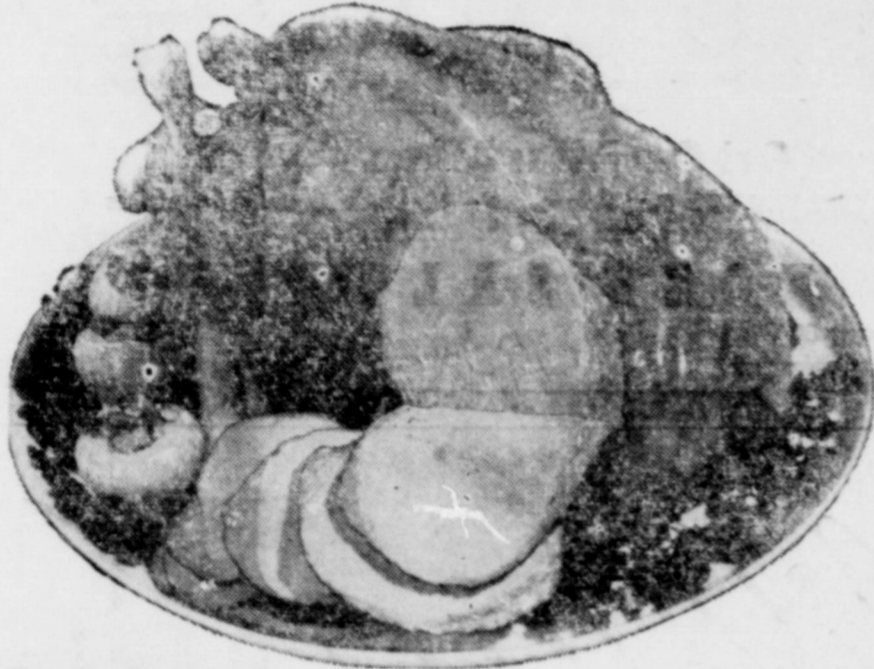


FOR YOUR HOLIDAY TABLE

These Prices Effective Friday, Saturday and Monday ... Closed Christmas Day

GOLDEN Fluffo
3 -Lb. Can .. **79c**

TURKEYS



READY FOR THE OVEN TENDER DELICIOUS

Fresh Dressed **HENS** Lb. **43c**

Pork **ROAST** Lb. **43c**

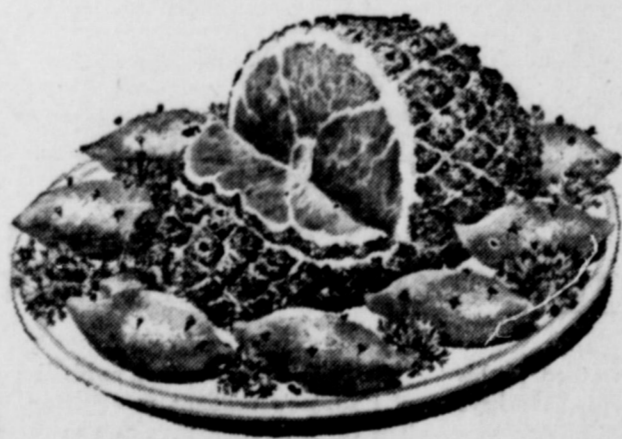
Chuck **ROAST** Good Quality Lb. **37c**

Fresh Ground **MEAT** Lb. **29c**

Home Made Pork **Sausage** Lb. **29c**

Kraft Velveeta **CHEESE** **2** Lb. Box **89c**

CURED **HAMS**
Whole Lb. **55c**



Fancy Delicious **Apples** Lb. **15c**

Central American **BANANAS** Lb. **12 1/2c**

Idaho Russet **Potatoes** **10** Lb. Bag **39c**

KING SIZE **Dr. Pepper** 10-Oz. Bottle 6 Bot. Carton **18c**

FOLGER'S **COFFEE** Drip or Regular Lb. **98c**

IMPERIAL PURE CANE **SUGAR** **5** Lb. Bag **48c**

DETERGENT **VEL** Large Size **25c**

MRS. TUCKER'S **Margarine** Lb. **23c**

GLENDAL **PEACHES** Sliced or Halves No. 2 1/2 Can **29c**

GOLD MEDAL **FLOUR** **10** Lb. Bag **95c**

REG. \$2.00 SIZE **LILT** Tax Included **1.39c**

PAPER SHELL **PECANS** Lb. **39c**

CLOVER FARM **PUMPKIN** **2** No. 300 Cans **25c**

SUNSHINE KRISPY **Crackers** 1-Lb. Box **25c**

BIG MIKE **Dog Food** **3** 300 Tail Cans **19c**

CLOVER FARM PINEAPPLE **JUICE** 46-Oz. Can **29c**

WELCH'S GRAPE **JUICE** 24-Oz. Bottle **29c**

EATMORE FRESH **Cranberries** 1-Lb. Box **15c**

FLORIDA **Oranges** **5** Lb. Bag **15c**

OPEN EVERY NIGHT TIL 8 P.M.—SATURDAY TIL 9 P. M.

CLOVER FARM STORES

400 South Seaman

Phone 31