

EASTLAND TELEGRAM



VOLUME 92, NUMBER 73

EASTLAND, TEXAS, 76448, THURSDAY, SEPTEMBER 12, 1968

PRICE

Peanut Crop Prospects: Good, But Rain Needed

The prospect for a large peanut crop in Eastland this year look very good.

De Gordon, county agent, reports that the crops over the county vary from poor to excellent, but in general, look very good.

Dry land peanuts are in need of rain. Gordon says if it does not rain within a week, the dry land peanut yields will be reduced considerably. A two or three inch rain this week would be worth a million

dollars to Eastland County farmers, Gordon estimates.

Some areas around Gorman got an inch of rain last week. This helped dry land peanuts but it covered only a small portion of the county, Gordon says.

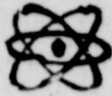
Most irrigated peanuts look very promising, especially those where southern blight and leaf spot were controlled, reported the county agent.

Some of the early planted peanuts had to be harvested prematurely because of southern blight. Some yields were as low as 25 bushels per acre and the grades were mostly in the 50's. Gordon said more farmers have used chemicals to control southern blight and leaf spot this year than in the previous years.

The lesser corn stalk borers have caused damage in some fields this year, but the infestation is not as bad as last year. Gordon says that most peanuts are too large to treat for borers now. Since they are soil insects the insecticide must be applied to the soil around the vines. This is just about impossible to do after the vine starts covering the middles.

Even with a good rain this week the Eastland County peanut crop would not be expected to reach the size of the 1966 crop which was worth over four and one half million dollars Gordon says. But he adds it would be considered a real good crop.

TidBits



By H.V.O.

CALLING ALL CARS: Be on the lookout for a misplaced wheelbarrow.

It happened like this: Navyman Rex Webb, on 45-day leave recently, was helping fix up his mother's home at 401 W. Sadosa St. Mrs. Bertha Webb's house got a lot of fresh paint and other sprucing up during the project, and on one day when a wheelbarrow was needed, Friend Charley Burkett, brought one over for Rex's use. The jobs completed, the Navyman began to clean up and return the tools. Then he and his wife left for Jacksonville, Fla., his new duty station. This week Mr. Burkett called Mrs. Webb to ask if it would be alright if he came by to pick up his wheelbarrow.

"Didn't the boy bring it home? I'm sure I gave him your address on Patterson St."

Point is: if you've got an unidentified wheelbarrow in your yard or garage, it's probably Charley Burkett's. He can be reached at 629-1378.

MOST YOUNGSTERS know the Sunday School song "Jesus loves the little children of the world" — red, yellow, black and white. Up at First Baptist Church, there's a two-year-old you know, who sings it, but it comes out "black and blue..."

MRS. BURLESON up at the Southern Maid Do-Nut Shop has taken us all off our diets — pleasantly. She's a master and tells us that the science of donut making is exacting, what with control of water temperature and a lot of other things we didn't know about. We just know they're good eating.

You've heard Tiny Tim sing Tiptoeing Through the Tulips on a popular TV show but did you see two Eastland men tiptoeing down another man's driveway the other night? That thing they were carrying was a rocking chair belonging to the man who owns the driveway.



BAND LEADERS — Busy for weeks and ready for Friday night is the Eastland High School Maverick Band, to be lead on the field by these pretty girls. At center is Drum Major Janet West, flanked at left by Twirler Belenda Herring and at right by Twirler Jana Rexroat. The band has been going through intensive drills in preparation for the grid season. Director is Paul Wallace. (Staff Photo)



MAVERICK LINEBACKERS — Among the stalwarts due to do battle with the Buffaloes from Cross Plains at Maverick Stadium Friday night are Linebackers Steve Wilson, Randy Lowrance and Alex Jiminez. Drills have been long, hot and productive Coach Shirley Frazier reports, with the Mavericks labeled "Ready" for the season opener here Friday night. Kickoff time is 8 p.m. (Staff Photo)

Carbon Soldier Earns Army Heroism Medal

Sp-4C Charley J. Stephenson, a Carbon High School graduate and native Eastland Countian now on duty with military operations against a hostile force in the Republic of Vietnam: PFC Stephenson distinguished himself by valorous actions on June 11, 1968 as a howitzer cannoneer during a heavy enemy mortar and rocket attack on Special Forces Camp at Tay Ninh Province.

"During the initial moments of the attack Pvt. Stephenson was directed to take cover in

side a personnel bunker but he refused the safety and security of the bunker and received permission to take his position on his howitzer instead. As the incoming rounds continued to impact in and around their position he and eight other men fired counterfire programs until the enemy weapons were silenced.

"Pfc. Stephenson's heroic actions were in keeping with the highest traditions of the military service and reflect great credit upon himself his unit and the United States Army."

It is signed by Brig. Gen. Frank H. Linnell US Army Chief of Staff.

Dated Aug. 22, the commendation award said in part: "For heroism in connection with military operations against a hostile force in the Republic of Vietnam: PFC Stephenson distinguished himself by valorous actions on June 11, 1968 as a howitzer cannoneer during a heavy enemy mortar and rocket attack on Special Forces Camp at Tay Ninh Province.

"During the initial moments of the attack Pvt. Stephenson was directed to take cover in

side a personnel bunker but he refused the safety and security of the bunker and received permission to take his position on his howitzer instead. As the incoming rounds continued to impact in and around their position he and eight other men fired counterfire programs until the enemy weapons were silenced.

"Pfc. Stephenson's heroic actions were in keeping with the highest traditions of the military service and reflect great credit upon himself his unit and the United States Army."

It is signed by Brig. Gen. Frank H. Linnell US Army Chief of Staff.

Dated Aug. 22, the commendation award said in part: "For heroism in connection with military operations against a hostile force in the Republic of Vietnam: PFC Stephenson distinguished himself by valorous actions on June 11, 1968 as a howitzer cannoneer during a heavy enemy mortar and rocket attack on Special Forces Camp at Tay Ninh Province.

"During the initial moments of the attack Pvt. Stephenson was directed to take cover in

side a personnel bunker but he refused the safety and security of the bunker and received permission to take his position on his howitzer instead. As the incoming rounds continued to impact in and around their position he and eight other men fired counterfire programs until the enemy weapons were silenced.

"Pfc. Stephenson's heroic actions were in keeping with the highest traditions of the military service and reflect great credit upon himself his unit and the United States Army."

It is signed by Brig. Gen. Frank H. Linnell US Army Chief of Staff.

17 Entries Seeking 9th Crown

A total of 17 lovely, young ladies have been entered the Ninth Annual Peanut Bowl Queen Contest to be held next Tuesday, Sept. 17, at the Eastland High School Auditorium, contest chairman Don Baird and Rex Morgan have announced.

With the first game due Friday night, the coach now says: "They're all looking good, indicating that his juniors and sophomores are 'coming through'."

In a controlled scrimmage last Friday night the Mavericks stalling everything the Dublin Lions tried, holding

Time for the event is 8 p.m. and admission charges will be \$1. for adults and 50 cents for students and children.

Deadline for entry was noon Wednesday.

The contestants will appear on stage twice during the contest, once in street dress and once in a one-piece bathing suit. Judges will be from out of the county.

The Women's Clubs of Eastland will entertain the girls at a buffet supper prior to the contest. The Queen and other contestants will ride in the parade at 3 p.m., Saturday, Sept. 21, and will also be presented during the football game at Maverick Stadium at 8 p.m. that night.

The first Peanut Bowl Queen was Mary Kay Rush, crowned in 1960. Other Queens are Carol MacMoy, 1961; Jane Wilford, 1962; Jan Taylor, 1963; Sharon Ruth Denton, 1964; Kathleen LeDoux, 1965; Becky Patterson, 1966; and Joan Kelly, 1967.

Members of the seventh grade team are Philip Arthur, David Baze, Jim Brown, Mac Caldwell, Steve Downard, Terry Ensor, Randy Beggs, Nickie Gaeta, John Graham, Steve Haines, Pat Hart, Sammy Herrera, Jim Lawless, Tom Magness, Jerry McCoy, Dale Minchew, Alfred Orocco, Mark Parsons, Boyce Posey, B. W. Robertson, Joe Taylor, Bobby White, Terry Wilson, and Gary Thomas.

Larry Courtney is manager for the junior high teams. Coaches are Shirley Frazier, Harold Price, and Doug Dallas.

Some 22 Eastland High School boys will go to Early Saturday for the "B" team game at 9:10 a.m.

Coach Shirley Frazier announced that these boys will play in Early: Sam Harris, Joe Herrera, Rocky Maynard, Richard Sencillo, Dickie Anderson, Dean Brown, Butch Eidson, Gil Gaeta, Steve Hart, Mike Jones, Mickie Kendrick, Steve Key, Robin King, Bob Mace, Charles Marshall, Joe Martinez, Ronald McCleskey, Scott Miller, Bill Mueller, Mike Parsons, Randy Rexroat, and Jimmy Sayre.

"I don't know how it happened," the stewardess told the husband, "but we seem to have left your wife behind in the terminal."

"Thank heaven!" exclaimed the man. "I thought I had gone deaf."

Mavericks Open Season On Own Turf Friday With Buff

The 1968 Eastland Mavericks will play host to the Cross Plains Buffaloes in Maverick Stadium Friday evening — but the Emily Post Guidebook to Good Hosting will undoubtedly be ignored when the whistle blows.

The Mavericks will be working on their first win of what ever index gives of being a "winsome season."

Head Coach Shirley Frazier calls his Mavericks in fine shape and ready for the Buff invasion. With a list of 25 veterans and seven lettermen, the Eastland grid machine gives every indication of being quite up to snuff this year.

Lettermen are Quarterback Eddie Kincaid, Steve Wilson, Eddie Simms, David Cagle, and Larry Lane.

At the beginning of workouts Coach Frazier said: "The Mavericks have good returning seniors, however, the unproven sophomores and juniors will have to come through for a successful season."

With the first game due Friday night, the coach now says: "They're all looking good, indicating that his juniors and sophomores are 'coming through'."

In a controlled scrimmage last Friday night the Mavericks stalling everything the Dublin Lions tried, holding

them scoreless and putting the ball across twice for Eastland scores. Coach Frazier said of that outing: "We looked good; there were a lot of mistakes; we're going to be looking better."

Squad for the Mavericks is as follows:

Seniors — Steve Wilson, Bill Hoffman, Terry Grimes, LaLary Lane, David Cagle, Robert Harbin, Eddie Kincaid, George Simms and John Baker.

Juniors — Alex Jiminez, Randy Boles, Ricky Culpepper, John McCleskey, Randy Lowrance, Bill Hart, Danny Elrod, Larry Wilson, Gary Pipkin, and Bobby Bird.

Sophomores — Ricky Maynard, Roger Sosebes, Sam Harris, Phillip Smith, Phillip Harrison, Bobby Williamson, and Richard Sencillo.

Freshmen — Dean Brown, Craig Lund, Russell Stephenson, Randy Rexroat, Rueben Gaeta, Gil Gaeta, Rodney Reynolds, James Eidson, Billy Mueller, Scott Miller, Ronald McCleskey, Bob Mace, Dickie Anderson, Robin King, Michael Parsons, Charles Marshall, Steve Key, Steve Hart, Jimmy Sayre, Joe Martinez, Mike Jones, Mick-

ey Kendrick and Eddie Kincaid.

Cross Plains suffered at hands of the Cisco Lobos a scrimmage last week.

The Bisons met Rosco P boys in the initial "practice" game of the season. The squads battled to a score draw.

Coach Cowan rated the E defense as "looking good" and said that the team worked primarily on defense during the pre-season workouts. Roscoe penetrates the Bison five once during two and a half hour practice but failed to score in f downs. "We were concerned about the new players," coach said, "but they came through on defense."

Buffaloes lost both safes from both corner backs and from the 6-4 record team last year.

Cowan said that the offense looked ragged, but noted emphasis had been placed defense during the first few days of pre-season drills.

The Herd drove to the Roscoe 12 during one thrust, f the drive died on a punt. Cowan noted that a lot work would be devoted to (Continued on Page Four)

THE EASTLAND MAVERICKS, 1968

No.	Player	Pos.	Weight	Class
10	Craig Lund	QB	160	FR
12	Eddie Kincaid	QB	160	SR
14	John Baker	Kicker	135	SR
20	Bobby Williamson	WB	150	SR
22	George Simms	WB	140	SR
24	Ruben Gaeta	TB	155	FR
25	Steve Wilson	TB	178	SR
30	Randy Boles	FB	155	JE
32	Randy Lowrance	FB	165	JR
40	John McCleskey	End	160	JR
50	Terry Grimes	T	180	SR
51	Gary Pipkin	C	155	JR
52	Alex Jiminez	C	160	JR
66	David Cagle	G	160	SR
67	Ricky Culpepper	G	172	JR
69	Phillip Harrison	G	170	SO
70	Robert Harbin	T	194	SR
73	Phillip Smith	T	195	SO
75	Bill Hart	T	160	JR
80	Larry Lane	End	150	SR
82	Bill Hoffmann	End	180	SR
84	Danny Elrod	End	160	JR

MANAGERS: Eddie Arnold and Bobby Kincheloe. TRAINER: Tony Harrison. CHEERLEADERS: Dianne Young, Susie Sneed, Sharon Herridge, Janie Miller and Sarah Brewer. COACHES: Shirley Frazier, Doug Dallas and Harold Price.

FIRST FOOTBALL WEEKEND Thursday: Albany Jr. High at Eastland Friday: Cross Plains at Eastland May at Olden. Saturday: Carbon at Mullin. Early vs Maverick B. here.

The regular Third Sunday Singing will be held at 1:30 p.m. Sunday, Sept. 1 at the Congregational Methodist Church at Gorman. Many visiting singers are expected. H. A. (Pete) Tyrone announced. Everyone is invited to attend.

Mr. and Mrs. T. L. Henderson of Levelland visited in the home of her sister, Mr. and Mrs. W. E. Tankersley.

Horton Tire Co. Presents BREAD of Life

Love is strong as death... many waters cannot quench love, neither can the floods drown it. — 8-6, 7. This is the love that sought us, This is the love that bought us, This is the love that brought us, From darkness to the joys of light.

Freyschlag INSURANCE Presents the WEATHER — CLEAR and partly cloudy today High temperature near 90. Low temperature around 70.

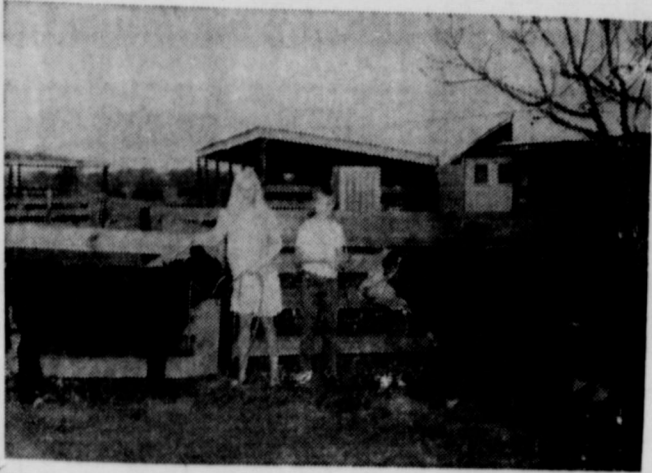
FULLEN MOTOR Co. LAUGH-A-DAY

B Team Goes To Early Saturday

Some 22 Eastland High School boys will go to Early Saturday for the "B" team game at 9:10 a.m.

Coach Shirley Frazier announced that these boys will play in Early: Sam Harris, Joe Herrera, Rocky Maynard, Richard Sencillo, Dickie Anderson, Dean Brown, Butch Eidson, Gil Gaeta, Steve Hart, Mike Jones, Mickie Kendrick, Steve Key, Robin King, Bob Mace, Charles Marshall, Joe Martinez, Ronald McCleskey, Scott Miller, Bill Mueller, Mike Parsons, Randy Rexroat, and Jimmy Sayre.

Peanut Bowl Tickets Available Today



Shown are Sicily Heyser and her brother, Joe Heyser, both of Cisco with the calves they plan to bring to the Beef Calf Field Day on Saturday, September 14. These young 4-H'ers are the children of Mr. and Mrs. J. V. Heyser.

4-H Calf Day Is Saturday

The Eastland County 4-H Beef Calf Field Day will be held at the County Livestock Show grounds in Eastland on Saturday, Sept. 14. Activities will begin at 9:10 a. m. and last all day.

The planning committee has selected a panel of speakers which include: Chuck Threet, County Agri. Agent of Brown County, who will speak on Selecting Beef Calves for Show and Points to consider when Judging Beef Calves; Peyton Scott, Eastland County rancher, who will speak on Feeding, Fitting, and Showing Beef Calves; and Dr. Bill Cardwell, Veterinarian from Cisco, who will speak on some medicines for and causes of Bloat, Shipping Fever, and Pneumonia; TB and Brucellosis requirements of the Animal Health Department; and What to do for Anaphalactic Shock?

Anyone who is interested in showing beef calves is invited to attend and participate in the program. Every year the Field Day is held to help beef calf feeders, new ones and veterans, learn more about this science. According to Assistant County Agent, Bob Cohen, the stage is set and the committee is looking forward to a big turnout.

Retread Tires

Big Savings Now!

- First-Class Carcass
- No. 1 Dixie-Cap Tread Rubber
- 670x15, 815x15, 775x14 825x14
- Guaranteed life of tread

HORTON TIRE CO.
EASTLAND



AUCTION SALE!

SATURDAY, SEPT. 14, 1968

One O'Clock P.M.

Dixie Drive-In Theatre, Olden Texas

Mr. I. B. Walker, owner of the Dixie Drive-In Theatre in Olden, Texas, is retiring and is offering his entire household furnishings, tools, and farm equipment to be auctioned off to the highest bidder.

Items to be Auctioned Off Include:

- | Equipment and Tools | Household Items |
|----------------------------------------|--------------------------------------------|
| Three-wheel Harley Davidson motorcycle | Electric hedge clipper |
| 1954 half-ton Chevrolet pickup | Wheel barrows |
| Two We Allis Chalmers Tractors | Portable TV set |
| 14-foot swather | Console TV set |
| Large equipment trailer | Lady Kenmore Automatic washer |
| Steel dump trailer | Bedroom Suits |
| Buck rack | Rocking chairs |
| Portable welder on trailer | Kirby vacuum cleaner |
| New Holland Hay Bailer | vibrating table |
| New Holland side delivery rake | Lamps, beds, steam iron |
| Hay conditioner | Tables of all kinds |
| Two Wisconsin motors | Clock, pictures, books, Vases |
| Regular Farmall with grader and loader | Wall Plaques, Gas heaters |
| New Holland seven foot mower | Electric blankets |
| Hammermill, drill press, Socket sets | Fireplace Andirons |
| New wrench sets | Fireplace Log Stove |
| Many tools of all kinds | General Electric Vacuum Cleaner |
| Electric drills | Dining room suits |
| Acetylene welding set | Singer Slant-O-atic Zig-Zag sewing machine |
| Bench grinder | Refrigerator gas range |
| Spark plug cleaner | Exhaust fan, filing cabinet |
| Chains and boomers | Wall mirrors |
| Air compressor | Dinnette table |
| Blacksmith vice, skill saw | Dishes, pots and pans |
| Electric portable grinder | Linens, blankets |
| 4-hp riding lawn mower | Silverware |
| Battery charger | Ironing board, electric adding machine |
| | Box springs and mattresses |

PLUS MANY, MANY OTHER ITEMS TOO

NUMEROUS TO MENTION

Don't Miss This Gigantic Sale of A Lifetime!

JAMES T. WRIGHT, LICENSED AUCTIONEER

JRB Meats Are U.S. Government Inspected and Graded . . . If For Any Reason, You Are Not Satisfied, We Will Cheefully Refund Your Money!

"A" — GRADE

SLICED BACON lb. **65c**

Boston Butt	lb. 55c	Lean & Tender	lb. 59c
PORK ROAST		PORK STEAK	
Hormel Cure 81		Hormel — The Not-Hot Hot Dog	
BONELESS HAM	lb. \$1.39	FRANKS	12-oz. pkg. 49c
Hormel Sausage		Lean	
LITTLE SIZZLERS	12-oz. pkg. 59c	GROUND BEEF	lb. 49c

SHOP MADE — SEASONED JUST RIGHT

PORK SAUSAGE **2 lbs. 99c**

Gladiola	CORN MEAL	KLEAN DETERGENT	giant box 49c
5-lb. bag	39c	BAKE-RITE	Shortening 3 lb. can 39c
		CAKE MIX	Swansdown 19-oz. box 25c

Carnation — Reg. Size
TUNA FISH **3 cans \$1**

Lob Cabin — 24-oz.	SYRUP	bottle 73c	Libby's — No. 303	SPINACH	5 cans \$1
Morton's — 26-oz.	SALT	2 boxes 27c	Lipton's — 16-Count	TEA BAGS	pkg. 25c
Zee Family — 360-Count	NAPKINS	box 59c	Lipton's — 48-Count	TEA BAGS	pkg. 67c

PARKAY
MARGARINE lb. carton **31c**

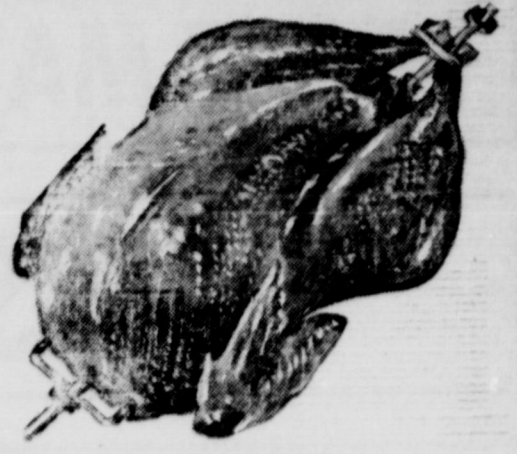
FLOUR	Dutch Oven	5 lb. bag	39c	Dama JELLY • Apple • Apple-Grape • Apple Plum 18-oz. jars 3 for \$1
Detergent	COLD POWER	giant box	65c	
4-Roll Packages	COMO TISSUE	pkg.	25c	

Kingford
CHARCOAL **10-lb. bag 89c**

—Frozen Food Specials—
Morton's — Chicken-Beef-Turkey
MEAT PIES 5 for \$1
Morton's
PIE CRUST each 39c
Morton's — 10-oz.
DOUGNUTS pkg. 39c

—HEALTH & BEAUTY AIDS—
VO-5 CREAM RINSE 60c size 39c
STRIPE TOOTHPASTE 1.29 size 79c
ALKA SELTZER 79c size 53c
GILLETTE SUPER BLADES 1.00 size 79c

—DAIRY FOOD SPECIALS—
Foremost — Ass't. Flavors
BIG DIP 1/2-gal. 49c
Foremost
FRUIT DRINKS 1/2-gal. 29c
Foremost Fudge Sicles or
POPSICLES 6-pak 29c



USDA Inspected

CHICKEN HENS

Roasting Size 4 to 6 lbs. Lb. **39c**

MIX OR MATCH

Shamrock French Style	303	4 FOR \$1
GREEN BEANS	can	
Shamrock 3sv Alaska		
PEE WEE PEAS		
Shamrock Whole Kernel or ream Style	303	5 FOR \$1
CORN	can	
Peter Piper Peeled	303	
TOMATOES	can	

Del Monte	303	6 FOR \$1
SPINACH	can	
Gold Tip	303	
TOMATOES	can	
Franco American	15 1/4	7 FOR \$1
SPAGETTOS	can	
Ranch Style	300	
SPAGHETTI	can	
Musselman		
APPLE SAUCE		

Shamrock	303	6 FOR \$1
SPINACH	can	
Shamrock Fresh Shelled	300	
BLACKEYES	can	
Shamrock — 10-count	303	7 FOR \$1
Potatoes	can	
Shamrock Jumbo		
BUTTER BEANS		
Peter Piper Short Cut	303	
GREEN BEANS	can	

Shamrock	300	7 FOR \$1
PORK & BEANS	can	
Shamrock Red		
KIDNEY BEANS		
Alma	303	7 FOR \$1
PEAS & CARROTS	can	
Gold Tip Cut	303	
GREEN BEANS	can	
Alma Baby		
LIMA BEANS		
Alma		
Mexican Style Beans		

—JRB QUALITY PRODUCE FEATURES—

Carton	TOMATOES	each	19c
California Red Delicious	APPLES	lb.	19c
East Texas	YAMS	lb.	19c
White	ONIONS	lb.	10c

DOUBLE S&H GREEN STAMPS
with purchase of \$2.50 or more
EVERY WEDNESDAY!



PRICES GOOD THROUGH SATURDAY, SEPT. 14
PRICES GOOD IN EASTLAND
Quantity Rights Reserved — No Sales to Dealers

CLASSIFIED ADS

EASTLAND TELEGRAM

Phone 629-1707

110 W. Commerce St. — Eastland, Texas 76448

(Consolidate with Eastland Chronicle, established in 1887, and Eastland County Record, established in 1931).

Second Class Postage paid as Eastland, Texas under the act of Congress of March 3, 1879

Published Semi-Weekly - Thursday and Sundays
By Eastland County Newspapers, Inc.
H. V. O'BRIEN, Editor

SUBSCRIPTION RATES: By carrier in city, 15c week or 65c month; one year by mail in county, \$4 per year; one year by mail in city or elsewhere in state, \$6 per year; one year by mail outside state, \$7.

Mrs. Don Joiner Is Meet Hostess For Zeta Pi Club

The Zeta Pi Chapter of Beta Sigma Phi met Monday night in the home of Mrs. Don Joiner. A program, "Paths of Loveliness, Oratory", was presented by Mrs. Don Baird.

Miss Diana Maynard was selected to represent the Sorority in the Peanut Bowl Queen Contest Sept. 17. The group discussed plans for the float for Little Miss Eastland to ride in the Peanut Bowl Parade.

Present were Meses Dale Bakker, Baird, Hoffmann,

Jamie Fry, Wade Freeman, Walter Loudermilk, Brenda Barney, and the hostess, Mrs. Joiner.

WANTED: WINCHESTER MODEL 62.22 cal. hammer pump repeating rifle or MARLIN MODEL 394, 22 CAL LEVER ACTION RIFLE. CONTACT ELVIN O. HILL, 1206 S. SEAMAN OR CALL 629-1568 AFTER 5 P. M. 73

Chick's Repair Service

Radio, TV
Home Appliances
Water Well Pump Service

1403 S. Seaman Street
Call 629-1046, day or night

Martha Circle In Browning Home For CWF Meeting

The Martha Circle of the CWF of First Christian Church met Monday morning in the home of Mrs. Juel Browning, who called the meeting to order, and led the opening prayer.

During the business meeting, plans for the new year work were completed, the service committee reported a meal served to a bereaved home, and suggested a gift be sent to a sick member.

The lesson was given by Mrs. R. T. Magness, subject, "The Churches We Started" from the book "Winds of Change". Mrs. Magness ably explained the changes of the church in this day and time as compared to years past.

The worship service was conducted by Mrs. Joe Tow, using scripture from Acts. Refreshments were served to Meses. Basset, Duckett, Maxwell, Magness, and Tow.

CALL OF THANKS

We wish to express our sincere appreciation for the beautiful flowers, food and words of comfort at the loss of our loved one.

Mrs. W. D. Waller and family.
Argentina, Brazil and Chile are known as the ABC Powers.



Then it's time to switch to Skelly Supreme... the industry's low consumption motor oil. Use less oil, if any, between changes. Insist on Skelly Supreme for maximum engine protection.

Eastland Dealers
CLEM GILLESPIE
EASTLAND TRUCK STOP
K-C FUEL CO.

IMPORTANT NOTICE

The annual meeting of the Contributors of The Eastland Memorial Hospital will be held on September 24, 1968 at 7:30 p.m. in the Conference Room Eastland Memorial Hospital, Eastland, Texas. Directors will be elected for ensuing year.

Mr. JACK GERMANY, Secretary
Board of Directors — Eastland Memorial Hospital

Announcing
Mrs. Elizabeth Vaughn
NOW ENROLLING
STUDENTS, ALL AGES

PIANO - ORGAN
& THEORY
1510 West Commerce
Phone 629-2416

PERMANENTS

\$10 Creme Oil Waves \$7.50
\$12 Protein Waves — 8.50
\$12 Lanolin Waves — 10.00
Helen Curtis Waves \$11, up

MINI-BILLBOARD
for rent
\$3 per month.
Call 629-1707.



Give Those Outmoded Shoes A New Look...
Quality Shoe Repair
North Side of Square



JOE SAYS:
What you get when you take a bull by the horns is usually a lot of bull.
JOE CULPEPPER
of Hood King Motor Co.
also says: "See me for the best automobile deal."

Wanted

LABOR WANTED: \$1.80 per hour, 50 to 60 hours per week. Call D.S. Sartin, 945-3577, Moran, Texas. 73

HELP WANTED: LVNs and nurses aids. Apply in person to Hickman Nursing Home. tf

WANTED: Evening waitress at the Old Rip Cafs. tf

WANTED: Old houses to salvage if priced cheap. Call Marvin Martin 442-3622 or Joe Seabourn 442-1545. 76

HELP WANTED: One dishwasher. Apply in person. See Mrs. Brooks, Village Hotel Coffee Shop. 74

HELP WANTED: Service station attendant. Full time. Must be experienced. Apply at Rollins Mobil Service, Eastland. tf

To Us For First Quality Laundry Service
Free Pickup & Delivery
CISCO STEAM LAUNDRY
Cisco — 442-2151

NOTICE

SUMMER HOURS:
8 a.m. to 10 p.m.
except
Sunday:
8 to 9:30 a.m.
11 a.m. to 10 p.m.

HILLCREST
FOOD MARKET
1401 W. Main
629-1600

ROY LEE SMITH
distributor for
Dayton
Electric Motors
offering complete
motor replacement
(Other brand motors
available)
Complete Line in stock
at

Smith
Plumbing Co.
114 N. Seaman 629-1722

GUARANTEED
ELECTRIC
SERVICE
BOND
ELECTRIC
629-1724
407 Foch

ROLLINS & SONS
MOBIL SERVICE
Call for Appointments
on Wash - Grease
Oil Changes
601 W. MAIN
9188 - 629

DON'T WAIT
Now is the time to tune-up
and repair your boats and
motors. ALL TYPES, FREE
ESTIMATES.
Boat & Motor Sales
New and Used
TROY GALYEAN
442-3016 after 5:30 p.m.
804 Ave. D — Cisco

FOR SALE: Floor Furnace. Call 629-2344, Eastland. SS

FOR SALE: 1955 GMC pickup; one metal and one wood trailer; car radios and car parts. Gordon Clark, 629-2785, Eastland. SS

FOR SALE: One 1961 three-quarter ton pickup. Four speed. With cab-over camper. Sleeps four. For sale cheap. See at 1208 S. Bassett or call 629-1230. tf

FOR SALE: Beautiful, new office credenza in grey, still in its carton. Best addition to office equipment since desk were was invented. See at The Telegram. tf

FOR SALE: Railroad car seats, reclining, only \$15.00. F. O. B. in railroad car. Built to last. Ideal for home, office, lake, etc. 307 South Hillcrest. tf

FOR SALE: 126 acres of the Jess Hale farm, west of Carbon. Two tanks, some cultivation, several pecan trees. Contact Smokey Hale, Route 1, Carbon, Pleasant Hill Community. 74

FOR SALE: Floor Furnace. Call 629-2344, Eastland. SS

FOR SALE: Need someone to assume small monthly payments on spinet piano in this area. Nothing down and easy terms. Write Credit Manager, Box 3035, Lubbock, 79410. 76

FOR SALE: Exerciser. Bicycle and rowing type. Six months old. Never been used. Call 629-2146, Eastland. 74

FOR SALE: 69 Ford Pickup, 6 cyl. Dependable and clean with new tires. Must sell: \$325. Call after five or at noon: 629-1402. 74

For Rent

FOR RENT: Three and a half room unfurnished cottage. On top of Park Hill, 505 High Street, Only \$30.00. Call 629-1417. tf

FOR RENT: One large partly furnished house. Call 442-3183 in Cisco during day or inquire at 804 W. Moss in Eastland after 6 p.m. 74

TREAT rugs right, they'll be a delight if cleaned with Blue Lustre. Rent electric shampooer \$1. Perry Bros., Eastland.

PLUFFY soft and bright a r e carpets cleaned with Blue Lustre. Rent electric shampooer \$1. Coats Furniture Co. 74

BOX
DRILLING CO.
IRG. & DOMESTIC
WELL SERVICE
15 yr. experience Cable
Tool Drilling, Phone 629-
1212, Eastland.

Exchange and Sales on
Submersible Pumps —
Service on Pressure
Pumps and Wind Mills.
15 Years Experience
MANCILL SMITH
Ph. 629-1212
Eastland, Texas
203 E. Plummer

HOMES & LAKE CABINS
2 bedroom home South Daugherty ready to move in.
3 room and bath, 8 lots Carbon \$3,150.
5 room home and 5 acres, Olden.

FARMS AND RANCHES
37 a. 6 miles southwest of Eastland. \$4,200.
80 a. near Scranton \$82.50 per acre.

80 a. 6 miles north Eastland, 3 bedroom, \$12,800.
39 a. south of Ranger, 3 bedroom home, \$15,000. Terms.
153 a. near Rising Star, 21 a. peanuts, 20 a. Coastal \$137.50 per ac.
96 a. Carbon, 50 ac. Coastal, 191 a. 35 a. peanuts 145 ac. cultivation. \$125.00 per a. near Romney.
Have 650 a. 880, 1000, 1240 acre tracts Eastland Co. larger tracts if desired. Bottom or on Sand.

M. L. TERRELL
REAL ESTATE
FARM BUREAU BLDG.
Highway 80 East
Tel. 629-1725 Day or Night
Eastland, Texas

FOR SALE: Take up payments on repossessed merchandise: concolor color TV, \$17 month; 20" portable TV, \$15 month; Three different stereos, each \$10 month; portable black and white TV, \$9 month; Good-year Service Store, Eastland, Texas. tf

FOR SALE: Large, fiber, dark chair pad to protect your carpet at the office. The Telegram has two, and much more.

FOR SALE: Nice two-bedroom home. 305 S. Virginia. Phone 629-2206. tf

FOR SALE: Lake house, beautifully decorated, paneled walls, one and one-half baths, custom cabinets, two porches, sidewalks, patio, 100 trees. Fenced, new bath fixtures, lighting, 220 wiring, new roof. Barn red color, white trim. South side of lake across dam. Open for inspection. Price: \$7,950. Call Carl Garrett, 629-1485. tf

FOR SALE: Refrigerated drinking fountain in excellent condition. Also a Speed Queen ironer and a Frigidaire electric range. See at 808 Front St., or call 442-1472, Cisco. 77

FOR SALE: One used clarinet. Good condition. Price \$50. 629-1459, 613 S. Lamar. 78

FOR SALE: Several used portable TV sets. Good-year Service Stores, Eastland, Texas. tf

Three lots near the hospital. Will sell separately or together. Call 629-2168. tf

DON'T merely brighten carpets... Blue Lustre them... no rapid resoiling. Rent electric shampooer \$1. Coats Furniture Co. 99

FOR SALE—4 bedroom home. 801 W. Commerce. Phone 629-2290. tf

REAL ESTATE

HOMES FOR SALE
Lot and 3 bd rm house \$2650.00 Olden.
2 bd rm and 5 ac land \$4,000. Olden.
3 bd rm and 2 1-2 ac \$7,500.00 Olden.

IN EASTLAND:
2 bd rm and 3 lots \$3,500.00
3 bd rm and 2 1-2 ac \$4,500.00
3 bd rm and lot \$3,000.00
3 bd rm and 2 bath excellent, terms can be arranged \$12,900.
New 3 bd rm brick \$20,000.00
3 bd rm 2 lots \$9,000.00
3 bd rm 3 lots, nice \$12,600.00
2 bd rm, Lake Leon Home, south Dam.

LAND FOR SALE
106 ac 2 bd rm house
25 ac cult Lake Leon good terms.

120 ac stock farm with 1-3 river bottom, pecans, terms available.
78 ac good improvements.
86 ac no buildings, but good water.
1660 ac improved stock farm, 300 ac south of Ranger mostly grass.

500 ac mostly bottom land.
200 ac 1-2 cult close in.
760 ac excellent deer hunting 1000 ac ranch land Eastland County.
3000 ac highly improved Bosque County.
3400 acres Hamilton County.
10 sections grass land Scurry County.
8 sections improved ranch in Palo Pinto County.

KINCAID
REAL ESTATE
100 S. Seaman — 629-1788
J. W. Elder, Robert Kincaid
647-1321 629-2721

ONE - STOP SERVICE

FOR
Total-Car Care!
That's
D & M
SERVICE CENTER
802 W. Main St.
Humble Products
General Repair
Air - Conditioning
Brake Work
Road Service: 8 to 5
Open 24 Hours
• OBIE DUNCAN
• ROBERT MANGUM
Steam Cleaning
Wash - Lubrication
Dial 629-8866
Complete line accessories
Tires Batteries

Announcements

ONIC LODGE NO. 467
Meets second Thursday of each month at 8 p. m. in the Masonic Hall. Call Wayne Jackson, W. M. at 44 or 629-1145 or L. E. Abbey, sec'y, 629-1391 for nation.

LAND ROTARY CLUB
Meets each Monday noon at White Elephant Restaurant in Eastland.

Culpepper President

Notice

CE. Planning a wedding? and Telegram has napkins with shower and reception. tf

ICE — "If they're WEST-BILT, They're Guaranteed." Call western mattress Co. complete mattress service. 629-1740 or 629-1398. tf

ICE: Repreads at big saw now at Morton Tire Co. land. tf

ICE — Pasturage for 85 or cows. Close in. Call 1577 after 4 p.m. 73

For Sale

FOR SALE: Several used portable TV sets. Good-year Service Store, Eastland, 629-2662. tf

FOR SALE: Take up payments on repossessed merchandise: concolor color TV, \$17 month; portable TV, \$15 month; three different stereos, each \$10 month; portable black and white TV, \$9 month; Good-year Service Store, Eastland, 629-2662. tf

FOR SALE: Mon du Graphical purpose paper, 8 1/2" x 5 1/2" sheets per package. Limited quantity, \$1.00 a package—Eastland Telegram. tf

FOR SALE: Precision Swiss watch personalized for you. The marriage or emblem your choice mysteriously appears on the face of the watch. Every 20 seconds; is readable for 10 seconds, then appears to reappear later. Our advertising or personal message appears 2880 times a year. Call The Eastland Telegram for a demonstration. \$12.70 each. tf

FOR SALE — Mimeograph machine in like-new condition. Bargain at \$60. See it at the Ranger Times office in Ranger. tf

Classified brings action

EDDIE'S



Now Offers You
MOHAWK
TIRES
&
TUNE UPS
Complete Service
Call 629-8838
—Free Pickup—
GUARANTEED SERVICE & TOP PHILLIPS PRODUCTS
West Main St.

TERMITES?

- Free Inspection
- No Obligation

for information call
POE FLORAL, 629-1711

All Work Guaranteed
Roaches—any size house, \$12.50
(guaranteed 9 months)

ABC PEST CONTROL

A carefully prepared family insurance plan

Protects your home, your family and yourself

Something good happens when you see your "Heart of Gold" man
M. H. PERRY
107 W. MAIN ST.
Office — 629-1566
Residence — 629-1095

Southland Life

INSURANCE COMPANY

OUR DAD WANTS TO SELL YOU SOME INSURANCE HOW ABOUT SEEING HIM AT

D. L. KINNAIRD GENERAL INSURANCE
207 W. Main St. — 629-2544

JIMMY & DWIGHT KINNAIRD

County Dairymen Attend State Meeting Held In San Antonio

Riots and demonstrations during the Democratic National Convention and other such events were compared to activities of "the bully boys of Hitler's brown shirts" in an address at the recent convention of Milk Producers, Inc., in San Antonio, according to Ernest Reich of Cisco, a delegate to the meeting.

The speaker was Dr. George Mehren, professor at the University of California and a

former assistant secretary of agriculture, and some 2,000 Texas milk producers were in attendance. Others attending from Eastland County were D. Williamson and Weldon Tankersley of Morton Valley.

Dr. Mehren also commented that some members of the "Poor Peoples March" on Washington several months ago said in essence "We want what you have right now," and held up a box of match-

es to show what could happen if they didn't get it.

"Somehow, some parts of this minority group seem to think that the Almighty God has blessed these groups with the ultimate truths, and they seem to think that if anyone doesn't agree with them they are square, perverts, prostitutes, and totally unhuman," Mehren said.

"We have seen these groups before, in the bully boys of Hitler, who had the single truth; the 'thought' police of Japan, the Red Guards of China the black shirts of Mussolini.

"I, for one, do not believe these minorities have the single truth," Mehren said, to the applause of the audience.

The Convention Center ballroom resounded time and again while Mehren spoke with

milk producers and their families from seven states in attendance.

"I'm not certain we should give to everybody what they want," the university professor said. He also is head of Agribusiness Council Inc., New York City.

To give would be the same as to forget the moral values of this nation — work, honesty and integrity — he said.

"Even if we wanted to, it is not possible to give things to people," Mehren said, and added, "It is time to be honest."

"It would be wrong to turn to a philosophy of turning to given things and people would be denied the right and privilege to get things for themselves," the speaker continued. "We must not commit ourselves to destroy those moral values on which our nation was built."

America is a pluralistic community, that operates within rules of self-discipline, order and decency, Mehren said.

"What next for agriculture?" he asked. "You should ask instead, what next for America? Unless we resolve, and resolve quickly, where the nation goes, there will not be time or resources to worry what next agriculture.

"There will always be an agriculture, so long as man is born of woman, wants to eat, drink, clothe himself and live in a house.

"In most of the things that really matter to agriculture, it doesn't really matter whether there is a Republican or Democratic administration. No Mediterranean fruit fly coming into Brownsville knows the difference."

"The government can't really do too much for you," Mehren told the dairy farmers. "They can only provide the legal authority for you to operate. You and only you, can make it tick."

Mehren said there are only a few basic issues that confront America today.

One is Vietnam and Communist aggression. He said he and his wife were in Europe when Czechoslovakia was invaded by Russia, and his wife's relatives were for the first time in months trying to cope with being bludgeoned into submission.

"Those who say the United States should not defend itself are fools," Mehren said. "They forget 1920 and Japan, 1930 and Hitler and Stalin, Mussolini and Tojo, and Korea.

"There has been more equality in this country at all times than any other nation in the world. The average American Negro earns more per capita than the average United Kingdom (England) wage earner."

Mehren said current riots and demonstrations are the first step of a conspiracy, which has the next step of dictatorship.

"For my part, I am not ready to concede defeat to the kinds of people who are trying to destroy this country," he concluded, receiving a standing ovation.

Public Invited To Pecan Tour Friday, 9 a.m.

Friday, Sept. 13, is the date for the Eastland County Pecan tour sponsored by the county pecan growers association. Anton White, president of the association, invites everyone interested in pecans to go on the tour.

The tour begins at Fred Perkins' orchard at 9 a. m. Perkins' orchard is located on highway 183 — 11 miles south of Cisco and eight miles north of Rising Star. Other orchards to be visited are C. T. Barton's orchard at Pioneer, Leroy Livingston's orchard and C. E. Smith's orchard near Rising Star.

De Gordon, county agent, says two Extension Service specialists will be on the tour to discuss pecan production problems. They were Dr. J. W. Worthington, Area Horticulturist from Stephenville, and Jerral D. Johnson, Plant Pathologist from Texas A&M University.

A business meeting will be held following lunch at the Elite Cafe in Rising Star. The members of the pecan growers association will discuss plans for the 1968 county pecan show. Representatives from towns desiring to host the pecan show will extend invitations at this time. White says members of the association who have paid their 1968 dues by Friday will have an opportunity to vote by mail ballot on the site of the pecan show.

GRAND OPENING

FRIDAY and SATURDAY

SEPT. 13-14

Steak House will be open 4:00 until 12:00 p.m. serving the finest in steaks — chicken served in our beautifully decorated dining rooms, with a country atmosphere.

Dance to the music of Tony Jay and his Western Plainsmen in our Ball Room with a seating capacity of 800. Open 8:00 p.m. until midnight Friday and 1:00 a.m. Saturday.

EVERYONE WELCOME

3 Miles South Of Cisco on Cross Plains Highway

GREEN VALLEY RANCH

Steak House

Ball Room

One or a Large Group

Couples Only

Choice Meats at Savory Savings

- CHOICE SIRLOIN STEAK lb. 79c
- CHOICE PIN BONE STEAK... .. lb. 69c
- CHOICE T-BONE STEAK lb. 99c
- CHOICE BONELESS ROAST lb. 79c
- CHOICE SEVEN ROAST lb. 59c
- CHOICE BEEF RIBS lb. 33c
- BONELESS STEW MEAT lb. 79c
- FRESH GROUND BEEF lb. 49c
- PURE PORK SAUSAGE 2-lbs. 89c

PLENTY PIT COOKED BAR-B-QUE

Pit-Cooked Bar-B-Q — Sliced Beef — Chipped Beef — Beef Ribs — German Sausage — Hot Links — Center Cut Ham — Fryers.

NOW IN STOCK — Jesse Riggans Old Fashion Homemade Chili

Home Made Potato Salad
Home Cooked Beans
Home Made Salads of All Kinds

— WE WILL BE CLOSED ALL DAY LABOR DAY —

SLEDGE RETAIL MARKET

At Earnest Packing Company

210 S. Lamar



Eastland

SUNDAY BUFFET — \$1.75

CHILDREN UNDER 12 — \$1.00

Baked Turkey with Cornbread Dressing and Giblet Gravy, 1/4 Southern Fried Chicken, Sliced Barbecue Beef, Baked Veal Loaf with Brown Gravy, Sugar-Cured Ham Steak.

VEGETABLES: Fresh Green Beans with New Potatoes, Baked Summer Squash, Cauliflower au Gratin, Buttered Whole-Kernel Corn O'Brien. SALADS: Congealed Vegetable Salad, Tossed Green Salad, Fruit and Cottage Cheese Salad, Macaroni-Egg Salad, Stuffed Celery with Pimento Cheese, Jellied Tokay Salad, German Potato Salad, Cucumber and Green Onion Relish Tray, English Pea Salad, Stuffed Tomato with Ham Salad.

DESSERTS: Assorted Ice Box Pies or Fruit Jello.

BEGINNING AT 5 P.M.

FISH NIGHT — EVERY WEDNESDAY
ALL THE FISH YOU CAN EAT FOR \$1.25
all the trimmings: french fries, slaw, onion rings, hush puppies

COUNTRY CHICKEN NIGHT — EVERY THURSDAY
ALL THE CHICKEN YOU CAN EAT FOR \$1.40
Gravy, hot rolls, honey, salad, drinks of tea or coffee
— BRING THE FAMILY OUT FOR AN EATING-OUT TREAT —



RESTAURANT

EASTLAND, TEXAS
Mr. and Mrs. Charles Robertson, Mr. and Mrs. Ernest Robertson Your Hosts
DOUG CUDE — Your Chef

VACATION SALE

We have reduced all prices on all new and used travel trailers. New prices start at \$975.00. We only have one of each kind in stock, new prices will be 3 percent higher from the factory. We are also selling new Pick-Up Camper Covers from \$125.00 up. Exyliff hitches sold and installed.

Kelly Kar Co.
H 9-4003 — Breckenridge

Mehren said there are only a few basic issues that confront America today.

One is Vietnam and Communist aggression. He said he and his wife were in Europe when Czechoslovakia was invaded by Russia, and his wife's relatives were for the first time in months trying to cope with being bludgeoned into submission.

"Those who say the United States should not defend itself are fools," Mehren said. "They forget 1920 and Japan, 1930 and Hitler and Stalin, Mussolini and Tojo, and Korea.

"There has been more equality in this country at all times than any other nation in the world. The average American Negro earns more per capita than the average United Kingdom (England) wage earner."

Mehren said current riots and demonstrations are the first step of a conspiracy, which has the next step of dictatorship.

"For my part, I am not ready to concede defeat to the kinds of people who are trying to destroy this country," he concluded, receiving a standing ovation.

FOR SALE

1,341 Acres in East Texas well improved, good grasses. Will carry 600 cows. Artesian wells, 2 lakes.
Excellent Financing
TRIANGLE REAL ESTATE
214 TR 1-3900
3650 Samuels, Blvd.
Dallas, Tex. FL 2-7396

Pianos & Organs

Back-to-School Sale
We invite you to come in and look over our new and used pianos and organs. Mirror Spinets in most all finishes. Studios Self-Player. A mpico Player Grand in maple finish. New Lowrey Organs, low as \$545. Used organs, \$295. Student pianos, \$85.

All prices reduced in this sale. Up to 36 months to pay.

Factory - Authorized Lowrey Dealer.

DOUGLAS

Piano and Organ Sales and Service
166 Virginia, 1 block east of square in Stephenville
Tel. 965-4221
Stephenville, Tex.



WHAT'S LEFT

SALE

EASTLAND & RANGER
COUNTY'S FAMILY STORE

ALL SUMMER MERCHANDISE MUST GO—ODDS & ENDS OF FAMOUS BRANDS OF SUMMER ITEMS. HURRY!

UNHEARD OF PRICES!

Women's DRESSES Ass't. Fabrics And Styles \$2	Women's BETTER DRESSES Terrific Values Ass't Sizes \$3	Women's DRESSES Not All Sizes You've Seen At \$20 \$4	Women's PLAY SHORTS Jamaica Many Colors \$1	Women's NYLON STRETCH JAMAICA SHORTS \$2	Girl's Summer SPORTS-WEAR Many Items 2/\$1
------------------------------------------------------------	---------------------------------------------------------------------	--------------------------------------------------------------------	----------------------------------------------------------	----------------------------------------------------	---------------------------------------------------------

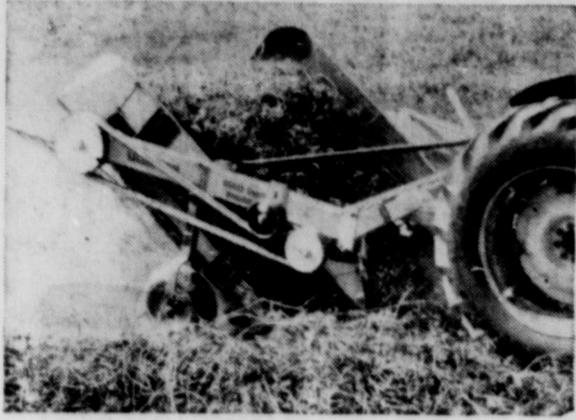
WOMEN'S SUMMER PURSES \$1	MEN & BOYS — Permanent Press WALKING SHORTS \$2
MEN'S WESTERN STRAWS \$1	MEN'S SUMMER SPORT COATS \$10
BOY'S SUMMER SPORT COATS \$3	ASST. PATTERNS SUMMER FABRICS... 2 yds. \$1
ONE GROUP SUMMER FABRICS 4 yds. \$1	BOY'S SHORT SLEEVE SPORT SHIRTS 2 yds. \$3

Women's Canvas SHOES
Children's Sandals Ass't. Styles
Values To \$15 **\$1**

Women's Jacquelyn SHOES
Ass't. Styles
Reg. \$15 **\$5**

Women's Connie SHOES
Ass't. Styles Odd Sizes
Reg. \$10 \$12 **\$3**

**POSITIVELY PROVEN THE
FINEST IN THE FIELD**



**The LILLISTON 2700
Digger-Shaker-Windrower
OUT-RUNS
OUT-WINDROWS
OUTLASTS THEM ALL**

**Come by - we'll show you
exactly how and why**

Squiers Farm Store

WEST MAIN ST. — EASTLAND, TEXAS

DIXIE Drive-In
EASTLAND RANGER HIGHWAY

Box office opens 8:30, show starts 9:10
Box Office closes 10:10

ADMISSION — 60c . . . Children under 12 Free
Each Wednesday and Thursday Are Bargain Nights!
Adults — 25c

WEDNESDAY — THURSDAY
THE UPPER HAND

A Paramount Release — In Color
—Starring—
JEAN GABIN — GEORGE RAFT

FRIDAY — SATURDAY
Paramount Pictures Present
ARIZONA BUSHWACKERS

—TECHNICOLOR—

Majestic
EASTLAND

NOW THRU TUESDAY

Weekdays Open 5:45 — Shows at 6:15 and 9:00 only

**THE SPECIAL ONES
THE GREEN BERETS**

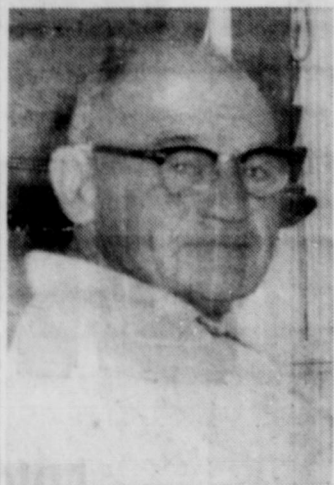
Green when they began...like the color of
their berets...but when the going got rough...they
became the toughest fighting force on earth!



JOHN WAYNE **DAVID JANSSEN**
JIM HUTTON
A BATJAC PRODUCTION Starring ALDO RAY

PRAY FOR ROSEMARY'S BABY!

**FRANK HIGHTOWER RETIRES
AFTER 42 YEARS WITH TESCO**



**FRANK HIGHTOWER
TESCO retiree**

Frank Hightower retired in Aug. 30 after 42 years with Texas Electric Service Co. He spent 39 years at the company's Eastland Transmission Department as foreman and supervisor of lines.

Hightower was guest of honor at a banquet Aug. 29 at Lone Cedar Country Club and at a party Aug. 20 at the transmission building. He and his wife, Nell, were presented gifts by transmission employees.

A native of Hill County, Frank came to Eastland in 1929. Mrs. Hightower has been tax accessor-collector for the Eastland Independent School District for 14 years. They are members of the First Christian Church. Hightower is a past president of the Quarterback Club, and is a director of the Stephenville Production Association. He is

**Andrea Rhodes Enters
Kilgore Jr. College**

Andrea Rhodes, daughter of Mr. and Mrs. Gene V. Rhodes, has enrolled at Kilgore Junior College. Her studies will enable her to enter the Airline Hostess School in Fort Worth later.

A 1968 graduate of Eastland High School, Andrea was in basketball, tennis and was a three-year member of the FHA. She was in the Senior Play, a Junior Play Usher, and was a member of the Thespian Club. She won third place in the Industrial Theme Contest and served on the library staff. Andrea was a contestant in the Peanut Bowl Queen Contest.

a member of the Black Angus Association and raises registered Black Angus cattle on his ranch south of Eastland. He also has a pecan orchard which has produced prize-winning pecans.

Frank is a member of the Texas Electric Quarter Century Club. Mrs. Hightower is a past president of the Civic League and Garden Club.

They have two daughters, Mrs. Jack (Shirley) Kelly of Iowa Park and Mrs. S. A. M. (Barbara) Miller of Houston; one granddaughter, Ann Kelly of Iowa Park; and five grandsons, Mike and Steve Kelly of Iowa Park; Mark, Sammy, and Steven Miller, of Houston.

**\$8,225 Goal Is
On Tap for UF;
Starting Oct. 3**

The 1968 United Fund Drive will be launched October 3 when all workers will meet at the White Elephant Restaurant for a Kick-Off Luncheon at noon, Drive Chairman E. O. Moore has announced.

The Screening Committee met Monday morning to approve a goal of \$8,225, covering 15 agencies. UF President Dale Bakker said, "We are stressing the 'One Campaign Only' theme again this year. It was a successful project last year and Eastland residents obviously prefer it. We feel sure that the drive will be a big success because we are sure that everyone will cooperate with the UF."

Members of the Screening Committee are Mr. Bakker, Moore, Clint Brav, Charles Freyschlag, Mrs. Ed Ethridge, Grove Hallmark, and M. H. Perry. Representing various agencies at the meeting Monday were: Mrs. Marene Johnson, Frank Sayre, Joe Culpepper, James T. Wright, Rudolph Little, Mike Collins and Tom Wilson, all of Eastland; and John Pound of Brownwood.

The committee approved these agencies and amounts: USO, \$175; Boy Scouts, \$1,600; West Texas Rehabilitation Center in Abilene, \$150; Texas Rehabilitation Center in Gonzales, \$100; Teenage Baseball League, \$1,050; YMCA, \$400; Muscular Dystrophy Fund, \$450; United Fund, \$50; Red Cross, \$1,000; Salvation Army, \$1,000; Little League, \$900; Cancer, \$400; Heart, \$200; Easter Seals, \$400; and March of Dimes, \$150. Campaign expenses were allotted \$200.

The Advance Gifts Committee, members are Grover Hallmark, Don Kinnaid, Jr., and Marcus O'Dell. The committee will begin work this week.

Moore announced that Ben McKinnis, Jeff Glazner, Lewis Tiner, James Glenn, Clint Brav, James Zuspahn, Mrs. Ed Ethridge, Ray Pryor, Dick Dixon and Dick Johnson will be Team Captains for the drive.

Drug-Toons
—By—
Don Stoner

The old maid says, "I DON'T mind the men who kiss and tell . . . at my age I NEED ALL the ADVERTISING I can get."



Will The Tall Dark Man
Take Me To

**CENTRAL
DRUG CO.**

Prescription Specialist
Phone 629-2681
103 West Main
Eastland, Texas

MAVERICKS . . .
(Continued from page 1)

fense in the next few practice sessions.

Bufs are looking for players to replace all three running backs, both ends and a tackle who departed with senior class.

Ten seniors, eight juniors, 11 sophomores and eight freshmen now compose the 37-member Herd. Richard Wilson, junior, was forced to hang up pads for some time because of a foot ailment.

Seniors are: Rusty Beggs, Tommy Burks, Dick Dickson, Jr., Tommy Dodds, Ricky Jones, Lanny Kellar, Jesse Moon, Stewart Sorvell, Vern Webb and Greg Williams.

Juniors: Larry Bishop, Leslie Cowan, Joe Dodds, Steve Fortune, Mike Knott, James McMillan, David Merryman and Delbert Turner.

Sophomores: J. S. Archer, Gail Arnold, Kim Beggs, Ricky Burks, Bobby Davis, Brad Harris, Brett Hollingshead, Robert Lewis, Billy Melton, Tommy Merryman and Ronnie Pancake.

Guests in the home of Mr. and Mrs. Frank Hightower were their daughters, Master Sgt. and Mrs. Jack Kelly, Ann, Mike, and Steve of Iowa Park; Mr. and Mrs. Sam Miller, Mark, Sammy, and Steven of Houston. Mr. Hightower celebrated his birthday at a family party, Aug. 25.

Service-Toons
—By—
BILL & AL



"Those are the FIRST
SQUAWKS Joe ever had
on his service."

We don't get squawks, because our service never "LAYS AN EGG!" That reminds us: We specialize in truck service too!

Morton Texaco

Best Service
In Eastland

Phone 629-8850
702 West Main

**WANDA'S WONDERLAND
KINDERGARTEN**

**Kindergarten will be open Sept. 9
Monday, Tuesday and Wednesday**

Registration day will be Sept. 2—
anytime between 8 a.m. and 5 p.m.

All supplies are furnished by the Kindergarten. We have ample room,
four teachers. For ages 4 through 6.

1001 W. Commerce—Phone 629-1506

Teachers are Mrs. Almeda Goode, Mrs. Judy James, Mrs. Trena Thomas
and Mrs. Wanda Webb.



Drug

**YOU
DESERVE
THE
BEST!**



You'll Always
Find A Big
Supply of The
Freshest, Best
Assortment in
our

Needs

**MODERN, ONE-STOP DRUG STORE.
Think Central, The Compete Store**

**GIFTS Galore For All Occasions
COSMETICS Of The Top Lines
JEWELRY For The Discriminating**

SHOP AND SAVE TODAY

**DRUG STORES ARE MUCH MORE
THAN THEY USED TO BE &**



VITAMINS

**CENTRAL
IS EVEN
MORE SO!**

CENTRAL DRUG

FREE DELIVERY

PHONE 629-2681

Here! New '69 CHEVROLET TRUCKS!

Now there are even more reasons why Chevrolet is more truck.



MORE STYLE

Here's the bold new look in pickups—Chevrolet's handsome new hood profile, new aluminum grille, new interior trim colors! You get a cab and Fleetside pickup box that are double wall, double strong. America's most popular pickup is more truck than ever for '69!

MORE LENGTH

New '69 Fleetside pickups provide cargo boxes up to 8½ ft. long—haul bigger payloads or king-sized camper bodies! For work or play, you get the riding smoothness of work-proven independent front suspension, the economy of Chevy truck power. Plus easier handling.



MORE COMFORT

New, more comfortable seats are designed with molded foam. Thick insulation hushes road noise. Bump leveling coil springs at all four wheels on most models smooth the way. More comfort!



MORE POWER

New workpower! A spirited new 350-cu.-in. V8 is standard in medium-duty V8 models. Order it for pickups, too! And there's big V8 power in heavyweights. Chevrolet gives you plenty of workpower!

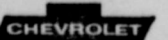


MORE VAN FOR THE MONEY

Low-cost Chevy-Van delivers loads of economy with big Sixes or work-whipping V8. Nimble maneuverability in traffic makes light of big loads. Now available with 3-speed Turbo Hydra-Matic.

At your Chevrolet dealer's now.

More trucks are Chevrolets because Chevrolet is more truck!



Was your heating all it could have been last winter?



Modernize now with gas central heating and save on installation!

We're having a Warm-Up Sale! That means now and through October 31st many gas heating dealers and Lone Star Gas are offering installation discounts. Move up to gas central heating, and enjoy fresh, warm circulating air in your home this winter. Call your nearest gas heating dealer.



Announcing

Open Under New Management
Village Hotel Coffee Shop

Offering a complete menu
and businessmen's luncheon

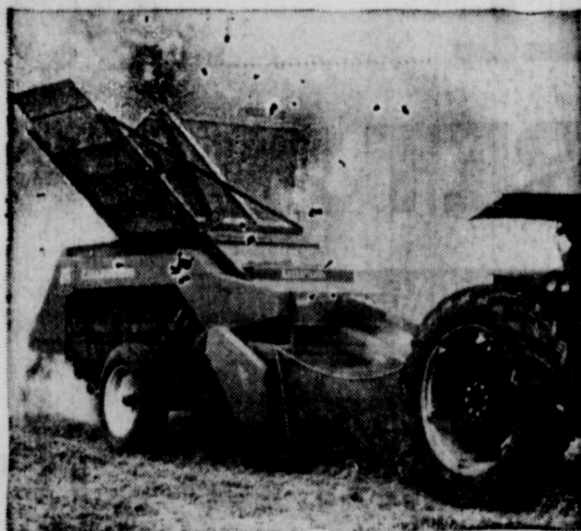
weekdays at \$1

Charles and Hallie Brooks

More farmers harvest more peanuts with Lilliston Combines than with any other make in the field.

Fifty-four years of pioneering know-how pays off for these farmers — harvest after harvest year after year.

They know when they've got something good going for them. In fact — the best!



Overwhelming testimony proves the Lilliston first in the field.

Have you seen the new Lilliston?

Squiers Farm Store

WEST MAIN ST. — EASTLAND, TEXAS

HOSPITAL NEWS

Patients reported in Eastland Memorial Hospital Wednesday morning were:

Retta Richardson, Rising Star.
Larry Wilson.
Troy Woods.
Ollie Yeager, Cisco.
Eula Slatton, Cisco.
Louise Tyrone, Carbon.
Henry (Pete) Tyrone, Carbon.
Violet Robertson.
Opal Robertson.
William Owen.
Randolph Hubbard, Rising Star.
Eula Hart, Ranger.
Lucille Sutton.
Mrs. Johnny Simmons, Cisco.
Carrie Harlow.
Jessie McBee.
Maude Finley.
Pearl Bond, Rising Star.
Bernice Grieger.
Charlie Chambers.
Opal Williams.
Minnie Wilson.
Amanda Morris.
Leeman Underwood, Cross Plains.

Luther Davis, Fort Worth.
Delores Hernandez.
Dellie Baird, Cisco.
Senta Squyres, Ranger.
Laura Noble.
Nina Lockhart.
Mary Castro, Ranger.
James Murphree, Rising Star.
Haddon Freeman.
Charlie Taylor, Gorman.
Frank Sharp.
Mrs. Wylie.
James Blalock, Dallas.
Troy Ray.
Vera Harris, Cisco.
Ruby Petty.
Gertrude Parker.
Cordia Keck, Cisco.
Vernice Hunt, Fort Worth.
Wanda Smith.
Ina Edwards.
Abbie Lawson.
Eula Preslar.
Pamela Golden.
Ruth Sutton.
Judy Williams.
Mattie McPherson.
Gladys Sharp, Cisco.
Earl Brown, Breckenridge.
Weldon Coffey, Fort Worth.

Fort Worth areas for his Country-Western music.

The Ball Room, with a seating capacity of 800, will be open until midnight Friday, and until 1 a. m. Saturday, the announcement said.

Following the grand opening, the Steak House will be open each day, except Monday, from 4 until 12 p. m. and the Ball Room will be open every Friday and Saturday nights with its own band, Bill Thompson and the Green Valley Ranch Hands.

Many name bands have agreed to appear at the Ball Room in the near future, the announcement said, to help make Green Valley Ranch one of the finest attractions in this area.

WAYNE'S TV SERVICE

Repairing black & white or color TV
Call 629-1583, days or 629-1154, nights and week-ends.
WAYNE CALDER
107 East Sadosa

FACTORY REBUILT BAND INSTRUMENT

Available on our Rental-Purchase Plan for approximately one-half the price of a new instrument

All Instruments Subject to Approval by Your Band Director

Call collect

CALDWELL MUSIC COMPANY

221 Grape Street — Abilene, Texas — 915-677-2471

GREEN VALLEY RANCH SETS OFFICIAL GRAND OPENING

Green Valley Steak House and Ball Room will have their official Grand Opening Friday and Saturday, Sept. 13 and 14, according to an announcement by the owner, Mrs. Winnie Hollis. It is located three miles south of Cisco on the Cross Plains Highway.

The Steak House will begin serving the very finest in steaks, chicken, etc., at 4 p. m. Friday and Saturday and will be there to serve you until midnight, the announcement said.

A very cordial invitation has been extended to everyone in Eastland and surrounding counties to dine at beautiful Green Valley during grand opening and to visit often

throughout the coming years. At 8 p. m. the spacious Ball Room will open its doors with dancing to the music of Tony Jay and his Western Plainsmen. Tony is well known throughout the Lubbock and

Mom's Back Home-Made Fried Pies DAIRY TREAT

Phone 629-1144

CAGLE BODY SHOP

100 S. Mulberry St.

Beauty Mist Annual Hosiery Sale



Dress Sheers Regularly \$1 Pair Sale Price \$.79 6 Pairs Only \$4.70

Save 20% on other styles

This is it—the hosiery sale you've waited for. Nationally advertised Beauty Mist stockings at great, once-a-year savings! Beautiful, luxuriously sheer, the choice of smart women everywhere. Now be smarter than smart—scoop up a wardrobe of elegant Beauty Mist Stockings in your favorite fashion shades at these irresistible sale prices!

Shop HARELIK'S And Save EASTLAND

Save 25%

on Hearing Aid Batteries

Fresh Mallory No. 675, per pkg. \$1.80 All other sizes 25% off, postpaid anywhere

Repair and service all Hearing aids. Free demonstration of the new ALL IN THE EAR HEARING AID. Circuit made by Westinghouse Electric.

McELYEA HEARING SERVICE

2034 Cedar Crest Drive Abilene, Texas

SUPER SAVE MARKETS DOLLAR DAYS

Sunshine VANILLA WAFERS 12-oz. box 35c

White Swan FRUIT COCKTAIL 4 303 cans \$1

White Swan PEACH HALVES 3 2 1/2 cans \$1

White Swan SLICED PEACHES 3 2 1/2 cans \$1

WHY PAY MORE?

Low Prices spell Great Savings

White Swan WHOLE GREEN BEANS 4 303 cans \$1

Del Monte WHOLE NEW POTATOES 6 303 cans \$1

Light Crust FLOUR 5-lb. bag 49c



Super Save MARGARINE 2 lbs. 25c

Borden's MELLORINE 2 1/2-gal. 79c

Kraft's CHEESE American & Pimento Slices Choice 8-oz. pkg. 39c

MEAT Decker's WEINERS 12-oz. pkg. 45c Decker's Quality SLICED BACON lb. 59c SIRLOIN STEAK lb. 79c CHUCK ROAST lb. 59c ARM ROAST lb. 69c

PRODUCE Fresh GREEN ONIONS 2 bunches 15c Cello RADISHES 2 pkgs. 15c White ONIONS lb. 10c Tokay GRAPES lb. 19c Rutabagas TURNIPS lb. 10c

DOUBLE GOLD BOND STAMPS Every Wednesday with \$2.50 Purchase Or More

SUPER SAVE

HOME OWNED — HOME OPERATED G. A. WHITE — Manager PHONE 629-1191 400 S. SEAMAN

TO THE MAVERICKS . . . WE'RE BEHIND YOU ALL THE WAY

EASTLAND vs. CROSS PLAINS

FRIDAY NIGHT, 8:00 p.m. HERE

1968 MAVERICK SCHEDULE

1968 MAVERICKS

EASTLAND MAVERICKS

Sept. 13	Cross Plains	Here
Sept. 20	Ranger	There
Sept. 27	Baird	Here
Oct. 4	DeLeon	Here
Oct. 11	Albany	There
*Oct. 18	Hamilton	There
*Oct. 25	Granbury	Here
*Nov. 1	Comanche	There
*Nov. 8	Cisco	There
*Nov. 15	Clyde	There

*District Games

District Games Begin at 7:30

All other games tentatively set for 8 p.m.

EASTLAND HIGH SCHOOL B TEAM

Saturday September 14, 9:30 a. m. Early here.
All other B team games will be played at 7:30 p. m. on Thursday.
September 19: Open date
September 26 Cisco, there
October 3: Ranger here.
October 10: Clyde, here.
Oct. 17: Albany, there.
Oct. 24: Early, there
Oct. 31 Cisco, home.
Nov. 7: Ranger, there.
Nov. 14: Clyde there.
JUNIOR HIGH
The Junior High games will be played on Thursday, with the Seventh Grade playing at 5 p. m. and the Eighth Grade playing at 6 p. m.
Sept. 12 Albany, home.
Sept. 19: Ranger there.
Sept. 26: Cisco there.
Oct. 10 Clyde, home.
Oct. 17: Albany, there.
Oct. 24: Ranger here.
Oct. 31 Cisco, home.
Nov. 14: Clyde, there.



1968 MAVERICK ROSTER

Seniors — Lettermen *Steve Wilson, *Bill Hoffmann, *Terry Grimes, *Larry Lane, *David Cagle, Robert Harbin, *Eddie Kincaid, *George Simms and John Baker.

Juniors — Alex Jiminez, Randy Boles, Ricky Culpepper, John McCleskey, Randy Lowrance, Bill Hart, Danny Elrod, Larry Wilson, Gary Pipkin, and Bobby Bird.

Sophomores — Rocky Maynard, Rober Sosebee, Sam Harris, Phillip Smith, Phillip Harrison, Bobby Williamson and Richad Sancillo.

Feshmen — Dean Brown, Craig Lund, Russell Stephenson, Randy Rexroat, Rueben Gaeta, Gill Gaeta, Rodney Reynolds, James Eidson, Bill Mueller, Scott Miller, Ronald McCleskey, Bob Mace, Dickie Anderson, Robin King, Michael Parsons, Charles Marshall, Steve Key, Steve Hart, Jimmy Savre, Joe Martinez, Mike Jones, ickev Kendrick and Eddie Arnold.
*Lettermen

The 10-10 CB Club will furnish emergency communication facilities to the Stadium — and may be contacted for the transmission of messages to and from Maverick Stadium — Phone NUMBER — 629-1678.

D. L. KINNAIRD
GENERAL INSURANCE
297 W. Main — 629-2544

HOLLYWOOD VASARETTE

SCOTT PAINT
AND BODY WORKS

EARL BENDER AND CO.
INSURANCE

M. L. TERRELL Real Estate
Farms - Ranches - City Property
311 1/2 W. Main 629-1725
Nights — 629-1926

HOOD KING MOTOR CO.
Ford & Mercury — Sales & Service
On the Square 629-1786

COMPLIMENTS OF
Mr. and Mrs. Jack Elliott

BUCK WHEAT
FARM and RANCH SUPPLY
City Property - FHA and GI Homes
301 N. Seaman 629-2131

We Give S&H Green Stamps
JRB SUPERMARKET

CENTRAL DRUG

Green Street Flower Shop
200 N. Green 629-1101

BRAY'S
DEPARTMENT STORE
111 S. Lamar 629-1789
Eastland

TEXAS LIGHTWEIGHT
AGGREGATE COMPANY
Producers of Concrete Aggregates
C W. Martin, Manager
629-2060 Eastland

BRUCE PIPKIN MOTOR CO.
Olds - Cadillac - GMC

CITY GARAGE
Engine, Starter & Generator Work
International Trucks, Sales & Serv.
103 White St. 629-1709

HILLCREST FOOD MARKET
"When you run out, run in"
1401 W. Main 629-1600

BOLES DAIRY QUEEN
"Where The Mavericks Meet"
Hwy. 80 East 629-2400

Hareluk's Department Store
212 W. MAIN

Mr. & Mrs. Victor Cornelius

SQUIRES FARM STORE
516 W. Main 629-2220

Eastland Memorial Hospital

Dr. and Mrs. J. O. Jolly

ALTMAN'S

COMPLIMENTS OF
Lone Star Gas Employees

Texas Electric Service Co.
F. N. Sayre, Manager
629-2651

Judge and Mrs. L. W. Dalton

EASTLAND NATIONAL BANK
"On the Square" — Member FDIC

GRAHAM'S TRIM SHOP
709 W. Main 629-2266

Dr. and Mrs.
M. A. Treadwell, Jr.

SMITH
Plumbing - Air Conditioning

B & W CLINIC
H. J. Bulgerin, M. D.
B B. Alexander, M. D.
310-330 Petroleum Bldg.

BUDDY AARON
Eastland County Farm Bureau

HORTON TIRE SERVICE
Seiberling Tires — Batteries
East Main St.

KINCAID REAL ESTATE
"All types of real estate and long term
farm and ranch loans"
100 S. Seaman 629-1788

COMPLIMENTS
SUPER SAVE
400 S. Seaman 629-1191

R. M. SNEED
CONTRACTOR, INC.
Hiway 80 East 629-1756

FOREMOST DAIRIES
Clyde Manning, Manager
410 W. Commerce 629-1701

Hanna Hardware & Lumber

WESTERN AUTO
ASSOCIATE STORE
Corner Commerce and Lamar

WHITE ELEPHANT
RESTAURANT

Supporting The Mavericks
All The Way
Mr. and Mrs. Nolan DeFord
and Nannette

SOUTHERN TELEVISION
SYSTEMS CORPORATION
CISCO—EASTLAND—RANGER . . .
inviting you to watch all of the games
NCAA, AFL, NFL

SOUTHERN TELEVISION SYSTEMS CORPORATION

Cisco - Eastland - Ranger . . . Inviting You to Watch All of the Games — NCAA - AFL - NFL

Education Report Detailed: But All Answers Not Given

Texas can have the best public school system in the nation with ten years according to a report just released by the Governor's Committee on Public School Education, entitled: "The Challenge and the Chance." The "Challenge" is a history of educational mediocrity which finds Texas traditionally ranked among the lowest

one-fourth of the states in measures of educational achievement and financial ability. The "Chance" will be of once-in-a-century combination of stable school enrollments, a projected 60 percent increase in economic activity, and a rich harvest of prospective teachers produced by the population boom of the past 20 years.

To take advantage of its opportunity, "Texas must set its educational house in order, eliminate inefficiency and financial favoritism, and make an all-out commitment to excellence, the Committee warns. State aid formulas must be made flexible to promote new educational approaches, and the results must be carefully measured.

Proposed innovations include regular summer programs to utilize otherwise empty school buildings and to offer year-round employment for teachers who cannot support a family on nine months' pay; encouragement of vocational program expansion geared to the actual opportunities in Texas' business and industry; preschool training beginning at five years of age with top priority for those in greatest need—and eventually a program for four-year-olds with "educational handicaps."

For teachers, the Committee proposes salary increases, contracts with a regular workweek providing time for conferences, planning, lesson preparations, and grading papers, and staff aides for non-professional chores. To get her with provisions for sick leave, periodic developmental leaves at State expense, and Texas the "best State-guaranteed personnel program" in the nation. The base salary would be

\$600 per month for a beginning teacher with a Bachelor's Degree. Addition of a tenth-month to the schedule in 1970-71 would make the annual salary \$6,000 for beginners. With summer instructional assignments a man with a Master's Degree and five years experience could earn more than \$10,000 a year.

Committee proposals for a "Supplemental State Aid Program" would provide extra personnel and operating funds and higher salaries for districts with heavy concentrations of educationally handicapped children. The proposals reject the concept of "equal education for unequal children."

To manage the expanded educational programs efficiently and assure provision of comprehensive educational opportunities, the Committee recommends that every school district be a 12-grade system and that it either (1) contain a minimum of 2,600 students, or (2) be at least countywide in size. County superintendencies would be eliminated and a new system of regional offices of the Texas Education Agency would replace Educational Service Centers established last year.

The proposed plan to make Texas a national leader would require an average increase of about \$126 million a year over the ten-year period. But the bill for the taxpayer will not be as painful as it looks at first glance.

School enrollments will stabilize in the next decade because the number of births in Texas has decreased steadily for the past eight years. Fifty thousand fewer children were born in 1966 than in 1960. But the economy should continue to grow at a rapid pace.

Current taxes on property, sales, natural resources and other forms of economic activity will grow enough to avoid a big gap between income and proposed expenditures to support the 10-year Texas can finance a top quality educational program by matching the commitment of other leading states, the Committee contends. By investing only four percent of their income in public education, Texas can have the best public school system in the nation.

Authorized by the Legislature in 1965, the Committee of 15 laymen and professional educators has spent nearly three years on a study which examined every facet of public school education in Texas.

Citizen attitudes toward the suggested changes will be as important as their willingness to pay more money for excellence in public school education, the Committee believes. Almost every recommendation—from school district reorganization to new formulas for determining the amount each district will pay to support the program; and from teacher pay increases to the establishment of public kindergartens and adult education programs—requires legislative action. The Legislature is responsive to public opinion, and the Committee has carefully sampled that opinion as a part of its comprehensive study.

Statewide surveys of adults and teachers have indicated general approval of the new educational approaches which the Committee is recommending. The results show recognition of the need to strengthen educational programs as a means to providing improved standards of living for a

responsible citizenry. And most important adds the Committee, attitudes have changed to demand an emphasis on reaching the individual child rather than trying to "mass-produce" uniform "batches" of students.

The Committee report contends that investments in improved education is a saving for the future. Dropouts and students who graduate without job skills to support themselves frequently wind up being supported by the State—on welfare or in a correctional institution. Education should fit the student for responsible citizenship and make him a contributor to the economy rather than a drain on the State's resources.

At the request of the Legis-

lature the Committee will continue to work until June 1, 1969. General recommendations on organization and finance will be applied in specific detail to every district in the State through a Supplement to the Committee's report, due in about six weeks.

Members of the Committee are: Mr. Leon Jaworski, Chairman, Houston; Mr. Paul Haas, Vice Chairman, Corpus Christi; Mr. Joe E. Chapa, Linn; Mrs. J. O. A. Conner, Waco; Mr. M. K. Hage, Jr., Austin; Mrs. George Hawn, Port Aransas; Dr. Harold Hitt, San Antonio; Dr. Frank W. R. Hubert, College Station; Dr. June Hyer, Houston; Mr. Morgan Jones, Jr., Abilene; Mrs. Savannah Cross Lockey, Troup; Dr. James McCrock-

lin, San Marcos; Mr. Madden, Jr., Amarillo; Loyd Turner, Fort Mr. Dick West, Dallas.

Scientists' Subject

Congregations in Church Science churches through the world will hear a sermon Sunday, Sept. 15, titled "Substance".

Its Golden Text is John: "Labour not for meat which perisheth, but for that which endureth to everlasting life, which Son of man shall give you."

The Sunday service at Church of Christ, Science Eastland, begins at 11. All are welcome.

CISCO JUNIOR COLLEGE NIGHT CLASSES

A meeting will be held for all persons interested in night classes at Cisco Junior College, Monday night, 6:30, administration Bldg.

Any academic or vocational course in which there is a demand will be offered—English, History, Biology, Math, Business, Music, P.E., Art, Agriculture, Data Processing, Foreign Languages, Industrial Arts, Journalism, Psychology, Government, plus other courses.

For further information, contact the Registrars Office, CJC. Telephone 442-2567.

EASTLAND COUNTY HEADQUARTERS FOR LEVI'S IS

For the Wide Open Spaces Wear LEVI'S AMERICA'S FINEST OVERALL



HEIDENHEIMER'S

IN CISCO

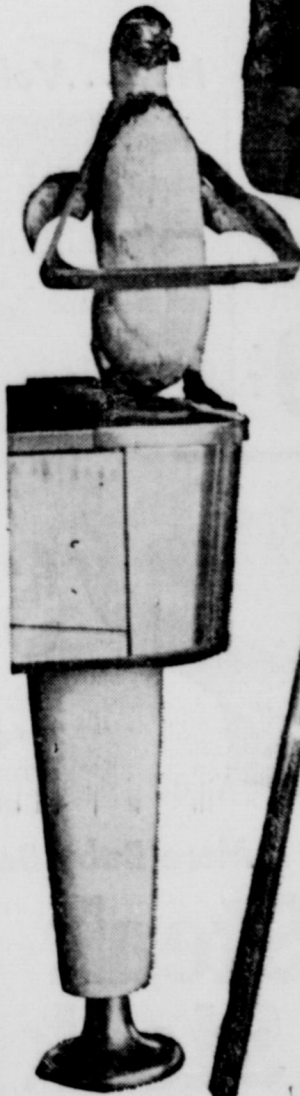
fit trimmer... look slimmer...



LEVI'S AMERICA'S FINEST JEANS • SINCE 1851

You'll look more neat and get more wear in LEVI'S—the original blue jeans—made of the world's heaviest all-cotton denim. Why take less than the real thing?

Get that cool, unruffled look!



Mr. LEVI'S SLACKS

LEVI'S STA-PREST never need ironing

STA-PREST(r) SPARTAN CLOTH

50% Fortrel Polyester
50% Cotton
Blue Amber — Gold — Olive
30 to 42 Waist \$8.50

STA-PREST(r) DRESS PLAID

70% Dacron — 30% Avril Rayon
30 to 42 Waist \$11.00
Brown & Gray

GUARANTEED To Shrink To Fit: Button Front Men's 27 to 44 Waist 28 to 36 Length

\$5.29 pr.
38 & 40 Lengths \$5.79

Boy's Zipper Front Size 0 to 12 18 to 26 Inch Waist \$4.29

GOODYEAR CLEAN SWEEP SALE!

3 DAYS ONLY! THURSDAY, END-OF-SEASON TIRE CLEARANCE SAVE BIG—SAVE NOW. See HURRY! These tires will sell fast at these SPECIAL LOW PRICES! OPEN 8 AM TO 6 PM

NOW YOU PAY LESS!

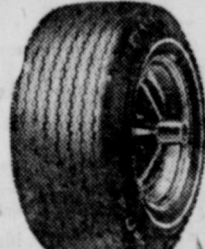
WIDE SELECTION OF SIZES & PRICES—DISCONTINUED DESIGNS—ODDS & ENDS

Quantity	Size	Type & Description	Price	Fed. Ex. Tax
few	845x15	TPA-pw-nw-ny-ty	\$20.00	2.81
few	825x14	cus-so-nw-ry-tyl	20.00	2.35
few	775x15	cus-powl-3w-nytl	30.00	2.21
few	825x14	speedwayblack streaks	30.00	2.35
few	775x14	speedway black streaks	28.00	2.21

"HOT ONES" are ON SALE!

Goodyear's famous wide tread tire is yours today at reduced prices!

Size	Replaces	Red or White Stripe Tubeless	Fed. Ex. Tax
170x14	825x14 spd-wt-rs-pr-tl	\$25.25	\$2.58
170x15	815x15 spd-wt-rs-pr-ty	25.25	2.64
170x14	775x14 spd-wt-rs-pr-tl	25.25	2.35
170x14	858x14 spd-wt-rs-pr-tl	25.25	2.77



NO TRADE-IN REQUIRED

LOW PRICE BUDGET BUYS USED TIRES

ANY SIZE WHITEWALL OR BLACKWALL. Plenty of original tread depth remaining. Dressed up—cleaned up—they look great. Ideal for use on that second car.

\$7 \$10

ANY SIZE-ONE LOW PRICE

"Famous Name" CHANGEOVERS

24.50

Quantity	Size	Type & Description
5	825x14	C5n-Xnew-ny tl
10	775x14	power-cus-xnw-nytl
8	825x14	power-cus-xnw-ny

All of these tires are new car takeoffs driven only a few miles!

Special Preseason Offer!

2 GALLONS OF PERMANENT ANTI-FREEZE

FREE!

with the purchase of a pair of GOODYEAR "Suburbanite" WINTER TIRES with Vytacord Polyester Cord

NO MONEY DOWN • EASY TERMS • FREE MOUNTING!

GOODYEAR SERVICE STORE

306-308 E. Main Eastland 629-2662

Offer good only during our 3-Day Sale Event

2 FOR 46.50

CHECK YOUR SIZE & PRICE

Size	Tubeless Blackwall Pair Price	Fed. Ex. Tax per tire
775x14	\$52.50	\$2.19
825x14	56.50	2.35
775x15	52.50	2.21
815x15	56.50	2.36
845x15	61.50	2.54

7.00 x 13 tubeless blackwall plus 1.95 Fed. ex. tax per tire no trade-in required

• Deep tractor-type cleats dig deep—grips hard to give the traction you need.
• Made with Vytacord polyester cord—ideal for winter tires because it withstands the moisture and damaging bruises of winter's ice and snow.
• Built to give a softer ride on wet or dry roads.

oil Survey Is 65% Finished In This County

il surveys are completed, about 65 percent of Eastland County. During the year, an additional 10 acres are planned to be completed. Joe Moore and Coburn, soil scientist the Soil Conservation District cooperators of the Leon Soil and Water

Conservation District are the main users of the soil survey. Knowledge of the soil and its capabilities and limitations is the base of all sound conservation treatments. City planners, road builders and many other groups are also finding the information helpful. The Soil Scientist making this survey walks over the land to prepare the map. He

carries an auger and spade to examine the soil, a hand level to measure the slope of the land and an aerial photograph on which to record observed information. He studies soil characteristics such as depth, texture, permeability, structure and color of the soil. Soil samples are taken in some areas for laboratory studies, and correlation with sur-

rounding counties.

The Eastland County Soil Survey is a part of the National Cooperative Soil Survey, which is a cooperative project of the Soil Conservation Service and the Texas Agricultural Experiment Station. The purpose is to get a complete inventory of the Nation's soils and to learn as much as possible about how the soils react to different kinds of use and management. In addition to the Experiment Station's tests on these soils, soil sci-

tists note the types of use and management that seems best suited for each particular soil. Yield data and other useful information is accumulated throughout the survey.

When the survey is completed, the information will be published in book form. It will include aerial maps of every section of the county, a description of the soils, information on agricultural and engineering uses and detailed weather data of the county. It will have a section on geology,

range, wildlife, cropland and other informative pages about Eastland County. The published soil survey will contain more information about the soils of Eastland County than any other published book.

Horse Shoeing

Corrective — Plating
Trimming
PAT WALKER
629-1004 Eastland

RAWLINS SINCE 1884 Monuments

WEATHERFORD PHONE LY 4-2726
IF WE MAY ASSIST YOU, CALL US COLLECT OR MAIL THIS AD
NAME _____ PHONE _____
ADDRESS _____ CITY _____



<p><i>Safeway Special!</i></p> <p>Crisco Shortening. (4¢ Off Label)</p> <p>3-Lb. Can 69¢</p>	<p><i>Safeway Special!</i></p> <p>Fruit Cocktail Del Monte</p> <p>3 17-oz. Cans 69¢</p>	<p><i>Safeway Special!</i></p> <p>Toilet Tissue Brocade. White. So Soft.</p> <p>4-Roll Pkg. 29¢</p>	<p><i>Safeway Special!</i></p> <p>Purex Bleach Liquid. (4¢ Off Label)</p> <p>1/2-Gallon Plastic 29¢</p>
<p><i>Safeway Special!</i></p> <p>Pillsbury Flour Pillsbury's Best. All Purpose.</p> <p>5-Lb. Bag 49¢</p>	<p><i>Safeway Special!</i></p> <p>Wolf Chili All Meat.</p> <p>15-oz. Can 49¢</p>	<p><i>Safeway Special!</i></p> <p>Peanut Butter Real Roast. ★ Creamy or ★ Chunky</p> <p>3-Lb. Jar 99¢</p>	

Non-Food Values!

Rubbing Alcohol
M.L.H. 16-oz. Bottle **10¢**
★ Glass or ★ Plastic.

Motor Oil
Toscon. 20-wt. or 30-wt. Quart Can **29¢**

Now... Volume No. 2

UNIVERSAL HISTORY OF THE WORLD

START YOUR COMPLETE SET TODAY WITH VOLUME 1 ONLY **49¢**

99¢ EACH FOR VOLUMES 2 THROUGH 19!

For Casual Living!

TV TRAYS

For Indoor or Outdoor Use!

King Size. 16 1/2 x 22 1/2 In. (99¢ Value) —Each **88¢**

Safeway Baby Beef Sale!

Sirloin Steak

Baby Beef. Safeway Waste-Free Trim. So Tender. (Compare Trim.) —Lb. **89¢**

More Baby Beef Values!

Round Steak —Lb. **89¢**

T-Bone Steak —Lb. **99¢**

Rump Roast —Lb. **85¢**

Short Ribs Baby Beef. —Lb. **29¢**

Boneless Brisket Baby Beef. —Lb. **79¢**

Pork Roast Boston Butt. —Lb. **49¢**

Pork Steak Butt Cut. Fresh —Lb. **59¢**

Sliced Liver Fresh Beef Skinned & Deveined. —Lb. **49¢**

Ground Beef Safeway Handy Chub Pak. 2-Lb. Chub **\$1.05**

Ground Chuck Safeway. Lean and Meaty. —Lb. **75¢**

Sliced Bologna Safeway. Jumbo. 1-Lb. Pkg. **63¢**

Canned Picnics Armour Star. 3-Lb. Can **\$2.49**

Boneless Hams Samuel's Chieftain. ★ Half or ★ Whole. —Lb. **\$1.38**

USDA Inspected Grade "A"

FRYERS

USDA Inspected Grade "A". Whole. Everyday Low Price! (Cut-up... Lb. 35¢) —Lb. **29¢**

Leg Quarters From USDA Inspected Fryers. —Lb. **39¢**

Breast Quarters From USDA Inspected Fryers. —Lb. **45¢**

Stock-Up on These Frozen Food Values!

Meat Pies 6-oz. Pkg. **10¢**

Sparetime. ★ Beef ★ Chicken or ★ Turkey. Special!

Waffles 5-oz. Pkg. **10¢**

Bel-air. Serve with Ham 'n Eggs! Special!

French Fries 2 9-oz. Pkgs. **25¢**

Bel-air. ★ French or ★ Crinkle Cut. Special!

Ice Cream 1/2-Gallon Carton **63¢**

Snow Star. Assorted Flavors. Big Buy!

Shop... Compare These Everyday Low, Low Prices!

Tomato Soup 10 1/4-oz. Can **10¢**

Town House. Rich flavor. Big Buy!

Soda Crackers 1-Lb. Box **19¢**

Melrose. Soup favorite! Big Buy!

Twin Pet Dog Food 15-oz. Can **7¢**

Good for Cats, too! Big Buy!

Fresh Fruits and Vegetables... Always at Safeway!

Potatoes Russet. Serve 'em Baked or Fried! —20-Lb. Economy Bag **89¢**

Top Quality, Always!

Watermelons Red Ripe. 25 to 32-Lb. —Each **59¢**

Peaches Large. Yellow Freestone. —Lb. **23¢**

Apples Red Delicious. Large and Fancy. —Lb. **29¢**

Lemons Sunlight or ★ Limes. Large and Juicy. 6 for **35¢**

Purple Plums Stanley. —Lb. **29¢**

White Onions US #1 Quality. 2 Lbs **29¢**

Red Onions US #1 Quality. 2 Lbs **29¢**

Cucumbers Selected Sizes. 3 for **25¢**

Bell Peppers Large and Crisp. 3 for **25¢**

Lettuce Large, Crisp Heads. —Each **15¢**

Grapes ★ Thompson Seedless. ★ Tokay or ★ Malagas. —Lb. **19¢**

Celery Large, Crisp Stalks. —Each **19¢**

Bananas Golden Ripe. Everyday Low Price! 2 Lbs. **29¢**

REPUBLIC MONEY ORDERS ISSUED HERE

SAFEWAY

Prices Effective Thurs., Fri. and Sat., Sept. 12, 13 and 14, in Eastland. We Reserve the Right to Limit Quantities. No Sales to Dealers.