

EASTLAND TELEGRAM



VOLUME 92, NUMBER 88

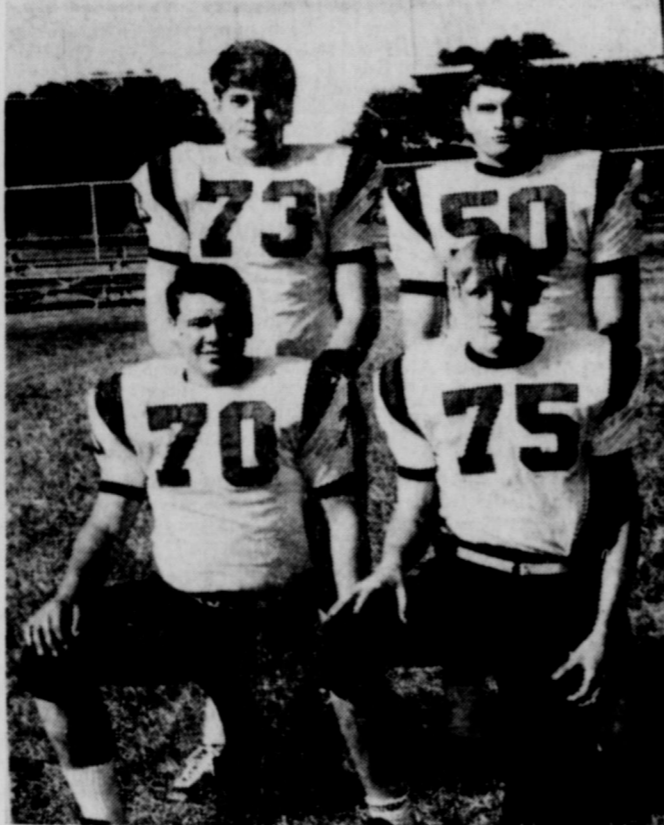
EASTLAND, TEXAS, 76448, SUNDAY, NOVEMBER 3, 1968

PRICE: 10¢

Defense to be called on again...



DEFENSIVE GUARDS — Phillip Harrison, 170, left, David Cagle, 160, center, and Ricky Culppepper, 172, have a special way of preventing break-throughs and keeping the offense of the Eastland opponents on its face. Coach Harold Price is in charge of the Maverick line.



DEFENSIVE TACKLES — Phillip Smith, 195, top left; Terry Grimes, 180, top right; Robert Harbin, 194, bottom left; and Bill Hart, 160, bottom right, individually and collectively put the stops to a lot of opponents' plays. When a play is busted up you can usually expect one of these Mavericks to be right on top of it.

Mavericks Face Loboes

This will undoubtedly be the weekend that was in District 8-AA. The big chips could be picked up Friday night.

Smartering from a 29-19 smacking at the hands of the league-leading Comanche Indians, the Eastland Mavericks will try for a bounce-back

when they go to Cisco Friday to take on the much-improved and formidable Loboes, in a 7:30 p. m. kickoff.

And the Mavericks once again find themselves in the underdog spot, with a four-place rating in the district, right behind Cisco. Comanche has a 3-0 record: Granbury, 2-0-1; Cisco; and the Mavericks have a 1-1-1 for the conference play.

Eyes will wander to Granbury too, where Comanche takes its bid. Hamilton will be a Clyde.

Monday morning quarterbacks were asking "What happened in Comanche?" and most every time the answer came back that the Indians were just up and ready. They had been reported to be a revitalized team and a definite threat, but the Eastland spirit was no where as great as for the Granbury game a week earlier, and the game just didn't jell for the Big Reds.

Point-wise the Mavericks have outscored Cisco in conference play (65-53) but the Loboes have allowed only 21 points while the Mavericks have had 43 scored on them.

8-AA (SEASON)

Team	W	L	T	Pts.	Opps
Eastland	6	1	1	245	61
Granbury	5	2	1	209	49
Cisco	5	3	0	127	86
Comanche	5	3	0	124	145
Hamilton	0	8	0	38	265
Clyde	0	3	0	6	283

DISTRICT

Team	W	L	T	Pts.	Opps
Comanche	3	0	0	90	25
Granbury	2	0	1	68	49
Cisco	2	1	0	53	21
Eastland	1	1	1	65	43
Hamilton	0	3	0	25	105
Clyde	9	3	0	6	283

Last Week's Results

Comanche 29, Eastland 19; Granbury 54, Clyde 6; Cisco 26, Hamilton 7.

This Week's Schedule

Eastland at Cisco; Comanche at Granbury; Hamilton at Clyde.

Horton Tire Co.
Presents

BREAD of Life

That good, and acceptable, and perfect will of God. — Romans 12:2.

Kind is God's will and sweet My own I dare not ask: My heaven is at His feet, Or at His task.

HHH Carries County by 500; Richard Nixon Is Apparent Winner

Democratic Presidential Candidate Hubert H. Humphrey carried Eastland County by about 500 votes — with all eight boxes complete.

The unofficial but complete returns show the Democrat polling 3,231, Richard Nixon, 2,699, and George Wallace, 1,124 in this county.

Eight of the county's boxes were complete, including absentee. Ranger's returns were reported just before noon Wednesday.

Richard Nixon was declared the apparent winner at mid-morning Wednesday, with a majority of the electoral vote.

VP Humphrey carried every box except absentee and Eastland. Eastland voted 597 for Humphrey, 681 for Nixon, and 231 for Wallace. Cisco voted 737 HHH, 664 Nixon and 254 Wallace. Ranger voted 518, 344 and 152.

One of two write-in candidates in the county was successful. Assistant County Attorney Emory Walton, who staged a write-in for the county attorney's office for which no candidate was nominated, tallied 1,422, and Eastland (from Ranger), and Eastland Attorney Saul Pullman, an unannounced write-in, got 145. District Judge Earl Conner

easily defeated write-in candidate Truman Kirk, Cisco attorney, for the district judge's office. Conner polled 4,081 and Kirk 1,071. The 3 big boxes went like this: Cisco — Conner 836, Kirk 528; Eastland — Conner 1138, and Kirk 138; and Ranger — Conner 731 and Kirk 86.

A total of 6,293 voters went to the polls Tuesday and voted for Democratic candidates, 2-to-1, except in the presidential race.

This was believed to have been the heaviest turnout in recent history. The long, difficult ballot gave counters fits and most were late coming in.

The Eastland box reported in about 1:15, and Rising Star came in complete at 12:45.

In other races, the county voted as follows: Governor — Smith, 4,182; Eggers, 1,893.

Congress — Burleson, 4,662.

Lt. Governor — Barnes, 4,704 and DeCluitt, 1,324.

Att'y. General — Martin, 4,672 and Wynn, 1,244.

Comptroller — Calvert, 4,597 and Bennett, 1,284.

Treasurer — James, 4,770, Sanchez, 1,148.

Land Commissioner — Sadler, 4,700, Neptune, 1,204.

Agriculture Commissioner — White, 4,675, Schart, 1,215.

Railroad Commissioner — Langdon, 4,593, Seigrist, 1,250.

Countdowns voted FOR only six of the 14 proposed Constitutional Amendments. Favored in Eastland County were Nos. 1, 3, 7, 9, 12, and 14. All others were rejected.

State Rep. Burke Musgrove polled 4,786 to his GOP Opponent Pat McGough's 1,030 in this county and easily carried the five-county district.

Unopposed Candidates Esco Walters, Edgar Altom, L. E. Sublett, Danny Woods, Porter Woods received large numbers of votes.

The first box reported in, naturally, was from Desdemona where Election Judge L. E. Clark made his complete call at 7:15 p. m. Cotton Guy at Carbon reported in at 8 and Olden came in at 8:15. J. V. Heyster of Cisco brought his returns in at 10:40 p. m. Gorman called in at 10:25 and Rising Star came in at 12:45.

Sayre's Mother Rites Wednesday In Breckenridge

Funeral for Mrs. Arthur N. (Edna Vivian) Sayre, 78, mother of Frank Sayre of Eastland, was held Wednesday at 10 a. m. at the First United Presbyterian Church in Breckenridge.

The Rev. Jim Thams officiated. Burial was in the Breckenridge Cemetery.

Mrs. Sayre, a long-time resident of the Breckenridge area, died at 4:55 p. m. at Stephens Memorial Hospital in Breckenridge.

Survivors include her husband; three sons, Col. Edwin Sayre of Breckenridge, Frank of Eastland and Arthur K. of Dallas; one daughter, Mrs. R. H. Dye of Odessa; one brother, Riggs Yarbro of California; two sisters, Mrs. Meda Williams of Bakersville, Calif. and Mrs. Bess Moore of El Paso; nine grandchildren and one great-grandchild.

FULLEN MOTOR Co. LAUGH-A-DAY

Henry, on a self-improvement program, enrolled in a dancing class to learn the latest steps.

"I already know how to dance a little," he explained to his pretty instructor. "All I really want is for you to analyze my dancing and tell me the latest steps, too."

After dancing with him the teacher said, "Sir, there are really only two things wrong with your dancing."

"And what are they?" asked the eager learner.

"Your feet," she replied.

Freyschlag INSURANCE

Presents the WEATHER — PARTLY CLOUDY, but clearing in the afternoon. Continued mild. High Sunday 80.

EASTLAND NATIONAL BANK EASTLAND, TEXAS

Caton Retires TESCO; To Do Photography

Wayne Caton retired Oct. 31, following 41 years and three months service with Texas Electric Service Company.

Caton was born in Red River County, Texas, and is a graduate of Clarksville High School. He attended Texas A&M for two and a half years and completed ISC engineering courses.

He started work in the construction crew when the No. 5 turbine was being installed at the Leon Power Plant. After installation, Wayne worked in the plant until the transmission headquarters were established. At that time, he became a system operator in the transmission department. When he retired he was working as the data analyst for the department.

Caton worked in Eastland except for 1932 and 1933 when he was in Big Spring while visiting back in Eastland. Wayne met Miss Flarra Malone of Handley who was visiting her parents in Eastland, where her father was employed at the Leon Plant.

Wayne and Flarra were married in 1933 in Arlington. They have one daughter, Mrs. Don (Jeanette) Roff of Waco; and three granddaughters, Beverly, nine; Paula, four; and Debra, eighteen months.



WAYNE CATON

The Catons attend the First Christian Church and she is a member of Las Leales Club. Wayne was a major contributor to the building of Eastland Memorial Hospital, doing much of the interior and cabinet work. He served several years on the hospital board.

His hobbies are woodworking and photography and he plans to do commercial photography. He may be called at 629-1114 for appointments for pictures, developing, enlarging, and other photography services.

Peanut Industry Officials Visit In This County

Paul P. Kume from the Farmer Programs Division of the United States Department of Agriculture, Washington, D.C. and Bob Lorenz, Program Specialist, Texas Agricultural Stabilization and Conservation visited in Eastland County Nov. 5.

After visiting the County ASCS Office, county office manager, Gilbert Meredith, took them to the Carbon, Gorman area where they spent the day touring the peanut industry and making a study of the marketing and grading of peanuts.

P-TO Profit Is \$500 at Carnival

The Parent-Teacher Organization cleared more than five hundred dollars at its annual Carnival and Chili Supper, held at the high school cafeteria and gym Oct. 29. Mrs. H. J. Bulgerin, president, said the money would be used to pay for parties for elementary school children and added to a fund which has been started to pave a playground at the school.

The organization expressed appreciation to the Eastland merchants who contributed merchandise to be used as prizes and to each parent who helped at the carnival.

Mrs. Eli Camet and son, Michell of Pittsburg, Kansas, visited Mr. and Mrs. Oliver Canet.

Several Flat Roofs Are Damaged by Hail, Wind

A rain storm, accompanied by high winds and hail, hit Eastland at 2:45 p.m. Saturday, and Weather Observer James Dabney measured four-tenths of an inch of rain in minutes.

Dabney said an inch of hail was on the ground, ranging in size from marble-sized up. Hail was heavier in parts of town than at the weather station.

First Class Brochure for the City Okayed by Chamber Directors

A really first-class brochure to exploit the advantages of Eastland will be developed as the result of action taken by the Eastland Chamber of Commerce board of directors, Thursday.

Directors okayed the project which has been under consideration in various stages of interest for several years, but under intensive study during the past few years.

Heading up planning for the brochure is Ben McKinnis who will work with others in designing the picture-perfect piece to be used in every way possible to attract industry, business, visitors and residents to the city.

Approval came at the luncheon meeting at the White Elephant Restaurant when R. P. (Buddy) Haun introduced a motion, asking that the chamber plan to spend upwards of some \$750 to produce some 5,000 first-class brochures. We've all talked about how much we need a good brochure, for years," Haun said, "I propose that we just get busy getting us one."

C-C President J. T. Gregory, presiding, received a unanimous vote when the motion was called. The directors also agreed to invest some \$100 to install new lighting fixtures at the chamber's downtown office. The building owners had agreed to assist with the cost of the fixtures, lit was reported in the amount of \$50.

Haun further suggested that a three-man committee be named to be in charge of distribution of the brochure so that the chamber will have adequate control of their placement.

McKinnis read minutes of the previous meeting and M. H. Perry of the chamber's industrial committee reported

that 21 persons are presently enrolled in the industrial education program now in progress. Purpose of the program is to expand the industrial prospecting team and to have at least one or two men qualified in each of several fields to provide instant information when called on to provide data for a prospect.

Gregory reported that Vice-President Grover Hallmark is working with a committee, mapping preliminary plans for a possible January chamber banquet, with detail to be worked out and announced.

McKinnis also reported on the annual Eastland County Pecan Show which will be held in Eastland in December — for the first time here. The chamber special events and an agriculture committee will meet with the officers and directors of the County Pecan Association Monday night at the Texas Electric Service Co. Reddy Room to map out plans for the annual show here.

Committee chairman for the Community Development Program were reported as follows: M. H. Perry, job opportunities; Don Kinaird, downtown beautification; Dale Bakker, residential improvements; R. P. Haun, expansion of hotel and motel accommodations; Willard Griffin, expansions of recreation facilities; Lewis Tiner, local zoning and ordinances; Wendell Siebert, expansion of public vocational training courses; and H. V. O'Brien, development of political interest locally.

Present were Gregory, McKinnis, Walter Maynard, Nolan DeFard, Clint Bray, Frank Deaton, Guests James Wright and Marcus O'Dell, Perry, Haun, Tiner, Morris Jones and O'Brien, and Chamber Secretary Mrs. Clyde Berton.

CJC Drama Department Ready For First Staging This Week

Something rather extraordinary will happen Thursday and Friday night, Nov. 7 and 8 at 8 p.m. in the CJC Fine Arts Auditorium. A play about death, all the characters of which have passed beyond, will catch the attention of a Cisco audience, enlist its sympathy, amuse it genuinely and genially, and end by stirring it to very considerable depth of human pity and mortal terror. The play is CJC Drama Dept's production of "Outward Bound" by Sutton Vane, a British playwright.

The scene of its three acts is the lounge and part of the deck of a small ocean liner. The people who assemble seem quite normal and in point of fact do not know at first that they are dead. A part of the drama of the play, and also of its comedy, lies in the different processes by which they come to realize what has happened to them. They are troubled by the fact that they do not know just how they came aboard or what port they are bound for. Aside from the steward, portrayed by Michael Brusewitz, there are no crew, no officers. And there are no lights to port or starboard. They are sailing in a chartless sea.

The steward explains that he is a "Half-way." One does not know at first just what this means, except that he has presided at some 5,000 such trips. The first of his customers is an amiably bibulous and inwardly distracted sympathetic lad, portrayed by Oscar Garza. He is the most humanly sympathetic of the passengers and serves to develop the foibles of a pompous and insolent dowager (played by Delena Fall) and an equally pompous and hard-boiled businessman (played by Kyle McClaran).

There is also a young minister portrayed by Dwain Fall and a humble cockney charwoman enacted by Suzann Mercer. The dowager is surprised to find such folk aboard, and is outrage upon learning that on the ship there is no steering, that all of the passengers are of one class. As the play progresses, a very intimate bond develops between this bibulous, tortured young man of the world and this charwoman, and the audience is gradually inducted into a scene of human tenderness as moving as anything in the modern theatre.

Port is sighted--the port which for some is Heaven and for others Hell. The examiners, portrayed by Smokey Isaac and Randy Haynes, come aboard to deliver sentences. However, a mysterious pair of young lovers, Tim Hart and Lynda Marrs, remain to provide the play with a special surprise ending. Also in the cast are Doug Bowden, Vida Davenport, and Saad Sawayan. The stage manager is Bill Hearrell.

Settings and lighting for drama are under the supervision of Mr. Fred Mullinax. Special new stage equipment has been purchased to provide for unusual special effects. The director of the play, Tom Kinney, feels that it is entertainment for everyone, old or young. It is a mystery play of the infinite. Touched with imagination, this drama of life and death has mingled humor, pathos, and surprise into a most absorbing fineness. Tickets will be sold at the door—\$1.00 for adults and 50 cents for students.

CAGLE BODY SHOP

100 S. Mulberry St.

- Whirlpool
- Washers
- Dryers
- Refrigerators
- Dish Washers

in stock for fast delivery!

ROY GANN
629-2474

ROY'S REPAIR

For Consultation in Your Home

No Obligation

PARTAIN-WHITE MONUMENTS

MONUMENTS — MARKERS — VASES
3 1/4 Miles E. On 80 — P. O. Box 505
Weatherford, Texas 76086

Office: LY 4-5688

Res.: 817-677-2669

TIDBITS . . .

(Continued from Page 1.) "hardest ever" ballot Tuesday. (However, one was heard to comment: "Yes, this is my first election — and it's going to be my last.")

Counting the absentee ballots were: A. E. Crawley and A. H. Powell, both of Ranger, Mrs. F. L. Bond, Kenneth Watson and Warren Chapman.

Working with Election Judge Jeannette Harris, counting the Eastland ballots, were Mrs. T. N. Richardson, Mrs. Everett Plowman, Mrs. Marcus O'Dell, Rowena Hart, E. C. Ragland, Don Nicholas, Mrs. Bernard Hanna, Pat Crawford, Bucky Harris and W. J. Stone.

We voters may have thought the ballot was a hard one to vote but when you're tallying the rate is about 30 an hour.

A 73-acre farm near Gorman sold this week for \$90,000 . . . A Marine Corps Deserter got the shock of his life recently down at the Eastland County Jail, where he went into a cell to visit his wife who was being held in connection with a series of slightly cool checks passed recently in Cisco. Once the young man was inside, Jailer John Shook slammed the door shut, locked it and announced: "I'm holding you for authorities who want to talk about where you have been for the past several months."

NOW THAT the election is over, let's all unite behind the winners and get ready for the deer and quail hunting season. Both deer and quail hunting begins in our region of Texas on Saturday, Nov. 9. Dove hunters (their season ended Oct. 31.) report that the 1968 quail crop is the best in many years in this region. The deer hunting also promises to be good.

THE FOLKS OVER in Cisco are serious about the football game there Friday night. Their mayor, Mr. W. W. Sawyers issued a proclamation Tuesday proclaiming Friday, Nov. 8, as official "Beat Eastland Day" in Cisco.

See you there. You might want to go early and attend the CHS band's spaghetti supper from 4:30 to 7 p. m. at the CHS cafeteria.

Look Who's New

Mr. and Mrs. Joe Housson announce the birth of a son, Malcolm Matthew, Oct. 30 at Eastland Memorial Hospital.

The baby weighed seven pounds and ten ounces. He has one brother, Joel Shamoun, five; and two sisters, Shirley Elizabeth, four, and Janette Betinia, two.

Mrs. Joe Housson of Batsob, Texas is the paternal grand mother and Mrs. Tifan Ateck of Nazareth, Israel is the maternal grandmother.



The store that cares about you!

Allgood BACON 1-lb. pkg. 59c
Allgood BACON 2-lb. pkg. \$1.17

SULTANA APPLE-RASTRAWBERRY, APPLE-RASPBERRY OR APPLE-BLACKBERRY

JELLY

3 1-lb. Glasses \$1.00

A&P INSTANT COFFEE 10-oz. Jar 99c

PINEAPPLE JUICE 46-oz. Can 29c
MRS. SMITH'S FROZEN REGULAR OR DUTCH APPLE PIES 44-oz. Size 79c
A&P Frozen ORANGE JUICE 12-oz. Can 37c
PET RITZ FROZEN "9" PIE SHELLS 3 Pks. \$1.00

COLLINSWOOD

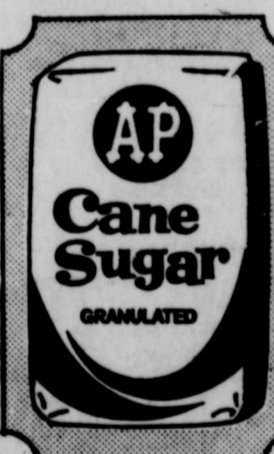
FRESH BLACKEYE, PURPLE HULL, OR FIELD PEAS 2 15-oz. CANS / 25c

WHITE BEAUTY SHORTENING 3-lb. Tin 49c

CHAMPION SALTINE CRACKERS 1-lb. Box 19c

ANGEL SOFT PAPER NAPKINS Pkg. of 60 10c
ANN PAGE ASS'D LAYER CAKE MIXES Pkg. 25c
WOLF BRAND PLAIN CHILI 19-oz. Can 59c
HAIR SPRAY STYLE 14-oz. Can 48c

PURR CAT FOOD 6-oz. can 10c



SUGAR 5-lb. Bag 39c

Plaid Stamp gifts... on you they'll look great!

JANE PARKER QUALITY FRUIT CAKES 1 1/2-lb. \$1.79 3-lb. \$3.29 5-lb. \$4.59

POTATOES 20-lb. Bag 89c

CARROTS 1-lb. Cello Bag 10c
GREEN BEANS 1-lb. 29c
AVOCADOS 23c
REGALD BRAND SALAD MIX OR COLE SLAW MIX 8-oz. Pkg. 29c

GOLDEN RIPE BANANAS 10c

"SUPER-RIGHT" QUALITY GRAIN-FED HEAVY FULL-CUT CALF ROUND STEAK lb. 89c
LOIN TIP CUTLETS lb. 99c
"SUPER-RIGHT" QUALITY GRAIN-FED HEAVY CALF CHUCK BLADE POT ROAST lb. 59c
U.S.D.A. GRADE "A" 10 TO 14-LB. AVERAGE HEN TURKEYS lb. 37c

NO COUPON NEEDED—GET 25 EXTRA PLAID STAMPS WITH THE PURCHASE OF EACH PACKAGE OF MRS. WEAVER'S SALADS AT THE REGULAR RETAIL

Dependable Grocery Values!

PEACHES OAK HILL 29-oz. CAN... 25c

PICKLES HEINZ KOSHER DILL OR PROCESSED DILL 32-oz. jar 39c

CARNATION NON-DAIRY CREAMER COFFEE MATE 18-oz. Size 99c
JERGENS HAND LOTION 14 1/2-oz. Size 89c
REGULAR AND SUPER LATHER VO 5 SHAMPOO 16-oz. Size 79c
EXTRA DRY 18c OFF ARRID DEODORANT 8.8-oz. Size 99c

SUGAR 5-lb. Bag 39c

JANE PARKER QUALITY FRUIT CAKES 5-lb. \$4.59
DONUTS 2 Pkg. of 12 49c
COFFEE CAKE 1-lb. 49c
JANE PARKER CRACKED WHEAT, WHEAT SANDWICH, PLAIN RYE, SOUR RYE OR PUMPKINICEL—SPECIAL Variety Bread 4 1-lb. Loaves 89c

PRICE APPLIES ONLY WITH THIS COUPON
Pillsbury 3 LAYER CAKE MIXES 3 Pkgs. / 85c

"SUPER-RIGHT" QUALITY GRAIN-FED HEAVY BEEF SHOULDER ARM POT ROAST lb. 69c
"SUPER-RIGHT" QUALITY GRAIN-FED HEAVY BEEF SHORT RIBS lb. 39c
"SUPER-RIGHT" QUALITY GRAIN-FED HEAVY BEEF GROUND BEEF lb. 59c
S.R. Heavy Calf Boneless Rump Roast lb. 89c
"SUPER-RIGHT" QUALITY GRAIN-FED HEAVY BEEF CENTER-CUT 7-BONE CHUCK STEAKS lb. 59c
"SUPER-RIGHT" QUALITY GRAIN-FED HEAVY BEEF SHOULDER ROUND SWISS STEAK lb. 79c
Cube Steak lb. 99c
Can't John's Frozen Fillets of — 1-lb. pkg. PERCH 43c
CAPT. JOHN'S FROZEN FISH STICKS 2 10-oz. Pkgs. 69c
CAPT. JOHN'S FROZEN FILLETS 14-oz. Pkg. 59c
CHEF BOY-AR-DEE PIZZAS
CHEESE 12 1/2-oz. Pkg. 59c
SAUSAGE 13 1/2-oz. Pkg. 69c
PEPPERONI 14-oz. Pkg. 75c

KEEP THEM ON THE GO... WITH VITAMINS CENTRAL IS EVEN MORE SO!

CENTRAL DRUG

FREE DELIVERY PHONE 629-2681

COURT NEWS

EASTLAND TELEGRAM
PAGE FOUR
Thursday November 7, 1968

Filed for Record
Willie Arnold Bender to Jack W. Frost, quit claim deed.
Edgar B. Brown to First State Bank, Ranger, deed of trust.
Bessie Brown to First State Bank, Rising Star, warranty deed.
Hazel Burrows to Sally Nuttrel Notgrass, warranty deed.
T. J. Bettles Company to First National Bank in St. Louis assignment of mechanic and materialman's lien.
J. W. Barnes Jr. et ux to First State Bank, Ranger, Texas deed of trust.
J. M. Cate to Sadie Ellen Youngblood, deed of trust.
E. W. Childers et ux to J. Sheppard, warranty deed.
Dennis Cotton et ux to Jonny Cagle et ux, warranty deed.
Gerald Dempsey to Levi Dempsev, warranty deed.
First National Bank, Cisco, Walter Tonne et ux, release mechanic and materialman's lien.
Jack W. Frost to Ima Lou Daley, right of way and easement.
First Federal Savings and Loan Association, Ranger, to Earl H. Redwine, et ux, release deed of trust.
First Federal Savings and Loan, Ranger, to George E. Pholley et ux, release deed of trust.
First State Bank, Rising Star, to Herman O. Krueger, et ux, release deed of trust.
First State Bank, Rising Star, to Annie Nunn, warranty deed and certified copy resolution.
Elouise J. Lumbkin Grayson et vir to Aubrey Easter, warranty deed.
Maude Gray to Glen Warren, warranty deed.
I.D.S. Credit Corporation to Mattie K. McPherson, release mechanic and materialman's lien and deed of trust.
L. E. Jones Construction Company to Eastland National Bank, deed of trust.

Donald A. Jones et ux to State of Texas, deed.
Donald A. Jones et ux to State of Texas, easement.
Eva Laddelle Key to John C. Miles et ux, release vendor's lien.
Herman O. Krueger et ux to Nina Grisham, warranty deed.
Thomas E. Lucas, deceased, to the public, proof of heirship.
Camma Glenn Boon Liles et vir to John M. Kidd, warranty deed.
Fannie Lee Littleton to J. T. Greogry, release vendor's lien.
Linebarner Lites Inc. to State of Texas, state tax lien.
Mrs. R. E. May, power of attorney for Herman Oldham et ux to Don Rodeers, warranty deed.
Missouri - Kansas - Texas Railroad Company to B. O. Blodgett, quit claim deed.
Carl Willard Meador, dba or dba Billie Truck Center Cafe and Station to State of Texas, state tax lien.
Ressie W. McWilliams to J. M. Cobb, et ux, quit claim deed.
H. W. McAllister to Gene Neaves, assignment oil and gas lease.
Lennie Kimble McGlamery, deceased to the public, certified copy probate.
C. C. Nelson to C. F. Wiggin, vendor's lien.
C. C. Nelson to Clair E. Winslow, warranty deed.
Olen Otis Odum Jr. to Betty Odum, quit claim deed.
Guy Parker to the public, affidavit.
C. J. T. et ux to Donald Mark Couger, et al, warranty deed.
Reeve W. Pruett to Zack Proaks Drilling Company Employee Thrift Plan, deed and trust.
Mrs. Julia Perkins to Mrs. Thelma Cowden et al, power of attorney.
Earl H. Redwine et ux to G. D. Sledge, warranty deed.
Tonsie Mary Renshaw vs. Grover Thomas Renshaw to



Technical Sergeant Virgil L. Whittington (right), whose wife, JoAnn, is the daughter of Mrs. Jewell Calley of Rt. 2, Eastland, receives the U. S. Air Force Commendation Medal at Hickam AFB, Hawaii. Sergeant Whittington, a data systems analyst, was cited for his professional skill and knowledge in the performance of his duties. The sergeant is a graduate of Spearville (Kan.) High School. His parents, Mr. and Mrs. Virgil R. Whittington, now reside in Edmonton, Canada. Colonel Thomas Sims Jr., deputy chief of staff, Comptroller, makes the presentation.

the public, certified copy absolute divorce decree.
Kirk Slater to Texas Electric Service Company, easement and right.
Verna E. Coe to J. A. G. Villaan Coffey Shon, to State of Texas, state tax lien.
Sklade Brothers Drilling Company to John R. Jordan et al, assignment of overriding priority interest.
Tonal Dean Thompson dba or dba Ray's Trading Post, Eastland and Cisco to State of Texas, state tax lien.
W. E. Tyler et al to J. A. McFall et ux, release oil and gas lease.
Cherk Underwood et al to the public, affidavit.
Glen Warren to Maude Gray, deed of trust.
Fay Walker et al to Carl D. Gorr et ux, grazing lease.
Jimmy R. West to M. M. Wash, appointment substitute trustee.
Jimmy R. West to Tom Hickman, transfer deed of trust.
Sadie Ellen Youngblood to J. M. Cate, warranty deed.
Marriage License
James Gordon Casey and Judy Flora Lewis.
Suits Filed
JoAnn Johnson vs. Jimmy C. Johnson, divorce.



DR. REED To Talk At JC Meeting At Texas A&M

COLLEGE STATION — The Texas commissioner for higher education, Dr. Bevington A. Reed, will keynote the 25th Junior College Conference at Texas A&M University, Nov. 11-12.

Conference chairman Dr. C. H. Ransdell said that Reed will address conferees Tuesday morning, Nov. 12, at 8:30. Ransdell is A&M College of Engineering assistant dean.

Reed's address is entitled "Accomplishable Directions for Higher Education in Texas."

The conference is sponsored by A&M and will be held in the Memorial Student Center. Reed, also a member of the Coordinating Board, Texas College and University System, is a native of Eastland County, Texas.

He attended public schools in Cisco, and earned his A.A. degree from Randolph Junior College in Cisco. His B.S. degree was earned at Daniel Baker College, Brownwood, where he majored in English and education. He received his M.S. and Ph.D. degrees from Texas Technological College.

A veteran Texas educator, Reed started gaining his public school experience as a teacher and principal from 1934 to 1941.

His teaching career was interrupted by service in World War II when he enlisted in the Marine Corps. A year later he received a field promotion to lieutenant, retiring as a major.

He returned to Vaughn, N. M., as principal prior to serving two years as a teaching fellow at Texas Tech.

He was later an assistant professor at San Angelo and Sul Ross colleges, before being named dean of college at Sul Ross in 1947.

In 1961, he became Academic Dean at Mankato State College in Minnesota, and three years later was named chancellor of Minnesota State College.

He was named Texas' commissioner in 1966.

Theme for the two-day conference is "The Challenge of Technican Training."

LVNs Plan To Hold Meeting on Nov. 11

The Licensed Vocational Nurses' Association, Division #4, will meet at 7:30 p. m. Monday, Nov. 11, in the conference room of the Eastland Memorial Hospital.

Officers will be installed. All members are urged to attend this meeting.

★ READ THE CLASSIFIEDS ★

Movie Rating Is Due on Pictures At The Majestic

The Majestic Theater in Eastland will join theaters throughout the country in adopting a new movie rating system in the near future, according to Manager Dick Dixon.

"Virtually all Texas theaters have agreed to apply the new voluntary movie rating system devised by the Motion Picture Association of America to provide a system of guidance as to the suitability of films for young audiences."

This is the first all-out effort nationally to restrict attendance by persons under 16 years of age to see certain films, he added.

Under the new system, a competent staff of film appraisers will rate movies in four symbol categories: "G" for general audiences, "M" for mature audiences, "R" for restricted to 16 years old unless accompanied by parents; and, "X" for films where young people under 16 will not be admitted under any circumstances.

Advertising material concerning films will carry the letter rating as fast as same can be applied, Dixon said.

Highway Patrol Seeks Applicants

Patrolman Bob Rivers announced today that the Texas Department of Public Safety is making a special effort to obtain qualified young men for the position of Patrolman with the Department.

Patrolman Rivers said, "All men between the ages of 20 and 35 who are of sound physical condition, have at least a high school education or equivalent, have vision of not less than 20-40 and have high moral standards should contact him or any member of the Texas Department of Public Safety immediately."

There are four branches of service for which men are directly recruited—Driver License, License and Weight, Highway Patrol and Motor Vehicle Inspection. Trainees are assigned to the service for which they are best suited.

Upon graduation from the 18 week training program at the modern DPS Law Enforcement Academy in Austin, the trainee is commissioned into one of these services. At the Academy, he will receive a salary of \$500 a month while in training. He will be taught such subjects as Texas Highway Law, accident investigation, first aid, professional driving, care and use of firearms, and many other subjects. The next class begins Dec. 10.

Benefits afforded patrolmen include: two weeks annual vacation; 12 or more holidays each year; 12 days sick leave each year; modern retirement privileges and travel expense. DPS patrolmen are furnished all uniforms and equipment necessary for performance of their duties.

Ouchproof your home this winter

with a \$150 Carrier Humidifier
It's yours as a bonus for installing Carrier central air conditioning before November 15th.

Humidifier offer available to homeowners only and does not include installation.



Eliminate annoying static electricity!

Call now for a free survey. No money down, up to 5 years to pay. **Carrier**

SMITH PLUMBING CO.

114 Seaman — Eastland — Phone 629-1722

Shifting Insurance Burdens —

... has long been an American custom, and it's a good custom. Don't try to carry the load of financial risks yourself against the hazards of these modern times, but shift it to your local agent and let Insurance do it. Your losses may be hours or years away but meanwhile Insurance will give you peace of mind and financial protection that is worth far more than its cost. Loss or no loss, you win either way — with Insurance.

★ ★ ★
Earl Bender & Company
Eastland (Insurance since 1924) Texas

ANNUAL SAF-BI SALE

COTINUES THIS WEEK AT COATS FURNITURE

YOUR CHOICE Jewelry Chest Italian Ashtray 4-Pc. Coffee Hottle	7-PIECE DINETTE 6 Large Chairs Self Edge Table in Wood Grain Plastic
VAL-O-SEAT Black or Brown Vinyl Upholstery	Marble Top Tables Sculptured Base
EXTRA SPECIAL! BABY BED Complete with Mattress	5-Piece Living Room Group 2 Step Tables 1 Coffee Table Sofabed Large Swivel Rocker Covered in Vinyl
SOLID ROCK MAPLE Bed Room Pieces Dresser Base Chest on Chest Desk Chest and Student L. sk	Stratorester Recliner Recline and Vibrate With Soothing Heat.
7-PIECE LIVING ROOM Sofa Bed Club Chair 3 Tables 2 Lamps	WHILE THEY LAST Lane Cedar Chest Spanish and Early American

FREE DELIVERY EASY TERMS

COATS FURNITURE

EASTLAND, TEXAS

VACATION SALE

We have reduced all prices on all new and used travel trailers. New prices start at \$975.00. We only have one of each kind in stock. New prices will be 3 per cent higher from the factory. We are also selling new Pick-Up Camper Covers from \$125.00 up. Ezylift hitch sold and installed.

Kelly Kar Co.

H 9-4003 — Breckenridge

DOLLAR DAY BUYS

Misses & Childrens — Values to 8.99 SHOES \$2 Close-Out of Discontinued Styles in Flats & Heels	Thigh-High — Fancy Ladies — Reg. \$1.00 HOSE 3 pair \$2
Ladies & Childrens — Values to \$2.00 SOX 3 pr. \$1 Anklets and Thigh-High — White or Ass't. Colors	Thermal BLANKETS ea. \$3.88 Fancy or Solid — Eight Colors
One Group Ladies Odd SWEATERS \$5 Slip-Over & Cardigan	ONE GROUP OF LADIES BLOUSES ● CLOSE-OUT \$2 ● BETTER QUALITY \$2 ● 3.99 to 7.99 NOW
Outing or Twill-Back FLANNEL yd. 33 1/3¢ Printed or Solid — 1 to 5 yd. Pieces	ACETATE OR NYLON BLEND JERSEY ● 1 to 5 yd. Lengths \$1.66 yd. ● 45-in. Wide ● Was 1.99 yd. Now

SALE! LEVI'S Values to 9.00

- Hopsack Nuvo's
- Corduroys
- White Levi's
- Elastique Bravos
- Corded Californians

now \$4.98 (Limited Time Only)

HEIDENHEIMER'S

THE FAMILY STORE IN CISCO

ONE GROUP OF SLACKS TO CLOSE OUT PLEATED AND OTHER DISCONTINUED STYLES NOW \$5.88

Reg. 10.00 SLACKS	NOW \$ 7.95
Reg. 12.00 SLACKS	NOW \$ 9.95
Reg. 13.00 SLACKS	NOW \$10.95
Reg. 14.00 SLACKS	NOW \$12.95
Reg. 16.00 SLACKS	NOW \$13.95
Reg. 18.00 SLACKS	NOW \$14.95
Reg. 20.00 SLACKS	NOW \$15.95
Reg. 25.00 SLACKS	NOW \$20.95

Stock up and Save in our **SLACKS SALE** HAGGAR SLACKS ARE BEST!

LEAGUE LUNCHEON AT LONE CEDAR CLUB

The Civic League and Garden Club will hold a luncheon and business meeting at noon, Wednesday, Nov. 13, at the Womens Club.

Mrs. Beverly Nicholson, home economist for Texas Electric Service Company, will speak on "Christmas Decor."

Hostesses will be Mmes. Nicholson, Durel Reid, H. T. Weaver, J. T. Gregory, Earl Conner, Kenneth Watson and Robert Bishop.

Reservations for the luncheon must be made before 5 p. m. Monday, Nov. 11, by calling Mrs. Robert Bird, 629-1639. A nursery for pre-school children will be open in the First Baptist Church at 11:30. Mothers are asked to tell Mrs.

WAYNE'S TV SERVICE

Repairing black & white or color TV
Call 629-1583, days or 629-1154, nights and week-ends.
WAYNE CALDER
107 East Sadoa

Service-Toons

By BILL & AL



"TOO MUCH LEAD... I GUESS."

There is no guess work about our service. Our men know their business. Give us a try real soon.

Morton Texaco

Best Service In Eastland
Phone 629-8850
702 West Main

Bird how many children will be left in the nursery when making luncheon reservations. Mothers are asked to take a sack lunch for each child. Drinks will be provided.

Victory Class Installs Leaders

The Victory Sunday School Class of ethel Baptist Church held a coffee and officer installation service Tuesday morning in the home of Mrs. Bobby Blair.

Mrs. Susie May, teacher of the Gleaners Class, conducted the installation with "The Cross as theme. She presented each officer a cross made from colored ribbon. Colors represented duties of the office and challenges.

Officers are Mrs. Tom Clark, teacher; Mrs. Blair, associate teacher; Mrs. Marcus O'Dell, president; Mrs. David Wright, vice president; Mrs. Margaret Byrns, secretary; Mrs. Edlie Pietraszek, treasurer; and Mrs. Luce Pittman, reporter.

Refreshments of pumpkin bread, pineapple bread, nuts, mints, and coffee were served. Appointments were silver and crystal. Napkins were of fall colors.

Locals Invited to Spaghetti Supper

Eastland football fans have been invited to take advantage of a Community Spaghetti Supper in Cisco Friday night prior to the Maverick-Lobo football game, it has been announced here.

The meal will be served at the Cisco High School Cafeteria, beginning at 7 p. m., with tickets a \$1 for adults and 50c for children 12 and under, available at the door. The event is sponsored by the Cisco Band Boosters.

LOOK SHARP

- MAVERICKS
- DOGIES
- FANS

At **MAVERICK BARBER SHOP**
Floyd Williams
East Side of Square
Phone 629-1151

Zeta Pi Chapter Meets Monday At Barney Home

The Zeta Pi Chapter of Beta Sigma Phi met Monday in the home of Mrs. Bruce Barney of Cisco. The program, "Paths of Loveliness Poetry," was given by Mrs. Walter Loudermilk, who discussed the study of poetry and read several representative types of poems.

The state project, Girlstown, U.S.A., was discussed. The new cookbooks, "Cooking with Eastland, is on sale from any member. The book, which sells for a dollar, contains many recipes from the local women.

Mrs. Barney served french lemon pie, Cokes, and coffee. The club will meet Nov. 18 in the home of Mrs. Dale Bakker. Mrs. Don Joiner will speak on "Paths of Loveliness, Verse Making.

Present were Mmes. Don Baird, Bakker, Jerry Brock, Robert Cohen, Wade Freeman, Jammie Fry, Bill Hallmark, C. W. Hoffmann, Jr. Joiner Loudermilk Bob Mahoney and Barney.

Beta Event Held At L.C. C-C

The Beta Sigma Phi Pledge Banquet was held Nov. 2, at Lone Cedar Country Club, hosted by members of the Zeta Pi Chapter and their husbands. Guests were Xi Alpha Zeta Chapter members and their husbands.

Pledges are Mrs. Bob Mahoney and Mrs. Bill Hallmark, Zeta Pi; and Mrs. John Whistler, Xi Alpha Zeta.

Attending were Mrs. Eula Arrington, Mr. and Mrs. Dick Johnson, Mrs. A. D. Taylor, Mr. and Mrs. Bill Walters, Mr. and Mrs. Robert Bird, Mr. and Mrs. Don Baird, Mr. and Mrs. Jerry Brock, Mr. Mrs. Wade Freeman, Mr. and Mrs. Hallmark, Mr. and Mrs. C. W. Hoffmann, Jr., Mr. and Mrs. Don Joiner, Mr. and Mrs. Walter Loudermilk, Mr. and Mrs. Bruce Barney, Mr. and Mrs. Manoney, Mr. and Mrs. Whistler, and Mr. and Mrs. James Smith of Hurst.

Students to Give Program for Club

Students of Eastland schools will present "Echoes of Summer Books" at the Thursday Afternoon Club meeting at 3 p. m. Nov. 7, at the Woman's Club.

The Children's Book Week program will include a display of children's books prepared by Mrs. A.E. Cushman, librarian.

Hostesses for the meeting will be Mmes. Cecil Collings, Ben Hamner, and E. G. Rice.

Bobby Grammer Celebrates First

Bobby Frank Grammer, Jr., son of Mr. and Mrs. Bobby F. Grammer of Eastland, celebrated his first birthday Saturday, Nov. 2, in the home of his maternal grandparents, Mr. and Mrs. Lewis Fagan, 207 South Connellee.

The birthday cake was decorated with the face of a clown. A single candle was in the center of the cake.

The table was decorated with birthday napkins and balloons. A birthday cuneake was served to each guest.

Calling between 1 and 4 p. m. and presenting gifts to the honoree were Linda Hammer, and Darla Gay, Mr. and Mrs. F. L. Johnson, Ruby Jackson, Mr. and Mrs. H. D. Martin, Lilly Hazard, Elna Everton, Johnnie Mae Herring, and Mrs. Jess Siebert.

Sgt. Harris Sent To Hawaii Post

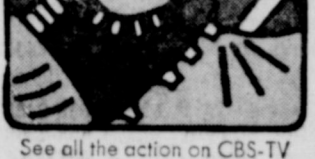
Technical Sergeant Derold L. Harris, son of Mr. and Mrs. J. A. Harris of 412 S. Walnut St., Eastland, has arrived for duty at Hickam AFB, Hawaii.

Sergeant Harris, a supply inventory supervisor, was assigned to Shepard AFB, Tex., before his arrival in Hawaii.

His wife, Dorothy, is the daughter of Mr. and Mrs. W. C. Moore of Fort Worth.

He attended Eastland High School.

Catch NFL Football



See all the action on CBS-TV Sunday! See me for a better deal on your car, home or life insurance any day!



STATE FARM MUTUAL AUTOMOBILE INSURANCE COMPANY
Hogge Office: Bloomington, Illinois

BETA CLUB HOLDS ITS ANNUAL INDUCTION

The Beta Club of Eastland High School held its annual induction service Thursday afternoon at the school.

President George Simms introduced Janet West, vice-president; Jan Jolly, secretary; Diana Maynard, treasurer; and Mrs. R. P. Haun, sponsor. Each officer described the duties of the office.

Simms read achievements of new members Ann Boney, Nannette DeFord, Darlene Lovelace, JoAnn Baker, Craig Beskow, Jan Brewer, Katie C. A. pers, Teresa Herridge, Jeff Jackson, Jana Rexroat, Gloria McDonald, Philio Smith, and Randall Treadwell. The new members gave the Beta Pledge and then received pins from Janet West, Diana Maynard, and Jan Jolly.

Sharon Herridge led the opening prayer and Paul Chapman led the pledge of allegiance to the American Flag. Two songs, "America" and "God Bless America" were sung, with Teresa Herridge leading and JoAnn Baker as pianist.

The stage was decorated with "Beta" and keys in gold and arrangements of gold and bronze mums. The Beta insignia was displayed.

A reception for members and their guests was held in the cafeteria. Guests were registered by Irene Sullivent. The table was laid with white and centered with a bronze floral arrangement. Napkins were white, printed with "Beta Club" in gold. Cake squares were decorated with the Beta insignia in green and gold. Cake and punch were served by Earin Miller, Diana Maynard, Jan Jolly, and Janet West.

BOX DRILLING CO.

IRG. & DOMESTIC WELL SERVICE
15 yr. experience Cable Tool Drilling. Phone 629-1212, Eastland.

Announcing, Something New For You

A SPLENDID SUNDAY DINNER BUFFET

\$1.35 for adults — Kiddie Korner 75c

Chicken and Dressing — Barbecued Sliced Brisket
Fried Chicken — Chicken Fried Steak

Cream Potatoes — Glazed Carrots — Green Beans
New Creamed Potatoes

Chocolate-Coconut Pie or Banana Pudding

Combination Salad—Fruit Salad—Congealed Salad
Tea or Coffee

WATCH FOR OUR SPECIALS!

Bring the family for a delightful, economical dinner after church Sunday.
BUFFET FROM 11 A.M. to 2 P.M.

Village Hotel Coffee Shop

Fred Guyger, chef
Hallie Brooks, mgr.

SUPER SAVE THE TALK OF THE TOWN SPECIALS

HEART O' QUALITY

WHOLE SLICED YELLOW CLING PEACHES No. 2 1/2 can 29c

FRISKIES Meal-Flavor DOG FOOD 2 25 1/2-oz. cans 35c

BISQUICK 40-oz. Box 49c

Del Monte PINEAPPLE-GRAPEFRUIT Juice Drink 5 29-oz. cans \$1

KRAFT TOMATO JUICE 3 46-oz. cans \$1

WHITE SWAN Shortening 3-lb. can 59c

SIRESIDE SALTINE CRACKERS Lb. Pkg. 19c

FROZEN FOODS

Garden Pride Strawberries 10 oz. 25c

El Chico Mex. or Enchilada Dinners Reg. Pkg. 39c

Golden Nip Orange Juice 5 6-oz. cans \$1

Bama Fruit Pies 20-oz. Pkg. 29c (Except Cherry)

PRODUCE SPECIALS

AVACODAS each 10c

Texas ORANGES 5 lb. bag 59c

Fresh Green CABBAGE lb. 5c

NEW POTATOES 2 lbs. 29c

Cello CARROTS 2 pkgs. 19c

TASTY MEATS WITH THRIFT APPEAL

Decker's Korn Kist SLICED BACON lb. 49c

CHUCK ROAST lb. 59c

Boneless STEW MEAT lb. 79c

Fresh Ground PORK STEAK lb. 59c

HAMBURGER lb. 49c

DOUBLE GOLD BOND STAMPS

Every Wednesday with \$2.50 Purchase Or More

HOME OWNED — HOME OPERATED

SUPER SAVE

G. A. WHITE — Manager
PHONE 629-1191 400 S. SEAMAN

Jean-Claude Killy talks shop Chevrolet Sports Shop

(Freely translated from the French) "I am a man who drives for sport... for fun, you know? This is why I am telling you about the brave new Chevrolet and its Sports Shop. "Only in the Chevrolet Sports Shop do you find cars like the Camaro Z/28. Ah, the Z/28. Camaro with 302 V8, more muscular suspension and Hurst shifter. Only Z/28 offers 4-wheel disc brakes like Corvette, also in the Sports Shop. "You will find, too, the Camaro SS, Chevelle SS 396, Nova SS and the big Impala SS 427. "The Sports Shop. Part of the Sports Department at your Chevrolet dealer's. "But of course."

Putting you first, keeps us first.

See the Super Sports at your Chevrolet dealer's Sports Department now.

'100-Bushel-Acres' Seen In Present County Harvesting

Quite a few instances of "100-bushel-acres" are being reported in the present Eastland County peanut harvest which is about half finished, according to Gilbert Meredith, County ASCS office manager.

A report will be issued soon on the exceptional yields which are the results of increased fertilization of crops in this county, he said.

Some 32,000-plus acres are in peanut production in the county with grades running in the 70s. This is up some 1,000 acres from 1966-67 and the usual grades running in the 60s.

1966 was the record crop for Eastland County with \$4.20 million for county farmers. Meredith said this years crop will yield from \$4.50 to \$5 million. Government support has been increased by \$13.25 per ton. Acre yield in 1966 was 1,266 pounds; in 1967, 937 pounds; and this year the yield is expected to be from 1,200 to 1,250 pounds per acre.

Meredith said the dry, clear weather of the past weeks has been a boon to the peanut farmer and they need a few weeks more of the same to get the entire crop harvested. He predicts, weather permitting, that harvest will be completed by Nov. 20th.

Dry-land and irrigated peanuts are grading out about equal. The very dry weather

has presented some difficulty in harvesting. Some with irrigation equipment have watered to loosen the soil. The too-dry ground tends to pull off the nuts in the harvest process.

Melvin Shell, manager for Gorman Peanut Company in Gorman, said his company was further behind this week than at the peak of the bumper 1966 season, though drying facilities have been greatly expanded since 1966.

Martha Circle Has Leon Meet

The Martha Circle of the C.W.F. of the First Christian Church met Monday Oct. 28 in the home of Mrs. LeRoy Maxwell on Lake Leon.

The group opened the meeting with sentence prayers. Mrs. Juell Browning, chairman of the group conducted the business session in which more plans for the Christmas bazaar were made also we were reminded of the fact we are hostess for the CWF Meeting Nov. 4th.

Names of the sick were noted to send cards.

Mrs. Varge Daniel combined the study lesson with the worship. In the study she used the third chapter of the study book "How we work within Society" using scripture Acts 6:2-6 to relate the new forms of ministering to the many needs of people in the U.S.A. as well as in foreign countries.

Mrs. Daniel used scripture from 1st Cor. 12:4-20 in conducting the worship service one of the methods to serve the aged or shut-ins "Meals on Wheels". A report of the members of our congregation attending the Dist. 6 meeting a Lake Brownwood Christian retreat was made.

The meeting closed with the missionary benediction refreshments were served to Mmes. Bassett, Duckett, Homer Williams, Lon Horn, Freyehlag, Joe Tow, Daniel, Browning and the hostess.

EASTLAND SCHOOL MENUS

Monday, Nov. 4: steak and gravy, buttered rice, green beans, cole slaw, hot rolls, apple sauce cake.

Tuesday Nov. 5: weiners with cheese, pinto beans, mixed greens or cabbage cornbread, cinnamon rolls.

Wednesday, Nov. 6: turkey and dressing, giblet gravy, whipped potatoes, green peas, cranberry sauce, sliced bread, pumpkin pie.

Thursday Nov. 7: italian spaghetti, green lisas, harvard beets, hot rolls, fudge cake.

Friday, Nov. 8: baked ham, whole kernel corn, buttered carrots, sliced bread, jello with fruit.

Las Leales Club Enjoys Fashion

"A more feminine look is the latest fashion trend according to Mrs. Floyd Robertson of Altman's Style Shop of Eastland, who presented a fall fashion show for Las Leales Club members and their guests Monday night at the Womans Club.

"Styles are softer and more feminine, Mrs. Robertson said. "A return to the classic fitted suit is part of the new look. And ruffles, lace, a belted waistline, fullness in the skirt, and even hats are all returning to our fashion scene.

Modeling clothes for all occasions were Mrs. Mary Parks of Cisco; Mmes. Ed Ethridge, Harold Price, E. G. Rice, and Milton Hunt, all of Eastland; Misses Becky Hanna, Susie Hanna, Janie Miller, Terresa Herridge, Sharon Herridge, Ann Boney, Carla Boney, Shelly Siebert, and Kathy Gregory, all of Eastland.

Misses Becky and Susie Hanna and Janie Miller played background music for the show and also presented special numbers at intermission.

Misses Terresa Herridge and Janie Miller sang two songs. Mrs. J.T. Gregory, Las Leales president, welcomed members and their guests and introduced Mrs. Maurice S. Dry, chairman of the hostess committee. Other hostesses were Mmes. Don Kinnaird Jr., Aileen Raymond, Herman L. Hassell, and Miss Verna Johnson.

Mrs. Dry read the quotation for the "Because a Woman Loves Clothes" meeting, "We grow old soon enough, so dress as young as your years will permit. She introduced Mrs. Robertson, commentator for the show.

Decorations were arrangements of tall flowers, leaves, and pumpkins. Fashion posters were placed around the room. A gown and robe set and matching slippers were displayed. Guests registered in a white guest book.

Cake, coffee, nuts, and mints were served. Present were Mmes. B. F. Hanna, Bert Herridge, J. L. Owen, Francis Urban, Leland Hallmark, Dick Johnson, Ben Mahiwe, J. V. Harbin, Bobbie Wood, I. C. Heck, Florence Miller, Jack Germany, C. W. Bole, DeMarquis Gordon, Jess Siebert, Ina Bean, Don Massingill, O. H. Dick, Pat Miller, Charles Marshall, Harold H. Durham, Pat Crawford Niles Turner, Gregory, Wendell Siebert, James Horton James Smith Waynt Cattle, Gene Boney Rudolph Little, Ruth Poe Herring, Gene Rhodes, the hostesses, and the models.

Final Rites Set Thursday For Mrs. Cox

Mrs. D. C. Cox, resident of Ranger for 50 years, died at 6:45 p.m. Tuesday in Hendrick Hospital in Abilene following a lengthy illness.

Funeral will be held at 3 p.m. Thursday in First Baptist Church in Ranger. Burial will be in Evergreen Cemetery.

Born May 8, 1906 in Marion, Ind. She married Dewey C. Cox Aug. 5, 1922 in Ranger. She was the former Jessie Winchell. She was a housewife and a member of the First Baptist Church.

Survivors include her husband; three sons, Dewey C. Cox, Jr., and Richard C. Cox, both of Ranger, Charles C. Cox of Long Beach, Calif.; two daughters, Mrs. Harold Dillinger of Jacksboro and Mrs. J. D. Cheshire of San Antonio; one brother Ed Winchell of Odessa; two sisters, Mrs. Odell Haltom of Abilene and Mrs. B. F. Bailey of Anson; and 15 grandchildren.

Mrs. O. O. Mickle Hosts Lydia Meet

The Lydia Circle of the First United Methodist Church WSCS met Tuesday in the home of the secretary, Mrs. O. O. Mickle.

Mrs. Mary Clyatt led the opening prayer and Mrs. L.C. Brown presented the devotional.

Mrs. T. M. Colie, treasurer, gave a report. The group voted to knit shoulder bandages and to crochet baby caps for world service.

Sandwiches, candy, cookies, nuts, and coffee were served. A Halloween motif was used in the plate favors and napkins.

Present were Mmes. Clyatt, Borwn, R. A. Pool, Colie, Etta Johnson, Ina Bean, Roy Stokes, Ed Ethridge, Hattie Baker, Potter, and Mickle.

The group will meet with Mrs. Ed Ethridge Tuesday.

McCoy with Marine Unit In Vietnam

Marine Corporal Rodney L. McCoy, 20, son of Mr. and Mrs. Clarence L. McCoy of Eastland, is serving with the First Marine Aircraft Wing in Vietnam.

The First Marine Aircraft Wing operates several hundred aircraft which includes fighter, attack, reconnaissance, helicopter and transport aircraft.

The wing operates several hundred aircraft which includes fighter, attack, reconnaissance, helicopter and transport aircraft.

In addition to providing aviation support for the First and Third Marine Divisions, he wing supports other U. S. and Allied forces.

A free turkey will be given away at 9:30 p.m. Saturday Nov. 9, at the Jaycee Kiddie Carnival on East Man Street. The winner must be present at the drawing.

Funeral Services Held Saturday For Mrs. McRae

Mrs. Fannie McRae, sister of Mrs. Alice Crabtree of Ranger, died Thursday, Oct. 31, in San Antonio following an apparent heart attack.

Final rites were conducted in San Antonio on Saturday, Nov. 1. Ranger relatives were unable to attend.

Miss Hull Named To 'Who's Who'

Miss Rita Marie Hull of Fort Worth was one of 36 seniors at Texas Woman's University in Denton named to "Who's Who in American Colleges and Universities."

A business education major, she is president of Delian Literary Social Club. She has been president of Kappa Epsilon Mu, vice president of Phi-sic Club, and editor of the chemistry department "Newsletter."

Miss Hull is the daughter of Mrs. Irene Hull of Fort Worth and sister of Mrs. Foy True of Eastland.

Spaghetti Dinner Planned Nov. 10

The MYF of the First United Methodist Church of Eastland will have a Spaghetti Dinner Sunday Nov. 10, immediately following the morning worship service.

Tickets are \$1.25 for adults and 75 cents for children. They may be bought from any MYF member. The public is invited to attend.

Guests in the home Mrs. W. A. Justice were her cousins, Mr. and Mrs. Everrett Cross of Austin, Missouri and Mrs. Charlie Debrnon of El Paso.

For Your Convenience: NEW TELEPHONE NUMBERS

OLDEN

Table of telephone numbers for the OLDEN area, listing names and numbers.

CARBON

Table of telephone numbers for the CARBON area, listing names and numbers.

Drug-Toons advertisement featuring Don Stoner and Central Drug Co.

Funeral Security Trust advertisement with contact information for Arrington Hamner Funeral Home.

CLIP & SAVE FOR YOUR CONVENIENCE advertisement for COMANCHE COUNTY TELEPHONE CO., INC.

Shangri La
by Ora Lee Woods

I've found my inn in the wilderness,
My place of sure retreat,
My house by the side of the road
Where I mankind may meet.

You probably wouldn't recognize it —
There's really not much to see;
But this is my house of moderation
And it works just fine for me!

★ **HOSPITAL NEWS** ★

Patients in the Ranger General Hospital on Wednesday were:

- Mrs. Susie Hearn.
- J. I. Sncke.
- Wilson Unkart.
- Mrs. Cora Preslar.
- Mrs. J. H. Greer.
- Riley Robinson.
- William C. Imes.
- W. W. Crenshaw.
- Carl Eakin.
- Mark McGuire.
- Mrs. C. D. Jones.
- Mrs. W. O. Caraway.
- W. W. Slemmons.
- Mrs. W. W. Slemmons.
- Mrs. Hattie Crossley.
- Mrs. R. L. Edwards.
- Mrs. Jessie Sager.
- Mrs. Mae Brown.
- Mrs. Anita Gomez.
- Mrs. Viola Cagle.
- Mrs. Johnny Swinney and baby girl.
- Mrs. Dora Lee.
- Mrs. Gertrude Merdith.
- Mrs. Lottie Ainsworth.
- G. H. Abbott.
- B. L. Swinney.
- Don Reeves.
- W. D. Cowan.

- Erna Eifert, Cisco.
- Thelma Humphrey.
- Maude Dabney.
- Pernecia Cearley, Cisco.
- Glen Graham.
- Gut Abbott, Cisco.
- Lavesta Myers, Ranger.
- Marion Herridge.
- Nora Adams, Cisco.
- Imabe Clark.
- Joyce Lewey, Colorado City.
- Leslie Riggins, Cisco.
- Jesse Simmons, Cisco.
- Clarence Ragland, Gorman.
- Pearl Bond, Rising Star.
- Eula Preslar.
- Wesley Harris.
- Elmo Webster.
- Hubbard Bilbert, Gorman.
- Walter Smith, Rising Star.
- Bevley Martin, Cisco.
- Joseph Garbers, Cisco.
- Winifred Young.
- Delphia Stephens, Abilene.
- Betty Durham.
- Lois Reiton, Cisco.
- Nancy Trout.
- Jacqueline R. Hendricks of Cisco.
- Lota Hutton, Cisco.
- Ina Edwards.
- Elizabeth Rhyme Cisco.
- David Livingston, Jr.
- Weldon Coffey, Fort Worth.
- Patsy Tackett, Bluff Dale.
- Hattie Ragsdale.
- Ruth Sudderth, Rising Star.
- Gertie Exline, Cisco.
- Daisy Davis, Cisco.
- Addie Overstreet.

Patients reported in Eastland Memorial Hospital Wednesday morning were:

- John Baines.
- Judy Kimmell, Cisco.
- Lill Hull.
- Lizzie Hallmark.
- Serena Farrell, Olden.

Horse Shoeing

Corrective — Plating
Trimming
PAT WALKER
629-1004 Eastland

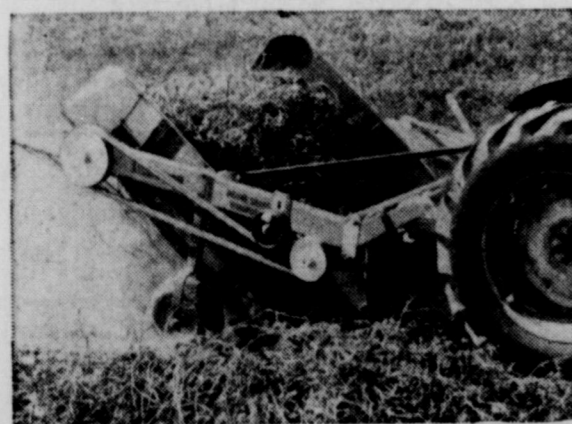
Retread Tires

Big Savings
Now!
• First-Class Carcass
• No. 1 Dixie-Cap Tread Rubber
• 670x15, 815x15, 775x14, 825x14
• Guaranteed life of tread

★ ★ ★
HORTON TIRE CO.

EASTLAND

**POSITIVELY PROVEN THE
FINEST IN THE FIELD**



**The LILLISTON 2700
Digger-Shaker-Windrower**
OUT-RUNS
OUT-WINDROWS
OUTLASTS THEM ALL

Come by - we'll show you
exactly how and why
Squiers Farm Store

Phone 629-2220 — Eastland — 514 Main St.



Neuhoff's Preferred
SLAB BACON

By The Piece Sliced
lb. 49c lb. 55c

Foremost
COTTAGE CHEESE
2 lb. ctn. **49c**

- Shamrock — No. 300
PORK & BEANS can 9c
- Del Monte — No. 2
PINEAPPLE JUICE 2 cans 25c
- Purex
BLEACH 1/2-gal. 35c
- Arrow Medium — 1-lb. Bags
RICE 2 bags 25c
- Lily — 26-oz. Boxes
SALT 2 boxes 23c
- Strong Heart
DOG FOOD Tall Can 9c
- Zee — 60-Count
NAPKINS 2 pkgs. 25c
- Frito — 3 1/2-oz.
BEAN DIP can 9c

ELGIN — Reg. 2 for 29c LIMIT 6-lbs.
OLEO 1-lb. solid lb. **9c**

- | | | | |
|-------------------|-------------|---------------|--|
| Detergent | | | |
| RINSO | giant box | 59c | FLUFFY ALL giant 85c |
| LUX LIQUID | giant size | 49c | DISHWASHER ALL giant 79c |
| SURF | giant size | 70c | WISK quart 83c |
| Bath Size | | | FINAL TOUCH giant 85c |
| PHASE III | 2 for | 49c | SILVER DUST giant 85c |
| Jumbo Size | | | Lux — Bath |
| 3-B ALL | | \$2.33 | BEAUTY BAR 2 for 35c |
| Liquid | | | DOVE LIQUID king 89c |
| SWAN | 22-oz. size | 65c | LIFEBUOY 2 for 43c |
| Cold Water | | | |
| ALL | quart | 83c | |
| BREEZE | reg. | 39c | |

CAMPBELL'S — TALL CANS
TOMATO SOUP each **9c**

— **JRB QUALITY PRODUCE FEATURES** —

- LONG GREEN
CUCUMBERS each **5c**
- GOLDEN RIPE
BANANAS lb. **10c**
- COLORADO RED DELICIOUS
APPLES 2 lbs. **29c**
- NAVAL JUICY SWEET
ORANGES 2 lbs. **29c**

JRB QUALITY MARKET SPECIALS

- | | |
|--|--|
| Gooch's German
Sausage 12-oz. pkg. 79c | Decker's
Cervelat lb. 69c |
| Shop Sliced
Bologna All-Meat lb. 59c | Wisconsin Red-Rind
Cheese lb. 89c |
| Corn King — Pickle Olive, Bologna — 6-oz. pkgs.
Lunch Meats 3 pkgs. \$1 | 5 to 7 lb. Pieces
Cured Ham lb. 49c |
| Small 'Little Pig'
Spare Ribs lb. 65c | Cracker Barrel
Cheese 10-oz. sick 65c |

JRB MEATS
are U.S. Government
Graded and inspected . . .
If for any reason you are
not satisfied we will cheer-
fully refund your money.

SHOP MADE — SEASONED JUST RIGHT

PORK SAUSAGE 2 lbs. **89c**

**Christmas is just a few
S&H books away!**
START SAVING EARLY FOR GREAT GIFTS.



**Christmas
is only
54 books
away**

Ajax Laundry
DETERGENT
Giant Size **59c**

Shortening
SNOWDRIFT
3-lb. Can **59c**

Ajax — 14-oz.
CLEANSER
2 pkgs. **25c**

Klean
DETERGENT
Giant Box **49c**

- Admiral Oil reg.
- Sardine can
- Gold Tip No. 1
- TOMATOES** can
- Shamrock 303
- Lima Beans can
- Shamrock Whole Irish 303
- Potatoes can
- Argo 303
- Sweet Peas can
- Ranch Style 303
- Blackeye Peas can

6 FOR \$1

- Alma 303
- Red Kidney Bean
- Shamrock 303
- Chile Beans can
- Alma Baby 303
- Lima Beans can
- Alma Fresh 300
- Blackeye Peas can
- Peter Piper 303
- Pinto Beans can
- Peter Piper 300
- Red Beans can

7 FOR \$1

- Kozy Kitten Tall
- Cat Food can
- Alma 300
- Spaghetti can
- H.L.H. 300
- Shoestring Potatoes can
- Rotel No. 1
- Kraut can
- Shamrock 300
- Hominy can
- Shamrock Turnip or 303
- Mustard Greens can
- Saxet Spec Ked 303
- Butter Beans can

8 FOR \$1

DOUBLE S&H GREEN STAMPS
with purchase of \$2.50 or more
EVERY WEDNESDAY!



PRICES GOOD THROUGH SATURDAY, NOV. 9
PRICES GOOD IN EASTLAND
Quantity Rights Reserved — No Sales to Dealers

TO THE MAVERICKS . . . WE'RE BEHIND YOU ALL THE WAY

EASTLAND vs. CISCO

FRIDAY NIGHT, 7:30 p.m. THERE

1968 MAVERICK SCHEDULE

1968 MAVERICKS

EASTLAND MAVERICKS

Sept. 13	Eastland 57, Cross Plains 12
Sept. 20	Eastland 27, Ranger 8
Sept. 27	Eastland 58, Baird 0
Oct. 4	Eastland 40, DeLeon 0
Oct. 11	Eastland 7, Albany 0
*Oct. 18	Eastland 46, Hamilton 12
*Oct. 25	Eastland 0, Granbury 0
*Nov. 1	Comanche 29, Eastland 19
*Nov. 8	Cisco, There
*Nov. 15	Clyde, Tere

*District Games

District Games Begin at 7:30

All other games tentatively set for 8 p.m.

EASTLAND HIGH SCHOOL B TEAM

Saturday September 14, 9:30 a. m. Early here.
All other B team games will be played at 7:30 p. m. on Thursday.

September 19: Open date
September 26 Cisco, there
October 3: Ranger here.
October 10: Clyde, here.
Oct. 17: Albany, there.
Oct. 24: Early, there
Oct. 31 Cisco, home.
Nov. 7: Ranger, there.
Nov. 14: Clyde, there.

JUNIOR HIGH

The Junior High games will be played on Thursday, with the Seventh Grade playing at 5 p. m. and the Eighth Grade playing at 6 p. m.
Sept. 12 Albany, home.
Sept. 19: Ranger, there.
Sept. 26: Cisco, there.
Oct. 10 Clyde, home.
Oct. 17: Albany, there.
Oct. 24: Ranger, home.
Oct. 31 Cisco, home.
Nov. 14: Clyde, there.



1968 MAVERICK ROSTER

Seniors — Lettermen *Steve Wilson, *Bill Hoffmann, *Terry Grimes, *Larry Lane, *David Cagle, Robert Harbin, *Eddie Kincaid, *George Simms and John Baker.

Juniors — Alex Jiminez, Randy Boles, Ricky Culpepper, John McCleskey, Randy Lowrance, Bill Hart, Danny Elrod, Larry Wilson, Gary Pipkin, and Bobby Bird.

Sophomores — Rocky Maynard, Rober Sosebee, Sam Harris, Phillip Smith, Phillip Harrison, Bobby Williamson and Richard Sancillo.

Freshmen — Dean Brown, Craig Lund, Russell Stephenson, Randy Rexroat, Rueben Gaeta, Gill Gaeta, Rodney Reynolds, James Eidson, Bill Mueller, Scott Miller, Ronald McCleskey, Bob Mace, Dickie Anderson, Robin King, Michael Parsons, Charles Marshall, Steve Key, Steve Hart, Jimmy Sayre, Joe Martinez, Mike Jones,ickey Kendrick and Eddie Arnold.
*Lettemen

The 10-10 CB Club will furnish emergency communication facilities to the Stadium — and may be contacted for the transmission of messages to and from Maverick Stadium — Phone NUMBER — 629-1678.

D. L. KINNAIRD
GENERAL INSURANCE
207 W. Main — 629-2544

HOLLYWOOD VASSARETTE

SCOTT PAINT
AND BODY WORKS

EARL BENDER AND CO.
INSURANCE

M. L. TERRELL Real Estate
Farms - Ranches - City Property
311 1/2 W. Main 629-1725
Nights — 629-1926

HOOD KING MOTOR CO.
Ford & Mercury — Sales & Service
On the Square 629-1786

COMPLIMENTS OF
Mr. and Mrs. Jack Elliott

BUCK WHEAT
FARM and RANCH SUPPLY
City Property - FHA and GI Homes
301 N. Seaman 629-2131

We Give S&H Green Stamps
JRB SUPERMARKET

CENTRAL DRUG

Green Street Flower Shop
200 N. Green 629-1101

BRAY'S
DEPARTMENT STORE
111 S. Lamar 629-1789
Eastland

TEXAS LIGHTWEIGHT
AGGREGATE COMPANY
Producers of Concrete Aggregates
C W. Martin, Manager
629-2060 Eastland

BRUCE PIPKIN MOTOR CO.
Olds - Cadillac - GMC

CITY GARAGE
Engine, Starter & Generator Work
International Trucks, Sales & Serv.
103 White St. 629-1709

HILLCREST FOOD MARKET
"When you run out, run in"
1401 W. Main 629-1800

BOLES DAIRY QUEEN
"Where The Mavericks Meet"
Hwy. 80 East 629-2400

Harelik's Department Store
212 W. MAIN

Mr. & Mrs. Victor Cornelius

SQUIERS FARM STORE
516 W. Main 629-2220

Eastland Memorial Hospital

Dr. and Mrs. J. O. Jolly

ALTMAN'S

COMPLIMENTS OF
Lone Star Gas Employees

Texas Electric Service Co.
F. N. Sayre, Manager
629-2651

Judge and Mrs. L. W. Dalton

EASTLAND NATIONAL BANK
"On the Square" — Member FDIC

GRAHAM'S TRIM SHOP
709 W. Main 629-2266

Dr. and Mrs.
M. A. Treadwell, Jr.

SMITH
Plumbing - Air Conditioning

B & W CLINIC
H. J. Bulgerin, M. D.
B. B. Alexander, M. D.
310-330 Petroleum Bldg.

BUDDY AARON
Eastland County Farm Bureau

HORTON TIRE SERVICE
Seiberling Tires — Batteries
East Main St.

KINCAID REAL ESTATE
"All types of real estate and long term
farm and ranch loans"
100 S. Seaman 629-1788

COMPLIMENTS
SUPER SAVE
400 S. Seaman 629-1191

R. M. SNEED
CONTRACTOR, INC.
Hiway 80 East 629-1756

FOREMOST DAIRIES
Clyde Manning, Manager
410 W. Commerce 629-1701

Hanna Hardware & Lumber

WESTERN AUTO
ASSOCIATE STORE
Corner Commerce and Lamar

Supporting The Mavericks
All The Way
Mr. and Mrs. Nolan DeFord
and Nannette

SOUTHERN TELEVISION
SYSTEMS CORPORATION
CISCO—EASTLAND—RANGER . . .
Inviting you to watch all of the games
NCAA, AFL, NFL

WHITE ELEPHANT
RESTAURANT

SOUTHERN TELEVISION SYSTEMS CORPORATION

Cisco - Eastland - Ranger . . . Inviting You to Watch All of the Games — NCAA - AFL - NFL

COUNTY TAX OFFICE IS BUSY YEAR-AROUND

TEXAS CONSTITUTION, Article VIII, Section 14: "... There shall be elected by the qualified electors of each county an Assessor and Collector of Taxes... who shall perform all the duties with respect to assessing property for the purpose of taxation and of collection taxes as may be prescribed by the Legislature."

Eastland County Tax Collector Edgar Altom was elected to the office in 1964 and re-elected in the primary held in May of this year.

His office assesses and collects taxes: ad valorem for the county and state and school taxes for two districts on the eastern edge of the county and one on the western edge of the county.

man has a half mile strip of its eastern edge in this county, although the town itself is in another county.)

License plates are sold in the office, and all title changes are handled there. Altom said this year the office will sell 9,300 passenger car licenses, 2,700 truck trailer and commercial, 1,450 farm vehicle, more than a thousand for special trailers, (house trailers, etc.) 150 for motor buses and truck tractors, and some 200 for motorcycles.

Tax collections, averaged for the years 1963 through 1967, were 92.61 percent of the amount assessed. Altom says "We collect delinquent taxes regularly, along with current taxes, which would raise the average slightly."

The office also handles voter registration, which is required for every voter. To be eligible to vote, anyone must register between Oct. 1, 1968 and Jan. 31, 1969.

The office occupies two large offices in the main floor space in a courthouse basement vault. A check of the older records shows that in 1931-32, the county issued 130 "special Occupation Tax Receipts to Commercial Traveller Drummers, salesmen or solicitors trade." Each sold \$50.00. A five-page "inventory of goods," written for a tax-payer in 1879 in cluded, these items: "one tin cup, value 10 cents; one china box, value 10 cents; and two ounces of soap, value 20 cents".

Chief office deputy is H.M. Gilbr. Office deputies are Paul McFarland, Mrs. Nancy Trout, Mrs. Dorothy Walton, and Mrs. Ion Bownds, all of Eastland; Miss Glenda Fox of Olden; and Mrs. Bonnie Petty of Cisco.

Altom said, "Each of us is here to serve the public. We are willing to help anyone who needs help in completing his records and to discuss any questions anyone has."

Applications To Fill Gov't. Jobs Are Announced

Congressman Omar Burleson, (D-Tex) said today that the Civil Service Commission is now receiving applications for the 1969 competitive examination for summer employment with the United States Government. The examination leads to eligibility for appointment to most temporary summer jobs, at Grade GS-1 through 4, also Post Office Clerk-Carrier PFS-5.

Those who are interested in the summer jobs covered may apply to take the written test on or before filing dates—Nov. 6, Dec. 6, 1968 and Jan. 3, Jan. 30, 1969. Representative Burleson stressed that no application postmarked after Jan. 30, 1969 will be accepted. If you miss the last test, you can not be considered jobs if filled by this application and for maximum consideration, you should apply early.

The Congressman noted that last year's eligibles, including those who were selected for a summer job, must take this new examination. The examination provides an opportunity to compete on a merit basis for a summer job merit bit or a summer job. It will last one-half hour and will measure vocabulary, reading comprehension, abstract reasoning and table and chart interpretation.

Any application forms needed to apply for jobs described in Civil Service Announcement No. 414 may be obtained from high school counseling office, college placement offices, most post offices, and Civil Service Interagency Boards.

Copies of announcement No. 414, entitled "Summer which provides complete information about summer jobs opportunities in Federal Agencies is currently available on request through Congressman Burleson's Washington office, burn House Office Building, Washington, D.C., 20515 or at the Congressman's district of Abilene, Texas, 79601.

Plans Announced

A well-loved verse from Psalm 130 — "Let Israel hope in the Lord: for with the Lord there is mercy, and with him is plenteous redemption" — is part of a Bible Lesson-Sermon titled "Everlasting Punishment" to be read in all Christian Science churches this Sunday. Services at First Church of Christ, Scientist in Eastland, will begin at 11 a. m.

Selections to be read from the denominational textbook, *Science and Health With Key to the Scriptures* by Mary Baker Eddy, include the following: "Divine Love corrects and governs man. Men may pardon, but this divine Principle alone reforms the sinner. God is not separate from the wisdom He bestows. The talents He gives we must improve. Calling on Him to forgive our work badly done or left undone, implies the vain supposition that we have nothing to do but to ask pardon, and that afterwards we shall be free to repeat the offence."

Classified brings action

STORE MANAGER

For apparel and accessory shop. Qualified women with managerial experience who can sell. Excellent salary, incentive plan, company benefits.

Apply
ELLENS SHOP
Breckenridge
or call
Mr. Jack Sullivan
RI 7-3721, Dallas

FREE ESTIMATES ON new roofs only

Repair of Your Old Roofs
Residential and Commercial
"ALL NEW WORK GUARANTEED"
TRICITIES
ROOFING CO.
Call
Noble Sculcers
629-2370
EASTLAND

MR. HEALER DIES
James C. Healer, 71, resident of Houston for the past 24 years, died at 7:4 p. m. Tuesday in a Houston hospital. Funeral services are set for 2 p. m. Friday in Killingsworth Funeral Home Chapel with Masonic graveside rites in Evergreen Cemetery.
Mr. Healer is a retired pipe line inspector for Brown and Root Construction Co. He was a member of the Breckenridge Masonic Lodge 492.
Survivors include his wife, Peggy M. Healer, of Houston.

PROJECT POSTPONED
The Texas Highway Department has postponed an Eastland County highway project scheduled to be bid on by contractors on Nov. 12.
The project was to have been for work along U.S. 183 for grading, drainage structures, flexible base and two-course surface treatment on 9.514 miles of highway.

Endebrock's JANITORIAL SUPPLY
Sales & Service
1004 Avenue D
Cisco, Texas

LEMON OIL qt. \$1.00
Dust Mop Treatment
Solarine FLOOR WAX gal. \$4.50
Dua Dellay Dry RUG CLEANER gal. \$4.95

SPECIAL NOTICE

BUSINESS MEN'S LUNCH

\$1.00

CHOICE OF TWO ENTREES
GENEROUS SERVINGS INCLUDING
DRINK & DESSERT

MONDAY THRU FRIDAY

Featuring
GOOCH BLUE RIBBON STEAKS



SUNDAY BUFFET - \$1.75
CHILDREN UNDER 12 - \$1.00

NOTICE: BOOK YOUR HOLIDAY PARTIES NOW FOR CHOICE OF DATES!



Mr. Charles Robertson, Mr. and Mrs. Ernest Robertson Your Hosts
Bo Hood and Casey Meazell, Your Chefs

AN INTERSTATE THEATRE

MAJESTIC

EASTLAND PH. 629-1120

THURSDAY - FRIDAY - SATURDAY
Thur.-Fri. Open 4:45 Features 5:00, 7:10, 9:20
Sat. Open 12:45 Features 1:00, 3:10, 5:20, 7:30, 9:40




The hanging was the best show in town!

CLINT EASTWOOD

"HANG 'EM HIGH"

A LEONARD FREEMAN PRODUCTION
INGER STEVENS ED BEGLEY PAT HINGLE as Judge Fenton
COLOR by DeLuxe

"The 1968 Lilliston 1500 Combine is the best peanut combine I've ever used."



That's exactly the way Fagan Bays, Route 1, Stephenville, Texas, feels about his new Lilliston. Son Sam agrees. Here's what Mr. Bays says about the performance he's now getting:

"We're picking the cleanest peanuts we've ever picked. And they're really grading high. A good example of what the new Lilliston 1500 will do is the 850 bags of peanuts I thrashed in just six hours the other day.

"We do a lot of custom work, too, and must have peanut harvesting equipment we can depend on. That's why we use Lillistons.

"Another good thing about the Lilliston Combine is that I think it has the highest resale value on the market. I found that out when I traded my old Lilliston for the great 1968 model."

Note: Sam Bays received the coveted AMERICAN FARMER AWARD—the highest honor that can be bestowed upon a member of the Future Farmers of America. Only one FFA member in 1,000 receives this honor.

Overwhelming testimony proves the Lilliston first in the field
Have you seen the new Lilliston?

SQUIERS FARM STORE

514 W. Main St. Eastland, Texas 629-2220

BUY NOW...SAVE-Special Offer ends Saturday Night!

PRICES CUT



GOODYEAR

4-PLY NYLON CORD

"MARATHON" TIRE A tire that offers you good service at low cost!

WAS \$12.20 **\$10.98** 6.00x13 Tubeless blackwall plus \$1.50 Fed. Ex. Tax No trade needed.

- Extra tough Tufsyn rubber
- More than 8,000 gripping edges
- Modern wrap-around tread

WAS \$15.30 **\$12.77** 6.50x13 Tubeless blackwall plus \$1.50 Fed. Ex. Tax No trade needed.

WAS \$17.45 **\$14.70** 7.50x14 Tubeless blackwall plus \$1.50 Fed. Ex. Tax No trade needed.

NO MONEY DOWN with approved credit—FREE MOUNTING!

OTHER SIZES SALE PRICED TOO			
Blackwall Tubeless Size	Was	Now	Plus Fed. Ex. Tax No Trade Needed
8.25x14			\$2.35
8.15x15	\$19.75	\$16.77	\$2.36
8.55x14	\$21.90	\$18.71	\$2.54
8.45x15			\$2.54
9.00x15	\$25.95	\$22.35	

GREAT SONGS OF CHRISTMAS



\$1.00
NUMBER 8
14 famous artists sing old and new favorites

GOODYEAR'S 1968 CHRISTMAS ALBUM

One side features traditional favorites and one modern songs. Artists include: Tony Bennett, Ray Coniff, Johnny Mathis, Barbra Streisand, Andy Williams, Robert Merrill, The Brothers Four, Percy Faith and others. Stereo or monaural.

PRICE BREAK SPECIAL!



\$2.57

Midget Light Set
For indoor or outdoor use

Made by Noma. Has 30 push-in lamps, plus extra colored flasher bulb. Sockets have stay-in-place clips. UL ap.

GOODYEAR SERVICE STORE

306-308 EAST MAIN ST. — EASTLAND — 629-2662

Court of Civil Appeals

The following proceedings were had in the Court of Civil Appeals, Eleventh Supreme Judicial District of Texas: Richard Gibson Caldwell v. Casualty Reciprocal Exchange of Insurance Group, (Opinion Per Curiam); Taylor Cotton Concentration Company, Inc. v. A. Lassberg & Company et al, Opinion by Judge Collings); Dallas. Byron Welborn v. Kitchen-Quip Finance Company, Inc. (Opinion by Judge Grissom); Dallas. Donald Weekes et ux v. Timothy E. Kelley et ux. Opinion by Judge Grissom); Dallas. American Marine Upholstery Company, Inc. v. Nathan Min-

sky at al (Opinion by Judge Grissom); Dallas. Jeffries-Eaves, Inc. et al v. The Vernon Company. (Opinion by Judge Collings); Dallas. Henry S. Miller Company v. Nancy Shoat. (Opinion by Judge Walter); Dallas. Durwood O. Phillips et ux v. Bill C. Latham. (Opinion by Judge Collings); Dallas. Chester A. Oehler v. Mitzie Irick Cx Bowen et al. (Opinion by Judge Grissom); Dal-

as. Archie McLarty et al v. Judnita Levell McWhorter McLarty. (Opinion by Judge Collings); Dallas. R. Drumwright Keys v. May Aluminum, Inc. (Opinion by Judge Collings); Dallas. Community Life & Health Insurance Company v. Earnest Mitchell. (Opinion by Judge Walter); Dawson. REVERSED & REMANDED Employers Mutual Liability Insurance Company et al v.

Jack Murphy et al. Opinion Judge Collings); Dallas. MOTIONS SUBMITTED Employers Mutual Liability Insurance Company et al v. Jack Murphy et al. Appellees' motion to strike the Transcript, Statement of Facts, Appellants' briefs and to tax costs against appellants; Dallas. Texas Employers' Insurance Association v. L. T. Marshall. Joint motion for permission to file supplemental transcript; Jones.

MOTION GRANTED Texas Employers' Insurance Association v. L. T. Marshall. Joint motion for permission to file supplemental transcript.

RAWLINS SINCE 1884
Monuments
WEATHERFORD PHONE LY 4-2720
IF WE MAY ASSIST YOU, CALL US COLLECT OR MAIL THIS AD
NAME _____ PHONE _____
ADDRESS _____ CITY _____

SAFEWAY STOCK-UP SALE! SHOP! COMPARE! SEE HOW YOU SAVE AT SAFEWAY

Biscuits 5¢
Mrs. Wright's
★ Sweetmilk or ★ Buttermilk
(Limit 6, Please) 8-oz. Can

Come in and Shop Around... Compare Safeway Low, Low Everyday Prices!
Fill your cart with the many bargains you'll find...
You also get Specials Twice a Week!
Remember **IT'S THE TOTAL FOOD BILL THAT COUNTS!**

Quality Frozen Foods!
APPLE PIE 24-oz. Pkg. **29¢**
Bel-air. Frozen. Serve Pie a la mode!
Ice Cream Snow Star. Assorted Flavors 1/2-Gal. Ctn. **49¢**
Green Peas Bel-air Special! 10-oz. Pkg. **18¢**
Strawberries Bel-air. Sliced 10-oz. Pkg. **31¢**
Broccoli Spears Bel-air 4 10-oz. Pkg. **11¢**
Orange Juice Bel-air. From Florida Special! (12-oz. Can 43¢) 5 6-oz. Cans **11¢**
Fish Sticks Captain's Choice Special! 3 8-oz. Pkg. **11¢**
Baby Okra Bel-air. Whole 4 10-oz. Pkg. **11¢**
Blackeye Peas Bel-air 4 10-oz. Pkg. **11¢**
Meat Pies Manor House. ★ Beef ★ Chicken ★ Turkey Special! 5 5-oz. Pkg. **95¢**

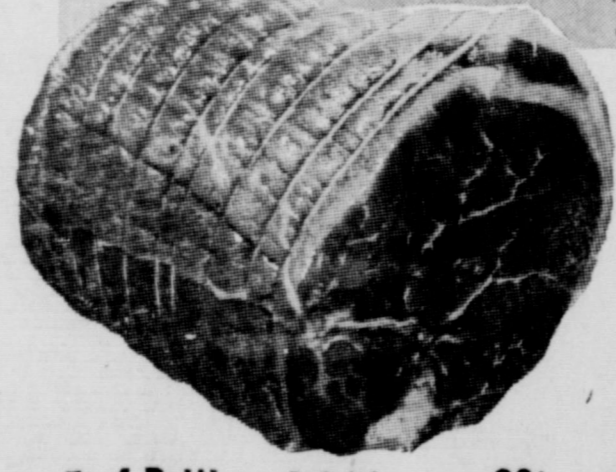
Shasta Pure
Preserves 59¢
★ Peach ★ Plum
★ Apricot-Pineapple
★ Apricot ★ Grape 32-oz. Jar
Special! (Strawberry 32-oz. Jar 69¢)

Edwards Coffee All Grinds 1-Lb. Can **59¢**
Canned Milk Lucerne Special! 7 14 1/2-oz. Cans **\$1**
Peaches Highway. Cling ★ Sliced or ★ Halves Special! 29-oz. Can **25¢**
Chunk Tuna Sea Trader. Light Meat 6 1/2-oz. Can **29¢**
Enriched Flour Kitchen Craft (10-Lb. Bag 98¢) 5-Lb. Bag **49¢**
Detergent Laundry. White Magic Special! 49-oz. Box **49¢**
Liquid Bleach White Magic Gallon Plastic **39¢**
Facial Tissues Truly Fine Assorted 200-Ct. Box **19¢**
Par Detergent Liquid 32-oz. Plastic **38¢**

Fresh Fruits and Vegetables... Always at Safeway!
Bananas 10¢
Golden Ripe! Lunch Box Favorite! Safeway Special! —Lb.
White Potatoes Haig. US No. 1A 10-Lb. Bag **49¢**
Texas Yams Texas' Finest. Golden sweet 2 Lbs. **29¢**
D'Anjou Pears Washington's Extra Fancy. —Lb. **29¢**
Red Grapes Red Emperor. US No. 1 —Lb. **25¢**
To Brighten Your Salad!
Bell Peppers 3 for **25¢**
Large. For salads, stuffing
Yellow Onions 3 Lbs. **29¢**
Medium. US No. 1
Turnips 2 Lbs. **29¢**
New Crop. Crisp. Bulk
Carrots Safeway 2-Lb. Cello **25¢**
Rutabagas New Crop —Lb. **10¢**
Mincemeat Borden's. Ready to Use (Condensed 7-oz. Pkg. 39¢) 18-oz. Jar **49¢**
Waldorf Dates Pitted (Non-Pitted—79¢) Pack 1 1/2-Lb. **89¢**

Town House ★ Cut Green Beans ★ Cream Style Golden Corn ★ Green Peas **Special! 5 Reg. Cans \$1**
Town House **Tomato Soup** Serve Soup and Crackers 10 1/2-oz. Can **10¢**
Instant **Coffee** Airway **Special! 6-oz. Jar 69¢**
Tea Canterbury **Special! 2-oz. Jar 69¢**
Busy Baker ★ Sugar ★ Lemon ★ Chocolate Chip ★ Coconut ★ Oatmeal Tray Pak 14-oz. Pkg. **39¢**
Zippy ★ Whole Sour ★ Whole Dill ★ Fancy Sliced Dill ★ Whole Kosher Dill ★ Sliced Kosher Dill **Special! Your Choice! 3 22-oz. Jars \$1**

... Always Fresh!
Brown 'n Serve Rolls ★ Twin or ★ Cloverleaf. Skylark **Safeway Special! 2 for 49¢**
12-Ct. Pkg.
Buttermilk Lucerne. Fresh. 1/2-Gal. Carton **39¢**
Sour Cream Lucerne. 8-oz. Ctn. **35¢**



Safeway Meats are Guaranteed to Please!
Boneless Roast 79¢
★ Chuck or ★ Shoulder. USDA Choice Grade Heavy Beef —Lb.
Smoked Picnics 33¢
Samuel's Mohawk Dry-Cure. 6 to 8-Lb. Average. (Sliced ★ Half or ★ Whole —Lb. 39¢) Whole —Lb.
Ground Chuck Safeway Freshly ground lean beef. —Lb. **69¢**
Beef Arm Roast Full Cut. USDA Choice Grade Heavy Beef. —Lb. **79¢**
Rath Bacon ★ Rath Black Hawk or ★ Safeway. Sliced 1-Lb. Pkg. **69¢**
Thick-Sliced Bacon ★ Rath Black Hawk or ★ Safeway 2-Lb. Pkg. **\$1.35**
Pork Sausage Wingate. ★ Regular or ★ Hot 2-Lb. Pkg. **89¢**
Pork Chops Quarter Sliced Loin —Lb. **69¢**

Compare These Prices!
Cake Mixes Mrs. Wright's. Assorted 19-oz. Pkg. **25¢**
Toilet Tissue Truly Fine. Assorted Colors 4-Roll Pkg. **56¢**
Paper Towels Truly Fine. Colors or Decorated 185-Ct. Roll **29¢**
Margarine Coldbrook Solids 1-Lb. Pkg. **10¢**
Cleanser White Magic 14-oz. Can **13¢**
Mayonnaise Nu Made Quart Jar **59¢**
Vanilla Extract Crown Colony 2-oz. Bottle **39¢**
Pinto Beans Town House 4-Lb. Pkg. **54¢**
Soft Drinks Cragmont. Assorted Flavors ★ Diet or ★ Regular 2 32-oz. Bottles **25¢**
Gelatins Jell-well Assorted Flavors Special! 12 3-oz. Pkg. **51¢**
Instant Breakfast Lucerne Assorted Flavors 6-Ct. Pkg. **59¢**
Soda Crackers Busy Baker 16-oz. Box **29¢**
Snack Crackers Busy Baker 16-oz. Pkg. **39¢**
Shortening Royal Satin (85 Oil Label) Special! 3-Lb. Can **69¢**
Tomato Juice Town House 46-oz. Can **36¢**
Canned Drinks Cragmont Assorted Flavors ★ Regular or ★ Diet 12-oz. Cans **79¢**
Peanut Butter Real Roast ★ Creamy or ★ Chunky 3-Lb. Jar **\$1.19**
Cane Sugar Candy Cane 5-Lb. Bag **39¢**

FREE SALT!
You get FREE 26-oz. Box of Snow-White Salt With purchase of 4-oz. Can Crown Colony
Black Pepper 4-oz. Can **39¢**
Slenderway Lucerne. Assorted Flavors Safeway Special!
★ Chocolate ★ Dutch Chocolate ★ Chocolate Malt ★ Vanilla ★ Strawberry **5 8-oz. Cans \$1**

—USDA Inspected Grade "A"—
FRYERS Everyday Low Price! Whole. —Lb. **29¢**
Cut-Up Fryers Fresh or Manor House. Frozen —Lb. **35¢** **Leg Quarters** From USDA Inspected Fryers. —Lb. **39¢** **Breast Quarters** From USDA Inspected Fryers. —Lb. **45¢**

SAFEWAY
Prices Effective Thurs., Fri. and Sat., Nov. 7, 8 and 9, in... We Reserve the Right to Limit Quantities. No Sales to Dealers. Eastland