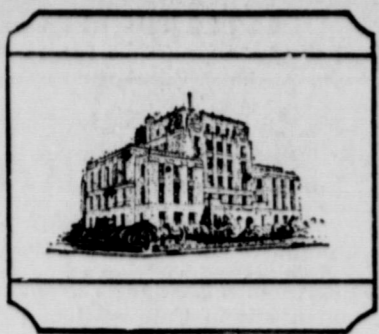


EASTLAND TELEGRAM



VOLUME 92, NUMBER 92

EASTLAND, TEXAS, 76448, SUNDAY, NOVEMBER 17, 1968

PRICE: 10¢

TidBits



By H.V.O.

REMEMBER THE community improvement survey of this past summer. Hundreds of energetic people indicated that they are ready to go to work on projects. Monday 9 a. m., committee chairmen of the some seven categories surveyed to be needing the most immediate work, will be selecting committee members from the list of volunteers. The Chairmen will meet at the Chamber office, Secretary Mrs. Emma Lou Benton reports, and work-study meetings will begin immediately.

THE UPCOMING moon orbit and the recent 11-day spin in space by America's astronauts prompted Mrs. Joe Poe of imaginary interviews concerning space, of Lander, Wyo., to send a clip to her mother, Mrs. Roy Justice, an Eastland Avon costume representative. An Avon representative is quoted: "Yes, I signed up for a moon trip. It was my patriotic duty. Have you any idea what all that dust could do to a woman's skin? It represents a real challenge. Of course, I'll be lost without my door chimes for a while." — Ding-a-ling, Avon Calling.

THE MOST beautiful memories come with a letter from Mrs. M. L. Brashear, Rt. 1, Lubbock. She renews her paper subscription and writes lovingly of Leon Leaves: "About how the leaves are changing color. (They've never been prettier than right now, Mrs. B.) We knew where to drive to see the prettiest ones. Even a few sumac by the side of the road were beautiful to us. There were some on the Lone Cedar Road on past where the Staff road turned off. Wonder if they are still there. You went down a hill into a kind of small valley. We liked the drive. There were some sumac on the hill on the Staff Road on the home place. The bridge is on the home place. The road goes in front of where the front of where the front yard was and across the orchard. I like to think of things as they were before the lake. The creek and the bridge and the old roads, the houses where people lived and where we camped on the creek for family reunions. Times and progress brings changes, but we hold on to the memories." — Mrs. Brashear.

Freyschlag INSURANCE

Presents the WEATHER — CLEARING and warmer throughout Sunday. Rain Thursday amounted to 1.10 in town.

Dr. Jolly Named Executive Board Member at Meet

Dr. J. O. Jolly of Eastland was elected an Executive Board Member in business proceedings of the annual session of the Baptist General Convention of Texas Thursday afternoon.

This institutional board & executive board members include both laymen and ministers who serve for varying lengths of time.

Members were nominated prior to the convention proceedings and were elected by delegates to the convention representing Texas' 1.8 million Baptists.

Eastland Man Charged With Rape Attempt

Willie L. Butler, 33, of Eastland and formerly of Arizona, is being held in Eastland County Jail, and charged with the attempted rape of a 10-year-old Cisco girl.

Butler is being held on a \$2,500 bond, set by Cisco Justice of the Peace W. L. Lewis, before whom he was taken Tuesday after his arrest by the County Sheriff's Dept. He lists an Eastland apartment address, but has not given a statement, officers report.

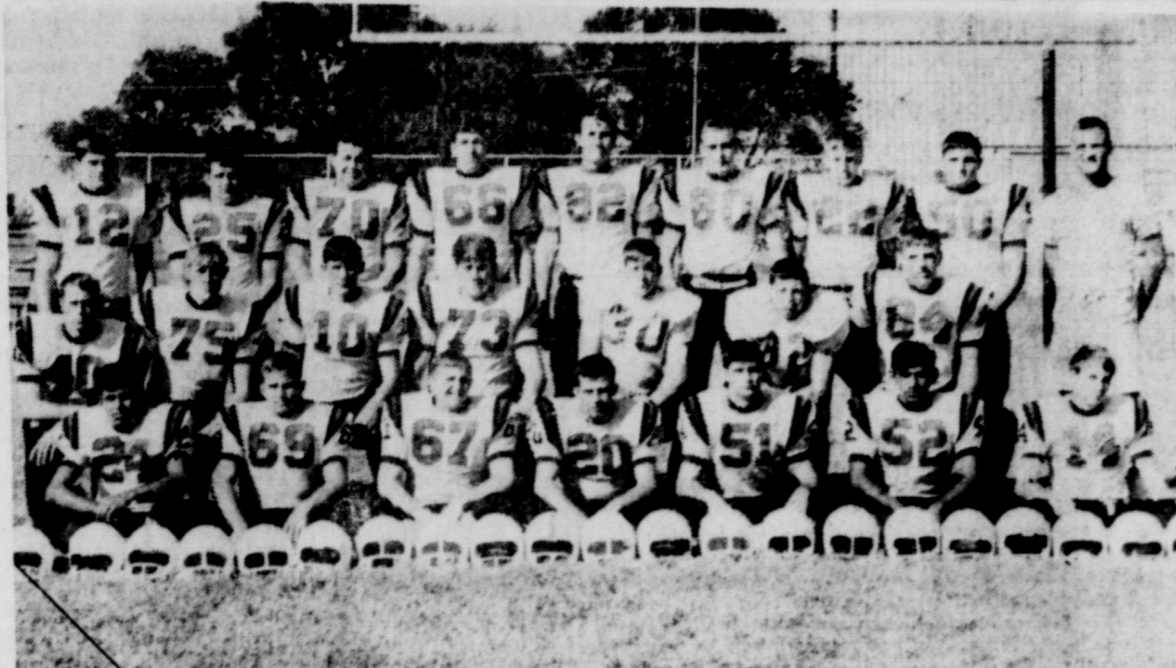
The incident happened Sunday morning at a home in Eastland.

Officers were called Sunday night, a warrant was sworn out and the man was arrested Tuesday.

Butler reportedly has a wife living in California and is distantly related to the Cisco residents.

The child was not physically harmed, it was reported.

EASTLAND NATIONAL BANK
EASTLAND, TEXAS



THE '68 MAVERICKS — Closing out an impressive 1968 season are these Eastland High School Mavericks. From left, front row are: Ruben Gaeta, Phillip Harrison, Ricky Culpepper, Bobby Williamson, Gary Pipkin, Alex Jiminez and John Baker; second row, from

left: John McCleskey, Bill Hart, Craig Lund, Phillip Smith, Randy Boles, Randy Lowrance, Danny Elrod; third row: Eddie Kincaid, Steve Wilson, Robert Harris, David Cagle, Bill Hoffmann, Larry Lane, George Simms, Terry Grimes and Head Coach Shirley Frazier.

'Perfect Idiot' Provides Perfect Entertainment

The brilliant high school student hypnotized the dumb football star; the flamboyant executive accidentally hypnotized himself, and the whole situation cast a spell of fun and laughter over Saturday night's audience of "The Perfect Idiot," the Junior Class Play held in the school's auditorium.

As the young genius and quiz show star, Jeff Germany had problems. He disagreed with his show's sponsor, a loud and not too learned soap manufacturer, played by Joe Trout.

He wanted to go to college but his parents (Shannon Wilson and Mike Arther) agreed with the principal (Roger Berry) and his teacher (Linda Rice) that because of his inability to get along with others, he was not ready. Then there was his humiliation at having the girl he liked (Donna Haynes) turn down his invitation for a date to a lecture on "Fossil Formation: Stratigraphic Paleontology."

With encouragement from the colored maid (Shelley Siebert), he sets about to change things.

When friends of his brother (Daryl Thomas), asked him to tutor the school's failing football star (Randy Lowrance), he agreed to help the athlete pass by the use of post hypnotic suggestion. In return for the favor the boys and their girls (Lana Parks and Earin Miller) had to promise him social success.

The athlete fell quickly under the spell of hypnosis, but then so did his boss, who unwittingly put on the earphones used in hypnosis. The fun that followed was the highlight of the show.

A psychiatrist (Eddie Blair) had helped straightened things out when Trout, the executive, again fell under

the spell of hypnosis and responded to a suggestion that he looked like a rabbit.

The curtain closed as he began again his search for parsnip.

Marsha Hanna played the part of a newspaper reporter; Randy Boles was a policeman who arrived on the scene to add to the confusion.

Mrs. Vernon Mahan directed the lively cast, producing a play that was warmly received by the audience.

Judy Williams and Debbie Anderson were script girls.

The backstage crew included Tommy Ford, Kay White, Ricky Culpepper, Margaret McKelvin, and Alexa Meredith.

Ushers were Janie Graham, Kay Smith, Martha Brewer, Nita Cagle, Judy Carroll, Sharon Herridge, Irene Sullivan, Judy Sharp, Belinda Herrington, Paul Chapman and Charles Peel.

A reception for Junior Class members and their families followed the play and was held in the school cafeteria.

Miss Loretta Morris is sponsor of the class.

First basketball action of the 1968 season will be Tuesday evening in the EHS Gym when the High School A and B girls face Albany teams.

Tip-off time is 6:30. Charlotte Mason is girls coach.

Annual CJC Variety Show Scheduled November 22-23

An evening of gags, songs, skits, music, and all possible forms of entertainment ranging from the sublime to the ridiculous is being prepared at Cisco Junior College for the fourth annual Hilltop Wrangler Variety Show, which will be presented at 8 p. m. Friday and Saturday night, Nov. 22-23. This show, which has delighted audiences in the past years, for the first time, in the new Fine Arts Auditorium. In previous years it was presented in the gym.

The acts will be many and varied. Comedy acts will include such plots as the meeting of the two kooky characters in the park, a passionate plea for the life of a flea, boy dressed up as a woman making a speech to a Ladies Club, a spinster schoolteacher proposing marriage to her boyfriend, and many other jokes and surprises.

There will be musical acts of every imaginable form and shape — from "rock 'n roll" to musical comedy, from American folk singing to Arabian music, from Dixieland Jazz to the songs of Mrs. Miller. CJC's fine stage band, under the direction of Mr. Roan, will play, and the excellent chorus, under the direction of Miss Condray, will sing.

This year the show is being jointly sponsored by Delta Psi Omega (CJC's newly formed chapter of that national dramatic fraternity) and the dept.

G. L. Russell, 56, Buried in Services In Louisiana

G. L. Russell, 56, of Baton Rouge, Louisiana, brother of Mrs. Jewell Reaves of Eastland, died Monday in the Baton Rouge General Hospital.

Funeral services were conducted by Rev. John Harris. Burial was in Greenoaks Memorial Park, Baton Rouge.

He was a native of Olden. He was a retired route supervisor for Sunbeam Bakery. He was a member of Grace Baptist Church and of Baton Rouge Masonic Lodge No. 372, F and AM.

Survivors include his wife, Sydney M. Russell; two sons, Michael Wayne Russell and Stanley Warner Russell, both of Baton Rouge; one daughter, Mrs. Lydia Russell Reese of Baton Rouge; one sister, Mrs. Jewell Reaves of Eastland; two brothers, Arthur W. Russell of Duncan, Oklahoma and Harvey Russell of Sweetwater; three grandchildren and a number of nieces and nephews.

Funeral services for E. M. Anderson

Everett Monroe Anderson, 70, died Monday in the Stephenville Hospital.

Funeral was held at 2 p. m. Tuesday in the Stephenville Funeral Home Chapel with Rev. Charles Rice, pastor of Calvary Baptist Church, and the Rev. Emil Baker, pastor of First Baptist Church, officiating. Burial was in West End Cemetery at Stephenville.

Born June 23, 1898 in Hope, Ark., he married Elizabeth Williams on Dec. 26, 1919. He moved from Eastland to Stephenville twenty years ago. He was a Mason and owned Anderson's Ready to Wear in Stephenville before he retired.

Survivors include his wife; two sons, Joe Anderson of Eastland and James E. Anderson of Fort Worth; one daughter, Mrs. Terry D. Roberts of Abilene; and three grandchildren.

Mavericks Salt Bulldogs, 66-14 to Close Out Season

The Eastland Mavericks closed out Football '68 with a booming 66-14 win over the winless Clyde Bulldogs — and hang up their jerseys smug in the knowledge that they were the only District 8-AA team that came close to whipping the Champion Granbury Pirates.

The Maverick finale came in the local stadium Friday night and to a max. and to a fan, it brought thoughts of "had it but been three Fridays earlier, in a town with an Indian name."

But not a "had it been" club, the Mavericks put together their biggest scoring

show of the year, with everybody providing a turn. Tight back Steve Wilson brought his score total up to 122 points by adding 30 against Clyde. First scoring was in a pass from Quarterback Eddie Kincaid to George Simms for 11 yards.

Wilson scored in the first quarter on a 70-yard punt return, and Kincaid ran the conversion. Another first quarter TD was made on a pass from Kincaid to Simms for 18 yds. John Baker kicked the extra.

Wilson ran four yards for the first TD in the second, and Baker kicked the conversion. Larry Lane intercepted a pitch out in the second and raced 19 yards to score. Another TD came on a four-yard carry by Randy Lowrance.

In the third, Eastland got a TD when Craig Lund scampered around end on a four-yard carry. The Bulldogs scored again in the fourth.

Clyde scored in the third on a carry by Quarterback Stanley Allen. Joe Gray ran the 2-point conversion. The Clyde 4th quarter score came on a five-yard pass play from Allen to D. Fleming.

The Mavericks weren't through though. A pass from Kincaid to Wilson was good for a touchdown and Lund passed to Wilson, covering 15 yards and another score. Kincaid ran the conversion. The last TD was made on a nine-yard run by Wilson.

In other closing AA action, Granbury was defeating Hamilton, 27-15, to end up with a 4-0-1 winning record. Comanche bested Cisco, 7-6, for a 4-1, second place slot.

Eastland closed with a 2-2-1 in district, and 7-2-1 for the season.

Score by periods:
Eastland .. 21 19 6 20—68
Clyde .. 0 0 8 6—14

INDUSTRIAL TEAM COMPLETES TRAINING; TESTING DUE SOON

The Eastland Industrial Team training program concluded its sixth and last session Friday, and made preparations for a "dry-run" for a "test-run", hopefully in preparation for the real thing soon.

The some 20 Eastland business and professional men have been meeting two hours each Friday, studying material relative to industrial prospects. Much research has been done, and visual aides made on the advantages of selecting Eastland for a plant location.

A special team from the Texas Industrial Commission will be in Eastland on Friday, Nov. 22, to pose as industrial prospects and test the trainees with questions and problems relative to locating an industry here.

A dry-test to make sure that all members are well-versed will be held the evening before, Nov. 21, beginning at 7 p. m. at the Eastland National Bank Conference Room, which will also be the site of the test by TIC.

The TIC visitors will grade the Eastlanders and critique them to be better prepared for dealing with actual prospects in the future.

The in-depth study has covered such topics as transportation, resources and services, construction, insurance, financing, labor market, education and training, utilities, sites and zoning, taxes, community development, government, and other data.

P-TO TO MEET TUESDAY, 7:30

The Parent Teacher Organization will meet at 7:30 p. m. Tuesday, November 19, at the Elementary School Cafeteria.

Miss Mary Hood of the Special Education Service Center of Abilene, will be guest speaker. Mrs. J. C. Grubbs, vice president, is program chairman.

Mrs. Bill Jordan and Mrs. F. M. Rollins will be in charge of refreshments.

All members are urged to attend.

LOOK WHO'S NEW

Mr. and Mrs. Neil Van Geem of Fort Worth announce the birth of a son, Alan Kent, November 19, 1968 at A I I Saints Hospital.

The baby weighed nine pounds and ten ounces. He has one brother, Steven Neil, four and a half years old.

The maternal grandmother is Mrs. E. E. Basefield of Del Rio. Paternal grandparents are Mr. and Mrs. Henry Van Geem of Eastland, Mrs. Ellen Lewis of Eastland is the paternal great-grandmother.

A&P GROCERY CLOSES DOOR ON SATURDAY

A&P Grocery, an Eastland institution on the South side of the square, for the past some 40 years, closed permanently Saturday, according to announcements by company officials.

Regretful closing of the Eastland store came as the result of no being able to secure adequate facilities, particularly for parking, it was said by officials. The giant food store chain has had an Eastland affiliate for the past 43 years, it was said.

Customers were being invited to shop the firm's Cisco A&P Store. Local Manager

Jimmy Hendricks will become co-manager of the Cisco store, where his brother, Harold Hendricks, a former Eastland store manager, is presently serving as manager.

Mr. Hendricks expressed his appreciation to the many customers and friends of the A&P store in Eastland, in announcing the closing.

Announcement of the closing came early this past week and stocks were being transferred to the Breckenridge and Cisco stores as the week ended and the permanent closing after business Saturday neared.

Funeral Services Held Tuesday for E. M. Anderson

Funeral was held at 2 p. m. Tuesday in the Stephenville Funeral Home Chapel with Rev. Charles Rice, pastor of Calvary Baptist Church, and the Rev. Emil Baker, pastor of First Baptist Church, officiating. Burial was in West End Cemetery at Stephenville.

Horton Tire Co. Presents BREAD of Life

Great peace have they which love thy law (word): and nothing shall offend them. — Psalm 119:165.

"Touchiness" is a most undesirable complaint; let us be quick to judge it in ourselves and tolerant of it in others.

FULLEN MOTOR Co. LAUGH-A-DAY

"The Marine Corps Builds Men."

That's what the poster in the window of the recruiting office said.

Somehow a determined girl must have gotten to the poster because in a feminine hand was written: "Build me one. Diane."



Cast and crew of Junior Play presented Saturday at Eastland High School.



Randy Lowrance, under hypnosis, sleeps through a scene in the Junior Play while the genius Jeff Germany who puts him there argues with his quiz show sponsor, Joe Trout. Watching are Darrell Thomas on the couch and his girl, Lena Parks (left) and Earin Miller, far right. The scene is from "The Perfect Idiot" presented Saturday night at the Eastland High School Auditorium.

THE GORDON SPOT

by DeMarquis Gordon
Eastland County Agri. Agent

The surprise snow on November 8 gave some much needed moisture. Not everyone benefited from the snow however. It is pretty discouraging to look at some of our best pecan orchards in the county. The weight of the snow broke to many limbs that it looks as if a tornado hit the orchards. Only the well managed orchards received damage since they were the only ones that were still in full foliage. Leaves had already fallen from those trees where insects and diseases were not controlled. Little or no damages was done to these trees. Of course it is necessary to keep the foliage in the trees as long as possible to expect a good crop of pecans next year.

permits. These publications are available at the county agent's office.

This could be a most critical fire season for range and forest fires. We have a large amount of grass and vegetation this fall. Abundant rainfall during the growing season produced a large quantity, and since the frosts this vegetation is like a tinder box.

Especially will this be the case with low humidity and high winds during the Thanksgiving period when folks are cleaning up around the home for Thanksgiving.

Carelessness with trash burning around the house is a major cause of fires, particularly between November and February. Trash around the home should be disposed of in a fire-safe trash burner.

Hunters as well as land owners may be interested in making agreements for leases for 999 seasons before the hunters leave the farms and ranches his season. We have a new act sheet "Leases for Hunting" which discussed provisions of a hunting lease. This publication encourages the use of a written agreement and helps to make individuals aware of some of the important elements of hunting lease agreements.

In addition to this we have some hunting lease forms for both seasonal leases and day or weekend hunting or fishing

The peanut yield in the county continue to look very good. Several more farmers have told me their yields are best they have ever made. Not only are yields high but peanuts are grading extremely high. I've heard of several dry land farms that averaged over 60 bushels per acre and irrigated farms that averaged over 90 bushels.

Concert Choirs Presented In Ranger Nov. 12

The pre-opening musical program of the West Texas Baptist District Board was a concert presented by combined Eastland County Choirs in St. Paul Baptist Church of Ranger on Tuesday evening, Nov. 12.

The ninety-minute program by the twenty voice choir was a superb rendition of hymns and gospel songs. Directing the presentation was Mrs. Joe Jones with piano accompaniment by Miss Anna E. Ivory. Associate directresses were Mmes. Ozona Durell, Howard Shelton and Pinkie Randle. The Rev. A. L. Dunn is district moderator; the Rev. J. C. Mills, pastor-host.

MISSIONARY TO SPEAK
Don Jones, missionary to Korea, will be the guest preacher at Olden Baptist Church Sunday, Nov. 17, the pastor, the Rev. Bob Farrell, has announced.
The public is invited.

Retread Tires

Big Savings Now!

- First-Class Carcus
- No. 1 Dixie-Cap Tread Rubber
- 670x15, 815x15, 775x14 825x14
- Guaranteed life of tread

HORTON TIRE CO.

EASTLAND

MAJESTIC

EASTLAND PH. 629-1120

The features shown at the Majestic Theatre are rated by the Motion Picture Association of America as follows: G—suggested for general audiences, M—suggested for adults and mature young people, R—restricted, persons under 16 not admitted unless accompanied by parent or guardian, X—persons under 16 not admitted under any circumstances.

SUNDAY — MONDAY — TUESDAY

Sun. Open 12:45 — Feature 1:10-3:00-7:00-9:00
Mon.-Tues. Open 4:45 — Feature 5:00-7:00-9:00

He uses his badge like a bludgeon...

RATED M

She uses her body like a lure!

KIRK DOUGLAS
SYLVA KOSCINA
ELI WALLACH

A LOVELY WAY TO DIE

STARTS WEDNESDAY

Open 4:45 — Feature 5:00-7:05-9:10

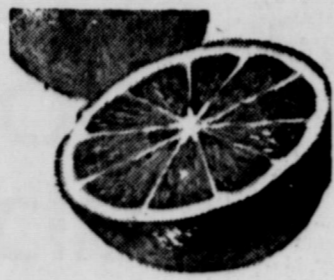
THIS IS THE TRUE STORY OF THE SELF-CONFESSED BOSTON STRANGLER.



RATED R

20th Century-Fox presents THE BOSTON STRANGLER

JRB QUALITY PRODUCE FEATURES



Texas Ruby Red
GRAPEFRUIT 2 lbs. 29c

EAST TEXAS
YAMS 2 lbs. 27c

ONIONS yellow 3 lbs. 25c

NEW CROP SHELLLED
PEANUTS 3 lbs. \$1

Calif. Navel
ORANGES
lb. 19c

DOUBLE S&H GREEN STAMPS
with purchase of \$2.50 or more
EVERY WEDNESDAY!

JRB

SUPERMARKETS

S & H GREEN STAMPS
WITH EVERY PURCHASE

PRICES GOOD IN EASTLAND
PRICES GOOD THROUGH WEDNESDAY, NOV. 20
Quantity Rights Reserved — No Sales to Dealers

DUTCH OVEN FLOUR 5-lb. bag 39c

BISCUITS Jolly Baker — 10-Count Cans 6 for 49c

MELLORINE Foremost — All Flavors 3 1/2-gal. ctn \$1

PUMPKIN Festal — No. 303 6 cans \$1



MIX OR MATCH

Del Monte 46-oz. can
Grape Drink 3 FOR \$1
Swans Down 19-oz. can
Cake Mix box
Val Vita 2 1/2
Sliced Peaches can

Shamrock French Style 303
Green Beans can
Argo Green 303
Lima Beans can
Rosedale Whole or CS 303
Corn can
Stokley Shreddeds 303
Kraut can

Trellis 303
English Peas can
Del Monte Whole
New Potatoes 5 FOR \$1
Festal 303
Pumpkins can
Libby 303
Spinach can
Ranch Style 303
Spaghetti can

Admiral Oil 1/4
Sardnie can
Shamrock 303
Spinach can
Alma Cut & Whole 303
Yams can
Shamrock Whole 10
Irish Potatoes count
Argo 303
Sweet Peas can
American Beauty
Mixed Vegetables

FROZEN FOOD SPECIALS

Ore-Ida
TATER TOTS ... 2-lb. bag 49c
Banquet — Ass't. Flavors
TV DINNERS ea. 49c

FOLGERS COFFEE lb. 69c

Swansdown — 19-oz.
CAKE MIX 3 boxes \$1
Trellis — 303 can
PEAS 5 cans \$1
Kraft's — 7-oz.
Marshmallow Creme .. jar 25c
Libby's — 4-oz.
Vienna Sausage 4 cans \$1

HEALTH & BEAUTY AIDS

Foil Pack — 36 Tablets — Reg. 98c
ALKA SELTZER 79c
Ultra Brite — Reg. 1.09
TOOTH PASTE tube 79c



Hershey's — 6-oz.
CHOCOLATE CHIPS ... pkg. 25c
Baker's Angel Flakee — 7-oz.
COCONUT pkg. 39c
None-Such — 9-oz.
MINCE MEAT box 37c
Minot — No. 303
CRANBERRY SAUCE .. 4 cans \$1

DAIRY FOOD SPECIALS

Foremost
BUTTERMILK 1/2-gal. ctn. 39c
Foremost
COTTAGE CHEESE .. 2-lb. ctn. 49c
Foremost
SOUR CREAM 8-oz. ctn. 29c

C. G. BRAND
SLICED BACON
1-Lb. 59c
Pkg.

JRB MEATS

are U.S. Government Graded and inspected . . . If for any reason you are not satisfied we will cheerfully refund your money.

JRB QUALITY MARKET SPECIALS

CG Brand — Thick
SLICED BACON 2-lb. pkg. 1.15
Lean
GROUND BEEF lb. 49c
Plumrose — Reg. 69c Size
SLICED HAM pkg. 59c
Plumrose — 49c Size
PRESSED HAM pkg. 39c
USDA Choice — Arm
SWISS STEAK lb. 79c
Fine for Seasoning
SALT JOWLS lb. 29c

FAMILY STEAK USDA Choice lb. 69c

State President Federated Clubs To Speak Here

Mrs. Henry P. Sharper Sr. of San Antonio, president of Texas Federation of Women's Clubs, will speak at the Fed-

eration Day Program in Eastland.

The meeting, hosted by Thursday Afternoon Club, will be at 7:30 p. m. Thursday, November 21, at the Woman's Clubhouse. Members of Las Leales Club will be guests.

Mrs. Sharper will discuss "Through the Door of Federation."

Greetings will be given by Mrs. J. T. Gregory, Las Leales president and the speaker will be introduced by Mrs. Arthur Murrell, federation counselor of Thursday Afternoon Club.

Music will be presented by the String Ensemble composed of Ben Karnes and Mmes. Mildred Pickrell, Winifred Hittson, and Nettie Wilson. Mmes. A. E. Ethridge, James Horton, Joseph M. Perkins, and Haston Brewer will be hostesses.

VISITING GRANDPARENTS

Kimmy and Debbie Hall of Littlefield are visiting their grandparents, Mr. and Mrs. Paul Taylor, while their parents, the Rev. and Mrs. R. B. Hall attend the Baptist Convention in Dallas.



GEORGIANNE SIKES

Engagement and Wedding Date Announced Here

Mr. and Mrs. E. L. Sikes announce the engagement and approaching marriage of their daughter, Georgianne, to Jack Adams of Olden.

The couple will be married at 7 p.m. November 29 at the Olden Baptist Church, with the Rev. Bob Farrell, pastor, officiating.

A reception will be held in the educational building of the church following the ceremony.

Following a wedding trip, the couple will live at Lake Leon. The prospective groom is employed by Lone Star and the bride-elect is employed by Hollywood-Vassarette in Eastland.

Alton J. Ivory, son of Mrs. Charlie Mae Lewis, 300 East White Street, left Tuesday for Loring Air Force Base in Maine.

Opera to Be Topic For Music Club

The Eastland Music Study Club will meet at 3:30 p.m. Wednesday, November 20, at the Woman's Club.

Miss Marjorie Van Hoose will be program leader and Mrs. Mike Collins will speak on "Opera Goes Modern." The program is part of the study "How Opera Grew" by Ethel Peyser and Marion Bauer.

Recordings will be presented. All members are urged to attend the meeting, Mrs. Floyd Robertson, president, said.

ASKS MAIL CARDS

Mrs. Thelma Humphrey, who has been hospitalized for the past two weeks, would appreciate cards and letters from friends and relatives. Her stay in the hospital is indefinite.

Send mail to her at Room 4B, Eastland Memorial Hospital.

CAGLE BODY SHOP

100 S. Mulberry St.

WAYNE'S TV SERVICE

Repairing black & white or color TV
Call 629-1583, days or 629-1154, nights and week-ends.
WAYNE CALDER
107 East Sadosa

REPORT OF CONDITION OF THE

Eastland National Bank

Eastland, Texas

Report of Condition of the Eastland National Bank of Eastland, Texas, in the State of Texas, at the close of business on October 30, 1968. Published in response to call made by Comptroller of the Currency, under Section 5211, U.S. Revised Statutes.

ASSETS

Cash, balance with other banks, and cash items in process of collection	\$1,375,333.19
United States Government obligations	1,860,779.48
Obligations of States and political subdivisions	604,322.73
Securities of Federal agencies and corporations	349,800.00
Other securities	19,689.36
Loans and discounts	4,159,830.00
Bank premises, furniture and fixtures, and other assets representing bank premises	78,253.90
Other assets including \$ None direct lease financing	86,634.25
TOTAL ASSETS	8,534,642.91

LIABILITIES

Demand deposits of individuals, partnerships, and corporations	4,717,683.81
Time and savings deposits of individuals, partnerships, and corporations	2,595,140.42
Deposits of United States Government	74,214.49
Deposits of States and political subdivisions	390,990.80
Deposits of commercial banks	58,129.35
Certified and officers' checks, etc.	61,006.95
TOTAL DEPOSITS	\$7,898,165.82
(a) Total demand deposits	4,366,464.76
(b) Total time and savings deposits	3,531,701.06
Other liabilities including \$ None mortgages and other liens on bank premises and other real estate	133,844.10
TOTAL LIABILITIES	8,032,009.92

CAPITAL ACCOUNTS

Common stock — total par value	100,000.00
No. shares authorized	5,000
No. shares outstanding	5,000
Surplus	150,000.00
Undivided profits	241,632.99
Reserves	11,000.00
TOTAL CAPITAL ACCOUNTS	502,632.99
Total Liabilities and Capital Accounts	8,534,642.91

MEMORANDA

Loans as shown above are after deduction of valuation reserves of 30,841.12

I, James Reid, Vice President and Comptroller, of the above-named bank do hereby declare that this report of condition is true and correct to the best of my knowledge and belief.

JAMES REID

We, the undersigned directors attest the correctness of this report of condition and declare that it has been examined by us and to the best of our knowledge and belief is true and correct.

**H. T. WILSON
M. H. PERRY
RUSSELL HILL**
Directors

Mr. and Mrs. Flavil R. Yeakley, Sr., and her mother, Mrs. W. G. Klingman, have returned from Kansas, where they attended funeral services for Mrs. Jewel Barber, a sister-in-law of Mrs. Klingman.

Mrs. Barber died Saturday following a lengthy illness. Funeral services were held Tuesday morning at Sterling, Kansas. Graveside rites were held Tuesday afternoon at Hugoton, Kansas.

The Pioneer Club will hold its regular monthly covered dish luncheon and business meeting at noon Thursday, November 21, in the home of Mrs. Nora Wilkerson of Cisco. All members are urged to attend.

Drug-Toons —By— Don Stoner

It's BETTER to remain silent and be THOUGHT a fool, than to speak, and REMOVE ALL DOUBT.



He Said Keep The Trophy! And Went To

CENTRAL DRUG CO.

Prescription Specialist
Phone 629-2681
103 West Main
Eastland, Texas

we're doing something about that calendar



Recently we modernized the enclosure we've been sending out with monthly electric service bills.

We redesigned it so it would be less bulky, simpler, and easier to cut out and file the recipe.

The trouble was, we thought the two-month calendar wasn't serving any particular purpose and we eliminated it.

It was a mistake. We got calls and letters.

So, starting in late November, you'll find that we have revised the enclosure so the two-month calendar will again be a part of it. The only difference is that it will be a two-sided calendar that can easily be cut out and carried or used any way you want.

We sure hope this fixes things up. We also hope you'll find the new enclosure useful, and that you will even read the advertising sometimes.



DROP IN! COME SEE OUR FRESH, NEW HOLIDAY GREETINGS

by THE DRAWING BOARD

Our new collections have arrived, and they are truly more beautiful than ever — religious, whimsical and delightfully decorative designs to please every taste. Please come by soon and shop leisurely, before the rush.

EASTLAND DRUG

629-1791

Ruby Lee's Beauty Shop

403 South Lamar

announces the association of **ELEANOR RICH** Graduate of **Glen and Lottie's School of Beauty** Abilene



All friends invited to call 629-2168 For Appointment
Mrs. Lucille Taylor — Owner-Operator
Mrs. Merle Dry — Mrs. Dee Tindall
Mrs. Carolyn Adkins — Mrs. Eleanor Rich

Announcing, Something New For You

A SPLENDID SUNDAY DINNER BUFFET

\$1.35 for adults — Kiddie Korner 75c

Chicken and Dressing, an' all the trimmings
Roast Pork Loin — Fried Chicken
Baked Ham — Chicken-Fried teaks

Home-Made Rolls

Candied Yams — Baked Squash
Creamed English Peas — Snowflake Potatoes

Strawberry Short Cake
Lemon or Coconut Pies

Tossed Green Salad — Jello Salad
Beet Salad — Cole Slaw

BUFFET FROM 11 A.M. to 2 P.M.

Village Hotel Coffee Shop

Fred Guyger, chef
Hallie Brooks, mgr.

HEY MOM! Here's a DEVIL of a DEAL!



BIG 8" x 10" PORTRAIT IN LIVING COLOR

NOW ONLY 99¢

Plus 50¢ Handling

GENUINE FULL NATURAL COLOR PORTRAITS!
Not the old style tinted or painted black & white photos.

SATISFACTION GUARANTEED
or your money refunded.

FOR ALL AGES!

Babies, children, adults. Groups photographed at an additional 99¢ per subject.

LIMITED OFFER!

One per subject, two per family.

WE RESERVE THE RIGHT TO LIMIT QUANTITIES. This very special offer is presented as an expression of our thanks for your patronage.

FANTASTIC TWO-DAY SPECIAL

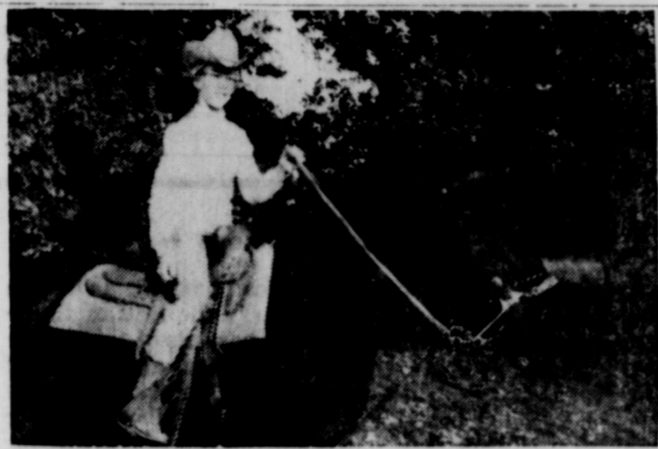
WED. — THURS.
Nov. 20-21
9 A.M. to 5 P.M.
DAILY

PERRY'S
KNOWN FOR BETTER VALUES

4-H Horse Club Organizing Meeting To Be Tuesday Nite

The 4-H Horse Group meeting which will be held Tuesday night, November 19, at 7:30 p. m. at the Eastland County Farm Bureau Building, will be the start of a project area that a number of 4-H members and leaders have worked to obtain. Mr. Tommy Pope of Cisco has agreed to serve as a horse subject matter leader. Other than being a horse breeder, Mr. Pope is also a teacher at Cisco Junior College.

According to Bob Cohen, Asst. Co. Agent, the horse as a working animal has been on the decline or a number of



years; however, horses used for recreation have sharply increased in the last ten years. This is primarily due to more spare time and the availability of the horse.

Among those 4-H members and leaders who have been instrumental in bringing about the youth horse group are Becky Miller, Suzanne Harbin, Mrs. M. H. Miller, Mrs. L. A. Harbin, and H. L. Ferguson, Cohen says. Boys and girls who are not 4-H members and are interested in a youth horse group should attend the meeting, along with 4-H members, and later join the 4-H Club in their local community.

Ranger General Hospital Has Served County for Many Years

Ranger General Hospital has played a vital role in the physical welfare of Eastland County for more than four decades.

Built in the early 1920's, it bore the name of City-County Hospital for many years and after name change, continued to maintain county affiliations.

Policies and financial affairs of the institution are administered by a seven-member board representing towns within the county. Members are appointed for indefinite terms and serve without pay. Many prominent county citizens are ex-members of this board. Current members include four Ranger residents and one each from Rising Star, Cisco and Eastland.

Serving as president is John A. Bates of Ranger, long-time resident and civic leader, a retired employee of Lone Star Gas Co. The couple resides at 808 Cherry St., and are members of First United Methodist Church. They have one daughter and three grandchildren.

A member of the board for the past six years is James Rutherford of Rising Star. A resident of that city for the past seven years, Mr. Rutherford is vice-president of First State Bank. He and Mrs. Rutherford have three children, two of whom are still at home. They are members of the Methodist Church.

Herman Cupp, mortician for Killingsworth Funeral Home in Ranger, has been a member of the board for the past two years. Mr. and Mrs. Cupp and three children reside on Breckenridge Rd. and the children attend public schools. They are members of Mesquite and Rusk St. Church of Christ and Mr. Cupp is also active in civic affairs.

★ HOSPITAL NEWS ★

Patients in the Eastland Memorial Hospital Saturday were listed as follows:

John Baines
Hattie Baker
Mary Brister
Nina Fauth
Becky Smith, Cisco
Thelma Humphrey
Eula Preslar
Ethel Levens
Glen Graham
Jeri L. Ervin, Rising Star
Lavesta Myers, Ranger
Martha Jessup, Cisco
Brenda Carlton, Carbon
Hattie Duncan
Vassie Turner
Santha Squyres, Ranger
Della Gibbons, Carbon
Anna Pryor, Cisco
Thomas Agnew
Hubbard Gilbert, Gorman
Lula Lester, Olden
Daisy Motley, Ranger
Eula Narry
John Barham
Claude Simmons, Cisco
Troyce Boone, Ranger
Della Johnson
Baby Girl Stroud, Carbon
May Ferguson
Wanda Kelley, Graham
James Griffin, Carbon
Frances Burns
Nancy Trout
Lois Haley, Cisco
Marie Stroud, Carbon
Jeanne Livingston
Odie Elrod
Joe Roady, Clyde
John Jessup
Ruby Denny

Mrs. Dora Decker.
Mrs. Bessie Rose.
Mrs. W. O. Caraway
Mrs. Charlene Summers.
Mrs. Hattie Crossley.
Mrs. R. L. Edwards.
Mrs. Charlotte Taliaferro.
Mrs. Dora Lee.
Mrs. Gertrude Meredith.
Mrs. Coy Caraway.
J. I. Encke.
A. W. Niska.
Riley Robinson.
William C. Imes.
Wallace W. Crenshaw.
Carl Eakin.
Alan Robinson.
Ben Yung.
Raymond Proctor.

Patients in the Graham Hospital Saturday morning were listed as follows:

Mrs. Virgie Gosnell.
Kirby Thetford.
Mrs. Louis Nail.
Mrs. H. O. Anderson.
Walter Tonne.

STORE MANAGER

For apparel and accessory shop Qualified women with managerial experience who can sell. Excellent salary, incentive plan, company benefits.

Apply
ELLENS SHOP
Breckenridge
or call
Mr. Jack Sullivan
RI 7-3721, Dallas

Driver Charged With DWI in Car Accident

Randy Vernon Ables, driver of a car which crashed into the back of a truck between Cisco and Eastland Tuesday afternoon, was charged in Eastland Justice of the Peace Wells Dalton's court with driving while intoxicated Thursday morning.

The charge was filed by Highway Patrolman Bob Rivers who investigated the wreck. Bond was set at \$500 by Judge Lewis.

Ables and a passenger in his auto were released from Eastland Memorial Hospital Wednesday after having been treated for injuries sustained in the crash.

Investigating Patrolman Bob Rivers reported a 1967 Chevrolet driven by Randy Vernon Ables apparently struck the left rear of a 1964 Ford Truck

driven by William Lee Thomas of Ranger, while the auto was believed to have been passing. After the initial impact, the automobile, which was virtually demolished, turned over several times.

Both Ables and a passenger in his auto, George Kenneth Holt, also of Grandby, were injured, with Holt having one of his feet pinned in the wreckage of the auto for some time. Both vehicles were eastbound at the time of the crash, about 4:45 p.m., about two miles west of Eastland on U.S. Highway 80.

Horse Shoeing
Corrective — Plating
Trimming
PAT WALKER
629-1004 Eastland

Fabulous fly-by-nights from Vanity Fair

Winging your way... a flutter of embroidered satin butterflies on this pretty shift. All in carefree nylon tricot. And such tempting colors, you'll want to net them all. XS, S, M, L, \$9.

THE MAN'S STORE
Bob Elliott
629-2148

WARDS CHRISTMAS BRIGHT Gift Ideas

MONTGOMERY WARD
Catalog Department

For a Bright and Merry Christmas

FIRST SHOP WARDS Christmas Catalog

NO MONTHLY PAYMENT TILL FEBRUARY

On Any Wards Merchandise Ordered On A Credit Account by Nov. 22!!

OPEN AN ACCOUNT TODAY!!!

SEE gift ideas for everyone on your list!

Just Call Ranger 647-3224
Eastland Dial Direct 629-1633
Cisco Call Collect 629-1633

VACATION SALE

We have reduced all prices on all new and used travel trailers. New prices start at \$975.00. We only have one of each kind in stock. New prices will be 3 per cent higher from the factory. We are also selling new Pick-Up Camper Covers from \$125.00 up. Ezvlift hitches sold and installed.

Kelly Kar Co.
H 9-4003 — Breckenridge

FREE ESTIMATES ON new roofs only Repair of Your Old Roofs Residential and Commercial "ALL NEW WORK GUARANTEED" TRICITIES ROOFING CO.

Call Noble Souters 629-2370 EASTLAND

SPECIAL NOTICE

BUSINESS MEN'S LUNCH \$1.00

CHOICE OF TWO ENTREES
GENEROUS SERVINGS INCLUDING DRINK & DESSERT

MONDAY THRU FRIDAY

Featuring **GOOCH BLUE RIBBON STEAKS**

SUNDAY BUFFET - \$1.75
CHILDREN UNDER 12 — \$1.00

NOTICE: BOOK YOUR HOLIDAY PARTIES NOW FOR CHOICE OF DATES!

The WHITE ELEPHANT

Mr. Charles Robertson, Mr. and Mrs. Ernest Robertson Your Hosts
Bo Hood and Casey Mezell, Your Chefs

Announcing

THE INSTALLATION OF **HUNTER** LITE-A-LINE FRONT END WHEEL ALIGNMENT

DON'T DRIVE AN UNSAFE CAR! SAFETY CHECK IT TODAY!

THESE SIGNS ARE SIGNS OF SAFETY

SLOW

OBEY THEM FOR SAFETY'S SAKE

YIELD

WATCH FOR SIGNS OF DANGER TOO IN YOUR AUTO

CAUTION

EQUIPMENT & FACTORY-TRAINED MEN OFFERING: COMPLETE FRONT-END SERVICE

CONSISTS OF:

- Check Front Bearings
- Set Caster & Camber
- Set Toe-In
- Check Ball-Joints, Tie Rod Ends
- Check Shocks & Breaks

\$9.50 Complete

NOW OFFERING COMPLETE BRAKE SERVICE

And **HUNTER SPIN-BALANCER WHEEL BALANCING**

ALL NEW EQUIPMENT!

AT OUR CENTRAL LOCATION

3 Great Auto-Care Names to Serve You:
HORTON - TEXACO - HUNTER

TIRE FUEL EQUIPMENT

ODIS COLEMAN — JACKIE COLLINS — HOLLIS CLIFTON

STOP

FIRST-CLASS SAFETY-CHECK IN TODAY FOR A AT HORTON TIRE CO.

EAST MAIN ST. — IN EASTLAND

H. H. Qualls Is Retired After 38 Years by Humble

HOUSTON — Henry H. Qualls, 2118 Green Brier, Abilene, Texas, district manager for Humble Pipe Line Company, retired November 1 after more than 38 years service with the Company.

Mr. and Mrs. Qualls were honored by employees of the Abilene District at a dinner held at Lytle Shores Auditorium in Abilene. Friends and guests from throughout the Company's operation attended the dinner. D. C. Lamm, operations manager from Houston, reviewed the highlights of Mr. Qualls' long career, commending him for his valuable service and presented him with a retirement plaque. Employees of the Abilene District presented the honoree and his wife with several gifts for use in retirement.

A native of Hillsboro, Texas, Mr. Qualls attended school there and at Cisco and later attended Randolph College. The veteran pipeliner joined the Company as a truck driver at Cisco in 1931. His entire Company career has been in the West Texas area. He later was transferred to Wink where he served as gang foreman. In 1947, he became connection foreman at McCamey and was named district superintendent of the McCamey District in 1957. He was transferred to Andrews as district superintendent in 1960. In 1961, when the Abilene District was organized, he was made district superintendent and in 1966 named district manager, the position he held at retirement.

Mr. Qualls has been active in industry, civic and youth organizations for many years in the communities where he has resided. He presently is a member of the West Central Texas Oil & Gas Association, the Abilene Country Club and the Abilene Chamber of Commerce.

Catch NFL Football



See all the action on CBS-TV Sunday! See me for a better deal on your car, home or life insurance everyday!



STATE FARM MUTUAL AUTOMOBILE INSURANCE COMPANY
Home Office: Bloomington, Illinois

Service-Toons

—By—
BILL & AL



"Fill'er up, Al... ONE FULL QUART."

Whether you want a quart or a tankful, we're always glad to see you!

Morton Texaco

Best Service In Eastland

Phone 629-8850
702 West Main

AUCTION REPORT

The market action at Eastland Auction Co. is termed good, at the Tuesday sale, with 802 head sold to 78 buyers. There were 198 consignors, with 147 hogs, 38 sheep and goats sold.

Prices ranged as follows:
Butcher bulls, 17 to 23.25; stocker bulls, 21 to 31; butcher cows, 15.50 to 18.70; canners & cutters, 11 to 16.90; butcher calves, 21 to 25.
Stocker str. cifs. (L.I. choice) 27.50 to 34.50; stocker str. cifs. (hvy. choice) 23.50 to 31.50.
Stocker Hfrs. cifs. 23.50 to 27.
Yrl. Hfrs. 20 to 24.25.
Stocker cows, 120 to 170.
Pairs, 185 to 245.
Butcher hogs, 16.50 to 17.80.
Sows, 15.50 to 16.50.

Mrs. Gladys Neblett Is Guest Speaker for Ranger Garden Club

Mrs. Gladys Neblett was guest speaker during the meeting of Ranger Garden Club at the Community Club House on Thursday, Nov. 14.

Mrs. Neblett, a national accredited flower show master judge and exhibitor, and her friend, Mrs. Creole Wisdom, both of Stephenville, conducted a workshop, assisting members in achieving new effects in arrangements.

In the absence of the president, Mrs. R. W. Gordon, Mrs. W. A. Lewis was in charge of the meeting.

Following the program, a covered dish luncheon was served with Meses. Joe Dennis and L. H. Kay as hostesses. Those present were Meses. D. B. Allsup, Wayne White, W. H. Gay, P. M. Kuykendall, Bess Brinneman, W. A. Lewis, R. V. Robinson, Jack Redford, J. C. Carter, L. L. Bruce and the guests, Meses. Neblett and Wisdom.

RAWLINS SINCE 1884

Monuments

WEATHERFORD PHONE LY 4-2724

IF WE MAY ASSIST YOU, CALL US COLLECT OR MAIL THIS AD

NAME _____ PHONE _____

ADDRESS _____ CITY _____

Mmes. James R. Clark, L. G. Kennedy and Avery Sullivan attended the state convention, Baptist WMU in Fort Worth on Monday and Tuesday.

Weekend guests in the home of Mr. and Mrs. Morris Newham were her parents, Mr. and Mrs. L. T. Newlin of Houston.

Shifting Insurance Burdens —

... has long been an American custom, and it's a good custom. Don't try to carry the load of financial risks yourself against the hazards of these modern times, but shift it to your local agent and let Insurance do it. Your losses may be hours or years away but meanwhile Insurance will give you peace of mind and financial protection that is worth far more than it costs. Loss or no loss, you win either way — with Insurance.

★ ★ ★

Earl Bender & Company

Eastland (Insurance since 1924, Texas)

OES TO FETE MASONS
Eastland Chapter No. 280 Order of the Eastern Star will entertain the Mason's and their families with a Pot-Luck Supper Tuesday, Nov. 19 at 7 p.m. in the Lodge Hall. A 11 Masons and Eastern Stars are urged to attend, according to Doris Morion, Worthy Matron.

"Battle Hymn of the Republic," written by Julia Ward Howe, was first published in the Atlantic Monthly in 1862.

Cockroaches are the natural enemies of bedbugs and are known to destroy them in great numbers.

You're Invited
Our 2nd Annual **SALE**

Performance-Tested Angus
60 BULLS — 60 COWS

NOVEMBER 25 — Noon Monday

★ ★ ★

HAMMETTS RANCH

Home of Dependable Angus Cattle
LAMPASAS, TEXAS

COMPARE... SHOP... SAVE!

Stock Your Freezer Now!

SPARETIME MEAT PIES

★ Beef ★ Chicken ★ Turkey
Just Heat and Serve... So Convenient!
Safeway Special!

6-oz. Pkg.

10¢

With Low, Low Prices Every Day You Can
CHOOSE YOUR OWN SPECIALS!!

- ★ Only USDA Choice Grade Heavy Beef!
- ★ Finest Fruits and Vegetables!
- ★ Tops in Dairy Foods & Fresh Bake Goods!
- ★ Friendly, Courteous Service!
- ★ Discount Prices on Health & Beauty Aids!
- ★ Selection of National Brands!
- ★ Extra Money-Saving Safeway Brands!
- ★ Specials Twice a Week!
- ★ Rainchecks Which GUARANTEE You'll Get Advertised Specials!

We have special values all over the store... check all departments.
You'll find it great fun to shop at Safeway!

SAFEWAY HAS THE LOW, LOW EVERYDAY PRICES Plus SPECIALS!

Heinz Baby Food

Assorted Strained ★ Fruits or ★ Vegetables
Safeway Big Buy!

4 1/2-oz. Jar **8¢**

Canned Biscuits

Mrs. Wright's ★ Sweet Milk or ★ Buttermilk
Safeway Big Buy!

8-oz. Can **8¢**

Dog Food

Twin Pet. Rich in Vitamins...
Good for Cats, Too!
Safeway Big Buy!

15-oz. Can **7¢**

Drink Mix

Cragmont. Assorted Pre-Sweetened.
Safeway Big Buy!

3 Pkgs. **10¢**

Waffles

Bel-air. Frozen Ready in Seconds!
Safeway Big Buy!

5-oz. Pkg. **2 FOR 25¢**

Sno-White Salt

★ Plain or ★ Iodized
Nature's Finest!
Safeway Big Buy!

26-oz. Box **10¢**

Tomato Soup

Town House. Serve Soup'n Crackers, Today!
Safeway Big Buy!

10 3/4-oz. Can **10¢**

Soda Crackers

Melrose Just a Whisper Crisper!
Safeway Big Buy!

1-Lb. Box **19¢**

Beans

Highway. Pork & Beans
Safeway Big Buy!

16-oz. Cans **2 25¢**

Drinks

Cragmont. ★ Regular or ★ Diet
Safeway Big Buy!

2 Quart Bottles **2 25¢**

Orange Juice

Scotch Treat. Frozen Rich in Vitamin "C"
Safeway Big Buy!

6-oz. Can **18¢**

Alcohol

Rubbing. Now in Plastic Unbreakable Bottle!
Why Pay 18¢

16-oz. Plastic **12¢**

Fresh Fruits and Vegetables Always at Safeway!

Bananas

Golden Ripe! Just right for lunchbox!

Safeway Special Price! **9¢ -Lb.**

Cabbage

Crisp Solid Heads

7¢ -Lb.

9¢

7¢

Your Best Meat Buys Are at Safeway!

Ground Beef

Lean, freshly ground meat!
(Safeway Handy Chub Pak 2-Lb. Chub 98¢)

49¢ -Lb.

Armour Sliced Bacon

★ Armour's Star Mira Cure or ★ Safeway

65¢ 1-Lb. Pkg.

Smoked Hams

Dry Cure Delicate Flavor. Pink Texture

39¢

[Half or Whole 59¢] Shank Portion —Lb. \$1.09

FRYERS

Ready to cook! Everyday Low Price!
Whole—Lb. **29¢**
(Cut-Up Lb. 35¢)

Drumsticks or Trays—Lb. 49¢ Whole Breasts—Lb. 59¢

Imperial Margarine Sticks... 1-Lb. 41¢ Mar. Canve Jentl Pkg.	Hunt's Tomato Sauce With Tomato Tidbits 15-oz. Can 27¢	One-A-Day Vitamins Regular 100-Ct. Bottle \$2.59 Plus Iron 100-Ct. Bottle \$2.98	Fresh Clean Smell Ajax Cleanser Wipes Off Stains Easily and Quickly 14-oz. Can 17¢
Final Touch Fabric Softener 33-oz. Plastic 75¢	Maryland Club Coffee ★ Regular or ★ Drip 2-Lb. (3-Lb. Can... \$2.17) Can 1.47	Keebler Cookies Danish Wedding—16-oz. Pkg. 53¢ Frisbury Biscuits 10 Flaky Buttermilk 2 1/2-oz. Cans 39¢	Slenderella Jelly Low-Calorie ★ Blackberry ★ Cherry ★ Grape—4-oz. Jar 7¢ Instant Maryland Club Coffee—10 1/2-oz. Jar \$1.57 Vanquish Tablets For Fast Relief of Pain 30-Ct. Bottle 63¢ Command Hair Groomer Spray-On For Men 4-oz. Can 79¢

Prices Effective Mon., Tues. and Wed., Nov. 18, 19 and 20, in Eastland. We Reserve the Right to Limit Quantities. No Sales to Dealers.

SAFEWAY