

The Readers Write . . .

Editor:
Now is the time for one, or more, wide-awake, and progressive citizens of Eastland to consider seriously the prospect of running for City Commissioner in next Spring's city election.

I have refrained from writing "letters to the editor" hoping that the attitude of one, or more, of the present city commission would change and that their attitudes would change (with reference to how City tax money is spent on maintenance and upkeep of City radio equipment), but apparently it has not, and will not change.

First off, let me say that what money the city spends on maintenance, upkeep and purchasing of radio equipment will not make or break me. It is the mere principle of the thing that counts. And I think that the majority of readers would agree that it is quite a shame when the City spends tax money in Abilene to have this type of work done when a qualified person is within two blocks of the City Hall A person who owns property and pays taxes to the City.

A case in point: Recently the City joined in an effort to purchase a new base station radio. Even though the license is in the name of the County, the City more or less took the lead in purchasing this equipment, called a rather hurried meeting, and one of the commissioners called a Communications concern from Abilene to be present at the meeting, and more-or-less "as the spot" awarded him the contract at a figure somewhere around \$2300. I had previously placed a bid on the same piece of equipment, with some power output . . . the only exception being that my bid also included a new remote console at no extra cost. My bid was received from the DuMont Commission on May 28, 1969, and forwarded to the proper officials on June 5, 1969. Total cost being \$1596.00. A savings of over \$700 in tax money could have been the end result.

However, once again petty grievances on the part of one or more city commissioners weighed heavily and my bid was not considered.

Now, consider this hypothetical situation. Let's assume the City was in the market for a new patrol car for the police department, and local automobile dealers submitted bids, and that among these bids there was naturally a low bidder. But, even though an

Eastland concern, one who lives here and pays taxes locally, made the low bid, the City decided to buy the patrol car in Abilene. NOW, what do you suppose the local low-bidding car dealer would do. And, how would he feel?

A more recent case in point: Last week, the City's patrol car radio went on the blink. I had heard it going downhill for several days, and had diagnosed the trouble, just by listening to it on the air. I could have had the trouble repaired within 10 minutes after it finally went out of operation. However, the City chose to get the same Abilene firm to come all the way down here, at the rate of 10¢ per mile, plus \$3.75 per hour in transit, plus \$7.50 per hour while actually working on the equipment plus parts (if any). I don't know what this particular bill amounted to, I am assuming in the vicinity of at least \$20.00.

My charge would have been \$3.50 (and perhaps free), and the radio would not have been out of service more than 10 minutes, instead of the 3 days it was more or less inoperative.

I have been told, "Dabney, the reason you don't get the City's radio work is because you write letters to the editor."

I look at it this way: If this same type of thing went on in Abilene, or some other larger City, it wouldn't take the citizens long, through their local press, radio, and TV, to bring it all to a halt.

As I have said, what little money the city would spend with me is not going to make or break me.

But, when tax money is spent out of town when local tax paying people are qualified to do the job, it is going to cause some replacements within the ranks of the Commissioners just as soon as enough people are apprised of the fact and just as soon as enough interested and interested people decide it is time to make a change at the City Hall.

Two men are on the commission today by what might be called "default" in other words, they are there not by popular vote, and public explanation, but because no one else ran for the office, and they had no opposites. Personally I would feel a little guilty holding a public office under those conditions.

Perhaps 1970 will be the year for change. I hope so.
Sincerely,
F. James Dabney

Dump Ground



Statements On Co. Supt. Office Are Challenged

O. L. Stamey, county school superintendent, has requested Eastland County Newspapers publish the following statement in response to an article appearing this week:

"Ordinarily one pays no attention to anonymous statements but since there were some misleading 'misinformation' in the article on county school issues, I feel that a correction is important. The implication that the budget for the office would be divided among the schools of Eastland County is all wrong. This money would not be divided among the Eastland County schools but would be returned to Austin and the general school fund, according to the finance department of the Texas Education Agency.

"The office is operated at no cost to the schools of Eastland County nor to the county itself.

"The Superintendent's office in cooperation with the school administrators of the local schools has received and dispersed for the local schools from 1965 through 1968, \$335,497. Title One money under the E.S.E.A. Act. Money used in salaries, equipments, teacher aids, remodeling and auxiliary services.

"In addition to this the County Board has a contract with the Department of Labor under the 'in-school' N.Y.

C. Program to train pupils for job training — bringing to the students of Eastland County \$13,115. from November, 1965 to May 23, 1969. The County Superintendent is Sponsor for this Program.
It seems that the County Office is of value to the schools and pupils of Eastland County."

PERMANENTS
\$10 Cold Waves — \$8.50
— Open 8:30 to 5:30 —
Close noon Wed. & Sat.
Basham Beauty Bar

For those who can afford the Finest.

PANGBURN'S
Western Style CHOCOLATES

Give Pangburn's WESTERNER Chocolates

Different. Delicious. Milk and Dark Chocolates including Pangburn's big, light, soufflé centers and your favorite Pecan Millionaires. Made with Milk and Honey.

\$2.25 1-lb
\$4.00 2-lb

CENTRAL DRUG



1970 BONNEVILLE



1970 GTO

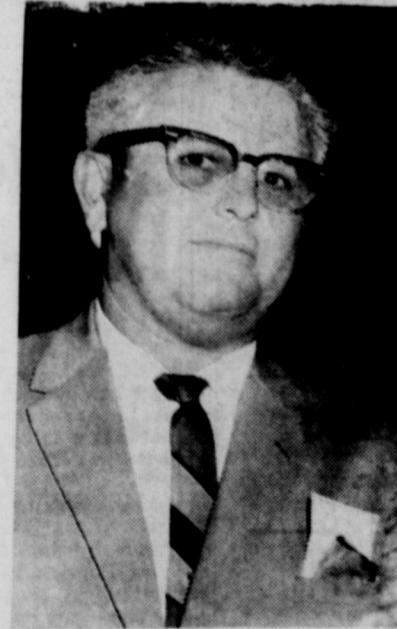


1970 GRAND PRIX



1970 LE MANS SPORT

Your nearest Pontiac dealer may be closer than you think.



BRUCE PIPKIN

Now that we're here.

BRUCE PIPKIN MOTOR CO.
314 WEST MAIN — EASTLAND, TEXAS

So if you've been admiring the 1970 Pontiacs from afar, now's your chance to get right next to them. Feel the upholstery. Kick the tires. Do the whole bit. Maybe even buy one. And while you're at it, take a look

around our dealership. We have a professional sales department, factory-trained service personnel and enough parts and equipment to keep a whole fleet of Wide-Tracks in top condition. Including yours.



This Christmas Give...

Our Soft warm pajamas and gowns in arnel triacetate and nylon, hand washable and drip dry. Long and short. Sleeves and legs. Prices 4.99 & 5.99.



the warm

wrap-up—
7.99 to 14.99

Soft as powder puffs, our robes are lovely comforts in flattering colors, fine fabrics.



WEST SIDE — EASTLAND

A NEW KIND OF SECURITY

We're talking about Funeral Security Trust Plans and what they do to protect your family

- Assure that arrangements will be right.
- Guide survivors in how much to spend
- Save insurance benefits for survivors.
- Provide when there is no family
- Spare the family difficult decisions.
- Provide a reduced price for services.
- Provide a hedge against inflation.

If you don't know about Funeral Security Trust Plans, Phone 629 - 2611 out of town call collect.

* * *

**ARRINGTON
FUNERAL HOME**

FRIENDLY, PERSONALIZED SERVICE

Mrs. Helen Hall To Appear in List Personalities

Mrs. Helen Anita Hall of Littlefield, daughter of Mr. and Mrs. Paul Taylor of Eastland, has been selected to appear in the 1969 edition of "Personalities of the South."

Among recipients of this honor are governors, United State Senators and congressmen from the various southern states, who, because of their achievements and service to their communities and state - wuosaed su puzpocaa are ties of the south.

Homemakers Plan Monday Event

The Eastland Art Club will hold its Christmas party at 3 p.m., Tuesday, December 18, in the home of Mrs. E. E. Layton.

Members are asked to bring a gift to exchange.



Miss Condray Gives Demonstration on New Organ

\$15,000 Organ Expands CJC Music Department

The Cisco Junior College Department of Music saw three extremely important, needed, and hoped for dreams of expansion become reality this past summer.

The installation of a three-manual Baldwin electronic organ in the Harrell Fine Arts Auditorium was completed during the last week of August. The instrument, known as the Baldwin C600, was donated by the Rockwell Foundation of Houston. It is a brand-new organ model by Baldwin, and this installation is only the ninth of its kind in the United States. Cisco magnificent instrument on its written in 1777. "In my eyes and ears the organ will ever be the King of Instruments."

—It truly is just that. The organ is an instrument of beauty and versatility, and in the hands of a good musician, it is capable of communicating the profound message that music can convey. A pipe organ would be the ideal in many colleges and university situations, but here at CJC, as at many other colleges, the type of programs that take place in the auditorium are varied a great deal beyond that of professional classical musicians in concert; therefore, an instrument that can produce all kinds of music is best. The Junior College is extremely fortunate to have such a Baldwin C600 can do that beautifully! It has a wide selection of stops which produce enough different combinations of sound for any type of piece, whether a sacred or secular piece from the Renaissance or Baroque period, or a popular jazz or "rock" rendition from today. And the speaker system is installed so that it utilizes the acoustical qualities of the Harrell Fine Arts Auditorium.

During the school year, the organ will be used for private instruction, student, faculty, and visiting organists' recitals, accompaniment in concerts, and "theatre music" entertainment, during various programs and produc-

tions. There are seven students taking private organ instruction this semester. Five are full-time students on the campus: Mary Chapman, Clara Smith, Jesse Warren, Esther Yeung, and Billie Zellman; and two are from the Cisco community: Mary Austin and Lloyd London. This is an excellent class of students for the first semester of organ instruction.

In the early part of the summer, a seven-foot Steinway concert grand piano was ordered. Steinway is very far behind in filling orders, but because of the kindness and generosity of S & M Music Company in Abilene, CJC will have a concert grand piano on the Harrell Fine Arts Auditorium stage this year. Steve Slack and Boyd Miller, owners of S & M, are granting the college the use of their store piano, and any of the concerts, recitals, etc., taking place on the CJC campus will have first priority. For this, the Department of Music is deeply grateful. The concert grand will be used in concerts by visiting professional artists, during choir and band concerts, and will enable students to learn and perform an instrument of the highest caliber.

Toward the end of July, the second dream of expansion became a reality. This was the hiring of another teacher for the Department of Music, made possible by the fact that he can also work audiovisual equipment. Mr. Wyley Peebles, who is teaching Music Literature, Introduction to the Study of Music, and Freshman and Sophomore Music Theory, is also Director of the Audio-Visual Department. Mr. Peebles came to CJC from Baylor University in Waco, and his versatility is a definite asset to the college.

"The Department of Music is deeply grateful for all three of these tremendous additions. They make possible much more adequate music instruction and a more well-rounded music program to the college and the Cisco Community."

SCS Recommends Plans Leon-Bosque Project

A planning authorization for the proposed Sabanno Watershed Development Project has been made by the U. S. Department of Agriculture according to an announcement by Congressman Omar Burleson.

The approval provides financial and technical assistance by the Soil Conservation Service in planning the watershed project.

The project was proposed by an informal organization of farmers and ranchers living in the area to control flooding, counter soil damage and erosion and improve the productive capacity of the area.

Water would be conserved and flooding checked by a series of dams on tributaries of the Sabanno. The project is similar to that already under way on Rush Creek in Comanche County.

The project embraces 202,000 acres located in Comanche, Eastland and Callahan counties. It is sponsored by the Upper Leon Soil and Water Conservation district, the Lower Clear Work of the Brazos SWCD, and the commissioners courts of Eastland and Comanche counties.

When completed the work plans will be submitted for authorization for actual development.

An extremely large project in the flood-control program, the Sabanno project has been in the development stages for many years, the project failed to receive a high enough priority in an evaluation about two years ago.

A public hearing and barbecue was held at Gorman at that time to impress the authorities with the citizens' concern for authorization of the Sabanno project. At that time, it was one of 12 other projects being considered for approval.

Earlier estimates indicate that some 20 structures, some large and some small, would be necessary to implement the project through the South part of the county.

The Eastland County directors include Sam Powers, Joe Criswell, J. T. Gregory, E. F. Harrison, B. W. McKinnis, W. B. Wright, Glyn Gilliam, A. D. Jenkins, E. G. Henderson, James Rutherford, Mike Collins, Mack Stubblefield and Dick Foster.

The Eastland County directors of the Leon-Bosque RC&D Area will meet Dec. 17, 1969, at 2:00 p.m. in the Eastland County Commissioners Court room. The group will select a land County on the steering director to represent East Committee and discuss possible projects for consideration.

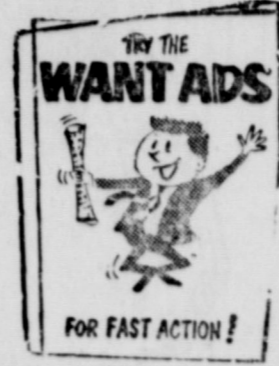
Friendship Class Has Yule Event

The Friendship Class of the First Baptist Church held its annual Christmas party in the fellowship hall Thursday night, December 11.

Mrs. R. W. Goodwin led the prayer before the dinner. "Silent Night, Holy Night" was sung by the class.

Mrs. Haston Brewer gave the devotional on "Our Wonderful Counselor, Jesus," in her usual inspirational manner.

The party ended by an exchange of presents.



A carefully prepared family insurance plan

Protects your home, your family and yourself

Something good happens when you see your "Heart of Gold" man

M. H. PERRY
107 W. Main St.
Office — 629-1566
Residence — 629-1095

Southland Life

INSURANCE COMPANY

Smart Santas...

SHOP HERE!

FIRST!

TOYS - APPLIANCES

A STORE FULL OF GIFTS, EVERY ONE VALUE-PRICED AND SURE TO PLEASE. SAVE STEPS - START HERE FOR EASY AND DELIGHTFUL CHRISTMAS GIFTING!

WESTERN AUTO

EASTLAND

SUDDENLY

It's Christmas

AND GIFT IDEAS ARE PLENTIFUL AND SPECIAL AT CENTRAL DRUG

- FOR HIM
- FOR HER
- FOR LITTLE ONES
- FOR HOME

YOU'LL FIND JUST THE GIFT AND BEAUTIFUL GIFT WRAPPING! Shop While Stocks Are Complete

CENTRAL DRUG

EASTLAND

KINGLY QUALITY

62 FALCON

Fordor Std. Shift.
Nice Second Car

67 CHEVY MALIBU

SS—4-Speed, air.
Real Nice Power

68 FORD PICKUP

Short, Wide Box
Nice—In Warranty

67 FORD-6

Four Speed, Short Wheel Base
Still in Warranty

67 FORD RANCHERO

Std. Shift, Air

KING MOTOR CO.

EASTLAND

"Make it a Merry Christmas!"

WITH

RCA

Also available in Early American, Danish, and Traditional... Same Price.

Computer Crafted Six-Speaker Stereo by RCA

Computer Crafted AM-FM-FM Stereo tuner is designed for sensitivity and selectivity. 50-watt peak power solid state amplifier. Studiomatic 4-speed changer. Six-speaker sound.

The ALCAZAR Model VMT35

\$399⁹⁵

Slim, trim RCA FM-AM Portable, AC/DC powered. Vertical styling, FM and AM reception, vernier tuning, AFC, AC or DC operation.

The RALLY Model RM110

\$299⁹⁵

The CATSKILL, Model VMP54. New Portable "Modular" Stereo from RCA. Two 9" oval duo-cone speakers, Studiomatic changer, great sound.

\$99⁹⁵

ROBERTSON TV SALES & SERVICE

New Game Warden Says County Deer Many, Fat



KENNETH PAYNE

"There are quite a few deer in Eastland County and they are in very good shape," Game Warden Kenneth E. Payne says. "This has been a good year, with lots of grain and lots of cover, so the deer have had plenty of food and are fat now," Payne said.

Payne checked the Ranger locker plant the third day of deer season and found "more than a hundred deer there, probably 97 of them bucks, all of them in good shape."

A native of Sangar in Denton County, Payne has been with the Texas Parks and Wildlife Department for three years and moved from Wichita Falls recently. He and his wife, Jenny, have one son, Scott, two years old. They live at 303 East Sadosa in Eastland.

The enforcement of all game and fish laws and regulations and also water safety are Payne's responsibility. "There are practically no problems with water safety at this time of year," Payne said, "but we do have problems with night hunting and with killing antlerless deer without a permit. Either offense carries a maximum fine of \$200.00."

Booklets concerning hunting and fishing regulations may be obtained from Payne's office at the county sheriff's office in the courthouse, or requested by mail. Anyone who wishes more information may call Payne at 629-1774 in Eastland.

All You Can Eat BUFFETS

SEAFOOD BUFFET
Each Wednesday Night
Beginning 5 p.m.
All You Can Eat \$1.35

CHICKEN BUFFET
Each Thursday Night
Beginning 7 p.m.
All You Can Eat \$1.45

SUNDAY BUFFET
11 a.m. to 2 p.m.

WHITE ELEPHANT RESTAURANT
Eastland

Good For 1 Free Game
Eastland Recreation Center
Under New Management
Family Recreation can be Fun
This ad entitles you to 1 Free Game

Christmas is only a few S&H books away

START SAVING NOW FOR EXTRA GIFTS THIS CHRISTMAS!



DOUBLE S&H GREEN STAMPS
with purchase of \$2.50 or more every Wednesday

JRB

SUPERMARKETS

S & H GREEN STAMPS WITH EVERY PURCHASE

PRICES GOOD THRU WEDNESDAY, DEC. 17
Quantity Rights Reserved — No Sales to Dealers
PRICES GOOD IN EASTLAND

JRB Meats are U.S. Government Inspected and Graded. If for any reason you are not satisfied we will cheerfully refund your money.



FRYERS

whole lb. 29c
cut up, pan ready lb. 35c

King Size COCA-COLA

6-bottle ctn. plus deposit 39c

Shurfine Pure Cane **SUGAR** 5-lb. bag 49c
Bake Rite **SHORTENING** 3-lb. can 59c
Foremost **BUTTERMILK** 1/2-gal. 43c
A.F. **BISCUITS** 8-oz. can 8c

KARO SYRUP Red Label quart 65c
OLEO All Sweet 1/4s 2 lbs. 49c
BIG DIP Foremost 1/2-gal. 49c
POT PIES Morton's 8-oz. 5 for \$1
BEEF DINNERS Morton's 11-oz. 49c
BREAD DOUGH 2 1-lb. loaves 39c
CAN DRINKS Shasta 10-oz. can 10/\$1
CATSUP Food King 12-oz. 4/\$1
BAR-B-Q SAUCE Morton's 16-oz. 41c

Pork Steak Lean and Tender lb. 59c	Gooch Olde Virginia SAUSAGE lb. 79c 2-lb. bag 1.55 Gooch Blue Ribbon SLICED BOLOGNA lb. 69c Shop Made — Seasoned Just Right PORK SAUSAGE lb. 49c Fresh, Tender CALF LIVER lb. 79c Fresh, Thick Sliced BEEF LIVER lb. 59c Armour's FRYER LIVERS lb. 69c Decker's HOT LINKS lb. 69c Decker's Texas Style CERVALOT lb. 79c Armour's Star Mira-Cure SLICED BACON 12-oz. pkg. 69c
Pork Roast Semi-Boneless lb. 55c	Gooch Blue Ribbon FRANKS 12-oz. pkg. 55c

MORTON'S SALAD DRESSING qt. 39c	
SHURFRESH CRACKERS 1-lb. box 4 for \$1	
ENERGY BLEACH 1/2-gal. 29c	

TOMATO SOUP Heinz reg. can 10c	Christmas is only 2 books away
RUBBING ALCOHOL pint 2 for 25c	
MARSHMALLOW CREAM Hipolite 7-oz. jar 19c	
EVAPORATED MILK Pet or Carnation tall can 16c	

Towie Med. RIPE OLIVES 7 1/2-oz. can 59c	Rosebowl MACKERAL tall can 29c
SWEET RELISH Heinz 11-oz. 33c	American Beauty Long SPAGHETTI 10-oz. 23c
Burleson CREAMED HONEY 10-oz. 43c	PITTED DATES Dromidary 8-oz. 35c
Shurfine Cut GREEN BEANS 303 can 4/\$1	RICE Shurfine Cello Bag 2 lbs. 35c
BEETS Shurfine Sliced 303 can 5/\$1	Hersheys CHOCOLATE CHIPS 12-oz. 63c

CARNATION LIGHT CHUNK TUNA FISH reg. can 3 for 89c

ne-303 an Greens with Turnips 2/39c	SEASON SALT Lowerys 3-oz. 29c
Green Giant Peas and Onions 303 can 31c	CHILI POWDER Eagle 1-oz. 19c
NOODLES Chow Mein 303 can 23c	COFFEE MATE large 6-oz. 49c
APPLESAUCE 303 can 4/\$1	Old Spice AFTER SHAVE Reg. 1.50 99c
DOG FOOD Roxey tall can 3/29c	O.J. BEAUTY LOTION Reg. \$1.00 69c
Rotel Tomatoes and GREEN CHILIES No. 1 can 21c	Shurfine HAIR SPRAY Reg. 79c 39c

CRISCO COOKING OIL 48-oz. bottle 89c

FLOUR

Shurfine 5-lb. bag 39c

Cream PIES

Morton 3 for \$1

Garden Fresh Produce Features!

BANANAS Golden Ripe lb. 10c
POTATOES Russets 10-lb. bag 69c
Navel Calif. sun-kissed **Oranges** lb. 19c
Rome cook or eating **Apples** lb. 19c
ONIONS Yellow Medium Size lb. 9c

DEAF?

NEW POPULAR BRAND HEARING AIDS

FOR MILD HEARING LOSSES

99⁹⁵

With TRADE

FOR SEVERE HEARING LOSSES

179⁹⁵

AND UP With TRADE

Fit in Our Well Equipped Office Only
PROFESSIONALLY FITTED BY TIM SPURRIER
With 20 YEARS EXPERIENCE
LARGE SELECTION OF STYLES AVAILABLE



HEARING AID CENTER

1866-C Pine Abilene, Texas Phone 673-8501

MONTGOMERY WARD

You Asked for It, Eastland County,
NOW, WE'RE OPEN MORE HOURS FOR
YOU TO SHOP AND SAVE! HURRY IN!

OPEN EVERY NIGHT TILL CHRISTMAS UNTIL 8 P.M.
WARDS BIG STORE IN RANGER



COUNTY PECAN ROYALTY—Diana M. Aynard, Eastland, and a student at Cisco Junior College, shown at center, was crowned Eastland County Pecan Queen for 1970 at Eastland Tuesday night. Mary L. Etha Hubbard, left, of Rising Star was the 1969 queen. Runner-up for 1970 honors is Lynne Pippen, right.

County Political Pot Is Faintly Simmering

With 1970 and the beginning of a new campaign year less than three weeks away there have been only faint signs of activity along the political front in Eastland County.

Twelve county offices, from county judge to justices of the peace are to be filled in the primary and general voting next year. All are for four year terms.

They are the offices of county judge, county superintendent of schools, district clerk, county clerk, county treasurer, the county commissioners of Precincts 2 (Gorman) and 4 (Cisco); justices of the peace at Rising Star, and the constable's office at Eastland.

Officers whose terms have still two years to go are district judge, county sheriff, county tax assessor-collector, county and district attorney and three constables.

Steel Hill, constable at Eastland is serving as an appointee following the death of Porter Woods last April, and he faces election for the remainder of the term at the polls next year.

Although none of the incumbents of offices to be filled in

a candidate for re-election. No other candidacies for the office have been reported and there was no known speculation concerning any opposition announcement.

District Clerk Roy Lane was likewise noncommittal about his plans, but it was generally regarded as almost certain that he would be a candidate for re-election. No possible rival candidates have been identified, even speculatively.

Mrs. Ellen Justice said frankly that she would be a candidate for re-election as county treasurer.

County Supt. O. L. Stamey, whose office has been the target of some petitions seeking an election to abolish it, said that he was giving serious consideration to seeking re-election. His friends were confident, however, that Stamey, a veteran educator and former president of Cisco junior college, would again offer for the office which administers large amounts of state and federal aid to the county schools.

Two Cisco offices will be filled in the 1970 voting and in both of them there were clear prospects of primary contests.

They are the office of county commissioner of Precinct 4, now occupied by Clarence (Runt) Dill.

Mr. Dill was regarded as certain to be a candidate for re-election, although he would not commit himself in an interview Friday. He pointed out that it was somewhat early to make any announcement that he would prefer to wait until the first of the year before making a definite statement of his plans.

A possible contest for the office loomed in reports that W. W. Sawyers would offer for the post. Sawyers admitted that he had been approached by some of his friends seeking an announcement for the office but that he has not yet made up his mind.

A similar situation exists in regard to the office of the office of justice of the peace in Cisco, now held by W. L. Lewis. Mr. Lewis indicated that he would have an announcement to make about the first of the year. It was regarded as highly probable that he would be a candidate

County Law Enforcement Association Is Formed

Meeting at the White Elephant Cafe in Eastland Friday noon, 32 peace officers, judges and city officials of Eastland county set up a temporary organization for what is tentatively known as the Eastland County Law Enforcement Association.

Purpose of the organization, as explained by District County Attorney Emory Walton, who presided, is "to bring about a closer cooperation between the various public officials charged with law enforcement in the county to the end of a better enforcement of the laws."

Named as temporary officers were:

President, Johnnie Morren, assistant chief of Eastland city police; vice-president, Sheriff L. E. Sublett; secretary-treasurer, Mayor Douglas Fry of Cisco, and Judge W. L. Lewis of Cisco, chairman.

A nominating committee consisting of Sgt. Jerry Matthews, Department of Public Safety, as chairman, and Chief Clyde Bryner of Cisco and Chief T. W. Vinson of Ranger, were named to suggest officers for a permanent organization.

In his remarks prior to the organization, Mr. Walton told the officers to urge the importance of registration as a qualification for voting in next year's elections upon all citizens.

Also discussed were some of the constitutional amendments to be voted upon in the 1970 general election.

HOSPITAL NEWS

Patients listed in the Eastland Memorial Hospital Saturday morning were:

Alba Johnson, Ft. Worth
Bobby Lewis
Vera Harris, Cisco
Peggy Parker
Henry Hancock, Ranger
Ivy Myers, Ranger
Carl Page, Ranger

Laverne Allgood
Myrtle Gray
W. B. Ensor
Chris Franklin
E. J. McKellar
Eulice Sessums, Gorman
Mina Laffon
Pearl Hunt, Cisco
Ima Haley

for re-election. He told this newspaper that he was giving serious consideration to such a decision.

The clear possibility of a contest for this office was presented by reports that Carl Lamb a former county commissioner would offer for the office. Mr. Lamb said he was considering it but had not fully made up his mind.

All candidates are in the democratic column and their nomination in the primary election next May is tantamount to election in the general voting next November. The republican party is very much in the minority in the county and rarely has offered candidates for county office.

FREE ESTIMATES ON new roofs only
Repair of Your Old Roofs
Residential and Commercial
"ALL N.W. WORK GUARANTEED"
TRI-CITIES ROOFING CO.
Call Nobil Squiers 629-2370 EASTLAND

Louie Vaden, Gordon
Henry Fowler
James Griffin, Carbon
Frank Jenkins, Cisco
Clifford Edwards, Moran
Virgie Porter, Burkett
Lois Holder, Cisco
Mary Harris, Cisco
Leamon Pittman
William Crawford, Cisco
Dicy Spink, Cisco
Mattie Evans, Cisco
Furman Terrell, Santo
Henry Werley
Robert Carvy, Rising Star
Haddon Freeman
Wanda Cottle, Gorman
Irma Parker
Charlie Norris, Carbon
Florence Yancey
Martha Downing, Gorman
Weltha Dunn, Carbon
Beulah Turner
Hettie Harper, Cisco
Donnie Rone, Gorman
Marguerite Reger, Cisco
L. M. Blalock
Dayton Sessions, Cisco
Ruben Gaeta
Flora Maynard
Claudie Casey, Cisco

Mrs. Elizabeth James.
Mrs. Odessa Johnson.
Mary Rogocki.
Mrs. Jewel Gholson.
Mrs. Louise Trippett.
Mrs. Esther Boustead.
Mrs. Opal Kiley.
Mrs. Cordia Wood.
Mrs. Mae Hunt.
W. W. Jones.
Conley Necessary.
C. D. Jones.
Raymond Proctor.
Purl Hunt.
Carol Clark.
Larry Edwards.
Jay Jones.
J. D. Stuart.

Patients in Ranger General Hospital Saturday morning were:

Mrs. C. J. Johnson.
Mrs. Ellen Bollinger.
Mrs. Edith Thomas.
Cheryl Nelms.
Mrs. Joyce Hopson.

Ranger Air Service
is now the Authorized Evinrude Motor Dealer
in the Ranger area
Also Specializing in Parts and Repair Service

SPECIAL At GREER'S WESTERN STORE

DAN POST BOOTS
2 Styles
\$30.00 Value
NOW ONLY **24.98**



What's an Aquatic Biologist doing working for your electric service company?

He's doing many things. He counts fish, observes their growth and movement and generally monitors water quality.

These are but a few of the many jobs of John Tilton, Texas Electric Service Company's Aquatic Biologist. His laboratory is the various lakes on which the company's modern steam-electric power plants are located.

He works closely with biologists of the Texas Parks and Wildlife Department and with biologists from colleges and universities.

Their findings are good news for fishermen. They reveal that the lake water which goes through the plants' condensers and back into the lake actually helps stir up more food for fish; and the constant flow of water provides slightly warm currents which Texas fish seem to like.

major job of providing dependable electric service. It includes protection and improvement of the environment in which we all live, including air as well as water.

As we build additional facilities to assure plenty of dependable electric power for the future, we will continue to monitor the lakes that provide water and recreation. Lines, plants and other facilities will continue to be built with full consideration to appearance and environment.

Why should Texas Electric Service Company be concerned?
Our responsibility, we feel, goes beyond our

The First All-Label, No-Obligation Discount Record Service to Offer All These Advantages

FREE DISCOUNTS! **FREE CHARGE ACCOUNT!** **UNLIMITED SELECTION!** **NO MINIMUM PURCHASE REQUIRED!**

Plus a unique extra bonus...
SELECT ANY RECORD OF YOUR CHOICE—FREE
if you join now and pay the modest lifetime enrollment fee

Now... a record-buying service that has all the advantages you've been looking for—Records Unlimited! It gives you big discounts on all records, all labels—with no minimum purchase required. And you buy on credit with at-home shopping convenience! What's more, you get your first record free for joining right now!

No other service, club or method of buying records offers all this without obligation of any kind!

No obligations—No limitations!

If you buy records regularly—5, 7, or 12 a year—you probably like to make your selections from a variety of labels. And you don't want the commitment to buy a specified number of records. What you do want are the most generous discounts that can be offered on every one of the records you buy!

You get all these advantages only with Records Unlimited!

Discounts up to 75%

Though you have no obligation to buy any records, every record you do buy will have a big discount... generally 33% off the manufacturers' suggested list price (see the chart).

You can choose any 12" long-playing record of any label available in the United States. In some cases we are able to offer discounts up to 75%! And remember, Records Unlimited is the only all-label service that lets you charge your records!

Free Buying Guides

You will learn about these special savings regularly through your free copies of the Records Unlimited buying guide, which will carry listings of new releases and best-selling hit records in all fields of music... classical, folk, pop, teen, Broadway, etc. You can take advantage of the super discounts, or order any record you want at our

Manufacturers' Suggested List Prices	RECORDS UNLIMITED
\$1.79 through \$1.98 \$1.19
2.49 through 2.78 1.66
3.49 through 3.78 2.33
3.79 through 3.98 2.49
4.79 through 4.98 3.09
5.79 through 5.98 3.79
6.79 through 6.98 4.49

(Certain hard-to-get records somewhat higher)

Special-Price Records Each Month!
Leading Labels..... \$99 + \$1.19 + \$1.66
(Originally sold for up to \$4.79*)
*In some areas, records may be purchased at below manufacturers' suggested list prices.

regular low discount prices (plus a small mailing and handling charge). All records, of course, are brand-new and guaranteed to be in perfect playing condition.

First Record Free

Your first record is free, if you join now and pay the modest \$2.50 lifetime enrollment fee. And you can select your free record now from the best-selling records shown on this page, or you can pick any other record currently available in the United States.

Mail Coupon Today

Just fill out and mail the coupon, along with your check or money order for \$2.50 to cover your lifetime enrollment. We'll send the free record of your choice promptly. You'll also receive a copy of the current Records Unlimited buying guide, listing hundreds of records available to members at special discount prices.

Note: Since stereo records may now be played on monaural (regular high-fidelity) phonographs, and cost no more than monaural records, all of your records will be sent in stereo.

CHOOSE A RECORD FREE—NOW!
Take any one of these hit albums—or any other record you want!

7085 6876 7168 95420
7029 95414 6898 7186

Records Unlimited
Box 500, Harmony, Indiana 47853

I'm enclosing my \$2.50 lifetime enrollment fee. Please send me this record—free:

Title.....
Label.....
Catalog No.....

Also send me a copy of the current Records Unlimited buying guide. I understand that enrollment includes no obligation to purchase any records at any time, but I can order the records I want at Records Unlimited discount prices and charge them to my account.

Print Name.....
Address.....
City..... Zip.....
State..... Code.....

T3 S69-P1-R4-0406
© 1969 Records Unlimited

Railroads Pay \$18,716 in Taxes In This County

Current annual taxes paid to various government agencies by Texas railroads in Eastland County total \$18,716, it is announced by the Texas Railroad Association.

That amount was the county's share of the nearly \$11,000,000 the railroads paid in Texas on their own right of way and other property.

The biggest railroad contribution was to the school systems throughout the state. Large sums were also distributed to city, village and county governments and for road and bridge funds.

In addition, of course, was the large total in taxes the more than 30,000 railroad employees in Texas contributed on their own property. The vast majority of rail workers, many of whom live in Eastland County, own their own homes.

"We are very pleased that nearly half of the taxes paid by the railroads in Texas go to support the schools," said Walter Caven, general counsel of the Texas Railroad Association. "The future of our country depends to a great extent upon the education of our youth," he said.

"Recognizing this need for education, many of the railroads operating in Texas also continue to make scholarships available to a large number of students every year."

DAR Yule Meet At Eastland

The Charles Crawford of the Daughters of the Association Revolution will meet at 3 p. m. Monday, Dec. 15 in the home of Mrs. Joseph M. Perkins in Eastland, according to an announcement.

The roll call responses will consist of a Christmas thought or experience from each member. The Christmas greetings from the President General's Desk will be taken from the DAR magazine. A Christmas story, "The Unexpected Christmas Guest" will be given by Mrs. Robert Stewart. The Christmas music will be arranged by the hostess, Mrs. Perkins. "A Money Tree" in lieu of a gift exchange will complete the program.

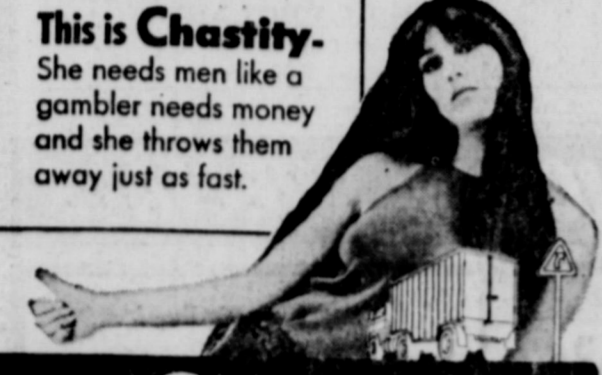
Mrs. Amy Brown from Ranger and Mrs. F. L. Crawford of Eastland will be co-hostesses with Mrs. Perkins.

All members are urged to attend this meeting.

RANGER DRIVE-IN THEATRE

ADULTS 75¢ — KIDDIES UNDER 11 FREE
Box Office Opens 6:30 Show Starts 7:00

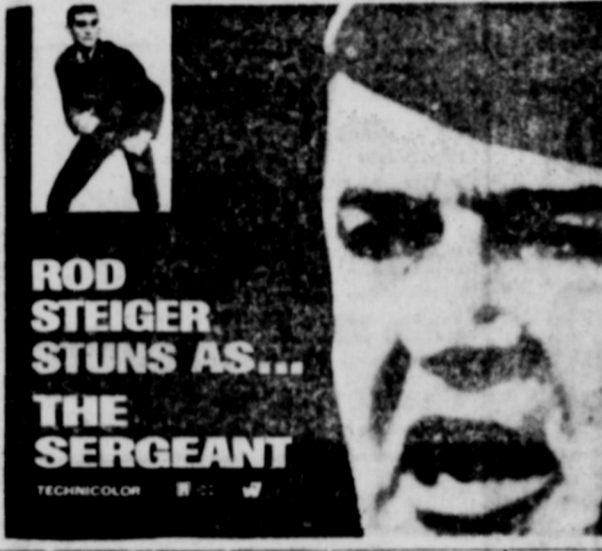
LAST TIMES SUNDAY
DECEMBER 14



"Chastity" COLOR

CHER BARBARA LONDON STEPHEN WHITTAKER

FRIDAY — SATURDAY — SUNDAY
DECEMBER 19-20-21



ROD STEIGER STUNS AS... THE SERGEANT

TECHNICOLOR

COMPARE AND SAVE AT



1866 PINE ABILENE
SPECIAL PRICES On Long-Term Medication



shop Wards 1969 Christmas Catalog

JUST CALL
RANGER — PHONE 647-3224 DIRECT
EASTLAND — PHONE 629-1633 DIRECT
CISCO — PHONE 629-1633 COLLECT
... And pick up your order before Christmas
WARDS RANGER

MAJESTIC

SUNDAY — MONDAY — TUESDAY
Sun. open 1:45 — Show 2:30-5:45-7:40-9:35
Mon.-Tues.: open 5:15—Show 5:30-7:20-9:15
RATED R—No One Under 13 Without Parents



STARTS WEDNESDAY
Open 5:15—"Run" at 5:35 & 9:05—"Box" at 7:25
RATED M—Parental Discretion Advised



RICHARD CRENNAN ANNE HEYWOOD
FRED ASTAIRE as Pedley
MIDAS RUN

with guest star
Ralph Richardson · Cesar Romero · Adolfo Celi and Roddy McDowall

NOW, FOR THE FIRST TIME... EDGAR ALLAN POE'S Classic Tale of the Living Dead!



COMING FOR CHRISTMAS



MONTGOMERY WARD

1/2 PRICE

SHOP THIS SALE! 1/2-PRICE ITEMS EVERYWHERE!

TOYS!
One Entire Counter
Prices Low as 44¢ — 1/2 price

Flashlight Batteries
Standard Size— 2 for 25¢
Ideal for toys, radios and cameras

60 WATT AND 100 WATT LIGHT BULBS... 10¢
Men's Sweat Shirts M-L-XL—No-Iron Red with Blue Trim 1.49

GAS RANGE or DISHWASHER 1/2 price
Range — Reg. \$220 — \$109
Dishwasher—reg. \$119—\$59

Open an Account To-Day—Just "Charge IT"

ENTIRE STOCK!!!
LADIE'S COATS AND JACKETS
ALL 1/2 PRICE

Special Christmas LP Albums—Chimes, Organ, Carols, Songs 77¢

UNFINISHED FURNITURE
• Reg. 24.95 DESK \$12.50
• Reg. 29.95 CHEST \$15.00

STEREO TAPES—Country & Western, Current Hits, Ray Charles 3.99

AUTOMOBILE ACCESSORIES
Seat Covers, Trouble Lights
All 1/2 Price Now!



You don't have to travel any place to love new TRAVELACE by VANITY FAIR

But if you are slipping off to some exotic spot, you'll love it even more. TRAVELACE has a whole new look—rather like ribbons rippling through delicate filigree. Looks divine in deep yokes and double cuffs and feather-light scuffs, in new Vanity Fair shades. Packs, washes and wears as beautifully as the sleek tricot it decorates. TRAVELACE. Give it a special place on your itinerary!

D. Gown: 32-40, \$9.00
Robe: 32-40, \$13.00
Pajama: 32-40, \$13.00
Scuff: S,M,L, \$5.00

THE MAN'S STORE
Bob Elliott
CISCO, TEXAS

