







# Baptists Plan Encampment Which Will Be Held In July

**RAILROAD PROPERTY VALUE**  
WASHINGTON, April 13. — Proprietors of the St. Louis-Southwestern railway were given a final valuation by the Interstate Commerce Commission today of \$88,535,235 as of June 30, 1915.

**NOTICE TO CREDITORS OF THE ESTATE OF F. A. HIGGINBOTHAM, DECEASED.**  
Notice is hereby given that original letters of administration upon the estate of F. A. Higginbotham, deceased, were granted to me, the undersigned, on the 12th day of March, 1929, by the County Court of Eastland County, Texas. All persons having claims against said estate are hereby required to present the same to me within the time prescribed by law. My residence and postoffice address are Eastland, Eastland County, Texas.  
**MRS. ALICE HIGGINBOTHAM,**  
Executrix of the Estate of F. A. Higginbotham, Deceased.  
April 7-14-29.

A few minutes of poor lighting may ruin your eyes forever. You may now buy 60 watt Edison Mazda lamps for 20c.

**Texas Electric Service Co.**  
Phone 18

**FEDERATED STORES**  
Links in a chain of independently owned stores united in buying and advertising.  
**TATE'S**  
Side Square Eastland

**EVERYTHING MUSICAL EASTLAND MUSIC CO.**  
"On the Square"  
Mrs. Hilley Phone 3  
Copeland Dependable Electric Refrigerators

**CLASSIFIED ADS BRING QUICK RESULTS**  
RATE: 2c per word first insertion, 1c per word each insertion thereafter. No ad taken for less than 50c.  
TERMS: Cash with order. No classified ads accepted on charge account.  
No ad accepted after 12 noon on week days and 4 p.m. Saturday for Sunday

**1—LOST AND FOUND**  
LOST: A Hamilton 21 jewel watch, white gold case. Return to Telegram for reward.

**2—MALE HELP WANTED**  
WANTED—Good dependable boys to carry news routes. Must be over 13 years old. Call at Telegram office between 5:00 and 5:30 p. m.

**3—ROOMS FOR RENT**  
FOR RENT—Three furnished light housekeeping rooms, with garage at 906 S. Seaman. For information apply 909 S. Bassett.

2 furnished light housekeeping rooms, 145 E. Valley.

**4—HOUSES FOR RENT**  
FOR RENT—A nice clean, four-room furnished cottage. Hot and cold water. Also a four-room unfurnished house for rent or for sale. Mrs. J. U. Johnson, phone 216.

**5—APARTMENTS FOR RENT**  
FOR RENT—Three and two-room furnished apartments with private bath, desirable location. See Mrs. Lucy Gristy, 701 Plummer Phone 343.

FOR RENT—Two-room apartment, furnished, with bath, 301 N. Green St.

FOUR-ROOM furnished apartment and garage for rent cheap, 1308 S. Bassett St.

FOR RENT—Nicely furnished apt., nice large rooms, bath, garage. All modern conveniences, close in. Also room in private home. Call 90.

FOR RENT—Furnished apartment, 312 So. Seaman.

13—FOR SALE—Miscellaneous

FOR SALE—Tomato plants, 40 cents per hundred, 1502 South Bassett, phone 667.

**22—AUTOMOBILES**  
DIRECTOR of service stations dispensing TEXACO Gasoline and Motor Oils—  
Horned Frog Service Station—Eastland Nash Co.  
Horn Gasoline Station—Eastland Storage Battery Co.  
States Service Corporation—Carbon Motor Co. Carbon  
Newell Filling Station—R. J. Raines  
Midway Station, 4 miles west Joe P. Tow, 5 miles north. Helbert Serv. Station, S. Seaman. Excise Jones, phone 123.

## FRECKLES AND HIS FRIENDS

**FRECKLES AND UNCLE HARRY TOOK OFF FROM HONOLULU YESTERDAY TO FLY OVER KILAUEA VOLCANO.... HAVING FLOWN OVER THE ISLANDS OF MOLOKAI AND MAUI THEY ARE NOW APPROACHING THE ISLAND OF HAWAII....**



I SEE A VOLCANO, ALREADY, UNCLE HARRY—LOOK! LOOK!!

SEE THAT GREAT SHINY-BLACK SHALLOW LAKE WITH VAPORS RISING IN MYSTIC WISPS THROUGH THE LAVA CRACKS, FRECKLES? THAT IS KILAUEA VOLCANO!

WHAT DO YOU THINK OF IT, FRECKLES?

IT'S WONDERFUL, UNCLE HARRY—AND WHAT A SWELL PLACE TO THROW AWAY OLD RAZOR BLADES!!



## MOM'N POP

**BRAGG TAKES ON A CONFEDERATE IN HIS SCHEME TO TRIM POP OUT OF HIS HARD-EARNED COIN AND AT THE SAME TIME EVEN UP AN INSULT.**

YOU KNOW HIM, POP GUNN, HE BEAT YOU IN THAT WIDOW DARE CASE, AND HOW!

YES, BUT I'M NOT THROUGH WITH POP GUNN YET, WHAT THAT CASE DID TO ME WAS PLENTY AND I INTEND TO SETTLE A FEW THINGS WITH THAT BABY WHEN I GET HIM IN THE RIGHT CORNER.

WELL, I'VE A LITTLE MATTER TO SETTLE WITH GUNN MYSELF AND, UNDER THE CIRCUMSTANCES, I THINK YOU'RE JUST THE MAN TO GIVE ME A HAND, HANK.

I CAN'T THINK OF ANYTHING TO EITHER DO THAN GET POP GUNN IN COURT AGAIN!

SHAKE! HERE IN THE SAME BOAT, HANK, BUT SINGING POP ISN'T THE HALF OF WHAT I INTEND SENDING AT HIM. I'VE A NEATER SCHEME TO SQUARE MY BILL WITH THAT BABY AND MAKE HIM PAY PLENTY TO BOOT. NO CROOKED STUFF, JUST SLIP AROUND ONE OVER ON HIM, IF YOU ARE CONGENIAL WE'LL GO FIFTY-FIFTY ON THIS AND I'LL TELL YOU MY PLAN.

JUST TURN HIM UPSIDE DOWN AND SHAKE HIS POCKETS EMPTY, EH? SHOOT! THAT'S O. K. WITH ME.

THIS LOOKS BAD FOR POP.

THE NAME WINNING THE \$25 PRIZE WILL BE ANNOUNCED TOMORROW.

WE'VE OFTEN WISHED MORE CATS WOULD DO IT. CALL AT THE NEWS OFFICE FOR YOUR \$5, MARGERY.

ODAY'S HONORABLE MENTION WINNING NAME IS—  
"SING-LOW"  
SUBMITTED BY MARGERY CURRIER NORFOLK, NEB.

**LIBERTY'S TORCH ON**  
By United Press.  
NEW YORK—Residents on Badloe's Island, from which the Statue of Liberty surveys New York harbor, breathed easier on learning that Lady Liberty's torch had been repaired. The electric light in the statue's hand failed to flash through Thursday night for the first time in 43 years when a boat, dragging an anchor, snapped the cable.

**"MARY AND DOUG" FILM**  
By United Press.  
HOLLYWOOD, Cal.—Mary Pickford and Douglas Fairbanks will be seen together in the next motion picture in which they appear. They will play "Katherine" and "Petruchio" in Shakespeare's "The Taming of the Shrew."  
The picture will be all-talkie. It will be all-color. It will be all costume—no "modern clothes."  
It will follow closely the trend of the original Shakespearean comedy.  
Plans for this film, too rich even for a press agent's adjectives, were outlined for the United Press in an exclusive interview with Mary and Doug in the former's radio hangar.  
"It will be the greatest thing I've ever done," Miss Pickford said.

may Hut was built. This building is modern and has 30 screened windows with shutters.

A patrol of Boy Scouts from each of three towns direct the maze of traffic which is occasioned by the annual encampment, the boys working in eight hour shifts and with such cooperation that a car has never been known to feel even a bent tender under their management. As many as 2500 cars have been counted in one day at the meeting, and as many as 4000 students have been registered at Sunday School. It is estimated that 15,000 people have attended services at the encampment at times.

Supervised recreation which includes swimming, basketball, tennis and valley ball, filling in time between sermons, lectures and schools takes place on the grounds where natural scenery includes wide spreading pecan trees. The grounds are electrically lighted and equipped with a complete water system and modern sewer system.

## Millionaire's Son Is Steel Worker



The steel superstructure of the world's biggest business building, the Merchandise Mart in Chicago, has begun to rise above the Chicago river at Wells Street. James Simpson, Jr., son of the millionaire president of Marshall Field & Co., is shown driving the first rivet in the steel framework. The building will house 2000 prominent manufacturers, wholesalers and importers. Young Simpson has been helping with the construction work. On the right is shown C. A. Welles, general manager of the Merchandise Mart.

## Cisco Marketing Association Is Making Shipment

**CISCO, April 13.**—One of the largest shipments of livestock made by the Cisco Cooperative Livestock Marketing Association in many months will leave here Tuesday, April 16, for market at Ft. Worth. This shipment will consist of four and a fraction of cars of hogs and almost a car of cattle and according to R. L. Poek, known as the father of the association which was 17 years old last month—will return the members of the association more than \$5,000.

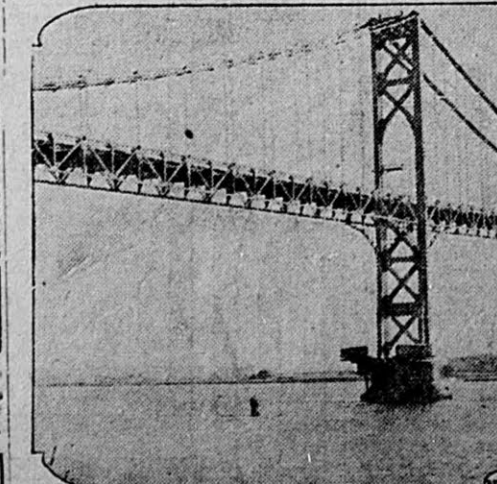
The largest single shipment previously made by the association was sent in May, 1928, when five cars of animals returned the participating members of the association approximately \$8,200.

Shipments of cattle are made monthly. So far since the association was organized it has never missed a shipment, but, on the contrary, has grown steadily in the amount of cattle and hogs handled. Last year almost \$70,000 worth of animals were shipped by the association and the shipments this year are certain—provided market conditions continue good—to exceed that figure.

The association numbers in the neighborhood of 400 members who pool their cattle and hogs each first Saturday for shipment on the second Tuesday.

**DIES FROM BITE OF SNAKE**  
LAREDO, Tex., April 13.—Bitten by a monster rattlesnake on his ranch near San Ignacio, Zapata county, Jose Maria Sanchez, 30, brother of Sheriff Ignacio Sanchez of Zapata county, died in a Laredo hospital Friday afternoon. The reptile, said to be about eight feet long, bit Sanchez on both legs.

## Big Bridge, Not Yet Finished, to Be Torn Down



Because it was discovered that some of the steel cables had broken, this big new suspension bridge between Providence and Newport, R. I., now 55 per cent completed, must be dismantled and new between Providence and Newport, R. I., now 55 per cent completed, must be dismantled and new cables installed. Already workmen are cutting the 60,000 rivets that hold the steel together and when they finish dismantling practically nothing but the towers will be left standing. The parts will be stored and re-erected later.

**Monday's Five Best Features**  
WJZ and NBC network 6:30 CST—Roxy and His Gang.  
WJZ and NBC network 8:00 CST—Recording Artists.  
WOR and CBS network 8:30 CST—Movie and Talkie Stars.  
WEAF and NBC network 8:30 CST—Symphony orchestra, with Sigurd Nilssen, basso cantante.  
WEAF and NBC network 10:00 CST—National Grand Opera Co. Victor Herbert's "Natoma," in English.

**HOKUS - POKUS**  
"Where Groceries are Cheaper"  
West Main St. Phone 91

**RADIO FEATURES**  
Sunday's Five Best Radio Features Copyright 1929, by United Press.  
WOR Newark (422) 2:00 CST—Philharmonic-Symphony orchestra, Clemens Krauss conducting.  
WJZ and NBC network 6:30 CST—Walter Gieseking, pianist, and the International Singers.  
WJZ and NBC network 8:15 CST—Testimonial dinner to John J. McGraw and the New York Giants.  
WEAF and NBC network 8:15 CST—Song recital, Tito Schipa, Lyric tenor of the Chicago Opera.  
WABC and CBS network 9:00 CST—Anna Case, soprano, and Rudolph Ganz, pianist, in joint recital.

**Have Your—**  
last year's Panamas cleaned and blocked.  
**We Are—**  
Expert hat cleaners and are equipped to block them—RIGHT!  
**MODERN**  
Dry Cleaners and Dyers  
So. Seaman St., Phone 132

**PHONE 82**  
if you want it in a hurry. Quicker and Better.  
**SPEE-DEE**  
Dry Cleaners

**EASTLAND NASH CO.**  
Sales and Service  
Telephone 212

West	Schedule	East
7:10 a. m.	8:55 a. m.	
11:00 a. m.	11:20 a. m.	
1:00 p. m.	1:30 p. m.	
3:00 p. m.	3:00 p. m.	
5:00 p. m.	3:40 p. m.	
7:00 p. m.	8:20 p. m.	
9:00 p. m.	12:25 a. m.	

1926 Dodge Coupe.  
1925 Doze 1/2-ton Commercial.  
2 1926 Dodge Coupes  
1926 Dodge Sedan.  
1927 Chevrolet Coupe.  
1928 Chevrolet commercial.  
1926 Chrysler 80 Roadster.  
**DEE SANDERS**  
Dodge Dealer  
Eastland Ranger  
Phone 620

**PALACE DRUG STORE**  
Prescriptions Filled Promptly.  
South Side Square  
Phone 59

**PANHANDLE PRODUCTS**  
GOODRICH TIRES  
BETTER SERVICE  
SUPER SERVICE STATION

General Practice  
**J. H. CATON, M.D.**  
401-3 Exchange National Bank Bldg.  
Phones: Office 301, Res.

**EAT Banner ICE CREAM**  
"It tastes better"

**HILTON HOTELS**  
UNUSUALLY LOW RATES  
Three of Texas' finest moderate priced hotels. Maximum rate—3.00

**WEST TEXAS COACHES**  
Serving West Texas  
Vacation Time

will soon be here. Plan to travel the scenic way—via bus. Our local agent will be glad to help you arrange your trip to any vacation center in the United States.

**Those Who Buy AT HOME AND BANK AT HOME—HAVE A BETTER HOME**  
WE APPRECIATE YOUR BUSINESS  
**Exchange National Bank**  
EVERYBODY'S BANK

SOCIETY

Mrs. W. K. Jackson, Editor

MONDAY
Library open 2 to 5:30
Club House.

TUESDAY
Auxiliary 2:30 p. m.
Afternoon Bridge club 4 p. m.

WEDNESDAY
Library open 2 to 5:30
Club House.

THURSDAY
Library open 2 to 5:30
Club House.

FRIDAY
Library open 2 to 5:30
Club House.

SATURDAY
Library open 2 to 5:30
Club House.

SUNDAY
Library open 2 to 5:30
Club House.

ing president of the Federated Mission Study club, Mrs. Fred Davenport, who also represented the Ladies Aid Society of the Christian church, as president; Mrs. J. A. Caton, recently elected president of Federated Mission Study club; Mrs. Hayes, president Women's Auxiliary, Presbyterian church; Mrs. F. W. Corby, vice president; Mrs. Charles Hubbard, vice president Federated Mission Study club; Mrs. Iola Mitchell, president of Mission Study of Women's Society, Methodist church.

THE THURSDAY AFTERNOON CLUB ENTERTAINS WITH AN UNIQUE EVENING THEIR FRIENDS AND MEMBERS:
The assembly room of the Community Club House, very handsome in its new dress of paint and fresh paper and brightened by the odd and attractive decorations that carried the flair of the Indian and Texas cowboy atmosphere in the tepee with shield lettered T. A. C. (Thursday Afternoon Club) in Indian characters and near the tepee, a camp fire over which hung an iron kettle, hugged by a soap box, the stand for the tin coffee pot, and all circled with camp stools. Chairs for the onlookers were arranged in a double circle that swung around the room, centered with a table massed in Blue Bonnets and Indian paint-brushes. Tall jars of Blue Bonnets stood in every available space, and Indian rugs were scattered through the entire building, which was opened for the evening, including the library, where the choir of 40 voices assembled until time for their appearance on the program. Four or five floor lamps with colorful shades threw a warm glow over the scene which opened with an Italian dance number given in costume by several little children from the South Ward school followed by a clever Dutch song and dance, and a chorus by twenty children, which terminated in the last song of the South Ward school opera, "Let's Go Traveling." In this chorus, travelers to the United States had reached Texas and here Earl Gough was presented to the audience in duet numbers with Mrs. B. B. Bickerstaff. This music was wonderful: of the romantic school, with selections from various popular operas, and climaxed by Mr. Gough in the solo "Have You Ever Been to Texas in the Spring."

The appearance of the Methodist church choir was announced by Mrs. Bickerstaff with the interesting statement that the choir had several members and officers that were Thursday Afternoon club members among them, the president of the choir, Mrs. Grace Phipps; the director, Mrs. Wilda Drago; the pianist, Mrs. C. G. Norton, who was an officer in the Thursday Afternoon club. A magnificent rendition was given by the choir, of McDowell's "To A Wild Rose," in softly swelling cadence and a second number, "The Builders," by Cadman, interpreted in sonorous, majestic and rhythmic strength. Two classical numbers, violin work of Kriessler, were played by Mrs. Wilda Drago; piano, the McDowell Music club attended, and will report or analyze the concert numbers at their next meeting. The cowboy songs were introduced in an original and effective fashion by Mr. Gough, who appeared in full cowboy regalia of broad brimmed silver-banded stetson, high laced boots, red neckerchief and all the rest of the trimmings. His selections, those set to music by Oscar Fox. During the rendition of the final song, "Greer County," a rapid series of sketches were done by Mrs. Virgil Seaberry on an immense easel, these pictures depicting the scenes as presented in the song. The crowning touch in the cowboy history was staged by Mrs. Steele Johnston who arranged the very clever burlesque which followed.

Through the doorway came the "covered wagon" pulled by an oxen (Dickie Johnston) who wore an abject attitude and a large ox head. Following, came the pioneer and his wife, these played by Mr. Sample and Mrs. Harry Sample, accompanied by Mrs. Carl Springer, another pioneer, a picture in gaudy calico skirts and slab sun bonnet. Tracking this peaceful adventure into early Texas cow-lands dashed a warlike Indian, Mrs. Joseph M. Perkins, who was accompanied them with whops and kill-cries and dragged off the family. The spoils heaped in the covered wagon were saved by a "Texas Ranger" (Mrs. W. E. Staiter) who opportunely appeared upon the scene. If anyone was in doubt as to what she, he, was, they had only to look at the belt full of cartridges around her waist, which, by the way, was the belt the bandit wore who robbed the Cisco bank; gage at her pocket, knee trousers, heavy boots, and enormous pistols (the prized possessions of Sheriff Lawrence) to be convinced. But that Ranger surge made them stand around. On flashes the pony express rider, (Mrs. Virgil Seaberry) whose stick-horse had a head of the normal horse size. The riders decided the goods in the wagon

should be sold from the court house steps. The "steps" proved to be a tiny step ladder, and the Texas Ranger or sheriff, (Mrs. Staiter) delivered the goods to the express rider and the sale began.

And what a sale. Big box bundles, little boxes, flat packages, round mysterious rolls, all wrapped in tissue paper and contents unknown. Everything was disposed of at the end of the sale and some very handsome things were sold. All packages were gifts from club members or their friends and the sale netted a nice sum for the club.

Mrs. Sample, the general chairman, was a wonderful manager, and the "grub and coffee" served in the color tone obtained. Ice cream covered with fresh strawberries had perfectly wonderful chocolate and spice cake iced in chocolate, and angel food cake, iced. The service plate was very dainty in its pretty coloring and composition.

FRIENDS RECEIVE MARRIAGE ANNOUNCEMENT:
Eastland friends are interested in the recent announcement received from Mr. R. C. Kinniard announcing the marriage of his daughter Sarah Carol to Mr. Raymond Ellis Batchelor, on Sunday, March 31, 1929. In the announcement is the "at home" address, 417 Pattie Ave., Wichita, Kans.

The former Miss Kinniard is one of the younger sisters of Donald Kinniard of Eastland and has a large circle of friends here who will be happy in her happiness. The Misses Roberta and Sarah Kinniard and their father had the distressing experience of death visiting the family and taking during their Christmas visit to their son, Donald Kinniard.

A CHARMING AFTERNOON BRIDGE HONORS YOUNG VISITORS:

Mrs. Joseph M. Weaver was hostess to a very beautifully appointed bridge function Thursday afternoon at her attractive home which was given in honor of Miss Virginia Beall Paull, of Wellburg, W. Va., Miss Virginia Carter of Baltimore, Md., and Miss Martha Goodman of El Paso, the guest of her aunt, Mrs. J. E. Lewis. The delightful southern girls are the nieces of Mrs. Weaver, whom they have been visiting the past several weeks.

Reading from "Voice," class missionary magazine, Mrs. Horace Conley.

"Turning the World Upside Down," Mrs. T. J. Pitts. "Darkness and Dawn," talk by Mrs. W. B. White. "Today's Lighthouse," talk on foreign missions and countries, Mrs. M. A. Hearn.

FRIDAY AFTERNOON: "Texas Composers' Day" will be observed in the program to be presented by the Music club of Eastland at their meeting April 19. Mrs. W. K. Jackson and Mrs. R. I. Perkins will be hostesses for the afternoon. The program will open with a talk and paper by Mrs. W. J. Herrington, "Some Notable Texas Composers."

of the Society, with Mrs. G. V. Dakan as leader. The order of procedure will open with the "Circle Song," "Ready" prayer by leader, and Scripture reading will preface the introductory talk by Mrs. Dakan, on general topic, "Faithful to the Trust."

Reading from "Voice," class missionary magazine, Mrs. Horace Conley.

"Turning the World Upside Down," Mrs. T. J. Pitts. "Darkness and Dawn," talk by Mrs. W. B. White. "Today's Lighthouse," talk on foreign missions and countries, Mrs. M. A. Hearn.

MUSIC CLUB MEETS IN REGULAR SESSION FRIDAY AFTERNOON: "Texas Composers' Day" will be observed in the program to be presented by the Music club of Eastland at their meeting April 19. Mrs. W. K. Jackson and Mrs. R. I. Perkins will be hostesses for the afternoon.

Mrs. Joseph M. Weaver was hostess to a very beautifully appointed bridge function Thursday afternoon at her attractive home which was given in honor of Miss Virginia Beall Paull, of Wellburg, W. Va., Miss Virginia Carter of Baltimore, Md., and Miss Martha Goodman of El Paso, the guest of her aunt, Mrs. J. E. Lewis.

Reading from "Voice," class missionary magazine, Mrs. Horace Conley.

"Turning the World Upside Down," Mrs. T. J. Pitts. "Darkness and Dawn," talk by Mrs. W. B. White. "Today's Lighthouse," talk on foreign missions and countries, Mrs. M. A. Hearn.

FRIDAY AFTERNOON: "Texas Composers' Day" will be observed in the program to be presented by the Music club of Eastland at their meeting April 19. Mrs. W. K. Jackson and Mrs. R. I. Perkins will be hostesses for the afternoon.

Mrs. Joseph M. Weaver was hostess to a very beautifully appointed bridge function Thursday afternoon at her attractive home which was given in honor of Miss Virginia Beall Paull, of Wellburg, W. Va., Miss Virginia Carter of Baltimore, Md., and Miss Martha Goodman of El Paso, the guest of her aunt, Mrs. J. E. Lewis.

Reading from "Voice," class missionary magazine, Mrs. Horace Conley.

"Turning the World Upside Down," Mrs. T. J. Pitts. "Darkness and Dawn," talk by Mrs. W. B. White. "Today's Lighthouse," talk on foreign missions and countries, Mrs. M. A. Hearn.

FRIDAY AFTERNOON: "Texas Composers' Day" will be observed in the program to be presented by the Music club of Eastland at their meeting April 19. Mrs. W. K. Jackson and Mrs. R. I. Perkins will be hostesses for the afternoon.

Denton Ewing of this community and Miss Opal Witt of Brushy community were married Saturday of last week. We extend to them our most hearty congratulations.

THE MEN'S SHOP
Where SOCIETY BRAND CLOTHES Are Sold

ATTENTION LADIES!
Owing to bad weather it has been impossible for our special solicitor to cover the entire town in the specified thirty days allotted to us. And as we have only four more days we are going to give each customer sending in a dollar and fifty cents cash order, one of our Genuine Indestructible strands of "Rose Marie" Perles. Remember the days: Monday, April 15th, through Thursday, April 18th.

EASTLAND COUNTY LUMBER COMPANY
Good Building and Rig Material.
Phone 334 West Main St.

EXCLUSIVE LADIES WEAR
Hemstitching, Pleating, Button Making, PRESLAR'S

IMPORTANT QUESTION
How much did you save last year?
Eastland Building and Loan Association

Motor mastery in a Style Setting
In the new LOW-PRICED WILLYS-KNIGHT '70-B"
Grace of line and luxury of finish distinguish the new Willys-Knight "70-B" as the outstanding creation of modern style specialists.
Its big motor is the patented double sleeve-valve engine, so notable for smoothness, silence, economical operation and increased efficiency. A heavy seven-bearing crankshaft reduces vibration to a minimum, while the improved frame construction gives extra rigidity and greatest possible riding comfort.
"INDEX-TIP CONTROL"
One button in center of steering wheel controls starter, lights and horn. Simple design, easy operation. No wires in steering post.
COACH \$1045
NEW STYLE Willys-Knight Whippet SALES COMPANY
JACK WILLIAMSON, Mgr.
220 South Seaman Eastland, Texas Phone 605

Spring Coats
Do not try to make the Spring season without a new Spring Coat — if we have your size among the very select models that are on our racks.
The Price Will Please You
These coats are the very latest in style and material. BEAUTIFUL — SERVICEABLE MODISH!
There are just a few left. BUY NOW!
Phone 53 PRESLAR'S Phone 53 LADIES WEAR

TO THE DISTRICT MEETING:
Joseph M. Perkins leaves Monday morning for Brownwood to attend the sixth district convention of the Texas Federation of Women's Clubs. Mrs. W. E. Stall attend and several other women of Eastland as well as the Civic League will elect delegate on Wednesday.

TO THE DISTRICT MEETING:
Joseph M. Perkins leaves Monday morning for Brownwood to attend the sixth district convention of the Texas Federation of Women's Clubs. Mrs. W. E. Stall attend and several other women of Eastland as well as the Civic League will elect delegate on Wednesday.

### Women Out To Lick Governor Long

BATON ROUGE, La. — He fought the world from the age of 14 and licked it, rising from a barefooted country boy to the governorship of Louisiana after battles with more than two centuries of battle history.

Then he aroused the ire of the women. He hanged the first white woman ever hanged in Louisiana, despite strong protests and pleas for clemency. At his orders, state militia, raiding road houses in a gambling war, stripped women, searched them and took money off their persons without receipt. Now he faces charges of impeachment

on 19 counts. The women, backed by a considerable number of men, are out to lick him.

That, briefly, is the amazing story of Huey P. Long, Louisiana's 35-year-old governor and central figure in a political hurricane the like of which has not been seen in Louisiana since reconstruction days.

Charges ranging all the way from misuse of state funds to bribery, carrying concealed weapons, intimidation of the courts and the legislature and a plot to assassinate Jared Y. Sanders, Jr., a legislator who had opposed him, stand preferred against Governor Long. The last charge is based on an affidavit by Harry "Battling" Bozeman, the governor's former personal bodyguard.

He is also publicly accused of attending wild parties in New Orleans' gay French quarter and of dancing, cocktail glass in hand, with a fair but scantily clad entertainer. He is also charged, in his less than a year in office, with having received more money, spent more money, borrowed more money and owing more money than any governor of Louisiana since the close of the Civil War.

He replies with the charge that the fight against him is being se-

cretly directed by the railroads, the oil companies and other big corporations whom he has consistently opposed. And it is not disputed that he has fought the corporations, with taxes and otherwise, tooth and toenail.

Governor Long's career has been one of the most turbulent in the history of a turbulent state.

Born on a tiny farm in the red clay piney hills of North Louisiana, he sought battle from boyhood. His parents were poor and he had to go to work when most boys were in grammar school. He became a typesetter on a country paper. He bought a horse and buggy on credit and peddled books. He organized a medicine show, complete with naphtha torch and banjo player, and traveled the northern parishes.

Next he peddled flour from house to house and later organized cake baking contests for a flour mill. And then he married the Shreveport girl who won his cake-baking contest in that city.

Just before that, dead broke, he had gone to Oklahoma in an effort to study law at the University of Oklahoma. His money ran out at Oklahoma City and he walked the remaining 18 miles to Norman through the snow. A kind-hearted traveling salesman lent him \$5. That night he slept in the warm engine room of a cottonseed mill.

He stayed at the university a year and then went back to work as a traveling salesman, selling lard to grocers. From lard he shifted to flour and when he married he had to borrow \$10 from his bride to tip the minister. It was an elopement.

He worked a year, saved his money and then went to New Orleans to study law at Tulane. He completed the four-year course in one year. The last half of that year he sent his wife home to her people and lived on \$5 a week. Graduated, he went back to the little town of Winnfield with his diploma — and 30 cents in his pockets.

For the next year he lived on \$25 a month, but gradually his law practice grew. He decided to enter politics and came "busting out of the bush," as Louisiana

politicians put it, as a candidate for the state public service commission.

He made a personal horse-and-buggy canvas of his remote district his wife riding with him and talking cooking recipes and babies to the farmers' wives while he talked politics with the men. His campaign headquarters were his front parlor. His wife addressed letters he carried it to the postoffice and mailed it.

Long was elected and later he became chairman of the commission. Right then he started his battles with the big oil companies and other corporations. His fight against the Standard Oil, the Illinois Central railroad, the New Orleans Public Service, Inc., the telephone company were classics. He beat the telephone company in the U. S. supreme court and forced a refund of deposit money.

In 1924 he ran for governor and was defeated by the New Orleans city vote, though he beat both of his opponents in the country. Long always claimed the heavy rains of that week beat him, making many roads impassable in the country where his greatest strength lay.

He ran again in 1928 in another three-man race and was elected by a plurality of 40,000.

Louisiana cheered him until finally the time came for the hanging of Mrs. Ada Bonner LeBoucq and Dr. Thomas Drcher in the state's famous murder case. Sentiment was divided. A delegation from a mass meeting of women voters sought to plead for them; Governor Long refused to hear the plea.

In advance of the state pardon board's consideration of the case he announced: "I'm going to hang that woman and that man, no matter what the pardon board recommends."

Another brush with Louisiana's women came when the state militia, acting under the governor's orders, raided road houses and stripped and searched women guests. Long's reply to criticism was that if the women didn't want to be stripped and searched they should stay away from road houses.

When it was publicly charged that on the night Governor Long gave orders for the road house raids he was attending a "studio party" in New Orleans' old French

### 'Not Sorry,' Laughs Child Killer



"I'm not sorry I killed him," declared 12-year-old Laura Landino, above, before she was arraigned in Juvenile Court, Baltimore, Md., on a charge of slaying her brother-in-law, Anthony Bevalacqua. Laura, according to police, shot him twice when he attempted to force his way into the Landino home to see his children, living there with his estranged wife. The girl laughed and joked as she was led to her cell.

parents, Mr. and Mrs. L. S. Hamilton.

Joe Starkey from Big Spring is here for a few days visit with friends and relatives. He is enroute to South America.

Mrs. Wright of Scranton is here holding a Bible training school at the Methodist church each night this week.

Miss Etta Pearl Howell leaves soon for Temple to go in training as a nurse.

Miss Lillian Huskey from Abilene is here visiting Mr. and Mrs. Russell.

Mrs. Bettie Mitchell is ill at the home of her daughter, Mrs. Russell.

Mrs. W. A. Jackson attended a Woodman Circle meeting at Mineral Wells Thursday.

Mr. and Mrs. W. H. Greene of Cisco were the guests Sunday of Mr. and Mrs. G. W. Collins.

### Ranger Youths Under Charges

RANGER, Texas, April 13.—Charges of theft and burglary were filed today in Justice of the Peace J. N. McFatter's court against John Wallace, 17, and Floyd Simmons, 18, Ranger boys. The youths are charged with stealing copper and brass from the Banner Ice Cream company. It is

alleged the metal was taken from the Banner building.

The two youths in signed statements made to Chief of Police Jim Ingram said they bought the metal from two boys and later sold it to a Ranger dealer for a profit.

Later, however, one of the boys, in a signed statement, said they had stolen the copper and sold it.

### Former Marine Leaves Ranger After Accident

RANGER, Texas, April 13.—Thirty-seven days after he fell beneath the wheels of a Texas &

Pacific freight train in the Ranges, narrowly escaping John Fickenworth, 24, was leased from the West Texas C and Hospital this morning.

The youth left today for home in Erie, Pa., continuing trip which was interrupted here. His left leg was amputated above the knee and two fingers of his left hand were removed in the accident.

He had received his discharge from the United States Marine Corps in California and was enroute home when the accident occurred.

READ THE WANT-ADS

Watch Our Windows for BARGAINS

BARROW FURNITURE COMPANY



BILL H. HAMES Shows

The Show Built By Merit Eastland, Texas

15 60-ft. Cars — 10 Shows — 8 Rides

300 PEOPLE

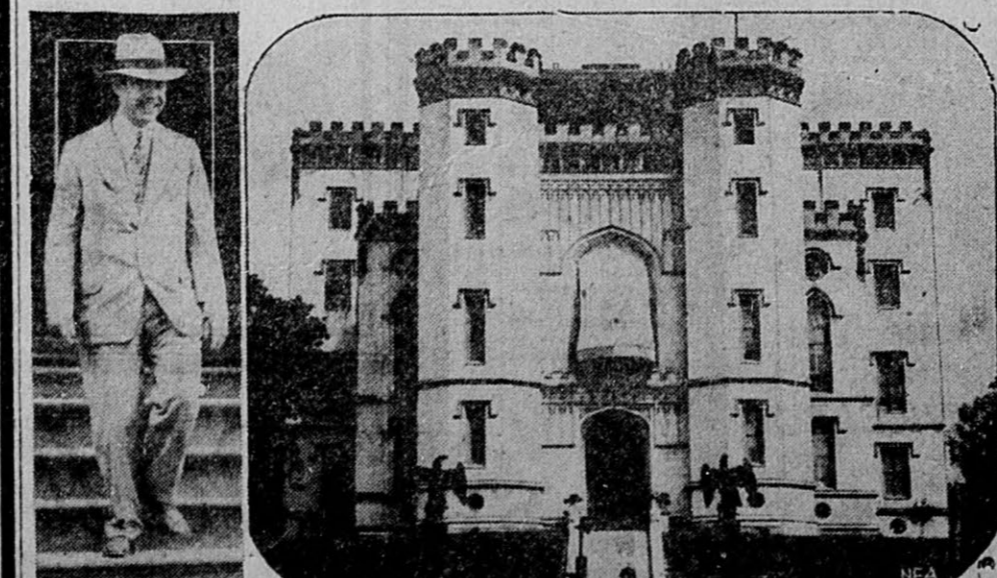
All Week COMMENCING Monday April 15th.

Saturday, April 20th, between the hours of 1 and 5 o'clock— Children's Matinee... All Children under 12 years old see and ride anything on the Show Grounds for 5c.

Auspices, Eastland Volunteer Fire Dept.



### Governor Long Faces Fight With a Smile



The ancient state capitol at Baton Rouge, La., where the Louisiana General Assembly started impeachment proceedings against Governor Huey P. Long, is pictured above. To the left Governor Long is shown descending the steps of the capitol after he had defied members of the house who brought against him the charges, which included drunkenness and an alleged attempt to have a political opponent murdered.

Announcing SUPER SERVICE SANDWICH SHOP

Under New Management

Special attention given to home cooked plate lunches, pies and cakes as well as sandwiches, Coney Islands, chili and cold drinks.

We solicit your patronage.

Mrs. W. C. Marlow

For your convenience—the National Cold Control Demonstration will continue through Tuesday—until 9 p. m. each night. Come to our display floor—work the "COLD CONTROL" with your own hands. See its exclusive masterful performance. Take advantage of our Special Seven Day Offer.

Texas Electric Service Co. PHONE 18

Musical Extravaganza of the Screen!

Eye and ear entertainment de luxe!

All - talking comedy - drama with "Buddy" as a jazz band leader; Nancy as a girl hooper. She sings. Buddy sings and plays. And you'll all join in the chorus. Gorgeous girls. A genuine love story. Startling song spectacle of the screen!

"Close Harmony" WITH CHARLES (BUDDY) ROGERS NANCY CARROLL JACK OAKIE RICHARD (SKEETS) CALLAGHER HARRY GREEN

A Paramount ALL-TALKING Picture

Now Showing

A DENT ARCADIA THEATRE RANGER

Added Movietone Review and News

# H. Hames Attractions Here This Week

Bill H. Hames attractions, 10 first class shows and number of riding devices, in a week's engagement in Monday night. The attractions come here under the auspices of the Eastland Fire Department.



**BILL H. HAMES**  
Whose shows and carnival attractions open a week's engagement in Eastland Monday under the auspices of the Eastland fire department.

## Lardner Wins Place Among The Classics

"Round Up" Is Group of Short Stories That Picture Life and People Just As They Are.

Ring Lardner's name has always suggested real humor to us—but humor of the class that brings to mind the hurrying of luscious custard pies—the variety of humor in literature that Charlie Chaplin made famous in the movies long, long ago.

To make people laugh is no small achievement and it is not fitting that one who possesses this gift should be spoken of lightly and condescendingly, even when one resorts to burlesque, farce, trick costumes and breezy slang. The "You Know Me, Al" sort of thing and all that other Satevepost stuff that Ring has written.

But "Round Up" is as different from all else that we've ever seen by Lardner as our productions are different from Shakespeare's. Folks, here is a book that is a book. Comedy there is, yes—but it is the comedy that one finds in life itself, without artificial coloring matter, and with no bonzonnate of soda, so to speak.

"I Can't Breathe" depicts the modern slapper as realistically as a photograph with photographic attachment.

For sentiment, there's "Who Deal?" and for ironic tragedy, you can read "Old Folks' Christmas." Dreams that fail are pictured in "The Maysville, Minn.," and there is power to "Haircut."

Some of the greatest critics in the land declare that "Champion" is a perfect short story. "Round Up" is a collection of short stories—all of them portraying real people such as you see every day in real life.

Not since becoming acquainted with O. Henry's tales years ago has this reviewer read such short stories as Lardner has produced. —B. H.

## OIL NEWS

WASHINGTON.—The troublesome problem of conserving America's oil resources without running afoul of federal anti-trust laws has been handed to the states where the federal oil conservation board believes it belongs.

A compact of states, in which the federal government might be included through Congressional action, was advocated in a letter from the federal oil conservation board to the American Petroleum Institute.

Concurring in the attorney general's opinion, the Institute's original plan to restrict production through agreement among the oil companies might violate the Sherman act. The board said "the sole legal authority for restrictive measures lies with the states."

Secretary of Interior Wilbur, who drafted the letter, stated he was sending Dr. George Otis Smith of the geologic survey to confer with governors of the three or four largest oil producing states. He will learn their views on the proposal.

Taking what it termed a "long view" of the petroleum problem, the board stated a program drafted only to restrict present production met the oil problem only half way.

## OUT OUR WAY



WE'RE BEIN' ABSORBED BY PROGRESS, OL' COWBOSS YOU AN' ME— AN' IT LOOKS LIKE I'LL END UP PUNCHIN' A CLOCK IN SOME FACTOREE— SO, EF YO'RE HAULIN' A JUNK CART, AN' FEEL LIKE A PIECE O' CHEESE JEST THINK O' ME OL' TIMER A ENDIN' MY DAYS IN THESE.

## Rail Lines Want to Reach Rich Region

LUBBOCK, Texas.—A fight for mastery in one of the richest undeveloped territories in the United States today— Eastern New Mexico, with its vast ranches its fast growing oil fields, and its fertile though sparsely cultivated farms—was underway here today.

The struggle found the Santa Fe railroad pitted against the Texas and Pacific line. The Santa Fe has filed application with the Interstate Commerce Commission to extend its line 70 miles from Seagraves, Texas, to Lovington, N. M., county seat of Lea county and center of the

territory which constitutes the prize awaiting the winning railroad. The Texas and Pacific has filed application to extend northward from Monahans, Texas, through Jal, N. M., to Lovington. A hearing was opened Monday before Interstate Commerce Commission Examiner H. C. Smith. About 100 attorneys, railroad officials, oil men and intervenors from towns affected gathered for the hearing.

The first day was taken up principally with testimony from the Texas and Pacific and its intervenors. Ten witnesses were heard during the day. They testified that their reason for wanting the extension was to secure tonnage from the Lea

county oil fields, development of which is looked forward to as being of big proportions. Witnesses from towns in Lea county, N. M., pointed out that the Texas-Pacific extension would give them a railroad which they need and stressed that the T. & P. line would open new cattle markets, such as El Paso, California and Ft. Worth. The hearing will continue throughout the week.

**FUTURES STEADY**  
By United Press.  
NEW YORK, April 13.—Futures opened steady 4 higher to 3 lower. Opening: May 20.50; July 19.92; October (old) 19.94; October (new) 19.87; December 19.95; January

**AUTHORIZED SALES AGENCY**  
**FEDERAL TIRE**  
EXTRA SERVICE

**OUR NEW LOW CASH PRICES**

**Are the Lowest You Have Ever Seen — WHOLESALE OR RETAIL WE SAVE YOU MONEY**

Now is the time to buy federals and prepare for the long hot summer drives that are so hard on tires.

Equip all around with these great mileage tires—and put thousands of miles between yourself and tire worries.

**Eastland Storage Battery Co.**  
G. M. HARPER, Manager  
West Main Phone 335

9.42; March 20.05. —Futures opened 2 to 10 higher. Opening: May 19.83; July 19.95; October 19.80; December 19.84. Mrs. Donald Kincaid and infant son are in Ft. Worth for a short stay.

# Sensational

**Bargains offered you during Green's monster DISPOSAL SALE. The few listings below will give an idea of the savings we are offering you.**

**EVERY PRICE CUT—NOTHING RESERVED**

A large shipment of new Spring Silk Dresses placed on sale at <b>\$4.38, \$6.88 and \$8.88</b>	Ladies' Shoes in red, blonde, patents, satin. New patterns, new styles <b>\$2.88, \$3.88 and \$4.88</b> Values up to \$8.50.	Men's Felt Hats, on sale <b>\$1.88</b>
New Spring Hats in flaps and small shapes, values up to \$5.85, on sale at <b>\$1.88, \$2.88 and \$3.88</b>	Boys' Overalls, sizes 2 to 8 <b>79c</b>	Men's Dress Shoes <b>\$2.88</b>
Indian Head, a real value <b>19c</b>	Boys' Unions— <b>39c</b> Extra good grade.	Men's Overalls, extra heavy <b>89c</b>
Anna Mae Pongee, on sale at <b>24c</b>	New Spring House Dresses <b>78c, \$1.48</b>	Men's Dress Pants <b>\$2.88</b>
Turkish Towel <b>10c</b>		Men's Dress Shirts in fancy broadcloth <b>79c</b>
Ladies' Gowns <b>39c</b>		

# Green's D. G. EASTLAND

## No Repairing Parts Replaced New There's a Difference

The G E carries an unconditional two year service guarantee

Parts not repaired but replaced with new units complete

## WHY—HOW?

**ONE MINUTE AND YOU'RE CONVINCED**

FIRST—A G. E. is hermetically sealed and dust proof, requires no oiling, all troublesome machinery is eliminated—All mechanism is a separate unit on top of the cabinet.

BUT—If for any reason at any time your G E fails to function properly—THERE IS NO SERVICING, no time lost, no food wasted. The local dealer calls and replaces the old unit with an entire new one—your G E service continues uninterrupted.

These features, tested and proved by thousands of enthusiastic owners have brought an enviable position of leadership to General Electric refrigerators.

Come in and examine these "YEARS AHEAD" refrigerators at our display room. Let us tell you about our plan of conveniently spaced time payments.

**\$23.00 DOWN, \$3.16 WEEKLY**

## HAIL BATTERY COMPANY

EXIDE BATTERY

Prof. and Mrs. Gough of John Tarleton college were entertained at dinner by Mr. and Mrs. B. B. Bickerstaff Thursday evening preceding the Thursday afternoon club evening, open entertainment.

WANT ADS BRING RESULTS

## MEXICO HAS 28 STATES, LEAST BIGGER THAN R. I.

WASHINGTON—To follow the news stories from Mexico requires an acquaintance with the 28 states of Mexico.

"The average American, familiar with Canadian provinces, would be hard put to tell whether Chiapas is on the Pacific or Atlantic; where Nayarit is; if Campeche is east or west; or even to pronounce Aguascalientes," says a bulletin of the National Geographic society which describes the 28 commonwealths of the Southern republic.

"In Mexico also are two territories. One is Lower California, dry, arid, mountainous and thinly populated. Fifteen hundred miles away from Lower California lies Mexico's other territory, Quintana Roo, farthest south and east.

"It is common to think of Mexico as a great horn sprouting south from Southwest United States. The position of the two Mexican territory punctures this geographic myth. Mexico is not a thin nation. It is just as wide as it is long. While its westernmost city is Tijuana, over the international line from San Diego, Cal., the outermost point of the Yucatan peninsula lies as far east as Indianapolis.

**Texcala Smallest State**  
"The United States has one smaller state than Mexico's smallest. Rhode Island is 300 square miles smaller than Texcala, which lies fifty miles east of Mexico City. Colima, a state on the Pacific coast of Mexico, directly west of the capital, measures less than Delaware. But the largest state of Mexico, Chihuahua, across the border from New Mexico, is much smaller than the American giant, Texas. It approximates Oregon or Illinois and Indiana taken together.

"It was by a sign on the railway station at Toluca that Col. Lindbergh, on his first flight to Mexico in 1927, found his position and then flew directly into Mexico City. The relations between Toluca and Mexico City might be compared roughly to those between Annapolis and Washington. Toluca is the nearest state capital to the federal city, and its state includes the federal district, just as Maryland incloses the District of Columbia. Physically, however, the comparisons are not so close. Both Mexico City and Toluca lie on a high plateau and are surrounded by mountains.

"Situating forty miles from Mexico City Toluca is visited by residents of the capital as a pleasure resort. It lies in one of the most beautiful valleys of the republic—the valley of Toluca. From this upland plain come the spirited bulls for the bull rings of Mexico City. Cortez founded the city twelve years after the conquest. It lies on part of the original grant made to the Conqueror by the King of Spain.

"The state of Mexico, of which Toluca is the capital, embraces both upland plains and mountains. In addition to the 'valley of Toluca,' it includes the famous 'valley of Mexico,' the heart of the republic with its show haciendas and beautiful scenery. The famed lakes near Mexico City also lie

in the state of Mexico. In the western part of the state are rich mines. The republic's most important river, the Lerma, rises in the state of Mexico and flows westward to a final outlet in the Pacific.

**Richness of Queretaro**  
"Queretaro, the Delaware of Mexico, makes up for its limited area by the richness of its mountains and valleys. The former contain minerals and the latter deep layers of fertile well-watered soil which grow pineapples, dates, bananas, pomegranates, figs, and lemons. Queretaro sweet potatoes have a reputation in Mexico like Idaho potatoes have in the United States. The situation of Queretaro City, capital of the state, 2,000 feet higher above sea level than Denver, gives further clue to the surrounding geography. Mexico classifies Queretaro as one of the Estados del Centros, occupying the elevated valley of Mexico. Through Queretaro runs the trade routes from the north, converging on Mexico City. And by the trade routes come the famous Mexican opals mined in Queretaro mountains.

"The states of Mexico were originally laid out to coincide roughly with the areas occupied by the Indian tribes which the Spaniards conquered. Then the conquerors apportioned the districts among themselves. Thus Hernando Cortez was 'Marquis del Valle,' Oaxaca. As 'Marquis' he laid waste the Zapotec Indians' chief town, built a new city on the same site and named it Artequera, after a town of Spain near Malaga. When Mexico won its independence from Spain the city resumed its old Zapotec name, Huasteca (modified in Spanish to Oaxaca) and the state took the same title. This is a story repeated with variations many times in Mexico. Practically all the states have resumed their Indian names. There are exceptions, such as the states of Vera Cruz, San Luis Potosi, Guanajuato and Nuevo Leon.

"Although the ancient Aztecs, Zapotecs and Mayas are responsible for the boundaries of modern states of Mexico, the borders often outline definite geographic units. There is a classification handy for Mexican states which our republic can not use to advantage. In Mexico there are low states, high states and higher states. The low states are the eastern seaboard units from north to south, Tamaulipas, Nuevo Leon, Vera Cruz and Tabasco. The Yucatan peninsula group of Campeche, Yucatar and Quintana Roo also hugs sea level. Pacific coastal states are, for the most part, low states, too, but not so low as eastern coastal states. Sonora, Nayarit, Colima, Michoacan, Guerrero, Oaxaca and Chiapas. Then come the high states, that is, those which are 3,000 feet above sea level. Chihuahua, Coahuila and Durango. The first two lie in the Rio Grande basin between the wide-open arms of the mountain ranges that border the famous valley of Mexico.

South of Durango are the higher states, and, it may be added, the smaller, and the most populous and the richest states of Mexico. The average elevation of eleven states and the federal district is more than a mile above sea level. Orizaba Peak, 125 miles southeast of Mexico City, is the key pin of a gigantic pair of dividers opened to a 60-degree angle. Each arm of the dividers is a mountain range, the left arm connecting with the Rocky mountains and the right losing itself at Monterrey.

**Federal District Also**  
"Between the arms spreads the fertile mile-high or higher region of blue lakes and fruitful valleys, elevated enough to have an equable climate. Just as the mountain ranges converge on Orizaba, so the trade routes converge on Mexico City. Like Washington, the Mexican capital has been isolated within a small Distrito Federal, administered by the national Congress. But there is this difference: Mexico City is the New York, as well as the Washington of Mexico. Its population of 900,000 nearly equals that of the most populous of the nation's provinces.

"Just as the United States has, in the state of Washington, a Commonwealth named for the hero of its Revolution, so Mexico has honored the father of its freedom from Spain. Padre Hidalgo was a parish priest in Dolores, in the state of Guanajuato, until he led the revolution in 1810. Dolores has now become Dolores Hidalgo. Hidalgo state is one of the most mountainous in Mexico. Six ranges cross the relatively small area creating a maze of peaks and ridges. In this tangle of mountains are some of the heaviest mineral deposits in the republic.

"A near-by area of 8,600 square miles of the valley of Mexico has been carved out to make the state of Hidalgo. South of Mexico City another relatively small state, Morelos, honors another hero of Mexico's war of independence.

"Straddling the Sierra Madre range, running down the west coast of Mexico, Michoacan state judiciously places one foot in the fertile valley of Mexico and the other on the Pacific coast. But its valley acres, with sparkling lakes surrounded by farms, support the major part of its population. To Michoacan many other travelers' Americans go annually in the late fall, for the blue lakes beckon flocks of 'American' wild ducks and geese wintering in

the Southland. Because of the variety of its products, Michoacan earns high rank among Mexican states. It is the greatest cereal-growing state of the republic, and, in addition produces coffee, sugar, fruits, vanilla, wines and tobacco.

"San Luis Potosi is one of Mexico's inland states, consisting of a high and dry temperate plateau intersected by a few deep tropical valleys. Where there is sufficient rainfall there are large upland plantations of corn and cotton and in the warm valleys, coffee and sugar are grown. Cattle raising is a chief industry on the dryer plains and the mountainous districts are rich in gold and silver mines. The state is in a very old settled area, figuring largely in the Spanish colonization scenes of the sixteenth century. An important railway connects the capital of the state, a city of the same name, situated in the cool highlands, with the port of Tampico, on the Gulf of Mexico. The city of San Luis Potosi contains a fine old cathedral and many quaint houses of Spanish colonial architecture.

"Vera Cruz is the richest of Mexico's Gulf coast states. It is densely forested, low-lying and tropical along the coastal plain, but splendid mountain ranges rise along the western border. From the forests come some of the world's costliest cabinet woods and plantations of the lowlands are rich in cotton, sugar, coffee, cacao and vanilla. This state was once the seat of an ancient Indian civilization and magnificent ruins dating from this period are scattered throughout the country. Rainfall is heavy and countless rivers traverse the state from mountains to the sea. Four railway lines converge at the port city of Vera Cruz.

**CELEBRATION IN HONOR OF HENRY MILLER**  
Knights of Pythias Convent at Weatherford For Dedication

WEATHERFORD, Texas —On Sunday April 7th, members of Knights of Pythias of Texas will assemble here to dedicate the boys dormitory at the Pythian Home in honor of Henry Miller, for forty years Grand Keeper of Records and Seals of the order in Texas. The principal speaker will be P. O. Beard, Grand Chancellor, with Mrs. Fannie Gordon of Dallas, Grand Chief of the Pythian Sisters, speaking in behalf of that organization. Other prominent Pythians throughout the

state will be present and take part in the exercises. A suitably inscribed tablet in honor of Henry Miller will be placed in the boys dormitory and will be a perpetual memorial of the work he has done for the order and for the Pythian Home. The ritualistic dedication service of the order will be a part of the dedication program.

This dormitory was completed in 1914, just west of the main building and was the second built of the three buildings that now constitute the plant of the Pythian Home. To the east of the main building is the girls dormitory, the three buildings being connected by archways so that students, teachers and employes may go from one building to another without being exposed in bad weather.

It has been a little more than twenty years since the Pythian Home was established and during that time 418 children have been received in it, with 118 there at present, some 300 children having gone from its protecting care into the active affairs of life. There is not a record of one of these who has gone out from the Home who has not become an active and useful citizen, or who has done anything to reflect on the splendid training received in its walls.

The selection of the location for this Home was an inspiration for there are few more beautiful sites for any public building in Texas. Crowning a gentle eminence the building looks out on a beautiful valley with rolling hills beyond. A few hundred yards south of the Home is the Bankhead highway, the "Broadway of America," along which rolls a constant stream of local and transcontinental traffic. There are two gateways facing this highway with a beautiful driveway connecting them passing through the ground and directly in front of the main building.

The 200 acres of land owned by the Home are ideal for its use. The drainage is perfect and there are excellent playgrounds around the buildings. There are 75 acres of land in cultivation and ten acres in orchards. The soil is

adapted to growing wide variety of crops and is utilized in producing many things needed in the Home. A herd of 15 registered cows, hogs, chickens and turkeys help in furnishing food supplies for the Home and all things give training to the children in the practical affairs of life. Every thing is done on the basis of one happy family, but with a sufficient number of trained employes to look after tasks beyond the ability of the children or that might interfere with their school duties.

Since the fall of 1918 the Home has been under the supervision of Judge and Mrs. F. S. Heffner, as superintendent and matron. Judge Heffner resigned as county judge of Falls County before his term had expired in order to accept the position of superintendent. Both he and Mrs. Heffner have given their hearts and soul to this work, they have been father and mother to the children under their care. Judge Heffner is a man of wide business experience and he has been invaluable in financing the Home and in helping the directors shape its financial affairs. Only those consecrated to the service of humanity could have accomplished what he and Mrs. Heffner have.

The dedication ceremony on April 7th will be a recognition of a great task that has been faithfully done. The dedication of this

building to Henry Miller, honor to one worthy of it is ever mean as much as the of him carried out by the talis of this Home. Not only building but all of those Home have been consecrated mothers prayers, have been things of life and beauty,ish laughter, have been to humanity by the good done.

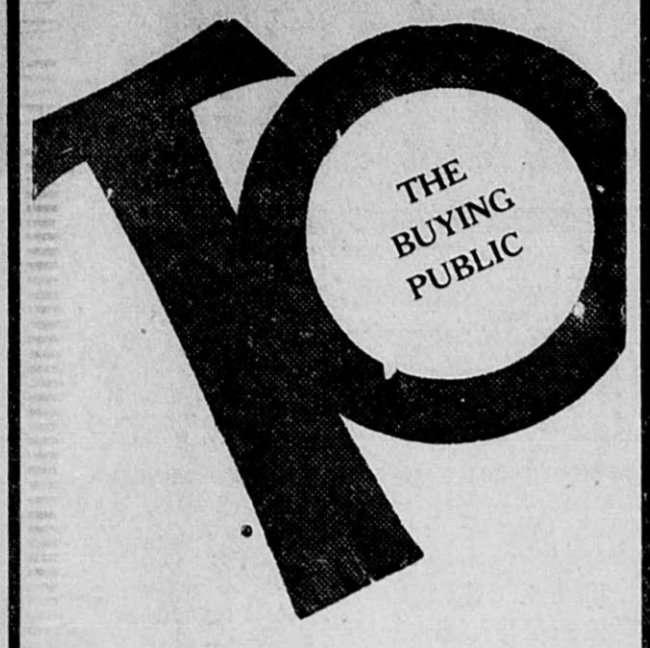
KELVINATOR Electric Refrigerators  
Oldest Manufacturers of Refrigerators made.  
KIMBRELL HARDWARE West Side Square

J. E. Bills B. E. McGee  
BILLS TAILORING  
Made-to-Measure Clothing  
Fancy Dry Cleaning  
Pressing and Dyeing  
Phone 57 207 So.

Special Offer For  
MOTHER'S DAY  
The One Gift that Only You Can Give  
YOUR PHOTOGRAPH  
\$10.00 value for \$4.98  
Six 4x6 photographs in cases folders and one 8x10 on colored paper, only \$4.98  
BRUBAKER STUDIO  
Phone 600 for Appointment.

April Sale of Dresses  
These are the leading styles for the leading month of the year. Embodied in these models are the stylish details you have seen stressed in the fashion magazines and fabrics of the most modern trend.  
For a few days we offer you special inducement in price of these new style dresses.

SEE and HEAR  
WARNER BROS.  
present  
FANCY BAGGAGE  
with  
AUDREY FERRIS and MYRNA LOY  
Directed by JOHN ADOLFI  
The VICTORVILLE THEATRE  
Five years in jail for one million! See what a beautiful society deb did after she decided whether the prize was worth the price in this absorbing comedy-drama.  
TUESDAY & WEDNESDAY  
RAMON NOVARRO  
THE FLYING FLEET



WE OFFER the greatest savings ever offered in our history during this quitting business sale.

THE building is leased, we must vacate and we are throwing our entire stock of high grade dry goods on the block at a tremendous sacrifice.

YARD GOODS, thousands of yards of silks, flat crepe, crepe de chine, and georgettes as well as all kinds of cotton fabrics at these low prices open the way for home dressmakers to save half or more on their materials.

OUR shoe department offers hundreds of bargains including the famous Martha Washington Shoes as well as other high grade lines.

SEE US BEFORE YOU BUY  
BUY YOUR SUPPLY  
**AT**  
THE BOSTON STORE

SUMMER BOUND!

HERE'S Footwear that invites you to enjoy a complete Summer of foot ease—also summer of style, service and incidental value.

6.00

Moldave's  
EASTLAND, TEXAS

**April Sale of Dresses**

These are the leading styles for the leading month of the year. Embodied in these models are the stylish details you have seen stressed in the fashion magazines and fabrics of the most modern trend.

For a few days we offer you special inducement in price of these new style dresses.

\$19.75 SILKS  
In this lot you will find all the Spring and Summer colors in solid and figured silks also some ensembles are to be found. All were well worth the original price of \$19.75. A very special value at

\$15.75

\$24.50, \$26.50 DRESSES  
Beautiful Crepe Dresses in navy, tans, and figured silks. All this season's styles. Some with scarf of same material, others in ensembles. Values \$24.50 and \$26.50, for a special sale priced at only

\$18.75

\$34.50 TO \$38.50  
These Dresses are worth \$39.50 to \$45.00 and the styles are the newest, and the colors are the season's leading shades. Whether you wish a dress or an ensemble it will pay you to see these values.

\$26.50

**Faggy's**  
EASTLAND'S FAVORITE SHOPPING PLACE  
Dry Goods & Clothing