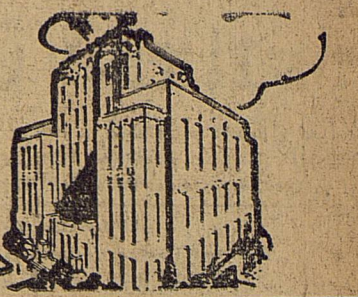




Eastland Telegram

"COVERING EASTLAND COUNTY"



VOLUME TWENTY-EIGHT

EASTLAND, TEXAS, TUESDAY, OCTOBER, 29, 1957

No. 79

Moore ... ABOUT EASTLAND by Virgil E. Moore

This early frost caught everybody looking the other way. Guy Parker even tells us that he lost his sweet potato crop. He blames the boys who wrote the almanac. Last time we saw him he was mumbling something about " . . . whoever heard of frost in October in Eastland County?"

We hate to lose ballgames, but if we have to lose 'em we want it to be like the one Friday night. The Mavs were keyed up, and played good ball. They ended up on the short side of the score, but they sent the Albany Lions home with the knowledge that they were lucky to win. The Mavs are apparently out of the race for the district crown, but Eastland could still decide who will be the winner. Throckmorton is the team favored by most sides now, and it would be a feather in Eastland's hat to beat the district champs. You might remember that Eastland did just that back in 1954 when Dublin won the championship.

Not long ago we traveled from one end of Highway 6 to the other. We can truthfully report that the 10-mile strip between Eastland and Carbon is the worst stretch on the highway, which begins down around Hempstead (not so far from Houston) and ends up around Breckenridge. In fact, most of the highway is in excellent shape. The thing wouldn't make us unhappy if someone would just put the highway on the planning stage, but it seems that folks are happy with it the way it is.

In this day and time of high taxes, it might be well to note some facts prepared by the Institute of Life Insurance. For instance, we note today that in 1951 total governmental spending (Democratic administration) was 79.4 billion. In 1955 total governmental spending was listed at 105.2 billion. The highest World War II expenditure was 103.1 billion.

That 103.1 billion expenditure came in 1944. Eighty-six percent of the money was spent for national security and 14 percent for civilian programs. In 1956 only 40 percent of the money was for national security and 60 percent for civilian programs. In 1953, when 103.1 billion was spent, the split was 50-50 between civilian and national security programs.

In other words spending is going up each year mainly because the American people are demanding and getting more civilian programs. The figures we are using include Federal, State and local expenditures. What it amounts to is that Americans are demanding more for their tax dollar. They are getting more, but it's costing them more to get it. It reminds us of Phil Harris' old song, "Where Does It Get You In the End?"

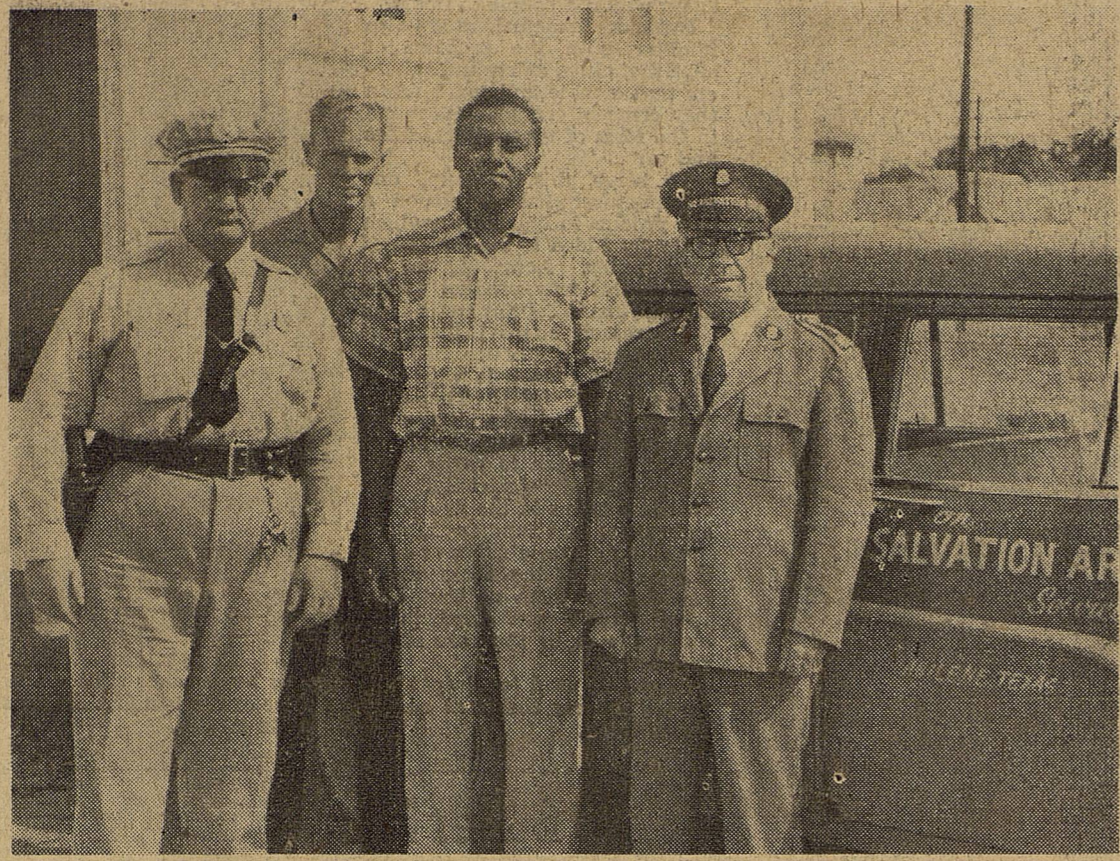
The University of Texas Bureau of Business Research came out with some good news for Eastland County. Turkey growers this past week. The Bureau says that a 30 percent increase in turkey consumption has been noted so far in 1957. The Bureau comments that this would seem to indicate that homemakers are gradually getting away from the idea that turkey is primarily a Thanksgiving - Christmas dish. The Bureau also reports that "Prospects for the Texas turkey industry are called 'reasonably good' for the long run period ahead, despite an expected drop in prices this fall as a result of increased production."

FREYSCHLAG INSURANCE AGENCY
presents the

WEATHER NEWS

High	63
Low	49
Rain	0
Total Rain for Oct.	9.44
Lake Leon Level	75'
Total Rain for Year	26.53
Forecast	Showers

Teeny Weeny Gas Burners!
Largest selection of new sedans, hardtops, convertibles in this area. Prices start at \$1095.



SALVATION ARMY AID—The United Fund drive in Eastland this year should have been helped considerably during the recent floods here. In the picture above Police Chief Ray Laney; Hubert Westfall, Salvation Army chairman; Garland Washington, Douglas School principal; and a captain in the Army pose outside Douglas School after clothes were distributed to needy families. Both clothes and furniture went to families who lost all in the flood. (Staff Photo).

Foreign Flu Closes Two Schools; 60 Absent Here

That foreign flu seems to be getting a strong foothold in Eastland County.

Schools in Ranger and Scranton are closed today after many students and teachers failed to attend classes. In Eastland absences are double normal but the situation will have to get a lot worse before schools close here. This morning some 55-60 students were absent, according to Supt. Wendell Siebert. Siebert said normally only about 30 students would be absent. "We will have to have at least 100 students out before we could consider closing down," he

added. Last year local schools were forced to close.

At Scranton schools closed after 57 of the 102 students were absent, along with three teachers. At other county schools the situation is about like it is here.

Ranger Closed For Week

The week of school being lost this week on account of influenza will have to be made up later, according to Supt. G. B. Rush, but he wasn't ready at this time to announce just how or when the lost days would be recovered.

The lost days can be made up by whacking some of the holidays

off of Christmas, or doing away with some regularly scheduled holidays later in the year, or by extending the time when school is to turn out next spring, or by a combination of all of them.

Supt. Rush said they would announce later just what they would do to it.

When school was dismissed Monday morning, there were 182 absent by actual count, and it is said that several students went home before the count was made. It was estimated that in round numbers, at least 200 pupils were absent in all the schools together.

All last week, absentees ran from 170 to 175 per day. The average daily attendance records couldn't take it any longer with the situation this week being worse instead of better, Rush said.

Style Fresh Chevrolet Slated To Go On Display Thursday at Fullen's

Dramatic new styling and outstanding engineering advances mark the 1958 Chevrolet which makes its bow all over the country this week.

Labeled "the car of the year" by newsmen and technical writers who have seen it in private showings, the new model will be unveiled Thursday, October 31, at Fullen Motor Company in Eastland.

The 1958 Chevrolet is new from bumper-to-bumper and from frame to roof line. Nothing about the car was tooled from an old die. The all-new features include:

Longer, Lower, Wider
A completely re-styled car which is longer, lower and wider and emphasizes flowing sculptured lines from the dual headlamps to softly flared rear fenders. An X-shaped frame which allows a lower silhouette but retains ample head room and increases leg room and luggage space.

Two suspension systems for a more luxurious ride along with remarkable handling, stability, and durability. Sturdy coil springs.

Installment Loans Custom Made For Each Customer
EASTLAND NATIONAL BANK
Member F. D. I. C.

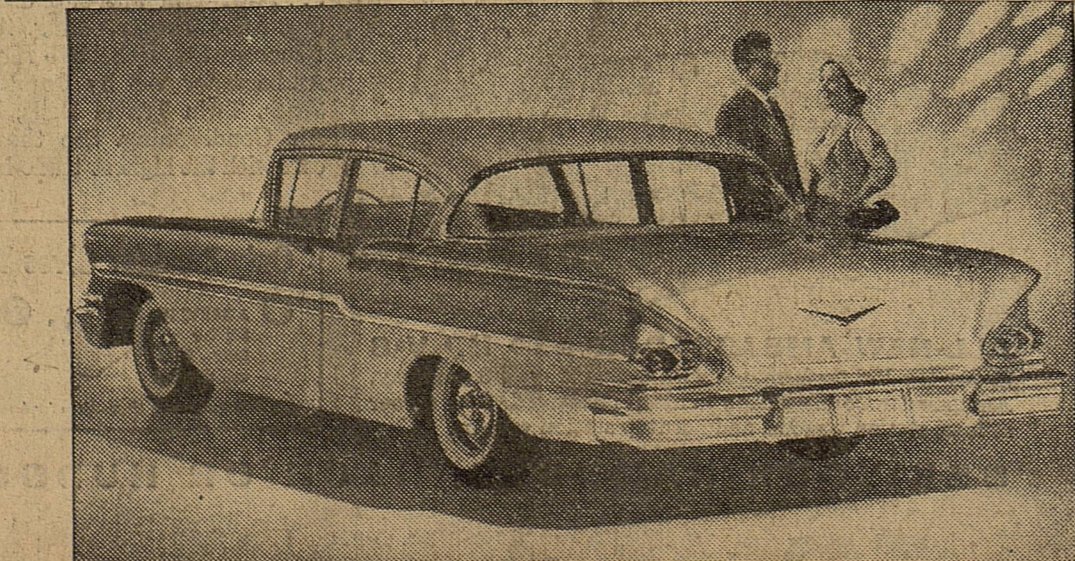
front and rear, are standard. A new "Level Air" system which automatically adjusts to all load weights is optional.

A 348 - inch engine which is all new from fan to flywheel. Designed primarily around a new combustion chamber, the optional Turbo-Thrust V6 offers greater torque for improved mid-range performance. Some idea of the fresh newness of the Chevrolet line is suggested by the new body groupings and identification.

In recognition of the growing popularity of station wagons, an exclusive five-unit series of this body type has been established.

New Series Announced
The Bel Air series is continued, but adds among its six models a sumptuous sport coupe and convertible under the Impala nameplate, introduced on a "dream car" at the General Motors Motorama of 1956.

In the middle range of the low-priced car bracket is a Biscayne series, with two sedans. The bottom end of the price spread will be occupied by three models making up the Delray series. In 1957 comparable series were known as Two-Ten and One-Fifty, respectively. (Continued On Page Six.)



NEW CHEVY STYLE—That new Chevrolet style you have been hearing about will be yours to see Thursday at Fullen Motor Co. in Eastland. The side and rear treatment of the Biscayne four-door sedan, pictured above, points up the complete job of restyling on the 1958 Chevrolets. Note the broad, flat rear deck lid, the graceful gull-wing sweep of the rear fender line and the full-length molding that marks the new Chevy. You can't see it for 1958 naturally has dual headlamps and is set

County Is Requested To Repair Hospital

Cost of Project Is Estimated at \$5000

A committee of members of the Ranger General Hospital Board of Directors appeared before Eastland County Commissioners Monday to request that some \$5000 be spent to repair the city-county hospital.

Ranger General Hospital is jointly owned by the City of Ranger and Eastland County. Ranger City Commissioners name three members of the Board of Directors and the county names three.

Appearing before the Commissioners Court Monday were Morris Newnam and Bill Herrington of Ranger and Don Parker and Bernard Hanna of Eastland. The four men asked that the County dip into its healthy permanent improvement fund to repair the building. They said there were cracks in most of the hospital's walls and that the kitchen is "in terrible shape."

Newnam pointed out to the Commission that, "The hospital is your responsibility and we are just doing the job for you." It wasn't long after that statement that Rising Star Commissioner Bob Carter said he would be "in favor of closing it (the hospital) down" and sending county patients to "Gorman and other places."

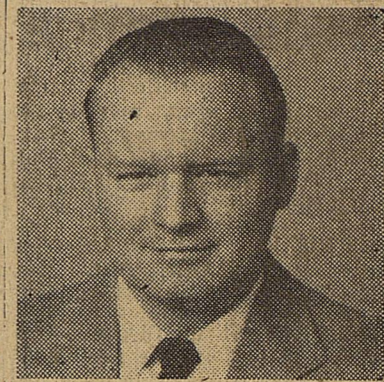
Commissioner J. B. (Tip) Arther of Precinct 1 (Eastland-Ranger) replied, "I'm not in favor of closing it down, I'll tell you that!" He then suggested that Carter get a few more facts. Carter replied that he was giving his honest opinion.

Herrington asked if the Court would feel differently about the situation if the City of Ranger would allow the county full control of the hospital. Commissioners replied that it might, although they said "we couldn't pick a better board."

It was agreed that County Attorney Joe Nuesse would be requested to seek an opinion from the attorney-general as to whether county money could be spent on the hospital or not.

At present the county gives \$150 a month and Ranger General Hospital cares for all county patients. Arther estimated it would cost \$1000 a month to keep the patients in other hospitals. Commissioners, in other action, voted to authorize C. R. Burk to

attempt to purchase \$25,000 worth of the county's 1953 road and bridge refunding bonds at a price not to exceed par. Only Arther voted against the move. Other commissioners said they voted yes to attempt to save some \$8750 in interest. Arther declined to favor the move, saying the Court couldn't tell how much money would be needed out of the fund to carry on county operations. A report of the Home Demonstration agents was also heard.



UF CHAIRMAN—James K. Smith is downtown chairman of the 1957-58 United Fund campaign drive. He has named four captains to help in that stage of the campaign.

Blacksmith Shop In Cisco Opened In '85

Editor's Note: This is the 34th in a series of articles taken from the book, "History of Eastland County, Texas," written by Mrs. George Langston in 1904.)

Eppler & Russell
Nineteen years ago, when there were only two farms between Cisco and Rising Star, and all the cowboys for 20 to 30 miles came here to get their horses shod, Sel Eppler came to Cisco, bought an interest in the blacksmith shop owned by T. W. Plummer, and has since been working at the same stand and at the same prices. Business has rarely been so dull that he did not have a partner—usually enough to give both more than they could do.

The firm has three forges well equipped, owns a 60 x 24 foot building, and is capable of meeting all calls.

Mr. Eppler, who has been in Texas 50 years has a wife and three children. M. B. Russell was born in Georgia, and came to Texas in 1894, locating here two years ago. He is an energetic young man, a member of the Presbyterian church and has a wife and two children and possesses a pleasantly situated home.

Mayhew & Company
This rapidly growing business was established in 1900, and carries a full line of implements and grain, both for the retail and wholesale trade.

They handle the famous Blue Fibron line of buggies, the Old Reliable Fish Bros. and Peter Schuttler wagons, and the Moline and Bradley line of implements. Having their own corn mill, they are enabled to offer for sale only the very best grain products the market affords. They carry a full stock of all kinds of field seeds, and are extensive pecan dealers, having shipped eleven carloads from Cisco the fall of 1902.

In addition to their grain and implement business they deal extensively in live stock, and always have mules and horses to sell, either for cash, trade or on time.

The senior member of the firm, Aaron L. Mayhew, has charge of the implements and livestock departments, Avner L. Mayhew of the grain department. Both are

Peanuts Start To Roll Out In Loads This W'k

There's no use keeping peanuts in the ground another minute because there wouldn't be another dozen groobers made in the county if they were left alone for a month. That is what many farmers are saying as they begin their big "operation plowup" this week.

Several peanut crops have already been harvested, but the ground has been too wet to get into many of them. Tractors, however, can negotiate the fields this week and they're going after them.

One of the most optimistic reports made yet on the peanut crop came from Col. Gene Baker, editor of the Gorman Progress, last week. When Baker dies he had just as soon be reincarnated into a peanut as anything else, and he knows just about as much about them as anybody alive in Eastland County. He has personally looked under every vine in the county and he said last week when all the crop was in, it would be a pretty good one, and enough to cause dancing in the streets.

Although the crop will not be as heavy as once hoped, it is expected to average around 20 bushels to the acre, maybe a little more. Government loan price has been set at \$210.57 a ton for 66 grade peanuts.

Installment Loans Custom Made For Each Customer
EASTLAND NATIONAL BANK

Funeral Services For Mr. Williams 2:30 Wednesday

Funeral services for J. W. Williams, 79, a native of Eastland, will be held Wednesday at 2:30 p. m. in the Hamner Funeral Home chapel with Rev. Richard Smith III, pastor of the First Methodist Church, officiating.

Mr. Williams died this morning at five at Eastland Memorial Hospital. He was born Feb. 3, 1878 in Eastland.

Nov. 14, 1900 Mr. Williams married Miss Willie McGough at McGough Springs. He was a retired rancher and a member of the Methodist Church. Mr. Williams was one of three committeemen who established the Eastland bank.

Survivors include his wife; one son, Bill of Fort Worth; two daughters, Fay Williams of Eastland and Mrs. Tom Wynn of Austin; four sisters, Mrs. Lora Norris, Mrs. Etta Harbin, Mrs. Mable Norris and Ella Garrett, all of Eastland; one brother, Curtis Williams. (Continued On Page Six.)

Castleberry Is Named Manager By Refining Co.

Frank P. Castleberry, son of Mrs. Frank Castleberry of Eastland, has been named manager of the Atlantic Refining Co.'s new district office in Calgary, Alberta, Canada.

Castleberry, a 1930 graduate of Eastland High School, will be in charge of the new office as well as manager of all land work. The SMU graduate has been with Atlantic for 17 years, spending the last six years in Midland. He is married and has four children, Karen, Frank, Jr., May and a daughter, Charolotte. They move to Canada this week.

The Calgary office will handle land and exploration work in Alberta and British-Columbia.

Bold New Buick Is On Display Now At Muirhead Motor Co. In Eastland

The new 1958 Buick went on display today at Muirhead Motor Co. in Eastland.

The new models, with dynamic new styling, feature the new miracle ride, a revolutionary new Dynaflo transmission, improved brakes with thicker linings and a host of other engineering changes.

The new Buicks come in five series, topped by the new Limited, a distinctively-styled luxury model which is Buick's new entry in the prestige-car market.

"This is the beginning of a new era for Buick," Jack Muirhead said. "Our new styling, which features the most dazzling grille design in the history of Buick, is a complete departure from the industry's traditional front end design."

"With the new air-ride suspension, which literally floats the car on four columns of air; the new flight-pitch Dynaflo transmission, which provides a spectacular increase in performance, and

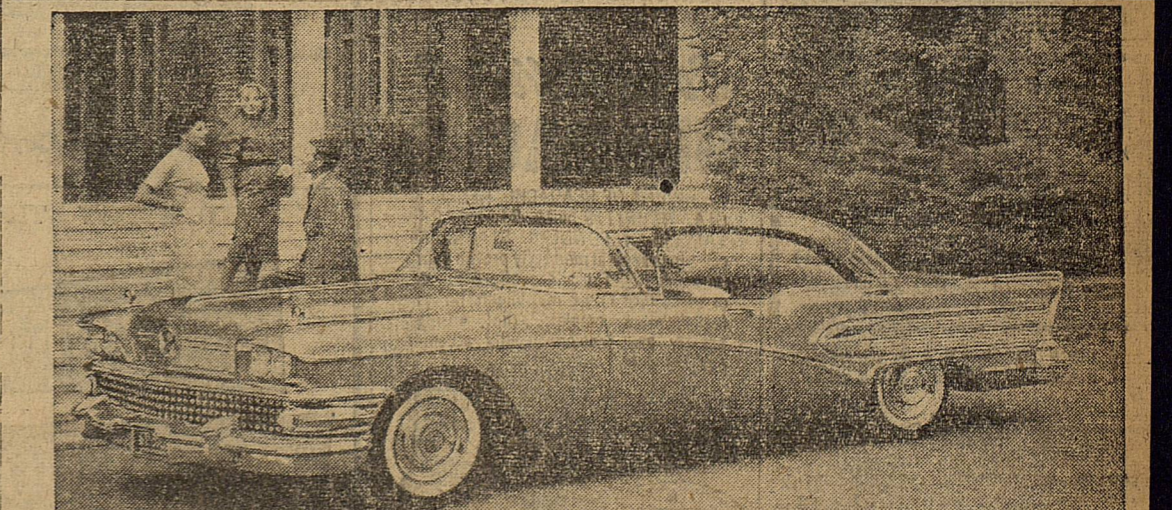
the new air-cooled aluminum brakes, Buick attains a new high in automotive engineering."

All models are equipped with dual headlights on each front fender.

The new styling features are apparent from every angle with the most spectacular change in the grille which is unlike anything ever offered in the industry.

Previously, grilles have been distinguished by vertical or horizontal bars of chrome, varying in design. Instead of chrome bars the new Buick grille is distinguished by chrome squares, like jewels set in four rows that extend all the way across the front to the outer extremities of the car, accentuating the lowness and breadth. Each chrome square is composed of four triangular surfaces designed to reflect maximum light, giving the front end greater sparkle and beauty.

The fender line has been lowered. (Continued On Page Six.)



BOLD NEW BUICK—Muirhead Motor Co. today introduced the new 1958 line of Buick cars. Bold lines of Buick's 1958 styling are exemplified in the luxury and beauty of the Buick Special, the big volume seller in the Buick line. Dual headlights and a dazzling new grille add breath and lowness to the front end design. The Special, mounted on 122-inch wheelbase, boasts new and bigger brakes, and exquisite new interiors the

Eastland Telegram

Eastland County Record established in 1931, consolidated August 31, 1951. Chronicle established 1887, Telegram established 1923. Entered as second class matter at the Post Office at Eastland, Texas under the act of Congress of March 3, 1879.

TIMES PUBLISHING COMPANY
 Published Tri-Weekly—Tuesdays - Thursdays - Sundays
ONOUS DICK and JOE DENNIS, Publishers
VIRGIL E. MOORE, Editor
CAROLYN COLLINS, Society Editor

One week by carrier in city15
 One month by carrier in city65
 One year by mail in County2.95
 One year by mail in state4.95
 One year by mail out of state6.95

NOTICE TO PUBLIC—Any erroneous reflection upon the character, standing or reputation of any person, firm or corporation which may appear in the columns of this newspaper will be gladly corrected upon being brought to the attention of the publishers.

Classified Ads..

Cards of Thanks charged for at rate of \$2.00 Each

FOR RENT -

FOR RENT: Modern four room house, soft water. See Travis Reese, Olden.

FOR RENT: Small furnished house, close in. Apply 210 E. Valley, after 6 p.m.

FOR RENT: Apartment, bills paid. Prefer elderly lady or gentleman. 207 South Walnut.

FOR RENT: 2 furnished rooms, private bath. Phone 811-W.

FOR RENT: Furnished apartments. 611 Plummer.

FOR RENT: Four unfurnished rooms in Duplex. Phone 394-J.

FOR RENT: Newly decorated apartments. Phone 1085-W.

FOR RENT: Newly decorated apartment. Hillside Apartments. Phone 9520.

FOR RENT: Five room unfurnished house, 103 N. Ammerman. Phone 446-J or 270.

MISC. FOR SALE -

FOR SALE: Registered Siamese kittens. Bill Parten, Carbon.

FOR SALE: Pecan crop. Contact Clyde Brymer, 1207 East 16th, Cisco.

FOR SALE: Special Rubberized paint, \$3.59 per gallon. The House of Color, Highway 80 east, Ranger.

FOR SALE: Rye seeds for planting, nice well matured seed, clean enough. A. H. Cox, Ivan Star Route, Breckenridge, Tex.

FOR SALE: 1956 Evinrude motor, used, 15 miles. Original price \$385, Sale price \$275. Phone 421, Ranger.

NOTICE
FRESH DRESSED FRYERS
 Every Day Special Price for Your Deep Freeze
 —also—
 Chicken Blood Bait . . . Guaranteed to stay on any type hook.
PHONE 110
WALKER Dressing Plant

Insurance AND Real Estate
D. L. KINNAIRD
 Life - Fire - Auto - Farm
 Follo - Bonds
 37 years in the Insurance
 Business in Eastland

Overseas Veterans Welcome
 Karl and Boyd Tanner
 Post No. 4186
VETERANS OF FOREIGN WARS
 Meets 2nd and 4th Thursday
 8:00 p.m.

HELP WANTED
Male
 HELP WANTED—MALE—Make \$75 up weekly. Full or part time. Take orders for America's largest selling liquid fertilizer. Used by farmers since 1946. Liberal profits. No investment. Write "Natures" Plant Food Co., 435 Monroe St., Marion Ohio.

SPECIAL NOTICE

NOTICE: Build a chain link fence. We do all the work, complete the fence. No down payment, 3 years to pay. Call Eastland Chain Link Fence Co. Phone 108-J. Marvin Hood, manager.

NOTICE: Can take five ladies for reducing plan. Phone 653. Mrs. Bert Fuller, 613 West Moss.

NOTICE: Valet Rug Cleaner—Our truck will pick up the first Monday of each month. One week service. Wall to wall carpet and furniture cleaned on location by appointment. Call Mrs. J. B. Johnson 132 Eastland for information. Satisfaction guaranteed. A. C. Roberts, Orchard 33561, Abilene.

REAL ESTATE - FOR SALE

FOR SALE: Six room house. Just remodeled, inside and out. Knotty pine kitchen and cabinets. Phone 1137-W.

FOR SALE: 3 bedroom house. 605 S. Bassett. Call 720-W-2 or 707-W-2.

FOR SALE: Three room house, 1405 S. Bassett.

FOR SALE IN CISCO: Three bedroom brick home on paved corner lot. Central heating, dish washer and garbage disposal unit. Double garage and nice garage apartment. Phone 848, Eastland.

ED V. PRICE & CO. TAILORED SUITS
 Sport Coats Slacks
C. L. FIELDS
 Phone 571 103 W. Valley

AUTOS FOR SALE
 FOR SALE: 1956 Ford, cheap. Call 839.

Reduce Without Dieting
 Use my Stauffer Reducing Machine. Reasonable rates.
 Mrs. Bert Fuller, 613 West Moss. Phone 653.

MAJESTIC IN EASTLAND
 Tuesday & Wednesday
GREAT LOVER! BOLD WARRIOR! DARING ADVENTURER!

OMAR KHAYYAM
 starring MICHAEL WILDE, DEBRA RENNIE, PAGET BREWSTER, DEREK HAYES, RAYMOND MASSEY
VISTAVISION TECHNICOLOR

CALL 601 FOR CLASSIFIED ADVERTISEMENT

Quick Relief of HEADACHE

Ease PAINS OF HEADACHE, NEURALGIA, NEURITIS with STANBACK TABLETS or POWDERS. STANBACK combines several medically proven pain relievers. The added effectiveness of these MULTIPLE ingredients brings faster, more complete relief, easing anxiety and tension usually accompanying pain. Snap Back with STANBACK against any preparation you've ever used.

Guaranteed by Good Housekeeping

ATTEND THE CHURCH OF YOUR CHOICE EACH SUNDAY

First Methodist Church Speaker Tells of Christianity In Far East

Half way around the world a Sunday-school class of elderly women, of which the youngest was 75 years old, baked and sold pies to support a young ministerial student in the seminary.

Sunday that same ministerial student, now a full-time minister of the Methodist Church in the Philippines Conference spoke twice at the First Methodist Church.

Rev. Phillip del Rosario spoke at a joint session of all adult classes of the Sunday School about better understanding among peoples of the earth. He emphasized the truth that the ethical approach would not solve the problem, only salvation under Christ would have better understanding of men throughout the world. He illustrated his talk with colored slides showing typical scenes of his work in the Philippines.

Later Rev. Del Rosario spoke at the regular Sunday morning services. He chose as his subject the title, "Echo The Hymn," based on the words of the hymn, "A Message to the Nations I have."

Rev. Mr. Del Rosario is now studying at Perkins School of Theology, Southern Methodist University, on a Crusade for Christ Scholarship. He is a graduate of the Union Theological Seminary in Manila and while he is doing advance work in theology his wife is studying to equip herself to better minister to the people of her native land. When the couple complete their studies at SMU they will return to the Philippines or their continued work.

Rev. Del Rosario is not exactly a missionary in the sense most Americans think of missionaries. He is second generation of a Methodist preacher family. His father was a Filipino Methodist minister before him. And in his youth Mr. Del Rosario said he was determined to be almost anything except a Methodist minister. That, however, was before he got the Call to Christ's work for the advancement of His kingdom on this earth.

Rev. Del Rosario said it was nothing for his father to walk

P-TA Halloween Carnival To Be Held Thursday

Oct. 31 is Halloween and as it is each year the P.T.A. of West Ward and South Ward have planned a Halloween Carnival to be in the high school gymnasium. The Carnival will open at 6 p.m.

The P.T.A. invites everyone to eat supper at the carnival at the food booth which is sponsored by the fifth grade. There will be hot dogs, pie, coffee, milk and cold drinks for everyone to buy.

Each room will have a certain booth the room chairman will be responsible for that room's booth. Finance chairman for South Ward P.T.A. is Mrs. J. D. Early and Mrs. Rudolph Little is finance chairman for the West Ward P.T.A.

There will be a Spook House, Country Store, Parcel Post Sale and many other booths.

Beethoven Junior Club and Scale Runners Club Attend T.F.M.C.

Beethoven Junior Music Club and Scale Runners Club attended the Sixth District Texas Federation of Music Club convention held in Brownwood on Oct. 24, 25 and 26. Junior day was on Saturday which closed the convention. This was the Thirty-first Annual Convention and it was "most successful."

Mrs. Ellie Locks is president of the Sixth District and Mrs. Walter Castleman is Sixth District Junior Counselor.

Beethoven Junior Music Club was represented in the all district program by Linda Huckabay and Jan Robertson playing a piano duo, "Grande Valse Deconcert" by Holst.

Jo Ann Morren read the report of the "very wonderful" year's work of the Beethoven Club. Mrs. A. F. Taylor is their counselor.

Patricia Ann Liles represented the Scale Runners Club in the all district program. She played "very beautifully" "Sonatina" by Kuhlman.

Festival chairman of the Festival held last spring, complimented her before the convention on her lovely playing and winning an engraved loving cup.

Donna Kay Ford, convention delegate for the Scale Runners, gave a full length report on the club's work. Mrs. Taylor is also their counselor.

All district mass chorus was directed by W. D. Wheatley, of San Angelo Sixth District junior choral chairman. Members from the Taylor Studio of Eastland in the mass chorus were: Marsha Treadwell, Sherry Jo Butler, Marcia Petty, Donna Kay Ford, Patricia Ann Liles, Sherry Decker, Suzanne Butler, Linda Huckabay, Jan Robertson, Jo Ann Morren and Jeanne Morren. There were 125 voices harmonizing in the three part junior choruses.

Chester Parks of Brownwood directed the all district orchestra. About 50 played in the orchestra.

Federated Clubs playing on the all districts program were from San Angelo, Miles, Abilene, San Saba, Brady, Goldthwaite, Lometa, Brownwood, Sweetwater and Eastland. The clubs gave a program of voice, piano, accordion, tap and ballet dancing.

A luncheon was served on the

College Assembly Sponsored by Business Dep't.

On Friday, October 25, the Business Department of Ranger College, sponsored by Miss Vivian Simmons, had charge of the assembly program. The invocation given by Miss Simmons opened the assembly. After student and faculty announcements, some of the business students gave a demonstration program of the operation of several office machines.

Students participating were Roger Kelly, Barbara Mauldin, Wilda Sides, Beth Calvert, Elpidia Gonzales, and James Tull. James, posing as Governor Priced Daniel, dictated a letter into a dictaphone concerning the college game on Saturday night, urging students to support the team and wishing the team luck. The letter, in turn, was transcribed by Beth.

Following the demonstration, Miss Simmons introduced Rev. Mr. James H. Ellison, of the First Methodist Church. He gave an excellent speech on school loyalty which was well received by the student body.

Rinse Takes Static From Synthetic Fabrics

BY EDNA MILES

MOST homemakers are in love with man-made fabrics. These drip-dry timesavers make housekeeping easier, quicker and much more efficient. They cut down greatly on the load of family ironing each week and make it possible for a soiled garment to be clean and in service again within a couple of hours.



This homemaker adds a new liquid fabric softener to the last rinse of her laundry. Maker says it eliminates static from man-made fabrics.

But most homemakers are also familiar with the problem of slips that cling, shirts and sweaters that crackle and spark when they come in contact with metal in the form of typewriters, desks and cars.

To solve this problem, one manufacturer has developed a new product in liquid form which is simply added to the last tub of rinse water. According to the maker, this new product makes all man-made fabrics static-free. The reason for this is that most of the newer synthetics shed water quickly (which is why they drip-dry so fast). Therefore, there's no moisture left after they're washed. And there's no "path" of water to carry away the charge of "electricity." The charge remains in the dry fabric and causes that annoying cling.

The new fabric softener coats the surface of the fibers and is retained by them so that even when clothes are dried in an automatic dryer, they are static-free.

It can be used for drapes, slip covers and car covers as well as for clothing.

Suzanne Butler Leads Study On Instruments of Beethoven Club

Beethoven Junior Music Club studied instruments in the meeting Monday night in the home of Mr. and Mrs. Artie Liles. Their daughter, Patricia, was hostess.

Suzanne Butler was leader of the discussion on the organ. She gave the history of the Salt Lake City Tabernacle organ. Others joined the discussion most of them had seen or heard of the Salt Lake City Organ. They discussed the piano and others instruments.

Georgia Bess Faircloth began the program by playing "The Magic Flute" by Mozart, arranged by Schamm. "Rondian" by Schamm was played by Sherry Decker. Jo Ann Morren played "Our School Will Shine Tonight" Patricia Ann Liles played "Sonatina" by Kuhl-

lau. She represented the Scale Runners Music Club by playing the same number at the Sixth District Convention in Brownwood. Four members sang in the mass chorus at the Convention.

Linda Huckabay and Jan Robertson played "Valse Deconcert" by Holst. They represented the Beethoven Music Club at the Brownwood Convention. Jo Ann Morren read the report of the club that she read at the Convention.

Suzanne Butler, president, presided over the short business meeting. Minutes were read by Linda Huckabay in the absence of the secretary, Susan Johnston. It was reported by the treasurer that all dues and bills were paid. After the meeting a Halloween

social was enjoyed by the group. The table was laid with an orange cloth and centered with an artistic arrangement of pumpkin and fruit.

Cake decorated in orange and Halloween candy were served. Favors of tiny banjos and violins with Halloween faces attached were given to each guest.

Mrs. A. F. Taylor, counselor, made the announcements of the season's program.

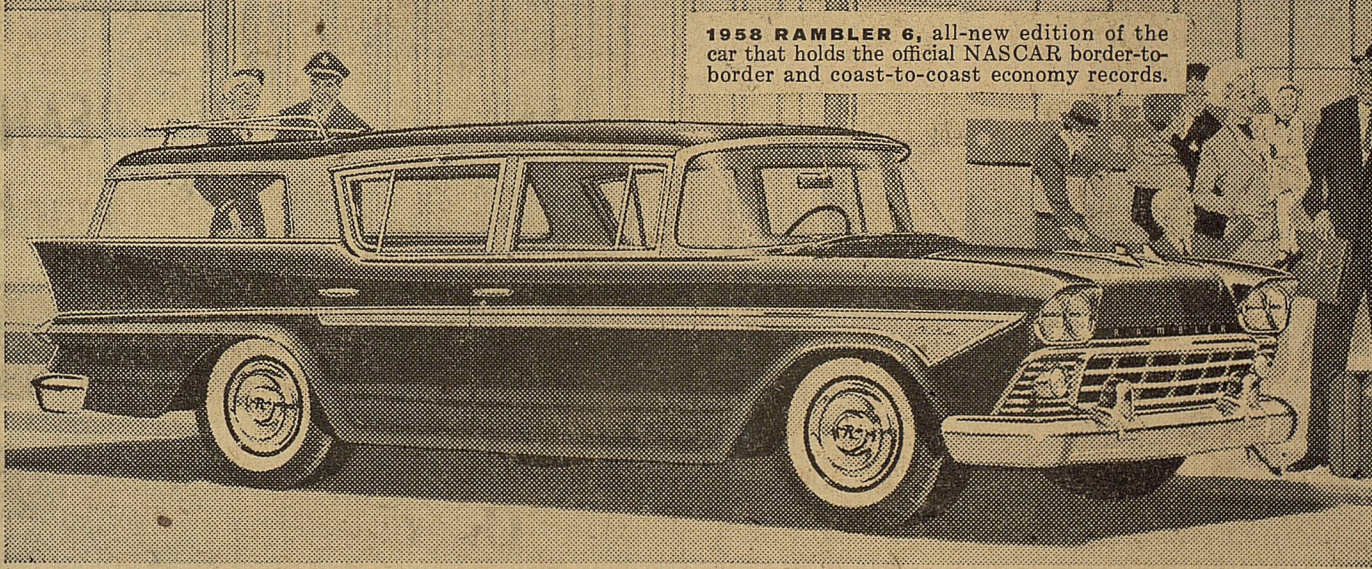
The next meeting will be in the home of Mr. and Mrs. Kenneth Butler, 1506 West Commerce on Nov. 18 at 7 p.m. Suzanne Butler will be hostess.

RETURNED FROM SUMMER HOME

Mr. and Mrs. Dudley L. Houle have returned home from their summer home in Sturgeon Bay, Wis. They spend each summer there. They returned home Saturday.

Everything's New But the Record Economy!

All-New '58 Rambler



1958 RAMBLER 6, all-new edition of the car that holds the official NASCAR border-to-border and coast-to-coast economy records.

Rambler Cross Country Station Wagon, above, is one of 11 all-new Rambler 6 and Rambler Rebel V-8 models for 1958

NOW—With All-New Jet Stream Styling, All-New Pushbutton Driving . . . Choose from 17 Models . . . Two Wheelbases!

Now, the car that's first in economy, first in sales gains, is first in smartness, too—brilliantly new with jet stream styling. All-new Pushbutton-controlled Flash-O-Matic Transmission . . . Pushbutton Windows . . . Pushbutton Transistor Radio . . . Powr-Lok anti-slip differential . . . America's first full-dip rustproofing. All-new power choices: Economy Six, Rebel 215 HP V-8, and new 270 HP Ambassador V-8 by Rambler. Airliner Reclining Seats, Twin Travel Beds, lowest-cost All-Season Air Conditioning. See the all-new lowest-priced cars with the highest trade-in value. . . Rambler '58.

Only Rambler Gives You The Best of Both:

- 1 AMERICAN Big Car Room, Ride and Comfort
- 2 EUROPEAN Small Car Economy, Handling Ease

The American Motors Means More for Americans *NASCAR Record—6 with Overdrive

ALL-NEW AMBASSADOR 270 HP V-8
 Enjoy top V-8 performance with outstanding V-8 economy. Ambassador Country Club hardtop illustrated. Also 4-door sedans, station wagons, and hardtop station wagons.

SEE YOUR RAMBLER, NASH OR HUDSON DEALER

TOM'S SPORT CARS

312 West Main EASTLAND Phone 8

DIXIE Drive-In
 EASTLAND RANGER HIGHWAY

Box Office Opens 6:45
 Show Starts 7:00
 Box Office Closes 9:00

TUESDAY ONLY, OCT. 29
Tuesday Is Bargain Day—Adults 25c
Child Under 12—FREE

dan duryea a trail of perfume... and violence!
jayne mansfield
martha vickers
 An army of police—and the underworld—are hot on the scent of the beautiful burglar mixed up in the robbery of the decade!

the burglar
 A COLUMBIA PICTURE

with PETER CAPPELL - MICKY SHAUGHNESSY - Screen Play by DAVID GOODIS From His Original Novel
 Produced by LOUIS W. KELLMAN - Directed by PAUL WENGER

PLUS: Color Cartoon and Sports Reel

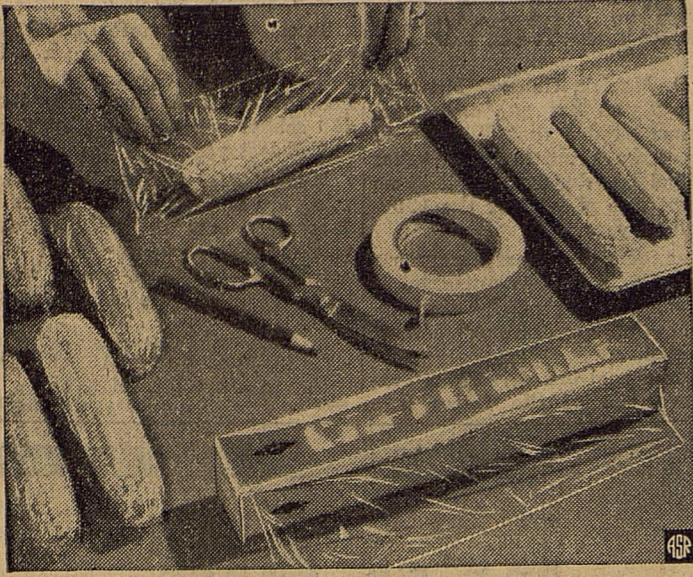
WEDNESDAY THURSDAY, OCT. 30 - 31

THE WAY TO THE GOLD
 20th CENTURY-FOX presents
CINEMASCOPE

JEFFREY HUNTER-SHEREE NORTH-BARRY SULLIVAN-WALTER BRENNAN

PLUS: 2 Color Cartoons

Corn on the Cob for Winter Meals



When winter arrives nothing will give more satisfaction than the knowledge that summer fresh corn on the cob is available in the family freezer. Many gardeners will find that now is the time to freeze late varieties of corn, and as a rule, these varieties are among the best for flavor and freezing quality.

Transparent plastic wrap is ideal for wrapping corn for the freezer. Wrap ears individually or in groups of two or three, depending on individual family needs. The use of plastic wrap for freezing corn will make the job of wrapping so much simpler. This wrapping material which is ideal for so many foods for the freezer, molds itself around the corn easily and makes it possible to force out the maximum amount of air. Transparent plastic wrap helps keep air out and moisture in. This assures the homemaker that the corn she freezes now will be kept at top condition until she takes it from the freezer later on. The wrap's transparency also permits easy identification of foods in the family freezer.

In preparing the corn for the freezer, select only ears that have slightly immature kernels and milk that is thin and sweet. All corn should be blanched before freezing. For steam blanching, small ears—6½ minutes; medium ears—8½ minutes; large ears—10½ minutes. If corn is being blanched in water, reduce the time by ½ minute for each size of ear. Here is the procedure for the whole operation. First of all, husk the corn, wash and trim. Then comes the blanching followed by chilling in ice water for 4 minutes. After chilling, place the corn in the refrigerator for 10-15 minutes. Wrap carefully in plastic film using the technique shown here.

Coffee to Open Meeting of Delta Kappa Gamma

Region XVI of Delta Kappa Gamma will meet Saturday in Sweetwater with the meeting being held in the Blaubonnet Hotel. Gamma Tau Chapter of Sweetwater will be host to the group.

At 9 a.m. a coffee will begin the day. The business meeting with roll call will be at 10 a.m. There will be a luncheon at 1 p.m.

Mrs. J. C. Whatey, teacher in Eastland High School will participate in the program for the day. Mrs. Whatey is president of the Beta Upsilon Chapter whose membership is composed of women educators from Eastland and Callahan Counties. Seven women from

Eastland, nineteen from Cisco and seven from Ranger are members of the club.

The theme of the meeting is "An Informed, Participating Membership." The directors for the sessions are Miss Ellen Ruth Livingston, Mrs. Faun Walker and Mrs. Ruth Calloway.

READ THE CLASSIFIEDS

PERMANENTS
 \$ 7.50 Oil-Glo Creme ... \$ 5.00
 \$10.00 Creme Wave ... \$ 7.50
 \$15.00 Creme Oil Wave \$10.00

Basham Beauty Bar
 Lula Mae Smith Basham
 1416 S. Lamar Phone 984

VISITING CHURCH.
 Miss Lilly Moon of Fort Worth, former resident of Eastland, visited with friends and attended the First Baptist Church over the weekend.

VISITED IN ABILENE
 Mrs. R. P. Hawn and daughter, Ann visited in Abilene Saturday with her brother and sister-in-law, Mr. and Mrs. J. W. Newton while her husband attend the A&M football game at College Station.

NOTICE... Come To Kendrick Drive-In Dairy
 (Serving This Territory Since 1940)
FOR Good, Clean JERSEY Sweet Milk
Price - 70c Gal.
 Phone 896-J-2 — Located Halfway between Eastland and Cisco

IMPERIAL FOR 1958

COMING OCT. 31 BLEVINS MOTOR CO.
 511 West Main Phone 308

Scale Runners Junior Music Club Meets In Treadwell Home

Marsha and Terry Treadwell were hostess and host to the Scale Runners Junior Music Club at the home of their parents, Dr. and Mrs. M. A. Treadwell Wednesday.

The meeting was opened by Mrs. A. F. Taylor leading the Lord's Prayer. Jan Robertson, president, presided over the meeting. Marsha Treadwell read the minutes.

The club members sang "Dear

Land of Home", "Hark the Vespers Hymn Is Stealing," "God Bless America," Mrs. Taylor led the songs and Patricia Ann Liles accompanied.

Lela Lee played "Off to Camp," Sherry Jo Butler played "The Mill" by Rodgers. Marsha and Terry Treadwell played a piano and organ duo of "Forest Voices." After Donna Kay Ford, delegate to the Convention, read the report of the club the following numbers were played: Mary Ann Manning, "The Guitar;" Karen Green, "Swaying Silver Birches;" Susan Coleman, "Nodding Ferns;" Marcia Petty, "Bells Are Ringing;" Janice Dendy, "Waltzing Balarina;" Sue Underwood, "The Ferris Wheel;" and Marilyn Huckabay, "Bubbling Brook."

Arrangements of large yellow and bronze mums were noted throughout the house. The play room was decorated "in full Halloween dress." The long table was laid with a white cloth with gold sequines and centered with yellow and black scare crows with a pumpkin head, based with smilax and orange berries circled with a brown fence. Hay stacks and small turkeys were other decorations on the table.

Brown cats were given as favors. Orange drinks topped with black owls and a salad plate were served. Places were laid with plates and napkins carrying the Halloween theme. Marsha passed compotes of candy.

Those present were Deborah Earnest, Lynette Dorsey, Sussie Sneed, Linda Ann Perry, Susan Coleman, Sherry Jo Butler, Mary Ann Manning, Jan Taylor, Donna Kay Ford, Marcia Petty, Sarah Earnest, Janice Dendy, Lela Lee, Karen Green, Marilyn Huckabay, Denna Sue Underwood, Jeannie Wright, a guest, Randall Treadwell, house hostess, Mrs. M. A. Treadwell and Mrs. A. F. Taylor, counselor and teacher.

Donna Fay Ford will be hostess at the next meeting on Nov. 20 at 3:15 in the home of Mr. and Mrs. George Ford, 200 East Sadosa.

Your children's growing-up years...



Keep them forever in portraits

A phone call will arrange your appointment.

CANARIS STUDIO
 On The Square Phone 46

DOUBLE "J.N." GREEN STAMPS WEDNESDAY
 With Purchase of \$2.50 or More

NO TRICKS! HERE ARE REAL BUDGET TREATS

Prices Effective Tuesday & Wednesday - We Reserve Right to Limit - No Sales to Dealers.

NATIONALLY KNOWN BRANDS

WORTH FOOD MART

LOW EVERY DAY LOW PRICES

CHILI TEXAS FAVORITE WOLF BRAND
 Plain—No Beans No. 2 Can **49c**

Halloween Candy
 Brach's Cello 29c
 Nestle's Morsels Semi-Sweet 12-Oz. Toll House 41c

HIXSON'S COFFEE Reg. or Drip Lb. Can **69c**

CUT GREEN BEANS Campfire Brand No. 303 Can **10c**

This Week's Cards Must Have 'Black' Band

Miss Worth Invites You to Play "MARKO" SATURDAYS, 7 to 8 p.m. KFJZ-TV channel 11 Free MARKO Cards only at

WORTH FOOD MART

treats for tricksters!

DELICIOUS Apples 15c
 Washington Red Extra Fancy Lb.

ORANGES FLORIDA—Prime Source of Vitamin "C" 5 -lb. Bag **39c**

GRAPES Thompson Seedless ... Lb. **19c**

Carrots Crisp Tender 2 1-Lb. Cellos **25c**

PEANUTS Virginia Roasted Edg **29c**

Cranberries Ocean Spray 1-Lb. Pkg. **25c**

BUTTER FOOD MART SWEET CREAM 1-lb. Ctn. (qtrs.) **69c**

CATSUP STOCKTON 2 12-Oz. Btls. **25c**

COLDENE LIQUID COLD REMEDY Reg. \$1.00 2-Oz. Bott. **79c**

CREME SHAMPOO HELENE CURTIS Reg. \$2.00 Value **99c**

Roast WORTH QUALITY CALF—CHUCK BLADE
 Lb. ONLY **39c**

SIRLOIN STEAKS Worth Quality Calf. Lb. **79c**

PORK LIVER Fresh-Sliced Lb. **29c**

CHEESE SLICES KRAFT'S DELUXE .8-Oz. Amer., Pim., Swiss . Pkg. **35c**

WORTH QUALITY CALF ROUND STEAK Lb. **79c**

SWIFT'S ORIOLE SLICED BACON Lb. Pkg. **55c**

Frozen Foods Specials!

PUMPKIN PIES or MINCE LIBBY'S 24-Oz. Pkg. **49c**

MEAT PIES LIBBY'S—CHICKEN, BEEF or TURKEY 5 8-Oz. Pkgs. **\$1.00**

SAVE 50% and MORE
 12" Hi-Fi Records
 Highest Quality — Famous Music
 "This Week's Specials"
 Select from Classical, Popular, Musical Comedies, Hymns and etc.

HEAR 'EM PLAYED BY THE "PROS" ON KFJZ-1270 Guaranteed \$3.98 Value **\$1.49** Each

yep, podners—Chrysler has an all-new luxury car in a lower-priced field for '58!

see it here **Oct. 31**
BLEVINS MOTOR CO.
 511 West Main Phone 308

Vol. 9 Also 1-8 New On Sale! ENCYCLOPEDIA OF PICTURED KNOWLEDGE
 For The Entire Family WORTH \$2.00 Per Volume Vol. 9 **49c**
 WORTH \$2.00 Per Volume Vol. 9 **49c**
 On Our Convenient Book-A-Week Plan

WHITE OR COLORS SCOT TOWELS 2 150-Ft. Rolls 39c	LADY BETTY PRUNE JUICE Quart Bott. 33c	WILSON'S IDEAL DOG FOOD 2 1-lb. Cans 31c
WALDORF TOILET TISSUE 3 Rolls 27c	NON-FAT SOLIDS—4-Qt. Size PET INSTANT MILK 13-Oz. Pkg. 35c	DETERGENT FLUFFY "ALL" 3 -lb. Pkg. 75c
WHITE OR COLORS SCOT TISSUE 2 Rolls 27c	HORMEL CHILI WITH BEANS 16-Oz. Can 35c	BEST FOR ALL YOU BAKE & FRY SPRY SHORTENING 3 -lb. Can 91c
STALEY'S STA-PUF RINSE Quart Bott. 47c	UNDERWOOD'S DEVILED HAM 4½-Oz. Can 35c	SWIFT'S STRAINED OR CHOPPED MEATS FOR BABIES 8½-Oz. Jar 23c
FRESH-FRAGRANCE LIFEBOUY SOAP 2 Reg. Bars 23c	AUSTEX BEEF STEW No. 300 Can 33c	AUNT JEMIMA PANCAKE FLOUR 2 -lb. Pkg. 35c
NO MEDICINAL ODOR LIFEBOUY SOAP 2 Bath Bars 31c	WILSON'S "BIF" CHOPPED BEEF 12-Oz. Can 41c	DETERGENT LUX LIQUID 22-Oz. Can 69c

WORTH FOOD MART

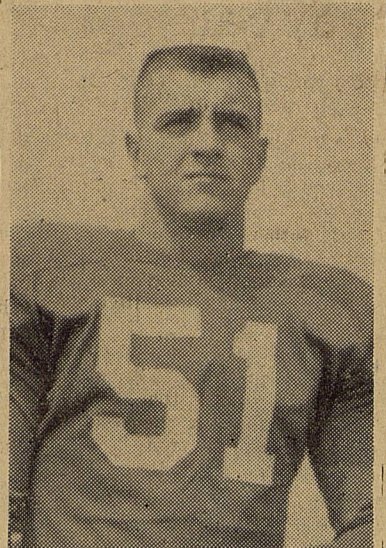


AROUND RANGER COLLEGE CAMPUS

By Ranger College Journalism Class

As Personality of the Week on the Ranger College Campus, Charles Smith, son of Mr. and Mrs. Elbert Smith of Rusk, Texas, has been chosen. Charles is a young man of unusual courage and determination. Last year Charles began his freshman year in college at Ranger College only to be injured seriously in a car wreck during the first month of school. His injuries were to the extent that he had to drop from school to remain in a cast and then in a wheelchair for several months; in fact, the doctors told him he would never play football again. He proved the doctors to be wrong, though, by returning at mid-term last year to start his schooling

again and by going out for spring football training. He returned this fall for pre-season training and is the starting center for the 1957 Ranger College Rangers.



CHARLES SMITH PERSONALITY OF THE WEEK

Not only is Charles to be commended for his courage in making a come-back after such a serious injury, but also he is to be admired for his qualities of leadership. He has been elected president of the freshman class, and he is friendly and gets along well with others. He is dependable and persevering, and he has a keen sense of humor. Besides possessing an attractive personality, he is a tall, clean-cut brunette with blue eyes

Halloween Party Given By College Business Dep't.

The Business Department of Ranger College under the direction of Vivian Simmons sponsored a Halloween Masquerade party Thursday evening, Oct. 24 from 7:30 to 9:30 p.m. Decorations in the Union Building carried out both the Halloween and autumn theme. Guests came in costume, and prizes were given for the most unusual costumes to Betty and Dickie Fletcher, who came as Abe and Mary Lincoln. During the evening many contests were held, and dancing was enjoyed. Punch and cookies were served from a table decorated in a fall motif. A large group of students attended.

After the dance a snappy pep rally was led by the cheerleaders back of Cell Block to get everyone in a winning spirit for the coming game with Tarleton, Sat., Oct. 26. It was a fitting conclusion for a very enjoyable evening.

and a winning smile. Miss Vivian Simmons, Chairman of the Business Department of Ranger College, represented the college at the convention of the West Texas Business Teachers which was held in Wichita Falls Friday and Saturday, October 25-26. Meetings were held on the campus of Midwestern University. The program of the meeting was in the form of a clinic concerning secretarial science, accounting, and office management.

Betty Melton, Bobby Justice Are Married

Miss Betty Melton was married to Bobby Justice in the parsonage of the First Baptist Church in Ranger Saturday evening, October 19, at 8 o'clock p.m. The Rev. Ralph Perkins officiated.

The bride is the daughter of Mr. and Mrs. Morris Underwood of Garland, formerly of Ranger. The bridegroom is the son of Mr. and Mrs. O. L. Justice of Ranger. Mrs. Fred Lamb was matron of honor, and Eddie Wallace was best man.

The bride wore a white dress, with white accessories. She carried a bouquet of white feathered carnations and white gardenias on a white satin-covered Bible.

The bride attended Ranger High School and Ranger Junior College. She was a member of

Sub-Debs in high school and the Rangeans in college. She was employed by Temco Aircraft in Grand Prairie. The bridegroom is also a graduate of Ranger High School. The couple plan to make their home in Houston.

READ THE CLASSIFIEDS

INGROWN NAIL HURTING YOU?
Immediate Relief!

A few drops of OUTGRO bring blessed relief from tormenting pain of ingrown nail. OUTGRO softens the skin underneath the nail, allows the nail to be cut and thus prevents further pain and discomfort. OUTGRO is available at all drug counters.

They Forgot One Thing—

... in the rush of other duties in setting up house-keeping—they forgot how large a part of their home investment was in the furnishings. After they had the big fire insurance paid for rebuilding the house, but lack of funds to replace the contents left them a long way from having a liveable home. Don't make this mistake. Provide now for adequate insurance to cover your household effects.

EARL BENDER & COMPANY
Eastland, Texas (Insurance since 1924)

Save Money On Auto Repairs!

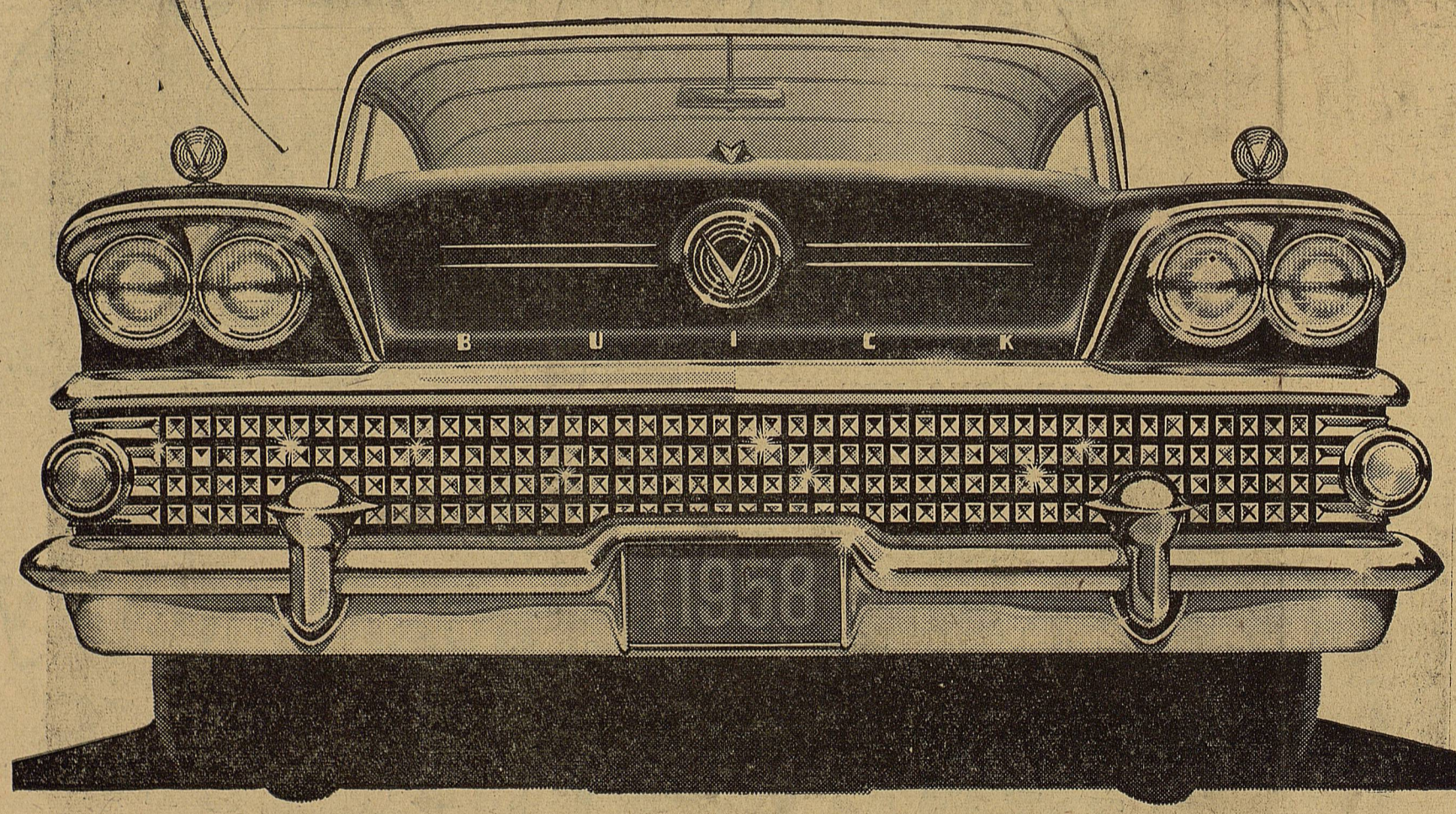
We are equipped to do all your auto, truck and field mechanic work. Mechanic Vernon Garrett has 20 years experience and is factory trained. We can do your tractor repair work, too.

—For Night and Sunday Work Call 1186—

HIGHWAY GARAGE

1006 West Main M. E. Spain Eastland

You're face to face with the B-58 BUICK



It looks and feels like flight on wheels

IT RUNS on gasoline and rolls on wheels. But beyond that, all similarity between this 1958 Buick and any other car you've ever known comes to a decisive end.

This B-58 Buick is literally born of aviation principles—starting with a greater use of aluminum than ever before, and going on from there.

With this stunning automobile you're in the forefront of styling's freshest advance.

With it you boss the B-12000 engine—command through a transmission that's the big talk of the automotive world—feel a

modern miracle in buoyancy of ride, plus the never-before wonders of Buick Air-Poise Suspension.*

With it you can drive with more magnificent advances in automobile design and engineering than history shows in any single year.

This B-58 Buick is ready now in look and line and lift and life to thrill you to a tingle. Go see—now on display at your Buick dealer's.

*Air-Poise Suspension optional at extra cost on all Series. Flight Pitch Dynaflo standard on LIMITED and ROADMASTER 75, optional at extra cost on other Series. Aluminum Brakes standard on all Series except SPECIAL.

NEVER SO MUCH SO NEW

- * FRESH BOLD STYLING with the Dynastar Grille.
- * THE MIRACLE RIDE plus Buick Air-Poise Suspension.*
- * FLIGHT PITCH DYNAFLOW* with the instant flexibility of a million switches of pitch.
- * B-12000 ENGINE with 12,000 pounds of thrust behind every piston's power stroke.
- * AIR-COOLED ALUMINUM BRAKES* with smoother, surer control and longer life.
- * "VELVET WALL" Sound Silencing.
- * All built to exacting quality standards

When better automobiles are built Buick will build them



NOW ON DISPLAY

THE AIR BORN B-58 BUICK

* See TABLES OF WELLS FARGO, Monday Nights, NBC-TV and THE PATRICE MUNSEL SHOW, Friday Nights, ABC-TV

SEE YOUR AUTHORIZED BUICK DEALER

Wednesday



DOUBLE STAMPS

AT MacMoy CLOVER FARM STORE PLUS THESE WEDNESDAY SPECIALS

GOLDEN	Fluffo	3	Lb. Can	89¢
CLOVER FARM	Margarine		Lb.	23¢
CLOVER FARM	Milk	2	Tall Cans	26¢
	Bab-o		Giant Size	15¢
GLENDALE EARLY JUNE	Peas	2	No. 303 Cans	25¢
GLENDALE CREAM STYLE	Corn	2	No. 303 Cans	25¢
WHITE SWAN BLACKEYED	Peas	2	No. 300 Tall	19¢
G. E. LIGHT	Globes	15 - 25 - 40 and 50 Watt	Each	17¢
TEXAS RUBY RED	G'r'fruit	6	For	39¢
U. S. NO. 1 IDAHO RUSSET	Potatoes	10	Lb. Bag	43¢
ARMOUR'S MATCHLESS	Bacon	Sliced	Lb.	59¢
	Rib Steak	Choice Beef	Lb.	59¢
	Round Steak	Choice Beef	Lb.	79¢
	Chuck Roast	Choice Beef	Lb.	45¢
	Pork Chops	Lean Tender	Lb.	59¢

OPEN EVERY NIGHT TIL 8 P.M. — SATURDAY TIL 9 P. M.

FOODS CLOVER FARM STORES

400 South Seaman Phone 31

Chevrolet-

(Continued from Page 1)

Roominess and quality of the line is immediately apparent. Overall lengths have been extended a full nine inches. Roof lines have been lowered as much as 2 1/2 inches.

Look of Liveliness
In looks, the cars have an air of liveliness. Dual headlamps, a grille with fine grid concave ribs and a low, flat hood, unbroken by ornamentation, distinguish the frontal view. The rearward treatment also is unique. Avoiding sharp fin protrusion, rear fender lines sweep outward from the

body, then curl around the tail light ensemble to form a shape which stylists liken unto a graceful gull-wing in flight.

Beautiful Interiors
More than ever before, Chevrolet has fitted body interiors in accord with the exterior distinction of each series. For example, each of the series has its own steering wheel, and each has exclusive upholstery fabrics and paneling, with special luxury reserved for the Impalas.

The basic instrument panel is new, extending rearward into the sides of the body. Major instruments are grouped in separate housings. The speedometer is oblong and spans the entire cluster. Everything about the car is new, every square inch is shown for the first time. Everyone is invited to see the new cars on display here Thursday and see for themselves what a marvel in engineering the new 1958 Chevrolets really are.

New Buick-

BOLD NEW BUICK

(Continued from Page One)
ad and the hood line raised slightly to complement the new front end design.

The front fenders project over the headlights and the leading edge is capped by a chrome strip which extends around the fender and becomes part of the side molding. This molding extends gracefully along the side of the car all the way back to the rear wheel cutout, which has been modified to reveal only the lower portion of the wheel.

A "V" and ring adorn each front fender on all models to make it easier in traffic.

A panel of ribbed aluminum, trimmed in chrome, extends along the side of the rear fender on all models except the Limited. On this series, the rear fenders, which are eight inches longer are trimmed with three banks of Chrome-capped louvers to make it more distinctive from the rest of the line.

The rear fenders of all models are topped by a chrome applique which blends with the newly-styled taillight housing.

Heading the list of exclusive engineering achievements on the 1958 Buicks is the new flight pitch Dynaflo transmission in which the stator vanes operate on the same "switch the pitch" principle as an airplane propeller.

The new transmission also has three turbines instead of two, which increases the torque output.

CALL 601 FOR CLASSIFIED ADVERTISEMENT

T. L. FAGG
REAL ESTATE

Property Management
Home and Farm Loans



MIGHTY POTATO FROM TINY VINE—This six-pound sweet potato was grown by John W. Diehms of Stillwater, Okla. Diehms, who styles himself a "city farmer," said he found the huge specimen growing on a tiny vine in his patch.

250,000 Tree Seedlings For Land Owners

250,000 tree seedlings will be available to Central and West Texas landowners for windbreak plantings in early 1958. Don Young, head, Forest Management Department of the Texas Forest Service announced today.

"Landowners in critical areas should establish farmstead or field windbreaks to prevent wind erosion of their valuable topsoil," Young said.

Austrian pine, ponderosa pine, Chinese elm, and red cedar will be available for the 1958 winter planting season. These seedlings, procured from the Oklahoma State Nursery at Norman and Boyd's Nursery at McMinnville, Tennessee, will be sold for \$3.00 per hundred. This price includes the cost of shipment to landowners.

Application blanks for ordering the seedlings can be procured from county agents and Soil Conservation District offices in the Central and West Texas area. In addition, order forms are available, upon request, from the Director, Texas Forest Service, College Station.

The deadline for ordering seedlings will be March 1, 1958. Seedlings will be shipped from the first week of March, 1958 to locations specified on the application blanks. Information on how to store and plant the seedlings is available upon request.

"As the orders will be filled on a 'first come-first serve' basis, we want to urge those interested to get their requests in as soon as

Phonograph Duck Calls Against Law

Don't plan to use an electronic duck call or a phonograph record for calling ducks this season, is the warning of the Director of Law Enforcement of the Game & Fish Commission.

Conventional mouth callers are still permissible, however. The standard penalties for taking migratory birds now prohibit the taking of such birds "by use or aid of recorded bird calls or possible," Young added.

Financial assistance may be available to some Central and West Texas landowners for the establishment of farmstead or field windbreaks through the Conservation Reserve section of the Soil Bank Act. Landowners with sufficient area to plant a minimum of one acre in windbreaks should contact the ASC office in the county in which the lands are located for information on this program.

sounds recorded or amplified imitations of bird calls or sounds." The maximum penalties call for a 6-month jail sentence, a fine of \$200 or both.

CALL 601 FOR CLASSIFIED ADVERTISEMENT

SPECIALS

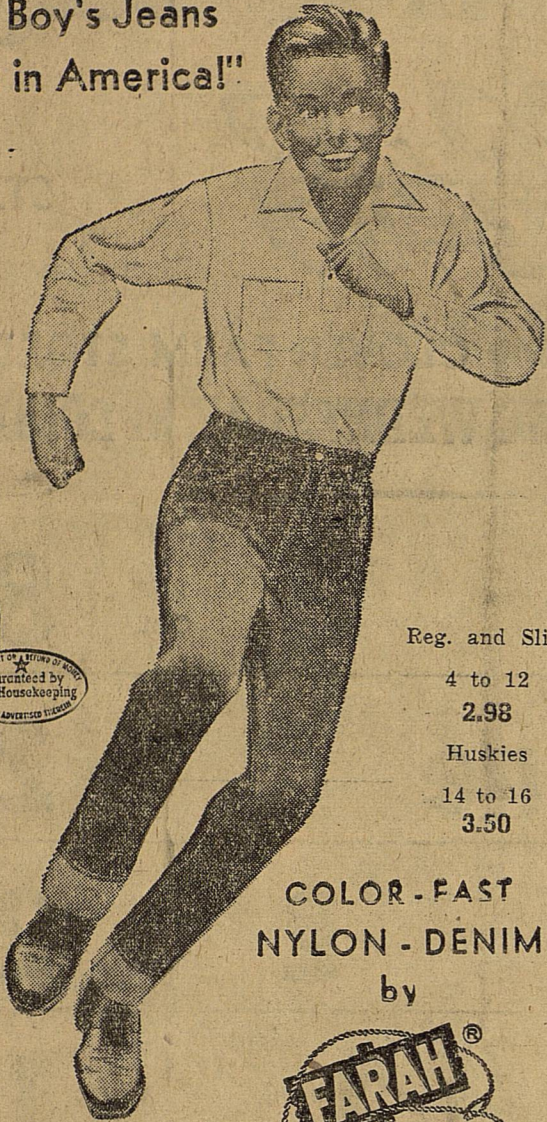
25.00 Permanents ... 20.00
20.00 Permanents ... 15.00
15.00 Permanents ... 10.00
10.00 Permanents ... 7.50
Other Permanents ... 5.00
For a complete Beauty service call 14. If we please you, tell others. If not, tell us.

JOSEPHINE Beauty Salon

Josephine Brister, Owner and Operator
Betty Crawley - Vivian Jones Operators

JUST ARRIVED... another shipment of Farah Ivy and GOLD STRIKES

"Best Boy's Jeans made in America!"



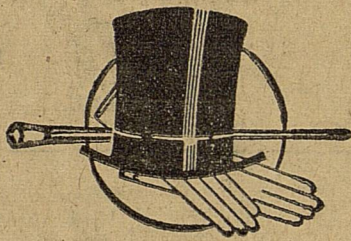
Reg. and Slim
4 to 12
2.98
Huskies
14 to 16
3.50

COLOR-FAST NYLON-DENIM

by

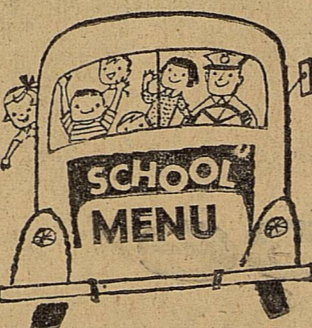


The Men's Shop



—NEW CHARGE ACCOUNTS INVITED—

113 S. Lamar EASTLAND Phone 678



Funeral-

(Continued from Page One)

Williams of Eastland; three grand children and one great-grandchild.

Pallbearers will be Russell Hill, Porter Woods, Carl Johnson, Hoover Pittman, J. B. Williams and Earl Conner.

All friends of Mr. Williams will be honorary pallbearers.

ATTEND THE CHURCH OF YOUR CHOICE EACH SUNDAY

WEDNESDAY:

- Salmon Croquets
- Baked Boston Beans
- Potato Chips
- Congee Salad
- Corn Bread
- Cinnamon Rolls

THURSDAY:

- Chicken Pie
- Creamed Potatoes
- Buttered Carrots
- Apple and Celery Salad
- Sliced Bread
- Fried Apricot Pies

FRIDAY:

- Roast Beef
- Baked Potatoes
- English Peas
- Combination Salad
- Sliced Bread
- White Cake

Deer, Wild Turkey And Other Hunting Dates Announced

There will be a 15 day hunting season on both deer and wild turkey in the Alabama Creek wildlife management area of Tyler county, it has been announced by the Assistant Director of Wildlife Management of the Game & Fish Commission.

On wild deer, the season will be Nov. 16 to Nov. 30, both days inclusive, with a bag limit of one buck with pronged antlers. Shotguns using slugs or rifles, except 22 rim-fire, may be used for taking.

The season is the same on wild turkey, with a bag limit of one gobbler.

The squirrel season will be from Oct. 15, until Jan. 15, with a bag limit of 10 and a possession of 20.

Quail shooting will be Dec. 1 to Jan. 16, both days inclusive, with a bag limit of 12 and possession of 24.

Taking of fur-bearing animals is allowed from Dec. 1, to Jan. 31. They can be either shot or trapped.

The Alabama creek area is on U. S. Forest Service land, under regulatory authority of the Game

M. H. PERRY

Representing
Southland Life
Life - Retirement Income Partnership
Mortgage Cancellation
Educational - Annuities
Accident - Sickness
Hospitalization - Group
Call 173 or 713-J
107 W. Main • Eastland



ALEX RAWLINS & SONS
MONUMENTS
WEATHERFORD, TEX.
Serving This Community

Come In!

See how modern electric cooking can save you time and work!



Cook Better Electrically DEMONSTRATIONS

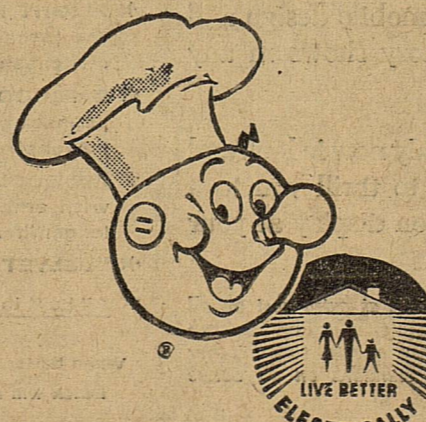
IN OUR OFFICE

Wednesday, October 30th

2 p.m.

FREE DOOR PRIZE

Here's a wonderful opportunity to get acquainted with the many time-saving, work-saving advantages of modern electric cooking. See for yourself, through actual cooking demonstrations on an Electric Range, how CLEAN, COOL, FAST, ACCURATE and AUTOMATIC electric cooking can be. And while you're here, see representative makes and models of new electric ranges, placed in our office for display purposes. COOK BETTER... ELECTRICALLY!



TEXAS ELECTRIC SERVICE COMPANY

Watch

for OLDS mobility!

... and the greatest advance in fuel economy in Oldsmobile's 60 years of engineering leadership!

Coming Soon to your Authorized

OLDSMOBILE QUALITY DEALER'S

Make A Date for November 8!