

Moore... ABOUT EASTLAND by Virgil E. Moore

We got our Morrises mixed up in our Tuesday account of the county commissioners meeting. It is Morris George and not Morris Newham who is a member of the Ranger General Hospital Board of Directors.

And we also had our hand called on another statement in the story. We said that at present the county gives \$150 a month and Ranger General Hospital care for all county patients. We were told to do a little checking on that. Check we did and wrong we were.

Our admisher (that might be too mild a word) said the county hadn't paid anything to the hospital in the past year. And the person working us over (name withheld by request) was nearer correct than we were.

Records in the county auditor's office show that the county has paid only \$284.49 to the hospital since January, 1957. That was for insurance. We confess that a monthly payments made to the hospital by the county in 1956 were what we had in mind. In that year the county paid \$200 monthly from May through December, or a total of \$1600, plus \$266.63 for insurance. During 1955 the county paid \$250 monthly to the hospital from January through September, a total of \$2250. Insurance that year was listed at \$790 and other expenses paid for by the county pushed the total contribution that year to \$3078.64.

Ranger General Hospital is owned jointly by the City of Ranger and Eastland County. As long as it is we will print news concerning it.

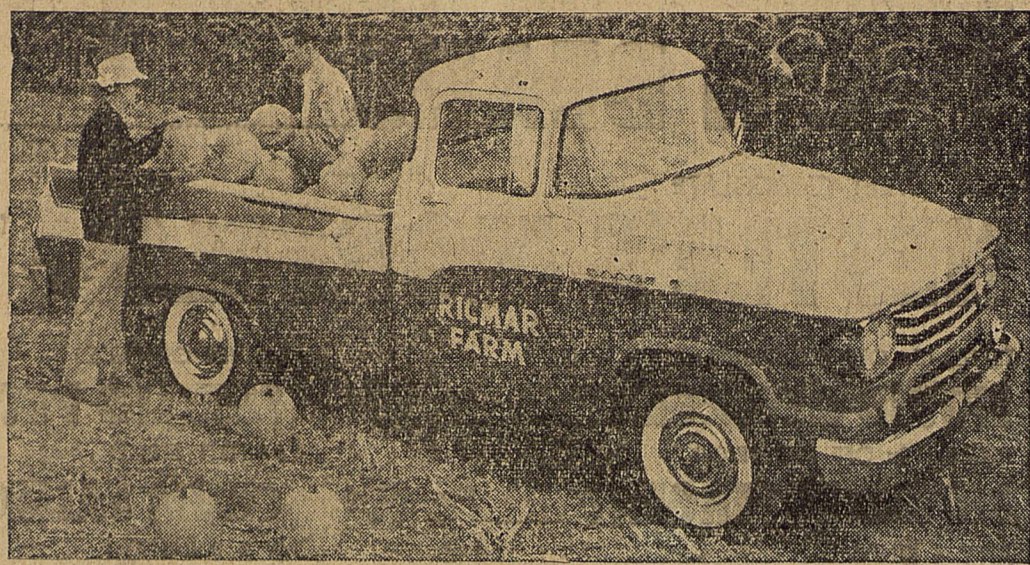
Frankly, we do not see how the county can expect the hospital to take care of county patients without paying something for services rendered. And we do not say that to get on the good side of anyone. We do think it's time to quit putting bandages over old wounds. It's time to heal the sore, not keep it irritated. Ranger General Hospital should be put on its feet so that the present administrator—who we are told is doing an exceptionally good job—would have a fair chance. Then the county should demand monthly reports and make sure the hospital pays its way, which, again, we are assured it could.

For those who are interested, this column also offers free of charge, advice on sick dogs, the care of frogs and how to fall off a pile of logs. It also gets plenty of free advice on how to run a newspaper.

It's Halloween, so if you haven't put your trash barrel in the garage.

FREYSCHLAG INSURANCE AGENCY presents the

High	63
Low	49
Rain	0
Total Rain for Oct.	9.44
Lake Leon Level	75'
Total Rain for Year	26.53
Forecast	Showers



NEW DODGE TRUCK—The new Sweptside 100 Dodge truck for 1958 has the style to do double duty as a passenger car. Its bold new styling is emphasized by twin headlights, liberal chrome trim and massive chrome bumpers. It is powered by a 204-horsepower V-8 engine and can carry 1675 pounds. Loading height is less than 24 inches. It's on display Friday at McGraw Motor Co.

PAGE ONE MUST

Eastland's Mavericks have an open date Friday night. Tonight the Mav B team is slated to travel to Dublin to take on the Lion B team, however. And Tuesday night the Junior High Dogies scored an impressive win over the Cross Plains Juniors. Area football sees Ranger playing host to Ballinger and Cisco entertaining Winters. And in District 10-A Throckmorton goes to Albany for the big one Friday and Clyde meets Wylie in Wylie Saturday.

Friday night Olden's cagers will take on Eula. There will be both a boys and girls game. Tipoff time is 7 p.m. This is the first game of the year for the Olden girls and the third start of the year for the Hornets. Girls playing for Olden will be Cindy Fox, Wilma Edwards, Elizabeth Fox, Barbara Cook, Betty Cook, Betty Napier, Charlene Rodgers, Deolores Cooper and Judy Brown.

Stanley W. Powers of Desdemona, senior in arts and science at Texas Tech, has been promoted to cadet major for the 1957-58 academic year. He is commander of the band squad.

McGraw Motor Co. Puts New Swept Wing Dodge On Display Here Friday

Significant advances in safety engineering, fuel economy, and engine performance, plus dramatic "swept-wing" styling, distinguish the 1958 Dodge passenger cars, which will go on display Friday at McGraw Motor Co. in Eastland.

"This is an automobile designed to maintain the brisk sales pace of this year, and then forge ahead to new records during 1958," declared Larry McGraw.

"Public acceptance of the 1957 Dodge has been truly overwhelming," he said.

"Swept-wing '58 will capitalize on that acceptance by combining the proven, years-ahead advantages of Dodge styling, riding comfort and handling ease with the traditional emphasis on safety, economy and sure, dependable performance."

Dual headlights, mounted side-by-side under bold, jutting fender hoods, provide greater safety for after-dark driving, and set the pace for all-new grille design on the 1958 Dodge.

The inner lamp of each dual unit is designed exclusively for

Dodge Truck for 1958 Can Double As Passenger Car, McGraw Declares

Increased power, unique styling, greater load capacities added driver comfort, larger brakes, and new automatic transmissions are among the outstanding features of 1958 Dodge trucks.

Larry McGraw, of McGraw Motor Co., local Dodge dealer, said the new "L" Series line offers the right model for virtually every trucking need. Specific hauling requirements of individual truck owners are met by the greatest variety of transmissions, axles, springs, frames, and other components in Dodge history.

Many features that improve driver comfort and increase economy, safety, and dependability have been built into the new models.

The new truck line offers engines with 10 different horsepower ratings ranging from 113 to 234. Maximum gross vehicle weights on the 1958 models range from 5,100 to 46,000 pounds and gross combination weights up to 75,000 pounds.

Light and medium-duty trucks are stylishly different in appearance from heavy-duty models. This has been accomplished by introducing two new grille designs. Available for a distinctive touch is a bright-metal chrome trim package.

A full-width alligator hood, heavy-duty bumpers, and twin headlights—which provides greater visibility for night driving—are among exciting changes in appearance.

The alligator hood, opened upright to a full 90 degrees by Dodge engineers last year, now is full-width for the first time ensuring easy accessibility to the engine for routine maintenance.

Cabs have been made more comfortable and more attractive. Floors open 15 per cent wider than on previous models to provide easy entrance and exit. New breathable vinyl or saran seat coverings enhance the beauty and comfort of the easy-chair seats.

A new transistor radio has been suspended from the ceiling of the cab between the sun visors for better reception. Far removed from engine and road noises, it's

(Continued on Page Four)

Youthful Pair End Wild Spree With Arrest

A wild spree of a young Virginia boy and girl ended Wednesday in Eastland County when Highway Patrolman Les Strawn stopped the pair for speeding east of Ranger.

Strawn questioned the 17 year old boy and 15 year old girl after noting that the car driven by the boy had license plates which obviously had been switched from another car. The pair broke down and admitted they had stolen a pair of license plates in Fort Worth. Strawn called in Highway Patrol Sgt. C. A. Cockrell and Deputy Sheriff Johnny Boyd to assist. Still later the boy, who will soon be 18, admitted that he and the girl had stolen three cars and broken into a number of places between here and Norfolk, Va.

The car the couple was caught in was a late model which they had stolen off a car lot in Hot Springs, Ark. Federal authorities picked up the girl yesterday afternoon.

The pair lived in a Virginia orphan's home and officials said the boy had been out of a state reformatory only a short while. When arrested the pair had plenty of money.

Installation Loans Custom Made For Each Customer EASTLAND NATIONAL BANK Member F. D. I. C.

(Continued on Page Four)

Rushing Motor Co. Puts Exciting New DeSoto On Display Friday

Rushing Motor Co. Friday will put the new 1958 DeSoto on display.

The new DeSoto is long, low and completely beautiful. It has a little look of forward motion that can only hint at its performance.

Smart, luxurious interiors, graced by the very finest fabrics and appointments are featured.

The DeSoto features new push-button torqueflite new sure-grip differential, new total-contact brakes and new constant-control power steering.

And the '58 DeSoto has an exciting new engine which is stronger, lighter and more efficient. This new power plant delivers more power in relation to weight than other current American engines. Its high power-to-weight ratio is made possible by a combination of remarkable engineering features, including new, high

efficiency, wedge-shaped combustion chambers and a stronger, stiffer crankshaft, enclosed in a sturdy new deep-skirt block.

Torsion-Aire ride is another DeSoto first. No other suspension system available today provides a ride so incredibly soft, smooth and well-behaved as Torsion-Aire, Rushing says.

New push-button torqueflite means that you control your DeSoto with a light touch on the convenient push-button control.

The DeSoto offers the look and feel of the future today. There's three series for you to choose from. The Fireflite, the Lividome and the Firesweep.

For 1958 DeSoto offers something for everyone. A glittering array of convertibles, spacious station wagons, the Sportsman is included in the Chrysler Corp.'s DeSoto this year.

BE SURE—See Don Pierson Olds - Cadillac Eastland Quality Cars at Volume Prices

Installation Loans Custom Made For Each Customer EASTLAND NATIONAL BANK Member F. D. I. C.

First Surplus Food Available In County

Local Residents Can Apply Here Monday

Eastland County's surplus food program will swing into operation next Monday, J. J. Porter, administrator, announced today.

Under the program Eastland County residents will be eligible to receive surplus foods held by the United States Department of Agriculture. Porter said the county has been divided into four precincts to help make the program work smoothly. Food will be distributed on four days, Nov. 4-7.

Monday all citizens eligible to share in the program who live in Precinct 1 are to report. That includes citizens in the Eastland, Ranger and Olden areas.

Tuesday Precinct 2 residents (Gorman, Carbon and Destemona) will pick up their food.

Wednesday all citizens of Precinct 3, Rising Star, Pioneer, and Okra will be served, and Thursday Precinct 4 citizens, Cisco, Scranton and Nimrod, can pick up their food.

Porter reminded citizens that they must bring their own containers.

Available for distribution at this time is flour, meal, cheese and milk.

Under the program, an individual with an income of less than \$60 monthly can share in the program. A family of two or three persons making not more than \$120 qualifies and a family of four or five persons making not more than \$140 is eligible. A family with six or seven members can make as much as \$165 monthly and still participate in the program and a family with eight or nine members can have a monthly income of \$180 and still share in the foodstuff allotted the county. For each additional person

over nine, \$15 additional income is allowed.

As of Thursday a total of 1063 applications had been approved. An average of two persons per application was noted, meaning that more than 2000 persons are sharing in the program.

The Masonic Building in Eastland, across from the First Methodist Church, is being used as distribution point for the surplus foods.

American Legion To Bring Show Here Nov. 12

The American Legion today announced that arrangements have been completed for the professional stage show, "Hypnotic Marvels," to come to Eastland Nov. 12 at 8 p.m.

The show features Professor Russel K. Barron. Proceeds will be used for the benefit of disabled veterans and their families.

Pop Whitaker, commander of the local Legion post, said Barron has traveled throughout the world making a study and application of therapeutic hypnosis.

Whitaker said Barron has appeared in every important auditorium in the nation and has made numerous appearances on television. The show will include audience participation, including control of subconscious, extrasensory perception, telepathy, pain control and many others.

The main feat is billed as "In the Long, Long Ago" where the Professor gives a demonstration of Age Regression.

Available for distribution at this time is flour, meal, cheese and milk.

Under the program, an individual with an income of less than \$60 monthly can share in the program. A family of two or three persons making not more than \$120 qualifies and a family of four or five persons making not more than \$140 is eligible. A family with six or seven members can make as much as \$165 monthly and still participate in the program and a family with eight or nine members can have a monthly income of \$180 and still share in the foodstuff allotted the county. For each additional person

(Continued on Page Two)

Eastland's Three Plymouth Dealers Put New 'Silver Dart' On Display

Substantial styling advances in keeping with the trend-setting characteristics of the immensely popular current model Plymouth cars plus a broad new lineup of six engine options and other important new engineering features will be seen when the Plymouth for 1958 is introduced Friday at Eastland's three authorized Plymouth dealers, Blevins Motors, McGraw Motors and Rushing Motors.

"The new Plymouth is improved in appearance, performance, comfort and safety, yet retains many of the outstanding styling, handling and riding features that were so enthusiastically accepted by American car-buyers this year," John P. Mansfield, Plymouth president, said today.

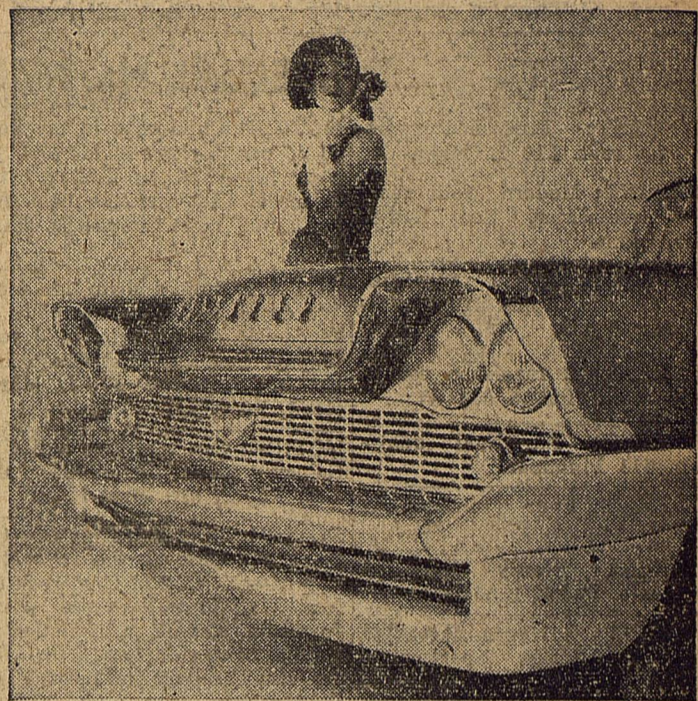
"While the 1957 model year has been one of the finest in our history, we intend to move even farther ahead with the introduction of finer, more advanced line

of new Plymouth".

Styling features of the new Plymouth include a bright new "Silver Dart" side moulding treatment, sweeping upward at the rear on Belvedere and Sport Suburban models to the tip of Plymouth's familiar high-flung directional stabilizer fins, with optional dart inserts of silver anodized aluminum or compatible colors. Another distinctive new side trim is available also with Savoy and Plaza models.

Double header dual headlights are standard equipment on all new Plymouths, with the inner beams producing maximum long-range forward visibility and the outer pair providing supplemental fill-in light when used in combination, or efficient low beam light.

(Continued on Page Two)



NEW CHRYSLER—Dual headlights set over a massive rectangular-checked grille and double air-scoop bumper lend an elegant look to the 1958 Chrysler Windsor, offered for the first time in a new lower price range. The Chrysler line goes on display Friday at Blevins Motor Co. in Eastland. The Windsor is available with Auto-Pilot, a new driver assist which provides automatic throttle control.

New 1958 Chrysler Goes On Display Friday For First Time At Blevins

The 1958 Chrysler line, introducing a new Windsor series and two new nine-passenger station wagons, will be shown by Blevins Motors, in Eastland, beginning Friday.

Combining such innovations as Auto-Pilot, a new pushbutton automatic drive assist, aircraft-type bubble windshields and improved full-time power steering, the 1958 Chryslers are offered in the New Yorker and Saratoga series, plus a new Windsor series in a lower price range.

Beautiful new grilles, plus side and rear styling detail refinements give the new Chryslers added glamour. Interiors are all new with luxurious fabrics and leathers color keyed to a wide range of exterior colors. Improved V-8 engines give added performance and economy with new 10 to 1 compression ratios.

The new cars offer advanced sure-traction differential, captive air tires and dual headlights. They feature award-winning four-billion-mile-tested Torsion-Aire Ride as standard equipment. There is also the new Chrysler 300-D with optional fuel injection.

For 1958 Chrysler introduced Auto-Pilot, an unusual new safety, comfort and economy feature.

which differs from any speed control device previously marketed. Auto-Pilot allows selection of any cruising speed by means of a dial on the instrument panel. When the car has attained this pre-selected speed a warning back-pressure develops on the accelerator pedal.

By pushing a button recessed

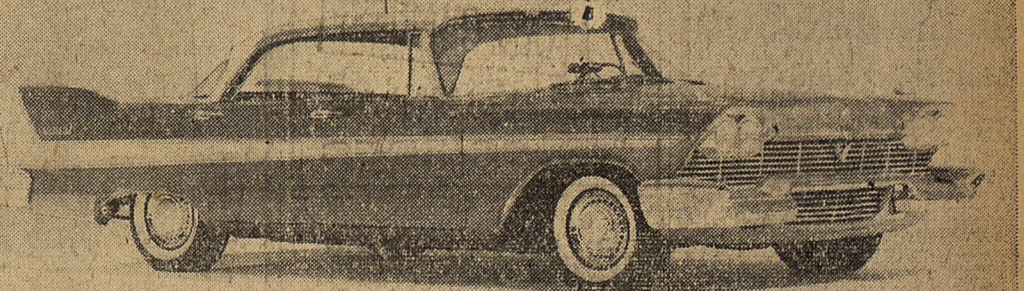
Olden High FFA Members Receive Sears Duroc Pigs

Three Olden High School Future Farmers of America were awarded pigs this week through the Sears program.

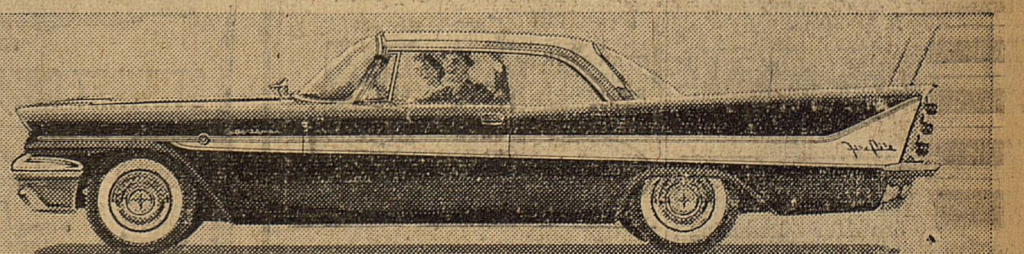
The duroc gilts went to Roy Haley, Homer Thomas and Phillip A'Ford. The gilts were ones given back to the Olden Chapter by three other boys who won pigs through the program. Under the program the boy receiving the pig returns the first gilt.

Olden Future Homemakers of America also met for a program on beautification of the school grounds. Speaking to them were Travis Hilliard, Gilbert Copeland, Stanley Cook and Eddie Munn. Plans were made to paint the merry-go-round for the smaller children. The group will also sod grass on the school ground and plant trees and flowers around all the buildings.

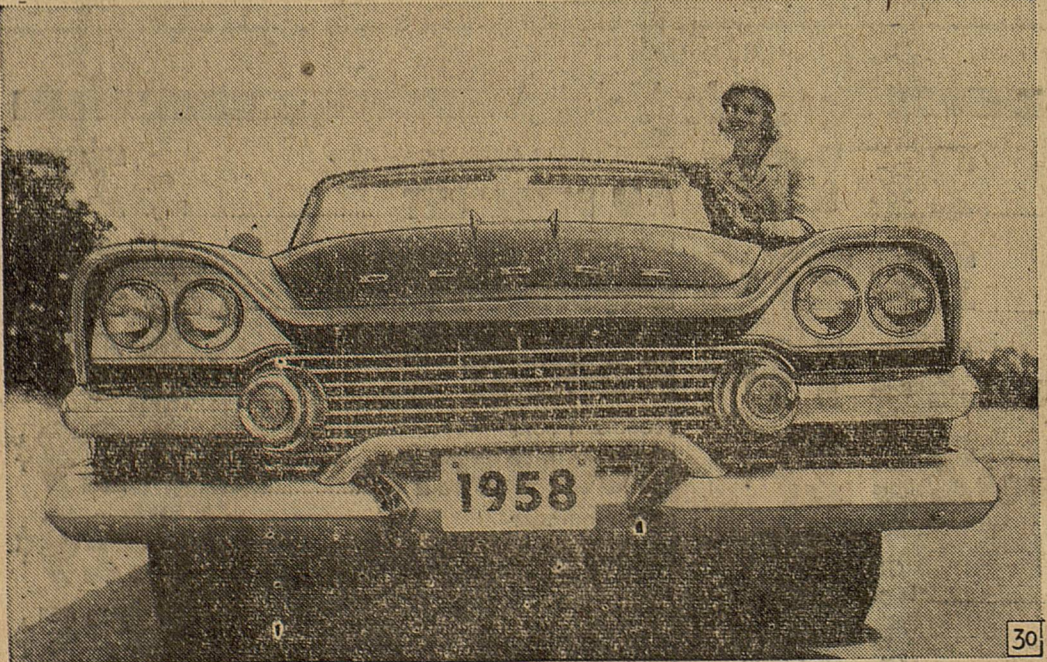
Teeny Weeny Gas Burners! Largest selection of new sedans, hardtops, convertibles in this area. Prices start at \$1095. TOM'S SPORT CARS Eastland



SILVER DART PLYMOUTH—Silver Dart twotone exterior styling trim, sweeping backward and up to the tip of the Plymouth Belvedere four-door hardtop's familiar fins, is new with 1958 Belvedere models and Sport Suburban station wagons. The new Plymouth goes on display here tomorrow at Rushing Motors, McGraw Motors and Blevins Motors. Plymouth's outstanding Torsion-Aire suspension system and its push button controls are retained for 1958. A new automatic Econo-Choke are also available this year.



THE NEW DESOTO—Rushing Motor Co. Friday will put the 1958 DeSoto in their show windows for the first time. The Fireflite two-door Sportsman pictured above is a fine example of this year's exciting models, which have the look and feel of the future.



SWEPT WING DODGE—Adding a dramatic touch of boldness to the swept wing '58 is the completely redesigned front end. Dual headlights are arranged side by side, under flaring, fashionable hoods, for safer, surer night time driving. The new Dodge goes on display Friday at McGraw Motor Co. in Eastland. Note the parking lights, which are recessed in protective "bombs," placed to shield the cross-hatched grille from damage.

Eastland Telegram

Eastland County Record established in 1931, consolidated August 31, 1951. Chronicle established 1887, Telegram established 1923. Entered as second class matter at the Post Office at Eastland, Texas under the act of Congress of March 3, 1879.

TIMES PUBLISHING COMPANY

Publishing Tri-Weekly—Tuesdays - Thursdays - Sundays

ONOUS DICK and JOE DENNIS, Publishers

VIRGIL E. MOORE Editor

CAROLYN COLLINS, Society Editor

One week by carrier in city	.15
One month by carrier in city	.65
One year by mail in County	2.95
One year by mail in state	4.95
One year by mail out of state	6.95

NOTICE TO PUBLIC—Any erroneous reflection upon the character, standing or reputation of any person, firm or corporation which may appear in the columns of this newspaper will be gladly corrected upon being brought to the attention of the publishers.

Classified Ads..

Cards of Thanks charged for at rate of \$2.00 Each

FOR RENT -

FOR RENT: Furnished apartment for rent. 310 E. Main.

FOR RENT: Modern four room house, soft water. See Travis Reese, Olden.

FOR RENT: Small furnished house, close in. Apply 210 E. Valley, after 6 p.m.

FOR RENT: 2 furnished rooms, private bath. Phone 811-W.

FOR RENT: Furnished apartments. 611 Plummer.

FOR RENT: Four unfurnished rooms in Duplex. Phone 394-J.

FOR RENT: Newly decorated apartments. Phone 1085-W.

FOR RENT: Newly decorated apartment. Hillside Apartments. Phone 9520.

FOR RENT: Five room unfurnished house, 103 N. Ammerman. Phone 446-J or 270.

MISC. FOR SALE -

FOR SALE: Very nice dining room suite—table, six chairs, buffet—\$35. Phone 1177.

FOR SALE: Donkey for sale. Phone 755-J-1.

FOR SALE: Registered Siamese kittens. Bill Parton, Carbon.

FOR SALE: Special Rubberized paint, \$3.59 per gallon. The House of Color, Highway 80 east, Ranger.

FOR SALE: Rye seeds for planting, nice well matured seed, clean enough. A. H. Cox, Ivan Star Route, Breckenridge, Tex.

FOR SALE: 1956 Evinrude motor, used, 15 miles. Original price \$385, Sale price \$275. Phone 421, Ranger.

NOTICE
FRESH DRESSED
FRYERS

Every Day Special Price for Your Deep Freeze—also—
Chicken Blood Bait... Guaranteed to stay on any type hook.

PHONE 110
WALKER
Dressing Plant

Insurance
AND
Real Estate
D. L. KINNAIRD
Life - Fire - Auto - Farm
Polio - Bonds
37 years in the Insurance
Business in Eastland

Overseas Veterans Welcome
Karl and Boyd Tanner
Post No. 4136
VETERANS
OF
FOREIGN
WARS
Meets 2nd and
4th Thursday
8:00 p.m.

AUTOS FOR SALE
FOR SALE: 1956 Ford, cheap. Call 839.

Reduce Without Dieting
Use my Stauffer Reducing Machine. Reasonable rates.
Mrs. Bert Fuller, 613 West Moss. Phone 653.

SPECIAL NOTICE

NOTICE: Child care in my home \$1.25 per day per child; \$.50 per hour per child or \$.75 for two or more. That includes meal. Any age. 1005 West Commerce. Phone 1185.

NOTICE: Build a chain link fence. We do all the work, complete the fence. No down payment, 3 years to pay. Call Eastland Chain Link Fence Co. Phone 108-J. Marvin Hood, manager.

NOTICE: Can take five ladies for reducing plan. Phone 653. Mrs. Bert Fuller, 613 West Moss.

NOTICE: Valet Rug Cleaner—Our truck will pick up the first Monday of each month. One week service. Wall to wall carpet and furniture cleaned on location by appointment. Call Mrs. J. B. Johnson 132 Eastland for information. Satisfaction guaranteed. A. C. Roberts, Orchard 33561, Abilene.

REAL ESTATE - FOR SALE

FOR SALE: House reduced for quick sale. Phone 887.

E. K. HENDERSON home for sale. 104 E. Valley or phone 189.

FOR SALE: Six room house. Just remodeled, inside and out. Knotty pine kitchen and cabinets. Phone 1137-W.

FOR SALE: 3 bedroom house. 505 S. Bassett. Call 720-W-2 or 707-W-2.

FOR SALE: Three room house, 1405 S. Bassett.

FOR SALE IN CISCO: Three bedroom brick home on paved corner lot. Central heating, dish washer and garbage disposal unit. Double garage and nice garage apartment. Phone 848, Eastland.

ED V. PRICE & CO.
TAILORED
SUITS
Sport Coats Slacks
C. L. FIELDS
Phone 571 103 W. Valley

MAJESTIC
IN EASTLAND
FRIDAY & SATURDAY

FRANK SINATRA
MITZI GAYNOR
JEANNE CRAIN

The Joker
Is Wild

SUNDAY & MONDAY

FRED ASTAIRE
CYD CHARISSE

Silk
Stockings

Quick Relief of HEADACHE

EASE PAINS OF HEADACHE, NEURALGIA, NEURITIS with STANBACK TABLETS or POWDERS. STANBACK combines several medically proven pain relievers... The added effectiveness of these MULTIPLE ingredients brings faster, more complete relief, easing anxiety and tension usually accompanying pain.

STANBACK
POWDERS
STANBACK TABLETS

TRADE WITH YOUR HOMETOWN MERCHANTS

AROUND RANGER COLLEGE CAMPUS

School is still in session at Ranger College. Though there have been many cases of Flu on the campus, there have not been great numbers of students out at a time, and it has been possible to continue classes.

When the Rangers played Tarleton Saturday evening, Oct. 25, a large number of Ranger College supporters attended the game. The college band provided music, and the Rangeans performed between halves despite the extreme cold and in spite of the fact that a few Rangeans were out because of illness.

In addition, there were many other supporters in the stands, among whom were the following students: Gene Ashcraft, Charlotte Rose, Jim Bacus, Sherry Baker, Ken Chandler, Charles Clark, Gene Edwards, Sue Garrett, Jimmy Gordon, Gay Nell Loper, Mary Jane Maddux, Barbara Nichols, Boone Martin, Ronnie McPherson and Kay Vaughn.

Faculty members attending the game were Dr. and Mrs. Price Ashton, Dr. and Mrs. George Rushton, Mrs. Frances

Plymouth—

(Continued from Page One)
ing when used alone. With filaments centered in all lamps, the new dual headlights produce the safest, most scientifically effective night lighting ever attained for automobiles.

New turn signals and parking lights are nestled in a triangular area above and between the headlights. Tail lights also are new, with circular reflectors lower in the fender and a silver-colored reflective wedge extending upward to the tip of the fin. The back-up light is centered beneath the rear bumper.

The lower front grille of the Plymouth for 1958 has been redesigned with a horizontal bar effect identical to the upper grille section.

New Plymouth colors for 1958 are generally softer and more elegant, with 15 solid color options and 44 two-tone combinations. Luxurious new textured fabrics are offered in all lines.

SIX ENGINE OPTIONS
Plymouth's new engine lineup offers six options, including the new 350-cubic-inch Golden Commando V-8 at extra cost, with a 10 to 1 compression ratio and a horsepower rating of 305. New fuel injection is available with this engine as a limited option.

Standard V-8 Plymouth engine for 1958 is the 318-cubic-inch Fury V-800 with dual carburetion, a compression ratio of 9 to 1 rated at 225 horsepower. Super Pak, with four-barrel carburetion, is available as extra equipment, and a Dual Fury 7-800 engine with eight-barrel carburetion is the standard power plant for the high performance Plymouth Fury car in 1958.

Standard on all six-cylinder models is the smooth and economical Power Flow "6," at 230 cubic inches, 8 to 1 ratio and 132 horsepower.

Jameson, Mrs. R. L. Hamrick, Mrs. Tom Hestand and Sandra, Mr. David B. Allsup, and Mr. H. A. Lotspeich. Former Coach Pat Thomas, Mrs. Thomas, and sons Ricky and Bruce were also present to root for the Rangers. Too, there were many parents and friends of the Rangers present from other towns in various parts of Texas.

The Baptist Student Union at Tarleton State College invited the BSU of Ranger College to meet with them for Evening Watch at 6:30 p.m. and for Afterglow Fellowship after the game, when refreshments and a game period were enjoyed. Those from Ranger College meeting with the Tarleton group were Jean Eaton, Sherry Baker, Mary Jane Maddux, Ray Dell Fowler, Lanny Smith, and Bonnie McPherson.

Ranger College students were also invited to the after-game dance in the Student Union Building at Tarleton. Those attending this affair included Gail Bagley, Dorothy Daws, Desma Eakin, Elpidia Gonzales, Jimmy Gordon, Evelyn Jones, Boone Martin, Jimmy Mae Miller, Elizabeth Seymour, Patsy Shaffer, Mary Lou Wright, and Mr. H. A. Lotspeich.

The girls' dormitory was the scene of a very beautiful devotional led by Dorothy Daws Monday night, October 28. After the devotional a surprise birthday party was given for Dorothy Daws and Doris Nabers.

Plans for the Sadie Hawkins dance to be held in the Student Union Building Thursday Night, October 21, were discussed further. Also finishing touches were put on the program to be presented in assembly Friday.

CALL 601 FOR CLASSIFIED ADVERTISEMENT

JOY
DRIVE-IN THEATRE
Cisco - Eastland Highway
Open 6:45 - Closes 9:00
Friday & Saturday

JACK WEBB
as
T/SGT. JIM MOORE
U.S. Marines.
Rough, Tough
and Wonderful
in a surprising
new role!

THE D.I.
PRESENTED BY WARNER BROS.
SCREEN PLAY BY JAMES LEE BARRETT

DIXIE Drive-In
EASTLAND RANGER HIGHWAY

Box Office Opens 6:45
Show Starts 7:00
Box Office Closes 9:00

TUESDAY ONLY, OCT. 29
Tuesday Is Bargain Day—Adults 25c
Child Under 12—FREE

WEDNESDAY THURSDAY, OCT. 30 - 31

THE WAY TO THE GOLD
CINEMASCOPE
STARRING
JEFFREY HUNTER - SHEREE NORTH - BARRY SULLIVAN - WALTER BRENNAN

PLUS: 2 Color Cartoons

FRIDAY - SATURDAY, NOV. 1 - 2

FASTER THAN "THE FASTEST GUN ALIVE"

M-G-M PRESENTS
STEWART GRANGER RHONDA FLEMING
GUN GLORY
CINEMASCOPE AND METROCOLOR
STARRING CHILL WILLS - STEVE ROWLAND
WITH JAMES GREGORY - JACQUES AUBUCHON

PLUS: Two Color Cartoons

WHEN IT COMES TO CASH SAVINGS PLUS FINE QUALITY...
MORE PEOPLE COME TO A&P!

DENTI-KISS TOOTHPASTE Lge. Tube **25¢**

SULTANA WHOLE
GREEN BEANS 2 16-oz. Cans **29¢**

SEMI SWEET CHOCOLATE
NESTLE'S MORSELS 6-oz. Pkg. **19¢** 12-oz. Pkg. **37¢**

TEXIZE (5c OFF REG. PRICE)
LIQUID DETERGENT 12-oz. Can **25¢**

TEXIZE (10c OFF REG. PRICE)
LIQUID DETERGENT 22-oz. Can **49¢**

JIFFY 4 KINDS
CAKE MIXES 9-oz. Pkg. **41¢**

HALVES OR PIECES
SHELLED PECANS 1-lb. **99¢**

PERFECT STRIKE
CHUM SALMON 1-lb. Can **49¢**

A & P INSTANT
COFFEE 6-oz. Jar **41¢** 2-oz. Jar **\$1.05**

ANN PAGE Pure STRAWBERRY Preserves 2 LB. JAR **59¢**

ANN PAGE Pork and Beans SPECIAL! 2 31-OZ. CANS **37¢**

ANN PAGE MAYONNAISE Pint Jar **49¢**

ANN PAGE ELBOW SPAGHETTI 1-lb. Pkg. **15¢**

ANN PAGE BLENDED SYRUP 24-oz. Bil. **43¢**

ANN PAGE TOMATO KETCHUP 14-oz. Bil. **19¢**

TAKE YOUR CHOICE... AND TAKE THE SAVINGS!

JANE PARKER LARGE **Apple Pie** REG. 53c Special! **43¢** EACH

JANE PARKER ORANGE **Chiffon Cake**

JANE PARKER **CAKE DONUTS** 3 Kinds Doz. **20¢**

JANE PARKER **PROTEIN BREAD** 1-lb. Loaf **21¢**

JANE PARKER **SUGAR COOKIES** 11-oz. Pkg. **29¢**

JANE PARKER **ENRICHED BREAD** 1-lb. Loaf **21¢**

JANE PARKER **LIGHT FRUIT CAKE** 3-lb. Cake **\$2.65**

You Can Put Your Trust In Bourland's Meats

It's New! Swift Whole Hog...

Sausage 15c off Reg. Price Lb. **49¢**

Ground Beef Lb. **35¢**

Chuck Steak Lb. **55¢**

Club-or-Sirloin Lb. **69¢**

WILSCO BACON 1-lb. **59c**

WILSON CHEESE 2 lbs. **79c**

CHUCK ROAST 1-lb. **49c**

ROUND STEAK 1-lb. **75c**

NEW! Swift Premium **COUNTY FAIR Pure Pork SAUSAGE** LEAN and DELICIOUS

IDAHO JONATHAN
Apples 4 Lb. Bag **35¢**
EXTRA FANCY WASHINGTON STATE

APPLES Red Delicious 2 Lb. **25¢**

FLORIDA **AVOCADOS** each **10c**

FRESH FLORIDA **CUCUMBERS** 3 for **19c**

Chestnuts Imported Italian Lb. **29¢**

Storewide Values

TOILET SOAP
PALMOLIVE 2 Reg. Bars **19¢**

TOILET SOAP
PALMOLIVE 2 Bath Bars **27¢**

TOILET SOAP
Cashmere Bouquet 2 Reg. Bars **19¢**

TOILET SOAP
Cashmere Bouquet 2 Bath Bars **27¢**

DETERGENT
VEL Gt. Pkg. **75¢**

DETERGENT
FAB Gt. Pkg. **75¢**

CLEANSER
AJAX 2 14-oz. Pkgs. **25¢**

DETERGENT FOR AUTOMATIC WASHERS
AD DETERGENT Gt. Pkg. **75¢**

PINK DETERGENT
LIQUID VEL 22-oz. Can **69¢**

AEROSOL BOMB DEODORIZER
FLORIENT 5 1/2-oz. Can **69¢**

DEODORANT SOAP
WOODBURY 3 Reg. Bars **29¢**

DEODORANT SOAP
WOODBURY 2 Bath Bars **29¢**

PUFFIN
BISCUITS 2 Pkgs. **25¢**

AMERICA'S FOREMOST FOOD RETAILER... SINCE 1859
A&P Food Stores
THE GREAT ATLANTIC & PACIFIC TEA COMPANY

Texas Congress of Parents and Teachers to Meet In Eastland

The first regular meeting of Eastland County Council No. 5, Texas Congress of Parents and Teachers, will be held November 4 in the Texas Electric Service Co. Community Room in Eastland, at 9:00 a. m., with the president, Mrs. R. M. Benton of Cisco presiding. A short business meeting will be conducted, and at 9:30 a. m. Mrs. T. A. Swenson, State Vice-President from Tyler, will present an introduction to and explanation of the Texas Parent Teacher Procedure and Texas Parliamentary Law Courses. The Texas Parent Teacher Procedure Course is prepared for parent-teacher members, and offers them an opportunity to familiarize themselves with the history, program, and technique of the organization to the end that they may make wiser and more efficient leaders and better informed members in this important work.

The Texas Parliamentary Law Course is a short but full course

in the proper parliamentary procedure used by the units of the Texas Congress, and is based on "Robert's Rules of Order Revised."

Mrs. Swenson will point out how we as parents may work to improve our schools, homes, churches, and communities through Parent-Teacher work, and how P-TA units can be improved through good programs that educate the general public to the needs and necessities of children and youth in the community.

Mrs. W. O. Workman, President of First District, Texas Congress, which includes Eastland County is also expected at the meeting as Mrs. M. W. Herweck of Ranger, Vice-President of First District.

All officers of Council and local units are urged to attend this meeting, as well as Council Representatives from the 10 units in membership with Eastland County Council.

First Meeting Is Held By 4-H Club

Eastland 4-H Club held its first meeting of the year Wednesday, Oct. 9, in the Junior High study hall. They met to elect officers for the coming year.

Georgie Bess Faircloth, president of the club last year, presided over the meeting during the election of officers. Miss Nancy Weathers, assistant home demonstration agent, explained the duties of each officer and pointed out the importance of electing good officers.

The following new officers will take over their duties in November: Georgie Bess Faircloth, president; Jan Lewis, vice-president; Sharon Kay Wilson, secretary-treasurer; Jeane Morren, reporter; and Jo Ann Yancy, council delegate.

ATTEND FUNERAL

Mr. and Mrs. Ed Willman attended the funeral of his brother-in-law, Mr. A. E. Crosse, The funeral was held Monday in Mason.

SOCIAL CALENDAR

Friday, November 1

9 a. m. — Women's Hospital Auxiliary will open their Thrift Sale in the Pullman building north of the square. The Thrift Sale will also be open at 9 a. m. Saturday.

Monday, Nov. 4

7:30 p. m. — Ruth group of the Christian Woman's Fellowship of the First Christian Church will meet in the home of Mrs. Eldress Gattis, 510 South Dixie.

2:30 p. m. — Martin circle of the WSCS in the home of Mrs. N. C. Norris. Mrs. T. M. Johnson will be program leader. Co-hostesses are Mes. Norris, T. L. Fagg, and D. O. Mickle.

Tuesday, Nov. 5

9:30 a. m. — Van Geem circle of the WSCS will meet in the home of Mrs. Frank Sparks for their meeting. Mes. Harold White, H. J. Bulgerin and H. L. Hassell will be co-hostess. Mrs. Henry Van Geem will bring the program on "Our Home Mission Centers."

Thursday, Nov. 7

3 p. m. — Thursday Afternoon Club will meet in the Woman's Club for their regular meeting. Mrs. Cecil Collings will be leader. Mrs. Ben Hamner will be moderator of a panel discussion on "Lore of Eastland County."

Priscilla Group Meets with Mrs. L. E. Huckabay

Mrs. L. E. Huckabay was hostess to the Priscilla group of the Christian Woman's Fellowship of the First Christian Church Monday morning.

Mrs. Joe Tow, co-chairman, presided over the meeting in the absence of the chairman, Mrs. Jack Chamberlain Sr.

"Uplifted Hands" was the devotional given by Mrs. Carl Garrett. Mrs. Huckabay gave the lesson on "A Look Around."

Refreshments of coffee and doughnuts were served to Mes. Roy Turner, Bill Collings, Carl Garrett, Joe Tow, Curtis Young, one guest, Mrs. E. T. Matthews, and the hostess, Mrs. Huckabay.

HOME FROM GERMANY

Sgt. PC and Mrs. Bobby Fisher and daughter Suzzie, have returned home from Bad Kreuznach, Germany, where he has been stationed with the Armed Force. He will be stationed at Fort Hood now.

They are visiting in the home of his parents, Mr. and Mrs. L. E. Fisher, 205 West Pinner.

Program Is Given By Mrs. Horton To Xi Alpha Zeta

Mrs. Jim Horton gave the delightful program for the Xi Alpha Zeta Chapter of the Beta Sigma Phi in the home of Mrs. Fehrman Lund on Monday night.

The program given by Mrs. Horton was concerned with her trip abroad. To make her program more interesting Mrs. Horton brought her colored slides of her trip to show the group. Her trip was to the countries of England, Sweden, Ireland, Iceland and Scotland. London was the main town discussed in England.

During the short business meeting it was voted that the International headquarters send \$5,000 to the Cystic Fibrosis Research Foundation.

The group was also reminded of the dance for Beta Sigma Phi members and their husbands to be held at the Cisco Country Club Saturday night at 6:30. Underwood of Abilene will be catering for the dance.

Refreshments of cake and coffee were served to Mes. Bill Arthur, Bill Collings, Don Doyle, John Goode, Red Graham, Bill Hofmann, Jack Horn, Larry Kinard, Bob King, Bill Leslie, Bill Walters, R. M. Sneed, and hostess, Mrs. Lund.

Hospital News

Patients in the Eastland Memorial Hospital are:

Mrs. D. L. Mitchell and baby boy

Fay Phelps, medical

Hugh Brown, medical

Mrs. Milton Underwood, medical

Ronald Robertson, medical

Lona O'Neil, medical

W. A. Justice, medical

Mrs. Lillie Sneed, medical

Jody Cooper, medical

Mary Jane Randall, medical

Harold Courtney, medical

Rodney Brinkley, medical

Mrs. Jess Brinkley, medical

Mrs. R. E. Lawson, medical

Mrs. J. D. Hitt, medical, Cisco

Patients in the Ranger General Hospital from Eastland are:

Bill Carlton, medical

Mrs. J. C. Lilley, medical

Eddie Gallagher, Jr., medical

Norman Short, medical

J. F. Trott, medical

Mrs. W. J. Shoerrock, medical

Mrs. Beatrice Jones, medical

R. W. Kleiner, medical

LeRoy Millican, medical

Dismissed were: Marvin Lee and D. B. Moore.

ATTEND FOOTBALL GAME

Mr. and Mrs. J. C. Poe, Mr. and Mrs. Frank Hightower, and Mr. and Mrs. Russell Hill attended the A&M-Baylor football game at College Station Saturday.

Look Who's New

Mr. and Mrs. Walter Maynard are the parents of a new baby daughter, Eva Jan. She was born on Oct. 16 in the Eastland Memorial Hospital. She weighed 7 pounds and 11 ounces.

She has one sister and one brother: Rhonda Kay who is six years old and Rocky who is four.

Grandparents are Mr. and Mrs. C. W. Norris of Carbon and Mr. and Mrs. M. L. Maynard of Carbon. Great grandparents are Mr. and Mrs. W. T. Maynard of Gorman and J. B. Johnson of Carbon.

David Quinn is the new son of Mr. and Mrs. Ansel Fortenberry of Slidell. He was born on Oct. 21 in Decatur and weighed 6 pounds and 7 ounces. He has one sister, Judy Nell who is 2 years old.

Maternal grandmother is Mrs. David Whitten of Eastland. Paternal grandparents are Mr. and Mrs. Quinn Fortenberry of Slidell.

JAN TAYLOR IS PRESIDENT OF SCALE RUNNERS

Jan Taylor is president of the Scale Runners Junior Music Club. It was stated that "Jan Robertson" was president in the article, "Scale Runners Junior Music Club Meets in Treadwell Home."

WEEKEND GUESTS

Mr. and Mrs. Paul Brown of Austin were weekend guests of Mrs. Will Turner, 208 Ostrom.

PENNEY'S
ALWAYS FIRST QUALITY!

It takes a good neighbor to found a good-neighbor store! Today, the over 1690 stores that continue Penney's good-neighbor way of doing business honor him with the year's most dramatic offers...

FRIDAY! SATURDAY!

BIG FOUNDER'S DAY VALUES

HONOR MR. J. C. PENNEY

Founder's Day offer!
Genuine 17-jewel Penney's Benrus watches at this fabulous low price!
16 STYLES TO CHOOSE FROM

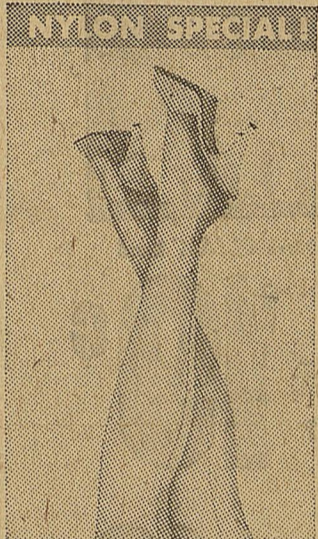
21.50
plus 10 percent Federal tax

HOLIDAY PREMIUM BUY!

\$2.00 holds your watch on lay-away

Famous Benrus made these watches for Penney's with features found only in the finest watches: Precision ground jewels, Unbreakable mainspring, more! 10 Karat gold plated watches, nickel chrome waterproof* models.

1 year written guarantee against mechanical defects... free repair service if they occur!
*When crystal, case, crown remain intact.

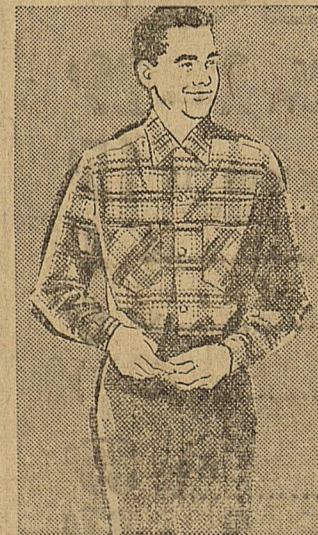


DARK SEAM DRESS SHEERS

2 pair 88c

All-first quality, full-fashioned 60-gauge, 16 denier sheers. Sizes 8 1/2 to 11.

New striped sheets! The styling—spectacular! The quality—Penney's own famous Nation-Wide muslin. Luxury at tiny prices full flat. 2.98 full fitted bottom 2.98



1.98

Save! Look smart! Penney's hefty 5.3-ounce cotton suede sport shirts. Boldly patterned, proportion fitted! Sanforized, machine washable. Sizes small, medium, large.

SPECIAL LOW PRICE!

PREMIUM GIFT BUY!

Blanket yourself in easy-care beauty... Penney's 100% Acrilan®

72 by 90 inches **7.44**

Only thing we've scrimped on is the price. Top quality Acrilan with life-of-the-blanket nylon binding. Moth proof, non-allergenic. Stays fluffy machine washing after washing.



INTRODUCING NEW

Swept-Wing 58

So advanced it leaves the rest behind!

On display for the first time today is a car that stands apart in any company. It is very low, very daring, beautifully proportioned. Its unusual sureness of handling and control reflects the latest engineering advances. To own it is a new adventure. **Swept-Wing 58 by DODGE**

McGraw Motor Company

416 S. Seaman Street

Phone 80

Shop Penney's... you'll live better, you'll save!

Dodge Truck-

(Continued from Page One) easy to dial and convenient to service. Push-button driving controls again are available on all low-tonnage models and the P400 forward-control model. Color options have been increased in keeping with the trend toward high styling in trucks. The new models are offered in 13 dramatic colors—nine of them new—and 12 additional two-tone combinations. A new 6-speed Torqmatic transmission brings automatic shifting to medium and high-tonnage models. An outstanding feature of the new transmission is the hill retarded, a safety device that assists downhill braking to lengthen

brake life. New and more effective hydraulic brakes add increased stopping power to medium and high tonnage models. Power brakes again are standard or available on all Dodge trucks. Increased road clearance on the low-tonnage trucks aids off-highway driving and is of particular value on secondary or rutted roads and to farmers and ranchers in field operations. Low-tonnage models, featuring the high-style look, are paced by the sleek Sweptside 100 pickup, while high-tonnage models offer modern lines and a massiveness the emphasizes power.

VISITED IN EL PASO

Mr. and Mrs. Paul Taylor visited friends in El Paso during the past weekend.

CWF Meets In McNatt Home

Lydia group of the Christian Woman's Fellowship of the First Christian Church met recently in the home of Mrs. L. C. McNatt. The meeting was opened with a prayer by Mrs. McNatt. Mrs. B. H. Clifton, chairman, presided over the business meeting. Mrs. McNatt gave the devotion on "Christian Home." The lesson on "Gospel of Kingdom of God" was given by Mrs. J. W. Watson. Mrs. Watson closed the meeting with a prayer. Refreshments of cakes squares and punch were served to Mes. McNatt, Clifton, Watson, T. L. Cooper, Cyrus Miller, T. L. Bendy, Jim Gilbreath, and Dixie Williams.

New Chrysler-

(Continued from Page One) in the speed selector, the driver arranges automatic throttle control. The driver can then remove his foot from the accelerator pedal. Automatic control is cancelled by a touch on the brake pedal. A new dual air conditioning unit for extremely hot weather conditions more than doubles the flow of cold air. It uses two separate evaporator and blower units, one located in the engine compartment and the other on a shelf in the luggage compartment. In addition to the new dual unit, an improved single-evaporator and blower unit, which circulates 15 percent more cool air,

is available. Fourteen models in three series are offered. The Chrysler Windsor is available in a four-door sedan, two-door hardtop, four-door hardtop, two-seat Town and Country station wagon and three-seat Town and Country station wagon. The Saratoga is available in a four-door sedan, two-door hardtop and four-door hardtop. The New Yorker is offered in a four-door sedan, two-door hardtop, four-door hardtop, convertible, two-seat Town and Country station wagon and three-seat Town and Country station wagon. They are available in a choice of 18 new colors and 45 color combinations. High-swept fender fins carry out an aircraft-derived dart shape.

There is also a new Chrysler 300-D with optional fuel injection engine. Moore About— (Continued from Page One) age you better do so now. By the way, does anyone know how trick or treat got to be a tradition so fast? Back in our days there was lots of tricks, but we didn't offer our customers a way to buy their way out of it. Now understand, we prefer the way it is now, but we just wondered who put this new deal over. We'd write some more, but that swept wing Dodge down below has claimed some of our space.

OLDEN HIGH SCHOOL By Elizabeth Fox The honor roll at O.H.S. for the first six weeks is as follows: Allen Foreman, Sharon Holladay, Ricky Robinson, Patricia Sullivent, Larry Williamson, Nancy Bridge, Judy Duncan, Wade Thomas, Rodney Patton, Tommie Sharpe, Eddie Munn, Gary Fox, Elizabeth For, Cindy Fox, Wilma Edwards, Judy Brown, Ledee Cooper, Deedores Cooper and Stanley Cook. Mr. and Mrs. W. E. Hallenbeck Sr. were honored with a house warming in their new home Thursday. Mrs. Homer Stiffler and Mrs. W. E. Hallenbeck Jr. were co-hostesses. Mr. and Mrs. Hallenbeck Sr. did most of the carpenter work on their new home in Eastland. They have been living in the rural part of Eastland County. Punch and cake squares were served to about 40 guests who called. They received several "nice" gifts. The house was decorated with several different flower arrangements of roses, nuns and other flowers. In spite of a stubborn, dreaching rain last Monday, which made us seek shelter in the gym, we hurried for Olden and really started our basketball season off right with an enthusiastic pep rally. The first game of the season was with Abilene Christian High last Tuesday. Although both the A and B teams tried hard, they couldn't win. The scores were 48-43 respectively. There was no girls game. Halloween signs are all over the place. Everyone is getting ready for the Halloween carnival Thursday. Booths chose are first and second, movie film; third and fourth, rummage sale; fifth and sixth country store; seventh a n d eighth, hayride; freshmen, basketball and the spook house; sophomores, fishing and bowling; juniors, cafeteria and ring toss; and seniors, bingo and baseball. A treat will be Gilbert Copeland and the junior boys washing dishes. New teachers in Olden this year include C. E. Bridge, principal; Jackie Heath, English; Mrs. La Faye Spurlen, elementary; and John Morgan, part time. Making health posters has been a very helpful and interesting way to learn about health to the fifth and sixth grade students. The seventh and eighth grades' interests at the moment include health posters, the basketball tournament at Rising Star and the art class. In art class each person has a project. The various projects include working with leather, building birdhouses, embroidery, etc.

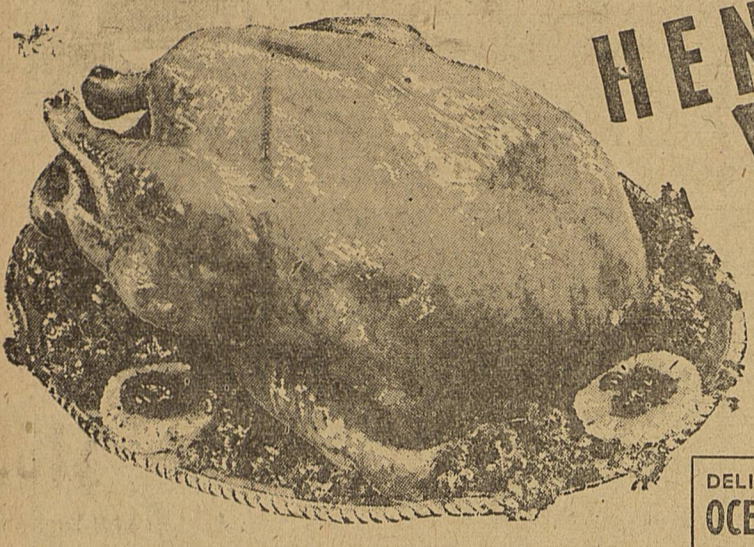
Hallenbecks Are Honored with House Warming

Mr. and Mrs. W. E. Hallenbeck Sr. were honored with a house warming in their new home Thursday. Mrs. Homer Stiffler and Mrs. W. E. Hallenbeck Jr. were co-hostesses. Mr. and Mrs. Hallenbeck Sr. did most of the carpenter work on their new home in Eastland. They have been living in the rural part of Eastland County. Punch and cake squares were served to about 40 guests who called. They received several "nice" gifts. The house was decorated with several different flower arrangements of roses, nuns and other flowers.

McGraw Motors-

(Continued from Page 1) the corners and sides, as well as at the top. Unlike conventional "wrap around" windshields, which in reality wrap around only at the bottom the Dodge "picture" windshield offers true control tower vision. Curving smoothly into the dramatically thin roof, it blends functionally and fashionably with the fast lines of Dodge sport models. All Dodge windshields offer greater glass area than those of other cars in the class. Accentuating the low, lance-like profile of the 1958 Dodge are the styling accents of the sides and rear end. The jet-age rear fins are reminders that this car was designed with directional stability in mind. Wind tunnel tests have shown that the "wedge" shape reduces steering corrections in crosswinds by as much as 20 per cent. Tail light lenses have been redesigned to dramatize the distinctive rear-end styling. A completely new line of engines headed by the rugged Ram Fire V-8, powers all 1958 Dodge cars. Combining light weight, compactness, quiet operation and economy, the Ram Fire V-8 is standard on all Custom Royal and station wagon models in the 350-cubic inch version. The seventh and eighth grades' interests at the moment include health posters, the basketball tournament at Rising Star and the art class. In art class each person has a project. The various projects include working with leather, building birdhouses, embroidery, etc.

WORTH FOOD MART



HEN Turkeys SUNCO FANCY U. S. GOVT. INSPECTED—GRADE A 8-14 Lb. Avg.—WORTH'S LOW PRICE 39c

PREMIUM BACON SWIFT'S Lb. 59c SLICED Pkg. BEEF CHUCK ROAST WORTH CONTROLLED QUALITY Lb. 43c TENNESSEE FARM NEUHOFF'S PURE PORK SAUSAGE 2 Lb. Pkg. \$1.29 LEAN SPARE RIBS SMALL, LEAN SIDES Lb. 49c CRACKER BARREL Kraft's Cheese, 8-Oz. Mellow Pkg. 39c 1 3/4-Oz. Pkg. 65c

Miss Worth Invites You to Play "MARKO" SATURDAYS, 7 to 8 p.m. KFJZ-TV channel 11 Free MARKO Cards only at WORTH FOOD MART

GRAPEFRUIT JUICE TEXSUN—SWEET or NATURAL 46-Oz. Can 19c

SAVE 50% and MORE. 12" Hi-Fi Records. Highest Quality—Famous Music. SELECT FROM: POPULAR, CLASSICAL, FOLK MUSIC, HYMNS, MUSICAL COMEDY. HEAR 'EM PLAYED BY THE "PROS" ON KFJZ-1270 Guaranteed \$3.98 Value \$1.49

SWEET POTATOES HOMEFOLKS WHOLE No. 3 Sgt. Can 19c ANGEL FOOD CAKE MRS. BAIRD'S Reg. 49c 39c SLICED PEACHES VAL VITA DELICIOUS WITH ANGEL FOOD CAKE 3 No. 2 1/2 Cans 69c WHITE SWAN COFFEE Reg. Drip or Fine Lb. Can 83c

WHITE LARGE EGGS Doz. 55c

Frozen Foods Specials! FROZEN-RITE ROLLS PARKER HOUSE or CLOVER LEAF 24-Ct. Pkg. 35c LIBBY CORN-ON-COB GOLDEN-SWEET... 3 2-Ear Pkgs. 69c

EXTRA SAVINGS WITH "Z.N." GREEN STAMPS Drug Dept. Special! SCHICK INJECTOR BLADES 20-Ct. Reg. 73c 59c

National Apple Week Specials! APPLES 2 Lbs. 25c JONATHANS Washington ROME BEAUTY 2 Lbs. 29c DELICIOUS Lb 15c YELLOW ONIONS TEXAS MILD Lb. 4c RED POTATOES U. S. No. 1 LARGE McCLURES Lb. 6c CALIFORNIA LEMONS LARGE, JUICY Lb. 19c

NABISCO PREMIUM CRACKERS 1-Lb. Box 27c LIPTON'S ONION SOUP MIX 2 1/2-Oz. Pkg. 17c LIPTON'S SOUP MIX BEEF & VEGETABLE 2 1/2-Oz. Pkg. 17c LIPTON'S SOUP MIX CHICKEN NOODLE 3 Ct. Pkg. 42c KRAFT'S DRESSING MIRACLE FRENCH 8-Oz. Botl. 25c KRAFT'S MIRACLE SANDWICH SPREAD Pint Jar 39c

Vol. 9 Also 1-8 New On Sale THE LITTLE 4-YEARS ENCYCLOPEDIA OF PICTURED KNOWLEDGE For The Entire Family WORTH \$3.00 For Volume VOL. 9 49c

BLUE OR BROWN LABEL BRER RABBIT SYRUP 24-Oz. Botl. 45c SWIFT'S BEEF STEAKS w/GRavy 12-Oz. Can 55c SWIFT'S CHOPPED HAM 12-Oz. Can 59c SWIFT'S HAMBURGERS 10-Oz. Can 49c LUNCHEON MEAT SWIFT'S PREM 12-Oz. Can 43c DOG FOOD SWIFT'S PARD 2 1-Lb. Cans 31c LIQUID PUREX BLEACH 1/2-Gal. Jug 35c WHITE OR COLORED SOFT-WEVE TISSUE 2 Rolls 27c SCOTKINS DINNER NAPKINS 50-Ct. Pkg. 27c FACIAL TISSUES 200-Ct. Pkgs. 29c SCOTTIES WONDERFUL NEW DISHWASHER "ALL" 20-Oz. Pkg. 43c SOAP OF THE STARS LUX TOILET SOAP 3 Reg. Bars 29c

ALTMAN'S -IN CISCO- LARGEST ASSORTMENT OF CHILDRENS WEAR IN THE OIL BELT POLL PARROT, SCAMPERRO AND JUMPING JACK SHOES. CINDERELLA, NANNETTE AND OTHER DRESS LINES. FOR EVERYTHING... FOR INFANTS AND CHILDREN—SHOP ALTMAN'S - CISCO Cinderella back-to-class dresses School was never like this! So much fashion... so much fun! CINDERELLA takes every girl back to books with charming nautical looks—wonderful new old-fashioned touches. In new exciting prints, charming stripes, exclusive plaids, new wool-like flannels. All wasnaoie, all delightfully priced. Sizes 3 to 6x, 7 to 14. Come see, come enjoy today!

More Early Pioneers Of Red Gap Praised

(Editor's Note: This is the 35th in a series of articles taken from the book, "History of Eastland County, Texas," written by Mrs. George Langston in 1904.)

Mrs. J. D. Alexander Mrs. Julia D. Knowlton-Alexander, born in Farming, Maine, June 21, 1858, came from the original family of Knowltons, whose ancestry can be traced back to Cheswick, Kent County, England. She is a lineal descendant of Col. Thomas Knowlton, a hero of

the Revolutionary War, whose bronze statue was erected on the grounds of the State Capitol, Hartford, Conn., on the 15th day of November, 1895, at which time the Knowlton Association of America, of which Mrs. Alexander is a member, formed. It holds its annual meetings in connection with the Bunker Hill Association. The family is a distinguished one and has held prominent positions for many years.

Mrs. Alexander, who came to the South 25 years ago, has been an active business woman in Cisco for 23 years, and brought the first of millinery and fancy goods to the town. She is every ready to extend a helping hand to the needy, and no woman in the county holds so many prominent positions in fraternal and other organizations. She is serving her seventh year as Secretary of the State Rebekah Assembly, L.O.O.F. She was the first lady in the State to receive the Decoration of Civility, the highest compliment that can be paid to women by the Patriarch Militant of the State, for meritorious work done in promoting the interests of the order. She was the first woman ever appointed State Organizer of the Lodge of Adoption of the Scottish Rite Masons of the thirty-second degree. She is State Treasurer of the Texas Woman's Press Association, although a member of only three years' standing, and a member of the League of American Pen Women of Washington D. C.

In 1893 Mrs. Alexander was appointed a Commissioner from this County to the World's Fair held in Chicago, and is Lady Chairman of Eastland to the St. Louis Exposition. She organized the first Civic Improvement League in Cisco and devised the plan of work.

In the home Lodges Mrs. Alexander is Admirable Mistress of the Lodge of Adoption, Past Matron of the Eastern Star Chapter, A. F. & A. M., and Past Protector of the Knights and Ladies of Honor. She served two years as Nobel Grand in the Rebekah Lodge and four as Chaplain. She has recently been appointed by the National Society of Daughters of the Revolution, Regent for Cisco.

Mr. Alexander, who came to this county in 1881, was for a long while in the dry goods business. He is now an extensive cotton buyer and insurance agent. Mr. and Mrs. Alexander are earnest supporters of any move that will advance the interests of the town.

Mrs. Will Kleiner

Has 240 acres of land under

fence one mile north of Cisco. Twenty-five acres of this plot has been put in an orchard and vineyard. There are 1200 trees—apple, pear, peach, plum and apricot, all of which grow and bear well. Seven thousand blackberry and

dewberry vines furnish Mrs. Kleiner with more berries than the town of Cisco can consume, and the surplus is put into jam and

cordial, which she dispenses to those who want it. In this vineyard three thousand grape vines thrive and yield enormous quantities. The owner expects to put up 100 gallons of grape juice next season for sacramental purposes.

This property is valued at more than \$6000. (Next: "The Red Front Drug Store.")

WE'RE CELEBRATING WITH OUR

Anniversary Sale

AT COATS FURNITURE STORE . . . IN EASTLAND

2YRS. IN EASTLAND

We want to thank you for the good business you've given us for the past two years, and offer you some EXTRA GOOD bargains right now. Feel free to come in and look around. You are always welcome at Coats Furniture.

EXTRA SPECIAL 5-PC LIVING ROOM GROUP \$9950

- Studio Couch
- Large Platform Rocker
- Matching Spot Chair
- 2 Sofa Pillows

All Hardwood Construction Throughout

PAY ONLY \$9.95 DOWN—BALANCE MONTHLY

8-PC. LIVING ROOM GROUP \$119.50

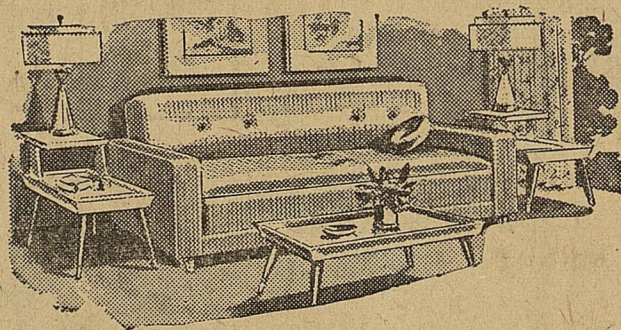
Same as above with two step tables and one coffee table added. \$12.00 down.

END TABLES 99¢

EXTRA ANNIVERSARY SPECIAL! UPHOLSTERED SPOT CHAIR \$8.88

Reg. \$13.50 Value
Lime Oak Legs.
Close Outs At Only

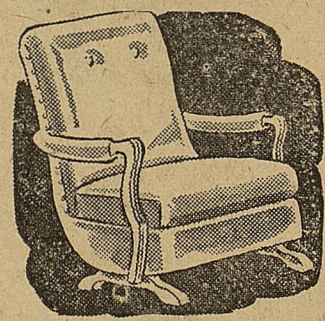
SPECIAL PURCHASE! NYLON CONVERTIBLE SOFAS \$15950



All Nylon Covers
Solid Foam Cushions
Innerspring Mattress
Reg. \$219.50 Value
ONLY 3 TO GO!

\$15950

ONLY \$16.00 DOWN



ANNIVERSARY SPECIAL PLATFORM ROCKER

Red, Brown, Green
Plastic Covers
\$14.95

GROUP ASSORTED CHAIRS

Values to \$39.50. Both Rockers and Straight Chairs \$18.88

GROUP ASSORTED ROCKERS

Values to \$59.50. Swivel, Platform and other styles \$39.88

BIG CEDAR ROBE AND CHEST

Reg. \$79.95 Value. Solve your storage problem. Wonderful to own, and for gifts. \$49.88

ASSORTED RUGS

8x10 Fiber \$12.88 9x12 Cotton Loop \$19.88
9x12 Fiber \$16.88 9x12 Viscose \$39.88

NOVELTY ITEMS

- ★ Metal Smokers
 - ★ Metal Ash Trays
 - ★ Metal Fruit Bowls
 - ★ Magazine Racks
 - ★ Napkin Holders
- YOUR CHOICE

99¢

9-PIECE DINETTE

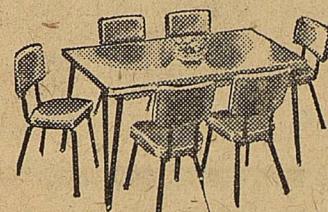


Table has two 12-inch leaves extending size to 36 x 72-inches.

\$8888

Bronze finish.
Foam Padded Chairs.
Self Leveling Casters

5-PC. DINETTE \$3888

Table 30 x 48-Inches.
One 8-Inch Leaf
Same construction as Suite Described Above.

9 x 12 LINOLEUM RUGS

Sells in most stores for \$5.95. Colors and Patterns for Kitchen, Living Room and Bedroom. \$3.99

FREE!

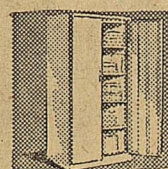
\$200 IN PRIZES

- Lane Cedar Chest
- Large Platform Rocker
- Inner Spring Mattress

Nothing to buy. You do not have to be present to win. Just come in and register.

DRAWING TUESDAY, NOV. 19

Employees and Families Not Eligible



Metal Utility Cabinet

4 Large Shelves
Double Doors
Extra Special! \$12 88

18 x 27-In. Throw Rugs 49¢

Cottons, Wools, Rayons, Nylons

Clothes Hampers \$4.88

Assorted Colors
Regular \$7.95

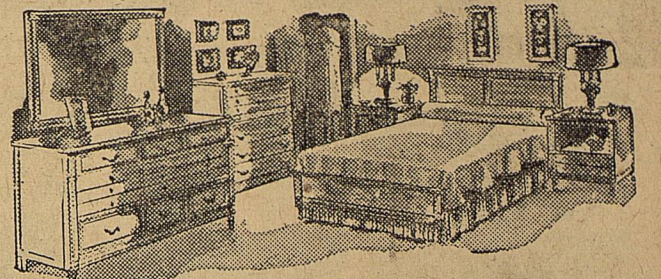
SOFA PILLOWS

Made from Upholstery Material and filled with soft, clean cotton. A big Anniversary Special 79¢

LAY-A-WAY

FOR CHRISTMAS

We will be glad to hold any item you choose and deliver Christmas Eve.
GOOD TRADE-INS — FREE DELIVERY



SPECIAL BEDROOM GROUP IN MOON MIST GRAY

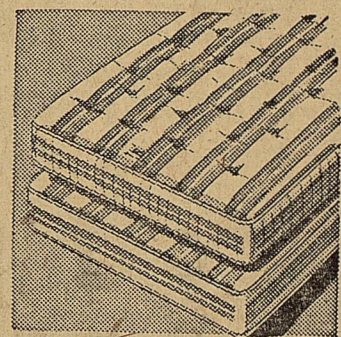
This Suite has all the appointments of quality furniture. Center drawer guides, full dust proof partitions, solid sycamore interiors, beveled plate glass and many more features.

DOUBLE DRESSER BOOK CASE BED \$139

Reg. \$169.50 \$14.00 Down

TRIPLE DRESSER BOOK CASE BED \$159

Reg. \$198.00 \$16.00 Down



ENGLANDER MATTRESS SPECIAL

- Air Foam Cushioned
- Cover Reinforced with DuPont Nylon
- Attractive Lurex weave

FULL OR TWIN SIZE Matching Box Springs \$28.88 \$28.88

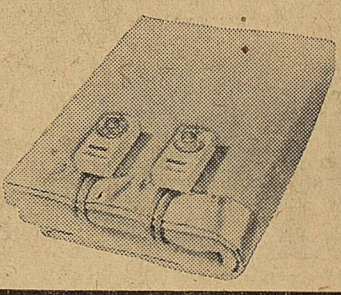
209 Coil Mattresses \$24.88

Cord handles, taped edges. Tempered Steel

Matching Box Springs 24 88

Single Dresser and Panel Bed \$49.50

Reg. \$69.50 Value
Lime Oak Finish
Slats and Rails Included



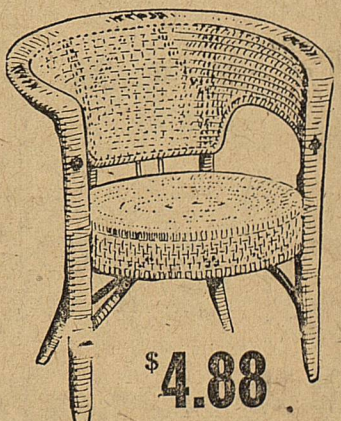
Elect. Blankets

Assorted Colors
Two Years Guarantee

Dual Control \$29.95
Single Control \$23.95

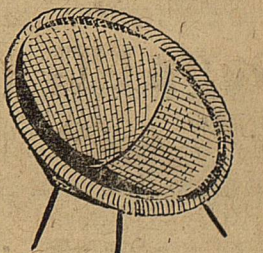
9-DRAWER CHEST

UNFINISHED PINE SIX LARGE DRAWERS THREE SMALL DRAWERS REG. \$27.50 Value \$1888



Peel Cane Chair \$4.88

Hand woven Peel Cane cover with sturdy construction throughout. Frames of solid rattan. A very exceptional bargain.



CIRCLE CHAIR \$5.88

A real \$8.95 Value. Wrought iron legs with woven cane seat. Can be used in any room in the house.

Rev. Kimbler Is Pilot on Safari To Africa Tues.

Ladies of the Women's Missionary Society of the First Baptist Church enjoyed a safari to Africa Tuesday via the boat, "Contentment in Commotion" by Dr. Ira N. Patterson.

Rev. Harvey Kimbler was pilot for the venture with Mrs. Frank Sayre as co-pilot. Other members of the crew included Mrs. Warren Chapman, navigator, and Mrs. John Dickey, stewardess.

Upon arrival each person secured a ticket from the ticket office and was escorted aboard the plane by the stewardess. The group made a trip over Africa and they visited such countries as Rhodesia, Kenya and Nigeria.

The plane landed in a native airport and the group had a luncheon amid a setting of pineapple trees, coconut trees and banana trees. After the luncheon the group re-boarded their plane to conclude a successful and inspirational journey.

Those making the journey were Mes. Frank Lovett, Albert Cartledge, Frank Sayre, Charles Layton, Irma Lynn, Earl Stevens, M. A. Treadwell, Harvey Kimbler, Henry Sims, Gene Rhodes, Frank Williams, Prudy Brashears, J. A. Pogue, Johnnie Grimes, Carl Jones, J. O. Jolly, Howard Upchurch, W. E. Reed, J. W. Hardin, Vic Edwards, W. D. Dukes, Roy Rushing, A. E. Halford, and Miss Verne Allison.

LUBBOCK VISITORS

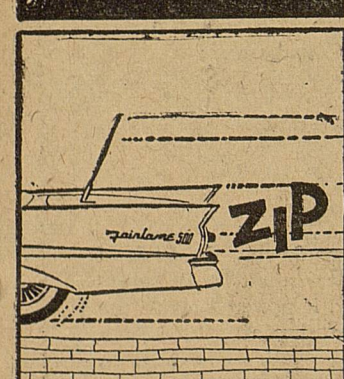
Mrs. Harold S. Adam and daughters, Glenda and Sandra, of Lubbock visited with their parents, Mr. and Mrs. L. E. Fisher over the weekend. She also visited her brother and sister-in-law, Sgt. FC and Mrs. Bobby Fisher, who are home from Germany.

Las Leales Club Cancels Meeting For Monday Night

Due to unavoidable circumstances the Las Leales Club will not be able to meet for the planned meeting for Monday night, Nov. 4.

The next meeting will be held Nov. 18 at 7:30 p.m. in the Woman's Club. Hostesses will be Mrs. L. E. Huckabay, Miss Gladys Green and Mrs. Harold Hassell. Mrs. J. C. Whatley will bring the lesson "The Burnished Sword."

Nothing newer in the World!



See it Nov. 7 at your Ford Dealer's

Demand!

ZIP

ACCEPT NO IMITATION

SPECIALS

25.00 Permanents	20.00
20.00 Permanents	15.00
15.00 Permanents	10.00
10.00 Permanents	7.50
Other Permanents	5.00

For a complete Beauty service call 14. If we please you, tell others. If not, tell us.

JOSEPHINE Beauty Salon

Josephine Brister, Owner and Operator
Betty Crawley - Vivian Jones Operators

NOTICE... Come To Kendrick Drive-In Dairy

(Serving This Territory Since 1940)

FOR Good, Clean JERSEY Sweet Milk Price - 70c Gal.

Phone 896-J-2 - Located Halfway between Eastland and Cisco

EASY TERMS

→ **COATS** ←

FURNITURE & CARPETS, LTD. • EASTLAND, TEXAS

GOOD TRADES FREE DEL.

ATTENDS FATHER'S FUNERAL

Home from attending the funeral of her father, Owen Ambrose. He died Monday in Temple. The funeral was held Wednesday.

Mrs. Harold White has returned

Burial was in the Dell Wood Cemetery.

READ THE CLASSIFIEDS

CALL 601 FOR CLASSIFIED ADVERTISEMENT

Halloween Social Is Held With Meeting of EGBDF Club

Mike Siebert was host to the EGBDF Music Club in the home of his parents, Mr. and Mrs. Wendell Siebert Saturday. EGBDF Music Club met for their regular meeting and for a Halloween social. Co-hostesses were Shelley Siebert and Mrs. Siebert.

The meeting was opened by the group singing, "America." After the meeting was opened Mike Siebert, president, presided over the business session. Layne Gregory led the group in repeating the "Junior Pledge" and "Club Collect."

Sharon Sayer, secretary, read the minutes and had the roll call. Treasurer's report given by Weldon Broussard showed that all dues were paid.

Debra White, Lana Pittman and Judy Beth Crosby were elected to membership of the club.

The program was begun by the members singing "Faith of Our Fathers" led by Weldon Broussard with Mike Siebert at the piano. The story Hymn of This Is My Father's World was told by Sharon Sayer and followed by singing of the hymn.

Marsha White played two piano solos, "March of the Dominos" by Host and "My Little Boat" by Richter. Two piano duets "Whispering Hope" and "Betty Shoe Dance" by Light were played by Mary Ann Turner and Jennifer Pryor.

Sharon Sayer and Kimberly Halley played piano solos. "Climbing" by Mac Lachlen, a piano duet was played by Marsha White and Mike Siebert. "Merry Majorities," piano solo, was played by Mary Ann Turner. Jennifer Pryor played the piano solo, "In the

Forest Tall" by Burnan.

After the program the group enjoyed a social hour. Mrs. Siebert assisted by her son and daughter, Mike and Shelley, served individual refreshment plates of sandwiches, cookies, nuts and hot chocolate. As the members ate their refreshments they sat in front of an open wood fire place. Mrs. Siebert presented each member with Halloween favors. Halloween "Motifs" were dominate throughout the house.

The next meeting will be held in the home of Mr. and Mrs. W. F. Broussard, 909 South Bassett. Marsha White will be leader.

All members attended the meeting. They were Mike Siebert, Weldon Broussard, Sharon Sayer, Judy Phillips, Janet Gimbley, Kimberly Halley, Layne Gregory, Jennifer Pryor, Mary Ann Turner, Marsha White, Lana Pittman, Judy Beth Crosby, Debra White and Mrs. F. L. Drago, teacher and counselor.

Rev. Roy Turner Speaks at Tri-Hi-Y Meeting

Eastland Tri-Hi-Y met Tuesday night at 7 in the YMCA. Anne Pittman, vice-president, presided in the absence of the president, Sidney Lou Seale.

Judy Inzer opened the meeting with prayer. The devotional was given by Gaila Walters. The girls were asked to decide whether or not they would like for Eastland



LAST RITES HELD—Funeral services for Jess W. Williams were held Wednesday in the Hamner Funeral Home chapel with Rev. Richard Smith officiating. Mr. Williams, 79, was a native of Eastland. He died Tuesday morning. He was a retired rancher and one of three committeemen who established the Eastland bank. Survivors include his wife; one son, Bert of Fort Worth; two daughters, Fay Williams of Eastland and Mrs. Tom Wynn of Austin; four sisters; one brother, three grandchildren and one great-grandchild.

to be host to the West Texas Council meetings in preparation to vote at the next meeting.

Rev. Roy Turner pastor of the First Christian Church, was speaker at the meeting. He gave "a very provoking talk on the thoughts, 'dare to be different, but not be different because you're dared' and 'we become like these we admire'."

Those present were as follows: Rev. Roy Turner, speaker, Mrs. Alice Frost, sponsor, Jacket Baggett, Sandy Taylor, Dixie Durban, Cora Mendieta, Brenda Evans, Martha Freese, Martha Connell, Patsy Hollis, Glenda Johnson, Kathy Williamson, Jamie Stamie, Suzanne Butler, Frances Cogburn, Roma Kay Ploughman, Judy Inzer, Kay Dodson, Donna Pugh and Sue Dalton.

Janie Morton, Janie Arthur, Peggy Humphreys, Betty Young, Charlotte Vaughn, Sue Day, Patricia Fullen, Gaila Walters, Nancy Beck, Glenda Garrett, Rebecca Graham, Sarah Sims, Mildred Day, Barbara Brock, Alice Frazier, Phyllis Phillips, Judy Cockrell, Rosemary Jones and Anne Pittman.

CALL 601 FOR CLASSIFIED ADVERTISEMENT

SAVE MORE here!

PIES SIMPLE SIMON FROZEN PUMPKIN OR MINCE With 15c Coupon In Paper **39¢**

BISCUITS BETTY CROCKER OR PUFFIN Can **10¢**

COFFEE FOLGER'S Drip or Reg. Lb. **84¢**

CAKE MIXES BETTY CROCKER—All Flavors 24-Oz. Pkg. **29¢**

HOMINY WHITE SWAN 2 No. 300 Cans **17¢**

KARO WHITE 16-Oz. Bottle **25¢**

BANANAS CENTRAL AMERICAN Lb. **12 1/2¢**

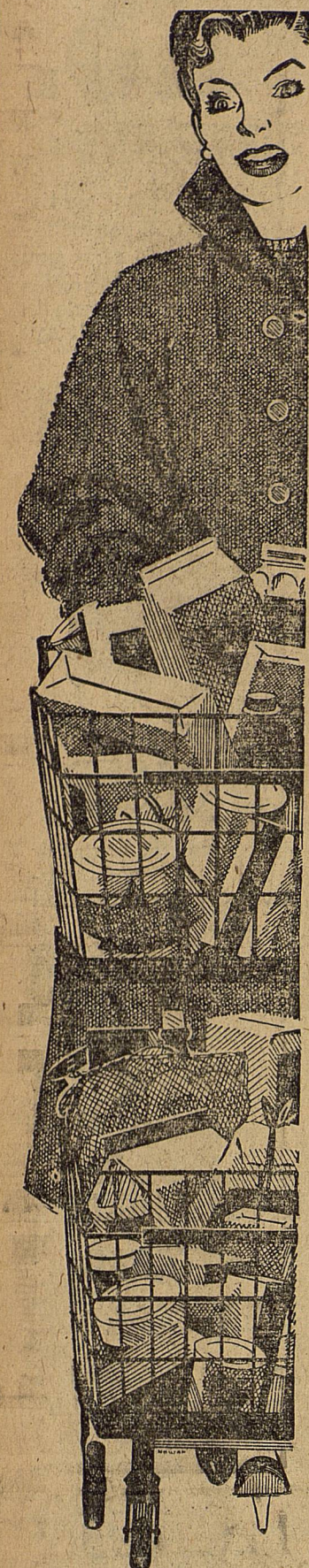
HOME PERMANENT 2.00 Plus Tax Tax **1.49**
Value Inc.

PINEAPPLE JUICE Clover 46-oz. Can **29¢**
Farm

TOMATO JUICE Clover 46-Oz. Can **29¢**
Farm

NORTHERN NAPKINS 2 80-Count Boxes **25¢**

DOG FOOD Big Mike 3 No. 300 Tall **20¢**



RUBY RED GRAPEFRUIT 6 Large Size **39¢**

TEXAS JUICY ORANGES 5 Lb. Bag **35¢**

U.S. No. 1 IDAHO RUSSETT POTATOES 10 Lb. Bag **43¢**

ZEE TOILET TISSUE 4 Rolls **30¢**

GOOCH'S FRANKS 3 Lbs. **94¢**

RATH'S Pork Sausage 2 Lb. Roll **85¢**

WILSON'S THICK SLICED Bacon 2 Lbs. **1.19**

RIB Steak Choice Beef Lb. **59¢**

LEAN TENDER PORK Roast Lb. **49¢**

CHUCK Roast Choice Beef Lb. **45¢**

SMOKED Picnics Lb. **39¢**



Home Made Pure Pork Sausage Lb. **39¢**

H. B. MacMoy, Owner
7:30 a.m. to 8:00 p.m. Weekdays
7:30 a.m. to 9:00 p.m. Saturdays

LIMIT 1 COUPON PER CUSTOMER
Cash value 1/20 of 1 cent. Void where taxed, licensed or prohibited.

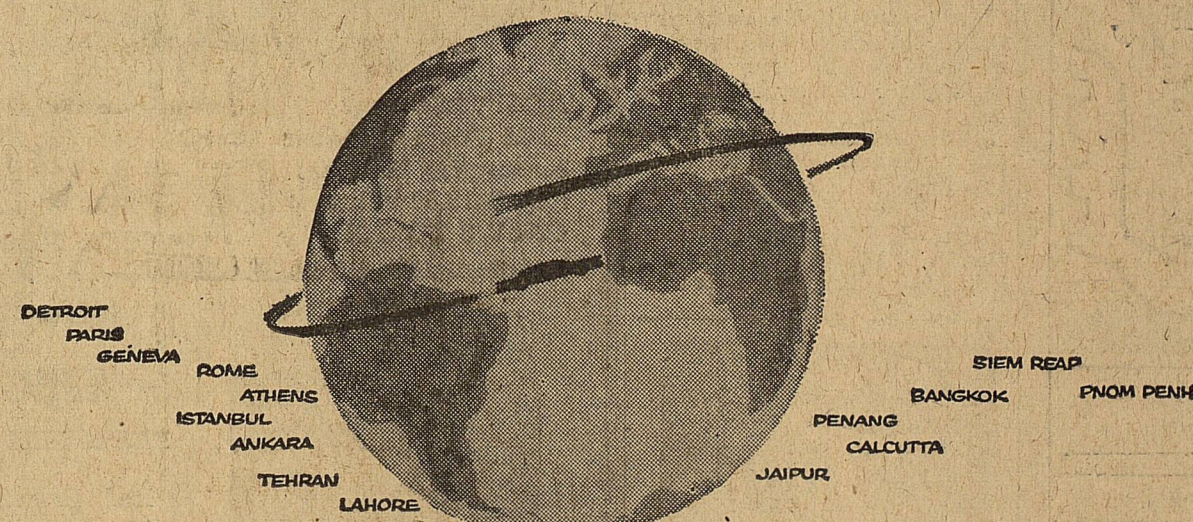
SAVE 15¢ ON YOUR PURCHASE OF SIMPLE SIMON PUMPKIN OR MINCE PIE

WITH THIS COUPON \$5-\$20
Good Through Nov. 30, 1957

CUSTOMER'S NAME _____
ADDRESS _____

58 FORD COMING NOV. 7

AROUND THE WORLD



The 58 Ford has been proved around the world. This is the most dramatic and most grueling test ever given a new car before its public announcement.

The whole world was used as a test track for the 58 Ford. The car drove through England, France, Switzerland, Italy, Yugoslavia, Greece, Turkey, Iran, Afghanistan, Pakistan, India, Malaya, Thailand, Cambodia, Vietnam, and finally back to the place it started—Detroit, Michigan, U.S.A.

The Ford powered over the great mountain ranges of three continents: from the Alps to the Himalayas and the Rockies. It crossed the great rivers of history: the Thames, the Seine, the Tiber, the Arno, the Tigris, the Euphrates, the Indus, the Ganges.

This car stood at Buckingham Palace, rolled up the Champs Elysees to the Arc de Triomphe, and paused at the Eiffel Tower. It was greeted by the great Paris couturieres at the famous fashion salons where its "sculptured in steel" styling was applauded by the most style-conscious audience in the world.

The 58 Ford rode smoothly down the rugged, beautiful seacoast of Tito's country, to a festival in Dubrovnik, and into Greece to Athens, where this newest classic met such ancient classics as the Parthenon and the Temple of Poseidon.

Into Turkey; and the 58 Ford passed the great white lacework palaces of the Sultans along the Bosphorus and the Golden Horn. Then the Ford went where few but nomads travel, up into the hot days and chill nights of the ancient mountains of Afghanistan. And thence along the route Alexander the Great followed with his chariots to cross the historic Indus river.

On and on the Ford moved, down into the heat of mysterious India, through New Delhi to the Taj Mahal, and to the great pink palace of the Maharajah of Jaipur.

This great new car met the challenge of the monsoons—rains that for centuries have stopped all road movement throughout Indo-China, but didn't stop the 58 Ford. It drove on to Penang in Malaya, and then north to Bangkok.

Further on came Saigon, the Paris of the Orient, at the farthest tip of Southeast Asia. Finally, it powered across the great Rockies and plains of North America and back, at long last, to Detroit, Michigan.

The 58 Ford . . . has been proved and approved around the world. A natural question arises. Why did Ford go to such great lengths with its 1958 model? Why spend so much money and time and go through all the problems of negotiations, customs, border transit, diplomacy in so many countries?

The answer: in the competitive automobile market of today, only the best in all-around value can survive. And this round-the-world test is the most decisive possible demonstration of the best.

The 1958 Ford is value: hard-dollar value. It is also style, power, performance, and a dozen great new features. But above all, it is value.

This is the car you've been waiting for. See it November 7—there's nothing newer in the world than the 58 Ford!

proved and approved around the world **58 FORD**
The first car ever to use the whole world as a test track

King Motor Company

100 E. Main

EASTLAND

Phone 42