

MOORE about... EASTLAND

by Virgil E. Moore

Today 23 persons have confessed that they wrote us that "coffee cup" letter about the Telegram which appeared in Tuesday's edition. All willingly admitted they could read their Telegram before they could drink a cup of coffee.

All of this has come as a great shock to us. It has unbalanced us to the degree that we are thinking of asking for two weeks vacation starting tomorrow morning.

The unfortunate thing about the affair is that while many are willing to say they wrote the unsigned letter we received, none are willing to buy us that cup of coffee and a doughnut.

By accident and by leaving closer to the couple who was talking in the booth next to ours at the White Elephant the other day, we overheard a conversation which came as a shock to us. Jim Golden was saying that he had never had enough fried potatoes to fill him up. Jim even went on to tell about the time that Al Mayfield, who used to live here, purchased 10 pounds of spuds and fried every last one of them. Golden swears he ate every bite of them and asked Al to check the sack and see if he had overlooked one.

It had to happen! Gordon Smith, resident highway engineer, made a fine talk at Lions Club Tuesday. When he finished he asked if there were any questions. A few nice, easy ones were thrown at him and he had the right answers. Then Bruce Pipkin stood up with a smile hiding the rest of his face and asked, "When are you going to build that road over the dam?"

Smith gave a roundhouse answer, carefully stating that someday a road would be built, but probably it would go around the dam and not over it. Bruce asked immediately, "On which side?"

Attention Ex-Navy Men—The Eastland Little League is in bad need of some Navy seabags. Little League equipment is kept in the bags. In all eight are needed. James Wright, president of the L-L, an ex-Navy man himself, put out the call. He admitted even some old Army duffle bags would help out.

Speaking of Little League, it seems that the boys will play on a grassless field again this year. The time has come that the City will have to haul in some dirt right now if there is to be any hope for getting the grass up before the season begins.

Our hat is off to Dr. J. O. Jolly. His new home is beautiful. When he first started building the house we ribbed him a bit about his location. As you know he built on the side of a hill, and the situation looked hopeless to us. That just proves that our hindsight is lots better than our foresight. Doc was telling us the other day he realized that he faced a problem, but that was where he wanted to build. Then, he admitted, the real reason for the location was the fact that his wife wanted the house there.

Understand Mr. and Mrs. Bruno Kaufus celebrated their first anniversary as Eastland County residents this week. Both had the flu!

We got a letter from Jon Tate, Mav coach who is serving a six-month Army hitch, this week. Jon (Continued on Page Eight)

FREYSCHLAG INSURANCE AGENCY
presents the
WEATHER NEWS

High	57
Low	28
Rain	0
Total Rain for March	2.12
Avg. Rain in March	1.59
Total Rain for Year	4.53
12 Months Avg. Rain	25.83
Lake Leon Level	75' (Full)
Forecast	Warmer

Installment Loans Custom Made For Each Customer
EASTLAND NATIONAL BANK
Member F. D. I. C.

Rifle Contest Set By Area Four-H

A 4-H county elimination rifle contest will be held Saturday beginning at 9 a. m. at the Cisco National Guard armory, Curtis L. Boase, assistant county agricultural agent, announced today.

Boase said contestants may use any .22 caliber rifle with metallic sights (open or peep sights) capable of being loaded at a time, except tubular magazine rifles.

The auto loading tubular rifles are barred from the contest.

Eastland Band Attends Du Band Festi

The Eastland High School Band attended the Dublin Band Festival on St. Patrick's Day, March 17.

In sight-reading, the band received a Division III rating in concert playing. Miss Martha Freese, director, and Miss Ann Toombs, pianist, were present.

After the various contests, the band marched in a parade honoring the Irish. The band had a very enjoyable day despite the cold weather and we gained experience in concert playing and sight-reading," a spokesman said.

Two Oil Tries In County Are Staked In Week

Eastland County has drawn two oil tries in the past week. The No. 1-S Lon Palmer was staked in the regular field six miles south of Eastland by Henry Cohen of San Antonio.

Location is 960 feet from the south and 2,370 feet from the east lines of Section 29, Block 2, H&TC survey. Proposed depth is 650 feet with rotary.

The second county venture is a 1,700 foot rotary wildcat, staked 2 1/2 miles northeast of Rising Star. It is the N. M. Dillard, Cross Plains, No. 1 J. W. Roach.

NEW 1958 RAMBLER
2-Door sedans, six passenger, for only \$1895 delivered. 35 miles per gallon. Easy to park. Ever so comfortable. Cash to drive.

Trade - Cash - Terms
TOM'S SPORT CARS, Eastland

reasons. Entrants must provide their own rifles and ammunition. A box of 50 shells, shorts or long, will be needed.

Seventy eight 4-H boys have been invited to participate. Contestants must have been 13 years old or older on Jan. 1. The four high scoring contestants will go to the District contest at Tarrleton April 19.

Letters from parents with their signature, giving their permission to enter the contest, must be turned in by each boy.

Boase urged boys to remove the bolt from their rifles before loading it in their car. He said the rifles should be kept separate from the boys until they reach the contest. Boys are not to load their rifles until told to do so at the contest. Boys should point the rifles down on the ground at all times. Boys not following instructions will be barred from the contest.

Home Education Being Set

The Cisco Home Education Association meeting March 24-25. Registration will be held from 12-1 p. m. on March 24, with 4-H girls, Carol Jean Hagan, Chris Stroebel, Jean Berry, and Beverly Bostick acting as pages.

The meeting will open with a group singing led by Jean Berry, accompanied by Mrs. W. O. Wiley Jr. at the piano. Mrs. L. B. Jones, Eastland County H. D. Council Chairman, will give the greeting. Eastland County Judge, John Hart will welcome the group.

Mrs. Florence Low, Extension Home Economist, will be the guest speaker. Afterward, the group will divide into workshops: Citizenship, 4-H, Health and Safety, Recreation, Civil Defense, and Education. These will be led by H. D. women from over the district.

A banquet will be held in the High School Cafeteria at 6:30 p. m. Immediately following will be a period of recreation in the Junior High Gym.

The second day of the meeting will begin at 9 a. m. New officers will be elected. The meeting will adjourn at noon on the 25th.

ATTEND FUNERAL

Mr. and Mrs. Johnson Smith and Dan Martin attended the funeral of an old friend, George Alford, at Longbranch Sunday.



SPRING HAS SPRUNG—The nostalgia of a heated sun can be most welcome after knowing the inside of a closed room for scores of months. Gail Bagley, sophomore student at Ranger College from Rusk, Texas, displays a springtime smile as spring is but a few hours away. To feel the blinding sun, smell the flowers, feel the grass under one's feet, and witness the dance of Cupid, is just another signal that, using some well-worn words, spring has sprung. Photo by B. Frank Johnson.

Need of Overpass On 80 and 16 Stressed

The need of an overpass at the intersection of U.S. Highway 80 and State Highway 16, about eight miles east of Ranger, was stressed by Gordon Smith, State Highway resident engineer, when he spoke to Eastland Lions Tuesday.

Smith pointed out that such an overpass will be included in the new limited access coast to coast highway, but then told his listeners that the crossing had cost the lives of five persons in the last three years. The latest accident at the crossing occurred last Friday night, when two persons were killed.

Smith was introduced by Dr. H. J. Bulgerin, program chairman.

L. C. PHAGAN, PREMIER JOBBER
1206 W. Bliss — Phone Cisco HI 2-1660
All types of oils and greases for farm, industrial and commercial users.
Only local oil (no imported oil) used in making Premier Products.

'Spring Has Sprung' Writer Gaily Tells Us

By RAY SWINDELL
Officially, spring will be sprung at 9:06 p. m. tonight but local residents will still be resting in the comfort of heated rooms.

And, from all indications, an inviting fire place will remain just as popular for several weeks to come as the weather man signaled for temperatures to remain status quo.

Sunshine sprinkled most areas of the county this week but cold weather still caused chills and kept scores of residents inside.

Regardless of the weather, the way the picture looks now, spring's entry will go all but unnoticed since the launching of the United States' second satellite, the Vanguard I. The satellite joined Russia's Sputnik II and the U. S. Army's Explorer I in circling the earth.

Cupid's appearance may be at brief intervals. The carrier of the Love-Bug germ prefers slightly warmer weather in which to use his famous bow and arrow. But the son of Venus is possessed with an unlimited amount of patience and will appear as soon as the warm sun prevails.

Former Olden Man Buried In Kilgore

Funeral services were held Wednesday in Kilgore for A. L. Pheus, 53, who was killed in an automobile accident in Louisiana Monday, it was learned here today.

He was a resident of Olden for fifteen years and had just moved to Kilgore where he was an employee of the Magnolia Company.

No other details were available Thursday.

Adult Leaders Of 4-H Clubs Hold Workshop

Nancy Weathers, assistant county home demonstration agent, recently conducted an adult leader training workshop for clothing leaders of 4-H clubs at the Nimrod Progressive Clubhouse.

Each leader was required to make a simple gathered skirt. Plans were made by the various leaders present for teaching clothing construction and wardrobe planning in different 4-H clubs.

Present at the meeting were Mrs. Carl Stroebel, Nimrod; Mrs. Walter Tonne, Nimrod; Mrs. W. H. Teague, Rising Star; and Mrs. Ann Reeves, Ranger.

Singer Sewing machines used at the meeting were through the courtesy of the Singer Company.

DIRECTORS CALL...

Water Board Vote April 1

A special election has been called April 1 to elect four directors of the Eastland County Water Supply District.

Four persons, all incumbents, two from Ranger and two from Eastland, have made application to the board to have their names placed on the ballot.

The two Rangrites seeking re-election to two-year terms are C. E. Pruet and E. H. Mills. Guy Parker, who serves as president of the board, and T. M. Fullen are the two Eastland residents seeking re-election.

The board, created by House Bill 888 and passed by the fifty-first state legislature, is composed of eight members, four from Ranger and four from Eastland.

Each member is elected for two year terms. The president, chosen by the members of the board, also serves for two years. The terms

are alternated between a man from Eastland and one from Ranger.

H. P. Pentecost has been named by the board as presiding judge for the Eastland precinct. He said the election would be held at the justice of the peace office in the county courthouse.

The Ranger precinct will vote in the chamber of commerce office on Main Street. W. W. Mitchell has been appointed as presiding judge.

The election was called during the March 11 meeting of the board in Eastland. Six members were present at that meet.

Only qualified voters residing in the Eastland County Water Supply District and who own taxable property are entitled to vote in the election.

Present board members are F. P. Brashier, Sr., Mills, Wilson Guest, Parker, L. E. McGraw, M. H. Perry, Fullen, and Pruet. Members of the board must reside in and own taxable property in the district.

Former Olden Man Buried In Kilgore

Funeral services were held Wednesday in Kilgore for A. L. Pheus, 53, who was killed in an automobile accident in Louisiana Monday, it was learned here today.

He was a resident of Olden for fifteen years and had just moved to Kilgore where he was an employee of the Magnolia Company. No other details were available Thursday.

Adult Leaders Of 4-H Clubs Hold Workshop

Nancy Weathers, assistant county home demonstration agent, recently conducted an adult leader training workshop for clothing leaders of 4-H clubs at the Nimrod Progressive Clubhouse.

Each leader was required to make a simple gathered skirt. Plans were made by the various leaders present for teaching clothing construction and wardrobe planning in different 4-H clubs.

Present at the meeting were Mrs. Carl Stroebel, Nimrod; Mrs. Walter Tonne, Nimrod; Mrs. W. H. Teague, Rising Star; and Mrs. Ann Reeves, Ranger.

Singer Sewing machines used at the meeting were through the courtesy of the Singer Company.

Research Work On Phone Set-Up Still Underway

Research work on a tri-city appeal for a one-telephone hookup for Eastland, Ranger and Cisco is still being conducted by Southwestern Bell Telephone Co., W. H. McAnnally, district manager, revealed Thursday.

McAnnally said the Dallas Bell office is still conducting a study of the request. He anticipated that it would be three or four months before the company is ready to go before the city commissions of the three towns to tell what action the company is willing to take.

Under a plan first proposed by the Eastland Rotary Club and later backed by the Eastland Lions Club and the Cisco Rotary Club, Eastland, Ranger and Cisco residents would be able to phone each other without going through a dial operator and without paying a long distance charge.

Richard Jones Is Pledged by Phi Kappa Sigma

H. Richard Jones Jr. of Eastland has been selected to pledge Phi Kappa Sigma, national social fraternity, at North Texas State College.

Names of 136 pledges of the 10 social fraternities were announced this week by William G. Woods, dean of men.

Jones, the son of Mr. and Mrs. Hubert R. Jones, is a junior business administration major. He is also a member of the Marketing Club and College Players, student drama group.

ARRIVES HOME

A 2-C Weslie L. Goheen arrived here Wednesday after an overseas duty with the Army. He is visiting with his wife, former Louelle Lewis. He will also visit his parents, Mr. and Mrs. Ernest Goheen at Anton. He will be stationed at Lake Charles, La.

VISITS IN AN ANGELLO

Mrs. Norman Guess, Susan, Janet and Marla visited with her parents, Mr. and Mrs. R. H. Swarling and her mother-in-law and father-in-law, Mr. and Mrs. Edward Guess in San Angelo for about a week. They returned home Wednesday.

RETURNS HOME

Mrs. James K. Smith, Cynthia and Kenneth have returned home from a visit with her parents, Mr. and Mrs. L. D. Lewis, and her mother-in-law and father-in-law, Mr. and Mrs. Herman H. Smith, of Cumby.

Indifference Still Big Problem Of Upper Leon Conservation District

A group of farmers who were tired of seeing their land misused banded together in 1941 to organize the Upper Leon Soil Conservation District.

Today the District comprises some 5000 farms and ranches and 1,246,412 acres in Eastland, Comanche and Erath counties.

Actually the district was formed under State authority in an election held Dec. 14, 1940. Since organization it has been enlarged by 338,700 acres in 12 annexations. Approximately 57 percent of the land is cultivated and 43 percent is pasture and rangeland. Of the 5000 to 5300 operating units in the District 3,015 of these owners and operators are District cooperators.

Members of the Board of Supervisors are B. B. Hickman, Rising Star; F. M. Spurlen, Route 2, Eastland; W. J. Fritts, Route 1.

Annette Sherman Named Favorite

Annette Sherman, business administration major from Eastland, was elected sophomore favorite of the Ranger College evening school recently.

Miss Sherman's picture will appear in the favorite section of The Ranger, college yearbook.

Comanche; Wade George, Route 3, DeLeon; and H. W. Turney, Route 7, Dublin.

The District's first supervisors were T. E. Castleberry, Eastland; J. B. Eberhart, Rising Star; T. E. Hughes, Dublin; J. H. Huddleston, DeLeon; and W. J. Fritts.

The District cooperates with local, county, State and Federal agencies in seeing that soil conservation practices are made available.

Efforts of the District have not been small, nor have results. In 1957, 1549 cooperators applied, one or more conservation practices. Since 1941, 121,359 acres of contour farming has gone into the District's books.

In that same period 148,815 acres have been planted to cover crops and 3,365 farm ponds have been constructed, 207 of them in the past year. Other practices such as strip cropping, brush control, pasture planting, rotation grazing, fish pond improvement, field terracing and many others also have impressive figures.

What problems face the District. The annual report best explains that. "The attitude and understanding of the people is a factor that needs our constant attention and will remain so for years to come. The constant changing of land ownership, complications arising out of the many agricultural problems, and indifference on the part of some landowners makes the need for informational programs a continuing thing."

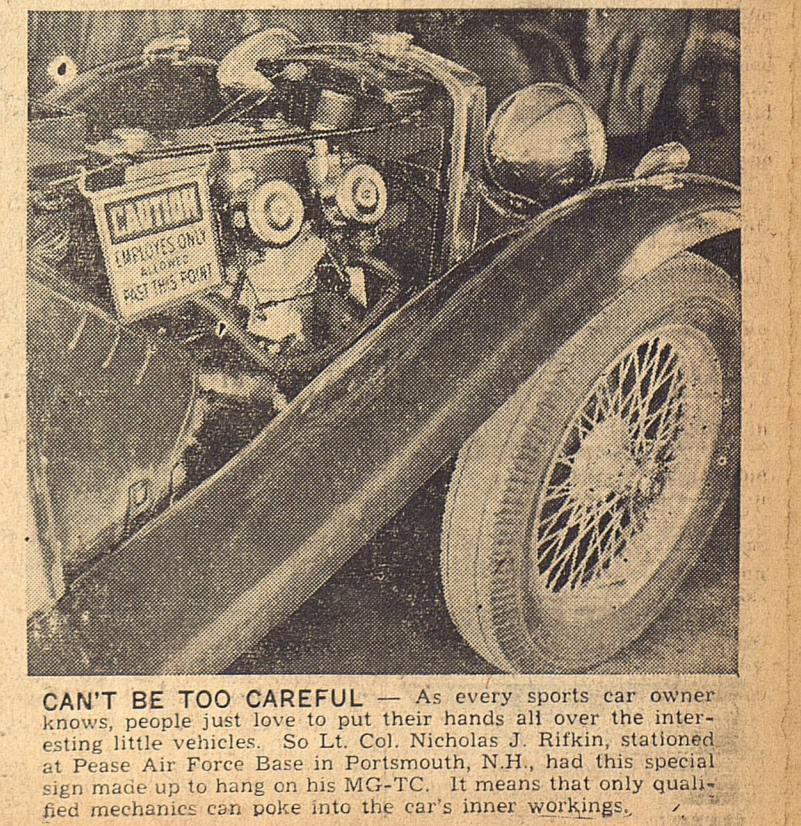
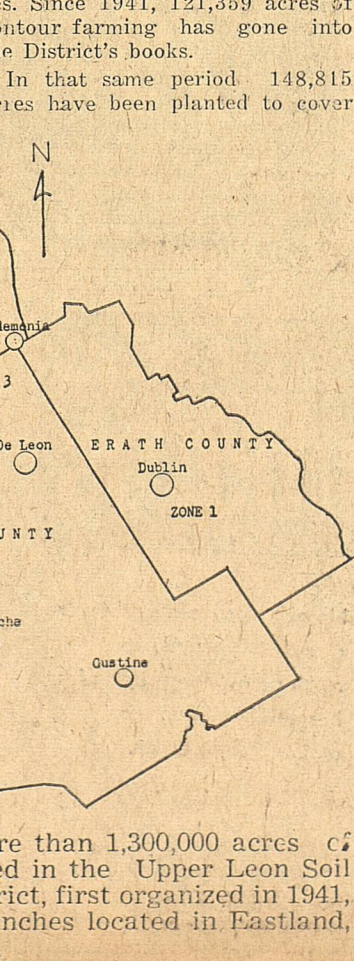
"We have been highly successful in getting the leadership in the towns in our District interested and informed about the program and the aims and problems of the District."

"This is possible because of the various town organizations that are interested in civic improvements. District philosophy can be discussed with such groups when the need arises."

"There is no counterpart to these clubs in most of the rural areas. Active formal civic or social organizations in rural areas are rare. A high percentage of rural churches and most of the rural schools no longer exist in our district."

UPPER LEON DISTRICT—More than 1,300,000 acres of farm and ranch land is included in the Upper Leon Soil Conservation District. The District, first organized in 1941, serves some 5000 farms and ranches located in Eastland, Comanche and Erath Counties.

UPPER LEON SOIL CONSERVATION DISTRICT
No. 525—Texas



CAN'T BE TOO CAREFUL—As every sports car owner knows, people just love to put their hands all over the interesting little vehicles. So Lt. Col. Nicholas J. Rifkin, stationed at Peace Air Force Base in Portsmouth, N.H., had this special sign made up to hang on his MG-TC. It means that only qualified mechanics can poke into the car's inner workings. But they will appear.

BE SURE—See Don Pierson Olds-Cadillac Eastland Quality Cars at Volume Prices

Eastland Telegram

Eastland County Record established in 1931, consolidated August 31, 1951. Chronicle established 1887, Telegram established 1923. Entered as second class matter at the Post Office at Eastland, Texas under the act of Congress of March 3, 1879.

TIMES PUBLISHING COMPANY
Published Tri-Weekly—Tuesdays - Thursdays - Sundays
ONOUS DICK and JOE DENNIS, Publishers
VIRGIL E. MOORE, Editor
CAROLYN COLLINS, Society Editor

One week by carrier in city	.15
One month by carrier in city	.65
One year by mail in County	2.95
One year by mail in state	4.95
One year by mail out of state	6.95

NOTICE TO PUBLIC—Any erroneous reflection upon the character, standing or reputation of any person, firm or corporation which may appear in the columns of this newspaper will be gladly corrected upon being brought to the attention of the publishers.

THE TELEGRAM SPEAKS

Spanish Peanut Growers Request For Acreage Increase Warranted (An Editorial)

We have often heard it said that Secretary of Agriculture Ezra Taft Benson is a man with a strong basic will, but also a man who is fair.

We think the outcome of a request made this past week by Texas and Oklahoma Spanish peanut growers should answer this question once and for all.

The Telegram does not think that a fair man can turn down the request of growers for increased acreage allotments. Here in Eastland County peanut growers have not made a crop in years. They certainly have not caused a peanut surplus. In fact, there is no surplus of Spanish peanuts, which are far superior to nuts grown in many other areas. During the past year the demand for the Spanish peanut was higher than was production.

Eastland County farmers deserve increased peanut acreage. There is a demand for their product, and these growers who have been holding on against a prolonged drought, should be given a chance to get their heads above water.

We repeat. We think we will find out how fair a man this Ezra Taft Benson is!

WANT ADS

Cards of Thanks charged for at rate of \$2.00 Each

FOR RENT

FOR RENT: Furnished house, 310 East Main.

FOR RENT: Furnished apartment, newly decorated. Phone 377, 501 E. Sadosa.

FOR RENT: Small furnished house, Apply Mode O'Day.

FOR RENT: Five room unfurnished house, 1404 Slay. Phone 823-J.

FOR RENT: Newly decorated apartment, Hillside Apartments. Phone 9520.

FOR RENT: Four room unfurnished apartment, Phone 394-J.

FOR RENT: Duplex three room unfurnished apartment, 305 West White.

FOR RENT: 36 x 60 tile brick building, 110 South Bassett. Phone 430 or 16.

FOR RENT: Five room house, 1241 W. Plummer. Phone 988.

FOR RENT: Two bedroom house, Apply 507 South Madera.

FOR RENT: Three or six room unfurnished duplex, two baths, 509 South Daugherty, Eastland. Phone 827 Ranger or inquire 310 East Main, Eastland.

PIANO FOR RENT: By night or week. Lovelace Transfer and Storage. Phone 314.

FOR RENT: Three bedroom house, 801 W. Commerce. Hamner, Phone 17.

FOR RENT: Small furnished house with garage, close in, ideal for couple. 311 E. Valley.

FOR RENT: Furnished apartments. 611 Plummer.

FOR RENT: Modern five room house in Olden. Mrs. H. G. Vermillion, Olden.

MISC. WANTED

JOB WANTED by experienced practical nurse. Mrs. J. R. Rector, Route 4, Cisco, Sabana community.

WANTED: Light housework. Mrs. S. C. Dugan, 607 West Plummer.

TREES One-Half Price!

This is a wonderful time to plant our high quality

- ★ Fruit Trees
- ★ Shade Trees
- ★ Roses and Shrubs
- ★ Berry Plants
- ★ Other Things

FRESH DUG TREES ONE-HALF PRICE!

Tennyson Nursery
1003 West 16th St. Cisco

TRADE WITH YOUR HOMETOWN MERCHANTS

ED V. PRICE & CO
TAILORERS
SUITS
Sport Coats Slacks
C. L. FIELDS
Phone 571 103 W. Valley

SPECIAL NOTICE

Reduce Without Dieting
Use my Stauffer Reducing Machine. Reasonable rates.
Mrs. Bert Fuller, 613 West Moss. Phone 653.

NOTICE: We have in this area three repossessed pianos, one Spinnet Console, and two Medium Small Uprights. Responsible party may assume balance on low monthly payments, or will discount for cash. Instruments fully warranted. For further information, write at once, Credit Mgr., Ft. Worth Piano Sales Inc. 1525 W. Rosedale St., Ft. Worth, Texas.

AUTOS FOR SALE

A-1 USED CARS

1957 Ford Fairlane club sedan. Radio, heater, Fordomatic and other extras. A clean, low mileage demo.

1957 Ford Custom 300 fordor, radio, heater, Fordomatic, power steering and air conditioning.

1955 Ranch Wagon. Radio, heater and overdrive. Nice and low mileage.

1955 Fairlane fordor. Radio, heater, Fordomatic and other extras. Really nice.

1953 Chrysler fordor, all power equipment and air conditioning.

1953 Ford fordor. Radio, heater. Nice clean older car.

1955 Chevrolet fordor 210 series. A clean low mileage car.

King Motor Co.
100 E. Main Phone 42

Olds - Cadillac Trade Ins

1956 Olds, Super 88, fordor sedan, power steering and brakes, factory air conditioning, all other equipment. Low miles and in excellent condition. \$1995.

—TRADE - CASH - TERMS—
1955 Olds 98 Holiday Coupe. Brand new inside and out. Power steering and brake. Factory air conditioning. A top buy at only \$1795.

—TRADE - CASH - TERMS—
1956 Pontiac Star Chief Catalina. Fordor hardtop. Absolute like new. All equipment, including factory air-conditioning and power steering and brakes. Very, very low miles by one owner. See it today for only \$1795.00.

—Trade - Cash - Terms—
1955 Olds Super 88 fordor sedan, all power and factory air conditioning. Low mileage by one owner. A car with all luxuries to enjoy at the low, low price of only \$1695.

—TRADE - CASH - TERMS—
1955 Olds Super 88 fordor sedan, power steering and brakes plus all other equipment. Like new condition for only \$1595.

—TRADE - CASH - TERMS—
1953 Ford Custom line sedan, radio and heater. Excellent condition. One lady owner. Real economy at only \$525.

—TRADE - CASH - TERMS—
1955 Chevrolet 210 sedan. Radio, heater, white tires, new seat covers. Like new condition. Only \$1095.

—TRADE - CASH - TERMS—
1958 Rambler six passenger sedan. 30 miles per gallon, only \$1895.

—TRADE - CASH - TERMS—
1950 Olds fordor sedan, one owner, only \$295.

—TRADE - CASH - TERMS—
1950 Studebaker Champion fordor, radio, heater, overdrive. Only \$265.

—TRADE - CASH - TERMS—
1949 Ford Custom V8 with overdrive. One owner. \$295.

—TRADE - CASH - TERMS—
Almost new motor bike, only \$175 special. New Vespa motor-scooters. Many other clean, one owner Ford, Chevrolets, Oldsmobiles and Cadillacs!

—TRADE - CASH - TERMS—
1950 Chevrolet sedan, 17,000 actual miles by one lady owner. Excellent condition. \$595.

SEE **DON PIERSON** EASTLAND

CALL 601 FOR CLASSIFIED ADVERTISEMENTS

LEGAL NOTICE

THE STATE OF TEXAS THE CITY OF EASTLAND

I, HORACE E. HORTON, in my capacity as Mayor of the City of Eastland, Texas, do hereby order that an election be held in said City on the 1st day of April, 1958, for the purpose of electing the following officials for said City: TWO COMMISSIONERS

That in accordance with an order adopted by the City Commission of said City, said election shall be held at the following place in said City, and the following named persons are hereby appointed officers of said election.

In Election Precinct No. 1, at City Hall Building, in said City, with Herman Hassell as Presiding Judge, and two clerks.

That said election shall be held in accordance with the Election Code of this State and only resident qualified voters of said city shall be eligible to vote in said election.

That the City Clerk shall give notice of said election by posting a copy of this order in each of the election precincts of said city, which posting shall be done not less than 30 days prior to date fixed for said election.

That immediately after said election is held, the officers holding the same shall make returns of the result thereof to the City Commission of this city as required by the Election Code of this state.

A copy of this order shall also serve as a writ of election which shall be delivered to the above appointed Presiding Judge, for said election.

Horace E. Horton Mayor

ATTEND THE CHURCH OF YOUR CHOICE EACH SUNDAY

REAL ESTATE FOR SALE

FOR SALE: Five room house 504 South Daugherty. Phone 872 after 5 p.m.

FOR SALE: Three bedroom house, 505 S. Bassett. Call 720-W2 or 707-W2.

Building Headquarters

Plywood Specials
1/4" Fir Plywood G-1
Side 09c Sq. Ft.
3/4" Fir Plywood G-1
Side 22c Sq. Ft.

1/4" Mahogany Plywood
Plain 15 1/2c Sq. Ft.
1/4" Mahogany V.
Grooved 16 1/2c Sq. Ft.

5/8" Fir
Sheathing 15c Sq. Ft.
3/4" Mahogany or Birch
Plywood 47 1/2c Sq. Ft.

Wire & Iron Specials
Corrugated & 5V
Crimp 9.25 Per Sq.
35' Sheep Goat Fence
20' Rd. Roll 11.50

Lt. & Heavy Barb
Wire 7.50 and 9.75
48" Ply. & Rabbit Fence
per roll 6.00

90-Lb. Slate Roofing
per roll 3.00
15 & 30-lb. Felt
per roll 2.95

167-lb. Comp. Roofing
per sq. 5.99
Outside White Paint
per gal. 3.48

Prem Grade Framing
Lbr.06 1/2c per ft.
Prem Grade Decking
Lbr.07 1/2c per ft.

1/12 White Pine
Decking09 1/2c per ft.
8 & 16 Com Nails
Per Keg 15.00
Mahogany Doors
2/0x6/8 each 4.50

Wm. P. Carey Lumber Co.
"Home of the House Doctor"
Phone Or-44922 - 201 Oak St. Abilene, Texas

KEEPING POSTED

By MARENE JOHNSON Eastland Postmaster

The last of these great Alaskan dog sled mail routes is now operating on remote St. Lawrence Island in the Bering Sea, Postmaster General Arthur E. Summerfield noted today.

Reports from postal officials in Alaska show only one remaining regular dog sled route on the once-considerable "mush mush" mail circuit.

Chester Noonwood, 22, of Savoonga, an Eskimo village about 50 miles Southeast of Gambell (the Island's main community, about 200 miles Southwest of Nome) is the sole remaining dog sled mail carrier in Alaska.

Noonwood and his 10 Huskies—Spotty, Brownie, Lassy, Boy, Milk-buk, Frisky, Whitey, Donkey, Blackie and Camel—cover the 190-mile mail route between Savoonga and Gambell about twice a week.

The dogs are used usually from November through May. In June through October, Noonwood uses a skin boat to carry the mails.

The dog route follows the Northern coastline of St. Lawrence Island between the two points, rather than moving directly over the frozen Bering Sea where the "sea ice" is extremely rough and dangerous.

The skin boat route goes directly over open sea from Savoonga to Gambell, located on the extreme northern tip of the Island. (The Island itself is located out in the Bering Sea, 120 miles distant, at the closest point, from the Alaska mainland.)

Noonwood, who is a contract carrier for the Post Office Department, is paid \$40-a round trip.

Starting out on his trip from Savoonga—a typical Eskimo settlement consisting of frame houses where the Eskimos live, a church, a Bureau of Indian Affairs School and a native store—the young carrier usually requires a day to reach Gambell, unless he runs into one of the frequent howling storms or has trouble on a "soft" trail.

These, incidentally, appear to be the principal dangers of the 100-mile round trip run, because Postmaster John Waghiyi of Savoonga reports, "No wolves on Island."

After taking the mail from Savoonga into Gambell, Noonwood usually picks up a full load of 300 pounds or more of mail for Savoonga. The return trip usually requires about two days, because the load is heavier going back.

In addition to letters, newspapers and the like, Noonwood usually has a heavy mail consignment of parcel post, which affords a real service bargain at low cost rates in transporting goods in Alaska. Almost anything that can qualify as parcel post going between Gambell and Savoonga is, in fact, carried by Noonwood and his dogs.

Shortly after he began carrying the route in 1956 when he was 20, he had one of his heaviest mail jobs.

A new missionary at Savoonga

JOHNSON MOTORS
ALL TYPE BOATS
Power Lawn Mowers
Factory Trained Motor Mechanic
SPORT CENTER
Eastland Phone 525

Demand!
7up
ACCEPT NO IMITATION

ORDER NOW! Mother's Day gift photos
No gift pleases a mother or grandmother quite so much as a photograph of her children. Call for a sitting right away.
CANARIS STUDIO
On The Square Phone 46

had more than 5,000 pounds of parcel post sent in from the "outside," and it had to be hauled in— in December weather— by Noonwood and his dogs.

He took it all in safely, although it required many extra trips. "Star Route Carrier" Noonwood "has never had an accident," Postmaster Waghiyi reported, although he has had trouble at times. Some times he has to stop overnight on the way between here and Gambell in cabins due to the snow storm and soft trail."

The virtual demise of the dog sled U. S. mail route in Alaska, where it was once employed by the Post Office Department in large numbers to open Alaskan frontiers to the mails, is due to factors such as greatly increased use of air facilities and other transportation.

However, it still symbolizes the spirit of dedication to duty in the face of adverse conditions, and is typical of the great tradition of service of our own people and of the star route carriers who operate under private contract to help the U. S. Government in the huge task of moving the U. S. mails.

Social Security Notes

(Editor's Note: This is the second in a series of articles on your Social Security program compiled by C. M. Vaden, Jr., Field Representative of the Abilene Social Security Office.)

How do you get credits to become eligible for Social Security Payments?

You build up social security credits by working in covered work pay Self-Employment tax on net earnings possible you must have worked a certain length of time. This time is measured in "quarters of coverage." A quarter of coverage corresponds to a calendar quarter of a year—January, February and March is the first quarter—April, May and June the second, etc.

1. You get one quarter of coverage for each quarter in which you are paid \$50 or more in wages for most kinds of work.

2. You get four quarters of coverage for each year in which you pay Self-Employment tax on net earnings from self-employment of \$400 or more.

3. A farm worker gets one quarter of coverage for each \$100 of creditable farm wages paid him during a year. Of course, you can never have more than four quarters of coverage in any one year.

If you work for a railroad and do not work long enough to become eligible for a Railroad annuity, the time you worked on the railroad can count for Social Security quarters of coverage.

If you were in military service from the beginning of World War II up to Jan. 1, 1957, you get credit for quarters of coverage for the time you spent on active duty.

These quarters of coverage are used to determine eligibility for Social Security payments. They are not used to determine the amount of your Social Security Payment.

The first few pages of the booklet, "Your Social Security" will give you more complete explanation of "quarters of coverage." Write for your free copy—Social Security Administration, P. O. Box 1641, Abilene.

CALL 601 FOR CLASSIFIEDS

DIXIE Drive-In
EASTLAND RANGER HIGHWAY

Boxoffice Opens 7:00 Show Starts 7:15
Boxoffice Closes 9:15
ADMISSION NEVER OVER 50c
Children Under 12 FREE—Each Tuesday is BARGAIN Night—Adults 25c

WEDNESDAY & THURSDAY, MARCH 19 - 20

The world forgives many things but not...
"THE SEVENTH SIN"
M-G-M's DRAMA OF MODERN MORALS IN RECKLESS HONG KONG
ELEANOR PARKER - BILL TRAVERS
GEORGE SANDERS - JEAN PIERRE AUMONT
IN CINEMASCOPE
PLUS: Two Color Cartoons

FRIDAY - SATURDAY, MARCH 21 - 22

The gun-slinger and the blonde!
M-G-M PRESENTS
RORY CALHOUN ANNE FRANCIS
THE HIRED GUN
IN CINEMASCOPE
PLUS: Two Color Cartoons

ANNOUNCING

We now have the most durable and colorful bathroom and kitchen walls and floors that money can buy. All out of ceramic tile that can be installed over most any existing wall with mastic.

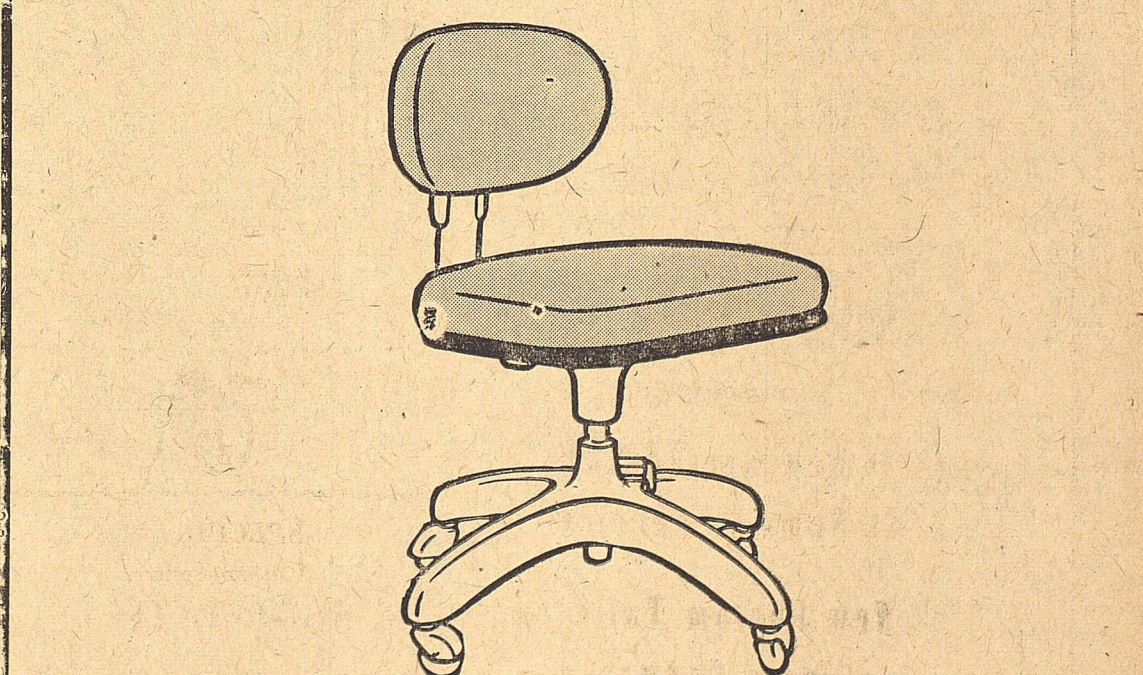
We have in stock 16 colors of wall tile and 6 colors of floor tile.

We can furnish you with skilled labor to install this tile or loan you the necessary tools so that you may install them.

Ceramic wall tile prices start at fifty three cents per foot. Floor tile starts at sixty one cents per foot.

Higginbotham - Bartlett Co.
Jack Elliott, Mgr.
301 W. Main Phone 112 or 1014

TODAY'S AIRFLOW DESIGNING



CRAMER...
"CHALLENGER"
Secretarial Chairs

SEE THEM AT...
Eastland Telegram
Phone 601

CALL 601 FOR CLASSIFIEDS

PENNEY'S
ALWAYS FIRST QUALITY



The lovely look of silk in a leno cotton cupioni rayon dress **695**

Cupioni rayon is the rich, machine washable Bemberg* yarn that blends with cotton to give luster and smooth, silky hand. You'll love the airy, open weave leno stripes. Penney's price for this gentle, gore-skirted button front dress is remarkably low. Misses and half-sizes.

SHOP PENNEY'S . . . you'll live better, you'll save!

Carolyn's MOVIE Comments
By Carolyn Collins

It is hard to say which of the three movies showing this week in Eastland tops the list. These movies have the marks of good movies with some of the top new stars or the screen.

"Darby's Rangers" is one of the top movies starring James Garner, the "Maverick" himself. Etchika Choureau and Jack Warden also stars in this movie.

Gardner portrays Col. William Orlando Darby who is recognized as one of the best combat leaders in the Army. Col. Darby was the leader of the Darby's Rangers in World War II, the theme of this movie.

"Darby's Rangers" is the first story of the American Commandos . . . the personal story that finds a soft spot in America's toughest fighting hearts.

The leading feminine role is played by French beauty Miss Choureau. This is her second movie in Hollywood but she has starred in 15 films abroad. This World War I drama is packed with adventure and excitement.

"Witness for the Prosecution" starring six academy nominations, is unmatched with suspense as Tyrone Power is accused of murder and his wife testifies against. This movie is sensational.

"Witness for the Prosecution" is the play that became famous for its surprise ending. Even the last 10 pages of the script was withheld from the cast until the last day of filming.

Starring with Tyrone Power are Marlene Dietrich and Charles Laughton. Miss Dietrich stars as the wife of Power and Laughton is the attorney for the defense.

"The most electrifying entertainment of our time!" describes this movie. This movie of suspense is climaxed by 10 most breath-stopping minutes you will ever live . . . don't miss this movie.

The enchanting Orient comes to life again as "Escapade in Japan" is presented starring Cameron Mitchell and Teresa Wright while seven-year-old Jon Provost and young Roger Nakagawa have co-starring roles.

The picture's scenic beauty might overshadow its drama if it were not for the wonderful adventure story enacted by Japanese as well as Americans.

Mitchell appears as a U.S. Embassy attache in Tokyo with Miss Wright as his wife. The excitement begins as they await the arrival of their son by plane. But the plane is lost in the Pacific and Jon, the lone survivor, is saved by Japanese fisherman.

The Nakagawa boy, who speaks enough English to act as interpreter, plays the fisherman's son. More excitement is added to the film as the two boys start a journey to Tokyo alone. During the time of the boys' journey the parents of Jon have begun a country-wide search for their son.

This thrilling movie will be enjoyed by every member of the family. It is a true family picture.

LOWER PRICES!

EXTRA SAVINGS with **S.N. GREEN STAMPS!**

INSTANT COFFEE Maxwell House 6-Oz. Jar **99¢**

Swift's Jewel SHORTENING 3 -Lb. Can **69¢**

Whole Sweet Potatoes HOMEFOLK No. 3 Sqt. Can **19¢**

Chef's Pride Pinto Beans 4 -Lb. Cello **39¢**

ICE CREAM PINEAPPLE TAYLOR'S "HOME-MADE" ALL FAVORITE FLAVORS "HEADLINER SPECIAL" 1/2-Gal. **69¢**

TOMATOES DE SOTO BRAND 8 No. 303 Cans **\$1.00**

APPLE SAUCE WIN-ALL BRAND 2 No. 303 Cans **25¢**

COOKED PICNICS SWIFT'S PREMIUM FULLY-COOKED Lb. **49¢**

PREMIUM BACON SWIFT'S SLICED Lb. Pkg. **69¢**

PORK SAUSAGE RATH'S BLACK HAWK Lb. **45¢**
SPARE RIBS SMALL, LEAN SIDES Lb. **59¢**
RATH MEATBALLS FROZEN 10-oz. Pkg. **69¢**
FLOUNDER FILLETS TASTE O'SEA Lb. **59¢**

WIN THOUSANDS OF DOLLARS IN PRIZES

REGISTER FREE AT WORTH FOR A CHANCE TO ANSWER THE JACKPOT QUIZ ON

"WORTH HEADLINERS"

WIN SUCH VALUABLE PRIZES AS:
★ Maytag Freezers ★ DeJur Home Movie Sets
★ Texas Maid Boats ★ Admiral Refrigerators
★ Youngstown Dishwashers ★ Easy Washers

Libby's "Headliner" Specials!

SPINACH LIBBY'S FROZEN CHOPPED 3 10-Oz. Pkgs. **49¢**

CORN LIBBY'S FROZEN-CUT OR CREAM STYLE LIBBY'S 10-oz. 3 Pkgs. **59¢**

WHOLE BABY OKRA LIBBY'S CUT OR FRENCH STYLE 9-oz. 3 Pkgs. **59¢**

GREEN BEANS 9-oz. 3 Pkgs. **59¢**

WINESAP APPLES CRISP, RED 2 Lbs. **25¢**

FRIZIN INSTANT SELTZER Large Size **43¢**

COLGATE TOOTH PASTE giant size **39¢**

WEBSTER DICTIONARY Only **89¢**

SECTION 5 NOW ON SALE

GROUND MEAT COOKBOOK Only **29¢**

"COOKING MAGIC"

TEXAS ORANGES 5 Lb. Bag **45¢**

TEXAS GRAPEFRUIT 5 Lb. Bag **39¢**

PASCAL CELERY CRISP STALKS **15¢**

WHITE ONIONS NEW CROP Lb. **14¢**

SWEET POTATOES KILN-DRIED Lb. **15¢**

WORTH FOOD MART

Prices Effective Thursday, Friday & Saturday—Reserve Right to Limit

114 West Olive

PAUL DYGDARD

will be here
Friday and Saturday
March 21 and 22
with . . .

STORRS-SCHAEFER'S
presentation

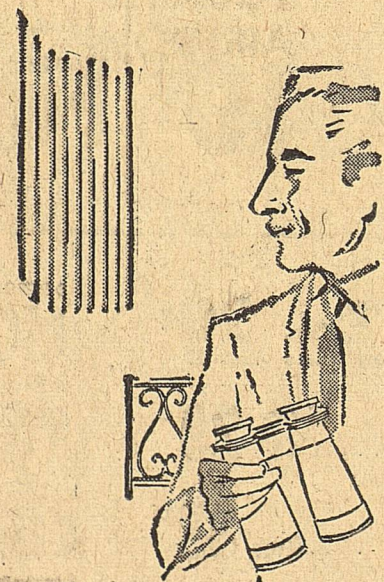
New Spring and
Summer Fabrics

New Custom Tailored
Model Garments

For You To See and Try On

A \$22.50 Custom Tailored
Slack will be awarded as a
door prize at the termination
of the show.

Delivery now or later . . .
as you prefer.



SPECIAL!!!
Custom Tailored
SPORT COAT
only
\$22.50

when purchased with any suit
from our new spring and summer
line at the regular price.



Tailors of Fine Clothes



MODERN DRY CLEANERS

Eastland

Texas

General Line Of
Nursery Trees, Pecan Trees,
Shade Trees, Flowering Shrubs,
Evergreens
WOMACK'S NURSERY
DeLeon Phone 3642

E. H. S.
School Views

St. Pat's day celebration. This is the first time that trophies have been offered at Dublin and there were several bands there.

The contest consisted of a concert, sight-reading, and marching. On the concert the EHS band played Symbol of Honor March and Crusaders Overture. They sight read British Airs and then marched in a seven block parade. In all three divisions they were rated as third class. This is very good considering that some of the finest bands in the District were attending.

In the solo twirling division only Mary Ann Toombs and Martha Freese twirled. Their judge was drum-major from TCU and they were both given a second division. They will receive a certificate later.

(The above information was supplied by the band reporter Laura Harris.)

There was a paid assembly Tuesday in the EHS auditorium. It was a demonstration of what can be done with the electronics and the guitar. Everyone enjoyed it very much.

There will be a dance at the American Legion Hall next Saturday night. More information will be given in the Saturday edition of the paper.

Watch for Miss Mavericks Madness (and write her your problems).

The EHS Senior Class play, "Who Dunit" was given last Friday night and was quite a success. The setting and the cast were of very fine quality. At a gathering after the play the Senior Class gave Mrs. Earl Conner, Jr. a milk-glass vase and a corsage along with a check to show their appreciation. We are all joining in thanking Mrs. Conner once again—and the Senior cast, prompters, stage crew, and ushers—for the fine job they did this year in production.

Band News
The EHS band went to Dublin this past week-end for the annual

T. L. FAGG
REAL ESTATE
Property Management
Home and Farm Loans

Laundry Service
Let Us Do Your
★ WASHING
★ ROUGH DRY
★ WET WASHING
Pick-up & Delivery
Sunshine Laundry
106 E. Plummer - Ph. 155

By Martha Kay Connell
1. Why is it that Judy Cockrell has been staying away from Hampton Stamey so much lately?
2. Looks as if Sandy Taylor has hooked her a guy.
3. Why is it Ann Toombs has such a hard time remembering which leg she hurt? Sure do wish she would make up her mind and let us know about it.
4. Does anyone know why Mildred Day and Ronald Robertson broke up? It's the mystery of the week and such a shame too.
5. Dixie Durham and Jackie

Baggette seem to have turned artists models for three young imps from Ranger. And such good artists—aren't they girls!
6. There are a lot of girls who would like to see Peggy and Henry break-up. They say Henry's too cute to go steady but we personally think the two are a perfect couple!
7. Yvonne Green certainly does get around. Can you imagine going steady for only one week. She did it!
8. Have you ever noticed how every day at noon you can see Clyde Evatt driving around EHS looking for Anne Pittman? It's precious.
9. Billy Don Turner didn't exactly like Ella Joy Walker's part in the Senior Play. You should have seen the color of green he turned during certain parts of it. Wonder why?
10. Sue Day doesn't waste any time in getting what she wants, does she.
11. Phillip Lewis is slowly getting over Brenda Evan's moving but he still doesn't like it too much.
12. Isn't it amazing how quickly make-up turned Johnny McMahon into an angel—or does he always act like that, Cathy.
13. Cora Mendieta seems to get a lot of fun out of pouring Coke all over people in study hall. We know! We know! It was an accident but still "It's cold!"
14. David Carothers is acting like he is up to something. Wonder what it is?
15. Mike Reese is simply too cute a boy to go steady. But then, have you seen the perfect doll he is going steady with? WOW.
16. Gaila Walters and Knicky Arther are going steady again. No one thought they would stay apart for very long. Gaila wouldn't let them.
17. Freddie Miller seems to be taking after his big brothers. Have you seen the way A. F. watches him when he walks past.
18. The out of town boys have completely taken over all of the girls, haven't they Jim.

LECTURES
MARCH 16-22

"WE WELCOME YOU TO THIS FEAST OF SPIRITUAL THINGS"
General Theme: "Building A Strong Church"

Scripture Text: "But ye, beloved, building yourselves up on your most holy faith, praying in the Holy Ghost, keep yourselves in the love of God, looking for the mercy of our Lord Jesus Christ unto eternal life."—Jude 20, 21.

DATE	SUBJECTS	SPEAKERS
THURS. 20	"Building Christianity in the Home"	W. R. Smith, A. C. C.
FRI. 21	"Building Thru Development of Young People"	Robert Oglesby, Breckenridge
SAT. 22	"Building Thru Bible Study Classes"	James Willeford, Abilene

NOTE: All Young People in this area are urged to be present on Friday night. Come and get acquainted with other young people.

CHURCH OF CHRIST

LAST 10 DAYS
A \$3.95 PLAYTEX™
LIVING BRA
FREE

when you buy a Playtex®
Magic Controller
or **Mold 'n Hold**
Zipper Girdle

The makers of Playtex will give you your first Playtex Living Bra free... because they're sure that once you wear it you'll never wear any other bra. You'll enjoy heavenly comfort all day long with the exclusive elastic design. The bias-cut elastic side panels self-adjust to your every motion. Full elastic back won't wrinkle or curl. Never shifts, rides or slides.

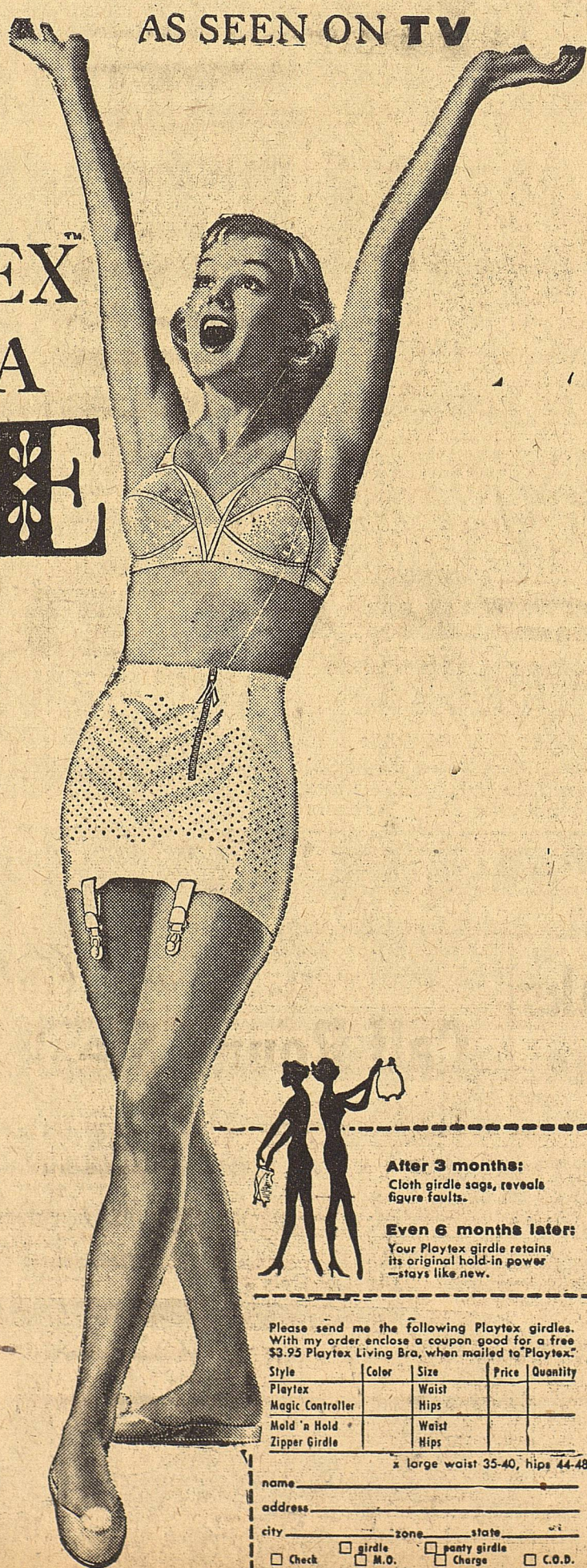
You get this \$3.95 bra free when you buy one of these figure-slimming Playtex Girdles:

Magic Controller has Magic "finger" panels to slim and support you without a bone, seam or stitch... girdle or panty girdle. Pink or white \$8.95, XL \$9.95.

Mold 'n Hold Zipper Girdle zips on and off so easily. Magic "finger" panels smooth bulges front and back. Girdle or panty girdle. Pink or white. (Black in girdle only.) \$10.95, XL \$11.95.

Buy either girdle and Playtex sends you the bra FREE.

Make sure your free bra is the right size. Come in for a fitting now!



After 3 months:
Cloth girdle sags, reveals figure faults.

Even 6 months later:
Your Playtex girdle retains its original hold-in power—stays like new.

Please send me the following Playtex girdles. With my order enclose a coupon good for a free \$3.95 Playtex Living Bra, when mailed to Playtex.

Style	Color	Size	Price	Quantity
Playtex Magic Controller		Waist		
		Hips		
Mold 'n Hold Zipper Girdle		Waist		
		Hips		

x large waist 35-40, hips 44-48

name _____
address _____
city _____ zone _____ state _____
 Check girdle M.O. panty girdle Charge C.O.D.

Anderson's
NORTH SIDE OF SQUARE

Special Offer! 10¢ OFF Regular Price!
ANN PAGE PURE STRAWBERRY PRESERVES 2 LB. JAR **59¢**
REG. 69¢—NOW ONLY
NO LIMIT ON MERCHANDISE

- | | |
|---|---|
| WHITE HOUSE
EVAPORATED MILK 3 ^{Can} 40¢ | BIRDS EYE FROZEN
GREEN PEAS 2 10-oz. Pkgs. 27¢ |
| SULTANA
TUNA CHUNKS 6-oz. Can 25¢ | BIRDS EYE FROZEN
BUTTER BEANS 2 10-oz. Pkgs. 31¢ |
| LIBBY FROZEN
GREEN PEAS 2 10-oz. Pkgs. 27¢ | LIBBY WHOLE
SPICED PEACHES 2 9-oz. Can 29¢ |

EQUAL TO THE BEST—YET COSTS YOU LESS
dexola Cooking Oil Qt. **59¢**
Btl.

ALLEN—Cut and Whole
Sweet Potatoes 2 303 Cans **23¢**

PERFECT STRIKE
CHUM SALMON 1-lb. Can **49¢**

CRISPO
MIXED COOKIES 1-lb. Pkg. **29¢**

ANN PAGE
PORK & BEANS 3 1-lb. Cans **35¢**

KLEEN-TOUCH CHARCOAL
BRIQUETS 10 -lb. Bag **49¢**

RIPE OLIVES OBERTI 2 No. 1 Tall Can **49¢**

Tomato Ketchup ANN PAGE 2 14-oz. Btls. **35¢**

SPAGHETTI ALSO ANN PAGE ELBOW MACARONI 2 1-lb. Pkgs. **35¢**

ENCYCLOPEDIA FUNK & WAGNALLS FAMOUS, VOL. 10... ea. **99¢**

LUX FLAKES SOAP FLAKES 1-lb. Pkg. **33¢**

JANE PARKER LARGE DUTCH SPECIAL
Apple Pie REG. 53¢ **43¢**

Pineapple Topped Buns Jane Parker 9 Pkg. 27¢
RAISIN BREAD Jane Parker 1-lb. Loaf 17¢

400 Count
KLEENEX 27¢

JANE PARKER LARGE—Reg. 49¢—SPECIAL
Angel Food ea. **39¢**

ALL GOOD
BACON Sliced Lb. **49¢**

HEAVY CALF CHUCK
Roast Lb. **59¢**

CAP'N JOHN'S FROZEN FLOUNDER
Fillets 16-Oz. Pkg. **53¢**

BEEF, TURKEY AND CHICKEN BANQUET
Dinners Each **49¢**

CAP'N JOHN'S FROZEN PERCH
Fillets 16-Oz. Pkg. **39¢**

- | | |
|--|--|
| TOILET SOAP
LIFEBUOY 3 Reg. Bars 29¢ | DETERGENT
LIQUID LUX 22-oz. Can 69¢ |
| A&P TOMATO
JUICE 46 oz. Can 29¢ | NORTHERN
TISSUE 3 For 25¢ |
| DETERGENT
RINSO BLUE Reg. 32¢ | DETERGENT
CONDENSED "all" Reg. size Box 39¢ |
| SLICED YELLOW CLING
PEACHES 3 No. 2 1/2 Cans 1⁰⁰ | DETERGENT
WISK LIQUID Qt. Can 69¢ |

FRESH FRUITS & VEGETABLES

EXTRA FANCY WASHINGTON
APPLES WINESAP Lb. **10¢**

CALIFORNIA
AVOCADOS 2 For **25¢**

FRESH TEXAS
RADISHES Bunch **5¢**

BANANAS

Golden Ripe
Tropical
American Lb. **10¢**

AMERICA'S FINEST FOOD RETAILER... SINCE 1859
A&P Food Stores
THE GREAT ATLANTIC & PACIFIC TEA COMPANY

SAFEGWAY'S 30th Anniversary SALE 1928 1958

Prices apply only when purchased in quantities as advertised.

- Coffee Nob Hill Rich Flavored 1-Lb. Pkg. 79¢
- Shortening Royal Satin 5c off Label 3-Lb. Can 80¢
- Shortening Royal Satin 6-Lb. Can \$1⁵⁹
- Corn Meal White Self Rising Kitchen Craft 5-Lb. Bag 49¢
- Hot Cross Buns 8 Count Curtsy 10-Oz. Pkg. 25¢
- Prunes Large Glenview 2-Lb. Cello 63¢
- Crest Tooth Paste Reg. \$1.06 2 Pkgs. 89¢
- Margarine Kraft Miracle 1-Lb. Pkg. 30¢
- Biscuits Puffin—Sweetmilk or Buttermilk 2 8-Oz. Cans 21¢
- Cookies Nabisco Fancy Crest 7 1/2-Oz. Cello 31¢
- Strawberries Sel-air Frozen—Sliced Pkg. 10-Oz. 25¢

- Cut Green Beans Highway Cut 303 Can 15¢ or 2 For 25¢
- Del Monte Corn Cream Style Golden 303 Can 19¢ or 2 for 29¢
- Pork and Beans Van Camp 300 Can 15¢ or 2 for 25¢
- Blackeye Peas Libby Fresh 300 Can 16¢ or 2 for 25¢
- Austex Beef Stew With Vegetables 300 Can 29¢

HELD OVER BY POPULAR DEMAND 3 MORE BIG DAYS!

Your response to our 30th Anniversary Sale during the past 7 days was so great, that we are continuing this sale for 3 more big days. New items and more low prices. Make sure you attend this sale. Remember... Safeway is your best place to save.

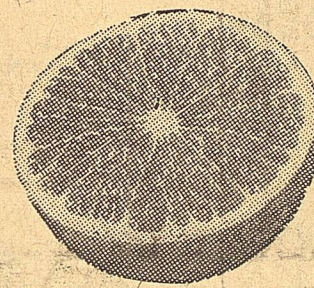
- Welch's Grape Juice 24-Oz. Bottle 33¢
- Town House Bartlett Pears No. 2 1/2 Can 29¢
- Sliced Pineapple Del Monte No. 1 Can 17¢ or 2 for 29¢
- Applesauce Highway Ideal for Cakes 303 Can 15¢ or 2 for 25¢
- Crushed Pineapple Del Monte No. 1 Can 16¢ or 2 for 29¢

- Orange Juice Town House Sweetened 46-Oz. Can 27¢
- Pineapple-Grapefruit Drink—Del Monte 46-Oz. Can 29¢
- Tomato Juice Town House 46-Oz. Can 25¢
- Apricot Halves Highway No. 2 1/2 Can 27¢

- Dolls of All Lands While Supply Lasts Each 69¢
- Pooch Dog Food 16-Oz. Can 9¢ or 7 for 49¢
- Evergreen Brooms So Strong and Durable, Reg. 1.09, Each 79¢
- Facial Tissue Kleenex, White 200-Ct. Box 15¢ or 2 for 25¢
- Ground Black Pepper Trader Horn 4-Oz. Can 15¢
- Breakfast Gems Eggs Grade A Quality Large Size Doz. 63¢
- Highway Peaches Sliced or Halves No. 2 1/2 Can 25¢
- Lucerne Milk Homogenized 1/2-Gal. Ctn. 47¢ Dairy Drink Lucerne Qt. Chocolate Ctn. 24¢

- Get Acquainted Specials!
- Cloverleaf Rolls Skylark Brown and Serve 12 Count Regular 23c 13-Oz. Pkg. 19¢
 - Stoneridge Farm Skylark Wheat Bread 16-Oz. Pkg. 25¢
 - Party Protein Bread Skylark 16-Oz. Loaf 29¢

Safeway's Your Best Place to Buy Produce!



Grapefruit

8 49¢ -Lb. Bag

Ruby Red—Grand for Breakfast. In Luncheon and Dinner Salads, or When Fresh Fruit is Your Dessert

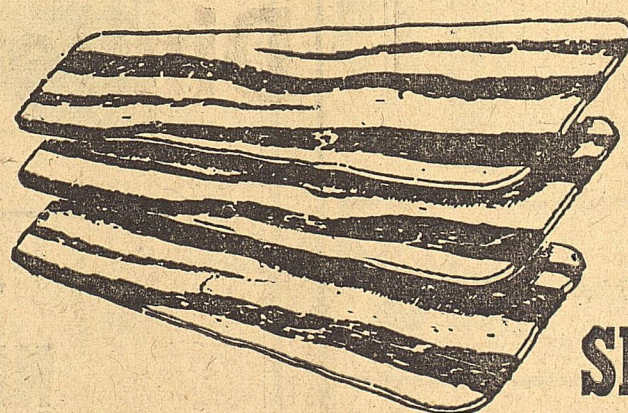
- Ironing Board Pad and Cover Set Regular \$1.98 Now Only each 99¢

- Fresh Carrots Sweet, Tender, Young Crisp to Bite Into 2 1-Lb. Cello 15¢
- Lettuce Crisp, Cracking Fresh Head 21¢
- Anjou Pears Plump, Sweet Ideal for Salads Lb. 19¢
- Potatoes Economy—Ideal for Baking or Frying 10-Lb. Bag 79¢
- Oranges Sunkist Navel, Juicy Sweet & Delicious Lb. 19¢

30th Anniversary Buys!

- Golden Shore Salmon Chum 1-Lb. Can 39¢
- Vienna Sausage Libby No. 1/2 Can 21¢ or 2 for 37¢
- Tempest Tuna Light Meat Grated No. 1/2 Can 21¢ or 2 for 37¢
- Empress Preserves Grape 12-Oz. Jar 23¢ or 2 for 35¢
- Joyett Dessert Assorted Flavors Delicious Mellorine 1/2-Gal. Ctn. 39¢

Safeway's Your Best Place to Buy Meats!



BACON 2 99¢

Thick Sliced—Northern Cured. The Bacon with the Sweet-Smoke Taste.

- Sliced Bacon Armour's Star Every Slice Tastes Nice! Perfect for Breakfast or Snacks 1-Lb. Cello 65¢

Safeway Calf Sale!

- Calf Round Steak or Sirloin U.S.D.A. Good Grade Lb. 85¢
- Calf Rib Chops U.S.D.A. Good Grade Lb. 79¢
- Calf T-Bone Steak U.S.D.A. Good Grade Lb. 89¢
- Calf Rump Roast U.S.D.A. Good Grade—Bone-In Lb. 75¢

- Deviled Ham Underwood No. 1/4 Can 21¢
- Pizza Pie Mix. With Sauce Appian Way 12 1/2-Oz. Pkg. 42¢
- Barbecue Ireland's Chipped Beef or Sliced 300 Can 73¢
- Cookies Nabisco Wafer Cones or Cuplets 12-Ct. Pkg. 19¢
- Mayonnaise Kraft 16-Oz. Jar 45¢
- Muffin Mix Corn Dromedary 8-Oz. Pkg. 17¢
- Miracle Whip Kraft 16-Oz. Jar 37¢
- Breeze Detergent Large Size Box 33¢
- Cheez Whiz 16-Oz. Jar 55¢
- Toilet Soap Lux—Blue, Green, Pink or Yellow Reg. Bar 10¢
- Cheese Kraft Sliced American, Pimento or Swiss 1/2-Lb. Pkg. 35¢
- Detergent Rinse Blue Large Box 32¢
- Salad Oil Kraft Qt. 71¢
- Lux Liquid Detergent 32-Oz. Can 99¢

- Somerset Franks All Meat 1-Lb. Cello 49¢
- Somerset Chili Delicious with Franks 1-Lb. Pkg. 49¢

- Salt Morton's or Free Running 2 26-Oz. Boxes 25¢
- Salt No-White Iodized or Free Running 26-Oz. Box 10¢
- Modess Napkins, Sanitary Regular or Super 12-Ct. Box 35¢

Prices effective Thursday, Friday and Saturday, March 20-21-22, in... Eastland. We reserve the right to limit quantities. No sales to dealers.

- Sponges Du Pont—Four Color Cellulose #6 Each 23¢
- Dog Meal Kesco 5-Lb. Bag 69¢
- Dog Food Ideal 2 1-Lb. Cans 31¢



IT'S A HIT! OUR BIG...
Food Buys

GOLDEN FLUFFO 3 Lb. Can 79¢

CLOVER FARM Milk 8 Tall Cans \$1

CLOVER FARM WHOLE GOLDEN Corn 7 No. 303 Cans \$1

CLOVER FARM RED PITTED CHERRIES 5 No. 303 Cans 1.00
CLOVER FARM PORK & BEANS 8 No. 303 Cans 1.00
CLOVER FARM GARPEFRUIT JUICE 4 46-oz. Cans 1.00
CLOVER FARM PEACHES 5 No. 303 Cans 1.00

CLOVER FARM RED RIPE TOMATOES 6 No. 303 Cans 1.00
CLOVER FARM WHO BLUE LAKE BEANS 4 No. 303 Cans 1.00
CLOVER FARM KRAUT 8 No. 303 Cans 1.00
WHITE SWAN GOLDEN WHOLE YAMS 4 No. 303 Cans 1.00

PRESERVES STRAWBERRY PEACH APRICOT 3 18-Oz. Glass \$1

CLOVER FARM CAN SAVE YOU MONEY ... PLUS B & B STAMPS WITH EVERY PURCHASE!

SALMON CLOVER FARM RED SOCKEYE 2 No. 1 Flat Cans \$1
VIENNAS CLOVER FARM 5 No. 1/2 Cans \$1

BETTY CROCKER or PUFFIN Biscuits Each 10¢

FANCY WINESAP Apples 2 Lbs. 25¢

IMPERIAL PURE CANE Sugar 10 Lb. Bag 93¢

U. S. NO. 1 IDAHO RUSSET Potatoes 10 Lb. Bag 59¢

NO MATTER WHAT DAY YOU BUY... YOU SAVE AT CLOVER FARM

SWIFT'S COUNTY FAIR WHOLE HOG SAUSAGE 2 Lbs. 1 15

Gooch's Franks 3 Lbs. 89¢

Fresh Dressed Hens Lb. 39¢

Gooch's Thick Sliced Bacon 2 Lbs. 1 25



H. B. MacMoy, Owner

7:30 a.m. to 8:00 p.m. Weekdays

7:30 a.m. to 9:00 p.m. Saturdays

BONELESS Pork Roast Lb. 55¢

LEAN TENDER Pork Chops Lb. 69¢

READY-TO-EAT—CANNED Hams 4 Lb. Can 3.95

KRAFT VELVEETA Cheese 2 Lb. Box 89¢

HOME MAKERS Views and News

Debra Kirkland Home Dem. Agent Nancy Weathers Asst. Home Dem. Agent

Is your diet adequate in vitamin C? Do you bruise easily? A Vitamin C deficiency might be responsible... Oranges, grapefruits and other citrus fruits are rich in Vitamin C important to good health of the blood vessels. Eat some Vitamin C rich foods every day... there is a very small storage of this vitamin in the body. Other symptoms of an inadequate supply are decaying teeth (in some cases), sore and bleeding gums, pains and swelling in joints and limbs, and wounds that heal slowly.

Citrus 'round the clock
Although we often think of oranges as a breakfast food, they are good at any meal.

Frozen Lemon Cream
2 eggs, separated
1 can sweetened condensed milk
1-2 cup fresh lemon juice
1-4 cup fresh orange juice
2 T. grated orange peel
4 T. sugar

Beat egg yolks until thick and yellow; add sweetened condensed milk, lemon juice, orange juice and grated orange peel. Beat egg whites until frothy; add sugar gradually and continue beating until soft peaks form. Fold into lemon mixture. Pour into 2 refrigerator trays and freeze. Garnish with orange slices. Fills 6 to 8 dishes.

Orange shortcake
2 cups biscuit mix
1 egg, slightly beaten
1-2 cup fresh orange juice
12 oranges, cut in chunks
sugar

Combine biscuit mix, egg and orange juice lightly with a fork. Follow regular biscuit directions. Split hot biscuits spread generously with butter or margarine, fill with sweetened orange chunks. Replace top of biscuit and cover with more fruit. Serve with whip cream. Makes 12 servings.

For sweetened orange chunks, allow one orange per serving. Sprinkle orange chunks with sugar. Let stand at least 15 minutes before serving.

Six Ideas for Serving Oranges
Orange chunks with dips—Chunks make grand "dippers" for avocado, cheese and other dips.

Cartwheels for Ambrosia—For a quick salad or dessert, peel oranges; slice into cartwheels. Sprinkle with 1-2 cup powdered sugar and 1-2 cup grated coconut.

Bite-size pieces for orange sundae—Add 2 T. of sugar to 1 cup of bite-size orange pieces. Allow juice to collect. Serve as ice-cream topping.

Wedges for breakfast—Wedges are very quickly prepared.

Sections in salads—Section add taste and color to many dishes. Remember that "meat" and see meat walls contain important food values.

Garnishes—Create original shapes of orange slices to garnish meat and vegetable salads.

Dictionary of Terms

Navel orange—In season November through May, they have no seeds at all. With a small "navel" formation to the blossom end, they are smooth and roud-sweet and juicy.

Valencia orange—In market May through November, valencia have no navel—are slightly oblong in shape. Sweet and juicy.

1 Cup orange chunks—allow 2 medium oranges
1 Cup fresh juice—Allow 2 to 2 medium oranges

VISITS MOTHER

Mrs. Virgil Moore and Trippy and Ricky visited with her mother-in-law, Mrs. Edgar Ward in Corsicana during the past week. They returned home Monday evening.

HALF HOUR Laundry Service

Automatic coin operated washer and dryers, open 24 hours every day.
WASHERS—20¢ per load
DRYERS—25¢ for 2 washer loads

LAUNDROMAT
515 West Main
In Old Tip Top Cafe Building

READ THE CLASSIFIEDS ADVERTISEMENT

Insurance AND Real Estate D. L. KINNAIRD
Life - Fire - Auto - Farm Polio - Bonds
39 years in the Insurance Business In Eastland

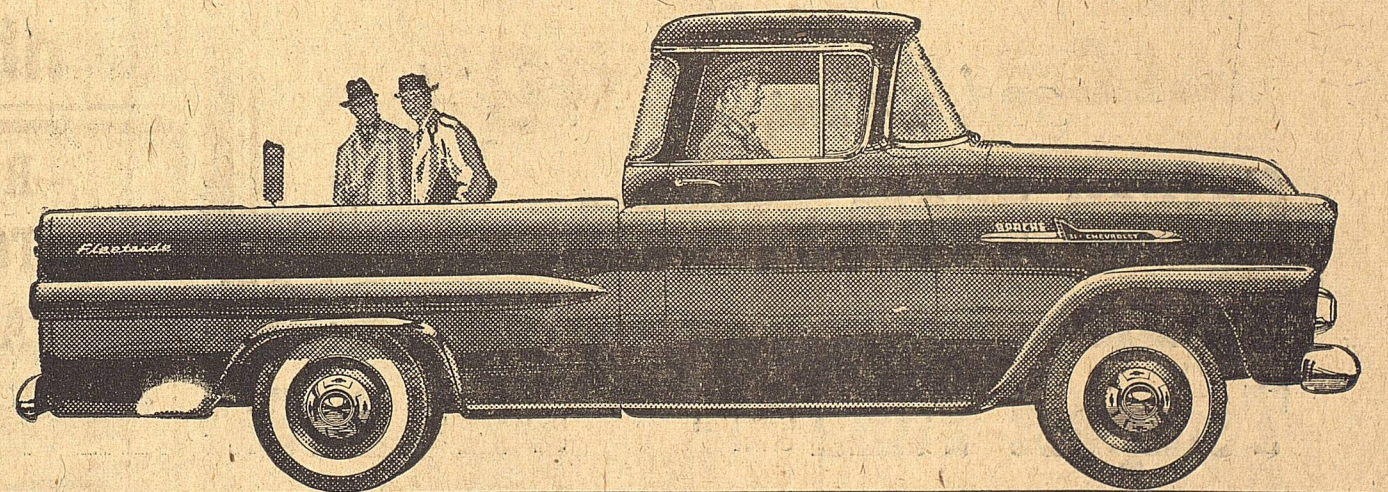
Kidney Slow-Down May Bring Restless Nights

When kidney function slows down, many folks complain of nagging backache, headaches, dizziness and loss of pep and energy. Don't suffer restless nights with these discomforts if reduced kidney function is getting you down—due to such common causes as stress and strain, over-exertion or exposure to cold. Minor bladder irritations due to cold or wrong diet may cause getting up nights or frequent passages. Don't neglect your kidneys if these conditions bother you. Try Doan's Pills—a mild diuretic. Used successfully by millions for over 50 years. While often otherwise caused, it's amazing how many times Doan's give happy relief from these discomforts—help the 15 miles of kidney tubes and filters flush out waste. Get Doan's Pills today!

Keeping the Barn Door Shut—

... while the horse is still in the stable and your property adequately insured before disaster is good, sound advice to all classes of property owners. After the storm clouds have already gathered or the kitchen fire is out of control, it is too late then to begin arranging your insurance needs. Do that today and every day, if necessary, for peace of mind and full protection when you really need it.

EARL BENDER & COMPANY
Eastland, (Insurance since 1924) Texas

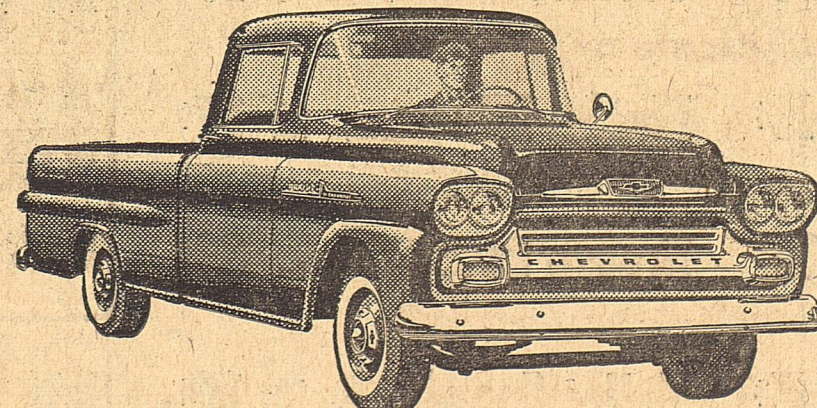


Just out! New, wide and handsome! NEW CHEVROLET FLEETSIDE PICKUPS

They're as brawny as they are beautiful—three new Fleetside pickups with the power and cargo capacity to tame tough jobs and look good doing it!

The new Fleetside reports in with more load space than you'll find in any other low-priced pickup in its

weight class! Two body sizes are offered—78" and 98" long—both a full 6 feet wide. And you get the best remedy for overhead worry that's ever been built—Chevy's hustling Thriftmaster 6 engine. Your dealer will fill in the facts, or details about any new Chevrolet models, including America's lowest priced popular pickup!



NEW Styling that catches the eye and calls attention to your business name!

NEW Extra-big capacity! New Fleetside bodies are wider, longer and deeper!



See your local authorized Chevrolet dealer

FULLEN MOTOR COMPANY

305 E. MAIN

PHONE 44

EASTLAND

NEWS FROM DESDEMONA

Carl Young of Longview spent a few days last week with his sister and brother-in-law, Mr. and Mrs. Bennie Belyne.

returned to duty but Mrs. Lewis stayed here for a short while. Pfc. Eddie Stewart of Alaska is home on a short leave. He is visiting his parents, Mr. and Mrs. Ralph Stewart of Duster, and an aunt, Mrs. J. A. Griffith, here.

The past week with his parents, Rev. and Mrs. Buel Bryan. Mrs. Bill Greenshaw and daughters Linda, spent Tuesday in Abilene shopping.

side here for a while. Friends are glad to welcome Mr. Moss back. Mrs. J. Grimshaw's mother, Mrs. W. F. Rodgers of Portales, N.M., passed away Saturday afternoon after a long illness. Friends wish to extend their sympathy to the Grimshaws.

Advertisement for Crosby Square shoes. Features an illustration of a man and a woman, a large shoe, and text: 'A Step to Distinction', 'Crosby Square', 'SILK SHANTUNG OVERLAYS', 'THE MEN'S SHOP', 'YOUR CHARGE ACCOUNT INVITED'.

Mrs. Hattie Tate, Mrs. Inez Heeter, Mr and Mrs. Cora Sparks, Maude Frique, Ella Tidwell and Mrs. L. Williamson attended Henry Grahams funeral Friday in Stephenville. Jimmie Bryan of Odessa spent the weekend here visiting her mother Mrs. W. Clayton.

Mr. and Mrs. M. E. Cannon and children from Houston were visiting Mrs. Cannon's sister, Mrs. Jiggs Rainey. Miss Gracie Fonville of Breckenridge is now at home here with her mother, Mrs. Fonville.

Announcements Political

The Eastland Telegram has been authorized to announce candidates for public office in the Democratic First Primary election in July as follows:

- State Representative PAUL BRASHEAR
County Judge JOHN S. HART (Re-election) CLYDE L. GARRETT
County Clerk JOHNSON SMITH (Re-Election)
For Justice of the Peace Precinct 1 C. E. OWEN
County Treasurer MRS. ELLEN JUSTICE
County School Superintendent H. R. (Pop) GARRETT (Re-Election)
District Clerk ROY L. LANE (Re-Election)

Mr. and Mrs. W. H. Davis spent Sunday afternoon in Glen Rose visiting. Mrs. Richardson spent the past weekend here visiting her mother Mrs. W. Clayton.

Henry Graham, who lived between Lingleville and Desdemona, suffered a fatal heart attack late Wednesday evening. Our sympathy is extended to Mrs. Graham.

Mr. and Mrs. W. H. Davis were in Stephenville on business Thursday.

Mr. and Mrs. W. H. Davis were in Stephenville on business Thursday.

Mr. and Mrs. W. H. Davis were in Stephenville on business Thursday.

Mr. and Mrs. W. H. Davis were in Stephenville on business Thursday.

Mr. and Mrs. W. H. Davis were in Stephenville on business Thursday.

Mr. and Mrs. W. H. Davis were in Stephenville on business Thursday.

Mr. and Mrs. W. H. Davis were in Stephenville on business Thursday.

Mr. and Mrs. W. H. Davis were in Stephenville on business Thursday.

Mr. and Mrs. W. H. Davis were in Stephenville on business Thursday.

Carbon School News

By LINDA COLLINS, Telegram School Reporter

Hi! Everyone and I suppose you have figured out by now that I am going to gab about the happenings around our dear, wonderful school.

There is not much excitement around CHS now, but it seems that the teachers sure like to grade papers, due to the amount of lessons we have been having.

In the line of sports, track is the highlight of the events. Our track boys will enter a meet Saturday in Bangs. Lyndall Morrow, Charles Bryant and Kenneth Taylor will compete in the 100 yard dash; Lyndall Morrow, Charles Bryant and Kenneth Taylor, the 220 yard dash; Don Cook, the 440 yard dash; Lyndall Morrow, Charles Bryant, Kenneth Taylor and Benny Frazer, the 440 relay; Don Underwood and Jerry Mry, the 880 yard run; Ray Thompson and Don Wilson, mile run; Eldon Maynard, Jerry May, Don Under-

wood and Don Cook, mile relay. Don Cook will enter for the 120 yard high hurdles; and Lyndall Morrow and Ray Thompson the 180 yard low hurdles. Jimmy Burtson will be the contestant for the pole vault. Charles Bryant and Don Cook will do the broad jump; Larry Greer and Don Cook, the high jump. Delbert Justice, Jimmy Sandlin and Charles Bryant will throw the shot-put. The discus will be thrown by Delbert Justice and Mickey Rodgers.

Another track meet is in sight about March 29 at Lueders. We are sure our boys will have a successful season this year.

The date has been set. What date? Don't tell me you have forgotten? The date the presentation of the senior play, "It's a Girl," Thursday, March 27 is the all important date of the play.

As hard as the seniors are working on their play it is bound to be a good one. Don't forget March 27 in the Carbon High School auditorium at 8 p.m. Admission is 50c for adults and 25c for students.

The seniors are still laboring on their autobiographies and plans for graduation as well as their play. It won't be long before school will be out and the seniors will be on their way toward the future.

In just about two months school will be over until September. Boy-

wood and Don Cook, mile relay. Don Cook will enter for the 120 yard high hurdles; and Lyndall Morrow and Ray Thompson the 180 yard low hurdles. Jimmy Burtson will be the contestant for the pole vault. Charles Bryant and Don Cook will do the broad jump; Larry Greer and Don Cook, the high jump. Delbert Justice, Jimmy Sandlin and Charles Bryant will throw the shot-put. The discus will be thrown by Delbert Justice and Mickey Rodgers.

Another track meet is in sight about March 29 at Lueders. We are sure our boys will have a successful season this year.

The date has been set. What date? Don't tell me you have forgotten? The date the presentation of the senior play, "It's a Girl," Thursday, March 27 is the all important date of the play.

As hard as the seniors are working on their play it is bound to be a good one. Don't forget March 27 in the Carbon High School auditorium at 8 p.m. Admission is 50c for adults and 25c for students.

The seniors are still laboring on their autobiographies and plans for graduation as well as their play. It won't be long before school will be out and the seniors will be on their way toward the future.

In just about two months school will be over until September. Boy-

some of us (including one) can hardly wait until the day. The gossip is that the jackets for the football and basketball girls and boys will soon be arriving, and from the talk they are going to be pretty.

A couple of new faces have been appearing around Carbon School the last few days. Tommy Collins, a sophomore, Danny Arnold, seventh grader, are the new students.

That is it for now; see you next week.

That is it for now; see you next week.

That is it for now; see you next week.

That is it for now; see you next week.

ATTEND THE CHURCH OF YOUR CHOICE EACH SUNDAY

Overseas Veterans Welcome Karl and Boyd Tanner Post No. 4136 VETERANS OF FOREIGN WARS Meets 2nd and 4th Thursday 8:00 p.m.

ANDERSON logo

ALEX RAWLINS & SONS MONUMENTS WEATHERFORD, TEX. Serving This Community Since 1884

Luncheon Honors Smiths and Mrs. Martin Tuesday

Mr and Mrs. R. W. Smith celebrated their 61st wedding anniversary with Mrs. Dan Martin whose birthday was on the same day, Tuesday with a luncheon.

Mrs. Martin was hostess to the luncheon in her home at 409 West Commerce. Luncheon guests were Mr. and Mrs. Smith, Dan Martin, Mr. and Mrs. Johnson Smith and children and Dick Williams, son-in-law of Mr. and Mrs. Martin, of Fort Worth.

NOTICE... Come To Kendrick Drive-In Dairy (Serving This Territory Since 1940) FOR Good, Clean JERSEY Sweet Milk Price - 70c Gal. Phone 896-J-2 - Located Halfway between Eastland and Cisco

QUALITY MEATS IS OUR BUSINESS IT IS NOT A SIDE LINE You Pay Only One Profit When You Buy from Us

Table with meat prices: Loin Steak Lb. 79c, Club Steak Lb. 69c, Stew Meat Lean/Boneless Lb. 49c, Hamburger Lean Lb. 43c

Table with food prices: PINTO BEANS, cooked right pint 19c, POTATO SALAD, fresh daily pint 25c, CHICKEN SALAD lb. 69c, HAM SALAD lb. 69c, BAR-B-Q, Pit Cooked Boneless, sliced lb. 89c, BAR-B-Q FRYERS, large size each 1.39, BAR-B-Q HAM, all lean lb. 1.10, CHILI, Home Made lb. 55c

Table with meat prices: Shoulder Round Roast Lb. 59c, PORK CHOPS, lean center cuts lb 73c, SAUSAGE, country style 2 lbs. 65c, SAUSAGE, whole hog 2 lbs. 98c, SLICED BACON, Goech's thick 2 lbs. 1.19

EARNEST Frozen Food Center 210 South Lamar Phone 11

J-B HOUSE PAINT advertisement featuring a painter character and text: 'Looks Better STAYS Brighter LASTS Longer'

J-B advertisement featuring a painter character and text: 'Brighten Up PORCH AND OUT DOOR FURNITURE GARDEN TOOLS OUTDOOR TOYS JONES-BLAIR'

J-B JIFFY DRY advertisement

America's Finest VARNISH advertisement

J-B HANNA advertisement featuring a painter character and text: 'HEAVY-BODIED WEAR-RESISTANT MODERATELY PRICED JONES-BLAIR HANNA HARDWARE & LUMBER COMPANY 203 N. Seaman Eastland Phone 70'

1958 Motor Vehicle License Tags DEADLINE APRIL 1 GET YOUR LICENSE PLATES NOW Be Early-Avoid the Rush! 1958 Automobile License Fees must be paid on or before April 1, 1958. All residents of Texas are required by law to buy licenses for motor vehicles in the counties in which they reside. Please Bring Texas Certificate of Title and 1957 Registration Receipt J. C. ALLISON TAX ASSESSOR-COLLECTOR Eastland County

Mrs. O'Brien Is Hostess to S. S. Class Tuesday

The Homemaker's Sunday School Class of the First Baptist church met at Mrs. O'Brien's home Tuesday at 7 o'clock for their regular monthly social and business meeting.

The affair was a covered dish supper. Mrs. O'Brien's table was set in pink and silver with a centerpiece of pink rosebuds. Pink Azaleas and primroses were used about the house to carry out the pink theme.

Mrs. Roy Young gave the invocation and Mrs. Carl Timmons conducted a Bible quiz.

Those present were Mrs. Victor Cornelius, Mrs. Carl Jones, C. F. Lucas, C. P. Hastings, Artie Liles, Frances Zerial, H. M. Hart, Reese, C. G. Cornelius, Ed Layton, T. L. Amis, Roy Young, Irene Hightower, Carl Timmons and the hostess Mrs. O'Brien.

CALL 601 FOR CLASSIFIED ADVERTISEMENT

PERMANENTS
 \$7.50 Oil-Glo Creme \$5.00
 Creme Waves 7.50 and up
 Lanolin Waves 10.00

Racham BEAUTY BAR
 1416 S. Lamar Phone 964

Morton Valley Club Meets for Day of Quilting

An all day quilting and luncheon was held by the Morton Valley Community Club March 6 in the home of Margie Stovall.

Ten members were present and participated in the short business meeting and quilting. The quilt was a lovely Dutch doll quilt with 30 blocks. Each doll has a different color dress. The quilt will be given away.

All guests and new members are invited to attend the quiltings held by the Morton Valley Community Club.

Look Who's New

Mr. and Mrs. Robert Kincaid are the parents of a baby daughter, Rebecca Jane. She was born Friday morning in Eastland Memorial Hospital. She weighed 7 pounds.

Rebecca Jane has three sisters, Kathy, eight; Patsy, five; and Mila, two and a half; and one brother, Eddie, seven.

Maternal grandparents are Mr. and Mrs. M. A. Sinclair of Artesia, N. M. Paternal grandparents are Mr. and Mrs. Alvin Kincaid of Eastland. Great-grandparents are Mrs. S. M. Branscum of Eastland and Mr. Sinclair of Kansas.

Women's Activities

Miss Charlotte Vaught to Be Presented in Recital Sunday

The Progressive Study Club will present Charlotte Vaught of Eastland and Kay Culbertson of Haskell in a piano and organ recital Sunday at 3 p.m. in the Haskell First Baptist Church. A reception will follow in the Fellowship Hall.

Both young artists are pupils of Charles Kiker of Abilene and were former pupils of Mrs. F. I. Drago of Eastland.

Miss Vaught, a sophomore, is the daughter of Mrs. Elizabeth

Vaught of Eastland. In March, 1957, Miss Vaught participated in the Junior competitive festival of the Sixth District National Federation of Music Clubs. She was adjudged the outstanding pianist of 442 entrants in the contest and won a scholarship award. She played in the festival five years, winning five superior ratings. She also played in the National Piano Tournament five years, winning five superior ratings. She is organist of Holy Trinity Episcopal Church.

Miss Culbertson, a sophomore in Haskell High School, is the daughter of Mr. and Mrs. E. H. Culbertson of Haskell and formerly of Eastland.

Miss Culbertson played in the Junior division of National Federation Festivals seven years, receiving four superior ratings and three excellent ratings. She played in national piano playing auditions six years, winning four superior ratings and two excellent plus-high ratings. She played fute in University Interscholastic League competition in April, 1957, and received first division ratings.

She is pianist for the Junior Choir for First Baptist Church, for the Intermediate Sunday School department, The Sophomore Sextette and Haskell chapter of Future Homemakers of America.

SOCIAL CALENDAR

Thursday, March 20
7:30 p.m.—Mrs. Dave Fiensy will be hostess to the Past Matrons Association Order of the Eastern Star 280 in her home, 208 Frost.

Tuesday, March 25
9:30 a.m.—Woman's Society of Christian Church of Methodist Church will meet for Bible study in the church parlor. Mrs. Cecil Jollings will present the missionary notes at this meeting.

3:15 p.m.—South Ward P.T.A. will meet for a program on "How to be American Youth." Frank Sparks will be guest speaker.

7:30 p.m.—Rebekah Lodge No. 77 will meet for their regular meeting in the IOOF Hall.

7:30 p.m.—Mrs. R. P. Haun will be hostess to the Zeta Phi Chapter of Beta Sigma Phi in her home 204 South Hillcrest with Mrs. Bruno Kaulfus as co-hostess. Mrs. Kaulfus will present the program on "Easter."

Wednesday, March 26
12 noon—The Fifty Year Pioneer Club will meet in the home of Mrs. L. C. McNatt, 510 East Pershing, for their regular monthly luncheon.

Thursday, March 27
3 p.m.—Alpha Delphian Club will meet in the Woman's Club for a special program. Mrs. M. B. Tittsworth will be the special speaker. This day will be guest day for the club. Mmes. Carl Jones, Roy Turner and Ed. Turner will be hostesses for the afternoon.

Presents Book Mrs. F. Crowell Review for WSCS

Mrs. Frank Crowell presented a book review on "Healing Power of Faith" at the meeting of the Woman's Society of Christian Service Tuesday morning in the church parlor of the First Methodist Church.

Mrs. R. C. Ferguson opened the meeting with prayer. Mrs. James Horton, president, presided during the meeting.

Mrs. Fred Davenport gave a report on the district meeting held last week in Cisco. She reported that Mrs. John Smith of Strawn was elected district president.

Mrs. W. P. Leslie led the Bible study. Mrs. H. J. Bulgerin discussed "Christ's Healing" and Mrs. Crowell's book review coincided with Mrs. Bulgerin's discussion.

Mrs. O. M. White concluded the program with prayer.

Two members, Mrs. Sylvene Roan and Mrs. D. J. McElreath, were welcomed by Mrs. Horton.

Members present were Mmes. Claud Boles, H. J. Bulgerin, Frank Castleberry, T. M. Collie, Cecil Collings, Frank Crowell, W. F. Davenport, J. A. Doyle, R. Ferguson and Tom Haley.

B. O. Harrell, Chas. Harris, P. L. Hassell, James Horton, T. M. Johnson, W. P. Leslie, Rudolph Little, W. A. Martin, O. O. Mickle, N. C. Morris, E. S. Perdue, Guy Quinn, Richard Smith, Taylor Smith, Jerry Souther, M. B. Tittsworth, Henry Van Geem, O. H. White and H. E. White.

NOTICE
 FRESH DRESSED
FRYERS
 and
 Fresh Dressed
 Hens
 At The Plant
 PHONE 110
WALKER
 Dressing Plant

Program of Arts Presented at Las Leales Club

Mmes. Don Parker and Homer Smith presented a program on "Art" for members of Las Leales Club at their meeting Monday evening at the Woman's Club.

Mrs. Parker spoke on the "Old Masters and Impressionists." She told of the inflation in the market and the several phases which are hobbies of the American public.

Mrs. Smith spoke on modern art, finger painting and the practical forms in which it is now being taught in the public schools. She pointed out that in former years pupils were given a picture and told to copy it; now they are given an object or even asked to pick their own object and draw and paint it as they see it. She displayed many attractive objects and paintings made in the local schools.

Mrs. L. E. Huckabay was hostess and presented the participants. Mrs. Anna Grace Bumpass, president, presided and welcomed Mrs. James Young, new member.

Present were Mmes. Myrtle Anderson, Anna Grace Bumpass, O. H. Dick, D. E. Frazer, H. L. Hassell, L. E. Huckabay, W. A. Leslie, Opal Cross, E. E. McAllister, Don Parker, Guy Patterson, Homer Smith, Thura Taylor, J. O. Whately, Misses Sandra Kirkland, Nancy Weathers and new members, Mmes. Merle Dry and James Young.

ATTEND THE CHURCH OF YOUR CHOICE EACH SUNDAY

M. H. PERRY
 Representing
Southland Life
 Life - Retirement Income
 Partnership
 Mortgage Cancellation
 Educational - Annuities
 Accident - Sickness
 Hospitalization - Group

Call 173 or 713-J
 107 W. Main ★ Eastland

Customer Satisfaction IS OUR AIM

- Rough Dry • Finish
- Wet Wash

Pick-Up — Delivery Service

Eastland Steam Laundry
 Phone 584

Try Them On in Your Home!
FREE

Actual Size Replica Cut-Out Maico Hearing Glasses

Now, in the privacy of your own home, discover how good you look in the all-new slender Maico Hearing Glasses. Included is colorful folder showing face flattering styles for men and women. Send coupon today

Inquire at Corner Drug, Eastland or, Write:
MAICO HEARING SERVICE
 734 Butternut - Abilene, Texas

Musical Program Is Presented at Bumble Bee Club

Musical program was given at the Bumble Bee Junior Music Club meeting March 3 in the home of Mr. and Mrs. Jimmy Young with their daughters, Dixie and Dianne, as hostesses.

Marsha Smith, daughter of Rev. and Mrs. Richard Smith, was welcomed to the club as new member.

After the members had completed a theory test, a musical program was presented by several members of the club. Donna Hart played "Oh Dear What Can the Matter Be," Dianne Young and Bryan Garner played a duet of "Coming 'Round the Mountain." Dixie Young continued the program with "Cinderella at the Ball."

The program was completed as Marsha Smith played "White Swans at the Lake" and Bill Garner played "White Sea of Lullaby."

A plate of cookies, miniature cheese sandwiches, candy kisses and Dr. Peppers were served by Dixie and Dianne Young. Following the refreshments, jokes were told and guessing games were played.

The Golden Bees for the month of February were Dianne Young, Bill Garner and Bryan Garner.

Next meeting of the Bumble Bee Music Club will be held at 7 p.m. in the home of Mr. and Mrs. B. B. Hart with Donna Hart as hostess.

NOTICE

GI - FHA OR CONVENTIONAL TYPE

LOANS

FOR NEW HOMES

PAY

As Little As 5 percent down, if you can qualify.

Build on your lot or our lot.
PHONE 326-RANGER
 or see **TROY EUBANK**
 911 Pershing St., Ranger

Hospital News



Patients in the Eastland Memorial Hospital are:

S. S. Faircloth Jr., medical
 Mrs. Otto Crabb, medical
 Mrs. Noble Squires, medical
 Mrs. Virgil Hagar, medical
 Allen Jones, medical
 H. D. Warren, medical
 Mrs. Howard Burnett, medical
 Mrs. Vera Cook, surgical
 Mrs. T. E. Richardson, medical
 Edwin Allison, surgical, German
 J. R. Allen, medical
 Dismissed were Mrs. Ida Wende.
 Patients in the Ranger General Hospital from Eastland and Olden

are:
 Mrs. H. L. Steddum and baby girl
 Mrs. C. B. Graham, surgical
 Dismissed were: C. W. Medford, Ronald Patton, Lena Smith and Aubrey Patton.

Mr. and Mrs. T. L. Morgan of Fronte are here visiting with Mrs. Morgan's father, O. B. Crowley, and sister and brother-in-law, Mr. and Mrs. Marvin Hutto, of Olden.

Moore About—
 (Continued from Page One)
 denied Elvis was at Fort Chaffee. He also admitted coaching wasn't as hard as he thought it was, and suggested that anyone who is tired of their present employment join him. His address: J. R. Tate, NG25982266 (185), Brty. D 4th Bn, Basic Tng. Command, USA TC FA, Fort Chaffee, Ark.

NOTICE

• RAW MILK — 60c GALLON
 From Bangs and T. B. Tested Cows

5 TO 8 DAIRY

Lee Williamson Olden, Texas

GET MORE OUT OF LIFE **FRIDAY & SATURDAY**

MAJESTIC IN EASTLAND The Raw Story of War As Only This Special Trained Unit Fought

GO OUT TO A MOVIE

DARBY'S RANGERS
 Starring JAMES GARNER - ETCHIKA CHOUREAU JACK WARREN

See!! How This Unit Fighting Made History

Funeral Directors

HAMNER FUNERAL HOMES

Ben E. Hamner

Oxygen Equipped - Air Conditioned

Eastland Phone 17 Cisco Phone Hillcrest 2121

AMBULANCE SERVICE ANY WHERE ANY TIME

Nominal Cost Burial Insurance For The Entire Family

32 Years Square Dealing The Year Round

A Company Is Known By The Customers It Keeps

EASTLAND

IRON & METAL CO.
 Owned and Operated By HENRY PULLMAN

Carlye

GET ALL PRETTIED UP FOR **Easter**

This year as always, Altman's has the newest, prettiest fashions for Easter...



From a collection of Easter into Summer fashions

perfectionist sheath...traced by tucks

The exquisite detailing that is the signature of Carlye... is found in every inch of this slim little silk shantung. Shoulder to hem, tiny baby-tucks alternate with banding... the collar just a sparkle-touch for face-radiance. Perfectionist pastels... sizes 6 to 18, 7 to 17. 00.00

See our exciting fashion handbag collection!



Easter hats beautifully abrim with fashion!

Hats with the spirit, the sparkle of spring!
 The newest silhouettes, fashion-favored colors, in wonderful-to-wear straws from our new collection.

The new hint of a tint shades in... • Hose • Bags • Gloves • Costume Jewelry • Scarfs... to complete your Spring Wardrobe.

ALTMAN'S
 North Side Of Square