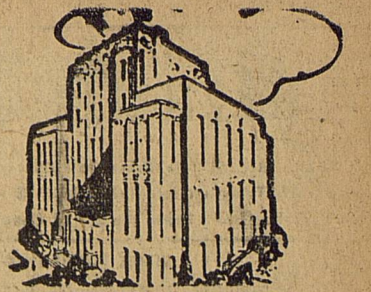




Eastland Telegram

"COVERING EASTLAND COUNTY"



VOLUME TWENTY-EIGHT

EASTLAND, TEXAS, THURSDAY, OCTOBER 3, 1957

No. 68

Eastland-Ranger Renew Series Friday

Thirty-Fifth Clash Finds Dogs Favored

Moore... ABOUT EASTLAND by Virgil E. Moore

Past records of Eastland-Ranger gridiron games show that the Ranger eleven has always been a jinx for the Mavericks.

In fact, in 32 games Eastland has won just eight, tied one and lost 23.

This year, however, it is Ranger who faces the big jinx. For the Bulldogs will not only be trying to preserve a record of consecutive wins—they will be out for their tenth in a row—but they face the "seven jinx" as well.

What's the "seven jinx" that's the talk of the town? Look at the record below and figure it out for yourself:

1927—Eastland 7, Ranger 0
1937—Eastland 47, Ranger 13
1947—Eastland 6, Ranger 0
1957—Eastland ..., Ranger ...

All the Mavs have to do is fill in the blanks above and complete the magic series. Eastland has never lost to Ranger in a year which ended in seven and needless to point out, this is 1957.

There's a few other things which need to be pointed out. Let's look at the Mav squad. There's big Saul Pullman, the great Eastland fullback. Saul's number, as you all know, is 16. Yes, one and six does make seven, doesn't it? Oh yes, Saul is listed seventh on the Mav roster on your program too.

Then there's Halfback Larry Hollis. Hollis' weight is listed at 142 pounds. One and four is five and two is seven. That's easy to figure.

Johnny McMahan of course weighs in at 160. Figure that one out yourself, another easy seven. And you will note, Marvin Agnew weighs the same.

Knick Arther offers no problem either. Knick weighs 156 pounds and his number is 19. Say you can't get a seven out of that? Easy, friend, easy. Using his weight we find one and five is six and six more makes 12. Put down his number, 19, and subtract the 12. Now you have your seven.

Clint Humphrey, at first look, does create a problem. But checking close you find the Mav quarterback's number is 29. He has 14 letters in his name, and 14 from 29 is 15. Yipes, that still doesn't do it. But check his weight. He weighs 134. Add those three figures together and you get eight. Take eight from 15 and what have you got? Seven, man, seven. Why didn't we just take 2 from 9 in his Jersey number!

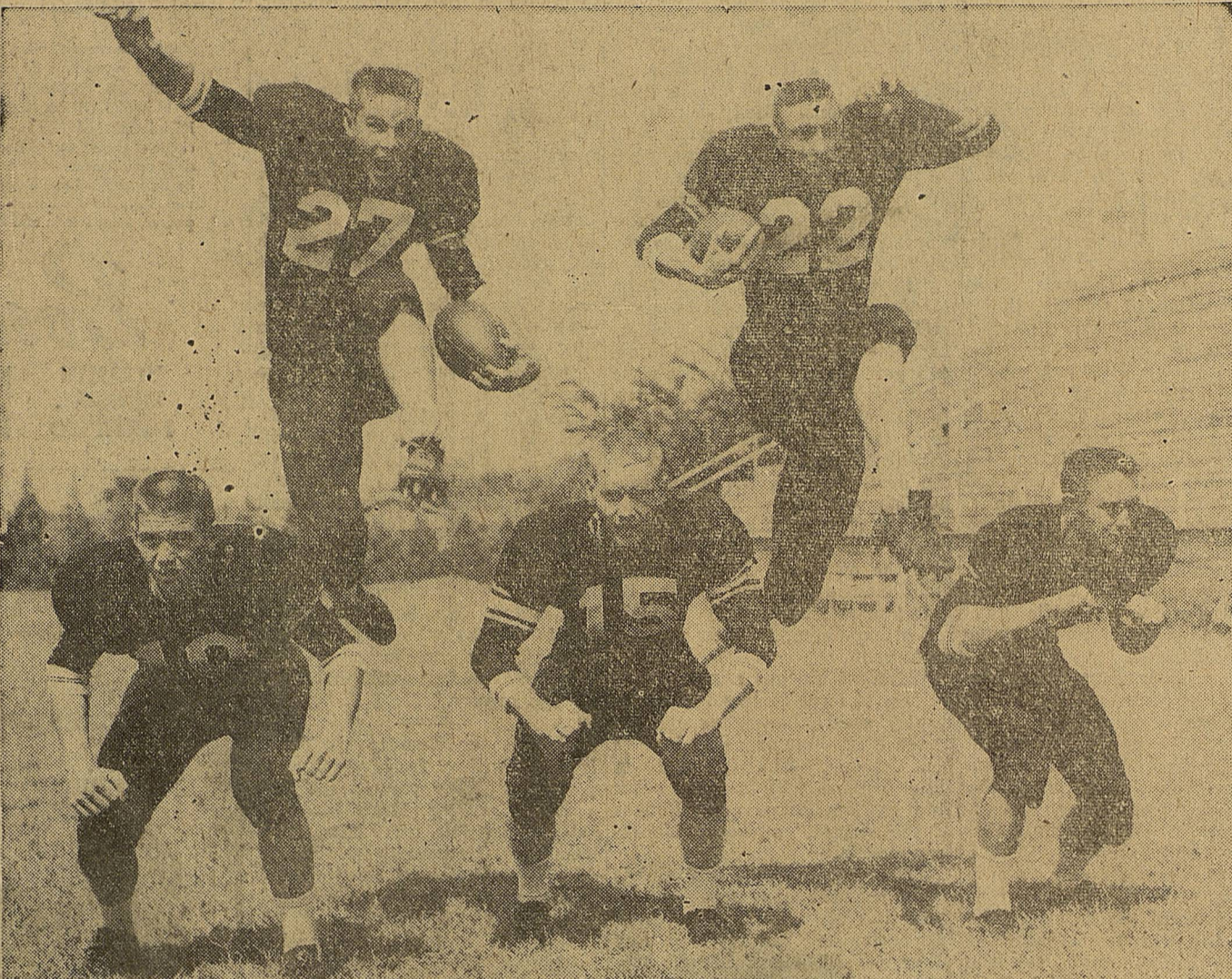
Then there's Bill Norwood. Bill's number is 21 and his weight is 138 pounds. Not so easy, but taking his weight we find one and three makes four and four from eight leaves four. Then take his number and you find two and one is three. Take the three and add the four, there's your seven.

Of course, that's just a start. Every man on the team has that same seven combination. But we will let you figure out the rest yourself. After all, we listed seven of them for you.

This is one time we are climbing out on the old limb to predict an upset victory. We figure it Eastland 19, Ranger 12. You're absolutely correct, that is a seven point spread!

Mrs. Frank Hightower tells about the time her little five year old granddaughter, Anne Kelly, a kindergarten student in Clovis, N.M., was asked if she was a Catholic by one of her fellow classmates. Anne replied, "No indeed, I'm not a Catholic, I'm a Texan."

(Continued On Page Three)



HERE THEY ARE MAVERICKS—Here are the five Ranger backs that our neighbors to the east are so fired up about. Blocking are, left to right, Quarterback Lee King, Quarterback-End Charles Wolford and Halfback Jerry Underwood. The ball carriers are Fullback David Wharton (27) and Jerry Underwood. One Maverick pointed out after looking at the picture that none of them seemed to be over seven feet tall. Wharton is the big gun in the Ranger attack. And we can't help but point out that the poor lad wearing his school's jinx number, a big seven.

Hubert Wilson Funeral Rites This Afternoon

Funeral services for Hubert Wilson, 61, will be held at Hammer Funeral Home chapel today at 3 p.m.

Mr. Wilson died Monday at the Veterans Hospital in Houston. He was a veteran of World War I.

He was reared at Flatwood and survivors include a brother, Henry Wilson, of that community.

Burial will be in Flatwood Cemetery.

PAGE ONE MUST

Firemen answered a call at 611 West Plummer Tuesday night and put out a fire at the home of Clifford Wilson. Fire Chief Billy Jack Johnson said the blaze was caused by a lighted cigar, apparently dropped by Wilson on a chair. Smoke damage was reported to one room, and Wilson was treated after inhaling fumes.

Eastland County Farm Bureau members will meet Thursday night.

City commissioners are also slated to hold their monthly meeting Thursday at 7:30 p.m.

Junior Dogies Score Early to Win 6-0 Victory

The Eastland Junior High School Dogies struck paydirt on the third play of the game Tuesday night against the Cross Plains Junior High Mites and then held on to take a hard fought 6-0 victory.

The game, played in Cross Plains, was the opener for the locals. After taking the initial kickoff, Buddy Moser tucked in the ball on third down and raced 60 yards for a touchdown. The extra point try failed.

When the final gun sounded the Mites were deep in Dogie territory, but couldn't get the ball across. The Dogies will go to Ranger next Tuesday for their next game.

The Eastland pep squad, under the direction of Mrs. Milton Day, (Continued on Page Two)

Four-H Clubbers To Go to Dallas

A large number of Eastland County 4-H boys and girls will attend the Texas fair Saturday. Thirty-six 4-H club boys and girls, under direction of the county agent and home demonstration agent's offices, will make the trip.

Dallas businessmen have invited more than 100,000 Texas farm boys and girls to the king-size picnic on Rural Youth Day at the opening of the 1957 State Fair.

The gathering of 4-H Club members, Future Farmers and Future Homemakers is the largest annual assemblage of its kind in the world.

The youngsters will begin converging on Dallas from all parts of the state long before daylight. They will come in every conceivable type of vehicle, from pickup trucks and school buses to private cars and mammoth mobile homes that have been converted into traveling classrooms by 4-H Clubs and Future Farmer Chapters.

The fair will be ready for them. The mammoth feed at noon will require 54,900 hot dogs. (Continued on Page Five)

Winter Cover Crop Program Now Underway

The winter cover crop program is now in operation in Eastland County, Emmett Powell, Agricultural Stabilization and Conservation office manager, said Thursday.

Powell pointed out that, "There is a straight rye cover crop for 1957 peanut acreage with a cost share of \$1.25 per acre. Vetch and beans also may be used as a cover crop. The legumes are not limited to peanut acreage. Payment on vetch is eight cents per pound on winter peas.

"The straight rye cover crop is limited only by the acreage of 1957 peanuts, but the legume crop is limited to one-half of the cropland, but not in excess of 60 acres. Assistance is offered on phosphate for the legumes."

Powell urged farmers, "To be sure and secure an approval from the ASC office before these practices are planted, otherwise payment can not be made."

The ASC manager also pointed out that under a new law any producer may now grow 30 acres of wheat for feed on the farm. If a producer wishes to take part in this program an agreement must be filed by Oct. 15 or before wheat is seeded, whichever is earlier, he said. If an agreement is signed no wheat may be sold off the farm.

Friday is the deadline for placing wheat acreage in the wheat acreage reserve program for 1958.

Band Boosters Issue Supper Invitations

Eastland Band Boosters Thursday issued Eastland and Ranger fans an invitation to "have supper with us."

Chicken Dinner Set Saturday By Douglas P-TA

The Douglas School Parent-Teachers Association will sponsor a chicken dinner and bake sale Saturday at the school.

Proceeds from the dinner and bake sale will go to pay the expense of sending Douglas School students to the State Fair.

Chicken dinner plates will sell for \$1, and there will be a large selection of homemade baked goods, a spokesman said.

Plans call for chartering a bus and sending all students in the Negro school to the fair.

Blackwell Has Re-Opened Tri City Sign Co.

Bill Blackwell announced today that he is re-opening his Tri-City Sign Co. in Eastland for full-time operation.

Blackwell will locate his business at 201 North Ammerman. He has been employed by the Coca-Cola Co. here for some time, and will continue to do work for the (Continued on Page 2)

Wright Says... ..Dogs In Walk

Norman Wright, The Ranger Times sports writer, says it's kinda useless for Eastland to show up for the Ranger game Friday night.

Wright says the Bulldogs' "speed and fight" will "carry them to a victory by at least two touchdowns and maybe more."

The Ranger scribe says the odd makers have Ranger down as 20-point favorites. He reports that the Bulldogs have twice sent their ace scout, Boone Yarbrough, to check on Eastland (against DeLeon and Cross Plains.)

Yarbrough himself told a Telegram reporter at one of the games that Eastland would see an offense "they have never seen before."

Eastland football players back in 1955 heard the same kind of poop from Mr. Wright just before Eastland played heavily favored Cross Plains. Eastland upset the Buffs that year, and brought home the game ball and presented it to Wright, telling him, "Stick this in your big mouth and eat it!"

There's room for one more football in Norman's mouth Mavs.

Probable Line-Ups

EASTLAND	Wt.	Position	Wt.	RANGER
Johnny McMahan	160	End	165	Boone Yarbrough Jr.
Charles Martin	172	Tackle	200	Robert Veal
Henry Van Geem	148	Guard	160	Tommy Ford
Kenneth Watson	157	Center	170	Walter Hutchins
Knicky Arther	156	Guard	150	Wayne Jowers
Wayne Dodson	210	Trackle	185	Joe Bradford
Stanley Reed	152	End	150	Charles Wolford
Clint Humphreys	134	QB	155	Lee King
Larry Hollis	142	HB	165	Jerry Underwood
Bill Norwood	138	HB	140	Jake Basham
Saul Pullman	190	FB	165	David Wharton

Giant Value Range Sale Is Opened By Lone Star Gas and Local Dealers

Tremendous savings on gas ranges will be available during the Giant Value Range Sale to be conducted during October and November by local appliance dealers in cooperation with Lone Star Gas Company. High trade-in allowances and special terms, along with these low prices, will be emphasized by the dealers participating in the campaign.

"The ranges to be displayed during the campaign will be of the same high quality and will contain the many features of convenience and economy that have come to be expected from gas ranges. Foremost among these will be the 'Burner With A Brain', the most revolutionary cooking device since the invention of the thermostat," Hubert Westfall, Eastland Lone Star Gas Co. manager, said.

(Continued on Page 2)

T&PRailroadHelped In Building County

(Editor's Note: This is 25th in a series of articles taken from the book, "History of Eastland County, Texas" written by Mrs. George Langston in 1904.)

E. A. Hill In Tennessee, on July 16, 1865, E. A. Hill was born. Seven years later his father died. Having been reared on a farm his education was limited to that afforded by the common schools and the Dresden High School.

Mr. Hill was elected County Attorney in November, 1888, and re-elected in 1890. He is a good lawyer, has a well equipped library and office on the north side of the square, is a ready speaker, a good story-teller, and an excellent entertainer. He is serving his fourth term as mayor of Eastland.

On Dec. 14, 1892, Mr. Hill was married to Miss Bessie, daughter of Dr. and Mrs. Evans. Mrs. Hill died in 1894. He was again married to the eldest daughter of Mr. and Mrs. W. H. Parvin.

Mr. Hill enjoys in a marked degree the confidence of his fellow townsmen.

The Eastland Chronicle
BE SURF—See Don Pierson Olds - Cadillac Eastland Quality Cars at Volume Prices

At the age of 18 he entered the office of the Dresden Enterprise and there served and apprenticeship.

In 1864 he came to Texas and entered the law office of Davenport and Conner as student, and was admitted to the Bar in 1885, at the age of 21.

Mr. Hill was elected County Attorney in November, 1888, and re-elected in 1890. He is a good lawyer, has a well equipped library and office on the north side of the square, is a ready speaker, a good story-teller, and an excellent entertainer. He is serving his fourth term as mayor of Eastland.

On Dec. 14, 1892, Mr. Hill was married to Miss Bessie, daughter of Dr. and Mrs. Evans. Mrs. Hill died in 1894. He was again married to the eldest daughter of Mr. and Mrs. W. H. Parvin.

Mr. Hill enjoys in a marked degree the confidence of his fellow townsmen.

The Eastland Chronicle
BE SURF—See Don Pierson Olds - Cadillac Eastland Quality Cars at Volume Prices

A two touchdown underdog Eastland Maverick eleven will go up against the powerful Ranger Bulldogs here Friday night in one of the top schoolboy gridiron contests of the week.

This, the 35th meeting of the two Eastland County teams, promises to be a continuation of the hard fought games of the past. Although the game is not even a district clash, both Eastland and Ranger fans rate it as one of the top games of the year.

Ranger will be representing District 7-AA while Eastland will fly the colors of District 10-A.

The Mavs have their work cut out for them. Ranger Fullback David Wharton is the top scorer in all of West Texas, having scored 10 touchdowns and 60 points. He will get some able assistance from two speedy halfbacks, Jake Basham and Jerry Underwood, and the new Ranger head coach, Harold Barrett, has not one, but two good quarterbacks, Lee King and Charles Wolford, who divide the time as man under.

The Bulldogs have a T-offense of their own. Ranger uses flakers on almost all plays, and split

their line, making it hard to defend. It's an entirely new offense for the East-countains, and one that has worked with amazing success. The Bulldogs have romped over three opponents and fumbled away a game to triple-A Mineral Wells. Ranger opened the season by beating Merkel, 25-13, then lost to Mineral Wells, 33-14, beat Jackboro, 28-27, and slaughtered DeLeon, 33-0.

Eastland, on the otherhand, opened with a 21-13 setback at the hands of Cisco, downed Dublin, 25-7, lost to DeLeon, 20-8, and upset Cross Plains, 18-7.

By comparative scores you can figure the game anyway you want to. Taking the DeLeon games you can come up with Ranger as 47 point favorites. That figures since Ranger beat the Bearcats by 33 points and Eastland lost to DeLeon by 14.

But another paper check makes Eastland the favorite. Ranger beat Merkel 25-13, a 12 point spread. Cross Plains then downed Merkel 19-7, also a 12-point difference. That would make Ranger and Cross Plains rate evenly on paper, and since Eastland beat Cross Plains by 12 points, the Mavs would rate that much as favorites. So forget your paper work. It will not prove a thing.

Ranger has a weight advantage. The starting Dog eleven will average out at 164 pounds a man, compared to Eastland 160. The Ranger line will average 169 pounds a man, the Eastland front seven 165 pounds each. In the backfield, Ranger has the advantage, 156 to 151.

Eastland has been working hard this week on defense. The Mavs were having to dream up something new for the Ranger offense. More pass defense work was also stressed, since Ranger likes to pass.

The Mavs will be without the services of Ronald Robertson, Mike Manning and Larry Allredge. All may be out for the season. Saul Pullman, Knicky Arther and Johnny McMahan are others on the ailing list. All three will start the Ranger game, if no new injuries should occur, but they are still nursing injuries suffered in the bruising win over Cross Plains.

Ranger reports some of their boys have been fighting the flu bug. Jake Basham, Boone Yarbrough Jr., Lee King and Robert Veal are the boys mentioned by the Dog camp. All are expected to be ready to start the game, however.

Ranger suited out only 14 boys last week against DeLeon. Word reaching Eastland is that the Dog bench will be full Friday night, however.

Past Records

Here is the record of all Eastland-Ranger football games dating back to 1922. It shows 23 wins for Ranger, eight for Eastland, and one scoreless tie in 1945.

Year	Ranger	Eastland
1922	Ranger 7, Eastland 0	
1923	Ranger 25, Eastland 0	
1924	Ranger 13, Eastland 9	
1925	Eastland 25, Ranger 0	
1926	Ranger 46, Eastland 0	
1927	Eastland 7, Ranger 0	
1928	Ranger 26, Eastland 25	
1929	Ranger 26, Eastland 6	
1930	Ranger 12, Eastland 0	
1931	Ranger 14, Eastland 0	
1932	Ranger 34, Eastland 13	
1933	Ranger 46, Eastland 13	
1934	Ranger 34, Eastland 7	
1935	Eastland 13, Ranger 7	
1936	Eastland 45, Ranger 6	
1937	Eastland 47, Ranger 13	
1938	Ranger 40, Eastland 8	
1939	Ranger 32, Eastland 0	
1940	Eastland 12, Ranger 6	
1941	Ranger 40, Eastland 0	
1942	Unavailable	
1943	Unavailable	
1944	Unavailable	
1945	Eastland 0, Ranger 0	
1946	Ranger 13, Eastland 6	
1947	Eastland 6, Ranger 0	
1948	Ranger 13, Eastland 0	
1949	Ranger 37, Eastland 6	
1950	Ranger 28, Eastland 6	
1951	Ranger 33, Eastland 0	
1952	Ranger 47, Eastland 0	
1953	Ranger 27, Eastland 0	
1954	Ranger 21, Eastland 0	
1955	Ranger 28, Eastland 0	
1956	Ranger 28, Eastland 12	
1957	Believed games cancelled because of war.	

Installment Loans Custom Made For Each Customer EASTLAND NATIONAL BANK Member F. D. I. C. (Continued on Page Two)

FREYSCHLAG
INSURANCE AGENCY
presents the

WEATHER NEWS

High	81
Low	44
Rain	0
Total for month	2.43
Ave. For Sept.	2.45
Total for Year	24.51
12 Month Ave.	25.83
Forecast	Cooler

ICE COLD
Comfort in three hours, installed in any car \$273—Automobile air conditioners.
Don Pierson Olds - Cadillac Eastland

Eastland Telegram

Eastland County Record established in 1931, consolidated August 31, 1951. Chronicle established 1887, Telegram established 1923. Entered as second class matter at the Post Office at Eastland, Texas under the act of Congress of March 3, 1879.

TIMES PUBLISHING COMPANY
Published Tri-Weekly—Tuesdays - Thursdays - Sundays
ONOUS DICK and JOE DENNIS, Publishers
VIRGIL E. MOORE, Editor
CAROLYN COLLINS, Society Editor

One week by carrier in city15
One month by carrier in city65
One year by mail in County 2.95
One year by mail in state 4.95
One year by mail out of state 6.95

NOTICE TO PUBLIC—Any erroneous reflection upon the character, standing or reputation of any person, firm or corporation which may appear in the columns of this newspaper will be gladly corrected upon being brought to the attention of the publishers.

Classified Ads..

Cards of Thanks charged for at rate of \$2.00 Each

FOR RENT -

FOR RENT: 3 bedroom house on pavement. Phone Cisco Hillcrest 2-1525.

FOR RENT: 3 bedroom house, South Seaman Street. Phone 463.

FOR RENT: 6 room furnished house. 403 East Sadosa.

FOR RENT: Have two nice three bedroom homes centrally located \$75.00 Mo. One 4 bedroom home, close in at \$50.00 Mo. T. L. Fagg 202 Petroleum Bldg. Phone 597 Eastland.

FOR RENT: Five room furnished house. 1403 Slay. Phone 823-J.

FOR RENT: Four furnished and four unfurnished rooms in Duplex. Phone 394-J.

FOR RENT: Four unfurnished rooms in Duplex. Phone 394-J.

FOR RENT: 2 room apartment, 404 South Bassett.

FOR RENT: Newly decorated apartments. Phone 1085-W.

FOR RENT: Newly decorated apartment. Hillside Apartments. Phone 9529.

FOR RENT: 5 room house, modern conveniences. Call 515.

FOR RENT: Five room unfurnished house, 103 N. Ammerman. Phone 446-J or 270.

FOR RENT: Furnished two bedroom apartment in duplex. 611 W. Plummer.

MISC. FOR SALE -

FOR SALE: 52 head mixed white-face yearlings. About 650 average. Fair flesh and thrifty. H. A. Tyrone, Carbon, Texas.

FOR SALE: To be moved, 8'x8' sheet iron building. Phone 1047.

FOR SALE: 800-1200 bushels oats. Graded 32 and 33. J. V. Harbin, Phone 749-W1.

FOR SALE: Baby bed at Smith's Service Station, Hwy. 80, Olden.

FOR SALE: Rye seeds for planting, nice well matured seed, clean enough. A. H. Cox, Ivan Star Route, Breckenridge, Tex.

FOR SALE: 1956 Evinrude motor, used, 15 miles. Original price \$385, Sale price \$275. Phone 421, Ranger.

Insurance AND Real Estate
D. L. KINNAIRD
Life - Fire - Auto - Farm
Polio - Bonds
37 years in the Insurance
Business in Eastland

Overseas Veterans Welcome
Karl and Boyd Tanner
Post No. 4136
VETERANS OF FOREIGN WARS
Meets 2nd and 4th Thursday
8:00 p.m.

AUTOS FOR SALE

AUTO FOR SALE: 1956 Ford Customline four door sedan. New tires, low mileage. A steal. Call 839, Eastland.

FOR SALE: '46 model Ford winch truck. \$200. W. B. Norton, 705 West 12th Street. Phone Hillcrest 21685, Cisco.

PERMANENTS
\$ 7.50 Oil-Glo Creme ... \$ 5.00
\$10.00 Creme Wave ... \$ 7.50
\$15.00 Creme Oil Wave \$10.00

Basham Beauty Bar
Lula Mae Smith Basham
1416 S. Lamar Phone 964

SPECIAL NOTICE

NOTICE: We have a nursing home for elderly people in Gorman. Licensed vocational nurse, Government inspected. Kirks Nursing Home, phone 26-J.

ATTENTION SENIOR CITIZENS—Myers Rest Home in Meridian invites you to make your home with us. Contact J. W. Rains, Box 46, Meridian. Phone 7-2721.

We are repossessing soon two small pianos in this area. One Spinet, and also one Studio upright. Responsible parties may assume balance on reasonable terms. For information, write Credit Dep't, Ft. Worth Piano Sales Inc. 2100 E. Rosedale St. Ft. Worth, Texas.

NOTICE
FRESH DRESSED FRYERS
Every Day Special Price for Your Deep Freezer
—also—
Chicken Blood Bait ... Guaranteed to stay on any type hook.
PHONE 110
WALKER Dressing Plant

SPECIALS

25.00 Permanents 20.00
20.00 Permanents 15.00
15.00 Permanents 10.00
10.00 Permanents 7.50
Other Permanents 5.00
For a complete Beauty service call 14. If we please you, tell others. If not, tell us.

JOSEPHINE Beauty Salon
Josephine Brister, Owner and Operator
Betty Crawley - Vivian Jones Operators

BUSINESS OPPORTUNITIES

Man or Woman
Established Toy Routes
Good Income
No Selling—No Experience Necessary. Operate from home
We place and locate all racks
Spare Or Full Time
Earn up to \$350 monthly refilling and collecting from our MAGIC TOY RACKS in your area. Must have car—reference—five hours spare time weekly—and minimum investment of \$495—for local interview—write at once giving phone number.

ADAMS INDUSTRIES
170 West 74th Street
New York 23, N. Y.

Plans for Pecan Show
RISING STAR—The Eastland County Pecan Growers' Ass'n membership will select the location of the County Pecan Show to be held on Dec. 6 and 7 by ballot, it was decided at the meeting of the association during a business session here last Friday. The members were here for lunch during the annual fall field day. Cards will be mailed to the members by County J. M. Cooper and the members will vote on invitations extended by Cisco, Eastland, Ranger and Gorman. The show has annually been held in Cisco.

Oscar Shaefer of Nimrod, president, appointed a committee composed of B. B. Freeman of Ranger, Doss Alexander of Rising Star and Kent Word of Cisco to make arrangements for the show.—The Rising Star Record

ATTEND THE CHURCH OF YOUR CHOICE EACH SUNDAY

Lacasa Lines

Mrs. D. B. Raney

James Wayne Stanford, who is a student in Tarleton State College, returned to the school Thursday after a few days at home due to a sore arm.
Mrs. Ida Raney spent Saturday with her sister, Mrs. Lula Newham, in Ranger.

Mrs. Josh Ridling was buried in the Veale Cemetery Thursday. She was an aunt of Jesse and Charlie Veale.

Mr. and Mrs. Perry Pittman of Archer City visited her father, M. D. Lasiter, Sunday.

H. E. Martin and family visited his brother and family, Carl Martin at Garland, Texas, over the weekend.

Mrs. John Gray returned home from Garland last week, where she had been visiting her son, Johnnie Gray and wife and caring for the new baby.

Rev. and Mrs. Jackie Taylor are visiting her mother in Fort Worth this week.

Visitors to Mr. and Mrs. Jack Pockrus last week were Mr. and Mrs. A. F. Stevens, Mrs. Dora Dempsey and family of Ranger, Mrs. John Gray, Jack Eddleman, Rev. and Mrs. Jackie Taylor, and Hubert Pockrus.

Mr. and Mrs. Ben Truesdell of Breckenridge were Sunday visitors in this community.

Mrs. Melvin Truesdale is the new driver for the school bus to Breckenridge.

TRADE WITH YOUR HOMETOWN MERCHANTS

Building Headquarters

35' sheep and goat fence
20 rod roll 11.68

26' hog wire 20 rod roll 12.88

48' Poultry and Rabbit fence 10 rod roll 12.68

58' Ellwood fence
10 Rod roll 25.55

7' Steel fence post each 1.21

8' Steel fence post each 1.31

Galvanized Corrugated Roofing Per Sq. 9.20

Mahogany Door Units Complete 18.50

Outside House Paint per gal. 2.98

A complete line of Du Pont's Paint

1x8 Good Fir per bd. ft. ... 7.50

2x4 & 2x6 good Fir per bd. ft. 7.00

1x12 Good White Pine per bd. ft. 8.50

167 Composition Roofing per sq. 6.24

Heavy Barb Wire per spool 9.25

All Prices Cash
Wm. P. Carey Lumber Co.
"Home of the House Doctor"
Phone OR4-4922 201 Oak St. Abilene, Texas

REAL ESTATE - FOR SALE

FOR SALE: Furnished 3 bedroom house, South Seaman Street. Phone 465.

FOR SALE: 3 bedroom house, 005 S. Bassett. Call 720-W-2 or 707-W-2.

FOR SALE: Three room house, 1405 S. Bassett.

FOR SALE IN CISCO: Three bedroom brick home on paved corner lot. Central heating, dish washer and garbage disposal unit. Double garage and nice garage apartment. Phone 848, Eastland.

FOR SALE: Here is one of the best buys on the market. The E. K. Henderson home is in A-1 condition inside and out. Close in paved street. Can be had for \$6500.00 for quick sale. T. L. Fagg 202 Petroleum Bldg, Phone 597 Eastland.

FOR SALE: 4 acres land, modern home in Olden. Late J. C. Brumlow place. \$1200. W. B. Norton, 705 West 12th Street, Phone Hillcrest 21685, Cisco.

County History-

(Continued from Page One)

ry during the Spanish-American war. He was married to Miss Maude Harrison on Sept. 25, 1902.

Texas and Pacific Railway

When it became known in Eastland that this great East and West line had reached Fort Worth and would be built on to El Paso there was great rejoicing in this section of the county because of the development of the conveniences that would result. The settlements that followed, the building and maintenance of schools and churches, the cheapness of lands (at that time from 50 cents to \$1) and develop the resources of the county.

The Texas and Pacific Railroad Co. was organized under an act of Congress, March 3, 1871, and the general railroad laws of the State of Texas. It acquired the properties of the Southern Pacific Railroad Co. of Texas in 1872, which Company, at that date, owned and operated the 60 odd miles of railway between Shreveport, Louisiana, and Longview. The Southern Pacific Railroad Company was a consolidation of the Vicksburg, Shreveport and Texas Railroad, (chartered in Louisiana), and the Southern Pacific Railroad, organized under the laws of Texas.

The New Orleans Pacific Railroad Company, (organized also under the laws of Louisiana), was consolidated with the Texas and Pacific Railway Company in June, 1881. Early in the seventies the Texas and Pacific also acquired the properties of the Southern Transcontinental and the Memphis, El Paso and Pacific Railroads, both incorporated under the laws of Texas.

In these early days, the population of the State was, of course, insignificant in numbers as compared with the present time, and was confined mainly to the eastern and coast counties. West of the line drawn through say, Gainesville, Fort Worth, Austin, San Antonio and Corpus Christi, there was, then, scarcely a n y white population.

The charters granted by the State to the Memphis, El Paso and Pacific Railroad, and to the Southern Transcontinental Railroad, were the results of efforts made by the people of the counties of Bowie, Red River, Lamar, Fannin, Grayson, Cooke and Denton to secure this great East and West Railroad.

Junior-

(Continued from Page One)

performed during the game. Twirlers are Kay Morton, Becky McAlister and Coralee McCleskey. Georgia Bess Faircloth, Marsha Smith, Julie Frost, Judy Seaberry, Judy Keith and Gracie Tankersley are cheerleaders. Carolyn Frost is pep squad mascot.

Blackwell -

(Continued from Page One)

company on a contract basis, he said.
Tri-City Sign Co. will feature all types of neon and commercial sign service.

MAJESTIC IN EASTLAND
FRIDAY and SATURDAY

JOEL McCREA • MARK STEVENS
JOAN WELDON

Shock-by-shock
drama of
Special Agent
Mike Ryan!

Gunsight Ridge
A UNITED ARTISTS PICTURE

PLUS: ROBINSON-BASILIO—FIGHT PICTURES

Hamilton Fruit Market

Friday & Saturday Specials

Fresh Dressed FRYERS ... lb. 28c
Vine Ripe TOMATOES lb. 5c
Tex. Ruby Red Grapefruit .. lb. 5c
YAMS lb. 5c
Red or White Potatoes lb. 5c
CABBAGE lb. 5c
BANANAS lb. 5c

Hwy. 80 West - Ranger

Giant-

(Continued From Page One)

"A highlight of every dealer's display will be the new and modern way of cooking made possible by low-cost natural gas. With such features as thermostatic griddles, meat thermometers, removable roasters and range-top grills, in addition to the 'Burner With A Brain,' the new gas ranges make cooking an easier task than ever before.

"With their striking lines and bright sparkling colors the new gas ranges are available in such a wide range of styles and colors that they will match any kitchen, no matter what its decor.

"Lone Star's Home Economics department personnel will play a key part in the Giant Value Range Sale with their dealer sales floor demonstrations. Easily identified by their smart white aprons with the blue flame, these college-trained young women will present the many new features on the gas ranges as well as answer all questions. Refreshments will be served at these demonstrations.

"At the demonstrations, Julia Meade recipe folders will be given away. These attractive and colorful folders give a number of interesting recipes and provide style hints by showing the famous actress in clothes she might wear to serve the various dishes.

"In addition to their work in the dealer's store, the home economists will follow up each sale with a visit in the customer's home. During this visit she will give the owner of the new range additional information about its care and will also supply valuable aid in explaining the new cooking features.

"Most of the gas range brands on sale at local dealers will be on display at the Lone Star exhibits at the State Fair of Texas in Dallas, October 5-20. In addition these displays will feature other fine gas appliances and "Ranges of the Future," advanced laboratory models.

"The 'Burner With A Brain' is only one of the many accurate controls that make today's gas cooking cooler and quicker than any other method. The automatic top burner, making automatic appliances out of ordinary pots and pans, provides pin-point heat control. It prevents overcooking as well as undercooking and guarantees accurate temperatures.

"Automatic clock controls on the new models permit the homemaker to cook while she is miles away. Automatic timers are included on many models to cut off the gas and signal when the food is done. The thermostatic griddles and range-top grills allow the homemaker unlimited opportunities in her cooking as she can prepare entire meals on these new devices.

"The new ranges to be shown in the Giant Value Range Sale will place great stress on cool cooking since modern gas ranges produce no 'hangover heat,' heat that lingers in a cooking element after the unit is turned off. Tiny pilots in the new gas ranges give off no more heat than a person seated in a room.

"Throughout the campaign special advertising by Lone Star, local dealers and the American Gas Association will be featured. Julia Meade will demonstrate the features of the gas ranges on "Playhouse '90," the award-winning CBS dramatic television show, and national magazines will include full-page color advertisements.

"During the Giant Value Range Sale, gas appliance dealers will offer particularly attractive finance and insurance plans. Low down-payments, high trade-in allowances and special discounts will provide a plan that can be tailored to fit any budget."

SINGING SET
Eastland County singers will gather Sunday at the Carbon Methodist Church at 2 p.m. for their monthly singing. The singing was announced today by H. A. Tyrone.

CALL 601 FOR CLASSIFIED ADVERTISEMENT

HOME MAKERS

Views and News

Sandra Kirkland Home Dem. Agent
Nancy Weathers Asst. Home Dem. Agent

Beginning with this edition, the home demonstration agents of Eastland County will present a weekly article of value to you as a homemaker. We will also feature Home Demonstration and 4-H Club news. Suggestions and questions from you would help us to make this column more meaningful.

The opening of school means a "fresh start" for most family members in one way or another. It's also the time when eating habits are re-established for the school and work days ahead. Extension foods and nutrition specialists say it's a fine time to establish good breakfast habits for every member of the family.

Eating a good breakfast pays off in efficiency, alertness and better health. There's lots of proof for that statement. Research has shown that breakfast-skippers rob themselves of potential alertness and efficiency during late morning hours, and that dieters are wrong if they think missing breakfast is a practical way to lose weight.

Aim for a good adequate breakfast. That means one that will provide one-fourth to one-third of the day's total food requirements in calories and nutrients. It should include these basic foods—fruit or fruit juices, cereal or eggs and meat, or both, whole or enriched bread, butter or margarine, milk and coffee. Be a better breakfast booster. Start with yourself and other family members to help improve breakfast eating habits of all age groups.

Now is the time to stock the freezer with a fresh supply of doves and other game birds. It's a simple process. Draw birds as soon as possible after they have been shot. If there isn't time to do a thorough job of cleaning and dressing, remove the crow and intestines. Chill promptly.

Plucking the birds is preferable to skinning them. Skinning causes dryness and some loss of flavor. Wash birds thoroughly before packaging. Wrap individually in moisture-vapor-proof material. Cellophane, aluminum foil, plastic, and different kinds of laminated wrapping papers are satisfactory. Seal with freezer tape. Label with name and date. To maintain top quality, store birds at 0 degree F. or below. From six to nine months is recommended storage period. Thaw birds before cooking.

Imaginative homemakers find cheese one of their best friends for adding taste appeal, color and extra nutrition to vegetable dishes. A cheese sauce, for example, can be used to top boiled potatoes, cabbage, onions, peppers, eggplants, tomatoes or other vegetables now in plentiful supply. Left-over dishes disappear faster, too, when converted into cheese scalloped dishes. Simply pour the cheese sauce over the vegetable and cover with bread crumbs. Bake in a shallow dish until the

crumbs are brown and the vegetables heated through.

Here's an easy recipe for making cheese sauce for vegetable dishes. Assemble these ingredients: 1-2 tablespoons butter or margarine, 1-2 tablespoons flour, 1 cup of milk, salt to taste, 3-4 cup grated cheese (or 3 ounces sliced cheese).

Melt the butter or margarine and blend in the flour. Add the milk, then stir and cook until the sauce is thick and smooth. Cook about a minute longer. Add salt and cheese and remove from heat. Stir until cheese is melted.

ATTEND THE CHURCH OF YOUR CHOICE EACH SUNDAY

FORTIFIED
WITH VITAMINS AND MINERALS

Your daily needs of vitamins and minerals are supplied in two ways by Boswell Dairies.
BOSWELL'S VITAMIN MINERAL FORTIFIED WHOLE MILK
BOSWELL'S VITAMIN MINERAL FORTIFIED SKIM MILK

Each member of your family by drinking one quart a day of either of these fortified Boswell Milks receives the minimum daily requirements of nine essential nutrients (as established by Federal Food and Drug Administration). They are Vitamin A... the B Vitamins... Vitamin D... Calcium, Phosphorus, Iron, Niacin and Iodine.

Boswell's VITAMIN MINERAL FORTIFIED WHOLE MILK OR SKIM

DIXIE DIXIE
EASTLAND RANGER HIGHWAY

Box Office Opens 7:15
Show Starts 7:30
Box Office Closes 9:30

WEDNESDAY - THURSDAY, OCTOBER 2 - 3

THE STORM RIDER

SCOTT BRADY
MALA POWERS
BILL WILLIAMS

A REGALSCOPE picture
Released by 20th Century-Fox

PLUS: Two Color Cartoons

FRIDAY - SATURDAY, OCT. 4 - 5

JOSEPH COTTEN • VIVECA LINDFORS • BETSY BLAIR • WARD BOND

THE HALLIDAY BRAND

IT DRENCHED THE GREAT SOUTHWEST IN BLOOD!

Released thru United Artists

PLUS: Two Color Cartoons

2 for 1 Protection

DOUBLE-DOOR WARDROBE + SOLID CEDAR CHEST

Double Door Wardrobe and Solid Cedar Chest, BOTH only

Double value, double savings, double protection against moths, mildew, damage. Wardrobe is a big 63" high - chest a wide 39" - ample room for sheet (in bottom of wardrobe) hanging garments, woolsens, etc.

49.88
Liberal Credit

Coats Furniture and Carpets Ltd.

Free Delivery Easy Terms EASTLAND Phone 585 G. E. Appliances Good Trade-Ins

Morton Valley HD Club Meets with Mrs. Floyd White

Morton Valley Home Demonstration Club met in the home of Mrs. Floyd White for their regular meeting and to elect officers for the coming year.

After the meeting was opened by the president, Mrs. W. J. Graham led the group in the motto, pledge, and prayer. Mrs. D. J. West welcomed a new member, Mrs. H. N. Sherman, and one guest. Roll call was answered with "First Aid for Home."

Officers for the coming year were elected as follows: Mrs. Floyd White, president; Mrs. W. J. Graham, vice-president; Mrs. B. J. French, secretary, treasurer, and reporter; and Mrs. J. R. Tankersley, council delegate.

The program, "Civil Defense," was a skit presented by Mmes. Alvin Kincaid, Floyd White, D. C. Frost and Tankersley. Mrs. Edgar McCollum of Eastland reported on her trip to T.H.D.A. Convention in Houston.

Lesson on cheese dishes will be given at the next meeting on Oct. 10 in the home of Mrs. Henry Berry.

Refreshments of Cokes, coffee and cookies were served to Mmes. D. J. West, Alvin Kincaid, J. R. Tankersley, D. C. Frost, H. N. Sherman, W. J. Graham, Belma Puanda, Robert Kincaid, Floyd White and guest, Mrs. McCollum.

Sub Deb Club To Hold Dance Fri.

Peggy Humphrey was hostess to the Sub Deb Club in her home. Charlotte Vaught presided over the meeting. Linda Huckabay gave the devotional.

Sub Debs reminds high school students of the dance at the American Legion Hall after the Eastland - Ranger football game Friday night.

Gerry Hange was accepted into the club. Refreshments were served to Charlotte Vaught, Frances Cogburn, Gerry Hange, Betty Young, Fay Phelps, Linda Huckabay, Judy Hassell, Beverly Moser, Martha Freese, Brenda Evens and Peggy Humphrey.

CALL 601 FOR CLASSIFIED ADVERTISEMENT

Four Local Women Attend Porcelain Art Guild Meet

Four Eastland women, Mrs. E. E. Layton, Mrs. G. C. Kimbrell, Mrs. G. L. Wingate and Mrs. Guy Parker, attended the second meeting of the West Texas Chapter No. 4 of Porcelain Art Guild of Texas which convened Saturday at the Blue Bonnet Hotel in Sweetwater.

About 100 members and guests attended the meeting. To get the meeting underway, members of the Executive board met at 10 a.m. in the Sombrero Room for handling of business matters.

Following the Board meeting, a buffet luncheon was served in the hotel dining room. Members again convened at 1 p.m. in the Sky Room for a program of instruction and demonstration. Social Drama in China Painting was presented by Mrs. I. T. Graves of Floydada.

The painting of roses was demonstrated by Mrs. W. B. Little of Lubbock. Throughout the demonstration, Mrs. Little stressed points of Do's and Don'ts in the painting of roses. During the meeting, pieces of china decorated

Moore About—

(Continued from Page One)

Far be it for us to spread a rumor, but have you heard the tale that one of those "South Pacific Gigantic Monsters" that was shown in Eastland Tuesday, "a Jungle Rat", got loose?

That's the poop. We were told that the three feet long rats with teeth an inch and a half long made a dash for freedom. The rat, according to literature given out by the owner, weighs from 25 to 50 pounds and has "giant fangs and massive razor sharp claws."

Now, understand, we don't think one of 'em really got loose. We're just repeating what we heard. Really we think those tracks they found around the courthouse must have been made by some other large animal. If you should happen to see the monster we would appreciate a phone call, though.

See you at the game.

VISITING IN WACO

Mr. and Mrs. W. C. Howard of Oiden visited Ralph Norton, who is in a veterans hospital in Waco. He is the son of Mrs. Howard.

with roses and painted by Mrs. Little was on exhibit. Refreshments were served at the close of the meeting. The next meeting will be a Workshop which will be held in Sweetwater Saturday, Nov. 2.

CALL 601 FOR CLASSIFIED ADVERTISEMENT

CALL 601 FOR CLASSIFIEDS

READ THE CLASSIFIEDS

Stokely's FINEST FROZEN FOODS

Stokely will give you 50¢ for six labels (or stamped can tops) from Stokely's finest Frozen Foods. This offer expires Oct. 31, 1957.



- Chicken Pie
- Turkey Pie
- Beef Pie
- Tuna Pie

3 8-oz. pkgs. 69¢

STRAWBERRIES

2 10-oz. pkgs. 39¢



LEMONADE

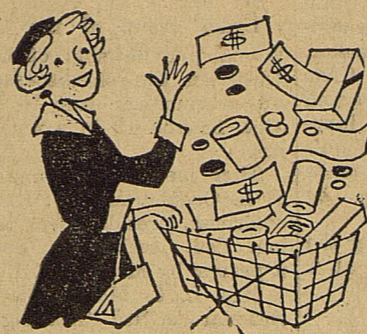
3 6-oz. cans 33¢

LEAF OR CHOPPED



- Cream Peas
- Green Peas
- Spinach
- Okra Cut

3 10-oz. pkgs. 49¢



Gather a Windfall of SAVINGS

BEST BUYS
Gerber's **BABY FOOD**
3 4 3/4-Oz. Cans 25¢

Coffee FOLGER'S Drip or Reg. Lb. **89¢**
GOLDEN **Fluffo** 3 Lb. Can **79¢**
MAZOLA PURE CORN—Quart **Cooking Oil** **49¢**

NORTHERN BATH ROOM **Tissue** 3 Rolls **25¢**

CLOVER FARM **Margarine** Lb. **23¢**

Kleenex 200 Count **13¢**

CONCHO **Pork & Beans** 2 No. 300 Tall **19¢**

EATWELL—300 Tall **MACKEREL** **16c**

GLENDALE Sliced or Halves—No 2 1/2 Can **PEACHES** **29c**

CLOVER FARM RED PITTED—No. 303 Can **PIE CHERRIES** **23c**

Sunkist Lemons Lb. **12 1/2¢**

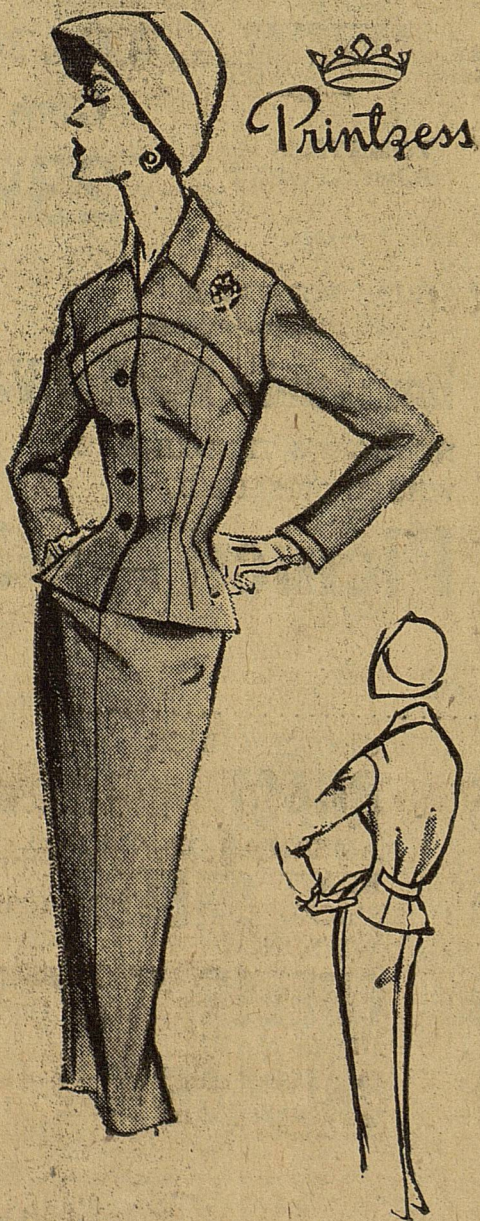
LOOK
Matchless Sliced **BACON**
Lb. **60¢**

U. S. No. 1 Idaho Russet **Potatoes**
10-Lb Bag **39¢**

BEST BUYS
Grade A **FRYERS**
Lb. **39¢**

SPECIAL! GOOCH'S BLUE RIBBON **Bacon** Thick Sliced 2 Lbs. **1.19**
Rib Steak Choice Beef Lb. **59¢**
KRAFT VELVEETA **Cheese** 2 Lbs. Box **79¢**
LEAN TENDER **Pork Chops** Lb. **59¢**

SMOKED **Picnics** Lb. **39¢**
save at CLOVER FARM STORES
Good Quality **CHUCK ROAST** Lb. **45¢**
H. B. MacMoy, Owner
7:30 a.m. to 8:00 p.m. Weekdays
7:30 a.m. to 9:00 p.m. Saturdays



Printzess

The blouson and softly belted back are good news from any angle. Shorter jacket, narrow cuffs and higher collar line are fashion fresh for Fall. In French blue, heather, brown, granite, taupe and black. Custom sizes 12C to 22C **64.95**

From collection of suits in regular, junior and half sizes. Cotton, dacrons, pure silk, and wool fabrics. Also, beautiful knits. All new colors. Priced from **\$19.95 up.**

ALTMAN'S

North Side of Square

Phone 25

SOCIAL CALENDAR

Saturday, Oct. 5
6:30 p.m.—A picnic will be given in the honor of the L. P. Stamboughs at the Eastland Park. All of their friends are invited to come and bring a picnic lunch.

Monday, Oct. 7
12 noon—Christian Woman's Fellowship will meet in the annex of the church for a covered dish luncheon. The Esther group will be hostesses. The lesson will be on "Home for the Homeless."
7:30 p.m.—Wesleyan Service Guild of the Methodist Church will meet in the Fellowship Hall of the church.

Tuesday, Oct. 8
9:30 a.m.—Woman's Society of Christian Service of the First

Methodist Church will meet in the church for Mission Study. Prayer services will be held at 9 a.m. prior to the W.S.C.S. meeting in the Susan Steele Class room.
7:30 p.m.—Zeta Pi Chapter of the Beta Sigma Phi will meet in the home of Mrs. James Smith 601 South Connellee. Mrs. Willis Moore will be co-hostess. Mrs. A. G. Crosby will give the lesson on "Self Estimates."
7:30 p.m.—Las Leales Club will meet at the Woman's Club for their first meeting. Mrs. O. H. Dick, Mrs. Wayne Caton, Mrs. D. E. Frazer, Mrs. Wendell Siebert and Mrs. Anna Grace Bumpass will be hostess. Mrs. James Horton will give a speech on "Lady On Cruise."
7 p.m.—Homemakers Class of the First Baptist Church will meet in the home of Mrs. A. W. Cartledge, 410 South Dixie for business and social meeting.

Wednesday, Oct. 9
9 a.m.—Civic League and Garden Club will hold their formal opening in the Majestic Theater. A morning coffee in the foyer of the Theatre from 9 to 10 will be a prelude of the regular program when Harry H. Schweir, gemologist of Ft. Worth, will be speaker.
12 noon—Following the Civic League and Garden Club opening at the Majestic Theater a luncheon will be held in the Woman's Club. Reservations must be made with Mrs. Frank Castleberry by Monday, Oct. 7 at 1 p.m. There will be games following the luncheon. Games will begin at 1 p.m.

Mrs. J. Horton Presides Over WSCS Monday

Twenty-six members of the Woman's Society of Christian Service of the First Methodist Church met Tuesday morning at 9:30 in the church parlor. Mrs. James Horton, president, presided over the meeting.
Mrs. H. Hassell announced that a Methodist minister from the Philippine Islands, Philip Del Rosario, will speak at the Sunday morning service October 27.
At conclusion of the business meeting Mrs. T. M. Collie gave the first lesson of the study course. Mrs. Richland Smith gave the devotional and Mrs. Don Doyle sang a beautiful hymn.
Members present were: Mmes. W. P. Leslie, T. M. Collie, James Horton, H. E. White, Cecil Collins, H. Hassell, O. O. Mickie, T. M. Johnson, N. O. Morris, Cyrus Frost, Etta Harlow, F. Castleberry, O. M. White, W. F. Davenport, W. F. Deaton, E. S. Perdue, C. Harris, G. Quinn, D. Doyle, J. Souther, H. J. Bulgerin, Taylor Smith, J. A. Doyle, T. Haley, B. O. Harrell, and Richard Smith

Rummage Sale Is Planned by Lydia Group of CWF

Lydia group of the Christian Woman's Fellowship of the First Christian Church discussed plans for a rummage sale to be held Oct. 18 and 19 in a recent meeting.
They met in the home of Mrs. T. L. Cooper. Mrs. B. H. Clifton, chairman, presided over the meeting. The meeting was opened by a prayer by Mrs. T. A. Bandy.
Mrs. L. C. McNatt gave a devotional entitled "Abiding Faith." The lesson on "Even As Your Father" was given by Mrs. Bandy.
The meeting was closed by prayer by Mrs. Bandy. Refreshments of pie a la mode and coffee was served to Mmes. Bill Collins, Pat Murphy, J. C. Gilbreath, B. H. Clifton, R. I. Carpenter, T. A. Bandy, L. C. McNatt, Dixie Williamson, and hostess, Mrs. Cooper.

Slumber Party Is Postponed Mon.

Double Seven Club decided to postpone their slumber party until a later date in their meeting Monday afternoon. They met in the home of Nancy Beck.
Jackie Baggett presided over the meeting. The devotional was given by Laura Harris and Gaila Walters led in prayer.
Members present were: Rosemary Jones, Sandy Taylor, Jackie Baggett, Laura Harris, Cora Mendietta, Dixie Durham, Gaila Walters, Nancy Beck, Judy Inzer, Patricia Fullen, Janice Arther, Phyllis Phillips and Linnette Capers.
Refreshments of lime freeze, cookies and mixed nuts were served.

Card of Thanks
To my many friends and to the hospital staff I want to express my sincere appreciation for the many expressions of kindness shown me while I was in the hospital. For your help and thoughtfulness I am deeply grateful.
Mrs. Pearl Cross

VISITING HERE
Mrs. Joe A. Davission of Austin is the house guest of Mrs. Samuel Butler.

ED V. PRICE & CO.
TAILORED SUITS
Sport Coats Slacks
C. L. FIELDS
Phone 571 103 W. Valley

ATTENDS CONVENTION

Mr. and Mrs. J. C. Poe have returned home from the Fourth Annual Convention of the West Texas New Mexico Florist Association in El Paso. Headquarters of the convention was in the Hotel Cortez.
They also visited in Juarez, Mexico. During the time they were in old Mexico they attended a Bull Fight.
They also toured the Big Bend country during the week they were gone. They also visited their daughter and son-in-law, Mr. and Mrs. Ralph Green in Midland.

READ THE CLASSIFIEDS

PENNEY'S
ALWAYS FIRST QUALITY!

17 by 25 inches



OCTOBER PREMIUM BUY

Pillows... All Foam Rubber! Allergy-free! needs plumping Pre-shrunk muslin zipper covers. White, pink. Fabulous Penney buy!

3.00

DOLLAR DAYS

BREATH-ABLE SOLE!




OCTOBER PREMIUM BUY!

Penney's new Cotton Knit Sleepers. Two piece, with non-skid soles that air comfort baby's feet! Machine washable pastels!

1.00 each

Sanforized cotton flannels




OCTOBER PREMIUM BUY

Boys' warm, rugged sport shirts in hefty 4.6 ounce fabric! Richly printed; machine washable. Penney-priced at a budget low.

sizes 2 to 18

1.00

SPECIAL PURCHASE!



OCTOBER PREMIUM BUY

FOR FAMILY SLEEPWEAR!

Soft—as—down cotton flannel in florals, stripes, juvenile designs, zesty colors! Machine washes beautifully! Another exciting value... at Penney's today!

3 yards for \$1

COTTON FLANNELS!



OCTOBER PREMIUM BUY

TERRIFIC NEW LOW PRICE!

1.33

Sizes small, medium, large Penney's put new deep colors, new plaids in rugged, hefty cotton flannel. Penney's had 'em full cut, priced at a new low! Sanforized*, machine washable. *Won't shrink more than 1 percent.

LOW PENNEY PRICE



OCTOBER PREMIUM BUY

FLANNELETTE GOWNS!

Big Penney values!... our specially selected print cotton nighties. Toasty warm, they machine wash in luke-warm water. 34to 48.

1.66

SPECIAL! Cannon Wash Cloths 12 for 1.00

SPECIAL! Cannon Dish Cloths 12 for 1.00

Thanks, Folks!



THANKS TO YOU WE ARE CELEBRATING OUR 2nd Anniversary IN THE FURNITURE BUSINESS IN EASTLAND

We sincerely thank you for the fine patronage you have given us in the past. Because of your confidence in us, we have been able to expand our business and are better able than ever to serve you in furniture and home furnishing needs.

- ★ OUR STOCK IS MUCH LARGER
- ★ WE HAVE INCREASED OUR LINES
- ★ WE HAVE BIGGER AND BETTER VALUES

TRY US ALWAYS WE CAN HELP YOU SAVE MONEY

NECCHI SEWING MACHINES

New and Used Furniture We Buy - Sell or Trade

HAMMON

201 South Lamar Phone 706

SOAP FLAKES

LUX FLAKES
Large Pkg. **33¢**

TOILET SOAP

LIFEBUOY
3 Reg. Bars **29¢**

TOILET SOAP

LIFEBUOY
2 Bath Bars **29¢**

TOILET SOAP

LUX
2 Reg. Bars **19¢**

TOILET SOAP

LUX
2 Bath Bars **27¢**

BLUE DETERGENT

RINSO
Reg. Pkg. **32¢**

DETERGENT

SURF
Reg. Pkg. **32¢**

DETERGENT

BREEZE
Giant Pkg. **77¢**

BLUE DETERGENT

SILVER DUST
Reg. Pkg. **33¢**

DETERGENT

LIQUID LUX
22-oz. Can **69¢**

ALL PURPOSE SHORTENING

SPRY
3-lb. Can **93¢**

CONTAIN'S COLD CREAM

DOVE
2 Reg. Bars **39¢**

CONTAIN'S COLD CREAM

DOVE
2 Bath Bars **49¢**

KRAFT'S

CHEEZ-WHIZ
16-oz. Jar **57¢**

KRAFT'S

MAYONNAISE
Pint Jar **45¢**

SUNNYFIELD LONG GRAIN FANCY RICE
2 1-lb. Pkgs. **29¢**

SULTANA FINE QUALITY RICE
3-Lb. Pkg. **39¢**

LIQUID DETERGENT

WISK
32-oz. Can **69¢**

GELATIN DESSERTS

SPARKLE
Ass. Flavors 5 Pkgs. **27¢**

OCTOBER ISSUE

Woman's Day
Each **10¢**

TO THANK YOU FOR YOUR PATRONAGE, WE ANNOUNCE A GIGANTIC MONTH-LONG EVENT!

A&P's 98th Anniversary Sale

1859-1957

Special Values!

FROZEN LEMONADE PURE GOLD 3 6-oz. Cans **25¢**

FROZEN WAFFLES NIFTY Pkg. of 6 **10¢**

TOMATO SOUP ANN PAGE 2 20-oz. Cans **31¢**

PRESERVES ANN PAGE—PEACH, PINEAPPLE, OR APRICOT 2-lb. Jar **49¢**

FRUIT COCKTAIL DEL MONTE 3 No. 303 Cans **65¢**

PINEAPPLE JUICE DOLE 3 46-oz. Cans **89¢**

GREEN BEANS DEL MONTE 2 No. 303 Cans **39¢**

GOLDEN CORN DEL MONTE CREAM STYLE 2 No. 303 Cans **29¢**

GARDEN PEAS DEL MONTE 2 No. 303 Cans **37¢**

Garden Spinach DEL MONTE 2 No. 303 Cans **25¢**

NIBLETS CORN WHOLE KERNEL GOLDEN 2 12-oz. Cans **31¢**

SAUERKRAUT LIBBY 2 No. 303 Cans **27¢**

TOMATO JUICE LIBBY 2 46-oz. Cans **53¢**

V-8 COCKTAIL VEGETABLE JUICE 2 46-oz. Cans **69¢**

BAKED BEANS BROWN BEAUTY 3 No. 300 Cans **25¢**

JANE PARKER WHITE ENRICHED BREAD Large Loaf **21¢**

JANE PARKER APPLE PIES Ea. **43¢**

CRESTMONT ICE CREAM 1/2-Gal. Ctn. **69¢**

JANE PARKER CINNAMON CAKE DONUTS Pkg. of 12 **20¢**

IRISH POTATOES

IONA SWEET PEAS 2 No. 303 Cans

TOMATOES Allen's SWEET **23¢**

Bourland's Market Values

NEUHOFF'S TENDER MADE WHOLE OR SLICED

Picnics Lb. **39¢**

WILSON TENDER MADE HAM'S HALF OR WHOLE Lb. **59¢**

CHOICE CHUCK STEAK Lb. **55¢**

FRESH GROUND BEEF Lb. **35¢**

CHOICE CLUB STEAK Lb. **69¢**

SIRLOIN STEAK Lb. **69¢**

KORN KIST OR PALACE BACON SLICED TRAY PAC Lb. **55¢**

CHOICE CHUCK ROAST Lb. **49¢**

AMERICAN-OR-PIMINTO KRAFT SLICED CHEESE 1/2 lb. **39¢**

WILSON CHEESE 2 Lb. Box **79¢**

HOME MADE SAUSAGE PURE PORK Lb. **55¢**

PRODUCE SPECIALS

FLORIDA RUBY RED Grapefruit Large Size 2 Lbs. **15¢**

CALIFORNIA PASCAL Celery Large Stalk **19¢**

WASHINGTON STATE RED DELICIOUS Apples Lb. **19¢**

WASHINGTON STATE JONATHAN Apples 2 Lbs. **25¢**

TEXAS YELLOW Onions 3 Lbs. **10¢**

SAFEWAY STOCK-UP SALE!

Del Monte
Round-Up Buys

Times a wastin' pardners!
Hurry on down to Safeway
and pick up some of these Del
Monte Roundup specials.



Stewed Dried Prunes	No. 303 Glass	29¢
Asparagus Tips	Early Garden Blended 10 1/2-Oz. Can	35¢
Lima Beans	Early Garden No. 303 Can	27¢
Sliced Beets	Del Monte No. 303 Glass	19¢
Chili Sauce	Just Right Flavor 12-Oz. Bottle	29¢
Tomato Sauce	Rich Flavored 8-Oz. Can	9¢

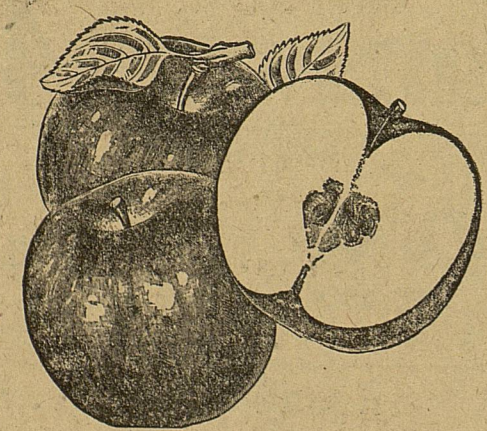
featuring the **DEL MONTE** fall **ROUND-UP**

Del Monte Tomato Juice	Richest Flavor 4 46-Oz. Cans	\$1.00
Del Monte Corn	Cream Style White or Golden 2 No. 303 Cans	29¢
Del Monte Early June Peas	2 No. 303 Cans	35¢
Del Monte Fruit Cocktail	Five Fruit Flavor 3 No. 2 1/2 Cans	\$1.00
Del Monte Pineapple Juice	Refreshing Pickup 46-Oz. Can	29¢
Del Monte Juice	Pineapple and Grapefruit 46-Oz. Can	29¢
Del Monte Sliced Pineapple	No. 2 Can	29¢
Del Monte Crushed Pineapple	4 No. 2 Cans	\$1.00
Del Monte Cut Green Beans	5 No. 303 Cans	\$1.00
Del Monte Spinach	Fresh Flavored 8 No. 303 Cans	\$1.00
Del Monte Tomatoes	Ideal for Casseroles 5 No. 303 Cans	\$1.00
Del Monte Spiced Peaches	Whole No. 2 1/2 Glass	46¢
Del Monte Prune Juice	Rich in Vitamins 32-Oz. Bottle	37¢
Del Monte Peaches	Sliced or Halves Yellow Cling No. 303 Can	23¢

Safeway's Low Coffee
Prices

Airway Coffee	Start Your Day Right 1-Lb. Pkg.	73¢
Nob Hill Coffee	Freshest You Can Buy 1-Lb. Pkg.	79¢
Edwards Coffee	Regular, Drip or Pulverized 1-Lb. Can	87¢

Royal Satin Shortening	For Perfect Baking 3-Lb. Can	79¢
Rise Lather Shave	Push Button Regular 69¢	Can 49¢
Nylon Hoisery	Famous Brand Regular \$1.00	2 Pairs \$1.00
Grade A Eggs	Breakfast Gems Mixed Medium	Doz. 49¢
Bel-air Frozen Grape Juice	Refreshing 6 6-Oz. Cans	\$1.00



Sparkling Fresh Produce

APPLES
2 25¢
Jonathan Gleaming Red Lbs.

Sweet Tokay Grapes	Tangy Lb.	10¢
Red Potatoes	Economy 10 Lb. Bag	49¢
Pears	Bartlett 2 lbs.	29¢

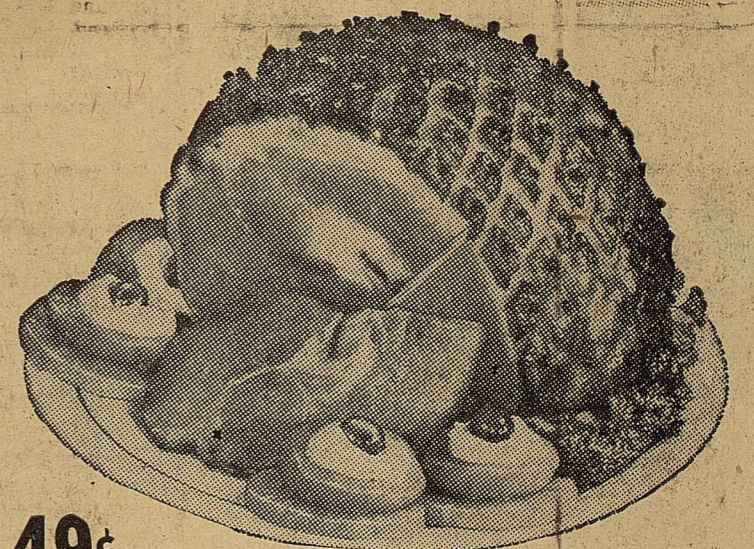
Dole Pineapple	Chunks No. 211 Can	22¢	Bisquick	Baking Mix 4-Oz. Box	45¢
Cheer Detergent	Large Box	31¢	Bisquick Biscuits	Home Style or Buttermilk 2 8-Oz. Cans	25¢
Oxydol Detergent	Large Box	32¢	Ritz Crackers	Nabisco 1-Lb. Box	37¢
Dash Detergent	25-Oz. Box	39¢	Cheez It Crackers	Sunshine 6 1/4-Oz. Box	19¢
Dash Dog Food	2 1-Lb. Cans	31¢	Salad Dressing	Piedmont 32-Oz. Jar	39¢
Minute Rice	Cooks Up Fluffy 5 1/2-Oz. Box	15¢	Apple Thins Mix	Py-O-Myl Sliced 16-Oz. Pkg.	39¢

SMOKED HAMS

Armours Star 10 to 12 Pound Average Half or Whole Lb. **49¢**

Smoked Hams Butt End Cut Lb. **49¢**

Armours Star Sliced Bacon	Fries So Evenly 1-Lb. Cello	59¢
Capitol Sliced Bacon	(Northern Cured) 1-Lb. Cello	55¢
Rath Blackhawk Franks	Tasty and Good 1-Lb. Cello	45¢
Economy Ground Beef	Ground Fresh Daily Delicious for Hamburgers Lb.	33¢



120 Recipes in October

Family Circle **7c** Magazine

Safeway Bakery Specials

Mrs. Wrights Bread	Reg. Sliced White 24-Oz. Loaf	21¢
Skylark Rye Bread	1-Lb. Loaf	29¢
Cinnamon Rolls	Curtsy 8-Count 9-Oz. Pkg.	23¢
Multi-Grain Bread	Skylark 1-Lb. Loaf	22¢

SPECIAL OFFER Both For

Vanilla Wafers	Busy Baker 7-Oz. Box	29¢
Vanilla Pudding	Jell Well 3 1/2-Oz. Box	

Stock Up Buys

Swifts Margarine	Allsweet 1-Lb. Pkg.	31¢
Lucerne Milk	Homogenized 1/2-Gal. Ctn.	47¢
Lucerne Buttermilk	1/2-Gal. Ctn.	37¢
Lucerne Half & Half	Pt. Ctn.	28¢
Heinz Soup	Split Pea 2 No. 1 Cans	37¢
Campbell Soup	Green Pea 2 No. 1 Cans	31¢
Toilet Tissue	Zee Asstd. Colors Family Pak 4-Roll Pak	35¢
Zee Napkins	Colored or White 2 80-Ct. Pkg.	29¢
Zee Lunch Bags	Perfect Size 2 20-Ct. Pkg.	23¢
Sleepy Hollow Syrup	12-Oz. Bot.	31¢
Sleepy Hollow Syrup	24-Oz. Bot.	56¢

Here's How You Can Really Save!

SAFEWAY'S Save-A-Tape Plan

It's Easy... It's Fun

Just save the green cash register tapes you get when you shop Safeway

NEW LOW EVERYDAY PRICES!

MAXWELL HOUSE COFFEE	lb. 90c

EDWARD'S COFFEE	lb. 84c



Prices effective Thursday, Friday and Saturday, Oct. 3-5

HOME FOR WEEKEND

Misses Joyce Gordon, Marylou McCutchin, Mavis Yellott and Mary Nell Yellott visited with Helen Flowers in her home here over the weekend. They are all juniors at TCU.

VISITING HER PARENTS

Mrs. A. J. Cornelius of San Marcus has been visiting with her parents, Mr. and Mrs. W. A. Martin. She also visited her grandmother, Mrs. Eunice Cornelius Taylor. She has returned home.

Dinner Honors B. F. Alford on 75th Birthday Saturday

B. F. Alford and I. E. Talley were honored with a birthday dinner Saturday night in the home of Mr. and Mrs. Cecil Alford of Olden. Alford was celebrating his 75th birthday at the dinner.

Menu was chicken, barbecued roast, salads, vegetables, pies, cakes, tea and coffee. The dinner was fixed and served by the ladies.

Those attending were Rev. and Mrs. John Morgan and children, Mr. and Mrs. Dick Yeilding, Mr. and Mrs. Bolley Williams, Robert Barber of Eastland, Mr. and Mrs. Gene Falls, Mr. and Mrs. S. E. Talley, Mr. and Mrs. Cecil Alford and sons, Norman and Jerry.

Carbon School News

By LINDA COLLINS
Telegram School Reporter

School is coming along just fine at dear ole C. H. S. It won't be long until time for six weeks test.

We are really rather proud of our football boys after the football victory Thursday night. The score was 31-6. The game was played at Brooksmith. Our boys did some good playing.

John Grace, Charles Bryant, Robert Norris, Donald Cook and Benny Frazier made the touchdowns. Donald Cook caught a pass for the extra point. Of course, the touchdowns would have not been made if it had not been for the other boys playing the good game they did.

We are hoping for another victory Thursday as we play Gustine at Carbon. The game will begin at 8 p.m. We would like to see everyone at the game.

The basketball girls have started practice. They practice on Monday, Wednesday and Friday afternoons. At the present 19 girls have come out for basketball. Mr. Harrison is the coach.

You had better hurry if you want an annual because the deadline on making your deposit is October 25. The deposit is \$1 and if you don't make a deposit you will not get an annual.

Now I would like to take time out and tell you what the seniors of '57 are doing at the present time.

Mary Ester Eaves is a telephone operator in Abilene.

Mary Emma Nicholas is working in the County Clerk's office in the Eastland courthouse.

I do not know what Donna McAfee is doing or plans to do.

Patsy Jackson and Wanda Payne are attending college at Ranger College.

Jo Holleman is now Mrs. Bob Engledow. She married during the summer and is living in California.

J. V. Lewis is working at the glove factory in Cisco at the present time.

Lee Hays is in the Air Force. He is stationed in San Antonio.

Charles Little is working for R. M. Sneed, contractor in Eastland.

Carolyn Collins is society editor of the Eastland Telegram.

Hospital News

Patients in Eastland Memorial Hospital are:

Mrs. James Ward, medical
William Murphy, medical, Cisco
Polk Valliant, medical
W. C. Kimbrough, medical
Johnny Yancy, medical
Mrs. Millie Waldarip, surgical, Cisco

Dismissed were:
Mrs. Idel Hamilton, Mrs. Louella Turner, R. L. Watson, Mrs. Billy Pritchard and baby girl, and G. C. Watson.

Patients in the Ranger General Hospital from Eastland and Olden are:

Mrs. C. L. McCoy, medical
Mrs. Aubrey Patton, medical, Olden
Mrs. Robert Irvin, surgical, Olden
Mrs. J. E. Pitman, surgical, Olden

Dismissed were J. L. Fox, Carolyn Sue Medford, and A. L. Fox.

Friends Honor Butler Family With Party Tues.

Mr. and Mrs. Carl Butler of Olden were honored with a going away party Tuesday night in the home of Mrs. Myrtle Warren.

Mrs. Mabel Matlock and Mrs. Lee Williams were co-hostesses.

The Butlers are moving to Bryan to make their home.

Friends of the Butlers expressed words of appreciation to the family. A present was also presented to the Butlers at the party.

Cake and homemade ice cream were served to those present.

COUNTY NEWS ROUND-UP

Higher Rates Begin Oct. 15
RANGER—The City Commission announces a slight increase in the water rates for the City of Ranger, and also an increase in the sewer and sanitary rates, all effective beginning Oct. 15.

Phone Co. Purchases Lot
RANGER—Southwestern Bell Telephone Company has announced that final details have been completed and the deal concluded in Ranger for purchase of the 100 by 140 foot lot at the corner of Pine and Austin Streets as the site for the Company's new dial telephone exchange to be erected in Ranger.

The lot was purchased from the Times Publishing Company, owned by Joe Dennis and Onous Dick.

McAnnally said he did not know the exact date when any kind of construction would begin, but said it was not too far in the future.—The Ranger Times.

Police Department Praised
CISCO—The City Commission commended the work of Police Chief Lee Horn and the Police Department for their efforts to enforce the laws and pledge full support in a resolution adopted at the semi-monthly meeting Tuesday night at the city hall, it was reported today.

City officials commended police for their efforts to keep crime to a minimum and for their traffic regulations enforcement. It was voted to install "stop" and

Letters To Editor

Dear Mr. Moore,
I am an old resident of Eastland and I enjoy your column to the utmost. Keep up the good work.

Your coverage of all the news up that way sure keeps me informed on local events which I

COLD SUFFERERS

Get STANBACK, tablets or powders, for relief of COLD DISCOMFORTS. The STANBACK prescription type formula is a combination of pain relieving ingredients that work together for FASTER RELIEF OF HEADACHE, NEURALGIA and ACHING MUSCLES due to colds. STANBACK also RELIEVES FEVER. SNAP BACK with STANBACK.

Enclosed is check for another year's subscription to the Telegram.

We Live in a Great Country—

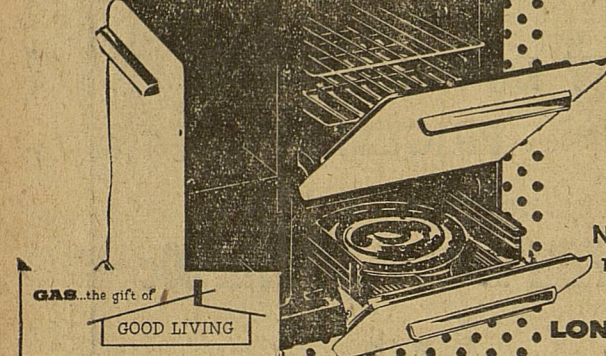
... and one of the things that has helped to make it so is insurance. In one particular at least the average American is unique in that he buys more insurance than any other nationality. He doesn't like to carry risks and the attendant worries that go along with them. He keeps himself insured—his family, his property, everything he has—because it's good business to do so. Yes, it's American to be insured and insurance is typically American!

EARL BENDER & COMPANY

Eastland, (Insurance since 1924) Texas

GIANT VALUE GAS RANGE SALE

SAVE \$55.05 ON THIS NEW UNIVERSAL Burner-with-a-Brain Gas Range \$219.95
Regularly \$275.00
Sale-priced, with trade-in Model No. 8045



NEW Burner-With-a-Brain temperature controlled top burner automatically adjusts flame to cook foods at correct temperature. Only instant GAS gives you this fully automatic feature. Makes all pots and pans automatic!

NAME YOUR OWN DOWN PAYMENT!
Then as little as \$1.80 weekly (payable monthly)

LONE STAR GAS COMPANY

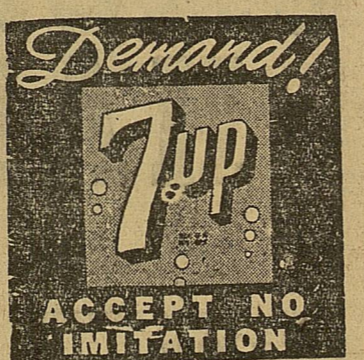
BUYING! SELLING! RENTING! SWAPPING!



YOU'LL FIND IT IN THE WANT ADS

Read and Use Want Ads for Quick Results!
It's The Town's Biggest Market Place...

EASTLAND TELEGRAM



Card of Thanks
We wish to take this means of expressing our sincere appreciation to the host of neighbors and friends for their many acts of kindness and expressions of sympathy in the final illness and death of our loved one.
Family of Mrs. W. A. Curtis

RETURNED HOME
Mrs. C. W. Young has returned home from visiting with her new granddaughter, Lana Jean. She is the daughter of Mr. and Mrs. Lester Nichols of Odessa.

SUCH BIG NAMES AS
• Pat Boone
• Elvis Presley
• Jimmy Dorsey
• Sal Mineo
• Tommy Sands
• Perry Como
• Nat "King" Cole
• Patti Page
• The Crew Cuts
• Fats Domino and many, many others

Complete Selection Records
Now you can get your favorite recordings right here in Eastland. We have just added a complete stock, including Albums and Singles
ALL REASONABLY PRICED!

CANARIS STUDIO
102 South Seaman Eastland

RE-PAIR AND RE-MODEL

NO DOWN PAYMENT... 36 MONTHS TO PAY
★ PAINT
★ WALLPAPER
★ LUMBER
★ HARDWARE
★ ALL BUILDING MATERIALS

CROWELL LUMBER CO.
"Everything To Build Anything"
700 W. Main Phone 300

TOP QUALITY MEATS AT REAL SAVINGS

BACON Thick Sliced... 2 lbs. 1.32
Corn King lb. 61c
Dairy Brand lb. 72c
Mid West lb. 69c

Salt Pork Best For Boiling Lb. 39¢

Cured Hams Lean Skinless Whole Lb. 49¢

Sausage lb. 33c
..... 2-lbs. 65c
..... 4-lbs. 1.00

Choice Beef Round Steak lb. 69c
Loin Steak lb. 65c
T-Bone Steak lb. 65c
Club Steak lb. 59c

Pork Chops Lb. 55¢

Hamburger Good Grade Lb. 33¢

Stew Meat Lean Boneless Lb. 39¢

EARNEST Frozen Food Center
210 South Lamar Phone 11