

PLAN NOW TO
BACK SCOUTING
NOVEMBER 1

Eastland Telegram



"COVERING EASTLAND COUNTY"

EASTLAND, TEXAS, THURSDAY, OCTOBER 28, 1954

PRICE FIVE CENTS

VOLUME TWENTY-FIVE

Moore... ABOUT Eastland

By VIRGIL E. MOORE

Visitors in the Telegram office this week were Congressman and Mrs. Omar Burleson.

Con. Burleson said he and his attractive wife were just on a tour of his district before his schedule again got too tight to make any personal contacts. Enjoyed his brief visit.

When does a businessman do something to hurt his own business? The answer to that question has been supplied locally. Several members of the Lions Club, who by part, at least, make their money by selling brooms, mops and what have you, will be knocking on doors Tuesday trying to sell such products. The money they get from their sales will go to the Lions Crippled Camp at Kerrville and to Texas blind workmen, and not into their own pockets, however.

Instead of protesting the "competition," these men have done everything in their power to see that the Lions' Texas Blind Shop Caravan sale is a success.

We say they have some creative coming.

The Curly Maynards had reason to be proud Monday. Their granddaughter, Kay Davis, sang KRBC-TV. It was Kay's ninth birthday, by the way.

And speaking of birthdays reminds us to check the Band Boosters' Community Birthday calendar. Seems that Jessie L. Rick, F. F. Terrell and Nancy Lee Williams will all be celebrating today. Richard Jones, Nancy Dolores DeBusk and Martha Freeze have a birthday Friday and Gail Gage and Craig Lund will be a year older come Saturday.

Birthdays seem to be as good a subject as any on this pleasant rainy day, so we might mention the cake and coffee we enjoyed over at Martha's News Stand Tuesday. Martha was celebrating her birthday and her sixth anniversary at the news stand.

Wow! Watta car. In fact, what cars.

Have you seen them yet? We mean the new Chevrolet at Fullen Motor Co. and the new Pontiac at Jack Muirhead's. We figured 10 years ago that they had run out of new designs, but from the looks of these two new beauties, they have just begun to fight.

That explosion down at Edinburg, our old stomping ground, rocked us all the way up here. Seems that some bird decided to blow up the Hidalgo County courthouse. Beats all we ever heard of.

The courthouse wasn't even completed when we left Edinburg just over a year ago. Before we found out the facts in the case, we figured one of two things had happened. We decided that either a despondent newsman, who hadn't a decent news story in the last few months, or someone from McAllen, a town that wants to be the Hidalgo County seat as bad as Cisco wants to be the Eastland County seat, had tossed in a little TNT.

See you Sunday.

Installment Loans Custom Made For Each Customer
EASTLAND NATIONAL BANK
Member F. D. I. C.

COUNTY TO SEND THREE FARM BUREAU DELEGATES TO MEET

The Eastland County Farm Bureau will send three delegates to the Texas Farm Bureau convention in Galveston Nov. 8-10. They are Ed Harrison of Gorman, Ray Norris of Eastland and P. M. Ray of Scranton.

Norris told the Telegram that acreage allotments, price supports and the farmer's cost-price squeeze are likely to get top billing when the convention is held.

Seaberry To Attend State Bar Board Meet

A Eastland attorney will be in Austin Friday and Saturday to attend the quarterly meeting of the board of directors of the State Bar of Texas. He is Virgil T. Seaberry, chairman of the board.

A more uniform and dignified procedure for handling traffic cases is one subject on the agenda. The State Bar is one of the sponsors of a traffic conference scheduled for Nov. 8 and 9 in Austin.

Another subject up for discussion is the constitutional amendment that proposes to transfer undivided Confederate pension funds to a state building fund. The amendment was unanimously approved by the state lawyers group at its convention last July.

Seaberry has practiced law in Eastland since 1919. He is a former vice-president of the Eastland County Bar Association and was first elected a State Bar director in 1952. He was unanimously elected chairman of the board of directors last July.

Eastland Gets 1.43 Inch Rain

The best rain Eastland County has seen in months sent spirits higher this week, but Thursday morning the clouds had been replaced by blue skies.

The two-day rain, Tuesday and Wednesday, totaled 1.43 inches in Eastland according to the official U. S. Weather Bureau rain gauge. Cisco recorded 1.75 inches in the same period of time and Ranger reported 1.53.

All parts of the County reported more than an inch of rain.

Wendell Taylor Taking Training In Japan Now

CAMP YOKOHAMA, Japan — Army Pfc. Wendell R. Taylor, whose wife, Dolores, lives at 1008 W. Patterson St., Eastland, is undergoing rigorous training in amphibious warfare with the 56th Tank and Tractor Battalion's Company D in Japan.

The 56th, which spearheaded the landing at Inchon, Korea, has the primary mission of landing the early waves of troops and providing them with fire power.

Private First Class Taylor, a mechanic, arrived overseas last February. His parents, Mr. and Mrs. William R. Taylor, live at 308 W. Third St., Cisco.

Mavs Journey To Rising Star; B-Team Tilt Tonite

B-TEAMERS TO TEST DUBLIN IN EASTLAND

The Dublin Bees move into Maverick Stadium tonight seeking to revenge a 0-13 loss handed them by the Eastland B Team in the opening game of the season for both teams. Gametime is set for 7:30 p.m.

Coach Bobby Blair's Mav-Bees, who lost to strong Mineral Wells last week, will be seeking to get back into the winning column once again. The locals sport a record of one win and three losses.

Eastland's regular backfield is expected to get starting roles. J. C. Jarrett will be at quarterback, David Willoughby at fullback and Don Lee and Saul Pullman at the halfback positions.

In the line, Don Smith will be at left end, Gene Reagan at left tackle, Don Welf at left guard, Ken Watson at center, Wayne Durham at right guard, Ray Norris at right tackle and Johnny McMahon at right end.

Albert Honea Is Stationed At San Diego

SAN DIEGO, Calif. (FHTNC) — Albert M. Honea, seaman, USN, son of Mrs. Ruth Honea of Eastland, has reported to the U. S. Naval Station here for duty with the Commissary Store.

Honea, who entered the Navy in January, 1954, reported here from the U. S. Naval Training Center, San Diego, Calif., on Oct. 13th.

Before entering the Navy, Honea was graduated from Eastland High School.

The Eastland National Bank will be closed Tuesday for election day. A spokesman urged everyone to do their banking early to avoid inconvenience.

MAVS SEEK SECOND DISTRICT 7-A VICTORY FRIDAY NIGHT

Eastland's High School Mavericks, off to a good start in District 7-A play with a victory over Clyde safely in their pocket, journey to Rising Star Friday night in a game that will probably do one of two things—stamp the locals as district contenders or eliminate them from the championship bracket.

The Mavs knocked off Clyde 18-7 last Friday to earn themselves a 1-0 district record. Rising Star was taking a thumping from Dublin, favorite in the district, at the time Eastland scored their first win of the year.

Coach Bill Milam, who in his first year at the Rising Star helm has compiled one of the best records in that school's recent grid history, will be shooting the works against the Sheltonn, for a loss will completely remove the Wildcats from any title contention.

Both Eastland and Rising Star have displayed good defensive teams in their six games, and this would call for a low scoring game Friday night. Both teams have good passing games, however, so anything could happen.

Billy Upchurch is Eastland's leading passer, but Harvey Lewis and Ben Cate come in for their share of the aerial duties. For Rising Star, Quarterback Bert Agnew is the number one passer. End Clyde Evatt is the number one Mav pass receiver and End Jim Walker and Halfback Wesley Moore do most of the catching for the Cats.

Eastland's record to date shows one win and five losses. The win came last week against Clyde and the losses came at the hands of Cisco 52-12; DeLeon, 14-0; Granbury 39-13; Merkel, 13-0; and Ranger, 21-0. Cisco, DeLeon and Ranger are all Class AA teams.

Rising Star has won three, lost two and tied one. The Cats hold wins over May, 20-7; Early, 14-7 and Santa Anna 8-7; tied South Taylor 0-0; and lost to Baird, 12-6, and Dublin.

Eastland's probable starting line-up will have Harvey Lewis at Quarterback, Bill Upchurch at Ben Cate at halfbacks and Duard Turner at fullback. In the line, the Mavs will have Clyde Evatt and Leo Smith at ends, Larry

Tankersley and Carl Freeze at tackles, Roy Don Harris and Lupe Herrera at guards and Terry Warren at center.

Rising Star's backfield will most likely have Agnew at quarterback, John Joyce and Wesley Moore at halfbacks and Eddie Hardin at fullback.

In the line, Jim Walker and Howard Barton will probably be at ends, Doyle Edmondson and Lewis Shaffer at tackles, Gerald Maynard and Lewis Barton at guards and Vernon Walker at center.

Martha's News Stand Has 6th Anniversary

It was double celebration time at Martha's News Stand Tuesday. Martha Hubbard, owner and operator, was celebrating her birthday and her sixth anniversary at the news stand, which is located on the ground floor of the Connellee Hotel.

She served cake and coffee all day long and approximately 100 persons registered.

Schenk Is New Navy Recruiting Officer For Area

William J. Schenk of Abilene is now serving as Navy recruiting officer for the Eastland area. Schenk said that one of the Navy's newest incentives is nine weeks basic training instead of 11.

Weather FREYSSCHLAG INSURANCE AGENCY No. 512 Square Phone 1184 Fire's with the Weather Report



In Final Second Of Play!

Dogies Drop De Leon Junior Hi 20-18

With the clock winding off the final second of play, Quarterback Clinton Ray (Button) Humphreys darted across the goal stripe for an Eastland Dogie touchdown Tuesday night to give Eastland a 20-18 victory over the underdog DeLeon Cubcats in a little Oil Belt Conference game played before some 500 well-chilled fans in Eastland's Maverick Stadium.

It was a suitable climax to a hard fought game that saw the Dogies trailing most of the time. Eastland scored twice in the final period of play to pull the game out of the fire after DeLeon had built up a comfortable 18-7 lead. Again it was the passing of Humphreys and the pass receiving of Halfback Larry Hollis and End Virle Lee that gave the locals the much-needed victory. Humphrey passed to Lee and Hollis for one touchdown each and then ran the third tally after setting it up with two passes to Lee.

Came Winning Score Eastland marched 69 yards in five plays in just over a minute to snatch the game from the red side of the ledger. The hard-charging DeLeon Cubbs drove from their own 39 to the Eastland eight following the second Dogie score, but the determined Dogies pushed them back to the 18 in two plays and then Humphreys intercepted a pass off the arm of Bruce McGinnis and raced to his own 31 to set up the winning drive.

On first down Humphrey passed incompletely as he was rushed hard. He found Lee on his next toss, however, and the speedy end took it to DeLeon's 36 for a first down. Humphrey again passed incompletely, but on second down hit Lee again, this time on the DeLeon 15. Lee gathered in the ball at that point, and despite the attempts of three would-be tacklers,

carried the ball to the one foot line. Humphreys snatched into the center of the line on a quarterback sneak as play ran out to gain mere inches, but as the awed crowd looked on up came the Dogies' hands to indicate the Dogie ball carrier had scored. The crowd went wild at this point, and their enthusiasm wasn't dampened when Humphreys failed to run over the extra point. The game in many ways compared with the Breckenridge-Eastland tilt of a few weeks ago. Again it was a powerful ground game against a wouldn't-be-stopped aerial game. Eastland ended up with a net yardage rushing of 202 yards, however. DeLeon made 247 yards rushing and none through the air.

DeLeon could not set up an effective pass defense against the locals, despite the fact that Eastland ran the ball only twice in the last half of play. One of those running plays lost two yards and the other gained a foot, into paydirt.

Neither team could score in the first period of play, but DeLeon, paced by McGinnis, who played outstanding ball for the losers all night, went 51 yards in 10 plays early in the second quarter to put the Cubcats ahead 6-0. McGinnis' extra point try was no good. The score came on a 14 yard scamper by Halfback Terry Nelson.

Eastland came back to match the score the next time they got their hands on the ball. Humphreys passed to Hollis for 53 yards and the TD. The entire series of downs covered 63 yards. Humphreys passed to Lee for the extra

point to put Eastland ahead 7-6. An Eastland miscue set up the next DeLeon score in the opening minutes of the third period. On a short kickoff into the Dogie line, Eastland fumbled and DeLeon recovered on the Dogie 49. Eight plays later Nelson went over from the nine for the score. Again McGinnis' conversion try was no good.

Neither team scored again until the fourth quarter. The Cubbs got a drive going late in the third period and completed their journey into paydirt as the fourth quarter got underway to apparently sew up the game. In 10 plays they marched 70 yards for the score with McGinnis racing wide around left end for the final 10 yards. McGinnis failed again on his third extra point try for the night, but DeLeon enjoyed an 18-7 lead never-the-less.

Coach Jimmy Hughes gave the Dogies the go-ahead sign on their aerial game at this point, and following the Cub kick-off, Humphreys tossed four complete passes out of six tries to move Eastland 64 yards for another score. From his own 36, Humphrey passed to Lee to the Cub 49. From that point he hit Hollis on the 25 and then completed a pass to Lee on the 17. Going to the air from that point, he connected on a heave to Lee on the five and Lee dashed across. Humphreys passed to Lee for the extra point.

Following the Dogie kickoff, DeLeon started the drive that carried them to the Eastland eight. The Dogies intercepted the only Cub pass of the night at that

point, however, and then drove for the score.

Hollis, Knicky Arther, Billy Don Turner, Mike Manning, Wayne Dodson, Larry Aldredge, Galton Ables, Jim Webb, Otis Green and a host of other Eastland lads played heads up football.

Next Tuesday night the Dogies enter their regular season when they take on Cisco at Maverick Stadium.

Game In Figures

EASTLAND	DELEON
8 First Downs	17
-1 Yds. Gained Rush	247
9 for 202 Passes Comp.	0 for 0
1 Fumbles Int.	0
3 for 23 Points, Avg.	0
1 for-6 Penalties	3 for 15

Desdemona Girl Takes Fourth Win

DESDEMONA (TNS) — With a large crowd in attendance at the Desdemona gymnasium Monday night the Desdemona Junior girls won their fourth consecutive game without defeat, while the Desdemona Junior Boys lost their third consecutive game.

In the first game, Desdemona girls defeated the Scranton Junior girls by a score of 41 to 7. For the Desdemona team Carr led in scoring with 21 points, Allen had 13 and Nabers 7. Helen Lewis and Barker, regular guards, played a very good game. Boen, Yancey, Hall and Doris Lewis also played. La Tonne Lewis, who did not play in the last game with Scranton was back in the lineup and played a very good game. For Scranton the leading scorers were

(Continued On Page 5)

NEW CHEVROLET ON DISPLAY AT FULLEN MOTOR CO. HERE

"Pronounced mechanical advances plus new riding comfort and a complete re-styling of body," give Chevrolet for 1955 its most spectacular model announcement. Milton Fullen said today as the new Chevrolets went on display for the first time in the nation at Fullen Motor Co. in Eastland.

No major part of the car has been overlooked in the broadscale improvement program. Driving ease and riding comfort benefit along with the creation of fresh automotive design. The accomplishment, says Fullen, has been possible only because of a thorough job of product re-engineering and the tremendous new plant

facilities Chevrolet adds this year. And most Eastlanders who viewed the car this morning agreed. From an extraordinarily long list of new features Eastlanders witnessed on the new Chevrolet, these are particularly outstanding:

First automobiles in the low-price field to reflect the "dream car" influence of the General Motors Motorama. All roofs have been visibly lowered with a corresponding reduction in hood and belt lines to accentuate a longer, sleeker appearance. Overall, sedans have been lowered two and one-half inches, station wagons as much as six. At the same time, passenger room has been increased.

First V8 engine offered on a Chevrolet in 35 years. Profiting by recent research in combustion and manufacturing techniques, the V8 is unveiled as "far more precisely built and efficient in performance than others in its class." Named the "Turbo-Fire V8," the V8 delivers 162 horsepower.

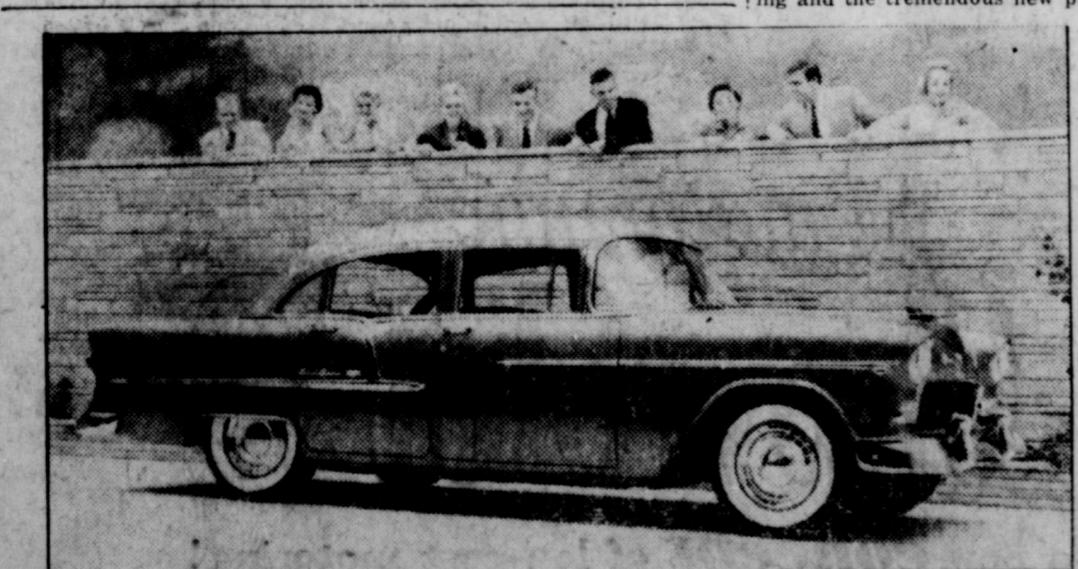
Higher horsepower ratings and new quietness and smoothness in two "Blue Flame" sixes. Engines are of the traditional valve-in-head design, which in the last few years has won virtually 100 per cent acceptance by other makes. A 123-horsepower engine is available with the manual gearshift. The six built exclusively for the Powerglide automatic transmission now develops 136 horsepower.

Integrated body and frame design. Chevrolet points out it has been able to obtain close unity with body and frame by engineering components to complement (Continued On Page Two)

STYLE - SAFETY - ECONOMY That's The DODGE for 1954 McGRAW MOTOR CO



AT JACK MUIRHEAD MOTORS—"Vogue" two-toning and new panoramic body styling enhance the long sleek look of the all new 1955 Pontiac Star Chief Custom Catalina. Powered with Pontiac's new 180 h.p. Strato-Streak V-8 overhead valve engine, the very popular Catalina is offered in Star Chief Custom and Chieftain 870 models. The new Pontiac will be displayed in Eastland at Jack Muirhead Motors this afternoon at a special showing. They go on display nationally Friday.



AT FULLEN MOTOR CO.—This is it. The new 1955 Chevrolet which went on display this morning at Fullen Motor Co. in Eastland. A styling advance from any point of view is claimed by the new Chevrolet. The latest lineup of 14 models has been completely restyled and in addition incorporates the widest array of chassis improvements ever offered by Chevrolet on a new model. Lower, sleeker lines are accompanied by new frames, new suspensions, new operating devices, and new power. See it today at Fullen's in Eastland.

OWN THE ECONOMY WINNER The 1954 DODGE McGRAW MOTOR CO.

Your New Car Financed At Low Bank Rates With Your— EASTLAND NATIONAL BANK Member F. D. I. C.

Eastland Telegram

Eastland County Record established in 1931, consolidated August 31, 1951. Chronicle established 1887, Telegram established 1923. Entered as second class matter at the Post-office at Eastland, Texas under the act of Congress of March 3, 1879.

O. H. DICK, Manager
 TIMES PUBLISHING COMPANY
 Published Tri-Weekly—Tuesdays - Thursdays - Sundays
 O. H. Dick and Joe Dennis, Publishers

One week by carrier in city	.45
One month by mail in city	2.95
One year by mail in state	3.95
One year by mail out of state	5.95

NOTICE TO PUBLIC—Any erroneous reflection upon the character, standing or reputation of any person, firm or corporation which may appear in the columns of this newspaper will be gladly corrected upon being brought to the attention of the publishers.

LEGAL NOTICES

OCTOBER 25, 1954

Sealed bids will be received by the Design and Construction Division, State Board of Control, Austin, Texas, until 10:00 a.m. November 16, 1954, for the installation of a Chain Link Fence around resident engineer's office and maintenance warehouse, Eastland, Texas, for the Highway Department. Plans, specifications and instructions available at Board of Control, Design and Construction Division. Bids to be made in accordance with state procedure.

Notice is given that on the 10th day of November, 1954, I will sell at public auction, at my warehouse in Eastland, Texas, one Bendix washing machine and one Frigidaire ice box, to satisfy my claim for storage of said property and costs of selling the same in Sparks, jointly.

LOVELACE TRANSFER & STORAGE
 By Tom Lovelace, Owner.

**T. L. FAGG
 R. L. JONES**
 REAL ESTATE
 Property Management
 Home and Farm Loans

CHEVROLET

(Continued from Page One)

Each other. An important reduction in vibration has been effected and weight saved. The frame is more rectangular and twist-resistant. With a scientific repositioning of mounts and the utmost application of rubber insulation, the body is isolated from road shocks to an unusual degree.

Increased safety through greater visibility. Every car window of safety plate glass — front, rear and side — is larger in 1955 Chevrolet bodies. The gain is due largely to the extension of glass over areas that have been "blind spots" since the early days of the automobile. Increase in visibility through the sweep-sight windshield alone is 19 per cent. As another example of the improvement, glass area in four-door sedans totals an amazing 24.5 square feet.

Optional overdrive. An overdrive installation will be offered for the first time. Engine speed reduction of more than 20 per cent is accomplished by the overdrive which automatically cuts in when the foot is lifted off the accelerator above 31 miles an hour. Operating economy is better while reduced engine revolutions also give smoother, quieter performance. Less clutch operation in city driving is still another advantage. Optional overdrive brings to six the number of "power packages" available on each of 14 Chevrolet passenger car models.

More electrical power. A 12-

volt electrical system will furnish ample reserve power for the ever-growing demands of accessories. The system is standard on both sixes and V8s, assuring increased generator efficiency and higher starting motor speeds. Another safety feature is a dual circuit breaker. A short circuit or overload will as consequence not entirely disable the system.


"Dry-Air" ventilation. This feature involves an arch-shaped plenum chamber that channels fresh air from a slotted cowl vent. Drainage from the chamber prevents any water from reaching passengers, even in rainiest weather. Cowl-installed and extended to the frame on each side, the plenum chamber acts as a structural brace as well. In addition, it is a perfect adjunct to an all-weather air-conditioner which Chevrolet introduces this year as optional equipment.

Tubeless tires for increased safety. The casing remains the same, but instead of an inner tube, interior surfaces are coated with a butyl "skin" for sealing. Blowouts are resisted and deflation slower with punctures.

Easier steering. From power steering, an improved version of which is available on 1955 cars, Chevrolet has adopted the recirculating ball-nut great and combined it with a relay type of linkage that increases smoothness and reduces driver effort. A more rigid wheel coupling and truer geometry is also claimed.

What's The Score?

By Virgil Moore



Picking football games, especially Southwest Conference football games, is almost impossible. That's why we are so pleased with the fact that we picked winners in all games involving Southwest Conference teams in the past week. Picking only District 7-A high school games, the Southwest Conference games, and close-by high school and junior college tilts, we hit 10 out of 12 right for the week.

That boosted our lagging average for the year back up to .709. We have picked 56 winners out of 79 tries for the season.

—wt—

This week the picking really starts getting rough. In the top game in District 7-A, Cross Plains will give Dublin the severe test. Cross Plains, loser of only one game in six starts, will be the underdog against five times beaten Dublin. It looks like a Dublin victory to us too, say about 19-7.

Wylie and Clyde get together in another important game. We look for underrated Wylie to win again, although they could lose by a close score. Wylie has a good defense but a not so hot offense. Let's say 6-0 Wylie.

A&M victor over Arkansas in the biggest upset for the year.



Alex Rawlins & Sons
 MONUMENTS
 WEATHERFORD, TEX.
 Serving This Community
 For More Than 70 Years.

Classified Ads..

SPECIAL NOTICES

LODGE NOTICE
 Stated meeting R. A. chapter No. 403 meets on fourth Thursday of each month.
 L. E. Huckabay, H. P. H. P. Pentecost, Sec.

Regular meeting Tuesday night 8 p. m.

Regular meeting each Friday 8 p. m.
 Paul Taylor, Noble Grand
 H. C. McAdams, Vice Grand
 J. W. Howell, Secretary.

NOTICE: Will open play school in my home Oct. 18th for children from 2 to 4 years old. Mrs. C. M. Pogue. Phone 1011-W-2.

Stated meeting Eastland Lodge No. 467, Second Thursday each month, 7:30 p. m.
 Wayne Jackson, W. M.
 H. P. Pentecost, Sec.

Notice chapter Masons stated meeting Oct. 28. Chapter opens at 7:30 p. m. Very important as this is the last meeting before the Grand Chapter meeting. As our next stated meeting comes on Thanksgiving Day and there will be football that day and some of the companions are on the team and will not be able to attend. This notice when presented to the sec. will be worth 10 cents in cash.

L. E. HUCKABY, H.P.
 H. P. PENTECOST, Sec.

RENTALS

FOR RENT: Nice, clean furnished apartment with garage. 302 E. Main.

FOR RENT: Downtown upstairs apartment, furnished, air-conditioned, \$42.50 month, bills paid, phone 692.

FOR RENT: Furnished apartment Phone 9520. Hillside Apartments.

FOR RENT: Four room nicely furnished apartment, private bath, garage. Phone 648-W.

FOR RENT: Unfurnished, newly decorated, one and two bedroom apartments, garages, phone 465.

FOR RENT: Nice clean rooms, \$5.00 per week. Eastland Hotel.

FOR RENT: Light Housekeeping room. Tel. 775, 111 North Daugherty.

FOR RENT: Four room nicely furnished apartment, private bath, garage. Phone 854-J.

FOR RENT: Furnished four room apartment, new stove, new refrigerator. 700 W. Patterson.

FOR RENT: Small furnished house with garage, close in. 211 E. Valley.

BUSINESS OPPORTUNITIES

OWN and operate the best one-man business in America. Have opening for a Watkins Dealer in Eastland. No capital necessary if you can qualify. Customers prefer nationally advertised spices, extracts, medicines vitamin and minerals, cosmetics, household aids. Attractive premium offers. Car or light truck needed. Write R. M. Barrington, Wholesale Distributor, P. O. Box 972, Abilene, Texas.

Help Wanted - Female
 WANTED: Waitress. Phone 9549.

CALL 601 FOR CLASSIFIED AD SERVICE

FOR SALE
 Battery raised FRYERS
 Lb. 48c
 Also do custom dressing. Fryers under 2 1/2 each, 10c. Large, 12 1/2c each. Hens, 15c each.

MISC. FOR SALE

FOR SALE: Seven case upright Coca-Cola Vending Machine, in perfect condition and priced for quick sale. MacMoy Clover Farm Store. You may see this upright box at the Coca-Cola Bottling Plant.

FOR SALE: 23 stands of Bees, one 4-tray honey extractor, extra equipment. Phone 734-W.

FOR SALE: For the best in Bibles and Bible helps, everyday and Christmas cards. See Lessie Gregg 407 N. Daugherty, 167-W.

FOR SALE: Detroit Table Top Range, late model. 1506 S. Bassett.

FOR SALE: Coronet in very good condition. See at Eastland Telegram office.

FOR SALE: 150 gallon butane tank. Perfect condition. Phone 601.

FOR SALE: Registered Toy Fox Terrier, male. Date of birth April 4, 1952. Call at Eastland Telegram office or Phone 601. If no answer then Phone 2315, Olden.

WANTED: A garage to be moved; or what have you? J. H. Pittman.

FOR SALE: Canning apples. Jonathan, Winesap, Ben Davis, \$2.90 a bushel. Double Red Delicious, 10c a pound. Green tomatoes, 6c a pound. Ripe tomatoes, 10c a pound. Mabel Hamilton, Old Highway, Olden.

FOR SALE: Brick home. Call Mrs. James Horton. Phone 461, Eastland.

FOR SALE: Dwellings and small farms in and near Carbon. Terms may be arranged. Carbon Ins. Agency, Telephone No. 55.

FOR SALE: A beautiful (excellent mechanical condition) Fordor 1951 Dodge with radio, heater, \$995.00 easily financed or will consider trade. Inquire Eastland Telegram.

Miscellaneous Wanted
 WANTED: Paper hanging, painting or carpenter work, general contracting. A. W. Cartledge 410 South Dixie.

POSITION WANTED: Baby sitting or house work. Mrs. Shirley Bryant, first apartment north of Post Office.

WANTED: Two or three bedroom furnished or unfurnished house. Phone 9549.

WANTED: Man and wife want farm work, responsible. Call 191, Eastland.

WANTED: Listeners To The New Hi Fidelity Phonographs, come in and hear the new sound in Music! The Pop Shop — Cisco, Texas

AUTOS FOR SALE

BUICK
 1953 Buick Eight. Beautiful two-tone grey finish. Equipped with Buick's finest.

\$1,185
 ★ ★

OLDSMOBILE
 1953 Oldsmobile 88 Holiday. Beautiful two tone green finish, fully equipped.

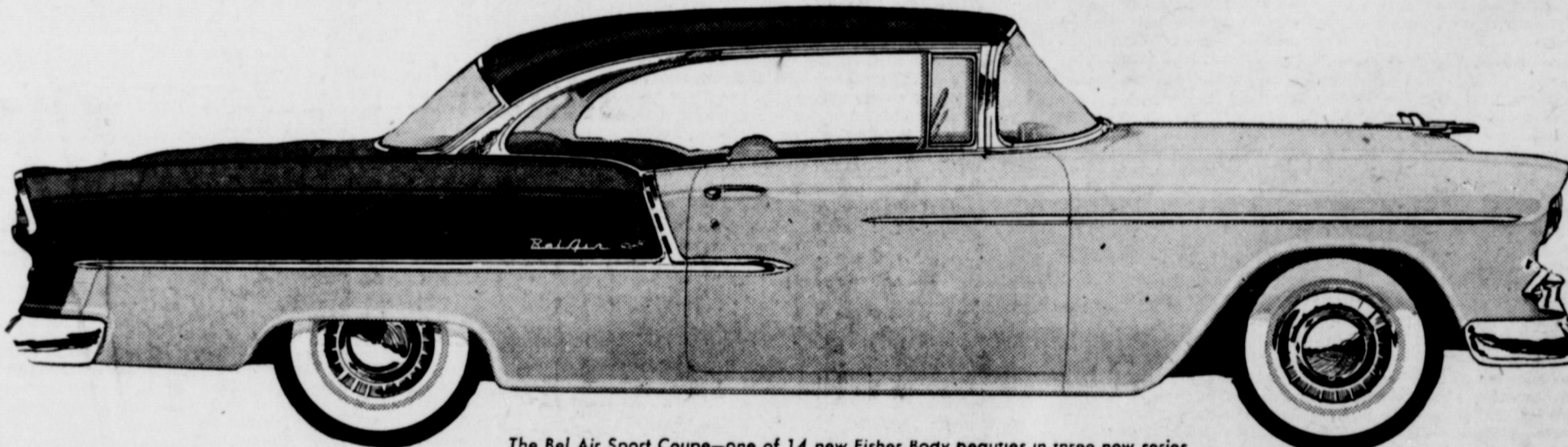
\$1,995
 See
DON PIERSON
 Olds - Cadillac

Overseas Veterans Welcome
 Post No. 4136
VETERANS OF FOREIGN WARS
 Meets 2nd and 4th Thursday 8:00 p. m.
 Earl and Boyd Tanner

Low...and behold!

The motoramic Chevrolet for '55

Chevrolet and General Motors took a whole new look at the low-cost car —and just look what happened! **NOW BEING SHOWN!**



The Bel Air Sport Coupe—one of 14 new Fisher Body beauties in three new series

The valve-in-head V8 as only the valve-in-head leader can build it!

8

Now Chevrolet, the leading builder of valve-in-head engines, introduces the "Turbo-Fire V8." It carries the V8 design to a new high in efficiency with its high horsepower (162), high-compression (8 to 1), high performance and surprisingly high gas mileage. Available with standard transmission, or with the extra-cost options of Overdrive or Powerglide.

6

You can choose from two new sixes, too! Chevrolet also offers the last word in six-cylinder performance and economy! There's a new "Blue-Flame 136" teamed with Powerglide and a new "Blue-Flame 123" with either standard transmission or Overdrive.

Can't you tell just by looking that Chevrolet and General Motors have come up with a completely new idea about the low-priced car? The idea is this: to build a car that offers the very newest thing in styling, the most modern features, the finest kind of performance and the highest quality of manufacture—all at a modest price. It's something that took a lot of doing and that only the world's leading car builders could do. Everything's new in this Motoramic Chevrolet from its lower top right down to its tubeless tires. Come in for the most fascinating visit you ever made to an automobile showroom!

The motoramic
Chevrolet

More than a new car—a new *concept* of low-cost motoring!

FULLEN MOTOR COMPANY

Sales—CHEVROLET—Service

305 East Main

EASTLAND

Phone 44

Cooperative Degree Program Is Announced By Howard Payne, A&M

BROWNWOOD (Sp.) — A new cooperative degree program between the Texas A&M College School of Agriculture and Howard Payne College's Daniel Baker College of Agriculture and Useful Arts at Brownwood has been announced by A&M's president, Dr. David H. Morgan, and Howard Payne's president, Dr. Thomas H. Taylor.

Under this program, students may earn a degree in liberal arts from Howard Payne College and a bachelor of science degree in agriculture from Texas A&M with only five years of study.

"Our two institutions have entered into a mutual understanding of a cooperative program whereby the student may secure a broad general and cultural education from a liberal arts college, and at the same time complete a technological program in the field of agriculture, earning degrees in both fields within the requirements of a five-year program," President Morgan of A&M explained.

"This is another illustration of the growing cooperation between institutions of higher education in Texas to use staffs and facilities of both to their maximum efficiency in their respective areas of specialization, without undue duplication in either and with the thought of Texas' needs constantly in mind," he added.

The agreement is similar to those existing between A&M's School of Engineering and several other schools, such as Texas Christian University. This is the first such program in the field of agriculture, however.

Dean C. N. Shepardson of

A&M's School of Agriculture said that although the program becomes effective immediately, it will be some time before students move to A&M from Brownwood under the plan.

It will probably take at least two more years of work at Brownwood for such students to complete requirements there, he explained. Students attend Howard Payne College three years and A&M two years to earn the two degrees.

Dr. Taylor, president of Howard Payne, expressed his appreciation to Dean Shepardson for his part in making the cooperative degree program possible.

"Dean Shepardson recently spent two days in Brownwood to work with us on developing this program," Dr. Taylor said.

Dean Shepardson explained that the need for such a program springs from the growing practice by industry of choosing executives from among its technically trained personnel.

"This choice clearly points up a need on the part of such technical workers for a broader general background in the humanities than has been provided previously.

"We are looking forward to similar cooperative efforts with other institutions in the future," the dean said.

Georgetown. She and her brother, Burr Jones, attended a family reunion of relatives at Bryson.

Robert L. Ervin, age 73, a one-time resident of this vicinity, died Sunday at the home of his sisters, Misses Abbie and Ruth Ervin in Goldthwaite and was buried at Macedonia Cemetery Monday evening.

Ladies of this community quilted at the Jack Pockrus home Thursday, serving a covered dish luncheon at the noon hour. Those attending were Meses. H. A. Pockrus, Truman Dempsey, Carson McNabb, Mary and D. Z. Herrington, G. V. McGowen, Robert Jackson, John Gray, Omer Sherrill, R. E. Miller and D. B. Raney.

Mrs. Will Caraway of Hereford is visiting her sister, Mrs. Vallie Jones and other relatives here.

James Wayne Stanford spent Saturday at the Dallas Fair.

Mrs. D. M. Stanford made a business trip to Abilene Friday, visiting her brother, Buster Bone, and family while there.

Rev. Phil Testerman and family of Brownwood were Sunday visitors at New Hope Baptist Church, Rev. Testerman bringing the morning and evening sermons. Attendance at Sunday School and Training Union was 49 and 47, respectively.

Seven ladies attended WMS meeting Monday evening. The lesson was on Stewardship, with Mrs. C. C. Veale in charge.

Note for do-it-yourselfers: Amateur paperhanger George Washington and his friend the Marquis de Lafayette personally papered the dining room of historic Mount Vernon in less than half a day.

NEWS FROM LACASA

Visitors to Mrs. Effie Newham Friday and Friday night were her cousins, Mrs. Delia Gordon of Pampa and Mr. and Mrs. Henry Gill of Amarillo.

Mrs. Buddy Martin and daughter of View, and Mr. and Mrs. Farrell Kent of Brownwood visited their aunt and uncle, Mr. and Mrs. Frank Eddleman over the weekend.

A visitor in the Jones home last week was Mrs. Clara Galloway of

DR. O. A. JONES
Chiropractor
7 a.m. till 12 noon
210 Pet. Bldg. Eastland

Tasty Tip for Quick Meals!



Tender, delicious
MACARONI-AND-CHEESE
home cooked in 7 minutes

with **KRAFT GRATED** cheese flavor for that through-and-through cheese flavor

Kraft Dinner is a timesaver and a menu-maker! Stock up today—it costs only pennies. So handy for school lunches, emergency meals. And good eatin' always!

First tooth... or first party dress

have the Portrait made now...



Your child's portrait keeps the memories first in your heart. For the priceless record of each precious age—have your child's portrait made now.

SHULTZ PHOTO STUDIO
202 1/2 W. Main Eastland

Come in! SEE SPECIAL JUBILEE SHOWING OF MODERN Electric RANGES

head your **SHOPPING LIST** with these **FOOD BUYS!**



4 Leaf Clover SPECIAL
CLOVER FARM
Pumpkin
2 No. 300 Cans **23¢**

4 Leaf Clover SPECIAL
CHOICE RECLEANED
Pinto Beans
2 Lb. Cello **21¢**

4 Leaf Clover SPECIAL
HONEY BOY
Salmon
No. 1 Tall **39¢**

4 Leaf Clover SPECIAL
GLENDALE
Peas
2 No. 303 Cans **29¢**

4 Leaf Clover SPECIAL
AUNT JEMIMA
Flour
5 Lb. Box **49¢**

ALL POPULAR BRANDS—Regulars

Cigarettes Carton **\$1.99**

CLOVER FARM
Milk 2 No. 1 Tall **25¢**

PARD
Dog Food 2 No. 1 Tall **25¢**

CLOVER FARM
Margarine Lb. **23¢**

SEASIDE
Butter Beans No. 303 Can **13¢**

WHITE SWAN BLACKEYED
Peas 2 No. 300 Cans **23¢**

WAPCO WHOLE
Green Beans No. 303 Can **23¢**

MISS KING'S TEXAS
Pecan CAKE Can **1.25**

PETER PAN KRUNCHY
Peanut Butter 12-Oz. Jar **35¢**

CALIFORNIA LARGE FIRM
Lettuce Head **10¢**

U. S. NO. 1 IDAHO RUSSETT
Potatoes 10 Lb. Mesh Bag **45¢**

CALIFORNIA HARD GREEN
Cabbage Lb. **5¢**

Fresh and Tempting MEATS

CHOICE BABY BEEF
Roast Lb. **39¢**

CHOICE BABY BEEF
7-or Chuck Roast Lb. **35¢**

CHOICE BABY BEEF
Loin Steak Lb. **45¢**

CHOICE BABY BEEF
Club Steak Lb. **49¢**

WILSON'S KORN KING — Sliced
Bacon Lb. **59¢**

FRESH GROUND
Hamburger Lb. **25¢**

TO ALL OUR FRIENDS AND CUSTOMERS...

We Invite You to
A SPECIAL PREVIEW
of the

1955
PONTIAC

ON DISPLAY TODAY, OCT. 28

Muirhead Motor Company

304 W. Main Phone 692

FIRST PUBLIC SHOWING, FRIDAY, OCT. 29

WE GIVE

Soup For Breakfast? Why Not! Try It One Of These Mornings

Although most families would prefer a little variety in the first meal of the day, most find that the pattern of menus is a little bit narrow. Some families are adding variety to their breakfast by serving soup.

Families who have not yet tried soup for breakfast sometimes feel that it is an unusual addition to the menu. Yet, the American Indian usually started off his day with a bowl of porridge. And on shipboard, midmorning broth is served to most of the passengers.

Nutritious soup is one of the best meals that can be served. If you have a teen-age youngster whose lunch is a chocolate bar and whose dinner is eaten on the run to a basketball game, soup for breakfast may help to solve a serious nutritional problem.

Soup usually works out well for children because they have the

most experimental tastes in food. They have not yet conditioned themselves to a set pattern of eating or a set formula.

Soup gives the family a variety of poultry, fish, vegetable, fruit and cereal. It is adaptable to any appetite.

Some of the most enthusiastic soup-for-breakfast exponents discover the menu by accident. One family was on a camping trip and was nearly out of supplies except for a few cans of soup and a few crackers. A businessman who often traveled by train, tried soup in a dining car. One homemaker prepared soup in the morning to help her son while he was working hard on a forthcoming law exam during his vacation at home.

Once, most people get started on a soup-for-breakfast menu, they usually become enthusiastic exponents of soup added to the menu.

Your New SOCIAL SECURITY



The 1954 amendments to the Social Security Act, signed into law by President Eisenhower recently, will have a direct effect on almost every American family, according to R. R. Tuley, Jr., manager of the Abilene district office of the Social Security Administration.

"Some of the changes take effect immediately," stated Tuley, "and other changes will not become effective until Jan. 1, 1955. This is the first of a series of informative articles prepared to acquaint the people of this area with just what the changes are and also what they are not."

All Social Security offices want this change to get as wide publicity as possible, trying to reach some 300,000 affected persons over the entire country. Widows and unmarried children under 18 of persons who died before Sept. 1, 1950, can now be paid benefits previously denied, if the deceased had at least 6 quarters of coverage to his credit at the time of death after 1939. A quarter of coverage means being paid at least \$50 in wages for employment covered by the Social Security Act in a calendar quarter after Dec. 31, 1936.

Persons covered by Social Security can receive credit of up to \$4200 per year, starting in 1955, towards future benefits instead of only \$3600 per year as had been the case since 1950, or \$3000 per year for years before 1951.

The coverage of Social Security will be expanded to cover more farm workers than before, more domestic employees than before, added self-employed groups such

Let's Eat Apples—National Apple Week, October 22-29

As farm operators, accountants, engineers, funeral directors, architects and, on voluntary basis, ministers and Christian Science practitioners.

Following articles in this series will give more details on the items mentioned above. Readers are urged to clip and save this series as a source of reference when the question of Social Security comes up later in family or other discussions. To get the most from one's own Social Security account, accurate information as to the things provided and not provided by the law is essential. There's just a little "mis" between information and misinformation, but that little difference might well serve to cost some family thousands of dollars.

YANKEE APPLE JOHN
(Apple Cobbler)
(Makes 6-8 servings)

Biscuit Recipe:
2 cups sifted flour
3 teaspoons baking powder
1 teaspoon salt
1-3 cup Crisco
3-4 cup milk

Sift flour, baking powder and salt in bowl. Cut in Crisco (with knives or a blender) until the mixture looks like coarse cornmeal. Add milk to Crisco mixture and mix just enough to hold dough together. Transfer dough to a

board or pastry cloth which has been dusted with flour. Roll to fit pan (8" square).

Filling:
6 - 8 tart apples, thinly sliced
3-4 cup sugar
1 teaspoon cinnamon
1-2 teaspoon nutmeg
1-2 teaspoon salt

Grease shallow baking dish (8" square x 2") and fill with sliced apples. Mix sugar, spices and salt and sprinkle over apples. Place biscuit dough on top of apple mixture, brush with milk, bake in hot oven (450 degrees F.) about 25

Will Your Car Start During Cold Weather?

During the first month of winter, more than a million motorists will probably push their foot on the starter of their car and get no response. Each of these people will probably be the owner of a car with a dead battery.

There are several things you can do to insure that your battery will work well this winter. The most important rule to remember is that the battery must be kept charged at all times. Your car's own charging system, kept properly adjusted, will handle this task automatically. Be sure to watch out for overcharging or undercharging as this will cause your battery to be damaged.

Occasional checking of your battery by a service station attendant or mechanic will save you money and also important, help to prevent your car from stalling during the cold days ahead.

FARMS - RANCHES
Pentecost & Johnson
REAL ESTATE
City Property

DIXIE Drive-In EASTLAND RANGER HIGHWAY

Box Office Opens 6:30
First Show 7:00
Second Show 9:00

Each Tuesday is Bargain Night - Adults 25c
Admission 50c - Children Under 12 Free

WEDNESDAY - THURSDAY, OCT. 27 - 28

The Thrilling "SAR-EVE" Post Adventure!

starring **JAN STERLING** **NEVILLE BRAND**

RETURN from the SEA

AN ALLIED ARTISTS PICTURE

PLUS: Color Cartoon and Sports Reel

FRIDAY - SATURDAY, OCT. 29-30

UNIVERSAL INTERNATIONAL presents

UNTAMED FRONTIER

color by Technicolor

starring **JOSEPH COTTEN** **SHELLEY WINTERS** **SCOTT BRADY**

and starring **SUZAN BALL**

PLUS: Color Cartoon and 2 Reel Sports Parade in Technicolor

PALACE THEATRE - IN CINCINNATI, TEXAS

Wednesday - Thursday

UNFORGETTABLE LOVE STORY!

Indiscretion

starring **Jennifer JONES** **Montgomery CLIFF**

Friday - Saturday

STARBUCK PRISON DRAMA!

DUFFY OF SAN QUENTIN

starring **Louis HAYWARD**

Plus

THE OUTLAW STALLION

color by Technicolor

starring **PHIL CAREY** - **DOROTHY PATRICK**

JOY DRIVE-IN CINCINNATI - EASTLAND HIGHWAY

Tues. - Wed. - Thurs.

IN CINCINNATI

Naughty New Orleans

Plus

His Name Was **Norman Conquest**

Friday - Saturday

HUMAN FURY UNLEASHED!

DEAD END!

starring **SYLVIA SIDNEY** **JOEL McCREA**

Plus

Caro Cooper the WESTERNER!

starring **WALTER BRENNAN** **FRED STONE** **BOBBI SAFFORD**

PONTIAC

(Continued from Page One)

lined appearance of the new Pontiacs.

Body interiors, luxuriously color-keyed to the new exterior paints, reach new heights of comfort, roominess and safety. The graceful instrument panel mounts aircraft-type instruments at 90 degrees to the driver's vision with control knobs recessed for added safety. Pontiac's exclusive safety-arc speedometer indicates speed with a continuous red curve.

The glove compartment, centrally located within easy reach of both driver and front seat passengers, has been designed with an additional function. When open, the compartment door acts as a tray with recesses for cups.

The 1955 Pontiacs will be available in two new series, the Star Chief Series, having a 124 inch wheelbase and the Chieftain Series with a wheelbase of 122 inches. Dimensionally, sedan and coupe models are 2 3-4 inches lower in overall height. A two-door station wagon has been added to the line of Pontiac body styles this year. Station wagons are as much as 6 inches lower. All models have lower hood lines exposing both front fenders to the driver's vision. Hip and shoulder room have been substantially increased by redesigning the car interior.

The new bodies with panoramic windshield, and increased glass at side and back have 26 per cent more "see through" area. Station Wagons have wrap-around rear windows.

In all, 12 body styles are offered this year by Pontiac.

The new Strato-Streak V-8 engine represents Pontiac's answer to the automotive industry's goal of developing an engine with durability and low-cost dependability and with the power and quick response that modern drivers demand.

The Strato-Streak released this year, after years of developmental work and over 3,000,000 miles of testing on dynamometers and under all types of road conditions, has a displacement of 287 cubic inches. Its displacement and high compression ratio of 8:1 give it high power output especially at traffic speeds where instant response is needed.

The engine develops 180 horsepower, reaching maximum torque at low engine speed.

Hydraulic valve lifters, a harmonic balancer, and a completely machined anti-knock combustion chamber with large quench areas add to the silent operation of the Strato-Streak.

Call 601 For Classified Ad Service

A HINT TO THE WISE...WINTERIZE

WITH **Dearborn NOW!**

Famous Cool Safety Cabinet Heater

ON LAY-AWAY

only **1.00** DOWN

easy weekly installments

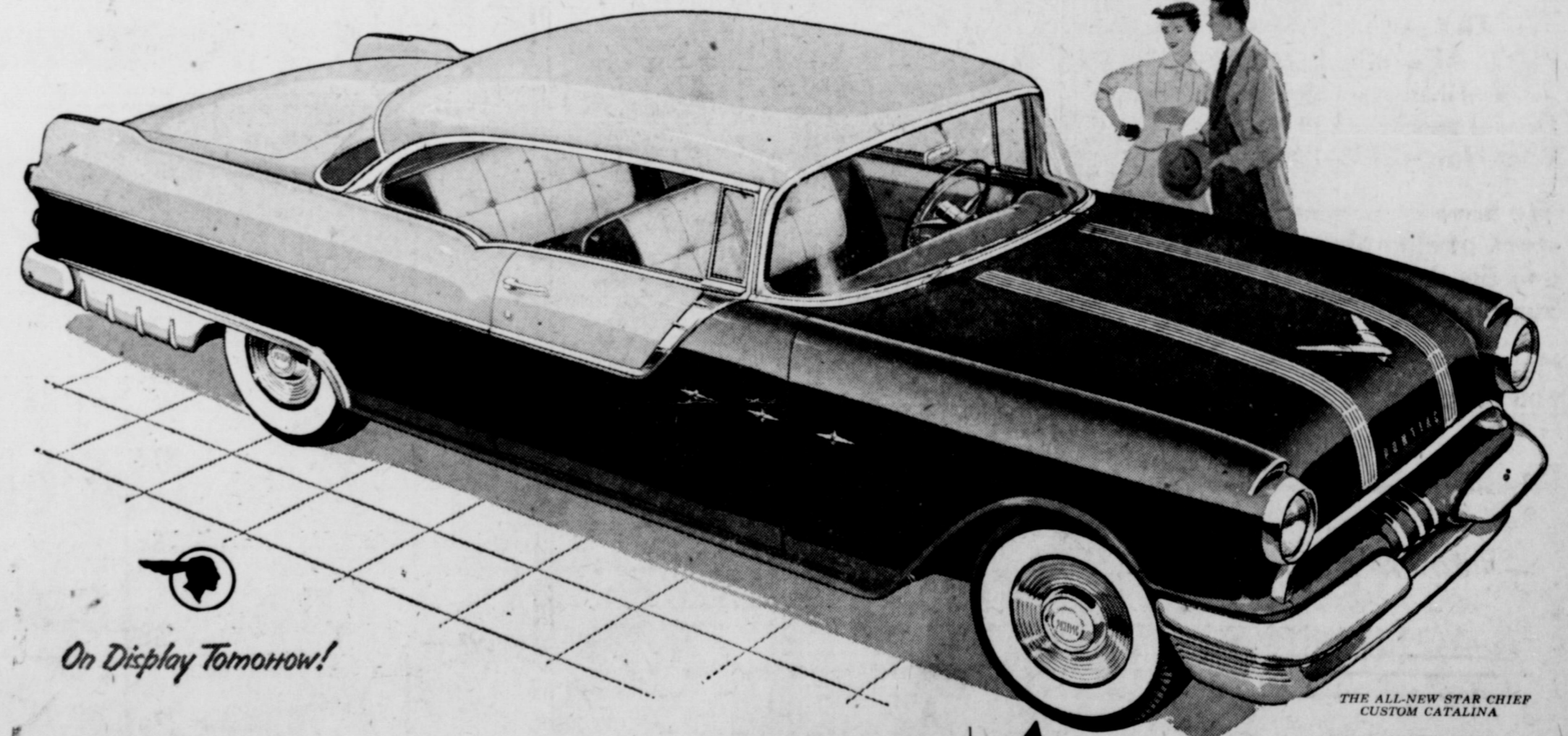
Come in... make your selections early

Western Auto Associate Store

East Side Square Herbert Ekrut, Owner

Announcing the All-New '55 Pontiac

with the 180-HP Strato-Streak V-8!



ALL-NEW STRATO-STREAK V-8

You'll get the lift of a lifetime from this all-new V-8. Every feature is entirely new from the multiple jet carburetor to the advanced antiknock combustion chambers. Here's performance that will fill the miles with thrills—proved for dependability by over 3,000,000 test miles!

ALL-NEW PANORAMIC BODY

Take another look at that panoramic windshield... that fender-level hood... the dream-car design of the wide front end. It's a masterpiece of modernity—this lower, roomier Body by Fisher—with luxurious new fabrics color-keyed to the beautiful Vogue Two-Tone body colors!

ALL-NEW SHOCK-PROOF CHASSIS

The '55 Pontiac chassis is a catalog of all that's new. An even heavier "X" frame. Wider-spaced parallel rear springs. Bigger brakes. Recirculating ball steering. Tubeless tires. Vertical king pins. Here's every finest feature adding up to a smoother ride, greater safety, extra driving ease!

It's here—the mighty, future-fashioned Pontiac for 1955. And never have you seen a car so surely marked for stardom! With everything new except its great name and world-famed value... with every part and feature presenting a bold advance, it is a new pace-setter for the industry. See this exciting new car this week end—new proof that dollar for dollar you can't beat a Pontiac!

A GENERAL MOTORS MASTERPIECE—ALL-NEW FROM THE GROUND UP

Muirhead Motor Co.

304 West Main Street EASTLAND, TEXAS Phone 692

Ninth of A Series

Only Seven Counties Effected By Proposed Hospital Amendment

(Editor's Note: This is another in a series of articles concerning the 11 proposed amendments to be voted on Tuesday in the general election. They were prepared by the Texas League of Women Voters.)

This amendment would empower the Legislature to pass a law authorizing the creation of county-wide hospital districts in counties of 190,000 or more and in



Handy, thrifty... and oh, so good!

Made by **KRAFT** from the one and only **MIRACLE WHIP** and special pickle relishes



Miracle Sandwich Spread

Galveston County, on a local basis. The amendment would apply to Bexar, Dallas, El Paso, Harris, Jefferson, Tarrant and Galveston Counties. The purpose of the amendment is to help these urban counties build, maintain and finance city-county hospitals if their citizens so desire. Creation of the districts would be subject to a vote of the qualified property owners of the county at an election held for that purpose. If voted the hospital district could levy a tax not to exceed 75c on the 100-dollar valuation for the support of any county-owned hospital or any hospital owned jointly by the city and county. Such hospital would be required to assume full responsibility for providing medical and hospital care to needy inhabitants of those counties.

FOR Consolidation of county and city hospital facilities would reduce administrative costs and insure more adequate medical treatment and services. Passage of this amendment would permit the creation of hospital districts only after a vote of the people in the counties concerned.

Submission of this amendment is merely a request that all the people of Texas permit a few counties to tax themselves to pay for the medical care of the needy, living in their midst.

Some counties already have combined city and county hospitals and this amendment would relieve the confusion existing as to distribution of funds.

AGAINST This amendment would open

Three Eastland Women Host DAR Meeting Monday

Mrs. Frank Castleberry, Mrs. A. F. Taylor and Mrs. Ed Castleberry were hostesses Monday afternoon to members of the Daughters of the American Revolution in the Castleberry home, 209 South Oak Street.

Guests were served a salad dessert on arrival. Miss Sue Stofer played a piano solo, entitled, "The Country Gardens." Mrs. W. C. McDaniel, year book chairman, presented the year books and talked on the program for the year, and introduced Yancy McCrea Jr. of Cisco.

Mr. McCrea showed colored slides made while serving 17 months in Japan and Korea. Mrs. Yancy McCrea, regent presided. Announcement of the next meeting November 22, in Cisco with Mmes. Fleet Sheppard and Homer Slicker as hostesses.

Others present were Mmes. Grace Reed, W. D. R. Owen, Alex Spears, M. H. Hagaman, and T. C. Williams.

Americans use 57 million matches every hour of which more than 30 million are received free in the form of book matches handed out with tobacco purchases.

the doors to another form of taxation.

Too many of the less industrious and responsible will flock to the cities where the advantages and facilities are either cheaper or free. This amendment would increase the rush and would place insurmountable burdens on those counties.

Such hospital districts would be controlled by politically appointed boards.

COUNTY-

(Continued From Page One)

the morning session featuring TFB President J. Walter Hammond's annual address.

Two nationally-known speakers will address the convention that afternoon. They are Senator James Eastland of Mississippi, and Howard Hill, president of the Iowa Farm Bureau Federation.

Banquet speaker Tuesday night will be the well-known Dr. W. H. (Bill) Alexander, pastor of the First Christian Church in Oklahoma City.

Voting on resolutions will take place on the final day, Wednesday. Balloting will begin after the credentials committee reports and delegates are seated.

Adopted resolutions dealing with state matters will become the official policy of the Texas Farm Bureau for 1955. Approved resolutions on national issues will be recommendations to the American Farm Bureau Federation's annual meeting which convenes Dec. 12-16 in New York City.

Desdemona-

(Continued From Page One)

Luster with 13 points and Linda Speagle with 3.

The second game was won by the Scranton boys by the score of 57 to 21. For Scranton, Blackwell led with 24 points, Foster had 19, Hiebs 2, Elam 5, Fleming 3, Reese 2, and Sneed 2. For Desdemona, Whitlock led with 8 points, Bridges had 2, Johnson 3, Yancey 4, Hogg 2 and Stacey 2.

Monday night the Stephenville High School teams will play at Desdemona. The general public is urged to attend these games.

PERSONALS

Big Kitchen Idea In A Tiny Space

Mr. and Mrs. Aubrey Van Hoy have just returned from Camp Chaffey, Ft. Smith, Ark., where they visited Lt. and Mrs. Guy Delaney and baby daughter Alice Rebecca. Mrs. Delaney is the daughter of the Van Hoy's and attended Eastland schools.

Mr. and Mrs. Jos. M. Perkins have arrived home after a busy summer in the east. Mrs. Perkins has been attending the many business session and conferences which her various chairmanships involve with the National Federation of Womens Clubs. She has been in Washington, New York, Boston and Philadelphia with her headquarters at their summer home in Gleasondale, Mass.

Mr. and Mrs. Joe Tow have returned from Conroe where they visited with their son and daughter-in-law, Mr. and Mrs. Doyle Tow, who are the parents of a son born October 22. He has been named Rodney Dwayne.

Mr. and Mrs. J. T. Cooper and Mr. and Mrs. E. M. Little visited here Tuesday night with Mr. and Mrs. T. L. Cooper, enroute to their home in Abilene from a visit in Fort Worth and Dallas. Mr. Little is Mrs. Cooper's brother.

PATRONIZE YOUR HOME TOWN MERCHANTS!

Although the homemaker may have a tiny kitchen, there is no reason for her to be cramped for space when she is doing the family cooking.

The November issue of Better Homes & Gardens Magazine describes how a tiny kitchen, only 9 x 13 feet, can be changed into an efficient working wonder. The secret is lots of storage space on all four sides and surprise hide-aways that will compactly take care of all your kitchen equipment.

For example, a Lazy Susan built into one corner of the room affords a convenient storage space for bulky pans and bowls. And many built-in ovens have a convenient "garage" for your roll-around cart. Out-of-the-way bins hanging on the wall for your flour and sugar will save much of the kitchen space.

Ronald Lynn O'Neal Pays Visit To Grandparents

Mr. and Mrs. Glen O'Neal and their three weeks old son, Ronald Lynn of Abilene visited here Monday with Mrs. O'Neal's parents, Mr. and Mrs. Otto Crabb, 1001 S. Folts.

This was the first time out for the young O'Neal baby and his first visit with his grandparents.

Charles Collins, Jimmy Don Huckabay and Joe Muirhead, students of the University of Texas spent the week end here with their parents, Mr. and Mrs. J. F. Collins, Mr. and Mrs. L. E. Huckabay and Mr. and Mrs. Jack Muirhead.

FOR SALE MINNOWS
J. O. WHISENAT
OLDEN, TEXAS



HOLIDAY NOTICE
ELECTION DAY
November 2, 1954
Please plan your banking needs in advance in order not to inconvenience you on the above date.
YOUR EASTLAND NATIONAL BANK
Member F. D. I. C.

Is Your Home Ready For Winter ?

WINTRY WEATHER MAY ARRIVE ANY TIME... Even Tonight! Will Your Home Be Ready?

We have a complete stock of Plumbing and Electrical Supplies.

Here is a few items you probably need NOW...

- Replacement Radiants
- Range Connections
- Copper Heater Connections
- Gas Tubing
- Gas Cocks
- Gas Hose Connections
- Copper Tubing, All Sizes
- Brass Fittings of all kinds
- Pipe, Galvanized or Black
- Nipples of all kinds

- **GAS HEATERS**
- **STOVE PIPE**



PREPARE FOR COLD DAYS AHEAD

ACT NOW AND SAVE!

- **STOVE ELBOWS**
- **BOX HEATERS**
For Wood Burning

Pullman Supply Co.

PHONE 270

EASTLAND, TEXAS

East Main, Highway 80



Week-End SUPER-VALUES
CHECK THE EXTRA SAVINGS

RUFFY	Dog Food	Can	5c	WELCH'S GRAPE —24-oz. Bot.	Juice	39c
PUFFIN	Biscuits	5 Cans	55c	CAL-TOP SLICED —No. 2 1/2 Can	Peaches	25c
KIMBELL'S BEST	Flour	25 Lb. Sack	\$1.79	KIMBELL'S —No. 303 Can	Blackberries	25c
KIMBELL'S	Oleo	Lb.	21c	DIAMOND BRAND —No. 2 Can	Spinach	15c
DELSEY TOILET	Tissue	Roll	10c	DIAMOND BRAND —No. 300 Can	Pork & Beans ..	2 for 19c
CARNATION	Milk	2 Tall Cans	25c	TRELLIS —No. 303 Can	Peas	2 for 29c
				DIAMOND BRAND —No. 300 Can	Corn	2 for 25c

DEL HAVEN —14-Oz. Bot.	Catsup	19c	SALT	Jowls	Lb.	19c
KIMBELL'S BLACKEYE —No. 300-Can	Peas	15c	MIDWEST SLICED	Bacon	Lb.	55c
KIMBELL'S NO. 2 Can	Chili	45c	COUNTRY STYLE	Sausage 3 Lbs.		\$1.00
DEL MONTE —15-oz. Box	Raisins	21c	CENTER CUT	Pork Chops	Lb.	59c
AJAX	Cleanser	2 cans 25c	BABY BEEF	Loin Steak	Lb.	45c
ALL FLAVORS	Jello	3 pkgs. 25c	BABY BEEF	Chuck Roast	Lb.	35c
GERBER'S STRAINED	Baby Food	3 cans 27c	FRESH GROUND	Hamburger	Lb.	25c
SUPREME SALAD —Lb. Box	Wafers	27c				

These Prices Effective Friday and Saturday Only

EARNEST
Frozen Food Center

206 South Lamar

Phone 170

Governor Proclaims "Beef Week In Texas"



Beef Week in Texas, November 8 to 14, was made official this week when Governor Allan Shivers handed an official proclamation to Roy Parks, Midland, President of the Texas Beef Council. The proclamation urged all Texans "to eat beef at least once a day." Shown with the Governor and Mr. Parks is J. D. Sartwell, Houston, center, TBC first vice-president.

Court Of Civil Appeals Eleventh District

Reversed and Remanded
3108 Castro Cooperative Gin Company, et al vs. W. B. Harrison, et al. (Opinion by Judge Grissom.) Haskell.

Reversed and Rendered
3111 U. S. Trust & Guaranty Company vs. West Texas State Bank of Snyder, Texas. (Opinion by Judge Grissom.) Scurry.

Motions Submitted
3153 J. S. Garlington, et al vs. A. L. Wasson, et al. Appellants' motion for extension of time to file briefs. Howard.

3153 J. S. Garlington, et al vs. A. L. Wasson, et al. Appellees' motion to strike Statement of Facts. Howard.

3153 J. S. Garlington, et al vs. A. L. Wasson, et al. Appellees' motion to dismiss appeal because of insufficiency of appeal bond. Howard.

3160 The State of Texas, et al vs. Mack Cave, et al. Appellants' motion for extension of time to file record. Nolan.

3161 Westwood Development Company, et al vs. City of Abilene, Texas. Appellants' motion to advance submission. Case is set for submission November 12, 1954, at 9:00 a. m. Taylor.

Motions Overruled
3153 J. S. Garlington, et al vs. A. L. Wasson, et al. Appellees' motion to dismiss appeal because of insufficiency of bond. Motion is overruled, but Appellants are permitted to amend their bond by filing in this Court a new bond more accurately describing the judgment appealed from within 30 days hereafter, if Appellants so desire. Howard.

Cases Submitted
3148 Cora Guilliams vs. Alvin Koonsman, et al. Scurry
3119 Margaret G. Gibson, et vir vs. Fred Turner, Jr., et al. Upton.
3120 Mrs. C. H. King, et al vs. Astor Alston, et al. Jones.
3121 Ritchie Perkins, et al vs. R. F. Kemp, et ux. Coleman.
3122 The Citizens State Bank of Roby vs. Bruce McCain, County Judge, et al. Fisher.

Cases Set for Submission November 5, 1954
3128 Germania Mutual Aid Association vs. Henry A. Schaefer. Eastland.

3129 Western Cottonoil Company vs. Fred J. Brecheon, et ux. Taylor.

3130 Western Cottonoil Company vs. Bessie Alexander. Taylor.
3131 Simon Terrazas vs. R. T. Carrol. Scurry.

3132 W. O. Henderson, et al vs. Otto Couch, et al. Howard.
Cases Set for Submission November 19, 1954
3161 Westwood Development Company, et al vs. City of Abilene, Texas. Taylor.

Cases Set for Submission November 19, 54
3133 Munday Independent School District vs. County Board of Trustees of Knox County, Texas, et al. Knox.
3134 York Supply Co., et al vs. Dunigan Tool & Supply Company, Stephens.
3135 Gulf, Colorado & Santa Fe Railroad Co. vs. Earl R. Deen. Brown.

3136 Barney McKinney vs. Calvert Fire Insurance Co. Dawson.
3141 J. M. Dubose, et ux vs. Abilene & Southern Railway Company. Jones.

Drug Injections Discovered For Curbing Grubs

Veterinary scientists, searching for better ways to control cattle grubs, have come up with another new angle of attack, the American Foundation for Animal Health announced today.

Research veterinarians of the U.S. Department of Agriculture have reported encouraging results with daily intake of phenothiazine during the months when heel flies deposit eggs on the legs of cattle. The drugs are absorbed into the animal's blood stream so they can attack grubs before extensive damage is done.

Treated cattle averaged some 80 per cent fewer grubs than untreated animals, and some were completely free of infestation.

Grubs are the larvae of the heel fly. They burrow into the animal from eggs deposited on the hide by the adult fly. After living within cattle several months, they puncture their way out again, usually through the back, and in so doing cost the livestock industry millions of dollars every year in damaged hides and prime meat cuts.

Some success in cattle grub control also has been reported with drug injections which accomplish much the same results as the feeding program, according to the Foundation, but more research is necessary.

The present common method of control by spraying or dusting cattle is considered unsatisfactory. It does not prevent all damage to the hide, inasmuch as treatment cannot be started until the grubs are present under the skin of the back. Better control depends upon the cooperation of all cattle owners in the area.

Some success in cattle grub control also has been reported with drug injections which accomplish much the same results as the feeding program, according to the Foundation, but more research is necessary.

The present common method of control by spraying or dusting cattle is considered unsatisfactory. It does not prevent all damage to the hide, inasmuch as treatment cannot be started until the grubs are present under the skin of the back. Better control depends upon the cooperation of all cattle owners in the area.

Come in! SEE SPECIAL JUBILEE SHOWING OF MODERN Electric RANGES

MOBIL 210
• Stays 34% Stronger
• Lasts 14% Longer
At the Sign of the FLYING RED HORSE
W. Q. VERNER Phone 64 Eastland

• NOW •
White Cross Hospital Insurance Plan
Your Eastland County Representative Is
A. L. ARCHER—BOX 331—CISCO, TEXAS

CITY GARAGE
J. J. Finley, Proprietor
Engine, Starter and Generator Work
103 White St. Phone 995

MODERN DRY CLEANERS
 209 So. Seaman Phone 132

EASTLAND Chamber of Commerce

MUIRHEAD MOTOR CO.
 304 W. Main Phone 692

DOC DAVIS DRUG
 FILLED ACCURATELY
South Side of Square Phone 696

WILSON FEED AND SEED
YUR PURINA DEALER
204 N. Seaman Phone 175

McGRAW MOTOR COMPANY
 416 So. Seaman Phone 80

FREYSCHLAG INSURANCE AGENCY
North Side of Square Phone 173

POOL'S DRY CLEANERS
Free Pick-Up and Delivery
207 So. Lamar St. Phone 47

Poe Floral
"When It's Mums Say It With Poes"
200 North Green Phone 96

STOKER TRUCK AND TRACTOR
International Harvester Trucks & Tractors
Sales and Service
Phone 657

Rising Star vs. Eastland Mavericks

NIGHT GAME 7:30 p.m.

FRIDAY, OCTOBER 28 AT RISING STAR

EASTLAND MAVERICK ROSTER		1954 SCHEDULE OF THE EASTLAND MAVERICKS
ENDS	CENTERS	
Leo Smith	Terry Warren	SEPT. 10—Eastland 12, Cisco 51
Clyde Evatt	Neil Pogue	SEPT. 17—De Leon 14, Eastland 0
Richard Corbell		SEPT. 24—Granbury 39, Eastland 13
Henry Sims	BACKS	OCT. 1—Merkel 13, Eastland 0
	Harvey Lewis	OCT. 8—Ranger 21, Eastland 0
	Jimmy Martin	OCT. 15—Open
	Billy Upchurch	OCT. 22—Clyde 7, Eastland 18*
	Duard Turner	OCT. 29—Rising Star at Rising Star*
	Billy Cates	NOV. 5—Wylie at Eastland*
	Dale Slatton	NOV. 12—Cross Plains at Eastland*
	Larry Graham	NOV. 19—Dublin at Dublin*
	Jack Akers	*Denotes District Games
TACKLES		
Carl Freeze		
Larry Tankersley		
Charles Cook		
GUARDS		
Lupe Herrera		
Rual Herrera		
Jimmy Phillips		
Roy Don Harris		

UNDER NEW MANAGEMENT CONNELLEE HOTEL COFFEE SHOP Mrs. Fred Harrell - Warren Coffman	WILSON'S VARIETY STORE West Side of Square We Give S&H Green Stamps	CARL JOHNSON DRY GOODS North Side of Square
---	--	---

KING MOTOR COMPANY
100 East Main Phone 42

CISCO LAUNDRY SERVICE
IN EASTLAND
Otis Coleman, Mgr. Phone 60

MURRELL'S GROCERY & MARKET
"Pit Cooked Barbecue"
700 West Main Phone 9538

MOBIL-OIL AND MOBIL-GAS
 W. Q. VERNER, Consignee

LUMBER
Estimates No Obligation
Higginbotham - Bartlett Co.
301 W. Main Phone 112

HOLLYWOOD CORSET FACTORIES
Eastland, Texas

ARTHUR PRODUCE & FEED
303 N. Seaman Phone 43

HOWELL & ROGERS GROCERY & MARKET
111 White St. Phone 178

Eastland Steam Laundry and Washateria
Pickup and Delivery
210 N. Lamar Phone 584

R. M. SNEED CONTRACTOR
Oil Field Construction - Labor Gangs - Bulldozers - Ditching Machines - Welding Machines - Back Hoe Side Booms - Pipe Line Construction
Hwy. 80 East Phone 684

EASTLAND TELEGRAM

Come in! SEE SPECIAL JUBILEE SHOWING OF MODERN Electric RANGES



LeVine ORIGINAL

fills a tweed-need with Tweed textured-rayon

27.50

and who doesn't need an all-season tweedy wafer weight all-purpose dress... feels smooth as silk?

coat dress with side-wise buttoning for that very new look... of a tweedy fabric that won't itch and resists wrinkles.

all this casual elegance touched off at throat with a crisp, taffetarized bowtie. In navy seasoned with red, brown with copper, charcoal with red.

sizes 12 1/2 to 22 1/2, 14 to 44

WE GIVE S & H GREEN STAMPS

Altman's Style Shop

"SMART WOMENS WEAR" Eastland Cisco - Abilene



IT'S THE LAW in Texas

RIGHTS OF ACCUSED EXPLAINED

Most criminals have a good idea of their rights in court, but the average citizen, confronted with a traffic ticket or court summons, has little knowledge of the protection provided for him.

Probably the most fundamental and important right is summarized in the well-known adage, "Every man is innocent until proved guilty."



They won't be little very long

But you can remember your children's precious growing-up years forever with professionally made portraits.

Phone 46 CANARIS STUDIO

doubt, or you will be acquitted. The mere fact that you have been given a ticket or accused of a crime is not even evidence of guilt.

Another important protection is the right to have a witness testimony you may need subpoenaed to appear in court and testify.

It is the duty of every citizen to testify if he has information important to a law suit and is called upon to do so. The courts can and do enforce attendance in court and the giving of testimony.

Our courts provide many safeguards for the innocent against false accusations of crime. But many of these rights would be valueless without the assistance of a lawyer, who has been schooled in legal principles and rules of statute or decision involved, to invoke these rights.

Every person charged with an infraction of the law has the right to consult counsel before making any plea. This applies to cases in every court — including justice of the peace courts, municipal courts, traffic courts and district courts.

The courts are open to you any time one of your legal rights has been denied or any of your property has been unlawfully taken.

(This column, based on Texas Law, is written to inform — not to advise. No person should ever apply or interpret any law without the aid of an attorney who knows the facts, because the facts may change the application of the law.)

LEOMINSTER, Mass. — Unless your name is Johnson, don't try to go places with the Leominster fire department. Fred Johnson, 30, has just named fire chief, succeeding his uncle, Earnest Johnson, who was chief for 22 years.

LOW! LOW! PRICES!

PIGGY WIGGLY

PIGGY WIGGLY STORE AT YOUR WEDNESDAY EVERY STAMPS S. & H. DOUBLE PLUS PRICES! LOW! LOW! PRICES!

BABY BEEF SEVEN ROAST lb. 39c
MATCHLESS SLICED BACON lb. 55c
FRESH GROUND BEEF lb. 29c
ARMOUR STAR SMOKED PICNICS lb. 49c
BABY BEEF SHORT RIBS lb. 25c

DARICRAFT EVAPORATED Milk 2 Tall Cans 25c

GLADIOLA FLOUR

5 Lb. Bag 39c Limit 1

CAULIFLOWER FRESH LARGE HEAD 35c
CANTALOUPE LB. 12c
TOMATOES CARTON 13c
ORANGES 5 POUND BAG 39c

MY-T-FINE LEMON PUDDING REG. PKG. 10c
RED LABEL KARO SYRUP PINT BOTTLE 25c
Penick's Waffle Syrup 12-OUNCE BOTTLE ... 22c
PARKAY MARGARINE 1-LB. CARTON 32c

Thin, Crisp, Crackers PREMIUM SALTINES 1-LB. BOX 27c
Nabisco, Old Fashioned Ginger Snaps 1-LB. BOX 36c

7¢ OFF REGULAR PRICE Snowdrift THE WESSON OIL SHORTENING YOU PAY ONLY 69¢ 3 lb. can

Treat 'em tonight to **POPCORN!** JOLLY TIME - 10 oz. Can 21c
WESSON OIL 69c Quart pops it fluffier!

Bruce's Cleaning Wax PINT CAN 25c
BABO CLEANSER 2 REG. CANS 25c
CLOROX LIQUID BLEACH 1/2 GALLON 33c
PIE CRUST MIX Aunt Ellen's PI-DO 9-OZ. PKG. 17c
SKINNER'S LONG SPAGHETTI 2 7-OZ. PKGS. 25c
MODART Creme SHAMPOO 3-LB. BOX 81c
Uncle Ben's CONVERTED RICE 14-OZ. BOX 25c

Ballard OR Pillsbury BISCUITS

2 Cans For 19c Limit 2

Baby Food

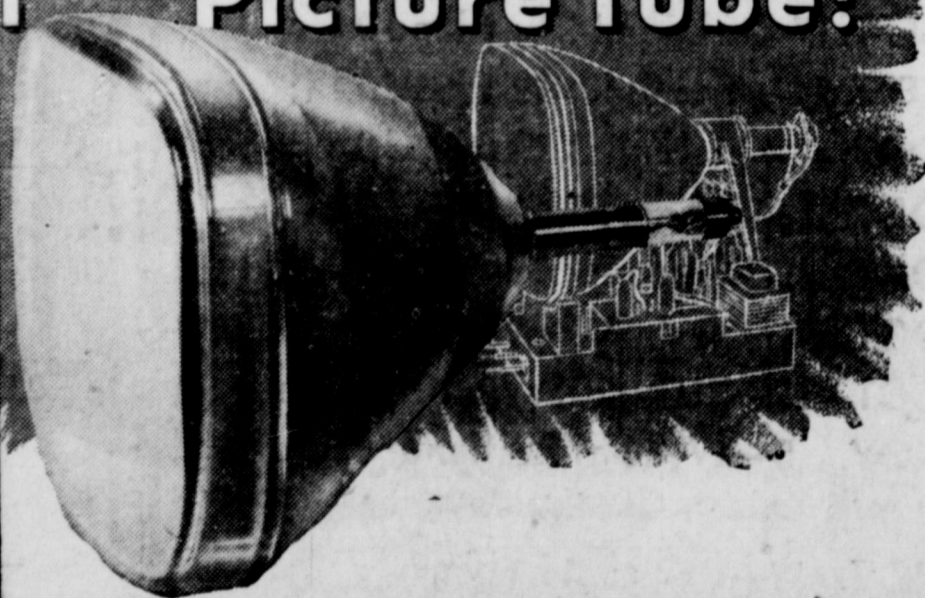
GERBER'S STRAINED 3 4 1/2-oz. Cans 28c
FUNSTEN Pecan Halves 3 1/2 Oz. PKG. ... 35c

Walker's AUSTEX CHILI No Beans Family Economy Size Can 1 1/2 Lbs. 49c

Special GET ACQUAINTED Offer 2 lb. package PIONEER BISCUIT MIX 2 lb. package PIONEER CORN BREAD MIX 57c

New DuMont Quality Television with the wonderful

SUPER-LUMENIZED DuMont Picture Tube!



FIRST WITH BUILT-IN BRILLIANCE CONTROL

Gives you exactly the light and contrast you need for clearest viewing — automatically! Produced by DuMont, maker of finest picture tubes since the beginning of television!

FIRST WITH MATCHED CHASSIS PERFORMANCE

The Quality Controlled DuMont Chassis and the DuMont Super-Lumenized Tube are "born together" developed as "one" to give matching performance that doubles your viewing pleasure!

There is only one DUMONT

COMPLETE TELEVISION SERVICE

* ANTENNAS * TOWERS * ROTORS

TRUMAN BROWN

214 So. Neblett

Phone 785