

EASTLAND TELEGRAM

EASTLAND, TEXAS 76448: Today's CENTER for tomorrow's FUTURE!



Volume 104 Number 41

Sunday, May 21, 1972

Tid Bits

By HVO

EASTLAND FOLK take pride in many things. One of the great assets is our growing list of fine, civic-minded industries. We have some real dandies here, any one of which towns all over the United States would be proud to claim. And there're new ones being added regularly because of the favorable situation here. Good environment and ready-to-work people who appreciate and love living in a town like Eastland.

One of Eastland's oldest industries is Texas Lightweight Aggregate, and everybody knows that Charlie Martin and his people out at the haydite plant are good neighbors. And it is to Charlie and to his company's credit that they were concerned about "ecology" long before that word became a national touchstone. For many years, Eastland's haydite plant has been actively involved in a control program that today marks it as near perfect in its efforts to keep the environment the way we like it.

A division of Texas Industries, Inc., the local plant under Charlie's guidance has spent nearly \$100,000 doing the things necessary to keep it clean. And when you look at the plant today, you do see "Mr. Clean". The nature of the plant could cause an unbearable situation if it weren't managed the way it is, but you can check it now, and compare the condition to no longer ago than a year, and know right off, that these people care. Perhaps in no other industry is there such a drive to "keep things clean". And Charlie, we just thought you and TXI might like to know that we appreciate you and your efforts.

OUR TELEPHONE survey on toll-free dialing is presently running four-to-one in favor of the service. If instituted it would cost a little more (50¢ per month residential), but would give us unlimited dialing access to Cisco, Ranger, Olden and Carbon. One woman called to ask if she could get a list of signatures of people in favor of the project. We told her, go ahead, it's an informal survey to find out if our people really do want the service. We'd welcome your opinion.



Sam Houston Exhibit Opens Here Monday At Eastland National

The Eastland County Historical Survey Committee is announcing the presentation of a vast exhibit on Texas History, concerning the life and times of General Sam Houston.

This exhibit is an enlargement of the one shown at the Texas State Building on the grounds of HemisFair 1968 in San Antonio. This building now known as the INSTITUTE OF TEXAN CULTURES, administered by the University of Texas at Austin, has become the center for preserving, recording, displaying and cataloging our Texas heritage. It is here that students and officials come from all over the world to further their knowledge of their countrymen who pioneered in Texas.

There is no charge -- come and stay as long as you like. Hours are 9 to 2:30 p.m., Monday through Friday.

A series of exhibits is being prepared at the INSTITUTE OF TEXAN CULTURES and will be available at intervals for display in Texas cities and towns. These exhibits will document the ethnic groups which settled here and contributed so much to the culture, growth, education and security of this vast, variegated expanse known as Texas: Spaniards, Czechs, Germans, Swiss, Poles, English, Negro, French, Chinese, Italians, Swedes and others.

These up coming exhibits will deal specifically with ethnic settlements in Texas; their cultures and the individuals who contributed to the welfare of Texas -- educators, doctors, artists, statesmen, lawyers, builders, preachers, law enforcement officers, etc.

Mike Collins, chairman of Eastland County Historical Survey Committee, and vice president of Eastland National Bank, stated that he is interested in having groups from colleges, schools, churches, Girl and Boy Scouts, clubs, etc. tour the bank lobby exhibit. The bank will furnish a guide when necessary. Reservations for the tour are not required but notice of group attendance is welcomed.



Steve Wilson, senior at Austin College in Sherman, Texas, was selected in Pi Gamma Mu National Honor Society. The members must have a "B" average and must be majoring in a Social Science.

He plans to attend Summer School in Puebla, Mexico (June 7 - August 18).

He will receive his BA degree in Physical Education and History (Double Major) in December, 1972. He plans to go ahead and get his Masters before accepting a position in his field.

Tommie Fields Services Held

Tommie Eugene Fields, 39, of Eastland died in Hendrick Memorial Hospital in Abilene last Monday. Funeral was held in Godfrey Funeral Home of Abilene.

Born February 15, 1933 in Sweetwater, Mr. Fields moved to Eastland County 1 1/2 years ago from Dallas and farmed in this area. He was a member of the Methodist Church.

Survivors are his mother, Mrs. Margaret T. Fields of Eastland; one brother, Raymond Fields Jr. of Mesquite and an uncle, Grady Davis of Baird.

Mrs. Trixie Lester of Dallas is visiting this week with Mr. and Mrs. Guy Horton of Eastland.

DON BAIRD over at B&B Sales & Service has a very interesting calling card. On the back this test: try it; you'll like it.

DIRECTIONS FOR THIS MIRACLE

Look steadily and concentrate on the 4 dots on the nose for about 20 seconds, then look at one fixed spot on a wall for about 10 seconds, and picture will appear. White or smooth wall preferred.

Follow above directions and look into sky away from the sun, and picture will appear. For best results look into sky when dark.



DATE SET for the Annual Jaycee Peanut Bowl is Sept. 16 between RJC and CJC in Maverick Stadium.

DID YOU know that Clara Barton organized the first American Red Cross on this date in 1881? Me either.

A CAMPERS FEE will be charged at six of seventeen lakes under jurisdiction of the Fort Worth District, U.S. Army Corps of Engineers. Colonel Floyd H. Henk, Fort Worth District Engineer, has announced. Signs will be located at each entrance to designated area. Free areas are available at each lake.

Park areas at which the \$1 per night camping fee will be in effect from May 26 through September 4 are:

- Canyon Campground, Canyon Lake, Flat Rock and Lakeside Park Campgrounds, Hords Creek

Hospitality, Food are Topics For Civic League Meet

Mrs. Bulgerin Is New President

By Gay Nell O'Brien

Hospitality and tradition were the major tones of a luncheon meeting Wednesday of the Civic League and Garden Club at Lone Cedar Country Club, where eighty area women gathered.

President Beverly Nicholson presided over the meeting after members and guests were served buffet style by the country club and had sampled local cooks' cooking at a special table set up for a few who brought special dishes with recipes. A "kitchen type" theme was carried out in decorations.

Famous hostess and author, Mary Faulk Kooch, was introduced as speaker for the occasion by Mrs. Ed Ethridge. Mrs. Ethridge told of warm and humorous episodes during a time when she worked at Green Pastures, the Kooch's original famous restaurant and catering service. The original restaurant was first in Mrs. Kooch's family home. It has since burned and been rebuilt.

Mrs. Kooch has written two cookbooks: "The Texas Cookbook", which contains recipes from famous hostesses throughout Texas is indexed by cities and towns and "Cuisine of the Americas". She is finishing a third book: "Life at Green Pastures".

She challenged women with today's modern conveniences to try some of hospitality and tradition their grandmothers provided to both family and strangers alike.

Tradition in the home was stressed as being important in the security as well as delight it provides families, especially children. A lot of people today are getting away from these things with the continual "going out" trend, she continued, which tends to give

children a confused feeling. She told of interesting accounts in catering for chief of protocol dinners at the Lyndon Johnson Ranch, etc. The club voted to continue receptions for both the peanut and pecan queen contestants but agreed to discontinue sponsoring the pecan queen contest as done previously for financial reasons.

Mrs. Lillian Horton installed new officers to close the last meeting of this club year. Mrs. Loretta Bulgerin was installed as president; Mrs. Eula Arrington, 1st vice president; Mrs. Mary Ann McCloud, 2nd vice president; Mrs. Sue Rossander, secretary; Mrs. Sue Alexander, corresponding secretary; Mrs. Juanita Fullen, treasurer; Mrs. Edna Conner, publicity chairman and historian; Mrs. Helen Lund and Mrs. Jean Reid, club house board members. Mrs. Nancy Frost presented each new officer with a white daisy.

WMU Bible Study Prayer Group To Meet The WMU Bible Study and prayer group of Bethel Baptist Church will meet Thursday, May 25, at 6:30 p.m. in the Educational Building of the church. All ladies are invited and visitors are welcome.

At the midway point in Eastland Little League play, the Bulldogs are leading the Majors with a handsome five win, one loss record, and the Medics and Comets are tied for

THE STANDINGS			
MAJORS	W	L	Pct.
Bulldogs	5	1	833
Medics	3	3	500
Lions	2	4	333
Comets	2	4	333
MINORS			
Medics	W	L	Pct.
Medics	4	2	667
Comets	4	2	667
Bulldogs	3	3	500
Lions	1	5	167

FREYSCHLAG Insurance Presents The Weather Continued clear and warm. High near 75 degrees.

FULLEN MOTOR Laugh-A-Day The four year old daughter of a used car salesman, attending her first church wedding, watched as the bride walked to the altar on the arm of an elderly gray haired man. She stared in amazement after the ceremony ended and the bride walked back with her young groom. "Mother," the girl whispered rather loudly, "is that how weddings are? You trade off an old man for a nice, new model?"

EASTLAND NATIONAL BANK EASTLAND, TEXAS



MAJOR LIONS: Top Row, left to right - Marty Daniels, Thane Arther, Author Gaeta, Donnie Cates, John Matthews, Gary Daniel and Bobby Elliott. Bottom Row left to right - Chris Justice, Kerry Watson, Rodney May, Bart Boles, Kenny Watson, Mark Warford. Bob Daniels and Kenneth Watson are in charge of this team.

At the midway point in Eastland Little League play, the Bulldogs are leading the Majors with a handsome five win, one loss record, and the Medics and Comets are tied for

At the midway point in Eastland Little League play, the Bulldogs are leading the Majors with a handsome five win, one loss record, and the Medics and Comets are tied for

THE STANDINGS			
MAJORS	W	L	Pct.
Bulldogs	5	1	833
Medics	3	3	500
Lions	2	4	333
Comets	2	4	333
MINORS			
Medics	W	L	Pct.
Medics	4	2	667
Comets	4	2	667
Bulldogs	3	3	500
Lions	1	5	167

FREYSCHLAG Insurance Presents The Weather Continued clear and warm. High near 75 degrees.

FULLEN MOTOR Laugh-A-Day The four year old daughter of a used car salesman, attending her first church wedding, watched as the bride walked to the altar on the arm of an elderly gray haired man. She stared in amazement after the ceremony ended and the bride walked back with her young groom. "Mother," the girl whispered rather loudly, "is that how weddings are? You trade off an old man for a nice, new model?"

EASTLAND NATIONAL BANK EASTLAND, TEXAS

men on base and wrap up the game with his homer.

In the final game, the Comets beat the Lions, 4 - 2

In the final game, the Comets beat the Lions, 4 - 2

In the final game, the Comets beat the Lions, 4 - 2

In the final game, the Comets beat the Lions, 4 - 2

men on base and wrap up the game with his homer.

In the final game, the Comets beat the Lions, 4 - 2

In the final game, the Comets beat the Lions, 4 - 2

In the final game, the Comets beat the Lions, 4 - 2

In the final game, the Comets beat the Lions, 4 - 2

men on base and wrap up the game with his homer.

In the final game, the Comets beat the Lions, 4 - 2

In the final game, the Comets beat the Lions, 4 - 2

In the final game, the Comets beat the Lions, 4 - 2

In the final game, the Comets beat the Lions, 4 - 2

men on base and wrap up the game with his homer.

In the final game, the Comets beat the Lions, 4 - 2

In the final game, the Comets beat the Lions, 4 - 2

In the final game, the Comets beat the Lions, 4 - 2

In the final game, the Comets beat the Lions, 4 - 2



MINOR LIONS: Top Row left to right - Robert Hanson, Joe Flynn, Billy Davis, James Davis, Eddie Gibson, Darryn Willoughby, Kevin Plowman. Middle Row left to right - Jimmy Watson, Greg Garrett, Robert Sharp, Mark Bakker, Larry Martin. Bottom Row left to right - James Arnold, Rodney Simmons, David Lynch, Vance O'Brien, Grandall Garrett, and Steve Alford. Ed Watson - Coach and Marion Davis is manager.

HIGHER COURT

The following proceedings were had in the Court of Civil Appeals, Eleventh Supreme Judicial District of Texas:

AFFIRMED
R.W. King et ux v. King
William Smith. (Opinion by Judge McCloud) - - Stephens.

Restuarant, Inc. v. City of Dallas. Joint motion to allow late filing of original exhibits. - - Dallas

Darrell Ray Steubing et al v. Robert Munson. Agreed motion for extension of time to file record. - - Erath.

MOTIONS GRANTED
Vincent's Continental

Members Join Farmers Union

The Texas Farmers Union met recently and eight new members were announced. This brings the total membership in the Rising Star area close to 200.

Restaurant, Inc. v. City of Dallas. Joint motion to allow late filing of original exhibits. - - Dallas.

Darrell Ray Steubing et al v. Robert Munson. Agreed motion for extension of time to file record. - - Erath.

Some of the purposes, provisions and accomplishments of the Texas Farmers Union are as follows: The Texas Farmers Union is an organization working to:

- protect farm and electric cooperatives through adequate funding and fair taxation.
- represent you at state and

national levels to protect the wise agricultural use of your insecticides and herbicides.

- pass state and national programs and legislation to increase net farm income to achieve the goal of full parity.
- support state water conservation programs that retain for agriculture a fair share of the water resources

School Lunch Menu

Monday May 22
Steak fingers
Oven fried potatoes
Green beans
Tossed salad
Hot rolls
Cake squares
Tuesday May 23
Sausage pizza
Blackeye peas
Harvard beets
Lettuce & tomato salad.
Applesauce
Wednesday May 24
Hot dogs with chili
Pinto beans
Buttered spinach
Cabbage slaw
Corn bread
Chocolate chip cookies
Thursday May 25
Ham salad sandwiches
Green peas
potato salad
Jello with fruit
Friday May 26
Chicken salad sandwiches
Pimento cheese sandwiches
Vegetables
Fudgesicles
Happy Summer Vacation

League Speaker



Mary Faulk Kooek
Gracious Hostess
Gourmet Cook

Austin
Author, Columnist,
Food Editor, Speaker

Mrs. Kooek created "Green Pastures", one of Central Texas' most famous gourmet restaurants in her family's historic homestead in Austin and has catered many of the formal dinners and informal parties at the LBJ Ranch. She

has written two best selling cookbooks, The Texas Cookbook and Cuisine of the Americas. Mrs. Kooek is the food editor for the Texas Star supplement to the Dallas Morning News and writes a monthly column in the "Texas Parade Magazine."

BUY WISELY . . . PAY PROMPTLY . . .

PROTECT YOUR CREDIT

If you are not enjoying the advantages of Credit buying let us help you open a charge account. Your home town merchants welcome a new charge customer. Many of Life's luxuries and good things are enjoyed by those who have good use their credit ratings.

★ MEMBERSHIP ★

Altman's	Hollywood Vasserette
B&B Sales & Service	Humble
Benders Insurance	King Hood Motor Company
Brays	Kinnard Insurance
Central Drug	Perkins Implement
City Garage	Melvin Henexson, D.C.
Coats Furniture	Montgomery Ward
Eastland Auto Parts	Robertsons TV
Eastland Hospital	Scott Pain & Body Works
Eastland National Bank	Smiths Plumbing
Eastland Service Parts	Southern Television
Eastland Telegram	Southwestern Bell Telephone
Freyschlag Insurance	Squires Farm Store
Fullen Motor Company	Stevens Printing Co.
Goodyear	Super Save Market
H&R Lumber	Texas Electric Service Co.
	Turner, Seaberry & Walford.

Eastland Merchants Credit Association.

Mrs. James Glenn, Sec.-Treas.



"Because Someone Lived"

RAWLINS MONUMENTS

Since 1884 THE NAME to look for in distinctive memorials

Roy Taylor 500 East 8th St. Cisco

Please Call Collect
CALL 442-1127

Dayton
TIRE
Open For Business
Saturday, May 13
Dayton
TIRE

	BLACK		WHITE		Federal Tax
	*Sugg. Retail Price	Your Cost	*Sugg. Retail Price	Your Cost	
DAYTON FLYER TUBELESS 4 PLY NYLON					
650x13	25.35	15.57	28.90	17.28	1.75
735x14	27.95	17.28	31.90	19.05	2.00
775x14-775x15	28.55	18.20	32.50	20.04	2.13
825x14-815x15	32.35	18.89	36.95	20.77	2.32
855x14-845x15	35.60	20.21	40.60	21.76	2.51
885x14-900x15			45.10	22.86	2.90
THOROBRED PREMIUM** 78 SERIES 4 PLY POLYESTER - 4 PLY NYLON					
A78-13	31.80	17.82	39.95	21.24	1.86
C78-13	33.25	18.89	41.75	22.55	1.95
C78-14	36.70	19.71	45.85	23.49	2.08
E78-14	36.95	20.42	46.40	24.28	2.24
F78-14-F78-15	40.85	22.62	51.45	25.95	2.43
G78-14-G78-15	45.00	23.28	56.50	26.60	2.63
H78-14-H78-15	49.45	25.14	61.95	28.60	2.81
J78-15	54.70		68.70	29.73	3.01
L78-15-900-15	56.60		71.15	30.29	3.16
DAYTON BLUE RIBBON 78 SERIES 2 - 2 POLYESTER & FIBERGLASS CORDS					
C78-13			52.65	24.71	1.90
E78-14			52.70	27.40	2.34
F78-14-F78-15			58.40	28.51	2.58
G78-14-G78-15			64.15	29.64	2.78
H78-14-H78-15			70.35	32.48	3.01
J78-14-J78-15			78.00	33.16	3.12
L78-15-900-15			80.80	35.12	3.16
DAYTONA SPORT 60 & 70 SERIES RAISED WHITE LETTER SIDEWALL					
F60-14-F60-15			68.70	30.20	2.92
G60-14-G60-15			75.55	31.67	3.03
E70-14			53.35	25.91	2.56
F70-14			57.25	27.53	2.60
G70-14-G70-15			62.95	29.84	2.88

Cisco Tire Service
Auto Repair Shop

509 E. 8th

442-2072



We Invite You
To Share Our Pride in Our New
Banking Home By Attending an Open House
Sunday, May 21, from 2 to 5 p.m.

1 STATE BANK

st

Rising Star, Texas

FDIC

Gordon pot

by DeMarquis Gordon

Livestock men and pet owners need to be on the alert for screwworms. This flesh eating insect is threatening Eastland County after an absence of about ten years.

So far, we have not had any cases reported in Eastland County, but 93 other counties have. The latest counties reporting screwworms are

Mitchell, Scurry, and Throckmorton Counties. The total number of screwworms reported in Texas this year is more than in any year since the eradication program began in 1962.

Inspect, collect and treat are the by-words for the screwworm program. And now they are more important than

ever. We must do all we can to help the sterile flies to do the eradication job. You are needed to get out and collect worm samples from wounded animals.

We may be most susceptible because we haven't had screwworms of quite awhile and we're not used to looking for them. Program officials must know where every screwworm case is located in order to treat it with sterile flies. Take the time to inspect every animal regularly, collect any worms you find for a sample and then treat all the animals' wounds. There are mailing cartons available in the County Agents Office. A sample

of about ten worms can be sent to the screwworm lab in Mission without cost.

The pecan nut casebearer has been very unpredictable. We found casebearer eggs in one orchard on May 19th. However, we were unable to find eggs or insect damage during the past week. We predicted that pecan trees should be sprayed between May 17th and 20th. The insects must have read the article because they stopped all their activities.

Most growers are examining their pecans daily and plan to spray when the first damage appears. Those of you who

sprayed last week should prepare to spray again in 10 to 14 days after the first application.

B.G. Hancock, Extension Horticulturist, says the casebearers started about two weeks earlier than usual, but cooler temperatures cause a delay in egg laying and egg hatching.

We have seen some of the prettiest vegetable gardens this year that we can remember. Looks like there is going to be an abundance of home grown vegetables and fruit this year. Peaches, plum, apple, and pear trees have heavy crops of fruit. We have been enjoying our

Spring Gold peaches for over a week now. They began ripening on May 12th.

Spring has come and with it came man's pests - insects, weeds, rodents, and plant diseases. Farmers, ranchers, and homeowners are once again calling on pesticides to eliminate these problems.

Since all pesticides are poisonous, extreme caution in their use is essential. Observing some simple rules can minimize the hazards involved.

Always read the label completely, even the small print, before beginning and follow the directions for mixing and using the pesticides. If the

information on the label includes specific recommendations for safety equipment such as a respirator, by all means use it.

If pesticides are being used for extended periods of time, such as several days, a shower and a change of clothes at the end of each work day are important. Clothing should be laundered after each day's use.

Always change and bathe if pesticides are spilled on the skin or clothing. Studies have shown that you must wash the affected area immediately in order to minimize the chance of poisoning.



"When somebody behind you wants to pass, pull over to the right and let him by that's driving friendly!"
-Charley Pride

J R B

SUPER MARKETS

3 CONVENIENT LOCATIONS TO SERVE YOU

CISCO - EASTLAND - RANGER

WE RESERVE THE RIGHT TO LIMIT QUANTITIES



UNBEATABLE PRICES UNBEATABLE STAMPS

PRICES GOOD ALL WEEK

DOUBLE S&H GREEN STAMPS WEDNESDAY

& SATURDAY With purchase of \$2.00 or more (excluding cigarettes)

PRICES

Good Thru

May 25

Hunts Peaches
Sliced or halves
No. 300 cans
5/\$1.00



Hunts Tomato Paste
6 oz. cans
6/\$1.00

Hunts Pears
Halves No. 300 can
4/\$1.00

J.R.B. MEATS ARE U.S. GOVERNMENT INSPECTED. IF FOR ANY REASON YOU ARE NOT SATISFIED WE WILL CHEERFULLY REFUND YOUR MONEY.

Swift Premium
Sliced Bacon lb. **66¢**

Hunts Catsup
32 oz. bottle
49¢

Breck Basic Texturizing Shampoo 6 oz. \$1.49

Breck Liquid Shampoo Dry, Normal, Or Oily
3 1/2 oz. 69¢

Breck Liquid Shampoo Dry, Normal, or Oily
7 oz. \$1.25

Breck Creme Rinse
With Body or for Blondes
7 oz. \$1.09

Fresh Hair Instant Shampoo
7 oz. Aro. \$1.65

Lean & Tender
Pork Steak lb. **59¢**

Hunts Stewed Tomatoes No. 300 can **29¢**
Hunts Fruit Cocktail No. 2 1/2 can **45¢**

Del Monte Pudding Cups
Banana, Butterscotch,
Choc. Choc, Fudge, Vanilla
4 pack **69¢**

Del Monte Cream Style Corn
Gold or White
Whole Kernel Golden
Buff can **2/39¢**

U.S.D.A. Inspected Farm Fresh Whole
Fryers lb. **29¢** Cut up pan ready lb. **37¢**

Seasoned Ready to BBQ
Split Broilers lb. **39¢**

All dark meat Leg quarters lb. **39¢**
All white meat Breast quarters lb. **45¢**

Keebler Pecan Sandies Cookies
14 oz. bag **59¢**

Skinners Large Elbo Macaroni
12 oz. bag **29¢**

Marshmallows Kraft Jet Puffed
10 oz. bag **24¢** 16 oz. bag **33¢**

Del Monte Pineapple
Sliced, Crushed, or Tidbits
In natural juice or syrup
No. 1 Flat can **21¢**

Del Monte Green Beans
Cut or French Style
Buff. can **2/41¢**

Kraft's Twisteroos Candy
12 oz. box **51¢**

Kraft's Toffee Candy
10 oz. box **49¢**

Jumbo-A.F. All Meat- By the piece
BOLOGNA lb. **59¢**

Swift American SLICED CHEESE 12 oz. roll **73¢**
Each slice wrapped

Oscar Mayer All Meat Weiners.... lb. **99¢**

Oscar Mayer Little Smokies 5 oz. pkg. **59¢**

Oscar Mayer Sliced Bacon lb. **99¢**

A.F. All Meat
Franks 12 oz. **49¢**

Goch Blue Ribbon Luncheon Meats Bologna, Pickle, or Liver Loaf 6 oz. pkg. **39¢**

Arrow Charcoal
Lighter Fluid 32 oz. can **29¢**

Wishbone 1000 Island Salad Dressing 16 oz. bottle **55¢**

Shurline Tomatoes 303 cans **5/\$1.00**

Arrow Charcoal 10 lb. bag **59¢**

Reynolds Aluminum Foil **4/\$1.00**
12" x 25' rolls

Ponds Lemon Facial Cleanser 5 1/4 oz. jar **\$1.49**

Del Monte Juice Pineapple Pineapple-Grapefruit Tomato 6 Oz. cans **5/\$1.00**

Groom & Clean Gel 1.5 oz. Tube **67¢**
Groom & Clean Gel 3.5 oz. tube **59¢**
Groom & Clean Gel 4.5 oz. tube **52¢**

Janitor in a Drum Cleaner 32 oz. **79¢**

Ultra Brite TOOTHPASTE Regular or Cool Mint Medium size **59¢**

VALUABLE COUPON King Size

Tide Detergent
with 30¢ coupon
Limit 1 **99¢**

SAVE MORE!

FRESH PRODUCE

Yellow Squash lb. **25¢**

Fresh Cabbage lb. **9¢**

Yellow Onions lb. **12¢**

Red Potatoes 10 lb. **49¢**

Bananas 2 lb. **25¢**

CLIP THIS COUPON

Folgers Coffee
Limit 1
All Grinds **99¢**
2 lb. can
With \$7.50 purchase & 20¢ coupon

SAVE MORE!

4-H NEWS

On Wednesday, June 7, will be the first of a series of meetings on Bicycle Safety, care and maintenance. The meeting will be at the Elementary School Parking Lot at 3:00 p.m.

This first meeting will be on safety and the new law now enforced. If you would like to attend this meeting then just come. It is open to all youth and to adults interested in learning more about bicycle safety. Bicycle decals and bicycle completion certificates will be presented to those completing the project.

4-H members - remember to make plans for the County Wide 4-H Party to be held

FOR RENT:
this
MINI-BILLBOARD
for
ONLY \$3.50 a month
Call your local paper!

June 3 at the city park in Eastland. The Council has planned to have competitive sports and games for recreation. A weiner roast will be held following recreation. More information concerning the county picnic will be given later.

The Rising Star 4-H Dog Show held on Saturday, May 13, was a success. Adult Leader, Mrs. Johnnie Scott, was responsible for the planning of this event.

Many clothing leaders are beginning project meetings now. Mrs. Phyllis Kincaid met with the Eastland girls last Wednesday. The 4-H members studied about lines in dress and pattern selection.

4-H Girls - plan to complete a Clothing Project and enter the county 4-H Dress Revue to be held June 23 at Cisco Junior College.

COURT NEWS

Homer Shahan, et al vs State Farm Mutual Automobile Ins. Co. - Suit for Damages
Millie Reed vs. W.G. Reed - Divorce

Annie Bernice Brooks vs. George Randolph Brooks - Divorce

Jo Ann Gray vs. Larry S. Gray - Divorce and Child Custody.

Russell Botts vs. Brenda Sue Botts - Divorce

Vickie Jo Carroll vs. James B. Carroll - Divorce

Mahita Joy Joyce vs. John J. Joyce - Divorce

Billie J. Jernigan vs. Hartford Accident and Indemnity Co. - Workman's Comp.

Don Neville vs. Wholack Machine and Tool Co. Inc. - Suit on Debt

Bituminous Casualty Corp. vs. Darrel Price - to set aside award

NEW CAR REGISTRATIONS
Thomas N. Roberts, Gorman, Ply.

Eastland Co. Prec. 1 - Eastland - Chev.

Eastland Ranch Equip. Inc. - Eastland - Chev.

Marvin N. Hill - Cisco - Ford

Texas Elec. Service Co. - Eastland - Chev.

Ike Watts - Cisco; Ford

A.E. Ethridge Jr. - Eastland - Ford

A.J. Lindsey - Breckenridge - Dodge

C.C. Brown - Eastland - Ford

Hershell Self - Ft. Worth - Ply.

King Motor Co. Special - Eastland - Ford

Jim Ray Cox - Rising Star - Ford

James L. Pittman - Eastland - Pont.

Mrs. Olga Fay Parker - Cisco - Ford

Andrew J. Elliott - Eastland - Chev.

B.W. Robertson - Eastland - Olds.

Woltman's - Dallas - Cad.

MARRIAGE LICENSES
Billie Lowell Stephens and Ho Sun Cha

Bernard Dacre Yancey, Jr. and Linda Marie Chisolm

A.D. Anderson to George S. Galbraith - oil, gas lease

E.L. Amis et ux to Effie Harris - Warranty deed

Sallie Mae Burdick to Ardine B. Wilson - power of attorney

Chester H. Breneman to First Fed. S&L Ass'n Ranger - deed of trust

Capital Investment Co. to K.B. Homes - warranty deed

Dewey Cox, Jr. et al to The Public - public hearing

Eastland Auto Parts to Kellers Fix it Shop to Olan Z. Keller aba - abstract of judgement

W.G. England et ux to Wayne Bailey to Eastland Nat'l Bank - Mechanic materials lien and Asgn.

Evelyn M. Eldridge to B.E. Hanson - warranty deed.

Federal Land Bank, Houston to R.M. Earp, et ux - release deed of trust

First Nat'l Bank of Ft. Worth to Geo. S. Galbraith - oil, gas lease

James M. Fisher, et ux to First State Bank, Ranger - deed of trust

First State Bank Rising Star to Rising Star Building Corp. - Warranty deed

First State Bank Rising Star to Ruth Green - partial release deed of trust

George S. Galbraith to Leroy G. Denman, Jr. trustee - partial release oil, gas lease

Joe Gallegos to First National Bank - deed of trust

Laura Green et vir to State of Texas - deed

Susan R. Hunt to Glen R. Ferguson, Jr. et ux - warranty deed

Edith Hamilton, et vir to Geo. S. Galbraith - oil, gas lease

H.H. Harrelson, et ux to George S. Galbraith - oil, gas lease

Robert E. Hamilton, et ux to Geo. S. Galbraith - oil, gas lease

Price Hooks Ex. of est J.M. Flournoy Dec'd to Geo. S. Galbraith - oil, gas lease

Effie Harris to First State Bank, Rising Star - deed of trust

Vergie Johnson, dec'd to The Public - public hearing

K.B. Homes to CCapital Investment Co. - deed of trust

J.L. King, et ux to Geo. S. Galbraith - oil, gas lease

Blanche O. Keener to Chester H. Breneman, et ux - warranty deed

Susan Duke Langille armentd McMullen, dec'd to The Public - Public Hearing

G.B. Lanier, et al to Soan O. Butler, et vir - warranty deed

Hazel Clyde Manning, dec'd to The Public - certified copy of death certificate

Edgar McLendon, et ux to James A. Rather, et ux - warranty deed.

Vinia Norvall, et al to Geo. S. Galbraith - oil, gas lease

Venia Norvall, et al to Geo. S. Galbraith - oil, gas lease

Martha P. Olson to Geo S. LGalbraith - oil gas lease

Olney Savings Assn to Weldon R. Leonard, et ux - release deed of trust

Fred J. Perkins, et ux to State of Texas - Essmt - Right of way

Cora Patterson to Alice Jumper - quick claim deed

Emma Fern Palmor et al to Geo. S. Galbraith - oil, gas lease

Robert L. Phillips to Louise

BOAT SALE

Over 35 New Rigs to choose from. All are tri-hull, open front, fully equipped with inboard, out-board motors.

All are going for 5% over our cost. Come to Hubbard Lake and try any of these boats out and check my prices. Also several used rigs. 2 late model Deck Boats, 2 - 16 ft. Evinrude Boats. Evinrude & Mercury motors

Star Craft Tri-Sonic, Glasspar Stern Craft Invader and Del-Magic Boats. 2 factory trained mechanics open 7 days a week. Ask for R. V. Carey at Carey's Marina Hubbard Lake.

Ph. 817, 559 - 2720

Gregory - warranty deed
James Rather to Edgar McLendon, et ux - deed of trust
Melvin G. Sandler, et ux to Wayne Webb to 1st Nat'l Bank, Cisco - materials & mechanic lien & asgn.
Arlton E. Smith et al to Standley W. Powers, - Warranty Deed
Don Shepard, et ux to R.M. Sneed, Contractor, Inc. - to 1st Nat'l Bank Cisco - materials & mechanic lien & asgn.

Tri mark Development, Inc. to Eastland Nat'l Bank - deed of trust
A.A. Tate to E.R. Butler - Warranty Deed

Peter Tierney, dec'd to The Public - Public Hearing
United States to Travis & Wynogene - notice Fed tax lien

Veterans Land Board to Roy F. Dennis - contract of sell & purchase

Beecher Whaley, dec'd to The Public - Public Hearing
Beecher Whaley, dec'd to The Public - Certified copy probate

J.E. Walker, Jr. to G.W. Poyner - release venders lien
Mary Wright, et al to Veterans Land Board - warranty deed.

Southwestern Bell Tel. - Ft. Worth - G.M.C.
Durel Z. Reid - Eastland - Chev.

Danny Dutton - Brownwood - Chev.

Morton - Norwich Prod. Inc. - Amarillo - Chev.

W.E. Hallenbeck - Eastland - Chev.

Elbern Alan Goode - Midland - Ply.

Harrison Bro. - Eastland - Ford

John E. Townsend - Ranger - Ford

Pamela Jo Pierce - Olden - Ford

Florence C. Alperin to Susan Diane Zamara - Warranty Deed

Aarco Oil & Gas Co. to Neil D Day dba Leon Oil Co. - Asgn. Oil - Gas - Lease

Carl M. Alnoch, dec'd to The Public - Letter of administration

Carl M. Alnoch, dec'd to The Public - Certified copy probation

Carl M. Alnoch, dec'd to The Public - Certified copy probate

Argosy Petroleum Co. to Ft. Worth Nat'l Bank - Deed of trust

Robert E. Burns to Richardson Heights Bank & Trust - Deed of trust

F.D. Bruton, et ux to Lewis Wayne Bailey, et us - Warranty deed

Burgess Industries, Inc. to First Nat'l Bank of Dallas - Deed of trust

Arther Blair et ux to Phillip E. Reeves - Warranty deed.

Hospital News

Patients in Ranger General Hospital Saturday morning were:

Belle Hindman
Holly Brooks
Ola Norman
Effie High
Jack Gilbert
Clara Pitcock
Roy Farley
Larry Walker
Mae Rudder
Modelle Cawley
Athena White
Herb Morrison
Eleanor Horton
Joseph Vaughn
Travis Reese
Bill Rogers
Mrs. C.R. Bearden
Mrs. Willie Hughes
Barbara Ramsey
Louise Wright
Mary L. Ellis
Baby Boy Ellis
Eunice McCrary
Edna Peppers
Gene Pierce

Patients in Eastland Memorial Hospital Saturday morning were:

Michael Trout, Commerce
Luther Carter, Ranger
Grady Rogers
Becky Miller
Mary Harden
Nellie Peacock, DeLand, Fla.
Leila Brannon
Alman Smith, Cisco
Sarah Mueller
Lois Meazell
Ida Henderson, Cisco
Lillie Dunlap
Charles Day, Gorman
Henry Hall, Carbon
Ollie McGuire, Olden
Grace Brown, Cross Plains
Miles Awalt
D.B. Warren, Gorman
Velma Lawrence
Bessie Blue, Carbon
Ruby Petty, Cisco
Blanche Files, Gorman
Gertie McDaniels, Carbon
Inez Luker
Lela Armstrong
Bobbie Barnett, Gorman
Rose Day
Robert McCowen, Cross Plains

James Park, Gorman
Eddie James, Ranger
M.H. Ross, Dublin
Virgie Jarrett, Gorman
Dorothy Awalt
Avie Allgood
Ruby McLearen, DeLeon
Glenda Grissom, Cross Plains

Lee Roy Higginbottom, Cross Plains
Alma Matthews, Cisco
Baby Girl Grissom, Cross Plains

Bertha Alley, Gordon
Lorena Fields
Lee Williamson, Olden
Janna Hubbard, Rising Star
Addie Overstreet, Gorman
Bessie Bethany, Moran
Alma Elder, Cisco

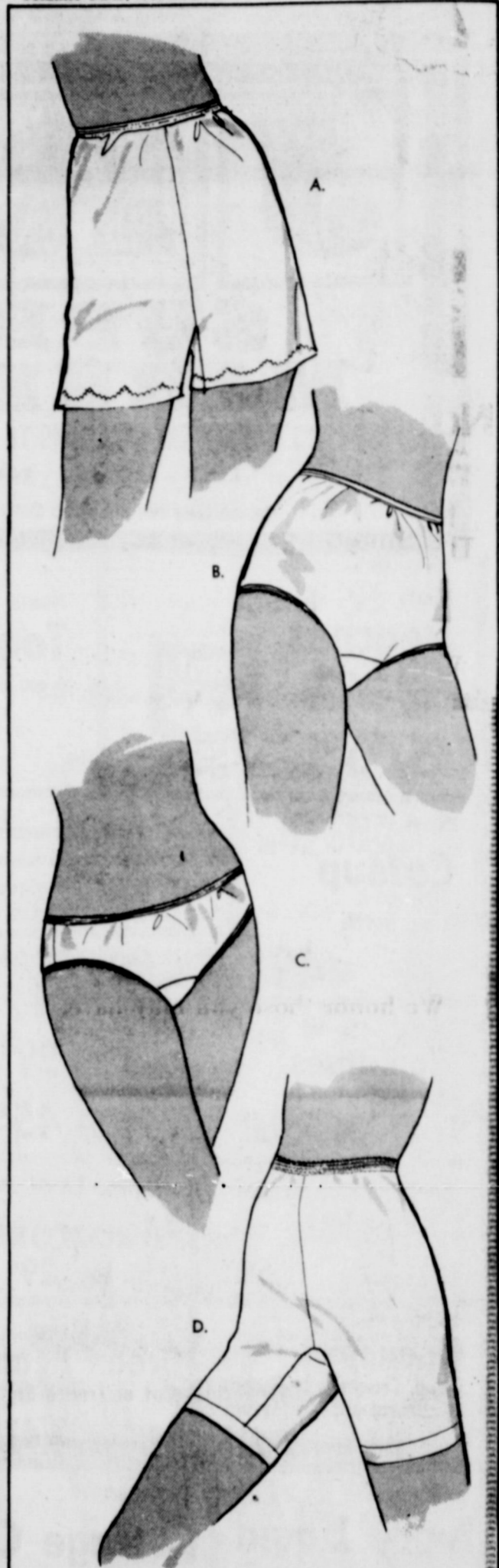
NOTICE

For all types of wiring.
Phone 442-1965
Stewart Slotton,
Electrical Contractor
600 W. 11th Cisco

HELEN CRAWFORD

Representative of
GAY TRAVEL SERVICE, INC.
of Abilene
442-2265 442-1499

Attend The
Church Of Your
Choice Sunday



For a limited time only

buy 3 and save on
PECHGLO
by

VANITY FAIR

Once a year you have your chance to stock up on perfect little Pechglos. This famous rayon-and-nylon fabric feels fresh and cool as a fluff of fine powder next to the skin. Marvelously soft and absorbent. Wears and wears. And launders like a dream.

ALL IN DAWN PINK AND STAR WHITE

A. SHORT PANTIE, 5-7, reg. \$2.50 each
NOW 3 FOR \$6.35

sizes 8-9, reg. \$2.75 ea. Now 3 for \$7.15

B. BRIEF, 4-7, reg. \$1.75 each
NOW 3 FOR \$4.50

size 8, reg. \$2.00 ea. Now 3 for \$5.25

C. BIKINI, 4-7, reg. \$1.50 each
NOW 3 FOR \$4.00

D. TITE PANTIE, 5-7, reg. \$2.50 each
your choice of 3 lengths (medium shown)
NOW 3 FOR \$6.35

sizes 8-9, reg. \$2.75 ea. Now 3 for \$7.15

Sale Period
May 22nd thru June 3rd.

THE MAN'S STORE

Bob Elliott

C800

WHAT ABOUT ALL THOSE STATE STAMPS, REP. HOLMES?

Between Sept. 1., 1969 and Dec. 31, 1970, Representative Tom Holmes withdrew \$4,592.10 in stamps from the Texas House Contingent Expense Fund. That would have mailed 76,535 letters. Holmes claims he still has these stamps.

Why did He Get \$2,388 more Stamps since then?

A former colleague of Holmes has been indicted for buying a pick-up truck with \$1300 worth of state stamps.

Another former House member who served with Holmes has been subpoenaed for paying off a \$6,000 loan with state stamps.

What are you doing with all those stamps paid for by the Taxpayers, Rep. Holmes?

Vote for Honest Representation

Elect Tom Creighton

Last times Sunday MAY 21

Show Starts at Dusk

RANGER DRIVE-IN THEATRE

Sean Connery as James Bond 007

"Diamonds Are Forever" Forever

GP PANAVISION TECHNICOLOUR United Artists

Starting Friday MAY 26

Grand Summer Opening

OPEN EVERY NIGHT WITH THE Best and Latest MOTION PICTURES

Opening With a Big **DOUBLE FEATURE** and **DOOR PRIZES**

NO1 LETS SCARE Jessica TO DEATH

NO2 HAROLD and MAUDE

ALL AGES ADMITTED PARENTAL GUIDANCE SUGGESTED

Sunday, May 21, 1972

Nimrod News

NIMROD NEWS
Mrs. Oliver Harrelson
The Nimrod Neighbors

Progressive Club met Monday night, May 8, for their business meeting. Plans were made for a clean up day to get the church house and club house ready for the cemetery association day.



May 21 and clean up day will be Wednesday.

The Star Fox Hunters met Saturday night, May 13, with several members present to enjoy the supper and visiting.

Mr. and Mrs. Jack Cozart were Sunday dinner guests of Mr. and Mrs. Johnny Nelms and family in Cisco.

Mr. and Mrs. Hershel Stone and great grandchildren visited Mr. and Mrs. Buford Cozart Friday evening.

Mrs. Jerry Broom and daughter spent the weekend with Mr. and Mrs. Jack Cozart.

Mrs. Drew Dan Jackson and Cindy visited Mrs. Buford Cozart Monday afternoon.

Mrs. Edgar Townsend visited Mr. and Mrs. Herman Schaefer Sunday.

Sunday visitors with Mr. and Mrs. Herman Schaefer were Mr. and Mrs. Rudolph Schaefer of Cisco.

Mrs. Edgar Townsend and Mrs. Vernie Allen visited Mrs. Bob Blackwell Saturday.

Rev. and Mrs. Irven Chandler of San Angelo and her brother of Birmingham visited her brother, Dick Ingram and family Sunday.

Mrs. Edgar Townsend and Mrs. Beulah Sheridan visited Mrs. Loren Barron at her home Sunday and also visited Mrs. Joe Hale at the Graham Memorial Hospital in Cisco.

Mrs. Drew Dan Jackson visited Mrs. Herman Schaefer Tuesday.

Mr. and Mrs. Carl Stroebel visited Mrs. Edgar Townsend Sunday night to share her Mother's Day cake with Mrs. Townsend.

SCOTT BODY WORKS
Serving Eastland Since 1937
Quality Workmanship
Ask Your Neighbor

LIBBY-OWENS-FORD
SAFETY GLASS
Installed

Complete Auto Body Repair
All Work Guaranteed
300 W. COMMERCE
EASTLAND, TEXAS
Phone 629-2372

Wedding
ANNOUNCEMENTS
AND
INVITATIONS...

You'll find a wide selection of beautiful lines at The Telegram!

No worries here
And as their parents, you'll have no worries about paying for their hospital care and doctor's expenses if you shelter them with MFA Health Insurance.

MFA INSURANCE
The Shield of Shelter
For your health, life, home, car. Call your MFA Insurance Agent

Richard Rossander
West Main EASTLAND

FREE IDEAS
FREE IDEAS
FREE IDEAS
FREE IDEAS
YOURS FOR THE ASKING

Display Advertising
Classified Advertising
Commercial Printing
Office Supplies
Furniture
Books
ASK US!

At The
EASTLAND TELEGRAM

JRB FAMILY CENTER
SPECIALS
EASTLAND

Delta OSCILLATING SPRINKLER Reg. \$6.48 Now **\$5.69**

Proctor Silex ICE CREAM FREEZER Reg. \$9.88 Now **\$8.88**

Air Conditioner roll PLASTIC TUBING **\$1.29**
25 ft.

SOAKER HOSE Reg. \$2.99 Now **\$2.69**

So-Rite SPRAY ENAMEL **79c**

We give S&H Green Stamps with every purchase.
J.R.B. Variety Dept.

CENTRAL DRUG
has

24k gold-plated JEWEL BOXES
by Globe
men's & ladies WALLETS, KEY CHAINS, etc.

JEWELRY
grooming accessories

I.D. bracelets and much more! come see CENTRAL DRUG for ALL gifts!

GREAT GIFTS FOR GRADS

Your Pre-Need Plans and Burial Insurance Policies Are YOUR property!

You and your family determine where they are used!

We honor those you may have, just as the policies we offer are good any where!

Give us the honor of assisting in making these important plans.



Ever Faithful to One High Standard...

Bakker Funeral Home

306 W. PLUMMER • EASTLAND, TEXAS 76448 • PHONE 817-629-1726

SINCERE-EXPERIENCED SERVICE

AIR CONDITIONERS INSTALLED
\$210⁰⁰
in most pickups
Service on All car Air Conditioners
*4⁰⁰ plus Freon

Insurance Claims
Windshields Installed
Complete Paint & Body Repair

Eastland Paint & Body Shop
304 E. Main 629-1543

NOTICE

EASTLAND GRAIN & SEED

Is Now Located at
304 West Commerce
Eastland
Phone 629-2288

Next Door to Scott's Paint & Body Shop

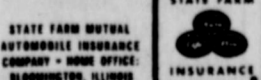
Offering: ★ ★ ★
Martin Lane Feeds
Olin Matheson Fertilizers
Scott Lawn Products (Complete line)

FOR RENT:
this MINI-BILLBOARD for ONLY \$3.50 a month
Call your local paper!

State Farm is now paying big 20% car insurance dividends-
to eligible Texas policy holders on expiring six-month policies.
CALL 629-1096



211 W. Main like a good neighbor, B.T. Van Cleave is there.



Was Representative Tom Holmes a Member of the Powerful Mutscher Team?

In 1971 Speaker Gus Mutscher appointed Representative Tom Holmes to the following committees, upon which he could serve his own personal financial interests

BANKS AND BANKING—Tom Holmes is president of a state bank

INSURANCE—Tom Holmes owns an insurance agency

PARKS AND WILDLIFE—Tom Holmes owns an expensive feed lot operation

PUBLIC HEALTH—Tom Holmes owns an insurance agency and an expensive feed lot operation.

(IS THIS A CONFLICT OF INTEREST?)

VOTE FOR HONEST REPRESENTATION

Elect Tom Creighton your State Senator

Pol. adv. pd. for by Committee T o Restore Honesty in Government

Zeta Pi Chapter Holds May Meetings

The Zeta Pi Chapter of Beta Sigma Phi elected and installed officers for 1972-73 in meetings held in May.

The sorority met Monday, May 1, in the home of Mrs. C.R. Kinser in Gorman. Vice president Mrs. Don Brumbelow presided.

Members read letters from Mrs. Mildred Turner's third grade class thanking the club

for painting the playground equipment at Eastland Elementary School; discussed their scholarship project; and planned a May social - a steak supper at Lake Leon May 6.

Officers were elected and are as follows:

Mrs. Don Brumbelow - president
Mrs. Kenny Payne - vice president

Mrs. Linton Webb - treasurer
Mrs. Richard Wilhelm - secretary

Mrs. Russell Walker - Extension Officer
Mrs. James Fullen - Parliamentarian.

Mrs. H.D. Alsup was in charge of the program, "The Good". It was presented by Mrs. Kenny Payne in Mrs. Alsup's absence.

Refreshments of ice cream, toppings, chocolate chip squares, and punch were served to Mmes. Brumbelow, Payne, Wilhelm, Webb, Walker, Fullen, Don Joiner, J.D. Simpson, Robert Mangum, and Ted Martin by the hostess.

On Monday, May 15, Zeta Pi met in the home of Mrs. Ted Martin with Mrs. H.D. Alsup, president, presiding.

Sponsoring a contestant in the Eastland County Peanut Pageant was discussed and Mrs. C.P. Chick was appointed in charge of this project. Members also finalized plans for selecting their scholarship recipient and planned an Adios party, their final meeting of this year.

Installation rites were read by Mrs. Alsup for the newly elected officers. Following this ceremony, Mrs. Don Brumbelow, new president, named her committee heads for next year.

The sorority also welcomed a new member, Mrs. David Martin.

Mrs. Brumbelow gave the program, "The True". Refreshments of finger sandwiches, chips, pink lemonade pie, and cokes were served to Mmes. Alsup, Chick, Brumbelow, Richard Wilhelm, Kenny Payne, James Fullen, and J.D. Simpson by the hostess.

May Birthdays

Hickman Nursing Home had a birthday party Thursday, May 18th at 2:00 p.m.

Celebrating May birthdays were: Mr. Lowell Marton, 72; Mr. Moses Johnson, 81; Mrs. Maude Burns, 74; and Mrs. Millie Waldrep, 91.

The cake was decorated with a May Pole on top with ribbon streamers down to the roses on the cake.

Another party will be held in June.

TORNADO SAFETY RULES

WHEN A TORNADO APPROACHES, IMMEDIATE ACTION MAY SAVE YOUR LIFE!

A TORNADO WATCH means weather conditions are ripe for tornadoes to develop. Stay tuned to radio or television and listen for weather bulletins, even if the sky overhead is blue. A storm may appear suddenly. Occasionally scan the horizon for the approach of dark, threatening clouds. There may not be time for an official tornado warning.

Stay alert for the abrupt onset of violent wind, rain, hail, or a funnel-shaped cloud. Listen for a sudden increase in wind noise. When in doubt, take cover. Tornadoes are often obscured by rain or dust. Some occur at night.

A TORNADO WARNING means a tornado actually has been sighted or indicated by radar. If the twister is nearby, seek inside shelter immediately, preferably in a storm cellar, underground excavation, or steel-framed or concrete-reinforced building. STAY AWAY FROM WINDOWS!

In office buildings, go to an interior hallway on the lowest floor, or to a designated shelter area.

In factories, workers should move quickly to the section of the plant offering greatest protection, in accordance with advance plans.

In homes, the basement offers the greatest safety. Seek shelter under heavy furniture if possible. In homes without basements, take cover in the center part of the house on the lowest floor, in a small room such as a closet or bathroom, or under sturdy furniture. Keep some windows open, but stay away from them!

Mobile homes are particularly vulnerable to destructive winds. Proper tie-downs to prevent overturning will minimize damage. A warden should be appointed in mobile-home parks to scan the skies and listen to radio and television for warnings. There should be a designated community shelter where residents can assemble during a tornado warning. If there is no such shelter, do not stay in a mobile home when a tornado is approaching. Seek refuge in a sturdy building or as a last resort, in a ditch, culvert, or ravine.

In schools, wherever possible, follow advanced plans to an interior hallway on the lowest floor. Avoid auditoriums and gymnasiums or other structures with wide free-span roofs. If a building is not of reinforced construction, go quickly to a nearby reinforced building, or to a ravine or open ditch and lie flat.

In open country, if there is no time to find suitable shelter, lie face down in the nearest depression, such as a ditch or ravine, and protect your head with your arms.

In exchange for unlimited inter-city (Cisco, Ranger, Olden, Carbon) toll-free dialing, would you agree to a small (50¢ per month residential) rate increase:

// YES

// NO

Please indicate your thinking and any other thoughts regarding this service to:

THE EASTLAND TELEGRAM
P.O. Box 29
Eastland, Texas 76448

THIS IS THE SPACE

where you'll find advertised specials every Sunday

THIS IS THE PLACE

where you'll find these week-long special prices:

PRESCRIPTION PHARMACY

EAST SIDE OF THE SQUARE
LOOK AT THESE:

Family Size

GLEEM TOOTHPASTE ...reg. 1.09...NOW—89¢

Breck HAIR SPRAY ...reg. 1.09 ...NOW 79¢

Get Set HAIR SPRAY ...reg. 98¢ NOW 69¢

Keri LOTION ...reg. 3.15 NOW \$2

Right Guard SPRAY DEODORANT ...reg. 1.09 NOW 75¢

VO-5 HAIR SPRAY ...reg. 1.65 NOW 1.19

Kleenex BOUTIQUE ...reg. 40¢ NOW 33¢

200 count KLEENEX ...reg. 43¢ NOW 35¢

SHOP AND SAVE THE CONVENIENT WAY

AT PRESCRIPTION PHARMACY

FREE DELIVERY

He adds a little more reliability to your electric service.

The man who reads your electric meter is more than just a meter reader. He's a trained company representative who watches for potential problems that could cause interruptions in your electric service.

When he spots a damaged pole, wires being frayed by a tree limb, or any possible source of trouble, he reports it. Then we can take the proper action before a problem develops.

Our meter readers are specially trained to make accurate meter readings. And they're part of our team effort to provide electric service that's constant and dependable.

It's the job of every one of us to see that you get the most value from your electric service.

TEXAS **ELECTRIC SERVICE COMPANY**
People power... at your service
F. N. SAYRE, Manager, Phone 629-2651



Authorized Medicare Supplier

for
Wheel Chairs Hospital Beds
Walkers Crutches
Canes Vaporizers
Commode Chairs and other sickroom supplies

All of the above are available for non-medicare patients on a sales or rental basis.

U-SAVE PHARMACY
629-1166
Commerce & Daugherty St.
Eastland

These Know the Value of Chiropractic:

● Col. Harland Sanders Arnold Palmer
● Marlo Thomas Clint Walker John Gary
● Jack LaLanne Viking Star Fred Cox

Here's what Col. Sanders says:
"I attribute my good health to the fact that I have taken from one to two chiropractic adjustments every week for the past 53 years. My first adjustment was for a bad cold."

Do you know what Chiropractic can do for you? Find out, contact

MELVIN H. HENEXSON, D. C.
In The Muirhead Bldg.
103 S. Mulberry 629-1731
Eastland, Texas 76448

WATER AND SEWER FUND

REVENUES AND EXPENDITURES

April 30, 1972

REVENUES:	April	Year to Date	Balance
Due From Other Funds	-	\$ 241.36	\$16,265.08
Accounts Receivable	10,911.97	80,247.56	
Checks	79.07	149.13	
Consumer Deposits	210.00	1,350.00	
Extra Water Sold	5.77	84.80	
Water and Sewer Taps	35.00	1,220.00	
Turn - On Charges	19.00	106.00	
Refund of Utilities	-	20.82	
Other Refunds	689.01	689.01	
Cash Over (Short)	(.10)	22.87	
TOTAL OP. REV.	\$11,949.72	\$84,131.55	11,949.72
TOT. GROSS OP. REV.			\$28,214.80

EXPENDITURES:	April	Year to Date	Balance
F.I.C.A. Account	\$585.64	\$1,064.87	
Payroll Account	1,889.51	13,424.49	
Meter Refund Account	-	966.00	
Checks	27.38	149.13	
Trash Due	-	7,048.85	
Due Other Fund	-	126.92	
Refunds	-	5.49	
Gasoline & Oil	193.14	611.07	
Materials & Supplies	55.07	133.08	
Postage & Freight	4.01	76.50	
Stationery, Printing, Supplies	3.00	957.63	
Janitor Supplies	-	43.59	
Travel & Other	6.69	67.29	
Dues	-	135.31	
Extension Schools	-	24.00	
Auditing	875.00	8875.00	
Christmas	-	80	
Advertising & Other	34.90	117.27	
Fixed Assets Acquired	34.03	2,009.37	
Utilities	104.43	794.60	
Repairs to Buildings	28.66	39.16	
Insurance	149.43	862.78	
System Maintenance	1,232.70	6,445.46	
Laboratory	30.00	220.00	
Election Expense	43.85	48.85	
Equipment Repair	19.21	814.69	
Water Purchased	5,156.56	29,094.52	
TOTAL EXP.	\$10,473.21	\$66,156.72	10,473.21
TOTAL NET. OP. REV.			\$17,741.59

CITY OF EASTLAND GENERAL FUND

REVENUES AND EXPENDITURES

April 30, 1972

REVENUES:	April	Year To Date	Balance
Trash Fees	-	\$7,048.85	\$38,013.61
Due to Other Fund	-	116.92	
Firemen's Baseball Field	-	8.69	
Due to Other Fund	-	1.00	
1971 Taxes	66.50	60,763.45	
Delinquent Taxes	101.25	2,081.41	
Tax Discounts	-	(972.69)	
Penalty and Interest	8.35	595.33	
Franchise Taxes	-	17,727.94	
Occupation Taxes	-	25.00	
Tax Certificates	4.00	74.00	
Sale of City Vehicle	-	1,000.00	
2 percent Sales & Use Tax	-	24,615.66	
Parking Meters - Regular Receiv	306.08	2,016.36	
Parking Meters - Fines	46.80	213.85	
Parking Permits	16.50	935.50	
Interest Earned on Tax Bonds	-	37.50	
Cemetery Lot Sales	285.00	2,630.00	
Other Cemetery Receipts	150.00	2,030.00	
Sale of Lot	-	150.00	
Court Fine	57.50	1,368.50	
Reg. of B and D Cert.	61.90	407.90	
Rents & Leases	-	459.00	
Peddler's Fees	80.00	80.00	
Fee Checking Street Lights	12.00	84.00	
Fire Fighting Fee From County	50.00	550.00	
Other Fee	-	18.00	
Refund of Utilities	11.01	188.69	
Insurance Indemnities	-	30.00	
Refunds of Cash Disbursements	-	43.00	
TOTAL OP. REV.	\$1,256.89	\$125,677.86	1,256.89
TOT. GROSS OP. REV.			\$39,270.50
TOT. EXP. FOR MONTH			21,764.03
TOT. NET OP. REV.			\$17,506.47

EXPENDITURES:	April	Year to Date	Balance
F.I.C.A.	\$1,624.13	\$8,381.47	
Payroll Account	8,097.10	59,896.50	
White Tops Ball Club	-	.83	
Due to Other Fund	-	241.36	
Deposits Not Yet Credited	-	75.00	
Notes Payable	60.00	420.00	
Notes Payable	1,004.78	8,038.21	
Refunds	-	60.00	
Extra Labor	-	30.40	
Fire Marshal's Salary	25.00	175.00	
Gasoline & Oil	714.57	2,554.80	
Materials and Supplies	224.85	1,298.08	
Postage & Freight	-	76.96	
Stationery, Printing, Supplies	64.20	491.98	
Chamber of Commerce	150.00	1,050.00	
Car Registration Fees	-	75.00	
Parking Meter Expense	-	221.00	
Pound Expense	77.90	84.40	
Sanitation Supplies	28.75	273.01	
Janitor Supplies	7.95	170.65	
Eastland Public Library	-	1,000.00	
Travel & Other	2.16	257.19	
Dues	-	176.53	
Property Transfer Reports	-	60.00	
Auditing	875.00	2,625.00	
Christmas	-	2.67	
Special	-	259.00	
Uniforms	-	39.95	
Cleaning	69.95	490.70	
S.P. Water Treatment	125.35	125.35	
Medical	-	4.00	
Reg. of B and D Certs	20.00	178.00	
Graves	9.00	331.00	
Advertising & Other	55.80	202.43	
Recharging Fire Extinguishers	-	17.22	
Eastland V Fire D	30.00	310.00	
Fixed Assets Acquired	3,896.59	9,706.84	
Benevolence	10.00	25.00	
Miscellaneous	-	10.49	
Utilities	903.47	7,213.05	
Repairs to Buildings	78.85	330.69	
Insurance	819.28	4,574.50	
Street Repair	490.00	3,681.55	
Election Expense	43.90	48.90	
Equipment Repair	1,127.68	5,033.30	
Checking Street Lights	12.00	84.00	
Water Purchased	-	5,200.51	
Note Interest	58.77	470.19	
Tax Fines	57.00	311.12	
Lease	-	1,000.00	
Total Exp.	\$21,764.03	\$127,383.83	

Mrs. Kimmey Is New GOP Chairman

After the Eastland County Republican Convention, the County Executive Committee met to take care of some County Party Business.

At the meeting, County Chairman, Mrs. H.J. Bulgerin, resigned as chairman stating that her home and civic obligations were not leaving enough time to handle the party office. The members voted to accept Mrs. Bulgerin's resignation with regret.

Mrs. Murray Kimmey (Virginia) was chosen to succeed Mrs. Bulgerin as county chairman. Mr. and Mrs. Kimmey have moved to Eastland from Midland where they were active in the Republican Party. "Mrs. Kimmey has experience in party affairs and is well qualified to serve as County Chairman." Mrs. Bulgerin stated.

GOP CONVENTION

The Eastland County Republican Party held its County Convention Saturday, May 13, 1972, in the Commissioner's Courtroom at 2:00 p.m. The following Delegates were chosen to attend the State Convention on June 13th in Galveston, Texas. These same delegates will attend the other State Convention to be held in Dallas on Sept. 19th. The delegates are as follows:

Rev. James Haney - Rising Star

Mr. W.H. Carleton - Rising Star

Mr. Gerald Makepeace - Cisco

Mrs. Virginia Kimmey - Eastland

Mrs. H.J. Bulgerin - Eastland

Mr. Richard Rossander - Eastland

Alternate Delegates are:

Mr. Lloyd London - Cisco

Mr. & Mrs. Phil Rogers - Cisco

Mrs. James Haney - Rising Star

Mrs. W.H. Carleton - Rising Star

Mrs. Virginia Russell - Eastland.

The Resolutions which were passed are:

RESOLUTIONS

1. Resolved that the Republican Party of Eastland County does wholeheartedly endorse and support the re-election of Richard Milhous Nixon to the office of President of the United States.

VFW Elects

New officers installed in the Eastland V.F.W. are: Jack Mathis - Commander; J.E. McFarland - Sr. vice; John Seabourn - Jr. vice; J.W. Harper - Q.M.; L.W. Dalton - Judge Adj.; H.B. Okeffe - Service Officer; Pat Woods - Post Sergeant; N. Soto - Chaplain; W.W. Tackett - Trustee.

The Light Touch



By Cini Bray
People used to hesitate to go abroad because of the strange conditions. Now they're reluctant to stay home for the same reason. Space experts now say it will be at least 20 years before man gets to Mars. Does this mean we have to unpack? Husband to wife: "Well, no, I didn't get the raise - but the boss pointed out a tax loophole I didn't know about."

Psychiatrist: a doctor who specializes in trying to find out what's cooking.

It's particularly embarrassing when someone at a party says, "Excuse me, but I've forgotten your first and your last name."

Introduce yourself at Bray's and you'll be remembered.

Former Eastlander Receives Teacher Award

Kenneth M. Williamson, Mathematics Teacher and Chairman of the Mathematics Dept., Andrews High School, Andrews, Texas, recently accompanied his students to Regional and International Science Fairs in Texas and Louisiana. Two of his students entering the Permian Basin Regional Science Fair, Odessa, Texas, were awarded trips for their work in Mathematics and Science.

He accompanied Miss Ann Thomas, Senior at Andrews High to Science Fair International held in New Orleans, La. May 2 - 6 for her Math Research Paper "Multiply Perfect Numbers". Miss Leona Shoffitt, Senior, exhibited her project in San Antonio at the Texas Medical Convention for her research in "Amino Acids". He then accompanied Mark Joyce, senior, to Washington, D.C. May 10 - 14 where Mark was awarded a \$6,000.00 scholarship from "Tomorrow's Scientists and Engineers" for his Math Research Paper "Superprimes". This was held at the Mayflower Hotel and presented by Standard Oil Company (New Jersey) and Humble Oil and Refining Company. At this time Mr. Williamson was presented a Teacher Award in honor of one of his students who received an Award for Excellence.

Both awards were presented by Mr. Edward J. Gornowski Executive Vice President, Esso Research and Engineering. Mr. Williamson attended Morton Valley and Eastland High Schools and is married to the former Barbara Dick, daughter of Mr. and Mrs. O.H.

At Rural Prosecutors Austin Committee Meet

The Rural Prosecutors Committee of the Texas District & County Attorneys Association met in Austin, May 12th and 13th, to discuss the role of the rural prosecutors in relation to a complete judicial reorganization which appears on the horizon.

The Committee, chaired by Dick, Olden, and is the son of Mr. and Mrs. A.W. Williamson, Eastland. He received his B.S. Degree from Howard Payne; His Masters from Sul Ross Univ. and has done Graduate work in Mathematics and Computer Science at Kansas State Univ.; Manhattan; Univ. of Arizona, Tucson; Univ. of Ill. Urbana; Knox College, Galesburg, Ill. and Univ. of Oregon, Eugene. He has taught in the Andrews System for 17 years.

the Hon. Jack Boone, Memphis, Texas, and district attorney of the 100th Judicial District, also formulated a program for uniting county attorneys and district attorneys in rural areas into an effective group who could present a unified voice. Boone stated, "For the first time in Texas, the country people are organizing early enough and in a strong way which will give us some protection before the metropolitan areas grab all the power."

Texas prosecutors attending the meeting from all areas of the state included Dick Bowers, County Attorney, Alpine; Emory Walton, Criminal District Attorney, Eastland; Dick Brainerd, County Attorney, Vega; Bill Eblen, Council of Governments,

Sunday, May 21, 1972

G. A. Dunn Selected Co. Demo Chairman

G.A. Dunn, Jr., of Rising Star was elected chairman of the Eastland County Democratic Convention which was held May 13 in Eastland.

Delegates to the State Democratic Convention were also elected. They are Saul Pullman and Jeanette Harris of

Eastland; Charles Arnett, of Ranger; Dr. G.A. Dunn, of Rising Star; Mrs. Morris Newnham of Gorman and Desdemona; and Lee Starr and Scott Bailey of Cisco.

Alternates are Robert Marsh and Harold Price of Eastland; Bill Herod of Ranger; Mrs. G.A. Dunn and Cloia Tucker, one-half vote alternates from Rising Star; David Persful of Gorman and Desdemona and Mrs. Joe Bisbee and Mrs. Ora Lee Woods, both of Cisco.

Delegates - at-large are Dr. Jack Elsom, Vernon Phillips and Truman Kirk. Alternates are Clarence Dill, Ben Bassett and David Pickrell.

All delegates from Eastland will go to the State Democratic Convention in San Antonio uncommitted.

let's move ahead in '72

Kilgore, Clark Murray, County Attorney, Floresville; Henry Guillite, County Attorney, Andrews; and John Flinn, District Attorney, Sinton.

You Get **LOW, LOW EVERYDAY PRICES!** *and You Get... SPECIALS EVERY DAY, too!*

 <p>Biscuits 5¢ Mrs. Wright's. *Sweet Milk or *Buttermilk (Limit 6) Safeway Special! 10-Ct. Can</p>	 <p>Towels 28¢ Paper. Tree Saver. White Safeway Big Buy! 175-Ct. Roll</p>
 <p>Saltines 23¢ Melrose Soda Crackers Safeway Big Buy! 1-Lb. Box</p>	 <p>Detergent 49¢ Parade. For All Your Wash! Big Buy! 49-oz. Box</p>
 <p>Plain Chili 39¢ Town House. Heat & Serve! Safeway Special! 15-oz. Can</p>	 <p>Bleach 27¢ Liquid. White Magic Safeway Big Buy! 1/2-Gal. Plastic</p>

Store Hours: Mon. Thru Fri 8:00 a.m. to 8:00 p.m. Closed Sunday



Safeway Everyday Low Prices!

Enriched Flour 39¢ Harvest Blossom. For Cooking and Baking! 5-Lb. Bag	Canned Pop 8¢ Snowy Peak. Great For Snacks! 12-oz. Can
Tomato Soup 10¢ Town House. Zesty Flavor! 10 1/2-oz. Can	Paper Plates 59¢ Brocade White. 9 Inch 100-Ct. Pkg.
Toilet Tissue 9¢ A-1 Brand. Thrifty Buy! -Roll	

In February 1967, Safeway launched a new pricing program, DISCONTINUED STAMPS AND THEIR EXTRA COST TO YOU and offered you the lowest possible price on every item in our stores. When you compare our prices with so-called "Discounters" ... compare our quality ... compare our services, you'll see why it pays to shop at Safeway. We pledge ourselves to continue to bring you EVERYDAY low prices ... plus SPECIALS to lower your total food bill ... to maintain high standards of quality ... and to serve you better in every way.

Safeway Money-Saving Values!

Velkay Shortening 59¢ All Purpose! For Baking and Frying! -3-Lb. Can	Chunk Tuna 37¢ Sea Trader Light Meat 4 1/2-oz. Can
Salad Dressing 37¢ Piedmont. Light Flavor! Quart Jar	Paper Napkins 10¢ Tree Saver White. Soft! 60-Ct. Pkg.
Dog & Cat Food 7¢ Favorite Brand. Economical! 15 1/2-oz. Can	

Finest Quality Meats!

Sliced Bacon 64¢
Smoked. Slab. Rindless
(Safeway Bacon 75¢)
-Lb.

Fresh Corn 5¢
Large Tender Ears. New Crop
Full of Country Sweetness!
-Each

All Meat Wieners 53¢ **Lunch Meat** 35¢
Safeway. Armour Star Franks. 12-oz. Pkg. (All Meat-12-oz. Pkg. 57¢)
Safeway. *Pillsbury-Pillets *Meatloaf & Cheese *Spiced *All-Test Sausage *Olive Pkg.

Safeway Meats are Unconditionally Guaranteed to Please!

Eckrich Sausage 1.15 Smoked. Pre-Cooked -Lb.	Sliced Bologna 69¢ Safeway. All Meat 12-oz. Pkg.
Pork Spareribs 65¢ Frozen. 3 to 5-Lb. Avg. -Lb.	Stick Salami 89¢ Safeway. By The Chunk -Lb.
Fresh Pork Chops 75¢ Economic Family Pack -Lb.	All Beef Wieners 89¢ Safeway. 1-Lb. Pkg.
Short Ribs 55¢ USDA Choice Grade Heavy Beef. Lean & Meaty! -Lb.	Corn Dogs \$1 Easy to Prepare! 10-Ct. Pkg.
Lean Ground Beef 87¢ Compare Lean & Fat Content! -Lb.	Canned Ham \$2.88 Safeway. Compare Quality! 3-Lb. Can
Ground Beef \$1.49 Safeway Chub Pack 2-Lb. Chub	Cure 81 Ham \$1.49 Horned Boneless. Half Ham -Lb.
Boneless Roast \$1.29 *Pillsbury Peak or *Bottom Round. USDA Choice Grade Heavy Beef -Lb.	Smoked Picnics 45¢ Whole. 4 to 8-Lb. Avg. -Lb.
Top Sirloin Steak \$1.69 Boneless. USDA Choice Heavy Beef -Lb.	Armour Bacon 85¢ Armour Star Mini-Cure 1-Lb. Pkg.

USDA inspected Grade 'A'

Garden Fresh Fruits and Vegetables!

Navel Oranges 19¢
Sunkist. Fancy. Sweet & Juicy! Large Size
-Lb.

Russet Potatoes 59¢
US #1A. For Baking!
5 Lb. Bag

Compare Quality and Variety!

Golden Bananas 2 Lbs. 29¢ Top Quality. Safeway Low Price!	Green Cabbage 10¢ Top Quality. Medium Size -Lb.
Golden Delicious 29¢ Apples. Washington. Large Size -Lb.	White Onions 19¢ US #1. Medium. Texas Grown -Lb.
Pineapples 45¢ Cayenne Variety. Large Size -Each	Clip-Top Turnips 19¢ No Waste! Medium Size -Lb.
Tropical Drink 69¢ Coconut-Pineapple Quart Decan.	Blackeye Peas 29¢ Pancy! New -Lb.
Orange Juice 89¢ Safeway. Pure 1/2-Gal. Decan.	Zucchini 29¢ Italian Squash. Extra Fancy. Medium Size -Lb.
Red Apples 69¢ Red Delicious. Washington's Finest 3 Lb. Bag	Crisp Carrots 19¢ US #1 Quality! 1-Lb. Cello
Seedless Raisins 14 1/2-oz. 35¢ Sunmold. Mini Pack	

Check These Low Prices!

Oatmeal Cookies 39¢ Keebler's Old Fashioned-13-oz. Pkg.	El Chico Dinners 52¢ Frozen-14-oz. Pkg.
Grape Jelly 61¢ or Jam. Welch-32-oz. Jar	Hot Dog Sauce 29¢ Gebhardt's Chili-10-oz. Can
Poor Boy Sandwich 89¢ Larry's. Frozen. 2-Ct.-15-oz. Pkg.	Hush Puppy Mix 23¢ Light Crust 2 1/2-oz. Pkg.
Hash Brown Potatoes 41¢ Pillsbury Hungry Jack-7 1/2-oz. Pkg.	Prune Juice 65¢ Sunsweet-40-oz. Glass
Potatoes 54¢ Tutti Fries French Fried-20-oz. Pkg.	

FRYERS 29¢
Fresh. Ready to Cook! Whole -Lb.

Fryer Thighs 73¢ or *Drumsticks. Cut From USDA Insp. Grade 'A' Fryers	Split Breasts 77¢ With Ribs. Cut From USDA Insp. Grade 'A' Fryers
Baking Chickens 37¢ Fresh. 3 to 6-Lb. Avg. USDA Grade 'A'	

Shop and Save!

Close-up 49¢
Toothpaste Brightens Teeth! Freshens Breath!
3-oz. Tube

Hair Spray 53¢
Truly Fine
13-oz. Can

Aspirin 19¢
Tablets. Safeway Brand. 5-Grain
100-Ct. Bottle

<p>No Sting! Soft & Dri Anti-Perspirant 5-oz. Can \$1.09</p>	<p>Deodorant Right Guard Extra Protective! 7-oz. Can \$1.19</p>	<p>Adorn Hair Spray Self-Styling -13-oz. Can \$1.79</p> <p>White Rain Shampoo. Sparkling Hair! -14-oz. Bottle \$1.01</p>	<p>Dinner Top Chop's Steak-13-oz. Pkg. \$1.13</p> <p>Potato Flakes Idahoan-2-Lb. Can 99¢</p> <p>Bathroom Tissue Scott's Soft-Wave 2-Roll Pkg. 27¢</p> <p>Sani-Wax Furniture Polish. Lemon Oil-13-oz. Can \$1.37</p> <p>Avocado Dip Red's Sausage-8-oz. Plastic 55¢</p> <p>Jell-O Gelatin 2 1/2-oz. Pkg. 23¢</p> <p>Snack Pack Puddings. Hunt's 3-oz. Can-4-Pack 67¢</p>
-------------------------------------------------------------------------------------	------------------------------------------------------------------------------------	-----------------------------------------------------------------------------------------------------------------------------------------	-------------------------------------------------------------------------------------------------------------------------------------------------------------------------------------------------------------------------------------------------------------------------------------------------------------------------------------------------------------------------

Prices Effective May 22-24, in Eastland. No Sales to Dealers.



SAFEWAY

© Copyright 1968, Safeway Stores, Incorporated.

**NOW OPEN
At New Location
405 S. SEAMAN**

Offering Complete Auto Repair

- Tune-ups
- Over-haul
- Brakes
- Electrical
- Radiator Service

**COMPLETE AUTO SERVICE
STATE APPROVED
AUTO INSPECTION CENTER
ALLEN AUTO REPAIR**

24-Hour Wrecker Service
405 S. Seaman 629-2270

Get your Meats & Eats at
**Sledges Market
&
Dining Room**

Market open from
8:00 a.m. to 6 p.m.
Monday thru Saturday.
★★★★
Dining Room open from
11:00 a.m. to 2:00 p.m.
Monday thru Friday

SLEDGES MARKET
629-2913

**Eugene Williams
Receives Degree at TCU**

Eastland resident Eugene F. Williams was among approximately 950 Texas Christian University students to receive degrees during spring commencement held May 14.

Spring baccalaureate and commencement services, combined into one event for the first time this year, were held in TCU's Daniel - Meyer Coliseum.

Honorary doctoral degrees were conferred upon eight persons. They were Omar N. Bradley of Beverly Hills and Washington, America's only living five star general; John B. Hawley of Minneapolis, Minn., president board chairman of Northern Pump Co.; Louis A. Saunders of Dallas, executive director of Greater Dallas Council of Churches; D. Ray Lindley of

Puebla, Mexico, chancellor of the University of the Americas and former TCU president; and Fort Worth residents Eula Lee Carter, TCU emeritus professor of Spanish; Sam P. Woodson, chief executive officer of Coca Cola Bottling Co. of Fort Worth; Julius Truelson, Fort Worth public schools superintendent; and Mrs. Edith Alderman Deen, noted author, former newspaper woman and former Fort Worth City Council member.

Robert Reeves Phyllis Nelson Receive Degrees

Robert Reeves of Gorman and Mrs. Phyllis Nelson of Eastland were among 1,287 students from 31 different states and six foreign countries receiving degrees at the 82nd annual spring commencement May 16 at North Texas State University.

The record number included 1,066 bachelor's, 192 master's and 29 doctor's degree

**Donald Webb
Receives Degree
From ASU**

Donald Ray Webb, Sr. of Eastland received his Bachelor of Arts degree from Angelo State University in San Angelo during the University's sixth annual spring commencement ceremonies.

Dr. Bevington Reed, commissioner of higher education, Coordinating Board, Texas College and University System, was the commencement speaker.

**Herridge
Awarded
Scholarship**

William S. Herridge of Eastland, junior journalism student at Texas A&M University, has been awarded a \$500 scholarship by the Texas Gridiron Club of Fort Worth.

The club is sponsored by the Fort Worth chapter of Sigma Delta Chi, national journalism society. The group has contributed more than \$100,000 in scholarships during the past 20 years to journalism students throughout the state.

Herridge is the son of Mr. and Mrs. Bert Herridge of 203 North Daugherty in Eastland.



**Religious Services
For All Faiths**

The deep meaning in religious services bring comfort and enlightenment. Our individual services respectfully pay tribute with dignity. Have confidence in our experience.

Arrington Funeral Home
Ph. 629-2611 -- Eastland
*Utmost Consideration
at a Time of Utmost Need*

**Phyllis Nelson
Receives Award
At NTSU**

Mrs. Phyllis K. Nelson of Eastland was among outstanding students recognized for academic achievement during the annual Honors Day Convocation Wednesday (April 26) at North Texas State University.

Mrs. Nelson, the daughter of Mr. and Mrs. Robert M. Kincaid, Route 3, Cisco, was presented the Borden Award in home economics. Awarded annually since 1957, the scholarship is presented to the home economics major entering her senior year with the highest grade point average.



FOR RENT:
this
MINI-BILLBOARD
ONLY \$3.50 a month
Call your local paper!

WANTED

**Responsible Sales Lady to handle our
Fine Jewelry Line (no costume jewelry)
Thru our color catalogue. Generous
Commission-Full or part time plus 30%
saving to customer.**

Member Jewelers Board of Trade

**Write or Call
Miss Jane Whiting 214-691-7031**

**Or Write
BNB Trading Co.
1801 Preston Tower
Dallas, Texas 75225**

**8 ways to make prowlers
prowl less.**



Capture all the charm of the nineteenth century while you make your home a safer place to live. With an authentic Early American gaslight. These beautiful gaslights give a warm, friendly glow that will welcome your friends and discourage prowlers. Night after night. You have your choice of many classic and contemporary styles. All of them are ruggedly built to give years of trouble-free operation.

See Lone Star Gas or your gaslight dealer. Today. And make your home a safer, more beautiful place to live.



If you get \$20 or more in tips in a month from one employer, give a written report to your employer by the 10th of the next month.

If you get \$20 or more in tips in a month from one employer, arrange with him to pay the social security contributions.

Eligible children can get social security benefits until they're 18; if in school full time and single they will receive until age 22.

EDDIE'S
513 West Main
629-8838



**Don't Worry
... Let Us!**

Serviceing cars is our job. And we'll keep yours in top shape. We'll worry, okay? You drive.

Full Auto Service

NO NEW TAXES

Tom Creighton opposes any tax on groceries and medicine

Tom Creighton opposes taxing feed, seed, and fertilizer

Tom Creighton opposes a personal or corporate income tax.

I personally feel that we can meet the needs of our state without new taxes. If elected your State Senator I will work to keep the operation of our state within the budget.

Tom Creighton

**Vote for Honest Representation
Elect Tom Creighton your State Senator**



**perry's
fabrific
FABRIC CENTERS**

EASTLAND

Assorted
**Cotton
Print**
Values to \$4.89
4/\$1.00
yd.

100% Arnel Triacetate
45" Wide
**Jersey
Prints**
reg. \$1.29 **88c**

Big new shipment
100% Dacron Polyester
**Double
Knit**
Dress Maker Lengths
Complete Machine W/D
New Assorted Colors
Fantastic Summer special
reg. \$3.99
\$2.22



Work Wonders

The Eastland Telegram 629-1707

Sunday, May 21, 1972

FOR SALE

MUSIC. FOR SALE - THE proven carpet cleaner Blue Lustre is easy on the budget. Restores forgotten colors. Rent electric shampooer \$1. Perry Brothers. t-41

FOR SALE: 1 full size roll away bed in good condition. El Morocco Motel. Call 629-2661. t-41

FOR SALE: 1 complete twin bed, floral drapes, cornice boards and traverse rods, used Hotpoint electric range, round lamp table and cover deorbarn heater, radiant heater, gas logs, swivel rocker, upright hair dryer. t-43

FOR SALE - NO regret, the best yet; Blue Lustre cleans carpets beautifully. Rent electric shampooer \$1. Coats Furniture. t-41

FOR SALE: 1965 Chevrolet Super Sport. Call 629-8877 or 629-1826. t-41

FOR SALE: 3 lots and small house in Ranger. Corner of N Marston and Caddo Hwy. Call Eastland 629-2447 after 5. t-43

FOR SALE: 3 bedroom, 2 bath home, excellent condition & location. carpeted. Might consider trade. Call 629-1676. t-42

FOR SALE: Singer Zig Zag mends, darns, button hole, sews on buttons all for \$37.50 with free home demonstrations. We clean, oil, and adjust all makes and models. Call 629-2920. t-51

★ NOTICE

Applications being accepted for manager of Eastland Auto Parts. Contact John McClure at 300 S. Seaman, Eastland, Texas. t-42

LIKE TO FISH? Nice 2 bedroom house for rent or sale at Lake Leon. Call 653-2374 in Olden. t-41

FREE: Kittens and mothers cute, clean and healthy. Call 629-2286, see at 517 E. Foch St. t-42

NEEDED AT ONCE: Registered professional nurse for 11, 7 and 3-11 shift relief. Licensed Vocational nurse, all shifts. Excellent working condition, new hospital, good salary. Contact Mary S. Lee, director of nursing, E.L. Graham Memorial Hospital, Cisco, phone 442-3951, extension 281-42

EMMET MORREN PLUMBING COMPLETE REPAIR SERVICE 1015 W. Main 629-2092 24 Hour Service

FOR RENT

FOR RENT: Redecorated, furnished, large living room, bedroom, kitchen and bath. Utilities paid. Phone 629-2362 between 10 a.m. and 5 p.m. Permanent renters preferred. t-41

FOR RENT: Nice small apt. close in, bills paid, cable & telephone. Call 629-2083 or 629-8821. t-41

3 room furnished apt. Bills and cable paid, carport, for individual or couple. 203 N. Dixie t-41

FOR RENT: Unfurnished 2 bedroom house, 303 W. Moss. Adults only. See Ben Hamner 307 S. Lamar or 1001 S. Seaman. t-41

FOR RENT: 3 room unfurnished apt., close in. Call 629-2168 t-41

FOR RENT: 2 bedroom unfurnished house. Corner Plummer & Bassett. Call 629-1810. t-41

FOR RENT: Duplex just south of Super Save. Call 629-1344 or after 5 p.m. 629-1074. James Wright. t-41

Attractive 1 bedroom & efficiency - \$55.00 to \$70.00 month. Water & gas pd. Weekly rates. (Eastland). Call 629-1374. t-46

LOST & FOUND

LOST: Ladies green overnite case on W. Sadosa Sunday, May 14. Case and contents primarily sentimental value. Reward. Call 629-2428 or 629-1678. t-43

Singer Sewing Machine - Repair Center. Servicing all makes. New and Used for sale. Complete line of parts. MODERN DRY CLEANERS 210 S. Seaman 629-1344

"We can handle anything but litterbugs." **Goode Pest Control** Phone 629-1179 after 3:00 310 N. Ammerman roaches, ants, termites, moths, spiders. ALL GUARANTEED

NOTICE Lites, brakes & running gears installed. All Types of New Trailers For Sale. **Roy Cozart** 1107 W. 15th 442-1912

SERVICES

Are you sure your home is insured? Let Freyschlag Insurance Agency check over your existing policy for needed changes - or let us fix you a new one. Freyschlag Ins. Agency, 107 W. Main - 629-2275, "On The Square".

NOTICE - Mattresses. Complete bedding made by Western Mattress Co., San Angelo. Best quality, low price, renovate or exchange new. Every other Wednesday. They're guaranteed. For home appointment, call Lois Meazell, 629-2703, leave name. If Freyschlag Insurance has exactly the kind of policy that you need. Check with Charles today and see just how he can help you. Freyschlag Insurance Agency, on the Square in Eastland, 629-2275, 107 W. Main Street

Mercer's Appliance Repairs Dishwashers, washers, stoves, dryers, disposals, ovens. Call 653-2473 Olden, Texas t-47

Wanted

WANTED: One chef capable of preparing and serving complete buffet; fixing steak orders; and handling complete baking. Salary open. Contact Glenn R. Bakker after 3 p.m. at Lone Cedar Country Club, or at home, 629-2316. T

WANTED: Reliable combination warehouse man and truck driver. Must have commercial operators license. Apply at West Texas Produce in Cisco. t-41

WANTED: Office girl. Hours 8 til 5, Mon. thru Fri. Answer phone, light typing. H&W Development. Ph. 629-1702. t-42

WANTED: Someone to care for 2 children and do light housework. 4 days a week 7:30 - 3:30 Call weekends only 629-2443. t-41

WANTED: Dealer or manager for Mobil Station in Eastland. See Standlee McCracken. Day 817-629-2145; Nite 817-442-2653. t-41

Farming and Hauling Call 629-1907 t-41

FOR SALE

70 Buick Le Sebre 4 dr. sed. power & air.

70 Lincoln Cont. 4 dr. sed. Loaded & clean

68 Int. V - 8 6 pass. Travelall

68 Int. 4 wheel drive V - 8 Pickup 4 spd. air.

67 Pontiac Ambulance

71 Int. LWB 1/2 ton V - 8 Pickup

Two 72 Int. Travelall Demonstrators with all the extras? \$1,000 Discount.

Forty 3 wheel Ex. Post Office Scooters

71 & 72 New Int. Scouts. Pickups & Travelalls

5 acres of other new & used trucks, trailers, winches, parts, & other stuff

JOHNSTON TRUCK & SUPPLY 725 - 2181 Cross Plains, Tex.

HELP WANTED: L.V.N.'s & kitchen personnel. good salary, vacation, paid holidays & insurance. Excellent working conditions. Apply in person. Eastland Manor Nursing Home. t-42

WANTED: Carpentry work, build or repair, painting and paneling. Contract or by the hour rates. Call 629-1124 in Eastland. If no answer call after five. t-41

HELP WANTED: Full time custodian for local church in Ranger. Tel. 647-3261 or write P.O. Box 144, Ranger, Texas 76470. t-41

WANTED: Woman to live in part time or full time to take care of elderly woman. Specified days or weekends off if desired. Phone 643-3881, Rising Star. t-41

WANTED: Some one to take care of 2 children and do light housework 4 days a week 7:30 a.m. - 3:30 p.m. Call only on weekends 629-2443. t-41

Veterinarian Veterinary Medicine and Surgery **Old Sandy Sanders Farm** Vergil Patrick 6 Miles N. W. Cisco TEL. 442-3457

ROY LEE SMITH PLUMBING Contracting and Repairing Complete Plumbing fixtures and Supplies Bath & Kitchen Improvements Trained, Adequate Staff Call a Licensed Plumber Day or Night 629-1722

SMITH PLUMBING 114 N. Seaman Eastland

FREE Estimates on new roofs only **Repair of Your Old Roofs Residential and Commercial** "ALL NEW WORK GUARANTEED" **TRI-CITIES ROOFING CO.** Call **Noble Squiers** 629-2370 EASTLAND

SOUTHLAND LIFE INSURANCE M. H. PERRY 100 S. Seaman 629-1566 629-1095

AMERICAN NATIONAL INSURANCE COMPANY HOME OFFICE, GALVESTON, TEXAS **M. W. Herweck - Agent** Office 629-1512 Home 629-1288



SUTTON'S A-1 Office Machines Call 629-1707 Eastland

NOTICE If you need irrigation equipment - check with us. Largest supply in Central Texas Pump Units All Sizes Pipe - Wheel Lines - Traveling Systems **KIMMEL IRRIGATION SUPPLY, INC.** DE LEON, TEXAS PHONE: 817-893-6266

You can become a **SINGER** Franchise Dealer for Cisco - Eastland - Ranger This is a good opportunity to run your own business and make money in the booming sewing machine market. • Full Line Singer Products No Franchise on Royalty Fee • Small Investment Required • Singer Training Available Sales Financing Arranged Call or Write **THE SINGER CO.** Mr. G. Ned Robinson 6400 North Central Exp. Dallas, Texas 75206 214-368-6370



MASONIC LODGE NO. 467 Meets second Thursday of each month at 8:00 p.m. in the Masonic Hall. Call Pat Miller, W.M. at 629-1077 or L.E. Huckabay, sec'y at 629-1391 for information.

EASTLAND ROTARY CLUB Saul Pullman, president

Meets each Monday at Sledges Dining Room, S. Lamar 12:00 noon

Rebeckah Meetings each 2nd & 4th Monday at 7:30 p.m. 300 N. Lamar St. Sec'y Dorothy Awalt Phone 629-1682

Recapped Tires Any Size In Stock! *12⁹⁵ Each **Guaranteed 12 months** West Side Skelly Hiway 80 West Phone 629-8842 Nite 629-1415 or 629-2182

GARDENHIRE OIL COMPANY Yes! We can sell wholesale to you! See us for all your oil, grease, filters, spark plugs, brake fluid, anti-freeze, S. T. P. for oil, gasoline, diesel or radiator, tires for cars, truck or tractor. **WE HAVE TANKS** for farm or commercial gasoline and diesel fuel. See us before you trade. All major brands of Oil and Grease. **WHY PAY MORE??**

since 1962 **Roy's Complete Whirlpool Appliance Center** 629-2474 Roy Gann 205 S. Lamar

Sabine Terrace Apartments Now Leasing **New** 1 - 2 - 3 Bedrooms are ready for immediate occupancy **Open** 9 a.m. - 6 p.m. Monday - Friday Closed 12:30 - 1:30 during lunch hour **600 W. Sadosa Eastland** Mrs. Dorothy Livingstone Manager **629-2518**

H.V. O'BRIEN, Publisher and Editor
Second Class Postage paid at Eastland Texas under Act of Congress on March 1870.
Published semi-weekly - Thursdays and Sundays by Eastland County Newspapers, Inc.
SUBSCRIPTION RATES: By carrier in city, 15 c a week or 65 c a month; one year by mail incountry, \$5; city P.O. Boxes, \$6; one year elsewhere in state, \$7; out of state, \$8.
NOTICE: Any erroneous reflection upon the character, standing, or reputation of any person, firm or corporation which may appear in the columns of this newspaper will be gladly corrected upon being brought to the attention of the editor.

WANTED: Sewing, plain or western. Men, Ladies & children. **105 S. Virginia.** Call 629-1054

Nothing can be done about anything, anyway! (Pd. Adv.)



ABCO Plumbing & Heating Contracting and Repairing **Complete Plumbing Service** Call 629-1200 Day or Nite **BOB WILLIAMS** Master Plumber **Serving Texans 25 years**

REAL ESTATE

ALL TYPES OF REAL ESTATE: HOMES farms ranches **Financing Assistance** Listings requested and long list of good properties on hand **CALL US AND LET US SHOW YOU HOW WE CAN HELP YOU**

Furnished Cabin at Lake Leon. \$9,000.00
2 bedroom frame house, large corner lot, plenty of closet space. Lots of storage in garage. \$10,000.00
Large 4 bedroom frame home in good repair. Nice big lot, near schools.
3 bedroom, 1 bath frame house, living room, dining room, service area, roomy pantry. Neat kitchen, plenty of storage, garden area.
Large city lot. Neat. \$2,500.00
Older type three bedroom frame house, double car port, fruit trees. \$6,000.00
Machine and lawn mower repair shop, tools, equip. included. 2 bedroom home corner lot, some fruit trees.
Flower shop and equipment, including 2 story bldg. with apt. Doing good business. Good terms can be arranged.
3 small rent houses - all two bedroom. Sell one or all. Priced \$4,500.00 and \$5,000.00
Small one bedroom house with 3 lots. A good buy \$2,850.00
2 acres and older house in Carbon. \$2,000.00
Nice corner lot on South Seaman \$1,000.00
3 bedroom frame, living room, den, kitchen, utility room, garage, some terms.
Farms & Ranches
171 acre well improved farm and ranch with lovely three bedroom brick home, 2 baths, 5 water wells, irrigation equipment, spring, cross fenced. Fruit and pecan trees, large metal barn. A real nice home in the country. Some terms and some minerals.
Misc.
We have motels large and small, lake property, large ranches and just about anything you want in the way of real estate. Give us a call.
KINCAID REAL ESTATE 100 South Seaman Eastland, Texas 629-1781 **Robert M. Kincaid** 629-2721 **J.W. Elder** 647-1321

DAD WANTS TO INSURE YOUR HOME CALL **D. L. Kinnaird** General Insurance 207 W. Main 629-2544



GIFT THE GRADUATE
With A Gift She Will Treasure-
Choose From A Wide Selection of

- Dresses
- Pantsuits
- Gowns
- Shorty Pajamas
- Shorts
- Blouses
- Tank Tops
- Gowns & Robe Sets

Junior Sizes by

- Gay Gibson
- Jerell
- Howard Wolf
- Wrangler

The Unusual in Bags

- by
- Collins
- Cora-Nan

May Festival OF DRESSES



Jewelry With a 'Look' The Graduate Will Love

Altman's Gift Wrap Adds So Much

Miss King Is Honoree

Miss Janice King, bride elect of David Moody, Jr. was honored Friday night at a dinner party and kitchen shower by Shelley Siebert in the home of her parents Mr. and Mrs. Wendell Siebert, 600 South Dixie Street in Eastland.

Co-hostesses with Shelley were her mother, Mrs. Wendell Siebert, and Miss Verna Johnson, former Eastland High School English Teacher.

The honoree wore a white double knit sleeveless dress, trimmed with a blue scarf. A white nylon lace cloth covered the dining table, which was centered with an arrangement of white and blue carnations, and baby breath, the chosen colors of the bride elect. A white Maderia cloth covered the other table, which was centered with a white candle in a ring of bridal flowers.

Special guests were the bride elect's mother, Mrs. Roston King, and the mother of the fiance, Mrs. David Moody, Sr. Parents of the couple are Mr. and Mrs. Roston King of Eastland and Mr. and Mrs. David Moody Sr. of Lubbock.

The couple will be married June 10th in the First Baptist Church in Eastland.

Bicycle Safety To Be Presented

BY PAUL CAMPBELL
Ast. Co. Agri. Agent

Do you know which side of the street to ride a bicycle? Are you supposed to yield or stop at signs? Is a bicycle considered a vehicle? How do you oil and maintain a bike in good working condition. These and many more questions will be answered through a 4-H Bicycle Project to be started in

Eastland after school is out. All youth and adults who have and ride bicycles are invited to learn about bicycles.

With spring here and summer not far away it is more important than ever that you know how to ride safely. The Department of Public Safety and the Eastland Police Department have agreed to present programs on the laws regarding bicycles and bicycle

safety. Other individuals will present programs on maintenance of bikes.

If you would like to attend these meetings or would like your child to attend them, then keep the project in mind. Further information on meeting dates, time and place will be published.

The program is being sponsored by the 4-H Division of the Texas Agricultural Extension Service.

YOU ARE CORDIALLY INVITED TO VISIT THE UNIVERSITY OF TEXAS SAM HOUSTON EXHIBIT

CURRENTLY ON DISPLAY IN THE LOBBY OF THE EASTLAND NATIONAL BANK

Club and School Groups Welcome

EASTLAND NATIONAL BANK
EASTLAND, TEXAS

Member FDIC

drive friendly

HiGH

value at low cost—our Family Life Insurance Plan. Contact me today!

Van Cleave
211 W. Main
Eastland
629-1096

STATE FARM
Life Insurance Company
Home Office: Bloomington, Illinois

Altman's

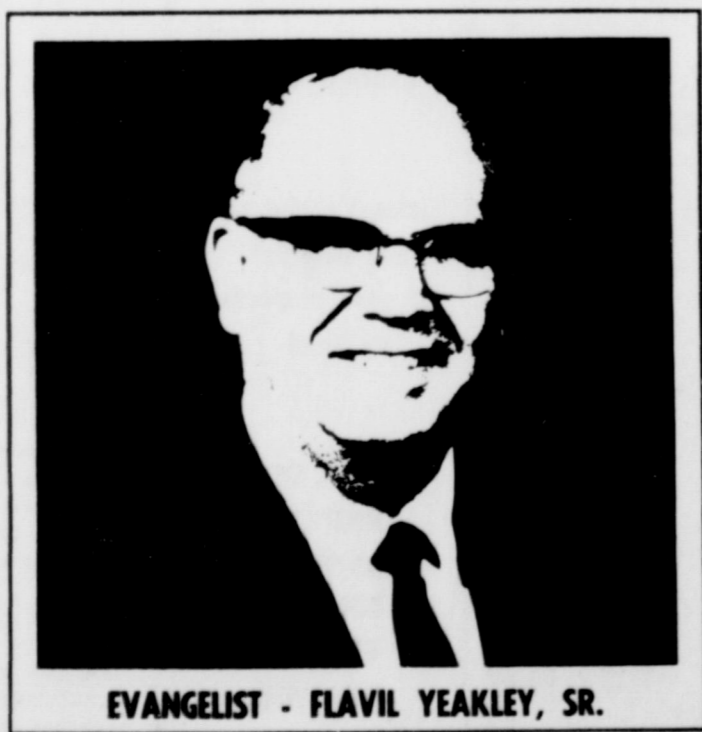
Style Shop in Eastland

GOSPEL MEETING

FLATWOOD CHURCH OF CHRIST

"I WILL PRAY FOR YOU UNTO THE LORD" I SAMUEL 7:5

May 29 - June 4



EVANGELIST - FLAVIEL YEAKLEY, SR.

MEETING TIME: 8:00 P. M.

REGULAR SERVICES -

WEDNESDAY NIGHT - 7:00 P. M.

SUNDAY MORNING - Classes 9:45 a.m. - Worship 10:45 a.m.

SUNDAY NIGHT 6:00 p.m.

NOTICE
For all types of wiring,
Phone 442-1965
Stewart Slotton,
Electrical Contractor
600 W. 11th Cisco

HELEN CRAWFORD
Representative of
GAY TRAVEL SERVICE, INC.
of Abilene
442-2265 442-1499

BUMPER TO BUMPER
BODY REPAIR
RELIABLE-ECONOMICAL
442-1789



Straight Talk!

Had a fender dented? Don't worry. We'll straighten things out. All work guaranteed.

Free ESTIMATE

DAN'S
Paint & Body
310 Ave. D

To get peanut yields like this, stop nematodes with a pegging-time application of [®]DASANIT insecticide.

Nematodes are no longer a problem for growers who protect their peanuts with [®]DASANIT insecticide/nematicide at pegging time.

Merely apply an economical 12 to 18-inch band of DASANIT 15% Granules over the row and mix into the soil to a depth of 1 to 2 inches on each side of the row.

Now is the time to order DASANIT. See your dealer right away!

Chemagro, A Division of Baychem Corporation, Box 4913, Kansas City, Missouri 64120.

