



Eastland Telegram

"COVERING EASTLAND COUNTY"



VOLUME TWENTY-SEVEN

EASTLAND, TEXAS, THURSDAY, JANUARY 3, 1957

No. 106

New Officials Are Sworn Into Office

Eastland County's newly elected officials for the next four years were sworn in briefly Monday, in impressive, if quiet, ceremonies.

County Judge John Hart gave the oath of office to the officials, most of whom won re-election this year.

Joe M. Nuessle of Ranger was

sworn in as county attorney, having won re-election by 11 votes. A second county-wide official to take the oath was J. C. Allison, who officially became county tax assessor-collector. The Eastland man had been acting assessor-collector for several months, since the resignation of Stanley Webb of Cisco. Sheriff J. B. Williams also took the oath. He too won re-election this year.

Missing from the swearing in ceremony was an oldtimer around the courthouse. Henry Carter stepped down as Precinct 3 commissioner from Rising Star after a long period of service. In his place, R. L. (Bob) Carter, no kin, was sworn in. J. B. (Tip) Arther took his second term as Precinct 1 (Eastland-Ranger) commissioner. This was the first time these officials to accept four year terms of office.

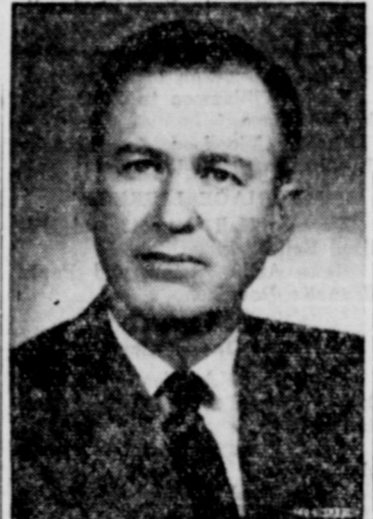
Constables taking office were Porter Woods, precinct 1; Ralph Vead, Precinct 2; E. L. Dennis, Precinct 5; J. J. Honea, Precinct 6; and R. B. Forehand, precinct 7.

Other officials who took office Monday which Eastland County voters helped elect included 91st District Judge Turner M. Collie; Omar Burleson, 17th Congressional District representative; Floyd W.

Bradshaw, 22nd District state senator; Paul Brashear, 76th District state representative; and Judge M. S. Long, associate justice of the 11th District Court of Civil Appeals.



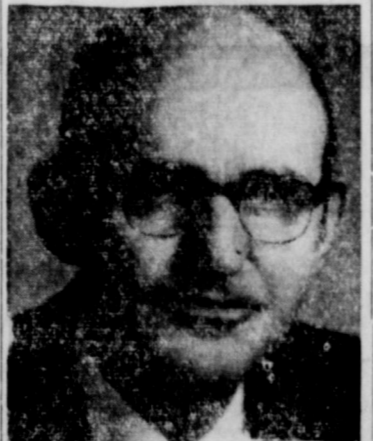
T. M. COLLIE
... District Judge



OMAR BURLESON
... Congress, 17th Dist.



JUDGE MILBURN LONG
... Ass't. Justice



FLOYD BRADSHAW
... State Senator

Local Citizens Get Invitations To Inauguration

Many citizens in this section of the state are already beginning to receive invitations to the Inaugural Ceremonies for Governor-Elect Price Daniel and the mails will probably be full of them right up until Inauguration Day.

The engraved invitations read: "The Citizens of Austin request the honor of your presence at the Inaugural Festivities honoring Governor Price Daniel and Lieutenant Governor Ben Ramsey Tuesday, January the fifteenth nineteen hundred and fifty-seven, Austin, Texas."

The invitations are signed by James P. Nash, general chairman and Joe R. Greenhill, chairman of the invitation committee, and state that "this invitation admits one couple."

Accompanying the invitation is a white and gold booklet tied with a purple ribbon and picturing the historical red granite state capitol building.

The booklet gives a line-up of the parade which includes practically every band you ever heard of.

Police and Highway Patrol Escort followed by Grand Marshall and Mayor. Then comes Governor and Mrs. Daniel and Lieutenant Governor Ramsey and Mrs. Ramsey and distinguished guests.

This is followed by bands from Texas Tech, Peacock Honor Guard Drill Team, Ross Volunteers, Lamar State College of Technology Band, A&M College Band, Liberty High School Band, Anderson High School, Travis High School, McCallum High School, Peacock Military Academy Drum and Bugle Corps, Stephen F. Austin High School, Hillcrest High School Band and Precision Drill Team.

Lackland Air Force Base Drum and Bugle Corps and Drill Team, Bergstrom AFB Squadron, 36th Infantry Division Band and National Guard Band.

(Continued On Page Eight)

Gorman To Have Display In '57 Fat Stock Show

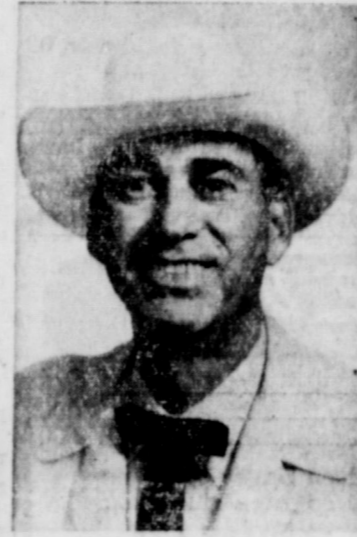
Gorman will have a display in the Texas Ranch and Farm Show at the Southwestern Exposition and Fat Stock Show, Jan. 25 through Feb. 3.

The exhibit will carry out the city's slogan, "Peanut Center of Texas," and one feature will be the actual making of peanut brittle.

The Gorman High School band will give a concert one day during the Stock Show. The booth is sponsored by the Gorman Progress and Gene Baker, editor, will be in charge.

Cities interested in having a booth should contact I. E. McWhirter, manager of the Texas Ranch and Farm Show, Box 150, Fort Worth.

FOR
Fine Furniture, Floor Coverings, E. E. Appliances, It's Coats Furniture & Carpet, Ltd., Eastland. Free Delivery and Convenient Terms. Good Trade-In, too!



J. B. WILLIAMS
... Sheriff



JOE NUESSELE
... County Attorney



PAUL BRASHEAR
... State Representative

Street Lights Are Targets of Local Culprits

Eastland police would like nothing better than to get the person or persons responsible for shooting out some 25 street lights here.

City Manager Jimmy Young, who also serves as Corporation Court judge, said the street lights started going out right after Christmas. He said police think an air rifle is being used.

Asked what the approximate cost to the City is for each light which is knocked out, Young said, "I can't give you that information, but I can tell you it will cost someone \$5 a light in fines if we catch them."

TENTH YEAR OF DROUGHT

Past Year Seventh Driest In History

The year just past was the seventh driest in the past 46 years in Eastland County, official Weather Bureau records reveal.

A total of 17.47 inches fell during 1956, and only an above average rainfall of 2.99 inches in December kept this from being next to the driest year in history here. Not since 1940 had that much

rain been recorded here in December.

The light annual rainfall marked 1956 as the seventh year in a row of below average rainfall and the ninth year out of the past 10 that rainfall has failed to reach the 26.95 average.

Here are the driest years in Eastland county since 1911:

Year	Inches
1948	14.10
1943	14.19
1917	14.41
1954	16.33
1952	17.02
1921	17.45
1956	17.47

Note that five of the driest years have appeared during the record drought experienced by this area in the past 10 years.

Rainfall in Eastland county during the year was concentrated in the early and late months of the year. The area had an extremely hard summer when less than half an inch fell in each of the hottest months. In January the total was 1.74 inches; February, 1.94; March, 10; April, 3.30; May, 2.50; June, 33; July, 30; August, 20; September, 44; October, 2.05; November, 1.58; December, 2.99.

Proof that Eastland County has in no way helped to create farm surpluses in the past 10 years are (Continued on Page 8)

Seven Die In County Wrecks In Past Year

Seven traffic deaths occurred in Eastland County during 1956, records of the State Highway Department in Eastland reveal. Five of the fatalities were recorded in the last two months to ruin what was hoped to be a record year here.

The seven deaths still dropped the number of deaths in the county as compared to a year ago. In 1955 13 persons lost their lives in county wrecks in eight fatal accidents. There were only five wrecks which resulted in deaths this year, and only in two was more than one person killed.

A total of 108 accidents were investigated by Highway Patrolmen Les Strawn and Alfred White. A total of 68 of the accidents resulted in property damage and 35 injuries were recorded. In 1955 there were 43 persons injured and 55 wrecks involving property damage.

The first fatal accident of the year occurred Jan. 23 when Robert Jones, 44, of Big Spring died at 3 a.m. after a crash 1.6 miles east of Ranger on US Highway 80.

The second fatal accident took place July 14. Dessie Mae Gilmore Booth, 24, of Pouke, Ark. died in that crash, which took place at 3:40 a.m. on U. S. 80 3.7 miles west of Cisco.

Two persons died in the third fatal accident of the year. The wreck occurred 8.3 miles east of Ranger on Highway 80 Nov. 12, 12:30 p.m. Rosie Neill, 44, and James Wright, both of Brownwood, died in the crash.

The fourth fatal accident took place Nov. 28, Bert Harlow, 17 year old Rio High School football player, when he was thrown from on State Highway 36 at 1 p.m. The mishap took place west of Rising Star.

Final fatal accident in the county took place Dec. 23, Hamner, 24, and Reuben Hurley, 16, both of Cisco.

SERVICE
Pamper your car with quality service from our experienced mechanics. All cars—fast, efficient, nominal. Call 802 today.
Don Pierson Olds-Cadillac
Eastland

Dr. Basden To Lead Revival At First Baptist

The First Baptist Church announced that Dr. Harold Basden, pastor of Gaston Avenue Baptist Church in Dallas, will lead the church in a revival meeting Feb. 24 through March 3.

Dr. Basden is one of the outstanding young preachers in Texas according to Harvey Kimbler, local pastor. He is a former professor of sociology at Mississippi College and has been pastor of Gaston Avenue Baptist Church since 1954.

Dr. Basden received a B. A. degree from Mississippi College and the Th. M. and Th. D. degrees from Southwestern Baptist Theological Seminary in Dallas. He was recently pastor at the convention of ALKALIS.

Mavs Test Ranger In Opener Tonite

Coach Jon Tate fields his first Eastland basketball team tonight, and the Maverick assignment will be a rough one, that of stopping the Ranger Bulldogs in first round play of the Olden Invitation Tournament.

Eastland, due to have a good squad later on in the season, will go into the game as underdogs due to the fact that it will be their first game of the year. Ranger has played several games and has already competed in one tournament.

The Mavericks will have a fast team this year with lots of experience but little height. Talented man on the starting team is expected to be about 5'11". Tate said he would not release his starting five until shortly before game time, at 9:15 Thursday night. He has four starters back from last year's team, however, and a number of other talented players to select his fifth man from. Returning starters are Lupe Herrera, Johnny McMahan, Dale Slatton and Lupe Herrera. Others fighting for starting assignments are Button Humphrey, Larry Hollis, Jimmy Martin, Otis Green, Elston Williams, Mike Manning and J. C. Jarrett. Green, a freshman, is the tallest lad in the squad, and is fast progressing into a potential star.

The late starting hour for the game is caused by a crowded schedule in the Olden gymnasium.

Other first round games besides the Eastland — Ranger affair match Carbon against Putnam and Scranton against Olden. Strawn drew first round bye. The Carbon-Putnam game will begin at 6:30 p.m. Olden will play Scranton Friday night at 9:15 p.m. In the girls division, Strawn will play Scranton at 5:15 Thursday and Carbon plays Putnam at

8 p.m. Eastland and Olden girls meet at 6:45 Friday.

Scranton and Ranger are the favored teams in the boys division, with Eastland ranked as the dark-horse and green Olden as a potential threat. Carbon's girls are given the nod in their bracket, with Scranton picked as the team expected to give them the most trouble.

In all there will be four sessions in the tourney. The first starts at 5:30 Thursday, the second at 5:30 Friday, the third at 9:30 a.m. Saturday and the fourth at 5:15 p.m. Saturday.

Tate says the Mavs will probably make a lot of mistakes in the opener, but he said he believes he is beginning to work the football out of most of his charges. Practice sessions have been held here during the holidays.

Texans Slack Off On Killing, But Still Bad

Texans, evidently shocked by the violent death toll that swept the nation during the Christmas holidays, slackened off killing themselves during the New Year's week-end, and wound up the overall holiday period beginning Friday, Dec. 21 and ending midnight Tuesday, slightly under the number of deaths predicted for the state, but terrible enough to place it near the unwanted top spot in the nation in fatalities.

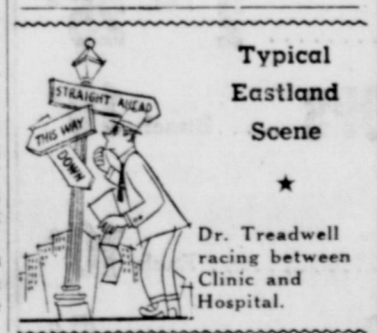
The Safety Department had predicted a total of 205 people would die violently in Texas during the 12-day holiday period, with 105 of them losing their lives in traffic accidents. The final count showed that 183 had died violently, with 98 of them in traffic accidents.

Nationally, 706 traffic fatalities were recorded during the Christmas week-end, and another 258 over the New Year's holiday, for a total of 1,064. According to the National Safety Council it was the first time in the history of the United States that traffic deaths had reached beyond the 1,000 mark during any holiday period.

Sabanna Valley Game Preserve Meeting Tuesday

A regular meeting of the Sabanna Valley Game Preserve Association will be held Tuesday night at 7 p.m. at the Center Point Community House near Carbon, Berry Greenwood, secretary-treasurer, announced today.

Greenwood said refreshments would be served at the close of the regular business meeting. He said members and other interested persons were all urged to attend the meeting.



Typical Eastland Scene
Dr. Treadwell racing between Clinic and Hospital.

Final Services For Mrs. Lovell Scheduled Today

Funeral services will be held this afternoon in the Hamner Funeral Home Chapel in Eastland for Mrs. Susie Jane Lovell, 66, who died Tuesday in a Ranger hospital.

Services will be conducted by a Church of Christ minister from Clyde beginning at 3 p.m.

Mrs. Lovell lived in Eastland County many years, moving to Eastland from Carbon some 10 years ago.

Survivors include her husband, J. W. Lovell; two sons, Walden of McCamey and T. L. of Abilene; seven daughters, Mrs. H. D. Courtney of Odessa, Mrs. W. W. Cherry of Cisco, Mrs. L. G. Louder of Dimmitt, Mrs. G. S. Manness of Idell, Mrs. A. W. Manness of Ozona, Mrs. C. L. Rich of Cisco and Mrs. W. B. Hurst of Clyde and two sisters, Mrs. F. V. Stanfield of Yuba City, Calif. and Mrs. L. E. Dewese of Fort Worth.

Burial will be in the Gunsight Cemetery in Stevens County.

John Goode's Father Dies

Word was received here this morning of the death of Lee Goode, father of John Goode of Eastland.

Mr. Goode dies this morning at 2 a.m. at Eagle Lake. Services will be held Friday at 2 p.m. at Eagle Lake. He was a member of the Methodist Church.

Survivors include his wife; two sons, Robert Lee of Eagle Lake and John; two daughters, Mrs. Allen Queck of Corpus Christi and Mrs. Fred Frnk of Eagle Lake.

BE SURE—SEE
Don Pierson Olds-Cadillac
Eastland
Quality Cars at Volume Prices

Local Stork Race Is Won In By Girls In 1956

son of Mr. and Mrs. Jack Edward King, who was born Dec. 1.

One sad fact, at least from the dollar and cent standpoint, was the small number of babies born in December, as compared to the large number born in January, the biggest baby month here. A baby in December means a tax refund, but one in January is not allowed by the tax experts.

Probably a number of babies born in December were not included in the list this year. Their

birth records apparently had not yet been filed.

Six boys and four girls were born in January; two boys and one girl in February; three boys and six girls in March; three boys and five girls in April; two girls and no boys in May; three girls and two boys in June; five boys and one girl in July; two boys and five girls in August; one boy and five girls in September; one boy and three girls in October; four girls and no boys in November; and one girl and no boys in December.

This was the third straight year that new girl arrivals outnumbered new boy babies. The trend could mean bad times for the girls in later years!

Partly cloudy through Friday with not much change in temperature. High both days 55 to 60. Low Thursday night near 40.

Partly cloudy through Friday with not much change in temperature. High both days 55 to 60. Low Thursday night near 40.

County Judge John Hart was in the office recently with an ad. Wanted to sell a Jersey milk cow. (Continued on Page 6)

BEAUTY BAR
... Reg. Ba...
... there...
... ed, accord...
... at City Hall...
... Reg. Ca...
... the way, al...
... a late start...
... Ann Lee...
... Mrs. John...
... baby born...
... as Jan. 8...
... Lola Cel...
... of Mr. and...
... She made

WEAVER REFSCHLAG INSURANCE AGENCY
No. Side Square Phone 178
Present in the Woman's Report

DODD

Eastland Telegram

Eastland County Record established in 1931, consolidated August 31, 1951. Chronicle established 1887. Telegram established 1923. Entered as second class matter at the Post Office at Eastland, Texas under the act of Congress of March 3, 1879.

VIRGIL E. MOORE, Editor
TIMES PUBLISHING COMPANY
Published Tri-Weekly—Tuesdays - Thursdays - Sundays
FRANCES MOORE, Society Editor

One week by carrier in city 18
One month by carrier in city 45
One year by mail in County 3.75
One year by mail in state 4.75
One year by mail out of state 6.75

NOTICE TO PUBLIC—Any erroneous reflection upon the character, standing or reputation of any person, firm or corporation which may appear in the columns of this newspaper will be gladly corrected upon being brought to the attention of the publishers.

Classified Ads.

Cards of Thanks charged for at rate of \$2.00 Each

MISC. FOR SALE - FOR RENT -

FOR SALE: Extra nice strawberry plants, \$2.50 per hundred. Phone 554-J.

Native trees, shrubs and plants that we could probably furnish you in the size that you would like: live oak, post oak, black jack, red bud, pecan, hackberry, native elm, persimmon, willow, plum, prickly ash, red holly, black holly, alberta berry bush, shynahall, anemone and others. We welcome your inquiry. Tennyson Nursery and Landscape Service, 1008 West 10th Street, Cisco.

FOR SALE: 18 by 14 house. Perfect for cabin. Call 189 or 123.

FOR SALE: AUTO 1950 Plymouth suburban, good condition, good tires. \$475. Phone 17.

FOR SALE: Three room house 2 apartment. Call 394-J, or 379.

FOR SALE: Broad Hampshire gifts, with or without papers. Homer Stephens, Route 1, Gorman. Mile west of Rucker.

FOR SALE: MINNOWS. BIG Golden Shiners and Red Horses. Pink Haley, east side of Olden.

FOR RENT: Furnished apartments. 611 West Plummer.

FOR RENT: Newly decorated apartments. Phone 1085-W.

FOR RENT: 3 bedroom house, 1 1/2 bath. Inquire at 1211 West Main. Phone 804-J.

FOR RENT: Small furnished house, 3 rooms and bath. 310 E. Main.

FOR RENT: 5 room house 407 S. Connellee. See Charles Harris 520 S. Connellee. Phone 354-W.

FOR RENT: Four room house 2 blocks from square. 209 W. Valleys.

FOR RENT: Four room furnished apartment, also bedroom with private bath. Phone 90.

CARD OF THANKS

I wish to express thanks and sincere appreciation for all our friends who showed true friendship in so many ways during my recent illness.
Howard E. Gill
ATTEND THE CHURCH OF YOUR CHOICE EACH SUNDAY

REAL ESTATE -

FOR SALE: Five room house. 603 Gilmer. Phone 989.

FOR SALE: Five room residence two extra lots. 611 Gilmer, Phone 444.

FOR SALE: 3 bedroom house. 505 S. Bassett. Call 720-W-2 or 707-W-2.

FOR SALE: 2 residences and 2 acres on school bus route. Would trade both for one. Phone 727-J-1.

TRI-CITIES REAL ESTATE EXCHANGE

Oil and Gas Leases
Business Property
Farms & Ranches



REALTOR
Phone 1076 Box 22
Eastland

LOST & FOUND -
LOST: Blue parakeet. Reward return to 404 South Bassett or phone 1109-W.

LOST: A small lock and key case. Drivers licenses in case. Small reward. Media Pautot, 401 South Oak Street.

FOR SALE: 26 inch boys bicycle. Reconditioned. Phone 970. 300 West Sadona.

FOR SALE: Good used gas ranges from \$10 up. Western Auto Stores.

FOR SALE: Three desks in good condition. Replacing desks with newer models. These are excellent buys. Two flat top desks, which would cost \$150 new, for \$25 each. One typewriter desk (not a stand) for \$15. See at Telegram.

FOR SALE: Nice, young, fresh Jersey milk cow. Four miles east Cisco on Breckenridge highway. John Hart.

WANTED: 40 head large feeder smolt. Kirksey Locker, Throckmorton, Texas.

WANTED—Sewing and alterations. Mrs. Schuler, 700 West Sadona Street.



ALEX RAWLINS & SONS
MONUMENTS
WEATHERFORD, TEX.
Serving This Community Since 1884

COURTHOUSE NEWS AND RECORDS

Real Estate Transfers, Marriages, Suits Filed.
Court Judgments, Orders, Etc.

INSTRUMENTS FILED
County Clerk's Office

Rayneal O. Baze to Vesthia M. Greer, warranty deed.
Mrs. Bessie Brown to Mary E. Carmon, lease agreement.
H. M. Bagwell to O. L. Cantrell, warranty deed.
George U. Cook to F. A. Seidel, assignment of oil and gas lease.

Glenn D. Compton to Bob Baker, deed of trust.
W. F. Coffman to Pioneer Oil Co., Inc., lease agreement.
W. E. Davis to Elsie Davis, warranty deed.
Elsie Davis to W. E. Davis, warranty deed.
Mrs. Ralph Dean to Ervin E. Addy, Jr., release of deed of trust.

DIXIE Drive-In

Box Office Opens 6:45
Show Starts 7:00
Box Office Closes 9:00

Admission—50c . . . Children Under 12—Free
Each Tuesday Is Bargain Night—Adults 25c
FRIDAY - SATURDAY, JANUARY 4 - 5



PILLARS OF THE SKY
WARD BOND - KEITH ANDERSON
LEE MARVIN - SYDNEY CHAPLIN
A UNIVERSAL-INTERNATIONAL PICTURE
PLUS: Color Cartoon

FOR SALE NOW—

The W. W. Linkenhoger home, 411 E. Pershing St., Eastland. Three bedrooms, living room, dining room, kitchen, new central heating system, fire place, attic fan, 2 complete baths with new fixtures, den (could be used as 4th bedroom) with pine paneling, lovely hardwood floors, wired for 220, large spacious double garage with steel overhead doors, concrete floor, servant's quarters, on paved street in choice neighborhood.

\$10,500.00

Terms can be arranged for immediate sale!

Listed Exclusively With

Tri-Cities

REAL ESTATE EXCHANGE

100 W. Commerce Eastland Phone 1076

Norman Elson to Henry Lichtig, assignment of oil and gas lease.
Norman Elson to George Aibel, assignment of oil and gas lease.
First Federal S & L Assn. to Rayneal O. Baze, release of deed of trust.
Vesthia M. Greer to First Federal S & L Assn., deed of trust.
Bryant W. Howell to Herbert Ekurt, deed of trust.
Anna Pearl Henderson to Ransom R. Knott, power of attorney.
Dr. E. L. Haney to H. L. Smith, release of oil and gas lease.
R. L. Jones to Herbert Ekurt, release of deed of trust.
Herman C. Jordan to C. U. Norton, oil and gas lease.
K. L. B. Oil Corporation to the following (all assignments of oil and gas leases): Don Pierson, Norman Elson, H. J. Hamilton, and K. L. B. Corporation.
James P. Kiel to K. L. B. Corporation, assignment of oil and gas lease.
F. W. Lavery to J. M. McKendrick, assignment of oil and gas lease.
Nash H. Miller to Brooks N. Ross, power of attorney.
Mile High Oil Company, Inc. to Robert W. Fox, release of oil and gas lease.
Victoria H. May to Earl Blackwell, Sr., release of deed of trust.
L. E. Melton to L. Z. Melton, warranty deed.
Max McCotter to C. V. Fox, release of oil and gas lease.
O. F. Newsum to Mrs. H. P. Smith, assignment of oil and gas lease.
O. F. Newsum to Omie Semple, assignment of oil and gas lease.
C. U. Norton to Percy L. Smith, assignment of oil and gas lease.
L. E. Owens to Herbert Ekurt, deed of trust.
State of Texas to Lake Cisco Amusement Co., release of franchise tax lien.
Conrad Schaefer to G. E. Winfrey, warranty deed.
S. C. Thompson to Lone Star Producing Co., casinghead gas contract.
E. C. White to Earl Blackwell, warranty deed.
Woodson Oil Company to The Public, designation of homestead.
F. C. Williamson to Z. O. McHaffey, lease.
G. W. Woodson to Blanche Brooks, partition deed.

MARRIAGE LICENSES
Herman Gail Bennett and Mildred Bell Kirk.
Gene Arlin Agnew and Paula Jeanette Douglas.

SUITS FILED
91st District Court

Ex Parte: Application of Katrina L. Wood for removal of disabilities.
L. B. Richards v. Bob Carroll, damages.
Frank C. Judia v. Mary C. Judia, divorce & custody.

ORDERS AND JUDGMENTS
91st District Court

Ex Parte: Application of Katrina L. Wood, order.
Robert Hobbs v. Margie Hobbs, judgment.
Frank C. Judia v. Mary C. Judia, order.
W. R. Penn v. Carolyn Fowler, et vir, judgment.
Roger L. Hudson v. Liberty Mutual Insurance Co., order of dismissal.
Marie Parsons v. Howard Parsons, judgment.
J. E. Woodson v. Blanche Brooks, et al, order of dismissal.

TRADE WITH YOUR HOMETOWN MERCHANTS

Overseas Veterans Welcome
Karl and Boyd Tanner
Post No. 4136
VETERANS OF FOREIGN WARS
Meets 2nd and 4th Thursday 8:00 p.m.



Insurance AND Real Estate
D. L. KINNAIRD
Life - Fire - Auto - Farm
Polio - Bonds
37 years in the Insurance
Business in Eastland

OUR WINTERPROOF SERVICE leaves WEATHER WORRIES BEHIND EARLY TIRE SERVICE

302 W. Main Eastland
PHONE 208

We're Authorized Dealers For
ALL HOTPOINT APPLIANCES
Washing Machines — Dryers — Ranges
Dish Washers — Disposals
Home Freezers — Refrigerators
Air Conditioners — Hot Water Heaters

Call Us For Complete Service On ALL Appliances

SMITH PLUMBING & TIN
114 S. Seaman Phone 304

PHONE 42 EXPERT Day and Night
BODY WORK AND PAINTING
WRECKER SERVICE

KING MOTOR CO.
Direct Factory Ford Dealer
Northeast Corner of Square

Our New Schedule of Prices—
... effective January 1, 1957 is as follows:
(1) Certification \$5.00. (2) Pages thru 10, \$1.00 per page.
(3) Pages from 11 thru 25, \$1.50 per page. (4) Pages 26 thru 100, \$1.25 per page. (5) All the rest \$1.00 per page.
These increases are unavoidable brought on by increased operating costs including high federal taxes of many kinds. You can cut down on future costs by keeping your abstracts in a safe place and avoid loaning them to others without a cash replacement deposit.

EARL BENDER & COMPANY
Eastland (Abstracting since 1923) Texas

OIL FIELD Equipment

- SURFACE CASING
- OIL STRING CASING
- TUBING
- RODS
- PUMPING UNITS
- TANKS

BOUGHT - SOLD - TRADED
IRISH DRILLING CO., INC.

Hwy. 80 East Eastland, Texas
Office Phone 100 - 101 Yard Phone 199

—We Give Hometown Trading Stamps—

DELICIOUS APPLES	2 Lbs.	25¢
TURNIPS & TOPS	Bunch	10¢
LARGE HARD HEADS LETTUCE	Each	10¢
GREEN ONIONS	Bunch	5¢
KIMBELL'S OLEO	Lb.	23¢
KIMBELL'S SHORTENING	3 Lb. Ctn.	73¢

These Prices Effective . . .

FRIDAY and SATURDAY

Wednesday Double Stamp Day

Hamburger Fresh Ground All Meat Lb. **25¢**

Sausage Country Style Lb. **25¢**

Sa Country Lb. **5** Lbs. **\$1**

CALTOP SLICED PEACHES	No. 2 1/2 Can	29¢
DIAMOND BRAND TOMATO JUICE	46-Oz. Can	29¢
DEL MONTE GOLDEN CREAM CORN	2 No. 303 Cans	35¢
DELMONTE EARLY GARDEN PEAS	303 Can	21¢
KIMBELL'S PORK & BEANS	2 No. 300 Cans	19¢
SONNY HILLS CATSUP	Bottle	17¢
BUD WAFFLE SYRUP	24 Oz. Bottle	49¢

Choice Beef

Crown Roast

SWIFT SEMINOLE SLICED Bacon Lb. **39¢**

With Beans

Brick Chili

lb. **29¢**

EST Center **STEAK** Shoulder Lb. **39¢**

Phone 11

WORTH QUALITY

CALF SALE



WORTH QUALITY CALF is your best buy... and here's why! Worth's meat buyer personally selects each and every quarter, side or carcass with extreme care, choosing only the very best for our customers. This complete program of inspection, selection,

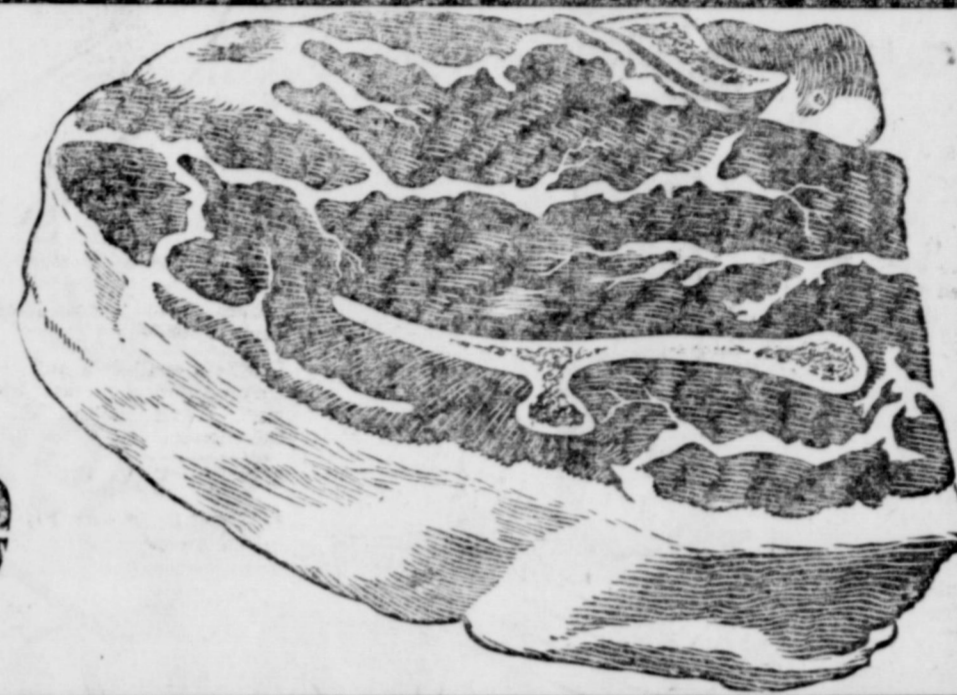
ageing and handling assures you of highest quality always. Right now is a wonderful time to "get acquainted" with WORTH QUALITY CALF at terrific savings!

PRICES EFFECTIVE THURSDAY, FRIDAY & SATURDAY

CHUCK ROAST

Worth Quality Calf
Tender, Flavorful
At Worth
Food Mart

Lb. **29¢**



**STOCK YOUR FREEZER,
FILL YOUR REFRIGERATOR!**

T-BONE STEAKS WORTH QUALITY CALF Lb. 69¢	GROUND BEEF FRESHLY GROUND Lb. 33¢
SIRLOIN STEAKS WORTH QUALITY CALF Lb. 59¢	FRANKFURTERS RATH'S BLACKHAWK .. 1-Lb. Pkg. 45¢
SHORT RIBS WORTH QUALITY CALF Lb. 23¢	PORK DAINTEES RATH'S BLACKHAWK .. 1-Lb. Pkg. 69¢

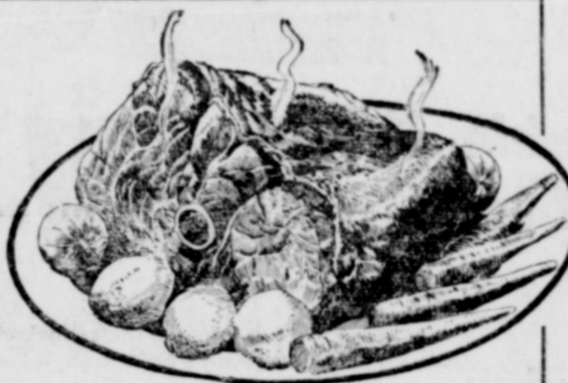
ROUND STEAK

Worth Quality Calf

Lb. **69¢**

ROUND BONE ROAST

Worth Quality Calf... Lb. **39¢**



RATH BLACKHAWK SLICED

BACON 1-Lb. Pkg. **55¢**

ARMOUR'S STAR PORK

SAUSAGE 1-Lb. Pkg. **33¢**

RATH'S BEEF, PORK, VEAL

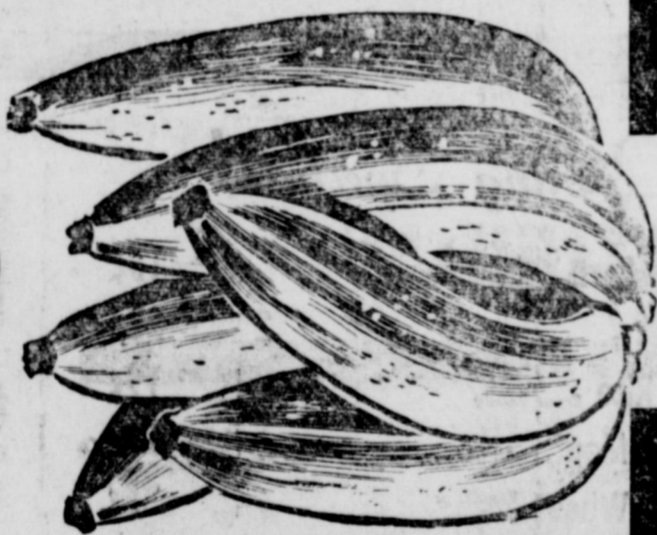
CHOP-ETTES 2 8-Oz. Pkgs. 89¢

"S & H" GREEN STAMPS FOR EXTRA SAVINGS!

BANANAS

Central America
Golden Ripe
At Worth Food Mart

Lb. **10¢**



LARGE, JUICY
SUNKIST ORANGES 2 Lbs. 29¢

ORANGES Texas, Juicy 5 -Lb. Cello Bag **29¢**

RIPE, MELLOW, LUSCIOUS

D'Anjou Pears Lb. **17¢**

RUTABAGA TURNIPS Waxed 2 Lbs. **9¢**

SUNKIST LEMONS Large, Juicy Lb. **19¢**

HIXSON'S ALL GRINDS

COFFEE Lb. Can **85¢**

PARKAY 1-Lb. Pkg. **30¢**

MARGARINE 1-Lb. Pkg. **30¢**

TOLIET SOAP **PALMOLIVE** 3 Reg. Bars **25¢**

TOLIET SOAP **PALMOLIVE** 2 Bath Bars **25¢**

FOR AUTOMATIC WASHER **AD DETERGENT** Giant Box **79¢**

DETERGENT **VEL LIQUID** Large Can **39¢**

NO DETERGENT BURN **VEL DETERGENT** Giant Box **73¢**

MORE ACTIVE DIRT REMOVER **FAB DETERGENT** Giant Box **73¢**

BEAUTY SOAP **CASHMERE BOUQUET** 3 Reg. Bars **25¢**

CONTAINS NO ALKALIS **VEL BEAUTY BAR** Reg. Bar **25¢**

FOAMING ACTION **AJAX CLEANSER** Reg. Can **13¢**

DEODORANT SPRAY **FLORIENT** 12-Oz. Can **79¢**

PAPER **ZEE TOWELS** 150-Ct. Roll **19¢**

WHITE OR COLORED **ZEE NAPKINS** 80-Ct. Pkg. **13¢**

ZEE COLORS **TOILET TISSUE** 4 Roll Pkg. **37¢**

HEALTH & BEAUTY AIDS
at B. M. C. display

HALO SHAMPOO

Medium Size Bottle

53¢

ANTISEPTIC

LISTERINE Med. Size **49¢**

COLGATE

TOOTH PASTE Giant Pkg. **49¢**

QUICK RELIEF FOR HEAD-ACHE

ALKA-SELTZER Large Pkg. **54¢**

NO UPSET STOMACH

BUFFERIN Reg. Pkg. **53¢**



Visit our Frozen Foods
Section During

**MINUTE MAID
PARADE of VALUES**

BUY NOW-AND SAVE!

MINUTE MAID

ORANGE JUICE 2 6-Oz. Cans **35¢**

MINUTE MAID

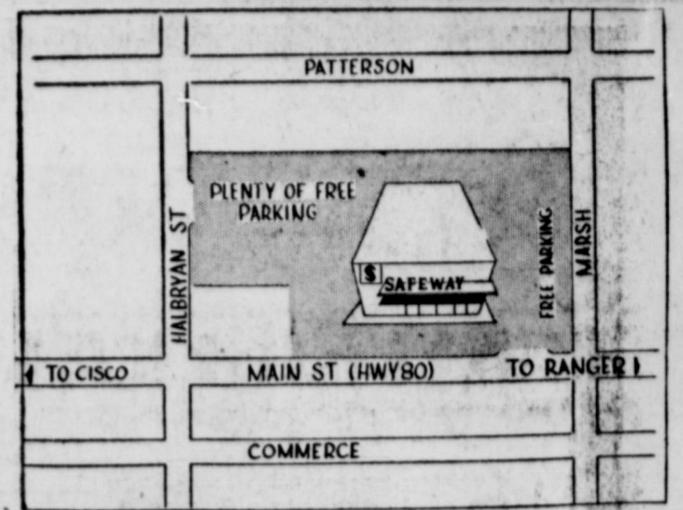
GRAPEFRUIT JUICE 2 6-Oz. Cans **27¢**

WORTH FOOD MART

NEW SAFEWAY

HAPPY NEW YEAR

Your New Safeway is Located
**504 E. Main
Eastland**



STORE HOURS
Monday through Friday
8:00 A.M. to 6:00 P.M.
Saturday
8:00 A.M. to 8:00 P.M.



**3rd
BIG
WEEK**

GRAND

**YOU Receive Valuable
Premiums FREE When
You Join Safeway's**

Save Safeway's Green Cash Register Tapes. When you save the required number of envelopes each containing \$35.00 of tapes, redeem them at this Safeway Store.

“SAVE-A-TAPE” PLAN

Here are just a few of the many wonderful premiums you can get with Safeway's Save-A-Tape Plan:

- Bathroom Scales
- TV Tables
- Roller Skates
- Electric Toasters
- Copper Cookware
- Electric Skillets
- Dixie Dogwood Dinnerware

FREE! STARTER ENVELOPE
Worth \$3.00 in Tapes.

This handy envelope is furnished free by Safeway. You can save your tapes easily in this envelope and it's worth \$3.00 in cash register tapes. Complete details at Safeway.



Grand Opening Feature Buys!

Sweet Potatoes Highway Cut	2 No. 303 Cans	33¢
Cake Mixes Pillsbury, Yellow, White Fudge, Spice or Orange	17-Oz Pkg.	31¢
Frozen Orange Juice Bel-air	2 6-Oz. Cans	25¢
Coldbrook Margarine	2 1-Lb. Pkgs.	25¢
Cheese Spread Breeze	2 -Lb. Box	79¢
Dutch Mill Cheese Sliced American, Pimiento, Swiss	1/2-Lb. Pkg.	35¢

New Year Good Buys!

Bleach White Magic	1 Gal. Jug	51¢
Liquid Starch Fautleroy	1/2-Gal. Jug	42¢
Cleanser Rik Rat	2 14-Oz. Cans	21¢
Apricot Preserves Empress	20-Oz. Jar	41¢
Empress Preserves Apricot Pineapple	20-Oz. Jar	41¢
Welch Grapelade or Grape Jelly	10-Oz. Jar	25¢

Coffee Specials!

Airway Coffee	1-Lb. Pkg.	87¢
Nob Hill Coffee	1-Lb. Pkg.	95¢
Edwards Coffee	1-Lb. Can	\$1.01
Edwards Instant Coffee	2-Oz. Jar	51¢
Nescafe Instant Coffee	2-Oz. Jar	53¢
Maxwell House Instant Coffee	2-Oz. Jar	53¢

Opening Specials!

Highway Corn Whole Kernel Golden	12-Oz. Can	15¢
Tomatoes Gardenside	2 No. 303 Cans	27¢
Spanish Rice Brown Beauty	No. 300 Can	19¢
Luncheon Meat Oscar Meyer	12-Oz. Can	39¢
Cream of Wheat Regular or 5-Minute	28-Oz. Box	35¢
Malt-O-Meal Children Love It	24-Oz. Box	34¢
Quaker Oats Regular or Quick	20-Oz. Box	19¢
3-Minute Oats Cup and Saucer	40-Oz. Box	49¢

You'll Be Surprised When
You See and Hear

SQUAKEE

The Talking Puppet

The Kidides will be thrilled to see
and hear him talk without
assistance.

IT'S FUN
IT'S ENTERTAINING

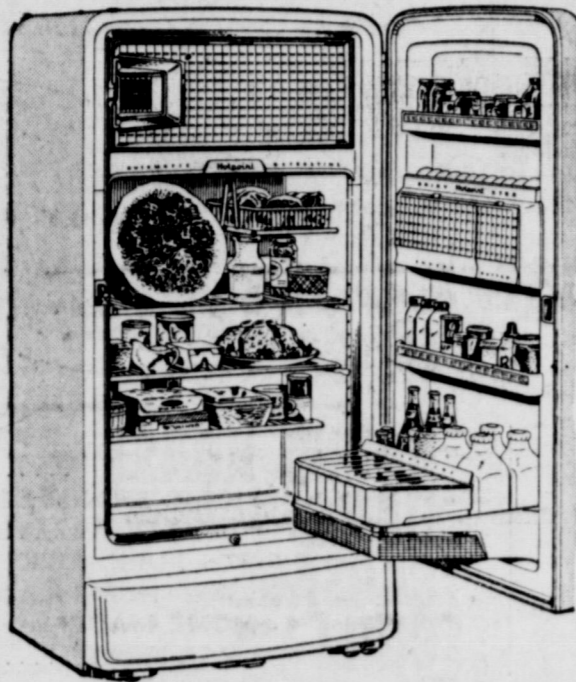
“Extra Specials!”

Grapefruit Juice Town House Natural	2 No. 2 Cans	29¢
Blend O Gold Orange and Grapefruit Juice	2 No. 2 Cans	35¢
Tomato Juice Taste Tella	2 No. 2 Cans	27¢
Citrus Salad Glenn-Aire	No. 303 Can	29¢
Sliced Pineapple La Land	2 No. 1 Cans	33¢
Cut Green Beans Highway	No. 303 Can	15¢
Toilet Soap Brocade	10-Bar Bag	49¢
Peanut Butter Real Roast	18-Oz. Jar	55¢
Maple Syrup Pack Train Imitation	24-Oz. Bottle	33¢

**EVERY ITEM
SOLD AT
SAFEWAY IS
GUARANTEED**

If you are not satisfied completely, your money will be cheerfully refunded. At Safeway you will always find the lowest prices in town and friendly courteous service.

FREE! HOTPOINT FREEZER-REFRIGERATOR COMBINATION



to be given away Saturday, January 5, at 4:00 P.M.

The most convenient refrigerator made today... roomy automatic defrosting refrigerator section, plus all deluxe features, quality and dependability for which Hotpoint is famous.

FREE BASKETS OF GROCERIES



20 baskets of groceries to be given away this weekend. 10 baskets each day on Thursday, Friday and Saturday.

ONE REGISTRATION QUALIFIES YOU FOR ALL PRIZES AT DRAWING

FREE ICE CREAM

Free Ice Cream Sandwiches will be given away to the first 10,000 customers on Friday and Saturday, January 4 and 5.

FREE BREAD

One loaf of Cracked Wheat Bread will be given away to our first 1500 customers on Saturday, January 5.

OPENING CELEBRATION

Safeway Guaranteed Meats

Jumbo Sliced Bologna	1-Lb. Fkg.	39¢
Capitol Sliced Bacon	1-Lb. Cello	43¢
Ground Beef Economy	4-Lb. Pkg.	\$1.00
Pork Loin Roast Rib End or Loin End	Lb.	33¢
Round Steak Bone-In U.S. Choice Heavy Steers	Lb.	65¢
Chuck Roast Calf U.S. Gov't Graded	Lb.	35¢
Sirloin Steak Calf U.S. Gov't Graded	Lb.	69¢
Short Ribs or Brisket Calf, U.S. Gov't Graded	Lb.	23¢
Canned Picnics Ready to Eat	4 1/2-Lb. Can	\$2.89
Wingate Sausage Reg or Hot	2-Lb. Roll	59¢
Pork Spareribs Fresh, Small-Lean	Lb.	39¢
Dry Salt Bacon Center Cut	Lb.	33¢
Cured Hams Half or Whole 10 to 12-Lb. Avg.	Lb.	59¢
Frankfurters Skinless	3-Lb. Pkg.	\$1.00

New Year Specials!

Kleenex Facial Tissues White, Yellow or Pink 400-Ct. Box	15¢
Kitchen Craft Flour Perfect for All Your Baking	10-Lb. Bag 69¢
Gladiola Flour Win Praises for Your Baking	10-Lb. Bag 69¢
White Corn Meal Covered Wagon	5-Lb. Bag 41¢
Del Monte Peas Early Garden	2 No. 303 Cans 25¢
Salad Dressing Cascade or Piedmont	32-Oz. Jar 43¢
Sandwich Spread Lunch Box	16-Oz. Jar 39¢
Zippy Pickles Fancy Whole	1/2-Gal. Jar 59¢
Grade A Eggs Breakfast Gems Large	Doz. 57¢
Kraft Cheese Cracker Barrel Sharp	13 1/4-Oz. Pkg. 71¢
Kraft Cheese Cracker Barrel Mellow	13 1/4-Oz. Pkg. 61¢

Grand Opening Feature Buys!

Emerald Bay Spinach Good to Eat Good for You	No. 2 1/2 Can	20¢
Ranch Style Beans Just Plain Good	3 No. 300 Cans	25¢
Wolf Plain Chili Grand Flavor	No. 2 Can	39¢
Wolf Tamales Delicious with Chili	No. 1 1/2 Can	19¢
Tide Detergent For a Whiter Wash	Large Box	25¢
Parade Detergent Works Wonders on Washday	Large Box	23¢
Busy Baker Crackers Delicious with Soup	1-Lb. Box	19¢
Royal Satin Shortening	3-Lb. Can	59¢
Snowdrift Shortening	3-Lb. Can	85¢



Lucerne Milk Homogenized	1/2-Gal. Ctn.	47¢
Buttermilk Lucerne	1/2-Gal. Ctn.	41¢
Half and Half Lucerne	Pt. Ctn.	26¢
Curtsy Snails Fruit, Jelly or Nut	7-Oz. Pkg.	20¢
Skylark Bread Regular Sliced White	24-Oz. Loaf	25¢

Farm Fresh Produce

Red Potatoes Economy	10-Lb. Bag	39¢
Yellow Onions Tasty	2 Lbs.	5¢
Sunkist Oranges Navels 110's	Lb.	15¢
Cauliflower Snowy Heads	Lb.	17¢
Pascal Celery	Lb.	15¢
Crisp Lettuce	Lb.	17¢

Prices effective Thursday, Friday and Saturday, January 3-4-5.



NEWS FROM STAFF

By Mrs. M. O. Hazard

Mr. and Mrs. Dale Pope, from Monument, New Mexico were here last week to visit with his parents, Mr. and Mrs. T. E. Pope.

Mrs. Pope accompanied the Dale Pops to Fort Worth on Thursday for a visit.

Mr. and Mrs. Jid Blackwell, from Cheaney were visiting with the T. E. Pops on Monday evening of last week.

Mrs. Zona Griffin is spending a

few days at Desdemona visiting with her son-in-law and daughter, Mr. and Mrs. J. H. (Slim) Adams.

Quite a number have been spending some time fishing on Lake Leon during the holidays.

Mr. and Mrs. L. G. Uowell went to Fort Worth on Thursday of last week where they meet their daughter, Mrs. W. W. Lee and son, Wilson, who came by plane from Arlington, Virginia to spend the Christmas holidays with the Powsells. Major W. W. Lee came Saturday to join his family here.

Mr. and Mrs. Sam Fonville and Earl, from Desdemona, spent Christmas day with Mrs. Fonville's parents, Mr. and Mrs. M. O. Hazard.

Mr. and Mrs. E. G. Henderson and young son, Kelly from Midland spent the Christmas holidays with his parents, Mr. and Mrs. C. L. Henderson.

Mrs. Zelda Little of Dallas spent Christmas with her parents, Mr. and Mrs. J. W. Mounce.

Mr. and Mrs. Jack Cole of Beaumont were week end guests of Mrs. Cole's parents, Mr. and Mrs. O. T. Hazard.

Mr. and Mrs. Louie Puryeur, from Weatherford, spent Christmas day with her sister, Mrs. L. G. Fowell and Mr. Powell.

Mr. and Mrs. O. T. Hazard spent Christmas day in the home of Mrs. Hazard's brother, Mr. and Mrs. Ray White at Elliasville.

Anson Little of Odessa was here during the holidays to visit with his parents, Mr. and Mrs. J. L. Little and other relatives.

Mr. and Mrs. Royce Pope, Johnny Edward and David from Winters were visiting with Pope's parents the T. E. Pops Christmas evening.

Hospital News

Patients in the Eastland Memorial Hospital are:

Mrs. Pearl Jones, medical
Mrs. Hattie Whatley, medical
Kenneth Sullivan, medical
Mrs. C. D. Everton, surgical
Mrs. Ida Joy, Cross Plains, surgical

Earl Throne, medical
Dismissed were Mrs. Earline Horton, Mrs. Billy Mayfield, Charles Peel, LeRoy McCullough, Harvey Lewis and Mrs. David Fry and baby girl.

Patients in the Ranger General Hospital from Eastland are:

Mrs. Lawrence Thomas and baby girl born Jan. 3.
Frank Jones, medical
Mrs. Veta Hudson, medical
M. T. Pharris, medical
Clinton Lovelace, medical
Carolyn Sue Medford, medical
Dismissed were G. B. Massengale, Mrs. Berta Garland and Allen Leslie.

Story Telling Time To Be Held At Woman's Club

Mrs. Tom Wilson will be in charge of the Saturday Story Hour Saturday morning at 10 o'clock in the Woman's Club at which time she will tell stories and provide other entertainment for children between the ages of three years and the fifth grade.

The hour is sponsored the first Saturday of the month by the Thursday Afternoon Club. All children between the age limits are invited to attend.

Moore About-

(Continued from Page 1)
We took his ad and when he looked it over he said, "Could you change that 'milch' to 'milk'?" We country folks don't write it that way." We will buy that judge. The fellow that dreamed up that spell-

ing should be shipped out to Russia. TRADE WITH YOUR HOME-TOWN MERCHANTS

CALL 601 FOR CLASSIFIEDS

BOURLAND'S MARKET VALUES

STEAK

Baby Beef or Veal, Home Butchered Loin, Choice T-Bone or Club

Lb. 59¢



CHUCH STEAK OR ROAST

Lb. 39¢



PORK CHOPS NICE LEAN Lb. 59¢
HAM WILSON'S CERTIFIED SHANK & BUTT PIECES Lb. 35¢
GROUND MEAT DECKER'S KORN KRIST Lb. 29¢
BACON SLICED Lb. 43¢

ROUND ROAST SHOULDER Lb. 45¢
PICNIC SHANKLESS 4 To 8 Lb. Ave. Lb. 39¢
HAMS PURE PORK HOME MADE Lb. 39¢
SAUSAGE MOME MADE Lb. 49¢
CHILI ALL MEAT Lb. 49¢

Sliced Peaches Old Ivory 2 1/2 Cans 27¢

Tomatoes Iona 2 No. 303 Cans 25¢

June Peas A & P Early Small Size 303 Can 25¢

Pinto Beans Dried 4 Lb. Pkg. 45¢

Spinach A & P 2 No. 303 Cans 25¢

"SUPER-RIGHT" CANNED LUNCHEON MEAT

12 oz. Can 29¢

EVAPORATED MILK White House 3 Tall Cans 39¢
dexo SHORTENING 1-lb. Can 33¢ 3-lb. Can 79¢
dexola COOKING OIL Quart 57¢
NUTLEY MARGARINE 1-lb. Pkg. 21¢
CLING PEACHES Iona Slices or Halves 29-oz. Can 29¢
EIGHT O'CLOCK Mild, Mellow Coffee 1-lb. Bag 87¢
A&P INSTANT COFFEE 2-oz. Jar 49¢
ORANGE JUICE Minute Maid 2 6-oz. Cans 35¢
LEMONADE Minute Maid 2 6-oz. Cans 29¢
GRAPE JUICE Minute Maid Frozen 2 6-oz. Cans 35¢

Ann Page Buys
TOMATO KETCHUP Ann Page 14-oz. 21¢
PURE GRAPE JELLY Ann Page 12-oz. 21¢
BEANS WITH PORK Ann Page 2 16-oz. Cans 23¢

SPARKLE ASSORTED (REGULAR) PUDDINGS 4 Pkgs. 25¢
ANN PAGE PREPARED SPAGHETTI 3 15 1/2-oz. Cans 35¢

Bakery Values
STRAWBERRY PIE Jane Parker 53¢
GOLD POUND CAKE Jane Parker 25¢
FUDGE COOKIES Jane Parker 2 11-oz. Pkgs. 49¢

JANE PARKER GLAZED DONUTS Pkg. of 8 25¢ Pkg. of 12 29¢

fresh produce

FLORIDA JUICE ORANGES 8 Lb. Bag 49¢
CALIFORNIA SUNKISTS NAVEL ORANGES Lb. 15¢
U. S. No. 1 IDAHO RUSSETT POTATOES 10 Lb. MESH BAG 65¢
MINNESOTA RUTABAGAS Lb. 5¢
TEXAS YOUNG TENDER CARROTS 2 Lb. Bag 17¢
TEXAS CALIFLOWER LARGE SIZES Head 15¢
VANILLA WAFERS Nabisco 7 1/2-oz. Pkg. 23¢
KOTEX Box 33¢
FRUIT PIES Swanson's Apple or Peach Pkg. of 2 29¢
CORN A&P Golden Sweet 2 303 CANS 25¢

LIBBY'S SAUSAGES VIENNAS 2 4-oz. Cans 37¢
LIBBY'S CORNED BEEF 12-oz. Can 45¢
LIBBY'S ROAST BEEF 12-oz. Can 45¢
KRAFT'S CARMELS 1-lb. Pkg. 37¢
MIRACLE WHIP DRESSING (SALAD) Pint Jar 37¢
NIFTY FROZEN WAFFLES Pkg. of 6 10¢

NICK MILLER'S PRE-INVENTORY CLEARANCE SALE

Begins Friday, January 4th EIGHT DAYS ONLY Continues through Sat., January 12 EIGHT DAYS ONLY

YOUR OPPORTUNITY TO SAVE on the many famous brand items throughout our store.

Grid of clothing items with prices and discounts: MEN'S TOPCOATS Now 1-3 Off, JACKETS Now 1/4 Off, NECKWEAR Now 1/2 Price, FLORSHEIM SHOES Now 15.80 - 17.80, BOYS' SPORT COATS Now 1-3 Off, BOYS' JACKETs Now 1-3 Off, BOYS' HUGGAR CAPS Now 98c, LADIES ROBES Now 1/2 Price, LADIES SKIRTS Now 1-3 Off, FALL SUITS Group No. 1 Greatly Reduced, WOOL SHIRTS Now 1/4 Off, SWEATERS Now 1/4 Off, JARMAN SHOES AND LOAFERS Now 6.88 pair, BOY'S SUITS Now 1-3 Off, BOY'S SLACKS Now 1-3 Off, SPORT JACKETs Now 1/4 Off, COSTUME JEWELRY Now 1/2 Price.

NICK MILLER

All Sales Final. Please On Sale Merchandise No Refunds - No Exchanges - No Approvals STARTS FRIDAY, JANUARY 4th FOR EIGHT DAYS ONLY "The Man's Store" CISCO

Clubwomen To Give Opinion On Establishment of UN Police Force

Mrs. A. J. House, Yoakum, President of The Texas Federation of Women's Clubs has requested Texas Clubwomen to cooperate with the General Federation President, Mrs. R. I. C. Prout in her appeal to clubwomen to answer the crucial question "Do you favor establishment of a permanent UN police force?"

This question will be discussed by Brigadier General Carlos P. Romulo, Philippine Delegate to the United Nations Security Council and a panel of General Federation of Women's Clubs members on the Home Show with Arlene Francis (NBC-TV) at 10 a.m. (EST), Wednesday, Jan. 2, 1957.

Representing the General Federation's 15,600 American member clubs, 1,000 of which are in Texas, on the program will be Mrs. Prout, Mrs. Zaid Woodford Schroeder of Detroit, Michigan, GFWC International Affairs chairman, and state international affairs chairmen: Mrs. Clarence Sicard, Chesire, Connecticut, Mrs. Thomas E. McGlade, Haddonfield, New Jersey, and Mrs. George G. Meltum, Massapequa, Long Island, N. Y. Each will pose questions on behalf of GFWC membership to Brigadier General Romulo, ambassador, statesman and top United Nations leader. Mrs. Prout will relay questions from clubwomen all over the nation.

At the close of the program, Brigadier General Romulo will "turn the tables" on the panel, asking them questions about the American woman's role in strengthening the United Nations organization.

Mrs. Prout urges that every clubwoman watch this program, and report their opinions to her immediately which will be compiled into a report of nation-wide feeling of clubwomen and announced on the January 14 morning bulletin of General Federation of Women's Clubs on the Home show.

VISITING HERE

Visiting in the home of Mr. and Mrs. M. A. Peterson are her parents, Mr. and Mrs. Jess Morgan of Ranger, CWO and Mrs. Frank Couch, Mike and Susan of El Paso and Mr. and Mrs. M. L. Spindle of Hobbs, N.M.

Gorman Gatherings

By Mrs. R. E. Boucher

Ray Duke returned to his home in Abilene Friday after spending the holidays with his sister, Mrs. D. G. Riley.

Mr. and Mrs. Robert Palmer of Stephenville, attended Mrs. Pat Peak's funeral Saturday.

Mr. and Mrs. Jim Moates of Houston visited with Mrs. Mattie Jones and Mr. and Mrs. Floyd Joy Wednesday.

Mrs. DeOla Moates of Houston is visiting her cousin Mrs. Florence (Butler) Joy who is critically ill at the Blackwell Hospital.

Mh. and Mrs. W. L. Garrett are visiting at his sister's, Mrs. S. E. Lindes.

Miss Sora Beth Breer of Lubbock visited with Linda Speck the week end.

Jackie Lon Wheeler and Neil Gilbert will return to Texas Tech Wednesday to their school work after spending the holiday with their parents.

Miss Floy Dean Gilbert will return to Abilene Christian College after the holiday with the home folk.

ATTEND THE CHURCH OF YOUR CHOICE EACH SUNDAY

Your Car Can Deliver
 UP TO 58% MORE COMPRESSION
 UP TO 54% MORE GAS MILEAGE
 UP TO 900% MORE OIL-SAVING EFFICIENCY

Mere Minutes After You Add
MOTOR OVERHAUL
 Only \$298

To Your Oil... and DRIVE!
 *These Increases Proved and certified by On-the-Road INDEPENDENT LABORATORY TEST REPORT



DISTRIBUTED BY **MARVIN GRUBB**
 517 S. Daugherty
 Eastland Phone 370

M and W PLUMBING COMPANY

- Bath Fixtures • Fittings • Repair Parts
- Prompt and Courteous Service
- Business Appreciated

405 S. Seaman Eastland Phone 1159

PENNEY'S SPECTACULAR

NEW LOW PRICES!

On All Nationally Famous Penney Sheets

WHITE GOODS

SPECIAL!

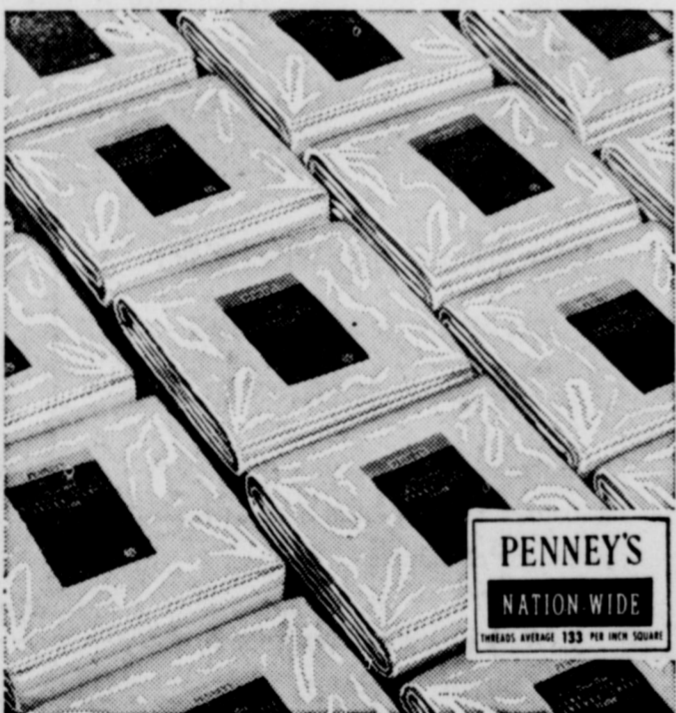
Corduroy

Chenille

BEDSPREADS

\$5

- Full Bed Size
- High Fashion Decorator Shades
- Rounded Corners



NATION-WIDE MUSLINS

Strong, smooth sheets that wash & wear superbly. Penney's own famous brand... home tested by millions!

1.72

72 by 108 inch flat or twin fitted Sanforized bottom, \$1.59.

81 by 108 in. flat or full fitted Sanforized bottom

SPECIAL!

Men's Cotton

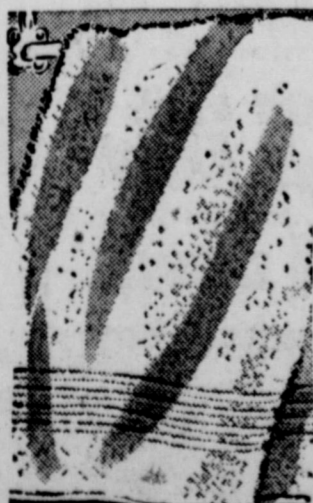
SWEAT

SHIRTS

1.22 each

Colors: White or Grey

Sizes S-M-L



Very special Cannons at very special savings! Dacron-nylon selvaged to take tugs, add wear! Fine terries!

22 by 44 inch bath size,

2 for 1.00



SPECIAL

IDAHO RUSSET

Potatoes

10-Lb. Bag 39¢

SPECIAL

CLOVER FARM

MILK

3 Tall Cans 38¢

SPECIAL

PREMIUM SALTINE

Crackers

1-Lb. Box 25¢

SPECIAL

GLEEM

Tooth Paste

69c Size 49¢

SPECIAL

GLENDALE

Peaches

Sliced or Halves No. 2 1/2 Can 29¢

CLOVER FARM

Coffee Drip or Reg. 1-Lb. Can 87¢

VEL Large Box 25¢

CLOVER FARM

Bleach Quart Bottle 13¢

LILT HOME

Permanent \$2.00 Size Tax Included 1.39

GOLDEN FLUFFO

Shortening 3 Lb. Can 79¢

BORDEN'S

Starlac Makes 5 Qts. Milk 1-Lb. Box 37¢

BIG MIKE

Dog Food 3 Tall Cans 19¢

CLOVER FARM

Salt Plain or Iodized 26-Oz. Pkg. 9¢

WELCH'S

Grape Juice 24-Oz. Bottle 29¢

FRESH CALIFORNIA

Cauliflower Lb. 10¢

CENTRAL AMERICAN

BANANAS Lb. 12 1/2 ¢

FLORIDA JUICY

Oranges 5 Lb. Bag 29¢

ARMOUR'S MATCHLESS

Bacon Sliced Lb. 43¢

GOOD TO BOIL OR FRY

Bacon Ends 5 Lbs. 89¢

Chuck Roast Good Quality Lb. 39¢

FRESH Ground Meat Lb. 29¢

HOME MADE PURE PORK

Sausage Lb. 29¢

BEEF

Short Ribs Lb. 23¢

CLUB

STEAK GOOD QUALITY Lb. 49¢

GOOCH'S

FRANKS 3 Lb. 89¢

OPEN EVERY NIGHT TIL 8 P.M.—SATURDAY TIL 9 P.M.

CLOVER FARM STORES

400 South Seaman

Phone 31

THE MEN'S SHOP

ANNUAL PRE-INVENTORY

S-A-L-E

Sale starts Friday... Sizeable reductions in all departments, including special price groups of our Nationally Known Merchandise, priced to clear quickly.

MEN'S SUITS

Regular	NOW
67.50 — 65.00	57.50
60.00 — 59.50	52.50
55.00	48.50
50.00	43.50
45.00	38.50
39.75	34.50
35.00	29.50

MEN'S TOP COATS

Regular	NOW
67.50	52.50
59.50	48.50
55.00	43.50
39.75	32.75

MEN'S SPORT COATS

Regular	NOW
39.75	34.50
37.50	32.75
35.00	29.50
32.50	27.95
29.95	25.75
27.50 — 25.00	21.95

MEN'S JACKETS

Regular	NOW
19.95	14.85
13.95 — 12.95	9.95

MEN'S SLACKS

Regular	NOW
22.50	18.95
19.95	16.95
15.95 — 14.95	12.95
13.95 — 12.95	10.95
10.95 — 9.95	8.95

MEN'S SOPRT SHIRTS

Regular	NOW
10.00 — 8.95 — 7.95	5.80
6.95 — 5.95	4.60
5.00 — 4.95	3.80
3.95	2.90

MEN'S SHOES - Nunn Bush

Regular	NOW
22.95 — 21.95	19.80
20.95 — 19.95 — 18.95	16.80

MEN'S SHOES - Crosby Square

Regular	NOW
15.95 — 14.95	12.90
13.95 — 12.95	10.45
Others reduced to	7.95

BOYS' SUITS

Regular	NOW
27.50 — 24.95 — 22.50	18.40
19.75 — 18.95	15.40
16.95 — 15.00	13.85
11.95 — 10.95	9.40

BOYS' SPORT COATS

Regular	NOW
17.95 — 16.95	14.40
13.95	11.40

BOYS' SLACKS

Regular	NOW
12.95	8.85
7.95 — 7.75 — 7.50	5.85
6.95 — 5.95	4.85
4.95 — 3.95	2.85

BOYS' SPORT SHIRTS

Regular	NOW
4.95	3.90
3.95	2.90
2.98	2.19

ALL SALES FINAL, PLEASE
NO APPROVALS — ALTERATIONS EXTRA

THE MEN'S SHOP

—New Charge Accounts Invited—
On The Square Eastland



SOCIAL CALENDAR

Saturday, January 5
10 a.m.—Mrs. Tom Wilson will tell stories at the aturday tory our in the Woman's Club. All children between the ages of three years and the fifth grade are invited to attend. It is sponsored by the Thursday Afternoon Club.

Monday, January 7
7:30 p.m.—Mrs. Versie Bell will present "A New Way To a Happy New Year" at the Las Lealas Club meeting in the Woman's Club. Mrs. Don Parker will be hostess.

Wednesday, January 9
3 p.m.—A speaker from the Southwest Insurance Information

Local Citizen-

(Continued from Page 1)

tional Guard Troops, 9171 AF Reserve Group, University of Texas ROTC Band and Cadet Corps, American Legion Drum and Bugle Corps and Color Guard, VFW Drum and Bugle Corps and Color Guard, Ben Hur Temple Patrols and Drum and Bugle Corps, Odessa Junior College Las Senoritas de Las Rosas, Austin High

Incorporation and films will be the program at the Civic League and Garden Club meeting in the Woman's Club.

Thursday, January 10
3 p.m.—The Alpha Delphian Club will meet in the Club House and have Rev. Jack Garrett as guest speaker for the afternoon. Members will answer roll call with a Bible verse.

School Red Jackets, Anderson High School Jackets, Harris County Junior Deputy Band and Junior Deputy Rifle and Drill Team, Texas Whirlers, Sheriff's Poses from Palo Pinto, Travis and Williamson Counties.

And then while all these bands are marching and playing there will be a Saluting Battery from Camp Mabry National Guard firing away and over all this the Bergstrom Air Force Base and Texas Air National Guard will be flying a bunch of planes. There ought to be enough racket to suit everybody.

To cap it all off, there will be five Inaugural Balls all going on at once including those at Gregory Auditorium, Commodore Perry Hotel, Stephen F. Austin Hotel, Driskill Hotel and the City Coliseum.

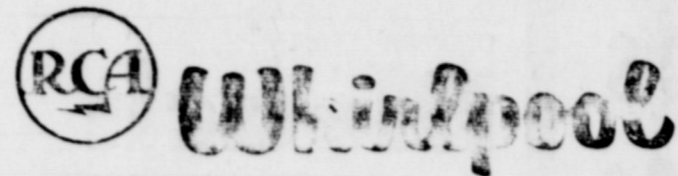
If there happens to be anybody who wants to attend the Inauguration and they have missed getting around to you with an invitation, all you have to do is to show up in Austin and you can take in everything that you can possibly find time for, and welcome.

Seven Die-

(Continued from Page 1)

set an all-time record of Christmas holiday traffic fatalities in the nation.

Patrolman Strawn said that one of the bright spots in the year was the smaller number of traffic accidents between Eastland and Ranger on Highway 80. Only four wrecks occurred on the highway, and no deaths were recorded. The 10 mile stretch has been a heavy target this past year for radar control.



automatic washers and dryers

Smith Plumbing and Tin

114 N. Seaman

Phone 304

STARTS TOMORROW AT ALTMAN'S
PRE-INVENTORY

SALE

Here's the special savings event you've been waiting for! Our Annual Pre-Inventory Sale. Drastic reductions to clear our stock. You'll find all sizes, beautiful styles and fabrics.

DRESSES

To Wear Now and for Many More Months To Come.
1-2 AND 1-3 OFF

Were to 39.95 NOW **\$15**

Were to 29.95 NOW **\$10**

OTHERS REDUCED

Group Famous Brand

SUITS

Reduced to Clear

As Much As

1/2 OFF

SPECIAL SALE

on group

- Blouses • Skirts
- Sweaters • Jackets
- Costume Jewelry

All Winter

COATS

AT WORTH-WHILE

SAVINGS

LINGERIE SALE

famous name

- Slips • Gowns
- Robes

REDUCED TO CLEAR

KNIT SUITS ON SALE
GROUP HATS NOW 1/2 PRICE

Altman's Style Shop

North Side of Square

Eastland

Past Year-

(Continued From Page 1)

these rainfall figures recorded during the record drought:

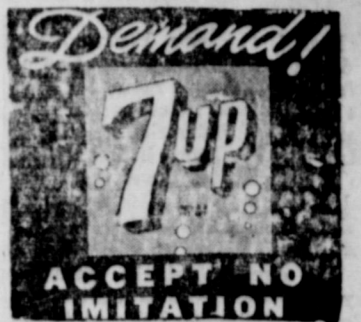
Year	Inches
1947	18.59
1948	14.10
1949	31.62
1950	23.04
1951	18.25
1952	17.02
1953	24.32
1954	16.33
1955	19.99
1956	17.47

The 10 year average shows that the area has averaged six inches below normal. The all-time average here is 26.05 here and the 10 year average is 20.07. The last 10 years have dropped the all-time average two inches a year.

Was 1956 the last year of the terrible drought? Farmers and businessmen alike hope so. As one old timer put it, "What we need is another year like 1942." More than 41 inches of rain was recorded that year—more than twice the 1956 figure.

READ THE CLASSIFIEDS

TRADE WITH YOUR HOME-TOWN MERCHANTS



WE BUY

SCRAP

IRON AND METAL

Get Our Prices Before You Sell

- You Will Like Our Prices
- You Will Like Our Weights
- You Will Like Our Service

KOEN SALVAGE

Highway 80 West

1315 W. Main

Warehouse Clearance SALE!

Big Discounts for You
on new automatic
GAS appliances

Samples of new automatic GAS appliances are now on Lone Star Gas sales floors for clearance!

Take advantage of
huge savings, but
Supply is Limited!

Now—come to Lone Star Gas for that gas appliance you've been needing. Make big savings on ranges, refrigerators and clothes dryers. Buy on low, easy terms of only \$1 down, take up to 36 months to pay. You get free normal installation, but don't wait—selections won't last long!

Cash in on the
Big Savings NOW

Buy for only \$1 DOWN
36 months to pay



LONE STAR GAS COMPANY

