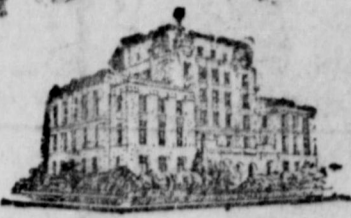


Eastland Telegram



COVERING EASTLAND COUNTY
THE ONLY PLACE YOU CAN READ THE MOST IMPORTANT NEWS IN THE WORLD — ALL THE NEWS ABOUT YOU, YOUR FAMILY AND YOUR FRIENDS!
EASTLAND, TEXAS, THURSDAY, MAY 31, 1962

PRICE 10¢

New Administrator Reports, Goes to Work

Plans Include Expansion

Eastland Memorial Hospital's new administrator is a man of experience and a man of outspoken determination. This is good, because Maury Gray has a king-sized job ahead of him.

With expansion inevitable, the new 41-year-old administrator will be calling on most of his vast resources to cope with obstacles—which are likewise inevitable.

A native of Terre Haute, Ind., Gray was named by the hospital board last week, to step in as director of the hospital, and it's his big step.

The administrator's post has been vacant here since last fall when Richard Spaulding resigned.

Mrs. Lewis Tiner, business manager, has been serving as acting administrator in the interim.

Coming to Eastland from Brackenridge Hospital in Austin, Gray has the appearance of a professional golfer and the quick wit of a psychology major—which he is.

After high school at Terre Haute, he joined the Canadian Royal Air Force in 1941, and switched to the United States Army Air Corps in 1942.

The Corps brought him to Texas, as an instructor at old Foster Air Base at Victoria, and he's been a Texan ever since.



MAURY GRAY
... has resources available

Baptist VBSs In Progress

First Baptist and Bethel Baptist Churches' Vacation Bible Schools are now in progress. Both schools began Monday with First Baptist reporting an enrollment of 129 and Bethel, 65.

First Baptist's school will close Friday and Bethel's will continue through Friday week, June 8th.

First Baptist V.B.S. will have their commencement Friday night beginning at 8 p.m. A display of work done during the school will start at 7:30 p.m.

After his discharge in 1945 he entered North Texas State at Denton, and took his bachelor of science degree there in January of 1949, and his master's degree in August of 1950.

With his psychology major he took an education minor, and was a teaching fellow at NTSC for some time.

He entered the personnel field and got his first taste of hospital work at St. Paul's in Dallas in 1958. He was later transferred to the gigantic Parkland hospital as administrative assistance in March of 1960. Later that same year he accepted the key post of assistant administrator at Brackenridge Hospital in Austin.

Expansion of Local Hospital

Expansion of the local community-owned hospital is a much-talked but as yet, an unofficial fact at this time, but the wheels seem to be in motion since the new boss came to town.

A meeting was held Tuesday evening of doctors to discuss the needs and possible future requirements.

Expansion is one of the resources at Gray's command. At Parkland, he was concerned with an 858 bed hospital; at

His wife and one child will move to Eastland soon.

Expansion of the local community-owned hospital is a much-talked but as yet, an unofficial fact at this time, but the wheels seem to be in motion since the new boss came to town.

A meeting was held Tuesday evening of doctors to discuss the needs and possible future requirements.

Expansion is one of the resources at Gray's command. At Parkland, he was concerned with an 858 bed hospital; at

Closes Saturday

Hollywood Vasquette will close down here for vacations the first two weeks of June along with Musingwear's other three bra plants.

The 180 employees will begin vacations Saturday, June 2nd and will not report back to work until Monday, June 18th, according to Mike George, manager.

E.F. Willman, Ex-Postal Clerk Buried In Eastland Monday

Funeral services for Ed F. Willman, 76, retired postal employee who died of a heart attack at 4:30 p. m. Saturday in his home at 106 E. Williams St. were held at 3 p. m. Monday in Methodist Church here.

The Rev. William S. Fisher, pastor, was in charge and burial was in Eastland Cemetery under the direction of Hamner Funeral Home.

Mr. Willman was resting at home at the time of the attack and was pronounced dead shortly after the arrival of the doctor.

He was born Feb. 1, 1886, in Mason, Tex., and was married to Louise Boren Oct. 21, 1929, in Carthage, Tex.

Before his retirement in 1956 he had been with the Post Office Department for 47 years, serving in Mason, Waco and Brady before moving to Eastland about 30 years ago.

Mr. Willman had been active in civic work and was on the official board of Eastland Methodist Church. He had been a member of the Methodist Church for 66 years and had been serving as superintendent of the Sunday school.

Poppy Sale Is Big Success

Members of the Ladies Auxiliary of the VFW have reported that the Buddy Poppy Sale was a 100 per cent success.

The Auxiliary have expressed their thanks to the Eastland County citizens and the Boy Scouts who made the Buddy Poppy Sale a success.

It Rained! .24 of Inch

For 28 days this month has been rainless, but Monday the official rain gauge in Eastland registered .24 of an inch.

The moisture fell during what appeared to be a state-wide thunderstorm which brought wind and hail damage to other parts of the state.

Heavier rain fell south and east of Eastland, with an inch reported at Kokomo and about that amount in Ranger.

Voting Saturday Will Determine Local, State Demo Primary Victors

'Thanks,' Eastland

Friendliness and a helping hand seldom go unnoticed, and Eastland residents seem to be getting a reputation for an abundance of good will.

A Brackenridge woman, Mrs. Vic Ridley, recently found herself in a not uncommon, but unpleasant situation here, and she found friends.

She was so impressed that she took the time to write the local Chamber of Commerce to express her thanks.

Her letter reads as follows: "Two weeks ago on Sunday, about 6 p. m., my daughter and another little girl and myself ran out of gas close to your bowling alley and every body I think in your town tried to help us.

Polls will open 8 a.m. Saturday for the Democratic runoff election and the ballots are short ones.

There are only five races for Eastland voters to decide on and six for those in the other 11 boxes in the county.

Absentee voting has been heavy, indicating a heavy turnout Saturday. A total of 275 votes had been cast absentee in County Clerk Johnson Smith's office before the deadline Tuesday. Only 192 were cast in the primary.

Drawing the most interest and speculation were the governor's race on the state level and the district clerk's race on the local level.

Justice, 1,928; and Bennett, 966.

The other local races are precinct decisions with two commissioners run-offs and one justice of the peace.

Gubernatorial candidate John Connally, who got 1,522 county votes in the primary, is expected to lead his opponent Don Yarborough, who got only 562 votes here the first go-around.

Connally included all three county towns, Ranger, Eastland, and Cisco in his whistle-stop state-wide railway campaign, and was "given" Ole Rip in Eastland, and he promised that he would name this county the pilot site for his urban industrialization project, if elected.

Mrs. Jordan Is Improving

Mrs. Buford Jordan of Abilene and a former resident of Eastland is reported as improving but still seriously ill in Hendricks Hospital in Abilene.

Mrs. Jordan underwent emergency surgery Friday.

She is the mother of Mrs. E. E. McAlister, Jr. (the former Jane Jordan) of Abilene.

Terrell Is Rotary Speaker

Intricacies of measuring natural gas were explained for the Eastland Rotary Club Monday.

Charles Terrell, a retired gas company executive who now lives in Eastland, was speaker. He has recently helped edit a manual for the industry on gas measurement.

The gas industry, he said, is the sixth largest investor-owned industry in the nation, and in 1960 had gross revenue of \$3.3 billion.

County Judge John Hart

County Judge John Hart was successful in downing two opponents in the primary without a run-off, and County Clerk Johnson Smith, County Treasurer Ellen Justice, County School Superintendent H. R. Garrett and County Surveyor E. T. Magness Jr. had no opponents.

A. E. Crawley of Ranger defeated A. J. Blevins Jr. as county Democratic chairman in the first Demo vote.

Also successful were State Rep. Wayne Gibbons and State Sen. Tom Creighton.

Road Fund Redesignated By Commissioners' Court

The Commissioners Court voted to lease the county farm to Billy D. Jones Monday and authorized County Judge John Hart to execute a five-year lease to Jones.

In reply to an opinion by District Attorney Earl Conner, County Auditor Earl O'Brien, asked commissioners to pass an order to redesignate funds that were in the Eastland County's old Road Bond Interest and Sinking Fund into a Road and Bridge Operating and Maintenance Fund.

The funds which have accumulated over a long period of time and now amount to around \$20,000 were originally levied to pay road bonds, the last of which expired February 1st of this year.

The redesignation order will allow commissioner's to put the funds in use on county roads in the following ways: salaries for county road employees, maintenance of county roads and machinery; material for work on county roads and any other aid determined by the Commissioner's Court.

Church Of God Features Singers

The Faithfuls, a singing group from Gulf Coast Bible College in Houston, will bring a musical program at the local Church of God Sunday evening.

The personnel of the group will be touring Texas, New Mexico, Colorado, Nebraska, Kansas, and Oklahoma, during the summer vacation period.

The program will consist of numbers from a trio composed of: Mariene Malone, Cozad, Nebraska; Marion Halick, Houston; Linda Hall, Wichita, Kansas; and will be accompanied by Elizabeth Fox.

Now Showing At The MAJESTIC IN EASTLAND "Moon Pilot"

FREE PASSES To Those Who Find Their Names Set Bold Face Type Among The CLASSIFIEDS!

BANK-RATE AUTOMOBILE LOANS Eastland National Bank Member F.D.I.C. "On The Square"

It's 'Down to the Sea' For Commissioner Pierson

City Commissioner Don Pierson, who kicked up quite a stir recently with a bid for lower city water rates, is going to get a good taste of water next week — salt water.

Pierson will be the guest of the U. S. Navy for a four-day cruise aboard the aircraft carrier USS Forrestal.

A dry-land man, Pierson, recalling his last sailing experience (an hours-long jaunt from Los Angeles to off-shore Catalina Island) said that he is fortifying himself with sea-sickness preparations, and depending on medical science.



DON PIERSON
... 'going to sea'

SA Sending Four Youth To Camp

Four lucky Eastland boys will be spending a week at a famous summer camp this year as guests of the local Salvation Army unit.

Leaving for Camp Hobbitzelle on Sunday, June 17th, will be Johnny Stiffier, 14, Danny Lee Hudson, 12, Jimmy Hughes, 14, and Joe Stephen Trout, 10.

The camp is located near Waxahatchie and is named for Karl Hobbitzelle, founder of the Interstate Theater chain.

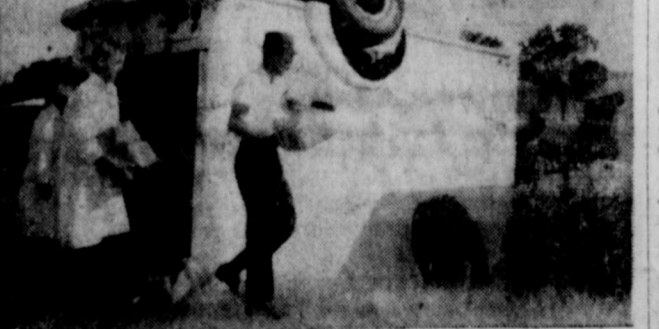
Police Chief Ray Lane is local Salvation Army coordinator for the camp, and Everett Plowman and James Smith are representatives.

Lions Club Gets Charter

Bill Garner, neighborhood scouting commissioner, presented a charter to the Eastland Lions Club Tuesday.

The club has sponsored Troop 103 for many years—none of the members could remember exactly, but guessed since 1929.

Lion John Schofield introduced Garner, who also distributed club committee cards in behalf of the troop.



'UNPACKING'—Packing company employees unload an up-turned truck on U. S. 80 about three miles east of Cisco early Wednesday morning. The eastbound truck went over a small culvert, overturned and burned about 2:58 a.m. Highway Patrolman E. M. Watts, investigating officer, reported. The driver, Kenneth Hankins received minor injuries and was treated at Graham Hospital in Cisco. The truck, valued at about \$10,000, was a total loss, and its cargo of some 12000 pounds of meat was also considered unusable. Truck is the property of Pace Packing Co. of Sweetwater. (Staff Photo)

HOME IMPROVEMENT LOANS At Lowest Rates Eastland National Bank Member F.D.I.C.

Vertical text on the left margin containing various small notices and advertisements.

EASTLAND TELEGRAM

Eastland County Record established in 1931, consolidated August 31, 1951. Chronicle established 1887, Telegram established 1923. Entered as second class matter at the Post Office in Eastland, Texas under the Act of Congress of March 3, 1879.

Published Semi Weekly—Thursdays and Sundays
By Eastland County Newspapers, Inc.
H. V. O'BRIEN, Editor

One Week by carrier in city 15
One month by carrier in city 65
One year by mail in county 2.95
One year by mail out of state 6.95

NOTICE TO PUBLIC—Any erroneous reflection upon the character, standing or reputation of any person, firm or corporation which may appear in the columns of this newspaper will be gladly corrected upon being brought to the attention of the publishers.

READ THE CLASSIFIEDS

RAWLINS
MONUMENTS
SINCE 1884
WEATHERBORO HOME 7-2724

RANGER DRIVE-IN
HIGHWAY 40 EAST ON RANGER HILL
MI 7-1149

Adults Still 50c. Kiddies Under 11 FREE
Bargain Nite Each Wednesday—50c Carload
THURSDAY — FRIDAY

IT'S ELEPHANTASTIC... AND FUN!!!
the Bashful Elephant
MOLLIE MACK, HELMUT SCHMID, KAI FISCHER, BUDDY BAKER

SATURDAY ONLY

JOEL McCREA THE DARING OF SAW HOUSTON!
The First Texan
TECHNICOLOR CINEMASCOPE

SUNDAY — MONDAY — WEDNESDAY

THE TENDER PASSION OF
First Love!
Light in the Piazza
OLGA BOSANO VITTE MINIEUX HAMILTON
de HAVILLAND BRAZZI CINEMASCOPE METROCOLOR

EVERYBODY LOVES A BARGAIN

and this Gibson two-door is the biggest and best bargain of all!

YOU GET THIS:

- 13.02 cu. ft. Capacity
- 104 lb. Zero Zone Freezer
- Automatic Cycle Defrosting
- Adjustable Shelf
- 15 Quart Crisper
- Butter and Cheese Chest
- Tall Bottle Storage
- Multi-Magnet Door Seal

FOR ONLY **\$219⁰⁰**

RANGER FROZEN FOOD CENTER
Phone MI 7-3281 RANGER 214 N. Austin

Too Old For What?

You hear a lot of talk about old folks in our county. And you may even have heard people from one of the three larger towns comparing the numbers: such as "Our town has more than yours." "I believe there are more here than there," etc.

And from the way some of the young "social planners" talk, using charts, graphs and figures, the impression is left that these old folks are a liability.

When actually, they are assets, regardless of the number and regardless of which town has the most.

The local trend in thinking follows the national pattern. In the past few years, the United States has suddenly become aware—often through scare headlines and half-told stories—that there are a lot of old people around and that old people are a problem.

It is true that close to 10 per cent of our national population is over 65—and many of these 17 million people do have special needs. But it is not true that this group constitutes a "problem area" any more than it is true that because some teenagers are delinquents, all teenagers should be so grouped.

There seems to be some odd sort of thinking that all elderly persons need special housing; all elderly persons are abandoned by their children; all elderly persons are unable to think clearly.

That's not true and it's ridiculous thinking.

The National Council on the Aging is trying to convince the public that one elderly person's needs, interests and capacities differ from another's.

You can get information from this organization by writing The National Council on the Aging, 49 West 45th St., New York 36, N. Y.

Of course, right now, the mails are being bargained by two parties concerning old-age medical help. The two parties are the Federal Administration which is pushing its bill for medical benefits, and the American Medical Assoc., which is fighting the program.

Locally, it seems, we need to put our thinking about old folks into the proper perspective.

There's a lot of talk about getting industry and developing projects to keep our young people at home. This we need to do, without question—but not at the expense of our elder citizens.

Perhaps we'd be more successful in helping the young people if we tap the resources of our aged—their experience and level thinking.

They may be too old for a lot of things, and one of the things that they may be too old for, could be "making miserable mistakes."

READ THE CLASSIFIEDS

Soil Stewardship Week

"Good soil and sufficient water are two of our basic, God-given resources. Out of these basic resources have grown an expansion of our Texas economy and population. They will continue to be essential to future development," so said Governor Price Daniel in his opening greetings proclaiming this week as Soil Stewardship Week in Texas.

He continued, "Every citizen bears responsibility for the good stewardship of these vital resources. The Soil Conservation Districts, Watershed Districts and all individuals and organizations interested in the conservation and development of our soil and water resources are making significant progress in this work. Soil and water conservation and development are important to the continued strength of Texas and the stability of the economy."

Civil Appeals Court Ranks Eighth in State

Ranking eighth among the 11 state appellate courts in the number of cases disposed of in 1966 was the Eleventh Court of Civil Appeals of Eastland, which handles cases in the Abilene area.

The Texas Civil Judicial Council's report on 1966 judicial statistics shows that in the Eastland court 88 cases were disposed of during the year, compared to 137 for the Fourth Court at San Antonio, which was the leader. The Eastland court was also eighth in the number of cases filed during the year with 55 cases, compared to the leading San Antonio court with 199 cases.

The Eastland Court handled an average of about 29 cases per judge. Statewide, the 11 courts wrote 1,032 opinions.

GUARDS YOUR MACHINERY

Jones-Blair Guardian Enamel is a tough, glossy finish for metal or wood surfaces, indoors or out. Protects your valuable equipment from oils, water, grease and dirt penetration. Withstands ordinary engine temperatures. Cleans easily!

Add years to machinery life with

JONES-BLAIR GUARDIAN ENAMEL
Hanna Hardware and Lumber Co.
201 N. Seaman
Phone MA 9-2104

LOWEST PRICES

VIC'S AUTO REPAIR
306 W. Main MA 9-2111

THANKS

This will express my very sincere appreciation to the people of Eastland County for the fine vote of confidence that I received in the first primary Election. You can be every sure that I will try hard to merit this kind of endorsement.

Please feel free to call on me in any way that I can be of service to you.

TOM CREIGHTON
STATE SENATOR

Reed Plays Part In Carpenter Recovery Task

Larence Reed, boatswain's mate second class, USN, son of Mr. and Mrs. L. B. Reed of 608 South Halbryant st., Eastland, Texas, is serving aboard the destroyer USS John R. Pierce, which retried the "Aurora 7" space craft from Atlantic waters on May 24 following the three-orbit flight of Navy Lt. Cdr. Malcom Scott Carpenter.

The astronaut, first sighted afloat after the flight by Navy patrol aircraft, was picked from the Atlantic by a Navy helicopter and taken aboard the attack aircraft carrier USS Intrepid. He later was flown to Grand Turk Island in the Bahamas.

JOY DRIVE-IN

Open 7:30 - Starts 8:00
Feature at 8:15 p.m.
WEDNESDAY — THURSDAY — FRIDAY
The Singer Not The Song
—IN COLOR—
Dirk Bogarde — John Mills

SATURDAY — SUNDAY — MONDAY
SWEET BIRD OF YOUTH
—IN COLOR—
Paul Newman — Geraldine Page

ELECTRIC PATIO LIGHTS

Completely Installed **39⁹⁵**
As low as
Financing Available. Up to 24 months to pay.

Air conditioners serviced and installed

Complete Electrical service
All electrical appliances repaired.

Rose Electric Service
119 S. Rusk — Ranger
Office MI 7-1744
Night - MI 7-1408

BETTER Leave it to VIC

IGNITION and ELECTRICAL Systems

We inspect and check with the latest equipment. Ignition timing set and starter and generator check. We'll put your car's electric system in A-1 shape! Low cost!

LOWEST PRICES

VIC'S AUTO REPAIR
306 W. Main MA 9-2111

IF YOU WANT A HOME OF YOUR OWN...

Finance your home where you get the most advantageous terms at the lowest possible rates. Finance your home through us and we'll arrange your mortgage according to your needs. See us for your loan today!

First Federal Savings & Loan Association of Ranger
234 Main Ranger, Texas Phone MI 7-1611

Soil Stewardship Week is sponsored nationally by the National Association of Soil Conservation Districts.

Reed Plays Part In Carpenter Recovery Task

Larence Reed, boatswain's mate second class, USN, son of Mr. and Mrs. L. B. Reed of 608 South Halbryant st., Eastland, Texas, is serving aboard the destroyer USS John R. Pierce, which retried the "Aurora 7" space craft from Atlantic waters on May 24 following the three-orbit flight of Navy Lt. Cdr. Malcom Scott Carpenter.

JOY DRIVE-IN

Open 7:30 - Starts 8:00
Feature at 8:15 p.m.
WEDNESDAY — THURSDAY — FRIDAY
The Singer Not The Song
—IN COLOR—
Dirk Bogarde — John Mills

SATURDAY — SUNDAY — MONDAY
SWEET BIRD OF YOUTH
—IN COLOR—
Paul Newman — Geraldine Page

ELECTRIC PATIO LIGHTS

Completely Installed **39⁹⁵**
As low as
Financing Available. Up to 24 months to pay.

Air conditioners serviced and installed

Complete Electrical service
All electrical appliances repaired.

Rose Electric Service
119 S. Rusk — Ranger
Office MI 7-1744
Night - MI 7-1408

BETTER Leave it to VIC

IGNITION and ELECTRICAL Systems

We inspect and check with the latest equipment. Ignition timing set and starter and generator check. We'll put your car's electric system in A-1 shape! Low cost!

LOWEST PRICES

VIC'S AUTO REPAIR
306 W. Main MA 9-2111

IF YOU WANT A HOME OF YOUR OWN...

Finance your home where you get the most advantageous terms at the lowest possible rates. Finance your home through us and we'll arrange your mortgage according to your needs. See us for your loan today!

First Federal Savings & Loan Association of Ranger
234 Main Ranger, Texas Phone MI 7-1611

Participating in the "Project Mercury" recovery operations were 32 U.S. Navy ships and units on station in the Atlantic range area.

Read The Classifieds

MAJESTIC Thurs. — Fri. Open Thurs. Open Sat. Sun.

Walt Disney's MOON PILOT

PLUS
THE RACE TO SPACE

The story of our first manned space flight and the actual films of the orbiting of Colonel

Under New Management

GOLDEN AGE NURSING HOME

104 East 4th Street Cisco Phone 7-1149

24 Hour Nursing Care, Good Meals, Spacious Rooms
State Licensed and Approved For Patients

Mrs. C. M. Seaman
Administratrix

Hamner Life Insurance Co.
Ben E. Hamner, President

This company has been in operation since 1942 selling policies to be primarily for burial purposes. We write to \$600 and our policies are paid in full allows freedom in the selection of the Director of your choice.

Ages from 1 month to 90 years.
For further information come by

Hamner Funeral Home, 301 S. Lamar
P. O. Box 431 Dial MAIN

PLAN NOW TO ATTEND

Cisco Junior College Summer Session

1st Term Begins June 11
Registration Now In Progress

2nd Term Begins July 1
Registration Begins July 1

COURSES — Freshman and Sophomore History, Education, Math, Government others as demand justifies.

HOURS — Classes will meet from 6:45 on Mondays, Tuesday, Thursdays and Fridays.

COST — The charges will be \$9.50 per hour.

CISCO JUNIOR COLLEGE IS THE REGIONALLY ACCREDITED COLLEGE SERVING THIS AREA

For Complete Information Write to Registrar

CISCO JUNIOR COLLEGE
Cisco, Texas Phone 7-1149

We Take Photographs In Your Home

of Birthday Party's, Reunions, Home Photographs of your family

Fast Roll Film finishing on Black and White as well as Solor.

A&C STUDIO
102 S. Seaman Phone 7-1149

Court News

Marriage Licenses

Gerald Pat Guy and Linda Sue Hallmark.
 Bennie Ray Jarrett and Netta Lou Hubbard.
 Alvin Jerry Reeves and Jackie Loretta Whitehead.

Suits Filed

The following suits were filed for record in the 91st District Court last week:
 Grayson A. Townzen, et al vs. Texas & Pacific Railway Co., damages.
 Evelyn Yvonne Moncrief vs. Randall Ray Moncrief, divorce.

Billy Jack Maupin vs. La Vera Maupin, divorce.
 Thelma Luttrell vs. Harry Luttrell, divorce.

Orders and Judgments

The following orders and judgments were rendered from the 91st District Court last week:
 First National Bank of Gorman, Texas et al vs. United States Fire Insurance Co., judgment.
 Horace E. Horton, et ux vs. Trinity Universal Insurance Co., judgment.
 Dallie Frances Pollard vs. Lester F. Pollard, order.
 Patsy J. Tate vs. Robert D. Tate, judgment.

The following instruments were filed for record in the County Clerk's office last week:

Ray Agnew to Stephenville Production Credit Assn., renewal and extension of deed of trust. Roy Armstrong, et al to James W. Armstrong, power of attorney. Gene Barton vs. S. J. Chapman, abstract of judgment. Will J. Brewer to Rufus Pierce, warranty deed.
 City of Ranger to Joe R. Gomez, et ux, cemetery deed.
 M. R. Carb, Jr., et ux to Roy Parnell, warranty deed. E. P. Crawford to Raymond Farley, et ux, release of ven-

tor's lien and deed of trust. Callahan Interests Inc., et al to Parragan Corp., assignment, conveyance and release of production payment.
 Dunlop Tire & Rubber Corp. vs. Glen Hamner, d b a Hamner Tire Shop, abstract of judgment. June M. Davis to Roy B. Smith, et ux, warranty deed. J. D. Douglas, et ux to Kenneth Simpson, warranty deed. Nell Montague Elder to W. E. Downing, et ux, warranty deed. Eastland National Bank to Raymond Farley, et ux, release MML.
 Eastland County Water Supply District to Kenneth Jamison, Ind. Ex'rx., et vir, con-

tract. Fullen Motor Co. to Eastland National Bank, et al, deed of trust. Raymond Farley, et ux to J. H. Latson, et ux, warranty deed. Federal Land Bank of Houston to Loyd H. Dillinder, et ux, release deed of trust. Federal Land Bank of Houston to M. A. Abel, et ux, release deed of trust.
 First National Bank of Cisco to Tommy J. Wyatt, et ux, release of vendor's lien and deed of trust. Oly Hitt, et al to O. R. Hitt, warranty deed. Willie Maude Hughes to Winfred Robinson, warranty deed. Claude C. Harris, et ux to Texas Electric Service Co., right-of-way. Merle L. Joyce, Ind. Ex'r. of Est. of Ida Joyce, deceased to Eleanor C. Roberds, warranty deed.
 J. W. King to The Public, affidavit. J. H. Latson, Jr., et ux to W. B. Smith, deed of trust. Emma Mae Murray, et vir to Aubrey D. Alford, et ux, warranty deed. P. L. Mashburn, deceased, to The Public, proof of heirship. B. W. Martin to Howard B. Langford, et ux, deed. Nora Mashburn to Veterans Land Board of Texas, warranty deed.
 Charles A. McElhane to C. H. Ingram, release of vendor's lien. Alfred Verner McCarty, deceased, to The Public, proof of heirship. Alfred Verner McCarty, deceased, to The Public, proof of heirship. Ann R. Peacock, et vir to O. E. Rose, et ux, warranty deed. Rubye M. Pledger to Mrs. Jodie Roberson, bill of sale. Cora Patterson to Mrs. Winfred Robinson, bill of sale.
 Don Pierson, d b a Village Homes to James E. Williams, MML affidavit. Van Parmer to Luther Pryor, quit claim deed. A. C. Poe, et ux to John C. Koen, warranty deed. C. C. Rutherford, et al to J. W. Hight, warranty deed. A. L. Roberts, et ux to Rockwell Bros. & Co. to First National Bank of Cisco, MML. Ava Reddick to O. O. Mobley, warranty deed. Oscar Schaefer to F. W. Roberds, deed of trust. P. T. Smith, et al to Eastland County Water Supply District, assignment of lease. George Steel, et al to The Public, affidavit. Veterans Land Board of Texas to Orby E. Hull, contract of sale and purchase. J. B. Wells, et ux, deceased, to The Public, proof of heirship. Boyd Richard Wolfe, deceased, to The Public, proof of heirship. John Leroy Wren, et ux, deceased, to The Public, proof of heirship. James T. Wright to Texas Electric Service Co., right-of-way.
 J. S. McCowell, deceased, application to probate will.

Read The Classifieds



Only JOHN CONNALLY

has the background, experience and record of achievement to provide the mature, responsible leadership our state must have. Join with fellow Texans from every walk of life who are rallying behind this great new leader!

JOHN CONNALLY will work for

- * A better way of life for our elderly and dependent.
- * New industry in small communities to provide more and better jobs.
- * Improved educational opportunities for all our children.

John CONNALLY

and you vote for a new day of unity and progress in Texas!

(Pd. Pol. Adv.)

CHICKEN HENS

SUNCO
 USDA INSPECTED
 4 TO 7 LB. AVG.

LB. 35¢



WORTH QUALITY
GROUND BEEF LB. 39¢



CHUCK ROAST

W.C.Q.
HEAVY BEEF LB. 49¢

VIENNA SAUSAGE BAXTER 4-oz. CANS 2 FOR 35¢

BAMA-BLACKBERRY JAM OR
STRAWBERRY PRESERVES 3 12-oz. JARS 99¢

BORDEN'S
INSTANT COFFEE 5-oz. JAR 69¢

FOOD MART — PLAIN or
Iodized Salt 26-oz. Box 10¢

WORTH - Yellow or Blue Label
Dog Food 10 1-lb. Cans \$1.00

Renown - French Style or
Whole Green Beans No. 303 19¢

Chef's Pride
Pinto Beans 2 Lb. Cells Bag 25¢

Borden's - 8 Servings
Instant Potatoes 5 1/2-oz. Pkg 35¢

HUNT'S - Yellow Cling Slices or Halves
Peaches No. 300 Cans 19¢

ROYAL INSTANT
Puddings 2 Pkgs. 23¢

Nabisco - Premium
Crackers Lb. Box 31¢

NABISCO
Chipit Cookies 10 1/2-oz. Pkg 49¢

CURTIS - BABY RUTH AND
Butterfingers Assorted 6-Bar Pak 25¢

Paste 2 6-oz. Cans 29¢

Style Corn 2 303 Cans 39¢

Mist Large Size Plus 10c Tax \$1.50

Paste With Hexa-Florida 53¢

Food Features

Man Dinners 16-oz. Pkgs. 49¢

ade 2 6-oz. Cans 25¢

FRESH CALIFORNIA STRAWBERRIES

3 PINT BOXES \$1.00

PINT BOX

EA. **35¢**



WHITE ONIONS 2 LBS. 15¢

CUCUMBERS GARDEN FRESH LB. 15¢

AVOCADOS MEDIUM SIZE EA. 10¢

LEMONS LARGE AND JUICY DOZEN 35¢

NEW POTATOES 3 LBS. 25¢

LIQUID AJAX
Cleanser Large Btl. 39¢

AT WORTH FOOD MART
 You Get Quality
 Friendly Service And



CLIP AND SAVE!

25 Bonus S&H Stamps
 With This Coupon And Purchase
 Large Btl. AJAX
 Liquid Cleanser
 Void After Sat. June 2, 1962

WORTH FOOD MART

CLIP AND SAVE!

50 Bonus S&H Stamps
 With This Coupon And Purchase
 of 18-oz. Jar PETER PAN
 Peanut Butter
 Void After Sat. June 2, 1962

WORTH FOOD MART

CLIP AND SAVE!

250 Bonus S&H Stamps
 With This Coupon And Purchase
 of The New Testament of The
 New English Bible — \$4.95
 Void After Sat. June 2, 1962

WORTH FOOD MART

CLIP AND SAVE!

25 Bonus S&H Stamps
 With This Coupon And Purchase
 of 1/2 Gallon Foremost
 Cottage Cheese
 Void After Sat. June 2, 1962

WORTH FOOD MART

CLIP AND SAVE!

50 Bonus S&H Stamps
 With This Coupon And Purchase
 Two No. 303 Cans of Our Darling
 Cream Style Corn 2 for 39¢
 Void After Sat. June 2, 1962

WORTH FOOD MART

CLIP AND SAVE!

25 Bonus S&H Stamps
 With This Coupon And Purchase
 of Any 10-oz. Pkg. WRAFT
 Cracker Barrel Cheese
 Void After Sat. June 2, 1962

WORTH FOOD MART

CLIP AND SAVE!

50 Bonus S&H Stamps
 With This Coupon And Purchase
 of 48 Count Box Tenderloin
 TEA BAGS
 Void After Sat. June 2, 1962

WORTH FOOD MART

CLIP AND SAVE!

25 Bonus S&H Stamps
 With This Coupon And Purchase
 of 1/2 Gallon Foremost
 BUTTERMILK
 Void After Sat. June 2, 1962

WORTH FOOD MART

CLIP AND SAVE!
 ON THE PURCHASE
 4 Gallon Ctns. TAYLOR'S
 FLORINE — 2 for 69¢
 With This Coupon
 After Sat. June 2, 1962

WORTH FOOD MART

CLIP AND SAVE!
 ON THE PURCHASE
 Large Pkgs. 3c off Label
 DETERGENT 2 pkgs. 43¢
 With This Coupon
 After Sat. June 2, 1962

WORTH FOOD MART

CLIP AND SAVE!
 ON THE PURCHASE
 8-oz. Can McCormick's
 BLACK PEPPER — 69¢
 With This Coupon
 After Sat. June 2, 1962

WORTH FOOD MART

CLIP AND SAVE!
 ON THE PURCHASE
 32-oz. Cans of Welch's
 Juice or Fiesta Punch 3 cans 79¢
 With This Coupon
 After Sat. June 2, 1962

WORTH FOOD MART

COOL VALUES for Summer Living

NO. 1

- McNARRIS
KHAKI PANTS \$4.98 & \$3.98
KHAKI SHIRTS to match \$4.98 & \$3.98
 McNARRIS
Reg. 2.98 KHAKI PANTS & SHIRTS \$2.79 ea.
 COTTON
WORK GLOVES reg. 35¢ Now 29¢ pr.
WORK STRAW HATS Now \$1.19

NO. 2

- WEEKEND ONLY—Reg. 8.95 & Up
TOWN & COUNTRY FLATS \$3.97
MUSKATEERS FLATS reg. 8.95 & up \$3.97
 BROWN & BLACK
AIR STRIDE HEELS reg. 14.95 \$6.88

NO. 3

- SPORTSWEAR TORADOR PANTS, CAPRIES, PEDAL**
PUSHERS, DARK COLORS In Large Sizes — 38, 42, 44 3.97
UNIFORMS 5.99
 Drip-Dry Nylon — 8.99 & \$5.99 — Drip-Dry Cotton
SKIRTS & BLOUSE SETS 3.97 & 4.97 Set

SELL AND PROFIT... BUY AND SAVE... GET A BETTER JOB... HIRE GOOD HELP!

Read and Use the Want Ads!

CALL MA 9-1707

FOR RENT
FOR RENT: Three room furnished apartment. Close in. Air-conditioned. Private bath. Car port. Bill paid. Phone MA 9-2613. tf

FOR RENT: One and two bedroom furnished apartments. 611 Plummer. tf

FOR RENT: Furnished house 1209 W. Commerce. Phone MA 9-2224. 53

FOR RENT: Four room furnished apartment. Phone MA 9-2186. tf

FOR RENT: 3 bedroom house. Central heating, air conditioned. On Madera St. Close to schools. Phone MA 9-1989. tf

FOR RENT: Small furnished house. B's paid. Close in. 209 W. Patterson. tf

FOR RENT: Four-room furnished apartment. Newly decorated. Book cases, walk-in closets. Extra bed. Air conditioned, close in. Bills paid. MA 9-1062. tf

FOR RENT: Three room apartment. Private bath and car port. Phone MA 9-1559. tf

FOR RENT: Lovely furnished or unfurnished apartments, any size, bills paid, maid and hotel services included, very reasonable. Also comfortable rooms with tile baths only \$39.95 monthly. Throw away your high bills and troubles and come live with us. Mrs. Robinson, manager, Village Hotel, MA 9-1716.

FOR SALE: Two registered Herford bulls. One 2-year-old at \$225; one 2-year-old at \$250. One 12-mo. old bull, \$200. MI 7-1105, Ranger, David D. Pickrell.

SPECIAL NOTICE
SPECIAL NOTICE: Typewriter and office machine repair. Machines to loan while yours is being repaired. Call the Eastland Telegram, MA 9-1707. tf

NOTICE: Bring Baldy. Make exchange. Get low price recap. \$6.95. New shop modernization. Seiberling rubber. Giving safer, longer lasting, recap. Passed on in better price. Six month guarantee. Don't delay or baldy will blow. Horton Tire Service MA 9-1420, Eastland, Texas.

NOTICE: Let me break your land. 1-2 or 100 acres. Casey Meazell. Ph. MA 9-2703. tf

NOTICE: Rent Blue Lustre Electric Carpet Shampooer. Call for only \$1 per day. Coat's Furniture and Carpet Co. 52

NOTICE: Prompt payment for producing royalty in gas units. Sipe Springs area. Write W. E. Perkins, P. O. Box 1345, Abilene, giving name of well and average monthly receipts. 52

NOTICE: Fiesta Bowl pinqueto of the day—The atomic bomb is here to stay. But are we? 52

NOTICE: Chick's Radio and T. V., 103 E. Main. Service calls. \$2.50; work guaranteed 90 days. Phone MA 9-1374, day or night. tf

NOTICE: H. L. Weatherly, social security representative from Abilene, will be in Eastland for his regular visit on Monday. Anyone wishing to see him on Social Security business may see him at 10 a.m. at the local city hall.

EASTLAND ROTARY CLUB
Meets in White Elephant for noon luncheon. Call Mike George, 3-1495, for each Monday.

EASTLAND JAYCEES
Wives, forget breakfast each 2nd & 4th Thursday. Get your JC off for 7 a.m. meet at White Elephant Restaurant.

LADIES GOLF AUXILIARY
Meets at Lakeside Country Club for noon luncheon the second Tuesday of each month. For information call Mrs. Max Beazley, 3-2478.

NOTICE
Contrary to gossip and malicious rumors, I am not leaving nor have any intentions of leaving Ranger now, or in the foreseeable future. W. P. Watkins, M. D.

HALLMARKS cards and Lennox China are only two of the famous brand names you'll find at The Gift House, Cisco. tf

RECORD-KEEPING got you down? The Eastland Telegram has a complete line of book-keeping supplies—ledgers, pads and all the necessary accessories for efficient record-keeping. tf

NOTICE: Let us break and (or) sow your land. No gardens. Contact B. H. Courtney, Main 9-1540 or Bill Cagle, Main 9-1663 after 6 p.m. tf

NOTICE: TAKE UP payments on Slant-O-Matics and straight-stitch machines. Sales, Service, Rentals and Repairs. D. L. Morton. MA 9-2084. tf

MISC. FOR SALE

FOR SALE: Immediately. Good Jersey milk cow with white faced male calf. W. J. Matthews, four miles N. W. of city. Phone MA 9-2759. 54

FOR SALE: Typewriters and business machines. New and used. Trades and terms. See at Eastland Telegram. MA 9-1707. tf

FOR SALE: MOVING TO Abilene? Have a 3-bedroom, low equity home with chain-link fence, down-drought air. Call MA 9-2413 or MA 9-1707, or write Box 29. tf

FOR SALE: A bargain priced for quick sale. Modern lake cabin. Furnished. All conveniences. Year around living. Protected dock, recessed swimming, boat area. Large patio. Barbecue pit. Carport. 10 miles from Eastland square. Walter Duncan Lease. Open Saturday, Sunday. Write, phone Ralph E. Perkins, Rt. 2, Eastland, Phone MA 9-1969. 53

FOR SALE: Bill's Car Danced—called Horton. Tires inspected free. Suggested balancing and trimming for \$1.95. Found bad cut. Put on a new Nytex Seiberling safe stop tread design. No more dancing car. Bill was safe. Liked Horton Tire Service. You will too. MA 9-1420. Eastland, Texas.

FOR SALE: Six room house with bath and a two room house with bath on 7 lots. Contact Mr. E. D. Allgood after 5 p.m. at 505 S. Ostrom, Eastland. tf

FOR SALE: Three bedroom house. One and one-half baths. Built-in range. One year old. Chain link fence. 509 S. Dixie. Phone MA 9-1523. 60

FOR SALE: Cheap new aluminum boat house. Joe Dennis Ranger, Phone MI 7-3109.

FOR SALE: Dogs and chickens. All kinds. Cheap. Mrs. Charlie C. Wilson, Box 681, Carbon. 52

FOR SALE: 1958 Chevrolet and 1956 Chevrolet. Excellent condition. See Glyn Gilham at Eastland National Bank or call MA 9-2137 after 5 p.m. tf

FOR SALE: Bargain. Perfect Smith Typewriter also Underwood Portable. \$30.00 each. Guaranteed. Stephens Typewriter Co., 417 S. Lamar, Call MA 9-2319. tf

FOR SALE: Home on Lake Leon near country club, boat and dock, 20 x 24 den with fireplace, \$6,500. Phone MA 9-2120. 53

EASTLAND REBEKAH LODGE NO. 177
Meets at 7:30 p.m. in the IOOF Hall on the second and fourth Tues. of each month. For information call Corrie Harlow, vice grand, MA 9-1429.

MASONIC LODGE NO. 467
Meets second Thursday of each month at 8:00 p.m. in the Masonic Hall, Call Floyd B. Nichols W. M. information. Phone MA 9-1227, or L. E. Huckabay, Sec., 9-1391, for information.

WE BUY AND SELL USED FURNITURE
Phone MA 9-1740
WAYNE JACKSON

FOR SALE: Blackberries, Tom Sharp. Phone 2767, Olden.

FOR SALE: "We got a bunch of used Trucks & Trailers of all kinds, grain, cattle & oil-field. New I H Trucks, Pickups & Scouts in stock at reduced prices. We Buy, Sell, Trade & Finance. Come prepared to Trade — We Are. Johnston Truck 725 - 2181 Cross Plains, Tex." 53

REAL ESTATE
FOR SALE: House in Abilene. Have a 3-bedroom, low equity home with chain-link fence, down-drought air. Call MA 9-2413 or MA 9-1707, or write Box 29. tf

FOR SALE: Furnished or unfurnished house on 150 by 150 ft. corner lot, in good neighborhood. Low down payment, small monthly payments OR trade for well-fenced land. Phone MA 9-1880. tf

HOMES FOR SALE: Brand new three bedroom homes for sale in the 500 block East Conner. FHA approved. Quality construction. Small down payment with monthly payments like rent. Call Don Kinnaid Jr., at MA 9-2544 or Donald Pierson at MA 9-1033. tf

Becky McAlister

FOR SALE: Modern 2-bed room house on Oaklawn 75 ft. corner lot. Recently re-decorated. Attached garage, floor furnace, hardwood floors, washer plumbed, tile bath. Contact Charles Layton. 57

FOR SALE: 5 room house on 2 1/4 acre lot. Out of city limits. Corner of Folts and Plummer. Storm cellar. Phone MA 9-1532.

FOR SALE: New two bedroom. Interior almost complete. 506 block East Commerce, Eastland. \$1798 cash as is or \$39.98 a month with no down payment. Call collect Modern Homes Construction Company, Pershing 2-0885, Fort Worth. tf

FOR SALE: Three bedroom, two tile baths, one year old, 806 S. Oaklawn. Business property 214 South Seaman. Phone MA 9-1742

FOR SALE: 3 young white-face cows with baby calves. Also 5 heavy Springers. Phone MA 9-2683. tf

David Taylor

FOR SALE: 200 laying hens. Phone MA 9-2683. tf

MIS WANTED
SALESMAN WANTED: LOOK Splendid Rawleigh business available in E. Eastland Co. Exceptional opportunity for industrious person. See Mrs. Mary E. Hester, R. 2, Cisco or write Rawleigh Dept., TXE-1929-18, Memphis, Tenn.

WANTED: Young married man, mechanically inclined for interesting local position. Mean double your previous income if you qualify. Phone OR 3-1135, or write P. O. Box 5307, Abilene. tf

WORK WANTED: I am seeking employment as soon as possible Perfer typing and office work. Jo Ann Morren, Phone MA 9-2883. 54

WANTED: Four or five room house to be moved. Give description and price. A. B. Hunt, F Gorman. 53

HELP WANTED: Pants press operator. Eastland Steam Laundry. Phone MA 9-2613. tf

WANTED: Woman companion to care for couple and live in our home. Light housework. R. L. Taylor, 608 W. Patterson, Call MA 9-2096. tf

MAN OR WOMAN WANTED: Good Rawleigh business new open in E. Eastland Co. If willing to conduct Home Service business with good profits. Write immediately. Rawleigh Dept. TXE-1020-45 Memphis, Tenn. See Mrs. Mary E. Hester, R 2, Cisco. 52

FEMALE HELP WANTED: If you like to sell. Opportunity in rural area Eastland County for ambitious women with free time. Write applications to Box 2264, Abilene, Texas. 55

PERSONALS
If you are lonely, broken hearted, troubled in spirit or burdened with a sin-sick soul, you can find comfort, consolation and peace at First Methodist Church. tf

FOR LEASE
NOTICE: Painting, interior and exterior, taping and bedding, free estimates. Phone 3-2683. tf
Lake Leon River, big shade trees new road, good fishing and picnicing. Casey Meazell, phone MA 1793, if

LOST and FOUND
LOST: Three month old registered Boxer pup. Female. Answered to the name of Happy. Reward. Call MA 9-1680.53

LOST: Pair glasses black frames, bifocals. Lost near Majestic Theater. Finder please leave at Eastland Telegram.

PERMANENTS
\$10 Creme-Oil Waves \$6.50
\$12 Creme-Oil Waves \$7.50
\$12 Lanolin Waves \$8.50
Other waves \$10 and up
Basham Beauty Bar

CHICK'S RADIO AND TV
103 E. Main
Service Calls \$2.50
Work guaranteed for 90 days
Phone MA 9-1374
Day or Night

FREE
Estimates On
RE-ROOFING
Or Repair Your Old Roof.
Residential and Commercial
Roofing Co.
Eastland
Noble Squiers
Phone MA 9-2370

Insurance and Real Estate
D. L. KINNAIRD
Life - Fire - Auto - Farm
Polio - Bonds
42 years in the Insurance Business in Eastland

Dressing NOTICE
FRESH DRESSED
HENS. 35c lb.
and Custom At The Plant
WALKER Dressing Plant
PHONE MA 9-1200

Phone Today
M. H. PERRY
offers this coverage:
LIFE HOSPITALIZATION (tailored plans) ACCIDENT AND SICKNESS INCOME RETIREMENT EDUCATIONAL PROGRAMS GROUP MORTGAGE CANCELLATION CANCER (with no age limits)
RANCH LOANS
107 W. Main
Office Ph.: MA 9-2275
Res. Ph.: MA 9-1095

MATTRESSES
Save up to 50% renovating choice of color and firmness. Complete bedding. Made and guaranteed by WESTERN MATTRESS CO. San Angelo and leave address. lo. Phone MA 9-2689, East-

T. L. FAGG
REAL ESTATE
Property Management
Home and Farm Loans

New -
(Continued from page one)
Breckenridge, 255.
There are 40 in Eastland and since January 1st, the percent of occupancy has been in the high 80s, he says.

"And when your occupancy per centage hits that 85 per cent mark, it's time to think about extra room," Gray says. (The beds were full and one patient was in the hall Tuesday.)

Actually, he doesn't expect to have a lot of free time here, but he lists golf and tennis as hobbies.

Asked his golfing calibre, he answered that it is in the "high I'd-rather-not-say."

Responsibility lines apparently will be clearly drawn under the new administrator. "Each department head will be in complete charge of his or her section, under my supervision, of course," he said.

The director of nursing will be in charge of nurses, and will make schedules, set vacations, and otherwise handle her own personnel problems, and as long as the work is done efficiently, they won't hear from

Gray knew Eastland Memorial's history before he ever came here and called it a miraculous undertaking, and successful project.
He, like others here, envision the hospital as a prime contributor to making this city a medical center, exerting influence throughout the area, and with equipment it now has (which he called "superior"), it will continue to attract patients from a large area.
Apparently the hospital was built originally to provide for the care of the Eastland sick and injured—but its service has now far-outstripped that original goal.
Gray is a member of the Texas and American Hospital Assoc. and a nominee of the American College of Administrators.
The interview for this story took him away from blue prints of structure, sketches of possible future.
In the few years he's been here, parenly been a magic spell of ers—"Our hospital est in the world

VACATION SPECIAL AT RUSHING MOTOR CO.
New Plymouth V 100 2 Dr., heater, direct lights
New Plymouth V 200 4 Door Heater, Direct Lights
New Plymouth Belv. 4 Dr. Fully Equipped
Factory Air Cond. Power Steering Heater Radio
New Plymouth Fury 4 Dr. Sedan. Factory Conditioner, Power Steering, Fully Equipped
Many More To Choose From Bank Financed
RUSHING MOTOR
215 So. Seaman Eastland Phone M
Good Selection of Used Cars

Before you vote in the Governor's race Saturday . . .

Study The Hard Facts About The Candidate

JOHN CONNALLY DON YARBOROUGH

BACKGROUND: Native Texan. Born on farm in Wilson County, near Floresville. One of 7 children of J. B. and Lela Connally. Family Bible shows birth date as Feb. 27, 1917. Connally family in Texas dates back more than 5 generations. Connally family still lives in region settled by forebears in 1849.

FAMILY: Wife, Kay Edwards of Houston, newspaper daughter, Inez, 14 months old.

EDUCATION: Attended school in Louisiana until 1937. Then went to University of Texas Law School, where sole membership in National Intercolligate Debate team and being assemblyman from the School of Law from Southwest Louisiana Institute at Lafayette, Louisiana.

RELIGION: Episcopalian.

MILITARY SERVICE: Served in U.S. Marine Corps.

BUSINESS BACKGROUND: Partner in Houston law firm of Brigan. In 1955 was elected president of the Houston of Commerce.

CIVIC AFFILIATIONS: Member board of directors, Medical Auxiliary; board member, Big Brothers; United Food chairman.

PROFESSIONAL AFFILIATIONS: Chairman, economic Houston Bar Association; member, State Bar of Texas.

RANCH AND FARM AFFILIATIONS: ?

OTHER PUBLIC SERVICE: ?

DEMOCRATIC PARTY RECORD: Defeated for lieutenant 1960.

BACKGROUND: Born in Louisiana on December 15, 1922, Texas in 1937.

FAMILY: Wife, Kay Edwards of Houston, newspaper daughter, Inez, 14 months old.

EDUCATION: Attended school in Louisiana until 1937. Then went to University of Texas Law School, where sole membership in National Intercolligate Debate team and being assemblyman from the School of Law from Southwest Louisiana Institute at Lafayette, Louisiana.

RELIGION: Episcopalian.

MILITARY SERVICE: Served in U.S. Marine Corps.

BUSINESS BACKGROUND: Partner in Houston law firm of Brigan. In 1955 was elected president of the Houston of Commerce.

CIVIC AFFILIATIONS: Member board of directors, Medical Auxiliary; board member, Big Brothers; United Food chairman.

PROFESSIONAL AFFILIATIONS: Chairman, economic Houston Bar Association; member, State Bar of Texas.

RANCH AND FARM AFFILIATIONS: ?

OTHER PUBLIC SERVICE: ?

DEMOCRATIC PARTY RECORD: Defeated for lieutenant 1960.

Following graduation from Law School, Connally became congressional secretary to then Congressman Lyndon Johnson. Also served as administrative assistant to Senator Johnson for 8 months in 1949.

1962 governor's race is his initial effort to seek public office. Led the first Democratic primary, May 5, by 114,000 votes.

BUSINESS BACKGROUND: From 1949-1952 he was a partner in the law firm of Powell, Wirtz and Raubach in Austin. Formed radio station with veterans. From 1952 until appointed Navy Secretary by President Kennedy, Connally served as attorney for Richardson and Bass, independent oil operators in Fort Worth. An executor of the Richardson estate. Has participated in management of companies and corporations engaged in salt water control, carbon and carbon black, radio and TV, insurance and investments, and oil and gas. As Navy Secretary was responsible for an annual budget of 15.5 billion dollars. His personal and business life was checked and cleared by the FBI, Naval Intelligence, Central Intelligence Agency, and the Senate Armed Services Committee. Appointment was unanimously confirmed.

CIVIC AFFILIATIONS: Director, Southwestern Exposition and Fair Stock Show; honorary chairman, Gonzales Warm Springs Foundation; director, Boys, Inc., a charitable organization devoted to elimination of juvenile delinquency; member, executive committee, and councilman-at-large, Ex-Students Association, University of Texas.

PROFESSIONAL AFFILIATIONS: Member and director, Southwestern Legal Foundation, State Bar of Texas, Fort Worth & Tarrant County Bar Association, American Bar Association, American Juridical Society.

RANCH AND FARM AFFILIATIONS: Member, South Texas Hereford Breeders Association, Santa Gertrudis Breeders International and Galiceno Horse Breeders Association of America.

OTHER PUBLIC SERVICE: Served as attorney for organization of Texas Electric Co-ops. Served as director of the Lower Colorado River Authority, participating actively in extensive flood control and water conservation projects on the Colorado River.

DEMOCRATIC PARTY RECORD: Active in party affairs since childhood, when helped father campaign for election as Democratic county clerk of Wilson County; has attended every national Democratic convention since 1940, with exception of war years.

Which Man Would You Rather Have Running YOUR Business

★ ★ ★ ★ ★ ★ ★ ★ ★ ★

VOTE SATURDAY FOR THE ONLY QUALIFIED CANDID

JOHN CONNALLY for GOVERNOR

(Pd. Pol. Adv. by Eastland Friends of John Connally)

SAFEGWAY

First of the Month Stock-Up!

Safeway Stock-Up Buys!



Jell Well Gelatin Assorted flavors, 3-Oz. Pkg. **5¢**

Bel-air Waffles Frozen, 8-count, 5-Oz. Pkg. **10¢**

Grapefruit Juice Town House, Natural, 4 46-Oz. Cans **\$1.00**

Sea Trader Tuna For sandwiches, 4 6 1/2-Oz. Cans **\$1.00**

Highway Pears For Salads, 3 No. 2 1/2 Cans **89¢**

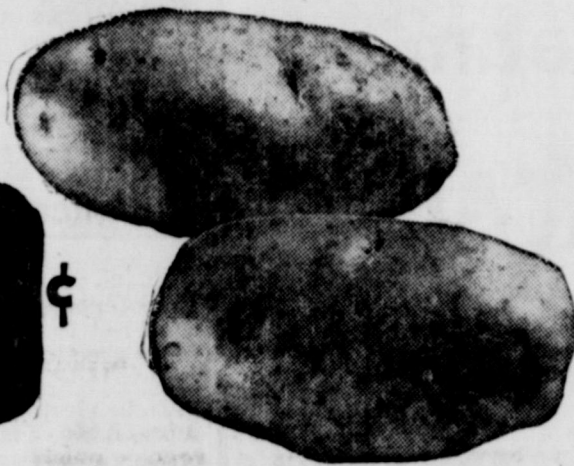
Cherub Milk Lucerne, For coffee or cooking, 6 1 1/2-Oz. Cans **77¢**

Margarine Easy spreading, 1-Lb. Ctn. **24¢**
 Margarine Tasty and flavorful, 1-Lb. Ctn. **28¢**
 Margarine Creamy smooth, 1-Lb. Ctn. **22¢**

Cottage Cheese Lucerne, All Styles, A good buy, 1-Lb. Ctn. **19¢**

Safeway Produce!

Potatoes U. S. No. 1 White Rose, Ideal for baking, boiling or frying, 10-Lb. Bag **59¢**



Redeem this Coupon for **50 FREE GOLD BOND STAMPS** With purchase of \$5.00 or more (Excluding Cigarettes) One Per Customer * Coupon Expires June 2, 1962

This Coupon Worth **50 FREE GOLD BOND STAMPS** Plus your regularly earned Gold Bond Stamps with the purchase of 10-Lb. Bag Chuck Wagon CHARCOAL BRIQUETS Coupon Expires June 2, 1962

This Coupon Worth **50 FREE GOLD BOND STAMPS** Plus your regularly earned Gold Bond Stamps with the purchase of Any Heavy Beef or Baby Beef BEEF ROAST. Coupon Expires June 2, 1962

Watermelons 5¢

Onions 2 Lbs. **15¢**

Bell Peppers Fresh and tender, Perfect for stuffing, 25¢

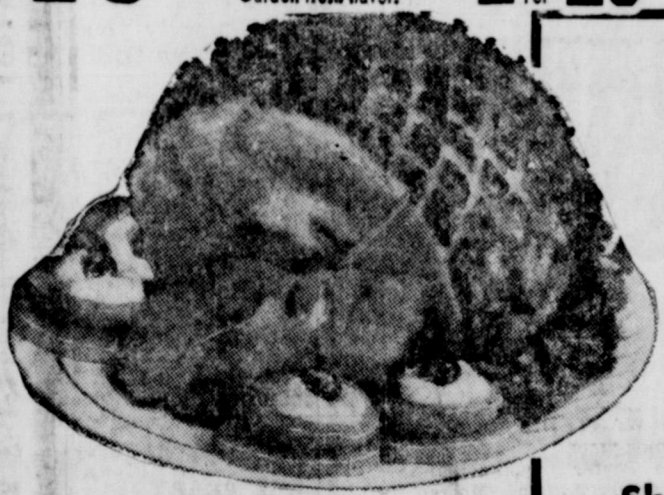
Cucumbers Add zest to salads, Garden fresh flavor, 2 For **25¢**

Chunk Tuna Chicken of the Sea, Green Label, 6 1/2-Oz. Can **35¢**

Chunk Tuna Chicken of the Sea, Light Meat, 9 1/2-Oz. Can **49¢**

Green Beans No. 303, Gardenside Cut, Can **10¢**

Golden Hominy Van Camp's, No. 300, Can **10¢**



HAMS

Smoked. 16-24-Lb. average. Delicately pink and finely textured. **29¢**

Shank Portion Lb.

Half Roast Slices Or Whole, For baking, Lb. **45¢** Center Cut, So tasty, Lb. **69¢** Center Cut, For breakfast, Lb. **79¢**

Round Steak U.S.D.A. Choice Grade Heavy Beef, Lb. **85¢**

Rump Roast U.S.D.A. Choice Grade Heavy Beef, Lb. **79¢**

More Meat Values!

Pork Sausage 2-Lb. Pkg. **77¢** Wingate Regular or Hot.

Sliced Bologna 1-Lb. Pkg. **49¢** Jumbo. A lunch box treat

Braunschweiger Lb. **39¢** Smoked. By the chunk.

Liquid Ivory Detergent. For dishes, 12-Oz. Plastic **31¢**

Liquid Joy Makes dishwashing almost nice, 22-Oz. Plastic **61¢**

Comet Cleanser Removes grime, 2 14-Oz. Cans **33¢**

Mr. Clean Cleaner All purpose liquid, 15-Oz. Bot. **32¢**

Sanitary Napkins Modest regular, super or teen-age, 12-Ct. Pkg. **35¢**

Peach Pie Bel-air Frozen, Large 8-inch Family size, 1 1/2-Lb. Pie **35¢**

Giant Rinso Detergent. (White Magic... Gt. Box 53¢) Giant Box **63¢**

Apple Butter Musselman's, 28-Oz. Jar **33¢**

Maxwell House Coffee Regular or Drip, 1-Lb. Can **64¢**

More Safeway Savings!

Instant Coffee Maxwell House, 10-Oz. Jar **\$1.23**

Light Crust Flour For baking, 5-Lb. Bag **57¢**

Light Crust Flour For all your cooking, 10-Lb. Bag **\$1.07**

Light Crust Flour Economy size, 25-Lb. Bag **\$1.89**

Always Fresh at Safeway!

Gelatin Salads Lucerne Delicatess. All flavors. Regular 39¢ Value! 14-Oz. Cin **29¢**

Fresh Milk Blossom Time Homogenized, 2 1/2-Gal. Ctns. **92¢**

Grade 'A' Eggs Breakfast Gems, Grade 'A' Quality, Med. Size, Doz. **31¢**

Large 'AA' Eggs Cream O' the Crop, Grade 'AA' Quality, Large size, Doz. **45¢**

Samsonite

FOLDING CHAIR

To match your card table. Each only... **\$3.99** with \$15.00 worth of cash register tapes.

Coupon Worth 25 GOLD BOND STAMPS Buy 10 Gold Bond Stamps with the purchase of 10-Oz. Carton of TOMATOES Expires June 2, 1962

Coupon Worth 50 GOLD BOND STAMPS Buy 10 Gold Bond Stamps with the purchase of 10-Oz. Cans Morton House BAKED BEANS Expires June 2, 1962

Coupon Worth 50 GOLD BOND STAMPS Buy 10 Gold Bond Stamps with the purchase of 10-Oz. Jars Zippy Whole ALL PICKLES Expires June 2, 1962

Reg. Box **39¢** Peppercorn Assorted flavors.

11-Oz. **59¢** Pkg. Pepperidge Farm Frozen.

Large **29¢** Ivory gentle.

24-Oz. **77¢** Pre-measured detergent.

Large **29¢** New blue Cheers.

Giant **77¢** For brighter clothes.

25-Oz. **39¢** For automatics.

Bakery Feature!

Bread 1-Lb. Loaf **19¢**

Bread 12-Oz. Pkg. **21¢**

Buns Stylers, 8-count, For picnics, 13-Oz. Pkg. **19¢**

Bread Italian, 1 1/2-Lb. Loaf **29¢**

Prices and Coupons Effective Thurs., Fri. and Sat., May 31, June 1 and 2 in Eastland We Reserve the Right to Limit Quantities. No Sales to Dealers.

SAFEGWAY

CENTRAL DRUG

Summer Time Headquarters

Bathing Caps
Swim Fins
Water Toys
Suntan Lotions
Insect Repellents
Chlgarid
Calamine Lotions &
Caladryl Cream

SODA FOUNTAIN

Sundaes
Shakes
Malts
Sodas

PHOTO FINISHING

CAMERAS

Brownie Bullseye
Kodak Fiesta
Argus C-3
8 mm Movie Cameras
Movie Projectors
Slide Projectors
Slide Viewers
Light Meters

POLORID FILM All Sizes

Yes, Check Wth CENTRAL DRUG In Eastland
If It's Not There It's On The Way
We Give S&H Green Stamps Double On
Saturday - Free Parking Saturdays -
FREE DELIVERY

ATTENDS GRADUATION

Mr. and Mrs. Johnny Aaron and son, Buddy Aaron, who is home on leave from Fort Polk, La., attended the baccalaureate and graduation services of Edwin Aaron Sr. Edwin received his BSED degree from Abilene Christian College Monday.

The Aarons also attended the baccalaureate service at Hardin Simmons in Abilene for E. E. McAlister Jr., son of Mr. and Mrs. E. E. McAlister Sr. of Eastland.

LUBBOCK VISITORS

Debbie Aaron of Lubbock is spending the next two weeks with her grandparents, Mr. and Mrs. Johnny Aaron. Buddy Aaron, who is also visiting in the Aaron home, went to Lubbock Tuesday to bring his daughter, Debbie, to Eastland.

Promote House Speaker

James A. (Jimmy) **TURMAN**
to LT. GOVERNOR

Led in the Primary & Runoff Leader
Pg. Pol. Adv.

Ed. J. ...



Thank you for the confidence expressed in me in the First Democratic Primary Election.

To be elected your state representative is an honor and a great responsibility, and I shall strive to represent the interests of all the people of my district fairly and impartially.

I hope you will contact me in Breckenridge whenever I can be of any assistance to you.

Sincerely yours,
WAYNE GIBBENS

IF IT'S MORE PROFIT YOU WANT... PLANT-



Certified SPANTEX

HI-BRED BRAND Certified STARR

PEANUT SEED

Plant the proven seed that puts more money in your pocket... with higher grade and bigger yield. In irrigated or dry land... the cheapest seed you can buy is the best. And the best peanut seed is WILCO brands.

WILCO Certified Peanut seed is a product of Wilson County Peanut Company, the Southwest's exclusive seed plant. See your local authorized WILCO seed dealer today!

Eastland Grain and Seed Co., Eastland, Texas
Farm & Ranch Supply Co., Cisco, Texas
Ranger Peanut Co., Ranger, Texas
Gorman Public Scales & Peanut Warehouse, Gorman, Texas

Mrs. G. Gilliam Is Honoree at Surprise Shower

Mrs. Glyn Gilliam was honored with a surprise baby shower at the regular meeting of the Xi Alpha Zeta Chapter of Beta Sigma Phi Monday evening.

Mrs. James Smith was hostess to the meeting in her home on 407 E. Conner.

After the regular business session, the surprise shower for Mrs. Gilliam and an ice cream party was held.

Ice cream and cake were served to Mr. and Mrs. Glenn Scallorn, Mr. and Mrs. Mike George, Mr. and Mrs. Norman Watson, Mr. and Mrs. Don Kincaid, Mr. and Mrs. A. D. Taylor, Mr. and Mrs. Glyn Gilliam and Mr. and Mrs. James Smith.

Mrs. David Trent of Del Rio was a guest at the meeting and party.

Card of Thanks

We wish to thank our neighbors, friends, relatives, the staff of Ranger General Hospital, Dr. W. P. Watkins, blood donors, and Rev. Bill Penland for their acts of love and sympathy during the long illness and loss of our loved one. For the floral offerings, food and other kindnesses we are deeply grateful.

The family of
Tom B. Marlow

Read the Classified Ads

Shower Honors Two Women At Leon Village

Mrs. James Smith and Mrs. Charles Neger were honored with pink and blue showers Friday, May 18th, from 10:00 a. m. in the home of Mrs. C. W. Coan of the Leon Plant Village.

The hostesses, Mrs. Coan, Mrs. W. J. Stone and Mrs. J. L. Owen served the guests cokes, coffee, pink and blue frosted cookies, mints and nuts from a table laid with a pink and white cloth and centered with a lovely arrangement of roses.

Other floral arrangements were noted throughout the house.

Look Who's New

Mr. and Mrs. Ray Pool Jr. of 300 S. Oaklawn have announced the arrival of Ray Earnest Pool, III. The Pool's first son was born Tuesday at 12:56 a.m. in the Eastland Memorial Hospital and weighed 5 pounds and 13 ounces.

Ray Earnest has two sisters, Sherri, who is 10, and Teresa, who is 6.

Mr. and Mrs. W. R. Whitford of Azle are the maternal grandparents and Ray Pool Sr. of Odessa and Mrs. Margaret Pool Sr. of Odessa are the paternal grandparents.

The great-grandparents are Mrs. Bell Thomason of Spur, W. J. Pool of Odessa and Mrs. Lela Reed of Everett, Wash.

(Read The Classifieds)

Southern Television System Corp.



Village Hotel

CALL US
and we will
WIRE YOU

Watch Your Favorite TV Program
• Comedy • Western
• Sports • Drama

Ph. MA 9-1716



Drive in here for...

COMPLETE AUTO CARE

Let us inspect brakes, tires, radiator, steering and electrical system to prevent costly repairs and unwanted delays later. Leave all car worries to us.

24 HOUR WRECKER SERVICE

Phones
MA 9-2270
Night
MA 9-2224

ALLEN AUTO REPAIR
AT RUSHING MOTOR CO.
215 SOUTH SEAMAN

NOTICE

Now Open With A Complete Line Of Fancy Groceries

Cured Meats, Picnic Supplies, Ice Chests, Water Cans. Also Coco Cola, Dr. Pepper and all Soft Drinks.

Buy The Case Ice Cold

Block and Crushed Ice To Go.

CITY ICE & GROCERY

410 West Commerce

Eastland

Open 6 A. M. to 9:30 P. M.

VISITS IN FORT WORTH

Mr. and Mrs. James Sherill, Mr. and Mrs. Wayne Caton and Mrs. Saturday Robert

HAMNER FUNERAL

Ben E. Hamner, O...

Serving Eastland County ambulance and funeral service. are oxygen equipped and air conditioned. Through our nation-wide other funeral directors, we can from any point in America. We knowing that we can relieve the burdens incident to any death.

Eastland

FURNITURE

CARPET APPL

Quality Merchandise at Every FREE DELIVERY - NO CARR ON FURNITURE and C FOR 1 FULL YEAR

Ranger Furniture

123 N. RUSK

"BRASHER'S" Ranger

Ranger Junior SUMMER SES

June 4-August 2

First Term: June 4

Second Term: July 10

Classes offered in freshman English, American history, geography, advanced typewriting and

An opportunity to earn 12 to that will transfer to any senior

Registration for first term June M.

Classes begin Tuesday,

TO THE PEOPLE OF EASTLAND COUNTY

I have made a hard and vigorous for the Office of District Clerk, and seeing you. I have campaigned on my own merits and not at anytime to ed to elevate myself at the expense of my opponent, or anyone else.

The fact that the records show I have held this office for 10 years, and has been paid \$77,715 the privilege of the people to do a Democracy and I sincerely hope to yield to our known Democratic opponent, 2nd, and elect me as your next. It can be said in these modern times primarily a woman's job, as 100 State have women District Clerks. The State have women Chief District Clerks.

I thank you profoundly for your support at all times during the past active campaigning. You have been kind to me.

Your vote will be greatly appreciated.

ANN JUSTICE

YOUR VOTE FOR ROY L. LANE FOR RE-ELECTION DISTRICT CLERK

Will Be Greatly Appreciated

He has stayed on the job. He will not sacrifice principle to appease any individual in performing his duties in accordance with the laws of our state. His record speaks for its self.

LET'S GIVE HIM A LARGE MAJORITY

SATURDAY
JUNE 2nd

Honored at Reception

former Mrs. Willie Brunette. Children present for the affair were a son, and family, Mrs. B. L. Fisher of Dallas; another son, and family, Mr. and Mrs. Leonard Fisher of Midland, and a daughter and family, Mr. and Mrs. Harold Adams of Lubbock. Another son and family, Bobby, who

are with the armed forces in Germany, were unable to be present.

Decorations throughout the home were carried out with gold mums. Grandchildren of the couple served from the huge wedding cake decorated with a gold bride and groom and from the punch bowl.

Grandchildren present were Mr. Barry Fisher, Dallas; Monty Fisher, Dallas; Cecelia Fisher, Midland; Sandra Adams, Lubbock; and Mrs. Bill Terry, Hobbs, N. M.

One hundred and fifty

relatives, friends and neighbors called during the day. Those from out of town were Mr. and Mrs. Cloyd Brunette, Lampasas; Mr. and Mrs. Alva Thompson, Carbon, Texas; Mr. and Mrs. Leroy McCullough and family, Mrs. Ina McCullough and Mr. and Mrs. L. T. Blevins, all of Breckenridge; Mr. and Mrs. Virgie Burnette, Odessa; Mrs. Ruby Springer, Lamesa; Mrs. Frances Rutherford, Odessa; Mr. and Mrs. Bill Terry, Hobbs, N. M.; Mr. and Mrs. Ronnie McPheeters and family, Mona-

hans; Mrs. Lillian Smith, Ranger; Jannie Bills, Midland; Mrs. Ora Crowder, Duncaneville; and Mr. and Mrs. J. W. Carter of California.

R. H. Latham Still Critical

Robert H. Latham, radio and television repairman at Western Auto, was reported as still on the critical list Tuesday in the Saint Joseph Hospital in Fort Worth.

Mrs. Latham is staying with her husband at all times.

Friends who wish to send cards may send the cards to Robert H. Latham, Saint Joseph Hospital, Fort Worth.

5 Students Candidates For Degrees

Five Eastland County students are candidates for undergraduate degrees from Texas Technological College in Lubbock.

Fred H. Moore, Mobil Oil Company and Tech graduate, will give the principal address during the exercises at 8 p.m., Monday, May 28, in the Lubbock Municipal Coliseum.

The Rev. John William Lancaster, pastor of the First Presbyterian Church in Houston, will deliver the baccalaureate sermon at 8 p.m., May 27, in the Coliseum.

Candidates for degrees from Eastland County include: Ralph Allen Garverick of Cisco, Bachelor of Arts in geology; Arnold Edwin Anderson of Gorman, Bachelor of Science in physics; Oliver Wendell Dunlap of Cisco and Willie Paul Johnson of Desdemona, Bachelor of Science in Agriculture; and Mary L. Kleiner Stormer of Cisco, Bachelor of Science in Home Economics.

Milton Dale King of Cisco was recently elected treasurer of Alpha Lambda Pi, organization for accounting majors, at North Texas State University for the fall semester.

King, the son of Mr. and Mrs. Sam B. King of Cisco, is a junior accounting major. A sophomore from Cisco,

Robert Edgar Shrader, has been awarded a grant-in-aid at Texas Christian University for the second year in a row. Shrader, son of Mr. and Mrs. John H. Shrader of Route 4, Box 137 in Cisco, is a graduate of Scranton High School in Scranton.

ACHING MUSCLES

Quickly relieve nagging pains of tired, sore, aching muscles with STANBACK Powders or Tablets. STANBACK'S combination of medically-proven ingredients for relief of pain works fast and gives remarkably comforting relief. Satisfaction guaranteed. Snap back with STANBACK.

READ THE CLASSIFIEDS

PIPKIN'S Value Rated USED CARS

Your Assurance of Used Car Values

58 Chevrolet Brookwood Station Wagon Air Conditioned, Power Steering, Radio and heater.

57 Chevrolet Bell Air Station Wagon Air Conditioned, Power Steering, Radio and Heater.

53 Chevrolet 4 door, Radio & Heater

50 Chevrolet 4 door, Real clean.

PIPKIN'S OLDS, CADILLAC RAMBLER

314 West Main Pho. MA. 9-2636 Eastland

Round-Up STAMPS

CONGRATULATIONS GRADUATES!

Super Save Market would like to take part in celebrating the graduates of 1962 and everything in the coming years.

39¢ LAWRY'S SEASONED SALT 3-1/8 Oz. 29¢
21¢ LAWRY'S SEASONED PEPPER 1-5/8 Oz. 49¢

59¢ Pound Can

45¢ BARTLETT PEARS 303 Can 23¢

\$1.99

39¢

79¢ CLADIOLA FLOUR 5 Pound Bag 39¢

65¢

25¢

15¢

69¢

25¢

33¢

98¢

19¢

89¢

39¢

10¢

PARKAY MARGARINE Quarters Pound Carton 27¢

GRIFFIN'S WAFFLE SYRUP 34-Oz. Decanter 39¢

WHITE SWAN EVAPORATED MILK 2 Tall Cans 25¢

GLADIOLA FLOUR 5 Pound Bag 39¢

NEW BALANCED BLEND ALL-PURPOSE FLOUR

GLADIOLA FLOUR

NEW BALANCED BLEND SELF-RISING FLOUR

QUANTITY RIGHTS RESERVED

CAKE MIXES SWANSDOWN Layer Cakes Reg. Box 29¢

63¢

25¢

69¢

\$1.

25¢

39¢

10¢

25¢

49¢

29¢

Terrell -

(Continued from page 1)

and thereby increased the need for accurate measurement. Present standards are about 1/2 of one per cent accurate, he said.

The manual was written by about 90 men, and edited into the booklet which is expected to be available by September, Terrell said.

Peter Fox of Sweetwater, B. L. Clements of Abilene, Archer Marx, Grady Hogue and J. W. Sitton, all of Cisco, were Rotary guests.

Jack Germany was program chairman and introduced Terrell.

BOX SCORE: PLYMOUTH-8 FORD-1 CHEVROLET-1

It's 8 out of 10 for Plymouth in Riverside, California, tests! Plymouth asked for this "Showdown at Riverside." Plymouth engaged the U. S. Testing Company to conduct it, buy the cars, hire drivers, and enforce the rules. Plymouth had to take its

chances that it could beat a comparably equipped Chevrolet and Ford. Read what happened in box below. Plymouth not only beat the other two in acceleration, passing and stopping but in economy, too. The Greatest Plymouth Ever Built!

OFFICIAL U. S. TESTING COMPANY RESULTS

EVENT	ZERO-TO-60 MPH	QUARTER-MILE	GO, STOP, PARK	KILO-METER	HIGHWAY PASSING	CITY PASSING	ECONOMY RUN	HILL CLIMB	EMERGENCY STOP	3/4-MILE CLASSIC
1st	Plymouth 10.0 sec.	Plymouth 17.7 sec.	Ford 3:08.3 min.	Plymouth 33.1 sec.	Plymouth 633 ft.	Plymouth 269 ft.	Plymouth 17.6 m.p.g.	Chevrolet 21.5 sec.	Plymouth 139 ft.	Plymouth 2:51.8 min.
2nd	Chevrolet 13.6 sec.	Chevrolet 19.2 sec.	Plymouth 3:11.0 min.	Chevrolet 36.5 sec.	Chevrolet 672 ft.	Ford 303 ft.	Ford 14.4 m.p.g.	Ford 28.0 sec.	Ford 143 ft.	Ford 3:02.8 min.
3rd	Ford 15.4 sec.	Ford 20.5 sec.	Chevrolet 3:19.0 min.	Ford 38.3 sec.	Ford 701 ft.	Chevrolet 341 ft.	Chevrolet 13.9 m.p.g.	Plymouth 27.8 sec.*	Chevrolet 147 ft.	Chevrolet 3:03.7 min.

Ask your dealer for detailed "Showdown" brochure

* Incomplete third heat



MAKE YOUR OWN TEST BEHIND THE WHEEL... TODAY!

Rushing Motor Company
215 South Seaman
Blevins Motor Company
514 W. Main

MacMOY'S Super Save

Home Owned—Home Operated

This Statement Comes To You From County - Wide Friends Of

ANN JUSTICE

Candidate For District Clerk
 She Is Qualified By Disposition, Education, And Training For This Important Office.
 We Urge You To Support ANN JUSTICE

Paid For By County Wide Friends of



FIRST METHODIST CHURCH
 Wm. S. Fisher, Pastor
 215 S. Mulberry
SUNDAY
 9:45 a.m.: Church School
 10:45 p.m.: Worship Service
 8:15 p.m.: Youth Fellowship
 7 p.m.: Evening Worship
TUESDAY
 9:30 a.m.: W.S.C.S.
WEDNESDAY
 7:30 p.m.: Choir rehearsal
 Wesleyan Guild every 1st & 3rd Wednesdays
 Official Board Monday

after 1st Tuesday
 Five Commissions—every
 1st Monday
FIRST CHRISTIAN CHURCH
 Corner Olive & Lamar
 Ray Heckendorn, Pastor
SUNDAY
 9:45 Church School
 11:00 Morning Worship
 7:00 Evening Vespers
WEDNESDAY
 5:00 Junior Choir
 6:30 Adult Choir

CARBON BAPTIST CHURCH
 Rev. Jimmy Turner, pastor
SUNDAY
 10 a.m.: Sunday School
 11 a.m.: Morning Worship
 6:30 p.m.: BTU
 7:30 p.m.: Evening Worship
MONDAY
 2 p.m.: WMU
WEDNESDAY
 7 p.m.: Prayer Service

CHRISTIAN SCIENCE
 Plummer and Lamar
 Sunday
 9:45 a.m.: Sunday School
 11 a.m.: Sunday morning service.
 Wednesday
 7:30 p.m.: Mid-week Service
 The public is cordially invited.
 Read The Classifieds

OLDEN METHODIST CHURCH
 William C. Fisher, Pastor
 Olden
Sunday
 Morning Worship 9:00 AM

CARBON METHODIST CHURCH
 James W. Walker, Pastor
 Carbon
Sunday
 Sunday School 10:00 AM
 Morning Worship 1:00 AM

OLDEN BAPTIST CHURCH
 Rev. Bill Pentland, Pastor
 Olden
Sunday
 Sunday School 9:45 AM
 Morning Worship 11:00 AM
 Training Union 6:00 PM
 Evening Service 7:00 PM
WEDNESDAY
 Prayer Service 7:30 PM

ASSEMBLY OF GOD
 Rev. Frank Evans, Pastor
SUNDAY
 9:45 a.m.: Sunday School
 11 a.m.: Morning Worship
 6:45 p.m.: Christ Ambassador
 7:30 p.m.: Evening Service

HOLY TRINITY EPISCOPAL CHURCH
 710 S. Seaman
 Rev. William Ralph Woods
SUNDAY
 10 a.m.: Morning Prayer
 10:15 a.m.: Holy Communion & Sermon
WEDNESDAY
 6:30 a.m. & 9 a.m.: Morning Prayer & Holy Communion
 5:30 p.m.: Evening Prayer & Litaney

FIRST PRESBYTERIAN CHURCH
 Methodist Youth Fellowship 6:00 PM
 Evening Service 7:00 PM
Wednesday
 Mid-Week Service 7:00 PM
 Mission Study and Luncheon
WEDNESDAY
 6:45 p.m.: Sunbeam Band
 Royal Ambassadors
 Girl's Auxiliary
 S.S. Superintendents
 7 p.m.: Teacher's Meeting
 7:45 p.m.: Prayer Meeting
 8:30 p.m.: Church Choir
CHURCH OF CHRIST
 Corner of Plummer and Daugherty
 Gary B. Adams, Minister
SUNDAY
 9:30 a.m.—Bible Class For All Age Groups.
 10:20 a.m.—Morning Worship
 2:00 p.m.—Visitation of Shut-ins.
 8:00 p.m.—Young Peoples' Meeting.
 7:00 p.m.—Evening Worship.
WEDNESDAY
 9:30 a.m.—Ladies' Bible Class.
 7:00 p.m.—Prayer Meeting and Bible Study.

FLATWOOD CHURCH OF CHRIST
 Truman Carter, Pastor
 Flatwood
Sunday
 Sunday School 10:00 AM
 Morning Worship 11:00 AM
 Evening Service 7:00 AM

CHURCH OF GOD
 Corner Lamar and Valley
 Rev. W. E. Hellenbeck Jr., Pastor
SUNDAY
 10 a.m.: Sunday School
 11 a.m.: Sermon
 6:45 p.m. Youth Fellowship
 7:30 p.m.: Sermon
WEDNESDAY
 7:30 p.m.: Prayer Service

HOLY TRINITY EPISCOPAL
 710 So. Seaman St.
 The Rev. W. Ralph Woods, Vicar
SUNDAY
 9:45 a.m. Church School
 10:00 a.m.: Morning Prayer
 10:15 a.m.: Holy Communion
MONDAY
 7:30 p.m.: Vestry meeting at Joseph Neepner, 501 West 18th, Cisco.

UNITED PENTECOSTAL CHURCH
 208 N. Dixie
 Rev. Freddie Waldrep
SUNDAY
 9:45 a.m.: Sunday School
 11 a.m.: Morning Worship
 7:45 p.m.: Evening Service
WEDNESDAY
 7:45 p.m.: Prayer Meeting
SATURDAY
 7:45 p.m.: Pentecostal Conquerers.

ST. FRANCIS CATHOLIC CHURCH
 Rev. Joseph L. Van Winkle, C.L.C.M.
SUNDAY MASS
 1st and 3rd Sunday at 9:30 a.m.
 2nd, 4th and 5th Sunday at 11 a.m.
 Every Tuesday Mass at 6:30 p.m. Holy Days Mass at 7:15 a.m.

Rev. Eugene Surface, Pastor
Sunday
 10:00 a.m. - Church School
 11:00 a.m. - Divine Worship
 12 noon - Monthly meeting of the Church Session on the Sunday after the first Wednesday.
Tuesday
 9:30 a.m. - United Presbyterian Woman meet on the first and the third Tuesdays of each month.

BETHEL BAPTIST CHURCH
 Rev. Jimmy Roberts, Pastor
 1304 W. Main
SUNDAY
 9:45 a.m.: Sunday School
 11 a.m.: Morning Worship
 6:30 p.m.: Training Union
 7:30 p.m.: Evening Worship
WEDNESDAY
 6:15 p.m.: Primary teachers and officers meet
 7:30 p.m.: Midweek prayer
 8:15 p.m.: Choir practice

CHURCH OF THE NAZARENE
 Rev. Clarence Manners
 613 W. Main
Sunday
 10—Sunday School
 11—Morning Worship
 6:45 p.m.—N.V.P.S.
 7 p.m.—Evening Services
Wednesday
 7 p.m.—Mid-week Prayer Service
FRIDAY
 Noon—Prayer and Fasting
 8:15 p.m.—Children Hour

FIRST BAPTIST CHURCH
 Rev. Haston Brewer, Pastor
 108 W. Plummer
SUNDAY
 9:45 a.m.: Sunday School
 11 a.m.: Morning Worship
 6:15 p.m.: Training Union
 7:30 p.m.: Evening Service
TUESDAY
 9:30 a.m. & 1 p.m.: WMU

CALVARY BAPTIST
 Rev. Floyd Osborn
 207 N. Oak St.
SUNDAY
 10 a.m.—Sunday School
 11 a.m.—Morning Worship
 7 p.m.—Prayer Service
 7:30 p.m.—Evening Worship
WEDNESDAY
 7:30 p.m.—Midweek Prayer

Card of Thanks
 With sincere gratitude and deep humility, we try to express our appreciation for the help given us during the illness and death of our mother.
 We especially express thanks to Dr. Alexander, Dr. Bulgerin, the nurses, the hospital staff and all those friends who were so kind to call and offer wonderful comfort, the beautiful floral offerings and food.
 May God bless you ever.
 The Carter Family
 The T. C. Brown Family
 The C. N. Adams Family
 Mrs. Parraek

Card of Thanks
 We wish to take this means of expressing our sincere appreciation to the host of neighbors and friends for their many acts of kindness and expressions of sympathy during the loss of our loved one.
 The family of E. C. Roper

Beware of The Spring
 ... and look out for hail destructive elements that we can't expect and prepare for, to property owners in this season to residence and business storm damage to plate glass. One city in Texas last year reported dollar loss on plate glass these hazards with adequate now before it is too late.
Earl Bender & Co.
 Eastland (Insurance since

WE PROVE IT CAN BE DONE!
A&P GIVES YOU CASH SAVINGS AND VALUABLE PLAID STAMPS

Coupon No. 5 for 90 Free Plaid Stamps Redeemable This Week at A&P.

"Super-Right" Heavy Calf-Freeze Sale

75 TO 100-LB. AVERAGE	Hindquarters 59¢	150 TO 200 LB. AVG.	SIDES 49¢
75 TO 100-LB. AVERAGE	Forequarters 39¢	U.S.D.A. INSP. FRESH BROZEN	HENS 29¢

LUNCHEON MEAT "SUPER-RIGHT" SLICED
 BOLOGNA PICKLE AND PIMIENTO LOAF 29¢

Cap'n John's Frozen
 Fried Fish Sticks 2 10-oz. Pkgs. 69¢
 Breaded Shrimp 10-z. Pkg. 65¢

PATRO BEFI ENCHILADAS 24-oz. Size 55¢

"SUPER-RIGHT" MEAT CANS
 Plate Stew or Short Ribs 25¢
CHUCK BLADE ROAST Lb. 49¢
 Sliced Beef Liver 49¢
 ALLGOOD BRAND Sliced Bacon 5¢

Jane Parker Bakery Specials

WHOLE WHEAT BREAD	2 16-oz. Loaves	33¢
FRENCH ROLLS	2 Pkgs. (Brown 'n' Serve)	39¢
CARAMEL PECAN ROLL	Pkg.	35¢
GLAZED DONUTS	Pkg. of 12	39¢

APPLE PIE 39¢

25 PLAID STAMPS With the Purchase of **JANE PARKER GOLD or MARBLE POUND Cake** Ea. 59¢

CUT GREEN BEANS Argo Blue Lake No. 303 Can 10¢

FREESTONE PEACHES A&P Halves 4 No. 2 1/2 Cans 99¢

PRUNE JUICE Garden Club 3 Qt. Btls. \$1.00

25 PLAID STAMPS With the Purchase of **"SUPER-RIGHT" CANNED LUNCHEON MEAT** 12-oz. Can 39¢

Kobey's Potato Sticks	3 2 1/2-oz. Cans	29¢
White House Evap. Milk	6 Tall Cans in Cln.	75¢
Aunt Jemima Pancake Mix	Made with Buttermilk 5-lb. Bag	49¢
Ann Page Spaghetti	Prepared 2 15 1/2-oz. Cans	25¢
Lemonade	Tree Sweet Frozen Plain or Pink 3 6-oz. Cans	25¢
Superior Spirex Paper Plates	Pkg. of 100	69¢
Chef's Pride Charcoal Briquets	20-lb. Bag	89¢

Fresh Produce

Strawberries	California pt. carton	3	For \$1
Cantaloupes	Large Size each	3	For \$1
Fresh Tomatoes	Lb.	29¢	
Fresh Corn	1/2-ear	6	For 39¢
Black-eyed Peas	Fresh Lbs.	2	25¢

SUNNYBROOK GRADE A MED. EGGS 2 Doz. 59¢

50 PLAID STAMPS When You Buy **A&P VACUUM COFFEE** \$1.31 2 LB. CAN

DEVRAL DOES IT!
DEVROE Super ALL-WEATHER HOUSE PAINT
 with DEVRAL
 Double-protects and beautifies your home
 Modern chemistry's improvement on the original 2-coat system. SUPER ALL-WEATHER HOUSE PAINT, contains the special ingredient, DEVRAL, that fights blistering, peeling or cracking. The self-cleaning second coat is highly resistant to wind, rain, sleet, snow, dust and sun.
 Over 1000 colors for your selection with the DEVROE LIBRARY OF COLORS
Crowell Lumber Co.
 715 W. Main
 Phone MA 9-2411

Clauss Friendship HOSIERY SALE

Here's the once-a-year hosiery sale you've been waiting for! It's your opportunity to buy national quality Seamless and Full-Fashioned CLOTH, LOW PRICES. Replenish your wardrobe with these extra styles and colors you've never seen before. member the women on your gift list. SAVE! Don't miss this finest hosiery sale. remember, the sale ends (insert date)

Sale Starts Thursday For One Week

SALE PRICES
 NO-SEAM, Nude Heel, or Re-enforced Heel and Toe in Plain, Micro or Stretch \$1.00
 PLAIN SEAM, 15 Denier, 60 Gauge or 30 Denier, 51 Gauge
 OVER-THE-KNEE STRETCH No-Seam Evening Sheer Regular 1.95
 NO-SEAM, Re-enforced Heel and Toe in Plain or Micro, FULL-FASHIONED, 15 Denier. 89¢

ALTMAN'S STYLE SHOP
 Eastland, Texas