

Eleventh Annual Quarterback Minstrel Tonight



Eastland Telegram

"COVERING EASTLAND COUNTY"



VOLUME TWENTY-SEVEN

EASTLAND, TEXAS, THURSDAY, APRIL 11, 1957

No. 147

Housing Development Gains Momentum

Moore...

ABOUT Eastland

VIRGIL E. MOORE

We never have understood that sign that they have up over at Earl Bender's. It says, "Quiet People Working." Now they couldn't be talking about John Goode, we know, because that guy's anything but quiet. In fact, the word "quite" fit him better.

Don Pierson tapped us on the shoulder the other day at Rotary Club after Wendell Siebert spoke on the need for a new elementary school. "Now there is something for you to really crusade for," he said. We agree with Don. It's something that all of us should start considering a lot more seriously.

Have you given thought to this (Continued on Page 2)



NEW THREE BEDROOM HOMES—Pictured above are two of the new three bedroom homes recently completed in the Rivercrest Addition in Eastland. More than a dozen new homes are expected to be built in the new addition (nine having already been purchased.) Three bedroom

homes such as these sell for as little as \$7800 in the new section. They can be financed for as little as \$600 to \$700 down (including closing costs) under FHA loans, making monthly payments just \$37 a month. (Telegram Staff Photo)

Nine Houses Under Construction Now

Eastland's biggest housing development since immediately after World War II is occurring in the newly opened Rivercrest Addition in the south part of the city.

Five houses have already been completed, two others are now under construction and two more have been sold. C. C. Broyles, Abilene contractor, who is doing the work, and James Dabney, local real estate dealer, revealed this week. That makes a total of nine homes sold, and Broyles said at least two more—and possibly even a larger number—will be constructed.

The addition has been opened on East Conner Street and connects with developed property. All of the new houses face north. Three of the completed homes have two bedrooms and the other two are three bedroom houses. The

lots are 75 foot wide and 160 foot deep. Curb, gutter and sidewalks are included in the construction. All of the homes have been financed through FFA with 25 year loans.

Down payments range as low as

\$250 plus closing costs, which go as low as \$300, depending on the type of home built. A person can move into a two bedroom home for as low as \$550, however. Conventional loans are also available, if desired.

Dabney said that monthly payments on a two bedroom home can be as low as \$31.01, including principle and interest, and monthly payments on a three bedroom home start at \$37.

The homes all include complete insulation, number one hardwood floors and concrete foundations. They are plumbed for automatic washers and have plenty of closets and electrical outlets.

Homes have been purchased by Les Strawn, John Trimble, Clar-

Henry Hensley Funeral Rites This Afternoon

Funeral services will be held this afternoon at 4 p.m. for Henry Jesse Hensley, 86, in the Hamner Funeral Home Chapel in Eastland (Continued on Page 2)

(Continued on Page 2)

Q-Back Minstrel Tonight & Friday

Thursday and Friday are the days. That's when the eleventh annual Eastland Quarterback Club Minstrel will be presented in the High School Auditorium.

Curtain time both nights is 8 p.m. Mr. and Mrs. Andy Taylor, Co-directors of the show, promise plenty of talent in the two act performance.

James Reid will again serve as Mr. Interlocutor this year. Carbonated (Milton) Underwood will be one end man and Flapjack (Milton) Hunt will hold down the other corner.

Others in the line will include Rocket (Norman) Guess, Hot Line (Virgil) Moore, Satch (John) Slaughter, BB (Buster) Graham, Kilowatt (Frank) Hightower, Butch (Jim) Ewatt, Beany (Jim) Watson, Pepper (Wayne) Jackson, Neon (Bill) Blackman, Big Foot (Jim) Young, Slat (Donald) Nicholas, Short Change (David) Fry, Hambone (Carroll) Shelton, Dirty (Wells) Dalton, Snowball (Jack) Chamberlain Jr., T. Bone (John) Tate, Yankee (Ed) Lorenz, and Parace (Earl) Labredo.

Guest performers will include Barbara Hightower, Dixie Durham, Dixie Day, Barbara Dalton,

Sandra Taylor and Cora Mendiet—the Party Dolls; Honey Child (Jan) Taylor; Taffy (Sandra) Taylor, Cornpone (Billy Don) Turner; and Sassfrass (Wendell) Seibert.

Miss Candy (Mrs. Andy Taylor) will be on the piano and Downbeat (Geraldine) Johnson on the drums.

Jack Chamberlain Jr. is business manager of the show, Mr. and Mrs. B. B. MacMoy are in charge of makeup, Curtis Koen is in charge

of ticket sales, Gene Townsend and Billy Don Turner in charge of advertising, Jim Smith and Jon Tate head the country store and Poe Floral Shop will provide the flowers.

Stage Setting crew members include Mrs. Jim Watson, Mrs. Jim Ewatt, Mrs. Frank Hightower, Mrs. Jack Chamberlain Jr., Mrs. John Slaughter, Mrs. Earl Labredo and Mrs. Wells Dalton.

Red Cross Aid For Tornado Area Urged

Stanley Webb, county Red Cross chairman, stated today that his last Dallas Disaster Bulletin dated April 5 showed that according to Red Cross surveys, a total of 800 families were affected by the recent tornado.

One hundred twenty-five homes were demolished and 437 more damaged. In all 700 buildings in a 69 square block area of West Dal-

las were destroyed or damaged. April 4 Red Cross opened two major disaster centers and launched its vast rehabilitation program for meeting the long-range needs of disaster victims.

Present estimates are that approximately 400 families who were affected will apply for rehabilitation assistance from Red Cross.

Ralph Owens, director of Red Cross disaster operations in Dallas, believes it would take approximately six weeks to complete the disaster victims. Opening the major centers Thursday marked the beginning of the transition from the initial emergency state of Red Cross operations to the long-term rehabilitation phase.

Out in the devastated neighborhoods where disaster victims were picking through the wreckage of giant task of meeting the needs of their homes, three Red Cross mobile canteens drove slowly through, stopping now and then to dispense hot coffee, sandwiches, and milk for the children. At each stop clusters of weary persons, including emergency crews, volunteers, and disaster victims—gathered around and were fed. Storm victims continued to receive meals, grocery orders clothing, and other essentials from two Red Cross shelters set up in the battered area. Scores of men, women and children have crowded into these shelters.

So far, Red Cross has received (Continued on Page Two)



LOOKING OVER PLANS—C. C. Broyles, right, and James Dabney look over plans for a new two-bedroom home. In the background a foundation for another home in the Rivercrest Addition is going down. Broyles is contractor for the homes and Dabney is acting as local real estate dealer. Both said that as many homes would be built in the Addition as people demanded. The houses can be financed through FFA or by conventional loan. (Telegram Staff Photo)

FOR SATURDAY IN BROWNWOOD

Regional Meet Set

Eastland thirlinades journey to Brownwood Saturday to participate in the Regional track meet.

The Mavs, champions of District 10-A, will have a number of men eligible for this year's regional meet. The Mavs will be eligible to compete in the high hurdles, 100-yard dash, low hurdles, 200 yard dash, the mile run, the high jump, the pole vault, the 440-yard dash, the 440-yard relay, the mile relay, and the broad jump.

Clyde Young will run the 120 yard high hurdles, the 180-yard lows, and represent the Mavs in the high jump and pole vault events. He won first or second place in all these events in the district meet. Saul Pullman will run the 100-yard dash, the 220-yard dash and participate in the broad jump.

Mike Manning will be eligible to run in the 440-yard dash, Norman Owen will run the mile and Bill Upchurch will participate in the pole vault.

The Mavs won the district meet by getting 61 1-2 points. They won seven firsts, five seconds, four thirds and seven fourths in completely dominating the meet. The regional meet will be held on the Howard Payne campus.

The Mavericks golf team, also district champions, will be going to Brownwood Saturday. Your New Car Financed At Low Bank Rates With Your—EASTLAND NATIONAL BANK Member F.D.I.C.

after regional honors too. Mike Reese, Lancy Lee, Hampton Stamey and Juan Jay Smith make up the Eastland first team, Carol Shelton coaches the Mav thirlinades and Jon Tate is golf mentor.

Young and Pullman have led the Mavericks track team in point making, but Owen, the miler, is rated as the Mav's top choice for a first place award from the regional meet. Owen has been beaten only once

in this year in the long run, and he finished second then, despite a high wind.

SERVICE

Pamper your car with quality service from our experienced mechanics. All cars—fast, efficient, economical. Call 802 today.

Don Pierson Olds-Cadillac Eastland

Cancer Drive Here To Last Five Days

The local cancer drive got underway Tuesday morning with a Kick-off Coffee in the First Christian Church annex with Mrs. Jack Frost as hostess. The drive will last five days, the general chairman, Mrs. Roy Turner, announced, ending with a results meeting of all captains Saturday afternoon at four o'clock. The Eastland drive is in memory of Mrs. H. R. Garrett and Miss Mable Hart.

Local workers have been listed as follows: North side, Mrs. Carl Watson, Henry Pullman, Frank Levett, Curtis Young, Charles Beskow, H. S. Curtis and Misses Mildred and Dixie Day; South side, Mrs. Virgil Moore, chairman, L. E. Huckabay, J. D. Earley, James Smith, Fehrman Lund, T. M. Fullen, Jack Hoffman, Earl Stephens, Ed Willis and Clyde Young; East side, Mrs. Dave Fiensy, chairman, Dorothy Cox, Flora Caton, Nina Hart, Winnie Wynne, Ola Robinson, Charles Freyschlag.

Cyrus Miller, Ruby Denny, Arthur Gallagher, Edith McCullough, Clyde Manning and Robert Perkins.

(Continued on Page Two)

Final Services For Mrs. Alford This Afternoon

Funeral services for Cordelia Cotton Alford, 67, will be held Thursday at 2 p.m. in the Hamner Funeral Home in Eastland with Rev. Carroll Herring, pastor of the Olden Baptist Church, officiating, assisted by Rev. Harvey Kimbler, pastor of the First Baptist Church of Eastland.

Mrs. Alford was born August 14, 1889 and died Tuesday while riding with some friends in Ranger. She had lived in Eastland 35 years and made her home at 107 West Plummer.

Survivors include five sons, W. H., R. L., C. G., and E. A. all of Dallas and Tommy of Eastland; one sister, Mrs. Sally Rose of Johnson City and 18 grandchildren.

Burial will be in Eastland Cemetery.

Conservation Meet Planned Here Friday

An Upper Leon Conservation District meeting will be held Friday afternoon at 2 p.m. in the Texas Electric Conference room in Eastland.

There will be various meetings to discuss local conservation problems. Directors will also meet with leaders in conservation work (farmers and ranchers,) businessmen, contractors, agriculture workers, implement dealers and editors of the Eastland, Ranger and Cleco papers.

Members of the Board of Supervisors are Henry Turney, Dublin; Walter Fritts, Comanche; Wade George, DeLeon, B. B. Hickman, Rising Star; and F. M. Spurlen, Eastland.

Work units assisting are in Eastland, Rising Star and De Leon.

Custom Tailor Due At Modern

Paul Dygard of Storrs-Schaefer Tailors, Cincinnati, will be in Eastland Thursday to display the new Spring and Summer Fabrics. Mrs. I. B. Johnson, manager of Modern Dry Cleaners, said today.

Dygard will be at Modern Cleaners all day. Mrs. Johnson urged Eastland men to come in and see about having their clothes custom tailored.

BE SURE—SEE Don Pierson Olds-Cadillac Eastland Quality Cars at Volume Prices

Local Lion To Seek Top Post

Eastland Lions have entered the name of H. L. (Pop) Garrett as a candidate for Lions Club district governor.

Local Lions unanimously voted



H. R. (Pop) GARRETT seeks higher post

to back Garrett for the high post at their Tuesday meeting. Lion President Fehrman Lund told club members he had been told from Lions all over the district, including the large Fort Worth clubs, that they would throw their support behind Garrett.

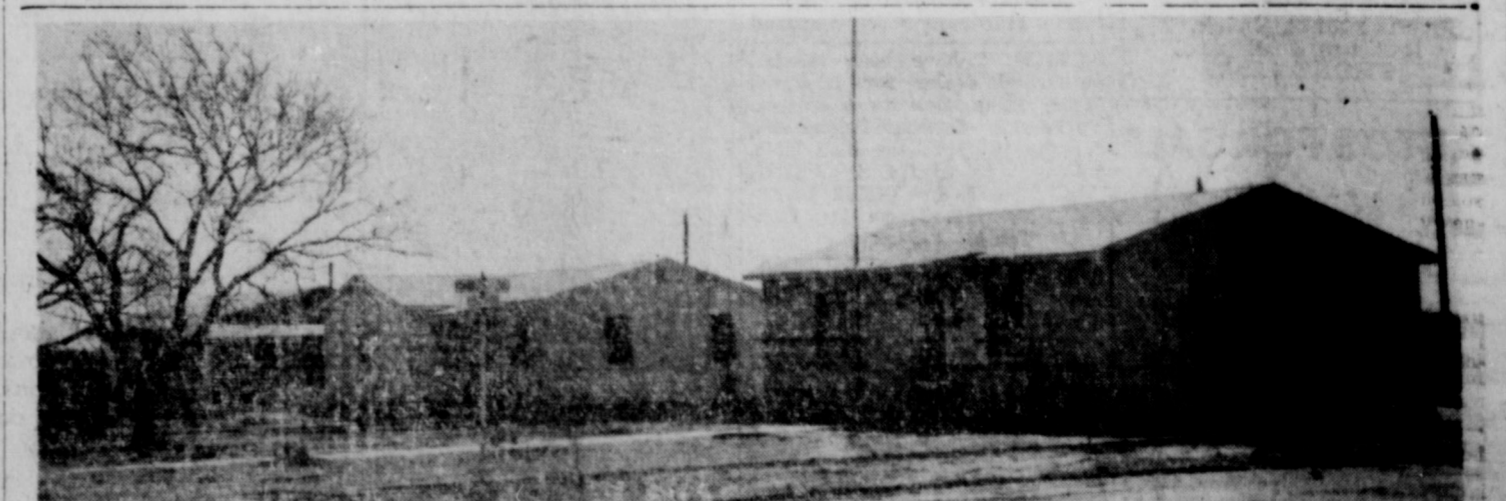
Garrett is county school superintendent. He has been a leader in Lionism for years and this year served in the district governor's cabinet, and later as assistant district governor.

Dr. Lund said more information on Garrett's bid for the high post would be made available, including a complete list of his activities in the Lion Club here and in Cisco during the many years he has been a member.

Lions met in the Fellowship Hall of the First Methodist Church. The program for the day was provided by a group from Ranger Junior College called the Clefs. They sang a number of modern songs and provided Lions with a better-than-usual share of entertainment. (Continued on Page 2)

Wearie FREYSCHLAG INSURANCE AGENCY No. 516 Square Phone 378

Partly cloudy and continued mild Thursday and Friday. High both days about 80. Low Thursday night 55.



LINE OF TWO BEDROOM HOMES. These are the modern economic two-bedroom homes being built in the new Rivercrest Addition of Eastland. The two houses in the foreground have been completed and the third is nearing completion. A fourth house is being constructed on the

far side, with only the foundation down. These homes sell for as little as \$6300. As little as \$550 down, including closing costs, can move you into one of these homes, and monthly payments including interest and principle, run as low as \$31.01. (Telegram Staff Photo)

Eastland Telegram

Eastland County Record established in 1922, consolidated August 31, 1951. Chronicle established 1887, Telegram established 1928. Entered as second class matter at the Post Office at Eastland, Texas under the act of Congress of March 3, 1879.

VIRGIL E. MCORE, Editor
TIMES PUBLISHING COMPANY
Published Tri-Weekly—Tuesdays - Thursdays - Sundays
ONOUS DICK and JOE DENNIS, Publishers
FRANCES MOORE, Society Editor

One week by carrier in city .15
One month by carrier in city .45
One year by mail in County 2.95
One year by mail in state 3.95
One year by mail out of state 5.95

NOTICE TO PUBLIC—Any erroneous reflection upon the character, standing or reputation of any person, firm or corporation which may appear in the columns of this newspaper will be gladly corrected upon being brought to the attention of the publishers.

Classified Ads..

Cards of Thanks charged for at rate of \$2.00 Each

FOR RENT - REAL ESTATE - FOR SALE

FOR RENT: Newly decorated apartments. Phone 1085-W.

FOR RENT: Five room house for rent. Phone 727-J-1.

FOR RENT: Nice 2 room apartment. Would like lady or couple. 310 E. Main.

FOR RENT: Furnished 3 rooms and bath apartment, \$35 month. 310 E. Main.

HOUSE FOR RENT: 5 rooms. Corner of College and Plummer. Phone 388.

FOR RENT - Newly decorated apartment. Hillside Apartments. Phone 9520.

FOR RENT: Nicely furnished two bedroom house. James Wright, Phone 111.

FOR RENT: Nice 3 room furnished apartment, private bath. Bills paid. 416 N. Lamar. Phone 63.

FOR RENT: Nice clean two bedroom house, 709 Halbryan. Call 17 or 564.

FOR RENT: Nicely furnished 6 room house with garage. Also 3 room house, garage. Close in. 209 W. Patterson.

FOR RENT: Furnished 2 bedroom apartment in duplex. 611 W. Plummer.

FOR RENT: Three room furnished apartment. Bills paid. 710 West Patterson.

MISC. FOR SALE -

I HAVE been selected as authorized dealer in this area for De Witt's Babcock Bessie White Leghorn pullets. These are proven Texas most profitable egg layers, having won every Texas Random Sample test to date. Now booking orders for delivery any month in the year. Bart J. Frasier, Route 2, Cisco.

FOR SALE: 75 X 150 foot lot on pavement. Phone 631.

FOR SALE: 3-inch portable aluminum irrigation system, 5 1/2 H.P. portable pump, complete layout. Phone 2653, Olden, after 6 p.m., or write Box 659, Olden.

FOR SALE: Milk goats and goats milk. I. S. Echols. Phone 841-J-1.

FOR SALE: Spudnuts. Call 1179, Pentecostal Church Ladies.

RED WIGGLER fishing worms, pint cartons. Western Auto Supply.

RED WIGGLER fishing worms, wholesale. G. Graham, phone 624, 210 S. College.

FOR SALE: Two coon hounds and two toy fox terrier pups. Phone 1022, 207 West Patterson.

FOR SALE: 8 piece dining room set, also electric ironer. Both in good condition. See at 1005 West Commerce Saturday morning. Nute Hart.

FOR SALE
Nortex Seed Oats
1.05 Delivered
Phone 232 - 901 Gilmer St.

HOME FOR SALE
In Hillcrest
Seven rooms, brick, 2 1/2 lots, beautiful yard.
PHONE 260-W

AUTOS FOR SALE

NEW 1957 RAMBLERS, sedans, station wagons, with or without factory air conditioning, hydraulic or over drive, reclining seats that make a bed—30 miles per gallon—top resale value over all low-priced cars—from \$1950—other imported 4-door sedans from \$1395—Tom's Sport Cars—authorized sales parts and service—Eastland.

Overseas Veterans Welcome
Karl and Boyd Tanner
Post No. 4136
VETERANS OF FOREIGN WARS
Meets 2nd and 4th Thursday
8:00 p.m.



Inspecting a replica of an old river showboat are L. A. Boswell, vice-president, and Aubrey Neal, sales manager of Boswell Daires. The showboat float is being used to help introduce Boswell's new praline pecan ice cream. The new ice cream is named for the rich old-fashioned praline pecan candy that is added to Boswell's ice cream.

Nine Houses— Moore About—

(Continued from Page 1)

ence Jenkins, Willard Griffin, Rudi Marshall, Bob Sessums and Roscoe Marsh so far. Two other contracts are being completed.

The Eastland Chamber of Commerce Board of Directors recently took note of the new development and made public a letter of appreciation sent to Broyles. It follows:

"The Board of Directors of the Eastland Chamber of Commerce wish to extend their appreciation to you for your accomplishment in fulfilling a local need in the construction of new homes, and for the assistance given you by the Tri-Cities Real Estate Exchange, in bringing this about."

Dabney said that plans call for opening up Garvin Street, which is south of Conner, if the demand for homes continues. Marsh Street would be extended south and then Garvin Street would be opened to Seaman.

TRADE WITH YOUR HOME-TOWN MERCHANTS

For Lease
SINCLAIR Service Station for lease. For information see Pat Thomas, Sinclair Agent, Ranger.

McKinnis New Ag Representative
Ben W. McKinnis is new Texas Electric Service Co. agricultural representative for this district. McKinnis and his wife, Martha Jane, will make their home at 504 South Dixie. They are members of the Baptist Church and he is an LSU graduate.

COOL COOL COOL COOL

there's nothing like a **Carrier** ROOM WEATHERMAKER with FULLY AUTOMATIC POWER COOLING

See it today at **SMITH Plumbing & Tin**
114 N. Seaman Phone 304

LOST & FOUND -
LOST or Misplaced: 1 asbestos siding cutter, 1 vibrator hand sander, 1 Johnson floor polisher. Please call or return to Hanna Hardware & Lumber, Eastland, Texas.

Henry— Local Lions—

(Continued from Page One)

with Lonnie Brennam of Ranger officiating.

Mr. Hensley died Wednesday in Midland after a lengthy illness. He had farmed in Eastland County for many years until his health failed last year. He moved to Midland to live with a son in November.

Born March 26, 1871, Mr. Hensley is survived by three sons, W. E. and Frank, both of Eastland, and Jesse of Midland; one daughter, Mrs. C. H. Tankersley of Morton Valley; 22 grand children and 17 great grandchildren.

Burial will be in Eastland Cemetery.

County 4-H Club Girls Enter Area Electric Contest

"A Bundle of Sunshine" will be the title of the electric demonstration which will be presented at Tarleton College Saturday, April 13 by Rosemary Berry and Kathleen Ziehr, two outstanding 4-H Club girls and members of the Cisco Cheerful Toppers 4-H Club.

The electric demonstration will be one of several which will be entered in the District 8 4-H Club Contest Eliminations. This team will be in competition with other 4-H teams in District 8. The winners of the contest Saturday will represent the District at the 4-H Club Round-up, which is to be held at A&M College in June.

The Eastland County electric team's demonstration will consist of the uses of the infrared bulb both on the farm and in the home, with special emphasis on the uses for the homemaker.

Rosemary and Kathleen have presented their demonstration to the Pleasant Hill Home Demonstration Club and also to the Nimrod Progressive Neighbors Club.

The team has been trained by County Home Demonstration Agent Mrs. Don Hart, who was assisted by her husband, Don Hart, Texas Electric Service Company.

Linnett Capers Is Double Seven Hostess Monday

Linnett Capers was hostess to members of the Double Seven Club Monday in her home, with Sandy Taylor, president, presiding over the business session.

The group voted to send the sponsor, Mrs. David Fry, a pot plant during her illness. All dues were paid.

After refreshments of Cokes and cookies, the group adjourned until April 15. Attending were Laura Harris, Phyllis Phillips, Nancy Beck, Jackie Baggett, Cora Mendicino, Sandy Taylor, Rosemary Jones, Dixie Durham, Kathy Williamson, Gaila Walters, Patricia Fullen, Judy Inzer, Janie Arthur and Linnett Capers.

Every room will be needed to house all the visitors in Eastland June 8-9. Make your home available for Texas' biggest homecoming.

DIXIE Drive-In
EASTLAND RANGER HIGHWAY

Box Office Opens 7:00
First Showing 7:30
Box Office Closes 9:30

Cancer Drive—

(Continued from Page One)

West side, Mrs. J. LeRoy Arnold, chairman. Mmes. Neil Hurt, N. F. Davenport, H. C. Westfall, W. D. Spain, W. N. Coppock, J. S. Berry, Johnson Smith, L. E. McGraw and J. H. Rushing. Rev. O. B. Shaw is captain of colored town assisted by Rev. Fleming and Mrs. Luce Paramo is also a captain.

All captains are to telephone in their reports to Mrs. Turner Friday afternoon. Total contributions collected will be deposited in the Eastland National Bank in the name of the American Cancer Society.

Stranger At My Door

HERBERT J. YATES presents
Stranger At My Door
MACDONALD CAREY - PATRICIA MEDINA
SKIP HOMEIER
A REPUBLIC PRODUCTION

PLUS: Color Cartoon and Sports Reel

FRIDAY - SATURDAY, APRIL 12 - 13

TONY MARTIN
in a new kind of virile, violent, vengeful role...as
QUINCANNON FRONTIER SCOUT
COLOR DE LUXE
Released thru United Artists

PLUS: Color Cartoon and Sports Reel

Red Cross—

(Continued from Page One)

and answered over 2000 welfare inquiries received from all 48 states and several foreign countries.

"The cost of this operation is tremendous and whether or not this type of help can be continued depends entirely on voluntary contributions from American citizens," Webb said. He urged that everyone who can to please mail a contribution to Red Cross, 100 Earl Woody, treasurer, Box 111, Eastland.

Frosts Plan Open House On Anniversary

Mr. and Mrs. D. C. Frost of Morton Valley will celebrate the Golden Wedding Anniversary Sunday with an open house at their home.

Their six children will assist them in the celebration. They are Major D. C. Frost of Washington D. C.; Charlie Frost of Wichita Falls; Mrs. R. A. Sneed, Odessa; Mrs. A. B. Norris, San Antonio; Bobby Earl Frost of Florida and Fred Frost of Odessa.

All friends and relatives of the couple are invited to visit the Frosts on their special day.

STRENGTH FOR THESE DAYS
From The Bible
... But if any man be a worshipper of God, and doeth His will, him He heareth.—(St. John 9:31.)

So many of us, in bewilderment and misunderstanding, often seek to find a quick "short cut" to our Heavenly Father's love and mercy. But the Bible is a never-failing guide, and Jesus tells us the straight, sure way to reach God through devotion and prayer.

ATTEND THE CHURCH OF YOUR CHOICE SUNDAY

NOTICE... Come To Kendrick Drive-In Dairy
(Serving This Territory Since 1940)
FOR Good, Clean JERSEY Sweet Milk
Price - 70c Gal.
Phone 896-J-2 - Located Halfway between Eastland and Cisco

Now, That it's Spring Again—

... we are reminded of the many joys and pleasant memories for which this season is noted. But Spring may bring hail and windstorms, too, which are not so pleasant, and sometimes they bring death and much destruction of property, without warning. If you are not carrying this type of insurance give us a ring today. Remember, it is better to have it and not need it than to need it and not have it.

EARL BENDER & COMPANY
Eastland, (Insurance since 1924) Texas

BUY A GREAT NEW '57 JOHNSON SEA HORSE

For Only **10% down**
Balance Easy Terms

Johnson

J.H.P. to 35 H.P.

BRUCE PIPKIN SPORT CENTER
304 East Main Phone 525

Never has such size, power and luxury cost so little

Everything about the new Big M is way up—except the price! Much more power, much more weight, much more room inside, much more comfort. But The Big M is still just an easy step up from the low-priced 3! See us now!

'57 MERCURY

WAYNE MOTORS 1006 West Main EASTLAND Phone 40

PRICES CUT! BUY A&P premium-quality COFFEE!
ENJOY THE COFFEE THAT'S "ALIVE with FLAVOR"!



What could be better? Prices are dropped again on wonderful A&P premium-quality Coffees... just as thousands are swinging back to them because folks have found that other coffees simply don't deliver as

much fresh, full flavor! Now's the time to enjoy freshly-roasted A&P premium-quality Coffee... lots of it... the coffee that's "Alive with Flavor".

Mild & Mellow
1-LB. BAG
83¢
3-Lb. Bag \$2.43



Rich & Full-Bodied
1-LB. BAG
89¢
3-Lb. Bag \$2.61



Vigorous & Winey
1-LB. BAG
93¢
3-Lb. Bag \$2.73

SULTANA PRUNE PURPLE **Plums** No. 2 1/2 Can **19¢** **A&P** **Pears** 3 No. 2 1/2 Cans **\$1** IONA HALVES

ANN PAGE GROUND **PURE BLACK PEPPER** 8-oz. Can **39¢** 2 2-oz. Cans **25¢**
 4-oz. Can **23¢**

ANN PAGE PEACH, PINEAPPLE OR APRICOT **PURE PRESERVES** 1-lb. Jar **25¢** 2-lb. Jar **49¢**

LIMA BEANS A&P ALL GREEN 2 16-oz. Cans **39¢** **GREEN BEANS** A&P FANCY FRENCH STYLE 16-oz. Can **19¢**
TOMATO JUICE A&P FANCY 46-oz. Can **27¢** **FLOUR SUNNY FIELD** 10 Lb. Bag **75¢**
NIBLETS CORN GOLDEN WHOLE KERNEL 1 12-oz. Can **17¢** **ICE CREAM** BANANA-NUT CRESTMONT 1/2-Gal. Ctn. **75¢**

BOURLAND'S MARKET VALUES

Lot Fed Home Butchered Baby Beef
BABY BEEF CHUCK
ROAST OR STEAK Lb. **45¢**
BABY BEEF
SIRLOIN STEAK Lb. **69¢**
BABY BEEF
CLUB STEAK Lb. **59¢**
BABY BEEF
ROUND STEAK Lb. **69¢**
 FRESH FINEST QUALITY
GROUND MEAT Lb. **29¢**
PICNICS SHANKLESS WHOLE OR 6 to 8 lb. **35¢**
 ALL BRANDS SLICED avg. 1 lb. MATCHLESS SLICED
BISCUITS 2 For **25¢** **BACON** Lb. **49¢**
 WILSON'S OR ARMOUR'S WILSON'S
BACON 2 Lb. Pkg. **1.15** **CHEESE** 2 Lb. Box **69¢**

EASTER CANDY
EASTER EGGS WORTHMORE MARSHMALLOW 14-oz. Pkg. **29¢**
JELLY EGGS WORTHMORE ASSORTED 2-lb. Pkg. **39¢**
BASKET MIX WORTHMORE ASSORTED 14-oz. Pkg. **29¢**
CREAM EGGS WORTHMORE CHOC. ASST. 6-oz. Pkg. **25¢**
EASTER EGGS WORTHMORE CHOC. Dozen in Crate **19¢**
RABBITS WORTHMORE MARSHMALLOW Pkg. of 10 **19¢**

ANN PAGE FINE FOODS
SALAD DRESSING Qt. Jar **35¢**
FRENCH DRESSING 8-oz. Btl. **19¢**
EGG NOODLES 8-oz. Pkg. **17¢**
IMIT. VANILLA Pint Btl. **17¢**
PORK & BEANS 32-oz. Can **31¢**

Robert R. Gann Final Rites Are Held Sunday

Funeral services for Robert R. Gann, who resided at 1105 West Main, were held Sunday at 2:30 p.m. in the Hamner Funeral Chapel with Rev. Harvey Kimbler, pastor of the First Christian Church, officiating.
 Mr. Gann had been a resident of Eastland some 30 years and was engaged in the wholesale and retail gasoline business most of that time. He was born in Gorman Feb. 18, 1893 and died April 5.
 He is survived by his wife, Lillie Gann; two sons, Donald E. of Odessa and James Ed of Abilene; two brothers, Walter L. of Eastland and Oscar of Grand Prairie; three sisters, Mrs. Lee Williams of Eastland, Mrs. Elmer Ward of Abilene and Mrs. Della Reynolds of Grand Prairie; and two grandchildren, Nancy Lynn and Cindy Beth, both of Odessa.

Cancer Film To Be Shown Friday In Carbon Church

Mrs. Claud Stubblefield of Carbon has announced that the film "146,000 Could Live" would be shown Friday evening at 7:30 o'clock in the Methodist Church in Carbon. She said everyone interested in seeing the film is invited to come.
 The film, a success story of people who have recognized cancer in time to be cured, is furnished by the American Cancer Society.
 Ben McKinnis of the Texas Electric Service Company will show the pictures.

FORMER RESIDENT VISITS

Marion S. Martin of Austin, former resident of Eastland, was a recent visitor in the Harry E. Wood home. Former school mates of the Woods, Martin is connected with the University of Texas Industrial Education Department and is a retired colonel of 32 years service, having served in World War one and two and Korea.
 Martin was here to inquire about the Eastland High School reunion in June which he, with his wife, brothers and sisters, plan to attend.

VISIT FROM GERMANY

Visiting in the home of Mr. and Mrs. Roy Lane this week are Mrs. Roy Lane, Jr. and daughter, Debra Louise. The two arrived from New York Tuesday where they had been visiting Mrs. Lane's parents.
 Mrs. Lane and daughter will return to Germany in May where S. Sgt. Roy Lane, Jr. is stationed with the Air Force.

PERMANENTS
 \$ 7.50 Oil-Glo Creme \$ 5.00
 \$10.00 Creme Wave \$ 7.50
 \$15.00 Creme Oil Wave \$10.00
Basham Beauty Bar
 1416 S. Lamar Phone 964

LIQUID DETERGENT
JOY 22-oz. Can **69¢**
PINK TOILET SOAP
CAMAY Reg. Bars **9¢**
PINK TOILET SOAP
CAMAY 2 Bath Bars **25¢**
HAND SOAP
LAVA Large Bar **15¢**
CLEANSER
Spic & Span 16-oz. Pkg. **27¢**
FOR AUTOMATIC WASHERS
DASH Detergent 25-oz. Pkg. **39¢**
FOR ELEC. DISHWASHERS
CASCADE 20-oz. Pkg. **43¢**
ALL-PURPOSE SHORTENING
CRISCO 3-lb. Can **93¢**

JANE PARKER DELICIOUS
FRUIT PIES
 Special BLUEBERRY or PEACH Each **49¢**
 JANE PARKER **GLAZED DONUTS** Pkg. of 8 **27¢** Doz. **31¢**
 JANE PARKER LARGE **ANGEL FOOD RING CAKE** Each **39¢**
FRESH PRODUCE
FLORIDA JUICE
ORANGES 8 lb. mesh Bag **59¢**
FLORIDA RUBY RED
GRAPEFRUIT 8 lb. mesh Bag **59¢**
U.S. No. 1 COLORADO RED Mc. CLURE
POTATOES 10 lb. mesh Bag **29¢**
CRISP FRESH ARIZONA ICEBURG
LETTUCE 2 Heads Size 24 **19¢**
MEXICAN CANTALOUPE Lb. **15¢**
GOLDEN SHORTENING
FLUFFO 3-lb. Can **85¢**

CLEANSER
COMET 2 14-oz. Pkgs. **29¢** 2 1 1/2-oz. Pkg. **21¢**
STAR-KIST CHUNK STYLE
TUNAFISH Green Label 6 1/2-oz. Can **31¢**
ALL-PURPOSE OIL
KRAFT OIL Pint Bottle **35¢**
KRAFT CHEESE WHIZ 8-oz. Pkg. **31¢**
DEODORANT SOAP
ZEST 2 Reg. Bars **29¢**
DEODORANT SOAP
ZEST 2 Bath Bars **39¢**
NUTLEY
OLEO Lb. **21¢**

Prices in this ad are effective through Saturday, April 13, 1957.
A&P Food Stores
 THE GREAT ATLANTIC & PACIFIC TEA COMPANY

We have the pig starting feeds that produced...

100 lbs. of gain for only 207 lbs. of feed

Test results on Nutrena Creep-20 and Pre-Shoot 16 certified by Doane Agricultural Service, Inc., professional farm management and research organization. (Feed started when pigs averaged 17.9 lbs.)

Order Now!
Nutrena CREEP-20
PRE-SHOAT 16
SPAIN
FEED STORE
 305 N. Seaman Ph. 858

Stubby Warden Condition Said To Be Serious

Dr. P. M. Kuykendall this morning described O. C. "Stubby" Warden's condition as "very serious" although not believed at this time to be "critical," following an auto mis-hap about 1:00 a.m. Thursday below Ranger Hill near Russell Creek.

Warden, principal of Hodges Oak Park Elementary School in Ranger, was returning to Ranger from Strawn when his 1956 Buick left the road and turned over at least four or five times, according to officers who said there were indications on the roadway where it had somersaulted at least that many times. The steel top of the car was wrapped around the car body almost flat.

Officers said as near as they could reconstruct the scene, Warden must have dozed off temporarily while his front wheels struck a soft shoulder and he lost control of the vehicle.

Warden was taken to West Texas Clinic and Hospital where he was placed under oxygen, unconscious.

Early this morning (Thursday) Dr. Kuykendall said a preliminary examination revealed that Warden had a fractured skull and several broken ribs. Warden, who had regained consciousness, also complained of severe pains in the neck and back. Dr. Kuykendall said, but technicians had not yet had an opportunity to study x-rays to determine the full extent of other injuries.

Card of Thanks

We wish to express our heartfelt thanks to everyone who assisted us at the passing of our loved one, Robert R. Gann. Your kind expressions of sympathy, the floral offerings and loving attendance to our needs is deeply appreciated. May God's blessings be with you all.

Mrs. R. R. Gann and sons, Donald and James Ed and families.

CALL 601 FOR CLASSIFIED AD SERVICE



ALEX RAWLINS & SONS
MONUMENTS
WEATHERFORD, TEX.
Serving This Community Since 1884

LOW COST. GET A DEMONSTRATION!



AFTER CHEVROLET'S \$5,000 "LUCKY TRAVELER" CONTEST!



Jet engine, close-ratio transmission, Turboglide or overdrive automatic drive, lowest of extra cost.

display this famous trademark

Dealer

SOCIAL CALENDAR

Thursday, April 11
3 p.m.—A Federation Day program will be held at the Alpha Delphian Club meeting in the Woman's Club with Mrs. Carl Jones as leader.

8 p.m.—First night of the Quarterback Club Minstrel under the direction of Mr. and Mrs. Andy Taylor, in the Eastland High School.

Friday, April 12
8 p.m.—The Quarterback Club Minstrel will be held in the Eastland High School auditorium.

Saturday, April 13
10 a.m.—Mrs. M. A. Treadwell will tell stories to children between the ages of three years and the fifth grade in the Woman's Club. All children within the age limit are invited to attend.

Monday, April 15
7:30 a.m.—The Las Leales Club will hold its Guest Tea in the Woman's Club when Mrs. Opal Cross will present "George B. Shaw's 100th Year" and Mrs. Don Russell will review Alan Joy Lerner's "My Fair Lady."

3:15 p.m.—A book review will be the program at the West Ward Parent Teachers Association meeting in the school cafeteria. Hostesses will be the fourth grade mothers and the teacher, Miss Gladys Green.

9 a.m.—Mr. Fehrman Lund will be leader for the annual Civic League and Garden Club Home and Garden Tour.

Bellevue Hospital in New York City is the oldest general hospital on the North American continent, according to the New York Convention and Visitors Bureau. The hospital covers 12 square city blocks.

Eastland County Pecan Field Day Set for April 26

The annual Eastland County Pecan Field Day will be held at Rising Star Friday, April 26. The program, sponsored jointly by the County Extension Service and the Rising Star Chamber of Commerce, will include a morning session at the American Legion Hall where experts in various phases of pecan culture will speak, and a series of demonstrations in the Pecan orchard of C. E. Smith in

the afternoon. County Agent J. M. Cooper will be in charge.

Speakers will include L. G. Romberg of the U. S. Pecan Experiment Station, Brownwood; B. G. Hancock, Texas A&M College; T. E. Denman, Texas Agriculture Experiment Station, Stephenville and J. W. Foster, entomologist, Weatherford.

The newly organized Eastland County Pecan Growers Association will have a business meeting early in the afternoon when proposed constitution and by-laws will be considered. Oscar Schaefer, Rising Star, is president, and Ellis Cooper, Ranger, and B. H. Free-

man, Ranger, are vice-president and secretary, respectively.

The program will be open to pecan growers in Eastland and adjoining counties, any of whom may become members of the association.

TRADE WITH YOUR HOMETOWN MERCHANTS



They ALL want your

Portraits
for EASTER!

May we make your appointment today

Canaris Studio
Eastside of Square
Phone 46



VISIT OUR
FISHING
Tackle Dept.

... and see why we are the headquarters for all brand name tackle in Eastland. We invite you to come in and look around and compare our prices.

We now have our new stock displayed for Spring and Summer fishing.

Higginbotham - Bartlett Co.

Jack Elliott, Mgr.
301 W. Main Phone 112 or 1014
• Inlaid Linoleum and Floor Tile

BARGAIN BOMBSHELL!

MODERN WARDROBE PLUS MATCHING CHEST OF AROMATIC RED CEDAR

DOUBLE DOOR for easy access.

Room for **DOZENS** of Hanging Garments.

SHOE STORAGE in BOTTOM.

SAFETY BRACKET Holds Lid Open.

Convenient **HANDLES** On Ends.

AMAZING VALUE

Regular \$79.95

\$49.95

SAVE \$30!

TENNESSEE RED CEDAR CHEST

Here's a Jumbo Robe and Matching Chest that practically shout their quality construction of aromatic Red Cedar. You'd expect to pay at least \$30 MORE! They're roomy enough to store the whole family's woolsens... and look at the latest styled square framing and tapered legs on both pieces that make them "right at home" in the same rooms with other modern furniture. Positively guaranteed not to be an eyesore!

Coats Furniture and Carpets Ltd.,

Free Delivery Easy Terms

EASTLAND Phone 585

G. E. Appliances Good Trade-Ins

Y Members Enjoy Wiener Roast and Hayride Saturday

Members of the Hi-Y and Tri-Hi-Y assembled at the Y building Saturday at 5 p.m. where they boarded a truck of hay and rode to Lake Leon for an evening of roasting weiners and fun. Cokes and potatoes chips were served with the hot dogs.

Following the meal the party rode back to town and those who wished, returned to the Y building for games and dancing. Approximately 35 attended the party.

RAMBLER SETS ECONOMY MARK



1¢ A MILE
New York—Less than a penny a mile for fuel is the all-time coast-to-coast economy record set by Rambler 6 with overdrive. The Rambler Cross Country traveled 2,961 miles from Los Angeles to New York on 92.27 gallons of gasoline, averaging 40.35 miles per hour.

WINS 2 DAYTONA CONTESTS



Daytona Beach—Only car to win two classes in the NASCAR one-mile standing-start acceleration contests here was the Rambler—a '67' won Class 3 and the 190 H.P. Rambler V-8 won Class 4. See the only car that combines big car performance and room with compact car handling ease and economy. Drive a Rambler today.

AMERICAN MOTORS MEANS MORE FOR AMERICANS

1st IN PERFORMANCE AND ECONOMY
RAMBLER 6 OR V-8

AT YOUR NASH DEALER
TOM'S SPORT CARS

307 W. Commerce—Phone No. 8

Fine Arts Group Leaves Friday For Trip to Mexico

Forty-three students from the department of Fine Arts at Ranger Junior College will leave Friday morning, April 12th, at four o'clock for a four-day trip to Monterrey, Mexico.

Faculty members and students making the trip will include Dean and Mrs. H. A. Lotspeich, Mrs. J. P. Morris, Miss Waldine Kribbs, Dr. and Mrs. Price Ashton, and Mrs. Peggy TheBerge, Mrs. P. J. O'Donnell, Richey TheBerge, Rita TheBerge, Michael TheBerge, Jody Beal, George Boynton, B u b b Canuteson, Rosald Darnell, Jimmy Everett, Jack Florence, Roger Flowers, Teddy Henderson, Keith Hodo, Butch Kalineck, Claude Koenig, Joe Lawson, Ronald Miller, Dan Mitchell, Doug Roark, Carol Sandlin, Tommy Stark, Tommy Sutton, Lloyd Trubenback, Alton Williams, Brent Waldrop, Hazel Adams, Donna Blackwell, Marie Chambers, Charlotte Clark, Jackie Cornelison, Dorothy Daws, Thelma Edwards, Elpidia Gonzales, Joyce Herring, Mary Hinds, Sonia Irwin, Gay Nell Loper, Mary Maddux, Shirley Matlock, Geneva Martin, Doris Nabers, Barbara Nichols, Zelma Phillips, Patsy Shaffer, Betty Wells and Mary Lou Wright.

The group will travel by bus and car to Garner Park in Uvalde. After a picnic lunch the musicians will turn full sail toward Laredo, Texas. Rooms at the beautiful Gran Hotel Ancira have been reserved for the stay in Monterrey.

Educational tours, shopping, sight seeing, and bull fighting will crowd the planned entertainment of the coeds.

Students making the trip were required to attend two orientation classes. The eligibles include members of the chorus, band, and Rangeans.

Return trip is scheduled for Monday, April 15.

Make plans to welcome back Eastland's ex-students now. June 8-9—date for the first annual all-school homecoming—is just around the corner. Do your part to make this Texas-Biggest Homecoming

Mrs. Leon Wells Funeral Services Held 2 p.m. Today

Funeral services for Mrs. Leon Wells, 61, were held at 2 p.m. today, Thursday, at Killingsworth Funeral Chapel in Ranger, with the Rev. R. Herman Boyd, pastor of the First Methodist Church of Ranger officiating. Burial was in Evergreen Cemetery under direction of Killingsworth Funeral Home.

Mrs. Wells was found dead at

her home Monday morning by two grandsons who were living with her. Death was a result of natural causes.

Mrs. Wells was born Dec. 2, 1895, and moved to Ranger in 1925 from Stephenville, having lived here ever since. She was a member of the Methodist Church. Survivors include four daughters, Mrs. Thomas Hilbert of Tampa, Fla., Mrs. Fred Brock of El Paso, Mrs. R. C. Leverett of Stockton, Calif., and Mrs. L. C. Archer of Mineral Wells. There were 14 grandchildren and one great grandchild.

Pallbearers were Joe Harper, Jack Williams, Sr., Jack Williams, Jr., H. C. Wilkinson, J. A. Bates, W. F. Creager, Thomas Huling and Tom Williams.

Helps Heal And Clear Itchy Skin Rash!

Zemo, a doctor's antiseptic, promptly relieves itching, stops scratching and so helps heal and clear surface rashes. Buy *Extra Strength Zemo* for stubborn cases!

READ THE CLASSIFIEDS

CLEAR PLASTIC SEAT COVERS
Protect The Beauty Of Your New Car

Tailored To Fit

THE TRIM SHOP

706 W. Main

Phone 170



50-FOOT GARDEN

HOSE

We Give B&B Stamps for Extra Savings

CLOVER FARM

Coffee Drip or Reg. Lb. **87¢**

kleenex 400 Count **25¢**

VAN CAMP'S

Tuna No. 1 Flat **19¢**

RED LABEL

Karo No. 1 1/2 Bottle **23¢**

THESE PRIVES EFFECTIVE FRIDAY AND SATURDAY

100% Vinyl Plastic 4.98
5-Year Guarantee Value **1.39**

- GERBER'S **BABY FOOD** 3 4 1/2-oz. Cans **25¢**
- GLENDALE CREAM STYLE **CORN** 2 303 Cans **25¢**
- GLENDALE HAND PACKED **TOMATOES** 3 No. 1 Cans **29¢**
- CLOVER FARM **PINEAPPLE JUICE** 46-oz. Cans **29¢**
- CLOVER FARM **GRAPEFRUIT JUICE** 46-oz. Can **25¢**

- PREMIUM SALTINE **CRACKERS** 1 Lb. Box **27¢**
- CENTRAL AMERICAN **BANANAS** Lb. **12 1/2¢**
- U.S. No. 1 IDAHO RUSSETT **POTATOES** 10 Lb. Bag **43¢**
- CALIFORNIA FIRM GREEN **LETTUCE** Large Heads **13¢**
- TEXAS **JUICY ORANGES** 8 Lb. Bag **39¢**

GOLDEN
Fluffo 79¢
3-Pound Can

NEW CROP BERMUDA
Onions 6¢
Lb.

QUALITY MEATS

ARMOUR'S MATCHLESS
Bacon Sliced Lb. **49¢**

GOOD TO BOIL OR FRY
Bacon Ends 3 Lbs. 54¢

TIDE
or
CHEER
Giant Size **70¢**

NEUHOFF'S ALL MEAT
FRANKS Lb. **39¢**

LEAN TENDEF
PORK CHOPS Lb. **59¢**

PURE PORK
Sausage Lb. **29¢**

FRESH GROUND
Meat Lb. **29¢**

CHUCK
Roast Choice Beef Lb. **43¢**

ROUND
Steak Choice Beef Lb. **69¢**



H. B. MacMoy, Owner

7:30 a.m. to 8:00 p.m. Weekdays
7:30 a.m. to 9:00 p.m. Saturdays

KRAFT'S
Miracle Whip Pint **35¢**

ATTEND THE CHURCH OF YOUR CHOICE EACH SUNDAY

M. H. PERRY Representing Southland Life Life - Retirement Income Partnership Mortgage Cancellation Educational - Annuities Accident - Sickness Hospitalization - Group Call 173 or 713-J 107 W. Main • Eastland

Mrs. Treadwell Will Read Tales At Story Hour

Saturday morning at 10 o'clock in the Woman's Club, Mrs. M. A. Treadwell will tell stories to children between the ages of three years and the fifth grade. The stories will be taken from the children's books in the Eastland Library.

All children within the age limit are invited to attend. The Story Hour is held once a month under the sponsorship of the Thursday Afternoon Club.

Demonstration To Be Given By Two Scranton 4-H'ers

Letha Luster and Nelda Stuart, members of the Scranton 4-H Club, will present a safety demonstration entitled "A Bird's Eye View of Safety" Saturday, April 13 in the District 8 4-H Club Contest Eliminations to be held at Tarleton State College.

Safety practices in the home are of utmost importance to the lives of each of us. Most home accidents can be eliminated by correcting unsafe conditions and unsafe practices. The safety demonstration to be presented by Letha and Nelda emphasizes the leading causes of home accidents - falls, burns, poisons, firearms, mechanical suffocation, and poisonous gases - and their prevention. The objective of the demonstration is to make both children and adults conscious of the home accident problem.

Letha Luster was one of the team members who presented a similar demonstration in the District 4-H eliminations last year, winning first place honors.

The winner of the District Safety contest will represent the District at the 4-H Club Roundup at College Station in June. Letha and Nelda have presented their demonstration to the Pioneer HD Club and the Nimrod Neighbors Progressive Club here in the county.

The team has been trained by the county home demonstration agent, Mrs. Minnie Mae Hart.

Last Rites for Mrs. Baldersee Held 4 p.m. Today

Funeral services for Mrs. R. C. Baldersee Sr., 67, were held at 4 p.m. today, Thursday, in the Second Baptist Church of Ranger with Rev. E. L. Scarbrough officiating. Burial was in Evergreen Cemetery under direction of Killingsworth Funeral Home.

Mrs. Baldersee died at 12:16 p.m. Wednesday at Ranger General Hospital. She was born Feb. 12, 1890, and had lived in Eastland County for 30 years.

Survivors include her husband; one son, R. C. Baldersee Jr., of Refugio; four daughters, Mrs. L. A. Williams of Arlington, Mrs. B. I. Duncan, Mrs. D. H. Duncan and Mrs. Mary L. Parks, all of Ranger; three sisters, Mrs. A. J. Hanger of San Angelo, Mrs. Nellie Baines of Ballinger and Mrs. Walter Ivie of Sulphur, Oklahoma, and 10 grandchildren.

Palbearers were Marcus Matthews, Fred Matthews, J. D. Nichols, Carl White, Walter Mitchell and Clyde Rodgers.

TO VISIT IN WASHINGTON

Mrs. J. W. Woods will leave this week for a visit with her daughter and son-in-law, Major and Mrs. E. Tabor in Washington, D. C.

Hospital News

Patients in the Eastland Memorial Hospital are:

J. T. Finley, medical Joseph Carlisle, Cisco, medical Mrs. Elvie Shepard, medical Mrs. David Fry, medical E. L. Hare, medical Mr. and Mrs. W. L. VanGeem, medical

Mrs. Earl Conner, Sr., medical Truman Brown, medical Mrs. T. D. Smallwood, Cisco, medical

Dismissed were L. B. Reed, Johnnie Smith, Mildred Hood, J. B. Storton, Mrs. Marguerite Welch and Ronald Robertson.

Patients in the Ranger General Hospital from Eastland are: Mrs. Lela Day, medical

Sheri Nixon, medical C. L. Fields, medical Mrs. C. R. Harbin, surgical Dismissed was Clifford Richard son.

El Salvador is the only Central American country that fronts on one ocean only, the Pacific, according to the Pan American Union.

Itching Torture PROMPTLY RELIEVED

A doctor's formula—soothing anti-septic Zemo—promptly relieves the itching, burning of Skin Rashes, Eczema, Psoriasis, Ringworm and Athlete's Foot. Zemo stops scratching and so aids healing of irritated skin.

zemo

Funeral Directors HAMNER FUNERAL HOMES Ben E. Hamner Oxygen Equipped - Air Conditioned Eastland Phone 17 Cisco Phone Hillcrest 21211 AMBULANCE SERVICE ANY WHERE ANY TIME Nominal Cost Burial Insurance For The Entire Family

CALL 601 FOR CLASSIFIEDS

It's FUR STORAGE TIME



Time to PROTECT YOUR PRECIOUS FURS

Let us take care of them through the Summer in our Modern, Cool, Insulated, Fumigated Vault. All garments are insured against fire, theft and moths.

EXPERT CLEANING AND GLAZING

You cannot afford to do without this protection. The cost is so small!

FUR COATS, minimum charge \$2.00 MEN'S and LADIES' OVERCOATS, minimum charge \$1.00 MEN'S and LADIES SUITS, minimum charge \$1.00

SANTONE Modern Dry Cleaners

Stan and Glenna Hake, Owners 209 S. Seaman CALL 132 FOR PICK-UP AND DELIVERY Only Storage Vault in Eastland County You Pay Nothing Until Next Fall

Look lovelier, prettier for Easter

An EASTER BOUQUET from US to YOU!



"Pretty as a posy!" That's what you'll say about each of the spanking smart coifs in the cluster of hairdos now being featured in our styling section. Of course you'll want a gay shortdo to show as you doff your Easter bonnet, so make an appointment now for a nicely new style that will frame your face with flattery... give you a fragile, flower-like look... make you the prettiest belle in the Easter Parade!

Ruby Crawley Beauty Shoppe

We Style Your Hair To Fit You Hair Shaping A Specialty

Appointment Only Ruby Crawley, Operator and owner 107 N. Lamar Phone 379

VISIT PARENTS

C. F. Gilbreath of McCamey and James R. Gilbreath of Harlingen came to be with their parents, Mr. and Mrs. J. F. Gilbreath on learning that their parents home had burned. Both returned to their homes Monday with Mrs. Gilbreath returning to McCamey with her son.

CALL 601 FOR CLASSIFIED AD SERVICE

SCHOOLASTIC SET (pencil, tablet, ruler, and blotter)



2 COUPONS

BOTTLE OPENER (wall type)



Sturdy opener that will last a lifetime. Fasten to wall in kitchen or any convenient place.

3 COUPONS

OUTDOOR THERMOMETER



A novel, accurate thermometer made to stand up outdoors. May be used inside, too, of course.

4 COUPONS

MINIATURE COCA-COLA CASE AND BOTTLES



Accurate, scale reproductions of the famous Coca-Cola bottle and a case. Put them in.

5 COUPONS

CHECKERS



Checkerboard and carved wood checkers

15 COUPONS

SPORTS MANUAL



A 128-page book of facts, rules, and records about all kinds of sports.

3 COUPONS

Now you get

VAL CO

when

Coca look you

Sparkling ite refres and your Now, whi prizes, the up on del

PLAYING



Colorfully illustrated ing cards.

10 COU

PENNEY'S ALWAYS FIRST QUALITY! Penney's has smart Quality Easter Shoes for Everybody!



For that barely there look!

SEAMLESS GAYMODES

Beautiful proportioned Penney nylons mist of color, fit flawlessly! Glowing shades in conventional Seamless or longer-wearing micro-mesh. Sizes 8 1/2 to 11.

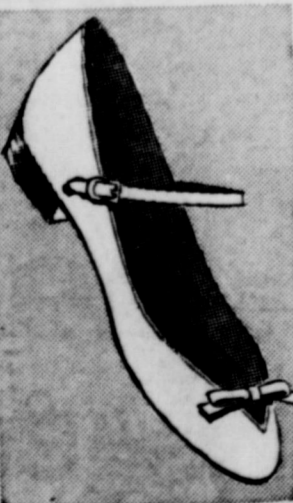
98c pair



BAREBACK CASUALS

3.98

Suddenly you're walking on air! The barest, lightest shoes possible with a just-right height wedge heel for extra comfort! In white. 4 1/2 to 9.



BOW TIED PARTY FLATS

8 1/2 to 3

2.98

The daintiest! Ankle-straped flats... white... Scientific lasts for excellent support, just enough flexibility!



TRIM 2-EYELET CONTINENTALS

sizes 6 1/2 to 11

7.95

Sleek as a jet, these hipolish plain toes have style, comfort, quality! Built with sharp storm welts, wide rubber heels, rugged composition soles. Sanitized.



KEEP COOL IN KNITTED NYLON

sizes 6 to 11

7.95

Penney's superior knit construction lets your feet "breathe"... assures longer, finer wear. Choice side leathers. Sanitized protection



"Coca" is a registered trademark.

Bottled under authority of The Coca-Cola Company by

Texas Coca-Cola

Every room will be needed to house all the visitors in Eastland June 8-9. Make your home available for Texas' Biggest Homecoming.



Get regular MOBIL-CARE for CARE-FREE Going

EARLEY TIRE SERVICE

PHONE 208 302 W. Main Eastland



IT'S THE LAW in Texas

One of these days—perhaps soon—you may get a notice telling you to report for jury duty—and to "fail not." In serving, you share one of the most solemn duties known to our democracy. Some people try to get out of jury service. It may be inconvenient or unpleasant. Yet, when you are put on a jury you should think of this as a chance to help make good one of the promises of our Constitution—trial by jury. Say the following to yourself: "My forefathers wrested my right to serve as a juror from tyrants. Under our law no one's life, liberty, or property can be taken without due process of law. Trial by jury is our basic right. All who seek their day in court should have a fair hearing. They will get it from me. I will not ask to be excused from jury service except in an

Here's the Way to Stop A Thief

Few burglars can pick a simple lock, but they find a new victim every 80 seconds because of lost keys, wrong locks, and locks that simply aren't used. A lock is good protection against a burglar only if you use it correctly, reminds an article in the April issue of Better Homes & Gardens magazine. Keep your doors locked whether you're inside or outside. If there is an eye window in your front door, use it when the doorbell rings. If there isn't, install an auxiliary chain lock, so the door can be opened a few inches without leaving you vulnerable. Never unlock your door and open up blindly when a stranger rings the bell. Many a thug has talked open a door by posing as a telegraph messenger, delivery boy, salesman, or passer-by seeking directions to another address. Whenever you leave the house, make sure the door is locked. You may think it is, yet be sadly mistaken. "On my oath I will well and truly try each case before me, and a true verdict render under the law given me by the judge and the evidence introduced at the trial—without fear, favor, or hope of reward. I will listen closely, with open mind to all of the testimony, instructions, and arguments. I will not make up my mind until all the facts are in and the judge has instructed the jury on the law. I will search for the truth regardless of wealth or poverty, friendship or enmity, of any party or witnesses. To someone my decision may mean the difference between freedom or imprisonment, poverty or wealth. Justice, once but a dream, is a reality when I, as a juror, do my full duty. No act of mine shall bring shame to our system of liberty under law." (This column, prepared by the State Bar of Texas, is written to inform—not to advise. No person should ever apply or interpret any law without the aid of an attorney who is fully advised concerning the facts involved, because a slight variance in facts may change the application of the law.)

taken, the article says. A common type of burglar pretends to be a door-to-door salesman. While giving his sales talk, he releases the night latch, hoping that when the lady goes out later, she won't notice and he can walk in. Even with a "dead bolt" type lock, which can be unlocked from either side only with a key, the fake salesman may jam some paper or cotton into the strike, so that the bolt will fail to hold when closed. Or he may even use a specially built, short screw-driver hidden in his hand to loosen a screw which anchors the lock's cylinder. Once this vital screw is loose, he can return later and take off the whole lock. Another mistake some people make, after locking a door, is to leave a spare key in too obvious a spot outside. Burglars appreciate, too, a back door with a glass pane, making it easy to reach inside and turn the lock after breaking the glass. If you have a door like this, use a dead lock which opens or closes only with a key, inside or out. Unscreened windows with simple catches can be unlocked in the same way. Simply use wood screws at the two top corners of the bottom half of the sash to bar this entrance way. Check the outer door, also, to see if the hinges are on the outside. It's easy for a burglar to remove the door completely if the hinges are exposed. Install hinge pins which are fixed securely in place, the magazine advises.

CALL 601 FOR CLASSIFIED AD SERVICE

TRADE WITH YOUR HOMETOWN MERCHANTS

CALL 601 FOR CLASSIFIEDS

Holy Week Services

SUNDAY, APRIL 14 Through FRIDAY, APRIL 19

Sunday Services—11 a.m. - 7:30 p.m. Weekdays—7:30 Each Evening

NURSERY PROVIDED



Paul Campbell . . . Evangelist



Bill Collings . . . Song Leader

FIRST CHRISTIAN CHURCH

NOTICE

OUR PRICES ON EVAPORATIVE AIR COOLERS

Are In Line With Abilene and Fort Worth!

PLUS: Service When You Need It!

TRADE WITH YOUR HOME TOWN MERCHANTS

WAYNE JACKSON AUTO SUPPLY

Phone 894 Phone 894

COLD SUFFERERS

Get STANBACK, tablets or powders, for relief of COLD DISCOMFORTS. The STANBACK prescription type formula is a combination of pain relieving ingredients that work together for FASTER RELIEF of HEADACHE, NEURALGIA and ACHING MUSCLES due to cold. STANBACK also REDUCES FEVER. SNAP BACK with STANBACK.

Advertisement for Boswell's Praline Pecan Ice Cream featuring a man with a megaphone and a large ice cream cone.

Here comes the Showboat, bringing a new flavor from 'ole New Orleans . . . Boswell's Praline Pecan Ice Cream. You'll love this rich and buttery old-fashioned praline flavored ice cream with pecans a-plenty in every bite. Don't miss the boat . . . get a half-gallon right away.



Boswell's PRALINE PECAN Quality Checked Ice Cream

Large advertisement for gas ranges featuring a cartoon woman with glasses and a comparison between electric and gas ranges.

AS ANY COOK CAN PLAINLY SEE...

gas TURNS OFF INSTANTLY!



Modern gas ranges alone have no hangover heat to cause boilovers!

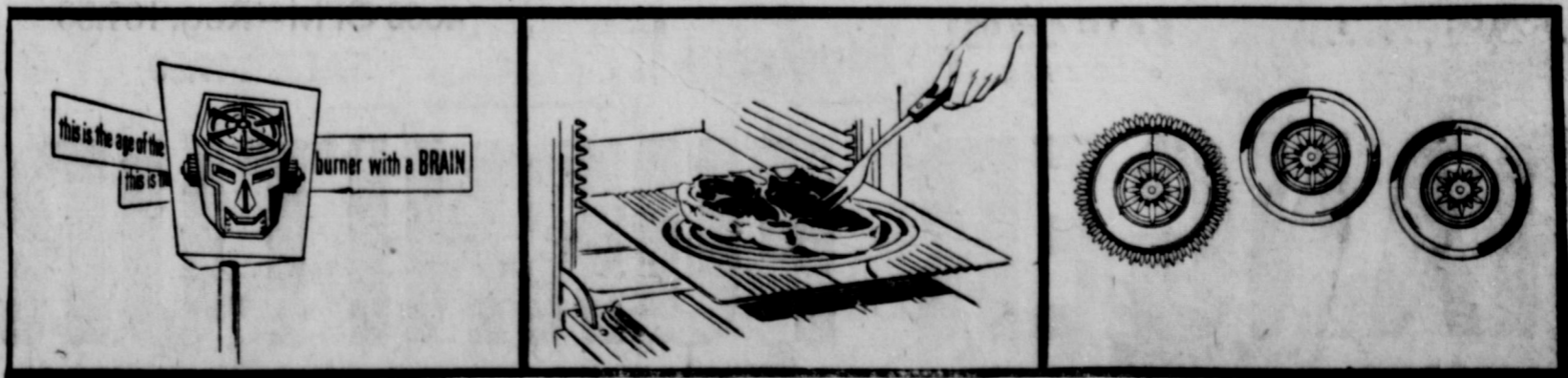
You don't need glasses to see that gas turns off instantly! Here's a good test. Turn the flame off under boiling water. Boiling stops instantly! No Hangover Heat on a gas range to cause messy boilovers. But with an electric range, boiling continues even after the cooking unit is turned off. This means bothersome watching for you and extra heat in your kitchen. So be smart . . . buy a cooler, cleaner-cooking, all-automatic gas range today.

Ask about the GAS APPLIANCE PURCHASE PLAN . . . free insurance, easy terms. On cooking demonstration days get a free copy of Lone Star's Home Economics Department 25th Anniversary Cookbook.

see your GAS RANGE DEALER or

LONE STAR GAS COMPANY More than 85 out of 100 women cook with gas!

Watch Playhouse 90 over CBS television, Thursdays. Julia Meade is your Lone Star Gas hostess.



FLOOR DISPLAY: Look for the dealer with this display . . . 'cause that's where you find Burner-with-a-Brain gas ranges.

CLOSED DOOR BROILING: Exclusive smoke proof broiler means cleaner cooler cooking!

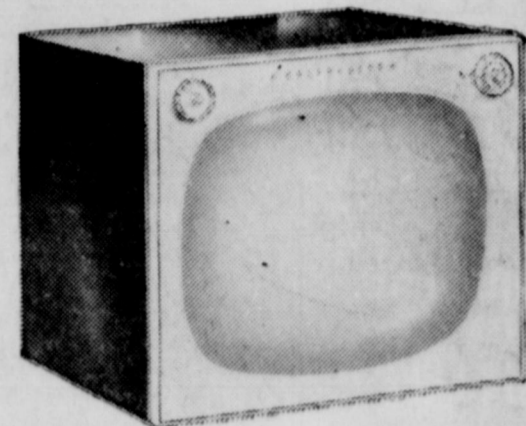
1001 INSTANT SETTINGS: Any shade of heat is instantly at your command with flame-fast gas.

BRASHIER'S 36TH ANNIVERSARY SALE ENDS SATURDAY APRIL 13th

**ENGLANDER FAMOUS
FOAM RUBBER SET**
Full or Twin Size
Reg. 129.50 **89.50**
SALE
10-Year Warranty

Mrs. Betty Campbell
Home Economist for Lone
Star Gas Co.
Will demonstrate our
"Range with a Brain" all day
Friday, April 12.
FREE COFFEE AND COOKIES
FREE ANNIVERSARY COOK BOOK

**NOTHING
HELD
BACK!**



WESTINGHOUSE TV
New Silver Safe-Guard Chassis
Precisioneer Quality for perfect picture
Reg. 209.95 **189.95**
SALE
Plus State Tax

Our fine stock of Nationally Advertised Merchandise brought to you at substantial savings... Fine decorator fabrics on Kroehler, National and Flexsteel Living Room Suites.

Basset, Camden, Olive & Myers, and Woodward Bed Room Suites.

Mattress and springs by Simmons, Englander, Morning Glory and Serta.

Youngstown Kitchens, Westinghouse Refrigerators, Washers, Ranges and Televisions.

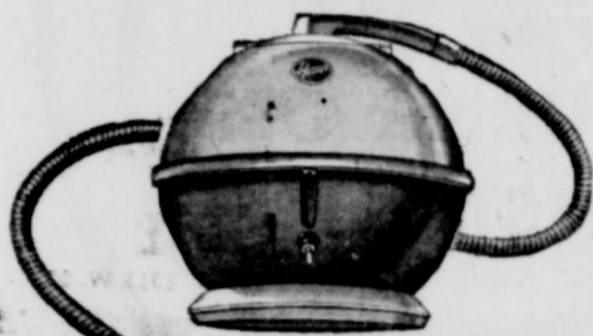
Gas Ranges by Florence. See our complete line of Lee Carpets.

Many, many lamps, tables, occasional and spot chairs.

**TWO COMPLETE
HOLLYWOOD BEDS**

Consists of
2 Mattresses **88.00**
2 Box Springs
2 Headboards
2 Sets of Legs
ALL FOR ONLY

SEE IT NOW
the cleaner
that walks
on air!



**NEW HOOVER
Constellation**

- ✦ Floats after you on its own air stream
 - ✦ Nozzle glides on 3 quiet wheels
 - ✦ Exclusive Double-Stretch Hose
 - ✦ Throwaway Bag—10 second change
 - ✦ New Forecast Colors
- Reg. 89.50
SALE 69.50

3-Pc. Dinette 44.95
Cane Chair 1.98
Wardrobe 44-inches wide 32.95

FREE DOOR PRIZES

- 1st PRIZE STRATOLOUNGER CHAIR
- 2nd PRIZE Serta Box Spring and Mattress
- 3rd PRIZE Utility "Bonaire" Air Conditioner

COME IN AND REGISTER NOW! You Need Not Be Present to Win. Nothing to Buy to be Eligible.

2-PIECE

Studio and Platform Rocker

Choice of Colors **8888**
Reg. 109.95

Gracious Dining
Virtue
* SCULPTURED BLACK METAL
* GLEAMING BRASS ACCENTS
* LUXURIOUS WOOD GRAINS
* FASHIONABLE NEW FABRICS



SAVE \$40.00
7 PIECES - CHROME OR BLACK METAL
SALE 99.88

**WESTINGHOUSE
WASH-DRY LAUNDROMAT**

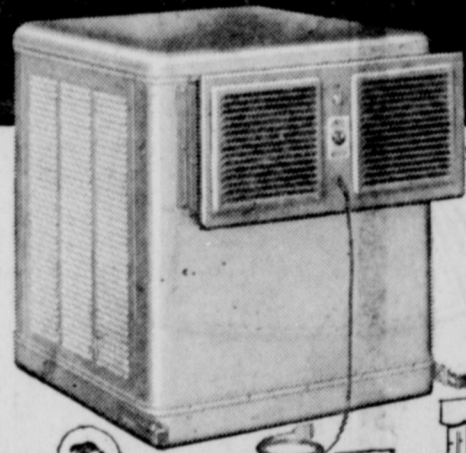


First it washes... then it dries
Automatically
Reg. 529.95 **SALE 429.95**
and Old Washer

**10 %
to
40 %**

DISCOUNT
On All
Merchandise
Free
Delivery
No
Carrying
Charges
On
Furniture

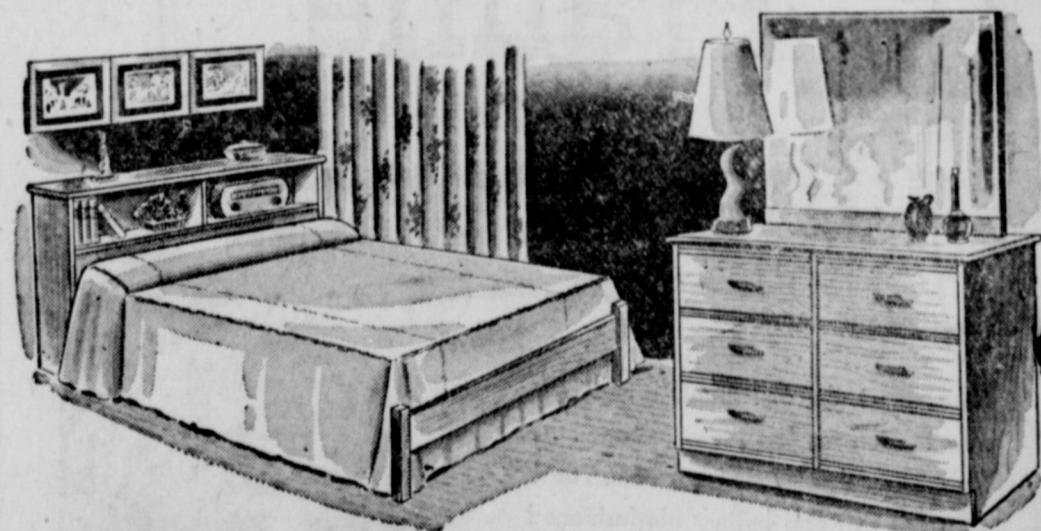
EASY TO INSTALL EASY ON THE EYE!!
UTILITY FULL VIEW *air coolers*



These attractive Air Coolers just slip into window, do not obstruct view and produce cool, healthful, circulating air.



AIR COOLERS
See the complete line now at your Dealers.
4000 CFM - Reg. 189.50
SALE 149.50



- DOUBLE DRESSER
- BOOKCASE BED
- BOX SPRINGS
- MATTRESS
- TWO PILLOWS

Regular 159.50
129.50
ALL SIX PIECES

RANGER FURNITURE EXCHANGE

North Rusk Street - RANGER, TEXAS - Phone 242

New Leaflet Tells How to Control Household Insects

COLLEGE STATION — Seldom can one observe a home and its surroundings without finding some form of insect life. That's the text

of a new leaflet compiled by extension entomologists offering today's best control measures for household pests.

Certain pests may be found outside and controlled before they enter the home, say the specialists. Some pests live entirely within the home, however, and must be controlled by applying insecticidal sprays or dusts inside the dwelling.

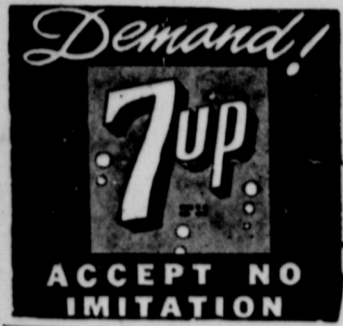
Entomologists say insect activity changes from season to season. While some feed on fabrics, contaminate food, or attack dwellings, others bite humans, carry diseases, or cause infections. Sanitation and good housekeeping are usually effective in controlling or preventing most of these nuisances. But even the best-kept homes sometimes become infested, point out the entomologists, and require more direct action. Many types of sprayers and dusters designed for

use in controlling household pests are now on the market.

This new bulletin classifies all major pests except the termite into specific categories relating to type of damage. Illustrations, descriptions and summaries of common habits supplement clear, concise control measures listed for each insect.

Some cautions listed by the specialists concerning application of oil solutions include: never spray near pilot lights or other open flames; don't apply directly to the skin of humans or pets and always allow sprayed surfaces to dry before touching them to prevent smears. Read the manufacturer's labels on all insecticides and follow directions to the letter. Store out of children's reach and label home mixtures.

The "Texas Guide for Controlling Household Insects" is available from your county extension agent or the Agricultural Information Office at College Station. Ask for Bulletin L-311.



OIL FIELD Equipment

- SURFACE CASING
- OIL STRING CASING
- TUBING
- RODS
- PUMPING UNITS
- TANKS

BOUGHT - SOLD - TRADED

IRISH DRILLING CO., INC.

Hwy. 80 East
Office Phone 100 - 101

Eastland, Texas
Yard Phone 199



... But if any man be a worshipper of God, and doeth His will, him He heareth.—(St. John 9, 31.)

So many of us, in bewilderment and misunderstanding, often seek to find a quick "short cut" to our Heavenly Father's love and mercy. But the Bible is a never-failing guide, and Jesus tells us the straight, sure way to reach God through devotion and prayer.

ATTEND THE CHURCH OF YOUR CHOICE SUNDAY

YOUNG IDEAS
from *Polly Ponds*

Q: "Is there any way I can get rid of my freckles?"

A: Freckles tend to fade as you get older—in the meantime, if you want them to be less noticeable, here's a suggestion:

Use a liquid make-up and apply it over your entire face, blending it up to your hair-line and down to your collarbone. Buff it with a tissue when you're finished. The contrast between your naturally pale skin and the dark freckles is what makes them stand out. A slightly tan make-up will help hide them.

If you have a problem and you'd like an answer to it, write a note to *Pond's Good Grooming Service*, 420 Lexington Avenue, New York 17, N.Y.

1957 Pond's Good Grooming Service

which is considered one of the most significant steps in evaluating the place of minerals and their combinations in putting extra weight on poultry.

Research in this area of nutrition is expected to find implications in other areas - in livestock feeding and possibly in human nutrition. Already, an experiment to determine the value of molybdenum fed at different levels on growth of swine has been instituted at Texas A & M College.

Plumbing Repairs
Also post holes dug and fences erected.
JESS GREEN - Ph. 1152

BUTLER
BILL HYDE
Sells and Builds **STEEL BUILDINGS** for:
• Industry
• Commerce
• Schools
and other single-story construction
STANFORD ENGINEERING CO.
P.O. Box 687 Dial 3-4721
Abilene, Texas

UNDER NEW MANAGEMENT DAIRY KING
1500 West Main Street

We Are Now Open from 11 a.m. til 11 p.m.
7 Days A Week

ICE CREAM DAIRY KING
Banana Nut Strawberry Chocolate Vanilla

BROWN DERBY SHERBETS
Lime Orange Pineapple

DRINKS
Coca-Cola Dr. Pepper Root Beer Orange
Lime Orange Slush Coffee Hot Chocolate
Milk

MALTS AND MILK SHAKES
Vanilla Chocolate Strawberry Pineapple
Cherry

SUNDAES
Chocolate Pineapple Cherry
Strawberry Pecan Butterscotch

SANDWICHES
Hamburgers Cheeseburgers Grilled Cheese
Ham Chili Bun Ham & Cheese Bacon
& Tomato Steak Barbecue Dooper
Dogs Hot Dogs

FRENCH FRIES
Operated by Mr. and Mrs. Tollie F. Shaw
COME OUT AND SEE US

JUST RECEIVED! SHIPMENT GENUINE MONDO GRASS

For A Beautiful Permanent Lawn!
THE ONLY GRASS THAT NEVER NEEDS MOWING!

Enjoy the beauty and the convenience of a lawn you'll never have to mow, by planting genuine MONDO GRASS. Mondo is the wonder GRASS that's easy to start, grows a lush turf quickly, stays a rich blue-green all year

round, crowds out weeds and other grasses and gives you a lovely, enduring lawn completely free from the work and worry of mowing. **Stays green the year 'round. Guaranteed to withstand severe freezing or money refunded.**

O. H. DICK
Phone 601, Eastland or 2315, Olden

Discovery Means More Income for Poultry Producers

COLLEGE STATION, - Adding a quarter's worth of molybdenum to 2,000,000 pounds of poultry feed can mean an extra \$18,000 worth of chickens at market time, scientists of the Poultry Science at Texas A & M College have discovered.

The extra two-bits would go for an ounce of molybdenum, one of the "trace" minerals in common supply, necessary for plant life, inexpensive and now proved capable of producing 15 percent larger birds than those whose diets lack the mineral.

This "add - a quarter - and - get back - \$18,000" story figures this way: It takes about 1,000 tons of feed to get 200,000 chickens to market. Figuring a 15 percent increase in weight in the chickens getting adequate molybdenum in their feed, the live weight added would be 90,000 pounds. At 20 cents a pound live weight, this means an extra \$18,000 for somebody.

Poultry Science researchers have found that molybdenum has a high tolerance too, before becoming toxic. You have to feed about 10,000 times too much before it damages the birds, by causing a decrease in weight.

Molybdenum is only one of a number of minerals being checked out in research at Texas A & M to determine the effect of inorganics on poultry growth. During the past year scientists have tested the effects of adding aluminum, arsenic, barium, boron, cadmium, chromium, cobalt, cop-

per, silver, iron, lead, nickel, silicon, titanium, tin, tungsten, and zinc to poultry diets - - all without significant response. Still to go are about 70 minerals and combinations.

The research is being conducted through funds provided by the Welch Foundation of Houston. The Foundation has provided \$330,000 to the college department for research on determination and isolation of new vitamins and minerals in unidentified growth factors affecting poultry.

Only this past week Cornell University, another national center of poultry research, confirmed the work at Texas A & M College,

WE BUY
SCRAP IRON AND METAL
Get Our Prices Before You Sell
• You Will Like Our Prices • You Will Like Our Weights
• You Will Like Our Service
KOEN SALVAGE
highway 80 West 1315 W. Main

NEW FORD PICKUPS

COST LESS... to buy **LOWEST-PRICED WITH FULL-WIDTH BODY!**

COST LESS... to run **LESS GAS AND OIL TO BUY!**

RIDE BEST... like a car SMOOTH

FORD TRUCKS COST LESS
LESS TO OWN
LESS TO RUN
LAST LONGER, TOO!

King Motor Company
DIRECT FACTORY FORD DEALER
100 E. Main EASTLAND Phone 42
See Great TV, Ford Theatre Channel 9 KRBC-TV, Thursday 8:30 p.m.

LET'S GO!
WITH STRAIGHT - LINE

THE SHORTEST DISTANCE BETWEEN TWO POINTS IS A STRAIGHT LINE. BUT—IN SCRAP IRON AND METAL MARKET EASTLAND IRON & METAL CO. PROVIDES THE SHORTEST PATH FOR BUYING SCRAP IRON.

WE ARE YOUR BEST MARKET
FOR OVER 30 YEARS—SQUARE DEALING YEAR ROUND

EASTLAND
Iron & Metal Co.

Phone 970 Owned and Operated by Henry Pullman East Main St.

FREE! YOUR HEARTS DESIRE WITH SAFEWAY'S SAVE-A-TAPE PLAN!

In Eastland



You get your pick of many valuable premiums with Safeway's Save-A-Tape Plan.

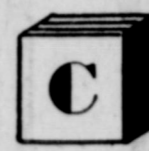
Safeway's Save-A-Tape Plan is so easy and it's fun, too. All you do is save the Green Cash Register Tapes you get when you shop Safeway.



The friendly clerk at your Safeway Store will give you your Green Cash Register Tapes each time you shop Safeway.



Place them in the handy envelope furnished free by Safeway and is worth \$3.00 in cash register tapes.



When you have the required amount of tapes for the premium you want, bring them to Safeway and select your item.

Week-End Bargain Buys

Grapefruit Juice	Town House Natural	5	46-Oz. Cans	\$1 ⁰⁰
Del Monte Corn	Cream Style, White or Golden	6	No. 303 Cans	\$1 ⁰⁰
Gardenside Peas	Early June or Sweet	8	No. 303 Cans	\$1 ⁰⁰
Pork and Beans	Taste Tells	12	No. 300 Cans	\$1 ⁰⁰
Vienna Sausage	Baxter	9	No. 1/2 Cans	\$1 ⁰⁰
Pooch Dog Food	Rich in Vitamins	14	15 1/2-Oz. Cans	\$1 ⁰⁰

Empress Jelly		4	12-Oz. Jars	\$1 ⁰⁰
or Preserves Strawberry				
Zippy Pickles		5	16-Oz. Jars	\$1 ⁰⁰
Whole Sour or Dill				
Colgate Tooth Paste		3	Giant Tubes	\$1 ⁰⁰
For Shiny White Teeth				

Fresher, Better Produce!

Pascal Celery

2 Lbs. 15[¢]

Chop Some for Salads or Better Still, Cut in Long Stalks and Serve in Shining Dish



Sunkist Oranges

Navel, Juicy

Lb. 10[¢]

Pink Grapefruit	Fresh Tangy	Lb.	8 [¢]
California Calavos	Fresh	Each	29 [¢]

New Potatoes	Full of Flavor	Lb.	6 [¢]
Baby Palm Trees	White They Last	Each	39 [¢]

Good Buys!

Dial Soap	Regular Size	2 Bars	25 [¢]
Dial Soap	Bath Size	2 Bars	35 [¢]
Super Suds	Washday Helper	Large Box	32 [¢]
Vel Detergent	Ideal for Dishes, too	Giant Box	73 [¢]
Fab Detergent	For a Whiter Wash	Large Box	31 [¢]
Ad Detergent	Ideal for Automatics	Giant Box	69 [¢]
All Detergent	So Kind to Hands	10 Lb. Box	\$2 ²⁹

Bargain Buys!

Babo Cleanser	Ideal for Woodwork	2 14-Oz. Cans	29 [¢]
Ajax Cleanser	For All Household Cleaning	2 14-Oz. Cans	29 [¢]
Shortening	Mrs. Tuckers	3 1-Lb. Ctn.	79 [¢]
Spanish Peanuts	Circus Unblanched	8-Oz. Can	33 [¢]
Circus Nuts	Salted Mix	6 3/4-Oz. Can	60 [¢]
Cantonese Dinner	Chun King, Frozen	14-Oz. Pkg.	98 [¢]
Dog Food	Red Heart, Assorted	2 1-Lb. Cans	31 [¢]
Dog Yummies	Hartz Mountain	6-Oz. Box	18 [¢]

Meats that are Guaranteed to Please...

Poppy Sliced Bacon	Fries So Evenly	1-Lb. Cello	55 [¢]
Dry Salt Jowls	Ideal for Seasoning	Lb.	15 [¢]
Canned Picnics	Ready to Eat	4 1/2-Lb. Can	\$2 ⁵⁹

Economy Ground Beef	Lb.	29 [¢]	Pork Roast	Boston Butt	Lb.	45 [¢]	
Calf Chuck Roast	U.S. Gov't Graded	Lb.	49 [¢]	Large Salami	Cooked, Sliced	8-Oz. Pkg.	33 [¢]
Calf Short Ribs	or Brisket, U.S. Gov't Graded	Lb.	29 [¢]	Luncheon Meat	Spiced, Sliced	8-Oz. Pkg.	29 [¢]
Royal Treat Mushrooms	Buttons	2-Oz. Can	26 [¢]	Parsons Sudsy Ammonia		16-Oz. Bottle	14 [¢]
Dole Crushed Pineapple		No. 2 Can	29 [¢]	Northern Tissue	Assorted Colors	2 Rolls	17 [¢]
Kitchen Craft Flour	For Better Baking	25-Lb. Bag	1.80	Paper Towels	Northern, Assorted Colors	Roll	18 [¢]
Pillsbury Best Flour	For Lighter Cakes	10-Lb. Bag	99 [¢]	Boraxo	Gets Dirt Fast	8-Oz. Can	19 [¢]
Pancake Flour	Aunt Jamima	2-Lb. Box	37 [¢]	20 Mule Team Borax		2-Lb. Box	42 [¢]
White Corn Meal	Aunt Jamima	5-Lb. Bag	47 [¢]	Dyanshine Polish	Liquid, Black, Brown or White	Reg. Bottle	21 [¢]
Vel Pink Liquid Detergent		22-Oz. Can	69 [¢]	Frozen Beans	Bel-air Green, French Style or Cut	5 10-Oz. Pkgs.	1.00
Frozen Corn on Cob	Bel-air	5 2-Ear Pkgs.	1.00	Bel-air Frozen	Succotash or Cut Wax Beans	5 10-Oz. Pkgs.	1.00

Famous Nylon Hose	15-Denier, 51 Gauge	2 Pairs	\$1 ⁰⁰
Frozen Strawberries	Bel-air, Frozen	5 10-Oz. Pkgs.	\$1 ⁰⁰

Peanut Butter	Peter Pan, Plain or Crunchy	12-Oz. Jar	42 [¢]	Sugar Wafers	Dutch Maid, Chocolate or Vanilla	1-Lb. Cello	45 [¢]
Indian Grill Dressing	Blu Hill	8-Oz. Bottle	39 [¢]	Sunshine Cheez It	Fresh, Crispy	6 1/4-Oz. Box	19 [¢]
Blu Hill Dressing	Caesar Roquefort	8-Oz. Bottle	54 [¢]	Curtsy Hot Cross Buns	8-Count	10-Oz. Pkg.	29 [¢]
Long Grain Rice	Uncle Ben's	28-Oz. Box	41 [¢]	Lucerne Milk	Homogenized	1/2-Gal. Can	46 [¢]
				Lucerne Whipping Cream		1/2-Pt. Can	29 [¢]

Prices effective Thursday, Friday and Saturday, April 11-12-13. We reserve the right to limit quantities.

