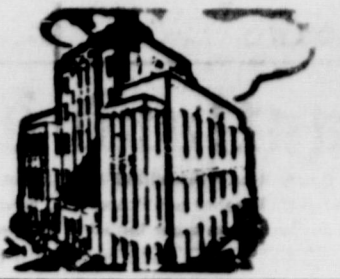




Eastland Telegram

"COVERING EASTLAND COUNTY"



VOLUME TWENTY-NINE

EASTLAND, TEXAS, SUNDAY, FEBRUARY 1, 1959

No. 123

MOORE about... EASTLAND by Virgil E. Moore

We have had a big problem all week long and still haven't decided what to do.

Our problem is deciding which one of Abilene's three colleges we are going to try to steal. Now the Church of Christ has Abilene Christian College, the Methodists have McMurry and the Baptists Hardin-Simmons. Surely Eastland should be able to talk the leaders of one of these churches into moving their college to Eastland.

Sounds impractical, you say. How would we move the campus? you ask. Well, we might make the same summary about Abilene's request that Eastland give up the Court of Civil Appeals, and we might ask the same question about moving the top floor of the Eastland County courthouse.

It sounds a little impractical to us to consider moving the Court from here to there just to please Abilene's vanity.

We might even go after Dyess Air Force Base. After all, if you move the base you would kinda cut Abilene back down to our size. Give Eastland those 30,000 acres and their dependents and take them away from Abilene and these two little towns might be about the same size. But then we haven't gripped about Abilene being fortunate enough to get the tax-supported (that's you buddy) base.

Abilene reminds us of some of our larger paper boys. The big boys are always trying to bully around the smaller lads, just as Abilene is always trying to shove around the smaller cities. Once in a while one of the smaller paper boys gets enough of one of the bully's treatment and gives him a working over. Abilene just may find herself coming out second best if she doesn't stop trying to steal the Appeals Court. Seems to us the Key City could do West Texas more good by trying to bring in outside industry.

Actually Eastland has no gripe with Abilene. We are proud to point to that city's growth, but we certainly are not going to sit still and let Abilene pull a stolen base on us. Abilene has been a good neighbor and we certainly hope they continue to be. The theft of the Appeals Court or even a serious effort to move it from Eastland, will not be appreciated, though.

We think perhaps that it would be wise for County citizens to elect their state senator and state representative, and any other lawmakers they might know, and let them know just how strongly Eastland feels about the court. You can write Sen. Floyd Bradshaw or Rep. Paul Brashear merely by addressing your letter to Capitol Station, Austin.

License Plates Go On Sale In County Monday

New license plates for 1959 go on sale in Eastland Monday at the County Tax Assessor - Collector's office.

The new license plates are the reverse of 1958 plates, having black letter and numerals on a white background.

Registration deadline is April 1, and vehicle owners were urged by Collector J. C. Allison not to put off buying the plates until the last minute.

To register a vehicle the law requires that a certificate of title and last year's registration receipt be shown. No plates will be issued unless these two requirements are met, Allison said.

FREYSCHLAG
INSURANCE AGENCY
presents the
WEATHER NEWS

High	54
Low	32
Rain	0.05
Total Moisture in Jan.	0.05
Avg. Rain in Jan.	1.37
Total Rain for Year	27
Forecast	Cloudy and Cool

250 ACRES BURN

Six Grass Fires Keep Firemen Busy

A series of grass fires—six in all—kept Eastland firemen working overtime Thursday and Friday.

Only one of the fires caused heavy damage, but the series of fires stretched the city's equipment thin. A grass fire one and one-half miles east of Eastland Friday afternoon caused the heaviest damage.

Chief Billy Jack Johnson reported some 250 acres of grass and timberland was razed by the blaze, which covered land owned by several ranchers. The fire occurred at about 3 o'clock and Chief Johnson said it possibly could have gotten completely out of hand had it not been for the help of some 30 Texas Electric Service Co. employees who pitched in to help firemen from Eastland and Ranger.

The other blaze Friday was a grass blaze at the corner of Moss and Connellee. The alarm was turned in as a house fire, but Chief Johnson said it was just another grass fire.

Thursday firemen answered one alarm at 1002 South Seaman, another at 608 South Bassett, one five miles west of Eastland and another two miles west of Eastland.

Chief Johnson warned area citizens that it is extremely dry after a rainless month. He urged special care in seeing that grass does not catch on fire.

February Listed As Girl Scout Month by Leader

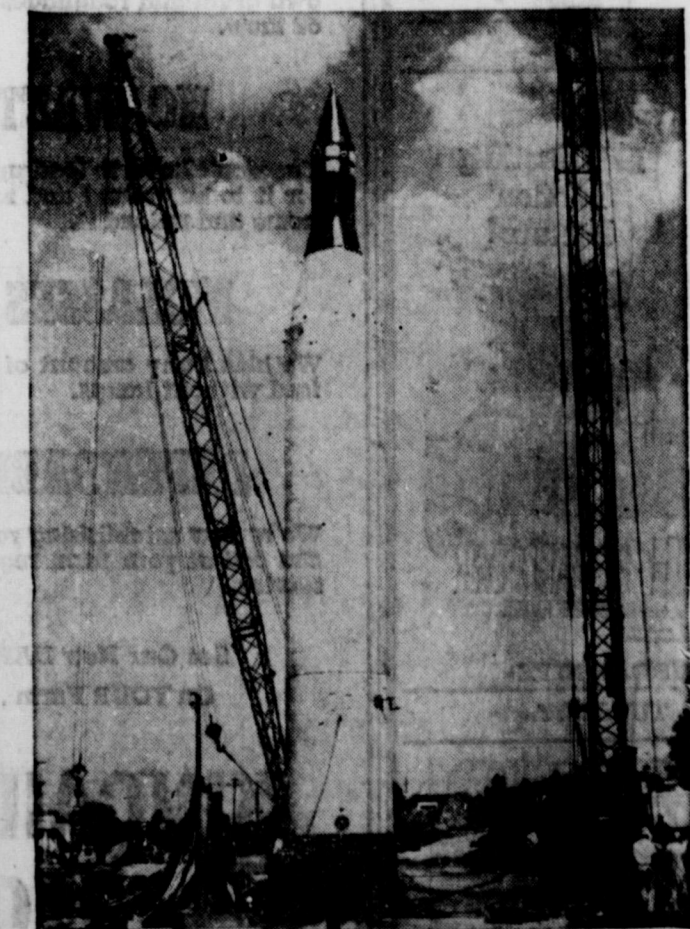
Mrs. Ellis Slaughter, community chairman of the Eastland Girl Scout Association, in announcing February as International Month in Girl Scouting said today, "Many activities in the Girl Scout program increase girls' interest in and understanding of people, and encourage a willing sharing in the chores of life as well as creative participation in the betterment of life."

"A service project is often the starting point for such widened experience outside a girl's own troop. While service is by no means the whole of citizenship training, it is an important aspect of it. More than that, it can be the gateway to many of the skills and individual qualities that make a good citizen. Thinking of service in terms of special credit or number of hours, or choosing the quick and easy way, defeats what we are trying to do," Mrs. Slaughter emphasized. "We want our girls to realize that the satisfaction of having carried a civic responsibility well is the real reward of service."

"We encourage creativeness when we give girls the opportunity to explore thoughtfully the different, the interesting, the most suitable way to carry out a project. Continuity and creativeness, common to all good programs, are especially important in service activities in order to keep them from lapsing into the routine and imitative. An imaginative touch on the part of the leader is necessary. Then, to open eyes, alert minds, and sensitive hearts, even the limited service project may open up a treasure of meaningful experience."

"The fourth law of the Girl Scout Laws says 'A Girl Scout is a friend to all and a sister to every other Girl Scout.' All of us need help in making this law a part of ourselves. All of us need to examine our hearts and our actions before we can share ourselves and the world with other people."

L. C. PHAGAN, PREMIER JOBBER
1206 W. Bliss — Phone Gisco HI 2-1640
All types of oils and greases for farm, industrial and commercial users.
Only local oil (no imported oil) used in making Premier Products.



JUNO II—The Army's intermediate range ballistic missile, Jupiter, serves as the main stage for this vehicle shown here with the Pioneer III. The 1500-mile range Jupiter, developed by the Army, has been adopted by the Air Force which has had two squadrons training with it at Redstone Arsenal, Ala.



GOOD GRASS—Good grass grown in summer will winter stocker cattle. Cattle will consume large amounts of dry forage, especially if their appetites are whetted with protein supplement. Grass left on the land is best cover for retaining spring rainfall.

Soil Conservation District News

By SCS Unit Workers

Good grass on good range can't be beaten for making money with cattle. The heavy cover of grass grown on our rangeland last spring and summer is really paying

Olden Defeats Ranger Team

Olden Independents took their first win over the Ranger Independents in a 75-73 basketball victory Thursday night in Ranger.

In two previous matches, the Ranger team defeated Olden.

At the half, the Olden Independents were leading 43-33. Standout man on the court for Olden was Tommy Edwards, who sank seven goals and six free shots for 20 points. He scored more points than any other player.

Second was Dale Slatton, with six field goals and six free throws for 18 points. Jack Tyrone came in third with 17.

High-point men for Ranger were Roddy Carter and B. H. King, with 15 points each. Second was Jerry Wharton with 13.

Here are the boxes:

Player	FG	FT	Pts.
Edwards	7	6	20
Dale Slatton	6	6	18
Tyrone	6	5	17
Leon Rogers	4	2	10
Jack Adams	4	2	10

Player	FG	FT	Pts.
Carter	6	3	15
King	6	3	15
Jerry Wharton	5	3	13
Charles Tibbels	2	8	12
David Wharton	2	4	8
Ronald Carroll	2	2	6
Dale Cozart	2	0	2
Louis Conn	2	0	2

T & P Directors Vote Dividend

Directors of Texas Pacific Coal and Oil Company today voted a regular quarterly dividend of 25c, payable March 5, to shareholders of record Feb. 11.

Net income for the fourth quarter of 1958 was \$2,065,241, equal to 53c per share, up substantially from the same period in 1957, and the highest quarterly earnings in the fiscal year 1958. Gross income for the fourth quarter was \$6,568,588, up from \$6,044,486 in the fourth quarter of 1957, and \$6,223,409 in the third quarter 1958.

H. B. Fuqua president and board chairman, said improvement in gross income and earnings in the later months of 1958 was directly related to increased allowances in the states of regulated production. The company's fourth quarter crude oil production was 1,822,543 net barrels, compared to 1,769,462 in the previous quarters and 1,727,507 in the fourth quarter of 1957. Gas sales were up, too, he said, being 3,739,162 mcf for the fourth quarter compared with 3,434,612 mcf in the third quarter of 1958 and 3,218,189 mcf in the fourth quarter of 1957.

Fuqua said the board voted to take no action on an offer made November 24, 1958, to merge with Sinclair Oil Corporation, and to conform with an order issued January 26 by the 17th District Court in Tarrant County, Texas, restraining all parties from action on the offer.

Mother of M. L. King Dies

Mrs. Ada King, mother of M. L. King of Ranger, died in a San Angelo Hospital about 3:30 a.m. Saturday of a heart attack.

Funeral rites are pending, however burial will be in Crawford, Texas.

Mr. and Mrs. King and son, Lee, left Ranger early Saturday to complete arrangements in San Angelo.

C-C Kicks Off Airport Drive With \$500 Gift

Eastland Chamber of Commerce directors, without a dissenting vote, have given the Chamber's Industrial Committee the go-ahead sign on the airport improvement project.

C-C directors, at their regular monthly meeting, okayed the Industrial Committee's plan to lead a drive to provide the Eastland airport with an all-weather paved airstrip and lights.

Chamber President Robert Perkins named a four-man committee to follow through with plans to do the work. Grady Pipkin will serve as chairman of the Committee, and will be assisted by Virgil Seaberry Jr., Horace Horton and Dr. James Whittington.

Directors approved a resolution offered by Frank Sayre and seconded by E. E. Freyschlag to start the drive off by contributing \$500 from C-C funds.

It was stressed at the meeting that the airport improvements "... are not for just a few local pilots." Several spokesmen explained that the present airport is actually fine for the light planes which are now kept in the hangar. The new paved strip would be an inducement to flying industrialists and others to stop in Eastland, the spokesman stated.

The Chambers Industrial Committee earlier this month asked the City to make a study of what is needed and what the estimated cost would be. That study is now being made.

To Resume Breakfasts
President Perkins also named a committee of four to make plans to resume the C-C's Membership

Graveside Rites For A. E. Stevens

Funeral services for A. E. Stevens, long-time Ranger resident, will be held at 10 a.m. Monday in the Normandie Baptist Church of Fort Worth.

Graveside services will be held at 2 p.m. Monday in Evergreen Cemetery.

Stevens is well-remembered by a host of local friends. He worked for the Southern Ice Co. here.

Survivors include his wife; seven sons, Roy of California, Robert and Howard of Dallas, and Floyd, Jimmy, Preston and Joe D.—all of Fort Worth; two daughters, Lois of California and Mildred Stevens of Fort Worth.

Cold Mavs Beaten By League Leaders

Eastland stayed in the game for seven and a half minutes before Cisco pulled out into a lead which the Mavs could never overcome Friday night as the visiting Lobos humbled Eastland 63-44, in a crucial District 7-AA game.

It was nip and tuck in the first period of play until the last 30 seconds, then the Mavs dropped their guard for a moment and the Lobos quickly scored two goals to lead 14-9.

The Mavs stayed within shooting range of Cisco in the second half, but trailed 31-23 at the midpoint. Then Eastland got hot. The local narrowed the Cisco edge to just two points in the third quarter before a norther froze the locals. Then Cisco began their march to victory, scoring nine straight points before the Mavs could score again.

The final stanza was more of Cisco, as Milton King and John Adams teamed together to outplay the Mavs.

Eastland again had ball control problems and their shotmaking was extremely cold. Clint Humphreys and Otis Green kept the locals in the game, with Humphreys getting 16 points and Green 13. King had 25 for Cisco and Adams got 15. The Mavs got just 14 field goals in the game while Cisco had 25.

Stanley Reed got four points for Eastland, Philip Lewis got two, Larry Hollis had eight and Don Hull one.

The Maverick B team copped the first game of the night in an overtime, 55-52. The Mavs came from behind in the fourth stanza to tie it up, then out hustled the visitors up to take the extra period win.

Winters 3 3

The Mavs will play Coleman in Coleman Tuesday night.

In other District 7-AA games, Coleman whipped Ballinger, 64-52 and Winters slaughtered Ranger, 71-49.

7-AA Standings

Team	Wins	Losses
Cisco	5	1
Coleman	5	1
Ballinger	3	3
Eastland	2	4
Ranger	0	6



LOT MORE ROOM ON THE RIGHT—There'll be lots of room to the right of the Senate rest room during the 86th Congress. Democratic side of the chamber is crowded with 64 desks, at left. On the right, 34 desks are all that are needed. In the House: 283 Democrats, 193 Republicans.

GOAL OF 200 SET

Q-Back Club Begins Membership Drive

The 1959 Quarterback Club membership drive will get off to a fast start here Monday, Gene Rhodes, chairman of the Membership Committee, announced today.

Rhodes said membership cards are being printed and will be ready by Monday. A goal of "... not less than 200 members" has been set.

Membership in the organization, which year in and year out is the largest club in Eastland, costs \$5. The Quarterback Club is instrumental in backing the Eastland public schools' athletic program, and in the past has made substantial contributions to other groups such as the Little League and a Teenage Baseball League.

Members of the Membership Committee include James Smith, Lois Dunlap, Everett Flowman, J. D. Earley Vernon Humphreys, Virgil Moore and Willie Speaker.

Rhodes said that as many persons as possible would be personally contacted. He said that persons wanting to join could mail their checks to him at 605 South Mulberry or to Charles Freyschlag.

January Driest First Month Here Since '14

Eastland County farmers and ranchers are crying for moisture, a check around the county reveals.

After two good years of heavy rainfall, 1959 got off on the wrong foot in January. Not a drop of rain was reported, but .06 inches of melted snow did keep the month's precipitation record from being blank.

January was the driest January in Eastland County since 1914, records show. No moisture was recorded that year in January.

With good seasoning in the ground, county agricultural leaders have not become alarmed, but they would like to see a wet February.

EASTLAND NATIONAL BANK
"On The Square"
MEMBER F. D. I. C.

**TIRED OF A GAS HOG?
OF PARKING A DINOSAUR?**
Try and buy the popular, smart new Rambler, truly a teeny-weezy gas burner. Famous for fun, resale, quality and economy.

See
TOM'S SPORT CARS
Eastland

discussion of efforts by Abilene to move the 11th District Court of Civil Appeals from Eastland to Abilene.

Seaberry spoke briefly on the subject and explained what steps Abilene would have to take to move the court. He urged Eastland to be on guard.

Calcium Is Deficient In American Diets

COLLEGE STATION — With a good supply of milk in this country, all of us should get enough. Yet, extension foods and nutrition specialists say studies show that more American diets are deficient in calcium than in any other nutrient.

In addition to being the best source of calcium, milk is a good source of high-quality protein, needed for growth and replacement of body tissues. Milk also contains vitamins A, D and riboflavin.

Whatever age groups you have in your family — babies, teenagers, or adults — they all need milk daily. Children need four cups or one quart daily to meet calcium requirements.

Recent studies show older people need a pint of milk — it's just as important for them as for children. They need the calcium and phosphorus found in milk to keep their bones from becoming fragile. Broken bones are much more serious for older people since recovery is slower. Older people should eat fewer calories and more protein food.

RETURNS FROM DALLAS
Mrs. Myrtle Anderson has returned from market in Dallas. She returned home Thursday.

ATTENDS MARKET
Mrs. Floyd Robertson attended market in Dallas Tuesday.

EASTLAND NATIONAL BANK
"On The Square"
Member F. D. I. C.

Eastland Telegram

Eastland County Record established in 1921, consolidated August 31, 1951. Chronicle established 1887. Telegram established 1923. Entered as second class matter at the Post Office at Eastland, Texas under the act of Congress of March 3, 1879.

TIME PUBLISHING COMPANY
Published Tri-Weekly—Tuesdays - Thursdays - Sundays
ONCUS DICK and JOE DENNIS, Publishers
VIRGIL E. MOORE, Editor
CAROLYN COLLINS, Society Editor

One week by carrier in city	.18
One month by carrier in city	.68
One year by mail in County	2.98
One year by mail in state	4.98
One year by mail out of state	6.98

OFFICE TO PUBLIC—Any erroneous reflection upon the character, standing or reputation of any person, firm or corporation which may appear in the columns of this newspaper will be gladly corrected upon being brought to the attention of the publishers.

WANT ADS

Goods of Thanks charged for at rate of \$2.00 Each

FOR RENT
FOR RENT: Five room house at 1211 W. Plummer. Phone 388, Eastland.
FOR RENT: Five room house at 1211 W. Plummer. Phone 388, Eastland.
FOR RENT: Furnished apartments, 2 rooms and bath. Bills paid. Reasonable rates. Under new management. 212 W. Patterson. Phone 188.
FOR RENT: Newly decorated apartments Hillside. Phone 9820.
FOR RENT: Newly decorated apartments. Adults. Phone 1085-W.
FOR RENT: Furnished two room apartment and a bedroom. 205 South Walnut. Phone 324-W.
FOR RENT: Nice furnished apartment with garage. 302 East Main.
FOR RENT: Furnished two bedroom apartment in duplex. 511 W. Plummer.
FOR RENT: 4 room unfurnished house. 2 bedrooms. Nice and clean. Phone 457-J. Alice Speer.

MISC. WANTED
WANTED: Babysitting. Yard work. Call 645-J. Mr. and Mrs. James Duke.
WANT TO BUY: Small home with small acreage in Eastland. D. G. Fambrough, Route 3, Cisco.

REAL ESTATE FOR SALE
FOR SALE: Five room house, hardwood floors, good condition, reasonable price and name own amount of down payment. Phone 388, Eastland.
FOR SALE: Two bedroom home. Just re-modeled inside, including new kitchen cabinets. Moderately priced. 1203 West Main. Phone 1007.
SIX ROOM home for sale by owner—two corner lots. 500 Farnish, \$9500, with \$3,000 down payment. Can be seen by appointment from J. O. Earnest. For further details write L. P. Stambaugh, Box 185, Vernon, Texas.
FOR SALE: House. Four rooms and bath. On corner lot. Cypress Street in Ranger. Re-modeled. Phone 618-J, Eastland. 105 South Virginia.

MISC. WANTED
WANTED: Babysitting. Yard work. Call 645-J. Mr. and Mrs. James Duke.
WANT TO BUY: Small home with small acreage in Eastland. D. G. Fambrough, Route 3, Cisco.

REAL ESTATE FOR SALE
FOR SALE: Five room house, hardwood floors, good condition, reasonable price and name own amount of down payment. Phone 388, Eastland.
FOR SALE: Two bedroom home. Just re-modeled inside, including new kitchen cabinets. Moderately priced. 1203 West Main. Phone 1007.
SIX ROOM home for sale by owner—two corner lots. 500 Farnish, \$9500, with \$3,000 down payment. Can be seen by appointment from J. O. Earnest. For further details write L. P. Stambaugh, Box 185, Vernon, Texas.
FOR SALE: House. Four rooms and bath. On corner lot. Cypress Street in Ranger. Re-modeled. Phone 618-J, Eastland. 105 South Virginia.

FOR SALE
FOR SALE: Five room house, hardwood floors, good condition, reasonable price and name own amount of down payment. Phone 388, Eastland.
FOR SALE: Two bedroom home. Just re-modeled inside, including new kitchen cabinets. Moderately priced. 1203 West Main. Phone 1007.
SIX ROOM home for sale by owner—two corner lots. 500 Farnish, \$9500, with \$3,000 down payment. Can be seen by appointment from J. O. Earnest. For further details write L. P. Stambaugh, Box 185, Vernon, Texas.
FOR SALE: House. Four rooms and bath. On corner lot. Cypress Street in Ranger. Re-modeled. Phone 618-J, Eastland. 105 South Virginia.

LOST & FOUND
LOST: Boy's black leather jacket at corner of Plummer and Maderia. Phone 573-J, Cris Franklin.
LOST: Black and White Chihuahua. Disappeared in Carbon between 9 and 11 a.m. Wednesday. Phone 2215, Carbon, collect at night. Bill Parton.
LOST: Gray kid glove. Probably on Seaman Street. Phone 442-J.
LOST: Grey kid glove probably on Seaman St. Phone 442-J.

TRUCK SEATS

• Repaired • Repadded • Reupholstered • Original Truck Leather

FIBRE-PLASTIC LUM-PUF NYLON AND ORIGINAL MATERIALS

SEAT COVERS

FOAM RUBBER CARPETS, DOOR PANELS, ARM REST AND TRUCK LINING HEAD LINERS

ORIGINAL AND PLASTIC LEATHER

GRAHAM TRIM SHOP

706 W. Main Phone 170

SPECIAL NOTICE

MR. STORE OWNER—If you have bookkeeping problems, we suggest you take a look at The Johnson System. The new Modern Merchant simplified bookkeeping book is designed to ease the work of keeping records for the small retail store owner. It can easily be adjusted to fit your operation. EASTLAND TELEGRAM.

ANNOUNCING. Ferguson Electric Co. wishes to announce that they are now open for business, located in the Grimes Bldg. Electric motors repaired and rewound. Large or small. We make service calls. 14 years experience. All work guaranteed. Phone 94.

REFRIGERATION SERVICE — Dairy, Commercial, Auto, Household. Call collect, Bill Kendall, HI 2-1312, Cisco, Texas.

NOTICE: Refrigeration repairs, household, commercial. Phone 785. Roy Gann, Nite 976.

MR. FARMER—We recommend Garner's Farm Record, a simplified bookkeeping system and income tax record for operating either a cash or inventory basis. So simple a school child can keep it. So economical all can afford it. So complete it meets all income tax laws. And your complete, simplified bookkeeping system costs just \$1.75. EASTLAND TELEGRAM.

MAN WANTED: for 1500 family Rawleigh Business in Stephens County. Permanent if you are a hustler. See R. F. Lewis Desdemona or write Rawleigh's Dept. TXA - 1022-129 Memphis, Tenn.

JANUARY SPECIAL: Regular \$1.00 S-t-r-e-t-c-h nylons 79c—2 pair \$1.50. 60 gauge full fashion guaranteed perfect at Mode O' Day

Eastland Masonic Lodge No. 467
Reg. Stated meetings 2nd Thursday of each month, at 7:30 p.m.
E. A. HATTEN, W. M.

Special!

For January ONLY

Your Choice of Any Of Our Fibre

SEAT COVERS

Cut and Tailored To Fit All Regular 2 and 4 Door Sedans.

MANY PATTERNS TO CHOOSE FROM

24.50

We Will Give S & H Green Stamps On This Special

BLEVINS MOTOR CO.

514 W. Main Phone 308

SINGER SEWING MACHINES and VACUUM CLEANERS

New and Used

Call

Dois Morton

Phone 985-W-1 after 5 p.m. Service All Makes

ATTENDS SCHOOL

Mrs. Modena Turner of Eastland was one of the Cisco elementary teachers attending North Texas State Laboratory School in Denton Tuesday and Wednesday.

TV and RADIO SERVICE

Sales - Trades - Used Sets
Call \$2.50 Phone 746-J-4

JACK LEACH EASTLAND

Typewriters

Adding Machines
Cash Registers
BUY SELL RENT
New Electric Adding Machines \$127.45

STEPHENS TYPEWRITER CO.
417 S. Lamar St. EASTLAND, TEX. Phone 639

NOTICE

Effective February 1st
MRS. VERA KLEINER will be your

Abilene-Reporter Agent

Trees & Shrubs

Paper shell pecans, fruit trees, shade trees, oriental trees, evergreens and shrubs, also lawnmowers, garden tools, fertilizer and insecticides. Visit us soon.

Tennyson Nursery
1003 W. 16th St. - Cisco

Olds - Cadillac TRADE-INS

1956 Olds fordor hardtop Super 88, power and factory air.
1956 Cadillac sedan, DeVille, loaded and like new.
1957 Cadillac 62 sedan, absolutely perfect.
1957 Olds Super 88 fordor sedan, power and air.
Two 1957 Chevrolets. V-8 sedans. Power glide. One with factory air.
1956 Mercury Monterey 4-door sedan. Fully equipped. Sharp!
1948 Pontiac. Local car and absolutely like new. Special price.
1953 Plymouths 4-door. A very nice car. Priced to sell.
1954 Buick Century sedan. Full power. Very clean.
Special Of The Week
1953 Pontiac Station Wagon—Like new and fully equipped. This week only. . . \$595.00.

DON PIERSON
Olds - Cadillac Eastland

Your Old Tires will make the Down Payment

On A Set of First Line SEIBERLING SUPER SERVICE TIRES

670-15 RAYON \$15.58
670-15 NYLON \$17.08
(Black Tube Type—Plus Tax and Exchange)

All other sizes and types at equally low prices. Road hazard guarantee. All tires you buy from us are mounted and balanced at no extra cost to you.

SEE US FOR BARGAINS IN TIRES!
Seiberling Tire Distributor
Jim Horton Tire Service
East Main St. Phone 258 Eastland, Texas

Hospital News



Patients in the Eastland Memorial Hospital are:
Mrs. LeRoy George and baby girl, Cisco
W. B. Inzer, medical
Mrs. H. L. Bilbrey, medical, Cisco
Buford Webb, medical
Mrs. Sally Nabors, medical
Mrs. Stanley Harris, medical
Mrs. Roscoe Abbott, medical
Mrs. Jack Hamilton, surgical, Cisco
Mrs. W. W. Walters, surgical
Mrs. Anna Reich, medical, Cisco
Mrs. G. T. Pogue, medical
Terry Gaeta, medical
Mrs. Iva Burnett, medical, Carbon
Miss Cecelia Haas, medical
Dismissed were H. L. Parson, Mrs. J. T. Wilson, Mrs. LeRoy Berry, Roger Joe Berry, Mrs. Ray Pryor, Mrs. C. J. Prater, Mrs. Lillie Smith and Mrs. Arthur Lehman.

Mrs. John Ratliff of Eastland is a medical patient in the Ranger General Hospital.

IT'S THE LAW in Texas

A public service feature of the State Bar of Texas

LEGAL CHECKUP IS SAFETY MEASURE

Legal trouble is easier and cheaper to prevent than to cure. Most wage earning, childbearing, home-buying installment paying families don't see much need for a family lawyer. Often under prodding, one may get a lawyer to write a will. But can you tell a big legal risk from a small one? Can you spot the signs of legal trouble? Check your family lawyer when: 1. Your status changes: upon coming of age, marriage, the birth of your children, buying a house, divorce or death. For you may then need to draft or revise your will, change your insurance, or re-figure your rates. 2. You buy or sell. Look out for flaws in the papers before you go into debt, part with money, or sign anything involving big expenditures or long term obligations. 3. You enter into other contracts. Promises, spoken or written, bind you if they call for a "consideration", something of value in return. 4. Someone threatens your rights. The law exists to defend them, but with some rights you must take action yourself for them to work for you. When you can bring your lawyer "live" facts (e.g. unsigned contracts, vexing tax returns you haven't filed), he can do much more for you, and at a smaller cost than when you bring him "cold" facts (mistakes you have made which threaten trouble.)

JOY

DRIVE-IN THEATRE
Eastland - Cisco Hwy.
Sunday - Monday

A WARM WONDERFUL STORY OF CAMPUS ROMANCE ... AND THE BIG DANCE...

SENIOR PROM

Starring PAUL HAMPTON, JIMMIE KUMACK, BARBARA BOSTOCK

First Feature Motion Picture Appearance of LOUIS PRIMA and KEELY SMITH with SAM DICKER and THE WIZARDS

A COLUMBIA PICTURE

MAJESTIC Sunday & Monday

SPENCER TRACY

Ernest Hemingway's **THE OLD MAN AND THE SEA**

MAN vs. the WRATH OF NATURE!

Adults 75c Children 25c

RANGER DRIVE-IN

HIGHWAY 80 EAST ON RANGER HILL

Box Office Opens 6:30 - Show Starts 7:00
Adults 50c—Kiddies Under 11 Free
Only Eastland County Drive-In With All Year Operation

SATURDAY ONLY

WARNER BROS. PRESENTS

CLINT WALKER

His First Big Motion Picture!

FORT DOBBS

VIRGINIA MAYO · BRIAN KEITH · RICHARD EYER

Written by BURR KENNEDY and GEORGE W. GEORGE · Produced by MARTIN RACKIN
Directed by GORDON DOUGLAS

FREEVUE EVERY SATURDAY NITE
SUNDAY - MONDAY - TUESDAY

The one truly big story of the U.S. Marines

IN LOVE AND WAR

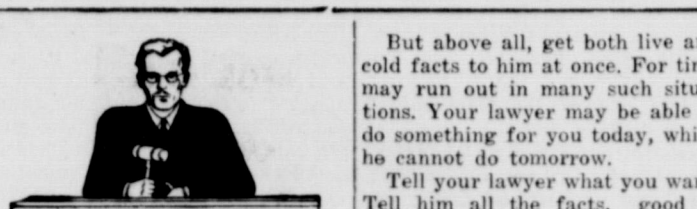
ROBERT WAGNER · DANA WYNTER

COLOR BY DE LUXE CINEMASCOPE

MAJESTIC SUNDAY AND MONDAY



SPENCER TRACY and HARRY BELLAVER test their strength in Ernest Hemingway's 'THE OLD MAN AND THE SEA' from Warner Bros. in color.



LEGAL CHECKUP IS SAFETY MEASURE
Legal trouble is easier and cheaper to prevent than to cure. Most wage earning, childbearing, home-buying installment paying families don't see much need for a family lawyer. Often under prodding, one may get a lawyer to write a will. But can you tell a big legal risk from a small one? Can you spot the signs of legal trouble? Check your family lawyer when: 1. Your status changes: upon coming of age, marriage, the birth of your children, buying a house, divorce or death. For you may then need to draft or revise your will, change your insurance, or re-figure your rates. 2. You buy or sell. Look out for flaws in the papers before you go into debt, part with money, or sign anything involving big expenditures or long term obligations. 3. You enter into other contracts. Promises, spoken or written, bind you if they call for a "consideration", something of value in return. 4. Someone threatens your rights. The law exists to defend them, but with some rights you must take action yourself for them to work for you. When you can bring your lawyer "live" facts (e.g. unsigned contracts, vexing tax returns you haven't filed), he can do much more for you, and at a smaller cost than when you bring him "cold" facts (mistakes you have made which threaten trouble.)

Trade With Your Hometown Merchants

CARS WANTED

We will pay cash for your clean low mileage car. Any make or model.
BLEVINS MOTOR CO.
514 W. Main Phone 308

NOTICE... Come To Kendrick Drive-In Dairy

(Serving This Territory Since 1940)

FOR Good, Clean JERSEY Sweet Milk Price - 70c Gal.

Phone 896-J-2 - Located Highway between Eastland and Cisco

Daffin Feedmobile

FRESHER FEED

Made right at the bin-door — but just where you want it without fuss, muss.

NO HAULING

We bring the concentrate— or you furnish your own grain and roughages go into the mill from bin or mow.

NO WASTED TIME

You don't have to load up and haul the grist—wait for it to be ground and mixed—then haul the feed home and unload it.

MOLASSES BLENDING

We blend any amount of fresh molasses into your feed without lumps.

DEPENDABLE SERVICE

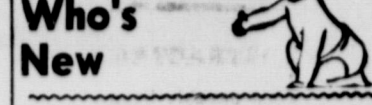
We're now establishing routes so our new DAFFIN can call at your farm regularly for prompt, sure service.

See Our New DAFFIN in Operation
On YOUR Farm... Call us today!

KINCAID FEED STORE

303 North Seaman — Phone 73
Phone Cisco HI 2-1200 Phone Ranger No. 1

Look Who's New



Mr. and Mrs. Roy Thackerson, 402 East Sadosa, have announced the arrival of their baby son, Rex Harvey, who was born in the Blackwell Tuesday at 1:45 p.m. and weighed seven pounds 12 ounces. Mr. and Mrs. Clyde Benton of Route 1, Eastland are the maternal grandparents. Mrs. C. A. Thackerson of Cisco is the paternal grandmother. The great-grandparents are Mr. and Mrs. M. H. Byrd of Carbon.

LEGAL NOTICE

NOTICE VETERANS' LAND BOARD SALE

The Veterans' Land Board will receive sealed bids at the General Land Office, Austin 14, Texas until 10 o'clock A. M., January 20, 1959, for approximately 107 tracts of land located in various counties of Texas. Lists and other detail information may be obtained from Bill Alcorn, Chairman of the Veterans' Land Board, General Land Office Bldg., Austin 14, Texas.

ALEX RAWLINS & SONS

MONUMENTS WEATHERFORD, TEX. Serving This Community Since 1884 Phone LY4-2726

READ THE CLASSIFIEDS

THE ABSTRACTER AND THE LANDOWNER

... are inseparable friends and naturally for we have so many interests in common. The abstracter would not exist if there were no landowners and the reverse is also true. When business is brisk we both share in the prosperity; when it is bad we suffer together. So we are yoked together for better or for worse journeying toward an unknown future, and as we trudge merrily along let us wish for ourselves and the rest of you a prosperous New Year.

EARL BENDER & COMPANY

Eastland, (Abstracts since 1923) Texas

Patricia Fullen's Marriage to Jaye C. Jarrett Is Announced

Mr. and Mrs. T. M. Fullen of 1005 South Seaman, have announced the marriage of their daughter, Patricia Ann, to Jaye C. Jarrett, son of Mr. and Mrs. J. H. Jarrett of 407 South Virginia.

The young couple were married in Altus, Oklahoma, on November 1, 1958. The ceremony was performed at 2 p.m. in the study of the First Methodist Church by the pastor of the church.

The bride wore a beige suit with black accessories. Mrs. Jarrett was a senior in Eastland High School and is planning to complete her senior year in Beaumont where the couple are making their home.

Her husband, who attended East Texas State College in Commerce, presently is attending Lamar Tech in Beaumont. He is a sophomore.

First Presbyterian Church

Rev. Eugene H. Surface, Minister

Morning worship at the First Presbyterian Church begins at 11 o'clock. The sermon by the minister is on "The Book of Genesis," with the Scripture Lesson, Genesis 22:1-19, and the Text Genesis 1:1 and 22:1.

Sunday Church School begins at 9:45 o'clock. The minister will attend the regular meeting of the Eastland Ministers' Association on Monday morning at 8 o'clock at the White Elephant Restaurant.

The Women's Association will meet Tuesday morning at 9:30 o'clock, at the church. In addition to the regular Devotions and Business, the Minister will lead the second lesson on the "Book of the Acts," under the study-guide booklet title, "The Spirit Speaks to the Church."

First Methodist Church

Rev. James Campbell, pastor

The Sunday School hour is 9:45. The Friendship Class, which is a couples' class, always welcomes visitors and new members. Bill Leslie is the president and Jimmy Hughes is teaching the class at present. The class is sponsoring putting in tile flooring in the Fellowship Hall. They would appreciate other groups offering some assistance on the expense.

A class for prospective teachers starts Sunday morning.

The morning worship service will begin at 10:50 with the prelude "Solomon March" by Faulkes. The pastor, the Rev. James H. Campbell, will bring the sermon on "Be Not Weary in Well-Doing." The choir will present the anthem "Seek Ye the Lord" by Roberts with solo by Paula Angus, of Ranger. Mrs. Lopsch, organist, will use Gounod's "Nazareth" as the offertory. The postlude "The Lord Bless You and Keep You" by Lutkin will conclude the service.

The Youth Fellowship will resume the regular time of meeting this evening 6:15. The evening worship hour is at 7 o'clock this evening with the Rev. James H. Campbell again bringing the message. The youth choir will be in their places tonight to lead in the song service conducted by Wendell Siebert, followed by the altar prayer.

Cub-Scouts will meet in Fellowship Hall Monday evening.

The Woman's Society of Christian Service will meet in the church parlor Tuesday morning at 9:30 for the program on "Literature and Publications" by Mrs. O. M. White. The prayer meeting led by Mrs. W. P. Leslie will be in the Susan Steele room at 9 o'clock.

The Wesleyan Service Guild will meet Wednesday evening at 7:30. Mrs. Carl Elliott will be the devotional leader with the chapter on Middle East Pilgrimage brought by Mrs. Harold Durham.

Choir rehearsal Wednesday evening at 7:30.

DALLAS GUESTS

Mr. and Mrs. H. D. Pike of Dallas, who were enroute to Midland, visited in the home of Mr. and Mrs. T. M. Fullen Thursday and Friday.

Bethel Baptist Church

REV. JAMES FLAMING, pastor

The Bethel Baptist Church reports a most successful Bible conference during the past week. The total enrollment was 104. Thus the Bethel Church continues to provide training and teaching opportunities within their church program. Last year of the 30 churches in Cisco Baptist Association, the Bethel Baptist Church was fourth in training awards.

Sunday School begins Sunday at 9:45. The worship service follows at 11. At the worship hour the pastor will be speaking on the subject, "Refusing Divine Help." Training Union begins at 6:00, the evening worship beginning at 7.

Activities for the week include the mid-week service, Wednesday night at 7:30, teachers meeting at 6:45 together with GA's. This Wednesday will be high-lighted by the G. A. coronation. Advancing in their forward steps the girls will present examples of their accomplishments, and will receive forward recognition. Inasmuch as this is always one of the most beautiful of the services at Bethel, you are cordially invited to attend.

Mrs. Felton Holloway is GA leader.

First Baptist Church

Rev. Harvey Kimbler, pastor

Sunday is Baptist World Alliance Day and will be observed in Baptist Churches in 50 nations.

Activities for the week are as follows:

Sunday — Sunday school, 9:45; Morning Worship, 11; Elementary Choirs, 5:30; Training Union, 6:30; Evening Service, 7:30. There will be a meeting of the Intermediates and Young People after evening services to complete plans for the annual Valentine Banquet.

Tuesday — All circles of the WMU will meet at the church at 9:30 a.m. for Business Meeting and Royal Service program. Mrs. M. A. Treadwell Jr. will present the program on Alaska, Fabulous 49th State.

The deacons will meet Tuesday evening at 7:30. Wednesday — Chapel Choir, 5:30; R. A., G. A., YWA, Sunbeams, Teacher's meeting, 7; Church business and a continuation of the study of the book of Revelation, 8; Chancel Choir, 8:45.

SOCIAL CALENDAR

Saturday, January 31

7:30 p.m. — Members of Las Leales Club are sponsoring a game tournament at the Woman's Club. Bridge, forty-two, canasta and hearts will be played. Tickets are 50c.

7:30 p.m.—The Gleaner Sunday School Class of the First Baptist Church will meet for a social in the home of Mrs. Jessie Garner at 711 North Walnut.

Monday, February 2

7:30 p.m.—Mrs. J. M. Cooper

will present the educational program entitled "Backwoods Teacher" by Joseph Nelson for members of Las Leales Club in the Woman's Club.

7:30 p.m. Members of the Odd-fellow Lodge will meet in the IOOF Hall for their regular meeting.

7:30 p.m. — Members of the Pythian Sisters will meet in the Castle Hall for their regular meeting.

Tuesday, February 3

9:30 a.m.—Mrs. O. M. White will be leader for the program when the members of the Woman's Society of Christian Service in the church parlor of the First Methodist Church.

3 p.m.—The Esther Group of the CWF of the First Christian Church will be host to an afternoon tea in the church annex. Mrs. L. E. Huckabay will present the devotional. "The Church a Living Mission" will be the program presented. 7:30 p.m.—The Rebekah Lodge

will meet in the IOOF HALL for their regular meeting.

7:30 p.m. — Members of the Eastland Chapter of the Order of Eastern Star will meet in the Masonic Hall for their regular meeting.

Wednesday, February 4

3:30 p.m. — Students from McMurry College will be presented on the program when the members of the Eastland Music Study Club meet in the Woman's Club.

7:30 p.m. — The Wesleyan Service Guild of the First Methodist Church will meet in the church parlor.

Thursday, February 5

3 p.m. — Senior girls of Eastland High School will be guests at an afternoon tea given by members of the Thursday Afternoon Club in the Woman's Club. Mrs. E. R. Townsend, Harold Bulgerin, M. A. Treadwell Jr., and Harold Durham will present the program on "Career Opportunities." Mrs. Frank Sparks will be leader for the program. She will also present seven of her speech students.

Funeral Directors

HAMNER FUNERAL HOMES

Ben E. Hamner

Oxygen Equipped - Air Conditioned

Eastland

Phone 17

Cisco

Phone Hillcrest 21211

AMBULANCE SERVICE ANY WHERE ANY TIME

Nominal Cost Burial Insurance

For The Entire Family

THE BEST WAY IS THE BANK WAY



COME IN TODAY!

WE'LL FINANCE YOUR

CAR... AND YOU'LL SAVE!

Yes, the bank way is certainly the best way to finance payments on the purchase of a new or used car... and especially when you select our bank. Our rates are low, payments are easy, and service is superior! Come in and let's talk it over today.

"ON THE SQUARE" EASTLAND NATIONAL BANK

Member F. D. I. C.

WE ARE NOW A DIRECT Factory Dealer

SAVE! SAVE! SAVE!

HEAVY GAUGE STEEL

Filing Cabinets

- One Drawer Letter File 24.50
- One Drawer Legal File 29.50
- Two Drawer Letter File 29.95
- Two Drawer Legal File 39.95
- Three Drawer Letter File 39.95
- Three Drawer Legal File 49.95
- Four Drawer Letter File 46.50
- Four Drawer Legal File 54.50

Eastland Telegram

PHONE 601

NOTICE

FRESH DRESSED FRYERS and Fresh Dressed Hens At The Plant PHONE 110 WALKER Dressing Plant

WE ARE EQUIPPED TO DO...

- ★ Roustabout Work
- ★ Well Hook-Ups
- ★ Spray Painting
- ★ Tank Setting

P & H Oil Field

Construction • Painting Phone 183 Eastland

REMEMBER WHEN?

By Milton Fullen

This was one of the most famous "bonehead" plays in the history of sports. It featured Eddie Collins, one of baseball's greats, and Heinie Zimmerman, a man whose solid years of fine play are all but forgotten... while his "boner" is remembered.

It was during the World Series of the year... and this was the game that decided the Series. Collins was on third base with the potential for a winning run... and he was caught in a routine rundown play between third and home.

While the crowd roared, Collins jockeyed back and forth, then broke for the plate. Zimmerman set out in pursuit. The catcher frantically called for the ball... but in the excitement Zimmerman forgot to throw. He kept chasing Collins with the ball... and pursued him right across home plate with the run that won the World Series!

Remember the year?

Those were days when wages were a lot lower than they are now... for star ballplayers and everyone else. A man investing in a car then had to bargain for a deal that meant real savings.

The year as 1917.

We're in a bargaining mood this year. We've got the flashing new Chevrolet to offer... and we're ready to offer you a deal that means substantial saving. We're proud to say that every customer becomes a friend, at FULLEN MOTORS, East Main. Phone 44.



Nothing New This Year...



WE ARE CONTINUING OUR

SAME OLD PRACTICE...

SQUARE DEALING—YEAR ROUND

ALWAYS IN THE MARKET FOR scrap IRON AND METAL

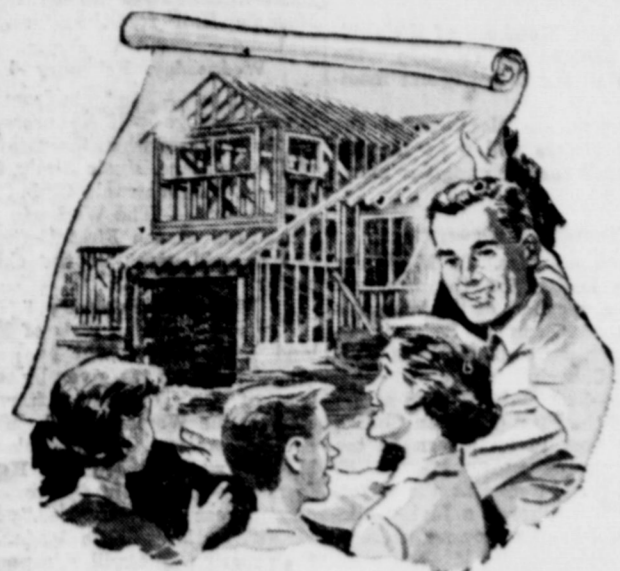
let us solve your PLUMBING PROBLEMS

Fixtures, Supplies, Water Heaters Electrical Supplies For Home and Farm Copper Tubing, Plastic Pipe, New and old Pipe, Brass and Copper Fittings... WE HAVE EVERYTHING.

EASTLAND IRON & METAL CO.

OWNED AND OPERATED BY HENRY PULLMAN

CALL 601 FOR CLASSIFIEDS



HOW TO MAKE YOUR DREAM HOME COME TRUE SOONER...

Probably you've got a pretty clear picture in your mind's eye of the home in which you and your family will "live happily ever after."

LOANS FOR HOME BUILDING Purchase, or Re-Modeling

We'll arrange a low-cost loan that you can repay, just like rent with all-in-one monthly payments.

First Federal Savings and Loan Association

204 Main Street Ranger, Texas

Mrs. Jordan Is Installed as Noble Grand of Rebekah Lodge

Mrs. Ima Jordan was installed as noble grand of the Eastland Rebekah Lodge No. 177 Tuesday evening in the IOOF Hall.

Other new officers installed for the coming year were Mrs. Meajo Pool, vice grand; Mrs. Vinetta Miller, recording secretary; Mrs. Corrie Harlow, treasurer; Mrs. Mary F. Street, chaplain, M. R. S. Mae Mitchell, right side to chaplain; Mrs. Della Hagan, left side to chaplain.

Mrs. Ruth Lewis, musician; Mrs. Georgia Gosnell, warden; Mrs. Stella Grigsby, conductor; Mrs. Erma Kelley, color bearer; Mrs. Florence Crabb, left side of noble grand; Mrs. Genoa Brown, right side to noble grand; Mrs. Jess Smith, outside guardian; Mrs. Ethel Daniels, inside guardian; Mrs. Johnnie Mathews, right side of vice grand; Mrs. Lena Smith,

left side of vice grand; Mrs. Ethel Harbin, right side of past noble grand; Mrs. Millie Thompson, left side to past noble grand; Mrs. Ruby Crawley, right side to altar; and Mrs. Bea McAdams, left side to altar.

Mrs. Kleiner led the installing team which consisted of Meses. Johnnie Mathews, Florence Crabb, Lena Smith, Ruby Crawley, Olive McCain, Norma Kelley, Genoa Brown, Beatrice McAdams, Blanche Nichols and Mae Mitchell.

For the coming year the lodge voted to meet on the second and fourth Tuesday of each month in the IOOF Hall. The new officers will hold office for a full year instead of the usual six months.

New officers who were elected but not installed were Mrs. Juanita Grisham, junior past noble grand; Mrs. Olive McCain, lodge deputy; Mrs. Florence Crabb, degree captain; Mrs. Lee Campbell, lodge mother; Mrs. Della Hagan, representative; and Mrs. Grisham, alternate representative.

Mrs. Shelton Is Elected Officer Of Winsome Class

Mrs. Carrol Shelton was elected as the vice president of the Winsome Sunday School Class of the First Baptist Church Tuesday evening.

Mrs. Neal Edwards was hostess to the class in her home at 309 1/2 East Valley.

Mrs. Joe Ed Ingram, president, presided over the meeting with Mrs. Edwards assisting by presenting the secretary and financial reports.

An inspiring devotional was presented by Mrs. Shelton. Mrs. Ingram presented a Bible quiz.

During the social hour Mrs. Shelton directed various games. Mrs. Edwards served refreshments of pecan cake and hot spiced tea.

Attending were Meses. Lowell Thomas, Kenneth Bullard, Harold Dillinger, Joe Ed Ingram, Carrol Shelton, Kay Spalding, Harvey Kimbler and Neal Edwards.

Local Members Attend DAR Meet In Cisco Monday

Mrs. Joseph M. Perkins and Mrs. A. F. Taylor, both of Eastland, were among the members of the Charles Crawford Chapter of the D.A.R. who met in the home of Mrs. Joe Clements in Cisco Monday evening.

Mrs. Yancy McCrea of Cisco was co-hostess.

Dr. D. Ball was guest speaker at the meeting. Dr. Ball spoke on the Yellowstone Park. He illustrated his speech by showing pictures.

Mrs. Ruth Horrigan, regent, presided over the meeting during which Mrs. McCrea was elected as the delegate for the state meeting to be held in March. Mrs. Frank Harrell was elected as the alternate delegate.

The chapter also voted to send money to the state approved school.

Mrs. Perkins reported that the meeting was well attended.

Music Club to Present McMurry Students in Fine Arts Program

The Eastland Music Study Club will present their annual "Fine Arts Program," their gift to the music-loving public, at the First Methodist Church of Eastland, on Sunday afternoon, February 15, at 3:00 p.m.

The program will be given by two outstanding students from the Music Department of McMurry College — David Benningfield, baritone; and Edmond Lewis, pianist and accompanist.

Mr. Benningfield is the son of Mr. and Mrs. Ralph Benningfield of Leveled. He is a junior at McMurry College and a music major.

He is a soloist for the Chanters, the college choral group, and is a pupil of Dr. Richard C. Von Ende. Mr. Lewis is the son of Mr. and Mrs. Ivan Lewis of Breckenridge. He is a senior music major. He has given annual solo recitals at McMurry since coming there in 1957. He is a pupil of Clarence Brady and plans to do graduate work at North Texas State College.

Mrs. A. H. Johnson will preside. Rev. James Campbell will give the invocation. This program is free, and the public is cordially invited to attend.

A reception in the church parlor will follow the program. The hostesses will be Meses. A. H. Johnson, Don Parker, Kerman Bond, Myrtle Anderson, R. N. Grisham, F. L. Drago, E. C. Ragland and F. N. Sayre.

CARD OF THANKS

We want to thank our many friends for the kindness shown us during the death of our mother. Especially the ones who sent flowers, telephone calls and cards. May God bless each and every one of you.

The Harrison Family Mr. and Mrs. Howard Bradford and Family

CARD OF THANKS

We take this means to express our thanks to everyone for their kindness, food, cards, flowers, and many acts of kindness during the loss of our husband and father. We especially want to thank the doctors, nurses and hospital staff for the kindness shown us in the death of our love one.

The Bert Fuller Family

RETURNS HOME

Mrs. J. D. Pittman returned home Friday night after visiting with her daughter and son-in-law, Mr. and Mrs. Clyde Evatt of Alpine. The Evatts accompanied Mrs. Pittman home to spend the weekend with their parents, Mr. and Mrs. Pittman and Mr. and Mrs. J. H. Evatt.

LEGAL NOTICE

NOTICE TO BIDDERS Notice is hereby given that the Commissioners' Court of Eastland County, Texas will request sealed bids to be made in accordance with law, by any interested bidders for the purchase of a New Truck for use by Commissioner's precinct number One of Eastland County, Texas.

Said bids will be opened and considered by the court at its regular place of meeting in the Courthouse at Eastland, Texas on February 10, 1959 at 10:00 o'clock A. M., and will at such time let a contract therefore if any bid be accepted; all such bids to be made as required by law. Right to reject any and all bids is hereby especially reserved by the Commissioners' Court.

Any and all such bids should take into consideration a trade-in by the county towards a purchase of such equipment of a 1952 Chevrolet Dump Truck. John S. Hart County Judge; by order of the Commissioners' Court

Marsha Treadwell Is Elected President of Scale Runners

Marsha Treadwell was elected president of the Scale Runners Junior Music Club to serve for the next four months when the members of the club met in the home of Dr. and Mrs. J. O. Jolly Wednesday afternoon with their daughter, Jan, as hostess.

Other officers elected were Sally Perkins, vice president; Lynette Dorsey, secretary; Lela Lee, pianist; Sue Underwood, treasurer; Jeannie Wright, reporter; Deborah Earnest, parliamentarian; and Sharon McElreath, critic.

Marilynn Huckabay, president, presided over the business meeting during which Deborah Earnest read the minutes and correspondence.

Marsha Treadwell accompanied the group as they sang "Wonderful Words of Life." The Club Collect was led by Sharon McElreath.

Mrs. A. F. Taylor, teacher and counselor, was leader for the program on American music and composers. She presented several short stories on the life and works of Edward MacDowell, Lowell Mason, Dr. Damrosch, John W. Sham and John Thompson.

Claudia Bond presented a piano solo, "The Church Organ" by Thompson and "Skating" by Loeta Stilwell was played by Marilyn Fagan. "Bunny Hop" by Richter was presented by Sue Underwood; "Chimes" by John Thompson, Marilyn Treadwell, "Ta-ra-ra Boom-de-ay" by Schaum, Sally Perkins, "Cradle Song" by Brahms a n d arranged by Schaum, Sharon McElreath and "Our Stairway" by Hiale, Jan Jolly.

A duet, "Country Gardens," arranged by Schaum, was played by Jeannie Wright and Marilyn Huckabay. "Sonatina No. 1" by Hazel Cobb was played by Lela Lee. Deborah Earnest and Sherry Jo Butler presented a duet of "Minuet" by Bach and arranged by Schaum.

Jan Jolly assisted by her mother received the guests and invited them into the living room, decorated with pink roses.

After the program the guests were served refreshments of Cokes, fudge squares and pecans.

The next meeting will be in the home of Mrs. Louise Dorsey, 300 S. Maderia on Wednesday, Feb. 11, at 3:15 p.m. Her daughter, Lynette, will be hostess with Sue Underwood as co-hostess.

Those present were Lela Lee, Marilyn Fagan, Lynette Dorsey, Deborah Earnest, Jan Jolly, Sherry Jo Butler, Linda Ann Perry, Marsha Treadwell, Jeannie Wright, Sue Underwood, Marilyn Huckabay, Sharon McElreath, Marilyn Treadwell, Mary George Perkins, Claudia Bond, Sally Perkins, Kay Gallagher, Mrs. Taylor a n d Mrs. Jolly.

CALL 601 FOR CLASSIFIED ADVERTISEMENT

Sham and John Thompson.

Claudia Bond presented a piano solo, "The Church Organ" by Thompson and "Skating" by Loeta Stilwell was played by Marilyn Fagan. "Bunny Hop" by Richter was presented by Sue Underwood; "Chimes" by John Thompson, Marilyn Treadwell, "Ta-ra-ra Boom-de-ay" by Schaum, Sally Perkins, "Cradle Song" by Brahms a n d arranged by Schaum, Sharon McElreath and "Our Stairway" by Hiale, Jan Jolly.

A duet, "Country Gardens," arranged by Schaum, was played by Jeannie Wright and Marilyn Huckabay. "Sonatina No. 1" by Hazel Cobb was played by Lela Lee. Deborah Earnest and Sherry Jo Butler presented a duet of "Minuet" by Bach and arranged by Schaum.

Jan Jolly assisted by her mother received the guests and invited them into the living room, decorated with pink roses.

After the program the guests were served refreshments of Cokes, fudge squares and pecans.

The next meeting will be in the home of Mrs. Louise Dorsey, 300 S. Maderia on Wednesday, Feb. 11, at 3:15 p.m. Her daughter, Lynette, will be hostess with Sue Underwood as co-hostess.

Those present were Lela Lee, Marilyn Fagan, Lynette Dorsey, Deborah Earnest, Jan Jolly, Sherry Jo Butler, Linda Ann Perry, Marsha Treadwell, Jeannie Wright, Sue Underwood, Marilyn Huckabay, Sharon McElreath, Marilyn Treadwell, Mary George Perkins, Claudia Bond, Sally Perkins, Kay Gallagher, Mrs. Taylor a n d Mrs. Jolly.

CALL 601 FOR CLASSIFIED ADVERTISEMENT

TIME TO BUY... TIME TO SAVE ON LUMBER AND BUILDING SUPPLIES

We have many interesting millwork pieces... finest hand and power tools... paints... roofing — and you can buy what you need on easy credit terms. Delivery is free in a 50-mile radius.



HIGGINBOTHAM - BARTLETT CO.

301 W. Main Jack Elliott, Mgr. Phone 112 or 1014

BE MODERN... INSTALL AN Electric Lawn Light

Completely Installed As Low As \$29.95

Others at 39.95 to 54.95

For normal installation with up to 50-ft. of cable and normal installation of inside switch.

ONLY PENNIES TO OPERATE... Use all night—every night for less than 30c per month.

You can get YOUR choice of design and color —Black — White — Black and Brass or White and Brass.

Terms If Desired

Decore Metal Products

306 E. Main Phone 288

FINAL CLEARANCE

Sale

We must make room for New Spring Merchandise. Sale begins Saturday, January 31st... ends Saturday, February 7th.

ONE RACK OF 50 DRESSES Values from 8.95 to 39.95 5.00 Buy The Second Dress for \$1.00

ALL WINTER SUITS AND COATS MARKED TO SELL ONE GROUP One-Half Price And Less ONE GROUP One-Third Off

LINGERIE 3/4 Off ALL SALES FINAL

ONE RACK CHILDRENS Dresses 2.00

All Sales Final ANDERSON'S NORTH SIDE OF SQUARE

Mrs. Kelley Hosts Esther Group in Her Home Monday

Mrs. C. M. Kelley was hostess to the members of the Esther Group of the Christian Woman's Fellowship of the First Christian Church in her home at 602 Gilmer Street. The meeting was held Monday afternoon.

Mrs. C. M. Cooper presented the devotional prior to the lesson presented by Mrs. H. B. Meeks. After the lesson the group held open discussion.

The missionary benediction was repeated in unison.

Mrs. Kelley served german chocolate cake and coffee to the members present: Meses. C. M. Cooper, H. B. Meeks, J. R. Gilbreath, E. I. Malone, J. H. Evatt, Millie Brittain and C. M. Kelley. Mrs. Jack Chamberlain Sr. was a visitor of the group.

Thursday Afternoon Club to Honor Senior Girls at Afternoon Tea

The senior girls of the Eastland High School will be the special guests when the members of the Thursday Afternoon Club present their "most outstanding program of the year."

The program will be presented at an afternoon tea in the Women's Club at 3:00 o'clock Thursday afternoon.

Mrs. Frank Sparks will be leader for the program stressing the importance of career opportunities. A quotation describing the program is "If God writes 'Opportunity' on one side of an open door, He writes 'Responsibility' on the other side."

Mrs. E. R. Townsend, Mrs. Harold Bulgerin, Mrs. M. A. Treadwell Jr., and Mrs. Harold Durham, who are well qualified, will present the program.

Mrs. Townsend, who is a registered nurse, will speak on "Nursing." Mrs. Bulgerin, who is a registered medical technologist, will present a topic on "Medical Technology." "Library Science" will be given by Mrs. Treadwell, who has her degree in library science. Mrs. Durham, who has her master degree, will speak on "Teaching."

In presenting the outstanding program Mrs. Sparks will present seven of her speech students, Marilyn Huckabay, Sally Perkins, Donna Horton, Jeannette Freysehlag, Toni Connell, Dixie Young and Janet West. All of the students attend South Ward except

Janet West, who attends West Ward.

Hostesses for the tea are Meses. Virgil Seaberry Jr., B. J. Patterson, D. L. Houber, and Hubert Jones.

CARD OF THANKS

We wish to express our heartfelt thanks to our good neighbors and many friends for each kind word of sympathy, each kind deed and the beautiful floral offering extended to us during the veil of sadness we are passing through in the death of our dear father and brother. May God bless you.

Mr. and Mrs. A. H. Crosby Mr. and Mrs. Boyd Hazard Mr. and Mrs. Bill McFadden Mr. and Mrs. O. E. Hazard Mr. and Mrs. Maurice Hazard Mr. and Mrs. Sam Fonville Mrs. Pearl Bourland Conrad Hazard

TERMITE CONTROL and all other types PEST EXTERMINATION MODERN EXTERMINATING CO. Box 312 Ranger PHONE RANGER Day 919—Night 911

M. H. PERRY Representing Southland Life Life Retirement Income Partnership Mortgage Cancellation Educational - Annuities Accident - Sickness Hospitalization - Group Call 173 or 128 107 W. Main * Eastland

T. L. FAGG REAL ESTATE Property Management Home and Farm Loans

Balance your books... with the Original FINE POINT Lindy AUDITOR'S Ball Point Pen #F-485 Long 7" perfectly balanced writing instrument designed for auditors, accountants, bookkeepers and others who need a fine ball point pen for extreme legibility. ONLY THE AUTHENTIC NATIONALLY ADVERTISED LINDY PEN CARRIES THE LINDY UNCONDITIONAL GUARANTEE. DO NOT ACCEPT SUBSTITUTES—LOOK FOR "LINDY" ON THE PEN! GIANT INK SUPPLY Also available in 5" pocket purse size #F-450. 49¢ Lindy Pen Co., Inc. Culver City, Calif., U.S.A.