

# Eastland Telegram

"COVERING EASTLAND COUNTY"



VOLUME TWENTY-NINE

EASTLAND, TEXAS, THURSDAY, MAY 15, 1958

No. 7

## MOORE about... EASTLAND

by Virgil E. Moore

The E. E. McAlisters have a black and white puppy they are hunting a good home for. The pup is half cocker and half fox terrier, and according to Mrs. McAlister "it would make someone a wonderful house dog." Mrs. McAlister said they want to give the puppy away. "You're interested drop by to see it some afternoon at 500 South Bassett. The pup is six weeks old."

Mrs. Dave Hogan of Athens, daughter of Mr. and Mrs. O. M. White and a sister of Mrs. Jack Carothers of Eastland, had a narrow escape the other day. The Hogans were driving near the Athens Country Club lake when a .22 bullet crashed through the windshield of the family car, striking Mrs. Hogan in the forearm and on the shoulder near the right side of her face. The injuries were minor, but painful. Mr. Hogan jumped out of the car and apprehended two youths and took them to the office of the sheriff. The boys said they were shooting at a stump in the lake and a bullet apparently ricocheted from the water.

All of this just proves again that .22 rifles are dangerous things and certainly should be used with utmost caution.

Sidney Seale attended the autobiography tea the other day for members of the Senior Class in one of the new sack dresses. Greeting the seniors and their guests at the door was Johnny McMahan, president of the class. When Sidney said hello to Johnny he replied, "Come on in Sidney, we're really seeking them up inside."

A little later Anne Pittman came in wearing a chemise creation with a low waistline. "Anne, don't tell anyone, but your belt is slipping down," Johnny whispered in her ear.

James Reid, according to fellow-worker David Fry, is one sharp cashier. The Eastland National Bank teller, Fry says, had a sharpie try to get change for a \$15 bill the other day. He solved the problem by giving the fellow two \$7's, two 35c pieces and two 15c pieces.

Fry didn't enter this tale in our liars' contest, but we are accepting it anyway. If you can top the tale it might win you a fountain pen. Let us hear from you.

J. W. Ashley, 605 South Lamar, has a yard that anyone could be proud of. And certainly Mr. Ashley, who is 91, should. He has done all of the work himself, and has some of the most beautiful flowers in Eastland. If you drive out that way you will want to go around the block so you can see the back yard too.

As usual the rose bush at the J. H. Parker house, 410 Daugherty, is attracting its share of attention. The bush has red roses or one side and white ones on the other. We will try to get more information of it and let you know what the score is. We've been told that it is one bush, however.

## Rev. C. N. Ellis Is North Lamar Baptist Pastor

Rev. C. N. Ellis of Stephenville has accepted the pastorate of the North Lamar Baptist Church. Rev. and Mrs. Ellis are making their home at 511 South Seaman. He will conduct services Sunday morning at the church.

## FREYSCHLAG INSURANCE AGENCY

## WEATHER NEWS

High	68
Low	62
Rain	.54
Total Rain in May	1.73
Avg. Rain in May	4.08
Total Rain for Year	9.07
12 Months Avg. Rain	25.83
Lake Leon Level	75' (Full)
Forecast	Rain

## Candidates to Put Down \$5800 As Election Costs

Candidates whose names will appear on the Democratic July primary ballot in Eastland County will plunk down a total of \$5800 to pay for the cost of holding the election, Jay Blevis, county Democratic chairman, revealed today.

Blevis made this disclosure following the meeting of the County Democratic Executive Committee. He said that an assessment percentage ratio of 6 1/2 percent of the annual salary of the office for each candidate was used except in cases where the fees are

set by law. Under the set-up candidates will have to pay the following fees: County school superintendent, \$388.44; county judge, \$325.91; district clerk, \$325; county clerk, \$325; county attorney, \$179.14 (for half of unexpired term); county treasurer, \$179.14; county commissioner, \$272.74; justices of the peace, Precinct 1 and 2, \$130; justice of the peace, Precinct 6, \$78.

Blevis said all fees must be paid by midnight Saturday, May 17. If not paid by that time can-

didates will not get their names on the ballot.

Here is how the county ballot will shape up, with the exception of state races:

Omar Burleson is unopposed in his bid for re-election to the U. S. Congress, but Paul Brashear faces Omar Burkett and C. H. Dawson in his effort to win a third term as state representative.

Judge Clyde Grissom failed to draw an opponent in the race for chief justice of the 11th District Court of Civil Appeals, and Judge Esco Walter, seeking his first elected term as associate justice of the same Court, also will be unopposed.

Seeking the Democratic nomination for county judge are John Hart, the incumbent, and Clyde L. Garrett. District Clerk Roy L. Lane faces Richard C. Cox in the district clerk's race. Lane now holds the office and Cox is at present county treasurer.

John Smith, county clerk, also has drawn an opponent. He is Arlon E. Smith.

Earl Conner is unopposed in the race for county attorney, as is Mrs. Ellen Justice for county treasurer. Opposing B. M. Bennett, incumbent, in the race for commissioner of Precinct 2 (Gorman) are A. M. Thurman and M. E. (Buck) Foster. The Precinct 4 commissioner contest also is a

splitted one. Carl Lamb, Don Rufe, Clifford R. Phippen, J. J. (Jake) Honea, Clarence B. (Runt) Dill and Carl D. Gorr all are asking the nomination. J. E. McCanlies has announced he will not seek re-election. C. E. Owen is unopposed for justice of the peace, Precinct 1. Charles Bobo and Mrs. Ruby Stone Springer are seeking the Precinct 2 JP post, and Ross Griffith is unopposed in his bid for re-election as Precinct 6 JP.

Funeral services for Mrs. Hattie Roberts, 72, will be held Thursday at 3 p.m. at the First Baptist Church (Colored) in Eastland with Rev. L. C. Young of Fort Worth officiating.

Mrs. Roberts died May 10 in Ranger General Hospital. She was born at West Point and had lived in Eastland for many years. Burial will be in Eastland Cemetery.

Survivors include two sons, Sgt. Jack V. East of Virginia and Leon C. East of Kansas City, Mo.; one daughter, Mrs. L. A. East of Eastland.

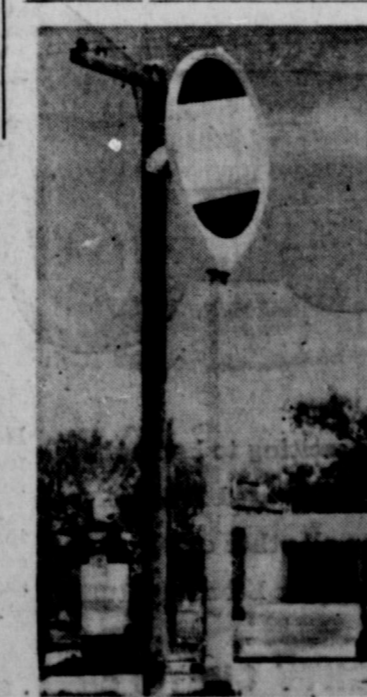
Paintings Displayed An exhibit of paintings of roses by local artists was displayed on the veranda of Mrs. Cyrus Frost's home. The porch gave guests a view of the brick patio and of the natural landscaping of trees and foliage enhanced with flowers.

Paintings, displayed on easels, were by Mmes. Homer White, Sidney Seale, W. W. Walters, Marvin in Hood, H. B. MacMoy, Louise Corbell, E. E. Layton and Francis Urban. A framed picture of roses embroidered with the cross stitch was exhibited by Mrs. Mary Roop of Cisco.

China handpainted with a rose design by local women was displayed at the home of Mrs. Jack Chamberlain Sr. The pieces were painted by Mmes. E. E. Layton, Curtis Kimbrell, Gerald Wingate,

Roy Pierce of Carbon died Wednesday in Gorman Hospital. Funeral services were still pending this morning, however.

EASTLAND NATIONAL BANK "On The Square" Member F. L. I. C.



CHANGES TO COSDEN—W. B. (Wes) Harris has switched over to Cosden and recommends that you do the same. West is holding his opening all day Saturday. The picture shows some of the recent improvements in the station, which has been completely repainted. (Arrow Photo).

## PAGE ONE MUST

West Ward School will hold the annual all-school program Friday night at 7:30 in the school auditorium. Everyone has been urged to attend.

The regular American Legion meeting is scheduled for tonight.

Eastland Little Leaguers swung back into action tonight, providing rain does not interfere, with the Medics playing the Comets and the Lions testing the Bulldogs.

## GOC Invites All To Visit Center Here Saturday

Eastland Ground Observer Corp. Commander Billy Jack Johnson announced today that the Corp. would hold an alert here Saturday from 1 to 5 p.m.

Johnson said the alert would be part of the nationwide observance of Armed Forces Day. The public has been invited to come by the GOC headquarters at the American Legion Hall and see GOC volunteers in action.

## All Is Rosy On Garden Tour Here Wednesday Despite Rain

The rain which produced Eastland's abundance of roses arrived again when they were viewed in every aspect Wednesday by Civic League and Garden Club members.

For those who donned raincoats and overshoes to trudge between the four homes on tour "everything was rosy," literally.

Mrs. H. B. MacMoy led the group. At the home of Mrs. W. A. Leslie, a table in the dining area was set for tea with "Regents Park Rose" china by Haviland, pink "Rosepoint" crystal, a n d Wallace's "Rosepoint" silver. Napkins were pink damask woven with a rose motif.

An arrangement of Mojave roses in a silver basket centered the table. A tall silver candelabra held pink candles in crystal hobnail vigil lights.

In the den, a table was set informally with the Franciscan "Desert Rose" pattern of pottery on straw mats woven with brown and green threads. The Daity Bess roses in the design of the pottery were matched by those in the centerpiece. The silverware was "Georgian Rose" by Reed and Barton.

Mrs. Cecil Collins and Mrs. Victor Cornelius assisted Mrs. Leslie in showing guests through the home.

Other bouquets of roses decorated the room. A memorial to the late Mrs. T. E. Richardson was given by Mrs. Joseph M. Perkins.

Mrs. Arthur Murrell told legends and stories which have made the rose a symbol of love and purity in her talk on "Roses in Religion."

The business session was presided over by the club's president, Mrs. Art Johnson. Coffee and cake squares, each topped with a pink sachet rose, were served. Mrs. Perkins provided piano music.

(Continued on Page 2)

## Celebration Details Made in C-C Meeting

Details for the Fourth of July Celebration to be held at Lake Leon were worked out by joint committees of the Ranger and Eastland chambers of commerce Wednesday night.

Wilson Guest, president of the Ranger Chamber of Commerce, announced that fishing permits for the day have been suspended, according to a decision of the Water Board.

Bill Stevenson of Ranger presided over the meeting which moved along smoothly and swiftly.

About 75 entries in the skiing contest are expected to participate, with each skier being assigned even numbers from Ranger, and odd numbers from Eastland. Out-of-area amateur skiers may also enter the events. They will be assigned a number upon registration in either the Eastland or Ranger offices of the chamber of commerce. Deadline for entering

is 2 p.m. that day. Joe Collins will be in charge of mapping out a specified skiing course, using yellow tubes to be

## Humphreys First President of Letterman's Club

Election of officers was held recently by the newly organized "E" Club at Eastland High School.

Named president of the letterman's organization was Clinton Roy (Buton) Humphreys. Knicky Ayther is vice president, Larry Tollis is secretary and John Powell is treasurer.

Tentative plans have been made for a barbecue June 6 on the Vernon Humphreys farm. Coach Carol Shelton and Supt. Wendell Siebert will serve as cooks.

furnished by Stevenson. Each entry is responsible for furnishing his own boat to pull him around the lake.

The grand entry of boats was planned to start at the bridge, west of the dam, and to proceed to the dam.

Herman Bond, director of the Eastland High School band, will be in charge of furnishing musical entertainment for the occasion. He will recruit area musicians to perform.

In the Fishing Rodeo, it was decided to award a prize to the adult or child catching the largest number of fish on a mixed string. They will not be judged by the weight of fish, nor will small fish count.

In other action, it was decided to have three out-of-town judges for skiing contests. Fort Worth will be contacted by R. V. "Rip" Galloway, manager of the Ranger Chamber of Commerce, in an effort to procure the judges.

Four men will be on hand with scales to weigh in the fish for the rodeo. Two Eastland men and two men from Ranger will start weighing at 11 a.m. on July the Fourth and continue until 4 p.m. Fishing will get underway at 12:01 a.m.

A public address system for the event will be furnished by the Volunteer Fire Dept. of Ranger, which will also give away a boat at 4 p.m. at the dam.

Methods of publicizing the event were discussed, but no definite plans made. Victor Cornelius, Eastland, will be contacted for ideas on effective promotion.

The next meeting was set Tuesday, June 17, in the Eastland Chamber of Commerce office.

Attending the joint session from Ranger were: Galloway, Guest, Stevenson, E. F. Arterburn, Louis Conn, and Charles Milliken. Eastland men attending were: H. J. Tanner, manager of the chamber of commerce; Guy Robinson, Wayne Jackson, Carl Johnson, Wayne Massengale, and Virgil Seaberry.

## John Dickey to Receive Degree From Seminary

Southwestern seminary will confer 218 degrees and award 16 diplomas in commencement exercises in Fort Worth May 16. This semester's graduation will bring to 468 the total of students graduated by the seminary in the past year. That total includes 119 in July, 1957, and 115 this past January.

Arnold T. Ohrn, general secretary of the Baptist World alliance, will deliver the commencement address.

Ten students will graduate from the School of Church Music, 96 from the School of Religious Education, and 128 from the School of Theology.

Among those graduating will be John Dickey of Eastland. He will receive his Bachelor of Church Music Degree. Dickey is music and educational director of the First Baptist Church.

L. C. PHAGAN, PREMIER JUNIOR 1204 W. Bliss - Phone Choc HI 5-1600 All types of oils and greases for farm, industrial and commercial users. Only local oil, no imported oil used in making Premier Products.

## Hill Announces Connellee Hotel Ownership Change

Mr. and Mrs. Don Hill have taken over operation of the Connellee Hotel here, Hill announced today.

The Hills, having reacquired the property, plan to personally manage its operation. They operated the hotel from 1944 until 1954.

"On The Square" Member F. D. I. C.

## Annual Field Day of Pecan Growers Set

Pecan demonstrations and talks are set to highlight the annual field day of Eastland County Pecan Growers Association when they meet at Ranger College Cafeteria at 10 a.m. tomorrow.

The program will get underway at that time with experts leading discussions. Don King, of the department of entomology at Texas A & M, will lead a discussion on the pecan nut case bearer and webworms, their damage and control.

Joe Orchard, a grower and director of the association from Texasarkana, will talk on marketing pecans.

A business meeting is set in the morning session. Oscar Schaefer, association president, will preside.

NEW 1958 RAMBLER 2-Door sedan, six passenger, for only \$1895 delivered. 35 miles per gallon. Easy to park. Ever so comfortable, fun to drive. Trade - Cash - Terms TOM'S SPORT CARS, Eastland

At noon, the members will be guests at a joint meeting of the Ranger Lions and Rotary Clubs in the cafeteria.

In the afternoon session, the latest techniques of grafting pecans will be discussed by L. G. Romberg of the U. S. Pecan Field Station in Brownwood at B. B. Freeman's orchard, 10 miles south of Ranger.

A tour of the orchard will be made, and a spraying demonstration from a helicopter given. John L. Scott, of the Conventional Coopers, Inc., of Ft. Worth, will show a new method of spraying in this section.

Pecan growers and others who are interested are invited to attend the meeting.

Organized in December of 1954 as a result of efforts by J. W. Cooper, county agent, the association has two other meetings—annual tours in the fall and staging of the annual field day in December.

# Eastland Telegram

Eastland County Record established in 1931 consolidated August 31, 1951. Chronicle established 1887, Telegram established 1923. Entered as second class matter at the Post Office at Eastland, Texas under the act of Congress of March 3, 1879.

**TIME PUBLISHING COMPANY**  
Published Tri-Weekly—Tuesdays - Thursdays - Sundays  
DONOUS DICK and JOE DENNIS, Publishers  
VIRGIL E. MOORE, Editor  
CAROLYN COLLINS, Society Editor

One week by carrier in city . . . . . 15  
One month by carrier in city . . . . . 45  
One year by mail in County . . . . . 2.95  
One year by mail in state . . . . . 4.95  
One year by mail out of state . . . . . 6.95

**NOTICE TO PUBLIC**—Any erroneous reflection upon the character, standing or reputation of any person, firm or corporation which may appear in the columns of this newspaper will be gladly corrected upon being brought to the attention of the publishers.

## WANT ADS

Cards of Thanks charged for at rate of \$2.00 Each

### FOR RENT

**FOR RENT:** 2 bedroom house, 407 South Connellee. Call 354-W before noon or after 6:30 p.m.

**ROOM AND BOARD:** Vacancy—Eastland Hotel, room and board. Rates reasonable.

**FOR RENT:** Furnished apartment, newly decorated. Phone 377, 501 E. Sadona.

**FOR RENT:** Newly decorated apartment. Hillside Apartments. Phone 9520.

**FOR RENT:** Four room unfurnished apartment. Phone 394-J.

**FOR RENT:** Three or six room unfurnished duplex, two baths, 509 South Daugherty, Eastland. Phone 827. Ranger or inquire 310 East Main, Eastland.

**FOR SALE or Rent**—New two bedroom home. 503 E. Conner. Call 9433.

**FOR RENT:** Three bedroom house, 801 W. Commerce. Hammer, Phone 17.

**FOR RENT:** Furnished apartments. 611 Plummer.

### MISC FOR SALE

**FOR SALE:** Six room house, two lots. 108 New Street.

**POWER SPRAYING:** Tree & shrubs and under your house. This is a wet year. There are lots of worms and insects. For appointment, Phone 886—today.

**FOR SALE:** 55 gallon oil drums—while they last, \$2 each. Also a few 5 gallon gasoline cans, \$5 each. Guy Parker, phone 800, Eastland.

**FOR SALE:** Ten acres land, four room house, poultry farm. Ideal for chicken or turkey farm. Two miles east of Cisco. C. B. Williams, Rt. 3, Cisco.

**FOR SALE:** 12 1-2 gauge barb wire. 75 spools. \$7.40 each. Call 112.

**FOR SALE:** 40 acres on highway. Good six room house and bath. Goat proof fence, well and electric pump. A bargain. Day and Pentecost. Phone 1068.

**FOR SALE:** Just in time for graduation!! 35 mm camera: Mercury II, with flash, filters, leather case, sunshade, instructions, complete. Perfect condition. Takes 32-65 pictures on a roll. Original cost over \$100 now \$35. Phone 628-J.

**FOR SALE:** Country Butter. 1-4 mile west of Magnolia crossing on railroad. Phone 2745, Mrs. Cecil Alford, Olden.

### MISC. WANTED

**WANTED TO BUY:** One and two inch structural pipe. Ed Haynes, Box 307, Eastland. Phone 183.

**FOR SALE:** Young Jersey cow, 500 chick gas brooder, 20 young leghorn hens. G. C. Byrd, Route 1.

**WANTED:** Light housework. Mrs. S. C. Dugan, 607 West Plummer.



**ALEX RAWLINS & SONS**  
MONUMENTS  
WEATHERFORD, TEX.  
Serving This Community Since 1884

**T. L. FAGG**  
REAL ESTATE  
Property Management  
Home and Farm Loans

### SPECIAL NOTICE

Special Notice: Plants now ready. Double ruffled petunias, verbenas, snap dragons, geraniums, carnations, pinks, marigolds, begonias, lilies, chrysanthemums, colous, pansies, and other bedding plants. Vegetable plants: improved Porters, Porter's Pride, Red Cloud, and Earliana tomatoes, Bell peppers, mild hot Anihem Chilis, yellow wax Hungarians. All at reduced prices. Tennyson Nursery, 1003 W. 16th—Cisco.

**24-HOUR FILM DEVELOPING.** Arrow Photo Service. Located over Eastland Telegram Office.

**NOTICE:** Reproductions and hey-drick maps. Photo copy and ozalid prints. Mrs. W. C. Whaley, phone 838.

**FREE:** Blown out tractor tires. Just the thing for the kid's sand pile. You can have one—no charge compliments of the JIM HORTON TIRE SERVICE.

### REAL ESTATE FOR SALE

**FOR SALE:** Five room house 504 South Daugherty. Phone 872 after 5 p.m.

**FOR SALE:** Three bedroom house. 505 S. Bassett. Call 720-W2 or 707-W2.

**WANTED:** Trade 2 bed room dwelling on corner lot in Pecos, Texas, for dwelling in Eastland. Call 1073 or see Leonard Florence at Earl Bender & Company.

**WEEKEND GUESTS**  
Mrs. Ray Poi Sr. of Azle, Paul Whitford of Azle and Mr. and Mrs. Gene Thomason of Springtown were Mother's Day weekend guests in the home of Mr. and Mrs. Ray Pool.

### Oldsmobile - Cadillac Trade-Ins At Special Reduced Prices This Week

1954 Buick V8 sedan. All power, air conditioned, only 17,000 actual miles, one lady owner, only \$1495.

1954 Chevrolet 4-door sedan. Nice and clean. Light pastel green, only \$695.

1955 Ford Fairlane V8 sedan. All power, steering, brakes, windows, seats, almost new, only \$1295.

1956 Mercury Phaeton sedan, air cond., all power, windows, seats, steering and brakes. Only \$1495.

1957 Olds 98 sedan, absolutely like new. All power, factory air, special trade offered here.

1955 Pontiac Starchief Catalina, all power, one lady owner. A new car for only \$1395.

1951 Cadillac, 62 sedan, all power, windows and seats. Large air conditioner. Special at only \$695.

1956 Ford Fairlane V8 sedan, factory air. A beautiful two tone, one owner car for only \$1495.

1953 Olds 98 sedan, full power and factory air cond., really a beautiful clean car, only \$995.

1956 Dodge V8 1/2-ton pickup. Lovely two-tone finish. Excellent condition. Special, only \$995.

1956 Mercury Phaeton. Soft light pastel, two tone finish. Ready for summer. Only \$1295.

1952 Cadillac 60 sedan, all power, windows, seats, steering, brakes and large air conditioner. Really a sharp clean car. Special only \$995.

SEE  
**Don Pierson**  
OLDS - CADILLAC  
Eastland

**MAY SPECIAL**  
Wholesale Prices On Limited Number  
**ALL NYLON TIRES**

Tube Type	
670x15 Black	19.97
670x15 White	22.05
TUBELESS	
670x15 Black	21.88
670x15 White	24.04

These low prices include all taxes—also free mounting and balancing service. All are No. 1 NYLON tires and covered by a written road hazard guarantee. Terms can be arranged.

**JIM HORTON**  
East Main St. Phone 255  
Eastland, Texas

**HORTON'S SPECIAL MAY OFFER**  
NEW SHIPMENT OF SECONDS  
Reg. \$1.00 and \$1.50  
**JARDINIERES 50c**  
Reg. \$2.25  
**JARDINIERES \$1.00**  
**BEAUTIFUL TROPICAL PLANTS \$1.75 each**  
(Any Two Plants \$3.00)  
**FACTORY POTTERY SALES ROOM**  
Highway 80 East — Eastland, Texas

## SOCIAL CALENDAR

**Thursday, May 15**  
2 p.m. — Flatwood Demonstration Club will meet for a regular meeting with Mrs. Bessie McCollum as hostess in her home on South Seaman.  
7:30 p.m. — Past Matrons Club meets with Miss Christine Garrard, 708 West Commerce.

**Friday, May 16**  
7:30 p.m. — West Ward School will hold their annual all school program at the school.

**Saturday, May 17**  
10 a.m. — Catholic ladies of the Saint Francis Altar Society will sponsor a tamale and bake sale in the home of Mrs. Lusia Paramo, 413 North Bassett. Everyone is invited to come by.  
11 a.m. — Barbecue dinner will be served at the home of Mrs. Ozna Durall, 308 West Patterson, by the First Baptist Church (colored). Each plate will cost \$1. For delivery call 570.

**Sunday, May 18**  
3:30 p.m. — Mrs. Charles Harris will present 13 students in a piano recital in the parlor of the First Methodist Church. The public is cordially invited to attend.  
8 p.m. — Oddfellow Lodge No. 120 will meet in the IOOF hall for their regular meeting.  
7:30 p.m. — Pythian Sisters will meet in the Castle Hall, 106 Commerce, for their regular meeting.

**Monday, May 19**  
7 p.m. — Mrs. Don Parker will be hostess to Las Leales Club in the Woman's Club. Mrs. W. A. Lewis will give the program on "Dede O'Shea" at the final meeting of the season.  
12:30 p.m. — Woman's Society of Christian Service of the First Methodist Church will meet in the Fellowship Hall for a luncheon and social. Officers' reports will be given. Mrs. Taylor Smith will give the program on "The March of Missions Dollars." Mmes. W. A. Martin, Henry Van Geem, W. F. Davenport, H. L. Hassell, O. M. Mickle and Frank Castleberry.

**Tuesday, May 20**  
3:15 p.m. — West Ward PTA will install officers for the coming year at their meeting. All members are urged to be present. Hostesses will be the fifth grade mothers, W. Turner and Mrs. James Young.

**Hospital News**  
Patients in the Eastland Memorial Hospital are:  
Emmett Powell, surgical  
Mrs. Minnie Shaw, surgical, Carbon  
Mrs. Mary Casstevens, medical  
Mrs. J. R. Niver, medical  
Mrs. M. M. Palmer, surgical, Cisco  
Luther Stafford, surgical  
Mrs. Gailon Ables and baby boy  
Mrs. J. F. Wilson, medical  
Vibian Jones, medical  
Mrs. Fred Burfiend, medical, Carbon  
Vernon Kelly, surgical, Bronte  
W. M. Bailey, medical  
Mrs. Melvin Brown, medical  
Mrs. C. E. Foster medical, Cross Plains  
Dismissed were: Terry Gaeta, C. C. Byrd, Pauline Gould, and W. S. Willoughby.  
Mrs. Dick Yielding of Eastland is a medical patient in the Ranger General Hospital.  
Mrs. J. F. Mosley has been dismissed.

### All Is Rosy—

(Continued From Page One)  
Mrs. Sidney Seale was chairman of the hostess committee. Hostesses were Mmes. Curtis Kimbrell, Joe Tow, Alma Quinn, Homer White, Marvin Hood, Francis Urban and B. B. MacMoy.  
Assisting with the arrangements for the art and china painting exhibits were Mmes. Kimbrell, Urban, Hood, W. W. Walters, Roy Lawson, Gerald Wingate, E. E. Layton, and Aubrey Van Hoy.

### PERSONALS

**ABILENE VISITORS**  
Dale Slatton who is working in Abilene was home during the weekend to serve as best man at his brother's Don Slatton wedding. He also visited with his parents, Rev. and Mrs. Murphy Slatton.

**HOME ON LEAVE**  
Roy Don Harris is home on a short leave from Fort Chaffee, Ark., where he is stationed with the Army. He is visiting with his wife and parents, Mr. and Mrs. A. W. Harris.

**BRECKENRIDGE VISITORS**  
Mr. and Mrs. Lester Trout and Joy Lou of Breckenridge were visitors in the home of Mr. and Mrs. Elbie Moore, Mr. and Mrs. Larry Graham, and James Sherrill Mother's Day.

**GUESTS FOR MOTHER'S DAY**  
Mrs. W. N. Fox had several of her children as guests Mother's Day. Among them were her son-in-law, C. U. Norton, and his daughter-in-law, Mrs. Don Norton and Debbie from Farmington, N. M. Also visiting Mrs. Fox were her daughter and son-in-law, Mr. and Mrs. H. O. Lee, and children, Dean, Honnie, Cooter and Bobby, all of Big Spring.

### Joe F. High Is Participant In Army Exercise

FORT POLK, LA.—Specialist Third Class Joe F. High, son of C. J. High, Route 3, Cisco, recently participated in "Exercise Strong Arm", a Continental Army Command maneuver conducted near Fort Polk, La.  
Specialist High, assigned to the 53d Signal Battalion at Fort Hood, Tex., entered the Army in September 1956 and received basic training at Fort Hood, Tex.

**TO BE IN RECITAL**  
Bryan Garner will be presented in a recital Sunday afternoon at 3:30 in the parlor of the First Methodist Church by Mrs. Charles Harris. Others to be presented are Donna Beth Hart, Eilee Smith, Jane Mayers, Dianne Young, Linda Holloway, Diana Fry, Madge Justice, Marsha Smith, Nancy Justice, Don Massingill, Bill Garner and Joe Basham.

**Card of Thanks**  
To all the wonderful people of Eastland who were so kind and thoughtful during our sorrow and the passing of our mother we want to express our sincere and deepest appreciation for every thing you did. May God bless each of you.  
The W. C. McFadden Family

**FOR CRUSHED MATERIALS**  
Filler Sand, Drive Way Materials, Crushed Concrete Rock  
**PHONE 215**  
After 6 p.m. telephone 575 or 1131  
**Bob Carrol - Edwin Aaron A. C. MATERIALS**

The 23-year-old soldier is a 1952 graduate of Breckenridge High School and a 1954 graduate of Tarleton State College.

**ED V. PRICE & CO. TAILORED SUITS**  
Sport Coats Slacks  
C. L. FIELDS  
Phone 571 103 W. Valley

**NOTICE... Come To Kendrick Drive-In Dairy**  
(Serving This Territory Since 1940)  
FOR  
**Good, Clean JERSEY Sweet Milk**  
Price - 70c Gal.  
Phone 896-J-2 — Located Halfway between Eastland and Cisco



Get more mileage and knock-free power!  
**TEXACO Sky Chief SU-PREME**

**NEW ECONOMY!** More miles per gallon, because Petrox in Sky Chief Su-preme gasoline cuts power loss by reducing harmful engine deposits. Greater life-mileage for your car, because Petrox cuts engine wear.

**NEW POWER!** Top octane Sky Chief Su-preme, at the Tower of Power, guarantees all the knock-free power your engine can deliver.

**NEW ZIP!** 100% Climate Controlled—Sky Chief Su-preme gives you quicker-than-ever starts, smoother warm-ups and getaways.

As members of Texaco's 48-state dealer family, we are trained to give you better service—for safer, more carefree driving. Come in and see us!

**T. C. BROWN, CONSIGNEE**  
C. T. Lucas - 300 E. Main Craven - Hwy. 80 East  
J. F. Holloway - 503 W. Main J. T. Sawyer-1300 S. Seaman  
Collin Campbell - Carbon

Perfect Gift for her...  
• GRADUATION  
• BIRTHDAY  
• ENGAGEMENT  
**SAVE UP TO 1/3**

**LANE CEDAR CHEST**

START AT ONLY 49.95

The Gift of Love

**COATS FURNITURE & CARPETS**  
Easy Terms — Good Trade-Ins — Free Delivery  
Authorized C. E. Appliance Dealer  
305 S. Seaman EASTLAND Phone 585

# THE MIGHTY CHRYSLER

makes driving exciting all over again

And it's exciting to know that this Chrysler averaged 21.02 miles per gallon to top all other cars in this year's Mobilgas Economy Run!

Here she is—ready to ride—the power-packed package that puts excitement back behind the wheel.  
Feel the confident way this Chrysler takes the tightest turn—the comfortable way she smooths the roughest road. Discover how easy it is to a sure, safe, certain stop.  
And what a satisfying feeling it is to know that every mile you drive, you're saving money in a Chrysler. Chrysler rolled up more miles per gallon than any other car—even beat out the smallest, lightest entries in the 1958 Mobilgas Economy Run!

But the most exciting news of all is how easy it is to own a Mighty Chrysler. Find out for yourself at your Chrysler dealer's.

**THE MIGHTY CHRYSLER... styled to excite... engineered to endure... priced to please... See it at BLEVINS MOTOR COMPANY • 514 W. Main Street**



Prices Effective Thursday, Friday & Saturday - We Reserve the Rights to Limit Quantities and to Refuse Sales to Dealers at these LOW PRICES!

# ICE CREAM Ken-L-Ration

TAYLOR'S DELICIOUS "HOME-MADE" ASSORTED FLAVORS

1/2-Gal. Crtn. **69¢**

# DOG FOOD

DOG FOOD SAVE 24c

1-Lb. Cans **8 \$1.00**



Take It Easy!

Chicken, Beef or Turkey

BANQUET

## QUICK FROZEN PIES

8-Oz. **5 Pies Only 99¢**

FOLGER'S 15c OFF LABEL

## INSTANT COFFEE

YOU SAVE 24c (Net)

6-Oz. Jar **99¢**

TEXAS FAVORITE

## RANCH STYLE BEANS

2 No. 300 Cans **25¢**

## PEACHES

VAL VITA SAVE 18c

3 No. 2 1/2 Cans **69¢**

KINGSFORD—SAVE 16c

## CHARCOAL BRIQUETS

10 -Lb. Bag **69¢**

SHORTENING

Swift's Jewel **SAVE 10c**

3 -Lb. Can **69¢**

## ORANGE DRINK

LIBBY'S FROZEN It's Delicious!

2 6-Oz. Cans **25¢**

Best Meat Buys!

**BACON** SWIFT'S ORIOLE SLICED Lb. Pkg. **59¢**

**SHRIMP** Medium-Small Fresh-Frozen 5 -Lb. Box **\$3.29**

**Sliced Bologna** SWIFT'S PREMIUM Lb. **49¢**

**Cooked Salami** SWIFT'S PREMIUM SLICED Lb. **69¢**

**Cheese Slices** KRAFT DELUXE—Swiss, American or Pimiento 8-Oz. Pkg. **33¢**

Versatile Beef Buy!

WORTH CONTROLLED QUALITY BEEF

**ROUND STEAK**

Lb. Only **89¢**

Everyday Low Prices!

- SUPREME BAKERS SALAD WAFERS 1-Lb. Box **27c**
- BEST MAID SALAD DRESSING 1-Pint Jar **25c**
- PLANTERS SALTED PEANUTS 7 1/2-Oz. Can **39c**
- PRATT-LOW WHOLE SPICED PEACHES No. 2 1/2 Can **29c**
- SAMA APPLE JELLY 20-Oz. Jar **29c**
- AUNT JEMIMA PANCAKE FLOUR 2 -Lb. Pkg. **35c**
- MEDIUM DEL MONTE PRUNES 1-Lb. Pkg. **25c**
- EXTRA FANCY SUNSWEET PEACHES 12-Oz. Pkg. **39c**
- BOOK SAFETY MATCHES 10-Ct. Pkg. **19c**

Finest Fruits & Vegetables!

- SUNKIST CALIFORNIA VALENCIA ORANGES Lb. **19¢**
- Carrots TENDER, CRISP 2 1-Lb. Cello Bags **15¢**
- Cucumbers COOL, LONG-GREEN Lb. **10¢**
- Yellow Onions MEDIUM SIZE Lb. **5¢**
- Tomatoes SELECT 3's, 4's Carton **29¢**

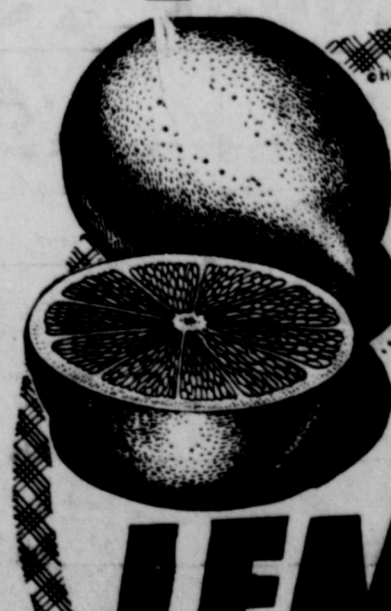
HELENE CURTIS

**SPRAY NET** Regular Super-Soft Plus Tax **99c**

**BAYER ASPIRIN** 100-Tablet Bottle **55c**

- FOR YOUR FLOORS SIX-MONTHS WAX Quart Can **\$1.19**
- MILD & GENTLE PALMOLIVE SOAP 3 Reg. Bars **29c**
- LARGE SIZE PALMOLIVE SOAP 2 Soft Bars **27c**
- DOES EVERYTHING DUZ WASHDAY SOAP Giant Pkg. **77c**
- ASSORTED FAMILY PACK ZEE TISSUE 4 Roll Pkg. **35c**
- WHITE OR RAINBOW ZEE NAPKINS 2 50-Ct. Pkg. **27c**
- ZEE WAXED PAPER 100-Pk. Roll **21c**
- WHITE ZEE TOWELS 150-Pk. Roll **19c**

BE SURE TO REGISTER OFTEN FOR THE "WORTH HEADLINERS JACKPOT" WORTH OVER \$1,936.25 THIS WEEK MAYBE EVEN MORE NEXT WEEK



Taste Tip!

Almost any recipe tastes better with fresh lemon! Try it and see!

# Sunkist LEMONS

Prices effective Thursday, Friday and Saturday, May 15-16-17. In Eastland. We reserve the right to limit quantities. No sales to dealers.

# SAFEWAY

**Priscilla Group Elects Officers For Ensuing Year**

Priscilla Group of the Christian Woman's Fellowship of the First Christian Church elected new officers of the ensuing year at their

meeting Monday afternoon in the home of Mrs. Carl Garrett. Mrs. Neil Day was elected as chairman, Mrs. Homer Williams as co-chairman and Mrs. F. W. Graham as secretary and treasurer. The meeting was opened by Mrs. Jack Chamberlain Sr., chairman, as the group prayed the Lord's Prayer in unison.

Mrs. Garrett began the program with the devotional on "Family Worship." Mrs. L. E. Huckabay presented the lesson entitled "Statistics of Integration." The lesson was a continuation of the racial problems. The next meeting will be held in the home of Mrs. Chamberlain Sr. on May 26.

Refreshments of coffee and cake were served to the following members: Mmes. Chamberlain, Huckabay, Day, Graham, Williams, Curtis Young, Carl Johnson by Mrs. Garrett.

**Tea and Program Honors Mothers Of Morgan GA's**

The Gertrude Morgan Girl's Auxiliary honored mothers of the girls at a special program at the First Baptist Church Wednesday night. Donna Kay Ford was crowned "Queen for a Week" for being most faithful in attendance throughout the year. She was presented a bouquet of red roses and robed in a blue satin robe.

The program was patterned after the TV program, "Queen for a Day". Janet Kimbler was mistress of ceremonies, and contestants were Sharon Sayre, Jan Taylor, Mary Ann Manning, and Donna Kay Ford. Wanda Lane gave the station break in the form of a devotional.

Sally Perkins presided during the business meeting. Forward Step Chairman Brenda Jenkins outlined Focus Week activities, and Ernie Mae Lane read the missionaries' names on the "Calendar of Prayer." Sharon Gist announced that the Community Missions project for May was for each girl to lead in a family worship period in her own home. Linda Dickey welcomed the mothers as special guests.

Mrs. Herbert Ekruat ladled lime sherbert punch from a crystal bowl, and macaroons, cookies, and nuts were served. The tea table was covered with a white linen cloth over green and centered with yellow iris, utilizing the Girls' Auxiliary colors of green, white and gold.

Those present were Wanda and Ernie Mae Lane and Mrs. Roy Lane; Jan Taylor and Mrs. Andy Taylor; Brenda Jenkins and Mrs. C. P. Jenkins; Sharon Sayre and Mrs. F. N. Sayre; Mary Ann Manning; Donna Kay Ford and Mrs. George Ford; Anna Kay Smith; Lois Ann Sims and Mrs. H. W. Sims; Linda Dickey and Mrs. John Dickey; Sally Perkins and Mrs. R. G. Perkins; Janet Kimbler; Mary Herrera, Sharon Gist, Mrs. Herbert Ekruat, and Mrs. Gene Rhodes. A special guest was Miss Delores Boone, from Alabama, who is visiting her niece, Linda Dickey.

**Mrs. Bond Gives Lesson on Bible Women for Group**

Mrs. Kermon Bond presented the lesson for the members of the Rachel group of the First Christian Church Monday morning in the home of the hostess, Mrs. Ray Pool.

Preceding the lesson, Mrs. Charles Freyschlag gave the devotional entitled "The Tongue." Mrs. Bond continued the lesson on the "Woman of the Bible."

Mrs. Freyschlag, chairman, presided over a short business meeting. During the business meeting the group voted to change the meeting to Wednesday at the beginning of the incoming year.

Mrs. Pool served sweet rolls and coffee to her guests. Attending the meeting were four members and two guests, Mmes. Freyschlag, Pool, Bond, S. G. McCullough, Roy Turner and Bill Collings.

**Lesson Is Given By Mrs Smitham At Group Meeting**

Mrs. N. L. Smitham presented the lesson for the members of the Esther group of the Christian Woman Fellowship of the First Christian Church Monday afternoon in the home of Mrs. Winnie Wynne.

The lesson titled "A Faith to Live By" given by Mrs. Smitham was presented by the devotional on "Well Done Thy Good and Faithful Servants." Mrs. N. T. Johnson gave the devotional.

Mrs. Wynne presided over the meeting with Mrs. Jack Chamberlain Sr. giving the opening prayer. The meeting was closed as Mrs. Millie Brittain led in prayer.

Opened faced sandwiches, punch, cookies and potato chips were served to Mmes. Brittain, Smitham, Johnson, Dave Fiensy, W. M. Bagley, Eugene Day, J. H. Evatt, Henry Ferrell, R. I. Malone, Mae Gattis, Bill Collings, Jack Chamberlain Sr., Janie Bills of Midland by Mrs. Wynne.

**Barbecue Lunch To Be Served at Durall Home Sat.**

Members of the First Baptist Church (colored) announce a barbecue luncheon to be held Saturday beginning at 11 a.m. in the home of Mrs. Ozna Durall, 308

East Patterson. Everyone is invited to attend the luncheon. Each plate containing barbecue chicken, beans, slaw, potato salad and other trimmings will cost \$1. For delivery of the barbecue phone 570.

The proceeds of the barbecue will help send some of the children of the church to a District Meeting of Sunday School and Training Congress.

CALL 601 FOR CLASSIFIED ADVERTISEMENT

**L. B. McQUEEN Pressure Massuer**  
If you are not familiar with this type of treatment see him for free examination and explanation.  
220 W. Mason St. Ph. L-3208 STEPHENVILLE, TEX.



**QUALITY MEATS**

IS OUR BUSINESS IT IS NOT A SIDE LINE  
You Pay Only One Profit When You Buy from Us

Sausage Country Style	2 Lbs.	65¢
Sausage Whole Hog	2 Lbs.	98¢

**READY-TO-EAT**

BAR-B-Q BONELESS BEEF lb. 89c	BAR-B-Q BONELESS HAM lb. \$1.10
BAKED TURKEY & DRESSING 1-Lb. Boneless Turkey, 1 1/2 Pounds Dressing and 1 Pint Giblet Gravy 1.39	RED BEANS pt. 19c
LARGE SIZE BAR-B-Q FRYERS each 1.39	CHICKEN SALAD lb. 69c
POTATO SALAD pt. 25c	HAM SALAD lb. 69c
	PIMIENTO Cheese Spread lb. 69c

Seven Roast Fed Beef Lb.	49¢
Shoulder Roast Lb.	59¢
Stew Meat Boneless Lean Lb.	49¢

**EXTRA SPECIAL**

Loin Steak Lb.	69¢
Veal Cutlets Lb.	95¢

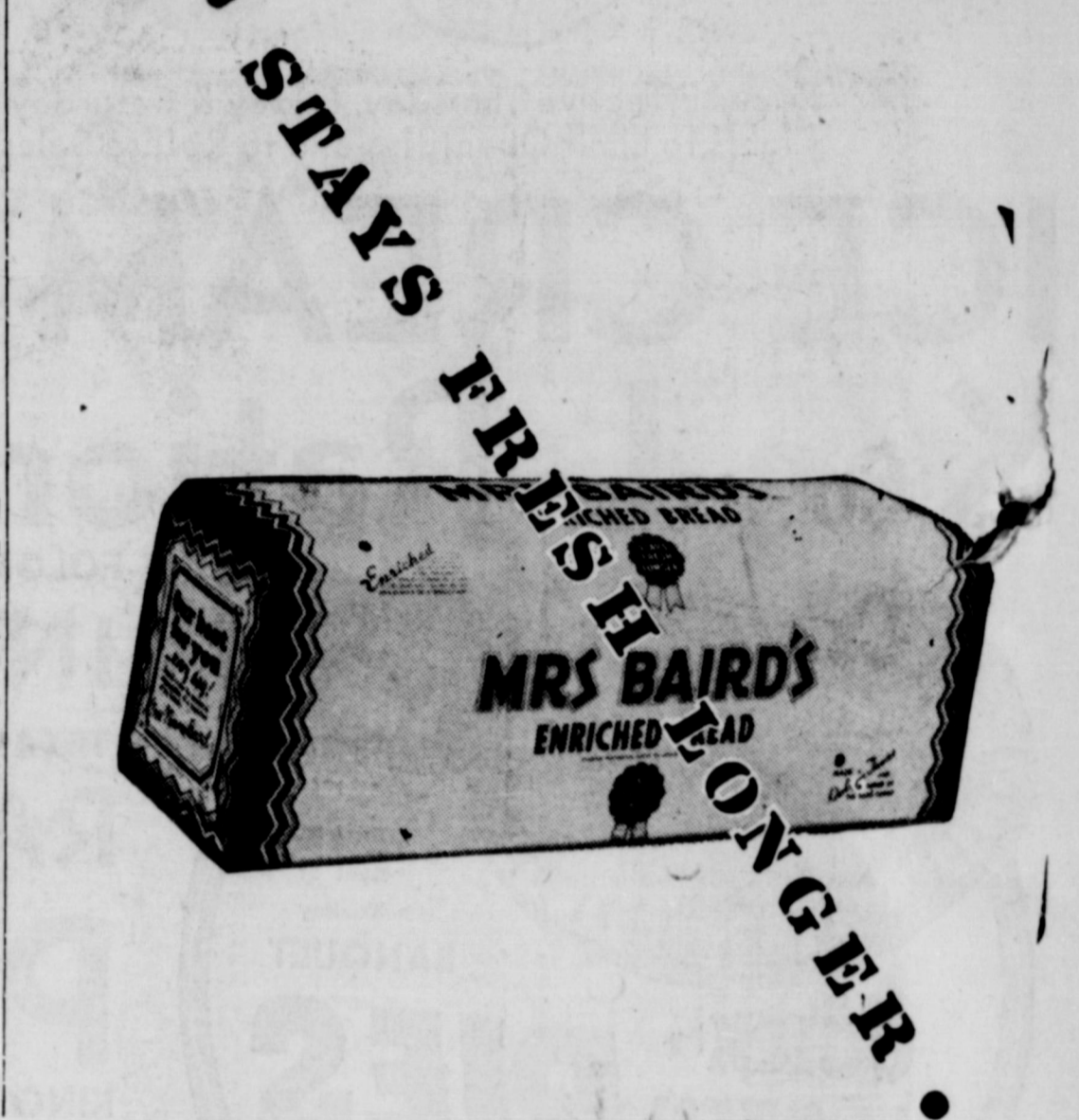
**Announcements Political**

The Eastland Telegram has been authorized to announce candidates for public office in the Democratic First Primary election in July as follows:

- State Representative PAUL BRASHEAR OMAR BURKETT
- County Judge JOHN S. HART (Re-election) CLYDE L. GARRETT
- County Clerk JOHNSON SMITH (Re-Election) ARLTON E. SMITH
- For Justice of the Peace Precinct 1 C. E. OWEN
- County Treasurer MRS. ELLEN JUSTICE
- County School Superintendent H. R. (Pop) GARRETT (Re-Election)
- District Clerk ROY L. LANE (Re-Election) RICHARD COX

**Insurance AND Real Estate**  
**D. L. KINNAIRD**  
Life - Fire - Auto - Farm  
Polio - Bonds  
39 years in the Insurance Business in Eastland

**NOTICE**  
FRESH DRESSED FRYERS and Fresh Dressed Hens  
At The Plant  
PHONE 110  
**WALKER Dressing Plant**



with Gas... when it's off... it's off!

**FOOD'S HOT... BURNERS' NOT!**

Only Gas gives you **No hangover heat!**

Turn the flame off, it's off instantly! No lingering heat to over-cook or burn foods. No left-over heat to raise room temperature. And no hangover heat to keep pots steaming, dirtying kitchen walls. You cook cooler, cleaner! What's more, for what it costs to cook one year electrically, you can cook four years with flame-fast GAS! New models NOW at new, low prices!

See Your Gas Range Dealer or  
**LONE STAR GAS COMPANY**  
\*Most Everywhere in Lone Star Land

TERMS TAILORED FOR YOU  
LIVE MODERN... FOR LESS WITH FLAME-FAST GAS

FOR SALE: Three bedroom house, 605 S. Bassett, Call 720-W2 or 707-W2.  
WANTED: Trade 2 bed room dwelling on corner lot in Pecos, Texas, for dwelling in Eastland. Call 1073 or see Leonard Florence at Earl Bender & Company.

Reg. 32.25 JARDINIERES \$1.00  
BEAUTIFUL TROPICAL PLANTS (Any Two Plants \$3.00) \$1.75 each  
**FACTORY POTTERY SALES ROOM**  
Highway 80 East - Eastland, Texas



# EXTRA-VALUE DAYS!

...a golden opportunity to ease those budget "blues"

- Luncheon Meat** Oscar Mayer 12-Oz. Can **39¢**
- Crown Salad Olives** 21-Oz. Jar **49¢**
- Kitchen Craft Flour** deal for Baking 10-Lb. Bag **79¢**
- Cottage Cheese** Lucerne, Regular, or Farm Style 1-Lb. Ctn. **23¢**
- Cragmont Mixers** Collins, Lemon, Lime Sparkling Water, or Ginger Ale 2 32-Oz. Bottles **25¢**

- Lather Shave** 45¢  
Rise—Push Button Large Can
- Joyett Dessert** 39¢  
Assorted Flavors 1/2-Gal. Ctn.
- Iced Tea Blend**  
The Perfect Treat Tea Bags 48 Ct. Box **59¢** 1/2-Lb. Pkg. **59¢**
- SAFEGWAY EGGS**
- Breakfast Gems Eggs** 55¢  
Grade A Quality—Large Size Doz.
- Cream O' the Crop Eggs** 59¢  
Grade AA Quality—Large Size Doz.

You can get valuable premiums by joining **SAFEGWAY'S SAVE-A-TAPE PLAN TODAY!**

Announcing Skylark Bread's \$70,000 Buick Contest!



EASY TO ENTER... EASY TO WIN!

22 Air Born Buick Riviera Hardtops to be awarded! New Contest every week for 6 weeks. Entry Blanks in the Bakery Section at Safeway.

- Butter and Egg Bread** Skylark 1-Lb. Loaf **19¢**
- Stoneridge Farm Bread** Skylark Wheat 1-Lb. Loaf **25¢**

Get Acquainted Special!

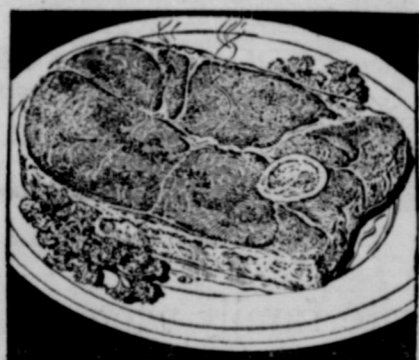
**Cloverleaf Rolls**

- Skylark Brown and Serve—12 Count 13-Oz. Pkg. **19¢**

Bargain Buys!

- Potato Crackers** Nabisco Chipper 8 1/2-Oz. Box **29¢**
- Nabisco Crackers** Triangle Thins 10-Oz. Box **33¢**
- Blue Bonnet Margarine** 3c Off Label 1-Lb. Pkg. **25¢**

Safeway's Your Best Place to Buy Meats!



**Round Steak**

- U.S.D.A. Choice Grade Heavy Beef—Full Cut, Bone-In Lb. **79¢**

**Bottom Round Steak** Beef, Boneless U.S.D.A. Choice Grade Lb. **85¢**

**Top Round Steak** Beef, Boneless U.S.D.A. Choice Grade Lb. **89¢**

**Rump Roast** Beef, U.S.D.A. Choice Grade, Bone-In Lb. **75¢**

**Beef Pot Roast** U.S.D.A. Choice Grade Heavy Beef Chuck Blade Lb. **55¢**

**Arm Pot Roast** U.S.D.A. Choice Grade—Beef Chuck Lb. **65¢**

**Poppy Sliced Bacon** First So Evenly 1-Lb. Cello **75¢**

Check These Buys!

- Underwood Deviled Ham** 4 1/2-Oz. **35¢**
- Chunk Style Starkist Tuna** No. 1/2 Can **33¢**
- Sno White Salt** Iodized or Plain 2 26-Oz. Boxes **23¢**
- Mortons Salt** Plain or Iodized 2 26-Oz. Boxes **25¢**
- Crisco Shortening** 7c Off Label 3-Lb. Can **84¢**
- Fluffo Shortening** 10c Off Label 3-Lb. Can **81¢**
- Liptons Tea Bags** Orange Paloo 16-Ct. Box **25¢**
- Liptons Tea** Orange Paloo 1/2-Lb. Pkg. **85¢**

Top Quality Values!

- Tide Detergent** The Washday Miracle Giant Box **75¢**
- Oxydol Detergent** For a Whiter Wash Giant Box **77¢**
- Dash Detergent** Start Using Dash Today 25-Oz. Box **39¢**
- Joy Liquid Detergent** For Sparkling Dishes 22-Oz. Can **69¢**
- Trend Liquid Detergent** 22-Oz. Can **53¢**
- Comet Cleanser** Gets Dirt Fast 2 14-Oz. Cans **29¢**
- Real Kill & Sprayer** 16-Oz. Bottle **59¢**
- Reynolds Wrap** Aluminum Foil 25" x 12" Roll **31¢**

- Fluffiest Marshmallows** 1-Lb. Cello **29¢**
- Del Monte Drink** Pineapple—Grapefruit 46-Oz. Can **29¢**
- Sliced Peaches** or Halves in Heavy Syrup Town House No. 2 1/2 Can **25¢**
- Sweet Peas** Town House 2 303 Cans **25¢**
- Del Monte Spinach** Fresh Flavored 2 303 Cans **25¢**
- Tomatoes** Gardenside Ideal for Casseroles 2 303 Cans **35¢**

Safeway Coffee Buys!

- Airway Coffee** Rich Flavored 1-Lb. Pkg. **73¢**
- Nob Hill Coffee** No Finer Coffee 1-Lb. Pkg. **77¢**
- Edwards Coffee** Regular, Drip or Fine Grind 1-Lb. Can **85¢**

Check These Values!

- Date Bar Cake Mix** Betty Crocker's 14-Oz. Box **35¢**
- Kitchen Craft Flour** Self Rising 10-Lb. Bag **88¢**

Safeway's Your Best Place to Buy Produce!



**Strawberries**

- Fresh—Red Ripe Sugar Sweet Pt. **35¢** or 3 Pts. **\$1.00**

**Lemons** Sunkist Ideal for Tea or Lemonade Lb. **12¢**

**Carrots** Sweet and Tender 2 1-Lb. Cellos **15¢**

**Squash** Yellow Flavor Packed Lb. **10¢**

**Oranges** Sunkist Valencia Lb. **19¢**

**Pears** Anjou A Salad Treat Lb. **19¢**

More Bargain Buys!

- Trend Detergent** Ideal for Dishes, food 2 Large Pkgs. **39¢**
- Cheer Detergent** Works Miracles in Your Wash Large Box **32¢**
- White Magic Liquid Bleach** 1/2-Gal. Jug **31¢**
- Band Aid Plastic Strips** Johnson and Johnson, Plain Box **19¢**

Check These Bargains!

- Dreft Detergent** Ideal for All Your Washables 8-Oz. Box **75¢**
- Wesson Oil** Ideal for Frying Ct. Bottle **69¢**
- Sunshine Hydrox Cookies** 12-Oz. Cello **37¢**
- Modess Napkins** Regular or Super Sanitary 12-Ct. Pkg. **35¢**

Prices effective Thursday, Friday and Saturday, May 5-16-17. In Eastland. We reserve the right to limit quantities. No sales to dealers.



**SAFEGWAY**

# MONEY SAVERS

# Crisco

# 89¢

3 Pound Can

Instant Folgers  
COFFEE

Giant 6-oz. Jar

99¢

Light Crust  
FLOUR

10-Lb. Bag

89¢

GLENDALE—14 Oz. Bottle  
**CATSUP** ..... 17c

BETTY CROCKER or PUFFIN  
**BISCUITS** ..... can 10c

FULL DRESS—No. 300 Tall  
**DOG FOOD** ..... 2 cans 15c

VEL  
**BEAUTY BAR** ..... bar 15c

SUNSHINE COOKIES—12-Oz. Pkg.  
**HYDROX** ..... 37c

CLOVER FARM  
**MARGARINE** ..... lb. 23c

**CAKE MIX** ..... 25¢

BETTY CROCKER Marble  
White Choc. Malt  
Black Walnut  
Yellow Peanut Delight  
Devil Food 20-Oz.  
Honey Spice Pkg.

NORTHERN TOILET  
**Tissue** 3 Rolls 25¢

LOOSE LEAF  
**Note Paper** 25c Pkg. 16¢

FRESH GREEN  
**Cabbage** ..... Lb. 5¢

HOME GROWN YELLOW  
**Squash** ..... Lb. 10¢

CENTRAL AMERICAN  
**Bananas** ..... Lb. 12 1/2¢

U. S. NO. 1 IDAHO RUSSET  
**Potatoes** 10 Lb. Bag 59¢

## IT'S THE BEST!

**SLICED BACON** ARMOUR STAR ..... Lb. 69¢

**GOOCH'S FRANKS** 3 Lbs. \$1

**SLICED BACON** NEUHOFF'S THICK 2 Lbs. 1.25

HOME MADE PURE  
**PORK SAUSAGE** ..... Lb. 45¢



**Loin Steak** Good Quality ..... Lb. 85¢

SMOKED  
**Picnics** ..... Lb. 43¢

LEAN TENDER PORK  
**Chops** ..... Lb. 69¢

H. B. MacMoy, Owner  
7:30 a.m. to 8:00 p.m. Weekdays  
7:30 a.m. to 9:00 p.m. Saturdays

### Gorman Gatherings

By Mrs. R. E. Boucher

Rev. and Mrs. Winford Harper and children of Fort Worth were guests in the home of his parents, Mr. and Mrs. W. D. Harper, Sunday, May 4. They will be leaving soon for their mission in Africa.

Mrs. Eva Harper of Livermore, Calif., spent Saturday and Sunday with her sister and brother-in-law, Mr. and Mrs. W. D. Harper.

Out-of-town guests in the home of Mrs. V. W. Day and Mrs. Elma Elliott the past week were Mr. and Mrs. C. E. McFatter, Rev. and Mrs. J. H. Littleton of Eastland, Mr. and Mrs. Charley Carruth and sons, David and Denny, Mr. and Mrs. A. A. Wallace of De Leon, Mrs. Mack McCoy of Big Lake, Mr. and Mrs. R. K. Wallace of San Angelo and Mr. and Mrs. B. B. Baze of Fort Worth.

Mrs. Elbie Clark and Little Pickey of Corpus Christi are visiting in the home of her mother, Mrs. Minnie Richey, and Mrs. Colie and other relatives.

The out-of-town visitors here for Mother's Day and attending church at the First Baptist Church were Mrs. W. L. Andrews and her daughter, Neta, and husband of San Antonio, Mr. and Mrs. Robert Hodge of Midland, Mr. and Mrs. Doyle Linder and son of Abilene, Mr. and Mrs. Earl Pittman and children of Ranger. Mrs. Dixie Jorman of Fort Worth spent the weekend with her mother, Mrs. C. O. Alsobrook. Mr. and Mrs. Herman Tomlinson and son of De Leon were weekend visitors in the home of her parents, Mr. and Mrs. C. O. Reid.

Julia Ann and Jannie Pittman and Eddie Robertson left Saturday for Venezuela. Mrs. Pittman remained for a few more days because of the illness of her father, John Brown. The girls and Eddie have been attending school here for the past term.

Mr. and Mrs. W. D. Harper were in Abilene Sunday, Mother's Day, to be in church services where their son Rev. Winford was to preach.

Mr. and Mrs. J. N. Ellison accompanied their son, Gene, and family to San Antonio for the weekend with their daughter and family, Mr. and Mrs. O. D. Hite. Mr. and Mrs. Ben Nix and Sherry of Denton were weekend guests in the home of his parents, Mr. and Mrs. Marvin Nix. Mr. and Mrs. Bob Boswell of Fort Worth visited Saturday and

Sunday with his parents, Mr. and Mrs. R. C. Boswell. Mr. and Mrs. Henry Burks of Austin and Mr. and Mrs. Floyd Rider and children were guests in the home of their mother, Mrs. Nettie Rider, over the weekend.

Weekend guests in the home of Mr. and Mrs. W. L. Andrews were her sisters, Mrs. Clara Crawford, Mrs. Mark Burrows, and Mark Jr. of Fort Worth.

Mrs. Shell Logan of Corpus Christi returned home Monday after a week's visit in the home of her mother and sister, Mrs. Angie Pritchard and Ethel. They spent Saturday at Buchanan Dam. Mr. and Mrs. John Collins of Eastland spent Sunday evening in the home of his sister, Mrs. Aurie Pritchard.

Mr. and Mrs. T. G. Gray met their daughter, Mrs. James Matthews of Corpus Christi, in Ranger Monday. She will be with them for a week.

### Tamale Sale... Set Saturday

A tamale and bake sale will be sponsored by the Catholic ladies of the Saint Francis Altar Society in the home of Mrs. Lusia Paramo, 413 North Bassett, Saturday.

The ladies invite the public to come to the sale which opens at 10 a.m.

### MOTHER'S DAY GUESTS

Mrs. Millie Brittain of 215 S. Walnut had all of her children as guests for Mother's Day. Her guests were Mrs. Paul D. Ferguson of Taylor, Mrs. John F. Wedding and three daughters, Carol, Jan and Debby, of Abilene, Mr. and Mrs. Ronald C. Brittain and children, Bruce, Ronda and Kathy, of Midland and her granddaughter and husband, Mr. and Mrs. Rex Stubbs, an children, Cherri, Brenda, Rex Jr., and Vicki, of Abilene.

**JOY**

DRIVE-IN THEATRE  
Eastland - Cisco Hwy.

All New Speakers  
Thurs. - Fri. - Sat.

ANNA MAGNANI  
ANTHONY QUINN  
ANTHONY FRANCIOSA

"WILD IS THE WIND"

MAJESTIC IN EASTLAND Regular Prices THURS. - FRI. - SAT.

**GLENN FORD · SHIRLEY MacLAINE**

Jason the Sheepman... he knew his best defense was in violent offense!

**THE SHEEPMAN**

LESLIE NIELSEN · MICKY SHAUGHNESSY · EDGAR BUCHANAN

In CinemaScope and METROCOLOR

**DIXIE Drive-In**  
EASTLAND RANGER HIGHWAY

Box Office Opens 7:15 Show Starts 7:30  
Box Office Closes

ADMISSION NEVER OVER 50c  
Children Under 12 FREE—Each Tuesday is BARGAIN Night—Adults 25c

WEDNESDAY & THURSDAY, MAY 14 - 15

Mystery plane! A fateful cargo!  
A nerve-tingling drama!

**ROBERT TAYLOR · DOROTHY MALONE**

**TIP ON A DEAD JOCKEY**

GIA SCALA  
IN CINEMASCOPE

PLUS: Two Color Cartoons

FRIDAY AND SATURDAY, MAY 16 - 17

**WALT DISNEY**  
DOROTHY McGUIRE and FESS PARKER

**OLD YELLER**

Technicolor

PLUS: Two Color Cartoons



## Here's why Plymouth, America's favorite family wagon, is TODAY'S BEST BUY-TOMORROW'S BEST TRADE

You get more wagon for your money today... more money for your wagon tomorrow!

Any way you look at it, you can't find a better wagon buy than Plymouth! So big—it carries more, does more, provides more room for family fun. So beautiful—just look at those long, years-ahead lines. So economical—Plymouth is priced right in the low-price "3", yet you can't buy a bigger wagon at any price. And further proof: Plymouth beat every car in the low-price class in the 1958 Mobilgas Economy Run; Plymouth's second consecutive victory!

Get the biggest wagonload of value at a price far lower than you would expect. See your Plymouth dealer today.

### FIVE BIG REASONS WHY YOUR NEXT WAGON SHOULD BE A PLYMOUTH

- 1. Biggest of the low-price "3".** Big as wagons costing thousands of dollars more. You can't buy a bigger wagon at any price!
- 2. Holds so much more than the "other two".** Over 7 cu. ft. extra passenger and cargo space. Optional "secret" luggage compartment available in 6-passenger models.
- 3. Rear-facing 3rd seat.** Folds flush into floor. You don't store it outside when it's not in use. Easy to enter, has convenient back step.
- 4. Disappearing rear window.** Rolls down into the one-piece tailgate. Doesn't jut out. Only on Plymouth wagons in the low-price "3".
- 5. Torition-Aire Ride at no extra cost.** Only Plymouth has it in the low-price "3". No sidesway on turns... no nose-dive on stops.

They don't come any bigger than *Plymouth* station wagons

\*Complete the circle of safety... check your car... check your driving... check accidents

# OPEN HOUSE

SATURDAY - MAY 17

W. B. "Wes" Harris - Service Station



**FREE! EXCITING EXHIBIT SATURDAY ONLY!**

Cosden Petroleum Corporation is pleased to announce the association of W. B. Harris as your retail dealer in Eastland. The big 32-foot trailer at left will be here Saturday only for Open House to help acquaint you with fine Cosden products from one of the world's largest independent inland refineries.

Treat the whole family to this absorbing adventure. Through a series of fascinating models in this trailer, you'll see how Cosden seeks, produces, refines and transports the oil that reaches your gas tank in high octane gasolines. No admission, of course.

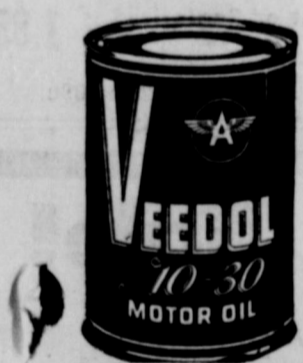
W. B. Harris now offers you a convenient stop for top-quality Cosden Gasolines. Both grades—Cosden Higher Octane Regular and Premium Ethyl — now give you more octane than ever before. That means a big power bonus for smoother performance . . . quicker starting . . . safer passing . . . and real mileage economy under all conditions.

Discover for yourself how Cosden's better products and Harris' superior service team up to add new pleasure to your motoring.



YOUR FIRST STOP FOR SUPERIOR SERVICE

**COLD DRINKS for all! FREE CANDY for the kiddies!**



FEATURING A FULL LINE OF TOP-QUALITY AUTOMOTIVE ACCESSORIES

## W. B. "Wes" Harris SERVICE STATION

811 W. MAIN

Open 6 A.M. - 9 P.M. Daily

JOBBER: MARVIN BROWDER OIL COMPANY

EASTLAND AND RANGER

WANT MORE TIME FOR FUN IN THE SUN? NOW'S THE...  
**Time to FILL your cupboards**  
 WITHOUT EMPTYING YOUR PURSE!



SULTANA LARGE OR SMALL  
**STUFFED OLIVES** 10 1/2-oz. Jar **49¢**  
 ANN PAGE PURE • PEACH • PINEAPPLE • APRICOT  
**PRESERVES** 2-lb. Jar **49¢** 1-lb. Jar **27¢**

THERE ARE NO LIMITS AT A&P!  
 A&P STORES ARE CLOSED ALL DAY SUNDAYS

**SALE! A&P'S OWN ALL PURPOSE OIL**  
**dexola**  
 FOR FRYING, BAKING AND SALADS  
 1 qt. **31¢** 1/2 qt. **59¢**

SOAP FLAKES  
**LUX FLAKES** Lge. Pkg. **33¢**  
 TOILET SOAP  
**LIFEBUOY** 3 Reg. Bars **29¢**  
 TOILET SOAP  
**LIFEBUOY** 2 Bath Bars **29¢**  
 WHITE TOILET SOAP  
**LUX** 2 Reg. Bars **19¢**  
 TOILET SOAP  
**LUX** 2 Bath Bars **27¢**  
 DETERGENT  
**RINSO BLUE** Reg. Pkg. **32¢**  
 DETERGENT  
**SURF** Reg. Pkg. **32¢**  
 DETERGENT  
**BREEZE** Giant Package **77¢**  
 DETERGENT  
**SILVER DUST** Giant Package **77¢**

**SPECIAL SALE!**  
 A&P **INSTANT COFFEE**  
 6 OZ. JAR **99¢**

**BEAN SALE**

Hardwood, Smokeless <b>Charcoal</b> Red Glow 2 5-lb. Bags <b>39¢</b>	Campfire Economy, 3 in 1 Package <b>Marshmallows</b> 1-lb. Pkg. <b>29¢</b>	Sultana Beans 1-lb. Can <b>10¢</b>	Pork & Beans 1-lb. Can <b>10¢</b>
SEMI-SWEET CHOCOLATE <b>NESTLE'S MORSELS</b> 4-oz. Pkg. <b>25¢</b>	A&P FANCY <b>PINEAPPLE CHUNKS</b> 2 20-oz. Cans <b>49¢</b>	Ann Page Red Beans 1-lb. Can <b>10¢</b>	Ann Page Blackeyes 1-lb. Can <b>10¢</b>
Comstock Sliced <b>Pie Apples</b> 6 No. 2 Cans <b>\$1.00</b>	M&M Plain or Peanut <b>Candies</b> 5 1/2-oz. Bag <b>29¢</b>	Ann Page Red Kidney 1-lb. Can <b>10¢</b>	

**"Super-Right" Smoked Hams...**

Half or Whole <b>55¢</b>	Shank Portion <b>35¢</b>	Butt Portion <b>49¢</b>	Center Slices <b>89¢</b>
--------------------------	--------------------------	-------------------------	--------------------------

**GROUND BEEF** "SUPER-RIGHT" **49¢** Lb.

*You Can Always Put Your Trust In "Super-Right" Quality Meats!*

"SUPER RIGHT" FRANKFURTERS 1-lb. <b>59¢</b>	Sliced ALLGOOD BACON 1-lb. <b>55¢</b>
"SUPER RIGHT" HEAVY CALF CHUCK ROAST Blade Cut 1-lb. <b>59¢</b>	"SUPER RIGHT" HEAVY CALF ROUND STEAK ..... lb. <b>99¢</b>
CAPN JOHN'S BREADED SHRIMP 12 oz. <b>63¢</b>	CAPN JOHN'S FISH STICKS 2 for <b>65¢</b>

**CHERRY PIES** Jane Parker **43¢**  
**ANGEL FOOD** Jane Parker Large Ring Cakes **39¢**

✓CHECK the FLAVOR!  
 ✓CHECK the PRICE!  
**A&P ICED TEA**  
 Famous since 1859  
 Hearty & Vigorous **OUR OWN** 1/2-lb. Pkg. **31¢**

**Fruits & Vegetables**

CALIFORNIA FRESH  
**Lemons** Large Size 6 for **19¢**

FLORIDA FRESH GOLDEN  
**Corn** 12 ears **49¢** 6 ears **25¢**

TEXAS FRESH BLACKKEYED  
**Peas** Lb. **10¢**

FRESH FLORIDA  
**Cucumbers** 3 for **19¢**

DETERGENT  
**Liquid Lux** 22-oz. Can **69¢**

DETERGENT  
**Condensed "All"** Reg. **39¢**

ANN PAGE TOMATO  
**Ketchup** 2 14-Oz. Bottls. **35¢**

DETERGENT, LIQUID  
**BLUE WISK** Qt. Can **69¢**

ALL-PURPOSE SHORTENING  
**SPRY** 3-lb. Can **91¢**

IONA CUT GREEN  
**Beans** 2 303 Cans **23¢**

KRAPIS  
**Malted Milk** 1-lb. Jar **49¢**



**Juniors and Senior Banquet Is In Oriental Garden Friday Evening**

An "Oriental Garden" was the beautiful setting as the juniors and seniors of Eastland High School met for their annual banquet Friday evening in the high school gymnasium.

The Oriental Garden was beneath a ceiling of red paper with gold stars appearing at various points. From the ceiling Japanese lanterns, gold glittered stars, chimes and balloons were hanging. Red glittered candles in gold holders were placed at different intervals down the tables laid in white arrangements of poppies. A large beautifully arrangement of poppies centered the head table. Nut cups, place cards and parasols of the Oriental theme completed the decor of the table.

Menu of Cherry Blossoms, Chop Suey, Chopsticks, Fruit of the Good Earth, Fluffy Clouds, Star Dust, Lotus Blossom Salad, Emperor's Delight and Cantonese Tea was served to the group.

Clinton Ray Humphreys was toast master. Julia Inzer and Patricia Fullen played "Chopsticks" on the piano to begin the program. Ronald Robertson gave the invocation. Larry Hollis gave the welcoming address and Johnny McMahan presented the response. Sandra Taylor sang "Tea for Two" accompanied on the

piano by Mrs. Andy Taylor.

Nancy Beck and Michael Lisenbee presented the senior class prophecy. Kerman Bond, band director, directed the stage band followed Sidney Seale and Kenneth Watson giving the senior class will. The program and banquet was concluded as the group sang the Alma Mater.

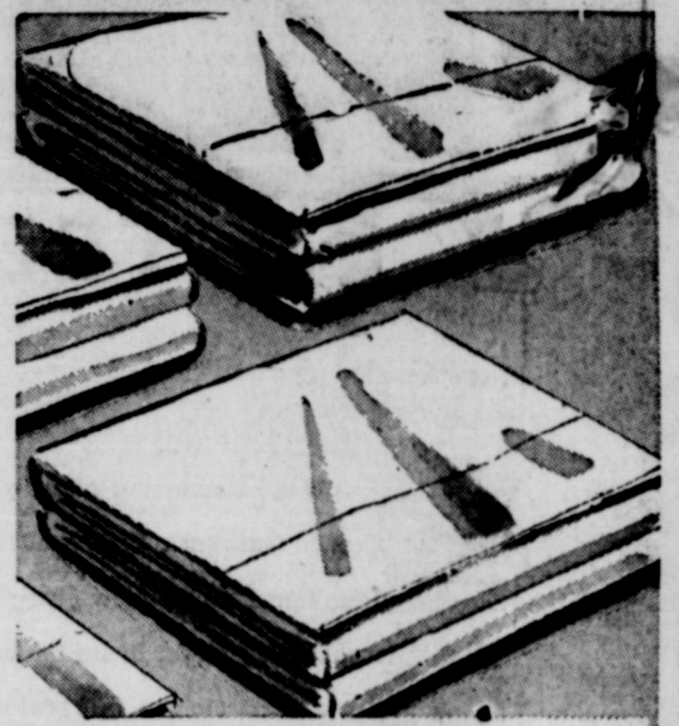
Miss Loretta Morris and Mrs. Ethel Woloszyn are co-sponsors.

CALL 601 FOR CLASSIFIED ADVERTISEMENT

Overseas Veterans Welcome  
 Karl and Boyd Tanner  
 Post No. 4136  
**VETERANS OF FOREIGN WARS**  
 Meets 2nd and 4th Thursday 8:00 p.m.

**PENNEY'S**  
 ALWAYS, FIRST QUALITY

**MAY WHITE GOODS**



**NEW LOW PRICES ON OUR PENCELE SHEETS!**

Penney's proves you can get fine Pencele sheets at prices you've seen on muslin. Penceles are silky smooth, fine weave with years of luxurious wear built in! Save now!

**195** 31 x 108" white

**Penney's Nation-Wide Sheets Famous Long-Wearing Muslins**

★ 81 x 108 inch full flat or sanforized Fitted Bottom	<b>1.85</b>
★ 72 x 108 inch Twin Flat or Sanforized Fitted Bottom	<b>1.65</b>
• 42 by 36 inch Case	2 for 85c
<b>COLORED NATION-WIDE SHEETS</b>	
★ 81 x 108 inch Full Flat or Sanforized Fitted Bottom	<b>2.13</b>
★ 72 x 108 inch Twin Flat or Sanforized Fitted Bottom	<b>1.85</b>
• 42 by 36 inch Cases	2 for 89c

**Dr. Caton Speaks At Luncheon of Friendship Class**

Dr. J. H. Caton was guest speaker at the regular monthly luncheon held in the annex of the First Christian Church by the Friendship Sunday School Class Tuesday noon.

Tables for the luncheon were laid with white cloths and centered with lovely arrangements of red roses. Red roses were noted throughout the annex.

Dr. Caton was guest speaker at the luncheon. Mrs. Roy Turner and Mrs. M. Turner were also featured speakers at the luncheon.

Mrs. Millie Brittain, president, presided over a short business meeting.

Members attending the luncheon were Mmes. Margaret East, Len Horn, R. L. Carpenter, J. R. Gilbreath, Mattie Miller, N. L. Smitham, Millie Brittain and Winnie Wynne.

Mrs. Janie Bills of Midland, Mrs. Mae Gattis, Mrs. Roy Turner, Mrs. M. Turner, Eric Turner and Dr. J. H. Caton were guests at the luncheon.

**Coffee Honors Mrs. R. D. Hart At Rebekah Lodge**

Mrs. R. D. Hart was honored at a coffee held by the Rebekah Lodge No. 177 in the IOOF Hall Tuesday evening.

Mrs. Hart is the former Miss Betty Jo Carroll. The Rebekah Lodge presented her with a gift of crystal.

Coffee and cookies were served to the 17 members present.

Following the coffee the Lodge held their regular business meeting. The announcement was made concerning the meeting of Tuesday which will be a special meeting. Members of the Lodge are requested to attend the meeting which will be at 7 p.m. instead of 8 p.m.

**Home Freezer Sale!**

PRICES AND TERMS YOU HAVE BEEN WAITING FOR!

**DELUXE UP-RIGHTS**

12 Cu. Ft. 430 Lb. Capacity	<b>\$259.00</b>	15 Cu. Ft. 530 Lb. Capacity	<b>\$289.00</b>
18 Cu. Ft. 630 Lb. Capacity	<b>\$349.00</b>	20 Cu. Ft. 700 Lb. Capacity	<b>\$429.00</b>
27 Cu. Ft. 950 Lb. Capacity	<b>\$469.00</b>		

**CHESTS**

15 Cu. Ft. 560 Lb. Capacity	<b>\$259.00</b>	21 Cu. Ft. 780 Lb. Capacity	<b>\$379.00</b>
-----------------------------	-----------------	-----------------------------	-----------------

**EXTRA SPECIALS (One of Each Only)**

COMBINATION: 9 Foot Freezer, 9 Foot Refrigerator	<b>\$399.00</b>
21 Cu. Ft. Chest (1957 Model)	<b>\$309.00</b>
18 Cu. Ft. Up-Right (1957 Model)	<b>\$299.00</b>

**RANGER FROZEN FOOD CENTER**

Dealer for RCA Whirlpool Appliances  
 Phone 426 RANGER, TEXAS 214 N. Austin