



# Eastland Telegram

"COVERING EASTLAND COUNTY"



VOLUME TWENTY-NINE

EASTLAND, TEXAS, THURSDAY, FEBRUARY 5, 1959

No. 125

## MOORE about... EASTLAND

by Virgil E. Moore

A letter received recently by the Susan Steel Bible Class of the First Methodist Church real-estate should be shared by all of Eastland, and the ladies of the class have graciously permitted us to print it here. It is from Mrs. Guy Patterson, now of Monahans. The letter follows:

Dear Friends,  
You will never know the warm glow that came into my heart when I received your message of good cheer today.

To be remembered by such lovely women, as I have always held you in mind, is unforgettable.

As I use to sit in the choir and see you, I always felt that you were "the Church," the inspiration for the pastor, and the kind of woman I'd like to grow to be.

I can see each of your faces and remember goodness comes from such thoughts as you live, express and grow in each day of your life. Your card reassured me as if I were really in your arms and I felt elated in spirit and body to have been so graciously given your prayers. Thank you so much.

I am feeling good again, but tire out very soon. Maybe within four weeks I'll resume my "beloved" work (school teaching.) I have 21 pupils; third grade level; and there is never a dull moment. My room has won the P-TA attendance count three times this year, of which I am grateful for such interested mothers. I have a wonderful principal and nice co-workers. I am in an ultra modern new building, but all this doesn't surpass my wonderful years at home in an old building.

My 16 consecutive years in Eastland schools will ever be a living memory of sweet girls and boys whom I loved and they returned it. My patrons there were appreciative, cooperative and good to me. Not once was there ill feelings between the children and me nor their parents. To me this was a small portion of heaven on earth.

Guy and I are members of the First Methodist Church out here. The pastor, Carl Clement, is a life friend of my brother so we feel close to Carl and his wife, Frances. We visit back and forth. Have made some very nice new friends of whom we have already learned to love, but they can't ever take the place of friends we left behind when moving out here. May God bless and keep you in His endowed love. May He turn nuclear weapons and cannon balls into church bells and atomic bombs dinner gongs.

Mrs. Gordon Smith, 300 South Jaklawn, has a persian cat on her hands that she is willing to give away. The cat may just be lost, Mrs. Smith reasons, so if you have lost one, check with her.

Eastland appreciates Ranger's opposition to the Abilene move to steal the 11th Court of Civil Appeals.

Ranger Chamber of Commerce directors went on record this week as opposing any effort to remove the court from Eastland County. In so doing, Ranger's C-C recognized the fact that the Court is a vital part of Eastland County. More and more Eastland County towns are working as a unit, and Ranger's efforts in behalf of keeping the Appeals Court here will not be forgotten by Eastland citizens.

Mark Winters down as District 7-AA's most thrilling team. The Blizzards have beaten both Coleman and Ballinger teams by two points in their home gym and lost to Eastland by the same margin.

We would rate Winters as the district's most hustling ball club, for we do not think they have the material to beat either Coleman or Ballinger.

## Eaves to Head Livestock Show

N. B. Eaves will serve as general superintendent of this year's Eastland County Livestock Show, it was announced this week.

Ben McKinnis, agricultural representative of Texas Electric Service Co. and secretary of the County Livestock Association, made the announcement Tuesday at the regular noon luncheon meeting of the Lions Club, held in the Fellowship Hall of the First Methodist Church.

The show will be held March 20-21 at the new County Livestock Show grounds on the banks of Eastland Lake. The City of Eastland donated the land, some 25 acres, to the Livestock Association and the Sheriff's posse. A large metal building, donated by Bill Hoffmann, has already been moved to the show grounds and another building is now being constructed.

McKinnis told Lions that the Eastland County show is rated as one of the best county shows in this part of the state. Some 300 exhibitors show stock and some \$1400 in prize money is awarded annually.

Assistant superintendent of the show this year will be Johnny Aron. Other superintendents of the show will include Clinton Pierce, swine; Walter Kucklin, sheep and goats; Ernest Reich and Marshall Berry, dairy cattle; R. L. Stuard, fat steers; and Ed Harrison, beef cattle.

Lion program chairman was James Wright.

The money belongs to Mrs. W. A. Rogers, 1317 South Bryens Street. Mrs. Rogers' daughter-in-law cashed a pension check for Mrs. Rogers at the Eastland Bank, put the money in the envelope and missed it before leaving the square.

A search failed to turn up the money.

"We certainly need the money," a family spokesman said, "and we have faith that the person who found it will return it when they discover who the money belongs to."

Mrs. Rogers' phone number is 665-J.

## Lost Money... Badly Needed

A government envelope containing \$60 in cash was lost on the streets of downtown Eastland Wednesday morning.

The money belongs to Mrs. W. A. Rogers, 1317 South Bryens Street. Mrs. Rogers' daughter-in-law cashed a pension check for Mrs. Rogers at the Eastland Bank, put the money in the envelope and missed it before leaving the square.

A search failed to turn up the money.

"We certainly need the money," a family spokesman said, "and we have faith that the person who found it will return it when they discover who the money belongs to."

Mrs. Rogers' phone number is 665-J.

## Poll Tax Sales In County Are At Record Low

Eastland County poll tax sales dropped to a modern all-time low this year, records kept by County Tax Assessor - Collector J. C. Allison reveal.

Only 2,682 persons paid their \$1.75 to be eligible to vote in this year's elections, compared to 4,038 a year ago.

Actually, with 1959 being a so-called "off election year" it would be unfair to compare 1959 and 1958 sales. Sales in the last "off year," 1957, were listed at 3122, however, and in 1956, the presidential election year, poll tax sales in this county totaled 5,100.

Only Cisco reported a heavy sale of poll taxes, although the courthouse has the heaviest sales. A total of 1411 poll tax slips were sold at the courthouse while Cisco sales totaled 711. Ranger's sub-station sold 282, Gorman's 147 and Rising Star's 126.

There will be a city election and school board election here this year.

## James K. Smith Named Member Army Committee

Clyde Young, chairman of the Salvation Army Service Unit Committee in Eastland, announced today that James K. Smith, manager of Perry Brothers, has accepted an invitation to serve on the welfare committee.

Other members of the Salvation Army Board are Ray Laney, vice-chairman; H. T. Wilson, treasurer; and Everett Plowman.

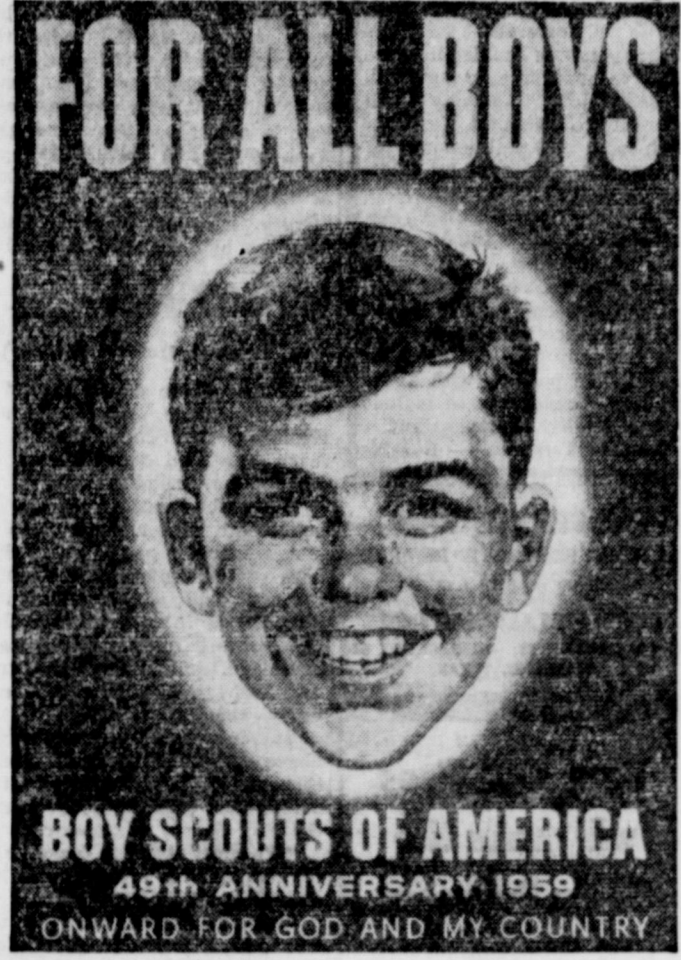
This organization, Young said, is supported by the Eastland United Fund and is dedicated to meet all the emergency welfare problems of this area not covered by other agencies.

Wilson reported that a total of 557 persons were given assistance by the Committee in 1958. Grocery orders, meals, lodging, auto repairs, clothing, transportation and a summer camping program for deserving youngsters are some of the things sponsored by the Army.



JAMES K. SMITH  
Salvation Army committee

## 'A Scout Is Friendly' Is Theme Of Boy Scouts' 49th Anniversary



Local Boy Scouts will observe Boy Scout Week, Feb. 7-13, by launching the fourth and final year of the "Onward for God and My Country" program. Observing the 49th anniversary of the Boy Scouts of America will be 4,780,000 Scouts in the nation. Several local events are planned to commemorate the special week.

## Ranger C-C Lashes At Abilene 'Steal'

Directors of the Ranger Chamber of Commerce adopted a resolution condemning the action of Taylor County to move the 11th District Court of Civil Appeals from Eastland to Abilene, in a meeting Tuesday night.

A letter of protest will be sent by the legislative committee of the Chamber to the Abilene Chamber of Commerce and to Chambers of Commerce in this area, asking them to protest the move.

Members of the committee—David D. Pickrell, L. R. Pearson, Sr., B. S. Dudley, Sr., and Dewey Cox, Jr.,—will draw up the letter also to be sent to state representatives and senators.

Earlier it was announced that the Taylor County Commissioners had voted to buy six lots on the block east of the courthouse, and the Abilene Reporter - News said this would be "... for future expansion purposes and with the possibility that the 11th Court of Civil Appeals at Eastland might eventually come here."

"There has been some work here this year designed to bring about introduction of a bill in this legislature to bring about the move," the Reporter - News declared. It emphasized that Abilene would like to get the present Legislature to vote in favor of moving the court.

Ranger directors expressed the feeling that since Abilene is supported by this area, it is "biting the hand that feeds them."

## Stanley Blevins To Attend Clinic On Youth Revivals

Stanley Blevins of Eastland, a student in Hardin - Simmons University, will attend a clinic on youth-led revivals at Mount Lebanon Baptist encampment grounds near Dallas, Feb. 20-21.

Dr. W. F. Howard, secretary of the Texas Baptist student department, said that nearly 100 students from colleges and universities over the state will attend the clinic.

During the coming summer, the students will conduct revivals arranged by the student department. Purpose of the clinic is to study the problems and techniques of the revival campaigns, Dr. Howard said.

More than 1,100 revivals have been conducted by students during the 14 years the program has been in operation, said Dr. Howard.

Speakers for the clinic will include Drs. C. A. Roberts, pastor, First Baptist Church, Altus, Okla.; E. F. Hallock, pastor, First Baptist Church, Norman, Okla.; Riley Fubank, pastor, Woodlawn Baptist Church, Houston; and Howard.

## Cisco College Registration Is Extended

Registration for the spring semester is continuing at Cisco Junior College. Students may enroll for full time work through Monday.

Registration for night classes has been extended through Feb. 10 due to the icy weather. The registrar's office will be open from 6:30 - 8 p.m. Thursday, Feb. 10, for the benefit of night students.

Classes offered at night are: Monday—office machines, typing and government; Tuesday—introduction to education and American history; Thursday—freshman English and sophomore English. Classes meet once each week from 7:30-9:30 p.m.

L. C. PHAGAN, PREMIER JOBER  
1206 W. Bliss — Phone Cisco MI 2-1440  
All types of oils and greases for farm, industrial and commercial users.  
Only local oil (no imported oil) used in making Premier Products.

## Boy Scouts to Run City Government In Eastland

Eastland Boy Scouts will literally take over Eastland Saturday to kick off Scout Week in Eastland.

Boy Scouts will assume the duties of all city officials and will enforce parking meter payments all day Saturday. All fines paid Saturday for parking violations will go to the Scouts.

Scouts will elect their own mayor, city commissioners and city manager to rule the town for the day.

Sunday Scouts will attend the

First Presbyterian Church as a unit and a special sermon is to be delivered by Rev. Eugene Surface, pastor.

Camp outs, hikes and window displays (The Men's Shop) are also planned for Scout Week here.

"Onward for God and My Country" is the theme for the Boy Scouts of America as they celebrate the 49th Anniversary Feb. 7-13 throughout America.

"Over 2300 Cub Scouts, Boy Scouts, and Explorers with 1025

adult leaders in 120 Scouting Units sponsored by 87 Churches, Schools, Veterans Organizations, and Civic Clubs are planning to do Texans share in celebrating the occasion," according to Lowell Pouncey of Brownwood who is chairman of Camping & Activities in the eight-county Comanche Trail Council. E. R. Weatherford of Breckenridge and Norton McCullough of Brownwood are District chairmen of these committees.

The members are engaged in a five point plan which includes attending church services as a Unit on Scout Sunday, Feb. 8, displaying an up-town window with handicrafts and camping equipment, parents and friends as guests, conducting an open house with

adopting a project of service to their sponsors or community to carry out the slogan "good will and good turn," and going on an outing or hike with advancement as the objective. Each unit that completes four of the five points will receive a national ribbon award. The boys who own uniforms are urged to wear them during Scout Week.

A report to the Governor program will be held in Austin February 14, and the Dublin Rotary Club Explorer Post 30 will attend the activities to represent the Council. Explorer Eddie Bone and Advisor Lois Gee of Dublin with several Explorers will be present and participate in the parade, report to Governor, luncheon, and tour of University of Texas.

"We encourage each sponsor or organization to cooperate with the Scouts in observing the anniversary," stated Cyrus B. Frost, Jr. of Eastland, president of the Council.

The Scouting movement of our area had a 9.1 percent unit gain and 3.7 percent boy gain in 1958 and has set an ambitious objective in 1959 — all in the interest of boys — the reason for it all.

## THE BAND WAGON

By Mrs. Andy Taylor

We saw some new faces at the January meeting of the Band Boosters Club! If yours was not one of them nor one of the "old faithful" ones, we hope you can meet with us come February 23, which is our next meeting date.

James Wright, club president, expressed thanks in behalf of the membership for the fine work already accomplished by the newly appointed committees. "Our committees have certainly been on the job," Wright said.

Mrs. James Whittington a n d Mrs. Don Russell presented a draft of the proposed Constitution and By-Laws for the recently re-organized Band Booster Club. They will be up for adoption at the February meeting.

Andy Taylor, chairman of the Finance Committee, and Mrs. J. C. Lilly, another Finance Committee member, gave reports on projects which are being considered for raising funds for new band uniforms. The club voted to accept Mr. and Mrs. Henry Pullman's offer to let the Boosters use the five-reel moving pictures taken in Eastland some thirty years ago in combination with a concert by the Eastland Maverick Band. No definite date has been set for the event, however, it is hoped it can be scheduled in the early part of March. This should be of interest to both old and new residents of Eastland — seeing shots of schools and other public buildings as they were in 1929. We understand some of the reels have been shown to several clubs in town and proved to be a barrel of fun. So watch for the date — we'll be letting you hear about it again very soon.

A brief discussion was held on reviving the Annual Ranch Day this spring. We remember this as being a day of fun several years back. It is also a good community project since various civic organizations are asked to sponsor a booth. In these busy times so often "community Get-Togethers" are neglected, but have you ever seen Eastlanders fail to have any community project that wasn't a success? No sir, you name one! Some

of you other clubs, let us hear your idea on this.

And speaking of communities, in one of the size of ours there is generally only one band — the High School Band. They are called upon time and time again by all of us for parades of every type, concerts wherever a peppy tune or stirring march can add to the occasion.

We are always proud of our band when they play well and look well. We want them to have slick looking uniforms and step high like a good band should. It's just necessary if we have a good band — just as it is necessary that the music they play is nice to hear. Now people, I am closely associated with the band and their work at present. I know that some of you are also, and some of you are not. So — I am asking you to take this reporters word for it — we have a wonderful group of boys and girls on Eastland High School Hill that are working hard at learning to play under the splendid supervision and instruction of Kerman Bond. From the sixth grade up we have band classes of instruction for enthusiastic students and as I have mentioned before by next year Eastland could have a 60 to 70 piece band. The plain facts are — the school system allows only so much money in the budget for operation of the band, including music, instruments, expenses for trips, etc. and enough money for new uniforms just isn't there.

We Band Boosters think the band needs new uniforms. So you say, what's wrong with the present ones? They have only had them for a few years? Well, let's see, where shall I begin to pass on to you these answers. In the first place, the present uniforms are not the school's colors. Secondly, there aren't enough of them to outfit a 70 piece band even if they were not nearly worn out. Uniforms are expensive and we hate to buy additional ones when they are not what we want. We need to adopt a standard uniform like most bands

(Continued on Page Two)

## Don Smith Is Accepted by Medical School

Don Smith, pre-medical student and junior at the University of Texas, has been accepted for entrance into the University of Texas Southern Medical School at Dallas beginning with the fall semester.

Don is a member of the Alpha Epsilon Delta, honorary pre-medical fraternity, and Pi Kappa Alpha, social fraternity.

He is the son of Mr. and Mrs. Homer Smith of 400 South Hillcrest.

EASTLAND NATIONAL BANK  
"On The Square"  
Member F. D. I. C.

## SANDY'S SCHOOL SCOOPS

By SANDY TAYLOR  
Telegram School Reporter

Hi! Well, we have been rather ice-bound this week as school has been open only one day. I'm sure that everyone enjoyed the two holidays even though we will have to make them up later.

Last Friday was a big day for the Maverick Band and Eastland High Seniors as they spent the day in Fort Worth. The band marched in the annual Stock Show Parade and attended the first performance of the Stock Show Rodeo and Horse Show. They also were thrilled by the performance of Wells Fargo's Dale Robertson, and the daredevil antics of Jimmy Murphy and his white chargers. This act consisted of two beautiful white horses, their trainer, and their amazing feats with fire. Incidentally, on page 16 of the Stock Show program, there is a picture of the Maverick Band as it marched in the Stock Show Parade last year.

The seniors of EHS spent the day at the annual Career Conference at Texas Christian University and from all reports, they enjoyed a very interesting day.

We of EHS are very privileged to have two organization sweethearts in our midst. They are Carol MacMoy, sweetheart of the Eastland County Sheriff's posse, and Rebecca Graham, State Pecan Queen of Texas.

Basketball this week is against Ranger Friday night in Eastland. Ranger hasn't won a conference game this year and we surely don't want this to be the first, so everybody come on out and urge our Mavericks on.

See ya' next week!

## Charles Polston Is On Carrier

FAR EAST — Charles A. Polston, seaman, USN, son of Mr. and Mrs. F. B. Polston of Route 3, Ranger, and husband of the former Miss Nancy J. Brown of Olden, is aboard the attack aircraft carrier USS Midway, operating as a unit of the U. S. Seventh Fleet in the Far East.

The Midway, flagship for the Commander of Carrier Division Five, visited Hong Kong, British Crown Colony, Jan. 12, after a 16-day period of fleet operations at sea.

Various other Far Eastern ports, including Yokosuka, Japan, have also been visited by the heavy flat-top. She is expected to return to the U. S. in the near future.



TOUGH "HALIBUT" — An extremely untasty dish for an enemy would be this "Halibut," Uncle Sam's newest nuclear sub. Launched at Mare Island Naval Shipyard near Vallejo, Calif., it is the first nuclear-powered submarine capable of firing guided missiles. Rear Adm. E. W. Grenfell, commander, Pacific Fleet Submarine Force, calls the Halibut "the greatest and most powerful individual submarine weapons system in any navy in the world."

**FREYSCHLAG**  
INSURANCE AGENCY  
presents the  
**WEATHER NEWS**

High	63
Low	28
Moisture	10
Total Rain In Feb.	.30
Total Rain for Year	.36
Forecast	Cloudy and Cold

# Eastland Telegram

Eastland County Record established in 1931, consolidated August 31, 1951. Chronicle established 1887, Telegram established 1923. Entered as second class matter at the Post Office at Eastland, Texas under the act of Congress of March 3, 1879.

**TIME PUBLISHING COMPANY**  
Published Tri-Weekly—Tuesdays - Thursdays - Sundays  
**ONOUS DICK and JOE DENNIS, Publishers**  
**VIRGIL E. MOORE, Editor**  
**CAROLYN COLLINS, Society Editor**

One week by carrier in city	.18
One month by carrier in city	.48
One year by mail in county	2.75
One year by mail in state	4.75
One year by mail out of state	6.75

**NOTICE TO PUBLIC**—Any erroneous reflection upon the character, standing or reputation of any person, firm or corporation which may appear in the columns of this newspaper will be gladly corrected upon being brought to the attention of the publishers.

## WANT ADS

Cards of Thanks charged for at rate of \$2.00 Each

**FOR RENT**  
FOR RENT: Furnished two bedroom apartment in duplex. 611 West Plummer.  
FOR RENT: Small furnished house. Apply Mode-O-Day.  
FOR RENT: Five room house at 1211 W. Plummer. Phone 388, Eastland.  
FOR RENT: Newly decorated apartments Hillside. Phone 9520.  
FOR RENT: Newly decorated apartments. Phone 1083.  
FOR RENT: Furnished two room apartment and a bedroom. 205 South Walnut. Phone 324-W.  
FOR RENT: Five room house at 1211 W. Plummer. Phone 388, Eastland.  
FOR RENT: Nice furnished apartment with garage. 302 East Main.  
FOR RENT: 4 room unfurnished house. 2 bedrooms. Nice and clean. Phone 457-J. Alice Speer.

**MISC FOR SALE**  
FOR SALE: Complete Westinghouse roaster - oven cabinet, auto-timer and grid. Less than price over alone. See 702 A. West Patterson. Phone 1104-J.  
FOR SALE: Cash register, cold drink box and other store fixtures. See at Eastland Telegram.  
CHAIRS - CHAIRS—over 500 various types of straight chairs, with and without arms. Mattresses, tarpaulins, overcoats, field jackets, work pants, gadgets, gizmos . . . at low prices while they last. Army Surplus Store—North East Corner of Square, Eastland.  
FOR SALE: Used refrigerator, good running condition. \$30. See at Eastland Telegram office.  
SIX months to pay for an Ed V. Price tailored suit. Made to your individual measurements. NO interest. NO carrying charges.  
C. L. FIELDS  
103 W. Valley Phone 571  
ELECTROLUX (R) Cleaners factory rebuilt and guaranteed. Authorized Sales & Service. 1392 Sayles, Abilene. Ph. OR 3-1135.  
FOR SALE: Re-conditioned jukeboxes adding machine guaranteed \$27.50. Stephens Typewriter Co. 417 South Lamar  
FOR SALE: 40 penny peanut vending machines. Phone 571.

**MISC. WANTED**  
WANTED: Babysitting. Yard work. Call 845-J. Mr. and Mrs. James Duke.  
WANT TO BUY: Small home with small acreage in Eastland. D. G. Fambrough, Route 3, Cisco.

**REAL ESTATE FOR SALE**  
FOR SALE: Five room house, hardwood floors, good condition, reasonable price and name own amount of down payment. Phone 388, Eastland.  
FOR SALE: Two bedroom home. Just re-modeled inside, including new kitchen cabinets. Moderately priced. 1203 West Main. Phone 1007.  
SIX ROOM home for sale by owner—two corner lots. 500 Pershing. \$9500, with \$3,000 down payment. Can be seen by appointment from J. O. Earnest. For further details write L. P. Stambaugh, Box 185, Vernon, Texas.  
FOR SALE: House. Four rooms and bath. On corner lot. Cypress Street in Ranger. Re-modeled. Phone 618-J, Eastland. 105 South Virginia.

**LOST & FOUND -**  
LOST: Boy's black leather jacket at corner of Plummer and Maderia. Phone 573-J, Cris Franklin.  
LOST: Black and White Chihuahua. Disappeared in Carbon between 9 and 11 a.m. Wednesday. Phone 2215, Carbon, collect at night. Bill Parten.  
LOST: Gray kid glove. Probably on Seaman Street. Phone 442-J.  
LOST: Grey kid glove probably on S. Seaman St. Phone 442-J.  
LOST: Ladies white gold Bar Pin with one small stone. Reward. Call J. M. Davis, Phone 696 or phone 171 after 6 p.m.

**Typewriters**  
Adding Machines  
Cash Registers  
BUY SELL RENT  
New Electric Adding Machines \$127.45  
STEPHENS  
TYPEWRITER CO.  
417 S. Lamar St.  
EASTLAND, TEX.  
Phone 639

**AUTOS FOR SALE**  
FOR SALE: 1948 Ford Pick-up 307 North Ammerman.

## TRUCK SEATS

• Repaired • Repadded • Reupholstered  
• Original Truck Leather

FIBRE-PLASTIC  
LUM-PUP  
NYLON AND ORIGINAL MATERIALS

FOAM RUBBER CARPETS, DOOR  
PANELS, ARM REST AND TRUCK LINING  
HEAD LINERS

ORIGINAL AND PLASTIC LEATHER

### GRAHAM TRIM SHOP

706 W. Main Phone 170

### SPECIAL NOTICE

**MR. STORE OWNER**—If you have bookkeeping problems, we suggest you take a look at The Johnson System. The new Modern Merchant simplified bookkeeping book is designed to ease the work of keeping records for the small retail store owner. It can easily be adjusted to fit your operation. EASTLAND TELEGRAM.

**REFRIGERATION SERVICE**—Dairy, Commercial, Auto, Household. Call collect, Bill Kendall, HI 2-1312, Cisco, Texas.

**NOTICE**: Refrigeration repairs, household, commercial. Phone 785. Roy Gann, Nite 976.

**MR. FARMER**—We recommend Garner's Farm Record, a simplified bookkeeping system and income tax record for operating on either a cash or inventory basis. So simple a school child can keep it. So economical all can afford it. So complete it meets all income tax laws. And your complete, simplified bookkeeping system costs just \$1.75. EASTLAND TELEGRAM.

**MAN WANTED**: for 1500 family Rawleigh Business in Stephens County. Permanent if you are a hustler. See R. F. Lewis Desdemona or write Rawleigh's Dept. TXA - 1022-123 Memphis, Tenn.

**RUBBER STAMPS**—"24 HOUR SERVICE IF DESIRED"  
**EDDIE'S RUBBER STAMP SERVICE**  
607 SO. DAUGHERTY - P. O. BOX 646 EASTLAND, TEXAS

**CARS WANTED**  
We will pay cash for your clean low mileage car. Any make or model.  
**BLEVINS MOTOR CO.**  
514 W. Main Phone 308

**Eastland Masonic Lodge No. 467**  
Reg. Stated meetings 2nd Thursday of each month, at 7:30 p.m.  
E. A. HATTEN, W. M.

**Special!**

**For January ONLY**

Your Choice of Any Of Our Fibre

**SEAT COVERS**

Cut and Tailored To Fit All Regular 2 and 4 Door Sedans.

MANY PATTERNS TO CHOOSE FROM

**24.50**

We Will Give S & H Green Stamps On This Special

**BLEVINS MOTOR CO.**

514 W. Main Phone 308

**SINGER SEWING MACHINES and VACUUM CLEANERS**

New and Used

Call

**Dois Morton**  
Phone 955-W-1 after 5 p.m.  
Service All Makes

**HOW TO MAKE YOUR DREAM HOME COME TRUE SOONER...**

Probably you've got a pretty clear picture in your mind's eye of the home in which you and your family will "live happily ever after." Big question is: how SOON can you build this home of your dreams? First you must accumulate the necessary cash for the down payment. We can help you do this SOONER by giving your savings greater earning power. They'll grow FASTER at our liberal rate of return . . . with INSURED safety. Then, for additional financing, investigate our

**LOANS FOR HOME BUILDING Purchase, or Re-Modeling**

We'll arrange a low-cost loan that you can repay just like rent with all-in-one monthly payments.

**First Federal Savings and Loan Association**

204 Main Street Ranger, Texas

### Band Wagon

(Continued from Page One)  
do and then add the suits that are needed from year to year. It's a high goal to tackle, but so was the lighted football field, the practice field, the Eastland Memorial Hospital, and other projects that citizens of Eastland have worked together on and accomplished.  
I want to warn you people, you will be hearing from us on these Band Booster projects. We don't

expect anyone to be hurt by our efforts, unless it's from hard work. If you are broke, maybe you can help us work or at least give us some encouragement. Any volunteers?

I have rather "let-go" on you this time, haven't I? We just want everyone to know exactly what we are facing and planning. We probably cannot do it in a year, but before we say we can't, we've decided to give it a try.  
The Maverick Band had a nice trip to Fort Worth last Friday for the Stock Show parade and a rodeo. Incidentally, when you buy your program at the rodeo this year, look on page 16 at the picture of the Eastland Band made last year during the parade. Needless to say, these boys and girls were proud and thrilled to open their program and see a picture of our band under the caption, "Everyone Loves a Parade". Think on this a bit! Thanks for listening.

### Chief Scout

(Continued from Page One)  
those ages, there should be 4,173,000 Cub Scouts, Boy Scouts, and Explorers Dr. Schuck said. To reach one-third would mean 5,648,000 boy members.

The Cub Scout program for boys eight, nine and 10 years old is now reaching one of every three boys of those ages. Boy Scouting for ages from eleven through 17 attracts one in every four of those ages, while Exploring for those 14 years old, and in the ninth grade and through 17 reaches one of every nine.

Current total membership is above 4,780,000 boys and leaders. Since 1910, he added, more than 29,500,000 persons have been in the Boy Scouts of America.

"We must strive to make Scouting available to every boy in America," Dr. Schuck wrote.  
"Looking ahead for the next five years," says the Chief Scout Executive, "we must recognize that never has it been so important or imperative that the youth of our nation be trained to high idealism, acquired through unselfish service, by self-reliance, and cooperative effort."

**Cisco Orchestra To Play at Lone Cedar Club Sat.**

Ray Judia of Cisco and his orchestra will play for dancing at the Lone Cedar Country Club Saturday evening. Hours of the dance will be from 9 until 12 p.m.

**NOTICE**  
Effective February 1st  
**MRS. VERA KLEINER** will be your Abilene-Reporter Agent

### READ THE CLASSIFIEDS

### CALL 601 FOR CLASSIFIEDS

**TIME TO BUY... TIME TO SAVE ON LUMBER AND BUILDING SUPPLIES**



We have many interesting millwork pieces . . . finest hand and power tools . . . paints . . . roofing — and you can buy what you need on easy credit terms. Delivery is free in a 50-mile radius.

**HIGGINBOTHAM - BARTLETT CO.**  
Jack Elliott, Mgr. Phone 112 or 1014  
301 W. Main

**Nothing New This Year . . .**



WE ARE CONTINUING OUR SAME OLD PRACTICE . . . SQUARE DEALING—YEAR ROUND

ALWAYS IN THE MARKET FOR **Scrap IRON AND METAL**

let us solve your **PLUMBING PROBLEMS**

Fixtures, Supplies, Water Heaters  
Electrical Supplies For Home and Farm  
Copper Tubing, Plastic Pipe,  
New and old Pipe, Brass and Copper  
Fittings... WE HAVE EVERYTHING.

**EASTLAND IRON & METAL CO.**  
OWNED AND OPERATED BY HENRY PULLMAN

**BE MODERN...INSTALL AN Electric Lawn Light**

Completely Installed  
As Low As  
**\$29.95**  
Others at 39.95 to 54.95

For normal installation with up to 50-ft. of cable and normal installation of inside switch.

ONLY PENNIES TO OPERATE . . . Use all night—every night for less than 30c per month.

You can get YOUR choice of design and color —Black — White — Black and Brass or White and Brass.

Terms If Desired

**Decore Metal Products**

306 E. Main Phone 288

### SOCIAL CALENDAR

**Monday, February 9**  
7:30 p.m. — Members of the Oddfellow Lodge will meet in the IOOF Hall for their regular meeting.

7:30 p.m. — Members of the American Legion Auxiliary will meet in the Legion Hall.

**Tuesday, February 10**  
9:30 a.m. — Mrs. George Corse will present "Masonic Information" at the meeting of the W.S.C.S. of the First Methodist Church in the church parlor.

7:30 p.m. — Mrs. Kerman Bond will be hostess to the members of the Zeta Pi Chapter of Beta Sigma Phi in her home at 1094 S. Seaman with Mrs. Don Kincaid presenting the program on "Love's Miracle in Marriage."

7:30 p.m. — Mrs. R. M. Sneed will present the program for members of the Xi Alpha Chapter of

Beta Sigma Phi in the home of Mrs. Bill Leslie, 415 Hillcrest.

7:30 p.m. — Members of the Rebekah Lodge will meet in the IOOF Hall for regular meet.

7 p.m. — Mrs. H. M. Hart will be hostess to the Homemakers' Sunday school class of the First Baptist Church for a covered dish supper in her home, 601 South Bassett.

**Wednesday, February 11**  
3 p.m. — "News in Cooking" will be the topic for the meeting of the Civic League and Garden Club. Mrs. M. A. Treadwell is hostess chairman. Other hostesses are Meses. Frank Sayre, E. S. Perdue, J. O. Jolly and H. W. Sims. Mrs. W. F. Davenport is leader for the program on "Spring Pastries."

2 p.m. — The Morton Valley Club House will be the scene of the regular meeting of the Morton Valley Home Demonstration Club.

**Thursday, February 12**  
2 p.m. — Members of the Morton Valley Community Club will meet in the Club House for their regular meeting.

3 p.m. — Members of the Alpha Delphian Club will meet in the Woman's Club for their "Valentine Party" with Mrs. J. LeRoy Arnold as leader. Mrs. E. S. Perdue will present "The Origin of Valentine."

### Hospital News

Patients in the Eastland Memorial Hospital are:

Mrs. Lloyd Johnson, medical, Cisco.

Lee Campbell, surgical, Abilene.

Mrs. J. G. Biggs, medical.

Mrs. J. E. Loughrey, surgical.

Mrs. Vergie Mae Johnston, medical, Breckenridge.

Mrs. Lee Taylor, medical, Odessa.

Hugh Johnston, medical, Breckenridge.

Mrs. Lewis Treadway, surgical.

Mrs. Marvin Mahan, medical, Abilene.

Mrs. John E. Collins, medical.

Mrs. Hugh Mahaffey, medical.

Mrs. Lula Fox, medical.

Mrs. Vernon Humphrey, medical.

Jason Proctor, medical, Cisco.

Mrs. S. S. Faircloth, surgical.

George Moore, medical.

W. B. Inzer, medical.

Mrs. Sally Nabors, medical.

Mrs. Anna Reich, medical, Cisco.

Miss Cecelia Haas, medical.

Dismissed were Mrs. T. E. Clemmer, Mrs. Allen Brim, Al Gaeta, Mrs. Stanley Harris and Mrs. G. T. Pogue.

Trade With Your Hometown Merchants

### NOTICE... Come To Kendrick Drive-In Dairy

(Serving This Territory Since 1940)  
FOR  
**Good, Clean JERSEY Sweet Milk**  
Price - 70c Gal.  
Phone 896-J-2 - Located Halfway between Eastland and Cisco

### JOY DRIVE-IN

Cisco - Eastland Highway  
Thurs. - Fri. - Sat.  
Open 6:30 - Starts 7:00

Play Quiz Bank Every Thursday Nite



### TREES AND SHRUBS

Paper shell pecans, fruit trees, shade trees, ornamental trees, evergreens, and shrubs, also lawnmowers, garden tools, fertilizer and insecticides. Visit us soon.

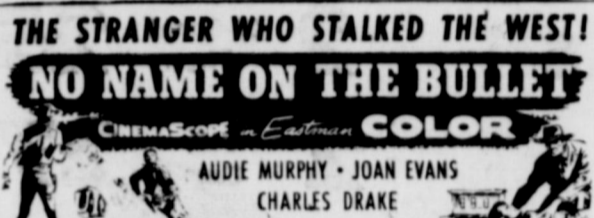
### Tennyson Nursery

1003 W. 16th St. CISCO

### TV and RADIO SERVICE

Sales - Trades - Used Sets  
\$2.50 Phone 746-J-4  
**JACK LEACH**  
EASTLAND

### MAJESTIC IN EASTLAND Friday & Saturday



### RANGER DRIVE-IN

Highway 80 - East on Ranger Hill  
Box Office Opens 6:30 - Show Starts 7:00  
Adults 50c - Kiddies Under 11 Free  
Only Eastland County Drive-In With All Year Operation

WEDNESDAY - THURSDAY - FRIDAY  
2 BIG THRILL PACKED FEATURES

Only the skum of the earth could be so brutal—

### GANG WAR

—PLUS—  
**RX MURDER**  
Murder by Prescription  
Plus Color Cartoon

## Daffin Feedmobile

### FRESHER FEED

Made right at the bin-door — but just where you want it without fuss, muss.

### NO HAULING

We bring the concentrate—or you furnish your own grain and roughages go into the mill from bin or mow.

### NO WASTED TIME

You don't have to load up and haul the grist—wait for it to be ground and mixed—then haul the feed home and unload it.

### MOLASSES BLENDING

We blend any amount of fresh molasses into your feed without lumps.

### DEPENDABLE SERVICE

We're now establishing routes so our new Daffin can call at your farm regularly for prompt, sure service.

See Our New Daffin in Operation  
On YOUR Farm... Call us today!

## KINCAID FEED STORE

303 North Seaman — Phone 73  
Phone Cisco HI 2-1200 Phone Ranger No. 1

SWIFT'S SLICE D

**Premium Bacon** Lb. 59¢  
Pkg.

**Brookfield Links** Swift's Sausage Lb. 59¢  
Pkg.

**Philadelphia** Cream Cheese 2 3-Oz. 25¢  
Pkg.

**Perch Fillets** Taste O' Sea Lb. 45¢  
Frozen Pkg.

**Flounder Fillets** Taste O' Sea Lb. 59¢  
Frozen Pkg.

ARMOUR FANCY WHOLE or CUT-UP, FRESH-DRESSED

AT WORTH **33**¢  
Lb. Just

**Eggs** Large Size Dozen 55¢

**Peach Preserves** Famous Bama Brand SAVE 35c 3 Giant 20-oz. Tumblers \$1.00

Prices Effective Thursday thru Saturday — Limit Rights Reserved

EARLY GARDEN BEANS  
**DEL MONTE LIMAS** No. 303 Can 27c

TOWIE THROWN MANZANILLAS  
**STUFFED OLIVES** 7 1/2-Oz. Refr. Jar 45c

NABISCO  
**PREMIUM CRACKERS** 1-Lb. Box 29c

NABISCO TWIN-PACK  
**FIG NEWTON COOKIES** 16-Oz. Pkg. 45c

ALMA GOOD LUCK  
**BLACKKEYED PEAS** No. 300 Can 10c

APPIAN  
**PIZZA PIE MIX** 15 1/2-Oz. Pkg. 39c

YELLOW BOW IRREGULAR-SLICED  
**Elberta Peaches** SAVE 24c 4 No. 2 1/2 Cans \$1

**Pinto Beans** CHEF'S PRIDE 4 -Lb. Pkg. 35¢

**Niblets Corn** WHOLE KERNEL GOLDEN 12-Oz. Can 15¢

**Vienna Sausage** Mohawk - With Cereal Added 4 No. 1/2 Cans 29¢

WITH SOUR CREAM & CHIVE, or CHEDDAR CHEESE  
**Baked Potatoes** "M" Brand 14-Oz. Pkg. 29¢  
Frozen

**Cream Pies** Morton's Lemon or Chocolate, Frozen 1-Lb. Pkg. 65¢

**Frozen Rolls** Jean's Tender Pkg. 24-Cnt. 25¢

MRS. BAIRD'S  
**Devil's Food Cake** Reg. 49c 39¢

QUICK RELIEF FOR UPSET STOMACH  
**Pepto-Bismol** 4-Oz. Bott. 49¢

IPANA—SPECIAL OFFER  
**Tooth Paste** 2 53c Tubes 79¢

**Apples** Crisp, Red DELICIOUS 2 Lbs. Only 25¢

**Grapefruit** Famous Texas Ruby Red 5 Lb. Cello 35¢

**Green Cabbage** Firm Heads Lb. 5¢

**Pascal Celery** Crisp, Tender 2 Stalks 25¢

## WORTH FOOD MART

Trade With Your Hometown Merchants

**WE ARE EQUIPPED TO DO . . .**

- ★ Roustabout Work
- ★ Well Hook-Ups
- ★ Spray Painting
- ★ Tank Setting

**P & H Oil Field**

Construction • Painting  
Phone 183 Eastland

**Delegates to Attend THDA Meet Are Elected by HD Council Wed.**

Mrs. Earnest Schaefer, Mrs. W. D. Hazel and Mrs. Vergie Hale were elected delegates to attend the district THDA meeting in Taylor April 2 and 3. The delegates were elected at the council

**T. L. FAGG**  
REAL ESTATE  
Property Management  
Home and Farm Loans

meeting of the Home Demonstration Clubs Wednesday afternoon in the Texas Electric Conference room.

Mrs. D. J. West and Mrs. Ola Boles were elected as alternate delegates.

Recommendations of the council committees were accepted and a committee was selected for the planning meeting of the four county's Home Demonstration Camp to be held in the summer. Mrs. Ed Wende, Mrs. Clint McCain, Mrs. L. W. Tucker and Mrs. H. N. Sherman are members of the committee.

Mrs. W. D. Hazel, THDA chairman, presented a report on the latest news of "Cornmeal and Grits Enrichment Legislation."

Mmes. Jack Cozart, Daisy Steele and Earnest Schaefer were appointed to make suggestions for the National Home Demonstration Week celebrations.

**TERMITE CONTROL**  
and all other types  
**PEST EXTERMINATION**  
**MODERN EXTERMINATING CO.**  
Box 312 Ranger  
PHONE RANGER  
Day 919—Night 911

**Program Is Given By Mrs. Shelton At HD Club Meet**

Mrs. Carroll Shelton presented the program when members of the Morton Valley Home Demonstration Club met in the home of Mrs. Alvin Kincaid Wednesday, Jan. 28.

Mrs. Howard Sherman, president, opened the meeting and welcomed the visitors.

Mrs. Kincaid led the motto, pledge and prayer prior to the program. The program on "Attractive and Convenient Homestead" was presented in a most interesting manner" by Mrs. Shelton.

Mrs. Shelton also introduced Miss Sockwell, the new assistant home demonstration agent.

Mrs. Jack Leach reminded the members of the "March of Dimes" drive. Plans for a dinner at the home of Mrs. Jeff Laughlin on Feb. 7 were also discussed.

Refreshments of cookies and coffee were served to the following members: Mmes. C. Pogue, D. J. West, H. Sherman, J. Laughlin, Jack Leach, R. Gordon, Aubrey Kincaid, Robert Kincaid and the following guests: Mmes. Bert Duncan, Homer White, Dale Young, C. Shelton and Miss Stockwell. The next meeting will be Feb. 11 at the home of Mrs. Aubrey Kincaid in Ranger.

**Recent Meeting**

Mrs. R. W. Gordon of Ranger was hostess recently to members of the Morton Valley Home Demonstration Club.

Mrs. Howard Sherman, president, opened the meeting with the motto, pledge, and prayer. Roll call was answered with "a quality of a charming hostess."

Mrs. Jack Leach, chairman of the Morton Valley Community March of Dimes, asked the members to help make the drive a success.

Mrs. D. J. West was nominated as THDA candidate to represent the club.

Cake and coffee was served by the hostess to Mmes. Alvin Kincaid, Aubrey Kincaid, Robert Kincaid, H. Sherman, Jack Leach and D. J. West.

**Olden Sweetheart Banquet Is Set**

A sweetheart banquet will be held at the Olden Baptist Church education building Thursday, Feb. 12 at 7 p.m.

The banquet will be for all young people of Olden.

Frank Brooks, pastor of the New Hope Baptist Church, will be guest speaker at the semi-formal event. Adults of the church will give the after dinner program.

**IF IT'S METAL**  
**Decore Metal Products**  
306 E. Main Phone 288  
SHOP WELDING  
PAINTING REPAIR

**Funeral Directors**  
**HAMNER FUNERAL HOMES**  
Ben E. Hamner  
Oxygen Equipped - Air Conditioned  
Eastland Phone 17 Cisco Phone Hillcrest 21211  
AMBULANCE SERVICE ANY WHERE ANY TIME  
Nominal Cost Burial Insurance  
For The Entire Family

LOVE THOSE HEARTY FOODS AND **HEARTY SAVINGS!**

**U. S. No. 1 Idaho Russet POTATOES**  
10 Pound Bag  
**43¢**

**Washington Red Delicious Apples**  
Lb. **15¢**

**Cello Bag Calif. Carrots**  
2-For **25¢**

**ORANGES**  
California Navel  
Lb. **15¢**

**KRAFT'S JET PUFFED Marshmallows** 10-Oz. Pkg. **19¢**

**CLOVER FARM Margarine** Lb. **19¢**

**SUNSHINE KRISPY Crackers** Lb. Box **27¢**

**CLOVER FARM Bleach** Quart Bottle **15¢**

**GLENDALE Peaches** Sliced or Halves No. 2 1/2 Can **29¢**

**NORTHERN Napkins** 2 80-Count Pkgs. **25¢**

**CLOVER FARM Milk** 2 Tall Cans **27¢**

**PRINCE CAT or Dog Food** No. 300 Tall **10¢**

**CONCHO Pork & Beans** 2 No. 300 Tall **19¢**

**LOOSE LEAF Note Paper** 25c Pkg. **16¢**

**BIG BUYS!**  
Folger's **COFFEE**  
Drip or Reg.  
Pound Can **69¢**

**Wolf CHILI**  
300 Can **49¢**

**Gooch's Thick Sliced Bacon** 2 Lbs. **1.09**

**Swift's Fully Cooked PICNICS**  
Pound **45¢**

**Franks GOOCH'S Bacon Ends** 3 Lbs. **1.05**

**5 Lbs. 1.00**

**Pork Roast** Boneless Lb. **49¢**

**TENDER Pork Chops** Lb. **59¢**

**CANNED Picnics** 3 Lb. Can **2.19**

**KRAFT VELVEETA Cheese** 2 Lb. Box **89¢**

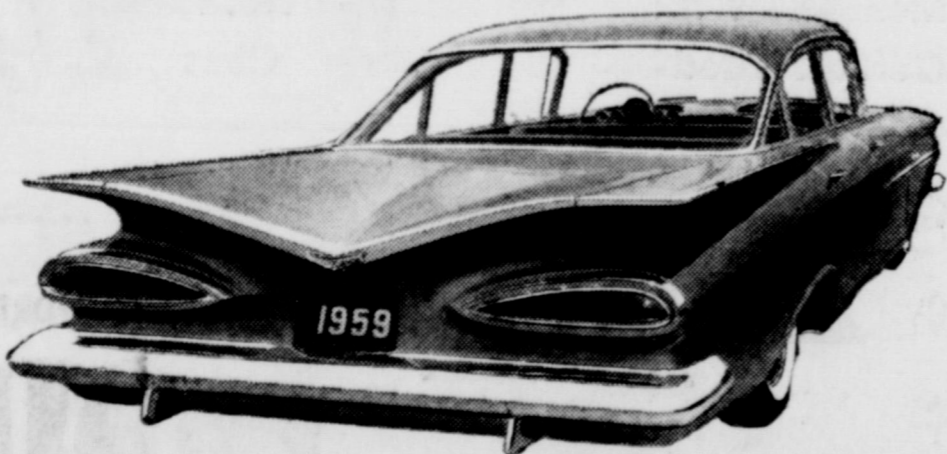
**CLOVER FARM**  
H. B. MacMoy, Owner  
7:30 a.m. to 8:00 p.m. Weekdays  
7:30 a.m. to 9:00 p.m. Saturdays

These Prices Effective Friday and Saturday

More families agree...  
Mrs. Baird's Bread stays fresh longer

**MRS BAIRD'S ENRICHED BREAD**  
MRS BAIRD'S STAYS FRESH LONGER

**GOES AND GOES AND GOES ON A GALLON!**



Discayne 1-Door Sedan shows the Fisher Body beauty of Chevrolet's lowest priced series for '59.

**CHEVY'S NEW HI-THRIFT 6**

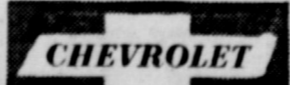
More miles are back in a gallon of regular-grade gas—up to 10% more—and Chevy's new Hi-Thrift 6 engine puts them there. It also gives you more "git" in the speeds you drive the most.

Here's an engine that always seems able to coax extra miles out of a tank of regular-grade gas. In fact, if you're one of those drivers who keep tab on things like gas mileage, you'll soon see for yourself that this new Hi-Thrift 6 gets up to 10% more miles a gallon.

Another thing you'll like about this 135-h.p. 6 is the

extra pep it gives you for passing and climbing hills. This is due to higher torque at normal speeds.

It may be hard to believe anything that looks and moves like this '59 Chevy can be such a stickler for economy. But—whether you pick the Hi-Thrift 6 or a vim-packed V8—this is just one more reason Chevy's the car that's wanted for all its worth. Stop by your dealer's and see.



The smart switch is to the '59 Chevy!

now—see the wider selection of models at your local authorized Chevrolet dealer's!

**FULLEN MOTOR COMPANY**  
305 E. MAIN PHONE 44  
EASTLAND

**VISITING SISTER**  
Mrs. George Pretridge is visiting with her sister, Mrs. L. C. Sutton in Ardmore, Oklahoma.

Mrs. Sutton, a former resident of Eastland, underwent a major operation Monday morning.

Mr. and Mrs. M. S. Warren of Abilene were weekend guests in the home of Mr. and Mrs. W. E. Tankersley.

Mr. and Mrs. Carrol Shelton visited in Lubbock over the weekend with his brother and sister-in-law, Mr. and Mrs. Wendell Shel-

ton. They were accompanied by Mr. Shelton's parents, Mr. and Mrs. C. D. Shelton, and Nancy of Itasca.

**Mrs. Seale Hosts Art Club in Her Home Tuesday**

Mrs. Sidney Seale was hostess to the members of the Eastland Art Club in her home, 418 South Foch, Tuesday afternoon.

Mrs. W. E. Lawson, president, presided over the business meeting.

During the afternoon a gift of Fostoria was presented to Mrs. Homer White, the out-going president.

Several of the members began new oil paintings while others were completing their paintings. Mrs. Seale painted portraits of her two daughters during the afternoon.

Refreshments of dairy homemade cookies and coffee was served to the following members: Mrs. H. B. MacMoy, Homer White, Francis Urban, W. E. Lawson, Varge Daniel, Joe Tow and Sidney Seale.

The next meeting will be held in the home of Mrs. H. B. MacMoy on February 17.

**Class Dedicates Books to Church Library Recently**

Members of the Fidelis Matron Sunday School Class dedicated two new books to the church in memory of the deceased members, Grace Bray, Lillah Hearn and Audrey Hooges.

The dedication of the books was held when the members of the class met in the home of Mrs. Bessie McWilliams recently. Mrs. Nell Carney presided.

Mrs. Nettie Lovett presented the inspiring devotional and read a lovely poem by Vada Steward.

Refreshments of angel food cake, fruit salad and coffee were served to the guests.

Attending were Mrs. Nettie Rushing, Sue Gourley, Etta Drake, Mary Francis Street, Edna Taylor Adams, Irene Hightower, Genoa Brown and Miss Sue Naylor.

ATTEND THE CHURCH OF YOUR CHOICE EACH SUNDAY

**VISITING**  
Mr. and Mrs. I. E. Talley of Oiden visited in Temple and Belton with Mr. Talley's relatives.

CALL 601 FOR CLASSIFIED ADVERTISEMENT

**M. H. PERRY**  
Representing  
**Southland Life**  
Life - Retirement Income Partnership  
Mortgage Cancellation  
Educational - Annuities  
Accident - Sickness  
Hospitalization - Group  
Call 173 or 128  
107 W. Main \* Eastland

**Insurance AND Real Estate**  
**D. L. KINNAIRD**  
Life - Fire - Auto - Farm  
Polio - Bonds  
39 years in the Insurance Business in Eastland

**ALEX RAWLINS & SONS**  
MONUMENTS  
WEATHERFORD, TEX.  
Serving This Community Since 1884  
Phone LY4-2726

**NOTICE**  
FRESH DRESSED FRYERS and Fresh Dressed Hens  
At The Plant  
PHONE 110  
**WALKER Dressing Plant**

**THE ABSTRACTER AND THE LANDOWNER**  
... are inseparable friends and naturally for we have so many interests in common. The abstracter would not exist if there were no landowners and the reverse is also true. When business is brisk we both share in the prosperity; when it is bad we suffer together. So we are yoked together for better or for worse journeying toward an unknown future, and as we trudge merrily along let us wish for ourselves and the rest of you a prosperous New Year.

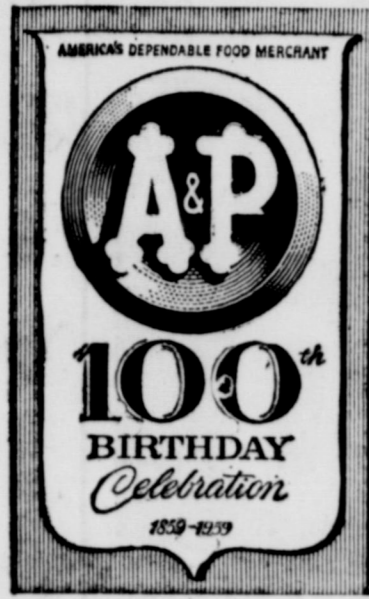
**EARL BENDER & COMPANY**  
Eastland, (Abstracts since 1923) Texas



**A&P's 100th BIRTHDAY CELEBRATION!**  
MILLIONS OF SHOPPERS WHO KEEP COMING BACK FOR MORE AGREE:

**"Just CAN'T BEAT that A&P!"**

SHOP ANY DAY AND SEE!



- BEL MONTE WHOLE KERNEL GOLDEN CORN 16-oz. Can 19c
- ANN PAGE WILD Elderberry Jelly 12-oz. Jar 25c
- ANN PAGE GROUND BLACK PEPPER 2 1/2-oz. Tins 25c
- ANN PAGE MAYONNAISE 1-lb. Jar 29c

- Jane Parker*
- JANE PARKER STRAWBERRY PIE** ea. 53¢
- JANE PARKER PEACH PIE 49c
  - JANE PARKER CINNAMON ROLLS 27c
  - JANE PARKER WHOLE WHEAT BREAD 1-lb. Loaf 15c
  - JANE PARKER CHIFFON CAKE 47c

- WHITE HOMINY** IONA 3 16-oz. Cans 25¢
- YELLOW HOMINY** PURITAN 3 No. 300 Cans 25¢
- SWEET PICKLES** RAINBO SWEET MIDGETS 12-oz. Jar 29¢
- SWEET GHERKINS** RAINBO 22-oz. Jar 39¢
- SWEET POTATOES** YELLOW LABEL SUGARY SAM 2 29-oz. Cans 39¢
- MARGARINE** NUTLEY 3 1-lb. Pkgs. 44¢

- A&P FANCY QUALITY APPLESAUCE 2 16-oz. Cans 27c
- COMSTOCK PIE APPLES 2 18-oz. Cans 39c
- S.O.S. SCOURING PADS 2 1/2 Pkgs. of 10 45c
- LADY BETTY PRUNE JUICE 39c
- RED LABEL KARO SYRUP 2 1 1/2-lb. Jars 45c
- ANN PAGE SANDWICH SPREAD 35c
- ANN PAGE GROUND BLACK PEPPER 4-oz. Tin 23c
- DUNCAN HINES CAKE MIXES WHITE DEVIL'S FOOD, YELLOW, SPICE 19-oz. Pkg. 29c
- ALL PURPOSE WESSON OIL 49c
- ANN PAGE LINGUINE SPAGHETTI 16-oz. Can 19c
- ANN PAGE WITH CHILI GRAVY RED BEANS 2 16-oz. Cans 27c
- A&P FROZEN LEAF SPINACH 10-oz. Pkg. 10c
- A&P FROZEN CHOPPED SPINACH 10-oz. Pkg. 10c
- ANN PAGE TOMATO KETCHUP 2 14-oz. Bkgs. 39c

**Mar-Crest MELMAC DINNERWARE**  
Break Resistant

ELEGANT Spring Banquet Pattern

3-Pc. Accessory SET \$1.69

3-Piece Complete Set \$1.39

3-Piece Place Setting Each \$1.69

2.35 VALUE \$3.20 VALUE

ANN PAGE REALLY FRESH SPECIAL!  
**Mayonnaise** QT. JAR 49¢

DEPENDABLE "Super-Right" QUALITY MEATS!

- A&P FANCY QUALITY SAUERKRAUT 16-oz. Can 10¢
  - LIBBY SAUERKRAUT 2 16-oz. Cans 25¢
  - "SUPER-RIGHT" ALL-MEAT FRANKFURTERS 16-oz. Pkg. 49¢
- FROZEN MEAT VALUES**
- CAP'n JOHN'S FROZEN FILLETS 16-oz. Pkg. 49c
  - Cap'n John's Frozen Breaded SHRIMP 10-oz. Pkg. 59c
  - YOUNGBLOOD'S FROZEN CHICKEN DRUMSTICKS 1-lb. Ctn. 49¢
  - Cap'n John's Frozen Oyster—10-oz. Stew 2 cans 59c
  - YOUNGBLOOD'S FROZEN THIGHS chicken 1-lb. Ctn. 59c

- Pork Loin** "SUPER-RIGHT" FRESH PORK HALF LOIN RIB CUT 45¢
- "SUPER-RIGHT" HALF LOIN PORK LOIN LOIN CUT 49c
- "SUPER-RIGHT" RIB ROAST RIB END 39c
- "SUPER-RIGHT" CENTER CUT PORK CHOPS LOIN CUTS 59c
- "SUPER-RIGHT" HEAVY BEEF ROUND STEAK 95c
- "SUPER-RIGHT" HEAVY CALF CHUCK ROAST BLADE CUT 65c
- "SUPER-RIGHT" SLICED BOLOGNA 8-oz. Pkg. 33c
- "SUPER-RIGHT" CENTER CUT PORK CHOPS RIB CUT 55c
- "SUPER-RIGHT" LOIN ROAST LOIN END 45c
- COUNTRY STYLE BACKBONES 39c
- MORRELL CANNED Picnics 3-lb. can 1.89
- "SUPER-RIGHT" HEAVY SHOULDER ARMROAST 75c
- "SUPER-RIGHT" THICK CUT BACON SLICED 2-lb. Size 99c

- Fresh Fruits & Vegetables!**
- COLORADO RED McCLURE POTATOES 10-Lb. Bag 39¢
  - RED DELICIOUS APPLES 1-lb. 15c
  - CALIFORNIA NAVEL ORANGES 1-lb. 10c
  - CALIFORNIA—Large Size AVOCADOS 2 for 25c
  - RUBY RED GRAPEFRUIT 5-lb. bag 29c

- ALL-PURPOSE SHORTENING—5c OFF**
- CRISCO 3-lb. Tin 80¢
  - COLDEN SHORTENING FLUFFO 3-lb. Tin 85¢
  - DOLE FROZEN PINEAPPLE JUICE 6-oz. Can 19¢
  - DOLE FROZEN PINEAPPLE ORANGE JUICE 6-oz. Can 21¢
  - A&P FROZEN BROCCOLI 10-oz. Pkg. 10¢

10¢

**AP Food Stores**  
THE GREAT ATLANTIC & PACIFIC TEA COMPANY  
1959 AMERICA'S DEPENDABLE FOOD MERCHANT 1959



**Me asleep ... don't be silly**

NO NEED TO GRUMBLE, STUMBLE, OR GROPE getting out of bed to answer late-night calls. Get a handy bedside telephone. Black or 9 colors. Electrically illuminated dial (optional). One-time-only charge for color. Call the telephone business office.

EXTENSION PHONES COST \$1.00 A MONTH PLUS INSTALLATION  
Call by number... it's twice as fast

**Spring Ahead**

DRIVE CAREFREE AND COMFORTABLE

**GET YOUR CAR READY NOW**

Before trouble starts ... is the time to see us. We will give your car a thorough check, bumper to bumper. Free of charge.

WE GIVE S & H GREEN STAMPS

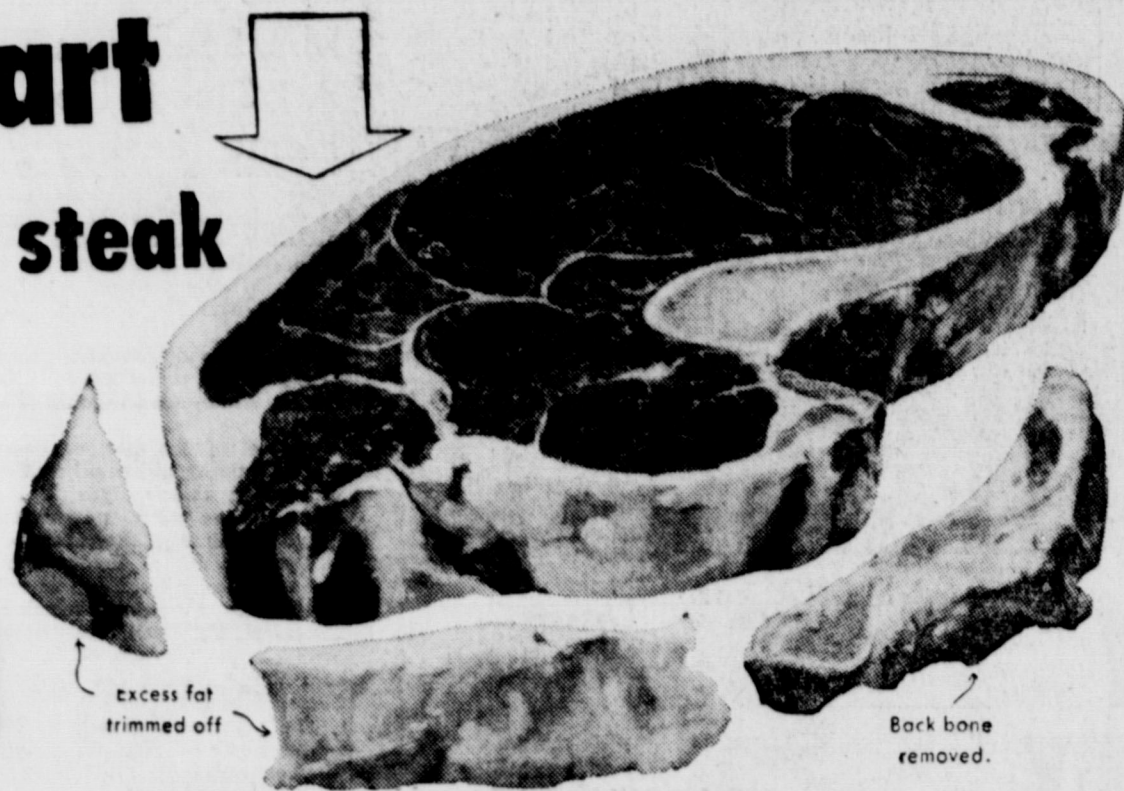
**BLEVINS MOTOR CO.**

Come Our Way for Bargains That Pay  
514 W. Main Phone 308

**Only this part**  
**is perfect-eating steak**

... AND AT SAFEWAY  
IT'S THE ONLY PART  
YOU PAY FOR!

**SAFEWAY**



**Catsup 2 25¢**  
12-Oz. Bottles  
Val-Tex or Stockton.  
Makes Good Food Taste Better!

**Round Steak 89¢**  
U.S.D.A. Choice Grade Heavy Mature Beef, Bone-In Extra Lean and Flavorful

**Chuck Blade Steak** U.S.D.A. Choice Grade Heavy Mature Beef. Lb. 69¢  
**Calf Sirloin Steak** Or Round Steak. U.S. Good Grade Bone-in. Lb. 99¢  
**Calf Rib Chops** U.S. Good Grade Calf. Delicious Flavor! Lb. 75¢  
**Pork Steak** Enjoy the Tender, Juicy Goodness of Pork in Tempting Steak Form. Lb. 45¢

**STEAKS UNLIMITED**

U.S.D.A. Choice Grade Heavy Mature Beef

**SIRLOIN STEAK**

Our way of trimming Sirloin steaks means that you pay for only the big, tender-eating center portion. You don't pay for excess fat and gristle... these are trimmed off before we weigh and price each steak.

**89¢**  
Lb.

**T-Bone Steak** U.S.D.A. Choice Grade Heavy Mature Beef. Lb. \$1.09  
**Swiss Steak** U.S.D.A. Choice Grade Heavy Mature Beef. Boneless. Lb. 89¢  
**Top Round Steak** U.S.D.A. Choice Grade Heavy Mature Beef. Boneless. Lb. \$1.09  
**Rib Steak** U.S.D.A. Choice Grade Heavy Mature Beef. Boneless. Lb. \$1.25  
**New York Steak** U.S.D.A. Choice Grade Mature Beef. Boneless. Lb. \$1.79  
**Loin Tip Steak** U.S.D.A. Choice Grade Heavy Mature Beef. Boneless. Lb. \$1.09

**Shortening**  
**Cherub Milk**

Velky, For Finer Cakes, Flakier Pies, and Better Fried Foods!

**3 69¢**  
Lb. Can

**Mellorine**  
**Peaches**

Joyett Frozen Dessert Assorted Flavors

**49¢**  
1/2 Gal. Can.

**Cane Sugar**

Hemet Whole Spiced Yellow Cling

**25¢**  
No. 2 1/2 Can

Imperial or Domino

**10 102**  
Lb. Bag

**Safeway Guarantee**  
Every item at Safeway is sold on a money-back guarantee. This means that the full purchase price will be cheerfully refunded on any item that does not give you complete satisfaction.

*Lamb Buys!*

**Rib Chops**

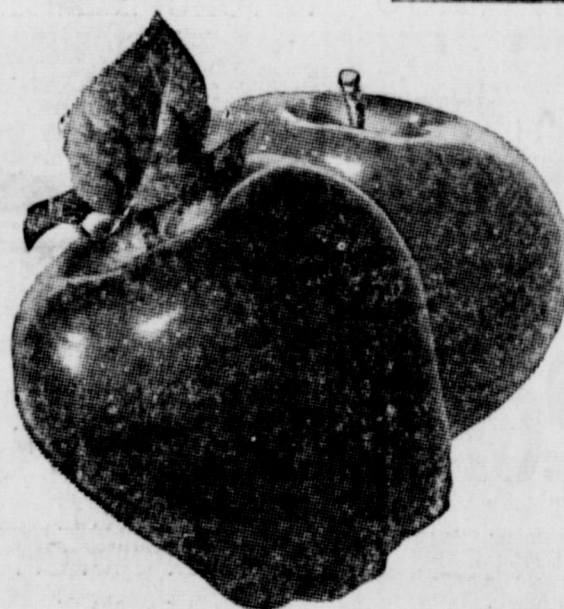
or Loin. Add Variety to Your Meals

**99¢**  
Lb.

**Shoulder Chops**

Blade — Delicate Flavor

**49¢**  
Lb.



*Safeway Produce*

**APPLES**

Washington State, Extra Fancy Grade, Medium Size, Red Delicious. You Get Them Crisp, Fragrant and Perfect. Lb. **12¢**

**Grapefruit** Ruby Red Sweet and Juicy Lb. **79¢**  
20 Bag

**Broccoli** Delicious Served with Cheese Sauce. Lb. **19¢**

**Green Onions** Delicious in Salads 2 Bunches **19¢**

*Hand Decorated—Hand Painted*  
**Marcrest Dinnerware**

Five-Piece Place Setting Consisting of:

- ★ Dinner Plate
  - ★ Salad Plate
  - ★ Dessert Dish
  - ★ Cup and Saucer
- Only \$1.19**

Complete Your Dinnerware with These Units!

- Soup Bowls** Set of Three Only **\$1.19**
- Sugar Bowl & Creamer** Only **\$1.99**
- Meat Platter** Or Vegetable Bowl Each **99¢**
- Ranch Style Beans** Perfect Quality, Modest Cost 2 300 Cans **27¢**
- Starkist Tuna** Chunk Style — Delicious in Salads and on Sandwiches! No. 1/2 Can **33¢**

*"Bakery Feature of the Week"*

**Slenderway Bread**

Skylark — Regular 23¢ Value. Thursday, Friday and Saturday Special. 1-Lb. Loaf **19¢**

**French Rolls** Skylark — Poppyseed 10 1/2-Oz. Pkg. **24¢**

**Butter Horns** Curtsy 6 1/2-Oz. Pkg. **23¢**

**Buttermilk Bread** Cook Book 24-Oz. Cello **28¢**

**Frozen-Rite Rolls** Parker House or Cloverleaf 22-Oz. Pkg. **29¢**

**Bleach**

White Magic Liquid — Your Best Buy in Bleach. Bleaches, Sanitizes, and Deodorizes!

**15¢ 29¢**  
Bottle 1/2-Gal. Jug

**Vinegar**

Piedmont White — A Vinegar to Add Aroma and Flavor to Salads!

**19¢**  
Quart Bottle

**Grade 'A' Eggs**

Breakfast Gems Finest Quality, Freshness Guarded From Nest to You Doz. **53¢**

**Cheez-It Crackers** Sunshine 6 1/4-Oz. Box **19¢**

**Morton Salt** Plain or Iodized, America's Most Popular Brand! 2 26-Oz. Boxes **25¢**

**Liquid Joy** Detergent — Joy Makes Dishwashing Almost Nice 12-Oz. Can **39¢**

**Camay Toilet Soap** Pink 2 Reg. Bars **19¢**

**Supreme Club Crackers** Reach Out for Flavor! 1-Lb. Box **37¢**

**Fig Newtons** Nabisco — Delicious for Lunches or Snacks! 8-Oz. Pkg. **25¢**

**Cheer** Detergent — Blue Cheer Washes So White You Can See the Difference! Large Box **32¢**

**Dreft** Detergent — Mild, Pink Dreft — Makes Water Feel Smooth, Like a Lotion! Large Box **32¢**

**Tide Detergent** The Cleanest Clean Possible! Large Box **32¢**

**Oxydol** The Only Leading Detergent That Contains Its Own Bleach! Large Box **33¢**

**Dash Detergent** Modern Miracle for Automatic Washers! 9 1/2-Oz. Box **\$2.29**

**Zest Beauty Bar** Deodorant — New Fresh Fragrance! 2 Bath Bars **39¢**



**SAFEWAY**

Prices effective Thursday, Friday and Saturday, February 5, 6, and 7. In Eastland. We reserve the right to limit quantities. No sales to dealers.