



# Eastland Telegram

"COVERING EASTLAND COUNTY"



VOLUME TWENTY-NINE,

EASTLAND, TEXAS, SUNDAY, AUGUST 3, 1958

No. 41

## MOORE about... EASTLAND

by Virgil E. Moore

Jerry Sittion, editor of the Cisco Press, had this to say about Saturday's primary election in one of his recent columns.

"The newspapers and the candidates would have been spared a lot of extra hours of waiting if the courthouse box at Eastland had conducted the affairs of the other boxes as efficiently as the other boxes in the county. The courthouse box, which cast less than 500 votes, was more than four hours longer than any other box in completing its count.

"The big Cisco box which cast over 1200 votes (more than twice as many as the Eastland courthouse box, was completed and the tally sheets turned in by 10 p. m. Saturday. It was not until 2 a. m. or later (most of us gave up and went to bed) that the Eastland box was finished.

"This situation has prevailed now for several years. It seems to us that the county chairman would be justified in checking into the matter, and perhaps, offering some suggestions on how to speed up vote counting."

Jerry, although not quite correct with his figures, is quite correct with his reasoning, we believe.

Actually the court house box cast 652 votes, compared to 1205 for the Cisco box. That lacks 100 votes being even twice the number cast in Precinct 1.

However the box should be one of the first in, we think, since it is here in Eastland. In fact, there is no reason for any box being more than three hours in coming in after the polls close.

We agree that a check would not hurt. Perhaps, we do not know, the vote counting is not started early enough. Most precincts have most of their votes counted when the polls close.

Something that is interesting to note is the fact that Cisco outvoted Ranger by more than 2 to 1. A total of 1567 Cisco citizens cast votes compared to 773 in Ranger. In Eastland 1163 persons voted.

Reason for the heavy Cisco vote was undoubtedly the fact that six men were running for county commissioner of Precinct 4. There was no county commissioner's race this year in Eastland and Ranger. Two years ago in the July Primary, records show Cisco cast 1375 votes, Eastland 1346 and Ranger 1072.

## City's Eighty-Third Anniversary Honored

(Editor's Note: It has become tradition that the Telegram asks Mrs. Buda B. Butler each year to write an article on the city's anniversary. We express our gratitude to Mrs. Butler for the following article.)

By MRS. BUDA B. BUTLER

Behold the turtle; he makes progress only when he sticks his neck out. These words of a famous scientist have a special meaning because the progress made in Eastland County during the past four years has been made by a group of business and professional men who are willing to stick their necks out. Yes, as volunteer workers they have squandered themselves for a purpose. Through their efforts, Ranger, Olden and Eastland are assured of an abundant water supply.

We are enjoying beautiful Lake Leon, with its 35 miles of shoreline and the 100 or more permanent and summer homes that have been built since the lake was completed. We realize not only Ranger and Eastland but our County has a vacation wonderland.

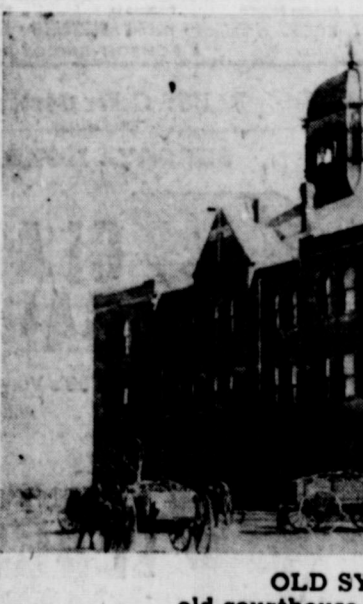
From time to time, on August

## Freyschlag to Head UF Budget Committee Here

Charles Freyschlag will head this year's United Fund Screening and Budget Committee, Larry Kinard, general chairman, announced Saturday.

Other members of the committee will be Willard Griffin, Willis Moore, Frank Deaton and Johnson Smith.

The committee passes on applications from organizations seeking membership in the United Fund, and sets the financial goal for the year.



OLD SYMBOL ... old courthouse destroyed in 1927

## Father of Eastland Tells of Early Experiences

(Editor's Note: The following story was written by the late C. U. Connellee, the founder of Eastland. It appeared in the June, 1930 edition of the "West Texas Historical Association Year Book.")

At your request I am giving you some of the early impressions made upon my mind, when I came to Texas, and incidents that happened on my arrival here. I was born in Scott County, Kentucky, August 21, 1851. I left Kentucky on the 15th day of October, 1874, coming by the way of Memphis and Little Rock. I arrived in Dallas on the 19th day of the same month.

I formed a partnership before leaving Kentucky, with an old schoolmate of the Kentucky University by the name of J. S. Daughtery. He met me at the depot in Dallas, and took me to his office, which was in a little two story brick building opposite the depot. I found in the office were a lot of hog wallows and the hogs were rolling in them fighting each other and squealing. Dallas at that time consisted of about 3000 people and was located mostly on Elm and Main streets, near where the old Court house stood. Where the Linz Building now is, was a branch, and lot were selling there at about \$100 each. My partner, Daughtery was boarding at a place east of Dallas, about two miles — he drove a buggy to and from his boarding house to his office.

Adams and Leonard had a private bank in Dallas at that time and I think that W. H. Thomas and W. H. Gaston had a private bank there or they formed one after I came. W. H. Gaston was very fond of hunting so he and W. H. Thomas had a contract between them which read something like this, "The said W. H. Thomas and W. H. Gaston have this day formed a partnership in the banking business and the said W. H. Gaston is to receive \$1.00 a day while actually engaged in the business of the bank, but as the said W. H. Gaston is very fond of hunting and fishing, it is hereby agreed that he is absent from his duties,

2, Eastland anniversary as county seat. I have reminded you of Eastland's progress, with a bit of her early history. Birthdays are not significant in themselves, but the progress made through the years is important. We either grow or die.

## Livestock Meet Set Tuesday At Breckenridge

A livestock meeting with emphasis on three phases of beef cattle production will be conducted Tuesday, Aug. 5, at 1:30 p. m. in the district courtroom of the Stephens county courthouse. Livestockmen of the county and surrounding counties are urged to attend by Stephens County Agricultural Agent Jack Gressett.

Program for the meeting was released today by the agent, who said that it covered many of the problems which are now being encountered by the livestockman of the area. Beginning at 1:30 p. m. introductions will be made followed by a talk on external parasites of cattle and their control. Manning Price, entomologist of the Texas A. & M. College Staff and Texas Experiment Station will handle this part of the program.

"Creep Feeding, Its Advantages and Disadvantages" will be the subject presented by Charlie Sewell, district sales representative for the Purina Feed Company, at 2:30 p. m. Dr. Don Pitts, Breckenridge veterinarian, will cover two subjects—Brucellosis and Texas Brucellosis Laws, and Leptospirosis Outbreaks. His part on the program will begin at 3:30. At 4:30 p. m. a period will be given in which livestockmen may ask questions about their personal beef cattle problems along the lines of the subject matter presented.

With new developments being made daily in the beef cattle industry, it is very important that livestockmen of the area are kept aware of these changes, state Gressett.

What is a city or a community but the people? Yes, people with a vision.

The young men of Eastland county who have chosen to make their homes here have visions, even as those young pioneers had vision, as they blaze the trails to male their towns a better place in which to live. These men to day are not only interested in their town but their county. They realize what is good for one town in the county is good for all the towns and they prefer to think of them as a whole.

This month we have evidence of this type of thinking. When The Lone Cedar Country Club, on the shores of Lake Leon, is completed, with its swimming pool and beautiful grounds, it will be another dream come true—only as you will see, it has surpassed in beauty, comfort and style anything, even the dreamers, had hoped to accomplish. The membership of The Lone Cedar Country Club is from each town in Eastland County.

I have heard these same men have another vision for the future but I will have to record that when the dream comes true and this I believe will happen. In the meantime, I salute you.

## Billy Upchurch Completes Army Advanced School

Fort Chaffee, Ark.—Army Pvt. Billy H. Upchurch, son of Mr. and Mrs. William H. Upchurch, 401 E. Sadosa, Eastland, recently completed eight weeks of advanced artillery training at Fort Chaffee, Ark.

Upchurch entered the Army last March and completed basic training at Fort Chaffee, Ark.

The 18-year-old soldier is a 1957 graduate of Eastland High School. He attended Hardin-Simmons University, Abilene.

## Surplus Food Distribution Dates Revealed

Next issue date for the USDA Surplus Food Commodities, will be as follows, J. J. Porter Sr., administrator, announced Saturday:

Monday, Aug. 11—Eastland, Olden and Ranger.

Tuesday, Aug. 12—Rising Star, Okra, Carbon, Gorman and Desdemona.

Wednesday, Aug. 13—Cisco, Pioneer, Scranton and Nimrod.

## Good Guesser to Get Watermelon

Want a nice, big juicy watermelon? Who doesn't?

The Eastland Chamber of Commerce has one waiting for the person who can come the closest to guessing its weight.

The Eastland County grown melon was brought in by Larry Harding of Route 1, Rising Star. Harding received a bonus from the chamber of commerce for bringing in the largest melon grown in the county, and for his efforts to expand melon growing in the county.

The melon is on display in the lobby of the Eastland National Bank. It will be given away Friday Aug. 8, to the person who comes the closest to guessing its weight.

## August 13-14 Set As Dates For 4-H Meet

August 13-14 has been set as the dates for the 4-H Club boys six-county camp. The camp will be held at the Cisco Lake Park and the starting time is 10 a. m. Aug. 13.

The counties participating in this camp are Eastland, Callahan, Shackelford, Jones, Palo Pinto, and Stephens. It is expected that there will be an attendance of 150 4-Hers, adults and county extension agents and assistant agents.

Activities at the camp will be baseball, swimming, horseshoes, washers, track and various other games.

Meals will be served at the camp, being cooked and served in the shade of some trees. Bedrolls will be brought by each attending camp and the boys and adults will sleep under the trees around in the park.

Mr. and Mrs. Floyd McBoe will do the cooking with the assistance of some of the county extension agents.

All the 4-H Club boys from Eastland county along with their fathers and adult leaders are encouraged to attend.

## Lupe Herrera Completes Basic Military Training

Lackland AFB—Airman Third-class Lupe Herrera, son of Manuel Herrera of 410 E. Olive St. Eastland, has completed his initial course of Air Force basic military training here. He has been selected to attend the technical training school for Radio Intercept Operators at Keesler AFB, Miss.

Airman Herrera is a graduate of Eastland High School and attended Ranger Junior College where he studied engineering. He was employed by Bell Telephone Company prior to entering the Air Force.

Basic airman at Lackland are selected for specialized training at technical schools on the basis of their interest and aptitudes. They are reassigned to the school after four week of basic and are given additional military training along with the technical subjects.

## Spanish Peanut Support Price Is Set at \$209.60

Support price on 1958 Southwest Spanish peanuts will be \$209.60, per ton, the United States Department of Agriculture announced this week.

The Loan price, which is the basis for buying in the Southwest as well as other areas, will be some \$9.00 below support of approximately \$200.60 per ton or \$3.008 per bushel.

The support price is below the national average, and again Southwest growers will be paid less for their peanuts than growers in the Southeast and Virginia.

Support price on Virginia peanuts will be \$222.74. Southeast peanuts will be supported at \$218.

## Polk Valliant Commander of Eastland Legion

Polk Valliant is the newly elected commander of the Eastland American Legion post.

New officers were elected at a recent meeting of the Legion. Named vice-commander at that time was J. W. Harper. Adjutant is George Carter.

Commander Valliant will name other members of his command.

## Homecoming Is Set At Strawn

The 21st annual Strawn Homecoming will be staged in Strawn Friday, Saturday and Sunday, Aug. 22-23-24, under sponsorship of the Strawn Ex-Students and Ex-Teachers Association.

The yearly summer get-together of former teachers, students and ex-residents of this community and area has been held regularly since 1935 with the exception of two World War years.

Miss Georgia Lueille Stephen is president of the exes organization and chairman of the 1958 Homecoming which will be highlighted by a downtown carnival and a street dance on Aug. 22, a gala parade, old fiddlers contest, barbecue and homecoming dance on Aug. 23, and special worship services at Strawn churches on Aug. 24.

Other officers of the Strawn Ex-Students and Ex-Teachers Association include Jimmy Lynn, first vice president, Miss Ruth Messimer, second vice president, and Mrs. Elizabeth Mills, secretary-treasurer. Frank S. Phillips is co-chairman of the 1958 Homecoming.

Miss Stephen said final plans for the three-day event have been completed and a heavy attendance is expected. Record was set in 1949 when nearly 5,000 exes attended the gathering held here that year.

Support price on 1958 Southwestern runner type peanuts at \$202.22. The national average will be \$213.20.

The \$213.20 average was announced March 31. Price differentials have just been announced, however.

The support price on peanuts grown in Eastland County is also lower than the recommendation made by the industrial group, composed of representatives from all areas.

Southwestern Peanut Growers Association explained that peanut grower and sheller representative met in Washington July 22 in an attempt to reach agreement with respect to price support differentials.

"The price by types range both over and under the national average," the SWPGA pointed out. "Establishing these prices to conform to the national average is an administration function of the USDA. However USDA officials asked for recommendation of the industry group. The following recommendations were adopted by the industry representatives in the recent meeting."

"Being unable to agree on any better basis of establishing price differentials on peanuts of various types, be it resolved that we support the recommendations of the Department as set forth in a bulletin dated July 10, 1958 and request that it be adopted for the 1958 season, with the further request—(Continued On Page Two)

## Eastland Rogues To Play Ranger Saints Aug. 12

Members of the Ranger Ministerial Alliance are vacationing prior to strenuous work-outs for benefit game scheduled between the "Saints" and the "Sinners" (Rogues) on Tuesday, Aug. 12, at Little League Park.

On vacation this week are two members of the Alliance, and others are planning to take trips soon. Work-outs are expected to start the last part of this week.

Any men, interested in becoming "Saints" in Ranger, may contact Ronald Waters in Ranger to be signed up on the baseball team, Umpires are also needed.

The benefit game is being held to raise funds for the Jimmy Arrendale Hospital Fund Drive, now underway. Donations will be taken at the game.

Playing for the "Saints" will be Rev. Ralph Perkins, Rev. Ed Scarborough, Rev. K. C. Edmonds, Rev. Mario Benitez, Rev. J. C. Atkins, Rev. Jack Barker, Rev. Bill Vaughn, Rev. J. E. Lamb, and Rev. Lively Brown, plus the recruits, Jesse Sutton.

"Sinners" will include Hayman Thomas, Tommy Edwards and J. Tyrone of Olden; Gerald Ables, Jimmy Jimenez and J. Dorsey McAlreath and Clinton Humphries of Eastland; and David Wharton, Jimmy Jimenez, J. Dorsey McRayburn Hogan, Paul Hinds, Glen Herring, Randall Hoover, Terry Young, Alonzo Stevens and Charles White—all of Ranger.

## Dry Hole Is... Hit at Club

There's water in Lake Leon, but don't press your luck a few steps away from shore.

The new Lone Cedar Country Club got a dry hole when they put down a 82 foot well this week. Drilled by Bill Hoffmann, the well turned out much as others in the same general area have, powder dry.

That will mean that a filtration unit will have to be installed to process lake water which will be used for drinking purposes in the clubhouse.



NEW SYMBOL ... new courthouse symbolizes county seat

## FREYCHLAG INSURANCE AGENCY

promotes the

## WEATHER NEWS

High ..... 98

Low ..... 73

Rain ..... 0

Total Rain for July ..... 4.08

Total Rain for Year ..... 19.27

12 Months Avg. Rain ..... 25.83

Lake Leon Level ..... 75'

Forecast ..... Cloudy and Hot

EASTLAND NATIONAL BANK "On The Square" Member F. L. I. C.

L. C. PHAGAN, PREMIER JOBBOR 1204 W. Bliss — Phone Cacao HI 2-1440 All types of oils and greases for farm, industrial and commercial users. Only local oil (no imported oil used in making Premier Products.

HOT! SAVE 9% FROM LIST! Be sold in 40 seconds with the largest and best refrigerated auto air conditioner, installed in 3 hours, any make or model car or truck — ONLY \$259.95.

BON PIERSON Olds — Cadillac, Eastland

EASTLAND NATIONAL BANK "On The Square" Member F. D. I. C.



# Eastland Telegram

Eastland County Record established in 1931, consolidated August 31, 1951. Chronicle established 1887, Telegram established 1923. Entered as second class matter at the Post Office at Eastland, Texas under the act of Congress of March 3, 1879.

**TIMES PUBLISHING COMPANY**  
Published Tri-Weekly—Tuesdays - Thursdays - Sundays  
ONCUS DICK and JOE DENNIS, Publishers  
VIRGIL E. MOORE, Editor  
CAROLYN COLLINS, Society Editor

One week by carrier in city . . . 15  
One month by carrier in city . . . 45  
One year by mail in County . . . 2.75  
One year by mail in state . . . 4.75  
One year by mail out of state . . . 6.75

**NOTICE TO PUBLIC**—Any erroneous reflection upon the character, standing or reputation of any person, firm or corporation which may appear in the columns of this newspaper will be gladly corrected upon being brought to the attention of the publishers.

## WANT ADS

Cards of Thanks charged for at rate of \$2.00 Each

### SPECIAL NOTICE

**24-HOUR FILM DEVELOPING.**  
Arrow Foto Service. Located over Eastland Telegram Office.

**POWER SPRAYING.** T. J. Gilbreath, 1012 S. Main St., Eastland, Texas. This is a wet year. There are lots of worms and insects. For appointment, phone 886-today.

**Notice to the Creditors of the Estate of T. J. Gilbreath, Deceased.** Notice is here given that original letters of administration upon the estate of T. J. Gilbreath, deceased, were granted to me on the 17th day of June, 1958, by the County Court of Lubbock County, Texas. All persons having claims against said estate are hereby required to present the same to me within the time prescribed by law. My residence and Post Office address are Box 248, Big Lake, Reagan County, Texas.

**OLIN LUSBY**  
Independent Executor of the Estate of T. J. Gilbreath, Deceased.

**NOTICE:** See our new Fall samples of suit materials. Select now and we will ship at any time. Six months to pay. C. L. Fields, Phone 571.

**LICENSED State-Wide Maternity Home-Hospital.** Confidential, complete care. Phone JE-6-2855 Fort Worth, or write "Volunteers of America", 407 Majestic Bldg., Fort Worth.

### FOR RENT

**FOR RENT**—Small furnished house. Close in. Apply 210 East Valley after 6 p. m.

**FOR RENT**—Newly decorated apartment. Hillside Apartments. Phone 9520.

**FOR RENT OR SALE:** House and lot. 200 East Hill. Phone 712-W.

**FOR RENT:** Five room house. Also downtown upstairs apartment, air conditioned. Phone 1085-W.

**FOR RENT:** Five room furnished house. 1403 Slay. Call 823-J.

**FOR RENT:** Two bedroom furnished apartment. Couple or two men. Phone 425.

**FOR RENT**—Furnished bedroom apartment. Air-conditioned. 611 West Plummer.

**FOR RENT**—Furnished two bedroom apartment. Air-Conditioned. 611 West Plummer.

### HELP WANTED

**Male**  
HELP WANTED—Wash, grease polish man. Experienced. No others need apply. Early Tire Service.

**Female**  
WANTED—Mechanic. Early Tire Service.

### TOP PAID POSITION

**STAUFFER HOME PLAN**  
Will employ three women whose standard of living requires income of \$500 per month or more. Car necessary. No experience required as we have complete training program. For appointment write Stauffer Home Plan, 877 North Mockingbird, Abilene.

**SAVE MONEY**  
Clean Retreaded  
8.70 x 15 . . . \$9.95  
Exchange  
7.50 x 14 . . . \$12.95  
Exchange

**Jim H. Houston**  
**TIRE SERVICE**  
East Main St. — Eastland — Phone 258

## SOCIAL CALENDAR

Monday, August 4  
7:30 p.m. — Pythian Sisters

**NOTICE!**  
For Reliable  
**TV SERVICE**  
Call **DAVE DUNCAN**  
Phone 2761 in Olden

**Brick - Concrete  
Rock  
Work**  
★  
Free  
Estimates  
★  
Phone 1149  
**Ed Lorenz**

**JOY**  
DRIVE-IN THEATRE  
Eastland - Cisco Hwy.  
Saturday Only

**GEORGE MONTGOMERY**  
as the  
Marshall  
whose guns were  
white lightning—and  
whose name was

**BLACK PATCH**  
Sun. - Mon. - Tues.

**DARBY'S RANGERS**  
PRESENTED BY WARNER BROS.

**JAMES GARNER**  
"MAVERICK"

will meet at Castle Hall, 106 Commerce, for their regular meeting.  
8 p.m. — Oddfellow Lodge No. 120 will meet at the IOOF Hall for their regular meeting.

**Tuesday, August 5**  
7 p.m. — A "Round-Up Party" will be held in the home of Mr. and Mrs. Ed Lorenz, 302 S. Connelley by Zeta Pi Chapter of Beta Sigma Phi. The called meeting will be in the form of a covered dish dinner. Husbands of members will be guests.

8 p.m. — Rebekah Lodge No. 177 will meet for their weekly meeting in the IOOF Hall.  
**Thursday, August 5**  
2 p.m. — The Flatwood Home Demonstration Club will meet in the home of Mrs. L. L. Vines for their regular meeting.

### Pioneer Club Is Honored With Patio Luncheon

Mrs. R. L. Watson was hostess to the Pioneer Club recently in her home for their regular meeting and a patio luncheon.

The guests were showed to the patio where table, covered with white linen cloths, were laid for the luncheon. The flowers were in full bloom, thus making a pretty setting for the luncheon.

Mrs. M. B. Titworth gave the invocation preceding the luncheon. A business session with Mrs. T. M. Johnson, president, presiding, followed the luncheon. Mrs. Johnson led the group in prayer. A report of the sick was given and cards were sent to the members who are ill.

Mrs. O. M. White presented the program which consists of reading cards and poems. The meeting was concluded by the group singing "Blessed Be the Tide."  
The next meeting will be held with Mrs. Hannah Linsey on Aug. 28.

Those present were: Mmes. Nora Andrews, Roberta Garland, Maude Braxley, Nora Vaught, M. B. Titworth, Hannah Linsley, Ina Bean, Tonsie Johnson, Millie Brittan, O. M. White, Winnie Wynne, Miss Beulah Spear, Mrs. R. L. Watson and her husband, Bob, and a guest, Forest Lightfoot.

### VISITORS

E. J. Weatherly of Brownwood visited with his sister, Mrs. A. F. Taylor, Wednesday. Mrs. Taylor's niece and nephew Mr. and Mrs. W. H. Henshaw of Abilene spent Friday with her.

**ANDERSON**  
**ALEX RAWLINS & SONS**  
MONUMENTS  
WEATHERFORD, TEX.  
Serving This Community Since 1884  
Phone LY4-2726

**TERMITE CONTROL** and all other types **PEST EXTERMINATION**  
**MODERN EXTERMINATING CO.**  
Box 312 RANGER  
PHONE RANGER  
Day 919—Night 941

Overseas Veterans Welcome  
Karl and Boyd Tanner  
Post No. 4136  
**VETERANS OF FOREIGN WARS**  
Meets 2nd and 4th Thursday  
8:00 p.m.

**B. and W. Clinic**  
announces the association of  
**DR. B. BOB ALEXANDER**  
Office: 310-30 Petroleum Building  
Eastland, Texas  
Home Phone: 415 Office Phone 1096

**NOTICE... Come To Kendrick Drive-In Dairy**  
(Serving This Territory Since 1940)  
FOR  
**Good, Clean JERSEY Sweet Milk**  
Price - 70c Gal.  
Phone 896-J-2 — Located Halfway between Eastland and Cisco



**Miss Edwards to Become Bride of Philip Hilliard**  
Mrs. W. F. Edwards of Olden has announced the engagement and approaching marriage of her daughter, Thelma Ann, to Pfc. Philip Arlie Hilliard, son of Mr. and Mrs. Travis Arlie Hilliard of Olden. The prospective bridegroom is stationed in Milwaukee, Wisconsin, with the U. S. Army AAA Msl. Bn. The couple plan an early September wedding.

The couple are both graduates of Olden High School and both attended Ranger College, and are members of Phi Theta Kappa, national honor society of Junior Colleges.

The bride-to-be was football sweetheart, Freshman and Sophomore favorite and lieutenant in the Range Anns while attending Ranger College and is now employed with the Southwestern Bell Telephone Co.

**RETURN FROM VACATION**  
Mr. and Mrs. W. C. Howard of Olden have returned home from their vacation during which they toured various southern states. They visited in the home of Mr. and Mrs. Frank Burns in Alabama, Mr. and Mrs. Sandlin Holt and Mr. and Mrs. Victor Snyder in Shreveport, La. They also toured Arkansas and Mississippi.

**MAJESTIC** SUNDAY & MONDAY  
Regular Prices  
"TAMMY" IS PERKIN' AGAIN!  
**THIS HAPPY FEELING**  
A UNIVERSAL PICTURE  
CINEMASCOPE  
"DEBBIE" CURT "JOHN" REYNOLDS "JURGENS" SAXON

**RANGER DRIVE-IN**  
HIGHWAY 80 EAST ON RANGER HILL  
Adults 40c Kiddies Under 11 Free  
**LAST TIMES SATURDAY**  
**GEORGE MONTGOMERY**  
...They call him  
**BLACK PATCH**  
PRESENTED BY WARNER BROS. DIANE BREWSTER and SEBASTIAN CABOT A MONTGOMERY Production

**FREEVUE SATURDAY NITE**  
SUNDAY - MONDAY - TUESDAY  
Admission 50c — Bargain Nite Suspended  
**MARLON BRANDO**  
AND AN EXQUISITE NEW JAPANESE STAR,  
**SAYONARA**

**MARLON BRANDO**  
AND AN EXQUISITE NEW JAPANESE STAR,  
**SAYONARA**  
I am not allowed to love  
But I will love you  
if that is your desire.  
Filmed in TECHNICOLOR and TECHNICOLOR presented by WARNER BROS.  
STARRING PATRICIA OWENS - RED BUTTONS - RICARDO MONTALBAN - MARTHA SCOTT - JIYOSHU UMEKI - JAMES BARNEY  
AND INTRODUCING MIKO TAKA PRODUCED BY WILLIAM GOETZ DIRECTED BY JOSHUA LOGAN  
BASED ON THE NOVEL BY JAMES A. MICHENER. SCREEN PLAY BY PAUL OSBORN. LYNN BERRY. © 1958 WARNER

CALL 601 FOR CLASSIFIED ADVERTISEMENT  
**Insurance AND Real Estate**  
**D. L. KINNAIRD**  
Life - Fire - Auto - Farm  
Polio - Bonds  
39 years in the Insurance Business in Eastland

## DIXIE Drive-In

Box Office Opens 7:45 Show Starts 8:00  
Box Office Closes 40:00  
ADMISSION NEVER OVER 50c  
FRIDAY - SATURDAY, AUG. 1 - 2

**SADDLE TRAMP and HELLCAT!**  
They matched each other sin for sin!

**GUY MADISON**  
**RHONDA FLEMING**  
AN ALLIED ARTISTS PICTURE  
**BULLWHIP**  
CINEMASCOPE COLOR  
Hear FRANKIE LAINE sing that "BULLWHIP"  
Executive Producer: WILLIAM F. BRIDY • Produced by: HELEN AINSWORTH • HARMON JONES • ADELE BUFFINGTON  
A ROMSON-BRIDY PRODUCTION  
PLUS: Color Cartoon & Sports Reel

SUNDAY - MONDAY, AUG. 3 - 4  
Paramount presents  
**CLARK GABLE** **DORIS DAY**  
In '58's Very Forward Look in Comedy  
— In A Class By Itself

IN THE PERLBERG-SEATON PRODUCTION OF  
**TEACHER'S PET**  
TEN YEARS FROM TODAY YOU'LL STILL BE TALKING ABOUT IT!

**GIG YOUNG - MAMIE VAN DOREN**  
Produced by WILLIAM PERLBERG  
Directed by GEORGE SEATON  
Written by FAY and MICHAEL KANIN A PARAMOUNT RELEASE  
PLUS: Two Color Cartoons

TUESDAY ONE DAY ONLY, AUG. 5  
Tuesday Is Bargain Day—Adults 25c  
Child Under 12—FREE

**DEADLY CURSE OF AZTEC TREASURE**  
**VS. GRIM JUSTICE OF THE...**  
**NAKED GUN**  
We lived by the law of "Shoot to Kill—But Shoot First!"  
WILLARD PARKER • BARBA CORDAY • BASTON MACLANE  
PLUS: Two Color Cartoons



**Connellee-**

(Continued From Page One)  
Indian. I engaged his son, Larkin as a chain carrier and we went out and surveyed some land. While doing so I pulled my little five-shooter Smith & Wesson out and practiced shooting at a live-oak tree; Larkin came up and asked me what I was doing. I told him I was practicing shooting my pistol. He looked at it and remarked that if any man were to shoot him with that pistol and he found it out he would kill him. At that time he had two .45 calibre Colts revolvers swung to him, and told me they were the only kind of pistol with which to fight Indians. That country was very thinly settled, but it had some cattle and horses on it; many deer and some antelope. I surveyed land in that county until about Christmas when my partner Daugherty came out to Brownwood to bring me some more certificates and to visit with me. I had brought with me about three hundred dollars when I came from Kentucky, and left

it with Daugherty, who between the time of my arrival in Dallas and his coming to see me at Christmas of 1874 had purchased for the magnificent sum of fifty cents per acre the C. S. Betts Survey in or which the town of Eastland is now located. He suggested that we make a trip to Eastland County to record our deeds and to examine the land. Eastland County had been organized in December, 1873, and had a little court house about 20 by 30 at what is now Merriman — there were no town in the county. The officers of the county were A. J. Stuart, clerk; H. S. Schmick, first sheriff, and Ike P. Schmick was the first treasurer — all lived at Mansker's Lake about 12 miles southeast of the county seat of Merriman. I stayed all night with A. J. Stuart, the county clerk who had two little log cabins, and my partner, Daugherty went a mile or two further up the Leon River and stayed with John L. Duffer, then a prominent citizen of Eastland County, and who has descendants living in the town of Eastland at the present time. My brother A. S. Connellee, afterwards married the daughter of A. J. Stuart. We came up to what is now called Holcomb Flat, two miles northeast of Eastland where there was a log cabin occupied by J. S. Redford, Williams Gwaltney and J. E. Cold, also J. H. Calhoun — all of whom were surveyors, and were interested in surveying land in Eastland County. They knew where where the C. S. Betts Survey was located and took Daugherty and myself and showed us all the corners.

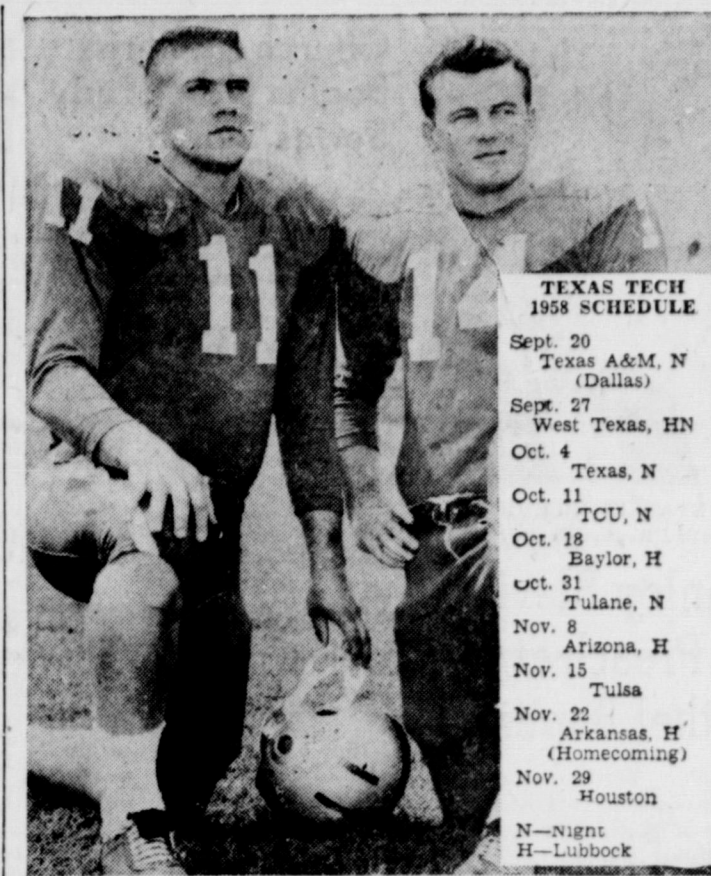
Seeing that no officer of the county lived at Merriman the county seat and there being only about 100 men living in the county, and Merriman being quite a distance from the center of the county, Daugherty and myself concluded we would lay off a town on the C. S. Betts survey, which we did in the Christmas week of 1874 and named it Eastland. The next thing was to get the county seat removed to Eastland. We made a proposition to the county that if they would move the county seat from Merriman to Eastland, that we would build a two story stone building at Eastland and would give the county the upper story of this building to be used as a court room and a district clerk's office. This we did and the justices of the peace who were what is now our commissioners court, ordered an election for the removal of the county seat from Merriman to Eastland. This election held on the second day of August 1875 at which time there were 127 votes cast of which Eastland received 67, which was a majority of all the votes cast. The court then issued a certificate of election to Eastland and the records were removed to Eastland and the county seat has remained there ever since. The nearest competitor to Eastland in the election was McGough Springs, about four and one-half miles southeast of Eastland. The only postoffice in Eastland County was McGough's, the mail being brought from Sipe Springs to McGough Springs twice a week by Uncle Tommy McGough, the father of W. C. McGough, who was a long time settler in Eastland County having come to McGough Springs in 1863. Uncle Tommy kept his post office in a little side room of the house, in what was then a boot box, being a pine box about 15 inches deep and 12 inches wide and four feet long. When you called for your mail, Uncle Tommy would tell you to go into the side room and get all the mail you were entitled to. Postage stamps were then three cents each, but Uncle Tommy was a thrifty citizen, and when they were scarce he raised the price to 5 cents, and as our nearest postoffice on the way to Dallas was at Stephenville we gladly paid the price.

The largest settlement in Eastland County at that time was on the Palo Pinto Creek near Allen's Mill. Uncle Peter Davidson lived in that neighborhood. He was county surveyor and was the most hospitable man I have ever known, and more people traveling through the county were directed to his home than in all the rest of the county. There was a settlement on Sabano Creek close to the line of Comanche County, in the south part of Eastland County. Among others who resided there were the three Justice boys, J. W. Morgan, Cal Watkins, old man Marsh and his family J. T. Townsend the grandfather of Dr. E. R. Townsend who now lives in Eastland. J. T. Townsend then lived on Battle Creek on the west line of Eastland County. The names of these cattlemen were Hart and Green Riddle. There were a few places east of Eastland on Leon River, and as I said before there were a number of settler around Mansker's Lake.

There are very few settlers in Eastland County now who were here when I came. Among them is M. V. Brewer, who at that time was a blacksmith a mile or two from Merriman, and Mrs. J. O. Warren, who now lives at Gorman, and who was then the wife of John Bagwell. There were no road to Eastland at the time and after the county seat was located here a number of us got together and cut a road to Mansker's Lake. At that time we hauled our cotton to Stephenville to be ginned, and we took our corn and wheat to the same place to be ground into meal and flour. We had no banks in the county. More money passes over the counter in one of the banks in Eastland each day now than passed between the citizens of the entire county during the whole year. I do not recall to mind that there was any bank then in Stephenville or Granbury. I have continuously remained in this county, as you know, since May, 1875. I had many experiences locating land in the northwestern part of the state, but it would make this letter too long to attempt to relate them, but if you think it would be interesting I will write you another letter telling you of the conditions and my experiences in locating land in the then unknown north western part of this state.

**Mrs. Allison... Visits Arizona**

Mrs. J. C. Allison has returned home after her week's trip to Tucson, Arizona, where she visited her son and daughter-in-law, Mr. and Mrs. John L. Allison, accompanying Mrs. Allison on her trip were her son, Nelson Allison of Odessa, her daughter, Miss Ethel Allison of Abilene, and her sister, Mrs. Anne Shelburne of Fort Hancock. While enroute to Arizona they visited in Sierra Blanca, Fort Hancock, Juarez, Mexico, and Las Cruces, New Mexico. In Sierra Blanca they visited Mrs. Allison's sister and brother-in-law, Mr. and Mrs. John Q. Adams and Johnny Jr. After arriving in Arizona, they enjoyed a one day picnicing trip to Mount Lemmon which is 8000 feet high and covered with granite and pine burrs. They also attended the Presbyterian Church in Tucson where Mr. and Mrs. John Allison are members. They heard Princeton Theological Seminary Choir of 23 voices from Princeton, New Jersey. They also visited "Old Tucson" where several movies have been made. The temperature in Arizona was "very agreeable" due to the fact that July is during the rainy season. It rained almost everyday for a short time.



**TEXAS TECH CAPTAINS**—Leading the Red Raiders through their 1958 schedule are quarterback Jerry Bell of Ballinger, captain, (left) and halfback Mack Pogue of Sulphur Springs, alternate captain.

**Texas Tech Will Face Conference Foes**

Lubbock — Two Southwest Conference teams and a pair of Border Conference rivals make up Texas Tech's home football schedule this fall. In Jones Stadium, Coach DeWitt Weaver's Red Raiders will meet West Texas State Sept. 27, Baylor Oct. 18, Arizona Nov. 8, and Arkansas Nov. 22. All except the opener with West Texas State will be played at 2 p. m. The Buffalo engagement is set for 8 p. m. Special days have been designated for the games with Baylor (Dad's Day), Arizona (Band Day) and Arkansas (Homecoming). The 1958 schedule will mark the first time since 1949 for Tech to meet a Southwest Conference opponent at Homecoming. To make a total of five Southwest Conference opponents—most in history—on the Red Raider Schedule, Texas Tech will also play Texas A & M in Dallas September 20, University of Texas in Austin Oct. 4, and Texas Christian in Fort Worth Oct. 11, all at night. The Red Raiders will meet five SWC opponents next year, also before launching official title play in 1960. A more experienced team than last year's will face the schedule, toughest in Tech history. Compared with only nine returning letter-

**McCAMEY VISITORS**  
Mr. and Mrs. C. F. Gilbreath of McCamey have returned home after spending the weekend with Mr. Gilbreath's parents, Mr. and Mrs. J. R. Gilbreath.

**FOR CRUSHED MATERIALS**  
Filler Sand, Drive Way Materials, Crushed Concrete Rock  
PHONE 215  
After 6 p.m. telephone 575  
Edwin Aaron  
AARON MATERIALS



Don't fail to include a wedding portrait in your plans for this once in a life-time occasion.

For Appointment  
Phone 46  
CANARIS  
STUDIO

**M. H. PERRY**  
Representing  
**Southland Life**  
Life - Retirement Income Partnership  
Mortgage Cancellation  
Educational - Annuities  
Accident - Sicknes Hospitalization - Group  
Call 173 or 713-J  
107 W. Main ★ Eastland

Thanks to my friends and the people of Eastland County for your confidence and vote—re-electing me again as your County Judge for another term.  
I shall do my very best to handle your County Judge's office in a way and manner that will be to the best interest of the people of Eastland County.  
My family and I shall always be humbly grateful to you. Again I thank you.  
**JOHN HART**  
County Judge, Eastland County

**DAVID MASSENGALE**  
**PLUMBING**  
TELEPHONE **26**  
Night or Day

**Funeral Directors**  
**HAMNER FUNERAL HOMES**  
Ben E. Hamner  
Oxygen Equipped - Air Conditioned  
Eastland Phone 17 Cisco Phone Hillcrest 2121  
AMBULANCE SERVICE ANY WHERE ANY TIME  
Nominal Cost Burial Insurance  
For The Entire Family

**WANTED**  
SCRAP IRON  
SCRAP IRON  
METAL METAL  
BATTERIES BATTERIES  
**EASTLAND**  
IRON & METAL CO.  
OWNED AND OPERATED BY HENRY PULLMAN

**Hospital News**

Patients in the Eastland Memorial Hospital are:  
Mrs. N. F. Cate, medical, Cisco  
Mrs. R. D. Burton, medical  
Mrs. Oscar Lyeria, medical  
Mrs. Mae Edna Gattis, medical  
Mrs. James Wright, medical  
Billy Wayne Cate, medical  
Jerry Dukes, medical  
Mrs. W. M. Culver, medical  
J. R. Niver, medical  
Mrs. Tom Lovelace, medical  
Mrs. Mary Brown, medical  
Mrs. M. O. Hazard, medical  
Dismissed were:  
Mrs. Charlie Jackson, Fred Burfiend, Mrs. R. A. Brim, Mrs. Edwin Aaron and baby boy, Morte McIntire, and Mrs. Wesley Walker.  
Patients in the Ranger General Hospital from Eastland and Olden are:  
Mrs. O. B. Crowley, medical  
B. J. Elliott, medical, Olden  
J. A. Flourney, medical  
Dismissed were:  
Patricia Slaughter and Mrs. W. E. Brockman.

**Look Who's New**

Mr. and Mrs. Derrel L. Black of Kermit are the parents of a baby girl who was born July 13 and weighed seven pounds and nine ounces. Sharon Lynn is her name.  
Mr. and Mrs. Charles Black of Eastland are the paternal grandparents. Maternal grandparents are Mr. and Mrs. Thurman Williamson of Denver City, Texas.

TRADE WITH YOUR HOMETOWN MERCHANTS

**BUY SEVEN-UP**

**Spanish-**  
(Continued From Page One)  
commendation that a study be continued to determine method of determining differentials in 1959."

The July 10, USDA bulletin recommended Southwest peanuts be supported at \$210.30 per ton, Southeast peanuts at \$218.28 per ton, Virginia peanuts at \$222.74 per ton and runner peanuts at \$202.22 per ton.

**IF IT'S METAL**  
**Decore Metal Products**  
306 E. Main Phone 288  
SHOP WELDING  
PAINTING REPAIR

A check shows that since the July 10 bulletin was released, the USDA further penalized Southwest growers to the advantages of Southeast growers.

**The Next Best Thing-**  
... to a clear conscience and a good night's sleep is the feeling of security in knowing that all of your property is adequately insured and by agents in your home town who are always on hand when you need them most. This is especially true around vacation time. Whether you stay at home or take a trip, vacation time is hazard time for you and yours. Be sure to check with us now if you don't feel quite right about your insurance coverages.  
**EARL BENDER & COMPANY**  
Eastland, (Insurance since 1924) Texas

**WE ARE NOW A DIRECT Factory Dealer**  
**SAVE! SAVE! SAVE!**  
HEAVY GAUGE STEEL  
**Filing Cabinets**  
One Drawer Letter File ..... 24.50  
One Drawer Legal File ..... 29.50  
Two Drawer Letter File ..... 29.95  
Two Drawer Legal File ..... 39.95  
Three Drawer Letter File ..... 39.95  
Three Drawer Legal File ..... 49.95  
Four Drawer Letter File ..... 46.50  
Four Drawer Legal File ..... 54.50  
**Eastland Telegram**  
PHONE 601



### Richard Bumpass to Preach Sunday At First Baptist Church Services

Richard Bumpass, student at Southwestern Baptist Theological Seminary and formerly of Eastland, will preach both services at the First Baptist Church Sunday morning in the presence of the pastor, Harvey Kimbler, who is away on vacation. R. B. Hall Jr. minister of music, will have charge of the song service with Miss Helen Taylor at the organ.

Sunday School begins at 9:45 under the leadership of Mr. Arla Hallford; Morning Worship, 11; Chapel Choir, 5:00; Cherub and Celestial Chorus, 6; Training Union, 7 and evening services at 8 p. m.

The men will attend the Brotherhood camp at Lueder Monday

afternoon at 3. The W. M. U. will have monthly business meeting Tuesday evening at 9:30 with Mrs. Frank Seay presiding. "Some Barred Doors" is the topic for study following the business session. The "Background Study Course" begins Tuesday evening at 7:30 and different departments will study books on Baptist history as follows: Adults with Mr. and Mrs. Herbert Ekrut, Young People with Evan Mitchell, Intermediates with Mr. and Mrs. Charles Layton Juniors with Dr. and Mrs. Treadwell and the Elementary groups at the church.

Sunday School teachers and officers and youth organizations will meet Wednesday evening at 7:00 with prayer meeting at 8:00 and church choir at 8:45.



STANLEY BLEVINS  
Bethel Baptist Church Speaker

### Stanley Blevins To Preach at Bethel Baptist

Stanley Blevins, student at Hardin-Simmons university and a native of Eastland, will preach at the Bethel Baptist Church Sunday morning. The pastor, James Fleming, is away in a revival meeting but will be back for the Sunday evening service. Sunday School begins at 9:45. Worship service follows at 11.

Bible School is the major topic at the Bethel Baptist Church during the coming week. Bible School will be held every morning, Monday through Saturday at 8:30. Monday morning will be preparation day and so a short day. Commencement will be held at the Sunday evening worship service on August 10. Classes are provided for all children through 15. Though limited in space, a special effort is being made to reach all of the children and young people of the Bethel Baptist Church, and for those children who do not attend Sunday School at any church.

Superintendents of the various departments are, Mrs. Felton Holloway, nursery; Mrs. Truitt Gregory, beginners; Mrs. Marcus O'Dell, primary; Mrs. Allen Brim, juniors; and Mrs. James Fleming, intermediates.

Activities for the week other than Bible School are prayer meeting, teacher's meeting Wednesday night at 7:15 and 8 respectively.

### Church of Christ Begins New Study Series Sunday

A new series of sermons on the book of Acts is being started at the Church of Christ here Sunday, according to Otta Johnson, minister. He states that these sermons are designed to show how the church of Christ started, how the worship was carried on, and how people became members of the church. Sermon subjects for Sunday are at 10:50 a. m. and at 7:30 p. m.

Pible classes on Sunday morning start at 10 o'clock. Everyone is invited to attend the classes and the worship services. Bro. Johnson said.

### Episcopal Church Holy Communion At Ten Sunday

Holy communion services will be held Sunday at 11 a. m. at the Holy Trinity Episcopal Church.

Rev. R. A. Lewis will be celebrant for the service.

Father Washington is in Hampton Mass, this week to be married.

### Billy D. Turner To Lead Revival

Billy Don Turner of Eastland will conduct a one week revival at the Eolian Community Church five miles south of Breckenridge, Aug. 4-11.

Turner will do the preaching and Kent Waddill of Waco will conduct singing.

### Mrs. Clark Hosts Pals SS Class at Social Thursday

Mrs. Doyle Clark was hostess to the Pals Sunday School Class of the Bethel Baptist Church in her home 1317 South Seaman, Thursday morning for a "Fellowship Hour."

During the social Mrs. Clark served refreshments of coffee and cake.

Attending the social were Meses. Jean Stone, Jo Ann Brown, Dell Ward, Elaine Parrish, Sharon Parrish, Tommy Clark, and Doyle Clark. Nine children were present.

### Sharon Sutton Is New President Of G.A. Council

The Cisco Associational Girl's Auxiliary met for its summer outing in the Northwest Lodge, Possum Kingdom Lake. The meeting began with an assembly at 9 a. m. July 24 at the First Baptist Church of Breckenridge and then moved, caravan style, to Northwest Lodge.

### HOUSE GUESTS

Mrs. F. L. Drago had as her house guests for three days her daughter, Mrs. C. B. Beall of San Angelo, her granddaughter and her husband Mr. and Mrs. W. W. Wendland and children, Wendt, and Wren of Dallas, and Dr. Bobby Beall of Galveston.

### EAGLE MOUNTAIN VISITORS

Mr. and Mrs. M. L. White and children, Ronald Mack, Mayna and baby Mark, of Eagle Mountain have returned home after visiting with Mr. White's parents, Mr. and Mrs. O. M. White, Leon Village.

### VISITS GRANDPARENTS

Starkey Warren of Abilene is here visiting with his grandparents Mr. and Mrs. W. E. Tankersley.

## TALES OF LOST TREASURES IN-AND-AROUND EASTLAND COUNTY

"La Vieja Mina de de Cucarachas," or translated into English "The Old Mine of the Cockroaches." What a strange title for a lost mine! Yet—there it is. Exactly as the Spaniards named it two hundred year ago.

I learned of this old mine through my friend Jake Thompson who resides on his farm near Rising Star. He was kind enough to include it in his drawings that he made for me not long ago. The drawing includes the "Lost Cockroach Mine," and a total of 35 other lost bonanzas as well.

Whoever re-finds this "Lost Mine" will not only be considered very lucky but also very rich to boot. The disheartening part of it though, is he is going to have a very big job on his hands before being able to extract the mine's riches for refinement. The reason for this is because of the terrible cockroaches to be found there. The astronomical number inhabiting the mine is astounding! There are millions and hundreds of millions of the dreaded insects according to Jake. He says they are everywhere, crawling up and down, sideways and all around. Nowhere can a man step without grinding down on ten or twelve of them at the time.

Jake said he heard of the cockroaches from a Mexican in Chihuahua City while there looking for "leads" to the fabulous Lost Topopa Mine which is located somewhere near the headwaters of the Yaqui River in the state of Sonora.

"At first, I thought such a thing impossible," said Jake, "but a Tucson chaged my tune after Pablo (the Mexican) explained that the Cockroach will multiply quite rapidly when existing in ideal environments such as is found in that old mine's underground tunnels."

"Perhaps Pablo and Jake are right. I don't venture to say. But whether the cockroaches abound in the old mine or not—the mine itself is there! That I can sustain as fact. To much supporting information concerning the mine is evident to cause me to believe otherwise. Not only is there recorded evidence of its existence to be found in dusty and tattered archives in Spain, but according to Jake Thompson, there are also signs and symbols somewhere in the Palo Pinto Mountains south of Brad that further support its being a true reality."

In a letter I received from Jake not more than a week ago are a reproduction of these symbols pointing to the mine's entrance which is covered over by large rocks and huge boulders from a canyon nearby. The Indians performed this task of concealment after their attack on the spanish miners in 1753.

"Not all of the Spaniards were killed," say the records, "and of those who were fortunate enough to escape, some remained at hand to mark the mine's location, thereby going to great risk of being murdered by the hostiles to do so

## Decorator's Notebook by Alicia Joyce



### Naturalness Decor Demands Hardwoods

The "Naturalness" era now riding rampant in home decor has brought with it a greater appreciation and far more extensive use of the oldest and most natural of all prestige materials—fine hardwoods.

Architects, decorators, and furnishing experts (whether professional or home owner "amateurs") are using more hardwood in the home than ever before, both in traditional applications and new areas of use. Homeowners are finding that the use of genuine hardwood paneling, flooring, millwork, kitchen cabinets and other built-ins, and doors not only adds to livability of the home but also adds to value at resale time. The reasons are several.

Genuine hardwood has a natural warmth to the touch and to the eye, and balances out large expanses of colder materials such as masonry and glass.

Properly finished hardwood can be kept luxurious for life with an occasional wiping with a dry cloth and a simple cleaning now and then.

### Zemo Great for Minor Burns, Cuts

Zemo, a doctor's formula, liquid or ointment, soothes, helps heal minor burns, cuts, bruises. Family antiseptic, eases itch of surface rashes, eczema, teen-age pimples, athlete's foot. Stops scratching, so aids faster healing. For stubborn cases, get Extra Strength Zemo.

**T. L. FAGG**  
REAL ESTATE  
Property Management  
Home and Farm Loans

## REMEMBER WHEN?

By Milton Fullen

In a small town in the Canadian backwoods, a country doctor named Allan Roy DaFoe went on a routine mission. A 25-year-old woman already the mother of six children, was going to have a baby. Her name was Mrs. Olive Dionne.

What happened after the doctor arrived electrified the world... for Mrs. Dionne gave birth to five little girls, who became the most famous babies in the world, the Dionne quintuplets. Their combined weight was less than ten pounds all together at birth.

Dr. DaFoe saw to it that all of the quintuplets survived... Yvonne, Annette, Cecile, Emilie and Marie. The world took the quintuplets to their hearts. Within a few years 3000 visitors a day would be counted coming to their home just to see them. The world has never forgotten the Dionne quintuplets, whose early years were eagerly followed in press and newsreel by millions... but do you remember when they were born?

Remember the year? A family man in those days, with a few mouths to feed, couldn't afford to gamble when he bought a car, new or used. He looked for the best deal he could find... and bought from a reliable dealer he could trust. The year was 1934.

Whether you're in the market for a new CHEVROLET or a good late model used car, we can offer you a better deal. Right now we have a terrific selection of good, reconditioned use cars... backed by our reputation for dependability and honest dealing. So drive safely with a good used car from FULLEN MOTOR CO., 305 E. Main, Phone 44.

### Mangum Baptist Church Revival Is In Progress

Revival services began Friday at the Mangum Baptist Church and will continue through Aug. 10.

Rev. Ben Hagan of Cisco is evangelist and Floyd Fisher of DeLeon is song leader.

Services are being held twice daily, at 10 a. m. and 7:45 p. m.

### Presbyterian Sermon Topics Are Announced

Morning Worship begins at the First Presbyterian Church at 11 o'clock, the Rev. Eugene H. Surface, Minister. The sermon-subject is "The Prophet of Personal Religion." The scripture lesson is Jeremiah 2:11-13; 31:27-36. The Texts is Jeremiah 31:23.

Sunday Church School convenes at 10 o'clock.

CALL 601 FOR CLASSIFIED ADVERTISEMENT

**DR. R. G. VERHETSEL**  
CHIROPRACTOR  
announces the removal of his office to  
**709 South Seaman**  
**EFFECTIVE AUGUST 1**  
Open Weekdays from 9 a.m. to 5 p.m.  
Closed Thursday and Saturday afternoons  
Phone 536

## Our Thanks To You!

We are grateful to you, our customers, for the fine cooperation you have shown, and for the acceptance you have given the new account numbering system. Your use of the free personalized checks and identification cards have made the installation of our new electronic bookkeeping much easier and more effective.

We will appreciate your continued cooperation so that we may give you faster, more accurate service. We want to give you the best in modern banking service.

If you have not received them, please come by the bank for your free personalized checks and identification cards.

**EASTLAND NATIONAL BANK**  
"ON THE SQUARE"  
Member FDIC Member Federal Reserve

### NOTICE

FRESH DRESSED  
**FRYERS**  
and  
Fresh Dressed  
Hens  
At The Plant  
PHONE 110  
**WALKER**  
Dressing Plant

## REPAIR AND REMODEL

NO DOWN PAYMENT...  
36 MONTHS TO PAY

- ★ PAINT
- ★ WALLPAPER
- ★ LUMBER
- ★ HARDWARE
- ★ ALLBUILDING MATERIALS

**HIGGINBOTHAM-BARTLETT CO.**  
Jack Elliott, Mgr.  
301 W. Main Phone 112 or 1014

## BUYING! SELLING! RENTING! SWAPPING!

**YOU'LL FIND IT IN THE**

# WANT ADS

Read and Use Want Ads for Quick Results!  
It's The Town's Biggest Market Place...

## EASTLAND TELEGRAM