



# Eastland Telegram

"COVERING EASTLAND COUNTY"



VOLUME TWENTY-NINE

EASTLAND, TEXAS, TUESDAY, DECEMBER 23, 1958

No. 107

## MOORE about... EASTLAND

by Virgil E. Moore

Quail hunters are complaining. Although there are more quail this year than in some time, the hunters still aren't too pleased. The problem is, although hunters have been able to flush a lot of birds, they haven't been too successful in knocking them down.

Two hunters we ran across the other day were discussing the situation. One nimbrod said that the quail were just faster this year than usual, but the other said, "Nope, the ammunition just ain't as fast."

We even heard one hunter admit he just couldn't hit the things.

Coleman's fine fullback, Pat DeBusk, is also an outstanding basketball player it would seem, as the Eastland Mavs may well find out when they swing into Class AA action.

So far this year, in five games, DeBusk has netted 141 points. He has been consistent too, getting 30, 29, 26, 27 and 27 in the five games.

Cisco is the general favorite in the District, with Coleman, Ballinger, Winters, Eastland and Ranger, rated in the order given.

The following poem was submitted by Mrs. G. C. Flaherty of Route 1, Eastland. It was written by John Lair and appeared in Mrs. Flaherty's hometown paper, the Lawrence County (Ill.) News.

Don't Blame the Children We read in the papers and hear on the air

Of killing and stealing and crime everywhere We sigh and we say as we notice the trend

"This young generation. Where will it all end?"

But can we be sure that it's their fault, alone— That maybe a part of it isn't our own?

And we less guilty who place in their way Too many things that lead them astray?

Too much money to spend; Too much idle time; Too many movies of passion and crime;

Too many books not fit to be read; Too much of evil in what they hear said;

Too many children encouraged to roam By too many parents who won't stay at home.

Kids don't make the movies, they do not write the books That paint gray picture of gangsters and crooks;

They don't make the likker, they do not run the bars, They don't make the laws and they don't buy the cars.

They don't peddle drugs that addle the brain, That's all done by older folks (Continued On Page Two)

## Mrs. Billy Ray Lyerla Funeral Services Pending

Funeral services were still pending this morning for Mrs. Billy Ray Lyerla, 36, who died Saturday in a Rochester, Minn. hospital.

Mrs. Lyerla underwent a delicate heart operation early Saturday at the hospital.

She made her home at Clifton, Ariz. and was a graduate of Eastland High School. The former Oma Crenshaw, Mrs. Lyerla had made her home with Mr. and Mrs. A. K. Garrett while living in Eastland.

Survivors include her husband; one son, Kenneth Ray, 11; her mother, Mrs. Maud Pierce of Casa Grande, Ariz.; and her father, Dewey Crenshaw of San Angelo; and two sisters.

Hammer Funeral Home is in charge of arrangements.

FREYSLAG INSURANCE AGENCY presents the

## WEATHER NEWS

High	60
Low	24
Rain	0
Total Rain in Dec.	0
Avg. Rain in Dec.	1.61
Total Rain for Year	28.38
Forecast	Cloudy and Mild

## Santa Gets All Kinds of Wants

You name it, and some Eastland area child has asked Santa Claus to bring it this Christmas.

Santa letters continue to arrive at the Telegram, and a few of them are printed here. All other Santa letters will appear in the Telegram's special Christmas edition, which will be printed Wednesday.

Dear Santa, Will you please bring me a red can-can and play high heels, and a me bobby sock? I am nine years old. I love you very much.

Love, Jackie Brooks.

Dear Santa, I would like like to have a cap gun and a bee-tee gun and some clothes and a guitar. I am six years old. I love you.

Love, Danny Brooks.

Dear Santa, Would you please bring me a baby doll and some dishes, and play high heels and a white can-can? I love you very much. I am two years old.

Love, Jane Brooks.

Dear Santa, Will you please bring me a

## Biggest Crowd Of Season Is Here Saturday

The biggest crowd of the Christmas season swarmed Eastland Saturday.

The big attractions were Santa's visit and a \$100 give-away. Free parking and the Eastland High School band also aided in drawing hundreds of shoppers here, and fair weather was another contributor.

Most Eastland stores reported brisk business, with at least two businesses reporting their best single day in several years.

## Albert McGrath Of Eastland Now Army Colonel

Eagles of an Army colonel were pinned on the shoulders of former Lt. Col. Albert W. McGrath of Eastland by his wife and Maj. General Raleigh R. Hendrix, chief of staff of the United States Forces in Japan, recently at ceremonies held at Fuchu Air Station, Japan.

The new colonel, who is with the Facilities Branch of USEF's J-4 Division, has more than 28 years of federal service and has been in Japan for the past 2½ years.

## Commissioners To Meet Monday

Eastland County Commissioners will hold their regular semi-monthly meeting Monday in the courthouse.

The meeting will begin at 9 a.m.

bride doll and some play high heels and a real can-can? I love you. I am four years old. And some bobby socks.

Love always, Cathy Brooks

Dear Santa Claus, I am a girl seven years old. Please bring me a Tami doll and clothes. I want a super market too. And a cowgirl suit with guns, too. And a sewing kit and little play clothes.

I love you Santa, Kay Alexander

Dear Santa Claus, I would like a Tiny Tears doll with jointed arms and legs. Also a baton, a piano just my size and I would like 10 books for my library. There will not be a fruit cake, instead it will be soup and crackers and a big glass of milk. I want a Brownie camera.

With love, Belinda Howell

Dear Santa, I am a little girl in the second grade. For Christmas I would like for you to bring me something and please bring my sister a baton, a doll, a teddy bear and a blue robe and house shoes.

Love, June

Dear Santa, I want a football suit and a football. I want a ride and a man in it. I want a Razzle Dazzle. I want a cowboy and a horse. I want a robe.

I love you, Tim Lienbee

Dear Santa, I am a little boy in the school. I want a teddy bear and a little teddy bear for my brother. I want five for me and him. There are two five and five for my brother.

I love you, Terry

I love you, Paul

Dear Santa, I am a little boy. I want a gun and holster. I want a BB gun and a wagon and rope.

I love you, David Cagle

## Small Percent Of Cotton Land Actually Planted

Only 35 percent of the Eastland County cotton allotment was planted in 1958, records show.

The county's allotment was 7,017 acres. Of that only 1,927 acres were planted. A total of 4,091 acres was put in the acreage reserve program and 1,899 acres was not planted.

The county's 1959 allotment has been reduced to 6,327 acres.

L. C. PHAGAN, PREMIER JOBSER 1206 W. Bliss — Phone Tisco HI 2-1640

All types of oils and greases for farm, industrial and commercial users.

Only local oil (no imported oil) used in making Premier Products



EASTLAND COUNTY TURKEY—Mrs. Don Kincaid presented the large Eastland County turkey, pictured, to Governor Price Daniel recently to grace his holiday table in the Governor's Mansion at Austin. The Texas Turkey Federation made sure it was a Lone Star State bird by having Texas Turkey Queen, Mrs. Kincaid, present it. Helping calm the jittery bird is W. T. Jones, Jr., of Coleman, president of the Federation.

## Bond Sales In County Continue In the Lead

Savings Bond sales in Eastland County continue to lead all other counties in District 16 during November, for the ninth consecutive month, the latest Treasury Department figures show.

During November, Eastland County sales were \$45,351, pushing total sales to \$670,979, gaining 32.3 percent over the goal of \$507,000 set for the year. Total sales are over the goal by \$163,979.

Counties going over the goal in District 16 for the first time in November were Callahan (with 107 percent), Nolan (with 101 percent) and Taylor (105).

Cumulative sales brought the entire district over the 1958 goal by 2 percent. District sales total \$4,975,479, compared with the goal of \$4,967,000.

November sales of E & H Savings Bonds brought Eastland County into second place in the Fort Worth area. Leading county is Johnson with 144.7 percent of its goal reached. In the third place is Foard County, with 131.6.

"For This Christmas, more than ever, people need to give the gift of peace — U. S. Savings Bonds. It's a present with a future; and for the New Year, to keep our country strong and free and at peace with the world; to build for all the tomorrows, a land of which we will be continually proud; to provide security for the generations to come in the manner such as we have known, and above all — to keep the precious liberties and freedoms that are a part of our heritage," Guy Parker, County Chairman, said.

The Fort Worth Area has gone further towards achieving its share of the '58 goal than any other area in the state. Sales in the area represent 98.5 percent of the total goal. Cumulative area sales of \$28,087,232 are second only to the Houston area with sales totaling \$30,284,356.

Tired of a gas hog? OF PARKING A DINOSAUR? Try and buy the popular, smart new Rambler, truly a teeny-weeny gas burner. Famous for fun, resale, quality and economy.

See TOM'S SPORT CARS Eastland

Secondly, the cornerstone opening in the old courthouse was from the top only. There was no other way to get into the stone itself except remove the wall from above. Several feet of wall were left around the cornerstone, though, until the day it was to be opened. As I remember it, it was a Saturday and the opening was at about noon, or shortly thereafter. A truck with a crane was backed on and a cable was run around the remaining wall. Then the cable was fastened to the truck's motor and engine and the wall was pulled down.

With a thud and a splash of black mortar dust, part of the wall gave way. The cable was just again around the still-remaining part of the wall, the pulley repeated, and more of the wall came tumbling down.

As this cornerstone opening had been done some publicity in Eastland was a lot of people had gathered for the occasion. Officer Tom Jones used a rope to keep the crowd back. He passed the rope around to those who were the closest to the cornerstones and the front row people held the rope against the opening, making sure I was one of those holding the rope, and there wasn't another person between me and the cornerstones except Officer Jones.

After this had been well had all (Continued on Page Two)

EASTLAND NATIONAL BANK "On The Square" MEMBER F. D. I. C.

## Farmers Get Three Million Dollar Present

Eastland County farmers got their Christmas present early this year in the form of a three million dollar peanut crop, and the effect of the farm money on the county's economy has been remarkable.

Ross Wilson, manager of the Southwestern Peanut Growers Association at Gorman, estimated today that the crop in this county alone would total 950,000 bushels. He based those figures on an average yield of 30 bushels to the acre and used \$3 per bushel as the average price to come up with the \$3 million figure.

Wilson said the price per bushel may average as high as \$3.15 and the 30 bushel average "might be conservative."

All storage facilities in the county, except some newly leased warehouses in Eastland, are now full. Wilson said that some 12,000 tons of peanuts are now in storage in Gorman. Facilities there have been full for weeks. At Ranger, Ranger Peanut Co. also is full and the Gorman and Ranger companies have both leased warehouse space in Eastland.

Wilson estimated that some 1000 tons of peanuts have already been stored in Eastland. He said the nuts were coming to Eastland from as far as Seminole.

Wilson said this year's crop is the best since 1950. Actually, in fact, he said the 1958 crop was even better than the '50 crop, for average yields have run much higher. More acreage was planted in 1950, however.

For the two counties area, Eastland and Comanche, which are the top two producing counties in the state, this year's crop will be bigger than the 1950 crop, the nationally known peanut executive declared.

Some 32,000 acres of peanuts were planted in Eastland County and slightly more acreage was

planted in Comanche County. Wilson said that he had heard of yields in the county running as high as 70 bushels to the acre. That yield was on new land, however, and he stressed that fact that it was the exception.

Between 90 and 95 percent of the county crop has been harvested today. The harvest has been slowed because of poor thrashing weather.

The huge crop was the first peanut crop this county has made since 1950, which was also a bumper year. Heavy rains during the past two years finally ended the longest drought in history.

## Mrs. Hazard Is Mystery Farm Contest Winner

Mrs. O. T. Hazard was last week's Mystery Farm contest winner.

Mrs. Hazard correctly identified the 35th Mystery Farm as the L. J. (Left) Woods farm, east of Eastland. Her name was drawn from a hat containing the names of 11 other persons who correctly identified the farm.

Woods claimed his free aerial photo enlargement by calling at the newspaper office for it.

Another Mystery Farm appears in today's edition.

## School Is Out Until Jan. 5

Eastland schools dismissed classes Friday for the Christmas and New Year's holidays and classes will not resume until Jan. 5.

This will mean a 15-day-long holiday for students and teachers alike.

## Mavs Runner-Ups In Cage Tourney

Eastland's Mavericks bowed out in the finals of the Cross Plains tournament Saturday night to Cisco, 45-29, in their closest performance of the year.

The Mavs, plagued by fouls, couldn't hit the basket and were left at the post. Charles Lipsy, sank 17 points for Cisco while Clint Humphreys was Eastland's highpoint man. Both Larry Hollis and Otis Green fouled out for Eastland.

Humphreys was named on the all-tourney team along with Bill Eaves of Talpa, Jack Snipes of Early (Brownwood), Eldon Martin of Eula, Tony Burns of Cross Plains and Lipsy.

The Mavericks, advancing to the finals, beat Early of Brownwood in the semi-finals. Cisco

downed Talpa to win the finals berth.

Mavs will not see action again until Jan. 2 when they test Dublin in a non-district game. Jan. 6 the Mavs swing into District 7-AA play against Cisco in Cisco.

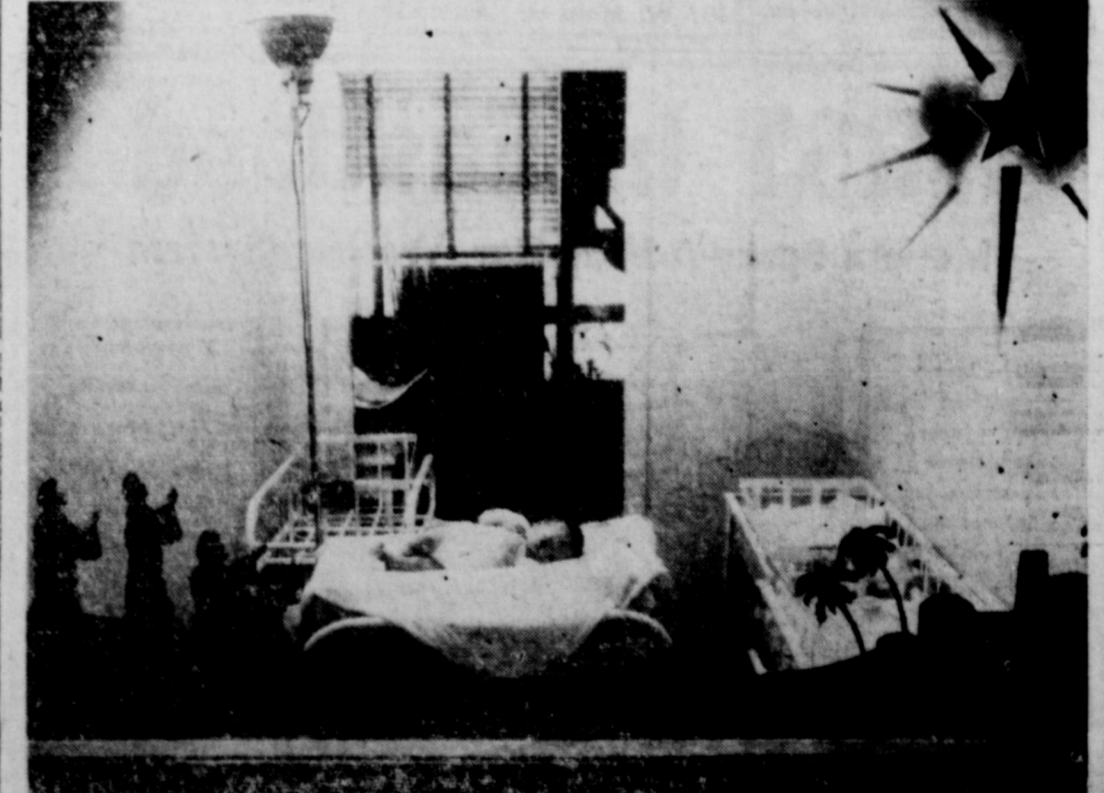
## Masons to Meet in Cisco Wed.

All Sir Knights and all Master Masons and their families in the area are invited to attend the Christmas observance program of Cisco Commandery No. 47 Wednesday night at 7:30, in the Masonic Temple at Cisco.

EASTLAND NATIONAL BANK "On The Square" Member F. D. I. C.



MYSTERY FARM—Here is Mystery Farm No. 36. The owner of the farm will receive a free enlargement of the aerial photo if he calls for it at the newspaper office, and all persons who correctly identify the farm will have a chance to win two free tickets to the Majestic theatre. All persons correctly identifying the farm will have their names placed in a hat and one name will be drawn out. Last week's mystery farm was the L. J. Woods place east of Eastland.



CHRISTMAS BABY—Little Kenneth Rudy Kamon, son of Mr. and Mrs. Robert Kamon of Cisco, arrived just in time for Christmas. Kenneth was born at Eastland Memorial Hospital, and is shown here in the nursery. The picture was taken through the nursery window, which was decorated by Mrs. Gladys Seale and Mrs. Bill Walters. Mrs. Kamon is the former Effie Hart. (Photo by Moderne).



# Eastland Telegram

Eastland County Record established in 1931, consolidated August 31, 1951. Chronicle established 1897, Telegram established 1923. Entered as second class matter of the Post Office at Eastland, Texas under the act of Congress of March 3, 1879.

**TIME PUBLISHING COMPANY**  
Published Tri-Weekly—Tuesdays - Thursdays - Sundays  
ONCUS DICK and JOE DENNIS, Publishers  
VIRGIL E. MOORE, Editor  
CAROLYN COLLINS, Society Editor

One week by carrier in city . . . . .15  
One month by carrier in city . . . . .45  
One year by mail in County . . . . .2.75  
One year by mail in state . . . . .4.75  
One year by mail out of state . . . . .6.75

**NOTICE TO PUBLIC**—Any erroneous reflection upon the character, standing or reputation of any person, firm or corporation which may appear in the columns of this newspaper will be gladly corrected upon being brought to the attention of the publishers.

## WANT ADS

Cards of Thanks charged for at rate of \$2.00 Each

**FOR RENT**  
FOR RENT: 2 room apartment, furnished. 205 South Walnut.  
FOR RENT: Newly decorated apartments Hillside. Phone 9520.  
FOR RENT: Four room unfurnished apartment Call 394-J.  
FOR RENT: Newly decorated apartments. Adults. Phone 1085-W.

**MISC FOR SALE**  
FOR SALE: Cub Scout suit. Complete. Size 8. Phone 1062.  
FOR SALE: 40 penny peanut vending machines. Phone 571.  
FOR SALE: Vancette Building Blocks—For homes, Garages, Lake Cabins and Foundations. Fearson Grimes Block Co. Grimes Bros. Bldg.  
FOR SALE: Used refrigerator, good running condition. \$30. See at Eastland Telegram office.  
SIX months to pay for an Ed V. Price tailored suit. Made to your individual measurements. NO interest, NO carrying charges.  
C. L. FIELDS  
103 W. Valley Phone 571  
ELECTROLUX (R) Cleaners factory rebuilt and guaranteed. Authorized Sales & Service. 1392 Sayles, Abilene. Ph. OR 3-1135.  
FOR CHRISTMAS give a copy of the history of Eastland County, by Ed T. Cox. See Eastland Telegram.  
REGISTERED Landrace pigs. J. F. Connell, Morton Valley.  
FOR SALE: Fresh Jersey milk cow with month old white face bull calf. Phone 107-J3.

## SPECIAL NOTICE

**MOUNT DORA, FLORIDA**  
Midst lakes, hills & orange groves. ALL SPORTS, HOTELS, MOTELS FREE FOLDER, WRITE BOX 196

**ANNOUNCING** Ferguson Electric Co. wishes to announce that they are now open for business, located in the Grimes Bldg. Electric motors repaired and rewound. Large or small. We make service calls. 14 years experience. All work guaranteed. Phone 94.

**FREE** black puppy—part scotty, part poodle, to a good home. Phone 779.

**REAL ESTATE FOR SALE**  
FOR SALE: By owner, five room home 1313 S. Bassett, Eastland. \$4,500 cash, would consider home trade. Write James E. Meador, Box 572, Seminole, Texas.

**SINGER SEWING MACHINES and VACUUM CLEANERS**  
New and Used  
Call  
**Dois Morton**  
Phone 985-W-1 after 5 p.m.  
Service All Makes

**TERMITE CONTROL** and all other types PEST EXTERMINATION  
**MODERN EXTERMINATING CO.**  
Box 312 Ranger  
PHONE RANGER  
Day 919—Night 911

**Typewriters**  
Adding Machines  
Cash Registers  
BUY SELL RENT  
New Electric Adding Machines \$127.45  
**STEPHENS TYPEWRITER CO.**  
417 S. Lamar St.  
EASTLAND, TEX.  
Phone 639

**M. H. PERRY**  
Representing  
**Southland Life**  
Life - Retirement Income Partnership  
Mortgage Cancellation  
Educational - Annuities  
Accident - Sickness  
Hospitalization - Group  
Call 173 or 128  
107 W. Main \* Eastland

**MISC. WANTED**  
HELP WANTED: Experienced service station attendant needed. Early Tire Service.

## FIRST In Eastland

### Modern Spray-A-Way Car Washing System

The best washing you've ever seen. Never scratches or injures the paint on your car.



A completely new scientific washing device. The very latest fast and efficient equipment.

The washing device that brings out the beauty as it cleans your car. New beauty wash shampoo that never injures the paint, even when porcelainized or waxed, it thoroughly cleans your car, bumper to bumper, and leaves it sparkling clean.

**LUCAS TEXACO SERVICE STATION**  
300 East Main Phone 9537

### Gray Matter

(Continued From Page One)  
been completely removed from the cornerstone an investigation was made of the contents of the

### Christmas Party Honors SS Class In Pogue Home

Mrs. C. M. Pogue was hostess in her home to the Martha Dorcas Sunday School Class of the First Methodist Church Wednesday evening. Mrs. Earl Bender and Mrs. Fred Davenport were co-hostesses. Santa in his "easy rocking chair" greeted the guests at the front entrance as the members entered the beautiful, Christmas decorated home.

Mrs. W. A. Martin related the familiar Christmas story to the members.

During the evening the members enjoyed several contests with much merriment. The very impressive Christmas tree in its array of beautiful colors was the center of attraction during the gift exchange.

A generous filled basket of food will be presented to a needy family from the class.

Mrs. Pogue served fruit cake topped with whipped cream and spiced tea to the twenty-five members present.

### Sunshine Laundry

Has Installed SPEED QUEEN COIN OPERATED AUTOMATIC WASHERS . . . top loading with gratators and three dryers for your convenience to dry clothes.

20c LOAD WASH  
TWO LOADS DRIED, 25c  
**Sunshine Laundry**  
106 East Plummer St.

### AUTOS FOR SALE

NEW CADILLAC, OLDSMOBILE TRADE INS—Perfect 1955 Cadillac sedan, all power, including windows and seats, factory air conditioning; beautiful 1953 Pontiac Catalina with all power, also an extra good and clean 1952 Rocket Oldsmobile 88 sedan. Trade, Cash, Terms. Don Pierson Olds-Cadillac, Eastland.

NEW SHIPMENT OF 1959 RAMBLER Station Wagons, the success line for '59. Tip top economy. . . big car room . . . big deal! Tom's Sport Cars, Eastland

### WE ARE EQUIPPED TO DO . . .

- ★ Roustabout Work
- ★ Well Hook-Ups
- ★ Spray Painting
- ★ Tank Setting

**P & H Oil Field**  
Construction • Painting  
Phone 183 Eastland

### COLD SUFFERERS

Get STANBACK tablets or powders for relief of COLD DISCOMFORTS. The STANBACK prescription type formula is a combination of pain relieving ingredients that work together for FASTER RELIEF of HEADACHE, NEURALGIA and ACHING MUSCLES due to colds. STANBACK also REDUCES FEVER. SNAP BACK with STANBACK.

IF IT'S METAL  
**Decore Metal Products**  
306 E. Main Phone 288  
SHOP WELDING PAINTING REPAIR

Overseas Veterans Welcome  
Karl and Boyd Tanner  
Post No. 4136  
VETERANS OF FOREIGN WARS  
Meets 2nd and 4th Thursday  
8:00 p.m.

- TOYS -  
- DOLLS -  
- BIKES -

USE OUR LAY-A-WAY

\$1.00 down holds any item

**Bruce Pipkin's SPORT CENTER**  
Phone 525 - 304 E. Main

### RANGER DRIVE-IN

HIGHWAY 80 EAST ON RANGER HILL PHONE 13

Box Office Opens 6:30 - Show Starts 7:00  
Adults 50c—Kiddies Under 11 Free  
Only Eastland County Drive-In With All Year Operation

LAST TIMES TUESDAY  
SUNDAY - MONDAY - TUESDAY

"PICTURE OF THE MONTH"  
The Matchmaker  
SHIRLEY BOOTH-ANTHONY PERKINS  
SHIRLEY McLAINE PAUL FORD  
Directed by Joseph Anthony. Produced by Van Nest Sarony. Screenplay by John Michael Hayes - from the play by Thornton Wilder

WEDNESDAY - THURSDAY

THE PICTURE THAT BELONGS TO YOUNG LOVERS OF THIS GENERATION!  
WARNER BROS. PRESENTS  
**"Marjorie Morningstar"**  
WARNERCOLOR  
STARRING GENE KELLY - WOOD  
ALSO STARRING BOB EGGERT  
TREVOR-WYNN SLOANE  
MILNER JONES  
Produced by Milton Sperling. Directed by Irving Rapper

stones cavity. Sure enough, Rev. . . . .  
but very faint indeed. He was as flat as an ordinary tin letter and just as lifeless. Some one said that up in the sun for a few minutes and the frog finally wigged a leg, muck to the delight of the crowd.

if anyone played a hoax it wasn't Boyce House, it was Earnest Wood. Mr. Wood is reputed to be the man who placed the frog in the cornerstone, as I remember it, although the Dallas News story says it was Will Wood. It could be that both of them were true. Will Wood was Earnest Wood's son, and incidentally he was Harry's brother.

In the intervening years since old Rip's discovery even Harry has sometimes wavered in his belief of the Old Rip Story, but it wasn't any hoax. House didn't penetrate any hoax in the Old Rip yarn, he merely reported a rumor of long standing as he had heard it and he continued to report the Cornerstone Opening as he saw it.

In all of the years of cornerstone opening our's was the one to get the greatest amount of publicity and create more reader interest than any of the others.

In the 30 and almost 31 years since the opening that aroused Old Rip from his peaceful slumber there has been a whole generation of people who probably never heard of our Old Rip. I wonder if Herb Tanner isn't responsible for Lob Campbell of Mineral Wells asking Tolbert to expose the hoax.

Tolbert's column is read by many people who never heard the story. Now the word of Eastland's favorite frog gets some mere publicity by one of the foremost writers of facts and things Texan in all the literary field. Tolbert's Old Rip story is probably the best thing he's done since he wrote of windmill fixers in West Texas in a windstorm.

This is the last time Gray Matter will appear before Christmas. This old West Texas country boy would like to extend to one and all a very Merry Christmas with the spirit of Him whose birthday we celebrate at every fireside this year. Merry Christmas to Us All.

### Hospital News

Patients in the Eastland Memorial Hospital are:  
W. L. Taylor, medical  
Mrs. Nancy Lenz, surgical  
Mrs. Robert Garland, medical  
Mrs. Joe Oels, medical  
Mrs. Alton Clark, surgical  
Anna Martin, medical, Olden  
E. W. Stoggin, medical, Scranton  
Mrs. Frances Russell, medical  
H. B. Dorsey, medical  
Mrs. D. L. Harber, medical  
Fred Davis, medical  
Cecelia Hans, medical  
Romona Orocco, medical  
Mrs. H. S. Holt, medical  
Don's Trout, medical  
Dismissed were Otis Hageman and Mrs. Mary Gantney.

Patients in the Ranger General Hospital from Eastland and Olden are:  
Mrs. E. L. McCullough  
Pitiley Collev, medical  
Mrs. John Ratliff, medical  
Mrs. Bill Day, surgical, Dallas.

### Moore About—

(Continued from Page One)  
greedy for gain.  
Delinquent teenagers: Oh, now we condemn  
The sins of the nation, and blame it on them  
By the laws of the blameless the Savior made known  
Who is there among us to cast the first stone?  
For in so many cases—it's sad, but it's true—  
The title "delinquent" fits older folks too. —John Lair

ATTEND THE CHURCH OF YOUR CHOICE EACH SUNDAY

### MAJESTIC IN EASTLAND

All In Wonderful Color  
**NIGHT OF THE BLOOD BEAST**  
- PLUS -  
**SHE GODS OF SHARK REEF**  
Don Duran  
AMERICAN INTERNATIONAL  
Tuesday and Wednesday

### MAJESTIC IN EASTLAND

INTERSTATE'S NEW HANDY, THRIFTY  
**BOOK OF THEATRE TICKETS**  
A DISCOUNT BOOK WITH BACK BOOK AN IDEAL CHRISTMAS GIFT  
ON SALE NOW

Coupon given with every dollar purchased for prizes of over \$130.00 in Sporting Goods at our Xmas Eve Gift Party Dec. 24th at 9:00 p.m. Furnished by Bruce Pipkin's Sport Center.

Looking for something?  
LOOK TO THE **WANT ADS**

### BUY NOW PAY LATER

You can now repair and remodel and have 60 months to repay the loan in small monthly payments. This includes all labor and material. Let us estimate your needs without obligation on your part.

**CROWELL LUMBER CO.**  
"Everything To Build Anything"  
West Main St. Phone 300

### BUY IT!

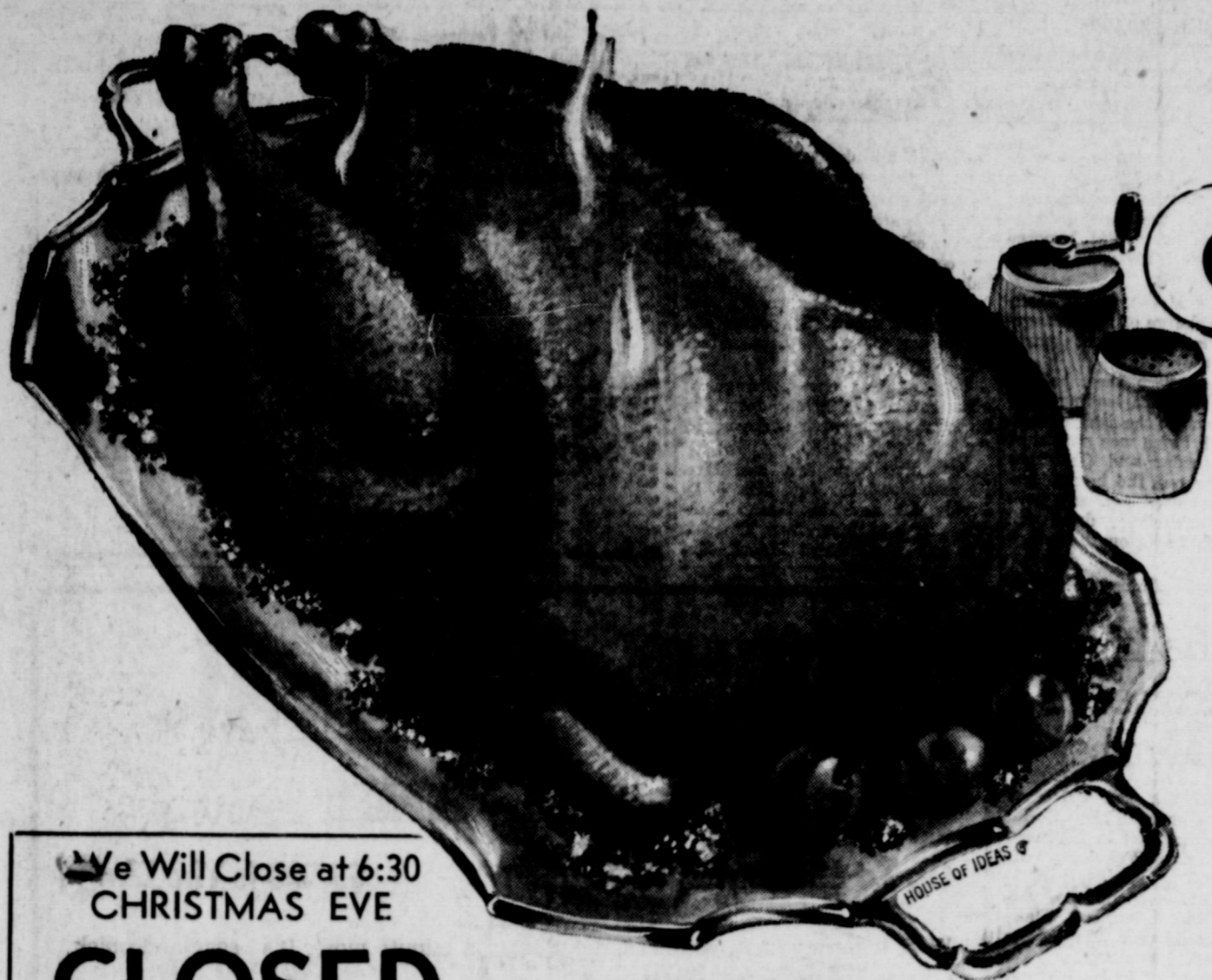
At  
**Don Pierson Olds - Cadillac**



**-FINANCE- WITH AN EASTLAND NATIONAL BANK AUTO LOAN**

- TRADE AT HOME
- FINANCE AT HOME
- LOW COST
- PROMPT, CONVENIENT SERVICE





# Merry Christmas!

## fine food sale!

Prices Effective Monday,  
Tuesday and Wednesday  
We Reserve Right To Limit

We Will Close at 6:30  
CHRISTMAS EVE

**CLOSED ALL DAY CHRISTMAS**  
**DOUBLE "S&H" Green Stamps**

WEDNESDAY with Purchase of \$2.50 or More

**WORTH  
FOOD MART**

<b>Pumpkin</b>	DEL MONTE LARGE SIZE	No. 2 1/2 Can	<b>19¢</b>
<b>Asparagus</b>	WINSLOW CUT ALL-GREEN	No. 300 Can	<b>25¢</b>
<b>WHITE CORN</b>	DEL MONTE CREAM STYLE	2 No. 303 Cans	<b>35¢</b>
<b>SUGAR PEAS</b>	TRELLIS No. 4 Sieve	2 No. 303 Cans	<b>25¢</b>
<b>STUFFED OLIVES</b>	FOWIE MANZANILLA	7 3/4-Oz. Refr. Jar	<b>39¢</b>

<b>Fruit Cocktail</b>	LIBBY'S FINEST	3 No. 303 Cans	<b>69¢</b>
<b>Cranberry Sauce</b>	OCEAN SPRAY Whole or Jellied	3 16-oz. Cans	<b>59¢</b>

<b>Fancy Fruit Cakes</b>	YE OLDE ENGLISH	2 1/2-Lb. Ring	<b>3.49</b>
--------------------------	--------------------	-------------------	-------------

<b>Dinner Napkins</b>	SCOTKINS	50-Cnt. Pkg.	<b>25¢</b>
-----------------------	----------	-----------------	------------

<b>Snowdrift Shortening</b>	7c Off Label	3 -Lb. Can	<b>69¢</b>
-----------------------------	-----------------	---------------	------------

LIBBY'S WHOLE FANCY	
<b>Beets</b>	No. 303 Can <b>19¢</b>

MINCE or PUMPKIN

# Pies

LIBBY'S FROZEN  
24-oz. Pkg.

## 39¢

<b>Apple Pies</b>	LIBBY'S FROZEN	24-Oz. Pkg.	<b>45¢</b>
<b>Sliced Strawberries</b>	KNOTT'S BERRY FARM FROZEN	5 10-Oz. Pkg.	<b>99¢</b>
<b>Baked or Candied Yams</b>	TRAPPEY'S FROZEN	2 14-Oz. Pkg.	<b>59¢</b>
<b>ROLLS</b>	JEAN'S SILVERDALE	24-Cnt. Pkg.	<b>29¢</b>
<b>PEAS</b>	SILVERDALE	2 10-oz. Pkg.	<b>29¢</b>
<b>ROLLS</b>	BUY 2, GET 1 FREE Mrs. Baird's Frozen	2 12-Cnt. Pkg.	<b>39¢</b>
<b>RICH WHIP</b>	DESSERT TOPPING	2 7-Oz. Cans	<b>59¢</b>

# Turkeys

**Sunco Fancy Toms** **Lb. 35¢**  
GRAIN - FED. BROAD - BREASTED  
16 to 24 Lbs. Avg.

**HEN TURKEYS** SUNCO FANCY, TENDER  
10 to 14 Lbs. Avg. **Lb. 43¢**

**Ducklings** LONG ISLAND **Lb. 59¢**  
**Chicken Hens** PLUMP, 3 to 6 Lbs. Avg. **Lb. 39¢**

**Fresh Oysters** EASTERN STANDARD **Lb. 99¢**  
**Canned Hams** 3 -Lb. Can **2.99**

**Ham** ARMOUR'S STAR HALF OR WHOLE  
SMOKED, 14 to 18 Lbs. Avg. **Lb. 59¢**

**FRYER GIZZARDS** MRS. CHESSHER'S FROZEN **8-Oz. Pkg. 39¢**

**FRYER LIVERS** MRS. CHESSHER'S FROZEN **8-Oz. Pkg. 59¢**

**Cooked Picnics** SWIFT'S PREMIUM  
FULLY-COOKED **Lb. 49¢**

**PHILADELPHIA** CREAM CHEESE **2 3-Oz. Pkg. 27¢**

**BROOKFIELD** SWIFT'S LINK SAUSAGE **Lb. Pkg. 59¢**

# Apples

WASHINGTON EXTRA FANCY DELICIOUS

OR  
ROME BEAUTY **2 Lbs. Just 25¢**

LARGE JUICY NAVELS **3 Lbs. 49¢**

California Oranges **Lb. 21¢**

WASHINGTON STATE APPLES **Lb. 21¢**

Golden Delicious **Lb. 21¢**

**CRANBERRIES** OCEAN SPRAY **1-Lb. Pkg. 19¢**

**PASCAL CELERY** CRISP, TENDER **Stalk 9¢**

SWEET TEXAS **Oranges** 2 Lbs. **23¢**

LARGE CLUSTERS-RED **Emporer Grapes** **Lb. 17¢**

SELECT 3's, 4's **Tomatoes** **ctn. 19¢**

IDAHO SPANISH **Yellow Onions** **Lb. 7c**

NO. 1 KILN-DRIED **Texas Yams** **2 Lbs. 25¢**

FANCY FLORIDA **Tangerines** **2 Lbs. 25¢**

**Broiler Foil** KAISER QUILTED **20-Ft. Roll 39¢**

**Morgan Apple Juice** DELICIOUS **24-oz. Bott. 21¢**

**Pineapple Juice** DOLE FANCY HAWAIIAN **3 46-oz. Cans 1.00**

**WORTH  
FOOD MART**



**T. L. FAGG**  
REAL ESTATE  
Property Management  
Home and Farm Loans

**Anna Gracia G. A. Holds Annual Christmas Party and Program**

The Anna Gracia Junior Girl's Auxiliary of the First Baptist Church met Wednesday evening in the home of Andrea Rhodes for their annual Christmas program and party.

Sally Perkins, president, opened the program by asking the group to join in singing "Silent Night" and saying the "Star Ideals." Dixie Young read the names of missionaries whose names appeared on the Calendar of Prayer.

Mrs. Harvey Kimbler, G. A. director, was welcomed as a visitor and she talked to the girls about their work on the "Forward Steps".

Plans were made to carry a "Christmas fruit basket to a 'shut-in' next week.

Judy Crosby was in charge of the program, "The Christmas Spirit." Members taking part were: Marsha Treadwell, Sally Perkins, Andrea Rhodes, Mary Beth Hall and Dixie Young.

After the program gifts were exchanged from the Christmas tree. Refreshments of assorted Christmas cookies and candies were served with hot punch from the table laid with a red and silver cloth. A "snowman" and candle arrangement formed the centerpiece of the dining table.

Attending the party were Marsha Treadwell, Sally Perkins, Dixie Young, Marilyn Treadwell, Judy Crosby, Brenda Cook, Mary Beth Hall, Andrea Rhodes, Mrs. Harvey Kimbler and Mrs. Gene Rhodes, counselor.

TRADE WITH YOUR HOMETOWN MERCHANTS

**Bumble Bee Club Is Honored with Christmas Party**

The home of Mr. and Mrs. Edgar McCollum, 515 South Seaman, was the setting for the Christmas program and party of the Bumble Bee Music Club. The party and program was held Thursday evening.

Each member of the club played from two to five Christmas carols while the group sang. After which they exchanged gifts before a lovely sparkling Christmas tree. Various Christmas games were played by the group.

Cookies and candies were served to Joe Basham, Bryan Garner, Dixie Young, Diana Fry, Bill Garner, Jane Mayers, Diana Young, Linda Holloway, Judy Kindrix, Anna Lookingbill, Ina May Elmore, Marcella Slaughter and Bill McCollum.

Special guests included Mmes. Harvey Basham, W. L. Garner, David Fry, Felton Holloway, A. R. Mayers, Jimmy Young, J. B. Kindrix, Ellis Slaughter, Ina Edwards, Kate McCullum, Edgar McCollum and Charles Harris.

Favors of candy bells and walking canes were given to the guests and members.

**Sorority Party For Children Held Friday**

Children of the members of the Zeta Pi Chapter of Beta Sigma Phi were honored with a party in the home of Mr. and Mrs. James Smith, 705 South Daugherty, Friday evening.

Mrs. Willis Moore, social chairman, was in charge of the party. Christmas games for children were directed during the evening.

A dinner of tuna fish sandwiches, potato chips, Christmas cookies and hot chocolate was served to the guests prior to the exchange of gifts before the sparkling tree.

Attending were Mrs. Bruno Kaulfus, Sandy and Carolyn, Mrs. Virgil Moore, Trippy and Ricky, Mrs. Earline Vincent and Stevie, Mrs. Willis Moore and Wayne, and Mrs. James Smith, Cynthia and Kenneth.

**Lydia Group Is Hosted by Mrs. Wynne at Party**

Mrs. Winnie Wynne was hostess to a Christmas party honoring the Lydia Group of the First Christian Church in her home at 111 North Connellee, Monday.

Mrs. Ray Heckendorn opened the meeting with prayer which preceded the program given by Mrs. N. L. Smitham.

Mrs. Smitham presented the Christmas story portraying a "Christmas Eve in the Slums." The program was closed with the regular benediction said in unison.

The members gathered around the beautifully decorated Christmas tree and exchanged gifts.

Mrs. Wynne served Christmas cake and coffee to Mmes. L. C. McNatt, Dave Finney, W. M. Gagey, T. A. Bendy, Eugene Day, Henry Ferrell, N. L. Smitham, Ray Heckendorn and Miss Sally Day.

**Zeta Pi Christmas Party Is Held In Smith Home Thursday**

Mr. and Mrs. James Smith were house host and hostess in their home, 705 South Daugherty, as the members of the Zeta Pi Chapter of Beta Sigma Phi honored their husbands with a Christmas dinner and party.

Mrs. Willis Moore, social chairman, was in charge of the arrangements for the dinner and party Thursday evening.

Appropriate with the holiday season, the archway, leading from the living room to the dining room, of the Smith home was garnished with green cedar and Christmas balls. Throughout the house, decorations emphasized the gay holiday season including dried fall arrangement placed on the television set.

The exquisite dining table, covered with a pink linen cloth, featured a white net Christmas tree flanked with matching candle holders bearing pink tapers.

The colorful and delicious dinner consisted of turkey, spaghetti, baked potatoes, English peas, cranberry relish, relished trays, hot rolls, pecan cream pie, coffee and cocoa was served to the members and guests.

Caroling and the exchange of gifts before the lovely decorated Christmas tree were enjoyed by the group.

Attending were Mr. and Mrs. Kerman Bond, Mr. and Mrs. J. D. Earley, Mr. and Mrs. Bruno Kaulfus, Mr. and Mrs. Don Kincaid, Mr. and Mrs. Virgil Moore, Mr.

and Mrs. Robert Verhetsel, Mrs. Art Johnson, Mrs. Earline Vincent, Mr. and Mrs. Willis Moore and Mr. and Mrs. James Smith.

CALL 601 FOR CLASSIFIED ADVERTISEMENT

CALL 601 FOR CLASSIFIED

**Funeral Directors**  
**HAMNER FUNERAL HOMES**  
Ben E. Hamner  
Oxygen Equipped - Air Conditioned  
Eastland Phone 17 Cisco Phone Hillcrest 21211  
AMBULANCE SERVICE ANY WHERE ANY TIME  
Nominal Cost Burial Insurance  
For The Entire Family

**The Car and its Companion—**  
... are inseparable friends and should be. The car is useless and harmless without the driver. With the driver it may become most useful but never harmless. The operator of a motor vehicle never realizes his responsibility to the public until he has a wreck. Then it dawns on him that he is living in a world with other people who have plenty of personal and property rights. So car, if you move, move carefully, but never with a pal without adequate insurance protection.  
**EARL BENDER & COMPANY**  
Eastland, (Insurance since 1924) Texas

**NOTICE... Come To Kendrick Drive-In Dairy**  
(Serving This Territory Since 1940)  
FOR  
**Good, Clean JERSEY Sweet Milk**  
Price - 70c Gal.  
Phone 896-J-2 — Located Halfway between Eastland and Cisco

**LAST MINUTE...**  
**TOY SALE**  
**25% Off**  
**On All Small Toys**  
SHOP NOW FOR BEST SELECTIONS

**Western Auto**  
ASSOCIATE STORE  
East Side of Square Luce Pittman, Owner Phone 38

**Insurance AND Real Estate**  
**D. L. KINNAIRD**  
Life - Fire - Auto - Farm Polio - Bonds  
39 years in the Insurance Business in Eastland

**NOTICE**  
**FRESH DRESSED FRYERS and Fresh Dressed Hens**  
At The Plant  
PHONE 110  
**WALKER Dressing Plant**

**Reliable**  
**Bring Your BATTERY TROUBLES To Us!**  
Group One Fits Most 6 Volt Cars  
**8.95**  
Exchange  
**JIM HORTON**  
East Main St. Phone 258 Eastland, Texas

**NEW . . . DEAL**  
**RE-MODEL—REPAIR**  
**Up To 60 Months To Pay \$3,500 Is The Limit**  
Well, if money is all you need, don't delay a minute more. It's easy and quick . . . obtaining one of our low-cost home loans. Like-rent monthly payments are tailored to suit your budget and needs. Call or come in!  
**YOUR FRIEND AND NEIGHBOR**  
**HIGGINBOTHAM - BARTLETT CO.**  
Jack Elliott, Mgr.  
301 W. Main Phone 112 or 1014

**ILLEGAL SUBSTITUTION**  
IN BUYING SCRAP IRON & METAL "WE CALL 'EM AS WE SEE 'EM" -- THERE IS NO ILLEGAL SUBSTITUTION.  
**YES!**  
WE PAY YOU CASH FOR YOUR SCRAP IRON & METAL ACCORDING TO GRADE, WHERE YOU GET THE MOST MONEY.  
YOUR SCRAP IRON & METAL IS WEIGHED ON STATE INSPECTED AND BONDED SCALES.  
OUR BEST REFERENCES ARE THOSE WHO HAVE BEEN DEALING WITH US FOR MORE THAN 32 YEARS.  
SQUARE DEALING THE YEAR ROUND IT PAYS TO DO BUSINESS WITH  
**EASTLAND IRON & METAL CO.**  
**OWNED AND OPERATED BY HENRY PULLMAN**

**Come to TOYLAND!**  
**LOOK AROUND USE OUR LAY-AWAY PLAN**  
★ BIKES — TRIKES ★ LAB SETS ★ PISTOL SETS ★ SWING SETS  
★ ELECTRIC TRAINS ★ WAGONS ★ BALLS ★ POGO STICKS  
★ CHEMISTRY SETS ★ DART BOARDS ★ GAMES ★ BATTERY POWERED TOYS  
★ RECORD PLAYERS ★ **SPORT CENTER** ★ DOLLS ★ TEA SETS FOR GIRLS  
• BRUCE PIPKIN  
304 E. Main Phone 525



These Prices Effective Through Saturday, December 27th

# Everything

## THAT'S GOOD TO EAT!

### CRISCO

3 Pound Can

**83¢**

Kraft Miracle Whip Salad—Pint

**Dressing 35¢**

Hemet Whole Spiced—No. 2 1/2 Can

**Peaches 25¢**

Northern Dinner

**Napkins**

2 80-Cnt. Boxes **25¢**

FOLGER'S INSTANT

### COFFEE

Giant 6-Oz. Jar ..... **98¢**

CLOVER FARM

### Margarine

Lb. **19¢**

GLENDALE YELLOW CREAM

**Corn 2** No. 303 Cans **27¢**

CONCHO SOUR OR DILL

**Pickles** Quart Jar **25¢**

Clover Farm

### MILK

2 Large Cans

**27¢**

Betty Crocker **CAKE MIX**

White, Chocolate, Dev. Food, Yellow, Spice

24-Oz. Pkg. .... **25¢**

White Swan Red Plum

### Preserves

12-Oz. Jar ..... **16¢**

READY-TO-EAT

### Canned Hams

4 Lb. Can **3.85**

CANNED

**Picnics 5** Lb. Can **3.25**

PORK

**Roast** Lb. **49¢**

SWIFT PREMIUM SLICED

**Bacon** Lb. **59¢**

SWIFT PREMIUM FULLY COOKED

**Picnics** Lb. **49¢**

FRESH DRESSED

### HENS

Pound ..... **39¢**

KRAFT JET PUFFED

### Marshmallows

10-Oz. Pkg. .... **19¢**

LILT HOME—Reg. 2.00 Plus Tax

### Permanent 1.49

GLENDALE

**Catsup** 14-Oz. Bottl. **15¢**

BALLARD

**Biscuits** Can **10¢**

WRIGLEY'S

**Gum 6** Pkgs. **20¢**

CALIFORNIA FIRM CRISP

### Lettuce

Giant Head ..... **12 1/2¢**

CENTRAL AMERICAN

**Bananas** Lb. **12 1/2¢**

EXTRA FANCY, DELICIOUS

**Apples** Lb. **15¢**

CALIFORNIA PASCAL

**Celery** Giant Stalk **14¢**

Campbell Tomato

### SOUP

2 No. 1 Tall **23¢**

FRESH DRESSED

### TURKEYS

**Toms** ..... Lb. **43¢**

Beltville **Hens** ..... Lb. **52¢**

ARMOUR'S STAR

### Cured Hams

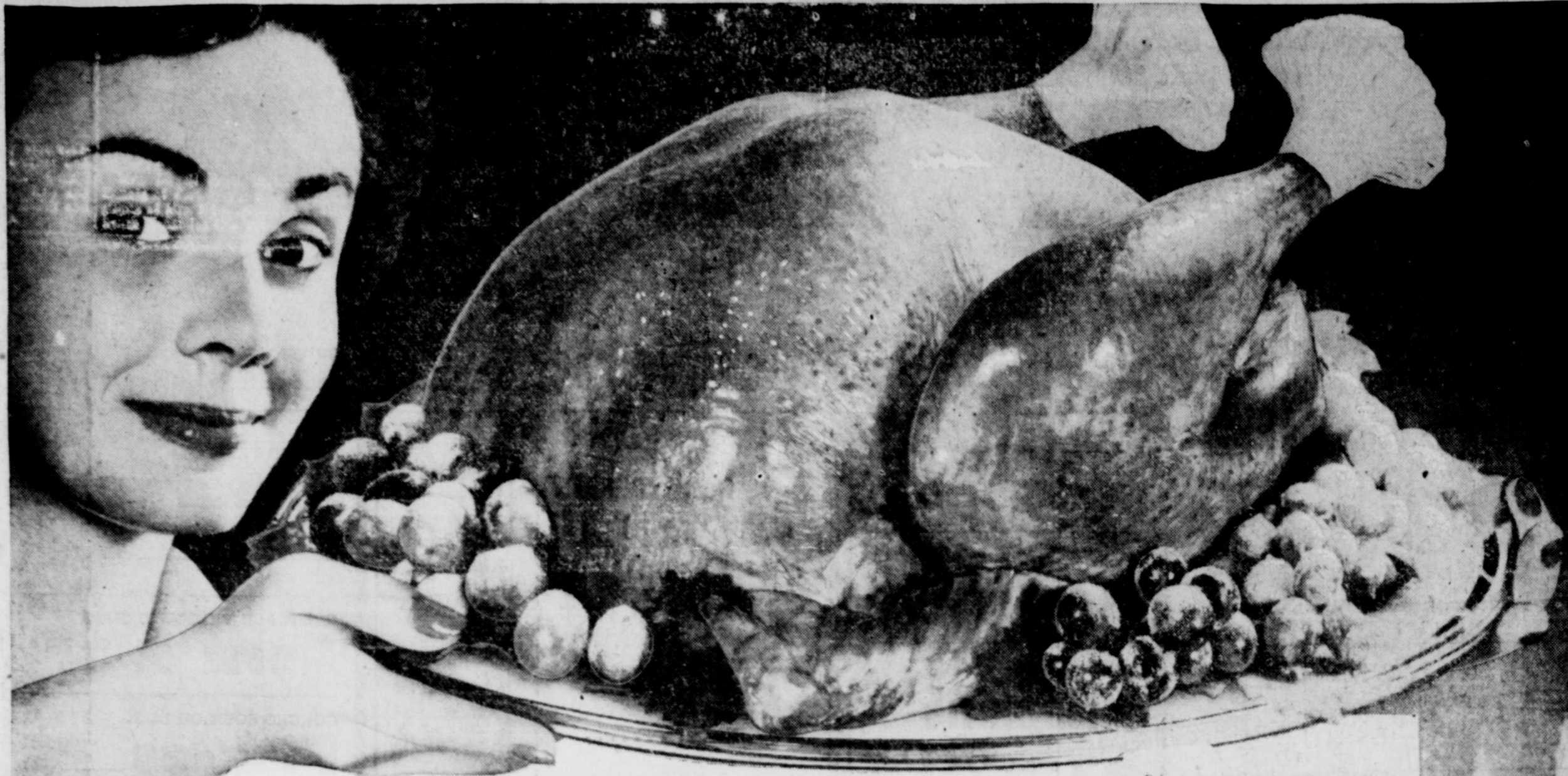
Half or Whole ..... Lb. **59¢**



It's QUALITY plus PRICE that counts when you buy Food. CLOVER FARM gives you BOTH

H. B. MacMoy, Owner  
7:30 a.m. to 8:00 p.m. Weekdays  
7:30 a.m. to 9:00 p.m. Saturdays





*This Christmas...serve the finest..*

# Serve a **SAFEGWAY TURKEY**

Prices effective Monday, Tuesday, and Wednesday, Dec. 22-23-24, in Eastland. No sales to dealers.

*Safeway Finest Quality Fruits and Vegetables!*

## Pascal Celery

Crisp and Crunchy... A Christmas Must!

## Navel Oranges

Large Sunkist, for that Fruit Salad.

## Fresh Cranberries

Late Howe

## Golden Bananas

Finest Quality

## Delicious Apples

Extra Fancy, Med. Size Washington State

## Yellow Onions

Just Right Flavor

## Party Pride Ice Cream

All Flavors... The Finest Quality.

Lb. **15¢**

Lb. **19¢**

Lb. **10¢**

Lb. **13¢**

Lb. **6¢**

**69¢**

1/2-Gal. Ctn.

Safeway sells only the Finest Quality Turkeys... U.S.D.A. "A" Grade. All turkeys are U.S.D.A. Inspected and graded... Fine broadbreasted turkeys



## Toms

Fancy Turkeys, 18 Pounds and Over—Truly a Magnificent Selection of Turkeys.

Lb. **35¢**



## Hens

Fancy Turkeys, Over 10 Pounds, for Those Who Demand the Medium Size Turkey.

Lb. **41¢**

## Chicken Hens

4 to 6 Lb. Average, Ready to Cook Guaranteed By Safeway

Lb. **39¢**

## Ducklings

Long Island—For Those Who Desire Duck for Christmas

Lb. **55¢**

## Oysters

Maryland Standard—

Pint **99¢**

## Turkeys

Beltville—For Small Families

Lb. **53¢**

## Ham

Rath—Ready to Eat

5 Lb. **\$4.99**

## Stuffing Bread

1 1/2-Lb. Loaf

**24¢**

Mrs. Wright's—Baked with Neutral

## Walnuts

Baby Emerald

1-Lb. Cello **35¢**

Large Diamond

1-Lb. Cello **45¢**

## Egg Nog Mix

Lucerne—Finest Quality

Ctn. **55¢**

## Cragmont Mixers

Collins, Lemon-Lime, Sparkling Water, Ginger Ale, Plus Btl. Dep.

2 Full Qt. **23¢**

## Mince Meat Snails

Curtis—Monday, Tuesday, Wednesday Bakery Special

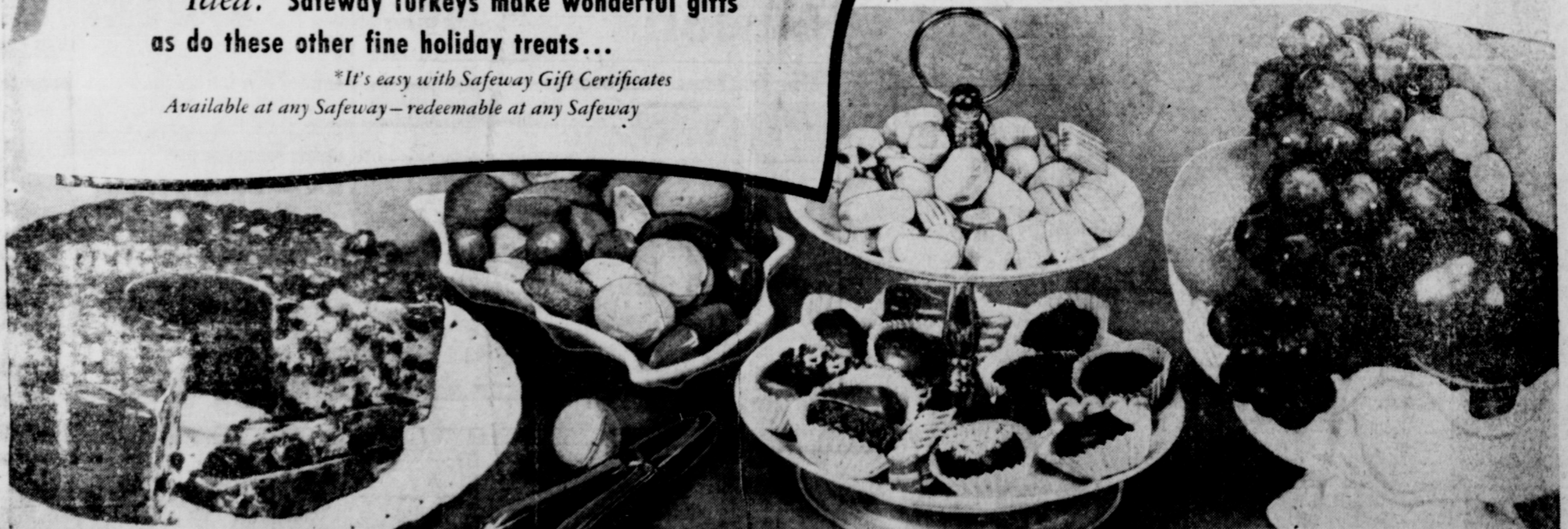
7-Oz. Pkg. **19¢**

Safeway Stores will close at 6:00 p.m. on Wednesday, December 24, and will remain closed All Day, Christmas, December 25. Shop Early for the Holiday.

*Idea: Safeway Turkeys make wonderful gifts\* as do these other fine holiday treats...*

*\*It's easy with Safeway Gift Certificates*

*Available at any Safeway—redeemable at any Safeway*



Assorted Brands—Whole or Shank Butt

**Smoked Picnics** Over 12-Lb. Avg. Lb. **59¢**

**Cranberry Sauce** Ocean Spray Whole or Jellied 300 Can **21¢**

**Del Monte Beans** Green Beans Whole 303 Can **23¢**

**Del Monte Corn** Cream Style Golden 2 303 Can **33¢**

**Olives** Crown Stuffed Brown Manzanilla 3-Oz. Btl. **15¢**

**Beverages** Cragmont—All Flavors Only Special Price, Plus Bottle Dep. 2 Full Qt. **19¢**

**Satin Mix** Roxbury Christmas Candy 14-Oz. Pkg. **33¢**

**Cream Cheese** Kraft Philadelphia 3-Oz. Pkg. **27¢**

**Whipping Cream** Lucerne 1/2-P. Ctn. **29¢**

**Mince Meat** Little Cook For Your Pies 9-Oz. Pkg. **23¢**

**Mixed Nuts** for the Nut Bowl 1-Lb. Cello **49¢**

**Strawberries** Bel-air Frozen Sliced 10-Oz. Pkg. **19¢**

**Sliced Peaches** Cr. Halves—Highway No. 2 1/2 Can **27¢**

