



Moore... ABOUT Eastland

By VIRGIL E. MOORE

So we lost a football game. It's not the first one, and probably won't be the last one.

True, we got beat in convincing fashion. But that wasn't an accident. Cisco could still taste the 7-0 loss they had to eat last year and they were determined to humiliate Coach Carroll Shelton's charges. It might be well for Cisco to remember the 51-12 score. The same Mavericks are going to be around for a few more seasons, and a few more games with Cisco.

But to heck with Cisco. Let's concentrate a little on DeLeon. Fact is, we had better concentrate a lot on Coach Al Langford's eleven, who in their only start of the season took a 37-0 victory.

Gorman, a Class B team, was loser to the AA Bears last week before last. DeLeon had an open date Friday getting ready for the Mavs this week. That gave Coach Langford a good look at the Eastland eleven and his scouting report should be down pat. Of course, Eastland coaches got to look over the DeLeon eleven in their start with Gorman.

Eastland grid fans will have a good chance this season to see one of the nation's top junior college grid teams in action. Speaking of Ranger Junior College. Coach Dick Henderson has built up a team that may find itself highly rated. Fact is, after knocking off Wharton Saturday night, eyebrows were raised all over the state. Wharton, you see, was supposed to be it this year in Texas Junior College circles.

The victory, and it was even more impressive than the score indicates, will put the Henderson men on the spot, since every team will now be gunning for them. It wasn't hard to see what made the Rangers go. A Ballenger led by the name of Herold Merryfield was the big difference. He gave the Rangers that needed pep and zip it takes to have a winning club. Merryfield was injured on the last play of the game and rumor had it his ankle was broken. We understand it is just a sprain, however.

Just a word of praise for Henderson, who came to Ranger when Hillsboro Junior College folded. We remember some of Dick's teams at Hillsboro, and believe us, they were plenty rough. Hillsboro won one state championship after another. That was when the Texas Junior College Conference was the big thing.

If Ranger should produce a championship team, and chances look good for just that, a lot of the credit should and will go to Henderson.

Light exploded at the RJC Saturday night and scattered glass over a large number of the crowd. No one reported hurt, however.

Another Texas Tech student from Eastland. He is Michael Cushman. Hope to hear from any other college students we haven't mentioned.

Mrs. Inez Hagus enjoys a birthday today and Wednesday half the town will be celebrating. Those who have birthdays include Mrs. Wayne Atchison, Mrs. Frank Castleberry, Martha Taylor, Jack Pittman, Earline Turner and Matie Ward.

That's it for now. Be back Thursday.

Olden FFA Boys Elect Carroll Nelson President

OLDEN (TNS) — The Olden chapter of the Future Farmers of America elected Carroll Nelson president at a meeting held Friday night.

Rex Martin was name vice-president; Bill McCotter secretary; Phil Hilliard, reporter; and Jimmy Colburn, sentinel. G. P. Copeland is advisor.

This is the first year that Olden has offered vocational agriculture. Thirty-three boys have enrolled.

STYLE • SAFETY • ECONOMY That's The DODGE for 1954 McGRAW MOTOR CO.

County Trapper Gets Bobcats And Wolves

Think Eastland County doesn't have its share of bobcats and wolves? Floyd Green, newly appointed county trapper can tell you differently. Green, who recently came to Eastland County from Denton County, where he had been employed for more than three years in cleaning wolves out of the area, has a total kill of seven wolves and five bobcats so far this month. Most have been killed west of Cisco near Dothan.

A&M Poultry Lxpert To Speak At Three Meets

Maintaining quality in eggs from laying to marketing time will be discussed and demonstrated at three different meetings to be held this week in Eastland County.

K. F. Schlamb, poultry marketing specialist of the A&M College Extension Service, will speak at all three meetings.

County Agent J. M. Cooper urged all interested to attend the meetings. The first will be held at the Harold Courtney farm, five miles northwest of Eastland on the Yellow Mound road. It will begin at 2:30 p.m. Thursday.

Friday morning at 9:30 the second meeting will be held at the Theo Ferguson cage layer poultry house, two miles east of Ranger on Highway 80. The Ferguson farm is on the south side of the highway.

Friday afternoon, the final meeting will be held at 2:30 at the home of Mrs. J. B. Eberhart, five miles north of Rising Star on the Cisco highway.

Entertainment At State Fair To Include New Varied Attractions

Entertainment highlights of the 1954 State Fair of Texas, Oct. 9-24, include such varied and spectacular attractions as the following:

- 1. "The King and I" opening Friday night, the evening before the fair officially begins, for 24 performances in the air-conditioned State Fair Auditorium, seating 4,285. The sensational Broadway hit musical starring Yul Brynner and Patricia Morison of the New York cast will be presented at 8:30 p.m. nightly Oct. 8-23, with matinees on Saturdays, Sundays, and Wednesdays.
2. "Ice Cycles of 1955," also opening Oct. 8 in the Ice Arena. The brilliant skating extravaganza features a production of "Snow White and the Seven Dwarfs." The show will have 24 performances nightly at 8:30 p.m. except Sundays. Matinees are at 2:30 p.m. Oct. 9, 12, 16, 23, 24, and also

Pythians To Hear Leon C. Lavey Tonight

Leon C. Lacey, grand chancellor of the Knights of Pythias, will be guest speaker tonight when the Eastland lodge holds a special meeting at Castle Hall. Chancellor Commander Porter Woods urges all members to be present. A watermelon supper will conclude the meeting.

ANDERSON'S Gifts, Women and Infants Wear!



AERIAL FARMHAND—Sweeping low to show off its crop-dusting ability, the "Fletcher Utility" goes through its paces at Rosebud, Calif. It is said by its manufacturers to be the first plane specifically designed for farm work to be put into volume production. Of all-metal construction, and with a 42-foot wingspan, the aerial workhorse is designed to pick up a 1250-pound load from an 870-foot, unimproved flight strip.

Actually Green traps the animals, which live off of sheep, goat, chickens and turkeys they can manage to kill. He displayed a live wolf in Eastland Monday and another last Friday. Livestockmen and the county are cooperating in trying to rid the county of the stock-killing animals. Green says he has barely touched the county's supply of the cats and wolves so far.

County Judge John Hart said a large number of complaints had been received about wolves killing poultry and stock.

The wolf Green had on display here was "this year's crop," he said. It weighed about 30 pounds and was full of fat. When a Telegram photographer took two shots of the animal, it wasn't at all shy, and readily snapped at anyone who offered to get too close. The pictures are on display in the Telegram window.

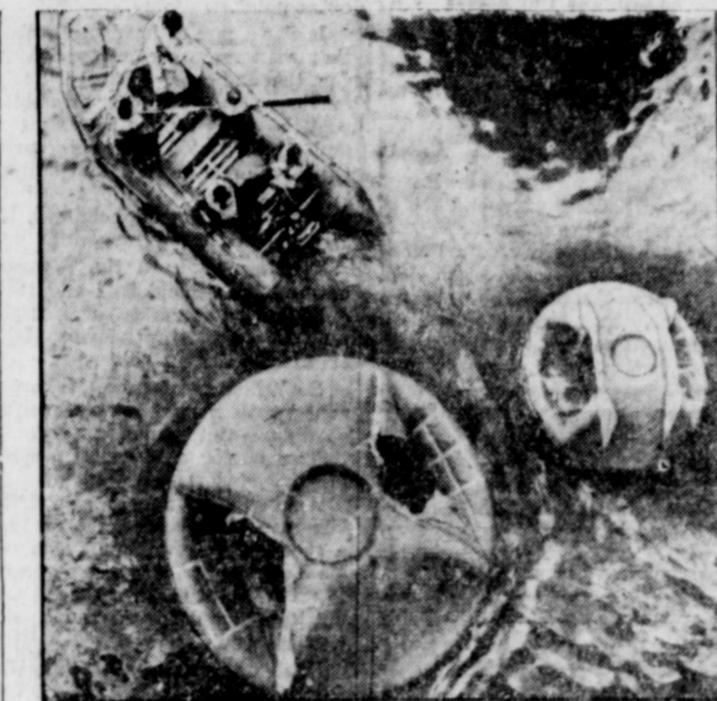
All in all, things look bad for the big bad wolf.

District 7-A Preview

Wylie's Victory Hopes Rest On Shoulders Of John Watts

(Editor's Note: This is the second in a series of stories on District 7-A grid teams. Others to follow include Rising Star, Dublin, Clyde and Eastland.)

By VIRGIL E. MOORE WYLIE (TNS) — Had Johnny



LIFESAVING "DOUGHNUTS"—Resembling huge doughnuts, with the holes left in, these round rubber lifesaving rafts are undergoing tests in harbor waters near London, England, as researchers aboard a conventional raft, top left, check their performance. Quickly inflatable, they have a shallow draft, high degree of seaworthiness, small storage volume, and can be propelled by cars, sails or an auxiliary motor. The smaller one carries ten passengers, the larger one 20 and is designed to do a maximum

Watts, Wylie's 131-pound scabbard, been in the game Thursday night, Merkel just might have found the going a little rougher. As it was the Badgers dumped Coach Rayburn Landers' District 7-A eleven 14-0.

Watts, one of 10 returning lettermen, was sitting out the game with a broken foot. He repeated his bad luck of last season when he missed the first few games with an injured shoulder. This year he probably won't see action until the Cross Plains game.

The Bulldogs made the game respectful Thursday night largely because of the efforts of Genkie Beyer, man under in Coach Landers' T offense. Beyer, a 142-pound senior, was the whole show for the Dogs. Of the 58 plays run by Wylie, he handled the ball on all but five occasions.

Rounding out the Wylie backfield will be Lynn South, a 130-pound junior and Freddie Hamilton, a 129-pound senior, at the halfback slots and John Scott, 136, at the fullback post. Don Near, 129, may fill in for Scott, however.

In the line, the mainstay is Bob Ray, 154-pound senior letterman. He was the big gun on defense Thursday night at a tackle post. Leland Robinson, 158, will be at the other tackle position. At the guard post will be 156-pound Jim Crenshaw and 137-pound Curtis Townsend. Tommy Stewman, at 146-pounds, will be at one end and his running mate will be Derrell Long, a 138-pound lad.

Nailing down the center spot

Legion Meeting Thursday Night

Eastland Legionnaires will hold their regular meeting Thursday night at 7:30 at the American Legion Hall.

Bill Hunter, post commander, urged all members to be present for the meeting.

ANDERSON'S Gifts, Women and Infants Wear!

Eastland Delegates At Mineral Wells Meeting

Four Eastland Girls Members Of Rangeans

RANGER (TNS) — Four Eastland beauties did more than their share Saturday night of making the Ranger Junior College Rangeans, RJC's newly organized marching squad, an immediate success when they were introduced at halftime during the Wharton-Ranger JC game.

The four, Margaret Cordelia Alford, Robbie Loyce Fox, Lylia Pearl Houston and Patsy Ann Simpson, were chosen along with 20 other girls as charter members of the organization.

The group of unusually attractive coeds, will be attired in flashing costumes carrying out the college colors of purple and white within the next two weeks, Mrs. David L. Norton, sponsor, said.

All of the girls were introduced at halftime. They will make their first appearance in uniform at the Cisco Junior College game Sept. 25.

Other members include Anna Sue Carroll, Ranger; Beverly Ann Cary and Mary Francis Cary, Vernon; Barbara Lou Emerson, Graham; Sudie Apal Gray, Ranger; Dolores Jean Hagar, Ranger; Nancy Jean Hamilton, Moran; Jenna Vee Hutton, Ranger; Della Joiner, Little River; Shirley Diane Koenig, Austin; Patsy Beth Needham, Ranger; Rhelda Jo Reed, Cisco; Cecil Lynn Robinson, Ranger; Joyce Lanell Rowell, Seymour; George Marie Steele, Anson; Gloria Wages, Vernon; and Mary Ann Wallace, Ranger.

Desdemona To Open Cage Season Tonight

Desdemona kicks off their season tonight against Linsleville, in the high school gymnasium. You read it right, it says in the high school gym. Desdemona, you see, is already busy with their basketball workouts, even as the grid season is just getting underway.

Practice got underway August 31 with 12 boys reporting for practice. Team prospects seem excellent this year, with four of last year's lettermen returning and several other top-notch prospects seeking starting posts.

New suits and equipment have been ordered and most of the playing equipment has been received. New suits are due in about two weeks. An excellent physical education program is being provided this year, with training beginning in the fifth grade.

W. L. Donahoe, formerly of Brownwood, will coach the high school, junior high and grade school teams. Donahoe formerly taught and coached at Putnam and Saranton.

The main problem Desdemona faces now is getting games. Any school interested in playing is urged to get in touch with Donahoe.

Mavs Escape Injuries In Cisco Game

Eastland's Mavericks came home through their tilt with Cisco without any serious injuries, and hit the training field again Monday in an effort to sharpen up their defense and offense for the De Leon home game Friday night.

Coaches Carroll Shelton and Bobby Blair were busy giving their unexperienced charges pointers after their lopsided loss Friday night.

The Mavs will hold heavy drills today and Wednesday and then taper off Thursday.

Weather FREYCHLAG INSURANCE AGENCY No. 102 Side Square Phone 173 Presents the Weather Report



CLEAR, CONTINUED MILD

CHIEF JUSTICE GRISSOM IS MENTIONED FOR HIGH COURT

MINERAL WELLS (TNS) — Eastland County delegates, with a unit vote favoring Gov. Allen Shivers' conservative forces, arrived in Mineral Wells along with hundreds of other delegates today to attend the state Democratic convention.

The county's 23 votes were firmly lined up with the other more than 4,000 of the 6,186 total votes in favor of Shivers.

A state Supreme Court justiceship, 11 district judgeships and scores of key convention and party organization posts were at stake. In most cases, it was not a question of whether or not the jobs would be handed down to the governor's friends, but which friends, an Associated Press report said.

Chief Justice Clyde Grissom of the 11th Court of Civil Appeals in Eastland has been mentioned in many reports as a likely Supreme Court nominee. He has said he would not accept the post, but may if it is offered to him. The vacancy was caused by the death of Judge G. M. Smedley. The nomination is expected to be made late today.

The liberals, who have 2,000 uncontested votes, have contested 750 more votes, but the credentials subcommittee, composed of backers of the Governor, is expected to award all of them to the conservatives.

As of now a scramble for choice plums of patronage is in swing by friends of the Governor.

Eastland delegates elected at the county convention were L. H. Haganman, Ranger; Mrs. Jack W. Frost, Eastland; Mrs. John Love, Alameda; A. F. Thomas Jr., Ranger; H. L. Capers, Gorman; Mrs. John Turner, Eastland; and Morris Newnam, Ranger.

Alternates were L. E. Clark, Desdemona; Mrs. Cyrus B. Frost Sr., Eastland; Virgil Seaberry Jr., Eastland; Mrs. C. G. Stubblefield, Carbon; H. C. Westfall, Eastland; Ronald Pruett, Ranger; and Dr. P. M. Kuykendall, Ranger.

Band Instrument Display Planned Here Thursday

Prospective Eastland band members will have an opportunity to attend an instrument display Thursday at the Band Hall from 3:30 until 8:30 p.m.

Band Director R. W. Scott urged "all parents and pupils interested" to attend.

Scott said this would be the only display this semester. Parents of sixth graders up were urged to attend.

Seaberry Will Speak To Club Women Saturday

Virgil Seaberry Sr. will be the speaker Saturday when the United Federation of Women's Clubs meets at 2:30 p.m. at the Woman's Club in Eastland. Seaberry will speak on the state constitution. He is a member of the committee appointed by the State Legislature to recommend any necessary changes.

The Home Demonstration Clubs of the county will be hostesses.

Four Enlist In Air Force During Week

Four area men enlisted in the Air Force at the Eastland Recruiting Station last week, S-Sgt. Grady Hoyle reported today.

Those who enlisted were Doyle Gentry of Ranger, Elmer Lowe of DeLeon, Gerry T. Snow of Graham, James D. McLoud of Breckenridge and Robert L. Lute of DeLeon.

Elmer and Robert Lowe are brothers and sons of Mrs. Josephine Chesser of DeLeon. Elmer was sent to Goodfellow AFB near San Angelo. Robert will receive his training at Lackland AFB along with Snow, McLoud and Gentry.



Reserve Seats Still Available

Got that reserve seat at Maverick Stadium yet? If you haven't, here's good news for you.

Wendell Siebert, principal, said there are still a number of good reserve seats left. You can get yours by dropping by his office or by phoning 671.

OWN THE ECONOMY WINNER The 1954 DODGE McGRAW MOTOR CO.

Eastland Telegram

Eastland County Record established in 1931 consolidated August 31, 1951. Chronicle established 1887. Telegram established 1922. Entered as second class matter at the Post-office at Eastland, Texas under the act of Congress of March 3, 1879.

O. H. DICK, Manager
TIMES PUBLISHING COMPANY
Published Tri-Weekly—Tuesdays—Thursdays—Sundays
O. H. Dick and Joe Dennis, Publishers

One week by carrier in city . . . 15
One month by carrier in city . . . 2.95
One year by mail in County . . . 29.50
One year by mail in state . . . 39.50
One year by mail out of state . . . 49.50

NOTICE TO PUBLIC—Any erroneous reflection upon the character, standing or reputation of any person, firm or corporation which may appear in the columns of this newspaper will be gladly corrected upon being brought to the attention of the publishers.

Classified Ads.

SPECIAL NOTICES

LODGE NOTICE
Stated meeting R. A. chapter No. 403 meets on fourth Thursday of each month.
L. S. Huckabay, H. P. H. P. Pentecost, Sec.

MISC. FOR SALE

FOR SALE: Lone Star aluminum boats. Phone 755-W-2.
FOR SALE: Three Table model Radios one with Clock all late models and in perfect condition. See them at the Eastland Telegram Office.
FOR SALE: Dinette suite, Servel refrigerator, Cook Stove, Heater. Phone 8433.
FOR SALE: Several hundred clean burlap sacks. Telephone 443.
FOR SALE: Used bathtub. Good condition. Call 855-W.
FOR SALE: Servel refrigerator with deep freeze. Apply 911 S. Halbrayn.
FOR SALE: or trade, 28 foot Zimmer trailer house, good condition. Phone 729-W-1.

Regular meeting Tuesday night 8 p. m.

Regular meeting each Friday 8 p. m.
Bill Hunter, Noble Grand
Paul Taylor, Vice Grand
3. W. Howell, Secretary.

Stated meeting of Eastland Lodge No. 467 meets second Thursday night of each month.
Wayne Jackson, W. M.
H. P. Pentecost, Sec.

Called meeting Masonic Lodge No. 467. For the purpose of work in the F. C. Degree Tuesday, September 14. Meeting called for 7:30 p. m. Members requested to be present, visitors invited.
Wayne Jackson, W. M.
H. P. Pentecost, Sec.

NOTICE: Nursery school opens 9 a. m. to 12 Monday through Friday, ages 4 to 6. Mrs. James Fields 407 Fach, phone 124-W.

NOTICE: Nursery school will re-open Sept. 13th. Hours 9-12 Monday thru Friday. Mrs. James Fields 124-W.

NOTICE: If interested in day nursery. Call 57 for information.

RENTALS

FOR RENT: Downtown upstairs apartment, furnished, air-conditioned. \$42.50 month, bills paid, phone 692.

FOR RENT: Furnished apartment Phone 9620. Hillside Apartments.

FOR RENT: Six room unfurnished house and garage, also four room unfurnished garage apartment and garage. Call 60.

FOR RENT: Three room furnished apartment and bath, electric refrigerator air-conditioned. 310 E. Main.

FOR RENT: Apartment, consists of bedroom, kitchenette, bath, and private entrance. 612 W. Patterson.

FOR RENT: Unfurnished eight room house. Four large bedrooms, 2 baths, 2 garages. Telephone 465.

FOR RENT: Four room nicely furnished apartment, private bath, garage. Phone 648-W.

FOR RENT: Four room house and bath. Apply 500 S. Bassett.


FOR RENT: Three room furnished apartment. Private bath and garage. 107 East Hill.

FOR RENT: Downstairs four unfurnished apartment. Phone 603.

FOR RENT: Three room furnished house, 211 East Valley. See H. H. Green, 505 S. Lamar.

NOTICE

Better glasses for less money.
Dr. George Blackwell
Gorman, Texas



Alex Rawlins & Sons

MONUMENTS
WEATHERFORD, TEX.
Serving This Community
For More Than 70 Years.

RANGER JUNIOR COLLEGE 11 DUMPS STRONG WHARTON TEAM

It was the Rangers all the way Saturday night as they broke open the 1954 season here against the Wharton Junior College Pioneers and left the visitors stunned by a 21 to 13 score. The score was not nearly so impressive as the playing on the field.

When Coach Dick Henderson and assistants, Sam Aills and Pat Thomas took the wraps off the new version of the fighting Rangers of the Ranger Junior College it was, for the fans, several surprise packages wrapped in one.

Area fans liked what they saw. It was a fast moving, charging crew of Rangers that didn't let up from the time of the kickoff until the closing seconds of the game when the third Ranger touchdown was run across the Wharton goal line.

Despite several threatening attempts in the first period it was not until the second quarter that the Ranger machine began to roll. The first two Ranger touchdowns came in rapid succession.

R. C. Smith, a former Ranger Bulldog, playing right end for the Rangers, set the stage for the first score when he recovered a Pioneer fumble at mid-field. Smith who has spent the past four years in the Navy and has an outstanding record on service teams, played a wonderful game, both offensively and defensively.

As the Rangers took the offense with the recovered fumble, the forward wall opened a wide hole and the interference furnished a clear right of way to allow Herold Merryfield, the Rangers fleet-footed halfback to go the distance of 49 yards for the first tally. Merryfield, whose footwork was one of the standouts of the night, came to RJC from Ballinger.

Raymond Gilstrap, left end who hails from Big Spring kicked the extra point.

It was a case of headsup football that set up the second touchdown for the Rangers. George Scott, tackle from Crowell, scrambled past the front wall of the Pioneers and intercepted a short pass. Quickly he lateraled to Gilstrap, who went from the Pioneer 30 to rack up the second touchdown. He again kicked the extra point.

Trailing 14 to 0 the Pioneers entered the second half and their only two outstanding plays of the night brought touchdowns, both of which were on long runs.

B. Williams of the Wharton squad took a punt on his own 20 yard line and managed to go all the way for a six-point score. Rench added the extra point.

Again in the fourth period the Wharton team scored. Rench took a short pass from Stauffacher on his own 15-yard line and managed to race 85 yards for a touchdown, but his attempt for the extra point was blocked.

With one second remaining before the final gun, Merryfield again brought the crowd to its feet. Froz the Wharton 22-yard stripe he sifted through the Pioneer defense and went across the goal line for another Rangers touchdown. Gilstrap then added another point with his third perfect boot of the night.

Offensively and defensively, the Rangers looked good throughout the game. They played a hard charging, blocking game, a n d demonstrated speed, and lots of fight and pep.

Time after time, the Rangers completely smothered the Pioneers, and dropped them for repeated loss of yardage.

There were a few ragged spots in the game, but the prospects for the Rangers of 1954 seem much, much brighter after their debut before the home fans.

Introduced to the good sized crowd was the membership of the newest organization on the RJC campus, the Rangeans. This group of coeds will make their formal appearance at the next home game, attired in their classy uniforms of Purple and White. This will be for the Cisco game on Sept. 25. The Rangeans will be a precision drill team led by six baton twirlers.

The Rangers travel to Bryan where they meet Allen Academy

DRESSMAKING ALTERATIONS

Mrs. C. L. Fields
Power Plant Rd. - Ph. 755-W-3

DIXIE Drive-In

EASTLAND RANGER HIGHWAY

Box Office Opens 7:00 p.m.
First Showing 7:30 p.m.
Second Showing 9:30 p.m.

Each Tuesday is Bargain Night - Adults 25c
Admission 50c - Children Under 12 Free

TUESDAY ONLY SEPTEMBER 14
Tuesday Is Bargain Day—Adults 25c
Children Under 12 FREE

You'll Go WILD with LAFFS!
LEO GORCEY - HUBERT HALL
and THE Bowery Boys
Jungle Gents
AN ALLIED ARTISTS PICTURE
PLUS: Color Cartoon and 2 Reel Comedy

WEDNESDAY - THURSDAY, SEPTEMBER 15 - 16

M-G-M
DARING SHOCKING
DRAMA OF RED TERROR!

PRISONER OF WAR

YOU'VE NEVER SEEN ANYTHING LIKE IT!
RONALD REAGAN - STEVE FORREST - DEWEY MARTIN

PLUS: Color Cartoon and Sports Reel

REAL ESTATE

FOR SALE: Six room brick house. Completely redecorated inside and out. Phone 461 or 258.

Miscellaneous Wanted

NOTICE: Need your septic tank pumped out? Phone 2795, Olden, E. Main.

HELP WANTED: Boy wanted, see Mr. VanHoy, Majestic Theatre.

WANTED: Ironing, sewing. Keep children. Mrs. Brashears, 106 Lula Ave.

PATRONIZE YOUR HOME TOWN MERCHANTS!

For MONUMENTS

Of Distinction
call
MRS. ED ATCOCK
Our years of experience enables us to give you prompt and courteous service.
See display at 206 Ave. E. or call 183 for appointment
Cisco

Brown Sanatorium

Office hours 8 to 5 p.m.
Dr. N. A. Brown, D.C.
In Charge
800 W. 6th St. Cisco

Eastland National Bank

This bank backs its farmer customers in sound farming practices.

SUPPORT THE SOIL, AND THE SOIL WILL SUPPORT YOU



CAMPUS—Bare knees are just the thing to wear on the campus this fall, says Kay Freeman, junior at Mississippi Southern College. Modeling the gray-flannel back-buttoned kil in Miami, Fla., she wears knee-length socks and a frilly shirt of cotton broadcloth to complete the ensemble.

Cisco Junior College Takes 52-6 Beating

CISCO (TNS) — Cisco Junior College's Wranglers found themselves strictly outclassed Saturday night when they took a 52-6 drubbing from the Hardin - Simmons University freshmen.

Joel Honeycutt, an undersized tailback from Temple, scored 27 of the H-SU points in a great show. The only Cisco TD came on a one-yard plunge by L. R. Taylor to climax an 80-yard drive.

The starting line-ups:

Ranger	Pos.	Wharton
Gilstrap	LE	Boureau
Bleeker	LT	Davis
Wood	LG	Oelfke
Wooten	C	Fontenot
Gibbs	RG	Gammage
Scott	RT	Topping
Smith	RE	Myers
Woods	QB	P. Johnson
Franklin	HB	B. Williams
Adcock	HB	R. Johnson
Lenamond	FB	Twadowski

The Rangers travel to Bryan where they meet Allen Academy

Texas Farmers Have Slightly Higher Income

Texas farmers' cash income for the first seven months of 1954 was slightly higher than the same 1953 period, the University of Texas Bureau of Business Research reports.

Total farm cash income through July was \$798,100,000, a rise of \$67,320, or 1 per cent, over 1953. Cash return on commodities remained fairly stable. Income from some crops increased significantly. Cotton income was up 35 per cent over 1953 figures. Peanuts income jumped 94 per cent. Appreciable gains also were made in grain sorghums, which climbed 12 per cent, and flaxseed, which edged upward 5 per cent.

Prices received in July by Texas farmers changed little from June levels. Minor gains in some commodities offset losses in others. July prices were 5 per cent below July, 1953.

Call 601 For Classified Ad Service

JOY DRIVE-IN

Tuesday Only
GIL DOUGLAS - P. PARKER - WILLIAM BENDIS
Detective Story
Plus Color Cartoon

Stop, You're Killing Me

Plus
SANDERS LITTLE BALL
Lured

WILSON FEED AND SEED

get acquainted offer

Get this Lovely Scarf.

FREE... with your first purchase of a PURINA LAYING CHOW during September

September is ladies' month at our store. We want to make friends with many more of you women who keep poultry. So come in and get your regular \$1.29 value scarf as a gift with your first order for 100 lbs. of any Purina Laying Chow. It's a colorful "Fall Fiesta" design especially made for Purina to celebrate "Get Acquainted Month." You'll love your choice of four different color patterns.

Get up to 40% MORE EGGS

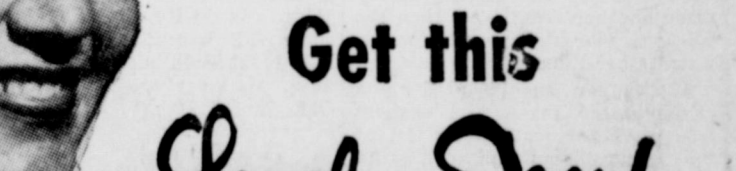
than U. S. average this fall while egg prices are best...

Another reason we offer this scarf bargain is to introduce you to the Purina way of feeding and managing pullets so you can get up to 40% more eggs this fall and early winter than most folks will get. This sounds like a lot of extra eggs—and it is! But we can tell you about many ladies who do it every fall. That's when eggs bring the best prices, and 40% more eggs can easily make you \$1.00 per pullet extra income by Christmas. Drop in real soon and let us tell you about it. And remember, it's open house for ladies all through September at our store.

WILSON FEED AND SEED

204 N. Seaman Phone 175

The Store with the Checkerboard Sign



Plus Color Cartoon

WEDNESDAY - THURSDAY

DAMON RUNYON WARNERCOLOR
Stop, You're Killing Me
Plus
SANDERS LITTLE BALL
Lured

OBIE & DOC SERVICE STATION

207 E. Main Phone 9535

COME IN PLEASE DRIVE OUT PLEASED

"His wife's gonna practice parking today."

Palace

THEATRE - IN CISCO, TEXAS
Last Times Today
BARBARA STANWYCK
MACMURRAY
The Moonlighter
Plus Color Cartoon

Rhapsody

WEDNESDAY - THURSDAY
Elizabeth TAYLOR
Vittorio GASSMAN
Technicolor
M-G-M

Palace

THEATRE - IN CISCO, TEXAS
Last Times Today
BARBARA STANWYCK
MACMURRAY
The Moonlighter
Plus Color Cartoon

COURTHOUSE NEWS AND RECORDS

Real Estate Transfers, Marriages, Suits Filed, Court Judgments, Orders, Etc.

INSTRUMENTS FILED

The following instruments were filed for record in the County Clerk's office last week:
 R. A. Bearman to Wico Oil Company, assignment of oil and gas lease.
 Fred Brizendine to Federal Land Bank of Houston, deed of trust.
 Fred Brizendine to Higginbotham Bros. Company, MML.
 J. B. Brandon to W. L. Andrus, transfer of vendor's lien.
 J. B. Brandon to V. E. Overstreet, release of vendor's lien.

George Campbell to Joe Petree, quit claim deed.
 City of Ranger to Junie L. Jones, warranty deed. Clark P. Chandler to C. C. Hudson, assignment of oil and gas lease.
 City of Ranger to Mrs. O. M. Grant, quit claim deed.
 M. E. Daniel to Jack Hailey, release of deed of trust.
 Lorene Foster to Billie L. Washington, warranty deed.
 Will Foster to The Public, proof of heirship.
 Joe Fraley to Maurice C. Griffith, warranty deed.
 Franklin Life Insurance Company to Ewing Baker, Jr., deed of trust.
 Mrs. F. Flippo to Perry L. Curtis, warranty deed.
 Ted Green to John Edward Greene, MD.
 Minerva E. Green to Joe Fraley, release of vendor's lien.
 Linda Sue Gregg to The Public, cc probate.
 Frank Griggs to Irving Green-span, assignment of oil and gas lease.
 Jack Hailey to First State Bank, Rising Star, deed of trust.

FOR SALE

Battery raised FRYERS
 Lb. 50c
 Also do custom dressing. Fryers under 2 1/2 lbs., 10c. Large, 12 1/2 Lb. Hens, 15c Lb.

WALKER
 DRESSING PLANT
 West on Highway 80
 South at Y Phone 109-J

H. K. Herbert to R. A. Barman, oil and gas lease.
 Fannie E. Hall to The Public, declaration of forfeiture.
 Higginbotham-Bartlett Company to Lone Star Gas Company, lease.
 Bob Hansford to Mrs. Ora May Grant, warranty deed.
 O. L. Hammit to Cecil H. Joyce, warranty deed.
 O. L. Hammit to M. G. Joyce, deed of trust.
 Don C. Hill to Claude L. Reeves, warranty deed.
 Don C. Hill to Claude L. Reeves, bill of sale.
 Theibert Jones to Frank Griggs, oil and gas lease.
 Cecil H. Joyce to O. L. Hammit, warranty deed.
 L. C. Line to First National Bank, Glen Rose, deed of trust.
 W. W. Linkenhoger to O. D. Dillingham, warranty deed.
 Mrs. Mary Elizabeth Little to Cecil H. Joyce, release of vendor's lien.
 O. D. Martin to Johnson Smith, sewer easement.
 C. L. MacLevey to Raymon Bryan, warranty deed.
 C. L. MacLevey to Raymon Bryan, release of vendor's lien.
 McCorstin Construction Company to Continental National Bank of Fort Worth, bill of sale.
 C. H. McBee to Marcus W. Grieger, release of MML.
 I. E. Oliver to Standard Oil Company of Texas, oil and gas lease.
 Guy Parker to Texas Electric Service Company, right of way.
 Randall F. Reeves to P. J. Usery, release of deed of trust.
 R. L. Ralston to William K. Tip-

pen, deed of trust.
 Mrs. Minnie Robey to H. Flowers, release of vendor's lien.
 M. H. Ragland to The Public, proof of heirship.
 Claude L. Reeves to Don C. Hill, deed of trust.
 Grace Wallace Seabolt to Standard Oil Company of Texas, oil and gas lease.
 Troye W. Thackerson to Annie E. McFadden, warranty deed.
 A. M. Townsend to The Public, proof of heirship.
 C. W. Waller to The Public, affidavit.
 Stanley Webb to Troye Thackerson, warranty deed.
 N. S. Woods to Federal Land Bank of Houston, homestead designation.
 N. S. Woods to Federal Land Bank of Houston, deed of trust.
 Harmon Whittington to Mrs. Lula Mae Whittington, deed.
 B. L. White to Mrs. O. M. Grant, quit claim deed.
 L. W. Wallace to Texas Electric Service Co., right of way.

PROBATE

Annie Hughes Kean, deceased, application to probate will.
MARRIAGE LICENSES
 The following couples were licensed to wed last week:
 Henry Elmer Procter to Senada Mae Davis.
 Jerry Kent Davis to Barbara Sue McGough.
 Otis Baugh to Maidelle Aileen Munn.
 Royce Wayne Holland to Mrs. Opal L. Moorhead.

SUITS FILED

The following suits were filed

for record in the 91st District Court last week:
 J. M. Cate v. Western National Insurance Company, to collect insurance.
 Consumers Acceptance Company of Texas v. Raymond W. Jones, debt.
ORDERS AND JUDGMENTS
 The following orders and judgments were rendered from the 91st District Court last week:
 Order directing Clerk to empty stub boxes.
 Pearl Pierce v. William Earl Pierce, judgment.
 Virgil V. Clark v. Juanita E. Clark, judgment.
 S. W. Herring, et al v. V. C. Nelson, et al, judgment.
 Julia W. Butler v. W. Fred Butler, order of dismissal.

Future Oil Uses Point to Increase

Estimated petroleum and petroleum product consumption in the U. S. in 1955 will be 23 per cent greater than in 1950, the Petroleum Administration for Defense says.
 Projecting petroleum requirements into 1975, the President's Materials Policy Committee estimates that U. S. consumption will be 110 per cent above 1950.
 Despite these authoritative projections on U. S. petroleum needs, U. S. petroleum needs, America's share of tanker cargo in world competition has dropped from 65 per cent in 1948 to only 38 per cent in 1952, according to the Commerce Report.

Scott Attends Band Meeting Held In Abilene

The Regional try-outs for all-State band and chorus will be held in Abilene Dec. 4 and Dec. 11. Regional band directors decided at a meeting held in Abilene over the week-end.
 R. W. Scott, Eastland band director, said directors also recommended having only one regional contest instead of having two zones as in the past.
 Dates for regional competition were also recommended to the regional directors.

There are no truly "national" holidays in the United States. Congress has never enacted a law setting aside a day as a national holiday; such observances are set by state legislatures.

Political Announcements

This paper is authorized to make the following announcements, subject to the November 2 General Election.
TOM C. HIGH
 Democratic write-in candidate for Constable Precinct 1.

Peach Ice Cream In Fruit Frame



Peach ice cream enjoys greatest use during July and August when the luscious peach season gets underway. Fresh of flavor and delicious by itself, this ice cream claims wonderful congeniality with other summer fruits in dessert array.
 Melon and peaches are a natural in fruit cups; so trust their fruited harmony by serving a scoop of peach ice cream in a melon half. The famous Peach Melba dessert links a raspberry sauce to peaches and ice cream. For a delicious variation, use sweetened raspberries to top a peach ice cream sundae. Fresh peach slices themselves can accent the positive of a peach ice cream serving.
 Many easy and attractive dessert combinations are possible with convenient pre-packaged peach ice cream. One can select a favorite fruit accompaniment when purchasing a pint or half-gallon of the ice cream. Always economical, pre-packaged ice cream is even more of a saving when purchased in the half-gallon carton containing 16 delicious portions.

YOU CAN'T MATCH IT!



Only Mercury offers you such extra power, famous economy, advanced styling—higher resale value too!

For example, you get an entirely new 161-horsepower overhead valve V-8—not an underpowered straight 8 or an old-fashioned 6 still offered by some cars.
 You get new ball-joint front wheel suspension for easier handling, smoother driving—exclusive with Mercury in its class.
 You enjoy Mercury's famous economy of operation, and low upkeep. For this is one of the most efficient Mercurys ever built.
 You get clean, fresh, flow-together styling—not ungainly bumps, bulges, and fancy chrome tricks that tend to "date" a car.
 Most important, you get proven value—a car that consistently holds the "class championship" for resale value according to independent national reports. It adds up to this. You can't match a Mercury. And you can't match our deal. We invite you to come in and see for yourself.

IT PAYS TO OWN A

MERCURY

—THE RECORD PROVES IT

Linkenhoger & Son Motors
 LINCOLN-MERCURY

Wednesday Only

Double Stamps With \$3.00 Purchase Or More
 PLUS REAL SAVINGS

Baby Beef Loin	Calf
Steak	Liver
Lb. 39¢	Lb. 29¢
Fresh Ground	Real Pit
H'burger	Barbecue
Lb. 19¢	Lb. 69¢

BONELESS
Stew Meat Lb. **39¢**

CARNATION
Topic 1/2 Gallon **49¢**

PICTSWEEP
 FROZEN FOOD

6 For **\$1**

- BUTTER BEANS 10-oz. Pkg.
- GREEN PEAS 10-oz. Pkg.
- CUT BROCCOLI 10-oz. Pkg.
- CUT CORN 10-oz. Pkg.
- SQUASH 10-oz. Pkg.
- PEAS & CARROTS 10-oz. Pkg.
- GREEN BEANS 10-oz. Pkg.

Kimbell's

Shorten'g

3 Lb. Carton **75¢**

Sliced

Peaches

No. 2 1/2 Can **25¢**

ADMIRATION

Coffee Lb. Can **98¢**

LARGE WHITE INFERTILE

Eggs Dozen **39¢**

EARNEST
 Frozen Food Center

Civic League Members Called To Meet Thur.

A called meeting of members of the Civic League and Garden Club has been set for 9:30 a.m. Thursday at the Woman's Club, Mrs. Horace Horton, president announced.

Business matters under discussion will include the voting on the amendment to the constitution enabling the club to have active and sustaining membership, Mrs. Horton stated.

All members were urged to be present.

Call 601 For Classified Ad Service

NOW YOU CAN LICK ATHLETE'S FOOT WITH KERATOLYTIC ACTION
T-4-L, a keratolytic fungicide, SLOUGHS OFF the tainted outer skin, exposing buried fungi and kills on contact. Leaves skin like baby's. In just ONE HOUR, if not pleased, your 40c back at any drug store. Today at Eastland Drug.

Alfords Host Annual School Picnic, Friday

Mr. and Mrs. T. M. Alford entertained members of the Olden school board, Olden teachers and friends, Friday evening when they had the annual back to school picnic on their lawn.

Attending were Mr. and Mrs. Travis Hilliard and children, Mr. and Mrs. J. T. Weaver and children, Mr. and Mrs. O'Bryan and children, Mr. and Mrs. Max McCotter and children, Rev. and Mrs. Alfred Nelson and children, Mr. and Mrs. Oliver Canet, Mr. and Mrs. O. H. Dick, Mr. and Mrs. Milton Day and children, Mrs. Rudolph Little and son, Mr. and Mrs. Gilbert Copeland, Mr. and Mrs. Bill Green, Mr. and Mrs. Bud Fox and children, Mr. and Mrs. Z. W. Cook and family, Misses Nannie Allmon and Eunice Hamilton, Mrs. Elizabeth Vaught, Edwards and children, Jessie Kelley.



Coffee Monday Opens Years Schedule for Methodist WSCS

Members of the Year Book committee of the Women's Society of Christian Service of the First Methodist Church hosted a coffee at 9:30 a.m. Monday for members.

On the Committee are: Mmes. Henry Van Geem, Clyde Young, Frank Crowell, James Horton, O. M. White, Jack Oglesby, George Lane and W. P. Leslie.

Mrs. J. C. Oglesby gave the opening prayer, and Mrs. Van Geem gave a talk entitled "Looking Ahead."

Mrs. G. E. Dendy sang. Mrs. Frank Crowell gave the devotional.

Mmes. Jim Horton, Crowell and O. M. White, study book chairmen, gave outlines for the studies for the coming year. A song by Mrs.

Grady Pipkin completed the program.

Present were Mmes. Bean, W. E. Chaney, Cecil Collins, Crowell, A. E. Cushman, Fred Davenport, J. A. Doyle, T. L. Fagg, Fred Hile, B. O. Harrell, Charles Harris, Horton, T. M. Johnson Lane, Leslie, Milburn S. Long, O. O. Mickle, Oglesby, C. M. Pogue, R. E. Sikes, H. B. Titsworth, John Turner, Van Geem, White, Clyde Young, Tom Haley, Frank Sparks, Grady Pipkin and Mrs. Dendy.

Thursday Club Get-Together At Castleberry Home

Members of the executive committee of the Thursday Afternoon Club, met at home of Mrs. Frank Castleberry last Thursday to formulate plans for the new year.

They were joined at 10 a.m. by all of the club members for a social hour, during which the hostess served refreshments.

J. L. Riggan Visits With Sick Brother

J. L. Riggan has returned from Los Angeles, Calif., where he has been at the bedside of his brother, A. J. Moon.

Mr. Moon is seriously ill in a Veteran's hospital.

Mrs. C. M. Van Geem, mother of the two men was unable to make the trip. She is recovering from injuries from a fall at her home several weeks ago.

Mr. and Mrs. J. C. Day of Pampa are visiting with relatives and friends here.



KINDERGARTEN — Just the thing for fashion-conscious kindergarten misses is this lightweight nylon snowsuit, lined with a plastic fabric. Styled by "Tydkins" of New York, the suit is designed for today's warmer winters, is completely washable and will not mat.



"TOPS" FOR MOM — Just the thing for crisp, fall days: a shallow, head-hugging cloche with short, slanting brim which just skirts the hairline for full-face flattery. A tricolor grosgrain ribbon shows up well against the tan wool felt, which is now being modeled in New York City.



"TOPS" FOR SIS — Fashion-conscious teen-agers in New York are eyeing this smooth gray wool-felt cloche for fall and early winter wear. A narrow, folded gray grosgrain band with bow at back accentuates its fresh simplicity, and is the only trim.

RELIEF AT LAST For Your COUGH

Creomulsion relieves promptly because it goes into the bronchial system to help loosen and expel germ-laden phlegm and aid nature to soothe and heal raw, tender, inflamed bronchial membranes. Guaranteed to please you or money refunded. Creomulsion has stood the test of millions of users.

CREOMULSION relieves Coughs, Chest Colds, Acute Bronchitis

Open For BUSINESS SUNSHINE LAUNDRY
106 E. Plummer
HELP-U-SELF LAUNDRY
Wet Wash - Rough Dry Finish
Pick-up Delivery Service
PHONE 155
Operated by Mrs. Harley Fox

PERSONALS

Mrs. Ina Bean and Mrs. Johnny Jarrett left Tuesday morning for a two weeks vacation in Edmorton. Mrs. Bean will visit her son Currie Bean and Mrs. Jarrett will visit with her husband.

Mr. and Mrs. J. T. Cooper and Tommy were the guests here last Friday in the home of Mrs. Cooper's parents Mr. and Mrs. T. L. Cooper.

Mrs. Jess Pittman underwent surgery this morning at the Ranger General Hospital.

Mr. and Mrs. Ossie Hogan of Odessa visited here with Mr. Hogan's parents, Mr. and Mrs. M. B. Hogan and with Mrs. Hogan's mother, Mrs. Nettie Ferguson of Olden.

Hospital News

Patients in the Eastland Memorial hospital Tuesday morning are Mrs. H. F. Vermillion; Mrs. D. L. Harber both medical.

Dismissed Tuesday were H. R. White of Wichita Falls and J. I. Brinkley both medical.

Mrs. Leonard Alldredge Jr. and five children, Lenda, Leonard, III, Ralph Lane, and twins, Karion and Sherion, who have been the guests here of Mr. and Mrs. L. W. Alldredge Sr. of 313 North Green, left Thursday to join their husband and father, Sgt. 1-c Leonard Alldredge Jr. has been overseas for the past six months.

The family will fly from New York to Frankford, where they expect to arrive Tuesday or Wednesday.

Miss Helen Hilton of Tyler was the week end guest here in the home of her sister, Mrs. Carl Hoffmann and Mr. Hoffmann.

Mr. and Mrs. Chester Alford Fort Worth were the week end guests here in the home of M. Alford's mother, Mrs. J. M. Alford.

Overseas Veterans Welcome
Post No. 4134
VETERANS OF FOREIGN WARS
Meets 2nd and 4th Thursday 8:00 p.m.
Karl and Boyd Tanner

HAMNER FUNERAL HOME

Funeral Directors

BEN E. HAMNER EASTLAND, TEXAS PHONE 11

THOMAS FUNERAL HOME

PHONE 166 CISCO, TEXAS

Nominal Cost Burial Insurance For The Entire Family

LOVELACE
LOCAL & LONG DISTANCE MOVING
EASTLAND TEXAS
PHO. 314

MOBIL 210
Stays 34% Stronger
Lasts 14% Longer
At the Sign of the FLYING RED HORSE
W. Q. VERNER Phone 64 Eastland

Past Matrons To Resume Meetings, Thur.

The Past Matrons' Association of the Eastern Star will resume meetings this week, when they meet at 6:30 p.m. Thursday Sept. 16, in the home of Mrs. R. L. Carpenter, West Highway 80 for a covered dish supper.

All members were urged to attend as important business matters will be discussed, Mrs. Carpenter, president said.

Real Estate And Rentals
MRS. J. C. ALLISON
Phone 347 920 W. Commerce

Wednesday Is DOUBLE

BB

STAMP DAY at MacMOY CLOVER FARM STORE

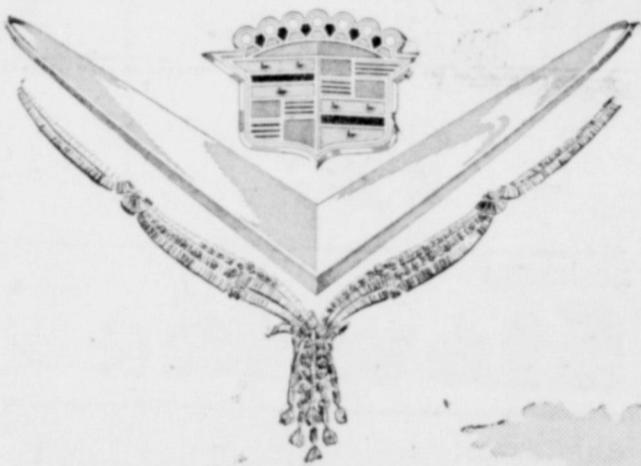
With \$3.00 Purchase or More

CHOICE BABY BEEF	Round Steak	Lb.	55c
CHOICE BABY BEEF	Loin Steak	Lb.	45c
CHOICE BABY BEEF	Tea Bones	Lb.	55c
CHOICE BABY BEEF	Club Steaks	Lb.	49c
FRESH GROUND	Hamburger	Lb.	25c
SHORT RIBS or	Stew Meat	Lb.	19c
SWIFT'S	Pard	2 No. 1 Tall	25c
SALAD WAFER	Crackers	1 Lb. Box	25c
AUNT JEMIMA	Flour	5 Lb. Box	49c
BETTY CROCKER HONEY SPICE	Cake Mix	With Coupon on Box—20-Oz. Pkg	25c
GLENDALE	Peaches	No. 2 1/2 Can	25c
WHITE SWAN GRAPEFRUIT	Juice	46-Oz. Can	25c
WOODBURY	Soap	3 Bath Size	35c
CLOVER FARM	Pork & Beans	2 No. 1 Tall	19c

These Prices Effective Wednesday Only

FOODS CLOVER FARM STORES MEAT
400 South Seaman Phone 3

Cadillac



A Ride Is an Education!

There has never before been a time—since the beginning of the automotive industry—when you could learn as much about motor car performance in a single hour as you can today!

All you need do is slide behind the wheel of a new 1954 Cadillac—and head for the open highway.

That great Cadillac engine introduces you to a new measure of power and performance. It takes even the most challenging hills in easy stride—and sweeps you out of a difficult traffic situation with only the slightest pressure on the accelerator.

Cadillac's improved Hydra-Matic Drive is unbelievably responsive and silken and smooth—and takes you from a standing start to your desired rate of speed in one continuous flow of power.

You guide the car with only a feather-light touch on the wheel. It seems almost to follow the weight of your hand around the corners—and it takes you over the winding highway as if it were reading your mind.

Vision is so wide and clear that a single, sweeping glance acquaints you with traffic on every hand. Braking is unbelievably sure and easy. And you ride in such comfort and quiet that you seem to be resting in your favorite easy chair.

Yes, it's an education to take the wheel of a 1954 Cadillac—an education in all the good and wonderful things of motordom.

So stop in any time—slip into the driver's seat—and head for your favorite stretch of highway. You're in for the greatest surprise of your motoring life!

Don Pierson Olds-Cadillac

314 W. Main

EASTLAND

Phone 302

You'll Relish Hamburgers Even More When You Use Relishes

BY DOROTHY MADDOX

ALMOST everyone likes hamburgers. And they taste even better with these easy-to-prepare special relishes.

Mayonnaise Pickle Relish (Makes 1 cup)

One-half cup mayonnaise or salad dressing, 1/2 cup sweet pickle relish, 2 teaspoons grated onion, freshly ground pepper to taste. In a small bowl or a jar, combine mayonnaise or salad dressing with remaining ingredients; blend well. Cover and keep in the refrigerator until time to serve with hamburgers.

Mustard Mayonnaise (Makes 1 cup)

One-half cup mayonnaise or salad dressing, 1/2 cup prepared mustard, 1 tablespoon prepared horseradish. In a small bowl or a jar, combine mayonnaise or salad dressing with remaining ingredients; blend well. Cover and keep in the refrigerator until time to serve with hamburgers.

Ever hear of Catch-a-Fellow Salad? It's quite a dish—whether or not it catches a fellow.

Catch-a-Fellow Salad (Serves 6)

Six hard-cooked eggs, chopped; 1/2 cup finely chopped celery, 1/2 cup finely chopped pimento, 2 tablespoons chopped, green onion; 1 teaspoon prepared mustard, 1/2 cup mayonnaise or salad dressing, 6 large tomatoes, salt and pepper to taste, crisp salad greens.

In a bowl, combine eggs, celery, pimento, onion, mustard and mayonnaise or salad dressing; mix thoroughly. Cover and chill several hours.

For each salad, turn the tomato stem end down and cut into quarters, not quite through. Spread tomato quarters out a little



Hamburgers, the any-time, any-place treat nearly everyone enjoys, acquire enhanced taste appeal when served with relishes.

on the crisp salad green and spoon egg salad mixture into the tomato roses. Or cut each tomato crosswise, into 3 slices. Arrange the largest tomato slice on the crisp salad greens. Top with egg salad mixture, then with second tomato slice, egg salad mixture and remaining tomato slice.



FACE MEETS FIST—Middleweight George Johnson's facial expression tells the story as he reels back from a stinging left jab by Bobby Jones in a bout in New York's Madison Square Garden.

Sleep Is Best Aid To Beauty; Midnight Chores Take Heavy Toll

Of all the beauty aids available to help achieve a dazzlingly clear skin, rosy complexion, shiny lustrous hair, and bright, unclouded eyes, the best one is absolutely free—good sound sleep and enough of it.

Be it sitting at a desk pounding a typewriter or caring for a home, husband, and three boisterous children, the day's activities produce considerable wear and tear on a woman's system. Only during sleep does nature receive a real opportunity to do her repair work.

How often, though, women ruthlessly and unnecessarily rob themselves of the hours of sleep so essential for beauty, health, and vitality. After everyone else has gone to bed, they prowl around the house doing odd tasks which could just as well be done the next day. They suddenly decide that

their hair must be washed immediately, their nails polished, or a dress they might wear next week mended. Then, they wonder why they get premature wrinkles.

Frequently, these "late-to-bed ladies" are tired to sleep when they finally do get there. Over-exhaustion can have a deplorable effect upon the nervous system, making rest and relaxation next to impossible. In the morning, it's a wan and weary woman with circles or pouches under her eyes that listlessly stares back from the mirror.

A few consecutive good nights' sleep and what a change takes place! Eyes brighten. Unbecoming lines begin to fade. Vitality and disposition are at their peak. A sufficient quantity of rest alone, however, is not adequate to produce these almost magical changes.

Diamond Collection To Be Shown At 1954 State Fair Of Texas

A collection of diamonds worth over ten million dollars, including the famous Hope diamond, will be the central exhibit in the new air-conditioned Women's Building at the 1954 State Fair of Texas, Oct. 9-24.

Surrounding the diamonds will be a fabulous display of fine furs, couturier gowns, lingerie, millinery, leather goods, textiles and other high-style items appealing to women simulating a window-shopping tour through the world's swankiest shopping districts.

Edith Head, winner of several Academy Awards for film costumes will be present at the fair with the Oscar-winning clothes she designed for the movie "Roman Holiday." A cobbler will show how a hand-crafted shoe is put together, a leading perfumer will introduce a new fragrance especially for the fair, and there will be an exhibit showing how an evening gown evolves from processes that begin in a South Texas oilfield chemical plant.

The diamond display will glitter around a manikin wearing the "Court of Jewels," a collection of priceless gems that one time adorned the crowned heads of Europe. Rough stones also will be shown, along with the finished gems in settings for the hair, throat or wrist.

The entire high-fashion display is something entirely new to fairdom, General Manager James H. Stewart said, and will give the new women's building a sparkling sendoff.

More than 65 leading fashion manufacturers will have displays

es. Quality of sleep is a big item.

Physical requirements for restful slumber include good ventilation (window open from both top and bottom so the air can circulate); a level, resilient mattress and bedspring combination that is neither too hard nor too soft for individual comfort preferences; a fluffy, buoyant pillow; and bed covering that is neither too light nor too heavy.

in the exhibit, and they are drawn from all over the world. One shoe firm now has representatives visiting London, Switzerland and Paris to bring the latest European designs to the fair. A Bavarian leather firm will show the latest in sportswear, and there will be sweaters from Scotland. Gowns designed in Paris along with "made in Texas" fashions will give the show a truly international flavor.



They won't be little very long

But you can remember your children's precious growing-up years forever with professionally made portraits. Phone for an appointment today.

Phone 46
CANARIS STUDIO

Researchers Test Texas Kaolin Clay

University of Texas researchers have built and operated a small-scale industrial plant to show that fine china and whiteware can be made from Texas kaolin clays.

A new bulletin by Professor F. K. Pence explains exactly how the

clays should be processed. The report climaxes 16 years research on Texas kaolin by Professor Pence and complements a bulletin published in 1949 detailing kaolin deposits in vast areas of Northeastern Central Texas.

Life of an Army parachute under normal conditions is between four and five years.

Before Insurance Was Known—

... toiling slaves hewed and wrought by hand. Life was cheap. And the idea of insurance would have been beyond understanding. Not so today. Insurance protection is indispensable both to the individual and industry. Without it the wheels of business and trade would stop. And the less one has the more important is insurance to him for he can least afford to lose what he has. So be prepared. We insure everything but the ashes and pay for them!

EARL BENDER & COMPANY

Eastland (Insurance Since 1924) Texas

Lone Star Fiberglass Boats



Amazing new boats built of Fiberglass! Will not leak, rust, rot or corrode. Resists marine borers. No scraping or caulking—color molded in. Extra strong, durable construction. Seamless one-piece hull. Safe, speedy, beautiful performance. Stop by and look them over today at

Mrs. Waverly Massengale

Phone 755-W-2

Give Them A GOOD START Toward GOOD GRADES with GOOD LIGHT!



Check Study Lighting When You Check Their School Supplies

You can give your child a good start toward a better school year by providing the proper study light. Proper lighting eliminates glare and shadows that cause eye fatigue and drowsiness... helps young minds to concentrate on homework!

It's simple and inexpensive to provide good lighting for your youngsters. In most cases, a good study lamp with a 150-watt frosted bulb will supply adequate light. For more specific suggestions, see the recipes for good lighting in the FREE booklet, "See Your Home in a New Light."



There's A Copy For YOU...

For helpful, easy-to-follow lighting recipes that will make seeing easier and every room in your home more attractive, phone, write, or come by our office for this free booklet, "See Your Home in a New Light."



It's the big Success today

You can read it in the sales figures—Buick's the car that's climbing to a phenomenal public preference. For Buick today is outselling all other cars in America—regardless of price class—except two of the so-called "low-price three." And every month strengthens Buick's new leadership position. It's the "hot" car for style, for power, for performance—and, most emphatically, for value.

Any way you look at it, Buick's the buy of the year, hands down. For Buick prices start close to the lowest—just a few dollars above those of the "low-price three." But those few more dollars you pay for a Buick buy you a lot more power, room, comfort, style, ride steadiness. And get this: with our tremendous sales volume right now, we can offer you a really top allowance on your present car. That's the added bonus you get from our big volume.

It's the Beautiful Buy right now

It's the "High Resale" car for years from now

No Wonder— Buick Sales are Soaring!

With Buick's year-ahead beauty today, you'll be driving a car that's right up front in the style parade of tomorrow. And when you're ready to resell your Buick, it will still be fresh and new-looking, with the modern features the others will adopt in the coming years. And that means you're bound to get a higher resale price when you do trade it in. Drop in and see this beautiful buy right now.

WHEN BETTER AUTOMOBILES ARE BUILT BUICK WILL BUILD THEM

DRIVE A BUICK IT'S TEXAS BUILT FOR TEXANS

Muirhead Motor Co.

304 W. Main Street

EASTLAND, TEXAS

Phone 692



TEXAS ELECTRIC SERVICE COMPANY

F. N. SAYRE, Manager

Phone 18

FOR WHOM THE BELL TOLLS!

Right now it's calling the children back to school. But it should warn us, too, that America's schools are more overcrowded than ever. And by 1960—enrollment will have increased another 25%.

To solve this, we must plan wisely and act boldly. We must have a long-range school plan that looks at least ten years ahead!

The school bell tolls this warning—It's later than you think!

Better Schools Build Better Communities
Published as a public service in cooperation with The Advertising Council

School Children Enjoy Improved Health Conditions

America's children returning to school this fall are enjoying better health than ever before in the country's history, statisticians for the Metropolitan life report.

Extraordinary gains have been made over the past 20 years in reducing mortality at the school ages. Records show that between the ages of five to 14 years, the death rate for boys dropped near-

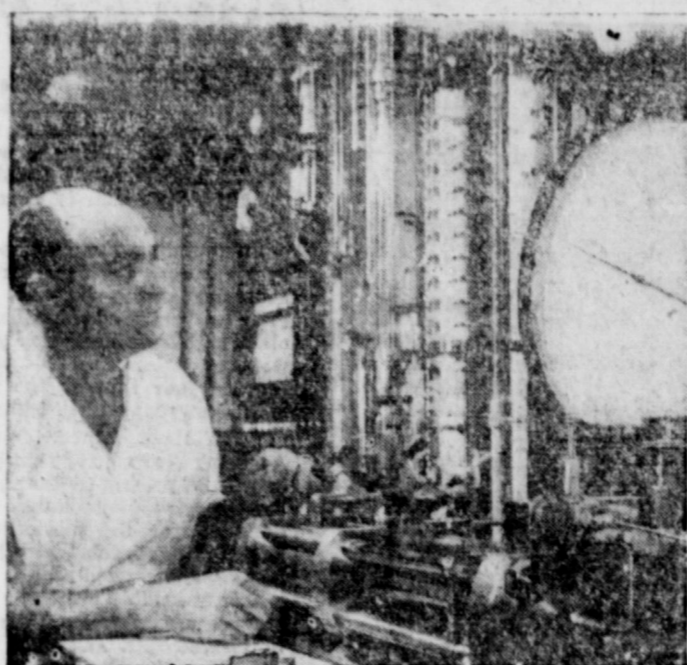
ly two-thirds, and the rate for girls declined even more sharply. Death rates have dropped 85 per cent or more for a number of diseases, including appendicitis, pneumonia and influenza, and tuberculosis.

Despite this progress, there are still about 15,000 deaths among children at school ages, with accidents being the greatest single menace to child life. Accidents account for more than two-fifths of the deaths among boys, and more than one-fourth of the girls. Second in rank as a death cause is cancer, which 20 years ago was a minor cause of death among children of school age.

FARMS - RANCHES
Pentecost & Johnson
REAL ESTATE
City Property

Texas produces more than 130 crops, and leads all other states in the production of cotton.

A fathead is also a cyprinoid fish (a kind of carp) that lives in Mississippi valley streams.



TO PRODUCE MORE OIL—Scientific equipment like this is a common sight in Humble Oil & Refining Company's new Houston Research Center, being formally opened this week to provide better facilities for continuing research into problems of finding and producing oil. Above, Humble technician Henry H. Shepherd tests fluid from a producing oil sand as part of a study of how to recover more oil from known fields. Some 320 other scientists, technicians, and assistants who formerly worked in separate locations will now carry on research in the new Houston Center.

Feed Bag Pillow Cases Available

When was the last time you took an inventory of your linen closet? Counted your sheets and pillow cases and checked them for worn spots and tears?

If you are like most women, you no doubt consider this an important part of keeping house. You probably see that you have more than enough of these items on hand and you also take advantage of every bargain that comes your way.

The National Cotton Council reports that you can now get a supply of pillow cases anytime you want or need them at your local feed store. A new cotton bag is designed to do double-duty, first as a 50-lb. container of feed and later as a bright bedroom accessory.

Cotton bags made of dress print material have long been a boon to women who sew at home. However, you don't even need to be handy with a needle and thread to convert the 50-lb. feed container into a pillow case. All you have to do is empty the feed, launder the bag, and put the pillow slip to work in the bedroom or in reserve on the linen shelf.

If you happen to have more than enough pillow cases in good repair, then you can use the 50-lb. feed bag for home sewing. Ripped, the container provides a yard and one-sixth of material for making children's dresses, napkins or place mats, curtains, skirts, sun suits, and aprons. The pillow case bags are available in plain white, border trims, or all-over print patterns.

Pillow case containers have been used theretofore for packing 100 pounds of feed, but minor alterations were needed to make the bags useful in the bedroom.

Call 601 For Classified Ad Service



YESTERDAY — Wasn't very different from today, insofar as leisure-time garb is concerned, according to 2000-year-old mosaics recently unearthed near Piazza America, Italy. The ceramic artist of a long-gone age captured a contemporary beauty wearing a costume which looks almost exactly like today's bikini swimsuit. Considering the dumbbell she's carrying, the girl apparently was taking exercises, perhaps for woman's favorite hobby—reducing.

T. L. FAGG
R. L. JONES
REAL ESTATE
Property Management
Home and Farm Loans

LOOK BETTER—FEEL FRESHER IN SUITS DRY CLEANED Our 7 Point Sanitone Way!



- 1 ALL DIRT OUT
- 2 SPOTS GONE
- 3 ODOR-FREE
- 4 PERSPIRATION REMOVED
- 5 BETTER PRESS LASTS LONGER
- 6 COLORS AND PATTERNS REVIVED
- 7 COSTS NO MORE THAN ORDINARY DRY CLEANING

You will marvel, too, the first time you try our revolutionary Sanitone Dry Cleaning and see how much better it is. Try it today!

MODERN DRY CLEANERS

209 S. Seaman Call 132 for Pick-Up - Delivery
Mrs. J. B. Johnson and Mrs. S. L. Hake, Owners - Operators

Wednesday Is DOUBLE "P." Green Stamp Day

DOUBLE GREEN STAMPS ON ALL PURCHASES AMOUNTING TO \$3.00 AND OVER!

Open 'till 8 p.m.

EVERY WEDNESDAY EVENING... FOR YOUR SHOPPING CONVENIENCE

These Prices Effective—Wednesday - 1 Day Only!

SERVE BAKED TOMATOES AU GRATIN

(RECIPE ON EACH CAN)

TOMATOES	3 NO. 303 CANS	25 ^c
FLOUR LA FRANCE (LIMIT 1)	10 LB. BAG	69 ^c
DARICRAFT, EVAPORATED CANNED MILK	3 TALL CANS	25 ^c

Chewing Gum 20 Pack Ctn.	69 ^c
Green Beans No. 303 Can	29 ^c
Sweet Peas No. 303 Can	21 ^c
Golden Corn 12-Oz. Tin	15 ^c
Beans & Potatoes 2 for	27 ^c

Turnip Greens No. 2 Can	2 for 23 ^c
Sweet Potatoes No. 303 Can	19 ^c
Chicken Dinner 1-Lb. Can	32 ^c
Chili No. 2 Can	55 ^c
Pork & Beans No. 309 Can	14 ^c



SUGAR CURED Sliced Bacon
LB. 59^c

BEEF	LB.	29 ^c
BOLOGNA	LB.	49 ^c
CHEESE	2 LB. BOX	89 ^c
CLUB STEAK	LB.	59 ^c

Tomato Juice 2 for	23 ^c
Shelf Paper 13-in. wide by 25-ft. roll	49 ^c
Grapefruit & Orange Juice 46 Ounce Can	33 ^c
Salad Dressing qt.	48 ^c

FROZEN FOODS
THRIF-T-PAK, FROZEN 10 Oz. Pkg.
STRAWBERRIES 25^c

BANANAS CENTRAL AMERICAN	2 LBS.	25 ^c
TOMATOES FRESH	CTN.	16 ^c
WATERMELONS HOME GROWN — ICE COLD	LB.	2 ^c
SQUASH HOME GROWN	2 LBS.	25 ^c
OKRA HOME GROWN	LB.	19 ^c

"THERE'S NO BETTER PLACE FOR FOODS"
PIGGLY WIGGLY

WE RESERVE THE RIGHT TO LIMIT QUANTITIES PURCHASED! NONE SOLD TO DEALERS!

Low! Low! Prices!

ROTHMOOR

in Womens' size suits by rothmoor 89.95



It's a softly feminine look in suits that is a great deal more flattering. Tailored of Mizou wool crepe with less padding, less stiffening and consequently less bulk! Not only a smarter look, but a great deal more comfortable. And when it comes time to wear a top coat over your suit, you'll really feel the wonderful difference! Yoke front suit with rhinestone trim. Black, blue or green. 14 1/2 to 20 1/2 women's half sizes. Tailored with longer lines for taller-than-average women. Hipline pocket tabs centered with rhinestones. Black or brown in 38 to 44 women's regular sizes. Notched collar suit trimmed in contrast. Charcoal or brown. 14 1/2 to 24 1/2 women's half sizes. Rothmoor's are ours alone in Eastland



ANDERSON'S

Millinery Ladies and Misses Ready to Wear Gifts

North Side of Square

Children's and Infants Wear

Eastland

Texas