



# Eastland Telegram

"COVERING EASTLAND COUNTY"



VOLUME TWENTY-NINE

EASTLAND, TEXAS, THURSDAY, DECEMBER 18, 1958

No. 105

## MOORE about... EASTLAND

by Virgil E. Moore

Hubert Jones probably won't appreciate us telling about it, but one of our scouts gave us a report on some of his actions which we think should be mentioned. To help a local organization out, Hubert contributed a dollar to a good cause, and used himself the winner of several dollars. He decided to buy some gifts for a few of the youths at Boys Town with the money and went downtown to make his selections. He spent the money he won in the contest, but still hadn't made all the selections he wanted to, so he pulled out his wallet again and finished his gift selections. It is guys like Hubert who really pull that old "X" back out of Christmas.

If one of your family's Santa letters called for a cute puppy, you will be interested in Mrs. A. W. Cogburn's offer to give away two male two month old puppies. The pups are purebred Hines. They are black with brown markings. Mrs. Cogburn lives at 215 South Maderia.

Ed Willman, this year's Eastland County Pecan Show grand champion winner, brought his big blue ribbon down for us to see and was kind enough to leave it in the Telegram window so you will have an opportunity to see it too. It seems that Eastland really walked off with all the prizes at the Show. This city claims not only the grand champion growing but the pecan queen as well. She is Miss Rebecca Graham.

The large star on the tall pole on the post office lawn has attracted a lot of attention. If you haven't gone inside the post office, you'll want to, too, for Mrs. Marene Johnson has, in her usual fashion, done an outstanding job of decorating the office for the Yule season.

If you haven't written your letter to Santa in care of the Telegram yet, you will want to do so in the immediate future. All letters received by Monday, Dec. 22 will be printed in the Telegram. Those arriving after that date will be as possible but we can't guarantee anything.

You may be able to make some people think you are younger than you are, but you can't fool a hamburger just before bedtime.

Have you seen the unusual Christmas decorations on the Eastland Memorial Hospital nursery window? We understand the decorating was done by Mrs. Gladys Seale and Mrs. Bill Walters. Very nice!

Well, after this week, Eastland will lose one of its claims to glory. This city has been one of the few anywhere that could claim it had three unmarried handsome coaches. When this city breaks a record, it breaks it good, however. Head coach Carroll Shelton will be on Saturday to Miss Sandra Kirkland, Home Demonstration agent, and a little later this month Bennett Ragsdale, assistant coach, will marry Miss Sue Day. That leaves only Jon Tate, line coach, on the 'good catch list.'

In breaking one claim to glory, the city is keeping another, though. There hasn't been a Home Demonstration agent stay in Eastland for more than two years yet who didn't get her man!

Santa Claus may have felt at home in Eastland the last two Saturdays, but the cold weather didn't help get him any crowds. See where Cisco even cancelled their Santa visit last Saturday. Eastland went ahead on schedule, but there were only a few brave souls on hand to greet Saint Nick.

(Continued On Page Two)

## Kincaid Is Re-Elected Country Club President

Aubrey Kincaid was re-elected president of the Lakeside Country Club at the annual membership meeting Tuesday night at the clubhouse.

Other officers were also re-elected. O. H. Dick is vice president and Andy Taylor is secretary-treasurer. Two directors, Emmett Powell and Homer Williams, were re-elected, and R. P. (Bud G.) Haun was a new selection to the Board of Directors.

Holder directors are Joe Stephens and Wells Dalton. A Dutch treat supper was served to all members attending the annual affair and a shuffleboard contest was held following the regular meeting.

Kincaid drew praise from members for an "outstanding job" during the past year. Under his leadership, the club revenue increased approximately 200 percent during the year. The club will end the year with a good balance in the bank, the treasurer's report showed.

## School Nurse Is Guest Speaker at Lions' Meeting

Some 2,800 students are under the direct supervision of the Eastland County school nurse, Mrs. J. B. Arther told Eastland Lions Tuesday.

Mrs. Arther, who is serving her first year as school nurse, said she is in charge of all schools except Cisco. She explained her job was not to treat the students, but to find any deviations from normal. The school nurse keeps a permanent record on all school children and gives vision, hearing and dental tests, plus the usual weighing and measuring.

If deviations are noted, parents are notified. Mrs. Arther said in the future she also plans to give TB patch tests. She praised Lions for their work in sight conservation. Local Lions provide glasses for Eastland students whose families are unable to purchase them.

## Christian Church Christmas Party Set For Friday

The First Christian Church will hold its annual Christmas program Friday at 7 p.m. in the annex of the church.

The program will be complete with candy and Santa Claus. Mr. and Mrs. Jow Tow are in charge of the program and the Men's Fellowship Bible Class will furnish the candy and Santa.

## Methodist Men's Dinner Tonight

Dr. Bob Alexander will be special speaker tonight when the Methodist Men's Club meets at 7 p.m. in the Fellowship Hall of the First Methodist Church.

Dinner will be served to all Methodist men and the program will follow.

**EASTLAND NATIONAL BANK**  
"On The Square"  
Member F. D. I. C.



**PECAN QUEEN**—and the two runners-up re pictured, above. Selected by judges in the Queen Contest, held in Ranger last Thursday night, the girls were participating in the event held in connection with the Sixth Annual Pecan Show. From left to right are Nancy Warren of Ranger, runner-up; Rebecca Graham of Eastland, pecan queen; Oscar Schaefer of Cook Community, president of the pecan growers association who crowned the queen; and Barbara Jean Merrill of Pioneer, runner-up. (Photo by Capps Studio.)

## SANDY'S SCHOOL SCOOPS

By SANDY TAYLOR  
Telegram School Reporter

Well, it seems as though basketball is the principal subject of discussion this week as quite a bit of it took place last week. In the girls game, all four teams played and ended in two wins, two losses. The "E" team won 27-16, the "A" team 66-35. The "Wrecking-crew" lost 19-8, and the girls 59-41. Wednesday afternoon, the girls played Olden and won 50-34 but lost to Pottsville 54-27 in the De Leon Tournament Thursday night.

Also that same night, the "A" boys lost to Pottsville 35-34 in a very exciting game. Friday night the teams went to Olden and "come back with two wins, two losses. The victories were won by the girls, 24-23, and the "A" boys, 42-38. In the girls game, the score was tied 20-20 at the end of the fourth quarter and 22-22 at the close of a three-minute period.

In order to break the tie, the referee ruled that the first team to make a field goal would be the winner. During the first exciting seconds of the second overtime period, Jackie Baggett made a field goal for the Mavericks and thus saved the day by making the score Eastland 24, Olden 22. Losses that night were by the "Wrecking-crew" 28-8 and the "B" team 51-38. In the second round of the De Leon Tournament, the girls were defeated by Gorman 26-20, and the boys by De Leon 47-44. Monday night however, the "A" boys whipped Baird 44-29 and will play Early Thursday night in the second round of the Cross Plains Tournament. Tuesday night's trip to Santa Anna ended in a win for the "B" team, 42-37 and a loss for the "A" team, 55-48. The girls did not make the trip because of illness among the players.

Honor students for the 2nd six weeks are: "A" honor roll—Seniors, Judy Inzer; Juniors, Charlotte Vaught; and Freshman—Susan Johnson, David Millican, and Joyce Robertson. "B" honor roll—Seniors, Janie Arther, Jackie Baggett, Nancy Beck, Jean Burrow, Linnet Caners, Judy Cokwell, Janice Crabtree, Dixie Durbin, Charlene Finley, Pat Fullen, Rebecca Graham, Laura Harris. Larry Hollis, Sarah Hones, Clinton Humphreys, Kenneth Craeh, Michael Lisenbee, Clarence Mayers, Perry Miller, Jannie Morton, John Powell, Sandy Taylor, Seba Williams, and Kathy Williamson.

Friday afternoon, the Christmas assembly will be held in the auditorium and entertainment will be provided by the E.H.S. Trio and Janice Crabtree. After the assembly, school will be dismissed until after the Christmas and New Year holidays.

Also in the Christmas spirit, the Maverick Band will march in the Santa Claus parade Saturday afternoon. The drawing for the Christmas money will be held that afternoon on the square.

**L. C. PHAGAN, PREMIER JOSEPH**  
1206 W. Bliss — Phone Cisco HI 2-1640  
All types of oils and greases for farm, industrial and commercial users.  
Only local oil (no imported oil) used in making Premier Products.



**QUEEN'S BOUQUET**—Here's the 1958 Eastland County Pecan Queen—Miss Rebecca Graham of Eastland, receiving a bouquet from Morris George, president of the Ranger Chamber of Commerce, while Oscar Schaefer of the Cook Community (left) looks on. The presentation was made after the Queen's coronation last Thursday night. (Photo by Capps Studio.)

## Letters to Santa

Dear Santa Claus,  
I am a boy seven years old. Please bring me some guns and holsters. I also want a sack of little cars and anything you can bring me. Thank you, Santa.  
Mitchel Kline

Dear Santa Claus,  
Merry Christmas! Christmas time is here again. My brother wants a tool set. I want a real watch and a machine gun. My sister wants a Tiny Tears doll. My very little sister wants a doll to please leave a baseball set.  
Your friend,  
Phillip Koss

Dear Santa,  
I am a boy 7 1/2 years old. I have a brother and sister four and three years old. My sister would like a hula hoop and a doll. My brother would like a fire truck and a gun. I also want a firetruck, a gun, a pair of troopers boots and anything you can spare.  
Love,  
Terry, Johnnie, Paul and Melinda Grimes

Dear Santa,  
Please bring me a baton, a stuffed tiger, the record "Little Nash Kumbler," a Ganesy doll with furniture, the game "Twenty One" and a book on nature and astronomy, and a white Bible with my name in gold letters at the bottom. I hope you will get to everyone.  
Sincerely yours,  
Marilyn Huckabay

Dear Santa,  
I am a girl seven years old. Please bring me a doll and a stove and an icebox and a doll playpen. I love you, Santa.  
Beverly French

Dear Santa,  
I would like to have a pair of boots, a bike, an airplane, a gun, an electric train, a Zorro suit, a guitar and a machine gun.  
I love you,  
Randy Squires

Dear Santa,  
Yuletide cheer! Christmas time is here again. I want a real live horse and a Tiny Tears doll.  
With love,  
Ginger Culpepper

Dear Santa,  
Will you please bring me an army helmet, a machine gun, a satchel and a gun.  
Love,  
Eugene Lindsey

Dear Santa,  
I would like a baseball, a bat and a baseball glove.  
Love,  
Paul Chapman

**EASTLAND NATIONAL BANK**  
"On The Square"  
MEMBER F. D. I. C.

## Cash Prizes, Santa's Visit Set Saturday

Saturday's the big day for area children and adults alike. Santa Claus will be in Eastland at 3 p.m. with a huge bag full of Christmas candy for all the boys and girls, and immediately following his visit, the annual Christmas drawing will be held.

The Eastland High School Band under direction of Kerman Bond, will play for the occasion. A total of \$100 in cash prizes will be awarded. First prize will be \$50, second prize is \$25, third \$15 and fourth \$10. To be eligible to win you must be present at the drawing. H. J. Tanner, chamber of Commerce manager, has explained.

The drawing will be held on the west side of the square. Lovelace Transfer and Storage will provide a truck for the occasion. Santa will arrive in the traditional way, riding on top of one of the large fire trucks. Weather permitting, a crowd of more than one thousand is anticipated. And the weatherman is predicting mild temperatures for this weekend.

Eastland merchants are predicting this Saturday will be their biggest day of the season. Extra merchandise has been put on the counters by several stores, and most stores are featuring Christmas specials. Almost all local stores are giving away tickets which make shoppers eligible to win one of the four cash prizes. Tanner said that a record of some kind probably has been set this year, since more tickets have been given away than in years.

## 'The Messiah' Will Be Given

"The Messiah" will be presented by the Chancel Choirs of the First Methodist Churches of Ranger and Eastland in services Sunday afternoon and night at both churches. The first service is scheduled in the First Methodist Church of Eastland at 5:30 p.m., and the second service in the First Methodist Church of Ranger at 8 p.m. Sunday.

Combined choirs will sing the Nativity portion of "The Messiah," an oratorio by George Frederick Handel. H. A. Lotspeich of Ranger will conduct the choir and Charles Kiker of Abilene, choir director at Dyess Air Force Base, will accompany them on the organ.

Soloists will include a group of Pauger College students—Jimmie May Miller, Paula Angus—Mr. and Mrs. Lotspeich, Dan Mitchell of Ranger and Mrs. Grady Pipkin of Eastland.

Such well-known airs as "I know That My Redeemer Liveth" and "The People That Walk in Darkness," will be given. "The Hallulah Chorus" will conclude the program.

Pastors of both churches—Rev. Lively Brown of Ranger and Rev. James Campbell at Eastland—invite the public to attend the all-singing service.

## Mavericks Split Pair of Games With Santa Anna

A sharp shooting Santa Anna Gversones downed the Eastland Mavericks, 55-48, Tuesday night in a non-district cage game, but the Mav B team salvaged some glory with a 42-37 conquest.

The Mavs got their shooting game down a little better than usual, but the big men under the basket still didn't get their share of the shots and the guards, despite being high pointers, couldn't carry the load.

Larry Hollis had 16 points and his fellow guard, Clint Humphreys, had 13. Stanley Reed got eight, Don Hull six and Otis Green five. Phillip Lewis missed his game because of illness.

Marv Day paced the Mav B teamers, getting 18 points. The girls game was cancelled.

## Policeman's Ball Is Big Success; Thanks Given

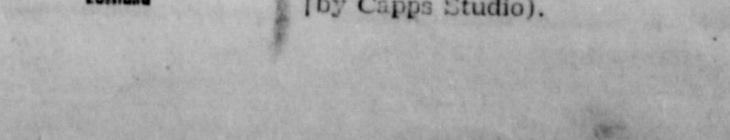
Eastland Police cleared more than \$500 on their annual Policeman's Ball, Chief Ray Laney said today.

In announcing the financial success of the Ball, Chief Laney praised Eastland citizens for the "fine support they have always given our force."

All money made from the Ball will be spent to better equip the police force. Chief Laney said he felt that Eastland Police are now better equipped than any other police force in this area due to the success of the Ball each year.

**TIRED OF A GAS HOG? OF PARKING A DINOSAUR?**  
Try and buy the popular, smart new Rambler, truly a teeny-weeny gas burner. Famous for fun, resale, quality and economy.

**500 TOM'S SPORT CARS**  
Eastland



**QUEEN CANDIDATES**—are pictured above with the Eastland County Pecan Queen at the Ranger High School Auditorium last week. From left to right are Nancy Warren of Ranger, Barbara Jean Merrill of Pioneer, Carolyn Hunt of Rising Star, Carolyn Cawley of Okra, and Pecan Queen Rebecca Graham of Eastland, Jan Johnston of Cisco, Lavonia Podgers of Grand View, Linda Greenbow of Eastland, Zolma Hendricks of Pumpkin Center, Kathryn Williamson of Norton Valley and Cindy Fox of Olden. (Photo by Capps Studio.)

**FREYSLAG**  
INSURANCE AGENCY  
presents the  
**WEATHER NEWS**

High	60
Low	24
Rain	0
Total Rain in Dec.	0
Avg. Rain in Dec.	1.61
Total Rain for Year	28.38
Forecast	Cloudy and Mild



# Eastland Telegram

Eastland County Record established in 1921, consolidated August 31, 1951. Chronicle established 1887, Telegram established 1923. Entered as second class matter at the Post Office at Eastland, Texas under the act of Congress of March 3, 1879.

**TIMES PUBLISHING COMPANY**  
Published Tri-Weekly—Tuesdays - Thursdays - Sundays  
OWNERS: DICK AND JOE DENNIS, Publishers  
VIRGIL E. MOORE, Editor  
CAROLYN COLLINS, Society Editor

NOTICE TO PUBLIC—Any erroneous reflection upon the character, standing or reputation of any person, firm or corporation which may appear in the columns of this newspaper will be gladly corrected upon being brought to the attention of the publishers.

## WANT ADS

Cards of Thanks charged for at rate of \$2.00 Each

**FOR RENT**  
FOR RENT: 2 room apartment, furnished. 205 South Walnut.  
FOR RENT: 3 room house and bath. Call 154-W.  
FOR RENT: Newly decorated apartments Hillside. Phone 9520.  
FOR RENT: Four room unfurnished apartment Call 394-J.  
FOR RENT: Newly decorated apartments. Adults. Phone 1085-W.  
FOR RENT: 6 rooms and bath with concrete storm cellar, four acres land in Ranger. \$30. Phone 557, Eastland.

**MISC FOR SALE**  
FOR SALE: Cub Scout suit. Complete. Size 8. Phone 1062.  
MINERALS FOR SALE: 3/8 Minerals in abstract 21 Thos Benson survey 334 acres. Pace Brothers, Heflin, La.  
FOR SALE: 21 Acres land 3 miles West of Eastland. Call after 5 P. M. Phone 750-W-4.  
FOR SALE: 40 penny peanut vending machines. Phone 571.  
FOR SALE: Vancrrete Building Blocks—For homes, Garages, Lake Cabins and Foundations. Pearson Gimes Block Co. Grimes Bros. Bldg.  
FOR SALE: Used refrigerator, good running condition. \$30. See at Eastland Telegram office.  
FOR SALE: Good used piano. For information see Aubrey Kincaid or see at Lakeside Country Club.  
SIX months to pay for an Ed V. Price tailored suit. Made to your individual measurements. NO interest, NO carrying charges.  
C. L. FIELDS  
103 W. Valley Phone 571

**SPECIAL NOTICE**  
ANNOUNCING: Ferguson Electric Co. wishes to announce that they are now open for business, located in the Grimes Bldg. Electric motors repaired and rewound. Large or small. We make service calls. 14 years experience. All work guaranteed. Phone 94.

**REAL ESTATE FOR SALE**  
FOR SALE: By owner, five room house 1313 S. Bassett, Eastland \$4,500 cash, would consider home trade. Write James E. Meador, Box 572, Seminole, Texas.

**KEEP THIS AD!**  
Over 25,000 Arthritic and Rheumatic Sufferers have taken this medicine since it has been on the market. It is inexpensive, can be taken in the home. For free information, give name and address to P. O. Box 824, Hot Springs, Arkansas.

ATTEND THE CHURCH OF YOUR CHOICE EACH SUNDAY

**SINGER SEWING MACHINES and VACUUM CLEANERS**  
New and Used  
Call  
**Dois Morton**  
Phone 985-W-1 after 5 p.m.  
Service All Makes

**FOR YOUR CONVENIENCE LORISE'S PET PARLOR**  
Featuring complete line supplies for your pets' needs—Also Aquarium supplies. Quality at a minimum. Take advantage of our free bulletin board if you have a pet for sale or placement. Pups or kittens available.  
PHONE 5491—TWO STORY BRICK OLD GORMAN ROAD DELEON, TEXAS

**M. H. PERRY**  
Representing  
**Southland Life**  
Life - Retirement Income Partnership  
Mortgage Cancellation Educational - Annuities Accident - Sickness Hospitalization - Group  
Call 173 or 128  
107 W. Main ★ Eastland

**FIRST In Eastland**  
Modern Spray-A-Way Car Washing System



The best washing you've ever seen. Never scratches or injures the paint on your car.

A completely new scientific washing device. The very latest fast and efficient equipment.

The washing device that brings out the beauty as it cleans your car. New beauty wash shampoo that never injures the paint, even when porcelainized or waxed, it thoroughly cleans your car, bumper to bumper, and leaves it sparkling clean.

**LUCAS TEXACO SERVICE STATION**  
300 East Main Phone 9537

CALL 601 FOR CLASSIFIED

### Sunshine Laundry

Has Installed  
SPEED QUEEN COIN OPERATED AUTOMATIC WASHERS... top loading with gyrators and three dryers for your convenience to dry clothes.  
20c LOAD WASH  
TWO LOADS DRIED, 25c  
**Sunshine Laundry**  
106 East Plummer St.

### AUTOS FOR SALE

NEW CADILLAC, OLDSMOBILE TRADE INS—Perfect 1955 Cadillac sedan, all power, including windows and seats, factory air conditioning; beautiful 1955 Pontiac Catalina with all power, also an extra good and clean 1952 Rocket Oldsmobile 88 sedan. Trade, Cash, Terms. Don Pierson Old-Cadillac, Eastland.

NEW SHIPMENT OF 1959 RAMBLER Station Wagons, the success line for '59. Tip top economy... big car room... big deal! Tom's Sport Cars, Eastland.

Overseas Veterans Welcome  
Karl and Boyd Tanner  
Post No. 4136  
**VETERANS OF FOREIGN WARS**  
Meets 2nd and 4th Thursday  
8:00 p.m.

**TERMITE CONTROL**  
and all other types  
**PEST EXTERMINATION**  
**MODERN EXTERMINATING CO.**  
Box 312 Ranger  
PHONE RANGER  
Day 919—Night 911

### MISC. WANTED

HELP WANTED: Experienced service station attendant needed. Early Tire Service.  
WANTED: Ironing, Baby-sitting. Phone 619.  
WANTED TO BUY: 60 to 80 acres South of Eastland on fairly deep sand, need at least 1/4 in cultivation. Write Box A Eastland Telegram, Eastland.  
WOMEN SEW easy ready-cut wrap-around aprons home. Earn \$26.16 dozen—Spare time—write Accurate Mfg's, Freeport, new York.  
WANTED: Used T. V. Antenna. Phone 1093 after five.

### LOST

LOST: Reward for return 900-20 10 ply tire and Chevrolet wheel. Lost between Valley Mills and Morton Valley. Jess Bloxom and Sons, Breckenridge.

**- TOYS -**  
**- DOLLS -**  
**- BIKES -**

USE OUR LAY-A-WAY  
\$1.00 down holds any item

**Bruce Pipkin's SPORT CENTER**  
Phone 525 - 304 E. Main

**Moore About—**  
(Continued from Page One)  
Santa will be here again this Saturday, however, and what with \$100 being given away on top of that, we anticipate lots of folks on the square, norther or no norther.

★ ★ ★ ★  
Trade With Your  
Hometown Merchants  
★ ★ ★ ★



**Bring Your BATTERY TROUBLES To Us!**  
Group One Fits Most 6 Volt Cars  
**8.95**  
Exchange

**JIM HORTON**  
East Main St. Phone 258  
Eastland, Texas

## SOCIAL CALENDAR

Thursday, December 18  
7:30 p.m.—Members of the Zeta Pi chapter of Beta Sigma Phi and their husbands will be hosted with a Christmas party in the home of Mr. and Mrs. James Smith, 703 South Daugherty.  
7:00 p.m.—Husbands of the Thursday afternoon Club will be honorees as the club meets for a Christmas dinner. Hostesses will be Ames, Ronald Burton, Harold White, Arthur Murrell and W. S. Poe.  
7:30 p.m.—The Bumble Bee Christmas recital in the home of Mr. and Mrs. Edgar D. McCullum, 15 South Seaman as they meet for their Christmas party.  
Friday, December 19  
10:30 a.m.—South Ward school will present their all-school program in the school auditorium. Members of each class will present the program. All parents and friends are invited to attend the program.  
7:30 p.m.—The Senior Class of the Eastland High School will be hosted with a Christmas party at the Y building. The mothers of the class members are hostesses for the occasion.  
6 p.m.—The home of Mr. and Mrs. James Smith, 705 South Daugherty, will be the scene of the Children's party given in honor of the children of the members of Zeta Pi Chapter of BSP.  
Saturday, December 20  
8:30 a.m.—With baked goods of all kinds the Double Seven Club will open their bake sale in the Pullman building.  
4 p.m.—The Dragoo Junior Music Club will meet in the home of Mr. and Mrs. J. A. Hernandez with Josie as hostess to the Christmas party and program. All members are requested to be present.  
Monday, December 22  
7 p.m.—The Young People's Dept. of the First Baptist Church will meet in the home of Evan Eitchell, 207 East Garvin. They will go caroling.


### Birthday Party Honors Larry On 10th Birthday

Larry Mace, son of Mr. and Mrs. Jack Mace, was honored with a party on his 10th birthday in the home of his parents, 517 East Conner, Tuesday afternoon.  
Classmates of Larry's were guests. They enjoyed playing bingo and other games.  
Miniature snowmen were given as favors as refreshments of punch, cake and ice cream were served to the guests.  
Attending were the honoree, Tommy McCullough, Eddie Gallagher, Ronald Hughes, Sharon McElreath, Coette Garrett, Melinda Lisenbee, Ronda Ross, Marilyn Huckabay, Dixie Young, Billy Earley, Stanley Cummings, Sherry Brim, Jerry Brim, Robert Mace, Gail Mace, Randy Wharton and the hostess, Mrs. Mace.

### Moore About—

(Continued from Page One)  
Santa will be here again this Saturday, however, and what with \$100 being given away on top of that, we anticipate lots of folks on the square, norther or no norther.

★ ★ ★ ★  
Trade With Your  
Hometown Merchants  
★ ★ ★ ★



**Bring Your BATTERY TROUBLES To Us!**  
Group One Fits Most 6 Volt Cars  
**8.95**  
Exchange

**JIM HORTON**  
East Main St. Phone 258  
Eastland, Texas

### Hospital News



Patients in the Eastland Memorial Hospital are:  
Mrs. Robert Garland, medical  
Mrs. Joe Ools, medical  
Mrs. Audrey Clark, medical, Midland  
Mrs. Alton Clark, surgical, Cisco  
Anna Martin, medical, Olden  
I. W. Morgan, medical, Scranton  
Mrs. Frances Russell, medical  
H. B. Dorsey, medical  
Barford Webb, medical  
Mrs. D. L. Harber, medical  
Mrs. Robert Kamon and baby boy, Cisco  
Fred Davis, medical  
Cecelia Haas, medical  
Mrs. Veda Hudson, medical  
Romona Orocco, medical  
Otta Hageman, medical  
Dismissed were Mrs. Mary Gantney, Mrs. Daley Baker, Mrs. Edna Cooper, Mrs. J. A. May, Mrs. Nell McAnnally, and Fred Burfriend.  
Patients in the Ranger General Hospital from Eastland are:  
Billie Colley, medical  
Mrs. John Ratliff, medical  
John Ratliff, medical

**WE ARE EQUIPPED TO DO...**  
★ Rousabout Work  
★ Well Hook-Ups  
★ Spray Painting  
★ Tank Setting

**P & H Oil Field**  
Construction • Painting  
Phone 183 Eastland

## DESEMONA NEWS FROM

Health in this community is only fair at the writing.  
Several children are out of school with the measles.  
Mrs. Agnes Owens has been

confined to her home but is reported better.  
Beth Coleman Weir and C. H. May are in a Veterans Hospital at Dallas. Coleman has undergone eye surgery and is reported in fair condition.  
The Grover Mosier family of Carbon spent the weekend here with her mother, Mrs. Lillie Witte.

The Desdemona Study Club met in the De Leon home of Rev. and Mrs. Jolanie Bursleson last week and a delicious turkey dinner was served to Mr. and Mrs. A. E. Henslee, Mr. and Mrs. W. H. Davie, Mr. and Mrs. James Williams, Mr. and Mrs. C. S. Eldridge, Mr. and Mrs. H. F. Wade, Rev. and Mrs. Hall of Dublin, Mrs. Ollie Fein and the hostess and host, Rev. and Mrs. Bursleson. Beautiful seasonal decorations were used throughout the house.

# BUY NOW PAY LATER

You can now repair and remodel and have 60 months to repay the loan in small monthly payments. This includes all labor and material. Let us estimate your needs without obligation on your part.

## CROWELL LUMBER CO.

"Everything To Build Anything"  
West Main St. Phone 300

## WE ARE NOW A DIRECT Factory Dealer



**SAVE!**  
**SAVE!**  
**SAVE!**

Check These Prices With Anybody's

**HEAVY GAUGE STEEL Filing Cabinets**

One Drawer Letter File .....	24.50
One Drawer Legal File .....	29.50
Two Drawer Letter File .....	29.95
Two Drawer Legal File .....	39.95
Three Drawer Letter File .....	39.95
Three Drawer Legal File .....	49.95
Four Drawer Letter File .....	46.50
Four Drawer Legal File .....	54.50

**Eastland Telegram**  
PHONE 601



# Stock Up For Santa Sale!

Prices Effective Thursday, Friday and Saturday—We Reserve Right to Limit!



Armour's Star, Half or Whole Center Slices Intact! 14 to 18-Lb. Avg.

## Ham Lb. 59¢

Canned Hams Hormel, Ready-To-Eat! 3 -Lb. Can 299¢

GUARANTEED FRESH  
Ground Beef Lb. 49¢ AMERICAN CHEESE KRAFT'S SLICED Lb. 59¢  
SMALL, LEAN SIDES  
Spare Ribs Lb. 49¢ TID-BIT SHRIMP TEXAS STAR BREADED 2 -Lb. Pkg. 1.39

Premium Bacon Swift's Sliced Lb. Pkg. 59¢

"S & H" Green Stamps For EXTRA Savings!

**WORTH FOOD MART**  
Select Holiday Nuts!

WALNUTS CALIFORNIA, NEW CROP Lb. 49c  
PECANS STEWART PAPERSHELL Lb. 55c  
MIXED NUTS NO. 1, NEW CROP Lb. 49c  
PEANUTS JUMBO, FRESH-ROASTED Lb. 35c

## Apples

WASHINGTON LARGE RED DELICIOUS

Extra Fancy 2 Lbs. Just 29¢

ROME BEAUTY APPLES CRISP, RED 2 Lbs. 25c  
FRESH CRANBERRIES OCEAN SPRAY Lb. Box 19c  
LARGE COCONUTS HONDURAS 2 For 25c  
FLORIDA TANGERINES "ZIPPER-SKIN" 2 Lbs. 25c  
ALMERIA GRAPES WHITE CALIFORNIA Lb. 25c  
LARGE D'ANJOU PEARS JUICY, SUCCULENT Lb. 17c  
PASCAL CELERY CRISP, LARGE Stalk 10c  
SWEET POTATOES SELECT EAST TEXAS 2 Lbs. 25c  
YELLOW ONIONS MILD SPANISH Lb. 7c

Oranges California Large Juicy Navels 3 Lbs. 50¢

SPICED PEACHES HEMET WHOLE 4 No. 2 1/2 Cans 100

SALAD DRESSING MORTON'S Quart Jar 39¢

Food Mart Biscuits Sweet-Milk or Butter-Milk 4 Reg. Cans 29¢

Whole Yams TRAPPY'S GOLDEN LOUISIANA NONE SUCH No. 3 Sgt. Can 27¢

Mincemeat MARTINELLI'S 28-Cz. Jar 57¢

Apple Cider MARTINELLI'S 1/2-Gal. Jug 75¢

Del Monte Peas EARLY GARDEN 3 No. 303 Cans 49¢

Chinese Dinners CHUN KING FROZEN 10-Oz. Pkg. 59¢ | Onion Rings TASTE O' SEA FROZEN 4 1/2-Oz. Pkg. 29¢

TRIPLE "H"  
BRAZIL NUTS 1-Lb. Pkg. 45c  
DIAMOND NEW CROP  
LARGE WALNUTS 1-Lb. Pkg. 55c  
BLUE RIBBON  
LARGE FILBERTS 1-Lb. Pkg. 43c  
McCORMICK  
BLACK PEPPER 4-Oz. Can 31c  
McCORMICK  
RUBBED SAGE 1/2-Oz. Can 17c  
McCORMICK  
POULTRY SEASONING 7/8-Oz. Can 15c

McCORMICK  
PUMPKIN PIE SPICE 1 1/2-Oz. Can 25c  
COMSTOCK  
PUMPKIN PIE MIX No. 2 Can 25c  
PLANTER'S  
COCKTAIL PEANUTS 7 1/4-Oz. Can 39c  
POPULAR LOCAL BRANDS  
EGG NOG MIX Quart Ctn. 55c  
LIBERTY  
MARASCHINO CHERRIES 4-Oz. Bott. 19c  
WHITE HOUSE  
SLICED PIE APPLES No. 2 Can 25c

CADET SIZE  
LIBBY'S RIPE OLIVES No. 1 Can 27c  
GRENNAN  
FRUIT BAR CAKE 1-Lb. Pkg. 79c  
BAIRD'S  
PECAN FRUIT CAKE 24-Oz. Pkg. 98c

YE OLDE ENGLISH  
FANCY FRUIT CAKES  
1-Lb. Leaf \$1.49 2 1/2-Lb. Ring \$3.75 5-Lb. Ring \$6.50

NABISCO  
TRIANGLE THINS 10-Oz. Pkg. 35c  
NORTHERN  
DINNER NAPKINS 40-Cnt. Pkg. 19c  
ASSORTED JELLY  
Smucker's Gift Box 12 10-Oz. Jars \$3.50  
ASSORTED PRESERVES  
Smucker's Gift Box 12 12-Oz. Jars \$3.98  
CHRISTMAS  
CANE CANDY 6 -Cnt. Pkg. 25c  
CHOCOLATE-COVERED  
HOSTESS CHERRIES 10-Oz. Pkg. 49c

Shelled Pecans ELLIS, PIECES 12-Oz. Pkg. 99¢

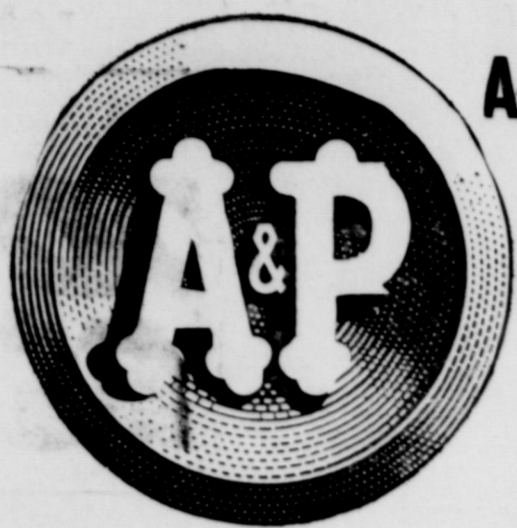
Ivory Sole Green Beans RENOWN VERTICAL PACK No. 303 Can 19¢

Ivory Sliced Pineapple DOLE FANCY HAWAIIAN No. 1 1/4 Can 19¢

**WORTH FOOD MART**



FIRST CHOICE OF THRIFTY SANTAS...



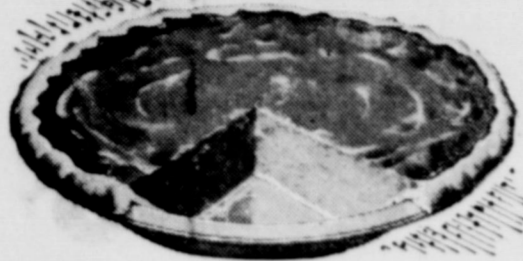
# A&P Christmas Turkeys!

"Super-Right" Dressed & Drawn  
**Hens lb. 43¢** | **Toms lb. 37¢**  
**Beltsville Turkeys lb. 49¢**



All A&P Turkeys Are U.S.D.A. "A" GRADE ONE PRICE For Toms ONE PRICE For Hens

Family Favorites At Special Prices!



JANE PARKER  
**Pumpkin Pie**  
 LARGE 8" SIZE **39¢** Reg. 49¢  
 SPECIAL!

Leave it to Jane Parker to come up with pumpkin pie that's smooth as custard... spiced just right... and nicely priced for the holiday season!

JANE PARKER  
**ORANGE CHIFFON CAKE SPECIAL!** **47¢** Reg. 55¢



Jane Parker  
 WITH OVER 1/2 FRUITS AND NUTS!

**FRUIT CAKES**  
 3-LB. SIZE **\$2.65**  
 1-LB. SIZE **\$1.35**  
 5-LB. **\$3.85**  
 Cake

- LEMON PIE JANE PARKER Each 43¢
- BREAKFAST ROLL JANE PARKER CINNAMON Pkg. 27¢
- CRACKED WHEAT BREAD JANE PARKER 1-lb. Loaf 15¢
- FUDGE COOKIES JANE PARKER Pkg. 25¢
- POTATO CHIPS JANE PARKER 8-oz. Pkg. 43¢
- STUFFING MIX JANE PARKER Pkg. 25¢
- STUFFING BREAD JANE PARKER 24-oz. Loaf 23¢

- ALCOA HEAVY DUTY ALUMINUM FOIL 75-ft. **75¢**
- IONA—No. 303 Can **2 for 25¢**
- Sweet Peas **2 for 25¢**
- EQUAL TO THE BEST—YET COSTS YOU LESS  
 dexola OIL Pt. 25¢ Qt. **45¢**
- WHITE HOUSE EVAP. MILK 3 Gall. Cans **40¢**

- CLANSER **Ajax 2** 14-oz. Pkgs. **31¢** 11-oz. Pkg. **23¢**
- HIP-O-LITE CREME **Marshmallow** 16-oz. Jar **25¢**
- HAIR TONIC **Vaseline** (Plus Tax) 4-oz. Btl. **68¢**
- Campfire Miniature, 5-oz. pkg. **Marshmallows 2 for 29¢**

**CUSTOM GROUND...**  
 TO GIVE YOU ALL THE FLAVOR YOU PAY FOR!  
 MILD & MELLOW  
**EIGHT O'CLOCK**  
 3-LB. BAG **\$1.69** 1-LB. BAG **59¢**  
 High & Full-Bodied  
**RED CIRCLE** 3-Lb. Bag **\$1.95**  
 Vigorous & Winery  
**BOKAR** 1-Lb. Bag **71¢** **\$2.07**

**CHUCK ROASTS** "SUPER-RIGHT" HEAVY CALF lb. **65¢**  
**SMOKED HAMS** "SUPER-RIGHT" 14 TO 18 LBS. AVERAGE HALF OR WHOLE lb. **59¢**  
**WHOLE FRYERS** "SUPER-RIGHT" lb. **33¢**  
**Pork Roast** "SUPER-RIGHT" FRESH BOSTON BUTT CUT lb. **45¢**

- BANQUET—3 1/2-lb. Can **CANNED CHICKEN** 99¢
- HORNEL'S **OVEN-BROWN PICNICS** 4-lb. Size **\$2.89**
- HORNEL'S **CANNED HAMS** 6 1/2-lb. Size **\$6.49**
- FLUMROSE **CANNED PICNIC** 2-lb. can **\$1.99**
- SUPER-RIGHT **SMOKED PICNICS** lb. **39¢**
- CHICKEN, BEEF OR TURKEY **BANQUET FROZEN PIES** 2 8-oz. Pkgs. **39¢**
- PLUMROSE **CANNED HAMS** 2-lb. size **\$2.39**
- BATH'S **CANNED HAMS** 3-lb. Size **\$2.99**
- CAP'N JOHN'S **FRESH OYSTERS** 7-lb. Btl. **99¢** 8-oz. Btl. **55¢**
- FRESH OR FROZEN **CHICKEN HENS** 4 TO 6 LBS. AVERAGE lb. **39¢**

OCEAN SPRAY **Cranberry Sauce** No. 300 Can **23¢**

Play Santa to your family with a plump, juicy and flavor-packed A&P turkey! Whatever size you choose, your A&P turkey will be heavy with more white meat, more light meat, more dark meat! That's because these beautiful birds were raised by the country's finest growers... and specially selected by A&P's expert turkey buyers. They're cleanly dressed, too. For turkeys this fine the prices are truly exceptional. Get your Christmas turkey at A&P... your family will thank you with enthusiasm!

- Smoked Hams** "SUPER-RIGHT" WHOLE OR HALF—10 TO 14-LB. AVERAGE lb. **65¢**
- Thick Sliced Bacon** "SUPER-RIGHT" 2-lb. Pkg. **99¢**
- Cap'n John's Breaded Shrimp** FROZEN 10-oz. Pkg. **57¢**
- CAP'N JOHN'S **Perch Fillets** FROZEN 1-Lb. **43¢**
- CAP'N JOHN'S **Fried Fish Sticks** FROZEN 10-O. Pkg. **37¢**

LEAF OR CHOPPED **A&P FROZEN SPINACH** 3 10-oz. Pkgs. **29¢**

WHITFIELD PICKLES **CANDIED CRISPY WAFERS** 3 16-oz. Jars **\$1.00**

RAINBO **SWEET MIDGET PICKLES** 3 12-oz. Jars **\$1.00**

RAINBO CANDIED **DILL PICKLE STRIPS** 3 16-oz. Jars **\$1.00**

RAINBO **SWEET GHERKIN PICKLES** 3 16-oz. Jars **\$1.00**

EQUAL TO THE BEST—YET COSTS YOU LESS  
**dexo SHORTENING** 3 lb. Tin **69¢**

HOUSE OF GEORGE **TOMATO JUICE** 2 46-oz. Cans **45¢**

ANN PAGE  
**Mayonnaise**  
 Qt. Btl. **49¢**

SULTANA  
**Stuffed Olives**  
 Large and Small 10 1/2-oz. Btl. **49¢**

- GERBER BABY FOODS
- ASSORTED CEREAL 8-Oz. Pkg. **18¢**
  - HI-MEAT DINNERS 4 1/2-oz. Can **17¢**
  - NABISCO **RITZ CRACKERS** 12-oz. Pkg. **29¢**
  - VANILLA WAFERS** 9 1/2-oz. **25¢**
  - SALTINE CRACKERS** 16-oz. Pkg. **27¢**
  - A&P GRAPE JUICE** 24-Oz. Bott. **33¢**
  - PACKAGED BISCUITS GOLDEN RISE 3 Pkg. **25¢**

- SPARKLE **PUDDINGS** ASSORTED 4 Reg. Pkgs. **27¢**
- NUTLEY **MARGARINE** 2 1-lb. Pkgs. **33¢**
- ANN PAGE IMITATION **VANILLA EXTRACT** 8-oz. Btl. **15¢**
- ANN PAGE PURE LEMON OR **ORANGE EXTRACT** 1-oz. Btl. **19¢**
- ANN PAGE ANGEL FOOD **CAKE MIX** 17-oz. Pkg. **39¢**

- SULTANA GREEN **QUEEN OLIVES** 21-oz. Btl. **69¢**
- Ann Page **GRAPE JELLY** ..... **21¢**
- A&P FANCY **APPLE SAUCE** 2 16-oz. Cans **35¢**
- A&P FANCY **PINEAPPLE** ..... **27¢**
- Towie Mariachino—8-Oz. **CHERRIES** ..... **29¢**

- NIFTY FROZEN **WAFFLES** 5-oz. Pkg. **10¢**
- SULTANA **FRUIT COCKTAIL** 30-oz. Can **39¢**
- A&P FANCY **SALAD FRUITS** 16-oz. Can **35¢**
- CRESTMONT ASSORTED **ICE CREAM** 1/2-gal. Ctn. **75¢**
- ANN PAGE ICE CREAM **TOPPINGS** ASSORTED 2 4-oz. Jars **35¢**

TOILET SOAP <b>Cashmere Bouquet</b> 2 Reg. Bars <b>19¢</b>	TOILET SOAP <b>Cashmere Bouquet</b> 2 Bath Bars <b>27¢</b>
DEODORIZER <b>FLORIENT</b> 5 1/2-oz. Can <b>75¢</b>	DETERGENT <b>LIQUID VEL</b> 22-oz. Can <b>69¢</b>
KITCHEN CHARM <b>WAX PAPER</b> 100-ft. Roll <b>19¢</b>	DOG FOOD <b>RED HEART</b> 2 16-oz. Cans <b>31¢</b>
LIQUID BLEACH <b>CLOROX</b> 1/2-gal. Jug. <b>37¢</b>	BEAUTY BAR <b>VEL BAR</b> 2 Reg. Bars <b>39¢</b>



- Washington Golden Delicious **APPLES** ..... **lb. 19¢**
- Texas Ruby Red **GRAPEFRUIT** ..... **3 for 25¢**
- WASHINGTON **PEARS** ..... **2 lbs. 25¢**
- BANANAS** ..... **2 lbs. 25¢**
- OCEAN SPRAY FRESH CRANBERRIES**

Washington Extra Fancy Red Delicious  
**APPLES**  
 Pound ..... **15¢**

- TEXAS **ORANGES** ..... **5-lb. bag 39¢**
- Washington Extra Fancy Winesap **APPLES** ..... **lb. 15¢**
- CALIFORNIA **AVOCADOS** ..... **2 for 25¢**
- CALIFORNIA **LETTUCE** ..... **2 heads 25¢**

TOILET SOAP <b>PALMOLIVE</b> 2 Reg. Bars <b>19¢</b>	TOILET SOAP <b>PALMOLIVE</b> 2 Bath Bars <b>27¢</b>	DETERGENT <b>VEL</b> Gt. Pkg. <b>75¢</b>	AUTOMA Detergent Reg. Pkg.
---	---	--	----------------------------------

THE GREAT ATLANTIC & PACIFIC TEA COMPANY  
**A&P Super Markets**  
 DEPENDABLE FOOD RETAILERS SINCE 1859

Wh  
 Slic



RETURNS HOME

Mr. and Mrs. Jerry Lee Johnson and daughter, Lisa have returned to their home in Midway Park, North Carolina after spending three weeks in Texas. They visited Mr. Johnson's parents, Mr. and Mrs. Rone Johnson in Odessa and her parents, Mr. and Mrs. Cecil Cope. They were also guests in the homes of Mr. Johnson's grandparents, Mr. and Mrs. Omar Burkett, and Mrs. C. C. Street of Eastland.

ON HONOR ROLL

Clen Porter Doss of Eastland has been named on the high school honor roll at Schreiner Institute in Kerrville.



ALEX RAWLINS & SONS MONUMENTS WEATHERFORD, TEX. Serving This Community Since 1884 Phone LY4-2726

Home of Opal Cross Is Scene of Las Lealas Club Christmas Party

The attractively decorated home of Mrs. Opal Cross of Bell Hurst Drive was the setting of the Christmas party given in honor of the members of Las Lealas Club.

Hostesses for the Christmas party Monday evening were Meses Cross, Don Parker, Homer Smith and O. H. Dick.

Mrs. W. A. Leslie, in presenting "Christmas in our Hearts" by Charles Allen and Charles Wallis, stressed the true meaning of Christmas being the birth of Christ. She told how one should keep Christmas throughout the year and not only one day of the year.

"The Man Who Gave Us Santa Claus" was given by Mrs. A. G. Crosby, in presenting the "joy and fun" of Christmas. She used the poem, "The Night Before Christmas" as the background of her

IF IT'S METAL Decore Metal Products

306 E. Main Phone 288 SHOP WELDING PAINTING REPAIR

Sig Faircloth Receives Part of Record Shipment

A record-breaking shipment of an entire sixty car trainload of Texo cattle feed was shipped to Texo dealers December 15, according to Caddo Wright, Burrus Feed Mills livestock specialist.

Sig Faircloth, Eastland, local Texo Feed dealer, who received a part of this huge shipment, pointed out that cattlemen in this area are feeding higher quality feeds in spite of the excellent pasture conditions existing this year.

"Today's higher price on cattle demands that cattlemen provide a well rounded quality feeding program, not only to insure top marketing price, but to promote a better calf crop next year," Faircloth said.

A nutritionally balanced feed, along with the good available pasturage, aids in maintaining body weight and conditions cattle for the winter range conditions here in this area. It is the kind of feeding program that is the stepping stone to a better calf crop next year which plays an important part in the Southwest livestock picture.

This sixty-car trainload of cattle feed was possibly the largest shipment ever made in the Fort Worth area, nationally recognized as the cattle feed manufacturing center of the Southwest, Burrus Feed Mills co-managers Charles Harris and Wesley Ballmann said.

HOME FOR CHRISTMAS

Corp. Donald Webb is here visiting with his parents, Mr. and Mrs. D. E. Webb during the Christmas season. Corp. John E. McAllister is also visiting with his parents, Mr. and Mrs. E. E. McAllister during the holidays.

Both Corp. Webb and Corp. McAllister are stationed at Marine Base El Toro in Santa Anna, California.

T. L. FAGG REAL ESTATE Property Management Home and Farm Loans

Card of Thanks

We wish to take this opportunity to express our appreciation to our many friends and neighbors in Eastland and the surrounding towns for the beautiful floral, food, telephone calls and cards during the passing of our love one, Floyd King. May God bless each of you, The Family of Floyd King.

Enter Gold Medals Exciting Carnival of Christmas "TWIN STAR" CONTEST

WIN 52 PIECE CHEST OF NEW "TWIN STAR" STAINLESS GOLD MEDAL FLOUR 10-Pounds ..... 93c

Details In Abilene-Reporter Thursday, December 18th

FOOD VALUES!

These Specials Good Friday and Saturday

HEMET WHOLE SPICED PEACHES

No. 2 1/2 Can ..... 25¢

CLOVER FARM COFFEE

Drip or Reg. Lb. Can .... 66¢

KRAFT JET PUFFED Marshmallows

10-Oz. Pkg. .... 19¢

GERBER'S Baby Food

3 4 3/4-Oz. Cans 25¢

CLOVER FARM FRUIT Cocktail No. 303 Can 25¢

CLOVER FARM Short'n 3 Lb. Can 73¢

LIPTON'S Tea 1/4-Lb. Pkg. 39¢

GLENDALE CUT GREEN Beans 2 No. 303 Cans 27¢

GLENDALE CREAM Corn 2 No. 303 Cans 27¢

GLENDALE Peas 2 No. 303 Cans 29¢

CALIFORNIA FIRM CRISP Lettuce Giant Head 15¢

WASHINGTON EXTRA FANCY DELICIOUS Apples Lb. 15¢

TEXAS RUBY RED Grapefruit Lb. 10¢

U. S. NO. 1 CRISP Apples Lb. 13¢

GIVE FOOD



Betty Crocker CAKE MIXES WHITE HONEY SPICE 25¢ DEVILS FOOD PEANUT DELIGHT YELLOW MARBLE CHOCOLATE MALT

NOTICE... Come To Kendrick Drive-In Dairy

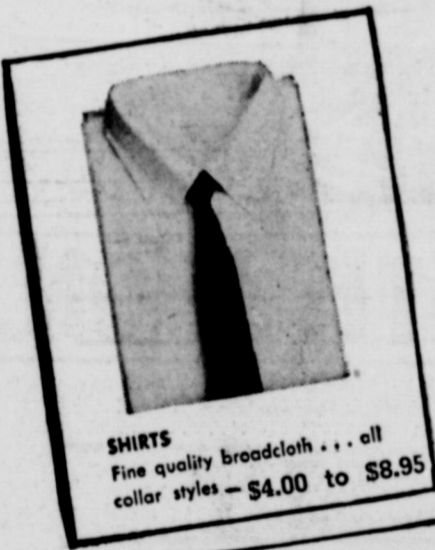
(Serving This Territory Since 1940) FOR Good, Clean JERSEY Sweet Milk Price - 70c Gal. Phone 896-J-2 - Located Highway between Eastland and Cisco



We've Something for Everyone in the FAMILY!

casual elegance by LOUART

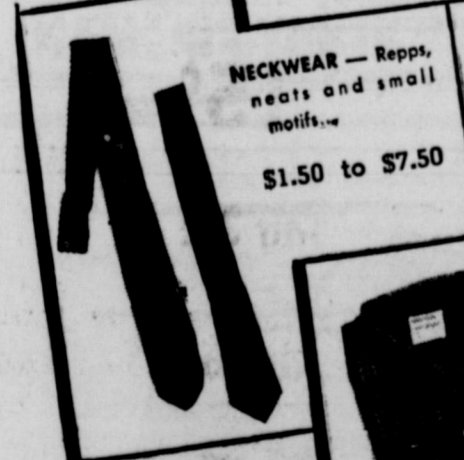
Dobbs - Stetson - Borsalino HAT GIFT BONDS A gift certificate enclosed in a miniature hat box entitles him to pick out his own hat! \$10.95 to \$25.00



SHIRTS Fine quality broadcloth... all collar styles - \$4.00 to \$8.95



HOSE - Colorful argyles... quick washing and drying stretch nylons \$1.00 to \$3.50



NECKWEAR - Repps, necks and small motifs... \$1.50 to \$7.50



SPORT SHIRTS In a variety of colorful fabrics and patterns. \$4.00 to \$13.95



The LOUART SPORT COAT in elegant Bouclé

a rich soft-to-the-touch fabric in subtle effects with casually spaced contrasting "nubs" that characterize the Bouclé texture. Why not come in today and try it!

\$35.00



WEDNESDAY VISITORS

Mrs. B. J. Parrish and daughter, Debbie, of Fort Worth accompanied Don Parker, who has been in a Fort Worth hospital, home and spent Wednesday with her parents, Mr. and Mrs. Don Parker.

Mrs. Homer White Is Hostess to Art Club at Christmas Luncheon

The Eastland Art Club had their Christmas meeting Monday at the home of its president, Mrs. Homer White, who lives north of the city.

Following the customs of the club for this particular meeting, each member carried a specially prepared dish for the traditional Christmas dinner. Each one carried a colorful and delicious work of culinary art "to please the palate"—having laid aside their palettes for this occasion.

Mrs. White's table was covered with a beautiful snow-white dinner cloth of almost transparently sheer linen, delicately hand embroidered in France. Together with matching napkins, it is an "heirloom piece" her sister brought from Italy and gave to her some years ago. Throughout the house,

decorations emphasized the beautiful and joyful significance of the season.

Grace was said by Mrs. Joe Tow and when the meal was finished the group gathered around the Christmas tree in the living room where gifts were exchanged.

Present were Meses. Roy Lawson, W. E. Lawson, Claude Maynard, H. B. MacMoy, Francis Urban, Joe Tow, Sidney E. Seale and Mrs. White's sister, Mrs. Carl Sims of Gorman.

Mrs. Marvin Hood was with her sister who is ill in a Dallas hospital, and Mrs. Ed Layton could not leave her school room for the party but she and Mr. Layton joined Mr. and Mrs. White for supper Monday evening. The Club's next meeting will be at Mrs. W. W. Walter's home.



Letters To Editor Eastland Telegram

SIR:

In regard to the new dial telephone system, we wish to congratulate the Southwestern Bell Telephone Co. for the wonderful service they have rendered in the past and I am highly for the new dial system just as soon as our financial condition can afford it. I am in favor of the telephone system standing as it is for the time being.

Respectfully,  
Jas. N. Jordan  
702 West Commerce

DEAR SIR,

It pleases us to leave the tele-

phone just as it is, especially the rates per month. If and when we wish to talk to Cisco or Ranger we will pay our bill as now and not have to pay more every month if we talk or don't talk. We hope it stays as is.

Millie Brittain  
Mr. and Mrs. J. R. Gilbreath

Editor,

As a citizen of Eastland I wish to say that I am strictly against the proposed change in our phone system.

I fail to see the advantage, except for those who have relative or business connections, in Ranger or Cisco. Would rather you do not mention my name.

Name Withheld

READ THE CLASSIFIEDS

TOWN AND COUNTRY  
ANIMAL  
HOSPITAL  
DR. SPENCER C. SPRUILL  
VETERINARIAN  
Large - Small Animal Practice  
Bathing - Boarding - Clipping  
Office Hours 8:00 to 12:00  
2:00 to 5:00  
Emergency Service  
PHONE 5491 TWO STORY BRICK  
OLD GORMAN ROAD  
DELEON, TEXAS

Look Who's New



Mr. and Mrs. E. E. McAllister Jr. of Abilene have announced the arrival of their baby girl, Kimberly Ilea. She was born Monday in the Hendricks Memorial Hospital in Abilene and weighed seven pounds.

Kimberly Ilea is the first grandchild of Mr. and Mrs. E. E. McAllister of Eastland and Mr. and Mrs. B. L. Jordan of 934 Beech Street in Abilene.

P. E. Moore of Stephenville is the great maternal grandfather. Mr. and Mrs. Clive McAllister of Route 5, Stephenville are also great-grandparents of Kimberly Ilea.

Kenneth Rudy Kamon is the new baby son of Mr. and Mrs. Robert Burton Kamon of Cisco. Kenneth Rudy was born in the Eastland Memorial Hospital Sunday morning and weighed seven pounds and 12 ounces.

Mr. and Mrs. Rudolph Kamon of Cisco are the paternal grandparents. Maternal grandmother is Mrs. Sam Hart of Cisco.

Kenneth Rudy is the great-nephew of John Hart of Eastland.

NOTICE  
FRESH DRESSED  
FRYERS  
and  
Fresh Dressed  
Hens  
At The Plant  
PHONE 110  
WALKER  
Dressing Plant

Ranger College Starts Holidays

Christmas Holidays at Ranger College start at noon tomorrow and continue through Jan. 4. Classes will resume on Monday, Jan. 5.

Students are preparing for trips all over the state and nation, most of them planning to go home over the Holidays. Teachers are also planning to spend the Holidays out of town, visiting friends and relatives.

Classes will dismiss next Tuesday, Dec. 23, at Ranger's public schools' for the Holidays. Students will return to classes on Jan. 5.

"Dead Week" at the College will be observed Jan. 19-24, with final exams beginning on Jan. 26. The fourth six-weeks period at the high school will start Jan. 19.

CALL 601 FOR CLASSIFIEDS

Funeral Directors

HAMNER FUNERAL HOMES

E. E. Hamner

Oxygen Equipped - Air Conditioned

Eastland  
Phone 17

Cisco  
Phone Hillcrest 21211

AMBULANCE SERVICE ANY WHERE ANY TIME

Nominal Cost Burial Insurance

For The Entire Family

Insurance AND Real Estate D. L. KINNAIRD Life - Fire - Auto - Farm Pollo - Bonds 39 years in the Insurance Business in Eastland

Enjoy both your home town paper and The Dallas News!

The Dallas Morning News DALLAS & TEXAS NEWS COMPLETE SPORTS COVERAGE FARM NEWS WORLD NEWS PICTURES, EDITORIALS, CARTOONS WORLD'S BEST COMICS TV TAB ON SUNDAYS THIS WEEK MAG. ON SUNDAYS

SUBSCRIBE! ALL THIS FOR ONLY \$1.75 PER MONTH!

The Dallas Morning News Marlin Cagle Phone 402-W YOUR LOCAL DALLAS NEWS DISTRIBUTOR

OR FILL OUT AND MAIL THIS COUPON

Subscription coupon form with fields for name, address, phone, and city.

NEW . . . DEAL

RE-MODEL—REPAIR

Up To 60 Months To Pay

\$3,500 Is The Limit

Well, if money is all you need, don't delay a minute more. It's easy and quick . . . obtaining one of our low-cost home loans. Like-rent monthly payments are tailored to suit your budget and needs. Call or come in!



HIGGINBOTHAM - BARTLETT CO.

Jack Elliott, Mgr.

301 W. Main

Phone 112 or 1014

Frontier News

The San Antonio Ledger says some fifteen thousand bushels of pecans have been brought to that city during the last three weeks.

The Bastrop Advertiser says a new jail is to be built in that county. There was a heavy rain in Bastrop on Friday last.

In connection with the overland mail route, the Patriot urges the necessity of a distributing office for the State, at Sherman.

BRENNHAM AND HEMPSTEAD RAILROAD

We learn from Col. W. M. Lewis that they have 100 hands at work on this road on the west side of Brazos river, and Col. L. only until the first of July, 1959, complete the road to Brenham.

Grass hoppers appear to be mostly left (from Travis) and those which remain hop as far as the length would seem to argue to do. A friend of the noticed one, yesterday slowly limping away and ankle, and an icicle to the end of his nose.

WATER-PROOF Roofing! We are prepared to work with this material. It is resistant to water, and IN-

elasticity and its superiority over other materials now in use. It is made of asphalt, tin or shingles and needs no re-tying. Shingles or metal are perfectly tight. H. S. & INGRAM

ILLEGAL SUBSTITUTION YES! EASTLAND IRON & METAL CO. OWNED AND OPERATED BY HENRY PULLMAN

Poinsettias

... say "Merry Christmas" most beautifully



• Poinsettias

Illustration of a child playing with a bicycle and a train.

WILL HOLD UNTIL SUBSTITUTION





*Merry Christmas!*

Season's Best to you... from all of us at **SAFEWAY**

# TURKEYS

U.S.D.A. Inspected and Graded Broad Breast — Ready to Cook



**HENS 41¢** **TOMS 35¢**  
 10 Pounds and Over Lb. 18 Pounds and Over Lb.

**DUCKLINGS**  
 Long Island, Ready to Cook A Pleasant Change Lb. **55¢**

**Chicken Hens** 4 to 6 Pound Average — Ready to Cook U.S.D.A. Inspected and Graded Lb. **39¢**  
**Turkeys** Bellville — Under 8 Lbs. Lb. **53¢** **Canned Ham** Rath Ready To Eat 5 Lb. Can **\$4.99**  
**Pork Sausage** Wings — Regular or Hot 2 Lb. Roll **69¢** **Standard Oysters** Check This Buy Pint Can **99¢**

**LUCERNE Egg Nog Mix**  
 Perfect for Any Holiday Party  
 Quart Size **55¢**  
**HOLIDAY FRUIT CAKES**  
 Perfect for Your Christmas Dinner  
 14-Oz. Pkg. **59¢** 1-Lb. 5-Oz. Pkg. Ring **89¢**  
**PLENTY OF CHRISTMAS CANDY AND NUTS**

*Coffee Sale!*  
**EDWARDS COFFEE**  
 All Grinds — Buy, Try, Compare... Why Pay More? 1-Lb. Can **75¢**  
**Frozen MINCE MEAT or PUMPKIN PIES**  
 So Easy to Prepare, Just Heat and Eat. Pat Ritz 24-Oz. Pkg. **45¢**  
**Whipping Cream** Lucerne 1/2-Pt. Can. **29¢**

**Libby Pumpkin** Perfect for Pies 2 303 Cans **29¢**  
**Cake Mix** Swansdown Apple Chips, Lemon Flakes, Banana 19-Oz. Pkg. **39¢**  
**Mince Meat** Little Cook 9-Oz. Pkg. **27¢**  
**Tea Timer Crackers** 1-Lb. Box **29¢**  
**Orange Coconut Mix** Swansdown 20-Oz. Box **39¢**  
**Pound Cake Mix** Swansdown — Golden 9-Oz. Box **39¢**  
**Angel Food Cake Mix** Swansdown 17-Oz. Box **53¢**  
**Angel Food Cake Mix** Swansdown Lemon Chip 16-Oz. Box **55¢**  
**Poultry Seasoning** Crown Colony 1-Oz. Can **15¢**  
**Shady Lane Butter** Finest Quality 1-Lb. Pkg. **67¢**  
**Cream Cheese** Kraft Philadelphia 2 3-Oz. Pkgs. **29¢**

**Brown Sugar** or Powdered Sugar Domino or Imperial 2 1-Lb. Boxes **25¢**  
**Ripe Olives** Town House Jumbo Fine For Salads 9-Oz. Can **23¢**  
**Cranberry Sauce** Ocean Spray Jellied or Whole 303 Can **21¢**  
**Fruit Cocktail** Town House 303 Can **23¢**  
**Pitted Dates** Dromedary 8 Oz. Pkg. **23¢**  
**Niblets Corn** All the Eating Fun of Fresh-Cooked Roasting Ears. 2 12-Oz. Cans **31¢**  
**Del Monte Peas** Early Garden Extra Tender 2 303 Cans **35¢**

**Zippy Gherkins** Sweet — Perfect for Salads 12-Oz. Jar **29¢**  
**Dill Pickles** Zippy — Whole 22-Oz. Jar **23¢**  
**Kitchen Craft Flour** 10 Lb. Bag **79¢**  
**Cake Mixes** Swansdown Instant, White, Yellow or Devils Food 20-Oz. Bag **25¢**

**SHORTENING** 3 Lb. Can **69¢**  
 VelKey, Creamy White and Smooth For All Your Holiday Baking

*Christmas Candies!*  
**Old Fashion Mix** Roxbury Candy 14-Oz. Pkg. **39¢**  
**Satin Mix** Roxbury Candy 14-Oz. Pkg. **33¢**

**Stuffing Bread** Mrs. Wright's — Perfect for Stuffing Poultry. Neutral Flavor. 1 1/2-Lb. Loaf **24¢**

*Finest Produce in Town!*  
**Pascal Celery** Crunchy Sweet Perfect for Salads Stalk **9¢**  
**Navel Oranges** Loaded With Juice. Special Buy for This Week-end. Lb. **15¢**

**Delicious Apples** Medium Size Extra Fancy Lb. **13¢**  
**Cranberries** Fresh — Perfect for Cranberry Sauce 1-Lb. Cello **19¢**  
**Large Avocados** Large California 2 for **25¢**  
**Large "A" Eggs** Breakfast Gems, Large Size, Grade A Quality Dozen **55¢**  
**Large "AA" Eggs** Cream of the Crop, Large, Grade AA Quality Dozen **59¢**  
**Green Giant Corn** Cream Style Golden 303 Can **19¢**  
**Deviled Ham** Underwood 4 1/2-Oz. Can **37¢**  
**Aluminum Foil** Reynolds Wrap 25' x 12" Roll **31¢**  
**Peanut Butter** Jif Creamy or Crunchy 12-Oz. Jar **43¢**  
**Ivory Toilet Soap** Personal 4 Reg. Bars **25¢**  
**Ivory Snow** Soap Powder Large Box **33¢**

**Russet Potatoes** Premium — Ideal for Baking Lb. **7¢**  
**Yellow Onions** Just Right Flavor Lb. **6¢**

**Truly Fine Hosiery**  
 Gift Wrapped Packages!  
 Beige or Taupe 60 Gauge 15 Denier 2 Pair **\$1.29** Beige or Sunstone Seamless 2 Pair **\$1.69**  
 WHILE SUPPLY LASTS

**Chunk Style Tuna** Chicken of Sea Green Label No. 1/2 Can **33¢**  
**Wax Paper** Kitchen Charm 100-Ft. Roll **19¢**  
**Morton Salt** Plain or Iodized 2 26-Oz. Boxes **25¢**  
**Maxwell House Coffee** Regular or Drip 1-Lb. Can **80¢**

*Holiday Nuts!*  
**Large Walnuts** Diamond 1-Lb. Cello **45¢**  
**Brazil Nuts** Large and Medium Washed 1-Lb. Cello **45¢**  
**Baby Walnuts** Emerald — Long Types 1-Lb. Cello **35¢**  
**Large Filberts** Perfect for Baking 1-Lb. Cello **43¢**  
**Mixed Nuts** All Your Favorites 1-Lb. Cello **49¢**

**Cragmont Beverages**  
 Why not serve the finest quality beverages for holiday entertaining?  
**MIXERS** 2 Full Quarts **23¢** **FLAVORS** 2 Full Quarts **19¢**  
 Plus Bottle Deposit

**Yellow Corn Meal** Kitchen Craft 5 Lb. Pkg. **35¢**  
**White Corn Meal** Kitchen Craft 5 Lb. Pkg. **39¢**  
**Instant Coffee** 15c Off Label Maxwell House 4-Oz. Jar **\$1.04**  
**Ritz Cheese Crackers** 8-Oz. Box **29¢**  
**Applesauce Cookies** Sunshine 16-Oz. Box **41¢**  
**Mortons Potato Chips** 4-Oz. Pkg. **25¢**

*Bakery Feature of the Week*  
**Mince Meat Snails** Holiday Special — Curry. Friday and Saturday Only. Reg. 23c 7-Oz. Pkg. **19¢**  
**Wheat Bread** Mrs. Wright's Sliced 1-Lb. Loaf **18¢**  
**Party Rye Bread** Stylark 1-Lb. Loaf **29¢**

**FREE!** 1/4-Lb. Sunnybank Margarine with the Purchase of **Sunnybank Margarine** 1-Lb. Pkg. **25¢**  
 Also includes 5c coupon on next purchase. While supply lasts.

**Paper Towels** Northern — Assorted Colors 2 Rolls **37¢**  
**Red Heart Dog Food** Assorted 2 1-Lb. Cans **31¢**  
**Kraft Salad Oil** Ct. Bottle **55¢**  
**Laundry Starch** Niagara 12-Oz. Box **21¢**  
**Modess Napkins** Regular 48-Ct. Box **\$1.39**  
**Northern Tissue** Assorted Colors 3 Rolls **27¢**  
**Trend Detergent** Giant Size 8oz. Box **49¢**  
**Trend Detergent** Liquid 32-Oz. Can **53¢**

**SAFEWAY**  
 Prices effective Thursday, Friday and Saturday, December 18-19-20, In Eastland  
 We reserve the right to limit quantities. No sales to dealers.



Looking for something?

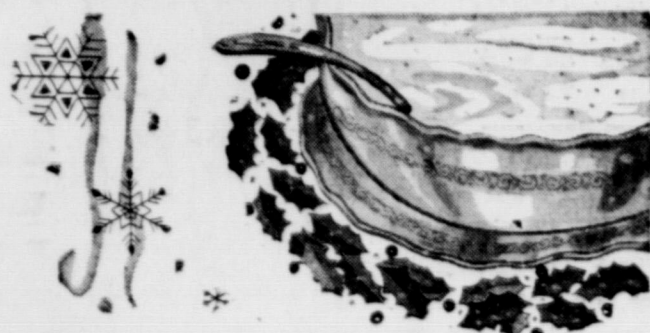
# LOOK TO THE WANT ADS

## The Car and its Companion

... are inseparable friends and should be. The car is useless and harmless without the driver. With the driver it may become most useful but never harmless. The operator of a motor vehicle never realizes his responsibility to the public until he has a wreck. Then it dawns on him that he is living in a world with other people who have plenty of personal and property rights. So car, if you move, move carefully, but never with a pal without adequate insurance protection.

### EARL BENDER & COMPANY

Eastland, Texas (Insurance since 1924)



## Holiday Hospitality

CALLS FOR CREAMY, DELICIOUS

# Boswell's PASTEURIZED EGGNOG



## Christmas Dinner Honors Members Past Matron Ass'n.

Members of the Past Matrons Association of the Order of the Eastern Star were entertained with a Christmas dinner and party by Mr. and Mrs. Claude Boles in their home, east of city, Monday evening.

Mrs. Venita Miller was co-hostess for the turkey dinner and Christmas party. Mrs. Annette Amis presented a Christmas story, "Joyful and Triumphant" by Etta Gilbert was related to the group by Mrs. Edna Oakley.

Gifts were exchanged before a lovely decorated Christmas tree. A lighted drive-way guided the guests to the Boles' home. Mr. and Mrs. Boles greeted the guests into their home which was beautifully decorated using the Christmas theme.

Attending the dinner were Moses, Laverne Wingate, Winnie Wynne, Mildred Amis, Elsie Fieney, Christine Cox, Bessie McWilliams, Edna Oakley, Beulah Cooper, Lena South, Sally Garrett, Velma Van Hoy, Mairaine James, Fannie Carpenter, Florine Martin, Mary L. Barton, Pebbles Boles and Venita Miller.

**MAJESTIC IN EASTLAND**

INTERSTATE'S NEW HANDY THRIFT

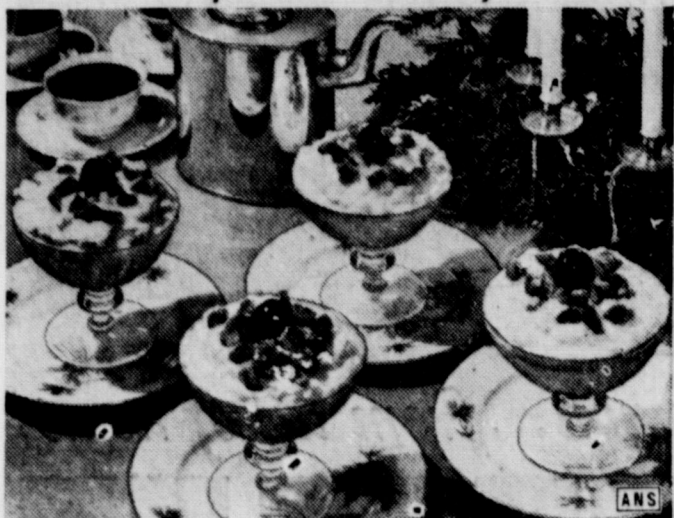
**BOOK OF THEATRE TICKETS**

A DISCOUNT BOOK WITH EACH BOOK AN IDEAL CHRISTMAS GIFT

ON SALE NOW

Coupon given with every dollar purchased for prizes of over \$130.00 in Sporting Goods at our Xmas Eve Gift Party Dec. 24th at 9:00 p.m. Furnished by Bruce Pipkin's Sport Center.

## Orient-Inspired Holiday Dessert



FROM THE ORIENT COMES THIS WONDERFUL IDEA of topping fluffy vanilla tapioca pudding with the tantalizing, sweet-sharp taste of diced candied ginger. A treat at any time of year, we recommend it highly as the perfect finish to a hearty holiday meal.

### CHRISTMAS PUDDING

- 1 egg white
  - 2 tablespoons sugar
  - 1 egg yolk
  - 2 cups milk
  - 3 tablespoons quick-cooking tapioca
  - 1/4 teaspoon salt
  - 2 tablespoons sugar
  - 1/2 teaspoon vanilla
  - 1/2 cup whipping cream
  - Diced preserved ginger
  - Nuts, coarsely broken
- Beat the egg white until foamy. Add 2 tablespoons sugar and continue beating with egg beater until meringue stands in soft peaks. Set aside.
- Mix egg yolk, milk, quick-cooking tapioca, salt, and 2 tablespoons sugar in saucepan. Cook and stir over medium heat until mixture comes to a full boil (5 to 8 minutes). Pour a small amount of hot mixture gradually into meringue, blending well. Quickly stir in the remaining tapioca mixture. Add vanilla. Let stand 15 to 20 minutes; stir. Then whip cream and fold into tapioca cream. Chill serve in sherbet glasses. Sprinkle with diced preserved ginger and nuts. Garnish with additional whipped cream and a cherry, if desired. Makes 5 or 6 servings.

## I GIVE YOU TEXAS

By BOYCE HOUSE

In Kansas City: A sign in front of a theatre which was showing "The Curse of Frankenstein": "It will haunt you forever."

I murmured, "Thanks for the warning"—and didn't go.

Another sign in Kansas City: "Mid-Summer Sale—Mixed Drinks at Reduced Prices".

A placard in a store window had this intriguing bit of information: "Jones Is Delightfully Air-Conditioned." The Jones referred to is a store, not a man.

The first cafeteria I entered, the piped-in music being heard at the moment was "San Antonio Rose" and, during my meal at another cafeteria, I was regaled with "That Good Old Baylor Line".

(However, the Kansas Citians probably thought they were hearing "The Good Old Summer Time.")

In one cafeteria, the cashier doesn't use an adding machine; she just looks at the contents of the tray, adds the items in her head and hands you a ticket with the total.

Incidentally, one of these eating establishments has a sign on the stairs, "Use the Hand Rail". As it requires two hands to carry the tray, only an octopus could obey the admonition.

Four strangers (myself among the number) were waiting for a special ballpark bus to see the Kansas City Athletics play but found that the service was not provided that day so we shared a

## Winter Care Gives Machinery Longer Life

College Station.—Up to 30 percent can be added to the life of farm machinery by giving it proper winter care. And, too, points out W. L. Ulich, extensions agricultural engineer, time will be saved in getting the machinery back on the job when it is needed.

Gasoline, he says, should be drained from auxiliary motors. Spark plugs should be removed and three or four ounces of cylinder oil dropped into each cylinder. The motor should be turned a few times to distribute the oil and the plugs replaced.

While the machines are in storage, Ulich suggests that they be thoroughly checked for worn and broken parts. Repairs can be made during the slack season and no time will be lost when the machines are again needed in the field.

Since spraying machines are precision equipment, Ulich says they need special care at storage time. The sprayer should be flushed with warm, soapy water and rinsed with clear water. Dismantle the equipment and drain the tank, pump, valve, hoses, pipes and nozzles. All water should be removed to prevent possible damage from freezing, says the engineer.

A light coating of oil should be applied to the inside of the tank after it has dried and metal piston and gear pumps should be filled with oil. Nozzles should be cleaned and stored where they will not be damaged. Farm costs can be cut and machinery life lengthened by proper winter care, concludes Ulich.

## CALL 601 FOR CLASSIFIEDS

### JOY DRIVE-IN

Cisco - Eastland Highway

Thurs. - Fri. - Sat. Open 6:30 - Starts 7:00

She's red-hot and deadly!

**A Shocker!**

**COP HATER**

Revised by THE UNITED ARTISTS

PLUS

Everything you've heard about them is TRUE!

**"ISLAND WOMEN"**

Revised by THE UNITED ARTISTS



## TELEPHONE TALK

By W. H. McAnally, Manager

Do you have your Christmas tree up and decorated? We can't help you put the tree up but we sure can help you with some of the decorations—that is, the decorations that go under the tree.

A lot of presents under a tree cannot be disguised. Folks know what it is by the shape of the package. That isn't true when the package contains a colored telephone.

### Helpful Hints for Husbands

If most of you husbands are like me, you fall into the same old trap every Christmas.

You go out and buy your wife that special something she wants, then sit back and relax, happy in the thought that you're going to please her. Suddenly, about a week before the big day, you realize all your eggs are in one basket. Mom will have one nice gift—but that's all. Everyone else, meanwhile, will have several packages under the tree.

If this is about to happen at your house this year, here's an idea.

Give Mom a color extension telephone for Christmas. We'll give you a colorful gift-wrapped miniature to put under the tree with the other presents, then have the real one hooked up after Christmas.

Table phones now come in nine pretty colors. The new wall phones, so popular for kitchens, are available in seven colors. The cost is \$10 plus installation.

### Holiday Greetings

Before the holiday season is upon us, I'd like to wish everyone a "Merry Christmas" and "Happy New Year" from all of us here at the telephone company.

Call by number. It's twice as fast.

SOUTHWESTERN BELL TELEPHONE COMPANY

## THIS WEEK'S MEAT VALUES

Seven Roast	Corn Fed Table Trimmed	Lb.	55¢
Pork Roast	Lean Shoulder	Lb.	43¢
Sausage	Whole Hog	Lb.	49¢
Sausage	Country Style	3 Lbs.	\$1
Bacon	Gooch's Ranch Style Sliced	2 Lbs.	1.09
Stew Meat	Lean Boneless	Lb.	59¢
Pork Chops	Center Cuts	Lb.	59¢
Pork Hams	Half or Whole	Lb.	55¢
Bar-B-Q	Pit Cooked Boneless	Lb.	98¢

## Fresh Dressed TURKEYS

ANY SIZE PLACE YOUR ORDER NOW

# EARNEST Frozen Food Center

210 South Lamar

Phone 11

**MAJESTIC IN EASTLAND Friday & Saturday**

EASY GOLD! EASY LIPS! EASY DEATH!

**MONEY, WOMEN and GUNS**

JOCK MAHONEY KIM HUNTER TIM HOVEY GENE EVANS COLOR CINEMASCOPE

The "Shoot 'Em Up" That Is Different!

**RANGER DRIVE-IN**

HIGHWAY 80 EAST ON RANGER HILL

Box Office Opens 6:30 - Show Starts 7:00

Adults 50¢—Kiddies Under 11 Free

Only Eastland County Drive-In With All Year Operation

LAST TIMES FRIDAY

Paramount Presents **THE COLOSSUS OF NEW YORK**

TOWERING ABOVE THE SKYLINE!

starring BARAGREY POWERS KRUGER HUTTON MARTIN

Plus Our Second Feature

Paramount Presents **THE SPACE CHILDREN**

THE CHILDREN OF EARTH ENSLAVED BY "THE THING" FROM OUTER SPACE!

starring MICHEL RAY

Presented by Adam Williams Peggy Webber William Allard Jack Arnold Bernard C. Schofield

SATURDAY ONLY

ROARING, SCORCHING, WILD!

JOEL MCCREA VIRGINIA MAYO

**THE TALL STRANGER**

CINEMASCOPE COLOR BY DELUXE

AN ALLIED ARTISTS PICTURE

FREEVUE EVERY SATURDAY NIGHT

## COLD SUFFERERS

Get STANBACK, tablets or powders, for relief of COLD DISCOMFORTS. The STANBACK prescription type formula is a combination of pain relieving ingredients that work together for FASTER RELIEF of HEADACHE, NEURALGIA and ACHING MUSCLES due to colds. STANBACK also REDUCES FEVER. SNAP BACK with STANBACK.

She'll Always Treasure Your

# Christmas Gift of a LANE CEDAR CHEST!

Our Collection of Beautiful Lane Chests Starts at Only **49.95**

Best buys will go fast... So hurry! All with Lane's famous features, superb craftsmanship.

We Will Deliver Any Item You Buy On Christmas Eve Free Delivery Easy Terms

MANY OTHER GIFTS TO CHOOSE FROM... Lamps, Pictures, Mirrors, Chairs, Tables, Card Tables, Heaters, Dinettes.

Coats Furniture Ltd.